

# Chicago Industrial Chess League

Bulletin 4,  
Volume 36  
January, 1993

## INSIDE THIS ISSUE:

**More Annotated Games**

**Featured Articles -**

- 2 Squares Column by Marv Cox
- Kumro's Korner

**A Few Words from the Editor**

**CICL Ratings List**

***NEED INPUT!*** To make the CICL bulletin even better, we are looking for anyone interested in submitting articles or games. If you are interested, call or write:

**Bulletin Editor - James Hodina**  
**Home: 708/799-5571**  
**Work: 312/856-2762**

**CICL OFFICERS**  
As of September 10, 1992

Addresses/Phones are listed in order of preference

<b>PRESIDENT</b>	<b>Anthony Jasaitis</b> P.O. Box 664 Bedford Park, IL 60499-0664	312-431-2966 (W)
	<b>Chicago Research &amp; Trading</b> 33rd Floor 440 S. LaSalle Chicago, IL 60605	708-448-4967 (H)
<b>SECRETARY</b>	<b>Leonard Spiegel</b> MS 219 Fermilab Batavia, IL 60510	708-840-2809 (W) 708-377-2675 (H)
<b>TREASURER</b>	<b>Wesley K. Underwood</b> 207 S. Dorchester Ave. Wheaton, IL 60187	708-752-5127 (W) 708-462-0393 (H)
<b>RATINGS CHAIRMAN</b>	<b>Charles Ward</b> 615 S. Lincoln Hinsdale, IL 60521	708-325-3885 (H) 708-979-4599 (W) 708-979-8451 (FAX)
<b>BULLETIN CHAIRMAN</b>	<b>James Hodina</b> 718 Central Park Ave. Flossmoor, IL 60422	312-856-2762 (W) 708-799-5571 (H)
<b>NORTH DIVISION</b>	<b>Leonard Augsburg</b> 16 N. Fiore Vernon Hills, IL 60061	708-632-5102 (W) 708-816-1649 (H)
<b>EAST DIVISION CHAIRMAN</b>	<b>William Cooper</b> 7035 W. Imlay Chicago, IL 60631	312-765-3493 (W) 312-763-1567 (H)
<b>NEAR WEST DIVISION CHAIRMAN</b>	<b>Dan Kumro</b> 802 S. Elmhurst Ave. Mount Prospect, IL 60056	708-259-4981 (H)
<b>FAR WEST DIVISION CHAIRMAN</b>	<b>Irwin Gaines</b> Fermilab - m/s 127 P. O. Box 500 Batavia, IL 60510	708-840-4022 (W)

## A WORD FROM THE EDITOR

Welcome, welcome, welcome to another issue of the CIGL Bulletin. Do you like the new cover? I understand that this is the "Official" logo of the CIGL and I thought I would explore my artistic half and try to use it to spruce up the bulletin. As usual, I have a few things to talk about, so without further ado.....

**US Amateur Team Championship** is coming to the Chicagoland area February 13-15. Our President, Tony Jasaitis, sent out a letter to all team captains recently and announced his obvious support for this tailor made event for the CIGL. More to the point, however, is the fact that the CIGL will financially supplement any CIGL team's entry fees. For more details, refer to the advertisement in the bulletin and Tony's letter considering the CIGL policy statement on this event.

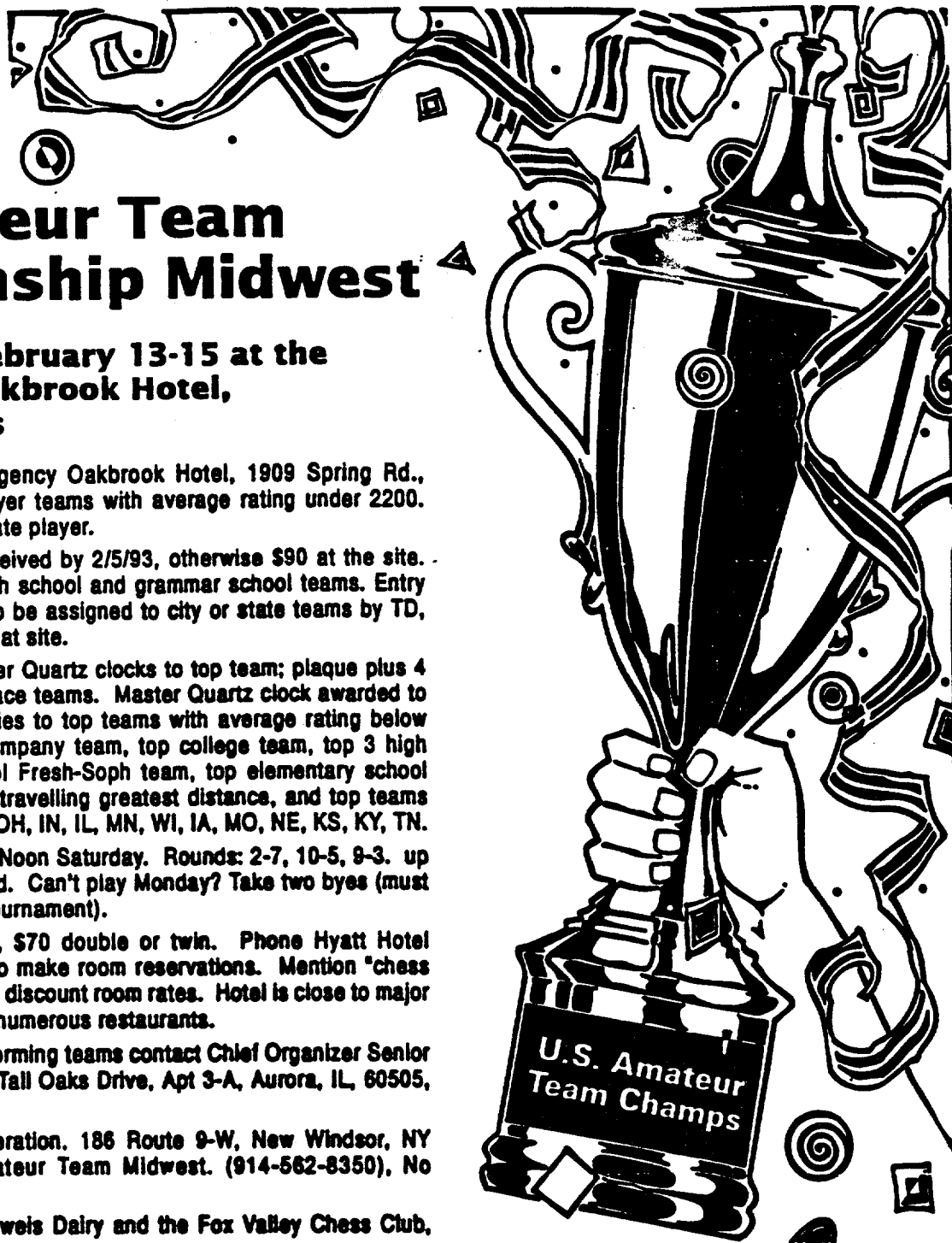
**Banquet Announcement** - The date of the Annual CIGL Banquet has been moved to June 18th. It will still be in the same great location as always, Harvey's Prime Rib. More details on this event will be made available as the date approaches.

**CIGL Officers** - As with everyone, the CIGL is looking for a few good men. Specifically, a few of the CIGL offices will be vacated. First and foremost to my heart is the Bulletin Editor. Yes, after two years I feel I need a break. The job requires a bit of time, 8-10 hours per issue, but I will be more than happy to assist in the transition. A computer is a great help and time saver, but not a requirement. Secondly, the East Division Chairman position will be open. With several new teams to the league and particularly this division, it is a great opportunity for some new blood to get involved with the league's organization. If you are interested, or if any other current officers are considering stepping down, give Tony Jasaitis a call.

**CIGL Best Game Awards** - I would like to remind everyone of the awards for games submitted to the bulletin. There are five awards this years for **Best Sacrifice, Best Salvage, Best Upset, Best Endgame, and Best Annotated Game**. These prize categories are pretty self explanatory, except possibly for the Best Annotated Game. A recent submittal had the accompanying query: " Enclosed is a game for publication the CIGL Bulletin. I'd also like it nominated for Best Annotated Game. I don't know if that means the best game with annotations or the game with best annotations." After much thought on this subject, I have a definitive answer for both interpretations - "YES". They must go hand in hand. The game in itself must be played well and be interesting enough to warrant being annotated. After all, there is not much to annotate on 1.f3, e5 2. g4, Qh5++. However, how many times have you seen shotty analysis on a very complex and interesting game. My quote above came from Mark Siwek, and as he went on to say, "....I think it stands up to either criteria." - As it should. If your still unsure, check out Mark's game in this bulletin and I think you will see what I mean.

**Near West Division Report** - Dan Kumro Chairman

Leading the pack in the near west are the Argonne Knights with a perfect score of 6 wins, no losses, and no draws. Close on their heels are the Rockwell Challengers with 4 wins, 2 losses, and no draws. Last year's second place trophy winners were the AT&T chargers who are off to a very poor start with 4 losses.



# U.S. Amateur Team Championship Midwest

**6-Round Swiss, February 13-15 at the  
Hyatt Regency Oakbrook Hotel,  
Oakbrook, Illinois**

6-SS, 50/2, 15/30, Hyatt Regency Oakbrook Hotel, 1909 Spring Rd., Oakbrook, IL. Open to 4-player teams with average rating under 2200. Each team allowed one alternate player.

**ENTRY FEE:** \$80/team if received by 2/5/93, otherwise \$90 at the site.

Special half price entry to high school and grammar school teams. Entry fee for individuals who wish to be assigned to city or state teams by TD, \$20 if received by 2/5/93, \$25 at site.

**PRIZES:** Plaque plus 4 Master Quartz clocks to top team; plaque plus 4 BHB clocks to 2nd and 3rd place teams. Master Quartz clock awarded to top player each board. Trophies to top teams with average rating below 2000, 1800 and 1600, top company team, top college team, top 3 high school teams, top high school Fresh-Soph team, top elementary school team, best team name, team travelling greatest distance, and top teams from the following states; MI, OH, IN, IL, MN, WI, IA, MO, NE, KS, KY, TN.

**REGISTRATION:** 8 a.m. - 12 Noon Saturday. Rounds: 2-7, 10-5, 9-3. up to two half-point BYES allowed. Can't play Monday? Take two byes (must request byes before start of tournament).

**HOTEL RATES:** \$60 single, \$70 double or twin. Phone Hyatt Hotel 708-573-1234 before 2/5/93 to make room reservations. Mention "chess tournament" to receive special discount room rates. Hotel is close to major shopping malls, theaters and numerous restaurants.

**INFORMATION:** For help in forming teams contact Chief Organizer Senior Master Richard Verber, 1970 Tall Oaks Drive, Apt 3-A, Aurora, IL, 60505, or 708-978-1380.

**ENTRIES:** U.S. Chess Federation, 186 Route 9-W, New Windsor, NY 1255S, Attention: U.S. Amateur Team Midwest. (914-562-8350), No smoking. No computers.

**SPONSORED BY:** The Oberweis Dairy and the Fox Valley Chess Club, Aurora, Illinois.

**TALK TO YOUR CHESS FRIENDS TODAY TO PLAN YOUR 4-MAN TEAM!**

**PLEASE MAIL YOUR TEAM OR INDIVIDUAL ENTRY TO USCF BEFORE FEB.3RD.**

*List Names, Ratings, ID #, and USCF Expir. Date for all Team Members.*

Board 1. \_\_\_\_\_  
Board 2. \_\_\_\_\_  
Board 3. \_\_\_\_\_  
Board 4. \_\_\_\_\_  
Alternate (if any) \_\_\_\_\_  
TEAM NAME \_\_\_\_\_

**Note: Boards must be assigned in order of January 1993 ratings.  
Make your check payable to U.S. Chess Federation.**

**PIRC DEFENSE  
Austrian Attack**

W: M. Siwek (2166)  
B: M. Stevanovic (2270)

Annotations by Mark Siwek

1. e4, d6 2.d4, Nf6 3.Nc3, g6 4.f4. A dangerous decision. Prior to this game, I had tried the Austrian Attack against Stevanovic's Pirc three times, with perfect score: 0 wins, 3 losses. I've done better with other systems.

4...., Bg7 5.Nf3, O-O 6.Bd3, Na6. Most common is 6...., Nc6. White can then try 7.e5 or 7.O-O. In The Pirc for the Tournament Player, John Nunn says the latter is more testing, and cites the game Parma-Eising, Mannheim 1975, giving White a small plus after 7.O-O, Bg4 8.e5, dxe5 9.dxe5, Nd5 10.h3, Nxc3 11.bxc3, Bf5 12.Be3, Qd7 13.Qe2, Rad8 14.Rad1, Bxd3 15.cxd3, b5 16.d4, Qd5 17.c4, bxc4 18.Rc1.

The text is a favorite, not only of Stevanovic's, but also of Bell Labs Dragons' Frank Tegel, who used to play in the North Division. I've thus debated this position several times in CICL play.

7.e5, Nd7 8.Ne2. White's alternatives are 8.e6, 8.h4, 8.O-O, 8.Qe2, 8.Ng5, 8.Be3, and 8.Ne4, which I previously tried. After 8.Ne4, c5 9.c3, cxd4 10.cxd4, two examples are: (1) 10...., Nb4 11.Bb1, dxe5 12.Qb3?!, Nc6 13.fxe5, Nb6 14.Be3, Bg4 15.Ned2, Na5 16.Qd3, Rc8 17.O-O, Nac4 18.Nxc4, Nxc4 19.b3, Nxe3 20.Qxe3, f8 21.Bd3, Qb6 22.Kh1, Bxf3 23.Rxf3, fxe5 24.dxe5, Rxf3 = Siwek-Stevanovic, CICL 1985-86. (2)

10...., Nb4 11.Bb1, dxe5 11.fxe5, Nb4 12.Bc4!? Nb6 13.Bb3, Bg4 14.O-O, Nbd5 15.Kh1, Bxf3 16.h3, Bf5 17.Ng3, Bd3 18.Rf2, Bb5 19.Ng5± Siwek-Tegel, CICL 1984-85.

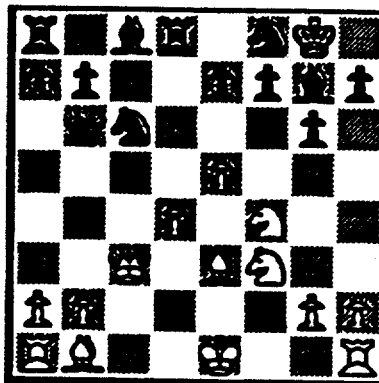
8...., c5 9.c3, cxd4 10.cxd4, Nb4. I began looking at 8.Ne2 after being impressed by the game Frisk-Boles, USCF Thematic (Postal) Tournament 1990-91 which saw 10...., dxe5 11.fxe5, f8 12.Qb3+, Kh8 13.Nf4, Qb6 14.e6, Qxb3 15.axb3 16.Nh4, Nc7 17.Nhxf6+, hxf6+ 18.Nxf6+, Kg8 19.Nxe7+ 1-0.

11.Bb1, dxe5 12.fxe5, Qb6. I don't like this move; it makes it hard for Black to develop. Preferable would be 12...., Nb6 13.O-O, Nbd5 followed by 14...., f6.

13.Nf4. Played primarily to restrict ...., Nd5, though it redeposits the horse to a more active post and hints at a possible e6.

13...., Rd8 14.Qb3. Developing with possible threats along the a2-g8 diagonal and eliminating the pin on the d-file. Black's next is an awkward move, but how else is he to defend and develop?

14...., Nf8 15. Be3, Nc6 16.Qc3.



After 16.Qc3

I thought about this for a long time, examining the complications after 16.Qxb6, axb6 17.d5?! or 17.O-O. After 17.d5?!, Nxe5 18.Nxe5, Bxe5 19.Bxf3, Nxd4 20.Bxd4, Rxd4 21..Nd5 followed by Nxb6 after either 21...., e6 or 21...., Re8 seems playable. However, I decided the text was not only superior, but safer, Black's reply is now forced, else 17.d5

16...., Qa5 17.Be4. I considered 17.h3 and 17.O-O as well as the text. I thought 17.Be4 was most active, developing the cleric to a post where it could preach to both sides of the board, protecting my Knight (after ...., Bg4)m and threatening Bxc6 at an opportune moment.

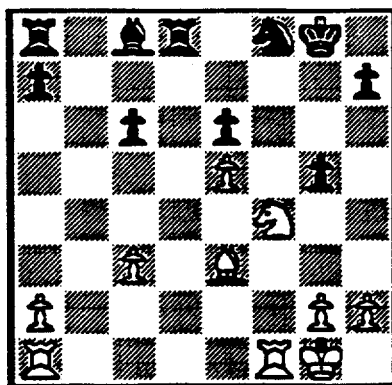
17...., f6. Thematic. Black might have been saying to himself, "If I can't play this, my game is no good."

18. O-O Qc3 19.bxc3, fxe5 20.Bd5+? I was proud of myself for playing this in-between move, the purpose of which was bury the Black Queen Bishop. Besides 20...., e6, I also examined the reply 20...., Kh8, considering 21.Ng5, exf4 22.Nf7+. However, the text should lose material (see the note to Black's 21st move).

For kicks, I programmed this position into my chess computer and had it play itself. It gave 20.dxe5, Nxe5 21.Nxe5, Bxe5 22.Nd5, Re8 (else the Ne7+ intrusion) 23.Bc5, Bd6 24.Bxd6, exd6 25.Nf6+ winning the exchange as "best play."

20...., e6 21.Bxc6, bxc6? I saw 21...., exf4 22.Bxb7, Bxb7 23.Bxf4 when I played 20.Bd5+, but doesn't that lose material? Black gets a question mark for returning the favor and failing to take advantage of White's inaccuracy.

22.Nxe5, Bxe5 23.dxe5, g5?



After 23.... g5?

A mistake, allowing White to penetrate on the Kingside. My opponent either overlooked my reply or underestimated its strength.

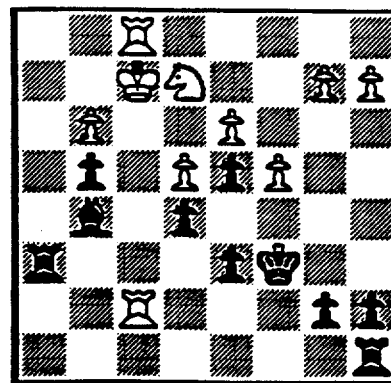
24.Nh5, h6 25.Rf6, Kh7 26.h4, Ba6 27.hxg5, hxg5 28.Bxg5, Rdb8. I thought Stevanovic might have tried counterplay on the d-file with 28...., Rd3. At this point, both player were beginning to experience time trouble.

29.Rd1, Rb2 30.Nf4, Bc4 31.Bh6, Kg8 32.Rd4, Bxa2 33.Nd3, Rb1+ 34.Kh2, Nh7. Starting with this move, we began plying "blitz chess" in a desperate attempt to make the time control. It's probably appropriate to make little comment on the remaining moves, as there were undoubtedly much better alternatives to be found—if we had had the the time. Nonetheless, the quality of play was still pretty good.

35.Rg6+, Kh8 37.Bh6+, Kh8 38.Nf4, Rb2. If 38...., Rg8, 39, Rxg8+, Kxg8 40.Rd8+, Kf7 41.Rd7+ Ke8 (41...., Kg8 42.Ng6 followed by Rg7 mate) 42.Rxh7 wins the Knight.

39. Nxe6, Bxe6 40.Rxe6, Rb7 41.Rxc6 a5 42.Rcd6, Rbb8

43.e6, a4 44.e7, Nf6 45.Rd8+ Kh7 46.Rxb8, Rxb8 47.Bg5 1-0. Black's flag fell in what, of course, is a lost position. White had about a minute left to reach move 50. This was probably the most intense time scramble I've ever been involved in. If you'll pardon the pun, I hope it's a long time until I see my next one!



After 23. Kf2

## ENGLISH OPENING

W: R. Osterlund, (1976)

B: P. Sajbel (1739)

### Exemplars vs UOP

Annotations by Mark Shwek

UOP's fifteen-match unbeaten streak came to an end at the hands of the Exemplars but I managed to save some face for our team with this win.

1.c4, Nf6 2.g3, c5 3.Bg2, Nc6 4.Nc3, e6 5.e4, Be7 6.Ne2, d6 7.O-O, h5 8.h4, e5 9.d3, Nd4 10.Nxd4, cxd4 11.Ne2. White's knight is trapped at e2 unless it can break out through f4.

11...., Nh7. If the saying "a knight on the rim is grim" is true, the square next to the corner could be even work; h7 best be a short-lived home for the horse until g5 can be freed.

12.f4, Bg4 13.f5, g5 14.fxg e.p. 15.Qe4+, Qd7 16.Qxd7, Kxd7 17.Bf3. The white knight is still blocked in and must be guarded.

17...., g5 18.Bxg4+, hxg4 19.hxg5, Nxg5 20.Bxg5, Bxg5 21.Rf7+, Kc6 22.Raf1, Rh6! Threats of Be3+ and Rah8 now leave White with few options.

23.Kf2

23...., Bd2!! The king's flight to safety is blocked! For example; (a) 24. Rd1, Rh2+ 25.Kf1 (if 25.Kg1, Rxe2), Rh1+ 26. Ng1 (if 26. Kg2, Rxd1), Be3 27.Kg2, Rah8, threatening R8h2++. (b) An attempt to clear f1 for safety is countered by 24.Kg2, Rah8 25.Rf2 (or Rg1) Be3.

24.Rg1, Be3+ 25.Kg2, Bxg1 26.Nxg1, Rah8 27.Kf1, Rh2 28.Ne2, Rh1+ 29.Ng1, R8h2 and White resigns.

The  
2  
Squares  
Column

by Marv Cox

*"If two (or more) squares are attacked more times than they are defended they may fall."*

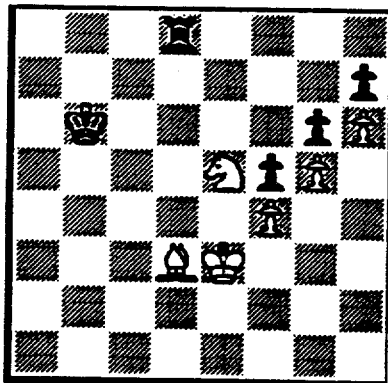


Diagram 56

White has a pawn on the sixth. If he can advance the g pawn he can invoke the famous dictum that two united unattacked pawns on the sixth are stronger than a rook. To do this White would have to eliminate Black's g and h pawns. We now have an idea for a 2-squares attack. Consider the squares f5 and g6. They are attacked by two white pieces and guarded only once, by the pawn on h7. The pawn on g6 does not count as a guard because it is on one of the 2-squares under attack.

1.Nxg6, hxg6 2.Bxf5 3.g6. The dictum has been invoked and black can not prevent White from queening. Incidentally, this shows what can be done with a "good bishop". A "good bishop" by definition is on squares of opposite color to its own pawns. A "bad bishop" is on squares the same color as its own

pawns. A "bad bishop" could not have assisted the pawns to queen.

*"If two (or more) squares are attacked more times than they are defended they may fall."*

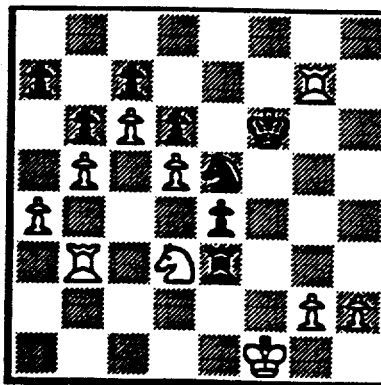


Diagram 57

I was white and had just captured my uncle's rook on g7. I expected him to recapture and I would move my knight to c5. Instead he did....

1...., Nxd3. The clever old fox had captured a piece, threatened mate, and left my rook hanging, all in one move. Could he really do this to me? No! No! No!

2.Rxd3, exd3 3.Rg3, d2. And his pawn queens. How did he do it? My uncle merely saw that by getting his knight to d3 he would set up a 2-squares attack against e1 and g7. Three attacks and only one guard.

*"If two (or more) squares are attacked more times than they are defended they may fall."*

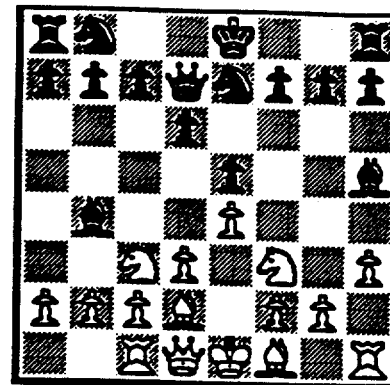


Diagram 58

Beware of pinning the K's knight against the queen by means of a bishop. Sometimes the pinned knight can become a swish-on-zug piece. In diagram 58 the knight can move, capture e5, and set up a 2-squares attack against d7 and h5.

1.Nxe4, dxe5 2.Qxh5. And White has won a pawn. Or Black can get fancy in his attempt to save the pawn:

1.Nxe5, Bxd1 2.Nxd7, Bxc2. 3.Nxb8, Bxc3 4.Bxc3, Ba4 5.b3, Bb5 6.a4, Bxa4 7.f3 8.e2, Rxb8. And White has won a minor piece for a pawn.

to play good chess, but it helps."

**Kumro's Korner  
by Dan Kumro**

I would like to apologize since part of Kumros Korner went astray for the last bulletin. I must admit my question about the oldest rivalry in the CICL was rather a trick question. The rivalry started over 50 years ago and not with direct "OTB" (over the board) play. Since the CICL was started in 1957, this early rivalry had ended in 1940 with the onslaught of WWII. In fact, it started shortly after WWI in the year 1920.

Those two teams that played telegraphic matches were the AT&T Chargers and the Bell Telephone Laboratory Dragons! However, the team names were not the one's used in the 1920' and 1930's. The rivalry started in 1920 quite a few years before the CICL was formed. These two teams have been going at it for over 72 years. However, there was lengthy lapse due to a couple of real wars and not wars over the chess board!

Sorry, I know my answer was more of a "shaggy dog's tale" and I promise the next answer will be short and sweet.

Question: "What team won the first six man team CICL Championship."

*On the lighter side.* US Grandmaster Larry Evans once gave a simultaneous exhibition in an insane asylum. He probably played about 30 or 40 boards, and after it was over he had lost one game. Larry mentioned the guy that beat me said, "You don't have be crazy



**Ratings Chairman's Report**

**NEXT FAX WINDOW**

The next deadline for ratings submission is Saturday, February 20. Team captains can make last minute submissions by fax during the week of February 15; prior to that the U.S. mail will be sufficient for submitting results.

-- Charlie Ward  
Ratings Chairman

NORTH DIVISION 01-17-1993

TEAM NAME	W	L	D	GAME POINTS	MATCH POINTS	PCT
EXEMPLARS	4	1	0	20.5	4.0	0.800
SEARS	3	0	2	19.5	4.0	0.800
UOP PROCESS DIV.	3	1	1	18.5	3.5	0.700
MOTOROLA	3	1	0	16.5	3.0	0.750
FRANKLIN-WATTS	2	2	1	15.5	2.5	0.500
KEMPER INSURANCE	1	2	2	13.5	2.0	0.400
NORTHROP CORP.	0	5	0	7.0	0.0	0.000
FEL-PRO	0	4	0	3.0	0.0	0.000

EAST DIVISION 01-17-1993

TEAM NAME	W	L	D	GAME POINTS	MATCH POINTS	PCT
CHICAGO RES. & TRDG.	6	0	0	32.5	6.0	1.000
CHICAGO POST OFFICE	5	0	1	26.5	5.5	0.917
ALUMNI CENTRAL	5	1	0	25.0	5.0	0.833
COLUMBIA COLLEGE	4	3	0	23.0	4.0	0.571
AMOCO CORP.	3	3	0	17.0	3.0	0.500
CTA ROAD	3	4	0	16.5	3.0	0.429
CONTINENTAL BANK	2	5	0	15.0	2.0	0.286
HULL TRADING CO.	1	3	1	12.0	1.5	0.300
CTA RAIL	0	5	2	14.0	1.0	0.143
CHICAGO MERC. EXCH.	1	6	0	10.5	1.0	0.143

NEAR WEST DIVISION 01-17-1993

TEAM NAME	W	L	D	GAME POINTS	MATCH POINTS	PCT
ARGONNE KNIGHTS	6	0	0	28.0	6.0	1.000
ROCKWELL INT'L	4	2	0	20.0	4.0	0.667
J. I. CASE	2	4	0	16.0	2.0	0.333
AT&T CHARGERS	1	5	0	11.5	1.0	0.167
A & B RADIO	1	5	0	10.0	1.0	0.167

FAR WEST DIVISION 01-17-1993

TEAM NAME	W	L	D	GAME POINTS	MATCH POINTS	PCT
BELL LABS ROYALS	5	1	0	25.5	5.0	0.833
BELL LABS DRAGONS	5	0	0	22.5	5.0	1.000
FERMILAB	3	2	0	17.0	3.0	0.600
AMOCO RESEARCH LABS	1	4	0	11.0	1.0	0.200
AT&T TYROS	0	5	0	6.5	0.0	0.000

17-NOV-92 J. I. CASE  
ROUND 4

2 ARGONNE KNIGHTS

4

BD	RATINGS	SCORE	RATINGS	SCORE
1 SATTERLEE, D	1727 -2	0	BENEDEK, R	2226 2 1
2 WHITE, H	1683 -8	0	YOUNG, C	1958 5 1
3 KALE, S	1548 34	1	DECMAN, S	1736-22 0
4 KLINEFELTER, H	1492-10	0	HILL, R	1703 10 1
5 REID, C	1313 -5	0	BAURAC, D	1674 3 1
6 MOTYCKA, R	1178 0	1F	SIMS, LL	0 0 OF

02-DEC-92 AT&T CHARGERS  
ROUND 4

1.5 FERMILAB

4.5

BD	RATINGS	SCORE	RATINGS	SCORE
1 WARREN, J	2142 -2	.5	DORIGO, T	2079 5 .5
2 STAMM, V	1733 -4	0	SPIEGEL, L	2043 4 1
3 RADAVICIUS, E	1670 19	1	GAINES, I	1770-19 0
4 KUMRO, D	1590-16	0	CISKO, G	1574 24 1
5 DOBR, K	1520-11	0	PARA, A	1612 17 1
6 BRADY, R	1282 -8	0	HARRIS, R	1550 8 1

15-DEC-92 J. I. CASE  
ROUND 5

1 BELL LABS DRAGONS

5

BD	RATINGS	SCORE	RATINGS	SCORE
1 SATTERLEE, D	1725 -3	0	TEGEL, F	2125 3 1
2 WHITE, H	1675-16	0	DURKEE, D	1776 11 1
3 KALE, S	1582 21	1	WARD, C	1560-14 0
4 GASTON, K	1339-13	0	EUSTACE, D	1494 13 1
5 KANAS, W	1318-13	0	PIAO, T	1470 13 1
6 CARTER, D	1074 0	0	MCCLLOUD, E	0 0 1

16-DEC-92 A & B RADIO  
ROUND 5

2 AT&T CHARGERS

4

BD	RATINGS	SCORE	RATINGS	SCORE
1 TYREE, D	0 0	0	WARREN, J	2140 0 1
2 O'DELL, DW	1593 0	1F	KUMRO, D	1574 0 OF
3 LASKY, J	1439 -9	0	RADAVICIUS, E	1689 6 1
4 LASKY, N	1400-16	0	DOBR, K	1509 10 1
5 MIKULECKY, B	1356-14	0	THOMAS, J	1489 10 1
6 MCGRIFF, M	1409 14	1	BRADY, R	1274-14 0

16-DEC-92 ARGONNE KNIGHTS  
ROUND 5

4 ROCKWELL INT'L

2

BD	RATINGS	SCORE	RATINGS	SCORE
1 BENEDEK, R	2228 12	1	JONES, B	2148-17 0
2 BERRY, G	2086 4	1	RAFACZ, T	1763 -6 0
3 GREEN, D	1889-25	0	RAFACZ, W	1605 37 1
4 DECMAN, S	1714-21	0	EFRON, D	1575 31 1
5 HILL, R	1713 12	1	MCQUINN, J	1528-12 0
6 BAURAC, D	1677 1	1	DEZONNO, T	1162 -2 0

06-JAN-93 ROCKWELL INT'L  
ROUND 6

3.5 J. I. CASE

2.5

BD		RATINGS	SCORE		RATINGS	SCORE
1	JONES, B	2131 4	1	SATTERLEE, D	1722 -3	0
2	RAFACZ, T	1757-29	0	WHITE, H	1659 29	1
3	RAFACZ, W	1642 13	1	KLINEFELTER, H	1482-13	0
4	MCQUINN, J	1516-17	0	KALE, S	1603 17	1
5	DEWITT, G	1413 -7	.5	REID, C	1308 7	.5
6	DEZONNO, T	1160 24	1	MOTYCKA, R	1178-24	0

07-JAN-93 ARGONNE KNIGHTS  
ROUND 6

5 AT&T CHARGERS

1

BD		RATINGS	SCORE		RATINGS	SCORE
1	BENEDEK, R	2240 0	1F	WARREN, J	2140 0	0F
2	BERRY, G	2090 1	1	KUMRO, D	1574 -1	0
3	YOUNG, C	1963 5	1	RADAVICIUS, E	1695 -5	0
4	DECMAN, S	1693 8	1	DOBR, K	1519 -8	0
5	HILL, R	1725-35	0	THOMAS, J	1499 24	1
6	DAWSON, J	1435 12	1	BRADY, R	1260-12	0

09-DEC-92 BELL LABS ROYALS  
ROUND 4

4 AMOCO RESEARCH LABS

2

BD		RATINGS	SCORE		RATINGS	SCORE
1	GUIO, J	2163-13	.5	SAJKOWSKI, D	1951 13	.5
2	DOBROVOLNY, C	1921-20	.5	PAAUWE, N	1441 20	.5
3	OGASAWARA, L	1822 3	1	SPANGLER, M	1374 -3	0
4	BLACKMON, E	1788 1	1	POMA, D	1178 -1	0
5	HAHNE, D	1574-40	0	MANILLA, M	1220 40	1
6	ANDERSON, CJ	1297 0	1	GABRIELLO, A	0 0	0

15-DEC-92 FERMILAB  
ROUND 5

1 BELL LABS ROYALS

5

BD		RATINGS	SCORE		RATINGS	SCORE
1	SPIEGEL, L	2047-11	0	GUIO, J	2150 16	1
2	DORIGO, T	2084 -4	.5	BUCHNER, R	2027 4	.5
3	GAINES, I	1751 -9	0	DOBROVOLNY, C	1901 13	1
4	CISKO, G	1598 13	.5	OGASAWARA, L	1825-13	.5
5	PARA, A	1629-13	0	BLACKMON, E	1789 13	1
6	HARRIS, R	1558-24	0	HAHNE, D	1534 24	.1

06-JAN-93 AMOCO RESEARCH LABS  
ROUND 5

4.5 AT&T TYROS

1.5

BD		RATINGS	SCORE		RATINGS	SCORE
1	SAJKOWSKI, D	1964 3	.5	STOLTZ, B	2003 -3	.5
2	ROSE, K	1970 0	0F	BLAZIE, J	1850 0	1F
3	PAAUWE, N	1461 26	1	SMITH, BR	1512-26	0
4	RINGENBERG, T	1381 33	1	SHAFF, R	1553-22	0
5	POMA, D	1177 16	1	SCHWARTZ, M	1079-16	0
6	MANILLA, M	1260 0	1	KARPIERZ, J	0 0	0

13-JAN-93 BELL LABS ROYALS  
ROUND 6

5.5 A & B RADIO

.5

BD	RATINGS	SCORE	RATINGS	SCORE
1 GUIO, J	2166 2	1	O'DELL, DW	1593 -2 0
2 DOBROVOLNY, C	1914 0	1	TYREE, D	0 0 0
3 OGASAWARA, L	1812 16	1	LASKY, JIM	1711-16 0
4 HAHNE, D	1558 15	1	LASKY, J	1430-15 0
5 ANDERSON, CJ	1297 30	1	MCGRIFF, M	1423-30 0
6 AUSTIN, R	0 0	.5	LASKY, N	1384 0 .5

10-DEC-92 MOTOROLA  
ROUND 4

2.5 SEARS

3.5

BD	RATINGS	SCORE	RATINGS	SCORE
1 HASAN, Y	2178-15	0	REYES, R	2294 10 1
2 WALLACH, C	2062 20	1	LATIMER, E	2026-13 0
3 SAMELSON, C	2010-23	0	BROCKETT, M	1809 34 1
4 AUGSBURGER, L	1847 7	1	MORTON, B	1549 -7 0
5 OGASAWARA, R	1604 -4	.5	MILLER, TT	1517 6 .5
6 WEST, R	0 0	0	WELTER, P	0 0 1

12-DEC-92 FRANKLIN-WATTS  
ROUND 2

1.5 EXEMPLARS

4.5

BD	RATINGS	SCORE	RATINGS	SCORE
1 BENESA, A	2161-21	0	WONG, P	2181 14 1
2 GAZMEN, E	2183 16	1	BLOOM, B	2083-16 0
3 SOLLANO, E	2003 2	.5	SULLIVAN, J	2024 -1 .5
4 PURDLE, D	0 0	0	OSTERLUND, R	1976 0 1
5 SANCHEZ, R	1411 -2	0	KRAKAU, H	1962 2 1
6 MIRANDA, V	0 0	0	UNDERWOOD, W	1960 0 1

28-DEC-92 FRANKLIN-WATTS  
ROUND 5

5 KEMPER INSURANCE

1

BD	RATINGS	SCORE	RATINGS	SCORE
1 WEBER, L	2237 -1	.5	SIWEK, M	2228 1 .5
2 BENESA, A	2140 19	1	LEONG, G	2082-13 0
3 GAZMEN, E	2199 10	1	VAN MEER, J	1990-10 0
4 SOLLANO, E	2005-11	.5	HUGHES, N	1838 11 .5
5 SANCHEZ, R	1409 26	1	OLSEN, A	1463-26 0
6 MIRANDA, V	1462 0	1	KAUFMAN, M	0 0 0

04-JAN-93 EXEMPLARS  
ROUND 5

4 UOP PROCESS DIV.

2

BD	RATINGS	SCORE	RATINGS	SCORE
1 WONG, P	2195 15	1	BOLDINGH, E	2196-23 0
2 BLOOM, B	2067 0	OF	BUERGER, E	2039 0 1F
3 SULLIVAN, J	2023 5	1	MICKLICH, F	1759 -5 0
4 OSTERLUND, R	1976-36	0	SAJBEL, P	1739 36 1
5 UNDERWOOD, W	1960 5	1	BRIONES, M	1694 -5 0
6 SUERTH, F	1640 0	1	LIKHTEREV, M	0 0 0
7 OELHAFEN, A	1289 0	OF	O'BRIEN, D	1427 0 1F
8 EDWARDS, S	1238 0	1	ADAMI, S	0 0 0
(UOP ) 9 O'BRIEN, D	1427-26	0	VAN ZILE, C	1370 26 1

06-JAN-93 NORTHROP CORP.  
ROUND 5

0 SEARS

6

BD	RATINGS	SCORE		RATINGS	SCORE
1 DIAZ, P	2028 -8	0	REYES, R	2304 5	1
2 BURIAN, D	1657 -5	0	GOLLA, R	2003 4	1
3 VIGANTS, A	1668 -5	0	LATIMER, E	2013 4	1
4 REICHERT, P	1669-30	0	MORTON, B	1542 30	1
5 ELEK, G	994 -2	0	MILLER, TT	1523 2	1
6	0 0	0F	WELTER, P	0 0	1F

13-JAN-93 EXEMPLARS  
ROUND 4

4.5 NORTHROP CORP.

1.5

BD	RATINGS	SCORE		RATINGS	SCORE
1 WONG, P	2210 -5	.5	GOLUMBOVSKI, P	2099 7	.5
2 BLOOM, B	2067 -4	.5	DIAZ, P	2020 4	.5
3 SULLIVAN, J	2028 3	1	BURIAN, D	1652 -5	0
4 OSTERLUND, R	1940 7	1	REICHERT, P	1639 -7	0
5 UNDERWOOD, W	1965 4	1	VIGANTS, A	1663 -7	0
6 SUERTH, F	1640-22	.5	ELEK, G	992 22	.5

21-OCT-92 CTA ROAD  
ROUND 3

4 CTA RAIL

2

BD	RATINGS	SCORE		RATINGS	SCORE
1 WILSON, A	1592-27	0	MATTHEWS, J	1519 27	1
2 SMITH, J	0 0	1	WILLIAMS, J	0 0	0
3 JONES, M	0 0	1	THOMPSON, J	0 0	0
4 PITTS, R	0 0	0	JARRETT, T	0 0	1
5 THOMPSON, T	0 0	1	VAN OTRIVE, R	0 0	0
6 HARRIS, F	0 0	1F	STEIN, C	0 0	0F

04-NOV-92 ALUMNI CENTRAL  
ROUND 4

4.5 CONTINENTAL BANK

1.5

BD	RATINGS	SCORE		RATINGS	SCORE
1 ALFARO, C	2118 0	0F	PAROAN, E	1769 0	1F
2 FRANEK, M	1945 6	1	DYCKZKOWSKI, R	1629 -6	0
3 BRONFELD, A	1812 3	1	HAMMOND, M	1347 -3	0
4 LITVINAS, A	1690-13	.5	ZOELLNER, J	1224 20	.5
5 CHARKOVSKY, R	1643 2	1	MCINTOSH, S	1149 -2	0
6 BROTSOS, J	1540 0	1	HILLIARD, J	0 0	0

18-NOV-92 CTA RAIL  
ROUND 6

2 CONTINENTAL BANK

4

BD	RATINGS	SCORE		RATINGS	SCORE
1 MATTHEWS, J	1546-12	0	SOMBONG, M	1725 12	1
2 ABRAHAM, T	1532-10	0	KOGAN, G	1753 10	1
3 JARRETT, T	0 0	0	DYCKZKOWSKI, R	1623 0	1
4 WILLIAMS, J	0 0	0	MCINTOSH, S	1147 0	1
5 NOWAK, W	0 0	1	HILLIARD, J	0 0	0
6 THOMPSON, J	0 0	1	GANSER, A	0 0	0

18-NOV-92 CHICAGO POST OFFICE	4	AMOCO CORP.	2
ROUND 4			
BD	RATINGS	SCORE	RATINGS SCORE
1 INUMERABLE, F	2202-29	0	HODINA, J 2092 29 1
2 MARCOWKA, R	1998 3	1	WENTLING, C 1609 -4 0
3 COOPER, W	1697 7	1	HAMILTON, L 1393 -7 0
4 PETWAY, L	1481-28	0	KRULL, E 1402 28 1
5 HOWARD, W	1368 18	1	HAMPER, P 1299-18 0
6 GRIESMEYER, W	1394 0	1	BAER, M 0 0 0
7 VERGE, C	0 0	0	PARAOAN, E 1769 0 1 (CONBK)

23-NOV-92 CHICAGO MERC. EXCH.	4	CTA RAIL	2
ROUND 4			
BD	RATINGS	SCORE	RATINGS SCORE
1 ZEIDEL, J	1947 4	1	MATTHEWS, J 1534 -4 0
2 FRANK, M	1726 0	1	JARRETT, T 0 0 0
3 SULLIVAN, C	1526 0	0	WILLIAMS, J 0 0 1
4 BAKER, LR	1155 0	1	HOOKE, L 0 0 0
5 LUBERSHANE, S	0 0	0	NOWAK, W 0 0 1
6 HILTON, J	0 0	1	ROJAS, R 0 0 0

01-DEC-92 CHICAGO MERC. EXCH.	0	ALUMNI CENTRAL	6
ROUND 3			
BD	RATINGS	SCORE	RATINGS SCORE
1 FRANK, M	1726 -6	0	COX, M 2044 6 1
2 SULLIVAN, C	1526 -7	0	BRONFELD, A 1815 7 1
3 COTE, J	1316 -5	0	LITVINAS, A 1677 3 1
4 HILTON, J	0 0	0	CHARKOVSKY, R 1645 0 1
5	0 0	OF	DAVIDSON, M 1681 0 1F
6	0 0	OF	BROTSOS, J 1540 0 1F

09-DEC-92 AMOCO CORP.	5	HULL TRADING CO.	1
ROUND 3			
BD	RATINGS	SCORE	RATINGS SCORE
1 HODINA, J	2121 4	1	RANGEL, R 1709 -4 0
2 ATKINSON, J	1790 0	1	KUSUMOTO, R 0 0 0
3 WENTLING, C	1605 0	1	WEISSKOPF, J 0 0 0
4 WEBB, E	0 0	1	MARGULIS, A 0 0 0
5 HAMILTON, L	1386 0	1	RAFFERTY, M 0 0 0
6 KRULL, E	1430 0	0	YOUNG, R 0 0 1
7 HAMPER, P	1281 0	0	FRANCISKOVICH, D 0 0 1

09-DEC-92 CTA RAIL	3	CHICAGO POST OFFICE	3
ROUND 8			
BD	RATINGS	SCORE	RATINGS SCORE
1 MATTHEWS, J	1530 44	1	INUMERABLE, F 2173-44 0
2 ABRAHAM, T	1522 -3	0	MARCOWKA, R 2001 2 1
3 CURRY, G	0 0	0	COOPER, W 1704 0 1
4 NOWAK, W	0 0	1	CARTER, L 1528 0 0
5 ROJAS, R	0 0	1F	PETWAY, L 1453 0 0F
6 THOMPSON, J	0 0	0	HOWARD, W 1386 0 1

09-DEC-92 CONTINENTAL BANK  
ROUND 7

2

CTA ROAD

4

BD		RATINGS	SCORE		RATINGS	SCORE
1	KOGAN, G	1763 11	1	WILSON, A	1565-11	0
2	PARAOAN, E	1769 0	1	SMITH, J	0 0	0
3	PATEL, R	1426 0	OF	HARRIS, FF	0 0	1F
4	ZOELLNER, J	1244 0	0	PITTS, R	0 0	1
5	HILLIARD, J	0 0	0	COBLEIGH, M	0 0	1
6	GANSER, A	0 0	0	SANCHEZ, N	0 0	1

12-DEC-92 CTA ROAD  
ROUND 6

4

CHICAGO MERC. EXCH.

2

BD		RATINGS	SCORE		RATINGS	SCORE
1	SMITH, J	0 0	0	ZEIDEL, J	1951 0	1
2	HARRIS, FF	0 0	0	SULLIVAN, C	1519 0	1
3	JONES, M	0 0	1	SULLIVAN, C	1519 0	0
4	FLESHMAN, M	0 0	1	COTE, J	1311 0	0
5	SANCHEZ, N	0 0	1	RUDDY, J	1232 0	0
6	COBLEIGH, M	0 0	1	BAKER, LR	1155 0	0

15-DEC-92 AMOCO CORP.  
ROUND 5

2

ALUMNI CENTRAL

4

BD		RATINGS	SCORE		RATINGS	SCORE
1	HODINA, J	2125 -5	.5	COX, M	2050 5	.5
2	ATKINSON, J	1790-13	0	FRANEK, M	1951 13	1
3	WENTLING, C	1605-10	0	BRONFELD, A	1822 10	1
4	HAMILTON, L	1386 -7	0	LITVINAS, A	1680 5	1
5	KRULL, E	1430 13	.5	CHARKOVSKY, R	1645-13	.5
6	BAER, M	0 0	1	BROTSOS, J	1540 0	0

06-JAN-93 CHICAGO MERC. EXCH.  
ROUND 7

.5

COLUMBIA COLLEGE

5.5

BD		RATINGS	SCORE		RATINGS	SCORE
1	SULLIVAN, C	1519 -3	0	MCALISTER, K	1956 3	1
2	COTE, J	1311 -8	0	BURDICK, S	1573 8	1
3	HILTON, J	0 0	0	KOSTECKA, K	1544 0	1
4	GAVIN, L	1216 0	OF	HERNANDEZ, DD	1513 0	1F
5	BAKER, LR	1155 0	OF	SPECK, D	1317 0	1F
6	BROWN, S	0 0	.5	JONES, MARC	0 0	.5

13-JAN-93 HULL TRADING CO.  
ROUND 6

2

COLUMBIA COLLEGE

4

BD		RATINGS	SCORE		RATINGS	SCORE
1	RANGEL, R	1705 37	1	MCALISTER, K	1959-37	0
2	YOUNG, R	0 0	0	BURDICK, S	1581 0	1
3	JACO, H	1122 -4	0	HERNANDEZ, DD	1513 4	1
4	MARGULIS, A	0 0	1	SPECK, D	1317 0	0
5	WEISSKOPF, J	0 0	0	BRANCH, Y	1292 0	1
6	KUSUMOTO, R	0 0	0	TURNER, R	1229 0	1



NORTH DIVISION TOP TEN

CUSI, R	FRANK	2437
REYES, R	SEARS	2309C
STEVANOVIC, M	UOP	2268C
WEBER, L	FRANK	2236
SIWEK, M	KEMPR	2229
GAZMEN, E	FRANK	2209
WONG, P	EXMPL	2205C
MELNIKOV, I	MTRLA	2205
BOLDINGH, E	UOP	2173
JAKSTAS, K	NORTH	2168C

EAST DIVISION TOP TEN

CZERNIECKI, A	ALUMN	2224C
JASAITIS, A	CRT	2218C
FRIESEMA, W	CRT	2152
INUMERABLE, F	PSTOF	2129
HODINA, J	AMCRP	2120
ALFARO, C	ALUMN	2118*
GREGORY, J	PSTOF	2117
COX, M	ALUMN	2055C
LORING, S	CONBK	2031
SMILEY, R	AMCRP	2024

NEAR WEST DIVISION TOP TEN

LEVINE, D	KNIGHT	2381
BENEDEK, R	KNIGHT	2240D
WARREN, J	CHRGR	2140T
JONES, B	ROCKW	2135
BERRY, G	KNIGHT	2091D
YOUNG, C	KNIGHT	1968C
GREEN, D	KNIGHT	1844C
STAMM, V	CHRGR	1729D
RAFACZ, T	ROCKW	1728
MORRISON, J	KNIGHT	1728

FAR WEST DIVISION TOP TEN

KOZLOVSKY, M	FERMI	2176
GUIO, J	ROYLS	2168
LUDWIG, T	DRGNS	2155
TEGEL, F	DRGNS	2128D
DORIGO, T	FERMI	2080
SPIEGEL, L	FERMI	2036C
BUCHNER, R	ROYLS	2031
STINSON, M	ROYLS	2028
STOLTZ, B	TYROS	2000
ROSE, K	AMOCO	1970

MOST IMPROVED PLAYERS

KALE, S	JCASE	97
CISKO, G	FERMI	89
HERNANDEZ, DD	COLUM	88
RANGEL, R	HULL	83
PAAUWE, N	AMOCO	79
HOWARD, W	PSTOF	72
BROCKETT, M	SEARS	71
SIWEK, M	KEMPR	64
HODINA, J	AMCRP	60
EUSTACE, D	DRGNS	59

NAME	TEAM	W	L	D	RATING	NAME	TEAM	W	L	D	RATING
ABRAHAM, T	RAIL	2	3	0	1519	CEASE, H	FERMI	0	0	0	0000?
ADAMI, S	UOP	1	2	0	0000?	CELANDER, C	COLUM	0	0	0	0000?
ALFARO, C	ALUMN	0	1	0	2118*	CHAN, H	SEARS	0	0	0	1551
ALMAZAN, S	NORTH	0	0	0	1344#	CHARKOVSKY, R	ALUMN	3	1	1	1632*
ALONSO, G	ROYLS	0	0	0	0000?	CHEVERESAN, S	UOP	0	0	0	1390C
ANDERSON, CJ	ROYLS	3	2	0	1327*	CHIU, H	KNGHT	0	0	0	1653*
ATKINSON, J	AMCRP	2	3	0	1777	CHOUDRY, A	KEMPR	0	0	0	0000?
AUGSBURGER, L	MTRLA	2	0	0	1854	CHRISTIAN, R	DRGNS	0	0	0	1830C
AUSTIN, R	ROYLS	2	0	1	1109#	CIBA, F	SEARS	0	0	2	1385
BAER, M	AMCRP	1	3	0	0000?	CIESLEK, D	MTRLA	0	0	1	2060
BAKER, B	FLPRO	0	3	1	1074	CIMMARRUSTI, A	CRT	2	1	0	0000?
BAKER, LR	MERC	2	2	0	1155#	CISKO, G	FERMI	4	0	1	1611*
BALASE, E	SEARS	1	0	0	1364*	COBLEIGH, M	ROAD	2	0	1	0000?
BARGERSTOCK, D	CRT	4	0	1	1920	COLE, P	FERMI	0	0	0	0000?
BARGYH, J	COLUM	0	2	0	0000?	COLEMAN, O	ROAD	0	0	0	0000?
BAURAC, D	KNGHT	4	0	0	1678C	COLEMAN, T	FLPRO	0	0	0	0000?
BEARD, G	ALUMN	0	0	0	1805	COOPER, B	WASTE	0	0	0	0000?
BECKLEY, S	DRGNS	0	0	0	1475*	COOPER, W	PSTOF	5	1	0	1704
BENEDEK, R	KNGHT	4	0	1	2240D	COTE, J	MERC	0	4	1	1303*
BENESA, A	FRANK	2	3	0	2159	COX, M	ALUMN	2	0	1	2055C
BENTLEY, D	COLUM	0	0	0	0000?	CREWSE, L	EXMPL	1	0	0	2039
BERNARD, D	CRT	3	1	0	1312	CROWE, R	ROYLS	0	0	0	1393*
BERRY, G	KNGHT	5	0	0	2091D	CUMBERLAND, M	SEARS	1	0	0	0000?
BEZZUBOV, V	FERMI	0	0	0	0000?	CUMMUTA, P	KEMPR	0	2	0	1372
BHOJWANI, C	TYROS	1	2	0	1958	CURRY, G	RAIL	0	1	0	0000?
BHOJWANI, R	INDNS	0	0	0	1710*	CUSI, R	FRANK	0	0	0	2437
BISH, D	NORTH	0	0	0	0000?	CZERNIECKI, A	ALUMN	0	0	0	2224C
BLACKMON, E	ROYLS	4	0	1	1802	DAVIDSON, M	ALUMN	2	0	0	1681*
BLAZIE, J	TYROS	0	2	1	1850	DAWSON, J	KNGHT	1	0	1	1447
BLOEDOW, P	KEMPR	0	2	1	1469C	DEARDORFF, M	FLPRO	0	2	1	0000?
BLOOM, B	EXMPL	2	1	1	2063	DECMAN, S	KNGHT	3	3	0	1701C
BOLDINGH, E	UOP	3	2	0	2173	DENG, J	CRT	4	0	0	1676*
BOOKER, G	RADIO	1	1	0	1373#	DEO, D	KEMPR	1	2	0	0000?
BRADY, R	CHRGR	0	5	0	1248*	DEWITT, G	ROCKW	2	1	1	1406C
BRANCH, Y	COLUM	2	3	0	1292*	DEZONNO, T	ROCKW	3	3	0	1184*
BRIONES, M	UOP	1	1	0	1689C	DIAZ, P	NORTH	1	2	2	2024
BROCKETT, M	SEARS	2	0	1	1843	DOBR, K	CHRGR	2	5	0	1511T
BRONFELD, A	ALUMN	3	1	0	1832	DOBROVOLNY, C	ROYLS	3	0	3	1914
BROTSOS, J	ALUMN	2	2	0	1540D	DONNA, D	MTRLA	0	0	0	0000?
BROWN, R	ROYLS	0	0	0	0000?	DORIGO, T	FERMI	0	0	4	2080
BROWN, S	MERC	0	0	1	0000?	DUNCAN, T	MTRLA	0	0	0	0000?
BROZOVICH, J	TYROS	0	1	2	1738C	DURKEE, D	DRGNS	3	0	1	1787C
BUCHANAN, R	ALUMN	0	0	0	1464C	DYCZKOWSKI, R	CONBK	2	4	0	1623*
BUCHNER, R	ROYLS	0	0	1	2031	EDWARDS, S	EXMPL	1	0	0	1236
BUERGER, E	UOP	1	3	0	2039D	EFRON, D	ROCKW	2	0	0	1606
BURDICK, S	COLUM	3	4	0	1581	ELEK, G	NORTH	0	1	1	1014*
BURIAN, D	NORTH	0	5	0	1647C	ELIASOFF, D	WASTE	0	0	0	0000?
CAPAGATTI, A	ROCKW	0	0	0	0000?	ELLERY, G	RADIO	0	0	0	1487*
CARTER, D	JCASE	0	2	0	1074*	ERLENBORN, M	AWEST	0	0	0	1456*
CARTER, L	PSTOF	0	1	0	1528	EUSTACE, D	DRGNS	3	0	1	1507

? - UNRATED  
# - 5 TO 9 RATED GAMES  
\* - 10 TO 24 RATED GAMES

C - CENTURY CLUB MEMBER  
D - DOUBLE CENTURION  
T - TRIPLE CENTURION  
Q - QUAD CENTURION

NAME	TEAM	W	L	D	RATING	NAME	TEAM	W	L	D	RATING
FAHRENHOLTZ, S	MTRLA	1	1	0	1727*	HOLM, B	WASTE	0	0	0	1716
FELDMAN, A	FLPRO	0	3	1	1406	HOOKE, L	RAIL	0	1	0	0000?
FIGUEROA, A	UOP	0	0	0	0000?	HOWARD, W	PSTOF	5	0	0	1386*
FISCHER, P	ROCKW	0	0	0	0000?	HUGHES, L	RAIL	0	0	0	0000?
FLESHMAN, M	ROAD	1	0	0	0000?	HUGHES, N	KEMPR	2	0	1	1849C
FLYNN, T	DRGNS	0	0	0	0000?	HUMPF, R	RADIO	0	0	0	1293*
FOLEY, T	INDNS	0	0	0	0000?	HUNG, N	MTRLA	2	0	0	1475#
FRAATS, D	CONBK	0	2	0	1858	INUMERABLE, F	PSTOF	2	2	1	2129
FRANCISKOVICH, D	HULL	1	0	0	0000?	ISAACS, D	WASTE	0	0	0	0000?
FRANEK, M	ALUMN	5	0	0	1964	JACKSON, JJ	ROAD	0	1	0	0000?
FRANK, M	MERC	2	2	0	1720*	JACO, H	HULL	0	1	0	1118
FRIESEMA, W	CRT	6	0	0	2152	JACOBS, N	DRGNS	1	0	3	1966C
GABRIELLO, A	AMOCO	0	2	0	0000?	JADERBERG, J	RADIO	0	0	0	0000?
GAINES, I	FERMI	2	2	1	1742C	JAKSTAS, K	NORTH	0	0	2	2168C
GANSER, A	CONBK	0	3	0	0000?	JAMES, V	TYROS	0	0	0	0000?
GASTON, K	JCASE	3	1	0	1326#	JARRETT, T	RAIL	2	3	0	0000?
GAVIN, L	MERC	0	1	0	1216	JASAITIS, A	CRT	4	0	2	2218C
GAZMEN, E	FRANK	4	0	1	2209	JENKINS, M	RADIO	0	1	0	0000?
GLICENSTEIN, J	FERMI	0	0	1	1845	JONES, B	ROCKW	4	2	0	2135
GLOWACKI, D	RADIO	0	0	0	0000?	JONES, M	ROAD	3	3	0	0000?
GOLLA, R	SEARS	1	0	0	2007C	JONES, MARC	COLUM	1	1	2	0000?
GOLUMBOVSKI, P	NORTH	0	2	2	2106	KALE, S	JCASE	5	1	0	1620
GONCHAROFF, N	MTRLA	1	0	0	1778Q	KANAS, W	JCASE	2	1	0	1305
GRAFT, D	AWEST	0	0	0	1835	KARPIERZ, J	TYROS	0	2	1	0000?
GREEN, D	KNGHT	2	1	0	1844C	KASSELBAUM, J	COLUM	0	0	0	0000?
GREENE, D	ROCKW	0	1	0	0000?	KAUFMAN, M	KEMPR	1	3	0	0000?
GREER, D	PSTOF	0	0	0	0000?	KEEFE, E	FLPRO	0	1	0	0000?
GREGORY, J	PSTOF	0	0	0	2117	KELLY, S	DRGNS	0	0	0	1258
GRIEB, S	KEMPR	0	0	0	0000?	KLINFELTER, H	JCASE	1	3	1	1469
GRIESMEYER, W	PSTOF	4	0	0	1394	KOGAN, G	CONBK	2	0	0	1774
GRYPARIS, J	MTRLA	0	0	0	1404	KOSTECKA, K	COLUM	2	2	1	1544
GUILLEN, B	KEMPR	0	1	1	1369#	KOZLOVSKY, M	FERMI	0	1	0	2176
GUIO, J	ROYLS	3	1	2	2168	KRAKAU, H	EXMPL	1	0	0	1964
HAHNE, D	ROYLS	3	2	0	1573	KRULL, E	AMCRP	1	2	2	1443
HAMILTON, L	AMCRP	1	3	1	1379*	KUMRO, D	CHRGR	0	5	0	1573D
HAMMOND, M	CONBK	2	2	0	1344*	KUSUMOTO, R	HULL	0	5	0	0000?
HAMPER, P	AMCRP	1	3	0	1281#	LAMBIRIS, J	KEMPR	2	1	0	0000?
HARBUZIU, W	ROCKW	0	0	0	0000?	LANG, P	KEMPR	0	0	0	0000?
HARRIS, FF	ROAD	0	4	0	0000?	LASKY, J	RADIO	0	3	3	1415
HARRIS, R	FERMI	3	1	1	1534	LASKY, JIM	RADIO	0	1	0	1695#
HASAN, Y	MTRLA	1	1	2	2163	LASKY, N	RADIO	1	4	1	1384
HASKELL, M	KEMPR	0	1	0	0000?	LATIMER, E	SEARS	1	1	0	2017D
HERMANN, T	WASTE	0	0	0	0000?	LEMBERGER, S	CRT	0	0	0	0000?
HERNANDEZ, DD	COLUM	5	1	0	1517	LENDI, L	WASTE	0	0	0	0000?
HESS, B	FLPRO	0	3	1	1496	LEONG, G	KEMPR	1	2	0	2069C
HICKS, C	DRGNS	2	0	0	1530	LEQUERE, F	KNGHT	0	0	0	1601
HILL, R	KNGHT	4	2	0	1690	LEVINE, D	KNGHT	1	0	0	2381
HILLIARD, J	CONBK	2	5	0	0000?	LIKHTEREV, M	UOP	0	1	0	0000?
HILTON, J	MERC	1	2	0	0000?	LITVINAS, A	ALUMN	3	1	2	1685C
HODINA, J	AMCRP	4	0	2	2120	LOMONT, C	SEARS	0	1	0	0000?

? - UNRATED  
 \* - 5 TO 9 RATED GAMES  
 \* - 10 TO 24 RATED GAMES

C - CENTURY CLUB MEMBER  
 D - DOUBLE CENTURION  
 T - TRIPLE CENTURION  
 Q - QUAD CENTURION

NAME	TEAM	W	L	D	RATING	NAME	TEAM	W	L	D	RATING
LORING, S	CONBK	0	0	0	2031	PARAOAN, E	CONBK	3	3	0	1769
LOSKE, D	INDNS	0	0	0	0000?	PATEL, R	CONBK	0	0	0	1426*
LOSOFF, A	CRT	1	0	0	1970	PETERS, P	EXMPL	0	0	0	1079*
LUBERSHANE, S	MERC	1	3	0	0000?	PETWAY, L	PSTOF	2	2	0	1453*
LUDWIG, T	DRGNS	1	0	1	2155	PIAO, T	DRGNS	4	0	0	1483#
MANIA, B	HULL	1	1	0	0000?	PIASZYNSKI, J	AMOCO	0	0	0	0000?
MANILLA, M	AMOCO	3	1	0	1260#	PITTS, R	ROAD	1	3	0	0000?
MARCOWKA, R	PSTOF	5	1	0	2003C	POMA, D	AMOCO	1	3	1	1193*
MAREMA, D	PSTOF	2	1	0	1958	POMA, M	AMOCO	0	1	0	0000?
MARGULIS, A	HULL	3	1	0	0000?	PURDLE, D	FRANK	0	2	0	0000?
MATTHEWS, J	RAIL	3	4	0	1574	RACANELLI, F	UOP	1	0	0	0000?
MCALISTER, K	COLUM	4	2	1	1922	RADAVICIUS, E	CHRGR	3	3	0	1690C
MCCLOUD, E	DRGNS	1	1	0	1081#	RADKE, P	COLUM	0	0	0	0000?
MCGRIFF, M	RADIO	1	2	0	1393	RAFACZ, T	ROCKW	3	3	0	1728
MCINTOSH, S	CONBK	1	2	0	1147*	RAFACZ, W	ROCKW	3	2	1	1655
MCNEASE, K	COLUM	0	0	0	0000?	RAFFERTY, M	HULL	0	2	0	0000?
MCPHAIL, C	TYROS	0	0	0	0000?	RANGEL, R	HULL	3	1	0	1742
MCQUINN, J	ROCKW	2	3	0	1499	REHORST, R	FLPRO	0	0	0	0000?
MCSMITH, B	COLUM	0	0	0	0000?	REICHERT, P	NORTH	0	4	0	1632#
MELNIKOV, I	MTRLA	2	0	1	2205	REID, C	JCASE	1	2	1	1315
MICKLICH, F	UOP	3	2	0	1754C	REVULURI, K	MTRLA	0	0	0	0000?
MIKULECKY, B	RADIO	2	2	0	1342	REYES, R	SEARS	3	1	0	2309C
MILLER, TT	SEARS	1	2	2	1525*	RIEDERER, D	CRT	0	0	0	1116#
MIRANDA, V	FRANK	1	1	0	1462#	RINGENBERG, T	AMOCO	1	2	0	1414
MITCHAM, L	ROCKW	0	1	0	1562*	RO, D	CRT	0	0	0	1450*
MOHANTY, K	KNIGHT	0	0	0	0000?	ROJAS, R	RAIL	0	3	0	0000?
MOKHTAR, M	INDNS	0	0	0	0000?	ROQUE, P	COLUM	0	0	0	0000?
MONZANI, A	FLPRO	0	0	0	1751	ROSE, K	AMOCO	0	0	0	1970
MORRISON, J	KNIGHT	0	0	0	1728	ROSLEY, D	DRGNS	0	0	0	1816
MORTON, B	SEARS	2	1	0	1572	RUDDY, J	MERC	0	2	0	1232*
MOSES, J	PSTOF	0	0	0	0000?	RZESZUTKO, R	ALUMN	1	0	0	1931
MOTYCKA, R	JCASE	1	1	0	1154	SAHLI, E	UOP	1	0	1	1727#
MURPHY, B	FRANK	0	0	0	0000?	SAJBEL, P	UOP	4	0	1	1775
NAUGHTON, T	HULL	0	3	0	0000?	SAJKOWSKI, D	AMOCO	1	0	4	1967
NELSON, H	CONBK	0	0	0	1960	SAMELSON, C	MTRLA	2	2	0	1987C
NISHIMURA, K	FLPRO	0	3	0	0000?	SANCHEZ, N	ROAD	2	0	0	0000?
NOWAK, W	RAIL	3	1	0	0000?	SANCHEZ, R	FRANK	1	3	0	1435*
NWABUDE, O	ROYLS	0	3	0	0000?	SANTOS, S	FRANK	0	0	0	0000?
O'BRIEN, D	UOP	0	1	0	1401*	SATTERLEE, D	JCASE	1	5	0	1719C
O'DELL, DW	RADIO	1	4	0	1591	SAUER, C	ROAD	0	1	0	0000?
OELHAFEN, A	EXMPL	1	1	0	1289*	SCHATTKE, N	AMOCO	0	2	0	0000?
OGASAWARA, L	ROYLS	3	0	2	1828	SCHWARTZ, M	TYROS	0	3	0	1063*
OGASAWARA, R	MTRLA	0	0	1	1600D	SCHWARTZ, S	SEARS	0	1	0	1718C
OLSEN, A	KEMPR	1	3	1	1437*	SHAFF, R	TYROS	0	4	0	1531C
OLUND, P	MTRLA	0	0	0	1373*	SHEU, G	ROYLS	0	1	1	1319*
OSTERLUND, R	EXMPL	2	1	0	1947	SHIREY, S	KEMPR	0	0	0	0000?
PAAUWE, N	AMOCO	2	1	1	1487	SIEGEL, R	CONBK	0	0	1	1469
PALMER, S	COLUM	0	0	0	0000?	SIMS, B	CRT	3	0	0	0000?
PAPOUTSIS, G	UOP	0	0	0	0000?	SIMS, LL	KNIGHT	0	0	0	0000?
PARA, A	FERMI	2	2	0	1616*	SIWEK, M	KEMPR	3	0	2	2229

? - UNRATED

# - 5 TO 9 RATED GAMES

\* - 10 TO 24 RATED GAMES

C - CENTURY CLUB MEMBER

D - DOUBLE CENTURION

T - TRIPLE CENTURION

Q - QUAD CENTURION

NAME	TEAM	W	L	D	RATING	NAME	TEAM	W	L	D	RATING
SLAUGHTER, S	ROAD	1	0	0	0000?	TYREE, D	RADIO	0	5	0	0000?
SLUSSER, C	CRT	0	0	0	0000?	UNDERWOOD, W	EXMPL	3	0	0	1969C
SMILEY, R	AMCRP	0	0	0	2024	VAN MEER, J	KEMPR	1	1	1	1980
SMITH, BR	TYROS	0	3	0	1486	VAN OTRIVE, R	RAIL	0	2	0	0000?
SMITH, J	ROAD	2	4	0	1522#	VAN ZILE, C	UOP	2	0	0	1396*
SOLLANO, E	FRANK	3	0	2	1994	VAN, R	RAIL	0	1	0	0000?
SOMBONG, M	CONBK	1	0	0	1737	VERGE, C	PSTOF	0	1	0	0000?
SPANGLER, M	AMOCO	0	1	0	1371	VERIVE, J	AWEST	0	0	0	1603#
SPECK, D	COLUM	3	2	0	1317	VIGANTS, A	NORTH	2	2	1	1656
SPIEGEL, L	FERMI	2	3	0	2036C	WALKER, R	FERMI	0	0	0	1368C
STAMM, V	CHRGR	1	2	0	1729D	WALLACH, C	MTRLA	2	0	0	2082
STEIN, C	RAIL	0	0	0	0000?	WALLIN, R	AWEST	0	0	0	1720*
STEIN, P	AWEST	0	0	0	2236	WARD, C	DRGNS	1	3	0	1546D
STELTON, N	AWEST	0	0	0	1373	WARREN, J	CHRGR	2	1	2	2140T
STEVANOVIC, M	UOP	2	1	1	2268C	WEAVER	FLPRO	0	0	0	0000?
STINSON, M	ROYLS	0	0	0	2028	WEBB, E	AMCRP	1	1	0	0000?
STOLTZ, B	TYROS	1	1	1	2000	WEBER, L	FRANK	1	1	2	2236
STUHLBARG, D	UOP	0	0	0	1527C	WEISSKOPF, J	HULL	2	3	0	0000?
SUERTH, F	EXMPL	2	0	2	1618C	WEITZ, R	FLPRO	0	4	0	1774C
SUH, G	AMOCO	0	0	0	1462#	WELTER, P	SEARS	3	0	0	0000?
SULLIVAN, C	MERC	1	7	0	1516*	WENTLING, C	AMCRP	2	2	1	1595
SULLIVAN, J	EXMPL	3	1	1	2031D	WEST, R	MTRLA	1	1	0	0000?
SWIDERSKI, M	CHRGR	0	0	0	1345C	WHITE, H	JCASE	2	3	0	1688
SZAUKELLIS, W	MTRLA	0	0	0	0000?	WHITTINGTON, D	HULL	0	0	0	0000?
TEGEL, F	DRGNS	3	0	1	2128D	WIECHERT, A	UOP	0	1	0	0000?
THOMAS, G	TYROS	1	2	0	1462	WILLIAMS, J	RAIL	2	3	0	0000?
THOMAS, J	CHRGR	2	1	1	1523C	WILLIAMSON, A	PSTOF	0	0	0	0000?
THOMPSON, J	RAIL	1	3	0	0000?	WILSON, A	ROAD	0	5	0	1554
THOMPSON, R	FLPRO	1	1	0	1079	WILSON, M	SEARS	0	1	0	0000?
THOMPSON, T	ROAD	1	1	0	0000?	WINGFIELD, L	INDNS	0	0	0	0000?
TOGAMI, P	JCASE	0	0	0	1173*	WINSTON, H	ALUMN	0	0	0	1982
TOLPPI, J	WASTE	0	0	0	0000?	WITHERIDGE, T	WASTE	0	0	0	0000?
TRUSNICH, M	WASTE	0	0	0	0000?	WONG, P	EXMPL	3	0	1	2205C
TUKES, W	COLUM	0	0	0	0000?	YOUNG, C	KNIGHT	2	0	0	1968C
TURNER, K	PSTOF	0	0	0	1559	YOUNG, R	HULL	1	1	0	0000?
TURNER, R	COLUM	2	4	0	1229*	ZEIDEL, J	MERC	2	2	1	1951
TURPIN, S	INDNS	0	0	0	1196#	ZOELLNER, J	CONBK	1	2	1	1244

? - UNRATED

# - 5 TO 9 RATED GAMES

\* - 10 TO 24 RATED GAMES

C - CENTURY CLUB MEMBER

D - DOUBLE CENTURION

T - TRIPLE CENTURION

Q - QUAD CENTURION