

Chicago Industrial Chess League

Bulletin 5,
Volume 36
March, 1993

INSIDE THIS ISSUE:

President's Letter
Meeting & Playoff
Announcements
4 Fully Annotated Games
US Amateur Team Championship
Report

Featured Articles -
○ 2 Squares Column by Marv Cox
○ Kumro's Korner

A Few Words from the Editor
CICL Ratings List

NEED INPUT! To make the CICL bulletin even better, we are looking for anyone interested in submitting articles or games. If you are interested, call or write:

Bulletin Editor - James Hodina
Home: 708/799-5571
Work: 312/856-2762

CICL OFFICERS
As of September 10, 1992

Addresses/Phones are listed in order of preference

PRESIDENT	Anthony Jasaitis P.O. Box 664 Bedford Park, IL 60499-0664	312-431-2966 (W)
	Chicago Research & Trading 33rd Floor 440 S. LaSalle Chicago, IL 60605	708-448-4967 (H)
SECRETARY	Leonard Spiegel MS 219 Fermilab Batavia, IL 60510	708-840-2809 (W) 708-377-2675 (H)
TREASURER	Wesley K. Underwood 207 S. Dorchester Ave. Wheaton, IL 60187	708-752-5127 (W) 708-462-0393 (H)
RATINGS CHAIRMAN	Charles Ward 615 S. Lincoln Hinsdale, IL 60521	708-325-3885 (H) 708-979-4599 (W) 708-979-8451 (FAX)
BULLETIN CHAIRMAN	James Hodina 718 Central Park Ave. Flossmoor, IL 60422	312-856-2762 (W) 708-799-5571 (H)
NORTH DIVISION	Leonard Augsburgur 16 N. Fiore Vernon Hills, IL 60061	708-632-5102 (W) 708-816-1649 (H)
EAST DIVISION CHAIRMAN	William Cooper 7035 W. Imlay Chicago, IL 60631	312-765-3493 (W) 312-763-1567 (H)
NEAR WEST DIVISION CHAIRMAN	Dan Kumro 802 S. Elmhurst Ave. Mount Prospect, IL 60056	708-259-4981 (H)
FAR WEST DIVISION CHAIRMAN	Irwin Gaines Fermilab - m/s 127 P. O. Box 500 Batavia, IL 60510	708-840-4022 (W)

A WORD FROM THE EDITOR [-ed.]

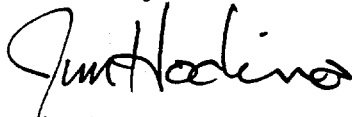
If this bulletin feels heavy to you, its because it is **loaded** with good stuff. In the two years I have been putting the bulletin together, I honestly feel this is the best one. Why? Because of YOUR input. There are 4 very well annotated games, a letter from the President, 2 CICL member reports on the Midwest Amateur Team Championship, Kumro's Korner, and what I believe to be one of Marv Cox's best 2 Squares Columns. This list, of course, does not include Charlie Ward's impeccable match and ratings report. But before you rush to all of this good stuff, there are some bits of information I want to pass along.

Most importantly, the CICL is without a playing site for the playoffs May 15. J. I. Case is unable to provide us their facility this year, for which we have all be very grateful for in the past. Without despair, Tony Jasaitis has put out a call to all teams to host this one day event. Please, if you have an available site, contact Tony to make arrangements. **YOUR HELP IS NEEDED.**

April 7 is a very important date for all CICL members as this is our Spring Business Meeting to be held at J. I. Case. Please review the agenda submitted by the President. Team representation is a must for several reasons. Foremost, officer elections will be held and Tony Jasaitis is calling for ambitious members to step forward and run for President! That's right, Tony is looking for some new blood to fill the CICL officer ranks. I haven't been contacted by anyone to replace me yet either as I have announced my resignation as bulletin editor at the conclusion of this season. Read Tony's President's letter for more details. Additionally, a representative from each playoff team must attend. This is especially important in lieu of the uncertainty of a playoff site for rounds 2 and 3.

You can expect the next bulletin to come out after the Spring Business Meeting and before the Playoffs which places the date around the third week of April. If you want something included in the next bulletin, please get it into me by the 16th of April.

Sincerely,



Jim Hodina

CICL SPRING BUSINESS MEETING

To be held on:

Wednesday

April 7, 1993

at

J. I CASE
(County Line Rd. just North of I-55)

at 7:00 pm

DIRECTIONS

County Line Rd. is west of I-294 (Tri-State Tollway), and east of Rt. 83. Take I-55 (Stevenson Expwy.) to NORTH County Line Rd. exit. You will soon come to a stoplight for the frontage road. Turn LEFT (west) and head directly into the entrance for the J.I. Case complex (do not make another left turn onto the frontage road). Park in the lot to the south (left) of the building and look for signs directing you to the cafeteria.

RSVP

Not necessary if you are on the current rating list. Otherwise, call Skip Kale of J.I. Case at 708-887-2372 (W) to register. You will need to check in with the guard.

AGENDA HIGHLIGHTS

Election of officers for next season, selection of playoff site and other playoff details, especially the Reserve Section (see President's Letter).

IMPORTANT UPCOMING EVENTS

Playoff Saturday: May 15
League Banquet: June 18

CICL PRESIDENT'S LETTER

To All League Officers, Team Captains, and Players:

Just a couple of quick notes in preparation for our Spring Meeting on April 7th (see complete details elsewhere in this bulletin):

I think it is good for the league to have a large number of people experienced at the league's various offices. Although I like being president and will not refuse a repeat nomination, I want to encourage other nominations for the good of the league. If someone else is elected, I will be happy to serve the league in other capacities, such as Bulletin Editor, or Publicity Director.

J. I. Case will not be available for our playoffs this year. We need other teams to volunteer their sites. Ideally, a site should have capacity for both playoffs (96 player). But two smaller sites for 48 players each would be acceptable. **All teams involved in the playoffs should send a representative to the league meeting April 7.**

This is the first year that we are holding "Reserve Section" (anybody have a better name?) playoffs, for the teams that finish in 3rd and 4th place. Skip Kale volunteered to be playoff director at the last meeting, but his team may be involved in these playoffs. It would be preferable to have a non-playing TD. Please volunteer! It's pretty easy, and I and/or Skip can serve as a background assistant for the novice.

It has been my assumption that these 2nd-tier playoffs would be subject to exactly the same rules as the main playoffs, including: the requirement that forfeits occur on bottom boards only; a minimum of 4 players must be fielded each round to retain eligibility for next year, etc. If anyone sees anything wrong with using the same rules, bring it up at the meeting.

I can see three possibilities for different handling of the 2nd-tier playoffs:

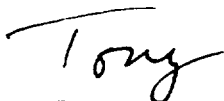
- 1) Playoff Saturday normally consists of rounds 2 and 3, with round 1 scheduling arranged between the two teams as in the regular season. Is there any large desire for the 2nd tier to play all 3 rounds on Saturday with a faster time control?
- 2) It has been suggested that the secondary playoff be open to any teams that want to join it with a swiss pairing format. I think that this would reduce the significance of this playoff, and would also require more rounds, but if there is a strong leaning in this direction, we can discuss it at the meeting.
- 3) I don't know if there has ever been a case where a team declined to play in the playoffs (for reasons such as not enough players, etc.), but I presume that in such a case the next team in the standings from its division would take its

place. However, if such a case arises in the Reserve playoffs, the next team is the last-place team in two divisions. I propose that such an opening be filled by the team with the best percentage won/loss record regardless of division that is not already in the playoffs (a wild-card approach). Let's discuss it at the meeting.

One thing that our league ought to have but doesn't is a playoff tournament "book." This is understandable, since it is a lot of work to produce it, but nonetheless lamentable, as many of the best and most important games of the season occur at this time. Well, this year we have a magnanimous volunteer to produce such a "book." Dennis Leong, one of our alumni. He will produce a printed copy that we can publish in our bulletin, as well as make available a computer copy compatible with ChessBase and NicBase. In order to make this as easy as possible for the players and for Dennis, the league will obtain 2-part USCF scoresheets. Scoresheets for round 1 can be picked up at the league meeting; the remainder will be available at the playoff site. Please take care to produce a legible copy, reviewing it after the game if necessary. Round 1 scoresheets can be turned in to the TD at the playoff site, along with match result sheets. All teams are expected to submit all games for inclusion in the playoff book. While I'm normally be selective about which games of me to publish, and I'm sure many of you are as well, I am putting aside pettiness for the league's sake, and I expect everyone else to do the same.

League officers that wish to have their prior award re-engraved instead of receiving a new one should bring it to the meeting for Bob Stoltz, our Trophy Chairman. Division Chairmen should aim to complete their regular-season schedules by April 23 at the latest (preferably the 16th), to allow for at least 3 weeks for round 1 of the playoffs.

Well, hope to see you at the meeting!



Tony Jasaitis
President, CIGL
312-431-2966 (W)
708-448-4967 (H)

CICL REPORT FROM THE U.S. AMATEUR TEAM CHAMPIONSHIP, MIDWEST

by Tony Jasaitis

The CICL was represented by two teams at the U. S. Amateur Team Championship, held February 13-15 in Oakbrook: the "CICL Cavaliers," exclusively from J. I. Case, and the "CICL Loose Ends," which consisted of various CICL members that contacted me to join a team. Below are the results for the teams and the individual players in the 6-round event. The number after the "/" indicates the number of games played by the player if it was less than 6.

CAVALIERS 2.5 pts
Average team rating: 1500

LOOSE ENDS 3.5 Pts
Average team rating: 1900

S. Kale 2
H. White 2
H. Klinefelter 4.5
D. Satterlee 4

A. Jasaitis 2.5
R. Stoltz 1.5/4
J. Sullivan 2.5
D. Fraats 3.5/5
W. Cooper 2.0/3

A total of 48 teams participated from many Midwestern States. I would like to think that the CICL turnout would have been better had Monday not been a workday for many people, and Valentine's Day not occurred during the tournament. Three people who contacted me were unable to play on a CICL-only team due to lack of a fourth.

Although neither of our teams won prizes (team or individual), the Cavaliers provided the high point for our league by upsetting a team containing a master and two experts! Too bad there was no upset or major-upset prize!

The tournament started out with an agonizing low, as we waited 2 1/4 hours for the preceding QuickChess Tournament to end; it was very unwisely scheduled immediately before the team tournament, and fell severely behind schedule when computer software problems forced the TD's to use manual pairings. On top of that, even if nothing had gone wrong, not enough time was allotted for speed games, pairing and posting time, players getting settled, etc; according to my estimates, the team tournament would have started at least a half hour late. If the tournament organizers want to continue to get large turnouts, they need to put themselves in the player's shoes. While the team tournament of national prominence should have been the highlight of the weekend, it felt to me like we were treated like second class in relation to the fat-prized speed tournament. Our first round time control was cut to 45/90, while no concessions were imposed on the other tournament.

I had my own ups and downs. I had high hopes for my team to win the under-2000 prize, as all of our USCF ratings were lower than our CICL ratings, with me

being 247 points under-rated. After losing to an unrated player and to a master who developed his Queen on the third move (a move that I couldn't find in four exhaustive opening books!), I seriously felt like quitting the USCF tournament scene for another 20 years. Despite being a CICL master, I scored only one draw against four masters. My Class-A teammates were losing to 1500's. I reached the conclusion that we semi-retired CICL'ers are getting flabby in relation to the cutthroats out there.

As I look back on who I lost to, I feel better. The unrated player was the champion of Honduras at age 15. One of them won the board-1 prize with 6-0. Another was 5-0 after beating me. My one draw was against my highest-rated opponent, Josh Manion, a junior rated 2346. Oddly enough, in the master games, I lost all the games where I thought I had the advantage, and drew the one where I had a serious disadvantage. After tough losses to masters in this and another USCF tournament, I've reached the following observation: you know when you've played somebody clearly better than you when you think you're winning, but it turns out you were losing at the time.

Good feelings started returning to all the team members as victory became increasingly apparent in our last round. The climax of returning joy was dramatically demonstrated by Dan Fraats: in the final game, as Bill Cooper made the move that guaranteed mate in one in a risky position, Dan's fists shot up as he leapt into the air. The 3.5-.5 blowout of a team that we outrated on every board helped us to forget the prior pain, and later that night I was dreaming up good team names for next time ...

One of the fun aspects of this event is the team names, for which a prize is awarded. Each team board gets to vote for the best team name. This year's choice was "Three Masta's and a Disasta'." My favorite was "Among the Lowest Dogs Around," which is what Fischer recently called a number of the world's leading grandmasters. Other good ones were: Fear Itself; Just Padding the Prize Fund; Shallow Thought; The Sandbaggers; Oh, Say Can You See UIC; Rosewater Transmuters (based on a chess fairy tale); Castles Into It; Eerie Knights; 4 Ducks, 2 Bills, No Quayle.

I could feel a difference in playing on a 4-board team versus our league's 6. I felt less in control of the situation, as it was much harder to make up for an inevitable upset of one of your boards against a team that you outranked, while we didn't benefit from the converse. I suppose it adds to the excitement for the margin of victory to be so fragile, but I prefer our league's format.

Here's my favorite game from the event: I sacrifice pawns five times for the initiative, win a rook, then get forced to "thread the needle" as my opponent has six different ways to either mate me or win my queen if I slip up! My complicated plan to get out of my difficulties works by a tempo.

White: Tony Jasaitis, (USCF 1971), CICL Loose Ends
Black: C. Felther, (USCF 1800), Shallow Thought

Round 4, Board 1 King's Gambit Accepted, Kieseritzky Variation

1.e4, e5 2.f4, exf4 3.Nf3, g5 4.h4, g5 5.Ne5, d6 6.Nxg4, Be7! 7.Bc4!?

Black is playing the best variation of an old-fashioned defense, for which I had forgotten the "book," which is 7.d4, Bxh4+ 8.Nf2. My move vacates the traditional King's Gambit King-flight-square, and doesn't turn out too badly.

7...Bxh4+ 8.Kf1, Qg5 9.Nh2, Qc5 10.Qe2, Bg6 11.b4!?

At this point, after 3 winless rounds on my board, one of my teammates asked me if I was trying to lose on purpose! P-c3-d4 would be more solid, but slower. Those of you who read my annotations regularly know how much emphasis I put on maintaining the initiative. Although this works here, my drive cost me at least a draw in the endgame in another round. As for my move, I'm eyeing Black's KR and want to pull his Q away from the 5th rank, as well as open more lines and gain more space.

11...Qxb4 12.e5, d5 13.Bxd5, Qd4?

A sucker move that accelerates my development.

14.Nc3, Ne7?

This natural-looking developing/attacking move is probably fatal, and shows why White's position typically is better than it looks in King's Gambit games. In fact, there are lines where White can even enter the endgame a pawn down still retaining the advantage (and not be losing on purpose, Dan!).

15.Nf3, Qc5 16.Ne4! Qxc2?!

This guy keeps grabbing everything that's not nailed down! Now I get an extra tempo to preserve my strong B.

17.Bb3, Qc6 18.Nf6+, Kd8?!?!

I don't know if this was a blunder or near-brilliant desperate sacrifice, since Kf8 doesn't look too appetizing either. Now my taking the time to win the rook gives him exciting counter-threats.

19.Ng5, Bf5 20.Nxf7+, Kc8 21.Nxh8, Qc5

Black now has or will have six ways to mate or win my queen, or both, if I make

a wrong move: Qf2; Bd3; Bg4; Ne3; Ng3; the back-rank (later). I manage to repulse all these by counter-attacks on his queen and king, which is my theme for the next 13 moves! My next three moves are forced.

22.d4, Qxd4 23.Bb2, Qb6 24.Rd1, Nbc6 25.Nf7, a6

He makes luft. The position is in equilibrium, with my pieces needed in their current positions, while he threatens to unleash another sleeping dog with K-b8-a7 given the opportunity. For a half hour, every move I considered seemed to let Black make more progress toward one of the previously-mentioned fatal threats, and I didn't want to be up less than a rook in this risky position unless I could stop the pressure cold.

26.Bc2!!!

My now unprotected B/b2 is safe due to Bxf5+, but the move is dangerous because it allows a N to access f5/e3. However, the vulnerable position of the Black K makes this move work, as we will see. Black must now temporarily retreat, while I get to unleash my own sleeping dog.

26...Be6 27.Rxh7, Kb8 28.Bb3!!

This and the next move had to be foreseen to justify my 26th. I exploit the potential fork at d7 and am willing to return some material for clear simplification. I don't ever check on the back rank because I don't want to drive the K away from the snare that I have in mind for his K & Q.

28...Nf5 29.Rd3!, Ncd4 30.Bxd4, Nxd4 31.Bxe6!

Yes, Virginia, this had to be foreseen, too, when I made my 26th move. I remove the defender of forks upon the fleeing K, saving my own Q. Now the fury of the tempest wanes until only desperation remains.

31...Ka7 32.Qd2, Qb1+ 33.Qd1, Qb2 34.Rd2, Qb5+ 35.Kg1, c5 36.Rxd4!, Qb6 37.Rd6, Qb2 38.Rd2, Qc3 39.Nd6, Rd8 40.Nd5, Qxe5 41.Rxb7+, resigns.

I guess I won't quit chess after all.

FRENCH DEFENSE Advance Variation

W: Charlie Young (1979)
Argonne Knights
B: Duane Saterlee (1703)
JI Case
January 14, 1992

Annotations by Duane Saterlee

Charley Young and I have played each other in the CIGL since about 1977. He has been stronger, but I have managed at least a couple of draws. He always played d4 and never liked my c5 response. When he opened with e4, I asked about it. He said, "I thought I should get more tactical experience." Yeah! Uh, Huh! When he started with the Advance Variation to the French, I felt good, because I usually have little trouble with it.

1.e4, e6 2.d4, d5 3.e5, c5 4.c3, Nc6 5.Nf3, Qb6 6.Bd3 cd. Charley's sixth move offers the **Milner Barry Gambit**. Taking the pawn is very tempting, because this is not a temporary sacrifice of the pawn, and the **extra pawn is a protected passed pawn**. This could result in a won endgame. I am fond of won endgames. However, this gambit is a **positional gambit**. It sacrifices the pawn to get development, mobility, space, and initiative.

7.cd, Bd7. Black's seventh move is necessary to avoid a **trap**. The immediate capture by 7... Nxd4 8. NxN, Qxd4, is followed by 9. Bb5+, and Black loses his queen!

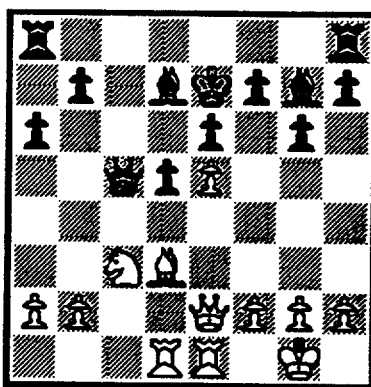
8.O-O, Nxd4 9.Nxd4, Qxd4 10.Nc3, Ne7. MC-13 shows a continuation here of 10... Qxe5 11. Re1, Qb8! 12. Nxd5, Bd6 from a correspondence game by

Messere-Endezelins, 1977.

11.Rfe1,a6 12.Qe2, g6? The twelfth move by Black results in black square weakness that turns his pawn formations into a sieve.

13.Bg5, Bg7. White's move thirteen poses two threats: BxN ending castling privileges and B-f6, attacking the rook and placing a long term bind on Black. Each is as unpleasant as the other. Black chooses what he hopes is the lesser of the two evils.

14.Bxe7, Kxe7 15.Rad1, Qc5.



After 15..., Qc5

After move 15, you can see in the first diagram what White has obtained for his efforts: he has superior development, mobility, space and the initiative. He crowds Black even further back.

16.Qg4, Qc7 [This could be the losing move. Black should consolidate by hustling the King's rook over and then play the king back to g8. Now his rooks will not be able to connect and Black will struggle through the rest of the game attempting to coordinate his pieces - ed.]

17.Qb4+ [!], Kd8 18.Rc1, Bc6 19. f4, a5 20.Qc5, Rab8. Black's twentieth move shows good moves are hard to find, but this move loses the a-pawn

on move 23. Black is in a box-shaped like a coffin.

21.Nb5, Qd7 22.Qb6+, Ke7 23.Qxa5, Rhc8 [too late! - ed.] 24.Qb4+, Kd8 25.Nd6, Qe7 26.Qb6+, Rc7 27.Rxc7, bxc6. Move 27 slams the lid shut. Black has lost a piece without compensation. Still, I do better in end games than elsewhere, and an extra piece isn't always a won game. So I played on.

28.Qxb8+, Kd7 29.g3, Qd8. Black is in such a bind, he offers to trade queens on move 29 to get some freedom, in spite of professional advice to avoid trades when you are behind in material.

30.Qxd8, Kxd8 31.b4, Bf8 32.b5, Bxd6 33.exd6, Rc8 34.Rc1, Kd7 35.Rxc6, Rxc6 36.bxc6+, Kxd6. Black took the wrong pawn on move 36. If he had taken the other one, he could have won both the c and d-pawns.

37.Bb5, f6 38.Kf2, e5 39.fxe5+, fxe5. Black arranges the pawns to keep the White king out of the action. The king can't attack, and he can't go around either, or the black pawns threaten to queen. [This is not quite true. Unless the pawns are very far advanced, a bishop can always stop two, unaided, connected pawns. In this case the pawns are unaided as the black King cannot pass the 6th rank. Here, the White bishop remains on the f1-a6 diagonal until the d-pawn reaches the second rank. Then, the bishop goes to e2 preventing the promotion. Meanwhile, the white King comes to the queenside and aides his passers. This technique is very important to know in many gambit lines such as the Benko or the Wing Gambit to the Sicilian in which

one side has two connected passed pawns. - ed.]

40.Ke3, h5 41.h4, Kc7

42.Ba4, Kb6. White has a win by merely pushing the a-pawn. For example, 42. a4, Kb6 43. a5+ (The White a-pawn and bishop are perfectly safe. If the king takes either one, the c-pawn queens.) 43..., Kc7 44. a6 Kd3, and now at most Black can put in only one more pawn move before he must either lose a pawn or move the king to a6 or c6. Then one of the white pawns moves forward to the seventh rank, giving an unstoppable pawn promotion.

43.Bc2, e4 44.Bxe4, dxe4

45.Kxe4, Kxc6. Black resigns. On move 45 it is clear that White has an inevitable win. While Black stops the White queen-side pawn, White mops up his kingside pawns and can't be stopped from queening a pawn.

Why wasn't I better prepared for this variation, I asked myself? The "Trends" "Advance French" booklet says, "After nearly forty years the variation is still not clear." MCO-12 presents it only as a footnote, saying it is "Complicated but questionable". In MCO-13 it is an unnamed variation, Milner-Barry's name being linked only to a variation in the Nimzo-Indian. So Charley deserves credit for digging out an obscure variation and playing it well. Is it a good one? It may depend on your style and individual strengths. Check it out for yourself. However, surprising your opponent with a two-edged variation he isn't likely to be familiar with can work really well.

ENGLISH OPENING

(Benoni-English)

W: Igor Melnikov (2205)

Motorola

B: Edwin Boldingh (2173)

UOP

January 22, 1992

Annotations by E. Boldingh

For some mysterious reason, I usually don't enjoy sharing my lost games with the rest of the world. I think, however, that the following game from round 7 of the North division is entertaining enough to make an exception.

1.d4, Nf6 2.c4, c5 3.Nf3, cxd4 4.Nxd4, e5! [I take issue with Mr. Boldingh in that he may be a bit optimistic with the exclamation here. Current opening theory still gives this anti-positional move (weakening d6 and d5 yet disrupting White's development) a !?. Having played this as Black myself, one cannot dismiss the surprise value of this move, and with that, maybe an ! is justified. However, based on Mr. Melnikov's rating, I doubt that he has not seen this before. In any case, the ensuing game is not for the faint of heart and Mr. Boldingh shows how playable this line is for Black! - ed.]

5.Nb5, Bc5. [The gambit 6..., d5 is more common. After 7.cd Black continues with Bc5, O-O, and e5. The rest of the game then revolves around Black's success in corralling the d-pawn. With the text, Mr. Boldingh delves into the even more obscure, where ECO only dedicates one line to this sixth move and concludes that Black can equalize. - ed.]

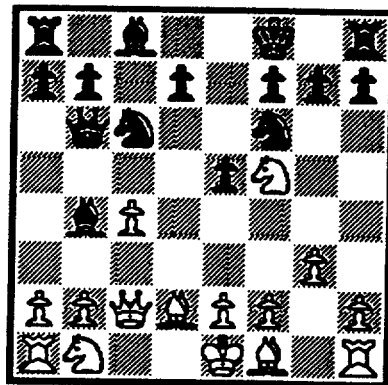
6.Nd6+, Ke7 7.Nf5+. Better

is Nxc8+.

7..., Kf8. Threatens d5 with advantage for Black.

8.Be3, Bb4+. A little better is 8.Qa5+ 9.Nc3 (Bd2? Qb6) 9..., Bb4 10.Bd2, d5 =+.

9.Bd2, Qb6 10.Qc2, Nc6 11.g3.



After 11.g3

11..., g6? Here I was considering:

A. 11..., Ng4 12.e3, g6 13.Nh4 Nxe3!?

B. 11..., d5 12.cxd5, Bxf5 13.Qxf5, Nxd4 14.Qd3 e4 15.Bxb4+, Qxb4 16.Qc3, Nc2+

Although B seemed (and is) a clear win, I was a little concerned about 15.Qxe5 and was not really sure if, after 15.Nc2+ and exchanging the bishops on b4, White had some counter chances with the Queen. I thought the text was safer and would accomplish the same (attack of c2). While the text is not a decisive blunder, it was a bad choice for several reasons:

1. Because it pushes the knight away from a square where it is so nicely exposed by d7-d5.

2. Because the knight goes naturally back to e3, from where it defends, of all places, c2, the square I'm trying to attack. Also square d5 is

controlled by this knight on e3.

3. Because it weakens h6.

4. Because the alternative d5, was clearly a winning move. Amazing how clear things are in retrospect.

12.Ne3, Nd4 13.Qc1. I already felt stupid here. I anticipated 13.Qa4. This looks very passive, but with the weakness of my h6 it may not be so bad. This is another critical moment in the game and I'm about to outsmart myself.

13..., Ne4?! I didn't think this was particularly good, but it set a cut little trap. (cute but probably not good).

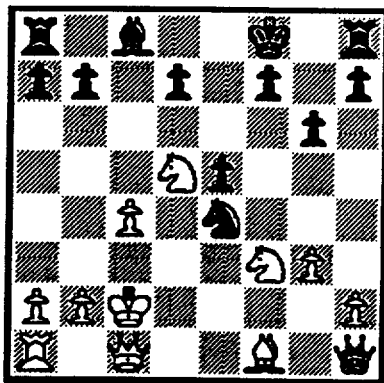
14.Nd5. White falls for it. (Although he would not regret it).

14..., Nf3+! White later admitted total surprise. He will lose a rook.

15.exf3 15.Kd1? Nxf2+ 16.Kc2, Nd4 mate.

15..., Qxf2+, 16.Kd1, Qxf3+ 17.Kc2, Bxd2 18.Nxd2, Qxh1. So far everything according to plan. I considered it a won game. But now look at this!

19.Nf3!!



After 19.Nf3!!

Looked like desperation, but the longer I thought about it the more I realized I was in trouble. Black has a difficult

choice to make. If he prevents 20.Qh6+ by (19..., Kg7, h6, or h5), his Queen will be caught by 20.Qe3, f5 [20..., d6 - ed.] 21.Re1, and Bh3, while attempts to save the queen by the knight sacrifice on g3 fail to Qxe5. This all looked sufficiently depressing to make me decide to take the knight and try to outrun the mate.

19..., Qf3 20.Qh6+, Ke8

21.Qg7. While pondering my 19th move, I had planned 21..., Rf8 22. Nc7+, Kd8 23.Qxf8+, Kxc7, but now I saw that after 21.Rf8 White takes the e-pawn with mate on the next move.

21..., Qf2+ 22.Kb3, Qf3+ 23.Ka4, b5+ 23..., Nc5+ is a little better, but cannot really save Black either.

24.Ka5, d6. The only move. White's knight controls the escape routes e7 and c7.

25.Qxh8+, Kd7 26.Qf8. Threatening 27.Qe7+, Kc6 28.Qc7 mate. Black's queen cannot defend e7 because the white knight also controls f6. Black's whole position is paralyzed by the white knight on d5. This, by the way, is the same knight that Black lured there to win a passive rook on h1! Is there a lesson to be learned here?

26..., Kc6 27.Qe8+, Kc5 28.Qxb5+, Kd4 29.Nb4, Nc5 30.Nc2+, Ke4 31. Qc6+ Black resigns. He loses the Queen.

SUBMISSION FOR BEST SALVAGE

MODERN DEFENSE

White: A. Jasaitis (2218)
CRT

Black: F. Inumerable (2202)
Post Office

Board 1 Played Jan 13, 1993

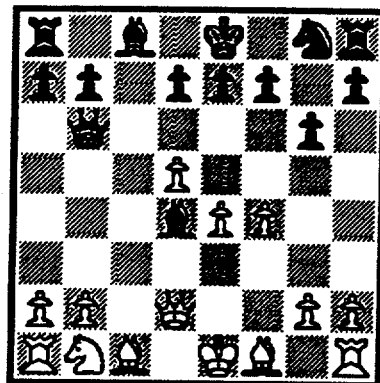
Annotations by Tony Jasaitis

White gets stuck with a sickly, undeveloped opening position. But as Black wins an exchange plus pawn, matter gets transformed into energy, and the developmental tables get turned. After passive play by Black, White sacrifices a piece to turn all of Black's material into useless observers of a crushing attack.

1.e4, g6 2.d4, Bg7 3.f4, c5 4.c3, Qb6 5.Nf3, cxd 6.cxd Nc6 7.d5? Nd4. White offered his b-pawn for a speculative lead in development, but Black instead chooses the solid path of exploiting his control of the dark squares.

8.Nxd4? Although Nc3 still leaves White with problems, it must be better.

8...Bxd4 9.Qd2.



After 9.Qd2

Ugly, but the QB has no

future anyway. This leaves c2 open for the QN.

9...Nf6 10.Bd3, d6! My opponent continues to keep his cool, avoiding overextending himself with the obvious 10...Ng4 11.Na3, Bf2+ 12.Ke2! which would dissipate the pressure.

11.Na3, O-O 12.Nc2! I didn't want to waste more development time trying to keep the b-pawn with Rb1.

12...Bxb2 13.Rb1, Bc3? Cute, but ...Bxc1 is best.

14.Qxc3, Qxb1 15.O-O?? At the time that I played my 12th move, I intended to play 15.Nb4 here, thinking that I would trap his Q, but on my 13th move I noticed that Black could then play 15...Nxe4. I never noticed that I could then respond with 16.Qa3, winning a piece (not 16.Qc4, b5 with an unclear ending).

15...Qb6+ 16.Kh1?? I was so happy to finally get my K to safety that I just kept going on momentum! But Be3-d4 would make it difficult for Black to make his material advantage felt. Black now makes a series of mildly weak moves that improve White's chances for a successful attack against the K.

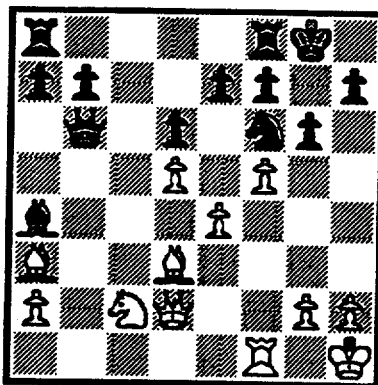
16...Qc5. A waste. Although the move temporarily takes control of the file and keeps the WQ off the long diagonal, she moves to another penetration point. Better was Bd7 immediately. At this point my opponent had already used up an hour and a half, which may explain the decreasing quality of his play in the remainder of the game.

17.Qd2, Bd7 18.Ba3. I spent my longest thought of the game on this move. I hated to postpone occupying the

long diagonal, but my opponent was threatening 18...Bb5!, which would reduce the attacking force, decrease my central bind, give his pieces more scope, and distract my Q from being dedicated to the looming K-side attack.

18...Qc7. Black should still play for getting Bb5 in, even if it involves compromises: e.g., 18...Qb6! 19.Ne3, Bb5! 20.Rb1, a6, when a capture on b5 would give his rooks more activity, while 21.Bc1 could be met by Qd4!

19.f5, Ba4.



After 19..., Ba4

Black is trying to keep White's looming K-side attack at bay by trying to penetrate on the Q-side, but White's coverage is just good enough, while his pieces simultaneously move into better attacking positions. Believe it or not, my computer found the risky-looking 19...gxf5 playable: 20.exf5, Nxd5! 21.f6, exf6! 22.Qh6, f5, which makes the defending / attacking ...Qc3! possible.

In retrospect, and with the help of a computer, I could put ?-marks on most of my opponent's middle game moves, but I won't. It is a fact

of chess life that a defense that needs to "thread the needle" to repulse all the possibilities of a flexible offense will usually fail, and the defender should not be made to look weak afterward. That's just the value of pressure, which also gives gambit players so many victories. Suffice it to say that my opponent's choice of moves does not solve all his problems.

20.Nd4, Rac8 21.Bb2, Qb6 22.Ba1, Rc5? 23.fxg6, hxg6?? It was crucial to at least allow the KR to help defend the K, even though it allows White to recover the exchange if he finds nothing better. My opponent had only about 10 minutes left here.

24.Nf5! gxf5 25.Qg5+ Kh8 26.Rf5. Rf3 also wins. 26...Rc1+ 27.Qxc1, 1-0.

Reflections on the U.S. Amateur Team Championship, Midwest

by Duane Satterlee

When our current club president, Satish Kale, suggested we enter four of us in the team championships, it sounded like fun, and it was. Our chess team from JI Case has been playing in the CICL, (Chicago Industrial Chess League) since 1976. The CICL schedules only about nine games a year unless you make the playoffs, while this was six games in a single weekend.

There was a lot more variety in opponents and method of play than in the CICL: Players ranged from old masters to grade school children. There were more surprising ideas in the play of the game than usual

for us. The most interesting situation was the grade school team coached by Richard Verber from Aurora. They drew a strong college team one round and were very excited about that.

Basically, the youngsters had been fairly well coached to get through the opening without major blunders and played reasonable tactics. They would only start making mistakes under pressure. It is a healthy activity for children, and I wish more were involved in chess.

The spectacle of an older gentleman playing chess while holding a large red and white teddy bear clutched to his chest, is something I may never forget. I think it belonged to his daughter, but I am still curious about it.

There were many unrated players. You had to be very careful of unrated players, and young players with low ratings. One unrated player was said to be champion of Honduras. I lost to another unrated player who was actually just under expert level in the Soviet Union. Somehow, I let him overturn a Stonewall opening. The young low rated players were usually quite a bit stronger than their rating, and did unexpected things. It might be unsound, but you would have to demonstrate that while the clock was running.

Team pairings were made according to the Swiss system, with all teams pooled together. This made several results stand out. The first round, with the strong half against the bottom half, and players ranging from 700 points strength to 2200, made that round a sort of warm up, at least for the weaker half. It probably didn't keep the top half on their toes.

After six rounds, the team's standings followed their ratings more closely than I would have expected. While the Swiss system did sort things out well, it did not give me a chance to make many points, because there were mostly far stronger and far weaker opponents. The US Chess Federation calculation method results in a small rating point change for that case. If I had been playing opponents of equal or slightly better strength, wins would have let my rating rise more to reflect my current playing strength, which is 300 points stronger in the CICL than my older USCF rating. Of course, a draw from a stronger player would have helped my rating by a large amount.

We started playing the first two rounds on Saturday afternoon. That worked out all right, even with a two hour delay. If we could do that, I encourage tournament directors to schedule Sundays for two afternoon rounds also. Then I could have been in church with my family. Yes, I know we played a church team called the "Holy Angels", but it's not the same. I would play in a lot more tournaments if they were not scheduled for Sunday morning, and I know I am not the only one. Remember, I'm "Just Padding the Prize Fund"(another team name).

Still, it was fun. I learned a few things, and I had a chance to try out some new ideas in a very competitive environment. What was even better, the new techniques worked. How else could I get that much feedback on what I am learning about chess in so short a time?

The 2 Squares Column

by Marv Cox

"If one square is attacked more times than it is defended it may fall."

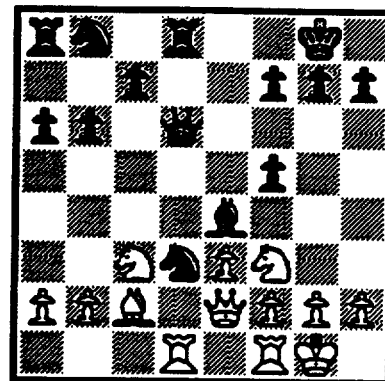


Diagram 59

In diagram 59 above, we note several salient points. Black is a pawn ahead. His knight is pinned against his queen. That same knight could act as a swish-en-zug piece if conditions were right. But most important, Black has not completed his development so his rooks do not guard each other. The black d3 knight is attacked three times and guarded three times so seems safe—but appearances are deceiving. The white rook on f1 can be used as a fourth attacker. We also note that if the black queen had completed a series of captures and recaptures on d3 it could be X-rayed by a white rook moving from f1 to d1. The queen would be lost as it is pinned to the d file to prevent the loss of the black rook on d8 with mate.

1.Bxd3, Bxd3 2.Rxd3, Qxd3
3.Rd1.

"If two lines are attacked more times than they are defended the may fall."

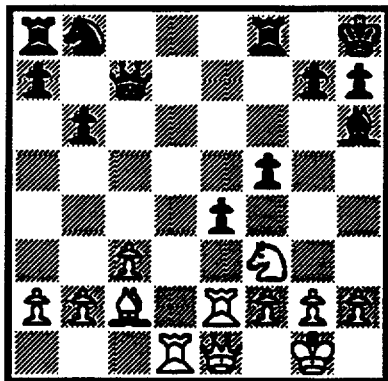


Diagram 60

In diagram 60 above, my uncle had moved his pawn ahead to e4. It cramped my game, but he had not completed his development. The a8-h1 diagonal had a lot of white space and bore down on that rook. The other white diagonal b1-h7 contained my bishop and his center pawns. The intersection of the two diagonals was e4. I had 3 attacks against the e4 focal point and my uncle had only one guard, the pawn on f5. The pawn on e4 did not count as a guard because it occupied the square under attack. I could sac my rook at e4, retake with queen, and simultaneously threaten mate and his queen's rook. So he didn't dare take the offered rook and I'd win the e4 pawn.

1.Rxe4, fx e4. Ho, Ho, Ho. He fell for it.

2.Qxe4, g6 3.Qxa8, Nc6. What's this? My queen's trapped. My uncle is laughing at me the way I set the trap, baited it, and sprung it on

myself.

"If three (or more) squares are attacked more times than they are defended they may fall."

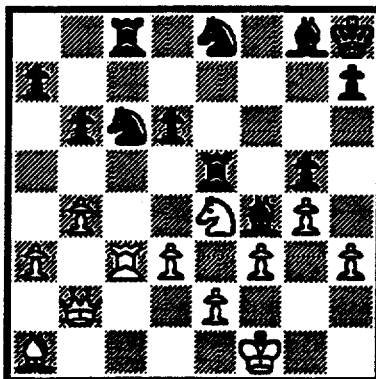


Diagram 61

In diagram 61 above, White and Black are about equal in total material. The obvious threat is mate on the a1-h8 diagonal. The three squares e5, d6, and c6 are attacked four times by the white rook, knight, queen, and bishop. Those same squares are guarded only three times by the black knight, pawn, and bishop. Four attacks and only three guards. The squares may fall.

1.Nxd6, Nxd6 2.Rxc6, Rxc6
3.Qxe5+, Bxe5, 4.Bxe5, mate.

My unice says that during a multi-sacrificial combination, the first sacrifice must usually be accepted to avoid material loss. However, refusal of the second offered sacrifice may destroy the combination. The game may then go into variations the attacker is not prepared to handle. Suppose black refuses the second sacrifice in the main line above.

2..., h5 3.Rxd6, Rc1+
4.Qxc1, Bxc1 5.Bxe5+, Kh7
6.Rd7+. Black should still lose the end game. But white

might panic in this variation and make a mistake. Or he might run out of time because his original analysis was so time consuming. Or, he might even have a heart attack and have to forfeit the game. Other black moves for second sacrifice refusal could have been Bf7 or Kg7 or Nc4. White must analyse all of these in depth before starting his combination.

Kumro's Komer
by Dan Kumro
League Historian

The first team to win the 6-man team CICL Championship was the Argonne Knights! The year or season was 1976-1977. The Knights accomplished this feat by beating the "First National Bank 3.5 to 2.5. The Argonne team was compsed of the following players:

C. Young, Board 1
G. Berry, Board 2
*C. Ward, Board 3
B. Nelson, Board 4
G. Kinsella, Board 5
B. Keig, Board 6

* Charlie Ward, CICL Ratings Chairman, was playing for Argonne Labs at that time.

They beat W. Nyman, W. Leong, K. Feiler, J. Gibbs, E. Gasteau, and T. Goffigan of First National Bank.

Question:

What team won the first CICL Championship with a perfect record? This was when there were 8 man teams!

ENJOY A WEEKEND CHESS VACATION AT AN ELEGANT COMFORTABLE PLAYING SITE

MARCH 12-13-14 IN CHICAGO

at the luxurious Ramada O'Hare Hotel

TOURNAMENT INFORMATION

5 Round Swiss in 6 Class Sections: Master (over 2200), Expert (2000-2199), Class A (1800-1999), Class B (1600-1799), Class C (1400-1599), Class D/E/Unr (1399 & under). **\$12,500 GUARANTEED PRIZE FUND** plus **MANY BONUSES and EXTRAS, INCLUDING A FREE raffle with a FREE air fare to the 1993 National Open in Las Vegas, June 11-13!! PRIZE FUND IS GUARANTEED AND WILL NOT BE REDUCED!!**

REGISTRATION

By mail (see form below) or phone: (708) 396-1984 (have VISA or MASTER CARD ready). At tournament: Friday, March 12, 4:00 to 7:00 p.m., or Saturday, March 13, before 10:00 a.m. with 1/2 point bye.

ROUNDS

Friday, March 12th: 8:00 p.m., Saturday, March 13th: 10:30 a.m. & 5:30 p.m., Sunday, March 14th: 10:30 a.m. & 5:30 p.m., 1/2 point bye allowed for any round. 5th & 6th round byes **MUST** be announced before the tournament.

ENTRY FEE

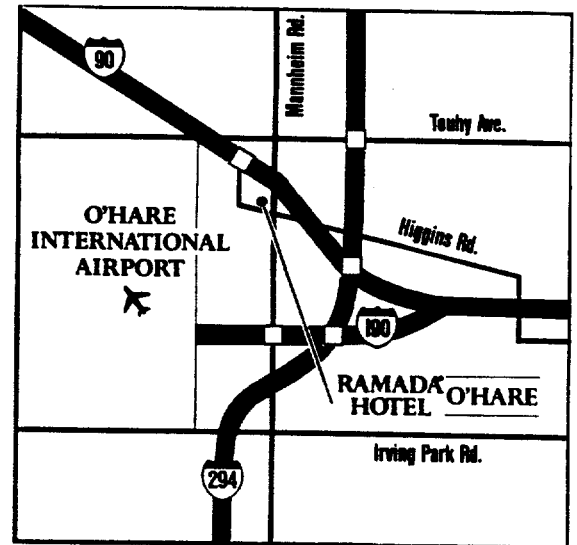
\$65 if mailed by March 5th. (\$10 more at the site). Grandmasters **FREE**. Special Discounts: **ALL Juniors \$30**. Any additional family members play for \$30. Fourth members of **ANY** school or chess club play **FREE**. **ALL SPECIAL ENTRY FEES ARE ADVANCE BY MAIL ONLY!** Add 50 cents for 1/2 point first round bye. **VISA and MASTER CARD to Thursday, March 11th, NOT AT DOOR!** Call 708-396-1984 **DAYTIME ONLY**. Mail entries to Mid-America Class Championships, Box 100, Palos Heights, IL 60463. You can play in one section above your rating for \$5 additional. Illinois Chess Association **MAXI-TOUR** event.

SPECIAL HOTEL RATES

\$59 single (add \$4) for double, (Regular rate is \$96) Ramada O'Hare Hotel, 708-827-5131. Mention "chess tournament". The Ramada O'Hare is located at 6600 N. Mannheim Road, less than 1 mile north of O'Hare airport with **FREE** pick-up service from O'Hare.

MANY EXTRAS

FREE parking. **FREE** raffle with **FREE** air fare to 1993 National Open in Las Vegas. **FREE BONUS** for perfect scores. Golf course, swimming pool on premises, weather permitting. **STOCK UP!-MIDWEST LARGEST** book concession by Jim/Helen Warren of American Postal Chess. Chess sets & boards provided. Please bring chess clocks!



6600 N. Mannheim at Higgins Road, Rosemont, Illinois

MAIL YOUR TOURNAMENT ENTRY BY MARCH 5th & SAVE \$\$ MONEY!

Please enter me in the Mid-America Class Championships, March 12-14 In Chicago.

NAME _____ U.S.C.F. I.D. # _____ U.S.C.F. RATING _____

ADDRESS, CITY, STATE, ZIP _____



GM Alexander Ivanov
1992 Mid-America Co-Champion

AMOUNT ENCLOSED \$ _____

SPECIAL INSTRUCTIONS: _____

Please include self-addressed postcard if you want return confirmation

MAKE CHECK PAYABLE TO: MID-AMERICA CLASS CHAMPIONSHIPS

MAIL ENTRY TO: MID-AMERICA CLASS CHAMPIONSHIPS
P.O. BOX 100
PALOS HEIGHTS, IL 60463



GM Roman Dzindzichashvili
1992 Mid-America Co-Champion

★ ★ ★ ★ ★ **Don't Miss the Fun!** ★ ★ ★ ★ ★

RATINGS CHAIRMAN'S REPORT

Amateur Team Championship

Since the CICL officially supported teams entering the recent USCF-sponsored Amateur Team Championship, games played by CICL members on a CICL-supported team in this event will be credited toward Century Club membership, although they will not be used for ratings purposes.

No FAX for Next Bulletin

The next deadline for ratings submission is Saturday, April 3. Because I will be away from my office during the week of March 29 I will not be able to pick up any results faxed to my office fax number. Please use the U.S. mail for submitting all match results for the next issue of the Bulletin.

-- Charlie Ward
Ratings Chairman

NORTH DIVISION 02-21-1993

TEAM NAME	W	L	D	GAME POINTS	MATCH POINTS	PCT
MOTOROLA	5	1	0	27.5	5.0	0.833
SEARS	4	0	2	24.5	5.0	0.833
EXEMPLARS	4	1	1	23.5	4.5	0.750
FRANKLIN-WATTS	3	2	1	21.5	3.5	0.583
UOP PROCESS DIV.	3	3	1	20.5	3.5	0.500
KEMPER INSURANCE	2	2	3	20.0	3.5	0.500
NORTHROP CORP.	0	6	0	9.5	0.0	0.000
FEL-PRO	0	6	0	3.0	0.0	0.000

EAST DIVISION 02-21-1993

TEAM NAME	W	L	D	GAME POINTS	MATCH POINTS	PCT
CHICAGO RES. & TRDG.	9	0	0	44.0	9.0	1.000
ALUMNI CENTRAL	6	2	0	32.5	6.0	0.750
CHICAGO POST OFFICE	5	1	1	29.0	5.5	0.786
COLUMBIA COLLEGE	5	3	0	27.5	5.0	0.625
AMOCO CORP.	5	3	0	25.5	5.0	0.625
CTA ROAD	3	5	0	19.0	3.0	0.375
CONTINENTAL BANK	2	6	0	16.5	2.0	0.250
HULL TRADING CO.	1	5	1	14.5	1.5	0.214
CTA RAIL	0	6	2	15.0	1.0	0.125
CHICAGO MERC. EXCH.	1	6	0	10.5	1.0	0.143

NEAR WEST DIVISION 02-21-1993

TEAM NAME	W	L	D	GAME POINTS	MATCH POINTS	PCT
ARGONNE KNIGHTS	6	0	0	28.0	6.0	1.000
ROCKWELL INT'L	4	2	0	20.0	4.0	0.667
J. I. CASE	2	4	0	16.0	2.0	0.333
AT&T CHARGERS	1	5	0	11.5	1.0	0.167
A & B RADIO	1	5	0	10.0	1.0	0.167

FAR WEST DIVISION 02-21-1993

TEAM NAME	W	L	D	GAME POINTS	MATCH POINTS	PCT
BELL LABS DRAGONS	7	0	0	32.5	7.0	1.000
BELL LABS ROYALS	5	1	1	28.5	5.5	0.786
FERMILAB	4	3	0	23.5	4.0	0.571
AMOCO RESEARCH LABS	1	5	0	11.5	1.0	0.167
AT&T TYROS	0	6	1	10.5	0.5	0.071

27-JAN-93 BELL LABS DRAGONS 5.5 AMOCO RESEARCH LABS .5
 ROUND 6

BD	RATINGS	SCORE	RATINGS	SCORE
1 LUDWIG, T	2155 11	1	SAJKOWSKI, D	1967-11 0
2 TEGEL, F	2128 -6	.5	ROSE, K	1970 10 .5
3 JACOBS, N	1966 2	1	PAAUWE, N	1487 -3 0
4 DURKEE, D	1787 3	1	RINGENBERG, T	1414 -5 0
5 EUSTACE, D	1507 6	1	POMA, D	1193 -6 0
6 PIAO, T	1483 0	1	GABRIELLO, A	0 0 0
7 MCCLOUD, E	1081 0	1	POMA, M	0 0 0

27-JAN-93 FERMILAB 5 AT&T TYROS 1
 ROUND 6

BD	RATINGS	SCORE	RATINGS	SCORE
1 SPIEGEL, L	2036 8	1	BLAZIE, J	1850-11 0
2 GAINES, I	1742 6	1	SMITH, BR	1486 -8 0
3 CISKO, G	1611-28	0	SHAFF, R	1531 18 1
4 PARA, A	1616 0	1	KARPIERZ, J	0 0 0
5 HARRIS, R	1534 3	1	SCHWARTZ, M	1063 -3 0
6	0 0	1F		0 0 0F

02-FEB-93 AT&T TYROS 3 BELL LABS ROYALS 3
 ROUND 7

BD	RATINGS	SCORE	RATINGS	SCORE
1 STOLTZ, B	2000-12	0	GUIO, J	2168 12 1
2 BHOJWANI, C	1958-25	0	DOBROVOLNY, C	1914 25 1
3 BLAZIE, J	1839 22	1	OGASAWARA, L	1828-22 0
4 THOMAS, G	1462 39	1	BLACKMON, E	1802-39 0
5 SCHWARTZ, M	1060 -2	0	HAHNE, D	1573 2 1
6 RADULSKI, B	0 0	1	ANDERSON, CJ	1327 0 0

10-FEB-93 FERMILAB 1.5 BELL LABS DRAGONS 4.5
 ROUND 7

BD	RATINGS	SCORE	RATINGS	SCORE
1 KOZLOVSKY, M	2176 22	1	LUDWIG, T	2166-22 0
2 SPIEGEL, L	2044-12	0	TEGEL, F	2122 12 1
3 CISKO, G	1583 19	.5	JACOBS, N	1968-12 .5
4 PARA, A	1616-10	0	CHRISTIAN, R	1830 7 1
5	0 0	0F	ROSLEY, D	1816 0 1F
6	0 0	0F	DURKEE, D	1790 0 1F
(DRGNS) 7 PIAO, T	1483 24	1	EUSTACE, D	1513-24 0

13-JAN-93 FEL-PRO 0 MOTOROLA 6
 ROUND 5

BD	RATINGS	SCORE	RATINGS	SCORE
1 WEITZ, R	1774 -3	0	HASAN, Y	2163 4 1
2 HESS, B	1496 -1	0	MELNIKOV, I	2205 1 1
3 FELDMAN, A	1406 -1	0	CIESLEK, D	2060 1 1
4 DEARDORFF, M	0 0	0	SAMELSON, C	1987 0 1
5 BAKER, B	1074 0	0	AUGSBURGER, L	1854 0 1
6 KEEFE, E	0 0	0	HUNG, N	1475 0 1
7 NISHIMURA, K	0 0	0	WEST, R	0 0 1

21-JAN-93 UOP PROCESS DIV.
ROUND 6

1

SEARS

5

BD	RATINGS	SCORE	RATINGS	SCORE
1 STEVANOVIC,M	2268 2	.5	REYES,R	2309 -2 .5
2 BOLDINGH,E	2173-33	0	GOLLA,R	2007 22 1
3 BUERGER,E	2039-16	0	LATIMER,E	2017 16 1
4 SAJBEL,P	1775-18	0	BROCKETT,M	1843 18 1
5 MICKLICH,F	1754-24	0	MILLER,TT	1525 35 1
6 BRIONES,M	1689 -5	.5	MORTON,B	1572 8 .5
7 LIKHTEREV,M	0 0	1	VAN ZILE,C	1396 0 0 (UOP)

25-JAN-93 KEMPER INSURANCE
ROUND 6

3

EXEMPLARS

3

BD	RATINGS	SCORE	RATINGS	SCORE
1 SIWEK,M	2229-11	.5	BLOOM,B	2063 11 .5
2 LEONG,G	2069 13	1	SULLIVAN,J	2031-13 0
3 HUGHES,N	1849 7	.5	OSTERLUND,R	1947 -7 .5
4 BLOEDOW,P	1469 -2	0	UNDERWOOD,W	1969 2 1
5 OLSEN,A	1437-12	0	SUERTH,F	1618 12 1
6 CUMMUTA,P	1372 0	1F		0 0 OF
7 LAMBIRIS,J	0 0	1	KAUFMAN,M	0 0 0 (KEMPR)

02-FEB-93 NORTHROP CORP.
ROUND 7

2.5

KEMPER INSURANCE

3.5

BD	RATINGS	SCORE	RATINGS	SCORE
1 JAKSTAS,K	2168-13	0	SIWEK,M	2218 19 1
2 GOLUMBOVSKI,P	2106 -2	.5	LEONG,G	2082 1 .5
3 DIAZ,P	2024 -3	.5	VAN MEER,J	1980 3 .5
4 REICHERT,P	1632 13	.5	HUGHES,N	1856-13 .5
5 BURIAN,D	1647-33	0	BLOEDOW,P	1467 22 1
6 VIGANTS,A	1656 0	1	DEO,D	0 0 0

03-FEB-93 FRANKLIN-WATTS
ROUND 7

6

FEL-PRO

0

BD	RATINGS	SCORE	RATINGS	SCORE
1 BENESA,A	2159 4	1	WEITZ,R	1771 -3 0
2 GAZMEN,E	2209 1	1	HESS,B	1495 -1 0
3 WEBER,L	2236 0	1	DEARDORFF,M	0 0 0
4 SOLLANO,E	1994 0	1	BAKER,B	1074 0 0
5 SANCHEZ,R	1435 0	1	KEEFE,E	0 0 0
6 MIRANDA,V	1462 0	1F		0 0 OF

11-FEB-93 MOTOROLA
ROUND 7

5

UOP PROCESS DIV.

1

BD	RATINGS	SCORE	RATINGS	SCORE
1 HASAN,Y	2167 29	1	STEVANOVIC,M	2270-20 0
2 MELNIKOV,I	2206 18	1	BOLDINGH,E	2140-18 0
3 CIESLEK,D	2061-25	0	BUERGER,E	2023 17 1
4 SAMELSON,C	1987 6	1	SAJBEL,P	1757 -9 0
5 AUGSBURGER,L	1854 15	1	MICKLICH,F	1730-10 0
6 FAHRENHOLTZ,S	1727 23	1	SAHLI,E	1727-22 0
7 HUNG,N	1475 0	1	LIKHTEREV,M	0 0 0
8 WEST,R	0 0	1	VAN ZILE,C	1396 0 0

13-JAN-93 CHICAGO POST OFFICE 2.5 CHICAGO RES. & TRDG. 3.5
 ROUND 7

BD	RATINGS	SCORE	RATINGS	SCORE
1 INUMERABLE, F	2129-17	0	JASAITIS, A	2218 17 1
2 MARCOWKA, R	2003 -9	0	FRIESEMA, W	2152 13 1
3 COOPER, W	1704 15	.5	LOSOFF, A	1970-15 .5
4 CARTER, L	1528 41	1	BARGERSTOCK, D	1920-41 0
5 HOWARD, W	1386 18	1	BERNARD, D	1312-18 0
6 GRIESMEYER, W	1394 0	0	SIMS, B	0 0 1

20-JAN-93 ALUMNI CENTRAL 5.5 HULL TRADING CO. .5
 ROUND 7

BD	RATINGS	SCORE	RATINGS	SCORE
1 COX, M	2055-11	.5	RANGEL, R	1742 17 .5
2 FRANEK, M	1964 0	1	YOUNG, R	0 0 0
3 RZESZUTKO, R	1931 0	1	JACO, H	1118 0 0
4 BRONFELD, A	1832 0	1	NAUGHTON, T	0 0 0
5 LITVINAS, A	1685 0	1	MARGULIS, A	0 0 0
6 BROTSOS, J	1540 0	1	FRANCISKOVICH, D	0 0 0

20-JAN-93 COLUMBIA COLLEGE 4.5 CONTINENTAL BANK 1.5
 ROUND 8

BD	RATINGS	SCORE	RATINGS	SCORE
1 MCALISTER, K	1922-32	0	KOGAN, G	1774 32 1
2 KOSTECKA, K	1544 13	.5	PAROAN, E	1769-13 .5
3 BURDICK, S	1581 15	1	SIEGEL, R	1469-15 0
4 HERNANDEZ, DD	1517 8	1	ZOELLNER, J	1244 -8 0
5 TURNER, R	1229 0	1	HILLIARD, J	0 0 0
6 BRANCH, Y	1292 0	1	GANSER, A	0 0 0
7 ALPER, T	0 0	1	FRAATS, D	1858 0 0

20-JAN-93 CTA ROAD 2.5 AMOCO CORP. 3.5
 ROUND 8

BD	RATINGS	SCORE	RATINGS	SCORE
1 SMITH, J	1522 44	1	HODINA, J	2120-44 0
2 HARRIS, FF	0 0	.5	ATKINSON, J	1777 0 .5
3 JONES, M	0 0	0	WENTLING, C	1595 0 1
4 PITTS, R	0 0	0	KRULL, E	1443 0 1
5 JACKSON, JJ	0 0	0	BAER, M	0 0 1
6 WILSON, A	1554 12	1	HAMILTON, L	1379-12 0

26-JAN-93 CHICAGO RES. & TRDG. 4 ALUMNI CENTRAL 2
 ROUND 8

BD	RATINGS	SCORE	RATINGS	SCORE
1 JASAITIS, A	2235 11	1	COX, M	2044 -7 0
2 FRIESEMA, W	2165 0	1F	RZESZUTKO, R	1931 0 0F
3 LOSOFF, A	1955 23	1	FRANEK, M	1964-23 0
4 BARGERSTOCK, D	1879 -4	.5	BRONFELD, A	1832 4 .5
5 DENG, J	1676 1	.5	LITVINAS, A	1685 0 .5
6 BERNARD, D	1294 -4	0	DAVIDSON, M	1681 4 1

10-FEB-93 CHICAGO RES. & TRDG.

4

HULL TRADING CO.

2

ROUND 9

BD

	RATINGS	SCORE		RATINGS	SCORE
1 JASAITIS,A	2246	3	1	RANGEL,R	1759 -3 0
2 FRIESEMA,W	2165	0	1	KUSUMOTO,R	0 0 0
3 BARGERSTOCK,D	1875	1	1	JACO,H	1118 -1 0
4 BERNARD,D	1290	0	0	NAUGHTON,T	0 0 1
5 SIMS,B	0	0	0	YOUNG,R	0 0 1
6 CIMMARRUSTI,A	0	0	1	MARGULIS,A	0 0 0

10-FEB-93 CTA RAIL

1

AMOCO CORP.

5

ROUND 7

BD

	RATINGS	SCORE		RATINGS	SCORE
1 MATTHEWS,J	1574	-2	0	HODINA,J	2076 2 1
2 HUGHES,L	0	0	OF	WENTLING,C	1595 0 1F
3 JARRETT,T	0	0	1	HAMILTON,L	1367 0 0
4 CURRY,G	0	0	OF	KRULL,E	1443 0 1F
5 STEIN,C	0	0	0	WEBB,E	0 0 1
6 SANCHEZ,P	0	0	0	HAMPER,P	1281 0 1
(AMCRP) 7 KRULL,E	1443	10	.5	WENTLING,C	1595-10 .5

NORTH DIVISION TOP TEN

CUSI, R	FRANK	2437
REYES, R	SEARS	2307C
STEVANOVIC, M	UOP	2250C
SIWEK, M	KEMPR	2237
WEBER, L	FRANK	2236
MELNIKOV, I	MTRLA	2224
GAZMEN, E	FRANK	2210
WONG, P	EXMPL	2205C
HASAN, Y	MTRLA	2196
BENESA, A	FRANK	2163

EAST DIVISION TOP TEN

JASAITIS, A	CRT	2249C
CZERNIECKI, A	ALUMN	2224C
FRIESEMA, W	CRT	2165
ALFARO, C	ALUMN	2118*
GREGORY, J	PSTOF	2117
INUMERABLE, F	PSTOF	2112
HODINA, J	AMCRP	2078
COX, M	ALUMN	2037C
LORING, S	CONBK	2031
SMILEY, R	AMCRP	2024

NEAR WEST DIVISION TOP TEN

LEVINE, D	KNIGHT	2381
BENEDEK, R	KNIGHT	2240D
WARREN, J	CHRGR	2140T
JONES, B	ROCKW	2135
BERRY, G	KNIGHT	2091D
YOUNG, C	KNIGHT	1968C
GREEN, D	KNIGHT	1844C
STAMM, V	CHRGR	1729D
RAFACZ, T	ROCKW	1728
MORRISON, J	KNIGHT	1728

FAR WEST DIVISION TOP TEN

KOZLOVSKY, M	FERMI	2198
GUIO, J	ROYLS	2180
LUDWIG, T	DRGNS	2144
TEGEL, F	DRGNS	2134D
DORIGO, T	FERMI	2080
SPIEGEL, L	FERMI	2032C
BUCHNER, R	ROYLS	2031
STINSON, M	ROYLS	2028
STOLTZ, B	TYROS	1988
ROSE, K	AMOCO	1980

MOST IMPROVED PLAYERS

RANGEL, R	HULL	97
KALE, S	JCASE	97
HERNANDEZ, DD	COLUM	96
HOWARD, W	PSTOF	90
BROCKETT, M	SEARS	89
CISKO, G	FERMI	80
PAAUWE, N	AMOCO	76
SIWEK, M	KEMPR	72
KRULL, E	AMCRP	56
KOGAN, G	CONBK	53

NAME	TEAM	W	L	D	RATING	NAME	TEAM	W	L	D	RATING
ABRAHAM, T	RAIL	2	3	0	1519	CARTER, L	PSTOF	1	1	0	1569
ADAMI, S	UOP	1	2	0	0000?	CEASE, H	FERMI	0	0	0	0000?
ALFARO, C	ALUMN	0	1	0	2118*	CELANDER, C	COLUM	0	0	0	0000?
ALMAZAN, S	NORTH	0	0	0	1344#	CHAN, H	SEARS	0	0	0	1551
ALONSO, G	ROYLS	0	0	0	0000?	CHARKOVSKY, R	ALUMN	3	1	1	1632*
ALPER, T	COLUM	1	0	0	0000?	CHEVERESAN, S	UOP	0	0	0	1390C
ANDERSON, CJ	ROYLS	3	3	0	1327*	CHIU, H	KNIGHT	0	0	0	1653*
ATKINSON, J	AMCRP	2	3	1	1777	CHOUDRY, A	KEMPR	0	0	0	0000?
AUGSBURGER, L	MTRLA	4	0	0	1869	CHRISTIAN, R	DRGNS	1	0	0	1837C
AUSTIN, R	ROYLS	2	0	1	1109#	CIBA, F	SEARS	0	0	2	1385
BAER, M	AMCRP	2	3	0	0000?	CIESLEK, D	MTRLA	1	1	1	2036
BAKER, B	FLPRO	0	5	1	1074	CIMMARRUSTI, A	CRT	3	1	0	0000?
BAKER, LR	MERC	2	2	0	1155#	CISKO, G	FERMI	4	1	2	1602*
BALASE, E	SEARS	1	0	0	1364*	COBLEIGH, M	ROAD	2	0	1	0000?
BARGERSTOCK, D	CRT	5	1	2	1876	COLE, P	FERMI	0	0	0	0000?
BARGYH, J	COLUM	0	2	0	0000?	COLEMAN, O	ROAD	0	0	0	0000?
BAURAC, D	KNIGHT	4	0	0	1678C	COLEMAN, T	FLPRO	0	0	0	0000?
BEARD, G	ALUMN	0	0	0	1805	COOPER, B	WASTE	0	0	0	0000?
BECKLEY, S	DRGNS	0	0	0	1475*	COOPER, W	PSTOF	5	1	1	1719
BENEDEK, R	KNIGHT	4	0	1	2240D	COTE, J	MERC	0	4	1	1303*
BENESA, A	FRANK	3	3	0	2163	COX, M	ALUMN	2	1	2	2037C
BENTLEY, D	COLUM	0	0	0	0000?	CREWSE, L	EXMPL	1	0	0	2039
BERNARD, D	CRT	3	4	0	1290	CROWE, R	ROYLS	0	0	0	1393*
BERRY, G	KNIGHT	5	0	0	2091D	CUMBERLAND, M	SEARS	1	0	0	0000?
BEZZUBOV, V	FERMI	0	0	0	0000?	CUMMUTA, P	KEMPR	0	2	0	1372
BHOJWANI, C	TYROS	1	3	0	1933	CURRY, G	RAIL	0	1	0	0000?
BHOJWANI, R	INDNS	0	0	0	1710*	CUSI, R	FRANK	0	0	0	2437
BISH, D	NORTH	0	0	0	0000?	CZERNIECKI, A	ALUMN	0	0	0	2224C
BLACKMON, E	ROYLS	4	1	1	1763	DAVIDSON, M	ALUMN	3	0	0	1685*
BLAZIE, J	TYROS	1	3	1	1861	DAWSON, J	KNIGHT	1	0	1	1447
BLOEDOW, P	KEMPR	1	3	1	1489C	DEARDORFF, M	FLPRO	0	4	1	1440#
BLOOM, B	EXMPL	2	1	2	2074	DECMAN, S	KNIGHT	3	3	0	1701C
BOLDINGH, E	UOP	3	4	0	2122	DENG, J	CRT	4	0	1	1677*
BOOKER, G	RADIO	1	1	0	1373#	DEO, D	KEMPR	1	3	0	0000?
BRADY, R	CHRGR	0	5	0	1248*	DEWITT, G	ROCKW	2	1	1	1406C
BRANCH, Y	COLUM	3	3	0	1292*	DEZONNO, T	ROCKW	3	3	0	1184*
BRIONES, M	UOP	1	1	1	1684C	DIAZ, P	NORTH	1	2	3	2021
BROCKETT, M	SEARS	3	0	1	1861	DOBR, K	CHRGR	2	5	0	1511T
BRONFELD, A	ALUMN	4	1	1	1836	DOBROVOLNY, C	ROYLS	4	0	3	1939
BROTSOS, J	ALUMN	3	2	0	1540D	DONNA, D	MTRLA	0	0	0	0000?
BROWN, R	ROYLS	0	0	0	0000?	DORIGO, T	FERMI	0	0	4	2080
BROWN, S	MERC	0	0	1	0000?	DUNCAN, T	MTRLA	0	0	0	0000?
BROZOVICH, J	TYROS	0	1	2	1738C	DURKEE, D	DRGNS	4	0	1	1790C
BUCHANAN, R	ALUMN	0	0	0	1464C	DYCKOWSKI, R	CONBK	2	4	0	1623*
BUCHNER, R	ROYLS	0	0	1	2031	EDWARDS, S	EXMPL	1	0	0	1236
BUERGER, E	UOP	2	4	0	2040D	EFRON, D	ROCKW	2	0	0	1606
BURDICK, S	COLUM	4	4	0	1596	ELEK, G	NORTH	0	1	1	1014*
BURIAN, D	NORTH	0	6	0	1614C	ELIASOFF, D	WASTE	0	0	0	0000?
CAPAGATTI, A	ROCKW	0	0	0	0000?	ELLERY, G	RADIO	0	0	0	1487*
CARTER, D	JCASE	0	2	0	1074*	ERLENBORN, M	AWEST	0	0	0	1456*

? - UNRATED

- 5 TO 9 RATED GAMES

* - 10 TO 24 RATED GAMES

C - CENTURY CLUB MEMBER

D - DOUBLE CENTURION

T - TRIPLE CENTURION

Q - QUAD CENTURION

NAME	TEAM	W	L	D	RATING	NAME	TEAM	W	L	D	RATING
EUSTACE, D	DRGNS	4	1	1	1489	HODINA, J	AMCRP	5	1	2	2078
FAHRENHOLTZ, S	MTRLA	2	1	0	1750*	HOLM, B	WASTE	0	0	0	1716
FELDMAN, A	FLPRO	0	4	1	1405	HOOKEE, L	RAIL	0	1	0	0000?
FIGUEROA, A	UOP	0	0	0	0000?	HOWARD, W	PSTOF	6	0	0	1404*
FISCHER, P	ROCKW	0	0	0	0000?	HUGHES, L	RAIL	0	0	0	0000?
FLESHMAN, M	ROAD	1	0	0	0000?	HUGHES, N	KEMPR	2	0	3	1843C
FLYNN, T	DRGNS	0	0	0	0000?	HUMPF, R	RADIO	0	0	0	1293*
FOLEY, T	INDNS	0	0	0	0000?	HUNG, N	MTRLA	4	0	0	1475#
FRAATS, D	CONBK	0	3	0	1858	INUMERABLE, F	PSTOF	2	3	1	2112
FRANCISKOVICH, D	HULL	1	1	0	0000?	ISAACS, D	WASTE	0	0	0	0000?
FRANEK, M	ALUMN	6	1	0	1941	JACKSON, JJ	ROAD	0	2	0	0000?
FRANK, M	MERC	2	2	0	1720*	JACO, H	HULL	0	3	0	1117
FRIESEMA, W	CRT	8	0	0	2165	JACOBS, N	DRGNS	2	0	4	1956C
GABRIELLO, A	AMOCO	0	3	0	0000?	JADERBERG, J	RADIO	0	0	0	0000?
GAINES, I	FERMI	3	2	1	1748C	JAKSTAS, K	NORTH	0	1	2	2155C
GANSER, A	CONBK	0	4	0	0000?	JAMES, V	TYROS	0	0	0	0000?
GASTON, K	JCASE	3	1	0	1326#	JARRETT, T	RAIL	3	3	0	0000?
GAVIN, L	MERC	0	1	0	1216	JASAITIS, A	CRT	7	0	2	2249C
GAZMEN, E	FRANK	5	0	1	2210	JENKINS, M	RADIO	0	1	0	0000?
GLICENSTEIN, J	FERMI	0	0	1	1845	JONES, B	ROCKW	4	2	0	2135
GLOWACKI, D	RADIO	0	0	0	0000?	JONES, M	ROAD	3	4	0	1371#
GOLLA, R	SEARS	2	0	0	2029C	JONES, MARC	COLUM	1	1	2	0000?
GOLUMBOVSKI, P	NORTH	0	2	3	2104	KALE, S	JCASE	5	1	0	1620
GONCHAROFF, N	MTRLA	1	0	0	1778Q	KANAS, W	JCASE	2	1	0	1305
GRAFT, D	AWEST	0	0	0	1835	KARPIERZ, J	TYROS	0	3	1	0000?
GREEN, D	KNIGHT	2	1	0	1844C	KASSELBAUM, J	COLUM	0	0	0	0000?
GREENE, D	ROCKW	0	1	0	0000?	KAUFMAN, M	KEMPR	1	4	0	0000?
GREER, D	PSTOF	0	0	0	0000?	KEEFE, E	FLPRO	0	3	0	0000?
GREGORY, J	PSTOF	0	0	0	2117	KELLY, S	DRGNS	0	0	0	1258
GRIEB, S	KEMPR	0	0	0	0000?	KLINEFELTER, H	JCASE	1	3	1	1469
GRIESMEYER, W	PSTOF	4	1	0	1394	KOGAN, G	CONBK	3	0	0	1806
GRYPARIS, J	MTRLA	0	0	0	1404	KOSTECKA, K	COLUM	2	2	2	1557
GUILLEN, B	KEMPR	0	1	1	1369#	KOZLOVSKY, M	FERMI	1	1	0	2198
GUIO, J	ROYLS	4	1	2	2180	KRAKAU, H	EXMPL	1	0	0	1964
HAHNE, D	ROYLS	4	2	0	1575	KRULL, E	AMCRP	2	2	3	1453
HAMILTON, L	AMCRP	1	5	1	1367*	KUMRO, D	CHRGR	0	5	0	1573D
HAMMOND, M	CONBK	2	2	0	1344*	KUSUMOTO, R	HULL	0	6	0	0000?
HAMPER, P	AMCRP	2	3	0	1281#	LAMBIRIS, J	KEMPR	3	1	0	0000?
HARBUZIU, W	ROCKW	0	0	0	0000?	LANG, P	KEMPR	0	0	0	0000?
HARRIS, FF	ROAD	0	4	1	0000?	LASKY, J	RADIO	0	3	3	1415
HARRIS, R	FERMI	4	1	1	1537	LASKY, JIM	RADIO	0	1	0	1695#
HASAN, Y	MTRLA	3	1	2	2196	LASKY, N	RADIO	1	4	1	1384
HASKELL, M	KEMPR	0	1	0	0000?	LATIMER, E	SEARS	2	1	0	2033D
HERMANN, T	WASTE	0	0	0	0000?	LEMBERGER, S	CRT	0	0	0	0000?
HERNANDEZ, DD	COLUM	6	1	0	1525	LENDI, L	WASTE	0	0	0	0000?
HESS, B	FLPRO	0	5	1	1494	LEONG, G	KEMPR	2	2	1	2083C
HICKS, C	DRGNS	2	0	0	1530	LEQUERE, F	KNIGHT	0	0	0	1601
HILL, R	KNIGHT	4	2	0	1690	LEVINE, D	KNIGHT	1	0	0	2381
HILLIARD, J	CONBK	2	6	0	0000?	LIKHTEREV, M	UOP	1	2	0	0000?
HILTON, J	MERC	1	2	0	0000?	LITVINAS, A	ALUMN	4	1	3	1685C

? - UNRATED

- 5 TO 9 RATED GAMES

* - 10 TO 24 RATED GAMES

C - CENTURY CLUB MEMBER

D - DOUBLE CENTURION

T - TRIPLE CENTURION

Q - QUAD CENTURION

NAME	TEAM	W	L	D	RATING	NAME	TEAM	W	L	D	RATING
LOMONT, C	SEARS	0	1	0	0000?	PARA, A	FERMI	3	3	0	1606*
LORING, S	CONBK	0	0	0	2031	PARAOAN, E	CONBK	3	3	1	1756
LOSKE, D	INDNS	0	0	0	0000?	PATEL, R	CONBK	0	0	0	1426*
LOSOFF, A	CRT	2	0	1	1978	PETERS, P	EXMPL	0	0	0	1079*
LUBERSHANE, S	MERC	1	3	0	0000?	PETWAY, L	PSTOF	2	2	0	1453*
LUDWIG, T	DRGNS	2	1	1	2144	PIAO, T	DRGNS	6	0	0	1507#
MANIA, B	HULL	1	1	0	0000?	PIASZYNSKI, J	AMOCO	0	0	0	0000?
MANILLA, M	AMOCO	3	1	0	1260#	PITTS, R	ROAD	1	4	0	0000?
MARCOWKA, R	PSTOF	5	2	0	1994C	POMA, D	AMOCO	1	4	1	1187*
MAREMA, D	PSTOF	2	1	0	1958	POMA, M	AMOCO	0	2	0	0000?
MARGULIS, A	HULL	3	3	0	0000?	PURDLE, D	FRANK	0	2	0	0000?
MATTHEWS, J	RAIL	3	5	0	1572	RACANELLI, F	UOP	1	0	0	0000?
MCALISTER, K	COLUM	4	3	1	1890	RADAVICIUS, E	CHRGR	3	3	0	1690C
MCCLOUD, E	DRGNS	2	1	0	1081#	RADKE, P	COLUM	0	0	0	0000?
MCGRIFF, M	RADIO	1	2	0	1393	RADULSKI, B	TYROS	1	0	0	0000?
MCINTOSH, S	CONBK	1	2	0	1147*	RAFACZ, T	ROCKW	3	3	0	1728
MCNEASE, K	COLUM	0	0	0	0000?	RAFACZ, W	ROCKW	3	2	1	1655
MCPHAIL, C	TYROS	0	0	0	0000?	RAFFERTY, M	HULL	0	2	0	0000?
MCQUINN, J	ROCKW	2	3	0	1499	RANGEL, R	HULL	3	2	1	1756
MCSMITH, B	COLUM	0	0	0	0000?	REHORST, R	FLPRO	0	0	0	0000?
MELNIKOV, I	MTRLA	4	0	1	2224	REICHERT, P	NORTH	0	4	1	1645*
MICKLICH, F	UOP	3	4	0	1720C	REID, C	JCASE	1	2	1	1315
MIKULECKY, B	RADIO	2	2	0	1342	REVULURI, K	MTRLA	0	0	0	0000?
MILLER, TT	SEARS	2	2	2	1560*	REYES, R	SEARS	3	1	1	2307C
MIRANDA, V	FRANK	1	1	0	1462#	RIEDERER, D	CRT	0	0	0	1116#
MITCHAM, L	ROCKW	0	1	0	1562*	RINGENBERG, T	AMOCO	1	3	0	1409
MOHANTY, K	KNGHT	0	0	0	0000?	RO, D	CRT	0	0	0	1450*
MOKHTAR, M	INDNS	0	0	0	0000?	ROJAS, R	RAIL	0	3	0	0000?
MONZANI, A	FLPRO	0	0	0	1751	ROQUE, P	COLUM	0	0	0	0000?
MORRISON, J	KNGHT	0	0	0	1728	ROSE, K	AMOCO	0	0	1	1980
MORTON, B	SEARS	2	1	1	1580	ROSLEY, D	DRGNS	0	0	0	1816
MOSES, J	PSTOF	0	0	0	0000?	RUDDY, J	MERC	0	2	0	1232*
MOTYCKA, R	JCASE	1	1	0	1154	RZESZUTKO, R	ALUMN	2	0	0	1931
MURPHY, B	FRANK	0	0	0	0000?	SAHLI, E	UOP	1	1	1	1705*
NAUGHTON, T	HULL	1	4	0	0000?	SAJBEL, P	UOP	4	2	1	1748
NELSON, H	CONBK	0	0	0	1960	SAJKOWSKI, D	AMOCO	1	1	4	1956
NISHIMURA, K	FLPRO	0	4	0	0000?	SAMELSON, C	MTRLA	4	2	0	1993C
NOWAK, W	RAIL	3	1	0	0000?	SANCHEZ, N	ROAD	2	0	0	0000?
NWABUDE, O	ROYLS	0	3	0	0000?	SANCHEZ, P	RAIL	0	1	0	0000?
O'BRIEN, D	UOP	0	1	0	1401*	SANCHEZ, R	FRANK	2	3	0	1435*
O'DELL, DW	RADIO	1	4	0	1591	SANTOS, S	FRANK	0	0	0	0000?
OELHAFEN, A	EXMPL	1	1	0	1289*	SATTERLEE, D	JCASE	1	5	0	1719C
OGASAWARA, L	ROYLS	3	1	2	1806	SAUER, C	ROAD	0	1	0	0000?
OGASAWARA, R	MTRLA	0	0	1	1600D	SCHATTKE, N	AMOCO	0	2	0	0000?
OLSEN, A	KEMPR	1	4	1	1425*	SCHWARTZ, M	TYROS	0	5	0	1058*
OLUND, P	MTRLA	0	0	0	1373*	SCHWARTZ, S	SEARS	0	1	0	1718C
OSTERLUND, R	EXMPL	2	1	1	1940	SHAFF, R	TYROS	1	4	0	1549C
PAAUWE, N	AMOCO	2	2	1	1484	SHEU, G	ROYLS	0	1	1	1319*
PALMER, S	COLUM	0	0	0	0000?	SHIREY, S	KEMPR	0	0	0	0000?
PAPOUTSIS, G	UOP	0	0	0	0000?	SIEGEL, R	CONBK	0	1	1	1454

? - UNRATED
- 5 TO 9 RATED GAMES
* - 10 TO 24 RATED GAMES

C - CENTURY CLUB MEMBER
D - DOUBLE CENTURION
T - TRIPLE CENTURION
Q - QUAD CENTURION

NAME	TEAM	W	L	D	RATING	NAME	TEAM	W	L	D	RATING
SIMS, B	CRT	4	1	0	0000?	TURNER, R	COLUM	3	4	0	1229*
SIMS, LL	KNGHT	0	0	0	0000?	TURPIN, S	INDNS	0	0	0	1196#
SIWEK, M	KEMPR	4	0	3	2237	TYREE, D	RADIO	0	5	0	0000?
SLAUGHTER, S	ROAD	1	0	0	0000?	UNDERWOOD, W	EXMPL	4	0	0	1971C
SLUSSER, C	CRT	0	0	0	0000?	VAN MEER, J	KEMPR	1	1	2	1983
SMILEY, R	AMCRP	0	0	0	2024	VAN OUTRIVE, R	RAIL	0	3	0	0000?
SMITH, BR	TYROS	0	4	0	1478	VAN ZILE, C	UOP	2	2	0	1396*
SMITH, J	ROAD	3	4	0	1566#	VERGE, C	PSTOF	0	1	0	0000?
SOLLANO, E	FRANK	4	0	2	1994	VERIVE, J	AWEST	0	0	0	1603#
SOMBONG, M	CONBK	1	0	0	1737	VIGANTS, A	NORTH	3	2	1	1656
SPANGLER, M	AMOCO	0	1	0	1371	WALKER, R	FERMI	0	0	0	1368C
SPECK, D	COLUM	3	2	0	1317	WALLACH, C	MTRLA	2	0	0	2082
SPIEGEL, L	FERMI	3	4	0	2032C	WALLIN, R	AWEST	0	0	0	1720*
STAMM, V	CHRGR	1	2	0	1729D	WARD, C	DRGNS	1	3	0	1546D
STEIN, C	RAIL	0	1	0	0000?	WARREN, J	CHRGR	2	1	2	2140T
STEIN, P	AWEST	0	0	0	2236	WEAVER	FLPRO	0	0	0	0000?
STELTON, N	AWEST	0	0	0	1373	WEBB, E	AMCRP	2	1	0	0000?
STEVANOVIC, M	UOP	2	2	2	2250C	WEBER, L	FRANK	2	1	2	2236
STINSON, M	ROYLS	0	0	0	2028	WEISSKOPF, J	HULL	2	3	0	0000?
STOLTZ, B	TYROS	1	2	1	1988	WEITZ, R	FLPRO	0	6	0	1768C
STUHLBARG, D	UOP	0	0	0	1527C	WELTER, P	SEARS	3	0	0	0000?
SUERTH, F	EXMPL	3	0	2	1630C	WENTLING, C	AMCRP	3	2	2	1585
SUH, G	AMOCO	0	0	0	1462#	WEST, R	MTRLA	3	1	0	0000?
SULLIVAN, C	MERC	1	7	0	1516*	WHITE, H	JCASE	2	3	0	1688
SULLIVAN, J	EXMPL	3	2	1	2018D	WHITTINGTON, D	HULL	0	0	0	0000?
SWIDERSKI, M	CHRGR	0	0	0	1345C	WIECHERT, A	UOP	0	1	0	0000?
SZAUKELLIS, W	MTRLA	0	0	0	0000?	WILLIAMS, J	RAIL	2	3	0	0000?
TEGEL, F	DRGNS	4	0	2	2134D	WILLIAMSON, A	PSTOF	0	0	0	0000?
THOMAS, G	TYROS	2	2	0	1501	WILSON, A	ROAD	1	5	0	1566
THOMAS, J	CHRGR	2	1	1	1523C	WILSON, M	SEARS	0	1	0	0000?
THOMPSON, J	RAIL	1	3	0	0000?	WINGFIELD, L	INDNS	0	0	0	0000?
THOMPSON, R	FLPRO	1	1	0	1079	WINSTON, H	ALUMN	0	0	0	1982
THOMPSON, T	ROAD	1	1	0	0000?	WITHERIDGE, T	WASTE	0	0	0	0000?
TOGAMI, P	JCASE	0	0	0	1173*	WONG, P	EXMPL	3	0	1	2205C
TOLPPI, J	WASTE	0	0	0	0000?	YOUNG, C	KNGHT	2	0	0	1968C
TRUSNICH, M	WASTE	0	0	0	0000?	YOUNG, R	HULL	2	2	0	0000?
TUKES, W	COLUM	0	0	0	0000?	ZEIDEL, J	MERC	2	2	1	1951
TURNER, K	PSTOF	0	0	0	1559	ZOELLNER, J	CONBK	1	3	1	1236

? - UNRATED
- 5 TO 9 RATED GAMES
* - 10 TO 24 RATED GAMES

C - CENTURY CLUB MEMBER
D - DOUBLE CENTURION
T - TRIPLE CENTURION
Q - QUAD CENTURION