

Chicago Industrial Chess League

Bulletin No.5, Vol. 37
April 1994

INSIDE THIS ISSUE:

- ♔ A word from the President
- ♔ 2 Squares Column by Marv Cox
- ♔ Annotated Games
- ♔ Treasurer's Mid-year Report
- ♔ Banquet Announcement
- ♔ Ratings Chairman Report
- ♔ Spring Business Meeting minutes

♔ **-NEED INPUT!** To make the CICL bulletin even better we are looking for anyone interested in submitting **articles** or **games**. If you are interested, call or write to the bulletin editor.

♔ -Bulletin Editor - Ruben Reyes
2019 W. Leland Ave.
Chicago, IL 60625

A WORD FROM THE PRESIDENT

There are a lot of things coming up for the CICL over the next few months and, although you have probably heard about it once already, I think it is important to reiterate upon the details.

We had our Spring Business Meeting on Thursday, April 7 and, quite frankly, the turnout was pretty poor (less than 15 attendees). I may be at fault for scheduling the meeting on a Thursday night, which was different than for meetings in the recent past. However, I had not received any feedback prior to or after the meeting from the CICL members and so this is merely speculative. Please, let me know so that in the future I can schedule meeting dates which is more convenient. For more details about what was discussed in the meeting, please read the minutes prepared by Lenny Spiegel. There are a few things which I would like to highlight.

First, the playoffs are drawing near and there were several things discussed regarding this. **All divisions must have completed their play in the first week of May so that pairings for the first round may be made on May 6. The second and third rounds will be held on May 21 at the Amoco Building.** The first round must be completed prior to May 20 and played at the Home Team's facility. The second round will begin at 9:00 am at the Amoco Building 3rd Floor and the third round will be at 2:00 pm. Directions are provided in this bulletin. **The rules for qualifying for Tier 2 have been modified.** The third place team from each division will automatically qualify as the top seeds. The last four spots will be filled by the remaining teams with the best overall record. This should give the divisions with the most teams the greatest representation. (Under the old system 4 out of 5 teams from the Near West and Far West each were qualifying for the playoffs). The playoff format for Tier 2 will be exactly the same as for Tier 1. Time control for first round playoffs are the same as the regular season (50/2 25/1). Second and third rounds will have a secondary time control of game/30.

All Division Chairman! Once you have determined the first and second place teams in your division, contact Bob Stoltz so that he may order the trophies. Also, Bob needs your selections for Outstanding Team Captain and MVP. You can reach Bob at (W) 708-224-2983.

Don't forget the CICL Banquet isn't far away. June 10 is the date, so mark it down. Again, there should be more information from the Banquet Chairman, Tony Jasaitis, in this bulletin. To further entice you this year, door prizes (books, sets, etc.) will be given away. The bulletin is projected to under run \$100 this year and it was decided at the meeting to put this money towards the banquet.

Start thinking about next year. We will need people to fill some of the officer positions, most notably, Secretary. Let me know if you are interested in doing something.

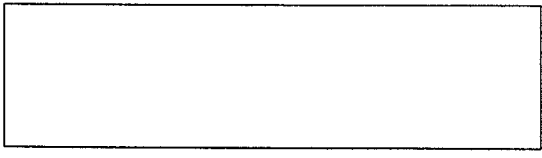
The CICL vs. Oak Park Chess Club Match was such a success that we are going to have another one on June 21. This is a Tuesday and will be virtually the same setup as the last one. If you are interested, let me know.

Thanks for your time and good luck finishing out the season!!!!!!!!!!!!!!

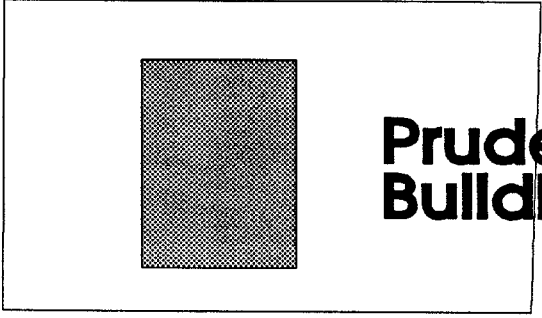
Sincerely,
Jim Hodina
(H) 708-799-5571

Michigan Avenue

**Grant Park
Garage
\$6.50 per day**

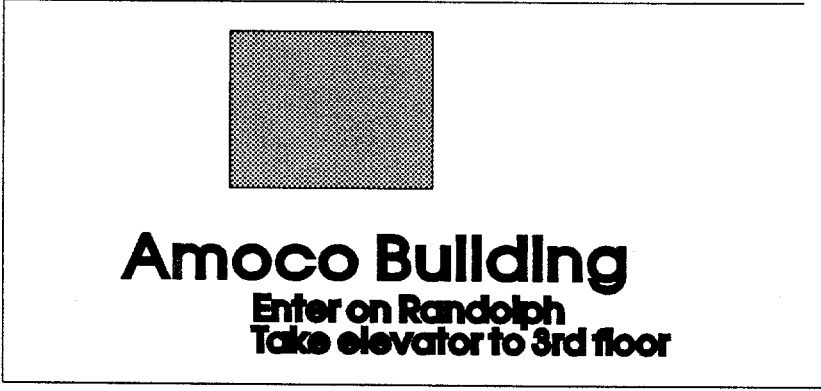


Lake



**Prudential
Building**

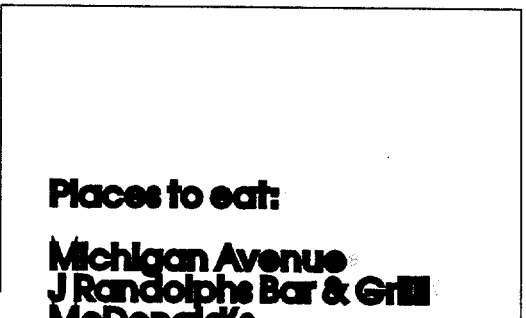
Randolph Drive



Amoco Building

**Enter on Randolph
Take elevator to 3rd floor**

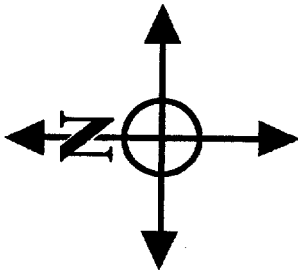
**Monroe Street Garage
\$5.00 per day
Enter on Columbus**



Places to eat:

- Michigan Avenue**
- J Randolphs Bar & Grill**
- McDonald's**
- au bon pain**
- Bennigan's**

**Additional restaurants on
State Street & Randolph**

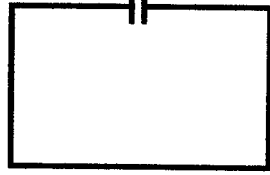


OAK PARK CHESS CLUB

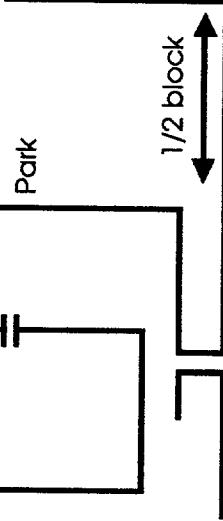
4/26 Tony Miles Simul
6/21 CICL vs. OPCC

**Dominican
Priory**

ENTER



Park



1. Take Eisenhower to HARLEM AVE.

2. Exit North on HARLEM.

3. Go to DIVISION ST. and turn West.

4. The Priory will be on your right across from a large church.

5. Follow access road to the right, park, and enter in middle of building.

Amoco



HARLEM AVE.

DIVISION ST.



7 Eleven

EISENHOWER EXPRESSWAY

CICL OFFICERS As of April 1994	
President:	James Hodina 718 Central Park Ave. Flossmoor, IL 60422 (312) 856-2762 W (708) 799-5571 H
Secretary:	Leonard Spiegel MS 219 Fermilab Batavia, IL 60510 (708) 840-2809 W (708) 377-2675 H
Treasurer:	Wesley K. Underwood 207 S. Dorchester Ave. Wheaton, IL 60187 (708) 752-5127 W (708) 462-0393 H
Ratings :	Charles Ward
Chairman:	615 S. Lincoln Hinsdale, IL 60521 (708) 325-3885 W (708) 979-4599 H (708) 979-8451 F
Bulletin Chairman:	See North Div Chairman
East :	Kelvin McAlister
Division :	3825 Canterbury Ct. 2A
Chairman:	Richton Park, IL 60471 (312) 663-1600 ext, 182 W
Near West:	Satish L. Kale
Division :	Jl Case
Chairman:	7 South 600 County Line Road Hinsdale, IL 60521 (708) 887-2372 W (708) 325-5253 H
Far West :	Irwin Gaines
Division :	Fermilab - MS 127
Chairman:	P.O. Box 500 Batavia, IL 60510 (708) 840-4022 W
North :	Ruben Reyes
Division :	2019 W. Leland Ave.
Chairman:	Chicago, IL 60625 (708) 286-0758 W (312) 334-5462 H (312) 769-0311 F
Banquet & Publicity :	Anthony Jasaitis P.O. Box 664
Chairman:	Bedford Park, IL 60499-0664 (708) 406-6420 W

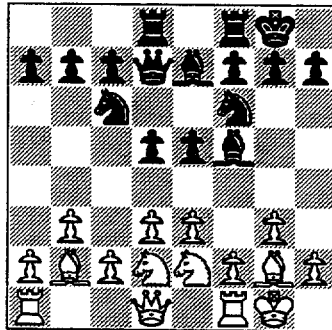
READER'S FORUM

(The following are excerpts from Duane Satterlee's letter. The game that follows was played in the exhibition match between the Oak Park Chess Club and CICL. - ed)

I thought I would suggest publishing this game because it is interesting. I didn't plan to play this opening. I play the Bird a lot. But who do I sit down across from? Eric Ortega, who convinced me one night that he plays the Bird at least as well as I. So I played this. If you can't dazzle them, baffle them!

You can't really annotate this spectacularly, because there aren't any books on it that I am aware of. I didn't really research MCO for all the Modern Opening, Reti and King's Indian Attack variations. I thought it was well played, but post-game analysis showed I missed first the win of a piece, and later a pawn, and even a mating net.

Irregular Opening; D. Satterlee (1718 CICL) vs. E. Ortega (1660 USCF): 1. g3 d5 2. Bg2 e5 3. d3 Nf6 4. b3 Be7 5. Bb2 Nc6 6. e3 0-0 7. Ne2 Bf5 8. Nd2 Qd7 9. 0-0 Rad8



After 9....Rad8

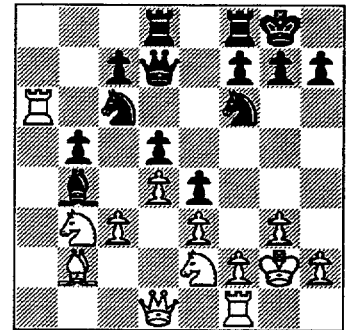
White has played a pawn formation that Andy Soltis calls the Macleod System when it is played for Black. Spassky twice obtained draws with the Macleod System against Petrosian in his world championship challenge. "Macleod Defense Reversed" seems like the right name for this opening. It is passive, but flexible, with potential for those who like to wait for their opponent to provide an opportunity for them. This was my first attempt to play this opening against man or machine, and I have seen no discussion or sample games with this formation for White.

10. d4 e4 11. a3 b5 12. b4

Bh3 13. c3 Bxg2

This early exchange of bishops weakens potential for a king side attack.

14. Kxg2 Bd6 15. a4 a6 16. Nb3 Ne7 17. axb5 axb5 18. Ra7 Nc6 19. Ra6 Bxb4



After 19....Bxb4

White was threatening to place a supported knight on c5 where it would cramp Black's style. Instead, Black plans to sacrifice a bishop for two pawns. Then Black will have a passed pawn and can put a knight on d3 where it will cramp White.

20. Rxc6 *(Keeping material already won seems alright here because 20.cxb4 Nxb4 21.Nc5 not only defends d3 but also attacks Black's queen - ed)*

20... Qxc6 21. cxb4 Ra8

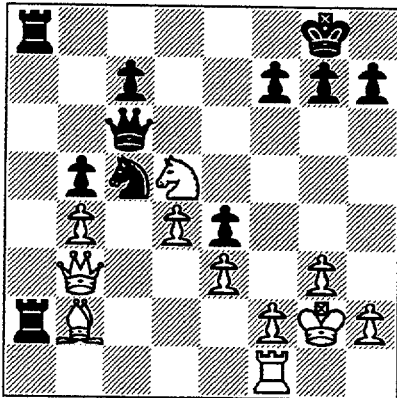
White chose to exchange a rook and pawn for two pieces, leaving Black's c-

pawn backward. In return, Black gains the open a-file. If Black had played 21... Qc4, White could play Ba3 and Na5, blocking the a-file.

22. Nc5 Nd7 23. Nf4

If now 23... Nxc5 24.dxc5 and 25.Nxd5.

23...Ra2 24. Qb3 Rfa8 25. Nxd5 Nxc5



After 25...Nxc5

Black takes the knight now because 25...Rxb2 26.Ne7+ Kf8 27.Nxc6 Rxb3 28.Nxb3 leaves Black a knight down. If the knight is recaptured with a pawn, it will screen Black's backward c-pawn.

26. dxc5

White missed the win of a piece by 26. Qxa2 Rxa2 27.Ne7+ Kf8 28.Nxc6 Nd3 29. Ra1 Rxa1 (30...Rxb2? 31.Ra8++) 30. Bxa1. Other variations are possible.

26...Rxb2

Now Black expected 27.Qxb2 Qxd5, equalizing material, because 27. Ne7+ Kf8 28.Nxc6 Rxb3 would leave White the exchange down. But the order of events is significant: White finds a favorable transposition that wins two pawns.

27. Ne7+ Kf8 28. Qxb2 Kxe7 Play could go 28...Qd7 29.Qe2 Kxe7 30.Qh5 h3 31.Qe5+ and White will win a pawn.

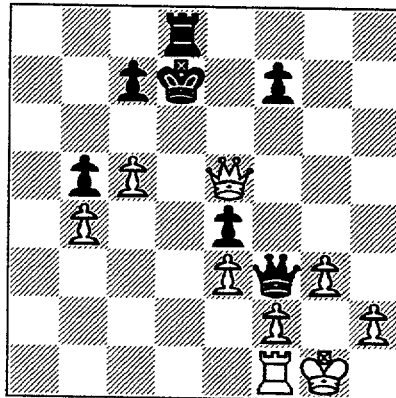
29. Qxg7 Qf6 If 29...Qg6? then 30.Qe5+ and White wins another pawn if the Black

queen interposes, or mates by 30...Kd8 31.Rd1+ Kc8 32. Qe8+ any 33.Qxb5+, etc. But now Black positions for a perpetual check.

30.Qxh7 Qf3+ 31. Kg1 Rd8

White uses checks to work his queen to b3 to stop the Black rook from reaching it.

32. Qh4+ Ke8 33. Qh8+ Ke7 34. Qe5+ Kd7



After 34...Kd7

Black should have played 34...Kf8 to avoid the possibilities on White's next move. However, after 34..Kf8 35.Qxc7 White is three pawns up with a good chance to win Black's pawn on b5 as well. If Black tries 35...Rd1, then 36.Qb8+ Kg7 37.Qxb5 protects against a draw.

35. Qd5+

White missed a quicker win with 35. c6+ Kxc6 36.Rc1+ Kb2 (36...Ke7 Rxc7++) 37. Qxc7+ etc. or 35...Kc8 36.Qa1 Kb8 37.Qa6 etc.

35...Ke7 36. Qb3

36.Qb7 wins a pawn after 36...Rd1 Qxb5. Taking at c7 may give Black the draw.

36 ...f5

Now the f-pawn can support the queen for a check at g5

37. c6 Qe2 38. Qc3 Rd1

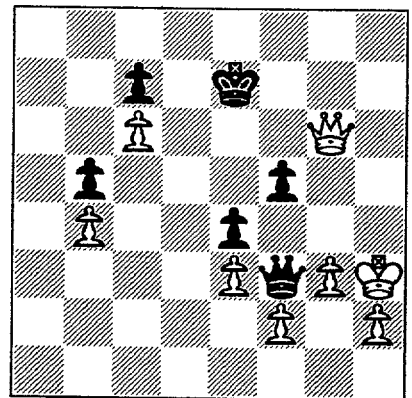
White was threatening a check from c5 or e5 followed by a pawn capture, but Black's rook move forces the moment of truth: Black threatens mate

in one, while 39.Rxd1 yields a draw by perpetual check. But Black's pawn move to f5 has created new opportunities in the Black backfield. So...

39. Qe5+ Kd8 40. Qf6+ Ke8 41. Qe6+ Kd8 42. Qf6+ Ke8 43. Qg6+ Ke7

Black carefully avoids mate positions and does not permit White a way to take the pawn on f5 with check. But White stops with his queen where it will not permit Black to get perpetual check after White dissolves the mate threat. Now Black has no way to avoid a loss.

44. Rxd1 Qxd1+ 45. Kg2 Qf3+ 46. Kh3



After 46. Kh3

46...Qxf2

What else can Black do? If Black exchanges queens by checking at g4, White wins a pawn and will queen one of the White pawns. If black keeps the queen on the checking diagonal, White simply takes the Black f4 pawn.

47. Qg7+ Ke6 48. Qd7+ Kf6 49. Qxc7 Qxe3

An alternative is 49...Qf1+ 50.Kh4 Qd1 51.Qf4 and while Black may delay or eliminate White's pawn from queening, White will pick up more pawns, becoming un-stoppable. 50. Qd6+ Kf7 51. c7 Qc3 Possible is 51...Qf3 52.Qf4 Qh5+ 53.Qh4 Qe2 54.Qh7+ Ke6 55.c8=Q+.

52. Qd7+ Resigns

White's next move, c8=Q prevents Black from checking on h8 and seals the win.

The 2 Squares Column

"If two (or more) squares are attacked more times than they are defended they may fall"

by Marvin Cox

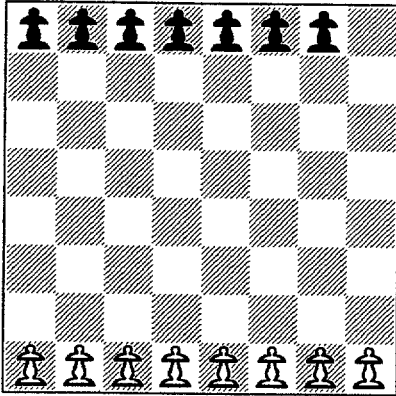


Diagram 68

I saw that my uncle had set up the chessboard as per diagram 68. Eight white pawns and seven black pawns.

"What's this", I asked.

"This is an example of a type of strategy", he answered, "Those are not pawns. They are units of fire power. Suppose a battle were fought to the extermination of the weaker side (black). How many white units of fire power would still remain after the battle?"

I answered him, "One, of course, because white started out one unit to the good".

"Wrong", said my uncle, "White finishes with two units of fire power."

I asked, "How do you figure that."

My uncle responded, "White will destroy seven units. Black starts with one less unit of fire power than white does so can destroy but one less units of white fire power, namely six. Right?"

I said slowly, "Yeah, six. So white ends up with two units of fire power when it's all over."

My uncle said, "Apply this to chess. Separate one major or minor piece from the rest of your opponent's army and immediately attack full force against his reduced force before his piece can return to play. During this battle we should be able to win one of black's pieces due to our extra fire power. We will end with two pieces. We now attack his single detached piece with our two pieces and destroy it."

I asked, "Is this really possible?"

"Yes," said my uncle, "I do it all the time."

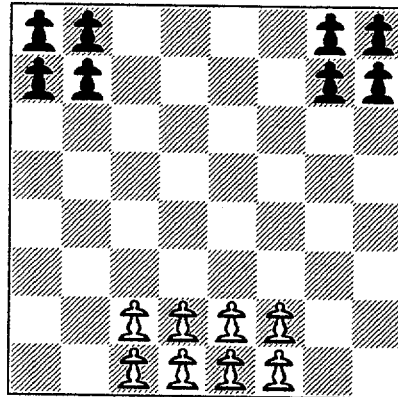


Diagram 69

This time my uncle set up diagram 69 on the chessboard. Eight units of white fire power are opposed to eight units of black fire power.

"What now, uncle," I asked.

"More strategy," he answered, "divide and conquer. We attack an army of four black fire power units with our full army of eight white fire power units. While we destroy four right hand black units black can destroy only two white units because he has only half our fire power. That leaves us with six units of fire power and our

opponent with the four black units in the upper left corner of the battlefield. Now while we destroy his four units he can only destroy two or three of ours because he had only four sixths of the firepower we had. This leaves us with two or three units of fire power and the enemy is exterminated."

"How does this apply to chess," I asked my uncle.

"Ah," said my uncle, "Very simple. Drive a pawn wedge up through the middle of the board to divide the black forces into two relatively equal parts which can not support each other. Attack and destroy one part with full force. Then turn and attack and destroy the remaining opposition."

I mused, "Eight units overwhelming eight units. Remarkable."

I listened to my uncle talk about the evils of having a piece separated from the pack. This of course includes lack of development. After also hearing the divide and conquer lecture I wondered if one should attack the smaller portion first or the larger portion. So I decided to see if I could make some mathematical comparisons based on his fire power theory.

- Case 1 - Attack the small group first
- Case 2 - Attack the larger group first.
- Case 3 - Divide the opposition into two equal parts.

In case 1 the first battle will eliminate 2 enemy units and 2/8 of 2 of our units. That is, we lose 1/2 a unit of fire power. We have 7-1/2 remaining units for the start of our second battle against the

enemy's 6 units. During this second battle we kill off 6 enemy units and lose 6 times 6 and divided by 7-1/2 of our own units. So we've lost 4.8 units in the second battle and have 2.7 units still alive.

In case 2 the first battle will eliminate 6 enemy units and 6/8 of 6 of our units. That is, we lose 4-1/2 units of fire power. We have 3-1/2 remaining units for the start of our second battle against the enemy's 2 units. During this second battle we kill off 2 enemy units and lose 2 times 2 divided by 3-1/2 of our own units. So we've lost 1.14 units in the second battle and have 2.36 units still alive.

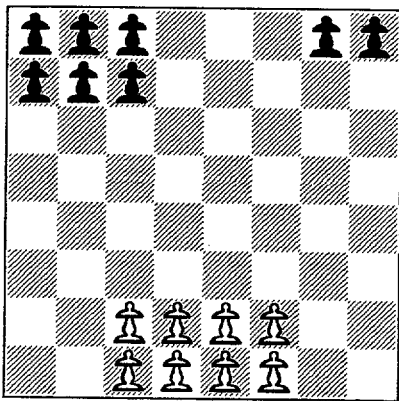


Diagram 70

In case 3 (see diagram 69) the first battle will eliminate 4 enemy units and $4 \times 4/8 = 2$ of our own units. So we still have 6 units after the first battle. During the second battle the enemy loses 4 units and we lose $4 \times 4/6 = 2.66$ units. We have 3.34 units still alive.

The conclusion is we should attempt to divide the enemy into 2 equal non-communicating parts and then destroy them one at a time. From a chess viewpoint the half with the king in it should be attacked first.

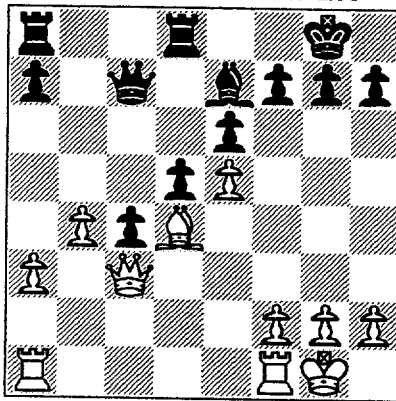
SICILIAN

WHITE: Dave O' Dell (1610)
BLACK: Satish Kale (1825)

J. I. Case vs. A & B Radio
For Best Salvage

This candidate game for best salvage shows how perseverance and tenacious defense pays off.

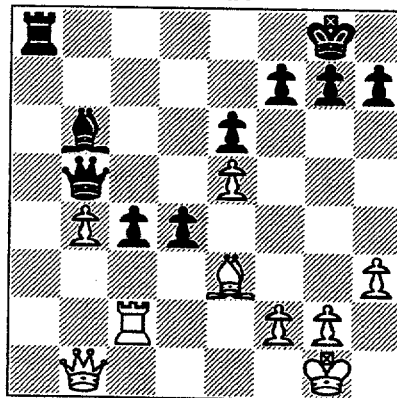
1. e4 c5 2. c3 d5 3. e5 Nc6 4. d4 cxd4
5. cxd4 e6 6. a3 Nge7 7. Nc3 Nf5 8.
Nf3 Qb6 9. Bb5 Be7 10. Bxc6+ bxc6
11. b4 Ba6 12. Ne2 O-O 13. O-O Bxe2
14. Qxe2 Nxd4 15. Nxd4 Qxd4 16.
Bb2 Qb6 17. Qd3 c5 18. Bc3 c4 19.
Qd2 Rfd8 20. Bd4 Qc7 21. Qc3



After 21...Qc3

Hangs tough on the dark squares.

21...Rdb8 22. Rab1 Qd7 23. Rfd1 Bd8
24. Be3 Qa4 25. Bd4 a5 26. Bc5 axb4
27. axb4 Qc6 28. Rb2 Ra4 29. Rdb1
Rba8 30. h3 Ra3 31. Qd4 Qb5 32. Rc2
Rd3 33. Qb2 Rb3 34. Qc1 Rxb1 35.
Qxb1 Bb6 36. Be3 d4



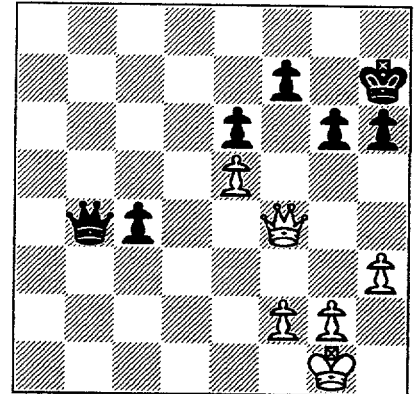
After 36...d4

Looks grim for White.

37. Ra2!

A well-conceived shot whose objective's also well concealed.

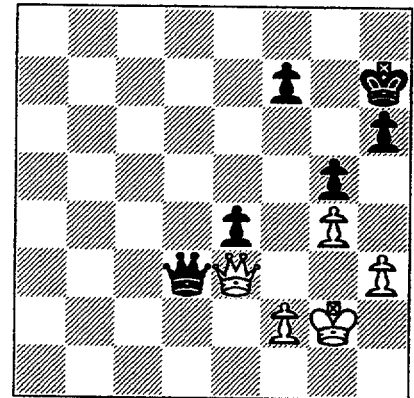
37...Rxa2 38. Qxa2 h6 39. Qa8+
Kh7 40. Qe4+ g6 41. Bxd4 Bxd4 42.
Qxd4 Qxb4 43. Qf4



After 43...Qf4

Nice. Now there's only one passed pawn to worry about.

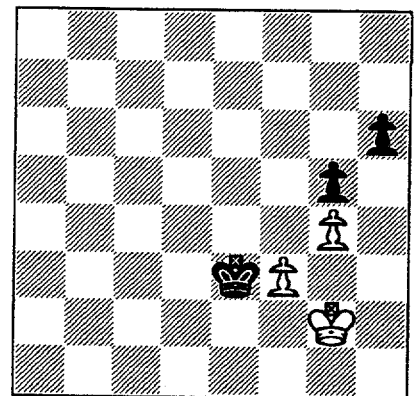
43...Qb1+ 44. Kh2 Qf5 45. Qxc4
Qxe5+ 46. g3 Qf5 47. Qa2 e5 48. Kg2
e4 49. Qe2 Qd5 50. Qe3 Qd3 51. Qf4
Qd5 52. Qe3 g5 53. g4 Qd3



After 53...Qd3

Eventual draw came here -O'Dell.

54. Qxd3 exd3 55. Kf3 Kg6 56. Ke3 f5
57. f3 d2 58. Kxd2 Kf6 59. Ke3 Ke5
60. Kf2 fxg4 61. hxg4 Kf4 62. Kg2
Ke3 63. Kg3 Kd3 64. Kf2 Kd2 65.
Kg3 Ke3 66. Kg2 1/2-1/2



FINAL POSITION

Catalan System

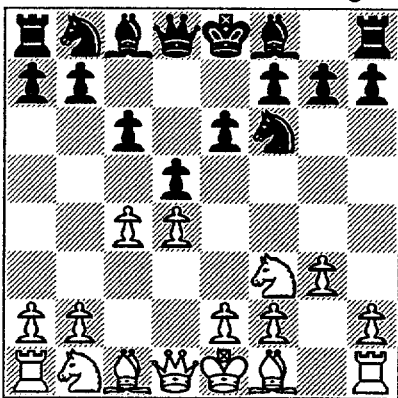
WHITE: Igor Melnikov (2229)
BLACK: Mark Siwek (2137)

Motorola vs. Kemper

Annotations by Mark Siwek
For Best Annotated Game

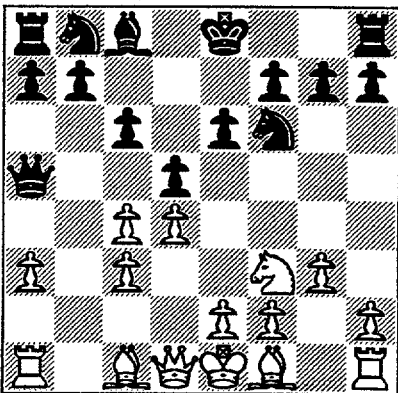
During my CIGL career, I've published a handful of games in the bulletin. At the banquet last year, five or six guys came up to me to say they enjoyed my annotations and found my games instructive. So when new Bulletin Editor Ruben Reyes asked if I had any games, I thought I'd share this contest against Motorola's Board 1, Igor Melnikov - a fine player.

1. d4 d5 2. Nf3 Nf6 3. c4 e6 4. g3 c6



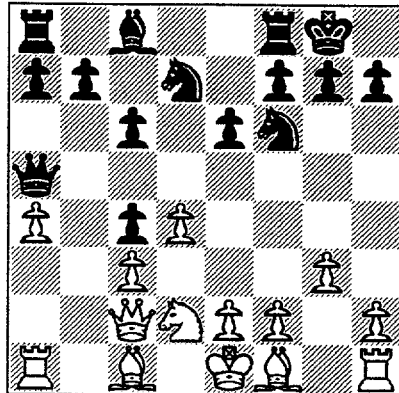
After 4...c6

White is trying to play the Catalan, but Black decides to go his own way. After the game, my opponent told me theory recommended 4...Be7. Typical play might be 5.Bg2 0-0 6.0-0 Nbd7 7.Qc2 c6 8.Nbd2 b6 9.e4 Bb7 10.b3 Rc8. 5. Nc3 Bb4 Why not? Let's be active. 6. a3 Melnikov criticized this in the post-mortem. 6...Bxc3+ 7. bxc3 Qa5



After 7...Qa5

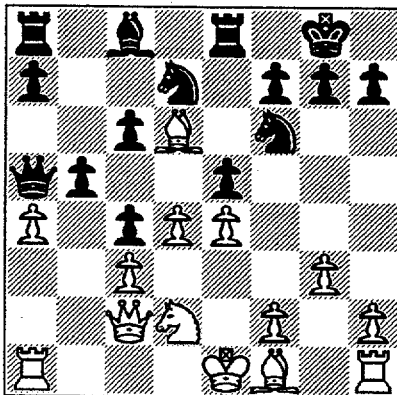
While it's true this does play on the c-pawn, the real intent is to eventually support ...e5. A timely ...dxc4 would support that initiative, as well as provide Her Majesty with an avenue to the Kingside. 8. a4 Totally unexpected. I had left the board to check on the other games, and when I returned, I just about had to ask my opponent what he had played. The Queen can take the c-Pawn, but it gets 'boxed in' - though not trapped - on the Queenside. 8...0-0 9. Qc2 Nbd7 10. Nd2 dxc4



After 10...dxc4

See the note to Black's 7th. Now, if 11.Nxc4 Qd5. I also considered 10 ...e5. but decided to stabilize the Pawn structure first.

11. Ba3 Now the real point of White's play becomes apparent: he's angling for the d6 outpost. 11...Re8 12. e4 b5 I wasn't planning on this, but I had to prevent the Nxc4-d6 invasion. As it turns out, I get to keep the Pawn. 13. Bd6 e5

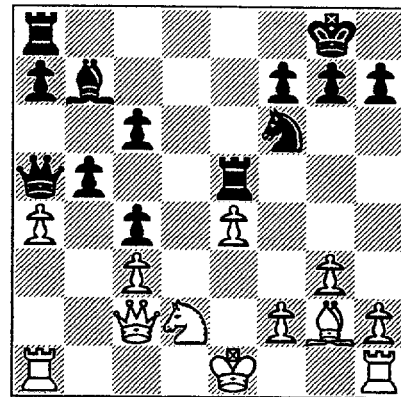


After 13...e5

Melnikov said he never saw this, even though (1) I had been planning it for quite some time, and (2)

I thought it was forced (as otherwise 14.e5). In d-Pawn games, if Black gets in ...e5, he's usually at least equal.

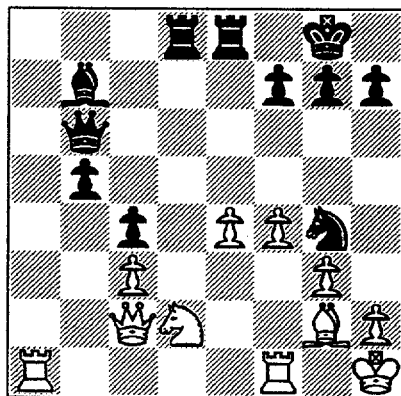
14. dxe5 Nxe5 15. Bxe5 Rxe5 16. Bg2 Bb7



After 16...Bb7

My opponent didn't expect this either, and it works out nice. He had, however, analyzed 16...Nd5 - which I never considered! 17. 0-0 Qc7 Time to consolidate. On 17...Qb6, I didn't like 18.a6, though in the post-mortem, Melnikov noted the 18.Rfb1 pin. 18. f4 Ree8 19. Kh1 Melnikov criticized this after the game, but I think he needed to avoid complications on the a7-g1 diagonal.

19...Rad8 I considered the immediate 19... a6, but thought the text was more active. I completely overlooked White's 21st.... 20. axb5 cxb5 21. Rxa7 ... which turned out to be good, as the Pawn was somewhat 'poisoned'. True, White restores material balance, but Black gets the initiative. Better was something like 21.Rfb1. 21...Qb6 22. Raa1 Ng4

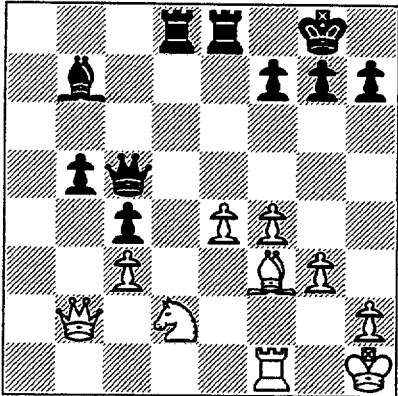


After 22...Ng4

The winning move. One threat is

23...Ne3, another is 23...Nf2+ and if 24.Kg1 Nh3+ 25.Kh1 Qg1+ 26.Rxg1 Nf2 Mate. White finds the best defense.

23. Bf3 Ne3 24. Qb2 Nxf1 25. Rxf1 Qc5



After 25...Qc5

Another strong move, keeping active, while defending against Nxc4. Melnikov was now in time trouble, and helps me out. 26. e5 Thank you! I want to exchange material, and the Bishop was not doing anything.

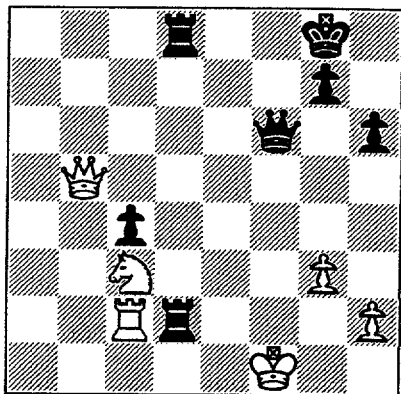
26...Bxf3+ 27. Nxf3 Rd3 28. Nd4 b4

The coup de grace. White admitted he hadn't seen it. 29. Ne2 bxc3 30. Nxc3 Qd4 31. Rc1 h6 Avoiding any last-minute back row Mates.

32. Rc2 Rd8 33. e6 fxe6 34. Kg2 e5 35. fxe5 Qxe5 36. Qb5 Rd2+ 37. Kf1 Qf6+ 0-1

Mate to follow: 39.Kg1 Qf2+ 40.Kh1 and Black has his choice of four mates.

FINAL POSITION



Colle System

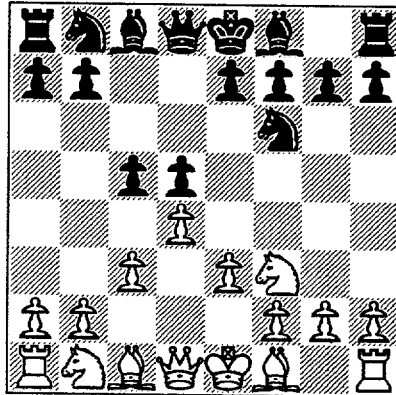
WHITE: Carl Reid (1317)
BLACK: Norm Lasky (1397)

J. I. Case vs. A & B Radio

For Best Sacrifice

White's resourcefulness and imaginative attack is what makes this candidate for Best-Sacrifice award interesting.

1. d4 d5 2. Nf3 Nf6 3. e3 c5 4. c3

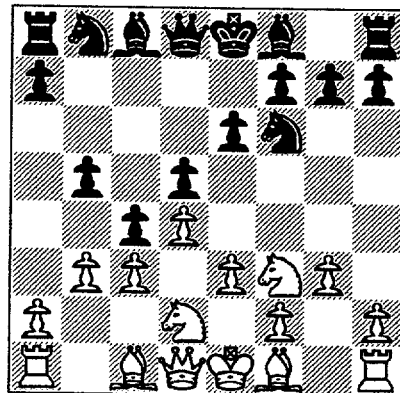


After 4...c3

White's last move deserves a diagram. The seemingly tame appearance of this classic system is deceiving because one of its secrets is a Kingside attack.

4...c4 Prevents White from playing Bd3 or c4, but creates a pawn chain the maintenance of which may be untenable.

5. b3 b5 6. Nbd2 Or 6. a4 . 6...e6 7. g3 This way of developing the Bishop is nice and resourceful.

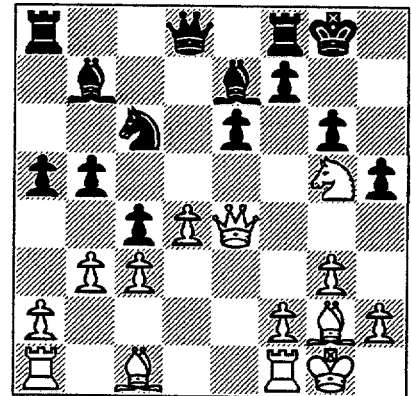


After 7. g3

7...Nc6 7...Nbd7 may be better as it enables the QB to contest the long diagonal unhindered while allowing Black the option of ...Nb6 (to strengthen the position of the advanced pawns) or ...Nf8 to inject a little more muscle to the defense of Black's King.

8. Bg2 Bd6 9. 0-0 0-0 10. Qe2 a5 11. e4 dxe4 12. Nxe4 Nxe4 13. Qxe4 Bb7 Logical as it develops the QB and protects the Knight. However, had Black foreseen what's now about to come, he'd have left his Bishop at c8 and defended the Knight instead with 13...Ra6. 14. Ng5! Well played. Here, Carl Reid says, 'My thoughts were that his King Side was bare of any defenders except the Rook on f8. If I could disrupt Black's pawn shield, there were some very interesting combinations in the air'.

14...g6 Forced 15. Qh4 h5 Again, forced 16. Qe4 Be7



After 16...Be7

17. Nxe6! Nice shot!! 17...fxe6 18. Qxg6+ Kh8 19. Qh6+ Kg8 20. Qxe6+ 20...Rf7 Or 20...Kh8 21.Qh6 + Kg8 22.Be4 Rf7 23.Qxf7 Qg8 24. Qxh5+ Kg7 25.Bh6+ Kh8 (or 25...Kf6 26.Qf5 mate) 26.Bf8+ and mate next move.

21. Bd5 Qf8 If 21...Qe8 22.Qg6+Kf8 23.Bh6+ is of no help for Black. 22. Bh6 Nd8 23. Qg6+ Kh8 24. Bxf8 Bxd5 The rest is elementary. 25. Qxh5+ Kg8 26. Qxd5 Ra7 27. Bxe7 Rxe7 28. Qxd8+ Kg7 29. Rae1 Rd7 30. Qg5+ Kf8 31. Qh6+ Rg7 32. Qh8+ Kf7 33. Qe8+ Kf6 34. Qe6+ Kg5 35. Re5++

Dutch Defense

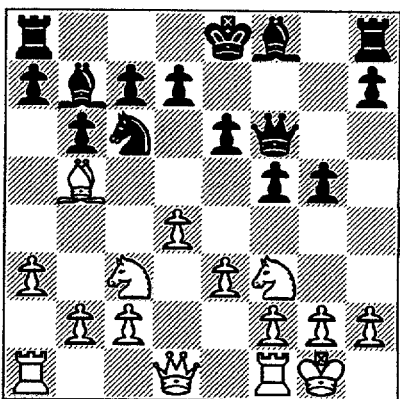
WHITE: Albert Vigants (1611)
BLACK: Pat Sajbel (1701)

Northrup vs. U.O.P.

For Best Sacrifice
(Notes by Pat Sajbel)

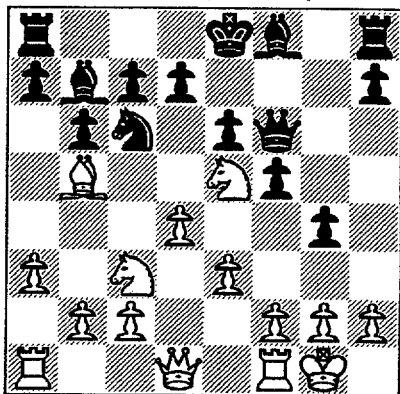
July 4th fireworks are events that draw crowds yearly. This candidate for Best Sacrifice is also just that: a display of fireworks on the chessboard. This one involves a Queen sacrifice.

1. d4 f5 2. Nf3 Nf6 3. Nc3 e6 4. c3 b6 5. Bg5 Bb7 6. Bxf6 Qxf6 7. e3 Nc6 8. Bb5 g5 9.0-0?! A dangerous move after I had just tipped off my intentions on the King side.



After 9.0-0?!

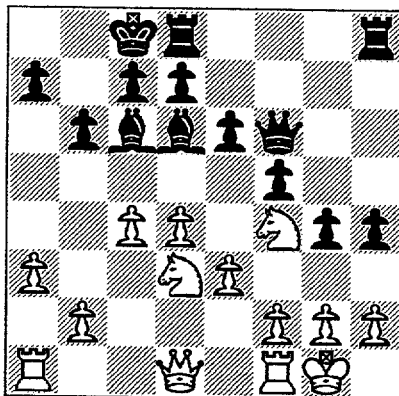
9...g4 10. Ne5 White baits a trap with a "free" pawn: 10...Nxe5 11.dxe5 Qxe5?? 12.Qxe7++. I rejected this line, but later realized that 11...Qg7 would have left White with a very weak pawn at



After 10. Ne5

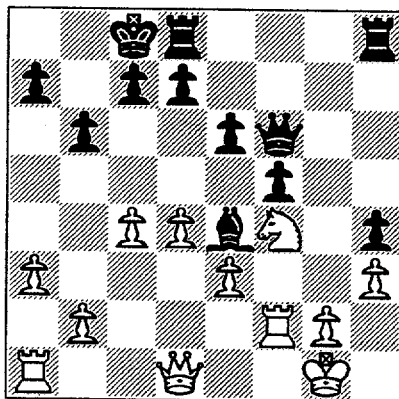
e5.

10...0-0-0 11. Nd3 Bd6 12. Ne2 h5 13. Nef4 h4 14. Bxc6 Bxc6 15. c4



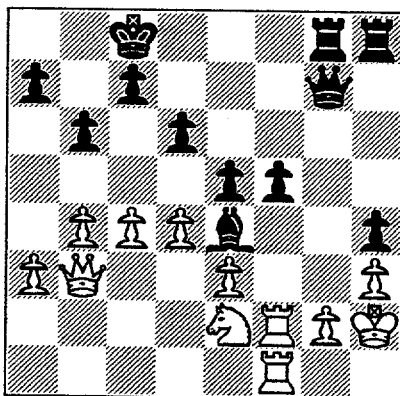
After 15. c4

15...Bxf4 16. Nxf4 g3 17. h3 gxf2+ 18. Rxf2 Be4! This is a very nice square for my Bishop!



After 18...Be4

19. b4 d6 20. Qb3 e5 21. Ne2 Rdg8 22. Raf1 Qg7 23. Kh2 White can defend g2 against the bishop by threatening to pin it against the



After 23. Kh2

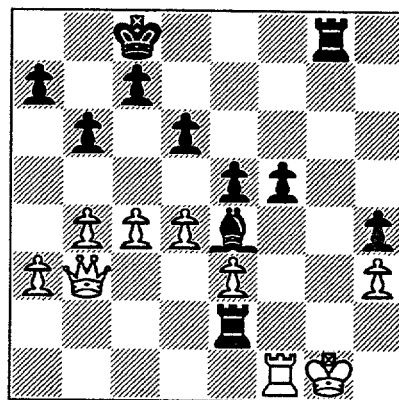
queen: after 23...Bxg2 24.Rg1.

23...Qxg2+!

I had 15 minutes left on my clock while my opponent nearly had an hour remaining. I needed a decisive move ASAP and found this winning queen sacrifice.

24. Rxg2 Rxg2+ 25. Kh1 Rxe2+ 26. Kg1 Rg8++

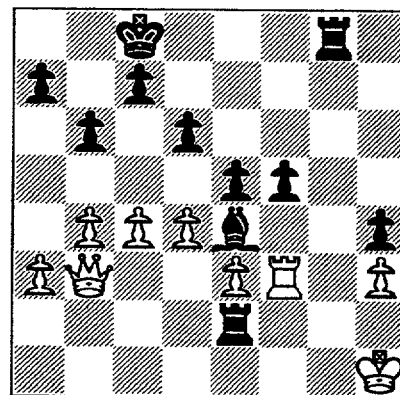
Final Position



White could have held on a bit longer with 26.Rf3 Bxf3+ 27.Kg1 Rg8+ 28.Kf1 but Black would have had a winning material advantage and threatened mate, e.g. R8g2, Rh2, Rh1.

(What's nice about the finale of this game is that even after 26. Rf3, mate in 2 is still inevitable: 26.Rf3 Rg8! when there's no stopping 27... Bxf3++

Superb fireworks display — ed)



After 26...Rg8 (analysis)

CHICAGO INDUSTRIAL CHESS LEAGUE
MID-YEAR TREASURER'S REPORT

Cash Receipts and Disbursements for 1993-1994 (through 4/1/94):

Beginning Cash Balance, August 1993 (Notes A,B) 2323.03

Cash Receipts:

Basic Team Dues (Note C)	1125.00
Late Dues Payment Penalties	20.00
Basic Team Bulletin Subscr's	364.00
Individual Bulletin Subscr's	28.00
Team Banquet Guarantees	493.00
Savings Account Interest	29.69
Deposit for Future Seasons' Dues	140.00
Individual Awards (Note D)	16.00

Total Cash Receipts 2215.69

Total Cash Available for Disbursement 4538.72

Cash Disbursements (through 4/1/94):

Bulletin Publication/Mailing (Note E)	44.10
USCF and ICA Dues	55.00
League Mailings (Non-Bulletin)	54.18
Banquet Deposit	300.00
Match Result Sheets	80.82
Miscellaneous Expenses	12.15

Total Cash Disbursements (546.25)

Current Cash Balance, April 1, 1994 (Notes A,F) 3992.47
=====

Note A: Of this balance, \$1400.00 is reserved for the eventual purchase of a new computer (to maintain ratings, standings, etc).

Note B: \$923.03 is undesignated. Checking Account Balance is \$144.94. Savings Account Balance is \$2178.09.

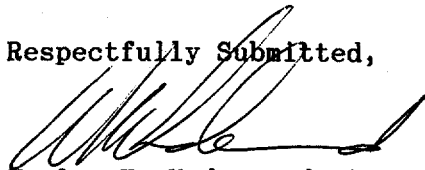
Note C: Twenty-Eight (28) teams @ \$40.00 plus one (1) team @ \$5.00.

Note D: Rockwell paid \$16.00 due for extra individual awards last season.

Note E: Represents reimbursement for postage costs for one issue only.

Note F: Checking Account Balance is \$831.69. Savings Account Balance is \$3160.78.

Respectfully Submitted,


Wesley K. Underwood, Treasurer
April 7, 1994

Budget/Actual for 1992-93 and 1993-94 Seasons:

	1992-93 Budget	1992-93 Actual	1993-94 Budget	1993-94 Actual-to-Date
Revenue:				
Basic Team Dues	858	924	1040	1125 (Note A)
Bulletin	348	420	339	392 (Note B)
Banquet	1600	1580	1600	493 (Note C)
Miscellaneous	95	110	75	50
Total Revenue	----- 2901 =====	----- 3034 =====	----- 3054 =====	----- 2060 =====
Disbursements:				
Bulletin	285	289	340	44
Banquet	1450	1360	1500	300
Awards	900	972	900	0
USCF/ICA Dues	55	55	55	55
Playoffs	0	157	160	0
Miscellaneous	150	207	100	147
Total Disbursements	----- 2840 =====	----- 3040 =====	----- 3055 =====	----- 546 =====
Net Gain (Loss)	----- 61 =====	----- (6) =====	----- (1) =====	

Note A: 28 Teams @ \$40.00 plus 1 team @ \$5.00.

Note B: 28 Companies @ \$13.00 plus 4 individuals @ \$7.00.

Note C: 29 Team commitments @ \$17.00.

Respectfully Submitted,



Wesley K. Underwood, Treasurer
April 7, 1994

CICL BANQUET ANNOUNCEMENT

- WHERE:** Harvey's Prime Rib (located between Cass Ave and Route 83,
331 East Ogden Avenue on the south side of the street).
Westmont, IL
708-789-2212
- WHEN:** **Friday, June 10, 1994**
Check-in/Registration: 5:45-6:45pm
Dinner served: 6:45pm
Special Feature and Awards Presentation: after dinner
Speed tournament approx: 9:30pm
- COST:** \$15.00 Per Person Advance Registration, if received by May 31. (3 years of 0 inflation!)
\$18.00 Thereafter
\$1.00 Additional for entry in the traditional sectioned speed tournament.

Although team dues include prepayment of one banquet ticket, all attendees must pay admission anyway. Rebates of the prepayment will be distributed after dinner. Although it may seem strange, this method has grown out of decades of experience.

Even if you are unable to pay by the advance registration deadline, please contact the Banquet Chairman as soon as you know you are attending anyway. This will keep last-minute complications to a minimum.

HOW: A registration form has been provided.

Make checks payable to: CICL
Mail to: Wes Underwood, 207 S. Dorchester, Wheaton, IL 60157

Payments will be also accepted at the playoff site by:
Tony Jasaitis or Wes Underwood or Jim Hodina.

MENU: Family style dinner including roast chicken, polish sausage, roast beef, fruit salad, soup, salad, corn, potato, beverage, and ice cream.
Contact Banquet Chairman if you have special dietary needs.
Cash bar upstairs.

FEATURE: We will try to obtain a copy of the Nightline program "Living in 64 Squares".
If anyone has access to a copy, contact the Banquet Chairman.

ATTENTION LADIES!!!

*For the first time in many years, we will focus on some activity for the ladies (or anyone else that prefers an alternative to the speed tournament)!
Either bring a game of your choice and round up some partners, or get involved in a "Make it & Take it" craft project, directed by Lorraine Jasaitis.
You will make a "paper twist" basket. Notify the Banquet Chairman to register (for free) to assure an adequate supply of materials. Also bring scrap scissors.*

DOOR PRIZES!!!

All attendees will be entered in a door prize drawing for chess books and equipment!

BANQUET CHAIRMAN: Tony Jasaitis

w: 708-406-6420

h: 708-448-4966

CHICAGO INDUSTRIAL CHESS LEAGUE

Spring Business Meeting

Thursday, April 7, 1994

J. I. Case

Attendees

Karel Dobr	AT&T Chargers
Wayne Ellice	Unilever
Martin Franek	Alumni East
James Hodina	Amoco Corporation, President
Tony Jasaitis	Chicago Research & Trading
Satish Kale	J. I. Case
Kelvin McAlister	Columbia College
Frank T. Micklich	U.O.P.
Carl Reid	J.I. Case
Ruben Reyes	Sears
Lenny Spiegel	Fermilab, Secretary
Charlie Ward	Bell Labs Dragons
Abe Wilson	CTA Road/Rail
John Zoellner	Continental Bank

Minutes

1. President James Hodina began the meeting at 7:13 PM. He noted that the bulletin was now being produced through a combination of Ruben Reyes handling the editing and Marty Franek the copying and distribution, and he expressed confidence that future bulletins would appear on time. Jim felt that the savings accrued from the lapse in bulletin service—about \$100—should be remitted to the teams in the form of a reduction in next year's dues.
2. Although Treasurer Wes Underwood was not present, he had prepared a budget summary, which was distributed. Discussion on the budget centered around the bulletin windfall. Several ideas were floated in addition to Jim's suggestion to reduce next year's dues. Among these were a proposal to increase the number of bulletin issues from 7 to 9 next year and to increase funding for this year's banquet. The idea of using the money for door prizes—perhaps APCT chess books—met with the most favorable reaction.

3. Charlie Ward re-iterated the need for team captains to send him copies of the match sheets as soon as possible following a match. For each match, both team captains should transmit copies.

4. Next Jim polled the four divisions as to the playoff standings:

North (Ruben Reyes)

Sears has clinched a playoff berth. Motorola and Grolier Subsidiaries were vying for the other playoff spot and the outcome of their impending match will determine the final standings.

Far West (Charlie Ward)

Charlie relayed an "if, then" analysis which showed that the AT&T Royals and AT&T Dragons would finish first and second respectively.

Near West (Satish Kale)

The Argonne Knights have clinched first place and the AT&T Chargers and J.I. Case are locked in a battle for second place.

Satish also indicated that a Unilever team (Wayne Ellice, captain) has been playing a series of exhibition matches with Near West teams and they have expressed an interest in joining the league next season. Similarly, there is interest from a General Motors plant, although at the moment they can only count on 5 players.

East (Marty Franek)

Marty indicated that the Alumni Central team had clinched a playoff spot but that five teams were within a point of each other in contention for the second spot.

Abe Wilson (CTA Road) spoke about some of the problems the two CTA teams had experienced and expressed the desire to consolidate the teams so as to produce a more viable team. This was informally agreed to and the merged team will be simply known as "CTA". Abe then gave Jim a check for next year's dues!

5. A request from Bob Stoltz was presented. Bob needs to know the final first and second place finishers for each division as well as the outstanding team captains, most valuable players, and the most

improved player. He needs this information for the trophy orders. Bob's address and phone numbers are:

550 Forest Ave
River Forest, IL 60305

H 708 366 8091
W 708 224 2983

6. Tony Jasaitis (banquet chairman) indicated that the traditional end of year awards banquet will take place on Friday, June 10, at Harvey's Prime Rib in Westmont. The entry fee is \$15 if paid in advance. More details will be supplied in the next bulletin.

Tony also distributed a list of suggestions for increasing attendance at the banquet. Some discussion ensued as to the different interests—guest speakers, chess videos, speed tournament—among the attendees and how to best satisfy them

7. Keith KostECKA (Columbia College) will replace Kelvin McAlister as the East division chairman.

Other league positions are to be resolved at the Fall business meeting. In particular, candidates are sought for the office of Secretary.

8. This year the site for playoff rounds 2 and 3 will take place at the AMOCO building in downtown Chicago. Jim distributed a local map and stressed that street parking will be very hard to find on a Saturday. There are, however, several nearby commercial parking lots. Also, Jim noted that food is not allowed in the playing site although there are many restaurants and fast food places within easy walking distance.

There was a suggestion to reduce the sudden death time controls from G/60 to G/30 so as to reduce the danger of running into the evening. This change was agreed to.

9. The issue of the second tier playoffs was discussed.

Charlie Ward offered an amendment to change the selection criteria for the second tier so that the 3rd place teams in each division would qualify (as before) but the remaining 4 teams would be chosen league-wide from the remaining pool of teams, based on match percentages. In the rare

case of equal percentages, the tournament director would use his discretion. This amendment was adopted unanimously.

The final playoff rounds will take place on May 21, and the morning round start time is scheduled for 9:00AM.

10. There was some discussion involving new teams to the league but Charlie Ward noted that the August business meeting was the appropriate time for entries and discussions.

11. Jim noted that a rematch with the Oak Park/River Forest chess team has been scheduled for Tuesday, June 21. Anyone interested in participating should contact him.

Apparently Grandmaster Tony Miles will give a simul at the same club on April 26, for the very reasonable fee of \$15.

There was some suggestion of again having a CICL summer round robin.

12. The meeting was adjourned at 8:44PM.

Lenny Spiegel
CICL Secretary

AS WE GO TO PRESS

North Division Report

April 18, 1994

Sears is this season's North Division champion, and Motorola is second based on tie-break.

Grolier is third, and U.O.P. fourth. See cross-score table below for more details.

The candidate for North Division MVP is Tom Miller of Sears.

The OTC awardee has not yet been determined and one match remain unplayed (Fel-Pro vs. Exemplars).

Near West Division Report

April 18, 1994

Satish Kale has reported that Argonne Knights is Near West Division champions and AT&T Chargers second. Argonne dominated the Division with a record of 9 wins, 1 loss and no draws. AT&T Chargers had 6 wins, 4 losses and no draws.

NORTH DIVISION: 1993-94

TEAM	SEARS	MTRLA	GROLR	U.O.P.	EXMPL	NORTH	KEMPR	FLPRO	Game Pts	Match Pts	Position SWISS			Game Pts	Match Pts
											Rnd 1	Rnd 2	Rnd 3		
SEARS		3.5	1	5	4	5	5.5	4	28	6	GROLR 3.5	MTRLA 3.5	U.O.P. 3	38	8.5
MTRLA	2.5		5	1.5	4	4.5	3.5	6	27	5	U.O.P. 4	SEARS 2.5	GROLR 5	38.5	7
GROLR	5	1		5	4	4	5.5	5	29.5	6	SEARS 2.5	U.O.P. 4	MTRLA 1	37	7
U.O.P.	1	4.5	1		4	4.5	3.5	4.5	23	5	MTRLA 2	GROLR 2	SEARS 3	30	5.5
EXMPL	2	2	2	2		3	3.5	4	18.5	2.5	NORTH 4	KEMPR 4	FLPRO -	26.5	4.5
NORTH	1	1.5	2	1.5	3		5	5	19	2.5	EXMPL 2	FLPRO 4	KEMPR 5.5	30.5	4.5
KEMPR	.5	2.5	.5	2.5	2.5	0		3.5	12	1	FLPRO 2.5	EXMPL 2	NORTH .5	17	1.5
FLPRO	1	0	1	1.5	2	1	2.5		9	0	KEMPR 2.5	NORTH 2	EXMPL -	13.5	0.5

RATINGS CHAIRMAN'S REPORT

Division Races Tighten

As the end of the regular season approaches, the race for trophies is tight in all four divisions. In the Near West, the Argonne Knights have run away with first place, but second place is still undecided. In the Far West, the AT&T Dragons have clinched a trophy, but the other trophy winner and first place still depend on the outcome of the last two matches still to be played. In the East Division, five teams are in contention for at least a tie for a trophy position. In the North, Sears has clinched a trophy, but three teams are still in contention to determine the other trophy winner and first place in the division.

Only a few games still remain to be played in each division:

Near West: Round 10 - A&B Radio at AT&T Chargers

Far West: Round 10 - J.I. Case at AT&T Royals
Round 10 - Fermilab at AT&T Tyros

North: Round 9 - UOP at Grolier
Round 10 - three of the four matches (Kemper vs. Northrup has been played)

East: Top-Six Swiss:
Round 12 - all three matches
Bottom-Four round robin:
Round 10 - Hull vs. Merc
Rounds 11 and 12 - all four matches

Team captains, please submit match results immediately following each match so that playoff pairings can be determined as soon as possible. Also, I would like to identify who is to receive this year's Most Improved Player award, which is based only on regular season results.

Unilever Results

Unilever was admitted to the Near East division earlier this year, playing a double-round-robin against Near West Division teams. However, because their entry to the CIGL occurred after the start of the season their results do not appear in the league standings. To this point in the season, Unilever has an 0-4-3 record, drawing two matches against J. I. Case and one against the AT&T Chargers. This record was achieved despite the handicap of six forfeit losses in the seven matches.

Locomotive vs. Tractors II

On March 23, J.I. Case hosted players from General Motors Electromotive Division, located in Countryside, playing extra boards at their Near West Division Round 9 match vs. A&B Radio. This was a follow-up to the exhibition match between Electromotive and J. I. Case played on March 9. The match results between players of the two CICL teams are rated in this issue. The extra boards involving the Electromotive players could not of course be rated, but the CICL players have been credited with a game played in CICL competition, counting toward Centurion awards. The results were as follows:

23-MAR-94 J. I. CASE		ELECTROMOTIVE	
BD	SCORE		SCORE
8 GASTON,K	1	MATHEWS,T	0
9 KALE,S	0	GARCIA,N	1
(AWEST)10 POMA,D	1	MANDZUKIC,S	0

CICL Match vs. Oak Park/River Forest Chess Club

Consistent with past practice, the players representing the CICL in the match against the Oak Park/River Forest Chess Club have been credited with a game played in CICL competition, counting toward Centurion awards,

NORTH DIVISION 04-09-1994

TEAM NAME	W	L	D	GAME POINTS	MATCH POINTS	PCT
SEARS	8	1	0	35.0	8.0	0.889
MOTOROLA	6	3	0	33.5	6.0	0.667
GROLIER SUBSIDIARIES	6	2	0	32.0	6.0	0.750
UOP PROCESS DIV.	5	3	0	25.0	5.0	0.625
NORTHROP CORP.	4	5	1	30.5	4.5	0.450
EXEMPLARS	4	4	1	26.5	4.5	0.500
KEMPER INSURANCE	1	8	1	17.0	1.5	0.150
FEL-PRO	0	8	1	13.5	0.5	0.056

EAST DIVISION 04-09-1994

TEAM NAME	W	L	D	GAME POINTS	MATCH POINTS	PCT
ALUMNI CENTRAL	8	2	1	45.5	8.5	0.773
CHICAGO RES. & TRDG.	7	1	3	43.5	8.5	0.773
COLUMBIA COLLEGE	7	3	1	43.5	7.5	0.682
CONTINENTAL BANK	7	3	1	43.0	7.5	0.682
CHICAGO POST OFFICE	7	3	1	37.5	7.5	0.682
AMOCO CORP.	5	5	1	35.5	5.5	0.500
CHICAGO MERC. EXCH.	3	6	0	20.0	3.0	0.333
CTA RAIL	2	8	0	18.0	2.0	0.200
HULL TRADING CO.	2	7	0	16.0	2.0	0.222
CTA ROAD	0	10	0	6.5	0.0	0.000

NEAR WEST DIVISION 04-09-1994

TEAM NAME	W	L	D	GAME POINTS	MATCH POINTS	PCT
ARGONNE KNIGHTS	9	1	0	47.0	9.0	0.900
AT&T CHARGERS	5	4	0	25.0	5.0	0.556
J. I. CASE	4	4	1	24.5	4.5	0.500
ROCKWELL INT'L	2	7	1	24.5	2.5	0.250
A & B RADIO	0	9	0	14.5	0.0	0.000

FAR WEST DIVISION 04-09-1994

TEAM NAME	W	L	D	GAME POINTS	MATCH POINTS	PCT
AT&T DRAGONS	7	2	1	37.0	7.5	0.750
AT&T ROYALS	6	1	2	37.0	7.0	0.778
FERMILAB	5	2	2	33.0	6.0	0.667
AT&T TYROS	3	4	2	24.5	4.0	0.444
ALUMNI WEST	1	8	1	13.0	1.5	0.150

02-MAR-94 FERMILAB		3		AT&T ROYALS		3	
ROUND 7							
BD		RATINGS	SCORE		RATINGS	SCORE	
1	KOZLOVSKY, M	2225 13	1	GUIO, J	2076-13	0	
2	SPIEGEL, L	2011-20	0	DOBROVOLNY, C	1885 30	1	
3	GAINES, I	1761-12	0	OGASAWARA, L	1839 18	1	
4	CISKO, G	1604 34	1	BLACKMON, E	1796-34	0	
5	HARRIS, R	1588 24	1	HAHNE, D	1605-24	0	
6	PARA, A	1583-34	0	ANDERSON, CJ	1385 34	1	
08-MAR-94 A & B RADIO		2.5		ALUMNI WEST		3.5	
ROUND 2							
BD		RATINGS	SCORE		RATINGS	SCORE	
1	O'DELL, DW	1635-25	0	VERIVE, J	1593 25	1	
2	TYREE, D	1503-11	0	WALLIN, R	1698 11	1	
3	BOOKER, G	1371 33	1	WHITSITT, S	1554-33	0	
4	GORZ, E	1315 -3	.5	POMA, D	1272 3	.5	
5	MIKULECKY, B	1326-26	0	EDWARDS, S	1264 26	1	
6	LASKY, N	1384 0	1F		0 0	0F	
09-MAR-94 AT&T CHARGERS		1.5		ARGONNE KNIGHTS		4.5	
ROUND 9							
BD		RATINGS	SCORE		RATINGS	SCORE	
1	WARREN, J	2110 3	.5	BENEDEK, R	2221 -5	.5	
2	STAMM, V	1740 -4	0	BERRY, G	2044 4	1	
3	RADAVICIUS, E	1723-13	0	HILL, R	1771 19	1	
4	DOBR, K	1501 7	.5	DECMAN, S	1684 -7	.5	
5	THOMAS, J	1480 -8	0	BAURAC, D	1653 8	1	
6	SHEU, G	1334 9	.5	KINSELLA, G	1477 -9	.5	
15-MAR-94 AT&T ROYALS		5		AT&T DRAGONS		1	
ROUND 9							
BD		RATINGS	SCORE		RATINGS	SCORE	
1	BUCHNER, R	2041 28	1	LUDWIG, T	2123-18	0	
2	DOBROVOLNY, C	1915 36	1	TEGEL, F	2150-24	0	
3	PEHAS, A	1953 -1	.5	JACOBS, N	1949 0	.5	
4	OGASAWARA, L	1857 17	1	DURKEE, D	1778-12	0	
5	ROSLEY, D	1788 19	1	PIAO, T	1729-19	0	
6	HAHNE, D	1581 -6	.5	EUSTACE, D	1497 6	.5	
15-MAR-94 ALUMNI WEST		3		AT&T TYROS		3	
ROUND 9							
BD		RATINGS	SCORE		RATINGS	SCORE	
1	UNDERWOOD, W	1991 18	1	STOLTZ, B	2050-26	0	
2	WALLIN, R	1709-15	.5	SMITH, BR	1445 15	.5	
3	VERIVE, J	1618 0	0F	SHAFF, R	1532 0	1F	
4	ERLENBORN, M	1442 4	1	SCHWARTZ, M	1054 -4	0	
5	POMA, D	1275-11	.5	KARPIERZ, J	1095 11	.5	
6	EDWARDS, S	1290 0	0	REED, K	0 0	1	

16-MAR-94 FERMILAB
ROUND 9

3.5 ROCKWELL INT'L

2.5

BD	RATINGS	SCORE	RATINGS	SCORE
1 SPIEGEL, L	1991 5	1	RAFACZ, T	1721 -8 0
2 CISKO, G	1638-23	0	RAFACZ, W	1628 23 1
3 HARRIS, R	1612 0	1F	MITCHAM, L	1552 0 0F
4 PARA, A	1549 14	1	DEWITT, G	1416-10 0
5 STAPLES, C	0 0	.5	MCQUINN, J	1450 0 .5
6 MENGEL, M	0 0	0	DEZONNO, T	1213 0 1

22-MAR-92 ROCKWELL INT'L
ROUND 6

3 UNILEVER

1

BD	RATINGS	SCORE	RATINGS	SCORE
1 RAFACZ, W	1651-11	0	ELLICE, W	1844 11 1
2 MITCHAM, L	1552 0	1	MCKAY, P	0 0 0
3 DEWITT, G	1406 5	1	DZURIESKO, G	1111 -7 0
4 DEZONNO, T	1213 0	1	NELL, D	0 0 0
5	0 0	0F		0 0 0F
6	0 0	0F		0 0 0F

23-MAR-94 J. I. CASE
ROUND 9

5 A & B RADIO

1

BD	RATINGS	SCORE	RATINGS	SCORE
1 KALE, S	1825-13	.5	O'DELL, DW	1610 13 .5
2 SATTERLEE, D	1718 6	1	TYREE, D	1492-10 0
3 DIAZ, L	0 0	1	BOOKER, G	1404 0 0
4 WHITE, H	1609 7	1	MIKULECKY, B	1300 -7 0
5 KLINEFELTER, H	1491-11	.5	GORZ, E	1312 11 .5
6 REID, C	1317 27	1	LASKY, N	1384-27 0
7 SAWDO, E	1422 0	1	MAA, R	0 0 0 (DRGNS)

30-MAR-94 AT&T DRAGONS
ROUND 10

3.5 ALUMNI WEST

1.5

BD	RATINGS	SCORE	RATINGS	SCORE
1 TEGEL, F	2126-13	.5	WALLIN, R	1694 20 .5
2 LUDWIG, T	2105 2	1	VERIVE, J	1618 -3 0
3 JACOBS, N	1949 2	1	ERLENBORN, M	1446 -2 0
4 CHRISTIAN, R	1837-29	0	POMA, D	1264 43 1
5 PIAO, T	1710 4	1	EDWARDS, S	1290 -4 0
6	0 0	0F		0 0 0F

03-APR-94 ARGONNE KNIGHTS
ROUND 10

4.5 ROCKWELL INT'L

1.5

BD	RATINGS	SCORE	RATINGS	SCORE
1 SHEYNIN, S	2203 2	1	RAFACZ, W	1640 -2 0
2 GREEN, D	1825 10	1	RAFACZ, T	1713-15 0
3 HILL, R	1790-18	.5	DEWITT, G	1411 12 .5
4 BAURAC, D	1661-28	0	DEZONNO, T	1213 42 1
5	0 0	1F		0 0 0F
6	0 0	1F		0 0 0F

04-~~MAR~~^{APR}-94 ALUMNI WEST
ROUND 8

1.5 FERMILAB 4.5

BD	RATINGS	SCORE		RATINGS	SCORE
1 UNDERWOOD, W	2009 -1	.5	SPIEGEL, L	1996 1	.5
2 ERLNBORN, M	1444 38	1	GAINES, I	1749-26	0
3 WHITSITT, S	1521-17	0	HARRIS, R	1612 17	1
4 EDWARDS, S	1286 -8	0	PARA, A	1563 8	1
5 POMA, D	1307 0	0	MENGEL, M	0 0	1
6	0 0	0F	HILL, C	1663 0	1F

23-FEB-94 SEARS
ROUND 8

3.5 GROLIER SUBSIDIARIES 2.5

BD	RATINGS	SCORE		RATINGS	SCORE
1 REYES, R	2309 12	1	BENESA, A	2227-17	0
2 LATIMER, E	2026 20	1	WEBER, L	2148-30	0
3 GOLLA, R	2025 -7	0	GAZMEN, E	2241 10	1
4 BROCKETT, M	1825 10	.5	SOLLANO, E	1977-10	.5
5 WELTER, P	1675-29	0	PUNZALAN, N	1570 29	1
6 MILLER, TT	1654 15	1	SANCHEZ, R	1525-15	0

03-MAR-94 MOTOROLA
ROUND 8

4 UOP PROCESS DIV. 2

BD	RATINGS	SCORE		RATINGS	SCORE
1 MELNIKOV, I	2167 5	.5	STEVANOVIC, M	2240 -3	.5
2 HASAN, Y	2202 18	1	BOLDINGH, E	2139-18	0
3 WALLACH, C	2103 23	1	BUERGER, E	2103-15	0
4 SAMELSON, C	1989 -9	.5	MICKLICH, F	1765 9	.5
5 CIESLEK, D	1933 7	1	SAJBEL, P	1640 -7	0
6 AUGSBURGER, L	1879-34	0	SAHLI, E	1693 34	1
7 LESTER, M	1599 -4	.5	LIKHTEREV, M	1539 4	.5
8 VALDEZ, C	0 0	1	VAN ZILE, C	1382 0	0

10-MAR-94 SEARS
ROUND 9

3.5 MOTOROLA 2.5

BD	RATINGS	SCORE		RATINGS	SCORE
1 REYES, R	2321 9	1	MELNIKOV, I	2172-13	0
2 LATIMER, E	2046 -8	0	HASAN, Y	2220 12	1
3 GOLLA, R	2018 0	1	TSEITLIN, E	0 0	0
4 BROCKETT, M	1835-14	0	SAMELSON, C	1980 9	1
5 DORFF, M	1476 17	.5	GONCHAROFF, N	1789 -7	.5
6 MILLER, TT	1669 33	1	AUGSBURGER, L	1845-33	0

16-MAR-94 KEMPER INSURANCE
ROUND 9

2 EXEMPLARS 4

BD	RATINGS	SCORE		RATINGS	SCORE
1 SIWEK, M	2159-19	0	BLOOM, B	2072 28	1
2 LEONG, G	2022-19	0	OSTERLUND, R	1920 29	1
3 OLSEN, A	1485 -5	0	FRISKE, T	1855 5	1
4 LAMBIRIS, J	1385 39	1	WEITZ, R	1725-26	0
5 MCFARLIN, B	1219 -4	0	SUERTH, F	1603 3	1
6 CUMMUTA, P	1368 0	1F		0 0	0F

23-MAR-94	FEL-PRO	2	NORTHROP CORP.	4
ROUND 9				
	BD	RATINGS	SCORE	RATINGS SCORE
1	QUERUBIN, R	2090 0	1F	JAKSTAS, K 2166 0 0F
2	HESS, B	1457 -1	0	GOLUMBOVSKI, P 2134 1 1
3	FELDMAN, A	1439 -1	0	DIAZ, P 2011 2 1
4	NISHIMURA, K	1265 20	.5	BURIAN, D 1700-20 .5
5	KEEFE, E	1191 -4	0	VIGANTS, A 1588 4 1
6	BAKER, B	1074 -5	.5	ELEK, G 1004 5 .5
05-APR-94	KEMPER INSURANCE	.5	NORTHROP CORP.	5.5
ROUND 10				
	BD	RATINGS	SCORE	RATINGS SCORE
1	SIWEK, M	2140-14	0	JAKSTAS, K 2166 14 1
2	VAN MEER, J	1989 9	.5	GOLUMBOVSKI, P 2135 -9 .5
3	OLSEN, A	1480 -2	0	DIAZ, P 2013 2 1
4	AMUNDSEN, C	0 0	0	BURIAN, D 1680 0 1
5		0 0	0F	VIGANTS, A 1592 0 1F
6		0 0	0F	ELEK, G 1009 0 1F
17-FEB-94	AMOCO CORP.	4.5	HULL TRADING CO.	.5
ROUND 7				
	BD	RATINGS	SCORE	RATINGS SCORE
1	HODINA, J	2109-22	.5	YOUNG, R 1361 22 .5
2	WENTLING, C	1541 0	1	RAFFERTY, M 0 0 0
3	HAMILTON, L	1402 20	1	WEISSKOPF, J 1363-20 0
4	HAMPER, P	1268 0	1	WEISS, G 0 0 0
5	KRULL, E	1399 0	0F	NAUGHTON, T 1323 0 0F
6	BAER, M	1315 0	1	SAMULAK, C 0 0 0
23-FEB-94	CHICAGO MERC. EXCH.	.5	AMOCO CORP.	4.5
ROUND 8				
	BD	RATINGS	SCORE	RATINGS SCORE
1	SLAGLE, S	1582 -2	0	HODINA, J 2087 2 1
2	SULLIVAN, C	1534 -9	0	ATKINSON, J 1772 9 1
3	COTE, J	1285 -8	0	WENTLING, C 1541 8 1
4	HILTON, J	1008 -4	0	HAMILTON, L 1422 4 1
5	GAVIN, L	1216 0	0F	BAER, M 1315 0 0F
6	RUDDY, J	1217 4	.5	HAMPER, P 1268 -4 .5
02-MAR-94	CTA ROAD	0	HULL TRADING CO.	6
ROUND 5				
	BD	RATINGS	SCORE	RATINGS SCORE
1		0 0	0F	YOUNG, R 1383 0 1F
2		0 0	0F	WEISSKOPF, J 1343 0 1F
3		0 0	0F	MARGULIS, A 1491 0 1F
4		0 0	0F	SAMULAK, C 0 0 1F
5		0 0	0F	WEISS, G 0 0 1F
6		0 0	0F	LUCEK, D 0 0 1F

02-MAR-94	CTA ROAD	0	AMOCO CORP.	6
ROUND 9				
	BD	RATINGS	SCORE	RATINGS SCORE
1		0 0	0F	0 0 1F
2		0 0	0F	0 0 1F
3		0 0	0F	0 0 1F
4		0 0	0F	0 0 1F
5		0 0	0F	0 0 1F
6		0 0	0F	0 0 1F
09-MAR-94	CHICAGO RES. & TRDG.	2	CHICAGO POST OFFICE	4
ROUND 10				
	BD	RATINGS	SCORE	RATINGS SCORE
1	JASAITIS, A	2259-18	0	INUMERABLE, F 2183 27 1
2	FRIESEMA, W	2120 16	1	MARCOWKA, R 2012-10 0
3	LOSOFF, A	1956-29	0	ALLEN, H 1857 29 1
4	BARGERSTOCK, D	1890 11	1	COOPER, W 1685-11 0
5	SZONTAGH, T	0 0	0	HOWARD, W 1529 0 1
6	BERNARD, D	1316-13	0	CARTER, L 1476 13 1
7	CARNAL, D	0 0	.5	DAVIS, R 0 0 .5
16-MAR-94	COLUMBIA COLLEGE	4.5	AMOCO CORP.	1.5
ROUND 10				
	BD	RATINGS	SCORE	RATINGS SCORE
1	MCALISTER, K	1907 11	.5	HODINA, J 2089-11 .5
2	SANTIAGO, T	1883 16	1	ATKINSON, J 1781-16 0
3	PRATTS, M	1701 13	1	WENTLING, C 1549-13 0
4	KOSTECKA, K	1638 10	1	HAMILTON, L 1426-10 0
5	HERNANDEZ, DD	1516 15	1	KRULL, E 1399-15 0
6	BRANCH, Y	1307-22	0	BAER, M 1315 22 1
16-MAR-94	ALUMNI CENTRAL	2.5	CONTINENTAL BANK	3.5
ROUND 10				
	BD	RATINGS	SCORE	RATINGS SCORE
1	CZERNIECKI, A	2208-12	.5	KOGAN, G 1800 19 .5
2	COX, M	2010-21	0	FRAATS, D 1866 31 1
3	RZESZUTKO, R	1912-31	0	PARAOAN, E 1779 31 1
4	FRANEK, M	1880-39	0	DYCKZKOWSKI, R 1568 39 1
5	LITVINAS, A	1707 8	1	SIEGEL, R 1529-12 0
6	CHARKOVSKY, R	1608 9	1	HAMMOND, M 1361 -9 0
(CONBK) 7	MCINTOSH, S	1133 9	.5	ZOELLNER, J 1266 -9 .5
16-MAR-94	CTA ROAD	1	CTA RAIL	5
ROUND 10				
	BD	RATINGS	SCORE	RATINGS SCORE
1	WILSON, A	1567-12	0	MATTHEWS, J 1735 12 1
2	JONES, M	1330 0	1	SANCHEZ, P 0 0 0
3	HARRIS, FF	1404 0	0F	NOWAK, W 0 0 1F
4	JACKSON, JJ	0 0	0F	JARRETT, T 1604 0 1F
5	COLEMAN, O	0 0	0F	ROJAS, R 0 0 1F
6	THOMPSON, T	0 0	0F	WILLIAMS, J 0 0 1F

30-MAR-94 AMOCO CORP.

3

CHICAGO RES. & TRDG.

3

ROUND 11

BD	RATINGS	SCORE	RATINGS	SCORE
1 HODINA, J	2078-13	0	JASAITIS, A	2241 8 1
2 ATKINSON, J	1765 -5	0	FRIESEMA, W	2136 5 1
3 WENTLING, C	1536 41	1	LOSOFF, A	1927-41 0
4 KRULL, E	1384 -2	0	BARGERSTOCK, D	1901 2 1
5 BAER, M	1337 39	1	DENG, J	1654-39 0
6 HAMPER, P	1264 0	1	CARNAL, D	0 0 0

31-MAR-94 CHICAGO POST OFFICE

4

ALUMNI CENTRAL

2

ROUND 11

BD	RATINGS	SCORE	RATINGS	SCORE
1 INUMERABLE, F	2210 22	1	CZERNIECKI, A	2196-14 0
2 MARCOWKA, R	2002-16	0	COX, M	1989 16 1
3 ALLEN, H	1886 22	1	RZESZUTKO, R	1881-22 0
4 PERAREN, E	1691 32	1	FRANEK, M	1841-32 0
5 HOWARD, W	1529 -7	0	BRONFELD, A	1812 7 1
6 CARTER, L	1489 35	1	LITVINAS, A	1715-24 0

05-APR-94 CONTINENTAL BANK

3

COLUMBIA COLLEGE

3

ROUND 11

BD	RATINGS	SCORE	RATINGS	SCORE
1 NELSON, H	1965 19	1	MCALISTER, K	1918-19 0
2 FRAATS, D	1897-22	0	SANTIAGO, T	1899 22 1
3 KOGAN, G	1819 -7	.5	PRATTS, M	1714 7 .5
4 PARAOAN, E	1810-32	0	KOSTECKA, K	1648 32 1
5 SOMBONG, M	1679-10	.5	HERNANDEZ, DD	1531 10 .5
6 DYCZKOWSKI, R	1607 10	1	STEVENS, J	1399-10 0
7 SIEGEL, R	1517 13	1	HAMMOND, M	1352-13 0 (CONBK)
8 MCCLENDON, L	1346 -6	.5	ZOELLNER, J	1257 6 .5 (CONBK)
9 HAMMOND, M	1339-11	0	SIEGEL, R	1530 11 1 (CONBK)

NORTH DIVISION TOP TEN

REYES, R	SEARS 2330D
GAZMEN, E	GROLR 2251
STEVANOVIC, M	UOP 2237C
HASAN, Y	MTRLA 2232
WONG, P	EXMPL 2217C
BENESA, A	GROLR 2210
JAKSTAS, K	NORTH 2180C
MELNIKOV, I	MTRLA 2159
WALLACH, C	MTRLA 2126
SIWEK, M	KEMPR 2126C

EAST DIVISION TOP TEN

JASAITIS, A	CRT 2249C
INUMERABLE, F	PSTOF 2232
CZERNIECKI, A	ALUMN 2182C
FRIESEMA, W	CRT 2141
ALFARO, C	ALUMN 2118*
HODINA, J	AMCRP 2065
MAREMA, D	PSTOF 2010
COX, M	ALUMN 2005C
MARCOWKA, R	PSTOF 1986C
NELSON, H	CONBK 1984

NEAR WEST DIVISION TOP TEN

LEVINE, D	KNIGHT 2387
BENEDEK, R	KNIGHT 2216D
SHEYNIN, S	KNIGHT 2205
WARREN, J	CHRGR 2113T
JONES, B	ROCKW 2061
BERRY, G	KNIGHT 2048D
KEISLER, J	KNIGHT 1965
GREEN, D	KNIGHT 1835C
KALE, S	JCASE 1812
HILL, R	KNIGHT 1772

FAR WEST DIVISION TOP TEN

KOZLOVSKY, M	FERMI 2238
TEGEL, F	DRGNS 2113D
LUDWIG, T	DRGNS 2107
DORIGO, T	FERMI 2080
BUCHNER, R	ROYLS 2069
GUIO, J	ROYLS 2063
STOLTZ, B	TYROS 2024
UNDERWOOD, W	AWEST 2008C
STINSON, M	ROYLS 2006
SPIEGEL, L	FERMI 1997C

MOST IMPROVED PLAYERS

POMA, D	AWEST 119
INUMERABLE, F	PSTOF 117
BAER, M	AMCRP 109
PIAO, T	DRGNS 105
MATTHEWS, J	RAIL 105
KALE, S	JCASE 98
PRATTS, M	COLUM 91
SANCHEZ, R	GROLR 81
SIEGEL, R	CONBK 70
OGASAWARA, L	ROYLS 70

NAME	TEAM	W	L	D	RATING	NAME	TEAM	W	L	D	RATING
ABBOTT, J	MTRLA	2	2	0	0000?	CHEVERESAN, S	UOP	0	0	1	1434C
ABRAHAM, T	RAIL	0	1	0	1531	CHOUDRY, A	KEMPR	0	0	0	0000?
ADAMI, S	UOP	0	0	0	0000?	CHRISTIAN, R	DRGNS	1	1	0	1808C
ALFARO, C	ALUMN	0	0	0	2118*	CIBA, F	SEARS	0	0	0	1385
ALLEN, H	PSTOF	2	0	0	1908	CIESLEK, D	MTRLA	3	2	0	1940
ALPER, T	COLUM	0	0	0	0000?	CIMMARRUSTI, A	CRT	0	0	0	1266#
AMUNDSEN, C	KEMPR	0	2	0	0000?	CISKO, G	FERMI	1	2	0	1615*
ANDERSON, CJ	ROYLS	3	0	1	1419	COBLEIGH, M	ROAD	0	0	0	0000?
ATKINSON, J	AMCRP	3	4	2	1760	COLEMAN, O	ROAD	1	1	0	0000?
AUGSBURGER, L	MTRLA	3	3	0	1812	CONNELY, S	HULL	0	2	0	0000?
AUSTIN, R	ROYLS	0	0	0	1135#	COOPER, W	PSTOF	4	3	2	1674
BAER, M	AMCRP	4	1	3	1376*	COTE, J	MERC	1	4	1	1277*
BAKER, B	FLPRO	0	0	1	1069	COX, M	ALUMN	4	2	2	2005C
BAKER, LR	MERC	1	4	0	1112*	CREWSE, L	EXMPL	5	2	0	2061
BALASE, E	SEARS	0	0	0	1364*	CUMBERLAND, M	SEARS	1	0	0	0000?
BANZA, S	HULL	0	0	0	0000?	CUMMUTA, P	KEMPR	0	1	0	1368
BARGERSTOCK, D	CRT	7	1	1	1903	CURRY, G	RAIL	0	0	0	0000?
BARGYH, J	COLUM	0	0	0	0000?	CZERNIECKI, A	ALUMN	6	3	1	2182C
BAURAC, D	KNGHT	5	3	0	1633C	DAVIDSON, M	ALUMN	2	0	0	1678*
BENEDEK, R	KNGHT	2	0	3	2216D	DAVIS, R	PSTOF	0	4	1	0000?
BENESA, A	GROLR	5	2	1	2210	DAWSON, J	KNGHT	0	0	0	1409
BERNARD, D	CRT	1	1	0	1303	DEARDORFF, M	FLPRO	0	7	1	1439*
BERRY, G	KNGHT	6	1	1	2048D	DECMAN, S	KNGHT	5	0	1	1677D
BEZZUBOV, V	FERMI	5	0	0	2273#	DENG, J	CRT	3	1	2	1615
BHOJWANI, C	TYROS	3	2	0	1977	DEO, D	KEMPR	0	0	0	0000?
BLACKMON, E	ROYLS	4	1	0	1762	DEWITT, G	ROCKW	3	4	3	1423C
BLAZIE, J	TYROS	0	1	3	1821C	DEZONNO, T	ROCKW	5	2	2	1255*
BLOEDOW, P	KEMPR	0	0	0	1498C	DIAZ, L	JCASE	1	0	0	0000?
BLOOM, B	EXMPL	3	2	2	2100	DIAZ, P	NORTH	6	4	0	2015
BOLDINGH, E	UOP	2	4	0	2121	DJORDJEVIC, I	FERMI	0	0	0	0000?
BOOKER, G	RADIO	3	7	0	1404*	DOBR, K	CHRGR	5	3	2	1508T
BRADY, R	CHRGR	2	2	0	1267	DOBROVOLNY, C	ROYLS	4	2	2	1951
BRANCH, Y	COLUM	2	1	1	1285*	DONNA, D	MTRLA	1	1	0	0000?
BRIONES, M	UOP	0	1	0	1660C	DORFF, M	SEARS	0	0	1	1493
BROCKETT, M	SEARS	2	3	1	1821	DORIGO, T	FERMI	0	0	0	2080
BRONFELD, A	ALUMN	3	1	1	1819	DUFRESNE, T	JCASE	3	6	0	1000#
BROTSOS, J	ALUMN	0	0	1	1547D	DURKEE, D	DRGNS	2	2	3	1766C
BROWN, S	MERC	0	0	0	0000?	DYCKOWSKI, R	CONBK	4	2	0	1617*
BROZOVICH, J	TYROS	2	1	2	1767C	DZURIESKO, G	UNILV	1	6	0	1104#
BUCHNER, R	ROYLS	1	0	2	2069	EDWARDS, S	AWEST	1	7	1	1278
BUERGER, E	UOP	4	2	1	2088D	EFRON, D	ROCKW	1	0	1	1638
BURDICK, S	COLUM	2	1	0	1562	ELEK, G	NORTH	0	7	1	1009*
BURIAN, D	NORTH	4	3	2	1680C	ELLICE, W	UNILV	4	0	3	1855
CAPAGATTI, A	ROCKW	0	0	0	0000?	ERLENBORN, M	AWEST	2	3	0	1482*
CARNAL, D	CRT	1	3	1	0000?	EUSTACE, D	DRGNS	2	1	3	1503
CARTER, D	JCASE	0	0	0	1059*	FAHRENHOLTZ, S	MTRLA	2	0	0	1790*
CARTER, L	PSTOF	5	4	1	1524	FELDMAN, A	FLPRO	1	5	3	1438C
CASTILLA, H	FERMI	0	0	0	0000?	FLESHMAN, M	ROAD	0	0	0	0000?
CHAN, H	SEARS	1	0	0	1578	FRAATS, D	CONBK	5	4	0	1875
CHARKOVSKY, R	ALUMN	2	0	0	1617*	FRANCISKOVICH, DHULL		1	4	0	1113#

? - UNRATED

- 5 TO 9 RATED GAMES

* - 10 TO 24 RATED GAMES

C - CENTURY CLUB MEMBER

D - DOUBLE CENTURION

T - TRIPLE CENTURION

Q - QUAD CENTURION

NAME	TEAM	W	L	D	RATING	NAME	TEAM	W	L	D	RATING
FRANEK, M	ALUMN	5	4	1	1809C	JASAITIS, A	CRT	5	1	1	2249C
FRANK, M	MERC	0	0	0	1719*	JENKINS, M	RADIO	0	0	0	0000?
FRIESEMA, W	CRT	8	2	1	2141	JONES, B	ROCKW	1	0	6	2061
FRISKE, T	EXMPL	5	1	1	1860	JONES, M	ROAD	1	4	0	1330*
GABRIELLO, A	AMOCO	0	0	0	0000?	JONES, MARC	COLUM	0	0	0	0000?
GAINES, I	FERMI	4	3	1	1723C	KALE, S	JCASE	3	2	4	1812
GANSER, A	CONBK	3	1	1	0000?	KANAS, W	JCASE	2	5	0	1263C
GASTON, K	JCASE	1	6	0	1289*	KARPIERZ, J	TYROS	0	3	2	1106#
GAVIN, L	MERC	0	0	0	1216	KAUFMAN, M	KEMPR	0	2	0	0000?
GAZMEN, E	GROLR	7	1	0	2251	KEEFE, E	FLPRO	2	4	0	1187#
GLICENSTEIN, J	FERMI	0	0	0	1853	KEISLER, J	KNGHT	4	0	1	1965
GLOWACKI, D	RADIO	0	0	0	0000?	KINSELLA, G	KNGHT	1	1	1	1468C
GOLLA, R	SEARS	3	3	1	2018D	KLINEFELTER, H	JCASE	4	2	1	1480
GOLUMBOVSKI, P	NORTH	5	1	4	2126	KOEPELE, J	TYROS	0	1	0	0000?
GONCHAROFF, N	MTRLA	6	0	2	1782Q	KOGAN, G	CONBK	5	3	3	1812
GORZ, E	RADIO	2	3	3	1323#	KOKONTAS, W	MERC	0	0	0	0000?
GREEN, D	KNGHT	5	1	1	1835C	KOSTECKA, K	COLUM	5	2	2	1680
GREENE, D	ROCKW	0	0	0	0000?	KOZLOVSKY, M	FERMI	3	0	0	2238
GRIESMEYER, W	PSTOF	1	3	1	1317	KRAKAU, H	EXMPL	0	0	0	1964
GUILLEN, B	KEMPR	1	0	0	1402*	KRULL, E	AMCRP	1	3	1	1382
GUIO, J	ROYLS	1	5	0	2063	KUMRO, D	CHRGR	0	0	0	1547T
HAHNE, D	ROYLS	5	1	1	1575	KUSUMOTO, R	HULL	0	0	0	0000?
HAMILTON, L	AMCRP	4	4	0	1416	LAMBIRIS, J	KEMPR	2	4	3	1424*
HAMMOND, M	CONBK	4	4	0	1328	LASKY, J	RADIO	0	0	0	1397
HAMPER, P	AMCRP	2	3	1	1264#	LASKY, JIM	RADIO	0	0	0	1695#
HARRIS, FF	ROAD	1	3	0	1404#	LASKY, N	RADIO	2	4	1	1357
HARRIS, R	FERMI	5	0	2	1629	LATIMER, E	SEARS	5	3	0	2038D
HASAN, Y	MTRLA	6	1	0	2232	LEE, B	UNILV	1	3	0	1471
HASKELL, M	KEMPR	0	0	0	0000?	LEMBERGER, S	CRT	0	0	0	0000?
HEDSTROM, L	RAIL	0	0	0	0000?	LEONG, D	ALUMN	3	0	3	1971
HEINRICH, J	FERMI	0	0	0	1901	LEONG, G	KEMPR	1	2	0	2003C
HERNANDEZ, DD	COLUM	6	2	1	1541	LERNER, R	SEARS	1	0	1	0000?
HESS, B	FLPRO	0	6	2	1456	LESTER, M	MTRLA	1	2	1	1595
HICKS, C	DRGNS	0	0	0	1530	LEVINE, D	KNGHT	1	1	0	2387
HILL, C	FERMI	0	1	0	1663*	LIKHTEREV, M	UOP	1	1	2	1543#
HILL, R	KNGHT	7	0	3	1772	LITVINAS, A	ALUMN	7	2	0	1691C
HILLIARD, J	CONBK	0	3	0	0000?	LOMONT, C	SEARS	1	0	1	1506#
HILTON, J	MERC	2	4	1	1004*	LOSOFF, A	CRT	5	4	0	1886
HODINA, J	AMCRP	4	2	4	2065	LUBERSHANE, S	MERC	0	0	0	0000?
HOOKER, L	RAIL	0	0	0	0000?	LUCEK, D	HULL	0	0	0	0000?
HOWARD, W	PSTOF	6	4	1	1522	LUDWIG, T	DRGNS	5	4	0	2107
HUGHES, L	RAIL	0	0	0	0000?	LUEDERS, J	CRT	0	3	0	0000?
HUGHES, N	KEMPR	2	1	1	1852C	MAA, R	DRGNS	0	4	0	0000?
HUNG, N	MTRLA	0	0	1	1471#	MANIA, B	HULL	0	0	0	0000?
INUMERABLE, F	PSTOF	8	0	1	2232	MANILLA, M	AMOCO	0	0	0	1251#
JACKSON, JJ	ROAD	1	2	0	0000?	MARCOWKA, R	PSTOF	5	4	1	1986C
JACO, H	HULL	0	0	0	1147	MAREMA, D	PSTOF	0	0	0	2010
JACOBS, N	DRGNS	4	1	5	1951C	MARGULIS, A	HULL	0	0	0	1491#
JAKSTAS, K	NORTH	3	1	4	2180C	MATHEWS, B	CRT	0	0	0	0000?
JARRETT, T	RAIL	0	1	0	1604#	MATTHEWS, J	RAIL	7	3	0	1747

? - UNRATED

- 5 TO 9 RATED GAMES

* - 10 TO 24 RATED GAMES

C - CENTURY CLUB MEMBER

D - DOUBLE CENTURION

T - TRIPLE CENTURION

Q - QUAD CENTURION

NAME	TEAM	W	L	D	RATING	NAME	TEAM	W	L	D	RATING
MCALISTER, K	COLUM	2	5	3	1899	POMA, M	AWEST	0	1	0	0000?
MCCLENDON, L	CONBK	0	0	1	1340	POZNIAK, J	KEMPR	0	1	0	0000?
MCCLOUD, E	ROYLS	0	0	0	1068#	PRATTS, M	COLUM	6	1	2	1721
MCFARLIN, B	KEMPR	0	6	1	1215#	PRICE, B	AWEST	0	1	0	1086#
MCGRIFF, M	RADIO	0	0	0	1393	PUNZALAN, N	GROLR	6	2	0	1599
MCINTOSH, S	CONBK	0	3	2	1142*	PURDLE, D	GROLR	0	0	0	0000?
MCKAY, P	UNILV	2	1	0	0000?	QUERUBIN, R	FLPRO	2	4	0	2090#
MCQUINN, J	ROCKW	0	1	2	1450	RACANELLI, F	UOP	0	0	0	0000?
MEDINA, P	FERMI	0	0	0	0000?	RADAVICIUS, E	CHRGR	4	2	4	1710D
MELNIKOV, I	MTRLA	3	5	2	2159	RADULSKI, B	TYROS	0	0	0	0000?
MENDOZA, D	FERMI	0	0	0	0000?	RAFACZ, T	ROCKW	1	6	2	1698
MENGEL, M	FERMI	1	1	0	0000?	RAFACZ, W	ROCKW	3	5	3	1638
MICKLICH, F	UOP	3	3	1	1774C	RAFFERTY, M	HULL	0	1	0	0000?
MIKULECKY, B	RADIO	1	4	4	1293	RANGEL, R	HULL	0	1	0	1741
MILLER, TT	SEARS	6	2	1	1702	REED, K	TYROS	1	0	0	0000?
MIRANDA, V	GROLR	0	0	0	1462#	REICHERT, P	NORTH	0	0	0	1639*
MITCHAM, L	ROCKW	3	3	0	1552*	REID, C	JCASE	5	3	1	1344
MOORE, JJ	MTRLA	1	0	0	0000?	REYES, R	SEARS	5	1	2	2330D
MORTON, B	SEARS	2	0	1	1591	RINGENBERG, T	AMOCO	0	0	0	1409
MOSS, J	MERC	0	0	0	0000?	ROJAS, R	RAIL	0	1	0	0000?
MOTYCKA, R	JCASE	4	2	1	1185	ROSE, K	AMOCO	0	0	0	1980
MUDAN, M	HULL	1	5	0	0000?	ROSLEY, D	ROYLS	4	1	0	1807
MURPHY, B	GROLR	0	0	0	0000?	ROSS, L	JCASE	0	1	0	0000?
NAUGHTON, T	HULL	0	3	0	1323#	RUBIN, J	UNILV	0	1	0	0000?
NELL, D	UNILV	1	4	0	1078#	RUDDY, J	MERC	1	4	2	1221
NELSON, H	CONBK	3	2	0	1984	RUEB, R	HULL	0	1	0	0000?
NISHIMURA, K	FLPRO	1	5	2	1285*	RZESZUTKO, R	ALUMN	3	4	0	1859
NOTERMAN, T	UNILV	0	4	0	1190	SAHLI, E	UOP	3	0	2	1727*
NOWAK, W	RAIL	0	1	0	0000?	SAJBEL, P	UOP	1	4	1	1633
NWABUDE, O	CHRGR	2	4	2	1029*	SAJKOWSKI, D	AMOCO	0	0	0	1956
O'BRIEN, D	UOP	1	0	1	1417*	SAMELSON, C	MTRLA	4	2	1	1989C
O'DELL, DW	RADIO	1	5	4	1623	SAMULAK, C	HULL	0	3	0	0000?
OCKERS, S	KNIGHT	0	0	0	1482	SANCHEZ, N	ROAD	0	0	0	0000?
OELHAFEN, A	EXMPL	0	0	0	1278*	SANCHEZ, P	RAIL	0	3	0	0000?
OGASAWARA, L	ROYLS	6	0	1	1874	SANCHEZ, R	GROLR	5	2	0	1510*
OGASAWARA, R	MTRLA	0	0	0	1600D	SANTIAGO, T	COLUM	3	2	2	1921#
OLSEN, A	KEMPR	1	6	2	1478	SANTOS, S	GROLR	0	0	0	0000?
OLUND, P	MTRLA	0	0	0	1328*	SATTERLEE, D	JCASE	4	6	0	1724C
OSTERLUND, R	EXMPL	4	4	0	1949	SAUER, C	ROAD	0	0	0	0000?
PAAUWE, N	AMOCO	0	0	0	1502	SAWDO, E	JCASE	3	2	2	1422
PARA, A	FERMI	3	3	1	1571	SCHATTKKE, N	AMOCO	0	0	0	0000?
PARAOAN, E	CONBK	7	2	0	1778	SCHWARTZ, M	TYROS	0	4	1	1050*
PATTON, D	CHRGR	1	1	1	0000?	SCHWARTZ, S	SEARS	0	0	0	1713C
PEHAS, A	ROYLS	1	0	3	1952	SHAFF, R	TYROS	1	4	1	1532C
PEPPERS, M	RAIL	0	0	0	0000?	SHEU, G	CHRGR	2	0	2	1343*
PERAREN, E	PSTOF	1	0	0	1723	SHEYNIN, S	KNIGHT	1	0	0	2205
PETWAY, L	PSTOF	0	0	0	1453*	SHOUSE, B	MTRLA	1	3	0	0000?
PIAO, T	DRGNS	8	1	0	1714*	SHUKLA, S	FERMI	0	1	0	0000?
PITTS, R	ROAD	0	0	0	0000?	SIEGEL, R	CONBK	7	1	2	1541
POMA, D	AWEST	8	5	5	1307	SIMS, B	CRT	1	2	0	1519#

? - UNRATED

- 5 TO 9 RATED GAMES

* - 10 TO 24 RATED GAMES

C - CENTURY CLUB MEMBER

D - DOUBLE CENTURION

T - TRIPLE CENTURION

Q - QUAD CENTURION

NAME	TEAM	W	L	D	RATING	NAME	TEAM	W	L	D	RATING
SIWEK, M	KEMPR	2	6	2	2126C	VALDEZ, C	MTRLA	2	1	0	0000?
SLAGLE, S	MERC	2	6	0	1580	VAN MEER, J	KEMPR	1	2	2	1998
SLAUGHTER, S	ROAD	0	0	0	0000?	VAN OUIRIVE, R	RAIL	1	3	0	1096#
SMITH, BR	TYROS	0	2	2	1460	VAN ZILE, C	UOP	1	2	0	1382*
SMITH, G	ROAD	0	0	0	1595#	VERGE, C	PSTOF	0	0	0	0000?
SMITH, JM	ALUMN	1	0	0	1196*	VERIVE, J	AWEST	1	3	0	1615*
SOLLANO, E	GROLR	4	2	1	1967	VICK, H	MTRLA	0	1	0	1516
SOMBONG, M	CONBK	2	3	1	1669	VIGANTS, A	NORTH	4	5	0	1592
SPANGLER, M	AMOCO	0	0	0	1371	WALKER, R	FERMI	0	0	0	1345C
SPECK, D	COLUM	0	0	0	1346	WALLACH, C	MTRLA	3	0	2	2126
SPIEGEL, L	FERMI	3	3	3	1997C	WALLIN, R	AWEST	1	4	2	1714
STAMM, V	CHRGR	4	5	1	1736D	WARD, C	DRGNS	4	2	1	1536D
STAPLES, C	FERMI	0	3	2	1210#	WARREN, J	CHRGR	2	2	5	2113T
STEIN, C	RAIL	0	0	0	0000?	WATSON, W	COLUM	0	0	0	0000?
STEINER, D	HULL	0	1	0	0000?	WEBB, E	AMCRP	0	0	0	1278#
STEVANOVIC, M	UOP	3	2	3	2237C	WEBER, L	GROLR	1	5	2	2118
STEVENS, J	COLUM	4	3	0	1389	WEISS, G	HULL	0	4	0	0000?
STINSON, M	ROYLS	1	1	0	2006	WEISSKOPF, J	HULL	3	3	0	1343#
STOLTZ, B	TYROS	4	2	0	2024	WEITZ, R	EXMPL	1	4	0	1699C
SUERTH, F	EXMPL	3	3	2	1606C	WELTER, P	SEARS	2	1	0	1646#
SULLIVAN, C	MERC	2	5	1	1525	WENTLING, C	AMCRP	3	5	0	1577
SULLIVAN, J	EXMPL	0	0	0	1996D	WEST, R	MTRLA	0	1	0	1447#
SZAUKELLIS, W	MTRLA	1	1	0	0000?	WHITE, H	JCASE	4	5	1	1616
SZONTAGH, T	CRT	0	2	0	0000?	WHITSITT, S	AWEST	0	4	0	1504*
TAYLOR, M	ROAD	0	0	0	0000?	WHITTINGTON, D	HULL	0	0	0	0000?
TEGEL, F	DRGNS	4	3	3	2113D	WIECHERT, A	UOP	0	0	0	0000?
THOMAS, G	TYROS	1	2	2	1511	WILLIAMS, A	ROAD	0	3	0	0000?
THOMAS, J	CHRGR	2	5	1	1472C	WILLIAMS, J	RAIL	2	0	0	0000?
THOMPSON, J	RAIL	0	0	0	0000?	WILSON, A	ROAD	0	5	1	1555
THOMPSON, R	FLPRO	0	2	0	1065	WILSON, M	SEARS	0	1	0	0000?
THOMPSON, T	ROAD	0	0	0	0000?	WONG, P	EXMPL	1	1	2	2217C
TSEITLIN, E	MTRLA	3	2	0	0000?	YOUNG, R	HULL	0	6	2	1383*
TURNER, R	COLUM	0	0	0	1229*	ZEIDEL, J	MERC	0	0	1	1947
TYREE, D	RADIO	1	8	1	1482*	ZOELLNER, J	CONBK	3	3	2	1263
UNDERWOOD, W	AWEST	2	2	1	2008C	ZUNGOLO, J	CRT	0	1	0	0000?

? - UNRATED

- 5 TO 9 RATED GAMES

* - 10 TO 24 RATED GAMES

C - CENTURY CLUB MEMBER

D - DOUBLE CENTURION

T - TRIPLE CENTURION

Q - QUAD CENTURION