

Chicago Industrial Chess League

Bulletin No.6, Vol. 37
JUNE 1994

ARGONNE KNIGHTS TAKE CICL CROWN

INSIDE THIS ISSUE:

-  2 Squares Column
-  Nik's Greatest Hit
-  Annotated Games
-  Final Results
-  CICL Ratings List
-  Speed Ratings List
-  '93 Playoff Book
Index

 **-NEED INPUT!** To make the CICL bulletin even better we are looking for anyone interested in submitting **articles** or **games**. If you are interested, call or write to the bulletin editor.

CICL OFFICERS

As of June 1994

President: James Hodina
718 Central Park Ave.
Flossmoor, IL 60422
(708) 990-6115 W (708) 799-5571 H

Secretary: Leonard Spiegel
MS 219
Fermilab
Batavia, IL 60510
(708) 840-2809 W (708) 377-2675 H

Treasurer: Wesley K. Underwood
207 S. Dorchester Ave.
Wheaton, IL 60187
(708) 752-5127 W (708) 462-0393 H

Ratings : Charles Ward
Chairman: 615 S. Lincoln
Hinsdale, IL 60521
(708) 325-3885 W (708) 979-4599 H
(708) 979-8451 F

Production: Marty Franek
Circulation: 9044 S. 51st Ave
Oak Lawn, IL 60453-0397
(312) 353-0397 W (708) 636-3714 H

East : Kelvin McAlister
Division : 3825 Canterbury Ct. 2A
Chairman: Richton Park, IL 60471
(312) 663-1600 ext. 182 W

Near West: Satish L. Kale
Division : JI Case
Chairman: 7 South 600 County Line Rd
Hinsdale, IL 60521
* (708) 887-2372 W (708) 325-5253 H

Far West : Irwin Gaines
Division : Fermilab - MS 127
Chairman: P.O. Box 500
Batavia, IL 60510
(708) 840-4022 W

North : Ruben Reyes
Division : 2019 W. Leland Ave.
Chairman: Chicago, IL 60625
(708) 286-0758 W (312) 334-5462 H
(312) 769-0311 F

Bulletin Editor: See North Division
Chairman

Banquet & Publicity : Anthony Jasaitis
Chairman: Bedford Park, IL
60499-0664
(708) 406-6420 W

READER'S FORUM

(Have I a treat for you. The following game won by our Banquet Chairman. Tony Jasaitis was against no other than USCF Hall of Famer and former World Correspondence chess champion Dr. Victor Palciauskas. - ed)

Below is my victory against my most formidable opponent in the annual North American Lithuanian Championship, where I tied for first place. (So wrote Tony Jasaitis who scored 3.5 out of 4 - ed)

ALEKHINE'S DEFENSE (Modern Variation)

WHITE: Victor Palciauskas (USCF 2300)
BLACK: Tony Jasaitis (USCF 2030; CICL 2250)

April 17, 1994 (Round 3 of 4), Board 1
Time control: 50/2, G/30

Annotated by Tony Jasaitis

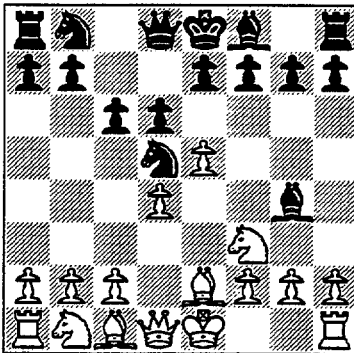
1. e4 Nf6

My choice of this rare defense was well-timed; my opponent plays mostly correspondence chess, where he has not encountered this opening "for many years."

2. e5 Nd5 3. d4 d6 4. Nf3

This Modern Variation is popular among masters, who do not want to be surprised by innovations in the very complex and sharp Four Pawns Attack (4.c4 and 5.f4).

4...Bg4 5. Be2 c6



A solid but mostly boring alternative to the richer ...g6, which I have not had time to study. The idea of ...c6 is to protect d5 and b7 from White's bishop which will wind up on f3. White replies with a natural move that gives Black easy equality and many chances to win the pawn on e5. 6.Ng5!? is the most challenging.

6. 0-0 Bxf3! 7. Bxf3 dxe5 8. dxe5 e6 9. Qe2

9.c4 is not to be feared; Black's K is not in danger after the Q trade.

9...Nd7 10. c4

Black's retreat is only temporary; the N's destiny in most cases is to pressure the e-pawn anyway.

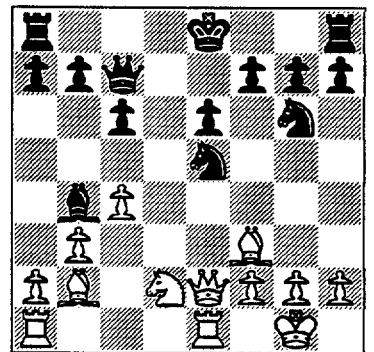
10...Ne7 11. b3?

This natural move, intending to defend the pawn on e5, actually loses it! Bg4 or Bd2-c3 keeps the pawn, but master practice shows Black to be better anyway.

11...Ng6 12. Bb2 Qc7 13. Re1 Bb4

Black wins a pawn, since the Q will not be able to defend e5 and d2 at the same time. At this point, my opponent had used 20-30 minutes; I had used only one, the fastest I have ever played an opening sequence.

14. Nd2 Ndx e5!



This gives White's pieces less activity than Bxd2, as well as preparing more pressure at d2.

| List of Individual Prize Winners | | | |
|----------------------------------|-------|--------|---------|
| Name | Award | Div | Rating |
| T. Miller | MVP | North | 1728 |
| F. Inumerable | MVP | East | 2236 |
| R. Hill | MVP | N/West | 1780 |
| R. Harris | MVP | F/West | 1644 |
| T. Piao | MVP | F/West | 1716 |
| P. Sajbel | OTC | North | U.O.P. |
| K. Kosticka | OTC | East | Colu |
| D. Baurac | OTC | N/West | Knight |
| S. Edwards | OTC | F/West | Awest |
| D. Poma | MIP | Awest | 119 Pts |

15. Be4 0-0?

Played routinely, but 15... 0-0-0 would have been stronger, gaining a tempo for the pressure on d2, and avoiding the counter-pressure that White develops against the Black King.

16. Bc2 Rad8 17. Rad1 Bxd2 18. Rxd2 Rxd2 19. Qxd2 Ng4 20. g3 Rd8 21. Qe2

The natural 21.Qc3 would have avoided Black's counter-play, and would have created enough pressure to compensate for the lost pawn.

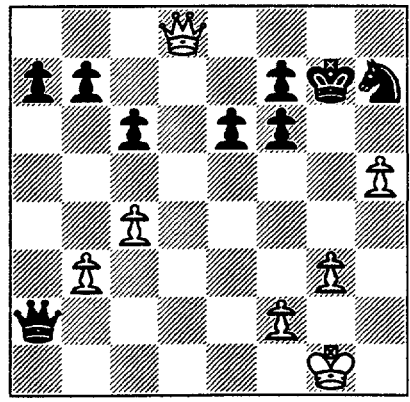
21...Nf6 22. h4?

Rightfully aggressive, but oblivious to Black's counterplay. 22.Bc3 or 22.a3 were needed first. Now Black goes on a suicidal-looking but successful raid.

22...Qa5 23. Rd1 Rxd1+ 24. Qxd1 Qxa2 25. Qd8+ Nf8 26. Bxf6 gxf6 27. Bxh7+ Kg7

I did not want to give my opponent drawing chances after ...Kxh7 28. Qxf8. This time, his exclusive concentration on the attack (or in his words, too much partying the night before) proves fatal.

28. h5? Nxh7 White Resigns



FINAL POSITION

The 2 Squares Column by Marvin Cox

"If two (or more) squares are attacked more times than they are defended they may fall"

Black has just castled and thinks himself safe. However, let us take a look at squares e6, e7, and f7 in diagram 71 right. White has three attackers of those three squares, namely the knight, queen, and rook. Black has two guards, namely the queen and rook. (The black king is redundant with the black rook so doesn't count as a guard,) Three attackers and only two guards. The three squares may fall.

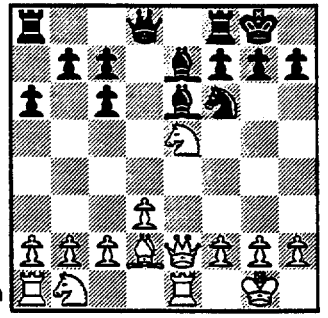


Diagram 71

1. ♖x17 ♙x17 2. ♚xe7 and white has won a pawn.

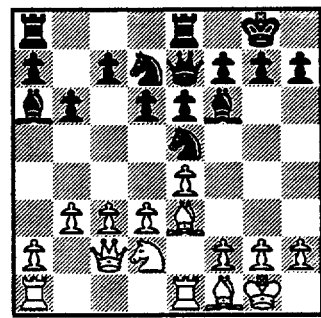


Diagram 72

We note black has an undefended bishop on a6 in diagram 72. My uncle always warned me not to have undefended pieces. Somehow an opponent manages to confiscate them. White has a masked bishop along the same diagonal as black's undefended bishop. My uncle also warned me against an opponent's masked lines of attack. Sometimes the unmasking can be devastating. And here we have a masked attack against an undefended piece. If the pawn on d3 advances white suddenly has a double attack which can not be parried.

1. d4 ♗xf1 2. dxe5 ♘xe5 3. ♘d2xf1 White has won a knight for a pawn.

Black appears perfectly secure in diagram 73 below, except for the unguarded bishop. However, white has two immediate attacks against squares e8 and f7 and black has two guards. The black rook on e8 does not count as a guard because it is on one of the e8, f7 squares. This gives black two weak points, the pawn on f7 and the bishop on f4. A queen or a rook are the only pieces which could be capable of attacking f7 and f4 simultaneously. Neither white rook is in position to do this. The white queen could go to either c4 or f5 to hit f7 and f4.

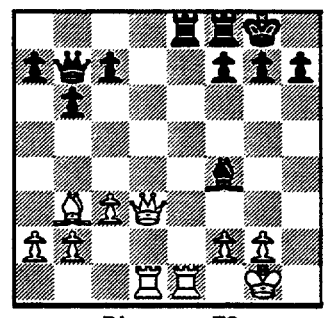


Diagram 73

In some positions the opponent can be attacked by "evolutionary" means. This can be as follows.

1. ♖xe8 ♖xe8 2. ♚c4 (or ♚f5) c5 3. ♚xf4 White has won a bishop.

Another evolutionary sequence could be the following. 1. ♖xe8 ♖xe8 2. ♚d7 ♚e4 3. ♗xf7 then 4. ♚xe8 to remove the queens and simplify to an easy ending.

A "revolutionary" sequence involves a sacrifice to radically change the position. One is: 1. ♗xf7+ ♚xf7 2. ♚d7 Winning a rook and pawn for a bishop. My own preference is the second evolutionary attack which gets rid of the queens so black can't set up any kind of counter attack.

Nik's Greatest Hit

"I Beat Bobby Fischer"

Only a rare few among us amateurs have the distinction of having the above bragging rights - beating one of the greatest player of all time: Bobby Fischer.

In 1964, Fischer was on the 1st year of a 3-year boycott of FIDE. After recording the most astounding feat in the history of the US Championship - winning it without a single draw or loss (11-0!!!) - Fischer announced that he was going on a trans-continental tour of simul and lecture appearances which would last from February thru May 1964. He would have none of the FIDE's interzonals which was to begin in May of 1964.

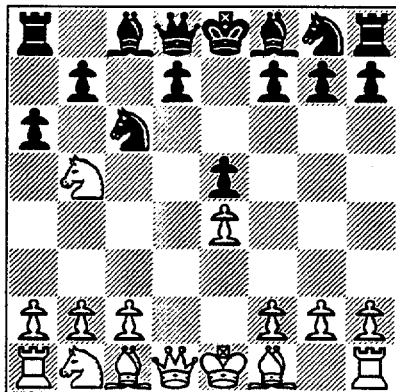
One of Fischer's stop was Chicago, Illinois.

This is how our one and only Quad Centurion, Nik Goncharoff crossed passed pawns with Robert J. ('Bobby') Fischer.

There's a distinct flavor and beauty in the character of the following game. The closest I can come to describing it is to say that the game is BEST SALVAGE *par excellence*.

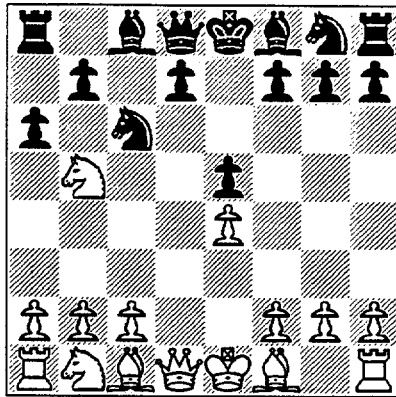
Robert J. Fischer (White), Nik Goncharoff (Black); Sicilian: 1. e4 c5 2. Nf3 Nc6 3. d4 cxd4 4. Nxd4 e5 Usual here is 4...Nf6 5.Nc3 and only now 5...e5 (the Lasker-Pilnik or Pelikan). What Black's doing here, perhaps, is to make a statement: "Show me what you've got, kid." ECO calls this line, Labourdonnais.

5. Nb5 a6



Looks to me Black's strategy may be is to entice White into an early trade of queens

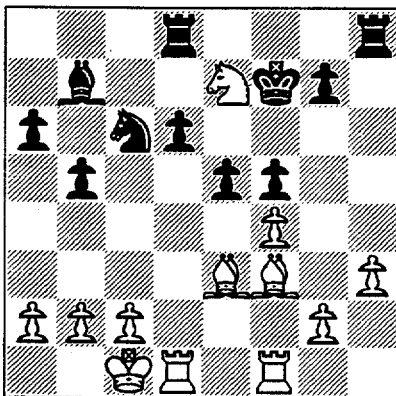
and head into an endgame, the proper strategy to employ against a superior tactician as Fischer. In short, bring the kid out of the books and into the endgame early on.



6. Nd6+ Bxd6 7. Qxd6 Qf6 8. Qa3 Qe7 8...Qg6 9. Nc3? Nd4! 10. Qa4 Rb8, threatening 11...b5 with slight advantage for Black (ECO). Correct is 9.Be3 Qxe4 10. Nc3! (ECO)

9. Qg3 Qf6 10. Nc3 Qg6 11. Qxg6 hxg6 Black finally got to trade queens .

12. Nd5 Rb8 13. Be3 Nge7 14. 0-0-0 b5 15. f4 Bb7 16. Be2 d6 17. h3 f5 18. Bf3 Kf7 19. Rhf1 Rbd8 20. exf5 gxf5 21. Nxe7!



The start of a nice combination.

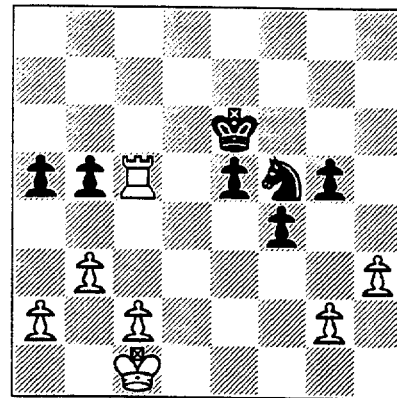
21...Kxe7 22. fxe5 Ke6 23. Bg5 dxe5

If 23 ...Rd7, then 24.Bd5+ Kxe5 25. Rhe1++, and moving the R away from the d-file allows 24.Rxd6+ Kxe5? 25.Rd5+ Ke6 26. Re1+ Ne5 27.Rxe5++

24. Bxd8 Rxd8 25. Rxd8 Nxd8 26. Bxb7 Nxb7 27. Rf3 g5 28. Rc3 a5 29. Rc7 Nd6 30. b3 f4 31. Re5 Nf5!

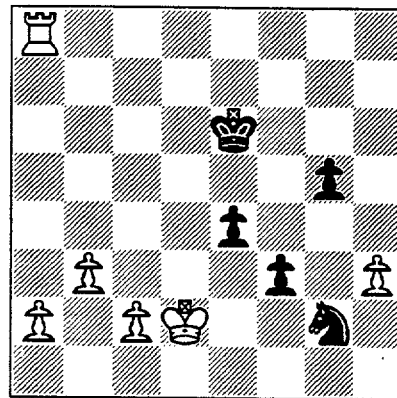
Giving up two pawns in order to remove the barrier at g2. What a gutsy plan for Black if we're to consider who the opponent is in this game. And the plan

works!!



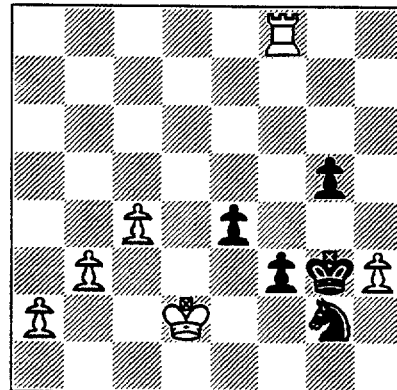
32. Rxb5 Ne3 33. Rxa5 Nxf2 Fischer most likely may have suddenly realized at this point in the game that he had fallen into a well-crafted and masterfully designed trap. Black's King and Knight are both working together now with the passed pawns. White's Rook alone can't stop the passed pawns, and White's King can be kept at bay by Black's Knight and f-pawn.

34. Ra8 f3 35. Kd2 e4



In a short span of three moves Black has turned the game completely into his favor.

36. Re8+ Kf5 37. c4 Kf4 38. Rf8+ Kg3 White Resigns



FINAL POSITION

SICILIAN (Grand Prix Attack)

WHITE: M. Stevanovic (2237)

BLACK: J. Hodina (2065)

1994 Tier 2 Playoffs

Round 3 UOP vs. AMOCO

Annotated by Jim Hodina

This match was for the Tier 2 Title. After just squeaking into the Second Tier, Amoco had made it this far, it was not a surprise that UOP was still undefeated. We were heavily overmatched on every board as I was the closest in rating to my opponent as compared to the rest of my teammates. So, if we were going to have a shot, I had to contribute.

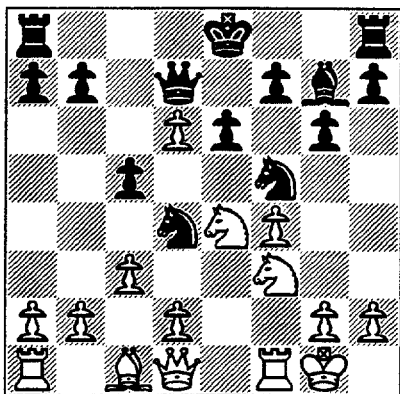
1. e4 c5 2. f4 g6 3. Nf3 Bg7 4. Bc4. When I went to look this line up in ECO, I was very surprised to not find White's fourth move. Only 4.Be2 was given. I can only suppose that 4.Bc4 loses a tempo since Black is preparing an early d5. Still, I have come across 4.Bc4 many times against strong players. Maybe I should just shut up and keep quiet.

4...e6 (?) A move played out of order. 4...Nc6 should come first.

5. 0-0 My opponent took a few minutes here. I wonder if he was looking at 5.d4 since 5...cxd4 reveals my weakness on d6? I didn't let White have a second chance.

5...Nc6 6. Nc3 Nge7 7. e5 d5 This is the thematic break which Black must strive for. As the game will show, White has a threat of 8.Ne4 hitting the hanging c-pawn and the hole on d6. As is, things turned out ok for me. But if I had it to do over again, I would have played 7...b6 first, then 8...d5.

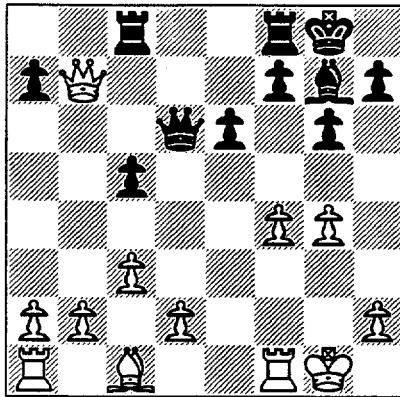
8. exd6 Nf5 9. Bb5 Bd7 10. Ne4 Ncd4 11. Bxd7+ Qxd7 12. c3!?



I had not previously calculated this move

into my plans, so I stopped and took a few minutes to reassess the position. This move, combined with White's 14th (g4), will force the win of a pawn. In doing so, White will create his own weaknesses, a hole on d3, a lack of development on the queenside and an exposed King. These weakness are not static and Black will have to act quickly to take advantage of them.

12...Nxf3+ 13. Qxf3 Rc8 14. g4 Nxd6 15. Nxd6+ Qxd6 16. Qxb7 0-0



A lot has happened and the position is significantly different than from only 5 moves ago. As previously mentioned, White has several weakness. At this point I formulated a plan to try and exploit them. First I will focus my attention on the under-developed queenside, attempting to fix the pawn structure and even possibly winning back material. Once this is complete, I will then turn back to the kingside and attempt to exploit to exposed King. I must keep an eye on my King as f5 is a threat. Also, I must maintain my control over the center so as to allow my pieces the flexibility to move quickly from one side of the board to the other.

17. Qf3 Perhaps 17.Qe4 is more precise.

17...c4 Hitting the hole on d3 and fixing the d2 pawn.

18. b3 Rfd8 19. Rb1 Rb8 20. Qe4 Qb6+ A nice little Zwichenzug which brings the King out just a little bit.

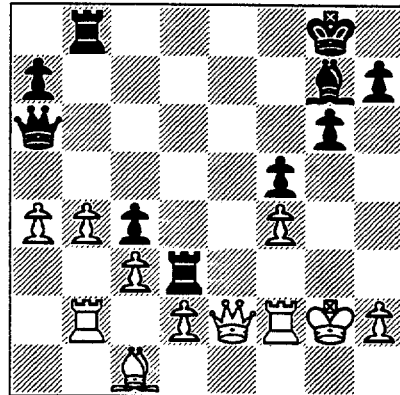
21. Kg2 Qa6 22. Rb2 Rd6 23. Rf2 Rdb6 24. b4 White has managed to keep his extra pawn, but at a serious cost. His queenside pieces are locked in behind his fixed pawns and cannot communicate with the Kingside. At this point, I could not help but think about Marv Cox's 2 Squares Column from the last bulletin. (If you have not read it, I would strongly encourage you to go back and do so.) The theme was about dividing the opponents

forces to maximize your odds in an attack. Now that White's pieces are divided, it's time to reinforce the center and go for the King

25...Rd6 25. a4 f5! Going for the h1-a8 diagonal and opening a file for the rooks.

26. gxf5 This only accelerates Black's attack. 26. Qe2 was better, but Black still has 26...fxg4 27.Qxg4 e5 28.f5 gxf5 29. Rxf5 (29.Qxf5 Rf8 30.Qe4 Rxf2+ 31. Kxf2 Rd3 is also good for Black) 29...Rg6 30.Rg5 Rxg5 31.Qxg5 Rf8 and White's King is too exposed.

26...exf5 27. Qe2 Rd3



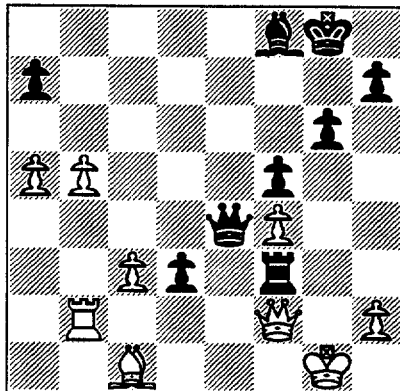
Locking the door on the queenside pieces.

28. a5 Qc6+ 29. Kg1 Re8 30. Qf1 Bh6

31. Qg2 Re1+ The ensuing exchange aids Black's attack. Using the logic from Marv Cox's 2 Squares Column again, Black has increased his advantage from four attackers versus two defenders - a 2:1 ratio - to three attackers and one defender - a 3:1 ratio. Too many times I have adhered to the misconception that the attacker should not exchange down. This is simply not always true.

32. Rf1 Rxf1+ 33. Qxf1 Qe4 34. b5 Bf8 35. Qf2 Rf3 36. d3 cxd3 White resigns

As it turned out UOP still went on to win the match 4-2. Which justly demonstrates that Board 1 is no more important than Boards 5 or 6.



FINAL POSITION

POLISH

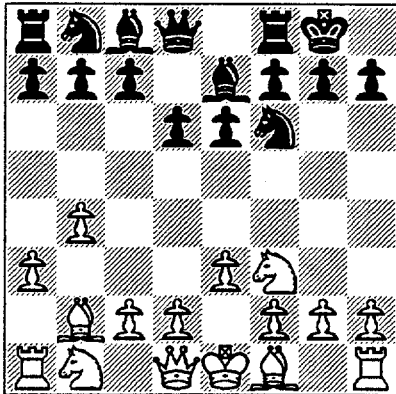
WHITE: R. Dyczkowski (1598)
BLACK: C. Reid (1325)

Continental Bank vs. J. I. Case

For Best Upset
Annotated by Carl Reid

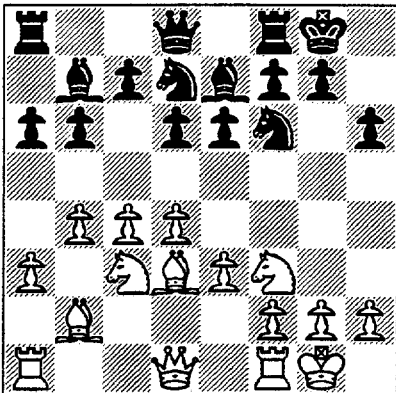
1. b4 Black's not familiar with the opening and so the next few moves are made with the thought of trying to hold the center and develop pieces.

1...Nf6 2. Bb2 e6 3. a3 d6 4. Nf3 Be7 5. e3 0-0



So far so good, the King is tucked away and no major surprises are evident

6. d4 b6 7. c4 Bb7



To hold d5 and threaten the N on f3

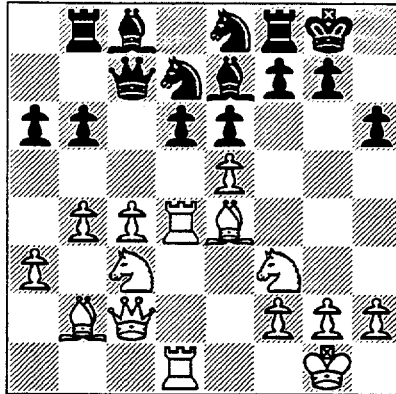
8. Nc3 a6 9. Bd3 h6 10. 0-0 Nbd7 11. e4 c6

Seemed logical, now any White pawn advances could easily be countered by Black.

12. e5 Ne8

Black avoids exchanging on e5 as that could allow White a good outpost for the N on f3. Also this supports the d pawn.

13. Qc2 c5 14. Be4 Rb8 15. Rad1 cxd4 16. Rxd4 Qc7 17. Rf1 Bc8



Even though White has doubled his Rooks on the d file, Black has adequate defense

18. exd6 Nxd6 19. Bh7+

To me White's move serves no good purpose, and I welcome his B being removed from the center of the board.

19...Kh8 20. Ne4 Nxe4 21. Rxe4 Nf6 22. Be5 Qb7 23. Bxf6

White does not wish to exchange Rooks but he wastes a move by not taking the N on move 22.

23...Bxf6 24. Re2 Qc7

I took a long time looking at 24 ...g6 25.Bxg6 fxg6 26.Qxg6 Qg7 27.Qxg7+ Kxg7 or 27. Q moves away. In either case I felt winning the Bishop for 2 pawns, but ending up with 2 isolated pawns was not worth the risk. I was in time trouble and did not want to open up my position.

25. Be4 Bb7 26. Red2 Rbd8

White has been so busy trying to control the d file that he has neglected to give his King "luft". This has been on my mind for a while and now it seems as though an exchange may lead to an entry on the first rank.

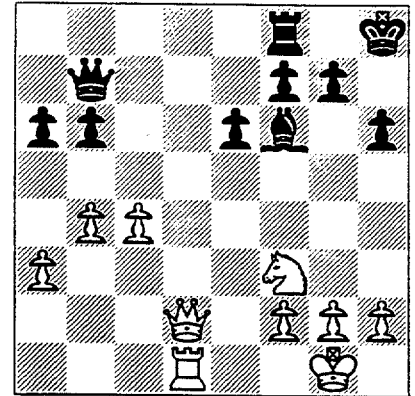
27. Rxd8 Bxd8 28. Bxb7 Qxb7 29. Qd2 Bf6

(See diagram top of next column)

30. Qd7

Looking to exchange Queens on d7 and ending up with a Rook on the 7th rank which would give White a powerful position.

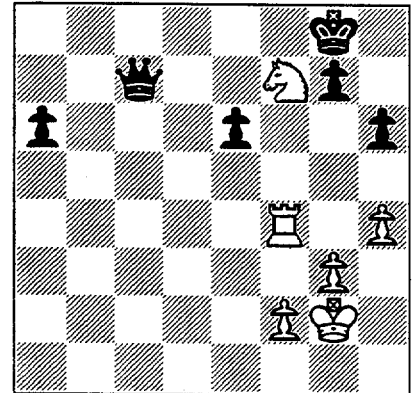
30...Rd8!!



After 29...Bf6

And now White's back rank weakness proves fatal.

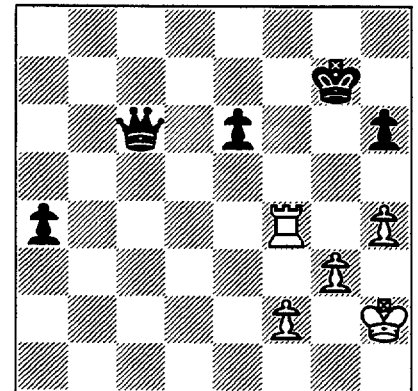
31.Qxd8+ Bxd8 32. Rxd8+ Kh7 33. h3 Qc7 34. Rf8 Qf4 35. c5 bxc5 36. bxc5 Qc1+ 37. Kh2 Qxc5 38. Rxf7 Kg6 39. Rf4 Qxa3 40. Ne5+ Kh7 41. Nf7 Qc1 42. g3 Qc7 43. h4 Kg8 44. Kg2



44...a5

This is not the best move for Black. I should have played 44...Qxf4. 45.gxf4 Kxf7. However, the text moves still win.

45. Nxf6+ gxf6 46. Rf6 Qc6+ 47. Kh2 Kg7 48. Rf4 a4 0-1



FINAL POSITION

BIRD

WHITE: D. Satterlee(1683)
BLACK: V. Stamm (1761)

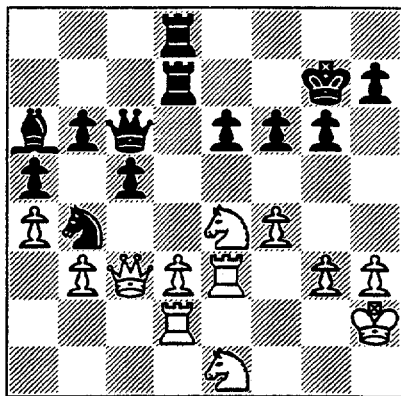
J. I. Case vs. AT & T Chargers

For Best Salvage
Excerpts of comments
by D. Satterlee

I badly botched this game in both the opening and the early middle. However, it is a good example of what one should do when he is behind. In 1993 four of our team participated in the Midwest Quad Championships. We were very impressed by a high school girl. Playing on a weaker team, she fought like a tigress against a stronger opponent. After she had reached the point of having hardly any pieces left, she was still asking herself, "Now what else can I do?" Look for every resource you can to make the game difficult for your opponent.

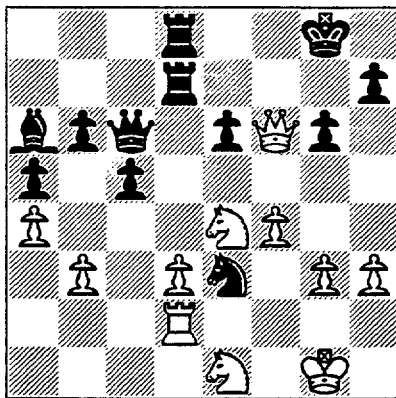
After losing the king pawn in the opening, I decided a counter attack was the best defense, but I botched it badly and was left a Rook and Pawn down at move 35. Nevertheless, I continued to find resources in the position.

1. f4 b6 2. Nf3 Bb7 3. e3 Nf6 4. b3 g6 5. Bb2 Bg7 6. g3 0-0 7. Bg2 e6 8. 0-0 d5 9. d3 Nbd7 10. Nbd2 a5 11. a4 Ng4 12. Qc1 Bxb2 13. Qxb2 Nxe3 14. Rf1 Nxe3 15. Kxg2 c5 16. Kg1 Re8 17. Re2 Qc7 18. Rael d4 19. Qc1 Nf6 20. h3 Nd5 21. Nf1 Nc3 22. Rf2 Qc6 23. N1d2 Kg7 24. Kh2 f6 25. Ne4 Nd5 26. c3 dxc3 27. Nxc3 Nb4 28. Re3 Rad8 29. Rd2 Ba6 30. Ne1 Rd7 31. Ne4 Red8 32. Qc3?



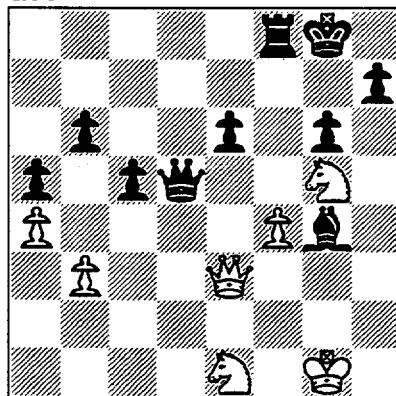
After 32.Qc3?

32...Nd5 33. Qb2 Nxe3 34. Qxf6+ Kg8 35. Kg1

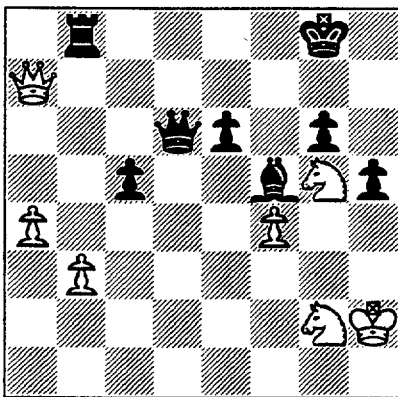


White's a Rook and Pawn down

35...Bxd3 36. Ng5 Bf5 37. g4 Rf8 38. Qc3 Nxe3 39. hxe3 Bxe3 40. Qe3 Rxd2 41. Qxd2 Qd5 42. Qe3



42...Qd6 (42...Qd4) 43. Ng2 Qd1+ 44. Kh2 Qd6 45. Qg3 h5 46. Qe3 Rd8 47. Qe4 Bf5 48. Qf3 Qd2 49. Qb7 Qd7 50. Qxb6 Qd6 51. Qxa5 Rb8 52. Qa7 Black resigns



FINAL POSITION

(Black can't stop 52. Qh7+ Kf8 53. Qf7 mate - D. Satterlee)

Editor's choice

CICL GAME AWARDS

Best Sacrifice : Pat Sajbel
Best Upset : Satish Kale
Best Annotated: Mark Siwek
Best Salvage : Duane Satterlee
Best Draw : Dave O'Dell
Best Endgame : Bob Stoltz

CICL PROPOSALS

By Keith Kostecka

Work: (312) 663-1600 x 182
Home: (708) 524-1460

1994 Summer CICL tournament:

As we did last summer (in two different sections), I would like to propose and organize a summer chess tournament that would be CICL rated. I think that the same format would work this year with possibly a larger turnout.

Replace and Eliminate 2nd Tier Playoffs: I propose that the League consider -

- 1) Eliminating the second tier of the playoffs.
- 2) "Replace" it with the following:
Have the 1st and 2nd place teams from each division qualify as before.

Then, take the top four other league finishers (wild card teams based on overall winning percentage) and have them play at the site of the 2nd place teams. (PRELIMINARY "Qualifying" Rounds)

The winners (a drawn match advances the 2nd place team) would go into the top tier as before.

(This means there'll be a one-round elimination with winners or 2nd place teams who draw advancing to the 3-round Swiss - ed)

- 3) I will also volunteer my services to direct an open individual tournament on the same day as the top tier (assuming that I am not playing in the top tier).

Champion

| | Rnd 1 | Rnd 2 | Rnd 3 | TOTAL |
|---------------|--------------|----------------|-----------------|-----------|
| KNIGHT | DRGNS | ROYLS | SEARS | |
| D. Levine | 1 | .5 | 1 | 2.5 |
| R. Benedek | 1 | 1 ₃ | .5 ₃ | 1.5 |
| S. Sheynin | 0 | 1 ₂ | .5 ₂ | 1.5 |
| G. Berry | 1 | .5 | 1 | 2.5 |
| J. Keisler | 1 | 1 | 1 | 3 |
| D. Green | 0 | 0 | 1 | 1 |
| | | | | |
| | | | | |
| TOTAL | 4 | 4 | 5 | 13 |

**1994
TIER 1
Playoffs**

2nd

| | Rnd 1 | Rnd 2 | Rnd 3 | TOTAL |
|--------------|--------------|--------------|---------------|-----------|
| SEARS | PSTOF | MTRLA | KNIGHT | |
| R. Reyes | 1 | 1 | 0 | 2 |
| E. Latimer | 1 | 0* | .5 | 1.5 |
| R. Golla | 1 | 0* | .5 | 1.5 |
| M. Brockett | 0 | 1 | 0 | 1 |
| C. Lomont | 0 | | | 0 |
| T. Miller | 1 | 1 | 0 | 2 |
| B. Morton | | 0* | 0 | 0 |
| | | | | |
| | | | | |
| TOTAL | 4 | 6 | 1 | 11 |

* Ruled a win for Sears

3rd

| | Rnd 1 | Rnd 2 | Rnd 3 | TOTAL |
|---------------|---------------|---------------|--------------|-----------|
| ROYLS | C.R.T. | KNIGHT | MTRLA | |
| R. Buchner | .5 | .5 | 1 | 2.5 |
| C. Dobrovoly | .5 | 0 | 1 | 1.5 |
| L. Ogasawara | 1 | 0 | 0 | 1 |
| D. Rosley | 1 | | | 1 |
| E. Blackmon | 1 | .5 | 1 | 2 |
| D. Hahne | 1 | 0 | 1 | 2 |
| C.J. Anderson | | 1 | 0 | 1 |
| | | | | |
| | | | | |
| TOTAL | 5 | 2 | 4 | 11 |

| | Rnd 1 | Rnd 2 | Rnd 3 | TOTAL |
|--------------|---------------|---------------|--------------|------------|
| DRGNS | KNIGHT | C.R.T. | ALUMN | |
| F. Tegel | 0 | 1 | 1 | 2 |
| T. Ludwig | 0 | | | 0 |
| N. Jacobs | 1 | .5 | .5 | 2 |
| D. Durkee | 0 | 0 | 1 | 1 |
| T. Piao | 0 | 1 | 0 | 1 |
| C. Ward | 1 | | 0 | 1 |
| D. Eustace | | 1 | .5 | 1.5 |
| | | | | |
| | | | | |
| TOTAL | 2 | 3.5 | 3 | 8.5 |

| | Rnd 1 | Rnd 2 | Rnd 3 | TOTAL |
|---------------|--------------|--------------|--------------|----------|
| ALUMN | MTRLA | PSTOF | DRGNS | |
| A. Czerniecki | 0 | .5 | 0 | .5 |
| M. Cox | 0 | 1 | .5 | 1.5 |
| R. Rzeszutko | | .5 | 0 | .5 |
| M. Franek | 0 | .5 | 1 | 1.5 |
| A. Litvinas | 1F | 0 | 1 | 2 |
| R. Charkovsky | .5 | 1F | .5 | 2 |
| J. Brotsos | 0 | | | 0 |
| | | | | |
| | | | | |
| TOTAL | 1.5 | 3.5 | 3 | 8 |

| | Rnd 1 | Rnd 2 | Rnd 3 | TOTAL |
|---------------|--------------|--------------|---------------|----------|
| PSTOF | SEARS | ALUMN | C.R.T. | |
| F. Inumerable | 0 | .5 | 1 | 1.5 |
| R. Markowka | 0 | | | 0 |
| H. Allen | 0 | 0 | 0 | 0 |
| E. Peraren | 1 | | 1 | 2 |
| W. Cooper | 1 | .5 | .5 | 2 |
| W. Howard | | .5 | 1 | 1.5 |
| L. Carter | 0 | 1 | 1 | 2 |
| | | | | |
| | | | | |
| TOTAL | 2 | 2.5 | 4.5 | 9 |

| | Rnd 1 | Rnd 2 | Rnd 3 | TOTAL |
|----------------|--------------|--------------|--------------|------------|
| MTRLA | ALUMN | SEARS | ROYLS | |
| N. Melnikov | | 0 | | 0 |
| I. Melnikov | 1 | 1* | 0 | 2 |
| Y. Hasan | 1 | | | 1 |
| C. Wallach | 1 | 1* | 0 | 2 |
| C. Samelson | | 0 | 1 | 1 |
| L. Ausburger | 0F | 0 | 0 | 0 |
| N. Goncharoff | .5 | 1* | 0 | 1.5 |
| S. Fahrenholtz | 1 | | | 1 |
| M. Lester | | | 1 | 1 |
| | | | | |
| TOTAL | 4.5 | 0 | 2 | 6.5 |

| | Rnd 1 | Rnd 2 | Rnd 3 | TOTAL |
|----------------|--------------|--------------|--------------|----------|
| C.R.T. | ROYLS | DRGNS | PSTOF | |
| A. Jasaitis | .5 | 0 | 0 | .5 |
| W. Friesema | .5 | .5 | 1 | 2 |
| A. Losoff | 0 | 1 | 0 | 1 |
| D. Bargerstock | 0 | 0 | .5 | .5 |
| J. Deng | 0 | | | 0 |
| J. Lueders | 0 | | | 0 |
| D. Carnal | | 0 | 0 | 0 |
| T. Szontagh | | 1F | 0 | 1 |
| | | | | |
| TOTAL | 1 | 2.5 | 1.5 | 5 |

* Ruled a win for Sears

Compiled by R. Reyes June 1994

Champion

| | Rnd 1 | Rnd 2 | Rnd 3 | TOTAL |
|---------------|--------------|--------------|--------------|-----------|
| U.O.P. | COLUM | CONBK | AMCRP | |
| M. Stevanovic | 1 | 1 | 0 | 2.5 |
| E. Boldingh | 0 | 1 | 1 | 1.5 |
| E. Buerger | 1 | 1 | 1 | 1.5 |
| F. Micklich | 0 | 1 | 0 | 2.5 |
| E. Sahli | 1 | 1 | 1 | 3 |
| P. Sajbel | 1 | 1 | 1F | 1 |
| | | | | |
| | | | | |
| TOTAL | 4 | 6 | 4 | 14 |

1994
TIER 2
Playoffs

| | Rnd 1 | Rnd 2 | Rnd 3 | TOTAL |
|--------------|---------------|-------------|--------------|-----------|
| COLUM | U.O.P. | CASE | EXMPL | |
| T. Santiago | 0 | 1 | 1 | 2 |
| K. McAlister | 1 | 1 | 1 | 3 |
| M. Pratts | 0 | .5 | .5 | 1 |
| K. Kostecka | 1 | 1 | 0 | 2 |
| D. Hernandez | 0 | 0 | 1F | 1 |
| J. Stevens | 0 | | | 0 |
| Y. Branch | | 1 | 1F | 2 |
| | | | | |
| | | | | |
| TOTAL | 2 | 4.5 | 4.5 | 11 |

| | Rnd 1 | Rnd 2 | Rnd 3 | TOTAL |
|--------------|-------------|--------------|---------------|------------|
| AMCRP | CASE | EXMPL | U.O.P. | |
| J. Hodina | 0 | 1 | 1 | 2 |
| J. Atkinson | .5 | 0 | | .5 |
| C. Wentling | 0 | 1 | 0 | 1 |
| L. Hamilton | 1 | 0 | 0 | 1 |
| E. Krull | 0 | 1F | 1 | 2 |
| P. Hamper | 0 | 1F | | 1 |
| M. Baer | | | 0 | |
| | | | | |
| TOTAL | 2.5 | 4 | 2 | 8.5 |

| | Rnd 1 | Rnd 2 | Rnd 3 | TOTAL |
|--------------|--------------|--------------|--------------|------------|
| EXMPL | CONBK | AMCRP | COLUM | |
| P. Wong | 1 | | | 1 |
| B. Bloom | 0 | | | 0 |
| L. Crewse | .5 | | | .5 |
| R. Osturlund | 1 | 0 | 0 | 1 |
| T. Frieske | 1 | 1 | 0 | 2 |
| R. Weitz | | 0 | .5 | .5 |
| F. Suerth | .5 | 1 | 1 | 2.5 |
| | | | | |
| TOTAL | 4 | 2 | 1.5 | 7.5 |

| | Rnd 1 | Rnd 2 | Rnd 3 | TOTAL |
|---------------|--------------|---------------|-------------|------------|
| CONBK | EXMPL | U.O.P. | CASE | |
| D. Fraats | 0 | 0 | .5 | .5 |
| G. Kogan | 1 | 0 | 1 | 2 |
| E. Paraoan | .5 | | | .5 |
| M. Sombong | 0 | 0 | 1 | 1 |
| R. Dyczkowski | 0 | 0 | 0 | 0 |
| R. Siegel | .5 | 0 | 1 | 1.5 |
| J. Zoellner | | 0 | | 0 |
| M. Hammond | | | 1 | 1 |
| | | | | |
| TOTAL | 2 | 0 | 4.5 | 6.5 |

| | Rnd 1 | Rnd 2 | Rnd 3 | TOTAL |
|----------------|--------------|--------------|--------------|------------|
| CASE | AMCRP | COLUM | CONBK | |
| S. Kale | 1 | | | 1 |
| D. Satterlee | .5 | 0 | .5 | 1 |
| H. White | 0 | 0 | 0 | 0 |
| H. Klinefelter | 1 | .5 | 0 | 1.5 |
| E. Swado | 0 | | | 0 |
| C. Reid | 0 | | 1 | 1 |
| K. Gaston | | 0 | 0 | 0 |
| W. Lamas | | 1 | | 1 |
| R. Motycka | | 0 | 0 | 0 |
| TOTAL | 2.5 | 1.5 | 1.5 | 5.5 |

| | Rnd 1 | Rnd 2 | Rnd 3 | TOTAL |
|--|-------|-------|-------|-------|
| | | | | |
| | | | | |
| | | | | |
| | | | | |
| | | | | |
| | | | | |
| | | | | |
| | | | | |
| | | | | |
| | | | | |

| | Rnd 1 | Rnd 2 | Rnd 3 | TOTAL |
|--|-------|-------|-------|-------|
| | | | | |
| | | | | |
| | | | | |
| | | | | |
| | | | | |
| | | | | |
| | | | | |
| | | | | |
| | | | | |
| | | | | |

RATINGS CHAIRMAN'S REPORT

CICL Century Club awards

Eleven CICL members have achieved the distinction of becoming Century Club members by playing 100 or more games in CICL competition. These players are:

| | |
|----------------|------------------|
| J. Atkinson | Amoco Corp. |
| H. Klinefelter | J. I. Case |
| N. Lasky | A&B Radio |
| T. Ludwig | AT&T Dragons |
| B. Mikulecky | A&B Radio |
| D. W. O'Dell | A&B Radio |
| L. Ogasawara | AT&T Royals |
| E. Paraoan | Continental Bank |
| R. Siegel | Continental Bank |
| C. Wentling | Amoco Corp. |
| J. Zoellner | Continental Bank |

No players qualified this season for Double, Triple or Quad Centurion awards.

Most Improved Player Award

This year's Most Improved Player award, based on the most rating points gained during the regular season, goes to Dennis Poma of the Alumni West team.

Ratings News

It was pointed out by Nik Goncharoff that a game played last January between N. Melnikov of Motorola and M. Likhterev of UOP had been incorrectly rated as played by I. Meknikov. This resulted in an incorrect transfer of 44 rating points from I. Melnikov to Likhterev. This error was corrected prior to the rating of the matches reported in this issue of the bulletin.

Two extra games played at the CICL championship site on May 21 have been rated; these results are:

| | RATINGS | SCORE | | RATINGS | SCORE |
|------------------|---------|-------|-------------------|---------|-------|
| | ----- | ----- | | ----- | ----- |
| M.BAER (AMCRP) | 1371-24 | 0 | M.HAMMOND (CONBK) | 1341 24 | 1 |
| M.LESTER (MTRLA) | 1609 14 | 1 | E.KRULL (AMCRP) | 1475-14 | 0 |

CHAMPIONSHIP DIVISION 05-22-1994

| TEAM NAME | W | L | D | GAME MATCH | | PCT |
|----------------------|---|---|---|------------|--------|-------|
| | | | | POINTS | POINTS | |
| ARGONNE KNIGHTS | 3 | 0 | 0 | 13.0 | 3.0 | 1.000 |
| SEARS | 2 | 1 | 0 | 11.0 | 2.0 | 0.667 |
| AT&T ROYALS | 2 | 1 | 0 | 11.0 | 2.0 | 0.667 |
| AT&T DRAGONS | 1 | 1 | 1 | 8.5 | 1.5 | 0.500 |
| ALUMNI CENTRAL | 1 | 1 | 1 | 8.0 | 1.5 | 0.500 |
| CHICAGO POST OFFICE | 1 | 2 | 0 | 9.0 | 1.0 | 0.333 |
| MOTOROLA | 1 | 2 | 0 | 6.5 | 1.0 | 0.333 |
| CHICAGO RES. & TRDG. | 0 | 3 | 0 | 5.0 | 0.0 | 0.000 |

SECOND TIER DIVISION 05-22-1994

| TEAM NAME | W | L | D | GAME MATCH | | PCT |
|------------------|---|---|---|------------|--------|-------|
| | | | | POINTS | POINTS | |
| UOP PROCESS DIV. | 3 | 0 | 0 | 14.0 | 3.0 | 1.000 |
| COLUMBIA COLLEGE | 2 | 1 | 0 | 11.0 | 2.0 | 0.667 |
| AMOCO CORP. | 2 | 1 | 0 | 9.5 | 2.0 | 0.667 |
| EXEMPLARS | 1 | 2 | 0 | 7.5 | 1.0 | 0.333 |
| CONTINENTAL BANK | 1 | 2 | 0 | 6.5 | 1.0 | 0.333 |
| J. I. CASE | 0 | 3 | 0 | 5.5 | 0.0 | 0.000 |

11-MAY-94 ALUMNI CENTRAL
ROUND 1

1.5 MOTOROLA 4.5

| BD | RATINGS | SCORE | RATINGS | SCORE |
|-----------------|---------|-------|----------------|------------|
| 1 CZERNIECKI, A | 2170-14 | 0 | MELNIKOV, I | 2198 21 1 |
| 2 COX, M | 2011 -6 | 0 | HASAN, Y | 2255 9 1 |
| 3 FRANEK, M | 1791 -5 | 0 | WALLACH, C | 2157 5 1 |
| 4 LITVINAS, A | 1703 0 | 1F | AUGSBURGER, L | 1796 0 0F |
| 5 CHARKOVSKY, R | 1617 11 | .5 | GONCHAROFF, N | 1787 -5 .5 |
| 6 BROTSOS, J | 1547 -6 | 0 | FAHRENHOLTZ, S | 1790 9 1 |

12-MAY-94 ARGONNE KNIGHTS
ROUND 1

4 AT&T DRAGONS 2

| BD | RATINGS | SCORE | RATINGS | SCORE |
|--------------|---------|-------|------------|-----------|
| 1 LEVINE, D | 2387 8 | 1 | TEGEL, F | 2113 -5 0 |
| 2 BENEDEK, R | 2204 11 | 1 | LUDWIG, T | 2107-11 0 |
| 3 SHEYNIN, S | 2206-37 | 0 | JACOBS, N | 1951 24 1 |
| 4 BERRY, G | 2048 5 | 1 | DURKEE, D | 1766 -5 0 |
| 5 KEISLER, J | 1965 9 | 1 | PIAO, T | 1714 -9 0 |
| 6 GREEN, D | 1835-25 | 0 | WARD, C | 1536 25 1 |
| 7 HILL, R | 1772 8 | 1 | EUSTACE, D | 1503 -8 0 |

12-MAY-94 SEARS
ROUND 1

4 CHICAGO POST OFFICE 2

| BD | RATINGS | SCORE | RATINGS | SCORE |
|---------------|---------|-------|---------------|-----------|
| 1 REYES, R | 2340 10 | 1 | INUMERABLE, F | 2232-16 0 |
| 2 LATIMER, E | 2026 13 | 1 | MARCOWKA, R | 1968-13 0 |
| 3 GOLLA, R | 2020 11 | 1 | ALLEN, H | 1919-16 0 |
| 4 BROCKETT, M | 1840-29 | 0 | PERAREN, E | 1743 29 1 |
| 5 LOMONT, C | 1506-12 | 0 | COOPER, W | 1688 12 1 |
| 6 MILLER, TT | 1697 12 | 1 | CARTER, L | 1524-12 0 |

18-MAY-94 AT&T ROYALS
ROUND 1

5 CHICAGO RES. & TRDG. 1

| BD | RATINGS | SCORE | RATINGS | SCORE |
|-----------------|---------|-------|----------------|------------|
| 1 BUCHNER, R | 2069 12 | .5 | JASAITIS, A | 2261 -8 .5 |
| 2 DOBROVOLNY, C | 1961 11 | .5 | FRIESEMA, W | 2132-11 .5 |
| 3 OGASAWARA, L | 1859 25 | 1 | LOSOFF, A | 1904-25 0 |
| 4 ROSLEY, D | 1807 27 | 1 | BARGERSTOCK, D | 1875-27 0 |
| 5 BLACKMON, E | 1724 15 | 1 | DENG, J | 1597-15 0 |
| 6 HAHNE, D | 1575 0 | 1 | LUEDERS, J | 0 0 0 |

21-MAY-94 MOTOROLA
ROUND 2

3 SEARS 3

| BD | RATINGS | SCORE | RATINGS | SCORE |
|-----------------|---------|-------|-------------|-----------|
| 1 MELNIKOV, N | 0 0 | 0 | REYES, R | 2350 0 1 |
| 2 MELNIKOV, I | 2219 12 | 1 | LATIMER, E | 2039 -8 0 |
| 3 WALLACH, C | 2162 14 | 1 | GOLLA, R | 2031-10 0 |
| 4 SAMELSON, C | 2004-23 | 0 | BROCKETT, M | 1811 34 1 |
| 5 AUGSBURGER, L | 1796-28 | 0 | MILLER, TT | 1709 28 1 |
| 6 GONCHAROFF, N | 1782 5 | 1 | MORTON, B | 1591-11 0 |

21-MAY-94 AT&T DRAGONS
ROUND 2

3.5 CHICAGO RES. & TRDG. 2.5

| BD | RATINGS | SCORE | RATINGS | SCORE |
|--------------|---------|-------|----------------|------------|
| 1 TEGEL, F | 2108 21 | 1 | JASAITIS, A | 2253-21 0 |
| 2 JACOBS, N | 1975 6 | .5 | FRIESEMA, W | 2121 -9 .5 |
| 3 DURKEE, D | 1761-10 | 0 | LOSOFF, A | 1879 15 1 |
| 4 PIAO, T | 1705 31 | 1 | BARGERSTOCK, D | 1848-31 0 |
| 5 EUSTACE, D | 1495 0 | 1 | CARNAL, D | 0 0 0 |
| 6 | 0 0 | 0F | SZONTAGH, T | 0 0 1F |

21-MAY-94 AT&T ROYALS
ROUND 2

2 ARGONNE KNIGHTS 4

| BD | RATINGS | SCORE | RATINGS | SCORE |
|-----------------|---------|-------|-------------|------------|
| 1 BUCHNER, R | 2081 17 | .5 | LEVINE, D | 2395-17 .5 |
| 2 DOBROVOLNY, C | 1972-11 | 0 | SHEYININ, S | 2169 11 1 |
| 3 OGASAWARA, L | 1884 -6 | 0 | BENEDEK, R | 2215 4 1 |
| 4 BLACKMON, E | 1739 17 | .5 | BERRY, G | 2053-11 .5 |
| 5 HAHNE, D | 1575 -4 | 0 | KEISLER, J | 1974 4 1 |
| 6 ANDERSON, CJ | 1419 41 | 1 | GREEN, D | 1810-27 0 |

21-MAY-94 ALUMNI CENTRAL
ROUND 2

3.5 CHICAGO POST OFFICE 2.5

| BD | RATINGS | SCORE | RATINGS | SCORE |
|-----------------|---------|-------|---------------|------------|
| 1 CZERNIECKI, A | 2156 3 | .5 | INUMERABLE, F | 2216 -4 .5 |
| 2 COX, M | 2005 11 | 1 | ALLEN, H | 1903-16 0 |
| 3 RZESZUTKO, R | 1859-10 | .5 | COOPER, W | 1700 10 .5 |
| 4 FRANEK, M | 1786-16 | .5 | HOWARD, W | 1502 16 .5 |
| 5 LITVINAS, A | 1703-23 | 0 | CARTER, L | 1512 34 1 |
| 6 BROTSOS, J | 1541 0 | 1F | | 0 0 0F |

21-MAY-94 CHICAGO POST OFFICE
ROUND 3

4.5 CHICAGO RES. & TRDG. 1.5

| BD | RATINGS | SCORE | RATINGS | SCORE |
|-----------------|---------|-------|----------------|------------|
| 1 INUMERABLE, F | 2212 24 | 1 | JASAITIS, A | 2232-16 0 |
| 2 ALLEN, H | 1887-10 | 0 | FRIESEMA, W | 2112 10 1 |
| 3 PERAREN, E | 1772 30 | 1 | LOSOFF, A | 1894-30 0 |
| 4 COOPER, W | 1710 7 | .5 | BARGERSTOCK, D | 1817 -7 .5 |
| 5 HOWARD, W | 1518 0 | 1 | CARNAL, D | 0 0 0 |
| 6 CARTER, L | 1546 0 | 1 | SZONTAGH, T | 0 0 0 |

21-MAY-94 AT&T DRAGONS
ROUND 3

3 ALUMNI CENTRAL 3

| BD | RATINGS | SCORE | RATINGS | SCORE |
|--------------|---------|-------|---------------|------------|
| 1 TEGEL, F | 2129 16 | 1 | CZERNIECKI, A | 2159-16 0 |
| 2 JACOBS, N | 1981 2 | .5 | COX, M | 2016 -2 .5 |
| 3 DURKEE, D | 1751 19 | 1 | RZESZUTKO, R | 1849-29 0 |
| 4 PIAO, T | 1736-20 | 0 | FRANEK, M | 1770 20 1 |
| 5 WARD, C | 1561-10 | 0 | LITVINAS, A | 1680 10 1 |
| 6 EUSTACE, D | 1495 9 | .5 | CHARKOVSKY, R | 1628 -9 .5 |

| | | | | | |
|-----------|---------------|---------|-------------|---------------|-----------|
| 21-MAY-94 | MOTOROLA | 2 | AT&T ROYALS | 4 | |
| ROUND 3 | | | | | |
| BD | | RATINGS | SCORE | RATINGS | SCORE |
| 1 | MELNIKOV, I | 2231-31 | 0 | BUCHNER, R | 2098 31 1 |
| 2 | WALLACH, C | 2176-35 | 0 | DOBROVOLNY, C | 1961 35 1 |
| 3 | SAMELSON, C | 1981 11 | 1 | OGASAWARA, L | 1878-16 0 |
| 4 | AUGSBURGER, L | 1768-23 | 0 | BLACKMON, E | 1756 23 1 |
| 5 | GONCHAROFF, N | 1787-16 | 0 | HAHNE, D | 1571 35 1 |
| 6 | LESTER, M | 1595 14 | 1 | ANDERSON, CJ | 1460-14 0 |

| | | | | | |
|-----------|-----------------|---------|-------|-------------|-----------|
| 21-MAY-94 | ARGONNE KNIGHTS | 5 | SEARS | 1 | |
| ROUND 3 | | | | | |
| BD | | RATINGS | SCORE | RATINGS | SCORE |
| 1 | LEVINE, D | 2378 21 | 1 | REYES, R | 2350-14 0 |
| 2 | SHEYNNIN, S | 2180-10 | .5 | LATIMER, E | 2031 6 .5 |
| 3 | BENEDEK, R | 2219 -8 | .5 | GOLLA, R | 2021 8 .5 |
| 4 | BERRY, G | 2042 7 | 1 | BROCKETT, M | 1845-11 0 |
| 5 | KEISLER, J | 1978 9 | 1 | MILLER, TT | 1737 -9 0 |
| 6 | GREEN, D | 1783 7 | 1 | MORTON, B | 1580-11 0 |

| | | | | | |
|-----------|------------------|---------|------------------|---------------|-----------|
| 07-MAY-94 | UOP PROCESS DIV. | 4 | COLUMBIA COLLEGE | 2 | |
| ROUND 1 | | | | | |
| BD | | RATINGS | SCORE | RATINGS | SCORE |
| 1 | STEVANOVIC, M | 2211 5 | 1 | SANTIAGO, T | 1948 -8 0 |
| 2 | BOLDINGH, E | 2125-35 | 0 | MCALISTER, K | 1899 35 1 |
| 3 | BUERGER, E | 2072 3 | 1 | PRATTS, M | 1710 -5 0 |
| 4 | MICKLICH, F | 1754-19 | 0 | KOSTECKA, K | 1660 28 1 |
| 5 | SAHLI, E | 1727 11 | 1 | HERNANDEZ, DD | 1527-11 0 |
| 6 | SAJBEL, P | 1638 9 | 1 | STEVENS, J | 1389 -9 0 |

| | | | | | |
|-----------|----------------|---------|-------------|-------------|------------|
| 12-MAY-94 | J. I. CASE | 2.5 | AMOCO CORP. | 3.5 | |
| ROUND 1 | | | | | |
| BD | | RATINGS | SCORE | RATINGS | SCORE |
| 1 | KALE, S | 1803 37 | 1 | HODINA, J | 2082-37 0 |
| 2 | SATTERLEE, D | 1718 1 | .5 | ATKINSON, J | 1745 -2 .5 |
| 3 | WHITE, H | 1631-24 | 0 | WENTLING, C | 1611 24 1 |
| 4 | KLINEFELTER, H | 1518 16 | 1 | HAMILTON, L | 1407-16 0 |
| 5 | SAWDO, E | 1422-23 | 0 | KRULL, E | 1414 23 1 |
| 6 | REID, C | 1354-29 | 0 | HAMPER, P | 1259 29 1 |

| | | | | | |
|-----------|------------------|---------|-----------|--------------|------------|
| 12-MAY-94 | CONTINENTAL BANK | 2 | EXEMPLARS | 4 | |
| ROUND 1 | | | | | |
| BD | | RATINGS | SCORE | RATINGS | SCORE |
| 1 | FRAATS, D | 1890 -6 | 0 | WONG, P | 2227 4 1 |
| 2 | KOGAN, G | 1812 38 | 1 | BLOOM, B | 2100-38 0 |
| 3 | PARAOAN, E | 1744 17 | .5 | CREWSE, L | 2061-17 .5 |
| 4 | SOMBONG, M | 1678 -8 | 0 | OSTERLUND, R | 1951 8 1 |
| 5 | DYCZKOWSKI, R | 1622 -9 | 0 | FRISKE, T | 1861 9 1 |
| 6 | SIEGEL, R | 1473 9 | .5 | SUERTH, F | 1607 -6 .5 |

21-MAY-94 UOP PROCESS DIV.
ROUND 2

6 CONTINENTAL BANK 0

| BD | | RATINGS | SCORE | | RATINGS | SCORE |
|----|--------------|---------|-------|--------------|---------|-------|
| 1 | STEVANOVIC,M | 2216 4 | 1 | FRAATS,D | 1884 -6 | 0 |
| 2 | BOLDINGH,E | 2090 9 | 1 | KOGAN,G | 1850 -9 | 0 |
| 3 | BUERGER,E | 2075 3 | 1 | SOMBONG,M | 1670 -4 | 0 |
| 4 | MICKLICH,F | 1735 10 | 1 | DYCZKOWSKI,R | 1613-15 | 0 |
| 5 | SAHLI,E | 1738 8 | 1 | SIEGEL,R | 1482 -8 | 0 |
| 6 | SAJBEL,P | 1647 5 | 1 | ZOELLNER,J | 1299 -5 | 0 |

21-MAY-94 COLUMBIA COLLEGE
ROUND 2

4.5 J. I. CASE 1.5

| BD | | RATINGS | SCORE | | RATINGS | SCORE |
|----|--------------|---------|-------|---------------|---------|-------|
| 1 | SANTIAGO,T | 1940 10 | 1 | SATTERLEE,D | 1719 -7 | 0 |
| 2 | MCALISTER,K | 1934 6 | 1 | WHITE,H | 1607 -6 | 0 |
| 3 | PRATTS,M | 1705-11 | .5 | KLINEFELTER,H | 1534 11 | .5 |
| 4 | KOSTECKA,K | 1688 4 | 1 | GASTON,K | 1289 -4 | 0 |
| 5 | HERNANDEZ,DD | 1516-36 | 0 | KANAS,W | 1263 36 | 1 |
| 6 | BRANCH,Y | 1285 16 | 1 | MOTYCKA,R | 1185-16 | 0 |

21-MAY-94 EXEMPLARS
ROUND 2

2 AMOCO CORP. 4

| BD | | RATINGS | SCORE | | RATINGS | SCORE |
|----|-------------|---------|-------|------------|---------|-------|
| 1 | OSTERLUND,R | 1959-17 | 0 | HODINA,J | 2045 17 | 1 |
| 2 | FRISKE,T | 1870 15 | 1 | ATKINSON,J | 1743-15 | 0 |
| 3 | WEITZ,R | 1699-18 | 0 | WENTLING,C | 1635 27 | 1 |
| 4 | SUERTH,F | 1601 7 | 1 | HAMILTON,L | 1391-10 | 0 |
| 5 | | 0 0 | 0F | KRULL,E | 1437 0 | 1F |
| 6 | | 0 0 | 0F | BAER,M | 1376 0 | 1F |

21-MAY-94 COLUMBIA COLLEGE
ROUND 3

4.5 EXEMPLARS 1.5

| BD | | RATINGS | SCORE | | RATINGS | SCORE |
|----|--------------|---------|-------|-------------|---------|-------|
| 1 | SANTIAGO,T | 1950 22 | 1 | OSTERLUND,R | 1942-22 | 0 |
| 2 | MCALISTER,K | 1940 19 | 1 | FRISKE,T | 1885-19 | 0 |
| 3 | PRATTS.M | 1694 -1 | .5 | WEITZ,R | 1681 1 | .5 |
| 4 | KOSTECKA,K | 1692-28 | 0 | SUERTH,F | 1608 19 | 1 |
| 5 | HERNANDEZ,DD | 1480 0 | 1F | | 0 0 | 0F |
| 6 | BRANCH,Y | 1301 0 | 1F | | 0 0 | 0F |

21-MAY-94 CONTINENTAL BANK
ROUND 3

4.5 J. I. CASE 1.5

| BD | | RATINGS | SCORE | | RATINGS | SCORE |
|----|--------------|---------|-------|---------------|---------|-------|
| 1 | FRAATS,D | 1878-11 | .5 | SATTERLEE,D | 1712 7 | .5 |
| 2 | KOGAN,G | 1841 9 | 1 | WHITE,H | 1601 -9 | 0 |
| 3 | SOMBONG,M | 1666 15 | 1 | KLINEFELTER,H | 1545-15 | 0 |
| 4 | DYCZKOWSKI,R | 1598-37 | 0 | REID,C | 1325 37 | 1 |
| 5 | SIEGEL,R | 1474 11 | 1 | GASTON,K | 1285-11 | 0 |
| 6 | HAMMOND,M | 1328 13 | 1 | MOTYCKA,R | 1169-13 | 0 |

21-MAY-94 AMOCO CORP.
ROUND 3

2

UOP PROCESS DIV.

4

BD

| | RATINGS | SCORE | | RATINGS | SCORE |
|---------------|---------|-------|---------------|---------|-------|
| 1 HODINA, J | 2062 32 | 1 | STEVANOVIC, M | 2220-21 | 0 |
| 2 WENTLING, C | 1662 -3 | 0 | BOLDINGH, E | 2099 3 | 1 |
| 3 HAMILTON, L | 1381 -1 | 0 | BUERGER, E | 2078 1 | 1 |
| 4 KRULL, E | 1437 38 | 1 | MICKLICH, F | 1745-26 | 0 |
| 5 BAER, M | 1376 -5 | 0 | SAHLI, E | 1746 5 | 1 |
| 6 | 0 0 | 0F | SAJBEL, P | 1652 0 | 1F |

REGULAR SEASON FINAL STANDINGS

NORTH DIVISION 05-22-1994

| TEAM NAME | W | L | D | GAME | MATCH | PCT |
|----------------------|---|---|---|--------|--------|-------|
| | | | | POINTS | POINTS | |
| SEARS | 8 | 1 | 1 | 38.0 | 8.5 | 0.850 |
| MOTOROLA | 7 | 3 | 0 | 38.5 | 7.0 | 0.700 |
| GROLIER SUBSIDIARIES | 7 | 3 | 0 | 37.0 | 7.0 | 0.700 |
| EXEMPLARS | 5 | 4 | 1 | 31.5 | 5.5 | 0.550 |
| UOP PROCESS DIV. | 5 | 4 | 1 | 30.0 | 5.5 | 0.550 |
| NORTHROP CORP. | 4 | 5 | 1 | 30.5 | 4.5 | 0.450 |
| KEMPER INSURANCE | 1 | 8 | 1 | 17.0 | 1.5 | 0.150 |
| FEL-PRO | 0 | 9 | 1 | 14.5 | 0.5 | 0.050 |

EAST DIVISION 05-22-1994

| TEAM NAME | W | L | D | GAME | MATCH | PCT |
|----------------------|---|----|---|--------|--------|-------|
| | | | | POINTS | POINTS | |
| ALUMNI CENTRAL | 9 | 2 | 1 | 49.0 | 9.5 | 0.792 |
| CHICAGO RES. & TRDG. | 7 | 2 | 3 | 46.0 | 8.5 | 0.708 |
| CHICAGO POST OFFICE | 8 | 3 | 1 | 41.5 | 8.5 | 0.708 |
| CONTINENTAL BANK | 7 | 3 | 2 | 46.0 | 8.0 | 0.667 |
| COLUMBIA COLLEGE | 7 | 4 | 1 | 45.5 | 7.5 | 0.625 |
| AMOCO CORP. | 5 | 5 | 2 | 38.5 | 6.0 | 0.500 |
| CHICAGO MERC. EXCH. | 3 | 6 | 1 | 23.0 | 3.5 | 0.350 |
| HULL TRADING CO. | 3 | 7 | 1 | 22.5 | 3.5 | 0.318 |
| CTA RAIL | 2 | 8 | 0 | 18.0 | 2.0 | 0.200 |
| CTA ROAD | 0 | 11 | 0 | 9.0 | 0.0 | 0.000 |

NEAR WEST DIVISION 05-22-1994

| TEAM NAME | W | L | D | GAME | MATCH | PCT |
|-----------------|---|----|---|--------|--------|-------|
| | | | | POINTS | POINTS | |
| ARGONNE KNIGHTS | 9 | 1 | 0 | 47.0 | 9.0 | 0.900 |
| AT&T CHARGERS | 6 | 4 | 0 | 29.5 | 6.0 | 0.600 |
| J. I. CASE | 4 | 5 | 1 | 27.0 | 4.5 | 0.450 |
| ROCKWELL INT'L | 2 | 7 | 1 | 24.5 | 2.5 | 0.250 |
| A & B RADIO | 0 | 10 | 0 | 16.0 | 0.0 | 0.000 |

FAR WEST DIVISION 05-22-1994

| TEAM NAME | W | L | D | GAME | MATCH | PCT |
|--------------|---|---|---|--------|--------|-------|
| | | | | POINTS | POINTS | |
| AT&T ROYALS | 7 | 1 | 2 | 40.5 | 8.0 | 0.800 |
| AT&T DRAGONS | 7 | 2 | 1 | 37.0 | 7.5 | 0.750 |
| FERMILAB | 6 | 2 | 2 | 36.5 | 7.0 | 0.700 |
| AT&T TYROS | 3 | 5 | 2 | 27.0 | 4.0 | 0.400 |
| ALUMNI WEST | 1 | 8 | 1 | 13.0 | 1.5 | 0.150 |

| | | | | | |
|-----------|---------------------|---------|----------------------|----------------|------------|
| 22-MAR-93 | CHICAGO MERC. EXCH. | 3 | HULL TRADING CO. | 3 | |
| ROUND 10 | | | | | |
| | BD | RATINGS | SCORE | RATINGS | SCORE |
| 1 | SULLIVAN, C | 1525-31 | 0 | YOUNG, R | 1383 31 1 |
| 2 | SLAGLE, S | 1580 9 | 1 | WEISSKOPF, J | 1343 -9 0 |
| 3 | COTE, J | 1277 0 | 1 | WEISS, G | 0 0 0 |
| 4 | RUDDY, J | 1221-16 | 0 | NAUGHTON, T | 1323 16 1 |
| 5 | HILTON, J | 1004 0 | 0 | SAMULAK, C | 0 0 1 |
| 6 | BAKER, LR | 1112 0 | 1F | | 0 0 0F |
| 19-APR-94 | COLUMBIA COLLEGE | 2 | CHICAGO POST OFFICE | 4 | |
| ROUND 12 | | | | | |
| | BD | RATINGS | SCORE | RATINGS | SCORE |
| 1 | GOLDBOGEN, G | 0 0 | 0 | INUMERABLE, F | 2232 0 1 |
| 2 | SANTIAGO, T | 1921 27 | 1 | MARCOWKA, R | 1986-18 0 |
| 3 | PRATTS, M | 1721-11 | 0 | ALLEN, H | 1908 11 1 |
| 4 | KOSTECKA, K | 1680-20 | 0 | PERAREN, E | 1723 20 1 |
| 5 | HERNANDEZ, DD | 1541-14 | 0 | COOPER, W | 1674 14 1 |
| 6 | BURDICK, S | 1562 20 | 1 | HOWARD, W | 1522-20 0 |
| 19-APR-94 | AMOCO CORP. | 3 | CONTINENTAL BANK | 3 | |
| ROUND 12 | | | | | |
| | BD | RATINGS | SCORE | RATINGS | SCORE |
| 1 | HODINA, J | 2065 17 | 1 | NELSON, H | 1984-17 0 |
| 2 | ATKINSON, J | 1760-15 | 0 | FRAATS, D | 1875 15 1 |
| 3 | WENTLING, C | 1577 34 | 1 | PARAOAN, E | 1778-34 0 |
| 4 | HAMILTON, L | 1416 -9 | 0 | SOMBONG, M | 1669 9 1 |
| 5 | HAMPER, P | 1264 -5 | 0 | DYCKOWSKI, R | 1617 5 1 |
| 6 | KRULL, E | 1382 32 | 1 | SIEGEL, R | 1541-32 0 |
| (CONBK) 7 | SIEGEL, R | 1509-36 | 0 | ZOELLNER, J | 1263 36 1 |
| 20-APR-94 | ALUMNI CENTRAL | 3.5 | CHICAGO RES. & TRDG. | 2.5 | |
| ROUND 12 | | | | | |
| | BD | RATINGS | SCORE | RATINGS | SCORE |
| 1 | CZERNIECKI, A | 2182-12 | 0 | JASAITIS, A | 2249 12 1 |
| 2 | COX, M | 2005 6 | .5 | FRIESEMA, W | 2141 -9 .5 |
| 3 | FRANEK, M | 1809-18 | 0 | LOSOFF, A | 1886 18 1 |
| 4 | BRONFELD, A | 1819 28 | 1 | BARGERSTOCK, D | 1903-28 0 |
| 5 | LITVINAS, A | 1691 12 | 1 | DENG, J | 1615-18 0 |
| 6 | CHARKOVSKY, R | 1617 0 | 1 | SZONTAGH, T | 0 0 0 |
| 12-APR-94 | AT&T TYROS | 2.5 | FERMILAB | 3.5 | |
| ROUND 10 | | | | | |
| | BD | RATINGS | SCORE | RATINGS | SCORE |
| 1 | BLAZIE, J | 1821 11 | .5 | SPIEGEL, L | 1997 -7 .5 |
| 2 | BROZOVICH, J | 1767-17 | 0 | GAINES, I | 1723 17 1 |
| 3 | THOMAS, G | 1511-15 | 0 | HARRIS, R | 1629 15 1 |
| 4 | KARPIERZ, J | 1106 20 | .5 | PARA, A | 1571-20 .5 |
| 5 | SCHWARTZ, M | 1050 10 | .5 | STAPLES, C | 1210-10 .5 |
| 6 | REED, K | 0 0 | 1 | MENGEL, M | 0 0 0 |

13-APR-94 A & B RADIO

1.5 AT&T CHARGERS

4.5

ROUND 10

| BD | | RATINGS | SCORE | | RATINGS | SCORE |
|----|--------------|---------|-------|---------------|---------|-------|
| 1 | O'DELL, DW | 1623 -3 | 0 | WARREN, J | 2113 1 | 1 |
| 2 | BOOKER, G | 1404 -6 | 0 | STAMM, V | 1736 4 | 1 |
| 3 | LASKY, N | 1357 -5 | 0 | RADAVICIUS, E | 1710 3 | 1 |
| 4 | GORZ, E | 1323-12 | 0 | DOBR, K | 1508 8 | 1 |
| 5 | MIKULECKY, B | 1293 11 | .5 | THOMAS, J | 1472 -7 | .5 |
| 6 | GLOWACKI, D | 0 0 | 1F | | 0 0 | 0F |

13-APR-94 ARGONNE KNIGHTS

4.5 UNILEVER

1.5

ROUND 7

| BD | | RATINGS | SCORE | | RATINGS | SCORE |
|----|------------|---------|-------|--------------|---------|-------|
| 1 | BENEDEK, R | 2216-12 | .5 | ELLICE, W | 1855 18 | .5 |
| 2 | SHEYIN, S | 2205 1 | 1 | LEE, B | 1471 -1 | 0 |
| 3 | BERRY, G | 2048 0 | 1 | MCKAY, P | 0 0 | 0 |
| 4 | GREEN, D | 1835 0 | 1 | NELL, D | 1078 -1 | 0 |
| 5 | BAURAC, D | 1633-29 | 0 | DZURIESKO, G | 1104 43 | 1 |
| 6 | | 0 0 | 1F | | 0 0 | 0F |

14-APR-94 AT&T ROYALS

3.5 J. I. CASE

2.5

ROUND 10

| BD | | RATINGS | SCORE | | RATINGS | SCORE |
|----|---------------|---------|-------|----------------|---------|-------|
| 1 | GUIO, J | 2063 9 | 1 | KALE, S | 1812 -9 | 0 |
| 2 | DOBROVOLNY, C | 1951 10 | 1 | SATTERLEE, D | 1724 -6 | 0 |
| 3 | OGASAWARA, L | 1874-15 | .5 | WHITE, H | 1616 15 | .5 |
| 4 | BLACKMON, E | 1762-38 | 0 | KLINEFELTER, H | 1480 38 | 1 |
| 5 | CROWE, R | 1393 0 | 1F | SAWDO, E | 1422 0 | 0F |
| 6 | AUSTIN, R | 1135-10 | 0 | REID, C | 1344 10 | 1 |

23-MAR-94 GROlier SUBSIDIARIES

4 UOP PROCESS DIV.

2

ROUND 9

| BD | | RATINGS | SCORE | | RATINGS | SCORE |
|----|-------------|---------|-------|---------------|---------|-------|
| 1 | BENESA, A | 2210 24 | 1 | STEVANOVIC, M | 2237-16 | 0 |
| 2 | GAZMEN, E | 2251 14 | 1 | BOLDINGH, E | 2121-14 | 0 |
| 3 | WEBER, L | 2118 21 | 1 | BUERGER, E | 2088-14 | 0 |
| 4 | SOLLANO, E | 1967 11 | 1 | MICKLICH, F | 1774 -7 | 0 |
| 5 | PUNZALAN, N | 1599 0 | 0F | SAHLI, E | 1727 0 | 1F |
| 6 | LACAPENA | 0 0 | 0 | BRIONES, M | 1660 0 | 1 |

13-APR-94 GROlier SUBSIDIARIES

1 MOTOROLA

5

ROUND 10

| BD | | RATINGS | SCORE | | RATINGS | SCORE |
|-----------|------------|---------|-------|---------------|---------|-------|
| 1 | WEBER, L | 2139 5 | .5 | MELNIKOV, I | 2203 -5 | .5 |
| 2 | BENESA, A | 2234-23 | 0 | HASAN, Y | 2232 23 | 1 |
| 3 | GAZMEN, E | 2265-31 | 0 | WALLACH, C | 2126 31 | 1 |
| 4 | SOLLANO, E | 1978-22 | 0 | SAMELSON, C | 1989 15 | 1 |
| 5 | SANCHEZ, R | 1510 16 | .5 | AUGSBURGER, L | 1812-16 | .5 |
| (SEARS) 6 | CHAN, H | 1578-11 | 0 | GONCHAROFF, N | 1782 5 | 1 |

14-APR-94 SEARS
ROUND 10

3

UOP PROCESS DIV.

3

| BD | RATINGS | SCORE | RATINGS | SCORE |
|--------------|---------|-------|--------------|------------|
| 1 REYES,R | 2330 10 | 1 | STEVANOVIC,M | 2221-10 0 |
| 2 LATIMER,E | 2038-12 | 0 | BOLDINGH,E | 2107 18 1 |
| 3 GOLLA,R | 2018 2 | .5 | BUERGER,E | 2074 -2 .5 |
| 4 BROCKETT,M | 1821 19 | 1 | MICKLICH,F | 1767-13 0 |
| 5 WILSON,M | 0 0 | 0 | SAHLI,E | 1727 0 1 |
| 6 MILLER,TT | 1702 -5 | .5 | SAJBEL,P | 1633 5 .5 |

04-MAY-94 FEL-PRO
ROUND 10

1

EXEMPLARS

5

| BD | RATINGS | SCORE | RATINGS | SCORE |
|---------------|---------|-------|-------------|-----------|
| 1 QUERUBIN,R | 2090-15 | 0 | WONG,P | 2217 10 1 |
| 2 HESS,B | 1456 0 | OF | CREWSE,L | 2061 0 1F |
| 3 DEARDORFF,M | 1439 -2 | 0 | OSTERLUND,R | 1949 2 1 |
| 4 KEEFE,E | 1187 -1 | 0 | FRISKE,T | 1860 1 1 |
| 5 THOMPSON,R | 1065 -2 | 0 | SUERTH,F | 1606 1 1 |
| 6 NISHIMURA,K | 1285 0 | 1F | | 0 0 OF |

04-APR-94 HULL TRADING CO.
ROUND 11

3.5

CTA ROAD

2.5

| BD | RATINGS | SCORE | RATINGS | SCORE |
|---------------|---------|-------|------------|-----------|
| 1 SAMULAK,C | 0 0 | 0 | WILSON,A | 1555 0 1 |
| 2 YOUNG,R | 1414-28 | 0 | JONES,M | 1330 28 1 |
| 3 WEISSKOPF,J | 1334 0 | 1 | CARTER,O | 0 0 0 |
| 4 NAUGHTON,T | 1339 0 | .5 | BARNES,D | 0 0 .5 |
| 5 MUDAN,M | 0 0 | 1F | FLESHMAN,M | 0 0 OF |
| 6 WEISS,G | 0 0 | 1F | COLEMAN,O | 0 0 OF |

NORTH DIVISION TOP TEN

| | |
|---------------|-------------|
| REYES, R | SEARS 2336D |
| HASAN, Y | MTRLA 2264 |
| GAZMEN, E | GROLR 2234 |
| WONG, P | EXMPL 2231C |
| BENESA, A | GROLR 2211 |
| MELNIKOV, I | MTRLA 2200 |
| STEVANOVIC, M | UOP 2199C |
| JAKSTAS, K | NORTH 2180C |
| WEBER, L | GROLR 2144 |
| WALLACH, C | MTRLA 2141 |

EAST DIVISION TOP TEN

| | |
|---------------|-------------|
| INUMERABLE, F | PSTOF 2236 |
| JASAITIS, A | CRT 2216C |
| CZERNIECKI, A | ALUMN 2143C |
| FRIESEMA, W | CRT 2122 |
| HODINA, J | AMCRP 2094 |
| COX, M | ALUMN 2014C |
| SANTIAGO, T | COLUM 1972* |
| LEONG, D | ALUMN 1971 |
| NELSON, H | CONBK 1967 |
| MCALISTER, K | COLUM 1959 |

NEAR WEST DIVISION TOP TEN

| | |
|------------|--------------|
| LEVINE, D | KNIGHT 2399 |
| BENEDEK, R | KNIGHT 2211D |
| SHEYNIN, S | KNIGHT 2170 |
| WARREN, J | CHRGR 2114T |
| JONES, B | ROCKW 2061 |
| BERRY, G | KNIGHT 2049D |
| KEISLER, J | KNIGHT 1987 |
| KALE, S | JCASE 1840 |
| GREEN, D | KNIGHT 1790C |
| HILL, R | KNIGHT 1780 |

FAR WEST DIVISION TOP TEN

| | |
|---------------|-------------|
| KOZLOVSKY, M | FERMI 2238 |
| TEGEL, F | DRGNS 2145D |
| BUCHNER, R | ROYLS 2129 |
| LUDWIG, T | DRGNS 2096 |
| GUIO, J | ROYLS 2072 |
| STOLTZ, B | TYROS 2024 |
| UNDERWOOD, W | AWEST 2008C |
| STINSON, M | ROYLS 2006 |
| DOBROVOLNY, C | ROYLS 1996 |
| SPIEGEL, L | FERMI 1990C |

MOST IMPROVED PLAYERS

| | |
|---------------|-----------|
| KALE, S | JCASE 126 |
| INUMERABLE, F | PSTOF 121 |
| POMA, D | AWEST 119 |
| PERAREN, E | PSTOF 111 |
| PIAO, T | DRGNS 107 |
| MATTHEWS, J | RAIL 105 |
| DOBROVOLNY, C | ROYLS 104 |
| BUCHNER, R | ROYLS 101 |
| SANCHEZ, R | GROLR 97 |
| KRULL, E | AMCRP 95 |

| NAME | TEAM | W | L | D | RATING | NAME | TEAM | W | L | D | RATING |
|----------------|-------|---|---|---|--------|------------------|-------|---|---|---|--------|
| ABBOTT, J | MTRLA | 2 | 2 | 0 | 0000? | COX, M | ALUMN | 5 | 3 | 4 | 2014C |
| ABRAHAM, T | RAIL | 0 | 1 | 0 | 1531 | CREWSE, L | EXMPL | 5 | 2 | 1 | 2044 |
| ALLEN, H | PSTOF | 3 | 3 | 0 | 1877 | CUMBERLAND, M | SEARS | 1 | 0 | 0 | 0000? |
| AMUNDSEN, C | KEMPR | 0 | 2 | 0 | 0000? | CUMMUTA, P | KEMPR | 0 | 1 | 0 | 1368 |
| ANDERSON, CJ | ROYLS | 4 | 1 | 1 | 1446 | CZERNIECKI, A | ALUMN | 6 | 6 | 2 | 2143C |
| ATKINSON, J | AMCRP | 3 | 6 | 3 | 1728 | DAVIDSON, M | ALUMN | 2 | 0 | 0 | 1678* |
| AUGSBURGER, L | MTRLA | 3 | 5 | 1 | 1745 | DAVIS, R | PSTOF | 0 | 4 | 1 | 0000? |
| AUSTIN, R | ROYLS | 0 | 1 | 0 | 1125# | DEARDORFF, M | FLPRO | 0 | 8 | 1 | 1437* |
| BAER, M | AMCRP | 4 | 3 | 3 | 1347* | DECMAN, S | KNGHT | 5 | 0 | 1 | 1677D |
| BAKER, B | FLPRO | 0 | 0 | 1 | 1069 | DENG, J | CRT | 3 | 3 | 2 | 1582 |
| BAKER, LR | MERC | 1 | 4 | 0 | 1112* | DEWITT, G | ROCKW | 3 | 4 | 3 | 1423C |
| BANZA, S | HULL | 0 | 0 | 0 | 0000? | DEZONNO, T | ROCKW | 5 | 2 | 2 | 1255* |
| BARGERSTOCK, D | CRT | 7 | 4 | 2 | 1810 | DIAZ, L | JCASE | 1 | 0 | 0 | 0000? |
| BARNES, D | ROAD | 0 | 0 | 1 | 0000? | DIAZ, P | NORTH | 6 | 4 | 0 | 2015 |
| BAURAC, D | KNGHT | 5 | 4 | 0 | 1604C | DJORDJEVIC, I | FERMI | 0 | 0 | 0 | 0000? |
| BENEDEK, R | KNGHT | 4 | 0 | 5 | 2211D | DOBR, K | CHRGR | 6 | 3 | 2 | 1516T |
| BENESA, A | GROLR | 6 | 3 | 1 | 2211 | DOBROVOLNY, C | ROYLS | 6 | 3 | 3 | 1996 |
| BERNARD, D | CRT | 1 | 1 | 0 | 1303 | DONNA, D | MTRLA | 1 | 1 | 0 | 0000? |
| BERRY, G | KNGHT | 9 | 1 | 2 | 2049D | DORFF, M | SEARS | 0 | 0 | 1 | 1493 |
| BEZZUBOV, V | FERMI | 5 | 0 | 0 | 2273# | DUFRESNE, T | JCASE | 3 | 6 | 0 | 1000# |
| BHOJWANI, C | TYROS | 3 | 2 | 0 | 1977 | DURKEE, D | DRGNS | 3 | 4 | 3 | 1770C |
| BLACKMON, E | ROYLS | 6 | 2 | 1 | 1779 | DYCZKOWSKI, R | CONBK | 5 | 5 | 0 | 1561 |
| BLAZIE, J | TYROS | 0 | 1 | 4 | 1832C | DZURIESKO, G | UNILV | 2 | 6 | 0 | 1147# |
| BLOOM, B | EXMPL | 3 | 3 | 2 | 2062 | EDWARDS, S | AWEST | 1 | 7 | 1 | 1278 |
| BOLDINGH, E | UOP | 5 | 6 | 0 | 2102 | EFRON, D | ROCKW | 1 | 0 | 1 | 1638 |
| BOOKER, G | RADIO | 3 | 8 | 0 | 1398* | ELEK, G | NORTH | 0 | 7 | 1 | 1009* |
| BRADY, R | CHRGR | 2 | 2 | 0 | 1267 | ELLICE, W | UNILV | 4 | 0 | 4 | 1873 |
| BRANCH, Y | COLUM | 3 | 1 | 1 | 1301* | ERLENBORN, M | AWEST | 2 | 3 | 0 | 1482* |
| BRIONES, M | UOP | 1 | 1 | 0 | 1660C | EUSTACE, D | DRGNS | 3 | 2 | 4 | 1504 |
| BROCKETT, M | SEARS | 4 | 5 | 1 | 1834 | FAHRENHOLTZ, S | MTRLA | 3 | 0 | 0 | 1799* |
| BRONFELD, A | ALUMN | 4 | 1 | 1 | 1847 | FELDMAN, A | FLPRO | 1 | 5 | 3 | 1438C |
| BROTSOS, J | ALUMN | 0 | 1 | 1 | 1541D | FRAATS, D | CONBK | 6 | 6 | 1 | 1867 |
| BROZOVICH, J | TYROS | 2 | 2 | 2 | 1750C | FRANCISKOVICH, D | HULL | 1 | 4 | 0 | 1113# |
| BUCHNER, R | ROYLS | 2 | 0 | 4 | 2129 | FRANEK, M | ALUMN | 6 | 6 | 2 | 1790C |
| BUERGER, E | UOP | 7 | 3 | 2 | 2079D | FRIESEMA, W | CRT | 9 | 2 | 4 | 2122 |
| BURDICK, S | COLUM | 3 | 1 | 0 | 1582 | FRISKE, T | EXMPL | 8 | 2 | 1 | 1866 |
| BURIAN, D | NORTH | 4 | 3 | 2 | 1680C | GAINES, I | FERMI | 5 | 3 | 1 | 1740C |
| CARNAL, D | CRT | 1 | 5 | 1 | 1210# | GANSER, A | CONBK | 3 | 1 | 1 | 0000? |
| CARTER, L | PSTOF | 7 | 5 | 1 | 1546 | GASTON, K | JCASE | 1 | 8 | 0 | 1274* |
| CARTER, O | ROAD | 0 | 1 | 0 | 0000? | GAZMEN, E | GROLR | 8 | 2 | 0 | 2234 |
| CHAN, H | SEARS | 1 | 1 | 0 | 1567 | GOLDBOGEN, G | COLUM | 0 | 1 | 0 | 0000? |
| CHARKOVSKY, R | ALUMN | 3 | 0 | 2 | 1619 | GOLLA, R | SEARS | 4 | 4 | 3 | 2029D |
| CHEVERESAN, S | UOP | 0 | 0 | 1 | 1434C | GOLUMBOVSKI, P | NORTH | 5 | 1 | 4 | 2126 |
| CHRISTIAN, R | DRGNS | 1 | 1 | 0 | 1808C | GONCHAROFF, N | MTRLA | 8 | 1 | 3 | 1771Q |
| CIESLEK, D | MTRLA | 3 | 2 | 0 | 1940 | GORZ, E | RADIO | 2 | 4 | 3 | 1311# |
| CISKO, G | FERMI | 1 | 2 | 0 | 1615* | GREEN, D | KNGHT | 7 | 3 | 1 | 1790C |
| COLEMAN, O | ROAD | 1 | 1 | 0 | 0000? | GRIESMEYER, W | PSTOF | 1 | 3 | 1 | 1317 |
| CONNELY, S | HULL | 0 | 2 | 0 | 0000? | GUILLEN, B | KEMPR | 1 | 0 | 0 | 1402* |
| COOPER, W | PSTOF | 6 | 3 | 4 | 1717 | GUIO, J | ROYLS | 2 | 5 | 0 | 2072 |
| COTE, J | MERC | 2 | 4 | 1 | 1277* | HAHNE, D | ROYLS | 7 | 2 | 1 | 1606 |

? - UNRATED

- 5 TO 9 RATED GAMES

* - 10 TO 24 RATED GAMES

C - CENTURY CLUB MEMBER

D - DOUBLE CENTURION

T - TRIPLE CENTURION

Q - QUAD CENTURION

| NAME | TEAM | W | L | D | RATING | NAME | TEAM | W | L | D | RATING |
|----------------|--------|----|---|---|--------|--------------|-------|---|---|---|--------|
| HAMILTON, L | AMCRP | 4 | 8 | 0 | 1380 | LOMONT, C | SEARS | 1 | 1 | 1 | 1494# |
| HAMMOND, M | CONBK | 6 | 4 | 0 | 1365 | LOSOFF, A | CRT | 7 | 6 | 0 | 1864 |
| HAMPER, P | AMCRP | 3 | 4 | 1 | 1288* | LUDWIG, T | DRGNS | 5 | 5 | 0 | 2096 |
| HARRIS, FF | ROAD | 1 | 3 | 0 | 1404# | LUEDERS, J | CRT | 0 | 4 | 0 | 0000? |
| HARRIS, R | FERMI | 6 | 0 | 2 | 1644 | MAA, R | DRGNS | 0 | 4 | 0 | 0000? |
| HASAN, Y | MTRLA | 8 | 1 | 0 | 2264 | MARCOWKA, R | PSTOF | 5 | 6 | 1 | 1955C |
| HEDSTROM, L | RAIL | 0 | 0 | 0 | 0000? | MATTHEWS, J | RAIL | 7 | 3 | 0 | 1747 |
| HERNANDEZ, DD | COLUM | 6 | 5 | 1 | 1480 | MCALISTER, K | COLUM | 5 | 5 | 3 | 1959 |
| HESS, B | FLPRO | 0 | 6 | 2 | 1456 | MCCLENDON, L | CONBK | 0 | 0 | 1 | 1340 |
| HILL, C | FERMI | 0 | 1 | 0 | 1663* | MCFARLIN, B | KEMPR | 0 | 6 | 1 | 1215# |
| HILL, R | KNIGHT | 8 | 0 | 3 | 1780 | MCINTOSH, S | CONBK | 0 | 3 | 2 | 1142* |
| HILLIARD, J | CONBK | 0 | 3 | 0 | 0000? | MCKAY, P | UNILV | 2 | 2 | 0 | 0000? |
| HILTON, J | MERC | 2 | 5 | 1 | 1004* | MCQUINN, J | ROCKW | 0 | 1 | 2 | 1450 |
| HODINA, J | AMCRP | 7 | 3 | 4 | 2094 | MELNIKOV, I | MTRLA | 5 | 6 | 2 | 2200 |
| HOWARD, W | PSTOF | 7 | 5 | 2 | 1518 | MELNIKOV, N | MTRLA | 0 | 1 | 1 | 0000? |
| HUGHES, N | KEMPR | 2 | 1 | 1 | 1852C | MENGEL, M | FERMI | 1 | 2 | 0 | 0000? |
| HUNG, N | MTRLA | 0 | 0 | 1 | 1471# | MICKLICH, F | UOP | 4 | 7 | 1 | 1719C |
| INUMERABLE, F | PSTOF | 10 | 1 | 2 | 2236 | MIKULECKY, B | RADIO | 1 | 4 | 5 | 1304 |
| JACKSON, JJ | ROAD | 1 | 2 | 0 | 0000? | MILLER, TT | SEARS | 8 | 3 | 2 | 1728 |
| JACOBS, N | DRGNS | 5 | 1 | 7 | 1983C | MITCHAM, L | ROCKW | 3 | 3 | 0 | 1552* |
| JAKSTAS, K | NORTH | 3 | 1 | 4 | 2180C | MOORE, JJ | MTRLA | 1 | 0 | 0 | 0000? |
| JARRETT, T | RAIL | 0 | 1 | 0 | 1604# | MORTON, B | SEARS | 2 | 2 | 1 | 1569 |
| JASAITIS, A | CRT | 6 | 3 | 2 | 2216C | MOTYCKA, R | JCASE | 4 | 4 | 1 | 1156 |
| JONES, B | ROCKW | 1 | 0 | 6 | 2061 | MUDAN, M | HULL | 1 | 5 | 0 | 0000? |
| JONES, M | ROAD | 2 | 4 | 0 | 1358* | NAUGHTON, T | HULL | 1 | 3 | 1 | 1339* |
| KALE, S | JCASE | 4 | 3 | 4 | 1840 | NELL, D | UNILV | 1 | 5 | 0 | 1077# |
| KANAS, W | JCASE | 3 | 5 | 0 | 1299C | NELSON, H | CONBK | 3 | 3 | 0 | 1967 |
| KARPIERZ, J | TYROS | 0 | 3 | 3 | 1126* | NISHIMURA, K | FLPRO | 1 | 5 | 2 | 1285* |
| KAUFMAN, M | KEMPR | 0 | 2 | 0 | 0000? | NOTERMAN, T | UNILV | 0 | 4 | 0 | 1190 |
| KEEFE, E | FLPRO | 2 | 5 | 0 | 1186# | NOWAK, W | RAIL | 0 | 1 | 0 | 0000? |
| KEISLER, J | KNIGHT | 7 | 0 | 1 | 1987 | NWABUDE, O | CHRGR | 2 | 4 | 2 | 1029* |
| KINSELLA, G | KNIGHT | 1 | 1 | 1 | 1468C | O'BRIEN, D | UOP | 1 | 0 | 1 | 1417* |
| KLINEFELTER, H | JCASE | 6 | 3 | 2 | 1530 | O'DELL, DW | RADIO | 1 | 6 | 4 | 1620 |
| KOEPELE, J | TYROS | 0 | 1 | 0 | 0000? | OGASAWARA, L | ROYLS | 7 | 2 | 2 | 1862 |
| KOGAN, G | CONBK | 7 | 4 | 3 | 1850 | OLSEN, A | KEMPR | 1 | 6 | 2 | 1478 |
| KOSTECKA, K | COLUM | 7 | 4 | 2 | 1664 | OSTERLUND, R | EXMPL | 6 | 6 | 0 | 1920 |
| KOZLOVSKY, M | FERMI | 3 | 0 | 0 | 2238 | PARA, A | FERMI | 3 | 3 | 2 | 1551 |
| KRULL, E | AMCRP | 4 | 4 | 1 | 1461 | PARAOAN, E | CONBK | 7 | 3 | 1 | 1761 |
| LACAPENA | GROLR | 0 | 1 | 0 | 0000? | PATTON, D | CHRGR | 1 | 1 | 1 | 0000? |
| LAMBIRIS, J | KEMPR | 2 | 4 | 3 | 1424* | PEHAS, A | ROYLS | 1 | 0 | 3 | 1952 |
| LASKY, N | RADIO | 2 | 5 | 1 | 1352 | PEPPERS, M | RAIL | 0 | 0 | 0 | 0000? |
| LATIMER, E | SEARS | 6 | 5 | 1 | 2037D | PERAREN, E | PSTOF | 4 | 0 | 0 | 1802 |
| LEE, B | UNILV | 1 | 4 | 0 | 1470 | PIAO, T | DRGNS | 9 | 3 | 0 | 1716 |
| LEONG, D | ALUMN | 3 | 0 | 3 | 1971 | POMA, D | AWEST | 8 | 5 | 5 | 1307 |
| LEONG, G | KEMPR | 1 | 2 | 0 | 2003C | POMA, M | AWEST | 0 | 1 | 0 | 0000? |
| LERNER, R | SEARS | 1 | 0 | 1 | 0000? | POZNIAK, J | KEMPR | 0 | 1 | 0 | 0000? |
| LESTER, M | MTRLA | 3 | 2 | 1 | 1623 | PRATTS, M | COLUM | 6 | 3 | 4 | 1693 |
| LEVINE, D | KNIGHT | 3 | 1 | 1 | 2399 | PRICE, B | AWEST | 0 | 1 | 0 | 1086# |
| LIKHTEREV, M | UOP | 1 | 1 | 2 | 1501# | PUNZALAN, N | GROLR | 6 | 2 | 0 | 1599 |
| LITVINAS, A | ALUMN | 9 | 3 | 0 | 1690C | QUERUBIN, R | FLPRO | 2 | 5 | 0 | 2075# |

? - UNRATED

- 5 TO 9 RATED GAMES

* - 10 TO 24 RATED GAMES

C - CENTURY CLUB MEMBER

D - DOUBLE CENTURION

T - TRIPLE CENTURION

Q - QUAD CENTURION

| NAME | TEAM | W | L | D | RATING | NAME | TEAM | W | L | D | RATING |
|---------------|-------|---|---|---|--------|----------------|-------|---|---|---|--------|
| RADAVICIUS, E | CHRGR | 5 | 2 | 4 | 1713D | STINSON, M | ROYLS | 1 | 1 | 0 | 2006 |
| RAFACZ, T | ROCKW | 1 | 6 | 2 | 1698 | STOLTZ, B | TYROS | 4 | 2 | 0 | 2024 |
| RAFACZ, W | ROCKW | 3 | 5 | 3 | 1638 | SUERTH, F | EXMPL | 6 | 3 | 3 | 1627C |
| RAFFERTY, M | HULL | 0 | 1 | 0 | 0000? | SULLIVAN, C | MERC | 2 | 6 | 1 | 1494 |
| RANGEL, R | HULL | 0 | 1 | 0 | 1741 | SZAUKELLIS, W | MTRLA | 1 | 1 | 0 | 0000? |
| REED, K | TYROS | 2 | 0 | 0 | 0000? | SZONTAGH, T | CRT | 0 | 4 | 0 | 0000? |
| REID, C | JCASE | 7 | 4 | 1 | 1362 | TAYLOR, M | ROAD | 0 | 0 | 0 | 0000? |
| REYES, R | SEARS | 8 | 2 | 2 | 2336D | TEGEL, F | DRGNS | 6 | 4 | 3 | 2145D |
| ROJAS, R | RAIL | 0 | 1 | 0 | 0000? | THOMAS, G | TYROS | 1 | 3 | 2 | 1496 |
| ROSLEY, D | ROYLS | 5 | 1 | 0 | 1834 | THOMAS, J | CHRGR | 2 | 5 | 2 | 1465C |
| ROSS, L | JCASE | 0 | 1 | 0 | 0000? | THOMPSON, R | FLPRO | 0 | 3 | 0 | 1063 |
| RUBIN, J | UNILV | 0 | 1 | 0 | 0000? | TSEITLIN, E | MTRLA | 3 | 2 | 0 | 0000? |
| RUDDY, J | MERC | 1 | 5 | 2 | 1205 | TYREE, D | RADIO | 1 | 8 | 1 | 1482* |
| RUEB, R | HULL | 0 | 1 | 0 | 0000? | UNDERWOOD, W | AWEST | 2 | 2 | 1 | 2008C |
| RZESZUTKO, R | ALUMN | 3 | 5 | 1 | 1820 | VALDEZ, C | MTRLA | 2 | 1 | 0 | 0000? |
| SAHLI, E | UOP | 7 | 0 | 2 | 1751* | VAN MEER, J | KEMPR | 1 | 2 | 2 | 1998 |
| SAJBEL, P | UOP | 3 | 4 | 2 | 1652 | VAN OUIRIVE, R | RAIL | 1 | 3 | 0 | 1096# |
| SAMELSON, C | MTRLA | 6 | 3 | 1 | 1992C | VAN ZILE, C | UOP | 1 | 2 | 0 | 1382* |
| SAMULAK, C | HULL | 1 | 4 | 0 | 1147# | VERIVE, J | AWEST | 1 | 3 | 0 | 1615* |
| SANCHEZ, P | RAIL | 0 | 3 | 0 | 0000? | VICK, H | MTRLA | 0 | 1 | 0 | 1516 |
| SANCHEZ, R | GROLR | 5 | 2 | 1 | 1526* | VIGANTS, A | NORTH | 4 | 5 | 0 | 1592 |
| SANTIAGO, T | COLUM | 6 | 3 | 2 | 1972* | WALLACH, C | MTRLA | 6 | 1 | 2 | 2141 |
| SATTERLEE, D | JCASE | 4 | 8 | 2 | 1719C | WALLIN, R | AWEST | 1 | 4 | 2 | 1714 |
| SAWDO, E | JCASE | 3 | 3 | 2 | 1399 | WARD, C | DRGNS | 5 | 3 | 1 | 1551D |
| SCHWARTZ, M | TYROS | 0 | 4 | 2 | 1060* | WARREN, J | CHRGR | 3 | 2 | 5 | 2114T |
| SHAFF, R | TYROS | 1 | 4 | 1 | 1532C | WEBER, L | GROLR | 2 | 5 | 3 | 2144 |
| SHEU, G | CHRGR | 2 | 0 | 2 | 1343* | WEISS, G | HULL | 0 | 5 | 0 | 0000? |
| SHEYNIN, S | KNGHT | 3 | 1 | 1 | 2170 | WEISSKOPF, J | HULL | 4 | 4 | 0 | 1334# |
| SHOUSE, B | MTRLA | 1 | 3 | 0 | 0000? | WEITZ, R | EXMPL | 1 | 5 | 1 | 1682C |
| SHUKLA, S | FERMI | 0 | 1 | 0 | 0000? | WELTER, P | SEARS | 2 | 1 | 0 | 1646# |
| SIEGEL, R | CONBK | 8 | 4 | 3 | 1485 | WENTLING, C | AMCRP | 6 | 6 | 0 | 1659 |
| SIMS, B | CRT | 1 | 2 | 0 | 1519# | WEST, R | MTRLA | 0 | 1 | 0 | 1447# |
| SIWEK, M | KEMPR | 2 | 6 | 2 | 2126C | WHITE, H | JCASE | 4 | 8 | 2 | 1592 |
| SLAGLE, S | MERC | 3 | 6 | 0 | 1589 | WHITSITT, S | AWEST | 0 | 4 | 0 | 1504* |
| SMITH, BR | TYROS | 0 | 2 | 2 | 1460 | WILLIAMS, A | ROAD | 0 | 3 | 0 | 0000? |
| SMITH, JM | ALUMN | 1 | 0 | 0 | 1196* | WILLIAMS, J | RAIL | 2 | 0 | 0 | 0000? |
| SOLLANO, E | GROLR | 5 | 3 | 1 | 1956 | WILSON, A | ROAD | 1 | 5 | 1 | 1555 |
| SOMBONG, M | CONBK | 4 | 5 | 1 | 1681 | WILSON, M | SEARS | 0 | 2 | 0 | 1293# |
| SPIEGEL, L | FERMI | 3 | 3 | 4 | 1990C | WONG, P | EXMPL | 3 | 1 | 2 | 2231C |
| STAMM, V | CHRGR | 5 | 5 | 1 | 1740D | YOUNG, R | HULL | 1 | 7 | 2 | 1386* |
| STAPLES, C | FERMI | 0 | 3 | 3 | 1200# | ZEIDEL, J | MERC | 0 | 0 | 1 | 1947 |
| STEINER, D | HULL | 0 | 1 | 0 | 0000? | ZOELLNER, J | CONBK | 4 | 4 | 2 | 1294 |
| STEVANOVIC, M | UOP | 5 | 5 | 3 | 2199C | ZUNGOLO, J | CRT | 0 | 1 | 0 | 0000? |
| STEVENS, J | COLUM | 4 | 4 | 0 | 1380 | | | | | | |

? - UNRATED

- 5 TO 9 RATED GAMES

* - 10 TO 24 RATED GAMES

C - CENTURY CLUB MEMBER

D - DOUBLE CENTURION

T - TRIPLE CENTURION

Q - QUAD CENTURION

SPEED CHESS RATINGS 1993 BANQUET (* = DID NOT PLAY IN 1993; OLD RATING)

| NAME | NEW RATING | CHANGE | OLD SCORE | NAME | NEW RATING | CHANGE | OLD SCORE |
|-------------|------------|--------|-----------|-------------|------------|--------|-----------|
| Stevanovic | 2336 | 0 | 5.0 | Augsburger | 1983 | 129 | |
| Hasan | 2312 | 138 | 5.0 | Benesa | 2176 | 0 | |
| Reyes | 2296 | 0 | 4.5 | Berry | 2137 | 0 | |
| Gazman | 2256 | 0 | 4.0 | Bhojwani | 1544 | 0 | |
| Boldingh | 2256 | 0 | 4.0 | Blazie | 1783 | 0 | |
| Cieslak | 2217 | 0 | 4.0 | Bloedow | 1701 | 24 | |
| Siwek | 2192 | -24 | 4.0 | Boldingh | 2256 | 0 | |
| Melnikov | 2192 | -31 | 4.0 | Buerger | 1992 | -24 | |
| Czerniecki | 2176 | 0 | 3.0 | Bujalski | 1344 | 0 | |
| Jasaitis | 2176 | 0 | 3.0 | Burian | 1701 | -11 | |
| Benesa | 2176 | 0 | 3.0 | Cheveresan | 1344 | 0 | |
| Solano | 2137 | 0 | 4.0 | Cieslak | 2217 | 0 | |
| Berry | 2137 | 0 | 4.5 | Cisko | 1415 | 0 | |
| Smiley | 2096 | 0 | 3.0 | Cole | 2336 | 0 | |
| Warren | 2072 | 19 | 3.5 | Cooper | 1704 | 0 | |
| Hodina | 2057 | 0 | 3.0 | Czerniecki | 2256 | 0 | |
| Wallach | 2032 | -25 | 3.0 | Deng | 1390 | 0 | |
| Hughes | 2023 | 179 | 3.0 | Dezonne | 1591 | 19 | |
| Rzeszutko | 1992 | -106 | 3.0 | Doer | 1903 | 125 | |
| Buerger | 1992 | -24 | 3.0 | Dobrovlny | 1918 | 0 | |
| Young | 1992 | 0 | 3.0 | Donna | 1104 | 0 | |
| Augsburger | 1983 | 129 | 4.0 | Durkee | 1743 | 44 | |
| Ogasawara | 1938 | 0 | 4.0 | Eustace | 1390 | 0 | |
| Spiegel | 1937 | 0 | 3.0 | Franek | 1898 | 0 | |
| Doer | 1903 | -25 | 3.0 | Freeman | 1500 | 0 | |
| Sullivan | 1903 | -93 | 3.0 | Gaston | 2076 | 0 | |
| Franek | 1898 | 0 | 3.0 | Gazman | 2256 | 0 | |
| Underwood | 1872 | 0 | 3.0 | Goncharoff | 1783 | -16 | |
| Hill | 1864 | 0 | 3.0 | Gryparis | 1740 | 0 | |
| Losoff | 1858 | 0 | 3.0 | Hammond | 1339 | 0 | |
| Dobrovlny | 1818 | 0 | 3.0 | Hasan | 2312 | 138 | |
| Blazie | 1783 | -49 | 3.0 | Hill | 1864 | 0 | |
| Goncharoff | 1783 | -169 | 3.0 | Hodina | 2057 | 0 | |
| Kale | 1731 | 197 | 3.0 | Hughes | 2023 | 179 | |
| Durkee | 1743 | -42 | 3.0 | Jasaitis | 2176 | 0 | |
| Gryparis | 1740 | 0 | 3.0 | Kale | 1731 | 0 | |
| Cooper | 1704 | 0 | 3.0 | Karpierz | 1230 | 0 | |
| Bloedow | 1701 | 203 | 3.0 | Klinefelter | 1624 | 0 | |
| Burian | 1701 | -11 | 3.0 | Lomont | 1458 | 0 | |
| Miller | 1657 | 0 | 3.0 | Losoff | 1458 | 0 | |
| White | 1624 | 0 | 3.0 | Melnikov | 2192 | 0 | |
| Klinefelter | 1621 | 0 | 3.0 | Micklich | 1421 | -117 | |
| Sanchez | 1578 | 0 | 3.0 | Miller | 1621 | 0 | |
| Bhojwani | 1544 | 0 | 3.0 | Morton | 1339 | 0 | |
| Suerth | 1541 | -117 | 3.0 | Motycka | 1220 | 0 | |
| Satterlee | 1501 | -43 | 3.0 | Ogasawara | 1938 | 0 | |
| Freeman | 1500 | 0 | 3.0 | Olsen | 1381 | -116 | |
| Lomont | 1458 | 0 | 3.0 | Reichert | 1458 | 0 | |
| Reichert | 1458 | 0 | 3.0 | Reid | 1380 | 16 | |
| Micklich | 1421 | -117 | 3.0 | Reyes | 2296 | 0 | |
| Cisko | 1415 | 0 | 3.0 | Rzeszutko | 1992 | -106 | |
| Dezonne | 1391 | 194 | 3.0 | Sanchez | 1578 | 0 | |
| Eustace | 1390 | -146 | 3.0 | Satterlee | 1501 | -43 | |
| Olsen | 1381 | -116 | 3.0 | Schwartz | 1270 | 0 | |
| Reid | 1380 | 16 | 3.0 | Siwek | 2217 | 0 | |
| Cheveresan | 1344 | 0 | 3.0 | Smiley | 2096 | 0 | |
| Deng | 1339 | 0 | 3.0 | Solano | 2137 | 0 | |
| Hammond | 1339 | 0 | 3.0 | Spiegel | 1937 | 0 | |
| Morton | 1339 | 0 | 3.0 | Stevanovic | 2336 | 0 | |
| Bujalski | 1316 | 0 | 3.0 | Suerth | 1541 | -117 | |
| Schwartz | 1270 | -74 | 3.0 | Sullivan | 1903 | -93 | |
| Szaukellis | 1264 | 0 | 3.0 | Szaukellis | 1264 | 0 | |
| Cole | 1236 | 0 | 3.0 | Torceva | 1082 | 18 | |
| Karpierz | 1230 | 147 | 3.0 | Underwood | 1872 | 0 | |
| Motycka | 1220 | 0 | 3.0 | Wallach | 2032 | -25 | |
| West | 1190 | -284 | 3.0 | Warren | 2072 | 19 | |
| Zoellner | 1156 | 0 | 3.0 | West | 1190 | -284 | |
| Donna | 1104 | 0 | 3.0 | White | 1592 | 0 | |
| Torceva | 1082 | -182 | 3.0 | Young | 1992 | 0 | |
| Gaston | 1076 | 0 | 3.0 | Zoellner | 1156 | 0 | |

MOTOROLA

| NAME | RATING | SEASON | | | RATING CHANGE | TOTAL GAMES | RATED GAMES |
|----------------|--------|--------|---|---|------------------|----------------|----------------|
| | | W | L | D | | | |
| HASAN, Y | 2264 | 8 | 1 | 0 | 90 | 22 | 22 |
| MELNIKOV, I | 2200 | 5 | 6 | 2 | -23 | 24 | 23 |
| WALLACH, C | 2141 | 6 | 1 | 2 | 52 | 27 | 26 |
| SAMELSON, C | 1992C | 6 | 3 | 1 | -18 | 146 | 139 |
| CIESLEK, D | 1940 | 3 | 2 | 0 | -48 | 50 | 48 |
| FAHRENHOLTZ, S | 1799* | 3 | 0 | 0 | 22 | 23 | 18 |
| GONCHAROFF, N | 1771Q | 8 | 1 | 3 | -13 | 426 | 366 |
| AUGSBURGER, L | 1745 | 3 | 5 | 1 | -141 | 72 | 60 |
| LESTER, M | 1623 | 3 | 2 | 1 | 35 | 14 | 9 |
| VICK, H | 1516 | 0 | 1 | 0 | 0 | 37 | 26 |
| HUNG, N | 1471# | 0 | 0 | 1 | 0 | 15 | 8 |
| WEST, R | 1447# | 0 | 1 | 0 | -27 | 13 | 6 |
| ABBOTT, J | 0000? | 2 | 2 | 0 | 0 | 4 | 3 |
| SHOUSE, B | 0000? | 1 | 3 | 0 | 0 | 4 | 0 |
| SZAUKELLIS, W | 0000? | 1 | 1 | 0 | 0 | 11 | 4 |
| TSEITLIN, E | 0000? | 3 | 2 | 0 | 0 | 5 | 3 |
| VALDEZ, C | 0000? | 2 | 1 | 0 | 0 | 3 | 1 |
| DONNA, D | 0000? | 1 | 1 | 0 | 0 | 3 | 0 |
| MELNIKOV, N | 0000? | 0 | 1 | 1 | 0 | 2 | 2 |
| MOORE, JJ | 0000? | 1 | 0 | 0 | 0 | 1 | 1 |

EXEMPLARS

| NAME | RATING | SEASON | | | RATING CHANGE | TOTAL GAMES | RATED GAMES |
|--------------|--------|--------|---|---|------------------|----------------|----------------|
| | | W | L | D | | | |
| WONG, P | 2231C | 3 | 1 | 2 | 3 | 161 | 156 |
| BLOOM, B | 2062 | 3 | 3 | 2 | 5 | 65 | 61 |
| CREWSE, L | 2044 | 5 | 2 | 1 | 2 | 70 | 67 |
| OSTERLUND, R | 1920 | 6 | 6 | 0 | -14 | 66 | 60 |
| FRISKE, T | 1866 | 8 | 2 | 1 | 23 | 28 | 27 |
| WEITZ, R | 1682C | 1 | 5 | 1 | -96 | 130 | 121 |
| SUERTH, F | 1627C | 6 | 3 | 3 | -18 | 124 | 112 |

UOP PROCESS DIV.

| NAME | RATING | SEASON | | | RATING CHANGE | TOTAL GAMES | RATED GAMES |
|---------------|--------|--------|---|---|------------------|----------------|----------------|
| | | W | L | D | | | |
| STEVANOVIC, M | 2199C | 5 | 5 | 3 | -52 | 160 | 152 |
| BOLDINGH, E | 2102 | 5 | 6 | 0 | -68 | 50 | 50 |
| BUERGER, E | 2079D | 7 | 3 | 2 | -6 | 254 | 222 |
| SAHLI, E | 1751* | 7 | 0 | 2 | 68 | 24 | 21 |
| MICKLICH, F | 1719C | 4 | 7 | 1 | -29 | 152 | 136 |
| BRIONES, M | 1660C | 1 | 1 | 0 | -24 | 119 | 110 |
| SAJBEL, P | 1652 | 3 | 4 | 2 | -49 | 71 | 67 |
| LIKHTEREV, M | 1501# | 1 | 1 | 2 | -34 | 10 | 8 |
| CHEVERESAN, S | 1434C | 0 | 0 | 1 | -5 | 110 | 74 |
| O'BRIEN, D | 1417* | 1 | 0 | 1 | 16 | 23 | 17 |
| VAN ZILE, C | 1382* | 1 | 2 | 0 | -4 | 22 | 15 |

SEARS

| NAME | RATING | SEASON | | | RATING CHANGE | TOTAL GAMES | RATED GAMES |
|---------------|--------|--------|---|---|---------------|-------------|-------------|
| | | W | L | D | | | |
| REYES, R | 2336D | 8 | 2 | 2 | 22 | 223 | 202 |
| LATIMER, E | 2037D | 6 | 5 | 1 | 21 | 247 | 215 |
| GOLLA, R | 2029D | 4 | 4 | 3 | -1 | 216 | 193 |
| BROCKETT, M | 1834 | 4 | 5 | 1 | 0 | 36 | 32 |
| MILLER, TT | 1728 | 8 | 3 | 2 | 93 | 42 | 39 |
| WELTER, P | 1646# | 2 | 1 | 0 | -19 | 8 | 7 |
| MORTON, B | 1569 | 2 | 2 | 1 | 3 | 48 | 44 |
| CHAN, H | 1567 | 1 | 1 | 0 | 16 | 91 | 74 |
| LOMONT, C | 1494# | 1 | 1 | 1 | 18 | 9 | 7 |
| DORFF, M | 1493 | 0 | 0 | 1 | 17 | 1 | 1 |
| WILSON, M | 1293# | 0 | 2 | 0 | 0 | 5 | 5 |
| CUMBERLAND, M | 0000? | 1 | 0 | 0 | 0 | 3 | 2 |
| LERNER, R | 0000? | 1 | 0 | 1 | 0 | 2 | 2 |

FEL-PRO

| NAME | RATING | SEASON | | | RATING CHANGE | TOTAL GAMES | RATED GAMES |
|--------------|--------|--------|---|---|---------------|-------------|-------------|
| | | W | L | D | | | |
| QUERUBIN, R | 2075# | 2 | 5 | 0 | -35 | 7 | 7 |
| HESS, B | 1456 | 0 | 6 | 2 | -11 | 60 | 58 |
| FELDMAN, A | 1438C | 1 | 5 | 3 | 28 | 113 | 106 |
| DEARDORFF, M | 1437* | 0 | 8 | 1 | -33 | 16 | 15 |
| NISHIMURA, K | 1285* | 1 | 5 | 2 | 11 | 17 | 11 |
| KEEFE, E | 1186# | 2 | 5 | 0 | -5 | 11 | 7 |
| BAKER, B | 1069 | 0 | 0 | 1 | -5 | 80 | 64 |
| THOMPSON, R | 1063 | 0 | 3 | 0 | -16 | 60 | 42 |

KEMPER INSURANCE

| NAME | RATING | SEASON | | | RATING CHANGE | TOTAL GAMES | RATED GAMES |
|-------------|--------|--------|---|---|---------------|-------------|-------------|
| | | W | L | D | | | |
| SIWEK, M | 2126C | 2 | 6 | 2 | -42 | 120 | 112 |
| LEONG, G | 2003C | 1 | 2 | 0 | -28 | 130 | 112 |
| VAN MEER, J | 1998 | 1 | 2 | 2 | 9 | 54 | 51 |
| HUGHES, N | 1852C | 2 | 1 | 1 | 8 | 118 | 110 |
| OLSEN, A | 1478 | 1 | 6 | 2 | 14 | 32 | 29 |
| LAMBIRIS, J | 1424* | 2 | 4 | 3 | 62 | 20 | 17 |
| GUILLEN, B | 1402* | 1 | 0 | 0 | 33 | 12 | 10 |
| CUMMUTA, P | 1368 | 0 | 1 | 0 | -4 | 94 | 64 |
| MCFARLIN, B | 1215# | 0 | 6 | 1 | -4 | 10 | 6 |
| AMUNDSEN, C | 0000? | 0 | 2 | 0 | 0 | 2 | 2 |
| KAUFMAN, M | 0000? | 0 | 2 | 0 | 0 | 8 | 4 |
| POZNIAK, J | 0000? | 0 | 1 | 0 | 0 | 1 | 1 |

NORTHROP CORP.

| NAME | RATING | SEASON | | | RATING CHANGE | TOTAL GAMES | RATED GAMES |
|----------------|--------|--------|---|---|---------------|-------------|-------------|
| | | W | L | D | | | |
| JAKSTAS, K | 2180C | 3 | 1 | 4 | 33 | 120 | 117 |
| GOLUMBOVSKI, P | 2126 | 5 | 1 | 4 | 21 | 41 | 41 |
| DIAZ, P | 2015 | 6 | 4 | 0 | -6 | 36 | 33 |
| BURIAN, D | 1680C | 4 | 3 | 2 | 39 | 119 | 99 |
| VIGANTS, A | 1592 | 4 | 5 | 0 | -19 | 37 | 31 |
| ELEK, G | 1009* | 0 | 7 | 1 | -2 | 28 | 23 |

GROLIER SUBSIDIARIES

| NAME | RATING | SEASON | | | RATING CHANGE | TOTAL GAMES | RATED GAMES |
|-------------|--------|--------|---|---|---------------|-------------|-------------|
| | | W | L | D | | | |
| GAZMEN, E | 2234 | 8 | 2 | 0 | 9 | 28 | 27 |
| BENESA, A | 2211 | 6 | 3 | 1 | 23 | 27 | 26 |
| WEBER, L | 2144 | 2 | 5 | 3 | -69 | 23 | 21 |
| SOLLANO, E | 1956 | 5 | 3 | 1 | -37 | 27 | 26 |
| PUNZALAN, N | 1599 | 6 | 2 | 0 | 64 | 8 | 7 |
| SANCHEZ, R | 1526* | 5 | 2 | 1 | 97 | 24 | 19 |
| LACAPENA | 0000? | 0 | 1 | 0 | 0 | 1 | 1 |

ALUMNI CENTRAL

| NAME | RATING | SEASON | | | RATING CHANGE | TOTAL GAMES | RATED GAMES |
|---------------|--------|--------|---|---|---------------|-------------|-------------|
| | | W | L | D | | | |
| CZERNIECKI, A | 2143C | 6 | 6 | 2 | -81 | 177 | 168 |
| COX, M | 2014C | 5 | 3 | 4 | -10 | 142 | 119 |
| LEONG, D | 1971 | 3 | 0 | 3 | -5 | 33 | 29 |
| BRONFELD, A | 1847 | 4 | 1 | 1 | -4 | 46 | 40 |
| RZESZUTKO, R | 1820 | 3 | 5 | 1 | -132 | 92 | 78 |
| FRANEK, M | 1790C | 6 | 6 | 2 | -136 | 123 | 97 |
| LITVINAS, A | 1690C | 9 | 3 | 0 | -16 | 169 | 126 |
| DAVIDSON, M | 1678* | 2 | 0 | 0 | 0 | 26 | 17 |
| CHARKOVSKY, R | 1619 | 3 | 0 | 2 | 18 | 36 | 25 |
| BROTSOS, J | 1541D | 0 | 1 | 1 | -8 | 233 | 188 |
| SMITH, JM | 1196* | 1 | 0 | 0 | 0 | 22 | 14 |

CONTINENTAL BANK

| NAME | RATING | SEASON | | | RATING CHANGE | TOTAL GAMES | RATED GAMES |
|---------------|--------|--------|---|---|---------------|-------------|-------------|
| | | W | L | D | | | |
| NELSON, H | 1967 | 3 | 3 | 0 | 7 | 28 | 25 |
| FRAATS, D | 1867 | 6 | 6 | 1 | 3 | 55 | 47 |
| KOGAN, G | 1850 | 7 | 4 | 3 | 16 | 49 | 39 |
| PAROAN, E | 1761C | 7 | 3 | 1 | 4 | 107 | 93 |
| SOMBONG, M | 1681 | 4 | 5 | 1 | -56 | 86 | 79 |
| DYCZKOWSKI, R | 1561 | 5 | 5 | 0 | -40 | 36 | 28 |
| SIEGEL, R | 1485C | 8 | 4 | 3 | 14 | 103 | 83 |
| HAMMOND, M | 1365 | 6 | 4 | 0 | 25 | 51 | 33 |
| MCCLENDON, L | 1340 | 0 | 0 | 1 | -6 | 35 | 27 |
| ZOELLNER, J | 1294C | 4 | 4 | 2 | 24 | 102 | 67 |
| MCINTOSH, S | 1142* | 0 | 3 | 2 | -23 | 26 | 17 |
| GANSER, A | 0000? | 3 | 1 | 1 | 0 | 11 | 4 |
| HILLIARD, J | 0000? | 0 | 3 | 0 | 0 | 15 | 8 |

AMOCO CORP.

| NAME | RATING | SEASON | | | RATING CHANGE | TOTAL GAMES | RATED GAMES |
|-------------|--------|--------|---|---|------------------|----------------|----------------|
| | | W | L | D | | | |
| HODINA, J | 2094 | 7 | 3 | 4 | 5 | 51 | 50 |
| ATKINSON, J | 1728C | 3 | 6 | 3 | -9 | 108 | 90 |
| WENTLING, C | 1659C | 6 | 6 | 0 | 79 | 100 | 77 |
| KRULL, E | 1461 | 4 | 4 | 1 | 95 | 54 | 41 |
| HAMILTON, L | 1380 | 4 | 8 | 0 | -2 | 38 | 30 |
| BAER, M | 1347* | 4 | 3 | 3 | 80 | 18 | 13 |
| HAMPER, P | 1288* | 3 | 4 | 1 | 7 | 18 | 11 |

CHICAGO RES. & TRDG.

| NAME | RATING | SEASON | | | RATING CHANGE | TOTAL GAMES | RATED GAMES |
|----------------|--------|--------|---|---|------------------|----------------|----------------|
| | | W | L | D | | | |
| JASAITIS, A | 2216C | 6 | 3 | 2 | -26 | 135 | 116 |
| FRIESEMA, W | 2122 | 9 | 2 | 4 | -23 | 68 | 64 |
| LOSOFF, A | 1864 | 7 | 6 | 0 | -121 | 55 | 51 |
| BARGERSTOCK, D | 1810 | 7 | 4 | 2 | -92 | 33 | 30 |
| DENG, J | 1582 | 3 | 3 | 2 | -50 | 41 | 37 |
| SIMS, B | 1519# | 1 | 2 | 0 | -34 | 9 | 6 |
| BERNARD, D | 1303 | 1 | 1 | 0 | 13 | 46 | 36 |
| CARNAL, D | 1210# | 1 | 5 | 1 | 0 | 7 | 5 |
| LUEDERS, J | 0000? | 0 | 4 | 0 | 0 | 4 | 3 |
| SZONTAGH, T | 0000? | 0 | 4 | 0 | 0 | 4 | 3 |
| ZUNGOLO, J | 0000? | 0 | 1 | 0 | 0 | 1 | 0 |

CHICAGO MERC. EXCH.

| NAME | RATING | SEASON | | | RATING CHANGE | TOTAL GAMES | RATED GAMES |
|-------------|--------|--------|---|---|------------------|----------------|----------------|
| | | W | L | D | | | |
| ZEIDEL, J | 1947 | 0 | 0 | 1 | -4 | 23 | 22 |
| SLAGLE, S | 1589 | 3 | 6 | 0 | -12 | 11 | 10 |
| SULLIVAN, C | 1494 | 2 | 6 | 1 | 10 | 41 | 34 |
| COTE, J | 1277* | 2 | 4 | 1 | 0 | 31 | 24 |
| RUDDY, J | 1205 | 1 | 5 | 2 | 3 | 37 | 31 |
| BAKER, LR | 1112* | 1 | 4 | 0 | -20 | 20 | 12 |
| HILTON, J | 1004* | 2 | 5 | 1 | -4 | 34 | 16 |

CHICAGO POST OFFICE

| NAME | RATING | SEASON | | | RATING CHANGE | TOTAL GAMES | RATED GAMES |
|---------------|--------|--------|---|---|------------------|----------------|----------------|
| | | W | L | D | | | |
| INUMERABLE, F | 2236 | 10 | 1 | 2 | 121 | 73 | 70 |
| MARCOWKA, R | 1955C | 5 | 6 | 1 | -44 | 171 | 151 |
| ALLEN, H | 1877 | 3 | 3 | 0 | 20 | 6 | 6 |
| PERAREN, E | 1802 | 4 | 0 | 0 | 111 | 4 | 4 |
| COOPER, W | 1717 | 6 | 3 | 4 | 7 | 85 | 74 |
| CARTER, L | 1546 | 7 | 5 | 1 | 21 | 70 | 53 |
| HOWARD, W | 1518 | 7 | 5 | 2 | 62 | 60 | 39 |
| GRIESMEYER, W | 1317 | 1 | 3 | 1 | -50 | 13 | 7 |
| DAVIS, R | 0000? | 0 | 4 | 1 | 0 | 5 | 2 |

COLUMBIA COLLEGE

| NAME | RATING | SEASON RATING | | | TOTAL RATED | GAMES | GAMES |
|---------------|--------|---------------|---|---|-------------|-------|-------|
| | | W | L | D | | | |
| SANTIAGO, T | 1972* | 6 | 3 | 2 | 89 | 11 | 11 |
| MCALISTER, K | 1959 | 5 | 5 | 3 | 12 | 37 | 37 |
| PRATTS, M | 1693 | 6 | 3 | 4 | 63 | 19 | 18 |
| KOSTECKA, K | 1664 | 7 | 4 | 2 | 47 | 40 | 35 |
| BURDICK, S | 1582 | 3 | 1 | 0 | 6 | 14 | 11 |
| HERNANDEZ, DD | 1480 | 6 | 5 | 1 | -52 | 28 | 22 |
| STEVENS, J | 1380 | 4 | 4 | 0 | 33 | 10 | 9 |
| BRANCH, Y | 1301* | 3 | 1 | 1 | -6 | 26 | 17 |
| GOLDBOGEN, G | 0000? | 0 | 1 | 0 | 0 | 1 | 1 |

CTA RAIL

| NAME | RATING | SEASON RATING | | | TOTAL RATED | GAMES | GAMES |
|---------------|--------|---------------|---|---|-------------|-------|-------|
| | | W | L | D | | | |
| MATTHEWS, J | 1747 | 7 | 3 | 0 | 105 | 22 | 20 |
| JARRETT, T | 1604# | 0 | 1 | 0 | -7 | 11 | 8 |
| ABRAHAM, T | 1531 | 0 | 1 | 0 | -10 | 7 | 6 |
| VAN OTRIVE, R | 1096# | 1 | 3 | 0 | 0 | 7 | 5 |
| NOWAK, W | 0000? | 0 | 1 | 0 | 0 | 9 | 4 |
| ROJAS, R | 0000? | 0 | 1 | 0 | 0 | 5 | 2 |
| SANCHEZ, P | 0000? | 0 | 3 | 0 | 0 | 4 | 4 |
| HEDSTROM, L | 0000? | 0 | 0 | 0 | 0 | 0 | 0 |
| WILLIAMS, J | 0000? | 2 | 0 | 0 | 0 | 7 | 3 |
| PEPPERS, M | 0000? | 0 | 0 | 0 | 0 | 0 | 0 |

CTA ROAD

| NAME | RATING | SEASON RATING | | | TOTAL RATED | GAMES | GAMES |
|-------------|--------|---------------|---|---|-------------|-------|-------|
| | | W | L | D | | | |
| WILSON, A | 1555 | 1 | 5 | 1 | -9 | 85 | 70 |
| HARRIS, FF | 1404# | 1 | 3 | 0 | 26 | 10 | 8 |
| JONES, M | 1358* | 2 | 4 | 0 | 0 | 14 | 11 |
| JACKSON, JJ | 0000? | 1 | 2 | 0 | 0 | 6 | 2 |
| COLEMAN, O | 0000? | 1 | 1 | 0 | 0 | 2 | 2 |
| TAYLOR, M | 0000? | 0 | 0 | 0 | 0 | 0 | 0 |
| WILLIAMS, A | 0000? | 0 | 3 | 0 | 0 | 3 | 3 |
| BARNES, D | 0000? | 0 | 0 | 1 | 0 | 1 | 1 |
| CARTER, O | 0000? | 0 | 1 | 0 | 0 | 1 | 1 |

HULL TRADING CO.

| NAME | RATING | SEASON RATING | | | TOTAL RATED | GAMES | GAMES |
|------------------|--------|---------------|---|---|-------------|-------|-------|
| | | W | L | D | | | |
| RANGEL, R | 1741 | 0 | 1 | 0 | -5 | 11 | 11 |
| YOUNG, R | 1386* | 1 | 7 | 2 | 11 | 18 | 17 |
| NAUGHTON, T | 1339* | 1 | 3 | 1 | -5 | 12 | 10 |
| WEISSKOPF, J | 1334# | 4 | 4 | 0 | -29 | 13 | 7 |
| SAMULAK, C | 1147# | 1 | 4 | 0 | 0 | 5 | 5 |
| FRANCISKOVICH, D | 1113# | 1 | 4 | 0 | -28 | 12 | 9 |
| BANZA, S | 0000? | 0 | 0 | 0 | 0 | 0 | 0 |
| RUEB, R | 0000? | 0 | 1 | 0 | 0 | 1 | 1 |
| STEINER, D | 0000? | 0 | 1 | 0 | 0 | 1 | 1 |
| WEISS, G | 0000? | 0 | 5 | 0 | 0 | 5 | 5 |
| MUDAN, M | 0000? | 1 | 5 | 0 | 0 | 6 | 5 |
| CONNELY, S | 0000? | 0 | 2 | 0 | 0 | 2 | 2 |
| RAFFERTY, M | 0000? | 0 | 1 | 0 | 0 | 3 | 2 |

30
A & B RADIO

| NAME | RATING | SEASON | | | RATING CHANGE | TOTAL GAMES | RATED GAMES |
|--------------|--------|--------|---|---|---------------|-------------|-------------|
| | | W | L | D | | | |
| O'DELL, DW | 1620C | 1 | 6 | 4 | 2 | 105 | 96 |
| TYREE, D | 1482* | 1 | 8 | 1 | -53 | 17 | 16 |
| BOOKER, G | 1398* | 3 | 8 | 0 | 13 | 23 | 20 |
| LASKY, N | 1352C | 2 | 5 | 1 | -25 | 101 | 89 |
| GORZ, E | 1311# | 2 | 4 | 3 | -9 | 9 | 9 |
| MIKULECKY, B | 1304C | 1 | 4 | 5 | 1 | 106 | 91 |

ARGONNE KNIGHTS

| NAME | RATING | SEASON | | | RATING CHANGE | TOTAL GAMES | RATED GAMES |
|-------------|--------|--------|---|---|---------------|-------------|-------------|
| | | W | L | D | | | |
| LEVINE, D | 2399 | 3 | 1 | 1 | -18 | 54 | 49 |
| BENEDEK, R | 2211D | 4 | 0 | 5 | -27 | 229 | 221 |
| SHEYNIN, S | 2170 | 3 | 1 | 1 | -33 | 5 | 5 |
| BERRY, G | 2049D | 9 | 1 | 2 | 1 | 299 | 250 |
| KEISLER, J | 1987 | 7 | 0 | 1 | 22 | 8 | 8 |
| GREEN, D | 1790C | 7 | 3 | 1 | -34 | 167 | 147 |
| HILL, R | 1780 | 8 | 0 | 3 | 27 | 71 | 65 |
| DECMAN, S | 1677D | 5 | 0 | 1 | 10 | 215 | 190 |
| BAURAC, D | 1604C | 5 | 4 | 0 | -81 | 175 | 156 |
| KINSELLA, G | 1468C | 1 | 1 | 1 | -9 | 115 | 97 |

AT&T CHARGERS

| NAME | RATING | SEASON | | | RATING CHANGE | TOTAL GAMES | RATED GAMES |
|---------------|--------|--------|---|---|---------------|-------------|-------------|
| | | W | L | D | | | |
| WARREN, J | 2114T | 3 | 2 | 5 | -27 | 375 | 327 |
| STAMM, V | 1740D | 5 | 5 | 1 | 8 | 233 | 213 |
| RADAVICIUS, E | 1713D | 5 | 2 | 4 | 36 | 222 | 194 |
| DOBR, K | 1516T | 6 | 3 | 2 | 16 | 328 | 300 |
| THOMAS, J | 1465C | 2 | 5 | 2 | -42 | 154 | 120 |
| SHEU, G | 1343* | 2 | 0 | 2 | 24 | 34 | 22 |
| BRADY, R | 1267 | 2 | 2 | 0 | 15 | 36 | 30 |
| NWABUDE, O | 1029* | 2 | 4 | 2 | 49 | 25 | 20 |
| PATTON, D | 0000? | 1 | 1 | 1 | 0 | 3 | 2 |

ROCKWELL INT'L

| NAME | RATING | SEASON | | | RATING CHANGE | TOTAL GAMES | RATED GAMES |
|------------|--------|--------|---|---|---------------|-------------|-------------|
| | | W | L | D | | | |
| JONES, B | 2061 | 1 | 0 | 6 | -45 | 61 | 60 |
| RAFACZ, T | 1698 | 1 | 6 | 2 | -75 | 94 | 87 |
| RAFACZ, W | 1638 | 3 | 5 | 3 | 9 | 61 | 58 |
| EFRON, D | 1638 | 1 | 0 | 1 | 26 | 46 | 43 |
| MITCHAM, L | 1552* | 3 | 3 | 0 | -8 | 17 | 16 |
| MCQUINN, J | 1450 | 0 | 1 | 2 | -26 | 70 | 62 |
| DEWITT, G | 1423C | 3 | 4 | 3 | -24 | 124 | 109 |
| DEZONNO, T | 1255* | 5 | 2 | 2 | 58 | 34 | 24 |

AT&T TYROS

| NAME | RATING | SEASON RATING | | | CHANGE | TOTAL GAMES | RATED GAMES |
|--------------|--------|---------------|---|---|--------|-------------|-------------|
| | | W | L | D | | | |
| STOLTZ, B | 2024 | 4 | 2 | 0 | 40 | 60 | 51 |
| BHOJWANI, C | 1977 | 3 | 2 | 0 | 29 | 97 | 92 |
| BLAZIE, J | 1832C | 0 | 1 | 4 | 2 | 107 | 92 |
| BROZOVICH, J | 1750C | 2 | 2 | 2 | 12 | 189 | 166 |
| SHAFF, R | 1532C | 1 | 4 | 1 | -31 | 160 | 125 |
| THOMAS, G | 1496 | 1 | 3 | 2 | -7 | 77 | 62 |
| SMITH, BR | 1460 | 0 | 2 | 2 | -8 | 68 | 52 |
| KARPIERZ, J | 1126* | 0 | 3 | 3 | 43 | 11 | 10 |
| SCHWARTZ, M | 1060* | 0 | 4 | 2 | 7 | 34 | 22 |
| REED, K | 0000? | 2 | 0 | 0 | 0 | 2 | 1 |
| KOEPELE, J | 0000? | 0 | 1 | 0 | 0 | 9 | 4 |

AT&T DRAGONS

| NAME | RATING | SEASON RATING | | | CHANGE | TOTAL GAMES | RATED GAMES |
|--------------|--------|---------------|---|---|--------|-------------|-------------|
| | | W | L | D | | | |
| TEGEL, F | 2145D | 6 | 4 | 3 | -3 | 298 | 263 |
| LUDWIG, T | 2096C | 5 | 5 | 0 | -31 | 108 | 105 |
| JACOBS, N | 1983C | 5 | 1 | 7 | 10 | 198 | 194 |
| CHRISTIAN, R | 1808C | 1 | 1 | 0 | -25 | 124 | 112 |
| DURKEE, D | 1770C | 3 | 4 | 3 | -15 | 139 | 131 |
| PIAO, T | 1716 | 9 | 3 | 0 | 107 | 29 | 26 |
| WARD, C | 1551D | 5 | 3 | 1 | 24 | 245 | 228 |
| EUSTACE, D | 1504 | 3 | 2 | 4 | 11 | 62 | 42 |
| MAA, R | 0000? | 0 | 4 | 0 | 0 | 4 | 4 |

ALUMNI WEST

| NAME | RATING | SEASON RATING | | | CHANGE | TOTAL GAMES | RATED GAMES |
|--------------|--------|---------------|---|---|--------|-------------|-------------|
| | | W | L | D | | | |
| UNDERWOOD, W | 2008C | 2 | 2 | 1 | 27 | 142 | 121 |
| WALLIN, R | 1714 | 1 | 4 | 2 | -6 | 31 | 30 |
| VERIVE, J | 1615* | 1 | 3 | 0 | 12 | 16 | 10 |
| WHITSITT, S | 1504* | 0 | 4 | 0 | -67 | 25 | 17 |
| ERLENBORN, M | 1482* | 2 | 3 | 0 | 26 | 27 | 16 |
| POMA, D | 1307 | 8 | 5 | 5 | 119 | 40 | 30 |
| EDWARDS, S | 1278 | 1 | 7 | 1 | 11 | 79 | 62 |
| PRICE, B | 1086# | 0 | 1 | 0 | -4 | 11 | 7 |
| POMA, M | 0000? | 0 | 1 | 0 | 0 | 4 | 3 |

J. I. CASE

| NAME | RATING | SEASON RATING | | | CHANGE | TOTAL GAMES | RATED GAMES |
|----------------|--------|---------------|---|---|--------|-------------|-------------|
| | | W | L | D | | | |
| KALE, S | 1840 | 4 | 3 | 4 | 126 | 56 | 47 |
| SATTERLEE, D | 1719C | 4 | 8 | 2 | 15 | 145 | 130 |
| WHITE, H | 1592 | 4 | 8 | 2 | -79 | 66 | 56 |
| KLINEFELTER, H | 1530C | 6 | 3 | 2 | 52 | 101 | 83 |
| SAWDO, E | 1399 | 3 | 3 | 2 | -56 | 42 | 37 |
| REID, C | 1362 | 7 | 4 | 1 | 28 | 61 | 57 |
| KANAS, W | 1299C | 3 | 5 | 0 | -2 | 117 | 99 |
| GASTON, K | 1274* | 1 | 8 | 0 | -44 | 29 | 21 |
| MOTYCKA, R | 1156 | 4 | 4 | 1 | -15 | 87 | 68 |
| DUFRESNE, T | 1000# | 3 | 6 | 0 | -51 | 12 | 10 |
| DIAZ, L | 0000? | 1 | 0 | 0 | 0 | 1 | 1 |
| ROSS, L | 0000? | 0 | 1 | 0 | 0 | 1 | 1 |

AT&T ROYALS

| NAME | RATING | SEASON RATING | | | CHANGE | TOTAL GAMES | RATED GAMES |
|---------------|--------|---------------|---|---|--------|-------------|-------------|
| | | W | L | D | | | |
| BUCHNER, R | 2129 | 2 | 0 | 4 | 101 | 33 | 30 |
| GUIO, J | 2072 | 2 | 5 | 0 | -98 | 46 | 46 |
| STINSON, M | 2006 | 1 | 1 | 0 | -22 | 90 | 84 |
| DOBROVOLNY, C | 1996 | 6 | 3 | 3 | 104 | 59 | 54 |
| PEHAS, A | 1952 | 1 | 0 | 3 | 12 | 81 | 81 |
| OGASAWARA, L | 1862C | 7 | 2 | 2 | 58 | 102 | 98 |
| ROSLEY, D | 1834 | 5 | 1 | 0 | 41 | 41 | 39 |
| BLACKMON, E | 1779 | 6 | 2 | 1 | 11 | 89 | 73 |
| HAHNE, D | 1606 | 7 | 2 | 1 | 27 | 73 | 66 |
| ANDERSON, CJ | 1446 | 4 | 1 | 1 | 77 | 43 | 33 |
| AUSTIN, R | 1125# | 0 | 1 | 0 | -10 | 11 | 8 |

FERMILAB

| NAME | RATING | SEASON RATING | | | CHANGE | TOTAL GAMES | RATED GAMES |
|---------------|--------|---------------|---|---|--------|-------------|-------------|
| | | W | L | D | | | |
| BEZZUBOV, V | 2273# | 5 | 0 | 0 | 39 | 9 | 9 |
| KOZLOVSKY, M | 2238 | 3 | 0 | 0 | 39 | 32 | 30 |
| SPIEGEL, L | 1990C | 3 | 3 | 4 | -46 | 139 | 130 |
| GAINES, I | 1740C | 5 | 3 | 1 | 19 | 175 | 159 |
| HILL, C | 1663* | 0 | 1 | 0 | -22 | 28 | 24 |
| HARRIS, R | 1644 | 6 | 0 | 2 | 77 | 23 | 16 |
| CISKO, G | 1615* | 1 | 2 | 0 | -1 | 30 | 21 |
| PARA, A | 1551 | 3 | 3 | 2 | -82 | 36 | 28 |
| STAPLES, C | 1200# | 0 | 3 | 3 | -10 | 6 | 6 |
| SHUKLA, S | 0000? | 0 | 1 | 0 | 0 | 1 | 1 |
| MENGEL, M | 0000? | 1 | 2 | 0 | 0 | 3 | 2 |
| DJORDJEVIC, I | 0000? | 0 | 0 | 0 | 0 | 0 | 0 |