

Chicago Industrial Chess League

March 1994

INSIDE THIS ISSUE:

Around the League
Playoffs
Spring Business Meeting
Match Results

Jl Case plays General Motors !?

Annotated Games

CICL Ratings List

NEED INPUT! To make the CICL bulletin even better, we are looking for anyone interested in submitting **articles** or **games**. If you are interested, call or write to the bulletin editor.

—Bulletin Editor - Ruben Reyes
2019 W. Leland
Chicago, IL 60625

Dear CICLers:

I thought it would be a good idea to send out a letter to inform you about several things going on in the league at this time. Specifically I wish to discuss the bulletin, Spring Business Meeting, CICL vs Park Forest Chess Club match, and the 1994 playoff site.

As you are all well aware by now, we have had difficulty in producing, copying, and mailing the bulletin this year. We are currently in the process of switching bulletin editors and should be back on a more regular publishing schedule from here on out. I was "acting editor" for this bulletin. **Starting with the next bulletin, Ruben Reyes, of Sears and North Division Chairman, will be taking over. Please send all bulletin material to Ruben Reyes at 2019 W. Leland, Chicago, IL 60625.** If you are not in the North Division, you are probably not aware of the fine work that Ruben has been doing there - including a very nice newsletter. I thank Ruben for taking on this responsibility. Marty Franek will, as long as his schedule permits, continue to do the photocopying and mailing of the bulletin. Marty's contributions, too, are very much appreciated. Again, I apologize for the way things have gone so far. I realize that a substantial portion of the annual dues go to supporting the bulletin and that CICL members have certain expectations when it comes to the content and delivery of the bulletin. Since this is only been the fourth bulletin to date, I am sure that we will underrun the budget. I will be proposing at the Spring Business Meeting that this underrun be credited to all teams toward the 1994/95 season dues and that individual subscribers be offered complimentary or reduced rate subscriptions next year as well. Please think about this and be prepared to vote on it at the meeting.

The Spring Business Meeting will be held at JI Case on Thursday, April 7. The meeting will start at 7:00 pm. This is the same place that the meeting has been held for the last couple of years, so I think most everyone knows how to get there. JI Case is located off the I-55 North Exit for County Line Road. It is to the left at the first stop light off of this exit and people should enter the building through the South Entrance.

A spot for the playoffs May 21 still has to be finalized. However, I have been able to guarantee a location. Amoco Corp has offered its meeting room facilities to the league. These facilities are located downtown in the Amoco Building and are quite sufficient to accommodate our need for adequate space, tables, chairs, and (gasp) quiet. I have ran this idea past several team captains and officers already and the general question is, "What about parking?" There is limited street parking around the building. However, Grant Park and Monroe Street Garages are across the street. I know that parking at Monroe Street Garage is the cheaper of the two and is \$5 per day. I have not researched the availability of the Ramada Inn - O'Hare yet, but I will do so soon. Last year's costs at the Ramada Inn were \$200 for the room and \$275 for the coffee service - all of which was graciously sponsored by UOP. I ask that if any other company is interested in sponsoring the playoffs to please contact me soon. So far, Amoco is our only option, but we are by no means locked in to this and if other possibilities arise, then we can make a decision at that time.

On March 22, the CICL played a 15 board match against the Oak Park/River Forest Chess Club. Oak Park pulled out to an early 2.5 to 0.5 lead but after all was said and done, the match **ended in a 7.5 to 7.5 draw!!!!** Only one game ended in a draw. I think this necessitates a rematch!

In fact we already have one scheduled for June 21, so I will be looking for players. I think everybody enjoyed the match and would say it was a big success. We passed out plenty of CICL literature so we'll see if we get any bites. I want to thank everyone who turned out for the match. I was honestly overwhelmed by the support. Thanks!!! For the record, this is how the match came down.

Board	CICL	Score	OP/RF	Score
1	Ruben Reyes (2309)	0	Ray Saterlee (2135)	1
2	Tony Jasaitas (2259)	1	Bob Hansen (2011)	0
3	Ed Buerger (2103)	0	Art Zacher (1998)	1
4	Jim Hodina (2109)	1	Bob Stoltz (1884)	0
5	Lenny Spiegel (2011)	1	Greg Minnis (1770)	0
6	Marv Cox (2010)	1	Bill Barber (1738)	0
7	Tom Friske (1855)	0	Don Winsauer (1714)	1
8	Skip Kale (1825)	0	Bob Curry (1700)	1
9	Dwayne Saterlee (1718)	1	Eric Ortega (1668)	0
10	Algis Litvinas (1707)	1	Mark Stamatakos (1641)	0
11	Hardie White (1609)	0	Ken Marshall (1626)	1
12	Jim Brotsos (1547)	½	Andy Schiller (1550)	½
13	Ross Siegel (1529)	1	Butch Thomas (UNR)	0
14	Howard Klinefelter (1491)	0	John Wallin (UNR)	1
15	John Zoellner (1266)	0	Damon McCoy (1399)	1

(Rating are CICL for CICL players, USCF for OP/RF Players)

Well, thanks for your time. Please contact me with any questions regarding the bulletin, the CICL vs Park Forest Chess Club match, Spring Business Meeting, the playoffs, or anything else that you may wish to discuss.

Jim Hodina
CICL President

Ph: (312) 856-2762 (w)

Ph: (708) 799-5571 (h)

A Note from the "League Historian" and Treasurer, Wes Underwood

Patently, quietly, and admirably, a memorable undefeated streak has been established. The Argonne Knights, a regular fixture atop the Near West Division, as well as in the League Playoffs, has established a record that will likely stand for a long, long time. There may have come a point in the minds of its Near West Division opponents that the Knights could never lose, but persistence paid off. On November 4, 1993, the Bell Labs Dragons defeated the Knights 4.5 to 1.5, which ended the Knights' streak of regular season matches without a loss. It was the Veterans Administration that last bet the Knights by the score of 4 to 2 back on March 4, 1984. In between, the Argonne Knights played 89 (yes 89) matches without a loss!! Following is the regular season final record for Argonne over the period of their streak:

1983-84	4-1-5 (loss in Rd 9)	1988-89	10-0-0
1984-85	9-0-1	1989-90	7-0-3
1985-86	9-0-0	1990-91	9-0-0
1986-87	9-0-0	1992-93	10-0-0
1987-88	10-0-0	1993-94	6-0-1 (so far...loss in Rd 3)

This was A LOT of matches without a loss! A single undefeated season is a success worthy of recognition, but this has been in my mind an unbelievable achievement. However, records are meant to be broken. If you or your team have an eye on breaking this one, plan for a long haul, for it would be an effort that lasted over nine or ten seasons, at least. Maybe Argonne is off to break their own record, back to their winning ways with 4 straight wins. I guess it's too soon to begin thinking about that....

CONGRATULATIONS TO THE ARGONNE KNIGHTS!!!

(Thanks to Dave Baurac of the Argonne Knights for calling this to my attention.)

WATCH OUT! THE LOCOMOTIVE IS HERE

by Howard E. Klinefelter

Co-Captain, JI Case

Bob Motycka has been playing for JI Case for years. He has always been a dependable player. In past, he has been the team captain, the treasurer and/or an active participant member of our team. Today, he is a well-know player of the team.

Late last year, Bob went to work for Electro Motive Division of General Motors, at their LaGrange plant. Only to discover, there was no Chess team participating in the Chicago Industrial Chess League. He figured, given the size of their plant, there must be at least six people who enjoy playing Chess. Bob went to work. In short period, he put together a six-man team. Then, he decided to turn back on his old friends. A nice guy, huh? He challenged JI Case for a friendly match. Case, looking for an easy win, accepted the challenge??? After all, these people had never played competitive Chess in the league. How tough can they be? We felt like the big bully boys. A match with the new kids on the block--no problem. That was the. Today, we know better. We have no idea what hit us so hard. It surely felt like a locomotive!! Now we are recuperating.

Wait a minute, shouldn't we be saying.....After all it's only a game. It's only game. Now, that we have got all this figured out, we feel better.

We are friends now. We will extend an opportunity, for them, to play on the extra boards during our regular season's matches. This will give them the insides of the CICL operations.

Then, may be then, they might end up being on our roster next year.

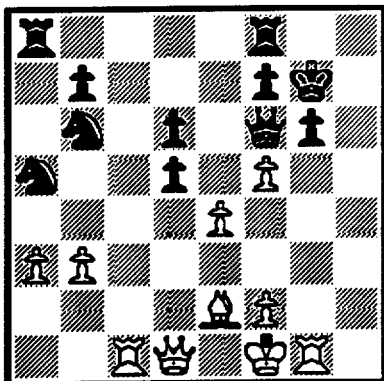
King's Indian Defense

WHITE: Satish Kale (1750)
BLACK: Roy Benedek (2234)

Jl Case vs. Argonne Knights

1.d4, Nf6 2.c4, g6 3.Nc3, Bg7 4.e4, d6 5.Nf3, O-O 6.Bd3. Bg4 7.Be3, Nc6 8.a3, Nd7 9.d5, Nce5 10.h3, Bxf3 11.gxf3, c6 12.Be2, cxd5 13.cxd5, Nb6 14.h4, Rc8 15.Bd4, e6 16.f4, Nec4 17.Bxg7, Kxg7 18.Nb5. Positionally this seems wrong. White's King is stuck in the middle and White should concentrate on controlling this part of the board. By sending the Knight after the pawn on a7, he has dislocated a valuable piece for this effort.

18..., exd5 19.Nxa7, Ra8 20.Nb5, Qf6 21.b3, Na5 22.Nc7?, Qc3+ 23.Kf1, Qxc7 24.Rc1, Qd8 25.h5, Qf6 26.hxg6, hxg6 27.f5.



After 27.f5

White wants to exchange down to an endgame, allowing him to utilize his extra piece more effectively. Unfortunately, he gets too anxious and, in doing so, he overlooks the immediate dynamics of the position, allowing White a

powerful attack. I would recommend getting the Knights off the edge of the board as quickly as possible and post them on either d4 or e5 (control of the center). 27.Rh8 28.Rg1, Rac8 29.Rxc8, Rxc8 30.fxg6, Nc6 31.gxf7+, Kxf7 32.Bh5+, Ke7 33.Rg6, Qe5 34.Qg4, Kd8 35.Re6, Qa1+ 36.Kg2, Kc7 37.Rg6+, Qxa3 38.Rg7+, Kb8 39.Rh7, Qxb3 40.Qg7, Nc4 41.Bg4, Qb2? Why give up the exchange, he has survived!

42.Qxb2, Nxb2 43.Bxc8, Kxc8 44.f4, Nd3 45.Kf3, Nc5 46.Draw? I am not sure why Black accepted a draw here as he surely has all of the winning chances. Perhaps his relief of surviving the attack overcame him and this might explain his 41st move. Had he taken the time to stop and collect his thoughts (assuming he had time to spare) I am sure he would have played on.

The following game was submitted for "Best Upset". With a 350+ point spread, I have a feeling it will be in contention.

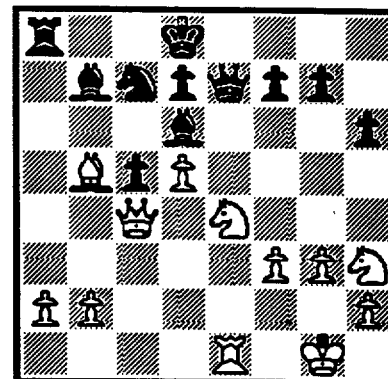
Benko Gambit

WHITE: Jim Warren (2118)
BLACK: Satish Kale (1750)

AT&T Chargers vs. Jl Case

1.d4, Nf6 2.c4, c5 3.d5, b5 4.cxb5, a6 5.f3, axb5 6.e4, e6 7.Bxb5, exd5 8.exd5, Qa5+ 9.Nc3, Bb7 10.Qe2+, Kd8 11.Bd2, Qb6 12.Bg5, h6 13.Bxf6+, Qxf6 14.Nh3, Bd6 15.Ne4, Qh4+ 16.g3, Qe7 17.O-O, Re8 18.Qc4, Na6 19.Rfe1, Nc7 20.Neg5, Qf6 21.Rxe8+, Kxe8 22.Re1+, Kd8

23.Ne4, Qe7.



After 23..., Qe7

24.Kf2, Bxd5 25.Qd3, Rxa2 26.Nc3, Rxb2+ 27.Kf1, Be6 28.Nf2, Rb4 29.Qd3, Rxa2 26.Nc3, Rxb2+ 27.Kf1, Be6 28.Nf2, Rb4 29.Ra1, c4 30.Qe4, Qf6 31.Rd1, Qxc3 32.Rxd6, Rxb5 33.Nd1, Qe5 34.Qxe5, Rxe5.

The following two games are ones that I have played this season. Both involved rook sacs(!?) which lead to the opening up of the King side. In the first game, I was the on the recieving end of this theme. Only through later misplay by my opponent did I manage to survive. But nevertheless, the sac was sound! In the second game, I uncorked my own rook sac. After looking through this game, it too seemed to be good although with best play I probably cannot get back to equality. Yet I had the opportunities, only to misplay the follow-up and could not bring home the full point. Now two games are hardly enough to generalize any trends, but both sacs should have lead to a win but they didn't. Why? I think one simple answer was "time". In both games the player took a lot of time to calculate the sac

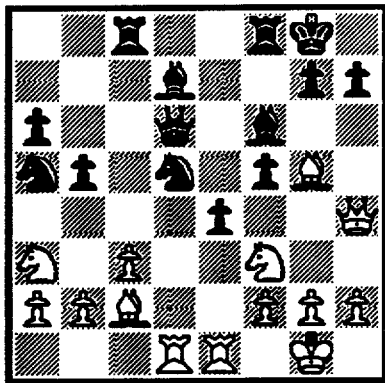
and then had little time to find the correct continuation. This reminds me of an axiom (poorly paraphrased), "Its generally not as necessary to always find the one best move as it is to find a sequence of good moves." I'm interested in hearing your "fish" stories about the one that got away and let me know why you think it happened.

Sicilian - Alapin

WHITE: Jerry Mathews (1735)
BLACK: James Hodina (2105)

CTA Rail vs. Amoco

1.e4, c5 2.d4, cxd4 3.c3, Nf6 4.e5, Nd5 5.Qxd5, e6 6.Nf3, Nc6 7.Qg4, Qc7 8.Qg3, d6 9.Bb5, Bd7 10.exd6, Qxd6 11.Qh4, Be7 12.Bg5, f6 13.Bd2, e5 14.Na3, a6 15.Bc4, b5 16.Bb3, Na5 17.Bc2, f5 18.Bg5, O-O 19.O-O, Rac8 20.Rad8, Bf6. Black needs to relieve the tension quickly with 20..., Bxg5 21.Qxg5 (21.Ng5, h6), Be6. Instead, Black goes on his merry way. 21.Rfe1, e4?



After 21..., e4?

22.Rxe4!!, fxe4 23.Bxe4, Bc6 24.Qxh7+, Kf7 25.Bg6+. 25.Bxf6, Qxf6 26.Bxd5 should

win for White.

25..., Ke7 26.Qxg7+, Kd8 27.Bf7. Right idea, wrong square. 27.Be4 meets White's objective.

27..., Kc7. Now Black can escape. White's best is to trade and hope the King side pawns can draw.

28.Bxd5+??. Too bad, White can't recover now.

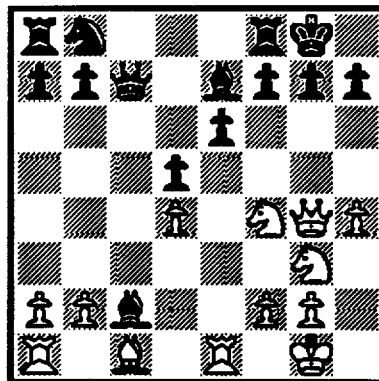
28.Bxg7 29.Bb3, Qg3 30.Bh4, Nxb3 31.Bg3+, Kb7 32.axb3, Rcd8 33.Nd4, Be5 34.Re1, Bxg3 35.hxg3, Rfe8 36.Nac2, Rfe8 37.Nxe1, Qe4 38.Kf1, Re8 39.Ndf3, Qe2+ 40.Kg1, Qd1 41.Kh2, Rh8+ 42.Nh4, Qxe1 0-1

Caro-Kann Defense

WHITE: James Hodina (2105)
BLACK: Kelvin McAlister (1907)

Amoco vs. Columbia College

1.e4, c6 2.d4, d5 3.Nc3, dxe4 4.Nxe4, Bf5 5.Ng3, Bg6 6.Nge2, e6 7.Nf4, Qc7 8.Bc4, Ne7 9.O-O, Nd5 10.Bxd5, cxd5 11.Re1, Be7 12.Qg4, O-O 13.h4, Bxc2.



After 13..., Bxc2

14.Rxe6!?, Qd7 15.Ngh5, Bg6 16.Nxg7, fxe6. Better

probably is 16..., Kxg7 17.h5, fxe6 18.Nxe6+, Kf7 19.hxg6 and White's attack fizzles, but Black has to watch his clock too.

17.Nfxe6. For some reason I was afraid of Rxf4, but this is actually better for me than the continuation. Again, time pressure...common to these types of games.

17..., Bf6 18.Nf5, Re8 19.h5, Rxe6 20.hxg6, Bg7 21.gxh7+, Kxh7 22.Be3, Rxe3 23.Qh4+, Kg8 24.Nxe3, Nc6 25.Rd1, Draw. While there is still a lot of play, both players had very little time on their clock to make 25 moves. After all the game is only half over, right?

RATINGS CHAIRMAN'S REPORT

The Locomotive Runs Over the Tractors 4-2

On March 9, J.I. Case played an exhibition match with a team representing General Motors Electromotive Division, located in Countryside. The match results were as follows:

09-MAR-94	J. I. CASE	2	ELECTROMOTIVE	4
	BD	SCORE		SCORE
	1 KALE,S	1	MANDZUKIC,S	0
	2 KLINEFELTER,H	1	JOHNSON,S	0
	3 SAWDO,E	0	GARCIA,N	1
	4 GASTON,K	0	MATHEWS,T	1
	5 KANAS,W	0	AMADOR,T	1
	6 DUFRESNE,T	0	MOTYCKA,R	1 (JCASE)

The Case players participating in the match were credited with a game played in CIGL competition counting toward Centurion awards, consistent with past practice.

-- Charlie Ward
Ratings Chairman

NORTH DIVISION 03-10-1994

TEAM NAME	W	L	D	GAME POINTS	MATCH POINTS	PCT
GROLIER SUBSIDIARIES	6	1	0	29.5	6.0	0.857
SEARS	6	1	0	28.0	6.0	0.857
MOTOROLA	5	2	0	27.0	5.0	0.714
UOP PROCESS DIV.	5	2	0	23.0	5.0	0.714
EXEMPLARS	3	4	1	22.5	3.5	0.438
NORTHROP CORP.	2	5	1	21.0	2.5	0.313
KEMPER INSURANCE	1	6	1	14.5	1.5	0.188
FEL-PRO	0	7	1	11.5	0.5	0.063

EAST DIVISION 03-10-1994

TEAM NAME	W	L	D	GAME POINTS	MATCH POINTS	PCT
ALUMNI CENTRAL	8	0	1	41.0	8.5	0.944
CHICAGO RES. & TRDG.	7	0	2	38.5	8.0	0.889
CONTINENTAL BANK	6	3	0	36.5	6.0	0.667
COLUMBIA COLLEGE	6	3	0	36.0	6.0	0.667
CHICAGO POST OFFICE	5	3	1	29.5	5.5	0.611
CHICAGO MERC. EXCH.	3	5	0	19.5	3.0	0.375
AMOCO CORP.	2	4	0	16.0	2.0	0.333
CTA RAIL	1	8	0	13.0	1.0	0.111
HULL TRADING CO.	1	6	0	9.5	1.0	0.143
CTA ROAD	0	7	0	5.5	0.0	0.000

NEAR WEST DIVISION 03-10-1994

TEAM NAME	W	L	D	GAME POINTS	MATCH POINTS	PCT
ARGONNE KNIGHTS	7	1	0	38.0	7.0	0.875
AT&T CHARGERS	5	3	0	23.5	5.0	0.625
J. I. CASE	3	4	1	19.5	3.5	0.438
ROCKWELL INT'L	2	5	1	20.5	2.5	0.313
A & B RADIO	0	7	0	11.0	0.0	0.000

FAR WEST DIVISION 03-10-1994

TEAM NAME	W	L	D	GAME POINTS	MATCH POINTS	PCT
AT&T DRAGONS	6	1	1	32.5	6.5	0.813
AT&T ROYALS	5	1	1	29.0	5.5	0.786
FERMILAB	3	2	1	22.0	3.5	0.583
AT&T TYROS	3	4	1	21.5	3.5	0.438
ALUMNI WEST	0	6	0	3.5	0.0	0.000

02-FEB-94 CHICAGO RES. & TRDG. 5 AMOCO CORP. 1

ROUND 6

BD		RATINGS	SCORE		RATINGS	SCORE
1	FRIESEMA, W	2165 -4	.5	HODINA, J	2105 4	.5
2	JASAITIS, A	2245 2	1	ATKINSON, J	1775 -3	0
3	LOSOFF, A	1920 5	1	WENTLING, C	1546 -5	0
4	BARGERSTOCK, D	1928 0	1F	HAMILTON, L	1402 0	0F
5	DENG, J	1657-18	.5	BAER, M	1297 18	.5
6	CARNAL, D	0 0	1	HAMPER, P	1268 0	0

08-FEB-94 CHICAGO RES. & TRDG. 3 ALUMNI CENTRAL 3

ROUND 8

BD		RATINGS	SCORE		RATINGS	SCORE
1	FRIESEMA, W	2161-20	0	CZERNIECKI, A	2194 14	1
2	JASAITIS, A	2247 6	1	COX, M	2015 -6	0
3	LOSOFF, A	1925 23	1	RZESZUTKO, R	1935-23	0
4	BARGERSTOCK, D	1928 4	.5	LEONG, D	1975 -4	.5
5	DENG, J	1639 15	.5	FRANEK, M	1895-15	.5
6	CARNAL, D	0 0	0	LITVINAS, A	1707 0	1

14-FEB-94 CHICAGO POST OFFICE 4 CTA RAIL 1

ROUND 8

BD		RATINGS	SCORE		RATINGS	SCORE
1	INUMERABLE, F	2158 4	1	MATTHEWS, J	1735 -4	0
2	COOPER, W	1693 0	1	SANCHEZ, P	0 0	0
3	HOWARD, W	1487 0	1	ROJAS, R	0 0	0
4	DAVIS, R	0 0	0	WILLIAMS, J	0 0	1
5	CARTER, L	1476 0	1F	CURRY, G	0 0	0F
6	GRIESMEYER, W	1343 0	0F	HOOVER, L	0 0	0F

16-FEB-94 CTA RAIL 6 CTA ROAD 0

ROUND 7

BD		RATINGS	SCORE		RATINGS	SCORE
1	MATTHEWS, J	1731 4	1	JONES, M	1334 -4	0
2	ABRAHAM, T	1531 0	1F	TAYLOR, M	0 0	0F
3	SANCHEZ, P	0 0	1F	HARRIS, FF	1404 0	0F
4	VAN OTRIVE, R	1096 0	1F	WILSON, A	1567 0	0F
5	NOWAK, W	0 0	1F		0 0	0F
6	WILLIAMS, J	0 0	1	JACKSON, JJ	0 0	0

23-FEB-94 CHICAGO POST OFFICE 3 CHICAGO RES. & TRDG. 3

ROUND 9

BD		RATINGS	SCORE		RATINGS	SCORE
1	INUMERABLE, F	2162 21	1	FRIESEMA, W	2141-21	0
2	MARCOWKA, R	2018 -6	0	JASAITIS, A	2253 6	1
3	COOPER, W	1693 -8	0	LOSOFF, A	1948 8	1
4	HOWARD, W	1487 42	1	BARGERSTOCK, D	1932-42	0
5	CARTER, L	1476 0	1	LUEDERS, J	0 0	0
6	GRIESMEYER, W	1343-26	0	BERNARD, D	1290 26	1

08-MAR-94 HULL TRADING CO.
ROUND 9

0 ALUMNI CENTRAL

6

BD	RATINGS	SCORE	RATINGS	SCORE
1 YOUNG, R	1362 -1	0	COX, M	2009 1 1
2 NAUGHTON, T	1323 0	OF	RZESZUTKO, R	1912 0 1F
3 MUDAN, M	0 0	0	BRONFELD, A	1812 0 1
4 WEISSKOPF, J	0 0	0	FRANEK, M	1880 0 1
5 SAMULAK, C	0 0	0	LITVINAS, A	1707 0 1
6 WEISS, G	0 0	0	DAVIDSON, M	1678 0 1

10-FEB-94 FEL-PRO
ROUND 7

1.5 UOP PROCESS DIV.

4.5

BD	RATINGS	SCORE	RATINGS	SCORE
1 QUERUBIN, R	0 0	0	STEVANOVIC, M	2240 0 1
2 DEARDORFF, M	1440 -1	0	BUERGER, E	2102 1 1
3 HESS, B	1441 13	.5	SAJBEL, P	1653-13 .5
4 FELDMAN, A	1437 5	.5	LIKHTEREV, M	1546 -7 .5
5 NISHIMURA, K	1254 11	.5	O'BRIEN, D	1428-11 .5
6 THOMPSON, R	1072 -7	0	VAN ZILE, C	1375 7 1

17-FEB-94 NORTHROP CORP.
ROUND 7

5 KEMPER INSURANCE

0

BD	RATINGS	SCORE	RATINGS	SCORE
1 JAKSTAS, K	2150 16	1	SIWEK, M	2162-16 0
2 GOLUMBOVSKI, P	2127 1	1	OLSEN, A	1489 -1 0
3 DIAZ, P	1981 1	1	LAMBIRIS, J	1382 -1 0
4 VIGANTS, A	1594 0	1	MCFARLIN, B	0 0 0
5 ELEK, G	1004 0	1F		0 0 0F
6	0 0	0F		0 0 0F

17-FEB-94 GROLIER SUBSIDIARIES
ROUND 7

5 SEARS

1

BD	RATINGS	SCORE	RATINGS	SCORE
1 BENESA, A	2196 31	1	REYES, R	2329-20 0
2 WEBER, L	2132 16	1	LATIMER, E	2037-11 0
3 GAZMEN, E	2230 11	1	GOLLA, R	2032 -7 0
4 SOLLANO, E	1962 15	1	BROCKETT, M	1840-15 0
5 SANCHEZ, R	1491 34	1	MILLER, TT	1688-34 0
6 PUNZALAN, N	1600-30	0	LOMONT, C	1476 30 1

28-FEB-94 NORTHROP CORP.
ROUND 8

2 EXEMPLARS

4

BD	RATINGS	SCORE	RATINGS	SCORE
1 GOLUMBOVSKI, P	2128 6	.5	WONG, P	2221 -4 .5
2 DIAZ, P	1982 29	1	CREWSE, L	2090-29 0
3 BURIAN, D	1681 19	.5	BLOOM, B	2091-19 .5
4 VIGANTS, A	1594 -6	0	OSTERLUND, R	1914 6 1
5 ELEK, G	1004 0	0	FRISKE, T	1855 0 1
6	0 0	0F	WEITZ, R	1725 0 1F

03-MAR-94 KEMPER INSURANCE

2.5 FEL-PRO

2.5

ROUND 8

BD		RATINGS	SCORE		RATINGS	SCORE
1	SIWEK, M	2146	13	1	QUERUBIN, R	2110-20 0
2	OLSEN, A	1488	-3	.5	HESS, B	1454 3 .5
3	LAMBIRIS, J	1381	4	.5	FELDMAN, A	1442 -3 .5
4	MCFARLIN, B	0	0	.5	DEARDORFF, M	1439 0 .5
5	AMUNDSEN, C	0	0	0	NISHIMURA, K	1265 0 1
6		0	0	0F		0 0 0F

22-FEB-94 AT&T TYROS

4 AT&T ROYALS

2

ROUND 8

BD		RATINGS	SCORE		RATINGS	SCORE
1	STOLTZ, B	2050	0	1F	GUIO, J	2076 0 0F
2	BHOJWANI, C	1958	19	1	DOBROVOLNY, C	1904-19 0
3	BLAZIE, J	1819	2	.5	OGASAWARA, L	1841 -2 .5
4	SHAFF, R	1538	-6	0	ROSLEY, D	1779 9 1
5	KARPIERZ, J	1078	17	.5	ANDERSON, CJ	1402-17 .5
6	SCHWARTZ, M	1054	0	1F		0 0 0F

23-FEB-94 ROCKWELL INT'L

2 J. I. CASE

4

ROUND 8

BD		RATINGS	SCORE		RATINGS	SCORE
1	JONES, B	2076-15		.5	KALE, S	1810 15 .5
2	RAFACZ, T	1746-25		0	SATTERLEE, D	1701 17 1
3	RAFACZ, W	1629	-1	.5	WHITE, H	1618 1 .5
4	MITCHAM, L	1552	0	0F	KLINEFELTER, H	1491 0 1F
5	DEWITT, G	1433-17		0	SAWDO, E	1397 25 1
6	DEZONNO, T	1181	32	1	REID, C	1333-32 0
(AWEST) 7	POMA, D	1245	27	1	GASTON, K	1316-27 0

02-MAR-94 AT&T DRAGONS

4.5 AT&T CHARGERS

1.5

ROUND 8

BD		RATINGS	SCORE		RATINGS	SCORE
1	LUDWIG, T	2140-17		0	WARREN, J	2099 11 1
2	TEGEL, F	2147	3	1	STAMM, V	1743 -3 0
3	JACOBS, N	1958	-9	.5	RADAVICIUS, E	1714 9 .5
4	CHRISTIAN, R	1833	4	1	DOBR, K	1505 -4 0
5	PIAO, T	1720	9	1	THOMAS, J	1486 -6 0
6	EUSTACE, D	1487	10	1	BRADY, R	1277-10 0

02-MAR-94 A & B RADIO

1 ARGONNE KNIGHTS

5

ROUND 8

BD		RATINGS	SCORE		RATINGS	SCORE
1	TYREE, D	1505	-2	0	BERRY, G	2043 1 1
2	O'DELL, DW	1647-12		0	GREEN, D	1817 8 1
3	BOOKER, G	1375	-4	0	HILL, R	1767 4 1
4	GORZ, E	1320	-5	0	DECMAN, S	1681 3 1
5	MIKULECKY, B	1332	-6	0	BAURAC, D	1649 4 1
6	LASKY, N	1384	0	1F		0 0 0F

03-MAR-94 UNILEVER
ROUND 7

3 J. I. CASE

3

	BD	RATINGS	SCORE		RATINGS	SCORE
	1	ELLICE, W	1834 10	1	WHITE, H	1619-10 0
	2	NOTERMAN, T	1206-16	0	REID, C	1301 16 1
	3	DZURIESKO, G	0 0	1	GASTON, K	1289 0 0
	4	MCKAY, P	0 0	1	DUFRESNE, T	1013 0 0
	5		0 0	OF		0 0 1F
	6		0 0	OF		0 0 1F
(AWEST)	7	POMA, D	1272 0	1	MAA, R	0 0 0 (DRGNS)

NORTH DIVISION TOP TEN

REYES, R	SEARS	2309D
GAZMEN, E	GROLR	2241
STEVANOVIC, M	UOP	2240C
BENESA, A	GROLR	2227
WONG, P	EXMPL	2217C
HASAN, Y	MTRLA	2202
MELNIKOV, I	MTRLA	2167
JAKSTAS, K	NORTH	2166C
SIWEK, M	KEMPR	2159C
WEBER, L	GROLR	2148

EAST DIVISION TOP TEN

JASAITIS, A	CRT	2259C
CZERNIECKI, A	ALUMN	2208C
INUMERABLE, F	PSTOF	2183
FRIESEMA, W	CRT	2120
ALFARO, C	ALUMN	2118*
HODINA, J	AMCRP	2109
MARCOWKA, R	PSTOF	2012C
MAREMA, D	PSTOF	2010
COX, M	ALUMN	2010C
LEONG, D	ALUMN	1971

NEAR WEST DIVISION TOP TEN

LEVINE, D	KNGHT	2387
BENEDEK, R	KNGHT	2221D
WARREN, J	CHRGR	2110T
JONES, B	ROCKW	2061
BERRY, G	KNGHT	2044D
KEISLER, J	KNGHT	1965
KALE, S	JCASE	1825
GREEN, D	KNGHT	1825C
HILL, R	KNGHT	1771
STAMM, V	CHRGR	1740D

FAR WEST DIVISION TOP TEN

KOZLOVSKY, M	FERMI	2225
TEGEL, F	DRGNS	2150D
LUDWIG, T	DRGNS	2123
DORIGO, T	FERMI	2080
GUIO, J	ROYLS	2076
STOLTZ, B	TYROS	2050
BUCHNER, R	ROYLS	2041
SPIEGEL, L	FERMI	2011C
STINSON, M	ROYLS	2006
UNDERWOOD, W	AWEST	1991C

MOST IMPROVED PLAYERS

PIAO, T	DRGNS	120
KALE, S	JCASE	111
SANCHEZ, R	GROLR	96
MATTHEWS, J	RAIL	93
POMA, D	AWEST	84
HOWARD, W	PSTOF	73
PRATTS, M	COLUM	71
INUMERABLE, F	PSTOF	68
STOLTZ, B	TYROS	66
BURIAN, D	NORTH	59

NAME	TEAM	W	L	D	RATING	NAME	TEAM	W	L	D	RATING
ABBOTT, J	MTRLA	2	2	0	0000?	CHOUdry, A	KEMPR	0	0	0	0000?
ABRAHAM, T	RAIL	0	1	0	1531	CHRISTIAN, R	DRGNS	1	0	0	1837C
ADAMI, S	UOP	0	0	0	0000?	CIBA, F	SEARS	0	0	0	1385
ALFARO, C	ALUMN	0	0	0	2118*	CIESLEK, D	MTRLA	2	2	0	1933
ALPER, T	COLUM	0	0	0	0000?	CIMMARRUSTI, A	CRT	0	0	0	1266#
AMUNDSEN, C	KEMPR	0	1	0	0000?	CISKO, G	FERMI	0	1	0	1604*
ANDERSON, CJ	ROYLS	2	0	1	1385	COBLEIGH, M	ROAD	0	0	0	0000?
ATKINSON, J	AMCRP	2	2	2	1772	COLEMAN, O	ROAD	1	1	0	0000?
AUGSBURGER, L	MTRLA	3	1	0	1879	CONNELY, S	HULL	0	2	0	0000?
AUSTIN, R	ROYLS	0	0	0	1135#	COOPER, W	PSTOF	4	2	2	1685
BAER, M	AMCRP	1	1	3	1315#	COTE, J	MERC	1	3	1	1285*
BAKER, B	FLPRO	0	0	0	1074	COX, M	ALUMN	3	1	2	2010C
BAKER, LR	MERC	1	4	0	1112*	CREWSE, L	EXMPL	5	2	0	2061
BALASE, E	SEARS	0	0	0	1364*	CUMBERLAND, M	SEARS	1	0	0	0000?
BANZA, S	HULL	0	0	0	0000?	CUMMUTA, P	KEMPR	0	1	0	1368
BARGERSTOCK, D	CRT	5	1	1	1890	CURRY, G	RAIL	0	0	0	0000?
BARGYH, J	COLUM	0	0	0	0000?	CZERNIECKI, A	ALUMN	6	2	0	2208C
BAURAC, D	KNGHT	4	2	0	1653C	DAVIDSON, M	ALUMN	2	0	0	1678*
BENEDEK, R	KNGHT	2	0	2	2221D	DAVIS, R	PSTOF	0	4	0	0000?
BENESA, A	GROLR	5	1	1	2227	DAWSON, J	KNGHT	0	0	0	1409
BERNARD, D	CRT	1	0	0	1316	DEARDORFF, M	FLPRO	0	7	1	1439*
BERRY, G	KNGHT	5	1	1	2044D	DECMAN, S	KNGHT	5	0	0	1684D
BEZZUBOV, V	FERMI	5	0	0	2273#	DENG, J	CRT	3	0	2	1654
BHOJWANI, C	TYROS	3	2	0	1977	DEO, D	KEMPR	0	0	0	0000?
BLACKMON, E	ROYLS	4	0	0	1796	DEWITT, G	ROCKW	2	3	2	1416C
BLAZIE, J	TYROS	0	1	3	1821C	DEZONNO, T	ROCKW	2	2	2	1213*
BLOEDOW, P	KEMPR	0	0	0	1498C	DIAZ, P	NORTH	4	4	0	2011
BLOOM, B	EXMPL	2	2	2	2072	DJORDJEVIC, I	FERMI	0	0	0	0000?
BOLDINGH, E	UOP	2	3	0	2139	DOBR, K	CHRGR	5	3	1	1501T
BOOKER, G	RADIO	2	6	0	1371*	DOBROVOLNY, C	ROYLS	2	2	2	1885
BRADY, R	CHRGR	2	2	0	1267	DONNA, D	MTRLA	1	1	0	0000?
BRANCH, Y	COLUM	2	0	1	1307*	DORIGO, T	FERMI	0	0	0	2080
BRIONES, M	UOP	0	1	0	1660C	DUFRESNE, T	JCASE	3	6	0	1000#
BROCKETT, M	SEARS	2	2	0	1825	DURKEE, D	DRGNS	2	1	3	1778C
BRONFELD, A	ALUMN	2	1	1	1812	DYCZKOWSKI, R	CONBK	2	2	0	1568*
BROTSOS, J	ALUMN	0	0	1	1547D	DZURIESKO, G	UNILV	1	5	0	1111#
BROWN, S	MERC	0	0	0	0000?	EDWARDS, S	AWEST	0	4	1	1264
BROZOVICH, J	TYROS	2	1	2	1767C	EFRON, D	ROCKW	1	0	1	1638
BUCHNER, R	ROYLS	0	0	2	2041	ELEK, G	NORTH	0	7	0	1004*
BUERGER, E	UOP	4	1	1	2103D	ELLICE, W	UNILV	3	0	3	1844
BURDICK, S	COLUM	2	1	0	1562	ERLENBORN, M	AWEST	0	2	0	1442*
BURIAN, D	NORTH	3	3	1	1700C	EUSTACE, D	DRGNS	2	1	2	1497
CAPAGATTI, A	ROCKW	0	0	0	0000?	FAHRENHOLTZ, S	MTRLA	2	0	0	1790*
CARNAL, D	CRT	1	2	0	0000?	FELDMAN, A	FLPRO	1	4	3	1439C
CARTER, D	JCASE	0	0	0	1059*	FLESHMAN, M	ROAD	0	0	0	0000?
CARTER, L	PSTOF	3	4	1	1476	FRAATS, D	CONBK	4	3	0	1866
CASTILLA, H	FERMI	0	0	0	0000?	FRANCISKOVICH, D	HULL	1	4	0	1113#
CHAN, H	SEARS	1	0	0	1578	FRANEK, M	ALUMN	5	2	1	1880C
CHARKOVSKY, R	ALUMN	1	0	0	1608*	FRANK, M	MERC	0	0	0	1719*
CHEVERESAN, S	UOP	0	0	1	1434C	FRIESEMA, W	CRT	6	2	1	2120

? - UNRATED
- 5 TO 9 RATED GAMES
* - 10 TO 24 RATED GAMES

C - CENTURY CLUB MEMBER
D - DOUBLE CENTURION
T - TRIPLE CENTURION
Q - QUAD CENTURION

NAME	TEAM	W	L	D	RATING	NAME	TEAM	W	L	D	RATING
FRISKE, T	EXMPL	4	1	1	1855	JONES, M	ROAD	0	4	0	1330*
GABRIELLO, A	AMOCO	0	0	0	0000?	JONES, MARC	COLUM	0	0	0	0000?
GAINES, I	FERMI	4	1	1	1761C	KALE, S	JCASE	3	2	3	1825
GANSER, A	CONBK	3	1	1	0000?	KANAS, W	JCASE	2	5	0	1263C
GASTON, K	JCASE	1	6	0	1289*	KARPIERZ, J	TYROS	0	3	1	1095#
GAVIN, L	MERC	0	0	0	1216	KAUFMAN, M	KEMPR	0	2	0	0000?
GAZMEN, E	GROLR	6	1	0	2241	KEEFE, E	FLPRO	2	3	0	1191#
GLICENSTEIN, J	FERMI	0	0	0	1853	KEISLER, J	KNIGHT	4	0	1	1965
GLOWACKI, D	RADIO	0	0	0	0000?	KINSELLA, G	KNIGHT	1	1	0	1477C
GOLLA, R	SEARS	2	2	1	2025D	KLINEFELTER, H	JCASE	4	2	0	1491
GOLUMBOVSKI, P	NORTH	4	1	3	2134	KOEPELE, J	TYROS	0	1	0	0000?
GONCHAROFF, N	MTRLA	6	0	1	1789Q	KOGAN, G	CONBK	5	3	1	1800
GORZ, E	RADIO	2	3	1	1315#	KOKONTAS, W	MERC	0	0	0	0000?
GREEN, D	KNIGHT	4	1	1	1825C	KOSTECKA, K	COLUM	3	2	2	1638
GREENE, D	ROCKW	0	0	0	0000?	KOZLOVSKY, M	FERMI	2	0	0	2225
GRIESMEYER, W	PSTOF	1	3	1	1317	KRAKAU, H	EXMPL	0	0	0	1964
GUILLEN, B	KEMPR	1	0	0	1402*	KRULL, E	AMCRP	1	1	1	1399
GUIO, J	ROYLS	1	4	0	2076	KUMRO, D	CHRGR	0	0	0	1547T
HAHNE, D	ROYLS	5	0	0	1605	KUSUMOTO, R	HULL	0	0	0	0000?
HAMILTON, L	AMCRP	2	3	0	1402*	LAMBIRIS, J	KEMPR	1	4	3	1385*
HAMMOND, M	CONBK	4	1	0	1361	LASKY, J	RADIO	0	0	0	1397
HAMPER, P	AMCRP	0	3	0	1268#	LASKY, JIM	RADIO	0	0	0	1695#
HARRIS, FF	ROAD	1	3	0	1404#	LASKY, N	RADIO	2	3	1	1384
HARRIS, R	FERMI	3	0	2	1588	LATIMER, E	SEARS	4	2	0	2026D
HASAN, Y	MTRLA	4	1	0	2202	LEE, B	UNILV	1	3	0	1471
HASKELL, M	KEMPR	0	0	0	0000?	LEMBERGER, S	CRT	0	0	0	0000?
HEDSTROM, L	RAIL	0	0	0	0000?	LEONG, D	ALUMN	3	0	3	1971
HEINRICH, J	FERMI	0	0	0	1901	LEONG, G	KEMPR	1	1	0	2022C
HERNANDEZ, DD	COLUM	5	2	0	1516	LERNER, R	SEARS	1	0	1	0000?
HESS, B	FLPRO	0	5	2	1457	LESTER, M	MTRLA	1	2	0	1599
HICKS, C	DRGNS	0	0	0	1530	LEVINE, D	KNIGHT	1	1	0	2387
HILL, C	FERMI	0	1	0	1663*	LIKHTEREV, M	UOP	1	1	1	1539#
HILL, R	KNIGHT	6	0	2	1771	LITVINAS, A	ALUMN	6	1	0	1707C
HILLIARD, J	CONBK	0	3	0	0000?	LOMONT, C	SEARS	1	0	1	1506#
HILTON, J	MERC	2	3	1	1008*	LOSOFF, A	CRT	5	2	0	1956
HODINA, J	AMCRP	3	1	2	2109	LUBERSHANE, S	MERC	0	0	0	0000?
HOOKER, L	RAIL	0	0	0	0000?	LUCEK, D	HULL	0	0	0	0000?
HOWARD, W	PSTOF	5	3	1	1529	LUDWIG, T	DRGNS	4	3	0	2123
HUGHES, L	RAIL	0	0	0	0000?	LUEDERS, J	CRT	0	3	0	0000?
HUGHES, N	KEMPR	2	1	1	1852C	MAA, R	DRGNS	0	3	0	0000?
HUNG, N	MTRLA	0	0	1	1471#	MANIA, B	HULL	0	0	0	0000?
INUMERABLE, F	PSTOF	6	0	1	2183	MANILLA, M	AMOCO	0	0	0	1251#
JACKSON, JJ	ROAD	1	2	0	0000?	MARCOWKA, R	PSTOF	5	2	1	2012C
JACO, H	HULL	0	0	0	1147	MAREMA, D	PSTOF	0	0	0	2010
JACOBS, N	DRGNS	3	1	4	1949C	MARGULIS, A	HULL	0	0	0	1491#
JAKSTAS, K	NORTH	2	1	4	2166C	MATHEWS, B	CRT	0	0	0	0000?
JARRETT, T	RAIL	0	1	0	1604#	MATTHEWS, J	RAIL	6	3	0	1735
JASAITIS, A	CRT	4	0	1	2259C	MCALISTER, K	COLUM	2	4	2	1907
JENKINS, M	RADIO	0	0	0	0000?	MCCLOUD, E	ROYLS	0	0	0	1068#
JONES, B	ROCKW	1	0	6	2061	MCFARLIN, B	KEMPR	0	5	1	1219#

? - UNRATED
- 5 TO 9 RATED GAMES
* - 10 TO 24 RATED GAMES

C - CENTURY CLUB MEMBER
D - DOUBLE CENTURION
T - TRIPLE CENTURION
Q - QUAD CENTURION

NAME	TEAM	W	L	D	RATING	NAME	TEAM	W	L	D	RATING
MCGRIFF, M	RADIO	0	0	0	1393	QUERUBIN, R	FLPRO	2	4	0	2090#
MCINTOSH, S	CONBK	0	3	1	1133*	RACANELLI, F	UOP	0	0	0	0000?
MCKAY, P	UNILV	2	0	0	0000?	RADAVICIUS, E	CHRGR	4	1	4	1723D
MCQUINN, J	ROCKW	0	1	1	1450	RADULSKI, B	TYROS	0	0	0	0000?
MEDINA, P	FERMI	0	0	0	0000?	RAFACZ, T	ROCKW	1	4	2	1721
MELNIKOV, I	MTRLA	3	4	1	2167	RAFACZ, W	ROCKW	2	3	3	1628
MENDOZA, D	FERMI	0	0	0	0000?	RAFFERTY, M	HULL	0	0	0	0000?
MICKLICH, F	UOP	3	3	0	1765C	RANGEL, R	HULL	0	1	0	1741
MIKULECKY, B	RADIO	1	2	4	1326	REICHERT, P	NORTH	0	0	0	1639*
MILLER, TT	SEARS	4	2	1	1654	REID, C	JCASE	4	3	1	1317
MIRANDA, V	GROLR	0	0	0	1462#	REYES, R	SEARS	3	1	2	2309D
MITCHAM, L	ROCKW	2	3	0	1552*	RINGENBERG, T	AMOCO	0	0	0	1409
MOORE, JJ	MTRLA	1	0	0	0000?	ROJAS, R	RAIL	0	1	0	0000?
MORTON, B	SEARS	2	0	1	1591	ROSE, K	AMOCO	0	0	0	1980
MOSS, J	MERC	0	0	0	0000?	ROSLEY, D	ROYLS	3	1	0	1788
MOTYCKA, R	JCASE	4	2	1	1185	ROSS, L	JCASE	0	1	0	0000?
MUDAN, M	HULL	1	5	0	0000?	RUBIN, J	UNILV	0	1	0	0000?
MURPHY, B	GROLR	0	0	0	0000?	RUDDY, J	MERC	1	4	1	1217
NAUGHTON, T	HULL	0	3	0	1323#	RUEB, R	HULL	0	1	0	0000?
NELL, D	UNILV	1	3	0	0000?	RZESZUTKO, R	ALUMN	3	2	0	1912
NELSON, H	CONBK	2	2	0	1965	SAHLI, E	UOP	2	0	2	1693*
NISHIMURA, K	FLPRO	1	5	1	1265*	SAJBEL, P	UOP	1	3	1	1640
NOTERMAN, T	UNILV	0	4	0	1190	SAJKOWSKI, D	AMOCO	0	0	0	1956
NOWAK, W	RAIL	0	1	0	0000?	SAMELSON, C	MTRLA	3	2	0	1989C
NWABUDE, O	CHRGR	2	4	2	1029*	SAMULAK, C	HULL	0	2	0	0000?
O'BRIEN, D	UOP	1	0	1	1417*	SANCHEZ, N	ROAD	0	0	0	0000?
O'DELL, DW	RADIO	1	4	3	1635	SANCHEZ, P	RAIL	0	2	0	0000?
OCKERS, S	KNGHT	0	0	0	1482	SANCHEZ, R	GROLR	5	1	0	1525*
OELHAFEN, A	EXMPL	0	0	0	1278*	SANTIAGO, T	COLUM	1	2	2	1883#
OGASAWARA, L	ROYLS	4	0	1	1839	SANTOS, S	GROLR	0	0	0	0000?
OGASAWARA, R	MTRLA	0	0	0	1600D	SATTERLEE, D	JCASE	3	6	0	1718C
OLSEN, A	KEMPR	1	4	2	1485	SAUER, C	ROAD	0	0	0	0000?
OLUND, P	MTRLA	0	0	0	1328*	SAWDO, E	JCASE	2	2	2	1422
OSTERLUND, R	EXMPL	3	4	0	1920	SCHATTKE, N	AMOCO	0	0	0	0000?
PAAUWE, N	AMOCO	0	0	0	1502	SCHWARTZ, M	TYROS	0	3	1	1054*
PARA, A	FERMI	1	2	1	1583*	SCHWARTZ, S	SEARS	0	0	0	1713C
PARAOAN, E	CONBK	6	1	0	1779	SHAFF, R	TYROS	1	4	1	1532C
PATTON, D	CHRGR	1	1	1	0000?	SHEU, G	CHRGR	2	0	1	1334*
PEHAS, A	ROYLS	1	0	2	1953	SHOUSE, B	MTRLA	1	3	0	0000?
PEPPERS, M	RAIL	0	0	0	0000?	SHUKLA, S	FERMI	0	1	0	0000?
PETWAY, L	PSTOF	0	0	0	1453*	SIEGEL, R	CONBK	5	0	2	1529
PIAO, T	DRGNS	7	0	0	1729*	SIMS, B	CRT	1	2	0	1519#
PITTS, R	ROAD	0	0	0	0000?	SIWEK, M	KEMPR	2	4	2	2159C
POMA, D	AWEST	7	4	3	1272	SLAGLE, S	MERC	2	5	0	1582
POMA, M	AWEST	0	1	0	0000?	SLAUGHTER, S	ROAD	0	0	0	0000?
POZNIAK, J	KEMPR	0	1	0	0000?	SMITH, BR	TYROS	0	2	1	1445
PRATTS, M	COLUM	5	1	1	1701	SMITH, G	ROAD	0	0	0	1595#
PRICE, B	AWEST	0	1	0	1086#	SMITH, JM	ALUMN	1	0	0	1196*
PUNZALAN, N	GROLR	5	2	0	1570	SOLLANO, E	GROLR	4	2	0	1977
PURDLE, D	GROLR	0	0	0	0000?	SOMBONG, M	CONBK	2	3	0	1679

? - UNRATED
- 5 TO 9 RATED GAMES
* - 10 TO 24 RATED GAMES

C - CENTURY CLUB MEMBER
D - DOUBLE CENTURION
T - TRIPLE CENTURION
Q - QUAD CENTURION

NAME	TEAM	W	L	D	RATING	NAME	TEAM	W	L	D	RATING
SPANGLER, M	AMOCO	0	0	0	1371	VERGE, C	PSTOF	0	0	0	0000?
SPECK, D	COLUM	0	0	0	1346	VERIVE, J	AWEST	0	2	0	1593#
SPIEGEL, L	FERMI	2	2	2	2011C	VICK, H	MTRLA	0	1	0	1516
STAMM, V	CHRGR	4	4	1	1740D	VIGANTS, A	NORTH	3	5	0	1588
STAPLES, C	FERMI	0	3	1	0000?	WALKER, R	FERMI	0	0	0	1345C
STEIN, C	RAIL	0	0	0	0000?	WALLACH, C	MTRLA	2	0	2	2103
STEINER, D	HULL	0	1	0	0000?	WALLIN, R	AWEST	0	4	0	1698
STEVANOVIC, M	UOP	3	2	2	2240C	WARD, C	DRGNS	4	2	1	1536D
STEVENS, J	COLUM	4	2	0	1399	WARREN, J	CHRGR	2	2	4	2110T
STINSON, M	ROYLS	1	1	0	2006	WATSON, W	COLUM	0	0	0	0000?
STOLTZ, B	TYROS	4	1	0	2050	WEBB, E	AMCRP	0	0	0	1278#
SUERTH, F	EXMPL	2	3	2	1603C	WEBER, L	GROLR	1	4	2	2148
SULLIVAN, C	MERC	2	4	1	1534	WEISS, G	HULL	0	3	0	0000?
SULLIVAN, J	EXMPL	0	0	0	1996D	WEISSKOPF, J	HULL	3	2	0	1363#
SZAUKELLIS, W	MTRLA	1	1	0	0000?	WEITZ, R	EXMPL	1	3	0	1725C
SZONTAGH, T	CRT	0	1	0	0000?	WELTER, P	SEARS	2	0	0	1675#
TAYLOR, M	ROAD	0	0	0	0000?	WENTLING, C	AMCRP	0	4	0	1541
TEGEL, F	DRGNS	4	2	2	2150D	WEST, R	MTRLA	0	1	0	1447#
THOMAS, G	TYROS	1	2	2	1511	WHITE, H	JCASE	3	5	1	1609
THOMAS, J	CHRGR	2	4	1	1480C	WHITSITT, S	AWEST	0	2	0	1554*
THOMPSON, J	RAIL	0	0	0	0000?	WHITTINGTON, D	HULL	0	0	0	0000?
THOMPSON, R	FLPRO	0	2	0	1065	WIECHERT, A	UOP	0	0	0	0000?
THOMPSON, T	ROAD	0	0	0	0000?	WILLIAMS, A	ROAD	0	3	0	0000?
TSEITLIN, E	MTRLA	3	1	0	0000?	WILLIAMS, J	RAIL	2	0	0	0000?
TURNER, R	COLUM	0	0	0	1229*	WILSON, A	ROAD	0	4	1	1567
TYREE, D	RADIO	1	6	1	1503*	WILSON, M	SEARS	0	1	0	0000?
UNDERWOOD, W	AWEST	1	2	0	1991C	WONG, P	EXMPL	1	1	2	2217C
VALDEZ, C	MTRLA	1	1	0	0000?	YOUNG, R	HULL	0	6	1	1361*
VAN MEER, J	KEMPR	1	2	1	1989	ZEIDEL, J	MERC	0	0	1	1947
VAN OTRIVE, R	RAIL	1	3	0	1096#	ZOELLNER, J	CONBK	3	3	0	1266
VAN ZILE, C	UOP	1	1	0	1382*	ZUNGOLO, J	CRT	0	1	0	0000?

? - UNRATED
- 5 TO 9 RATED GAMES
* - 10 TO 24 RATED GAMES

C - CENTURY CLUB MEMBER
D - DOUBLE CENTURION
T - TRIPLE CENTURION
Q - QUAD CENTURION