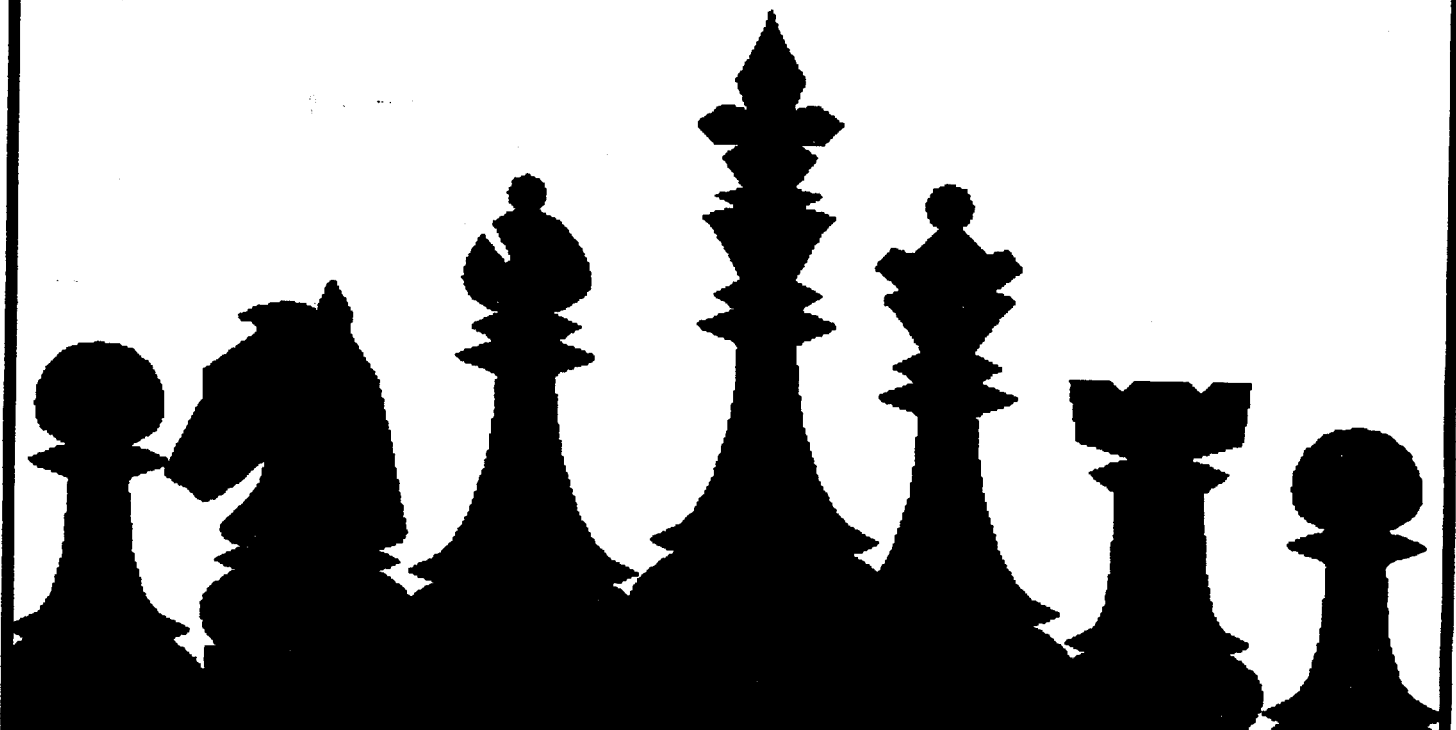


CICL

Playoffs

1993-94 SEASON



COVER DESIGN BY LORRAINE REYES © 1993

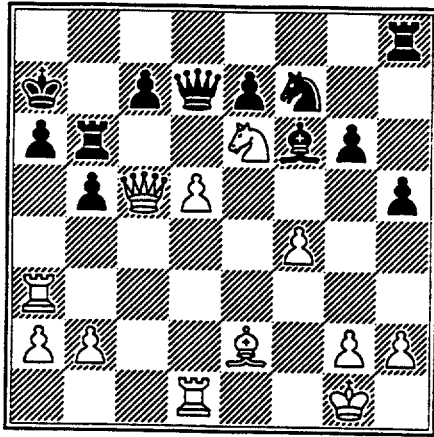
Dennis Leong (Data Processing) Tony Jasaitis (Coordination)
Marty Franek (Copying) Duane Satterlee (Preprocessing & Index)

Chicago Industrial Chess League Championship

① Allen, Hence (1900) - Friesema, Bill (2140) [A85]
Chicago ICL p1of, 1994
Post Office vs CRT 1.d4 f5 2.c4 Nf6 3.Nc3 g6 4.Nf3 Bg7 5.Bg5 d6 6.Qd2 h6 7.Bxf6 Bxf6 8.e4 Nc6 9.d5 Ne5 10.Be2 Bd7 11.exf5 Bxf5 12.Nd4 Qd7 13.Nxf5 Qxf5 14.0-0 0-0-0 15.Nb5 a6 16.Nd4 Qd7 17.Ne6 Rdg8 18.f4 Nf7 19.Rad1 h5 20.Qb4 Kb8 21.c5 Ka7 22.Rf3 Rb8 23.Ra3 dxc5 24.Qxc5+ b6 25.Qc4 b5 26.Qc5+ Rb6

35.Rc2 Ne5 36.f3 Kg6 37.Rc3 h6 38.Kf1 Rec8 39.Kf2 Ra7 40.Ke3 Kf7 41.Rd2 Ng6 42.Bf1 Ne5 43.h4 Re8 44.Kd4 gxh4 45.Rh2 Ng6 46.Kc5 Rb8 47.Rcc2 Kg7 48.Rcf2 Raa8 49.Kd4 Rc8 50.Be2 Ra7 51.f4 c3 52.Nc2 b4 53.f5 Ne5 54.Rxh4 b3 55.Rfh2 Nf7 56.Bd3 bxc2 57.Bxc2 Rb7 58.Bd3 Rb4+ 59.Ke3 Bb5 60.Bc2 Rb2 61.d6 Rb4 62.Bd3 Bxd3 63.Kxd3 Ne5+ 64.Ke2 Rb2+ 65.Ke3 Rxh2 66.Rxh2 Nxg4+ 0-1

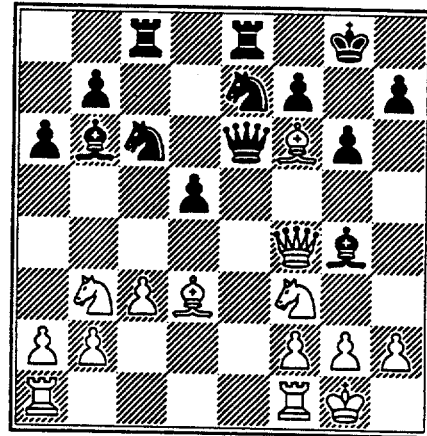
1



27.Qxc7+ [27.Rxa6+! Kxa6 (27... Kb7 28.Qa3 Rxa6 29.Nc5+) 28.Qa3+ Kb7 29.Nc5+] 27...Qxc7 28.Nxc7 Kb7 29.Ne6 Bxb2 30.Rb3 Bf6 31.Nc5+ Ka7 32.Nd7 Rd6 33.Nxf6 exf6 34.Bf3 Rc8 35.Re1 Rc7 36.Rbe3 Kb6 37.Re7 Rxe7 38.Rxe7 Nh6 39.Rg7 Nf5 40.g3 Nxg7 0-1

③ Anderson, Cliff (1446) - Green, Dave (1970) [C08]
Chicago ICL p1of, 1994
Royals vs Rooks 1.e4 e6 2.d4 d5 3.Nd2 c5 4.exd5 exd5 5.Bb5+ Nc6 6.Qe2+ Be6 7.dxc5 Bxc5 8.Nb3 Bb6 9.Nf3 Nge7 10.0-0 0-0 11.c3 a6 12.Bd3 Re8 13.Qc2 g6 14.Bg5 Rc8 15.Qd2 Bg4 16.Qf4 Qd7 17.Bf6 Qe6

2



② Allen, Hence (1915) - Golla, Roman (2000) [E00]
Chicago ICL p1of, 1994
Sears vs Post Office 1.d4 Nf6 2.c4 e6 3.Nc3 c5 4.e3 a6 5.a4 Qc7 6.Be2 Be7 7.Nf3 Nc6 8.0-0 0-0 9.Bd2 d5 10.cxd5 exd5 11.Rc1 c4 12.h3 Bd7 13.b3 Ba3 14.Ra1 Bb2 15.Ra2 Bxc3 16.Bxc3 Ne4 17.Qc2 b5 18.bxc4 Nxc3 19.Qxc3 dxc4 20.Rd1 Ne7 21.d5 Qd6 22.Qe5 Qc5 23.Qd4 Qxd4 24.Rxd4 Nf5 25.Rd1 Nd6 26.Ne5 Bf5 27.g4 f6 28.Nc6 Bd7 29.Bf3 Rfe8 30.Rd4 g5 31.e4 Kg7 32.a5 Nf7 33.Bg2 Rac8 34.Nb4 Ra8

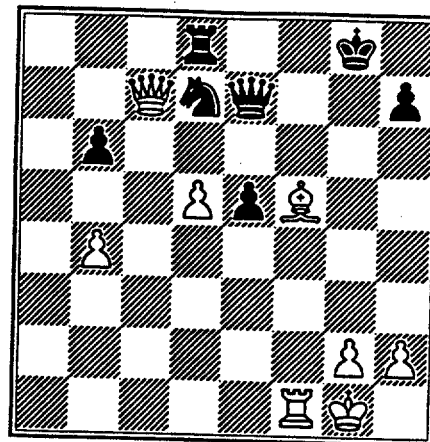
18.Nbd4 [18.Ng5 Qd7 19.Bd4!] 18...Bc7 19.Nxe6 Bxf4 20.Nxf4 Bxf3 21.gxf3 Kf8 22.Rad1 h6 23.Ne2 Nf5 24.Bxf5 gxf5 25.Nf4 Ne5 26.Bxe5 Rxe5 27.Rfe1 Rce8 28.Rxe5 Rxe5 29.Kf1 Kg7 30.Rxd5 Re7 31.Rxf5 Rd7 32.Rd5 Rc7 33.Rd6 Rc5 34.Rd7 Rf5 35.Ne6+ Kg6 36.Nd4 Ra5 37.Rxb7 Rxa2 38.b4 a5 39.Ra7 a4 40.b5 a3 41.c4 Rd2 42.b6 Rb2 43.c5 a2 44.Kg2 Kf6 45.b7 Rxb7 46.Rxa2 Rc7 47.Rc2 Kg5 48.Kg3 h5 49.f4+ Kg6 50.Kh4 Kh6 51.f5 Rc8 52.c6 Kg7 53.Kxh5 Kf6 54.f4 Ke7 55.Kg5 Rg8+ 56.Kh6 Kd6

Chicago Industrial Chess League Championship

57.Nb5+ 1-0

3

- ④ Augsburg, L (1745) - Blackmon, Eric (1775) [B22]
 Chicago ICL plov, 1994
 Motorola vs Royals 1.e4 c5 2.c3 d5 3.exd5 Qxd5 4.d4 e6 5.Nf3 Nf6 6.Be2 Nc6 7.O-O Be7? 8.Bf4 [8.c4! Qd8 9.dxc5 Qxd1 10.Rxd1 Bxc5 11.Nc3] 8...O-O 9.Re1 b6 10.Ne5 Nxe5 11.dxe5 Qxd1 12.Rxd1 Nd5 13.Bf3 Bb7 14.c4 Nxf4 15.Bxb7 Rad8 16.Nd2 Nd3 17.Nf3 Nxb2 18.Ba6 Rxd1+ 0-1



- ⑤ Benedek, Roy (2210) - Ludwig, T (2095) [E92]
 Chicago ICL plov, 1994
 Argonne Knights vs AT&T Dragons 1.Nf3 g6 2.d4 Bg7 3.c4 Nf6 4.Nc3 0-0 5.e4 d6 6.Be2 e5 7.Be3 Ng4 8.Bg5 Bf6? [8...f6 9.Bh4 g5 10.Bg3 Nh6 11.h3 Nc6 12.d5 Ne7] 9.Bxf6 Nxf6 10.dxe5 dxe5 11.Qxd8 Rxd8 12.Nxe5 Nxe4 13.Nxe4 Re8 14.Nf6+ 1-0

- ⑦ Berry, Greg (2045) - Brockett, Mark (1830) [B28]
 Chicago ICL plov, 1994
 Knights vs Sears 1.e4 c5 2.Nf3 a6 3.c3 e6 4.d4 cxd4 5.cxd4 d5 6.e5 h6 7.Nc3 Bd7 8.Bd3 Nc6 9.O-O Nge7 10.b3 b5 11.Bb2 Nc8 12.Rc1 Be7 13.Bb1 0-0 14.Qd3 g6 15.Ne2 Kg7 16.Nf4 N8a7 17.Nh5+ [17.a3 Rh8; 17.Nxg6 Nb4] 17...Kh7 18.Qe3 Rh8 19.Qf4 Kg8 20.Qg4 Be8 21.h4 Rh7 22.Bc3 Kh8 23.Ng3 b4 24.Bd2 h5 25.Qf4 Nb5 26.Ne2 a5 27.Bd3 Qb6 28.Be3 Kg8 29.Rfd1 Nca7 30.Ng5 Rg7 31.Qg3 Nc6 32.f4 Na3 33.Nf3 Bd7 34.Qf2 Kf8 35.g3 Rg8 36.Kg2 Na7 37.Neg1 N7b5 38.Qd2 Kg7 39.Ne2 Bc8 40.Ne1 Ba6 41.Kf3 Bd8 42.Rc5 Be7 43.Rcc1 Qb7 44.Kf2 Bd8 45.Nc2 Nxc2 46.Rxc2 Na3 47.Rcc1 Bb6 48.Bxa6 Rxa6 49.Ng1 Ba7 50.Nf3 Rc8 51.Rxc8 Qxc8 52.Rc1 Rc6 53.Rxc6 Qxc6 54.Qc1 Qb7 55.Ng1 Bb6 56.Ne2 Nb5 57.Qc2 Kf8 58.Qd3 Na3 59.Kf3 Ke7 60.Bc1 Qc7 61.Bxa3 bxa3 62.Ke3 Kd8 63.Qc3 Kd7 64.Qxc7+ Bxc7 65.Kf3 Bd8 66.Nc3 Kc6 67.Nb1 Be7 68.Ke3 Kb5 69.Kd3 Kb4 70.Nc3 f6 71.Na4 fxe5 72.fxe5 Kb5 73.Nc3+ Kc6 74.Ne2 Kd7 75.Nf4 g5 76.hxg5 Bxg5 77.Nxh5 Ke7 78.Ke2 Kf7 79.Kf3 Bd2 80.Nf4 Bc3 81.Ke3 Be1 82.Ne2 Kg6 83.Kf4 Bd2+ 84.Kg4 Be1 85.Nf4+ Kf7 86.Kf3 Bc3 87.Ne2 Be1 88.g4 Kg6 89.Nf4+ Kf7 90.g5 Bd2 91.g6+ Ke7

- ⑥ Benedek, Roy (2210) - Ogasawara, Lance (1860) [B38]
 Chicago ICL plov, 1994
 Argonne Knights vs Royals 1.Nf3 c5 2.c4 Nc6 3.d4 cxd4 4.Nxd4 g6 5.e4 Bg7 6.Be3 d6 7.Nc3 Nf6 8.Be2 0-0 9.O-O Bd7 10.Rc1 Nxd4 [10...Qa5 11.Nc2 Rfc8] 11.Bxd4 Bc6 12.Qd3 Rc8 13.Qe3 Nd7 14.Bxg7 Kxg7 15.b4 b6 16.Qd4+ Kg8 17.f4 a5 18.a3 Ra8 19.Nd5 axb4 20.axb4 Ra2 21.Bd3 e5 22.fxe5 dxe5 23.Qe3 Rb2 24.Rb1 Rxb1 25.Bxb1 Bxd5 26.cxd5 Qe7 27.Qc3 Nb8 28.Bd3 f5 29.exf5 gxf5 30.Bxf5 Nd7 31.Qc7 Rd8

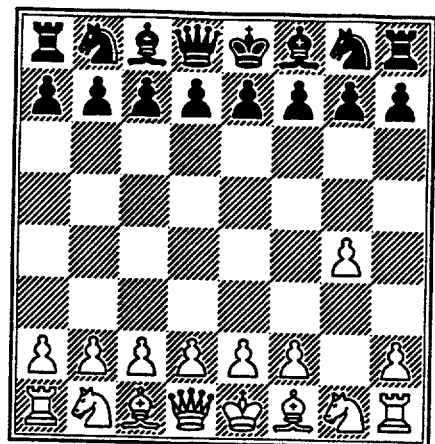
(diagram 3)

- 32.Be6+ Kh8 33.Rf7 Qh4 34.Bxd7 Qd4+ 35.Rf2 Qd1+ 36.Rf1 Qd4+ 37.Kh1 Rg8 38.Bf5 Rg7 39.Qd8+ Rg8 40.Qf6+ Rg7 41.Be6 1-0

Chicago Industrial Chess League Championship

92.g7 Kf7 93.Nxe6 Bh6 94.Nc7
Bxg7 95.Nxd5 Ke6 96.Ke4 Bf8 97.
Nf4+ Kd7 98.d5 Bg7 99.Ne6 Bh8
100.Nc5+ 1-0

4



⑧ Berry, Greg (2045) - Durkee, D
(1770) [B09]
Chicago ICL p1of, 1994
Knights vs Dragons 1.e4 d6 2.d4
Nf6 3.Nc3 g6 4.f4 Bg7 5.Nf3 0-0
6.Be2 Na6 7.0-0 c5 8.d5 Nc7 9.h3
e6 10.dxe6 fxe6 11.Be3 b6 12.Nd2
d5 13.Bf2 d4 14.Ncb1 Bb7 15.Bh4
Qd7 16.Bf3 Nfe8 17.g3 Nb5 18.e5
Bc6 19.a4 Nbc7 20.c4 dxc3 21.
Bxc6 Qxc6 22.Nxc3 Nd5 23.Nxd5
exd5 24.Nf3 Nc7 25.Qb3 Rae8 26.
Rfc1 Ne6 27.Rd1 c4 28.Qb5 Qb7
29.Qxd5 Rf7 30.Qxb7 Rxb7 31.Rac1
Rc7 32.Nd4 a6 33.Nxe6 Rxe6 34.
Rd8+ Kf7 35.Ra8 b5 36.axb5 axb5
37.Rb8 Rc5 38.Rb7+ Kf8 39.Rd1
Re8 40.Rdd7 1-0

1...e5 [1...d5 2.Bg2 Bxg4 3.c4
c6 4.cxd5 Nf6 (4...cxd5? 5.Qb3)
5.Nc3 cxd5 6.Qb3 e6 7.Qxb7 Nbd7]
2.Bg2 Nf6 3.e4 d5 4.h3 h6 [4...
Nxe4] 5.Ne2 Nxe4 6.Bxe4 dxe4 7.
Ng3 e3 8.fxe3 Qh4 9.Qf3 Bd7
[9...f5 10.gxf5 Bxf5 11.Qxf5
Qxg3+ 12.Kf1 Nc6 13.Rg1 Qh4 14.
Qg6+ Kd8 with the idea of Be7
and Rf8] 10.Nc3 Bc6 11.e4 Bc5
12.d3 Bd7 13.Nd5 Nc6 14.c3 0-0-0
15.b4 Bb6 [15...Bd6 and g6,f5]
16.a4 a5 17.b5 Na7 18.Nxb6+ cxb6
19.Be3 Kc7 20.Qf2 Nc8 21.d4 Kb8
22.dxe5 Be6 23.Nf5 Qxf2+ 24.Kxf2
g6 25.Nd6 Nxd6 26.exd6 Rc8 27.
Bd4 Rhd8 28.Ke3 Ka7 29.e5 Rc4
30.Rhf1 Rd7 31.Kd3 Rc8 32.Rf4
Bb3 33.Ra3 Be6 34.Be3 Rdd8 35.c4
Rh8 36.Rc3 h5 37.g5 Bxh3 38.Rxf7
Bf5+ 39.Ke2 h4 40.Bf4 h3 41.Bh2
Rh4 42.Rxf5 gxf5 43.d7 Rd8 44.e6
Rh7 45.Re3 Re7 46.Kf3 Rh8 47.Kf4
Rf8 48.Ke5 f4 49.Bxf4 Rxf4 50.
Kxf4 h2 51.Rh3 Rxe6 52.Rxh2 Rd6
53.Rh7 Kb8 54.Ke5 Kc7 55.d8Q+
1-0

⑨ Blackmon, Eric (1775) - Berry,
Greg (2045) [C01]
Chicago ICL p1of, 1994
Royals vs Knights 1.e4 e6 2.d4
d5 3.exd5 exd5 4.Nf3 Nf6 5.Be3
Bd6 6.c4 c6 7.h3 0-0 8.Bd3 Re8
9.0-0 h6 10.Nc3 dxc4 11.Bxc4 Be6
12.Qb3 Bxc4 13.Qxc4 Nbd7 14.d5
cxd5 15.Nxd5 Rc8 16.Nxf6+ Nxf6
17.Qb3 b6 18.Rac1 Rxc1 19.Rxc1
Nd5 20.Bd4 Nf4 21.Kf1 Ne2 22.Re1
Nxd4 23.Rxe8+ Qxe8 24.Nxd4 Qe4
25.Nb5 Bb4 26.Nc3 Qd3+ 27.Ke1
Bc5 28.Qd5 Qc2 29.Qa8+ Kh7 30.
Qe4+ Qxe4+ 31.Nxe4 Bd4 32.b3 Kg6
33.Ke2 Be5 34.a4 f5 35.Nd2 Kf6
36.Kd3 Ke6 37.Kc4 a6 38.Nf3 Bd6
39.b4 g6 40.Nd4+ Kd7 41.f3 Be5
42.Kd5 Bxd4 43.Kxd4 Kd6 44.f4 g5
45.g3 gxf4 46.gxf4 h5 47.h4 Ke6
48.Kc4 Kd6 49.a5 bxa5 50.bxa5
Kc6 51.Kd4 Kd6 H-H

⑩ Branch, Y(1301) - Motycka,
Bob(1156) [C25]
Chicago ICL p1of, 1994
Columbia vs JI Case 1.e4 e5 2.
Nc3 d6 3.Be2 Be7 4.Nf3 Nf6 5.b4
0-0 6.a3 Be6 7.0-0 c6 8.d4 Nbd7
9.dxe5 Nxe5 10.Nxe5 dxe5 11.h3
a6 12.Be3 Qc7 13.Bd3 Rad8 14.Qe2
Rd7 15.Na4 Rfd8 16.Bb6 Qc8 17.
Bxd8 Qxd8 18.Qe3 b5 19.Nc3 Rd4

⑪ Boldingh, Edwin (2100) - Kogan,
Greg (1850) [A00]
Chicago ICL p1of, 1994
UOP vs ConBank 1.g4

Chicago Industrial Chess League Championship

20.f4 Bxh3 21.Qxh3 g6 22.fxe5
Nd7 23.e6 Ne5 24.exf7+ Nxf7 25.
Qe6 Qe8 26.Rf3 Rd6 27.Qb3 Kg7
28.Raf1 Ne5 29.R3f2 Bg5 30.Rf8
Qe7 31.Qg8+ Kh6 32.Re8 Be3+ 33.
Rf2 Nf3+ 34.gxf3 Qg5+ 35.Kf1 Rd7
36.Rh2+ Qh5 37.Rxh5+ Kxh5 38.
Re5+ g5 39.Qe8+ 1-0

⑫ Brockett, Mark (1840) - Peraren, E
(1740) [A18]

Chicago ICL plof, 1994

Sears vs Post Office 1.c4 Nf6 2.
Nc3 e6 3.e4 Nc6 4.g3 Bc5 5.Bg2
e5 6.h3 d6 7.Nge2 Be6 8.d3 h6 9.
0-0 Qd7 10.Kh2 g5 11.Nd5 Nh7 12.
Be3 Nd4 13.b4 Nxe2 14.bxc5 Nd4
15.Bxd4 exd4 16.cxd6 Qxd6 17.f4
c6 18.e5 Qd7 19.Nb4 0-0 20.Qh5
Kg7 21.Rf2 Bf5 22.fxg5 Nxc5 23.
h4 Bg4 24.Qxg4 Qxg4 25.hxg5 hxg5
26.Be4 Rh8+ 27.Kg2 Rh3 28.Rf3
Rah8 29.Raf1 Rh2+ 30.Kg1 Rh1+
31.Kf2 a5 32.Nc2 R8h2+ 33.Ke1
Rxf1+ 34.Kxf1 Rxc2 0-1

⑬ Brotsos, Jim (1541) - Fahrenholtz,
S (1795) [B86]

Chicago ICL plof, 1994

Alumni vs Motorola 1.e4 c5 2.Nf3
d6 3.d4 cxd4 4.Nxd4 Nf6 5.Nc3 a6
6.Bc4 e6 7.Bg5 Be7 8.f4 Nc6 9.
Nxc6 bxc6 10.0-0 d5 11.exd5 exd5
12.Bb3 0-0 13.Qd3 Ng4 14.Bxe7
Qxe7 15.Rae1 Qc5+ 16.Kh1 Nf2+
17.Rxf2 Qxf2 18.Re3 Bf5 19.Nd1
Qxf4 20.Qe2 Bg4 21.Rf3 Bxf3 22.
gxf3 Rae8 23.Qd3 Re1+ 24.Kg2
Qg5+ 25.Kh3 Re6 0-1

⑭ Buchner, R (2125) - Melnikov, I
(2200) [A09]

Chicago ICL plof, 1994

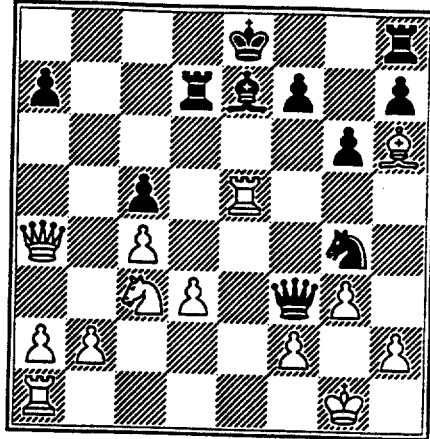
Royals vs Motorola 1.Nf3 d5 2.g3
c5 3.Bg2 Nc6 4.0-0 e5 5.c4 d4 6.
d3 Bg4 7.e4 dxe3 8.Bxe3 g6 9.Re1
Be7 10.Nc3 Nf6 11.Bh6 Qd7 12.Qa4
Bxf3 13.Bxf3 Nd4 14.Qd1 Qf5 15.
Bxb7 Rd8 16.Qa4+ Rd7 17.Bc6 Nf3+
18.Bxf3 Qxf3 19.Rxe5 Ng4

(diagram 5)

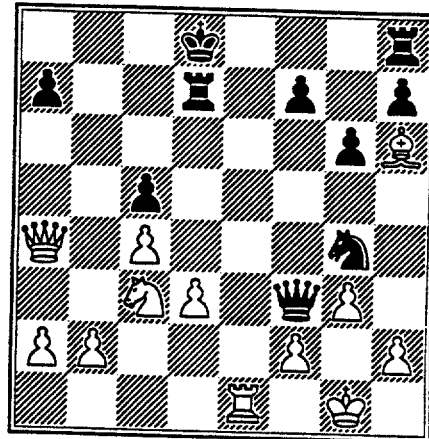
20.Rxe7+ Kxe7 21.Re1+ Kd8

[29...Ne5 30.Qc8+ Nd7 31.Qxd7+

5

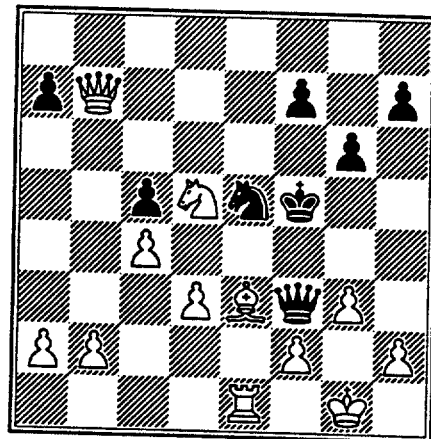


6



22.Be3 Re8 23.Qa5+ Rc7 24.Nd5
Ree7 25.Nxe7 Kd7 26.Nd5 Rb7 27.
Qa4+ Ke6 28.Qc6+ Kf5 29.Qxb7 Ne5

7



Chicago Industrial Chess League Championship

Ke5 32.Bxc5+ Qe4 33.Rxe4+] 1-0

(15) Carnal, Dave (1210) - Eustace,
Dan (1504) [A46]

Chicago ICL plof, 1994
CRT vs Dragons 1.d4 Nf6 2.Nf3 c5
3.e3 cxd4 4.exd4 d5 5.c3 Bg4 6.
Nbd2 e6 7.Bd3 Bd6 8.Qc2 0-0 9.
Nh4 Qc7 10.Ndf3 h6 11.g3 g5 12.
h3 gxh4 13.hxg4 hxg3 14.Rxh6
gxf2+ 15.Qxf2 Bg3 16.Bf4 Qxf4
17.Ke2 Bxf2 18.Rah1 Qe3+ 19.Kf1
Qxd3+ 20.Kxf2 Nxc4+ 21.Kg3 Nxc6
22.Rxh6 Kg7 23.Rh5 Rg8 24.Kg4
Kf8+ 25.Kf4 Qe4+ 0-1

(16) Carnal, Dave (1210) - Howard,
W (1518) [B07]

Chicago ICL plof, 1994
CRT vs Post Office 1.d4 Nf6 2.
Nf3 d6 3.e3 g6 4.Nbd2 Bg7 5.e4
c5 6.c3 0-0 7.Bd3 Bg4 8.Qb3 Qc7
9.0-0 Nc6 10.Re1 cxd4 11.Nxd4
Nxd4 12.cxd4 Nd7 13.h3 Be6 14.
Qc2 Qxc2 15.Bxc2 Bxd4 16.Nf3 Bg7
17.Ng5 Bc4 18.b3 Bxb3 19.Bb2
Bxc2 20.Bxg7 Kxg7 21.Rac1 Ba4
22.Rc4 Bc6 23.a4 Ne5 24.Rc3 h6
25.Nf3 Nxf3+ 26.gxf3 Bxa4 27.Rc7
Bc6 28.Rxe7 a5 29.Rd1 Rfd8 30.
Kf1 Kf8 31.Rc7 Rac8 32.Rxc8 Rxc8
33.Ke1 b5 34.Ra1 a4 35.Kd2 b4
36.Kc2 Bxe4+ 37.Kb2 Bc6 38.f4
Bb5 39.f3 Rc3 40.Rd1 0-1

(17) Carter, L.T. (1546) - Litvinas, A
(1690) [B07]

Chicago ICL plof, 1994
Post Office vs Alumni 1.d4 g6 2.
e4 d6 3.Bc4 Nf6 4.Nc3 Bg7 5.Bg5
0-0 6.Nf3 Nbd7 7.Qd3 c5 8.e5
dxe5 9.dxe5 Ng4 10.e6 fxe6 11.
Bxe6+ Kh8 12.Bxg4 Nf6 13.Qxd8
Rxd8 14.Bxc8 Raxc8 15.0-0 Re8
16.Rad1 e5 17.Rd6 Ng4 18.Ne4 b6
19.Rfd1 Kg8 20.Rd7 Ra8 21.h3 Nh6
22.Bxh6 Bxh6 23.Nf6+ Kf8 24.
Nxc7+ Kg8 25.Nf6+ Kf8 26.Nxe8
Rxe8 27.Rxa7 1-0

(18) Carter, L.T. (1546) - Szontagh,
Tom (UNR) [B07]

Chicago ICL plof, 1994
Post Office vs CRT 1.d4 d6 2.e4

Nf6 3.Nc3 b6 4.Bc4 e6 5.Bg5 Bb7
6.Qf3 c5 7.Bxf6 Qxf6 8.Qxf6 gxf6
9.d5 Nd7 10.Nf3 Rg8 11.0-0 Ne5
12.Nxe5 fxe5 13.Rad1 0-0-0 14.a4
exd5 15.Bxd5 Rg6 16.Bxf7 Rg4 17.
Be6+ Rd7 18.Bxg4 Kd8 19.Bxd7
Kxd7 20.Nd5 Ke6 21.c4 Ba6 22.
Nc7+ 1-0

(19) Cooper, W (1715) - Bargerstock,
Dan (1810) [E30]

Chicago ICL plof, 1994
Post Office vs CRT 1.d4 Nf6 2.c4
e6 3.Nc3 Bb4 4.Bg5 h6 5.Bxf6
Qxf6 6.e3 c5 7.a3 Bxc3+ 8.bxc3
0-0 9.Nf3 d6 10.Bd3 e5 11.dxe5
dxe5 12.Qc2 Bg4 13.Be4 Nc6 14.
Bxc6 Qxc6 15.e4 Qc7 16.Nd2 Rad8
17.f3 Be6 18.0-0 Rd6 19.Rfd1
Rfd8 20.Nf1 Bxc4 21.Rxd6 Rxd6
22.Ne3 Bd3 23.Qa4 b5 24.Qb3 Qb6
25.Qb2 c4 26.Qf2 Qc5 27.Nd5
Qxf2+ 28.Kxf2 H-H

(20) Cooper, W (1685) - Lomont, C (1506)
[E90]

Chicago ICL plof, 1994
Post Office vs Sears 1.d4 Nf6 2.
c4 g6 3.Nc3 Bg7 4.e4 d6 5.Nf3 c6
6.Bd3 0-0 7.Bf4 c5 8.dxc5 dxc5
9.Qc2 Nc6 10.a3 Bg4 11.Ne5 Nd4
12.Qb1 Nh5 13.Nd5 Nxf4 14.Nxc4
Nxc4+ 15.Kf1 Nh4 16.Qd1 Nhf3 17.
Be2 Nxe2 18.Qxe2 Nd4 19.Qd1 Qd7
20.Nge3 Qh3+ 21.Ng2 Nc6 22.Ndf4
Qc8 23.Rb1 Rd8 24.Qe2 f5 25.exf5
Qxf5 26.Qe6+ Qxe6 27.Nxe6 Rd2
28.Nxc7 Kxc7 29.Ke1 Rc2 30.Ne3
Nd4 31.Nxc2 Nxc2+ 32.Kd2 Nd4 33.
Ke3 Rf8 34.f4 Nc2+ 35.Kd3 Nd4
36.b4 b6 37.bxc5 bxc5 38.Rb7
Rxf4 39.Rxe7+ Kf6 40.Rxa7 Rf3+
41.Ke4 Rf5 42.Rxh7 Re5+ 43.Kd3
Nc6 44.Rc7 Nd4 45.a4 Ke6 46.a5
Kd6 47.Rb7 Kc6 48.Rhb1 Kd6 49.a6
Re8 50.Rg1 Ra8 51.Rxc6+ Ne6 1-0

(21) Crewse, L (2040) - Paraoan, E
(1760) [B07]

Chicago ICL plof, 1994
Exemplars vs ConBank 1.e4 d6 2.
d4 c6 3.f4 Nd7 4.Nf3 Qc7 5.Bc4
Ngf6 6.Nc3 h6 7.0-0 e6 8.Bb3 Be7
9.Kh1 a5 10.a3 b5 11.h3 Bb7 12.

Chicago Industrial Chess League Championship

e5 Nd5 13.Bxd5 exd5 14.Re1 0-0
 15.Be3 dxe5 16.fxe5 b4 17.axb4
 Bxb4 18.Qd2 Nb6 19.Bxb6 f6 20.
 Bf4 Qe7 21.exf6 Qxf6 22.Be5 Nc4
 23.Bxf6 Nxd2 24.Be7 Nxf3 25.gxf3
 Rxf3 26.Bxb4 axb4 27.Rxa8+ Bxa8
 28.Re8+ Kh7 29.Kg2 Rf7 30.Na4
 Bb7 31.Nc5 Rc7 32.Rb8 Bc8 33.
 Rxb4 Kh6 34.Rb6 Kh5 35.Kg3 g5
 36.c3 Kg6 37.Nd3 Kf5 38.Ne5 c5
 39.Rc6 Rxc6 40.Nxc6 Bd7 41.Ne5
 Be6 42.Nf3 c4 43.Nd2 Kf6 44.b4
 cxb3 45.Nxb3 Kf5 46.Kf3 Bf7 47.
 Nd2 Bh5+ 48.Ke3 Bf7 49.Kf3 Bh5+
 50.Kg3 Bf7 51.Nf3 Be6 52.Nd2 Bf7
 53.Kf3 Bh5+ 54.Ke3 Bf7 55.Nf3
 Be6 56.Ne5 Kf6 57.Ng4+ Kg6 58.
 Kf3 Kh5 59.Kg3 Kg6 60.Ne3 Kf6
 61.h4 gxh4+ 62.Kxh4 Kg6 63.Kg3
 Kg5 64.Kf3 Bf7 65.Ng2 Bh5+ 66.
 Ke3 Bf7 67.Kd2 Kf5 68.Kc2 Ke4
 69.Kb3 Kd3 70.Ne1+ Ke2 71.Nc2
 Kd2 72.Nb4 Be6 73.Nc6 Bf5 74.c4
 dxc4+ 75.Kxc4 Be4 76.Kc5 Kc3 77.
 Ne5 H-H

(22) Czerniecki, A (2140) - Tegel,
 Frank (2145) [B07]
 Chicago ICL plof, 1994

Alumni vs Dragons 1.e4 d6 2.Nf3
 Nf6 3.d3 c5 4.Nbd2 g6 5.g3 Bg7
 6.Bg2 0-0 7.0-0 Nc6 8.c3 Bg4 9.
 h3 Bd7 10.a4 Rc8 11.Re1 e5 12.
 Nc4 Ne8 13.Nh4 Bf6 14.Bh6 Bg7
 15.Qd2 f5 16.exf5 gxf5 17.Bd5+
 Kh8 18.Bxg7+ Kxg7 19.Kh2 f4 20.
 Rg1 Kh8 21.Be4 Qf6 22.Qe2 Be6
 23.Qh5 Rf7 24.Ng6+ Kg8 25.gxf4
 Rg7 26.fxe5 Qxf2+ 27.Rg2 hxg6
 28.Bxg6 Qf4+ 29.Kh1 Bd5 30.Rag1
 Nxe5 31.Nxe5 dxe5 32.c4 Bf3 33.
 Qf5 Qxf5 34.Bxf5 Bxg2+ 35.Rxg2
 Rxg2 36.Kxg2 Rc7 37.h4 Nf6 38.
 Be6+ Kg7 39.Kf3 a5 40.h5 Kh6 41.
 Ke3 Kxh5 42.Kd2 Kg5 43.Kc3 Kf4
 44.Bd5 b6 45.b3 Rd7 46.Bg2 Ke3
 47.Bf1 Nh5 0-1

(23) Deng, J (1620) - Blackmon, Eric
 (1705) [B56]
 Chicago ICL plof, 1994

AT&T Royals vs CRT 1.e4 c5 2.Nf3
 d6 3.d4 cxd4 4.Nxd4 Nf6 5.Nc3
 Nc6 6.Bb5 Bd7 7.0-0 g6 8.Be3 Bg7

9.Qd2 0-0 10.Be2 Ng4 11.Bxg4
 Bxg4 12.h3 Bd7 13.f4 Rc8 14.f5
 Ne5 15.b3 Bc6 16.Rad1 Nd7 17.Kh1
 Nf6 18.Nxc6 bxc6 19.Bh6 Qa5 20.
 Bxg7 Kxg7 21.Qe3 Rc7 22.Rf4 Qe5
 23.Rh4 Nh5 24.Rd3 h6 25.Qf3 Nf6
 26.Qe3 g5 27.Rg4 Nng4 28.hxg4 f6
 29.Qh3 h5 30.gxh5 Rh8 31.Kg1 Qf4
 32.Rg3 Qc1+ 33.Kh2 Qxc2 34.Rd3
 Qf2 35.Rg3 Rh6 36.Nd1 Qe2 37.Qg4
 Rxh5+ 38.Kg1 Qe1+ 0-1

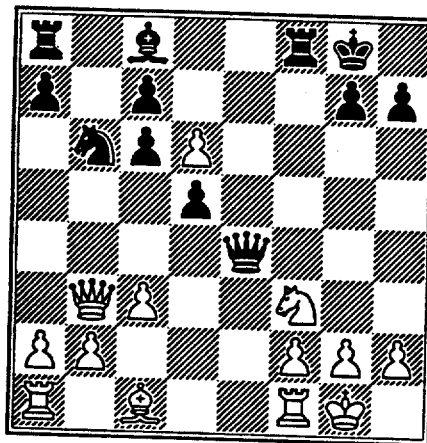
(24) Dobrovolny, C (1950) - Friesema,
 Bill (2140) [C05]
 Chicago ICL plof, 1994

AT&T Royals vs CRT 1.e4 e6 2.d4
 d5 3.Nd2 Nf6 4.e5 Nfd7 5.Ngf3 c5
 6.c3 Nc6 7.Bd3 Qb6 8.0-0 cxd4 9.
 cxd4 Nxd4 10.Nxd4 Qxd4 11.Nf3
 Qb6 12.a3 Be7 13.b4 0-0 14.Be3
 Qd8 15.Qc2 f5 16.exf6 Nxf6 17.
 Racl Bd7 18.Qc7 Bc6 19.Qe5 Qd6
 20.Bc5 Qxe5 21.Nxe5 Bxc5 22.Rxc5
 Ba4 23.Rc7 b5 24.Rfc1 a6 25.Re7
 Bb3 26.Rcc7 Ne8 27.Rc6 H-H

(25) Dobrovolny, C (1995) - Sheynin,
 Sam (2170) [C04]
 Chicago ICL plof, 1994

Royals vs Knights 1.e4 e6 2.d4
 d5 3.Nd2 Nc6 4.Ngf3 Nf6 5.e5 Nd7
 6.c3 f6 7.exf6 Qxf6 8.Bb5 Bd6 9.
 0-0 0-0 10.Qa4 Nb6 11.Qb3 e5 12.
 Bxc6 bxc6 13.Ne4 Qg6 14.dxe5
 Qxe4 15.exd6

8

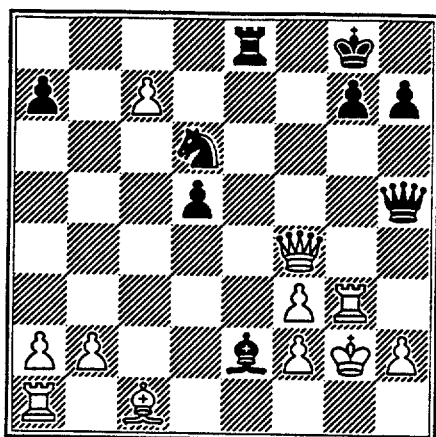


15...Rxf3 16.gxf3 Qg6+ 17.Kh1
 Qh5 18.c4 cxd6 19.cxd5 Ba6 20.

Chicago Industrial Chess League Championship

Rg1 Be2 21.dxc6+ d5 22.Rg3 Rf8
23.Kg2 Nc4 24.c7 Nd6 25.Qe3 Re8
26.Qf4

9



26...Nf5 27.Rg5 Bxf3+ 28.Qxf3
Nh4+ 29.Kg3 Qxf3+ 30.Kxh4 Re4+
0-1

26 Dyczkowski, R (1561) - Reid,
Carl (1362) [A00]

Chicago ICL plof, 1994

ConBank vs JI Case 1.b4 Nf6 2.
Bb2 e6 3.a3 d6 4.Nf3 Be7 5.e3
0-0 6.d4 b6 7.c4 Bb7 8.Nc3 a6 9.
Bd3 h6 10.0-0 Nbd7 11.e4 c6 12.
e5 Ne8 13.Qc2 c5 14.Be4 Rb8 15.
Rad1 cxd4 16.Rxd4 Qc7 17.Rfd1
Bc8 18.exd6 Nxd6 19.Bh7+ Kh8 20.
Ne4 Nxe4 21.Rxe4 Nf6 22.Be5 Qb7
23.Bxf6 Bxf6 24.Re2 Qc7 25.Be4
Bb7 26.Red2 Rbd8 27.Rxd8 Bxd8
28.Bxb7 Qxb7 29.Qd2 Bf6 30.Qd7
Rd8 31.Qxd8+ Bxd8 32.Rxd8+ Kh7
33.h3 Qc7 34.Rf8 Qf4 35.c5 bxc5
36.bxc5 Qc1+ 37.Kh2 Qxc5 38.Rxf7
Kg6 39.Rf4 Qxa3 40.Ne5+ Kh7 41.
Nf7 Qc1 42.g3 Qc7 43.h4 Kg8 44.
Kg2 a5 45.Nxh6+ gxh6 46.Rf6 Qc6+
47.Kh2 Kg7 48.Rf4 a4 0-1

27 Eustace, Dan (1504) - Charkovsky, R
(1615) [C45]

Chicago ICL plof, 1994

Dragons vs Alumni 1.e4 e5 2.Nf3
Nc6 3.d4 exd4 4.Nxd4 d5 5.Nxc6
bxc6 6.Nc3 Nf6 7.e5 Ne4 8.Nxe4
dxe4 9.Qxd8+ Kxd8 10.Bc4 f6 11.
exf6 gxf6 12.Bf4 Bd6 13.0-0-0

Ke7 14.Be3 Be6 15.Bxe6 Kxe6 16.
Bd4 c5 17.Bc3 Rhd8 18.Rhe1 f5
19.f3 Bxh2 20.fxe4 Rxd1+ 21.Kxd1
Rd8+ 22.Bd2 fxe4 23.Rxe4+ Kf5
24.Re2 Bf4 25.Rf2 Rxd2+ 26.Rxd2
Bxd2 27.Kxd2 Kf4 28.Ke2 Kg3 29.
Kf1 h5 30.a4 a5 31.b3 h4 32.Kg1
Kf4 33.Kf2 Ke4 34.Ke2 Kd4 35.Kd2
c6 36.c3+ Kd5 37.Ke3 Ke5 38.Kf3
Kf5 39.Ke3 Ke5 40.Kf3 H-H

28 Eustace, Dan (1504) - Hill, R
(1780) [B72]

Chicago ICL plof, 1994

Dragons vs Knights 1.e4 c5 2.Nf3
d6 3.d4 cxd4 4.Nxd4 Nf6 5.Nc3 g6
6.Be3 Bg7 7.Qd2 0-0 8.0-0-0 Ng4
9.f3 Nxe3 10.Qxe3 Nc6 11.Nb3 Bd7
12.h4 Rc8 13.a3 a6 14.h5 Ne5 15.
hxg6 fxg6 16.Be2 Nc4 17.Bxc4+
Rxc4 18.Nd5 Be6 19.c3 Bxd5 20.
exd5 Qc7 21.Kc2 Rc8 22.Nd2 Rc5
23.Ne4 Rb5 24.Ng5 Qd7 25.Rxh7
Rxb2+ 26.Kxb2 Qb5+ 27.Kc2 Qa4+
28.Kd2 Bxc3+ 29.Ke2 Qc4+ 30.Kf2
Qa2+ 31.Kg1 Be5 32.f4 Rc2 33.
fxe5 [33.Qe4] 33...Rxc2+ 34.Kf1
Rg4 35.Qe2 Rg1+ 36.Kf2 Rg2+ 37.
Kxg2 Qxe2+ 38.Kg3 Qxd1 39.Rxe7
Qxd5 40.Kf4 Kf8 41.exd6 Qxd6+
42.Re5 Qd4+ 43.Re4 Qf6+ 44.Kg4
Qf5+ 45.Kh4 Kg7 46.Re7+ Kf6 47.
Rf7+ Ke5 48.Rxf5+ gxf5 49.Nf3+
Ke4 50.Kg3 Ke3 51.Kg2 f4 52.Ne5
b5 53.Kf1 a5 54.Nc6 a4 55.Nb4
Kd2 56.Nd5 Kc2 57.Nxf4 b4 58.Nd5
bxa3 59.Nb4+ Kb3 60.Nd3 a2 0-1

29 Fraats, D (1865) - Stevanovic, M
(2195) [B07]

Chicago ICL plof, 1994

ConBank vs UOP 1.e4 d6 2.d4 Nf6
3.Nc3 g6 4.Be2 Bg7 5.Bf3 Nc6 6.
Nge2 0-0 7.0-0 Nd7 8.Be3 e5 9.d5
Ne7 10.Ng3 f5 11.exf5 Nxf5 12.
Nxf5 gxf5 13.g3 f4 14.gxf4 exf4
15.Bd4 Ne5 16.Kh1 Qh4 17.Rg1 Rf6
18.Ne4 Rh6 19.Rg2 Bh3 20.Rg5 Bg4
21.Rxc7+ Kxc7 22.Qg1 Qxh2+ 23.
Qxh2 Bxf3+ 24.Kg1 Rxh2 25.Kxh2
Bxe4 26.Re1 Bxd5 27.Bxe5+ dxe5
28.Rxe5 c6 29.Re7+ Kg6 30.Rxb7
Bxa2 31.b3 Bb1 32.Rc7 h5 33.
Rxc6+ Kg5 34.Kh3 Rd8 35.Rc5+ Kg6

Chicago Industrial Chess League Championship

36.Rc6+ Kf5 37.Rc5+ Ke4 38.Kg2
Rg8+ 39.Kf1 h4 40.Ke2 f3+ 41.Kd2
Kf4 42.Rc4+ Kg5 43.Ke3 Rf8 44.
Rc7 a5 45.Kd2 Kg4 46.Rg7+ Kh3
47.Rg1 Bxc2 48.Kxc2 Re8 49.Rh1+
Kg2 50.Rxh4 Kxf2 51.Rh5 Ke2 52.
Rxa5 f2 53.Rf5 Rc8+ 54.Kb2 f1Q
55.Rxf1 Kxf1 56.b4 Ke2 57.Kb3
Kd3 58.b5 Kd4 59.Kb4 Kd5 60.Ka5
Kc5 0-1

(30) Franek, M (1790) - Howard, W (1518)
[E91]

Chicago ICL plof, 1994
Alumni vs Post Office 1.d4 Nf6
2.c4 d6 3.Nf3 g6 4.Nc3 Bg7 5.e4
0-0 6.Be2 c5 7.d5 e6 8.0-0 exd5
9.exd5 Nbd7 10.Bf4 Nb6 11.Qd2
Re8 12.Ra1 Bf5 13.h3 h5 14.Rfe1
Qd7 15.Nh4 Ne4 16.Nxe4 Bxe4 17.
f3 Bd4+ 18.Kh1 H-H

(31) Friske, T (1865) - Atkinson, Jim
(1725) [C12]

Chicago ICL plof, 1994
Exemplars vs Amoco Corp 1.e4 e6
2.d4 d5 3.Nc3 Nf6 4.Bg5 Bb4 5.e5
h6 6.Bd2 Bxc3 7.bxc3 Ne4 8.Qg4
Kf8 9.h4 f5 10.Qf3 Nc6 11.Ne2
Ne7 12.Nf4 Qe8 13.g4 Ng6 14.gxf5
Nxf4 15.fxe6 Bxe6 16.Qxf4+ Ke7
17.Rg1 g5 18.hxg5 hxg5 19.Qe3
Qa4 20.Bd3 Rh3 21.Qe2 Rf8 22.
Bxe4 dxe4 23.Bxg5+ Kd7 24.Be3
Rhf3 25.Kd2 Bc4 26.Qe1 Qc6 27.
Rg7+ Kc8 28.Qg1 Qe6 29.Ke1 Qh3
30.Kd2 Qe6 31.Qg2 Bd5 32.Rh1
R8f7 33.Rh8+ Kd7 34.Rhh7 Rxc7
35.Qxc7+ Rf7 36.Qxf7+ Qxf7 37.
Rxf7+ Bxf7 38.a3 a6 39.Bg5 Ke6
40.Ke3 Kf5 41.Bd8 c6 42.f3 exf3
43.Kxf3 Bd5+ 44.Ke3 Ke6 45.Bb6
Bc4 46.Ke4 Bd5+ 47.Kd3 Bf3 48.c4
Bg2 49.Kc3 Bf3 50.Kb4 Be2 51.Kc5
Bf3 52.Ba5 Be2 53.Bc7 Bf1 54.d5+
cxd5 55.cxd5+ Kd7 56.Bb6 Bg2 57.
Kd4 Bf3 58.c4 Bg4 59.Ke3 Bh3 60.
Kf4 Bf1 1-0

(32) Friske, T (1865) - Dyczkowski,
R (1561) [C66]

Chicago ICL plof, 1994
Exemplars vs ConBank 1.e4 e5 2.
Nf3 Nc6 3.Bb5 d6 4.0-0 Nf6 5.Re1

a6 6.Bf1 Be7 7.c3 Bg4 8.h3 Bh5
9.d3 Qd7 10.Nbd2 0-0-0 11.b4 d5
12.Qc2 Bxf3 13.Nxf3 Rde8 14.a4
Bf8 15.Ba3 d4 16.b5 Bxa3 17.bxc6
1-0

(33) Gaston, Ken (1274) - Siegel,
Ross (1485) [B21]

Chicago ICL plof, 1994
JI Case vs ConBank 1.e4 c5 2.d4
e6 3.c4 cxd4 4.Qxd4 Nc6 5.Qe3
Nb4 6.Bd3 Bc5 7.Qe2 Qb6 8.Nh3
Nf6 9.0-0 h5 10.a3 Nc6 11.b4 Bd4
12.c5 Qc7 13.Ra2 Ng4 14.g3 Nce5
15.Bf4 f6 16.Rd1 g5 17.Bc1 h4
18.Kg2 b6 19.f4 gxf4 20.gxf4 Nh6
21.fxe5 Bxe5 22.Qf3 Bxh2 23.Bf4
Bxf4 24.Nxf4 Bb7 25.Bb5 0-0-0
26.Rc2 Rhg8+ 27.Kf1 Rg3 28.Bxd7+
Rxd7 29.Qe2 Rxd1+ 30.Qxd1 Qxf4+
0-1

(34) Golla, Roman (2025) - Benedek, R
(2210) [E94]

Chicago ICL plof, 1994
Sears vs Knights 1.Nf3 Nf6 2.c4
g6 3.Nc3 Bg7 4.d4 0-0 5.e4 d6 6.
Be2 e5 7.0-0 c6 8.Bg5 h6 9.Bxf6
Qxf6 10.dxe5 dxe5 11.Qc2 Na6 12.
a3 Nc5 13.Rad1 Ne6 14.Rd6 Qe7
15.Rd2 Re8 16.b4 Nd4 17.Qb2 Be6
18.c5 a5 19.Rfd1 Bb3 20.Rc1 a4
21.Nd1 Red8 22.Ne3 Nxe2+ 23.Rxe2
Rd4 24.Qb1 Rad8 25.h3 Qe6 26.Kh2
Rd3 27.Qb2 Qf6 28.Nd2 Be6 29.g3
R8d4 30.Rc3 Qd8 31.Rxd3 Rxd3 32.
Ndc4 Qd4 33.Nd6 Qxb2 34.Rxb2
Rxa3 35.Nxb7 Rb3 36.Rxb3 axb3
37.Nd1 Bc4 38.Nb2 Be2 39.Kg2 f5
40.f3 fxe4 41.fxe4 Kf8 42.Na5
Bb5 43.Nxb3 Ke7 44.Nd2 h5 45.
Ndc4 Ke6 46.Nd6 Ba6 47.Nbc4 Bh6
48.Kf3 Bc1 49.h4 g5 50.hxg5 Bxg5
51.Ne3 h4 52.gxh4 Bxh4 53.Ng2
Bg5 54.Ne3 Bh4 55.Ng2 Bg5 H-H

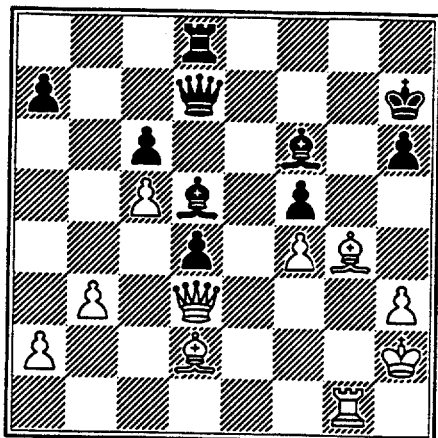
(35) Golla, Roman (2025) - Wallach,
Cliff (2140) [E62]

Chicago ICL plof, 1994
Sears vs Motorola 1.Nf3 Nf6 2.c4
g6 3.Nc3 Bg7 4.g3 0-0 5.Bg2 d6
6.0-0 e5 7.d4 Nc6 8.d5 Ne7 9.e4
Ne8 10.Qd3 f5 11.Bg5 h6 12.Bd2
Nf6 13.Nh4 Rf7 14.Ra1 c5 15.

Chicago Industrial Chess League Championship

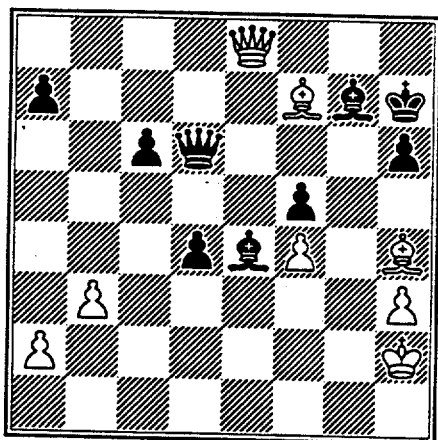
dxc6 bxc6 16.exf5 gxf5 17.b3 Rb8
 18.f3 Qc7 19.Kh1 Be6 20.Ne2 Qd7
 21.Rcd1 d5 22.c5 d4 23.Rfe1 Nfd5
 24.h3 Rd8 25.Kh2 Rf6 26.f4 Ng6
 27.Nxg6 Rxc6 28.fxe5 Bxe5 29.Nf4
 Nxf4 30.gxf4 Bf6 31.Bf3 Bd5 32.
 Rg1 Rxc6 33.Rxc6+ Kh7 34.Bg4

10



34...Be4 35.Qe2 Qd5 36.Bh5 Rg8
 37.Qf2 Qxc5 38.Rxc6 Kxc6 39.Qg3+
 Bg7 40.Qg6 Qe7 41.Be1 Qf6 42.
 Qe8+ Kh7 43.Bh4 Qd6 44.Bf7

11



44...Qxf4+ 45.Bg3 Qd2+ 0-1

(36) Goncharoff, Nick (1770) -
 Charkovsky, R (1615) [C77]
 Chicago ICL p1of, 1994

Motorola vs Alumni 1.e4 e5 2.Nf3
 Nc6 3.Bb5 a6 4.Ba4 Nf6 5.d4 exd4
 [5...Nxd4 6.Nxd4 exd4 7.e5 Ne4
 8.Qxd4 Nc5 9.Nc3 (9.Bb3 Nxb3 10.

axb3 Be7 11.0-0 0-0 12.Bf4 d5=
 Be7 10.Qg4 Szabo-Pachman, 1948
 10...Kf8L ECO 11.0-0 d5 12.Qd4
 c6 13.Bb3 h5 14.Ne2L Short-
 Korchnoi, London 1990; 5...b5 6.
 Bb3 exd4 7.e5 Ne4 8.Bd5 Bb4+ 9.
 c3 dxc3 10.0-0 cxb2 11.Bxb2
 ECO; 5...Nxe4 6.Qe2 b5 7.Qxe4 d5
 8.Qe3 bxa4 9.Nxe5 Nxe5 10.0-0
 Be6 11.dxe5 Qd7 12.Nc3 Bb4 13.
 Qg3 0-0 14.Bh6 f6 15.Bf4 c5 16.
 Rad1 Bxc3 17.Qxc3 f5 18.Qxc5
 Rac8= Shamkovich] 6.e5 [6.0-0
 Be7! (6...Bc5 7.e5 Nd5 8.c3 d3
 9.b4 Bb6 10.Qxd3OK Schlechter-
 Didier, Monte Carlo 1902)] 6...
 Ng4 [6...Ne4 7.Nxd4? Nxf2 8.Kxf2
 Qh4+ 9.Ke3 Qxd4+ 10.Qxd4 Nxd4
 11.Kxd4 c5+ with the idea 12...
 b5 & 13...c4 and Black has an
 endgame advantage. ECO Gunsberg-
 Cohn, Hannover 1902] 7.Bf4 Bb4+
 8.c3 dxc3 9.bxc3 Bc5 10.0-0 Nxf2
 11.Rxf2 Bxf2+ 12.Kxf2 f6 13.exf6
 Qxf6 14.Qe2+ Qe6 15.Qxe6+ dxe6
 16.Bxc6+ bxc6 17.Bxc7 0-0 18.Be5
 Bb7 19.Nbd2 Rad8 20.Kg3 c5 21.
 Rb1 Bxf3 22.Nxf3 Rf5 23.Rb7 Rf7
 24.Rb6 Rd5 25.Rxe6 a5 26.c4 Rd3
 27.Bd6 h6 28.Bxc5 Rc3 29.Re4 Rc7
 30.Bb6 R7xc4 31.Rxc4 Rxc4 32.
 Bxa5 Ra4 33.Bb6 Rxa2 34.h3 Kf7
 35.Bd4 Ra3 36.Kh2 g6 37.Ne5+ Ke6
 38.Nxg6 Kf5 39.Nh4+ Kg5 40.Nf3+
 Kf5 41.Bb2 Ra4 42.Bc1 h5 43.Be3
 Re4 44.Bf2 Kf4 45.Nh4 Re2 46.
 Bg3+ Kg5 47.Nf3+ Kg6 48.Nd4 Re4
 49.Nc6 Re6 50.Ne5+ Kf5 51.Nf3
 Re4 52.Bb8 Rb4 53.Bc7 Rc4 54.Bd8
 Rc8 55.Bg5 Rc4 56.Kg3 Ra4 57.h4
 Ra3 58.Kh3 Rd3 59.Kg3 Ra3 60.Kf2
 Kg4 H-H

(37) Goncharoff, Nick (1770) - Morton,
 Bruce (1569) [B21]

Chicago ICL p1of, 1994

Motorola vs Sears 1.e4 c5 2.f4
 d6 3.Bb5+ Bd7 4.Bxd7+ Nxd7 5.Nf3
 Ngf6 6.d3 Qc7 7.0-0 g6 8.c4 Bg7
 9.Nc3 a6 10.Rb1 0-0 11.a3 Rab8
 12.Bd2 b5 13.b3 b4 14.axb4 Rxb4
 15.Qc2 Rfb8 16.Rb2 Qb7 17.Rfb1
 Qc6 18.Ra2 Qb7 19.Ra3 Qc6 20.Nd5
 Nxd5 21.exd5 Qb7 22.Bxb4 cxb4

Chicago Industrial Chess League Championship

23.Ra4 Nc5 24.Ra2 a5 25.d4 Nxb3
26.Rxb3 Ra8 27.Ra4 Qa7 28.Qd2
Qd7 29.Rbxb4 1-0

38) Green, David (1790) - Morton,
Bruce (1569) [B21]

Chicago ICL p1of, 1994
Knights vs Sears 1.e4 c5 2.d4
cxd4 3.Nf3 d6 4.Bc4 e6 5.0-0 Nf6
6.Re1 Qc7 7.Bb3 Be7 8.c3 d3 9.
Qxd3 0-0 10.Be3 b6 11.Nbd2 Ba6
12.Qc2 Nc6 13.Ng5 h6 14.Nh3 Rac8
15.f4 Rfd8 16.Nf3 Nb4 17.Qd2 Nd3
18.Red1 Nxe4 19.Qc2 Ndc5 20.Rd4
Nxb3 21.axb3 Bb7 22.Rxe4 Bxe4
23.Qxe4 d5 24.Qd3 Rd7 25.Ne5 Rd6
26.f5 exf5 27.Bd4 Re6 28.Qxf5
Bc5 29.Nf3 Rce8 30.Qg4 Rg6 31.
Qf4 Bd6 32.Qd2 Rge6 33.Rf1 Re2
34.Qc1 Bc5 35.Nf4 Bxd4+ 36.Nxd4
R2e4 37.Nxd5 Qe5 38.Nf4 Rc8 39.
Qd1 Rd8 40.Qf3 Rd7 41.Qg4 Rdx4
time 1-0

39) Green, David (1790) - Ward,
Charles (1551) [C44]

Chicago ICL p1of, 1994
Knights vs Dragons 1.e4 e5 2.Nf3
Nc6 3.d4 exd4 4.Bc4 Be7 5.0-0 d6
6.Nxd4 Ne5 7.Bb3 Nf6 8.f4 Ng6 9.
Nc3 0-0 10.Qf3 Bg4 11.Qg3 Re8
12.Bd2 Nf8 13.Qd3 Ne6 14.Nf3 Nc5
15.Bxf7+ Kxf7 16.Ng5+ Kf8 17.Qc4
d5 18.exd5 Bd6 19.b4 Ncd7 20.h3
Nb6 21.Qd3 Bd7 22.Nxh7+ Nxh7 23.
Qxh7 Qf6 24.Qh8+ Kf7 25.Qh5+ Kg8
26.Kh1 Nc4 27.Be1 Rxe1 28.Raxe1
Qxc3 29.Re2 Qf6 30.g4 Nb6 31.g5
Qf5 32.Rfe1 Nxd5 33.Qf3 Nxf4 34.
Qb3+ Kh8 0-1

40) Hahne, D (1575) - Lueders, T (UNR)
[D45]

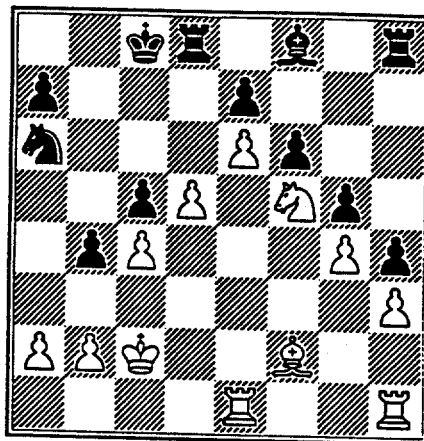
Chicago ICL p1of, 1994
AT&T Royals vs CRT 1.d4 d5 2.c4
c6 3.Nf3 Nf6 4.e3 e6 5.Nc3 Be7
6.Bd3 0-0 7.e4 Nbd7 8.e5 Ng4 9.
h3 Nxf2 10.Kxf2 Qa5 11.cxd5 exd5
12.Rf1 f6 13.Kg1 Qb6 14.Kh1 Re8
15.Qc2 c5 16.Nxd5 Qc6 17.Nxe7+
Rxe7 18.Bxh7+ Kf8 19.Qc4 Rf7 20.
e6 cxd4 21.Qxc6 bxc6 22.exf7
Kxf7 23.Be4 Ne5 24.Nxe5+ Ke6 25.
Nxc6 Bb7 26.Nxd4+ Ke5 27.Bxb7

Rb8 28.Nc6+ Kd6 29.Nxb8 f5 30.
Bf4+ Ke6 31.Rfe1+ Kf6 32.Nd7+
Kg6 33.Rac1 Kh7 34.Re7 Kh8 35.
Rc8+ Kh7 36.Nf8+ Kh8 37.Ne6+ Kh7
38.Rxg7+ 1-0

41) Hahne, D (1605) - Goncharoff, Nick
(1770) [A57]

Chicago ICL p1of, 1994
AT&T Royals vs Motorola 1.d4 Nf6
2.c4 c5 3.d5 b5 4.Bg5 Ne4 5.Bh4
Qa5+ 6.Nd2 Nxd2 7.Qxd2 Qxd2+ 8.
Kxd2 b4 9.e4 d6 10.f4 g6 11.e5
Bg7 12.Re1 dxe5 13.fxe5 Bh6+ 14.
Kc2 Bf5+ 15.Bd3 Bxd3+ 16.Kxd3
g5? 17.Bf2 Na6 18.e6 f6 19.g4
0-0-0 20.Ne2 Bg7 21.Ng3 h6 22.
Nf5 Bf8 23.Kc2 h5 24.h3 h4

12



25.Re3 Rh7 26.Ra1 Kb7 27.a3 Kb6
28.axb4 Nxb4+ 29.Kb1 a5 30.Rb3
Rc8 31.Rba3 Ra8 32.Kc1 Ra7 33.
Kd2 Bh6 34.Kc3 Bf8 35.Bxc5+ Kxc5
36.Rxa5+ Rxa5 37.Rxa5+ Kb6 38.
Kxb4 Bh6 39.c5+ Kb7 40.Rb5+ Kc7
41.c6 Bf8 42.Rb7+ Kc8 43.Nd6+
exd6 44.Rxh7 Kd8 45.Rh8 Ke7 46.
Rxf8 Kxf8 47.c7 1-0

42) Hammond, M (1365) - Baer, M (1347)
[B01]

Chicago ICL p1of, 1994
ConBank vs Amoco Corp 1.e4 d5 2.
Qf3 dxe4 3.Qxe4 Nf6 4.Qe3 Nc6 5.
Bb5 Bd7 6.Nf3 e6 7.Nc3 b6 8.d4
Ne7 9.0-0 Bxb5 10.Nxb5 Ned5 11.
Qe2 c5 12.Bg5 cxd4 13.Nfxd4 Qd7
14.Rad1 Bc5 15.c4 h6 16.Bh4 Nf4

Chicago Industrial Chess League Championship

17.Qf3 N4d5 18.Rfe1 0-0 19.cxd5
Nxd5 20.Nc3 Nxc3 21.bxc3 Rac8
22.Nxe6 fxe6 23.Qxf8+ Rxf8 24.
Rxd7 b5 25.Rxe6 Rc8 26.g4 Bb6
27.Ree7 1-0

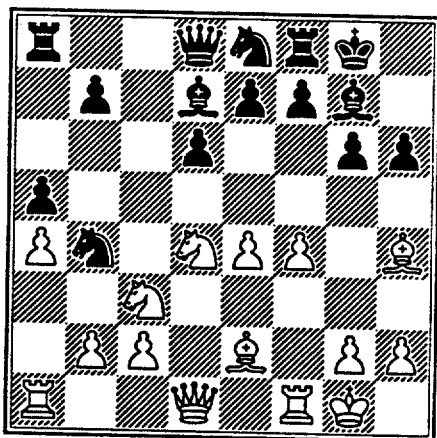
(43) Hernandez, Daniel (1480) -
McClendon, Leon (1340) [C44]
Chicago ICL p1of, 1994

Columbia vs ConBank 1.e4 e5 2.
Nf3 Nc6 3.d4 d6 4.dxe5 dxe5 5.
Qxd8+ Kxd8 6.Bc4 f6 7.Nc3 Bg4 8.
Be3 Bb4 9.0-0-0+ Kc8 10.Nd5 Bxf3
11.gxf3 Bd6 12.Rhg1 g6 13.Nc3 f5
14.Be6+ Kb8 15.exf5 Nf6 16.fxg6
hxg6 17.Rxg6 Rf8 18.Bh6 Nh7 19.
Bxf8 Nxf8 20.Rg8 a6 21.Ne4 Be7
22.Rd7 Ka7 23.Rxc7 Nxe6 24.Rxa8+
Kxa8 25.Rc8+ Ka7 26.Re8 Ned4 27.
Nd2 Bg5 28.Rf8 Ne7 29.c3 Ndf5
30.Kc2 Bf4 31.h3 Bh6 32.Rf7 Bg5
33.Ne4 Bh4 34.Kd3 Nh6 35.Rh7
Nef5 36.Nd6 Nxd6 37.Rxh6 Bxf2
38.Rxd6 1-0

(44) Hodina, Jim (2125) - Kale, Satish
(1850) [B70]

Chicago ICL p1of, 1994
Amoco vs JI Case 1.e4 c5 2.Nf3
Nc6 3.d4 cxd4 4.Nxd4 g6 5.Nc3
Bg7 6.Nb3 Nf6 7.Be2 0-0 8.0-0 d6
9.Bg5 h6 10.Bh4 Bd7 11.f4 a5 12.
a4 Nb4 13.Nd4 Ne8

13



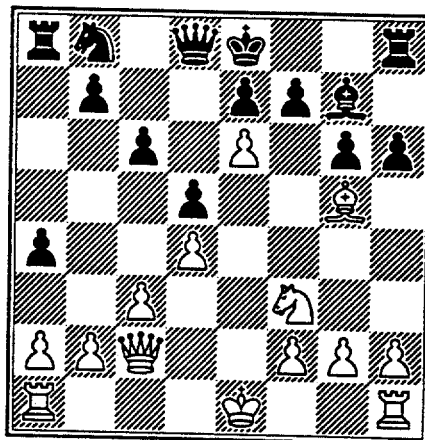
14.Kh1 Bxd4 15.Qxd4 Nxc2 16.Qd3
Nxa1 17.Nd5 Nf6 18.Ne3 Bxa4 19.
Rxa1 Bc6 20.Bf3 Qc7 21.f5 g5 22.
Bg3 b6 23.h4 Qb7 24.Nd5 Bxd5 25.

exd5 g4 26.Be4 Kg7 27.Qd4 b5 28.
Bf4 a4 29.h5 b4 30.Bd2 b3 31.Bc3
Ra7 32.Bd3 Rh8 33.Qxg4+ Kf8 34.
Qd4 Rg8 35.Be4 Rg4 36.Re1 a3 37.
bxa3 Rxa3 38.Bb2 Ra2 39.Qc3 Rh4+
40.Kg1 Qb6+ 41.Kf1 Rf4+ 42.Bf3
Qb5+ 43.Re2 Rc4 44.Qd2 Ng8 45.f6
Rc2 46.fxe7+ Ke8 47.Qf4 Raxb2
48.Qxd6 Rb1+ 49.Kf2 Qc5+ 50.Qxc5
Rxc5 51.Re3 Rc2+ 52.Be2 Rd2 53.
d6 Rxe2+ 54.Kxe2 Nf6 55.Rf3 b2
56.Rb3 Rg1 57.Rb8+ Kd7 58.Rd8+
Ke6 59.e8Q+ Nxe8 60.d7 Nf6 61.
Rb8 Kxd7 62.Rxb2 Rxg2+ 0-1

(45) Hodina, Jim (2090) - Osterlund,
Russ (1920) [B06]

Chicago ICL p1of, 1994
Amoco vs Exemplars 1.e4 d6 2.d4
g6 3.Bc4 Nf6 4.Qe2 Bg7 5.Nf3 c6
6.Bb3 d5 7.e5 Ne4 8.Nbd2 Nxd2 9.
Bxd2 a5 10.c3 Bf5 11.Bg5 a4 12.
Bc2 Bxc2 13.Qxc2 h6 14.e6

14



14...Qd6 15.exf7+ Kxf7 16.Bh4
Nd7 17.0-0 e6 18.Rae1 Rhe8 19.
Re3 Nf8 20.Bg3 Qd7 21.Be5 b5 22.
Bxg7 Kxg7 23.Ne5 Qc8 24.Rg3 g5
25.f4 Ra6 26.fxg5 h5 27.Rf7+ Kg8
28.Qe2 1-0

(46) Inumerable, F (2235) -
Czerniecki, A (2140) [A49]
Chicago ICL p1of, 1994

Post Office vs Alumni 1.d4 g6 2.
g3 Bg7 3.Bg2 Nf6 4.Nf3 d6 5.0-0
0-0 6.c4 Bg4 7.h3 Be6 8.Qb3 Qc8
9.Ng5 c6 10.Nxe6 fxe6 11.Bg5 h6

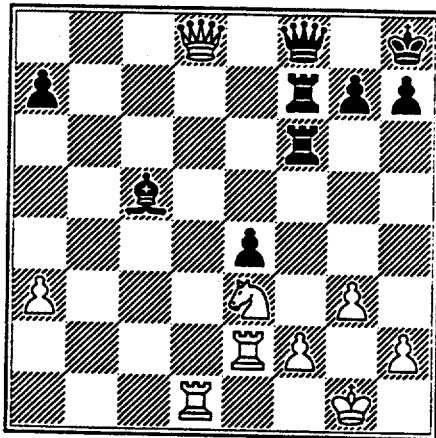
Chicago Industrial Chess League Championship

12.Bf4 Nbd7 13.Qe3 e5 14.dxe5
 Nxe5 15.Bxe5 dxe5 16.Nc3 Qe6 17.
 b3 Ne8 18.Ne4 b6 19.Rad1 Nf6 20.
 Nc3 Rad8 21.Rd3 Rxd3 22.Qxd3 Nd7
 23.b4 Kh7 24.Qe4 c5 25.b5 Rd8
 26.Qd3 Qd6 27.Rd1 Nf6 28.Qe3 Qc7
 29.Rxd8 Qxd8 30.Qxe5 Qd2 31.Ne4
 Qxa2 32.Nxf6+ exf6 33.Qe6 Qa1+
 34.Kh2 Qe5 35.Qg4 Qd4 36.Qxd4
 cxd4 37.g4 f5 38.Bd5 Be5+ 39.Kg2
 Kg7 40.Kf1 Kf6 41.Ke1 Kg5 42.
 gxf5 gxf5 43.Bc6 Bd6 44.Kd1 Kf4
 45.Kd2 Ke5 46.Be8 Bb4+ 47.Kd3
 Be1 48.f3 H-H

(47) Inumerable, F (2235) - Reyes,
 Ruben (2340) [E16]
 Chicago ICL plof, 1994

Post Office vs Sears 1.d4 Nf6 2.
 c4 e6 3.Nf3 b6 4.g3 Bb7 5.Bg2
 Bb4+ 6.Nbd2 0-0 7.0-0 d5 8.Qc2
 Nbd7 9.a3 Bd6 10.b4 c5 11.bxc5
 bxc5 12.cxd5 exd5 13.dxc5 Nxc5
 14.Nd4 Re8 15.Re1 Rc8 16.Bh3 Ne6
 17.Nxe6 fxe6 18.Qb3 Rc7 19.e4
 dxe4 20.Bxe6+ Kh8 21.Bb2 Bc5 22.
 Nf1 Rf8 23.Ne3 Bc8 24.Rad1 Qe8
 25.Bxc8 Qxc8 26.Bxf6 Rxf6 27.Qd5
 Qf8 28.Re2 Rcf7 29.Qd8

15



29...Rxf2 30.Qxf8+ Rxf8 31.Rxf2
 Bxe3 32.Rdf1 Kg8 33.Kg2 Bxf2 34.
 Rxf2 Rf6 35.Re2 Ra6 36.Re3 Kf7
 37.g4 Kf6 38.h4 Ke5 39.Kg3 Kd4
 40.Rb3 Rb6 41.Rxb6 axb6 42.Kf2
 Kd3 43.Ke1 Ke3 44.a4 h6 45.g5
 hxg5 46.hxg5 g6 0-1

Jacobs, Norm (1980) - Cox, Marvin
 (49) (2010) [A29]

Chicago ICL plof, 1994

Dragons vs Alumni 1.c4 e5 2.g3
 Nf6 3.Bg2 d5 4.cxd5 Nxd5 5.Nc3
 Nb6 6.Nf3 Nc6 7.0-0 Be7 8.a3 Be6
 9.b4 a6 10.Bb2 Nc4 11.Qc2 Nxb2
 12.Qxb2 0-0 13.Rac1 f5 14.d3 Bf6
 15.Qb1 Nd4 16.Nd2 c6 17.e3 Nb5
 18.a4 Nxc3 19.Rxc3 Qd7 20.Nb3
 Bxb3 21.Qxb3+ Kh8 22.Rfc1 Rac8
 23.Qc2 Be7 24.b5 axb5 25.axb5 c5
 26.d4 exd4 27.exd4 Qxd4 28.Bxb7
 Rcd8 29.Rc4 Qd3 30.Bc6 Rf6 31.
 Re1 Bf8 32.Qxd3 Rxd3 33.Re8 Kg8
 34.Rxc5 Kf7 35.Rce5 Bd6 36.Re2
 Rd1+ 37.Re1 Rxe1+ 38.Rxe1 Bc5
 39.Kf1 Bb6 H-H

Jacobs, Norm (1980) - Friesema,
 Bill (2120) [A10]

(49) Chicago ICL plof, 1994

Dragons vs CRT 1.c4 f5 2.g3 Nf6
 3.Bg2 g6 4.e3 Bg7 5.Ne2 0-0 6.d4
 d6 7.0-0 e5 8.Nbc3 c6 9.e4 fxe4
 10.Nxe4 Nxe4 11.Bxe4 Bh3 12.Bg2
 Bxg2 13.Kxg2 Qf6 14.Be3 Qf7 15.
 Qc2 Qf3+ 16.Kg1 Nd7 17.Rad1 Nf6
 18.dxe5 dxe5 19.Nc3 Rf7 20.Qe2
 Qf5 21.f4 exf4 22.Rxf4 Qe6 23.
 Bd4 Qxe2 24.Nxe2 Re8 25.Nc3 Nh5
 26.Rxf7 Bxd4+ H-H

Jacobs, Norm (1980) - Sheynin, Sam
 (50) (2170) [A13]

Chicago ICL plof, 1994

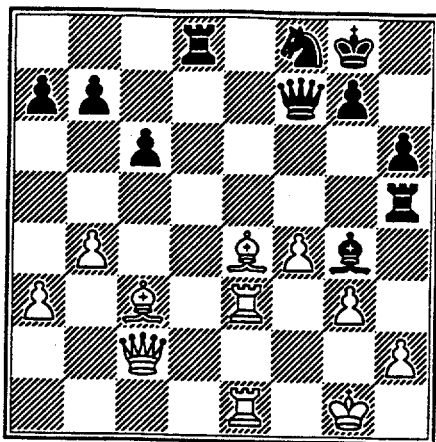
Dragons vs Knights 1.c4 e6 2.g3
 d5 3.cxd5 exd5 4.d4 Nf6 5.Bg2 c6
 6.Nc3 Bb4 7.Nf3 0-0 8.0-0 Re8 9.
 Bg5 h6 10.Bd2 Nbd7 11.a3 Bd6 12.
 Qc2 Nf8 13.b4 Bd7 14.Rfe1 Ne4
 15.Nxe4 dxe4 16.Ne5 Bxe5 17.dxe5
 Rxe5 18.Bxe4 Qe7 19.Bd3 Rh5 20.
 f3 f5 21.e4 Qf6 22.Bc3 Qg6 23.
 Rad1 Qf7 24.f4 fxe4 25.Bxe4 Bg4
 26.Rd3 Re8 27.Rde3 Rd8

(diagram 16)

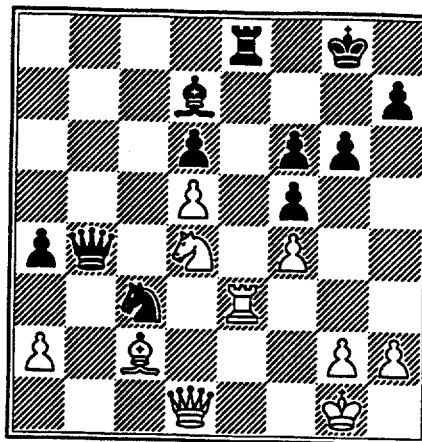
28.Bxc6 Ne6 [28...bxc6 29.Re7]
 29.Be4 Rh3 30.Bg6 Qd7 31.Bf5
 Bxf5 32.Qxf5 Nf8 33.Qxd7 Rxd7
 34.Re7 Rh5 35.Bxg7 Rd2 36.Bc3
 Rdxh2 37.Rg7+ Kh8 38.Rg5+ Kh7

Chicago Industrial Chess League Championship

16



17



1-0

(51) Jasaitis, Anthony (2265) -
 Buchner, R (2055) [C30]
 Chicago ICL p1of, 1994
 AT&T Royals vs CRT 1.e4 e5 2.f4
 Nf6 3.fxe5 Nxe4 4.Nf3 Ng5 5.Be2
 Nc6 6.0-0 Be7 7.d4 Nxf3+ 8.Bxf3
 0-0 9.Nc3 d6 10.Bxc6 bxc6 11.Bf4
 d5 12.Qh5 Qd7 13.Rae1 Qg4 14.
 Qxg4 Bxg4 15.Na4 Be6 16.Re3 Rab8
 17.Rb3 Rb5 18.Rff3 H-H

(52) Jasaitis, Anthony (2215) -
 Inumerable, F (2235) [A43]
 Chicago ICL p1of, 1994
 CRT vs Post Office 1.e4 g6 2.d4
 c5 3.d5 Bg7 4.f4 d6 5.Nf3 Nf6 6.
 Bd3 c4 7.Bxc4 Nxe4 8.Qe2 f5 9.
 Nbd2 Nxd2 10.Bxd2 Bxb2 11.Rb1
 Bf6 12.0-0 0-0 13.Rb3 Nd7 14.Bc3
 Nc5 15.Bxf6 exf6 16.Re3 Bd7 17.
 Nd4 Re8 18.Ne6 Qa5 19.Re1 Ne4
 20.Qd3 b5 21.Bb3 Rac8 22.c4 bxc4
 23.Bxc4 Qb4 24.Bb3 a5 25.Nd4 a4
 26.Bc2 Rc3 27.Qd1 Rxe3 28.Rxe3
 Nc3

(diagram 17)

29.Rxe8+ Bxe8 30.Qd3 Qxd4+ 0-1

Jasaitis, Anthony (2215) - Tegel,
 Frank (2145) [B09]
 Chicago ICL p1of, 1994
 CRT vs Dragons 1.e4 d6 2.d4 Nf6
 3.Nc3 g6 4.f4 Bg7 5.Nf3 0-0 6.

Bd3 Na6 7.0-0 c5 8.d5 Rb8 9.Kh1
 Nc7 10.a4 b6 11.Qe1 e6 12.dxe6
 fxe6 13.e5 Nfd5 14.Ne4 Nxf4 15.
 Nxd6 Nxd3 16.cxd3 Ba6 17.Qe4 Qd7
 18.Bg5 Ne8 19.Nb5 Bb7 20.Qe3 Nc7
 21.Nc3 Rf5 22.Ne4 Nd5 23.Qe2 Ba6
 24.Nd6 Rff8 25.Rfd1 Nb4 26.b3
 Nc6 27.Qe4 Nxe5 28.Nxe5 Qxd6 29.
 Nc4 Qd5 30.Ra2 Qxg5 0-1

Kanas, W(1299) - Hernandez,
 Daniel(1480) [C60]
 Chicago ICL p1of, 1994

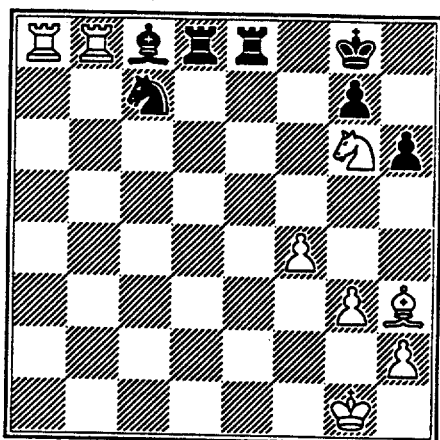
JI Case vs Columbia 1.e4 e5 2.
 Nf3 Nc6 3.Bb5 Nge7 4.Nc3 g6 5.
 0-0 Bg7 6.Re1 a6 7.Ba4 0-0 8.a3
 b5 9.Bb3 Na5 10.d3 Nxb3 11.cxb3
 c6 12.Be3 d5 13.Bc5 d4 14.Ne2
 Re8 15.Bb4 Bg4 16.Ng3 a5 17.Bd2
 Nc8 18.Qc1 Qd7 19.Bh6 Bxf3 20.
 gxf3 Bf6 21.f4 Bh4 22.f5 f6 23.
 Qc5 Nd6 24.Kh1 Bxg3 25.hxg3 g5
 26.Kg2 Nb7 27.Qc2 c5 28.Rh1 Rac8
 29.Rh2 Nd6 30.Rah1 Re7 31.Qd2
 Qa7 32.Bxg5 fxe5 33.Qxe5+ Rg7
 34.Qf6 Qe7 35.Qh6 Rc7 36.f6 Qf8
 37.fxe7 Rxe7 38.Qe6+ Nf7 39.Qf5
 h6 40.Qe6 Rh7 41.Rh4 Qd8 42.Qg6+
 Rg7 43.Qe6 Kf8 44.Qc6 c4 45.bxc4
 bxc4 46.Qxc4 Rg6 47.Rh5 Kg7 48.
 Rf5 Nd6 49.Qd5 Qc7 50.Qxe5+ Kh7
 51.Rf8 Qg7 52.Qxg7+ Rxe7 53.Rf6
 Nf7 54.Rh5 a4 55.e5 Kg8 56.Ra6
 Kf8 57.Rf5 Ke7 58.e6 Ng5 59.Rxa4
 Rxe6 60.Rb5 Kf6 61.b4 Ne6 62.Rb6
 h5 63.Kh3 Rc7 64.Raa6 Re7 65.a4
 Kf7 66.a5 Ng5+ 67.Kg2 1-0

Chicago Industrial Chess League Championship

Keisler, J (1985) - Hahne, D
 (55) (1605) [B12]

Chicago ICL plof, 1994
 Knights vs AT&T Royals 1.e4 c6
 2.d4 d5 3.e5 Bf5 4.Nf3 e6 5.g3
 c5 6.c3 Nc6 7.a3 Qc7 8.Bg2 Nge7
 9.0-0 c4 10.Re1 Na5 11.Nbd2 Nec6
 12.b4 cxb3 13.Nxb3 Nxb3 14.Qxb3
 Bd3 15.Nd2 Be7 16.Re3 Bg6 17.Bb2
 b5 18.a4 bxa4 19.Qxa4 Rb8 20.Ba3
 Bxa3 21.Qxa3 Qb7 22.c4 Qb2 23.
 cxd5 Qxa3 24.Rexa3 exd5 25.Bxd5
 Nxd4 26.Rxa7 0-0 27.Nc4 Rbd8 28.
 Bg2 f6 29.exf6 Rxf6 30.f4 h6 31.
 Ne5 Bf5 32.Rb7 Bc8 33.Rb8 Rff8
 34.Raa8 Ne6 35.Bh3 Nc7 36.Ng6
 Rfe8

18



37.Ne7+ Rxe7 38.Rxc8 Nxa8 39.
 Rxd8+ Kh7 40.Rxa8 Re1+ 41.Kf2
 Rh1 42.Kg2 Re1 43.Bf5+ g6 44.
 Ra7+ Kg8 45.Bxg6 Re2+ 46.Kh3 Rd2
 47.f5 1-0

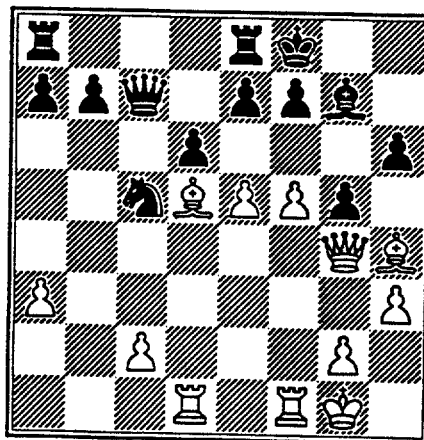
Klinefelter, H(1530) - Hamilton,
 Loyde(1380) [D02]

(56) Chicago ICL plof, 1994
 JI Case vs Amoco 1.d4 d5 2.Nf3
 Bg4 3.Ne5 Bf5 4.e3 Nd7 5.f4 f6
 6.Nf3 g6 7.Nc3 e6 8.Be2 Bg7 9.
 Nh4 Ne7 10.Bd2 c6 11.Bf3 Qb6 12.
 g4 Be4 13.Bxe4 dxe4 14.Nxe4 Qxb2
 15.Nd6+ Kf8 16.Qb1 Qxb1+ 17.Rxb1
 b5 18.Bb4 e5 19.fxe5 fxe5 20.
 Rf1+ Bf6 21.dxe5 Nxe5 22.Rxf6+
 Kg7 23.Re6 c5 24.Bc3 N7c6 25.
 Bxe5+ Nxe5 26.Rxe5 a6 27.Rxc5
 Rhd8 28.Rd1 Kh6 29.Nf7+ 1-0

Kogan, Greg (1850) - Bloom, R
 (57) (2060) [B34]

Chicago ICL plof, 1994
 ConBank vs Exemplars 1.e4 c5 2.
 Nf3 Nc6 3.d4 cxd4 4.Nxd4 g6 5.
 Nc3 Bg7 6.Nf3 Nf6 7.a3 0-0 8.Bc4
 d6 9.0-0 Ng4 10.h3 Nge5 11.Nxe5
 Nxe5 12.Bb3 Bd7 13.Bg5 h6 14.Bh4
 Bc6 15.f4 Nd7 16.Qe2 Nc5 17.Nd5
 Re8 18.Bc4 Bxb2 19.Rad1 Bg7 20.
 e5 Bxd5 21.Bxd5 Qc7 22.Qg4 Kf8
 23.f5 g5

19



24.f6 exf6 25.exf6 Re4 26.fxg7+
 1-0

Kogan, Greg (1850) - White,
 H(1592) [C62]

(58) Chicago ICL plof, 1994
 ConBank vs JI Case 1.e4 e5 2.Nf3
 Nc6 3.Bb5 d6 4.d4 Bd7 5.d5 Nce7
 6.Bxd7+ Qxd7 7.0-0 c6 8.Nc3 cxd5
 9.Nxd5 Nxd5 10.exd5 Nf6 11.c4
 Be7 12.h3 0-0 13.Re1 b5 14.b3
 bxc4 15.bxc4 Rfc8 16.Qe2 h6 17.
 Be3 Qc7 18.Recl Nd7 19.Rc2 Nc5
 20.Nd2 Rab8 21.Qg4 Kh7 22.Nf1
 Qd8 23.Ng3 g6 24.Qf3 Qf8 25.Bd2
 Bh4 26.Qg4 Bxg3 27.fxg3 f5 28.
 Qh4 Rb7 29.Rf1 Rf7 30.Bc1 Nd3
 31.Be3 Qg7 32.Rc3 e4 33.Rb3 g5
 34.Qh5 Rxc4 35.Rfb1 Rcc7 36.Rb8
 f4 37.gxf4 Nxf4 38.Qd1 Nd3 39.
 Qa4 Qg6 40.Qe8 Rf1+ 41.Rxf1 Qxe8
 42.Rxe8 Kg6 1-0

Chicago Industrial Chess League Championship

Kostecka, Keith (1680) - Gaston,
 (59) Ken(1274) [C40]

Chicago ICL plof, 1994
 Columbia vs JI Case 1.e4 e5 2.
 Nf3 f6 3.Bc4 Ne7 4.Nxe5 fxe5 5.
 Qh5+ Ng6 6.g3 Bd6 7.d3 Rf8 8.0-0
 Qf6 9.Bg5 Qf3 10.Qxh7 Nf4 11.
 Bxf4 exf4 12.Qg6+ Kd8 13.Nd2 Rf6
 14.Qxf6+ gxf6 15.Nxf3 fxf3 16.
 fxf3 c6 17.Kg2 b5 18.Bb3 Na6 19.
 h4 Bf8 20.Nd4 Nc5 21.Bf7 Ke7 22.
 Bg6 Bb7 23.Nf5+ Ke6 24.h5 d5 25.
 exd5+ cxd5 26.Rae1+ Kd7 27.h6
 1-0

Kostecka, Keith (1680) - Suerth, F
 (1625) [B70]

(60) Chicago ICL plof, 1994
 Columbia vs Exemplars 1.e4 c5 2.
 Nf3 d6 3.d4 cxd4 4.Nxd4 Nf6 5.
 Nc3 g6 6.Bd3 Bg7 7.Be3 0-0 8.Qd2
 Ng4 9.h3 Nxe3 10.Qxe3 Nd7 11.f4
 e6 12.0-0-0 Bh6 13.g4 e5 14.Nde2
 Nc5 15.Bc4 Be6 16.Bd5 a6 17.Rdg1
 Qb6 18.g5 Nb3+ 0-1

Krull, Eric(1461) - Micklich,
 (61) Frank(1719) [E90]

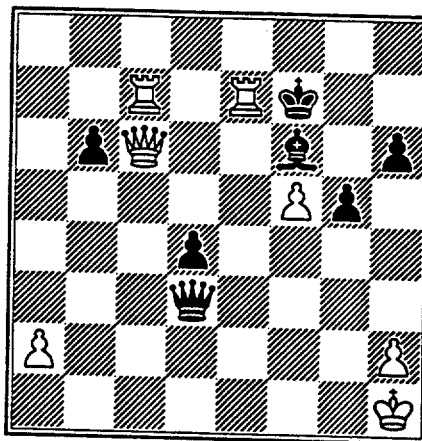
Chicago ICL plof, 1994
 Amoco vs UOP 1.e4 g6 2.d4 Bg7 3.
 c4 d6 4.Nf3 Nf6 5.Nc3 c5 6.dxc5
 Qa5 7.Qc2 Qxc5 8.Be3 Qc7 9.h3
 0-0 10.Bd3 Nc6 11.a3 e5 12.0-0
 Ne7 13.Nd2 Be6 14.f4 exf4 15.
 Bxf4 Nh5 16.Be3 Qd7 17.Rf3 Be5
 18.Ne2 f5 19.Raf1 Rf7 20.Nf4
 fxe4 21.Nxe4 Nf5 22.Nxh5 gxh5
 23.Ng5 Nxe3 24.Rxe3 Rxf1+ 25.
 Kxf1 Rf8+ 26.Rf3 Rxf3+ 27.Nxf3
 Qf7 28.Kg1 Bf4 29.Qe2 Kh8 30.Nd4
 Bd7 31.Qe4 Be5 32.c5 Kg8 33.cxd6
 Bxd6 34.Qxb7 Bc5 35.Qe4 Bc8 36.
 Qe5 Bb6 37.Kh1 Bb7 38.Qb8+ Kg7
 39.Nf5+ Kf6 40.Qd6+ Qe6 41.Qxe6+
 Kxe6 42.Ng7+ Kf6 43.Nxh5+ Kg5
 44.Ng3 Kf4 45.Kh2 h6 46.Nf1 Bc7
 47.Kh1 h5 48.b3 h4 49.a4 Bd6 50.
 Bc4 Bb4 51.Kh2 Bc6 52.Be2 Bd5
 53.Bc4 Bc6 54.g3+ hxg3+ 55.Nxg3
 Kg5 56.Ne2 Kh5 57.Be6 Bd6+ 58.
 Kg1 Bc5+ 59.Kf1 Bb4 60.Nd4 Be4
 61.Ke2 Bc3 62.Nb5 Bb4 63.Nxa7
 Bb7 64.Nb5 Bg2 65.Kd3 Bf1+ 66.
 Kd4 Be2 67.Nc3 Bf1 68.Nd5 Be1

69.b4 Bf2+ 70.Ke5 Bg3+ 71.Nf4+
 Kg5 72.h4+ Kxh4 73.Kf5 Bf2 74.b5
 Bb6 75.Nd5 Ba5 76.b6 Bd3+ 77.Kf6
 Be1 78.b7 Bg3 79.Ne3 Be4 80.Bd5
 Bd3 81.a5 Bb5 Black lost on time
 1-0

Latimer, E (2035) - Marcowka, R
 (62) (1955) [B20]

Chicago ICL plof, 1994
 Sears vs Post Office 1.e4 c5 2.
 c4 Nc6 3.Nc3 e6 4.g3 Nge7 5.Bg2
 f5 6.d3 Nd4 7.Nge2 d6 8.0-0 Rb8
 9.Nxd4 cxd4 10.Ne2 Qb6 11.b3 Bd7
 12.Bg5 e5 13.Kh1 Qc7 14.Rc1 b6
 15.Rc2 h6 16.Bc1 Nc6 17.f4 Qc8
 18.Ng1 Ne7 19.Re1 fxe4 20.Bxe4
 Bg4 21.Nf3 exf4 22.Bxf4 Qc5 23.
 Qe2 Kd8 24.Qf2 g5 25.Bd2 Bg7 26.
 b4 Bxf3+ 27.Qxf3 Qe5 28.g4 Rf8
 29.Qg2 Qf6 30.c5 dxc5 31.bxc5
 bxc5 32.Rxc5 Qf2 33.Ba5+ Rb6 34.
 Re1 Qe3 35.Bf5 Ke8 36.Re1 Rxf5
 37.gxf5 Qxd3 38.Bxb6 axb6 39.Rc7
 Bf6 40.Qc6+ Kf7 41.Rexe7+

20



[41.Rexe7+ Bxe7 42.Qe6+ Kg7 43.
 Rxe7+ Kh8 44.Qc8+] 1-0

Lester, Mike (1620) - Anderson,
 (63) Cliff(1446) [C32]

Chicago ICL plof, 1994
 Motorola vs Royals 1.e4 e5 2.f4
 d5 3.exd5 e4 4.d3 Nf6 5.dxe4
 Nxe4 6.Be3 Qh4+ 7.g3 Nxg3 8.Nf3
 Qh6 9.hxg3 Qxh1 10.Qe2 Be7 11.
 Bc5 0-0 12.Qxe7 Nd7 13.Kf2 Nxc5
 14.Qxc5 Bg4 15.Nbd2 b6 16.Qc3

Chicago Industrial Chess League Championship

Rad8 17.Re1 Qh5 18.Re5 f5 19.Re7
Rf7 20.Rxc7 Bxf3 21.Nxf3 Qh6 22.
Rxf7 1-0

Lester, Mike (1620) - Krull,

(64) Eric(1461) [C36]

Chicago ICL p1of, 1994

Motorola vs Royals 1.e4 e5 2.f4
exf4 3.Nf3 d5 4.exd5 Nf6 5.Bb5+
Bd7 6.Bxd7+ Qxd7 7.c4 c5 8.0-0
Bd6 9.Re1+ Kf8 10.Nc3 a6 11.a4
b6 12.Kh1 Qg4 13.d4 cxd4 14.Qxd4
Bc5 15.Qxf4 Qxf4 16.Bxf4 Nbd7
17.Ne5 Nxe5 18.Bxe5 Ng4 19.Bg3
h5 20.Ne4 h4 21.Bd6+ Bxd6 22.
Nxd6 h3 23.gxh3 Rxh3 24.Kg2 Rh6
25.Nf5 Rf6 26.h3 Rxf5 27.hxg4
Rf4 28.Rac1 Rxg4+ 29.Kf3 f5 30.
b3 Re8 31.Rxe8+ Kxe8 32.a5 b5
33.cxb5 axb5 34.a6 Rb4 35.Rc3 g5
36.a7 Rf4+ 37.Ke3 b4 38.a8Q+ Kf7
39.Qa7+ Kg6 40.Rc6+ Kh5 41.Qh7+
Kg4 42.Rc4 Rxc4 43.bxc4 b3 44.
Qb7 f4+ 45.Kf2 1-0

Levine, David (2395) - Buchner, R

(65) (2125) [A45]

Chicago ICL p1of, 1994

Knights vs Royals 1.d4 Nf6 2.Bg5
Ne4 3.Bf4 d5 4.Nd2 Bf5 5.Nxe4
Bxe4 6.e3 Nd7 7.Nf3 e6 8.Be2 Be7
9.0-0 0-0 10.c4 dxc4 11.Bxc4 Nb6
12.Bd3 Bxd3 13.Qxd3 Nd5 14.Be5
Bd6 15.Rac1 Bxe5 16.Nxe5 c6 17.
a3 Qe7 18.Rc5 f6 19.Nf3 e5 20.e4
exd4 21.Qxd4 Nf4 22.Qc4+ Qe6 23.
Qxe6+ Nxe6 24.Rc4 Rad8 25.g3 Rd3
26.Kg2 Rfd8 27.Rfc1 Nd4 28.Nxd4
R8xd4 29.R1c2 Rxc4 30.Rxc4 Rd2
31.Rb4 b5 32.Rb3 a5 33.Rc3 Rxb2
34.Rxc6 a4 35.Rc7 b4 36.axb4
Rxb4 37.Kf3 Rb3+ 38.Kg4 Rb2 39.
f4 Rxh2 40.Ra7 Ra2 41.Kf5 a3 42.
Ra8+ Kf7 43.Ra7+ Kg8 44.Ra8+ Kf7
45.Ra7+ Kg8 H-H

Litvinas, A (1690) - Ward,

(66) Charles(1551) [E94]

Chicago ICL p1of, 1994

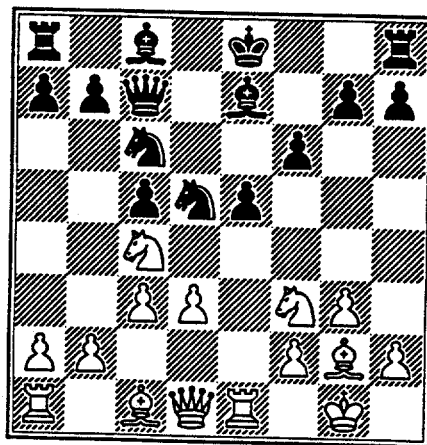
Alumni vs Dragons 1.d4 Nf6 2.c4
g6 3.Nc3 Bg7 4.e4 d6 5.Nf3 0-0
6.Be2 Nbd7 7.0-0 e5 8.d5 Nh5 9.
Bg5 f6 10.Be3 f5 11.exf5 gxf5
12.Ng5 Ndf6 13.Bxh5 f4 14.Bd2

Nxh5 15.Qxh5 Rf5 16.Qxh7+ Kf8
17.Ne6+ Bxe6 18.dxe6 Rf6 19.Nd5
Rh6 20.Qf5+ Kg8 21.e7 Qc8 22.
Qxc8+ Rxc8 23.Ba5 c6 24.Nc7 b6
25.e8Q+ Rxe8 26.Nxe8 bxa5 27.
Nxc7 1-0

Losoff, Alan (1860) - Durkee, Dave
(1770) [B07]

(67) Chicago ICL p1of, 1994
CRT vs Dragons 1.e4 d6 2.d3 c5
3.Nf3 Nc6 4.c3 Nf6 5.g3 e6 6.Bg2
Be7 7.Nbd2 Qc7 8.0-0 d5 9.Re1 e5
10.exd5 Nxd5 11.Nc4 f6

21



12.Nfxe5 Nxc3 13.Qh5+ g6 14.Nxc6
1-0

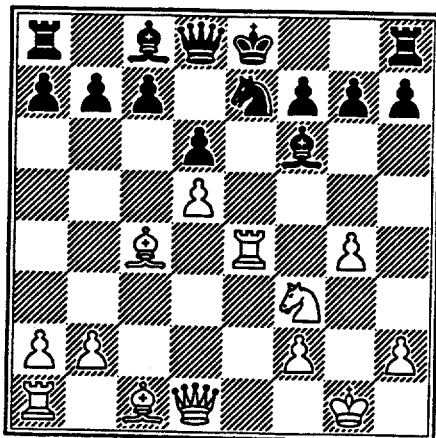
Losoff, Alan (1925) - Ogasawara,
Lance (1830) [C54]

(68) Chicago ICL p1of, 1994
AT&T Royals vs CRT 1.e4 e5 2.Nf3
Nc6 3.Bc4 Bc5 4.c3 Nf6 5.d4 exd4
6.cxd4 Bb4+ 7.Nc3 Nxe4 8.0-0
Bxc3 9.d5 Bf6 10.Re1 Ne7 11.Rxe4
d6 12.g4

(diagram 22)

Schlechter 12...0-0 [12...h6?]
13.h40 Bilguer] 13.h4 [13.g5 Be5
14.Nxe5 dxe5 15.Rxe5 Ng6 16.Re1
Qd7Q Keres] 13...c6 14.g5 cxd5
15.Bxd5 Nxd5 16.Qxd5 Be5 17.Nd4
Qd7 18.h5 Qh3 19.h6? [19.f4]
19...Bh2+ 20.Kh1 Bg3+ 21.Kg1
Qh2+ 0-1

22



Losoff, Alan (1860) - Peraren, E
(1800) [C50]

(69) Chicago ICL plof, 1994
Columbia vs Post Office 1.e4 e5 2.Nf3
Nc6 3.Bc4 Be7 4.d4 d6 5.h3 Nf6
6.Nc3 a6 7.0-0 0-0 8.Re1 Bd7 9.
d5 Nb8 10.a4 c6 11.dxc6 Nxc6 12.
Be3 Rc8 13.Bb3 Be6 14.Bxe6 fxe6
15.Qd2 d5 16.exd5 exd5 17.Bg5 e4
18.Nd4 Qd7 19.Nde2 Bb4 20.Bxf6
gxf6 21.Red1 Ne7 22.Qf4 f5 23.
Kh1 Ba5 24.Ra3 Bc7 25.Qd2 Rcd8
26.Nf4 d4 27.Nce2 Be5 28.Qb4 Nc6
29.Qb3+ Kh8 30.Ne6 Na5 31.Nxf8
Qd6 32.Qe6 Rxf8 33.Qxd6 Bxd6 34.
Ra2 Be5 35.b4 Nc6 36.b5 Nb4 37.
Ra3 Nxc2 38.Rb3 a5 39.g3 Rc8 40.
b6 d3 41.Nc1 Nb4 42.Kg2 0-1

McAllister, Kevin (1955) -
Friske, T (1865) [A58]

(70) Chicago ICL plof, 1994
Columbia vs Exemplars 1.d4 Nf6
2.c4 c5 3.d5 b5 4.cxb5 a6 5.bxa6
Bxa6 6.Nf3 g6 7.g3 d6 8.Bg2 Bg7
9.Nc3 Qa5 10.0-0 Nbd7 11.Qc2 Nb6
12.Rd1 Nfd7 13.Bd2 Nc4 14.Rac1
Nxd2 15.Rxd2 0-0 16.b3 Rfc8 17.
Bh3 Ra7 18.Qb2 Rb8 19.Qc2 Nb6
20.Nd1 c4 21.Ne3 c3 22.Rdd1 Bb7
23.a4 Nxd5 24.Nxd5 Bxd5 25.Nd4
Rc7 26.Nb5 Rxb5 27.axb5 Qxb5 28.
Rb1 Rb7 29.Rxd5 Qxd5 30.Bg2 Qb5
31.Bxb7 Qxb7 32.b4 Qb5 33.e3 d5
34.Rb3 d4 35.exd4 Bxd4 36.Rxc3
Qxb4 37.Rc8+ Kg7 38.Rc4 Qe1+ 39.
Kg2 e5 40.Rc7 h5 41.Qa2 Qe4+ 42.

Kg1 Qf3 43.Qc2 g5 44.Qd2 Kg6 45.
Qc2+ Kg7 46.Qd2 Qf5 47.Rc4 h4
48.gxh4 Qg4+ 49.Kf1 gxh4 50.Qe2
Qf5 51.f3 h3 52.Qe4 Kg6 53.Rc6+
f6 54.Rc8 Qxe4 55.fxe4 Kg5 56.
Ke2 Bg1 57.Rg8+ Kf4 58.Rxg1 Kxe4
59.Rg3 Kf4 1-0

McAllister, Kevin (1955) - White,
(71) H(1592) [D10]

Chicago ICL plof, 1994
Columbia vs JI Case 1.d4 d5 2.c4
c6 3.cxd5 cxd5 4.Nc3 e6 5.Nf3
Nc6 6.Bf4 Bd6 7.Bxd6 Qxd6 8.e3
Nge7 9.Bd3 h6 10.0-0 0-0 11.a3
a6 12.Rc1 b5 13.b4 Bb7 14.Bb1
Rac8 15.Qd3 Ng6 16.Ne2 Nce7 17.
Nh4 f5 18.Nxg6 Nxg6 19.Rc5 Rc6
20.Rfc1 Ne7 21.R1c3 Qd7 22.Qc2
Rxc5 23.Rxc5 Bc6 24.Nf4 Rf6 25.
Nd3 Ba8 26.Ne5 Qd8 27.Rc7 Rf8
28.Qc5 Nc6 29.Nxc6 Bxc6 30.Qxc6
Qh4 31.Qxa6 Rf6 32.Rc8+ Kh7 33.
Qa8 Qh5 34.Rh8+ Kg6 35.Qe8+ Kg5
36.f3 Qh4 37.g3 Qh3 38.Bd3 h5
39.Bf1 1-0

(72) Melnikov, Igor (2200) -
Czerniecki, A (2140) [A41]
Chicago ICL plof, 1994

Motorola vs Alumni 1.d4 g6 2.Nf3
Bg7 3.g3 d6 4.Bd2 b6 5.c4 Nf6 6.
Nc3 Bb7 7.d5 Nbd7 8.e4 0-0 9.Bd3
Ng4 10.Ng5 Nde5 11.Be2 Bc8 12.f4
h6 13.fxe5 Nxe5 14.Nf3 Kh7 15.
Nxe5 Bxe5 16.Bf4 Bxf4 17.gxf4 e5
18.fxe5 dxe5 19.Bd3 Qh4+ 20.Kd2
f5 21.Qe1 Qg5+ 22.Kc2 f4 23.Qf2
Qe7 24.h4 Bd7 25.Rad1 Rf6 26.Bf1
Qb4 27.b3 a5 28.Bh3 Be8 29.a4
Rd8 30.Na2 Qa3 31.Nc1 Bxa4 32.
bxa4 Qxa4+ 33.Kd3 Qa3+ 34.Ke2
Qc3 35.Qf3 Qxc4+ 36.Nd3 Rxd5 37.
exd5 e4 38.Qg4 exd3+ 39.Kf1 Qxd5
40.Qd7+ Qxd7 41.Bxd7 Rd6 1-0

Melnikov, Igor (2200) - Latimer, E
(2035) [E90]

(73) Chicago ICL plof, 1994
Motorola vs Sears 1.d4 Nf6 2.c4
g6 3.Nf3 Bg7 4.Nc3 0-0 5.e4 d6
6.Bd3 Nbd7 7.h3 c5 8.Be3 e5 9.
dxe5 dxe5 10.Nd5 Nxd5 11.cxd5 f5
12.Ng5 Nf6 13.Bxc5 Re8 14.d6 h6

Chicago Industrial Chess League Championship

15.Qb3+ 1-0

Micklich, F (1715) - Dyczkowski, R (1561) [C28]

(74)

Chicago ICL plof, 1994

UOP vs ConBank 1.e4 e5 2.Bc4 Nf6 3.Nc3 Nc6 4.d3 d6 5.f4 Bg4 6.Nf3 Qd7 7.Bb5 a6 8.Ba4 b5 9.Bb3 Nd4 10.f5 Nxb3 11.axb3 d5 12.0-0 Bc5+ 13.Kh1 d4 14.Ne2 Qd6 15.Bd2 Bb6 16.Qe1 c5 17.Qh4 h6 18.h3 Bxf3 19.Rxf3 Bd8 20.Qf2 Kd7 21.c3 Rc8 22.b4 cxb4 23.cxd4 Rc2 24.dxe5 Qxe5 25.Bf4 Qxb2 26.Qd4+ Qxd4 27.Nxd4 Rc3 28.Rxa6 Bc7 29.Bxc7 Rxc7 30.Nxb5 Rc1+ 31.Kh2 Rhc8 32.Ra7+ Kc6 33.Nd4+ Kd6 34.Rxf7 Ke5 35.Nb3 Rlc3 36.Nd2 Kd4 37.Rb7 Rxd3 38.Rxb4+ Kc3 39.Rb3+ Kxd2 40.Rfxd3+ Kc2 41.Re3 Nh5 42.Rf3 Re8 43.Rbe3 Re5 44.Rf2+ Kd1 45.Ra3 Ke1 46.Rb2 1-0

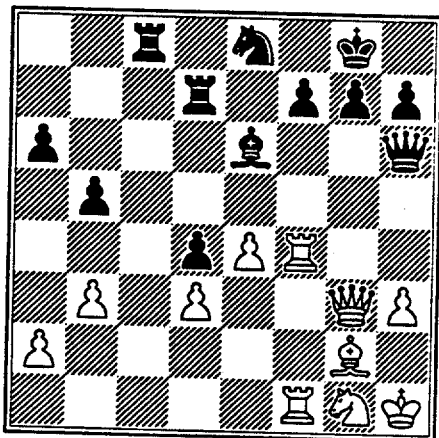
Miller, Tom (1725) - Augsburg, Len (1745) [A22]

(75)

Chicago ICL plof, 1994

Sears vs Motorola 1.c4 e5 2.Nc3 Nf6 3.e4 Bc5 4.g3 0-0 5.Bg2 d6 6.Nge2 Be6 7.d3 Nbd7 8.0-0 a6 9.h3 Rb8 10.Be3 b5 11.b3 c6 12.Qd2 Qb6 13.Kh1 Rfd8 14.g4 Nf8 15.Ng3 Ng6 16.g5 Ne8 17.Nh5 Nc7 18.Rae1 d5 19.Bxc5 Qxc5 20.cxd5 cxd5 21.f4 exf4 22.Nxf4 Nxf4 23.Rxf4 d4 24.Ne2 Qxg5 25.Ref1 Qh6 26.Ng1 Ne8 27.Qf2 Rd7 28.Qg3 Rc8

23



29.e5 Nc7 30.Be4 Nd5 31.Rh4 Qe3

32.Rf3 Qc1 33.Rxh7 Kf8 [33...g5 34.h4 g4 35.Bf5] 34.Qxg7+ Ke7 35.Rxf7+ Bxf7 36.Qxf7+ Kd8 37.Qxd7+ 1-0

Miller, Tom (1695) - Carter, L.T. (1524) [A22]

(76)

Chicago ICL plof, 1994

Sears vs Post Office 1.c4 Nf6 2.Nc3 e5 3.e4 Bc5 4.g3 Nc6 5.Bg2 d6 6.h3 Be6 7.d3 a6 8.Nge2 0-0 9.0-0 Nh5 10.g4 Nf6 11.Be3 Nd4 12.Qd2 Qd7 13.f4 Nxc4 14.hxc4 Bxc4 15.Bxd4 exd4 16.Nd1 Qa4 17.b3 Qe8 18.Nf2 f5 19.Nxc4 fxg4 20.Ng3 h5 21.Kf2 h4 22.Rh1 hxg3+ 23.Kxc4 Qe6 24.Rh4 Rf6 25.e5 dxe5 26.Bd5 exf4+ 27.Kf2 g3+ 28.Kf3 Qxd5+ 29.cxd5 Bd6 30.Rah1 Kf7 31.Rh8 Rxh8 32.Rxh8 Rh6 33.Rxh6 gxh6 34.Qe2 h5 35.Qe6+ Kg7 36.Qf5 Kh6 37.Qf6+ Kh7 38.Qg5 h4 39.Qxh4+ Kg6 40.Qg4+ Kf6 41.Qc8 b5 42.a4 bxa4 43.bxa4 Ke5 44.Qe6+ 1-0

Miller, Tom (1725) - Keisler, J (1985) [A24]

(77)

Chicago ICL plof, 1994

Sears vs Knights 1.c4 Nf6 2.Nc3 g6 3.e4 d6 4.g3 Bg7 5.Bg2 0-0 6.Nge2 e5 7.0-0 c6 8.d3 Nbd7 9.h3 Nb6 10.f4 Re8 11.Be3 d5 12.fxe5 Rxe5 13.d4 Rh5 14.cxd5 Nc4 15.Bc1 Bxh3 16.Nf4 Bxg2 17.Kxc2 Rg5 18.b3 Nd6 19.Qf3 cxd5 20.Nfxd5 Nxd5 21.Bxg5 Qxg5 22.Nxd5 Bxd4 23.Rad1 Be5 24.Rf2 f5 25.exf5 Nxf5 26.Rh1 Bxg3 27.Ne7+ Qxe7 28.Qd5+ Kh8 29.Rxf5 gxf5 30.Kxc3 Qe3+ 31.Kh2 Rg8 0-1

(78) Ogasawara, Lance (1860) - Samuelson, Chris (1990) [C01]

Chicago ICL plof, 1994

Motorola vs Royals 1.e4 e6 2.d4 d5 3.exd5 exd5 4.Nf3 Nf6 5.Bd3 Be7 6.0-0 0-0 7.Bf4 Bg4 8.Re1 Nbd7 9.c3 Re8 10.Nbd2 h6 11.h3 Be6 12.Rc1 Nh7 13.c4 c6 14.Qc2 Nhf6 15.c5 Qc8 16.Ne5 Nxe5 17.Rxe5 Nd7 18.Re3 Bg5 19.Bxg5 hxg5 20.Rce1 Nf6 21.Nf3 g4 22.Ng5 gxh3 23.Bh7+ Kf8 24.Nxe6+ Rxe6

Chicago Industrial Chess League Championship

25.Bf5 Rxe3 26.Rxe3 h2+ 27.Kh1
Qc7 28.Rh3 Re8 29.Rh8+ Ng8 30.g3
g6 31.Bd3 Kg7 32.Rxh2 Re1+ 33.
Kg2 Qe7 34.Qd2 Kf8 35.a3 Re6 36.
Qf4 Qd8 37.Rh7 Rf6 38.Qh4 g5 39.
Qg4 Re6 40.Qh5 Qf6 41.Qg4 Nh6
42.f4 Nxg4 43.fxg5 Qf2+ 44.Kh3
Ne3 45.g6 Qg1 46.Rh8+ Ke7 47.g7
0-1

(79) Osterlund, Russ (1920) -
Santiago, Teddy (1970) [A16]
Chicago ICL p1of, 1994

Exmplars vs Columbia 1.c4 Nf6 2.
g3 g6 3.Bg2 Bg7 4.Nc3 c6 5.e4 d6
6.d4 Qc7 7.Nge2 Bg4 8.f3 Bd7 9.
Be3 0-0 10.0-0 Na6 11.Qd2 Rad8
12.Rad1 b6 13.h3 Qc8 14.Kh2 e5
15.f4 exd4 16.Nxd4 Rfe8 17.f5
Nc5 18.fxg6 hxg6 19.Bg5 Ncxe4
20.Nxe4 Nxe4 21.Bxe4 Rxe4 22.
Bxd8 Qxd8 23.Qf2 Qe7 24.Rfel f5
25.Rxe4 fxe4 26.Qe3 Be5 27.b3
Qh4 28.Ne2 Qxh3+ 29.Kg1 Bf5 30.
Nf4 Qg4 31.Rf1 g5 32.Ne2 d5 33.
cxd5 cxd5 34.Qf2 Be6 35.Qf8+ Kh7
36.Rf2 Bg7 37.Rh2+ Kg6 38.Qe8+
Bf7 39.Qc6+ Qe6 40.Qa4 a5 41.Nd4
Qd6 42.Ne2 d4 43.Qb5 Be5 44.Nf4+
gxf4 45.gxf4 Bxf4 46.Qh5+ Kf6
47.Qh4+ Ke6 48.Qg4+ Ke7 49.Rh4
Be3+ 50.Kh1 Qg6 0-1

Piao, Tony (1715) - Bargerstock,
Dan (1810) [C02]
(80) Chicago ICL p1of, 1994

Dragons vs CRT 1.e4 e6 2.d4 d5
3.e5 c5 4.Nf3 Nc6 5.Be3 Qb6 6.b3
cxd4 7.Nxd4 Bc5 8.Bb5 Bd7 9.Bxc6
Bxc6 10.Qg4 Bf8 11.Nxe6 Qb4+ 12.
Qxb4 Bxb4+ 13.c3 Bxc3+ 14.Nxc3
fxe6 15.Ne2 Ne7 16.Nd4 Kd7 17.
0-0 Rhf8 18.f4 Nf5 19.Nxf5 Rxf5
20.Rac1 Bb5 21.Rf3 b6 22.Rf2 Bd3
23.Bd2 Rff8 24.Rf3 Be4 25.Rg3 g6
26.Rh3 h5 27.g4 Rh8 28.gxh5 Rxh5
29.Rhc3 Rh4 30.Rc7+ Kd8 31.Rg7
Rg4+ 32.Kf1 Bd3+ 33.Kf2 Bb5 34.
h3 Rh4 35.Kg3 Rh6 36.f5 gxf5 37.
Bxh6 1-0

Piao, Tony (1715) - Franek, Marty
(1790) [B99]

(81) Chicago ICL p1of, 1994
Alumni vs Dragons 1.e4 c5 2.Nf3
d6 3.d4 cxd4 4.Nxd4 Nf6 5.Nc3 a6
6.Bg5 e6 7.f4 Be7 8.Qf3 Nbd7 9.
0-0-0 Qc7 10.g4 0-0 11.h3 b5 12.
a3 Bb7 13.Bd3 Nc5 14.Rhe1 Rfc8
15.Qg3 e5 16.Nf5 Ne6 17.Nxe7+
Qxe7 18.Bxf6 Qxf6 19.f5 Nc5 20.
g5 Qd8 21.f6 g6 22.h4 Ne6 23.Bf1
Nf4 24.Bg2 Rc5 25.Bf3 Qa5 26.Qh2
Rac8 27.Re3 Rc4 28.h5 b4 29.hxg6
fxg6 30.axb4 Qa1+ 31.Nb1 Rxc2+
32.Qxc2 Rxc2+ 33.Kxc2 Qa4+ 34.
Rb3 Ne6 35.Nc3 Qc6 36.Kb1 Nd4
37.b5 axb5 38.Rxd4 exd4 39.Nxb5
Qc4 40.Ka2 Qc5 41.Na3 Qc7 42.Rb4
d3 43.Nc4 Ba6 44.Kb3 Qc5... 0-1
in 47 0-1

Piao, Tony (1715) - Keisler, Jeff
(1985) [E86]

(82) Chicago ICL p1of, 1994
Dragons vs Knights 1.e4 d6 2.d4
g6 3.c4 Nf6 4.Nc3 Bg7 5.f3 0-0
6.Be3 c6 7.Qd2 e5 8.Nge2 Nbd7 9.
Bh6 Nxe4 10.Nxe4 Qh4+ 11.g3 Qxh6
12.Qxh6 Bxh6 13.Nxd6 Be3 14.Rd1
exd4 15.Nxd4 Ne5 16.Ke2 Bh6 17.
f4 Bg4+ 18.Kd2 Bxd1 19.Rxd1 Ng4
20.Kc1 Bg7 21.Nf3 b6 22.Ne4 Rfe8
23.Ned2 Rad8 24.Rg1 Nf2 25.Kc2
Ne4 26.Nb3 c5 27.Bg2 Nd6 28.Nbd2
Re2 29.b3 Ne4 30.Bf1 Rxd2+ 31.
Nxd2 Rxd2+ 32.Kc1 Bb2+ 0-1

Reid, Carl (1362) - Hamper,
Paul (1288) [D02]

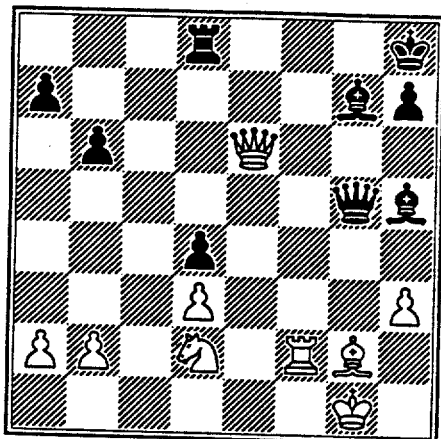
(83) Chicago ICL p1of, 1994
JI Case vs Amoco 1.d4 d5 2.Nf3
Nf6 3.Nbd2 Nc6 4.e3 e6 5.Bd3 g6
6.c3 Bg7 7.0-0 0-0 8.Ne5 Nxe5 9.
dxe5 Nd7 10.f4 Nc5 11.Bc2 f6 12.
Nf3 Nd7 13.Nh4 f5 14.Nf3 Nc5 15.
Bd2 Ne4 16.Be1 c6 17.Bh4 Qb6 18.
Qc1 Rf7 19.Bxe4 dxe4 20.Ng5 Rf8
21.c4 Re8 22.c5 Qc7 23.Be1 Bf8
24.b4 b6 25.h4 Ba6 26.Rf2 Bd3
27.Bc3 b5 28.g3 h6 29.Nh3 Qh7
30.Rg2 Be7 31.Qb2 Kf7 32.Qf2 Rg8
33.Qb2 Rg7 34.Rd1 Qg8 35.Nf2 Bc4
36.Qc2 g5 37.hxg5 hxg5 38.Nxe4
fxe4 39.Qxe4 Bd5 40.Rxd5 cxd5

Chicago Industrial Chess League Championship

41.Qf3 gxf4 42.exf4 Qh7 43.Qf1 Rh8 44.a3 Qh1+ 45.Kf2 Qxf1+ 46.Kxf1 Rh1+ 47.Kf2 Rgh7 48.c6 Rcl 49.Bd4 Rxc6 50.Bxa7 Ra6 51.g4 Rxa7 52.f5 exf5 53.gxf5 Rxa3 54.Rg6 Rh2+ 55.Kg1 Re2 56.e6+ Ke8 57.Rg8+ Bf8 58.Kh1 Ral+ 59.Rg1 Rxg1+ 60.Kxg1 Re5 0-1

84 Reyes, Ruben (2335) - Levine, David (2395) [A25]
Chicago ICL p1of, 1994
Sears vs Knights 1.c4 e5 2.Nc3 Nc6 3.g3 g6 4.Bg2 Bg7 5.e4 d6 6.Nge2 Nge7 7.0-0 0-0 8.d3 Be6 9.Be3 Qd7 10.Qd2 Nd4 11.f4 c6 12.Rael Rad8 13.Bxd4 exd4 14.Nd1 d5 15.cxd5 cxd5 16.e5 Nf5 17.g4 Ne3 18.Nxe3 dxe3 19.Qxe3 Bxg4 20.Nd4 Rfe8 21.h3 Bh5 22.Nb3 d4 23.Qe4 b6 24.Rf2 g5 25.Qc6 Qf5 26.fxg5 Qxg5 27.e6 fxe6 28.Rxe6 Rxe6 29.Qxe6+ Kh8 30.Nd2

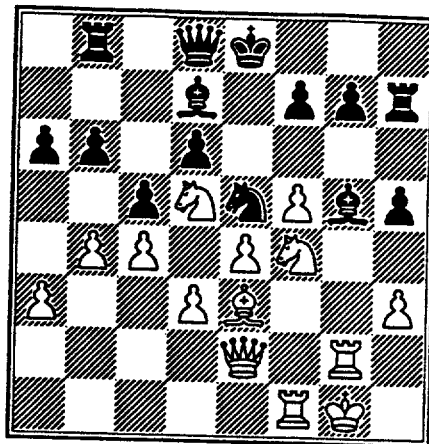
24



30...Qe3 31.Be4 Rf8 32.Bf5 Bg6 0-1

85 Reyes, Ruben (2335) - Melnikov, N [A13]
Chicago ICL p1of, 1994
Sears vs Motorola 1.c4 e6 2.e4 c5 3.Nc3 Nc6 4.g3 h6 5.Bg2 e5 6.Nge2 Nge7 7.0-0 d6 8.d3 Ng6 9.Be3 a6 10.a3 Be6 11.Rb1 Be7 12.Qd2 Rb8 13.f4 exf4 14.gxf4 Nh4 15.f5 Bd7 16.Rf2 Bg5 17.Nf4 Nxc3 18.Rxc3 Ne5 19.Rf1 h5 20.h3 Qe7 21.Ncd5 Qd8 22.b4 b6 23.Qe2 Rh7

25



24.f6! Bxf4 25.fxg7 Rxc7 26.Rxc7 Kf8 27.Rh7 Qg5+ 28.Kh1 Bg4 29.Bxf4 Qh4 30.Bxe5 Qxh3+ 31.Kg1 dxe5 32.Rfxf7+ Ke8 33.Nf6+ 1-0

86 Rosley, David (1780) - Bargerstock, Dan (1900) [D05]
Chicago ICL p1of, 1994

AT&T Royals vs CRT 1.d4 Nf6 2.Nf3 e6 3.e3 b6 4.Bd3 Bb7 5.0-0 c5 6.c3 d5 7.Re1 Nbd7 8.Nbd2 Bd6 9.e4 dxe4 10.Nxe4 Nxe4 11.Bxe4 Bxe4 12.Rxe4 Nf6 13.Re1 0-0 14.Bg5 h6 15.Bh4 Rc8 16.Qe2 Be7 17.Rad1 Nd5 18.Bxe7 Qxe7 19.Qe5 cxd4 20.Qxd5 dxc3 21.bxc3 Rxc3 22.Qd7 Qa3 23.Ne5 Rc2 24.Nxf7 Rxf7 25.Qxe6 Rxcxf2 26.Rd8+ Kh7 27.Qe4+ g6 28.Qd4 Qb2 29.Rh8+ 1-0

Rzeszutko, Russ (1820) - Durkee, D (1770) [A07]

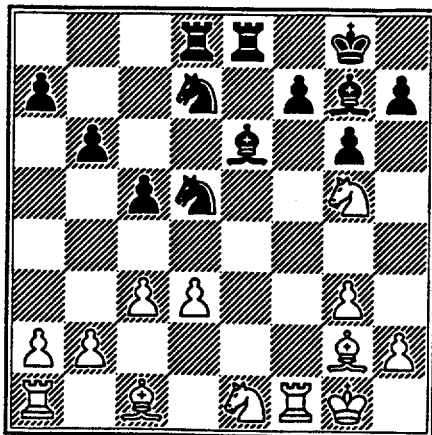
Chicago ICL p1of, 1994
Alumni vs Dragons 1.Nf3 Nf6 2.g3 g6 3.Bg2 Bg7 4.0-0 d5 5.d3 0-0 6.c3 c5 7.Qc2 Nc6 8.e4 e5 9.Nbd2 Re8 10.Ne1 Be6 11.f4 Qd7 12.exd5 Nxd5 13.Ne4 b6 14.Qa4 Rad8 15.fxe5 Nxe5 16.Qxd7 Nxd7 17.Ng5

(diagram 26)

17...Nxc3 18.bxc3 Bxc3 19.Rb1 Bxa2 20.Rb2 Bd4+ 21.Kh1 Bxb2 22.Bxb2 Re2 23.Bc3 Ne5 24.Bxe5 Rxe5 25.Ne4 f5 26.Nc3 Bf7 27.Nd1 Rde8 28.Nf3 Re2 29.Ng5 Bb3 30.Nc3 Rc2

Chicago Industrial Chess League Championship

26



31.Bd5+ Bxd5+ 32.Nxd5 Ree2 33.
Nf3 b5 34.Nf4 Rf2 35.Kg1 Rxf1+
36.Kxf1 b4 37.d4 b3 38.Nd3 b2
0-1

Sahli, Edward (1750) - Baer,

(88) Michael (1347) [A57]

Chicago ICL plof, 1994

UOP vs Amoco 1.c4 Nf6 2.d4 c5 3.
d5 b5 4.e3 b4 5.Bd3 d6 6.b3 Nbd7
7.Nf3 g6 8.Bb2 Bg7 9.Qc2 Qc7 10.
Nbd2 Ne5 11.Nxe5 dxe5 12.e4 e6
13.Nf3 Ng4 14.h3 Nh6 15.g4 Ng8
16.0-0-0 a5 17.Qd2 exd5 18.cxd5
a4 19.Bb5+ Bd7 20.Qd3 axb3 21.
Bxd7+ Qxd7 22.axb3 f6 23.Kc2 Ne7
24.Ra1 0-0 25.Qc4 Kh8 26.Rxa8
Rxa8 27.Ra1 Rxa1 28.Bxa1 Qd6 29.
Ne1 Qc7 30.Nd3 Nc8 31.Qxc5 Qxc5+
32.Nxc5 Bf8 33.Ne6 Bd6 34.Bb2 g5
35.Bc1 h6 36.Be3 Bb8 37.Bc5 Ba7
38.Bxa7 Nxa7 39.d6 Nc6 40.d7 Kg8
41.d8Q+ Nxd8 42.Nxd8 Kf8 43.Nc6
Ke8 44.Nxb4 1-0

Sajbel, Pat (1650) - Stephens,

(89) Joe (1380) [B18]

Chicago ICL plof, 1994

UOP vs Columbia 1.e4 c6 2.d4 d5
3.Nc3 dxe4 4.Nxe4 Bf5 5.Ng3 Bg6
6.Nf3 Nd7 7.Bd3 Bxd3 8.Qxd3 Ngf6
9.0-0 Qc7 10.Re1 e6 11.c4 Be7
12.Bg5 h6 13.Bd2 0-0-0 14.b4 g5
15.Qe2 Bd6 16.c5 Bf4 17.b5 Nd5
18.bxc6 Qxc6 19.Ne4 Kb8 20.Rab1
f5 21.Nd6 Bxd6 22.cxd6 Rhe8 23.
Ne5 Nxe5 24.dxe5 Nf4 25.Bxf4

gxf4 26.Recl Qd5 27.f3 Rd7 28.
Rb5 Qd4+ 29.Kf1 Qe3 30.Rbc5
Qxe2+ 31.Kxe2 Rg7 32.Kf2 Rd7 33.
Rc7 Red8 34.g4 fxg3+ 35.hxg3 a5
36.Kg2 h5 37.Kh3 b5 38.Kh4 b4
39.Rxd7 Rxd7 40.Kxh5 Rh7+ 41.Kg5
Rg7+ 42.Kf6 Rxc3 43.Kxe6 Rxf3
44.d7 Rd3 45.Ke7 f4 46.d8Q+ Rxd8
47.Kxd8 1-0

Sajbel, Pat (1650) - Zoellner,

(90) J(1294) [B07]

Chicago ICL plof, 1994

UOP vs ConBank 1.e4 d6 2.f4 Nf6
3.Nc3 a6 4.Nf3 Bg4 5.Bc4 Nc6 6.
d4 e6 7.d5 exd5 8.Bxd5 Bxf3 9.
Qxf3 Nxd5 10.Nxd5 Qd7 11.Bd2
0-0-0 12.0-0 Kb8 13.b4 Nd4 14.
Qd3 c5 15.a4 b5 16.bxc5 dxc5 17.
Ba5 Re8 18.Nc7 Rc8 19.Nxa6+ Ka7
20.axb5 Qxb5 21.Rfb1 Qxd3 22.
cxd3 c4 23.Bb6+ Kb7 24.Bxd4+ Kc6
25.Nb4+ Kd7 26.Ra7+ Ke6 27.f5+
Kd6 28.e5+ 1-0

(91) Samelson, Chris (1990) -

Brockett, Mark (1830) [B28]

Chicago ICL plof, 1994

Motorola vs Sears 1.e4 c5 2.Nf3
a6 3.d4 cxd4 4.Nxd4 Nf6 5.Nc3 e5
6.Nf3 Bb4 7.Bd2 Nc6 8.Bd3 d6 9.
h3 h6 10.0-0 0-0 11.Qc1 Be6 12.
a3 Ba5 13.b4 Bb6 14.Be3 Rc8 15.
Bxb6 Qxb6 16.b5 Na5 17.Na4 Qc7
18.Qe3 Nc4 19.Bxc4 Bxc4 20.Nb6
Bxf1 21.Nxc8 Bxb5 22.Nb6 Bc6 23.
Nd2 Nxe4 24.Nxe4 Bxe4 25.Rb1
Qxc2 26.Rc1 Qd3 27.Qxd3 Bxd3 28.
Rc7 Rd8 29.Rxb7 d5 30.f3 f6 31.
Kf2 f5 32.Re7 e4 33.Re5 exf3 34.
gxf3 d4 35.Nd5 Bc4 36.Ne7+ Kf7
37.Nc6 Kf6 38.Rc5 Bb5 39.Ke1
Re8+ 40.Kd2 Re2+ 41.Kd1 d3 42.
Rxf5+ Kxf5 43.Nd4+ Kf4 44.Nxe2+
dxe2+ 45.Ke1 Kxf3 0-1

(92) Satterlee, Duane (1715) -

Atkinson, J (1725) [D03]

Chicago ICL plof, 1994

JI Case vs Amoco 1.d4 Nf6 2.Nf3
g6 3.Bg5 Bg7 4.Nbd2 d5 5.e3 Bg4
6.Bd3 Nbd7 7.h3 Bxf3 8.Qxf3 0-0
9.0-0 e5 10.dxe5 Nxe5 11.Qe2 Qd7
12.Rab1 Rfe8 13.Bf4 Nh5 14.Bh2

Chicago Industrial Chess League Championship

Nc6 15.c3 Ne5 16.Bc2 c6 17.Rfd1
 Qe7 18.Nf3 Nxf3+ 19.Qxf3 Nf6 20.
 Rd2 Rad8 21.Rbd1 Ne4 22.Rd3 Nc5
 23.R3d2 Ne4 24.Rd3 Nc5 25.R3d2
 Ne4 H-H

Satterlee, Duane (1715) - Fraats,
 (93) Dan (1865) [A48]

Chicago ICL plof, 1994

JI Case vs ConBank 1.d4 Nf6 2.
 Nf3 g6 3.Bg5 Ne4 4.Bf4 Bg7 5.e3
 c5 6.c3 0-0 7.Bd3 d5 8.Nbd2 Bf5
 9.Qb1 Nxd2 10.Nxd2 Bxd3 11.Qxd3
 Nd7 12.0-0 e5 13.dxe5 Nxe5 14.
 Qe2 Re8 15.Nf3 Qe7 16.Rfd1 Rad8
 17.Nxe5 Bxe5 18.Bxe5 Qxe5 19.Rd2
 d4 20.Rad1 Qf6 21.cxd4 cxd4 22.
 Qf3 dxe3 23.Rxd8 Rxd8 24.Rxd8+
 Qxd8 25.fxe3 Qc7 26.Qf4 Qc1+ 27.
 Qf1 Qxe3+ 28.Kh1 Qd2 29.Qb1 h5
 30.h3 h4 31.b4 Kh7 32.Qb3 Qe1+
 33.Kh2 Qe5+ 34.Kg1 Qf6 35.a4 Qf4
 36.a5 Kh6 37.Qc3 f6 38.Qc5 g5
 39.Qf8+ Kg6 40.Qg8+ Kf5 41.Qc8+
 Kg6 42.Qxb7 Qc1+ 43.Kh2 Qf4+ 44.
 Kg1 Qe3+ H-H

(94) Satterlee, Duane (1715) -
 Santiago, T (1970) [A48]

Chicago ICL plof, 1994

JI Case vs Columbia 1.d4 Nf6 2.
 Nf3 g6 3.Bg5 Bg7 4.e3 c6 5.Bd3
 d5 6.Nbd2 Bg4 7.c3 Nbd7 8.Qc2
 Bxf3 9.Nxf3 a5 10.a4 0-0 11.h3
 Re8 12.Ne5 Nxe5 13.dxe5 Nd7 14.
 f4 Qb6 15.Qf2 Nc5 16.Bb1 f6 17.
 Bh4 fxe5 18.0-0 e4 19.Qe2 Bf6
 20.Bxf6 exf6 21.f5 Kg7 22.Qf2 g5
 23.Re1 Nd7 24.Ba2 Ne5 25.Qc2 Nd3
 26.Re2 Re7 27.Rb1 Qc7 28.b4 axb4
 29.cxb4 Qg3 30.b5 cxb5 31.Bxd5
 Rc7 32.Qd1 Rac8 33.Bxe4 Rc1 34.
 Bxd3 Rxd1+ 35.Rxd1 bxa4 36.Be4
 a3 37.Bxb7 Rc7 38.Bf3 Qe5 39.Kf2
 Qxf5 40.g4 Qe5 41.Ra2 Rc3 42.Re1
 Rb3 43.Ree2 h6 44.e4 Qf4 45.e5
 Rxf3+ 46.Kg1 Rf1+ 47.Kg2 Qf3+
 48.Kh2 Rh1+ 0-1

Sheynin, Sam (2170) - Latimer, Ed
 (2035) [A04]

Chicago ICL plof, 1994

(95) Knights vs Sears 1.Nf3 c5 2.g3
 Nc6 3.Bg2 g6 4.d4 cxd4 5.Nxd4

Bg7 6.Nxc6 bxc6 7.0-0 Nf6 8.Bd2
 0-0 9.c4 d5 10.cxd5 cxd5 11.Bc3
 e6 12.Nd2 Ba6 13.Nb3 Rb8 14.Nc5
 Qd6 15.Bd4 Rfc8 16.Nxa6 Qxa6 17.
 e3 Rb7 18.Rc1 Rbc7 19.Rxc7 Rxc7
 20.Qb3 Nd7 21.Rd1 Bxd4 22.exd4
 Qe2 23.Bf1 Qc2 24.Rd3 Nb6 25.Rc3
 Rxc3 26.bxc3 Qc1 27.Kg2 Kg7 28.
 a4 Qa1 29.Bb5 a6 30.Bxa6 Nxa4
 31.c4 dxc4 32.Bxc4 Nc3 H-H

Siegel, Ross (1485) - Sahli, Ed
 (96) (1750) [D37]

Chicago ICL plof, 1994

ConBank vs UOP 1.d4 e6 2.Nf3 d5
 3.c4 Nf6 4.Nc3 Nc6 5.c5 b6 6.
 cxb6 cxb6 7.Bf4 Bb4 8.e3 Bxc3+
 9.bxc3 0-0 10.Bb5 Bd7 11.Qa4 Na5
 12.0-0 Bxb5 13.Qxb5 Nc4 14.Ne5
 Nxe5 15.Bxe5 Ne4 16.Qd3 f6 17.
 Bf4 g5 18.Bg3 Rc8 19.Rfc1 Rc4
 20.f3 Nxc3 21.hxc3 Qc7 22.Kf2
 Rc8 23.Rh1 Rxc3 24.Qb1 Rc2+ 25.
 Kg1 Qxc3 26.Rh2 Qf2+ 27.Kh1 Qxe3
 28.Rh6 Rc1+ 29.Kh2 Qg1+ 30.Kg3
 Rxb1 31.Rxb1 Qxb1 32.Rxf6 Qe1+
 33.Kg4 0-1

Siegel, Ross (1485) - Suerth, Frank
 (97) (1625) [D07]

Chicago ICL plof, 1994

ConBank vs Exemplars 1.d4 d5 2.
 Nf3 Nc6 3.c4 Bg4 4.Nc3 e6 5.c5
 Bxf3 6.exf3 g6 7.Bb5 Nge7 8.Bf4
 Bg7 9.0-0 0-0 10.Bxc6 Nxc6 11.
 Nb5 Rc8 12.Be3 a6 13.Nc3 Qf6 14.
 Ne2 Rfe8 15.f4 Qe7 16.Rc1 Na5
 17.b3 b6 18.Qd2 Bf8 19.Rc2 Nc6
 20.Rfc1 Qd7 21.b4 Rb8 22.a3 b5
 23.Ng3 Bg7 24.h4 Qd8 25.h5 f5
 26.hxc6 hxc6 27.f3 Kf7 28.Kf2
 Rh8 29.Rh1 Rxh1 30.Nxh1 Qh8 31.
 Rc1 Bxd4 32.Ng3 Bxe3+ 33.Qxe3
 Qb2+ 34.Ne2 Qf6 35.Rd1 Rh8 36.
 Nd4 Nxd4 37.Qxd4 Qh4+ 38.Kf1 H-H

Sombong, M (1680) - Osterlund, R
 (98) (1920) [B07]

Chicago ICL plof, 1994

ConBank vs Exemplars 1.e4 d6 2.
 Bc4 Nf6 3.Nc3 g6 4.d4 Bg7 5.h3
 0-0 6.Nf3 Nxe4 7.Bxf7+ Rxf7 8.
 Nxe4 Nc6 9.0-0 e5 10.d5 Ne7 11.
 Bg5 Qe8 12.Ng3 Qb5 13.Bxe7 Rxe7

Chicago Industrial Chess League Championship

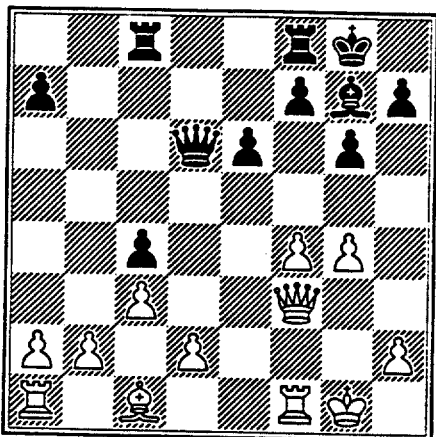
14.Rb1 e4 15.Nh2 c6 16.dxc6 Qxc6
17.Qd2 Be6 18.b3 d5 19.a4 Rc7
20.c4 dxc4 21.bxc4 Qxa4 22.Rfc1
Rac8 23.Qe3 Bxc4 24.Qxe4 Qe8 25.
Qxe8+ Rxe8 26.Rb4 Rec8 27.Nf3
Bd5 28.Rxc7 Rxc7 29.Ne4 Rc4 30.
Rxc4 Bxc4 31.Nd6 Bd5 32.Ng5 a5
33.Nge4 a4 34.Nc5 a3 35.Ndx7 a2
0-1

Stevanovic, M (2195) - Hodina, J
(99) (2090) [B21]

Chicago ICL ploff, 1994

UOP vs Amoco 1.e4 c5 2.f4 g6 3.
Nf3 Bg7 4.Bc4 e6 5.Nc3 Nc6 6.0-0
Nge7 7.e5 d5 8.exd6 Nf5 9.Bb5
Bd7 10.Ne4 Ncd4 11.Bxd7+ Qxd7
12.c3 Nxf3+ 13.Qxf3 Rc8 14.g4
Nxd6 15.Nxd6+ Qxd6 16.Qxb7 0-0
17.Qf3 c4

27



18.b3 Rfd8 19.Rb1 Rb8 20.Qe4
Qb6+ 21.Kg2 Qa6 22.Rb2 Rd6 23.
Rf2 Rdb6 24.b4 Rd6 25.a4 f5 26.
gxf5 exf5 27.Qe2 Rd3 28.a5 Qc6+
29.Kg1 Re8 30.Qf1 Bh6 31.Qg2
Re1+ 32.Rf1 Rxf1+ 33.Qxf1 Qe4
34.b5 Bf8 35.Qf2 Rf3 36.d3 cxd3
0-1

Suerth, F (1625) - Hamilton,

(100) L(1380) [B20]

Chicago ICL ploff, 1994

Exemplars vs Amoco 1.e4 c5 2.c4
Nc6 3.Nf3 d6 4.d3 Nf6 5.Nc3 g6
6.b3 Bg7 7.Bb2 0-0 8.Qd2 b6 9.g3
Bb7 10.Bg2 e6 11.0-0 d5 12.Rad1
a6 13.exd5 exd5 14.Rfel Qd6 15.

Re2 Rfe8 16.Rde1 Re7 17.Na4 b5
18.Nb6 Rae8 19.Bxf6 Rxe2 20.Rxe2
Rxe2 21.Qxe2 Bxf6 22.Nxd5 Nd4
23.Nxf6+ Qxf6 24.Nxd4 Bxg2 25.
Nxb5 Bf3 26.Qe1 axb5 27.cxb5 Qb2
28.b6 Qxa2 29.Qe8+ Kg7 30.Qe5+
Kf8 31.Qxc5+ Kg7 32.Qe5+ Kf8 33.
Qb8+ Ke7 34.Qe5+ Kd7 35.Qc7+ Ke6
36.Qc4+ Bd5 37.Qc8+ Ke5 38.Qc3+
Kf5 39.g4+ Kg5 40.Qe5+ Kxg4 41.
Qxd5 Kh3 42.Qf3+ Kh4 43.b7 Qxb3
44.Qf4+ Kh3 45.Qg3+ 1-0

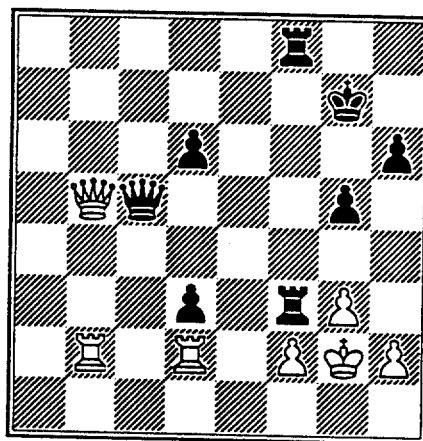
Tegel, Frank (2145) - Levine,

(101) David (2395) [A85]

Chicago ICL ploff, 1994

Dragons vs Knights 1.d4 e6 2.c4
f5 3.Nc3 Nf6 4.g3 Bb4 5.Bg2 0-0
6.e3 Bxc3+ 7.bxc3 d6 8.Rb1 c6 9.
Nf3 Qa5 10.Qb3 Ne4 11.Qb4 Qxa2
12.Rb2 Qa6 13.0-0 c5 14.Qb3 Qa5
15.Nd2 Nxd2 16.Bxd2 Nd7 17.e4
fxe4 18.Bxe4 Qc7 19.Ra1 a6 20.
Rab1 Rb8 21.Qc2 Nf6 22.Bd3 Bd7
23.Be3 e5 24.Bg5 h6 25.Bxf6 Rxf6
26.Be4 b6 27.Qd3 g5 28.Re1 Kg7
29.Rd2 exd4 30.cxd4 Rbf8 31.Rb1
b5 32.cxb5 Bxb5 33.Qc3 Qe7 34.
Bd5 Qa7 35.Qa3 Qb6 36.Qb2 cxd4
37.Bc4 Qc5 38.Bxb5 axb5 39.Qxb5
d3 40.Rbb2 Rf3 41.Kg2

28



41...Rxf2+ 0-1

(102) Wallach, Cliff (2140) -
Dobrovolny, C (1995) [B96]

Chicago ICL ploff, 1994

Motorola vs Royals 1.e4 c5 2.Nf3

Chicago Industrial Chess League Championship

d6 3.d4 cxd4 4.Nxd4 Nf6 5.Nc3 a6
6.Bg5 e6 7.f4 b5 8.Qe2 Be7 9.
0-0-0 b4 10.e5 bxc3 11.exf6
cxb2+ 12.Kxb2 gxf6 13.Bh6 Qb6+
14.Kc1 d5 15.g4 Ba3+ 16.Kd2
Qxd4+ 0-1

Wallach, Cliff (2140) - Franek,
Martin (1790) [B98]

(103) Chicago ICL p1of, 1994
Motorola vs Alumni 1.e4 c5 2.Nf3
d6 3.d4 cxd4 4.Nxd4 Nf6 5.Nc3 a6
6.Bg5 e6 7.f4 Be7 8.Qf3 Qb6 9.
0-0-0 Nc6 10.Nb3 Qc7 11.Bd3 0-0
12.Rhe1 h6 13.Bh4 Nb4 14.Kb1 b5
15.e5 Bb7 16.Qe2 dxe5 17.fxe5
Nfd5 18.Nxd5 Bxd5 19.Qg4 Bxh4
20.Qxh4 Bc4 21.Be4 Rac8 22.a3
Nc6 23.g4 Qe7 24.Qg3 Rfd8 25.Rd6
Bxb3 26.cxb3 Na5 27.Rxa6 Qc7 28.
g5 hxg5 29.Qc3 Qc5 30.Qxc5 Rxc5
31.Rxa5 1-0

Weitz, Ron (1680) - Pratts, M
(1690) [A45]

(104) Chicago ICL p1of, 1994
Exemplars vs Columbia 1.d4 Nf6
2.e3 e6 3.Bd3 d5 4.Nd2 Nc6 5.c3
e5 6.dxe5 Nxe5 7.Bc2 c6 8.h3 Bd6
9.Ng3 Qe7 10.Nxe5 Bxe5 11.Nf3
Bd6 12.0-0 0-0 13.Re1 Ne4 14.Qd4
Re8 15.Qd3 Bf5 16.Qe2 Bg6 17.c4
dxc4 18.Qxc4 Rad8 19.a3 Bc7 20.
b4 Qf6 21.Rb1 Ng5 22.Nxg5 Bxc2
23.Nxf7 Qxf7 24.Qxc2 Rd7 25.Bb2
Red8 26.Rbd1 Kh8 27.e4 Qf4 28.g3
Qf3 29.Rxd7 Rxd7 30.Qc3 Qh5 31.
h4 Kg8 32.Kg2 Bb6 33.Qf3 Qxf3+
34.Kxf3 H-H

Wentling, Charles (1655) -
Boldingh, Edwin (2100) [B01]

(105) Chicago ICL p1of, 1994
Amoco vs UOP 1.e4 d5 2.exd5 Nf6
3.c4 c6 4.dxc6 Nxc6 5.Nf3 e5 6.
d3 Bc5 7.Be2 0-0 8.0-0 Bf5 9.Nc3
h6 10.h3 Qd7 11.Be3 Bxe3 12.fxe3
Rad8 13.e4 Bh7 14.Nd5 Qd6 15.Qe1
Nh5 16.a4 Nf4 17.Nxf4 exf4 18.
Nh4 g5 19.Nf3 Rfe8 20.Kh1 Bg6
21.Qc3 Bh5 22.c5 Qe7 23.Rae1
Bxf3 24.Bxf3 Qe5 25.Rc1 Rd4 26.
Qb3 Rb4 27.Qd5 Rxa4 28.b3 Rd4
29.Qxe5 Nxe5 30.Be2 Nxd3 31.Bxd3

Rxd3 32.b4 Rxe4 33.Rb1 Rd2 34.
Rfel Rc4 35.Re7 Rcc2 36.Rg1 f3
37.Rxb7 h5 38.Rxa7 g4 39.hxg4
hxg4 40.Ra3 Rd5 41.Kh2 fxg2 42.
Kg3 f5 43.Rb3 Kg7 44.b5 Rxc5
45.Rxg2 Rxb5 46.Rc3 Kf6 47.Re2
Kg5 48.Re8 f4+ 49.Kf2 Rd6 50.
Rg8+ Rg6 51.Rd8 Rb2+ 52.Kg1 g3
53.Rdd3 Kg4 54.Rc4 Ra6 55.Rd1
Raa2 56.Rcd4 Rg2+ 57.Kh1 Rgc2
58.Kg1 Re2 59.Rc1 Re5 60.Rb4 Rh2
61.Rf1 Rf5 62.Rc4 Kg5 63.Rb4 f3
64.Rb3 Kg4 65.Rc3 f2+ 66.Rxf2
Rhxf2 0-1

Wentling, Charles (1655) - Weitz,
Ron (1680) [B20]

(106) Chicago ICL p1of, 1994
Amoco vs Exemplars 1.e4 c5 2.c4
Nc6 3.b3 Nf6 4.Nc3 d6 5.Bb2 Be6
6.d3 Nd4 7.Nge2 Bg4 8.h3 Bh5 9.
Qd2 Qa5 10.Nxd4 cxd4 11.Nb5
Qxd2+ 12.Kxd2 Kd7 13.Nxd4 e5 14.
Nf5 Bg6 15.Ne3 Be7 16.f3 Nh5 17.
Nd5 Bg5+ 18.Kd1 Rac8 19.d4 Ng3
20.Rg1 f5 21.exf5 Bxf5 22.dxe5
dxe5 23.Bxe5 Nxf1 24.Rxf1 Bh4
25.a4 Bd3 26.Rh1 Rce8 27.Bxg7
Rhg8 28.Bf6 Rxg2 29.Bxh4 Ree2
30.Nc3 Rd2+ 31.Ke1 Bc2 32.Ne4
Rde2+ 33.Kf1 Bd3 34.Nc5+ Kc8 35.
Nxd3 Rd2 36.Nc5 b6 37.Ne4 Rc2
38.Rb1 h6 39.Bg3 Rge2 40.Re1 Rg2
41.Bf2 Rg6 42.Rg1 Rc6 43.Rg8+
Kb7 44.Rg7+ Ka6 45.c5 b5 46.
axb5+ Kxb5 47.Rb7+ Ka6 48.Rb8
Ra2 49.b4 Rg6 50.b5+ Ka5 51.c6
h5 52.c7 h4 53.c8Q 1-0

Wentling, Charles (1655) - White,
Hardie (1592) [C41]

(107) Chicago ICL p1of, 1994
Amoco vs JI Case 1.e4 e5 2.Nf3
d6 3.Nc3 Nf6 4.Bc4 Be7 5.d3 Nc6
6.0-0 0-0 7.d4 Bg4 8.d5 Nd4 9.
Be2 Bxf3 10.Bxf3 Nxf3+ 11.Qxf3
c6 12.Re1 cxd5 13.Nxd5 Nxd5 14.
exd5 Rc8 15.c3 Bg5 16.Qg4 Bxc1
17.Rexcl f5 18.Qb4 Qd7 19.c4 Rc5
20.b3 Rfc8 21.Qd2 Qf7 22.Rc3 f4
23.Racl a5 24.a3 b6 25.b4 axb4
26.axb4 R5c7 27.Qa2 Ra7 28.Qb3
Rca8 29.h3 Qd7 30.c5 bxc5 31.
bxc5 dxc5 32.Rxc5 Kf8 33.Rc6 Ra5

Chicago Industrial Chess League Championship

34.Qb4+ Kg8 35.d6 Rd5 36.Qc4 Qe6
37.Qe4 Rd8 38.Rc8 R5xd6 39.Qb7
Qf6 40.R1c7 Rxc8 41.Rxc8+ Rd8
42.Qd5+ 1-0

16.Rxg6+ fxg6 17.Bc4 1-0

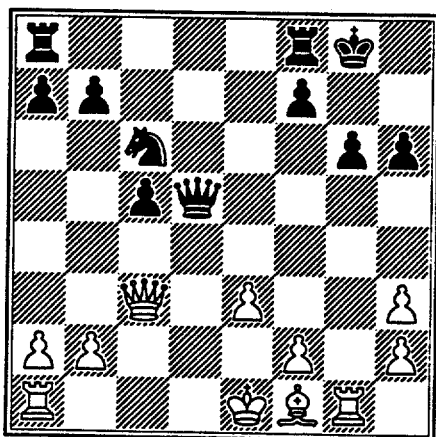
Wong, Philip (2230) - Fraats, Dan
(1865) [D91]

(108)

Chicago ICL p1of, 1994

Exemplars vs ConBank 1.d4 Nf6 2.
c4 g6 3.Nc3 d5 4.Nf3 Bg7 5.Bg5
Ne4 6.cxd5 Nxc3 7.Nxc3 e6 8.Qd2
h6 9.Nh3 0-0 10.dxe6 Bxe6 11.e3
c5 12.d5 Bxc3 13.Qxc3 Bxh3 14.
gxh3 Qxd5 15.Rg1 Nc6

29



ECO	#	Win	Lose	Draw
A00	2	1	1	0
A04	1	0	0	1
A07	1	0	1	0
A09	1	1	0	0
A10	1	0	0	1
A13	2	2	0	0
A16	1	0	1	0
A18	1	0	1	0
A22	2	2	0	0
A24	1	0	1	0
A25	1	0	1	0
A29	1	0	0	1
A41	1	1	0	0
A43	1	0	1	0
A45	2	0	0	2
A46	1	0	1	0
A48	2	0	1	1
A49	1	0	0	1
A57	2	2	0	0
A58	1	1	0	0
A85	2	0	2	0
B01	2	1	1	0
B06	1	1	0	0
B07	9	4	4	1
B09	2	1	1	0
B12	1	1	0	0
B18	1	1	0	0
B20	3	3	0	0
B21	4	2	2	0
B22	1	0	1	0
B28	2	1	1	0
B34	1	1	0	0
B38	1	1	0	0
B56	1	0	1	0
B70	2	0	2	0
B72	1	0	1	0
B86	1	0	1	0
B96	1	0	1	0
B98	1	1	0	0
B99	1	0	1	0

ECO	#	Win	Lose	Draw
C01	2	0	1	1
C02	1	1	0	0
C04	1	0	1	0
C05	1	0	0	1
C08	1	1	0	0
C12	1	1	0	0
C25	1	1	0	0
C28	1	1	0	0
C30	1	0	0	1
C32	1	1	0	0
C36	1	1	0	0
C40	1	1	0	0
C41	1	1	0	0
C44	2	1	1	0
C45	1	0	0	1
C50	1	0	1	0
C54	1	0	1	0
C60	1	1	0	0
C62	1	1	0	0
C66	1	1	0	0
C77	1	0	0	1
D02	2	1	1	0
D03	1	0	0	1
D05	1	1	0	0
D07	1	0	0	1
D10	1	1	0	0
D37	1	0	1	0
D45	1	1	0	0
D91	1	1	0	0
E00	1	0	1	0
E16	1	0	1	0
E30	1	0	0	1
E62	1	0	1	0
E86	1	0	1	0
E90	3	3	0	0
E91	1	0	0	1
E92	1	1	0	0
E94	2	1	0	1

Totals: 108 51 39 18
Result% 47% 36% 17%
Win Lose Draw

- A13 English
- A22 English 1.c4 e5 with Black Bc5
- A45 Queen's pawn Torre,Colle,etc
- A57 Benko/Volga Gambit
- A85 Dutch
- B07 Pirc
- B20 Closed Sicilian
- B21 Sicilian Rossolimo,Grand Prix,irregulars
- B70 Sicilian Dragon
- E90 King's Indian irregulars

CICL

1993 PLAYOFF

INDEX

Compiled by Duane Satterlee
JI Case

Game	White	Black	Score	Moves	W. Rating	B. Rating	Mov 1	Opening	Variation
96	Para, A	Litvinas, A	2	70	1605	1725	Nf3	KIA	Symmetric-4 moves vs. Robatsch
26	Cox, M	Kale, S	2	45	2015	1695	Nf3	KIA	
95	Para, A	Brockett, Mark	0	59	1610	1830	Nf3	KIA	
47	Golla, R	Gaines, Irwin	2	42	2035	1730	Nf3	KID	
6	Benedek, Roy	Buchner, R	1	60	2240	2015	Nf3	Nimzo	
69	Kostecka, Keith	Heinrich, Joel	0	30	1586	1895	Nf3	QGA	vs. KID
75	Leong, G	Boldingh, EP	0	21	2055	2135	Nf3	Reti	Blumenfeld
83	Ludwig, Tom	Marcowka, Bob	2	30	2120	2015	c4	Benoni	
102	Rafacz, Walter	Underwood, L	0	42	1635	1975	c4	English	Bremen
28	DeWitt, Greg	Augsburger	0	30	1450	1875	c4	English	Bremen
65	Jacobs, Norm	Cieslek, Dave	2	34	1955	2010	c4	English	Briton Wall
74	Latimer, E	Rzeszutko, Russ	1	29	2015	1935	c4	English	Briton Wall
82	Ludwig, Tom	Benedek, R	0	33	2140	2215	c4	English	Briton Wall
101	Rafacz, Walter	Meinikov, Igor	0	35	1635	2205	c4	English	Briton Wall
104	Reyes, Ruben	Leong, Dennis	2	34	2320	1980	c4	English	Briton Wall
105	Reyes, Ruben	Stevanovic, M	1	38	2315	2245	c4	English	Briton Wall
122	Underwood, W	Losoff, A	0	43	1975	1965	c4	English	Briton Wall
92	Miller, Tom	Eustace, Dan	2	20	1620	1490	c4	English	Closed Sicilian Rev
94	Osterlund, Russ	Rafacz, W	2	46	1920	1785	c4	English	Irregular
100	Rafacz, Walter	Guio, J	0	27	1635	2185	c4	English	Symmetric
123	Underwood, W	Markowka, Bob	2	57	1980	1990	c4	English	Symmetric
17	Brockett, Mark	Burger, Ed	0	54	1840	2075	c4	English	Symmetric-Briton W.
91	Miller, Tom	Davidson, Mike	1	41	1620	1685	c4	English	vs. Dutch
27	Cumberland, Mike	Micklich, FT	0	73	1745	1745	d3	Hedgehog	
37	Efron, D	Ogasawara, Lance	2	47	1629	1850	d4	Benko	
130	Young, C	Ogasawara, Lance	1	38	1965	1845	d4	Benko	
42	Franek, Marty	Klinefelter, H	2	53	1910	1461	d4	Benko	
64	Inumerable, F	Tegel, Frank	0	49	2125	2150	d4	Benoni	Accepted Blumenfeld or Tal
41	Franek, Marty	Golla, R	0	37	1925	2025	d4	Benoni	Closed
11	Bloedow, P	Dobr, K	2	41	1498	1520	d4	Colle	
12	Bloedow, P	Herandez, Dan	0	49	1498	1537	d4	Colle	
60	Hill, R	Carter, L	2	35	1740	1525	d4	Colle	Slav
61	Hill, R	Christian, R	1	43	1735	1835	d4	Colle	vs. Dutch
13	Bloedow, P	Sajbel, Pat	1	22	1498	1745	d4	Colle	vs. KID
103	Reid, C	Litvinas, A	0	34	1360	1720	d4	Colle	Accepted
129	Wong, P	Jasaitis, A	1	37	2225	2210	d4	Dutch	Irregular
29	Dezonne, Tony	Hahne, Dave	0	68	1183	1579	d4	Dutch	Leningrad
62	Hill, Robert	Hahne, Dave	2	34	1720	1579	d4	Dutch	Stonewall
121	Tricsmeyer, Walter	Cheveresan, Sabin	0	34	1910	1439	d4	Dutch	
87	Mcalister, Kevin	Spiegel, L	1	56	1710	2035	d4	Grunfeld	
25	Cooper, W	Decman, S	1	56	1710	1680	d4	KID	
80	Litvan	Lomont, C	2	30			d4	KID	

Game	White	Black	Score	Moves	W. Rating	B. Rating	Mov 1	Opening	Variation
5	Bargerstock, Dan	Osterlund, Russ	1	29	1860	1945	d4	KID	Catalan
35	Durkee, D	Decman, S	2	30	1775	1690	d4	KID	Samish
40	Franek, Marty	Gaines, Irwin	2	29	1915	1725	d4	KID	Samish
84	Marema, D	Benedek, Roy	0	20	2020	2230	d4	KID	Samish
85	Marema, D	Osterlund, Russ	2	22	1930	1950	d4	KID	Samish
38	Efron, D	Suerth, F	0	45	1635	1620	d4	Kevitz-Trajkovic	
53	Hahne, D	Bargerstock, Dan	0	57	1579	1895	d4	Nlmzo	
114	Stamm, Vern	McAlister, K	0	50	1725	1920	d4	Nlmzo	
118	Sullivan, Jim	Jones, Barry	2	51	1970	2135	d4	Nlmzo	
20	Buerger, E	Hughes, N	2	30	2070	1860	d4	QGA	
86	McAlister, Kevin	Siwek, Mark	1	38	1930	2175	d4	QGD	Anti-Colle
4	Bargerstock, Dan	Cieslek, Dave	2	57	1860	2045	d4	QGD	Exchange
34	Durkee, D	Cooper, W	1	49	1780	1685	d4	QGD	Slav
63	Inumerable, F	Sullivan, Jim	2	58	2105	1980	d4	QGD	4 Knights
24	Cheveresan, Sabin	Van Zile, Charlie	0	31	1439	1386	d4	Queen Pawn Game	
77	Levine, David	Inumerable, F	2	41	2380	2100	d4	Queen's Bishop Attac	
78	Levine, David	Tegel, Frank	2	29	2400	2165	d4	Ruth	
119	Tegel, Frank	Melnikov, Igor	0	60	2160	2200	d4	Ruth	
67	Klinefelter, Howard	Dobr, Karl	1	32	1461	1520	d4	Stonewall	
68	Klinefelter, Howard	Sajbal, Pat	0	50	1461	1735	d4	Stonewall	Dutch
15	Brady, Rich	Speck, Dan	0	28	1252	1346	d4	Stonewall	vs. Fianchetto
55	Hasan, Yusuf	Jasaitis, A	0	64	2200	2215	e4	Alekine's Defense	
58	Hernandez, D	Castilla, Herberto	2	42	1537	e4	e4	Alekine's Defense	
89	Micklich, FT	Olsen, Art	2	64	1740	1460	e4	Bishop's Opening	
97	Piao, Tony	Baurac, Dave	2	38	1610	1695	e4	Caro-Kann	
7	Bernard, Don	Augsberger, L	0	46	1290	1880	e4	Caro-Kann	Closed (2.d3)
30	Dobr, K	Kostecka, Keith	0	24	1520	1588	e4	Center Counter	Larsen-declined
48	Goncharoff, Nick	Eustace, Dan	2	58	1770	1490	e4	Center Counter	
43	Friseema, Bill	Melnikov, Igor	1	52	2130	2205	e4	Center Game	
16	Branch, Yvonne	Alper, Ted	0	51	1307	e4	e4	Center game	
46	Gaston, Ken	Sahli, Ed	0	40	1329	1675	e4	French	Advance
70	Kostecka, Keith	Hughes, Norm	1	38	1586	1850	e4	French	Advance
98	Piao, Tony	Samelson, C	0	43	1610	2005	e4	French	Advance
116	Suerth, F	Cooper, W	0	48	1640	1690	e4	French	Advance
52	Guio, J	Levine, D	0	48	2190	2390	e4	French	Exchange
56	Hasan, Yusuf	Ludwig, T	1	53	2175	2120	e4	French	Irregular
32	Dobrovoiny, Chuck	Friesma, Bill	0	48	1900	2135	e4	French	Tarrasch
81	Losoff, A	Ogasawara, Lance	2	34	1970	1815	e4	Italian	
125	Van Zile, Charlie	Kanas, Bill	2	53	1386	1298	e4	Italian	
22	Carter, LT	Edwards, Stan	2	35	1525	1267	e4	KGA	Accepted
72	Lambirts, Jim	Branch, Yvonne	0	25	1369	1307	e4	KID	
19	Brolsos, Jim	Wilson, Mike	0	44	1549	e4	e4	Owen's Defense	
8	Bernard, Don	Edwards, Stan	0	39	1290	1267	e4	Philidor's Defense	

Game	White	Black	Score	Moves	W. Rating	B. Rating	Mov 1	Opening	Variation
73	Lambiris, Jim	Likhterev, Mike	1	45	1369	1535	e4	Philidor's Defense	
50	Green, David	Jacobs, Norm	0	45	1840	1940	e4	Pirc	
54	Harris, Robert	Pratts, M	2	55	1564	1655	e4	Pirc	
106	Sajbel, Pat	Miller, Tom	0	47	1730	1695	e4	Pirc	
111	Siwek, Mark	Stamm, Vern	0	83	2230	1725	e4	Queens Indian	
79	Likhterev, Mike	Wilson, Mike	2	34	1535		e4	Robatsch	
124	Van Zile, Charlie	Anderson, Cliff	0	58	1386	1369	e4	Robatsch	
107	Samelson, C	Deng, J	2	8	2000	1650	e4	Scotch Game	
108	Samelson, C	McQuinn	2	51	2000	1476	e4	Scotch Game	
113	Spiegel, L	Cox, M	1	56	2035	2020	e4	Scotch Game	
117	Suerth, F	Deng, J	2	34	1610	1680	e4	Scotch Game	
51	Green, David	Marcowka, Bob	0	45	1840	1990	e4	Scotch game	
2	Austin, R	Bernard, Don	0	73	1135	1135	e4	Sicilian	
9	Blackmon, E	DeWitt, Greg	2	19	1760	1450	e4	Sicilian	
21	Burian, Dave	Goncharoff, Nick	2	56	1644	1775	e4	Sicilian	
31	Dobrovoiny, Chuck	Berry, Greg	1	39	1925	2050	e4	Sicilian	
33	Dobrovoiny, Chuck	Rafacz, W	0	35	1935	1735	e4	Sicilian	
59	Hernandez, D	Thomas, Jerry	1	40	1537	1509	e4	Sicilian	
76	Leong, G	Pratis, M	1	28	2040	1610	e4	Sicilian	
120	Thomas, Jerry	Reid, Carl	2	28	1509	1360	e4	Sicilian	
126	Wallach, C	Durkee, D	2	34	2080	1790	e4	Sicilian	
127	Wallach, C	Losoff, A	2	30	2060	1990	e4	Sicilian	
128	Ward, C	Howard, W	2	51	1543	1456	e4	Sicilian	
10	Blackmon, E	Decman, S	2	37	1760	1705	e4	Sicilian	Closed
23	Carter, LT	Piao, Tony	0	51	1525	1651	e4	Sicilian	Closed
36	Edwards, Stan	DeWitt, Greg	0	60	1267	1450	e4	Sicilian	Closed
45	Gaston, Ken	Brady, Richard	2	32	1329	1252	e4	Sicilian	Closed
57	Hasan, Yusuf	Rafacz, T	2	26	2195	1755	e4	Sicilian	Closed
66	Jasaitis, A	Guio, J	2	32	2225	2190	e4	Sicilian	Closed
71	Lambiris, Jim	Brady, Rich	0	39	1369	1252	e4	Sicilian	Closed
90	Micklich, FT	Reid, Carl	2	33	1740	1360	e4	Sicilian	Closed
99	Radavicius, E	Kale, S	0	40	1690	1690	e4	Sicilian	Closed
44	Friesema, Bill	Sullivan, Jim	2	22	2115	1990	e4	Sicilian	Closed
1	Augsberger, L	Ward, C	2	51	1880	1543	e4	Spanish	Morra Gambit
3	Austin, R	Ockers, S	2	45	1135	1492	e4	Spanish	
18	Brotsos, Jim	Kanas, Bill	2	29	1549	1298	e4	Spanish	
39	Fahrenholz, S	Dezonno, Tony	2	44	1775	1183	e4	Spanish	
49	Goncharoff, Nick	West, Rick	2	23	1770	1474	e4	Spanish	
93	Mitcham, L	Wallach, C	0	23	1550	2086	e4	Spanish	
109	Satterlee, D	Rzeszutko, Russ	0	61	1705	1940	f4	Bird	
110	Satterlee, D	Stamm, Vern	2	29	1695	1745	f4	Bird	
88	Mendoza, D	Speck, Dan	0	43		1346	f4	Bird	
112	Spec, D	Olsen, Art	0	56	1346	1460	g3	Modern	
115	Stevanovic, M	Siwek, Mark	2	21	2235	2190	g3	Modern	
14	Bolding, EP	Golla, R	2	40	2155	2040	g4	Grob	

Game	White	Black	Score	Moves	W. Rating	B. Rating	Mov 1	Opening	Variation
1	Augsberger, L	Ward, C.	2	51	1880	1543	e4	Spanish	
2	Austin, R	Bernard, Don	0	73	1135	1135	e4	Sicilian	
3	Austin, R	Ockers, S	2	45	1135	1492	e4	Spanish	Anti-Colle
4	Bargerstock, Dan	Cieslek, Dave	2	57	1860	2045	d4	QGD	Catalan
5	Bargerstock, Dan	Osterlund, Russ	1	29	1860	1845	d4	KID	
6	Benedek, Roy	Buchner, R	1	60	2240	2015	Nf3	Nimzo	Larsen-declined
7	Bernard, Don	Augsberger, L	0	46	1290	1880	e4	Caro-Kann	
8	Bernard, Don	Edwards, Stan	0	39	1290	1267	e4	Philidor's Defense	
9	Blackmon, E	DeWitt, Greg	2	19	1760	1450	e4	Sicilian	Closed
10	Blackmon, E	Decman, S	2	37	1760	1705	e4	Sicilian	
11	Bloedow, P	Dobr, K	2	41	1498	1520	d4	Colle	
12	Bloedow, P	Herandez, Dan	0	49	1498	1537	d4	Colle	
13	Bloedow, P	Sajbel, Pat	1	22	1498	1745	d4	Colle	vs. Dutch
14	Boldingh, EP	Golla, R	2	40	2155	2040	g4	Grob	
15	Brady, Rich	Speck, Dan	0	28	1252	1346	d4	Stonewall	vs. Fianchetto
16	Branch, Yvonne	Alper, Ted	0	51	1307	1307	e4	Center game	
17	Brockett, Mark	Burger, Ed	0	54	1840	2075	c4	English	Symmetric-Briton W.
18	Brotsos, Jim	Kanas, Bill	2	29	1549	1298	e4	Spanish	
19	Brotsos, Jim	Wilson, Mike	0	44	1549	1549	e4	Owen's Defense	
20	Buerger, E	Hughes, N	2	30	2070	1860	d4	QGA	
21	Burian, Dave	Goncharoff, Nick	2	56	1644	1775	e4	Sicilian	
22	Carter, LT	Edwards, Stan	2	35	1525	1267	e4	KGA	Accepted
23	Carter, LT	Piao, Tony	0	51	1525	1651	e4	Sicilian	Closed
24	Cheveresan, Sabin	Van Zile, Charlie	0	31	1439	1386	d4	Queen Pawn Game	4 Knights
25	Cooper, W	Decman, S	1	56	1710	1680	d4	KID	
26	Cox, M	Kale, S	2	45	2015	1695	Nf3	KIA	Symmetric-4 moves
27	Cumberland, Mike	Micklich, FT	0	73	1450	1745	d3	Hedgehog	
28	DeWitt, Greg	Augsburger	0	30	1183	1875	c4	English	Bremen
29	Dezonno, Tony	Hahne, Dave	0	68	1520	1579	d4	Dutch	Irregular
30	Dobr, K	Kostecka, Keith	0	24	1925	1586	e4	Center Counter	
31	Dobrovoiny, Chuck	Berry, Greg	1	39	1900	2050	e4	Sicilian	Tarrasch
32	Dobrovoiny, Chuck	Friesma, Bill	0	48	1935	2135	e4	French	Exchange
33	Dobrovoiny, Chuck	Rafacz, W	0	35	1780	1735	e4	Sicilian	Samish
34	Durkee, D	Cooper, W	1	49	1775	1685	d4	QGD	Closed
35	Durkee, D	Decman, S	2	30	1267	1690	d4	KID	
36	Edwards, Stan	DeWitt, Greg	0	60	1629	1450	e4	Sicilian	
37	Efron, D	Ogasawara, Lance	2	47	1635	1850	d4	Benko	
38	Efron, D	Suerth, F	0	45	1775	1620	d4	Kevitz-Trajkovic	
39	Fahrenholz, S	Dezonno, Tony	2	44	1915	1183	e4	Spanish	
40	Franek, Marty	Gaines, Irwin	2	29	1925	1725	d4	KID	Samish
41	Franek, Marty	Golla, R	0	37	1910	2025	d4	Benoni	Closed
42	Franek, Marty	Klinefelter, H	2	53	1910	1461	d4	Benko	Accepted

CICLINDEX

Thursday, January 27, 1994

Game	White	Black	Score	Moves	W. Rating	B. Rating	Mov 1	Opening	Variation
43	Friesema, Bill	Melnikov, Igor	1	52	2130	2205	e4	Center Game	Morra Gambit
44	Friesema, Bill	Sullivan, Jim	2	22	2115	1990	e4	Sicilian	Closed
45	Gaston, Ken	Brady, Richard	2	32	1328	1252	e4	Sicilian	Advance
46	Gaston, Ken	Sahil, Ed	0	40	1328	1675	e4	French	
47	Golla, R	Gaines, Irwin	2	42	2035	1730	Nf3	KID	
48	Goncharoff, Nick	Eustace, Dan	2	56	1770	1490	e4	Center Counter	
49	Goncharoff, Nick	West, Rick	2	23	1770	1474	e4	Spanish	
50	Green, David	Jacobs, Norm	0	45	1840	1940	e4	Pirc	
51	Green, David	Marcowka, Bob	0	45	1840	1990	e4	Scotch game	
52	Guio, J	Levine, D	0	48	2190	2390	e4	French	Exchange
53	Hahne, D	Bargerslock, Dan	0	57	1579	1895	d4	Nimzo	
54	Harris, Robert	Pratts, M	2	55	1584	1655	e4	Pirc	
55	Hasan, Yusuf	Jasaitis, A	0	64	2200	2215	e4	Alekine's Defense	
56	Hasan, Yusuf	Ludwig, T	1	53	2175	2120	e4	French	Irregular
57	Hasan, Yusuf	Rafacz, T	2	26	2195	1755	e4	Sicilian	Closed
58	Hernandez, D	Castilla, Herberto	2	42	1537	1509	e4	Alekine's Defense	
59	Hernandez, D	Thomas, Jerry	1	40	1537	1509	e4	Sicilian	
60	Hill, R	Carter, L	2	35	1740	1525	d4	Colle	Slav
61	Hill, R	Christian, R	1	43	1735	1835	d4	Colle	Leningrad
62	Hill, Robert	Hahne, Dave	2	34	1720	1579	d4	Dutch	Slav
63	Inumerable, F	Sullivan, Jim	2	56	2105	1980	d4	QGD	Blumenfeld or Tal
64	Inumerable, F	Tegel, Frank	0	49	2125	2150	d4	Benoni	Bremen
65	Jacobs, Norm	Cieslek, Dave	2	34	1955	2010	c4	English	Closed
66	Jasaitis, A	Guio, J	2	32	2225	2190	e4	Sicilian	
67	Klinefelter, Howard	Dobr, Karl	1	32	1461	1520	d4	Stonewall	Dutch
68	Klinefelter, Howard	Sajbel, Pat	0	50	1461	1735	d4	Stonewall	
69	Kostecka, Keith	Heinrich, Joel	0	30	1586	1895	Nf3	QGA	Advance
70	Kostecka, Keith	Hughes, Norm	1	38	1586	1850	e4	French	Closed
71	Lambiris, Jim	Brady, Rich	0	39	1369	1252	e4	Sicilian	
72	Lambiris, Jim	Branch, Yvonne	0	25	1369	1307	e4	KID	
73	Lambiris, Jim	Likhterev, Mike	1	45	1369	1535	e4	Philidor's Defense	
74	Latimer, E	Rzeszuiko, Russ	1	29	2015	1935	c4	English	Briton Wall
75	Leong, G	Boldingh, EP	0	21	2055	2135	Nf3	Reti	vs. KID
76	Leong, G	Pratts, M	1	28	2040	1610	e4	Sicilian	
77	Levine, David	Inumerable, F	2	41	2380	2100	d4	Queen's Bishop Attac	
78	Levine, David	Tegel, Frank	2	29	2400	2165	d4	Ruth	
79	Likhterev, Mike	Wilson, Mike	2	34	1535		e4	Robatsch	
80	Litvan	Lomont, C	2	30			d4	KID	
81	Losoff, A	Ogasawara, Lance	2	34	1970	1815	e4	Italian	Briton Wall
82	Ludwig, Tom	Benedek, R	0	33	2140	2215	c4	English	Blumenfeld
83	Ludwig, Tom	Marcowka, Bob	2	30	2120	2015	c4	Benoni	Samish
84	Marema, D	Benedek, Roy	0	20	2020	2230	d4	KID	Samish
85	Marema, D	Osterlund, Russ	2	22	1930	1950	d4	KID	

Game	White	Black	Score	Moves	W. Rating	B. Rating	Mov 1	Opening	Variation
86	Mcalister, Kevin	Siwek, Mark	1	38	1930	2175	d4	QGD	
87	Mcalister, Kevin	Spiegel, L	1	56	1910	2035	d4	Grinfeld	Finchello
88	Mendoza, D	Speck, Dan	0	43		1346	f4	Bird	
89	Micklitch, FT	Olsen, Art	2	64	1740	1460	e4	Bishop's Opening	
90	Micklitch, FT	Reid, Carl	2	33	1740	1360	e4	Sicilian	Closed
91	Miller, Tom	Davidson, Mike	1	41	1620	1685	c4	English	vs. Dutch
92	Miller, Tom	Eustace, Dan	2	20	1620	1490	c4	English	Closed Sicilian Rev
93	Mitcham, L	Wallach, C	0	23	1550	2086	e4	Spanish	
94	Osterlund, Russ	Rafacz, W	2	46	1920	1785	c4	English	Irregular
95	Para, A	Brockett, Mark	0	59	1610	1830	Nf3	KIA	vs. Robatsch
96	Para, A	Litvinas, A	2	70	1605	1725	Nf3	KIA	
97	Piao, Tony	Baurac, Dave	2	38	1610	1695	e4	Caro-Kann	Closed (2.d3)
98	Piao, Tony	Samelson, C	0	43	1610	2005	e4	French	Advance
99	Radavicius, E	Kale, S	0	40	1690	1690	e4	Sicilian	Closed
100	Rafacz, Walter	Guio, J	0	27	1635	2185	c4	English	Symmetric
101	Rafacz, Walter	Melnikov, Igor	0	35	1635	2205	c4	English	Briton Wall
102	Rafacz, Walter	Underwood, L	0	42	1635	1975	c4	English	
103	Reid, C	Litvinas, A	0	34	1360	1720	d4	Colle	vs. KID
104	Reyes, Ruben	Leong, Dennis	2	34	2320	1980	c4	English	Briton Wall
105	Reyes, Ruben	Stevanovic, M	1	38	2315	2245	c4	English	Briton Wall
106	Sajbel, Pat	Miller, Tom	0	47	1730	1695	e4	Pirc	
107	Samelson, C	Deng, J	2	8	2000	1650	e4	Scotch Game	
108	Samelson, C	McQuinn	2	51	2000	1476	e4	Scotch Game	
109	Satterlee, D	Rzeszutko, Russ	0	61	1705	1940	f4	Bird	
110	Satterlee, D	Stamm, Vern	2	29	1695	1745	f4	Bird	
111	Siwek, Mark	Stamm, Vern	0	83	2230	1725	e4	Queens Indian	
112	Spec, D	Olsen, Art	0	56	1346	1460	g3	Modern	
113	Spiegel, L	Cox, M	1	56	2035	2020	e4	Scotch Game	
114	Stamm, Vern	McAlister, K	0	50	1725	1920	d4	Nimzo	
115	Stevanovic, M	Siwek, Mark	2	21	2235	2190	g3	Modern	
116	Suerth, F	Cooper, W	0	48	1640	1690	e4	French	Advance
117	Suerth, F	Deng, J	2	34	1610	1680	e4	Scotch Game	
118	Sullivan, Jim	Jones, Barry	2	51	1970	2135	d4	Nimzo	
119	Tegel, Frank	Melnikov, Igor	0	60	2160	2200	d4	Ruth	
120	Thomas, Jerry	Reid, Carl	2	28	1509	1360	e4	Sicilian	
121	Tricsmeyer, Walter	Cheveresan, Sabin	0	34		1439	d4	Dutch	Stonewall
122	Underwood, W	Losoff, A	0	43	1975	1965	c4	English	Briton Wall
123	Underwood, W	Markowka, Bob	2	57	1980	1990	c4	English	Symmetric
124	Van Zile, Charlie	Anderson, Cliff	0	58	1386	1369	e4	Robatsch	
125	Van Zile, Charlie	Kanas, Bill	2	53	1386	1298	e4	Italian	
126	Wallach, C	Durkee, D	2	34	2080	1790	e4	Sicilian	
127	Wallach, C	Losoff, A	2	30	2060	1990	e4	Sicilian	
128	Ward, C	Howard, W	2	51	1543	1456	e4	Sicilian	
129	Wong, P	Jasaitis, A	1	37	2225	2210	d4	Dutch	
130	Young, C	Ogasawara, Lance	1	38	1965	1845	d4	Benko	Accepted

Game	White	Black	Score	Moves	W. Rating	B. Rating	Mov 1	Opening	Variation
16	Branch, Yvonne	Alper, Ted	0	51	1307		e4	Center game	
124	Van Zile, Charlie	Anderson, Cliff	0	58	1386	1369	e4	Robatsch	Larsen-declined
7	Bernard, Don	Augsberger, L	0	46	1290	1880	e4	Caro-Kann	Bremen
28	DeWitt, Greg	Augsburger	0	30	1450	1875	c4	English	
53	Hahne, D	Bargerstock, Dan	0	57	1579	1895	d4	Nimzo	Closed (2.d3)
97	Piao, Tony	Baurac, Dave	2	38	1610	1695	e4	Caro-Kann	Briton Wall
82	Ludwig, Tom	Benedek, R	0	33	2140	2215	c4	English	Samish
84	Marema, D	Benedek, Roy	0	20	2020	2230	d4	KID	
2	Austin, R	Bernard, Don	0	73	1135	1135	e4	Sicilian	
31	Dobrovolny, Chuck	Berry, Greg	1	39	1925	2050	e4	Sicilian	vs. KID
75	Leong, G	Boldingh, EP	0	21	2055	2135	Nf3	Reti	Closed
71	Lambiris, Jim	Brady, Rich	0	39	1369	1252	e4	Sicilian	Closed
45	Gaston, Ken	Brady, Richard	2	32	1329	1252	e4	Sicilian	
72	Lambiris, Jim	Branch, Yvonne	0	25	1369	1307	e4	KID	vs. Robatsch
95	Para, A	Brockett, Mark	0	59	1610	1830	Nf3	KIA	
6	Benedek, Roy	Buchner, R	1	60	2240	2015	Nf3	Nimzo	Symmetric-Briton W.
17	Brockett, Mark	Burger, Ed	0	54	1840	2075	c4	English	
60	Hill, R	Carter, L	2	35	1740	1525	d4	Colle	
58	Hernandez, D	Castilla, Herberto	2	42	1537		e4	Alekine's Defense	
121	Tricsmeyer, Walter	Cheveresan, Sabin	0	34		1439	d4	Dutch	Stonewall
61	Hill, R	Christian, R	1	43	1735	1835	d4	Colle	Slav
4	Bargerstock, Dan	Cieslek, Dave	2	57	1860	2045	d4	QGD	Anti-Colle
65	Jacobs, Norm	Cieslek, Dave	2	34	1955	2010	c4	English	Bremen
34	Durkee, D	Cooper, W	1	49	1780	1685	d4	QGD	Exchange
116	Suerth, F	Cooper, W	0	48	1640	1690	e4	French	Advance
113	Spiegel, L	Cox, M	1	56	2035	2020	e4	Scotch Game	vs. Dutch
91	Miller, Tom	Davidson, Mike	1	41	1620	1685	c4	English	
9	Blackmon, E	DeWitt, Greg	2	19	1760	1450	e4	Sicilian	Closed
36	Edwards, Stan	DeWitt, Greg	0	60	1267	1450	e4	Sicilian	Closed
10	Blackmon, E	Decman, S	2	37	1760	1705	e4	Sicilian	
25	Cooper, W	Decman, S	1	56	1710	1680	d4	KID	Samish
35	Durkee, D	Decman, S	2	30	1775	1690	d4	KID	
107	Samelson, C	Deng, J	2	8	2000	1650	e4	Scotch Game	
117	Suerth, F	Deng, J	2	34	1610	1680	e4	Scotch Game	
39	Fahrenholz, S	Dezozno, Tony	2	44	1775	1183	e4	Spanish	
11	Bloedow, P	Dobr, K	2	41	1498	1520	d4	Colle	
67	Klinefelter, Howard	Dobr, Karl	1	32	1461	1520	d4	Stonewall	
126	Wallach, C	Durkee, D	2	34	2080	1790	e4	Sicilian	
8	Bernard, Don	Edwards, Stan	0	39	1290	1267	e4	Philidor's Defense	Accepted
22	Carter, LT	Edwards, Stan	2	35	1525	1267	e4	KGA	
48	Goncharoff, Nick	Eustace, Dan	2	56	1770	1490	e4	Center Counter	
92	Miller, Tom	Eustace, Dan	2	20	1620	1490	c4	English	Closed Sicilian Rev

Game	White	Black	Score	Moves	W. Raing	B. Raing	Mov 1	Opening	Variation
32	Dobrovoiny, Chuck	Friesma, Bill	0	48	1900	2135	e4	French	Tarrasch
40	Franek, Marty	Gaines, Irwin	2	29	1915	1725	d4	KID	Samish
47	Golla, R	Gaines, Irwin	2	42	2035	1730	Nf3	KID	
14	Boldingh, EP	Golla, R	2	40	2155	2040	g4	Grob	Closed
41	Franek, Marty	Golla, R	0	37	1925	2025	d4	Benoni	
21	Burian, Dave	Goncharoff, Nick	2	58	1644	1775	e4	Sicilian	Closed
68	Jasaitis, A	Gulo, J	2	32	2225	2190	e4	Sicilian	Symmetric
100	Rafacz, Walter	Gulo, J	0	27	1635	2185	c4	English	Irregular
29	Dezanno, Tony	Hahne, Dave	0	68	1183	1579	d4	Dutch	Leningrad
62	Hill, Robert	Hahne, Dave	2	34	1720	1579	d4	Dutch	
69	Kostecka, Keith	Heinrich, Joel	0	30	1586	1895	Nf3	QGA	
12	Bloedow, P	Herandez, Dan	0	49	1498	1537	d4	Colle	
128	Ward, C	Howard, W	2	51	1543	1458	e4	Sicilian	
20	Buerger, E	Hughes, N	2	30	2070	1860	d4	QGA	
70	Kostecka, Keith	Hughes, Norm	1	38	1586	1850	e4	French	Advance
77	Levine, David	Inumerable, F	2	41	2380	2100	d4	Queen's Bishop Attac	
50	Green, David	Jacobs, Norm	0	45	1840	1940	e4	Pirc	
55	Hasan, Yusuf	Jasaitis, A	0	64	2200	2215	e4	Alekine's Defense	
129	Wong, P	Jasaitis, A	1	37	2225	2210	d4	Dutch	Accepted
118	Sullivan, Jim	Jones, Barry	2	51	1970	2135	d4	Nimzo	
26	Cox, M	Kale, S	2	45	2015	1695	Nf3	KIA	Symmetric-4 moves
99	Radavicius, E	Kale, S	0	40	1690	1690	e4	Sicilian	Closed
18	Brotos, Jim	Kanas, Bill	2	29	1549	1298	e4	Spanish	
125	Van Zile, Charlie	Kanas, Bill	2	53	1386	1298	e4	Italian	
42	Franek, Marty	Klinefelter, H	2	53	1910	1461	d4	Benko	Accepted
30	Dobr, K	Kostecka, Keith	0	24	1520	1588	e4	Center Counter	
104	Reyes, Ruben	Leong, Dennis	2	34	2320	1980	c4	English	Briton Wall
52	Gulo, J	Levine, D	0	48	2190	2390	e4	French	Exchange
73	Lambiris, Jim	Lkhterev, Mike	1	45	1389	1535	e4	Philidor's Defense	
96	Para, A	Litinas, A	2	70	1605	1725	Nf3	KIA	vs. KID
103	Reid, C	Litinas, A	0	34	1360	1720	d4	Colle	
80	Litvan	Lomont, C	2	30			d4	KID	Briton Wall
122	Underwood, W	Losoff, A	0	43	1975	1965	c4	English	
127	Wallach, C	Losoff, A	2	30	2060	1990	e4	Sicilian	
56	Hasan, Yusuf	Ludwig, T	1	53	2175	2120	e4	French	Irregular
51	Green, David	Marcowka, Bob	0	45	1840	1990	e4	Scotch game	
83	Ludwig, Tom	Marcowka, Bob	2	30	2120	2015	c4	Benoni	Blumenfeld
123	Underwood, W	Markowka, Bob	2	57	1980	1990	c4	English	Symmetric
114	Stamm, Vern	McAlister, K	0	50	1725	1920	d4	Nimzo	
108	Sameison, C	McQuinn	2	51	2000	1476	e4	Scotch Game	
43	Friesema, Bill	Meinikov, Igor	1	52	2130	2205	e4	Center Game	
101	Rafacz, Walter	Meinikov, Igor	0	35	1635	2205	c4	English	Briton Wall
119	Tegel, Frank	Meinikov, Igor	0	60	2160	2200	d4	Ruth	

Game	White	Black	Score	Moves	W. Rating	B. Rating	Mov 1	Opening	Variation
27	Cumberland, Mike	Micklich, FT	0	73	1730	1745	d3	Hedgehog	
106	Sajbel, Pat	Miller, Tom	0	47	1730	1695	e4	Pirc	
3	Austin, R	Ockers, S	2	45	1135	1492	e4	Spanish	
37	Efron, D	Ogasawara, Lance	2	47	1629	1850	d4	Benko	
81	Losoff, A	Ogasawara, Lance	2	34	1970	1815	e4	Italian	
130	Young, C	Ogasawara, Lance	1	38	1965	1845	d4	Benko	
89	Micklich, FT	Olsen, Art	2	64	1740	1460	e4	Bishop's Opening	
112	Spec, D	Olsen, Art	0	56	1346	1460	g3	Modern	
5	Bargerstock, Dan	Osterlund, Russ	1	29	1860	1945	d4	KID	Catalan
85	Marema, D	Osterlund, Russ	2	22	1930	1950	d4	KID	Samish Closed
23	Carter, LT	Piao, Tony	0	51	1525	1651	e4	Sicilian	
76	Leong, G	Pratis, M	1	28	2040	1610	e4	Sicilian	
54	Harris, Robert	Pratts, M	2	55	1564	1655	e4	Pirc	
57	Hasan, Yusuf	Rafacz, T	2	26	2195	1755	e4	Sicilian	Closed
33	Dobrovolny, Chuck	Rafacz, W	0	35	1935	1735	e4	Sicilian	
94	Osterlund, Russ	Rafacz, W	2	46	1920	1785	c4	English	Irregular Closed
90	Micklich, FT	Reid, Carl	2	33	1740	1360	e4	Sicilian	
120	Thomas, Jerry	Reid, Carl	2	28	1509	1360	e4	Sicilian	Briton Wall
74	Latimer, E	Rzeszutko, Russ	1	29	2015	1935	c4	English	
109	Satterlee, D	Rzeszutko, Russ	0	61	1705	1940	f4	Bird	
46	Gaston, Ken	Sahli, Ed	0	40	1329	1675	e4	French	Advance vs. Dutch
13	Bloedow, P	Sajbel, Pat	1	22	1498	1745	d4	Colle	Dutch Advance
68	Klinefelter, Howard	Sajbel, Pat	0	50	1461	1735	d4	Stonewall	
98	Piao, Tony	Samelson, C	0	43	1610	2005	e4	French	
86	Mcalister, Kevin	Siwek, Mark	1	38	1930	2175	d4	QGD	
115	Stevanovic, M	Siwek, Mark	2	21	2235	2190	g3	Modern	
15	Brady, Rich	Speck, Dan	0	28	1252	1346	d4	Stonewall	vs. Fianchetto Fianchetto
88	Mendoza, D	Speck, Dan	0	43	1346	1346	f4	Bird	
87	Mcalister, Kevin	Spiegel, L	1	56	1910	2035	d4	Grunfeld	
110	Satterlee, D	Stamm, Vern	2	29	1695	1745	f4	Bird	
111	Siwek, Mark	Stamm, Vern	0	83	2230	1725	e4	Queens Indian	
105	Reyes, Ruben	Stevanovic, M	1	38	2315	2245	c4	English	Briton Wall
38	Efron, D	Suerth, F	0	45	1635	1620	d4	Keviz-Trajkovic	
44	Friesema, Bill	Sullivan, Jim	2	22	2115	1990	e4	Sicilian	Morra Gambit Slav
63	Inumerable, F	Sullivan, Jim	2	56	2105	1980	d4	QGD	Blumenfeld or Tal
64	Inumerable, F	Tegel, Frank	0	49	2125	2150	d4	Benoni	
78	Levine, David	Tegel, Frank	2	29	2400	2165	d4	Ruth	
59	Hernandez, D	Thomas, Jerry	1	40	1537	1509	e4	Sicilian	
102	Rafacz, Walter	Underwood, L	0	42	1635	1975	c4	English	
24	Cheveresan, Sabin	Van Zile, Charlie	0	31	1439	1386	d4	Queen Pawn Game	4 Knights
93	Micham, L	Wallach, C	0	23	1550	2086	e4	Spanish	
1	Augsberger, L	Ward, C.	2	51	1880	1543	e4	Spanish	
49	Goncharoff, Nick	West, Rick	2	23	1770	1474	e4	Spanish	
19	Brolsos, Jim	Wilson, Mike	0	44	1549	1474	e4	Owen's Defense	
79	Likhterev, Mike	Wilson, Mike	2	34	1535	1535	e4	Robatsch	