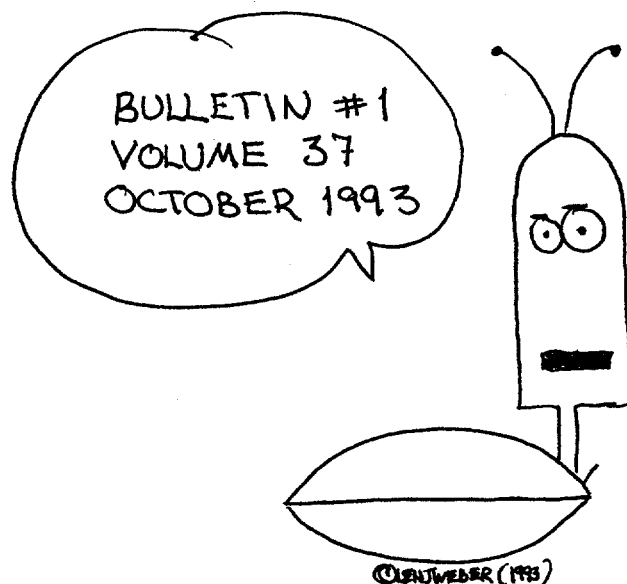


Chicago Industrial Chess League



... INSIDE THIS ISSUE ...

- A WORD FROM THE EDITOR
- BANQUET AND PLAYOFF BOOK NEWS
- CICL FALL MEETING MINUTES
- NEWS ITEMS
- THOUGHTS ON THE BANQUET
- AT&T NEWS
- BUDGET AND TEAM ASSESSMENTS
- TEAM CAPTAINS LISTS
- RATING CHAIRMAN REPORT
- RATING LIST

LET'S HEAR FROM YOU
Send games, comments, ideas, letters... to NM Len J. Weber
5723 W. 129th St. 12E
Crestwood IL 60445

CICL OFFICERS
As of September 29 1993

Phone numbers are listed in order of preference.

PRESIDENT	James Hodina 718 Central Park Ave. Flossmoor IL 60422	312-856-2762 (W) 708-799-5571 (H)
SECRETARY	Leonard Spiegel MS 219 Fermilab Batavia IL 60510	708-840-2809 (W) 708-377-2675 (H)
TREASURER	Wesley K. Underwood 207 S. Dorchester Ave. Wheaton IL 60187	708-752-5127 (W) 708-462-0393 (H)
RATINGS CHAIRMAN	Charles Ward 615 S. Lincoln Hinsdale IL 60521	708-325-3885 (H) 708-979-4599 (W) 708-979-8451 (FAX)
BULLETIN CHAIRMAN	Len J. Weber 5723 W. 129th St. 12E Crestwood IL 60445	312-693-0800 (W) 708-489-0415 (H) 312-693-0574 (FAX)
NORTH DIVISION CHAIRMAN	Ruben R. Reyes 2019 W. Leland Ave. Chicago IL 60625	708-286-0758 (W) 312-334-5462 (H) 312-334-5884 (H)
EAST DIVISION CHAIRMAN	Kelvin McAlister 3825 Canterbury Ct. 2A Richton Park IL 60471	312-663-1600 x182 (W)
NEAR WEST DIVISION CHAIRMAN	Satish L. Kale JI CASE 7 South 600 County Line Road Hinsdale IL 60521	708-887-2372 (W) 708-325-5253 (H)
FAR WEST DIVISION CHAIRMAN	Irwin Gaines Fermilab - m/s 127 PO BOX 500 Batavia IL 60510	708-840-4022 (W)
BANQUET & PUBLICITY CHAIRMAN	Anthony Jasaitis PO BOX 664 Bedford Park IL 60499-0664	708-879-8583 (W)

A WORD FROM THE EDITOR

Welcome to another year of play in the Chicago Industrial Chess League. In a world with so much that is uncertain, you can be reassured that the CICL, the oldest and second largest chess organization in the State of Illinois, will resume play. Bill Clinton told us during his presidential campaign that it wasn't about character, it was about change. Well, at the CICL, it isn't about change... it IS about character!

The CICL relies upon a dedicated staff of volunteers to operate. Not just any volunteers. Qualified volunteers. I am honored to join these CICL officers, captains, and players, and I hope to be able to assist their high standards.

Just so you don't think they pulled a rookie off the street... I will use a paragraph to give some background on your new editor. I have been involved in chess for 11 years, starting as a high school player. After that I have played, captained, coached, taught, organized, directed, and published.

I have played postal chess and am rated over 2000 in that field, in regular tournament play I rose from 1397 in March 1984 to peak at 2311 USCF two years ago. I am a USCF Life Master, one of the two currently on the CICL active list (the other is Levine.) I captained my H.S. team to 9-3 in 1983, and 12-0 in 1984. I also captained the Orland Park Chess Club team to back to back ICL titles in 1991-1992. I coached Thornridge H.S. in 1985-88. I have had various students over the years. I organized and directed a number of swiss events and master round robins, as recently as this winter, and I had been publishing a weekly newsletter for the Orland Park Chess Club until that club folded earlier this year, primarily because I left.

I admit, however, that I am not an expert in use of computer word processing programs, such as Word Perfect. Thus, until I learn that art as well as my predecessors, you will be asked to forgive the visual quality, it on occasion will not match previous bulletins. I will try to compensate by using cartoons and frequent editorial comment (and license.)

We will have some old favorites, such as the "Two Squares" columns. We will try to get Wes Underwood, the new historian, to send us some tidbits from the past. I will also introduce new features, such as "Notes & Quotes", which will have bits and pieces of humorous or interesting information from around the league. A startup article will appear next month to give readers the idea, then, ...send me some anecdotes! Readers will discover that a column like this will accurately reflect the 'flavor' of a season, even when read years later.

I hope to have a great issue for you. This issue will of course be later than past first issues... but I hope to increase the number of issues during the year. Enjoy!

** Note **

I apologize for the tardiness of this issue, it has been a busy beginning. Due to the large volume of material and time constraints, this month I have not included published games or the Marv Cox article (just received.) Further, as noted in the letters from Tony Jasaitis, the playoff bulletin will not be included in the first issue. All non 'photo-ready' material received will be published using the H.P. Editor program, in order to expedite publication. The summer crosstables are included, but the rating list shown will be the final one from last year. Updates will be in next month.

*** THE DEADLINE FOR ISSUE 2 IS OCTOBER 24 ***

BANQUET NEWS
by Tony Jasaitis, Banquet Chairman

At our fall meeting, President Jim Hodina reported that his search for alternates to Harvey's Prime Rib in Westmont was unsuccessful; Harvey's clearly had the best price and the best fit for our needs. Further, the membership was satisfied with the location.

As requested at the meeting, I have looked into the possibility of having our banquet on a Saturday evening. The good news is that the price per person would be the same. The bad news is that due to large banquet demand on Saturday evenings, our minimum attendance would have to be 150, which is more than double our normal attendance. Since there is no evidence that we can produce such a large turnout for a banquet, it appears that we will have to scrap the Saturday evening idea.

An alternative is Saturday afternoon, but we would have to clear out by 4pm for the evening rush. Since our banquet (including speed tournament) typically takes 5 hours, we would have to either serve food at 11am, or have the speed tournament before the banquet, or reevaluate how we want to conduct the banquet. Progress at the banquet would become more time-critical than now.

If you think that having the banquet on a Saturday afternoon would increase attendance from your team, call me at 708-448-4967 (hone, message machine is always enabled). If the response is strong, I will look into this possibility more deeply. Otherwise, expect the banquet to take place on Friday evening, June 10, 1994.

PLAYOFF BOOK NEWS
By Tony Jasaitis, Coordinator

The eagerly awaited 1992-3 Season Playoff Tournament Book is ready!! Dennis Leong, our Alumnus and League Librarian, has completed the monumental task of inputting into his computer the 131 playoff games that were submitted for publication.

One printed copy of the Playoff Book will be distributed to everyone who is entitled to receive a bulletin. Team dues and individual subscriptions must be paid in full before the Playoff Book will be sent. Our goal is to have it ready to mail with the second bulletin of the season. In addition, Dennis has offered to make copies available on diskette (in various database formats) to those who send him a formatted diskette (IBM compatible, 5.25 or 3.5 inch, minimum 320K) and self-addressed, stamped materials for return mailing. The normal materials would be a diskette mailer with sufficient postage. A reusable mailer containing a self-addressed mailing label and proper postage enclosed will be acceptable. Also, please specify which of the below formats you desire.

Dennis has following data formats available:

- a) ChessBase 3.0 or 4.0
- b) NICBase
- c) Chess Assistant 1.2x
- d) ASCII text (same as printed copy)
- e) a ChessBase demo version that lets you browse through portions of the book graphically without owning ChessBase (legal, and VERY nice!! - all you need is an IBM-compatible computer).

Thanks to all of you who cooperated so dramatically (91% turn-in rate!) and allowed your brilliancies, horrible blunders and pet lines to get published for the enjoyment of all. Corrections to the games are welcome. The games have already been scanned for legality and cross-checked with the opponent's score sheet (if submitted). Despite the high turn-in, we would like to see 100%. Updates and additions to the book will be published at a later time.

If you want your playoff game to be considered for an award, you should submit it to be published in the bulletin, preferrably annotated. Appearance in the Playoff Book alone does not constitute eligibility. As usual, playoff games published in the first two bulletins will be eligible for this season's awards.

Dennis Leong's address is: 5910 N. Washtenaw, Chicago, IL 60659.

CHICAGO INDUSTRIAL CHESS LEAGUE
 Spring Business Meeting
 Wednesday, August 25, 1993
 J. I. Case

Attendees

Dan Bargerstock	Chicago Research & Trading
Tony Dezonno	Rockwell International
Karel Dobr	AT&T Chargers
Todd J. DuFresne	J.I. Case
Stan Edwards	Alumni West
Martin Franek	Alumni East
Irwin Gaines	Fermilab
Ken Gaston	J.I. Case
Fred Harris	Chicago Transit Authority Road
James Hodina	AMOCO Corporation, President
Norman Hughes	Kemper Insurance
Tony Jasaitis	Chicago Research & Trading
Satish Kale	J. I. Case
Joe Karpierz	AT&T Tyros
Kelvin McAlister	Columbia College
David O'Neill	A&B Radio
Carl Reid	J.I. Case
Rubin Reyes	Sears
Russ Rzeszutko	Alumni Central
Lenny Spiegel	Fermilab, Secretary
Frank Suerth	Exemplars
Wes Underwood	Treasurer
Charlie Ward	Bell Labs Dragons
Len Weber	Bulletin Editor
John Zoellner	Continental Bank

Minutes

1. President James Hodina began the meeting at 7:15 PM by handing out the agenda and announcing several additions to the agenda. He asked for team captains to verify the current mailing addresses for the CICL bulletin.
2. The minutes of the Spring business meeting were accepted without revision.

- 3. James then introduced or noted the present League officials:

Jim Hodina	President
Lenny Spiegel	Secretary
Wes Underwood	Treasurer and Historian
Charlie Ward	Ratings Chairman
Irwin Gaines	Far West Division Chairman
Rubin Reyes	North Division Chairman
Kelvin McCalister	East Division Chairman
Skip Kale	Near West Division Chairman
Len Weber	Bulletin Editor
Tony Jasaitis	Publicity Chairman

Positions which still need to be filled include the Banquet Director, Tournament Director, and Trophy Chairman. Russ Rzeszutko volunteered to run the playoffs if no one else steps forward. It is important, however, for someone to secure the *playoff site* as early in the season as possible.

- 4. Wes Underwood gave the year-end Treasurer's report, which was also summarized in an accompanying document. He noted a loss of \$6.60 for the 1992-93 season. Given the likelihood of a \$200+ expense for a playoff site (last year U.O.P. generously picked up the tab for the rooms at the Ramada O'Hare) and uncertainties in the bulletin costs, Wes proposed a \$5 increase in the regular season team dues. At the same time the cost for additional bulletin subscriptions would increase from \$6 to \$7.

During the course of the budget discussion it was noted that our affiliate membership in the USCF entitles League members to a discount in their individual national dues. That is, there is a \$4 discount if regular USCF dues are paid through Charlie Ward.

Irwin Gaines offered a motion to accept the Treasurer's report as presented and to approve the recommended increase in team dues. This motion was approved unanimously. Thus net dues will increase from \$65 to \$70 per team per season. The \$70 includes a \$17 awards banquet ticket.

- 4. Next Jim requested a status review of the four divisions:

North Division (Rubin)

There was some uncertainty concerning Franklin Watts, which is short a couple of players (and would also need to be re-approved due to very late

Both Wes Underwood and Charlie Ward expressed post-vote reservations about scheduling the new Far West alumni team without a clear commitment on the part of at least eight players.

East Division (Kelvin)

All 10 teams should be returning. There was some question concerning Hull Trading Co. and Kelvin felt this should be clarified within a week. Also, as a result of recent transfers, CRT has been reduced to only 5-6 players.

Near West (Skip)

All 5 teams are returning but there is some question on the ability of the Chargers to field more than five boards. This now familiar theme—teams with fewer than six boards—led to a new round of discussion and suggestions. A common sentiment expressed was that any significant changes to the League format should be first aired in the bulletin.

6. Discussion ensued on modifications to the "second tier" playoff format. There was a wide range of opinion on the matter. Finally, Russ Rzeszutko offered a motion to defer a decision on possible format changes until the end of the year (i.e. by January 1, 1994). This was approved unanimously.

7. Jim proposed the following dates:

May 21st for the final playoff rounds (by tradition this is on the Saturday before the Memorial Day weekend).

June 12th for the banquet.

It was suggested that having the banquet on a Friday evening is difficult for players who are working and need to travel considerable distances. There was some discussion as to having the banquet on Saturday, June 13th. Tony Jasaitis motioned to table discussion on the banquet (to allow more flexibility in choosing the date) and this was approved unanimously.

8. Tony proposed an amendment to allow teams with forfeits in last year's "second tier" playoffs to participate in this season's playoffs (they would otherwise be restricted). Part of his rationale was that the "second tier"

payment of dues last year). Also, there was a question mark concerning Northrup's continued participation as their team has been hurt by recent layoffs.

Irwin Gaines motioned to admit Franklin Watts as an alumni team (and to waive any penalties stemming from last year's late-payment). This led to considerable discussion as this type of alumni team—one based on the nucleus of a corporate team—represents a new development for the CICL. There was a question, for example, on how new players at Franklin Watts would become eligible to participate on the alumni team. There was also the concern that this practice might become more widespread, distancing the League from its corporate roots. Eventually, though, Irwin's particular motion was approved unanimously.

Charlie Ward motioned to approve all former Franklin Watts players for alumni status and this was also approved unanimously.

Irwin's conditional motion to approve all Northrup players for alumni status IF Northrup is unable to field a team this season was also approved unanimously.

Far West Division (Irwin)

AMOCO Research Labs has dropped out due to a loss of their two top boards. However, their withdrawal has invigorated the possibility of a revised Far West alumni team. Prospective members now include Don Bernard, Tony Cimmarrusti, Stan Edwards, Don Josephson, Maynard Manilla, Neil Paauwe, Dennis Poma, Wes Underwood, and Scott Whitsitt. The team captain would be Stan Edwards and he would be assisted by Dennis Poma. There is also the possibility that former Tellabs players may participate.

The Far West alumni team was approved with a single nay vote.

By unanimous vote the following players were approved for alumni status: Don Bernard, Tony Cimmarrusti, Maynard Manilla, Neil Paauwe, and Dennis Poma. (Several of the other players mentioned already have alumni status.) There was some question regarding Scott Whitsitt's participation on the Motorola team and Charlie Ward asked Irwin to look in to this.

Irwin also offered a conditional motion to grant remaining CRT members alumni status SHOULD that team fold. This was approved unanimously.

format was something new to the League and may even be radically altered by the year's end.

This amendment was approved with 4 nay votes.

9. Irwin Gaines raised two new issues:

The possibility of allowing spouses and children of members to participate.

The possibility of allowing arbitrary pairings in forfeiture circumstances.

In both cases it was felt that the issues should be deferred to a later date, perhaps after some discussion in the bulletin.

10. A couple of announcements were made:

(Tony Jasaitis) A tournament book from last year's playoffs would be sent to each team (accompanying the first bulletin). The games were also available in diskette form if desired. Contact Tony.

(Jim) The CICL summer swiss tournament drew only 10 entries, many of them from the hosting site, J.I. Case. He cautioned against future exuberance for summer games.

11. The meeting came to a close at 9:45 PM.

Lenny Spiegel
CICL Secretary

'FREE AGENT' PROPOSITION IS PASSED

CICL President Jim Hodina announced on Thursday 23 September that the player 'loaner' program had been approved by all 16 captains who responded to the proposition. The provisional amendment to limit the players available to the loaner pool was only approved by 5 captains, and was thus defeated.

What this means for the teams in the league is that teams with extra players who do not get playing time can sign them up for the loaner pool. Then, teams with a narrow shortage of players can enlist these players to play for one year, after which the loaner player is reinstated to his original team. The president will determine need on a case by case basis for both loaners and borrowers. Tony Jasaitis explained in the original proposal sent to all captains that this plan appeared to be the best way to put the 'free agent' proposal brought up at the Fall meeting into a context compatible with current league rules.

Teams with extra players should have their captains contact the president immediately, as should teams that are short players.

OUTSTANDING TEAM CAPTAIN CRITERIA (By Tony Jasaitis)

A request was made at the Fall Business Meeting for the criteria for selecting the outstanding team captain (OTC) in each division. The following section is excerpted from the Spring 1991 minutes:

14. Russ Rzeszutko announced that he is donating trophies for an "Outstanding Team Captain" (OTC) award for this season and next, in the hopes that the League will continue it as a permanent feature after that point. One will be awarded in each Division, at the discretion of the Division Chairman. Russ offered some suggested criteria, and the assembly added to it. Here is the final list, with final discretion being the Division Chairman's (who can consider holding a vote by team captains in the division):

- a) Minimal board forfeits.
- b) Adherence to schedule.
- c) Timely submission of results.
- d) Extra board turnout.
- e) Cooperation with other team captains and the League.
- f) Preference will be given to low-ranked finish in the standings (on the assumption that it is harder for a team captain of a lower-ranked team to accomplish the above).

FRANKLIN WATTS CHANGES NAME TO GROLIER

The CICL team known as Franklin Watts (FRANK) has changed its name to Grolier Subsidiaries effective immediately, as announced by team co-captain Ruben Sanchez. The reason for the change was to more accurately describe the entity that the team plays for.

The company consists of several publishing companies, Childrens Press, Franklin Watts, Goldenkraft, Scarecrow Press, and Grolier Educational Corporation, which all operate under the same management and in the same building. All are owned and operated by Grolier, hence the name. Originally, the name Franklin Watts was chosen for the team, but now the players feel that is not appropriate, and voted to make the change.

THOUGHTS ON THE BANQUET (by the outgoing banquet chairman, Skip Kale)

Let me start by saying that I have enjoyed being the banquet chairman for the last three years. There have been some minor glitches, but in the end I was pleased with the finished product. I hope the positive aspects will be remembered above any negatives. Thanks to all who helped out in making the banquet successful, especially to Wes Underwood and Tony Jasaitis.

My only regret is that I'd hoped to generate more interest for the general membership than actually occurred. The attendance remained about 60 each year. The banquet is as much a part of a CIGL season as are the regular matches. It should not be looked upon as an unneeded item on the agenda, but rather as the event which is the natural conclusion for a CIGL season. The banquet offers a great opportunity to not only have an enjoyable evening, but also to thank those who helped make the CIGL season happen.

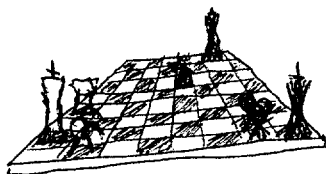
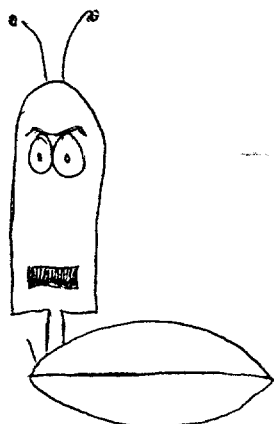
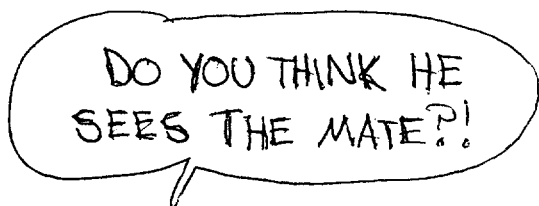
I thank those who have attended the banquet, and I ask each person to invite just one more from your team to attend next year. Captains, maybe you could arrange the banquet for your team as if it were a match. At first I had to twist some arms to get my team members to attend the banquet. Now they twist mine!

Finally, allow me to 'introduce' our new banquet chairman... Tony Jasaitis. Tony is not only well known in our league, but throughout the state chess scene. He either has been or is the league secretary, president, publicity director, and now also... banquet chairman. If past performances are any indication of the future, we will have an outstanding banquet director!

Thanks again for all those who attended and helped out, and remember, the next banquet is only nine months away!

Regards,

Satish L. Kale
Outgoing Banquet Chairman



©1993 L. WEDEZ



ATTENTION ALL CHESS PLAYERS

How would you like to play 10 more games, than the schedule will allow ?

All within CICL regulations.

All games CICL rated ? *

Just like your regular matches !!!!

Including Coffee and cookies.

If you have the time, we have the boards.

Sounds too good to be true ?

Here's a catch.

We prefer you to be a B player or under.

And be willing to play on the nights JI Case will play it's opponents.

Home or road games.

That's it. It's that simple !!!

Each match, we have 5 extra boards. They all like to play. **

If you like the idea , call me at W : (708) 887 - 2372.

I will schedule you from game to game.

No firm commitment for the season required.

Why wait ? Call now

Thank You

.....Satish L. Kale
 Captain JI Case
 Near West Division

* Non rated games can be arranged, prior to the game, if so desired.
 ** You may have to bring your own equipment.

Budget Proposal for 1993-94 Season:

	1992-93 Budget	1992-93 Actual	1993-94 Proposed Budget
Revenue:			
Basic Team Dues	858	924	1040 (Note A)
Bulletin	348	420	339 (Note B)
Banquet	1600	1580	1600
Miscellaneous	95	110	75
Total Revenue	<u>2901</u>	<u>3034</u>	<u>3054</u>
Disbursements:			
Bulletin	285	289	340
Banquet	1450	1360	1500
Awards	900	972	900
USCF/ICA Dues	55	55	55
Playoffs	0	157	160
Miscellaneous	150	207	100
Total Disbursements	<u>2840</u>	<u>3040</u>	<u>3055</u>
Net Gain (Loss)	<u>61</u>	<u>(6)</u>	<u>(1)</u>

Note A: Budgeted revenue from dues is based on 26 teams @ \$40.00.

Note B: Budgeted bulletin revenue is based on 25 companies @ \$13.00 plus an additional 2 individual subscriptions @ \$7.00.

To: Chicago Industrial Chess League Team Captains
 From: Wes Underwood, CICL Treasurer
 Date: August 25, 1993
 Re: Dues and Other Charges for the 1993-1994 Season

Below are the assessments to each CICL team for the 1993-1994 season. Please complete the form below, and return it with a check made payable to the Chicago Industrial Chess League.

Note: Payments postmarked after November 30th will require a \$5.00 additional fee. Payments postmarked after December 31st will require a \$10.00 additional fee, and will subject the team to possible dismissal both from the upcoming playoffs and from participation next season.

Team Name: _____

Annual Dues per 6-player Team	\$40.00	_____
Penalty fee if postmarked after 11/30/93	5.00	_____
Penalty fee if postmarked after 12/31/93	10.00	_____
CICL Bulletin Subscription (1 req'd per co.)*	13.00	_____
Add'l Subscriptions, each *	7.00	_____
Awards Banquet Ticket (1 req'd per team)	17.00	_____

Total (Payable to Chicago Industrial Chess League): \$ _____

Send payment with this form to the following:

Chicago Industrial Chess League
 c/o Wesley K. Underwood
 207 S. Dorchester Ave.
 Wheaton IL 60187

* Specify the correct address(es) for the bulletin subscription(s):



AT&T Bell Laboratories

subject: AT&T Chess Teams

date: September 17, 1993

from: Charles E. W. Ward
Org. NA8310500
IL0015 6N-312
(708)979-4599

Jim Hodina
President, CICL

Irwin Gaines
Chairman, Far West Division

Satish Kale
Chairman, Near West Division

Gentlemen:

Effective January 1, 1993, the product development organizations within Bell Laboratories were realigned with the various business units of AT&T. The Bell Labs organizations in the Naperville area became part of the various business units within the Network Systems Group. As a result, there is no longer any corporate distinction between these former Bell Labs organizations and the remainder of AT&T Network Systems. The title Bell Laboratories now applies generically to all AT&T R&D organizations and has no organizational significance outside core research activities located in New Jersey.

Accordingly, starting with the 1993-94 season AT&T will be represented in the CICL by four teams: the AT&T Dragons, Royals, Tyros and Chargers. AT&T should be treated as a single, four-team company within the CICL.

In accordance with section I.B.6. of the CICL constitution, I am providing you with the initial rosters of our teams in the CICL for the 1993-94 season (attached). The mailing addresses and daytime phone numbers of the team captains are also given in the attachment.

Charles E. W. Ward
Charles E. W. Ward

IL0015-NA8310500-CEWW-ceww

Att.
As stated

- 2 -

AT&T Chess Teams

1993-94 Initial Rosters

Dragons	Royals	Tyros	Chargers
T. Ludwig	J. Guio	B. Stoltz	J. Warren
F. Tegel	C. Dobrovolny	C. Bhojwani	V. Stamm
N. Jacobs	L. Ogasawara	J. Blazie	K. Dobr
D. Durkee	E. Blackmon	J. Brozovich	E. Radavicius
C. Ward	D. Hahne(*)	R. Shaff	J. Thomas(*)
D. Eustace(*)	C. J. Anderson	J. Karpierz(*)	R. Brady

(*) denotes team captain

Team Captains

Dragons	Royals
Dan Eustace AT&T, Room IH 4F-311 2000 N. Naperville Road Naperville, IL 60566 (708) 979-5826	Dave Hahne AT&T, Room IHC 1U-414 1000 E. Warrenville Road Naperville, IL 60566 (708) 713-1288
Tyros	Chargers
Joe Karpierz 726 Westfield Course Geneva, IL 60134 (708) 224-2777	Jerry Thomas AT&T 2443 Warrenville Road Lisle, IL 60532 (708) 955-4366

Division Chairman: Irwin Gaines W: 840-4022
Fermilab MS127 H: 420-1452
PO Box 500 FAX: 840-2783
Batavia, IL 60510

Rating Chairman: Charles Ward W:
615 S Lincoln H:
Hinsdale, IL 60521 FAX: 979-8451

Team Captain Phone

Alumni West Stan Edwards W: 231-6495
(AWEST) 309 Wood St H: 690-8518
Wheaton, IL 60187

Bell Labs Dan Eustace W: 979-5826
(DRAGONS) Room IH 4F-311
AT&T Bell Labs
2000 N Naperville Rd
Naperville, IL 60566

Bell Labs Dave Hahne W: 713-1288
(ROYALS) Room IHC 1U-414
AT&T Bell Labs
1000 E Warrenville Rd
Naperville, IL 60566

Fermilab Leonard Spiegel W: 840-2809
(FERMI) Fermilab MS 219
PO Box 500
Batavia, IL 60510

AT&T Technologies Joe Karpierz W: 224-7777
(TYROS) 726 Westfield Course H: 208-0036
Geneva, IL 60134

Near West Teams:

ANL Knights Dave Baurac W: 252-5548
H: 963-3127

AT&T Chargers Jerry Thomas W: 955-4366

J.I.CASE Skip Kale W: 887-2372
H: 325-KALE

Rockwell Challengers Tony DeZonno W:960-8621

A&B Radio Dave O'Dell W: (312)476-1553 or
(312)476-9020

18
NEAR WEST DIVISION
1993-1994 Season

DIVISION CHAIRMAN
Satish L. Kale

W: 708-887-2372
H: 708-325-5253

JI CASE
Agricultural Equipment and Technology Center
7 South 600 County Line Road
Hinsdale IL 60521

A&B RADIO

Captain: Dave O'Dell
A&B Radio
1923 W. 69th St.
Chicago IL 60636

W: 312-476-1553
W: 312-476-9020

ARGONNE NATIONAL LABS

Captain: Dave Baurac
Building 201
9700 Case Avenue
Argonne IL 60439

W: 708-252-5584
H: 708-963-3127

Alternate: Bob Hill

W: 708-252-4865
H: 708-759-3764

AT&T CHARGERS

Captain: Jerry Thomas
745 Hageman Place
Naperville IL 60563

W: 708-955-4366

Alternate: Rich Brady

W: 708-955-4215

Alternate: Karel Dobr
5341 South Kolin
Chicago IL 60632

H: 312-582-4280

JI CASE

Captain: Satish L. Kale
JI Case
7 South 600 County Line Road
Hinsdale IL 60521

W: 708-887-2372
H: 708-325-5253

Alternate: Howard Klinefelter

W: 708-887-3750
H: 708-961-0482

ROCKWELL INTERNATIONAL

Captain: Tony DeZonno
1431-623 Opus Place
Downers Grove IL 60515

W: 708-960-8621

Alternate: Berry Jones

W: 708-960-8695

CICL North Division Team Directory

MOTOROLA	Location: 1301 E. Algonquin, Schaumburg
Nik Goncharoff (Capt) 4000 Commercial Ave. Northbrook, IL 60062	John Gryparis (Asst Capt)
(708) 480-4736 (W) (708) 885-3924 (H)	(708) 480-4729 (W)

U.O.P.	Location: 25 Algonquin Rd, Des Plaines
Pat Sajbel (Capt) 616 S. Edward Mt. Prospect, IL 60056	Frank Micklich (Asst Capt)
(708) 391-2134 (W) (708) 506-9302 (H)	(708) 391-2418 (W)

KEMPER	Location: 1 Kemper Drive, Long Grove
Norm Huges (Capt) 1 Kemper Drive Long Grove, IL 60049	Mark Siwek (Asst Capt) 727 N. Broadway Park Ridge, IL 60068
(708) 540-2863 (W) (708) 426-7308 (H)	(708) 540-3658 (W)

NORTHRUP	Location: 600 Hicks Road Rolling Meadows, IL
Gabor Elek (Capt) Room L-3500 600 Hicks Road Rolling Meadows, IL 60008	Albert Vigants (Asst Capt) Room H-6055 600 Hicks Road Rolling Meadows, IL 60008
(708) 259-9600 x 24708 (W) (H)	(708) 259-9600 x 246187 (W) (H)

EXEMPLARS	Location:
Frank Suerth (Capt) 5228 W. Giddings. Chicago, IL 60630	Stan Edwards (Asst Capt)
(312) 736-4974 (H)	(708) 231-6495 (W) (708) 690-8518 (H)

SEARS	Location: 3333 Beverly Rd, Hoffman Estates
Mark Brockett (Capt) BSC ALL-1643 3333 Beverly Road Hoffman Estates, IL 60179	Tom Miller (Asst Capt) BSC E3-303A 3333 Beverly Road Hoffman Estates, IL 60179
(708) 286-6984 (W) (708) 695-0343 (H)	(708) 286-7586 (W) (708) 934-6665 (H)

FRANKLIN-WATTS	Location: 5440 N. Cumberland, Chicago
Len Weber (Capt) 3rd Floor 5440 N. Cumberland Chicago, IL 60656	Ruben Sanchez (Asst Capt)
(312) 693-0800x280 (W) (708) 489-0415 (H)	(312) 693-0800x286 (W)

FEL-PRO	Location: 7450 N. McCormick Blvd, Skokie
Abe Feldman (Capt) 7450 N. McCormick Blvd Skokie, IL 60076	
(708) 674-7701 x 2490 (W) (H)	

1993-94 CIGL EAST DIVISION TEAM CAPTAIN LIST

- | | |
|---|--|
| <p>1. CRT
Dan Bargerstock
440 S. LaSalle
Chicago, IL 60605
(W) (312)431-3062</p> | <p>6. CONTINENTAL BANK
Erman Paroan
596 Glen Flora
Carol Stream, IL 60188
(W) (312)828-3172</p> |
| <p>2. Postal Service
L.T. Carter
14227 S. Park Ave.
Dolton, IL 60419-1136
(W) (312)765-3625</p> | <p>7. CTA - (Road)
Fred Harris
2232 W. 80th St.
Chicago, IL 60620
(H) (312)436-2679</p> |
| <p>3. Alumni
Mark Franek
9044 S. 51st Ave.
Oak Lawn, IL 60453
(W) (312)353-0397
(H) (708)636-3714</p> | <p>8. Mercantile Exchange
Larusso Baker
7314 Baybury Rd.
Downers Grove, IL 60516
(W) (312)930-8272
(H) (708)769-0557</p> |
| <p>4. Columbia College
Keith Kostecka
600 S. Michigan
Chicago, IL 60605
(W) (312)663-1600 x182</p> | <p>9. Hull Trading Co.
Bob Young
311 S. Wacker
Suite 1400
Chicago, IL 60606
(W) (312)697-2728</p> |
| <p>5. Amoco
James Hodina
225 N. Michigan
PO Box 7513
Chicago, IL 60680
(W) (312)856-2762</p> | <p>10. CTA-B (Rail)
Jerry Matthews
5451 N. East River Road
Chicago, IL 60656
(H) (312)714-8936</p> |

Please send Match Results to: Kelvin McAlister
3825 Canterbury Ct. 2A
Richton Park, IL 60471

and

Charles Ward
615 S. Lincoln
Hinsdale, IL 60521

x437

JOIN THE U.S. CHESS FEDERATION !!

Because the CICL is a USCF affiliate, our members can join the USCF or renew membership at a discount.

WHY JOIN?

Membership in the USCF includes a subscription to Chess Life, one of the world's best chess magazines. It also allows members to play in USCF-rated tournaments and to earn a nationally recognized rating. There is a USCF-rated tournament scheduled almost every week somewhere in the Chicago area, ranging from the Illinois championship down to small local tournaments. USCF members can also purchase books and equipment at discount prices.

WHAT IS THE COST?

One year's USCF membership is \$26.00 (this includes the \$4.00 affiliate discount). To join, send a check made out to the U.S. Chess Federation to:

Charlie Ward
615 S. Lincoln St.
Hinsdale, IL 60521

Be sure to include your full mailing address, including ZIP code. If you are already a member and would like to renew your membership, please also include your membership number and expiration date (printed on the Chess Life mailing label). If you were previously a member but let your membership expire, please provide the approximate expiration date of the earlier membership.

WHAT HAPPENS NEXT?

I will forward your check to the USCF along with a letter certifying that you qualify for the discount. I will also send you a receipt that will serve as a temporary membership card until your permanent card arrives from the USCF.

RATINGS CHAIRMAN'S REPORT

Ratings for Summer Activities

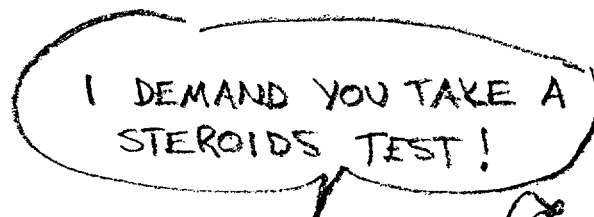
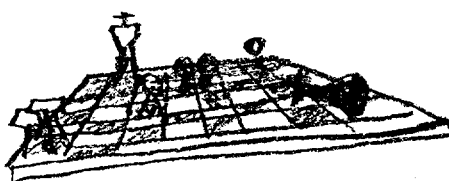
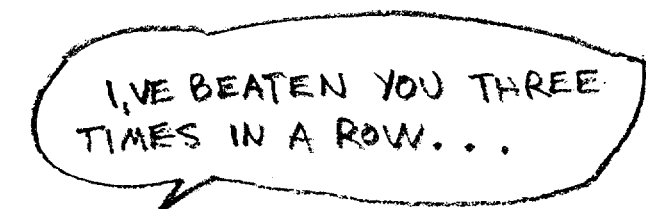
The 1993 CICL summer tournament consisted of two brackets of players who played a round-robin tournament among themselves. The cross-tables for these tournaments are included in this issue of the bulletin. The games were rated, and are included in the players' ratings in the ratings list in this issue; however they are not included in this season's won-lost information in the ratings list.

Also, the results of the CTA-RAIL versus MERC regular season match played last May were received after the end of the playoffs and the publication of the last year's final issue of the bulletin. As promised, the games played in this match were rated even though the match could not be included in last season's team standings.

-- Charlie Ward
Ratings Chairman

12-MAY-93* CTA RAIL
ROUND 12

BD	RATINGS	SCORE		RATINGS	SCORE
1	MATTHEWS, J	1619 23	1	SLAGLE, S	1624-23 0
2	ABRAHAM, T	1519 22	1	SULLIVAN, C	1506-22 0
3	JARRETT, T	1605 6	1	COTE, J	1283 -6 0
4	HUGHES, L	0 0	OF	BAKER, LR	1132 0 1F
5	NOWAK, W	0 0	0	HILTON, J	0 0 1
6	STEIN, C	0 0	OF	KOKONTAS, W	0 0 1F



15-SEP-93 CTA ROAD
ROUND 1

0 COLUMBIA COLLEGE 6

BD	RATINGS	SCORE	RATINGS	SCORE
1 WILSON,A	1564 -4	0	MCALISTER,K	1947 4 1
2 SLAUGHTER,S	0 0	OF	KOSTECKA,K	1617 0 1F
3 JONES,M	1358 -8	0	PRATTS,M	1630 8 1
4 HARRIS,FF	0 0	0	BURDICK,S	1576 0 1
5 COLEMAN,O	0 0	OF	HERNANDEZ,DD	1532 0 1F
6 JACKSON,JJ	0 0	0	BRANCH,Y	1307 0 1

22-SEP-93 J. I. CASE
ROUND 1

3 ROCKWELL INT'L 3

BD	RATINGS	SCORE	RATINGS	SCORE
1 SATTERLEE,D	1704 -3	0	JONES,B	2106 4 1
2 WHITE,H	1671 29	1	RAFACZ,T	1773-29 0
3 KALE,S	1714 17	1	RAFACZ,W	1629-17 0
4 KLINEFELTER,H	1478-17	0	MITCHAM,L	1560 17 1
5 SAWDO,E	1455-23	0	DEWITT,G	1447 23 1
6 REID,C	1334 14	1	DEZONNO,T	1197-14 0
7 MOTYCKA,R	1171 0	1	DUFRESNE,T	0 0 0 (JCASE)
8 GASTON,K	1318 14	1	POMA,D	1188-14 0 (AWEST)
(AWEST) 9 POMA,M	0 0	0	KANAS,W	1301 0 1 (JCASE)

22-SEP-93 ARGONNE KNIGHTS
ROUND 1

6 A & B RADIO 0

BD	RATINGS	SCORE	RATINGS	SCORE
1 BENEDEK,R	2238 1	1	O'DELL,DW	1618 -1 0
2 BERRY,G	2048 1	1	TYREE,D	1535 -2 0
3 KEISLER,J	1965 2	1	BOOKER,G	1385 -2 0
4 HILL,R	1753 5	1	LASKY,N	1377 -5 0
5 BAURAC,D	1685 3	1	MIKULECKY,B	1303 -4 0
6 DECMAN,S	1667 0	1F		0 0 OF

CICL SUMMER TOURNAMENT

1. Saterlee D.	1726	■	½	1	0	1	1	3½-1½	1704
2. Kostecka K.	1609	½	■	0	1	1	1	3½-1½	1617
3. Decman S.	1684	0	1	■	0	1	1	3-2	1667
4. Klinefelter H.	1440	1	0	1	■	0	1	3-2	1478
5. Anderson C.	1360	0	0	0	1	■	1	2-3	1369
6. Nwabude O.	unr	0	0	0	0	0	■	0-5	0980

1. Reid C.	1298	■	1	1	1	3-0	1334
2. Gaston K.	1328	0	■	1	1	2-1	1318
3. Motyca B.	1202	0	0	■	1	1-2	1171
4. DuFresne T.	unr	0	0	0	■	0-3	unr

NORTH DIVISION 09-26-1993

TEAM NAME	W	L	D	GAME	MATCH	PCT
				POINTS	POINTS	
FRANKLIN-WATTS	0	0	0	0.0	0.0	0.000
UOP PROCESS DIV.	0	0	0	0.0	0.0	0.000
EXEMPLARS	0	0	0	0.0	0.0	0.000
MOTOROLA	0	0	0	0.0	0.0	0.000
KEMPER INSURANCE	0	0	0	0.0	0.0	0.000
FEL-PRO	0	0	0	0.0	0.0	0.000
SEARS	0	0	0	0.0	0.0	0.000

EAST DIVISION 09-26-1993

TEAM NAME	W	L	D	GAME	MATCH	PCT
				POINTS	POINTS	
COLUMBIA COLLEGE	1	0	0	6.0	1.0	1.000
HULL TRADING CO.	0	0	0	0.0	0.0	0.000
CTA ROAD	0	1	0	0.0	0.0	0.000
CTA RAIL	0	0	0	0.0	0.0	0.000
CHICAGO POST OFFICE	0	0	0	0.0	0.0	0.000
CHICAGO MERC. EXCH.	0	0	0	0.0	0.0	0.000
CHICAGO RES. & TRDG.	0	0	0	0.0	0.0	0.000
AMOCO CORP.	0	0	0	0.0	0.0	0.000
CONTINENTAL BANK	0	0	0	0.0	0.0	0.000
ALUMNI CENTRAL	0	0	0	0.0	0.0	0.000

NEAR WEST DIVISION 09-26-1993

TEAM NAME	W	L	D	GAME	MATCH	PCT
				POINTS	POINTS	
ARGONNE KNIGHTS	1	0	0	6.0	1.0	1.000
J. I. CASE	0	0	1	3.0	0.5	0.500
ROCKWELL INT'L	0	0	1	3.0	0.5	0.500
AT&T CHARGERS	0	0	0	0.0	0.0	0.000
A & B RADIO	0	1	0	0.0	0.0	0.000

FAR WEST DIVISION 09-26-1993

TEAM NAME	W	L	D	GAME	MATCH	PCT
				POINTS	POINTS	
ALUMNI WEST	0	0	0	0.0	0.0	0.000
AT&T DRAGONS	0	0	0	0.0	0.0	0.000
AT&T TYROS	0	0	0	0.0	0.0	0.000
FERMILAB	0	0	0	0.0	0.0	0.000
AT&T ROYALS	0	0	0	0.0	0.0	0.000

NORTH DIVISION TOP TEN

REYES, R	SEARS 2314D
STEVANOVIC, M	UOP 2251C
WONG, P	EXMPL 2228C
GAZMEN, E	FRANK 2225
MELNIKOV, I	MTRLA 2223
WEBER, L	FRANK 2213
BENESA, A	FRANK 2188
HASAN, Y	MTRLA 2174
BOLDINGH, E	UOP 2170
SIWEK, M	KEMPR 2168C

EAST DIVISION TOP TEN

JASAITIS, A	CRT 2242C
FRIESEMA, W	CRT 2145
ALFARO, C	ALUMN 2118*
INUMERABLE, F	PSTOF 2115
HODINA, J	AMCRP 2089
COX, M	ALUMN 2024C
MAREMA, D	PSTOF 2010
MARCOWKA, R	PSTOF 1999C
LOSOFF, A	CRT 1985
LEONG, D	ALUMN 1976*

NEAR WEST DIVISION TOP TEN

LEVINE, D	KNIGHT 2417
BENEDEK, R	KNIGHT 2238D
WARREN, J	CHRGR 2141T
JONES, B	ROCKW 2106
BERRY, G	KNIGHT 2048D
YOUNG, C	KNIGHT 1963C
GREEN, D	KNIGHT 1824C
RAFACZ, T	ROCKW 1773
HILL, R	KNIGHT 1753
STAMM, V	CHRGR 1732D

FAR WEST DIVISION TOP TEN

KOZLOVSKY, M	FERMI 2199
GUIO, J	ROYLS 2170
TEGEL, F	DRGNS 2148D
LUDWIG, T	DRGNS 2127
DORIGO, T	FERMI 2080
SPIEGEL, L	FERMI 2036C
BUCHNER, R	ROYLS 2028
STOLTZ, B	TYROS 1984
ROSE, K	AMOCO 1980
JACOBS, N	DRGNS 1973C

MOST IMPROVED PLAYERS

KALE, S	JCASE 191
PIAO, T	DRGNS 144
HOWARD, W	PSTOF 142
MILLER, TT	SEARS 108
HERNANDEZ, DD	COLUM 103
PAAUWE, N	AMOCO 94
CISKO, G	FERMI 94
MATTHEWS, J	RAIL 93
RANGEL, R	HULL 87
KOGAN, G	CONBK 81

NAME	TEAM	W	L	D	RATING	NAME	TEAM	W	L	D	RATING
ABRAHAM, T	RAIL	2	3	0	1519	COBLEIGH, M	ROAD	2	0	1	0000?
ADAMI, S	UOP	1	2	0	0000?	COLEMAN, O	ROAD	0	0	0	0000?
ALFARO, C	ALUMN	0	1	0	2118*	COOPER, W	PSTOF	7	3	4	1710
ALPER, T	COLUM	2	0	0	0000?	COTE, J	MERC	1	5	1	1283*
ANDERSON, CJ	ROYLS	5	4	1	1360*	COX, M	ALUMN	3	2	5	2024C
ATKINSON, J	AMCRP	3	5	1	1737	CREWSE, L	EXMPL	1	0	1	2042
AUGSBURGER, L	MTRLA	9	0	0	1886	CUMBERLAND, M	SEARS	1	1	0	0000?
AUSTIN, R	ROYLS	3	1	1	1135#	CUMMUTA, P	KEMPR	0	2	0	1372
BAER, M	AMCRP	3	5	0	0000?	CURRY, G	RAIL	0	2	0	0000?
BAKER, B	FLPRO	0	6	1	1074	DAVIDSON, M	ALUMN	4	0	1	1678*
BAKER, LR	MERC	2	3	0	1132#	DAWSON, J	KNGHT	1	1	1	1409
BALASE, E	SEARS	1	0	0	1364*	DEARDORFF, M	FLPRO	1	5	1	1470#
BARGERSTOCK, D	CRT	9	2	3	1902	DECMAN, S	KNGHT	4	5	1	1684D
BARGYH, J	COLUM	0	2	0	0000?	DENG, J	CRT	5	2	3	1632
BAURAC, D	KNGHT	8	1	0	1685C	DEO, D	KEMPR	1	3	0	0000?
BENEDEK, R	KNGHT	7	0	3	2238D	DEWITT, G	ROCKW	5	3	1	1447C
BENESA, A	FRANK	4	3	0	2188	DEZONNO, T	ROCKW	4	6	0	1197*
BERNARD, D	CRT	5	7	0	1290	DIAZ, P	NORTH	1	2	3	2021
BERRY, G	KNGHT	6	1	2	2048D	DOBR, K	CHRGR	3	8	2	1500T
BHOJWANI, C	TYROS	2	4	0	1948	DOBROVOLNY, C	ROYLS	4	3	5	1892
BLACKMON, E	ROYLS	7	2	1	1768	DORIGO, T	FERMI	0	0	4	2080
BLAZIE, J	TYROS	1	3	3	1830C	DURKEE, D	DRGNS	7	2	2	1785C
BLOEDOW, P	KEMPR	3	4	3	1498C	DYCZKOWSKI, R	CONBK	3	7	0	1601*
BLOOM, B	EXMPL	2	2	3	2057	EDWARDS, S	EXMPL	3	3	0	1267
BOLDINGH, E	UOP	8	5	0	2170	EFRON, D	ROCKW	4	2	1	1612
BOOKER, G	RADIO	2	2	0	1385*	ELEK, G	NORTH	0	2	1	1011*
BRADY, R	CHRGR	3	8	0	1252	EUSTACE, D	DRGNS	6	3	1	1493
BRANCH, Y	COLUM	5	6	0	1307*	FAHRENHOLTZ, S	MTRLA	5	1	0	1777*
BRIONES, M	UOP	1	1	1	1684C	FELDMAN, A	FLPRO	0	5	2	1410C
BROCKETT, M	SEARS	5	4	1	1834	FLESHMAN, M	ROAD	1	0	0	0000?
BRONFELD, A	ALUMN	5	1	1	1851	FRAATS, D	CONBK	1	4	0	1864
BROTSOS, J	ALUMN	7	3	0	1549D	FRANCISKOVICH, D	HULL	2	5	0	1141#
BROWN, S	MERC	0	0	1	0000?	FRANEK, M	ALUMN	8	3	2	1926C
BROZOVICH, J	TYROS	0	1	2	1738C	FRANK, M	MERC	4	3	0	1719*
BUCHNER, R	ROYLS	0	1	2	2028	FRIESEMA, W	CRT	10	1	3	2145
BUERGER, E	UOP	7	4	1	2085D	GABRIELLO, A	AMOCO	0	3	0	0000?
BURDICK, S	COLUM	4	6	0	1576	GAINES, I	FERMI	3	5	2	1721C
BURIAN, D	NORTH	1	7	0	1641C	GANSER, A	CONBK	1	5	0	0000?
CAPAGATTI, A	ROCKW	0	0	0	0000?	GASTON, K	JCASE	5	4	0	1328*
CARTER, D	JCASE	0	3	0	1059*	GAVIN, L	MERC	0	1	0	1216
CARTER, L	PSTOF	4	5	0	1525	GAZMEN, E	FRANK	6	0	1	2225
CASTILLA, H	FERMI	0	2	0	0000?	GLICENSTEIN, J	FERMI	1	0	1	1853
CHARKOVSKY, R	ALUMN	3	3	2	1601*	GLOWACKI, D	RADIO	0	0	0	0000?
CHEVERESAN, S	UOP	2	0	0	1439C	GOLLA, R	SEARS	5	3	0	2030D
CHOUDRY, A	KEMPR	1	1	0	0000?	GOLUMBOVSKI, P	NORTH	1	2	3	2105
CHRISTIAN, R	DRGNS	1	0	1	1833C	GONCHAROFF, N	MTRLA	5	1	1	1784Q
CIBA, F	SEARS	0	0	2	1385	GREEN, D	KNGHT	2	3	0	1824C
CIESLEK, D	MTRLA	3	3	2	1588	GREENE, D	ROCKW	0	1	0	0000?
CIMMARRUSTI, A	CRT	3	2	0	1266#	GRIESMEYER, W	PSTOF	5	3	0	1367
CISKO, G	FERMI	5	1	2	1616*	GUILLEN, B	KEMPR	0	1	1	1369#

? - UNRATED

- 5 TO 9 RATED GAMES

* - 10 TO 24 RATED GAMES

C - CENTURY CLUB MEMBER

D - DOUBLE CENTURION

T - TRIPLE CENTURION

Q - QUAD CENTURION

NAME	TEAM	W	L	D	RATING	NAME	TEAM	W	L	D	RATING
GUIO, J	ROYLS	6	3	3	2170	LASKY, N	RADIO	1	5	2	1377
HAHNE, D	ROYLS	7	4	0	1579	LATIMER, E	SEARS	3	3	1	2016D
HAMILTON, L	AMCRP	3	6	1	1382*	LEMBERGER, S	CRT	0	0	0	0000?
HAMMOND, M	CONBK	3	3	0	1340	LEONG, D	ALUMN	2	1	0	1976*
HAMPER, P	AMCRP	3	3	0	1281#	LEONG, G	KEMPR	2	4	2	2031C
HARRIS, FF	ROAD	1	4	1	0000?	LEVINE, D	KNGHT	5	0	0	2417
HARRIS, R	FERMI	5	1	1	1567	LIKHTEREV, M	UOP	3	2	1	1535#
HASAN, Y	MTRLA	6	3	4	2174	LITVINAS, A	ALUMN	10	2	3	1706C
HASKELL, M	KEMPR	0	1	0	0000?	LOMONT, C	SEARS	0	2	0	0000?
HEINRICH, J	FERMI	1	0	1	1901	LOSOFF, A	CRT	6	2	1	1985
HERNANDEZ, DD	COLUM	9	4	1	1532	LUBERSHANE, S	MERC	1	3	0	0000?
HESS, B	FLPRO	0	6	1	1467	LUCEK, D	HULL	0	0	0	0000?
HICKS, C	DRGNS	2	0	0	1530	LUDWIG, T	DRGNS	3	3	2	2127
HILL, R	KNGHT	9	2	1	1753	MANIA, B	HULL	1	1	0	0000?
HILLIARD, J	CONBK	2	6	0	0000?	MANILLA, M	AMOCO	3	2	0	1251#
HILTON, J	MERC	1	3	0	0000?	MARCOWKA, R	PSTOF	8	4	0	1999C
HODINA, J	AMCRP	7	1	4	2089	MAREMA, D	PSTOF	5	2	0	2010
HOOKE, L	RAIL	0	2	0	0000?	MARGULIS, A	HULL	4	6	0	1491#
HOWARD, W	PSTOF	11	2	0	1456	MATHEWS, B	CRT	0	1	0	0000?
HUGHES, L	RAIL	1	1	0	0000?	MATTHEWS, J	RAIL	4	5	2	1619
HUGHES, N	KEMPR	5	1	4	1844C	MCALISTER, K	COLUM	6	4	5	1947
HUNG, N	MTRLA	6	1	0	1471#	MCCLOUD, E	DRGNS	2	3	0	1068#
INUMERABLE, F	PSTOF	4	5	3	2115	MCFARLIN, B	KEMPR	0	1	0	0000?
JACKSON, JJ	ROAD	0	3	0	0000?	MCGRIFF, M	RADIO	1	2	0	1393
JACO, H	HULL	1	4	0	1147	MCINTOSH, S	CONBK	2	3	0	1165*
JACOBS, N	DRGNS	6	2	4	1973C	MCQUINN, J	ROCKW	3	5	0	1476
JAKSTAS, K	NORTH	0	1	4	2147C	MEDINA, P	FERMI	0	2	0	0000?
JARRETT, T	RAIL	4	5	0	1605#	MELNIKOV, I	MTRLA	7	2	2	2223
JASAITIS, A	CRT	10	1	4	2242C	MENDOZA, D	FERMI	0	2	0	0000?
JENKINS, M	RADIO	0	1	0	0000?	MICKLICH, F	UOP	8	4	1	1748C
JONES, B	ROCKW	5	4	1	2106	MIKULECKY, B	RADIO	2	4	0	1303
JONES, M	ROAD	3	5	0	1358#	MILLER, TT	SEARS	5	4	4	1635
JONES, MARC	COLUM	1	1	2	0000?	MIRANDA, V	FRANK	1	1	0	1462#
KALE, S	JCASE	9	3	1	1714	MITCHAM, L	ROCKW	0	2	0	1560*
KANAS, W	JCASE	3	4	2	1301C	MORTON, B	SEARS	2	2	1	1566
KARPIERZ, J	TYROS	0	4	1	1083#	MOSS, J	MERC	0	0	0	0000?
KAUFMAN, M	KEMPR	1	4	0	0000?	MOTYCKA, R	JCASE	3	3	1	1202
KEEFE, E	FLPRO	1	3	0	0000?	MURPHY, B	FRANK	0	0	0	0000?
KINSELLA, G	KNGHT	1	0	0	1477C	NAUGHTON, T	HULL	2	5	0	1344#
KLINEFELTER, H	JCASE	1	7	4	1440	NISHIMURA, K	FLPRO	2	4	0	1274#
KOGAN, G	CONBK	5	0	1	1834	NOWAK, W	RAIL	5	2	0	0000?
KOSTECKA, K	COLUM	6	3	3	1609	NWABUDE, O	ROYLS	1	3	0	990#
KOZLOVSKY, M	FERMI	1	1	1	2199	O'BRIEN, D	UOP	0	1	0	1401*
KRAKAU, H	EXMPL	1	0	0	1964	O'DELL, DW	RADIO	2	5	0	1618
KRULL, E	AMCRP	3	5	3	1366	OCKERS, S	KNGHT	1	2	1	1482
KUMRO, D	CHRGR	1	7	0	1547T	OELHAFEN, A	EXMPL	1	2	0	1278*
KUSUMOTO, R	HULL	1	6	0	0000?	OGASAWARA, L	ROYLS	5	3	3	1804
LAMBIRIS, J	KEMPR	5	3	1	1369*	OGASAWARA, R	MTRLA	0	0	1	1600D
LASKY, J	RADIO	0	5	3	1397	OLSEN, A	KEMPR	4	6	1	1464*
LASKY, JIM	RADIO	0	1	0	1695#	OLUND, P	MTRLA	0	2	0	1328*

? - UNRATED
- 5 TO 9 RATED GAMES
* - 10 TO 24 RATED GAMES

C - CENTURY CLUB MEMBER
D - DOUBLE CENTURION
T - TRIPLE CENTURION
Q - QUAD CENTURION

NAME	TEAM	W	L	D	RATING	NAME	TEAM	W	L	D	RATING
OSTERLUND, R	EXMPL	5	3	2	1934	SOMBONG, M	CONBK	1	0	0	1737
PAAUWE, N	AMOCO	2	2	2	1502	SPANGLER, M	AMOCO	0	1	0	1371
PARA, A	FERMI	5	4	0	1633*	SPECK, D	COLUM	7	3	0	1346
PARAOAN, E	CONBK	5	4	1	1757	SPIEGEL, L	FERMI	4	4	4	2036C
PETWAY, L	PSTOF	2	2	0	1453*	STAMM, V	CHRGR	2	4	0	1732D
PIAO, T	DRGNS	11	1	0	1609*	STEIN, C	RAIL	0	1	0	0000?
PITTS, R	ROAD	1	4	0	0000?	STEINER, D	HULL	0	0	0	0000?
POMA, D	AMOCO	2	5	3	1188*	STEVANOVIC, M	UOP	4	4	3	2251C
POMA, M	AMOCO	1	2	0	0000?	STEVENS, J	COLUM	0	2	0	0000?
PRATTS, M	COLUM	1	4	1	1630	STOLTZ, B	TYROS	2	3	1	1984
PURDLE, D	FRANK	0	3	0	0000?	SUERTH, F	EXMPL	6	2	3	1645C
RACANELLE, F	UOP	1	0	0	0000?	SULLIVAN, C	MERC	3	8	0	1506
RADAVICIUS, E	CHRGR	5	7	0	1677D	SULLIVAN, J	EXMPL	5	7	1	1996D
RADULSKI, B	TYROS	1	2	0	0000?	TEGEL, F	DRGNS	7	2	3	2148D
RAFACZ, T	ROCKW	5	6	1	1773	THOMAS, G	TYROS	3	3	0	1503
RAFACZ, W	ROCKW	3	6	3	1629	THOMAS, J	CHRGR	4	3	3	1507C
RAFFERTY, M	HULL	0	2	0	0000?	THOMPSON, J	RAIL	1	3	0	0000?
RANGEL, R	HULL	4	3	3	1746	THOMPSON, R	FLPRO	1	2	0	1079
REICHERT, P	NORTH	0	5	1	1639*	THOMPSON, T	ROAD	1	1	0	0000?
REID, C	JCASE	2	7	1	1293	TURNER, R	COLUM	3	4	0	1229*
REYES, R	SEARS	7	2	3	2314D	TYREE, D	RADIO	1	6	0	1535#
RINGENBERG, T	AMOCO	1	3	0	1409	UNDERWOOD, W	EXMPL	9	2	0	1981C
ROJAS, R	RAIL	0	4	0	0000?	VAN MEER, J	KEMPR	2	1	2	1989
ROSE, K	AMOCO	0	0	1	1980	VAN OUTRIVE, R	RAIL	0	3	0	0000?
ROSLEY, D	DRGNS	0	1	0	1793	VAN ZILE, C	UOP	3	4	0	1386*
RUDDY, J	MERC	1	3	0	1202*	VERGE, C	PSTOF	0	1	0	0000?
RZESZUTKO, R	ALUMN	4	0	1	1952	VIGANTS, A	NORTH	3	4	1	1611
SAHLI, E	UOP	2	2	2	1683*	WALKER, R	FERMI	0	1	0	1345C
SAJBEL, P	UOP	5	5	3	1701	WALLACH, C	MTRLA	6	2	0	2089
SAJKOWSKI, D	AMOCO	1	1	4	1956	WARD, C	DRGNS	2	6	0	1527D
SAMELSON, C	MTRLA	9	2	2	2010C	WARREN, J	CHRGR	3	1	4	2141T
SANCHEZ, N	ROAD	2	0	0	0000?	WATSON, W	COLUM	0	1	0	0000?
SANCHEZ, P	RAIL	0	1	0	0000?	WEBB, E	AMCRP	3	4	0	1278#
SANCHEZ, R	FRANK	2	4	0	1429*	WEBER, L	FRANK	2	2	2	2213
SANTOS, S	FRANK	0	0	0	0000?	WEISSKOPF, J	HULL	2	3	0	0000?
SATTERLEE, D	JCASE	2	10	1	1716C	WEITZ, R	FLPRO	0	7	1	1778C
SAUER, C	ROAD	0	1	0	0000?	WELTER, P	SEARS	3	2	0	0000?
SCHATTKE, N	AMOCO	0	2	0	0000?	WENTLING, C	AMCRP	4	4	3	1580
SCHWARTZ, M	TYROS	0	6	0	1053*	WEST, R	MTRLA	4	3	0	1474#
SCHWARTZ, S	SEARS	0	2	0	1713C	WHITE, H	JCASE	2	5	1	1671
SHAFF, R	TYROS	2	4	0	1563C	WHITTINGTON, D	HULL	0	0	0	0000?
SHEU, G	ROYLS	0	1	1	1319*	WIECHERT, A	UOP	0	1	0	0000?
SIEGEL, R	CONBK	1	2	1	1471	WILLIAMS, J	RAIL	2	3	0	0000?
SIMS, B	CRT	4	1	0	0000?	WILSON, A	ROAD	1	6	1	1564
SIWEK, M	KEMPR	5	2	5	2168C	WILSON, M	SEARS	1	2	0	0000?
SLAGLE, S	MERC	0	0	1	1624	WONG, P	EXMPL	5	1	2	2228C
SLAUGHTER, S	ROAD	2	1	0	0000?	YOUNG, C	KNIGHT	2	0	1	1963C
SMITH, BR	TYROS	0	5	1	1468	YOUNG, R	HULL	2	6	0	1375#
SMITH, G	ROAD	4	4	0	1595#	ZEIDEL, J	MERC	2	2	1	1951
SOLLANO, E	FRANK	4	0	3	1993	ZOELLNER, J	CONBK	2	3	1	1270

? - UNRATED
- 5 TO 9 RATED GAMES
* - 10 TO 24 RATED GAMES

C - CENTURY CLUB MEMBER
D - DOUBLE CENTURION
T - TRIPLE CENTURION
Q - QUAD CENTURION