

Chicago Industrial Chess League

Bulletin No.6, Vol. 38
April 1995

INSIDE THIS ISSUE:

♔ Snapshots

♔ 2 Squares Column by Marv Cox

♔ Games

♔ Spring Business Meeting minutes

♔ Banquet Announcement

♔ The Bookshelf by Duane Satterlee

♔ Ratings Chairman Report

♔ **-NEED INPUT** To make the CICL bulletin even better we are looking for anyone interested in submitting **articles** or **games**. If you are interested, call or write to the bulletin editor.

CICL OFFICERS

As of April 1995

- President:** James Hodina
718 Central Park Ave.
Flossmoor, IL 60422
W:(708) 990-6115 H:(708) 799-5571
- Secretary:** Anthony Jasaitis
P.O. Box 664
Bedford Park, IL 60499-0664
W:(708) 406-6420
- Treasurer:** Wesley K. Underwood
207 S. Dorchester Ave.
Wheaton, IL 60187
W:(708) 752-5127 H:(708) 462-0393
- Ratings :** Charles Ward
Chairman: 615 S. Lincoln
Hinsdale, IL 60521
W:(708) 979-4599 H:(708) 325-3885
(708) 979-8451 F
- Production:** Marty Franek
Circulation: 9044 S. 51st Ave
Oak Lawn, IL 60453-0397
W:(312) 353-0397 H:(708) 636-3714
- East :** Keith Kostecka
Division : Columbia College
Chairman: Chicago, IL 60605-1996
W:(312) 663-1600 ext. 182
- Near West:** Satish L. Kale
Division : JI Case
Chairman: 7 South 600 County Line Rd
Hinsdale, IL 60521
W:(708) 887-2372 H:(708) 325-5253
- Far West :** Irwin Gaines
Division : Fermilab - MS 127
Chairman: P.O. Box 500
Batavia, IL 60510
W:(708) 840-4022
- North :** Ruben Reyes
Division : 2019 W. Leland Ave
Chairman: Chicago, IL 60625-1513
W:(708) 286-07
H:(312) 334-0591
F (312) 769-0311
- Bulletin Editor:** Ruben Reyes
See address and tel.
for North Division chair-
man above.
- Banquet & Publicity :** Anthony Jasaitis
P. O. Box 664
Chairman: Bedford Park, IL
60499-0664
W:(708) 406-6420

SNAPSHOTS

From the 1994 playoffs comes this position (diagram right) after **24.Qxc5+ b6**.

White played **25.Qc4** here, either rejecting or failing to see the obvious **25.Rxa6+**.

Actually, however, diagram right is a **mate in 4 (mate in 3** after the obvious **25.Rxa6+)**. Can you see it? Solution's somewhere in this page.

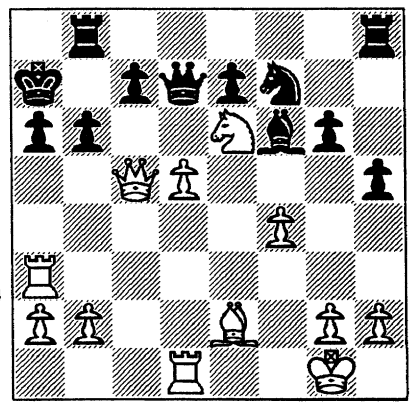
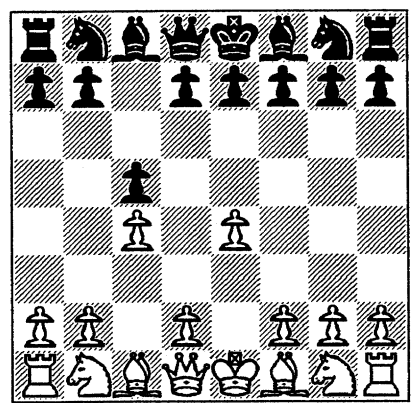


Diagram below is an off-beat but apparently successful anti-Sicilian (**1.e4 c5 2.c4**) opening from the 1994 playoffs.



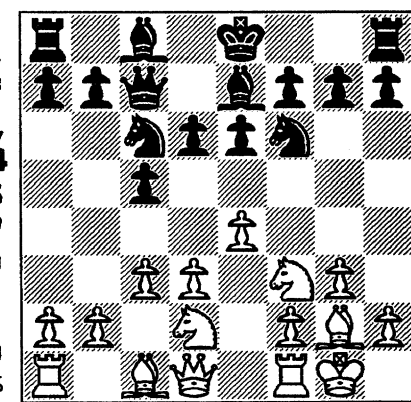
In the three occasions this line was played, White won all of them: on boards 1, 3, and 4 in three separate teams. Two were from the same Division.

Although the apparent intent of White's set up is to prevent ...d5, Black in two of the three games, however, was able to shove in ...d5.

The following game appears to be the shortest in the 1994 playoffs: **Alan Losoff (1860) - Dave Durkee, (1770) CRT vs Dragons 1.e4 d6 2.d3 c5 3.Nf3 Nc6 4.c3 Nf6 5.g3 e6 6.Bg2 Be7 7.Nbd2 Qc7 8. 0-0** (Diagram right)

There seems nothing wrong with Black's position at this point. But then things begin to unravel for Black after :

8...d5 9.Re1 e5 (This blocks 10.e5, but this makes the d-pawn vulnerable to a masking combination which White now goes after.) **10. exd5 Nxd5 11. Nc4 f6 12. Nfxe5 Nxc3 13.Qh5+ g6 14.Nxg6 1-0** Alert and fine play by Alan Losoff.



Solution to Mate in 4: 25.Rxa6+ Kb7 27.Ra7+!! Kxa7 (or 27...Kc8 28.Qxc7+ Qxc7 29.Rxc7++) 28.Qa3+ Kb7 29.Qa6++

CHICAGO INDUSTRIAL CHESS LEAGUE

from Jim Hodina

March 28, 1995

Dear CICLers:

I wanted to pass along some very important information as we head into the home-stretch for this very successful 1994/95 season.

Spring Business Meeting

First, some highlights from the March 14th Spring Business Meeting. Officer elections were held and I would like to announce the officers for 1995/96 season. Satish Kale, currently Near West Division Chairman and long-time captain of JI Case, was elected President. Wes Underwood, Wheaton College, was re-elected to the Office of Treasurer. East Division Chairman and Columbia College Team Captain, Keith Kostecka was elected Secretary. Officer-elects will take their positions at the conclusion of the 1995 season. I would like to extend my personal congratulations and warm-hearted thanks to these gentlemen. I know they will do an outstanding job!!!

The other big news is that the proposal for a new time control of 45/90, SD/45 was passed by a vote of 12 to 8. This vote will go into effect at the beginning of the 1995/96 season. However, anyone who is willing to give this new time control a trial run yet this year, is encouraged to do so. There was substantial discussion on the secondary time control, sudden death in 45 minutes. Several legitimate concerns were expressed. Specifically, the rules governing sudden death time controls can be complicated. With no official Tournament Director on site, how can we fairly administer the draw provisions of sudden death time controls? A 45-minute secondary time control requires players to adjust their clocks. Will this pose a problem? As a solution, a proposal to modify the secondary time-controls to 30/60 was made. In order to honor the absentee ballots, which did not address the 30/60 secondary time control, this motion was tabled until the Fall Business Meeting. Captains, please take a moment to poll your team regarding this proposal so that you may vote upon the motion this fall.

1995 Playoffs - New Open Section

The 1995 playoffs will be structured into a "Open" and "Closed" sections. The Closed Section will consist of the top two teams from each division to crown the league champion - no change from previous years. Instead of qualifying for the second tier, as previously required, it will now be open to any team wishing to play. *If your team is interested, you must complete the attached entry form and have it to me by April 30.* On May 1, I will make the pairings.

Both Closed and Open sections will run concurrently. The first round will be played during

the first 3 weeks of May. For the Open Section, the first place team in each division will be seeded against the second place team in each division with pairings being based on overall win/loss percentage. For the Closed Section, the teams will be seeded based on their win/loss percentage from the regular season. In both sections, the higher seed will be the home team for the first match. Arrangements must be made between the two team captains as is typically done during the regular season. The final two rounds will be held at Midcon Corp in Lombard on Saturday, May 20. Midcon was the host of the Spring Business Meeting. A map is enclosed for your reference. The start time of the second round will be 9:00 am and the start of the third round will be at 2:00 pm. Time controls for the first round will be 50/2, 25/1; time controls for rounds two and three will be 50/2, SD/30. More information will be available to you when the pairings are announced.

Midcon has graciously offered their cafeteria services during the match. *Snacks and lunch will be sold throughout the day, providing you express enough interest.* To determine if there is enough interest, please complete the attached survey with menu and mail it/fax it to Midcon Team Captain, Jim Edgerton. This survey is not a firm committment. However, your reponses need to be reasonably accurate so that we may determine if the league can commit to the minimum order required by the cafeteria.

CICL vs Oak Park River Forest Chess Club Match

Hey, hey, hey....we actually won one!!! The third time was a charm for the CICL, beating the OPCC 10.5 to 5.5. After drawing the first match and losing the second, we came with all guns to bear. *Knotted up 1-1-1, another challenge match is scheduled for Tuesday, June 13.* As before, all you have to do to play is give me a call. Here are the individual results.

Bd.	CICL	OPCC	Score	Bd.	CICL	OPCC	Score
1	Tony Jasaitis	Lance Gowie	0-1	9	Dan Fraats	T. Weber	0-1
2	Ed Buerger	Bob Hansen	1-0	10	Satish Kale	W Boguslowicz	1-0
3	Jim Hodina	C. Musgrave	½-½	11	F. Micklich	Ken Marshall	1-0
4	Tim Williams	Jim McNamara	1-0	12	D. Saterlee	Butch Thomas	1-0
5	C. Dobrovolny	Marty Ptacick	0-1	13	Algis Litvinas	Meno Bartucci	1-0
6	Rich Smiley	Bill Barker	1-0	14	Hardie White	Richard Horner	1-0
7	B. Marcowka	Jim Kelly	0-1	15	H. Kleinfelter	Andy Schiller	0-1
8	Jim Edgerton	Mario Bartucci	1-0	16	Ross Seigle	Joe Cygan	1-0

CICL OPEN TOURNAMENT ENTRY FORM

Team Name: _____ Regular Season Record: _____

Team Captain: _____ Phone Number: _____

Please submit to James Hodina, 718 Central Park Avenue, Flossmoor, IL 60422 by April 30.

PLAYOFF SITE - MAY 20

Directions to MidCon/Natural Gas Pipeline Office From Various Locations

701 East 22nd Street
Lombard, IL 60148
(708) 691-2500

From O'Hare:

1-90 East to 294 South. Take 294 South 9 miles to I-88 West. I-88 West 4 miles to Highland Avenue. Go North on Highland Avenue to 22nd Street (approximately 1 mile). Go East on 22nd Street approximately 0.60 of a mile. Building is on south side of the street.

From Chicago:

290 West approximately 20 miles to I-88 West. I-88 West 4 miles to Highland Avenue. Go North on Highland Avenue to 22nd Street (approximately 1 mile). Go East on 22nd Street approximately 0.60 of a mile. Building is on south side of street.

From Oakbrook:

Butterfield Road West to Meyers Road. North on Meyers Road to first stoplight (which is 22nd Street). Turn left at 22nd Street. Building is on the south side of street approximately 2 blocks.

From 355 South:

Exit at Roosevelt Road East to Highland Avenue. Go ^{South} North on Highland Avenue to 22nd Street (approximately 1 mile). Go East on 22nd Street approximately 0.60 of a mile. Building is on south side of street.

From 355 North:

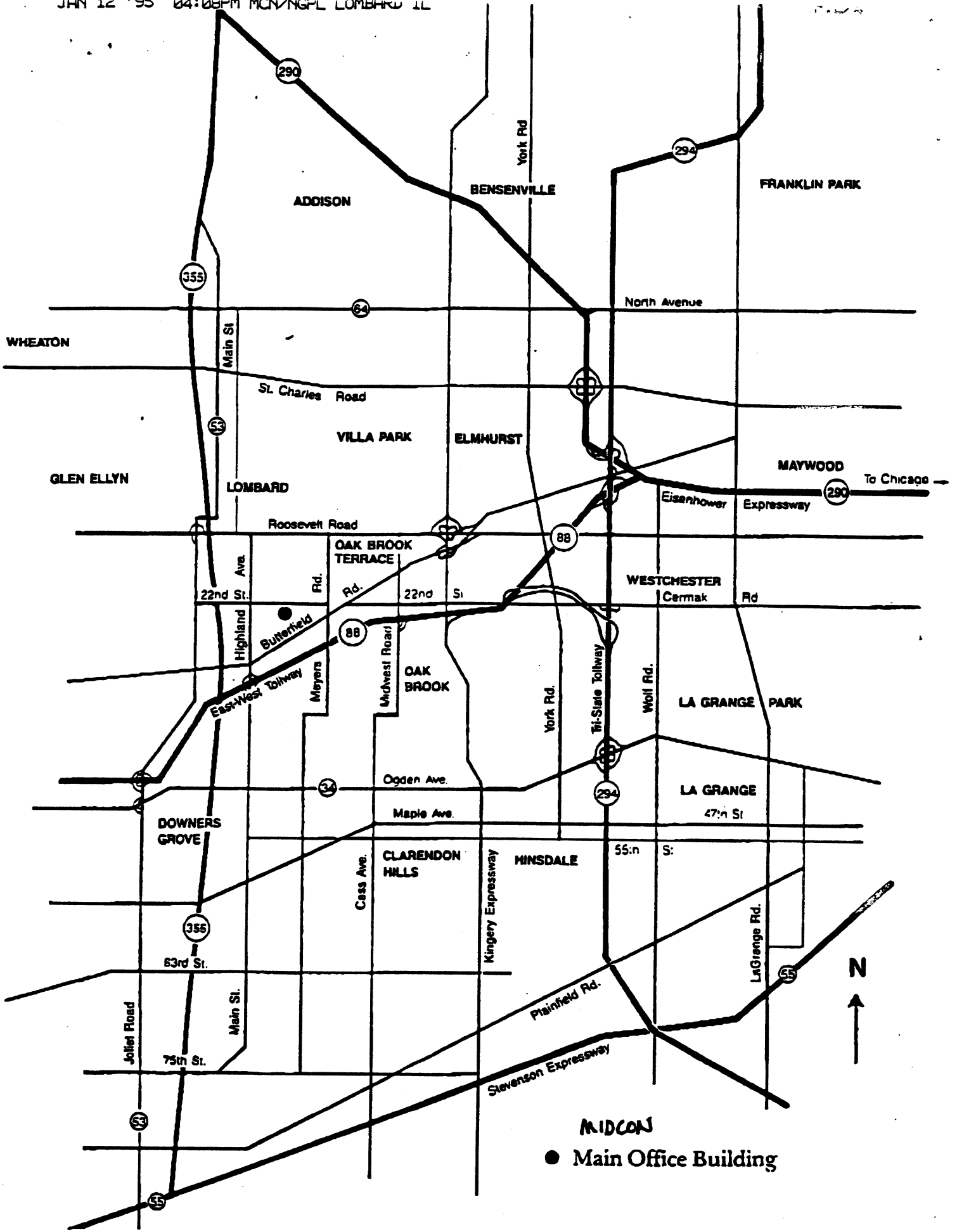
Exit at Roosevelt Road and go East to Highland Avenue. Go South on Highland Avenue to 22nd Street. Go East on 22nd Street approximately 0.60 of a mile. Building is on south side of the street.

From Midway Airport:

Take 63rd Street West 0.50 mile to Central Avenue. North on Central Avenue 1.50 miles to I-55 South. I-55 South 11 miles to 294 North. 294 North to I-88 West. I-88 west 4 miles to Highland Avenue. Go North on Highland Avenue to 22nd Street (approximately 1 mile). Go East on 22nd street approximately 0.60 of a mile. Building is on south side of street.

From South Suburbs:

Take 294 North to I-88 West. I-88 West 4 miles to Highland Avenue. Go North on Highland Avenue to 22nd Street (approximately 1 mile). Go East on 22nd Street approximately 0.60 of a mile. Building is on the south side of street.



MIDCON
● Main Office Building

CICL Playoff Lunch Survey

MENU SELECTION

Pizza individual (Sausage, Pepperoni, Cheese, Deluxe)	3.25
Deli Sandwich (Turkey, Ham, Cheese, Chips, Pickle)	3.00
Fruit (assorted)	.70
Cookies (variety)	.35
Juice	1.15
Milk	.40
Coffee (small)	.45
Coffee (large)	.90
Donuts (assorted)	.55
Soda (Large 22 oz.)	.75
Soda (Medium)	.55

Captains: copy and distribute this memu to your team. Total up the responses for Pizza & Sandwiches (to determine if food service will be provided) and fax your response to Jim Egerton MidCon (708) 691-3827 by May 12. *VOICE PHONE: 708-691-3060*

+++++

Team Name: _____

Captain: _____

Work Phone: _____

___ We prefer onsite lunch, here's our order if service is provided

___ PIZZAS (___ SAU, ___ PEP, ___ DLXE, ___ CHSE)

___ SANDWICHES (___ TUR, ___ HAM)

___ We will make our own lunch accomodations during the playoffs.

The 2 Squares Column

by Marvin Cox

"If two (or more) squares are attacked more times than they are defended they may fall"

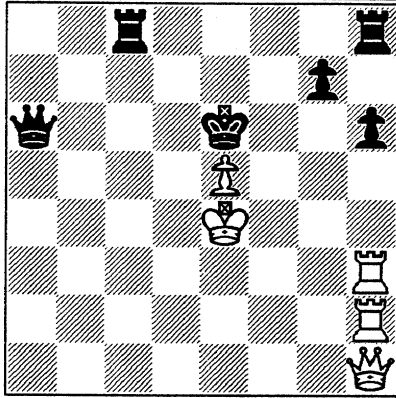


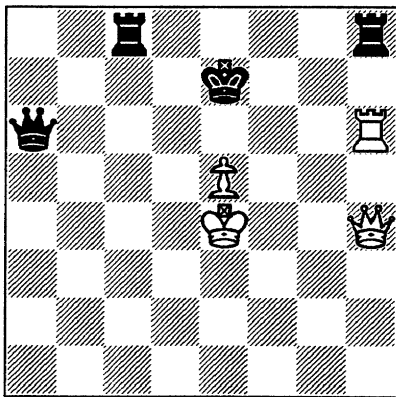
Diagram 86

In diagram 86 above black has two weaknesses. His king and queen are on the same rank and the square h6 is attacked three times but only guarded twice. Note that square h6, not the pawn on h6, is the focal point of the intersection of the rank the black king and queen are on with the file the three white major pieces are on.

1. ♖xh6+ gxh6
2. ♖xh6+ ♔e7

If 2...Rxf6 then white will have a queen vs. rook ending. Do you know this so called simple ending?

3. ♕h4+



after 3. ♕h4+

White's rook is pinned to the file. White must force the black king to a square which allows white to check with the queen while not on the h file.

- 3 ♔e8
4. ♕h5 ♔-any
5. ♕d1+ or f5 or g5+

(followed by 6. ♖xa6 winning the queen! - ed)

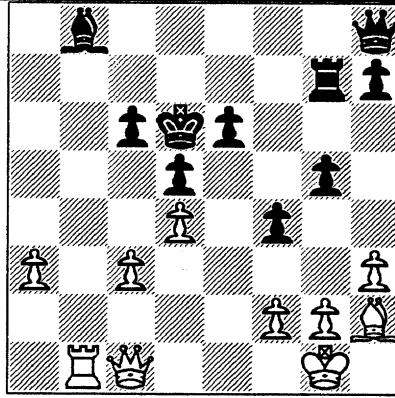


Diagram 87

In diagram 87 above black has three weaknesses. His bishop on b8 is attacked twice by the white rook and by the masked white bishop and is only guarded once. His pawn on f4 is attacked twice and only guarded once. Those two weaknesses and his king are all on the same diagonal, therefore the b8-h2 diagonal is also a weakness in black's camp. It appears that sacrifices on the b8 and f4 focal points could be fruitful. Which should be sacrificed first? My uncle says the sacrifice which need not be accepted should be made first. If it is not accepted we may retreat with our booty. In the problem above neither sac requires forced acceptance so either can be done first.

1. ♖xg8 ♔g8

You can analyse 1...Qxg8 2. Bxf4+

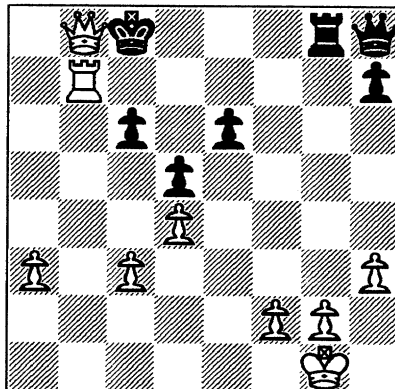
2. ♗xf4+ gxf4

You can analyse 2...Kd7 3.Be5

3. ♕xf4+ ♔d7

4. ♖b7+ ♔c8

5. ♕b8++



Or we can sac the B first: 1.Bxf4 Kd7 (2...gxf4 3.Qxf4+) 2.Rxb8 Rg8 3.Be5

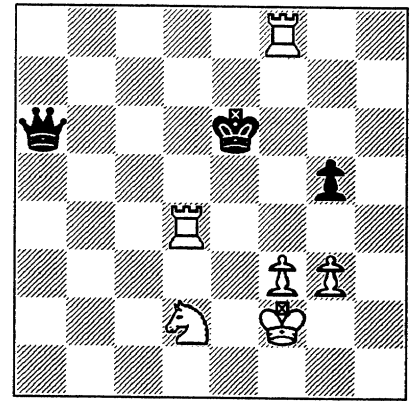
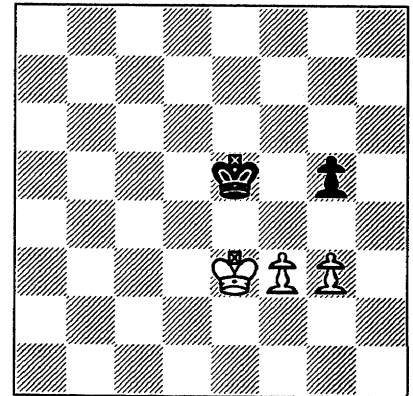


Diagram 88

In diagram 88 we see the black king and queen are on the same row. We also see if the white knight moved to e4 there would be a focal point of knight and rook at f6 and also at d6. Consider a 2-squares attack on the two focal points. White has 3 attacks but black has only 2 defenders. Analyse to see if the 6th row falls. Also examine the position after the simplification to see if white can win.

1. ♖d6+ ♔xd6
2. ♖f6+ ♔xf6
3. ♗e4+ ♔e6
4. ♗xd6 ♔xd6
5. ♔e3 ♔e5



After 5... ♔e5

White gave up three pieces for a queen. 95% of the time 2 pawns vs. 1 pawn wins. This is one of the wins. Study it.

(The natural inclination to "check" with 6.f4+ only leads to a draw as black keeps the "opposition" after 6... gxf4+ 7.gxf4+ Kf5 8.Kf3 Kf6 9.Ke4 Ke6, etc.

White should strive to force Black to lose the "opposition" - ed)

GAMES

Playing on board 1 and still gain 121 rating points for the season is a feat rarely accomplished. And that's exactly what Florentino Inumerable, last season's East Division MVP accomplished.

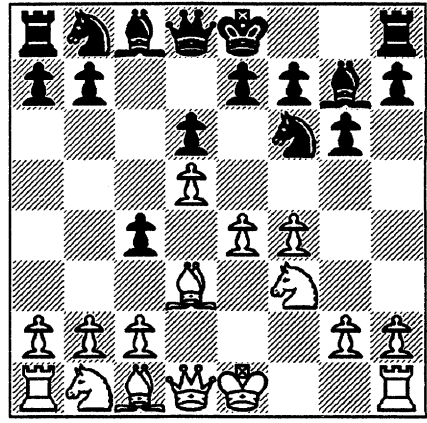
In the following game, Inumerable puts the game away with incredible suddenness via a six-move combo out of nowhere.

Modern Defense

WHITE: A. Jasaitis (2216)
BLACK: F. Inumerable (2235)

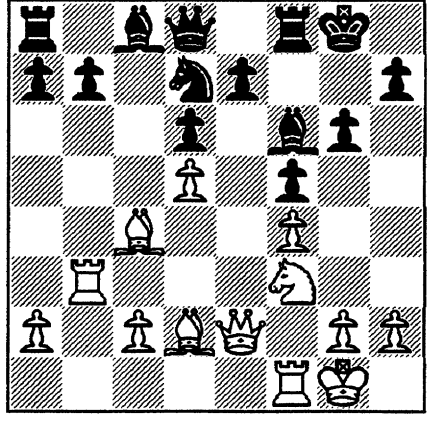
1994 Playoffs; CRT-Post Office

1.e4 g6 2.d4 c5 3.d5 ♟g7 4.f4 d6 5.♞f3 ♟f6 6.♞d3 c4



Nice as Black now breaks up White's central pawn mass in one fell swoop.

7.♞xc4 ♟xe4 8.♞e2 f5 9.♞bd2 ♟xd2 10.♞xd2 ♟xb2 11.♞b1 ♟f6 12.0-0 0-0 13.♞b3 ♟d7

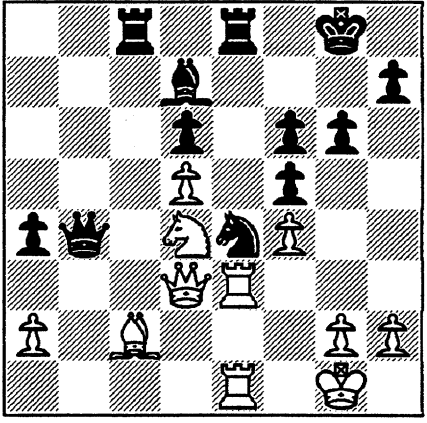


14.♞c3

Or build up pressure on the Kingside, i.e. 14.Ng5 intending 15.Rh3.

14...♞c5 15.♞xf6 exf6 16. ♞e3 ♞d7 17.♞d4 ♞e8 18.♞e6 ♞a5

19.♞e1 ♟e4 20.♞d3 b5 21. ♞b3 ♞ac8 22.c4 bxc4 23. ♞xc4 ♞b4 24.♞b3 a5 25.♞d4 a4 26.♞c2



White doesn't appear to be in a serious predicament here. But incredibly, as Black now begins to demonstrate, White is lost.

26... ♞c3!! 27.♞d1

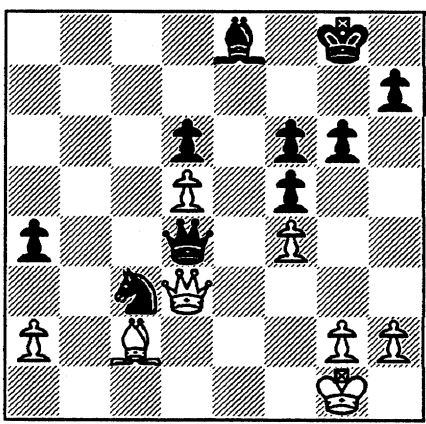
There's no other place for the Queen as White has to guard the Knight at d4.

27... ♞xe3 28. ♞xe3 ♟c3 29. ♞xe8+

29.Qd3 is also of no help as Black simply pursues the same theme as in the game.

29...♟xe8 30.♞d3 ♞xd4+ 1-0

Final Position



If 31.Qxd4 then 31...Ne7+ 32.K-any, Nxd4 and Black's a Knight up.

The North Division's MVP was Tom Miller with a record of 8 wins, 2 draws, and 3 losses for the entire season plus a ratings increase of 93 points.

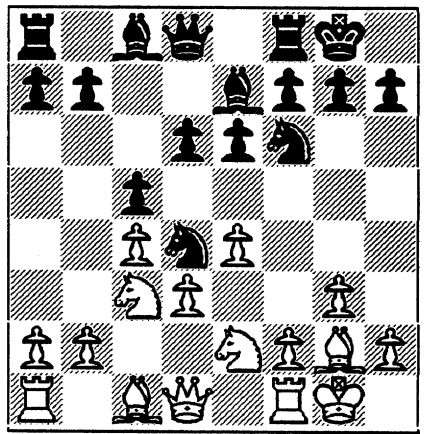
In this one, Miller (White) sacs two pawns for the attack. In the ensuing play, White offers a third pawn for a devious mate. Black accepts the pawn and that was that.

English

WHITE: T. Miller (1635)
BLACK: D. Cieslek (1988)

Sears-Motorola; Round 1, '93-94

1. c4 c5 2. ♞c3 ♟c6 3. e4 d6 4. g3 ♟f6 5. ♞g2 e6 6. ♞ge2 ♟e7 7. 0-0 0-0 8. d3 ♟d4



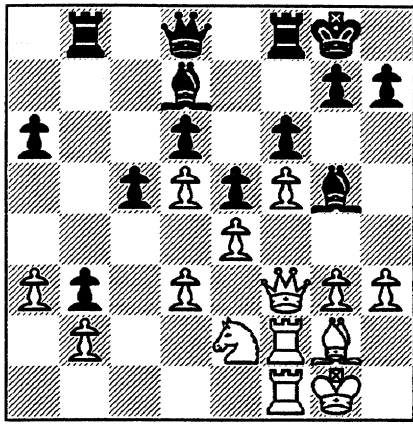
9. h3

9.Nxd4 cxd4 10.Ne2 with pressure on the d-pawn to force Black to play ...e5 could enable White to stabilize the center. Once accomplished, a wing attack can proceed without having to contend with the thematic break in the center.

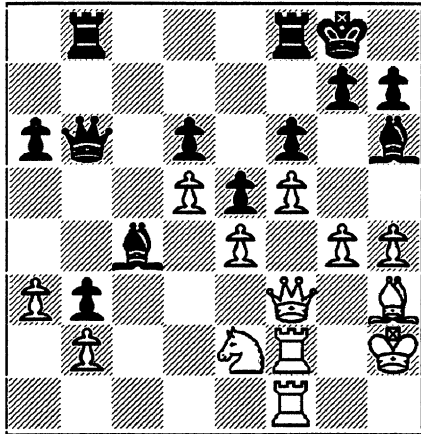
9...e5 10. f4 ♞d7 11. f5 a6 12. ♞e3 ♞b8 13. ♞d2 b5 14. ♞f2 b4 15. ♞d5 ♟xd5 16. cxd5 b3 17. a3 ♟c2 18. ♞af1 ♟xe3 19. ♞xe3 ♟g5 20. ♞f3 f6

Or 20...Qb6 threatening 21...c4 and 22...Be3.

(See diagram at top of next page)



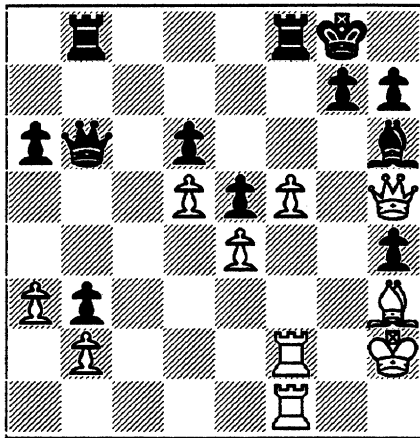
21. h4 ♖h6 22. g4 ♜b5 23. ♖h2 ♜b6 24. ♜h3 c4 25. dxc4 ♜xc4



26. g5 ♜xe2

Maybe 26...fxg5 28.Qh5 and only now 28...Bxe2.

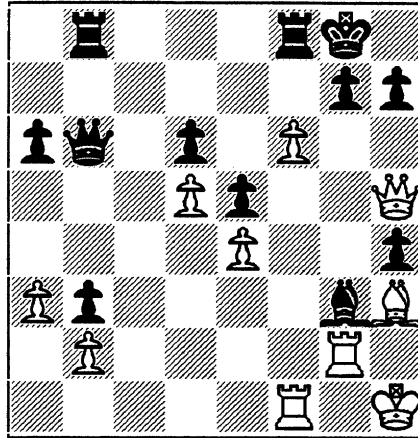
27. ♖xe2 fxg5 28. ♖h5 gxh4



29. ♜g2

If 29.f6 then 29...Qe3 - TM.

After 29.f6 the reply 29...Bf4+ (expecting 30.K-any Rxf6) gets Black into difficulties with 30.Rxf4 exf4 31.Be6+ Kh8 32.Bf4 g6 33.Bxg6 Rb7 34.f7 - ed. 29...♜f4+ 30. ♖h1 ♜g3 31. f6



The threat's 32.Be6+ Kh8 33.Bf5 g6 34.Bxg6 Rb7 35. f7 cutting off the defending Rook at b7 and further threatening 36.Qxh7 mate.

31... ♜xf6?

Correct is 31...g6. The sac of the f-pawn is part of a devious trap White has cooked up.

32. ♜xf6 gxf6 33. ♖xh4

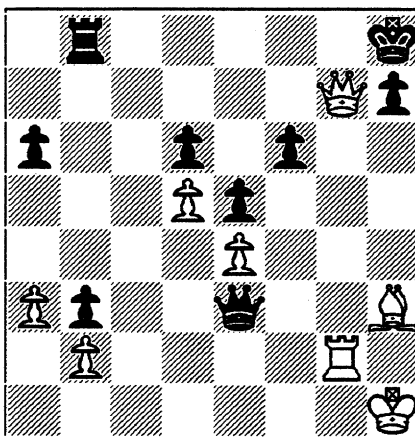
The point of the pawn sac. The Bishop loses its pawn protection, allowing White's mating attack to surge thru.

33... ♖h8 34. ♖xg3

White mates in two with 34.Qxf6+ and 35.Be6++ (or 35.Rxg3++) - TM.

34... ♖e3 35. ♖g7++

Final Position



This game submitted for the best upset award has a nice and unique touch to it. Black makes the first mistake losing a pawn but then plays a solid game and recovers material. What's unique are the probing Queen maneuvers in the finale before the kill.

Queen's Pawn

WHITE: Dave Baurac (1607)

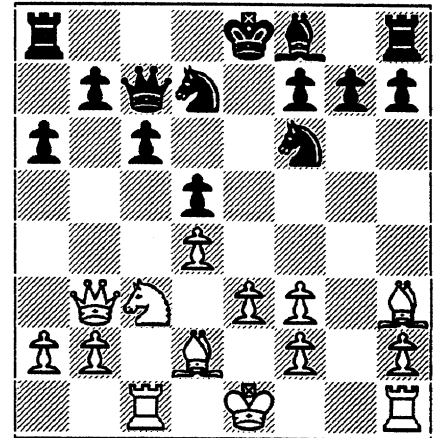
BLACK: Carl Reid (1328)

Knights - J.I. Case, Feb. 16, 1995

1.d4 d5 2. ♖f3 ♜f6 3.e3 ♜g4 4. c4 e6 5. ♖b3

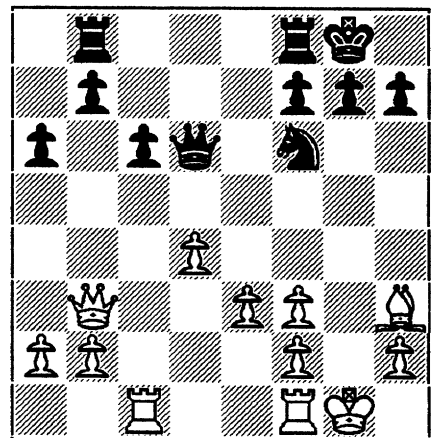
Though this could lead to doubled f-pawns, a pawn at f3 prevents a Black Knight from landing at e4 and g4.

5... ♜xf3 6.gxf3 ♜c8 7. ♜c3 c6 8. ♜d2 ♜bd7 9. cxd5 exd5 10. ♜h3 ♜c7 11. ♜c1 a6



11...Qg6 looks okay.

12. ♜xd5 ♜xd5 13. ♖xd5 ♜f6 14. ♖b3 ♜d6 15. ♜b4 ♜b8 16. ♜xd6 ♖xd6 17.0-0 0-0



18. ♖c2 ♜d5

Alert play. Black spots a double attack on the White a and f-pawn.

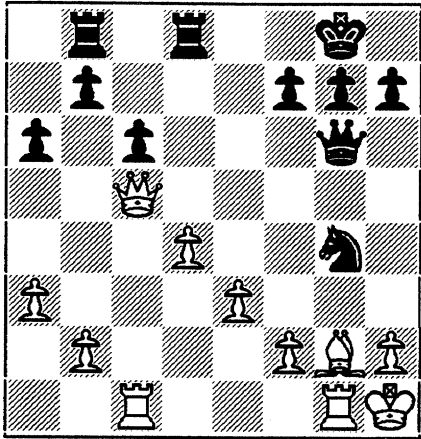
19.a3

Saving the a-pawn instead of the f-pawn is a wise choice.

19... ♖xf3 20. ♜g2 ♖h5 21.

♖c5 ♖g6 22.♔h1 ♚fd8 23.
♜g1 ♜g4

The threat of a one-move mate is easily defended.



24. ♖c2

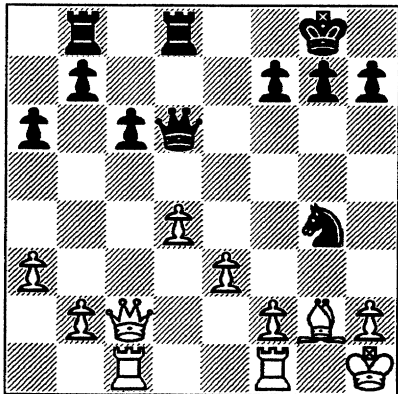
This prevents 24...Nxc2+ and offers a Queen trade. However, it inadvertently gives Black access to a key square which would later be a reason to cause White grief. Though White'd relinquish pressure on the g-file, 24.Rg1 seems better.

24... ♖f6!

The threat of 23...Nxf2 24.Qxf2 Qxf2 is easily parried. But what Black's actually doing here is force White into a set-up for Black's next move.

25. ♜gf1 ♖d6 ! 0-1

Final Position



If 26.f4, then 26...Nxe3 followed by 27...Nxf1 and 28... Q or Rxd4 winning not only the exchange but also two pawns in the process.

Superb maneuvering with the Queen by Carl Reid. Notice that without 24...Qf6 there'd be no fork at e3?

CTA perked things up last February with a 4-2 upset victory over CRT. Although one of CTA's wins was on forfeit, two were against CRT's outstanding players, Friesema and Bargerstock.

In this one on board 2, things don't go White's way in the opening and gets worse in the middlegame when White loses a piece for a pawn.

Then in the endgame White sets up a two-move combination to win a piece disguised as a simple one-move threat to win a Bishop.

Black falls for the feint and retreats the Bishop, enabling White to win back a piece and come out one pawn up.

It's all White's game from then on.

Sicilian

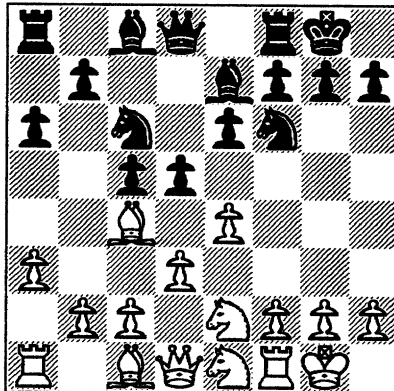
WHITE: Randy Byrnes
BLACK: W. Friesema (2085)

CTA - CRT, February 1995

1. e4 c5 2. Nf3 d6 3. Bc4

On thing with this move is that it gets Black out of the "book. However, as this game illustrates, it poses little difficulty for Black to equalize with the thematic ...d5 in the Sicilian.

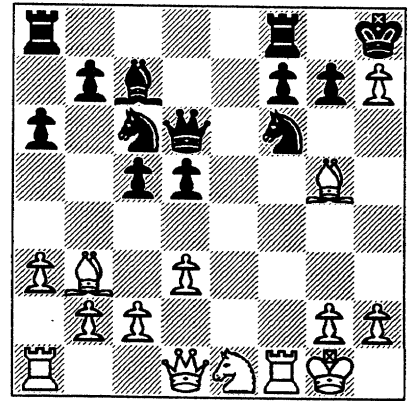
3...e6 4. Nc3 Nf6 5. d3 Be7 6. 0-0 Nc6 7. Ne2 a6 8. a3 0-0 9. Ne1 d5



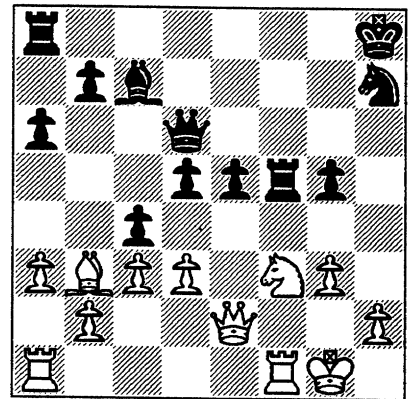
Black has equalized.

10. exd5 exd5 11. Bb3 Bg4 12. f3 Bh5 13. Ng3 Bg6 14. f4 Bd6 15. f5 Bxg3 16. fxc6 Bc7 17.

gxf7+ Kh8 18. Bg5 Qd6



19. g3 Nxf7 20. Bf4 Ne5 21. Nf3 f6 22. c3 g5 23. Bxe5 fxe5 24. Qd2 Rf5 25. Qe2 c4 !



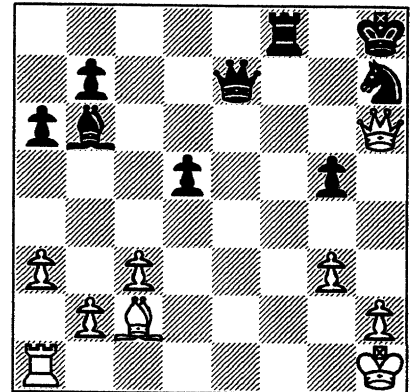
26. Bc2

If 26.dxc4 then 26...Qg6+ and 27...Qxb3 wins the Bishop.

26...cxd3 27. Qxd3 Bb6+ 28. Kh1 e4 29. Qe2

29.Bxe4 dxe4 30.Qxe4 wins two pawns for a piece. Here, however, even though White wins only a pawn for the piece, he retains opposite colored Bishops.

29...Rxf3 30. Rxf3 exf3 31. Qxf3 Rf8 32. Qh5 Qe7 33. Qh6



A clever "threat". For all appearances White seems to be only threatening the Bishop at b5.

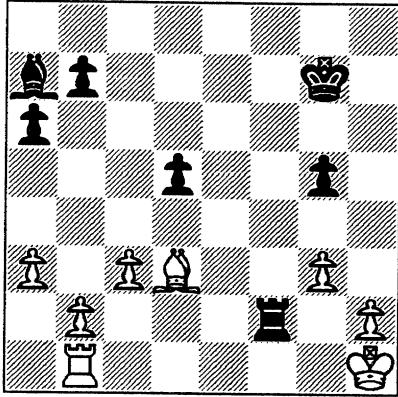
33...Ba7

Correct is 33... Rf6.

34. Bxh7! Qg7

Black can't recapture at h7 as he'd lose the Rook: 34...Qxh7 35.Qxf8+.

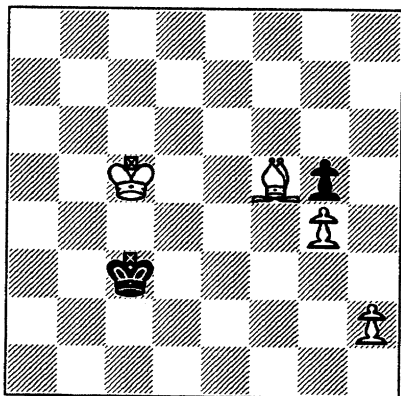
35. Qxg7+ Kxg7 36. Bd3 Rf2 37. Rb1



Though White's one pawn up, Black has a more active Rook and King plus the Bishops are on opposite colored squares.

37...Rd2 38. Bf5 Re2 39. Bc8 d4 40. Bxb7 dxc3 41. bxc3 Bc5 42. Bxa6 Rc2 43. a4 Rxc3 44. Ra1 Rc2 45. a5 Be3 46. Bb7 Rc1+ 47. Rxc1 Bxc1 48. Kg2 Be3 49. Kf3 Ba7 50. Ke4 Kf6 51. Bc8 Bg1 52. a6 Ke7 53. Kf5 Be3 54. Be6 Kf8 55. Ke5 Ke7 56. Kd5 Bg1 57. Bf5 Kf6 58. g4 Ke7 59. Kc6 Kf6 60. Kb7 Ke5 61. a7 Bxa7 62. Kxa7 Kd4 63. Kb6 Kc3 64. Kc5 1-0

Final Position



The second upset in the CRT-CTA encounter was even more resounding because of the 474 rating points difference involved.

In this game, Black fends off a mating attack with skill.

When White breaks off to regroup (32. Bf3), it's all that Black needs to take over the attack himself.

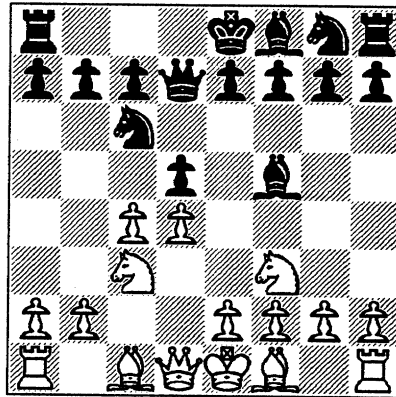
Tehigorin

WHITE: D. Bargerstock (1823)

BLACK: M. Jones (1349)

CRT - CTA, February 1995

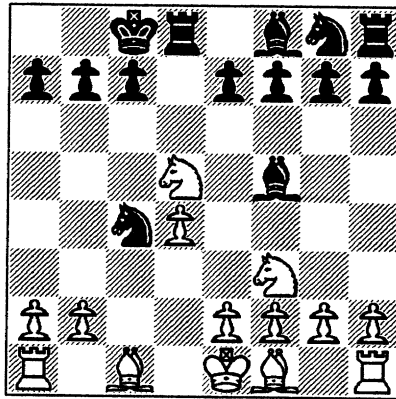
1. d4 d5 2. Nf3 Nc6 3. e4 Bf5 4. Nc3 Qd7



5. Qb3

5.cxd5 with 6.e4 to follow.

5...Na5 6. Qb5 Nxc4 7. Qxd5 Qxd5 8. Nxd5 0-0-0



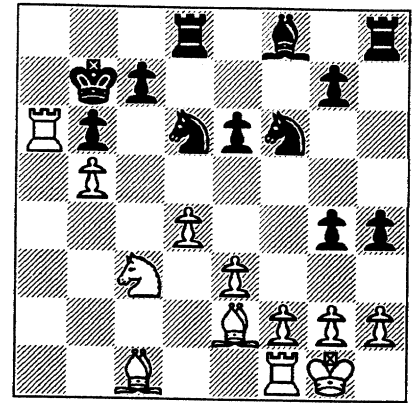
9. e3

9.Nc3, threatening 10. e4

9...e6 10. Nc3 Nd6 11. Be2 Nf6 12. 0-0 h6 13. Ne5 Bg6 14. Nxc6 fxc6 15. a3 g5 16. b4 g4 17. b5 h5 18. a4 b6 19. a5 h4 20. axb6 axb6 21. Ra7 Kb8 22. Ra6 Kb7

(See diagram top of next column)

Black hangs tough. This threatens 23... Ra8.

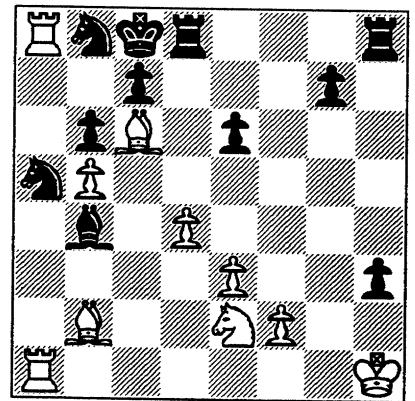


23. h3 gxh3 24. Bf3+ Kc8 25. Bc6 Nd7 26. Ra8+ Nb8 27. Bb2 27.Bd2.

27...Nc4 28. Rfa1 Na5

Exactly. 28...Nxb2?? leads to mate: 29. Rxc8+ and 30.Ra8++

29. Ne2 hxg2 30. Kxc2 h3+ 31. Kh1 Bb4

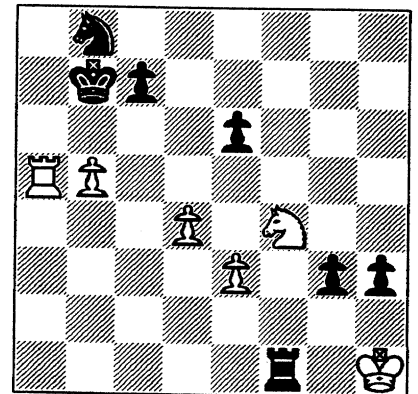


32. Bf3 Rdf8 33. Nf4 g5 34. Ng6 Rxf3!

Black handles the attack well here.

35. Nxh8 Rxf2 36. Ba3 Bxa3 37. Rxa3 Kb7 38. R8xa5 bxa5 39. Rxa5 g4 40. Ng6 g3 41. Nf4 Rf1++

Final Position



Gata Kamsky took the first game on time forfeit from Viswanathan Anand in the first game of the PCA final match. The winner gets to challenge Kasparov for the (PCA) World Title.

Ruy Lopez

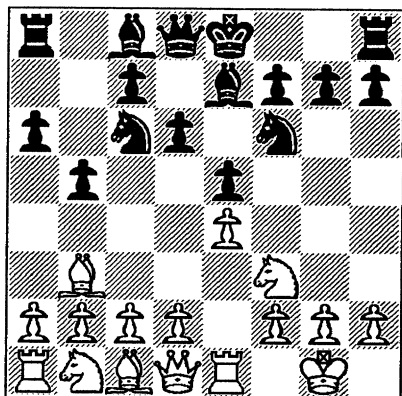
WHITE: V. Anand (India)
BLACK: G. Kamsky (USA)

Las Palmas SPA; March 9, 1995

1. e4 e5 2. ♘f3 ♗c6 3. ♖b5 a6

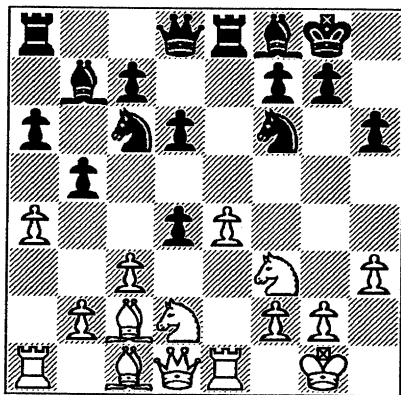
Kamsky got a lot of mileage from 3...g6 vs. GM Alonso Zapata of Colombia at the 1990 Interzonals in Manila: 4.0-0 Bg7 5.c3 a6 6.Ba4 d6 7.d4 Bd7 8.dxe5 dxe5 9.Bg5 Nge7 10.Re1 h6 11.Be3 b6 12.Na3 0-0 when Black's probably equal. Kamsky won that game in 40 moves.

4. ♗a4 ♗f6 5. O-O ♗e7 6. ♞e1 b5 7. ♖b3 d6



In game 3 of his match vs. Anand in the 2nd round of the FIDE candidates matches, Kamsky went for the Marshall Attack with 7...0-0 and lost.

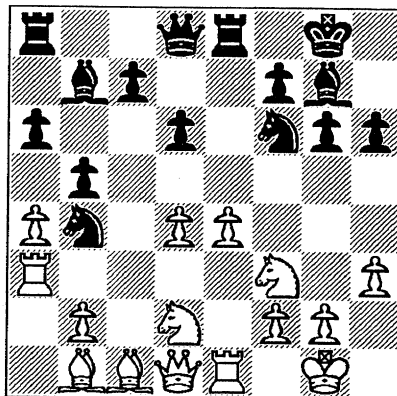
8. c3 O-O 9. h3 Bb7 10. d4 ♞e8 11. ♗bd2 ♗f8 12.a4 h6 13. ♗c2 exd4



An improvement over game 5 in his

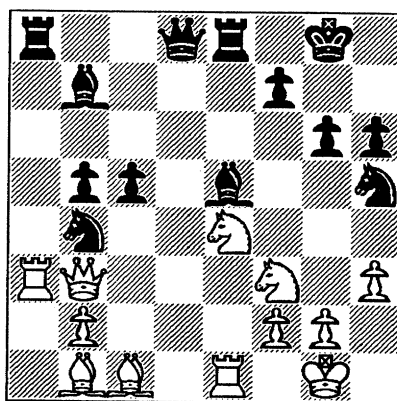
FIDE match vs. Anand last year. In that game Black's Knight was driven back to b8 with a timely d5 by White. Here Black seeks a more active role for the Knight with the pawn capture as we'll soon see.

14.cxd4 ♗b4 15.♗b1 g6 16. ♞a3 ♗g7



Though White has a mobile pawn center, his pieces are not as well coordinated as Black's. Black's Knight at b5 restricts the mobility of the White Bishop on the light squares and remains at his outpost throughout the rest of the game. What a Knight!

17. e5 dxe5 18. dxe5 ♗h5 19. axb5 axb5 20. ♞b3 c5 21. ♗e4 ♗xe5

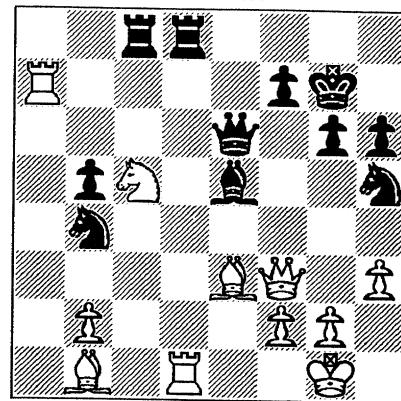


22. ♗xc5

22.Qe3 threatens both 23.Qxh6 and 23.Qxc5 but places the Queen in the line of fire of Black's Rook at e8. For example, 22.Qe3 f5 23.Qxc5 (the Knight at e4 can't move as it'd allow 24...Bh7+ and 25...Rxe3) 23...fxe4 24.Qxb4 exf3 winning a piece.

22...♗xf3 23.♞xf3 ♞c8 24. ♗e4 ♗g7 25. ♞d1 ♞e7 26.

♗e3 ♞ed8 27. ♞a7



27...♞e6 28. ♗c5 ♞xd1+ 29. ♞xd1 ♞d5

White's pieces have gained ground and are beginning to be in sync with each other. Black's now attempting to stop White's momentum via piece exchanges before things get out of hand.

30. ♞g4 ♞c7

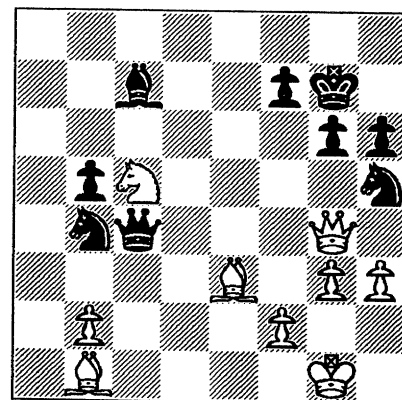
White can't be allowed the 7th rank.

31. ♞xc7 ♗xc7 32. g3

White can't do much with the Queen guarding the square d1 against mate.

32. ♞c4 0-1 (Time)

Final Position



The thing that's surprising is Anand's losing on time, considering the fact that Anand is known for finishing a game with lots of time to spare in his clock.

Why Anand took too much time than he normally does is puzzling. Perhaps Kamsky's improvement over a line they played in the 2nd round of the FIDE cycle had something to do with it.

Many thanks to Dave Baurac for providing this game via E-mail to Charlie Ward then to the Bulletin.

THE BOOKSHELF - Reviews by Duane Satterlee for the CICL

How to Be a Complete Tournament Player

by Edmar Mednis (G.M.), Maxwell Mcmillan Pub.

This is a small, very readable book. G.M. Mednis very openly shares many of his tournament experiences and gives advice that is uncommon in candor and the topics covered.

The author of "How to Beat Bobby Fischer", Mednis has played in many international tourneys, on an Olympic chess team and in Interzonal World Championship candidate tourneys. He claims considerable experience as a chess trainer.

For me, the most valuable section was an in-depth discussion on the rarely mentioned topic of opening transpositions and move order. He also covers some topics that may seem simple, but often make a difference between won and lost games: how to manage your move recording in time pressure, dealing with the disruptive influence of time control, (I don't know about you, but I have blown a few games at time control) how to manage back-to-back tournaments and stay in playing condition, several aspects of dealing with adjourned games, studying your opponent, making shrewd guesses about unknown opponents, selecting your opening repertoire, developing a training program, and his library recommendations. While in some cases, games by other masters are included, the entire book is illustrated with games and positions that the author has both won and lost in the context of the chapter topic. More than most authors, Edmar lets us in on his thinking as the game is played and during adjournment: his hopes and fears, and his assessment of the situation before, during and after the game.

Chess is nearly limitless, so the author weaves the theme of wise use of time throughout the book. How to spend your study time (He says half on openings, a quarter on endings, and a quarter on "learning chess"), how to spend it during a game, how to spend it during adjournment, and how to spend it when planning a sealed move.

Mednis says modern masters plan their opening move order and transpositions very carefully, and states that *"this new science is the most important single development in*

current opening theory." Furthermore, he states, *"The establishment of the most exact move order for achieving your desired variation is an absolute pre-requisite for successful opening play."* In this chapter he covers the 1 c4 and 1 Nf3 opening moves as, *"The champion opening moves for maximum flexibility and deviousness."* He quickly covers transpositions leading to different variations in the Sicilian, Ruy Lopez, Kings Gambit, various Indian games, English, Queen's Pawn openings, Slav Defense, Karo-Kann, Philidor's defense, Pirc Defense, and French Defense. Even at lower levels of play, I have been tricked and trapped in many opening transpositions. I used to wonder what happened.

Here is a transposition example from a CICL summer game. Radavicius-Satterlee Jul 1992. 1. e4 e6 2. Nf3 d5 3. e5 c5 4. Bb5+ Nc6 5. O-O Qa5 6. Bxc6+ bxc6 7. d3 Ne7 8. h3 Rb8 9. b3 [Whoa! I thought this was a French Defense! Black wants to exchange a doubled Bishop pawn for a Queen Pawn about here, but it's not possible to make headway on the Queenside now. Ed Radavicius is pleased with his transposition. I found a similar formation in Weinstein's Kings Indian Attack book!] Ng6 10. Qe2 Be7 11. Nh2 O-O 12. f4 f5 13. Nf3 Qb6 14. c4 a5 15. Nc3 Ba6 16. Na4 Qc7 17. Be3 Rfd8 18. Nxc5 Bxc5 19. Bxc5 Nxf4 20. Qe3 Ng6 21. Bd6 Rxd6 22. exd6 Qxd6 23. Nd4 Re8 24. Nxf5 Qd7 25. Rae1 e5 26. Qb6 Bc8 27. Qxa5 Nf4 28. Rxf4 exf4 29. Rxe8+ Qxe8 30. Nd6 Qe3+ 31. Kh1 h6 32. Nxc8 Qxd3 33. cxd5 Qf1+ 34. Kh2 f3 35. Qd2? Qe2 36. Qxe2 fxe2 37. Ne7+ Kf7 38. Nxc6 e1(=Q) 39. Nd8+ Ke8 40. Ne6 Qe5+ 41. Kh1 g5 42. a4 Ke7 43. b4 Qe1+ 44. Kh2 Qxb4 45. Ng7 Qd6+ 46. Kh1 Qxd5 47. Kh2 Qe5+ (0-1)

If there is another edition of this book, I'd wish the author would add more on transpositions and also add a section on use of computers in tournament preparation.

The USCF charged \$15.30 for this 111 page book. That's pricey, but you might consider it for your club library, since it can be read in a couple of weekends.

CICL BANQUET ANNOUNCEMENT

02/28/95

- WHERE:** Harvey's Prime Rib (located between Cass Ave and Route 83,
331 East Ogden Avenue on the south side of the street).
Westmont, IL
708-789-2212
- WHEN:** **Friday, June 9, 1995**
Check-in/Registration: **5:45-6:45pm** (PLEASE DON'T WAIT UNTIL
Dinner served: **6:45pm** THE LAST MINUTE.)
Special Feature and Awards Presentation: after dinner
Sectioned speed tournament approx: **9:30pm**
- MENU:** Family style dinner including roast chicken, polish sausage, roast beef,
fruit salad, soup, salad, corn, potato, beverage, and ice cream.
Contact Banquet Chairman if you have special dietary needs.
Cash bar upstairs.
- SPECIAL
FEATURE:** Home-grown entertainment!! Several members have volunteered to produce
comic entertainment. Interested contributors contact the Banquet Chairman.

ATTENTION LADIES!!!

We will again focus on some activity for the ladies (or anyone else who prefers an alternative to the speed tournament). Either bring a game of your choice and round up some partners, or get involved in a "Make it & Take it" craft project, directed by Lorraine Jasaitis.

The craft project is not yet finalized. Notify the Banquet Chairman to register (for free) to assure an adequate supply of materials.

DOOR PRIZES!!!

All attendees will be entered in a door prize drawing for chess books and equipment!

- COST:** **\$16.00** Per Person Advance Registration, if received by May 31.
\$18.00 Thereafter
\$1.00 Additional for entry in the sectioned speed tournament. Bring set & clock.

Although team dues include prepayment of one banquet ticket, all attendees must pay admission anyway. Rebates of the prepayment will be distributed after dinner. Although it may seem strange, this simple method has grown out of decades of experience with complications from other methods.

Even if you are unable to pay by the advance registration deadline, please contact the Banquet Chairman as soon as you know you are attending anyway. This will keep last-minute complications to a minimum.

- HOW:** A registration form has been provided.

Make checks payable to: **CICL**

Mail to: **Wes Underwood, 207 S. Dorchester Ave, Wheaton, IL 60187**

Payments will also be accepted at the playoff site by:
Tony Jasaitis or Wes Underwood or Jim Hodina.

BANQUET CHAIRMAN: Tony Jasaitis W:708-406-6420 h: 708-448-4967

CICL BANQUET REGISTRATION FORM

28-Feb-95

Friday, June 9, 1995 6:45pm
Harvey's Prime Rib 331 East Ogden Westmont, IL

\$16.00 Per Person Advance Registration (received by May 31)
\$18.00 Thereafter
\$1.00 Additional for entry in the sectioned speed tournament. Bring set & clock.

Make checks payable to: **CICL**

Mail to: **Wes Underwood, 207 S. Dorchester Ave., Wheaton, IL 60187**

Payments will be accepted at the playoff site by:
Tony Jasaitis or Wes Underwood or Jim Hodina.

During the speed tournament, your spouse/guest may be interested in the alternative activities:

- 1) Choose a game to bring & round up a partner(s).
- 2) Participate in the "Make it & Take it" Craft Project, directed by Lorraine Jasaitis.

– CHECK AT MOST ONE –

NAME(S) OF ATTENDEES	PLAYING IN SPEED TOURNAMENT	–or–	MAKING CRAFT PROJECT
_____	_____		_____
_____	_____		_____
_____	_____		_____
_____	_____		_____
_____	_____		_____
_____	_____		_____
_____	_____		_____
_____	_____		_____
_____	_____		_____
_____	_____		_____

Total number attending: _____	Total _____	Total _____
Multiply by \$16 or \$18 _____	(\$1 ea)	(free)
Total Speed Players @ \$1 _____		
Total enclosed: _____		

TEAM NAME: _____
Your Phone: _____

Name of person to contact (if more than one): _____

If you decide after the discount deadline (May 31) to attend, please use this form anyway or at least notify the banquet chairman by phone. Although advance registration is the most convenient for us (hence the discount), some advance notice still helps.

BANQUET CHAIRMAN: Tony Jasaitis w: 708-406-6420 h: 708-448-4967

HIGHLIGHTS OF LEAGUE MEETING
Tony Jasaitis, Secretary

While everyone should read the complete minutes of the meeting, I suspect that many do not. I thought it would be a good idea to summarize the most important events and ramifications of the meeting that need the greatest attention.

- a) We were forced to guarantee a minimum attendance at our banquet of 85. This is above our average attendance (although last year came close). This makes a high turnout more important than ever. The banquet details and registration form should be elsewhere in this bulletin. Also see item #7 in the minutes.
- b) Many vacancies exist in league positions (item #8). This is your chance to contribute!
- c) The proposal for faster default time controls was passed. See items 9-11, including some procedural points. Although the rule change is effective next season, teams are encouraged to use it already. Your experiences may result in suggestions for rule changes before the next season starts! A copy of sudden-death rules should be present elsewhere in this bulletin.
- d) A 30/60 secondary time control (instead of the new G/45) was proposed for debate and vote next meeting. See item 11.
- e) On-site lunch service might be available at the playoffs (item 12). A survey should be present in this bulletin.
- f) The Second Tier of the playoffs will be an open team tournament. "Loose" players can be pooled into teams. See #13.
- g) A point that did not receive attention is that volunteers are need to run the playoff tournament. If you are unsure if you are up to the task, experienced TD's from prior playoffs will be around to provide the benefit of their knowledge and experience if needed. Contact Jim Hodina.
- h) As I see it, detailed attention is needed to all the ramifications of our new time control rule. Some holes and gray areas were brought up at the meeting (see minutes), but I don't think all of them have been found yet. For example, since players can still agree to a time control of their own choice, what effect if any do the new adjournment rules have when both players agree to play under the old time control? Does a player then regain the old unilateral right to adjournment?

Please try think of any such peripheral issues and bring them to the attention of me or our new President and/or Secretary. This is why we need you try out the rules already, to help discover such pitfalls before we have to endure them for a whole new season.

CHICAGO INDUSTRIAL CHESS LEAGUE
 Meeting of March 14, 1995
 at: MidCon/Natural Gas Pipeline
 701 East 22nd St., Lombard, IL

by: Tony Jasaitis, Secretary

Attendees

Karel Dobr	AT&T Chargers
Jim Eggerton	MidCon
Wayne Ellice	Unilever
Dan Fraats	Bank of America
Tony Jasaitis	Chicago Research & Trading; CICL Secretary
Satish Kale	J.I. Case; Near West Division Chairman
Keith Kostecka	Columbia College; East Division Chairman
Algis Litvinas	Alumni Central
Hardie Logan	Midcon
Carl Reid	J.I. Case
Pat Sajbel	UOP
Wes Underwood	Wheaton College
Charlie Ward	AT&T Dragons; Ratings Chairman
Tim Williams	J.I. Case

Minutes

[Due to technical difficulties with the recording, some of the dialogue was unintelligible. I am partially relying on memory and notes, and have not been able to identify some people speaking. If anyone notices significant errors or omissions in these minutes, please contact me. -Tony Jasaitis]

1. President Jim Hodina called the meeting to order at 7:17pm. He thanked Jim Eggerton for arranging the meeting site, which will also be the playoff site.
2. No changes were noted to the minutes of the prior meeting.
3. Treasurer Wes Underwood gave a brief review of CICL finances, noting that most expenses do not occur until the end of the season. A copy of the report will be published in the bulletin.
4. Ratings Chairman Charlie Ward announced that he has made available more current ratings than the bulletin's edition, via electronic mail and/or FAX. However, he strongly prefers e-mail because the FAX is too slow and ties up the phone line too long. FAX recipients who cannot receive e-mail directly are encouraged to find a friend or co-worker who can. Al Litvinas asked how to resolve the possibility of different team captains having different editions of the ratings. Secretary Tony Jasaitis quoted from the rules, which state: "Players shall be ranked by most recent CICL rating ..."

5. East Division Chairman Keith Kostecka asked how to deal with Hull Trading Company, which has had excessive forfeits. Secretary Tony Jasaitis referred to the rules, which state, "Any team that forfeits an average of one-sixth or more of its games per match during a season may compete in the following season only after approval by a majority vote of team captains. An entire forfeited match will not be counted for this purpose."
6. In the Near West Division, A&B Radio dropped out, and Unilever foresees difficulty in fielding a full team next season. A merged team is a possibility next year, or an alumni team. Fel-Pro dropped out of the North Division.
7. Banquet Chairman Tony Jasaitis said that the Banquet will be at Harvey's Prime Rib in Westmont again, on June 9th, with food served at 6:45pm. Admission will be \$16 in advance, \$18 at the door. Tony's wife will again provide a "Make-it-and-Take-it" craft project for the ladies. Chess materials will again be raffled as door prizes. Details and a registration form will appear in the bulletin. The league is more "under the gun" to have a large turnout at the banquet, as we had to guarantee a minimum turnout of 85 this year. Last year's turnout was 84, while 60-65 is average. Al Litvinas suggested that the awards ceremony be shortened, with time taken for only the major awards. No discussion of the idea ensued.
8. Election of Officers for next season:
 - a) President Jim Hodina and Secretary Tony Jasaitis did not run for re-election.
 - b) The following were all elected unanimously:

President: Satish Kale
Secretary: Keith Kostecka
Treasurer: Wes Underwood
 - c) Vacancies exist in the following appointed [read volunteered!] offices: Bulletin Editor, Trophy Chairman, Banquet Chairman, Near West Division Chairman, North Division Chairman.
9. The proposal for a revised time control (45/90, Game/45) was debated. The discussion focused on the secondary time control. Some players did not want to wind up playing speed chess at the end of the game. Tony Jasaitis relayed advice from his teammate Al Losoff, an experienced tournament director, who recommended against sudden death time controls as a large source of disputes. Confusion in resetting the clock was brought up. Issues regarding adjournment procedures and their timing were raised.

As the consensus was clearly in favor of a non-sudden-death secondary time control, President Jim Hodina wished to take a vote on amending the secondary time control of the proposal to 30/60. However, Charlie Ward strongly objected to the effect on the absentee ballots, which Jim wanted to assume were in favor of the amendment as well. Eventually a vote was taken on only the proposal as originally stated. It passed 12-8 with 2 explicit abstentions, and 3 teams not responding at all.

The new rule is effective next season; however, teams are encouraged to try it already, to help shake out any problems with it in preparation for next season. In the remainder of this season, paired teams which both voted for the new rule may be most interested in using it already when playing each other: Northrup, Sears, Kemper, Post Office, Alumni Central, CRT, Bank America, Amoco, AT&T Chargers, Argonne Knights, Unilever, and Wheaton.

It was brought out that many players are not highly familiar with sudden death rules. A copy will be published in the bulletin.

10. The new time limit rule also eliminates a player's unilateral right to an adjournment. Under it, adjournments will only be possible with the agreement of both team captains. This raised the question of what the procedure should be for requesting an adjournment, especially with respect to stopping of the clock while the team captains decide whether the adjournment will be allowed.

The consensus was that the procedure should be: write the move that is to be sealed (out of sight of the opponent, of course, as presently), then stop the clock. If the adjournment is not approved, the game continues with the written move; otherwise the adjournment procedure concludes as usual.

Players might also be inexperienced at adjusting the clock when time controls are not in multiples of an hour. The following example is an illustration for the new default time controls of 45/90 followed by Game/45. Both players' clocks would initially be set at 4:30. 6:00 would mark the end of the first time control (45 moves in 90 minutes (1.5 hrs)). If both players make the first time control, the clocks of both players would be moved forward 15 minutes, so that 7:00 would mark the end of the second and final time control.

11. A proposal was submitted for debate and vote at the fall business meeting: to make to secondary time control 30/60 instead of G/45 (sudden death).

12. Jim Eggerton described plans for the playoffs, to be held at Midcon. It will be held in the cafeteria on the second floor. A skittles/analysis room is planned. Players will have access to the first two floors. The building is non-smoking. A limited food service is possible. Jim distributed a survey regarding food service (a copy will be published in the bulletin). Team captains are requested to tally their team's lunch wishes and fax the form back to Jim. If sufficient response exists, on-site lunch is likely to be provided.
13. Jim Hodina announced that the Second Tier of the playoffs will be an open team tournament (no requirement that the teams finish 3rd and 4th in their division). Tim Williams suggested that teams be formed of individuals who wish to play if their team as a whole doesn't [or if they do not make their team's playoff lineup -ed]. The idea was well-received, without an official vote.
14. Tony Jasaitis reported that the 1993-4 season's playoff book is almost complete. It will contain an index, diagrams, and some notes. Copies will be mailed to teams when the work is complete.
15. Trophy Chairman Bob Stoltz requested that Division Chairmen provide him with the following information as soon as it is finalized so that he can expedite ordering the trophies: the first and second place teams, the Most Valuable Player, and the Outstanding Team Captain. His day phone is: 708-224-2983.
16. President Jim Hodina closed the meeting at 9:10 pm.

CHICAGO INDUSTRIAL CHESS LEAGUE
MID-YEAR TREASURER'S REPORT

Cash Receipts and Disbursements for 1994-1995 (through 3/14/95):

Beginning Cash Balance, August 1994 (Notes A,B) 2600.02

Cash Receipts:

Basic Team Dues @ 40 (Note C)	1000.00
Late Dues Payment Penalties	10.00
Basic Co. Bulletin Subscr's @ 13	299.00
Individual Bulletin Subscr's @ 7	14.00
Team Banquet Guarantees @ 17	425.00
Savings Account Interest	29.95
Individual Awards	16.00
Miscellaneous Receipts	2.00

Total Cash Receipts 1795.95

Total Cash Available for Disbursement 4395.97

Cash Disbursements (through 3/14/95):

Bulletin Publication/Mailing	86.88
USCF and ICA Dues	55.00
League Mailings (Non-Bulletin)	14.50
Banquet Deposit	200.00
Miscellaneous Expenses	5.04

Total Cash Disbursements (361.42)

Current Cash Balance, March 14, 1995 (Notes A,E) 4034.55

Note A: Of this balance, \$1400.00 is reserved for the eventual purchase of a new computer.

Note B: \$140.00 is prepaid dues for Chicago Merc Exchange. \$75.00 is prepaid dues for CTA. \$985.02 is undesignated. Checking Account Balance is \$529.75. Savings Account Balance is \$2070.27.

Note C: Twenty-Five (25) teams @ \$40.00. Two teams paid in advance last year.

Note D: Post Office paid \$16.00 due for extra individual awards last season.

Note E: Checking Account Balance is \$176.83. Savings Account Balance is \$3857.72. \$70.00 is prepaid dues for Chicago Merc Exchange. \$5.00 is prepaid dues for CTA.

Respectfully Submitted,



Wesley K. Underwood, Treasurer
March 14, 1995

Budget/Actual for 1993-94 and 1994-95 Seasons:

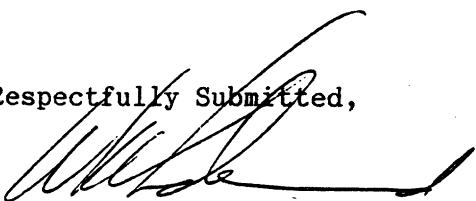
	1993-94 Budget	1993-94 Actual	1994-95 Budget	1994-95 Actual-to-Date
Revenue:				
Basic Team Dues	1040	1125	1120	1080 (Note A)
Bulletin	339	392	365	353 (Note B)
Banquet	1600	1832	1675	459 (Note C)
Miscellaneous	75	88	75	42
	-----	-----	-----	-----
Total Revenue	3054	3437	3235	1934
	=====	=====	=====	=====
Disbursements:				
Bulletin	340	243	350	87
Banquet	1500	1858	1650	200
Awards	900	1010	950	0
USCF/ICA Dues	55	55	55	55
Playoffs	160	13	100	0
Miscellaneous	100	196	125	20
	-----	-----	-----	-----
Total Disbursements	3055	3375	3230	362
	=====	=====	=====	=====
Net Gain (Loss)	(1)	62	5	
	=====	=====	=====	

Note A: 27 Teams @ \$40.00.

Note B: 25 Companies @ \$13.00 plus 2 individuals @ \$7.00.

Note C: 27 Team commitments @ \$17.00.

Respectfully Submitted,


Wesley K. Underwood, Treasurer
March 14, 1995

CHAPTER 4

Sudden-Death Rules

NOTE: A sudden-death time control is a relatively recent addition to tournament procedure. Until such time as players are familiar with these controls, USCF strongly recommends that a copy of these rules be posted whenever a sudden-death control is likely to be in effect.

1. Definition. A sudden-death time control requires each player to make all the moves of the game in a certain period of time, as opposed to more standard time controls that require only a certain number of moves in a given time.

2. Purpose. The purpose of sudden-death time controls is to guarantee that a round will be finished no later than a given time. They are, therefore, particularly useful in situations when the availability of a tournament site is limited in time, or when the players themselves have only limited time available for a tournament.

3. Restrictions. In order to use a sudden-death time control in a tournament:

- A. Advance notice must be given in all *Chess Life* ads and other publicity.
- B. There must be at least 30 minutes per player in a sudden-death time control.
- C. The USCF office maintains a list of any revisions to these restrictions, which may be obtained by writing to that office.

4. Rules. Unless otherwise specified, all normal USCF rules shall govern. For example, both sides are required to keep an accurate score. The only exceptions to normal rules will occur when one or both players are in time trouble (see Rule 9, below).

5. Tournament Director. One or more directors should be available during any sudden-death control, so that any disputes may be settled without delay. All claims, however, whether time forfeits, illegal moves, draws, or others, must be initiated by the players themselves (but see Rule 10.D, below). The tournament director may expel from the room or further penalize any spectator who interferes with a game or calls a player's attention to any available claim. The director is responsible for interpreting all rules.

VARIATION: If it is possible to have a tournament director or deputy watching every game, they may initiate a claim, including a time forfeit, on behalf of a player, but only if this procedure is carried out consistently and announced in advance.

6. Duration of the Game. A player loses on time if he fails to complete all of his moves before his flag falls. It is not necessary that his opponent have a complete and reasonably accurate score sheet.

7. The Won Game.

- A. A game is won by the player:
 - 1. who has mated his opponent's king;
 - 2. whose opponent resigns; or
 - 3. whose opponent's flag falls first, at any time before the game is otherwise ended.
- B. A player must claim a win himself by immediately stopping both clocks and notifying the director. To claim a win under this rule, the player's flag must be up and his opponent's flag must be down after the clocks have been stopped.

8. The Drawn Game. A game is drawn:

- A. if one of the kings is stalemated;
- B. by agreement between the players during a game, not before or after the game;
- C. if both flags are down before a win is claimed;
- D. if a player demonstrates a perpetual check or a forced repetition of position under the conditions of USCF Rule I.12.F;
- E. if neither player has sufficient material for a possible checkmate, as provided in USCF Rule I.12.I;
- F. if one player has insufficient material for a possible checkmate as described in USCF Rule I.12.I, and his opponent's flag falls first.

9. Time Trouble. Time trouble occurs when a player has less than five minutes to complete the game. A player in such a situation:

- A. must handle the clock with the same hand with which he handles his pieces;

- B. must remove his hand from the clock button after depressing his button and must keep his hand off the clock until it is time to press it again;
 - C. must not pick up the clock;
 - D. must replace pieces on his own time, if he accidentally displaces one or more of them.
- If only one player is in time trouble, normal rules apply to the one with more than five minutes left.

10. Miscellaneous.

- A. If a player makes an illegal move when time trouble exists and punches his clock, his opponent should immediately stop both clocks and summon the director. After verifying that an illegal move has been made, the tournament director should add two minutes to the time of the opponent. Illegal moves unnoticed by both players when time pressure exists cannot be corrected afterwards.
- B. Announcing a check is not required.
- C. In case of a dispute, either player may stop the clocks while the director is being summoned.
- D. In positions that are clearly drawn, such as positions with no pawns remaining for either side and with greatly simplified material (for example, king and knight versus king and knight), the director may intervene to declare the game a draw. In these same positions either player may stop the clock and ask the director for a draw. If the request is rejected, two minutes will be added to the time of the opponent of the person making the request.

- E. Any player using excessive force on a clock may be warned by the director and penalized by up to the loss of the game for a second infraction.



Chicago Industrial Chess League

Founded 1957

USCF Affiliate

CICL

Class Championships

An exciting event for the CICL members !!

PROVE that you are the **BEST** in your class

I am trying to organize a 5 round SWISS class championship tournament for CICL members. The format is similar to that of USCF tournaments. 1st game to be played on Friday night, 2nd and 3rd on Saturday and 4th and 5th on Sunday. I am proposing the weekend of August 04 for the event. I am also seeking volunteers for the site. It should be big enough to accommodate 150 boards. A small fee will have to be charged in order to cover the cost of the awards. A feedback from you is important to make this event successful. Please fill out the attached survey and mail it to me ASAP. If there are enough players, we will have awards for each of the following classes:

13 SEPARATE CLASS SECTIONS:

CICL RATINGS

2200 +
2100 - 2199
2000 - 2099
1900 - 1999
1800 - 1899
1700 - 1799
1600 - 1699
1500 - 1599
1400 - 1499
1300 - 1399
1200 - 1299
1100 - 1199
1000 - 1099

UNR

CLASS

Master
Expert - Top Half
Expert - Bottom Half
Class A - Top Half
Class A - Bottom Half
Class B - Top Half
Class B - Bottom Half
Class C - Top Half
Class C - Bottom Half
Class D - Top Half
Class D - Bottom Half
Class E - Top Half
Class E - Bottom Half

A class of their own

Call me at (708) 887 - 2372 (Office) or (708) 325 -5253 (Home) for any ?s.

Thank you.

SATISH L. KALE

Class Championships Survey

Respondent's Name (Optional):

How many rounds: 1/2 point Byes allowed: Yes No

Should this event be played in one or two weekends:

Day and Times:

1st Round Day: Start Time: Time Control:

2nd Round Day: Start Time: Time Control:

3rd Round Day: Start Time: Time Control:

4th Round Day: Start Time: Time Control:

5th Round Day: Start Time: Time Control:

Should this be opened to players outside CICL: Yes No

Should there be a fee charged (to cover the cost of the awards) : Yes No

If Yes how much:

Should Unrated have their own separate class: Yes No

Other:

Remarks:
.....
.....

PLEASE MAIL THE SURVEY TO:
Satish L. Kale
106 MacArthur Drive #5211
Willowbrook, Illinois 60514 - 1999

Ratings Chairman's Report

3/12/95

Ratings Speedup

Publication of recent issues of the CICL Bulletin have taken 3-5 weeks from the time that I have completed the ratings until the issue is in the hands of team captains. This means that more than two months can elapse between the playing of a match and its documentation in the Bulletin. Also, it is often difficult for team captains to arrange their lineups because the ratings of new players do not show up long after they have acquired a rating, and the printed ratings are often out of date by the time they are used. Team standings are likewise out of date.

I am proposing to remove this delay by transmitting the ratings directly to team captains by e-mail as soon as I have completed the monthly ratings update. I am also experimenting with faxing the ratings to teams that do not have the ability to receive e-mail. I am able to send the report from my computer directly to fax machines; however, each fax ties up my home phone line for about one minute per page. Continuing to distribute results by fax will depend on minimizing the total number of fax recipients.

If team captains (or some other team representative) are able and willing to receive advance copies of the CICL ratings electronically, please let me know the e-mail address (preferably) or fax number (if necessary). I will be sending the paper ratings reports for publication in the Bulletin as in the past, so if a team does not have an e-mail address or fax machine they will eventually receive the ratings via U.S. mail. You can contact me at:

E-mail	czar@csgcbu.att.com
Voice, work:	708-979-4599
Voice, home:	708-325-3885
Fax:	708-979-8451
U.S. mail:	615 S. Lincoln Street Hinsdale, IL 60521

Missing Results

Two match results from early rounds have not been received: Exemplars at Felpro (North Div. round 3) and Alumni Central vs. Hull (East Div. round 5). If these matches have been played I would appreciate it if either captain would send me the results.

-- Charlie Ward

NORTH DIVISION 03-12-1995

TEAM NAME	W	L	D	GAME	MATCH	PCT
				POINTS	POINTS	
MOTOROLA	4	0	3	26.0	5.5	0.786
NORTHROP CORP.	3	1	3	25.5	4.5	0.643
UOP PROCESS DIV.	2	1	4	25.0	4.0	0.571
SEARS	2	1	4	23.5	4.0	0.571
EXEMPLARS	3	3	0	19.5	3.0	0.500
KEMPER INSURANCE	2	5	0	14.5	2.0	0.286
FEL-PRO	0	5	0	4.0	0.0	0.000

EAST DIVISION 03-12-1995

TEAM NAME	W	L	D	GAME	MATCH	PCT
				POINTS	POINTS	
COLUMBIA COLLEGE	6	0	2	34.0	7.0	0.875
CHICAGO POST OFFICE	6	1	0	25.5	6.0	0.857
ALUMNI CENTRAL	4	0	2	24.0	5.0	0.833
CHICAGO RES. & TRDG.	4	4	0	27.5	4.0	0.500
AMOCO CORP.	3	4	0	21.0	3.0	0.429
BANK AMERICA ILLINOIS	2	3	2	20.5	3.0	0.429
CTA	2	5	1	18.5	2.5	0.313
CHICAGO MERC. EXCH.	0	5	1	8.0	0.5	0.083
HULL TRADING CO.	0	5	0	3.0	0.0	0.000

NEAR WEST DIVISION 03-12-1995

TEAM NAME	W	L	D	GAME	MATCH	PCT
				POINTS	POINTS	
AT&T CHARGERS	4	0	1	20.0	4.5	0.900
ARGONNE KNIGHTS	4	1	0	20.5	4.0	0.800
J. I. CASE	1	3	1	13.0	1.5	0.300
UNILEVER	0	5	0	5.5	0.0	0.000
A & B RADIO	0	0	0	0.0	0.0	0.000

FAR WEST DIVISION 03-12-1995

TEAM NAME	W	L	D	GAME	MATCH	PCT
				POINTS	POINTS	
FERMILAB	6	0	1	30.5	6.5	0.929
AT&T DRAGONS	5	2	0	27.0	5.0	0.714
ARGONNE ROOKS	4	2	1	24.5	4.5	0.643
AT&T TYROS	4	4	0	25.0	4.0	0.500
AT&T ROYALS	3	3	1	21.5	3.5	0.500
WHEATON COLLEGE	1	6	1	12.5	1.5	0.188
MIDCON CORP	1	7	0	15.0	1.0	0.125

02-FEB-95 ARGONNE KNIGHTS

3 UNILEVER

2

ROUND 7

BD	RATINGS	SCORE	RATINGS	SCORE
1 BENEDEK, R	2201 4	1	ELLICE, W	1863 -6 0
2 HILL, R	1832 4	1	MCKAY, P	1409 -4 0
3 SUAREZ, E	1613 2	1	NELL, D	1075 -2 0
4 KINSELLA, G	1470 0	0	LULKIN, V	0 0 1
5	0 0	0F	NOTERMAN, T	1188 0 1F
6	0 0	0F		0 0 0F

16-FEB-95 J. I. CASE

1.5 ARGONNE KNIGHTS

4.5

ROUND 8

BD	RATINGS	SCORE	RATINGS	SCORE
1 SATTERLEE, D	1675 -1	0	BENEDEK, R	2205 1 1
2 WHITE, H	1617 -4	0	KEISLER, J	2008 4 1
3 KLINEFELTER, H	1557 -8	0	HILL, R	1836 8 1
4 SAWDO, E	1399 13	.5	SUAREZ, E	1615-13 .5
5 REID, C	1328 37	1	BAURAC, D	1607-25 0
6 MOTYCKA, R	1140-13	0	GALLAGHER, H	1297 13 1
7 POMA, D	1307 0	1	SEMONES, E	0 0 0 (ROOKS)
8 NOBLE, S	0 0	1	KALE, S	1861 0 0 (JCASE)

23-FEB-95 AT&T CHARGERS

4.5 UNILEVER

1.5

ROUND 8

BD	RATINGS	SCORE	RATINGS	SCORE
1 WARREN, J	2117-16	0	ELLICE, W	1857 37 1
2 RADAVICIUS, E	1701 0	1F	MCKAY, P	1405 0 0F
3 SHEU, G	1343-10	.5	NOTERMAN, T	1188 10 .5
4 DOBR, K	1543 0	1F		0 0 0F
5 THOMAS, J	1461 0	1F		0 0 0F
6 BRADY, R	1282 0	1F		0 0 0F

07-MAR-95 UNILEVER

4 J. I. CASE

2

ROUND 9

BD	RATINGS	SCORE	RATINGS	SCORE
1 ELLICE, W	1894 10	1	SATTERLEE, D	1674 -7 0
2 MCKAY, P	1405-10	0	WHITE, H	1613 10 1
3 LULKIN, V	0 0	1	KLINEFELTER, H	1549 0 0
4 HARD, R	0 0	1	KANAS, W	1316 0 0
5 DZURICKO, G	1188-26	0	MOTYCKA, R	1127 26 1
6 NOTERMAN, T	1198 0	1	LUIS, D	0 0 0
7 NELL, D	1073 0	0	CZOSKE, M	0 0 1 (ROYLS)
8 DOBROVOLNY, C	2010 0	.5	WILLIAMS, T	0 0 .5
9 POMA, D	1307-19	0	REID, C	1365 19 1

02-FEB-95 SEARS

3 MOTOROLA

3

ROUND 7

BD	RATINGS	SCORE	RATINGS	SCORE
1 LATIMER, E	2031 -8	0	MELNIKOV, I	2197 12 1
2 GOLLA, R	1983 0	1F	WALLACH, C	2091 0 0F
3 BROCKETT, M	1792-11	0	SAMELSON, C	1997 7 1
4 MILLER, TT	1721-10	0	CIESLEK, D	1950 10 1
5 DZEKHTSER, A	0 0	1	GONCHAROFF, N	1781 0 0
6 DORFF, M	1466 21	1	GRYPARIS, J	1439-21 0
7 VAN METRE, R	0 0	1	BARTUSIAK, P	0 0 0

06-FEB-95 KEMPER INSURANCE 4.5 FEL-PRO 1.5
 ROUND 7

BD	RATINGS	SCORE		RATINGS	SCORE
1 OLSEN, A	1459 21	1	FELDMAN, A	1435-14	0
2 LAMBIRIS, J	1428-20	0	HESS, B	1474 20	1
3 POZNIAK, J	1473-10	.5	NISHIMURA, K	1321 10	.5
4 PAYTON, P	0 0	1F		0 0	0F
5 GALKO, D	0 0	1F		0 0	0F
6 HARDIN, L	0 0	1F		0 0	0F
7 PAYTON, P	0 0	1	HARDIN, L	0 0	0 (KEMPR)

13-FEB-95 UOP PROCESS DIV. 2 EXEMPLARS 4
 ROUND 7

BD	RATINGS	SCORE		RATINGS	SCORE
1 STEVANOVIC, M	2217 15	1	WONG, P	2220-15	0
2 BOLDINGH, E	2092-28	0	BLOOM, B	2011 28	1
3 BUERGER, E	2108-21	0	OSTERLUND, R	1963 31	1
4 SAHLI, E	1740 -7	0	CREWSE, L	2032 7	1
5 MICKLICH, F	1726 -9	0	FRISKE, T	1871 14	1
6 SAJBEL, P	1686 22	1	BURIAN, D	1672-14	0
7 LIKHTEREV, M	1501-12	0	WEITZ, R	1676 8	1
8 NARSOLIS, F	0 0	0	SUERTH, F	1613 0	1
9 VAN ZILE, C	1364-13	0	BROTSOS, J	1524 9	1
10 VAN ZILE, C	1351 16	.5	BURIAN, D	1658-11	.5
11 O'BRIEN, D	1417-11	0	SUERTH, F	1613 7	1

27-FEB-95 KEMPER INSURANCE 2 EXEMPLARS 4
 ROUND 8

BD	RATINGS	SCORE		RATINGS	SCORE
1 SIWEK, M	2150 10	1	BLOOM, B	2039-16	0
2 OLSEN, A	1480 -2	0	OSTERLUND, R	1994 2	1
3 LAMBIRIS, J	1408 -3	0	FRISKE, T	1885 3	1
4 POZNIAK, J	1463 33	1	BURIAN, D	1647-22	0
5 AQUENDE, A	0 0	0	WEITZ, R	1684 0	1
6 HARDIN, L	0 0	0	BROTSOS, J	1533 0	1

28-FEB-95 UOP PROCESS DIV. 3 MOTOROLA 3
 ROUND 8

BD	RATINGS	SCORE		RATINGS	SCORE
1 STEVANOVIC, M	2232 14	1	MELNIKOV, I	2209-21	0
2 BUERGER, E	2087 15	1	WALLACH, C	2091-23	0
3 BOLDINGH, E	2064-26	0	SAMELSON, C	2004 18	1
4 SAHLI, E	1733-18	0	FAHRENHOLTZ, S	1798 18	1
5 MICKLICH, F	1717-12	0	GONCHAROFF, N	1781 8	1
6 SAJBEL, P	1708 0	1F	AUGSBURGER, L	1764 0	0F
7 LIKHTEREV, M	1489 32	1	LESTER, M	1646-32	0
8 NARSOLIS, F	0 0	1	MELNIKOV, N	0 0	0
9 VAN ZILE, C	1367 0	0	VALDEZ, C	0 0	1
10 O'BRIEN, D	1406-22	0	GRYPARIS, J	1418 22	1
11 VANDECOTTE, M	0 0	1	BARTUSIAK, P	0 0	0
12 KATAOKA, N	0 0	0	RYU, R	1451 0	1 (UOP)
13 LIKHTEREV, M	1521-28	0	GRYPARIS, J	1440 28	1

15-FEB-95 AT&T ROYALS	3	FERMILAB	3
ROUND 8			
BD	RATINGS	SCORE	RATINGS SCORE
1 BUCHNER, R	2129 8	.5	KOZLOVSKY, M 2241 -8 .5
2 STINSON, M	2006 2	.5	MOTTA, H 2035 -2 .5
3 GUIO, J	2026-25	0	SPIEGEL, L 1990 17 1
4 DOBROVOLNY, C	2010-38	0	GAINES, I 1725 25 1
5 PEHAS, A	1960 7	1	HARRIS, R 1662 -7 0
6 OGASAWARA, L	1841 5	1	PARA, A 1579 -8 0
23-FEB-95 MIDCON CORP	1.5	ARGONNE ROOKS	4.5
ROUND 9			
BD	RATINGS	SCORE	RATINGS SCORE
1 CONNOR, P	2049 38	1	LEVINE, D 2340-38 0
2 EGERTON, J	1914 14	.5	SHEYNNIN, S 2153-14 .5
3 LORENZ, B	1459 -1	0	BERRY, G 2066 1 1
4 HANSEN, B	0 0	0	DECMAN, S 1668 0 1
5 FLEET, R	1163 -6	0	SCHWAB, W 1485 6 1
6 STEVENS, N	0 0	0	SEMONES, E 0 0 1
24-JAN-95 COLUMBIA COLLEGE	5.5	HULL TRADING CO.	.5
ROUND 8			
BD	RATINGS	SCORE	RATINGS SCORE
1 PRATTS, M	1773-18	.5	YOUNG, R 1410 18 .5
2 KOSTECKA, K	1663 6	1	WEISSKOPF, J 1333 -6 0
3 HERNANDEZ, DD	1520 11	1	NAUGHTON, T 1331-11 0
4 MARTIN, K	1485 0	1	MUDAN, M 0 0 0
5 STEVENS, J	1380 0	1	WEISS, G 0 0 0
6 ANGELOS, S	0 0	1	DOTY, B 0 0 0
25-JAN-95 BANK AMERICA ILLINOIS	4	CTA	2
ROUND 8			
BD	RATINGS	SCORE	RATINGS SCORE
1 FRAATS, D	1898 14	1	MATTHEWS, J 1759-14 0
2 PARAOAN, E	1750-31	0	JARRETT, T 1613 31 1
3 WHITE, T	0 0	0	NOWAK, W 1365 0 1
4 SIEGEL, R	1523 0	1F	WILSON, A 1585 0 0F
5 ZOELLNER, J	1401 0	1F	WILLIAMS, J 0 0 0F
6 GANSER, A	1282 0	1F	PEPPERS, M 0 0 0F
02-FEB-95 AMOCO CORP.	4	CTA	2
ROUND 6			
BD	RATINGS	SCORE	RATINGS SCORE
1 HODINA, J	2108 2	1	WILSON, A 1585 -2 0
2 SMILEY, R	2002 3	1	ABRAHAM, T 1541 -3 0
3 ATKINSON, J	1745 4	1	JONES, M 1349 -4 0
4 WENTLING, C	1636 0	0	BYRNES, R 0 0 1
5 POMA, D	1288 0	1	STAPLES, M 0 0 0
6	0 0	0F	CARTER, O 0 0 1F

28-FEB-95 NORTHROP CORP.
ROUND 8

3 SEARS

3

BD	RATINGS	SCORE		RATINGS	SCORE
1 JAKSTAS, K	2194 -9	0	REYES, R	2334 9	1
2 GOLUMBOVSKI, P	2188 13	1	LATIMER, E	2023 -8	0
3 DIAZ, P	2050 18	1	GOLLA, R	1983-12	0
4 CAIRONE, B	1808 0	1	DZEKHTSER, A	0 0	0
5 VIGANTS, A	1552-13	0	MILLER, TT	1711 13	1
6 BABINEK, J	0 0	0	VAN METRE, R	0 0	1

24-JAN-95 WHEATON COLLEGE
ROUND 7

3.5 MIDCON CORP

2.5

BD	RATINGS	SCORE		RATINGS	SCORE
1 UNDERWOOD, W	2019 12	1	EGERTON, J	1948-18	0
2 WALLIN, R	1708 0	.5	ROSENBERG, B	0 0	.5
3 JOSEPHSON, D	1812 0	0	HANSEN, B	0 0	1
4 COPELAND, P	1229 0	1	FLEET, R	0 0	0
5 MAYNARD, J	1370 0	1	LOGAN, H	0 0	0
6 BOSTICK, T	0 0	0	EGERTON, B	0 0	1

02-FEB-95 WHEATON COLLEGE
ROUND 9

2.5 AT&T TYROS

3.5

BD	RATINGS	SCORE		RATINGS	SCORE
1 WALLIN, R	1708 37	1	STOLTZ, B	1973-37	0
2 COPELAND, P	1229 0	0	BLAZIE, J	1828 0	1
3 MAYNARD, J	1370-13	0	SHAFF, R	1527 9	1
4 PENNINGTON, J	0 0	0	THOMAS, G	1505 0	1
5 BOSTICK, T	0 0	.5	SMITH, BR	1477 0	.5
6 ROBERTS, J	0 0	1	SCHWARTZ, M	1069 0	0

08-FEB-95 WHEATON COLLEGE
ROUND 8

1 AT&T DRAGONS

5

BD	RATINGS	SCORE		RATINGS	SCORE
1 UNDERWOOD, W	2031-13	0	LUDWIG, T	2069 13	1
2 WALLIN, R	1745 4	.5	DURKEE, D	1799 -2	.5
3 COPELAND, P	1229 0	0	EUSTACE, D	1590 0	1
4 MAYNARD, J	1357-11	0	HICKS, C	1562 11	1
5 BOSTICK, T	1407 8	.5	WARD, C	1532 -5	.5
6 ROBERTS, J	0 0	0	KRUEGER, J	1343 0	1

09-FEB-95 AT&T TYROS
ROUND 8

5 MIDCON CORP

1

BD	RATINGS	SCORE		RATINGS	SCORE
1 TAMEZ, I	2027 16	1	EGERTON, J	1930-16	0
2 BHOJWANI, C	1965-32	0	WHITED, W	1806 32	1
3 BLAZIE, J	1828 0	1F	LORENZ, B	1459 0	0F
4 SHAFF, R	1536 0	1	HANSEN, B	0 0	0
5 THOMAS, G	1505 0	1	LOGAN, H	0 0	0
6 KARPIERZ, J	1183 0	1	FLEET, R	0 0	0
7 BLAZIE, J	1828 0	1	LOGAN, H	0 0	0

07-FEB-95 CHICAGO MERC. EXCH. 2 COLUMBIA COLLEGE 4
 ROUND 9

BD	RATINGS	SCORE		RATINGS	SCORE
1 FRANK, M	1724 -2	0	WACHTEL, H	2223 2	1
2 SLAGLE, S	1562-11	0	PRATTS, M	1755 11	1
3 SULLIVAN, C	1529-14	0	KOSTECKA, K	1669 14	1
4 RUDDY, J	1205 41	1	BURDICK, S	1610-41	0
5 BAKER, LR	1101 -3	0	HERNANDEZ, DD	1531 3	1
6 HILTON, J	1021 40	1	STEVENS, J	1380-40	0

15-FEB-95 AMOCO CORP. 4 CHICAGO MERC. EXCH. 2
 ROUND 8

BD	RATINGS	SCORE		RATINGS	SCORE
1 HODINA, J	2110 0	1F	WARE, K	0 0	0F
2 SMILEY, R	2005 3	1	SULLIVAN, C	1515 -3	0
3 ATKINSON, J	1749-34	0	SLAGLE, S	1551 34	1
4 WENTLING, C	1636 5	1	COTE, J	1280 -5	0
5 KRULL, E	1449 5	1	BAKER, LR	1098 -5	0
6 POMA, D	1288-35	0	HILTON, J	1061 35	1

16-FEB-95 CTA 4 CHICAGO RES. & TRDG. 2
 ROUND 9

BD	RATINGS	SCORE		RATINGS	SCORE
1 WILSON, A	1583 -2	0	JASAITIS, A	2166 1	1
2 BARNES, R	0 0	1	FRIESEMA, W	2085 0	0
3 JONES, M	1345 42	1	BARGERSTOCK, D	1823-42	0
4 CARTER, O	0 0	0	DELEON, J	0 0	1
5 JARRETT, T	1644 3	1	CARNAL, D	1210 -3	0
6 NOWAK, W	1365 0	1F		0 0	0F

21-FEB-95 CHICAGO RES. & TRDG. 3.5 BANK AMERICA ILLINOIS 2.5
 ROUND 5

BD	RATINGS	SCORE		RATINGS	SCORE
1 JASAITIS, A	2167 6	1	FRAATS, D	1912 -8	0
2 FRIESEMA, W	2085 10	1	KOGAN, G	1857-10	0
3 BARGERSTOCK, D	1781-26	0	PARAOAN, E	1719 26	1
4 DELEON, J	0 0	1	WHITE, T	0 0	0
5 DENG, J	1551 -2	.5	SIEGEL, R	1523 2	.5
6 BERNARD, D	1345-19	0	ZOELLNER, J	1401 19	1

NORTH DIVISION TOP TEN

REYES, R	SEARS	2343D
STEVANOVIC, M	UOP	2246C
HASAN, Y	MTRLA	2237
WONG, P	EXMPL	2205C
GOLUMBOVSKI, P	NORTH	2201
MELNIKOV, I	MTRLA	2188
JAKSTAS, K	NORTH	2185C
SIWEK, M	KEMPR	2160C
BUERGER, E	UOP	2102D
WALLACH, C	MTRLA	2068

EAST DIVISION TOP TEN

INUMERABLE, F	PSTOF	2247
WACHTEL, H	COLUM	2225
JASAITIS, A	CRT	2173C
CZERNIECKI, A	ALUMN	2143C
HODINA, J	AMCRP	2110
FRIESEMA, W	CRT	2095
COX, M	ALUMN	2024C
SMILEY, R	AMCRP	2008
MAREMA, D	PSTOF	2006
MARCOWKA, R	PSTOF	1978C

NEAR WEST DIVISION TOP TEN

BENEDEK, R	KNGHT	2206D
WARREN, J	CHRGR	2101T
KEISLER, J	KNGHT	2012
ELLICE, W	UNILV	1904
KALE, S	JCASE	1861
HILL, R	KNGHT	1844
STAMM, V	CHRGR	1742D
RADAVICIUS, E	CHRGR	1701D
SATTERLEE, D	JCASE	1667C
WHITE, H	JCASE	1623

FAR WEST DIVISION TOP TEN

BEZZUBOV, V	FERMI	2338*
LEVINE, D	ROOKS	2302
KOZLOVSKY, M	FERMI	2233
TEGEL, F	DRGNS	2160D
SHEYNIN, S	ROOKS	2139
BUCHNER, R	ROYLS	2137
CONNOR, P	MDCON	2087
LUDWIG, T	DRGNS	2082C
BERRY, G	ROOKS	2067D
TAMEZ, I	TYROS	2043

MOST IMPROVED PLAYERS

ZOELLNER, J	CONBK	126
HILTON, J	MERC	92
EUSTACE, D	DRGNS	86
CONNOR, P	MDCON	80
OSTERLUND, R	EXMPL	76
GOLUMBOVSKI, P	NORTH	75
PRATTS, M	COLUM	73
BEZZUBOV, V	FERMI	65
HILL, R	KNGHT	64
GRYPARIS, J	MTRLA	64

03-12-1995

03-12-1995

NAME	TEAM	W	L	D	RATING	NAME	TEAM	W	L	D	RATING
ABBOTT, J	MTRLA	0	0	0	0000?	CARDI, P	HULL	0	1	0	0000?
ABRAHAM, T	CTA	1	2	1	1538	CARNAL, D	CRT	0	1	0	1207#
ALLEN, H	PSTOF	3	2	1	1833	CARTER, L	PSTOF	1	2	3	1487
AMUNDSEN, C	KEMPR	0	0	0	0000?	CARTER, O	CTA	1	2	0	0000?
ANDERSON, CJ	ROYLS	1	0	0	1446	CATENA, J	MTRLA	0	3	0	0000?
ANGELOS, S	COLUM	1	0	0	0000?	CHAN, H	SEARS	1	0	0	1574
AQUENDE, A	KEMPR	0	3	0	0000?	CHARKOVSKY, R	ALUMN	0	0	0	1619
ATKINSON, J	AMCRP	3	3	1	1715C	CHEVERESAN, S	UOP	0	0	0	1434C
AUGSBURGER, L	MTRLA	3	0	0	1764	CHRISTIAN, R	DRGNS	0	0	0	1808C
AUSTIN, R	ROYLS	0	0	0	1125#	CIESLEK, D	MTRLA	2	0	0	1960
BABINEK, J	NORTH	0	1	0	0000?	CISKO, G	FERMI	0	0	0	1615*
BAER, M	AMCRP	0	0	0	1347*	COLEMAN, O	CTA	0	2	0	0000?
BAKER, B	FLPRO	0	2	0	1042	CONNELY, S	HULL	0	0	0	0000?
BAKER, LR	MERC	0	3	0	1093*	CONNOR, P	MDCON	2	1	3	2087
BANZA, S	HULL	0	0	0	0000?	COOPER, W	PSTOF	2	1	1	1694
BARGERSTOCK, D	CRT	4	3	0	1755	COPELAND, P	WHEAT	1	3	0	1229?
BARNES, D	ROAD	0	0	0	0000?	COTE, J	MERC	0	4	1	1275
BARNES, R	CTA	1	0	0	0000?	COX, M	ALUMN	2	0	0	2024C
BARTUSIAK, P	MTRLA	0	6	0	0000?	CREWSE, L	EXMPL	1	1	1	2039
BAURAC, D	KNGHT	2	1	1	1582C	CUMBERLAND, M	SEARS	0	0	0	0000?
BECK, P	MERC	0	1	0	0000?	CUMMUTA, P	KEMPR	2	1	0	1398
BENEDEK, R	KNGHT	4	0	2	2206D	CURRAN, T	MTRLA	1	0	0	0000?
BENESA, A	GROLR	0	0	0	2211	CZERNIECKI, A	ALUMN	2	1	1	2143C
BERMAN, R	KEMPR	0	1	0	0000?	CZOSKE, M	ROYLS	1	0	0	0000?
BERNARD, D	CRT	3	3	0	1326	DAVIDSON, M	ALUMN	4	1	0	1661*
BERRY, G	ROOKS	4	0	1	2067D	DAVIS, R	PSTOF	0	0	0	0000?
BEZZUBOV, V	FERMI	6	0	0	2338*	DEARDORFF, M	FLPRO	0	0	0	1437*
BHOJWANI, C	TYROS	1	2	0	1933	DECMAN, S	ROOKS	5	2	0	1668D
BLACKMON, E	ROYLS	4	1	0	1764	DELEON, J	CRT	2	0	0	0000?
BLAZIE, J	TYROS	2	1	0	1828C	DENG, J	CRT	3	3	1	1549
BLOOM, B	EXMPL	1	4	0	2023	DEWITT, G	ROCKW	0	0	0	1423C
BOLDINGH, E	UOP	3	4	0	2038	DEZONNO, T	ROCKW	0	0	0	1255*
BOOKER, G	RADIO	0	0	0	1398*	DIAZ, L	JCASE	1	2	0	0000?
BOSTICK, T	WHEAT	0	4	3	1415#	DIAZ, P	NORTH	6	1	0	2068
BRADY, R	CHRGR	2	1	0	1282	DJORDJEVIC, I	FERMI	0	0	0	0000?
BRANCH, Y	COLUM	0	0	0	1301*	DOBR, K	CHRGR	2	0	2	1543T
BRIONES, M	UOP	0	0	0	1660C	DOBROVOLNY, C	ROYLS	2	4	1	1972
BRITT-WEBB, E	AMCRP	0	2	0	1265#	DONNA, D	MTRLA	0	0	0	0000?
BROCKETT, M	SEARS	1	4	1	1781	DORFF, M	SEARS	2	1	0	1487
BRONFELD, A	ALUMN	2	1	0	1851	DOTY, B	HULL	0	2	0	0000?
BROTOS, J	EXMPL	4	1	0	1533D	DUFRESNE, T	JCASE	2	1	0	997*
BROZOVICH, J	TYROS	2	1	0	1740C	DURKEE, D	DRGNS	2	2	2	1797C
BUCHNER, R	ROYLS	0	0	1	2137	DYCKOWSKI, R	CONBK	0	0	0	1561
BUERGER, E	UOP	5	2	0	2102D	DZEKHTSER, A	SEARS	6	1	0	1843#
BURBA, K	ROOKS	0	3	0	1371C	DZURICKO, G	UNILV	1	2	0	1162*
BURDICK, S	COLUM	2	1	0	1569	EDWARDS, S	AWEST	0	0	0	1278
BURIAN, D	EXMPL	1	4	1	1625C	EFRON, D	ROCKW	0	0	0	1638
BYRNES, R	CTA	1	0	0	0000?	EGERTON, B	MDCON	1	0	0	0000?
CADE, M	UNILV	0	1	0	0000?	EGERTON, J	MDCON	2	4	2	1928
CAIRONE, B	NORTH	3	1	0	1808	ELEK, G	NORTH	2	3	1	1049

? - UNRATED

- 5 TO 9 RATED GAMES

* - 10 TO 24 RATED GAMES

C - CENTURY CLUB MEMBER

D - DOUBLE CENTURION

T - TRIPLE CENTURION

Q - QUAD CENTURION

03-12-1995

NAME	TEAM	W	L	D	RATING	NAME	TEAM	W	L	D	RATING
ELLICE, W	UNILV	2	2	1	1904	HODINA, J	AMCRP	3	1	1	2110
ERLENBORN, M	AWEST	0	0	0	1482*	HOWARD, W	PSTOF	5	1	0	1515
EUSTACE, D	DRGNS	6	1	0	1590	HUGHES, N	KEMPR	0	0	0	1852C
FABIJONAS, R	ALUMN	2	1	1	1787D	HUNG, N	MTRLA	0	0	0	1471#
FAHRENHOLTZ, S	MTRLA	2	1	0	1816*	INUMERABLE, F	PSTOF	2	1	0	2247
FELDMAN, A	FLPRO	0	5	0	1421C	ITZENHEUSER, W	JCASE	0	2	0	0000?
FERGUSON, K	MDCON	0	1	0	0000?	JACKSON, JJ	ROAD	0	0	0	0000?
FLEET, R	MDCON	1	6	0	1157#	JACOBS, N	DRGNS	0	0	0	1983C
FRAATS, D	CONBK	3	2	1	1904	JAKSTAS, K	NORTH	1	1	3	2185C
FRANCISKOVICH, DHULL		0	0	0	1113#	JARRETT, T	CTA	4	1	0	1647*
FRANEK, M	ALUMN	2	2	0	1794C	JASAITIS, A	CRT	3	3	1	2173C
FRANK, M	MERC	1	1	0	1722*	JONES, B	ROCKW	0	0	0	2061
FRIESEMA, W	CRT	3	2	1	2095	JONES, M	CTA	2	3	0	1387*
FRISKE, T	EXMPL	3	1	1	1888	JOSEPHSON, D	WHEAT	1	3	0	1812#
GAINES, I	FERMI	4	2	0	1750C	JOSHI, A	UNILV	0	0	0	0000?
GALKO, D	KEMPR	0	2	0	0000?	KALE, S	JCASE	0	3	3	1861
GALLAGHER, H	KNGHT	2	3	0	1310	KANAS, W	JCASE	1	3	0	1316C
GANSER, A	CONBK	0	4	1	1282#	KARPIERZ, J	TYROS	2	0	2	1183*
GASTON, K	JCASE	0	0	0	1274*	KATAOKA, N	UOP	1	2	0	0000?
GAZMEN, E	GROLR	0	0	0	2234	KATZ, J	JCASE	0	1	0	0000?
GEBELE, R	UOP	0	1	0	0000?	KAUFMAN, M	KEMPR	1	1	0	0000?
GIMPLE, R	WHEAT	0	2	0	0000?	KEEFE, E	FLPRO	0	1	0	1181#
GOLDBOGEN, G	COLUM	0	0	0	0000?	KEISLER, J	KNGHT	4	0	0	2012
GOLLA, R	SEARS	0	4	0	1971D	KERCSMAR, J	WHEAT	0	1	0	0000?
GOLUMBOVSKI, P	NORTH	6	0	1	2201	KERCSMER, J	WHEAT	0	1	0	0000?
GONCHAROFF, N	MTRLA	5	1	0	1789Q	KINSELLA, G	KNGHT	2	2	0	1470C
GORZ, E	RADIO	0	1	0	1289*	KLINFELTER, H	JCASE	3	3	1	1549C
GREEN, D	ROOKS	5	0	0	1826C	KOEPELE, J	TYROS	0	0	0	0000?
GRIESMEYER, W	PSTOF	1	0	0	1317	KOGAN, G	CONBK	2	3	1	1847
GRYPARIS, J	MTRLA	4	1	0	1468	KOSTECKA, K	COLUM	3	1	2	1683
GUILLEN, B	KEMPR	0	0	0	1402*	KOZLOVSKY, M	FERMI	2	0	2	2233
GUIO, J	ROYLS	1	4	1	2001	KRUEGER, J	DRGNS	4	1	1	1343#
HAHNE, D	ROYLS	2	2	0	1586	KRULL, E	AMCRP	2	2	1	1454
HAMILTON, L	AMCRP	0	0	0	1380	LACAPENA	GROLR	0	0	0	0000?
HAMMOND, M	CONBK	1	2	0	1384	LAMBIRIS, J	KEMPR	1	6	0	1405*
HAMPER, P	AMCRP	0	0	0	1288*	LASKY, JIM	RADIO	0	1	0	1693#
HANSEN, B	MDCON	3	2	0	0000?	LASKY, N	RADIO	0	1	0	1352C
HARD, R	UNILV	1	0	0	0000?	LATIMER, E	SEARS	2	4	0	2015D
HARDIN, L	KEMPR	0	2	1	0000?	LAWRENCE, P	MTRLA	2	0	0	0000?
HARRIS, FF	CTA	0	1	0	1401#	LEE, B	UNILV	0	0	0	1470
HARRIS, R	FERMI	4	1	2	1655	LEONG, D	ALUMN	0	0	0	1971
HASAN, Y	MTRLA	0	1	0	2237	LEONG, G	KEMPR	1	2	0	1992C
HEDSTROM, L	RAIL	0	0	0	0000?	LERNER, R	SEARS	1	0	0	0000?
HERNANDEZ, DD	COLUM	5	1	0	1534	LESTER, M	MTRLA	3	1	0	1614
HESS, B	FLPRO	1	3	1	1494	LEVINE, D	ROOKS	1	2	2	2302
HICKS, C	DRGNS	4	0	0	1573	LIKHTEREV, M	UOP	2	4	0	1493*
HILL, C	FERMI	0	0	0	1663*	LITVINAS, A	ALUMN	3	1	2	1670C
HILL, R	KNGHT	6	0	0	1844	LOGAN, H	MDCON	1	4	0	1289#
HILLIARD, J	CONBK	0	1	0	0000?	LOMONT, C	SEARS	0	0	0	1494#
HILTON, J	MERC	2	1	1	1096*	LORENZ, B	MDCON	2	4	0	1458#

? - UNRATED

- 5 TO 9 RATED GAMES

* - 10 TO 24 RATED GAMES

C - CENTURY CLUB MEMBER

D - DOUBLE CENTURION

T - TRIPLE CENTURION

Q - QUAD CENTURION

03-12-1995

NAME	TEAM	W	L	D	RATING	NAME	TEAM	W	L	D	RATING
LOSOFF, A	CRT	4	0	2	1900	PAWLUS, D	MTRLA	0	1	1	0000?
LUDWIG, T	DRGNS	3	2	0	2082C	PAYTON, P	KEMPR	3	2	0	0000?
LUEDERS, J	CRT	0	1	0	0000?	PEHAS, A	ROYLS	4	2	0	1967
LUIS, D	JCASE	0	1	0	0000?	PENNINGTON, J	WHEAT	0	3	0	0000?
LULKIN, V	UNILV	4	0	1	1826#	PEPPERS, M	RAIL	0	0	0	0000?
LUSTRO, G	ROYLS	0	1	0	0000?	PERAREN, E	PSTOF	1	1	0	1788
MAA, R	DRGNS	0	0	0	0000?	PHELPS, C	DRGNS	0	2	1	1244#
MARCOWKA, R	PSTOF	4	1	1	1978C	PIAO, T	DRGNS	0	1	0	1711
MAREMA, D	PSTOF	0	0	1	2006	PILLAI, J	MTRLA	0	1	0	0000?
MARTIN, K	COLUM	4	1	0	1485	POMA, D	AMCRP	6	6	0	1253
MATTHEWS, J	CTA	1	1	0	1745	POMA, M	AWEST	0	0	0	0000?
MAYNARD, J	WHEAT	1	6	0	1346	POZNIAK, J	KEMPR	2	4	1	1496#
MCALISTER, K	COLUM	0	2	1	1909	PRATT, C	MTRLA	1	1	0	0000?
McCLENDON, L	CONBK	0	0	0	1340	PRATTS, M	COLUM	5	0	3	1766
MCFARLIN, B	KEMPR	0	2	0	1209#	PRICE, B	AWEST	0	0	0	1086#
MCINTOSH, S	CONBK	0	0	0	1142*	PUNZALAN, N	GROLR	0	0	0	1599
MCKAY, P	UNILV	0	3	0	1395#	QUARTETTI, C	NORTH	0	2	0	0000?
MCQUINN, J	ROCKW	0	0	0	1450	QUERUBIN, R	FLPRO	0	1	0	2067#
MELNIKOV, I	MTRLA	3	2	1	2188	RADAVICIUS, E	CHRGR	2	2	0	1701D
MELNIKOV, N	MTRLA	3	1	0	0000?	RAFACZ, T	ROCKW	0	0	0	1698
MENGEL, M	FERMI	0	0	0	0000?	RAFACZ, W	ROCKW	0	0	0	1638
MICKLICH, F	UOP	2	4	0	1705C	RAFFERTY, M	HULL	0	0	0	0000?
MIKULECKY, B	RADIO	1	1	0	1326C	RANGEL, R	HULL	0	0	0	1741
MILLER, J	NORTH	0	4	0	0000?	REED, K	TYROS	0	0	0	0000?
MILLER, TT	SEARS	1	1	2	1724	REID, C	JCASE	5	2	0	1384
MITCHAM, L	ROCKW	0	0	0	1552*	REYES, R	SEARS	4	1	1	2343D
MOORE, JJ	MTRLA	0	0	0	0000?	RINGER, D	SEARS	1	0	0	0000?
MORRISON, J	ROOKS	1	2	0	1668	RIPPE, D	TYROS	0	2	0	0000?
MORTADA, C	MTRLA	0	1	0	0000?	ROBERTS, J	WHEAT	2	2	0	0000?
MORTON, B	SEARS	0	0	0	1569	ROJAS, R	RAIL	0	0	0	0000?
MOTTA, H	FERMI	3	2	1	2033	ROMENESKO, G	UNILV	0	1	0	0000?
MOTYCKA, R	JCASE	2	3	0	1153	ROSENBERG, B	MDCON	0	5	1	1309#
MUDAN, M	HULL	0	3	0	0000?	ROSLEY, D	ROYLS	4	2	0	1806
NARSOLIS, F	UOP	3	2	0	0000?	ROSS, L	JCASE	0	0	0	0000?
NAUGHTON, T	HULL	0	3	0	1320*	RUBIN, J	UNILV	0	0	0	0000?
NELL, D	UNILV	0	3	0	1073#	RUDDY, J	MERC	1	0	0	1246
NELSON, H	CONBK	0	0	0	1967	RUEB, R	HULL	0	0	0	0000?
NISHIMURA, K	FLPRO	2	1	1	1331*	RYU, R	UOP	1	0	0	1451
NOBLE, S	JCASE	2	2	0	0000?	RZESZUTKO, R	ALUMN	0	1	0	1791
NO'ERMAN, T	UNILV	1	1	1	1198	SAHLI, E	UOP	2	4	1	1715
NOWAK, W	CTA	2	2	0	1365#	SAJBEL, P	UOP	4	0	1	1708
NWABUDE, O	CHRGR	0	0	0	1029*	SALAMANCA, R	ROYLS	1	0	0	0000?
O'BRIEN, D	UOP	1	2	0	1384*	SAMELSON, C	MTRLA	6	1	0	2022C
O'DELL, DW	RADIO	0	2	0	1573C	SAMOYLOV, A	MTRLA	0	1	0	0000?
OGASAWARA, L	ROYLS	2	2	0	1846C	SAMULAK, C	HULL	0	0	0	1147#
OLSEN, A	KEMPR	1	5	0	1478	SANCHEZ, P	RAIL	0	0	0	0000?
OSTERLUND, R	EXMPL	5	1	0	1996	SANCHEZ, R	GROLR	0	0	0	1526*
PARA, A	FERMI	3	2	0	1571	SANTIAGO, T	COLUM	2	2	2	1950*
PARAOAN, E	CONBK	3	3	0	1745C	SATTERLEE, D	JCASE	1	6	0	1667C
PATTON, D	CHRGR	1	1	0	0000?	SAWDO, E	JCASE	1	2	2	1412

? - UNRATED

- 5 TO 9 RATED GAMES

* - 10 TO 24 RATED GAMES

C - CENTURY CLUB MEMBER

D - DOUBLE CENTURION

T - TRIPLE CENTURION

Q - QUAD CENTURION

03-12-1995

NAME	TEAM	W	L	D	RATING	NAME	TEAM	W	L	D	RATING
SCHWAB, W	ROOKS	2	2	0	1491	TYREE, D	RADIO	0	1	0	1475*
SCHWARTZ, M	TYROS	2	3	1	1069	UNDERWOOD, W	WHEAT	2	2	1	2018C
SEMONES, E	ROOKS	1	4	0	0000?	VALDEZ, C	MTRLA	2	0	0	0000?
SHAFF, R	TYROS	3	1	0	1536C	VAN MEER, J	KEMPR	1	1	0	2007
SHEU, G	CHRGR	0	0	1	1333*	VAN METRE, R	SEARS	3	0	1	0000?
SHEYNIN, S	ROOKS	2	1	4	2139	VAN OTRIVE, R	CTA	0	1	0	1092#
SHOUSE, B	MTRLA	0	0	0	0000?	VAN ZILE, C	UOP	2	4	2	1367*
SHUKLA, S	FERMI	0	0	0	0000?	VANDECOTTE, M	UOP	3	1	0	0000?
SIEGEL, R	CONBK	1	0	1	1525C	VENEGAS, B	HULL	0	1	0	0000?
SIMS, B	CRT	0	0	0	1519#	VERIVE, J	AWEST	0	0	0	1615*
SIWEK, M	KEMPR	3	1	2	2160C	VICK, H	MTRLA	0	0	0	1516
SLAGLE, S	MERC	1	5	0	1585	VIGANTS, A	NORTH	1	3	1	1539
SMILEY, R	AMCRP	3	1	3	2008	WACHTEL, H	COLUM	4	1	0	2225
SMITH, BR	TYROS	3	1	1	1477	WALLACH, C	MTRLA	1	3	1	2068
SMITH, JM	ALUMN	0	0	0	1196*	WALLIN, R	WHEAT	1	4	3	1749
SOLLANO, E	GROLR	0	0	0	1956	WARD, C	DRGNS	2	3	1	1527D
SOMBONG, M	CONBK	0	1	1	1634	WARE, K	MERC	0	2	0	0000?
SPIEGEL, L	FERMI	6	1	0	2007C	WARREN, J	CHRGR	2	1	2	2101T
STAMM, V	CHRGR	2	1	0	1742D	WEBER, J	WHEAT	1	2	0	0000?
STAPLES, C	FERMI	0	0	0	1200#	WEBER, L	GROLR	0	0	0	2144
STAPLES, M	CTA	0	3	0	0000?	WEISS, G	HULL	0	3	0	0000?
STEINER, D	HULL	0	0	0	0000?	WEISSKOPF, J	HULL	0	3	1	1327*
STEVANOVIC, M	UOP	4	1	0	2246C	WEITZ, R	EXMPL	3	1	1	1684C
STEVENS, J	COLUM	1	1	0	1340	WELTER, P	SEARS	0	0	1	1642#
STEVENS, N	MDCON	0	1	0	0000?	WENTLING, C	AMCRP	2	3	2	1641C
STEVENSON, R	UNILV	0	1	0	1363	WEST, R	MTRLA	0	0	0	1447#
STINSON, M	ROYLS	0	0	1	2008	WHITE, H	JCASE	4	2	1	1623
STOLTZ, B	TYROS	0	5	2	1936	WHITE, T	CONBK	0	2	0	0000?
SUAREZ, E	KNGHT	2	1	1	1602	WHITED, W	MDCON	1	3	0	1838
SUERTH, F	EXMPL	4	1	1	1620C	WHITSITT, S	AWEST	0	0	0	1504*
SULLIVAN, C	MERC	2	4	0	1512	WILLIAMS, A	ROAD	0	0	0	0000?
SZAUKELLIS, W	MTRLA	0	0	0	0000?	WILLIAMS, J	RAIL	0	0	0	0000?
SZONTAGH, T	CRT	1	0	0	0000?	WILLIAMS, T	JCASE	0	0	1	0000?
TAMEZ, I	TYROS	3	1	1	2043	WILSON, A	CTA	1	4	0	1581
TAYLOR, M	ROAD	0	0	0	0000?	WILSON, M	SEARS	0	0	0	1293#
TEGEL, F	DRGNS	3	1	2	2160D	WONG, KK	NORTH	1	1	0	0000?
THOMAS, G	TYROS	3	3	0	1505	WONG, P	EXMPL	0	2	0	2205C
THOMAS, J	CHRGR	1	1	1	1461C	YOUNG, R	HULL	0	2	3	1428*
THOMPSON, R	FLPRO	0	0	0	1063	ZEIDEL, J	MERC	0	0	0	1947
TSEITLIN, E	MTRLA	0	1	0	0000?	ZOELLNER, J	CONBK	5	0	0	1420C
TURNER, K	PSTOF	1	0	0	1559	ZUNGOLO, J	CRT	0	0	0	0000?

? - UNRATED

- 5 TO 9 RATED GAMES

* - 10 TO 24 RATED GAMES

C - CENTURY CLUB MEMBER

D - DOUBLE CENTURION

T - TRIPLE CENTURION

Q - QUAD CENTURION