

Chicago Industrial Chess League

Bulletin No.3, Vol. 38
December 1994

INSIDE THIS ISSUE:


 2 Squares Column by Marv Cox

 Games

 The finishing touch

 Division cross tables

 Ratings Chairman Report

 **-NEED INPUT!** To make the CICL bulletin even better we are looking for anyone interested in submitting **articles** or **games**. If you are interested, call or write to the bulletin editor.

CICL OFFICERS As of December 1994	
President:	James Hodina 718 Central Park Ave. Flossmoor, IL 60422 W:(708) 990-6115 H:(708) 799-5571
Secretary:	Anthony Jasaitis P.O. Box 664 Bedford Park, IL 6499-0664 W:(708) 406-6420
Treasurer:	Wesley K. Underwood 207 S. Dorchester Ave. Wheaton, IL 60187 W:(708) 752-5127 H:(708) 462-0393
Ratings Chairman:	Charles Ward 615 S. Lincoln Hinsdale, IL 60521 W:(708) 979-4599 H:(708) 325-3885 (708) 979-8451 F
Production:	Marty Franek Circulation: 9044 S. 51st Ave Oak Lawn, IL 60453-0397 W:(312) 353-0397 H:(708) 636-3714
East Division Chairman:	Keith Kostecka Columbia College Chicago, IL 60605-1996 W:(312) 663-1600 ext. 437
Near West Division Chairman:	Satish L. Kale Jl Case 7 South 600 County Line Rd Hinsdale, IL 60521 W:(708) 887-2372 H:(708) 325-5253
Far West Division Chairman:	Irwin Gaines Fermilab - MS 127 P.O. Box 500 Batavia, IL 60510 W:(708) 840-4022
North Division Chairman:	Ruben Reyes 2019 W. Leland Ave. Chicago, IL 60625-1513 W:(708) 286-0758 H:(312) 334-5462 F (312) 769-0311
Bulletin Editor:	See North Division Chairman
Banquet & Publicity Chairman:	Todd J. DuFresne 2115 S. Finley Apt 216 Lombard, IL 60148 W:(708) 887-3771 or 2049 H:(708) 916-4677

READER'S FORUM

MERRY
CHRISTMAS
 and
 a
HAPPY
NEW
YEAR

The 2 Squares Column by Marvin Cox

"If two (or more) squares are attacked more times than they are defended they may fall"

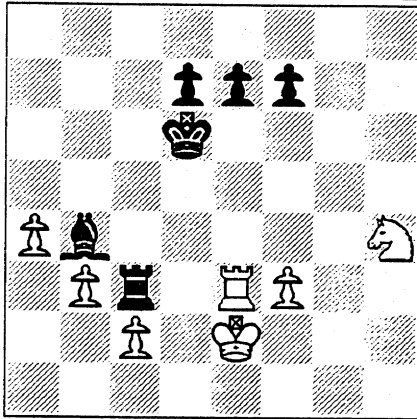


Diagram 80

White is a pawn up but faces a long and difficult endgame in diagram 80 above. However, a 3 squares attack results in a simpler ending.

Squares c3, e7 and f5 are under 2 attacks by white's rook and knight but are only guarded once by black's bishop. Two attackers, one defender, the squares may fall.

1. Nf5+ Kc5

Now we have a 2-squares problem against e7 and c3. Simplification is more important than the immediate pawn capture.

2. Rxc3 Bxc3
3. Nxe7

The ending is still difficult but with a 2 pawn advantage white should be able to win.

Later we reached move 50 time control. I'd resolved my difficulties, queened a pawn and wondered why my opponent didn't resign.

Instead he said, "I request adjournment, League rules permit me to do that".

I answered, "League rules don't say I have to grant your request. Get back to the board and take your loss."

(Art. II (G) of the League rules clarifies when a player can demand and actually force adjournment to occur. - ed.)

He swept the piecess off, got up and stomped away.

In diagram No. 81 (top of next column) I was playing black against my uncle. I

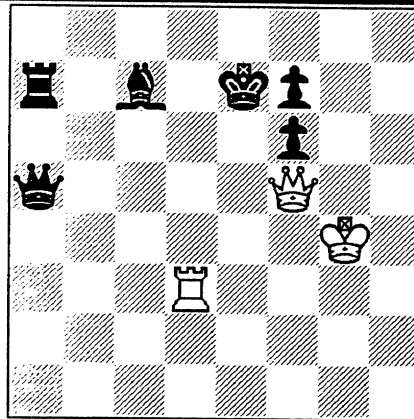


Diagram 81

was up a bishop and two pawns and was feeling pretty cocky. I'd just moved my queen to a5 believing a queen trade was necessary for me to obtain a win.

My uncle said, "You just blew it. There is a 3 squares combo for me. The three squares d7, c7 and a5 are attacked twice by my white rook and queen but only guarded once by your black rook. The black king doesn't count as a guard because it can't capture into check."

1. Rd7+ Ke8

Now it's a 2 squares problem against c7 and a5.

2. Qxa5 Rxa5
3. Rxc7

Amateur vs Master

Employing a rare line against a master is an excellent strategy. But it can backfire when mixed with dubious opening practice.

GM J. Fedorowicz (White) - Class A Amateur (Black); Queen's Gambit; US Open 1994: 1. d4 d5 2. c4 Bf5 3. cxd5 Bxb1

Black wants to play 3...Qxd5 without having to face 4.Nc3. But Black trades off a develop piece for one that's not, and inadvertently saves White a tempo to develop (clear the first rank).

4. Qa4+ Qd7 5. Qxd7+ Nxd7 6. Rxb1 Ngf6 7. Nf3 Nxd5 8. e4 Nb4

This galloping around the chessboard can provoke pawn weaknesses but could fence the Knight in with pawns.

9. a3 Nc6 10. Bf4 0-0-0

And white can hold the position to a draw. My uncle has done it to me again.

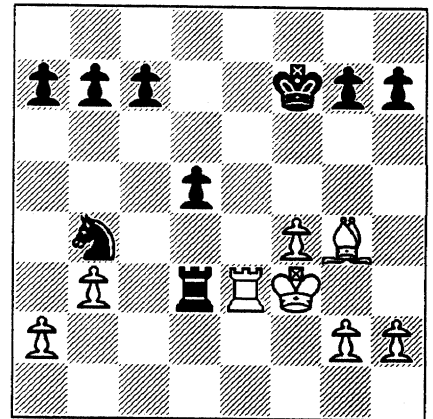


Diagram 82

White is not only a pawn down but black also has the queenside pawn majority.

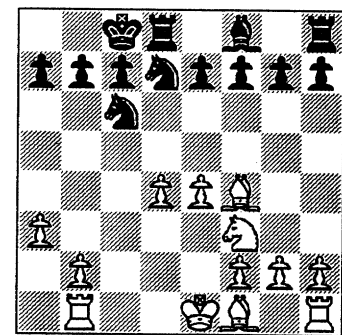
Now look at it from a 3-squares viewpoint. The 3 squares e6, d5 and d3 are attacked twice by white's bishop and rook and only guarded once by the black knight. The black king is not a guard because it can not capture into check.

1. Be6+ Kf6

Now it's a two square problem against d5 and d3.

2. Rxd3 Nxd3
3. Bxd5

And white is back in the game.



Logical because Black does two things at the same time: castling and protecting the c-pawn. But fatal. Black would have been better off with 10...Rc8.

11. d5 Ncb8 12. Rc1

12.Ng5 threatens 13.Nf7. But White's after bigger game: the King.

12...c6 13. dxc6 Nxc6 14. Rxc6+ 1-0

If 14....bxc6 then 15.Ba6+ is mate.

GAMES

There's a saying that the best defense is offense. Here's how aggressive and excellent play turn the battle into a win in the following game submitted for BEST SALVAGE.

Queen's Gambit Declined

WHITE: Ruben Reyes (2332)

BLACK: Mark Siwek (2115)

Kemper vs. Sears

Annotations by Mark Siwek

After the game, I joked that I was going to send it in to the Bulletin Editor as a candidate for Best Salvage. Ruben told me to go ahead, but said he'd only publish it if I included annotations.

1. c4 e6

It seems everyone on the Sears team plays the English, so I wanted to see if Ruben would transpose into a Reti or a Queen's Gambit. He chose the latter.

2. Nc3 d5 3. d4 Nf6 4. Bg5 Nbd7 5. cxd5 exd5 6. Nf3

A well-known trap is 6.Nxd5? Nxd5 7.Bxd8 Bb4+ 8.Qd2 Bxd2+ 9.Kxd2 Kxd8 and Black has won a piece.

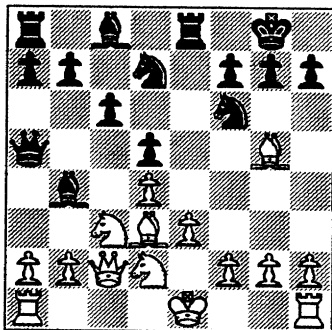
6...c6 7. e3 Qa5 8. Nd2

Black's last introduced a Cambridge Springs Defense-type setup, and while the text is thematic, due to the earlier Pawn exchange, one "book" line is 8.Bd3 Ne4 9.0-0 Nxc5 Be7 11.f4 Nf6 =.

8...Bb4 9. Qc2 0-0 10. Bd3

The most aggressive posting for the Bishop. Without the Pawn exchange earlier, dxc4 would have won a piece, forcing the cleric to develop more modestly at e2.

10...Re8



11. Nb3

(11.0-0 - ed)

11...Qc7

In some variations, ...Qa4 is played, but

I wanted to turn my attention to the Kingside. White's last removed another defender from that wing. I'm also envisioning retreating my Bishop to d6.

12. Bf4?

Illusory. As Ruben pointed out after the game, thanks to the pin on the e-file, simply 12...Qxf4 picks up the errant Bishop.

12...Bd6?

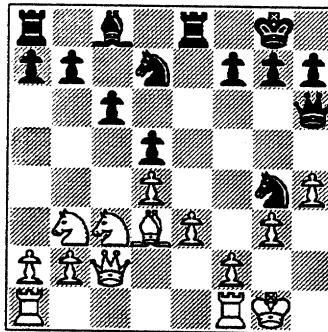
Returning the favor. Neither of us saw the Bishop was *en prise*, and the text allows 13. Nb5 (another Reyes' post-mortem suggestion) cxb5 14. Qxc7 Bxc7 15.Bxc7 with advantage to White.

13. Bxd6 Qxd6 14. 0-0 Ng4

Though the mate threat looks cheap, the intent is to actually weaken the Pawns in front of White's castled King. In the note to Black's 11th, I commented on the lack of White's Kingside defenders.

The above explains the strategic plan, but more immediately, it works tactically; e.g. 15.Bxh7+ Kh8 16. g3 Qh6 17.f3 Nxe3.

15. g3 Qh6 16.h4



16...Nf8

I stared at 16...Nxe3 17.fxe3 Rxe3 but it doesn't work because of 18.Qf2 so if 18... Rxd3 19.Qxf7+ Kh8 20. Qf8+ Nxf8 21.Rxf8 Mate.

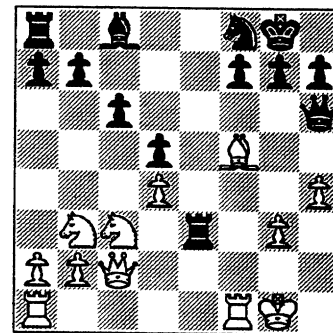
I'm not convinced the text is best, but I was concerned 16...Ndf6 would leave my other horseman with no flight square. The Knight move I played might help defend the back rank, and of course, ... Ng6 and ...Nxb4 are now possibilities. In addition, the Queen

Bishop is now free to try and exploit the weak White squares on my opponent's Kingside. That explains Ruben's next move - he wants to exchange Bishops. However, 17.e4 looks good, so I may have been better with 16...Ndf6 17.Rc1 Be6 18.Nc5 Re7 19.Ne2 Rae8.

17. Bf5 Nxe3?!

You only go around once. However, the sacrifice is not sound, so this should have been the losing move. Better would have been delaying the "sac", say with 17...Ng6 18.Nc5 Re7 19.Rac1 Nxe3 20.fxe3 Qxe3+ 21.Kg2 Bxf5 22.Qxf5 Qxd4.

18. fxe3 Rxe3



19. Kg2

Chess is an interesting game. In my calculations for my 17th move sacrifice, I noted that if 19.Qf2 Bxf5, so I expected the text. However, I had now planned 19...Qd6, overlooking 20.Qf2 - the SAME Queen move.

19...Ng6 20. Bxg6

I had expected 20.Bxc8, but Ruben feared a possible Knight sacrifice. My only hope is either perpetual check or some sort of endgame where my two extra Pawns might stand up to White's Knight.

20...hxg6 21. Rae1 Bf5 22. Qf2 Rae8 23. Rxe3 Rxe3 24. Re1 Be4+ 25. Nxe4 Rxe4 26. Rxe4 dxe4 27. Qf4

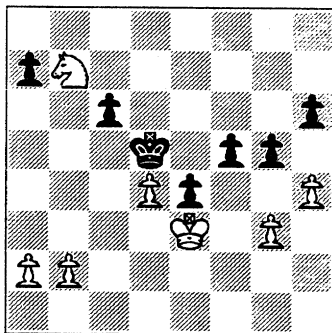
I have a passed Pawn, but it's probably not sufficient to draw. By exchanging Queens, Ruben eliminates the perpetual check possibility.

27...f5 28. Qxh6 gxh6 29. Na5 Kf7 30. Kf2 Ke6 31. Nxb7 Kd5 32. Ke3 g5

My only chance is to mobilize my Kingside Pawns. However, after 33. h5 or 33. hxg5 hxg5 34.Na5 I'm still lost.

At this point in the match, Kemper was up 3-1, and Sears was winning the other game. I stepped away from the board, and one of my teammates asked

me if I was satisfied with the impending 3-3 result. Considering we had just lost to UOP 6-0, I told him I was ecstatic.



33. Na5?

The new - and final - losing move. I'm now able to pull the rabbit out of my hat.

(33.Nc5 - ed.)

33...f4+ 34. gxf4 gxh4!

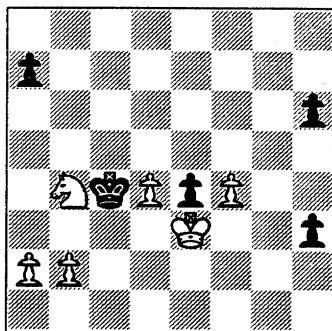
After the game, the same teammate referred to in the note in my 32nd move said he missed this. He said he would have played 34... gxh4+. Ruben now went into a long think. He realized what was happening.

35. Nxc6 h3!

If 35...Kxc6 36.Kxe4 and White is still in the h-Pawn's Queening square, but who cares about the Knight? Passed Pawns must be pushed!

36. Nb4+ Kc4 0-1

Final Position



Avoiding the final swindle. On 36...Kd6, the Knight can get back to stop the e-pawn, and the White monarch snaps up the h-Pawn. However, after the text, Black can't be stopped from Queening first (e.g. 37.Kf2 Kxb4 38.f5 h2 39.Kg2 e3 etc.). Ruben graciously extended his hand.

I'd like to add a postscript: Though I've been lucky against Ruben since Sears moved into the North Division (this game is a good example), he's a fine

player and a wonderful gentleman. I'm going to miss competing against him when he retires next year.

The following game is so unique and has such a fantastic finish that if you didn't see it you just may not believe it. *The White King marches from g1 to g5 and would have gone to h6 to support a mate with Qg7++ if Black didn't cut the game short by resigning!!!* And mind you, each side still had a Queen, a Rook a minor piece and seven pawns.

Alekhine

WHITE: GM Nigel Short (2680)
BLACK: GM Jan Timman (2665)

15th Interpolis Tournament
Tillburg, The Netherlands
November 1991

1. e4 Nf6 2. e5 Nd5 3. d4 d6 4. Nf3 g6
5. Bc4 Nb6 6. Bb3 Bg7 7. Qe2

The 13th game in Spassky-Fischer went 7.Nbd2 0-0 8.h3 a5 9.a4 dxe5 10.dxe5 Na6 11.0-0 Nc5 12.Qe2 Qe8! when Black snatched the a-pawn.

Karpov's is 7.Ng5

7...Nc6

The Fischer maneuver ...Na6-c5 addresses the problem of developing the bishop at c8 by allowing it (the Bishop) to find haven at e6.

8. 0-0 0-0 9. h3 a5

9...Na5 eliminates the Bishop while at the same time allow Black an easier time in developing his c-Bishop such as bringing to e6.

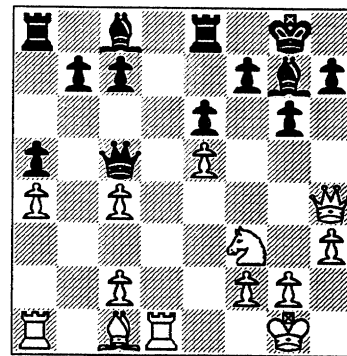
10. a4 dxe5 11. dxe5 Nd4 12. Nxd4 Qxd4 13. Re1 e6

The ramification of the text move isn't apparent at this time. But the danger is there whenever Black fianchettoes the f-bishop and the e-pawn moves forward.

Here the existence of a White pawn at e5 highlights the risk involved. However, Black may have intended to keep White occupied on the queenside and so have no time to direct an assault on the dark squares defended by Black's Bishop at g7.

14. Nd2 Nd5 15. Nf3 Qc5 16. Qe4 Qb4 17. Bc4 Nb6 18. b3 Nxc4 19.

bxc4 Re8 20. Rd1 Qc5 21. Qh4



The e-pawn is sufficiently protected as 21...Bxe5? fails against 22.Ba3. White now begins a campaign directed at gaining control of the dark squares surrounding Black's King.

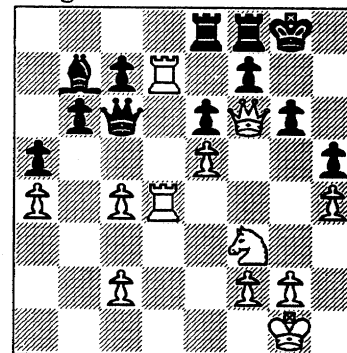
21...b6 22. Be3

But first take the Black Queen off the dark squares.

22...Qc6 23. Bh6 Bh8

The Bishop is needed.

24. Rd8 Bb7 25. Rad1 Bg7 26. R8d7 Rf8 27. Bxg7 Kxg7 28. R1d4 Rae8 29. Qf6+ Kg8 30. h4 h5

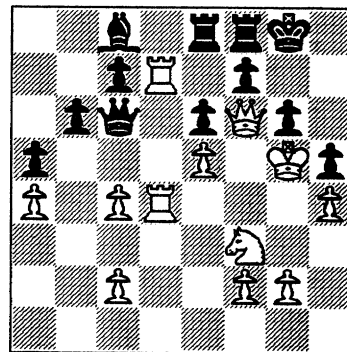


31. Kh2 Rc8,

31...Bc8 32.Rd8 Bb7 seems to hold.

32. Kg3! Rce8 33. Kf4 ! Bc8 34. Kg5! 1-0

Final Position



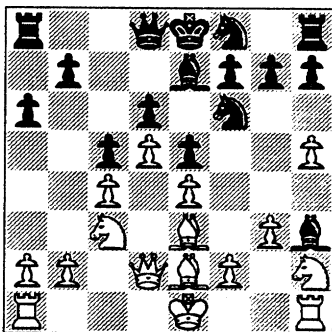
Mate's unavoidable: 33...Kh7 34. Rxf7+ Rxf7 35.Qxf7+ Kh8 36.Kh6 Rg8 37.Qf6+Rg7 38.Qxg7++

Solid play from last season's MVP of the East Division works well against NM Jerry Hanken in this year's US Open.

Benoni

WHITE: F. Inumberable (2211 CICL)
BLACK: J. Hanken (2296 USCF)
U.S. Open 1994

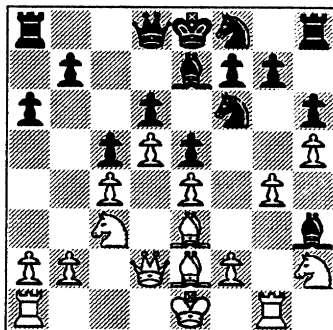
1. d4 c5 2. d5 e5 3. c4 d6 4. e4 Ne7 5. Be3 Ng6 6. g3 Be7 7. Nf3 Bg4 8. h4 Nd7 9. Be2 Nf6 10. Nc3 a6 11. Nh2 Bd7 12. h5 Nf8 13. Qd2 Bh3



14. Rg1 h6?

Having served it's purpose, it was more prudent to bring the Bishop out of there before it gets trapped.

15. g4



Shutting the door on the Bishop. NM Hanken now tries to wiggle out of his predicament but our East Division MVP won't be denied the full point.

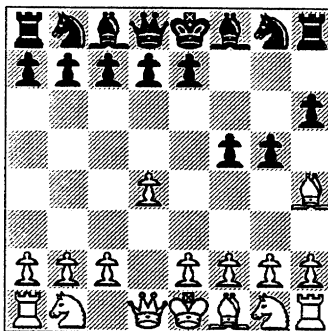
- 15... N6h7 16. Rg3 Ng5 17. Bxg5 Bxg5 18. Qc2 Bf4 19. Rxh3 Nh7 20. Nf3 Rb8 21. Qa4+ Kf8 22. Rh1 Qc8 23. Nh4 b5 24. cxb5 axb5 25. Nxb5 Ra8 26. Qc4 Qd8 27. Nf5 Ng5 1-0

Columbia College is creating waves in the East Division, thanks to the entry of a new sensation on board 1. Here's a nice win H. Wachtel records in the US Open.

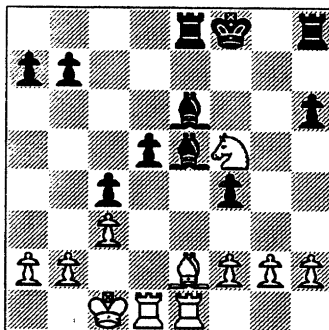
Dutch Defense

WHITE: H. Wachtel (2230 USCF)
BLACK: T. Sloan (2100+ USCF)
U.S. Open 1994

1. d4 f5 2. Bg5 h6 3. Bh4 g5

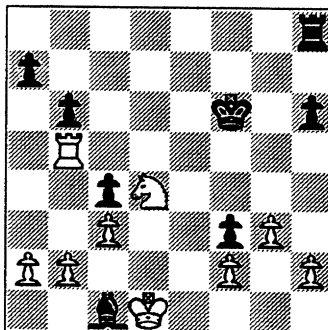


4. e4 Bg7 5. Bg3 f4 6. Bxf4 gxf4 7. Qh5+ Kf8 8. Qf5+ Ke8 9. Be2 Nf6 10. e5 e6 11. Qg6+ Kf8 12. exf6 Qxf6 13. Qxf6+ Bxf6 14. c3 d5 15. Bf3 c6 16. Nd2 e5 17. dxe5 Bxe5 18. Ne2 Nd7 19. Nb3 Bd6 20. Ned4 Ne5 21. Be2 c5 22. Nf3 Nc6 23. 0-0-0 Be6 24. Rhe1 Re8 25. Nh4 c4 26. Nd4 Nxd4 27. Rxd4 Bf7 28. Nf5 Be5 29. Rdd1 Be6



30. Bh5! Bf7 31. Bxf7 Kxf7 32. Rxd5 f3 33. g3 Bf4+ 34. Kd1 Rxe1+ 35. Kxe1 Bc1 36. Rb5 Kf6 37. Nd4 b6 38. Kd1! 1-0

Final Position



Black's Bishop has only one square to escape to, but after 38...Bg5 the Bishop runs out of room after 39.h4.

The Chess Olympiad produces a lot of fighting games. This may be because the welfare of a team may depend upon a player hav-

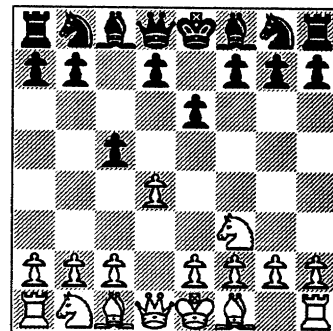
ing to fight tooth and nail for a point or even a measly draw just to win a match.

A case in point is this brilliant game from the 28th Chess Olympiad held in Thessaloniki, Greece in November 1988.

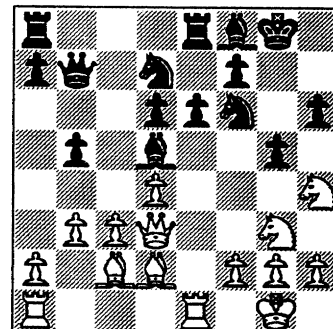
Queen's Pawn

WHITE: C. Hoi (2445) Denmark
BLACK: B. Gulko (2590) USA
Board 2, 1988 Chess Olympiad

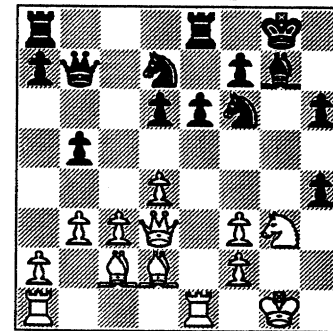
1. d4 e6 2. Nf3 c5



3. e3 Nf6 4. Bd3 b6 5. 0-0 Bb7 6. Nbd2 cxd4 7. exd4 Be7 8. Re1 0-0 9. c3 d6 10. Qe2 Re8 11. Nf1 Nbd7 12. Ng3 Bf8 13. Bg5 h6 14. Bd2 Qc7 15. Bc2 Bd5 16. b3 Qb7 17. Nh4 b5 18. Qd3 g5



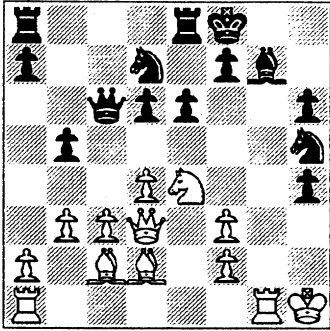
19. Nf3 Bxf3 20. gxf3 Bg7 21. h4 gxh4



22. Ne4 Qc6 23. Kh1 Nh5 24. Rg1 Kf8

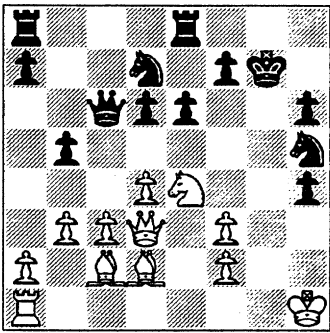
(See diagram top of next page). White's doubled f-pawn has opened up the g-

file for the Rooks to operate.



25. Rxc7! Kxc7

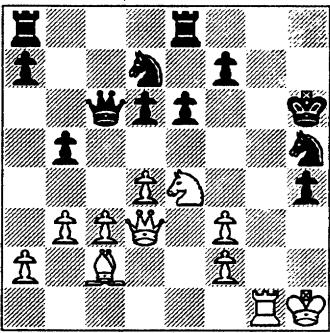
Obviously if 25...Nxc7 26.Bxh6 puts Black in a bad situation.



26. Bxh6+

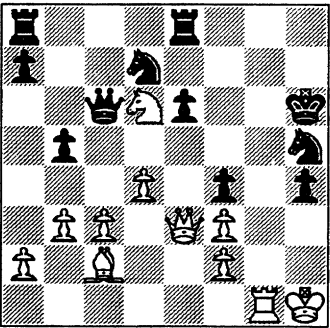
But White plays this move anyway.

26...Kxh6 27. Rg1



The threat's 28.Qe3+ Kh7 29.Nf6+ and 30.Qh6++.

27...f5 28. Qe3+ f4 29. Nxd6

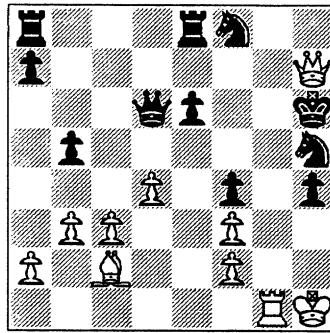


29...Qxd6

29...fxe3 30.Nf7++ is quite obvious.

30. Qd3 Nf8 31. Qh7+ 1-0

Final Position



Mate next move: 31...Nxh7 32.Rg6++

This was a disastrous 4th round for the US team as we lost to Denmark 1-3. Yasser Seirawan on board 1 and Nick DeFirmian on board 4 could each only get a draw while Larry Christiansen on board 3 lost to E. Mortensen.

From the 30th Olympiad held in Manila, 1992 comes this nice piece of work from Viswanathan Anand of India.

White sacs the exchange to keep Black's King at e8 and then proceeds to exploit the situation.

French

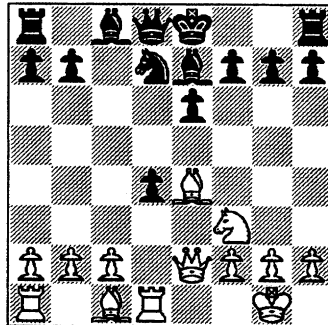
WHITE: V. Anand (2670) India
BLACK: K. Robatsch (2410) Austria

30th Chess Olympiad
Manila, Philippines
June, 1992

1. e4 e6 2. d4 d5 3. Nc3 dxe4

A classic variation in a modern setting. The Rubinstein/Burn is not often seen unlike the Winawer.

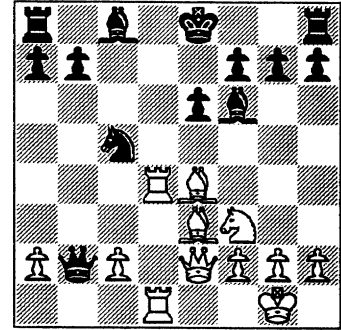
4. Nxe4 Be7 5. Nf3 Nf6 6. Bd3 Nxe4 7. Bxe4 c5 8. 0-0 Nd7 9. Qe2 cxd4 10. Rd1



White tempts Black to save the d-pawn

with 10...e5. The only problem for Black regarding this offer is that after 10...e5 11.c3 Black gets to have two choices, both of them bad: 1) try to keep the pawn with 11...dxc3 12.Nxe5 and have either the King or the Queen under siege or 2) return the pawn.

10...Nc5 11. Rxd4 Qb6 12. Be3 Qxb2 13. Rad1 Bf6



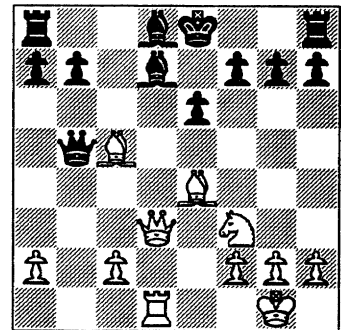
14. Rd8+!!

The beauty of the idea behind this exchange sacrifice - to prevent Black from castling - is its harmony with White's extremely superior development and centralization of pieces.

14...Bxd8 15. Bxc5 Bd7 16. Qd3

Threatens mate next move.

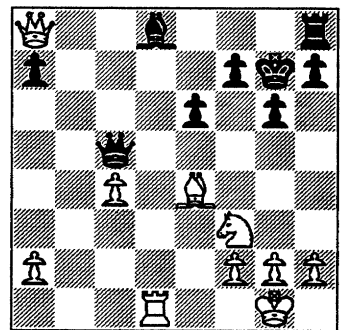
16...Qb5



A logical choice.If 16...Bb5, 17.Bxb7 Bxd3? then 18.Bc6++

17. c4 Qxc5 18. Qxd7+ Kf8 19. Qxb7 g6 20. Qxa8 Kg7 1-0

Final Position



The Finishing Touch

The thing that often attracts our interest in a game is the flurry of thrust, counter thrust that occurs just before one of the players succumbs. It can be a brilliant mating attack or just a slow but sure strangulation committed on the chessboard. It could also be unique and resourceful play which allows a player to turn a losing game into a win or a draw. Or simply being a witness to a spectacular battle or blunder. But whatever it is it boils down to the spectacle provided by a player's finishing touch.

This one's a gem of a finish from Alexander Beliavsky - Gary Kasparov at Belfort, France 1988 where Black offers the Queen not once but twice!!



Beliavsky (White)

After 18...Na6-b4

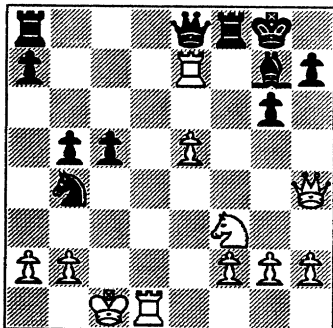
19. Bxg6! ? fxc6

Forced. 19...hxc6 fails against 20.Ng5 Re8 21.Rd7 and the game's practically over as there's no resource adequate to defend against the threat of 22. Qh7+ Kf8 23.Rxf7++.

20. Rd7 Qe8

Preventing 21.Qe7 while preparing the move 21...Rf7 to contest control of Black's 2nd rank.

21.Re7



Threatening to play Rdd7 and spell curtains for Black.

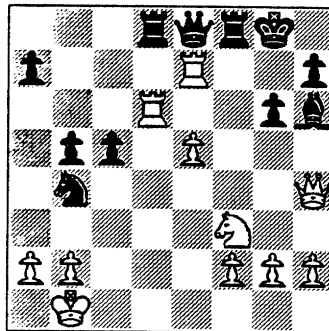
21...Bh6+! 22.Kb1

Forced as 22.Qxh6 obviously loses the Rook at e7 to 22...Qxe7.

22...Rd8!

Here 22... g5 cuts off the White Rook from the White Queen and after 23.Nxg5 Qxe7 24.Qxh6 Black' would then be a piece up, so it looks. But Kasparov's not in a mood to go into a shell one piece ahead, instead opts to go full steam ahead with the attack.

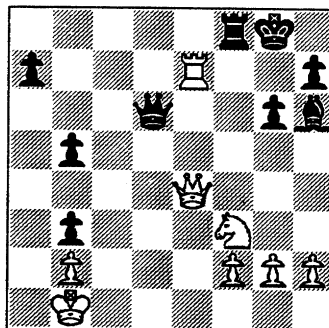
23.Rd6



23...Qc6!! 24.a3

24.Qxh6 fails to 24...Qe4+ and mate in 3 (25.Ka1 Nc2+ 26.Kb1 Na6+ 27.Ka8 Qb8++). If 24.Ree6 Bf4 25.Qxf4 then 25...Rxd6 wins.

24...Rxd6 25.exd6 Qxd6 26.axb4 cxb4 27.Qe4 b3 1-0



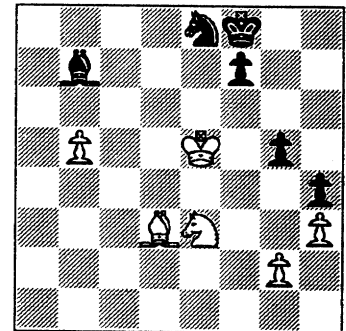
If 28.Qe6+ Qxe6 29.Rxe6 Rc8 30.Re1 Rc2 when 31.Rf1 fails against 31...Bg7 followed by 32...Rxb2+.

If 28.Nd4 Rf4 29.Qe6+Qxe6 30.Nxe6 Rxf2 wins. Or 28.Nd4 Rf4 29.Qa8+ Bf8.

From round 2 of the 10th Torneo Internacional de Ajedrez held in March 1992 in Linares, Spain comes this interesting position between Beliavsky and Nigel Short.

What you're about to witness is how a world class GM as Nigel Short can walk into a MATE IN ONE with his eyes wide open.

A. Beliavsky (Black)



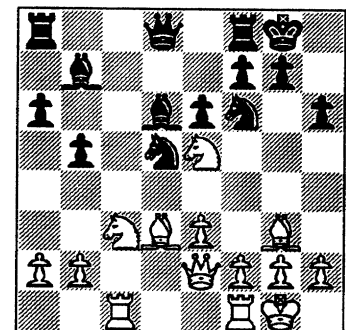
N. Short (White)

After 56...Bb7

57.Nd5 f6+ 58.Ke6?? Bc8++ 1-0

In this one, White interrupts a series of exchanges with one that on the surface seems to lose a piece. But upon closer examination it actually wins the exchange.

H. Dondis (Black)



F. Inumberable (White)

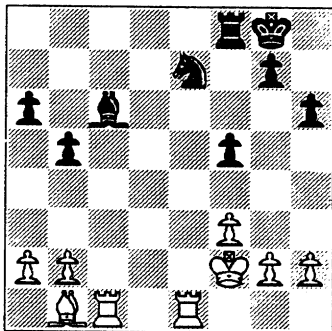
After 17...Bd6

18.Rfd1 Qb8 19.Nxd5 Bxd5 20.Nc6 Bxd6 21.Bxd6!! Seems to lose a piece because after 21...Qxd6 the Bishop at

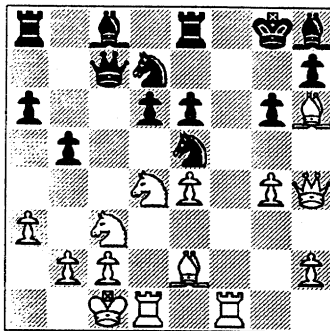
c6 would then be protected and so Black'd be a piece up. But on looking at White's move again, it becomes apparent that 21...Qxd6 loses the Queen to 22.Bh7+ followed by 23.Rxd6. The finishing touch to the game is interesting because of the unique beauty of its simplicity:

21...Qb7 22.Bxf8 Rxf8 23.f3 Nd5 24. Bb1 f5 25.e4 Qb6+ 26.Qf2 Qxf2+ 27. Kxf2 Ne7 28.exf5 exf5 29.Re1 1-0

Final Position



This one from the 1990 Interzonal in Biel (Round 9) is De Firmian-Yudasin after 18...fxe6.

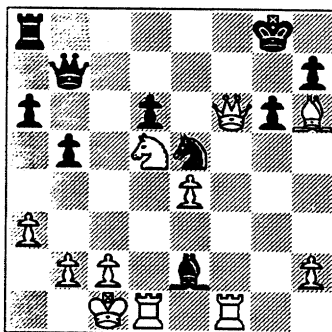


19.Nxe6 Qb7

If 19...Rxe6 then 20.Nd5 Qa5 (to prevent 21.Qd8+) 21.Qe7 (threatening both 22.Qxe6+ and mate in 2 and 22.Rf8+ Nxf8 23.Qxf8++) 21... Rxe7? 22. Nxe7++

20.Nd5 Nf6 21.Nec7 Bxg4 22.Nxe8 Bxe2 23. Nexf6+ Bxf6 24.Qxf6 1-0

Final position



many guys on the f-pawn.

26...g4 27.Bf1 Kd7 28.Bd3

White's on to the f-pawn again.

28...Ke6 29.Bf4 Rf7 30.Qc2 Bf8 31.Qe2+ 1-0

Final Position

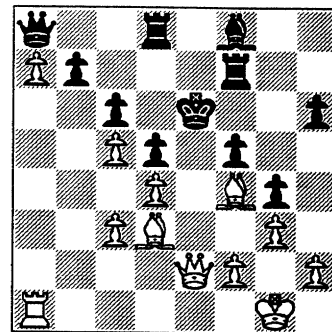
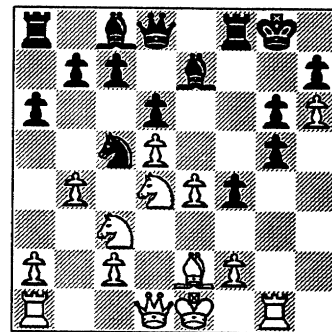


Diagram below is from the 1990 Interzonals. What's eye catching about the finish in this one is that it's simply all about a threat to threaten!!

Y. Seirawan (Black)

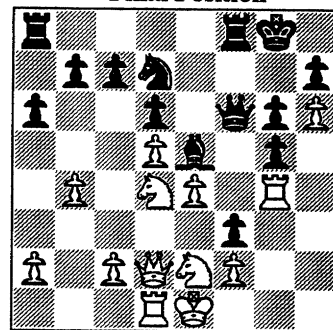


W. Arencibia (White)

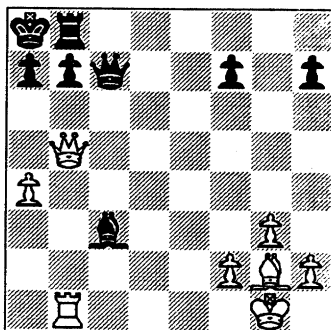
After 19. b4

19...Bf6 (The threat's to threaten 20... Bxc3 or 20...Bxd5 if White plays 20.bxc5) 20. Od2 Be5 (Amazingly, Black's threat is still to threaten retaliation along the diagonal with 21...Qf6 on 21.bxc5) 21. Rd1 Of6 (Black's still on White's back along the diagonal) 22. Bg4 Bxg4 23. Rvg4 Nd7 24. Nce2 f3 1-0 (Time)

Final Position



From the 1990 Reykjavik Open comes the following position from Geller-Howell after 27...Bc3



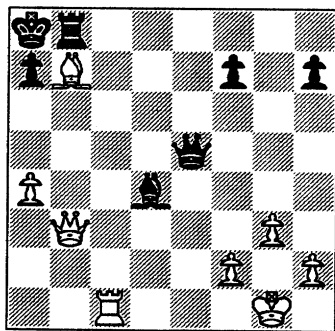
Black's b-pawn's to well guarded. So:

28.Rc1 Qe5 29. Qb3 Bd4

29...Rc8 is met by 30.Rxc6 Qxc6? 31. Qxb7++

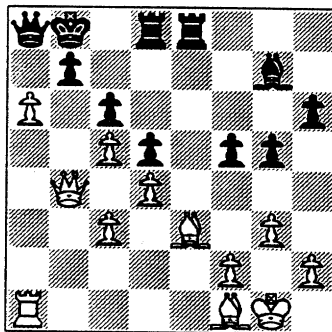
30.Bxb7! 1-0

Final Position



From the Dortmund Chess Meeting in 1992 (formerly called Dortmund Chess Festival) comes this no-nonsense finish

R. Heubner (Black)



V. Anand (White)

After 23...f5

24.Bh3 Rf8 25.a7 Kc8 26.Qb1

25.a7 has forced the Black King into the diagonal h3-c8. Now White has too

FAR WEST DIVISION

TEAM	ROOKS	FERMI	ROYLS	TYROS	MDCON	DRGNS	WHEAT	Game Pts	Match Pts	Position SWISS	Game Pts	Match Pts
ROOKS		2	5		4		3	14	2.5			
FERMI	4		5		4	4		17	4			
ROYLS	1	1		5.5				7.5	1			
TYROS			0.5		5.5		4.5	10.5	2			
MDCON	2	2		0.5		1.5		6	0			
DRGNS		2			4.5		6	12.5	2			
WHEAT	3			1.5		0		4.5	0.5			

NORTH DIVISION

TEAM	SEARS	MTRLA	U.O.P.	NORTH	EXMPL	KEMPR	FLPRO	Game Pts	Match Pts	Position SWISS	Game Pts	Match Pts
SEARS			3	3		2	6	14	2.0			
MTRLA			3	3.5			5	11.5	2.5			
U.O.P.	3	3				6		12	2.0			
NORTH	3	2.5			4			9.5	1.5			
EXMPL				2				2	0			
KEMPR	4	0						4	1			
FLPRO	0	1						1	0			

NEAR WEST DIVISION

TEAM	KNGHT	CHRGR	UNILV	RADIO	JCASE	Game Pts	Match Pts	KNGHT	CHRGR	UNILV	RADIO	JCASE	Game Pts	Match Pts
KNGHT			6	5	5.5	16.5	3							
CHRGR			5.5		3	8.5	1.5							
UNILV	0	.5		4		4.5	1							
RADIO	0		1			1	0							
JCASE	.5	3				3.5	0.5							

EAST DIVISION

TEAM	PSTOF	COLUM	ALUMN	CRT	AMCRP	CTA	HULL	MERC	CONBK	Game Pts	Match Pts	Rnd 10	Rnd 11	Rnd 12	Game Pts	Match Pts
PSTOF		1.5				4.5	4	5		15	3					
COLUM	4.5				3.5				3	11	2.5					
ALUMN						5			3	5	1					
CRT					3.5			6		9.5	2					
AMCRP		2.5		2.5					4	9	1					
CTA	1.5		1				6	2		10.5	1.5					
HULL	2					0				2	0					
MERC	0			0		2			2	4	0					
CONBK		3	3		2			4		12	2					

Ratings Chairman's Report

Team Captains Information

A number of early-round match results have not been received, or have been received late. Team captains are reminded that **both** captains are expected to send the results of each match to me as soon as possible after completion of the match in order to have the most up-to-date ratings and team standings in each issue of the bulletin. In addition, the home team captain should forward a copy of the results to the division chairman.

Some early-round results that have not yet been received are: Exemplars vs. Fel-Pro (North Div. round 3), Hull Trading vs. CRT (East Div. round 1) and Hull Trading vs. Alumni Central (East Div. round 3). If these matches have been played it would be appreciated if someone would send me the results.

I will be glad to receive results by electronic mail at czar@csgcbu.att.com. However, the paper results sheet should be sent anyway in order to provide the official record of the match result.

Ratings Correction

It has been determined that Hugh Gallagher, a new player with the Argonne Knights of the Near West Division, entered the CICL with a USCF rating of 1322. Before this could be verified, two games involving Hugh were rated in the last issue of the Bulletin assuming that he was unrated. This error has now been corrected and the two games were re-rated by hand prior to rating the games published in this issue of the Bulletin. As a result of this, Ed Gorz of A&B Radio lost 22 rating points, while Howard Klinefelter of J. I. Case gained 11 points.

Ratings Schedule

The ratings will next be updated just before New Year's Day. In general, the U.S. mail should provide adequate lead time for delivery of results, and team captains should not need to fax results to me. I prefer to receive results by mail rather than fax. However, should captains decide to fax results they must reach me by Thursday, Dec. 22 due to my holiday vacation schedule.

-- Charlie Ward
CICL Ratings Chairman

NORTH DIVISION 11-26-1994

TEAM NAME	W	L	D	GAME	MATCH	PCT
				POINTS	POINTS	
MOTOROLA	2	0	1	11.5	2.5	0.833
SEARS	1	1	2	14.0	2.0	0.500
UOP PROCESS DIV.	1	0	2	12.0	2.0	0.667
NORTHROP CORP.	1	1	1	9.5	1.5	0.500
KEMPER INSURANCE	1	1	0	4.0	1.0	0.500
EXEMPLARS	0	1	0	2.0	0.0	0.000
FEL-PRO	0	2	0	1.0	0.0	0.000

EAST DIVISION 11-26-1994

TEAM NAME	W	L	D	GAME	MATCH	PCT
				POINTS	POINTS	
CHICAGO POST OFFICE	3	1	0	15.0	3.0	0.750
COLUMBIA COLLEGE	2	0	1	11.0	2.5	0.833
CONTINENTAL BANK	1	1	2	12.0	2.0	0.500
CHICAGO RES. & TRDG.	2	0	0	9.5	2.0	1.000
CTA	1	2	1	10.5	1.5	0.375
ALUMNI CENTRAL	1	0	1	8.0	1.5	0.750
AMOCO CORP.	1	2	0	9.0	1.0	0.333
CHICAGO MERC. EXCH.	0	3	1	4.0	0.5	0.125
HULL TRADING CO.	0	2	0	2.0	0.0	0.000

NEAR WEST DIVISION 11-26-1994

TEAM NAME	W	L	D	GAME	MATCH	PCT
				POINTS	POINTS	
ARGONNE KNIGHTS	3	0	0	16.5	3.0	1.000
AT&T CHARGERS	1	0	1	8.5	1.5	0.750
UNILEVER	1	2	0	4.5	1.0	0.333
J. I. CASE	0	1	1	3.5	0.5	0.250
A & B RADIO	0	2	0	1.0	0.0	0.000

FAR WEST DIVISION 11-26-1994

TEAM NAME	W	L	D	GAME	MATCH	PCT
				POINTS	POINTS	
FERMILAB	4	0	0	17.0	4.0	1.000
ARGONNE ROOKS	2	1	1	14.0	2.5	0.625
AT&T DRAGONS	2	1	0	12.5	2.0	0.667
AT&T TYROS	2	1	0	10.5	2.0	0.667
AT&T ROYALS	1	2	0	7.5	1.0	0.333
WHEATON COLLEGE	0	2	1	4.5	0.5	0.167
MIDCON CORP	0	4	0	6.0	0.0	0.000

09-SEP-94 FEL-PRO

0

SEARS

6

ROUND 1

BD	RATINGS	SCORE	RATINGS	SCORE
1 QUERUBIN, R	2075 -8	0	REYES, R	2336 5 1
2 HESS, B	1455 -2	0	LATIMER, E	2037 1 1
3 FELDMAN, A	1437 0	0	DZEKHTSER, A	0 0 1
4 DEARDORFF, M	1437 0	0F	DORFF, M	1493 0 1F
5 NISHIMURA, K	1285 -7	0	CHAN, H	1567 7 1
6 BAKER, B	1069 0	0	LERNER, R	0 0 1

20-OCT-94 SEARS

3

NORTHROP CORP.

3

ROUND 2

BD	RATINGS	SCORE	RATINGS	SCORE
1 REYES, R	2341 -6	.5	JAKSTAS, K	2190 6 .5
2 LATIMER, E	2038-11	0	GOLUMBOVSKI, P	2143 16 1
3 BROCKETT, M	1834-11	0	DIAZ, P	2031 11 1
4 WELTER, P	1646 -4	.5	VIGANTS, A	1592 4 .5
5 DORFF, M	1493 0	1	MILLER, J	0 0 0
6 DZEKHTSER, A	0 0	1	ELEK, G	1008 0 0

03-NOV-94 NORTHROP CORP.

2.5

MOTOROLA

3.5

ROUND 3

BD	RATINGS	SCORE	RATINGS	SCORE
1 JAKSTAS, K	2196 1	.5	MELNIKOV, I	2216 -2 .5
2 GOLUMBOVSKI, P	2159 20	1	WALLACH, C	2116-20 0
3 DIAZ, P	2042-25	0	SAMELSON, C	1999 17 1
4 VIGANTS, A	1596 0	1F	CIESLEK, D	1950 0 0F
5 MILLER, J	0 0	0	AUGSBURGER, L	1745 0 1
6 ELEK, G	1008 -4	0	GRYPARIS, J	1404 4 1
7 QUARTETTI, C	0 0	0	GONCHAROFF, N	1771 0 1

03-NOV-94 KEMPER INSURANCE

4

SEARS

2

ROUND 3

BD	RATINGS	SCORE	RATINGS	SCORE
1 SIWEK, M	2115 23	1	REYES, R	2335-23 0
2 VAN MEER, J	1981 26	1	GOLLA, R	2029-17 0
3 LEONG, G	1992 8	1	BROCKETT, M	1823-12 0
4 OLSEN, A	1470 -6	0	BROCKETT, M	1811 6 1
5 LAMBIRIS, J	1417 27	1	DORFF, M	1493-27 0
6 POZNIAK, J	0 0	0	DZEKHTSER, A	0 0 1
7 CUMMUTA, P	1368 0	1	KAUFMAN, M	0 0 0 (KEMPR)
8 PAYTON, P	0 0	1	AQUENDE, A	0 0 0 (KEMPR)

22-NOV-94 SEARS

3

UOP PROCESS DIV.

3

ROUND 4

BD	RATINGS	SCORE	RATINGS	SCORE
1 REYES, R	2312 11	1	STEVANOVIC, M	2228-11 0
2 LATIMER, E	2027-12	0	BUERGER, E	2108 12 1
3 GOLLA, R	2012-11	0	BOLDINGH, E	2103 17 1
4 BROCKETT, M	1817 -5	.5	SAHLI, E	1750 5 .5
5 DZEKHTSER, A	0 0	1	MICKLICH, F	1717 0 0
6 MILLER, TT	1728 -3	.5	SAJBEL, P	1683 3 .5
7 RINGER, D	0 0	1	VAN ZILE, C	1382 0 0
8 VAN METRE, R	0 0	1	VANDECOTTE, M	0 0 0

06-OCT-94 HULL TRADING CO.

2

CHICAGO POST OFFICE

4

ROUND 2

BD		RATINGS	SCORE		RATINGS	SCORE
1	YOUNG, R	1386 21	.5	MARCOWKA, R	1958-14	.5
2	NAUGHTON, T	1339 -5	0	COOPER, W	1717 5	1
3	WEISSKOPF, J	1334 13	.5	CARTER, L	1545-13	.5
4	MUDAN, M	0 0	0	HOWARD, W	1527 0	1
5	WEISS, G	0 0	1F	TURNER, K	1559 0	0F
6	CARDI, P	0 0	0	GRIESMEYER, W	1317 0	1

12-OCT-94 AMOCO CORP.

4

CONTINENTAL BANK

2

ROUND 2

BD		RATINGS	SCORE		RATINGS	SCORE
1	HODINA, J	2109-14	.5	FRAATS, D	1867 14	.5
2	SMILEY, R	2019-11	.5	KOGAN, G	1850 11	.5
3	ATKINSON, J	1723 25	1	PARAOAN, E	1761-25	0
4	WENTLING, C	1662 0	1	GANSER, A	0 0	0
5	KRULL, E	1440 18	1	HAMMOND, M	1365-18	0
6	POMA, D	1307-23	0	ZOELLNER, J	1294 23	1

12-OCT-94 CHICAGO MERC. EXCH.

0

CHICAGO RES. & TRDG.

6

ROUND 1

BD		RATINGS	SCORE		RATINGS	SCORE
1	SULLIVAN, C	1490 -1	0	JASAITIS, A	2216 0	1
2	SLAGLE, S	1584 -2	0	FRIESEMA, W	2122 2	1
3	COTE, J	1268 -1	0	LOSOFF, A	1864 1	1
4	HILTON, J	1004 0	0	BARGERSTOCK, D	1810 0	1
5	WARE, K	0 0	0	DENG, J	1582 0	1
6	BECK, P	0 0	0	BERNARD, D	1303 0	1

20-OCT-94 CTA

1

ALUMNI CENTRAL

5

ROUND 2

BD		RATINGS	SCORE		RATINGS	SCORE
1	WILSON, A	1546 44	1	CZERNIECKI, A	2143-29	0
2	ABRAHAM, T	1532 -3	0	COX, M	2014 2	1
3	HARRIS, FF	1404 -3	0	BRONFELD, A	1847 3	1
4	NOWAK, W	1369 -4	0	FRANEK, M	1790 4	1
5	STAPLES, M	0 0	0	LITVINAS, A	1690 0	1
6	COLEMAN, O	0 0	0	DAVIDSON, M	1678 0	1

26-OCT-94 CONTINENTAL BANK

4

CHICAGO MERC. EXCH.

2

ROUND 1

BD		RATINGS	SCORE		RATINGS	SCORE
1	FRAATS, D	1881 0	1	WARE, K	0 0	0
2	KOGAN, G	1861 8	1	SLAGLE, S	1582 -8	0
3	PARAOAN, E	1736-36	0	SULLIVAN, C	1489 36	1
4	SOMBONG, M	1681-19	.5	COTE, J	1267 19	.5
5	ZOELLNER, J	1317 11	1	BAKER, LR	1112-11	0
6	GANSER, A	1314-17	.5	HILTON, J	1004 17	.5

27-OCT-94 COLUMBIA COLLEGE 4.5 CHICAGO POST OFFICE 1.5
ROUND 5

BD	RATINGS	SCORE	RATINGS	SCORE
1 WACHTEL, H	2205 25	1	INUMERABLE, F	2236-25 0
2 SANTIAGO, T	1957 4	.5	MAREMA, D	2010 -4 .5
3 MCALISTER, K	1964-24	0	MARCOWKA, R	1944 16 1
4 PRATTS, M	1690 34	1	ALLEN, H	1889-34 0
5 KOSTECKA, K	1669 14	1	CARTER, L	1532-14 0
6 HERNANDEZ, DD	1501 24	1	HOWARD, W	1527-24 0

02-NOV-94 CHICAGO RES. & TRDG. 3.5 AMOCO CORP. 2.5
ROUND 3

BD	RATINGS	SCORE	RATINGS	SCORE
1 JASAITIS, A	2216-20	0	HODINA, J	2095 30 1
2 FRIESEMA, W	2124 -8	.5	SMILEY, R	2008 8 .5
3 LOSOFF, A	1865 15	1	ATKINSON, J	1748-15 0
4 BARGERSTOCK, D	1810 13	1	WENTLING, C	1662-13 0
5 DENG, J	1582 15	1	KRULL, E	1458-15 0
6 BERNARD, D	1303-24	0	POMA, D	1284 24 1

08-NOV-94 CONTINENTAL BANK 3 COLUMBIA COLLEGE 3
ROUND 3

BD	RATINGS	SCORE	RATINGS	SCORE
1 GANSER, A	1297 0	0	WACHTEL, H	2230 0 1
2 FRAATS, D	1881 28	1	SANTIAGO, T	1961-28 0
3 KOGAN, G	1869-31	0	PRATTS, M	1724 31 1
4 SOMBONG, M	1662-28	0	BURDICK, S	1582 28 1
5 PARAOAN, E	1700 21	1	KOSTECKA, K	1683-21 0
6 ZOELLNER, J	1328 33	1	MARTIN, K	1509-33 0

08-NOV-94 CTA 2 CHICAGO MERC. EXCH. 2
ROUND 5

BD	RATINGS	SCORE	RATINGS	SCORE
1 MATTHEWS, J	1747 12	1	SLAGLE, S	1574-12 0
2 JONES, M	1358 -5	0	FRANK, M	1719 5 1
3 JARRETT, T	1596 6	1	COTE, J	1286 -6 0
4 VAN OUTRIVE, R	1096 -4	0	SULLIVAN, C	1525 4 1
5 WILSON, A	1590 0	OF	BAKER, LR	1101 0 OF
6 ABRAHAM, T	1529 0	OF	BECK, P	0 0 OF

10-NOV-94 HULL TRADING CO. 0 CTA 6
ROUND 4

BD	RATINGS	SCORE	RATINGS	SCORE
1 YOUNG, R	1407-11	0	JARRETT, T	1602 11 1
2 WEISSKOPF, J	1347-12	0	ABRAHAM, T	1529 12 1
3 MUDAN, M	0 0	0	JONES, M	1353 0 1
4 WEISS, G	0 0	0	NOWAK, W	1365 0 1
5 VENEGAS, B	0 0	0	CARTER, O	0 0 1
6	0 0	OF	STAPLES, M	0 0 1F

15-NOV-94 ALUMNI CENTRAL
ROUND 7

3

CONTINENTAL BANK

3

BD		RATINGS	SCORE		RATINGS	SCORE
1	CZERNIECKI, A	2114	7	1	FRAATS, D	1909-11 0
2	COX, M	2016	8	1	KOGAN, G	1838-12 0
3	RZESZUTKO, R	1820-29		0	PAROAN, E	1721 29 1
4	FABIJONAS, R	1785-25		0	SIEGEL, R	1485 38 1
5	LITVINAS, A	1690-26		0	HAMMOND, M	1347 40 1
6	DAVIDSON, M	1678	5	1	GANSER, A	1297 -5 0

26-OCT-94 WHEATON COLLEGE
ROUND 3

3

ARGONNE ROOKS

3

BD		RATINGS	SCORE		RATINGS	SCORE
1	UNDERWOOD, W	2024	6	.5	SHEYNIN, S	2167 -9 .5
2	WALLIN, R	1705	18	.5	BERRY, G	2057-12 .5
3	MAYNARD, J	1392	-4	0	GREEN, D	1790 3 1
4	BOSTICK, T	0	0	0	DECMAN, S	1698 0 1
5	ROBERTS, J	0	0	1	SCHWAB, W	1485 0 0
6	WEBER, J	0	0	1F		0 0 0F
7	WEBER, J	0	0	1	KERCSMAR, J	0 0 0 (WHEAT)

02-NOV-94 FERMILAB
ROUND 3

5

AT&T ROYALS

1

BD		RATINGS	SCORE		RATINGS	SCORE
1	BEZZUBOV, V	2296	8	1	DOBROVOLNY, C	2017 -8 0
2	MOTTA, H	2034	18	1	PEHAS, A	1964-18 0
3	SPIEGEL, L	2002	9	1	OGASAWARA, L	1855-14 0
4	GAINES, I	1716-11		0	ROSLEY, D	1803 17 1
5	HARRIS, R	1626	32	1	BLACKMON, E	1786-32 0
6	PARA, A	1551	26	1	HAHNE, D	1606-26 0

03-NOV-94 AT&T DRAGONS
ROUND 3

4.5

MIDCON CORP

1.5

BD		RATINGS	SCORE		RATINGS	SCORE
1	TEGEL, F	2135	-5	.5	CONNOR, P	2018 8 .5
2	LUDWIG, T	2096	9	1	EGERTON, J	1955-14 0
3	DURKEE, D	1783	18	1	WHITED, W	1856-27 0
4	EUSTACE, D	1540	0	1	ROSENBERG, B	0 0 0
5	WARD, C	1549	0	1	FLEET, R	0 0 0
6	PHELPS, C	1262	0	0	LORENZ, B	0 0 1

09-NOV-94 ARGONNE ROOKS
ROUND 4

2

FERMILAB

4

BD		RATINGS	SCORE		RATINGS	SCORE
1	LEVINE, D	2386-28		0	BEZZUBOV, V	2304 28 1
2	SHEYNIN, S	2158-19		0	KOZLOVSKY, M	2218 19 1
3	BERRY, G	2045	15	1	MOTTA, H	2052-23 0
4	GREEN, D	1793	23	1	SPIEGEL, L	2011-23 0
5	MORRISON, J	1728-24		0	GAINES, I	1705 16 1
6	DECMAN, S	1698-17		0	HARRIS, R	1658 25 1

15-NOV-94 MIDCON CORP
ROUND 4

.5

AT&T TYROS

5.5

BD	RATINGS	SCORE	RATINGS	SCORE
1 CONNOR, P	2026 -2	.5	STOLTZ, B	2004 2 .5
2 EGERTON, J	1941-21	0	TAMEZ, I	1958 21 1
3 ROSENBERG, B	0 0	0	BROZOVICH, J	1753 0 1
4 LOGAN, H	0 0	0	SHAFF, R	1532 0 1
5 LORENZ, B	0 0	0	SMITH, BR	1460 0 1
6 FLEET, R	0 0	0	SCHWARTZ, M	1059 0 1

16-NOV-94 AT&T DRAGONS
ROUND 4

6

WHEATON COLLEGE

0

BD	RATINGS	SCORE	RATINGS	SCORE
1 TEGEL, F	2130 11	1	UNDERWOOD, W	2030-11 0
2 LUDWIG, T	2105 3	1	WALLIN, R	1723 -4 0
3 EUSTACE, D	1540 0	1	JOSEPHSON, D	0 0 0
4 WARD, C	1549 9	1	MAYNARD, J	1388-13 0
5 HICKS, C	1530 0	1	ROBERTS, J	0 0 0
6 KRUEGER, J	1314 0	1	WEBER, J	0 0 0

27-OCT-94 J. I. CASE
ROUND 3

3

AT&T CHARGERS

3

BD	RATINGS	SCORE	RATINGS	SCORE
1 KALE, S	1858 -8	0	WARREN, J	2118 4 1
2 SATTERLEE, D	1714-15	0	RADAVICIUS, E	1714 15 1
3 WHITE, H	1581 15	1	THOMAS, J	1465-10 0
4 KLINEFELTER, H	1541-24	0	DOBR, K	1516 16 1
5 SAWDO, E	1399 14	1	BRADY, R	1267-14 0
6 REID, C	1362 0	1	PATTON, D	0 0 0
7 DUFRESNE, T	997 0	1	DIAZ, L	0 0 0 (JCASE)
8 ITZENHEUSER, W	0 0	0	MOTYCKA, R	1153 0 1 (JCASE)
(AMCRP) 9 POMA, D	1308-23	0	KANAS, W	1293 23 1 (JCASE)

03-NOV-94 UNILEVER
ROUND 3

0

ARGONNE KNIGHTS

6

BD	RATINGS	SCORE	RATINGS	SCORE
1	0 0	OF	0 0	1F
2	0 0	OF	0 0	1F
3	0 0	OF	0 0	1F
4	0 0	OF	0 0	1F
5	0 0	OF	0 0	1F
6	0 0	OF	0 0	1F

NORTH DIVISION TOP TEN

REYES, R	SEARS	2323D
HASAN, Y	MTRLA	2237
WONG, P	EXMPL	2231C
STEVANOVIC, M	UOP	2217C
MELNIKOV, I	MTRLA	2214
JAKSTAS, K	NORTH	2197C
GOLUMBOVSKI, P	NORTH	2179
SIWEK, M	KEMPR	2138C
BUERGER, E	UOP	2120D
BOLDINGH, E	UOP	2120

EAST DIVISION TOP TEN

WACHTEL, H	COLUM	2230
INUMERABLE, F	PSTOF	2211
JASAITIS, A	CRT	2196C
HODINA, J	AMCRP	2125
CZERNIECKI, A	ALUMN	2121C
FRIESEMA, W	CRT	2116
COX, M	ALUMN	2024C
SMILEY, R	AMCRP	2016
MAREMA, D	PSTOF	2006
LEONG, D	ALUMN	1971

NEAR WEST DIVISION TOP TEN

BENEDEK, R	KNIGHT	2200D
WARREN, J	CHRGR	2122T
KEISLER, J	KNIGHT	2000
ELLICE, W	UNILV	1864
KALE, S	JCASE	1850
HILL, R	KNIGHT	1798
STAMM, V	CHRGR	1741D
RADAVICIUS, E	CHRGR	1729D
SATTERLEE, D	JCASE	1699C
SUAREZ, E	KNIGHT	1638

FAR WEST DIVISION TOP TEN

LEVINE, D	ROOKS	2358
BEZZUBOV, V	FERMI	2332*
KOZLOVSKY, M	FERMI	2237
TEGEL, F	DRGNS	2141D
SHEYNIN, S	ROOKS	2139
BUCHNER, R	ROYLS	2129
LUDWIG, T	DRGNS	2108C
GUIO, J	ROYLS	2062
BERRY, G	ROOKS	2060D
MOTTA, H	FERMI	2029

MOST IMPROVED PLAYERS

ZOELLNER, J	CONBK	67
PRATTS, M	COLUM	62
BEZZUBOV, V	FERMI	59
GOLUMBOVSKI, P	NORTH	53
HERNANDEZ, DD	COLUM	45
BUERGER, E	UOP	41
HARRIS, R	FERMI	39
SIEGEL, R	CONBK	38
EUSTACE, D	DRGNS	36
WILSON, A	CTA	35

NAME	TEAM	W	L	D	RATING	NAME	TEAM	W	L	D	RATING
ABBOTT, J	MTRLA	0	0	0	0000?	CHEVERESAN, S	UOP	0	0	0	1434C
ABRAHAM, T	CTA	1	1	1	1541	CHRISTIAN, R	DRGNS	0	0	0	1808C
ALLEN, H	PSTOF	2	1	0	1855	CIESLEK, D	MTRLA	1	0	0	1950
AMUNDSEN, C	KEMPR	0	0	0	0000?	CISKO, G	FERMI	0	0	0	1615*
ANDERSON, CJ	ROYLS	0	0	0	1446	COLEMAN, O	CTA	0	2	0	0000?
AQUENDE, A	KEMPR	0	2	0	0000?	CONNELY, S	HULL	0	0	0	0000?
ATKINSON, J	AMCRP	1	1	1	1733C	CONNOR, P	MDCON	0	1	3	2024
AUGSBURGER, L	MTRLA	1	0	0	1745	COOPER, W	PSTOF	1	0	0	1722
AUSTIN, R	ROYLS	0	0	0	1125#	COTE, J	MERC	0	3	1	1280
BAER, M	AMCRP	0	0	0	1347*	COX, M	ALUMN	2	0	0	2024C
BAKER, B	FLPRO	0	1	0	1069	CREWSE, L	EXMPL	0	1	0	2027
BAKER, LR	MERC	0	1	0	1101*	CUMBERLAND, M	SEARS	0	0	0	0000?
BANZA, S	HULL	0	0	0	0000?	CUMMUTA, P	KEMPR	1	0	0	1368
BARGERSTOCK, D	CRT	2	0	0	1823	CURRAN, T	MTRLA	1	0	0	0000?
BARNES, D	ROAD	0	0	0	0000?	CZERNIECKI, A	ALUMN	1	1	0	2121C
BARTUSIAK, P	MTRLA	0	2	0	0000?	DAVIDSON, M	ALUMN	2	0	0	1683*
BAURAC, D	KNGHT	2	0	0	1611C	DAVIS, R	PSTOF	0	0	0	0000?
BECK, P	MERC	0	1	0	0000?	DEARDORFF, M	FLPRO	0	0	0	1437*
BENEDEK, R	KNGHT	1	0	1	2200D	DECMAN, S	ROOKS	3	1	0	1681D
BENESA, A	GROLR	0	0	0	2211	DENG, J	CRT	2	0	0	1597
BERNARD, D	CRT	1	1	0	1279	DEWITT, G	ROCKW	0	0	0	1423C
BERRY, G	ROOKS	2	0	1	2060D	DEZONNO, T	ROCKW	0	0	0	1255*
BEZZUBOV, V	FERMI	4	0	0	2332*	DIAZ, L	JCASE	1	1	0	0000?
BHOJWANI, C	TYROS	1	1	0	1965	DIAZ, P	NORTH	2	1	0	2017
BLACKMON, E	ROYLS	1	1	0	1754	DJORDJEVIC, I	FERMI	0	0	0	0000?
BLAZIE, J	TYROS	0	0	0	1832C	DOBR, K	CHRGR	1	0	1	1532T
BLOOM, B	EXMPL	0	1	0	2047	DOBROVOLNY, C	ROYLS	1	1	0	2009
BOLDINGH, E	UOP	2	1	0	2120	DONNA, D	MTRLA	0	0	0	0000?
BOOKER, G	RADIO	0	0	0	1398*	DORFF, M	SEARS	1	1	0	1466
BOSTICK, T	WHEAT	0	1	1	0000?	DUFRESNE, T	JCASE	2	1	0	997*
BRADY, R	CHRGR	1	1	0	1253	DURKEE, D	DRGNS	1	0	1	1801C
BRANCH, Y	COLUM	0	0	0	1301*	DYCKZKOWSKI, R	CONBK	0	0	0	1561
BRIONES, M	UOP	0	0	0	1660C	DZEKHTSER, A	SEARS	4	0	0	0000?
BRITT-WEBB, E	AMCRP	0	1	0	0000?	DZURICKSKO, G	UNILV	1	1	0	1188#
BROCKETT, M	SEARS	1	2	1	1812	EDWARDS, S	AWEST	0	0	0	1278
BRONFELD, A	ALUMN	1	0	0	1850	EFRON, D	ROCKW	0	0	0	1638
BROTSOS, J	EXMPL	1	0	0	1541D	EGERTON, J	MDCON	1	2	1	1920
BROZOVICH, J	TYROS	2	0	0	1753C	ELEK, G	NORTH	0	3	0	1004
BUCHNER, R	ROYLS	0	0	0	2129	ELLICE, W	UNILV	0	1	0	1864
BUERGER, E	UOP	3	0	0	2120D	ERLENBORN, M	AWEST	0	0	0	1482*
BURBA, K	ROOKS	0	1	0	1414C	EUSTACE, D	DRGNS	3	0	0	1540
BURDICK, S	COLUM	1	0	0	1610	FABIJONAS, R	ALUMN	0	1	0	1760D
BURIAN, D	NORTH	0	0	0	1680C	FAHRENHOLTZ, S	MTRLA	0	1	0	1768*
CARDI, P	HULL	0	1	0	0000?	FELDMAN, A	FLPRO	0	2	0	1437C
CARNAL, D	CRT	0	0	0	1210#	FLEET, R	MDCON	1	3	0	0000?
CARTER, L	PSTOF	0	1	2	1518	FRAATS, D	CONBK	2	1	1	1898
CARTER, O	CTA	1	0	0	0000?	FRANCISKOVICH, DHULL	0	0	0	1113#	
CATENA, J	MTRLA	0	1	0	0000?	FRANEK, M	ALUMN	1	0	0	1794C
CHAN, H	SEARS	1	0	0	1574	FRANK, M	MERC	1	0	0	1724*
CHARKOVSKY, R	ALUMN	0	0	0	1619	FRIESEMA, W	CRT	1	0	1	2116

? - UNRATED

- 5 TO 9 RATED GAMES

* - 10 TO 24 RATED GAMES

C - CENTURY CLUB MEMBER

D - DOUBLE CENTURION

T - TRIPLE CENTURION

Q - QUAD CENTURION

NAME	TEAM	W	L	D	RATING	NAME	TEAM	W	L	D	RATING
FRISKE, T	EXMPL	0	0	0	1866	KARPIERZ, J	TYROS	0	0	1	1126*
GAINES, I	FERMI	2	2	0	1721C	KATZ, J	JCASE	0	1	0	0000?
GALKO, D	KEMPR	0	1	0	0000?	KAUFMAN, M	KEMPR	0	1	0	0000?
GALLAGHER, H	KNGHT	1	1	0	1333	KEEFE, E	FLPRO	0	0	0	1186#
GANSER, A	CONBK	0	3	1	1292#	KEISLER, J	KNGHT	2	0	0	2000
GASTON, K	JCASE	0	0	0	1274*	KERCSMAR, J	WHEAT	0	1	0	0000?
GAZMEN, E	GROLR	0	0	0	2234	KINSELLA, G	KNGHT	1	0	0	1471C
GIMPLE, R	WHEAT	0	1	0	0000?	KLINFELTER, H	JCASE	1	1	0	1517C
GOLDBOGEN, G	COLUM	0	0	0	0000?	KOEPELE, J	TYROS	0	0	0	0000?
GOLLA, R	SEARS	0	2	0	2001D	KOGAN, G	CONBK	1	2	1	1826
GOLUMBOVSKI, P	NORTH	3	0	0	2179	KOSTECKA, K	COLUM	1	1	1	1662
GONCHAROFF, N	MTRLA	2	0	0	1771Q	KOZLOVSKY, M	FERMI	1	0	1	2237
GORZ, E	RADIO	0	1	0	1289*	KRUEGER, J	DRGNS	1	0	1	1314#
GREEN, D	ROOKS	3	0	0	1816C	KRULL, E	AMCRP	1	2	0	1443
GRIESMEYER, W	PSTOF	1	0	0	1317	LACAPENA	GROLR	0	0	0	0000?
GRYPARIS, J	MTRLA	1	0	0	1408	LAMBIRIS, J	KEMPR	1	1	0	1444*
GUILLEN, B	KEMPR	0	0	0	1402*	LASKY, JIM	RADIO	0	1	0	1693#
GUIO, J	ROYLS	0	1	1	2062	LASKY, N	RADIO	0	1	0	1352C
HAHNE, D	ROYLS	1	1	0	1580	LATIMER, E	SEARS	1	2	0	2015D
HAMILTON, L	AMCRP	0	0	0	1380	LEE, B	UNILV	0	0	0	1470
HAMMOND, M	CONBK	1	1	0	1387	LEONG, D	ALUMN	0	0	0	1971
HAMPER, P	AMCRP	0	0	0	1288*	LEONG, G	KEMPR	1	1	0	2000C
HANSEN, B	MDCON	1	0	0	0000?	LERNER, R	SEARS	1	0	0	0000?
HARRIS, FF	CTA	0	1	0	1401#	LESTER, M	MTRLA	0	0	0	1623
HARRIS, R	FERMI	3	0	1	1683	LEVINE, D	ROOKS	1	1	1	2358
HASAN, Y	MTRLA	0	1	0	2237	LIKHTEREV, M	UOP	0	2	0	1501#
HEDSTROM, L	RAIL	0	0	0	0000?	LITVINAS, A	ALUMN	1	1	0	1664C
HERNANDEZ, DD	COLUM	2	0	0	1525	LOGAN, H	MDCON	1	1	0	0000?
HESS, B	FLPRO	0	2	0	1453	LOMONT, C	SEARS	0	0	0	1494#
HICKS, C	DRGNS	1	0	0	1530	LORENZ, B	MDCON	1	3	0	0000?
HILL, C	FERMI	0	0	0	1663*	LOSOFF, A	CRT	2	0	0	1880
HILL, R	KNGHT	2	0	0	1798	LUDWIG, T	DRGNS	2	0	0	2108C
HILLIARD, J	CONBK	0	0	0	0000?	LUEDERS, J	CRT	0	0	0	0000?
HILTON, J	MERC	0	1	1	1021*	LULKIN, V	UNILV	1	0	1	0000?
HODINA, J	AMCRP	2	0	1	2125	MAA, R	DRGNS	0	0	0	0000?
HOWARD, W	PSTOF	3	1	0	1503	MARCOWKA, R	PSTOF	2	0	1	1960C
HOWARD, W	KEMPR	0	0	0	1852C	MAREMA, D	PSTOF	0	0	1	2006
HUGHES, N	MTRLA	0	0	0	1471#	MARTIN, K	COLUM	1	1	0	1476
HUNG, N	MTRLA	0	0	0	1471#	MATTHEWS, J	CTA	1	0	0	1759
INUMERABLE, F	PSTOF	0	1	0	2211	MAYNARD, J	WHEAT	0	3	0	1375
ITZENHEUSER, W	JCASE	0	2	0	0000?	MCALISTER, K	COLUM	0	1	1	1940
JACKSON, JJ	ROAD	0	0	0	0000?	MCCLENDON, L	CONBK	0	0	0	1340
JACOBS, N	DRGNS	0	0	0	1983C	MCFARLIN, B	KEMPR	0	1	0	1215#
JAKSTAS, K	NORTH	1	0	2	2197C	MCINTOSH, S	CONBK	0	0	0	1142*
JARRETT, T	CTA	2	1	0	1613*	MCKAY, P	UNILV	0	0	0	0000?
JASAITIS, A	CRT	1	1	0	2196C	MCQUINN, J	ROCKW	0	0	0	1450
JONES, B	ROCKW	0	0	0	2061	MELNIKOV, I	MTRLA	1	0	1	2214
JONES, M	CTA	1	1	0	1353*	MELNIKOV, N	MTRLA	2	0	0	0000?
JOSEPHSON, D	WHEAT	0	1	0	0000?	MENGEL, M	FERMI	0	0	0	0000?
KALE, S	JCASE	0	1	1	1850	MICKLICH, F	UOP	1	2	0	1717C
KANAS, W	JCASE	1	1	0	1316C						

? - UNRATED
- 5 TO 9 RATED GAMES
* - 10 TO 24 RATED GAMES

C - CENTURY CLUB MEMBER
D - DOUBLE CENTURION
T - TRIPLE CENTURION
Q - QUAD CENTURION

NAME	TEAM	W	L	D	RATING	NAME	TEAM	W	L	D	RATING
MIKULECKY, B	RADIO	1	1	0	1326C	REED, K	TYROS	0	0	0	0000?
MILLER, J	NORTH	0	2	0	0000?	REID, C	JCASE	2	0	0	1362
MILLER, TT	SEARS	0	0	1	1725	REYES, R	SEARS	2	1	1	2323D
MITCHAM, L	ROCKW	0	0	0	1552*	RINGER, D	SEARS	1	0	0	0000?
MOORE, JJ	MTRLA	0	0	0	0000?	RIPPE, D	TYROS	0	1	0	0000?
MORRISON, J	ROOKS	1	1	0	1704	ROBERTS, J	WHEAT	1	1	0	0000?
MORTADA, C	MTRLA	0	1	0	0000?	ROJAS, R	RAIL	0	0	0	0000?
MORTON, B	SEARS	0	0	0	1569	ROMENESKO, G	UNILV	0	1	0	0000?
MOTTA, H	FERMI	2	2	0	2029	ROSENBERG, B	MDCON	0	4	0	0000?
MOTYCKA, R	JCASE	1	1	0	1153	ROSLEY, D	ROYLS	2	1	0	1820
MUDAN, M	HULL	0	2	0	0000?	ROSS, L	JCASE	0	0	0	0000?
NARSOLIS, F	UOP	2	0	0	0000?	RUBIN, J	UNILV	0	0	0	0000?
NAUGHTON, T	HULL	0	1	0	1334*	RUDDY, J	MERC	0	0	0	1205
NELL, D	UNILV	0	0	0	1077#	RUEB, R	HULL	0	0	0	0000?
NELSON, H	CONBK	0	0	0	1967	RZESZUTKO, R	ALUMN	0	1	0	1791
NISHIMURA, K	FLPRO	1	1	0	1278*	SAHLI, E	UOP	1	1	1	1755*
NOBLE, S	JCASE	0	1	0	0000?	SAJBEL, P	UOP	2	0	1	1686
NOTERMAN, T	UNILV	0	1	0	1188	SAMELSON, C	MTRLA	3	0	0	2016C
NOWAK, W	CTA	1	2	0	1365#	SAMULAK, C	HULL	0	0	0	1147#
NWABUDE, O	CHRGR	0	0	0	1029*	SANCHEZ, P	RAIL	0	0	0	0000?
O'BRIEN, D	UOP	0	0	0	1417*	SANCHEZ, R	GROLR	0	0	0	1526*
O'DELL, DW	RADIO	0	2	0	1573C	SANTIAGO, T	COLUM	0	2	1	1933*
OGASAWARA, L	ROYLS	1	2	0	1841C	SATTERLEE, D	JCASE	0	2	0	1699C
OLSEN, A	KEMPR	0	2	0	1464	SAWDO, E	JCASE	1	0	0	1413
OSTERLUND, R	EXMPL	0	1	0	1904	SCHWAB, W	ROOKS	0	2	0	1485
PARA, A	FERMI	1	1	0	1577	SCHWARTZ, M	TYROS	2	1	0	1059*
PARAOAN, E	CONBK	2	2	0	1750C	SEMONES, E	ROOKS	0	2	0	0000?
PATTON, D	CHRGR	0	1	0	0000?	SHAFF, R	TYROS	1	0	0	1532C
PAYTON, P	KEMPR	1	1	0	0000?	SHEU, G	CHRGR	0	0	0	1343*
PEHAS, A	ROYLS	1	2	0	1946	SHEYNIN, S	ROOKS	1	1	2	2139
PENNINGTON, J	WHEAT	0	1	0	0000?	SHOUSE, B	MTRLA	0	0	0	0000?
PEPPERS, M	RAIL	0	0	0	0000?	SHUKLA, S	FERMI	0	0	0	0000?
PERAREN, E	PSTOF	1	0	0	1811	SIEGEL, R	CONBK	1	0	0	1523C
PHELPS, C	DRGNS	0	1	0	1262#	SIMS, B	CRT	0	0	0	1519#
PIAO, T	DRGNS	0	1	0	1711	SIWEK, M	KEMPR	1	1	0	2138C
PILLAI, J	MTRLA	0	1	0	0000?	SLAGLE, S	MERC	0	4	0	1562
POMA, D	AMCRP	2	2	0	1285	SMILEY, R	AMCRP	0	0	3	2016
POMA, M	AWEST	0	0	0	0000?	SMITH, BR	TYROS	2	0	0	1460
POZNIAK, J	KEMPR	1	1	0	0000?	SMITH, JM	ALUMN	0	0	0	1196*
PRATT, C	MTRLA	1	1	0	0000?	SOLLANO, E	GROLR	0	0	0	1956
PRATTS, M	COLUM	2	0	1	1755	SOMBONG, M	CONBK	0	1	1	1634
PRICE, B	AWEST	0	0	0	1086#	SPIEGEL, L	FERMI	3	1	0	1988C
PUNZALAN, N	GROLR	0	0	0	1599	STAMM, V	CHRGR	1	0	0	1741D
QUARTETTI, C	NORTH	0	1	0	0000?	STAPLES, C	FERMI	0	0	0	1200#
QUERUBIN, R	FLPRO	0	1	0	2067#	STAPLES, M	CTA	0	1	0	0000?
RADAVICIUS, E	CHRGR	2	0	0	1729D	STEINER, D	HULL	0	0	0	0000?
RAFACZ, T	ROCKW	0	0	0	1698	STEVANOVIC, M	UOP	2	1	0	2217C
RAFACZ, W	ROCKW	0	0	0	1638	STEVENS, J	COLUM	0	0	0	1380
RAFFERTY, M	HULL	0	0	0	0000?	STEVENSON, R	UNILV	0	1	0	1363
RANGEL, R	HULL	0	0	0	1741	STINSON, M	ROYLS	0	0	0	2006

? - UNRATED

- 5 TO 9 RATED GAMES

* - 10 TO 24 RATED GAMES

C - CENTURY CLUB MEMBER

D - DOUBLE CENTURION

T - TRIPLE CENTURION

Q - QUAD CENTURION

NAME	TEAM	W	L	D	RATING	NAME	TEAM	W	L	D	RATING
STOLTZ, B	TYROS	0	1	2	2006	WALLACH, C	MTRLA	1	2	0	2096
SUAREZ, E	KNGHT	1	0	0	1638	WALLIN, R	WHEAT	0	2	1	1719
SUERTH, F	EXMPL	1	0	0	1628C	WARD, C	DRGNS	2	1	0	1558D
SULLIVAN, C	MERC	2	2	0	1529	WARE, K	MERC	0	2	0	0000?
SZAUKELLIS, W	MTRLA	0	0	0	0000?	WARREN, J	CHRGR	2	0	0	2122T
SZONTAGH, T	CRT	0	0	0	0000?	WEBER, J	WHEAT	1	1	0	0000?
TAMEZ, I	TYROS	1	1	0	1979	WEBER, L	GROLR	0	0	0	2144
TAYLOR, M	ROAD	0	0	0	0000?	WEISS, G	HULL	0	1	0	0000?
TEGEL, F	DRGNS	1	1	1	2141D	WEISSKOPF, J	HULL	0	1	1	1335#
THOMAS, G	TYROS	0	1	0	1491	WEITZ, R	EXMPL	0	0	0	1682C
THOMAS, J	CHRGR	0	1	0	1455C	WELTER, P	SEARS	0	0	1	1642#
THOMPSON, R	FLPRO	0	0	0	1063	WENTLING, C	AMCRP	1	1	1	1649C
TSEITLIN, E	MTRLA	0	0	0	0000?	WEST, R	MTRLA	0	0	0	1447#
TURNER, K	PSTOF	1	0	0	1559	WHITE, H	JCASE	1	1	0	1596
TYREE, D	RADIO	0	1	0	1475*	WHITED, W	MDCON	0	2	0	1829
UNDERWOOD, W	WHEAT	1	1	1	2019C	WHITSITT, S	AWEST	0	0	0	1504*
VALDEZ, C	MTRLA	0	0	0	0000?	WILLIAMS, A	ROAD	0	0	0	0000?
VAN MEER, J	KEMPR	1	1	0	2007	WILLIAMS, J	RAIL	0	0	0	0000?
VAN METRE, R	SEARS	1	0	0	0000?	WILSON, A	CTA	1	1	0	1590
VAN OTRIVE, R	CTA	0	1	0	1092#	WILSON, M	SEARS	0	0	0	1293#
VAN ZILE, C	UOP	1	2	0	1382*	WONG, KK	NORTH	0	1	0	0000?
VANDECOTTE, M	UOP	2	1	0	0000?	WONG, P	EXMPL	0	0	0	2231C
VENEGAS, B	HULL	0	1	0	0000?	YOUNG, R	HULL	0	1	1	1396*
VERIVE, J	AWEST	0	0	0	1615*	ZEIDEL, J	MERC	0	0	0	1947
VICK, H	MTRLA	0	0	0	1516	ZOELLNER, J	CONBK	3	0	0	1361C
VIGANTS, A	NORTH	0	0	1	1596	ZUNGOLO, J	CRT	0	0	0	0000?
WACHTEL, H	COLUM	2	0	0	2230						

? - UNRATED

- 5 TO 9 RATED GAMES

* - 10 TO 24 RATED GAMES

C - CENTURY CLUB MEMBER

D - DOUBLE CENTURION

T - TRIPLE CENTURION

Q - QUAD CENTURION