

Chicago Industrial Chess League

Bulletin No.5, Vol. 38
February 1995

INSIDE THIS ISSUE:

 **2 Squares Column** by Marv Cox


 **Snapshots**

 **Games**

 **The Bookshelf** by Duane Satterlee

 **Division cross tables**

 **Ratings Chairman Report**

 **-NEED INPUT!** To make the CICL bulletin even better we are looking for anyone interested in submitting **articles** or **games**. If you are interested, call or write to the bulletin editor.

CICL OFFICERS

As of February 1995

President: James Hodina
718 Central Park Ave.
Flossmoor, IL 60422
W:(708) 990-6115 H:(708) 799-5571

Secretary: Anthony Jasaitis
P.O. Box 664
Bedford Park, IL 60499-0664
W:(708) 406-6420

Treasurer: Wesley K. Underwood
207 S. Dorchester Ave.
Wheaton, IL 60187
W:(708) 752-5127 H:(708) 462-0393

Ratings : Charles Ward
Chairman: 615 S. Lincoln
Hinsdale, IL 60521
W:(708) 979-4599 H:(708) 325-3885
(708) 979-8451 F

Production: Marty Franek
Circulation: 9044 S. 51st Ave
Oak Lawn, IL 60453-0397
W:(312) 353-0397 H:(708) 636-3714

East : Keith Kostecka
Division : Columbia College
Chairman: Chicago, IL 60605-1996
W:(312) 663-1600 ext. 182

Near West: Satish L. Kale
Division : JI Case
Chairman: 7 South 600 County Line Rd
Hinsdale, IL 60521
W:(708) 887-2372 H:(708) 325-5253

Far West : Irwin Gaines
Division : Fermilab - MS 127
Chairman: P.O. Box 500
Batavia, IL 60510
W:(708) 840-4022

North : Ruben Reyes
Division : 2019 W. Leland Ave.
Chairman: Chicago, IL 60625-1513
W:(708) 286-0758 H:(312) 334-5462
F (312) 769-0311

Bulletin Editor: See North Division
Chairman

Banquet & Publicity : Todd J. Dufresne
2115 S. Finley
Chairman: Apt 216
Lombard, IL 60148
W:(708) 887-3771 or 2049
H:(708) 916-4677

SNAPSHOTS

One of the most intriguing positions from the 1993 playoffs was this one from the board 1 encounter between

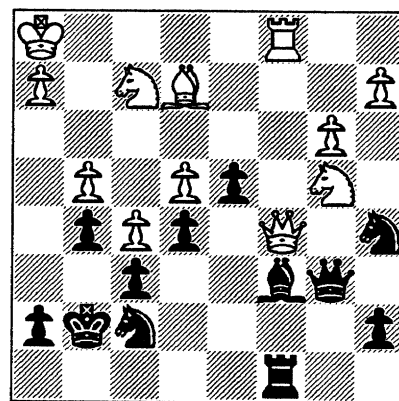
Bell Labs Dragons Frank Tegel and Motorola's Igor Melnikov in round 3. (see diagram right)

There's no way, it seems, that White could lose this position in just 5 short moves.

Yet, believe it or not, White's game unravels quickly as follows:

36.Nb4 Qb6 37.Rc1
(There seems nothing wrong with this move because White's simply doing what normally

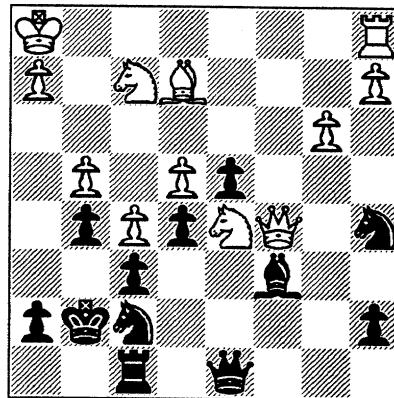
needs to be done: maintain control of the c-file). But Melnikov now comes up with a shocker: **37....Rc8!!** (see diagram below). What a shot. The threat's **38...Bxe4+** followed by **39...Rxc5**, and there just doesn't appear to be any defense against it.



In diagram right (taken from the 1993 Tier 2 playoffs) Black's in good shape.

After **14...Ng4 15. h3 Ne5** Black's game is looking good as his Knight has reached an excellent outpost at e5. Then came **16. Bh6 Bh8? 17. f4**. Black's Knight is trapped. White won the game eleven moves later.

F. Tegel (White)

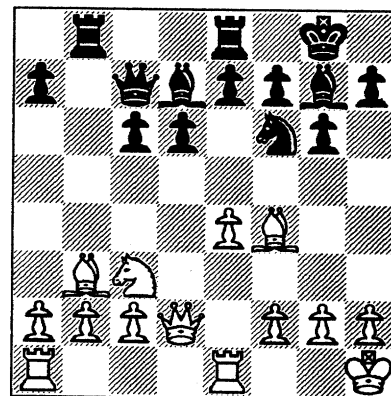


I. Melnikov (Black)
After **35...B(d7)c6**

White tried **38.Qxb6** but after **38...Bxe4+ 39.Nxe4 Rxc1+ 40.Kg2 axb6** White was down the exchange and a pawn.

Truly, a remarkable Rook move. In one fell swoop it wins the game.

After **14.Qd2**



GAMES

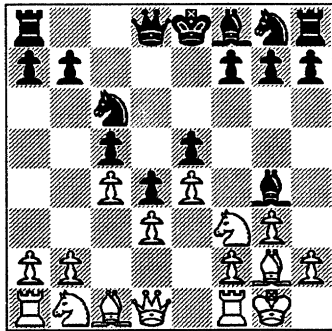
In this game submitted for the Best Attack award, White cleverly takes the upper hand in the opening with maneuvers designed to keep the Black King in the center. Pressured on several points, Black opts for an active defense, giving up the b-pawn and castling privileges (0-0-0) in the process. The strategy seems to work as Black gets to threaten mate in three (...Rxe6, ...Qf2+ and ...Qh2++). In the ensuing play, however, Black miscalcates, and that's all White needs to nail the point.

King's Indian (Colors Reversed)

WHITE: R. Buchner (2129)
BLACK: I. Melnikov (2200)

Royals vs. Motorola

1. g3 d5 2. g3 c5 3. g2 c6
4. 0-0 e5 5. c4 d4 6. d3 g4 7. e4



7... dxe3 e.p.

Allowing White to have the Czech Benoni (colors reversed) with 7... Qd7 offers interesting possibilities, particularly since White has the KB in a Modern Benoni setup.

8. xe3 g6 9. e1 !

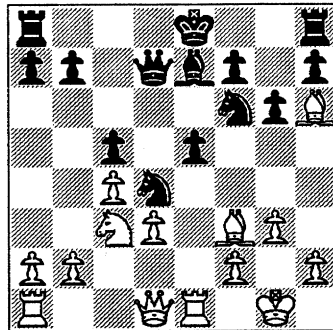
Well played. White puts pressure immediately on Black's King along the e-file.

9... e7

White's success in the opening is represented by this move which has compelled Black to forsake all ideas invoked by 8... g6 .

9... b6 looks playable because 10. Qa4 is met by 10... Bd7 and 10. h3 Bxf3 11. Bxf3 (or 11. Qxf3) by 11... Rc8 . But combinations based upon Black's King being in the direct line of fire of the White Rook may just be lurking around ready to be sprung at a moment's notice. For example, 9... b6 10. d4 cxd4 11. Bxd4 Nxd4 12. Rxe5+ and 13. Qxd4 wins a pawn.

10. c3 f6 11. h6! d7 12. a4 xf3 13. xf3 d4 14. d1



14... f5

Black opts for an active game.

15. xb7 d8

If 15... Rb8 then 16. Be4 when Black doesn't have time to regain material via ... Rxb2 as Black's Q is forced to move away.

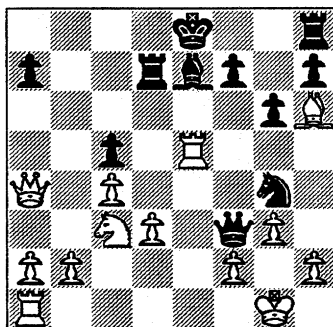
16. a4+ d7 17. c6

If 17. Bg7 then 17... Ng5 , threatening mate in two (18... Qxf2+ and 19... Qxh2++) gives Black good counterplay.

17... f3+ 18. xf3 xf3 19. xe5

White elects to pry open the e-file for the attack at the cost of the exchange.

19... g4

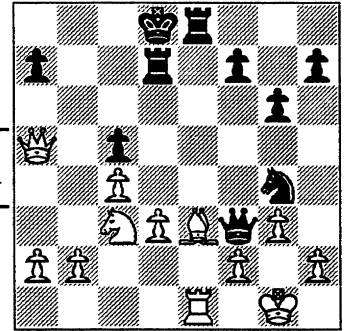


White's next move is forced because of

the threats: of mate in 2 (... Qxf2+ and ... Qxh2++) and... Nxh6 and ... Nxe5 .

20. xe7+ xe7 21. e1+ d8
22. e3 e8 23. a5+

Before going back to fend off a threatened mate in two, White attempts to improve his position first via checks to cause Black to interpose with the Rook: 23... Ke8 , 24. Qa6+ (not 24. Qxc5+ Rc7 25. Qd5 Rxe3 26. Qxf3 Rxf3 when Black's a rook up) 24... Rb7 (not 24... Kb8? because of 25. Bf4+)



23... c7? 24. d5

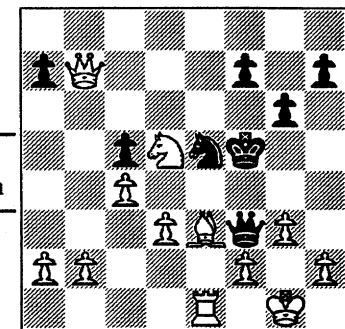
White is prompt and quick to avail of the slightest opportunity provided him to deal a fatal blow.

The threat of mate in one stops Black's intended ... Rxe3 dead in its tracks.

24... ee7 25. xe7 d7 26. d5 b7 27. a4+ e6 28. c6+ f5 29. xb7

It's mate in 7 after: 29. Ne7+ Rxe7 (else mate in 2: 29... Ke5 30. d4+ cxd4 31. Bf4++) 30. Qxf3+ Ke6 (or 30... Ke5 31. Bxc5 Ne3 32. Rxe3++) 31. Bxc5+ Ne5 (or 31... Kd7 32. Rxe7+ and 33. Qa8++) 32. Rxe5+ Kxe7 33. Qd5+ Kf6 34. Bd5+ Re5 36. Qxe5++

29.. e5 1-0



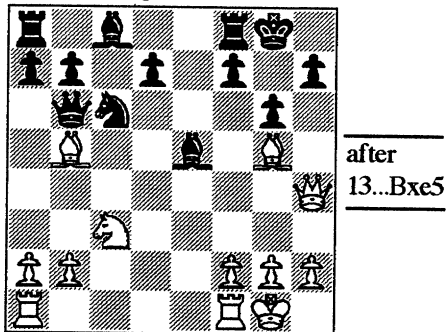
It's mate in four: 30. Qc8+ Nd7 31. Qxd7+ Ke5 32. Bxc5+ Qe2 33. Rxe2++ .

The following abbreviated game has an eye-catching Queen sac which completely destroys an intended counter to a counter combination.

Sicilian

WHITE: J. Polgar (Hungary)
BLACK: P. Angelova (Bulgaria)
28th Olympiad, Greece 1988

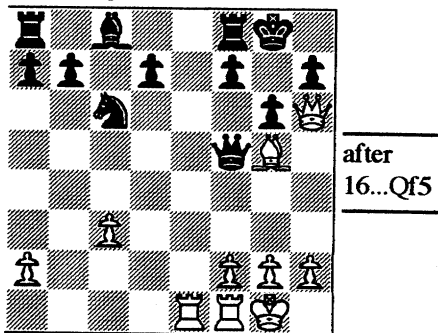
1. e4 c5 2. Nf3 Nc6 3. Bb5 g6 4. 0-0 Bg7 5. c3 e5 6. d4 exd4 7. cxd4 Nxd4 8. Nxd4 cxd4 9. e5 Ne7 10. Bg5 0-0 11. Qxd4 Nc6 12. Qh4 Qb6 13. Nc3 Bxe5



Black threatens to win a piece with 14... Bxc3 followed by 15.Qxb5.

14. Rae1 Bxc3 15. bxc3 Qxb5 16. Qh6! Qf5

Stops the mating combination 17. Bf6 and 18.Qg7++ .



17. Qxf8+!! 1-0

Only now is the significance of White's 14th (14. Rae1) move revealed.

Mate in two is now forced: 7... Kxf8 18. Bh6+ Kg8 19. Re8++

Kasparov's King-walk (14... Ke7, 15...Kf6) in a complicated line of the Slav Defense in this oldie of a game is worthwhile repeating if you've already seen it before. The sheer audacity and highly original way of "castling"

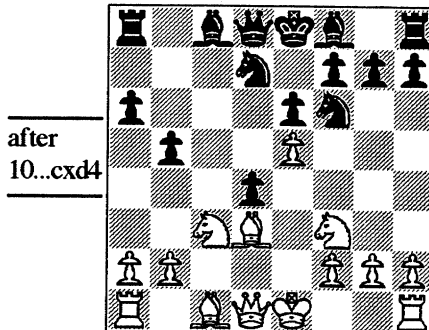
into the square f6 is just amazing.

Slav

WHITE: GM Anthony Miles
BLACK: GM Gary Kasparov

Exhibition Match, 6th Game
Basel, 1986

1. d4 d5 2. c4 c6 3. Nc3 Nf6 4. e3 e6 5. Nf3 Nbd7 6. Bd3 dxc4 7. Bxc4 b5 8. Bd3 a6 9. e4 c5 10. e5 cxd4



11. Nxb5 Ng4

The line with 11...Nxe5 is unclear. So is this one.

12. Qa4

Without in-depth research material, one can be led to assume that White's last move was a prepared variation.

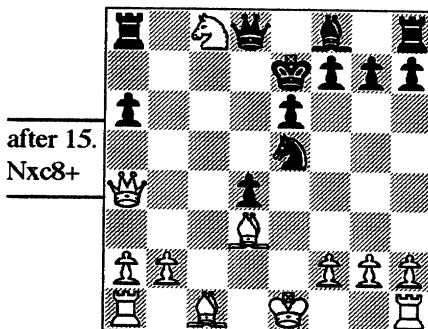
12...Ngxe5

The safer choice would have been 12... Bb7. But Kasparov here has concocted a nice surprise even if this game was merely in an exhibition match.

13. Nxe5 Nxe5 14. Nd6+

White wins the exchange on 14. Nc7+ Ke7 15. Nxa8 but would be saddled with an exposed King in the center of the board after 14...Nxe3+ 16.Kd2.

14...Ke7 15. Nxc8+



15...Kf6

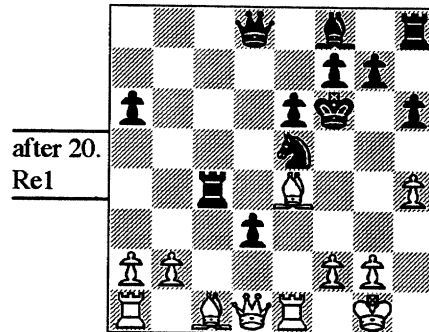
Black maximizes the scope of his pieces

first as the piece can be regained no matter what. If now 16.Bxa6, then 16...Nd3+ and 17...Nc5 picks up the Bishop at a6 while still keeping the Knight at c8 marooned.

16. Be4 Rxc8 17. h4 h6 18. 0-0

White sees that after 18. Bg5+ hxg5 19. hxg5+ Kxg5 20. Rxa8 Black has 20... Rc4 which threatens 21...Bb4+ and 22...Qxh8.

18...Rc4 19. Qd1 d3 20. Re1

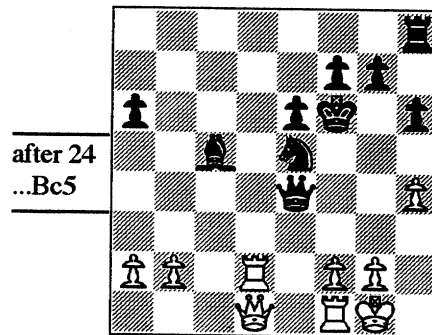


Better 20.Bf3.

20...Rxc8! 1 21. Rxc1 d2 22. Rf1 Qd4 23. Rc2

Forced. Otherwise 23...dxc8=Q.

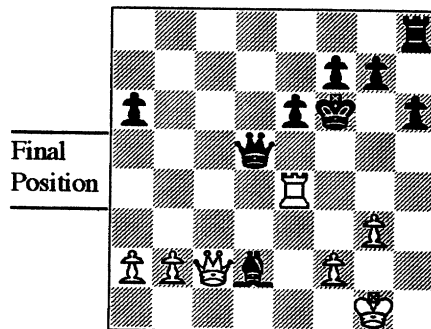
23...Qxe4 24. Rxd2 Bc5



25. Re1

This doesn't turn out well for White. 25. Rc2 and only then 26.Re1 may be better.

25...Qxh4 26. Qc2 Bb4 27. Rxe5 Bxd2 28. g3 Qd4 29. Re4 Qd5 1-0



Motorola's Cliff Wallach outsmarts Brad Crawford in a tactical melee.

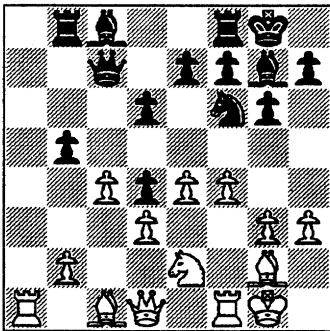
Watch how Black daringly and unafraid looks straight at the barrel of a masked Bishop, before playing 17... dxe5.

English

WHITE: B. Crawford (2221)
BLACK: C. Wallach (2060)

Round 9, 1994 US Open

1. c4 ♘f6 2. g3 g6 3. ♙g2 ♙g7
4. ♖c3 0-0 5. e4 d6 6. ♗ge2 c5
7. d3 ♗c6 8. 0-0 a6 9. h3 ♞b8
10. f4 ♚c7 11. a4 ♗d4 12. ♗xd4
cxd4 13. ♗e2 b5 14. axb5 axb5



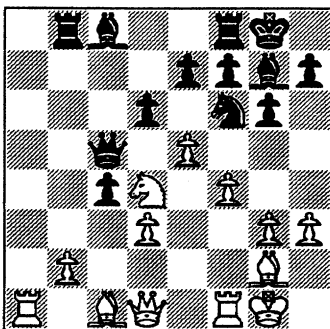
after
14...axb5

15. ♗xd4?

A tactical solution regarding the pawn at d4 fails completely here against an excellent tactician as Wallach. A strategy that could be tried here would be to compel Black to play ...e5.

At this time, there seems to be no need to hurry to remove the pawn at d4 from the board. That's because that pawn puts a limit to the scope of the g7-Bishop along the a1-h8 diagonal anyway.

15...bxc4 16. e5 ♚c5



after
16...Qc5

Well played. This in-between move wins at least a pawn.

17. ♗e3 dxe5

This pawn capture with the barrel of a White Bishop pointed straight right up Black's Queen's face symbolizes the extent of Black's domination of the board.

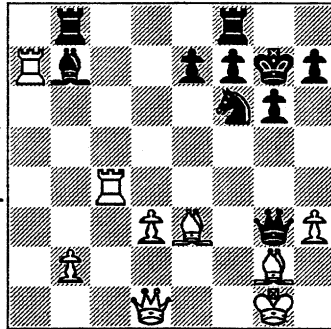
18. ♗f5 ♚c7 19. ♞a7 ♗b7 20. ♗xg7 exf4

Black relentlessly keeps the tactical pressure up.

21. ♞xf4 ♗xg7 22. ♞xc4

Safer 22.dxc4.

- 22... ♗xg3

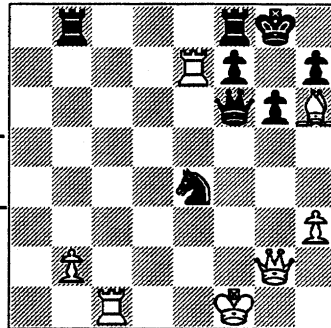


after 22.
...Qxg3

23. ♗d2

White has no time for 23.Bf4 because of 23...Qxg2+-. The idea 23.Rxb7 Rxb7 24.Bf4 followed by Bxb7 is doomed from the very start because of 23...Qxe3+. Nevertheless, after 24. Kh2 Qe5+ 26. Kh1 Rxb7 27.Bxb7 Qb6 28.Bg2 Qxb2, Black wins another pawn.

- 23... ♗xg2 24. ♗h6+ ♙g8 25. ♗xg2 ♚xd3 26. ♞c1 ♗e4 27. ♞xe7 ♗d4+ 28. ♚f1 ♗f6+ 0-1



Final
Position

Howard K. Wachtel, Columbia College's top board player, had his fine game played in the US Open.

White undertakes a minority

attack and then shifts pressure into another location on the board to score a kill.

Bogo-Indian

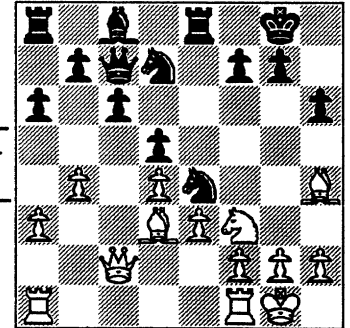
WHITE: H. Wachtel (2220)
BLACK: A. Mengelis (1900)

Round 8, 1994 US Open

1. d4 ♗f6 2. c4 e6 3. ♗f3 ♗b4+
4. ♗bd2 0-0 5. a3 ♗xd2+ 6. ♗xd2 d5
7. ♗c2

Preventing ...c5 before anything else.

- 7... ♗bd7 8. cxd5 exd5 9. ♗g5
c6 10. e3 h6 11. ♗h4 ♞e8 12.
♗d3 ♚c7 13. b4 a6 14. 0-0 ♗e4

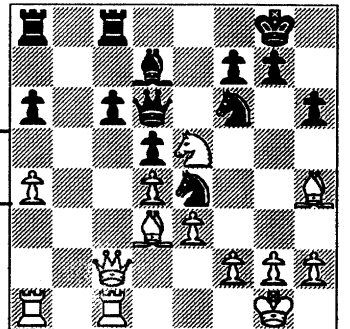


after 14.
...Ne4

15. a4

White has deftly managed to be several steps ahead with his minority attack.

- 15... ♗df6 16. b5 ♗d7 17. bxa6
bxa6 18. ♞fc1 ♚d6 19. ♗e5
♞ec8



after 19
... Rec8

Awkward though it may be, Black avoids losing material by 19...g5 20. Bg3 Nxg3. 21. hxg3 and only now 21...Rec8.

20. ♗xd7 ♗xd7

20...Nxd7 obviously loses a pawn: 21. Bxe4 dxe4 22.Qxe4.

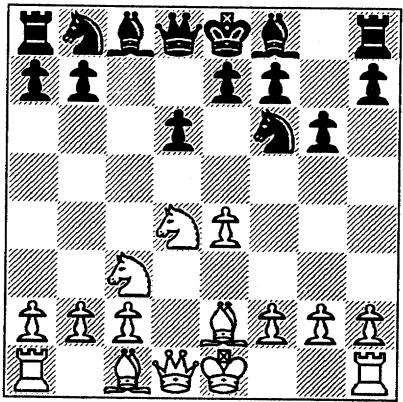
21. ♗xf6 ♗xf6 22. ♗f5 1-0

The following is a splendid demonstration of how superb opening strategy can translate into devastating advantage in the middlegame.

Sicilian

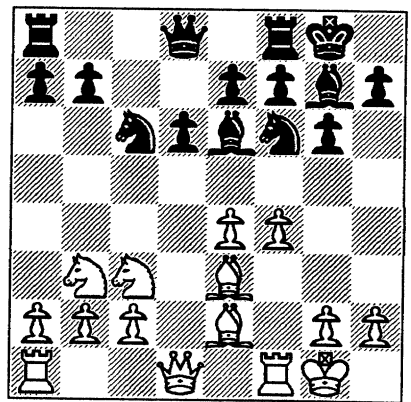
WHITE: C. Wallach (2060)
BLACK: A. Losoff (1990)
1993 Playoffs; Motorola-CRT

- 1. e4 c5 2. ♘f3 d6 3. d4 cxd4 4. ♘xd4 ♘f6 5. ♘c3 g6 6. ♘e2



A welcome change from the Yugoslav. The Classical variation may not look as menacing as the Yugoslav but, as we'll soon see in this game, it has deadly venom.

- 6... ♘g7 7. ♘e3 ♘c6 8. ♘b3 0-0 9. 0-0 ♘e6 10. f4



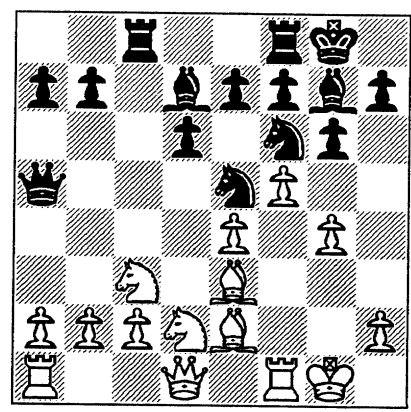
10... ♞c8

There may be two approaches to counter White's attack involving the moves f5 and g4.

One could be to set Black up to be able to play ...Bc4: 10...Na5 (11.f5 Bc4 12.Bd3! - R. Spielmann or 11.f5 Bc4 12.e5 Bxe2 13.Qxe2 dxe5 14.Rad1 Qc7 15. Nb5 Qc4).

Another may be to shoot for a timely ...d5 when White has committed himself with g4. For example, 10...Qc8 11.h3 Rd8 12.g4 d5

- 11. f5 ♘d7 12. g4 ♘e5 13. ♘d2 ♞a5



White's in complete command of the board, including of all things the square c4 which Black normally targets for occupation.

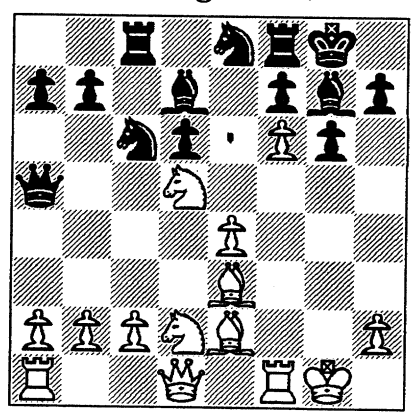
14. g5

Stops Black's threatened ...d5 dead in its tracks.

- 14... ♘e8 15. ♘d5 ♘c6

The retreat 15...Qd8 brings another unit to defend the beleaguered square f6.

- 16. f6 exf6 17. gxf6

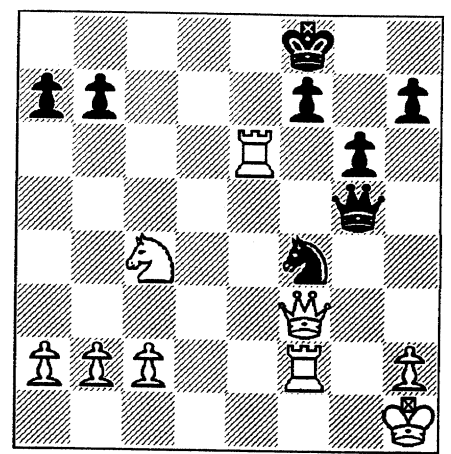


17... ♘xf6

If 17...Bh8 then 18.Ne7+ Nxe7 19.fxe7 wins a Rook. However, all's but over now but the shouting.

- 18. ♘xf6+ ♘xf6 19. ♙xf6 ♞e5 20. ♙f3 ♘g4 21. ♙f2 ♘h3 22. ♘c4 ♘b4 23. ♘h6 d5 24. ♘xf8 ♞g5+ 25. ♙h1 ♘xf8 26. ♙f3 ♘e6 27. exd5 ♘xd5 28. ♙e1

- ♞xc4 29. ♘xc4 ♘f4 30. ♙xe6 1-0



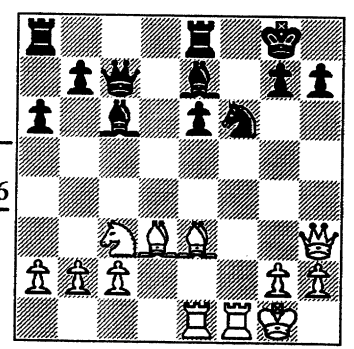
Final Position

Here's an oldie (played in 1975) from a match between an East Division team against a defunct team from R.R. Donnelley.

Sicilian

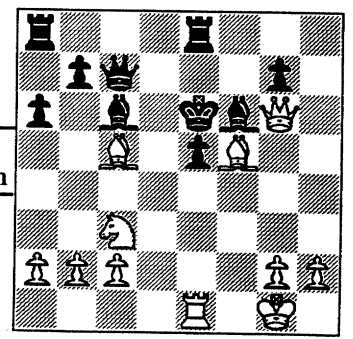
BLACK: G. Dobbins (1699)

- 1. e4 c5 2. Nf3 d6 3. d4 cxd4 4. Nxd4 Nf6 5. Nc3 a6 6. Bd3 e6 7. 0-0 Be7 8. Be3 Nc6 9. f4 0-0 10. Qf3 Bd7 11. Rae1 Qc7 12. Qg3 Rfe8 13. e5 dxe5 14. Nxc6 Bxc6 15. fxe5 Nd7 16. Qh3 f5 17. exf6 Nxf6



After 17...Nxf6

- 18. Rxf6 Bxf6 19. Qxh7+ Kf7 20. Be5 e5 21. Qg6+ Ke6 22. Bf5++



Final Position

THE BOOKSHELF - Reviews by Duane Satterlee for the CICL

Train Like a Grandmaster

by Alexander Kotov (G.M.) Batsford Books

"In chess as in any other form of sport the guarantee of future success is a properly laid down training program. There are many habits which have to be inculcated such as the ability to calculate variations, the correct assessment of position, the accurate realization of advantage, the correct psychological choice of continuation. All these can be, and must be, developed by special training" (Dvoretsky)."

Alexander Kotov worked closely with World Champion Botvinnik and many other top Soviet Union grandmasters. He was an insider in the Soviet Union Chess organization, working as a teacher and writer. He has stories of the current top players developing, picturing Karpov as a boy having tears in his eyes when he got poor positions playing a training game against Botvinnik.

"Every great master will find it useful to have his own theory on the openings, which he himself knows, a theory which is closely linked with plans for the middle game" - Botvinnik" This main reservoir of information is kept secret in the homes of the grandmasters. Botvinnik ran a training school where Karpov and Kasparov were students. The school was part chess camp and part correspondence school.

You think child prodigies simply have the knack and develop themselves by playing a lot of chess? Think again! The leading Soviet players had trainers, coaches, seconds and access to research staff. Additional study is available through more newspaper contests and quizzes than we see in the United States. Also video training was employed. Chess clubs and other organizations feed information about foreign player's openings and games to their club members. Today, they use computers with ChessBase data to assist in that work.

A basic key to improving your game is

review and annotation of the games you play. Kotov illustrates Botvinnik refusing to help a young man who had not been practicing annotating his games, telling him to start doing so immediately, and he would see him in a couple of years. *"No matter how hard you try... you will always figure things out better on your own than with the best helpers"*, says Kotov.

Annotations should contain descriptive notes, analytical comments, positional comments, and a synthesis of the entire game. The annotations should be free of unsubstantiated allegations, vague generalizations, and justification using long hypothetical variations.

Content of the book includes some history of chess, a chapter on how the opening is studied, another on objectivity in the ending, a precise approach to study of the middle game, how to annotate games, and some philosophy of chess. It finishes with a description of some Soviet schools and games of some well known students.

The book is full of pithy comments by Kotov as well as quotes from those he considers authorities. It contains games and playing positions with annotations illustrating the chapter points throughout.

He manages to weave considerable chess theory into the book with concise observations: *"The main attention must be focussed on the middle game..." "All middle game positions can be divided into two main groups: those resolved by intuitive decisions, and those resolved by logic."* Logical games are subdivided into *"logical positions"*, *"calculable positions"*, and *"tacking to and fro."* Each is illustrated.

This 124 p. book was purchased from APCT, run by Jim Warren and his wife, for \$22.95. You can inquire about their large book selection at (708)663-0688.

The 2 Squares Column

by Marvin Cox

"If two (or more) squares are attacked more times than they are defended they may fall"

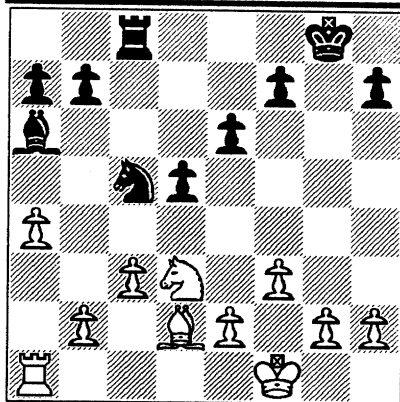
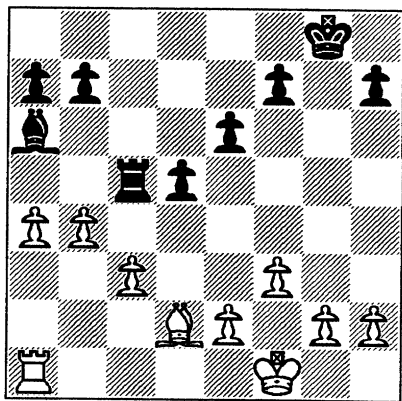


Diagram 83

In diagram 83 above the black bishop could be hemmed in and captured if the white pawn on b4 had an extra tempo. An immediate b4 is worthless because black plays ... ♗xd3 and then frees his bishop. However, if white first plays ♗xc5 black loses a tempo in recapturing with the rook. b4 (see diagram below) now attacks the undefended rook and then traps the black bishop.



after 1. b4

White could pick up a pawn by ♗xc5 in diagram 84. But the bishop on the doubly masked diagonal against the black king is too powerful to be wasted for a mere pawn gain. Better is to retain the bishop and use the e1 rook to start to clear the diagonal.

Consider a 3-squares attack against c8, d6 and e5. White has 4 attackers, his two rooks and two bishops. Black has only three guards, his king, queen and c6 pawn. The knight on d6 is not a guard because it is on one of the three squares under attack.

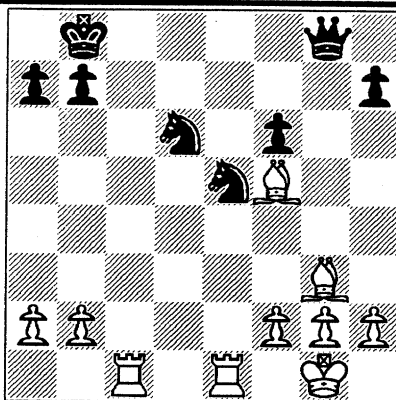


Diagram 84

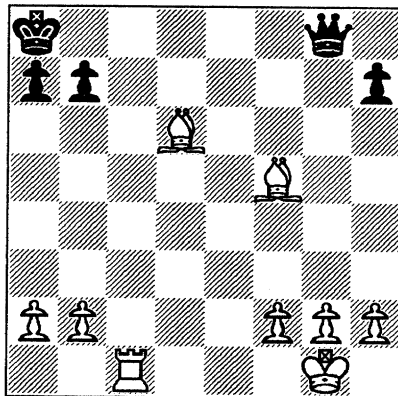
1. ♖xe5

Threatening 2. ♖e8+ ♔xe8 3. ♖c8+ ♔xc8 4. ♗xd6 or 2. ♖c5 ♔a8 3. ♖c8 so black must play...

1.... ♗xc5 2. ♗xe5

White now is threatening a two squares attack against c8 and d6. Three attacks and only two guards. The black knight does not count as a guard because it is on one of the squares under attack. Black must play...

2... ♔a8. 3. ♗xd6



after 3. ♗xd6

Note that white did not play for quick material gain but did play to set up a three squares attack. Again he did not play for material gain but played to simplify to a two squares attack. Then he simplified to a one square attack against c8 by removing the knight.

If a line and another square are attacked more times than they are defended they may fall. (Diag. 85)

Black has a glaring weakness along

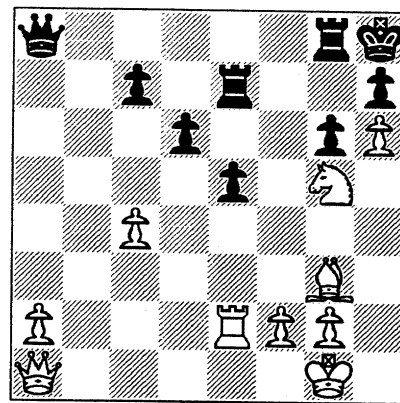


Diagram 85

the a1-h8 line. The f7 square is also weak. White has 5 attacks against the a1-h8 line and f7 square, namely the queen on g3, rook on e2, and queen on a1. Black has only three guards for that line and square pair, namely the king, rook on e2 and pawn on d6. Five attacks and only three guards. White should have an overwhelming attack if he can find it. The first thing we look at is to sac the rook at e5 in order to open the line and to preserve the bishop to use the line. But, black can weasel out of it. So we look at the bishop sac at e5 instead.

1. ♗xe5 dxex5

Black's rook on e7 is overloaded trying to protect both the a1-h8 line and f7.

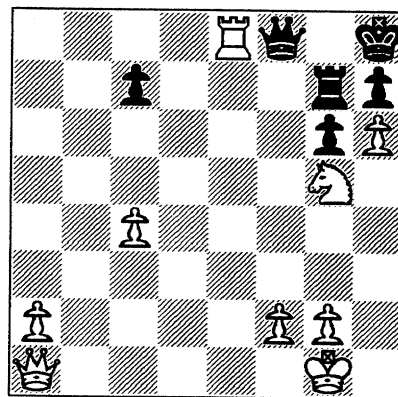
2. ♖xe5 ♖gg7

Otherwise black's queen is lost.

3. ♖xe7 ♔f8

To protect g7.

4. ♖e8



after 4. ♖e8

FAR WEST DIVISION

TEAM	ROOKS	FERMI	ROYLS	TYROS	MDCON	DRGNS	WHEAT	Game Pts	Match Pts	Position SWISS	Game Pts	Match Pts
ROOKS		2	5	3.5	4	2.5	3	20	3.5			
FERMI	4		5	4.5	4	4	6	27.5	6			
ROYLS	1	1		5.5	2	4	5	18.5	3			
TYROS	2.5	1.5	0.5		5.5	2	4.5	16.5	2			
MDCON	2	2	4	0.5		1.5		10	1			
DRGNS	3.5	2	2	4	4.5		6	22.0	4			
WHEAT	3	0	1	1.5		0		5.5	0.5			

NORTH DIVISION

TEAM	MTRLA	NORTH	U.O.P.	SEARS	EXMPL	KEMPR	FLPRO	Game Pts	Match Pts	Position SWISS	Game Pts	Match Pts
MTRLA		3.5	3	3	4.5	4	5	23	5			
NORTH	2.5		3	3	4	4.5	5.5	22.5	4			
U.O.P.	3	3		3		6	5	20	3.5			
SEARS	3	3	3		3.5	2	6	20.5	3.5			
EXMPL	1.5	2		2.5		5.5	6	17.5	2			
KEMPR	2	1.5	0	4	.5		4.5	12.5	1			
FLPRO	1	.5	1	0	0	1.5		4	0			

NEAR WEST DIVISION

TEAM	KNIGHT	CHRGR	UNILV	RADIO	JCASE	Game Pts	Match Pts	KNIGHT	CHRGR	UNILV	RADIO	JCASE	Game Pts	Match Pts
KNIGHT		2.5	6		5.5	14	2.0					3.5	17.5	3.0
CHRGR	3.5		5.5		3	12	2.5					3.5	15.5	3.5
UNILV	0	.5			1.5	2.0	0						2	0
RADIO														
JCASE	.5	3	4.5			8.0	1.5	2.5	2.5				13	1.5

EAST DIVISION

TEAM	PSTOF	COLUM	ALUMN	CRT	AMCRP	CTA	HULL	MERC	BAI	Game Pts	Match Pts	Rnd 10	Rnd 11	Rnd 12	Game Pts	Match Pts
PSTOF		1.5	3	3.5	4	4.5	4	5	3	28.5	6.5					
COLUM	4.5		3	4.5	3.5	6	5.5	4	3	34	7					
ALUMN	3	3		3.5	4	5	5.5	5.5	3	32.5	6.5					
CRT	2.5	1.5	2.5		3.5		6	6		22	3					
AMCRP	2	2.5	2	2.5		4			4	17	2					
CTA	1.5	0	1		2		6	2	2	14.5	1.5					
HULL	2	.5	.5	0		0		3	0	6	.5					
MERC	0	2	.5	0		2	3		2	9.5	.5					
BAI	2	3	3		2	4	6	4		24	4					

Ratings Chairman's Report
February 5, 1995

A & B Radio Drops From CICL

A& B Radio, a long-time member of the CICL, dropped out after completing only its first two matches of the season. By a decision of the Near West team captains, the results of those two matches have been removed from the standings. It was also decided that instead of treating the remaining scheduled A & B matches as byes, the two teams that would otherwise have byes in the same round will play each other. However, this arrangement would have pitted some teams more often against the perennial powerhouse Argonne Knights. It was decided that these additional matches will be played as exhibitions: They will not count for divisional standings, but will count for ratings and toward Century Club awards.

Team Name Change

I have been informed that the Continental Bank team in the East Division will be known as Bank America Illinois from now on. The name change will show up immediately in the standings and match results; however, for technical reasons the individual players will continue to have their team affiliation shown as CONBK in the ratings list until the end of this season. This will be changed to a new team abbreviation after the end of the season.

Protested Match

The results of the CRT-Alumni match played in the East Division have been protested due to a dispute regarding the board 5 game. I have entered the result as reported; however if the Division Chairman informs me that the protest has been upheld I will make the appropriate changes to the standings and to the involved players' ratings.

-- Charlie Ward
CICL Ratings Chairman

NORTH DIVISION 02-05-1995

TEAM NAME	W	L	D	GAME	MATCH	PCT
				POINTS	POINTS	
MOTOROLA	4	0	1	20.0	4.5	0.900
NORTHROP CORP.	3	1	2	22.5	4.0	0.667
UOP PROCESS DIV.	2	0	3	20.0	3.5	0.700
SEARS	2	1	2	17.5	3.0	0.600
EXEMPLARS	1	3	0	11.5	1.0	0.250
KEMPER INSURANCE	1	4	0	8.0	1.0	0.200
FEL-PRO	0	4	0	2.5	0.0	0.000

EAST DIVISION 02-05-1995

TEAM NAME	W	L	D	GAME	MATCH	PCT
				POINTS	POINTS	
CHICAGO POST OFFICE	6	1	0	25.5	6.0	0.857
COLUMBIA COLLEGE	4	0	2	24.5	5.0	0.833
ALUMNI CENTRAL	4	0	2	24.0	5.0	0.833
CHICAGO RES. & TRDG.	3	3	0	22.0	3.0	0.500
BANK AMERICA ILLINOIS	1	2	2	14.0	2.0	0.400
CTA	1	3	1	10.5	1.5	0.300
AMOCO CORP.	1	4	0	13.0	1.0	0.200
CHICAGO MERC. EXCH.	0	3	1	4.0	0.5	0.125
HULL TRADING CO.	0	4	0	2.5	0.0	0.000

NEAR WEST DIVISION 02-05-1995

TEAM NAME	W	L	D	GAME	MATCH	PCT
				POINTS	POINTS	
AT&T CHARGERS	3	0	1	15.5	3.5	0.875
ARGONNE KNIGHTS	3	1	0	17.5	3.0	0.750
J. I. CASE	1	3	1	13.0	1.5	0.300
UNILEVER	0	3	0	2.0	0.0	0.000
A & B RADIO	0	0	0	0.0	0.0	0.000

FAR WEST DIVISION 02-05-1995

TEAM NAME	W	L	D	GAME	MATCH	PCT
				POINTS	POINTS	
FERMILAB	6	0	0	27.5	6.0	1.000
AT&T DRAGONS	4	2	0	22.0	4.0	0.667
ARGONNE ROOKS	3	2	1	20.0	3.5	0.583
AT&T ROYALS	3	3	0	18.5	3.0	0.500
AT&T TYROS	2	4	0	16.5	2.0	0.333
MIDCON CORP	1	4	0	10.0	1.0	0.200
WHEATON COLLEGE	0	4	1	5.5	0.5	0.100

10-NOV-94 AMOCO CORP.
ROUND 4

2 CHICAGO POST OFFICE 4

BD	RATINGS	SCORE		RATINGS	SCORE
1 HODINA, J	2125-17	0	INUMERABLE, F	2211 17	1
2 SMILEY, R	2016-27	0	MARCOWKA, R	1939 18	1
3 ATKINSON, J	1733 30	1	ALLEN, H	1858-30	0
4 WENTLING, C	1649 3	.5	COOPER, W	1682 -3	.5
5 KRULL, E	1443 6	.5	CARTER, L	1528 -6	.5
6 POMA, D	1325-12	0	HOWARD, W	1503 12	1

15-DEC-94 ALUMNI CENTRAL
ROUND 5

4 AMOCO CORP. 2

BD	RATINGS	SCORE		RATINGS	SCORE
1 CZERNIECKI, A	2141 0	0F	HODINA, J	2108 0	1F
2 FRANEK, M	1825-13	0	SMILEY, R	1989 13	1
3 BRONFELD, A	1833 18	1	ATKINSON, J	1763-18	0
4 FABIJONAS, R	1760 10	1	WENTLING, C	1652-16	0
5 LITVINAS, A	1654 4	1	POMA, D	1313 -6	0
6 DAVIDSON, M	1651 4	1	BRITT-WEBB, E	1269 -4	0

12-JAN-95 CTA
ROUND 7

0 COLUMBIA COLLEGE 6

BD	RATINGS	SCORE		RATINGS	SCORE
1 MATTHEWS, J	1759 0	0F	WACHTEL, H	2223 0	1F
2 WILSON, A	1590 -5	0	SANTIAGO, T	1945 5	1
3 JONES, M	1353 -4	0	PRATTS, M	1769 4	1
4 JACKSON, JJ	0 0	0F	HERNANDEZ, DD	1520 0	1F
5 CARTER, O	0 0	0	BURDICK, S	1610 0	1
6 STAPLES, M	0 0	0	MARTIN, K	1485 0	1

18-JAN-95 CHICAGO RES. & TRDG.
ROUND 8

2.5 ALUMNI CENTRAL 3.5

BD	RATINGS	SCORE		RATINGS	SCORE
1 JASAITIS, A	2181 -2	.5	CZERNIECKI, A	2141 2	.5
2 FRIESEMA, W	2117 0	1F	BRONFELD, A	1851 0	0F
3 LOSOFF, A	1887 18	1	FRANEK, M	1812-18	0
4 BARGERSTOCK, D	1826-26	0	FABIJONAS, R	1770 17	1
5 DENG, J	1584-18	0	LITVINAS, A	1658 12	1
6 BERNARD, D	1316 -6	0	DAVIDSON, M	1655 6	1

25-JAN-95 CHICAGO POST OFFICE
ROUND 7

3.5 CHICAGO RES. & TRDG. 2.5

BD	RATINGS	SCORE		RATINGS	SCORE
1 INUMERABLE, F	2228 19	1	JASAITIS, A	2179-13	0
2 MARCOWKA, R	1957 21	1	FRIESEMA, W	2117-32	0
3 ALLEN, H	1828 5	.5	LOSOFF, A	1905 -5	.5
4 PERAREN, E	1811-23	0	BARGERSTOCK, D	1800 23	1
5 COOPER, W	1679 15	1	DENG, J	1566-15	0
6 CARTER, L	1522-35	0	BERNARD, D	1310 35	1

06-DEC-94 AT&T ROYALS 5 WHEATON COLLEGE 1
 ROUND 5

BD	RATINGS	SCORE	RATINGS	SCORE
1 GUIO, J	2062 5	1	WALLIN, R	1719 -5 0
2 DOBROVOLNY, C	2009 0	0	JOSEPHSON, D	0 0 1
3 PEHAS, A	1946 0	1	BOSTICK, T	0 0 0
4 ROSLEY, D	1820 0	1	COPELAND, P	0 0 0
5 BLACKMON, E	1754 0	1	PENNINGTON, J	0 0 0
6 ANDERSON, CJ	1446 0	1	KERCSMER, J	0 0 0

05-JAN-95 MIDCON CORP 4 AT&T ROYALS 2
 ROUND 6

BD	RATINGS	SCORE	RATINGS	SCORE
1 CONNOR, P	2024 25	1	GUIO, J	2067-25 0
2 EGERTON, J	1920 28	1	DOBROVOLNY, C	2009-28 0
3 WHITED, W	1829-23	0	ROSLEY, D	1820 23 1
4 ROSENBERG, B	0 0	0	BLACKMON, E	1754 0 1
5 LORENZ, B	0 0	1	HAHNE, D	1580 0 0
6 HANSEN, B	0 0	1	LUSTRO, G	0 0 0
7 FERGUSON, K	0 0	0	KRUEGER, J	1343 0 1 (DRGNS)

17-JAN-95 WHEATON COLLEGE 0 FERMILAB 6
 ROUND 6

BD	RATINGS	SCORE	RATINGS	SCORE
1 JOSEPHSON, D	0 0	0	BEZZUBOV, V	2338 0 1
2 WALLIN, R	1714 -6	0	MOTTA, H	2029 6 1
3 BOSTICK, T	0 0	0	SPIEGEL, L	1990 0 1
4 MAYNARD, J	1375 -5	0	GAINES, I	1721 4 1
5 GIMPLE, R	0 0	0	HARRIS, R	1662 0 1
6 WEBER, J	0 0	0	PARA, A	1579 0 1

19-JAN-95 AT&T TYROS 2.5 ARGONNE ROOKS 3.5
 ROUND 7

BD	RATINGS	SCORE	RATINGS	SCORE
1 TAMEZ, I	2009 18	.5	LEVINE, D	2358-18 .5
2 STOLTZ, B	1986-13	0	SHEYNIN, S	2140 13 1
3 SHAFF, R	1532 -5	0	GREEN, D	1821 5 1
4 THOMAS, G	1469 36	1	MORRISON, J	1704-36 0
5 SMITH, BR	1489-12	0	DECMAN, S	1660 8 1
6 KARPIERZ, J	1147 36	1	BURBA, K	1395-24 0

26-JAN-95 AT&T DRAGONS 2 AT&T ROYALS 4
 ROUND 7

BD	RATINGS	SCORE	RATINGS	SCORE
1 TEGEL, F	2150 10	1	GUIO, J	2042-16 0
2 LUDWIG, T	2088-19	0	DOBROVOLNY, C	1981 29 1
3 DURKEE, D	1808 -9	0	PEHAS, A	1946 14 1
4 EUSTACE, D	1552 38	1	ROSLEY, D	1843-38 0
5 WARD, C	1539 -7	0	BLACKMON, E	1754 10 1
6 KRUEGER, J	1343 0	0	SALAMANCA, R	0 0 1
7 PHELPS, C	1250 -6	0	HAHNE, D	1580 6 1

04-JAN-95	FEL-PRO	.5	NORTHROP CORP.	5.5
ROUND 4				
	BD	RATINGS	SCORE	RATINGS SCORE
	1 HESS, B	1453 22	.5	GOLUMBOVSKI, P 2191-22 .5
	2 FELDMAN, A	1437 -1	0	DIAZ, P 2019 2 1
	3 NISHIMURA, K	1278 0	0F	CAIRONE, B 1836 0 1F
	4 KEEFE, E	1186 -5	0	VIGANTS, A 1560 5 1
	5 ASHBROOK, R	853 0	0F	MILLER, J 0 0 1F
	6 BAKER, B	1069-27	0	ELEK, G 1004 27 1
(NORTH)	7 CAIRONE, B	1836 0	1	MILLER, J 0 0 0

05-JAN-95	EXEMPLARS	1.5	MOTOROLA	4.5
ROUND 5				
	BD	RATINGS	SCORE	RATINGS SCORE
	1 BLOOM, B	2047-12	0	MELNIKOV, I 2214 12 1
	2 CREWSE, L	2027 5	.5	WALLACH, C 2096 -5 .5
	3 OSTERLUND, R	1907 29	1	SAMELSON, C 2016-20 0
	4 FRISKE, T	1881-30	0	FAHRENHOLTZ, S 1768 30 1
	5 BURIAN, D	1689-17	0	GONCHAROFF, N 1771 8 1
	6 WEITZ, R	1686-12	0	AUGSBURGER, L 1745 19 1
	7 SUERTH, F	1628-15	0	LESTER, M 1623 23 1
	8 BROTSOS, J	1545-21	0	GRYPARIS, J 1408 31 1
(MTRLA)	9 BARTUSIAK, P	0 0	0	VALDEZ, C 0 0 1
(MTRLA)	10 CATENA, J	0 0	0	LAWRENCE, P 0 0 1
(MTRLA)	11 LESTER, M	1646 0	1	TSEITLIN, E 0 0 0

16-JAN-95	NORTHROP CORP.	3	UOP PROCESS DIV.	3
ROUND 6				
	BD	RATINGS	SCORE	RATINGS SCORE
	1 JAKSTAS, K	2194 0	1F	STEVANOVIC, M 2217 0 0F
	2 GOLUMBOVSKI, P	2169 19	1	BUERGER, E 2120-13 0
	3 DIAZ, P	2021 29	1	BOLDINGH, E 2120-29 0
	4 CAIRONE, B	1836-28	0	SAHLI, E 1755 28 1
	5 VIGANTS, A	1565-13	0	MICKLICH, F 1717 9 1
	6 MILLER, J	0 0	0	SAJBEL, P 1686 0 1
	7 ELEK, G	1031 18	.5	VAN ZILE, C 1382-18 .5
	8 QUARTETTI, C	0 0	0	KATAOKA, N 0 0 1

17-JAN-95	MOTOROLA	4	KEMPER INSURANCE	2
ROUND 6				
	BD	RATINGS	SCORE	RATINGS SCORE
	1 MELNIKOV, I	2226-29	0	SIWEK, M 2131 19 1
	2 WALLACH, C	2091 0	0F	LEONG, G 1992 0 1F
	3 SAMELSON, C	1996 1	1	OLSEN, A 1461 -2 0
	4 GONCHAROFF, N	1779 2	1	LAMBIRIS, J 1433 -5 0
	5 AUGSBURGER, L	1764 0	1	POZNIAK, J 0 0 0
	6 LESTER, M	1646 0	1	GALKO, D 0 0 0
	7 CATENA, J	0 0	0	PAYTON, P 0 0 1
	8 BARTUSIAK, P	0 0	0	KAUFMAN, M 0 0 1
	9 PAWLUS, D	0 0	.5	HARDIN, L 0 0 .5
10	LAWRENCE, P	0 0	1	PAWLUS, D 0 0 0 (MTRLA)
11	MELNIKOV, N	0 0	1	SAMOYLOV, A 0 0 0 (MTRLA)

17-JAN-95 EXEMPLARS 2.5 SEARS 3.5
 ROUND 5

BD	RATINGS	SCORE	RATINGS	SCORE
1 WONG, P	2231-11	0	REYES, R	2323 11 1
2 BLOOM, B	2035-24	0	LATIMER, E	2015 16 1
3 OSTERLUND, R	1936 27	1	GOLLA, R	2001-18 0
4 FRISKE, T	1851 20	1	BROCKETT, M	1812-20 0
5 WEITZ, R	1674 2	.5	MILLER, TT	1725 -4 .5
6 BURIAN, D	1672 0	0	DZEKHTSER, A	0 0 1
7 SUERTH, F	1613 0	.5	VAN METRE, R	0 0 .5

30-JAN-95 UOP PROCESS DIV. 5 FEL-PRO 1
 ROUND 5

BD	RATINGS	SCORE	RATINGS	SCORE
1 BUERGER, E	2107 1	1	HESS, B	1475 -1 0
2 BOLDINGH, E	2091 1	1	FELDMAN, A	1436 -1 0
3 SAHLI, E	1783-43	0	NISHIMURA, K	1278 43 1
4 SAJBEL, P	1686 0	1F	THOMPSON, R	1063 0 0F
5 O'BRIEN, D	1417 0	1F		0 0 0F
6 VAN ZILE, C	1364 0	1F		0 0 0F
7 LIKHTEREV, M	1501 0	1	NARSOLIS, F	0 0 0 (UOP)
8 O'BRIEN, D	1417 0	1	KATAOKA, N	0 0 0 (UOP)
9 VAN ZILE, C	1364 0	1	GEBELE, R	0 0 0 (UOP)

12-JAN-95 AT&T CHARGERS 3.5 ARGONNE KNIGHTS 2.5
 ROUND 6

BD	RATINGS	SCORE	RATINGS	SCORE
1 WARREN, J	2122 2	.5	BENEDEK, R	2204 -3 .5
2 RADAVICIUS, E	1729 -5	0	KEISLER, J	2000 8 1
3 STAMM, V	1741-12	0	HILL, R	1814 18 1
4 DOBR, K	1532 9	1	KINSELLA, G	1490-20 0
5 THOMAS, J	1455 9	1	GALLAGHER, H	1311-14 0
6 BRADY, R	1253 0	1F		0 0 0F

02-FEB-95 AT&T CHARGERS 3.5 J. I. CASE 2.5
 ROUND 7

BD	RATINGS	SCORE	RATINGS	SCORE
1 WARREN, J	2124 -7	.5	KALE, S	1846 15 .5
2 STAMM, V	1729 13	1	SATTERLEE, D	1688-13 0
3 RADAVICIUS, E	1724-23	0	KLINEFELTER, H	1523 34 1
4 DOBR, K	1541 2	.5	WHITE, H	1623 -6 .5
5 THOMAS, J	1464 -3	.5	SAWDO, E	1394 5 .5
6 BRADY, R	1253 29	1	REID, C	1357-29 0
7 PATTON, D	0 0	1	NOBLE, S	0 0 0

NORTH DIVISION TOP TEN

REYES, R	SEARS	2334D
HASAN, Y	MTRLA	2227
WONG, P	EXMPL	2220C
STEVANOVIC, M	UOP	2217C
MELNIKOV, I	MTRLA	2197
JAKSTAS, K	NORTH	2194C
GOLUMBOVSKI, P	NORTH	2188
SIWEK, M	KEMPR	2150C
BUERGER, E	UOP	2108D
BOLDINGH, E	UOP	2092

EAST DIVISION TOP TEN

INUMERABLE, F	PSTOF	2247
WACHTEL, H	COLUM	2223
JASAITIS, A	CRT	2166C
CZERNIECKI, A	ALUMN	2143C
HODINA, J	AMCRP	2108
FRIESEMA, W	CRT	2085
COX, M	ALUMN	2024C
MAREMA, D	PSTOF	2006
SMILEY, R	AMCRP	2002
MARCOWKA, R	PSTOF	1978C

NEAR WEST DIVISION TOP TEN

BENEDEK, R	KNIGHT	2201D
WARREN, J	CHRGR	2117T
KEISLER, J	KNIGHT	2008
ELLICE, W	UNILV	1863
KALE, S	JCASE	1861
HILL, R	KNIGHT	1832
STAMM, V	CHRGR	1742D
RADAVICIUS, E	CHRGR	1701D
SATTERLEE, D	JCASE	1675C
WHITE, H	JCASE	1617

FAR WEST DIVISION TOP TEN

LEVINE, D	ROOKS	2340
BEZZUBOV, V	FERMI	2338*
KOZLOVSKY, M	FERMI	2241
TEGEL, F	DRGNS	2160D
SHEYNIN, S	ROOKS	2153
BUCHNER, R	ROYLS	2129
LUDWIG, T	DRGNS	2069C
BERRY, G	ROOKS	2066D
CONNOR, P	MDCON	2049
MOTTA, H	FERMI	2035

MOST IMPROVED PLAYERS

ZOELLNER, J	CONBK	107
EUSTACE, D	DRGNS	86
PRATTS, M	COLUM	80
BEZZUBOV, V	FERMI	65
GOLUMBOVSKI, P	NORTH	62
KARPIERZ, J	TYROS	57
HILL, R	KNIGHT	52
TAMEZ, I	TYROS	45
OSTERLUND, R	EXMPL	43
CONNOR, P	MDCON	42

NAME	TEAM	W	L	D	RATING	NAME	TEAM	W	L	D	RATING
ABBOTT, J	MTRLA	0	0	0	0000?	CATENA, J	MTRLA	0	3	0	0000?
ABRAHAM, T	CTA	1	1	1	1541	CHAN, H	SEARS	1	0	0	1574
ALLEN, H	PSTOF	3	2	1	1833	CHARKOVSKY, R	ALUMN	0	0	0	1619
AMUNDSEN, C	KEMPR	0	0	0	0000?	CHEVERESAN, S	UOP	0	0	0	1434C
ANDERSON, CJ	ROYLS	1	0	0	1446	CHRISTIAN, R	DRGNS	0	0	0	1808C
AQUENDE, A	KEMPR	0	2	0	0000?	CIESLEK, D	MTRLA	1	0	0	1950
ATKINSON, J	AMCRP	2	2	1	1745C	CISKO, G	FERMI	0	0	0	1615*
AUGSBURGER, L	MTRLA	3	0	0	1764	COLEMAN, O	CTA	0	2	0	0000?
AUSTIN, R	ROYLS	0	0	0	1125#	CONNELY, S	HULL	0	0	0	0000?
BAER, M	AMCRP	0	0	0	1347*	CONNOR, P	MDCON	1	1	3	2049
BAKER, B	FLPRO	0	2	0	1042	COOPER, W	PSTOF	2	1	1	1694
BAKER, LR	MERC	0	1	0	1101*	COPELAND, P	WHEAT	0	1	0	0000?
BANZA, S	HULL	0	0	0	0000?	COTE, J	MERC	0	3	1	1280
BARGERSTOCK, D	CRT	4	1	0	1823	COX, M	ALUMN	2	0	0	2024C
BARNES, D	ROAD	0	0	0	0000?	CREWSE, L	EXMPL	0	1	1	2032
BARTUSIAK, P	MTRLA	0	4	0	0000?	CUMBERLAND, M	SEARS	0	0	0	0000?
BAURAC, D	KNIGHT	2	0	1	1607C	CUMMUTA, P	KEMPR	2	1	0	1398
BECK, P	MERC	0	1	0	0000?	CURRAN, T	MTRLA	1	0	0	0000?
BENEDEK, R	KNIGHT	2	0	2	2201D	CZERNIECKI, A	ALUMN	2	1	1	2143C
BENESA, A	GROLR	0	0	0	2211	DAVIDSON, M	ALUMN	4	1	0	1661*
BERMAN, R	KEMPR	0	1	0	0000?	DAVIS, R	PSTOF	0	0	0	0000?
BERNARD, D	CRT	3	2	0	1345	DEARDORFF, M	FLPRO	0	0	0	1437*
BERRY, G	ROOKS	3	0	1	2066D	DECMAN, S	ROOKS	4	2	0	1668D
BEZZUBOV, V	FERMI	6	0	0	2338*	DENG, J	CRT	3	3	0	1551
BHOJWANI, C	TYROS	1	1	0	1965	DEWITT, G	ROCKW	0	0	0	1423C
BLACKMON, E	ROYLS	4	1	0	1764	DEZONNO, T	ROCKW	0	0	0	1255*
BLAZIE, J	TYROS	0	1	0	1828C	DIAZ, L	JCASE	1	2	0	0000?
BLOOM, B	EXMPL	0	3	0	2011	DIAZ, P	NORTH	5	1	0	2050
BOLDINGH, E	UOP	3	2	0	2092	DJORDJEVIC, I	FERMI	0	0	0	0000?
BOOKER, G	RADIO	0	0	0	1398*	DOBR, K	CHRGR	2	0	2	1543T
BOSTICK, T	WHEAT	0	3	1	0000?	DOBROVOLNY, C	ROYLS	2	3	0	2010
BRADY, R	CHRGR	2	1	0	1282	DONNA, D	MTRLA	0	0	0	0000?
BRANCH, Y	COLUM	0	0	0	1301*	DORFF, M	SEARS	1	1	0	1466
BRIONES, M	UOP	0	0	0	1660C	DOTY, B	CRT	0	1	0	0000?
BRITT-WEBB, E	AMCRP	0	2	0	1265#	DUFRESNE, T	JCASE	2	1	0	997*
BROCKETT, M	SEARS	1	3	1	1792	DURKEE, D	DRGNS	2	2	1	1799C
BRONFELD, A	ALUMN	2	1	0	1851	DYCKOWSKI, R	CONBK	0	0	0	1561
BROTSOS, J	EXMPL	2	1	0	1524D	DZEKHTSER, A	SEARS	5	0	0	0000?
BROZOVICH, J	TYROS	2	1	0	1740C	DZURICKO, G	UNILV	1	1	0	1188#
BUCHNER, R	ROYLS	0	0	0	2129	EDWARDS, S	AWEST	0	0	0	1278
BUERGER, E	UOP	4	1	0	2108D	EFRON, D	ROCKW	0	0	0	1638
BURBA, K	ROOKS	0	3	0	1371C	EGERTON, J	MDCON	2	2	1	1948
BURDICK, S	COLUM	2	0	0	1610	ELEK, G	NORTH	2	3	1	1049
BURIAN, D	EXMPL	1	2	0	1672C	ELLICE, W	UNILV	0	1	1	1863
CADE, M	UNILV	0	1	0	0000?	ERLENBORN, M	AWEST	0	0	0	1482*
CAIRONE, B	NORTH	2	1	0	1808	EUSTACE, D	DRGNS	5	1	0	1590
CARDI, P	HULL	0	1	0	0000?	FABIJONAS, R	ALUMN	2	1	1	1787D
CARNAL, D	CRT	0	0	0	1210#	FAHRENHOLTZ, S	MTRLA	1	1	0	1798*
CARTER, L	PSTOF	1	2	3	1487	FELDMAN, A	FLPRO	0	4	0	1435C
CARTER, O	CTA	1	1	0	0000?	FERGUSON, K	MDCON	0	1	0	0000?

? - UNRATED

- 5 TO 9 RATED GAMES

* - 10 TO 24 RATED GAMES

C - CENTURY CLUB MEMBER

D - DOUBLE CENTURION

T - TRIPLE CENTURION

Q - QUAD CENTURION

NAME	TEAM	W	L	D	RATING	NAME	TEAM	W	L	D	RATING
FLEET, R	MDCON	1	3	0	0000?	JAKSTAS, K	NORTH	1	0	3	2194C
FRAATS, D	CONBK	2	1	1	1898	JARRETT, T	CTA	2	1	0	1613*
FRANCISKOVICH, DHULL	ALUMN	0	0	0	1113#	JASAITIS, A	CRT	1	3	1	2166C
FRANEK, M	ALUMN	2	2	0	1794C	JONES, B	ROCKW	0	0	0	2061
FRANK, M	MERC	1	0	0	1724*	JONES, M	CTA	1	2	0	1349*
FRIESEMA, W	CRT	2	1	1	2085	JOSEPHSON, D	WHEAT	1	2	0	1812#
FRISKE, T	EXMPL	1	1	1	1871	JOSHI, A	UNILV	0	0	0	0000?
GAINES, I	FERMI	3	2	0	1725C	KALE, S	JCASE	0	2	3	1861
GALKO, D	KEMPR	0	2	0	0000?	KANAS, W	JCASE	1	2	0	1316C
GALLAGHER, H	KNGHT	1	3	0	1297	KARPIERZ, J	TYROS	1	0	2	1183*
GANSER, A	CONBK	0	4	1	1282#	KATAOKA, N	UOP	1	1	0	0000?
GASTON, K	JCASE	0	0	0	1274*	KATZ, J	JCASE	0	1	0	0000?
GAZMEN, E	GROLR	0	0	0	2234	KAUFMAN, M	KEMPR	1	1	0	0000?
GEBELE, R	UOP	0	1	0	0000?	KEEFE, E	FLPRO	0	1	0	1181#
GIMPLE, R	WHEAT	0	2	0	0000?	KEISLER, J	KNGHT	3	0	0	2008
GOLDBOGEN, G	COLUM	0	0	0	0000?	KERCSMAR, J	WHEAT	0	1	0	0000?
GOLLA, R	SEARS	0	3	0	1983D	KERCSMER, J	WHEAT	0	1	0	0000?
GOLUMBOVSKI, P	NORTH	5	0	1	2188	KINSELLA, G	KNGHT	2	1	0	1470C
GONCHAROFF, N	MTRLA	4	0	0	1781Q	KLINEFELTER, H	JCASE	3	1	1	1557C
GORZ, E	RADIO	0	1	0	1289*	KOEPELE, J	TYROS	0	0	0	0000?
GREEN, D	ROOKS	5	0	0	1826C	KOGAN, G	CONBK	2	2	1	1857
GRIESMEYER, W	PSTOF	1	0	0	1317	KOSTECKA, K	COLUM	1	1	2	1663
GRYPARIS, J	MTRLA	2	0	0	1439	KOZLOVSKY, M	FERMI	2	0	1	2241
GUILLEN, B	KEMPR	0	0	0	1402*	KRUEGER, J	DRGNS	3	1	1	1343#
GUIO, J	ROYLS	1	3	1	2026	KRULL, E	AMCRP	1	2	1	1449
HAHNE, D	ROYLS	2	2	0	1586	LACAPENA	GROLR	0	0	0	0000?
HAMILTON, L	AMCRP	0	0	0	1380	LAMBIRIS, J	KEMPR	1	4	0	1428*
HAMMOND, M	CONBK	1	2	0	1384	LASKY, JIM	RADIO	0	1	0	1693#
HAMPER, P	AMCRP	0	0	0	1288*	LASKY, N	RADIO	0	1	0	1352C
HANSEN, B	MDCON	2	0	0	0000?	LATIMER, E	SEARS	2	2	0	2031D
HARDIN, L	KEMPR	0	0	1	0000?	LAWRENCE, P	MTRLA	2	0	0	0000?
HARRIS, FF	CTA	0	1	0	1401#	LEE, B	UNILV	0	0	0	1470
HARRIS, R	FERMI	4	0	2	1662	LEONG, D	ALUMN	0	0	0	1971
HASAN, Y	MTRLA	0	1	0	2237	LEONG, G	KEMPR	1	2	0	1992C
HEDSTROM, L	RAIL	0	0	0	0000?	LEONER, R	SEARS	1	0	0	0000?
HERNANDEZ, DD	COLUM	3	1	0	1520	LESTER, M	MTRLA	3	0	0	1646
HESS, B	FLPRO	0	3	1	1474	LEVINE, D	ROOKS	1	1	2	2340
HICKS, C	DRGNS	3	0	0	1562	LIKHTEREV, M	UOP	1	2	0	1501#
HILL, C	FERMI	0	0	0	1663*	LITVINAS, A	ALUMN	3	1	2	1670C
HILL, R	KNGHT	4	0	0	1832	LOGAN, H	MDCON	1	1	0	0000?
HILLIARD, J	CONBK	0	1	0	0000?	LOMONT, C	SEARS	0	0	0	1494#
HILTON, J	MERC	0	1	1	1021*	LORENZ, B	MDCON	2	3	0	1459#
HODINA, J	AMCRP	2	1	1	2108	LOSOFF, A	CRT	4	0	2	1900
HOWARD, W	PSTOF	5	1	0	1515	LUDWIG, T	DRGNS	2	2	0	2069C
HUGHES, N	KEMPR	0	0	0	1852C	LUEDERS, J	CRT	0	1	0	0000?
HUNG, N	MTRLA	0	0	0	1471#	LULKIN, V	UNILV	2	0	1	0000?
INUMERABLE, F	PSTOF	2	1	0	2247	LUSTRO, G	ROYLS	0	1	0	0000?
ITZENHEUSER, W	JCASE	0	2	0	0000?	MAA, R	DRGNS	0	0	0	0000?
JACKSON, JJ	ROAD	0	0	0	0000?	MARCOWKA, R	PSTOF	4	1	1	1978C
JACOBS, N	DRGNS	0	0	0	1983C	MAREMA, D	PSTOF	0	0	1	2006

? - UNRATED
 # - 5 TO 9 RATED GAMES
 * - 10 TO 24 RATED GAMES

C - CENTURY CLUB MEMBER
 D - DOUBLE CENTURION
 T - TRIPLE CENTURION
 Q - QUAD CENTURION

NAME	TEAM	W	L	D	RATING	NAME	TEAM	W	L	D	RATING
MARTIN, K	COLUM	3	1	0	1485	POMA, D	AMCRP	4	4	0	1307
MATTHEWS, J	CTA	1	0	0	1759	POMA, M	AWEST	0	0	0	0000?
MAYNARD, J	WHEAT	0	4	0	1370	POZNIAK, J	KEMPR	1	4	0	1473#
MCALISTER, K	COLUM	0	2	1	1909	PRATT, C	MTRLA	1	1	0	0000?
MCCLENDON, L	CONBK	0	0	0	1340	PRATTS, M	COLUM	4	0	2	1773
MCFARLIN, B	KEMPR	0	2	0	1209#	PRICE, B	AWEST	0	0	0	1086#
MCINTOSH, S	CONBK	0	0	0	1142*	PUNZALAN, N	GROLR	0	0	0	1599
MCKAY, P	UNILV	0	1	0	1409#	QUARTETTI, C	NORTH	0	2	0	0000?
MCQUINN, J	ROCKW	0	0	0	1450	QUERUBIN, R	FLPRO	0	1	0	2067#
MELNIKOV, I	MTRLA	2	1	1	2197	RADAVICIUS, E	CHRGR	2	2	0	1701D
MELNIKOV, N	MTRLA	3	0	0	0000?	RAFACZ, T	ROCKW	0	0	0	1698
MENGEL, M	FERMI	0	0	0	0000?	RAFACZ, W	ROCKW	0	0	0	1638
MICKLICH, F	UOP	2	2	0	1726C	RAFFERTY, M	HULL	0	0	0	0000?
MIKULECKY, B	RADIO	1	1	0	1326C	RANGEL, R	HULL	0	0	0	1741
MILLER, J	NORTH	0	4	0	0000?	REED, K	TYROS	0	0	0	0000?
MILLER, TT	SEARS	0	0	2	1721	REID, C	JCASE	3	2	0	1328
MITCHAM, L	ROCKW	0	0	0	1552*	REYES, R	SEARS	3	1	1	2334D
MOORE, JJ	MTRLA	0	0	0	0000?	RINGER, D	SEARS	1	0	0	0000?
MORRISON, J	ROOKS	1	2	0	1668	RIPPE, D	TYROS	0	2	0	0000?
MORTADA, C	MTRLA	0	1	0	0000?	ROBERTS, J	WHEAT	1	1	0	0000?
MORTON, B	SEARS	0	0	0	1569	ROJAS, R	RAIL	0	0	0	0000?
MOTTA, H	FERMI	3	2	0	2035	ROMENESKO, G	UNILV	0	1	0	0000?
MOTYCKA, R	JCASE	1	2	0	1140	ROSENBERG, B	MDCON	0	5	0	0000?
MUDAN, M	HULL	0	2	0	0000?	ROSLEY, D	ROYLS	4	2	0	1805
NARSOLIS, F	UOP	2	1	0	0000?	ROSS, L	JCASE	0	0	0	0000?
NAUGHTON, T	HULL	0	2	0	1331*	RUBIN, J	UNILV	0	0	0	0000?
NELL, D	UNILV	0	1	0	1075#	RUDDY, J	MERC	0	0	0	1205
NELSON, H	CONBK	0	0	0	1967	RUEB, R	HULL	0	0	0	0000?
NISHIMURA, K	FLPRO	2	1	0	1321*	RZESZUTKO, R	ALUMN	0	1	0	1791
NOBLE, S	JCASE	1	2	0	0000?	SAHLI, E	UOP	2	2	1	1740
NOTERMAN, T	UNILV	0	1	0	1188	SAJBEL, P	UOP	3	0	1	1686
NOWAK, W	CTA	1	2	0	1365#	SALAMANCA, R	ROYLS	1	0	0	0000?
NWABUDE, O	CHRGR	0	0	0	1029*	SAMELSON, C	MTRLA	4	1	0	1997C
O'BRIEN, D	UOP	1	0	0	1417*	SAMOYLOV, A	MTRLA	0	1	0	0000?
O'DELL, DW	RADIO	0	2	0	1573C	SAMULAK, C	HULL	0	0	0	1147#
OGASAWARA, L	ROYLS	1	2	0	1841C	SANCHEZ, P	RAIL	0	0	0	0000?
OLSEN, A	KEMPR	0	4	0	1459	SANCHEZ, R	GROLR	0	0	0	1526*
OSTERLUND, R	EXMPL	3	1	0	1963	SANTIAGO, T	COLUM	2	2	2	1950*
PARA, A	FERMI	3	1	0	1579	SATTERLEE, D	JCASE	1	4	0	1675C
PARAOAN, E	CONBK	2	2	0	1750C	SAWDO, E	JCASE	1	2	1	1399
PATTON, D	CHRGR	1	1	0	0000?	SCHWAB, W	ROOKS	1	2	0	1485
PAWLUS, D	MTRLA	0	1	1	0000?	SCHWARTZ, M	TYROS	2	2	1	1069
PAYTON, P	KEMPR	2	2	0	0000?	SEMONES, E	ROOKS	0	3	0	0000?
PEHAS, A	ROYLS	3	2	0	1960	SHAFF, R	TYROS	1	1	0	1527C
PENNINGTON, J	WHEAT	0	2	0	0000?	SHEU, G	CHRGR	0	0	0	1343*
PEPPERS, M	RAIL	0	0	0	0000?	SHEYNIN, S	ROOKS	2	1	3	2153
PERAREN, E	PSTOF	1	1	0	1788	SHOUSE, B	MTRLA	0	0	0	0000?
PHELPS, C	DRGNS	0	2	1	1244#	SHUKLA, S	FERMI	0	0	0	0000?
PIAO, T	DRGNS	0	1	0	1711	SIEGEL, R	CONBK	1	0	0	1523C
PILLAI, J	MTRLA	0	1	0	0000?	SIMS, B	CRT	0	0	0	1519#

? - UNRATED

- 5 TO 9 RATED GAMES

* - 10 TO 24 RATED GAMES

C - CENTURY CLUB MEMBER

D - DOUBLE CENTURION

T - TRIPLE CENTURION

Q - QUAD CENTURION

NAME	TEAM	W	L	D	RATING	NAME	TEAM	W	L	D	RATING
SIWEK, M	KEMPR	2	1	2	2150C	VAN OTRIVE, R	CTA	0	1	0	1092#
SLAGLE, S	MERC	0	4	0	1562	VAN ZILE, C	UOP	2	2	1	1364*
SMILEY, R	AMCRP	1	1	3	2002	VANDECOTTE, M	UOP	2	1	0	0000?
SMITH, BR	TYROS	3	1	0	1477	VENEGAS, B	HULL	0	1	0	0000?
SMITH, JM	ALUMN	0	0	0	1196*	VERIVE, J	AWEST	0	0	0	1615*
SOLLANO, E	GROLR	0	0	0	1956	VICK, H	MTRLA	0	0	0	1516
SOMBONG, M	CONBK	0	1	1	1634	VIGANTS, A	NORTH	1	2	1	1552
SPIEGEL, L	FERMI	5	1	0	1990C	WACHTEL, H	COLUM	3	1	0	2223
STAMM, V	CHRGR	2	1	0	1742D	WALLACH, C	MTRLA	1	2	1	2091
STAPLES, C	FERMI	0	0	0	1200#	WALLIN, R	WHEAT	0	4	1	1708
STAPLES, M	CTA	0	2	0	0000?	WARD, C	DRGNS	2	3	0	1532D
STEINER, D	HULL	0	0	0	0000?	WARE, K	MERC	0	2	0	0000?
STEVANOVIC, M	UOP	2	1	0	2217C	WARREN, J	CHRGR	2	0	2	2117T
STEVENS, J	COLUM	0	0	0	1380	WEBER, J	WHEAT	1	2	0	0000?
STEVENSON, R	UNILV	0	1	0	1363	WEBER, L	GROLR	0	0	0	2144
STINSON, M	ROYLS	0	0	0	2006	WEISS, G	HULL	0	2	0	0000?
STOLTZ, B	TYROS	0	4	2	1973	WEISSKOPF, J	HULL	0	2	1	1333*
SUAREZ, E	KNGHT	1	1	0	1613	WEITZ, R	EXMPL	1	1	1	1676C
SUERTH, F	EXMPL	2	1	1	1613C	WELTER, P	SEARS	0	0	1	1642#
SULLIVAN, C	MERC	2	2	0	1529	WENTLING, C	AMCRP	1	2	2	1636C
SZAUKELLIS, W	MTRLA	0	0	0	0000?	WEST, R	MTRLA	0	0	0	1447#
SZONTAGH, T	CRT	1	0	0	0000?	WHITE, H	JCASE	3	1	1	1617
TAMEZ, I	TYROS	2	1	1	2027	WHITED, W	MDCON	0	3	0	1806
TAYLOR, M	ROAD	0	0	0	0000?	WHITSITT, S	AWEST	0	0	0	1504*
TEGEL, F	DRGNS	3	1	2	2160D	WILLIAMS, A	ROAD	0	0	0	0000?
THOMAS, G	TYROS	1	3	0	1505	WILLIAMS, J	RAIL	0	0	0	0000?
THOMAS, J	CHRGR	1	1	1	1461C	WILSON, A	CTA	1	2	0	1585
THOMPSON, R	FLPRO	0	0	0	1063	WILSON, M	SEARS	0	0	0	1293#
TSEITLIN, E	MTRLA	0	1	0	0000?	WONG, KK	NORTH	1	1	0	0000?
TURNER, K	PSTOF	1	0	0	1559	WONG, P	EXMPL	0	1	0	2220C
TYREE, D	RADIO	0	1	0	1475*	YOUNG, R	HULL	0	2	2	1410*
UNDERWOOD, W	WHEAT	1	1	1	2019C	ZEIDEL, J	MERC	0	0	0	1947
VALDEZ, C	MTRLA	1	0	0	0000?	ZOELLNER, J	CONBK	4	0	0	1401C
VAN MEER, J	KEMPR	1	1	0	2007	ZUNGOLO, J	CRT	0	0	0	0000?
VAN METRE, R	SEARS	1	0	1	0000?						

? - UNRATED

- 5 TO 9 RATED GAMES

* - 10 TO 24 RATED GAMES

C - CENTURY CLUB MEMBER

D - DOUBLE CENTURION

T - TRIPLE CENTURION

Q - QUAD CENTURION