

Chicago Industrial Chess League

Bulletin No.4, Vol. 38
January 1995

INSIDE THIS ISSUE:

 Readers Forum

 Games

 The Bookshelf by Duane Satterlee

 Chess Beauties

 Rev. East, North Div Capt Directories

 Division cross tables

 Ratings Chairman Report

 **-NEED INPUT** To make the CICL bulletin even better we are looking for anyone interested in submitting **articles** or **games**. If you are interested, call or write to the bulletin editor.

CICL OFFICERS

As of January 1995

President: James Hodina
718 Central Park Ave.
Flossmoor, IL 60422
W:(708) 990-6115 H:(708) 799-5571

Secretary: Anthony Jasaitis
P.O. Box 664
Bedford Park IL 6499-0664
W:(708) 406-6420

Treasurer: Wesley K. Underwood
207 S. Dorchester Ave.
Wheaton, IL 60187
W:(708) 752-5127 H:(708) 462-0393

Ratings : Charles Ward
Chairman: 615 S. Lincoln
Hinsdale, IL 60521
W:(708) 979-4599 H:(708) 325-3885
(708) 979-8451 F

Production: Marty Franek
Circulation: 9044 S. 51st Ave
Oak Lawn, IL 60453-0397
W:(312) 353-0397 H:(708) 636-3714

East : Keith Kostecka
Division : Columbia College
Chairman: Chicago, IL 60605-1996
W:(312) 663-1600 ext. 437

Near West: Satish L. Kale
Division : JI Case
Chairman: 7 South 600 County Line Rd
Hinsdale, IL 60521
W:(708) 887-2372 H:(708) 325-5253

Far West : Irwin Gaines
Division : Fermilab - MS 127
Chairman: P.O. Box 500
Batavia, IL 60510
W:(708) 840-4022

North : Ruben Reyes
Division : 2019 W. Leland Ave.
Chairman: Chicago, IL 60625-1513
W:(708) 286-0758 H:(312) 334-5462
F (312) 769-0311

Bulletin Editor: See North Division
Chairman

Banquet & Publicity : Todd J. DuFresne
2115 S. Finley
Chairman: Apt 216
Lombard, IL 60148
W:(708) 887-3771 or 2049
H:(708) 916-4677

READER'S FORUM**Shorter Playing Times? Sudden Death?****A response to suggested rule changes**

by Duane Satterlee

The September Chess Life has a list of top USCF Affiliates ranked by activity. Here are the New York organization figures:

Manhattan Chess Club	122 events
Rochester Chess Club	110
Island Chess Club	65
Chess Center of NY	55
Continental Chess Assn of NY	39
Marshall Chess Club	61

No organization in Illinois even made the top 30. Neither the "Second City" nor the Illinois Chess Association could match even Rochester. The Illinois Open has a guaranteed prize fund of \$4000. The 1995 New York Open offers \$100,000.

The problem is, where does a Chicago area chess player get a chance to practice his skill in something like official tournament conditions? It costs a lot in vacation time, travel money and hotel expense to go out of state. Is migrating to New York a good move!?

The CICL has been providing a wonderful chess playing opportunity in many respects. I don't have to miss church to go. It's usually a congenial atmosphere, where even the opponents are friends. The travel cost and time commitment are low. And the game conditions, time limit, etc., are a lot like a serious tournament. They have been reasonably like International and Olympic playing terms.

Middle game strategy, adjournment strategy and end game strategy are skills a good chess player needs some practice at. Although I can remember only two adjourned games in 19 years in the CICL, the opportunity is there. Incidentally, the adjournment can provide the disadvantaged an opportunity to avoid a loss, but also provides the owner of the better position an improved chance to win. It brings one closer to the truth of the game. Analysis of adjourned games is a needed skill.

Changing the rules is just an opportunity to make the game more favorable for one player's skill set at the expense of another person. Maybe the good passing team would like a 50 yard football field, or the baseball team with short legs would like 25 foot base paths. How about a low hoop for a short basketball team? There would be a different champion, but it wouldn't be the same game. We shortened the time limit before, and it gave me time problems. My rating went down, and the rating of the great memorizers of opening books went up.

Already the game is slanted toward opening memorization too much. In speed chess, there is no time for the good problem solvers to find the weakness in someone's obscure and perhaps faulty opening traps. No time to figure out a sound counter attack. There is never any time to think out a good end game strategy. You just make a lot more blunders. You can practice your memorized openings a lot, but you can't work the wrinkles out of your new innovation. There is no time to learn good competition chess techniques.

If there is enough interest we should add more speed chess events. We could raise the profile of speed chess. It would enrich the CICL's offerings. I'll participate. Speed chess is good for you, too. But let's not put the good playing rules to a sudden death.

GAMES

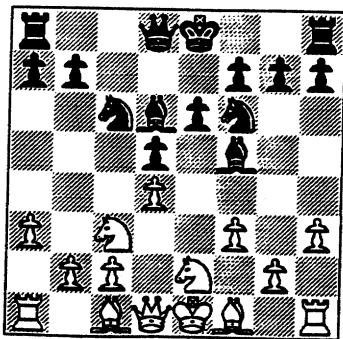
The following miniature was played on board 6, won by the only lady chessplayer to make it to the regular board lineup.

Queen's Pawn

WHITE: Bob Baker (1069)
BLACK: Raisa Lerner (Unrated)

Fel-PRO vs. Sears

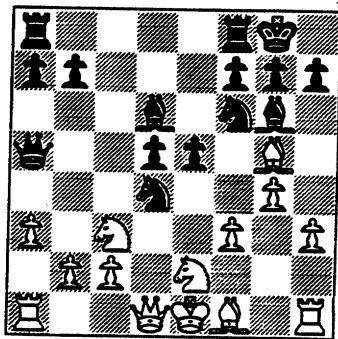
1. d4 d5 2. e3 Nf6 3. Nc3 Bf5 4. f3 e6 5. a3 c5 6. Nge2 Nc6 7. h3 cxd4 8. exd4 Bd6



After
8...Bd6

Nice, particularly considering that this move was preceded by 7...cxd4.

9. g4 Bg6 10. Bf4 0-0 11. Nb5 Qa5+ 12. Nbc3 e5 13. Bg5 Nxd4



After
13...Nxd4

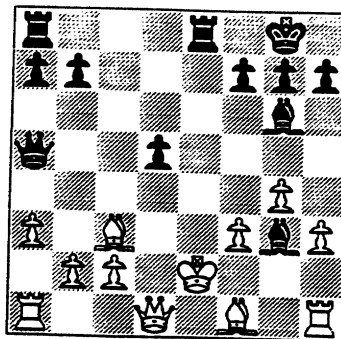
Better than the obvious 14...exd4 which opens the e-file for the Rook, and nothing more.

The text coerces White to play 14. Nxd4 (because of the threat of either 14...Nxc2 and 14...Nxf3+).

By "forcing" White to recapture with the Knight at e2, Black accomplishes not one but two things instead:

- (1) open up the e-file for the Rook
- (2) remove a protective cover from the King.

14. Nxd4 exd4 15. Bxf6 Bg3+ 16. Ke2 dxc3 17. Bxc3 Rfe8+ 0-1



After
17...Rfe8+

Final Position

White gets mated next move: If 18.Be5 then Rxe5++ or if 18.Kd7 then Bf4++

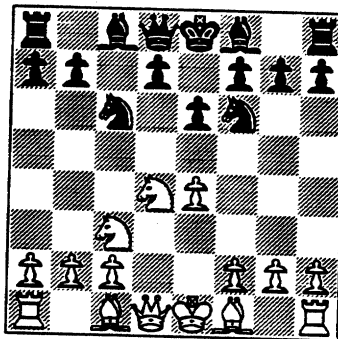
If off-beat games interest you, then this one of Kasparov's may just suit your taste. You see, White not only castles by hand but also settles his King down into an usual square: h3!! Yet it's White who embarks upon a mating attack triggered by a Knight sac. Later on, just when one would think that the attack would slow down because of a Queen trade, it actually doesn't as the mating attack continues.

Sicilian

WHITE: GM Garry Kasparov
BLACK: GM Miguel C. Illescas

Linares, Spain 1992

1. e4 c5 2. Nf3 e6 3. d4 cxd4 4. Nxd4 Nc6 5. Nc3 Nf6



After
5...Nf6

6. Nxc6

Avoids the well analysed line, 6.Ndb5 d6 7.Bf4 e5 8.Bg5.

6...bxc6 7. e5

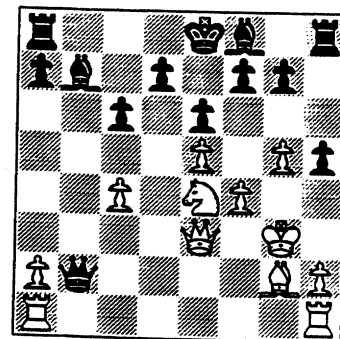
This may be the "winning" move not for

its strength but for the complications it brings into the game which simply overwhelms Illescas.

7...Nd5 8. Ne4 Qc7 9. f4 Qb6

Natural as it prevents 0-0 for White.

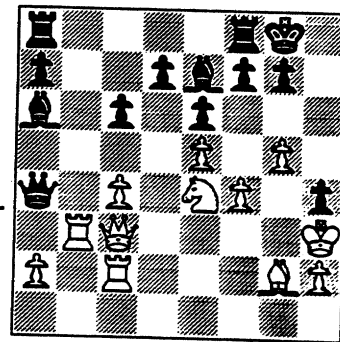
10. c4 Ne3 11. Qd3 Nf5 12. g4 Nd4 13. Bg2 h5 14. g5 Bb7 15. Be3 Nc2+ 16. Kf2 Nxe3 17. Qxe3 Qxb2+ 18. Kg3



After
18. Kg3

The position is deceptive. White's King is in the open, it's true. But the absence of coordination among Black's pieces when compared to White's domination of more space actually gives White the advantage.

18...Ba6 19. Rab1 h4+ 20. Kh3 Qc2 21. Rhc1 Qa4 22. Qc3 Ba3 23. Rc2 Be7 24. Rb3 0-0

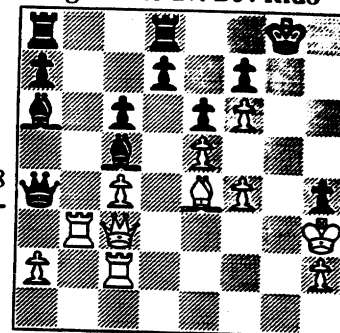


After
24...0-0

25. Nf6+!

This Knight sacrifice can't be refused. If 25...Kh8 then 26.Qe1 when 26...gxf6. 27.Qxh4+ followed by 28.gxf6 and the game's all but over.

25...gxf6 26. gxf6 Bc5 27. Be4 Rfd8



After
27...Rfd8

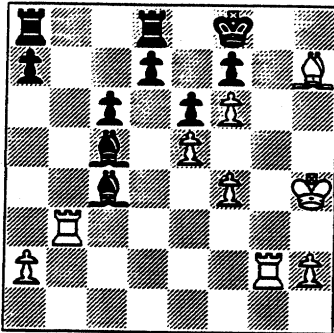
28. Kxh4

Mate in six is threatened: 29.Qg3+ Kf8
30.Rg2 Ke8 31.Qg8+ Bf8 32.Qxf8+
Kxf8 33. Bh7 and mate next move.

28...Kf8 29. Rg2 Qxc4

Grasping for something to slow down
the mating attack.

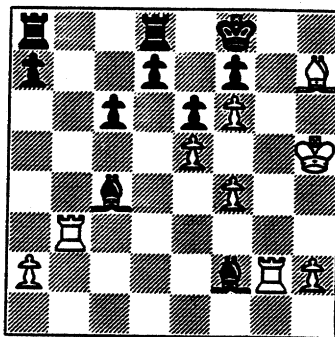
30. Qxc4 Bxc4 31. Bh7



After
31. Bh7

Mate in four is threatened: 31...Ke8 32.
Rg8+ Bf8 33.Rxf8+ Kxf8 34.Rg3 fol-
lowed by 35.Rg8++

31...Bf2+ 32. Kh5 1-0



Final
Position

In 1981 an international tourna-
ment was held in Baku a pro-
vince in the USSR bordering
Afghanistan and Iran.

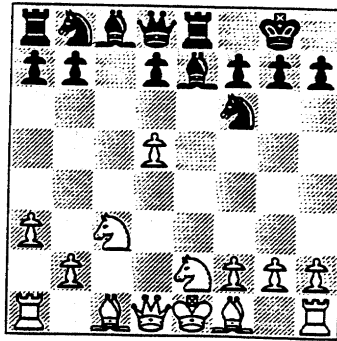
Like the previous game you've
just seen, White seems to have
placed his King in jeopardy. This
time with the move 14.g4. But
looks can be deceiving as in the
previous game because White
here needs only a single move
(17.g5) to launch an unstoppable
attack.

Nimzo-Indian

WHITE: IM G. Kasparov, USSR (2595)
BLACK: GM I. Csom, Hungary (2510)

Baku International, USSR 1981

1. d4 Nf6 2. c4 e6 3. Nc3 Bb4 4. e3 c5 5.
Nge2 cxd4 6. exd4 0-0 7. a3 Be7 8. d5
exd5 9. cxd5 Re8

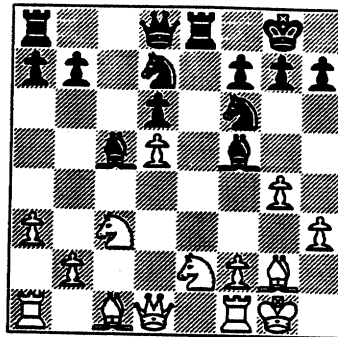


After
9...Re8

10. g3

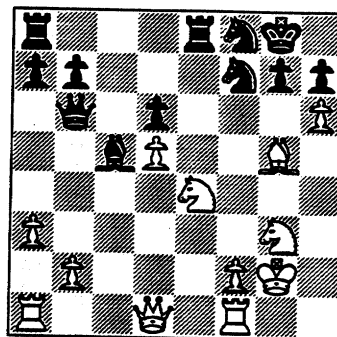
10. d6 looks tempting, except that
White's King is still in the center. This
makes it not worthwhile to focus atten-
tion on the defense d-pawn instead of
on the development of the Kingside.
Defens

10...Bc5 11. Bg2 d6 12. h3 Bf5 13. 0-0
Nbd7 14. g4



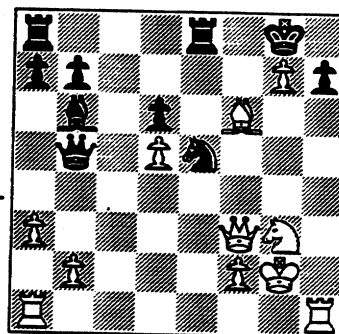
After
14. g4

14...Be4 15. Ng3 Bxg2 16. Kxg2 Nf8
17. g5 N6d7 18. h4 Ne5 19. h5 f6 20.
Nce4 fxe5 21. Bxg5 Qb6 22. h6 Nf7



After
22...Nf7

23. hxg7 Nd7 24. Nf6+ Nxf6 25. Bxf6
Qb5 26. Rh1 Bb6 27. Qf3 Ne5

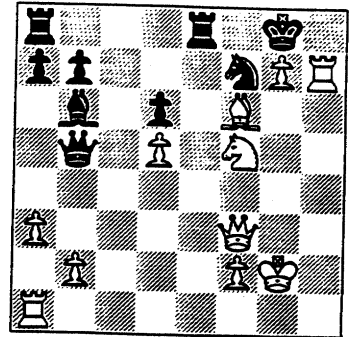


After
27...Ne5

28. Nf5

White says, go ahead take my Queen:
28...Nxf3?? 29.Nh6++

28...Nf7 29. Rxh7! 1-0



Final
Position

If 29...Kxh7 then 30.Qh4+ Kg8
31.Qh8+ Nxf8 32.gxh8=Q+ Kf7 33.
Qg7++.

This one's taken from the play-
offs last spring.

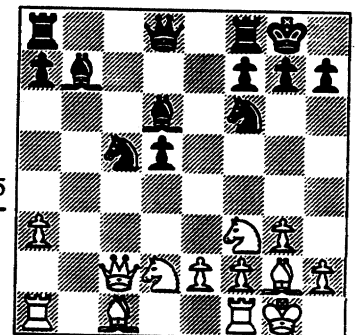
Queen's Indian

WHITE: 2200+

BLACK: 2200+

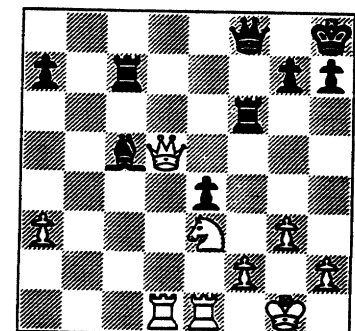
1994 CICL Playoffs

1. d4 Nf6 2. c4 e6 3. Nf3 b6 4. g3 Bb7
5. Bg2 Bb4+ 6. Nbd2 0-0 7. 0-0 d5 8.
Qc2 Nbd7 9. a3 Bd6 10. b4 c5 11. bxc5
bxc5 12. cxd5 exd5 13. dxc5 Nxc5



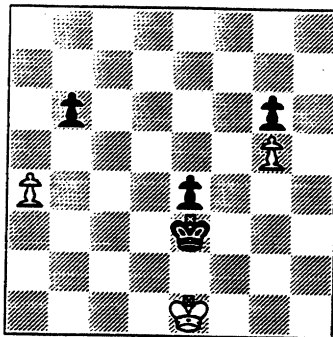
After
13...Nxc5

14. Nd4 Re8 15. Re1 Rc8 16. Bh3 Ne6
17. Nxe6 fxe6 18. Qb3 Rc7 19. e4 dxe4
20. Bxe6+ Kh8 21. Bb2 Be5 22. Nf1
Rf8 23. Ne3 Bc8 24. Rad1 Qe8 25.
Bxc8 Qxc8 26. Bxf6 Rxf6 27. Qd5 Qf8



After
27...Qf8

28. Re2 Rcf7 29. Qd8 Rxf2 30. Qxf8+ Rxf8 31. Rxf2 Bxe3 32. Rdf1 Kg8 33. Kg2 Bxf2 34. Rxf2 Rf6 35. Re2 Ra6 36. Re3 Kf7 37. g4 Kf6 38. Kg3 Ke5 39. h4 Kd4 40. Rb3 Rb6 41. Rxb6 axb6 42. Kf2 Kd3 43. Ke1 Ke3 44. a4 h6 45. g5 hxg5 46. hxg5 g6 0-1



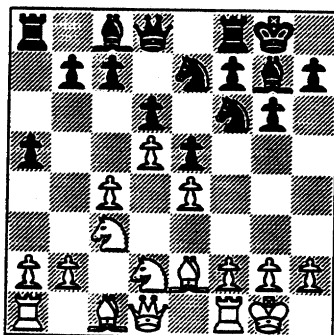
Final Position

Should Gata Kamsky get past Viswanathan Anand of India, Kamsky gets to challenge Kasparov. It'll then be a contest of contrasting style of play. Kasparov thrives in unclear positions where he has the knack for finding the way. Kamsky seems bent more on having uncomplicated positions where precise calculations are possible.

King's Indian

WHITE: G. Kamsky, USA (2655)
BLACK: V. Loginov, Uzbekistan (2540)
30th Olympiad, Manila 1992

1. d4 Nf6 2. c4 g6 3. Nc3 Bg7 4. e4 d6 5. Nf3 0-0 6. Be2 e5 7. 0-0 Nc6 8. d5 Ne7 9. Nd2 a5

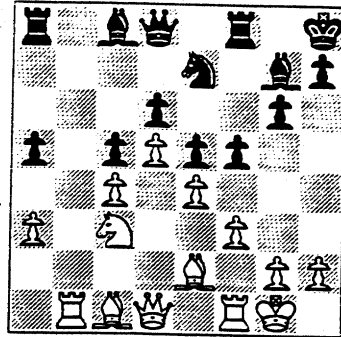


After 9...a5

In the Mar Del Plata, White expands on the Queenside with b4 and c5. 9.Nd2 intends to support this expansion via Nb3 or Nc4. The line with 9...a5 is an attempt to counter this idea.

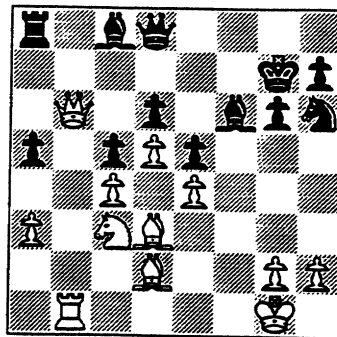
10. a3 Nd7 11. Rb1 f5 12. b4 Kh8 13. f3 c5 14. bxc5 Nxc5 15. Nb3 b6 16.

.Nxc5 bxc5



After 16...bxc5

17. Qb3 fxe4 18. fxe4 Rxf1+ 19. Bxf1 Ng8 20. Qb6 Bf6 21. Bd3 Kg7 22. Bd2 Nh6

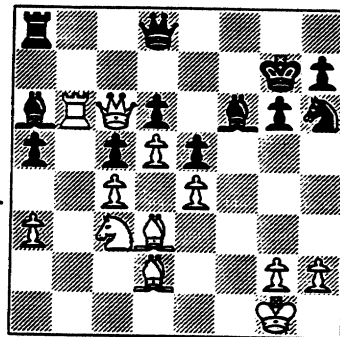


After 22...Nh6

23. Qc6

Although the threat is simply 24.Qxa8, White's last move actually devastates Black's position.

23...Ba6 24. Rb6

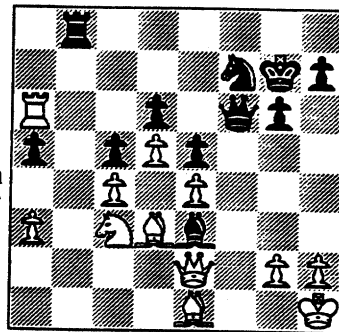


After 24.Rb6

And the game's now all but over.

24...Bg5 25. Be1 Nf7 26. Rxa6 Be3+ 27. Kh1 Rc8 28. Qa4 Rb8 29. Qc2 Qf6 30. Qe2 1-0

Final Position



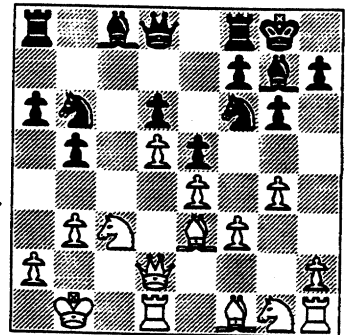
A double Rook sacrifice punctuates a 9-move mating combination in this one.

King's Indian

WHITE: NM Namshil, Mongolia
BLACK: L. Szabo, Hungary

14th Olympiad, Leipzig 1960

1. c4 g6 2. Nc3 Bg7 3. d4 Nf6 4. e4 d6 5. f3 0-0 6. Be3 e5 7. d5 c6 8. Qd2 cxd5 9. cxd5 a6 10. 0-0-0 b5 11. Kb1 Nbd7 12. g4 Nb6 13. b3



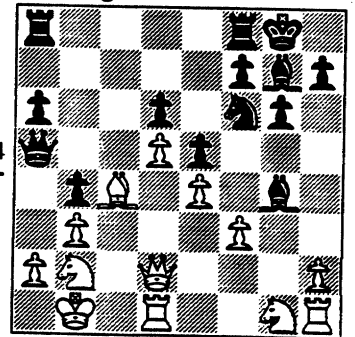
After 13. b3

White's last move prevents occupation of c4 and a4. But it offers up the b-pawn as Black's key for opening up the a-file.

13...b4

Fix the target pawn in its tracks so it can not avoid the a-pawn when it marches to a4 to open up the a-file with ...axb3.

14. Bxb6 Qxb6 15. Na4 Qa5 16. Bc4 Bd7 17. Nb2 Bxg4 !?

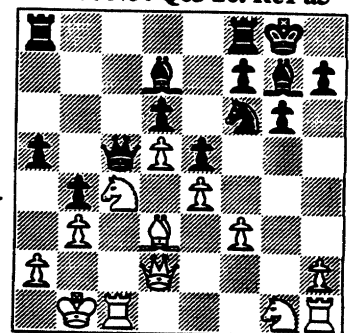


After 17...Bxg4

So if 18. fxc4 then 18...Nxe4 followed by 19... Nb6+ and ...e4 liberates the B at g7.

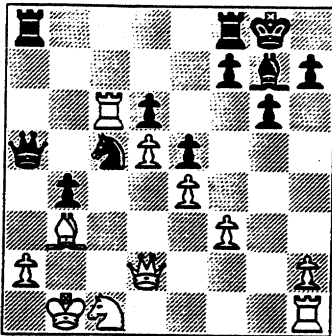
18. Bd3 Bd7 19. Nc4 Qc5 20. Rc1 a5

After 20...a5



If 21.Nxe5 then Qd4

21. Ne2 a4 22. Nb2 Qa5 23. bxa4 Bxa4
24. Nxa4 Qxa4 25. Bc4 Nd7 26. Bb3
Qa5 27. Rc6 Nc5 28. Nc1

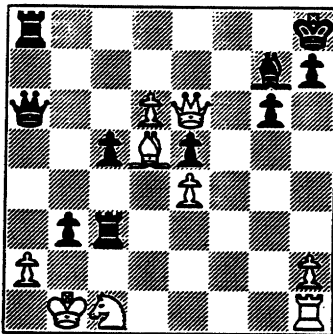


After
28.Nc1

29...f5

The other Rook comes into the fray.

29. Qc2 fxe4 30. fxe4 Rf3 31. Rxc5
dxc5 32. d6+ Kh8 33. Qc4 Rc3 34.
Qe6 Qa6 35. Bd5 b3

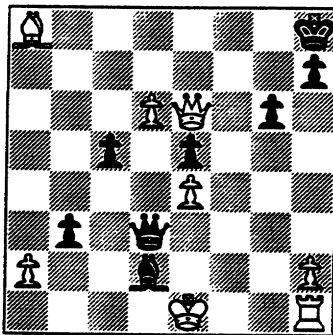


After
35...b3

36. Bxa8 Rxc1+!!

What a game this is. Black leaves only just enough material for the mate: Q+B.

37. Kxc1 Bh6+ 38. Kd1 Qd3+ 39. Ke1
Bd2+ 1-0



Final
Position

White has had enough and didn't care to see mate in five:

40. Kf2 Qe3+ 41. Kg2 (or 41. Kf1 Qf3+
42. Kg1 Be3++) 41...Qe2+ 42. Kg3 (or
42.Kh3 Qf3+ 43.Kh4 b4++) 42...Bf4+
43. Kh3 (or 43.Kh4 Qh5++) 43...Of3+
44. Kh4 g5++

The miniscule pawn mates!!

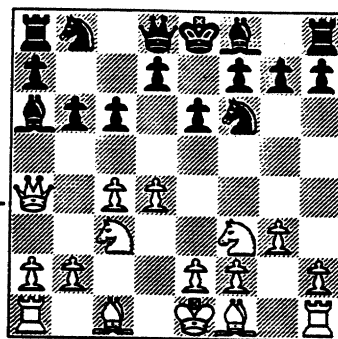
Prior to the match he lost for the FIDE world title versus Karpov, Jan Timman played a 4-game training match against GM Spyridon Skembris of Greece. Timman didn't win a single game, and could only draw with the white pieces.

Queen's Indian

WHITE: GM Spyridon Skembris
BLACK: GM Jan Timman

Korfu, Greece; July 1993

1. d4 Nf6 2. c4 e6 3. Nf3 b6 4. g3 Ba6
5. Qa4 c6 6. Nc3



After
6. Nc3

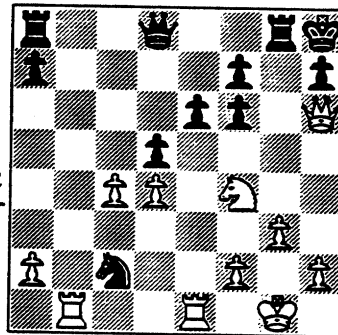
6...b5

Interesting.

7. cxb5 cxb5 8. Nxb5 Qb6 9. Nc3 Bb4
10. Bg2 0-0 11. 0-0 Bxc3 12. bxc3
Bxe2

Black has recovered the pawn.

13. Re1 Bb5 14. Qb3 Bc6 15. c4 Na6
16. Bf4 Be4 17. Be5 d5 18. Bxf6 gxf6
19. Qe3 Nb4 20. Qh6 Qd8 21. Nh4
Bxg2 22. Nxc2 Kh8 23. Nf4 Rg8 24.
Rab1 Nc2



After
24...Nc2

25. Nxe6! 1-0

Surprise! If 25...fxe6 then 26.Rb7 and mate at h7. If 25...Qe7 then 26.Rb7! Qxb7 27.Qxf6+ and mate next move. If 25...Rg6 26.Nxd8 Rxh6 27.Nxf7+ Kg7

28.Nxh6 Nxe8 29.Nf5+ Kg6 30.Nh4+ followed by 31.Rxe8 wins a piece. If instead of 28...Nxe8 Black plays 28...Kxh6, then 29.Rec1 Nxd4 30.cxd5 when White's the exchange up.

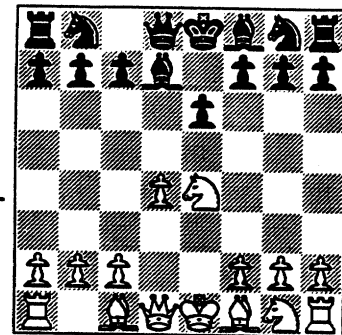
A six-game match between the top guns of Sweden, Ulf Andersson and Ferdinand Hellers was held in the Spring of 1993. Hellers won the match 3.5-2.5, winning the second game and drawing the rest.

French

WHITE: GM Ferdinand Hellers
BLACK: GM Ulf Andersson

Eksjo, Sweden; May 1993

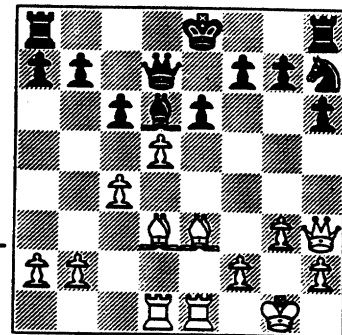
1. e4 e6 2. d4 d5 3. Nc3 dxe4 4. Nxe4
Bd7



After
4...Bd7

A rather unusual line in the French. Black's way of deploying the light colored square Bishop seems unique.

5. Nf3 Bc6 6. Bd3 Nd7 7. 0-0 Ngf6 8. Neg5 Bxf3 9. Qxf3 c6 10. Re1 Be7 11. c3 Nf8 12. Qh3 Qc7 13. g3 Bd6 14. c4 Qd7 15. Be3 h6 16. Rad1 N8h7 17. Nxc2 Nxc2 18. d5!



After
18. d5!

A timely breakthrough.

18...cxd5 19. cxd5 e5 20. Bf5 Qe7 21. f4 e4 22. Bxe4 Nf6 23. Bb1 0-0 24. g4 Rfe8 25. g5 Bc5 26. Kh1 Bxe3 27. gxf6 Qe5 28. Qg3 g5 29. Qh3 Bd4 30. Qxh6 1-0

THE BOOKSHELF - Reviews by Duane Satterlee for the CICL

How to Reassess Your Chess (A Complete Course to Chess Mastery)
by Jeremy Silman (I.M.)

Reading this book will change the way you think and plan while you play. Jeremy Silman is an author and chess teacher. He insists practicing his techniques will move you up to master play. His book is easy to read and understand by an average competition chess player. But it appears many masters could benefit from reading it.

Don't let the title mislead you. You may reassess your chess after reading this book, but it is not about self assessment of your play. It doesn't try to thoroughly cover the entire game for even the beginner, though it includes some opening theory and a little key end game theory. It is by far the best book I have found on planning your moves as you play. No other book in my library teaches what this one does about minor piece play in the opening, end game and especially the middle game.

Illustrative games include world championship games. They appear to be well selected to illustrate minor piece play and strategic planning. Comments are insightfully slanted toward tournament play situations, like who needed a draw or the win. There are a lot of Sicilian and Nimzo-Indian games containing unique ideas, though it's not an opening book.

Silman campaigns against the mindless use of rules like "bishops are better than knights" and stresses evaluating the situation, then proceeding accordingly. You don't want to make a minor piece exchange without thinking about the rules Silman gives for when to keep a knight and when to keep a bishop. But Jeremy also shows you how to make your own minor pieces better, and make your opponent's minor pieces worse. He advocates not just evaluating the position, but illustrates how to go about improving your position and how to change the game based on an evaluation of the imbalances.

Silman sees the whole chess game as

dependent on wise use of imbalances. If the game is balanced and equal, he says you must create favorable imbalances, even if you have to sacrifice material or create other unfavorable imbalances to do so. You can't work without some favorable imbalances. First you identify imbalances, then you use them and expand on them. Silman illustrates ways to advantageously sacrifice the exchange of rook for minor piece that I had never noticed before.

Here is a sampling of the advice and instructive ideas the book is crammed with: "*Don't make a move without having a plan first*". Take away the advanced support points from the opponent's knights. Create advanced support points for your own knights. "Leaving yourself with no imbalances to build on equals a failed opening effort". "The idea of fighting for squares instead of material or attack is extremely important and must be appreciated if the student is to improve his/her game". After you have successfully won material, you often must reorganize your army. "A weak [enemy] square can be created by using your pawns to force his to give up control of a desired spot". *A space advantage can be decisive in an end game with knights on each side.*

Jeremy addresses both the good and bad side of isolated and passed pawns. Ditto for doubled and other "bad" pawns. He teaches how to distinguish between useful and useless open files. He gives examples of creating open files, and usefully exchanging one imbalance for another one. He explains how to use a space advantage and the initiative. He includes a glossary of chess terms and library recommendations. He has "test yourself" game examples throughout.

I couldn't put this 402 page book aside. I delayed needed opening studies for two months so I could have these insights first.

Chess Beauties

In the 1992 Women's Olympiad, reporters just couldn't help but notice that some teams drew large crowds. One reporter wrote, "The biggest crowd-drawer in the women's playing hall was the round 3 match pitting the United States against Kazakhstan, and just one glance at the American players told it all. They have names like Irina Levitina, Elena Akhmilovskaya and Yulia Levitan, which sounded more Russian than American. But all three are great beauties, most especially Levitan who came in a dainty white but very revealing mini."

Here's a look at some of the attractive women players in the 1992 Women's Olympiad and their over-the-board chess beauties.

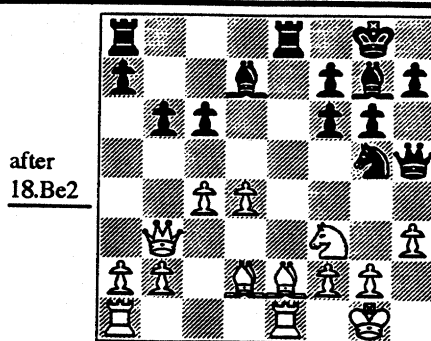


Yulia Levitan (USA) Board 4

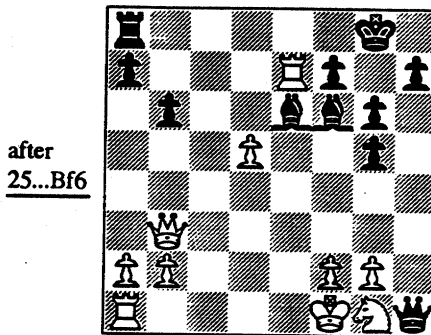
"If you've seen Yulia Levitan of the American team, you've seen the best of the beauties in the Manila Chess Olympiad," commented one chess fan. Levitan, who has no FIDE title yet, won this nice game in Round 2.

Y. Levitan (2245) USA - S. Sabizova (2000) Kyrgyzstan; Caro-Kann: 1. e4 c6 2. d4 d5 3. Nc3 g6 4. h3 Bg7 5. Nf3 dxe4 6. Nxe4 Nf6 7. Nxf6+ exf6 8. Bd3 0-0 9. 0-0 Re8 10. c3 Nd7 11. Qc2 Nf8 12. Bd2 Qd5 13. Qb3 Qh5 14. Nh2 b6 15. Rfe1 Bd7 16. c4 Ne6 17. Nf3 Ng5 18. Be2

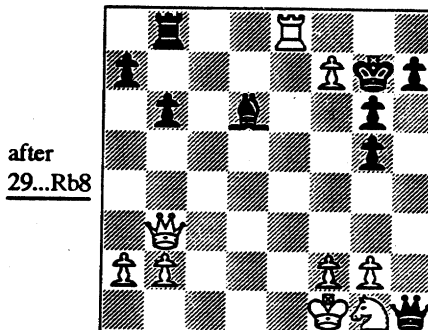
(See diagram top of next column)



18...Rxe2 19. Rxe2 Nxf3+ 20. Kf1 Ng5 21. Bxg5 fxg5 22. Re7 Qh1+ 23. Ng1 Be6 24. d5 cxd5 25. cxd5 Bf6



26. dxe6! Bxe7 27. exf7+ Kg7 28. Re1 Bd6 29. Re8 Rb8



30. Rg8+!!

This check before swinging the rook over is a nice little touch.

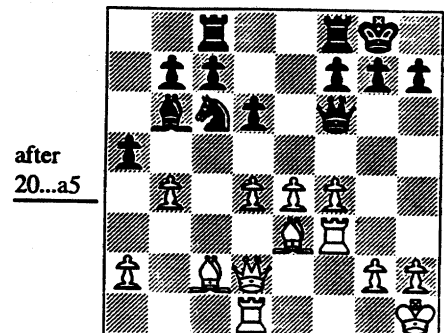
30...Kh6 31. Rxb8 1-0



Ildiko Madl (Hungary) Board 1

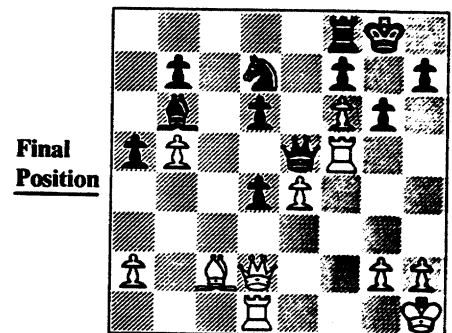
Ildiko Madl who played board 1 on the Hungarian women's team was not only a looker but also quite an artist over the chessboard. Here's a sample of one of her works of art.

I. Madl (2375) Hungary vs. C. Foisor (2375) Romania. We pick up the game after Black's 20... a5.



White has built up quite a positional advantage, and translates it into a win.

21. b5 Nb8 22. f5 c5 23. Rg3 cxd4 24. Bh6 g6 25. Bxf8 Rxf8 26. Rf3 Qe5 27. f6 Nd7 28. Rf5!! 1-0



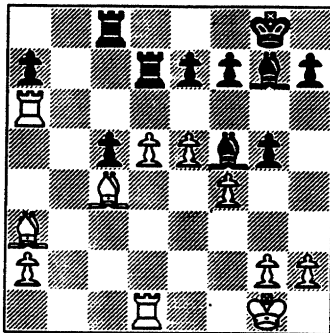
Obviously 28...gxf5 results in mate in two: 29.Qg4+ and 30.Qg7++ If 28...Qe8 29.Qh6 Nxf6 then 30.Rxf6 wins. If 28...Qe6 29.Bg3 d5 30.Bxd5 Qd6 then 31. e5 and 32.Qh6 wins.



Geraldine Putra Jones (Malaysia) Bd 3

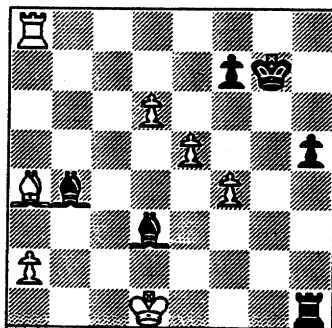
A reporter noted, "She doesn't attract the biggest crowd, and her moves don't have ... electrifying quality. But very quietly she is drawing raves.

Here she shows her resourcefulness in the endgame after Black's 25...g5 as shown in the diagram below: D. Gaso (2085) Bosnia & Herzegovina - vs. G. Putra (2005) Malaysia.



after
25...g5

26. g3 h5 27. Bb5 Rb7 28. Bc6 Rb6 29. Rxa7 gxf4? 30. gxf4? (30.Bxc4) 30... c4! 31. Bxe7 c3 32. Bc5 c2 33. Rc1 Rb1 34. Be3 Bf8 35. Ra5 Rcb8 36. Kf2 Rxc1 37. Bxc1 Rb1 38. Be3 c1Q 39. Bxc1 Rxc1 40. Ra8 Kg7 41. Ba4 Bc5+ 42. Ke2 Rh1 43. d6 Rxh2+ 44. Kf1 Bd3+ 45. Ke1 Bb4+ 46. Kd1 Rh1++ 0-1



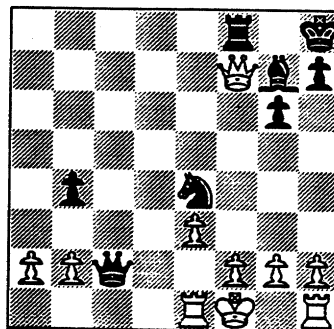
Final
Position



Corina Peptan (Romania) Bd. 4

One player in the Romanian women's team who created quite an impression in the Olympiad was 14-year-old Corina Peptan. Not only did she rack up a 71.43% average, she also beat Irina Chelushkina (2330) of Ukraine who's ranked 31st in the world among women players.

S. Battseugel (2000) Mongolia - C. Peptan (2115) Romania; Grunfeld: 1. d4 Nf6 2. c4 g6 3. Nc3 d5 4. Bf4 Bg7 5. e3 c5 6. Bxb8 Rxb8 7. Qa4+ Bd7 8. Qxa7 cxd4 9. Qxd4 dxc4 10. Bxc4 0-0 11. Nge2 b5 12. Bb3 b4 13. Na4 Qa5 14. Nc5 Bb5 15. Qe5 Bxe2 16. Bxf7+ Kh8 17. Qxe7 Rxf7 18. Qxf7 Qxc5 19. Kxe2 Qc2+ 20. Kf1 Ne4 21. Re1 Rf8 1-0

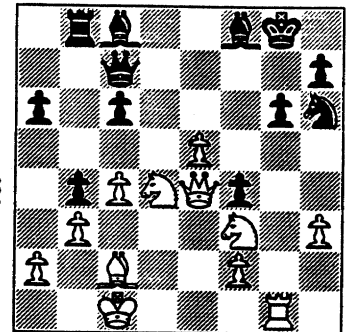


Final
Position



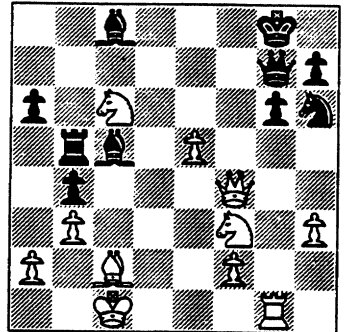
Almira Skripchenko (Moldova) Bd. 2

One of 16-year-old Skripchenko's nice games was this one. Let's take it up after 29...Rb8:



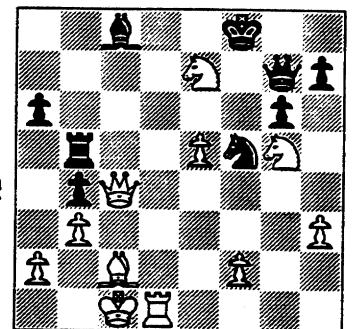
after
29...Rb8

A. Skripchenko (2115) Moldova - N. Koskela (2125) Finland: 30. c5! Bxc5 31. Qxf4 Qg7 32. Nxc6 Rb5



after
32...Rb5

33. Ng5! Nf5 34. Qc4+ Kf8 35. Rd1 Be7 36. Nxe7 1-0



Final
Position

EAST DIVISION Team Directory

Keith S. Kostecka, Division Chairman

Alumni

Algis Litvinas (Capt)
4610 S. Wood
Chicago, IL 60609
H: (312) 927-3953

Postal Service

William Howard (Capt)
4822 S. Dorchester
Chicago, IL 60615
H: (312) 924-2142

CRT

Dan Bargerstock (Capt)
440 S. LaSalle
Chicago, IL 60605
W: (312) 431-3062

Bank of America

Erman Paraoan (Capt)
596 Glen Flora
Carol Stream IL 60188
W: (312) 828-3172

Columbia College

Keith S. Kostecka (Capt)
1042 N. Hayes Ave
Oak Park, IL 60302
W: (312) 663-1600 Ext:182 H: (708) 524-1460

Amoco

James Hodina (Capt)
718 Central Park Ave.
Flossmor, IL 60422
W: (708) 990-6115 H: (708) 799-5571

Merchantile Exchange

Steve Slagle (Capt)
111 Peach Tree Lane
Westmont, IL 60559
Pager: (708) 762-1950

Hull Trading

Bob Young (Capt)
311 S. Wacker
Suite 1400
Chicago, IL 60606
W: (312) 697-2728

CTA

Abe Wilson (Capt)
12452 S. Laflin
Calumet Park, IL 60643
W: (312) 850-9411 Ext. 7158
H: (708) 396-0207

NORTH DIVISION Team Directory

MOTOROLA

1301 E. Algonquin
Schaumburg, IL

Nik Goncharoff MF464 (Capt)
Automotive and Industrial Electronics Group
4000 Commercial Avenue
Northbrook, IL 60062-1840
W: (708) 480-4736 H: (708) 885-3924

John Gryparis (Alternate Capt)
W: (708) 480-4279

SEARS

3333 Beverly Road
Hoffman Estates, IL

Mark Brockett (Capt)
34 W. 442 Lincoln St.
St. Charles, IL 60174
W: (708) 286-6984 H: (708) 695-0343

Tom Miller (Alternate Capt)
W: (708) 286-7586 H: (708) 934-6665

EXEMPLARS

Frank Suerth (Capt)
5228 W. Giddings
Chicago, IL 60630
H: (312) 736-4974

Tom Frieske (Alternate Capt)
W: (708) 506-4038 H: (708) 299-0706

NORTHROP

600 Hicks Road
Rolling Meadows, IL

Gabor Elek (Capt)
Electronics Systems Division
Rolling Meadows Site
Mailstop: L3500
600 Hicks Road
Rolling Meadows, IL 60008-1098
W: (708) 259-9600 Ext. 4708

Kaz Jakstas (Alternate Capt)
W: (708) 259-9600 Ext. 4801

U. O. P.

25 E. Algonquin Rd
Des Plaines, IL

Pat Sajbel (Capt)
616 S. Edward
Mt. Prospect, IL 60056
W: (708) 391-2134 H: (708) 506-9302

Edwin Bolding (Alternate Capt)
W: (708) 391-3467 H: (708) 590-9158

KEMPER

1 Kemper Drive
Long Grove, IL

Mark Siwek (Capt)
727 N. Broadway
Park Ridge, IL 60068
W: (708) 320-3658 H: (708) 692-6417

Art Olsen (Alternate Capt)
W: (708) 320-3783 H: (708) 437-9819

FEL-PRO

7540 N. McCormick Blvd
Skokie, IL

Abram D. Feldman (Capt)
7540 N. McCormick Blvd
P. O. Box 1103
Skokie, IL 60076-8103
W: (708) 674-7701 Ext. 2490

Ruben Querubin (Alternate Capt)

NEAR WEST DIVISION

TEAM	KNIGHT	CHRGR	UNILV	RADIO	JCASE	Game Pts	Match Pts	KNIGHT	CHRGR	UNILV	RADIO	JCASE	Game Pts	Match Pts
KNIGHT			6	5	5.5	16.5	3.0					3.5	20	4.0
CHRGR			5.5		3	8.5	1.5							
UNILV	0	.5		4	1.5	6.0	1							
RADIO	0		1			1	0							
JCASE	.5	3	4.5			8.0	1.5	2.5					10.5	1.5

EAST DIVISION

TEAM	PSTOF	COLUM	ALUMN	CRT	AMCRP	CTA	HULL	MERC	CONBK	Game Pts	Match Pts	Rnd 10	Rnd 11	Rnd 12	Game Pts	Match Pts
PSTOF		1.5			4	4.5	4	5	3	22	5					
COLUM	4.5		3	4.5	3.5				3	18.5	4					
ALUMN		3			4	5	5.5	5.5	3	26	5					
CRT		1.5			3.5		6	6		17	3					
AMCRP	2	2.5	2	2.5					4	13	1					
CTA	1.5		1				6	2		10.5	1.5					
HULL	2		0.5	0		0				2.5	0					
MERC	0		0.5	0		2			2	4.5	0.5					
CONBK	2	3	3		2			4		14	2					

FAR WEST DIVISION

TEAM	ROOKS	FERMI	ROYLS	TYROS	MDCON	DRGNS	WHEAT	Game Pts	Match Pts	Position SWISS	Game Pts	Match Pts
ROOKS		2	5		4	2.5	3	16.5	2.5			
FERMI	4		5	4.5	4	4		21.5	5			
ROYLS	1	1		5.5				7.5	1			
TYROS		1.5	0.5		5.5	2	4.5	14.0	2			
MDCON	2	2		0.5		1.5		6	0			
DRGNS	3.5	2		4	4.5		6	20.0	4			
WHEAT	3			1.5		0		4.5	0.5			

NORTH DIVISION

TEAM	SEARS	MTRLA	U.O.P.	NORTH	EXMPL	KEMPR	FLPRO	Game Pts	Match Pts	Position SWISS	Game Pts	Match Pts
SEARS			3	3		2	6	14	2.0			
MTRLA			3	3.5	4.5		5	16	3.5			
U.O.P.	3	3				6		12	2.0			
NORTH	3	2.5			4	4.5	5.5	14.0	3.5			
EXMPL		1.5		2		5.5	6	15	2			
KEMPR	4	0		1.5	0.5			6	1			
FLPRO	0	1		.5	0			1.5	0			

Ratings Chairman's Report

December 30, 1994

Timliness of Ratings

The date shown in the team standings is the date that the ratings update was completed. November's ratings were mailed to the Bulletin chairman on November 27. This month's results will be mailed on Dec. 31. Any additional delay in receiving up-to-date ratings results from the process for producing and mailing the Bulletin. Because of the production delays it is doubly important for team captains to submit the results as soon as possible following completion of each match.

Team captains are reminded that both captains are expected to send the results of each match to me. In addition, the home team captain should forward a copy of the results to the division chairman.

Some early-round results that have not yet been received are: Exemplars vs. Fel-Pro (North Div. round 3) and Fel-Pro vs. Northrup (North Div. round 4). If these matches have been played it would be appreciated if someone would send me the results.

I will be glad to receive results by electronic mail at czar@csgcbu.att.com. However, the paper results sheet should be sent anyway in order to provide the official record of the match result.

Unrated Extra-Board Games

Several players playing extra board games at J.I. Case matches requested that their games not be rated. Accordingly, they are shown as forfeits in the match results, which avoids any changes to ratings. In addition, each player's record in the ratings data base has been updated to give credit toward Centurion awards for the games played.

Ratings Schedule

The ratings will next be updated on the weekend of Jan. 28-29. For results mailed by Jan. 22 the U.S. mail should provide adequate lead time for delivery and team captains should not need to fax results to me. Results can be faxed to me during the week of Jan. 22.

-- Charlie Ward
CICL Ratings Chairman

NORTH DIVISION 12-30-1994

TEAM NAME	W	L	D	GAME POINTS	MATCH POINTS	PCT
NORTHROP CORP.	2	1	1	14.0	2.5	0.625
MOTOROLA	2	0	1	11.5	2.5	0.833
SEARS	1	1	2	14.0	2.0	0.500
UOP PROCESS DIV.	1	0	2	12.0	2.0	0.667
EXEMPLARS	1	1	0	7.5	1.0	0.500
KEMPER INSURANCE	1	3	0	6.0	1.0	0.250
FEL-PRO	0	2	0	1.0	0.0	0.000

EAST DIVISION 12-30-1994

TEAM NAME	W	L	D	GAME POINTS	MATCH POINTS	PCT
COLUMBIA COLLEGE	3	0	2	18.5	4.0	0.800
CHICAGO POST OFFICE	4	1	0	18.0	4.0	0.800
CHICAGO RES. & TRDG.	3	1	0	17.0	3.0	0.750
ALUMNI CENTRAL	2	0	2	16.5	3.0	0.750
CONTINENTAL BANK	1	2	2	14.0	2.0	0.400
CTA	1	2	1	10.5	1.5	0.375
AMOCO CORP.	1	2	0	9.0	1.0	0.333
CHICAGO MERC. EXCH.	0	3	1	4.0	0.5	0.125
HULL TRADING CO.	0	4	0	2.5	0.0	0.000

NEAR WEST DIVISION 12-30-1994

TEAM NAME	W	L	D	GAME POINTS	MATCH POINTS	PCT
ARGONNE KNIGHTS	4	0	0	20.0	4.0	1.000
J. I. CASE	1	2	1	10.5	1.5	0.375
AT&T CHARGERS	1	0	1	8.5	1.5	0.750
UNILEVER	1	3	0	6.0	1.0	0.250
A & B RADIO	0	2	0	1.0	0.0	0.000

FAR WEST DIVISION 12-30-1994

TEAM NAME	W	L	D	GAME POINTS	MATCH POINTS	PCT
FERMILAB	5	0	0	21.5	5.0	1.000
AT&T DRAGONS	4	1	0	20.0	4.0	0.800
ARGONNE ROOKS	2	2	1	16.5	2.5	0.500
AT&T TYROS	2	3	0	14.0	2.0	0.400
AT&T ROYALS	1	2	0	7.5	1.0	0.333
WHEATON COLLEGE	0	2	1	4.5	0.5	0.167
MIDCON CORP	0	4	0	6.0	0.0	0.000

21-NOV-94 UNILEVER.
ROUND 4

1.5 J. I. CASE 4.5

BD	RATINGS	SCORE	RATINGS	SCORE
1 ELLICE, W	1864 -1	.5	KALE, S	1850 1 .5
2 CADE, M	0 0	0	SATTERLEE, D	1699 0 1
3 NELL, D	1077 -2	0	WHITE, H	1596 2 1
4 MCKAY, P	0 0	0	KLINEFELTER, H	1517 0 1
5 LULKIN, V	0 0	1	SAWDO, E	1413 0 0
6 JOSHI, A	0 0	0F	KANAS, W	1316 0 1F
(ROYLS) 7 DOBROVOLNY, C	2009 0	1F	DUFRESNE, T	997 0 0F
(JCASE) 8 DIAZ, L	0 0	0F	DOBROVOLNY, C	2009 0 1F (ROYLS)
(AMCRP) 9 POMA, D	1285 27	1	REID, C	1362-27 0

01-DEC-94 J. I. CASE
ROUND 5

2.5 ARGONNE KNIGHTS 3.5

BD	RATINGS	SCORE	RATINGS	SCORE
1 KALE, S	1851 -5	0	BENEDEK, R	2200 4 1
2 SATTERLEE, D	1699-11	0	HILL, R	1798 16 1
3 WHITE, H	1598 25	1	SUAREZ, E	1638-25 0
4 KLINEFELTER, H	1517 6	.5	BAURAC, D	1611 -4 .5
5 SAWDO, E	1413-19	0	KINSELLA, G	1471 19 1
6 REID, C	1335 22	1	GALLAGHER, H	1333-22 0
7 MOTYCKA, R	1153-13	0	POMA, D	1312 13 1 (AMCRP)
(CHRGR) 8 DOBR, K	1532 0	0F	KANAS, W	1316 0 1F (JCASE)
9 DIAZ, L	0 0	0	NOBLE, S	0 0 1 (JCASE)

22-NOV-94 CHICAGO RES. & TRDG.
ROUND 1

6 HULL TRADING CO. 0

BD	RATINGS	SCORE	RATINGS	SCORE
1 FRIESEMA, W	2116 1	1	YOUNG, R	1396 -1 0
2 LOSOFF, A	1880 2	1	WEISSKOPF, J	1335 -2 0
3 BARGERSTOCK, D	1823 3	1	NAUGHTON, T	1334 -3 0
4 DENG, J	1597 0	1	WEISS, G	0 0 0
5 SZONTAGH, T	0 0	1F	MARGULIS, A	1491 0 0F
6 DOTY, B	0 0	1F		0 0 0F
7 SZONTAGH, T	0 0	1	DOTY, B	0 0 0 (CRT)

22-NOV-94 COLUMBIA COLLEGE
ROUND 6

3 ALUMNI CENTRAL 3

BD	RATINGS	SCORE	RATINGS	SCORE
1 WACHTEL, H	2230-29	0	CZERNIECKI, A	2121 20 1
2 SANTIAGO, T	1933 17	1	BRONFELD, A	1850-17 0
3 MCALISTER, K	1940-31	0	FRANEK, M	1794 31 1
4 PRATTS, M	1755 1	.5	FABIJONAS, R	1760 0 .5
5 KOSTECKA, K	1662 1	.5	LITVINAS, A	1664 0 .5
6 HERNANDEZ, DD	1525 32	1	DAVIDSON, M	1683-32 0

01-DEC-94 CONTINENTAL BANK
ROUND 6

2 CHICAGO POST OFFICE 3

BD	RATINGS	SCORE	RATINGS	SCORE
1 KOGAN, G	1826 31	1	MARCOWKA, R	1960-21 0
2 DYCZKOWSKI, R	1561 0	0F	PERAREN, E	1811 0 0F
3 HAMMOND, M	1387 -3	0	ALLEN, H	1855 3 1
4 ZOELLNER, J	1361 40	1	COOPER, W	1722-40 0
5 GANSER, A	1292-10	0	CARTER, L	1518 10 1
6 HILLIARD, J	0 0	0	HOWARD, W	1503 0 1

06-DEC-94 COLUMBIA COLLEGE
ROUND 4

4.5 CHICAGO RES. & TRDG. 1.5

BD	RATINGS	SCORE	RATINGS	SCORE
1 WACHTEL, H	2201 22	1	JASAITIS, A	2196-15 0
2 SANTIAGO, T	1950 -5	.5	LOSOFF, A	1882 5 .5
3 KOSTECKA, K	1663 0	1F	BARGERSTOCK, D	1826 0 0F
4 PRATTS, M	1756 13	1	DENG, J	1597-13 0
5 HERNANDEZ, DD	1557-37	0	BERNARD, D	1279 37 1
6 MARTIN, K	1476 0	1	LUEDERS, J	0 0 0

07-DEC-94 ALUMNI CENTRAL
ROUND 3

5.5 HULL TRADING CO. .5

BD	RATINGS	SCORE	RATINGS	SCORE
1 LITVINAS, A	1664-10	.5	YOUNG, R	1395 15 .5
2 KRAS, T	2262 0	1F		0 0 0F
3 CZERNIECKI, A	2141 0	1F		0 0 0F
4 FRANEK, M	1825 0	1F		0 0 0F
5 FABIJONAS, R	1760 0	1F		0 0 0F
6 DAVIDSON, M	1651 0	1F		0 0 0F

30-NOV-94 ARGONNE ROOKS
ROUND 5

2.5 AT&T DRAGONS 3.5

BD	RATINGS	SCORE	RATINGS	SCORE
1 SHEYNIN, S	2139 1	.5	TEGEL, F	2141 0 .5
2 BERRY, G	2060 6	1	DURKEE, D	1801 -6 0
3 GREEN, D	1816 5	1	EUSTACE, D	1540 -8 0
4 MORRISON, J	1704 0	0F	WARD, C	1558 0 1F
5 DECMAN, S	1681-21	0	HICKS, C	1530 32 1
6 BURBA, K	1414-19	0	KRUEGER, J	1314 29 1
7 SEMONES, E	0 0	0	SCHWAB, W	1485 0 1 (ROOKS)

30-NOV-94 FERMILAB
ROUND 5

4.5 AT&T TYROS 1.5

BD	RATINGS	SCORE	RATINGS	SCORE
1 BEZZUBOV, V	2332 6	1	STOLTZ, B	2006 -6 0
2 KOZLOVSKY, M	2237 4	1	BLAZIE, J	1832 -4 0
3 MOTTA, H	2029 0	0F	SHAFF, R	1532 0 1F
4 SPIEGEL, L	1988 2	1	THOMAS, G	1491 -2 0
5 HARRIS, R	1683-21	.5	KARPIERZ, J	1126 21 .5
6 PARA, A	1577 2	1	SCHWARTZ, M	1059 -2 0

20-DEC-94 AT&T TYROS
ROUND 6

2 AT&T DRAGONS 4

BD	RATINGS	SCORE	RATINGS	SCORE
1 STOLTZ, B	2000-14	0	TEGEL, F	2141 9 1
2 TAMEZ, I	1979 30	1	LUDWIG, T	2108-20 0
3 BROZOVICH, J	1753-13	0	DURKEE, D	1795 13 1
4 THOMAS, G	1489-20	0	EUSTACE, D	1532 20 1
5 SMITH, BR	1460 29	1	WARD, C	1558-19 0
6 RIPPE, D	0 0	0	HICKS, C	1562 0 1
7 SCHWARTZ, M	1057 12	.5	PHELPS, C	1262-12 .5

06-DEC-94 EXEMPLARS
ROUND 4

5.5 KEMPER INSURANCE .5

BD	RATINGS	SCORE	RATINGS	SCORE
1 FRISKE, T	1866 15	.5	SIWEK, M	2138-10 .5
2 OSTERLUND, R	1904 3	1	OLSEN, A	1464 -3 0
3 BURIAN, D	1680 9	1	LAMBIRIS, J	1444 -9 0
4 WEITZ, R	1682 4	1	CUMMUTA, P	1368 -6 0
5 SUERTH, F	1628 0	1	POZNIAK, J	0 0 0
6 BROTSOS, J	1541 4	1	MCFARLIN, B	1215 -6 0

14-DEC-94 KEMPER INSURANCE
ROUND 5

1.5 NORTHROP CORP. 4.5

BD	RATINGS	SCORE	RATINGS	SCORE
1 SIWEK, M	2128 3	.5	JAKSTAS, K	2197 -3 .5
2 LEONG, G	2000 -8	0	GOLUMBOVSKI, P	2179 12 1
3 LAMBIRIS, J	1435 -2	0	DIAZ, P	2017 2 1
4 POZNIAK, J	0 0	0	CAIRONE, B	0 0 1
5 CUMMUTA, P	1362 36	1	VIGANTS, A	1596-36 0
6 MCFARLIN, B	1209 0	0F	MILLER, J	0 0 1F
7 PAYTON, P	0 0	0	ELEK, G	1004 0 1
8 BERMAN, R	0 0	0	WONG, KK	0 0 1
9 AQUENDE, A	0 0	0F	QUARTETTI, C	0 0 1F

NORTH DIVISION TOP TEN

REYES, R	SEARS 2323D
HASAN, Y	MTRLA 2237
WONG, P	EXMPL 2231C
STEVANOVIC, M	UOP 2217C
MELNIKOV, I	MTRLA 2214
JAKSTAS, K	NORTH 2194C
GOLUMBOVSKI, P	NORTH 2191
SIWEK, M	KEMPR 2131C
BUERGER, E	UOP 2120D
BOLDINGH, E	UOP 2120

EAST DIVISION TOP TEN

WACHTEL, H	COLUM 2223
INUMERABLE, F	PSTOF 2211
JASAITIS, A	CRT 2181C
CZERNIECKI, A	ALUMN 2141C
HODINA, J	AMCRP 2125
FRIESEMA, W	CRT 2117
COX, M	ALUMN 2024C
SMILEY, R	AMCRP 2016
MAREMA, D	PSTOF 2006
LEONG, D	ALUMN 1971

NEAR WEST DIVISION TOP TEN

BENEDEK, R	KNIGHT 2204D
WARREN, J	CHRGR 2122T
KEISLER, J	KNIGHT 2000
ELLICE, W	UNILV 1863
KALE, S	JCASE 1846
HILL, R	KNIGHT 1814
STAMM, V	CHRGR 1741D
RADAVICIUS, E	CHRGR 1729D
SATTERLEE, D	JCASE 1688C
WHITE, H	JCASE 1623

FAR WEST DIVISION TOP TEN

LEVINE, D	ROOKS 2358
BEZZUBOV, V	FERMI 2338*
KOZLOVSKY, M	FERMI 2241
TEGEL, F	DRGNS 2150D
SHEYNIN, S	ROOKS 2140
BUCHNER, R	ROYLS 2129
LUDWIG, T	DRGNS 2088C
BERRY, G	ROOKS 2066D
GUIO, J	ROYLS 2062
MOTTA, H	FERMI 2029

MOST IMPROVED PLAYERS

ZOELLNER, J	CONBK	107
PRATTS, M	COLUM	76
GOLUMBOVSKI, P	NORTH	65
BEZZUBOV, V	FERMI	65
EUSTACE, D	DRGNS	48
BUERGER, E	UOP	41
HERNANDEZ, DD	COLUM	40
SIEGEL, R	CONBK	38
DURKEE, D	DRGNS	38
WILSON, A	CTA	35

NAME	TEAM	W	L	D	RATING	NAME	TEAM	W	L	D	RATING
ABBOTT, J	MTRLA	0	0	0	0000?	CATENA, J	MTRLA	0	1	0	0000?
ABRAHAM, T	CTA	1	1	1	1541	CHAN, H	SEARS	1	0	0	1574
ALLEN, H	PSTOF	3	1	0	1858	CHARKOVSKY, R	ALUMN	0	0	0	1619
AMUNDSEN, C	KEMPR	0	0	0	0000?	CHEVERESAN, S	UOP	0	0	0	1434C
ANDERSON, CJ	ROYLS	0	0	0	1446	CHRISTIAN, R	DRGNS	0	0	0	1808C
AQUENDE, A	KEMPR	0	2	0	0000?	CIESLEK, D	MTRLA	1	0	0	1950
ATKINSON, J	AMCRP	1	1	1	1733C	CISKO, G	FERMI	0	0	0	1615*
AUGSBURGER, L	MTRLA	1	0	0	1745	COLEMAN, O	CTA	0	2	0	0000?
AUSTIN, R	ROYLS	0	0	0	1125#	CONNELY, S	HULL	0	0	0	0000?
BAER, M	AMCRP	0	0	0	1347*	CONNOR, P	MDCON	0	1	3	2024
BAKER, B	FLPRO	0	1	0	1069	COOPER, W	PSTOF	1	1	0	1682
BAKER, LR	MERC	0	1	0	1101*	COTE, J	MERC	0	3	1	1280
BANZA, S	HULL	0	0	0	0000?	COX, M	ALUMN	2	0	0	2024C
BARGERSTOCK, D	CRT	3	0	0	1826	CREWSE, L	EXMPL	0	1	0	2027
BARNES, D	ROAD	0	0	0	0000?	CUMBERLAND, M	SEARS	0	0	0	0000?
BARTUSIAK, P	MTRLA	0	2	0	0000?	CUMMUTA, P	KEMPR	2	1	0	1398
BAURAC, D	KNIGHT	2	0	1	1607C	CURRAN, T	MTRLA	1	0	0	0000?
BECK, P	MERC	0	1	0	0000?	CZERNIECKI, A	ALUMN	2	1	0	2141C
BENEDEK, R	KNIGHT	2	0	1	2204D	DAVIDSON, M	ALUMN	2	1	0	1651*
BENESA, A	GROLR	0	0	0	2211	DAVIS, R	PSTOF	0	0	0	0000?
BERMAN, R	KEMPR	0	1	0	0000?	DEARDORFF, M	FLPRO	0	0	0	1437*
BERNARD, D	CRT	2	1	0	1316	DECMAN, S	ROOKS	3	2	0	1660D
BERRY, G	ROOKS	3	0	1	2066D	DENG, J	CRT	3	1	0	1584
BEZZUBOV, V	FERMI	5	0	0	2338*	DEWITT, G	ROCKW	0	0	0	1423C
BHOJWANI, C	TYROS	1	1	0	1965	DEZONNO, T	ROCKW	0	0	0	1255*
BLACKMON, E	ROYLS	1	1	0	1754	DIAZ, L	JCASE	1	2	0	0000?
BLAZIE, J	TYROS	0	1	0	1828C	DIAZ, P	NORTH	3	1	0	2019
BLOOM, B	EXMPL	0	1	0	2047	DJORDJEVIC, I	FERMI	0	0	0	0000?
BOLDINGH, E	UOP	2	1	0	2120	DOBR, K	CHRGR	1	0	1	1532T
BOOKER, G	RADIO	0	0	0	1398*	DOBROVOLNY, C	ROYLS	1	1	0	2009
BOSTICK, T	WHEAT	0	1	1	0000?	DONNA, D	MTRLA	0	0	0	0000?
BRADY, R	CHRGR	1	1	0	1253	DORFF, M	SEARS	1	1	0	1466
BRANCH, Y	COLUM	0	0	0	1301*	DOTY, B	CRT	0	1	0	0000?
BRIONES, M	UOP	0	0	0	1660C	DUFRESNE, T	JCASE	2	1	0	997*
BRITT-WEBB, E	AMCRP	0	1	0	0000?	DURKEE, D	DRGNS	2	1	1	1808C
BROCKETT, M	SEARS	1	2	1	1812	DYCZKOWSKI, R	CONBK	0	0	0	1561
BRONFELD, A	ALUMN	1	1	0	1833	DZEKHTSER, A	SEARS	4	0	0	0000?
BROTSOS, J	EXMPL	2	0	0	1545D	DZURICKSKO, G	UNILV	1	1	0	1188#
BROZOVICH, J	TYROS	2	1	0	1740C	EDWARDS, S	AWEST	0	0	0	1278
BUCHNER, R	ROYLS	0	0	0	2129	EFRON, D	ROCKW	0	0	0	1638
BUERGER, E	UOP	3	0	0	2120D	EGERTON, J	MDCON	1	2	1	1920
BURBA, K	ROOKS	0	2	0	1395C	ELEK, G	NORTH	1	3	0	1004
BURDICK, S	COLUM	1	0	0	1610	ELLICE, W	UNILV	0	1	1	1863
BURIAN, D	EXMPL	1	0	0	1689C	ERLENBORN, M	AWEST	0	0	0	1482*
CADE, M	UNILV	0	1	0	0000?	EUSTACE, D	DRGNS	4	1	0	1552
CAIRONE, B	NORTH	1	0	0	0000?	FABIJONAS, R	ALUMN	0	1	1	1760D
CARDI, P	HULL	0	1	0	0000?	FAHRENHOLTZ, S	MTRLA	0	1	0	1768*
CARNAL, D	CRT	0	0	0	1210#	FELDMAN, A	FLPRO	0	2	0	1437C
CARTER, L	PSTOF	1	1	2	1528	FLEET, R	MDCON	1	3	0	0000?
CARTER, O	CTA	1	0	0	0000?	FRAATS, D	CONBK	2	1	1	1898

? - UNRATED

- 5 TO 9 RATED GAMES

* - 10 TO 24 RATED GAMES

C - CENTURY CLUB MEMBER

D - DOUBLE CENTURION

T - TRIPLE CENTURION

Q - QUAD CENTURION

NAME	TEAM	W	L	D	RATING	NAME	TEAM	W	L	D	RATING
FRANCISKOVICH, D	HULL	0	0	0	1113#	JONES, M	CTA	1	1	0	1353*
FRANEK, M	ALUMN	2	0	0	1825C	JOSEPHSON, D	WHEAT	0	1	0	0000?
FRANK, M	MERC	1	0	0	1724*	JOSHI, A	UNILV	0	0	0	0000?
FRIESEMA, W	CRT	2	0	1	2117	KALE, S	JCASE	0	2	2	1846
FRISKE, T	EXMPL	0	0	1	1881	KANAS, W	JCASE	1	2	0	1316C
GAINES, I	FERMI	2	2	0	1721C	KARPIERZ, J	TYROS	0	0	2	1147*
GALKO, D	KEMPR	0	1	0	0000?	KATZ, J	JCASE	0	1	0	0000?
GALLAGHER, H	KNGHT	1	2	0	1311	KAUFMAN, M	KEMPR	0	1	0	0000?
GANSER, A	CONBK	0	4	1	1282#	KEEFE, E	FLPRO	0	0	0	1186#
GASTON, K	JCASE	0	0	0	1274*	KEISLER, J	KNGHT	2	0	0	2000
GAZMEN, E	GROLR	0	0	0	2234	KERCSMAR, J	WHEAT	0	1	0	0000?
GIMPLE, R	WHEAT	0	1	0	0000?	KINSELLA, G	KNGHT	2	0	0	1490C
GOLDBOGEN, G	COLUM	0	0	0	0000?	KLINEFELTER, H	JCASE	2	1	1	1523C
GOLLA, R	SEARS	0	2	0	2001D	KOEPELE, J	TYROS	0	0	0	0000?
GOLUMBOVSKI, P	NORTH	4	0	0	2191	KOGAN, G	CONBK	2	2	1	1857
GONCHAROFF, N	MTRLA	2	0	0	1771Q	KOSTECKA, K	COLUM	1	1	2	1663
GORZ, E	RADIO	0	1	0	1289*	KOZLOVSKY, M	FERMI	2	0	1	2241
GREEN, D	ROOKS	4	0	0	1821C	KRUEGER, J	DRGNS	2	0	1	1343#
GRIESMEYER, W	PSTOF	1	0	0	1317	KRULL, E	AMCRP	1	2	0	1443
GRYPARIS, J	MTRLA	1	0	0	1408	LACAPENA	GROLR	0	0	0	0000?
GUILLEN, B	KEMPR	0	0	0	1402*	LAMBIRIS, J	KEMPR	1	3	0	1433*
GUIO, J	ROYLS	0	1	1	2062	LASKY, JIM	RADIO	0	1	0	1693#
HAHNE, D	ROYLS	1	1	0	1580	LASKY, N	RADIO	0	1	0	1352C
HAMILTON, L	AMCRP	0	0	0	1380	LATIMER, E	SEARS	1	2	0	2015D
HAMMOND, M	CONBK	1	2	0	1384	LEE, B	UNILV	0	0	0	1470
HAMPER, P	AMCRP	0	0	0	1288*	LEONG, D	ALUMN	0	0	0	1971
HANSEN, B	MDCON	1	0	0	0000?	LEONG, G	KEMPR	1	2	0	1992C
HARRIS, FF	CTA	0	1	0	1401#	LERNER, R	SEARS	1	0	0	0000?
HARRIS, R	FERMI	3	0	2	1662	LESTER, M	MTRLA	0	0	0	1623
HASAN, Y	MTRLA	0	1	0	2237	LEVINE, D	ROOKS	1	1	1	2358
HEDSTROM, L	RAIL	0	0	0	0000?	LIKHTEREV, M	UOP	0	2	0	1501#
HERNANDEZ, DD	COLUM	3	1	0	1520	LITVINAS, A	ALUMN	1	1	2	1654C
HESS, B	FLPRO	0	2	0	1453	LOGAN, H	MDCON	1	1	0	0000?
HICKS, C	DRGNS	3	0	0	1562	LOMONT, C	SEARS	0	0	0	1494#
HILL, C	FERMI	0	0	0	1663*	LORENZ, B	MDCON	1	3	0	0000?
HILL, R	KNGHT	3	0	0	1814	LOSOFF, A	CRT	3	0	1	1887
HILLIARD, J	CONBK	0	1	0	0000?	LUDWIG, T	DRGNS	2	1	0	2088C
HILTON, J	MERC	0	1	1	1021*	LUEDERS, J	CRT	0	1	0	0000?
HODINA, J	AMCRP	2	0	1	2125	LULKIN, V	UNILV	2	0	1	0000?
HOWARD, W	PSTOF	4	1	0	1503	MAA, R	DRGNS	0	0	0	0000?
HUGHES, N	KEMPR	0	0	0	1852C	MARCOWKA, R	PSTOF	2	1	1	1939C
HUNG, N	MTRLA	0	0	0	1471#	MAREMA, D	PSTOF	0	0	1	2006
INUMERABLE, F	PSTOF	0	1	0	2211	MARTIN, K	COLUM	2	1	0	1476
ITZENHEUSER, W	JCASE	0	2	0	0000?	MATTHEWS, J	CTA	1	0	0	1759
JACKSON, JJ	ROAD	0	0	0	0000?	MAYNARD, J	WHEAT	0	3	0	1375
JACOBS, N	DRGNS	0	0	0	1983C	MCALISTER, K	COLUM	0	2	1	1909
JAKSTAS, K	NORTH	1	0	3	2194C	MCCLENDON, L	CONBK	0	0	0	1340
JARRETT, T	CTA	2	1	0	1613*	MCFARLIN, B	KEMPR	0	2	0	1209#
JASAITIS, A	CRT	1	2	0	2181C	MCINTOSH, S	CONBK	0	0	0	1142*
JONES, B	ROCKW	0	0	0	2061	MCKAY, P	UNILV	0	1	0	1409#

? - UNRATED
 # - 5 TO 9 RATED GAMES
 * - 10 TO 24 RATED GAMES

C - CENTURY CLUB MEMBER
 D - DOUBLE CENTURION
 T - TRIPLE CENTURION
 Q - QUAD CENTURION

NAME	TEAM	W	L	D	RATING	NAME	TEAM	W	L	D	RATING
MCQUINN, J	ROCKW	0	0	0	1450	RADAVICIUS, E	CHRGR	2	0	0	1729D
MELNIKOV, I	MTRLA	1	0	1	2214	RAFACZ, T	ROCKW	0	0	0	1698
MELNIKOV, N	MTRLA	2	0	0	0000?	RAFACZ, W	ROCKW	0	0	0	1638
MENGEL, M	FERMI	0	0	0	0000?	RAFFERTY, M	HULL	0	0	0	0000?
MICKLICH, F	UOP	1	2	0	1717C	RANGEL, R	HULL	0	0	0	1741
MIKULECKY, B	RADIO	1	1	0	1326C	REED, K	TYROS	0	0	0	0000?
MILLER, J	NORTH	0	2	0	0000?	REID, C	JCASE	3	1	0	1357
MILLER, TT	SEARS	0	0	1	1725	REYES, R	SEARS	2	1	1	2323D
MITCHAM, L	ROCKW	0	0	0	1552*	RINGER, D	SEARS	1	0	0	0000?
MOORE, JJ	MTRLA	0	0	0	0000?	RIPPE, D	TYROS	0	2	0	0000?
MORRISON, J	ROOKS	1	1	0	1704	ROBERTS, J	WHEAT	1	1	0	0000?
MORTADA, C	MTRLA	0	1	0	0000?	ROJAS, R	RAIL	0	0	0	0000?
MORTON, B	SEARS	0	0	0	1569	ROMENESKO, G	UNILV	0	1	0	0000?
MOTTA, H	FERMI	2	2	0	2029	ROSENBERG, B	MDCON	0	4	0	0000?
MOTYCKA, R	JCASE	1	2	0	1140	ROSLEY, D	ROYLS	2	1	0	1820
MUDAN, M	HULL	0	2	0	0000?	ROSS, L	JCASE	0	0	0	0000?
NARSOLIS, F	UOP	2	0	0	0000?	RUBIN, J	UNILV	0	0	0	0000?
NAUGHTON, T	HULL	0	2	0	1331*	RUDDY, J	MERC	0	0	0	1205
NELL, D	UNILV	0	1	0	1075#	RUEB, R	HULL	0	0	0	0000?
NELSON, H	CONBK	0	0	0	1967	RZESZUTKO, R	ALUMN	0	1	0	1791
NISHIMURA, K	FLPRO	1	1	0	1278*	SAHLI, E	UOP	1	1	1	1755*
NOBLE, S	JCASE	1	1	0	0000?	SAJBEL, P	UOP	2	0	1	1686
NOTERMAN, T	UNILV	0	1	0	1188	SAMELSON, C	MTRLA	3	0	0	2016C
NOWAK, W	CTA	1	2	0	1365#	SAMULAK, C	HULL	0	0	0	1147#
NWABUDE, O	CHRGR	0	0	0	1029*	SANCHEZ, P	RAIL	0	0	0	0000?
O'BRIEN, D	UOP	0	0	0	1417*	SANCHEZ, R	GROLR	0	0	0	1526*
O'DELL, DW	RADIO	0	2	0	1573C	SANTIAGO, T	COLUM	1	2	2	1945*
OGASAWARA, L	ROYLS	1	2	0	1841C	SATTERLEE, D	JCASE	1	3	0	1688C
OLSEN, A	KEMPR	0	3	0	1461	SAWDO, E	JCASE	1	2	0	1394
OSTERLUND, R	EXMPL	1	1	0	1907	SCHWAB, W	ROOKS	1	2	0	1485
PARA, A	FERMI	2	1	0	1579	SCHWARTZ, M	TYROS	2	2	1	1069
PARAOAN, E	CONBK	2	2	0	1750C	SEMONES, E	ROOKS	0	3	0	0000?
PATTON, D	CHRGR	0	1	0	0000?	SHAFF, R	TYROS	1	0	0	1532C
PAYTON, P	KEMPR	1	2	0	0000?	SHEU, G	CHRGR	0	0	0	1343*
PEHAS, A	ROYLS	1	2	0	1946	SHEYNIN, S	ROOKS	1	1	3	2140
PENNINGTON, J	WHEAT	0	1	0	0000?	SHOUSE, B	MTRLA	0	0	0	0000?
PEPPERS, M	RAIL	0	0	0	0000?	SHUKLA, S	FERMI	0	0	0	0000?
PERAREN, E	PSTOF	1	0	0	1811	SIEGEL, R	CONBK	1	0	0	1523C
PHELPS, C	DRGNS	0	1	1	1250#	SIMS, B	CRT	0	0	0	1519#
PIAO, T	DRGNS	0	1	0	1711	SIWEK, M	KEMPR	1	1	2	2131C
PILLAI, J	MTRLA	0	1	0	0000?	SLAGLE, S	MERC	0	4	0	1562
POMA, D	AMCRP	4	2	0	1325	SMILEY, R	AMCRP	0	0	3	2016
POMA, M	AWEST	0	0	0	0000?	SMITH, BR	TYROS	3	0	0	1489
POZNIAK, J	KEMPR	1	3	0	0000?	SMITH, JM	ALUMN	0	0	0	1196*
PRATT, C	MTRLA	1	1	0	0000?	SOLLANO, E	GROLR	0	0	0	1956
PRATTS, M	COLUM	3	0	2	1769	SOMBONG, M	CONBK	0	1	1	1634
PRICE, B	AWEST	0	0	0	1086#	SPIEGEL, L	FERMI	4	1	0	1990C
PUNZALAN, N	GROLR	0	0	0	1599	STAMM, V	CHRGR	1	0	0	1741D
QUARTETTI, C	NORTH	0	1	0	0000?	STAPLES, C	FERMI	0	0	0	1200#
QUERUBIN, R	FLPRO	0	1	0	2067#	STAPLES, M	CTA	0	1	0	0000?

? - UNRATED

- 5 TO 9 RATED GAMES

* - 10 TO 24 RATED GAMES

C - CENTURY CLUB MEMBER

D - DOUBLE CENTURION

T - TRIPLE CENTURION

Q - QUAD CENTURION

NAME	TEAM	W	L	D	RATING	NAME	TEAM	W	L	D	RATING
STEINER, D	HULL	0	0	0	0000?	VICK, H	MTRLA	0	0	0	1516
STEVANOVIC, M	UOP	2	1	0	2217C	VIGANTS, A	NORTH	0	1	1	1560
STEVENS, J	COLUM	0	0	0	1380	WACHTEL, H	COLUM	3	1	0	2223
STEVENSON, R	UNILV	0	1	0	1363	WALLACH, C	MTRLA	1	2	0	2096
STINSON, M	ROYLS	0	0	0	2006	WALLIN, R	WHEAT	0	2	1	1719
STOLTZ, B	TYROS	0	3	2	1986	WARD, C	DRGNS	2	2	0	1539D
SUAREZ, E	KNGHT	1	1	0	1613	WARE, K	MERC	0	2	0	0000?
SUERTH, F	EXMPL	2	0	0	1628C	WARREN, J	CHRGR	2	0	0	2122T
SULLIVAN, C	MERC	2	2	0	1529	WEBER, J	WHEAT	1	1	0	0000?
SZAUKELLIS, W	MTRLA	0	0	0	0000?	WEBER, L	GROLR	0	0	0	2144
SZONTAGH, T	CRT	1	0	0	0000?	WEISS, G	HULL	0	2	0	0000?
TAMEZ, I	TYROS	2	1	0	2009	WEISSKOPF, J	HULL	0	2	1	1333*
TAYLOR, M	ROAD	0	0	0	0000?	WEITZ, R	EXMPL	1	0	0	1686C
TEGEL, F	DRGNS	2	1	2	2150D	WELTER, P	SEARS	0	0	1	1642#
THOMAS, G	TYROS	0	3	0	1469	WENTLING, C	AMCRP	1	1	1	1649C
THOMAS, J	CHRGR	0	1	0	1455C	WEST, R	MTRLA	0	0	0	1447#
THOMPSON, R	FLPRO	0	0	0	1063	WHITE, H	JCASE	3	1	0	1623
TSEITLIN, E	MTRLA	0	0	0	0000?	WHITED, W	MDCON	0	2	0	1829
TURNER, K	PSTOF	1	0	0	1559	WHITSITT, S	AWEST	0	0	0	1504*
TYREE, D	RADIO	0	1	0	1475*	WILLIAMS, A	ROAD	0	0	0	0000?
UNDERWOOD, W	WHEAT	1	1	1	2019C	WILLIAMS, J	RAIL	0	0	0	0000?
VALDEZ, C	MTRLA	0	0	0	0000?	WILSON, A	CTA	1	1	0	1590
VAN MEER, J	KEMPR	1	1	0	2007	WILSON, M	SEARS	0	0	0	1293#
VAN METRE, R	SEARS	1	0	0	0000?	WONG, KK	NORTH	1	1	0	0000?
VAN OTRIVE, R	CTA	0	1	0	1092#	WONG, P	EXMPL	0	0	0	2231C
VAN ZILE, C	UOP	1	2	0	1382*	YOUNG, R	HULL	0	2	2	1410*
VANDECOTTE, M	UOP	2	1	0	0000?	ZEIDEL, J	MERC	0	0	0	1947
VENEGAS, B	HULL	0	1	0	0000?	ZOELLNER, J	CONBK	4	0	0	1401C
VERIVE, J	AWEST	0	0	0	1615*	ZUNGOLO, J	CRT	0	0	0	0000?

? - UNRATED

- 5 TO 9 RATED GAMES

* - 10 TO 24 RATED GAMES

C - CENTURY CLUB MEMBER

D - DOUBLE CENTURION

T - TRIPLE CENTURION

Q - QUAD CENTURION