

Chicago Industrial Chess League

Bulletin No.8, Vol. 38
June 1995

Inside this issue:

♔ From the editor

- Game submission winners, Kasparov loses 2 in VSB, etc.

♔ 1994-95 Playoff games

- D. Levine-R. Reyes, R. Marcowka-S. Sheynin

♔ Games

- CICL games (Best Game, Best Sacrifice, Best Draw)
- '95 NY Open won by Pavel Blatny (Benjamin-Blatny, Nijboer-Oll)
- Amsterdam VSB 1995 (Kasparov-Piket, Evans Gambit!!!)

♔ The Finishing Touch

- '95 NY Open (Valvo-Shabalov, Shabalov-Shliperman)
- IV Torneo Magistral, May 1995 (Short-J.Polgar)
- Tal Memorial, May 1995 (Elvhest-Timman)

♔ Cross Tables (Final - Far West and East Divisions)

♔ Ratings Chairman Report

Congratulations -

♔ **Argonne Rooks- League Champions**

♖ **Post Office - 2nd place**

♗ **Columbia College - 3rd place**

♔ **Alumni Tier 2 Champions**

♔ **-NEED INPUT!** To make the CICL bulletin even better we are looking for anyone interested in submitting **articles or games**. If you are interested, call or write to the bulletin editor.

CICL OFFICERS

As of June 1995

President: James Hodina
718 Central Park Ave.
Flossmoor, IL 60422
W:(708) 990-6115 H:(708) 799-5571

Secretary: Anthony Jasaitis
P.O. Box 664
Bedford Park, IL 60499-0664
W:(708) 406-6420

Treasurer: Wesley K. Underwood
207 S. Dorchester Ave.
Wheaton, IL 60187
W:(708) 752-5127 H:(708) 462-0393

Ratings: Charles Ward
Chairman: 615 S. Lincoln
Hinsdale, IL 60521
W:(708) 979-4599 H:(708) 325-3885
(708) 979-6124 F

Production: Marty Franek
Circulation: 9044 S. 51st Ave
Oak Lawn, IL 60453-0397
W:(312) 353-0397 H:(708) 636-3714

East: Keith Kostecka
Division: Columbia College
Chairman: Chicago, IL 60605-1996
W:(312) 663-1600 ext. 182

Near West: Satish L. Kale
Division: JI Case
Chairman: 7 South 600 County Line Rd
Hinsdale, IL 60521
W:(708) 887-2372 H:(708) 325-5253

Far West: Irwin Gaines
Division: Fermilab - MS 127
Chairman: P.O. Box 500
Batavia, IL 60510
W:(708) 840-4022

Bulletin: Ruben Reyes
Editor: 2019 W. Leland Ave
& Chicago, IL 60625-1513
North: W:(708) 286-07
Division: H:(312) 334-0591
Chairman: F (312) 769-0311

Trophy Chairman: Bob Stoltz
(708) 224-2983

Banquet & Publicity: Anthony Jasaitis
P. O. Box 664
Chairman: Bedford Park, IL
60499-0664
W:(708) 406-6420



From the editor



And the winner is.....

- Best Game Winner: **Tony Jasaitis**
- Best Attack Winner: **R. Buchner**
- Best Upset Winner: **Carl Reid**
- Best Endgame Winner: **Wayne Ellice**
- Best Salvage Winner: **Randy Byrnes**
- Best Annotated Winner: **Mark Siwek**

Erratum: Game 11 of Anand-Kamsky was played March 23rd (not the 19th as mentioned in the May issue)

To all of you who submitted games for publication, my thanks for sharing your game with us.

Late-breaking news: Kasparov lost twice in the VSB international tournament in Amsterdam, a double round-robin event. Final standings: Joel. Lautier 4, Gary Kasparov 3.5, Veselin Topalov 2.5, and Jeroen Piket 2. Here's how Kasparov lost:

May 15, 1995; Round 4 Gary Kasparov (White) - Joel Lautier(Black) Sicilian:1. e4 c5 2. Nf3 e6 3. d4 cxd4 4. Nxd4 Nc6 5. Nc3 Qc7 6. Be3 a6 7. Bd3 Nf6 8.O-O Ne5 9. h3 Bc5 10. Kh1 d6 11. f4 Ned7 12. a3 b5 13. Bxb5 axb5 14. Ndx5 Qb6 15. Bxc5 dxc5 16. Nd6 Ke7 17. Nxc8 Rhxc8 18. e5 Ne8 19. Qh5 h6 20. Rae1 f5 21.Rf3 c4 22. g4 fxg4 23. Qxg4 Ra5 24. Ne4 Qc6 25. Nd6 Nxd6 26. exd6 Kf8 27. Rg1 g5 28. Rgg3 Rf5 29. Qh5 Nf6 30. Qxh6 Kf7 31. Kg1 Rg8 0-1 [1.59 1.46]

Here's an excerpt of an eye-witness account of Kasparov's loss:
"I was in the room at the time and it was indeed very entertaining to see Kasparov's behaviour ... After resigning, Kasparov began raving outragedly in Russian to Lautier and gesticulating at the board as if something outrageous had happened there that was totally beyond his control. Lautier said that Kasparov had been saying that he (GK) had analysed the position before his 16th move and that it wall in his notebook but that he had totally forgotten the move e5, which he maintained was winning for White. The interviewer asked Lautier what he thought of this and he replied: 'I think he should read his notebook more often.."

May 18, 1995; Round 6 Jeroen Piket (White) -Gary Kasparov (Black - Joel Lautier(Black); Guenfeld: 1. d4 Nf6 2. c4 g6 3. Nc3 d5 4. Nf3 Bg7 5. Qb3 dxc4 6. Qxc4 O-O 7. e4 Na6 8. Be2 c5 9. d5 e6 10. O-O exd5 11. exd5 Re8 12. Rd1 Bf5 13. d6 h6 14. Bf4 Nd7 15. Rd2 Nb4 16. Qb3 Be6 17. Bc4 Nb6 18. Bxe6 Rxe6 19. Na4 Re4 20. Bg3 Nc4 21. Nxc5 Nxd2 22. Nxd2 Re2 23. Qxb4 a5 24. Qxb7 Rxd2 25. d7 Rxb2 26. Qd5 Rb5 27. Rd1 Bf8 28. Bd6 Bxd6 29. Qxd6 Rab8 30. h3 Rb1 31. Rxb1 Rxb1+ 32. Kh2 Rb6 33. Qe5 Kf8 34. Qh8+ Ke7 35. Qe5+ Kf8 36. f4 h5 37. Qd5 h4 38. Qe5 g5 39. Qh8+ Ke7 40. Qe5+ Kf8 41. fxg5 1-0 [2.06 1.48]

1994-95 Playoff Games

Argonne Rooks has won the League playoffs for the second straight year, on tie-break over Post Office.

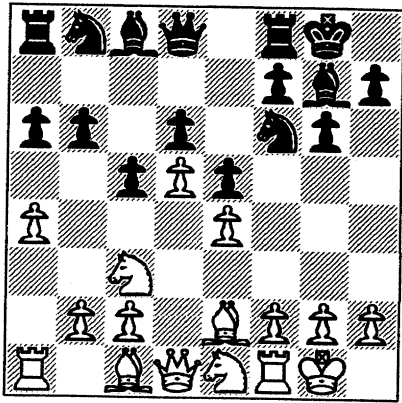
Here's a superb game from David Levine, the Rooks board 1 player.

King's Indian

WHITE: David Levine (2341)
BLACK: Ruben Reyes (2359)

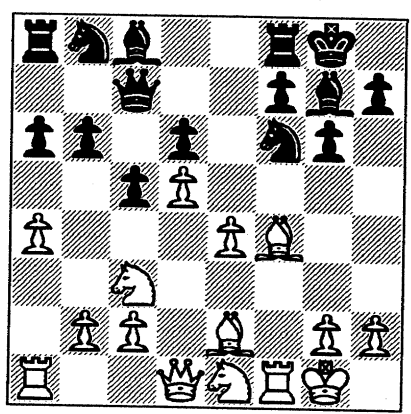
Argonne Rooks - Sears, Rnd 1

- 1. d4 c5 2. d5 d6 3. e4 Nf6 4. Nc3 g6 5. Nf3 Bg7 6. Be2 0-0 7. 0-0 e5 8. Ne1 a6 9. a4 b6



Black's combining the King's Indian with the Czech Benoni.

- 10. f4 exf4 11. Bxf4 Qc7



- 12. e5!

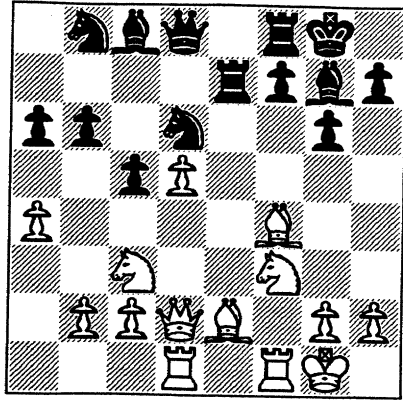
If now 12...dxe5, then 13.d6 and 14. Bxe5.

- 12...Ne8 13. exd6 Qd8

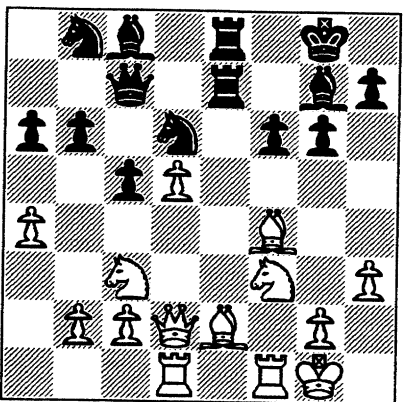
The d-pawn can't be captured (13... Nxd6) because of 14.Ne4.

- 14. Qd2 Nxd6 15. Nf3 Ra7 16. Rad1 Re7

See diagram next column



- 17. Bg5 f6 18. Bf4 Rfe8 19. h3 Qc7

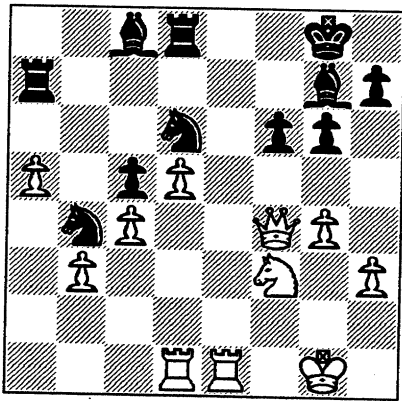


Black's development problems persists because of White's excellent pressure on the diagonal h2-b8..

- 20. a5 b5 21. Bxb5!

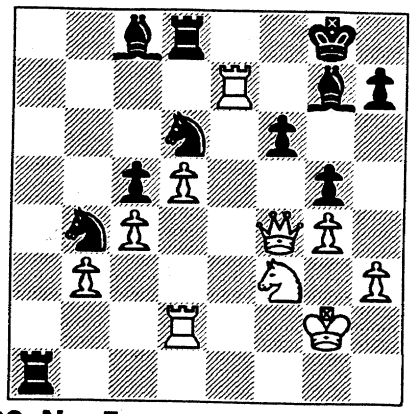
Capturing the Bishop is poison as we'll soon see.

- 21...axb5 22. Nxb5 Nxb5 23. Bxc7 Rxc7 24. c4 Nd6 25. Qf4 Rd8 26. Rfe1 Na6 27. g4 Nb4 28. b3 Ra7



- 29. Rd2 Rxa5 30. Re7 Ra1+

- 31. Kg2 g5

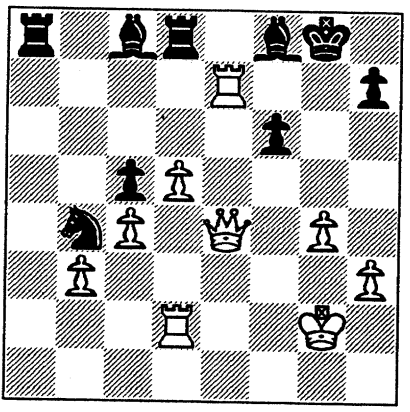


- 32. Nxc5

If now 32...fxg5 then 33.Rxc7+ Kxc7 34.Qxc5+ and 35.Qxd8.

- 32...Ra8 33. Ne4 Nxe4 34. Qxe4 Bf8 1-0

Final Position



Black resigned without waiting for White's reply: 35.Qxh7++.

A remarkable game from board 1 of the CACL League champions.

Post Office tied for first but lost out on tie-break to the Rooks. They (Post Office) were the only team to hold the defending champion Rooks to a 3-3 tie.

The following game is a nice work of chessboard artistry.

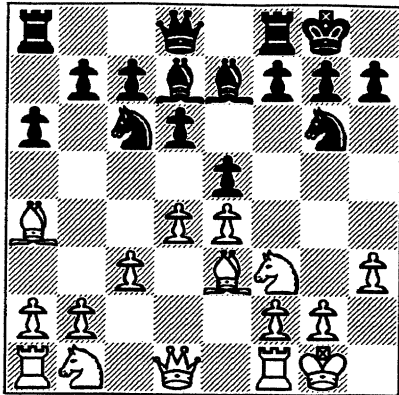
Ruy Lopez

WHITE: R. Marcowka (1982)
BLACK: S. Sheynin (2095)

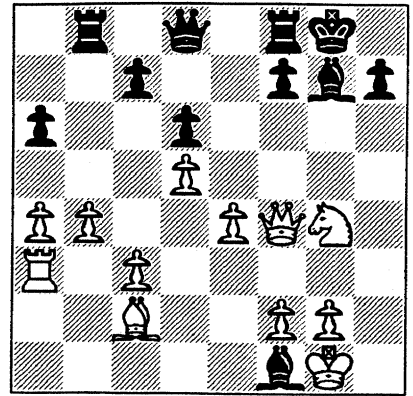
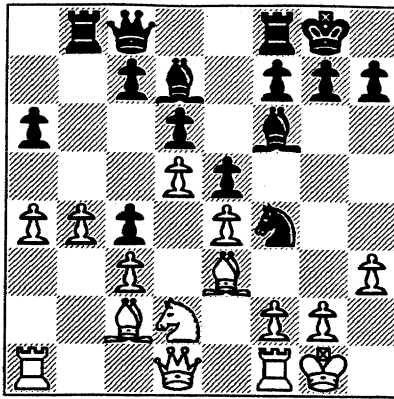
Post Office - Argonne Rooks

- 1. e4 e5 2. Nf3 Nc6 3. Bb5 a6

4. Ba4 d6 5. h3 Bd7 6. c3
Nge7 7. 0-0 Ng6 8. d4 Be7 9.
Be3 0-0

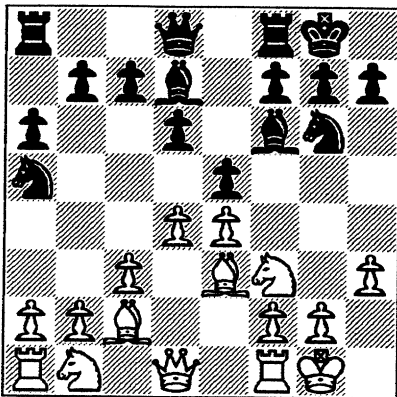


16. a4 Nf4 17. Nd2 Qc8

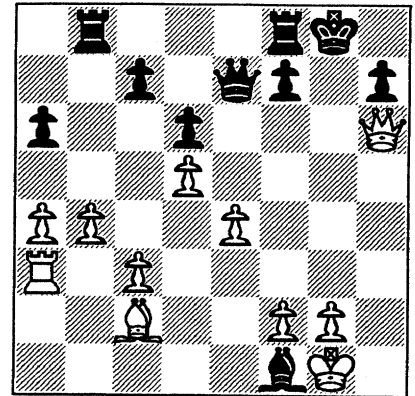
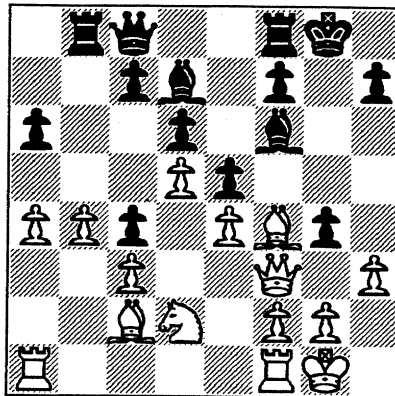


26. Nh6+ Bxh6 27. Qxh6 Qe7

10. Bb3 Na5 11. Bc2 Bf6

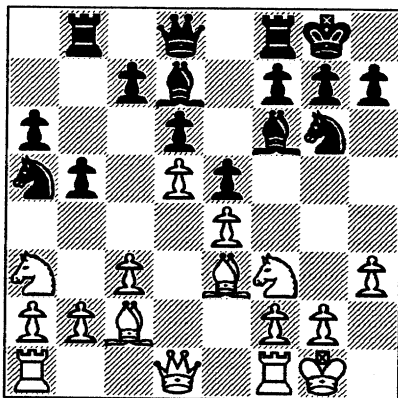


18. Qf3 g5 19. Bxf4 g4

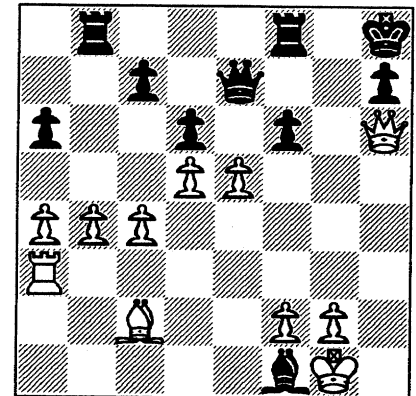
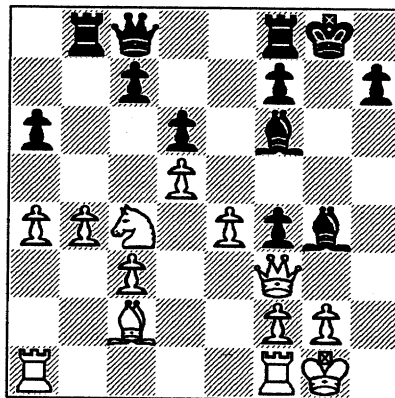


28. c4 e5 29. e5 Kh8

12. Na3 b5 13. d5 Rb8



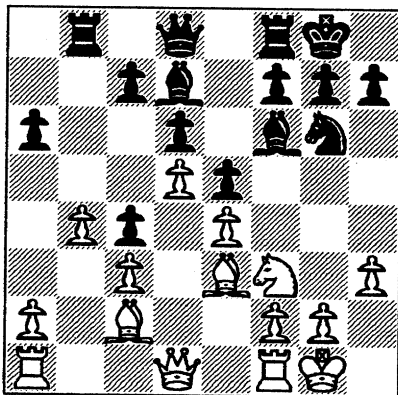
20. hxg4 exf4 21. Nxc4 Bxg4



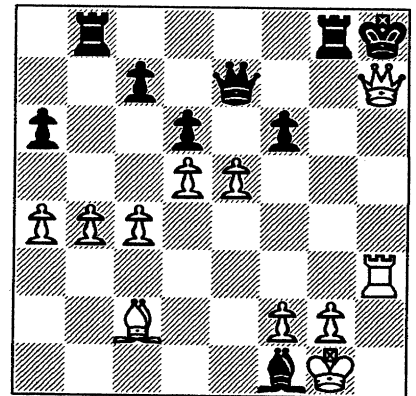
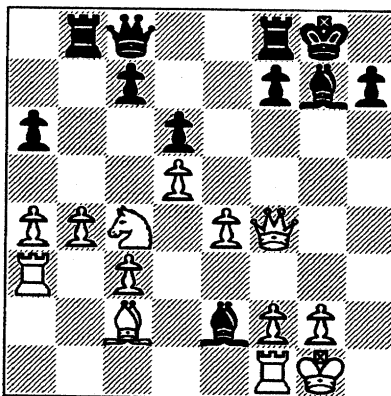
30. Rh3 Rg8 31. Qxh7+ 1-0

Final Position

14. b4 Nc4 15. Nxc4 bxc4



22. Qxf4 Bg7 23. Ra3 Be2



24. Ne3 Bxf1 25. Ng4 Qd8

If 31...Qxh7 then 32.Rxh7++

GAMES

For Best Game

Like most of us, I do not normally submit my losses for publication. I suppose that is because our losses usually can be attributed to a clearly definable mistake which ruined our game, rather than admiration for our opponent's superiority. In this case, I feel compelled to publish this loss because my opponent's win is indeed admirable. Just as I was entertaining hopes of nearly equalizing from an inferior opening, he shocked me with a queen sacrifice made for purely positional reasons.

Mr. Inumerable was the East Division's Most Valuable Player last season, with an undefeated record, and nearly captured the Most Improved Player award as well. As this game shows, he's still hot! This is about our 9th encounter. We used to be about evenly matched, but now this is my 5th consecutive loss to him.

Dutch Nimzo-Indian

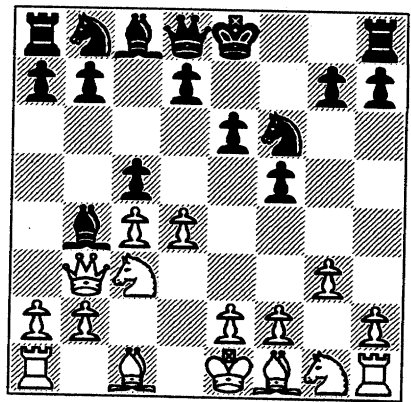
White: F. Inumerable (2250)
 Black: A. Jasaitis (2150)
 Post Office-Chicago Research & Trading
 Board 1 March 8, 1995

Notes by Tony Jasaitis

1.d4 f5 2.c4

Normally White first develops the K-side with g3, delaying c4 until after castling to avoid Black's development of the KB to b4, leading to positions resembling the Nimzo-Indian, but with Black having extra control of e4. Theory considers Black to be able to equalize easily.

2...Nf6 3.Nc3 e6 4.g3 Bb4 5.Qb3 c5!?



Here 5...Bxc3+ followed by d6, Nd7, Qe7, and an eventual e5 would be in the normal spirit of the Dutch-Nimzo.

The text move, which I am playing for the third time against my opponent, is played in the Nimzo-Indian, but may be suspect here. Black is a tempo behind in development, the dark squares are weaker, and White has good pressure on the light squares, especially thanks to the fianchettoed B, which is developed at d3 in a regular Nimzo. I had developmental problems in the other games as well, but my opponent's questionable follow-ups gave me a good attack in those.

6.dxc5!

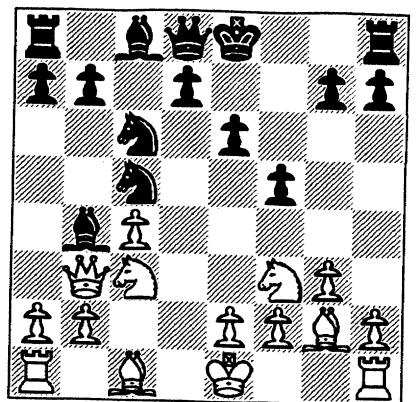
This time he does it right, exposing Black's dark square weaknesses. In our first encounter with this line, my opponent played 6.a3? Bxc3+ 7.Qxc3? Ne4 8.Qe3 Qa5+ 9.Kd1, although my developmental problems and incompetence lead to only a draw.

6...Nc6 7.Nf3 Ne4 8.Bg2 Nxc5?

See diagram next column

I decided not to chance 8...Qf6, judging 9.O-O!?, sacrificing a pawn for superior development, to be in White's favor. Now I am not so sure, but I have spent a lot of time not available over-the-board just to become unsure.

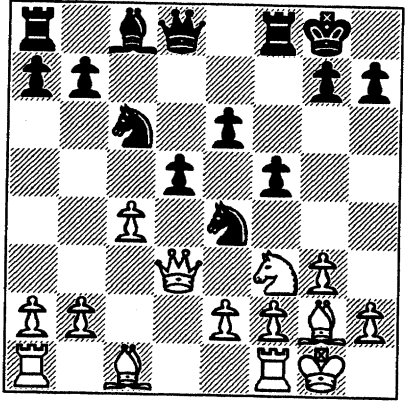
However, simplest was the obvious 8...Bxc3+ followed by Nxc5, with a playable game.



After 9...Nxc5?

9.Qc2 Bxc3+ 10.Qxc3 O-O 11.O-O Ne4 12.Qd3 d5

Already Black is feeling the heat: the d-pawn is weak, as are the dark squares, and active development is problematic. Black decides to accept a potential structural weakness (an isolated d-pawn on an open file) for a chance to complete development. 13.cxd5 can be met by Nb4, when Black's position is not too bad, although somewhat awkward.



13.Be3! Qf6 14.cxd5 Rd8

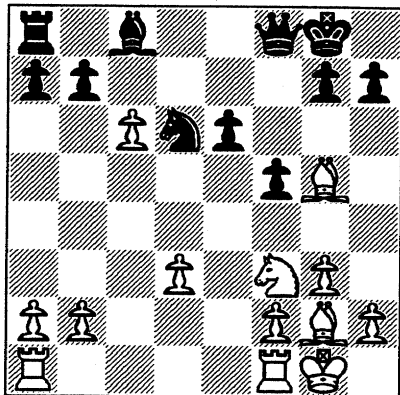
Not 14...Nb4 now, when 15.Qb3 followed by Bd4 leaves Black powerless on the dark squares. Now I was getting optimistic about surviving the opening with the temporary pawn sacrifice 15.Rd1 Rxd5 16.Qb3 Kh8! 17.Rxd5 exd5 18.Qxd5? (18.Rd1! with a positional edge) Be6 19.Qb5 Nd6, with equality, when my opponent played...

15.dxc6!?! Rxd3 16.exd3 Nd6 17.Bg5 Qf8

See diagram next page

Not 17...Qxb2 18.Be7 followed by Rab1. With White's stunning move, lack of development resurfaces as Black's main problem. Although

material "points" are even, White can be considered to have sacrificed, since a Queen usually outplays a Rook, Bishop, and pawn. But here, Her Majesty has little scope, and the queenside pieces have even less. Black must be careful to not lose his b-pawn or get the Rook trapped by the powerful bishops. By contrast, all of White's pieces have excellent mobility. And then there's that pawn...



18.c7

White doesn't have quite enough to cash in on the long white diagonal directly: 18.Ne5 bxc6 19.Nxc6 (threatening Ne7+ as well as Be7) Bb7 20.Be7 Qe8 21.Rac1 Rc8.

18...h6

The depth of my opponent's positional concept slowly started dawning on me. I could not, and still cannot, come up with an advantageous plan for Black, who must tread a fine line. He must activate his suffocating pieces and reduce White's piece activity, while avoiding piece exchanges. Most piece trades are bad for Black. Consider a position where all matching pieces have been exchanged. White would then win easily by protecting his c-pawn with his Bishop, while maneuvering his Rook to the back rank. It is especially important for Black not to trade Knights, since then he would have no way of capturing the c-pawn without giving up material.

I finally settled on 18...h6 as a means of reducing White's dark-square scope on the K-side, as well as supporting a potential counter-attack. If 18...b6 19.Ne5 (or Nd4, winning the e-pawn) Bb7 20.Bd8 Bxg2 21.Kxg2 Nf7 22.Nc6. The immediate 18...a5 may be best insofar as it is the most non-

committal, but it does not seem to solve Black's core problems any better than the text.

19.Bd2 a5

This isn't as life-giving to the Rook as it may look, because the a-pawn now needs protection. But the alternatives are also unsatisfactory: 19...Bd7 20.Ne5 Qe7 (20...Bc6 21.Nxc6 bxc6 22.Rfc1! keeps the c-pawn) 21.Bb4, threatening the deadly Nc4. Or 19...b6 20.Ne5 (or Nd4) Bb7 21.Bb4.

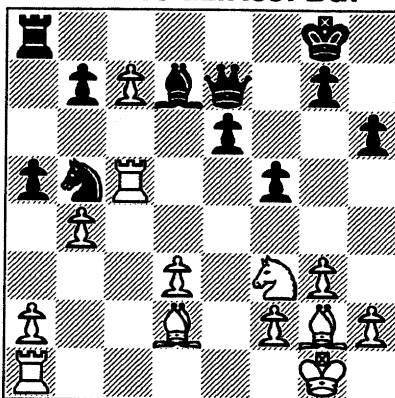
20.b4?!

20. Rfc1 first is more precise, as the text move gives up the c-pawn in several lines, as we will see.

20...Qe7

A few moves later I was kicking myself for not playing 20...Nb5, which at this point I thought was interchangeable with Qe7. Both moves threaten the b/c-pawns. However, after 20...Nb5 21.bxa5! Nxc7 22.Rfb1 Nd5 23.Rb5 Black is still in a bind.

21.Rfc1 Nb5 22.Rc5! Bd7



My original intention of 22...Nxc7 loses material to Rac1. This is why the order was important for both players' move #20. At this point my opponent had only about 10 minutes to get to move 50, while I had a half-hour.

23.Ne5 Rc8 24.Bxb7

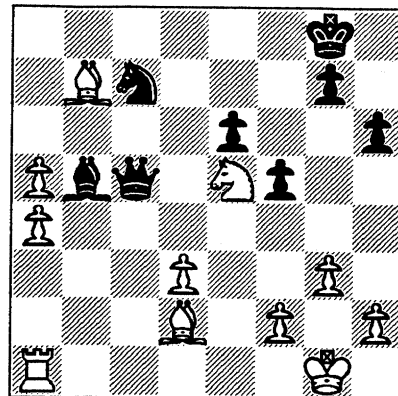
Also possible is the unclear 24.a4 Nd6 25.Nxd7 Qxd7 26.Rac1! (threatens Bf4) g5 27.h4 Ne8 28.Bxb7 Rxc7 29.Rxc7 or Bc6.

24...Rxc7 25.Rxc7 Nxc7 26.bxa5 Bb5

Just as I breathe a sigh of relief over getting rid of one monster, I have another one to deal with, magnified

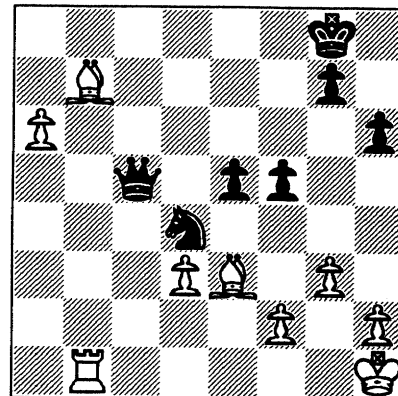
by White's two bishops and better mobility.

27.a4 Qc5?



I was hoping to exploit my opponent's time pressure with an active Queen. Although this plan nets me a pawn as well, it doesn't help any. Ba6 was needed, although White still has the better chances.

28.axb5 Qxe5 29.Rb1 Nxb5 30.Bf4 Qc5 31.Be3 Nd4 32.a6 e5 33.Kh1



This move sidesteps any useful Knight checks for Black in the upcoming variations - not a bad idea in time pressure.

33...g5

For the n'th time in this game, I think I see light at the end of the tunnel. The advancing pawn has been stalled, and if I can get f4 in, I can finally have some pressure of my own...

34.Rc1 Qa3

Qa5 would avoid the following beautiful finish, but White would be winning anyway after 35.f4! undermining the Knight. A sample line: 35...gxf4 36.gxf4 K-any 37.fxe5 Qxe5 38.Bg1 (the King move pays off) Nb5 39.Rc5 Qe8 40.Bc6.

35.Bxd4!!

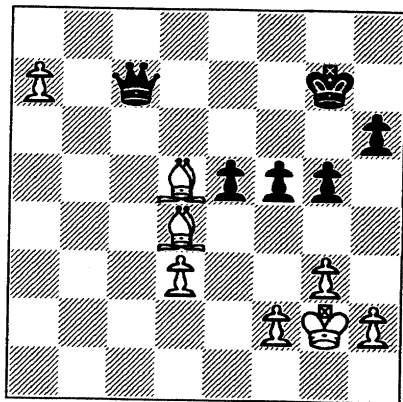
Wow!! He spits on the move whose purpose was to pressure the rook, giving it up with check!

35...Qxc1+

No better is 35...exd4 36.Bd5+ Kg7 37.Rc7+ and 38.a7.

36.Kg2 Qc7 37. Bd5+ Kg7 38.a7 1-0.

Final Position



After all that, I felt that my opponent was talented enough to get to move 50 in two minutes a piece up in a simplified position, and deserved to reap his reward already.

The following game submitted for **Best Draw** demonstrates how conservative and solid play can overcome a 372-point ratings difference.

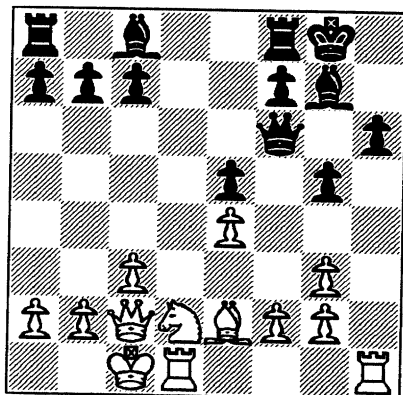
King's Indian

White: Satish Kale (1840)

Black: Roy Benedek (2212)

J.I. Case - Argonne Knights

1. d4 Nf6 2. Nf3 g6 3. Bg5 Bg7 4. Nbd2 0-0 5. e4 d6 6. c3 Nbd7 7. Be2 h6 8. Bh4 g5 9. Bg3 Nh5 10. Qc2 Nxc3 11. hxg3 e5 12. dxe5 Nxe5 13. Nxe5 dxe5 14. 0-0-0 Qf6

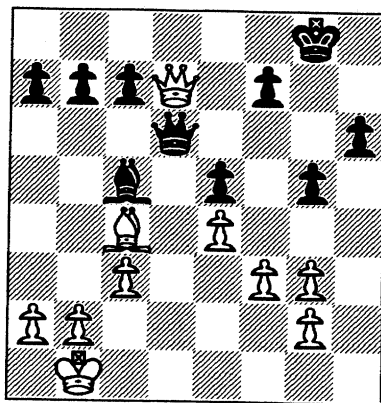


Opposite wings castling lends to a lot of fireworks.

15. f3

White elects to have a solid game without too much complications. Excellent strategy against a master.

15...Rd8 16. Kb1 Be6 17. Nc4 Rxd1+ 18. Rxd1 Rd8 19. Ne3 Rxd1+ 20. Qxd1 Bf8 21. Bc4 Bc5 22. Bxe6 Bxe3 23. Bc4 Bc5 24. Qd7 Qd6?



The text defends the c-pawn while threatening mate at d1 (...Qd1++) should White attempt to avoid a Queen trade. But Black's King is left open for mate in two (25. Qxf7+! Kh8 26.Qg8+++!).

25. Qxd6?

A rare opportunity to beat a master escapes White's grasp.

25...Bxd6 DRAW.

For Best Annotated

Annotated by Mark Siwek

I'm a materialist. I grab Pawns whenever I can, and I rarely sacrifice except when I see a clear line leading to Mate or material gain. This game is an exception.

Center Counter

White: Bob Bloom (2039)

Black: Mark Siwek (2150)

Northrop- Kemper

Board 1, Round 8 (North Div)

1. e4 d5

Prior to this game, I thought my record was perfect against Bob Bloom -- I don't recall ever beating

him. Since I lost in Sicilians and Caro-Kanns, I thought I'd try the Center Counter. This was only the second time I've tried it in a serious game.

2. exd5 Qxd5 3. Nf3

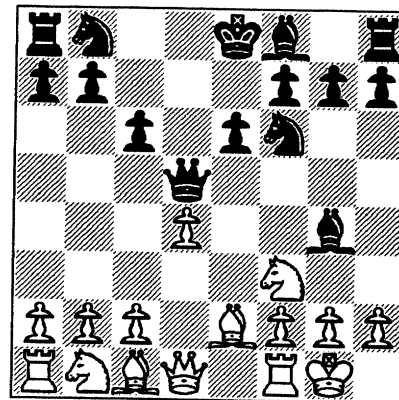
Move three, and I'm already out of "book". Most common is 3.Nc3 - the only line I know. After the game, Bloom told me his strategy against the Center Counter is to delay Nc3 and chase the Queen away with c2-c4. Since a common theme in the Center Counter is for White to play d4-d5, his idea's not bad at all.

3...Nf6

In their book on the Center Counter, Grefe and Silman consider 3...e5!? and 3...Bg4.

4. d4 Bg4 5. Be2 e6 6. 0-0 c6

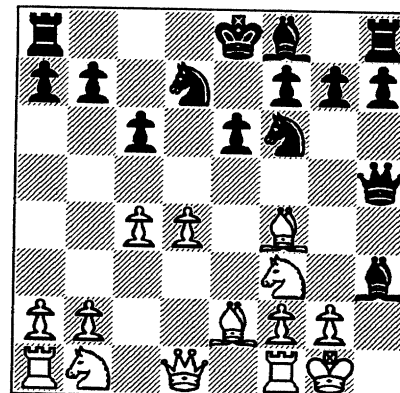
I know I probably need to get in ...c5, but I was worried about the a8-h1 diagonal if White's King Bishop made it to f3.



7. c4 Qh5!?

When I played this, I was proud of myself, but it leads to double-edged play. Black must be careful not to let his Queen get trapped. The standard 7...Qa5 was probably more prudent, though I wanted to be aggressive.

8. Bf4 Nbd7 9. h3 Bxh3



If you say "A", you have to say "B". Interestingly enough, I played a practice game against teammate Art Olsen before the match, and he did the same thing to me as I did to Bloom - sacrifice a Bishop for two Kingside Pawns. However, his sacrifice was not sound. I ask you, dear reader, do you think mine is?

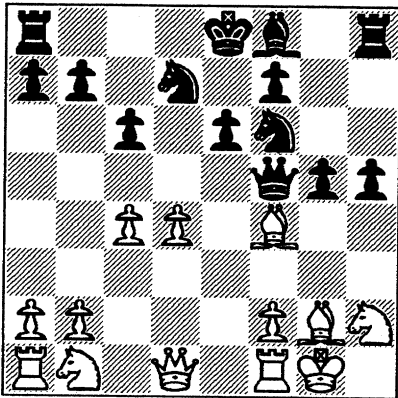
10. gxh3 Qxh3 11. Nh2

Presumably to either exchange pieces (12.Bg4 Nxg4 13.Qxg4 Qxg4 14.Nxg4) or work towards trapping the Queen. Either way, I need to limit White's squares and get the Kingside Pawns rolling, so the answer's the same: 11...h5. I need to attack before White can consolidate.

11... h5 12. Bf3 g5

Let's play "Space Invaders". The Pawn, of course, is immune (because of ...Rg8). More importantly, it drives the White Bishop off the b8-h2 diagonal so Black's King Bishop can assume it, joining the attack.

13. Bg2 Qf5



14. Be3 Bd6 15. Qf3 Qg6

Black, obviously, shouldn't exchange Queens. I was really starting to like my position..

16. Nc3 g4

Rolling, rolling, rolling....

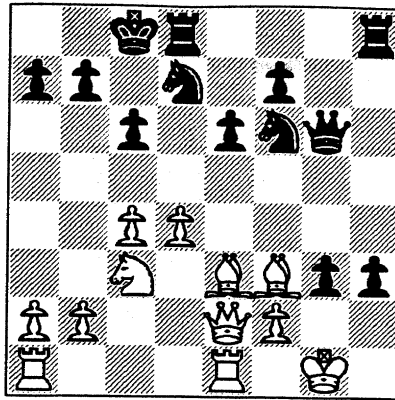
17. Qe2 h4

This put Bloom into a long think. He came up with a good move, providing a flight square for his King and protecting the QB if his Queen moves (such as to g2 to interpose) once the f-pawn is exchanged.

18. Rfe1 Bxh2+

This seemed simplest.

19. Kxh2 g3+ 20. Kg1 h3 21. Bf3 0-0-0



Bloom has defended well. I wasn't sure what to do - none of the Pawn combinations seemed to work, so I thought I'd leave the tension and bring up the reserves.

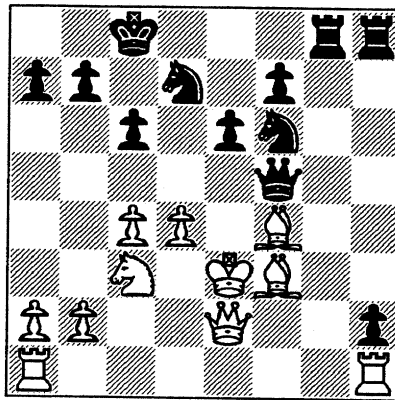
22. Bf4

I didn't want the Bishop on this diagonal. If 22...g2 23.Bh2, so it's time to open up the game some more.

22...h2+ 23. Kg2 gxf2+ 24. Kxf2 Rdg8 25. Rh1

My first thought was that I was in trouble, as the h-pawn is my main asset, and it appears it will be lost. However, my real advantage is White's exposed King.

25...Qf5 26. Ke3



I was surprised by this, but in the post-mortem, Bloom and I determined nothing else worked, either.

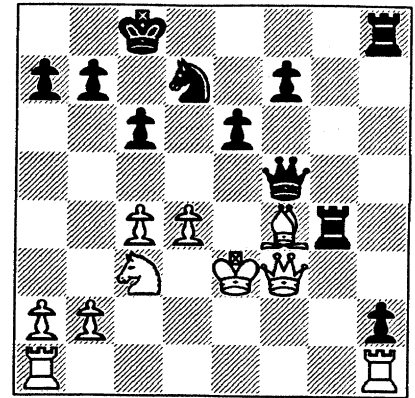
26... Ng4+ 27. Bxg4 Rxg4 28. Qf3

Protecting the QB and presumably guarding against ...Rh3+, but a tactical shot shows that's not true.

See diagram top of next column

28...Rxf4 29. Qg3

29.Qxf4 Rh3+ wins the Queen, forcing the King to give up defense



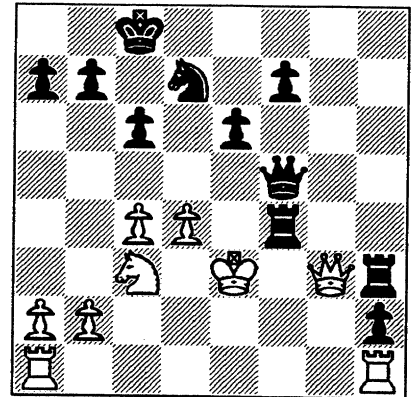
After 28.Qf3

Her Majesty.

29...Rh3 0-1

But then White's 29th move wasn't all that hot, either.

Final Position



Pavel Blatny of Czechoslovakia won the 1995 New York Open in April. Here's one of his wins, this one vs GM Joel Benjamin who tied for 2nd with several others.

This game illustrates the virtue of hanging tough and being aggressive on defense. White obtains a strong attack with a pawn roller and sacrifices a Knight to increase pressure. However, Black holds on and finishes the game with a nice combo.

Nimzo-Indian

(by transposition)

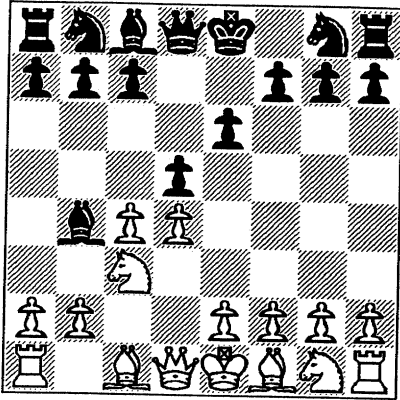
White: Joel Benjamin (2663)

Black: Pavel Blatny (2465)

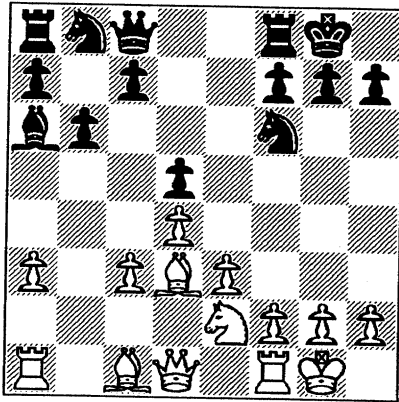
Round 8, April 16, 1995

1. d4 d5 2. c4 e6 3. Nc3 Bb4

Right off the bat, Black serves up a nice surprise, avoiding the Queen's Gambit and steering White into the Nimzo.

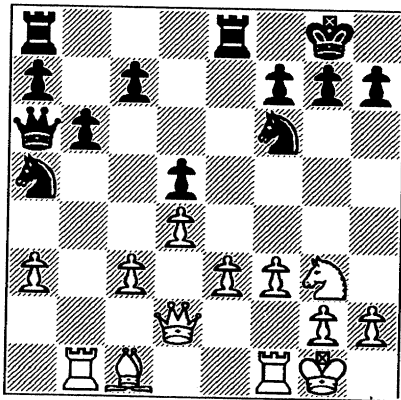


4. e3 Nf6 5. a3 Bxc3+ 6. bxc3 O-O 7. cxd5 exd5 8. Bd3 b6 9. Ne2 Ba6 10. O-O Qc8



Black has refrained from playing the usual ...c5, and will continue to do so thru the entire game.

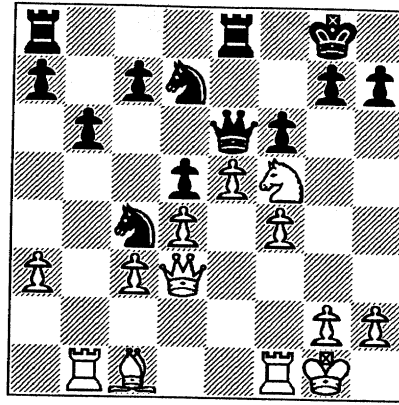
11. f3 Bxd3 12. Qxd3 Qa6 13. Qd2 Nc6 14. Ng3 Na5 15. Rb1 Rfe8



This holding back on ...c5 allows Black the capability of keeping a pawn at d5 (with ...c6). It also keeps White's Bishop fenced in by the pawns at c3 and d4.

16. Nf5 Nc4 17. Qd3 Qc8 18. e4

Qe6 19. e5 Nd7 20. f4 f6



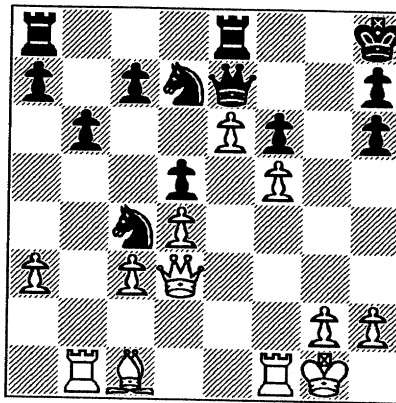
21. Nh6+

White's presses on , possibly considering 21.Ng3 and 22.f5 as too slow.

21...gxh6 22. f5

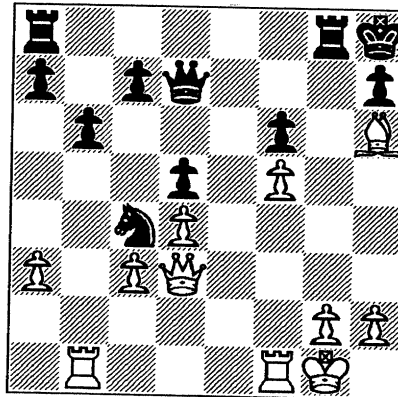
The point. The f and e-pawns roll forward.

22..Qe7 23. e6 Kh8



Nice. Black wastes no time re-deploying his pieces and ignores the idea of keeping material advantage.

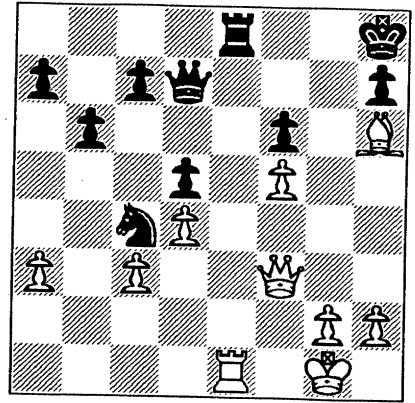
24. Bxh6 Rg8 25. exd7 Qxd7



Note that if Black had played ...c5 White would now have had the opportunity to put pressure on the pawn at d5 with dxc5.

26. Rbe1 Rae8 27. Qf3 Rxe1

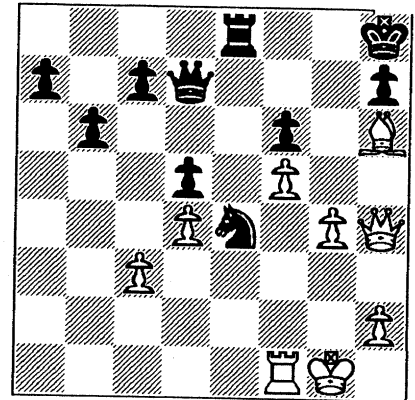
28. Rxe1 Re8



29. Rf1

If White's compelled to leave Black control of the only open file, then his game is suffering. Perhaps, 29. Rxd8+ Qxd8 30.Qg3 may hold. But then White may be playing for a win, which explains retaining the Rook.

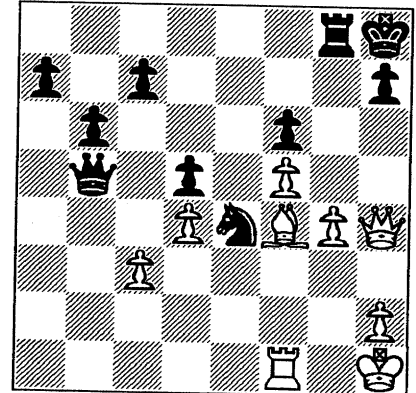
29...Nxa3 30. g4 Nc4 31. Qg3 Nd6 32. Qh4 Ne4



33. Bf4

Re-positioning a piece at this stage of the game may be the result of time pressure. Otherwise 33.Kh1 looks better.

33...Rg8 34. Kh1 Qb5



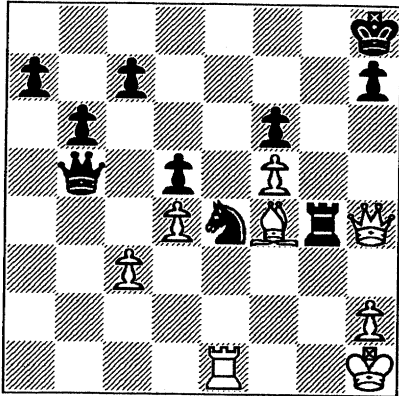
The threat 's 35...Qxf8 or 35...Qe2.

35. Re1

This prevents the maneuver 35... Qe2 which threatens 36...Qf3+

35...Rxf3!! 0-1

FINAL POSITION



White can't save the Queen. If 36.Qxg4, then 36...Nf2+ 37.Kg8 Nxf3 wins the Queen. And if 36.Qh6 then mate in one follows: 36...Nf2++.

One of the main attractions of the New York Open is its international flavor as strong players from many parts of the globe converge there to get a crack at it's large prize money.

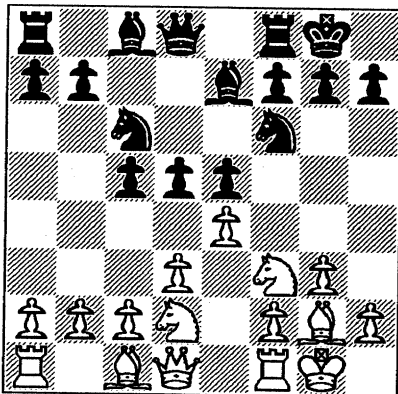
Here's a clash between IM Friso Nijboer of the Netherlands and GM Lembit Oll of Estonia.

King's Indian
(colors reversed)

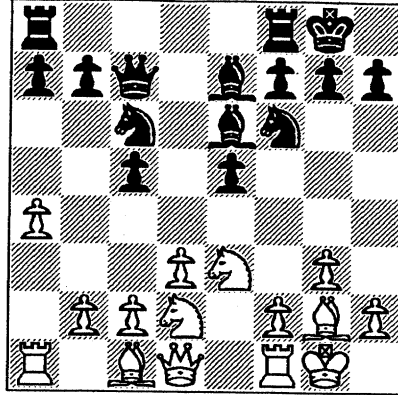
White: IM Friso Nijboer
Black: GM Lembit Oll

Round 8, April 16, 1995

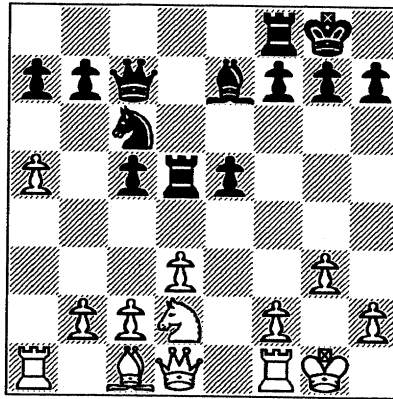
1. e4 c5 2. d3 Nc6 3. g3 d5 4. Nd2 Nf6 5. Bg2 e5 6. Ngf3 Be7 7. O-O O-O



8. a4 Qc7 9. exd5 Nxd5 10. Nc4 Nf6 11. Ne3 Be6 12. Nd2

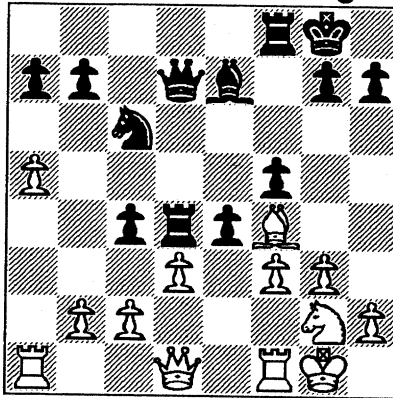


12...Rad8 13. a5 Nd5 14. Nxd5 Bxd5 15. Bxd5 Rxd5



White's has neglected development searching for a good place for his two Knights.

16. Nc4 e4 17. Bf4 Qd7 18. Ne3 Rd4 19. f3 f5 20. Ng2 c4



21. Be3 cxd3

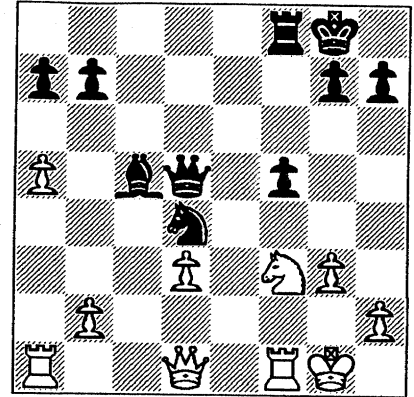
Justification for the sacrifice of the exchange doesn't come until several moves later.

22. Bxd4 Nxd4 23. cxd3 exf3 24. Ne1 Qd5 25. Nxf3 Bc5

See diagram next column.

The point. Without Bishops to cover the dark and light square diagonals,

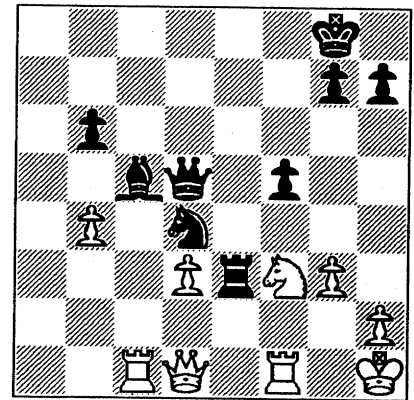
White's King would have no place to go. The threat's 26...Nxf3+.



26. Kh1 Re8

The remaining Rook enters the fray.

27. Rc1 b6 28. axb6 axb6 29. b4 Re3

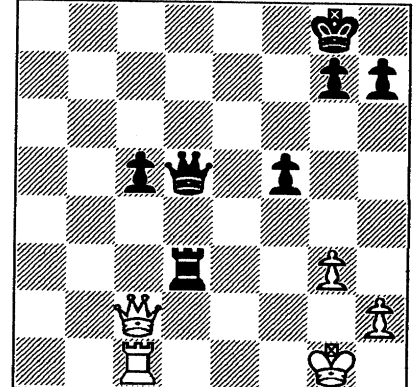


Black targets the piece blocking the diagonal to the King, ignoring the threat to the Bishop.

30. bxc5 Nxf3

The threat's 31...Nh4+. If 31.Rf2 then 31...Ng5+ 32.Kg1 Nh3+ 33.Kf1 Qh1++.

31. Rxf3 Rxf3 32. Kg1 bxc5 33. Qc2 Rxd3



34. Qxc5 Rd1+ 0-1

Excellent King hunt by Black.

From latest happenings in the international arena, Kasparov may be reviving interest in the old Evans Gambit.

After defeating Anand with it in the Riga Tal Memorial, Kasparov played the Evans Gambit again in Amsterdam with spectacular results.

Evans Gambit (Declined)

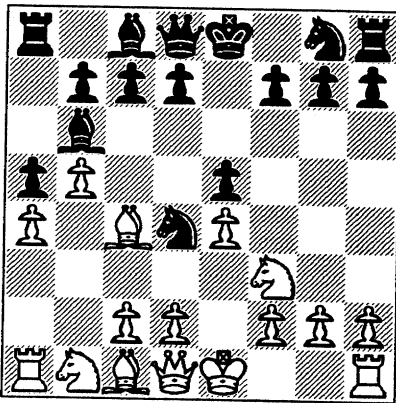
WHITE: Gary Kasparov (2805)
BLACK: Jeroen Piket (2615)

Amsterdam VSB, 05/13/95

1.e4 e5 2.Nf3 Nc6 3.Bc4 Bc5
4.b4 Bb6

After 4...Bxb4 5.c3 Be7 6.d4 Na5, Kasparov introduced what may be a theoretical novelty: 7.Be7.

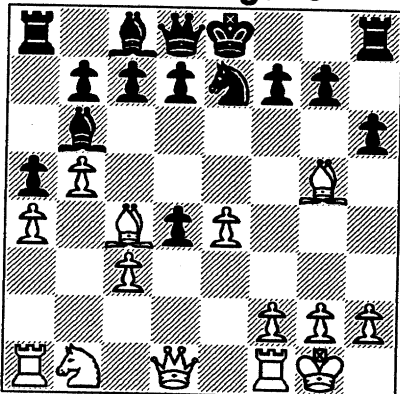
5.a4 a5 6.b5 Nd4



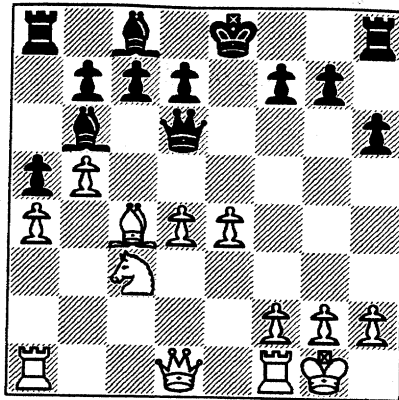
7.Nxd4

7.Nxe5 falls into an opening trap 7...Qg5 when something like 8.Nxf7? Qxg2 9.Rf1 Qxe4+ 10.Be2 Nf3++ is an example of its venom)

7...Bxd4 8.c3 Bb6 9.d4 exd4
10.O-O Ne7 11.Bg5 h6



12.Bxe7 Qxe7 13.cxd4 Qd6
14.Nc3



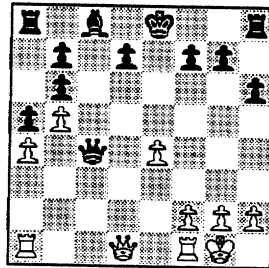
White was reported to have made his last move insanely. After the game, Kasparov explained, "This must be played, obviously. I was sure I was winning now. Just how, I was going to find out."

14...Bxd4

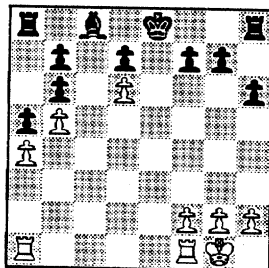
On 14...Qxd4 Kasparov gave this fantastic variation:

15.Nd5!! Qxc4
16.Nxb6 cxb6

Diagram right >



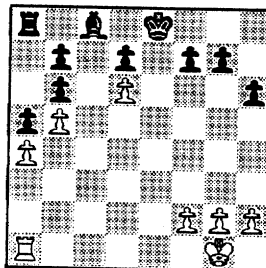
17.Qd6 Qe6 18.
e5 Qxd6 19.
exd6 (See diagram below)



19...Kd8 20.
Rf1 Re8 21.
Rxe8+ Kxe8
(See diagram below)

And though Black's a bishop and a pawn up in an end-game, he's totally helpless.

Diagram right >



15.Nd5 Bxa1 16.Qxa1 O-O
17.e5

Black's Queen is running out of room to hide in, not to mention the fact that his development isn't complete just yet.

17...Qc5 18.Rc1 c6 19.Ba2
Qa3

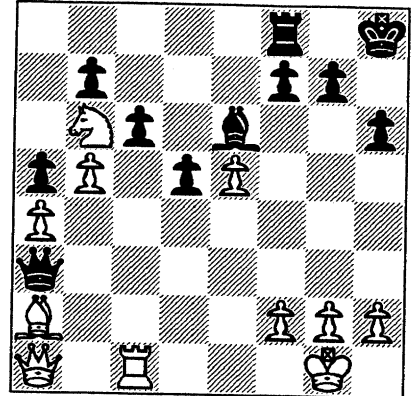
Kasparov reportedly thought for a long time here. After the game, he

explained that he was not entirely sure about the attack after 20.Rc3 Qxa4 21.Ne7+ Kh8 22.Rg3, showing some beautiful possibilities. This explains his settling for the win of a Rook with his next move.

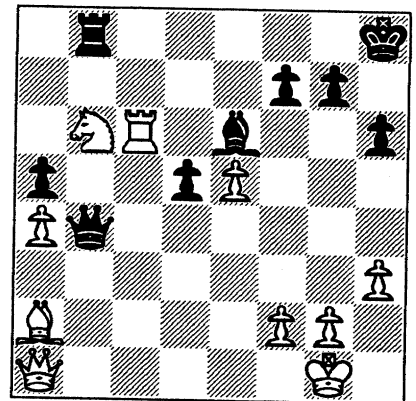
20.Nb6

Threatening 21.Bxf7+ winning the Queen or 21.Nxa8 which wins the Rook.

20...d5 21.Nxa8 Kh8 22.Nb6
Be6

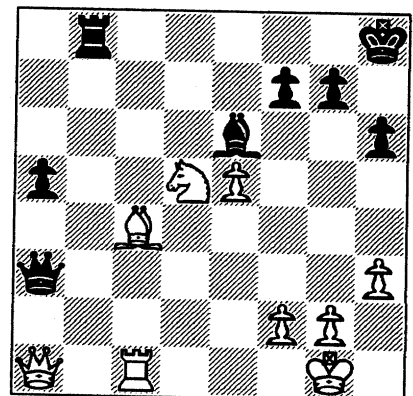


23.h3 Rd8 24.bxc6 bxc6
25.Rc3 Qb4 26.Rxc6 Rb8



27.Nxd5 Qxa4 28.Rc1 Qa3
29.Bc4 1-0

Final Position



FAR WEST DIVISION (Final)

TEAM	FERMI	ROOKS	ROYLS	DRGNS	TYROS	WHEAT	MDCON	Game Pts	Match Pts	Position SWISS					Match Pts
										RND 8	RND 9	RND 10	RND 11	RND 12	
FERMI		4	5	4	4.5	6	4	27.5	6	Royls 3		Rooks 4	Tyros 3	Drngns 4	9
ROOKS	2		5	2.5	3.5	3	4	20	3.5	-	Mdcon 4	Fermi 1	Drngns 4	Tyros 4	6.5
ROYLS	1	1		4	5.5	5	2	18.5	3	Fermi 3	-	Drngns 3	Mdcon 4	Wheat 3	6.5
DRGNS	2	3.5	2		4	6	4.5	22	4	Wheat 5	-	Royls 2	Rooks 2	Fermi 2	5
TYROS	1.5	2.5	0.5	2		4.5	5.5	16.5	2	Mdcon 5	Wheat 3	-	Fermi 3	Rooks -	4.5
WHEAT	0	3	1	0	1.5		3.5	9	1.5	Drngns 1	Tyros 2	Mdcon 3	-	Royls 2	2.5
MDCON	2	2	4	1.5	0.5	2.5		12.5	1	Tyros 1	Rooks 1	Wheat 2	Royls 1	-	1

EAST DIVISION (Final)

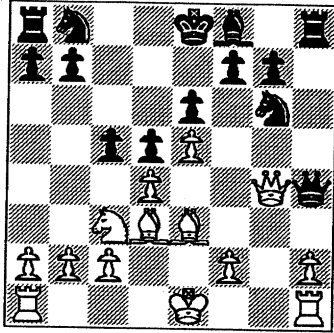
TEAM	COLUM	PSTOF	ALUMN	AMCRP	BAI	CRT	CTA	MERC	HULL	Game Pts	Match Pts	Rnd 10	Rnd 11	Rnd 12	Game Pts	Match Pts
COLUM		4.5	3	3.5	3	4.5	6	4	5.5	34	7	ALUM 3.5	PSTOF 3	AMCRP 4.5	45	9.5
PSTOF	1.5		3	4	3	3.5	4.5	5	4	28.5	6.5	CRT 3	COLUM 3	ALUM 4	38.5	8.5
ALUMN	3	3		4	3	3.5	5	5.5	5.5	32.5	6.5	COLUM 2.5	AMCRP 3.5	PSTOF 2	40.5	7.5
AMCRP	2.5	2	2		4	2.5	4	4	6	27	4	BAI 5	ALUM 2.5	COLUM 1.5	36	5
BAI	3	2	3	2		2.5	4	4	6	26.5	4	AMCRP 1	CRT 4	MERC 2	33.5	5
CRT	1.5	2.5	2.5	3.5	3.5		2	6	6	27.5	4	PSTOF 3	BAI 2	CTA 0	32.5	4.5
CTA	0	1.5	1	2	2	4		2	6	18.5	2.5	MERC 1	bye	CRT 6	25.5	3.5
MERC	2	0	.5	2	2	0	2		3	11.5	.5	CTA 5	HULL 3.5	BAI 3	23	3
HULL	.5	2	.5	0	0	0	0	3		6	.5	bye	MERC 2.5	bye	8.5	.5

The Finishing Touch

Contrasting styles of attack

From the New York Open held last April of this year, comes two games which demonstrate contrasting styles of attacking play.

In the first game (GM Michael Valvo - GM Alexander Shabalov played in Round 8 on April 16, 1995) White went berserk sacrificing pieces



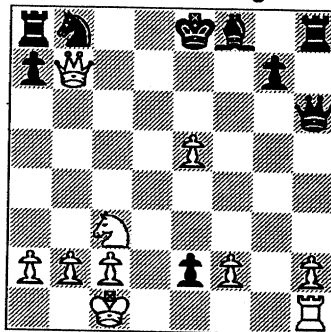
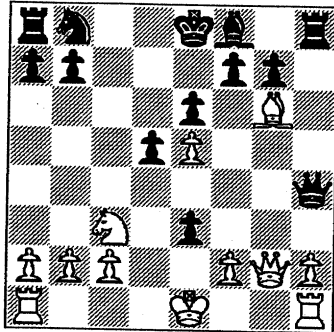
left and right for an attack. We pick up the game after 11... Qh4 (see diagram left)

12. Qg2 White doesn't want to trade Queens as he's ahead in development and has the two Bishops.

12...cxd4 13. Bxg6 dxe3 (See diagram below)

After 14.Bd3 Qxf7+ 15.Qxf7 exf7+ White'd be a pawn down. However, the Bishops would be on opposite colored square.

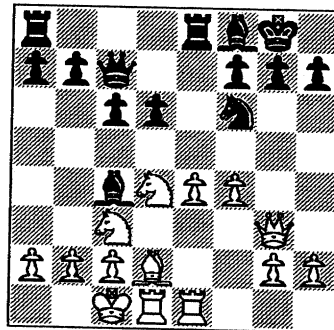
14. O-O-O White decides to go for the whole bowl of wax. **14...e2!** If now 15.Nxe2 then 15...Qh6+ followed by 16...Qxg6. **15. Rxd5** It's now all or nothing for



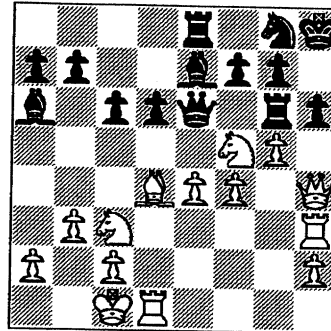
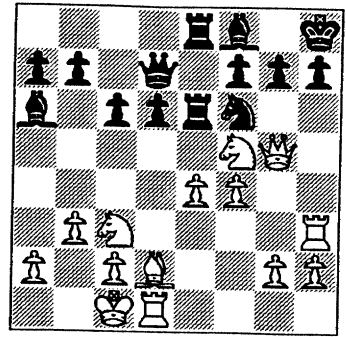
White. **15...exd5 16. Bxf7+ Kxf7 17. Qxd5+ Ke8 18. Qxb7 Qh6+ 0-1** (See diagram left) After 19.Kb1 Qc6, White's compelled to trade Queens as Black threatens 20... Qxh1+ with mate to follow. After which White's game is hopeless as he's two pieces down.

By contrast, here's the second game. We resume the game after **15...Qc7** (Diagram right). This is from Alexander Shabalov - Igor Shliperman in Round 9, April 16 1995.

16. b3 Ba6 The voluntary exile of the Bishop



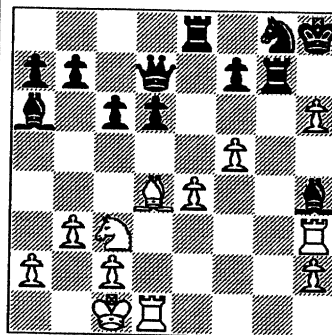
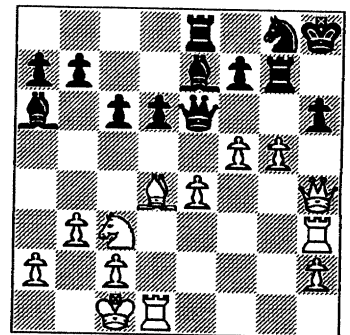
away from the field of combat diminishes Black's strength. **17. Nf5 Qd7 18. Qg5 Re6 19. Re3 Kh8 20. Rh3 Rae8** (diagram right) 20...Nxe4 fails against 21.Nxe4 Rxe4 22.Bc3 f6 23.Qg6 h6 24. Rxh6+ gxh6 25.Bxf6+ Bg7 26.Bxg7+ Kg8 27.Nh6++ or 24... Kh8 (instead of 24...gxh6) 25.Qh7+ Kf7 26.Rf6+ Ke8 27.Rxf8+ Kxf8 28. Qh8+ Kf7 29.Qxg7+ Ke8 30.Qg8++



21. Be3 Ng8 22. Bd4 Rg6 23. Qh4 h6 24. g4 Be7 25. g5 Qe6 (diagram left) In just five moves White has accumulated enough forces to pry open Black's King's position.

26. Nxd7 Rxd7 27. f5! (diagram below) The

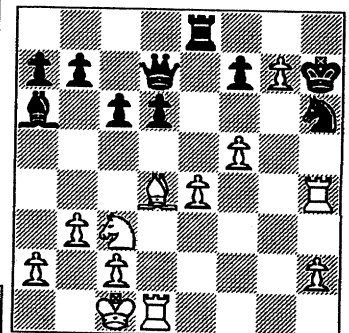
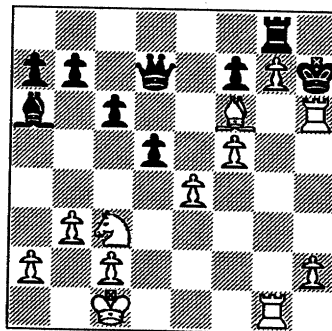
beauty of White's mating combination lies in its being both simple and ultra strong. **27...Qd7 28. gxh6! Bxh4** (see diagram below) White has sac'd the Queen for what? Yet Black's game is now hopelessly lost despite what seems to be insufficient material for a mate.



29. hxg7 +Kh7 30. Rxh4+ Nh6

(Diagram below) Forced as 30...Kg8 31.Rh8 is mate.

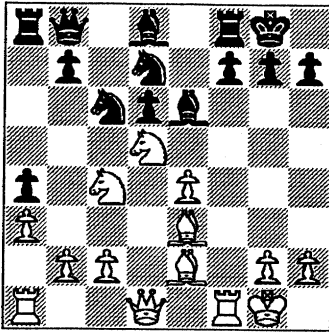
31. Rg1 Rg8 32. Bf6 d5 33. Rxh6!!+ 1-0



(Diagram left) If 33... Kxh6 then 34.Rg4 and there's no defense against the threat of Rh4++.

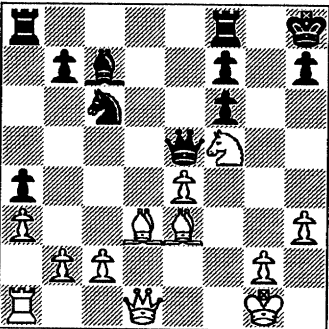
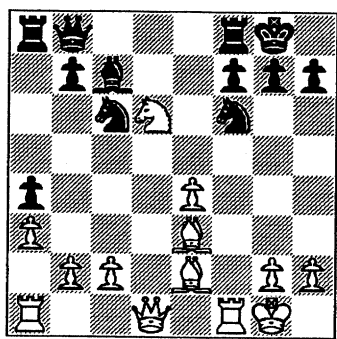
What a remarkable contrast in attacking style.

This one's a jewel of attack and defense, of thrust and parry. Things begin to boil after **16.Nd5 Bd8** (Diagram below: GM Nigel Short (2655) vs. GM Judit Polgar(2630); IV Torneo



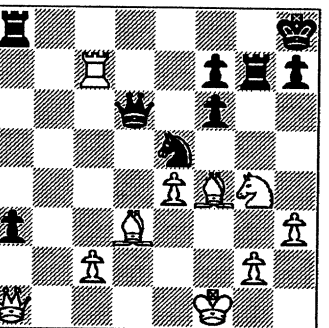
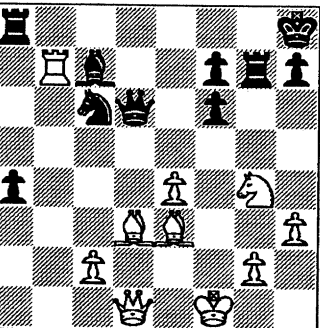
Magistral;ESP Madrid, Round 3, May 11, 1995) **17. Nxd6** (if now 17...Qxd6 then 18...Nf6+ wins the Queen)**Bxd5 18. Qxd5 Nf6 19. Qd1 Bc7** Diagram below: Black recovers material the moment the Knight at d6 retreats: **20.Nf5 Bxh2+**

20. Rxf6 gxf6 21. Nf5
The point of the Rook sac. The knight gets an excellent outpost for the exchange. **21...Kh8** Black wastes no time bringing the King to safety and ignores the taking of the h-pawn with check (**21... Bxh2+**). **22. h3 Qe8 23. Bd3**

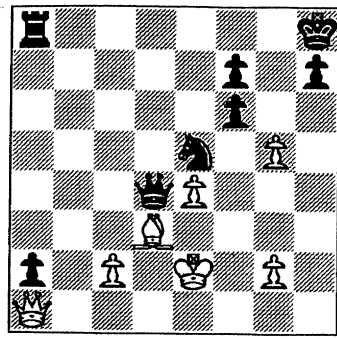


Qe5 Diagram left: White's attack has been halted. Black's King is safe, thanks to the pawn at f6 which blocks attempts on the long diagonal and White's e-pawn which blocks the light colored Bishop from Black's h7.
24. Kf1 Rg8 25. Nh6

Rg7 26. Ng4 Qxb2 27. Rb1 Qxa3 28. Rxb7 Qd6 Diagram right. The Queen has come full circle to the long diagonal, but in the meantime has harvested two pawns on the way. **29. Qa1 Ne5 30. Bf4 a3 31. Rxc7** Diagram below If now **31...Qxc7** then

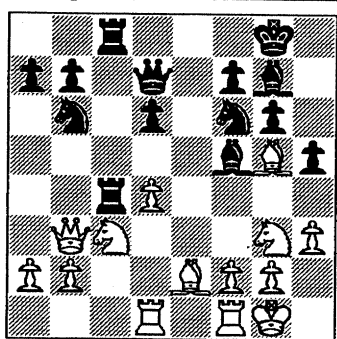


32.Nxe5 fxe5 33.Bxe5 31 ...Rxc7 Black keeps the long diagonal safely blocked. **32. hxg4 Qxc7 33. g5 Qc5 34. Ke2 a2 35. Be3 Qb4 36. Bd4 Qxd4!** 0-1 Diagram next column The clincher. Obviously **37. Qxd4 a1=Q** leaves White a



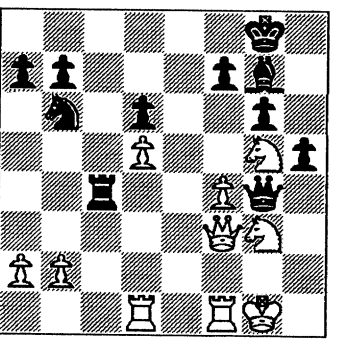
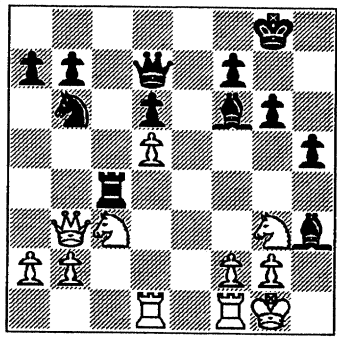
Rook down with no chance at all for getting at Black's King for some sort of perpetual check to save the game.
Nice defensive technique from Judit Polgar.

From the Tal Memorial Tournament held in Riga, Latvia comes the following demonstration of how to survive an attack born of desperation We pick up the game after **17...Rdc8 18.Be2** (Diagram below: GM Jaan Elvest(2615) - GM



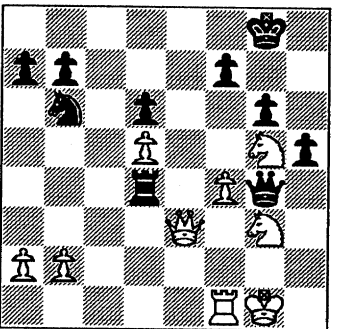
Jan Timman (2635)) **18...Be6** Black hopes to recover material after **19. Bxc4** with **19...Bxc4** followed by **20...Bxf8**. **19. d5!** But White ruins Black's plan entirely by posting the d-pawn to run interference between Black's Bishop and Rook.

If now **19...Bxd5**, then **20.Nxd5** wins a piece: **20...Nfxd5 21.Rxd5 Nxd5 22.Bxc4. 19...Bxh3** Since the Bishop's lost anyway it might as well go down fighting. **20. Bxc4 Rxc4 21. Bxf6 Bxf6** Diagram right. If now **22. gxh3**, then after **22...Qxh3** Black would be able to look



forward to putting pressure on the White King via ... **Rh4** or ...**Be5 22. Nce4** This clears the 3rd rank for the Queen while blocking the Black Rook from access to the h4-square. **22...Be5 23. gxh3 Qxh3 24. f4! 24...Bg7 25. Ng5 Qg4 26. Qf3**

Diagram above **26... Bd4+ 27. Rxd4 Rxd4 28. Qe3 1-0** Diagram right **28...h4** or **28... Rxd5** fails to mate in 3: **29.Qe8+ K-any 30.Qxf7+ K-any 31. Qh7++**



Ratings Chairman's Report

5/21/95

Century Club Awards

Four CICL members earned Century Club honors during the 1994-95 regular season:

Triple Centurions (300 games):

Greg Berry -- Argonne Rooks
Frank Tegel -- AT&T Dragons

Centurions (100 games):

Chandru Bhojwani -- AT&T Tyros
Eric Blackmon -- AT&T Royals

Most Improved Player Award

The winner of the Most Improved Player award is Dan Eustace of the AT&T Dragons. This award is based on regular season results only. Dan gained 100 rating points in regular season play.

CICL Championship

In the Tier 2 playoffs, AT&T was represented by a team made up of members of the Royals, Dragons and Tyros. None of these teams were able to field enough players to compete in the playoffs by themselves. This team is shown in the playoff results as the AT&T Royals because there were more Royals members on the combined team than either of the others.

Also, two games in the Tier 2 round 1 match between CTA and the Exemplars were adjourned, but were not completed prior to the May 20 playoff finals. These games have been treated as double forfeits for purposes of completing the playoff standings. However, if these games are later resumed and played to completion they will be rated.

Missing Result

The regular season East Division round 10 match result between Merc and CTA was never received, and so the match result could not be included in the regular season standings. However, if I subsequently receive this match result the individual results in it will be rated.

Internet Connection

23 of the 26 CICL teams are now receiving advance copies of the CICL ratings electronically, 18 via e-mail and 5 by fax. Here are the e-mail addresses for each Internet-connected team contact, plus fax numbers for teams without an e-mail contact. In some cases two people on a single team are listed:

FERMI	gaines@fnalv.fnal.gov lenny@fnal.gov
WHEAT	wu@david.wheaton.edu
ROOKS	steve_decman_at_ssd_ms@smtpgate.anl.gov
DRGNS	daniel.eustace@att.com
ROYLS	charles.r.dobrovlny@att.com
TYROS	joseph.a.karpierz@att.com
MDCON	hardie_logan@oxy.com
KNGHT	dave_baurac@qmgate.anl.gov b35456@salt.ra.anl.gov
CHRGR	jerome.e.thomas@att.com
UNILV	Fax: 312-838-3243
JCASE	Fax: 708-887-2223
HULL	bob@htc.com
CRT	danb@inet1.crt.com
COLUM	kkostecka@aol.com
AMCRP	mhs!amoco/G=JIM/I=D/S=HODINA@attmail.att.com
BKAMI	Fax: 312-828-5900
MERC	Fax: 312-461-8947
UOP	posajbel@uop.com
MTRLA	Nik_Goncharoff-GUSR184@email.mot.com
NORTH	diazpm@dtd.northrop.com
KEMPR	hades@thunderbolt.com
SEARS	rrgb@aol.com
EXMPL	Fax: 312-725-3432

Alumni East receives advance copies of the ratings by U.S. mail, since team member Marty Franek produces the Bulletin.

-- Charlie Ward
c.e.w.ward@att.com

TIER 1 PLAYOFF DIVISION 05-21-1995

TEAM NAME	W	L	D	GAME MATCH		PCT
				POINTS	POINTS	
ARGONNE ROOKS	2	0	1	11.5	2.5	0.833
CHICAGO POST OFFICE	2	0	1	11.0	2.5	0.833
COLUMBIA COLLEGE	2	1	0	11.5	2.0	0.667
SEARS	2	1	0	11.0	2.0	0.667
NORTHROP CORP.	1	2	0	8.0	1.0	0.333
FERMILAB	1	2	0	8.0	1.0	0.333
ARGONNE KNIGHTS	1	2	0	6.5	1.0	0.333
AT&T CHARGERS	0	3	0	4.5	0.0	0.000

TIER 2 PLAYOFF DIVISION 05-21-1995

TEAM NAME	W	L	D	GAME MATCH		PCT
				POINTS	POINTS	
ALUMNI CENTRAL	3	0	0	15.5	3.0	1.000
AMOCO CORP.	2	0	1	14.5	2.5	0.833
UOP PROCESS DIV.	2	1	0	11.0	2.0	0.667
AT&T ROYALS	1	1	1	8.0	1.5	0.500
BANK AMERICA ILLINOIS	1	2	0	8.0	1.0	0.333
J. I. CASE	1	2	0	7.5	1.0	0.333
EXEMPLARS	1	2	0	3.5	1.0	0.333
MIDCON CORP	0	2	0	1.0	0.0	0.000
CTA	0	1	0	0.0	0.0	0.000

18
1994-95 REGULAR SEASON
FINAL STANDINGS

NORTH DIVISION 05-07-1995

TEAM NAME	W	L	D	GAME	MATCH	PCT
				POINTS	POINTS	
SEARS	4	1	4	33.0	6.0	0.667
NORTHROP CORP.	4	1	4	32.0	6.0	0.667
UOP PROCESS DIV.	3	1	5	32.0	5.5	0.611
MOTOROLA	4	2	3	30.5	5.5	0.611
EXEMPLARS	5	4	0	32.0	5.0	0.556
KEMPER INSURANCE	2	7	0	16.5	2.0	0.222
FEL-PRO	0	6	0	4.0	0.0	0.000

EAST DIVISION 05-07-1995

TEAM NAME	W	L	D	GAME	MATCH	PCT
				POINTS	POINTS	
COLUMBIA COLLEGE	8	0	3	45.0	9.5	0.864
CHICAGO POST OFFICE	7	1	3	38.5	8.5	0.773
ALUMNI CENTRAL	6	2	3	40.5	7.5	0.682
AMOCO CORP.	5	6	0	36.0	5.0	0.455
BANK AMERICA ILLINOIS	4	5	2	33.5	5.0	0.455
CHICAGO RES. & TRDG.	4	6	1	32.5	4.5	0.409
CTA	3	5	1	24.5	3.5	0.389
CHICAGO MERC. EXCH.	2	6	2	18.0	3.0	0.300
HULL TRADING CO.	0	8	1	8.5	0.5	0.056

NEAR WEST DIVISION 05-07-1995

TEAM NAME	W	L	D	GAME	MATCH	PCT
				POINTS	POINTS	
ARGONNE KNIGHTS	5	1	0	24.5	5.0	0.833
AT&T CHARGERS	4	1	1	22.0	4.5	0.750
J. I. CASE	2	3	1	19.0	2.5	0.417
UNILEVER	0	6	0	5.5	0.0	0.000
A & B RADIO	0	0	0	0.0	0.0	0.000

FAR WEST DIVISION 05-07-1995

TEAM NAME	W	L	D	GAME	MATCH	PCT
				POINTS	POINTS	
FERMILAB	8	0	2	42.0	9.0	0.900
ARGONNE ROOKS	6	3	1	34.5	6.5	0.650
AT&T ROYALS	6	3	1	33.0	6.5	0.650
AT&T DRAGONS	5	5	0	33.5	5.0	0.500
AT&T TYROS	4	5	1	28.5	4.5	0.450
WHEATON COLLEGE	2	7	1	18.5	2.5	0.250
MIDCON CORP	1	9	0	19.0	1.0	0.100

19
SEARS

NAME	RATING	SEASON			RATING CHANGE	TOTAL GAMES	RATED GAMES
		W	L	D			
REYES, R	2346D	7	2	2	10	234	213
LATIMER, E	2037D	5	5	1	0	258	226
GOLLA, R	1982D	3	6	0	-47	225	202
BROCKETT, M	1801	2	4	2	-33	44	40
MILLER, TT	1767	5	1	3	39	51	47
DZEKHTSER, A	1761*	7	4	1	-82	12	10
WELTER, P	1642#	0	0	1	-4	9	8
CHAN, H	1574	1	0	0	7	92	75
DORFF, M	1529	5	1	0	36	7	5
RINGER, D	0000?	1	0	0	0	1	1
VAN METRE, R	0000?	3	0	1	0	11	4
LERNER, R	0000?	1	0	0	0	3	3

FEL-PRO

NAME	RATING	SEASON			RATING CHANGE	TOTAL GAMES	RATED GAMES
		W	L	D			
QUERUBIN, R	2067#	0	1	0	-8	8	8
HESS, B	1492	1	4	1	36	66	64
FELDMAN, A	1420C	0	6	0	-18	119	111
NISHIMURA, K	1329*	2	2	1	44	22	15
KEEFE, E	1181#	0	1	0	-5	12	8
THOMPSON, R	1061	0	1	0	-2	61	43
BAKER, B	1042	0	2	0	-27	82	65

KEMPER INSURANCE

NAME	RATING	SEASON			RATING CHANGE	TOTAL GAMES	RATED GAMES
		W	L	D			
SIWEK, M	2142C	3	3	2	16	128	120
LEONG, G	2012C	2	2	0	9	134	116
VAN MEER, J	2007	1	1	0	9	56	53
POZNIAK, J	1479#	2	6	1	6	10	9
OLSEN, A	1474	1	7	0	-4	40	37
LAMBIRIS, J	1441	2	7	0	17	29	26
CUMMUTA, P	1398	2	1	0	30	97	66
MCFARLIN, B	1209#	0	2	0	-6	12	7
GALKO, D	0000?	0	3	0	0	3	3
HARDIN, L	0000?	0	3	1	0	4	2
PAYTON, P	0000?	3	4	0	0	7	4
KAUFMAN, M	0000?	1	1	0	0	10	5
CHOUDRY, A	0000?	0	1	0	0	8	4
BERMAN, R	0000?	0	1	0	0	1	0
AQUENDE, A	0000?	0	3	0	0	3	1

MOTOROLA

NAME	RATING	SEASON			RATING CHANGE	TOTAL GAMES	RATED GAMES
		W	L	D			
HASAN, Y	2237	0	1	0	-27	23	23
MELNIKOV, I	2154	3	3	1	-46	31	30
WALLACH, C	2094	2	3	2	-47	34	33
SAMELSON, C	1990C	6	3	0	-2	155	148
CIESLEK, D	1973	3	0	0	33	53	51
GONCHAROFF, N	1789Q	6	1	0	18	433	369
FAHRENHOLTZ, S	1785*	2	2	0	-14	27	22
AUGSBURGER, L	1732	3	1	0	-13	76	62
LESTER, M	1583	3	2	0	-40	19	12
GRYPARIS, J	1499	6	1	0	95	86	58
BARTUSIAK, P	0000?	0	8	0	0	8	1
CURRAN, T	0000?	1	0	0	0	1	1
MELNIKOV, N	0000?	3	1	0	0	6	2
MORTADA, C	0000?	0	1	0	0	1	1
PAWLUS, D	0000?	0	1	1	0	3	0
PILLAI, J	0000?	0	1	0	0	1	0
PRATT, C	0000?	1	1	0	0	2	2
CATENA, J	0000?	0	3	0	0	3	0
TSEITLIN, E	0000?	0	1	0	0	6	4
VALDEZ, C	0000?	3	0	0	0	6	3
LAWRENCE, P	0000?	2	0	0	0	2	0
SAMOYLOV, A	0000?	2	1	0	0	3	0

EXEMPLARS

NAME	RATING	SEASON			RATING CHANGE	TOTAL GAMES	RATED GAMES
		W	L	D			
WONG, P	2196C	0	3	0	-35	164	159
CREWSE, L	2058	3	1	1	14	75	72
BLOOM, B	2034	2	5	0	-28	72	68
OSTERLUND, R	1943	6	4	1	23	77	71
FRISKE, T	1927	7	2	2	61	39	38
WEITZ, R	1704C	5	1	1	22	137	126
BURIAN, D	1626C	3	6	1	-54	129	108
SUERTH, F	1597C	4	3	1	-30	132	117
BROTSOS, J	1533D	5	1	0	-8	239	191

UOP PROCESS DIV.

NAME	RATING	SEASON			RATING CHANGE	TOTAL GAMES	RATED GAMES
		W	L	D			
STEVANOVIC, M	2269C	7	1	1	70	169	161
BUERGER, E	2095D	8	4	0	16	266	234
BOLDINGH, E	2028	6	5	1	-74	62	62
SAJBEL, P	1755	7	0	2	103	80	74
SAHLI, E	1698	2	5	1	-53	32	29
MICKLICH, F	1660C	3	7	1	-59	163	145
LIKHTEREV, M	1500*	4	4	1	-1	19	13
RYU, R	1451	1	0	0	0	1	0
O'BRIEN, D	1377*	2	3	1	-40	29	21
VAN ZILE, C	1357*	4	6	3	-25	35	22
GEBELE, R	0000?	0	1	0	0	1	1
KATAOKA, N	0000?	2	2	0	0	4	2
VANDECOTTE, M	0000?	3	1	0	0	4	1
NARSOLIS, F	0000?	3	2	0	0	5	2

NORTHROP CORP.

NAME	RATING	SEASON			RATING CHANGE	TOTAL GAMES	RATED GAMES
		W	L	D			
JAKSTAS, K	2198C	1	1	7	18	129	126
GOLUMBOVSKI, P	2158	8	2	2	32	53	53
DIAZ, P	2084	9	2	0	69	47	44
CAIRONE, B	1793	4	2	3	-43	9	6
VIGANTS, A	1528	1	5	3	-64	46	40
BABINEK, J	1416#	1	4	1	0	6	5
ELEK, G	1066	2	4	2	57	36	28
MILLER, J	0000?	0	4	0	0	8	7
WONG, KK	0000?	1	1	0	0	2	1
QUARTETTI, C	0000?	0	4	0	0	4	1

ALUMNI CENTRAL

NAME	RATING	SEASON			RATING CHANGE	TOTAL GAMES	RATED GAMES
		W	L	D			
CZERNIECKI, A	2121C	4	5	2	-22	188	179
COX, M	2028C	3	0	0	14	145	122
LEONG, D	2001	2	1	3	30	39	35
BRONFELD, A	1851	2	1	0	4	49	43
FABIJONAS, R	1841D	8	1	2	56	236	209
RZESZUTKO, R	1820	1	1	1	0	95	81
FRANEK, M	1776C	4	4	4	-14	135	109
LITVINAS, A	1696C	9	2	2	6	182	138
DAVIDSON, M	1617	6	3	0	-61	35	25

BANK AMERICA ILLINOIS

NAME	RATING	SEASON			RATING CHANGE	TOTAL GAMES	RATED GAMES
		W	L	D			
FRAATS, D	1857	4	6	2	-10	67	58
KOGAN, G	1855	3	4	2	5	58	48
PARAOAN, E	1726C	5	5	1	-35	118	104
SOMBONG, M	1634	1	1	1	-47	89	81
SIEGEL, R	1483C	3	2	1	-2	109	87
HAMMOND, M	1426	4	3	0	61	58	40
ZOELLNER, J	1406C	8	2	0	112	112	76
WHITE, T	1319#	1	5	0	0	6	5
GANSER, A	1266*	1	5	1	-48	18	10
HILLIARD, J	0000?	0	1	0	0	16	9

AMOCO CORP.

NAME	RATING	SEASON			RATING CHANGE	TOTAL GAMES	RATED GAMES
		W	L	D			
HODINA, J	2137	8	2	2	43	63	62
SMILEY, R	2005	7	2	5	-19	54	52
ATKINSON, J	1758C	6	3	4	30	121	102
WENTLING, C	1661C	6	5	3	2	114	89
KRULL, E	1476	6	5	1	15	66	50
BRITT-WEBB, E	1265#	0	2	0	-13	9	7
POMA, D	1257	9	9	0	-50	58	43

CHICAGO RES. & TRDG.

NAME	RATING	SEASON			RATING CHANGE	TOTAL GAMES	RATED GAMES
		W	L	D			
JASAITIS, A	2150C	3	4	2	-66	144	125
FRIESEMA, W	2097	4	3	2	-25	77	71
LOSOFF, A	1918	5	0	2	54	62	58
BARGERSTOCK, D	1744	6	4	0	-66	43	39
DENG, J	1549	3	3	1	-33	48	42
DELEON, J	1485#	2	3	0	-13	9	6
BERNARD, D	1296	3	5	0	-7	54	43
CARNAL, D	1207#	0	1	0	-3	8	6
RUBIN, A	0000?	0	1	0	0	1	1
SZONTAGH, T	0000?	1	1	0	0	6	4
LUEDERS, J	0000?	0	1	0	0	5	4

CHICAGO MERC. EXCH.

NAME	RATING	SEASON			RATING CHANGE	TOTAL GAMES	RATED GAMES
		W	L	D			
FRANK, M	1726	3	2	0	7	28	27
SLAGLE, S	1617	4	5	1	28	21	19
SULLIVAN, C	1467	3	7	0	-27	51	44
COTE, J	1306	2	5	1	29	39	30
RUDDY, J	1234	1	2	1	29	41	34
BAKER, LR	1093*	0	3	0	-19	23	15
HILTON, J	1087*	3	4	1	83	42	22
WARE, K	0000?	0	2	0	0	2	2
BECK, P	0000?	0	1	0	0	1	1

CHICAGO POST OFFICE

NAME	RATING	SEASON			RATING CHANGE	TOTAL GAMES	RATED GAMES
		W	L	D			
INUMERABLE, F	2306	7	2	1	70	83	80
MAREMA, D	2006	0	0	1	-4	8	8
MARCOWKA, R	2004C	7	3	2	49	183	163
ALLEN, H	1849	6	5	1	-28	18	18
PERAREN, E	1733	1	4	1	-69	10	10
COOPER, W	1678	4	3	3	-39	95	83
HOWARD, W	1575	8	2	0	57	70	46
TURNER, K	1559	1	0	0	0	2	1
CARTER, L	1554	5	4	4	8	83	66
GRIESMEYER, W	1317	1	0	0	0	14	7

COLUMBIA COLLEGE

NAME	RATING	SEASON			RATING CHANGE	TOTAL GAMES	RATED GAMES
		W	L	D			
WACHTEL, H	2230	6	2	3	25	11	11
MCALISTER, K	1977	4	2	2	18	45	45
SANTIAGO, T	1962*	5	4	2	-10	22	22
PRATTS, M	1792	8	1	4	99	32	31
KOSTECKA, K	1596	3	4	4	-68	51	46
BURDICK, S	1569	2	1	0	-13	17	13
HERNANDEZ, DD	1497	8	4	0	17	40	33
MARTIN, K	1493	5	1	0	-16	6	3
STEVENS, J	1340	1	1	0	-40	12	10
ANGELOS, S	0000?	1	0	0	0	1	0

HULL TRADING CO.

NAME	RATING	SEASON			RATING CHANGE	TOTAL GAMES	RATED GAMES
		W	L	D			
YOUNG, R	1406	0	6	3	20	27	26
WEISSKOPF, J	1381*	2	5	1	47	21	15
NAUGHTON, T	1308*	0	6	0	-31	18	15
CARDI, P	1240#	2	3	0	0	5	5
MUDAN, M	1123*	1	4	1	8	12	11
VENEGAS, B	0000?	0	1	0	0	1	0
WEISS, G	0000?	0	6	0	0	11	11
DOTY, B	0000?	0	3	0	0	3	1

CTA

NAME	RATING	SEASON			RATING CHANGE	TOTAL GAMES	RATED GAMES
		W	L	D			
MATTHEWS, J	1782	2	1	0	35	25	23
JARRETT, T	1660*	5	1	0	56	17	14
WILSON, A	1576	2	5	0	21	92	76
ABRAHAM, T	1574	2	2	1	43	12	11
HARRIS, FF	1401#	0	1	0	-3	11	9
JONES, M	1387*	2	3	0	29	19	15
NOWAK, W	1365#	2	2	0	-4	13	6
VAN OUTRIVE, R	1092#	0	1	0	-4	8	6
STAPLES, M	0000?	0	4	0	0	4	4
CARTER, O	0000?	1	2	0	0	4	2
COLEMAN, O	0000?	0	2	0	0	4	4
BYRNES, R	0000?	4	0	0	0	4	4

A & B RADIO

NAME	RATING	SEASON			RATING CHANGE	TOTAL GAMES	RATED GAMES
		W	L	D			
LASKY, JIM	1693#	0	1	0	-2	9	8
O'DELL, DW	1573C	0	2	0	-47	107	98
TYREE, D	1475*	0	1	0	-7	18	17
LASKY, N	1352C	0	1	0	0	102	89
MIKULECKY, B	1326C	1	1	0	22	108	93
GORZ, E	1289*	0	1	0	-22	10	10

ARGONNE KNIGHTS

NAME	RATING	SEASON			RATING CHANGE	TOTAL GAMES	RATED GAMES
		W	L	D			
BENEDEK, R	2173D	4	2	4	-38	239	231
KEISLER, J	1992	6	2	0	5	16	16
HILL, R	1849	8	2	0	69	81	75
SUAREZ, E	1622	4	2	2	-10	8	8
BAURAC, D	1591C	3	2	3	-13	183	164
KINSELLA, G	1481C	3	2	0	13	120	101
GALLAGHER, H	1300	2	5	0	-22	7	6

AT&T CHARGERS

NAME	RATING	SEASON			RATING CHANGE	TOTAL GAMES	RATED GAMES
		W	L	D			
WARREN, J	2113T	3	2	4	-1	384	336
STAMM, V	1722D	2	4	0	-18	239	219
RADAVICIUS, E	1678D	2	6	0	-35	230	202
DOBR, K	1537T	3	3	2	21	337	307
THOMAS, J	1469C	2	3	2	4	161	127
SHEU, G	1333*	0	0	1	-10	35	23
BRADY, R	1300	3	3	0	33	42	35
PATTON, D	0000?	1	1	0	0	5	3

J. I. CASE

NAME	RATING	SEASON			RATING CHANGE	TOTAL GAMES	RATED GAMES
		W	L	D			
WILLIAMS, T	1986	1	1	1	3	3	3
KALE, S	1870	1	4	4	30	65	55
SATTERLEE, D	1649C	2	8	1	-70	156	139
WHITE, H	1627	5	3	2	35	76	66
KLINEFELTER, H	1536C	5	5	1	6	112	92
REID, C	1433	8	3	0	71	72	66
SAWDO, E	1412	1	2	2	13	47	41
KANAS, W	1316C	1	3	0	17	121	101
MOTYCKA, R	1147	3	4	0	-9	94	73
DUFRESNE, T	997*	2	1	0	-3	16	11
DIAZ, L	0000?	1	4	0	0	7	3
NOBLE, S	0000?	3	3	0	0	6	2
KATZ, J	0000?	0	1	0	0	1	1
ITZENHEUSER, W	0000?	0	2	0	0	2	2

UNILEVER

NAME	RATING	SEASON			RATING CHANGE	TOTAL GAMES	RATED GAMES
		W	L	D			
ELLICE, W	1887	2	3	1	14	14	13
LULKIN, V	1826#	4	0	1	0	5	5
MCKAY, P	1395#	0	3	0	-14	7	7
STEVENSON, R	1363	0	1	0	-29	1	1
NOTERMAN, T	1198	1	1	1	8	7	6
DZURICKO, G	1158*	1	3	0	11	12	11
NELL, D	1073#	0	3	0	-4	9	8
JOSHI, A	0000?	0	0	0	0	0	0
CADE, M	0000?	0	1	0	0	1	1
ROMENESKO, G	0000?	0	1	0	0	1	1
HARD, R	0000?	1	1	0	0	2	2

25
ARGONNE ROOKS

NAME	RATING	SEASON			RATING CHANGE	TOTAL GAMES	RATED GAMES
		W	L	D			
LEVINE, D	2395	7	2	2	-4	65	60
SHEYNIN, S	2083	4	4	5	-87	18	18
BERRY, G	2080D	7	0	2	31	308	259
GREEN, D	1768C	6	4	1	-22	178	157
MORRISON, J	1765	5	2	0	37	8	7
DECMAN, S	1638D	7	4	2	-39	228	200
SCHWAB, W	1481	3	4	0	-11	7	5
BURBA, K	1371C	0	3	0	-43	136	115
SEMONES, E	0000?	1	4	0	0	5	3

AT&T ROYALS

NAME	RATING	SEASON			RATING CHANGE	TOTAL GAMES	RATED GAMES
		W	L	D			
BUCHNER, R	2106	0	1	3	-23	37	34
STINSON, M	2008	0	0	1	2	91	85
PEHAS, A	1977	5	2	0	25	88	87
GUIO, J	1977	1	5	1	-95	53	53
DOBROVOLNY, C	1926	4	7	2	-70	74	66
OGASAWARA, L	1852C	3	2	0	-10	107	103
ROSLEY, D	1808	5	2	0	-26	48	46
BLACKMON, E	1783	8	2	1	4	100	81
SALAMANCA, R	1610	1	0	1	2	2	2
HAHNE, D	1586	2	2	0	-20	77	68
ANDERSON, CJ	1495	5	0	0	49	48	36
CROWE, R	1405*	1	1	1	12	24	22
LUSTRO, G	0000?	0	1	0	0	1	0
CZOSKE, M	0000?	1	1	1	0	3	3

WHEATON COLLEGE

NAME	RATING	SEASON			RATING CHANGE	TOTAL GAMES	RATED GAMES
		W	L	D			
UNDERWOOD, W	1980C	2	4	2	-28	150	129
JOSEPHSON, D	1845#	2	3	1	33	10	7
WALLIN, R	1746	2	5	3	32	41	39
BOSTICK, T	1431#	1	4	3	24	8	7
MAYNARD, J	1330	2	7	0	-67	9	7
COPELAND, P	1229?	1	4	0	0	5	4
PENNINGTON, J	0000?	0	3	0	0	3	3
ROBERTS, J	0000?	2	2	0	0	4	4
TERPSTRA, D	0000?	0	1	0	0	1	1
KERCSMAR, J	0000?	0	2	0	0	2	1
GIMPLE, R	0000?	0	2	0	0	2	2
WEBER, J	0000?	2	2	0	0	4	3

FERMILAB

NAME	RATING	SEASON			RATING CHANGE	TOTAL GAMES	RATED GAMES
		W	L	D			
BEZZUBOV, V	2338*	6	0	0	65	15	14
KOZLOVSKY, M	2167	2	3	5	-71	42	40
MOTTA, H	2039	6	4	2	-21	43	43
SPIEGEL, L	1999C	9	2	2	9	152	142
GAINES, I	1776C	8	3	1	36	187	170
HARRIS, R	1644	5	2	2	0	32	23
CISKO, G	1621	1	0	3	6	34	25
PARA, A	1487	5	5	1	-64	47	37

AT&T TYROS

NAME	RATING	SEASON			RATING CHANGE	TOTAL GAMES	RATED GAMES
		W	L	D			
TAMEZ, I	2047	3	2	2	65	7	7
STOLTZ, B	1968	1	6	3	-56	70	61
BHOJWANI, C	1933	1	2	0	-44	100	95
BLAZIE, J	1830C	2	2	1	-2	112	95
BROZOVICH, J	1726C	2	2	0	-24	193	169
SHAFF, R	1535C	3	2	0	3	165	128
SMITH, BR	1511	4	1	1	51	74	55
THOMAS, G	1438	4	6	0	-58	87	69
KARPIERZ, J	1179*	2	1	2	53	16	13
SCHWARTZ, M	1091	2	3	2	31	41	26
RIPPE, D	0000?	0	2	0	0	5	3

AT&T DRAGONS

NAME	RATING	SEASON			RATING CHANGE	TOTAL GAMES	RATED GAMES
		W	L	D			
TEGEL, F	2167D	4	2	3	22	307	272
LUDWIG, T	2095C	4	2	1	-1	115	112
DURKEE, D	1777C	2	5	2	7	148	140
PIAO, T	1711	0	1	0	-5	30	27
EUSTACE, D	1577	8	5	0	73	75	52
WARD, C	1542D	3	4	3	-9	255	237
HICKS, C	1501	4	3	1	-29	54	48
KRUEGER, J	1353*	4	1	3	57	16	10
PHELPS, C	1244#	0	2	1	-18	15	8

MIDCON CORP

NAME	RATING	SEASON			RATING CHANGE	TOTAL GAMES	RATED GAMES
		W	L	D			
CONNOR, P	2089	2	1	4	82	7	7
EGERTON, J	1996	5	4	2	87	11	11
WHITED, W	1829	1	4	1	-42	6	6
LORENZ, B	1438*	2	8	0	-21	10	10
HANSEN, B	1313#	3	6	0	-8	9	7
ROSENBERG, B	1291#	0	7	1	-18	8	8
LOGAN, H	1273#	1	5	0	-16	6	6
FLEET, R	1154#	2	7	1	-9	10	7
FERGUSON, K	0000?	0	1	0	0	1	1
EGERTON, B	0000?	1	1	0	0	2	1
STEVENS, N	0000?	0	1	0	0	1	0

11-APR-95 AT&T DRAGONS

2

FERMILAB

4

ROUND 12

BD

	RATINGS	SCORE		RATINGS	SCORE
1 TEGEL, F	2165 2	.5	KOZLOVSKY, M	2204 -3	.5
2 LUDWIG, T	2098 -3	.5	MOTTA, H	2032 5	.5
3 DURKEE, D	1784 -7	0	SPIEGEL, L	2003 7	1
4 EUSTACE, D	1617-13	0	GAINES, I	1782 8	1
5 WARD, C	1521 4	.5	CISKO, G	1615 -6	.5
6 KRUEGER, J	1339 14	.5	PARA, A	1592-14	.5

11-APR-95 WHEATON COLLEGE

2.5

AT&T ROYALS

3.5

ROUND 12

BD

	RATINGS	SCORE		RATINGS	SCORE
1 UNDERWOOD, W	1999 5	.5	BUCHNER, R	2114 -8	.5
2 JOSEPHSON, D	1814 31	1	DOBROVOLNY, C	1958-31	0
3 WALLIN, R	1756-10	0	PEHAS, A	1967 10	1
4 COPELAND, P	1229 0	0	BLACKMON, E	1759 0	1
5 MAYNARD, J	1346-16	0	ANDERSON, CJ	1446 16	1
6 WEBER, J	0 0	1	CROWE, R	1405 0	0

13-APR-95 ARGONNE ROOKS

4.5

AT&T TYROS

.5

ROUND 12

BD

	RATINGS	SCORE		RATINGS	SCORE
1 LEVINE, D	2334 7	1	TAMEZ, I	2054 -7	0
2 SHEYNIN, S	2086 9	1	BLAZIE, J	1839 -9	0
3 BERRY, G	2069 1	1	SHAFF, R	1536 -1	0
4 GREEN, D	1784 5	1	THOMAS, G	1505 -8	0
5 DECMAN, S	1662-14	.5	SCHWARTZ, M	1069 22	.5
6 MORRISON, J	1685 0	0F		0 0	0F

01-JAN-95 FEL-PRO

0

EXEMPLARS

6

ROUND 3

BD

	RATINGS	SCORE		RATINGS	SCORE
1 FELDMAN, A	1421 -1	0	CREWSE, L	2039 1	1
2 HESS, B	1494 -2	0	OSTERLUND, R	1996 2	1
3 NISHIMURA, K	1331 -2	0	FRISKE, T	1888 2	1
4 THOMPSON, R	1063 -2	0	BURIAN, D	1625 1	1
5	0 0	0F	SUERTH, F	1620 0	1F
6	0 0	0F	BROTOSOS, J	1533 0	1F

14-MAR-95 SEARS

3.5

EXEMPLARS

2.5

ROUND 9

BD

	RATINGS	SCORE		RATINGS	SCORE
1 REYES, R	2343 9	1	WONG, P	2205 -9	0
2 LATIMER, E	2015 15	1	BLOOM, B	2023-23	0
3 GOLLA, R	1971-12	0	CREWSE, L	2040 18	1
4 BROCKETT, M	1781 13	.5	OSTERLUND, R	1998-13	.5
5 DZEKHTSER, A	1843-19	0	FRISKE, T	1890 19	1
6 MILLER, TT	1724 16	1	BURIAN, D	1626-11	0

30-MAR-95 SEARS 6 KEMPER INSURANCE 0
 ROUND 10

BD	RATINGS	SCORE	RATINGS	SCORE
1 REYES, R	2352 7	1	SIWEK, M	2149 -7 0
2 LATIMER, E	2030 1	1	OLSEN, A	1476 -2 0
3 GOLLA, R	1959 1	1	LAMBIRIS, J	1443 -2 0
4 BROCKETT, M	1794 7	1	POZNIAK, J	1486 -7 0
5 DZEKHTSER, A	1824 0	1	CHOUDRY, A	0 0 0
6 MILLER, TT	1740 0	1	PAYTON, P	0 0 0

06-APR-95 MOTOROLA 2 EXEMPLARS 4
 ROUND 10

BD	RATINGS	SCORE	RATINGS	SCORE
1 MELNIKOV, I	2188-34	0	BLOOM, B	2000 34 1
2 HASAN, Y	2237 0	1F	CREWSE, L	2058 0 0F
3 WALLACH, C	2077 17	1	OSTERLUND, R	1985-17 0
4 SAMELSON, C	2009-19	0	FRISKE, T	1909 29 1
5 FAHRENHOLTZ, S	1816-31	0	WEITZ, R	1684 20 1
6 AUGSBURGER, L	1764-32	0	BURIAN, D	1615 21 1
7 SAMOYLOV, A	0 0	1	BARTUSIAK, P	0 0 0 (MTRLA)

10-APR-95 UOP PROCESS DIV. 3 NORTHROP CORP. 3
 ROUND 10

BD	RATINGS	SCORE	RATINGS	SCORE
1 STEVANOVIC, M	2257 -3	.5	JAKSTAS, K	2185 3 .5
2 BUERGER, E	2082 20	1	GOLUMBOVSKI, P	2192-29 0
3 BOLDINGH, E	2040-19	0	DIAZ, P	2088 19 1
4 SAHLI, E	1715-17	0	CAIRONE, B	1795 17 1
5 SAJBEL, P	1718 12	1	VIGANTS, A	1539-12 0
6 MICKLICH, F	1680 0	.5	BABINEK, J	0 0 .5
7 VAN ZILE, C	1367-17	.5	ELEK, G	1049 17 .5
8 KATAOKA, N	0 0	1	QUARTETTI, C	0 0 0
9 LIKHTEREV, M	1493 16	1	O'BRIEN, D	1384-16 0 (UOP)
10 O'BRIEN, D	1368 9	.5	LIKHTEREV, M	1509 -9 .5(UOP)

20-DEC-94 CHICAGO MERC. EXCH. 3 HULL TRADING CO. 3
 ROUND 6

BD	RATINGS	SCORE	RATINGS	SCORE
1 FRANK, M	1715 7	1	YOUNG, R	1424 -7 0
2 SLAGLE, S	1598 8	1	NAUGHTON, T	1320 -8 0
3 SULLIVAN, C	1504-34	0	WEISSKOPF, J	1317 34 1
4 COTE, J	1275 0	1	WEISS, G	0 0 0
5 RUDDY, J	1242 0	0	MUDAN, M	0 0 1
6 HILTON, J	1094 0	0	CARDI, P	0 0 1

01-FEB-95 ALUMNI CENTRAL 3 CHICAGO POST OFFICE 3
 ROUND 9

BD	RATINGS	SCORE	RATINGS	SCORE
1 CZERNIECKI, A	2130 -9	0	INUMERABLE, F	2265 14 1
2 LEONG, D	1952 2	.5	MARCOWKA, R	1968 -1 .5
3 FABIJONAS, R	1800 16	1	ALLEN, H	1815-23 0
4 FRANEK, M	1773 0	.5	PERAREN, E	1763 1 .5
5 LITVINAS, A	1694-15	0	COOPER, W	1694 23 1
6 DAVIDSON, M	1634 14	1	CARTER, L	1500-14 0

30-MAR-95 CHICAGO POST OFFICE			3	COLUMBIA COLLEGE			3
ROUND 11							
BD		RATINGS	SCORE		RATINGS	SCORE	
1	INUMERABLE, F	2279 -4	.5	WACHTEL, H	2219 4	.5	
2	MARCOWKA, R	1967 15	1	SANTIAGO, T	1974-23	0	
3	PERAREN, E	1764-13	0	MCALISTER, K	1924 13	1	
4	ALLEN, H	1792 0	0F	PRATTS, M	1745 0	1F	
5	COOPER, W	1717 -4	.5	KOSTECKA, K	1660 4	.5	
6	CARTER, L	1486 28	1	HERNANDEZ, DD	1565-28	0	
06-APR-95 HULL TRADING CO.							
			2.5	CHICAGO MERC. EXCH.			3.5
ROUND 11							
BD		RATINGS	SCORE		RATINGS	SCORE	
1	YOUNG, R	1417-11	0	SLAGLE, S	1606 11	1	
2	NAUGHTON, T	1312 -4	0	FRANK, M	1722 4	1	
3	WEISSKOPF, J	1351 30	1	SULLIVAN, C	1470-30	0	
4	CARDI, P	0 0	1	COTE, J	1275 0	0	
5	WEISS, G	0 0	0	HILTON, J	1094 0	1	
6	MUDAN, M	1115 8	.5	RUDDY, J	1242 -8	.5	
12-APR-95 BANK AMERICA ILLINOIS							
			4	CHICAGO RES. & TRDG.			2
ROUND 11							
BD		RATINGS	SCORE		RATINGS	SCORE	
1	KOGAN, G	1847 17	.5	JASAITIS, A	2161-11	.5	
2	FRAATS, D	1896 13	.5	FRIESEMA, W	2110-13	.5	
3	WHITE, T	0 0	0	BARGERSTOCK, D	1780 0	1	
4	SIEGEL, R	1510 0	1	DELEON, J	0 0	0	
5	ZOELLNER, J	1400 17	1	BERNARD, D	1313-17	0	
6	GANSER, A	1282 0	1	SZONTAGH, T	0 0	0	
13-APR-95 CHICAGO POST OFFICE							
			4	ALUMNI CENTRAL			2
ROUND 12							
BD		RATINGS	SCORE		RATINGS	SCORE	
1	INUMERABLE, F	2275 13	1	CZERNIECKI, A	2121 -9	0	
2	MARCOWKA, R	1982 0	1F	LEONG, D	1954 0	0F	
3	ALLEN, H	1792 21	1	FRANEK, M	1773-14	0	
4	PERAREN, E	1751-18	0	FABIJONAS, R	1816 12	1	
5	HOWARD, W	1515-13	0	LITVINAS, A	1679 8	1	
6	CARTER, L	1514 31	1	DAVIDSON, M	1648-31	0	
25-APR-95 AMOCO CORP.							
			1.5	COLUMBIA COLLEGE			4.5
ROUND 12							
BD		RATINGS	SCORE		RATINGS	SCORE	
1	HODINA, J	2146-18	0	WACHTEL, H	2223 18	1	
2	SMILEY, R	2011-26	0	SANTIAGO, T	1951 26	1	
3	ATKINSON, J	1719 13	.5	MCALISTER, K	1937-13	.5	
4	WENTLING, C	1671-18	0	PRATTS, M	1745 18	1	
5	KRULL, E	1464 27	1	HERNANDEZ, DD	1537-27	0	
6	POMA, D	1225 -8	0	MARTIN, K	1485 8	1	

02-MAY-95 CHICAGO MERC. EXCH. 3 BANK AMERICA ILLINOIS 2
 ROUND 12

BD		RATINGS	SCORE		RATINGS	SCORE
1	WARE, K	0 0	0F	KOGAN, G	1864 0	0F
2	BECK, P	0 0	0F	PARAOAN, E	1741 0	1F
3	SLAGLE, S	1617 0	1	WHITE, T	0 0	0
4	SULLIVAN, C	1440 27	1	SIEGEL, R	1510-27	0
5	HILTON, J	1094 -7	0	HAMMOND, M	1398 7	1
6	COTE, J	1275 31	1	ZOELLNER, J	1417-31	0

05-MAY-95 CHICAGO RES. & TRDG. 0 CTA 6
 ROUND 12

BD		RATINGS	SCORE		RATINGS	SCORE
1	FRIESEMA, W	2097 0	0	BYRNES, R	0 0	1
2	BARGERSTOCK, D	1780-36	0	ABRAHAM, T	1538 36	1
3	DELEON, J	1498-13	0	JARRETT, T	1647 13	1
4	RUBIN, A	0 0	0	WILSON, A	1581 0	1
5		0 0	0F	JONES, M	1387 0	1F
6		0 0	0F	STAPLES, M	0 0	1F

02-MAY-95 COLUMBIA COLLEGE
ROUND 1

5 AT&T CHARGERS

1

BD	RATINGS	SCORE	RATINGS	SCORE
1 WACHTEL,H	2241 14	1	WARREN,J	2104 -6 0
2 SANTIAGO,T	1977 7	1	RADAVICIUS,E	1692 -5 0
3 PRATTS,M	1763 10	1	DOBR,K	1555 -5 0
4 KOSTECKA,K	1664-34	0	THOMAS,J	1466 23 1
5 HERNANDEZ,DD	1510 9	1	BRADY,R	1271 -9 0
6 MARTIN,K	1493 0	1F		0 0 0F

11-MAY-95 SEARS
ROUND 1

2 ARGONNE ROOKS

4

BD	RATINGS	SCORE	RATINGS	SCORE
1 REYES,R	2359-16	0	LEVINE,D	2341 24 1
2 LATIMER,E	2031 3	.5	SHEYNNIN,S	2095 -5 .5
3 GOLLA,R	1960-10	0	BERRY,G	2070 10 1
4 MILLER,TT	1740 4	.5	GREEN,D	1789 -2 .5
5 DZEKHTSER,A	1824-31	0	MORRISON,J	1685 31 1
6 DORFF,M	1487 32	1	DECMAN,S	1648-21 0

17-MAY-95 ARGONNE KNIGHTS
ROUND 1

1.5 NORTHROP CORP.

4.5

BD	RATINGS	SCORE	RATINGS	SCORE
1 BENEDEK,R	2202 -1	.5	JAKSTAS,K	2188 1 .5
2 KEISLER,J	2020-14	0	GOLUMBOVSKI,P	2163 14 1
3 HILL,R	1858 -9	0	DIAZ,P	2107 9 1
4 BAURAC,D	1577 9	.5	CAIRONE,B	1812-14 .5
5 SUAREZ,E	1576 -4	.5	VIGANTS,A	1527 4 .5
6 GALLAGHER,H	1310 0	0	BABINEK,J	0 0 1

18-MAY-95 FERMILAB
ROUND 1

2 CHICAGO POST OFFICE

4

BD	RATINGS	SCORE	RATINGS	SCORE
1 KOZLOVSKY,M	2201-17	0	INUMERABLE,F	2288 17 1
2 MOTTA,H	2037 19	1	MARCOWKA,R	1982-13 0
3 SPIEGEL,L	2010-23	0	ALLEN,H	1813 34 1
4 GAINES,I	1790 -3	.5	COOPER,W	1713 5 .5
5 CISKO,G	1609 -5	.5	CARTER,L	1545 5 .5
6 PARA,A	1578-27	0	HOWARD,W	1502 27 1

20-MAY-95 AT&T CHARGERS
ROUND 2

1.5 FERMILAB

4.5

BD	RATINGS	SCORE	RATINGS	SCORE
1 WARREN,J	2098 2	.5	KOZLOVSKY,M	2184 -6 .5
2 STAMM,V	1737 -4	0	MOTTA,H	2056 6 1
3 RADAVICIUS,E	1687 -5	0	SPIEGEL,L	1987 5 1
4 DOBR,K	1550 -4	0	GAINES,I	1787 6 1
5 THOMAS,J	1489-10	0	CISKO,G	1604 15 1
6 BRADY,R	1262 38	1	PARA,A	1551-38 0

20-MAY-95 SEARS	5	ARGONNE KNIGHTS	1
ROUND 2			
BD	RATINGS	SCORE	RATINGS SCORE
1 REYES, R	2343 9	1	BENEDEK, R 2201 -9 0
2 LATIMER, E	2034 14	1	KEISLER, J 2006-21 0
3 GOLLA, R	1950 11	1	HILL, R 1849-16 0
4 MILLER, TT	1744 13	1	BAURAC, D 1586 -9 0
5 DZEKHTSER, A	1793-35	0	SUAREZ, E 1572 35 1
6 DORFF, M	1519 10	1	GALLAGHER, H 1310-10 0

20-MAY-95 NORTHROP CORP.	1.5	COLUMBIA COLLEGE	4.5
ROUND 2			
BD	RATINGS	SCORE	RATINGS SCORE
1 JAKSTAS, K	2189 3	.5	WACHTEL, H 2255 -5 .5
2 GOLUMBOVSKI, P	2177-36	0	MCALISTER, K 1924 36 1
3 CAIRONE, B	1798 -2	.5	PRATTS, M 1773 2 .5
4 VIGANTS, A	1531 7	.5	KOSTECKA, K 1630 -7 .5
5 BABINEK, J	0 0	0	HERNANDEZ, DD 1519 0 1
6	0 0	0F	MARTIN, K 1493 0 1F

20-MAY-95 CHICAGO POST OFFICE	3	ARGONNE ROOKS	3
ROUND 2			
BD	RATINGS	SCORE	RATINGS SCORE
1 INUMERABLE, F	2305-19	0	LEVINE, D 2365 19 1
2 MARCOWKA, R	1969 20	1	SHEYNIN, S 2090-30 0
3 ALLEN, H	1847 19	1	GREEN, D 1787-12 0
4 COOPER, W	1718-23	0	MORRISON, J 1716 23 1
5 CARTER, L	1550-18	0	DECMAN, S 1627 12 1
6 HOWARD, W	1529 19	1	SCHWAB, W 1474-19 0

20-MAY-95 ARGONNE KNIGHTS	4	AT&T CHARGERS	2
ROUND 3			
BD	RATINGS	SCORE	RATINGS SCORE
1 BENEDEK, R	2192-19	0	WARREN, J 2100 13 1
2 KEISLER, J	1985 7	1	RADAVICIUS, E 1682 -4 0
3 HILL, R	1833 16	1	STAMM, V 1733-11 0
4 BAURAC, D	1577 14	1	DOBR, K 1546 -9 0
5 SUAREZ, E	1607 15	1	THOMAS, J 1479-10 0
6 GALLAGHER, H	1300 0	0F	BRADY, R 1300 0 1F

20-MAY-95 NORTHROP CORP.	2	SEARS	4
ROUND 3			
BD	RATINGS	SCORE	RATINGS SCORE
1 JAKSTAS, K	2192 6	.5	REYES, R 2352 -6 .5
2 GOLUMBOVSKI, P	2141 17	1	LATIMER, E 2048-11 0
3 DIAZ, P	2116-32	0	GOLLA, R 1961 21 1
4 CAIRONE, B	1796 -3	.5	DZEKHTSER, A 1758 3 .5
5 VIGANTS, A	1538-10	0	MILLER, TT 1757 10 1
6 BABINEK, J	0 0	0	DORFF, M 1529 0 1

20-MAY-95 COLUMBIA COLLEGE

2

CHICAGO POST OFFICE

4

ROUND 3

BD	RATINGS	SCORE	RATINGS	SCORE
1 WACHTEL, H	2250-20	0	INUMERABLE, F	2286 20 1
2 SANTIAGO, T	1984-22	0	MARCOWKA, R	1989 15 1
3 MCALISTER, K	1960 17	1	ALLEN, H	1866-17 0
4 PRATTS, M	1775 17	1	COOPER, W	1695-17 0
5 KOSTECKA, K	1623-27	0	HOWARD, W	1548 27 1
6 HERNANDEZ, DD	1519-22	0	CARTER, L	1532 22 1

20-MAY-95 ARGONNE ROOKS

4.5

FERMILAB

1.5

ROUND 3

BD	RATINGS	SCORE	RATINGS	SCORE
1 LEVINE, D	2384 11	1	KOZLOVSKY, M	2178-11 0
2 SHEYNIN, S	2060 23	1	MOTTA, H	2062-23 0
3 GREEN, D	1775 -7	0	SPIEGEL, L	1992 7 1
4 MORRISON, J	1739 26	1	GAINES, I	1793-17 0
5 DECMAN, S	1639 -1	.5	CISKO, G	1619 2 .5
6 SCHWAB, W	1455 26	1	PARA, A	1513-26 0

10-MAY-95 AT&T ROYALS

3

AMOCO CORP.

3

ROUND 1

BD	RATINGS	SCORE	RATINGS	SCORE
(TYROS) 1 STOLTZ, B	1966 10	.5	HODINA, J	2128-10 .5
2 GUIO, J	2001-24	0	SMILEY, R	1985 24 1
3 DOBROVOLNY, C	1927-12	.5	ATKINSON, J	1732 12 .5
4 BLACKMON, E	1759 16	1	WENTLING, C	1653-16 0
(DRGNS) 5 EUSTACE, D	1604 15	1	KRULL, E	1491-15 0
(DRGNS) 6 HICKS, C	1568-40	0	POMA, D	1217 40 1
7 CZOSKE, M	0 0	0	THOMAS, G	1497 0 1 (TYROS)

11-MAY-95 ALUMNI CENTRAL

5.5

J. I. CASE

.5

ROUND 1

BD	RATINGS	SCORE	RATINGS	SCORE
1 CZERNIECKI, A	2112 10	1	WILLIAMS, T	2002-16 0
2 LEONG, D	1954 -6	.5	KALE, S	1861 6 .5
3 RZESZUTKO, R	1791 15	1	SATTERLEE, D	1667-10 0
4 FRANEK, M	1759 9	1	WHITE, H	1623-14 0
5 FABIJONAS, R	1828 5	1	KLINEFELTER, H	1553 -8 0
6 LITVINAS, A	1687 5	1	REID, C	1398 -7 0
(JCASE) 7 NOBLE, S	0 0	0	MOTYCKA, R	1153 0 1

16-MAY-95 EXEMPLARS

3

CTA

0

ROUND 1

BD	RATINGS	SCORE	RATINGS	SCORE
1 FRISKE, T	1938 5	1	WILSON, A	1581 -5 0
2 WEITZ, R	1704 0	1	WILLIAMS, A	0 0 0
3 BURIAN, D	1636 0	OF	JONES, M	1387 0 OF
4 SUERTH, F	1620 0	OF	NOWAK, W	1365 0 OF
5 BROTSOS, J	1533 0	1	STAPLES, M	0 0 0
6	0 0	OF		0 0 OF

18-MAY-95 UOP PROCESS DIV.			4	BANK AMERICA ILLINOIS			2
ROUND 1							
BD		RATINGS	SCORE		RATINGS	SCORE	
1	BUERGER, E	2102	7	1	FRAATS, D	1909-11	0
2	BOLDINGH, E	2021	13	1	KOGAN, G	1864-13	0
3	SAJBEL, P	1730	23	1	PAROAN, E	1741-15	0
4	SAHLI, E	1698	0	1F	WHITE, T	1319	0 OF
5	MICKLICH, F	1680-25		0	HAMMOND, M	1405	37 1
6	VAN ZILE, C	1350-20		0	ZOELLNER, J	1386	20 1
20-MAY-95 J. I. CASE			5	BANK AMERICA ILLINOIS			1
ROUND 2							
BD		RATINGS	SCORE		RATINGS	SCORE	
1	KALE, S	1867	25	1	FRAATS, D	1898-25	0
2	SATTERLEE, D	1657	3	.5	PAROAN, E	1726 -3	.5
3	WHITE, H	1609	-4	.5	DYCZKOWSKI, R	1561	4 .5
4	KLINFELTER, H	1545	16	1	HAMMOND, M	1442-16	0
5	REID, C	1391	16	1	GANSER, A	1282-16	0
6	KANAS, W	1316	0	1F	WHITE, T	1319	0 OF
20-MAY-95 EXEMPLARS			0	ALUMNI CENTRAL			6
ROUND 2							
BD		RATINGS	SCORE		RATINGS	SCORE	
1	OSTERLUND, R	1968-13		0	CZERNIECKI, A	2122	9 1
2	FRISKE, T	1943-22		0	LEONG, D	1948	22 1
3	SUERTH, F	1620 -9		0	FRANEK, M	1768	9 1
4		0	0	OF	RZESZUTKO, R	1806	0 1F
5		0	0	OF	FABIJONAS, R	1833	0 1F
6		0	0	OF	LITVINAS, A	1692	0 1F
20-MAY-95 AMOCO CORP.			6	MIDCON CORP			0
ROUND 2							
BD		RATINGS	SCORE		RATINGS	SCORE	
1	HODINA, J	2118	7	1	WHITED, W	1836 -7	0
2	SMILEY, R	2009	2	1	LORENZ, B	1444 -2	0
3	ATKINSON, J	1744	4	1	HANSEN, B	1321 -4	0
4	WENTLING, C	1637	3	1	FLEET, R	1157 -3	0
5	KRULL, E	1476	0	1	SKRZYPCZAK, T	0	0 0
6	POMA, D	1257	0	1	SAUNDERS, N	0	0 0
20-MAY-95 UOP PROCESS DIV.			5	AT&T ROYALS			1
ROUND 2							
BD		RATINGS	SCORE		RATINGS	SCORE	
1	STEVANOVIC, M	2254	5	1	STOLTZ, B	1976 -8	0 (TYROS)
2	BUERGER, E	2109	7	1	DOBROVOLNY, C	1915-11	0
3	BOLDINGH, E	2034	8	1	BLACKMON, E	1775 -8	0
4	MICKLICH, F	1655	13	1	EUSTACE, D	1619-20	0 (DRGNS)
5	VAN ZILE, C	1330	33	1	THOMAS, G	1497-33	0 (TYROS)
6		0	0	OF	HICKS, C	1528	0 1F(DRGNS)
(ROYLS)	7 ANDERSON, CJ	1462	27	1	HICKS, C	1528-27	0 (DRGNS)

20-MAY-95 ALUMNI CENTRAL
ROUND 3

4

UOP PROCESS DIV.

2

BD

	RATINGS	SCORE		RATINGS	SCORE
1 CZERNIECKI, A	2131-10	0	STEVANOVIC, M	2259 10	1
2 LEONG, D	1970 31	1	BUERGER, E	2116-21	0
3 RZESZUTKO, R	1806 14	.5	BOLDINGH, E	2042-14	.5
4 FRANEK, M	1777 -1	.5	SAJBEL, P	1753 2	.5
5 FABIJONAS, R	1833 8	1	MICKLICH, F	1668 -8	0
6 LITVINAS, A	1692 4	1	VAN ZILE, C	1363 -6	0

20-MAY-95 AMOCO CORP.
ROUND 3

5.5 EXEMPLARS

.5

BD

	RATINGS	SCORE		RATINGS	SCORE
1 HODINA, J	2125 12	1	OSTERLUND, R	1955-12	0
2 SMILEY, R	2011 -6	.5	FRISKE, T	1921 6	.5
3 ATKINSON, J	1748 10	1	BURIAN, D	1636-10	0
4 WENTLING, C	1640 21	1	SUERTH, F	1611-14	0
5 KRULL, E	1476 0	1F		0 0	0F
6 POMA, D	1257 0	1F		0 0	0F
7 KRULL, E	1476 0	0	BYRNES, R	0 0	1 (CTA)
(CTA) 8 MATTHEWS, J	1745 37	1	UNDERWOOD, W	2004-24	0 (WHEAT)

20-MAY-95 AT&T ROYALS
ROUND 3

4

J. I. CASE

2

BD

	RATINGS	SCORE		RATINGS	SCORE
1 DOBROVOLNY, C	1904 22	1	KALE, S	1892-22	0
2 BLACKMON, E	1767 16	1	SATTERLEE, D	1660-11	0
(DRGNS) 3 EUSTACE, D	1599-22	0	WHITE, H	1605 22	1
(DRGNS) 4 WARD, C	1525 17	1	KLINEFELTER, H	1561-25	0
(TYROS) 5 THOMAS, G	1464-26	0	REID, C	1407 26	1
6 ANDERSON, CJ	1489 6	1	MOTYCKA, R	1153 -6	0

20-MAY-95 MIDCON CORP
ROUND 3

1

BANK AMERICA ILLINOIS

5

BD

	RATINGS	SCORE		RATINGS	SCORE
1 EGERTON, J	1980 16	1	FRAATS, D	1873-16	0
2 LORENZ, B	1442 -4	0	KOGAN, G	1851 4	1
3 HANSEN, B	1317 -4	0	PARAOAN, E	1723 3	1
4 EGERTON, B	0 0	0	SOMBONG, M	1634 0	1
5 SKRZYPCZAK, T	0 0	0	DYCKOWSKI, R	1565 0	1
6	0 0	0F	HAMMOND, M	1426 0	1F

NORTH DIVISION TOP TEN

REYES, R	SEARS	2346D
STEVANOVIC, M	UOP	2269C
HASAN, Y	MTRLA	2237
JAKSTAS, K	NORTH	2198C
WONG, P	EXMPL	2196C
GOLUMBOVSKI, P	NORTH	2158
MELNIKOV, I	MTRLA	2154
SIWEK, M	KEMPR	2142C
BUERGER, E	UOP	2095D
WALLACH, C	MTRLA	2094

EAST DIVISION TOP TEN

INUMERABLE, F	PSTOF	2306
WACHTEL, H	COLUM	2230
JASAITIS, A	CRT	2150C
HODINA, J	AMCRP	2137
CZERNIECKI, A	ALUMN	2121C
FRIESEMA, W	CRT	2097
COX, M	ALUMN	2028C
MAREMA, D	PSTOF	2006
SMILEY, R	AMCRP	2005
MARCOWKA, R	PSTOF	2004C

NEAR WEST DIVISION TOP TEN

BENEDEK, R	KNIGHT	2173D
WARREN, J	CHRGR	2113T
KEISLER, J	KNIGHT	1992
WILLIAMS, T	JCASE	1986
ELLICE, W	UNILV	1887
KALE, S	JCASE	1870
HILL, R	KNIGHT	1849
STAMM, V	CHRGR	1722D
RADAVICIUS, E	CHRGR	1678D
SATTERLEE, D	JCASE	1649C

FAR WEST DIVISION TOP TEN

LEVINE, D	ROOKS	2395
BEZZUBOV, V	FERMI	2338*
TEGEL, F	DRGNS	2167D
KOZLOVSKY, M	FERMI	2167
BUCHNER, R	ROYLS	2106
LUDWIG, T	DRGNS	2095C
CONNOR, P	MDCON	2089
SHEYNIN, S	ROOKS	2083
BERRY, G	ROOKS	2080D
TAMEZ, I	TYROS	2047

MOST IMPROVED PLAYERS

ZOELLNER, J	CONBK	112
SAJBEL, P	UOP	103
PRATTS, M	COLUM	99
GRYPARIS, J	MTRLA	95
EGERTON, J	MDCON	87
HILTON, J	MERC	83
CONNOR, P	MDCON	82
EUSTACE, D	DRGNS	73
REID, C	JCASE	71
STEVANOVIC, M	UOP	70

NAME	TEAM	W	L	D	RATING	NAME	TEAM	W	L	D	RATING
ABBOTT, J	MTRLA	0	0	0	0000?	CARNAL, D	CRT	0	1	0	1207#
ABRAHAM, T	CTA	2	2	1	1574	CARTER, L	PSTOF	5	4	4	1554
ALLEN, H	PSTOF	6	5	1	1849	CARTER, O	CTA	1	2	0	0000?
AMUNDSEN, C	KEMPR	0	0	0	0000?	CATENA, J	MTRLA	0	3	0	0000?
ANDERSON, CJ	ROYLS	5	0	0	1495	CHAN, H	SEARS	1	0	0	1574
ANGELOS, S	COLUM	1	0	0	0000?	CHARKOVSKY, R	ALUMN	0	0	0	1619
AQUENDE, A	KEMPR	0	3	0	0000?	CHEVERESAN, S	UOP	0	0	0	1434C
ATKINSON, J	AMCRP	6	3	4	1758C	CHOUDRY, A	KEMPR	0	1	0	0000?
AUGSBURGER, L	MTRLA	3	1	0	1732	CHRISTIAN, R	DRGNS	0	0	0	1808C
AUSTIN, R	ROYLS	0	0	0	1125#	CIESLEK, D	MTRLA	3	0	0	1973
BABINEK, J	NORTH	1	4	1	1416#	CISKO, G	FERMI	1	0	3	1621
BAER, M	AMCRP	0	0	0	1347*	COLEMAN, O	CTA	0	2	0	0000?
BAKER, B	FLPRO	0	2	0	1042	CONNELY, S	HULL	0	0	0	0000?
BAKER, LR	MERC	0	3	0	1093*	CONNOR, P	MDCON	2	1	4	2089
BANZA, S	HULL	0	0	0	0000?	COOPER, W	PSTOF	4	3	3	1678
BARGERSTOCK, D	CRT	6	4	0	1744	COPELAND, P	WHEAT	1	4	0	1229?
BARNES, D	ROAD	0	0	0	0000?	COTE, J	MERC	2	5	1	1306
BARTUSIAK, P	MTRLA	0	8	0	0000?	COX, M	ALUMN	3	0	0	2028C
BAURAC, D	KNGHT	3	2	3	1591C	CREWSE, L	EXMPL	3	1	1	2058
BECK, P	MERC	0	1	0	0000?	CROWE, R	ROYLS	1	1	1	1405*
BENEDEK, R	KNGHT	4	2	4	2173D	CUMBERLAND, M	SEARS	0	0	0	0000?
BENESA, A	GROLR	0	0	0	2211	CUMMUTA, P	KEMPR	2	1	0	1398
BERMAN, R	KEMPR	0	1	0	0000?	CURRAN, T	MTRLA	1	0	0	0000?
BERNARD, D	CRT	3	5	0	1296	CZERNIECKI, A	ALUMN	4	5	2	2121C
BERRY, G	ROOKS	7	0	2	2080D	CZOSKE, M	ROYLS	1	1	1	0000?
BEZZUBOV, V	FERMI	6	0	0	2338*	DAVIDSON, M	ALUMN	6	3	0	1617
BHOJWANI, C	TYROS	1	2	0	1933	DAVIS, R	PSTOF	0	0	0	0000?
BLACKMON, E	ROYLS	8	2	1	1783	DEARDORFF, M	FLPRO	0	0	0	1437*
BLAZIE, J	TYROS	2	2	1	1830C	DECMAN, S	ROOKS	7	4	2	1638D
BLOOM, B	EXMPL	2	5	0	2034	DELEON, J	CRT	2	3	0	1485#
BOLDINGH, E	UOP	6	5	1	2028	DENG, J	CRT	3	3	1	1549
BOOKER, G	RADIO	0	0	0	1398*	DEWITT, G	ROCKW	0	0	0	1423C
BOSTICK, T	WHEAT	1	4	3	1431#	DEZONNO, T	ROCKW	0	0	0	1255*
BRADY, R	CHRGR	3	3	0	1300	DIAZ, L	JCASE	1	4	0	0000?
BRANCH, Y	COLUM	0	0	0	1301*	DIAZ, P	NORTH	9	2	0	2084
BRIONES, M	UOP	0	0	0	1660C	DJORDJEVIC, I	FERMI	0	0	0	0000?
BRITT-WEBB, E	AMCRP	0	2	0	1265#	DOBR, K	CHRGR	3	3	2	1537T
BROCKETT, M	SEARS	2	4	2	1801	DOBROVOLNY, C	ROYLS	4	7	2	1926
BRONFELD, A	ALUMN	2	1	0	1851	DONNA, D	MTRLA	0	0	0	0000?
BROTSOS, J	EXMPL	5	1	0	1533D	DORFF, M	SEARS	5	1	0	1529
BROZOVICH, J	TYROS	2	2	0	1726C	DOTY, B	HULL	0	3	0	0000?
BUCHNER, R	ROYLS	0	1	3	2106	DUFRESNE, T	JCASE	2	1	0	997*
BUERGER, E	UOP	8	4	0	2095D	DURKEE, D	DRGNS	2	5	2	1777C
BURBA, K	ROOKS	0	3	0	1371C	DYCZKOWSKI, R	CONBK	1	0	1	1565
BURDICK, S	COLUM	2	1	0	1569	DZEKHTSER, A	SEARS	7	4	1	1761*
BURIAN, D	EXMPL	3	6	1	1626C	DZURICKO, G	UNILV	1	3	0	1158*
BYRNES, R	CTA	4	0	0	0000?	EDWARDS, S	AWEST	0	0	0	1278
CADE, M	UNILV	0	1	0	0000?	EFRON, D	ROCKW	0	0	0	1638
CAIRONE, B	NORTH	4	2	3	1793	EGERTON, B	MDCON	1	1	0	0000?
CARDI, P	HULL	2	3	0	1240#	EGERTON, J	MDCON	5	4	2	1996

? - UNRATED

- 5 TO 9 RATED GAMES

* - 10 TO 24 RATED GAMES

C - CENTURY CLUB MEMBER

D - DOUBLE CENTURION

T - TRIPLE CENTURION

Q - QUAD CENTURION

NAME	TEAM	W	L	D	RATING	NAME	TEAM	W	L	D	RATING
ELEK, G	NORTH	2	4	2	1066	HILTON, J	MERC	3	4	1	1087*
ELLICE, W	UNILV	2	3	1	1887	HODINA, J	AMCRP	8	2	2	2137
ERLENBORN, M	AWEST	0	0	0	1482*	HOWARD, W	PSTOF	8	2	0	1575
EUSTACE, D	DRGNS	8	5	0	1577	HUGHES, N	KEMPR	0	0	0	1852C
FABIJONAS, R	ALUMN	8	1	2	1841D	HUNG, N	MTRLA	0	0	0	1471#
FAHRENHOLTZ, S	MTRLA	2	2	0	1785*	INUMERABLE, F	PSTOF	7	2	1	2306
FELDMAN, A	FLPRO	0	6	0	1420C	ITZENHEUSER, W	JCASE	0	2	0	0000?
FERGUSON, K	MDCON	0	1	0	0000?	JACKSON, JJ	ROAD	0	0	0	0000?
FLEET, R	MDCON	2	7	1	1154#	JACOBS, N	DRGNS	0	0	0	1983C
FRAATS, D	CONBK	4	6	2	1857	JAKSTAS, K	NORTH	1	1	7	2198C
FRANCISKOVICH, DHULL	DHULL	0	0	0	1113#	JARRETT, T	CTA	5	1	0	1660*
FRANEK, M	ALUMN	4	4	4	1776C	JASAITIS, A	CRT	3	4	2	2150C
FRANK, M	MERC	3	2	0	1726	JONES, B	ROCKW	0	0	0	2061
FRIESEMA, W	CRT	4	3	2	2097	JONES, M	CTA	2	3	0	1387*
FRISKE, T	EXMPL	7	2	2	1927	JOSEPHSON, D	WHEAT	2	3	1	1845#
GAINES, I	FERMI	8	3	1	1776C	JOSHI, A	UNILV	0	0	0	0000?
GALKO, D	KEMPR	0	3	0	0000?	KALE, S	JCASE	1	4	4	1870
GALLAGHER, H	KNGHT	2	5	0	1300	KANAS, W	JCASE	1	3	0	1316C
GANSER, A	CONBK	1	5	1	1266*	KARPIERZ, J	TYROS	2	1	2	1179*
GASTON, K	JCASE	0	0	0	1274*	KATAOKA, N	UOP	2	2	0	0000?
GAZMEN, E	GROLR	0	0	0	2234	KATZ, J	JCASE	0	1	0	0000?
GEBELE, R	UOP	0	1	0	0000?	KAUFMAN, M	KEMPR	1	1	0	0000?
GIMPLE, R	WHEAT	0	2	0	0000?	KEEFE, E	FLPRO	0	1	0	1181#
GOLDBOGEN, G	COLUM	0	0	0	0000?	KEISLER, J	KNGHT	6	2	0	1992
GOLLA, R	SEARS	3	6	0	1982D	KERCSMAR, J	WHEAT	0	2	0	0000?
GOLUMBOVSKI, P	NORTH	8	2	2	2158	KINSELLA, G	KNGHT	3	2	0	1481C
GONCHAROFF, N	MTRLA	6	1	0	1789Q	KLINEFELTER, H	JCASE	5	5	1	1536C
GORZ, E	RADIO	0	1	0	1289*	KOEPELE, J	TYROS	0	0	0	0000?
GREEN, D	ROOKS	6	4	1	1768C	KOGAN, G	CONBK	3	4	2	1855
GRIESMEYER, W	PSTOF	1	0	0	1317	KOSTECKA, K	COLUM	3	4	4	1596
GRYPARIS, J	MTRLA	6	1	0	1499	KOZLOVSKY, M	FERMI	2	3	5	2167
GUILLEN, B	KEMPR	0	0	0	1402*	KRUEGER, J	DRGNS	4	1	3	1353*
GUIO, J	ROYLS	1	5	1	1977	KRULL, E	AMCRP	6	5	1	1476
HAHNE, D	ROYLS	2	2	0	1586	LACAPENA	GROLR	0	0	0	0000?
HAMILTON, L	AMCRP	0	0	0	1380	LAMBIRIS, J	KEMPR	2	7	0	1441
HAMMOND, M	CONBK	4	3	0	1426	LASKY, JIM	RADIO	0	1	0	1693#
HAMPER, P	AMCRP	0	0	0	1288*	LASKY, N	RADIO	0	1	0	1352C
HANSEN, B	MDCON	3	6	0	1313#	LATIMER, E	SEARS	5	5	1	2037D
HARD, R	UNILV	1	1	0	0000?	LAWRENCE, P	MTRLA	2	0	0	0000?
HARDIN, L	KEMPR	0	3	1	0000?	LEE, B	UNILV	0	0	0	1470
HARRIS, FF	CTA	0	1	0	1401#	LEONG, D	ALUMN	2	1	3	2001
HARRIS, R	FERMI	5	2	2	1644	LEONG, G	KEMPR	2	2	0	2012C
HASAN, Y	MTRLA	0	1	0	2237	LERNER, R	SEARS	1	0	0	0000?
HEDSTROM, L	RAIL	0	0	0	0000?	LESTER, M	MTRLA	3	2	0	1583
HERNANDEZ, DD	COLUM	8	4	0	1497	LEVINE, D	ROOKS	7	2	2	2395
HESS, B	FLPRO	1	4	1	1492	LIKHTEREV, M	UOP	4	4	1	1500*
HICKS, C	DRGNS	4	3	1	1501	LITVINAS, A	ALUMN	9	2	2	1696C
HILL, C	FERMI	0	0	0	1663*	LOGAN, H	MDCON	1	5	0	1273#
HILL, R	KNGHT	8	2	0	1849	LOMONT, C	SEARS	0	0	0	1494#
HILLIARD, J	CONBK	0	1	0	0000?	LORENZ, B	MDCON	2	8	0	1438*

? - UNRATED

- 5 TO 9 RATED GAMES

* - 10 TO 24 RATED GAMES

C - CENTURY CLUB MEMBER

D - DOUBLE CENTURION

T - TRIPLE CENTURION

Q - QUAD CENTURION

NAME	TEAM	W	L	D	RATING	NAME	TEAM	W	L	D	RATING
LOSOFF, A	CRT	5	0	2	1918	PAYTON, P	KEMPR	3	4	0	0000?
LUDWIG, T	DRGNS	4	2	1	2095C	PEHAS, A	ROYLS	5	2	0	1977
LUEDERS, J	CRT	0	1	0	0000?	PENNINGTON, J	WHEAT	0	3	0	0000?
LULKIN, V	UNILV	4	0	1	1826#	PEPPERS, M	RAIL	0	0	0	0000?
LUSTRO, G	ROYLS	0	1	0	0000?	PERAREN, E	PSTOF	1	4	1	1733
MAA, R	DRGNS	0	0	0	0000?	PHELPS, C	DRGNS	0	2	1	1244#
MARCOWKA, R	PSTOF	7	3	2	2004C	PIAO, T	DRGNS	0	1	0	1711
MAREMA, D	PSTOF	0	0	1	2006	PILLAI, J	MTRLA	0	1	0	0000?
MARTIN, K	COLUM	5	1	0	1493	POMA, D	AMCRP	9	9	0	1257
MATTHEWS, J	CTA	2	1	0	1782	POMA, M	AWEST	0	0	0	0000?
MAYNARD, J	WHEAT	2	7	0	1330	POZNIAK, J	KEMPR	2	6	1	1479#
MCALISTER, K	COLUM	4	2	2	1977	PRATT, C	MTRLA	1	1	0	0000?
MCCLENDON, L	CONBK	0	0	0	1340	PRATTS, M	COLUM	8	1	4	1792
MCFARLIN, B	KEMPR	0	2	0	1209#	PRICE, B	AWEST	0	0	0	1086#
MCINTOSH, S	CONBK	0	0	0	1142*	PUNZALAN, N	GROLR	0	0	0	1599
MCKAY, P	UNILV	0	3	0	1395#	QUARTETTI, C	NORTH	0	4	0	0000?
MCQUINN, J	ROCKW	0	0	0	1450	QUERUBIN, R	FLPRO	0	1	0	2067#
MELNIKOV, I	MTRLA	3	3	1	2154	RADAVICIUS, E	CHRGR	2	6	0	1678D
MELNIKOV, N	MTRLA	3	1	0	0000?	RAFACZ, T	ROCKW	0	0	0	1698
MENGEL, M	FERMI	0	0	0	0000?	RAFACZ, W	ROCKW	0	0	0	1638
MICKLICH, F	UOP	3	7	1	1660C	RAFFERTY, M	HULL	0	0	0	0000?
MIKULECKY, B	RADIO	1	1	0	1326C	RANGEL, R	HULL	0	0	0	1741
MILLER, J	NORTH	0	4	0	0000?	REED, K	TYROS	0	0	0	0000?
MILLER, TT	SEARS	5	1	3	1767	REID, C	JCASE	8	3	0	1433
MITCHAM, L	ROCKW	0	0	0	1552*	REYES, R	SEARS	7	2	2	2346D
MOORE, JJ	MTRLA	0	0	0	0000?	RINGER, D	SEARS	1	0	0	0000?
MORRISON, J	ROOKS	5	2	0	1765	RIPPE, D	TYROS	0	2	0	0000?
MORTADA, C	MTRLA	0	1	0	0000?	ROBERTS, J	WHEAT	2	2	0	0000?
MORTON, B	SEARS	0	0	0	1569	ROJAS, R	RAIL	0	0	0	0000?
MOTTA, H	FERMI	6	4	2	2039	ROMENESKO, G	UNILV	0	1	0	0000?
MOTYCKA, R	JCASE	3	4	0	1147	ROSENBERG, B	MDCON	0	7	1	1291#
MUDAN, M	HULL	1	4	1	1123*	ROSLEY, D	ROYLS	5	2	0	1808
NARSOLIS, F	UOP	3	2	0	0000?	ROSS, L	JCASE	0	0	0	0000?
NAUGHTON, T	HULL	0	6	0	1308*	RUBIN, A	CRT	0	1	0	0000?
NELL, D	UNILV	0	3	0	1073#	RUBIN, J	UNILV	0	0	0	0000?
NELSON, H	CONBK	0	0	0	1967	RUDDY, J	MERC	1	2	1	1234
NISHIMURA, K	FLPRO	2	2	1	1329*	RUEB, R	HULL	0	0	0	0000?
NOBLE, S	JCASE	3	3	0	0000?	RYU, R	UOP	1	0	0	1451
NOTERMAN, T	UNILV	1	1	1	1198	RZESZUTKO, R	ALUMN	1	1	1	1820
NOWAK, W	CTA	2	2	0	1365#	SAHLI, E	UOP	2	5	1	1698
NWABUDE, O	CHRGR	0	0	0	1029*	SAJBEL, P	UOP	7	0	2	1755
O'BRIEN, D	UOP	2	3	1	1377*	SALAMANCA, R	ROYLS	1	0	1	1610
O'DELL, DW	RADIO	0	2	0	1573C	SAMELSON, C	MTRLA	6	3	0	1990C
OGASAWARA, L	ROYLS	3	2	0	1852C	SAMOYLOV, A	MTRLA	2	1	0	0000?
OLSEN, A	KEMPR	1	7	0	1474	SAMULAK, C	HULL	0	0	0	1147#
OSTERLUND, R	EXMPL	6	4	1	1943	SANCHEZ, P	RAIL	0	0	0	0000?
PARA, A	FERMI	5	5	1	1487	SANCHEZ, R	GROLR	0	0	0	1526*
PARAOAN, E	CONBK	5	5	1	1726C	SANTIAGO, T	COLUM	5	4	2	1962*
PATTON, D	CHRGR	1	1	0	0000?	SATTERLEE, D	JCASE	2	8	1	1649C
PAWLUS, D	MTRLA	0	1	1	0000?	SAUNDERS, N	MDCON	0	1	0	0000?

? - UNRATED

- 5 TO 9 RATED GAMES

* - 10 TO 24 RATED GAMES

C - CENTURY CLUB MEMBER

D - DOUBLE CENTURION

T - TRIPLE CENTURION

Q - QUAD CENTURION

NAME	TEAM	W	L	D	RATING	NAME	TEAM	W	L	D	RATING
SAWDO, E	JCASE	1	2	2	1412	TURNER, K	PSTOF	1	0	0	1559
SCHWAB, W	ROOKS	3	4	0	1481	TYREE, D	RADIO	0	1	0	1475*
SCHWARTZ, M	TYROS	2	3	2	1091	UNDERWOOD, W	WHEAT	2	4	2	1980C
SEMONES, E	ROOKS	1	4	0	0000?	VALDEZ, C	MTRLA	3	0	0	0000?
SHAFF, R	TYROS	3	2	0	1535C	VAN MEER, J	KEMPR	1	1	0	2007
SHEU, G	CHRGR	0	0	1	1333*	VAN METRE, R	SEARS	3	0	1	0000?
SHEYNIN, S	ROOKS	4	4	5	2083	VAN OUIRIVE, R	CTA	0	1	0	1092#
SHOUSE, B	MTRLA	0	0	0	0000?	VAN ZILE, C	UOP	4	6	3	1357*
SHUKLA, S	FERMI	0	0	0	0000?	VANDECOTTE, M	UOP	3	1	0	0000?
SIEGEL, R	CONBK	3	2	1	1483C	VENEGAS, B	HULL	0	1	0	0000?
SIMS, B	CRT	0	0	0	1519#	VERIVE, J	AWEST	0	0	0	1615*
SIWEK, M	KEMPR	3	3	2	2142C	VICK, H	MTRLA	0	0	0	1516
SKRZYPCZAK, T	MDCON	0	2	0	0000?	VIGANTS, A	NORTH	1	5	3	1528
SLAGLE, S	MERC	4	5	1	1617	WACHTEL, H	COLUM	6	2	3	2230
SMILEY, R	AMCRP	7	2	5	2005	WALLACH, C	MTRLA	2	3	2	2094
SMITH, BR	TYROS	4	1	1	1511	WALLIN, R	WHEAT	2	5	3	1746
SMITH, JM	ALUMN	0	0	0	1196*	WARD, C	DRGNS	3	4	3	1542D
SOLLANO, E	GROLR	0	0	0	1956	WARE, K	MERC	0	2	0	0000?
SOMBONG, M	CONBK	1	1	1	1634	WARREN, J	CHRGR	3	2	4	2113T
SPIEGEL, L	FERMI	9	2	2	1999C	WEBER, J	WHEAT	2	2	0	0000?
STAMM, V	CHRGR	2	4	0	1722D	WEBER, L	GROLR	0	0	0	2144
STAPLES, C	FERMI	0	0	0	1200#	WEISS, G	HULL	0	6	0	0000?
STAPLES, M	CTA	0	4	0	0000?	WEISSKOPF, J	HULL	2	5	1	1381*
STEINER, D	HULL	0	0	0	0000?	WEITZ, R	EXMPL	5	1	1	1704C
STEVANOVIC, M	UOP	7	1	1	2269C	WELTER, P	SEARS	0	0	1	1642#
STEVENS, J	COLUM	1	1	0	1340	WENTLING, C	AMCRP	6	5	3	1661C
STEVENS, N	MDCON	0	1	0	0000?	WEST, R	MTRLA	0	0	0	1447#
STEVENSON, R	UNILV	0	1	0	1363	WHITE, H	JCASE	5	3	2	1627
STINSON, M	ROYLS	0	0	1	2008	WHITE, T	CONBK	1	5	0	1319#
STOLTZ, B	TYROS	1	6	3	1968	WHITED, W	MDCON	1	4	1	1829
SUAREZ, E	KNGHT	4	2	2	1622	WHITSITT, S	AWEST	0	0	0	1504*
SUERTH, F	EXMPL	4	3	1	1597C	WILLIAMS, A	CTA	0	1	0	0000?
SULLIVAN, C	MERC	3	7	0	1467	WILLIAMS, J	RAIL	0	0	0	0000?
SZAUKELLIS, W	MTRLA	0	0	0	0000?	WILLIAMS, T	JCASE	1	1	1	1986
SZONTAGH, T	CRT	1	1	0	0000?	WILSON, A	CTA	2	5	0	1576
TAMEZ, I	TYROS	3	2	2	2047	WILSON, M	SEARS	0	0	0	1293#
TAYLOR, M	ROAD	0	0	0	0000?	WONG, KK	NORTH	1	1	0	0000?
TEGEL, F	DRGNS	4	2	3	2167D	WONG, P	EXMPL	0	3	0	2196C
TERPSTRA, D	WHEAT	0	1	0	0000?	YOUNG, R	HULL	0	6	3	1406
THOMAS, G	TYROS	4	6	0	1438	ZEIDEL, J	MERC	0	0	0	1947
THOMAS, J	CHRGR	2	3	2	1469C	ZOELLNER, J	CONBK	8	2	0	1406C
THOMPSON, R	FLPRO	0	1	0	1061	ZUNGOLO, J	CRT	0	0	0	0000?
TSEITLIN, E	MTRLA	0	1	0	0000?						

? - UNRATED

- 5 TO 9 RATED GAMES

* - 10 TO 24 RATED GAMES

C - CENTURY CLUB MEMBER

D - DOUBLE CENTURION

T - TRIPLE CENTURION

Q - QUAD CENTURION