

Chicago Industrial Chess League

Bulletin No.7, Vol. 38
May 1995

INSIDE THIS ISSUE:

- ♔ **Snapshots**
- ♔ **Games** (with Game 9 & 11 of Kamsky-Anand)
- ♔ **Cross Tables** (Final and Partial)
- ♔ **The Finishing Touch**
- ♔ **Ratings Chairman Report**

♔ **-NEED INPUT!** To make the CICL bulletin even better we are looking for anyone interested in submitting **articles** or **games**. If you are interested, call or write to the bulletin editor.

CICL OFFICERS

As of May 1995

President: James Hodina
718 Central Park Ave.
Flossmoor, IL 60422
W:(708) 990-6115 **H:**(708) 799-5571

Secretary: Anthony Jasaitis
P.O. Box 664
Bedford Park, IL 60499-0664
W:(708) 406-6420

Treasurer: Wesley K. Underwood
207 S. Dorchester Ave.
Wheaton, IL 60187
W:(708) 752-5127 **H:**(708) 462-0393

Ratings : Charles Ward
Chairman: 615 S. Lincoln
Hinsdale, IL 60521
W:(708) 979-4599 **H:**(708) 325-3885
(708) 979-6124 F

Production:Marty Franek
Circulation: 9044 S. 51st Ave
Oak Lawn, IL 60453-0397
W:(312) 353-0397 **H:**(708) 636-3714

East : Keith Kostecka
Division : Columbia College
Chairman: Chicago, IL 60605-1996
W:(312) 663-1600 ext. 182

Near West: Satish L. Kale
Division : JI Case
Chairman: 7 South 600 County Line Rd
Hinsdale, IL 60521
W:(708) 887-2372 **H:**(708) 325-5253

Far West : Irwin Gaines
Division : Fermilab - MS 127
Chairman: P.O. Box 500
Batavia, IL 60510
W:(708) 840-4022

North : Ruben Reyes
Division : 2019 W. Leland Ave
Chicago, IL 60625-1513
Chairman:
W:(708) 286-07
H:(312) 334-0591
F (312) 769-0311

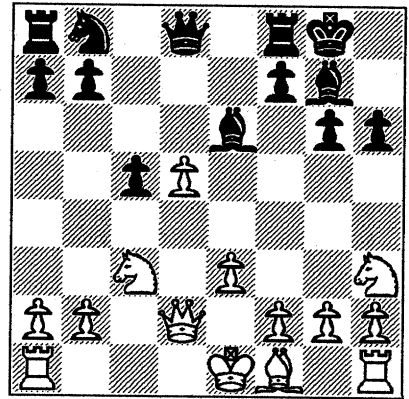
Bulletin Editor: Ruben Reyes
See address and tel.
for North Division chair-
man above.

Banquet & Publicity : Anthony Jasaitis
P. O. Box 664
Chairman: Bedford Park, IL
60499-0664
W:(708) 406-6420

SNAPSHOTS

This is from **P.Wong - D. Fraats (Exemplars vs. Continental Bank)** in the 1994 playoffs after **12.d5**. Black's a pawn down and decides to recover material while placing White's pawn structure in disarray with: **12...Bxc3 13. Qxc3 Bxh3 14. gxh3 Qxd5**

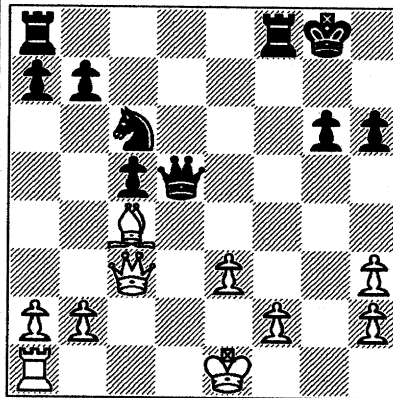
White's reply is forced, **15. Rg1**. But the Rook move



actually threatens a devious combination.

Unaware of White's real intent, Black plays **15...Nc6**, a developing move which is natural and makes sense.

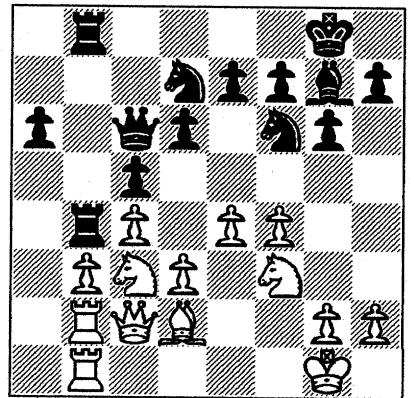
But then White drops this bombshell: **16. Rxc6+! fxc6** Forced, as otherwise it's mate next move (17. Qg7++) **17. Bc4 1-0** (See diagram left)



Final Position

Here's another from the 1994 playoffs (diagram right) in **N. Goncharoff vs. B. Morton (Motorola-Sears)** after **17...Qc6**.

White sees that the masking combination on the Rook at b4 won't work because the Rook at b2 is in the line of fire of Black's Bishop at g7. So, **18.Ra2**, taking it off the long diagonal and putting pressure on the Black a-pawn. Play resumed, **18...Qb7 19.Ra3** Now, not suspecting any danger, Black goes **19...Qc6**.



That's when White springs into action with a well-prepared masking combination: **20.Nd5!** (threatening 21.Nxe7+ forking K & Q as well as 21.Nxb4) **20...Nxd5 21.exd5 Qb7 22.Bxb4 cxb4**. White has come out the exchange ahead. Black continued to resist but to no avail and resigned after Whites 29th move.

GAMES

The following game was submitted for **Best Upset** award.

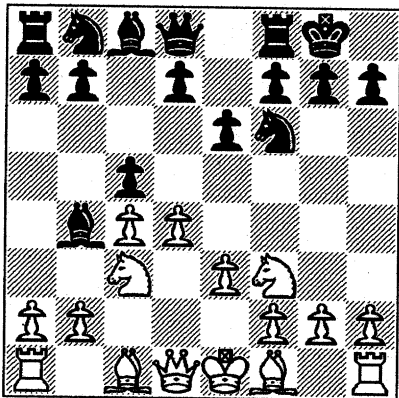
"I'm not much of an annotator, but I think the game revolves around good bishop vs. bad bishop from which I was able to win a pawn and trade down pieces," says the winner.

Nimzo-Indian

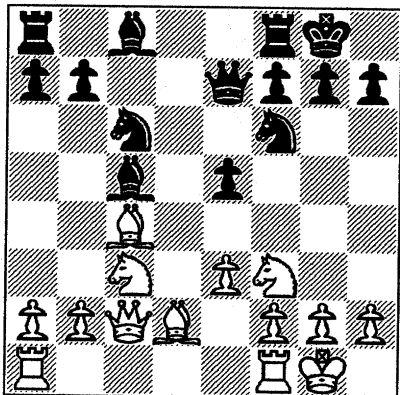
White: Wayne Ellice (1904)
Black: James Warren (2101)

Unilever - AT&T
February 23, 1995

1. d4 Nf6 2. c4 e6 3. Nc3 Bb4
4. Nf3 c5 5. e3 0-0



6. Qc2 d5 7. Bd2 Nc6 8. dxc5
Bxc5 9. Be2 Qe7 10. 0-0 dxc4
11. Bxc4 e5



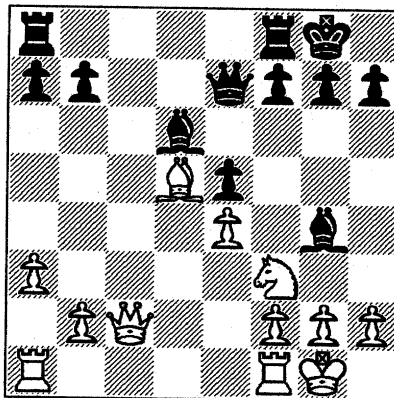
12. Nd5 Nxd5 13. Bxd5 Nb4
14. Bxb4 Bxb4 15. a3 Bd6 16.
e4 Bg4

See diagram at top of next column.

17. Nd2 Rac8 18. Qd3 b6

18...Bc5 expands the scope of the
Bishop on the dark squares.

19. b4



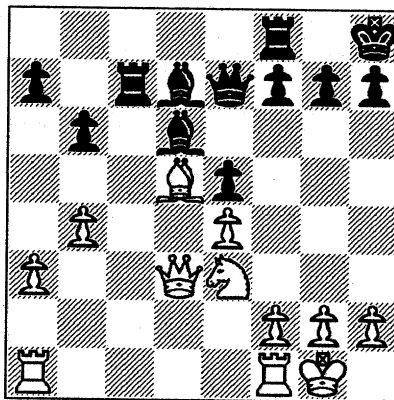
Position after 16...Bg4

Prevents ...Bc5 and fences the Bis-
hop out.

19...Rc7

This temporarily immobilizes the
Bishop at d6.

20. Nc4 Kh8 21. Ne3 Bd7



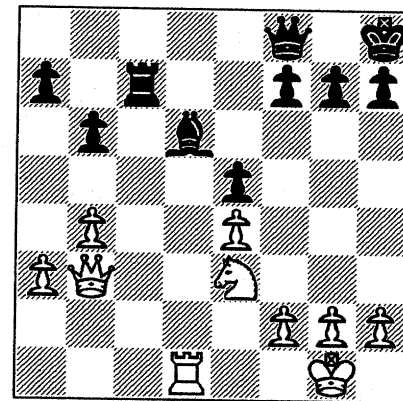
22. Rac1 Rfc8 23. Rxc7 Rxc7
24. Rd1

White seizes the opportunity pro-
vided by the temporary immobiliza-
tion of the Bishop at d6 to put pres-
sure on the d-file.

24...Ba4 25. Bb3 Bxb3 26.
Qxb3 Qf8

See diagram at top of next column.

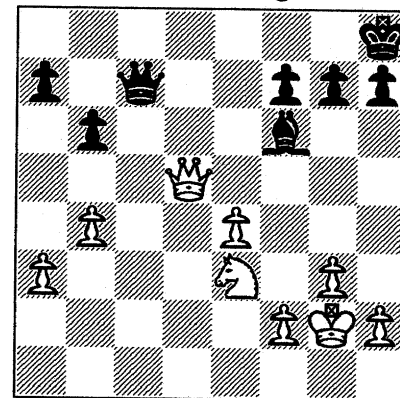
The threat was 27.Nf5 followed by
28.Nxd6 winning the Bishop. And it's
futile to keep the Bishop at d6 with
26...Rd7 because after 27.Nf5 Qd8



Position after 26...Qf8

28. Qd5 wins the pinned Bishop.

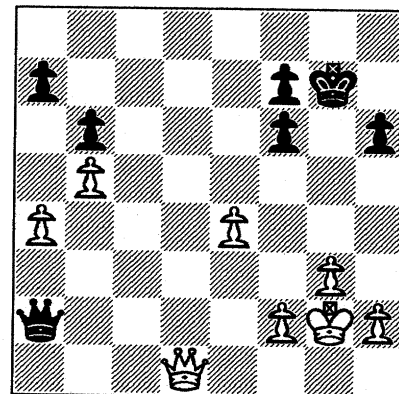
27. Qd5 Be7 28. Qxe5 Qc8
29. g3 Bf6 30. Qd5 Rc1 31.
Rxc1 Qxc1+ 32. Kg2 Qc7



33. Ng4 h6

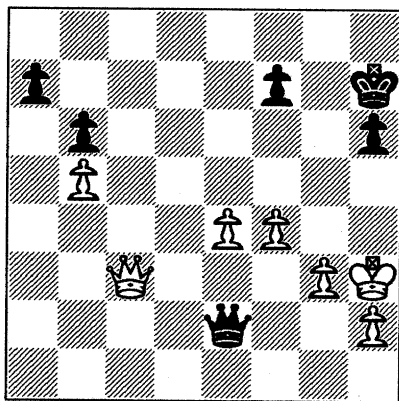
The decision to keep the Bishop or
have the f-pawn doubled is a difficult
one. Keeping the Bishop, such as
with 33...Bb2 for example, faces the
prospect of it's being shut off from its
base with f4 and e5.

34. Nxf6 gxf6 35. b5 Kg7 36.
Qd3 Qc1 37. a4 Qb2 38. Qd1
Qa2



39. Qg4+ Kh8 40. Qf4 Qxa4
41. Qxf6+ Kg8 42. Qc6 Kg7
43. f4 Qa2+ 44. Kh3 Qe2 45.

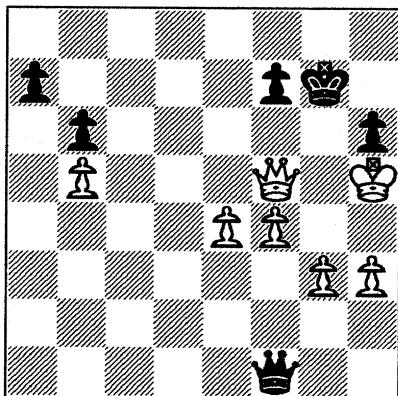
Qc3+ Kh7



46. Qe5

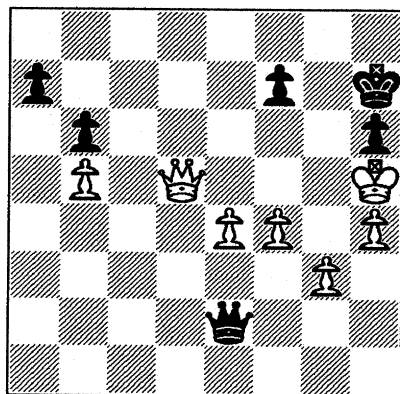
Defends both the b-pawn and the threat of perpetual check with 46...Qh5+ (47.Kg2 Qe2+, etc). But ever so gradually, White's preparing the ground for the King to come in.

46...Qf1+ 47. Kh4 Qe2 48. Qf5+ Kh8 49. h3 Qf1 50. Kh5 Kg7



White has exploited the doubling of the f-pawn to the hilt as he finds a spot for the King at h5.

51. Qe5+ Kh7 52. Qf5+ Kg7 53. h4 Qc4 54. Qe5+ Kh7 55. Qd5 Qe2+

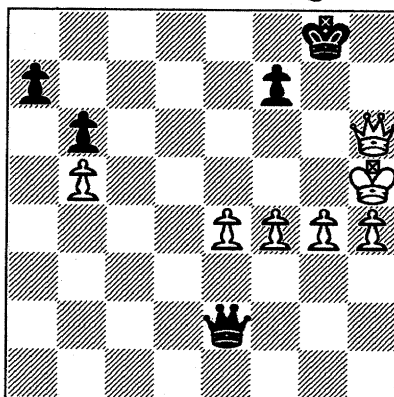


56. g4 Kg7 57. Qc6

The payoff for White's slow but sure

grip on Black's position. There's no defense for the beleaguered h-pawn.

57...Kh7 58. Qxh6+ Kg8

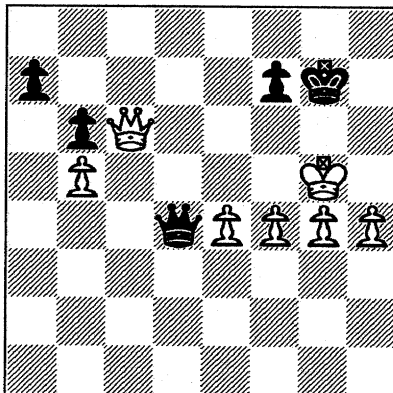


59. Qg5+

White repositions the Queen with tempo via a check to guard both the b-pawn and e-pawn.

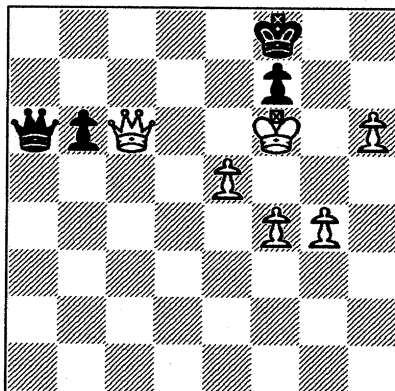
However, going straight to c6 with the Queen was okay too as 59.Qc6 threatens 60.Kh6 and 61.Qa8++

59...Kh7 60. Qd5 Kg7 61. Kg5 Qb2 62. Qc6 Qd4



63. e5 Qd3 64. h5 a6 65. h6+ Kf8 66. bxa6 Qxa6 67. Kf6 1-0

Final Position



Black's in zugzwang not to mention that White threatens 68.h7

and 69. h8 =Q++.

If Black moves the King he gets mated in three: 67...Kg8 68.Qe8+ Kh7 69.Qxf7+ and mate next move.

If Black moves the Queen away from guarding either a8 or c8, then he gets mated via either 68.Qa8+ or 68.Qc8+.

The attack in the following game is not only unique (mate with a pawn) but also quite spectacular (Queen sac!) - ed.

English

White: Ed Sahli (1715)

Black: Bob Cairone (1832)

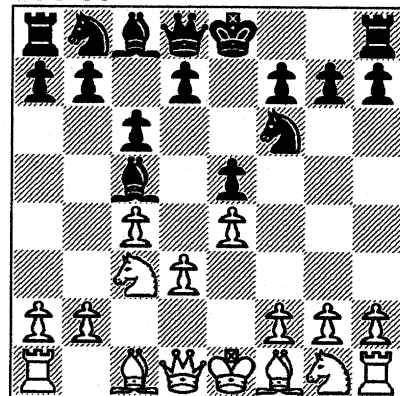
U.O.P. - Northrop-Grumman

April 10, 1995; Board 4

Annotated by Bob Cairone

I had met Ed two months before, in a game that started OK but I then lost due to lackluster play. That encounter may have given him a sense of confidence that this game would turn out the same way. I had the advantage of knowing he was a tough opponent.

1. c4 e5 2. Nc3 Nf6 3. e4 Bc5 4. d3 c6



I don't know this opening, so I have to make things up as I go along. It seems that White has a hole on Q4, and that the Queen Pawn could possibly be isolated later on. White's queenside Bishop looks bad now. Black has less presence in the center, and may have a problem developing the queenside pieces. My plan is to shore up my center and prepare an advance on the Queen file. Also, it allows the Black Queen access to QN2 for diagonal shots against the White Queenside.

5. h3 h6

White is protecting his KB2 against intrusions from the Knight, and Black prevents a pin of the Knight to keep his Queen mobile. These moves lose tempo and can be permanently weakening. Often it is best to avoid them.

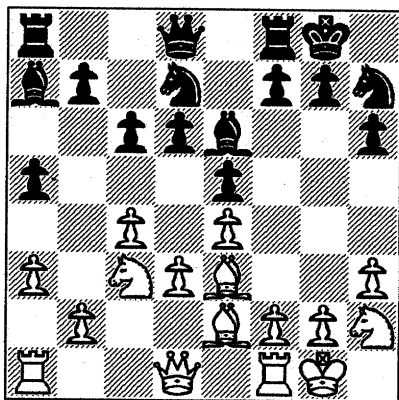
6. Nf3 d6 7. a3 a5

White looks to grab more space on the queenside. Black makes a retreat for the Bishop while countering the thrust, but the pawn could become overextended and can become a liability.

8. Be2 Be6 9. Na4

Bd2 first is better for white.

9...Ba7 10. 0-0 Nbd7 11. Nc3 0-0 12. Nh2 Nh7 13. Be3



Ed said in the post-mortem he thought this move was bad. He felt Black should trade off the Bishops and put the Queen on the Knight file for a quick attack against the enemy King. I didn't quite see how good the attack would be, and didn't think the pawn structure defects could be maintained. For example, 13...Bxe3 14. fxe3 Qg5 15.Ng4 (or 15.Rf3 - ed) 15...h5 (or 15...Bxg4 and 16...Qxe3+ - ed) 16.Ng2 Qxe3 17.Bxh5 Ng5 18.Qe1 is OK for White, or 17...Nd7f6 18.Qf3 also holds. Though I agreed with Ed right after the game, I stand by the move played.

13...f5 14. Bxa7 Rxa7 15. Qd2 Nc5 16. Rab1 f4 17. Bg4 Bxg4 18. Nxc4 Nb3 19. Qd1 Nd4 20. f3 h5 21. Nh2 Rf6

This move was a tough call. I had been thinking of offering a draw, but my team needed a win to get one of the top slots. Our other boards were too soon to call, and we know this to

be a tough team, so we needed as many wins as possible. I thought White's Kingside was weak and cramped, and that in the time it would take for him to bust through the center I would have an attack. This was my hope anyway.

22. Ne2

Perhaps White should try Qe1-h4 as an alternative strategy.

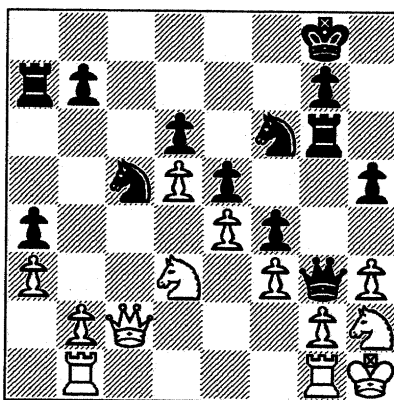
22...Ne6 23. Kh1 Rg6

This attack is faster than ...g5 first, which stalls, but I still didn't really think it would be enough.

24. d4 Qg5 25. Rg1 Nf6 26. d5

White now makes a critical error. He had noted that my time was getting very low, and wanted to keep the position as complicated as possible to maintain the pressure on my clock. Fortunately, he was not aware of my experience as a blitz player, I'm comfortable in positions like this with only two or three minutes left. My general rule is to make the best, most uncompromising move possible, and let the other guy's problems consume his time. Had my opponent played 26.dxe5 he'd have had a much better game. After the move played I was free to focus on my own attack.

26...cxd5 27. cxd5 Nc5 28. Qc2 a4 29. Nc1 Qg3 30. Nd3



30...Nfxe4!

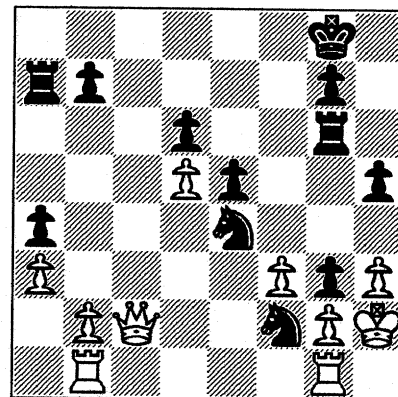
The shot I had been waiting for the whole game. Black wins a Pawn and gets a good position out of this, as the covering Pawn is pinned. If the Black Knight is captured the White Knight comes off as payback. If the other Knight is grabbed then Nf2+ wins the Queen. White really has no good replies at this point.

31. Nf1

Seemingly a good and adequate defense, but the following moves show otherwise. White could have played Rbf1 but Black should win anyway, as long as the defending Rook is left alone, as the recapture of the White Rook after the Knight check leaves my own Rook unprotected.

31...Nxd3 32. Nxc3 Ndf2+ 33. Kh2 fxc3++

Final Position



A surprise ending, a little fireworks with a Queen sacrifice. Not the smothered mate I had flashes of hope for but more than I would have expected earlier. Ed put up a terrific battle and helped make this the best game I've played since leaving New York. The positions were interesting and complex, with a high level of tension. The balance of power shifted back and forth without becoming one sided. I would have enjoyed this game even if I had lost, but I'm still glad I won.

Gata Kamsky has lost 4.5-6.5 to Viswanathan Anand in an 11-game match to determine who'd challenge Kasparov for the PCA world title.

After winning the first game on time, Kamsky could only draw (games 2, 4, 5, 6, 7, 8, and 10) while losing the rest (games 3, 9, and 11).

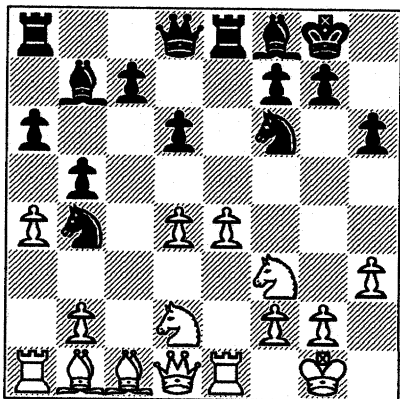
The turning point for Anand may have been game 9 when he uncorked an antidote (16.b3 and 17.Bb2) to a line in the Ruy Lopez that Kamsky had been using.

Ruy Lopez

White: Viswanathan Anand
Black: Gata Kamsky

Game 9
March 19, 1995

1. e4 e5 2. Nf3 Nc6 3. Bb5 a6
4. Ba4 Nf6 5. O-O Be7 6. Re1
b5 7. Bb3 d6 8. c3 O-O 9. h3
Bb7 10. d4 Re8 11. Nbd2 Bf8
12. a4 h6 13. Bc2 exd4 14.
cxd4 Nb4 15. Bb1

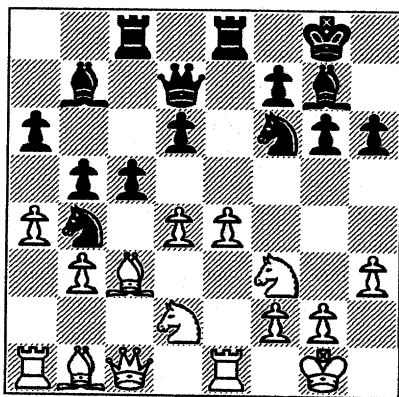


Kamsky went back to the line he used in Game 1 after he lost Game 3 where he deviated with 7...Bc5 (instead of 7.d6). This position from Games 1, 5 and 7 is the battleground upon which a theoretical contest was waged in this match.

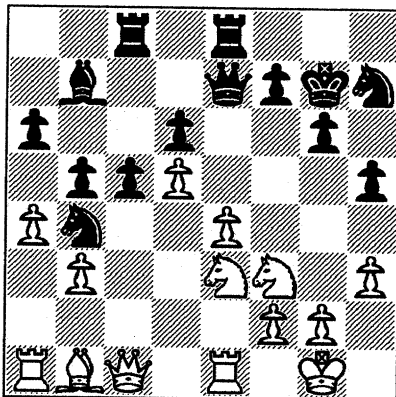
15...Qd7 16. b3!

This probably is the strongest response yet to the double fianchetto line Kamsky used in this match against the Ruy. Anand's treatment is reminiscent of that for White against the Benko where White positions the Bishop to b2 to defang the Benko Bishop at g7.

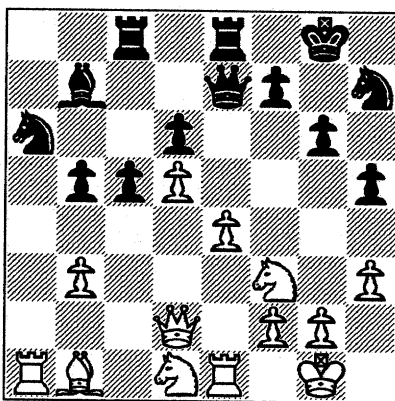
16...g6 17. Bb2 Bg7 18. Qc1 Rac8 19. Bc3 c5



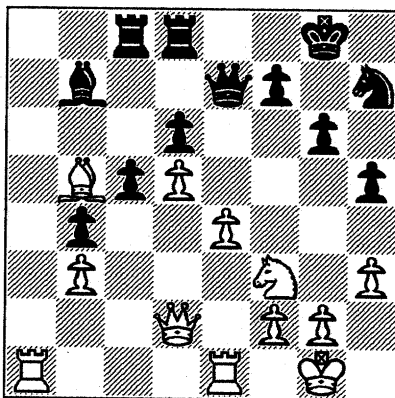
20. d5 Qe7 21. Nf1 Nh7 22. Bxg7 Kxg7 23. Ne3 h5



24. Qd2 Kg8 25. axb5 axb5
26. Nd1 Na6



27. Nc3 b4 28. Nb5 Nc7 29. Bd3 Nxb5 30. Bxb5 Red8



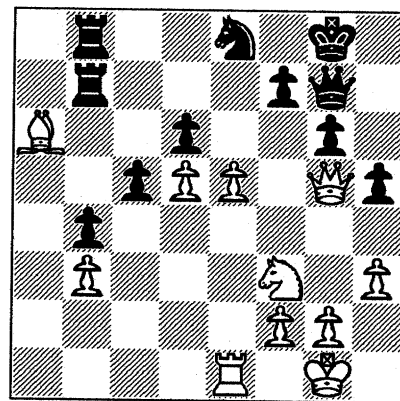
31. Bc4 Nf6 32. Qh6 Qf8 33. Qg5 Qg7

The disappearance of the Bishop at g7 has compelled Black to guard his dark squares now with the Queen.

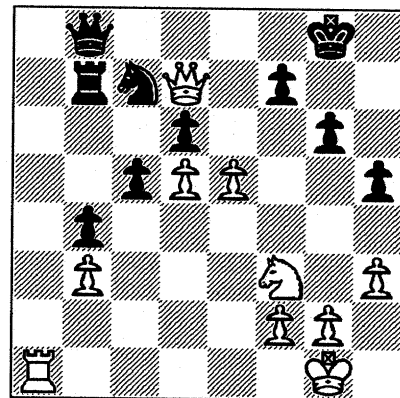
34. Ra7 Rc7 35. Ba6 Rb8 36. e5 Ne8

Black's slowly being driven back. 36. ...dxe5 would unleash the power of White's Bishop on the diagonal c4-f8.

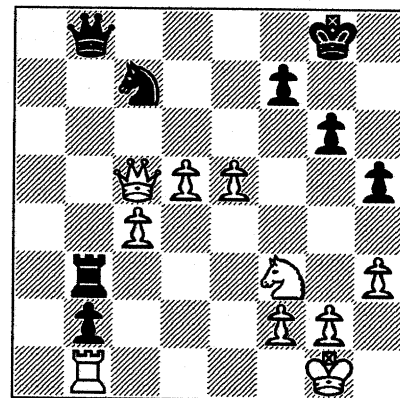
37. Rxb7 Rxb7



38. Bxb7 Rxb7 39. Qd8 Qf8
40. Ra1 Nc7 41. Qd7 Qb8



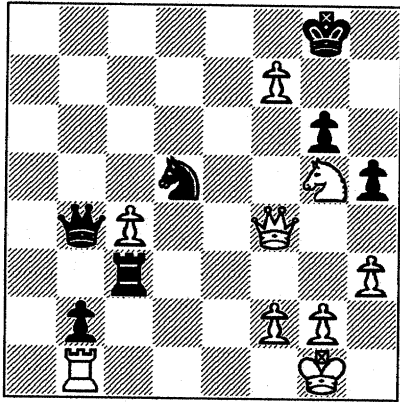
42. Qxd6 c4 43. bxc4 b3 44. Rb1 b2 45. Qc5 Rb3



46. Qd4 Qb4 47. Ng5 Rc3 48. Qf4 f5 49. exf6 Nxd5 50. f7+ 1-0

If 50...Kg7, it's mate in six: 51.f8=Q+ Qxf8 52. Ne6+ Kh7 53. Qxf8 Rc8+ 54.Kh2 Rh1+ 55.Kxh1 any 56. Qg7++

If 50...Kf8, it's mate in five: 51. Ne6+ Ke7 52.f8=Q+ Ke7 (or 52... Kxe6 53.Qc8+ Ke7 54.Q(f4)f8++) 53. Qd8+ Kxe6 (or 53...Kc6 54. Q(f4)c7+ Nxc7 55.Qxc7++) 54.Qc8+ Ke7 55.Q(f4)f8++.



Final Position

A point down, Kamsky abandons his double fianchetto line versus the Ruy. Anand, however, won't be denied.

Sicilian

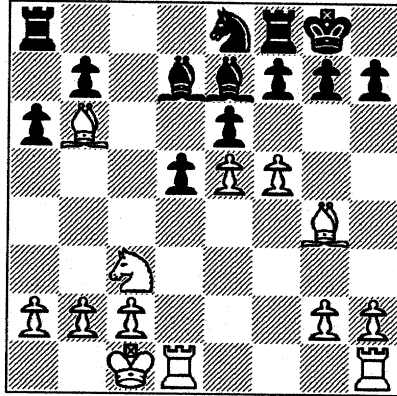
White: Viswanathan Anand

Black: Gata Kamsky

Game 11

March 19, 1995

- 1. e4 c5 2. Nf3 d6 3. d4 cxd4
- 4. Nxd4 Nf6 5. Nc3 a6 6. Be3
- e6 7. Be2 Be7 8. f4 Nc6 9.
- Qd2 Nxd4 10. Qxd4 0-0 11.
- 0-0-0 Qa5 12. Qb6 Qxb6 13.
- Bxb6 Ne8 14. e5 d5 15. f5
- Bd7 16. Bg4



16...Bc8

Kamsky appears to have run out of ideas

- 17. Rhf1 a5 18. Na4 f6 19.

- fxe6 fxe5 20. Nc3 Bg5+ 21.
- Kb1 Nf6

Kamsky may have miscalculated his chances here.

- 22. Nxd5 Nxg4 23. Rxf8+
- Kxf8 24. Nc7 Ra6 25. Bc5+
- Kg8 26. Nxa6 Bxe6

Black can't keep the piece after 26...bxa6 27.e7 (threatening 28. Rd8+ and 29.Rx8) Kf7 28.R8.

The exchange up, Anand puts the game away with excellent technique.

- 27. Nc7 Bf5 28. h3 Nf6 29. g4
- Be4 30. Ne6 Bh4 31. g5 Nd5
- 32. Rf1 h6 33. gxh6 gxh6 34.
- Rf8+ Kh7 35. Bd6 Nb4 36.
- Bxe5 Bxc2+ 37. Kc1 Be4 38.
- Nf4 Nd3+ 39. Nxd3 Bxd3 40.
- Rh8+ Kg6 41. Bf4 Bg5 42.
- Bxg5 Kxg5 43. Kd2 Bb5 44.
- Ra8 Ba6 45. Rc8 Kh4 46. Rc5
- a4 47. Ra5 h5 48. Ke3 Bf1 49.
- Rxa4+ Kxh3 50. Kf2 1-0

EAST DIVISION (Partial)

TEAM	PSTOF	COLUM	ALUMN	CRT	AMCRP	CTA	HULL	MERC	BAI	Game Pts	Match Pts	Rnd 10	Rnd 11	Rnd 12	Game Pts	Match Pts
PSTOF		1.5	3	3.5	4	4.5	4	5	3	28.5	6.5	CRT 3	COLUM 3		34.5	7.5
COLUM	4.5		3	4.5	3.5	6	5.5	4	3	34	7	ALUM 3.5	PSTOF 3		40.5	8.5
ALUMN	3	3		3.5	4	5	5.5	5.5	3	32.5	6.5	COLUM 2.5	AMCRP 3.5		38.5	7.5
CRT	2.5	1.5	2.5		3.5		6	6		22	3	PSTOF 3			25	3.5
AMCRP	2	2.5	2	2.5		4			4	17	2	BAI 5	ALUM 2.5		24.5	3
CTA	1.5	0	1		2		6	2	2	14.5	1.5	MERC 1	bye		15.5	1.5
HULL	2	.5	.5	0		0		3	0	6	.5	bye	MERC 2.5		8.5	.5
MERC	0	2	.5	0		2	3		2	9.5	.5	CTA 5	HULL 3.5		18	1.5
BAI	2	3	3		2	4	6	4		24	4	AMCRP 1			25	4

FINAL TABLES

NEAR WEST DIVISION

TEAM	KNIGHT	CHRGR	UNILV	JCASE	Game Pts	Match Pts	KNIGHT	CHRGR	UNILV	JCASE	Game Pts	Match Pts
KNIGHT		2.5	6	5.5	14	2.0		4	3	3.5	24.5	5.0
CHRGR	3.5		5.5	3	12	2.5	2		4.5	3.5	22	4.5
UNILV	0	.5		1.5	2.0	0	2	1.5		0	5.5	0
JCASE	.5	3	4.5		8.0	1.5	2.5	2.5	6		19	1.5

NORTH DIVISION

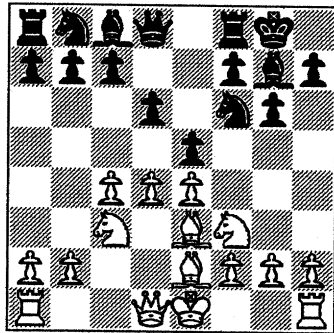
TEAM	SEARS	NORTH	U.O.P.	MTRLA	EXMPL	KEMPR	FLPRO	Game Pts	Match Pts	Position SWISS	Game Pts	Match Pts		
SEARS		3	3	3	3.5	2	6	20.5	3.5	NORTH 3	EXMPL 3.5	KEMPR 6	33	6
NORTH	3		3	2.5	4	4.5	5.5	22.5	4.0	SEARS 3	MTRLA 3.5	U.O.P. 3	32	6
U.O.P.	3	3		3	2	6	4.5	22	3.5	MTRLA 3	KEMPR 4	NORTH 3	32	5.5
MTRLA	3	3.5	3		4.5	4	5	23	5.0	U.O.P. 3	NORTH 2.5	EXMPL 2	30.5	5.5
EXMPL	1.5	4	2	2.5		6	17.5	21.5	3.0	KEMPR 4	SEARS 2.5	MTRLA 4	32	5
KEMPR	2	0	1.5	4	.5		4.5	12.5	2.0	EXMPL 2	U.O.P. 2	SEARS 0	16.5	2
FLPRO	1	1	.5	0	0	1.5		4	0	bye	W/D	-	4	0

The Finishing Touch

Changing the move sequence of a familiar line in the opening can be an excellent strategy, whose effect on the opponent can be devastating. From a Roy Benedek magic in the 1994 Playoffs.

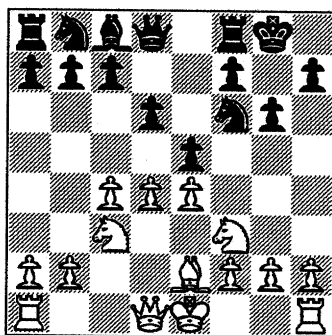
Take the position in the diagram below after: 1.

- Nf3 g6 2. d4 Bg7 3. c4 Nf6 4. Nc3 0-0 5. e4 d6 6. Be2 e5 7. Be3**



Normally, 7.0-0 is played here. For example, 7.0-0 Nc6 and only now 8. Be3

The effect, however of White's tinkering with move sequence upon Black turns unbelievably devastating as we'll now begin to see.



- 7... Ng4 8. Bg5 Bf6 9. Bxf6 Nxf6** (diag. left)

With the Bishop at g7 gone, Black's e-pawn is not anymore immune from capture as Black doesn't have the resource of capturing at e4 with the Knight, e.g., Nxe5 Nxe4; Nxe4

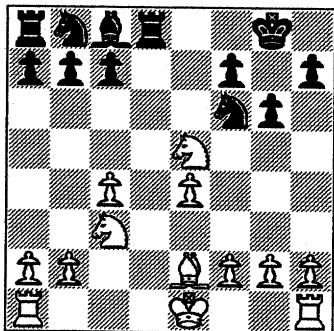
Bxe5.

- 10. dxe5 dxe5 11. Qxd8 Rxd8 12. Nxe5**

Diagram right. White's 7th move has paid off as he's now a pawn up.

- 12...Nxe4?**

Either Black miscalculated or just plain forgot that the Bishop at g7 isn't there anymore.

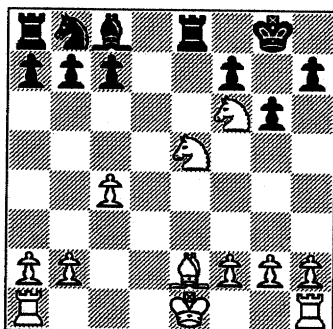


- 13. Nxe4**

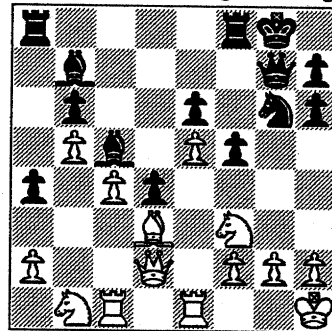
Now White's a Knight up.

- 13...Re8? 14. Nf6+ 1-0** (diagram left)

One never knows what a change in move sequence can bring.



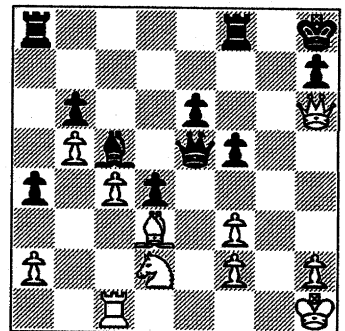
There are times when a defender says to himself, "He can't do that. What's he up to? This happens when the defender "thinks" he has enough pieces guarding a pawn or a piece.



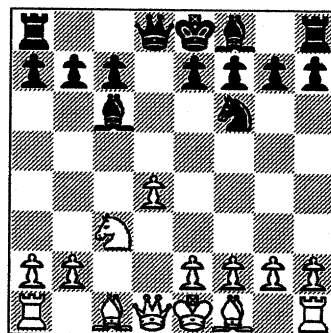
Take the diagram on the left. White's e-pawn appears to be defended adequately: two pieces defending, two pieces attacking.

(From the 1992 Olympiad in Manila on board 3 between Tunisia and Finland after 21.Rfe1) Yet now came **21...Nxe5**. Black takes the e-pawn anyway.

- 22.Rxe5**, 22. Nxe5? faces 22...Qxg7 mate. **22... Bxf3 23. gxf3 Qxe5** Black's the exchange up and won the game a few moves later: **24.Qxh6 Kh8 25.Nd2 1-0** (See diagram right)



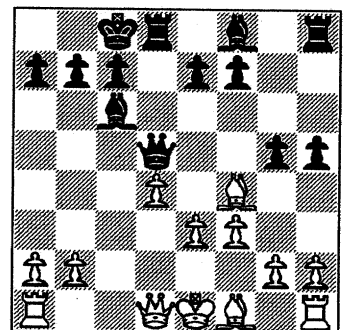
Northrop's P. Diaz produced the following gem of a game. We take it up after **6.Nc3, Nf6** (see diagram left).



- 7. Bg5 Nd5**

White intends 8.Bxf6 and 9. e4

- 8. Nxd5 Qxd5 9. Bf4 0-0-0 10. e3 h5 11. f3 g5** (Diagram below)



- 12. Bg3 g4 13. ffg4 13...Bh6**

Black goes full speed ahead and ignores the pawn grab.

- 14. Bf2 e5!**

Black presses on.

- 15.gxh5 Qa5+**

The h-pawn can wait. Black goes for the King!

- 16. Qd2 Qxd2+ 17. Kxd2 exd4 18. Bd3 dxe3+ 19. Bxe3 Bxe3+ 20. Kxe3 Rhe8+ 21. Kd2 Be4 22. Rae1 Rxd3+ 23. Kc1 Re6 24. b3 Rc3+ 25. Kb2 Rc2+ 26. Ka3 Ra6+ 27. Kb4 c5+ 1-0**

Ratings Chairman's Report

4/12/95

Ratings Speedup

23 of the 26 CICL teams are now receiving advance copies of the CICL ratings electronically, 16 via e-mail and 7 by fax. Alumni East receives a copy by U.S. mail, since team member Marty Franek assembles and publishes the Bulletin. Only two teams still do not have an e-mail or fax contact: Post Office and CTA.

If the captains of these two teams (or some other team representative) are able to receive advance copies of the CICL ratings electronically, please let me know the e-mail address (preferably) or fax number (if necessary). I can also determine the correct e-mail address if a team contact will send me a test message at czar@csgcbu.att.com.

Another way to further speed the turnaround on ratings is for captains to e-mail or fax match results to me at 708-979-6124. This number is more convenient for me than the fax number published in earlier issue of the Bulletin, although the older number will still work.

Missing Result

I am missing an East Division result, Post Office at Alumni East (round 9). I would appreciate it if either captain would send me the match result sheet.

-- Charlie Ward

NORTH DIVISION 04-09-1995

TEAM NAME	W	L	D	GAME	MATCH	PCT
				POINTS	POINTS	
NORTHROP CORP.	4	1	3	29.0	5.5	0.688
MOTOROLA	4	1	3	28.5	5.5	0.688
UOP PROCESS DIV.	3	1	4	29.0	5.0	0.625
SEARS	2	1	4	23.5	4.0	0.571
EXEMPLARS	3	3	0	19.5	3.0	0.500
KEMPER INSURANCE	2	6	0	16.5	2.0	0.250
FEL-PRO	0	5	0	4.0	0.0	0.000

EAST DIVISION 04-09-1995

TEAM NAME	W	L	D	GAME	MATCH	PCT
				POINTS	POINTS	
COLUMBIA COLLEGE	7	0	2	37.5	8.0	0.889
ALUMNI CENTRAL	6	1	2	35.5	7.0	0.778
CHICAGO POST OFFICE	6	1	1	28.5	6.5	0.813
AMOCO CORP.	5	5	0	34.5	5.0	0.500
CHICAGO RES. & TRDG.	4	4	1	30.5	4.5	0.500
BANK AMERICA ILLINOIS	3	4	2	27.5	4.0	0.444
CTA	2	5	1	18.5	2.5	0.313
CHICAGO MERC. EXCH.	0	6	1	8.5	0.5	0.071
HULL TRADING CO.	0	7	0	3.0	0.0	0.000

NEAR WEST DIVISION 04-09-1995

TEAM NAME	W	L	D	GAME	MATCH	PCT
				POINTS	POINTS	
ARGONNE KNIGHTS	5	1	0	24.5	5.0	0.833
AT&T CHARGERS	4	1	1	22.0	4.5	0.750
J. I. CASE	2	3	1	19.0	2.5	0.417
UNILEVER	0	6	0	5.5	0.0	0.000
A & B RADIO	0	0	0	0.0	0.0	0.000

FAR WEST DIVISION 04-09-1995

TEAM NAME	W	L	D	GAME	MATCH	PCT
				POINTS	POINTS	
FERMILAB	7	0	2	38.0	8.0	0.889
ARGONNE ROOKS	5	3	1	30.0	5.5	0.611
AT&T ROYALS	5	3	1	29.5	5.5	0.611
AT&T DRAGONS	5	4	0	31.5	5.0	0.556
AT&T TYROS	4	4	1	28.0	4.5	0.500
WHEATON COLLEGE	2	6	1	16.0	2.5	0.278
MIDCON CORP	1	9	0	19.0	1.0	0.100

02-NOV-94 CHICAGO MERC. EXCH. .5 ALUMNI CENTRAL 5.5
 ROUND 4

BD	RATINGS	SCORE	RATINGS	SCORE
1 WARE, K	0 0	0F	CZERNIECKI, A	2143 0 1F
2 FRANK, M	1722 -7	0	COX, M	2024 4 1
3 SLAGLE, S	1585 13	.5	FRANEK, M	1794 -8 .5
4 SULLIVAN, C	1512 -8	0	FABIJONAS, R	1787 5 1
5 RUDDY, J	1246 -4	0	DAVIDSON, M	1661 4 1
6 HILTON, J	1096 -2	0	LITVINAS, A	1670 1 1

02-FEB-95 HULL TRADING CO. 0 BANK AMERICA ILLINOIS 6
 ROUND 9

BD	RATINGS	SCORE	RATINGS	SCORE
1 YOUNG, R	1428 -3	0	FRAATS, D	1904 3 1
2 WEISSKOPF, J	1327 -4	0	PARAOAN, E	1745 4 1
3 NAUGHTON, T	1320 0	0	WHITE, T	0 0 1
4 DOTY, B	0 0	0	SIEGEL, R	1525 0 1
5 CARDI, P	0 0	0	ZOELLNER, J	1420 0 1
6	0 0	0F	GANSER, A	1282 0 1F

01-MAR-95 HULL TRADING CO. 0 AMOCO CORP. 6
 ROUND 7

BD	RATINGS	SCORE	RATINGS	SCORE
1 YOUNG, R	1425 -1	0	HODINA, J	2110 1 1
2 WEISS, G	0 0	0	SMILEY, R	2008 0 1
3 WEISSKOPF, J	1323 -6	0	WENTLING, C	1641 6 1
4 CARDI, P	0 0	0	KRULL, E	1454 0 1
5 MUDAN, M	0 0	0	POMA, D	1253 0 1
6	0 0	0F	ATKINSON, J	1715 0 1F

08-MAR-95 CHICAGO RES. & TRDG. 3 CHICAGO POST OFFICE 3
 ROUND 10

BD	RATINGS	SCORE	RATINGS	SCORE
1 JASAITIS, A	2173-12	0	INUMERABLE, F	2247 18 1
2 FRIESEMA, W	2095 15	1	MARCOWKA, R	1978-10 0
3 LOSOFF, A	1900 18	1	ALLEN, H	1833-18 0
4 BARGERSTOCK, D	1755 25	1	PERAREN, E	1788-25 0
5 DELEON, J	0 0	0	COOPER, W	1694 0 1
6 BERNARD, D	1326-13	0	CARTER, L	1487 13 1

08-MAR-95 BANK AMERICA ILLINOIS 1 AMOCO CORP. 5
 ROUND 10

BD	RATINGS	SCORE	RATINGS	SCORE
1 FRAATS, D	1907-11	0	HODINA, J	2111 11 1
2 PARAOAN, E	1749 -8	0	SMILEY, R	2008 8 1
3 WHITE, T	0 0	0	ATKINSON, J	1715 0 1
4 SIEGEL, R	1525-15	0	WENTLING, C	1647 15 1
5 ZOELLNER, J	1420-20	0	KRULL, E	1454 20 1
6 HAMMOND, M	1384 14	1	POMA, D	1253-14 0

16-MAR-95	ALUMNI CENTRAL	2.5	COLUMBIA COLLEGE	3.5	
ROUND 10					
	BD	RATINGS	SCORE	RATINGS SCORE	
1	CZERNIECKI, A	2143 - 3	.5	WACHTEL, H	2225 -6 .5
2	LEONG, D	1971-24	0	SANTIAGO, T	1950 24 1
3	FRANEK, M	1786-10	0	MCALISTER, K	1909 15 1
4	FABIJONAS, R	1792 14	1	PRATTS, M	1766-21 0
5	LITVINAS, A	1671 16	1	KOSTECKA, K	1683-23 0
6	DAVIDSON, M	1665-31	0	HERNANDEZ, DD	1534 31 1
29-MAR-95	AMOCO CORP.	2.5	ALUMNI CENTRAL	3.5	
ROUND 11					
	BD	RATINGS	SCORE	RATINGS SCORE	
1	HODINA, J	2122 24	1	CZERNIECKI, A	2146-16 0
2	SMILEY, R	2016 -5	.5	LEONG, D	1947 5 .5
3	ATKINSON, J	1715 4	.5	FRANEK, M	1776 -3 .5
4	WENTLING, C	1662 9	.5	FABIJONAS, R	1806 -6 .5
5	KRULL, E	1474-10	0	LITVINAS, A	1687 7 1
6		0 0	0F	CHARKOVSKY, R	1619 0 1F
15-MAR-95	FERMILAB	4.5	ARGONNE ROOKS	1.5	
ROUND 10					
	BD	RATINGS	SCORE	RATINGS SCORE	
1	KOZLOVSKY, M	2233-18	0	LEVINE, D	2302 18 1
2	MOTTA, H	2033 29	1	SHEYNIN, S	2139-29 0
3	SPIEGEL, L	2007 3	.5	BERRY, G	2067 -3 .5
4	GAINES, I	1750 18	1	GREEN, D	1826-18 0
5	HARRIS, R	1655 23	1	DECMAN, S	1668-16 0
6	PARA, A	1571 17	1	SCHWAB, W	1491-17 0
21-MAR-95	AT&T TYROS	3	FERMILAB	3	
ROUND 11					
	BD	RATINGS	SCORE	RATINGS SCORE	
1	TAMEZ, I	2043 11	.5	KOZLOVSKY, M	2215-11 .5
2	STOLTZ, B	1936 30	1	MOTTA, H	2062-30 0
3	BLAZIE, J	1828 11	.5	SPIEGEL, L	2010 -7 .5
4	BROZOVICH, J	1740-14	0	GAINES, I	1768 14 1
5	SMITH, BR	1477 34	1	HARRIS, R	1678-34 0
6	KARPIERZ, J	1183 -4	0	PARA, A	1588 4 1
22-MAR-95	AT&T ROYALS	3.5	AT&T DRAGONS	2.5	
ROUND 10					
	BD	RATINGS	SCORE	RATINGS SCORE	
1	BUCHNER, R	2137-21	0	TEGEL, F	2160 14 1
2	DOBROVOLNY, C	1970 12	1	DURKEE, D	1797 -8 0
3	OGASAWARA, L	1846 6	1	EUSTACE, D	1590 -8 0
4	BLACKMON, E	1764-12	.5	HICKS, C	1573 12 .5
5	SALAMANCA, R	1616 -6	.5	WARD, C	1527 4 .5
6	CROWE, R	1393 -4	.5	KRUEGER, J	1335 4 .5

22-MAR-95 MIDCON CORP 2.5 WHEATON COLLEGE 3.5
ROUND 10

BD	RATINGS	SCORE	RATINGS	SCORE
1 EGERTON, J	1928 -28	1	2018-19	0
2 WHITED, W	1838 -2	.5	1812 2	.5
3 LORENZ, B	1458 -7	0	1749 7	1
4 HANSEN, B	0 0	0	1346 0	1
5 ROSENBERG, B	1309-16	0	1415 16	1
6 FLEET, R	1157 0	1	0 0	0

04-APR-95 AT&T DRAGONS 2 ARGONNE ROOKS 4
ROUND 11

BD	RATINGS	SCORE	RATINGS	SCORE
1 TEGEL, F	2174 -9	0	2320 14	1
2 LUDWIG, T	2082 16	1	2110-24	0
3 DURKEE, D	1789 -5	0	2064 5	1
4 EUSTACE, D	1582 35	1	1808-24	0
5 HICKS, C	1585-17	0	1668 17	1
6 WARD, C	1531-10	0	1652 10	1

04-APR-95 AT&T ROYALS 4.5 MIDCON CORP 1.5
ROUND 11

BD	RATINGS	SCORE	RATINGS	SCORE
1 BUCHNER, R	2116 -2	.5	2087 2	.5
2 DOBROVOLNY, C	1982-24	0	1956 24	1
3 ROSLEY, D	1806 2	1	1293 -2	0
4 BLACKMON, E	1752 7	1	1451 -7	0
5 ANDERSON, CJ	1446 0	1	0 0	0
6 CROWE, R	1389 16	1	1289-16	0
7 CZOSKE, M	0 0	.5	1157 0	.5

16-MAR-95 MOTOROLA 2.5 NORTHROP CORP. 3.5
ROUND 9

BD	RATINGS	SCORE	RATINGS	SCORE
1 MELNIKOV, I	2188 0	OF	2185 0	1F
2 WALLACH, C	2068 9	.5	2201 -9	.5
3 SAMELSON, C	2022-13	0	2068 20	1
4 CIESLEK, D	1960 13	1	1808-13	0
5 AUGSBURGER, L	1764 0	OF	1539 0	1F
6 GONCHAROFF, N	1789 0	1	0 0	0
7 VALDEZ, C	0 0	1	1049 0	0
8 SAMOYLOV, A	0 0	1	0 0	0
9 GRYPARIS, J	1468 31	1	1614-31	0 (MTRLA)
10 BARTUSIAK, P	0 0	0	1499 0	1 (MTRLA)

20-MAR-95 KEMPER INSURANCE 2 UOP PROCESS DIV. 4
ROUND 9

BD	RATINGS	SCORE	RATINGS	SCORE
1 SIWEK, M	2160-11	0	2246 11	1
2 LEONG, G	1992 20	1	2102-20	0
3 OLSEN, A	1478 -2	0	2038 2	1
4 POZNIAK, J	1496-10	0	1708 10	1
5 LAMBIRIS, J	1405 38	1	1705-25	0
6 PAYTON, P	0 0	0	1493 0	1
7 GALKO, D	0 0	0	1367 0	1
8 HARDIN, L	0 0	0	1384 0	1

16-MAR-95 ARGONNE KNIGHTS

4

AT&T CHARGERS

2

ROUND 9

BD		RATINGS	SCORE		RATINGS	SCORE
1	BENEDEK,R	2206	--4 .5	WARREN,J	2101	3 .5
2	KEISLER,J	2012	8 1	STAMM,V	1742	-5 0
3	HILL,R	1844	14 1	RADAVICIUS,E	1701	-9 0
4	SUAREZ,E	1602	-26 0	DOBR,K	1543	12 1
5	BAURAC,D	1582	-5 .5	THOMAS,J	1461	5 .5
6	KINSELLA,G	1470	11 1	BRADY,R	1282	-11 0

06-APR-95 J. I. CASE

6

UNILEVER

0

ROUND 10

BD		RATINGS	SCORE		RATINGS	SCORE
1	WILLIAMS,T	1985	17 1	ELLICE,W	1904	-17 0
2	KALE,S	1861	0 1F	LULKIN,V	1826	0 0F
3	SATTERLEE,D	1667	0 1	HARD,R	0	0 0
4	WHITE,H	1623	0 1F	NOTERMAN,T	1198	0 0F
5	KLINEFELTER,H	1549	4 1	DZURICKO,G	1162	-4 0
6	SAWDO,E	1412	0 1F	NELL,D	1073	0 0F
7	POMA,D	1239	-14 0	REID,C	1384	14 1 (JCASE)
8	NOBLE,S	0	0 1	DIAZ,L	0	0 0 (JCASE)

NORTH DIVISION TOP TEN

REYES, R	SEARS 2343D
STEVANOVIC, M	UOP 2257C
HASAN, Y	MTRLA 2237
WONG, P	EXMPL 2205C
GOLUMBOVSKI, P	NORTH 2192
MELNIKOV, I	MTRLA 2188
JAKSTAS, K	NORTH 2185C
SIWEK, M	KEMPR 2149C
DIAZ, P	NORTH 2088
BUERGER, E	UOP 2082D

EAST DIVISION TOP TEN

INUMERABLE, F	PSTOF 2265
WACHTEL, H	COLUM 2219
JASAITIS, A	CRT 2161C
HODINA, J	AMCRP 2146
CZERNIECKI, A	ALUMN 2130C
FRIESEMA, W	CRT 2110
COX, M	ALUMN 2028C
SMILEY, R	AMCRP 2011
MAREMA, D	PSTOF 2006
SANTIAGO, T	COLUM 1974*

NEAR WEST DIVISION TOP TEN

BENEDEK, R	KNIGHT 2202D
WARREN, J	CHRGR 2104T
KEISLER, J	KNIGHT 2020
WILLIAMS, T	JCASE 2002
ELLICE, W	UNILV 1887
KALE, S	JCASE 1861
HILL, R	KNIGHT 1858
STAMM, V	CHRGR 1737D
RADAVICIUS, E	CHRGR 1692D
SATTERLEE, D	JCASE 1667C

FAR WEST DIVISION TOP TEN

BEZZUBOV, V	FERMI 2338*
LEVINE, D	ROOKS 2334
KOZLOVSKY, M	FERMI 2204
TEGEL, F	DRGNS 2165D
BUCHNER, R	ROYLS 2114
LUDWIG, T	DRGNS 2098C
CONNOR, P	MDCON 2089
SHEYNIN, S	ROOKS 2086
BERRY, G	ROOKS 2069D
TAMEZ, I	TYROS 2054

MOST IMPROVED PLAYERS

EUSTACE, D	DRGNS 113
ZOELLNER, J	CONBK 106
GRYPARIS, J	MTRLA 95
HILTON, J	MERC 90
HERNANDEZ, DD	COLUM 85
CONNOR, P	MDCON 82
HILL, R	KNIGHT 78
OSTERLUND, R	EXMPL 76
DIAZ, P	NORTH 73
TAMEZ, I	TYROS 72

NAME	TEAM	W	L	D	RATING	NAME	TEAM	W	L	D	RATING
ABBOTT, J	MTRLA	0	0	0	0000?	CARDI, P	HULL	0	3	0	0000?
ABRAHAM, T	CTA	1	2	1	1538	CARNAL, D	CRT	0	1	0	1207#
ALLEN, H	PSTOF	3	3	1	1815	CARTER, L	PSTOF	2	2	3	1500
AMUNDSEN, C	KEMPR	0	0	0	0000?	CARTER, O	CTA	1	2	0	0000?
ANDERSON, CJ	ROYLS	2	0	0	1446	CATENA, J	MTRLA	0	3	0	0000?
ANGELOS, S	COLUM	1	0	0	0000?	CHAN, H	SEARS	1	0	0	1574
AQUENDE, A	KEMPR	0	3	0	0000?	CHARKOVSKY, R	ALUMN	0	0	0	1619
ATKINSON, J	AMCRP	4	3	2	1719C	CHEVERESAN, S	UOP	0	0	0	1434C
AUGSBURGER, L	MTRLA	3	0	0	1764	CHRISTIAN, R	DRGNS	0	0	0	1808C
AUSTIN, R	ROYLS	0	0	0	1125#	CIESLEK, D	MTRLA	3	0	0	1973
BABINEK, J	NORTH	0	2	0	0000?	CISKO, G	FERMI	0	0	0	1615*
BAER, M	AMCRP	0	0	0	1347*	COLEMAN, O	CTA	0	2	0	0000?
BAKER, B	FLPRO	0	2	0	1042	CONNELY, S	HULL	0	0	0	0000?
BAKER, LR	MERC	0	3	0	1093*	CONNOR, P	MDCON	2	1	4	2089
BANZA, S	HULL	0	0	0	0000?	COOPER, W	PSTOF	3	1	1	1694
BARGERSTOCK, D	CRT	5	3	0	1780	COPELAND, P	WHEAT	1	3	0	1229?
BARNES, D	ROAD	0	0	0	0000?	COTE, J	MERC	0	4	1	1275
BARNES, R	CTA	1	0	0	0000?	COX, M	ALUMN	3	0	0	2028C
BARTUSIAK, P	MTRLA	0	7	0	0000?	CREWSE, L	EXMPL	1	1	1	2039
BAURAC, D	KNGHT	2	1	2	1577C	CROWE, R	ROYLS	1	0	1	1405*
BECK, P	MERC	0	1	0	0000?	CUMBERLAND, M	SEARS	0	0	0	0000?
BENEDEK, R	KNGHT	4	0	3	2202D	CUMMUTA, P	KEMPR	2	1	0	1398
BENESA, A	GROLR	0	0	0	2211	CURRAN, T	MTRLA	1	0	0	0000?
BERMAN, R	KEMPR	0	1	0	0000?	CZERNIECKI, A	ALUMN	2	2	2	2130C
BERNARD, D	CRT	3	4	0	1313	CZOSKE, M	ROYLS	1	0	1	0000?
BERRY, G	ROOKS	5	0	2	2069D	DAVIDSON, M	ALUMN	5	2	0	1634*
BEZZUBOV, V	FERMI	6	0	0	2338*	DAVIS, R	PSTOF	0	0	0	0000?
BHOJWANI, C	TYROS	1	2	0	1933	DEARDORFF, M	FLPRO	0	0	0	1437*
BLACKMON, E	ROYLS	5	1	1	1759	DECMAN, S	ROOKS	6	3	0	1662D
BLAZIE, J	TYROS	2	1	1	1839C	DELEON, J	CRT	2	1	0	0000?
BLOOM, B	EXMPL	1	4	0	2023	DENG, J	CRT	3	3	1	1549
BOLDINGH, E	UOP	4	4	0	2040	DEWITT, G	ROCKW	0	0	0	1423C
BOOKER, G	RADIO	0	0	0	1398*	DEZONNO, T	ROCKW	0	0	0	1255*
BOSTICK, T	WHEAT	1	4	3	1431#	DIAZ, L	JCASE	1	4	0	0000?
BRADY, R	CHRGR	2	2	0	1271	DIAZ, P	NORTH	7	1	0	2088
BRANCH, Y	COLUM	0	0	0	1301*	DJORDJEVIC, I	FERMI	0	0	0	0000?
BRIONES, M	UOP	0	0	0	1660C	DOBR, K	CHRGR	3	0	2	1555T
BRITT-WEBB, E	AMCRP	0	2	0	1265#	DOBROVOLNY, C	ROYLS	3	5	1	1958
BROCKETT, M	SEARS	1	4	1	1781	DONNA, D	MTRLA	0	0	0	0000?
BRONFELD, A	ALUMN	2	1	0	1851	DORFF, M	SEARS	2	1	0	1487
BROTSOS, J	EXMPL	4	1	0	1533D	DOTY, B	HULL	0	3	0	0000?
BROZOVICH, J	TYROS	2	2	0	1726C	DUFRESNE, T	JCASE	2	1	0	997*
BUCHNER, R	ROYLS	0	1	2	2114	DURKEE, D	DRGNS	2	4	2	1784C
BUERGER, E	UOP	5	3	0	2082D	DYCZKOWSKI, R	CONBK	0	0	0	1561
BURBA, K	ROOKS	0	3	0	1371C	DZEKHTSER, A	SEARS	6	1	0	1843#
BURDICK, S	COLUM	2	1	0	1569	DZURICKSKO, G	UNILV	1	3	0	1158*
BURIAN, D	EXMPL	1	4	1	1625C	EDWARDS, S	AWEST	0	0	0	1278
BYRNES, R	CTA	1	0	0	0000?	EFRON, D	ROCKW	0	0	0	1638
CADE, M	UNILV	0	1	0	0000?	EGERTON, B	MDCON	1	0	0	0000?
CAIRONE, B	NORTH	3	2	0	1795	EGERTON, J	MDCON	4	4	2	1980

? - UNRATED

- 5 TO 9 RATED GAMES

* - 10 TO 24 RATED GAMES

C - CENTURY CLUB MEMBER

D - DOUBLE CENTURION

T - TRIPLE CENTURION

Q - QUAD CENTURION

NAME	TEAM	W	L	D	RATING	NAME	TEAM	W	L	D	RATING
ELEK, G	NORTH	2	4	1	1049	HILTON, J	MERC	2	2	1	1094*
ELLICE, W	UNILV	2	3	1	1887	HODINA, J	AMCRP	6	1	1	2146
ERLENBORN, M	AWEST	0	0	0	1482*	HOWARD, W	PSTOF	5	1	0	1515
EUSTACE, D	DRGNS	7	2	0	1617	HUGHES, N	KEMPR	0	0	0	1852C
FABIJONAS, R	ALUMN	4	1	2	1800D	HUNG, N	MTRLA	0	0	0	1471#
FAHRENHOLTZ, S	MTRLA	2	1	0	1816*	INUMERABLE, F	PSTOF	3	1	0	2265
FELDMAN, A	FLPRO	0	5	0	1421C	ITZENHEUSER, W	JCASE	0	2	0	0000?
FERGUSON, K	MDCON	0	1	0	0000?	JACKSON, JJ	ROAD	0	0	0	0000?
FLEET, R	MDCON	2	6	1	1157#	JACOBS, N	DRGNS	0	0	0	1983C
FRAATS, D	CONBK	4	3	1	1896	JAKSTAS, K	NORTH	1	1	3	2185C
FRANCISKOVICH, D	HULL	0	0	0	1113#	JARRETT, T	CTA	4	1	0	1647*
FRANEK, M	ALUMN	2	3	2	1773C	JASAITIS, A	CRT	3	4	1	2161C
FRANK, M	MERC	1	2	0	1715	JONES, B	ROCKW	0	0	0	2061
FRIESEMA, W	CRT	4	2	1	2110	JONES, M	CTA	2	3	0	1387*
FRISKE, T	EXMPL	3	1	1	1888	JOSEPHSON, D	WHEAT	1	3	1	1814#
GAINES, I	FERMI	6	2	0	1782C	JOSHI, A	UNILV	0	0	0	0000?
GALKO, D	KEMPR	0	3	0	0000?	KALE, S	JCASE	0	3	3	1861
GALLAGHER, H	KNGHT	2	3	0	1310	KANAS, W	JCASE	1	3	0	1316C
GANSER, A	CONBK	0	4	1	1282#	KARPIERZ, J	TYROS	2	1	2	1179*
GASTON, K	JCASE	0	0	0	1274*	KATAOKA, N	UOP	1	2	0	0000?
GAZMEN, E	GROLR	0	0	0	2234	KATZ, J	JCASE	0	1	0	0000?
GEBELE, R	UOP	0	1	0	0000?	KAUFMAN, M	KEMPR	1	1	0	0000?
GIMPLE, R	WHEAT	0	2	0	0000?	KEEFE, E	FLPRO	0	1	0	1181#
GOLDBOGEN, G	COLUM	0	0	0	0000?	KEISLER, J	KNGHT	5	0	0	2020
GOLLA, R	SEARS	0	4	0	1971D	KERCSMAR, J	WHEAT	0	2	0	0000?
GOLUMBOVSKI, P	NORTH	6	0	2	2192	KINSELLA, G	KNGHT	3	2	0	1481C
GONCHAROFF, N	MTRLA	6	1	0	1789Q	KLINEFELTER, H	JCASE	4	3	1	1553C
GORZ, E	RADIO	0	1	0	1289*	KOEPELE, J	TYROS	0	0	0	0000?
GREEN, D	ROOKS	5	2	0	1784C	KOGAN, G	CONBK	2	3	1	1847
GRIESMEYER, W	PSTOF	1	0	0	1317	KOSTECKA, K	COLUM	3	2	2	1660
GRYPARIS, J	MTRLA	6	1	0	1499	KOZLOVSKY, M	FERMI	2	1	3	2204
GUILLEN, B	KEMPR	0	0	0	1402*	KRUEGER, J	DRGNS	4	1	2	1339#
GUIO, J	ROYLS	1	4	1	2001	KRULL, E	AMCRP	4	3	1	1464
HAHNE, D	ROYLS	2	2	0	1586	LACAPENA	GROLR	0	0	0	0000?
HAMILTON, L	AMCRP	0	0	0	1380	LAMBIRIS, J	KEMPR	2	6	0	1443
HAMMOND, M	CONBK	2	2	0	1398	LASKY, JIM	RADIO	0	1	0	1693#
HAMPER, P	AMCRP	0	0	0	1288*	LASKY, N	RADIO	0	1	0	1352C
HANSEN, B	MDCON	3	4	0	1321#	LATIMER, E	SEARS	2	4	0	2015D
HARD, R	UNILV	1	1	0	0000?	LAWRENCE, P	MTRLA	2	0	0	0000?
HARDIN, L	KEMPR	0	3	1	0000?	LEE, B	UNILV	0	0	0	1470
HARRIS, FF	CTA	0	1	0	1401#	LEONG, D	ALUMN	0	1	1	1952
HARRIS, R	FERMI	5	2	2	1644	LEONG, G	KEMPR	2	2	0	2012C
HASAN, Y	MTRLA	0	1	0	2237	LENER, R	SEARS	1	0	0	0000?
HEDSTROM, L	RAIL	0	0	0	0000?	LESTER, M	MTRLA	3	2	0	1583
HERNANDEZ, DD	COLUM	6	1	0	1565	LEVINE, D	ROOKS	3	2	2	2334
HESS, B	FLPRO	1	3	1	1494	LIKHTEREV, M	UOP	3	4	0	1493*
HICKS, C	DRGNS	4	1	1	1568	LITVINAS, A	ALUMN	6	1	2	1694C
HILL, C	FERMI	0	0	0	1663*	LOGAN, H	MDCON	1	5	0	1273#
HILL, R	KNGHT	7	0	0	1858	LOMONT, C	SEARS	0	0	0	1494#
HILLIARD, J	CONBK	0	1	0	0000?	LORENZ, B	MDCON	2	6	0	1444#

? - UNRATED

- 5 TO 9 RATED GAMES

* - 10 TO 24 RATED GAMES

C - CENTURY CLUB MEMBER

D - DOUBLE CENTURION

T - TRIPLE CENTURION

Q - QUAD CENTURION

NAME	TEAM	W	L	D	RATING	NAME	TEAM	W	L	D	RATING
LOSOFF, A	CRT	5	0	2	1918	PAYTON, P	KEMPR	3	3	0	0000?
LUDWIG, T	DRGNS	4	2	0	2098C	PEHAS, A	ROYLS	4	2	0	1967
LUEDERS, J	CRT	0	1	0	0000?	PENNINGTON, J	WHEAT	0	3	0	0000?
LULKIN, V	UNILV	4	0	1	1826#	PEPPERS, M	RAIL	0	0	0	0000?
LUSTRO, G	ROYLS	0	1	0	0000?	PERAREN, E	PSTOF	1	2	0	1763
MAA, R	DRGNS	0	0	0	0000?	PHELPS, C	DRGNS	0	2	1	1244#
MARCOWKA, R	PSTOF	4	2	1	1968C	PIAO, T	DRGNS	0	1	0	1711
MAREMA, D	PSTOF	0	0	1	2006	PILLAI, J	MTRLA	0	1	0	0000?
MARTIN, K	COLUM	4	1	0	1485	POMA, D	AMCRP	7	8	0	1225
MATTHEWS, J	CTA	1	1	0	1745	POMA, M	AWEST	0	0	0	0000?
MAYNARD, J	WHEAT	2	6	0	1346	POZNIAK, J	KEMPR	2	5	1	1486#
MCALISTER, K	COLUM	1	2	1	1924	PRATT, C	MTRLA	1	1	0	0000?
MCCLENDON, L	CONBK	0	0	0	1340	PRATTS, M	COLUM	5	1	3	1745
MCFARLIN, B	KEMPR	0	2	0	1209#	PRICE, B	AWEST	0	0	0	1086#
MCINTOSH, S	CONBK	0	0	0	1142*	PUNZALAN, N	GROLR	0	0	0	1599
MCKAY, P	UNILV	0	3	0	1395#	QUARTETTI, C	NORTH	0	3	0	0000?
MCQUINN, J	ROCKW	0	0	0	1450	QUERUBIN, R	FLPRO	0	1	0	2067#
MELNIKOV, I	MTRLA	3	2	1	2188	RADAVICIUS, E	CHRGR	2	3	0	1692D
MELNIKOV, N	MTRLA	3	1	0	0000?	RAFACZ, T	ROCKW	0	0	0	1698
MENGEL, M	FERMI	0	0	0	0000?	RAFACZ, W	ROCKW	0	0	0	1638
MICKLICH, F	UOP	2	5	0	1680C	RAFFERTY, M	HULL	0	0	0	0000?
MIKULECKY, B	RADIO	1	1	0	1326C	RANGEL, R	HULL	0	0	0	1741
MILLER, J	NORTH	0	4	0	0000?	REED, K	TYROS	0	0	0	0000?
MILLER, TT	SEARS	1	1	2	1724	REID, C	JCASE	6	2	0	1398
MITCHAM, L	ROCKW	0	0	0	1552*	REYES, R	SEARS	4	1	1	2343D
MOORE, JJ	MTRLA	0	0	0	0000?	RINGER, D	SEARS	1	0	0	0000?
MORRISON, J	ROOKS	2	2	0	1685	RIPPE, D	TYROS	0	2	0	0000?
MORTADA, C	MTRLA	0	1	0	0000?	ROBERTS, J	WHEAT	2	2	0	0000?
MORTON, B	SEARS	0	0	0	1569	ROJAS, R	RAIL	0	0	0	0000?
MOTTA, H	FERMI	4	3	1	2032	ROMENESKO, G	UNILV	0	1	0	0000?
MOTYCKA, R	JCASE	2	3	0	1153	ROSENBERG, B	MDCON	0	7	1	1291#
MUDAN, M	HULL	0	4	0	0000?	ROSLEY, D	ROYLS	5	2	0	1808
NARSOLIS, F	UOP	3	2	0	0000?	ROSS, L	JCASE	0	0	0	0000?
NAUGHTON, T	HULL	0	4	0	1320*	RUBIN, J	UNILV	0	0	0	0000?
NELL, D	UNILV	0	3	0	1073#	RUDDY, J	MERC	1	1	0	1242
NELSON, H	CONBK	0	0	0	1967	RUEB, R	HULL	0	0	0	0000?
NISHIMURA, K	FLPRO	2	1	1	1331*	RYU, R	UOP	1	0	0	1451
NOBLE, S	JCASE	3	2	0	0000?	RZESZUTKO, R	ALUMN	0	1	0	1791
NOTERMAN, T	UNILV	1	1	1	1198	SAHLI, E	UOP	2	4	1	1715
NOWAK, W	CTA	2	2	0	1365#	SAJBEL, P	UOP	5	0	1	1718
NWABUDE, O	CHRGR	0	0	0	1029*	SALAMANCA, R	ROYLS	1	0	1	1610
O'BRIEN, D	UOP	2	2	0	1384*	SAMELSON, C	MTRLA	6	2	0	2009C
O'DELL, DW	RADIO	0	2	0	1573C	SAMOYLOV, A	MTRLA	1	1	0	0000?
OGASAWARA, L	ROYLS	3	2	0	1852C	SAMULAK, C	HULL	0	0	0	1147#
OLSEN, A	KEMPR	1	6	0	1476	SANCHEZ, P	RAIL	0	0	0	0000?
OSTERLUND, R	EXMPL	5	1	0	1996	SANCHEZ, R	GROLR	0	0	0	1526*
PARA, A	FERMI	5	2	0	1592	SANTIAGO, T	COLUM	3	2	2	1974*
PARAOAN, E	CONBK	4	4	0	1741C	SATTERLEE, D	JCASE	2	6	0	1667C
PATTON, D	CHRGR	1	1	0	0000?	SAWDO, E	JCASE	1	2	2	1412
PAWLUS, D	MTRLA	0	1	1	0000?	SCHWAB, W	ROOKS	2	3	0	1474

? - UNRATED

- 5 TO 9 RATED GAMES

* - 10 TO 24 RATED GAMES

C - CENTURY CLUB MEMBER

D - DOUBLE CENTURION

T - TRIPLE CENTURION

Q - QUAD CENTURION

NAME	TEAM	W	L	D	RATING	NAME	TEAM	W	L	D	RATING
SCHWARTZ, M	TYROS	2	3	1	1069	TYREE, D	RADIO	0	1	0	1475*
SEMONES, E	ROOKS	1	4	0	0000?	UNDERWOOD, W	WHEAT	2	3	1	1999C
SHAFF, R	TYROS	3	1	0	1536C	VALDEZ, C	MTRLA	3	0	0	0000?
SHEU, G	CHRGR	0	0	1	1333*	VAN MEER, J	KEMPR	1	1	0	2007
SHEYNIN, S	ROOKS	2	3	4	2086	VAN METRE, R	SEARS	3	0	1	0000?
SHOUSE, B	MTRLA	0	0	0	0000?	VAN OUTRIVE, R	CTA	0	1	0	1092#
SHUKLA, S	FERMI	0	0	0	0000?	VAN ZILE, C	UOP	3	4	2	1367*
SIEGEL, R	CONBK	2	1	1	1510C	VANDECOTTE, M	UOP	3	1	0	0000?
SIMS, B	CRT	0	0	0	1519#	VENEGAS, B	HULL	0	1	0	0000?
SIWEK, M	KEMPR	3	2	2	2149C	VERIVE, J	AWEST	0	0	0	1615*
SLAGLE, S	MERC	1	5	1	1598	VICK, H	MTRLA	0	0	0	1516
SMILEY, R	AMCRP	5	1	4	2011	VIGANTS, A	NORTH	1	3	1	1539
SMITH, BR	TYROS	4	1	1	1511	WACHTEL, H	COLUM	4	1	1	2219
SMITH, JM	ALUMN	0	0	0	1196*	WALLACH, C	MTRLA	1	3	2	2077
SOLLANO, E	GROLR	0	0	0	1956	WALLIN, R	WHEAT	2	4	3	1756
SOMBONG, M	CONBK	0	1	1	1634	WARD, C	DRGNS	2	4	2	1521D
SPIEGEL, L	FERMI	6	1	2	2003C	WARE, K	MERC	0	2	0	0000?
STAMM, V	CHRGR	2	2	0	1737D	WARREN, J	CHRGR	2	1	3	2104T
STAPLES, C	FERMI	0	0	0	1200#	WEBER, J	WHEAT	1	2	0	0000?
STAPLES, M	CTA	0	3	0	0000?	WEBER, L	GROLR	0	0	0	2144
STEINER, D	HULL	0	0	0	0000?	WEISS, G	HULL	0	4	0	0000?
STEVANOVIC, M	UOP	5	1	0	2257C	WEISSKOPF, J	HULL	0	5	1	1317*
STEVENS, J	COLUM	1	1	0	1340	WEITZ, R	EXMPL	3	1	1	1684C
STEVENS, N	MDCON	0	1	0	0000?	WELTER, P	SEARS	0	0	1	1642#
STEVENSON, R	UNILV	0	1	0	1363	WENTLING, C	AMCRP	4	3	3	1671C
STINSON, M	ROYLS	0	0	1	2008	WEST, R	MTRLA	0	0	0	1447#
STOLTZ, B	TYROS	1	5	2	1966	WHITE, H	JCASE	4	2	1	1623
SUAREZ, E	KNGHT	2	2	1	1576	WHITE, T	CONBK	1	3	0	0000?
SUERTH, F	EXMPL	4	1	1	1620C	WHITED, W	MDCON	1	3	1	1836
SULLIVAN, C	MERC	2	5	0	1504	WHITSITT, S	AWEST	0	0	0	1504*
SZAUKELLIS, W	MTRLA	0	0	0	0000?	WILLIAMS, A	ROAD	0	0	0	0000?
SZONTAGH, T	CRT	1	0	0	0000?	WILLIAMS, J	RAIL	0	0	0	0000?
TAMEZ, I	TYROS	3	1	2	2054	WILLIAMS, T	JCASE	1	0	1	2002
TAYLOR, M	ROAD	0	0	0	0000?	WILSON, A	CTA	1	4	0	1581
TEGEL, F	DRGNS	4	2	2	2165D	WILSON, M	SEARS	0	0	0	1293#
TERPSTRA, D	WHEAT	0	1	0	0000?	WONG, KK	NORTH	1	1	0	0000?
THOMAS, G	TYROS	3	3	0	1505	WONG, P	EXMPL	0	2	0	2205C
THOMAS, J	CHRGR	1	1	2	1466C	YOUNG, R	HULL	0	4	3	1424*
THOMPSON, R	FLPRO	0	0	0	1063	ZEIDEL, J	MERC	0	0	0	1947
TSEITLIN, E	MTRLA	0	1	0	0000?	ZOELLNER, J	CONBK	6	1	0	1400C
TURNER, K	PSTOF	1	0	0	1559	ZUNGOLO, J	CRT	0	0	0	0000?

? - UNRATED

- 5 TO 9 RATED GAMES

* - 10 TO 24 RATED GAMES

C - CENTURY CLUB MEMBER

D - DOUBLE CENTURION

T - TRIPLE CENTURION

Q - QUAD CENTURION