

Chicago Industrial Chess League

Bulletin No.2, Vol. 38
November 1994

INSIDE THIS ISSUE:

 2 Squares Column by Marv Cox


 Games

 Knights and Bytes

 Anatomy of Oversight

 Division cross tables

 Ratings Chairman Report

 **-NEED INPUT!** To make the CICL bulletin even better we are looking for anyone interested in submitting **articles** or **games**. If you are interested, call or write to the bulletin editor.

CICL OFFICERS	
As of November 1994	
President:	James Hodina 718 Central Park Ave. Flossmoor, IL 60422 W:(708) 990-6115 H:(708) 799-5571
Secretary:	Anthony Jasaitis P.O. Box 664 Bedford Park, IL 6499-0664 W:(708) 406-6420
Treasurer:	Wesley K. Underwood 207 S. Dorchester Ave. Wheaton, IL 60187 W:(708) 752-5127 H:(708) 462-0393
Ratings Chairman:	Charles Ward 615 S. Lincoln Hinsdale, IL 60521 W:(708) 979-4599 H:(708) 325-3885 (708) 979-8451 F
Production:	Marty Franek
Circulation:	9044 S. 51st Ave Oak Lawn, IL 60453-0397 W:(312) 353-0397 H:(708) 636-3714
East Division Chairman:	Keith Kosticka Columbia College Chicago, IL 60605-1996 W:(312) 663-1600 ext. 437
Near West Division Chairman:	Satish L. Kale Jl Case 7 South 600 County Line Rd Hinsdale, IL 60521 W:(708) 887-2372 H:(708) 325-5253
Far West Division Chairman:	Irwin Gaines Fermilab - MS 127 P.O. Box 500 Batavia, IL 60510 W:(708) 840-4022
North Division Chairman:	Ruben Reyes 2019 W. Leland Ave. Chicago, IL 60625-1513 W:(708) 286-0758 H:(312) 334-5462 F (312) 769-0311
Bulletin Editor:	See North Division Chairman
Banquet & Publicity Chairman:	Todd J. DuFresne 2115 S. Finley Apt 216 Lombard, IL 60148 W:(708) 887-3771 or 2049 H:(708) 916-4677

READER'S FORUM

From the editor -

Charlie Ward has sent me the electronic mail addresses of the following CICL officers and team captains.

Officers

Lenny Spiegel - Secretary: lenny@fnal.gov

Wes Underwood - Treasurer: wu@david.wheaton.edu

Charlie Ward - Ratings Chairman: czar@csgcbu.att.com

Irwin Gaines - Far West Chairman: gains@fnalv.fnal.gov

Team Captains

Jerry Thomas - AT&T Chargers: jet@lpuxa.att.com

Dan Eustace - AT&T Dragons: eustace@ihlpm.att.com

Chuck Dobrovolny - AT&T Royals: crd@uscbu.att.com

Lenny Spiegel - Fermilab (see above)

Joe Karpierz - AT&T Tyros: fishman@nwsrs.att.com

Wes Underwood - Wheaton College (see above)

The most interesting game ever to come our way so far for the best upset award is that from Abe Wilson. His win is our main attraction in our 'GAMES' feature.

I inadvertently duplicated a diagram in the 2-squares column of the last issue. Knowing that Marvin has a lot of fans among our readers, I took it upon myself to republish a corrected version.

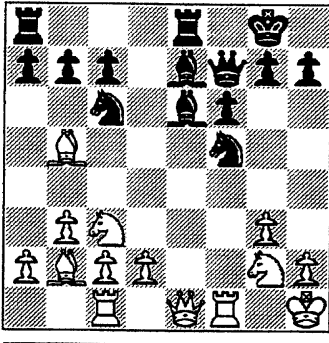
Anatomy of Oversight features the different situations where an oversight takes place. As in Korchnoi's case, one could be so concentrated on looking far ahead that a seemingly obvious "brilliancy" is overlooked. Or as in Wolff-Korchnoi, a player gets so bored shuffling pieces and gets tempted to capture a pawn while overlooking a mating threat. And there's more.

One for the Underdog features a last round game between a class A player and a USCF master. Winner takes all the marbles. Guess who gets it all.

Aside from the Greatest upset of the year game of Abe Wilson, GAMES feature a nice battle between Gelfand and Anand. There's an oldie from the Midwest Masters. And much much more.

The 2 Squares Column by Marvin Cox

"If two (or more) squares are attacked more times than they are defended they may fall"



Diag. 74

This is a repeat from the Sept. issue where diagram 75 was used instead of 74.

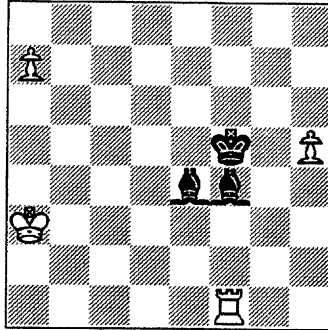
We have interesting attack and counterattack in diagram 74. The advantages for white are: black's knight is pinned on c6, black's other knight on f5 is weak (not guarded more times than attacked), black's king and queen are on the same diagonal and White has a bishop of the right color, black's bishop on e6 is weak (attacked once and guarded only once), black has two unguarded pawns on his queen side. Black's advantages are: white has a weak (unguarded) bishop on b2, black has a masked rook on the same open file as white's queen, and white's king is not too secure.

1. **Rxf5** Black can not retake because of Bc4. So he counterattacks with 1... **Ba3** against the weak bishop on b2 and assists the rook attack against the white queen.

2. **Bxa3** Rook to f1 or f6 is poor. 2... **Bxf5** clears black's rook on the file.

3. **Qf2** and white has won 2 pieces for a rook. Some of white's weaknesses have disappeared, black's haven't. White has the advantage of two bishops on an open board but does not have a good square to park his white bishop on. Black has the advantage of being able to double his rooks on the only open file, and one of white's knights is tied to the king's defense until the queens and a pair of rooks are traded off. Does this suggest the further lines of play for each

side?



Diag. 77

We see that white is attacking squares a8 and h8 with threatening pawns. The two squares are guarded by the two black bishops. Two attackers, two defenders. Not much prospects for white in a two square attack in diag. 77.

However, white's rook attacks one of the black defenders so we expand this to be a three square attack against a8, h8, and f4. Now there are three attackers and only two guards. The bishop on f4 is on one of the three squares being attacked so no longer counts as a guard.

The usual simplification is to convert a three square attack to a two square attack by means of a trade.

1.**Rxf4 Kxf4**

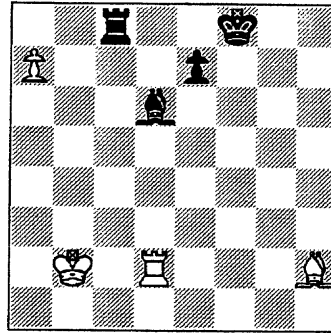
Now it's reduced to a two square attack against a8 and h8 with two attackers and only one guard.

2.**h6 Kg5 3.h7 Bxh7 4.a8=Q.**

You should know how to do the king and queen against king and bishop endgame. One simple endgame is worth three opening variations.

A quickie attempt to win in diagram 78 is to play 1.**Bxd6**, **exd6 2.Rxd6**. This fails due to 2...**Ke7**. Rook and rook pawn vs. rook endings are notorious for draws.

Let us examine the position from the standpoint of the two-squares theory. Square b8 is attacked twice by white, the pawn on a7 and the masked



Diag. 78

bishop on h2. Defenders are the rook on c8 and the bishop on d6. Two attackers and two defenders; we would expect black to be able to hold the position.

So now let's look at it from a three squares view. The white rook attacks the black bishop which was on the defenders. Let the three squares considered be a7, b8 and d6. Now there are three attackers but only two defenders, the black rook and the black pawn. The black bishop does not count as a defender because it is on one of the three squares white is attacking. This is worth analysing.

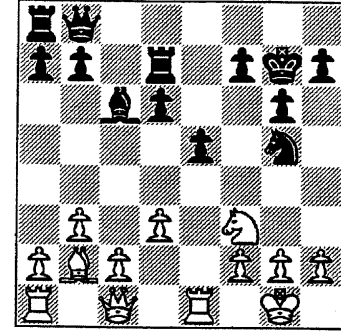
1. **Rxd6**

Black can not play 1...**exd6 2.Bxd6+** K-moves, 3.**Bb8** wins.

1...**Ra8 2.Rd8+**

Quicker than 2.**Ra6** by far.

2...**Rxd8 3.Bb8** and black soon runs out of checks as the white king travels up to b6.

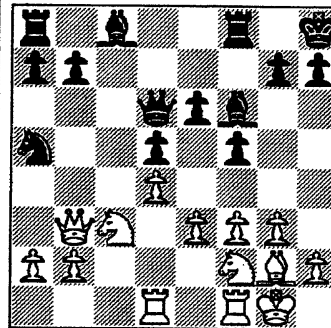


Diag. 79

The problem in diagram 79 is of rather easy solution. The black pawn on e5 is attacked three times and only guarded twice. The black king is on the same diagonal as the masked white bishop. The masking pawn is also our point of attack on e5. So-o, we look at the sacrifice of a piece on e5. Obviously we don't sac the bishop because we'd lose the masked attack against the black king. Rook takes e5 has no continuation if the black king moves. Or, knight takes e5 has the immediate threats of knight takes rook (**Nxd7**) or knight takes bishop check (**Nxc6+**) and then takes the black queen (**Nxb8**). If pawn takes knight (...**dxe5**) then bishop takes pawn check (**Bxe5+**) wins the black queen.

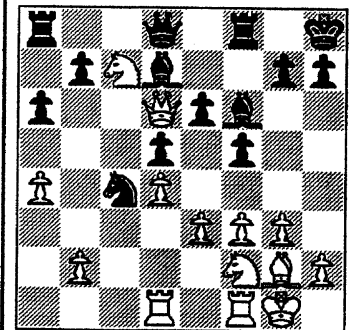
One for the Underdog

Diagram below (left) is from Edward Formanek (White) vs. Amateur (1999); Robert Byrne 1977 after: 1. **d4 f5 2. g3 Nf6 3. Bg2 e6 4. c4 Be7 5. Nc3 0-0 6. Nh3 d5 7. 0-0 Ne4 8. Qb3 c6 9. f3 Nd6 10. cxd5 cxd5 11. Bf4 Nc6 12. Rad1 Kh8 13. Nf2 Bf6 14. Bxd6 Qxd6 15. e3 Na5**



16.**Nb5** White embarks on an ill-fated journey. 16...**Qb6 17. Qb4** The die is cast. 17.**Qa4** loses to 17...**Bd7** and 17.**Qd3** Nc4 loses the b-pawn 17...**Bd7**

18. **a4 a6 19. Qd6 Qd8 20. Nc7 Nc4** No more room to hide



21. **Nxe6 Nxd6 22. Nxd8 Rfxd8**. And black won the game several moves later.

GAMES

In this game submitted for best upset, the rating point difference seems to be the highest we've seen for some time: 588 points!

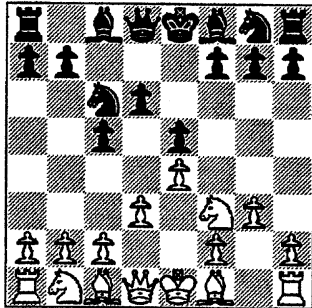
Sicilian Defense

WHITE: Tony Czerniecki (2143)

BLACK: Abe Wilson (1555)

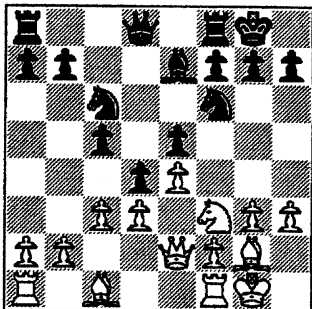
Alumni vs. CTA

1. e4 c5 2. Nf3 Nc6 3. d3 e5 4. g3 d6



A method (to counter the anti-Sicilian closed system) introduced in Smyslov-Botvinnik, Moscow 1955 is characterized by the "V" of pawns used here.

5. Bg2 Bg4 6. Nbd2 Nf6 7. h3 Bxf3 8. Nxf3 Be7 9. 0-0 0-0 10. c3 d5 11. Qe2 d4



Good strategy. Locking the center lessens the impact of white's bishop pair advantage.

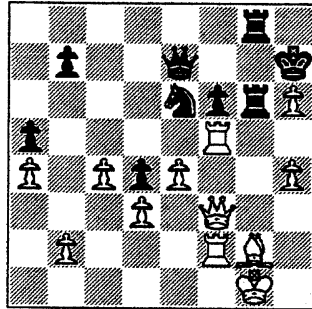
12. c4 a5

But shutting down the queenside leaves black no choice for counterplay except in the other wing where white is stronger.

13. a4 h6 14. Nh4 Nh7 15. Nf5 Bg5 16. f4 exf4 17. gxf4 g6

Black loses a pawn here. Remarkably, however, black gains in return for the pawn lost an impenetrable shield for the beleaguered black king in the form of a white pawn.

18. fxe5 gxf5 19. gxh6 Kh8 20. Rxf5 Ne7 21. Rxc5 Ra6 22. Bg5 Rg6 23. Bxe7 Qxe7 24. Rf5 Ng5 25. Qh5 Kh7 26. h4 Ne6 27. Rf1 f6 28. Qf3 Rfg8 29. Rf2

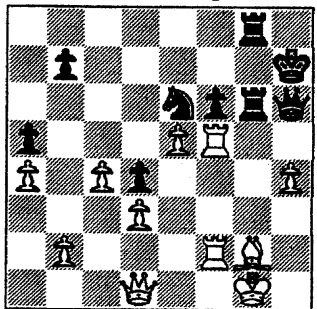


White's now ready for 30.e5, which vacates the e4 square for the bishop and forcibly pries open the f-file. The black king is safe for the moment from harm along the h-file because of the white h-pawn.

29....Qb4

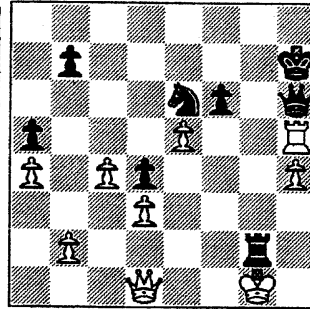
This expedition with the queen away from the battle scene is reminiscent of Elvhest-Korchnoi shown in "Anatomy of an Oversight" in this month's issue of the bulletin. Here Black threatens 30...Qe1+ when 31. Rf1 allows 31...Qxh4. Under the circumstance black's in, this counterplay with the queen seems to be black's best shot. If now 30.Kh2. 30...Qe1 pins the white bishop down because of the threat ...Qg1+ (should the bishop decide to move).

30. Qd1 Qf8 31. e5 Qxh6



A trap is set using the black queen as bait.

32. Rh5 Rxc2+ 33. Rxc2 Rxc2+



34. Kxg2??

Back's queen is doomed no matter what after 34.Ka1 (or even 34.Kf1). For then the threat is 35.Rxh6+ followed by 36. Kxg2 winning on the spot. If 34...Nf4 then 35.Rxh6+ Kxh6 36.Qf3 fxe5 37.Qxg2 Nxc2 38.Kxg2, when the distant h-pawn is a winner for white.

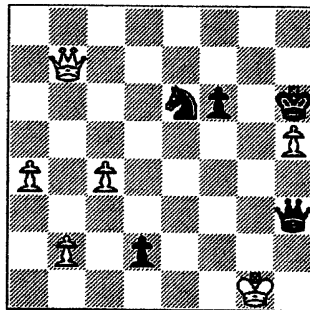
The sheer bravado and violence of black's attack may have contributed to white's demise here.

35....Nf4+ 35. Kh2 Nxc5

Black is a piece up now and doesn't let a monster of an upset get away.

36. e6 Qf4+ 37. Kg1 Qe3+ 38. Kf1 Nf4 39. Qg4 Qxd3+ 40. Kf2 Qe3+ 41. Kf1 Nxe6 42. Qf5+ Kg7 43. Qxa5 d3 44. Qe1 Qh3+ 45. Kg1 Kf7 46. Qe4 d2 47. Qxb7+ Kg6 48. h5+ Kh6 0-1

FINAL POSITION



A nice upset win. Credit black for courage and ingenuity under fire.

Rafael Vaganian was once a strong contender in the world title race. In this game he gets lost in a tactical skirmish.

English Opening

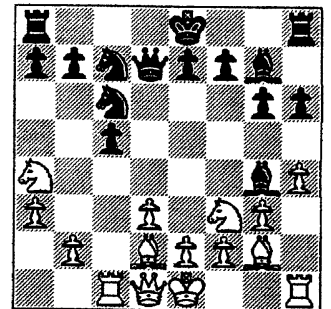
WHITE: J. Sunye-Nieto (2465)

BLACK: R. Vaganian (2630)

Interzonals, Manila 1990

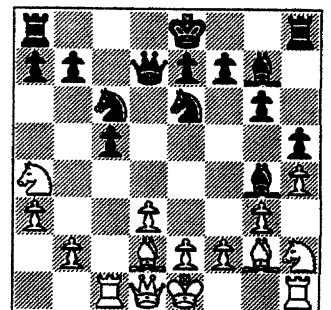
1. c4 Nf6 2. Nc3 e5 3. g3 d5 4. exd5 Nxd5 5. Bg2 Nc7 6. a3

Nc6 7. Nf3 g6 8. h4 h6 9. d3 Bg7 10. Bd2 Bg4 11. Rcl Qd7 12. Na4



Black is now faced with a difficult decision on how to protect his c-pawn. 12...b6 allows white to bring pressure on the knight at c6 via the c-file and diagonal h1-a8. For example, 12...b6 13.Nh2 threatening to win a piece (14.Nxc4 and 15.Bxc6+) or a pawn (14.bxc5 bxc5 15.Nxc5). 12...Na6 decentralizes the knight.

12...Ne6 13. Nh2 h5

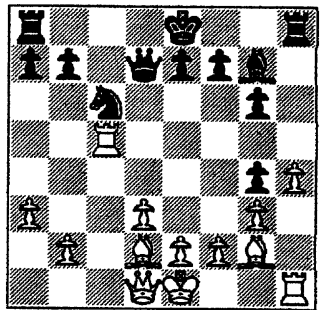


14. Nxc4

White could win the bishop with 14.f3 Bf5 15.e4, but at the cost of creating several weaknesses in his position such as the d-pawn and g-pawn.

Since white has black's c-pawn in the bag (and winning a pawn is tantamount to a win), white opts for a safer continuation.

14...hxg4 15. Nxc5 Nxc5 16. Rxc5



The white b-pawn's tempting. 16...Bxb2?

"Beware of Brazilian GM's bearing gifts".

17. Qc2

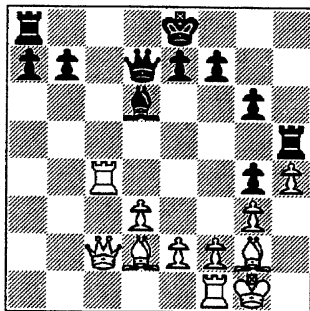
The point of the b-pawn gift. White gets to bring his queen onto the c-file with tempo via an attack on the black bishop at b2.

17...Bxa3 18. Rxc6 Bb6

The rook can't be taken without losing the queen (18...bxc6?? 19. Bxc6 winning the queen).

19. Rc4 Rh5 20. 0-0 1-0

FINAL POSITION

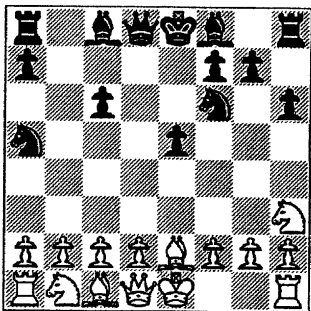


This one's from none other than CICL's highest rated player and Argentine Knight's top master. Kevin Schmuggerow, Levine's opponent, is a USCF master we could be hearing about, next year and the team Safety Clean.

Two Knights Defense

WHITE: K. Schmuggerow(2208)
BLACK: D. Levine (2362 USCF)
1986 Midwest Masters

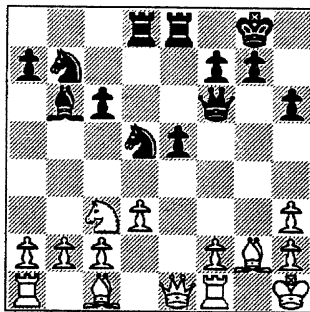
1. e4 e5 2. Bc4 Nf6 3. Nf3 Nc6 4. Ng5 d5 5. exd5 Na5 6. Bb5+ c6 7. dxc6 bxc6 8. Be2 h6 9. Nh3



Shades of Bobby Fischer (Fischer-Bisguier and Fischer-Radoicic, NY 1963).

9...Bc5 10. d3 Nb7 11. Nc3 Nd5 12. 0-0 0-0 13. Bf3 Bb6 14. Qe1 Re8 15. Kh1 Bxh3 16. gxh3 Qf6 17. Bg2 Rad8

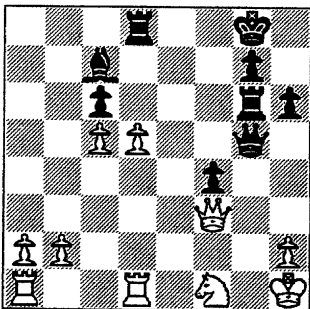
Black has wasted no time in centralizing his pieces and beginning a slow but sure build up in the king's wing.



18. Be3 Bc7 19. Ne4

Obviously if 19.Bxa7 c5 imprisons the bishop and gets caught after 20...Ra8.

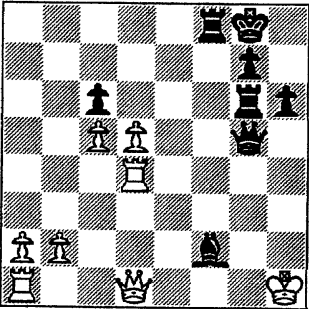
19...Qe7 20. Ng3 Qe6 21. Be4 Nd6 22. c4 Ne7 23. Bxa7 Qxh3 24. Bg2 Qd7 25. Qc3 Ng6 26. Rfd1 Nf4 27. d4 e4 28. Bc5 Nxe2 29. Bxd6 Qxd6 30. Kxg2 f5 31. f4 exf3+ 32. Qxf3 f4 33. Nf1 Re6 34. c5 Rg6+ 35. Kh1 Qf6 36. d5 Qg5



White has no time for 37.d6 because of 37...Qg1 mate, or if 37.Nd2 then 37...Rxd5 threatening 38...Rxd2 and 39...Qg1++.

37. Ng3 fxe3 38. hxe3 Bxe3 39. Rd4 Rf8 40. Qd1 Bf2 0-1

FINAL POSITION



A superb demonstration of how to organize and execute a well orchestrated buildup and attack from the premier player of the CICL.

Last year's Interzonals

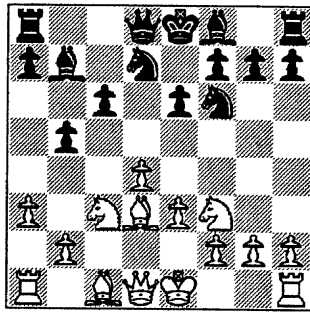
was won by Boris Gelfand. Here's his win vs. Viswanathan Anand.

Slav

WHITE: B. Gelfand (2670)
BLACK: V. Anand (2725)

Biel, Switzerland 1993

1. d4 d5 2. c4 c6 3. Nc3 Nf6 4. e3 e6 5. Nf3 Nbd7 6. Bd3 dxc4 7. Bxc4 b5 8. Bd3 Bb7 9. a3



The idea is to play b4 thereby preventing ...c5, an idea reported to have originated from Gelfand and Vyzhmanavin.

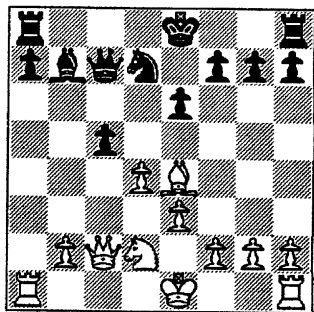
9...b4

Anand is said to have used this move against Karpov in Moscow 1992, an alternative to 9...a6 10.b4 a5.

10. Ne4 Nxe4 11. Bxe4 Qc7 12. axb4 Bxb4+ 13. Bd2 Bxd2+ 14. Nxd2

The point of this seeming decentralization of the knight becomes apparent next move.

14. c5 15. Qc2



White had anticipated this move when he played 14.Nxd2 by shifting protection of the bishop from the queen to the knight. Now the queen can't be diverted from the c-file with 15...Bxd4 because the recapture'd be with the knight.

15...Qb6

Black's compelled to get away from the pin.

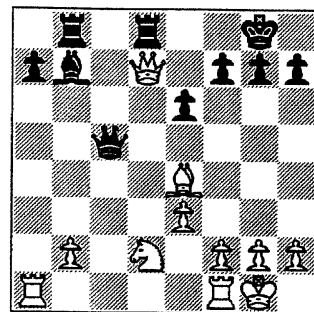
16. dxc5 Qxc5

Obviously, not 16...Nxc5 because of 17.Bxb7 Nxb7 (forced) when 18.Qa4+ K-moves is embarrassing.

17. Qa4 Rb8 18. 0-0 0-0

The knight at d7 is left without protection. However, Black hopes to gain it back.

19. Qxd7 Rfd8

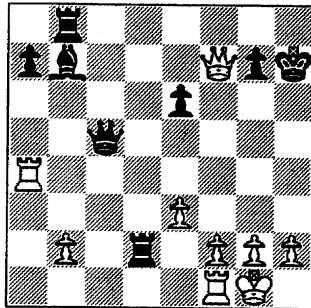


This may have been what Black had in mind for recovering his piece.

20. Bxb7+ Kxh7

20...Kf8 is the lesser of two evils. A player of Anand's caliber must have seen the bishop sac but most likely miscalculated the strength of white's attack.

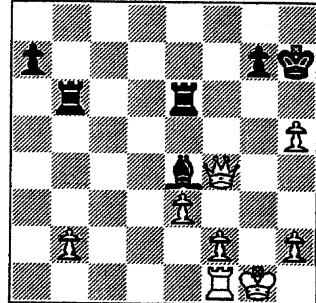
21. Qxf7 Rxd2 22. Ra4



The threat is simple but deadly.

22...Qg5 23. g3 e5 24. Rh4+ Qxh4 25. gxh4 Rd6 26. h5 Be4 27. Qe7 Rbb6 28. Qxe5 Re6 29. Qf4 1-0

29...Rg6+ 30.hxg6 Rxg6 31.Qg3 Rxg3+ 32.hxg3 wins for white.



Knights and Bytes

Chess is an international language, and chessplayers have gone "online" and communicated in their language via computer networks.

The result is a global village of chessplayers. To get on a computer network, you need a computer system that has a communications port, a modem to interface your computer with your telephone line, a graphics adapter, and appropriate communications software. You also need an account with the network that you decide to subscribe to. Most networks charge a monthly or yearly fee plus "connect time" charges that vary from about \$2.00 to \$5.00 per hour.

The chess services offered by public computer networks vary. Most networks enable you to play by electronic mail—correspondence chess via computer. Some allow "real-time" games with a "graphical interface," i.e., a chess board appears on your computer monitor and you use your keyboard or mouse to move the "pieces" against an opponent who is "at the chessboard" the same time you are. More expensive networks such as CompuServe provide a broader range of chess services, including theory discussions, news, elaborate game databases, and computer chess product information. Some of the public access computer networks offering chess services are:

America Online — manages a small e-mail chess group but no real-time or graphical chess. (800) 827-6364.

CompuServe — The CompuServe Chess Forum, international in scope, offers casual e-mail and real-time, graphical tournament games that are USCF-ratable. Daily reports on major events, including bulletins, are available if you're willing to incur large connect time charges. USCF news releases are also posted on the Chess Forum.

Opening theory forums and question/answer dialogues are provided for

ambitious and/or curious chessplayers. For the really ambitious, there are "downloadable" game files, which means that you can order CompuServe to send the game files to your computer's memory. These files are available in ASCII (American Standard Code for Information Interchange) format — standard computerese, understood at the basic level by all computers, and in ChessBase and NiCBase formats. Also useful are demo versions of many chess products. (800) 848-8990.

Internet — The Internet has its origins in the U.S. Defense Department's *Advanced Research Projects Agency Network* (ARPANet), a system started in 1969 for sharing information between the defense, government and research sectors. Eventually the National Science Foundation took over, and the network was opened to commercial accounts, and Internet and, eventually, the *Internet Chess Server* (ICS) was born. Internet also provides the Usenet service which posts news daily on all topics, including chess. With the ICS, you can play real-time chess against players all over the world. Watch the Usenet newsgroup, rec.games.chess.

It's not always easy to get an Internet account. It helps if you are a college student or associated with an institution that has an account. If not, you will have to get a commercial account through a company that can get one for your area.

Chess Bulletin Boards — NM Bruce Bowyer of the Manhattan CC has provided a list of chess bulletin boards and their phone numbers:

Chessboard	(201) 515-8557
Chess Horizons	(203) 596-1443
The Chess Board	(214) 641-1136
Chess Hotline	(310) 634-8549
Chessplayers Forum	(313) 386-7054
Chess Hackers	(403) 456-5808
Micro Chess Club	(403) 475-0027
The Chess Board	(503) 629-5473
Woodpusher	(504) 277-4339
Amiga Gateway	(504) 866-5765
High Tech	(504) 885-0165
Berkeley	(510) 486-0795
l'Ecumeur 1	(514) 355-0942
Le Dossier 1	(514) 482-3160
Le Dossier 2	(514) 482-8078

Game Master	(514) 858-777
l'Ecumeur 2	(514) 964-122
Electric Knights Chess	(519) 442-644
The Corner Store	(604) 464-020
Chess Hideout	(604) 479-028
The Strategist	(614) 882-262
Morning Star 1	(619) 660-150
Morning Star 2	(619) 660-156
Chessnuts Only	(702) 873-120
Byte Busters	(713) 852-454
Mind Matters BBS	(718) 951-665
	(718) 951-007
ChessBoard	(813) 754-604
Chessmaster	(817) 855-795
Ed Parry Chess	(818) 891-935
King's Castle	(904) 292-907
Isolated Pawn	(919) 471-144

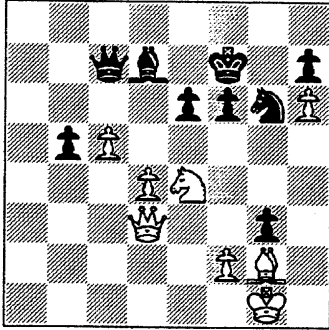
These bulletin boards come and go, so you may not be able to access all of them at this time.

Prodigy — e-mail chess but no real-time play or graphical chessboard. Good coverage of major chess events and a chess bulletin board are provided. (800) 284-5933.

Anatomy of Oversight

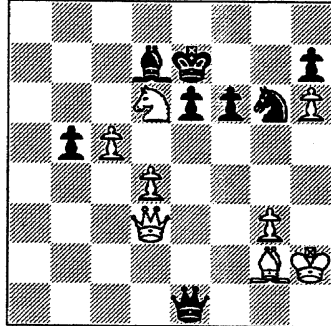
What's it about an oversight which hits a wide range of players - from the high and mighty grandmaster to the lowly amateur. Whatever it is, it can be entertaining.

Take this one from Ehlvest vs. Korchnoi in the 6th round of the 1989 World Cup Grand Prix (6th and final leg held in Sweden).



Position after 39...fxg3

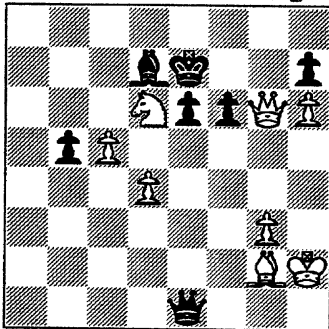
There's nothing here to indicate any kind of threat which would cause the game to end abruptly. Play went: 40.Nd6+ Ke7 41.fxg3 Qa5 42.Kh2 Qe1



Position after 42...Qe1

Black's possibly expecting 43. Nxb5 when 43...Qc8 regains the pawn

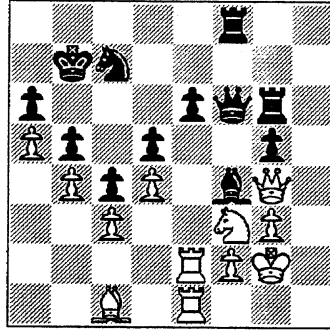
But now Whammo: 43.Qxg6!!



Black resigns

If 43...hxg6 then 44. h7, and the pawn queens.

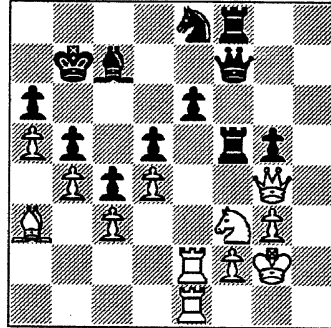
From the '93 Interzonals comes this position in P.Wolff - V. Korchnoi, after 28... Qf6.



Position after 28...Qf6

The five moves prior to this position were 24.Ra2 Bf4 25. Ba3 Kb7 26.Rae2 Rg6 27. Bb2 Qf7. 28. Bc1.

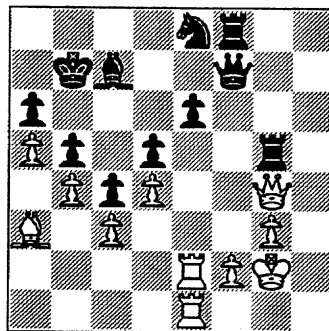
Both sides seemed to be simply shuffling pieces, each counting on the other to make a mistake. Play continued: 29. Ba3 Qf7 30. Bb2 Rf6 31.Rf1 Rf5 32. Ba3 Ne8 33.Rfe1 Bc7



Position after 33...Bc7

Black appears to have made the mistake White had been waiting for, so: 34.Nxg5

WRONG: 34...Rxg5!! 0-1

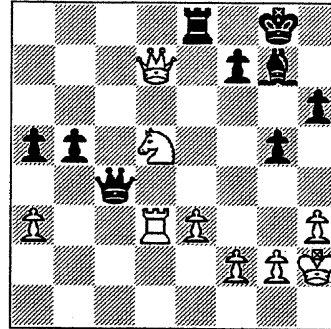


If 35.Qxg5, then 35... Qf3+ 36.Kh1 Rh8 and White is compelled to part away with his Q by 37.Qh4 Rxb4 or else get mated in the corner: Rh1++

This game was Patrick Wolff's 2nd straight loss - both against

the French Defense - which caused him to miss the cut-off for the next stage in the championship cycle.

Here's an oldie from round 1 of the '74 Great Lakes Open in Cleveland, OH; Ross Sprague (2236) Black.

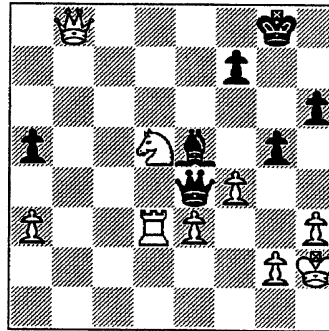


After 37...Qc4 38. Qd7

Black proceeds to lay a trap with 38...Qe4 offering the b-pawn as bait.

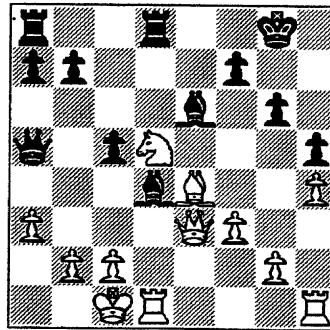
White bites 39.Qxb5. Now Black closes in: 39... Be5+ 40. f4 Rb8 Expecting probably either 41. Qa6 Rb2 or 41.Nb6 gxf4 when Black's winning.

Surprise!!: 41. Qxb8+ 1-0



If 41... Bxb8 then 42.Nf6+ followed by 43. Nxe4 wins.

This one's Speelman vs Noguerras from the 1989 World Team Championships in Lucerne, Switzerland after 22.Nd5 Bd4.

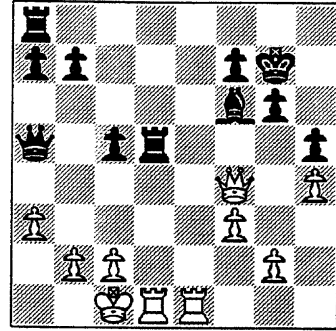


The Knight at d5 lacks sufficient protection. So:

23.Qg5. Now came: 23...Bxd5 24. Bxd5 Kg7 25.Rhe1 Bf6

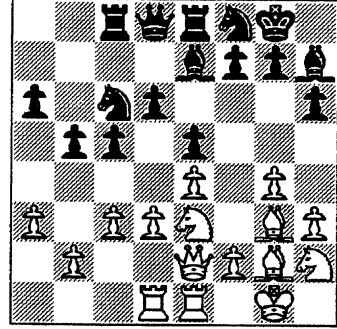
26. Qf4? White's not watching.

Bam!! 26...Rxd5 1-0



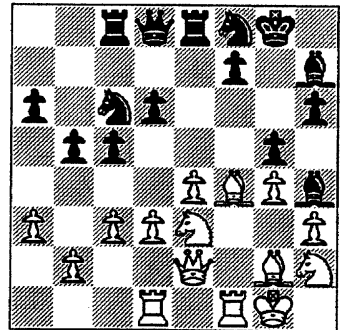
If 27.Rxd5 then 27...Qxe1+ wins a Rook.

From the 1992 Olympiad, this is J. Timman (Netherlands) - V. Akopian (Armenia) after 20. Nh2 e5



There appears to be nothing wrong now with proceeding to open up the f-file. So...

21.f4 exf4 22.Bxf4 Bh4 23.Rf1 g5



Suddenly White's bishop has no safe haven to go to.

24.Qf3

One idea is to keep Black's bishop imprisoned at h4. But it wouldn't work. If 24.Bxd6, then 24...Qxd6 lets the bishop out via g3. If 24.Be5 then 24... Nxe5 compels 25.Rf3 Nxf3+ 26.Qxf3 d5 when all the trouble White is taking may just be for naught.

24....gxf4 25. Qxf4 Ne5 26.Nd5 Qg5 0-1

FAR WEST DIVISION

TEAM	ROOKS	FERMI	ROYLS	TYROS	MDCON	DRGNS	WHEAT	Game Pts	Match Pts	Position SWISS	Game Pts	Match Pts
ROOKS			5		4			9	2			
FERMI					4	4		8	2			
ROYLS	1			5.5				1	1			
TYROS			.5				4.5	5	1			
MDCON	2	2						4	0			
DRGNS		2						2	0			
WHEAT				1.5				1.5	0			

NORTH DIVISION

TEAM	SEARS	MTRLA	U.O.P.	NORTH	EXEMPL	KEMPR	FLPRO	Game Pts	Match Pts	Position SWISS	Game Pts	Match Pts
SEARS				3			6	9	1.5			
MTRLA			3				5	8	1.5			
U.O.P.		3				6		9	1.5			
NORTH	3				4			7	1.5			
EXEMPL				2				2	0			
KEMPR		0						0	0			
FLPRO	0	1						1	0			

NEAR WEST DIVISION

TEAM	KNGHT	CHRGR	UNILV	RADIO	JCASE	Game Pts	Match Pts	KNGHT	CHRGR	UNILV	RADIO	JCASE	Game Pts	Match Pts
KNGHT				5	5.5	10.5	2							
CHRGR			5.5			5.5	1							
UNILV		.5		4		9	1							
RADIO	0		1			1	0							
JCASE	.5					.5	0							

EAST DIVISION

TEAM	PSTOF	COLUM	ALUMN	CRT	AMCRP	CTA	HULL	MERC	CONBK	Game Pts	Match Pts	Rnd 10	Rnd 11	Rnd 12	Game Pts	Match Pts
PSTOF		1.5				4.5	4	5		15	3					
COLUM	4.5				3.5					8	2					
ALUMN						5				5	1					
CRT								6		6	1					
AMCRP		2.5							4	6.5	1					
CTA	1.5		1							2.5	0					
HULL	2									2	0					
MERC	0			0					2	2	0					
CONBK					2			4		6	1					

NORTH DIVISION 10-26-1994

TEAM NAME	W	L	D	GAME POINTS	MATCH POINTS	PCT
UOP PROCESS DIV.	1	0	1	9.0	1.5	0.750
MOTOROLA	1	0	1	8.0	1.5	0.750
NORTHROP CORP.	1	0	0	4.0	1.0	1.000
EXEMPLARS	0	1	0	2.0	0.0	0.000
FEL-PRO	0	1	0	1.0	0.0	0.000
KEMPER INSURANCE	0	1	0	0.0	0.0	0.000
SEARS	0	0	0	0.0	0.0	0.000

EAST DIVISION 10-26-1994

TEAM NAME	W	L	D	GAME POINTS	MATCH POINTS	PCT
CHICAGO POST OFFICE	2	0	0	9.5	2.0	1.000
COLUMBIA COLLEGE	1	0	0	3.5	1.0	1.000
AMOCO CORP.	0	1	0	2.5	0.0	0.000
CTA	0	1	0	1.5	0.0	0.000
HULL TRADING CO.	0	0	0	0.0	0.0	0.000
CHICAGO MERC. EXCH.	0	1	0	0.0	0.0	0.000
CHICAGO RES. & TRDG.	0	0	0	0.0	0.0	0.000
CONTINENTAL BANK	0	0	0	0.0	0.0	0.000
ALUMNI CENTRAL	0	0	0	0.0	0.0	0.000

NEAR WEST DIVISION 10-26-1994

TEAM NAME	W	L	D	GAME POINTS	MATCH POINTS	PCT
ARGONNE KNIGHTS	2	0	0	10.5	2.0	1.000
AT&T CHARGERS	1	0	0	5.5	1.0	1.000
UNILEVER	1	1	0	4.5	1.0	0.500
A & B RADIO	0	2	0	1.0	0.0	0.000
J. I. CASE	0	1	0	0.5	0.0	0.000

FAR WEST DIVISION 10-26-1994

TEAM NAME	W	L	D	GAME POINTS	MATCH POINTS	PCT
ARGONNE ROOKS	2	0	0	9.0	2.0	1.000
FERMILAB	2	0	0	8.0	2.0	1.000
AT&T ROYALS	1	1	0	6.5	1.0	0.500
AT&T TYROS	1	1	0	5.0	1.0	0.500
MIDCON CORP	0	2	0	4.0	0.0	0.000
AT&T DRAGONS	0	1	0	2.0	0.0	0.000
WHEATON COLLEGE	0	1	0	1.5	0.0	0.000

15-SEP-94 UNILEVER .5 AT&T CHARGERS 5.5
 ROUND 1

BD	RATINGS	SCORE		RATINGS	SCORE
1 ELLICE, W	1873 -9	0	WARREN, J	2114 4	1
2 NOTERMAN, T	1190 -2	0	RADAVICIUS, E	1713 1	1
3 DZURICKO, G	1147 -1	0	STAMM, V	1740 1	1
4 LULKIN, V	0 0	.5	DOBR, K	1516 0	.5
5 ROMENESKO, O	0 0	0	BRADY, R	1267 0	1
6	0 0	0F	THOMAS, J	1465 0	1F

21-SEP-94 A & B RADIO 0 ARGONNE KNIGHTS 5
 ROUND 1

BD	RATINGS	SCORE		RATINGS	SCORE
1 LASKY, JIM	1695 -2	0	BENEDEK, R	2211 1	1
2 O'DELL, DW	1620 -5	0	KEISLER, J	1987 5	1
3 TYREE, D	1482 -7	0	HILL, R	1780 7	1
4 MIKULECKY, B	1304 -7	0	BAURAC, D	1604 5	1
5 GORZ, E	1311 0	0	GALLAGHER, H	0 0	1
6	0 0	0F		0 0	0F

06-OCT-94 ARGONNE KNIGHTS 5.5 J. I. CASE .5
 ROUND 2

BD	RATINGS	SCORE		RATINGS	SCORE
1 BENEDEK, R	2212-12	.5	KALE, S	1840 18	.5
2 KEISLER, J	1992 8	1	SATTERLEE, D	1719 -5	0
3 HILL, R	1787 11	1	WHITE, H	1592-11	0
4 SUAREZ, E	1632 6	1	KANAS, W	1299 -6	0
5 BAURAC, D	1609 2	1	MOTYCKA, R	1156 -3	0
6 KINSELLA, G	1468 3	1	DUFRESNE, T	1000 -3	0
7 GALLAGHER, H	0 0	0	KLINFELTER, H	1530 0	1
(ROOKS) 8 SEMONES, E	0 0	0	REID, C	1362 0	1
(AMOCO) 9 POMA, D	1307 0	1	KATZ, J	0 0	0
(JCASE) 10 DUFRESNE, T	997 0	1	ITZENHEUSER, W	0 0	0
(JCASE) 11 NOBLE, S	0 0	0	DIAZ, L	0 0	1

12-OCT-94 A & B RADIO 1 UNILEVER 4
 ROUND 2

BD	RATINGS	SCORE		RATINGS	SCORE
1 LASKY, JIM	1693 0	0F	ELLICE, W	1864 0	1F
2 O'DELL, DW	1615-42	0	DZURICKO, G	1146 42	1
3 TYREE, D	1475 0	0F	MCKAY, P	0 0	1F
4 LASKY, N	1352 0	0	LULKIN, V	0 0	1
5 MIKULECKY, B	1297 29	1	STEVENSON, R	1392-29	0
6	0 0	0F		0 0	0F

22-SEP-94 CHICAGO POST OFFICE 4.5 CTA 1.5
 ROUND 1

BD	RATINGS	SCORE		RATINGS	SCORE
1 INUMERABLE, F	2236 0	0F	MATTHEWS, J	1747 0	1F
2 ALLEN, H	1877 8	1	JARRETT, T	1604 -8	0
3 PERAREN, E	1802 9	1	WILSON, A	1555 -9	0
4 CARTER, L	1546 -1	.5	ABRAHAM, T	1531 1	.5
5 TURNER, K	1559 0	1	NOWAK, W	0 0	0
6 HOWARD, W	1518 0	1	COLEMAN, O	0 0	0

27-SEP-94	COLUMBIA COLLEGE	3.5	AMOCO CORP.	2.5	
ROUND 1					
	BD	RATINGS	SCORE	RATINGS SCORE	
1	SANTIAGO, T	1972-15	0	HODINA, J	2094 15 1
2	MCALISTER, K	1959 5	.5	SMILEY, R	2024 -5 .5
3	KOSTECKA, K	1664 5	.5	ATKINSON, J	1728 -5 .5
4	PRATTS, M	1693 -3	.5	WENTLING, C	1659 3 .5
5	HERNANDEZ, DD	1480 21	1	KRULL, E	1461-21 0
6	MARTIN, K	1509 0	1	BRITT-WEBB, E	0 0 0
17-OCT-94	CHICAGO POST OFFICE	5	CHICAGO MERC. EXCH.	0	
ROUND 3					
	BD	RATINGS	SCORE	RATINGS SCORE	
1	MARCOWKA, R	1955 3	1	SLAGLE, S	1589 -5 0
2	ALLEN, H	1885 4	1	SULLIVAN, C	1494 -4 0
3	HOWARD, W	1518 9	1	COTE, J	1277 -9 0
4	CARTER, L	1545 0	1F	WARE, K	0 0 0F
5	GRIESMEYER, W	1317 0	1F	BECK, P	0 0 0F
6		0 0	0F		0 0 0F
28-SEP-94	FERMILAB	4	AT&T DRAGONS	2	
ROUND 1					
	BD	RATINGS	SCORE	RATINGS SCORE	
1	BEZZUBOV, V	2273 15	1	TEGEL, F	2145-10 0
2	KOZLOVSKY, M	2238-20	.5	DURKEE, D	1770 13 .5
3	MOTTA, H	2060 5	1	PIAO, T	1716 -5 0
4	SPIEGEL, L	1990 2	1	WARD, C	1551 -2 0
5	GAINES, I	1740-24	0	EUSTACE, D	1504 36 1
6	HARRIS, R	1644-18	.5	KRUEGER, J	1296 18 .5
28-SEP-94	AT&T ROYALS	5.5	AT&T TYROS	.5	
ROUND 1					
	BD	RATINGS	SCORE	RATINGS SCORE	
1	GUIO, J	2072 -4	.5	STOLTZ, B	2024 4 .5
2	DOBROVOLNY, C	1996 21	1	BHOJWANI, C	1977-21 0
3	PEHAS, A	1952 24	1	TAMEZ, I	1982-24 0
4	OGASAWARA, L	1862 5	1	THOMAS, G	1496 -5 0
5	ROSLEY, D	1834 1	1	SCHWARTZ, M	1060 -1 0
6	HAHNE, D	1606 0	1	RIPPE, D	0 0 0
27-SEP-98	ARGONNE ROOKS	4	MIDCON CORP	2	
ROUND 1					
	BD	RATINGS	SCORE	RATINGS SCORE	
1	LEVINE, D	2399-19	.5	CONNOR, P	2007 19 .5
2	SHEYNIN, S	2170-15	.5	EGERTON, J	1909 15 .5
3	GREEN, D	1790 0	1	ROSENBERG, B	0 0 0
4	MORRISON, J	1728 0	1	LORENZ, B	0 0 0
5	DECMAN, S	1677 0	1	FLEET, R	0 0 0
6	BURBA, K	1414 0	0	LOGAN, H	0 0 1
7	SEMONES, E	0 0	0	HANSEN, B	0 0 1

11-OCT-94 AT&T TYROS 4.5 WHEATON COLLEGE 1.5
 ROUND 2

BD	RATINGS	SCORE	RATINGS	SCORE
1 STOLTZ, B	2028-24	0	UNDERWOOD, W	2008 16 1
2 BHOJWANI, C	1956 9	1	WALLIN, R	1714 -9 0
3 BROZOVICH, J	1750 3	1	MAYNARD, J	1397 -5 0
4 SMITH, BR	1460 0	1	PENNINGTON, J	0 0 0
5 KARPIERZ, J	1126 0	.5	BOSTICK, T	0 0 .5
6 SCHWARTZ, M	1059 0	1	GIMPLE, R	0 0 0

12-OCT-94 AT&T ROYALS 1 ARGONNE ROOKS 5
 ROUND 2

BD	RATINGS	SCORE	RATINGS	SCORE
1 GUIO, J	2068 -6	0	LEVINE, D	2380 6 1
2 PEHAS, A	1976-12	0	SHEYNIN, S	2155 12 1
3 OGASAWARA, L	1867-12	0	BERRY, G	2049 8 1
4 ROSLEY, D	1835-32	0	DECMAN, S	1677 21 1
5 BLACKMON, E	1779 7	1	SCHWAB, W	1492 -7 0
6	0 0	0F	SEMONES, E	0 0 1F

13-OCT-94 MIDCON CORP 2 FERMILAB 4
 ROUND 2

BD	RATINGS	SCORE	RATINGS	SCORE
1 CONNOR, P	2026 -8	0	BEZZUBOV, V	2288 8 1
2 EGERTON, J	1924 31	1	MOTTA, H	2065-31 0
3 WHITED, W	1871-15	0	SPIEGEL, L	1992 10 1
4 ROSENBERG, B	0 0	0	GAINES, I	1716 0 1
5 LORENZ, B	0 0	0	HARRIS, R	1626 0 1
6 FLEET, R	0 0	1	PARA, A	1551 0 0

29-SEP-94 MOTOROLA 3 UOP PROCESS DIV. 3
 ROUND 1

BD	RATINGS	SCORE	RATINGS	SCORE
1 HASAN, Y	2264-27	0	STEVANOVIC, M	2199 18 1
2 MELNIKOV, I	2200 16	1	BOLDINGH, E	2102-16 0
3 WALLACH, C	2141-26	0	BUERGER, E	2079 18 1
4 SAMELSON, C	1992 6	1	SAHLI, E	1751 -9 0
5 CIESLEK, D	1940 10	1	MICKLICH, F	1719 -7 0
6 FAHRENHOLTZ, S	1799-31	0	SAJBEL, P	1652 31 1
7 CURRAN, T	0 0	1	LIKHTEREV, M	1501 0 0
8 PILLAI, J	0 0	0	NARSOLIS, F	0 0 1
9 PRATT, C	0 0	1	VAN ZILE, C	1382 0 0
10 BARTUSIAK, P	0 0	0	VANDECOTTE, M	0 0 1
11 GONCHAROFF, N	1771 0	1	MORTADA, C	0 0 0 (MTRLA)
12 MELNIKOV, N	0 0	1	BARTUSIAK, P	0 0 0 (MTRLA)

06-OCT-94 NORTHROP CORP. 4 EXEMPLARS 2
 ROUND 1

BD	RATINGS	SCORE	RATINGS	SCORE
1 JAKSTAS, K	2180 10	1	BLOOM, B	2062-15 0
2 GOLUMBOVSKI, P	2126 17	1	CREWSE, L	2044-17 0
3 DIAZ, P	2015 16	1	OSTERLUND, R	1920-16 0
4 VIGANTS, A	1592 0	1F	FRISKE, T	1866 0 0F
5 ELEK, G	1009 -1	0	SUERTH, F	1627 1 1
6 WONG, KK	0 0	0	BROTSOS, J	1541 0 1

13-OCT-94 UOP PROCESS DIV.
ROUND 2

6

KEMPER INSURANCE

0

BD		RATINGS	SCORE		RATINGS	SCORE
1	STEVANOVIC, M	2217 11	1	SIWEK, M	2126-11	0
2	BOLDINGH, E	2086 17	1	VAN MEER, J	1998-17	0
3	BUERGER, E	2097 11	1	LEONG, G	2003-11	0
4	SAHLI, E	1742 8	1	OLSEN, A	1478 -8	0
5	MICKLICH, F	1712 5	1	LAMBIRIS, J	1424 -7	0
6	SAJBEL, P	1683 0	1	GALKO, D	0 0	0
7	VANDECOTTE, M	0 0	1	MCFARLIN, B	1215 0	0
8	LIKHTEREV, M	1501 0	0	POZNIAK, J	0 0	1
9	NARSOLIS, F	0 0	1	AQUENDE, A	0 0	0
10	VAN ZILE, C	1382 0	1	PAYTON, P	0 0	0

17-OCT-94 MOTOROLA
ROUND 2

5

FEL-PRO

1

BD		RATINGS	SCORE		RATINGS	SCORE
1	MELNIKOV, I	2216 0	1F	QUERUBIN, R	2075 0	0F
2	WALLACH, C	2115 1	1	HESS, B	1456 -1	0
3	SAMELSON, C	1998 1	1	FELDMAN, A	1438 -1	0
4	GONCHAROFF, N	1771 0	1F	DEARDORFF, M	1437 0	0F
5	PRATT, C	0 0	0	NISHIMURA, K	1285 0	1
6	GRYPARIS, J	1404 0	1F	THOMPSON, R	1063 0	0F
7	MELNIKOV, N	0 0	1	CATENA, J	0 0	0 (MTRLA)

NORTH DIVISION TOP TEN

REYES, R	SEARS	2336D
HASAN, Y	MTRLA	2237
WONG, P	EXMPL	2231C
STEVANOVIC, M	UOP	2228C
MELNIKOV, I	MTRLA	2216
JAKSTAS, K	NORTH	2190C
GOLUMBOVSKI, P	NORTH	2143
WALLACH, C	MTRLA	2116
SIWEK, M	KEMPR	2115C
BUERGER, E	UOP	2108D

EAST DIVISION TOP TEN

INUMERABLE, F	PSTOF	2236
JASAITIS, A	CRT	2216C
CZERNIECKI, A	ALUMN	2143C
FRIESEMA, W	CRT	2122
HODINA, J	AMCRP	2109
SMILEY, R	AMCRP	2019
COX, M	ALUMN	2014C
LEONG, D	ALUMN	1971
NELSON, H	CONBK	1967
MCALISTER, K	COLUM	1964

NEAR WEST DIVISION TOP TEN

BENEDEK, R	KNIGHT	2200D
WARREN, J	CHRGR	2118T
KEISLER, J	KNIGHT	2000
ELLICE, W	UNILV	1864
KALE, S	JCASE	1858
HILL, R	KNIGHT	1798
STAMM, V	CHRGR	1741D
SATTERLEE, D	JCASE	1714C
RADAVICIUS, E	CHRGR	1714D
SUAREZ, E	KNIGHT	1638

FAR WEST DIVISION TOP TEN

LEVINE, D	ROOKS	2386
BEZZUBOV, V	FERMI	2296*
KOZLOVSKY, M	FERMI	2218
SHEYNIN, S	ROOKS	2167
TEGEL, F	DRGNS	2135D
BUCHNER, R	ROYLS	2129
LUDWIG, T	DRGNS	2096C
GUIO, J	ROYLS	2062
BERRY, G	ROOKS	2057D
MOTTA, H	FERMI	2034

MOST IMPROVED PLAYERS

EGERTON, J	MDCON	46
EUSTACE, D	DRGNS	36
SAJBEL, P	UOP	31
STEVANOVIC, M	UOP	29
BUERGER, E	UOP	29
BEZZUBOV, V	FERMI	23
MIKULECKY, B	RADIO	22
HERNANDEZ, DD	COLUM	21
DOBROVOLNY, C	ROYLS	21
DECMAN, S	ROOKS	21

NAME	TEAM	W	L	D	RATING	NAME	TEAM	W	L	D	RATING
ABBOTT, J	MTRLA	0	0	0	0000?	CHRISTIAN, R	DRGNS	0	0	0	1808C
ABRAHAM, T	CTA	0	0	1	1532	CIESLEK, D	MTRLA	1	0	0	1950
ALLEN, H	PSTOF	2	0	0	1889	CISKO, G	FERMI	0	0	0	1615*
AMUNDSEN, C	KEMPR	0	0	0	0000?	COLEMAN, O	CTA	0	1	0	0000?
ANDERSON, CJ	ROYLS	0	0	0	1446	CONNELY, S	HULL	0	0	0	0000?
AQUENDE, A	KEMPR	0	1	0	0000?	CONNOR, P	MDCON	0	1	1	2018
ATKINSON, J	AMCRP	0	0	1	1723C	COOPER, W	PSTOF	0	0	0	1717
AUGSBURGER, L	MTRLA	0	0	0	1745	COTE, J	MERC	0	1	0	1268
AUSTIN, R	ROYLS	0	0	0	1125#	COX, M	ALUMN	0	0	0	2014C
BAER, M	AMCRP	0	0	0	1347*	CREWSE, L	EXMPL	0	1	0	2027
BAKER, B	FLPRO	0	0	0	1069	CUMBERLAND, M	SEARS	0	0	0	0000?
BAKER, LR	MERC	0	0	0	1112*	CUMMUTA, P	KEMPR	0	0	0	1368
BANZA, S	HULL	0	0	0	0000?	CURRAN, T	MTRLA	1	0	0	0000?
BARGERSTOCK, D	CRT	0	0	0	1810	CZERNIECKI, A	ALUMN	0	0	0	2143C
BARNES, D	ROAD	0	0	0	0000?	DAVIDSON, M	ALUMN	0	0	0	1678*
BARTUSIAK, P	MTRLA	0	2	0	0000?	DAVIS, R	PSTOF	0	0	0	0000?
BAURAC, D	KNGHT	2	0	0	1611C	DEARDORFF, M	FLPRO	0	0	0	1437*
BECK, P	MERC	0	0	0	0000?	DECMAN, S	ROOKS	2	0	0	1698D
BENEDEK, R	KNGHT	1	0	1	2200D	DENG, J	CRT	0	0	0	1582
BENESA, A	GROLR	0	0	0	2211	DEWITT, G	ROCKW	0	0	0	1423C
BERNARD, D	CRT	0	0	0	1303	DEZONNO, T	ROCKW	0	0	0	1255*
BERRY, G	ROOKS	1	0	0	2057D	DIAZ, L	JCASE	1	0	0	0000?
BEZZUBOV, V	FERMI	2	0	0	2296*	DIAZ, P	NORTH	1	0	0	2031
BHOJWANI, C	TYROS	1	1	0	1965	DJORDJEVIC, I	FERMI	0	0	0	0000?
BLACKMON, E	ROYLS	1	0	0	1786	DOBR, K	CHRGR	0	0	1	1516T
BLAZIE, J	TYROS	0	0	0	1832C	DOBROVOLNY, C	ROYLS	1	0	0	2017
BLOOM, B	EXMPL	0	1	0	2047	DONNA, D	MTRLA	0	0	0	0000?
BOLDINGH, E	UOP	1	1	0	2103	DORFF, M	SEARS	0	0	0	1493
BOOKER, G	RADIO	0	0	0	1398*	DUFRESNE, T	JCASE	1	1	0	997*
BOSTICK, T	WHEAT	0	0	1	0000?	DURKEE, D	DRGNS	0	0	1	1783C
BRADY, R	CHRGR	1	0	0	1267	DYCJKOWSKI, R	CONBK	0	0	0	1561
BRANCH, Y	COLUM	0	0	0	1301*	DZURICKO, G	UNILV	1	1	0	1188#
BRIONES, M	UOP	0	0	0	1660C	EDWARDS, S	AWEST	0	0	0	1278
BRITT-WEBB, E	AMCRP	0	1	0	0000?	EFRON, D	ROCKW	0	0	0	1638
BROCKETT, M	SEARS	0	0	0	1834	EGERTON, J	MDCON	1	0	1	1955
BRONFELD, A	ALUMN	0	0	0	1847	ELEK, G	NORTH	0	1	0	1008*
BROTSOS, J	EXMPL	1	0	0	1541D	ELLICE, W	UNILV	0	1	0	1864
BROZOVICH, J	TYROS	1	0	0	1753C	ERLENBORN, M	AWEST	0	0	0	1482*
BUCHNER, R	ROYLS	0	0	0	2129	EUSTACE, D	DRGNS	1	0	0	1540
BUERGER, E	UOP	2	0	0	2108D	FAHRENHOLTZ, S	MTRLA	0	1	0	1768*
BURBA, K	ROOKS	0	1	0	1414C	FELDMAN, A	FLPRO	0	1	0	1437C
BURDICK, S	COLUM	0	0	0	1582	FLEET, R	MDCON	1	1	0	0000?
BURIAN, D	NORTH	0	0	0	1680C	FRAATS, D	CONBK	0	0	0	1867
CARNAL, D	CRT	0	0	0	1210#	FRANCISKOVICH, D	HULL	0	0	0	1113#
CARTER, L	PSTOF	0	0	1	1545	FRANEK, M	ALUMN	0	0	0	1790C
CARTER, O	ROAD	0	0	0	0000?	FRIESEMA, W	CRT	0	0	0	2122
CATENA, J	MTRLA	0	1	0	0000?	FRISKE, T	EXMPL	0	0	0	1866
CHAN, H	SEARS	0	0	0	1567	GAINES, I	FERMI	1	1	0	1716C
CHARKOVSKY, R	ALUMN	0	0	0	1619	GALKO, D	KEMPR	0	1	0	0000?
CHEVERESAN, S	UOP	0	0	0	1434C	GALLAGHER, H	KNGHT	1	1	0	0000?

? - UNRATED

- 5 TO 9 RATED GAMES

* - 10 TO 24 RATED GAMES

C - CENTURY CLUB MEMBER

D - DOUBLE CENTURION

T - TRIPLE CENTURION

Q - QUAD CENTURION

NAME	TEAM	W	L	D	RATING	NAME	TEAM	W	L	D	RATING
GANSER, A	CONBK	0	0	0	0000?	KOEPELE, J	TYROS	0	0	0	0000?
GASTON, K	JCASE	0	0	0	1274*	KOGAN, G	CONBK	0	0	0	1850
GAZMEN, E	GROLR	0	0	0	2234	KOSTECKA, K	COLUM	0	0	1	1669
GIMPLE, R	WHEAT	0	1	0	0000?	KOZLOVSKY, M	FERMI	0	0	1	2218
GOLDBOGEN, G	COLUM	0	0	0	0000?	KRUEGER, J	DRGNS	0	0	1	1314#
GOLLA, R	SEARS	0	0	0	2029D	KRULL, E	AMCRP	0	1	0	1440
GOLUMBOVSKI, P	NORTH	1	0	0	2143	LACAPENA	GROLR	0	0	0	0000?
GONCHAROFF, N	MTRLA	1	0	0	1771Q	LAMBIRIS, J	KEMPR	0	1	0	1417*
GORZ, E	RADIO	0	1	0	1311#	LASKY, JIM	RADIO	0	1	0	1693#
GREEN, D	ROOKS	1	0	0	1790C	LASKY, N	RADIO	0	1	0	1352C
GRIESMEYER, W	PSTOF	0	0	0	1317	LATIMER, E	SEARS	0	0	0	2037D
GUILLEN, B	KEMPR	0	0	0	1402*	LEE, B	UNILV	0	0	0	1470
GUIO, J	ROYLS	0	1	1	2062	LEONG, D	ALUMN	0	0	0	1971
HAHNE, D	ROYLS	1	0	0	1606	LEONG, G	KEMPR	0	1	0	1992C
HAMILTON, L	AMCRP	0	0	0	1380	LENER, R	SEARS	0	0	0	0000?
HAMMOND, M	CONBK	0	0	0	1365	LESTER, M	MTRLA	0	0	0	1623
HAMPER, P	AMCRP	0	0	0	1288*	LEVINE, D	ROOKS	1	0	1	2386
HANSEN, B	MDCON	1	0	0	0000?	LIKHTEREV, M	UOP	0	2	0	1501#
HARRIS, FF	ROAD	0	0	0	1404#	LITVINAS, A	ALUMN	0	0	0	1690C
HARRIS, R	FERMI	1	0	1	1626	LOGAN, H	MDCON	1	0	0	0000?
HASAN, Y	MTRLA	0	1	0	2237	LOMONT, C	SEARS	0	0	0	1494#
HEDSTROM, L	RAIL	0	0	0	0000?	LORENZ, B	MDCON	0	2	0	0000?
HERNANDEZ, DD	COLUM	1	0	0	1501	LOSOFF, A	CRT	0	0	0	1864
HESS, B	FLPRO	0	1	0	1455	LUDWIG, T	DRGNS	0	0	0	2096C
HILL, C	FERMI	0	0	0	1663*	LUEDERS, J	CRT	0	0	0	0000?
HILL, R	KNIGHT	2	0	0	1798	LULKIN, V	UNILV	1	0	1	0000?
HILLIARD, J	CONBK	0	0	0	0000?	MAA, R	DRGNS	0	0	0	0000?
HILTON, J	MERC	0	0	0	1004*	MARCOWKA, R	PSTOF	1	0	0	1958C
HODINA, J	AMCRP	1	0	0	2109	MARTIN, K	COLUM	1	0	0	1509
HOWARD, W	PSTOF	2	0	0	1527	MATTHEWS, J	RAIL	0	0	0	1747
HUGHES, N	KEMPR	0	0	0	1852C	MAYNARD, J	WHEAT	0	1	0	1392
HUNG, N	MTRLA	0	0	0	1471#	MCALISTER, K	COLUM	0	0	1	1964
INUMERABLE, F	PSTOF	0	0	0	2236	MCCLENDON, L	CONBK	0	0	0	1340
ITZENHEUSER, W	JCASE	0	1	0	0000?	MCFARLIN, B	KEMPR	0	1	0	1215#
JACKSON, JJ	ROAD	0	0	0	0000?	MCINTOSH, S	CONBK	0	0	0	1142*
JACOBS, N	DRGNS	0	0	0	1983C	MCKAY, P	UNILV	0	0	0	0000?
JAKSTAS, K	NORTH	1	0	0	2190C	MCQUINN, J	ROCKW	0	0	0	1450
JARRETT, T	CTA	0	1	0	1596#	MELNIKOV, I	MTRLA	1	0	0	2216
JASAITIS, A	CRT	0	0	0	2216C	MELNIKOV, N	MTRLA	2	0	0	0000?
JONES, B	ROCKW	0	0	0	2061	MENGEL, M	FERMI	0	0	0	0000?
JONES, M	ROAD	0	0	0	1358*	MICKLICH, F	UOP	1	1	0	1717C
KALE, S	JCASE	0	0	1	1858	MIKULECKY, B	RADIO	1	1	0	1326C
KANAS, W	JCASE	0	1	0	1293C	MILLER, TT	SEARS	0	0	0	1728
KARPIERZ, J	TYROS	0	0	1	1126*	MITCHAM, L	ROCKW	0	0	0	1552*
KATZ, J	JCASE	0	1	0	0000?	MOORE, JJ	MTRLA	0	0	0	0000?
KAUFMAN, M	KEMPR	0	0	0	0000?	MORRISON, J	ROOKS	1	0	0	1728
KEEFE, E	FLPRO	0	0	0	1186#	MORTADA, C	MTRLA	0	1	0	0000?
KEISLER, J	KNIGHT	2	0	0	2000	MORTON, B	SEARS	0	0	0	1569
KINSELLA, G	KNIGHT	1	0	0	1471C	MOTTA, H	FERMI	1	1	0	2034
KLINEFELTER, H	JCASE	1	0	0	1530C	MOTYCKA, R	JCASE	0	1	0	1153

? - UNRATED

- 5 TO 9 RATED GAMES

* - 10 TO 24 RATED GAMES

C - CENTURY CLUB MEMBER

D - DOUBLE CENTURION

T - TRIPLE CENTURION

Q - QUAD CENTURION

NAME	TEAM	W	L	D	RATING	NAME	TEAM	W	L	D	RATING
MUDAN, M	HULL	0	0	0	0000?	RZESZUTKO, R	ALUMN	0	0	0	1820
NARSOLIS, F	UOP	2	0	0	0000?	SAHLI, E	UOP	1	1	0	1750*
NAUGHTON, T	HULL	0	0	0	1339*	SAJBEL, P	UOP	2	0	0	1683
NELL, D	UNILV	0	0	0	1077#	SAMELSON, C	MTRLA	2	0	0	1999C
NELSON, H	CONBK	0	0	0	1967	SAMULAK, C	HULL	0	0	0	1147#
NISHIMURA, K	FLPRO	1	0	0	1285*	SANCHEZ, P	RAIL	0	0	0	0000?
NOBLE, S	JCASE	0	1	0	0000?	SANCHEZ, R	GROLR	0	0	0	1526*
NOTERMAN, T	UNILV	0	1	0	1188	SANTIAGO, T	COLUM	0	1	0	1957*
NOWAK, W	CTA	0	1	0	1369#	SATTERLEE, D	JCASE	0	1	0	1714C
NWABUDE, O	CHRGR	0	0	0	1029*	SAWDO, E	JCASE	0	0	0	1399
O'BRIEN, D	UOP	0	0	0	1417*	SCHWAB, W	ROOKS	0	1	0	1485
O'DELL, DW	RADIO	0	2	0	1573C	SCHWARTZ, M	TYROS	1	1	0	1059*
OGASAWARA, L	ROYLS	1	1	0	1855C	SEMONES, E	ROOKS	0	2	0	0000?
OLSEN, A	KEMPR	0	1	0	1470	SHAFF, R	TYROS	0	0	0	1532C
OSTERLUND, R	EXMPL	0	1	0	1904	SHEU, G	CHRGR	0	0	0	1343*
PARA, A	FERMI	0	1	0	1551	SHEYNIN, S	ROOKS	1	0	1	2167
PARAOAN, E	CONBK	0	0	0	1761C	SHOUSE, B	MTRLA	0	0	0	0000?
PATTON, D	CHRGR	0	0	0	0000?	SHUKLA, S	FERMI	0	0	0	0000?
PAYTON, P	KEMPR	0	1	0	0000?	SIEGEL, R	CONBK	0	0	0	1485C
PEHAS, A	ROYLS	1	1	0	1964	SIMS, B	CRT	0	0	0	1519#
PENNINGTON, J	WHEAT	0	1	0	0000?	SIWEK, M	KEMPR	0	1	0	2115C
PEPPERS, M	RAIL	0	0	0	0000?	SLAGLE, S	MERC	0	1	0	1584
PERAREN, E	PSTOF	1	0	0	1811	SMILEY, R	AMCRP	0	0	1	2019
PIAO, T	DRGNS	0	1	0	1711	SMITH, BR	TYROS	1	0	0	1460
PILLAI, J	MTRLA	0	1	0	0000?	SMITH, JM	ALUMN	0	0	0	1196*
POMA, D	AMOCO	1	0	0	1307	SOLLANO, E	GROLR	0	0	0	1956
POMA, M	AWEST	0	0	0	0000?	SOMBONG, M	CONBK	0	0	0	1681
POZNIAK, J	KEMPR	1	0	0	0000?	SPIEGEL, L	FERMI	2	0	0	2002C
PRATT, C	MTRLA	1	1	0	0000?	STAMM, V	CHRGR	1	0	0	1741D
PRATTS, M	COLUM	0	0	1	1690	STAPLES, C	FERMI	0	0	0	1200#
PRICE, B	AWEST	0	0	0	1086#	STEINER, D	HULL	0	0	0	0000?
PUNZALAN, N	GROLR	0	0	0	1599	STEVANOVIC, M	UOP	2	0	0	2228C
QUERUBIN, R	FLPRO	0	0	0	2075#	STEVENS, J	COLUM	0	0	0	1380
RADAVICIUS, E	CHRGR	1	0	0	1714D	STEVENSON, R	UNILV	0	1	0	1363
RAFACZ, T	ROCKW	0	0	0	1698	STINSON, M	ROYLS	0	0	0	2006
RAFACZ, W	ROCKW	0	0	0	1638	STOLTZ, B	TYROS	0	1	1	2004
RAFFERTY, M	HULL	0	0	0	0000?	SUAREZ, E	KNIGHT	1	0	0	1638
RANGEL, R	HULL	0	0	0	1741	SUERTH, F	EXMPL	1	0	0	1628C
REED, K	TYROS	0	0	0	0000?	SULLIVAN, C	MERC	0	1	0	1490
REID, C	JCASE	1	0	0	1362	SZAUKELLIS, W	MTRLA	0	0	0	0000?
REYES, R	SEARS	0	0	0	2336D	SZONTAGH, T	CRT	0	0	0	0000?
RIPPE, D	TYROS	0	1	0	0000?	TAMEZ, I	TYROS	0	1	0	1958
ROJAS, R	RAIL	0	0	0	0000?	TAYLOR, M	ROAD	0	0	0	0000?
ROMENESKO, G	UNILV	0	1	0	0000?	TEGEL, F	DRGNS	0	1	0	2135D
ROSENBERG, B	MDCON	0	2	0	0000?	THOMAS, G	TYROS	0	1	0	1491
ROSLEY, D	ROYLS	1	1	0	1803	THOMAS, J	CHRGR	0	0	0	1465C
ROSS, L	JCASE	0	0	0	0000?	THOMPSON, R	FLPRO	0	0	0	1063
RUBIN, J	UNILV	0	0	0	0000?	TSEITLIN, E	MTRLA	0	0	0	0000?
RUDDY, J	MERC	0	0	0	1205	TURNER, K	PSTOF	1	0	0	1559
RUEB, R	HULL	0	0	0	0000?	TYREE, D	RADIO	0	1	0	1475*

? - UNRATED

- 5 TO 9 RATED GAMES

* - 10 TO 24 RATED GAMES

C - CENTURY CLUB MEMBER

D - DOUBLE CENTURION

T - TRIPLE CENTURION

Q - QUAD CENTURION

NAME	TEAM	W	L	D	RATING	NAME	TEAM	W	L	D	RATING
UNDERWOOD, W	WHEAT	1	0	0	2024C	WEITZ, R	EXMPL	0	0	0	1682C
VALDEZ, C	MTRLA	0	0	0	0000?	WELTER, P	SEARS	0	0	0	1646#
VAN MEER, J	KEMPR	0	1	0	1981	WENTLING, C	AMCRP	0	0	1	1662C
VAN OUTRIVE, R	RAIL	0	0	0	1096#	WEST, R	MTRLA	0	0	0	1447#
VAN ZILE, C	UOP	1	1	0	1382*	WHITE, H	JCASE	0	1	0	1581
VANDECOTTE, M	UOP	2	0	0	0000?	WHITED, W	MDCON	0	1	0	1856
VERIVE, J	AWEST	0	0	0	1615*	WHITSITT, S	AWEST	0	0	0	1504*
VICK, H	MTRLA	0	0	0	1516	WILLIAMS, A	ROAD	0	0	0	0000?
VIGANTS, A	NORTH	0	0	0	1592	WILLIAMS, J	RAIL	0	0	0	0000?
WALLACH, C	MTRLA	1	1	0	2116	WILSON, A	CTA	0	1	0	1546
WALLIN, R	WHEAT	0	1	0	1705	WILSON, M	SEARS	0	0	0	1293#
WARD, C	DRGNS	0	1	0	1549D	WONG, KK	NORTH	0	1	0	0000?
WARE, K	MERC	0	0	0	0000?	WONG, P	EXMPL	0	0	0	2231C
WARREN, J	CHRGR	1	0	0	2118T	YOUNG, R	HULL	0	0	0	1386*
WEBER, L	GROLR	0	0	0	2144	ZEIDEL, J	MERC	0	0	0	1947
WEISS, G	HULL	0	0	0	0000?	ZOELLNER, J	CONBK	0	0	0	1294C
WEISSKOPF, J	HULL	0	0	0	1334#	ZUNGOLO, J	CRT	0	0	0	0000?

? - UNRATED
- 5 TO 9 RATED GAMES
* - 10 TO 24 RATED GAMES

C - CENTURY CLUB MEMBER
D - DOUBLE CENTURION
T - TRIPLE CENTURION
Q - QUAD CENTURION