









Chicago Industrial Chess League

Bulletin No.1, Vol. 38
September 1994

INSIDE THIS ISSUE:

-  **2 Squares Column by Marv Cox**
-  **Games**
-  **Treasurer's Report**
-  **Speed Tournament Results**
-  **Speed Ratings**
-  **Ratings Chairman Report**
-  **Summer Business Meeting minutes**

 **-NEED INPUT!** To make the CICL bulletin even better we are looking for anyone interested in submitting **articles** or **games**. If you are interested, call or write to the bulletin editor.

CICL OFFICERS As of September 1994	
President:	James Hodina 718 Central Park Ave. Flossmoor, IL 60422 W:(708) 990-6115 H:(708) 799-5571
Secretary:	Anthony Jasaitis P.O. Box 664 Bedford Park, IL 6499-0664 W:(708) 406-6420
Treasurer:	Wesley K. Underwood 207 S. Dorchester Ave. Wheaton, IL 60187 W:(708) 752-5127 H:(708) 462-0393
Ratings :	Charles Ward
Chairman:	615 S. Lincoln Hinsdale, IL 60521 W:(708) 979-4599 H:(708) 325-3885 (708) 979-8451 F
Production:	Marty Franek
Circulation:	9044 S. 51st Ave Oak Lawn, IL 60453-0397 W:(312) 353-0397 H:(708) 636-3714
East :	Keith Kosticka
Division :	Columbia College
Chairman:	Chicago, IL 60605-1996 W:(312) 663-1600 ext, 437
Near West:	Satish L. Kale
Division :	Jl Case
Chairman:	7 South 600 County Line Rd Hinsdale, IL 60521 W:(708) 887-2372 H:(708) 325-5253
Far West :	Irwin Gaines
Division :	Fermilab - MS 127
Chairman:	P.O. Box 500 Batavia, IL 60510 W:(708) 840-4022
North :	Ruben Reyes
Division :	2019 W. Leland Ave.
Chairman:	Chicago, IL 60625-1513 W:(708) 286-0758 H:(312) 334-5462 F (312) 769-0311
Bulletin Editor:	See North Division Chairman
Banquet & Publicity :	Todd J. DuFresne
Chairman:	2115 S. Finley Apt 216 Lombard, IL 60148 W:(708) 887-3771 or 2049 H:(708) 916-4677

READER'S FORUM

ATTENTION ALL CHESS PLAYERS

How would you like to play 10 more games, than the schedule will allow ?

All within CICL regulations.

All games CICL rated?*

Just like your regular matches!!!!

Including Coffee and cookies.

If you have the time, we have the boards.

Sounds too good to be true?

Here's a catch.

We prefer you to be a B player or under.

And be willing to play on the nights Jl Case will play its opponents.

Home or road games.

That's it. It's that simple!!!

Each match, we have 5 extra boards. They all like to play.**

If you like the idea, call me at W: (708) 887-2372.

I will schedule you from game to game.

No firm commitment for the season required.

Why wait? Call now

Thank you

.....Satish L. Kale
Captain Jl Case
Near West Division

* Non rated games can be arranged, prior to the game if so desired.

** You may have to bring your own equipment.

The 2 Squares Column by Marvin Cox

If two (or more) squares are attacked more times than they are defended they may fall

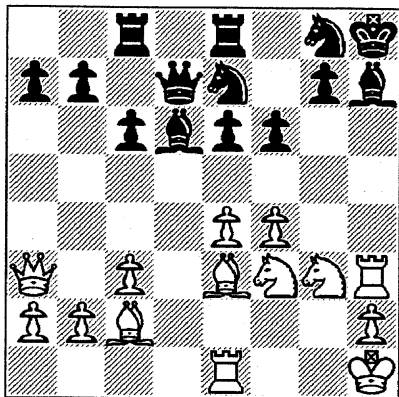


Diagram 74

We have interesting attack and counterattack in diagram 74. The advantages for white are: black's knight is pinned on c6, black's other knight on f5 is weak (not guarded more times than attacked), black's king and queen are on the same diagonal and White has a bishop of the right color, black's bishop on e6 is weak (attacked once and guarded only once, black has two unguarded pawns on his queen side. Black's advantages are: white has a weak (unguarded) bishop on b2, black has a masked rook on the same open file as white's queen, and white's king is not too secure.

1. **Rxf5** Black can not retake because of **Bc4**. So he counterattacks with 1... **Ba3** against the weak bishop on b2 and assists the rook attack against the white queen.

2. **Bxa3** Rook to f1 or f6 is poor. 2... **Bxf5** clears black's rook on the file.

3. **Qf2** and white has won 2 pieces for a rook. Some of white's weaknesses have disappeared, black's haven't. White has the advantage of two bishops on an open board but does not have a good square to park his white bishop on. Black has the advantage of being able to double his rooks on the only open file, and one of white's knights is tied to the king's defense until the queens and a pair of rooks are traded off. Does this suggest the further lines of play for each side?

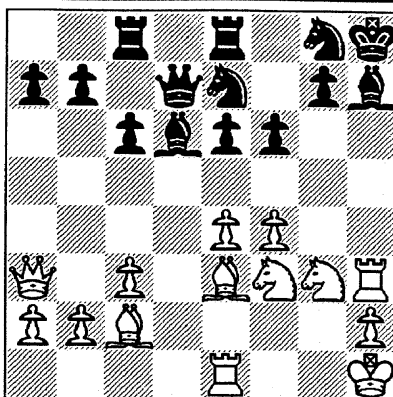


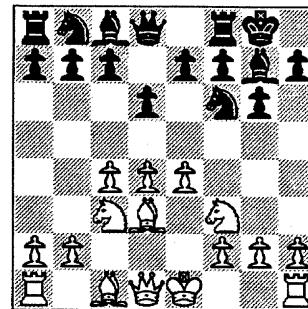
Diagram 75

Examination of diagram 75 shows several black weaknesses. The square h7 is under two attacks, one of them masked. The bishop on d6 is attacked once and guarded only once so it is weak. If a white knight could get to f6 it would fork d7, e8 and h7. A quicky combination of 1. **Rxh7+** followed by 2. **e5+** would win 2 bishops for a rook. However, if there is an easily visible combination maybe there is another obtained by transposition of moves.

1. **e5 Nh6** (not 1... **Bxa3**, 2. **Rxh7** mate)
 2. **Qxd6** forces a Q trade and so reduces black's chances of counter-attack. 2... **Rcd8** Black is a piece down so should not trade pieces voluntarily. 3. **Qxd7 Rxd7** White now has a hanging bishop and wants to reduce to an ending of K+N+pawns vs. K+pawns. 4. **Bxh7 Kxh7** At this point White has a possible 2 squares attack against f6 and h6. The e5 pawn, masked B on e3, and R on h3 are the attackers. The black pawn on g7 and black king on h7 are the defenders. 3 attacks, 2 defenders. 5. **ef gf** Reduced to 2 attacks and only 1 defender of h6. Also f6 is now in attacking range of the white knight on g3. 6. **f5 Ng8** not 6... **Nxf5** 7. **Nxf5** 7. **fe Rde7** not 7... **Rxe6** 8. **Nf5** 8. **Bxh6 Nxb6**. Now white could reduce the material by 9. **Rxh6** followed by 10. **Nf5+**. But a transposition might produce something even better. 9. **Nf5 Rxd6** 10.

Miniature in Tier 1 '94

I. Melnikov (2219) - E. Latimer (2039) King's Indian Defense: 1. **d4 Nf6** 2. **c4 g6** 3. **Nf3 Bg7** 4. **Nc3 0-0** 5. **e4 d6** 6. **Bd3** This move, was also played in Cooper-Lomont in round 1 instead of the usual 6. **Be2**.



6... **Nbd7** 7. **h3 c5** 8. **Be3 e5** 9. **dxcc5 dxc5** 10. **Nd5 Nxd5** 11. **cxdd5 f5** 12. **Ng5 Nf6** 13. **Bxc5 Re8** 14. **d6 h6** 15. **Ob3+!! 1-0**

Rxd6 Rxd6 white has reduced the material because he is ahead in material

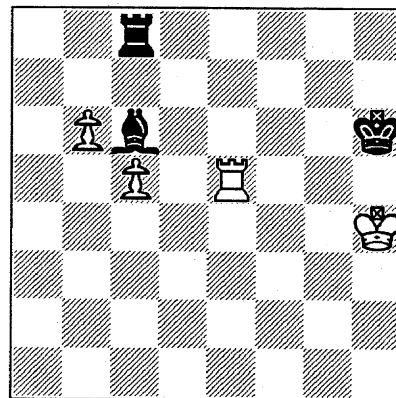


Diagram 76

It is axiomatic that 2 united, unattacked pawns on the 5th and 7th are stronger than a rook. If white were to move the b pawn to the 7th it would be eaten by the black bishop. So-o-o, first sacrifice the white rook for the black bishop. 1. **Re6+ Kg7** 2. **Rxc6 Rxc6 b7** and black can not stop one of the white pawns from queening. This gives us a king and queen vs. king and rook endgame, a win for white if he knows the ending. Do you know the ending? Study the so-called simple endings. They are more important than either the openings or middle-game.

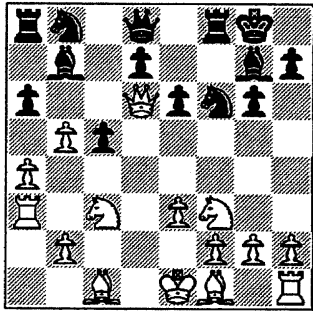
GAMES

Here're two from the 1993 interzonals. The first finishes in a beautiful mating sacrifice. The second culminates in a nice combination.

GM Kiril Georgiev (Bulgaria/2660) - Ian Rogers (Australia/2595); Benko Gambit: 1. d4 Nf6 2. c4 c5 3. d5 b5 4. cxb5 a6 5. e3

One of the earlier ways of meeting the Benko. 5. b6 or 5. bxa6 followed by 6. g3 are two of the latest fashion.

5...g6 6. Nc3 Bg7 7. a4 0-0 8. Ra3 Bb7 9. Nf3 e6 10. dxe6 fxe6 11. Qd6



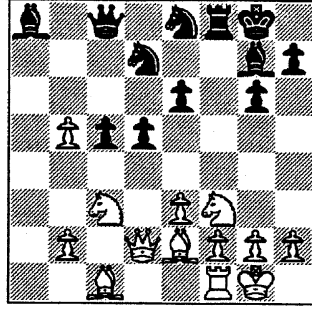
Although White's stay at d6 is only temporary this seems to be the recommended line for White. It delays ...d5 while taking a shot at the c-pawn.

11...Qc8

11...Bxf3 is inviting because it doubles the f-pawn. Problem is Black would be trading off a piece that asserts a lot of power along the diagonal a8-h1. Also, the doubling of White's f-pawn 'd be meaningless if it can't be exploited.

12. Be2 axb5 13. axb5 Ne8 14. Qd2 d5 15. Rxa8 Bxa8 16. 0-0 Nd7

This position (see diagram next column) is what encourages players to employ the Benko.



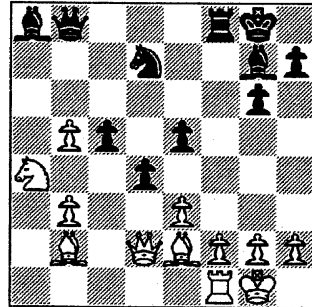
17. b3 Nef6 18. Bb2

Too slow. 18. Ba3 to put pressure on Black's c-pawn is better (see Schussler vs. S. Polgar in 2nd game).

18...e5 19. Na4 Qb8

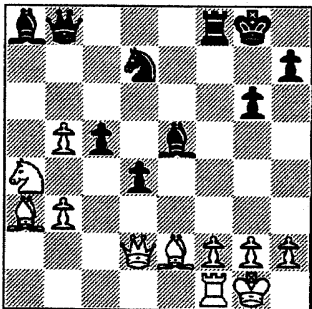
Perhaps, to parry White's Bh3 and Rc1 with ... Rc8 and ...Bf8.

20. Qc2 Ne4 21. Nd2 Nxd2 22. Qxd2 d4



Threatening 23...Qb7 24. Bf3 Qxb5 or 24.f3 Bh6.

23. exd4 exd4 24. Ba3 Be5

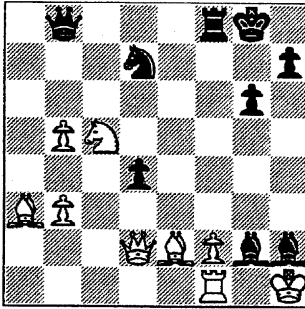


At first glance, Black seems to be simply offering his c-pawn for White's h-pawn. But what it is, however, is a devious trap!

25. Nxc5?

Unaware of Black's real intent, White takes the bait.

25...Bxh2+ 26.Kh1 Bxg2+!

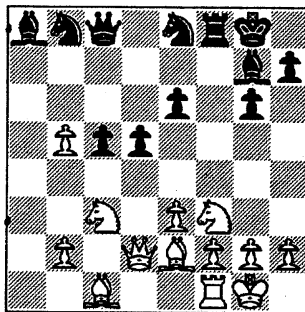


What a shot!!! The story goes that Georgiev sat there in shock staring at the position for a few excruciating minutes before he extended his hand.

0-1

After 27.Kxg2, then 27...Rxf2!! 28. Kh1 Qa8+ when all that White can do is postpone mate by interposing the Knight and the Bishop on the a8-h1 diagonal.. If 28. Kxf2 or Kh3 then 28...Qg3 mate. If 28. Rxf2, then 28...Qg3 followed by 29...Qg1 mate.

This is Schussler vs S. Polgar same as Georgiev - Rogers in the 1st game up to White's 16th move.

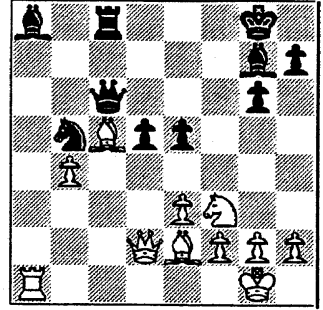


16...Qb7

Black follows a different approach by confronting the b-pawn directly. The trouble is, in trying to regain the pawn, Black's pieces get in each other's way.

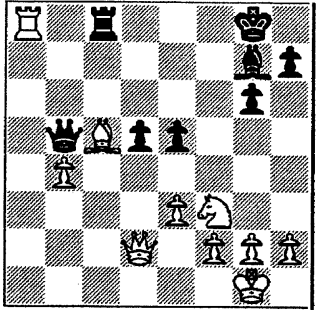
17. b3 Nd7 18. Ba3 Nc7 19.

Na4 Nxb5 20. Nxc5 Nxc5 21. Bxc5 Rc8 22. b4 e5 23. Ra1 Qc6



Black doesn't realize that the Q is overloaded.

24. Bxb5 Qxb5 25. Rxa8!!



1-0

If 25...Rxa8 then 26.Qxd5+ followed by 27.Qxa8 wins a piece.

This one's from round 1 of the 1994 Tier 1 playoffs.

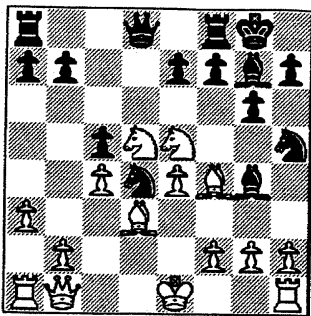
W. Cooper (1688) Pstof - C. Lomont (1506), Sears Brd 5: 1. d4 Nf6 2. c4 g6 3. Nc3 Bg7 4. e4 d6 5. Nf3 c6 6. Bd3

Usually played here is 6. Be2. Melnikov-Latimer in round 2 of 1994 Tier 1 also continued with 6.Bd3.

6...0-0 7. Bf4 e5 8. dxc5 dxc5 9. Qc2 Nc6 10. a3 Bg4 11. Ne5 Nd4 12. Qb1 Nh5 13. Nd5 (diagram next col)

Black should win a piece here. The challenge:

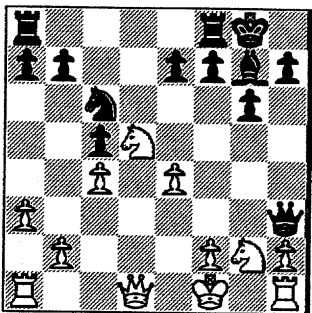
CAN YOU FIND THE MOVE WHICH WINS A PIECE FOR BLACK? (Solution's somewhere on the next page)



13...Nxf4

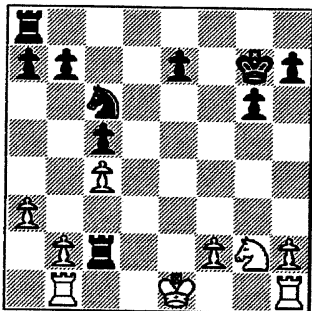
At least this wins a pawn.

14. Nxc4 Nxc2+ 15. Kf1 Nh4 16. Qd1 Nhf3 17. Be2 Nxe2 18. Qxe2 Nd4 19. Qd1 Qd7 20. Nge3 Qh3+ 21. Ng2 Nc6?



The threat 22...Bxb7 is a cheap shot which does not justify removing the Knight from a splendid outpost and tying it down to the defense of the e-pawn.

22. Ndf4 Qc8 23. Rb1 Rd8 24. Qe2 f5 25. exf5 Qxf5 26. Qe6+ Qxe6 27. Nxe6 Rd2 28. Nxc7 Kxc7 29. Ke1 Rc2??



Better is 29...Rad8. Perhaps, Black only considered 30.b3 to the exclusion of anything else.

30. Ne3! Nd4 31. Nxc2 Nxc2+

The exchange down, Black gallantly puts up a struggle. But White just can't be denied his victory.

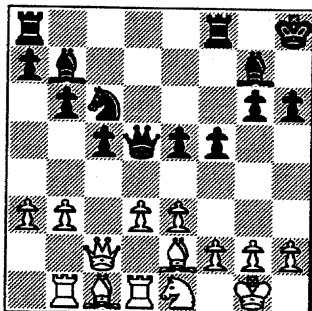
32. Kd2 Nd4 33. Ke3 Rf8 34. f4 Nc2+ 35. Kd3 Nd4 36. b4 b6 37. bxc5 bxc5 38. Rb7 Rxf4 39. Rxe7+ Kf6 40. Rxa7 Rf3+ 41. Ke4 Rf5 42. Rxh7 Re5+ 43. Kd3 Nc6 44. Rc7 Nd4 45. a4 Ke6 46. a5 Kd6 47. Rb7 Kc6 48. Rbh1 Kd6 49. a6 Re8 50. Rg1 Ra8 51. Rxc6+ Ne6 1-0

Here's an oldie from the 1974 Northern Illinois Open. This is from the last round. John V. Watson, rated only 2275 at that time obtains a good game here against a non-master. But then he drops a pawn and things go downhill from then on.

J. V. Watson (2275) Black; Feb. 17, 1974; Northern Illinois Open; Irregular: 1. Nf3 g6 2. e3 Bg7 3. c4 c5 4. Be2 Nf6 5. Qc2

White's opening is extremely timid. What he's attempting to do is transpose to a sort of Sicilian with colors reversed. But Black should have no problem here at all.

5...0-0 6. Nc3 Nc6 7. a3 b6 8. b3 e5 9. Rb1 d5 10. cxd5 Nxd5 11. Nxd5 Qxd5 12. d3 Bb7 13. 0-0 h6 14. Rd1 Kh8 15. Ne1 f5



Black appears to be in full control.

16. Bf3 Qd6 17. Bb2 g5 18. h3 Rad8 19. Bc3 a5 20.

Qb2 Qe6 21. b4

To create an open file for the rooks as antidote to pawn expansion on the other wing, similar to White's battleplan in the Mar del Plata (Go to the 7th then turn right).

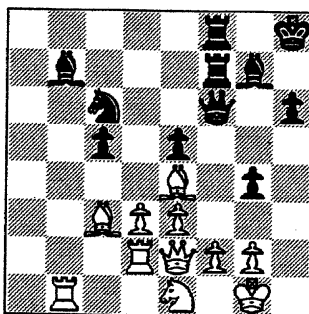
21...axb4 22. axb4 g4 23. hxg4 fxe4 24. Be4 Qf6 25. bxc5 bxc5 26. Qe2

26...Qxb7 risks 26...Qxf2+.

26...Rd7 27. Rd2

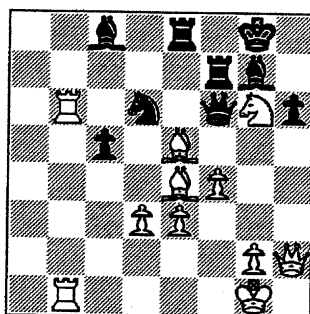
To double up on the b-file.

26...Rdf7



By a triple attack on White's f-pawn Black's last move deters White from taking the Rook away from the 2nd rank. Black, however, forgot all about his g-pawn.

28. Qxc4 Bc8 29. Qg3 Ne7 30. Nf3 Nf5 31. Qh2 Re7 32. Rdb2 Nd6 33. Rb6 Rd8 34. Nh4 Rf7 35. f4 Re8 36. Ng6+ Kg8 37. Bxe5 1-0

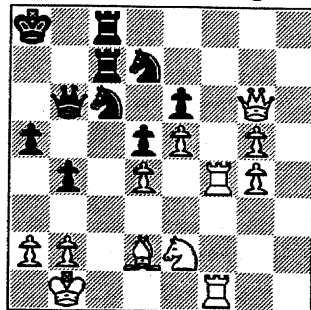


Final Position

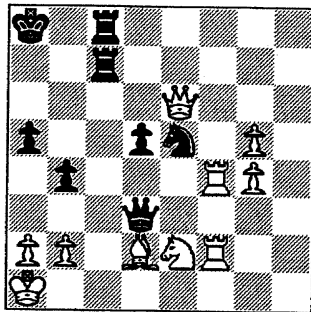
This is an East Division game on board 1.

1. e4 g6 2. d4 Bg7 3. Nc3 d6 4. f4 e6 5. Be3 Ne7 6. Nf3 b6 7. Be2 d5 8. e5 Ba6 9.

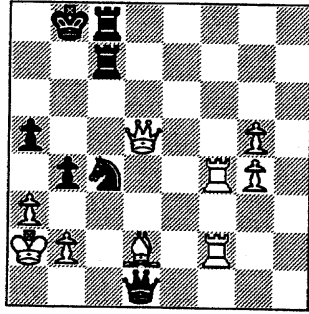
Qd2 Qc8 10. 0-0-0 Nd7 11. g4 Qb7 12. Kbl Bxe2 13. Nxe2 0-0-0 14. Ng3 Kb8 15. Qd3 e5 16. c3 Nc6 17. f5 cxd4 18. cxd4 Rc8 19. Ng5 Nf8 20. Rdf1 h6 21. f6 Bxf6 22. Rxf6 hxg5 23. Rf2 Nh7 24. h4 Rhd8 25. hxg5 Nf8 26. Rhf1 Rc7 27. Bd2 Rdc8 28. Ne2 b5 29. Nc3 a6 30. Ne2 Ka8 31. Ncl Nd7 32. Rxf7 Qb6 33. R7f4 a5 34. Ne2 b4 35. Qxc6



35...Qb5 Better is 5...Qa6. 36. R1f2 Ncxe5! 37. dxe5 Nxe5 38. Qxe6 Qd3+ 39. Ka1



39...Qxe2 Better 39...Qxd2 40. Qxd5+ Kb8 41. a3 Qd1+ 42. Ka2 Nc4



43. Rxc4?? Better 43. R4f3. But White has only seconds left in his clock 43...b3 Mate

Solution to challenge: 13...Be6! threatens both 14...Bxd5 followed by 15...Nxf4 and 14...Nxf4 followed 15...Bxe5

CHICAGO INDUSTRIAL CHESS LEAGUE

Fall Business Meeting
 Tuesday, August 30, 1994
 Sears at Hoffman Estates

Attendees

Mark Brockett	Sears
Marv Cox	Alumni Central
Karel Dobr	AT&T Chargers
Jim Egerton	Midcon
Wayne Ellice	Unilever
Irwin Gaines	Fermilab
Bob Hill	Argonne
James Hodina	Amoco Corporation, President
Norm Hughes	Kemper
Tony Jasaitis	Chicago Research & Trading
Satish Kale	J. I. Case
Art Olsen	Kemper
Ruben Reyes	Sears
Pat Sajbel	U.O.P
Lenny Spiegel	Fermilab, Secretary
Frank Suerth	Exemplars
Wes Underwood	Treasurer
Charlie Ward	Bell Labs Dragons

Minutes

1. President James Hodina began the meeting at 7:20 PM. He started out by introducing Jim Edgerton of Midcon Corporation. Midcon has a chess team and Jim was present to petition for entry in the League. The company is located in Lombard and they would participate in the Far West division.
2. Treasurer Wes Underwood distributed a very detailed accounting of the League's financial status and gave a brief report summarizing the pertinent details.

He noted that the League had actually gained about \$62 last season after all expenses had been paid. The net surplus can be fully attributed to savings from the bulletin publication: less than expected duplicating costs and fewer than anticipated publications. Wes worried that future bulletin costs may not be so favorable.

Wes noted that the League had a cash balance of \$2400.02 of which \$1,400.00 has been designated for the purchase a computer (to maintain ratings) and the rest is designated. He questioned whether the League should maintain this level of undesignated funds.

Finally, Wes noted that there were approximately 50 mailings for each issue of the bulletin and requested that the mailing list be examined for duplications and other unnecessary entries.

The budget was accepted "as is" unanimously.

3. The four division captains gave brief reports on the status of their respective divisions:

North (Ruben Reyes)

Grolier Subsidiaries has withdrawn from the North division. This leaves 7 remaining teams in the division. Ruben anticipates a 10 round season.

Far West (Irwin Gaines)

The Alumni West team had difficulties last year fielding six boards and will not be returning this season.

Midcon is joining the League and will participate in the Far West division. Also, it is very likely that Argonne will once again field a Far West team. And there was some hint that Wheaton College may also resume participation in the division. Thus there may be as many as 7 teams in the Far West division this year, which would represent a sharp reversal from the situation of the last few years.

Near West (Satish Kale)

The five continuing teams will be joined this year by a team from Unilever.

East (Jim Hodina for Kevin Mcalister)

The two CTA teams have merged. All other teams should be continuing with the possible exception of Hull Trading. Jim said he would look into the Hull situation.

Marv Cox spoke about the difficulties the Alumni Central team was facing in recruiting new players. He noted that the rule change which allowed retired players to continue playing for their former companies was working to the detriment of the Alumni team. It was pointed out that the change was implemented to help preserve company teams and the conflict between the interests of company teams and alumni teams was acknowledged, although without any indication as to how to resolve it.

Finally, Charlie Ward requested that the finalized list of teams be relayed to him for the purpose of keeping track of standings.

4. League officer positions were discussed. It was proposed that Jim Hodina continue as president, Wes Underwood as treasurer, and Tony Jasaitis serve as the new secretary and this was accepted unanimously. Jim indicated that he would like to step down as president next year.

5. Jim then went through the list of appointed positions:

Ruben Reyes will continue as the North division chairman although this will be his last year as he plans to retire and relocate next year.

Irwin Gaines will continue as the Far West division chairman.

Satish Kale will continue as the Near West division chairman.

In the East division, Keith Kostecka was appointed chairman.

Charlie Ward will continue to serve as ratings chairman.

Apparently Todd Dufresne has volunteered to serve as banquet chairman. The other appointed posts—trophy chairman, publicity chairman, and playoff director—remain unfilled for the moment.

6. By way of new business, Jim Egerton of Midcon in Lombard petitioned on behalf of the Midcon chess team for entry in the League. Questions regarding their participation—number of players, playoff site, etc.—were fielded by Jim and Midcon was unanimously accepted. They will play in the Far West division.

Jim indicated that the Amoco building in Chicago would not be available this year for a playoff site. The final two rounds of the playoffs are scheduled to take place on May 20, although at this point a match site has not been secured. Prospective sites will need sufficient space to handle at

least 50 boards. There was a suggestion that Kemper may host the playoffs this year.

The awards banquet will take place on June 9, which is a Friday.

7. Two amendments to the League constitution were presented:

Pat Sajbel proposed to give players the choice of demanding either adournment or Game/30, assuming that a time control has just been met. Irwin Gaines pointed out that there was no good way to graft sudden death time controls on to the normal time controls of the League. Consequently, Pat withdrew his amendment.

Considerable discussion followed on the merits of switching from the present *default* time controls (50 moves/2 hours followed by 25 moves/hour) to a sudden death format. Several opinions were offered in favor of and opposed to such a fundamental change to the playing rules. Finally, Ruben Reyes proposed that the League adopt a Game/60 format and this proposal was not accepted.

Next, Karel Dobr presented a proposal for modifying how the Most Improved Player is determined. His proposal, which was in response to a situation that took place last year, would have restricted points counted toward the MIP award to come from regular match games. After Charlie Ward indicated that he would have technical difficulties in identifying such games, Jim tabled the motion for future deliberation.

8. Both Tom Friske and Ron Felts were unanimously accepted for alumni status.
9. There was some discussion about the possibility of participating in a long distance match with the Long Island Chess League via the Internet. Irwin thought that Fermilab could supply and Internet connection.
10. The meeting was adjourned at 9:30PM.

Lenny Spiegel
CICL Secretary



Chicago Industrial Chess League

TREASURER'S YEAR-END REPORT FOR THE 1993-1994 SEASON

Contents:

1. Cash Receipts and Disbursements for 1993-1994
Reconciliation of Change in Cash with Accrual Basis Gain for the Season
2. Schedules of Revenue/Cost Relationships for 1993-94 Season
3. Budget Proposal for 1994-95 Season
4. Dues and Other Charges for the 1994-1995 Season

Please note the following:

The bulletin expense line is unusually low this year in part because there were only six issues published.

Although there was an increase in cash of \$276.99 during 1993-94, only \$61.99 of that amount is "gain" for the 1993-94 season. (See report on next page.)

Respectfully Submitted,

A handwritten signature in black ink, appearing to read 'W. Underwood', written over the printed name.

Wesley K. Underwood
CICL Treasurer

August 30, 1994

Cash Receipts and Disbursements for 1993-1994:

Beginning Cash Balance, August 1993		2323.03
Cash Receipts:		
Basic Team Dues Incl Penalties	1145.00	
Prepaid Dues (Note A)	215.00	
Team and Indiv Bulletin Subscriptions	392.00	
Team Banquet Guarantees	493.00	
Banquet Dinners	1302.00	
Speed Chess Entry Fees	37.00	
Savings Interest & Misc Receipt	68.39	
Extra Individual Awards (Note C)	137.00	

Total Cash Receipts		3789.39

Total Cash Available for Disbursement		6112.42
Cash Disbursements:		
Bulletin Publication/Mailing	243.21	
USCF and ICA Dues	55.00	
Trophies/Awards (Note C)	1146.73	
Playoff Expenses	13.25	
Banquet (Harvey's Prime Rib) Fee	1176.35	
Team and Individual Banquet Rebates	418.00	
Banquet Speed Chess Tourney Awards	140.00	
Banquet Expenses	124.02	
Miscellaneous Expenses	195.84	

Total Cash Disbursements		(3512.40)

Ending Cash Balance, August 1994 (Note B)		2600.02
		=====

Reconciliation of Change in Cash with Accrual Basis Gain for the Season:

Ending Cash Balance	8/94	\$2600.02
Beginning Cash Balance	8/93	2323.03

Change in Cash during 93-94		\$ 276.99
Pre-paid future dues rec'd in 93-94 (Note A)		(215.00)
Reimbursement still due for indiv awards (Note C)		16.00
Reimbursement rec'd for 92-93 indiv awards (Note C)		(16.00)

Accrual basis gain for 93-94		\$ 61.99
		=====

- (A) Chicago Merc Exch paid \$140.00 towards its next two seasons' dues and CTA paid \$75.00 towards its next season dues.
- (B) Of this balance, \$1400.00 is reserved for the eventual purchase of a new computer (to maintain ratings, standings, etc). \$1200.02 is undesignated. Checking Account Balance is \$529.75. Savings Account Balance is \$2070.27.
- (C) Extra individual awards totalling \$137.00 were ordered by various teams. Of this amount, \$121.00 has been reimbursed; \$16.00 is still due from Chicago Post Office. Rockwell paid \$16.00 due for last season awards.

Schedules of Revenue/Cost Relationships for 1993-94 Season:Schedule I: Bulletin Publication

Regular Team Subscriptions	364.00	
Individual Subscriptions	28.00	

Total Bulletin Revenue		392.00
Less: Publication & Mailing Costs		(243.21)

Gain from Bulletin 148.79

Schedule II: Banquet and Speed Chess

Team Banquet Guarantees	493.00	
Advance Dinners (70 @ \$15)	1050.00	
Dinners at the Door (14 @ \$18)	252.00	
Speed Chess Entries	37.00	

Total Banquet and Speed Chess Revenue		1832.00

Dinners/Tax/Tip/Bartender	1176.35	
Team Rebates (23 @ \$17)	391.00	
Triple Centurion Rebates (3 @ \$9)	27.00	
Speed Chess Awards	140.00	
TV/VCR Rental/Raffle/Craft	124.02	

Total Banquet and Speed Chess Costs		(1858.37)

Loss from Banquet and Speed Chess (26.37)

Schedule III: Undesignated (All Other) Funds

Regular Dues Received	1125.00	
Late Dues Penalties Received	20.00	
Savings Account Interest	66.39	
Miscellaneous Receipt	2.00	

Total Undesignated Revenue		1213.39

Trophies and Awards (net cost)	1009.73	
USCF/ICA Dues	55.00	
Postage, Phone, Copying, Etc.	115.02	
Playoffs (Scoresheets)	13.25	
Match Results Sheets	80.82	

Total Undesignated Costs		(1273.82)

Loss from Undesignated Funds (60.43)

Net Gain for the 1993-94 Season 61.99

=====

Budget Proposal for 1994-95 Season:

	1993-94 Budget	1993-94 Actual	1994-95 Proposed Budget
Revenue:			
Basic Team Dues	1040	1125	1120 (Note A)
Bulletin	339	392	365 (Note B)
Banquet	1600	1832	1675
Miscellaneous	75	88	75
Total Revenue	<u>3054</u> =====	<u>3437</u> =====	<u>3235</u> =====
Disbursements:			
Bulletin	340	243	350
Banquet	1500	1858	1650
Awards	900	1010	950
USCF/ICA Dues	55	55	55
Playoffs	160	13	100
Miscellaneous	100	196	125
Total Disbursements	<u>3055</u> =====	<u>3375</u> =====	<u>3230</u> =====
Net Gain (Loss)	<u>(1)</u> =====	<u>62</u> =====	<u>5</u> =====

Note A: Budgeted revenue from dues is based on 28 teams @ \$40.00.

Note B: Budgeted bulletin revenue is based on 27 companies @ \$13.00 plus an additional 2 individual subscriptions @ \$7.00.

To: Chicago Industrial Chess League Team Captains
From: Wes Underwood, CICL Treasurer
Date: August 30, 1994
Re: Dues and Other Charges for the 1994-1995 Season

Below are the assessments to each CICL team for the 1994-1995 season. Please complete the form below, and return it with a check made payable to the Chicago Industrial Chess League.

Note: Payments postmarked after November 30th will require a \$5.00 additional fee. Payments postmarked after December 31st will require a \$10.00 additional fee, and will subject the team to possible dismissal both from the upcoming playoffs and from participation next season.

Team Name: _____

Annual Dues per 6-player Team	\$40.00	_____
Penalty fee if postmarked after 11/30/94	5.00	_____
Penalty fee if postmarked after 12/31/94	10.00	_____
CICL Bulletin Subscription (1 req'd per co.)*	13.00	_____
Add'l Subscriptions, each *	7.00	_____
Awards Banquet Ticket (1 req'd per team)	17.00	_____

Total (Payable to Chicago Industrial Chess League): \$ _____

Send payment with this form to the following:

Chicago Industrial Chess League
c/o Wesley K. Underwood
207 S. Dorchester Ave.
Wheaton IL 60187

* Specify the correct address(es) for the bulletin subscription(s):

FAR WEST DIVISION

Irwin Gaines, Division Chairman
 Fermilab MS 127
 PO Box 500
 Batavia, IL 60510
 W: 840-4022 H: 420-1452 Fax: 840-2783

Bell Labs ROYALS

Chuck Dobrovolny (Capt)
 Room IC-457
 AT &T Bell Labs
 1200 E Warrenville Rd
 PO Box 3045
 Naperville, IL 60566
 W: (708) 979-0377 H: (312) 951-7533

Bell Labs DRAGONS

Dan Eustace (Capt)
 Room IH 4F-311
 AT &T Bell Labs
 2000 N. Naperville Rd
 Naperville, IL 60566
 W: (708) 979-5826

Fermilab FERMI

Leonard Spiegel (Capt)
 Fermilab MS 219
 PO Box 500
 Batavia, IL 60510
 W: (708) 840-2809

AT&T TYROS

Joe Karpierz (Capt)
 726 Westfield Course
 Geneva, IL 60134
 W: (708) 224-2777 H: (708) 208-0036

Argonne ROOKS

Steve Decman (Capt)
 Bldg 4
 Argonne National Laboratory
 9700 S Cass Ave
 Argonne, IL 60439
 W: (708) 252-3607 H: (815) 744-5272

Wheaton College WHEAT

Wes Underwood (Capt)
 207 S Dorchester Ave
 Wheaton, IL 60187
 W: (708) 752-5127 H: (708) 462-0393

Midcon Corp MIDCON

Jim Egerton (Capt)
 Midcon Corp
 701 E 22nd St
 Lombard, IL 60148
 W: (708) 691-3060 H: (708) 790-2396

TO: Far West Division Team Captains
FROM: Irwin Gaines, Division Chairman
RE: 1994-95 CICL Schedule

Welcome to the 1994-1995 CICL season. You will notice one obvious change. The Alumni West team will not be playing this year, but we have at least two new teams in the Far West: a 2nd team from Argonne (they will have 1 team in the Near West and 1 in the Far West), and a new company, Midcon Corp.

We may have an additional team, as Wes Underwood is trying to organize a Wheaton College team (perhaps augmented by a couple of the Alumni players from last years Alumni West team). If he is successful we will use the Plan B schedule enclosed; the first round pairings are the same for both schedules, and I will inform you which schedule we will use in the next two weeks.

Enclosed are the schedules and list of captains in our division. Please let me know of any mistakes on the list of captains, especially since we have new captains and new teams (and let me know of home telephone numbers or FAX numbers if you would like them listed).

Note that league rules again this year require home team captains to send copies of the match results to both the division chairman and the ratings chairman. Please send in the results of each match by the completion date for the round so that the matches can be rated promptly. If you can, use FAX: my FAX number is 840-2783, and the rating chairman (Charlie Ward's) FAX number is 979-8451.

As in the past, the top two finishers in our division will go to the championship playoffs. There will also be a 2nd tier playoff made up of 3rd, 4th and 5th place teams with the best records. Any ties in our division will be broken by the following tie-break procedure in the order listed (as stipulated in the league rules):

- 1) head-to-head match points during the season
- 2) head-to-head game points during the season
- 3) total game points during the season
- 4) sum of match points of beaten opponents plus half the match points of drawn opponents
- 5) same as (4) but with game points

In the incredibly unlikely case that teams are still tied a playoff match to resolve the tie must be completed by April 21.

Finally, I have been asked to state clearly what are the criteria for awarding the MVP and Outstanding Team Captain awards in the Far West. For MVP this remains the most points scored during the team's 10-match regular season regardless of board played. For OTC the criteria are those listed when these awards were first established, including fewest forfeits, matches played on time, fewest complaints by other teams, and lower finishing place when other things are equal.

Best of luck for the upcoming season (except when you are playing Fermilab). It looks like we will have a very competitive division this year.

1994-95 Far West Schedule

Rnd	Ends	Pairing		
1	Sept 30	Tyros @ Royals	Dragons @ Fermi	Midcon @ Rooks
2	Oct 21	Dragons @ Tyros	Rooks @ Royals	Fermi @ Midcon
3	Nov 11	Midcon @ Dragons	Royals @ Fermi	Rooks @ Tyros
4	Dec 2	Royals @ Dragons	Fermi @ Rooks	Tyros @ Midcon
5	Dec 23	Tyros @ Fermi	Dragons @ Rooks	Midcon @ Royals
6	Jan 20	Royals @ Tyros	Fermi @ Dragons	Rooks @ Midcon
7	Feb 10	Tyros @ Dragons	Royals @ Rooks	Midcon @ Fermi
8	Mar 3	Dragons @ Midcon	Fermi @ Royals	Tyros @ Rooks
9	Mar 24	Dragons @ Royals	Rooks @ Fermi	Midcon @ Tyros
10	Apr 14	Fermi @ Tyros	Rooks @ Dragons	Royals @ Midcon

1994-95 Far West Schedule - Plan B

Rnd	Ends	Bye	Pairings		
1	Sept 30	Wheat	Tyros @ Royals	Dragons @ Fermi	Midcon @ Rooks
2	Oct 14	Dragons	Wheat @ Tyros	Rooks @ Royals	Fermi @ Midcon
3	Nov 4	Tyros	Midcon @ Dragons	Royals @ Fermi	Rooks @ Wheat
4	Nov 18	Royals	Wheat @ Dragons	Fermi @ Rooks	Tyros @ Midcon
5	Dec 9	Midcon	Tyros @ Fermi	Dragons @ Rooks	Wheat @ Royals
6	Dec 30	Rooks	Dragons @ Tyros	Royals @ Midcon	Fermi @ Wheat
7	Jan 20	Fermi	Rooks @ Tyros	Royals @ Dragons	Midcon @ Wheat
Round 8-12 matchups determined by standings after the 1st 7 rounds; home/ away is opposite to the location of the match in the first round robin.					
8	Feb 20	3	1 vs 4	2 vs 6	5 vs 7
9	Feb 24	1,2,4	5 vs 6	3 vs 7	
10	Mar 17	5	1 vs 3	2 vs 4	6 vs 7
11	Mar 31	6	2 vs 3	4 vs 7	1 vs 5
12	Apr 14	7	1 vs 2	3 vs 5	4 vs 6

NEAR WEST DIVISION Team Directory

Satish L. Kale, Division Chairman

<p>Argonne National Labs</p> <p>Bob Hill (Capt) Argonne National Labs Bldg. 208 9700 Cass Avenue Argonne, IL 60439 W: (708) 252-4865 H: (708) 759-3764</p> <p>Dave Baurac (Alternate Capt) W: (708) 252-5584 H: (708) 963-3127</p>	<p>AT & T Chargers</p> <p>Jerry Thomas (Capt) 745 Hageman Place Naperville, IL 60563-3431 W: (708) 955-4366 W</p> <p>Rich Brady (Alternate Capt) W: (708) 955-4215</p> <p>Karel Dobr (Alternate Capt) 5341 South Kolin, Chicago IL 60632 H: (312) 582-4280 H</p>	<p>A & B Radio</p> <p>Dave O'Dell (Capt) A & B Radio 1923 West 69th Street Chicago, IL 60636 W: (312) 476-1553 or W: (312) 476-9020</p> <p>Alternate Capt: none</p>
<p>J. I. Case</p> <p>Satish L. Kale (Capt) JI Case <i>Agricultural Equipment and Technology Center</i> 7 South 600 County Line Road Hinsdale, IL 60521 W: (708) 887-2372 W: (708) 325-5253</p> <p>Howard Klinefelter (Alternate Capt) W: (708) 887-3750 H: (708) 961-0482</p>	<p>Rockwell International</p> <p>Tony DeZonno (Capt) Rockwell International 1431- 623 Opus Place Downers Grove, IL 60515 W: (708) 960-8621</p> <p>Walter Rafacz (Alternate Capt) W: (708) 960-8914</p>	<p>Unilever</p> <p>Wayne Ellice (Capt) Crosfield Catalysts 4099 West 71st Street Chicago, IL 60629 W: (312) 838-3215</p> <p>Don Nell (Alternate Capt) W: (312) 838-3195</p>

1994-95 Near West Schedule

Rnd	Ends	Inter-Division		
1	24 Sept	Knights @ A & B	JI Case @ Rockwell	Chargers @ Unilever
2	15 Oct	JI Case @ Knights	Rockwell @ Chargers	Unilever @ A & B
3	05 Nov	Chargers @ JI Case	A & B @ Rockwell	Knights @ Unilever
4	26 Nov	Rockwell @ Knights	Chargers @ A & B	JI Case @ Unilever
5	24 Dec	Knights @ JI Case	Chargers @ Rockwell	A & B @ Unilever
6	14 Jan	Knights @ Chargers	A & B @ JI Case	Unilever @ Rockwell
7	04 Feb	JI Case @ Chargers	Rockwell @ A & B	Unilever @ Knights
8	25 Feb	A & B @ Knights	Rockwell @ JI Case	Unilever @ Chargers
9	18 Mar	JI Case @ A & B	Chargers @ Knights	Rockwell @ Unilever
10	08 April	Knights @ Rockwell	A & B @ Chargers	Unilever @ JI Case

PLEASE pay your dues and play your games on time. GOOD LUCK and HAVE FUN!

Don't forget to send me your result sheet ASAP.

Near West Division Chairman **Satish L. Kale**

Tel. No; **(708) 887-2372 (Business), (708) 325-5253 (Home)**

August 31, 1994

EAST DIVISION Team Directory

Keith S. Kostecka, Division Chairman

Alumni

Algis Litvinas (Capt)
4610 S. Wood
Chicago, IL 60609
H: (312) 927-3953

Postal Service

William Howard (Capt)
4822 S. Dorchester
Chicago, IL 60615
H: (312) 924-2142

CRT

Dan Bargerstock (Capt)
440 S. LaSalle
Chicago, IL 60605
W: (312) 431-3062

Continental Bank

Erman Paraoan (Capt)
596 Glen Flora
Carol Stream IL 60188
W: (312) 828-3172

Columbia College

Keith S. Kostecka (Capt)
1042 N. Hayes Ave
Oak Park, IL 60302
W: (312) 663-1600 Ext:182 H: (708) 524-1460

Amoco

James Hodina (Capt)
718 Central Park Ave.
Flossmor, IL 60422
W: (708) 990-6115 H: (708) 799-5571

Merchantile Exchange

Steve Slagle (Capt)
111 Peach Tree Lane
Westmont, IL 60559
Pager: (708) 762-1950

Hull Trading

Bob Young (Capt)
311 S. Wacker
Suite 1400
Chicago, IL 60606
W: (312) 697-2728

CTA

Jerry Matthews (Capt)
5451 N. East River Road
Chicago, IL 60656
H: (312) 714-8936

1994-95 East Division Schedule

Rnd	Bye	Pairings			
1	ALUMN	CTA @ PSTOF	HULL @ CRT	MERC @ CONBK	AMCRP @ COLUM
2	COLUM	PSTOF @ HULL	ALUMN @ CTA	CRT @ MERC	CONBK @ AMCRP
3	CTA	MERC @ PSTOF	HULL @ ALUMN	AMCRP @ CRT	COLUM @ CONBK
4	CONBK	CTA @ HULL	PSTOF @ AMCRP	ALUMN @ MERC	CRT @ COLUM
5	HULL	CONBK @ CRT	MERC @ CTA	COLUM @ PSTOF	AMCRP @ ALUMN
6	CRT	ALUMN @ COLUM	PSTOF @ CONBK	CTA @ AMCRP	HULL @ MERC
7	MERC	COLUM @ CTA	CONBK @ ALUMN	CRT @ PSTOF	AMCRP @ HULL
8	PSTOF	MERC @ AMCRP	HULL @ COLUM	ALUMN @ CRT	CTA @ CONBK
9	AMCRP	CRT @ CTA	CONBK @ HULL	COLUM @ MERC	PSTOF @ ALUMN

(Rounds 1-6 should be completed before Christmas)

(Rounds 7-9 should be completed by the end of February)

After nine rounds of play, all teams with a mathematical chance of making the playoffs will be paired against each other in a modified three round Swiss. Remaining teams will be paired against each other

NORTH DIVISION Team Directory

MOTOROLA 1301 E. Algonquin
Schaumburg, IL

Nik Goncharoff MF464 (Capt)
Automotive and Industrial Electronics Group
4000 Commercial Avenue
Northbrook, IL 60062-1840
W: (708) 480-4736 H: (708) 885-3924

John Gryparis (Alternate Capt)
W: (708) 480-4279

SEARS 3333 Beverly Road
Hoffman Estates, IL

Mark Brockett (Capt)
34 W. 442 Lincoln St.
St. Charles, IL 60174
W: (708) 286-6984 H: (708) 695-0343

Tom Miller (Alternate Capt)
W: (708) 286-7586 H: (708) 934-6665

EXEMPLARS

Frank Suerth (Capt)
5228 W. Giddings
Chicago, IL 60630
H: (312) 736-4974

Tom Frieske (Alternate Capt)
W: (708) 506-4038 H: (708) 299-0706

NORTHROP 600 Hicks Road
Rolling Meadows, IL

Gabor Elek (Capt)
Electronics Systems Division
Rolling Meadows Site
Mailstop: L3500
600 Hicks Road
Rolling Meadows, IL 60008-1098
W: (708) 259-9600 Ext. 4708

Kaz Jakstas (Alternate Capt)
W: (708) 259-9600 Ext. 4801

U. O. P. 25 E. Algonquin Rd
Des Plaines, IL

Pat Sajbel (Capt)
616 S. Edward
Mt. Prospect, IL 60056
W: (708) 391-2134 H: (708) 506-9302

Edwin Bolding (Alternate Capt)
W: (708) 391-3467 H: (708) 590-9158

KEMPER 1 Kemper Drive
Long Grove, IL

Mark Siwek (Capt)
727 N. Broadway
Park Ridge, IL 60068
W: (708) 320-3658 H: (708) 692-6417

Art Olsen (Alternate Capt)
W: (708) 320-3783 H: (708) 437-9819

FEL-PRO 7540 N. McCormick Blvd
Skokie, IL

Abram D. Feldman (Capt)
7540 N. McCormick Blvd
P. O. Box 1103
Skokie, IL 60076-8103
W: (708) 674-7701 Ext. 2490

Ruben Querubin (Alternate Capt)

1994-95 North Division Schedule

Rnd	Ends	Bye	Pairings		
1	Sept 23	Kemper	UOP @ Motorola	Sears @ FelPro	Exemplars @ Northrop
2	Oct 14	Exemplars	FelPro @ Motorola	Kemper @ UOP	Northrop @ Sears
3	Nov 04	UOP	Motorola @ Northrop	Exemplars @ FelPro	Sears @ Kemper
4	Dec 02	Motorola	Kemper @ Exemplars	UOP @ Sears	Northrop @ FelPro
5	Dec 30	Sears	Motorola @ Exemplars	FelPro @ UOP	Northrop @ Kemper
6	Jan 20	FelPro	Kemper @ Motorola	Sears @ Exemplars	UOP @ Northrop
7	Feb 10	Northrop	Motorola @ Sears	Exemplars @ UOP	FelPro @ Kemper
8	Mar 03	7th place team	1st vs 2nd	3rd vs 4th	5th vs 6th
9	Mar 24	7th place team*	1st vs 2nd	3rd vs 4th	5th vs 6th
10	Apr 14	7th place team*	1st vs 2nd	3rd vs 4th	5th vs 6th

* If 7th place team has already had a bye, then the bye goes to 6th place team. If 6th place team has already had a bye, then the 5th place team gets a bye.

SPEED CHESS RATINGS 1994 BANQUET
SORTED BY NEW RATING

NAME	NEW RATING	CHANGE	OLD	SCORE
CREWSE	2353	309		6.0
STEVANOVIC	2336	0 *		5.0
LEVINE	2313	-86		5.5
HASAN	2312	0 *		5.5
REYES	2296	0 *		4.5
GAZMEN	2256	0 *		4.0
CIESLEK	2217	0 *		5.0
INUMERABLE	2193	-43		4.0
MELNIKOV	2192	0 *		4.0
CZERNIECKI	2176	0 *		3.0
JASAITIS	2176	0 *		3.0
BENESA	2176	0 *		3.0
HODINA	2153	96		3.5
SOLANO	2137	0 *		4.0
BERRY	2137	0 *		4.0
SIWEK	2113	-79		3.0
SMILEY	2096	0 *		2.0
WARREN	2072	0 *		2.5
KARANFILOVSKI	2066	66		6.0
WALLACH	2032	0 *		2.0
BLACKMCN	2026	247		5.5
HUGHES	2023	0 *		5.0
RZESZUTKO	1992	0 *		1.5
BUERGER	1992	0 *		1.5
YOUNG	1992	0 *		3.5
AUGSBURGER	1983	0 *		4.5
BOLDINGH	1953	-303		1.0
SHEYNIN	1953	-217		1.0
SAMELSON	1946	-46		4.5
OGASAWARA	1938	0 *		4.0
SPIEGEL	1937	0 *		2.0
SULLIVAN	1903	0 *		3.5
FRANEK	1898	0 *		3.5
KALE	1866	85		3.5
HILL	1864	0 *		5.0
LOSOFF	1858	0 *		3.0
DOBR	1826	-77		3.0
BURIAN	1809	108		5.5
GONCHAROFF	1786	3		2.5
BLAZIE	1783	0 *		2.0
SANCHEZ	1769	191		2.0
UNDERWOOD	1746	-126		2.0
DURKEE	1743	0 *		1.5
SAJBEL	1729	77		4.5
COOPER	1704	0 *		3.0
BLOEDOW	1701	0 *		5.0
STAMM	1689	-51		4.0
GRYPARIS	1689	-51		4.0
DOBROVLNY	1666	-152		1.0
MILLER	1657	0 *		6.0
LESTER	1623	0 *		0.0
SUERTH	1609	68		3.0
SIEGEL	1595	110		6.0
VALDEZ	1595	195		6.0
WILSON	1555	0 *		5.0
BHOJWANI	1544	0 *		1.0
WHITE	1529	-95		2.0
EUSTACE	1515	125		5.0
FREEMAN	1500	0 *		3.5
LCMONT	1458	0 *		1.0
REICHERT	1458	0 *		1.0
JONES	1435	77		4.0
MICKLICH	1421	0 *		1.5
CISKO	1415	0 *		1.0
DEZONNO	1391	0 *		5.0
KLINEFELTER	1369	-252		0.0
REID	1355	5		3.0
CHEVERESAN	1344	0 *		4.0
DENG	1339	0 *		3.0
HAMCND	1339	0 *		3.0
MORTON	1337	0 *		2.0
BUJALSKI	1316	0 *		3.0
KARPIERZ	1288	58		3.5
SATTERLEE	1275	-226		1.0
SCHWARTZ	1270	0 *		3.0
SZAUKELLIS	1264	0 *		3.0
CARTER	1248	48		3.0
COLE	1236	0 *		2.0
DUPRESNE	1208	8		2.5
ROJAS	1208	8		2.5
NOWAK	1208	8		2.5
OLSEN	1195	-186		2.0
SURTI	1195	-105		1.0
WEST	1190	0 *		2.0
MOTYCZA	1168	-52		2.0
ZOELLNER	1156	0 *		1.0
DONNA	1104	0 *		1.0
TOREVA	1082	0 *		0.0
GASTON	1076	0 *		0.0

(* = DID NOT PLAY IN 1994: OLD RATING)

SPEED CHESS RATINGS 1994 BANQUET
SORTED BY NAME

NAME	NEW RATING	CHANGE	OLD	SCORE
AUGSBURGER	1983	0 *		4.5
BENESA	2176	0 *		3.0
BERRY	2137	0 *		4.0
BHOJWANI	1544	0 *		1.0
BLACKMON	2026	247		5.5
BLAZIE	1783	0 *		2.0
BLOEDOW	1701	0 *		5.0
BOLDINGH	1953	-303		1.0
BUERGER	1992	0 *		1.0
BUJALSKI	1316	0 *		3.0
BURIAN	1809	108		5.0
CARTER	1248	48		3.0
CHEVERESAN	1344	0 *		4.0
CIESLEK	2217	0 *		5.0
CISKO	1415	0 *		1.0
COLE	1236	0 *		2.0
COOPER	1704	0 *		3.0
CREWSE	2353	309		6.0
CZERNIECKI	2176	0 *		3.0
DENG	1339	0 *		3.0
DEZONNO	1391	0 *		5.0
DOBR	1826	-77		3.0
DOBROVLNY	1666	-152		1.0
DONNA	1104	0 *		1.0
DUPRESNE	1208	8		2.5
DURKEE	1743	0 *		1.5
EUSTACE	1515	125		5.0
FRANEK	1898	0 *		3.5
FREEMAN	1500	0 *		3.0
GASTON	1076	0 *		0.0
GAZMEN	2256	0 *		4.0
GONCHAROFF	1786	3		2.5
GRYPARIS	1689	-51		4.0
HAMMOND	1339	0 *		3.0
HASAN	2312	0 *		5.5
HILL	1864	0 *		5.0
HODINA	2153	96		3.5
HUGHES	2023	0 *		5.5
INUMERABLE	2193	-43		4.0
JASAITIS	2176	0 *		3.0
JONES	1435	77		4.0
KALE	1866	85		3.5
KARANFILOVSKI	2066	66		6.0
KARPIERZ	1288	58		3.5
KLINEFELTER	1369	-252		0.0
LESTER	1623	0 *		0.0
LEVINE	2313	-86		5.5
LCMONT	1458	0 *		1.0
LOSOFF	1858	0 *		3.0
MELNIKOV	2192	0 *		4.0
MICKLICH	1421	0 *		1.5
MILLER	1657	0 *		6.0
MORTON	1337	0 *		2.0
MOTYCZA	1168	-52		2.0
NOWAK	1208	8		2.5
OGASAWARA	1938	0 *		4.0
OLSEN	1195	-186		2.0
REICHERT	1458	0 *		1.0
REID	1355	5		3.0
REYES	2296	0 *		4.5
ROJAS	1208	8		2.5
RZESZUTKO	1992	0 *		1.5
SAJBEL	1729	77		4.5
SAMELSON	1946	-46		4.5
SANCHEZ	1769	191		5.0
SATTERLEE	1275	-226		1.0
SCHWARTZ	1270	0 *		3.0
SHEYNIN	1953	-217		1.0
SIEGEL	1595	110		6.0
SIWEK	2113	-79		3.0
SMILEY	2096	0 *		2.0
SOLANO	2137	0 *		4.0
SPIEGEL	1937	0 *		2.0
STAMM	1689	-51		4.0
STEVANOVIC	2336	0 *		5.0
SUERTH	1609	68		3.0
SULLIVAN	1903	0 *		3.0
SURTI	1195	-105		1.0
SZAUKELLIS	1264	0 *		3.0
TOREVA	1082	0 *		0.0
UNDERWOOD	1746	-126		2.0
VALDEZ	1595	195		6.0
WALLACH	2032	0 *		2.0
WARREN	2072	0 *		2.5
WEST	1190	0 *		2.0
WHITE	1529	-95		2.0
WILSON	1555	0 *		5.0
YOUNG	1992	0 *		3.5
ZOELLNER	1156	0 *		1.0

(* = DID NOT PLAY IN 1994: OLD RATING)

1994 CICL Speed Tournament

Section 1	RATING	L. Crewse	D. Levine	S. Sheynin	F. Inumerable	J. Hodina	M. Siwek	E. Boldingh	M. Lester	TOTAL	RANK
L. Crewse	2044		1	1	1	0	1	1	1	6.0	1st
D. Levine	2399	0		1	1	1/2	1	1	1	5.5	2nd
S. Sheynin	2170	0	0		1	1	1	1	1	5.0	3rd
F. Inumerable	2236	0	0	0		1	1	1	1	4.0	4th
J. Hodina	2057	1	1/2	0	0		0	1	1	3.5	5th
M. Siwek	2192	0	0	0	0	1		1	1	3.0	6th
E. Boldingh	2256	0	0	0	0	0	0		1	1.0	7th
M. Lester	1623	0	0	0	0	0	0	0		0.0	8th

Section 2	RATING	C. Karanfilovski	E. Blackmon	C. Samelson	S. Kale	K. Dobr	N. Goncharoff	W. Underwood	C. Dobrovlny	TOTAL	RANK
C. Karanfilovski	2000		0	1	1	1	1	1	1	6.0	1st
E. Blackmon	1779	1		0	1/2	1	1	1	1	5.5	2nd
C. Samelson	1992	0	1		1	1	1/2	1	0	4.5	3rd
S. Kale	1781	0	1/2	0		0	1	1	1	3.5	4th
K. Dobr	1903	0	0	0	1		1	0	1	3.0	5th
N. Goncharoff	1783	0	0	1/2	0	0		1	1	2.5	6th
W. Underwood	1872	0	0	0	0	1	0		1	2.0	7th
C. Dobrovlny	1818	0	0	1	0	0	0	0		1.0	8th

1994 CIGL Speed Tournament

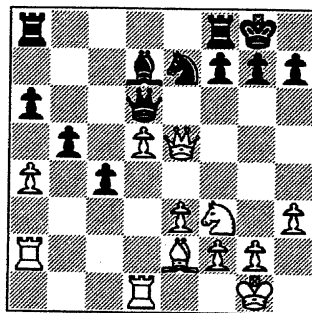
Section 3	RATING	D. Burian	R. Sanchez	P. Sajbel	V. Stamm	J. Gryparis	F. Suerth	H. White	H. Klinefelter	TOTAL	RANK
D. Burian	1701		0	1	1/2	1	1	1	1	5.5	1st
R. Sanchez	1578	1		0	1	0	1	1	1	5.0	2nd
P. Sajbel	1652	0	1		1/2	1	0	1	1	4.5	3rd
V. Stamm	1740	1/2	0	1/2		0	1	1	1	4.0	4-5th
J. Gryparis	1740	0	1	0	1		0	1	1	4.0	4-5th
F. Suerth	1541	0	0	1	0	1		0	1	3.0	6th
H. White	1624	0	0	0	0	0	1		1	1.0	7th
H. Klinefelter	1621	0	0	0	0	0	0	0		0.0	8th

Section 4	RATING	R. Siegel	C. Valdez	D. Eustace	M. Jones	C. Reid	A. Olsen	D. Satterlee	V. Surti	TOTAL	RANK
R. Siegel	1501		0	1	1	1	1	1	1	6.0	1-2nd
C. Valdez	1400	1		0	1	1	1	1	1	6.0	1-2nd
D. Eustace	1390	0	1		0	1	1	1	1	5.0	3rd
M. Jones	1358	0	0	1		1	1	1	0	4.0	4th
C. Reid	1350	0	0	0	0		1	1	1	3.0	5th
A. Olsen	1381	0	0	0	0	0		1F	1	2.0	6th
D. Satterlee	1501	0	0	0	0	0	0		1	1.0	7-8th
V. Surti	1300	0	0	0	1	0	0	0		1.0	7-8th

1994 CICL Speed Tournament

Section 5	RATING	A. Wilson	J. Karpierz	O. Carter	W. Novak	R. Rojas	T. Dufresne	R. Motycka	TOTAL	RANK
A. Wilson	1555		1	0	1	1	1	1	5.0	1st
J. Karpierz	1230	0		0	1	1	1/2	1	3.5	2nd
O. Carter	1200	1	1		0	1/2	0	1/2	3.0	3rd
W. Nowak	1200	0	0	1		0	1	1/2	2.5	4-6th
R. Rojas	1200	0	0	1/2	1		1	0	2.5	4-6th
T. Dufresne	1000	0	1/2	1	0	0		1	2.5	4-6th
R. Motycka	1220	0	0	1/2	1/2	1	0		2.0	7th

Unseen Treasure

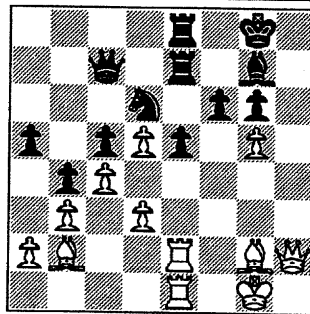


White has the right idea with 22.Qe5 in diagram above: remove the piece blocking the d-pawn. But after 22...Qe5? White played 23. Qd4? and later lost. But with 23. d6! White would've won as 23... Qxe5 24. Nxe5 wins a piece as Black's B and N would've been bothenprise.

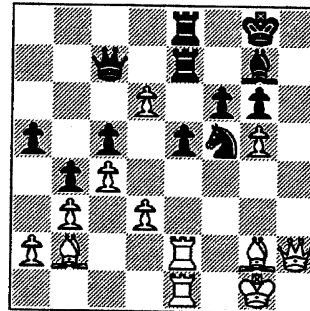
Diagram top of next column's a good one after 28. g5!! hxg5 29. hxg5.

White's winning. Here he's destroying the base that supports Black's e-pawn (with the threat of gx6 and Bxe5), plus he's threatening Bh3.

So Black replied with 29...Nf5 to block access to his e6, when White

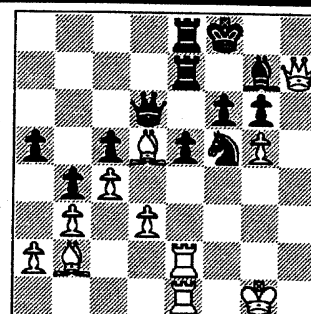


played 30.gxf6, missing 30.d6! (See diagram below).

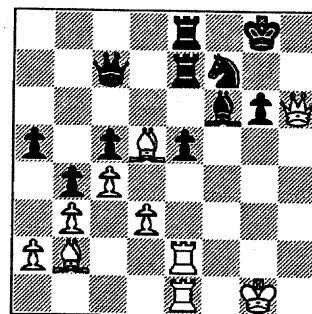


If now 30...Qxd6 then 31. Bd5+,Kf8 32. Qh7 (Diagram top next column) when the threat of 33.Qg8++ forces Black to give up the exchange with 32...Re6 (32...Rf7? 3.Qxg6!)

If 30...Nxd6 (from diagram above)



then 31.Bd5+,Nf7 32. gx6 Bxf6 33.Qh6 (Diagram below) wins.



The threat's 34. Qxg6+ Bg7 35.Rg2 and 36.Qxg7++.

If 33...Bg7 then 34. Qxg6 Kf8 35.Rf1 followed by 36. Rg2 wins.

APCT CHESS BOOK & SUPPLY SALE

BY APPOINTMENT ONLY--OCT 8 THRU NOV 13

ALL CHESSS BOOKS & SUPPLIES 25% OFF

SOME BOOKS 30%, 40% EVEN 50% OFF

Free book to everyone who brings this brochure

FOR APPOINTMENT CALL JIM WARREN (708)663-0688



VISA/MasterCard accepted

Checks accepted with identification



7213 Grand Court

Downers Grove, IL 60516

Our reputation and record of service is our best advertisement.

Directions to get here:

Grand Court is a small cul-de-sac just off Grand Ave., two blocks west of Fairview Ave, and three blocks north of 75th St. The nearest large intersection is Fairview Ave. & 75th St.

This area of Downers Grove is accessible from the tollways and expressways that reach the far west suburbs.

From the west: Exit Rte 355 at 75th St., go east on 75th St. to Fairview, then north to Blackburn, then west 2 short blocks to Grand Ave., right 1 block to Grand Ct.

From the east via the Stevenson: Exit Rte 55 at the Kingery (Rte 83) North, go north 2 lights to 75th St., then west to Fairview, then north to Blackburn, west 2 short blocks to Grand Ave., right 1 block to Grand Ct.

From the north near Rte 355: See "From the west" above.

From the north near Rte 294: Go south to Rte 55 South, then see "From the east..." above.

From the east via the Eisenhower: Go west to Rte 294 South, south to Rte 55 South, then see "From the east..." above.

From the southeast: Take Rte 294 north to Rte 55 South, then see "From the east via the Stevenson" above.

From the southwest via the Stevenson: Exit Rte 55 at Lemont Rd North, go north to 75th St, then east on 75th St. to Fairview, then north to Blackburn, then west 2 short blocks to Grand Ave., right 1 block to Grand Ct.

From the southwest via Rte 355: See "From the west" above.

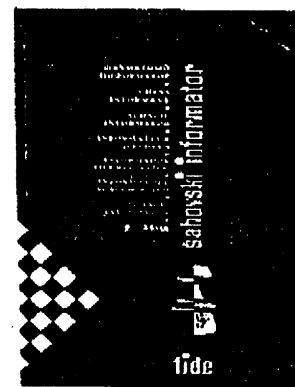
From the north near Oakbrook or Ogden Ave.: Take Fairview Ave. (or Meyers Rd which becomes Fairview Ave.) south to Claremont (7100 South), west on Claremont 2 short blocks to Grand Ave., left 2 short blocks to Grand Ct.

CHESS INFORMANT #60

Games from Feb-May 1994; openings indexed by variation; games have short coded annotations. Fig. Alg. notation. The most popular chess series in history!

Only \$22.12 after 25% discount!

Earlier Informants available, too.



APCT Stocks over 1400 Chess Titles!

HOW TO REASSESS YOUR CHESS - EXPANDED 3RD EDITION, IM Jeremy Silman - A Complete course to Chess Mastery, offers the chess student a step-by-step course that is designed to create a marked improvement in anyone's game. List \$17.95, APCT price \$16.95 w/discount you pay only \$12.71



WINNING WITH THE DRAGON, IM Chris Ward - The Dragon Variation of the Sicilian Defence is a devastating weapon in the hands of a well-prepared player. Black's "Dragon" bishop puts enormous pressure on White's center and is often instrumental in delivering the deathblow to White's King. List price is \$19.95, APCT price \$18.95, w/discount you pay only \$14.21

CHESS MASTER...at any age, Rolf Wetzel - How to Become a Chess Master - Are you spending all your "chess energy" learning new things instead of setting aside a portion of that time and energy insuring that you're not losing, not forgetting the good stuff you already know at the slowest possible rate? Studying specific models and improving one's games systematically are the most efficient way, Wetzel believes, to get the most improvement for any given level of effort. List price \$23.95, APCT price \$22.75, w/discount you pay only \$17.06



EXAMPLES OF SOME RECENT TITLES PART OF OUR STOCK OF OVER 1400 DIFFERENT CHESS TITLES

- Beating the French, Gary Lane \$11.96
- Petroff Defense Cochrane Gambit, Lutes. 10.65
- Secrets of Pawnless Endings, Nunn..... 19.20
- New In Chess #32 -- HB-22.46, PB 17.81
- Beating the Caro-Kann, Kotronias 11.96
- Winning Against 1 d4 (Nimzo-Bog-Indians), IM Tangborn 11.74
- New Ideas in the Nimzo-Indian Defence, Tony Kosten..... 16.35
- The Middlegame (Alg. Ed.), Euwe & Kramer Book One-Static Features 14.21
- Book Two-Dynamic & Subj. Features 14.21
- Philidor Countergambit, West..... 4.61
- Goring Gambit Accepted & Declined, Smith & Hall..... 11.74
- The Modern Benoni, IGM D. Norwood... 14.21
- Tactics in the French, Gennady Nesis 14.21
- Winning with the Spanish, Karpov 11.96
- The Lisitin Gambit, Gordon 9.60
- Chess Tactics Workbook, Woolum 9.94
- The Art of Combination, Blokh 11.21
- The Classical Caro-Kann Rejuvenated, Eric Schiller 4.95

Above prices reflect 25% off APCT prices. Many titles are 30%, 40% or 50% off! All chess equipment, sets, boards, clocks, bags, scorebooks, etc. are 25% off.

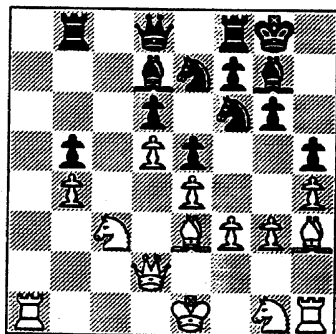
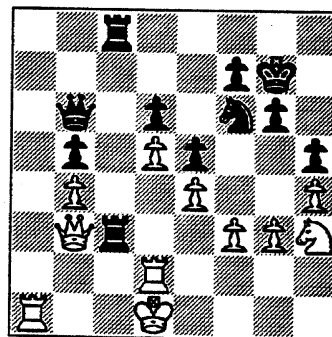
Golden Oldie

From the 1984 Midwest Masters Invitational

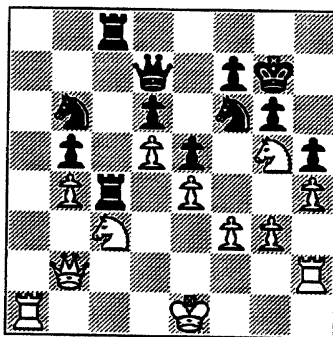
A. Sandrin (2199) - M. Stevanovic (22330; 1984 Midwest Masters Invitational; King's Indian: 1. d4 Nf6 2. c4 g6 3. Nc3 Bg7 4. e4 d6 5. f3 0-0 6. Be3 Nc6 7. Nge2 Rb8 8. Qd2 a6 9. a4 e5 10. d5 Ne7 11. h4 h5 12. g3 c6 13. Ng1 cxd5 14. cxd5 Bd7 15. Bh3 b5 16. axb5 axb5 17. b4

And this is exactly what Black now methodically exploits.

17...Nc8 18. Bh6 Nb6 19. Bxg7 Kxg7 20. Bxd7 Nc4 21. Qc1 Qxd7 22. Nh3 Rfc8 23. Ng5 Nb6 24. Rh2 Rc4 25. Qb2 Rbc8



The open spaces on the Queen's wing and the absence of a single pawn on the 2nd rank makes it impossible to conduct the normal Saemisch attack on the King's wing. The reason for this is that White needs to allocate some of his forces in defense of his exposed King.

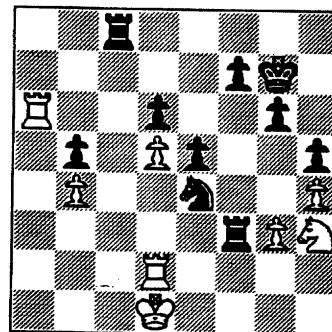


This pressure on the c-file is the beginning of the end for White.

26. Nd1 Na4 27. Qb3 Qa7 28. Nh3 Qd4 29. Rb1 Nc3 30. Rd2 Qb6 31. Ra1 Nxd1 32. Kxd1 Rc3 (see diagram at top of next column)

White's position begins to crumble.

33. Qa2 Rxf3 34. Qa6 Qxa6 35. Rxa6 Nxe4 0-1 **Final position**



Excellent technique by one of the North Division's top players.

NAME	TEAM	W	L	D	RATING	NAME	TEAM	W	L	D	RATING
ABBOTT, J	MTRLA	2	2	0	0000?	COX, M	ALUMN	5	3	4	2014C
ABRAHAM, T	RAIL	0	1	0	1531	CREWSE, L	EXMPL	5	2	1	2044
ALLEN, H	PSTOF	3	3	0	1877	CUMBERLAND, M	SEARS	1	0	0	0000?
AMUNDSEN, C	KEMPR	0	2	0	0000?	CUMMUTA, P	KEMPR	0	1	0	1368
ANDERSON, CJ	ROYLS	4	1	1	1446	CZERNIECKI, A	ALUMN	6	6	2	2143C
ATKINSON, J	AMCRP	3	6	3	1728	DAVIDSON, M	ALUMN	2	0	0	1678*
AUGSBURGER, L	MTRLA	3	5	1	1745	DAVIS, R	PSTOF	0	4	1	0000?
AUSTIN, R	ROYLS	0	1	0	1125#	DEARDORFF, M	FLPRO	0	8	1	1437*
BAER, M	AMCRP	4	3	3	1347*	DECMAN, S	KNIGHT	5	0	1	1677D
BAKER, B	FLPRO	0	0	1	1069	DENG, J	CRT	3	3	2	1582
BAKER, LR	MERC	1	4	0	1112*	DEWITT, G	ROCKW	3	4	3	1423C
BANZA, S	HULL	0	0	0	0000?	DEZONNO, T	ROCKW	5	2	2	1255*
BARGERSTOCK, D	CRT	7	4	2	1810	DIAZ, L	JCASE	1	0	0	0000?
BARNES, D	ROAD	0	0	1	0000?	DIAZ, P	NORTH	6	4	0	2015
BAURAC, D	KNIGHT	5	4	0	1604C	DJORDJEVIC, I	FERMI	0	0	0	0000?
BENEDEK, R	KNIGHT	4	0	5	2211D	DOBR, K	CHRGR	6	3	2	1516T
BENESA, A	GROLR	6	3	1	2211	DOBROVOLNY, C	ROYLS	6	3	3	1996
BERNARD, D	CRT	1	1	0	1303	DONNA, D	MTRLA	1	1	0	0000?
BERRY, G	KNIGHT	9	1	2	2049D	DORFF, M	SEARS	0	0	1	1493
BEZZUBOV, V	FERMI	5	0	0	2273#	DUFRESNE, T	JCASE	3	6	0	1000#
BHOJWANI, C	TYROS	3	2	0	1977	DURKEE, D	DRGNS	3	4	3	1770C
BLACKMON, E	ROYLS	6	2	1	1779	DYCJKOWSKI, R	CONBK	5	5	0	1561
BLAZIE, J	TYROS	0	1	4	1832C	DZURIESKO, G	UNILV	2	6	0	1147#
BLOOM, B	EXMPL	3	3	2	2062	EDWARDS, S	AWEST	1	7	1	1278
BOLDINGH, E	UOP	5	6	0	2102	EFRON, D	ROCKW	1	0	1	1638
BOOKER, G	RADIO	3	8	0	1398*	ELEK, G	NORTH	0	7	1	1009*
BRADY, R	CHRGR	2	2	0	1267	ELLICE, W	UNILV	4	0	4	1873
BRANCH, Y	COLUM	3	1	1	1301*	ERLENBORN, M	AWEST	2	3	0	1482*
BRIONES, M	UOP	1	1	0	1660C	EUSTACE, D	DRGNS	3	2	4	1504
BROCKETT, M	SEARS	4	5	1	1834	FAHRENHOLTZ, S	MTRLA	3	0	0	1799*
BRONFELD, A	ALUMN	4	1	1	1847	FELDMAN, A	FLPRO	1	5	3	1438C
BROTSOS, J	ALUMN	0	1	1	1541D	FRAATS, D	CONBK	6	6	1	1867
BROZOVICH, J	TYROS	2	2	2	1750C	FRANCISKOVICH, D	HULL	1	4	0	1113#
BUCHNER, R	ROYLS	2	0	4	2129	FRANEK, M	ALUMN	6	6	2	1790C
BUERGER, E	UOP	7	3	2	2079D	FRIESEMA, W	CRT	9	2	4	2122
BURDICK, S	COLUM	3	1	0	1582	FRISKE, T	EXMPL	8	2	1	1866
BURIAN, D	NORTH	4	3	2	1680C	GAINES, I	FERMI	5	3	1	1740C
CARNAL, D	CRT	1	5	1	1210#	GANSER, A	CONBK	3	1	1	0000?
CARTER, L	PSTOF	7	5	1	1546	GASTON, K	JCASE	1	8	0	1274*
CARTER, O	ROAD	0	1	0	0000?	GAZMEN, E	GROLR	8	2	0	2234
CHAN, H	SEARS	1	1	0	1567	GOLDBOGEN, G	COLUM	0	1	0	0000?
CHARKOVSKY, R	ALUMN	3	0	2	1619	GOLLA, R	SEARS	4	4	3	2029D
CHEVERESAN, S	UOP	0	0	1	1434C	GOLUMBOVSKI, P	NORTH	5	1	4	2126
CHRISTIAN, R	DRGNS	1	1	0	1808C	GONCHAROFF, N	MTRLA	8	1	3	1771Q
CIESLEK, D	MTRLA	3	2	0	1940	GORZ, E	RADIO	2	4	3	1311#
CISKO, G	FERMI	1	2	0	1615*	GREEN, D	KNIGHT	7	3	1	1790C
COLEMAN, O	ROAD	1	1	0	0000?	GRIESMEYER, W	PSTOF	1	3	1	1317
CONNELY, S	HULL	0	2	0	0000?	GUILLEN, B	KEMPR	1	0	0	1402*
COOPER, W	PSTOF	6	3	4	1717	GUIO, J	ROYLS	2	5	0	2072
COTE, J	MERC	2	4	1	1277*	HAHNE, D	ROYLS	7	2	1	1606

? - UNRATED
 # - 5 TO 9 RATED GAMES
 * - 10 TO 24 RATED GAMES

C - CENTURY CLUB MEMBER
 D - DOUBLE CENTURION
 T - TRIPLE CENTURION
 Q - QUAD CENTURION

NAME	TEAM	W	L	D	RATING	NAME	TEAM	W	L	D	RATING
HAMILTON, L	AMCRP	4	8	0	1380	LOMONT, C	SEARS	1	1	1	1494*
HAMMOND, M	CONBK	6	4	0	1365	LOSOFF, A	CRT	7	6	0	1864
HAMPER, P	AMCRP	3	4	1	1288*	LUDWIG, T	DRGNS	5	5	0	2096
HARRIS, FF	ROAD	1	3	0	1404#	LUEDERS, J	CRT	0	4	0	0000?
HARRIS, R	FERMI	6	0	2	1644	MAA, R	DRGNS	0	4	0	0000?
HASAN, Y	MTRLA	8	1	0	2264	MARCOWKA, R	PSTOF	5	6	1	1955C
HEDSTROM, L	RAIL	0	0	0	0000?	MATTHEWS, J	RAIL	7	3	0	1747
HERNANDEZ, DD	COLUM	6	5	1	1480	MCALISTER, K	COLUM	5	5	3	1959
HESS, B	FLPRO	0	6	2	1456	MCCLENDON, L	CONBK	0	0	1	1340
HILL, C	FERMI	0	1	0	1663*	MCFARLIN, B	KEMPR	0	6	1	1215#
HILL, R	KNGHT	8	0	3	1780	MCINTOSH, S	CONBK	0	3	2	1142*
HILLIARD, J	CONBK	0	3	0	0000?	MCKAY, P	UNILV	2	2	0	0000?
HILTON, J	MERC	2	5	1	1004*	MCQUINN, J	ROCKW	0	1	2	1450
HODINA, J	AMCRP	7	3	4	2094	MELNIKOV, I	MTRLA	5	6	2	2200
HOWARD, W	PSTOF	7	5	2	1518	MELNIKOV, N	MTRLA	0	1	1	0000?
HOWARD, W	PSTOF	7	5	2	1518	MELNIKOV, N	MTRLA	0	1	1	0000?
HUGHES, N	KEMPR	2	1	1	1852C	MENGEL, M	FERMI	1	2	0	0000?
HUNG, N	MTRLA	0	0	1	1471#	MICKLICH, F	UOP	4	7	1	1719C
INUMERABLE, F	PSTOF	10	1	2	2236	MIKULECKY, B	RADIO	1	4	5	1304
JACKSON, JJ	ROAD	1	2	0	0000?	MILLER, TT	SEARS	8	3	2	1728
JACOBS, N	DRGNS	5	1	7	1983C	MITCHAM, L	ROCKW	3	3	0	1552*
JAKSTAS, K	NORTH	3	1	4	2180C	MOORE, JJ	MTRLA	1	0	0	0000?
JARRETT, T	RAIL	0	1	0	1604#	MORTON, B	SEARS	2	2	1	1569
JASAITIS, A	CRT	6	3	2	2216C	MOTYCKA, R	JCASE	4	4	1	1156
JONES, B	ROCKW	1	0	6	2061	MUDAN, M	HULL	1	5	0	0000?
JONES, M	ROAD	2	4	0	1358*	NAUGHTON, T	HULL	1	3	1	1339*
KALE, S	JCASE	4	3	4	1840	NELL, D	UNILV	1	5	0	1077#
KANAS, W	JCASE	3	5	0	1299C	NELSON, H	CONBK	3	3	0	1967
KARPIERZ, J	TYROS	0	3	3	1126*	NISHIMURA, K	FLPRO	1	5	2	1285*
KAUFMAN, M	KEMPR	0	2	0	0000?	NOTERMAN, T	UNILV	0	4	0	1190
KEEFE, E	FLPRO	2	5	0	1186#	NOWAK, W	RAIL	0	1	0	0000?
KEISLER, J	KNGHT	7	0	1	1987	NWABUDE, O	CHRGR	2	4	2	1029*
KINSELLA, G	KNGHT	1	1	1	1468C	O'BRIEN, D	UOP	1	0	1	1417*
KLINEFELTER, H	JCASE	6	3	2	1530	O'DELL, DW	RADIO	1	6	4	1620
KOEPELE, J	TYROS	0	1	0	0000?	OGASAWARA, L	ROYLS	7	2	2	1862
KOGAN, G	CONBK	7	4	3	1850	OLSEN, A	KEMPR	1	6	2	1478
KOSTECKA, K	COLUM	7	4	2	1664	OSTERLUND, R	EXMPL	6	6	0	1920
KOZLOVSKY, M	FERMI	3	0	0	2238	PARA, A	FERMI	3	3	2	1551
KRULL, E	AMCRP	4	4	1	1461	PARAOAN, E	CONBK	7	3	1	1761
LACAPENA	GROLR	0	1	0	0000?	PATTON, D	CHRGR	1	1	1	0000?
LAMBIRIS, J	KEMPR	2	4	3	1424*	PEHAS, A	ROYLS	1	0	3	1952
LASKY, N	RADIO	2	5	1	1352	PEPPERS, M	RAIL	0	0	0	0000?
LATIMER, E	SEARS	6	5	1	2037D	PERAREN, E	PSTOF	4	0	0	1802
LEE, B	UNILV	1	4	0	1470	PIAO, T	DRGNS	9	3	0	1716
LEONG, D	ALUMN	3	0	3	1971	POMA, D	AWEST	8	5	5	1307
LEONG, G	KEMPR	1	2	0	2003C	POMA, M	AWEST	0	1	0	0000?
LERNER, R	SEARS	1	0	1	0000?	POZNIAK, J	KEMPR	0	1	0	0000?
LESTER, M	MTRLA	3	2	1	1623	PRATTS, M	COLUM	6	3	4	1693
LEVINE, D	KNGHT	3	1	1	2399	PRICE, B	AWEST	0	1	0	1086#
LIKHTEREV, M	UOP	1	1	2	1501#	PUNZALAN, N	GROLR	6	2	0	1599
LITVINAS, A	ALUMN	9	3	0	1690C	QUERUBIN, R	FLPRO	2	5	0	2075#

? - UNRATED
 # - 5 TO 9 RATED GAMES
 * - 10 TO 24 RATED GAMES

C - CENTURY CLUB MEMBER
 D - DOUBLE CENTURION
 T - TRIPLE CENTURION
 Q - QUAD CENTURION

NAME	TEAM	W	L	D	RATING	NAME	TEAM	W	L	D	RATING
RADAVICIUS, E	CHRGR	5	2	4	1713D	STINSON, M	ROYLS	1	1	0	2006
RAFACZ, T	ROCKW	1	6	2	1698	STOLTZ, B	TYROS	4	2	0	2024
RAFACZ, W	ROCKW	3	5	3	1638	SUERTH, F	EXMPL	6	3	3	1627C
RAFFERTY, M	HULL	0	1	0	0000?	SULLIVAN, C	MERC	2	6	1	1494
RANGEL, R	HULL	0	1	0	1741	SZAUKELLIS, W	MTRLA	1	1	0	0000?
REED, K	TYROS	2	0	0	0000?	SZONTAGH, T	CRT	0	4	0	0000?
REID, C	JCASE	7	4	1	1362	TAYLOR, M	ROAD	0	0	0	0000?
REYES, R	SEARS	8	2	2	2336D	TEGEL, F	DRGNS	6	4	3	2145D
ROJAS, R	RAIL	0	1	0	0000?	THOMAS, G	TYROS	1	3	2	1496
ROSLEY, D	ROYLS	5	1	0	1834	THOMAS, J	CHRGR	2	5	2	1465C
ROSS, L	JCASE	0	1	0	0000?	THOMPSON, R	FLPRO	0	3	0	1063
RUBIN, J	UNILV	0	1	0	0000?	TSEITLIN, E	MTRLA	3	2	0	0000?
RUDDY, J	MERC	1	5	2	1205	TYREE, D	RADIO	1	8	1	1482*
RUEB, R	HULL	0	1	0	0000?	UNDERWOOD, W	AWEST	2	2	1	2008C
RZESZUTKO, R	ALUMN	3	5	1	1820	VALDEZ, C	MTRLA	2	1	0	0000?
SAHLI, E	UOP	7	0	2	1751*	VAN MEER, J	KEMPR	1	2	2	1998
SAJBEL, P	UOP	3	4	2	1652	VAN OTRIVE, R	RAIL	1	3	0	1096#
SAMELSON, C	MTRLA	6	3	1	1992C	VAN ZILE, C	UOP	1	2	0	1382*
SAMULAK, C	HULL	1	4	0	1147#	VERIVE, J	AWEST	1	3	0	1615*
SANCHEZ, P	RAIL	0	3	0	0000?	VICK, H	MTRLA	0	1	0	1516
SANCHEZ, R	GROLR	5	2	1	1526*	VIGANTS, A	NORTH	4	5	0	1592
SANTIAGO, T	COLUM	6	3	2	1972*	WALLACH, C	MTRLA	6	1	2	2141
SATTERLEE, D	JCASE	4	8	2	1719C	WALLIN, R	AWEST	1	4	2	1714
SAWDO, E	JCASE	3	3	2	1399	WARD, C	DRGNS	5	3	1	1551D
SCHWARTZ, M	TYROS	0	4	2	1060*	WARREN, J	CHRGR	3	2	5	2114T
SHAFF, R	TYROS	1	4	1	1532C	WEBER, L	GROLR	2	5	3	2144
SHEU, G	CHRGR	2	0	2	1343*	WEISS, G	HULL	0	5	0	0000?
SHEYNIN, S	KNGHT	3	1	1	2170	WEISSKOPF, J	HULL	4	4	0	1334#
SHOUSE, B	MTRLA	1	3	0	0000?	WEITZ, R	EXMPL	1	5	1	1682C
SHUKLA, S	FERMI	0	1	0	0000?	WELTER, P	SEARS	2	1	0	1646#
SIEGEL, R	CONBK	8	4	3	1485	WENTLING, C	AMCRP	6	6	0	1659
SIMS, B	CRT	1	2	0	1519#	WEST, R	MTRLA	0	1	0	1447#
SIWEK, M	KEMPR	2	6	2	2126C	WHITE, H	JCASE	4	8	2	1592
SLAGLE, S	MERC	3	6	0	1589	WHITSITT, S	AWEST	0	4	0	1504*
SMITH, BR	TYROS	0	2	2	1460	WILLIAMS, A	ROAD	0	3	0	0000?
SMITH, JM	ALUMN	1	0	0	1196*	WILLIAMS, J	RAIL	2	0	0	0000?
SOLLANO, E	GROLR	5	3	1	1956	WILSON, A	ROAD	1	5	1	1555
SOMBONG, M	CONBK	4	5	1	1681	WILSON, M	SEARS	0	2	0	1293#
SPIEGEL, L	FERMI	3	3	4	1990C	WONG, P	EXMPL	3	1	2	2231C
STAMM, V	CHRGR	5	5	1	1740D	YOUNG, R	HULL	1	7	2	1386*
STAPLES, C	FERMI	0	3	3	1200#	ZEIDEL, J	MERC	0	0	1	1947
STEINER, D	HULL	0	1	0	0000?	ZOELLNER, J	CONBK	4	4	2	1294
STEVANOVIC, M	UOP	5	5	3	2199C	ZUNGOLO, J	CRT	0	1	0	0000?
STEVENS, J	COLUM	4	4	0	1380						

? - UNRATED

- 5 TO 9 RATED GAMES

* - 10 TO 24 RATED GAMES

C - CENTURY CLUB MEMBER

D - DOUBLE CENTURION

T - TRIPLE CENTURION

Q - QUAD CENTURION