

February 1996

Volume 39.5

# *The Chicago Chess Player*

The Official Bulletin of the Chicago Industrial Chess League

## **MAN vs MACHINE**

THE ACM CHALLENGE MATCH

**Kasparov - Deep Blue**

**Coverage of the Women's World Championship Match**

### **INSIDE**

③ Kasparov - Deep Blue Match

⑤ News from Everywhere

⑦ Selected Games

27 The Final Word

28 Match Results & Ratings List

**Bulletin Editor**

Tim Williams (CASE)  
 (708)887-3706 (Business)  
 lostloop@big10.metrobbs.com (E-Mail)  
 16W472 Honeysuckle Rose #114  
 Hinsdale, IL 60521

**The Officers for the CICL:****President**

Satish Kale (CASE)  
 (708)887-2372 (Business)  
 (708)325-KALE (Home)  
 skale@casecorp.com (E-Mail)  
 CASE Corp  
 7 South 600 County Line Rd  
 Burr Ridge, IL 60521

**Secretary**

Tony Jasaitis (CRT)  
 (708)448-4967 (Home)  
 tony@trdlnk.com (E-mail)  
 P.O. Box 664  
 Bedford Park, Illinois 60499-0644

**Treasurer**

Wes Underwood (Wheaton)  
 (708)752-5127 (Business)  
 (708)462-0393 (Home)  
 wu@david.wheaton.edu (E-Mail)  
 207 South Dorchester Avenue  
 Wheaton, Illinois 60187

**Publicity Director**

Carl Reid (CASE)  
 2289 Grand Drive  
 Northbrook, Illinois 60062-6937

**Trophy Chairman**

Wayne Ellice (PAWNS)  
 (312)838-3215 (Business)  
 (312)838-3243 (Fax)  
 wayne.ellice@crous.sprint.com (E-Mail)  
 Crosfield Catalysts  
 4099 West 71st Street  
 Chicago, Illinois 60629

**Banquet Chairman**

Len Spiegel (Fermi)  
 (708)840-2809 (Business)  
 (708)377-2675 (Home)  
 lenny@fnal.gov (E-Mail)  
 Fermilab MS 219  
 P.O. Box 500  
 Batavia, Illinois 60510

**Ratings Chairman**

Charlie Ward (LUCENT TECH Dragons)  
 (708)979-4599 (Business)  
 (708)979-6124 (Fax)  
 (708)325-3885 (Home)  
 c.e.w.ward@att.com (E-Mail)  
 615 South Lincoln  
 Hinsdale, Illinois 60521

**Division Chairmen****Far West**

Irwin Gaines (Fermi)  
 (708)840-4022 (Business)  
 (708)420-1452 (Home)  
 (708)840-2783 (Fax)  
 gaines@fnalv.fnal.gov (E-Mail)  
 Fermilab MS 127  
 P.O. Box 500  
 Batavia, Illinois 60510

**East**

Dan Fraats (Bank of America)  
 (312)247-4343 (Business)  
 (312)581-0923 (Home)  
 5820 West 55 th Street  
 Chicago, Illinois 60638

**Near West**

Howard Klinefelter (CASE)  
 (708)961-0482 (Home)  
 1125 Manchester Court  
 Naperville, Illinois 60563-2110

**North**

Pat Sajbel (UOP)  
 (847)391-2134 (Business)  
 (847)506-9302 (Home)  
 posajbel@uop.com (E-Mail)  
 616 S. Edward  
 Mt. Prospect, IL 60056

## The ACM Man Machine Challenge Kasparov Beats Deep Blue

Philadelphia USA (USA), II 1996.

	1	2	3	4	5	6	Total	Perf.	Rating		
Kasparov, Gary	g	RUS	2775	0	1	=	=	1	1	4.0	-----
Deep Blue			-----	1	0	=	=	0	0	2.0	2650

(Excerpted from The Week in Chess.)

Kasparov was quoted after game 4.

"I'm tired from these games and if I was playing a normal human match my opponent would also be exhausted, but here I have something that is not exhausted and it's playing with the same strength."

Kasparov was very complimentary of the strength of Deep Blue after winning the match. He was clearly struggling against it until game 5. His draw offer during game 5 seemed to suggest an over respect for the computer and perhaps tiredness on his part.

### The Contest

---

It must have come as a tremendous relief to the programmers that Deep Blue functioned well in game 1. The Deep Blue project has been around since 1988, in 1989 an early version played an exhibition match against Kasparov and was soundly beaten. Technical glitches having a bad effect on game 1 of that earlier match.

There were in fact technical problems during the match. In the second game Deep Blue lost contact with its opening repertoire a problem caused by a missing file. In game 3 the operator made a typo causing confusion for several minutes. Kasparov's mental processes were somewhat interrupted by the system freezing.

The games themselves saw Kasparov eventually provoke Deep Blue in the middlegame in game two and take advantage over 35 moves of his long range advantage.

The two draws in games 3 and 4 saw Kasparov very much surprised by Deep Blue's decisions. Certainly the machine was better (but not winning) at the end of the fourth game.

Kasparov, who was tiring badly after four games, seemed to not be very confident. He offered a draw in game 5 but this was rejected. This seems entirely sensible as this is supposed to be a test of the machinery and the game wasn't completely dead. The Deep Blue program responded by playing very mysteriously indeed. In what was an open position it simply ran its position down over the next few moves. The programmers said afterwards that they would have to study the game at length to understand what went wrong. In a hopelessly lost position the human minders stepped in and resigned the game..

The final game saw Kasparov beat the computer very soundly indeed.

If he had been playing a human, Kasparov would undoubtedly mentioned his draw offer in game 5 of this match as the decisive turning point.

### The ACM Congress

---

The sponsors of the match were "The Association for Computing" and the occasion is both their annual Congress and the 50th Anniversary of ENIAC being shown for the first time. This is the start of an 18 month long celebration of this anniversary which will include exhibitions, symposia by leading figures on the future of computing in a variety of fields and of course the Congress itself which coincided with the match.

#### Programmers and developers of Deep Blue

---

Feng-Hsiung Hsu who has been a research staff member of the IBM T. J. Watson Research Center since 1989. He is the architect and principal designer of DEEP BLUE.

Jerry Brody, A. Joseph Hoane, Jr. and Murray Campbell have also been working on Deep Blue project for at least five years.

The manager of the project and seior manager of the Parallel System Platforms Department at the IBM T. J. Watson Research Center in Yorktown Heights, New York. He has been involved in technical and managerial activities in the areas of design automation, optimising compilers, and parallel processing.

#### Deep Blue

---

Deep Blue itself only officially came into existence 3 days before the match commenced. Before that it was only known as Deep Blue prototype. The parallel processing techniques were tried on fewer than the 32 parallel processors used here. IBM officially call this system the RISC System/6000 Scalable POWER parallel Systems (SP) high-performance computer. Each node of the SP2 employs a single microchannel card containing 8 dedicated VLSI chess processors, for a total of 256 processors working in tandem. Deep Blue's programming code is developed in C and runs under the AIX operating system. The net result is a scalable, highly parallel system capable of calculating 50 to 100 billion moves within 3 minutes. The computer array used in this match is only 1/16th of the size of the largest commercial computer of this type shipped.

Deep Blue is augmented by endgame tablebases of positions with limited material. For instance Kasparov would have been sure to practice the basic ending Queen and King vs Rook and King as it has been shown that Grandmasters struggle to win this ending against tablebases it used to be regarded as a regulation win.

Deep Blue played in Hong Kong against a number of microcomputers and failed to win. The main reason for its failure was its opening repertoire. Chess experts try to construct an opening repertoire which avoids positions not handled well by the computer or which are known to be poor. Semi-open and Open positions are likely to be the best choice, it is clear that in some cases computers are massively superior to human's here.

In addition Deep Blue never accepts a draw so there is also a Grandmaster Joel Benjamin who is there to help the programmers to decide whether to accept a draw or not.

#### Rules

---

The most interesting regulations were those relating to the computer and its operators. In general they follow normal chess rules and the rate of play chosen was: 40 moves in 2 hours, 20 in 1, 30 minutes for the remaining moves.

The exceptional rules for this match were:

No postponements, if either side fails to show the game would be defaulted.

The operator must behave in a non-distracting manner at all times especially when it is Kasparov's turn to move. The operator may be replaced whilst it is the computer's turn to move. Technical problems shall also be solved whilst it is the computer's turn to move. A real chess clock is to be used and that is to be pressed by the computer operator on the completion of the move. In the event of an error by the operator, in communicating the moves to Deep Blue or playing the moves on the board, the clocks will be reset back as close as possible to the original times and the game shall continue from the point of the mistake. In the event of a power failure then the clocks shall be stopped. This is a rough summary of the rules Kasparov and IBM have a detailed contract which it is suggested contains a full set of contingencies.

The Prizemoney is \$500,000. 80% to the winner, 20% to the loser. 50% each in the case of a draw.

## Zsuzsa Polgar Wins Women's World Title

Jaen ESP (ESP), I-II 1996.

		1	2	3	4	5	6	7	8	9	0	1	2	3	4	5	6	Total	Perf Rating
Polgar, Zsuzsa	g HUN 2550	0	=	1	1	=	1	=	1	=	1	0	1	...				8.5	2640
Xie Jun	g CHN 2530	1	=	0	0	=	0	=	0	=	0	1	0	...				4.5	2440

Xie Jun has lost her title to Zsuzsa Polgar. She won the title in 1991 when she beat long time Champion Maia Chiburdanidze. She defended it successfully against Nana Ioseliani in Monaco in 1993. In fact Ioseliani had been very much a surprise qualifier for that match as it was generally expected that Zsuzsa Polgar would beat her in the match that

acted as qualifier. Now Zsuzsa Polgar who has been the best women's player competing for the title for some time has successfully captured the title. Xie Jun's victory in game 12 only helped restore some respectability to the score. Zsuzsa promptly avenged that lose in the next game eliminating the need for any further games in the match. Zsuzsa's more well-known sister Judit acted as her second for the match.

## Belgrade Tournament - Stopped and Re-Started

The Belgrade GM double round tournament in Belgrade was abandoned at the half way stage. Probably due to financial problems. The results at the time were (after 5 rds):

Belgrade YUG (ISR), I-II 1996      cat XVI (2639)

1 Bareev, Evgeny	g RUS 2645	4.0
2 Salov, Valery	g RUS 2670	3.0
3 Karpov, Anatoly	g RUS 2770	2.5
4 Leko, Peter	g HUN 2625	2.5
5 Popovic, Petar	g YUG 2570	2.0
6 Ilincic, Zlatko	g YUG 2555	1.0

Another Tournament was held at a different venue with almost the same players, again it was 5 rounds. The results are as follows (selected games can be found in the Games Section):

Belgrade - Stara Pazova

1. Karpov, Anatoly	g RUS 2770	3.5
2. Salov, Valery	g RUS 2670	2.5
3. Bareev, Evgeny	g RUS 2645	2.5
4. Rajkovic, Dusan	g YUG 2485	2.5
5. Ivkov, Borislav	g YUG 2455	2.5
6. Ilincic, Zlatko	g YUG 2555	1.5

## INTEL Drops Sponsorship of PCA

INTEL has decided by a marginal vote to drop sponsorship of the PCA. This would be to include the PCA World Championship and the PCA Grand Prix events. At this time the Grand Prix events are still scheduled to go. Apparently, INTEL Europe was willing to continue sponsorship but INTEL North America was not. The result is that with no significant backer, Kasparov's PCA may soon be in limbo. This only adds more confusion to the PCA/FIDE World Championship situation. Maybe Kasparov will be more motivated to have a unification match now. More on this story as it unfolds.

**CICL: New Team Names**

by Charles Ward

As the result of AT&T's plan to break into three independent companies, the AT&T teams in the CICL are taking on a new corporate name. Effective February 1, AT&T's systems and technologies businesses became a new company, Lucent Technologies. For the next ten months the new company will be a wholly-owned subsidiary of the parent AT&T. On January 1, 1997 AT&T will distribute all of Lucent Technologies stock to AT&T shareholders and the two companies will then be completely independent of one another.

The former AT&T units now forming Lucent Technologies are:

Bell Laboratories  
 Network Systems  
 Business Communications Systems  
 Consumer Products  
 Microelectronics

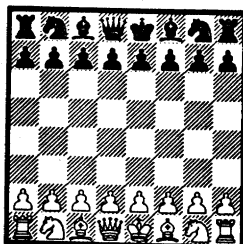
Since the four AT&T chess teams in the CICL are composed wholly or pre-dominantly of Lucent employees and are based at Lucent locations, they will be listed in the bulletin as the Lucent Technologies Dragons, Royals, Tyros and Chargers.

Also, the J.I. Case team will take on a new name as the result of breaking away from the parent

company and becoming simply Case Corp. The Case team has asked that its name be listed simply as Case in the CICL Bulletin. The name will be changed in the team standings but the abbreviation JCASE in the ratings listing will continue to appear until the end of the current season. (Editor's note: I've been making the name change from my end in the bulletin. So don't be confused if you've already caught this change.)

**Illinois Chess Association: New ICB Editor Selected**

Current Illinois Chess Bulletin Editor Bob Renault recently announced his decision to leave his position on the ICB for personal reasons. At the most recent ICA Business Meeting a new editor was chosen by the officers and is the CICL's own current bulletin editor, Tim Williams. The transition period for changing editors will take place over the next couple of issues of the ICB. At this time I plan to continue as the editor for the CICL also. Future events in the CICL and the ICA will dictate how long I will be able to do both but for the immediate future I foresee no obvious conflicts. I intend to start a small column in the ICB updating events in the CICL (similar to the club news columns). Hopefully, the CICL will get some much needed exposure and derive some benefit from this situation (new players, teams, etc.). I look forward to the challenge and possibilities.

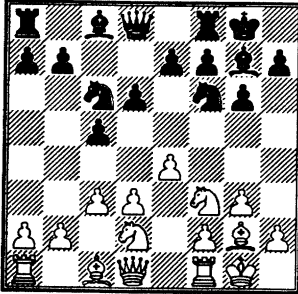


**Submit those games and articles!**  
**Your contributions are the heart of this bulletin.**

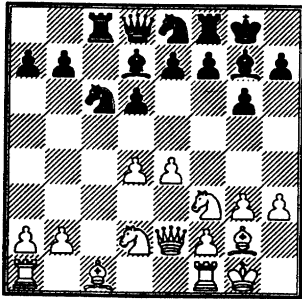
## GAMES SECTION

Czerniecki A. - Byrne R.  
CICL - Alumni v CTA, , 1996

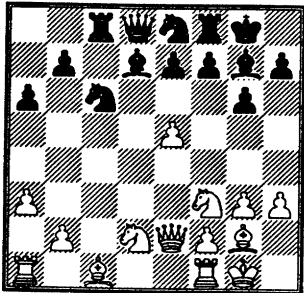
1. e4 c5 2. g3 g6 3. ♖g2 ♖g7 4.  
♟f3 ♟c6 5. 0-0 d6 6. d3 ♟f6 7.  
♟bd2 0-0 8. c3



8... ♖g4 9. h3 ♖d7 10. d4 cxd4  
11. cxd4 ♞c8 12. ♞e2 ♟e8

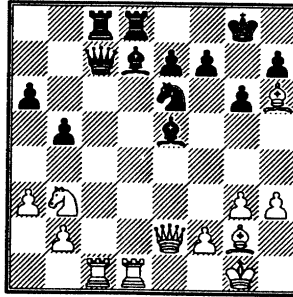


13. e5 a6 14. a3 dxe5 15. dxe5

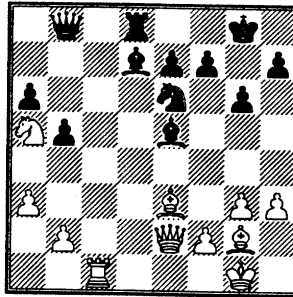


15... ♟c7 16. ♟c4 ♟e6 17. ♞d1  
b5 18. ♟cd2 ♞c7 19. ♟b3 ♟xe5

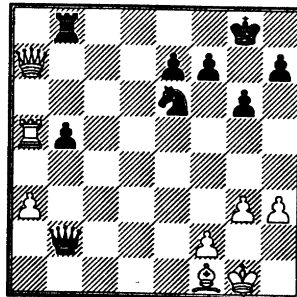
20. ♟xe5 ♖xe5 21. ♖h6 ♞fd8  
22. ♞ac1



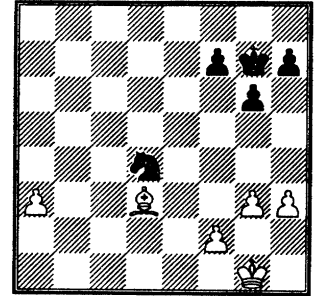
22... ♞b8 23. ♖e3 ♞xc1 24. ♞xc1  
♖c8 25. ♟a5 ♖d7



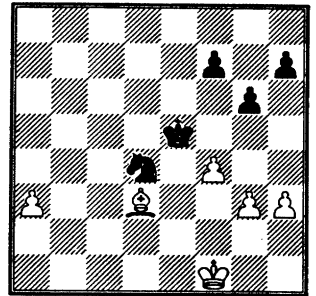
26. ♟c6 ♖xc6 27. ♞xc6 ♖d4 28.  
♞xa6 ♞e5 29. ♞a5 ♖xe3 30.  
♞xe3 ♞xb2 31. ♖f1 ♞b8 32.  
♞a7



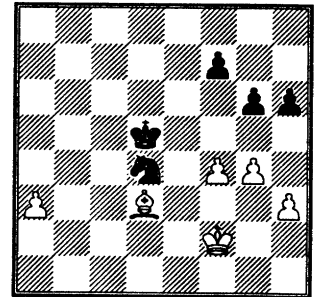
32... ♞e5 33. ♞xe7 ♞f5 34.  
♞xb5 ♞xb5 35. ♞e8+ ♟g7 36.  
♞xb5 ♞xb5 37. ♖xb5 ♟d4  
White has to be winning here.  
After an average kind of game an  
interesting endgame now develops.  
38. ♖d3 Maybe 38.a4 when black  
doesn't dare take the bishop.



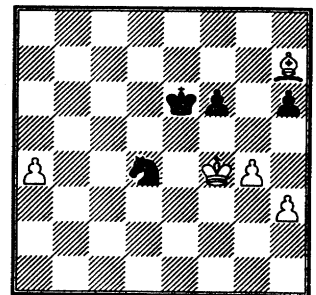
38... ♟f6 39. ♟f1 ♟e5 40. f4+



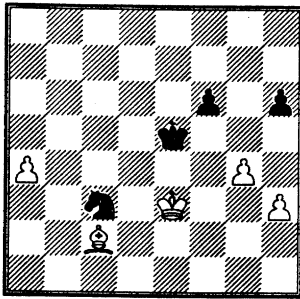
40... ♟d5 41. ♟f2 h6 42. g4



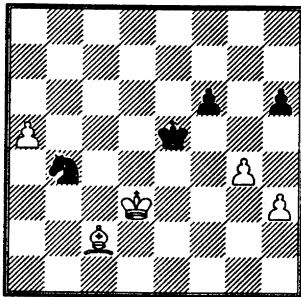
42... g5 43. ♟e3 f6 44. ♖h7 gxf4+  
45. ♟xf4 ♟e6 46. a4



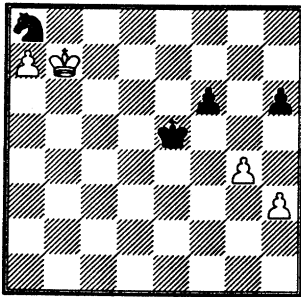
46... ♟e2+ 47. ♟e3 ♟c3 48.  
♖c2?! Why not 48.a5 ? 48... ♟e5



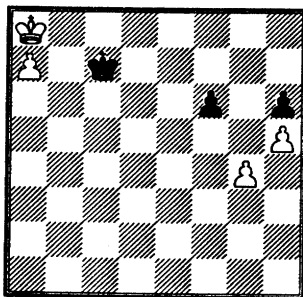
49. ♖d3 ♜d5 50. a5 ♜b4+



51. ♖c4 ♜xc2 52. a6 White's going to be short tempi with the rook pawn. 52... ♜e3+ 53. ♖c5 ♜d5 54. a7 ♜c7 55. ♖c6 ♜a8 56. ♖b7



56... ♖d6! 57. ♖xa8 ♖c7! 58. h4 ♖c8! 59. h5 ♖c7!



A great defense by Black! [60. g5 fxg5 □ (60 ... hxg5?? 61. h6 g4

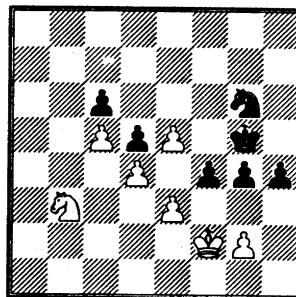
62. h7 g3 63. h8=♚ g2 64. ♚g7 white wins) stalemate! 1/2:1/2

Benedek R - Warren J  
CICL Knights - Chargers  
Jan 10, 1996

1. ♜f3 d5 2. d4 ♜f6 3. c4 e6 4. ♜c3 c6 5. e3 ♜bd7 6. ♔d3 ♔d6 7. e4 dxe4 8. ♜xe4 ♜xe4 9. ♔xe4 ♜f6 This is why I put this game in. Compare this game with the Kasparov - Deep Blue game of this same variation and see how they handled this position. White should get an edge here but it never happens. 10. ♔c2 ♔b4+ 11. ♔d2 ♚a5 12. 0-0 ♔xd2 13. ♜xd2 ♚h5 14. ♜f3 0-0 15. ♚e1 b6 16. ♜e5 ♚xd1 17. ♚axd1 ♔b7 18. b4 a5 19. bxa5 1/2:1/2

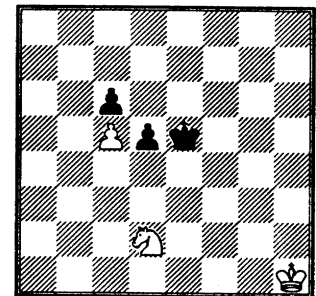
Edgerton J - Kale S  
CICL Midcon - CASE  
Jan 9, 1996

Black to move and win (?).



52... h3? [52 ... ♜f8 53. exf4+ ♖xf4 54. ♜a5 ♜e6 55. ♜xc6 g3+ 56. ♖g1 ♖e3 57. ♜e7 ♖xd4 58. c6 ♖xe5 59. ♖f1 ♖d6 60. ♜f5+ ♖xc6 61. ♜xh4 ♜d4 62. ♖e1 ♖d6 63. ♖d2 ♖e5 64. ♖e3 ♜f5+ 65. ♜xf5 ♖xf5 66. ♖f3 d4

67. ♖xg3 ♖e4 68. ♖f2 ♖d3 69. g4 ♖c2 70. g5 d3 71. g6 d2 72. g7 d1=♚ 73. g8=♚= ; 52 ... fxe3+! 53. ♖xe3 h3 54. gxh3 gxh3 55. ♖f3 ♖f5 56. ♖g3 ♜f4 57. ♜c1 ♖e4 58. ♜b3 ♖e3 59. ♖h2 ♖d3 60. ♖g3 ♖c3 61. ♜a5 ♖xd4 62. ♜xc6+ ♖xc5 63. ♜e7 d4 64. ♜f5 d3 65. e6 d2 66. ♜e3 ♖c6 67. ♖h2 ♖c7 68. ♖g3 ♖d8 69. ♜d1 ♖e7 70. ♜e3 ♖xe6 71. ♖h2 ♖f6 72. ♖g3 ♖g6 73. ♜d1 ♖f6 74. ♜e3 ♖e6 75. ♖h2 ♖d7 76. ♖g3 ♖c6 77. ♖h2 ♖b5 78. ♖g3 ♖c5 79. ♜d1 ♖c4 80. ♜f. ♖c3 81. ♜e4+ ♖c2 82. ♜xd2 ♖xd2+] 53. exf4+ ♖xf4 54. gxh3 gxh3 55. ♜d2 ♜xe5 56. dxe5 h2? [56 ... ♖xe5 57. ♖g3?? (57. ♜f3+! ♖e4 58. ♖e2 h2 59. ♜xh2 ♖d4 60. ♜f3+ ♖xc5 61. ♜e5 ♖b5 62. ♜xc6 ♖c4 63. ♖d2 d4 64. ♜xd4=) 57... ♖d4 58. ♖xh3+ Aren't endgames wonderful?!] 57. ♖g2 h1=♚+ 58. ♖xh1 ♖xe5



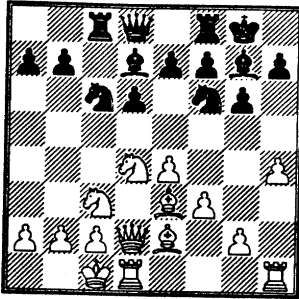
59. ♜f3+ ♖e4 60. ♖g2 d4 61. ♖f2 ♖d5 62. ♖e2 ♖c4 63. ♖d2 ♖xc5 64. ♖d3 ♖d5 65. ♜xd4 1/2:1/2

Rosenberg B - Curran T  
CICL Midcon - CASE  
Jan 9, 1996

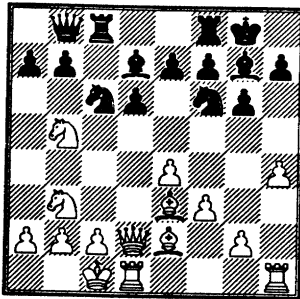
1. e4 c5 2. ♜f3 d6 3. d4 cxd4 4. ♜xd4 ♜f6 5. ♜c3 g6 6. ♔e3



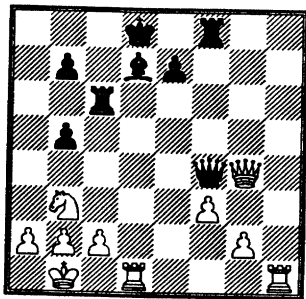
1. g7 7. f3 0-0 8. ♖d2 ♜c6 9. 0-0-0 ♙d7 10. ♙e2 ♜c8 11. h4



11... ♖a5? 12. ♜b3 ♖c7 13. ♜b5 ♖b8 Black is now in a real bind. This dragon won't get a chance to breath fire.

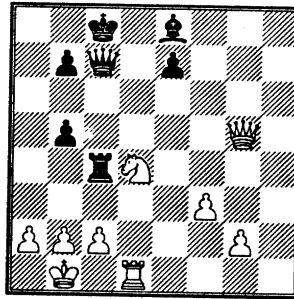


14. h5 a6 15. hxg6 fxg6 16. ♙c4+ d5 17. ♙xd5+ ♜h8 18. ♙h6 ♜xd5 [18 ... ♙xh6?? 19. ♜xh6 And after ♜dh1, ♜xh7+ white will mate black.] 19. ♙xg7+ ♜xg7 20. ♖h6+ ♜f6 21. ♖h4+ The king is running for it's life. Unfortunately, there's no where to run. 21... ♜f7 22. ♖xh7+ ♜e8 23. ♖xg6+ ♜d8 24. exd5 ♖f4+ 25. ♜b1 axb5 26. dxc6 ♜xc6 27. ♖g4



27... ♖c7? [27 ... ♖xg4 28. fxg4 ♜d6 This is still a disaster but maybe there's more of a chance.] 28. ♖g7 The white queen will

keep the attack going. 28... ♜e8 29. ♜h8 ♜c8 30. ♜xe8+ ♙xe8 31. ♜d4 ♜c4 32. ♖g5

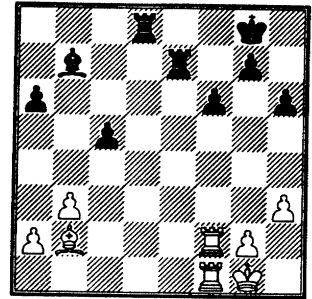


32... ♖d6 The rest of the game score was lost to a time scramble but black's position is hopeless and he soon lost. 1:0

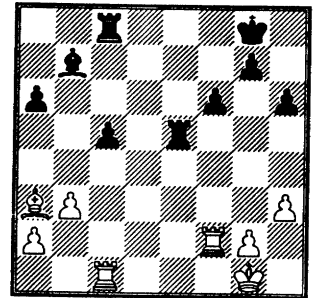
Satterlee D - Hansen B  
CICL CASE - Midcom  
Jan 9, 1996

1. b3 e6 2. ♙b2 ♜f6 3. f4 c5 4. e3 ♜c6 5. ♜f3 ♙e7 d5 would transpose into normal lines. 6. ♙b5 ♖c7 7. 0-0 a6 8. ♙xc6 ♖xc6 9. c4? [9. ♜e5! ♖c7 10. ♜g4] 9... 0-0 10. ♖c2 h6 11. h3 ♖e4 12. d3?? ♖xe3+ 13. ♜f2 ♖xf4 14. ♜bd2 ♖c7 15. ♜af1 White does not have compensation. 15... b5 16. ♜e4 ♜xe4 17. dxe4 ♙b7 18. ♜e5 f6 18... Bf6 is probably better. 19. ♜g6 ♜f7 [19 ... ♜f8?? 20. e5 fxe5 21. ♜f7 ♙ff 22. ♜1xf6 ♖c6 23. ♜xe5 ♜e7 24. ♜xe7 ♖e4 25. ♖xe4 ♙xe4 26. ♜ff7 ♜h8 27. ♜xg7 ♜f8 28. ♜g6+ ♙xg6 29. ♜xg6+ e5 30. ♙xe5+ ♜f6 31. ♙xf6#] 20. ♖e2 [20. ♜e5!? fxe5 21. ♜xf7 ♙f6 22. ♜7xf6 gxf6 23. ♜xf6] 20... e5 21. ♙xe5 [21. ♜xe5 ♜f8 22. ♜g6 ♜f8 23. ♖h5] 21... ♖d8 22. ♙b2 [22. ♖g4 bxc4 23. bxc4] 22... bxc4 23. ♖xc4 d5 24. exd5 ♖xd5 25. ♖g4?! [25. ♖xd5= ♙xd5 26.

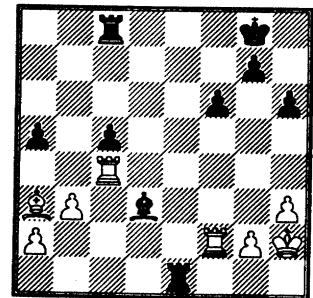
♙a3 ♜c8 27. ♜e2 ♙f8 28. ♜d1= 25... ♙e4 26. ♜f4 ♖e3+ 27. ♜4f2 ♖e4 White should repeat and take the draw. 28. ♖d7? ♜d8?? [28 ... ♙d8! 29. ♖f5 ♖xf5 30. ♜xf5 ♙e4 31. ♜e5 ♜b7 32. ♜5f4 ♙d5 33. ♜c4 ♙c7] 29. ♜xe7+ ♖xe7 30. ♖xe7 ♜xe7



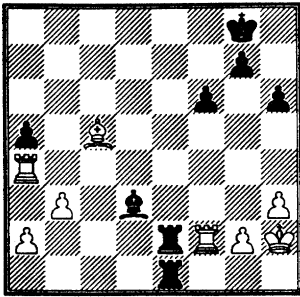
31. ♙a3 ♜e5 32. ♜c1 ♜c8



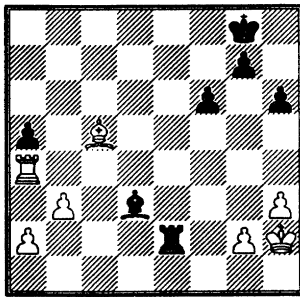
33. ♜c4 Rf2 is better. 33... a5 34. ♜fc2 ♜e1+ 35. ♜h2 Kf2 =. 35... ♙e4 36. ♜f2 -0.09 (11/15): c2d2 g8f7 h2g3 e4f5 a3c5 f5e6 c4c3 e1e5 d2c2 (00:11:13) 36... ♙d3



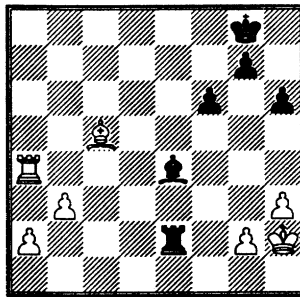
37. ♜a4 Why not Rxc5? 37... ♜ce8? This is asking for trouble. [37 ... c4 38. bxc4 ♙xc4 39. ♜xa5] 38. ♙xc5 ♜8e2 Now black is worse.



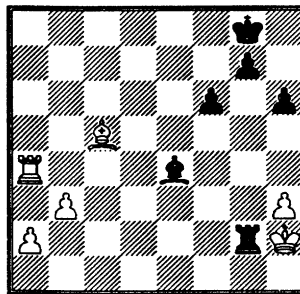
39. ♖xe2? Rxa5! and white has winning chances. 39... ♖xe2



40. ♖xa5 White had to play Kg1. 40... ♖e4! 41. ♖a4 Last chance to play for a win was 41.h4. White cannot escape from the corner.



41... ♖g2+ 42. ♖h1 ♖g4+! Securing the draw. 43. ♖h2 ♖g2+ 44. ♖h1 ♖g4+ 45. ♖h2 ♖g2+

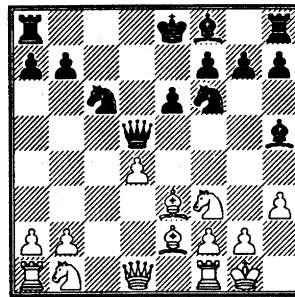


1/2:1/2

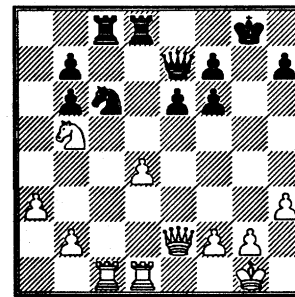
B22/8

Deep Blue - Kasparov G  
Philadelphia, ACM m, 1996

1. e4 c5 2. c3 d5 3. exd5 ♖xd5 4. d4 ♟f6 5. ♟f3 ♖g4 6. ♖e2 e6 7. h3 ♖h5 8. 0-0 ♟c6 9. ♖e3 cxd4 10. cxd4

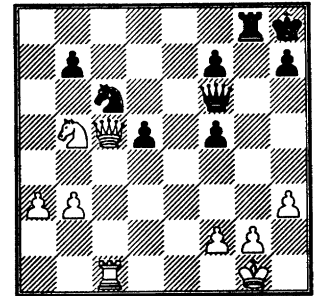


10... ♖b4? [10 ... ♖e7 11. ♟c3 ♖d6] A new move (but not to be recommended). This is an attempt to avoid 11. ♟f3 but the usual 10... ♖e7 is better. Later, black won't be able to find a good location for this bishop. 11. a3 ♖a5 12. ♟c3 ♖d6 13. ♟b5 ♖e7 14. ♟e5 ♖xe2 15. ♖xe2 0-0 16. ♖ac1 ♖ac8 17. ♖g5 ♖b6? [17 ... ♖fd8 18. ♖xf6 gxf6 19. ♟c4 a6 20. ♟xa5 ♟xa5 21. ♖xc8 ♖xc8 22. ♟c3 ♟c4 23. d5] 18. ♖xf6 gxf6 19. ♟c4 ♖fd8 [19 ... ♖c7 20. ♟xc7 ♖xc7 21. d5] 20. ♟xb6 axb6 21. ♖fd1! To support the future push d4-d5.



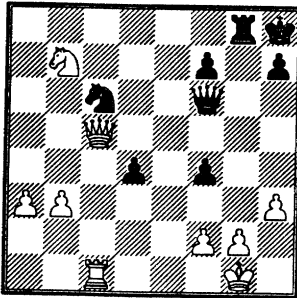
21... f5 [21 ... ♖d7 22. d5 exd5 23. ♖e3 d4 24. ♖f4 d3 25. ♖xf6 ♖d5 26. ♟c3 ♖e6 27. ♖xe6 fxe6 28. ♟e4 ♖d4 29. f3 ♖cd8 30. ♖c3

♟g7 31. ♟f2 ; 21 ... ♟h8 22. ♖e3 ♖d7 23. d5] 22. ♖e3! This move has some objectives: a) keep an eye on b6 b) control the c1-h6 diagonal c) a possible quick jump to control the g-file d) put pressure on the e-file. 22... ♖f6 23. d5! ♖xd5 24. ♖xd5 exd5 25. b3 [25. ♖c3 ♖d8 26. ♖xb6 ♖d7 27. ♖e3] 25... ♟h8 [25 ... ♖e6 26. ♖f4 ♟h8 27. ♟d6 ♖d8 28. ♟xf5 (28. ♟xb7 ♖d7 29. ♖a4 ♟e7) 28... d4 29. ♟h6 f6 30. ♟f1] 26. ♖xb6 ♖g8 27. ♖c5

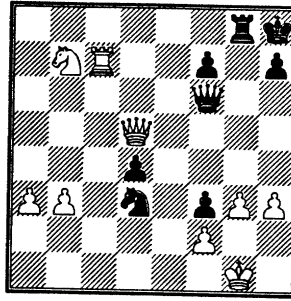


27... d4? [27 ... ♖g5 28. g3 ♖d2 29. ♟d6 f4 (29 ... ♟d4 30. ♖f1 ♟f3+ 31. ♟h1 ♟e5 32. ♖c1 ♖d3 33. ♖d1 ♖a6 34. ♟xf5) 30. ♟xf7+ ♟g7 31. ♟d6 ffg3 32. ffg3 ♟h8 33. ♖c3+ (33. g4 ♟d4 (33 ... d4 34. ♖f1 ♖e3+ 35. ♟g2) 34. ♟h1 ♟e2 35. ♖c2 ♖d3 36. ♖xe2 ♖xe2 37. ♖c3+ ♖g7 38. ♟f7+ ♟g8 39. ♟h6+ ♟f8 40. ♖c8+ ♟e7 (40 ... ♖e8 41. ♖f5+ ♟e7 42. ♖xd5 ♖d7 43. ♟f5+ ♟f6 44. ♖f3 ♖g5 45. ♟g3+ ♟e6 46. ♟e4) 41. ♟f5+ ♟f6 42. ♖f8+ ♖f7 43. ♖h6+ ♟e5 44. ♖d6+ ♟e4 45. ♟g3+-) 33... ♖xc3 34. ♖xc3 d4 35. ♟f7+ (35. ♖f3 b6 36. ♟h2 ♖g6 37. ♟b5) 35... ♟g7 36. ♖f3 d3 37. ♟d6] 28. ♟d6 f4 29. ♟xb7 [29. ♖d5 f3 (29 ... ♟e7 30. ♖e5 ♖xe5 31. ♟xf7+ ♟g7 32. ♟xe5 ♟f6 33. ♟g4+ ♟e6 34. ♖e1+ ♟d6 35. ♖e4) 30. g4 (30. g3 ♖g6 31. ♟c4 ♖g5 32. ♖e4 ♖h6 33. ♖e1 ♖xh3 34. ♖xf3) 30... ♖f4 31. ♖d1 ♖xg4+ 32.

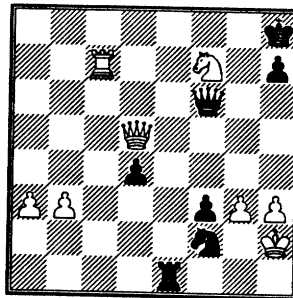
hxg4 ♖xg4+ 33. ♔f1 ♖g2+ 34. ♔e1 ♖g1+ 35. ♔d2 ♖xf+ 36. ♔c1 ♖a2 (36 ... ♖e3+ 37. ♔b1 f2 38. ♖b5! ♖f4 39. ♔xb7 ♖e4+ 40. ♔c1 ♖e3+ 41. ♔c2 d3+ 42. ♖xd3 ♔d4+ 43. ♔c3 ♔e2+ 44. ♔c4 ♖f4+) 37. ♔xf7+ ♔g7 38. ♖xf3 ♖a1+ 39. ♔d2 ♖b2+ 40. ♔e1 Black is dead.]



29... ♔e5 [29 ... f3 30. g3 ♔e5 31. ♖xd4 ; 29 ... ♔e7 30. ♔e1? (30. ♔d6! ♖g6 31. ♖xd4+ f6 32. ♔f1 ♖xg2+ 33. ♔e1 ♔d5 34. ♔c5 ♖h1+ 35. ♔d2 ♔g1 36. ♔c8+ ♔g8 (36 ... ♔g7 37. ♖a7+ ♔h6 38. ♔f5+ ♔g5 39. ♔g8+ ♔xf5 40. ♖d7+ ♔e4 41. ♔e8+-) 37. ♔xg8+ ♔xg8 38. ♖a7) 30... ♖g7 31. g4 fxg3 32. f3 (32. ♔xe7 gxf2+ 33. ♔xf2 ♖g1+ 34. ♔e2 ♔g2+ 35. ♔d3 ♔g3+ 36. ♔d2 ♖f+ 37. ♔e2 ♖f4+ 38. ♔d1 ♔g1+ 39. ♔e1 ♖f3+ 40. ♔d2 ♖f2+ 41. ♔e2 ♖f4+ 42. ♔c2 ♔c1+ 43. ♔b2 ♔xc5 44. ♔xc5 ♖f3) 32... ♔c8 (32 ... ♔g6 33. ♔d6 d3) 33. ♖c7] 30. ♖d5 f3 31. g3 ♔d3 [31 ... ♖e6 32. ♖xe6 fxe6 33. a4 d3 34. ♔c5 d2 35. ♔d1 ♔c8 36. b4 ♔c4 37. a5 ♔d8 Black has a better chance this way.] 32. ♔c7



32... ♔e8?? "A pathetic attack which can scare only a mortal player" I can't claim credit for that line but I wish I could. [32 ... ♔f+ 33. ♖xf3 ♔xh3+ 34. ♔g2 ♔f+ 35. ♔f1 ♖a6+ 36. ♔g1 (36. ♔c4 ♔g6 37. ♖d5 f6 38. a4 ♔e5 39. ♔c5 ♖c8 40. ♔xd4 ♖h3+ 41. ♖g2)] 33. ♔d6! ♔e1+ 34. ♔h2 ♔xf2 35. ♔xf7+

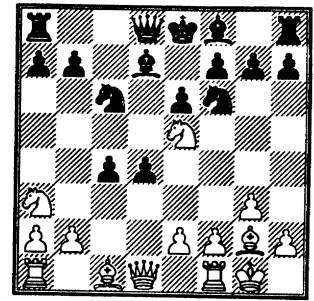


35... ♔g7 [35 ... ♖xf+ 36. ♖d8+ ♔g7 (36 ... ♖g8 37. ♖f+ ) 37. ♔xf7+ ♔xf7 38. ♖d5+ ♔e7 39. ♖xf3 ♔e4 40. ♖d3 ♔g5 41. ♖f5 h6 42. h4±] 36. ♔g5+ ♔h6 [36 ... ♔e7 37. ♔e6+ ♔h6 38. ♔c6 d3 39. ♔d4+-; 36 ... ♔g6 37. ♖g8+ ♔f5 38. ♔c5+ ♖e5 39. ♖e6+-] 37. ♔xh7+ [37 ... ♔g6 38. ♖g8+ ♔f5 39. ♔xf3+-] 1:0

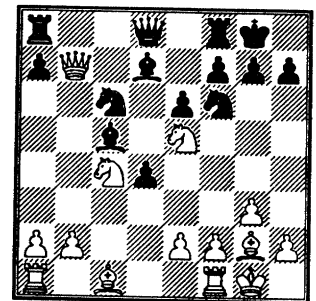
E04/13

Kasparov G - Deep Blue  
Philadelphia USA, ACM m, 1996

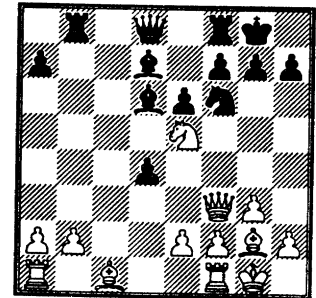
1. ♔f3 d5 2. d4 e6 3. g3 c5 4. ♔g2 ♔c6 5. 0-0 ♔f6 6. c4 dxc4 7. ♔e5 ♔d7 8. ♔a3 cxd4



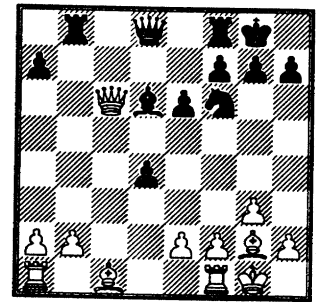
9. ♔axc4 ♔c5 10. ♖b3 0-0 11. ♖xb7



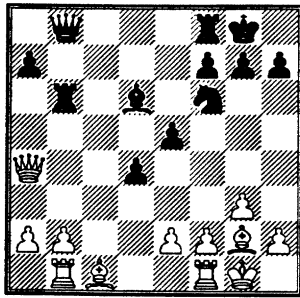
11... ♔xe5 12. ♔xe5 ♔b8 13. ♖f3 ♔d6



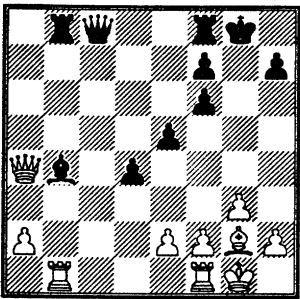
14. ♔c6 ♔xc6 15. ♖xc6



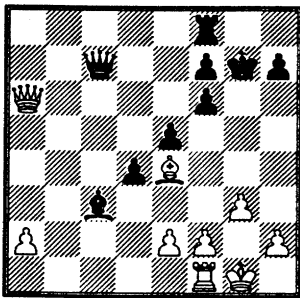
15... e5 16. ♔b1 ♔b6 17. ♖a4 ♖b8



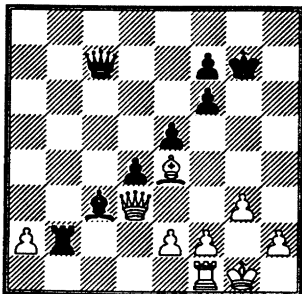
18. ♖g5 ♗e7 19. b4 ♖xb4 20.  
♗xf6 gxf6 21. ♖d7 ♖c8 22.  
♖xa7 ♖b8 23. ♖a4



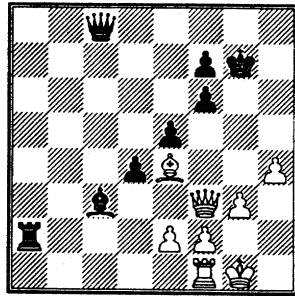
23... ♗c3 24. ♖xb8 ♖xb8 25.  
♗e4 ♖c7 26. ♖a6 ♖g7



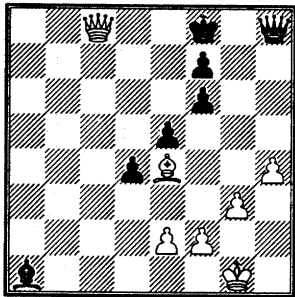
27. ♖d3 ♖b8 28. ♗xh7 ♖b2 29.  
♗e4



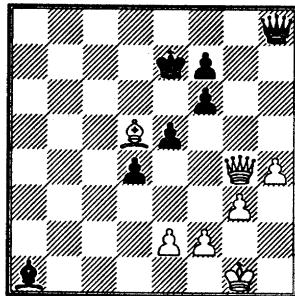
29... ♖xa2 30. h4 ♖c8 31. ♖f3



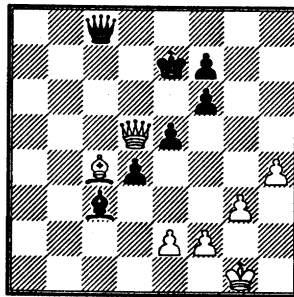
31... ♖a1 32. ♖xa1 ♗xa1 33.  
♖h5 ♖h8 34. ♖g4+ ♖f8 35.  
♖c8+



35... ♖g7 36. ♖g4+ ♖f8 37. ♗d5  
♖e7

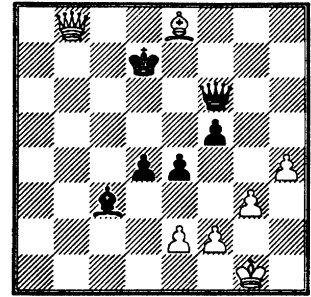


38. ♗c6 ♖f8 39. ♗d5 ♖e7 40.  
♖f3 ♗c3 41. ♗c4 ♖c8 42. ♖d5

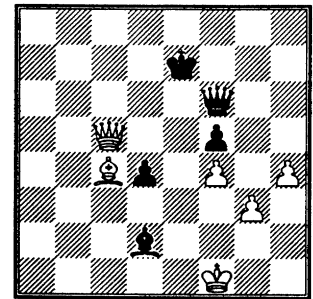


42... ♖e6 43. ♖b5 ♖d7 44.  
♖c5+ ♖d6 45. ♖a7+ ♖d7 46.  
♖a8 ♖c7 47. ♖a3+ ♖d6 48.

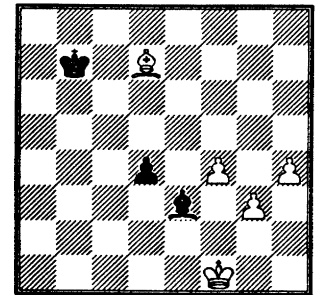
♖a2 f5 49. ♗x7 e4 50. ♗h5 ♖f6  
51. ♖a3+ ♖d7 52. ♖a7+ ♖d8  
53. ♖b8+ ♖d7 54. ♗e8+



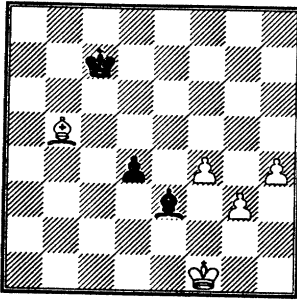
54... ♖e7 55. ♗b5 ♗d2 56. ♖c7+  
♖f8 57. ♗c4 ♗c3 58. ♖g2 ♗e1  
59. ♖f1 ♗c3 60. f4 exf3 61. exf3  
♗d2 62. f4 ♖e8 63. ♖c8+ ♖e7  
64. ♖c5+



64... ♖d8 65. ♗d3 ♗e3 66. ♖xf5  
♖c6 67. ♖f8+ ♖c7 68. ♖e7+  
♖c8 69. ♗f5+ ♖b8 70. ♖d8+  
♖b7 71. ♖d7+ ♖xd7 72. ♗xd7



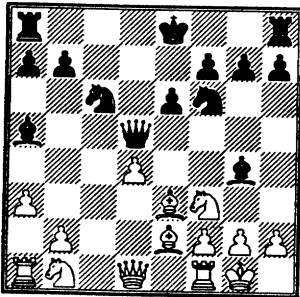
72... ♖c7 73. ♗b5



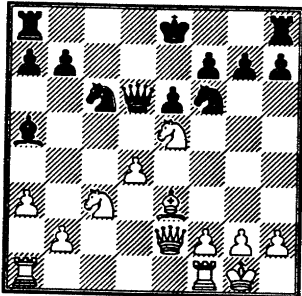
1:0

B22/8  
 Deep Blue - Kasparov G  
 Philadelphia USA, ACM m, 1996

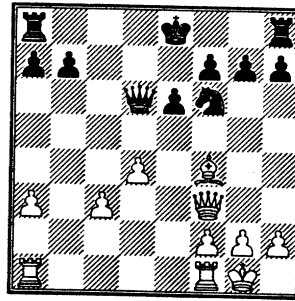
1. e4 c5 2. c3 d5 3. exd5 ♖xd5 4. d4 ♜f6 5. ♜f3 ♙g4 6. ♙e2 e6 7. 0-0 ♜c6 8. ♙e3 cxd4 9. cxd4 ♙b4 10. a3 ♙a5



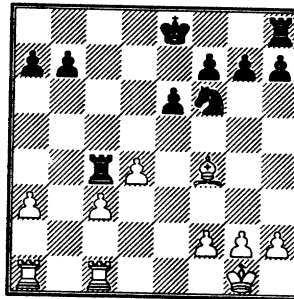
11. ♜c3 ♖d6 12. ♜e5 ♙xe2 13. ♖xc2



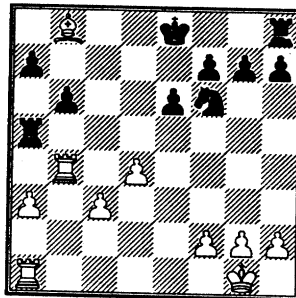
13... ♙xc3 14. bxc3 ♜xe5 15. ♙f4 ♜f3+ 16. ♖xf3



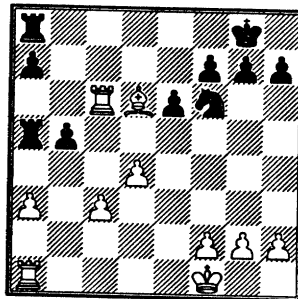
16... ♖d5 17. ♖d3 ♜c8 18. ♜fc1 ♖c4 19. ♖xc4 ♜xc4



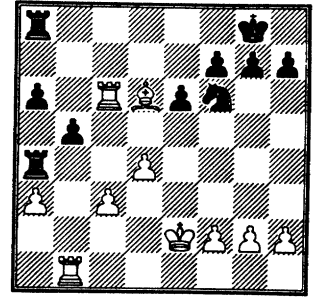
20. ♜cb1 b6 21. ♙b8 ♜a4 22. ♜b4 ♜a5



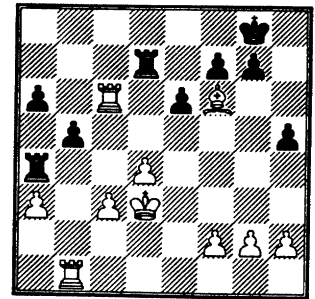
23. ♜c4 0-0 24. ♙d6 ♜a8 25. ♜c6 b5 26. ♜f1



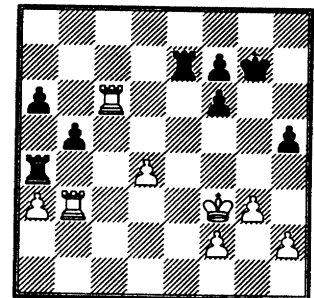
26... ♜a4 27. ♜b1 a6 28. ♜e2



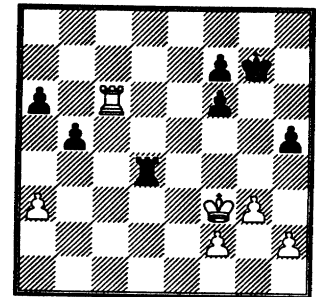
28... h5 29. ♜d3 ♜d8 30. ♙e7 ♜d7 31. ♙xf6



31... gxf6 32. ♜b3 ♜g7 33. ♜e3 e5 34. g3 exd4+ 35. cxd4 ♜e7+ 36. ♜f3



36... ♜d7 37. ♜d3 ♜axd4 38. ♜xd4 ♜xd4

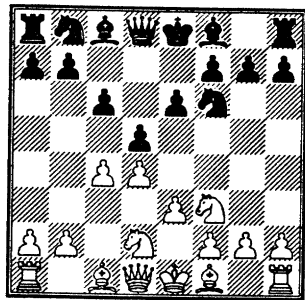


39. ♜xa6 b4 1/2:1/2

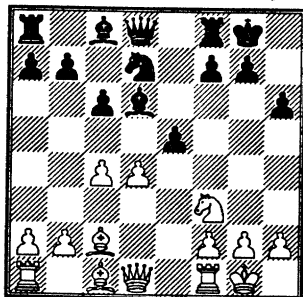
D46/12

Kasparov G - Deep Blue  
Philadelphia USA, ACM m, 1996

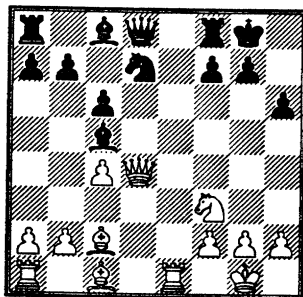
1.  $\text{d}3$   $\text{d}5$  2.  $\text{d}4$   $\text{c}6$  3.  $\text{c}4$   $\text{e}6$  4.  
 $\text{b}d2$   $\text{d}f6$  5.  $\text{e}3$



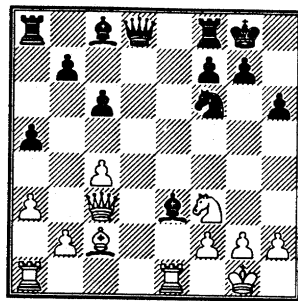
5...  $\text{b}d7$  6.  $\text{d}3$   $\text{d}6$  7.  $\text{e}4$   $\text{dxe}4$   
8.  $\text{dxe}4$   $\text{dxe}4$  9.  $\text{dxe}4$  0-0 10.  
0-0  $\text{h}6$  11.  $\text{d}c2$   $\text{e}5$



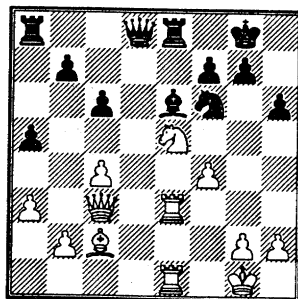
12.  $\text{d}e1$   $\text{exd}4$  13.  $\text{d}xd4$   $\text{d}c5$



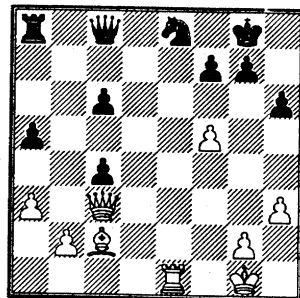
14.  $\text{d}c3$   $\text{a}5$  15.  $\text{a}3$   $\text{d}f6$  16.  $\text{d}e3$   
 $\text{d}xe3$



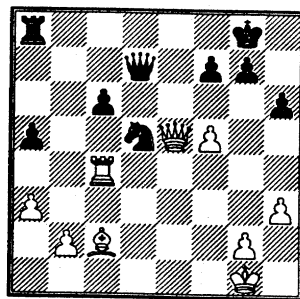
17.  $\text{d}xe3$   $\text{d}g4$  18.  $\text{d}e5$   $\text{d}e8$  19.  
 $\text{d}ae1$   $\text{d}e6$  20.  $\text{f}4$



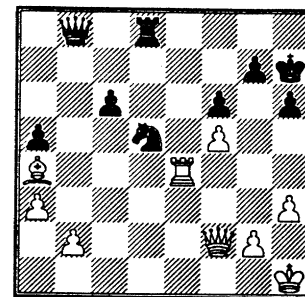
20...  $\text{d}c8$  21.  $\text{h}3$   $\text{b}5$  22.  $\text{f}5$   $\text{d}xc4$   
23.  $\text{d}xc4$   $\text{bxc}4$  24.  $\text{d}xe8+$   $\text{d}xe8$



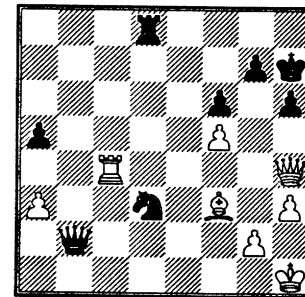
25.  $\text{d}e4$   $\text{d}f6$  26.  $\text{d}xc4$   $\text{d}d5$  27.  
 $\text{d}e5$   $\text{d}d7$



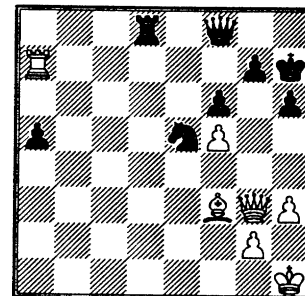
28.  $\text{d}g4$   $\text{f}6$  29.  $\text{d}d4$   $\text{d}h7$  30.  $\text{d}e4$   
 $\text{d}d8$  31.  $\text{d}h1$   $\text{d}c7$  32.  $\text{d}f2$   $\text{d}b8$   
33.  $\text{d}a4$



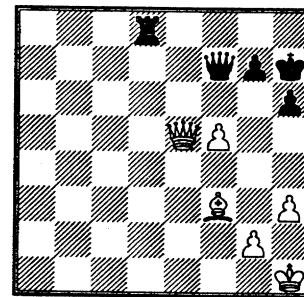
33...  $\text{c}5$  34.  $\text{d}c6$   $\text{c}4$  35.  $\text{d}xc4$   $\text{d}b4$   
36.  $\text{d}f3$   $\text{d}d3$  37.  $\text{d}h4$   $\text{d}xb2$



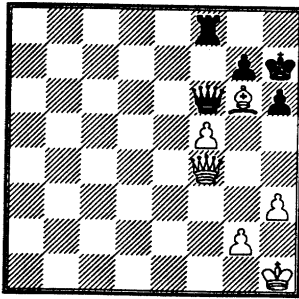
38.  $\text{d}g3$   $\text{d}xa3$  39.  $\text{d}c7$   $\text{d}f8$  40.  
 $\text{d}a7$   $\text{d}e5$



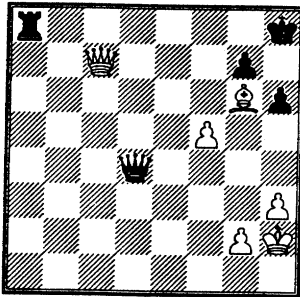
41.  $\text{d}xa5$   $\text{d}f7$  42.  $\text{d}xe5$   $\text{fxe}5$  43.  
 $\text{d}xe5$



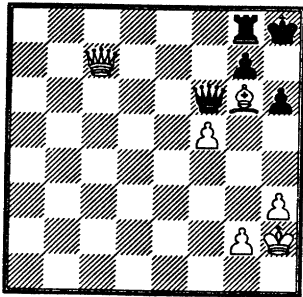
43...  $\text{d}e8$  44.  $\text{d}f4$   $\text{d}f6$  45.  $\text{d}h5$   
 $\text{d}f8$  46.  $\text{d}g6+$



46... ♔h8 47. ♕c7 ♖d4 48. ♔h2 ♜a8



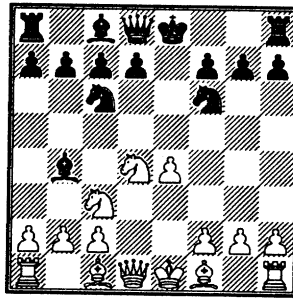
49. ♔h5 ♕f6 50. ♔g6 ♜g8



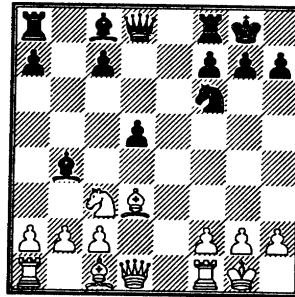
1/2:1/2

C47/8  
Deep Blue - Kasparov G  
Philadelphia USA, ACM m, 1996

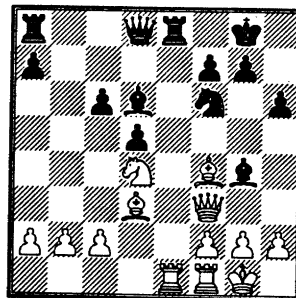
1. e4 e5 2. ♘f3 ♘f6 3. ♘c3 ♘c6  
4. d4 exd4 5. ♘xd4 ♔b4



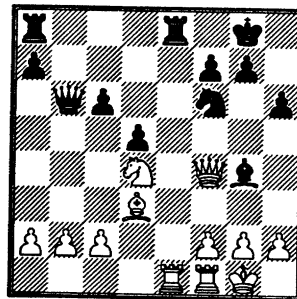
6. ♘xc6 bxc6 7. ♔d3 d5 8. exd5 cxd5 9. 0-0 0-0



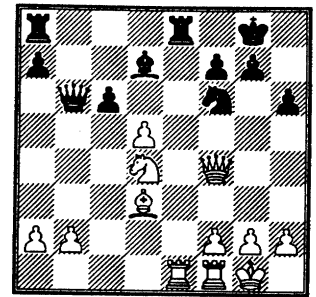
10. ♔g5 c6 11. ♕f3 ♔e7 12. ♜ae1 ♜e8 13. ♘e2 h6 14. ♔f4 ♔d6 15. ♘d4 ♔g4



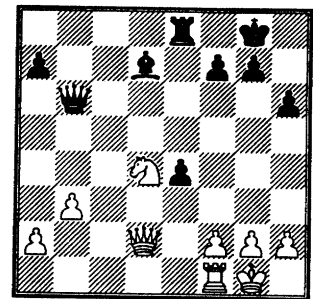
16. ♕g3 ♔f4 17. ♕f4 ♖b6



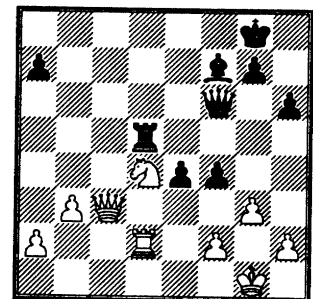
18. c4 ♔d7 19. cxd5



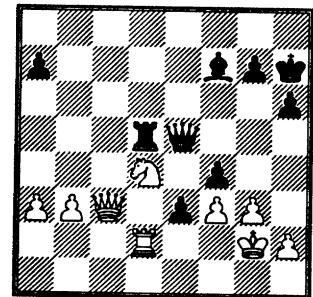
19... cxd5 20. ♜xe8+ ♜xe8 21. ♕d2 ♘e4 22. ♔xe4 dxe4 23. b3



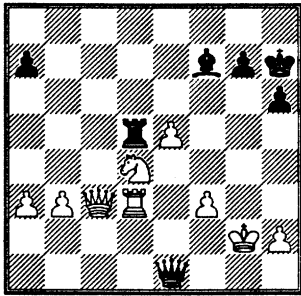
23... ♜d8 24. ♕c3 f5 25. ♜d1 ♔e6 26. ♕e3 ♔f7 27. ♕c3 f4 28. ♜d2 ♕f6 29. g3 ♜d5



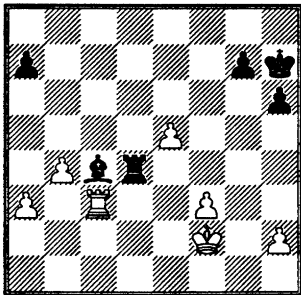
30. a3 ♔h7 31. ♔g2 ♕e5 32. f3 e3



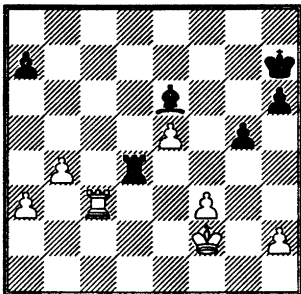
33. ♜d3 e2 34. gxf4 e1=♕ 35. fxe5



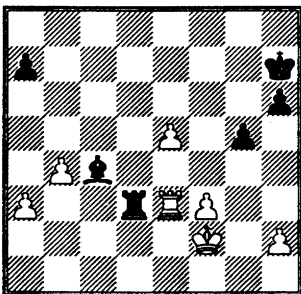
35... ♔xc3 36. ♖xc3 ♗xd4 37. b4  
♙c4 38. ♖f2



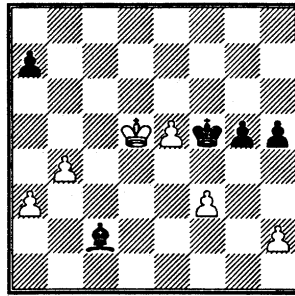
38... g5 39. ♖e3 ♙e6 40. ♖c3



40... ♙c4 41. ♖e3 ♗d2+ 42. ♖e1  
♗d3 43. ♖f2



43... ♖g6 44. ♗xd3 ♙xd3 45.  
♖e3 ♙c2 46. ♖d4 ♖f5 47. ♖d5  
h5

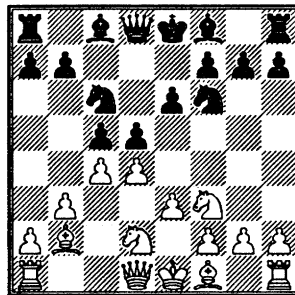


0:1

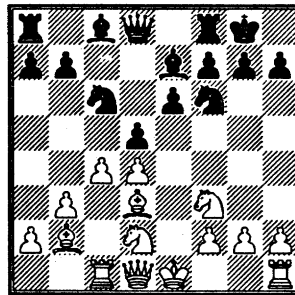
D30/8

Kasparov G - Deep Blue  
Philadelphia USA, ACM m, 1996

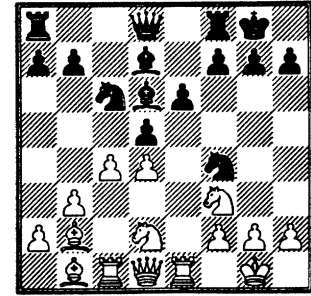
1. ♖f3 d5 2. d4 c6 3. c4 e6 4.  
♗bd2 ♗f6 5. e3 c5 6. b3 ♗c6 7.  
♙b2



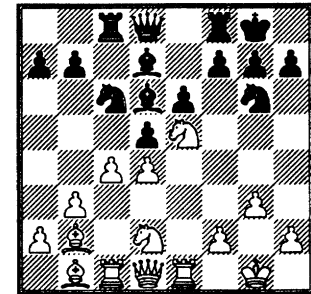
7... cxd4 8. exd4 ♙e7 9. ♖c1 0-0  
10. ♙d3



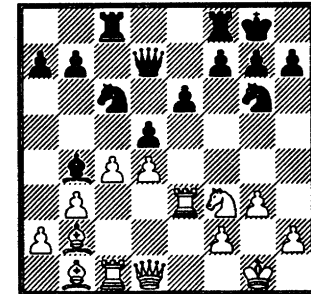
10... ♙d7 11. 0-0 ♗h5 12. ♖e1  
♗f4 13. ♙b1 ♙d6



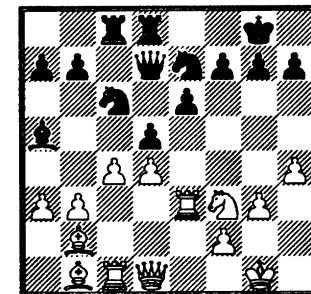
14. g3 ♗g6 15. ♗e5 ♖c8



16. ♗xd7 ♔xd7 17. ♗f3 ♙b4 18.  
♖e3

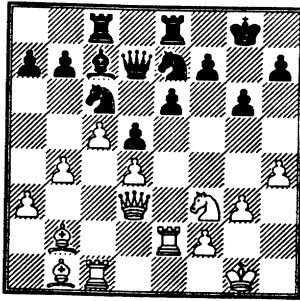


18... ♖fd8 19. h4 ♗ge7 20. a3  
♙a5

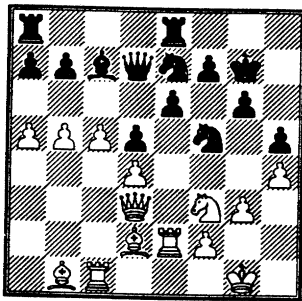


21. b4 ♙c7 22. c5 ♖e8 23. ♔d3  
g6 24. ♖e2

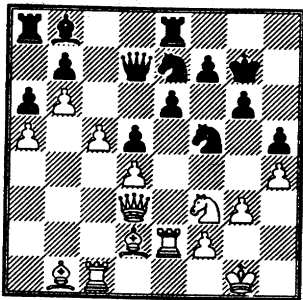




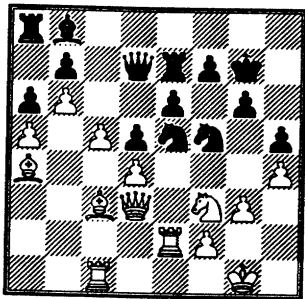
24... ♖f5 25. ♙c3 h5 26. b5  
 ♜ce7 27. ♙d2 ♚g7 28. a4 ♜a8  
 29. a5



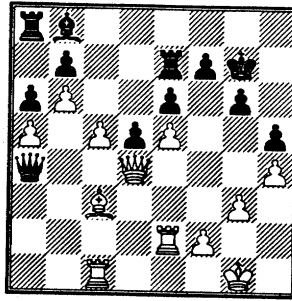
29... a6 30. b6 ♙b8



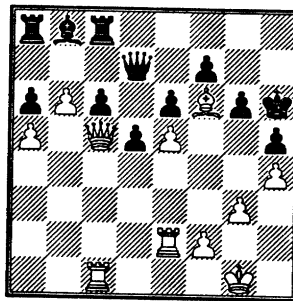
31. ♙c2 ♜c6 32. ♙a4 ♜e7 33.  
 ♙c3 ♜e5



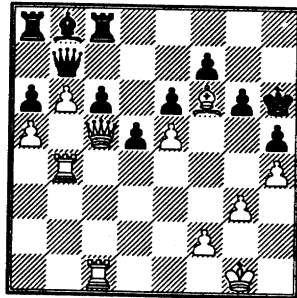
34. dxe5 ♜xa4 35. ♜d4 ♜xd4  
 36. ♜xd4



36... ♜d7 37. ♙d2 ♜e8 38. ♙g5  
 ♜c8 39. ♙f6+ ♚h7 40. c6 bxc6  
 41. ♜c5 ♚h6



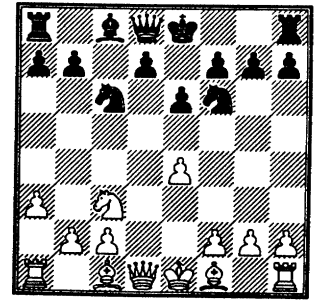
42. ♜b2 ♜b7 43. ♜b4



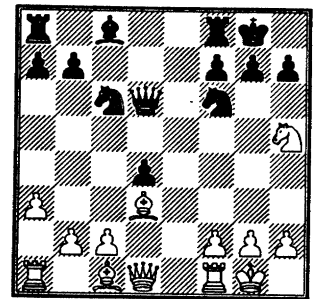
1:0

B45/11  
 Xie Jun - Polgar Z  
 Jaen ESP, wcc women, 1996

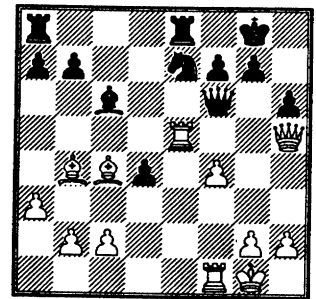
1. e4 c5 2. ♜f3 e6 3. d4 cxd4 4.  
 ♜xd4 ♜f6 5. ♜c3 ♜c6 6. ♜db5  
 ♙b4 7. a3 ♙xc3+ 8. ♜xc3



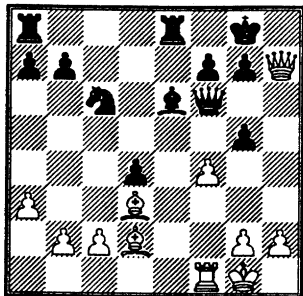
8... d5 9. exd5 exd5 10. ♙d3 0-0  
 11. 0-0 d4 12. ♜e2 ♜d5 13. ♜f4  
 ♜d6 14. ♜h5



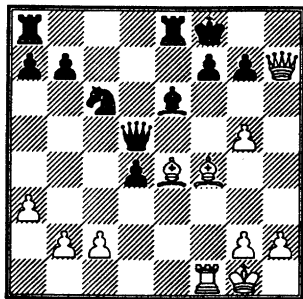
14... ♜xh5 15. ♜xh5 h6 16. ♙d2  
 ♙d7 17. ♜ae1 ♜fe8 18. f4 ♜e7  
 19. ♜e5 ♙c6 20. ♙b4 ♜f6 21.  
 ♙c4



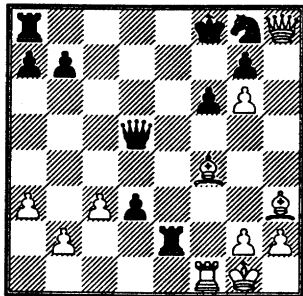
21... ♙d7 22. ♜g5 ♙e6 23. ♙d3  
 ♜c6 24. ♙d2 hxg5 25. ♜h7+



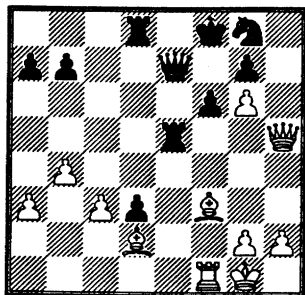
25... ♖f8 26. fxg5 ♜e5 27. ♔f4  
♜d5 28. ♔e4



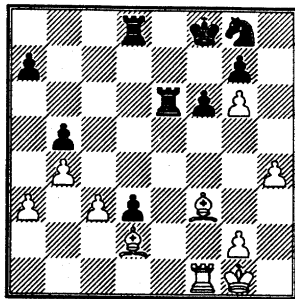
28... ♔f5 29. ♔xf5 ♜e2 30. ♔h3  
d3 31. c3 ♘e7 32. ♜h8+ ♘g8 33.  
g6 f6



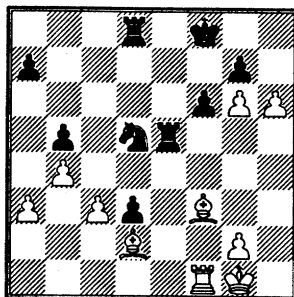
34. b4 ♜d8 35. ♔g4 ♜e4 36.  
♜h5 ♜e7 37. ♔d2 ♜d8 38. ♔f3  
♜e5



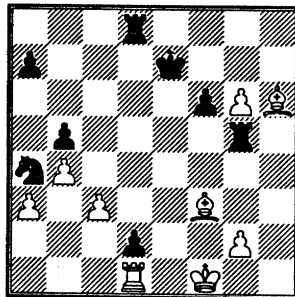
39. ♜g4 ♜d7 40. ♜c4 b5 41.  
♜b3 ♜e6 42. ♜xe6 ♜xe6 43. h4



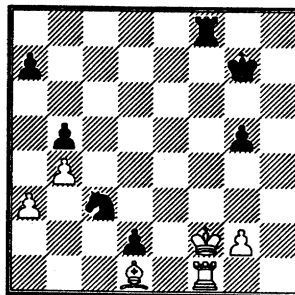
43... ♘e7 44. h5 ♘d5 45. ♔g4  
♜e4 46. ♔f3 ♜e5 47. h6



47... gxf6 48. ♔xf6+ ♖e7 49.  
♜c1 ♘e3 50. ♜e1 ♘c4 51. ♜d1  
♘b2 52. ♜b1 ♘a4 53. ♖f1 d2  
54. ♜d1 ♜g5



55. ♔xg5 fxg5 56. g7 ♖f7 57.  
♖g1 ♘xc3 58. ♜f1 ♖xg7 59.  
♔d1 ♜e8 60. ♖f2 ♜f8+

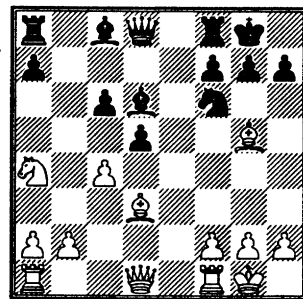


0:1

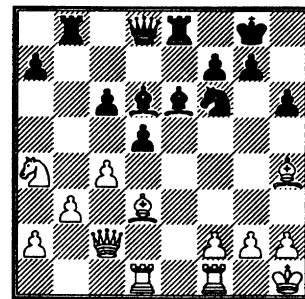
C47/8

Polgar Z - Xie Jun  
Jaen ESP, wcc women, 1996

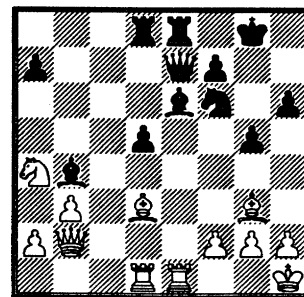
1. e4 e5 2. ♘f3 ♘c6 3. ♘c3 ♘f6  
4. d4 exd4 5. ♘xd4 ♔b4 6. ♘xc6  
bxc6 7. ♔d3 d5 8. exd5 cxd5 9.  
0-0 0-0 10. ♔g5 c6 11. ♘a4 ♔d6  
12. c4



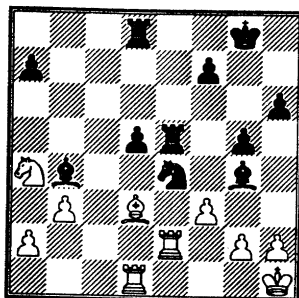
12... h6 13. ♔h4 ♔g4 14. ♜c2  
♔e6 15. ♖h1 ♜b8 16. ♜ad1 ♜e8  
17. b3



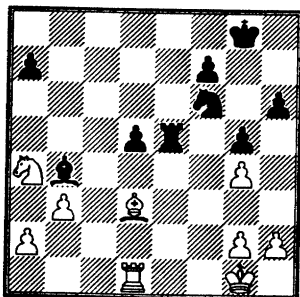
17... ♜e7 18. ♜fe1 ♜bd8 19. cxd5  
cxd5 20. ♜b2 g5 21. ♔g3 ♔b4



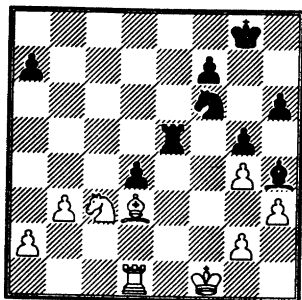
22. ♜e2 ♘e4 23. ♔e5 ♔g4 24. f3  
♜xe5 25. ♜xe5 ♜xe5



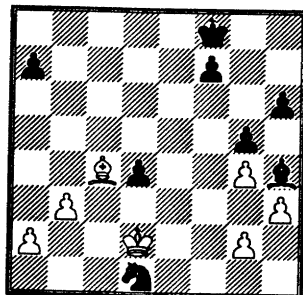
26. fxg4 ♖de8 27. ♔g1 ♜f6 28. ♖xe5 ♖xe5



29. h3 ♔e1 30. ♜f1 ♔h4 31. ♜c3 d4



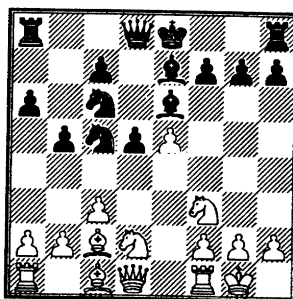
32. ♜e2 ♜d5 33. ♖c1 ♖e3 34. ♖d1 ♜f8 35. ♔c4 ♖xe2 36. ♜xe2 ♜c3+ 37. ♜d2 ♜xd1



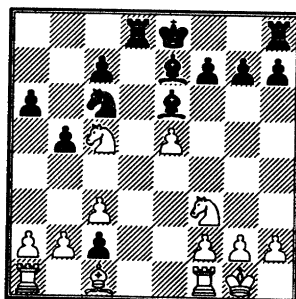
1/2:1/2

C80/14  
Xie Jun - Polgar Z  
Jaen ESP, wcc women, 1996

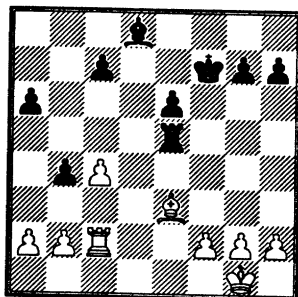
1. e4 e5 2. ♞f3 ♞c6 3. ♔b5 a6 4. ♔a4 ♞f6 5. 0-0 ♞xe4 6. d4 b5 7. ♔b3 d5 8. dxex5 ♔e6 9. ♞bd2 ♞c5 10. c3 ♔e7 11. ♔c2



11... d4 12. ♞e4 d3 13. ♞xc5 dxc2 14. ♜xd8+ ♖xd8

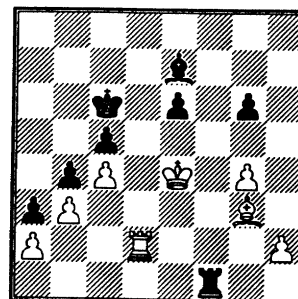


15. ♞xe6 fxe6 16. ♔e3 ♖d5 17. ♖ac1 ♞xe5 18. ♞xe5 ♖xe5 19. ♖xc2 ♜f7 20. c4 b4 21. ♖d1 ♖d8 22. ♖xd8 ♔xd8

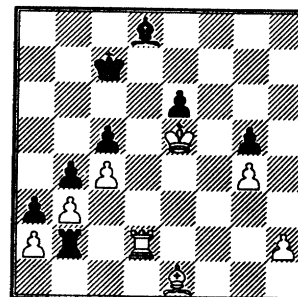


23. ♜f1 ♔g5 24. ♔a7 ♖f5 25. ♜e2 ♜e8 26. ♜d3 ♜d7 27. f3 c5 28. ♖e2 ♔e7 29. ♔b8 a5 30. ♜e4 ♜c6 31. ♔e5 g6 32. g4 ♖f8 33.

♖d2 a4 34. ♔g3 h5 35. ♖d3 hrg4 36. fxg4 ♖f1 37. b3 a3 38. ♖d2



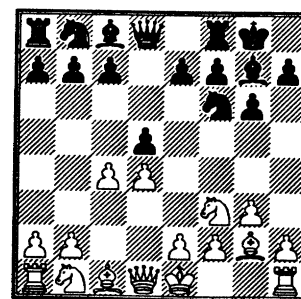
38... g5 39. ♖d3 ♖a1 40. ♖d2 ♖b1 41. ♜e5 ♖b2 42. ♔e1 ♔d8 43. ♖d6+ ♜c7 44. ♖d2 ♜c6 45. ♖d6+ ♜c7 46. ♖d2



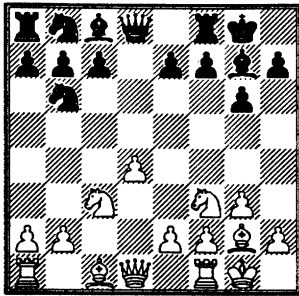
1/2:1/2

D76/5  
Polgar Z - Xie Jun  
Jaen ESP, wcc women, 1996

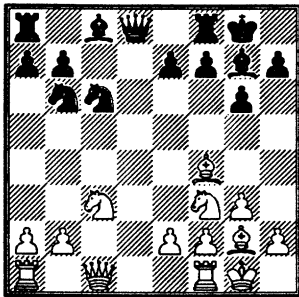
1. d4 ♞f6 2. ♞f3 g6 3. c4 ♔g7 4. g3 0-0 5. ♔g2 d5



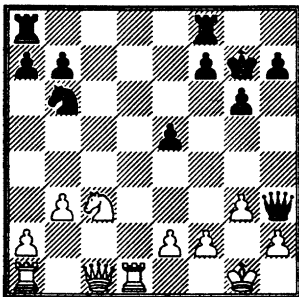
6. cxd5 ♞xd5 7. 0-0 ♞b6 8. ♞c3



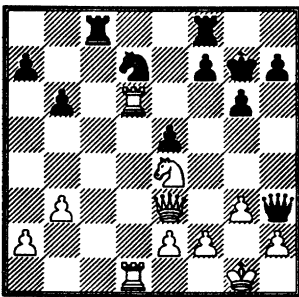
8... ♖c6 9. d5 ♖a5 10. ♙f4 c6  
11. dxc6 ♖xc6 12. ♚c1



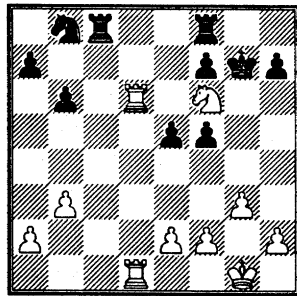
12... ♙g4 13. ♜d1 ♚c8 14. ♙h6  
♚f5 15. ♙xg7 ♚xg7 16. ♖d4  
♖xd4 17. ♜xd4 e5 18. ♜d1 ♚c8  
19. b3 ♙h3 20. ♙xh3 ♚xh3



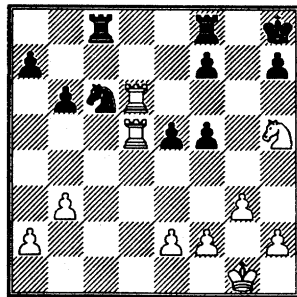
21. ♚e3 ♖d7 22. ♖e4 b6 23.  
♜d6 ♜ac8 24. ♜ad1



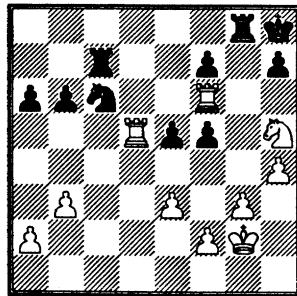
24... ♖b8 25. ♚g5 ♚f5 26. ♚xf5  
gxf5 27. ♖f6



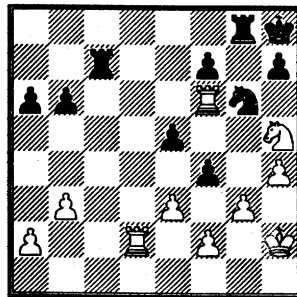
27... ♖c6 28. ♖h5+ ♚g8 29.  
♜d5 ♚h8



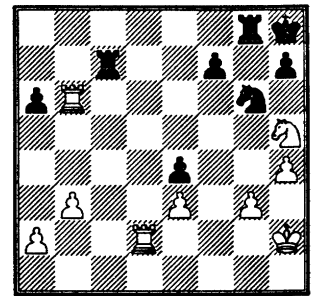
30. ♜f6 ♜c7 31. e3 ♜g8 32. h4 a6  
33. ♚g2



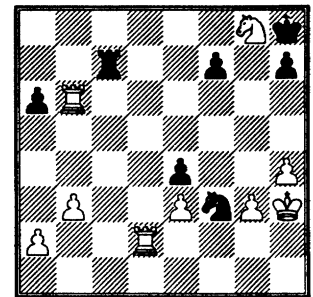
33... ♖e7 34. ♜d2 ♖g6 35. ♚h2  
f4



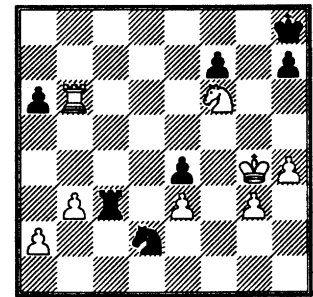
36. ♜xb6 fxe3 37. fxe3 e4



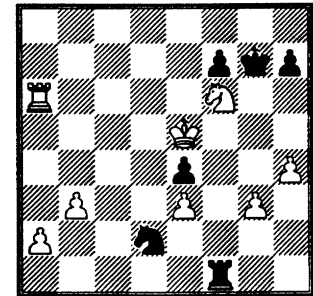
38. ♖f6 ♖e5 39. ♖xg8 ♖f3+ 40.  
♚h3



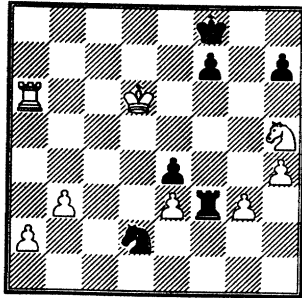
40... ♖xd2 41. ♖f6 ♜c3 42. ♚g4



42... ♚g7 43. ♚f4 ♜c1 44. ♜xa6  
♜f1+ 45. ♚e5



45... ♜f3 46. ♖h5+ ♚f8 47. ♚d6

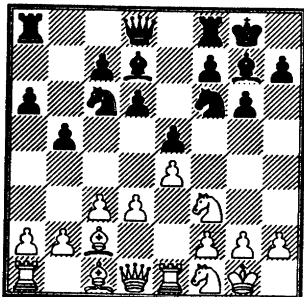


1:0

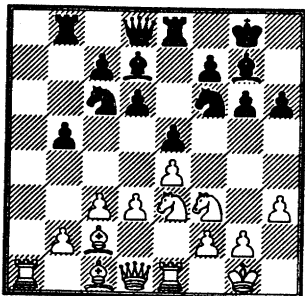
C77/15

Xie Jun - Polgar Z  
Jaen ESP, wcc women, 1996

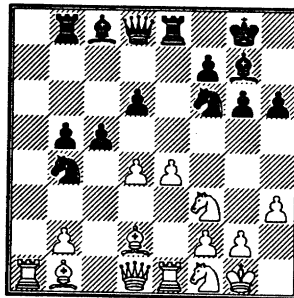
1. e4 e5 2.  $\text{Nf3}$   $\text{Nc6}$  3.  $\text{Bb5}$  a6 4.  $\text{Ba4}$   $\text{Nf6}$  5. d3 d6 6. c3  $\text{Bd7}$  7. 0-0 g6 8.  $\text{Nbd2}$   $\text{Bg7}$  9.  $\text{Re1}$  0-0 10.  $\text{Nf1}$  b5 11.  $\text{Bc2}$



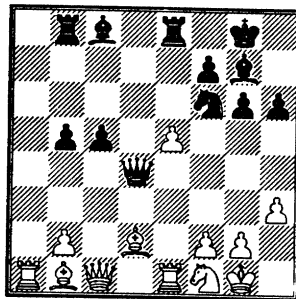
11... h6 12.  $\text{Nc3}$   $\text{Re8}$  13. a4  $\text{Bb8}$  14.  $\text{axb5}$   $\text{axb5}$  15. h3



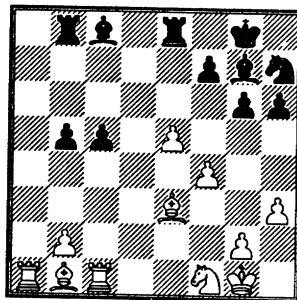
15...  $\text{Bc6}$  16. d4  $\text{exd4}$  17.  $\text{cxd4}$   $\text{Bc8}$  18.  $\text{Nf1}$   $\text{Nb4}$  19.  $\text{Bb1}$  c5 20.  $\text{Bd2}$



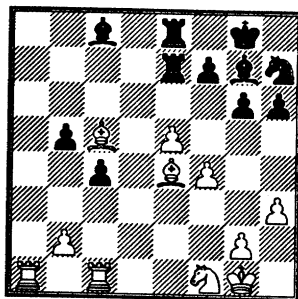
20...  $\text{Nc6}$  21.  $\text{dxc5}$   $\text{dxc5}$  22.  $\text{Wc1}$   $\text{Nd4}$  23.  $\text{Nxd4}$   $\text{Wxd4}$  24. e5



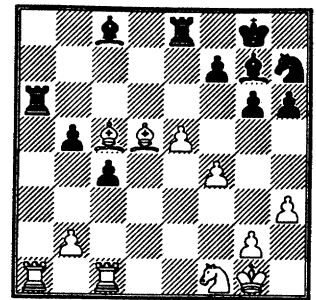
24...  $\text{Nh7}$  25.  $\text{Be3}$   $\text{Wc4}$  26. f4  $\text{Wxc1}$  27.  $\text{Bxc1}$



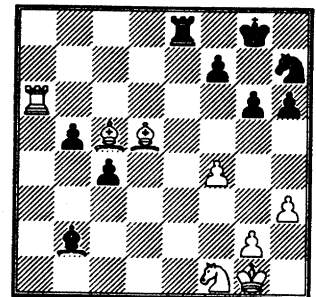
27... c4 28.  $\text{Ba7}$   $\text{Bb7}$  29.  $\text{Be4}$   $\text{Bbe7}$  30.  $\text{Bc5}$



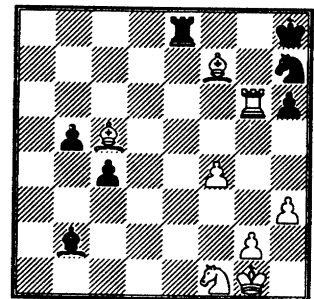
30...  $\text{Bc6}$  31.  $\text{Bd5}$   $\text{Ba6}$



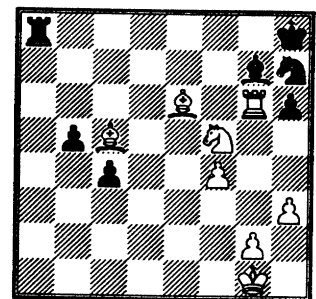
32.  $\text{Bxa6}$   $\text{Bxa6}$  33.  $\text{Ba1}$   $\text{Bxe5}$  34.  $\text{Bxa6}$   $\text{Bxb2}$



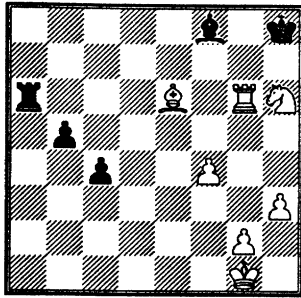
35.  $\text{Bxg6+}$   $\text{Kh8}$  36.  $\text{Bxf7}$



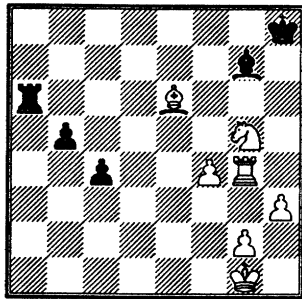
36...  $\text{Bc8}$  37.  $\text{Be6}$   $\text{Ba8}$  38.  $\text{Nc3}$   $\text{Bg7}$  39.  $\text{Nf5}$



39...  $\text{Nf8}$  40.  $\text{Bxf8}$   $\text{Bxf8}$  41.  $\text{Nxb6}$   $\text{Ba6}$



42. ♖f7+ ♔h7 43. ♜g3 ♙g7 44. ♖g5+ ♔h8 45. ♜g4

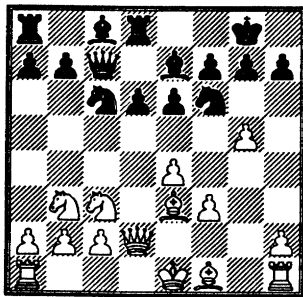


1:0

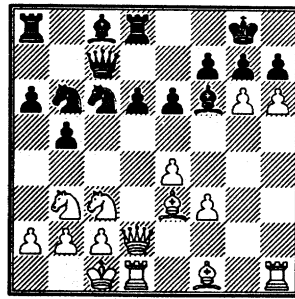
B60/4

Xie Jun - Polgar Z  
Jaen ESP, wcc women, 1996

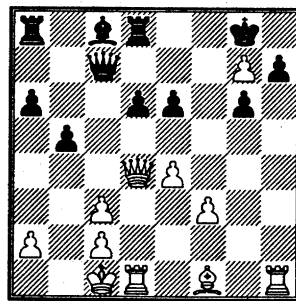
1. e4 e5 2. ♖f3 d6 3. d4 cxd4 4. ♖xd4 ♖f6 5. ♖c3 ♖c6 6. ♙g5 ♜b6 7. ♖b3 e6 8. ♜d2 ♙e7 9. f3 0-0 10. g4 ♜d8 11. ♙e3 ♜c7 12. g5



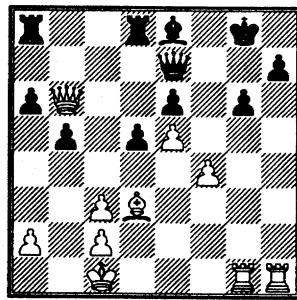
12... ♖d7 13. 0-0-0 a6 14. h4 b5 15. h5 ♖b6 16. g6 ♙f6 17. h6



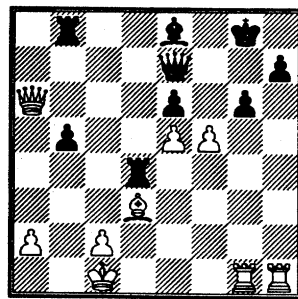
17... ♟fxg6 18. ♟hxg7 ♖a4 19. ♖d4 ♖xd4 20. ♙xd4 ♙xd4 21. ♜xd4 ♖xc3 22. bxc3



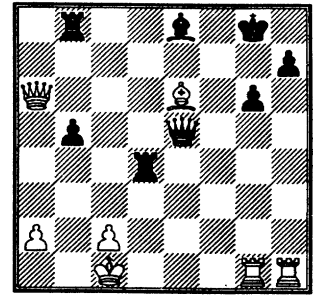
22... ♜xg7 23. ♜b6 ♜e7 24. e5 d5 25. ♙d3 ♙d7 26. ♜dg1 ♙e8 27. f4



27... d4 28. cxd4 ♜ab8 29. ♜xa6 ♜xd4 30. f5



30... exf5 31. ♙xf5 ♜xe5 32. ♙e6+

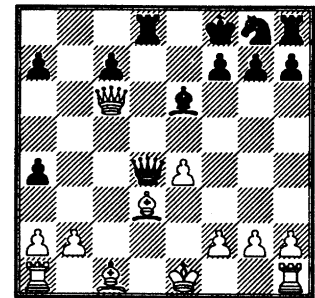


32... ♔h8 33. ♔b1 ♜a4 0:1

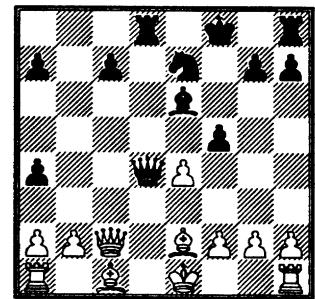
C45/6

Polgar Z - Xie Jun  
Jaen ESP, wcc women, 1996

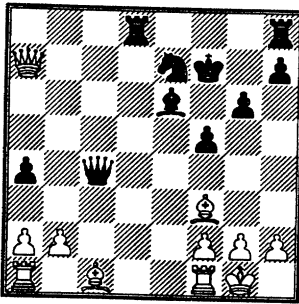
1. e4 e5 2. ♖f3 ♖c6 3. d4 exd4 4. ♖xd4 ♙c5 5. ♖xc6 ♜f6 6. ♜d2 dxc6 7. ♖c3 ♙e6 8. ♖a4 ♜d8 9. ♙d3 ♙d4 10. c3 b5 11. cxd4 bxa4 12. ♜c2 ♜xd4 13. ♜xc6+ ♔f8



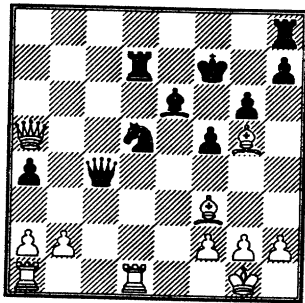
14. ♙e2 ♖e7 15. ♜c2 f5



16. 0-0 ♜xe4 17. ♜xc7 ♔f7 18. ♙h5+ g6 19. ♙f3 ♜c4 20. ♜xa7



20... ♖d4 21. ♗a5 ♘d5 22. ♜d1  
♚c4 23. ♙g5 ♞d7

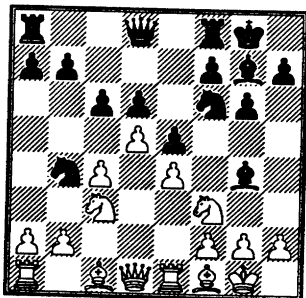


24. ♜ac1 ♗xa2 25. ♙xd5 1:0

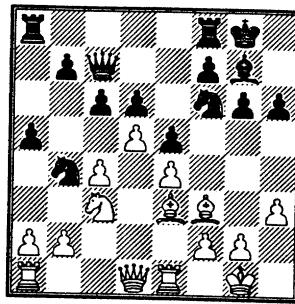
E94/1

Karpov An - Ilincic Z  
Belgrade, It., 1996

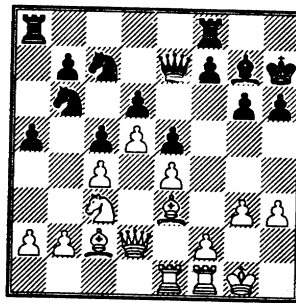
1. ♘f3 ♘f6 2. c4 g6 3. ♘c3 ♙g7  
4. e4 d6 5. d4 0-0 6. ♙e2 e5 7. 0-0  
♘a6 8. ♞e1 c6 9. ♙f1 ♙g4 10.  
d5 ♘b4



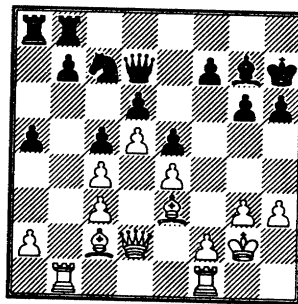
11. ♙e2 a5 12. ♙g5 h6 13. ♙e3  
♚c7 14. h3 ♙xf3 15. ♙xf3



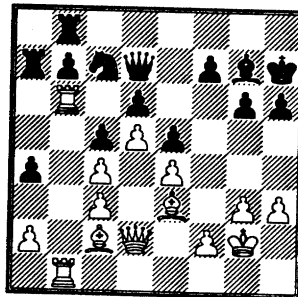
15... c5 16. ♞f1 ♗e7 17. ♗d2  
♚h7 18. ♞ae1 ♘a6 19. ♙d1  
♘c7 20. g3 ♘d7 21. ♙c2 ♘b6



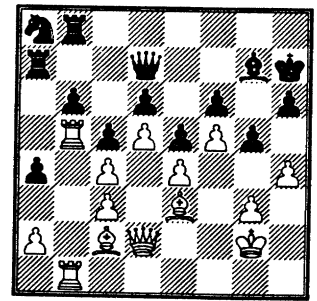
22. ♙d3 ♗d7 23. ♚g2 ♘a4 24.  
♞b1 ♞fb8 25. ♙c2 ♘xc3 26.  
bxc3



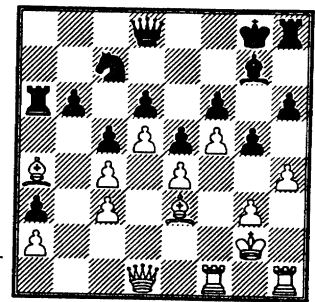
26... a4 27. ♞b6 ♞a7 28. ♞fb1



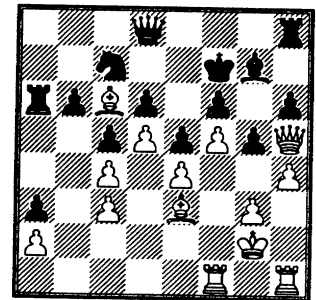
28... ♘a8 29. ♞b5 b6 30. f4 f6  
31. f5 g5 32. h4



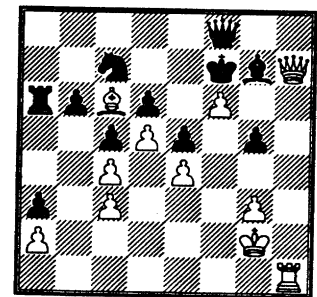
32... ♞h8 33. ♞h1 ♚g8 34. ♞bb1  
♞a6 35. ♞bf1 ♗d8 36. ♗d1 a3  
37. ♙a4 ♘c7



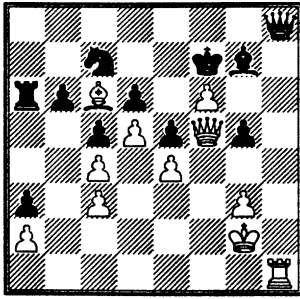
38. ♙c6 ♚f7 39. ♗h5+



39... ♚g8 40. ♞b1 ♗b8 41. ♗g6  
♗f8 42. hxg5 fxg5 43. ♙xg5 hxg5  
44. ♞xh8+ ♚xh8 45. ♞h1+ ♚g8  
46. ♗h7+ ♚f7 47. f6



47... ♗h8 48. ♗f5

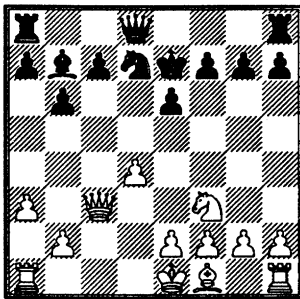


1:0

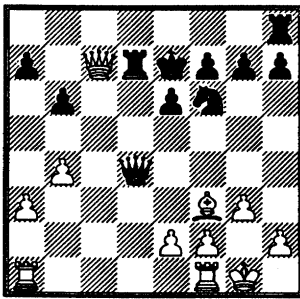
E12/11

Bareev E - Karpov An  
Belgrade, It., 1996

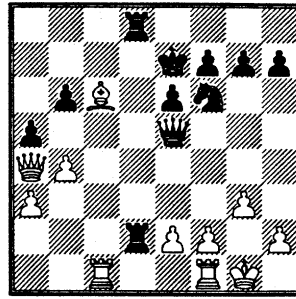
1. d4 ♘f6 2. c4 e6 3. ♘f3 b6 4.  
a3 ♙b7 5. ♘c3 d5 6. cxd5 ♘xd5  
7. ♖c2 ♘xc3 8. ♗xc3 ♘d7 9.  
♙g5 ♙e7 10. ♙xe7 ♖xe7



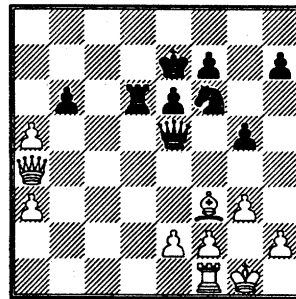
11. g3 ♘f6 12. ♙g2 ♗d6 13. b4  
♞ad8 14. 0-0 ♙xf3 15. ♙xf3  
♗xd4 16. ♗xc7+ ♞d7



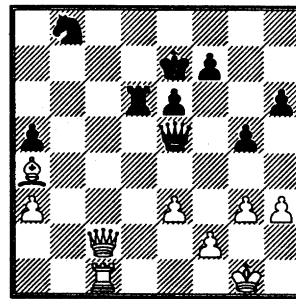
17. ♗c2 ♗e5 18. ♞ac1 ♞hd8 19.  
♙c6 ♞d2 20. ♗a4 a5



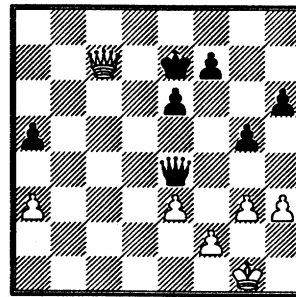
21. ♙f3 g5 22. ♞c6 ♞8d6 23.  
♞xd6 ♞xd6 24. bxa5



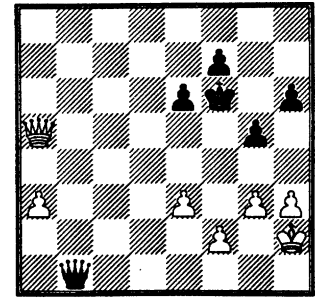
24... bxa5 25. ♗c2 h6 26. ♞c1  
♞d4 27. e3 ♞d6 28. h3 ♘d7 29.  
♙c6 ♘b8 30. ♙a4



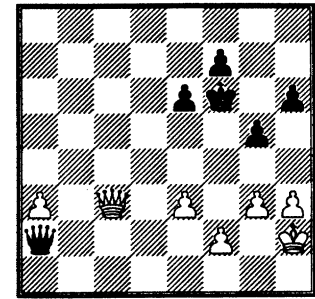
30... ♘d7 31. ♗c8 ♗e4 32. ♙xd7  
♞xd7 33. ♞c7 ♞xc7 34. ♗xc7+



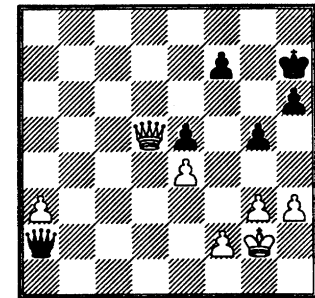
34... ♖f6 35. ♗xa5 ♗b1+ 36.  
♖h2



36... ♗c2 37. ♗e1 ♗a2 38. ♗c3+



38... e5 39. ♖g2 ♗d5+ 40. e4  
♗a2 41. ♗c5 ♖g6 42. ♗d6+  
♖h7 43. ♗d5



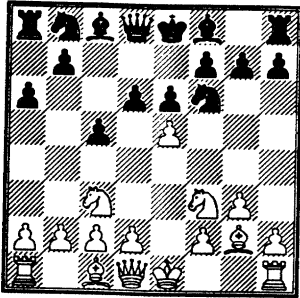
1:0

B40/1

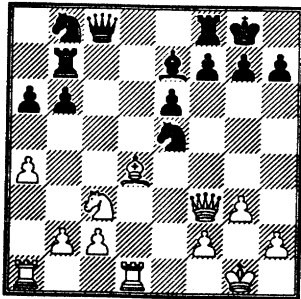
Anand V - Ivanchuk V  
Wijk aan Zee NED, Hoogovens,  
1996

1. e4 c5 2. ♘c3 e6 3. ♘f3 a6 4.  
g3 d6 5. ♙g2 ♘f6 6. e5





6... dxe5 7. Qxe5 ♖a7 8. d3 b6 9. 0-0 ♗e7 10. ♗e3 ♗b7 11. ♗xb7 ♖xb7 12. ♖f3 ♖c8 13. d4 cxd4 14. ♗xd4 0-0 15. a4 Qfd7 16. ♖fd1 Qxe5

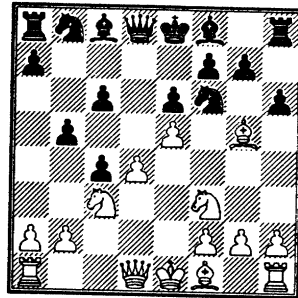


17. ♗xe5 Qc6 18. ♗d6 ♗xd6 19. ♖xd6 ♖c7 20. ♖e2 Qa5 21. ♖xb6 Qc4 22. ♖b4 a5 23. ♖b5 Qxb2 24. Qd5 exd5 25. ♖xb2 ♖c5 1/2:1/2

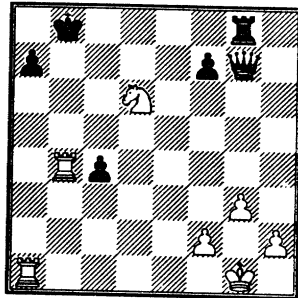
D44/7

Ivanchuk V - Shirov A  
Wijk aan Zee NED, Hoogovens,  
1996

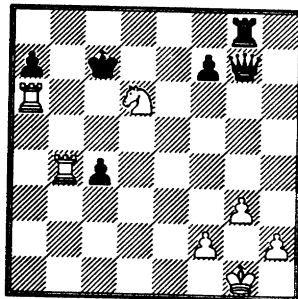
1. d4 d5 2. c4 c6 3. Qc3 Qf6 4. Qf3 e6 5. ♗g5 dxc4 6. e4 b5 7. e5 h6



8. ♗h4 g5 9. Qxg5 hxg5 10. ♗xg5 Qbd7 11. exf6 ♗b7 12. g3 c5 13. d5 ♖b6 14. ♗g2 0-0-0 15. 0-0 b4 16. Qa4 ♖b5 17. a3 exd5 18. axb4 cxb4 19. ♗e3 Qc5 20. ♖g4+ ♖d7 21. ♖g7 ♗xg7 22. fxg7 ♖g8 23. Qxc5 d4 24. ♗xb7+ ♖xb7 25. Qxb7 ♖b6 26. ♗xd4 ♖xd4 27. ♖fd1 ♖xb2 28. Qd6+ ♗b8 29. ♖db1 ♖xg7 30. ♖xb4+



30... ♗c7 Is there a better place for the king? 30... ♗a8! 31. ♖ab4 f6 at least makes white have to work harder. 31. ♖a6

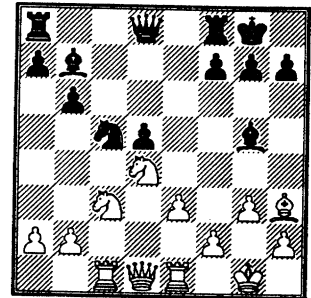


31... ♖b8 32. ♖xa7+ ♗xd6 33. ♖xb8 ♖g4 34. ♖d8+ ♗c6 35. ♖a1 1:0

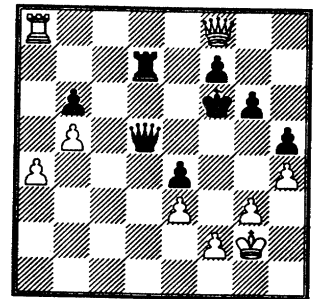
E17/8

Anand V - Adams Mi  
Wijk aan Zee NED, Hoogovens,  
1996

1. d4 Qf6 2. Qf3 e6 3. c4 b6 4. g3 ♗b7 5. ♗g2 ♗e7 6. 0-0 0-0 7. ♖e1 d5 8. cxd5 exd5 9. Qc3 Qa6 10. ♗f4 c5 11. ♖c1 Qe4 12. dxc5 Qaxc5 13. Qd4 ♗f6 14. ♗h3 Qg5 15. ♗xg5 ♗xg5 16. e3



16... ♗f6 17. ♖e2 g6 18. b4 Qe4 19. Qxe4 dxe4 20. ♖d2 ♖e7 21. b5 ♗xd4 22. ♖xd4 ♗c8 23. ♗d7 ♗xd7 24. ♖xd7 ♖a3 25. ♖c2 ♖a4 26. ♖d5 ♖ae8 27. h4 h5 28. ♗g2 ♖e6 29. ♖e2 ♖a3 30. ♖c7 ♖e7 31. ♖c6 ♖fe8 32. ♖c4 ♗h7 33. ♖d2 ♖b7 34. ♖dd6 ♖b2 35. a4 ♖e5 36. ♖d5 ♖xd5 37. ♖xd5 ♖e7 38. ♖d6 ♖e6 39. ♖d8 ♖e5 40. ♖c7 ♗g7 41. ♖xa7 ♖d6 42. ♖e7 ♖d5 43. ♖a8 ♖d7 44. ♖f8+ ♗f6

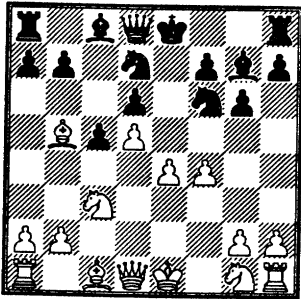


45. ♖e8 1:0

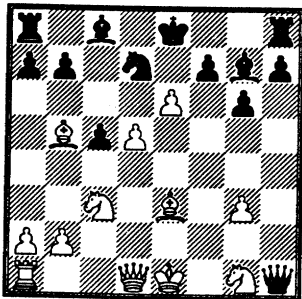
A67/1

Sokolov I - Topalov V  
Wijk aan Zee NED, Hoogovens,  
1996

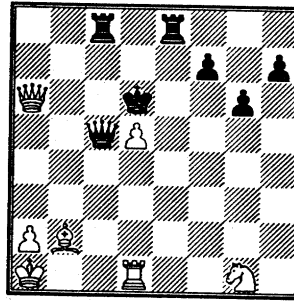
1. d4 ♘f6 2. c4 e6 3. ♘c3 c5 4.  
d5 exd5 5. cxd5 d6 6. e4 g6 7. f4  
♙g7 8. ♙b5+ ♘bd7



9. e5 dxe5 10. fxe5 ♘h5 11. e6  
♚h4+ 12. g3 ♘xg3 13. hxg3  
♚xh1 14. ♙e3



14... ♙xc3+ 15. bxc3 a6 16.  
exd7+ ♙xd7 17. ♙xd7+ ♚xd7  
18. ♚b3 b5 19. 0-0 ♞he8 20.  
♙xc5 ♞ac8 21. ♙d4 ♚g2 22.  
♚a3 ♚xg3 23. ♚xa6 ♞xc3+ 24.  
♚b2 ♞cc8 25. ♚xb5+ ♚d6 26.  
♚a1 ♚a3 27. ♙b2 ♚c5 28.  
♚a6+

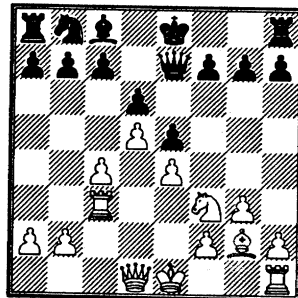


28... ♚d7 29. ♚a4+ 1:0

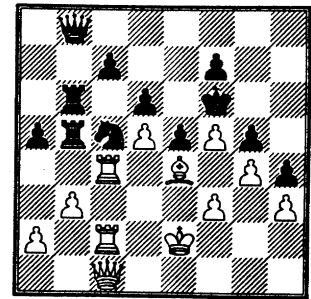
E11/21

Piket Je - Anand V  
Wijk aan Zee NED, Hoogovens,  
1996

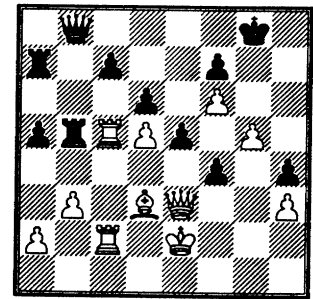
1. d4 ♘f6 2. c4 e6 3. ♘f3 ♙b4+  
4. ♙d2 ♚e7 5. g3 ♘c6 6. ♘c3 d6  
7. ♙g2 ♙xc3 8. ♙xc3 ♘e4 9.  
♞c1 ♘xc3 10. ♞xc3 e5 11. d5  
♘b8 12. e4



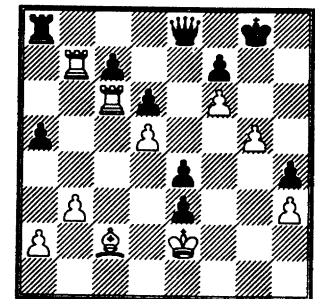
12... 0-0 13. ♘h4 a5 14. 0-0 ♘a6  
15. ♚e1 g5 16. ♘f5 ♙xf5 17.  
exf5 ♘c5 18. ♙e4 ♚f6 19. f3  
♞fe8 20. ♚e3 ♚g7 21. ♚g2 h5  
22. ♞h1 ♞g8 23. h3 h4 24. g4  
♞gb8 25. ♞hc1 b5 26. cxb5 ♞xb5  
27. ♞1c2 ♞ab8 28. ♚d2 ♚d8 29.  
b3 ♚e7 30. ♞c4 ♞b6 31. ♚f1  
♚d8 32. ♚e2 ♚f6 33. ♚c1 ♚b8



34. ♚e3 ♞a6 35. ♙d3 ♞a7 36. f4  
gxf4 37. g5+ ♚g7 38. f6+ ♚g8  
39. ♞xc5



39... fxe3 40. ♞xb5 ♚e8 41. ♞c6  
e4 42. ♙c2 ♞a8 43. ♞b7

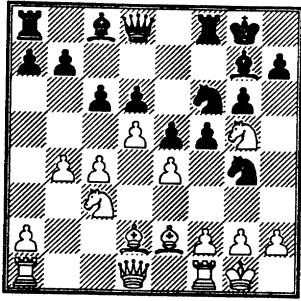


43... ♚e5 44. ♞bxc7 ♚f4 0:1

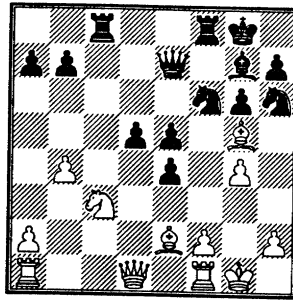
E94/17

Ivanchuk V - Piket Je  
Wijk aan Zee NED, Hoogovens,  
1996

1. d4 ♘f6 2. c4 g6 3. ♘c3 ♙g7 4.  
e4 d6 5. ♘f3 0-0 6. ♙e2 e5 7.  
♙e3 ♘bd7 8. 0-0 c6 9. d5 ♘g4  
10. ♙d2 f5 11. ♘g5 ♘df6 12. b4

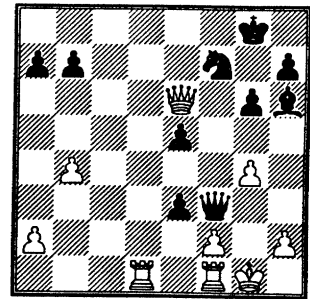


12... cxd5 13. cxd5 fxe4 14. ♖e6  
 ♙xe6 15. dx6 ♘h6 16. g4 d5 17.  
 ♙g5 ♜c8 18. e7 ♚xe7



19. ♘xd5 ♚e6 20. ♘xf6+ ♜xf6  
 21. ♙xf6 ♚xf6 22. ♚d5+ ♘f7

23. ♙c4 ♜xc4 24. ♚xc4 ♚f3 25.  
 ♚e6 ♙h6 26. ♜ad1 e3



27. ♜d7 1:0

## THE FINAL WORD

Well, I had a long lengthy editorial all ready to go but with the continued delays and such of this issue I finally through it off to the side. I just wanted to get in my two cents worth on a couple of things real quick though. A lot of people see the Human-Computer matches as dangerous for chess and I really have to disagree. I think in the end they (the computers) will become great tools to the world's elite chess players and their level of play will reach heights not even guessed at so far. On the other hand, you can probably say good-bye to longer time-controls and write off adjournments as extinct. I wouldn't want to adjourn only to worry whether or not my computer was better than my opponents.

Also, a quick word about my position here as the CICL bulletin editor. As noted earlier, I have accepted responsibility for the Illinois Chess Bulletin's editorship and that will come about over the next couple of months. I really intended to do both magazines at once and would still like to. However, the lack of concern by the majority of our league's players really makes me wonder about the worthiness of *anyone* spending their time with this. I get the feeling that most people really don't care if there is a bulletin as long as they get the latest rating list. At the **spring business meeting** I intend on bringing up two items. The first being the mandatory submission of game scoresheets with match results and, following that not passing, to bring forth a discussion as to keeping the bulletin at all. If nobody cares then why bother? And if you do, then why doesn't anyone submit games? Feel free to e-mail or write me with your opinions. And if you care either way let your team captain know so he'll be ready for the meeting.

One last thing, I have repeatedly been impressed by the goodwill and sportsmanship that is displayed across the CICL by its members. It gives me a good feeling inside to be a part of such a group. Unfortunately, there seems to be more than just an isolated case of a few individuals losing touch with the true spirit that created our league in the first place. There is no room for people trying to circumvent the league rules or even worse knowingly break them. I have in mind the rules for eligibility to play on a team. These rules quite clearly state who is eligible to play for any given team. I don't think there is any gray area, but feel free to ask a league officer if you aren't sure. Has winning a match or two become so important that it's worth starting a trend that would undermine the whole foundation of the league? I think not. And I think those that would engage in such activities should really step back and think over what they are doing. Is it worth winning when it's done by cheating? What does that prove and why bother to play in the league at all? Just go out and buy yourself a trophy claiming to be champion of whatever you want and let those of us who want the league to mean something play by our rules. I do not speak only for myself, there is a growing indignation toward these rule-breakers. Continued disruption will not be tolerated. If you're reading this and you're mad, then you know who I'm talking to.

Notice of the spring business meeting and the next bulletin will be out shortly and will include a play-off's preview. Until then, good chess as you begin finishing out the regular season.

Tim Williams, Editor

## NEAR WEST DIVISION 2-18-1996

TEAM NAME	W L D	GAME POINTS	MATCH POINTS	PCT
CASE	5 1 1	28.5	5.5	79%
ARGONNE KNIGHTS	5 2 0	27.0	5.0	71%
LUCENT TECH CHARGERS	4 3 1	22.5	4.5	56%
MIDCON CORP	3 4 0	22.0	3.0	43%
PAWNS	0 7 0	8.0	0.0	0%

## FAR WEST DIVISION 2-18-1996

TEAM NAME	W L D	GAME POINTS	MATCH POINTS	PCT
LUCENT TECH ROYALS	5 0 2	23.5	6.0	86%
ARGONNE ROOKS	5 2 0	26.5	5.0	71%
LUCENT TECH DRAGONS	3 1 3	26.5	4.5	64%
FERMILAB	3 1 3	24.5	4.5	64%
LUCENT TECH TYROS	1 6 0	18.5	1.0	14%
WHEATON COLLEGE	0 7 0	4.5	0.0	0%

## NORTH DIVISION 2-18-1996

TEAM NAME	W L D	GAME POINTS	MATCH POINTS	PCT
MOTOROLA	7 0 0	29.0	7.0	100%
UOP PROCESS DIV.	4 3 0	20.5	4.0	57%
EXEMPLARS	2 3 2	20.0	3.0	43%
NORTHROP CORP.	2 3 2	19.5	3.0	43%
SEARS	2 5 0	17.5	2.0	29%
KEMPER INSURANCE	2 5 0	16.5	2.0	29%

## EAST DIVISION 2-18-1996

TEAM NAME	W L D	GAME POINTS	MATCH POINTS	PCT
ALUMNI CENTRAL	8 0 0	34.5	8.0	100%
CHICAGO POST OFFICE	5 3 1	35.5	5.5	61%
BANK AMERICA ILLINOIS	4 2 3	29.5	5.5	61%
AMOCO CORP.	2 4 1	19.5	2.5	36%
CHICAGO RES. & TRDG.	2 3 1	16.0	2.5	42%
CTA	2 5 0	15.5	2.0	29%
CHICAGO MERC. EXCH.	0 6 0	5.0	0.0	0%

10-DEC-95 LUCENT TECH. CHARGERS 2 ARGONNE KNIGHTS 4  
ROUND 8

BD	RATINGS SCORE		RATINGS SCORE
1 WARREN,J	2109 2 .5	BENEDEK,R	2192 -4 .5
2 STAMM,V	1702 -7 0	HILL,R	1902 11 1
3 RADAVICIUS,E	1666 -3 .5	BAURAC,D	1596 3 .5
4 THOMAS,J	1502 0 0	RONIN,D	0 0 1
5 DOBR,K	1492-13 0	BURBA,K	1382 20 1
6 BRADY,R	1358 0 1F		0 0 0F

10-JAN-96 PAWNS 5 COOK CO. DEPT. OF CORR. 1  
ROUND 5

BD	RATINGS SCORE		RATINGS SCORE
1 ELLICE,W	1841 3 1	ROJO,V	1395 -3 0
2 O'DELL,DW	1551 0 1	JACKSON,S	0 0 0
3 LASKY,N	1352 0 1	APPLEBERRY,T	0 0 0
4 MIKULECKY,B	1382 0 1F		0 0 0F
5 DZURICKO,G	1130 0 0	JOHNSON,W	0 0 1
6 HARD,R	1201 0 1	STEELE,B	0 0 0

18-JAN-96 ARGONNE KNIGHTS 0 CASE 6  
ROUND 9

BD	RATINGS SCORE		RATINGS SCORE
1 HILL,R	1913-15 0	WILLIAMS,T	2026 15 1
2 SUAREZ,E	1630-10 0	KALE,S	1854 10 1
3 BAURAC,D	1599 0 0	ROYTBURG,E	0 0 1
4 BURBA,K	1402 0 0F	WHITE,H	1618 0 1F
5 GALLAGHER,H	1317 0 0F	KLINEFELTER,H	1515 0 1F
6	0 0 0F	REID,C	1410 0 1F
(CASE) 7 REID,C	1410-16 0	KLINEFELTER,H	1515 16 1

23-JAN-96 COOK CO. DEPT. OF CORR. 3 PAWNS 3  
ROUND 6

BD	RATINGS SCORE		RATINGS SCORE
1 HALL,A	0 0 0	ELLICE,W	1844 0 1
2 ROJO,V	1392-13 0	O'DELL,DW	1551 9 1
3 JACKSON,S	0 0 0	MIKULECKY,B	1382 0 1
4 JOHNSON,W	1221 0 1F		0 0 0F
5 APPLEBERRY,T	0 0 1F		0 0 0F
6 MATTAR,I	0 0 1F		0 0 0F

05-FEB-96 CASE 6 COOK CO. DEPT. OF CORR. 0  
ROUND 9

BD	RATINGS SCORE		RATINGS SCORE
1 WILLIAMS,T	2041 0 1	HALL,A	0 0 0
2 WHITE,H	1618 9 1	ROJO,V	1379 -9 0
3 SATTERLEE,D	1618 0 1	JACKSON,S	0 0 0
4 KLINEFELTER,H	1531 6 1	JOHNSON,W	1221 -6 0
5 SAWDO,E	1412 0 1	APPLEBERRY,T	0 0 0
6 REID,C	1394 0 1	AVERY,G	0 0 0
7 SHAWN,N	0 0 0	LARSON,T	0 0 1
8 OLSON,C	0 0 0	CHAMORRO,A	0 0 1

07-FEB-96 LUCENT TECH. CHARGERS	4	MIDCON CORP	2
ROUND 10			
BD	RATINGS SCORE		RATINGS SCORE
1 WARREN,J	2111-11 0	CONNOR,P	2076 25 1
2 STAMM,V	1695 -5 0	EGERTON,J	1965 8 1
3 RADAVICIUS,E	1663 0 1F	CONDON,J	2039 0 0F
4 THOMAS,J	1502 15 1	LORENZ,B	1496-22 0
5 DOBR,K	1479 6 1	HANSEN,B	1311-12 0
6 BRADY,R	1358 0 1	FERGUSON,K	0 0 0

08-FEB-96 PAWNS	0	ARGONNE KNIGHTS	6
ROUND 10			
BD	RATINGS SCORE		RATINGS SCORE
1 ELLICE,W	1844 -5 0	BENEDEK,R	2188 4 1
2 MCKAY,P	1395 -2 0	HILL,R	1898 2 1
3 NOTERMANN,T	1181 -3 0	SUAREZ,E	1620 3 1
4 DZURICKSKO,G	1130 -3 0	BAURAC,D	1599 2 1
5	0 0 0F		0 0 1F
6	0 0 0F		0 0 1F

08-DEC-95 CTA	2	AMOCO CORP.	4
ROUND 7			
BD	RATINGS SCORE		RATINGS SCORE
1 MATTHEWS,J	1782 -5 0	HODINA,J	2155 5 1
2 WILLIAMS,A	0 0 0	ATKINSON,J	1783 0 1
3 JONES,M	1425 0 1	PORTER,D	0 0 0
4 MCCARTNEY,M	0 0 0	NOTTOLI,R	0 0 1
5 STEVENS,G	0 0 0	CORBIN,Z	1290 0 1
6 TAYLOR,M	0 0 1	HOLMES,M	0 0 0
7 WILSON,A	1570 0 0	STAPLES,M	0 0 1(CTA )
8 WILSON,A	1570 0 1	DALTON,M	0 0 0(CTA )

10-JAN-96 CHICAGO MERC. EXCH.	0	CHICAGO POST OFFICE	6
ROUND 3			
BD	RATINGS SCORE		RATINGS SCORE
1 FRANK,M	1736 -2 0	INUMERABLE,F	2320 2 1
2 SLAGLE,S	1650 -5 0	MARCOWKA,R	1997 4 1
3 SULLIVAN,C	1466 -4 0	ALLEN,H	1888 4 1
4 HILTON,J	1086 -2 0	COOPER,W	1646 2 1
5 LODEWYCK,D	1414 0 0F	CARTER,L	1513 0 1F
6 WARE,K	0 0 0F	DAVIS,R	0 0 1F

11-JAN-96 BANK AMERICA ILLINOIS	2	CTA	4
ROUND 9			
BD	RATINGS SCORE		RATINGS SCORE
1 FRAATS,D	1897 -7 0	BYRNES,R	2196 7 1
2 KOGAN,G	1810 11 1	ABRAHAM,T	1605-11 0
3 PAROAN,E	1728 12 1	JARRETT,T	1657-18 0
4 HAMMOND,M	1423-14 0	WILSON,A	1570 14 1
5 ZOELLNER,J	1415-22 0	JONES,M	1425 22 1
6 GANSER,A	1266 0 0	WILLIAMS,A	0 0 1

18-JAN-96 CTA	1.5	ALUMNI CENTRAL	4.5
ROUND 8			
BD	RATINGS SCORE		RATINGS SCORE
1 BYRNES,R	2203 -6 .5	CZERNIECKI,A	2109 4 .5
2 ABRAHAM,T	1594 -4 0	LEONG,D	2001 4 1
3 WILSON,A	1584 -8 0	RZESZUTKO,R	1863 8 1
4 JONES,M	1447 40 1	PRATTS,M	1811-40 0
5 MCCARTNEY,M	0 0 0	LITVINAS,A	1715 0 1
6 STAPLES,M	1196 -4 0	DAVIDSON,M	1624 4 1

18-JAN-96 CHICAGO POST OFFICE 2 BANK AMERICA ILLINOIS 4  
ROUND 10

BD	RATINGS SCORE	RATINGS SCORE
1 INUMERABLE,F	2322 3 1	FRAATS,D 1890 -3 0
2 MARCOWKA,R	2001-22 0	KOGAN,G 1821 33 1
3 ALLEN,H	1892-32 0	PARAOAN,E 1740 21 1
4 COOPER,W	1648 9 1	HAMMOND,M 1409 -9 0
5 CARTER,L	1513-30 0	ZOELLNER,J 1393 30 1
6 DAVIS,R	0 0 0	GANSER,A 1266 0 1

24-JAN-96 CHICAGO POST OFFICE 5 CHICAGO MERC. EXCH. 1  
ROUND 8

BD	RATINGS SCORE	RATINGS SCORE
1 INUMERABLE,F	2325 1 1	FRANK,M 1734 -1 0
2 MARCOWKA,R	1979 4 1	SLAGLE,S 1645 -6 0
3 ALLEN,H	1860 4 1	SULLIVAN,C 1462 -4 0
4 COOPER,W	1657 0 1F	LODEWYCK,D 1414 0 0F
5 TURNER,K	1532-42 0	HILTON,J 1084 42 1
6 HOWARD,W	1554 0 1F	0 0 0F

01-FEB-96 ALUMNI CENTRAL 3.5 CHICAGO POST OFFICE 2.5  
ROUND 9

BD	RATINGS SCORE	RATINGS SCORE
1 CZERNIECKI,A	2113 -7 0	INUMERABLE,F 2326 10 1
2 SANTIAGO,T	1911 27 1	MARCOWKA,R 1983-18 0
3 RZESZUTKO,R	1871-23 0	ALLEN,H 1864 23 1
4 FRANEK,M	1776 0 1F	COOPER,W 1657 0 0F
5 LITVINAS,A	1715 6 1	CARTER,L 1483 -9 0
6 DAVIDSON,M	1628 -5 .5	HOWARD,W 1554 5 .5

08-FEB-96 BANK AMERICA ILLINOIS 4 AMOCO CORP. 2  
ROUND 11

BD	RATINGS SCORE	RATINGS SCORE
1 KOGAN,G	1854 16 .5	HODINA,J 2160-16 .5
2 PARAOAN,E	1761 9 1	WENTLING,C 1605-13 0
3 SIEGEL,R	1459 0 .5	WOOD,L 0 0 .5
4 HAMMOND,M	1400 0 1	NOTTOLI,R 0 0 0
5 ZOELLNER,J	1423 0 1	HOLMES,M 0 0 0
6 GANSER,A	1266-21 0	CORBIN,Z 1290 21 1

11-JAN-96 WHEATON COLLEGE 2.5 LUCENT TECH. ROYALS 3.5  
ROUND 5

BD	RATINGS SCORE	RATINGS SCORE
1 UNDERWOOD,W	1972 3 .5	STINSON,M 2036 -5 .5
2 LAKE,T	0 0 0	GUIO,J 2014 0 1
3 BOSTICK,T	1420 -4 0	DOBROVOLNY,C 1844 4 1
4 ENKE,E	0 0 0	ROSLEY,D 1758 0 1
5 MAYNARD,J	1325 0 1	CZOSKE,M 0 0 0
6 TAN,M	1201 0 1F	0 0 0F
7 KLAUDER,C	0 0 .5	BROLLIER,B 0 0 .5(WHEAT)

17-JAN-96 WHEATON COLLEGE 0 LUCENT TECH. DRAGONS 6  
ROUND 6

BD	RATINGS SCORE	RATINGS SCORE
1 UNDERWOOD,W	1975 -7 0	TEGEL,F 2171 7 1
2 BOSTICK,T	1416 -4 0	CHRISTIAN,R 1808 3 1
3 TAN,M	1201 -4 0	EUSTACE,D 1612 4 1
4 ENKE,E	0 0 0	PIAO,T 1711 0 1
5 MAYNARD,J	1325-10 0	WARD,C 1540 7 1
6 BROLLIER,B	0 0 0	HICKS,C 1528 0 1
7 JOSEPHSON,D	1793 0 1	HELLER,T 0 0 0(WHEAT)

25-JAN-96 LUCENT TECH. ROYALS	3.5	FERMILAB	2.5
ROUND 6			
BD	RATINGS SCORE		RATINGS SCORE
1 BUCHNER,R	2131 13 1	MOTTA,H	1982-13 0
2 STINSON,M	2031-22 0	SPIEGEL,L	2034 15 1
3 PEHAS,A	1992-5 .5	CARVALHO,W	1915 5 .5
4 DOBROVOLNY,C	1848-27 0	GAINES,I	1780 18 1
5 OGASAWARA,L	1830 8 1	HARRIS,R	1661-12 0
6 BLACKMON,E	1803 1 1	STAPLES,C	1200 -1 0
7 HAHNE,D	1586 -8 .5	ANDERSON,CJ	1457 8 .5(ROYLS)

07-FEB-96 ARGONNE ROOKS	6	WHEATON COLLEGE	0
ROUND 7			
BD	RATINGS SCORE		RATINGS SCORE
1 LEVINE,D	2396 1 1	JOSEPHSON,D	1793 -1 0
2 SHEYNIN,S	2019 1 1	BOSTICK,T	1412 -1 0
3 GREEN,D	1795 1 1	TAN,M	1197 -1 0
4 DECMAN,S	1662 0 1	ENKE,E	0 0 0
5 WALSH,W	1484 0 1	HELLER,T	0 0 0
6 SEMONES,E	0 0 1	BROLLIER,B	1263 0 0

15-FEB-96 LUCENT TECH. ROYALS	4	LUCENT TECH. TYROS	2
ROUND 7			
BD	RATINGS SCORE		RATINGS SCORE
1 BUCHNER,R	2144-27 0	TAMEZ,I	2072 27 1
2 STINSON,M	2009 19 1	STOLTZ,B	1947-19 0
3 GUIO,J	2014 7 1	BROZOVICH,J	1725 -5 0
4 DOBROVOLNY,C	1821 8 1	SMITH,BR	1548 -8 0
5 OGASAWARA,L	1838 4 1	SHAFF,R	1529 -4 0
6 ANDERSON,CJ	1465-22 0	THOMAS,G	1471 22 1

15-FEB-96 FERMILAB	3	LUCENT TECH. DRAGONS	3
ROUND 7			
BD	RATINGS SCORE		RATINGS SCORE
1 MOTTA,H	1969-10 0	TEGEL,F	2178 7 1
2 SPIEGEL,L	2049 2 .5	LUDWIG,T	2097 -2 .5
3 CARVALHO,W	1920 -9 .5	DURKEE,D	1777 6 .5
4 GAINES,I	1798 6 1	WARD,C	1547 -6 0
5 HARRIS,R	1649-30 0	HICKS,C	1528 30 1
6 KELLOGG,K	1683 2 1	PHELPS,C	1253 -3 0

16-JAN-96 NORTHROP CORP.	1	KEMPER INSURANCE	5
ROUND 6			
BD	RATINGS SCORE		RATINGS SCORE
1 DIAZ,P	2057-16 0	SIWEK,M	2165 10 1
2 CAIRONE,B	1796-10 0	LEONG,G	2017 7 1
3 VIGANTS,A	1549-27 0	OLSEN,A	1486 27 1
4 BABINEC,J	1405-37 0	PAYTON,P	1150 37 1
5 ELEK,G	1052 0 1	HARDIN,L	0 0 0
6	0 0 OF	MCKINNEY,T	0 0 1F

18-JAN-96 SEARS	1	EXEMPLARS	5
ROUND 6			
BD	RATINGS SCORE		RATINGS SCORE
1 LATIMER,E	2032 7 .5	WONG,P	2212 -7 .5
2 DORFF,M	1547 -5 0	FRISKE,T	1924 5 1
3 VITAVER,L	0 0 0	WEITZ,R	1693 0 1
4 VAN METRE,R	0 0 0	BURIAN,D	1645 0 1
5 WILSON,M	1303 -6 0	SUERTH,F	1634 4 1
6 FLOREY,J	0 0 .5	BROTSOS,J	1535 0 .5



23-JAN-96 UOP PROCESS DIV. 3.5 NORTHROP CORP. 2.5

## ROUND 6

BD	RATINGS SCORE		RATINGS SCORE
1 STEVANOVIC,M	2228 14 1	JAKSTAS,K	2206-14 0
2 BUERGER,E	2119 1 .5	GOLUMBOVSKI,P	2141 -2 .5
3 BOLDINGH,E	2061-24 0	DIAZ,P	2041 24 1
4 SAJBEL,P	1768 24 1	CAIRONE,B	1786-24 0
5 MICKLICH,F	1692 0 1	ALFONSO,E	0 0 0
6 LIKHTEREV,M	1496-21 0	VIGANTS,A	1522 21 1
7 VAN ZILE,C	1373-23 0	BABINEC,J	1368 23 1

25-JAN-96 KEMPER INSURANCE .5 MOTOROLA 5.5

## ROUND 6

BD	RATINGS SCORE		RATINGS SCORE
1 SIWEK,M	2175-16 0	MELNIKOV,I	2147 24 1
2 LEONG,G	2024 3 .5	WALLACH,C	2094 -5 .5
3 HUGHES,N	1852 -8 0	MORRIS,R	2021 12 1
4 OLSEN,A	1513 -3 0	SAMELSON,C	1984 2 1
5 CUMMUTA,P	1388 -2 0	MACKIE,A	1931 2 1
6 PAYTON,P	1187 -2 0	AUGSBURGER,L	1721 2 1
7 MCKINNEY,T	0 0 0	GONCHAROFF,N	1782 0 1
8 HARDIN,L	0 0 1F	LESTER,M	1569 0 0F
9 GALKO,D	0 0 1	FULLMER,G	0 0 0
10 ANDRYSIK,B	0 0 0	MELNIKOV,N	0 0 1

06-FEB-96 EXEMPLARS 3 NORTHROP CORP. 3

## ROUND 7

BD	RATINGS SCORE		RATINGS SCORE
1 FRISKE,T	1929 -8 0	JAKSTAS,K	2192 5 1
2 SOLLANO,E	1936 34 1	GOLUMBOVSKI,P	2139-34 0
3 WEITZ,R	1693 -3 0	DIAZ,P	2065 5 1
4 BURIAN,D	1645 20 1	CAIRONE,B	1762-30 0
5 SUERTH,F	1638 0 1	ALFONSO,E	0 0 0
6 HESS,B	1473-18 0	VIGANTS,A	1543 18 1
7 EDWARDS,S	1278 0 0F	BABINEC,J	1391 0 1F

06-FEB-96 SEARS 2.5 KEMPER INSURANCE 3.5

## ROUND 7

BD	RATINGS SCORE		RATINGS SCORE
1 LATIMER,E	2039-10 0	SIWEK,M	2159 10 1
2 MILLER,TT	1765 37 1	LEONG,G	2027-25 0
3 VAN METRE,R	1481 2 .5	OLSEN,A	1510 -2 .5
4 FLOREY,J	0 0 1	CUMMUTA,P	1386 0 0
5 WILSON,M	1297-30 0	PAYTON,P	1185 30 1
6 BALASE,E	1364 0 0	MCKINNEY,T	0 0 1

08-FEB-96 MOTOROLA 4 UOP PROCESS DIV. 2

## ROUND 7

BD	RATINGS SCORE		RATINGS SCORE
1 WOLF,D	0 0 .5	STEVANOVIC,M	2242 0 .5
2 HASAN,Y	2231 -7 .5	BUERGER,E	2120 5 .5
3 WALLACH,C	2089-26 0	BOLDINGH,E	2037 26 1
4 MORRIS,R	2033 7 1	SAHLI,E	1735 -7 0
5 SAMELSON,C	1986 5 1	MICKLICH,F	1692 -5 0
6 MACKIE,A	1933 2 1	VAN ZILE,C	1350 -2 0
7 AUGSBURGER,L	1723 0 1	ASSADIAN,K	0 0 0 (MTRLA)
8 FULLMER,G	0 0 0	REDDY,S	0 0 1 (MTRLA)

## CICL TOP TEN PLAYERS LISTS

As of 2-18-1996

NAME	TEAM	RATING	PREV	NAME	TEAM	RATING	PREV
<b>NEAR WEST DIVISION</b>				<b>FAR WEST DIVISION</b>			
BENEDEK,R	KNIGHTS	2192D	1	LEVINE, D	ROOKS	2397	1
CONNOR, P	MIDCON	2101	3	BEZZUBOV, V	FERMI	2338*	2
WARREN,J	CHARGERS	2100T	2	TEGEL, F	DRAGONS	2185D	3
WILLIAMS, T	CASE	2041	5	BUCHNER, R	ROYALS	2117	4
CONDON, J	MIDCON	2039	4	BERRY, G	ROOKS	2113T	7
KEISLER, J	KNIGHTS	1992	6	KOZLOVSKY	FERMI	2106	6
EGERTON, J	MIDCON	1973	7	TAMEZ, I	TYROS	2053	8
HILL, R	KNIGHTS	1900	8	LUDWIG, T	DRAGONS	2113C	5
KALE, S	CASE	1864	9	SPIEGEL, L	FERMI	2051C	-
ELLICE, W	PAWNS	1839	10	STINSON, M	ROYALS	2028	10
<b>NORTH DIVISION</b>				<b>EAST DIVISION</b>			
REYES, R	SEARS	2360D	1	INUMERABLE	PSTOF	2336	1
STEVANOVIC	UOP	2242C	5	HODINA, J	AMCRP	2144	2
HASAN, Y	MTRLA	2224C	2	JASAITIS, A	CRT	2117C	3
WONG, P	EXMPL	2205C	3	FRIESEMA, W	CRT	2109	4
JAKSTAS, K	NORTH	2197C	4	CZERNIECKI	ALUMNI	2106C	5
MELNIKOV, I	MTRLA	2171	7	COX, M	ALUMNI	2028C	6
SIWEK, M	KEMPR	2169C	6	MAREMA, D	PSTOF	2006	7
BUERGER, E	UOP	2125	9	SMILEY, R	AMCRP	2005	8
GOLUMBOVSKI	NORTH	2119D	8	LEONG, D	ALUMNI	2005	9
DIAZ, P	NORTH	2070	-	MARCOWKA	PSTOF	1965C	10
<b>MOST IMPROVED PLAYERS</b>				<b>CICL OVERALL TOP TEN</b>			
ROSENBERG	MIDCON	+104	1	LEVINE, D	ROOKS	2397	1
JONES, M	CTA	+100	-	REYES, R	SEARS	2360D	2
PAYTON, P	KEMPR	+84	-	BEZZUBOV, V	FERMI	2338*	3
MORRIS, R	MTRLA	+62	2	INUMERABLE	PSTOF	2336	4
BRADY, R	CHRGR	+58	4	STEVANOVIC	UOP	2242C	8
HICKS, C	DRGNS	+57	-	HASAN, Y	MTRLA	2224C	5
MIKULECKY	PAWNS	+56	5	WONG, P	EXMPL	2205C	6
WILLIAMS, T	CASE	+55	8	JAKSTAS, K	NORTH	2197C	7
THOMAS, G	TYROS	+55	-	BENEDEK,R	KNIGHTS	2192D	9
TAMEZ, I	TYROS	+52	-	TEGEL, F	DRAGONS	2185D	10

**CHICAGO INDUSTRIAL CHESS LEAGUE RATINGS LIST****RATING CODES:**

? - UNRATED

# - 5 TO 9 RATED GAMES

\* - 10 TO 24 RATED GAMES

C - CENTURY CLUB MEMBER

D - DOUBLE CENTURION

T - TRIPLE CENTURION

Q - QUAD CENTURION

**OFFICIAL RATINGS AS OF 2-18-1996**

NAME	TEAM	W	L	D	RATING						
ABRAHAM,T	CTA	1	3	0	1590	CARDI,P	HULL	0	0	0	1240#
ALFONSO,E	NORTH	3	2	1	1624#	CARNAL,D	CRT	0	1	0	1207#
ALLEN,H	PSTOF	7	1	1	1887	CARTER,L	PSTOF	2	4	1	1474
ANDERSON,CJ	ROYLS	1	2	2	1443	CARTER,O	CTA	0	1	0	0000?
ANDRYSIK,B	KEMPR	0	2	0	0000?	CARVALHO,W	FERMI	2	1	3	1911
ANGELOS,S	COLUM	0	0	0	0000?	CATENA,J	MTRLA	0	0	0	0000?
APPLEBERRY,T	CCDOC	1	2	0	0000?	CHAMORRO,A	CCDOC	1	0	0	0000?
AQUENDE,A	KEMPR	0	0	0	0000?	CHAN,H	SEARS	0	0	0	1574
ASSADIAN,K	MTRLA	0	1	1	0000?	CHOUDRY,A	KEMPR	0	1	0	0000?
ATKINSON,J	AMCRP	3	2	0	1783C	CHRISTIAN,R	DRGNS	1	0	0	1811C
AUGSBURGER,L	MTRLA	3	1	2	1723	CICUCCI,S	KEMPR	0	1	0	0000?
AVERY,G	CCDOC	0	3	0	0000?	CIESLEK,D	MTRLA	1	1	0	1938
AZCUNA,L	WHEAT	0	1	0	1214	CISKO,G	FERMI	0	1	0	1608
BABINEC,J	NORTH	2	2	0	1391#	COLBERT,W	PAWNS	0	1	0	0000?
BAKER,B	FLPRO	0	0	0	1042	COLEMAN,O	CTA	0	0	0	0000?
BAKER,LR	MERC	0	0	0	1093*	CONDON,J	MDCON	1	0	0	2039
BALASE,E	SEARS	0	1	0	1364*	CONNOR,P	MDCON	3	2	2	2101
BARGERSTOCK,D	CRT	2	3	1	1715	COOPER,W	PSTOF	5	2	0	1657
BARNARD,G	CRT	0	3	0	0000?	COPELAND,P	WHEAT	0	0	0	1229?
BARNES,D	CTA	0	1	0	0000?	CORBIN,Z	AMCRP	2	3	0	1311*
BARTUSIAK,P	MTRLA	0	0	0	0000?	COSTELLO,W	NORTH	0	1	0	0000?
BAURAC,D	KNGHT	4	2	2	1601C	COTE,J	MERC	0	0	1	1326
BECK,P	MERC	0	0	0	0000?	COX,M	ALUMN	0	0	0	2028C
BENEDEK,R	KNGHT	5	0	2	2192D	CREWSE,L	EXMPL	0	0	0	2058
BERMAN,R	KEMPR	0	0	0	0000?	CROWE,R	ROYLS	0	0	0	1405*
BERNARD,D	CRT	0	0	0	1296	CUMMUTA,P	KEMPR	1	3	0	1386
BERRY,G	ROOKS	3	0	1	2113T	CURRAN,T	CASE	1	2	0	1677
BEZZUBOV,V	FERMI	0	0	0	2338*	CZERNIECKI,A	ALUMN	2	2	4	2106C
BHOJWANI,C	TYROS	0	0	0	1933C	CZOSKE,M	ROYLS	0	1	0	0000?
BLACKMON,E	ROYLS	3	0	0	1804C	DALTON,M	CTA	0	1	0	0000?
BLAZIE,J	TYROS	2	0	0	1869C	DAVIDSON,M	ALUMN	3	0	1	1623
BLOOM,B	EXMPL	0	0	0	2034	DAVIS,R	PSTOF	0	1	0	0000?
BLUE,J	CCDOC	1	0	0	0000?	DECMAN,S	ROOKS	2	0	0	1662D
BOLDINGH,E	UOP	4	2	0	2063	DELEON,J	CRT	3	1	1	1518*
BOSTICK,T	WHEAT	0	7	0	1411*	DENG,J	CRT	0	0	0	1549
BRADY,R	CHRGR	6	2	0	1358	DENISENKO,K	SEARS	1	0	0	0000?
BRIONES,M	UOP	0	2	0	1624C	DIAZ,L	CASE	0	1	0	0000?
BRITT-WEBB,E	AMCRP	0	0	0	1265#	DIAZ,P	NORTH	4	3	0	2070
BROCKETT,M	SEARS	0	0	0	1801	DOBR,K	CHRGR	2	5	2	1485T
BROLLIER,B	WHEAT	1	5	1	1263#	DOBROVOLNY,C	ROYLS	2	3	2	1829
BRONFELD,A	EXMPL	2	1	0	1846	DORFF,M	SEARS	1	3	1	1542
BROTSOS,J	EXMPL	2	0	2	1535D	DOTY,B	HULL	0	0	0	0000?
BROZOVICH,J	TYROS	2	4	1	1720C	DUFRESNE,T	CASE	0	0	0	997*
BUCHNER,R	ROYLS	2	1	1	2117	DURKEE,D	DRGNS	2	3	1	1783C
BUERGER,E	UOP	2	0	5	2125D	DYCZKOWSKI,R	CONBK	0	0	0	1565
BURBA,K	KNGHT	3	0	0	1402C	DZEKHTSER,A	SEARS	0	0	0	1761*
BURDICK,S	COLUM	0	0	0	1569	DZURICKSO,G	PAWNS	0	6	0	1127*
BURIAN,D	EXMPL	5	2	0	1665C	EDWARDS,S	EXMPL	1	0	0	1278
BYRNES,R	CTA	1	0	2	2197#	EGERTON,B	MDCON	0	0	0	0000?
CADE,M	UNLV	0	0	0	0000?	EGERTON,J	MDCON	3	1	1	1973
CAIRONE,B	NORTH	1	4	2	1732	ELEK,G	NORTH	2	3	0	1052
						ELLICE,W	PAWNS	2	6	1	1839

ENKE,E	WHEAT	1	4	0	1377#	KEEFE,E	FLPRO	0	0	0	1181#
EUSTACE,D	DRGNS	4	2	0	1616	KEISLER,J	KNGHT	0	0	0	1992
FABIJONAS,R	ALUMN	3	2	0	1809D	KELLOGG,K	FERMI	2	0	1	1685C
FAHRENHOLTZ,S	MTRLA	0	0	0	1785*	KERCSMAR,J	WHEAT	0	0	0	0000?
FELDMAN,A	FLPRO	0	0	0	1420C	KINSELLA,G	KNGHT	0	0	0	1481C
FERGUSON,K	MDCON	0	2	0	0000?	KLAUDER,C	WHEAT	0	0	1	0000?
FLEET,R	MDCON	1	1	0	1140#	KLINEFELTER,H	CASE	5	1	1	1537C
FLOREY,J	SEARS	2	3	1	0000?	KOGAN,G	BKAMI	3	3	1	1870
FRAATS,D	BKAMI	2	3	1	1887	KOSTECKA,K	COLUM	0	0	0	1596
FRANEK,M	ALUMN	3	0	1	1776C	KOZLOVSKY,M	FERMI	0	3	0	2106
FRANK,M	MERC	0	3	1	1733	KRUEGER,J	DRGNS	0	0	0	1353*
FRIESEMA,W	CRT	1	0	0	2109	KRULL,E	AMCRP	1	0	0	1510
FRISKE,T	EXMPL	2	3	1	1921	LAKE,T	WHEAT	0	3	0	0000?
FULLMER,G	MTRLA	0	3	1	0000?	LAMBIRIS,J	KEMPR	1	1	0	1451
GAINES,I	FERMI	6	1	0	1804C	LARSON,T	CCDOC	1	0	0	0000?
GALKO,D	KEMPR	1	0	0	0000?	LASKY,JIM	RADIO	0	0	0	1693#
GALLAGHER,H	KNGHT	3	0	0	1317	LASKY,N	PAWNS	1	0	0	1352C
GANSER,A	BKAMI	1	2	0	1245*	LATIMER,E	SEARS	0	2	4	2029D
GEBELE,R	UOP	0	0	0	0000?	LAWRENCE,P	MTRLA	0	0	0	0000?
GIMPLE,R	WHEAT	0	0	0	0000?	LEONG,D	ALUMN	1	0	0	2005
GOLLA,R	SEARS	0	0	0	1982D	LEONG,G	KEMPR	1	1	3	2002C
GOLUMBOVSKI,P	NORTH	0	1	5	2105	LENER,R	SEARS	0	0	0	0000?
GONCHAROFF,N	MTRLA	3	1	1	1782Q	LESTER,M	MTRLA	3	1	0	1569
GORZ,E	RADIO	0	0	0	1289*	LEVINE,D	ROOKS	5	0	1	2397
GREEN,D	ROOKS	5	1	1	1796C	LIKHTEREV,M	UOP	1	3	0	1475*
GRIESMEYER,W	PSTOF	0	0	0	1317	LITVINAS,A	ALUMN	6	0	0	1721C
GRYPARIS,J	MTRLA	0	2	0	1478	LODEWYCK,D	MERC	1	1	0	1414
GUIO,J	ROYLS	3	0	1	2021	LOGAN,H	MDCON	1	4	0	1238*
HAHNE,D	ROYLS	0	0	1	1578	LORENZ,B	MDCON	3	3	1	1474*
HALL,A	CCDOC	0	4	0	0000?	LOSOFF,A	CRT	4	1	0	1948
HALLMAN,W	CASE	1	0	0	1219*	LUDWIG,T	DRGNS	2	1	1	2095C
HAMMOND,M	BKAMI	2	3	0	1400	LUEDERS,J	CRT	0	2	0	0000?
HANSEN,B	MDCON	2	3	1	1299*	LULKIN,V	UNILV	0	0	0	1826#
HARD,R	PAWNS	2	4	0	1201#	LUSTRO,G	ROYLS	0	0	0	0000?
HARDIN,L	KEMPR	0	1	0	0000?	MACBEAN,J	PAWNS	0	1	0	0000?
HARRIS,FF	CTA	0	0	0	1401#	MACKIE,A	MTRLA	4	1	1	1935
HARRIS,R	FERMI	3	2	0	1619	MARCOWKA,R	PSTOF	5	3	1	1965C
HARRUFF,E	WHEAT	0	1	0	0000?	MAREMA,D	PSTOF	0	0	0	2006
HASAN,Y	MTRLA	1	0	3	2224	MARTIN,K	COLUM	0	0	0	1493
HELLER,T	WHEAT	0	5	0	0000?	MATTAR,I	CCDOC	0	0	0	0000?
HERNANDEZ,DD	COLUM	0	0	0	1497	MATTHEWS,J	CTA	0	1	0	1777
HESS,B	EXMPL	1	2	0	1455	MAYNARD,J	WHEAT	1	3	0	1315
HICKS,C	DRGNS	6	0	0	1558	MCALISTER,K	ALUMN	0	1	0	1955
HILL,R	KNGHT	4	1	0	1900	MCCARTNEY,M	CTA	1	3	0	0000?
HILLIARD,J	BKAMI	0	0	0	0000?	MCFARLIN,B	KEMPR	0	0	0	1209#
HILTON,J	MERC	2	2	0	1126	MCKAY,P	PAWNS	0	1	0	1393#
HODINA,J	AMCRP	3	1	2	2144	MCKINNEY,T	KEMPR	1	2	0	0000?
HOLMES,M	AMCRP	0	2	0	0000?	MELNIKOV,I	MTRLA	2	0	2	2171
HOWARD,W	PSTOF	1	1	2	1559	MELNIKOV,N	MTRLA	2	2	0	0000?
HUEBNER,R	ROOKS	0	1	0	0000?	MICKLICH,F	UOP	3	2	2	1687C
HUGHES,N	KEMPR	1	2	0	1844C	MIKULECKY,B	PAWNS	2	0	3	1382C
INUMERABLE,F	PSTOF	7	0	1	2336	MILLER,J	NORTH	0	0	0	0000?
ITZENHEUSER,W	CASE	0	0	0	0000?	MILLER,TT	SEARS	3	3	0	1802
JACKLIN,E	CASE	1	3	1	1261	MORRIS,R	MTRLA	5	0	0	2040
JACKSON,S	CCDOC	1	6	0	0000?	MORRISON,J	ROOKS	1	0	0	1775
JAKSTAS,K	NORTH	2	3	1	2197C	MORTADA,C	MTRLA	0	0	0	0000?
JARRETT,T	CTA	0	2	0	1639*	MOTTA,H	FERMI	1	5	1	1959
JASAITIS,A	CRT	1	2	2	2117C	MOTYCKA,R	CASE	3	3	0	1156
JASUNAS,J	ROOKS	0	2	0	1422	MUDAN,M	HULL	0	0	0	1123*
JOHNSON,D	CTA	1	0	0	0000?	NARSOLIS,F	UOP	0	0	0	0000?
JOHNSON,W	CCDOC	2	4	0	1215#	NAUGHTON,T	HULL	0	0	0	1308*
JONES,M	CTA	4	1	0	1487*	NELL,D	UNILV	0	0	0	1073#
JONES,MIGUEL	CCDOC	0	1	0	0000?	NISHIMURA,K	FLPRO	0	0	0	1329*
JOSEPHSON,D	WHEAT	1	4	0	1792*	NOBLE,S	CASE	2	4	0	1286#
JOSHI,A	UNILV	0	0	0	0000?	NOTERMANN,T	PAWNS	0	4	1	1178
KALE,S	CASE	4	2	1	1864	NOTTOLI,R	AMCRP	1	2	0	0000?
KANAS,W	CASE	5	2	1	1321C	NOWAK,W	CTA	0	0	0	1365#
KARPIERZ,J	TYROS	2	1	2	1211*	O'BRIEN,D	UOP	0	0	0	1377*
KATAOKA,N	UOP	0	0	0	0000?	O'DELL,DW	PAWNS	2	3	1	1560C
KATZ,J	CASE	0	0	0	0000?	OGASAWARA,L	ROYLS	2	1	1	1842C
KAUFMAN,M	KEMPR	0	0	0	0000?	OLSEN,A	KEMPR	2	4	1	1508

OLSON,C	CASE	2	6	0	0000?	STEVENS,N	MDCON	0	0	0	0000?
OSTERLUND,R	EXMPL	0	0	0	1943	STEVENSON,R	UNILV	0	0	0	1363
PARA,A	FERMI	0	0	0	1487	STINSON,M	ROYLS	3	1	1	2028
PARAOAN,E	BKAMI	6	2	1	1770C	STOLTZ,B	TYROS	0	4	2	1928
PATTON,D	CHRGR	1	0	0	0000?	SUAREZ,E	KNIGHT	4	2	0	1623
PAWLUS,D	MTRLA	0	0	0	0000?	SUERTH,F	EXMPL	6	0	1	1638C
PAYTON,P	KEMPR	3	2	1	1215*	SULLIVAN,C	MERC	0	3	1	1458
PEHAS,A	ROYLS	1	0	2	1987	SULLIVAN,J	EXMPL	0	2	0	1980D
PENNINGTON,J	WHEAT	0	0	0	0000?	SZONTAGH,T	CRT	0	3	0	0000?
PERAREN,E	PSTOF	0	0	0	1733	TAMEZ,I	TYROS	3	1	0	2099
PHELPS,C	DRGNS	1	2	0	1250*	TAN,M	WHEAT	0	2	0	1196
PIAO,T	DRGNS	1	0	0	1711	TAYLOR,M	CTA	3	1	0	0000?
PILLAI,J	MTRLA	0	0	0	0000?	TEGEL,F	DRGNS	4	1	2	2185T
POMA,D	AMCRP	0	0	0	1257	TERPSTRA,D	WHEAT	0	0	0	0000?
PORTER,D	AMCRP	0	3	0	0000?	THOMAS,G	TYROS	2	1	1	1493
POZNIAK,J	KEMPR	0	1	0	1465*	THOMAS,J	CHRGR	7	2	1	1517C
PRATT,C	MTRLA	0	0	0	0000?	THOMPSON,R	FLPRO	0	0	0	1061
PRATTS,M	ALUMN	1	1	0	1771	TSEITLIN,E	MTRLA	0	0	0	0000?
QUARTETTI,C	NORTH	0	0	0	0000?	TURNER,K	PSTOF	0	2	0	1490
QUERUBIN,R	FLPRO	0	0	0	2067#	TYREE,D	RADIO	0	0	0	1475*
RADAVICIUS,E	CHRGR	2	2	2	1663D	UNDERWOOD,W	WHEAT	0	2	1	1968C
REDDY,S	MTRLA	1	0	0	0000?	VALDEZ,C	MTRLA	1	0	0	0000?
REID,C	CASE	2	3	0	1394	VAN MEER,J	KEMPR	0	2	0	1958
REYES,R	SEARS	3	0	1	2360D	VAN METRE,R	SEARS	0	1	1	1483#
RINGER,D	SEARS	0	2	0	0000?	VAN OUTRIVE,R	CTA	0	0	0	1092#
RIPPE,D	TYROS	0	0	0	0000?	VAN ZILE,C	UOP	2	4	0	1348
ROBERTS,J	WHEAT	0	1	0	1328#	VANDECOTTE,M	UOP	0	1	0	0000?
ROJAS,R	CTA	0	1	0	0000?	VENEGAS,B	HULL	0	0	0	0000?
ROJO,V	CCDOC	0	7	1	1370#	VIGANTS,A	NORTH	4	3	0	1561
ROMENESKO,G	PAWNS	0	1	0	0000?	VITAVER,L	SEARS	0	3	1	0000?
RONIN,D	KNIGHT	3	0	2	1648#	WACHTEL,H	COLUM	0	0	0	2230
ROSENBERG,B	MDCON	4	1	1	1395*	WALLACH,C	MTRLA	3	2	1	2063
ROSLEY,D	ROYLS	2	1	2	1758	WALLIN,R	WHEAT	0	0	0	1746
ROYTBURG,E	CASE	2	0	0	0000?	WALSH,W	ROOKS	1	2	0	1484C
RUBIN,A	CRT	0	1	0	0000?	WARD,C	DRGNS	3	3	1	1541D
RUDDY,J	MERC	0	0	0	1234	WARD,J	CTA	0	0	1	0000?
RYU,R	UOP	0	0	0	1451	WARE,K	MERC	0	0	0	0000?
RZESZUTKO,R	ALUMN	4	1	0	1848	WARREN,J	CHRGR	4	3	2	2100T
SAHLI,E	UOP	1	1	0	1728	WEBER,J	WHEAT	0	0	0	0000?
SAJBEL,P	UOP	2	1	0	1792	WEISS,G	HULL	0	0	0	0000?
SALAMANCA,R	ROYLS	0	0	0	1610	WEISSKOPF,J	HULL	0	0	0	1381*
SAMELSON,C	MTRLA	4	0	1	1991C	WEITZ,R	EXMPL	2	3	0	1690C
SAMOYLOV,A	MTRLA	0	0	0	0000?	WELTER,P	SEARS	0	0	0	1642#
SANTIAGO,T	ALUMN	2	2	1	1938	WENTLING,C	AMCRP	0	5	0	1592C
SATTERLEE,D	CASE	4	2	1	1618C	WHITE,H	CASE	7	1	0	1627
SAUNDERS,N	MDCON	0	0	0	0000?	WHITE,T	BKAMI	3	0	0	1355#
SAWDO,E	CASE	1	0	0	1412	WHITED,W	MDCON	0	0	0	1829
SCHWAB,W	ROOKS	1	0	0	1481	WILLIAMS,A	CTA	1	1	0	1499#
SCHWARTZ,M	TYROS	1	2	0	1078	WILLIAMS,T	CASE	6	1	3	2041
SEMONES,E	ROOKS	2	3	0	1108#	WILSON,A	CTA	2	4	0	1576
SHAFF,R	TYROS	0	2	0	1525C	WILSON,M	SEARS	1	3	0	1267#
SHAWN,N	CASE	0	1	0	0000?	WOLF,D	MTRLA	1	0	1	0000?
SHEU,G	CHRGR	0	0	0	1333*	WONG,KK	NORTH	0	0	0	0000?
SHEYNIN,S	ROOKS	3	2	2	2020	WONG,P	EXMPL	1	0	1	2205C
SIEGEL,R	BKAMI	1	2	2	1459C	WOOD,L	AMCRP	2	3	1	1429#
SITAR,K	CRT	0	0	0	0000?	WRIGHT,E	CCDOC	0	1	0	0000?
SIWEK,M	KEMPR	4	2	1	2169C	YOUNG,R	HULL	0	0	0	1406
SKRZYPCZAK,T	MDCON	0	0	0	0000?	ZOELLNER,J	BKAMI	3	3	2	1423C
SLAGLE,S	MERC	1	4	1	1639						
SMILEY,R	AMCRP	0	0	0	2005						
SMITH,BR	TYROS	2	2	1	1540						
SOLLANO,E	EXMPL	1	3	1	1970						
SOMBONG,M	BKAMI	1	1	0	1625						
SPIEGEL,L	FERMI	5	0	2	2051C						
STAMM,V	CHRGR	1	5	0	1690D						
STAPLES,C	FERMI	0	1	0	1199#						
STAPLES,M	CTA	1	2	0	1192#						
STEELE,B	CCDOC	0	2	0	0000?						
STEVANOVIC,M	UOP	2	3	1	2242C						
STEVENS,G	CTA	0	1	0	0000?						
STEVENS,J	COLUM	0	0	0	1340						

INTERNATIONAL GRANDMASTER

# **JOEL BENJAMIN**

Former United States Co-Champion

Presently ranked among America's top ten players

Will Play Up to 40 Boards  
at a

## **SIMULTANEOUS EXHIBITION**

**TUESDAY -- MARCH 12 -- 8:00 P.M.**

at the

**OAK PARK -- RIVER FOREST CHESS CLUB**

**DOMINICAN CONFERENCE CENTER**

7200 W. Division (Harlem and Division), River Forest, IL

[Enter grounds off Division; Enter building on Harlem side]

**PLAYING FEE: \$15.00 per board    SPECTATING FEE: \$2.00**

**BOARDS WILL BE AVAILABLE  
ON A FIRST COME, FIRST SERVED BASIS**

For more information about Grandmaster Benjamin's simultaneous exhibition, or about the Oak Park-River Forest Chess Club, which meets at the Dominican Conference Center every Tuesday night from 7 p.m. to midnight, please call Ken Marshall, OP-RF CC President, at (708) 932-1455.