

The Chicago Chess Player

The Official Bulletin of the Chicago Industrial Chess League

WHO'S REALLY THE BEST IN THE WORLD?

♔ KASPAROV?

♔ KARPOV?

♔ KRAMNIK?

♔ JUDIT POLGAR?

♔ ANAND?

♔ FISCHER?!

THE SEARCH CONTINUES AND THE PLOT THICKENS...

INSIDE

- ③ Still Looking for the Best
- ⑦ A Year at the Top - Siwek
- ⑫ The Finishing Touch - Reyes
- ⑬ Opening Theory - GM Davies
- ⑫ Match Results & Ratings List

Bulletin Editor

Tim Williams (CASE)
 (708)887-3706 (Business)
 lostloop@big10.metrobbs.com (E-Mail)
 16W472 Honeysuckle Rose #114
 Hinsdale, IL 60521

The Officers for the CICL:**President**

Satish Kale (CASE)
 (708)887-2372 (Business)
 (708)325-KALE (Home)
 CASE Corp
 7 South 600 County Line Rd
 Burr Ridge, IL 60521

Secretary

Tony Jasaitis (CRT)
 (708)448-4967 (Home)
 P.O. Box 664
 Bedford Park, Illinois 60499-0644

Treasurer

Wes Underwood (Wheaton)
 (708)752-5127 (Business)
 (708)462-0393 (Home)
 wu@david.wheaton.edu (E-Mail)
 207 South Dorchester Avenue
 Wheaton, Illinois 60187

Publicity Director

Carl Reid (CASE)
 2289 Grand Drive
 Northbrook, Illinois 60062-6937

Trophy Chairman

Wayne Ellice (PAWNS)
 (312)838-3215 (Business)
 (312)838-3243 (Fax)
 wayne.ellice@crous.sprint.com (E-Mail)
 Crosfield Catalysts
 4099 West 71st Street
 Chicago, Illinois 60629

Banquet Chairman

Len Spiegel (Fermi)
 (708)840-2809 (Business)
 (708)377-2675 (Home)
 lenny@fnal.gov (E-Mail)
 Fermilab MS 219
 P.O. Box 500
 Batavia, Illinois 60510

Ratings Chairman

Charlie Ward (AT&T Dragons)
 (708)979-4599 (Business)
 (708)979-6124 (Fax)
 (708)325-3885 (Home)
 c.e.w.ward@att.com (E-Mail)
 615 South Lincoln
 Hinsdale, Illinois 60521

Division Chairmen**Far West**

Irwin Gaines (Fermi)
 (708)840-4022 (Business)
 (708)420-1452 (Home)
 (708)840-2783 (Fax)
 gaines@fnalv.fnal.gov (E-Mail)
 Fermilab MS 127
 P.O. Box 500
 Batavia, Illinois 60510

East

Dan Fraats (Bank of America)
 (312)247-4343 (Business)
 (312)581-0923 (Home)
 5820 West 55 th Street
 Chicago, Illinois 60638

Near West

Howard Klinefelter (CASE)
 (708)961-0482 (Home)
 1125 Manchester Court
 Naperville, Illinois 60563-2110

North

Pat Sajbel (UOP)
 (847)391-2134 (Business)
 (847)506-9302 (Home)
 posajbel@uop.com (E-Mail)
 616 S. Edward
 Mt. Prospect, IL 60056

Still Looking for the Best...

First, let me state that the situation with FIDE is in such a state of chaos that it is hard to decide what should and should not be printed. The reality of the situation will no doubt only be known when all the smoke clears. The following are some of the many facts/rumours that are being circulated.

Campomanes Ousted as FIDE President.

On Sunday 19th of November at a FIDE Central Committee meeting in Paris, A motion of no confidence in FIDE President Florencio Campomanes and his whole team was passed 14 votes to 12. The motion was proposed by Phil Haley of Canada and backed by Fanueil Adams of the United States and Egon Ditt of Germany.

Although the vote seemed close, Campomanes and the other five members of his team all had votes and of course backed themselves.

The case against Campomanes was backed up with evidence from a Filipino Government investigation of the Manila Olympiad. It appears that Campomanes signed checks for various Olympiad expenses against undenominated funds. (this evidence was presented by Norwegian lawyer Norwegian lawyer Morten Sand). Also Kurt Jungwirth presented a "devastating" (according to one

observer) report about election irregularities during the 1994 Moscow Olympiad. In one particularly glaring case Campomanes used the Philippine vote himself and voted the Brunei proxy (which was given to the Philippine delegate not Campomanes) he was not entitled to do either of these things. This, of course was enough for him to get through the crucial vote allowing him to stand.

An immediate attempt to declare the decision illegal was made by Filipino Casto Abundo. This led to a walkout from the meeting by the US and some other countries. After an hour the meeting reconvened and the decision stood.

The decision could now only be reversed by the FIDE General Assembly which took place the following day.

FIDE GENERAL ASSEMBLY

Campomanes chaired the assembly but indicated his intention to resign at the end of the General Assembly.

On day two there was further FIDE News. It appears that FIDE only has 150,000 Swiss francs in its coffers (about \$135,000). Furthermore last June as part of a pensions deal Campomanes was paid nearly 200,000 Swiss francs and G. Makropoulos 30,000. The calculations that produced this payout mean that rough calculations mean that Campomanes was paid over \$100,000 a year. This does not include

the expenses which according to some sources even exceeded this payment.

63 Nations are said to have threatened to withdraw from FIDE unless full democracy was returned. Vice President Ghobash stated that he believed that he should be next in line if Campomanes did carry out his threat to resign. It was dismissed by the supporters of Kouatly who now appear to have near control of FIDE.

The FIDE General Assembly upheld the recommendation of the Central Committee to reject the PCA-FIDE agreement as it stands.

The Central Committee recommendation is as follows:

Following the Moscow Congress, good will and a lot of effort by FIDE's officers have been put into trying to achieve agreement with the PCA.

It is regretted that the current state of negotiations, represented by the draft set of regulations sent to FIDE by the PCA on 19.11.95 is unsatisfactory.

Beside some general points, which might be resolved, there are two principal difficulties:

1) The proposed match regulations are not equal for both players and therefore unacceptable;

2) FIDE would be renouncing sovereignty over the World Championship.

Therefore the Central Committee recommends that the General Assembly reject the agreement as it stands.

This recommendation was accepted by the FIDE assembly.

New Presidential Team

FIDE held elections in the early hours of November 24th. They elected the following team until the end of 1996. The assembly vote was 95-3 and they set up the elections for late next year.

New FIDE President: Krisan Iljumzhinov

The Russian Chess Federation, in spite of Kasparov's known dealings with Iljumzhinov spoke against him. They however disappeared during the voting, presumably they need to know whose side they are on. Andrei Makarov and Iljumzhinov are reported not to get on. A letter from President Yeltsin in support of Iljumzhinov seemed to settle the matter.

"The Karpov-Kamsky match has a sponsor in Montreal and apparently will take place in

1996. FIDE formed a Unity Commission with the following members: Ralf Liniger (Swiss), John Warlick (U.S. Virgin Islands), S. Garcia (Cuba), Omuku (Nigeria), Israel Gelfer (Israel), Giorgios Makropoulos (Greece), Morten Sand (Norway) and E. Steven Doyle (USA). The purpose of this commission is to arrange a unification match in 1996 between the winner of Karpov-Kamsky and Kasparov." [Larry Parr]

FIDE President Meets with Bobby Fischer

On Friday, December 15th, the President spent a night in Budapest meeting Robert J Fischer; he promised to pay to Fischer the \$100,000 claimed as due from the former USSR Chess Federation. After twelve hours of talks, Bobby promised to reconsider his position with FIDE and accepted from the President a gift of land to build a house in Kalmykia. However Fischer insisted that his chess rules should be adopted by FIDE. The President also had some conversations with Kasparov. Nothing concrete was decided, but more meetings are to come.

FIDE RATING LIST JAN 1996

Points to note. Kasparov appears second on the rating list to Vladimir Kramnik. Kramnik had more rated games and thus appears first. Rating differences of less than 25 points are negligible statistically so we see a group of Kramnik, Kasparov and Karpov as clear leaders in the World. Ivanchuk, Anand and Kamsky form a second close group. These are the clear chess elite.

The Kasparov-Anand PCA match was not rated because the results were not submitted. Kasparov's performance rating for that match would have been 2782 for 18 games, Anand's 2738. It is not clear to whether this would have increased or decreased his rating as compared to this list.

Judit Polgar is the first woman ever in the top 10 in the World. She had a solid year consolidating gains from previous years. She won a number of matches convincingly and is reported to be very happy with her progress in positional chess.

RANK	NAME	TITLE	NAT	RATING	BIRTHDAY	S	1/96	GAMES
------	------	-------	-----	--------	----------	---	------	-------

1.	Kramnik, Vladimir	g	RUS	2730	31	25.06.75	M	2775 42
2.	Kasparov, Gary	g	RUS	2795	26	13.04.63	M	2775 19
3.	Karpov, Anatoly	g	RUS	2775	37	23.05.51	M	2770 12
4.	Ivanchuk, Vassily	g	UKR	2740	36	18.03.69	M	2735 39
5.	Kamsky, Gata	g	USA	2735	16	02.06.74	M	2735 0
6.	Anand, Viswanathan	g	IND	2725	10	11.12.69	M	2725 0
7.	Topalov, Veselin	g	BUL	2640	40	15.03.75	M	2700 40
8.	Gelfand, Boris	g	BLR	2685	29	24.06.68	M	2700 24
9.	Shirov, Alexei	g	ESP	2695	61	04.07.72	M	2690 38
10.	Polgar, Judit (GM)	g	HUN	2635	31	23.07.76	F	2675 29
11.	Dreev, Alexey	g	RUS	2670	35	30.01.69	M	2670 24
12.	Salov, Valery	g	RUS	2685	25	26.05.64	M	2670 11
13.	Short, Nigel D.	g	ENG	2645	58	01.06.65	M	2665 37
14.	Sokolov, Ivan	g	BIH	2630	69	13.06.68	M	2665 20
15.	Ehlvest, Jaan	g	EST	2630	37	14.10.62	M	2660 48

Groningen and the proposed World-Championship tournament.

'FIDE is there to promote chess and should be above all other chess organisation'. With these words the President clearly replies to the PCA concerning the World Championship matches. He wants G.Kasparov to return to the FIDE's cycle for the sake of unity and as best for chess. The President proposes to create, starting at the end of 1996, an annual 21 days Knock-out Championship tournament. Two to four games to decide each pairing. Some players will qualify directly into round two and some to round three. (The schedule and list of players is already fixed) Kasparov and the winner of Kamsky - Karpov will go directly to the semi finals though they will be paired together only if they reach the final. For the first event the prize fund will amount US\$ 5,000,000!! This new idea accepted unanimously by the P.B, will have the direct effect that the Interzonal scheduled for Yerevan, Armenia in April-May 1996 is cancelled.

It may be obvious that the proposal for the WC 1996 by the new FIDE president initially came as an unpleasant surprise to the organization in Groningen. The dates of WC 1996 and Groningen overlap and when all strong players take part in the WC, it is practically impossible to organise a tournament in Groningen. Sponsorship for Groningen 1996 has already been assured and nobody wants to stop a tradition that started 34 years ago.

The shortest statement that can be made is: "If WC 1996 is in

December it will be in Groningen." The organisation in Groningen is thus prepared to organise the WC 1996, just as they organised the PCA candidates tournament in 1993.

The likelihood that the proposal by the new FIDE president is accepted by the top players is very close to 0%. Most of the players who voiced their opinion were very negative about the idea. The expectation is that Kasparov will not agree to it either. Given that the proposal gives the impression that the main purpose is to re-unite FIDE players and PCA players and that the top players in both camps will not accept the formula, it must be concluded that the proposal is just an attempt to get all parties around the table. They at least agree on something now: the FIDE proposal is not acceptable.

An alternative formula, that has been suggested in Groningen is to create a "compact World-Championship" as follows:

- 1) A Swiss open with 64 players (say 11 rounds).
- 2) Immediately followed by a round-robin tournament with the top 8 of the Swiss.

The final outcome of what will happen is still totally up in the air.

Interview with Gata Kamsky. (From Groningen)

Q. Are you happy with your performance in this tournament?

Yes, it is nice to play again. That's why I participated. Playing is different from analysing at home, you cannot take back the moves. I missed

some good chances, because of lack of play. For example, in my game with Karpov I had a good position from the opening and then I could not find a plan and gave the position away. I'm very happy I was invited to play here.

Q. What is going on with the WC match?

I don't know any details, no official papers. All the negotiations are with Karpov and I can only wait. The date for the WC match is changing all the time, first it was November, then December, February and now June perhaps, but then there are the Olympics...

Perhaps it will happen that in January (the final deadline) the Montreal organisation will say they have not found the money and Karpov continues to be the WC, and there is nothing I can do about it.

We (Rustam and Gata) have found many sponsors for the match. At least four Russian cities offered a prizefund that is significantly higher than the standard FIDE-fund. We think that Karpov has broken off the negotiations.

Q. Do you want to become WC?

You think I would answer no! As a WC you can earn a lot of money, status, prestige and you get good invitations. Of course, every chess player wants to become WC and so do I.

It is clear that neither Kasparov nor Karpov would like me to become WC. They both enjoy the power that being a WC provides. Especially Kasparov is blocking my way.

Q. What do you think of the new WC-cycle proposal?

My main problem is that the time between my WC-match with Karpov and the new WC-cycle is very short. Then I will be WC for only a few months and I don't like that. Otherwise, I'm not really against the proposal.

Q. How do you study chess?

That is a secret.

Q. What database do you use?

ChessBase.

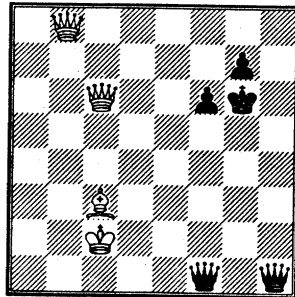
BEATING KASPAROV

While digging through my database I came across something very interesting. Of the games I could find where each side had two queens, there were two losses by Gary Kasparov and now wins or draws. Maybe all it takes to beat Gary is to get additional queens(!).

Korsunski - Kasparov Gary
Moscow (6), , 1976

1. e4 c5 2. d3 d6 3. d4 cxd4 4. dxd4 d6 5. d3 a6 6. e2 e5 7. b3 e7 8. 0-0 0-0 9. a4 e6 10. f4 c7 11. h1 bd7 12. e3 exf4 13. xf4 e5 14. d4 d6 15. e3 fe8 16. f5 f8 17. d4 d7 18. e1 ac8 19. f2 c5 20. g3 f6 21. h5 f7 22. ae1 c6 23. f3 d7 24. g4 c6 25. h4 xe4 26. xe4 e4 27. e4 xe4 28. h5 e8 29. d1 xc2 30. hxg6 hxg6 31. xd6 xd6 32. xd6

33. xa4 33. c3 b5 34. f3 g5 35. xb7 h5+ 36. g1 a5 37. f3 g5 38. d5 e3+ 39. h1 xd5 40. xd5+ h7 41. d3 c1+ 42. h2 f4+ 43. g1 c1+ 44. f2 c2+ 45. d2 e5 46. h3+ h5 47. d3 c5+ 48. e3 f5+ 49. e2 a4 50. d3 p4+ 51. f3 c4+ 52. d1 g8 53. e2 d5 54. e8+ h7 55. xa4 xg2 56. hxh5+ gxh5 57. d4 g6 58. b4 c6 59. d3+ f7 60. b5 h1+ 61. c2 h4 62. d7+ g6 63. c6 f1 64. b6 f5+ 65. b2 e5+ 66. c3 e2+ 67. c1 f1+ 68. c2 h3 69. b7 h2 70. b8= h1=

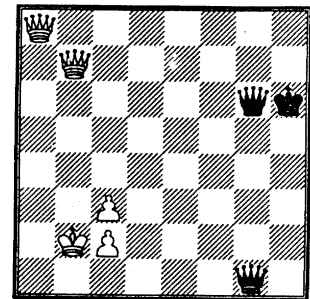


71. ce8+ f5 72. bc8+ g5 73. d2+ h4 74. h8+ g3 75. xg7+ f2 76. c5+ 1:0

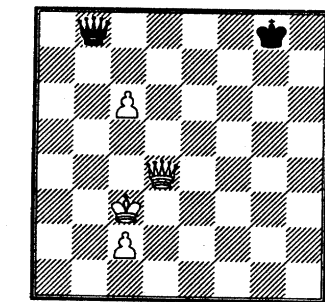
Mikhalchishin A. - Kasparov Gary
Tbilisi (12), , 1978

1. e4 c5 2. d3 d6 3. d4 cxd4 4. dxd4 d6 5. d3 e6 6. f4 a6 7. f3 b6 8. b3 c7 9. d3 b5 10. g4 b4 11. e2 b7 12. g5 fd7 13. d2 c6 14. bd4 c5 15. xc6 xc6 16. d4 d7 17. 0-0-0 a4 18. b1 b3 19. xb3 xe4 20. f1 g6 21. e1 g7 22. h4 0-0 23. h5 c5 24. h4 xd3 25. xd3 e4 26. hxg6 fxg6 27. c3 ac8 28. h2 f5 29. f2 xc3 30. xc3 e5

31. fe5 d3 32. e3 f1+ 33. c1 xc3 34. bxc3 b5+ 35. a1 c4 36. exd6 f7 37. f2 f2 38. xf2 xg5 39. b2 h5 40. d4 h4 41. d3 h3 42. d7 d8 43. e5 h2 44. c6 xd7 45. xd7 h1= 46. e5 f1 47. xf7 xf7 48. c8+ g7 49. xa6 g5 50. a4 g4 51. b5 g6 52. a5 g3 53. a6 g2 54. b7+ h6 55. a7 g1= 56. a8=



- 56... b6+ 57. xb6+ xb6+ 58. a2 e6+ 59. a1 c4 60. f8+ g6 61. b4 f1+ 62. b2 h7 63. e4+ g8 64. d5+ h8 65. h5+ g8 66. g5+ h8 67. d8+ g7 68. d7+ g8 69. e8+ g7 70. e7+ g8 71. d8+ h7 72. d7+ h8 73. d4+ g8 74. c4 f8 75. d5+ h8 76. e5+ h7 77. h5+ g8 78. d5+ h7 79. c5 b8+ 80. c3 h8 81. d4+ g8 82. c6



1:0

A YEAR AT THE TOP

BY MARK SIWEK
KEMPER - NORTH DIVISION

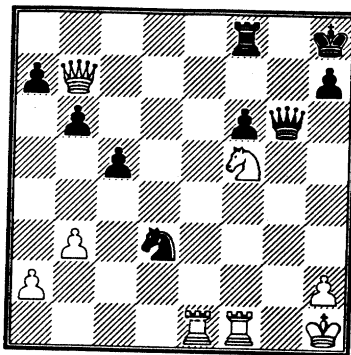
(Editor's Note: This article arrived in my mailbox over the holidays and was a real gift indeed! I hope Mark has set a new precedent and other top players in the CICL will contribute also.)

The Editor put out a call for articles to make our bulletin better, so I thought I'd try answering him. Some readers have kindly complimented me on my past published annotated games, so I figured there might be some interest in looking at my 1992-1993 season, when I went undefeated on Board 1. I scored 5 wins, 0 losses, 4 draws in the regular season on my way to being named North Division MVP. I think some of the games are instructive, and a few of them even illustrate the value of luck!

GAME 1:**HASAN - SIWEK**
MOTOROLA vs KEMPER

My season opened with a lifeless, almost boring draw. In a brief post-mortem, Hasan and I agreed that I had the advantage out of the opening, but frittered it away in the middlegame.

1.Nf3 d5 2.b3 c5 3.Bb2 Nc6
4.e3 Bg4 5.Be2 e6 6.O-O Nf6
7.h3 Bxf3 8.Bxf3 Be7 9.d4
cxd4 10.exd4 O-O 11.Nbd2
Qb6 12.c3 Rfd8 13.Re1 14.Qe2
h6 15.Nf1 Qa5 16.Qd3 b5
17.Ne3 Qb6 18.b4 a5 19.a3 a4
20.Ng4 Nxg4 21.Bxg4 Bf6
22.Re2 Ne7 23.Rae1 Rc6
24.Bc1 Qc7 1/2-1/2

GAME 2:**REYES - SIWEK**
SEARS vs KEMPER

White to move after 29... Nb4-d3.

I had played an absolutely horrible game, but rather than resign, I played 29... Nb4-d3 with the idea of ... Ne5 closing the e-file. I'm dead lost, but I thought I'd play on in the extremely remote chance I might be able to swindle Ruben into a perpetual. However, he gave me something better. He played

30.Rg1??,

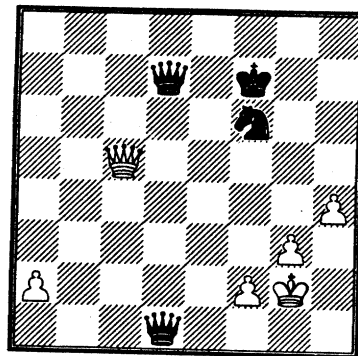
which looks like a killer move, except for one problem: my reply was

30... Nf2! Mate!

Ruben stared at the board for a minute, then burst out laughing. One of his teammates later told me this was the first CICL game Ruben had lost in three or four years.

GAME 3:**WEITZ - SIWEK**
FEL-PRO vs KEMPER

Again, not a particularly well-played game, but I won a pawn in the opening, survived a kingside knight sacrifice, and wound up with two queens in the endgame.



Black to move.

I simplified with

43... Q1d5+
44.Qxd5 Qxd5
45.Kh3

Missing 45... Qh1! mate and letting Ron play another 15 moves after

45... Qf5+??.

(Even better is 43... Qh3+! followed by Qh1 mate. -Ed.)

GAME 4:

**SIWEK - WEBER
KEMPER vs FRANKLIN-
WATTS**

This was an interesting contest. However, from a complex, wxciting middlegame, it petered out into a very equal endgame.

1.e4 Nf6 2.e5 Nd5 3.d4 d6 4.c4 Nb6 5.f4

The Four Pawns Attack, one of the sharpest lines against the Alekhine.

5... dxe5 6.fxe5 Bf5 7.Nc3 e6
8.Nf3 Nc6 9.Be3 Be7

An interesting deviation is 9... Nb4 10.Rc1 c5 11.Nc3 Be7 12.O-O cxd4 13.Nxd4 Bg6 14.a3 Nc6 15.Nxc6 as in Siwek-Lee, Kemper vs. Western Electric, 1982-83 CICL playoffs.

10.Be2

I've also experimented with 10.d5.

10... O-O 11.O-O f6 12.Qe1

The main line is 12.exf6 Bxf6 13.Qd2 Qe7 14.Rad1 Rad8 when 15.Qc1 and Qe1 are the major alternatives. I also considered 12.Nh4.

12... Nb4

12... fxe5 13.dxe5 Nd7 14.Rd1 Qe8 is equal, according to MCO-13.

13.Rd1 Nc2 14.Qf2 Nxe3
15.Qxe3 Qe8

ECO-2 gives 15... c6 as unclear.

16.d5

Thematic. I presume ECO-2 recommends 15... c6 to prevent the text.

16... fxe5 17.dxe6 Bxe6
18.Nxe5 Rxf1+ 19.Bxf1 Qf8
20.Kh1 Bc5 21.Qe4 Qf5

Unexpected. I now thought for a long time, considering 22.Bd3, 22.Qe1, Qxf5 (which my opponent thought I'd play), 22.g4, and 22.b3.

22.Bd3 Qxe4 23.Bxe4 c6 24.b3
1/2-1/2

I offered the draw with my 24th move.

GAME 5:

**SIWEK - STEVANOVIC,
KEMPER vs UOP**

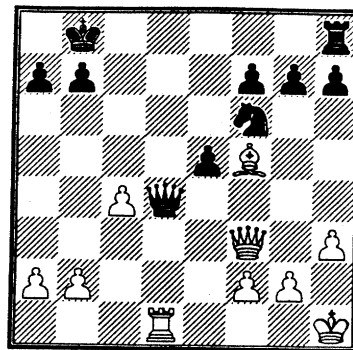
I won the first of my Best Annotated Game prizes for this win. See the January 1993 bulletin for the full annotations.

1.e4 d6 2.d4 Nf6 3.Nc3 g6 4.f4 Bg7 5.Nf3 O-O 6.Bd3 Na6 7.e5 Nd7 8.Ne2 c5 9.c3 cxd4 10.cxd4 Nb4 11.Bb1 dxe5 12.fxe5 Qb6 13.Nf4 Rd8 14.Qb3 Nf8 15.Be3 Nc6 16.Qc3 Qa5 17.Be4 f6 18.O-O Qxc3 19.bxc3 fxe5 20.Bd5+ e6 21.Bxc6 bxc6 22.Nxe5 Bxe5 23.dxe5 g5 31.Bh6 Kg8 32.Rd4 Bxa2 33.Nd3 Rb1+ 34.Kh2 Nh7 35.Rg6+ Kh8 36.Bg7+ Kg8 37.Bh6+ Kg8 38.Nf4 Rb2 39.Nxe6 Bxe6 40.Rxe6 Rb7 41.Rxc6 a5 42.Rcd6 Rbb8 43.e6 a4 44.e7 Nf6 45.Rd8+ Kh7 46.Rxb8 Rxb8 47.Bg5 1-0

GAME 6:

**BLOOM - SIWEK
EXEMPLARS vs KEMPER**

I didn't play the opening well, and Bloom gave up a pawn for an attack. I managed to defend well enough, and then he had to fight for the half point.



Black to move.

21... Qxc4 22.Qa3 Qc7 23.b4 Rd8 24.Rc1 Qd6 25.Qc3 a6 26.a4 g6 27.Bg4 h5 28.Be2 Nd5 29.Qc4 Nf4 30.Bf3 f5 31.Rd1 Qe7 32.b5 Rxd1+ 33.Bxd1 Qd8 34.Bb3 axb5 35.axb5 Qb6 36.Kg1 e4 37.Bc2 Qa5

I considered 37... Qc7 so if 38.Qb3 Ne2+ followed by ... Nd4, but after 38.Qxc7+ Kxc7 I didn't like the minor piece ending - - Black's kingside pawns are on the wrong color squares, and even if that weren't a consideration, if the ending was reduced to N + P vs. B, white could "sac" the cleric.

38.Kh2 Qd8 39.g3 Nd3
40.Bxd6 exd6

I saw the passed pawn and was concerned about 40... Qxd6 41.Qg8+ Ka7 42.Qxg6 but that was probably my best winning chance - - with 42... Qf3 -- though probably insufficient.

41.Qf4+ Qc7

I didn't see white's next, which initiates a perpetual, but 41...

Ka8 42.Qa4+ Kb8 43.Qf4+ repeats moves.

42.Qd4 b6 1/2-1/2.

GAME 7:

SIWEK - JAKSTAS
KEMPER vs NORTROP

This exciting contest is worth studying.

1.e4 c5 2.Nf3 Nc6 3.d4 cxd4
4.Nxd4 e5 5.Nb5 d6 6.N1c3

In Beating the Sicilian, GM John Nunn quotes a game 6.c4 Be7 7.N1c3 a6 8.Na3 Nf6 9.Be2 O-O 10.Be3 Be6 11.O-O Rc8 12.Rc1 as good for white.

6... a6 7.Na3 Nf6

ECO-2 gives 7... Be6 8.Nc4 Rc8 9.Nd5 Bxd5 10.exd5 Nb8 11.Be2 Nd7 12.O-O Ngf6 13.a4 Be7 ± as its main line.

8.Bg5 Be7

Nunn calls this "definitely inferior," adding "Black commits the bishop too soon." His main line is 9.Nc4 Be6 10.Bxf6 gxf6 11.Ne3 Qd7 12.Ncd5 followed by Bd3 and Qh5 "with a total white-squared bind."

9.Bxf6

Another ECO-2 line is 9.Nc4 Nd4 10.Bxf6 Bxf6 11.Nd5 Be6 12.Ncb6 Bxd5 13.Nxd5 Bg5 14.c3 Ne6 15.g3 ±)

9... gxf6

This is a book capture in some lines, but with 8... b5 -- instead of 8... Be7 -- played. However, I don't think it's appropriate here. Black's KB gets too bottled-up.

10.Bc4

On 10... b5, I intended 11.Bd5, and on 10... Be6 11.Qh5, so after 11... Bxc4 12.Nxc4 b5 13.Ne3 clamping down on d5. The text also prevents ... f5 because of 11.Qh5.

10... O-O

If black can get in ... f5, ... Bxf5, and if necessary, ... Bg6, his king should be perfectly safe. He also may have king-side attacking chances after ... Kh8 and ... Rg8. My next move is designed to prevent ... f5, but it does suggest a king-side attack. After the game Jakstas told me 11.Qh5 was strong.

11.Qh5 b5 12.Bd5 Bd7

I had expected 12... Bb7, but black wants to keep an eye on the c8-h3 diagonal with hopes of an eventual ... f5. He never succeeds. As a result, the KB remains buried.

13.Ne2

Defensively, responding to the threat of ... b4, positionally preventing ... Nd4 -- Nxd4 would give black two sets of doubled isolated pawns -- and offensively preparing for Ng3-f5.)

13... Rc8 14.c3 b4 15.Nc2 bxc3
16.Nxc3 Nd4 17.Ne3 Qb6
18.Bb3

18.Rb1 fails to 18... Rxc3, and if 18.O-O Qxb2 and my knight has nowhere to run. Hmm... if d5 were unoccupied, that would be a great square, forking black's queen and bishop. And who cares about the pawn black could pick up after ... Nxb3, axb3, ... Qxb3 ? There are plenty of weak black pawns to pick up, and besides, I'm after his KING!

18... Be6 19.O-O Bd8

I was surprised by this. I thought he would chop the bishop. I now eliminate that possibility and bring the knights into play.

20.Ncd5 Qb7 21.Ng4 Bxd5

I thought for sure that he would take the other knight. However, I can't criticize too much; Kaz defended well.

22.Bxd5 Qd7 23.Nh6+ Kg7
24.Rae1

I also considered f4, but I didn't like the 24... Ne2+ resource. The QR will enter the game through a "rook lift," I was okay timewise, but Jakstas was beginning to get into a little time trouble.

24... Rc7 25.Re3 Qb5 26.Nf5+

As noted previously, Jakstas defends well. If the Re3 moves to another file -- e.g. Rg3-- ... Qxf1+ followed by ... Rc1+ mates! My motto with the text was better safe than sorry. Unfortunately, black's king will now be able to march towards the Q-side. I'm always one attacking tempo short.

26... Nxf5 27.Qxf5 Qd7 28.Qh5
Rh8 29.Rg3+ Kf8 30.Qh6+ Ke8

30... Ke7 31.Qg7 or 31.Rg7. Note that due to the uncoordinated position of his pieces, black could still get mated in the center on f7.

31.Qg7 Rf8 32.Qxh7 Rc2
33.Rg8 Qe7?

A time pressure blunder. Jakstas had about 10 minutes left to reach the time control at move 50. As he pointed out after the game, 33... Bb6 would have offered good drawing chances.

34.Bb3

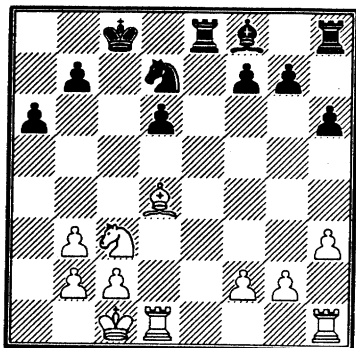
Played instantly. If the rook moves, Ba4+ spells finis.

1-0

GAME 8:

**SIWEK - WEITZ
KEMPER vs FEL-PRO**

I had built an opening advantage, when black opened the floodgates...



Black to move.

20... Nf6?

Black destroys his pawn structure, allowing white an easily won endgame. I had expected 20... Rg8 followed by ... g6 or ... g5 to activate the bishop. I now win a pawn.

21.Bxf6 gxf6 22.Rhe1 Bg7 23.Rxe8+ Rxe8
24.Rxd6 h5 25.Kd1 Rd8?

Black should keep the rooks on the board. White's task is even easier now, thanks to the bad black bishop and the "holes" in his pawn structure.

26.Rxd8+ Kxd8 27.Ne4 h4 28.Nd6 Kc7 29.Nf5

Missing 29.Ne8+, but white still won easily.

29... Bf8 30.Nxh4 Kd7 31.Nf5 Ke6 32.g4 b5 33.h4
a5 34.h5 Ke5 35.h6 Bxh6 36.Nxh6 Kf4 37.Ke2 b4
38.f3 Kg5 39.Nxf7+ Kg6 40.Nd6 Kg5 41.Nc4 f5
42.gxf5 Kxf5 43.Nxa4 1-0

GAME 9:

**JAKSTAS - SIWEK
NORTHROP vs KEMPER**

Again I played a bad opening, but managed to overcome it. I thought 10.Qh5 was strong, but apparently black had the resources to overcome it. After 14... e5, my Q-side pieces sprang to life, and everything was all right with the world. Jakstas' 22.Rxd3, sacrificing the exchange, was the best practical chance.

1.d4 d5 2.Nf3 Nf6 3.Bg5 e6 4.Nbd2 Be7 5.e3 O-O
6.Ne5 c5 7.c3 Nc6 8.f4 Nd7 9.Bxe7 Qxe7 10.Qh5
g6 11.Qh6 Ndx6 12.fxe5 f6 13.exf6 Rxf6 14.Nf3
e5 15.O-O-O Bg4 16.Be2 cxd4 17.cxd4 e4 18.Ng1
Bxe2 19.Nxe2 Nb4 20.Kb1 Nd3 21.Qg5 Qf7
22.Rxd3 exd3 23.Nf4 Rf5 24.Qg3 Rc8 25.Qe1 Qc7
26.Qd2 Qc2+ 27.Qxc2 dxc2+ 28.Kc1 g5 29.Nd3 a5
30.Re1 b6 31.a3 Rf6 32.h3 h5 33.Kd2 c1(Q)+
34.Nxc1 Rf2+ 35.Re2 Rxe2+ 36.Nxe2 Rf8 1/2-1/2

It was late, the match was over (Kemper won), and though I had a slight material advantage, it would most likely take hours to convert... if it could be converted at all. I thus offered a draw, preserving my perfect regular season record.

P.S. On a technicality, Kemper made the second-tier playoff's (then only for third and fourth place teams), but the magic didn't continue. I blundered away my first game with a dominating position against a 1700-rated player (I was 2237), played probably my worst CICL game ever to drop the second contest, and barely held my opponent to a draw in the third round. Who says life isn't funny?

ATTENTION! The CICL Playoffs are closer than you think and a Tournament Director is needed. If you can volunteer your services, please contact League President Satish Kale ASAP. Remember, the CICL lives on the contributions of its members.

ON THE LIGHTER SIDE

HOW TO TELL IF YOUR HEAD'S ABOUT TO BLOW UP

(From the WEEKLY WORLD NEWS, May 24, 1994)

MOSCOW -- Doctors are blaming a rare electrical imbalance in the brain for the bizarre death of a chess player whose head literally exploded in the middle of a championship game! No one else was hurt in the fatal explosion but four players and three officials at the Moscow Candidate Masters' Chess Championships were sprayed with blood and brain matter when Nikolai Titov's head suddenly blew apart. Experts say he suffered from a condition called Hyper-Cerebral Electrosis or HCE.

"He was deep in concentration with his eyes focused on the board," says Titov's opponent, Vladimir Dobrynin. "All of a sudden his hands flew to his temples and he screamed in pain. Everyone looked up from their games, startled by the noise. Then, as if someone had put a bomb in his cranium, his head popped like a firecracker."

Incredibly, Titov's is not the first case in which a person's head has spontaneously exploded. Five people are known to have died of HCE in the last 25 years. The most recent death occurred just three years ago in 1991, when European psychic Barbara Nicole's skull burst. Miss Nicole's story was reported by newspapers worldwide, including WWN. "HCE is an extremely rare physical imbalance," said Dr. Anatoly Martinenko, famed neurologist and expert on the human brain who did the autopsy on the brilliant chess expert. "It is a condition in which the circuits of the brain become overloaded by the body's own electricity. The explosions happen during periods of intense mental activity when lots of current is surging through the brain. Victims are highly intelligent people with great powers of concentration. Both Miss Nicole and Mr. Titov were intense people who tended to keep those cerebral circuits overloaded. In a way it could be said they were literally too smart for their own good."

Although Dr. Martinenko says there are probably many undiagnosed cases, he hastens to add that very few people will die from HCE. "Most people who have it will never know. At this point, medical science still doesn't know much about HCE. And since fatalities are so rare it will probably be years before research money becomes available." In the meantime, the doctor urges people to take it easy and not think too hard for long periods of time. "Take frequent relaxation breaks when you're doing things that take lots of mental focus," he recommends.

Although HCE is very rare, it can kill. Dr. Martinenko says knowing you have the condition can greatly improve your odds of surviving it. A "yes" answer to any three of the following seven questions could mean that you have HCE:

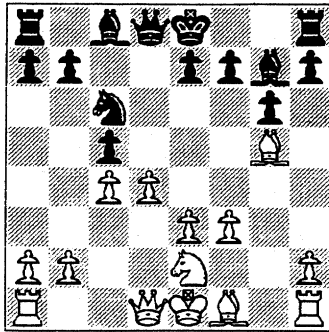
1. Does your head sometimes ache when you think too hard? (Head pain can indicate overloaded brain circuits.)
2. Do you ever hear a faint ringing or humming sound in your ears? (It could be the sound of electricity in the skull cavity.)
3. Do you sometimes find yourself unable to get a thought out of your head? (This is a possible sign of too much electrical activity in the cerebral cortex.)
4. Do you spend more than five hours a day reading, balancing your checkbook, or other thoughtful activity? (A common symptom of HCE is a tendency to over-use the brain.)
5. When you get angry or frustrated do you feel pressure in your temples? (Friends of people who died of HCE say the victims often complained of head pressure in times of strong emotion.)
6. Do you ever overeat on ice cream, doughnuts and other sweets? (A craving for sugar is typical of people with too much electrical pressure in the cranium.)
7. Do you tend to analyze yourself too much? (HCE sufferers are often introspective, "over-thinking" their lives.)

The Finishing Touch

by Ruben Reyes

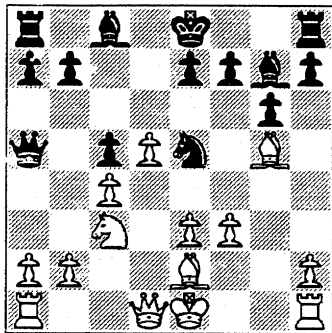
E. Buerger (2100) of UOP versus C. Dobrovoly (1925) of AT&T Dragons in the 1995 playoffs was quite a battle.

Let's look in after **9.gxf3 Nc6**



Black has come out well in the opening. Here he's got excellent pressure on the long diagonal a1-h8.

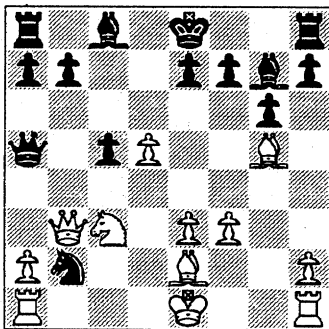
10.d5 Ne5 11.Nc3 Qa5 12.Be2



12...Nxc4 !

An ingenious move. If 13.Bxc4 then 13...Bxc3+ 14.bxc3 Qxc3+ 15.Kf2 Qxc4 when black wins back his piece and a pawn to boot.

13.Qb3 Nxb2!?



Black wins another pawn via another ingenious knight capture as 14.Qxb2? Bxc3 loses the queen for white.

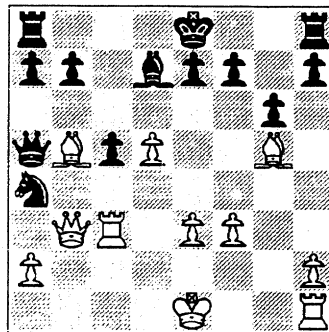
14.Rc1

Now black's knight is stranded.

14...Bxc3+

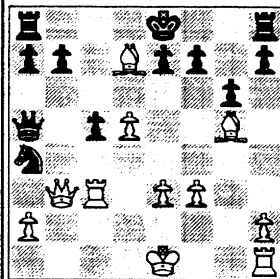
Seeking escape for the N to a4.

15.Rxc3 Na4 16.Bb5+ Bd7

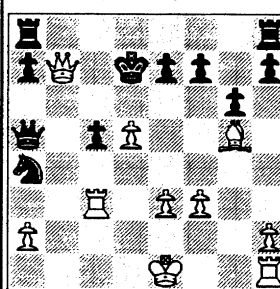


17.Bxa4

The natural continuation 17.Bxd7+ (diagram below) wins as black



either gets mated or loses material. If 17...Kxd7 (Or 17...Kf8 18. Bxa4 a6 19. Bh6+ Kg8 20. 0-0 b5 21. Qb2 wins as



either gets mated or loses material. If

17...Kxd7 (Or 17...Kf8 18. Bxa4 a6 19. Bh6+ Kg8 20. 0-0 b5 21. Qb2 wins as

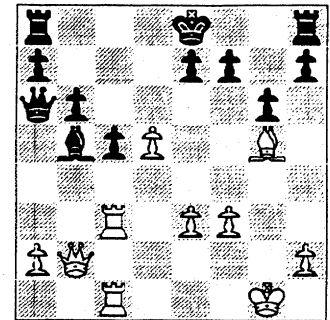
21...Q or bxa4 is mate in two: 22.Rc8+ followed by 23. Qg7++) then **18. Qx b7+**. Diagram left leaves black with two choices: **18... Kd8** or **18... Kd6**, both of them bad.

If **18...Kd6** it's mate in six: 19.Qxe7+ Kxd5 20. Qd7+ Ke5 21. f4+ Ke4 22.Qd3+ Kf3 23. e4+ Kg4 6.Qh3++

If **18...Kd8** (Not 18...Ke8??

19.Qxe7++) black gets mated or has to give up the Q to avoid mate: **19. Bxe7+ Ke8 20. Bf6** (threatening mate in one, 21.Qe7++) when one way to postpone getting mated is to give up the Queen: 21...Qxc3+22.Bxc3.

17...Bxa4 18.Qa3 b6 19.O-O Qa6 20.Rfc1 Bb5 21.Qb2



Threat: 22.Ra3 and 23.Qxh8.

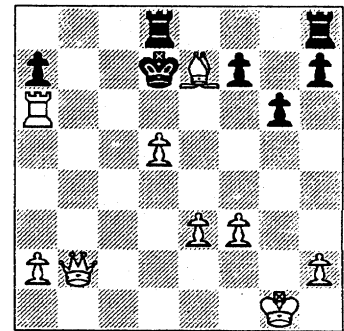
21...O-O-O

Castling into the line of fire of two rooks is just asking for trouble.

21...0-0 was no better as 22.Bh6 threatens both 23.Bxf8 and 23.Ra3 winning the queen (else 24.Qg7++)

21...f6 isn't pretty but it could keep black alive a little bit longer.

22.Bxe7 Bd7 23.Rxc5+!! bxc5 24.Rxc5+ Bc6 25. Rxc6+ Kd7 26.Rxa6 0-1



Nice finishing touch.

OPENING THEORY

THE MODERN DEFENCE

By Nigel Davies

(Editor's Note: This article was written by GM Davies from Great Britain for release to the general public on the internet. In an effort to supply the best articles possible for TCCP and a desire to start including some opening theory material, the following material is presented. Other such articles will be presented as they are discovered.)

It was in the late 1970s that I first made the acquaintance of this provocative counter attacking defence.

Under the influence of Raymond Keene, a great many British players were playing it around that time and I decided to jump on the bandwagon. Later on it proved quite difficult to jump off again and play more classical openings, but then that's another story.

With his first two moves, 1...g6 and 2...Bg7 Black makes no attempt whatsoever to follow the tried and trusted classical precept of occupying the center. Instead he calmly fianchettoes a bishop and argues the he can attend to things like development later in the game.

Some practitioners of the Modern (Colin McNab and David Norwood for example) like to try and close the position up with ... c6 and possible ... d5. But I have my own interpretation involving a fierce counterattack against the d4 square.

Above all I want that bishop on g7 to breathe fire, to strike terror along the h8-a1 diagonal. Sometimes I play ... c7-c5, sometimes ... e7-e5, but always something against the d4 square and with that long diagonal in mind.

There isn't enough time to show all the ins and outs of this defence, but the following games show my interpretation in action against a variety of White set-ups and how this opening has served me faithfully in some critical games. Amongst my victims with this opening are the likes of Bent Larsen and Viswanathan Anand, but on this occasion I'll show you the real crushes!

The first game was played in the last round of the student team Championships in Graz 1981 in which the England team was going for the silver medal....

Polajzer-Davies
Student Team Ch., Graz
Austria, 1981

1.d4 g6 2.c4 Bg7 3.Nc3 d6
4.e4

According to the late Mikhail Botvinnik, setting up the pawns on d4, c4 and e4 is the strongest answer to the Modern Defence. I have usually preferred my 'stock' recipe; a counterattack against the d4 square.

4... Nc6! 5.Be3 e5! 6.d5 Nce7

Reaching a kind of King's Indian Defence in which the fact that Black's knight has not been developed on f6 yet means that he can sometimes play ... f7-f5 before bringing it out. White takes immediate measures against this.

7.g4 c5 8.h4 Nf6 9.g5 Nh5
10.Be2 Nf4 11.Bf3 0-0 12.Nge2
f5 13.Qd2 Qa5 14.0-0 Rb8!!

One of the best moves I have ever played. The idea, should White play quietly now, is to prise open the queenside with ... b5 followed by ... a6. And there are other points should White capture on f4.

15.Nxf4 exf4 16.Bxf4 fxe4
17.Bxd6

The line which most beautifully illustrates the power of 14... Rb8 is 17.Bxe4 Bxc3 18.bxc3 Rxf4 19.Qxf4 Qxc3+ 20.Kb1 (or 20.Bc2 Bf5 21.Rd2 Qa1+) and now 20... b5, opening up the b-file. White, by the way, loses a piece after 17.Nxe4 Qxd2+.

17... Rxf3! 18.Bxb8 Rxc3+!
19.Kb1

Or 19.bxc3 Bxc3 20.Qc2 Qa3+
21.Kb1 Bf5 followed by 22... e3.

19... e3 20.fxe3 Bf5+ 21.Ka1
Rc2! 0-1

White lost on time by he could equally have resigned. 22.Qxa5 is met by 22... Bxb2+ 23.Kb1 Rd2+ followed by mate. I still count this as my most artistic miniature.

This next game was one of the wins which earned my first Grandmaster norm in Oslo 1988. After a few careless moves in the opening Black develops a murderous attack. White, by the way, is not a patzer. These days he has a rating of around 2500 and is on the verge of becoming a GM.

Gausel, E - Davies, N
Oslo, 1988

1.d4 d6 2.e4 g6 3.Nc3 Bg7
4.Bc4 Nc6 5.Be3 Nf6 6.h3

Preventing 6... Ng4 but losing time for development.

6... e5 7.dxe5 Nxe5 8.Bb3 0-0
9.Qd2 b5!

White's neglect of development allows Black to take the initiative.

10.f3 b4 11.Nd5 Nxd5 12.Bxd5
c6 13.Bb3 a5 14.a4 d5

Blasting open the center before White has got his king safe. If he had now tried to remedy this with 15.0-0-0 there would follow 15... Qf6 and after 16.Bd4 there is 16... c5!, distracting the bishop from the defence of b2.

15.exd5 Nc4! 16.Bxc4 Bxb2!

Suddenly White is in desperate trouble; the threats include 17... Bxa1 and 17... Bc3, not to mention 17... Qh4+.

17.Ne2 Qh4+

Even stronger than capturing the rook on a1, as that will remain a threat.

18.Bf2 Qxc4 19.Rb1 Bc3
20.Nxc3 bxc3 21.Qd3 Re8+
22.Kd1 Qa2! 23.Rc1 Ba6

24.Qxc3 Qxd5+ 25.Qd2 Rad8!
0-1

The final position shows the true extent of White's misery.

Engedal, N - Davies N
Gausdal Peer-Gynt , 1990

1.e4 g6 2.d4 Bg7 3.Nc3 d6 4.f4
Nc6

I was later to abandon this move after Dragan Velimirovic answered it with 5.Bb5 in a tournament in Vrnjacka Banja in 1991. Since then I have answered the Austrian Attack (4.f4) with 4... e6 followed by ... Ne7, ... Nd7, ... b6 and ... Bb7, obtaining a similar set-up to the game.

5.Be3 Nf6 6.Nf3 e6 7.Be2 0-0
8.0-0 Ne7 9.Nd2 b6 10.a4 a6
11.Qe1 c5

Black's usual way of challenging White's set-up from this structure. Here it proves especially effective because White has played the rather artificial 9.Nd2.

12.Qf2 Bb7 13.Bf3 Qc7 14.a5
cxd4 15.Bxd4 b5 16.Bb6 Qc8
17.Rac1 Nd7 18.Bd4

18.Be3 was better, as now Black rips apart what is left of White's center.

18... e5 19.Be3 f5!

The opening of the position proves good for Black as his pieces are better placed. Note that White's king also proves weak, a consequence of 4.f4!

20.g3 exf4 21.gxf4 b4 22.Nd1
Nf6 23.Qg2 fxe4 24.Nxe4 Nxe4
25.Bxe4 Bxe4 26.Qxe4 Qg4+
27.Kh1

27.Qg2 Qf5 would also have been unpleasant for White.

27... Nf5 28.Qxb4

A suicidal pawn snatch but it is already rather difficult to give White good advice.

28... Ng3+! 29.Kg1

Taking the knight allows 29... Qh3+ followed by 30... Qg3+ and 31... Rf5.

29... Nxf1+ 30.Kxf1 Qf3+
31.Kg1 Rae8 32.Qd2 Rxf4! 0-1

White has had enough. 33.Bxf4 is answered by 33... Re2 threatening both mate and the queen.

For a period of about 10 years I played nothing but the Modern, but in the late 1980s I started to branch out into other openings. Even eating caviar every day can become boring.

Yet faced with the prospect of having to win my last round game for a GM norm in a tournament in Budapest, I could hardly answer 1.e4 with 1... e5, after which I would get a boring Four Knights or Ruy Lopez. The only chance was the Modern Defence, and this was it's finest hour.

Godena, M - Davies, N
First Saturday Tournament,
Budapest, May 1993

1.e4 g6 2.d4 Bg7 3.Nc3 d6
4.Nge2

The safe way of introducing the fianchetto line for White, as after the immediate 4.g3 there is 4... Nc6 and if 5.Nge2 then 5... Bg4. After the text move I either play the immediate 4... Nc6, or sometimes 4... a6 5.a4 Nc6.

4... Nc6 5.Be3 Nf6 6.h3 e5
7.dxe5 Nxe5 8.Ng3 0-0

The safe way to play it would have been 8... Be6 9.Qd2 Nc4, but given that I had to win this game I was not afraid of danger.

9.Qd2 Re8 10.0-0-0 b5!

A pawn for an open file - not a bad deal with opposite wing castling. If White doesn't capture Black gets the c4 square for his knight on e5.

11.Bxb5 Bd7 12.Be2

After 12.f4 my opponent didn't like the look of 12... Bxb5 13.fxe5 Rxe5 14.Bd4 Qe7, which he felt gave me good compensation for the sacrificed exchange. In the post mortem we looked at 12.Ba6!? but then 12... Be6 wasn't clear.

12.... Qb8 13.f4 Nc6 14.Bf3 Qb4

Preparing to move a rook to b8 and threaten mate on b2.

15.a3 Qb7 16.e5 Rab8 17.b3

An alternative way to defend b2 was with 17.Na4, but then Black has 17... dxe5 18.fxe5 Qb5! 19.exf6 Bxf6 20.b3 Rxe3 21.Qxd7 Bg5 and if 22.Kb1 then 22... Rxb3+.

17... dxe5 18.fxe5 Rxe5
19.Nge4 Qa6!

It is less good to play this move after a preliminary exchange of knights on e4. Thus 19... Nxe4 20.Nxe4 Qa6 can be met by 21.a4 after which White's defences hold.

20.a4?

The decisive mistake. White should take this opportunity to exchange on f6, as for the time being Black is forced to recapture with the bishop. After Black's next move it becomes possible to take back on f6 with the queen.

20... Na5! 21.Nxf6+ Qxf6!

The point, after which the latent threats along the long h8-a1 diagonal prove decisive. Perhaps White thought that his next move made the capture with the queen impossible, but a serious disappointment is waiting.

22.Bd4 Qd6!

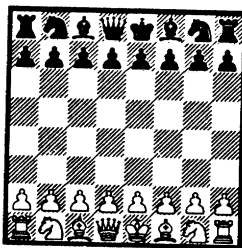
Ouch! Only now did he see that the intended capture of my rook on e5 is met by 23... Qa3+ followed by 24... Nxb3.

23.Nb1 Rxb3!

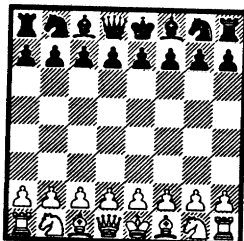
KAPOW! White must kiss his castled position goodbye.

24.Bxe5 Qb6! 0-1

White has had enough. The threat is 25... Rb1+, the rook is immune to capture because of the knight fork picking up White's queen and after 25.Nc3 there is either 25... Nc4 or 25... Ra3, depending on Black's mood.



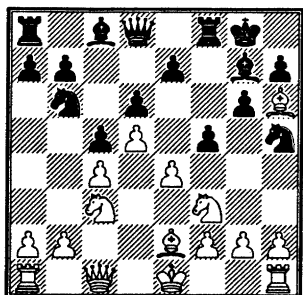
Submit those games and articles!
Your contributions are the heart of this bulletin.



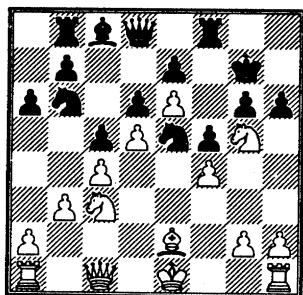
GAMES SECTION

Carter L - Litvinas A
CICL - East Division
Postal Service - Alumni Central
2 Nov 95

1. d4 ♘f6 2. c4 g6 3. ♘c3 ♙g7 4. ♘f3 0-0 5. e4 d6 6. ♙e2 ♘bd7 7. ♙f4 c5 8. d5 ♘h5 9. ♙d2 ♘b6 10. ♙c1 f5 11. ♙h6



11... ♘f6 First boner and it's mine. After f5, fxe4 should follow. 12. e5 ♘g4 With ♘f6 I thought of pressure on e4, before this move I thought of pressure on e5. After I made this move, I saw the horror of what I had done. 13. ♙xg7 ♙xg7 14. e6 This cuts my forces in two. On one side the king is over-exposed, the other is cramped and undeveloped. This is no way to open the game. 14... a6 h6 might have been better. 15. b3 ♖b8 16. ♘g5 ♘e5 This stops ♘f7. Only now I saw that he has f4. 17. f4 h6 Bold, desperate, and stupid. ♘g4 is better.



18. ♘f3 A safe "chicken" move, or was it time pressure? 18.fxe5 hxg5

19.exd6 ♙xd6 20. ♙xg5 nets a pawn and a king-side attack. 18... ♘g4 19. h3 ♘f6 With a sigh of relief. 20. ♙d3 ♘a8 21. a4 ♘c7 22. ♙b2 ♘h7 23. ♘e2 b5 Took four moves to prepare. This is the essential lever b5-c4. 24. ♘g3 The crucial mistake. d5 needs protection. ♙d2, ♖d1, or ♘c3 would be better. 24... bxc4 25. ♙xc4 ♘cxd5 Here a groan was heard. 26. ♙e2 ♙a5+ 27. ♙f2 ♘xf4 28. ♙e3 ♘4d5 29. ♙e2 ♙b7 30. ♖he1 ♘c3 31. ♙d3 ♘ce4+ 32. ♘e4 ♘xe4+ 33. ♙g1 ♙c3 34. ♙e2 ♙f6 35. ♖ec1 ♘g5 36. ♘d2 ♘e4 37. ♘f3 d5 38. ♙xa6 ♙xe6 39. ♙b5 ♙d6 White loses on time. Most time losses are in losing positions. 0:1

Kamsky G - Karpov An
Groningen NED

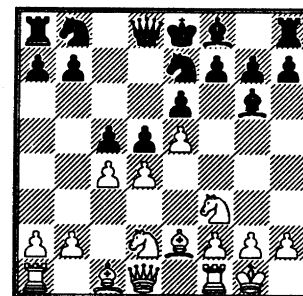
Groningen, 1995

Karpov plays a strange move order in the opening, first Ne7, Bg6 and only then c6-c5. Kamsky opened the center and got a clear advantage as Karpov had problems developing the queenside. However, after 21.Bc7?, Kamsky lost all of his advantage because 21... Qd7! 22. Ba5 (Kamsky had counted on 22. Red1, completely overlooking 22... Rxc7!). Karpov converted his small positional advantage to a pawn with the combination 45... Nxa5!. Everybody expected Karpov to win easily with the extra pawn and the better position, but then Kamsky

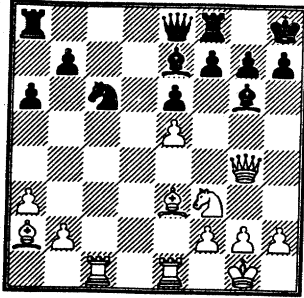
showed terrific persistency defending a worse position. The game continued into the "sudden death" period (rate of play is 2/40 + 1/20 + 0.30 sd) with Karpov still a pawn up. From move 75 the players blitzed out their moves and with both flags hanging a draw was agreed. It is possible that Karpov is still winning in the final position.

For the first time in this tournament Gata joined the post-mortem, obviously delighted by the narrow escape. He forgot the instructions of his father not to analyse with the opponent. The analysis, which was together with Svidler, was very animated and there are people who stated that it was the first time they saw Gata laugh. Even a joke was part of the proceedings, Gata: "We cannot analyse for too long, we have to dance." (In the evening there is the traditional Xmas-eve dance party with the participants, seconds, most-significant-other-halves and the organisation.)

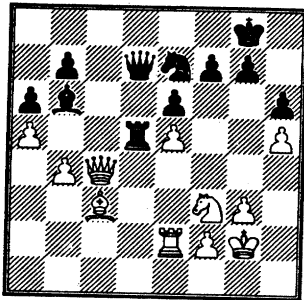
1. e4 c6 2. d4 d5 3. e5 ♙f5 4. ♘f3 e6 5. ♙e2 ♘e7 6. 0-0 ♙g6 7. ♘bd2 c5 8. c4



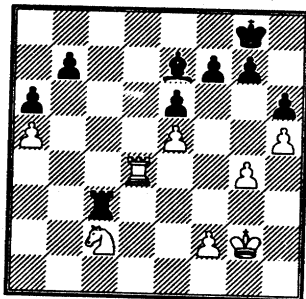
8... cxd4 9. ♘xd4 ♘ec6 10. ♘2f3 dxc4 11. ♙xc4 ♙e7 12. ♙e3 0-0 13. ♖c1 a6 14. a3 ♙e8 15. ♙a2 ♘h8 16. ♖e1 ♘xd4 17. ♙xd4 ♘c6 18. ♙g4



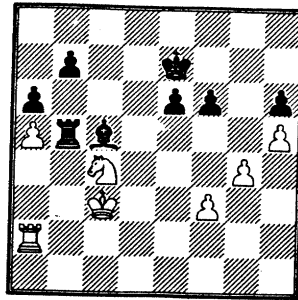
18... ♖c8 19. h4 h6 20. ♗b6 ♘b8
21. ♗c7 ♗d7 22. ♗a5 ♖xc1 23.
♖xc1 ♖c8 24. ♗c3 ♘c6 25. ♗b3
♗c5 26. ♖d1 ♗e7 27. h5 ♗h7
28. ♗f4 ♗c7 29. ♖d2 ♗g8 30.
♗h2 ♖d8 31. ♗c2 ♗xc2 32.
♖xc2 ♗b6 33. ♗h4 ♖d5 34. b4
♗e7 35. ♗e4 ♗d8 36. a4 ♗c7
37. g3 ♗d7 38. ♗g2 ♗c7 39. ♖e2
♘e7 40. ♗c4 ♗b6 41. a5



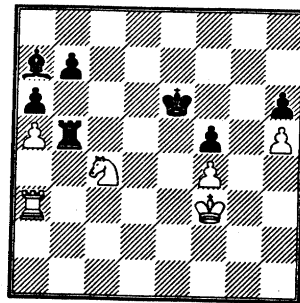
41... ♗c7 42. g4 ♘c6 43. ♖e4
♗d8 44. ♘e1 ♗e7 45. ♘c2
♘xa5 46. bxa5 ♖c5 47. ♗d4
♗xd4 48. ♖xd4 ♖xc3



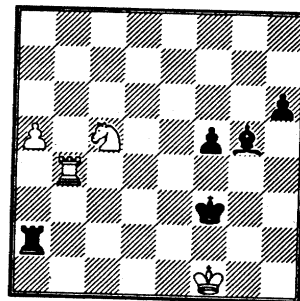
49. ♘e3 ♗f8 50. ♗f3 ♗e8 51.
♗e4 ♖b3 52. ♘c4 ♗c5 53. ♖d2
♖b4 54. ♗d3 ♖b3+ 55. ♗e4 ♖b4
56. ♗d3 ♗d7 57. ♗c3+ ♗e7 58.
f3 ♖b1 59. ♗c2 ♖b4 60. ♗c3
♖b5 61. ♖a2 f6 62. exf6+ gxf6



63. f4 ♗b4+ 64. ♗d3 ♖d5+ 65.
♗e4 ♗c3 66. ♗e3 ♗d4+ 67. ♗f3
♖b5 68. ♗e4 ♗a7 69. ♖a3 f5+
70. gxf5 exf5+ 71. ♗f3 ♗e6



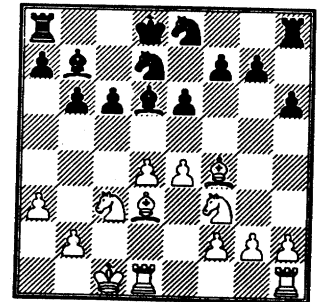
72. ♖d3 ♗c5 73. ♖d8 ♖b3+ 74.
♗g2 ♖b4 75. ♘e5 ♖xf4 76. ♘d3
♖g4+ 77. ♗f3 ♗e7 78. ♖b8 ♖d4
79. ♗e3 ♖e4+ 80. ♗f3 ♖h4 81.
♖xb7 ♖h3+ 82. ♗e2 ♗g5 83.
♘c5+ ♗e5 84. ♘xa6 ♖xh5 85.
♖b5+ ♗f4 86. ♖b4+ ♗g3 87.
♖b3+ ♗g4 88. ♘c5 ♖h2+ 89.
♗f1 ♖a2 90. ♖b4+ ♗f3



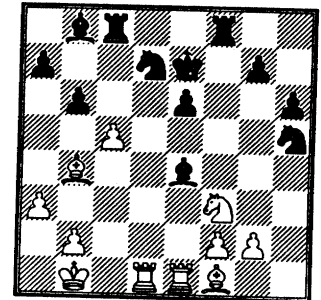
91. ♖a4 ♖c2 92. ♘d3 ♗d2 93.
♘e1+ ♗xe1 94. ♗xe1 Talk about
playing until the cows come home!
1/2:1/2

Van Wely L - Karpov An
Groningen NED
Groningen, 1995

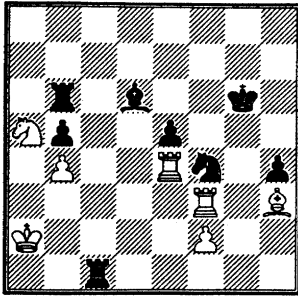
1. d4 ♘f6 2. c4 e6 3. ♘f3 b6 4.
a3 ♗b7 5. ♘c3 d5 6. ♗g5 ♗e7 7.
♗a4+ ♗d7 8. ♗xd7+ ♘bxd7 9.
♘b5 ♗d8 10. cxd5 ♘xd5 11. e4
♘5f6 12. ♗f4 ♘e8 13. ♗d3 h6
14. 0-0-0 c6 15. ♘c3 ♗d6



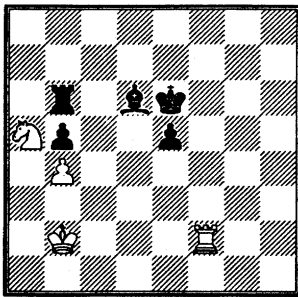
16. ♗e3 ♗e7 17. ♗b1 ♖c8 18. e5
♗b8 19. ♘e4 f5 20. exf6+ ♘exf6
21. ♖he1 ♖hd8 22. ♗d2 ♘d5 23.
h4 ♖f8 24. h5 ♘f4 25. ♗f1 ♘h5
26. ♗b4+ c5 27. dxc5 ♗xe4+



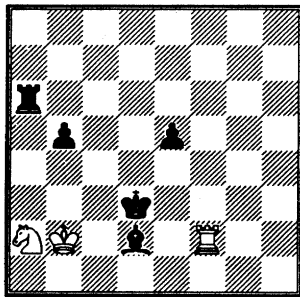
28. ♖xe4 bxc5 29. ♗c3 ♘hf6 30.
♖e3 ♗f4 31. ♖e2 ♗f7 32. g3
♗b8 33. ♗h3 ♖c6 34. ♗a5 g5 35.
♘d2 ♘b6 36. ♗xb6 axb6 37.
♘c4 b5 38. ♘a5 ♖b6 39. ♗g2
♖c8 40. b4 cxb4 41. axb4 ♗d6
42. ♖b2 ♖c3 43. ♖dd2 h5 44.
♗a2 h4 45. gxf4 gxf4 46. ♖b3
♖c1 47. ♖e2 ♘h5 48. ♖f3+ ♘f4
49. ♗h3 e5 50. ♖e4 ♗g6



51. ♖b2 ♜h1 52. ♔d7 h3 53. ♜g3+ ♖f6 54. ♙xh3 ♜xh3 55. ♜h4 ♜xf2 56. ♜xh1 ♜xh1 57. ♜h3 ♜f2 58. ♜f3+ ♖e6 59. ♜xf2



59... ♙xb4 60. ♜b3 ♖d5 61. ♜c1 ♜a6 62. ♜f1 ♖c4 63. ♜a2 ♙d2 64. ♜f2 ♖d3



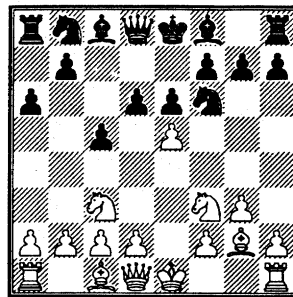
0:1

B40/1

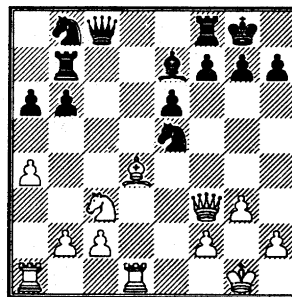
Anand V - Ivanchuk V
Wijk aan Zee NED

Hoogovens, 1996

1. e4 c5 2. ♜c3 e6 3. ♜f3 a6 4. g3 d6 5. ♙g2 ♜f6 6. e5



6... dxe5 7. ♜xe5 ♜a7 8. d3 b6 9. 0-0 ♙e7 10. ♙e3 ♙b7 11. ♙xb7 ♜xb7 12. ♜f3 ♜c8 13. d4 cxd4 14. ♙xd4 0-0 15. a4 ♜fd7 16. ♜fd1 ♜xe5



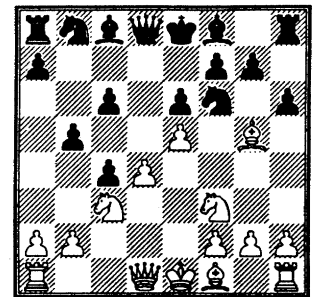
17. ♙xe5 ♜c6 18. ♙d6 ♙xd6 19. ♜xd6 ♜c7 20. ♜e2 ♜a5 21. ♜xb6 ♜c4 22. ♜b4 a5 23. ♜b5 ♜xb2 24. ♜d5 exd5 25. ♜xb2 ♜c5 1/2:1/2

D44/7

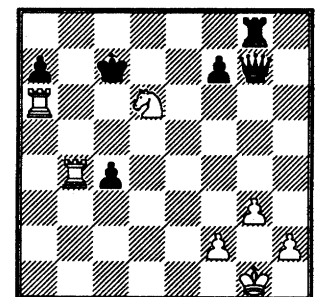
Ivanchuk V - Shirov A
Wijk aan Zee NED

Hoogovens, 1996

1. d4 d5 2. c4 c6 3. ♜c3 ♜f6 4. ♜f3 e6 5. ♙g5 dxc4 6. e4 b5 7. e5 h6



8. ♙h4 g5 9. ♜xg5 hxg5 10. ♙xg5 ♜bd7 11. exf6 ♙b7 12. g3 c5 13. d5 ♜b6 14. ♙g2 0-0-0 15. 0-0 b4 16. ♜a4 ♜b5 17. a3 exd5 18. axb4 cxb4 19. ♙e3 ♜c5 20. ♜g4+ ♜d7 21. ♜g7 ♙xg7 22. fxg7 ♜g8 23. ♜xc5 d4 24. ♙xb7+ ♜xb7 25. ♜xb7 ♜b6 26. ♙xd4 ♜xd4 27. ♜fd1 ♜xb2 28. ♜d6+ ♖b8 29. ♜db1 ♜xg7 30. ♜xb4+ ♖c7 31. ♜a6



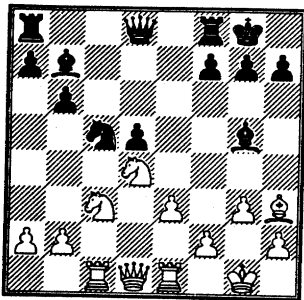
31... ♜b8 32. ♜xa7+ ♖xd6 33. ♜xb8 ♜g4 34. ♜d8+ ♖c6 35. ♜a1 1:0

E17/8

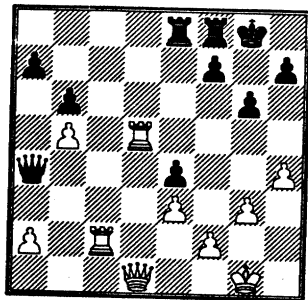
Anand V - Adams Mi
Wijk aan Zee NED

Hoogovens, 1996

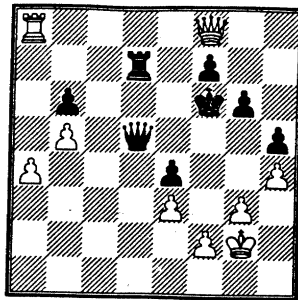
1. d4 ♘f6 2. ♘f3 e6 3. c4 b6 4. g3 ♙b7 5. ♙g2 ♙e7 6. 0-0 0-0 7. ♖e1 d5 8. cxd5 exd5 9. ♘c3 ♘a6 10. ♙f4 c5 11. ♖c1 ♘e4 12. dxc5 ♘axc5 13. ♘d4 ♙f6 14. ♙h3 ♘g5 15. ♙xg5 ♙xg5 16. e3



- 16... ♙f6 17. ♖e2 g6 18. b4 ♘e4 19. ♘xe4 dxe4 20. ♖d2 ♖e7 21. b5 ♙xd4 22. ♖xd4 ♙c8 23. ♙d7 ♙xd7 24. ♖xd7 ♖a3 25. ♖c2 ♖a4 26. ♖d5 ♖ae8 27. h4



- 27... h5 28. ♙g2 ♖e6 29. ♖e2 ♖a3 30. ♖c7 ♖e7 31. ♖c6 ♖fe8 32. ♖c4 ♙h7 33. ♖d2 ♖b7 34. ♖dd6 ♖b2 35. a4 ♖e5 36. ♖d5 ♖xd5 37. ♖xd5 ♖e7 38. ♖d6 ♖e6 39. ♖d8 ♖e5 40. ♖c7 ♙g7 41. ♖xa7 ♖d6 42. ♖e7 ♖d5 43. ♖a8 ♖d7 44. ♖f8+ ♙f6



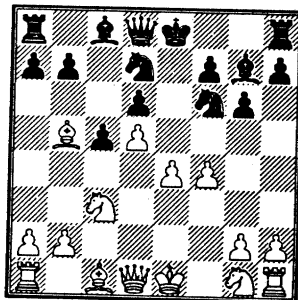
45. ♖e8 1:0

A67/1

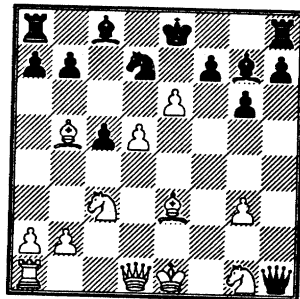
Sokolov I - Topalov V
Wijk aan Zee NED

Hoogovens, 1996

1. d4 ♘f6 2. c4 e6 3. ♘c3 c5 4. d5 exd5 5. cxd5 d6 6. e4 g6 7. f4 ♙g7 8. ♙b5+ ♘bd7

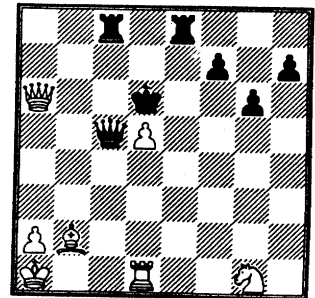


9. e5 dxe5 10. fxе5 ♘h5 11. e6 ♖h4+ 12. g3 ♘g3 13. hxg3 ♖xh1 14. ♙e3



- 14... ♙xc3+ 15. bxc3 a6 16. exd7+ ♙xd7 17. ♙xd7+ ♙xd7 18. ♖b3 b5 19. 0-0-0 ♖he8 20.

- ♙xc5 ♖ac8 21. ♙d4 ♖g2 22. ♖a3 ♖xg3 23. ♖xa6 ♖xc3+ 24. ♙b2 ♖cc8 25. ♖xb5+ ♙d6 26. ♙a1 ♖a3 27. ♙b2 ♖c5 28. ♖a6+



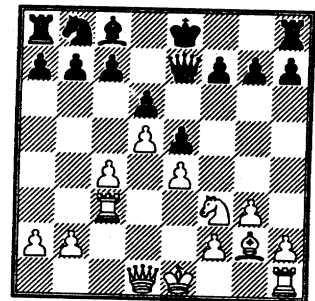
28... ♙d7 29. ♖a4+ 1:0

E11/21

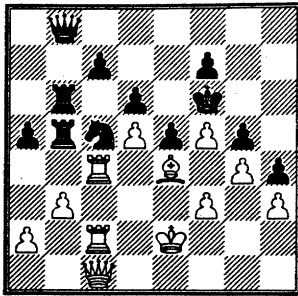
Piket Je - Anand V
Wijk aan Zee NED

Hoogovens, 1996

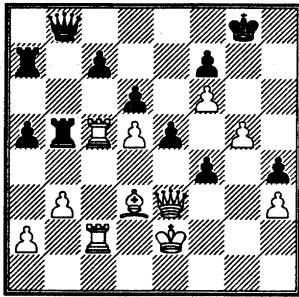
1. d4 ♘f6 2. c4 e6 3. ♘f3 ♙b4+ 4. ♙d2 ♖e7 5. g3 ♘c6 6. ♘c3 d6 7. ♙g2 ♙xc3 8. ♙xc3 ♘e4 9. ♖c1 ♘xc3 10. ♖xc3 e5 11. d5 ♘b8 12. e4



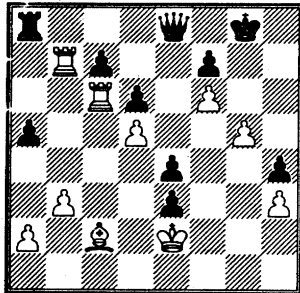
- 12... 0-0 13. ♘h4 a5 14. 0-0 ♘a6 15. ♖e1 g5 16. ♘f5 ♙xf5 17. exf5 ♘c5 18. ♙e4 ♖f6 19. f3 ♖fe8 20. ♖e3 ♙g7 21. ♙g2 h5 22. ♖h1 ♖g8 23. h3 h4 24. g4 ♖gb8 25. ♖hc1 b5 26. cxb5 ♖xb5 27. ♖1c2 ♖ab8 28. ♖d2 ♖d8 29. b3 ♖e7 30. ♖c4 ♖8b6 31. ♙f1 ♖d8 32. ♙e2 ♙f6 33. ♖c1 ♖b8



34. ♖e3 ♜a6 35. ♔d3 ♜a7 36. f4
gxf4 37. g5+ ♔g7 38. f6+ ♔g8
39. ♜xc5



39... fxe3 40. ♜xb5 ♖e8 41. ♜c6
e4 42. ♔c2 ♜a8 43. ♜b7



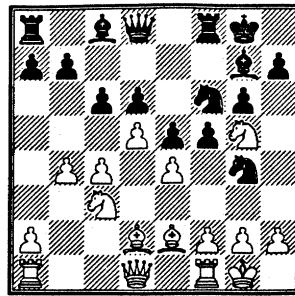
43... ♖e5 44. ♜bxc7 ♖f4 0:1

E94/17

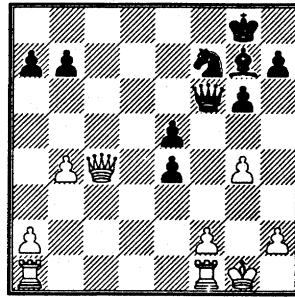
Ivanchuk V - Piket Je
Wijk aan Zee NED

Hoogovens, 1996

1. d4 ♟f6 2. c4 g6 3. ♟c3 ♔g7 4.
e4 d6 5. ♟f3 0-0 6. ♔e2 e5 7.
♔e3 ♟bd7 8. 0-0 c6 9. d5 ♟g4
10. ♔d2 f5 11. ♟g5 ♟df6 12. b4



12... cxd5 13. cxd5 fxe4 14. ♟e6
♔xe6 15. dxe6 ♟h6 16. g4 d5 17.
♔g5 ♜c8 18. e7 ♖xe7 19. ♟xd5
♖e6 20. ♟xf6+ ♜xf6 21. ♔xf6
♖xf6 22. ♖d5+ ♟f7 23. ♔c4
♜xc4 24. ♖xc4



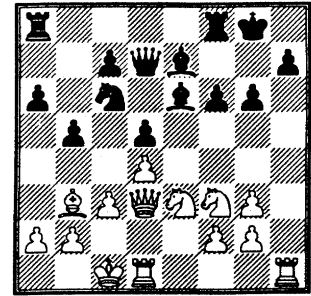
24... ♖f3 25. ♖e6 ♔h6 26. ♜ad1
e3 27. ♜d7 1:0

D00/5

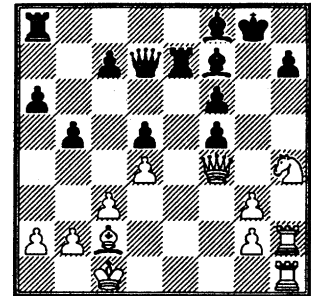
Benjamin, Joel (USA) -
Chessmaster 4000 Turbo
Boston, MA USA

Harvard Cup, 1994

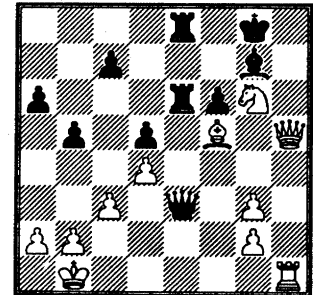
1. d4 d5 2. ♔g5 f6 3. ♔h4 ♟c6 4.
e3 e5 5. ♔b5 exd4 6. exd4 ♟e7 7.
♟f3 a6 8. ♔a4 b5 9. ♔b3 ♔g4
10. c3 ♟f5 11. ♔g3 ♟xg3 12.
hxg3 ♖d7 13. ♟bd2 ♔e7 14.
♟f1 0-0 15. ♟e3 ♔e6 16. ♖d3
g6 17. 0-0-0



17... ♜fe8 18. ♜h2 ♟a5 19. ♔c2
♔f8 20. ♜dh1 ♜e7 21. ♟h4 ♜g7
22. f4 ♟c4 23. f5 ♟xe3 24. ♖xe3
gxf5 25. ♜e1 ♜e7 26. ♖f4 ♔f7
27. ♜eh1



27... ♖e8 28. ♟f3 ♔g6 29. ♔xf5
♜d8 30. ♖g4 ♔g7 31. ♜xh7
♔xh7 32. ♔xh7+ ♔f8 33. ♔g6
♖c6 34. ♟h4 ♖e6 35. ♔f5 ♖e3+
36. ♔b1 ♜de8 37. ♟g6+ ♔g8 38.
♟f4 ♜e6 39. ♖h5 ♔f8 40. ♟g6+
♔g8



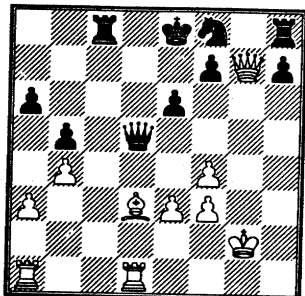
41. ♟f4 ♔ 42. ♔h7+ ♔g8 43
♖xd5 41... ♔f8 42. ♟g6+ ♔g8
43. ♖h7+ ♔f7 44. ♟f4 ♔f8 45.
♟g6+ ♔f7 46. ♟f4 ♔f8 47.
♟g6+ 1/2:1/2

D47/5

Chessmaster 4000 Turbo -
Shabalov, Alex (USA)
Boston, MA USA

Harvard Cup, 1994

1. d4 d5 2. c4 c6 3. e3 ♘f6 4. ♘c3 e6 5. ♘f3 ♘bd7 6. ♙d3 dxc4 7. ♙xc4 b5 8. ♙b3 ♙b7 9. a3 a6 10. 0-0 c5 11. ♙c2 ♖b8 12. dxc5 ♙xc5 13. b4 ♙d6 14. ♙b2 ♙xf3 15. gxf3 ♙xh2+ 16. ♖g2 ♙e5 17. ♙d3 ♘d5 18. ♖b3 ♖d8 19. f4 ♙xc3 20. ♙xc3 ♘xc3 21. ♖xc3 ♗c8 22. ♖xg7 ♘f8 23. ♗fd1 ♖d5+ 24. f3



24... ♖e7 25. ♖xh8 ♘g6 26. ♖xc8 ♘h4+ 27. ♖g3 ♖xf3+ 28. ♖xh4 ♖f2+ 29. ♖g5 h6+ 30. ♖xh6 ♖h4+ 31. ♖g7 ♖g4+ 32. ♖h8 ♖h4+ 33. ♙h7 ♖xh7+ 34. ♖xh7 ♖f6 35. ♖c5 1:0

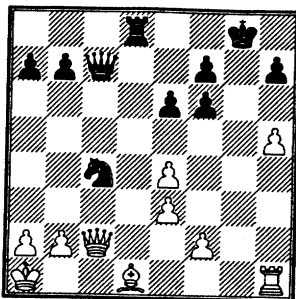
D25/5

Yermolinsky, Alex (USA) -
Computer WChess
Boston, MA USA

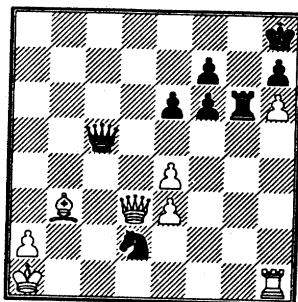
Harvard Cup, 1994

1. d4 d5 2. c4 dxc4 3. ♘f3 ♘f6 4. e3 ♙g4 5. ♙xc4 e6 6. ♖b3 ♙xf3

7. gxf3 ♘bd7 8. ♘c3 ♘b6 9. ♙e2 ♙e7 10. ♙d2 0-0 11. 0-0-0 c5 12. dxc5 ♙xc5 13. ♖b1 ♖c7 14. ♘e4 ♘xe4 15. fx4 ♗fd8 16. ♙c3 ♗xd1+ 17. ♙xd1 ♗d8 18. h4 ♙c7 19. h5 ♘c4 20. ♖c2 ♙f6 21. ♙xf6 gxf6 22. ♖a1



22... ♗d2 23. ♖c3 ♗xf2 24. ♙b3 b5 25. ♗g1+ ♖h8 26. ♖b4 ♖d8 27. ♖xb5 ♘xb2 28. h6 ♖c8 29. ♖b1 a6 30. ♖b6 ♘d3 31. ♖d4 ♘e5 32. ♗d1 ♗g2 33. ♖b6 ♗g8 34. ♖d6 ♖a8 35. ♖d4 ♖f8 36. ♗h1 ♗g6 37. ♖b6 ♘f3 38. ♖xa6 ♘d2+ 39. ♖a1 ♖c5 40. ♖d3



40... ♘xb3+ 41. axb3 ♖a5+ 42. ♖b1 ♗g2 0:1

THE FINAL WORD

First, I've got to blow my team's own horn! Look at the standings in the Near West Division - - - CASE at #1! Maybe that doesn't sound big to you but no one can remember us ever beating the Argonne Knights (perennial NW powerhouse) and now it has happened twice this season to

put CASE in a position to actually win the division. CASE has never evened managed second before. Congrats to my teammates!

Well, I guess somebody actually reads this thing because I've had people asking me how soon this issue was coming out. Two major factors affected the release of this issue. One, I decided there was no point in making a December issue since it only would have contained a rating list for the most part. If I was to wait until later in the month then there was a distinct possibility that it would have sat in various in-baskets over the holidays and I had planned to catch up in the beginning of January with my original schedule plans. Second, lightning struck and I recieved my new software making many of the changes you have probably noticed in this issue. From now on the games will be presented on par with some of the best chess publications around the world. Who says we're small time?

While I haven't got all the bugs under control, I am still working on it and the result should be an even better bulletin. How many more times can I say that? Anyway, many thanks to the people who have made the contributions that make this bulletin possible. Mark Siwek - for what may well be the best submission of the season. Algis Litvinas for his game (sorry I was too rushed this time to get in all your comments but they will re-surface yet). And of course Charle Ward for once again getting the ratings, etc to me on a most timely basis.

Enough for now, I still have some important matches to prepare for and so do you!

NEAR WEST DIVISION 1-14-1996

TEAM NAME	W L D	GAME POINTS	MATCH POINTS	PCT
CASE	4 1 1	22.5	4.5	75%
AT&T CHARGERS	3 2 1	16.5	3.5	58%
MIDCON CORP	3 3 0	20.0	3.0	50%
ARGONNE KNIGHTS	3 1 0	17.0	3.0	75%
PAWNS	0 6 0	8.0	0.0	0%

FAR WEST DIVISION 1-14-1996

TEAM NAME	W L D	GAME POINTS	MATCH POINTS	PCT
ARGONNE ROOKS	4 2 0	20.5	4.0	67%
FERMILAB	3 0 2	19.0	4.0	80%
AT&T DRAGONS	2 1 2	17.5	3.0	60%
AT&T ROYALS	2 0 2	12.5	3.0	75%
AT&T TYROS	1 5 0	16.5	1.0	17%
WHEATON COLLEGE	0 4 0	2.0	0.0	0%

NORTH DIVISION 1-14-1996

TEAM NAME	W L D	GAME POINTS	MATCH POINTS	PCT
MOTOROLA	5 0 0	19.5	5.0	100%
UOP PROCESS DIV.	3 2 0	15.0	3.0	60%
NORTHROP CORP.	2 1 1	13.0	2.5	63%
SEARS	2 3 0	14.0	2.0	40%
EXEMPLARS	1 3 1	12.0	1.5	30%
KEMPER INSURANCE	0 4 0	7.5	0.0	0%

EAST DIVISION 1-14-1996

TEAM NAME	W L D	GAME POINTS	MATCH POINTS	PCT
ALUMNI CENTRAL	6 0 0	26.5	6.0	100%
BANK AMERICA ILLINOIS	2 1 3	19.5	3.5	58%
CHICAGO POST OFFICE	3 1 1	19.5	3.5	70%
CHICAGO RES. & TRDG.	2 3 1	16.0	2.5	42%
AMOCO CORP.	1 3 1	13.5	1.5	30%
CTA	1 3 0	8.0	1.0	25%
CHICAGO MERC. EXCH.	0 4 0	4.0	0.0	0%

15-NOV	-95 BANK AMERICA	ILLINOIS	3	AMOCO CORP.		3
ROUND 6	BD	RATINGS	SCORE		RATINGS	SCORE
	1 FRAATS,D	1866-7	0	HODINA,J	2148 7	1
	2 KOGAN,G	1852-28	0	ATKINSON,J	1764 19	1
	3 PARAOAN,E	1735 10	1	WENTLING,C	1620-15	0
	4 SIEGEL,R	1459 0	1	WOOD,L	0 0	0
	5 HAMMOND,M	1426 15	1	CORBIN,Z	1305-15	0
	6	0 0	0F	PORTER,D	0 0	1F

29-NOV	-95 BANK AMERICA	ILLINOIS	3	CHICAGO RES. & TRDG.		3
ROUND 7	BD	RATINGS	SCORE		RATINGS	SCORE
	1 FRAATS,D	1859 38	1	JASAITIS,A	2142-25	0
	2 KOGAN,G	1824-14	0	LOSOFF,A	1966 14	1
	3 PARAOAN,E	1745-17	0	BARGERSTOCK,D	1709 25	1
	4 HAMMOND,M	1441-18	0	DELEON,J	1508 18	1
	5 ZOELLNER,J	1415 0	1	SZONTAGH,T	0 0	0
	6 WHITE,T	1355 0	1	BARNARD,G	0 0	0

06-DEC	-95 AMOCO CORP.		6	CHICAGO MERC. EXCH.		0
ROUND 4	BD	RATINGS	SCORE		RATINGS	SCORE
	1 HODINA,J	2155 0	1F	SLAGLE,S	1615 0	0F
	2 ATKINSON,J	1783 0	1F	FRANK,M	1717 0	0F
	3 WENTLING,C	1605 0	1F	SULLIVAN,C	1466 0	0F
	4 WOOD,L	0 0	1F	COTE,J	1306 0	0F
	5 NOTTOLI,R	0 0	1F	LODEWYCK,D	0 0	0F
	6 HOLMES,M	0 0	1F	WARE,K	0 0	0F
	7 NOTTOLI,R	0 0	0	LODEWYCK,D	1421 0	1
	8 WOOD,L	0 0	1	SLAGLE,S	1615 0	0

07-DEC	-95 CHICAGO RES & TRDG.		1.5	ALUMNI CENTRAL		4.5
ROUND 6	BD	RATINGS	SCORE		RATINGS	SCORE
	1 JASAITIS,A	2117 0	.5	CZERNIECKI,A	2121 0	.5
	2 FRIESEMA,W	2097 12	1	SANTIAGO,T	1923-12	0
	3 LOSOFF,A	1980-32	0	RZESZUTKO,R	1831 32	1
	4 BARGERSTOCK,D	1734-19	0	PRATTS,M	1792 19	1
	5 DELEON,J	1526-8	0	FRANEK,M	1783 6	1
	6 BARNARD,G	0 0	0	DAVIDSON,M	1624 0	1

12-DEC	-95 ALUMNI CENTL		3	CHICAGO MERC. EXCH.		2
ROUND 7	BD	RATINGS	SCORE		RATINGS	SCORE
	1 CZERNIECKI,A	2121-12	.5	FRANK,M	1717 19	.5
	2 FABIJONAS,R	1832-23	0	SLAGLE,S	1615 35	1
	3 RZESZUTKO,R	1863 0	1F	SULLIVAN,C	1466 0	0F
	4 FRANEK,M	1789-13	.5	COTE,J	1306 20	.5
	5 LITVINAS,A	1710 5	1	LODEWYCK,D	1421 -7	0
	6	0 0	0F	WARE,K	0 0	0F

30-NOV -95 MOTOROLA		4.5	NORTHROP	1.5
ROUND 4				
BD	RATINGS	SCORE	RATINGS	SCORE
1 WOLF,D	0 0	1	JAKSTAS,K	2206 0
2 HASAN,Y	2238 -7	.5	GOLUMBOVSKI,P	2134 7
3 MORRIS,R	2024 26	1	DIAZ,P	2083-26
4 MACKIE,A	1941-10	.5	CAIRONE,B	1786 10
5 SAMELSON,C	1982 2	1	VIGANTS,A	1552 -3
6 AUGSBURGER,	L 1733 0	.5	ALFONSO,E	0 0
7 LESTER,M	1567 2	1	ELEK,G	1054 -2
8 ASSADIAN,K	0 0	.5	FULLMER,G	0 0
9 GRYPARIS,J	1479 -1	0	WALLACH,C	2093 1
				.5(MTRLA)
				1 (MTRLA)

12-DEC -95 UOP PROCESS DIV.		4	EXEMPLARS	2
ROUND 5				
BD	RATINGS	SCORE	RATINGS	SCORE
1 STEVANOVIC,M	2198 5	1	FRISKE,T	1932 -8
2 BUERGER,E	2110 9	1	SOLLANO,E	1949-13
3 MICKLICH,F	1675 17	1	WEITZ,R	1710-17
4 BRIONES,M	1639-15	0	BURIAN,D	1630 15
5 LIKHTEREV,M	1511-15	0	SUERTH,F	1624 10
6 VAN ZILE,C	1373 0	1F	EDWARDS,S	1278 0
				0F

14-DEC -95 SEARS		1	MOTOROLA	5
ROUND 5				
BD	RATINGS	SCORE	RATINGS	SCORE
1 LATIMER,E	2027 5	.5	MELNIKOV,I	2155 -8
2 MILLER,TT	1773 -8	0	MORRIS,R	2050 8
3 VITAVER,L	0 0	0	MACKIE,A	1931 0
4 DORFF,M	1535 12	.5	AUGSBURGER,L	1733-12
5 RINGER,D	0 0	0	GONCHAROFF,N	1782 0
6 FLOREY,J	0 0	0	MELNIKOV,N	0 0
				1

05-DEC -95 AT&T CHRGRS		5	COOK CO. DEPT	OF CORR.
ROUND 3				
BD	RATINGS	SCORE	RATINGS	SCORE
1 WARREN,J	2121 0	1	HALL,A	0 0
2 STAMM,V	1706 0	1	ROJO,V	0 0
3 THOMAS,J	1494 0	1	WRIGHT,E	0 0
4 DOBR,K	1507 0	1	AVERY,G	0 0
5 BRADY,R	1341 0	1	JOHNSON,W	0 0
6	0 0	0F	JACKSON,S	0 0
				1F

11-DEC -95 MIDCON CORP		4	AT&T CHARGERS	2
ROUND 7				
BD	RATINGS	SCORE	RATINGS	SCORE
1 CONNOR,P	2053 27	1	WARREN,J	2121-12
2 CONDRON,J	2033 6	1	STAMM,V	1706 -4
3 LORENZ,B	1461 35	1	RADAVICIUS,E	1690-24
4 ROSENBERG,B	1321 34	1	DOBR,K	1507-15
5 HANSEN,B	1305-11	0	THOMAS,J	1494 8
6 LOGAN,H	1260-17	0	BRADY,R	1341 17
				1

11-DEC -95 CASE		3.5	COOK CO. DEPT	OF CORR.		2.5
ROUND 4						
BD	RATINGS	SCORE		RATINGS		SCORE
1 KANAS,W	1300 0	.5	ROJO,V	0 0		.5
2 MOTYCKA,R	1156 0	1	JACKSON,S	0 0		0
3 NOBLE,S	1286 0	0	JOHNSON,W	0 0		1
4 OLSON,C	0 0	0	APPLEBERRY,T	0 0		1
5 KLINEFELTER	1515 0	1F		0 0		0F
6 WHITE,H	1613 0	1F		0 0		0F
7 WHITE,H	1613 0	1	KLINEFELTER,H	1515 0		0 (CASE)

13-DEC -95 ARGONNE	KNIGHTS	3.5	PAWNS			2.5
ROUND 7						
BD	RATINGS	SCORE		RATINGS		SCORE
1 BENEDEK,R	2188 4	1	ELLICE,W	1847 -6		0
2 BAURAC,D	1582 14	1	O'DELL,DW	1565-14		0
3 RONIN,D	0 0	.5	MIKULECKY,B	1382 0		.5
4 GALLAGHER,H	1300 17	1	HARD,R	1218-17		0
5	0 0	0F		0 0		1F
6	0 0	0F		0 0		1F

09-JAN -96 MIDCON CORP		2.5	CASE			3.5
ROUND 8						
BD	RATINGS	SCORE		RATINGS		SCORE
1 CONNOR,P	2080 -4	.5	WILLIAMS,T	2022 4		.5
2 EGERTON,B	0 0	.5	KALE,S	1846 0		.5
3 LORENZ,B	1496 0	0	ROYTBURG,E	0 0		1
4 ROSENBERG,B	1355 40	1	CURRAN,T	1717-40		0
5 HANSEN,B	1294 17	.5	SATTERLEE,D	1629-11		.5
6 LOGAN,H	1243 -5	0	WHITE,H	1613 5		1
(CASE) 7 REID,C	1441-31	0	KANAS,W	1300 21		1

07-DEC -95 AT&T TYROS		2.5	AT&T DRAGONS			3.5
ROUND 4						
BD	RATINGS	SCORE		RATINGS		SCORE
1 STOLTZ,B	1956 13	.5	TEGEL,F	2170 -8		.5
2 BROZOVICH,J	1734-14	0	DURKEE,D	1768 14		1
3 SMITH,BR	1528 30	1	EUSTACE,D	1656-30		0
4 THOMAS,G	1456 28	1	WARD,C	1545-19		0
5 KARPIERZ,J	1196 -6	0	HICKS,C	1522 6		1
6 SCHWARTZ,M	1091-13	0	PHELPS,C	1240 13		1

13-DEC -95 FERMILAB		3.5	AT&T TYROS			2.5
ROUND 5						
BD	RATINGS	SCORE		RATINGS		SCORE
1 MOTTA,H	2001-19	0	TAMEZ,I	2053 19		1
2 SPIEGEL,L	2021 13	1	STOLTZ,B	1969-19		0
3 GAINES,I	1798-18	0	BROZOVICH,J	1720 18		1
4 HARRIS,R	1648 13	1	THOMAS,G	1484-13		0
5 KELLOGG,K	1696-13	.5	KARPIERZ,J	1190 21		.5
6 KOZLOVSKY,M	2106 0	1F		0 0		0F

19-DEC -95 ARGONNE	ROOKS	3.5	AT&T DRAGONS			2.5
ROUND 5						
BD	RATINGS	SCORE		RATINGS		SCORE
1 LEVINE,D	2407-14	.5	TEGEL,F	2162 9		.5
2 BERRY,G	2097 16	1	LUDWIG,T	2113-16		0
3 SHEYNIN,S	2046 8	1	DURKEE,D	1782 -5		0
4 GREEN,D	1773 9	1	EUSTACE,D	1626-14		0
5 WALSH,W	1498-14	0	WARD,C	1526 14		1
6 SEMONES,E	0 0	0	HICKS,C	1528 0		1

11-JAN	-96 ARGONNE	ROOKS	4	AT&T TYROS	2
ROUND 6	BD	RATINGS	SCORE	RATINGS	SCORE
	1 LEVINE,D	2393 3	1	STOLTZ,B	1950 -3
	2 SHEYNIN,S	2054-35	0	BLAZIE,J	1834 35
	3 GREEN,D	1782 13	1	BROZOVICH,J	1738-13
	4 MORRISON,J	1765 10	1	SMITH,BR	1558-10
	5 SCHWAB,W	1481 0	1F	THOMAS,G	1471 0
	6 HUEBNER,R	0 0	0	SCHWARTZ,M	1078 0
27-SEP	-95 CHICAGO POST OFFICE		5	AMOCO CORP.	1
ROUND 1	BD	RATINGS	SCORE	RATINGS	SCORE
	1 INUMERABLE,F	2306 12	1	HODINA,J	2137-12
	2 MARCOWKA,R	2004 6	1	ATKINSON,J	1758 -6
	3 ALLEN,H	1849 11	1	WENTLING,C	1661-11
	4 COOPER,W	1678-34	0	KRULL,E	1476 34
	5 HOWARD,W	1575 0	1	WOOD,L	0 0
	6 CARTER,L	1554 9	1	CORBIN,Z	1321 -9
04-OCT	-95 BANK AMERICA ILLINOIS		0	ALUMNI CENTRAL	6
ROUND 2	BD	RATINGS	SCORE	RATINGS	SCORE
	1 KOGAN,G	1855 -8	0	CZERNIECKI,A	2121 5
	2 FRAATS,D	1857 0	0F	MCALISTER,K	1977 0
	3 PAROAN,E	1726 -6	0	SANTIAGO,T	1962 9
	4 SIEGEL,R	1483 -5	0	FABIJONAS,R	1841 3
	5 HAMMOND,M	1426 0	0F	FRANEK,M	1776 0
	6 ZOELLNER,J	1406 -7	0	LITVINAS,A	1696 5
11-OCT	-95 CTA		1.5	BANK AMERICA ILLINOIS	4.5
ROUND 4	BD	RATINGS	SCORE	RATINGS	SCORE
	1 BYRNES,R	0 0	.5	FRAATS,D	1857 0
	2 MATTHEWS,J	1782 0	0F	KOGAN,G	1847 0
	3 JONES,M	1387 -6	0	PAROAN,E	1720 4
	4 CARTER,O	0 0	0	SOMBONG,M	1634 0
	5 TAYLOR,M	0 0	1	ZOELLNER,J	1399 0
	6 STAPLES,M	0 0	0	WHITE,T	1319 0
12-OCT	-95 CHICAGO POST OFFICE		3.5	CHICAGO RES. & TRDG.	2.5
ROUND 2	BD	RATINGS	SCORE	RATINGS	SCORE
	1 INUMERABLE,F	2318-11	.5	JASAITIS,A	2150 7
	2 MARCOWKA,R	2010-19	0	LOSOFF,A	1918 28
	3 ALLEN,H	1860 15	1	BARGERSTOCK,D	1744-15
	4 TURNER,K	1559-27	0	DELEON,J	1485 27
	5 COOPER,W	1644 0	1	LUEDERS,J	0 0
	6 CARTER,L	1563 0	1	BARNARD,G	0 0
19-OCT	-95 ALUMNI CENTRAL		5	CTA	1
ROUND 3	BD	RATINGS	SCORE	RATINGS	SCORE
	1 CZERNIECKI,A	2126 2	1	JARRETT,T	1660 -3
	2 SANTIAGO,T	1971-44	0	JONES,M	1381 44
	3 FABIJONAS,R	1844 0	1	ROJAS,R	0 0
	4 RZESZUTKO,R	1820 0	1	BARNES,D	0 0
	5 FRANEK,M	1776 0	1F	NOWAK,W	1365 0
	6 LITVINAS,A	1701 0	1F		0 0

19-OCT	-95 CHICAGO RES	& TRDG.	1	CTA		5
ROUND 1	BD	RATINGS	SCORE		RATINGS	SCORE
	1 JASAITIS,A	2157 1	1	WILSON,A	1576 -2	0
	2 BARGERSTOCK	,D 1729-32	0	ABRAHAM,T	1574 32	1
	3 LUEDERS,J	0 0	0	MCCARTNEY,M	0 0	1
	4 CARNAL,D	1207 0	0	JOHNSON,D	0 0	1
	5 SZONTAGH,T	0 0	0	TAYLOR,M	0 0	1
	6 BERNARD,D	1296 0	0F		0 0	1F
20-OCT	-95 CHICAGO	MERC.EXCH.	0	BANK AMERICA	ILLINOIS	6
ROUND 1	BD	RATINGS	SCORE		RATINGS	SCORE
	1 SLAGLE,S	1617 -9	0	FRAATS,D	1857 9	1
	2 SULLIVAN,C	1467 -5	0	KOGAN,G	1847 5	1
	3 HILTON,J	1087 -1	0	PARAOAN,E	1724 1	1
	4 LODEWYCK	0 0	0F	SIEGEL,R	1478 0	1F
	5 WARE,K	0 0	0F	HAMMOND,M	1426 0	1F
	6	0 0	0F	WHITE,T	1319 0	1F
(BKAMI)	7 SIEGEL,R	1478 -6	.5	ZOELLNER,J	1399 6	.5
01-NOV	-95 CHICAGO RES	& TRDG.	4	AMOCO CORP.		2
ROUND 3	BD	RATINGS	SCORE		RATINGS	SCORE
	1 JASAITIS,A	2158-16	0	HODINA,J	2125 25	1
	2 LOSOFF,A	1946 11	1	ATKINSON,J	1752 -7	0
	3 BARGERSTOCK,D	1697 19	1	WENTLING,C	1650-19	0
	4 DELEON,J	1512 0	1	PORTER,D	0 0	0
	5 SZONTAGH,T	0 0	0	WOOD,L	0 0	1
	6 BARNARD,G	0 0	1F	CORBIN,Z	1312 0	0F
12-NOV	-95 CHICAGO POST	OFFICE	2.5	ALUMNI CENTRAL		3.5
ROUND 4	BD	RATINGS	SCORE		RATINGS	SCORE
	1 INUMERABLE,F	2307 12	1	CZERNIECKI,A	2128 -8	0
	2 MARCOWKA,R	1991 14	1	MCALISTER,K	1977-22	0
	3 ALLEN,H	1875 4	.5	SANTIAGO,T	1927 -4	.5
	4 COOPER,W	1644-11	0	FABIJONAS,R	1844 7	1
	5 HOWARD,W	1575-11	0	FRANEK,M	1776 7	1
	6 CARTER,L	1563-14	0	LITVINAS,A	1701 9	1
08-NOV	-95 BANK AMERICA	ILLINOIS	3	CHICAGO POST	OFFICE	3
ROUND 5	BD	RATINGS	SCORE		RATINGS	SCORE
	1 KOGAN,G	1852 0	1F	INUMERABLE,F	2319 0	0F
	2 PARAOAN,E	1725 10	.5	MARCOWKA,R	2005-10	.5
	3 SOMBONG,M	1634 -9	0	ALLEN,H	1879 9	1
	4 SIEGEL,R	1472-13	0	COOPER,W	1633 13	1
	5 ZOELLNER,J	1405 10	.5	HOWARD,W	1564-10	.5
	6 WHITE,T	1319 36	1	CARTER,L	1549-36	0
13-NOV	-95 CHICAGO	MERC. EXCH.	2	CHICAGO RES.	& TRDG.	4
ROUND 5	BD	RATINGS	SCORE		RATINGS	SCORE
	1 FRANK,M	1726 -9	0	LOSOFF,A	1957 9	1
	2 SLAGLE,S	1608 7	.5	BARGERSTOCK,D	1716 -7	.5
	3 SULLIVAN,C	1462 4	.5	DELEON,J	1512 -4	.5
	4 HILTON,J	1086 0	1	RUBIN,A	0 0	0
	5 LODEWYCK,D	0 0	0F	BARNARD,G	0 0	1F
	6 WARE,K	0 0	0F	SITAR,K	0 0	1F

16-NOV ROUND 6	-95 CHICAGO POST OFFICE	5.5	CTA	.5	
BD	RATINGS	SCORE	RATINGS	SCORE	
1 INUMERABLE,F	2319 1	1	ABRAHAM,T	1606 -1	0
2 MARCOWKA,R	1995 2	1	WILSON,A	1574 -4	0
3 ALLEN,H	1888 0	1	MCCARTNEY,M	0 0	0
4 COOPER,W	1646 0	1	TAYLOR,M	0 0	0
5 CARTER,L	1513 0	.5	WARD,J	0 0	.5
6 DAVIS,R	0 0	1F	STAPLES,M	0 0	0F
29-NOV ROUND 5	-95 ALUMNI CENTRAL	4.5	AMOCO CORP.	1.5	
BD	RATINGS	SCORE	RATINGS	SCORE	
1 CZERNIECKI,A	2120 1	.5	HODINA,J	2150 -2	.5
2 FABIJONAS,R	1851-19	0	ATKINSON,J	1745 19	1
3 RZESZUTKO,R	1820 11	1	WENTLING,C	1631-11	0
4 FRANEK,M	1783 0	1	WOOD,L	0 0	0
5 LITVINAS,A	1710 0	1	PORTER,D	0 0	0
6 DAVIDSON,M	1617 7	1	CORBIN,Z	1312 -7	0
15-NOV ROUND 3	-95 FERMILAB	3.5	ARGONNE	ROOKS	2.5
BD	RATINGS	SCORE	RATINGS	SCORE	
1 KOZLOVSKY,M	2113 -7	0	LEVINE,D	2400 7	1
2 MOTTA,H	2017-18	0	BERRY,G	2083 12	1
3 SPIEGEL,L	2003 18	1	SHEYNIN,S	2076-27	0
4 CARVALHO,W	1925-10	.5	GREEN,D	1774 6	.5
5 GAINES,I	1798 0	1	SEMONES,E	0 0	0
6 HARRIS,R	1648 0	1F	MORRISON,J	1765 0	0F
16-NOV ROUND 3	-95 AT&T ROYALS	2.5	AT&T DRAGONS	2.5	
BD	RATINGS	SCORE	RATINGS	SCORE	
1 BUCHNER,R	2106 28	1	TEGEL,F	2188-18	0
2 STINSON,M	2028 8	1	DURKEE,D	1774 -6	0
3 DOBROVOLNY,C	1918-38	0	EUSTACE,D	1618 38	1
4 ROSLEY,D	1765-13	.5	WARD,C	1536 9	.5
5 ANDERSON,CJ	1478-21	0	HICKS,C	1501 21	1
6	0 0	0F		0 0	0F
30-NOV ROUND 4	-95 AT&T ROYALS	4	ARGONNE	ROOKS	2
BD	RATINGS	SCORE	RATINGS	SCORE	
1 BUCHNER,R	2134 -3	.5	BERRY,G	2095 2	.5
2 GUIO,J	2011 3	.5	SHEYNIN,S	2049 -3	.5
3 PEHAS,A	1981 11	1	GREEN,D	1780 -7	0
4 DOBROVOLNY,C	1880-36	0	DECMAN,S	1638 24	1
5 BLACKMON,E	1796 7	1	WALSH,W	1503 -5	0
6 ROSLEY,D	1752 6	1	JASUNAS,J	1428 -6	0
30-NOV ROUND 4	-95 WHEATON COLLEGE	0	FERMILAB	6	
BD	RATINGS	SCORE	RATINGS	SCORE	
1 BOSTICK,T	1422 -2	0	MOTTA,H	1999 2	1
2 AZCUNA,L	1214 0	0	SPIEGEL,L	2021 0	1
3 BROLLIER,B	0 0	0	CARVALHO,W	1915 0	1
4 HELLER,T	0 0	0	GAINES,I	1798 0	1
5 LAKE,T	0 0	0	HARRIS,R	1648 0	1
6 JOSEPHSON,D	1825-32	0	KELLOGG,K	1675 21	1

02-NOV	-95 CASE		2.5	AT&T CHARGERS		3.5
ROUND	5					
	BD	RATINGS	SCORE		RATINGS	SCORE
	1 WILLIAMS,T	2001 8	.5	WARREN,J	2124 -3	.5
	2 KALE,S	1822 16	1	STAMM,V	1717-11	0
	3 CURRAN,T	1744-27	0	RADAVICIUS,E	1672 18	1
	4 SATTERLEE,D	1648 9	1	DOBR,K	1513 -6	0
	5 WHITE,H	1643-33	0	THOMAS,J	1472 22	1
	6 KLINEFELTER,H	1545-36	0	BRADY,R	1305 36	1
	7 KANAS,W	1339-19	0	JACKLIN,E	1232 29	1 (CASE)
09-NOV	-95 PAWNS		.5	MIDCON CORP		5.5
ROUND	5					
	BD	RATINGS	SCORE		RATINGS	SCORE
	1 ELLICE,W	1872-12	0	CONNOR,P	2057 12	1
	2 MIKULECKY,B	1375 7	.5	LORENZ,B	1482 -7	.5
	3 HARD,R	0 0	0	HANSEN,B	1313 0	1
	4 NOTERMAN,T	1203-16	0	ROSENBERG,B	1305 16	1
	5 DZURICKO,G	1148-15	0	LOGAN,H	1262 15	1
	6 ROMENESKO,G	0 0	0	FLEET,R	1140 0	1
14-NOV	-95 ARGONNE	KNIGHTS	5	COOK CO. DEPT . OF CORR.		
ROUND	3					
	BD	RATINGS	SCORE		RATINGS	SCORE
	1 BENEDEK,R	2188 0	1	ROJO,V	0 0	0
	2 SUAREZ,E	1630 0	1	JACKSON,S	0 0	0
	3 BAURAC,D	1582 0	1	AVERY,G	0 0	0
	4 BURBA,K	1382 0	1	JOHNSON,W	0 0	0
	5 GALLAGHER,H	1300 0	1	STEELE,B	0 0	0
	6	0 0	OF		0 0	OF
28-NOV	-95 PAWNS		1	CASE		5
ROUND	6					
	BD	RATINGS	SCORE		RATINGS	SCORE
	1 ELLICE,W	1860-13	0	WILLIAMS,T	2009 13	1
	2 O'DELL,DW	1573 -8	0	KALE,S	1838 8	1
	3 HARD,R	1176 42	1	SATTERLEE,D	1657-28	0
	4 DZURICKO,G	1133 -3	0	WHITE,H	1610 3	1
	5 NOTERMAN,T	1187 -6	0	KLINEFELTER,H	1509 6	1
	6	0 0	OF	REID,C	1433 0	1F
(CASE)	7 REID,C	1433 8	1	MOTYCKA,R	1164 -8	0
(CASE)	8 HALLMAN,W	1188 31	1	KANAS,W	1320-20	0
(CASE)	9 OLSON,C	0 0	0	NOBLE,S	1286 0	1
28-NOV	-95 ARGONNE	KNIGHTS	6	MIDCON CORP		0
ROUND	6					
	BD	RATINGS	SCORE		RATINGS	SCORE
	1 BENEDEK,R	2178 10	1	CONNOR,P	2069-16	0
	2 HILL,R	1871 31	1	EGERTON,J	2004-31	0
	3 SUAREZ,E	1616 14	1	LORENZ,B	1475-14	0
	4 BAURAC,D	1577 5	1	HANSEN,B	1313 -8	0
	5 RONIN,D	0 0	1	ROSENBERG,B	1321 0	0
	6 BURBA,K	1371 11	1	LOGAN,H	1277-17	0
19-OCT	-95 KEMPER	INSURANCE	1.5	SEARS		4.5
ROUND	2					
	BD	RATINGS	SCORE		RATINGS	SCORE
	1 SIWEK,M	2146 -7	0	REYES,R	2350 7	1
	2 LEONG,G	2012 1	.5	LATIMER,E	2037 -1	.5
	3 OLSEN,A	1472 -7	0	MILLER,TT	1781 7	1
	4 PAYTON,P	0 0	1	WILSON,M	1293 0	0
	5 CICUCCI,S	0 0	0	DENISENKO,K	0 0	1
	6 CHOUDRY,A	0 0	0	FLOREY,J	0 0	1

02-NOV -95 EXEMPLARS
ROUND 3

BD	RATINGS	SCORE	MOTOROLA	RATINGS	SCORE
1 WONG,P	2212 0	OF	MELNIKOV,I	2155 0	OF
2 SOLLANO,E	1968 -8	0	HASAN,Y	2230 8	1
3 FRISKE,T	1917-13	0	WALLACH,C	2080 13	1
4 BRONFELD,A	1858 30	1	MACKIE,A	1971-30	0
5 BURIAN,D	1624 -3	0	SAMELSON,C	1979 3	1
6 BROTSOS,J	1533 14	1	GRYPARIS,J	1499-20	0
7 SUERTH,F	1610 7	.5	GONCHAROFF,N	1787 -5	.5
8 HESS,B	1492-19	0	LESTER,M	1548 19	1
9 EDWARDS,S	1278 0	1	FULLMER,G	0 0	0

09-NOV -95 SEARS
ROUND 3

BD	RATINGS	SCORE	NORTHROP CORP.	RATINGS	SCORE
1 REYES,R	2357 -6	.5	JAKSTAS,K	2200 6	.5
2 LATIMER,E	2036 4	.5	GOLUMBOVSKI,P	2141 -7	.5
3 MILLER,TT	1788 -7	0	DIAZ,P	2076 7	1
4 DORFF,M	1511 -8	0	CAIRONE,B	1778 8	1
5 VITAVER,L	0 0	0	VIGANTS,A	1552 0	1
6 RINGER,D	0 0	0	ALFONSO,E	0 0	1
7 FLOREY,J	0 0	0	BABINEC,J	1405 0	1
8 WILSON,M	1293 10	1	ELEK,G	1064-10	0

09-NOV -95 KEMPER
ROUND 3

BD	RATINGS	SCORE	INSURANCE	UOP PROCESS DIV.	RATINGS	SCORE
1 SIWEK,M	2139 19	1	STEVANOVIC,M	2226-19	0	0
2 LEONG,G	2013 4	.5	BUERGER,E	2101 -4	.5	.5
3 VAN MEER,J	2007-21	0	BOLDINGH,E	2032 21	1	1
4 HUGHES,N	1876-24	0	MICKLICH,F	1651 24	1	1
5 OLSEN,A	1465-21	0	LIKHTEREV,M	1490 21	1	1
6 LAMBIRIS,J	1441 19	1	VAN ZILE,C	1392-19	0	0
7 CUMMUTA,P	1398 0	1	ANDRYSIK,B	0 0	0	0 (KEMPR)

28-NOV -95 UOP PROCESS
ROUND 4

BD	RATINGS	SCORE	DIV.	SEARS	RATINGS	SCORE
1 STEVANOVIC,M	2207 -9	0	3.5	REYES,R	2351 9	1
2 BUERGER,E	2097 13	1		LATIMER,E	2040-13	0
3 BOLDINGH,E	2053 8	1		MILLER,TT	1781 -8	0
4 MICKLICH,F	1675 0	.5		VITAVER,L	0 0	.5
5 BRIONES,M	1660-21	0		DORFF,M	1503 32	1
6 VAN ZILE,C	1373 0	1		FLOREY,J	0 0	0

30-NOV -95 EXEMPLARS
ROUND 4

BD	RATINGS	SCORE	KEMPER	INSURANCE	RATINGS	SCORE
1 SOLLANO,E	1960-11	0	4	SIWEK,M	2158 7	1
2 FRISKE,T	1904 28	1		VAN MEER,J	1986-28	0
3 BRONFELD,A	1888-42	0		OLSEN,A	1444 42	1
4 WEITZ,R	1704 6	1		LAMBIRIS,J	1460 -9	0
5 BURIAN,D	1621 9	1		POZNIAK,J	1479-14	0
6 SUERTH,F	1617 7	1		CUMMUTA,P	1398-10	0
7 BROTSOS,J	1547-12	.5		PAYTON,P	1131 19	.5
8 HESS,B	1473 0	1		MCKINNEY,T	0 0	0

CICL TOP TEN PLAYERS LISTS

As of 1-14-1996

NAME	TEAM	RATING	PREV	NAME	TEAM	RATING	PREV
NEAR WEST DIVISION				FAR WEST DIVISION			
BENEDEK, R	KNIGHTS	2192D	1	LEVINE, D	ROOKS	2407	1
WARREN, J	CHARGERS	2109T	2	BEZZUBOV, V	FERMI	2338*	2
CONNOR, P	MIDCON	2076	3	TEGEL, F	DRAGONS	2170D	3
CONDON, J	MIDCON	2039	-	BUCHNER, R	ROYALS	2131	6
WILLIAMS, T	CASE	2026	4	LUDWIG, T	DRAGONS	2113C	4
KEISLER, J	KNIGHTS	1992	5	KOZLOVSKY	FERMI	2106	5
EGERTON, J	MIDCON	1965	6	BERRY, G	ROOKS	2097D	7
HILL, R	KNIGHTS	1902	7	TAMEZ, I	TYROS	2053	9
KALE, S	CASE	1854	9	SHEYNIN, S	ROOKS	2046	8
ELLICE, W	PAWNS	1841	8	STINSON, M	ROYALS	2036	10
NORTH DIVISION				EAST DIVISION			
REYES, R	SEARS	2360D	1	INUMERABLE	PSTOF	2320	1
HASAN, Y	MTRLA	2231C	2	HODINA, J	AMCRP	2155	3
WONG, P	EXMPL	2212C	4	JASAITIS, A	CRT	2117C	2
JAKSTAS, K	NORTH	2206C	5	FRIESEMA, W	CRT	2109	5
STEVANOVIC	UOP	2203C	3	CZERNIECKI	ALUMNI	2109C	4
SIWEK, M	KEMPR	2165C	7	COX, M	ALUMNI	2028C	6
MELNIKOV, I	MTRLA	2147	6	MAREMA, D	PSTOF	2006	7
GOLUMBOVSKI	NORTH	2141	8	SMILEY, R	AMCRP	2005	8
BUERGER, E	UOP	2119D	9	LEONG, D	ALUMNI	2001	10
WALLACH, C	MTRLA	2094	10	MARCOWKA	PSTOF	1997C	9
MOST IMPROVED PLAYERS				CICL OVERALL TOP TEN			
ROSENBERG	MIDCON	+104	-	LEVINE, D	ROOKS	2407	1
MORRIS, R	MTRLA	+80	2	REYES, R	SEARS	2360D	2
LORENZ, B	MIDCON	+58	3	BEZZUBOV, V	FERMI	2338*	3
BRADY, R	CHARGERS	+58	-	INUMERABLE	PSTOF	2320	4
MIKULECKY	PAWNS	+56	1	HASAN, Y	MTRLA	2231C	5
HILL, R	KNIGHTS	+53	-	WONG, P	EXMPL	2212C	7
RZESZUTKO	ALUMNI	+43	-	JAKSTAS, K	NORTH	2206C	8
WILLIAMS, T	CASE	+40	-	STEVANOVIC	UOP	2203C	6
FRAATS, D	BKAMI	+40	-	BENEDEK, R	KNIGHTS	2192D	10
BLAZIE, J	TYROS	+39	-	TEGEL, F	DRAGONS	2170D	9

CHICAGO INDUSTRIAL CHESS LEAGUE RATINGS LIST

RATING CODES:

? - UNRATED

- 5 TO 9 RATED GAMES

* - 10 TO 24 RATED GAMES

C - CENTURY CLUB MEMBER

D - DOUBLE CENTURION

T - TRIPLE CENTURION

Q - QUAD CENTURION

OFFICIAL RATINGS AS OF 1-14-1996

NAME	TEAM	W	L	D	RATING						
ABRAHAM,T	CTA	1	1	0	1605	CARNAL,D	CRT	0	1	0	1207#
ALFONSO,E	NORTH	3	0	1	0000?	CARTER,L	PSTOF	2	2	1	1513
ALLEN,H	PSTOF	4	0	1	1888	CARTER,O	CTA	0	1	0	0000?
ANDERSON,CJ	ROYLS	1	1	1	1457	CARVALHO,W	FERMI	2	1	1	1915
ANDRYSIAK,B	KEMPR	0	1	0	0000?	CATENA,J	MTRLA	0	0	0	0000?
ANGELOS,S	COLUM	0	0	0	0000?	CHAN,H	SEARS	0	0	0	1574
APPLEBERRY,T	CCDOC	1	0	0	0000?	CHOUDRY,A	KEMPR	0	1	0	0000?
AQUENDE,A	KEMPR	0	0	0	0000?	CICUCCI,S	KEMPR	0	1	0	0000?
ASSADIAN,K	MTRLA	0	0	1	0000?	CIESLEK,D	MTRLA	1	1	0	1938
ATKINSON,J	AMCRP	2	2	0	1783C	CISKO,G	FERMI	0	1	0	1608
AUGSBURGER,L	MTRLA	1	1	2	1721	COLBERT,W	PAWNS	0	1	0	0000?
AVERY,G	CCDOC	0	2	0	0000?	COLEMAN,O	CTA	0	0	0	0000?
AZCUNA,L	WHEAT	0	1	0	1214	CONDON,J	MDCON	1	0	0	2039
BABINEC,J	NORTH	1	1	0	1405#	CONNOR,P	MDCON	2	2	2	2076
BAKER,B	FLPRO	0	0	0	1042	COOPER,W	PSTOF	3	2	0	1646
BAKER,LR	MERC	0	0	0	1093*	COPELAND,P	WHEAT	0	0	0	1229?
BARGERSTOCK,D	CRT	2	3	1	1715	CORBIN,Z	AMCRP	0	3	0	1290*
BARNARD,G	CRT	0	3	0	0000?	COSTELLO,W	NORTH	0	1	0	0000?
BARNES,D	CTA	0	1	0	0000?	COTE,J	MERC	0	0	1	1326
BARTUSIAK,P	MTRLA	0	0	0	0000?	COX,M	ALUMN	0	0	0	2028C
BAURAC,D	KNGHT	3	1	1	1596C	CREWSE,L	EXMPL	0	0	0	2058
BECK,P	MERC	0	0	0	0000?	CROWE,R	ROYLS	0	0	0	1405*
BENEDEK,R	KNGHT	4	0	1	2192D	CUMMUTA,P	KEMPR	1	1	0	1388
BERMAN,R	KEMPR	0	0	0	0000?	CURRAN,T	CASE	1	2	0	1677
BERNARD,D	CRT	0	0	0	1296	CZERNIECKI,A	ALUMN	2	1	3	2109C
BERRY,G	ROOKS	3	0	1	2113T	CZOSKE,M	ROYLS	0	0	0	0000?
BEZZUBOV,V	FERMI	0	0	0	2338*	DAVIDSON,M	ALUMN	2	0	0	1624
BHOJWANI,C	TYROS	0	0	0	1933C	DECMAN,S	ROOKS	1	0	0	1662D
BLACKMON,E	ROYLS	2	0	0	1803C	DELEON,J	CRT	3	1	1	1518*
BLAZIE,J	TYROS	2	0	0	1869C	DENG,J	CRT	0	0	0	1549
BLOOM,B	EXMPL	0	0	0	2034	DENISENKO,K	SEARS	1	0	0	0000?
BLUE,J	CCDOC	1	0	0	0000?	DIAZ,L	CASE	0	1	0	0000?
BOLDINGH,E	UOP	3	1	0	2061	DIAZ,P	NORTH	2	2	0	2057
BOSTICK,T	WHEAT	0	4	0	1420*	DOBR,K	CHRGR	1	4	2	1492T
BRADY,R	CHRGR	5	2	0	1358	DOBROVOLNY,C	ROYLS	0	2	2	1844
BRIONES,M	UOP	0	2	0	1624C	DORFF,M	SEARS	1	2	1	1547
BRITT-WEBB,E	AMCRP	0	0	0	1265#	DOTY,B	HULL	0	0	0	0000?
BROCKETT,M	SEARS	0	0	0	1801	DUFRESNE,T	CASE	0	0	0	997*
BROLIER,B	WHEAT	1	3	0	0000?	DURKEE,D	DRGNS	2	3	0	1777C
BRONFELD,A	EXMPL	2	1	0	1846	DYZKOWSKI,R	CONBK	0	0	0	1565
BROTSOS,J	EXMPL	2	0	1	1535D	DZEKHTSER,A	SEARS	0	0	0	1761*
BROZOVICH,J	TYROS	2	3	1	1725C	DZURICKO,G	PAWNS	0	4	0	1130*
BUCHNER,R	ROYLS	1	0	1	2131	EDWARDS,S	EXMPL	1	0	0	1278
BUERGER,E	UOP	2	0	3	2119D	EGERTON,B	MDCON	0	0	0	0000?
BURBA,K	KNGHT	2	0	0	1382C	EGERTON,J	MDCON	2	1	1	1965
BURDICK,S	COLUM	0	0	0	1569	ELEK,G	NORTH	1	3	0	1052
BURIAN,D	EXMPL	3	2	0	1645C	ELLICE,W	PAWNS	0	5	1	1841
BYRNES,R	CTA	0	0	1	2196#	ENKE,E	WHEAT	1	1	0	0000?
CADE,M	UNILV	0	0	0	0000?	EUSTACE,D	DRGNS	3	2	0	1612
CAIRONE,B	NORTH	1	1	2	1796	FABIJONAS,R	ALUMN	3	2	0	1809D
CARDI,P	HULL	0	0	0	1240#	FAHRENHOLTZ,S	MTRLA	0	0	0	1785*
						FELDMAN,A	FLPRO	0	0	0	1420C

FERGUSON,K	MDCON	0 1 0	0000?	KLINFELTER,H	CASE	3 1 1	1515C
FLEET,R	MDCON	1 1 0	1140#	KOGAN,G	BKAMI	1 3 0	1810
FLOREY,J	SEARS	1 3 0	0000?	KOSTECKA,K	COLUM	0 0 0	1596
FRAATS,D	BKAMI	2 1 1	1897	KOZLOVSKY,M	FERMI	0 3 0	2106
FRANEK,M	ALUMN	3 0 1	1776C	KRUEGER,J	DRGNS	0 0 0	1353*
FRANK,M	MERC	0 1 1	1736	KRULL,E	AMCRP	1 0 0	1510
FRIESEMA,W	CRT	1 0 0	2109	LAKE,T	WHEAT	0 2 0	0000?
FRISKE,T	EXMPL	1 2 1	1924	LAMBIRIS,J	KEMPR	1 1 0	1451
FULLMER,G	MTRLA	0 1 1	0000?	LASKY,JIM	RADIO	0 0 0	1693#
GAINES,I	FERMI	4 1 0	1780C	LASKY,N	RADIO	0 0 0	1352C
GALKO,D	KEMPR	0 0 0	0000?	LATIMER,E	SEARS	0 1 3	2032D
GALLAGHER,H	KNIGHT	3 0 0	1317	LAWRENCE,P	MTRLA	0 0 0	0000?
GANSER,A	BKAMI	0 0 0	1266*	LEONG,D	ALUMN	0 0 0	2001
GEBELE,R	UOP	0 0 0	0000?	LEONG,G	KEMPR	0 0 2	2017C
GIMPLE,R	WHEAT	0 0 0	0000?	LERNER,R	SEARS	0 0 0	0000?
GOLLA,R	SEARS	0 0 0	1982D	LESTER,M	MTRLA	3 1 0	1569
GOLUMBOVSKI,P	NORTH	0 0 4	2141	LEVINE,D	ROOKS	4 0 1	2396
GONCHAROFF,N	MTRLA	2 1 1	1782Q	LIKHTEREV,M	UOP	1 2 0	1496*
GORZ,E	RADIO	0 0 0	1289*	LITVINAS,A	ALUMN	4 0 0	1715C
GREEN,D	ROOKS	4 1 1	1795C	LODEWYCK,D	MERC	1 1 0	1414
GRIESMEYER,W	PSTOF	0 0 0	1317	LOGAN,H	MDCON	1 4 0	1238*
GRYPARIS,J	MTRLA	0 2 0	1478	LORENZ,B	MDCON	3 2 1	1496*
GUIO,J	ROYLS	1 0 1	2014	LOSOFF,A	CRT	4 1 0	1948
HAHNE,D	ROYLS	0 0 0	1586	LUDWIG,T	DRGNS	2 1 0	2097C
HALL,A	CCDOC	0 2 0	0000?	LUEDERS,J	CRT	0 2 0	0000?
HALLMAN,W	CASE	1 0 0	1219*	LULKIN,V	UNILV	0 0 0	1826#
HAMMOND,M	BKAMI	1 1 0	1423	LUSTRO,G	ROYLS	0 0 0	0000?
HANSEN,B	MDCON	2 2 1	1311*	MACBEAN,J	PAWNS	0 1 0	0000?
HARD,R	PAWNS	1 4 0	1201#	MACKIE,A	MTRLA	2 1 1	1931
HARDIN,L	KEMPR	0 0 0	0000?	MARCOWKA,R	PSTOF	3 1 1	1997C
HARRIS,FF	CTA	0 0 0	1401#	MAREMA,D	PSTOF	0 0 0	2006
HARRIS,R	FERMI	3 0 0	1661	MARTIN,K	COLUM	0 0 0	1493
HARRUFF,E	WHEAT	0 1 0	0000?	MATTHEWS,J	CTA	0 0 0	1782
HASAN,Y	MTRLA	1 0 2	2231	MAYNARD,J	WHEAT	0 2 0	1325
HELLER,T	WHEAT	0 3 0	0000?	MCALISTER,K	ALUMN	0 1 0	1955
HERNANDEZ,DD	COLUM	0 0 0	1497	MCCARTNEY,M	CTA	1 1 0	0000?
HESS,B	EXMPL	1 1 0	1473	MCFARLIN,B	KEMPR	0 0 0	1209#
HICKS,C	DRGNS	4 0 0	1528	MCKAY,P	UNILV	0 0 0	1395#
HILL,R	KNIGHT	2 0 0	1902	MCKINNEY,T	KEMPR	0 1 0	0000?
HILLIARD,J	BKAMI	0 0 0	0000?	MELNIKOV,I	MTRLA	1 0 2	2147
HILTON,J	MERC	1 1 0	1086*	MELNIKOV,N	MTRLA	1 2 0	0000?
HODINA,J	AMCRP	2 1 1	2155	MICKLICH,F	UOP	2 1 2	1692C
HOLMES,M	AMCRP	0 0 0	0000?	MIKULECKY,B	PAWNS	1 0 3	1382C
HOWARD,W	PSTOF	1 1 1	1554	MILLER,J	NORTH	0 0 0	0000?
HUEBNER,R	ROOKS	0 1 0	0000?	MILLER,TT	SEARS	2 3 0	1765
HUGHES,N	KEMPR	1 1 0	1852C	MORRIS,R	MTRLA	4 0 0	2058
INUMERABLE,F	PSTOF	3 0 1	2320	MORRISON,J	ROOKS	1 0 0	1775
ITZENHEUSER,W	CASE	0 0 0	0000?	MORTADA,C	MTRLA	0 0 0	0000?
JACKLIN,E	CASE	1 3 1	1261	MOTTA,H	FERMI	1 3 1	1982
JACKSON,S	CCDOC	1 3 0	0000?	MOTYCKA,R	CASE	3 3 0	1156
JAKSTAS,K	NORTH	1 2 1	2206C	MUDAN,M	HULL	0 0 0	1123*
JARRETT,T	CTA	0 1 0	1657*	NARSOLIS,F	UOP	0 0 0	0000?
JASAITIS,A	CRT	1 2 2	2117C	NAUGHTON,T	HULL	0 0 0	1308*
JASUNAS,J	ROOKS	0 2 0	1422	NELL,D	UNILV	0 0 0	1073#
JOHNSON,D	CTA	1 0 0	0000?	NISHIMURA,K	FLPRO	0 0 0	1329*
JOHNSON,W	CCDOC	1 3 0	0000?	NOBLE,S	CASE	2 4 0	1286#
JONES,M	CTA	1 1 0	1425*	NOTERMAN,T	PAWNS	0 3 1	1181
JONES,MIGUEL	CCDOC	0 1 0	0000?	NOTTOLI,R	AMCRP	0 1 0	0000?
JOSEPHSON,D	WHEAT	0 3 0	1793*	NOWAK,W	CTA	0 0 0	1365#
JOSHI,A	UNILV	0 0 0	0000?	O'BRIEN,D	UOP	0 0 0	1377*
KALE,S	CASE	3 2 1	1854	O'DELL,DW	PAWNS	0 3 1	1551C
KANAS,W	CASE	5 2 1	1321C	OGASAWARA,L	ROYLS	0 1 1	1830C
KARPIERZ,J	TYROS	2 1 2	1211*	OLSEN,A	KEMPR	1 3 0	1486
KATAOKA,N	UOP	0 0 0	0000?	OLSON,C	CASE	2 5 0	0000?
KATZ,J	CASE	0 0 0	0000?	OSTERLUND,R	EXMPL	0 0 0	1943
KAUFMAN,M	KEMPR	0 0 0	0000?	PARA,A	FERMI	0 0 0	1487
KEEFE,E	FLPRO	0 0 0	1181#	PARAOAN,E	BKAMI	3 2 1	1728C
KEISLER,J	KNIGHT	0 0 0	1992	PATTON,D	CHRGR	1 0 0	0000?
KELLOGG,K	FERMI	1 0 1	1683C	PAWLUS,D	MTRLA	0 0 0	0000?
KERCSMAR,J	WHEAT	0 0 0	0000?	PAYTON,P	KEMPR	1 1 1	1150#
KINSELLA,G	KNIGHT	0 0 0	1481C	PEHAS,A	ROYLS	1 0 1	1992

PENNINGTON,J	WHEAT	0 0 0	0000?	TERPSTRA,D	WHEAT	0 0 0	0000?
PERAREN,E	PSTOF	0 0 0	1733	THOMAS,G	TYROS	1 1 1	1471
PHELPS,C	DRGNS	1 1 0	1253*	THOMAS,J	CHRGR	6 1 1	1502C
PIAO,T	DRGNS	0 0 0	1711	THOMPSON,R	FLPRO	0 0 0	1061
PILLAI,J	MTRLA	0 0 0	0000?	TSEITLIN,E	MTRLA	0 0 0	0000?
POMA,D	AMCRP	0 0 0	1257	TURNER,K	PSTOF	0 1 0	1532
PORTER,D	AMCRP	0 2 0	0000?	TYREE,D	RADIO	0 0 0	1475*
POZNIAK,J	KEMPR	0 1 0	1465*	UNDERWOOD,W	WHEAT	0 1 0	1972C
PRATT,C	MTRLA	0 0 0	0000?	VALDEZ,C	MTRLA	1 0 0	0000?
PRATTS,M	ALUMN	1 0 0	1811	VAN MEER,J	KEMPR	0 2 0	1958
QUARTETTI,C	NORTH	0 0 0	0000?	VAN METRE,R	SEARS	0 0 0	0000?
QUERUBIN,R	FLPRO	0 0 0	2067#	VAN OTRIVE,R	CTA	0 0 0	1092#
RADAVICIUS,E	CHRGR	2 2 1	1666D	VAN ZILE,C	UOP	2 2 0	1373*
REID,C	CASE	1 2 0	1410	VANDECOTTE,M	UOP	0 1 0	0000?
REYES,R	SEARS	3 0 1	2360D	VENEGAS,B	HULL	0 0 0	0000?
RINGER,D	SEARS	0 2 0	0000?	VIGANTS,A	NORTH	2 2 0	1549
RIPPE,D	TYROS	0 0 0	0000?	VITAVER,L	SEARS	0 2 1	0000?
ROBERTS,J	WHEAT	0 1 0	1328#	WACHTEL,H	COLUM	0 0 0	2230
ROJAS,R	CTA	0 1 0	0000?	WALLACH,C	MTRLA	3 1 0	2094
ROJO,V	CCDOC	0 4 1	1395#	WALLIN,R	WHEAT	0 0 0	1746
ROMENESKO,G	PAWNS	0 1 0	0000?	WALSH,W	ROOKS	0 2 0	1484C
RONIN,D	KNGHT	2 0 2	0000?	WARD,C	DRGNS	2 2 1	1540D
ROSENBERG,B	MDCON	4 1 1	1395*	WARD,J	CTA	0 0 1	0000?
ROSLEY,D	ROYLS	1 1 2	1758	WARE,K	MERC	0 0 0	0000?
ROYTBURG,E	CASE	1 0 0	0000?	WARREN,J	CHRGR	4 2 1	2109T
RUBIN,A	CRT	0 1 0	0000?	WEBER,J	WHEAT	0 0 0	0000?
RUDDY,J	MERC	0 0 0	1234	WEISS,G	HULL	0 0 0	0000?
RYU,R	UOP	0 0 0	1451	WEISSKOPF,J	HULL	0 0 0	1381*
RZESZUTKO,R	ALUMN	3 0 0	1863	WEITZ,R	EXMPL	1 2 0	1693C
SAHLI,E	UOP	1 0 0	1735	WELTER,P	SEARS	0 0 0	1642#
SAJBEL,P	UOP	1 1 0	1768	WENTLING,C	AMCRP	0 4 0	1605C
SALAMANCA,R	ROYLS	0 0 0	1610	WHITE,H	CASE	6 1 0	1618
SAMELSON,C	MTRLA	2 0 1	1984C	WHITE,T	BKAMI	3 0 0	1355#
SAMOYLOV,A	MTRLA	0 0 0	0000?	WHITED,W	MDCON	0 0 0	1829
SANTIAGO,T	ALUMN	1 2 1	1911	WILLIAMS,A	CTA	0 0 0	0000?
SATTERLEE,D	CASE	3 2 1	1618C	WILLIAMS,T	CASE	4 1 3	2026
SAUNDERS,N	MDCON	0 0 0	0000?	WILSON,A	CTA	0 2 0	1570
SAWDO,E	CASE	0 0 0	1412	WILSON,M	SEARS	1 1 0	1303#
SCHWAB,W	ROOKS	1 0 0	1481	WOLF,D	MTRLA	1 0 0	0000?
SCHWARTZ,M	TYROS	1 2 0	1078	WONG,KK	NORTH	0 0 0	0000?
SEMONES,E	ROOKS	1 3 0	0000?	WONG,P	EXMPL	1 0 0	2212C
SHAFF,R	TYROS	0 1 0	1529C	WOOD,L	AMCRP	2 3 0	0000?
SHEU,G	CHRGR	0 0 0	1333*	WRIGHT,E	CCDOC	0 1 0	0000?
SHEYNIN,S	ROOKS	2 2 2	2019	YOUNG,R	HULL	0 0 0	1406
SIEGEL,R	BKAMI	1 2 1	1459C	ZOELLNER,J	BKAMI	1 2 2	1415C
SITAR,K	CRT	0 0 0	0000?				
SIWEK,M	KEMPR	*2 1 1	2165C				
SKRZYPCZAK,T	MDCON	0 0 0	0000?				
SLAGLE,S	MERC	1 2 1	1650				
SMILEY,R	AMCRP	0 0 0	2005				
SMITH,BR	TYROS	2 1 1	1548				
SOLLANO,E	EXMPL	0 3 1	1936				
SOMBONG,M	BKAMI	1 1 0	1625				
SPIEGEL,L	FERMI	4 0 1	2034C				
STAMM,V	CHRGR	1 3 0	1702D				
STAPLES,M	CTA	0 1 0	0000?				
STEELE,B	CCDOC	0 1 0	0000?				
STEVANOVIC,M	UOP	1 4 0	2203C				
STEVENS,J	COLUM	0 0 0	1340				
STEVENS,N	MDCON	0 0 0	0000?				
STEVENSON,R	UNILV	0 0 0	1363				
STINSON,M	ROYLS	2 0 0	2036				
STOLTZ,B	TYROS	0 3 2	1947				
SUAREZ,E	KNGHT	3 1 0	1630				
SUERTH,F	EXMPL	4 0 1	1634C				
SULLIVAN,C	MERC	0 1 1	1466				
SULLIVAN,J	EXMPL	0 2 0	1980D				
SZONTAGH,T	CRT	0 3 0	0000?				
TAMEZ,I	TYROS	2 1 0	2072				
TAYLOR,M	CTA	2 1 0	0000?				
TEGEL,F	DRGNS	2 1 2	2171T				