

# *The Chicago Chess Player*

The Official Bulletin of the Chicago Industrial Chess League

## **Get Ready for the Play-Off's!**

**A Preview of the Early Qualifiers**



**"Founded 1957"**

### **INSIDE**

- 8** Karpov - Kamsky in Iraq ?!
- 10** Game: Stamm - O'Dell
- 12** The Finishing Touch - Reyes
- 15** The Final Word
- 16** Match Results & Ratings List

**Bulletin Editor**

Tim Williams (CASE)  
 (708)887-3706 (Business)  
 twilliams@casecorp.com (E-Mail)  
 16W472 Honeysuckle Rose #114  
 Hinsdale, IL 60521

**The Officers for the CICL:****President**

Satish Kale (CASE)  
 (708)887-2372 (Business)  
 (708)325-KALE (Home)  
 skale@casecorp.com (E-Mail)  
 CASE Corp  
 7 South 600 County Line Rd  
 Burr Ridge, IL 60521

**Secretary**

Tony Jasaitis (CRT)  
 (708)448-4967 (Home)  
 tony@trdlnk.com (E-mail)  
 P.O. Box 664  
 Bedford Park, Illinois 60499-0644

**Treasurer**

Wes Underwood (Wheaton)  
 (708)752-5127 (Business)  
 (708)462-0393 (Home)  
 wu@david.wheaton.edu (E-Mail)  
 207 South Dorchester Avenue  
 Wheaton, Illinois 60187

**Publicity Director**

Carl Reid (CASE)  
 2289 Grand Drive  
 Northbrook, Illinois 60062-6937

**Trophy Chairman**

Wayne Ellice (PAWNS)  
 (312)838-3215 (Business)  
 (312)838-3243 (Fax)  
 wayne.ellice@crous.sprint.com (E-Mail)  
 Crosfield Catalysts  
 4099 West 71st Street  
 Chicago, Illinois 60629

**Banquet Chairman**

Len Spiegel (Fermi)  
 (708)840-2809 (Business)  
 (708)377-2675 (Home)  
 lenny@fnal.gov (E-Mail)  
 Fermilab MS 219  
 P.O. Box 500  
 Batavia, Illinois 60510

**Ratings Chairman**

Charlie Ward (Lucent Tech Dragons)  
 (708)979-4599 (Business)  
 (708)979-6124 (Fax)  
 (708)325-3885 (Home)  
 c.e.w.ward@att.com (E-Mail)  
 615 South Lincoln  
 Hinsdale, Illinois 60521

**Division Chairmen****Far West**

Irwin Gaines (Fermi)  
 (708)840-4022 (Business)  
 (708)420-1452 (Home)  
 (708)840-2783 (Fax)  
 gaines@fnalv.fnal.gov (E-Mail)  
 Fermilab MS 127  
 P.O. Box 500  
 Batavia, Illinois 60510

**East**

Dan Fraats (Bank of America)  
 (312)247-4343 (Business)  
 (312)581-0923 (Home)  
 5820 West 55 th Street  
 Chicago, Illinois 60638

**Near West**

Howard Klinefelter (CASE)  
 (708)961-0482 (Home)  
 1125 Manchester Court  
 Naperville, Illinois 60563-2110

**North**

Pat Sajbel (UOP)  
 (847)391-2134 (Business)  
 (847)506-9302 (Home)  
 posajbel@uop.com (E-Mail)  
 616 S. Edward  
 Mt. Prospect, IL 60056

## The Early Playoff's Preview

Here are some of the teams that have already qualified for the Championship-Tier Playoff (based on my quick calculations of what is happening in each of the divisions) and some representative games of previous encounters. I've listed only players who have competed this year for each roster.

**MOTOROLA (North Division)**

	Match Percentage	100%	
	Game Percentage	71%	
HASAN,Y	2 0 4	2234	
MELNIKOV,I	2 0 3	2157	
WALLACH,C	4 2 2	2063	
MORRIS,R	7 0 0	2048	
SAMELSON,C	6 0 1	1995C	
CIESLEK,D	1 1 0	1938	
MACKIE,A	5 1 2	1926	
GONCHAROFF,N	5 1 1	1788Q	
AUGSBURGER,L	4 1 3	1739	
LESTER,M	3 1 0	1569	
GRYPARIS,J	0 4 0	1465	
ASSADIAN,K	0 1 1	0000?	
FULLMER,G	0 3 1	0000?	
REDDY,S	1 0 0	0000?	
VALDEZ,C	1 0 0	0000?	
WOLF,D	1 0 1	0000?	

**ALUMNI CENTRAL (East Division)**

	Match Percentage	91%	
	Game Percentage	65%	
CZERNIECKI,A	3 3 5	2087C	
LEONG,D	1 0 0	2005	
SANTIAGO,T	3 2 1	1961	
MCALISTER,K	0 1 0	1955	
RZESZUTKO,R	4 1 0	1848	
FRANEK,M	6 0 1	1785C	
FABIJONAS,R	4 4 0	1779D	
PRATTS,M	1 1 0	1771	
LITVINAS,A	8 0 0	1726C	
DAVIDSON,M	3 1 1	1589	

**CASE (Near West Division)**

	Match Percentage	81%	
	Game Percentage	67%	
WILLIAMS,T	7 1 3	2073	
KALE,S	4 3 1	1849	
CURRAN,T	2 2 0	1698	
SATTERLEE,D	4 2 2	1617C	
WHITE,H	7 2 0	1604	
KLINEFELTER,H	5 1 1	1537C	
SAWDO,E	1 1 0	1412	
REID,C	2 3 0	1394	
KANAS,W	5 2 1	1321C	
NOBLE,S	2 5 0	1286#	
JACKLIN,E	1 3 1	1261	
HALLMAN,W	1 0 0	1219*	
MOTYCKA,R	3 3 0	1156	
DIAZ,L	0 1 0	0000?	
OLSON,C	2 6 0	0000?	
ROYTBURG,E	3 0 0	0000?	
VAJSBERG,O	1 0 0	0000?	

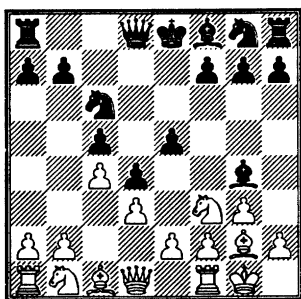
**LUCENT TECH. ROYALS (Far West Division)**

	Match Percentage	83%	
	Game Percentage	57%	
BUCHNER,R	2 1 3	2136	
GUIO,J	4 0 2	2025	
STINSON,M	3 2 2	1998	
PEHAS,A	1 0 3	1975	
DOBROVOLNY,C	4 3 2	1855	
OGASAWARA,L	2 1 2	1833C	
BLACKMON,E	4 0 1	1798C	
ROSLEY,D	2 1 2	1758	
HAHNE,D	0 0 1	1578	
ANDERSON,CJ	1 2 2	1443	
CZOSKE,M	0 1 0	0000?	

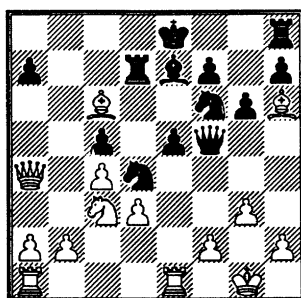
One interesting thing I notice is that CASE and Alumni Central have both made some serious improvement since last year. Here they both have locked up spots early compared to playing each other in the first round of the Second Tier Playoffs last season.

**Buchner R - Melnikov I**  
CICL Playoffs, 1994

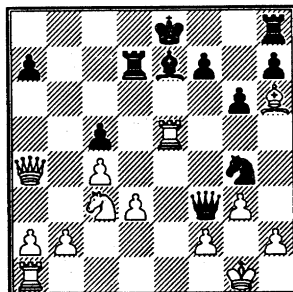
1.  $\text{c}3$   $\text{d}5$  2.  $\text{g}3$   $\text{c}5$  3.  $\text{g}2$   $\text{c}6$  4.  $\text{0-0}$   $\text{e}5$  5.  $\text{c}4$   $\text{d}4$  6.  $\text{d}3$   $\text{g}4$



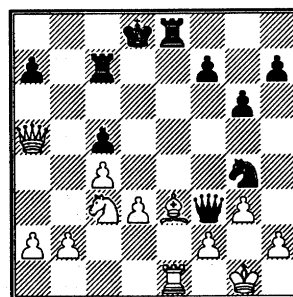
7.  $\text{e}4$   $\text{dxe}3$  8.  $\text{gxe}3$   $\text{g}6$  9.  $\text{h}1$   $\text{e}7$  10.  $\text{c}3$   $\text{f}6$  11.  $\text{h}6$   $\text{d}7$  12.  $\text{a}4$   $\text{xf}3$  13.  $\text{xf}3$   $\text{d}4$  14.  $\text{d}1$  Forced. The knight on  $\text{d}4$  threatens forks on  $\text{f}3$  and  $\text{c}2$ . 14...  $\text{f}5$  15.  $\text{xb}7$   $\text{d}8$  16.  $\text{a}4+$   $\text{d}7$  17.  $\text{c}6$



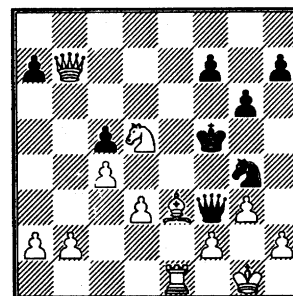
17...  $\text{f}3+$  18.  $\text{xf}3$   $\text{xf}3$  19.  $\text{xe}5$   $\text{g}4$



20.  $\text{xe}7+$ !  $\text{xe}7$  21.  $\text{e}1+$   $\text{d}8$  22.  $\text{e}3$   $\text{e}8$  23.  $\text{a}5+$   $\text{c}7$



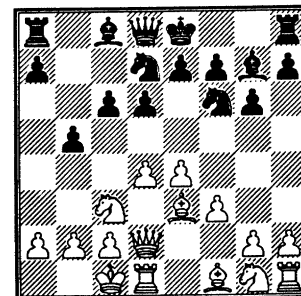
24.  $\text{d}5$   $\text{e}7$  25.  $\text{xe}7$   $\text{d}7$  26.  $\text{d}5$   $\text{b}7$  27.  $\text{a}4+$   $\text{e}6$  28.  $\text{c}6+$   $\text{f}5$  29.  $\text{xb}7$



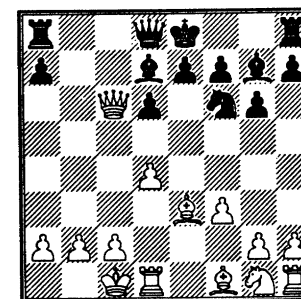
29...  $\text{e}5$   
[29 ...  $\text{e}5$  30.  $\text{c}8+$   $\text{d}7$  31.  $\text{xd}7+$   $\text{e}5$  32.  $\text{xc}5+$   $\text{e}4$  33.  $\text{xc}4\#$ ] 1:0

**Williams T - Czerniecki A**  
CICL Playoffs, 2nd Tier, 1995

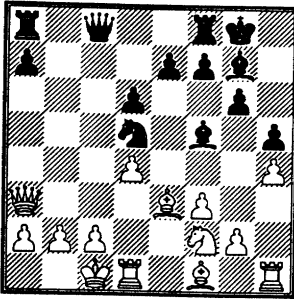
1.  $\text{c}3$   $\text{g}6$  2.  $\text{e}4$   $\text{g}7$  3.  $\text{d}4$   $\text{d}6$  4.  $\text{e}3$   $\text{f}6$  5.  $\text{f}3$   $\text{bd}7$  6.  $\text{d}2$   $\text{c}6$  7.  $\text{0-0}$   $\text{b}5$  This seems a little premature.



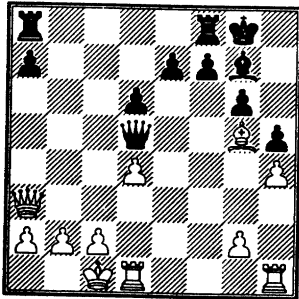
8.  $\text{e}5$ ! White decides to try and take advantage of the black king still being in the center by opening it up. 8...  $\text{b}4$  9.  $\text{exf}6$   $\text{bxc}3$  10.  $\text{xc}3$   $\text{xf}6$  11.  $\text{xc}6+$   $\text{d}7$



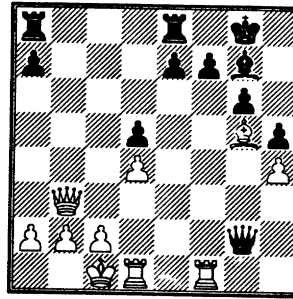
12.  $\text{a}6$   
[12.  $\text{b}7!$ ?]  
12...  $\text{d}5$  13.  $\text{a}3$   $\text{0-0}$  14.  $\text{h}4$   $\text{h}5$  15.  $\text{h}3$   $\text{f}5$  16.  $\text{f}2$   $\text{c}8$



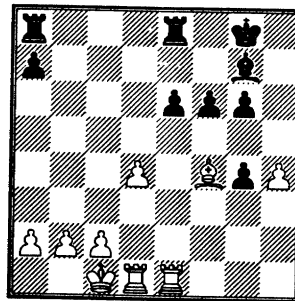
17. ♖e4 White gave black time to finish developing by accepting the c6 pawn but if he can manage to simplify the position, white should have a won endgame. 17... ♗e6 18. ♙c4 ♙xe4 19. ♜f4 ♗xe4 20. ♙xd5 ♗xd5 21. ♙g5



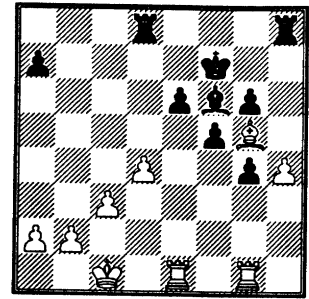
21... ♜fe8 A difficult position to evaluate. Black's position is solid but his queen is exposed. White's pieces are more active, but where to go? 22. ♗b3!? White offers the pawn sac in order to get at the black queen. Of course, declining is not appetizing to black. 22... ♗xg2 23. ♜f1 d5?!



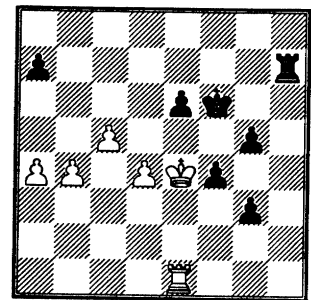
Black has blocked off the diagonal from his own queen. 24. ♜g1 ♗e4 25. ♜ge1 ♗g4 26. ♗xd5 e6 27. ♗e4 f6 28. ♗xg4 hxg4 29. ♙f4



29... ♜ad8 The position is still complicated but it looks as if black has got his pawn majority moving. 30. ♜g1 f5 31. c3 ♗f7 32. ♜de1 ♙f6 33. ♙g5 ♜h8



34. ♙d2? 34. ♜xg4!! with 34... fxg4 35. ♜f1 ♜de8 36. ♙xf6 ♜hg8 37. ♙e5+ ♙e7 and the g-pawn falls, or 34... ♙xg5+ 35. ♜xg5 ♜xh4 36. ♜dg1 with ♜lg2, ♙c2, etc. and white has all the winning chances. 34... ♜h5 35. ♙xf6 White has gotten himself into an untenable position. 35... ♙xf6 36. ♜h1 ♜dh8 37. c4 ♜xh4 38. ♜xh4 ♜xh4 39. c5 g3 40. ♙d3 ♜h7 41. b4 f4 42. ♙e4 g5 43. a4



43... ♜h2 Black's position is won. 44. c6 ♙e7 45. ♙f3 ♙d6 0:1

Next Issue - The Remaining Four Slots !

Amsterdam NED (NED), III 1996. (After Two Rounds)

cat. XVIII (2679)

				1	2	3	4	5	6	7	8	9	0	Score	Perf.
1	Topalov, Veselin	g	BUL	2700	*	.	1	.	.	.	.	1	.	2.0	...
2	Kramnik, Vladimir	g	RUS	2775	.	*	.	.	1	.	=	.	.	1.5	2818
3	Kasparov, Gary	g	RUS	2775	0	.	*	.	.	.	.	.	1	1.0	2635
4	Lautier, Joel	g	FRA	2630	.	.	.	*	0	1	.	.	.	1.0	2647
5	Seirawan, Yasser	g	USA	2630	.	0	.	1	*	.	.	.	.	1.0	2702
6	Short, Nigel D	g	ENG	2665	.	.	.	0	.	*	.	.	1	1.0	2665
7	Timman, Jan H	g	NED	2620	.	=	.	.	.	.	*	.	=	1.0	2672
8	Anand, Viswanathan	g	IND	2725	0	.	.	.	.	.	.	*	=	0.5	2507
9	Gelfand, Boris	g	BLR	2700	.	.	.	.	.	0	.	=	*	0.5	2502
10	Piket, Jeroen	g	NED	2570	.	.	0	.	.	.	=	.	*	0.5	2504

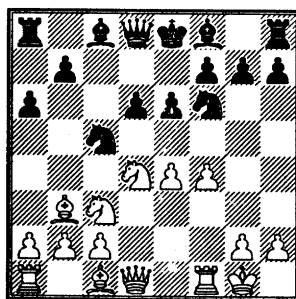
### Kasparov crushed by Topalov at the start of VSB-Match Amsterdam.

A lot of people were very curious about Kasparov's play after his match against IBM's supercomputer DEEP-BLUE. During that match he was complaining about it being unfair that a computer never has to get up to drink something or to go to the toilet. Playing a human today didn't equalize that, since he had to play Topalov; a player with tremendous concentration, who also never gets up during a game, but just sits there, staring at the board with his fingers stuck in his ears. Evidently it helped. Within a few minutes the board was on flames. Kasparov chose a rarely played variation of the Najdorf-Sicilian (9....- Nc5xe4), which is known as being risky and not very sound. A strange choice since he had been in trouble before using this line, against a couple of Spanish players in a television match a year ago. Topalov chose a very active and tactical continuation, which proved to be very dangerous for black. Especially his king's knight played a remarkable role, going from g1 to f3 to d4 to c6 to d8 to f7 to g5 to finally capture black's queen on f7. During all this it was hanging a couple of times without being taken. It looked like Kasparov had overlooked the move 17. Nc6-d8. He started shaking his head in the way we're used to whenever he has made a mistake. Only five moves later he gave his queen to parry all the white threats. From that point on Kasparov tried to stay alive as long as possible, but with a very steady and secure technique Topalov brought the game to an inescapable result : 1 - 0 !

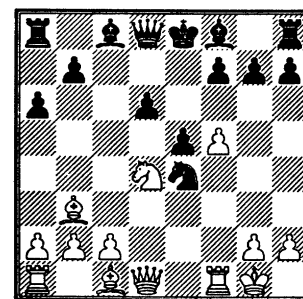
B86/6

Topalov V - Kasparov G  
Amsterdam NED, It., 1996

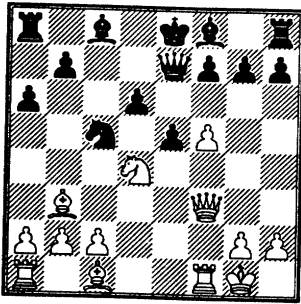
1. e4 c5 2. ♘f3 d6 3. d4 exd4 4.  
♗xd4 ♘f6 5. ♗c3 a6 6. ♖c4 e6  
7. ♖b3 ♗bd7 8. f4 ♗c5 9. 0-0



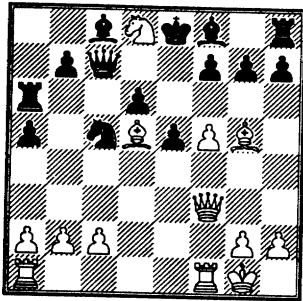
9... ♗cxe4 10. ♗xe4 ♗xe4 11. f5  
e5



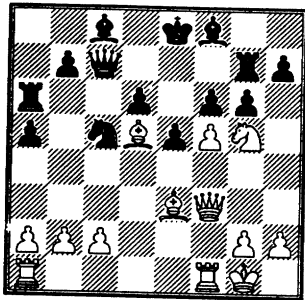
12. ♖h5 ♖e7 13. ♖f3 ♗c5



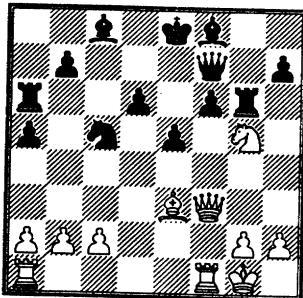
14. ♖c6 ♜c7 15. ♙d5 a5 16. ♙g5 ♞a6 17. ♘d8



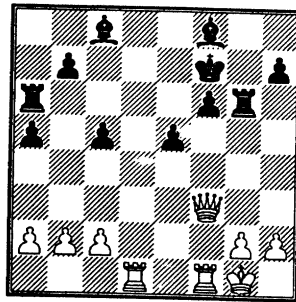
17... ♜f6 18. ♘f7 ♞g8 19. ♙e3 ♜g6 20. ♘g5 ♞g7



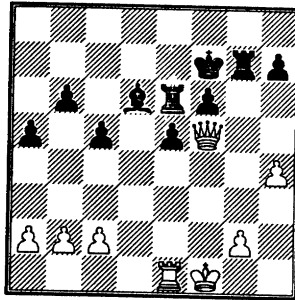
21. ♜fxg6 ♞xg6 22. ♙f7+ ♜xf7



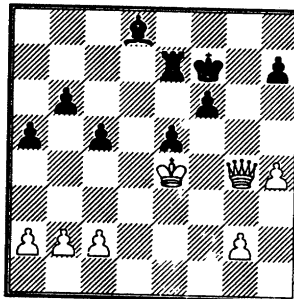
23. ♘xf7 ♜xf7 24. ♙xc5 dxc5 25. ♞ad1



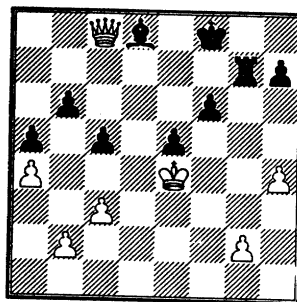
25... ♙e7 26. ♞d5 ♙g4 27. ♜e4 ♜g7 28. ♞fd1 ♙xd1 29. ♞xd1 ♞e6 30. ♜f5 ♜f7 31. ♞e1 b6 32. h4 ♞g7 33. ♜f1 ♙d6



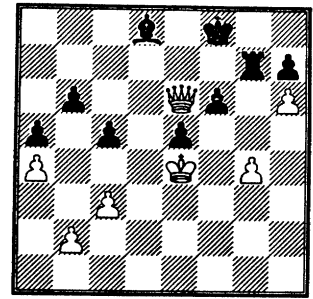
34. ♜f2 ♙c7 35. ♜f3 ♜e7 36. ♞e4 ♜f7 37. ♞g4 ♞e7 38. ♜e4 ♞xg4+ 39. ♜xg4 ♙d8



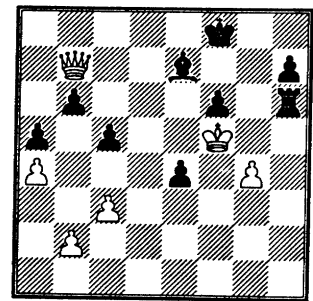
40. a4 ♜f8 41. c3 ♞g7 42. ♜c8



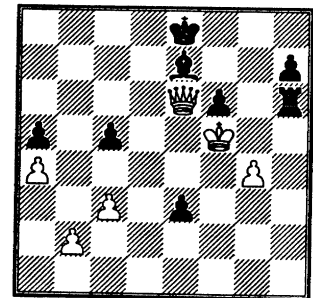
42... ♜e8 43. ♜e6+ ♜f8 44. ♜g4 ♞f7 45. h5 ♞g7 46. h6



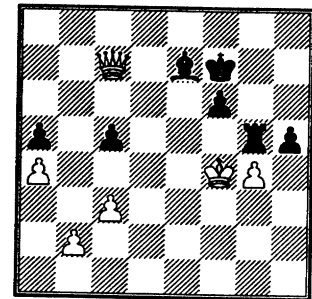
46... ♞g6 47. ♜d5 ♙e7 48. ♜f5 ♞xh6 49. ♜b7 e4



50. ♜b8+ ♜f7 51. ♜xb6 e3 52. ♜e6+ ♜e8

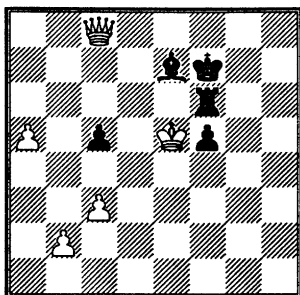


53. ♜xe3 ♞g6 54. ♜e4 ♞g5+ 55. ♜f4 ♜d7 56. ♜b7+ ♜e6 57. ♜c8+ ♜f7 58. ♜c7 h5



59. ♜gxh5 ♞xh5 60. ♜xa5 ♙d6+ 61. ♜e4 ♜f5+ 62. ♜d5 ♙e7 63.

♔c7 ♖h6 64. a5 ♜d6+ 65. ♚e5  
 ♜f6 66. ♚c8



1:0

## PCA Not Dead Yet

The PCA has announced three of the four venues for their proposed cycle of Rapidplay events this year. This in spite of the loss of INTEL as their sponsor.

Moscow - April 15-20

Geneva - August 25-30

Paris in November.

There will be a fourth event - venue and date to be decided between the Geneva and Paris Tournaments.

## PRESS CONFERENCE ON THE KARPOV-KAMSKY MATCH

by Christophe Bouton (Internet)

### THE FACTS

FIDE president Kirsan Ilyumzhinov announced today the site of the Karpov-Kamsky World championship match: it will be Baghdad, Iraq.

The match should start early June in a Congress Palace, near the five-star hotel Rachid. The prize fund will be 2 million dollars. 20 games will be played and the match will last no more than 40 days. No detail was given on the exact schedule and hours of play/game, adjournments etc.

Baghdad was chosen " because it was the best offer." Moscow and Baku were the two other contenders and M. Ilyumzhinov did not want to reveal the amount of these offers. FIDE and the players decided to give 500,000 dollars (from the 2 millions) prize fund for medicaments to the Iraqi

children. This should be made through the UNICEF, a UNESCO organization for children.

This press conference lasted 90 min. Karpov, Rustam Kamsky (Gata was said to be ill), Bachar Kouatly, FIDE President and his translator were answering the questions to the 35-40 reporters. A CNN representative plus various journalists of Russian-written press were also attending.

Karpov said he was not used to play in the Arabic World and that he would have preferred to play in Moscow but added that his job was to play, not to organize. He recalled this offer had " nothing spectacular compared to 2 of my matches with Kasparov were the prize funds were 3 million dollars".

FIDE President said, "I talked to Saddam Hussein and asked him if he was ready to make his first



Knight move ". Facing the many questions, Karpov declared that the situation of this match " was not totally clear to him ": " The problem with the State Department (regarding the right of American citizen Kamsky to play in a country under US embargo) has to be solved. Then, the two parties and their representatives will have to make a decision. "

After the press conference, Rustam Kamsky gave to the press copies of a letter from USCF representative Dennis J. Barry asking FIDE president " to do everything in your power to find another venue ". He also distributed to the press a two page fax from the Office of Foreign Assets Control regarding the Iraqi Sanctions Regulations for US citizens.

#### WHAT WAS SAID AFTER THE PRESS CONFERENCE

Rustam Kamsky said he was ready to play in any place: all the Kamsky's wanted is to play; but he did not believe that the US State Department would let them play in Iraq though he declared himself a Muslim during the press conference.

#### ANALYSIS

Karpov seemed reluctant too, though he said that the FIDE President " took the best decision ". But in his typical back and forth style, he said chess could help politics and gave an example of his own dating from 1977 when Zbigniew Zbrazinski played a friendly game with a Russian Foreign Minister (I do not remember the name).

Journalists were stunned and could not believe the match could take place in Baghdad. Maybe it is just a " coup " to get articles worldwide about chess... and to come back quietly in a more decent place like Moscow. The FIDE President said that nevertheless, it would be a critical period because of Russian elections in Moscow in June.

#### LATE NEWS

Kamsky has been refused permission by the US State Department to play in Baghdad. Rumor has it that the fine for playing would be \$1 million.

#### REACTIONS FROM AROUND THE WORLD

The Executive Committee of the Russian Chess Federation denounces the decision made by FIDE President Kirsan Ilyumzhinov and FIDE Presidential Board to organize the match between A. Karpov and G. Kamsky in Baghdad (Iraq).

This decision in effect supports the policy of international terrorism carried out by Saddam Hussein's regime. FIDE's decision is made especially cynical by the fact that it was taken only a few days after Saddam Hussein's relatives, including children, were killed in Baghdad.

The decision to organize the match was taken in spite of the clearly expressed opinion of the entire civilized world and the United Nations sanctions.

The Baghdad regime has committed numerous violations of human rights. Killing people, shelling Israeli cities, carrying out an aggression against a peaceful neighboring state - these are but a few of the acts committed by the dictator from whose hands FIDE intends to receive money for the match.

The Russian Chess Federation finds this completely immoral, no matter what the size of the prize fund is or what dress Saddam Hussein wears at the opening ceremony.

The Executive Committee of the Russian Chess Federation has instructed its President, Andrei Makarov, to bring this opinion to the attention of FIDE Presidential Board and the mass media.

The Executive Committee has instructed its President to use all possible means, including his powers as FIDE Vice President, in order to achieve an annulment of this decision, which disgraces those who take part in its implementation and FIDE on the whole.

The Executive Committee of the Russian Chess Federation is prepared, if necessary, to submit this issue to the Congress of the Russian Chess Federation for taking further measures.

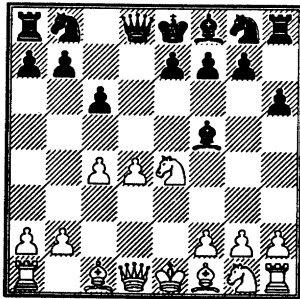
A. Makarov  
President of the Russian Chess Federation  
Vice-President of FIDE

GAMES SECTION

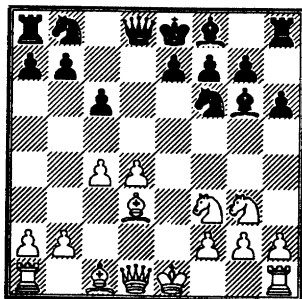
D10/4

Stamm V - O'Dell D  
CICL Chargers - Pawns, 1996

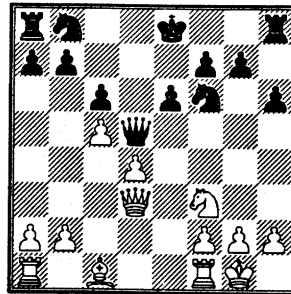
1. d4 d5 2. c4 c6 3. ♖c3 h6?! 3... ♗f6 or 3... e6 is more normal. 4. e4 dxe4 5. ♗xe4 ♙f5!? Black has created a situation comparable to a Classical Caro-Kann. Here the move h6 may be useful.



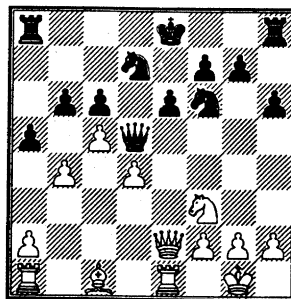
6. ♗g3 ♙g6 7. ♗f3 ♗f6 8. ♙d3



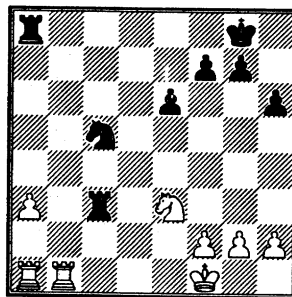
This offers a trade that has benefits for both sides!? White gains develop and black gets simplification. 8... ♙xd3 9. ♖xd3 e6 10. 0-0 ♙d6 11. ♗e4 ♖e7?! [11 ... ♗xe4! 12. ♖xe4 ♗d7 13. ♙e1 ♗f6 14. ♖d3 0-0] 12. ♗xd6+ ♖xd6 13. c5?! This gives up a lot of white's advantage. Now he has a backward d-pawn. 13... ♖d5!



14. ♙e1 ♗bd7 15. ♖e2 b6 16. b4 a5!

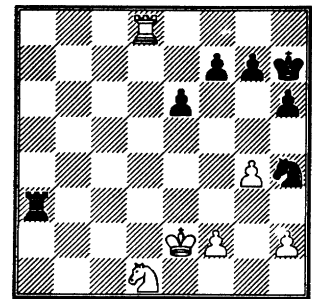


Exactly! Black attacks the base of the white pawn chain. 17. bxa5 ♙xa5 18. cxb6 ♗xb6 19. ♙f4 Maybe 19. ♙e3 awaiting the central push is better(?). 19... ♗bd7 20. ♙e1 0-0 21. a3 ♗e4 22. ♖c2 c5 23. ♙d2 ♗xd2 24. ♖xd2 cxd4 25. ♖xd4 ♙fa8 26. ♖xd5 ♙xd5 27. ♗f1 ♗c5 28. ♗e1 ♙d4 29. ♗c2 ♙c4 30. ♗e3 ♙c3

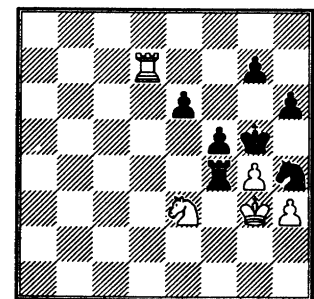


31. ♙c1 White has a real problem with his a-pawn. 31... ♙xc1+ [31 ... ♙axa3! 32. ♙xa3 ♙xc1+ 33. ♗e2 is a little trickier.] 32. ♙xc1

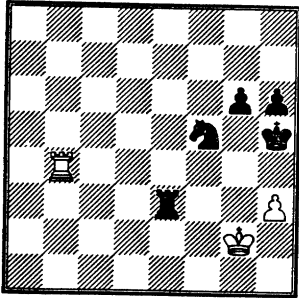
♗b3 33. ♙c3 ♙xa3 34. ♗e1 ♙a1+ 35. ♗d1 ♗d4 36. ♙c8+ ♗h7 37. ♙d8 ♗f5 38. g4? ♗h4 White has seriously compromised his pawn structure. Now it will be tough to hold a draw. 39. ♗e2 ♙a3



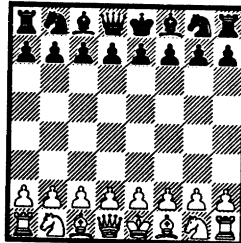
40. ♙d3?! [40. ♙d7 ♗g6 41. ♗e3 ♙a2+ 42. ♗f1] 40... ♙a5 41. ♗e3 ♗g6 42. f4? [42. h3 ♙a2+ 43. ♙d2 ♙xd2+ 44. ♗xd2] 42... ♙f5?! [42 ... ♙a4 43. h3 ♙xf4 44. ♙d7 ♗g5] 43. h3! ♙a4 44. ♗f2? [44. gxf5+ ♗xf5 45. ♗f3 ♗h5 46. ♗g4 Just about the last chance to try and save the position.] 44... ♙xf4+ 45. ♗g3 ♗g5 46. ♙d7



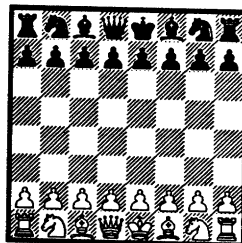
46... g6 [46 ... ♙f3+ 47. ♗h2 ♙xe3 48. ♙xg7+ ♗f6 This is more efficient but maybe it doesn't matter.] 47. gxf5 ♙f3+ 48. ♗h2 ♙xe3 49. fxg6 ♙xe6 50. ♙d5+ ♗f4 51. ♙d4+ ♗g5 52. ♙d5+ ♗f5 53. ♗g2 ♗h4 54. ♙b5 ♙e3 [54 ... ♙e2!+ 55. ♗f1 ♗g3+ 56. ♗g1 ♗xh3 One last tactical possibility.] 55. ♙b4+ ♗h5



0:1 White has had enough.



**Submit those games and articles!**  
**Your contributions are the heart of this bulletin.**

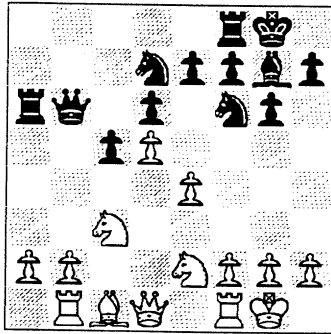


# The Finishing Touch

by Ruben Reyes

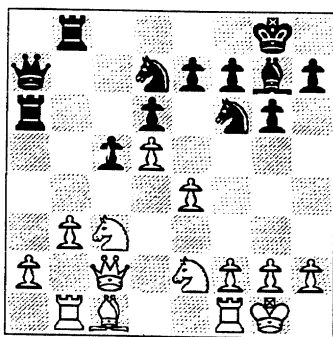
Sears - Northrop match was a tough one for the Hoffman Estate chessers. Not only were Sears without three of their regulars from last year they had only five against a much improved Northrop team.

**K. Jakstas (2187) Northrop vs. E. Latimer (2029) on board 2** looked liked this after 12.Rb1 Qb6



White's Nge2 appears to be a nice theoretical novelty. The two Knights in tandem adds muscle to White's stability on the Queen's wing.

13. b3 Rb8 14. Qc2 Qa7

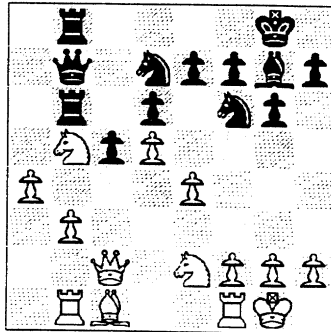


15. a4

An alternative plan is to conduct preparations for the maneuver (N at g3, R at d1, K at h1, p at f4) e5, dxe5; f5 intending to close the window on Black's B at g7 with Black's own pawn at e5 and proceed with a K-side attack.

15...Rab6 16. Nb5 Qb7

See diagram top of next column



The N at b5 has effectively blocked off Black's pressure on the b-file. Now White can prepare a Kingside attack without harassment in the other wing.

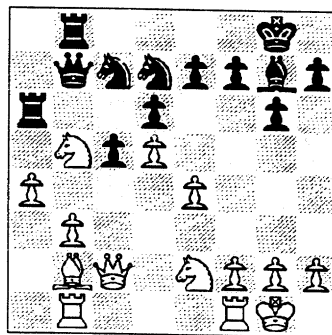
17. Nec3

This, perhaps, may be the whole point of White's theoretical novelty of Nge2: overprotection of the N outpost at b5 which makes White solid as a rock on the Queen's wing.

17...Ne8 18. Bb2

Exploitation of the face-off on the long diagonal between the dark-squared B takes too much of White's time.

18...Ra6 19. Ne2 Nc7

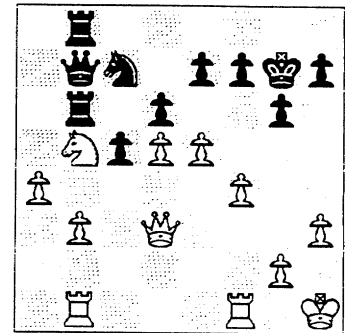


Black's now ahead in the race to see who penetrates faster. Once White's N at b5 is gone, Black's got a clear shot at White's b-pawn and gets in earlier.

20. Bxg7 Kxg7

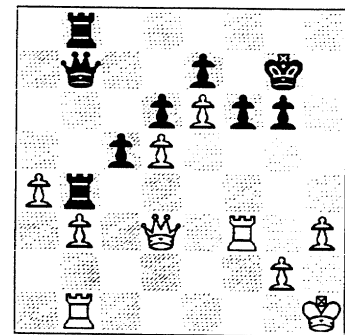
White has used up two moves to effect this exchange (17.Nec3 and 19.Ne2). This two-move delay probably may have allowed Black time to give succor to the Black King.

21. Nec3 Ne5 22. h3 Nd7 23. Kh1 Nf6 24. f4 Nxb5 25. Nxb5 Ne8 26. Qd3 Rb6 27. e5 Nc7



The race is finally on: who gets to his objective first? White or Black.

28. Nxc7 Qxc7 29. e6 f6 30. f5 Qb7 31. fxg6 hxg6 32. Rf3 Rb4!



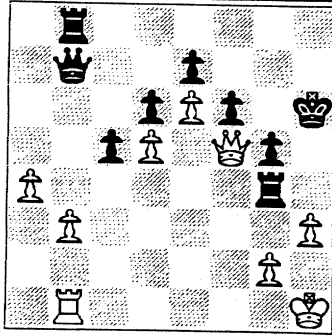
With all of Black's pieces on the Queen's wing, the R at b5 is Black's only defender that can fend off White's attack on the Black King who's all alone in the King's wing.

33. Rg3 g5 34. Qf5 Kh6

White threatened 35.Rxg5+! fxg5 36. Qxg5+ followed by 37.Rf1 when Black's K who's all alone with nary a defender is easy picking for White's Q+R.

35. Rg4 Rxg4

See diagram top of next page.



What else is there.

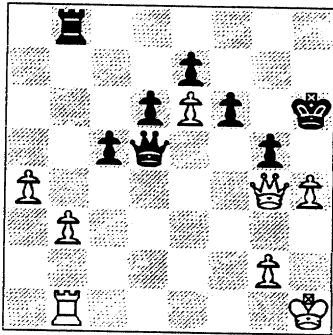
36. Qxg4

36.hxg4 Kg7, threatening 37...Ra8+ isn't pretty for White.

36... Qxd5

Black has achieved material equality and still retains pressure on the b-pawn.

37. h4



37...gxh4

Or 37...Rb5 37.hxg5+ fxg5 followed by 39...Rh5+ when White's K is under strong siege.

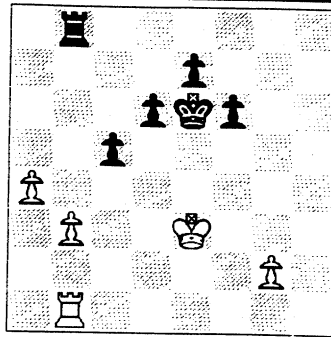
The text simplifies into an advantageous ending for Black

38. Qxh4+ Qh5 39. Qxh5+ Kxh5

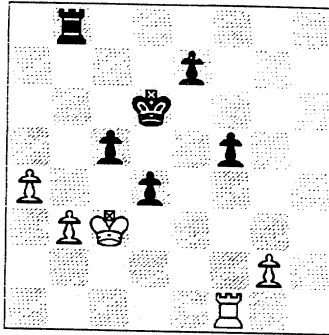
With White's R pinned to the defense of his b-pawn, White's pawn at e6 is defenseless. Defending it with the Rook may cost White the loss of two pawns instead of only one.

40. Kg1 Kg5 41. Kf2 Kf5 42. Ke3 Kxe6

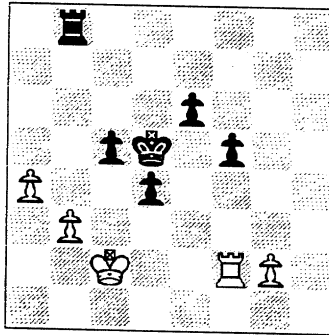
See diagram top of next column



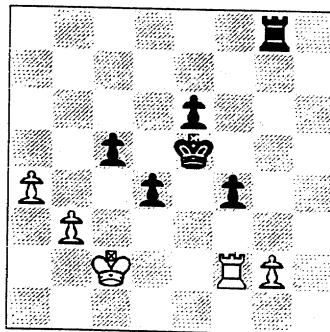
43. Kd3 d5 44. Re1+ Kd6 45. Kc3 f5 46. Rf1 d4+



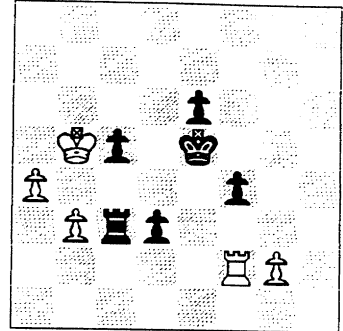
47. Kc2 e6 48. Rf2 Kd5



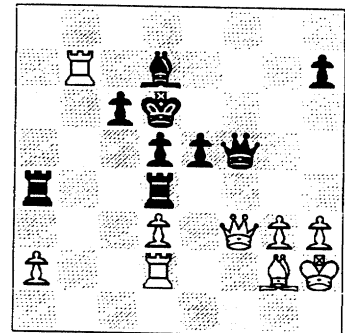
49. Rf4 Ke5 50. Rf1 Rg8 51. Rf2 f4



52. Kd3 Rg3+ 53. Kc4 Rc3+ 54. Kb5 d3 **White Resigns**

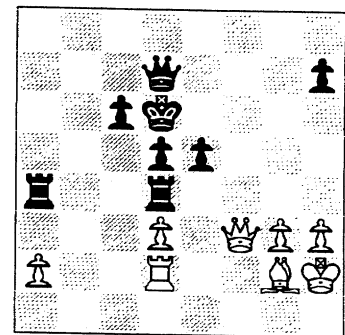


On board three, the game **T. Miller (1802) Sears - P. Diaz (2070) Northrop** arrived at the following position after 36...Qf5:



37. Rxd7+ Qxd7

Forced. 37...Kxd7 38.Qxf5 is unthinkable.



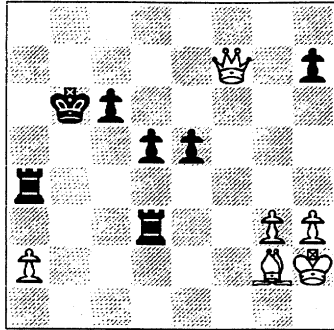
38. Qf8+ Kc7 39. Rf2 Rxd3!

A gutsy call by Black.

Black's willing to give up Queen for Rook, calculating to snag White's B at

g2 and come up with two R's for a Q not to mention having three formidable passed center pawns.

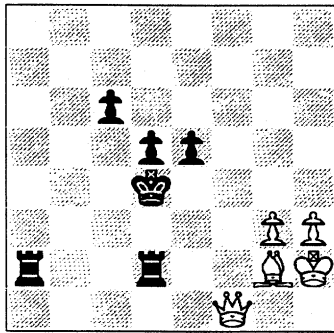
40. Rf7 Qxf7 41. Qxf7+ Kb6



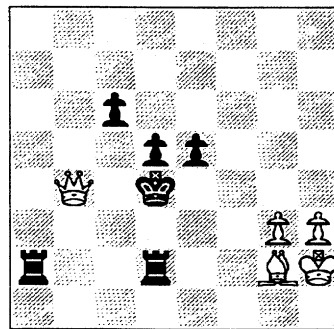
42. Qxh7 Rd2 43. Qg8

Every move counts now because once Black has picked up the B at g2, White would be hard pressed to stop Black's center passed pawns..

43...Raxa2 44. Qb8+ Kc5 45. Qf8+ Kc4 46. Qf1+ Kd4



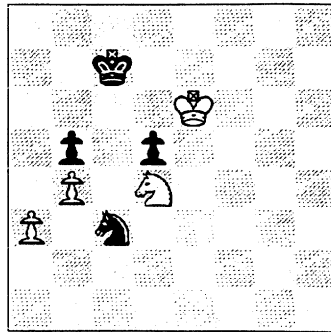
47. Qg1+ Kc4 48. Qf1+ .Kc5  
49. Qf8+ Kc4 50. Qf1+ Kc5  
51. Qf8+ Kd4 52. Qb4+  
**DRAW**



Nice game even if it ended up a draw.

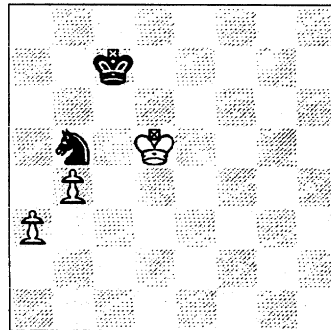
**Jeffrey Florey (Unrated) Sears vs E. Alfonso (Unrated) Northrop** was a see-saw battle until after:

51. Nd4 d5 (see diagram below)

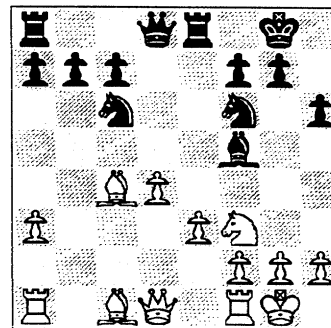


Here White took matters into his own hands to force an end to hostilities with:

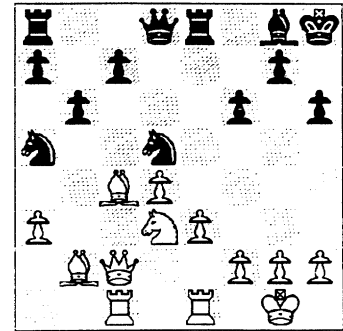
52. Nxb5+! 52...Nxb5 53. Kxd5 **Draw**



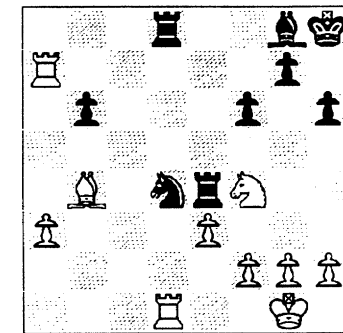
**P. Golumovski (2119) Northrop**, was in good shape with the Black pieces vs. **R. Reyes (2360) Sears** after: 11...dxc4 12. Bxc4 Bf5



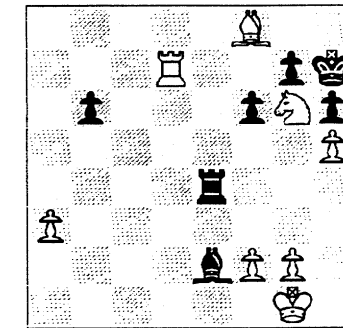
Play continued: 13. Bb2 Nd5  
14. Rc1 Be4 15. Nd2 Bg6 16.  
Nb3 Nce7 17. Nc5 b6 18.  
Nd3 f6 19. Nf4 Bf7 20. Qb3  
Kh8 21. Rfe1 Bg8 22. Nd3  
Nc6 23. Qc2 Na5



24. Bxd5 Qxd5 25. Nf4 Qe4  
26. Qxe4 Rxe4 27. Rxc7 Nc4  
28. Bc1 Rae8 29. Rd1 Rd8  
30. Rxa7 Na5 31. Bd2 Nb3  
32. Bb4 Nxd4



33. Rxd4 Rxd4 34. Ng6+  
Kh7 35. Nf8+ Kh8 36. exd4  
Rxd4 37. h4 Bc4 38. Rd7 Re4  
39. h5 Be2 40. Ng6+ Kh7 41.  
Bf8 **Black Resigns**



**THE FINAL WORD**

The season is beginning to wind down and the play-offs are approaching. By my calculations four of the eight slots for the Championship Tier are filled. Of course there may be results that I haven't received yet so if I didn't list your team and you know you're in then look for your name next issue and you should be there then. Some of the divisions are having some real battles for the second spot and it's already obvious that a couple of perennial qualifiers are being pushed out by some new (?) upstarts. But that's good, it keeps things stirred up and competitive. Midcon has graciously offered their site for the play-offs again this year and they deserve a real show of appreciation. Their team is being decimated by company re-organizing and they are expecting to not have a team at all next year. Combine this with being assured of not making the Championship Tier and you can get an idea of what a great group of guys they really are to offer their site. I'll really be sad to see them go.

**CICL Banquet** form is attached be sure to get yours in early and help make this a great event. Well, actually, it will be a great event whether you're there or not, but you certainly don't want to miss out!

Last year's **Play-off Book** has been completed I am told. Hopefully you'll find it arriving with your bulletin (the one you are currently reading).

**Game Awards and game submissions** are still a big concern from my end. The Spring Business Meeting will address this issue and maybe something will come out of it. I truly respect the history and heritage that our founding members have established but the league has got to begin making some changes in order to survive. Not necessarily anything drastic but a few things. I see most of the players in our league fit into one of two categories: old-timers and new blood. But by the way these two categories are grouped, the ratio of the first to the last is becoming increasingly smaller. That's life and things change. We don't live in a vacuum and neither does the league. But after nearly 30 years are we ready to let the CICL begin to breakdown. We should be looking for people with the desire to push the league forward before we lose the benefit of our longer members experience.

Look around the country and see where chess is heading. I looked through some older issues of Chess Life I have, in the late '60's and early '70's there were a number of chess leagues similar to our own. They all died out over time. The few leagues I hear about now are quite different from ours, and most of them don't last long. But there is something to be learned I'm sure. We need to take advantage of the size and scope of our league, it's long-standing tradition, the under-lying sportsmanship, and use these to keep it going while making sure we don't join all the other leagues in old piles of chess magazines in the bottom of someone's closet. We need to establish a direction and a plan, and start heading in that direction. Let's not wait until it's too late.

I really like the CICL a lot. It gives me a warm, fuzzy feeling and it's a great outlet for chess-related creativity. Let's make sure that it keeps on being there for us. And that means we have to be there for it.

Tim Williams, Editor

## NEAR WEST DIVISION

TEAM NAME	W L D	GAME POINTS	MATCH POINTS	PCT
*CASE	6 1 1	32.0	6.5	0.813
ARGONNE KNIGHTS	6 3 0	33.5	6.0	0.667
LUCENT TECH. CHARGERS	4 3 1	22.5	4.5	0.563
MIDCON CORP	4 5 0	28.5	4.0	0.444
PAWNS	0 8 0	8.5	0.0	0.000

## FAR WEST DIVISION

TEAM NAME	W L D	GAME POINTS	MATCH POINTS	PCT
*LUCENT TECH. ROYALS	6 0 3	31.0	7.5	0.833
ARGONNE ROOKS	6 2 1	34.0	6.5	0.722
FERMILAB	4 2 3	30.5	5.5	0.611
LUCENT TECH. DRAGONS	3 2 3	28.0	4.5	0.563
LUCENT TECH. TYROS	1 6 0	18.5	1.0	0.143
WHEATON COLLEGE	0 8 0	6.0	0.0	0.000

## NORTH DIVISION

TEAM NAME	W L D	GAME POINTS	MATCH POINTS	PCT
*MOTOROLA	9 0 0	38.5	9.0	1.000
UOP PROCESS DIV.	4 3 0	20.5	4.0	0.571
NORTHROP CORP.	2 4 3	22.5	3.5	0.389
EXEMPLARS	2 4 2	21.5	3.0	0.375
SEARS	2 5 1	21.5	2.5	0.313
KEMPER INSURANCE	2 5 0	16.5	2.0	0.286

## EAST DIVISION

TEAM NAME	W L D	GAME POINTS	MATCH POINTS	PCT
*ALUMNI CENTRAL	9 0 2	43.0	10.0	0.909
BANK AMERICA ILLINOIS	5 2 5	39.0	7.5	0.625
CHICAGO POST OFFICE	5 3 1	35.0	5.5	0.611
CHICAGO RES. & TRDG.	3 4 2	25.0	4.0	0.444
AMOCO CORP.	2 4 2	22.5	3.0	0.375
CTA	2 5 0	15.5	2.0	0.286
CHICAGO MERC. EXCH.	0 8 0	7.0	0.0	0.000

\*Denotes clinched Championship Playoff spot.



10-OCT-95 MIDCON CORP  
ROUND 1

1 COOK CO. DEPT. OF CORR. 5

BD	RATINGS	SCORE	RATINGS	SCORE
1 LOGAN,H	1238 0	0	JACKSON,S	0 0 1
2	0 0	0F	JOHNSON,W	1215 0 1F
3 ROSENBERG	1395 0	1	HALL,A	0 0 0
4 HALL,D	0 0	0	ROJO,V	1370 0 1
5 SAUNDERS,N	0 0	0	TRUDY,E	0 0 1
6	0 0	0F	SIPP,R	0 0 1F

02-FEB-96 MOTOROLA  
ROUND 8

4.5 EXEMPLARS 1.5

BD	RATINGS	SCORE	RATINGS	SCORE
1 HASAN,Y	2224 -2	.5	WONG,P	2205 1 .5
2 MELNIKOV,I	2171 -14	.5	FRISKE,I	1921 14 .5
3 WALLACH,C	2063 -6	.5	SOLLANO,E	1970 6 .5
4 MORRIS,R	2040 5	1	BURIAN,D	1665 -3 0
5 SAMELSON,C	1991 3	1	SUERTH,F	1638 -3 0
6 MACKIE,A	1935 4	1	BROTSOS,J	1535 -3 0
7 AUGSBURGER	1723 3	1	EDWARDS,S	1278 -3 0
8 GRYPARIS,J	1478 -7	0	GONCHAROFF	1782 3 1 (MTRLA)

14-FEB-96 ALUMNI CENTRAL  
ROUND 10

3 AMOCO CORP. 3

BD	RATINGS	SCORE	RATINGS	SCORE
1 CZERNIECKI	2106 4	1	ATKINSON,J	1783 -4 0
2 FABIJONAS,R	1809 7	1	WENTLING,C	1592 -10 0
3 FRANEK,M	1776 0	1	VEREZHENSKY	0 0 0
4 DAVIDSON,M	1623 -34	0	WOOD,L	1429 34 1
5	0 0	0F	PORTER,D	0 0 1F
6	0 0	0F	CORBIN,Z	1311 0 1F

15-FEB-96 CHICAGO RES. & TRDG.  
ROUND 12

3 BANK AMERICA ILLINOIS 3

BD	RATINGS	SCORE	RATINGS	SCORE
1 JAS. ITIS,A	2117 6	1	FRAATS,D	1887 -9 0
2 BARGERSTOCK	1715 -13	0	KOGAN,G	1870 13 1
3	0 0	0F	PARAOAN,E	1770 0 1F
4 BARNARD,G	0 0	0	SIEGEL,R	1459 0 1
5 SHATSKY,V	0 0	1	HAMMOND,M	1400 0 0
6 SZONTAGH,T	0 0	1	ZOELLNER,J	1423 0 0

20-FEB-96 MIDCON CORP  
ROUND 11

4.5 PAWNS .5

BD	RATINGS	SCORE	RATINGS	SCORE
1 CONNOR,P	2101 -15	.5	ELLICE,W	1839 15 .5
2 LORENZ,B	1474 8	1	HARD,R	1201 -8 0
3 ROSENBERG	1395 8	1	DZURICKSKO,G	1127 -8 0
4 HANSEN,B	1299 0	1F		0 0 0F
5 LOGAN,H	1238 0	1F		0 0 0F
6	0 0	0F		0 0 0F

22-FEB-96 CASE			3.5	ARGONNE KNIGHTS			2.5
ROUND 11							
BD	RATINGS		SCORE		RATINGS		SCORE
1 WILLIAMS,T	2041	32	1	BENEDEK,R	2192	-21	0
2 KALE,S	1864	-15	0	KEISLER,J	1992	15	1
3 ROYTBURG,E	0	0	1	HILL,R	1900	0	0
4 CURRAN,T	1677	21	1	RONIN,D	1648	-21	0
5 WHITE,H	1627	-23	0	SUAREZ,E	1623	23	1
6 SATTERLEE,D	1618	-1	.5	BAURAC,D	1601	1	.5
7 SAWDO,E	1412	0	0	VAJSBERG,O	0	0	1 (CASE)

26-FEB-96 COOK CO. DEPT. OF CORR.1				LUCENT TECH. CHARGERS			4
ROUND 8							
BD	RATINGS		SCORE		RATINGS		SCORE
1 HALL,A	0	0	0	WARREN,J	2100	0	1
2 JOHNSON,W	1215	-8	0	DOBR,K	1485	3	1
3 APPLEBERRY	0	0	0	THOMAS,J	1517	0	1
4 JACKSON,S	1150	-10	0	BRADY,R	1358	10	1
5 STEELE,B	0	0	1F		0	0	0F
6	0	0	0F		0	0	0F

27-FEB-96 ARGONNE ROOKS			4.5	FERMILAB			1.5
ROUND 8							
BD	RATINGS		SCORE		RATINGS		SCORE
1 LEVINE,D	2397	-40	0	SPIEGEL,L	2051	26	1
2 BERRY,G	2113	9	1	MOTTA,H	1959	-13	0
3 SHEYNIN,S	2020	16	1	CARVALHO,W	1911	-16	0
4 GREEN,D	1796	0	.5	GAINES,I	1804	0	.5
5 MORRISON,J	1775	13	1	HARRIS,R	1619	-13	0
6 DECMAN,S	1662	16	1	KELLOGG,K	1685	-16	0

27-FEB-96 NORTHROP CORP.			3	SEARS			3
ROUND 8							
BD	RATINGS		SCORE		RATINGS		SCORE
1 GOLUMBOVSKI	2105	-8	0	REYES,R	2360	6	1
2 JAKSTAS,K	2197	-22	0	LATIMER,E	2029	22	1
3 DIAZ,P	2070	-15	.5	MILLER,TT	1802	15	.5
4 CAIRONE,B	1732	11	1	DORFF,M	1542	-11	0
5 ALFONSO,E	1624	0	.5	FLOREY,J	0	0	.5
6 VIGANTS,A	1561	0	1F	BALASE,E	1364	0	0F

28-FEB-96 BANK AMERICA ILLINOIS			4.5	CHICAGO MERC. EXCH.			.5
ROUND 13							
BD	RATINGS		SCORE		RATINGS		SCORE
1 FRAATS,D	1878	0	1F	FRANK,M	1733	0	0F
2 KOGAN,G	1883	0	1F	SLAGLE,S	1639	0	0F
3 PARAOAN,E	1770	-11	.5	SULLIVAN,C	1458	17	.5
4 HAMMOND,M	1400	0	1F	GROTANS,G	1258	0	0F
5 ZOELLNER,J	1423	7	1	HILTON,J	1126	-7	0
6 WHITE,T	1355	0	0F	BAKER,LR	1093	0	0F

28-FEB-96 ALUMNI CENTRAL 3.5 CHICAGO RES. & TRDG. 2.5  
ROUND 11

BD	RATINGS	SCORE	RATINGS	SCORE
1 CZERNIECKI,A 2110	1	.5	JASAITIS,A 2123	-1 .5
2 SANTIAGO,T 1938	23	1	LOSOFF,A 1948	-23 0
3 FABIJONAS,R 1816	-20	0	BARGERSTOCK 1702	30 1
4 FRANEK,M 1776	6	1	DELEON,J 1518	-8 0
5 LITVINAS,A 1721	0	1	SHATSKY,V 0	0 0
6	0 0	0F	BERNARD,D 1296	0 1F

05-MAR-96 MIDCON CORP 2 ARGONNE KNIGHTS 4  
ROUND 12

BD	RATINGS	SCORE	RATINGS	SCORE
1 EGERTON,J 1973	12	.5	BENEDEK,R 2171	-8 .5
2 LORENZ,B 1482	-2	0	KEISLER,J 2007	2 1
3 ROSENBERG 1403	35	1	RONIN,D 1627	-35 0
4 HANSEN,B 1299	-5	0	SUAREZ,E 1646	5 1
5 LOGAN,H 1238	18	.5	BAURAC,D 1602	-12 .5
6	0 0	0F	BURBA,K 1402	0 1F

06-MAR-96 LUCENT TECH. DRAGONS 1.5 LUCENT TECH. ROYALS 4.5  
ROUND 8

BD	RATINGS	SCORE	RATINGS	SCORE
1 TEGEL,F 2185	-3	.5	BUCHNER,R 2117	5 .5
2 DURKEE,D 1783	9	.5	STINSON,M 2028	-14 .5
3 HICKS,C 1558	-3	0	GUIO,J 2021	3 1
4 EUSTACE,D 1616	13	.5	OGASAWARA 1842	-9 .5
5 WARD,C 1541	-5	0	DOBROVOLNY 1829	7 1
6 PHELPS,C 1250	-2	0	BLACKMON,E 1804	2 1

06-MAR-96 CHICAGO RES. & TRDG. 3.5 CHICAGO MERC. EXCH. 1.5  
ROUND 10

BD	RATINGS	SCORE	RATINGS	SCORE
1 LOSOFF,A 1925	0	1F	FRANK,M 1733	0 0F
2 BARGERSTOCK 1732	17	1	SLAGLE,S 1639	-17 0
3 DELEON,J 1510	20	1	SULLIVAN,C 1475	-20 0
4 SHATSKY,V 0	0	.5	COTE,J 1326	0 .5
5 BARNARD,G 0	0	0	HILTON,J 1119	0 1
6 SITAR,K 0	0	0F	GROTANS,G 1258	0 0F

07-MAR-96 ALUMNI CENTRAL 2 BANK AMERICA ILLINOIS 2  
ROUND 14

BD	RATINGS	SCORE	RATINGS	SCORE
1 CZERNIECKI,A 2111	-24	0	KOGAN,G 1883	35 1
2 FABIJONAS,R 1796	-17	0	PARAOAN,E 1759	17 1
3 LITVINAS,A 1721	5	1	ZOELLNER,J 1430	-7 0
4 FRANEK,M 1782	3	1	HAMMOND,M 1400	-4 0
5	0 0	0F	WHITE,T 1355	0 0F
6	0 0	0F	GANSER,A 1245	0 0F

13-MAR-96 MOTOROLA  
ROUND 9

6	NORTHROP CORP.	0
BD	RATINGS	SCORE
1 HASAN,Y	2222 12	1 DIAZ,P
2 WALLACH,C	2057 6	1 CAIRONE,B
3 MORRIS,R	2045 3	1 VIGANTS,A
4 SAMELSON,C	1994 1	1 BABINEC,J
5 MACKIE,A	1939 0	1F
6 AUGSBURGER	1726 0	1F
7 MACKIE,A	1939 -13	.5
8 GONCHAROFF	1785 3	1
		AUGSBURGER 1726 13
		GRYPARIS,J 1471 -6
		.5(MTRLA)
		0 (MTRLA)

13-MAR-96 FERMILAB  
ROUND 9

4.5	WHEATON COLLEGE	1.5
BD	RATINGS	SCORE
1 SPIEGEL,L	2077 10	1 UNDERWOOD
2 MOTTA,H	1946 2	1 BOSTICK,T
3 HARRIS,R	1606 -35	0 ENKE,E
4 KELLOGG,K	1669 3	1 MAYNARD,J
5 HILL,C	1663 -20	.5 AZCUNA,L
6 STAPLES,C	1199 0	1 HELLER,T
		0
		0
		1
		0
		.5
		0

14-MAR-96 ARGONNE ROOKS  
ROUND 9

3	LUCENT TECH. ROYALS	3
BD	RATINGS	SCORE
1 LEVINE,D	2357 -14	.5
2 BERRY,G	2122 10	1
3 SHEYNIN,S	2036 -1	.5
4 GREEN,D	1796 8	.5
5 MORRISON,J	1788 -19	0
6 DECMAN,S	1678 5	.5
		BUCHNER,R 2122 14
		STINSON,M 2014 -16
		GUIO,J 2024 1
		PEHAS,A 1987 -12
		DOBROVOLNY 1836 19
		BLACKMON,E 1806 -8
		.5

## CICL TOP TEN PLAYERS LISTS

As of 3-17-1996

## NEAR WEST DIVISION TOP TEN

BENEDEK,R	KNGHT	2163D
WARREN,J	CHRGR	2100T
CONNOR,P	MDCON	2086
WILLIAMS,T	CASE	2073
CONDON,J	MDCON	2039
KEISLER,J	KNGHT	2009
EGERTON,J	MDCON	1985
HILL,R	KNGHT	1900
ELLICE,W	PAWNS	1854
KALE,S	CASE	1849

## FAR WEST DIVISION TOP TEN

LEVINE,D	ROOKS	2343
BEZZUBOV,V	FERMI	2338*
TEGEL,F	DRGNS	2182T
BUCHNER,R	ROYLS	2136
BERRY,G	ROOKS	2132T
KOZLOVSKY	FERMI	2106
TAMEZ,I	TYROS	2099
LUDWIG,T	DRGNS	2095C
SPIEGEL,L	FERMI	2087C
SHEYNIN,S	ROOKS	2035

## NORTH DIVISION TOP TEN

REYES,R	SEARS	2366D
STEVANOVIC	UOP	2242C
HASAN,Y	MTRLA	2234
WONG,P	EXMPL	2206C
JAKSTAS,K	NORTH	2175C
SIWEK,M	KEMPR	2169C
MELNIKOV,I	MTRLA	2157
BUERGER,E	UOP	2125D
GOLUMBOVSKI	NORTH	2097
WALLACH,C	MTRLA	2063

## EAST DIVISION TOP TEN

INUMERABLE	PSTOF	2336
HODINA,J	AMCRP	2144
JASAITIS,A	CRT	2122C
FRIESEMA,W	CRT	2109
CZERNIECKI	ALUMN	2087C
COX,M	ALUMN	2028C
MAREMA,D	PSTOF	2006
SMILEY,R	AMCRP	2005
LEONG,D	ALUMN	2005
MARCOWKA	PSTOF	1965C

## MOST IMPROVED PLAYERS

ROSENBERG	MDCON	147
JONES,M	CTA	100
SPIEGEL,L	FERMI	88
WILLIAMS,T	CASE	87
PAYTON,P	KEMPR	84
MORRIS,R	MTRLA	70
BRADY,R	CHRGR	68
KOGAN,G	BKAMI	63
MIKULECKY,B	PAWNS	56
THOMAS,G	TYROS	55

## CICL TOP TEN

REYES,R	SEARS	2366D
LEVINE,D	ROOKS	2343
BEZZUBOV,V	FERMI	2338*
INUMERABLE	PSTOF	2336
STEVANOVIC	UOP	2242C
HASAN,Y	MTRLA	2234
WONG,P	EXMPL	2206C
TEGEL,F	DRGNS	2182T
JAKSTAS,K	NORTH	2175C
SIWEK,M	KEMPR	2169C

**CHICAGO INDUSTRIAL CHESS LEAGUE RATINGS LIST****RATING CODES:**

? - UNRATED

# - 5 TO 9 RATED GAMES

\* - 10 TO 24 RATED GAMES

C - CENTURY CLUB MEMBER

D - DOUBLE CENTURION

T - TRIPLE CENTURION

Q - QUAD CENTURION

**OFFICIAL RATINGS AS OF 3-17-1996**

NAME	TEAM	W	L	D	RATING	NAME	TEAM	W	L	D	RATING
ABRAHAM,T	CTA	1	3	0	1590	CAIRONE,B	NORTH	2	5	2	1737
ALFONSO,E	NORTH	3	2	2	1624#	CARDI,P	HULL	0	0	0	1240#
ALLEN,H	PSTOF	7	1	1	1887	CARNAL,D	CRT	0	1	0	1207#
ANDERSON,CJ	ROYLS	1	2	2	1443	CARTER,L	PSTOF	2	4	1	1474
ANDRYSIK,B	KEMPR	0	2	0	0000?	CARTER,O	CTA	0	1	0	0000?
ANGELOS,S	COLUM	0	0	0	0000?	CARVALHO,W	FERMI	2	2	3	1895
APPLEBERRY,T	CCDOC	1	3	0	0000?	CATENA,J	MTRLA	0	0	0	0000?
AQUENDE,A	KEMPR	0	0	0	0000?	CHAMORRO,A	CCDOC	1	0	0	0000?
ASSADIAN,K	MTRLA	0	1	1	0000?	CHAN,H	SEARS	0	0	0	1574
ATKINSON,J	AMCRP	3	3	0	1779C	CHOUDRY,A	KEMPR	0	1	0	0000?
AUGSBURGER,L	MTRLA	4	1	3	1739	CHRISTIAN,R	DRGNS	1	0	0	1811C
AVERY,G	CCDOC	0	3	0	0000?	CICUCCI,S	KEMPR	0	1	0	0000?
AZCUNA,L	WHEAT	0	1	1	1234	CIESLEK,D	MTRLA	1	1	0	1938
BABINEC,J	NORTH	2	3	0	1390#	CISKO,G	FERMI	0	1	0	1608
BAKER,B	FLPRO	0	0	0	1042	COLBERT,W	PAWNS	0	1	0	0000?
BAKER,LR	MERC	0	0	0	1093*	COLEMAN,O	CTA	0	0	0	0000?
BALASE,E	SEARS	0	1	0	1364*	CONDON,J	MDCON	1	0	0	2039
BARGERSTOCK,D	CRT	4	4	1	1749	CONNOR,P	MDCON	3	2	3	2086
BARNARD,G	CRT	0	5	0	0000?	COOPER,W	PSTOF	5	2	0	1657
BARNES,D	CTA	0	1	0	0000?	COPELAND,P	WHEAT	0	0	0	1229?
BARTUSIAK,P	MTRLA	0	0	0	0000?	CORBIN,Z	AMCRP	2	3	0	1311*
BAURAC,D	KNGHT	4	2	4	1590C	COSTELLO,W	NORTH	0	1	0	0000?
BECK,P	MERC	0	0	0	0000?	COTE,J	MERC	0	0	2	1326
BENEDEK,R	KNGHT	5	1	3	2163D	COX,M	ALUMN	0	0	0	2028C
BERMAN,R	KEMPR	0	0	0	0000?	CREWSE,L	EXMPL	0	0	0	2058
BERNARD,D	CRT	0	0	0	1296	CROWE,R	ROYLS	0	0	0	1405*
BERRY,G	ROOKS	5	0	1	2132T	CUMMUTA,P	KEMPR	1	3	0	1386
BEZZUBOV,V	FERMI	0	0	0	2338*	CURRAN,T	JCASE	2	2	0	1698
BHOJWANI,C	TYROS	0	0	0	1933C	CZERNIECKI,A	ALUMN	3	3	5	2087C
BLACKMON,E	ROYLS	4	0	1	1798C	CZOSKE,M	ROYLS	0	1	0	0000?
BLAZIE,J	TYROS	2	0	0	1869C	DALTON,M	CTA	0	1	0	0000?
BLOOM,B	EXMPL	0	0	0	2034	DAVIDSON,M	ALUMN	3	1	1	1589
BLUE,J	CCDOC	1	0	0	0000?	DAVIS,R	PSTOF	0	1	0	0000?
BOLDINGH,E	UOP	4	2	0	2063	DECMAN,S	ROOKS	3	0	1	1683D
BOSTICK,T	WHEAT	0	8	0	1409*	DELEON,J	CRT	4	2	1	1530*
BRADY,R	CHRGR	7	2	0	1368	DENG,J	CRT	0	0	0	1549
BRIONES,M	UOP	0	2	0	1624C	DENISENKO,K	SEARS	1	0	0	0000?
BRITT-WEBB,E	AMCRP	0	0	0	1265#	DIAZ,L	JCASE	0	1	0	0000?
BROCKETT,M	SEARS	0	0	0	1801	DIAZ,P	NORTH	4	4	1	2043
BROLIER,B	WHEAT	1	5	1	1263#	DOBR,K	CHRGR	3	5	2	1488T
BRONFELD,A	EXMPL	2	1	0	1846	DOBROVOLNY,C	ROYLS	4	3	2	1855
BROTOS,J	EXMPL	2	1	2	1532D	DORFF,M	SEARS	1	4	1	1531
BROZOVICH,J	TYROS	2	4	1	1720C	DOTY,B	HULL	0	0	0	0000?
BUCHNER,R	ROYLS	2	1	3	2136	DUFRESNE,T	JCASE	0	0	0	997*
BUERGER,E	UOP	2	0	5	2125D	DURKEE,D	DRGNS	2	3	2	1792C
BURBA,K	KNGHT	3	0	0	1402C	DYCKZOWSKI,R	CONBK	0	0	0	1565
BURDICK,S	COLUM	0	0	0	1569	DZEKHTSER,A	SEARS	0	0	0	1761*
BURIAN,D	EXMPL	5	3	0	1662C	DZURICKO,G	PAWNS	0	7	0	1119*
BYRNES,R	CTA	1	0	2	2197#	EDWARDS,S	EXMPL	1	1	0	1275
CADE,M	UNILV	0	0	0	0000?						

NAME	TEAM	W	L	D	RATING	NAME	TEAM	W	L	D	RATING
EGERTON,B	MDCON	0	0	0	0000?	JOSEPHSON,D	WHEAT	1	4	0	1792*
EGERTON,J	MDCON	3	1	2	1985	JOSHI,A	UNILV	0	0	0	0000?
ELEK,G	NORTH	2	3	0	1052	KALE,S	JCASE	4	3	1	1849
ELLICE,W	PAWNS	2	6	2	1854	KANAS,W	JCASE	5	2	1	1321C
ENKE,E	WHEAT	2	4	0	1412#	KARPIERZ,J	TYROS	2	1	2	1211*
EUSTACE,D	DRGNS	4	2	1	1629	KATAOKA,N	UOP	0	0	0	0000?
FABIJONAS,R	ALUMN	4	4	0	1779D	KATZ,J	JCASE	0	0	0	0000?
FAHRENHOLTZ,S	MTRLA	0	0	0	1785*	KAUFMAN,M	KEMPR	0	0	0	0000?
FELDMAN,A	FLPRO	0	0	0	1420C	KEEFE,E	FLPRO	0	0	0	1181#
FERGUSON,K	MDCON	0	2	0	0000?	KEISLER,J	KNIGHT	2	0	0	2009
FLEET,R	MDCON	1	1	0	1140#	KELLOGG,K	FERMI	3	1	1	1672C
FLOREY,J	SEARS	2	3	2	1392#	KERCSMAR,J	WHEAT	0	0	0	0000?
FRAATS,D	BKAMI	2	4	1	1878	KINSELLA,G	KNIGHT	0	0	0	1481C
FRANEK,M	ALUMN	6	0	1	1785C	KLAUDER,C	WHEAT	0	0	1	0000?
FRANK,M	MERC	0	3	1	1733	KLINEFELTER,H	JCASE	5	1	1	1537C
FRIESEMA,W	CRT	1	0	0	2109	KOGAN,G	BKAMI	5	3	1	1918
FRISKE,T	EXMPL	2	3	2	1935	KOSTECKA,K	COLUM	0	0	0	1596
FULLMER,G	MTRLA	0	3	1	0000?	KOZLOVSKY,M	FERMI	0	3	0	2106
GAINES,I	FERMI	6	1	1	1804C	KRUEGER,J	DRGNS	0	0	0	1353*
GALKO,D	KEMPR	1	0	0	0000?	KRULL,E	AMCRP	1	0	0	1510
GALLAGHER,H	KNIGHT	3	0	0	1317	LAKE,T	WHEAT	0	3	0	0000?
GANSER,A	BKAMI	1	2	0	1245*	LAMBIRIS,J	KEMPR	1	1	0	1451
GEBELE,R	UOP	0	0	0	0000?	LARSON,T	CCDOC	1	0	0	0000?
GIMPLE,R	WHEAT	0	0	0	0000?	LASKY,JIM	RADIO	0	0	0	1693#
GOLLA,R	SEARS	0	0	0	1982D	LASKY,N	PAWNS	1	0	0	1352C
GOLUMBOVSKI,P	NORTH	0	2	5	2097	LATIMER,E	SEARS	1	2	4	2051D
GONCHAROFF,N	MTRLA	5	1	1	1788Q	LAWRENCE,P	MTRLA	0	0	0	0000?
GORZ,E	RADIO	0	0	0	1289*	LEONG,D	ALUMN	1	0	0	2005
GREEN,D	ROOKS	5	1	3	1804C	LEONG,G	KEMPR	1	1	3	2002C
GRIESMEYER,W	PSTOF	0	0	0	1317	LERNER,R	SEARS	0	0	0	0000?
GRYPARIS,J	MTRLA	0	4	0	1465	LESTER,M	MTRLA	3	1	0	1569
GUIO,J	ROYLS	4	0	2	2025	LEVINE,D	ROOKS	5	1	2	2343
HAHNE,D	ROYLS	0	0	1	1578	LIKHTEREV,M	UOP	1	3	0	1475*
HALL,A	CCDOC	0	6	0	0000?	LITVINAS,A	ALUMN	8	0	0	1726C
HALL,D	MDCON	0	1	0	0000?	LODEWYCK,D	MERC	1	1	0	1414
HALLMAN,W	JCASE	1	0	0	1219*	LOGAN,H	MDCON	1	5	1	1256*
HAMMOND,M	BKAMI	2	5	0	1396	LORENZ,B	MDCON	4	4	1	1480*
HANSEN,B	MDCON	2	4	1	1294*	LOSOFF,A	CRT	4	2	0	1925
HARD,R	PAWNS	2	5	0	1193#	LUDWIG,T	DRGNS	2	1	1	2095C
HARDIN,L	KEMPR	0	1	0	0000?	LUEDERS,J	CRT	0	2	0	0000?
HARRIS,FF	CTA	0	0	0	1401#	LULKIN,V	UNILV	0	0	0	1826#
HARRIS,R	FERMI	3	4	0	1571	LUSTRO,G	ROYLS	0	0	0	0000?
HARRUFF,E	WHEAT	0	1	0	0000?	MACBEAN,J	PAWNS	0	1	0	0000?
HASAN,Y	MTRLA	2	0	4	2234	MACKIE,A	MTRLA	5	1	2	1926
HELLER,T	WHEAT	0	6	0	0000?	MARCOWKA,R	PSTOF	5	3	1	1965C
HERNANDEZ,DD	COLUM	0	0	0	1497	MAREMA,D	PSTOF	0	0	0	2006
HESS,B	EXMPL	1	2	0	1455	MARTIN,K	COLUM	0	0	0	1493
HICKS,C	DRGNS	6	1	0	1555	MATTAR,I	CCDOC	0	0	0	0000?
HILL,C	FERMI	0	0	1	1643	MATTREWS,J	CTA	0	1	0	1777
HILL,R	KNIGHT	4	2	0	1900	MAYNARD,J	WHEAT	1	4	0	1310
HILLIARD,J	BKAMI	0	0	0	0000?	MCALISTER,K	ALUMN	0	1	0	1955
HILTON,J	MERC	3	3	0	1119	MCCARTNEY,M	CTA	1	3	0	0000?
HODINA,J	AMCRP	3	1	2	2144	MCFARLIN,B	KEMPR	0	0	0	1209#
HOLMES,M	AMCRP	0	2	0	0000?	MCKAY,P	PAWNS	0	1	0	1393#
HOWARD,W	PSTOF	1	1	2	1559	MCKINNEY,T	KEMPR	1	2	0	0000?
HUEBNER,R	ROOKS	0	1	0	0000?	MELNIKOV,I	MTRLA	2	0	3	2157
HUGHES,N	KEMPR	1	2	0	1844C	MICKLICH,F	UOP	3	2	2	1687C
INUMERABLE,F	PSTOF	7	0	1	2336	MIKULECKY,B	PAWNS	2	0	3	1382C
ITZENHEUSER,W	JCASE	0	0	0	0000?	MILLER,J	NORTH	0	0	0	0000?
JACKLIN,E	JCASE	1	3	1	1261	MILLER,TT	SEARS	3	3	1	1817
JACKSON,S	CCDOC	2	7	0	1140#	MORRIS,R	MTRLA	7	0	0	2048
JAKSTAS,K	NORTH	2	4	1	2175C	MORRISON,J	ROOKS	2	1	0	1769
JARRETT,T	CTA	0	2	0	1639*	MORTADA,C	MTRLA	0	0	0	0000?
JASAITIS,A	CRT	2	2	3	2122C	MOTTA,H	FERMI	2	6	1	1948
JASUNAS,J	ROOKS	0	2	0	1422	MOTYCKA,R	JCASE	3	3	0	1156
JOHNSON,D	CTA	1	0	0	0000?	MUDAN,M	HULL	0	0	0	1123*
JOHNSON,W	CCDOC	2	5	0	1207#	NARSOLIS,F	UOP	0	0	0	0000?
JONES,M	CTA	4	1	0	1487*	NAUGHTON,T	HULL	0	0	0	1308*
JONES,MIGUEL	CCDOC	0	1	0	0000?	NELL,D	UNILV	0	0	0	1073#

NAME	TEAM	W	L	D	RATING	NAME	TEAM	W	L	D	RATING
NISHIMURA,K	FLPRO	0	0	0	1329*	SMILEY,R	AMCRP	0	0	0	2005
NOBLE,S	JCASE	2	5	0	1286#	SMITH,BR	TYROS	2	2	1	1540
NOTERMANN,T	PAWNS	0	4	1	1178	SOLLANO,E	EXMPL	1	3	2	1976
NOTTOLI,R	AMCRP	1	2	0	0000?	SOMBONG,M	BKAMI	1	1	0	1625
NOWAK,W	CTA	0	0	0	1365#	SPIEGEL,L	FERMI	7	0	2	2087C
O'BRIEN,D	UOP	0	0	0	1377*	STAMM,V	CHRGR	1	5	0	1690D
O'DELL,DW	PAWNS	2	3	1	1560C	STAPLES,C	FERMI	1	1	0	1199#
OGASAWARA,L	ROYLS	2	1	2	1833C	STAPLES,M	CTA	1	2	0	1192#
OLSEN,A	KEMPR	2	4	1	1508	STEELE,B	CCDOC	0	2	0	0000?
OLSON,C	JCASE	2	6	0	0000?	STEVANOVIC,M	UOP	2	3	1	2242C
OSTERLUND,R	EXMPL	0	0	0	1943	STEVENS,G	CTA	0	1	0	0000?
PARA,A	FERMI	0	0	0	1487	STEVENS,J	COLUM	0	0	0	1340
PARAOAN,E	BKAMI	7	2	2	1776C	STEVENS,N	MDCON	0	0	0	0000?
PATTON,D	CHRGR	1	0	0	0000?	STEVENSON,R	UNILV	0	0	0	1363
PAWLUS,D	MTRLA	0	0	0	0000?	STINSON,M	ROYLS	3	2	2	1998
PAYTON,P	KEMPR	3	2	1	1215*	STOLTZ,B	TYROS	0	4	2	1928
PEHAS,A	ROYLS	1	0	3	1975	SUAREZ,E	KNGHT	6	2	0	1651
PENNINGTON,J	WHEAT	0	0	0	0000?	SUERTH,F	EXMPL	6	1	1	1635C
PERAREN,E	PSTOF	0	0	0	1733	SULLIVAN,C	MERC	0	4	2	1455
PHELPS,C	DRGNS	1	3	0	1248*	SULLIVAN,J	EXMPL	0	2	0	1980D
PIAO,T	DRGNS	1	0	0	1711	SZONTAGH,T	CRT	1	3	0	1184#
PILLAI,J	MTRLA	0	0	0	0000?	TAMEZ,I	TYROS	3	1	0	2099
POMA,D	AMCRP	0	0	0	1257	TAN,M	WHEAT	0	2	0	1196
PORTER,D	AMCRP	0	3	0	0000?	TAYLOR,M	CTA	3	1	0	0000?
POZNIAK,J	KEMPR	0	1	0	1465*	TEGEL,F	DRGNS	4	1	3	2182T
PRATT,C	MTRLA	0	0	0	0000?	TERPSTRA,D	WHEAT	0	0	0	0000?
PRATTS,M	ALUMN	1	1	0	1771	THOMAS,G	TYROS	2	1	1	1493
QUARTETTI,C	NORTH	0	0	0	0000?	THOMAS,J	CHRGR	8	2	1	1517C
QUERUBIN,R	FLPRO	0	0	0	2067#	THOMPSON,R	FLPRO	0	0	0	1061
RADAVICIUS,E	CHRGR	2	2	2	1663D	TRUDY,E	CCDOC	1	0	0	0000?
REDDY,S	MTRLA	1	0	0	0000?	TSEITLIN,E	MTRLA	0	0	0	0000?
REID,C	JCASE	2	3	0	1394	TURNER,K	PSTOF	0	2	0	1490
REYES,R	SEARS	4	0	1	2366D	TYREE,D	RADIO	0	0	0	1475*
RINGER,D	SEARS	0	2	0	0000?	UNDERWOOD,W	WHEAT	0	3	1	1958C
RIPPE,D	TYROS	0	0	0	0000?	VAJSBERG,O	JCASE	1	0	0	0000?
ROBERTS,J	WHEAT	0	1	0	1328#	VALDEZ,C	MTRLA	1	0	0	0000?
ROJAS,R	CTA	0	1	0	0000?	VAN MEER,J	KEMPR	0	2	0	1958
ROJO,V	CCDOC	1	7	1	1370#	VAN METRE,R	SEARS	0	1	1	1483#
ROMENESKO,G	PAWNS	0	1	0	0000?	VAN OUIRIVE,R	CTA	0	0	0	1092#
RONIN,D	KNGHT	3	2	2	1592#	VAN ZILE,C	UOP	2	4	0	1348
ROSENBERG,B	MDCON	7	1	1	1438*	VANDECOTTE,M	UOP	0	1	0	0000?
ROSLEY,D	ROYLS	2	1	2	1758	VENEGAS,B	HULL	0	0	0	0000?
ROYTBURG,E	JCASE	3	0	0	0000?	VEREZHENSKY,E	AMCRP	0	1	0	0000?
RUBIN,A	CRT	0	1	0	0000?	VIGANTS,A	NORTH	4	4	0	1558
RUDDY,J	MERC	0	0	0	1234	VITAVER,I	SEARS	0	3	1	0000?
RYU,R	UOP	0	0	0	1451	WACHTEL,H	COLUM	0	0	0	2230
RZESZUTKO,R	ALUMN	4	1	0	1848	WALLACH,C	MTRLA	4	2	2	2063
SAHLI,E	UOP	1	1	0	1728	WALLIN,R	WHEAT	0	0	0	1746
SAJBEL,P	UOP	2	1	0	1792	WALSH,W	ROOKS	1	2	0	1484C
SALAMANCA,R	ROYLS	0	0	0	1610	WARD,C	DRGNS	3	4	1	1536D
SAMELSON,C	MTRLA	6	0	1	1995C	WARD,J	CTA	0	0	1	0000?
SAMOYLOV,A	MTRLA	0	0	0	0000?	WARE,K	MERC	0	0	0	0000?
SANTIAGO,T	ALUMN	3	2	1	1961	WARREN,J	CHRGR	5	3	2	2100T
SATTERLEE,D	JCASE	4	2	2	1617C	WEBER,J	WHEAT	0	0	0	0000?
SAUNDERS,N	MDCON	0	1	0	0000?	WEISS,G	HULL	0	0	0	0000?
SAWDO,E	JCASE	1	1	0	1412	WEISSKOPF,J	HULL	0	0	0	1381*
SCHWAB,W	ROOKS	1	0	0	1481	WEITZ,R	EXMPL	2	3	0	1690C
SCHWARTZ,M	TYROS	1	2	0	1078	WELTER,P	SEARS	0	0	0	1642#
SEMONES,E	ROOKS	2	3	0	1108#	WENTLING,C	AMCRP	0	6	0	1582C
SHAFF,R	TYROS	0	2	0	1525C	WHITE,H	JCASE	7	2	0	1604
SHATSKY,V	CRT	1	1	1	0000?	WHITE,T	BKAMI	3	0	0	1355#
SHEU,G	CHRGR	0	0	0	1333*	WHITED,W	MDCON	0	0	0	1829
SHEYNIN,S	ROOKS	4	2	3	2035	WILLIAMS,A	CTA	1	1	0	1499#
SIEGEL,R	BKAMI	2	2	2	1459C	WILLIAMS,T	JCASE	7	1	3	2073
SIPP,R	CCDOC	0	0	0	0000?	WILSON,A	CTA	2	4	0	1576
SITAR,K	CRT	0	0	0	0000?	WILSON,M	SEARS	1	3	0	1267#
SIWEK,M	KEMPR	4	2	1	2169C	WOLF,D	MTRLA	1	0	1	0000?
SKRZYPCZAK,T	MDCON	0	0	0	0000?	WONG,KK	NORTH	0	0	0	0000?
SLAGLE,S	MERC	1	5	1	1622	WONG,P	EXMPL	1	0	2	2206C



NAME	TEAM	W	L	D	RATING
WOOD,L	AMCRP	3	3	1	1463#
WRIGHT,E	CCDOC	0	1	0	0000?

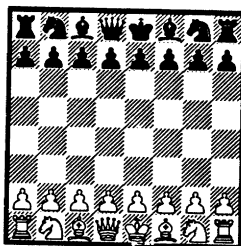
NAME	TEAM	W	L	D	RATING
YOUNG,R	HULL	0	0	0	1406
ZOELLNER,J	BKAMI	4	5	2	1423C

**RATING CODES:**

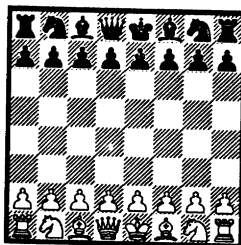
? - UNRATED  
 # - 5 TO 9 RATED GAMES  
 \* - 10 TO 24 RATED GAMES

C - CENTURY CLUB MEMBER  
 D - DOUBLE CENTURION  
 T - TRIPLE CENTURION  
 Q - QUAD CENTURION

03-17-1996



**Submit those games and articles!**  
**Your contributions are the heart of this bulletin.**



# CICL BANQUET ANNOUNCEMENT

**WHERE:** **Harvey's Prime Rib** (located between Cass Ave and Route 83,  
331 East Ogden Avenue on the south side of the street).  
Westmont, IL  
708-789-2212

**WHEN:** Friday, June 7, 1996  
Check-in/Registration: **5:45-6:45pm** (PLEASE DON'T WAIT UNTIL  
Dinner served: **6:45pm** THE LAST MINUTE.)  
Special Feature and Awards Presentation: after dinner  
Sectioned speed tournament **9:30pm** (approx:)

**MENU:** Family style dinner including roast chicken, polish sausage, roast beef,  
fruit salad, soup, salad, corn, potato, beverage, and ice cream.  
Please contact Banquet Chairman if you have special dietary needs.  
Cash bar upstairs.

**SPECIAL  
FEATURE:** *Very brief* film clips from a popular chess movie.

Updates from the Chicago Bulls' playoff game (if coinciding with  
the banquet)!

*DOOR PRIZES!!* All attendees will be entered in a door prize drawing!

**COST:** **\$16.00** Per Person Advance Registration, if received by May 31.  
**\$18.00** Thereafter  
**\$ 1.00** Additional for entry in the sectioned speed tournament.  
Bring set and clock.

**Although team dues include prepayment of one banquet ticket,  
all attendees must pay admission anyway. Rebates of the prepayment  
will be distributed after dinner.**

**HOW:** A registration form has been provided.

Make checks payable to: **CICL**  
Mail to: **Wes Underwood, 207 S. Dorchester Ave, Wheaton, IL 60187**

Payments will also be accepted at the playoff site by:  
Lenny Spiegel or Wes Underwood or Satish Kale

**BANQUET CHAIRMAN:** Lenny Spiegel W:708-840-2809 H:708-208-4738