

The Chicago Chess Player

The Official Bulletin of the Chicago Industrial Chess League

WORLD CHESS CHAMPIONSHIP

Kasparov Retains World Championship

After a record number of draws to start the match, Vishy Anand won his first and only game. This lit a fire under Gary Kasparov and the match was decided over the next five games. Apparently, when things started to go badly for Anand he fell apart and made things even easier for Kasparov (see the games for more details). Perhaps with more experience Anand will become a real threat to Kasparov's title.

There's a lot of material here to follow so on to the games!

**Anand - Kasparov [B85]
INTEL World Champ. (1)
New York 1995**

(Annotations by Yasser Seirawan)

1.e4 c5 2.Nf3 d6 3.d4 cxd4
4.Nxd4 Nf6 5.Nc3 a6

The Najdorf Variation of the Sicilian Defence. This is one of the sharpest of all chess openings.

6.Be2

Eschewing, for now, the sharper 6.Bg5 (Main line) and 6.Bc4 (Sozin Variation).

6...e6 7.a4 Nc6 8.O-O Be7 9.Be3
O-O 10.f4 Qc7 11.Kh1 Re8

The game has transposed into Kasparov's favorite Scheveningen

Variation, noted for its positional play. White has an advantage in space and Black has to try to limit the scope of the White pieces.

12.Qd2 Bd7 13.Rad1 Rad8

Played after 30 minutes of reflection. Black aims to prevent any possibility of e4-e5 by White.

14.Nb3

Avoiding a counterattack based upon ...e6-e5 which would hit the Knight on d4.

14...Bc8!

Black spends some worthwhile time re-routing his Bishop for a queenside fianchetto.

15.Bf3 b6 16.Qf2 Nd7 17.Nd4
Bb7 18.Bh5?!

A surprising tactical move. White is motivated by variations

involving Bh5xf7+ and Nd4xe6. A sample line would be: 18...g6? 19.f5 gxh5 20.fxe6 fxe6 21.Qf7+ Kh8 22.Nxe6, winning.

18...Rf8

Careful play. The f7-pawn is the Achilles Heel and Black protects it to stop White's tactical threats.

19.Qg3

Again preparing Bh5xf7+ and Nd4xe6.

19...Nxd4

Careful play. The f7-pawn is the Achilles Heel and Black protects it to stop White's tactical threats.

20.Bxd4 Bf6 21.Be2 e5
22.fxe5 Bxe5 23.Qf2 Nc5 24.Bf3
Rfe8 25.h3 a5 26.b3 Bc6 27.Rfe1
h6 1/2-1/2

(Cont'd on page 3)

INSIDE

- ① World Championship Report
- ② Directory of CICL Officers
- ⑪ Selected Games
- ⑬ Misc News and Commentary
- ⑯ Results and Ratings

The Chicago Chess Player is the official bulletin of the Chicago Industrial Chess League. It is published for and with contributions from its members.

The Officers for the CICL:

Bulletin Editor

Tim Williams (CASE)
(708)887-3706 (Business)
lostloop@big10.metrobbs.com (E-Mail)
16W472 Honeysuckle Rose #114
Hinsdale, IL 60521

President

Satish Kale (CASE)
(708)887-2372 (Business)
(708)325-KALE (Home)
CASE Corp
7 South 600 County Line Rd
Burr Ridge, IL 60521

Secretary

Tony Jasaitis (CRT)
(708)406-6420 (Business)
(708)448-4967 (Home)
JerryGems@aol.com (E-Mail)
P.O. Box 664
Bedford Park, Illinois 60499-0644

Treasurer

Wes Underwood (Wheaton)
(708)752-5127 (Business)
(708)462-0393 (Home)
wu@ david.wheaton.edu (E-Mail)
207 South Dorchester Avenue
Wheaton, Illinois 60187

Publicity Director

Carl Reid (CASE)
(708)272-6337 (Home)
2289 Grand Drive
Northbrook, Illinois 60062-6937

Trophy Chairman

Wayne Ellice (PAWNS)
(312)838-3215 (Business)
wayne.ellice@crous.sprint.com (E-Mail)
Crosfield Catalysts
4099 West 71st Street
Chicago, Illinois 60629

Banquet Chairman

Len Spiegel (Fermi)
(708)840-2809 (Business)
(708)377-2675 (Home)
lenny@fnal.gov (E-Mail)
Fermilab MS 219
P.O. Box 500
Batavia, Illinois 60510

Ratings Chairman

Charlie Ward (AT&T Dragons)
(708)979-4599 (Business)
(708)979-6124 (Fax)
(708)325-3885 (Home)
czar@csgc bu.att.com (E-Mail)
615 South Lincoln
Hinsdale, Illinois 60521

Division Chairmen

Far West

Irwin Gaines (Fermi)
(708)840-4022 (Business)
(708)420-1452 (Home)
gaines@fnalv.fnal.gov (E-Mail)
Fermilab MS 127
P.O. Box 500
Batavia, Illinois 60510

North

Pat Sajbel (UOP)
posajbel@uop.com (E-Mail)
616 S. Edward
Mt. Prospect, IL 60056

East

Dan Fraats (Bank of America)
(312)247-4343 (Business)
(312)581-0923 (Home)
5820 West 55 th Street
Chicago, Illinois 60638

Near West

Howard Klinefelter (CASE)
(708)961-0482 (Home)
1125 Manchester Court
Naperville, Illinois 60563-2110

**Kasparov - Anand [E34]
INTEL World Champ. (2)
New York 1995**

(Annotations by Yasser Seirawan)

The second game of the PCA World Championship match was eagerly awaited by the chess-playing public. The general feeling was that Anand would be under a lot of pressure today.

1.d4 Nf6 2.c4 e6

A surprise by Anand and a good one. Kasparov was undoubtedly well-prepared for either the Slav or Grunfeld Defenses, both of which Anand has favored.

3.Nc3 Bb4 4.Qc2 d5 5.cxd5 Qxd5

Historically, this recapture has been frowned upon. It was established theory that 6.Nf3 c5 7.Bd2 Bxc3 favors White but recently modern GMs have discovered that 6.Nf3 Qf5! is a good way to neutralize White's opening advantage.

**6.e3 c5 7.Bd2 Bxc3 8.Bxc3 cxd4
9.Bxd4 Nc6 10.Bxf6 gxf6 11.Ne2**

White has emerged from the opening with a small but persistent advantage. Black's doubled f-pawns demand constant care.

11...Bd7 12.a3 Qe5 13.Nc3 f5?

Far too committal. Black's minor pieces are not on their optimal squares. A better line was 13...Nd4! 14.Qd1 (14.Qd3 Nb3 5.Rd1 Bc6 or 15...Nc5 is fine for Black) 14...Nf5 15.Be2 Bc6 or 16...Nh4 allows Black fine piece play.

14.O-O-O O-O-O

Another possibility was 14...f4 15.exf4 Qxf4+ 16.Kb1 or 14...Ne7 playing for ...Bd7-c6.

15.g3 Kb8 16.Be2?

Played after a 44-minute think. Better was 16.Bg2 Ne7 (16...Na5? 17. Rd4 Bc6 18.Rhd1 Rxd4 19. exd4 Qc7 20.d5! is good for White.) 17.Qd2! Qc7 (17...Bc6? 18.Qxd8+ Rxd8 19.Rxd8+ Kc7 20.Rhd1 Bd5 21.Re8! Kd7 22.Ra8 is good for White) 18.Qd6 Bc6 19.Qxc7+ Kxc7 20.Bxc6 Kxc6 21.Rxd8 Rxd8 22.Rd1 Rxd1+ 23.Kxd1 offers White chances.

16...Ne7 17.Qd3 Qc7

Avoiding a cunning trap. If 17...Bc6? 18.Qxd8+ Rxd8 19.Rxd8+ Kc7 20.Rhd1 Nd5 21.R8xd5 Bxd5 22.Nxd5 exd5 23.Rd4!, when only White has chances to win.

**18.Qd6 Bc6 19.Qxc7+ Kxc7
20.Rhe1 Rxd1+ 21.Rxd1 Rd8
22.Rxd8 Kxd8 23.Kd2**

The presence of Bishops lessens White's winning chances. A straight Knight ending makes the possibilities of e3-e4 and a King march by Kd2-e2-f3-f4 more tangible.

23...Nc8 24.Kd3 Nd6 25.Kd4 b6!

The key defensive move. Now Black constructs an unassailable fortress.

**26.b4 Ke7 27.f4 h6 28.a4 f6 29.a5
Bd7 1/2-1/2**

Anand now offered a draw which was readily accepted. White cannot improve his position.

At the post-game press conference, Anand said he was pleased with the result of the game. He had had a relatively easy time holding the position and agreed that going for a Knight ending was White's best chance. He also expressed admiration for

Kasparov's willingness to sacrifice his Queen.

**Anand - Kasparov
INTEL World Champ. (3)
New York 1995**

(Annotations by Yasser Seirawan)

The third game of the Intel PCA World Chess Championship ended in a draw. It was the third draw in a row, as neither player was able to pierce the other's defenses.

Today's game was a bit of a different story from the first two, however. Viswanathan Anand, opening with the White pieces, made it clear that he had come well-prepared. He literally blitzed his way through the opening moves. Anand spent only sixteen minutes on his first seventeen moves and that included eleven minutes spent on move sixteen. He had clearly expected Kasparov's defensive choice.

For his part, Kasparov labored through his decisions. Thrown on the defensive, he was uncomfortable throughout much of the game.

As in Game One, Kasparov chose his favorite Scheveningen Defense. Anand deviated from the first game with 12.Bd3, pointing his Bishop at Kasparov's King. Garry indulged in very provocative maneuvers on moves seventeen and eighteen, leaving his King open to a stunning sacrifice.

On move twenty, Anand had a golden opportunity--which he overlooked. A relieved Kasparov was buoyant in the postmortem and was the first to confess that he was probably lost.

Anand had no one to blame but himself. His preparation was excellent but he missed his chance to take the lead.

With match now tied 1.5-1.5 after three games, PCA World Champion Garry Kasparov will try to draw first blood in Game Four tomorrow on top of the world on the 107th floor of the New York World Trade Center.

1.e4

As in Game One, Anand starts with his favorite opening move.

1...c5 2.Nf3 d6 3.d4 cxd4 4.Nxd4 Nf6 5.Nc3 a6 6.Be2 e6 7.O-O Be7 8.a4 9.Nc6 10.f4 Qc7 11.Kh1 Re8 12.Bd3 XXX 13.a5

Not burning his bridges entirely in favor of the kingside attack, White gains space on the queenside, seizing control of the b6-square.

13...Bd7 14.Nf3!? Bc6 15.Bb6 Qc8

Kasparov spent his first real think on this move. Black wants to keep the d7-square vacant so that he can knock out the White Bishop on b6 with ...Nf6-d7.

16.Qe1

A standard, but nonetheless effective, idea. White intends to redeploy his pieces towards the Black King.

16... Nd7 17.Bd4 Nc5

A very provocative move as Black removes a key defender from the kingside. A more cautious approach was 17...Nxd3 18.cxd3 f6, preparing ...e6-e5 clogging up the center. The first new move. In Game One, Anand essayed 12.Qd2 but was unable to prove an advantage. The idea of the text is straightforward: White aims his Bishop at Black's kingside. The potential for e4-e5 and a sudden attack on the h7-pawn is quite real.

18.Qg3 f6?

More provocation, and ill-timed to boot. The defensive reaction 18...Bf8 was necessary.

19.e5!

A very strong response. Now 19...dxe5 (19...Nbx3? 20.exf6 wins) 20.Bxh7+ Kxh7 21.fxe5 f5 (21...Rf8 22.exf6 Bxf6 23.Bxf6 Rxf6 24.Qh4+ [24.Ng5+ is good, too.] 24.Kg8 25.Qxb4 wins a pawn.) 22.Bxc5 Bxc5 23.Ng5+ Kg8 24.Qh4, with a mating attack.

19...Rf8 20.Bxc5?

A golden opportunity missed by Anand. In the post-game analysis, Kasparov called this a pleasant surprise. He cited 20.exf6! Bxf6 21.Bxh7+ Kxh7 22.Ng5+ as winning for White. The line continues: 22...Kg8 (22...Bxg5 23.fxg5, threatening g5-g6+, 23...Kg6 24.Rf6+! wins) 23.Qh4 Bxg5 24.fxg5 Rxf1+ 25.Rxf1 Qe8 26.Qh4+ Kg8 27.Bxg7 Kxg7 28.Qh6+ Kg8 29.g6 Qe7 30.Rf7 and White will win because of Black's exposed King. Anand thought the text would give him strong positional pressure on the light squares.

20...dxc5 21.Bc4 Bd5 22.Nxd5 exd5 23.Bb3 c4 24.Ba4 Nc6!

A key defensive move. By fighting for control of the e5-square, Black is able to neutralize White's pressure.

25.c3 fxe5 26.Nxe5 Nxe5 27.fxe5 Qe6 28.Bc2 Rxf1+ 29.Rxf1 Rf8 30.Rxf8+ Bxf8 31.Qf4 g6!

Preventing Qf4-f5. With all the Rooks off the board, the tide has turned. White's passed e5-pawn has become vulnerable and he must be careful.

32.Bd1 Qf7 33.Qd4?!

The position after 33.Qxf7+ Kxf7 34.Bg4 Be7! 35.Bc8 Bd8 36.Bxb7 Ke6 37.Bxa6 Bxa5 is worse for White due to the weak b2-pawn. The text aims for Bd1-f3. White provokes an exchange of Queens which brings his King to the center. A simpler solution was 33.g3 Bh6 34.Qf3 Bc1 35.Qg2! playing for Bd1-f3 when White is not worse at all.

33...Qf1+ 34.Qg1 Qxg1+ 35.Kxg1 Kf7 36.Bg4 b6?!

Allowing an immediate draw after 37.axb6 Bc5+ 38.Kf1 Bxb6 39.Bc8 a5 40.Ke2 Bc7 41.e6+ Ke7 42.h3 with an easy draw in sight. Although still a draw, a more challenging line by Black was 36...Bh6 37.Kf2! Bc1 33.Ke2! Bxb2 39.Kd2 d4 40.cxd4 Bxd4 41.Bc8 and White is in time to draw the game.

Kasparov offered a draw after 36...b6?! and it was quickly accepted.

1/2-1/2

Anand - Kasparov [B85]
INTEL World Champ. (5)
New York 1995

1.e4 c5 2.Nf3 d6 3.d4 cxd4 4.Nxd4 Nf6 5.Nc3 a6 6.Be2 e6 7.O-O Be7 8.a4 Nc6 9.Be3 O-O 10.f4 Qc7 11.Kh1 Re8 12.Bd3 Nb4 13.a5 Bd7 14.Nf3 Rac8 15.Qe2 Bc6 16.Bb6 Qb8 17.Nd4 Nxd3 18.cxd3 d5! 19.Qf3 Nd7 20.Nxc6 bxc6 21.Na4 Qd6 22.Qe3 Qb4 23.Rfc1 c5 24.Qf3 Nf6 25.Nc3 Bd8 26.exd5 exd5?

Kasparov believed after the game that 26. ... Bxb6 27. axb6 Qxb6 28. Na4 Qb5! that Black would have had winning chances. "After 28...Qd6? 29.dxe6 Rxe6 30.b4! White is better. With 28...Qb5! 29.dxe6 Rxe6 30.d4 c4 31.Nc5 Rd6 32.Qc3 Rcd8, I would be better."

27. Nxd5 Nxd5 1/2-1/2

Kasparov - Anand [C80]
INTEL World Champ. (6)
New York 1995

(Notes by Mark Crowther)

1. e4 e5 2. Nf3 Nc6 3. Bb5 a6 4.
Ba4 Nf6 5. O-O Nxe4

So much for insider predictions. Leko said to me that Kasparov would never allow this line. However, Kasparov does chose the potentially violent 11. Ng5 instead of normal lines.

6. d4 b5 7. Bb3 d5 8. dxe5 Be6
9. Nbd2 Nc5 10. c3 d4 11. Ng5

First played by Karpov against Korchnoi in their 1978 World Title match. Said to be an idea of Tal's. Its not a good idea to take the knight (although not totally out of the question).

11. . . dxc3 12. Nxe6 fxe6 13.
bxc3 Qd3 14. Nf3

Up to here all has been seen before.

14. . . O-O-O

Anand's new idea. It seems to place him in some trouble to me.

15. Qe1 Nxb3 16. axb3 Kb7 17.
Be3 Be7 18. Bg5! h6 19. Bxe7
Nxe7 20. Nd4 Rxd4

According to Speelman in today's Observer, absolutely forced.

21. cxd4 Qxb3 22. Qe3

Kasparov's big decision. The main alternative is 22. Qc1. 22. ...Qd5 and 22. Nd5 are losing. But 22. ...Qb4 a suggestion of Pal Benko's may keep Black on the board.

22. . . Qxe3 23. fxe3 Nd5 24. Kf2
Kb6 25. Ke2 a5 26. Rf7 a4 27.
Kd2 c5?

Kasparov admitted that this was a mistake. 27. Rd8 puts far more pressure on Anand's position.

28. e4

Kasparov himself criticised his draw offer here. Kasparov believes that 28. ... Nb4 is the only move and even then Anand would have to play accurately. Kasparov is obviously not in confident mood at the moment.

Speelman gives the following:

28. ...Nc7 29. Rd7 cxd4 (29. ...c4 is interesting) 30. Rc1 Na6 and White is much better.

28.Nb4 29. Re7 cxd4 30.Rxe6+
Ka5 31. Rd6 where Black must avoid 31. ... Rf8 as this loses to 32. e6 Rf2+ 33. Kd1 Rf1+ 34. Ke2 Ra1 35. e7 d3+ 36. Rxd3 Nxd3 37. Kxd3!

1/2-1/2

Anand - Kasparov [B85]
INTEL World Champ. (7)
New York 1995

(Notes by Mark Crowther)

As Game 5 varying with 15. Bb6.

15. Bb6 Qb8 16.e5 dxe5 17.fxe5
Nfd5 18.Nxd5 exd5 19.Re1 h6
20.c3 Nxd3 21.Qxd3 Bc5!

I like this move. Its the one Black wants to make if he can get it to work. Very quickly the position again becomes level.

22.Qxd5 Be6 23.Qd2 Bxb6
24.axb6 Rc6 25.Ra4 Rxb6 1/2-1/2

Kasparov - Anand
INTEL World Champ. (8)
New York 1995

(Notes by Mark Crowther)

1. e4 e5 2. Nf3 Nc6 3. d4 exd4 4.
Nxd4 Nf6 5. Nxc6 bxc6 6. e5 Qe7
7. Qe2 Nd5 8. c4 Ba6 9. b3 g5!?

This is new. Normal choices are 9. ...Qh4 (does very well on my database) 9. ...g6 and 9. ...0-0-0 are both common.) The idea is to play the g6 lines with f4 prevented. Kasparov plays Ba3 which he has played against Karpov's g6.

10. Ba3 d6 11. exd6 Qxe2+ 12.
Bxe2 Bg7 13. cxd5 Bxe2 14.
Kxe2 Bxa1

Somewhere Kasparov has gone badly astray. After looking at the alternatives whilst the game was being played we found 15. Rc1 as being forced.

15. Rc1 O-O-O

This is preparation still and was played quickly. The game has followed Kuksov-Aleksandrov from 1991 except that in that game 9. ...g6 had been played.

16. Rxc6 Rhe8+ 17. Kd3 Rd7 18.
Nc3

This was played after a long thought and is an excellent move.

18. . . Bxc3 19. Kxc3 Re5 20. Kc4
Re4+

If there is a try for a win then it is with 20. ...Kb7. That is for future analysis.

I was told that Short for one was analysing the position and that the draw was expected. Kasparov is quoted as suggesting:

20...Re2 21 Bc5 Rxa2 22 b4, and white is absolutely fine. eg 22...Ra1, then 23 dc Rxc7 24 Rf6 and White would have: a strong Bishop on c5 well protected by the b4 pawn; a strong, passed d6-Pawn; an active Rook; and active

play against the weak Black Pawns.

21. Kd3 Re5 22. Kc4 Re4+ 1/2-1/2

A natural result to a high quality game. This is why Kasparov is so hard to beat.

**Anand - Kasparov [B85]
INTEL World Champ. (9)
New York 1995**

(Notes by FM Christoh Pfrommer)

**1.e4 c5 2.Nf3 d6 3.d4 cxd4
4.Nxd4 Nf6 5.Nc3 a6 6.Be2 e6
7.0-0 Be7 8.a4 Nc6 9.Be3 0-0
10.f4 Qc7 11.Kh1 Re8 12.Bf3
Bd7**

Kasparov used to prefer 12...Rb8 instead of 12...Bb7 during his match against Karpov in Moscow 1985. But the famous 24th game of the match was the last time Kasparov played the 12...Rb8.

**12...Rb8 13.Qd2 Bd7 14.Nb3 b6
15.g4 Bc8 16.g5 Nd7 17.Qf2 Bf8
18.Bg2 Bb7 19.Rad1 g6 20.Bc1
Rbc8 21.Rd3 Nb4 22.Rh3 Bg7
23.Be3 Re7 24.Kg1 Rce8 25.Rd1
f5 26.gxf6 Nxf6 27.Rg3 Rf7
28.Bxb6 Qb8 29.Be3 Nh5 30.Rg4
Nf6 31.Rh4 g5 32.fgx5 Ng4
33.Qd2 Nxe3 34.Qxe3 Nxc2
35.Qb6 Ba8 36.Rxd6 Rb7 37.Qxa6
Rxb3 38.Rxe6 Rxb2 39.Qc4 Kh8
40.e5 Qa7+ 41.Kh1 Bxg2+
42.Kxg2 Nd4+ 0-1 Karpov -
Kasparov, Wch Moscow (24)
1985.**

**13.Nb3 Na5 14.Nxa5 Qxa5
15.Qd3 Rad8**

That's the way Kasparov played already in 1988 against John Van der Wiel.

16.Rfd1

The move is said to be a recommendation of Van der Wiel.

In Kasparov's annotations to the 1988 game he doesn't mention the move. This is where Anand's preparation begins. Anand now puts his hope on Queen-side pressure. 16. g4 was tried in the game Van der Wiel - Polugaevsky in 1989.

**16.Qd2 Rc8 17.e5 dxe5 18.fxe5
Qxe5 19.Bxb7 Rcd8 20.Bf4 Qa5
21.Qe2 Bc8 22.Bc6 Rf8 23.Bf3
Qb4 24.Bc7 Rd7 25.Be5 Bb7
26.a5 Rfd8 27.Ra4 Bxf3 28.Qxf3
Qc5 29.Bxf6 gxf6 30.Rh4 f5
31.Rh3 Qc4 32.g4 f4 33.g5 Rd4
34.Rf2 Bxg5 35.Qg4 f6 36.Rhf3
Kh8 37.Rg2 Rd2 38.h4 Rxg2
39.Kxg2 Bh6 40.Kh3 Rg8 41.Qh5
Qc6 42.Kh2 Bf8 43.Rf2 f5 44.Qe2
Rg4 0-1 van der Wiel -Kasparov,
Amsterdam 1988.**

16...Bc6 17.b4! Qc7

**17...Qxb4?? 18.Rdb1 Qa5 19.Bb6
+-**

18.b5 Bd7 19.Rab1

**19.Ne2 Rc8 20.bxa6 bxa6
21.Qxa6 Ra8 22.Qd3 Rxa4
23.Rxa4 Bxa4 24.Nc3 Bc6 25.Nb5
Bxb5 26.Qxb5 Rb8 27.Qa4 Rc8
28.Rd2 Nd7 29.Qd4 Rb8 30.g3
Nb6 31.Be2 Qc6 1/2-1/2 Cuijpers -
De Boer, Hilversum 1988.**

19...axb5?!

**19...Rc8 20.bxa6 (20.Rb3 axb5
21.Nxb5 Qxc2 22.Nxd6 Bxd6
23.Qxc2 Rxc2 24.Rxd6 Bxa4
25.Rxb7 Bc6=) 20...bxa6 21.Rb3
Rb8 (21...Qc4 ?! 22.Be2 Qxd3
23.Bxd3) 22.Rdb1 Rxb3 23.Rxb3
Rb8 24.Rxb8+ Qxb8 25.Qxa6 Qb2
26.Qc4 Qxc2 These lines maybe
offer Gary better chances for
equality.**

20.Nxb5 Bxb5?!

Speelman gives this as dubious. 20. ...Qa5 is given as an interesting alternative. 21. Nxd6 Bxa4 22. Bb6 (22. e5!?) 22.

**...Rxd6 then not 23. Qxd6 Bxd6
24. Bxa5 Bxf4! with good drawing
chances for Black but: 23. Bxa5
Rxd3 24. cxd3 Bxd1 25. Bxd1
when white is on top.**

21.Qxb5!

**21.Rxb5 Rc8 (21...Ra8 22.Qb3)
22.e5 dxe5 23.Rxb7 Qxc2 24.fxe5
Nd5 25.Qxc2 Rxc2 26.Bxd5 exd5
27.Rxd5 also comes into
consideration.**

21...Ra8

21. ...Qxc2 loses the Queen.

22.c4 e5

To stop e5 from white which was a threat.

**23.Bb6 Qc8 24.fxe5 dxe5 25.a5
Bf8?**

**25...Bd8! Seirawan 26.Qxe8+
Nxe8 27.Rxd8 Qxd8 28.Bxd8
Rxd8 29.Rxb7 Ra8 30.Rb5 Nd6
31.Rc5 f6 probably still equalizing.**

26.h3 Qe6 27.Rd5!! Nxd5?

This is a difficult decision. Anand's passed pawns soon become too strong. However Anand was delighted by the decision almost begging Kasparov to take the exchange. Kasparov is now busted.

**27...Rac8 28.Rbd1 g6 (28. ...Qc6
29. Rxe5 Rxe5 30. Qxe5 Qxc4 31.
Qd4! with e5 to follow) 29.c5 Qc6
30.Qb2 Black has no counterplay,
since the Bb6 restricts the Black
rooks.**

28.exd5 Qg6?

28...Qf5 is putting up more resistance (Anand). However after 29. Bg4! (29. c5 e4 30. Be2 Qxd5 is poor) Qg6 30. c5 is very strong.

29.c5

+ - Anand

29...e4 30.Be2 Re5 31.Qd7 Rg5
32.Rg1 e3 33.d6 Rg3 34.Qxb7
Qe6

One last thing to pay attention to.
35. Rf1 Rb8 36. Qxb8? (Qxc6
keeps some chances) leads to
perpetual.

35.Kh2 1-0

Anand was delighted to get off the
mark in this game as it is some
years since he has beaten
Kasparov.

Kasparov - Anand [C80]
INTEL World Champ. (10)
New York 1995

(Notes by FM C. Pfrommer)

1.e4 e5 2.Nf3 Nc6 3.Bb5 a6 4.Ba4
Nf6 5.0-0 Nxe4 6.d4 b5 7.Bb3 d5
8.dxe5 Be6 9.Nbd2 Nc5 10.c3 d4
11.Ng5 dxc3 12.Nxe6 fxe6
13.bxc3 Qd3 14.Bc2!

14.Nf3 0-0-0 15.Qe1 This was
played in the 6th game of this
match.

14...Qxc3 15.Nb3!

This rook sacrifice seems to
guarantee a strong attack.
Kasparov: "This game was won
basically at home."

15...Nxb3

15...Rd8!? 16.Bd2 Qxe5 17.Re1
Qd5 18.Qg4 Ne5 19.Qh5+ Nf7
20.Qh3 e5 21.Rad1 with excellent
attacking chances for White.

16.Bxb3 Nd4

16...Qxa1 looked better to me, but
I learned from some analysis by
German GM Knaak, that White
still breaks through with his attack:
17.Qh5+! g6 18.Qf3 Nd8 (18...0-0-
0? 19.Qxc6 Qxe5 20.Qxa6+ Kb8
21.Be3+-) 19.Qf6! Knaak

(19.Qxa8 is less clear.) 19...Rg8
20.Bxe6 Rg7 21.Ba3 Qxf1+
22.Kxf1 Bxa3 23.Bd5+-.

17.Qg4! Qxa1 18.Bxe6 Rd8

18...Qc3 19.Bd7+ Kf7 20.Be3 Bc5
21.e6+ Kg8 22.e7 g6 23.Qe4
Ne2+ 24.Kh1 Kf7 25.Qd5+ Kg7
26.Bxc5 Qf6 27.Re1 Qc3 28.Qd1
Qxc5 29.Qxe2 Rhe8 30.Qb2+ Kh6
31.Re3 Qd6 32.Rh3+ Kg5
33.Qc1+ Kf6 34.Qa1+ Kg5
35.Rxh7 Rxe7 36.h4+ Kf4
37.Rxe7 Qxe7 38.Qd4+ Qe4
39.Qf6+ winning. A lengthy
variation, but outlining a possible
way to attack the unprotected
black king.

19.Bh6 Qc3 20.Bxg7 Qd3
21.Bxh8 +-.

Up to here Kasparov simply had to
follow his home preparation.
21...Qg6 The resulting endgame is
easily won by Kasparov. He just
has to show a grandmaster's
routine in the endgame.

21...Ne2+ 22.Kh1 Ng3+ 23.hxg3
Qxf1+ 24.Kh2 Qd3 25.Bf5 Qc4
26.Qh3 Qf7 27.e6 Qg8 28.Bf6 Be7
29.Bxh7 Qf8 30.Bg6+ is mating in
2 moves.

22.Bf6 Be7

22...Qxg4 23.Bxg4 Rd5 24.f4 c5
25.f5 c4 26.Bh5+ Kd7 27.Re1 Kc6
28.e6 The White pair of bishops
excellently supports the advancing
central passed pawns.

23.Bxe7 Qxg4 24.Bxg4 Kxe7
25.Rc1 c6 26.f4 a5 27.Kf2 a4
28.Ke3 b4 29.Bd1 a3 30.g4 Rd5
31.Rc4 c5 32.Ke4 Rd8 33.Rxc5
Ne6 34.Rd5 Rc8 35.f5 Rc4+
36.Ke3 Nc5 37.g5 Rc1 38.Rd6 1-0

Anand - Kasparov [B78]
INTEL World Champ. (11)
New York 1995

(Notes by FM C. Pfrommer)

1.e4 c5 2.Nf3 d6 3.d4 cxd4
4.Nxd4 Nf6 5.Nc3 g6 6.Be3 Bg7
7.f3 0-0 8.Qd2 Nc6 9.Bc4 Bd7
10.0-0-0 Ne5 11.Bb3 Rc8 12.h4
h5 13.Kb1 Nc4 14.Bxc4 Rxc4
15.Nde2 b5 16.Bh6 Qa5

16...b4 has been played here.

17.Bxg7

17.Bg5 b4 18.Nd5 Nxd5 19.Qxd5
Rc5 20.Qd3 Be6 21.Nc1 Qa4
22.Bxe7 Rfc8 23.Rd2 Bc3 24.Bxd6
Bxa2+ 25.Nxa2 Ra5 26.Kc1 Qxa2
27.Kd1 Qxb2 28.Bf4 Bxd2
29.Kxd2 Rc3 1-0 Suetin - Szabo,
Leningrad 1967.

17...Kxg7 18.Nf4

18.g4?! b4 19.Nd5 Nxd5 20.exd5
Rfc8 21.Rc1 Qc5 22.gxh5 Bf5
White can't launch an attack that
easily.

18...Rfc8 19.Ncd5 Qxd2

19...b4!? Has this move been tried
in any game before?

A) 20.Nxf6 exf6 21.Rc1 (21.Qxd6?
Ba4 22.b3 Rxc2 23.bxa4 Qxa4
24.Qd5 R8c4-+) 21...R8c6 22.Qd3
(22.Qd5 R4c5 23.Qb3 Ra6
24.Rhd1 Ba4 25.Qe3 Bb5 Black
wins by attacking the weak spot on
a2.) 22...R4c5 23.Nd5 Be6
24.Rhd1 Bxd5 25.exd5 Ra6
26.Qb3 Qa4 27.Qxa4 Rxa4
intending Raa5 or Rca5.

B) 20.Nxe7!? Rxc2 21.Qxd6
Where are the Black attacking
chances?

20.Rxd2

Here, Anand declined a draw offer
from Kasparov.

20...Nxd5 21.Nxd5

This ending is probably slightly
better for White due to the strong
knight on d5.

**21...Kf8 22.Re1 Rb8 23.b3 Rc5
24.Nf4 Rbc8 25.Kb2**

25.e5?! Bf5 26.exd6 exd6 27.Ree2
White has not more of the game
any longer.

25...a5 26.a3 Kg7 27.Nd5 Be6?!

Kasparov should explain to me
why he sacrificed the pawn on e7
here. In my opinion the quiet
positional manoeuvres would have
brought success to Anand if now
he had taken on e7. Question:
Was Kasparov playing that risky
only to set the trap of 28.b4??

28.b4??

Put two (or more) question marks
here. Really a bad oversight from
the Challenger... Instead, 28.Nxe7
should have worked far better!

28.Nxe7 Re8 29.b4! axb4 30.axb4
Rc4 31.Nd5

A) 31...Rec8 32.c3! (32.Ree2
Bxd5 33.Rxd5 Rxb4+ 34.Kc1)
32...Bxd5 33.Rxd5 Rxc3 34.Re2
winning the pawn on b5.;

B) 31...Ra8 32.c3 Rc6 33.Ra1
Maybe other moves are even
stronger, but the (single) rook
ending looks promising. 33...Rxa1
34.Kxa1 Bxd5 35.Rxd5 Rxc3
36.Kb2 Re3 37.Rxb5 Re2+ 38.Kc3
Rxc3 39.Rd5;

C) 31...Bxd5 32.Rxd5 Rxb4+
33.Kc3 Rc4+ 34.Kb3 Rec8 35.Re2
White is going to win a pawn on
b5 or d6. Admittedly, a win is still
far away but not impossible.

**28...axb4 29.axb4 Rc4 30.Nb6
Rxb4+ 31.Ka3 Rxc2 0-1**

31...Rxc2 32.Rxc2 Rb3+ 33.Ka2
Re3+ 34.Kb2 Rxe1-+ .

**Kasparov - Anand
INTEL World Champ. (12)
New York 1995**

**1.e4 e5 2.Nf3 Nc6 3.Bb5 a6 4.Ba4
Nf6 5.0-0 b5 6.Bb3 Bc5**

6...Bb7 7.d3 Bc5 8.Nc3 d6 9.a4
Na5 10.Ba2 c6 11.Bd2 0-0 12.Ne2
bxa4 13.Qe1 Bb6 14.b4 axb3
15.Bb1 Nc4 16.dxc4 b2 17.Ra2
Nxe4 18.Rxb2 a5 19.Nc3 Nxd2
20.Qxd2 Ba6 21.Ba2 Bc7 22.Qe3
a4 23.Rd1 Qe7 24.Nxa4 Bxc4
25.Bxc4 Rxa4 26.Bf1 d5 27.g3
Bd6 28.c4 Ra3 29.Qe2 dxc4
30.Rc2 e4 31.Nd4 Savon -
Bronstein, Odessa 1974, 1/2-1/2
(41)

**7.a4 Bb7 8.d3 d6 9.Nc3 b4
10.Nd5 Na5**

10...h6 11.a5 0-0 12.c3 Rb8
13.Bd2 bxc3 14.bxc3 Ba7 15.Be3
Bc8 16.Nxf6+ Qxf6 17.Bd5 Bxe3
18.fxe3 Na7 19.Rb1 Rxb1
20.Qxb1 c6 21.Ba2 Nb5 22.Qb2
c5 23.Bc4 Bd7 24.Qb3 Qd8
25.Bxf7+ Kh8 26.c4 Nc3 27.Qxc3
Rxf7 28.Nd2 Rxf1+ 29.Nxf1 Qb8
30.Nd2 Ba4 31.Kf2 Qd8 32.Nf3
Bd1 33.Qd2 Bxf3 34.gxf3 Qh4+
35.Kg2 Qg5+ 36.Kf1 Qh4 37.f4
Qh3+ 38.Kg1 1/2-1/2 Timman -
Bareev, Wijk aan Zee 1995.

11.Nxf6+ Qxf6 12.Ba2 h6

This move seems new. 12...Bc8
13.Bg5 Qg6 14.Be3 Bg4 15.Bxc5
Bxf3 16.Qxf3 dxc5 17.Qe3 Qd6
18.f4 0-0 19.fxe5 Qxe5 20.Rab1
Rae8 21.Rf3 c4 22.dxc4 c5 23.Qf2
g6 24.Rf1 Re7 25.Rf6 Nb7
26.Rxa6 Nd6 27.Qf6 Qxf6 28.Rxf6
Nxe4 29.Rf1 Nd2 30.Ra1 f5
31.Rd6 Re2 32.Rd3 f4 33.Rd1 Ne4
34.Bb3 g5 35.Kf1 Rf2+ 36.Kg1
Re2 37.h3 Adams - Lin, Adelaide
1988 0-1 (66).

**13.c3 bxc3 14.bxc3 0-0 15.Be3
Rad8 16.Rb1 Bc8 17.Qe2 Be6
18.h3 Bxa2 19.Qxa2 Bxe3
20.fxe3 Qe6 21.Qxe6**

It has been suggested that 21.
Qd5 is good here. It may be that
Black can cope with the offside

knight in this position. 21. c4 may
also be a move.

**21... fxe6 22.Rb4 Rb8 23.Rfb1
Nc6 24.Rb7 Rbc8 25.Kf2 Rf7
26.Ke2 Rcf8 27.d4 g5 28.Kd3
Rg7 29.d5 exd5 30.exd5 g4
31.dxc6 e4+ 32.Kxe4 gxf3
33.gxf3 Re7+ 34.Kd4 Rxf3 35.e4
Rhx3 36.Rxc7 Rxc7 37.Rb8+ Kf7
38.Rb7 Re7 39.c7 Rxc7 40.Rxc7+
Ke6 41.Ra7 h5 42.Rxa6 Rh1
43.Ra8 h4 1/2-1/2**

**Anand - Kasparov [B78]
INTEL World Champ. (13)
New York 1995**

Annotations by GM Yasser
Seirawan

**1.e4 c5 2.Nf3 d6 3.d4 cxd4
4.Nxd4 Nf6 5.Nc3 g6**

A surprise. Kasparov's choice of
the Dragon with Black in Game 11
was expected to be a one-time-
only fling. Clearly Garry has done
some major work in the Dragon.

6.Be3 Bg7 7.Qd2

A bit offbeat as opposed to the
well-trodden paths initiated by 8.f3
as in Game 11. Kasparov now
mullered over 8...Ng4!? before
transposing back to the main line.

**7...Nc6 8.f3 O-O 9.Bc4 Bd7 10.h4
h5 11.Bb3!? Rc8 12.Nxc6?!**

A strange choice of opening tries.
Anand had the whole weekend to
prepare and it seemed reasonable
to expect the sharp lines stemming
from 12.O-O-O Ne5 13.Bg5 Rc5
14.g4. In the postmortem,
Kasparov was rather clear about
the psychological validity
of his choice of the Dragon. In the
first five games Anand had White,
Vishy had been content to use his
space advantage and avoided
sharp tactics and bridge-burning

kingside attacks. The Dragon's very nature dares White to go whole hog on the kingside with g2-g4. Earlier in the match, it seems as if Anand was determined to avoid such undertakings. As for the text, it too changes the struggle from a tactical to a positional fight.

12...bxc6 13.Bh6 c5 14.Bc4?!

While theoretical, the text allows Black's Queen to become better placed. I prefer 14.Bxg7 Kxg7 15.Qe2 Qc7 16.Bc4 Rb8 17.O-O-O as in Madl-Farago, Italy 1989, when Black's Queen was on the less-active c7-square.

14...Qb6 15.Bxg7 Kxg7 16.b3?!

By and large, White has played standard theory yet resigns in nine moves. What kind of preparation is this? The expected 16.O-O-O Rb8 17.b3 Qa8 18.Kb2 Rb4!? 19.d5 Nxd5 20.exd5 leads to an advantage for White.}

16...Be6!

An important tactical motif in the Sicilian Dragon. Black often allows the doubling of the e-pawns in order to play ...c5-c4, or shing down the c-file. This is best seen after 17.Bxe6 fxe6 18.O-O-O c4, with a strong queenside attack.

17.Nd5

A clear admission that White has no advantage. White has no chance for a center bind as 17.Na4?! Qc6 18.Bxe6 fxe6 19.c4?! Nxe4! 20.fxe4 Qxe4+ 21.Qe2 (21.Kd1 Rf4!) 21...Qf4 with advantage for Black.

17...Bxd5! 18.exd5 e5!

An important turning point. White had hoped to bring pressure to bear on Black's backward e7-pawn. Suddenly, the e7-pawn

becomes a strong e5-pawn. Will White let the upstart pass?}

19.dxe6??

Anand makes a horrible miscalculation, opening up the game with his King in the center. After 19.O-O-O Qb4, Kasparov thought the position equal, though I prefer Black. Now Garry is able to keep the White King in the center.

19...d5 20.Be2

20.Bxd5? Rfd8 21.c4 fxe6 wins.}

20...c4!

A beauty of a move. It stops White's King from castling on either side and remaining in the center is unhealthy indeed.

21.c3?

Anand's resistance snaps. Kasparov considered 21.Rd1 to be forced in order to threaten Qd2-d4. Even so, 21.Rd1 fxe6 22.Qd4 Qa5+ 23.Qd2 c3 24.Qd3 e5 is excellent for Black.

21...Rce8!!

One of the best moves of the match. It cuts to the heart of the position. Black will double on the e-file with devastating effect.

22.bxc4

White's position is bankrupt. If 22.exf7, then 22...Rxf7 is Black's point. Black's next move would be ...Rf7-e7, winning. While 22.O-O-O Rxe6 23.b4 a5 or 23...d4 is suicidal for White. Finally, 22.Qd4 Qxe6 forces White to retreat his Queen.

22...Rxe6 23.Kf1

If 23.cxd5, then 23...Re5! 24.Kf1 Rxd5 25.Qc2 Re8 will soon win.

23...Rfe8 24.Bd3 dxc4 25.Bxc4 Ne4!

The final blow. Anand gave up, as 25.fxe4 Rf6+ 26.Ke1 Rxe4+ 27.Be2 Qf2+ 28.Kd1 Rxe2 29.Qxe2 Rd6+, wins. Also, 25.Qd4 Qxd4 26.cxd4 Nd2+, wins White's Bishop.

0-1

Anand's task appears to be hopeless, as Kasparov now leads 7.5-5.5 with seven games left.

**Kasparov - Anand [B01]
INTEL World Champ. (14)
New York 1995**

Annotations by GM Yasser Seirawan

Controversy broke out because the audience became so excited during the latter stages of the game that their comments penetrated the "sound proof" glass enclosure. The noise bothered the contestants and Anand complained to Arbiter Carol Jarecki. His concentration broken, Vishy found it impossible to gather his thoughts and, as he lost the thread of the position, he was outplayed and unceremoniously defeated.

Anand was heart-broken after the game. The mild-mannered son of India complained that "the game became a lottery." At the press conference Kasparov said that, he too, had been adversely affected and didn't play his best. "This is not the way I want to win." Garry called for a change in the technical presentation of the match.

1.e4 d5?!

A rare and unexpected choice by Anand. Research indicated that Garry had never faced this opening, though theory considers it suspect with the main lines ending in White's favor. Anand was

clearly hoping to get Kasparov out of the opening preparation which has given the champion the advantage throughout the match.

2.exd5 Qxd5 3.Nc3 Qa5 4.d4 Nf6 5.Nf3 c6 6.Ne5 Be6!

All standard theory thus far. White plays for central dominance. The game now takes on some of the characteristics of the Caro-Kann.

7.Bd3 Nbd7 8.f4?!

A double-edged approach. White plays for an attack based on f4-f5. If he doesn't succeed in carrying out his plan, his c1-Bishop has a very limited future.

8...g6 9.O-O Bg7 10.Kh1?!

White's attack develops too slowly. After 10.f5 gxf5 11.Bxf5 Nxe5 12.Bxe6 fxe6 13.dxe5 Qxe5 14.Bf4 Qc5+ 15.Kh1, White has compensation for his sacrificed pawn.

10...Bf5! 11.Bc4?

Kasparov embarks on a series of misguided Bishop moves. He had to change his strategy with 11.Bxf5 gxf5 12.Qd3! e6 13.b3, angling for Ne5-c4 and Bc1-a3.

11...e6 12.Be2?

Hoping for g2-g4, snaring the f5-Bishop.

12...h5!

Reinforcing the Bishop's position. Black's last few moves are quite useful.

13.Be3 Rd8! 14.Bg1 O-O

Black completes his development and is ready to fight in the center based on ...c6-c5. White has yet to develop his a1-Rook.

15.Bf3 Nd5?!

Anand takes a positional approach. My audience preferred 15...c5! undercutting the e5-Knight's support. If 16.Bxb7? cxd4 (16...Qb6!?) 17.Qxd4 (17.Bxd4 Qb4) 17...Nxe5 18.Qxe5 Nd5 with advantage to Black. White's best is 15...c5! 16.Qe2 cxd4 17.Bxd4 Qb4 with tactics favorable to Black.

16.Nxd5

Kasparov offered a draw.

16...exd5

Having the advantage, Black declined the offer. Black has permanent control over the e4-square, whereas White's e5-Knight is unstable (no pun intended). No the fight centers around Black's attempts to get his Knight to e4.

17.Bf2 Qc7?! 18.Rc1?! f6 19.Nd3 Rfe8 20.b3 Nb6 21.a4?! Nc8 22.c4 Qf7 22.a5 Bf8?

Misplacing the f8-Bishop. The Bishop was fine where it was for the moment. Black should scurry to bring his Knight to e5. Best was 23...Nd6! 24.a6 Ne4 25.axb7 Qxb7 with advantage to Black. In some lines the g7-Bishop will be opened with ...f6-f5 and in others it can pop out by ...Bg7-h6 but this can wait. Developing the Knight was far more important.

23.cxd5 cxd5 24.Bh4 Nd6 26.a6!

It has to be admitted that, despite his inferior position, Kasparov has successfully managed to generate queenside counterplay.

26...b6?!

Again 26...Ne4! is correct. The text allows the a6-pawn to be a source of future concern.

27.Ne5?!

An amazing move. Kasparov plays for complications as both players grow short of time. Garry just felt in his bones that Anand would decline the sacrifice and had no concrete variations in mind!

27...Qe6?!

Played with little thought. Garry wins his gamble because he has come to the conclusion that Anand's approach to the match is to avoid tactical play. Vishy should have played: 27...fxe5 28.fxe5 Ne4 29.Bxd8 Rxd8 30.g4 hxg4 31.Bxg4 with an unclear position.

28.g4! hxg4 29.Nxg4 Bg7?!

Time after time, I've espoused ...Nd6-e4 and again it was the right move.

30.Rc7! Ne4?!

After waiting so long to play this move, it now loses its effectiveness. White's threats of Rc7xa7 or Rc7xg7+ have to be addressed. The Exchange sacrifice 30...Bxg4 31.Bxg4 f5 32.Bxd8 fxc4 33.Bh4 Nf5 34.Bf2 Qe4+ 35.Kg1 Ne3 36.Bxe3 Qxe3+ 37.Kg2 Qh3+ 38.Kh1 g3 39.Rc2 falls short. Perhaps, Black should give up a pawn by 30...Re7 31.Rxe7 Qxe7 32.Bxd5+ Be6! with holding chances.

31.Ne3!

Well-played! Kasparov now threatens 32.Nxf5 Qxf5? 33.Bg4, snaring Black's Queen.

31...Bh3

Exposing the g6-pawn. If 31...Ng3+ 32.Bxg3 Qxe3 33.Re1 will win several pawns.

32.Rg1 g5 33.Bg4!

Now White has completely taken over the initiative. Kasparov seeks to gain control over the f5-square.

33...Bxg4 34.Qxg4 Qxg4 35.Rxg4 Nd6?

The final error. Black had to try 35...Rc8 with some holding chances.

36.Bf2 Nb5 37.Rb7

Black is now lost, as all of White's pieces are better placed.

37...Re4 38.f5 Rxg4 39.Nxg4 Rc8 40.Rd7 Rc2 41.Rxd5

The time control reached, Anand now realized the hopelessness of his position. If now 41...Nc3, 42.Rd8+ Kf7 43.Rd7+ Kf8 44.Rc7 wins. White threatens d4-d5 and Bf2xb6.

1-0

Anand - Kasparov [B75]
INTEL World Champ. (15)
New York 1995

Annotations by GM Yasser Seirawan

Due to air conditioning problems, the match was delayed two hours until 5 pm. Forty minutes later, peace broke out--hardly a ringing endorsement for championship chess.

1.e4 c5 2.Nf3 d6 3.d4 cxd4 4.Nxd4 Nf6 5.Nc3 g6

The Sicilian Dragon, Kasparov's new-found weapon, has worked to perfection for him in this match. We were eager to see if Anand had found a sharp line against it to his liking.

6.Be3 Bg7 7.f3 O-O 8.Qd2 Nc6 9.g4!?

Tired of meeting ...h7-h5 defenses, Anand tries this advance first. The main purpose is to meet 9...d5? by 10.g5, driving away the f6-Knight.

9...Be6

Now that the f3-pawn is weak, Black tries to encourage 10.Nxe6 fxe6 with play based on ...Nc6-e5.

10.O-O-O Nxd4 11.Bxd4 Qa5 12.Kb1?!

Too timid. This loses a costly tempo in the fight for the initiative. Better (and much more exciting) was 13.a3 Rfc8 14.h4 Rab8 14.h5 b5 15.hxg6 hxg6 16.Qg5 with an ultra-sharp game in sight.

12...Rfc8 13.a3 Rab8 14.Nd5 Qxd2 15.Rxd2 Nxd5 16.Bxg7 Ne3 1/2-1/2

After 17.Bd4 Nxf1 18.Rxf1 a5!, the game is balanced.

Kasparov - Anand [B85]
INTEL World Champ. (16)
New York 1995

1.e4 c5 2.Nf3 d6 3.d4 cxd4 4.Nxd4 Nf6 5.Nc3 a6 6.Be2 e6 7.O-O Be7 8.a4 Nc6 9.Be3 O-O 10.f4 Qc7 11.Kh1 Re8 12.Bd3 Nb4 13.a5 Bd7 14.Nf3 Rac8 15.Bb6

15.Qe2 was game 5.

15...Qb8 16.Bd4

16.e5 was game 7.

16...Bc6 17.Qd2 Nxd3 18.cxd3 Nd7 19.Bg1 Qc7 20.Nd4 1/2-1/2

Anand - Kasparov [B78]
INTEL World Champ. (17)
New York 1995

1. e4 c5 2. Nf3 d6 3. d4 cxd4 4. Nxd4 Nf6 5. Nc3 g6 6. Be3 Bg7 7. f3 O-O 8. Qd2 Nc6 9. Bc4 Bd7 10. h4 h5 11. Bb3 Rc8 12. O-O-O Ne5 13. Bg5 Rc5 14. Kb1 Re8 15. Rhe1 Qa5 16. a3 b5 17. Bxf6 exf6 18. Nde2 Rc6 19. Nd5 Qxd2 20. Rxd2 Nc4 21. Bxc4 bxc4 22.

Red1 f5 23. exf5 Bxf5 24. Nd4 Bxd4 25. Rxd4 Re2 26. R4d2 Rxd2 27. Rxd2 Kf8 28. Kc1 Be6 29. Rd4 Bxd5 30. Rxd5 Ke7 31. Rb5 Ke6 32. Rb7 Rc5 33. Rxa7 g5 34. Ra8 gxh4 35. Re8+ Kd7 36. Re4 c3 37. Rxh4 cxb2+ 38. Kxb2 Rg5 39. a4 f5 40. a5 f4 41. a6 Kc7 42. Rxf4 Rxg2 43. Rf7+ Kb8 44. Kc3 h4 45. Kd3 Rf2 46. c4 Ra2 47. Ke4 Rxa6 48. Rh7 Ra5 49. f4 Kc8 50. f5 Kd8 51. Kf4 Rc5 52. Kg5 Rxc4 53. Kg6 Rg4+ 54. Kf7 d5 55. f6 Kd7 56. Kf8+ Ke6 57. f7 Rf4 58. Kg8 d4 59. f8=Q Rxf8+ 60. Kxf8 Ke5 61. Rxh4 d3 62. Rh3 Ke4 63. Rxd3 1/2-1/2

Kasparov - Anand [B01]
INTEL World Champ. (18)
New York 1995

1.e4 c5 2.Nf3 d6 3.d4 cxd4 4.Nxd4 Nf6 5.Nc3 a6 6.Be2 e6 7.O-O Be7 8.a4 Nc6 9.Be3 O-O 10.f4 Qc7 11. Kh1 Re8 12.Bf3 1/2-1/2

SELECTED GAMES

CICL GAMES

None submitted.

INTERNATIONAL GAMES

GM Shirov - GM Timman
Biel Closed 1995
Evans Gambit C51

1.e4 e5 2.Nf3 Nc6 3.Bc4 Bc5 4.b4 Bxb4 5.c3 Be7 6.d4 Na5 7.Be2 exd4 8.Qxd4 d6 9.Qxg7 Bf6 10. Qg3 Qe7 11.O-O Bd7 12.Nd4 O-O-O 13.Nd2 Nc6 14.Qe3 h5 15. Rb1 Nh6 16.Qd3 b6 17.a4 Kb8 18. a5 Nxa5 19.Qa6 Ka8 20.e5 Qxe5 21.Bf3+ d5 22.Nc4 Bc8 23.Qxa5 Qxd4 24.Qa2 Qxc3 25.Be3 Bb7 26.Bxb6 cxb6 27.Nxb6+ Kb8 28.Nxd5 1-0

GM Dreev - GM deFirmian
Biel Closed 1995
Modern Benoni A70

1.d4 Nf6 2.c4 e6 3.Nf3 c5 4.d5
exd5 5.cxd5 d6 6.Nc3 g6 7.e4
Bg7 8.h3 O-O 9.Bd3 b5 10.Nxb5
Re8 11. O-O Nxe4 12.Re1 a6
13.Na3 Nf6 14.Rxe8+ Nxe8
15.Bg5 Bf6 16. Qd2 Nd7 17.Nc4
Bb7 18.Be4 Bxg5 19.Nxg5 Ndf6
20.Re1 h6 21.Nxf7 Kxf7 22.Qxh6
Ng7 23. Bxg6+ Kg8 24.Re6 Bxd5
25. Rxd6 Bxc4 26.Rxd8+ Rxd8
27. Qh4 1-0

GM Gipslis - Schulze
Biel Open 1995 Caro-Kann
Panov-Botvinnik B13

1.e4 c6 2.d4 d5 3.exd5 cxd5 4.c4
Nf6 5.Nc3 Nc6 6.Bg5 dxc4
7.Bxc4 Nxd4 8.Nf3 Nxf3+ 9.Qxf3
Qc7 10.Bb5+ Bd7 11.O-O Bxb5
12. Nxb5 Qb6 13.a4 a6 14.Be3
Qd8 15.Rfd1 Nd7 16.Qxb7 axb5
17.Rxd7 Qc8 18.a5 b4 19.a6
Qxb7 20.Rxb7 e5 21.a7 Bd6
22.Ra6 1-0

Downloaded from
INSIDE CHESS WWW Site

GM Gheorghiu - IM Tal Shaked
Biel Open 1995
King's Indian Samisch E81

1.c4 g6 2.d4 Bg7 3.Nc3 Nf6 4.e4
d6 5.f3 O-O 6.Be3 c5 7.Nge2 Nc6
8.Qd2 e6

Commonly played, but Black does
better to transpose to a Maroczy
Bind where an early f3 and Qd2
are not the most precise: 8...cxd4
9.Nxd4 Nxd4 10.Bxd4 Be6 11.Rc1
Qa5 12.Qd2 Rfc8 13.b3 a6 14.Be3
b5 with complete equality in Ernst-
Petursson, Reykjavik 1994.

9.Rd1 b6 10.b3

A good TN. Now Black is hard
pressed to find a constructive
move.

10...Bb7 11.d5

Played only when the Bishop has
committed itself to b7.

11...exd5 12.exd5 Ne5 13.Ng3 a6

Here 13...Ne8, intending ...f5, was
better.

14.Be2 b5 15.O-O bxc4 16.bxc4
a5 17.Rb1 Ba6 18.Nb5 a4 19.h3
Bxb5 20.Rxb5 Re8 21.Bg5 Qc7
22.Rfb1 Rab8 23.Qc2 a3

Setting White the tricky problem of
how to win the pawn without giving
Black counterplay.

24.Bc1 Rxb5 25.Rxb5 h5 26.f4
Ned7 27.Bd3?!

More prudent was 27.Bf3,
preventing ...Nh5. Now Tal gets
right back into the game.

27...h4 28.Ne2 Nh5 29.Bxa3 Ng3
30.Bb2 Nf6 31.Bxf6 Bxf6 32.
Nxg3 hxg3 33.Rb1 Re3 34.Bf1
Qe7 35.Kh1 Bd4 36.Rd1 Qf6
37.Be2 Qxf4 38.Rf1 Qe5 39.Bd3
Re1 40. Qd2 Rxf1+ 41.Bxf1

Clearly Black is better as the
White King is trapped in the
corner. But how to win?

41...Bc3 42.Qe2 Qf4 43.Qd1 Kf8
44.Bd3 Ke7 45.Qf1 Qg5 46.Qd1
Kd8 47.Bf1 Bd4 48.Qe1 Qf4 49.
Bd3 g5 50.Qf1 Bf2 51.Qb1 Bd4
52.Qf1 Qe3 53.Bf5 Ke7 54.Bd3
Kf8 55.Bg6 Bf6 56.Bd3 Kg7 57.
Bf5 Bd4 58.Bd3 Qd2 59.Qe2
Qc1+ 60.Qf1 Qb2 61.Qb1 Qd2
62.a4

The concession Black has been
waiting for. Now Tal's King will be
able to infiltrate. the White
position.

62...Kf6 63.Qf1+ Ke7 64.Qe2+
Qxe2 65.Bxe2 Kd8 66.Bh5 f6
67.a5 Kc7 68.Be8 Kb7

69.Bb5 Ka7 70.a6 Kb6 71.a7
Kxa7 72.Bd7 Kb6 73.Bf5 Ka5
74.Bc2 Kb4 75.Bd3 Kc3 76.Be2
Kd2 77.Bf1 f5 78.h4 gxh4 79.Bd3
f4 80.Be2 Ke1

Ignoring White's attempt to
stalemate.

81.Bf3 Kf2 82.Bg4 Be5 83.Bh3
Ke3 84.Bd7 Kd3 85.Bb5 Kc3 86.
Kg1 f3 87.gxf3 h3 0-1

A Game of Theoretical
Significance

GM Zoltan Varga - Zelcics
Hungary 1995
Alekhine B02

1.e4 Nf6 2.Nc3 d5

Here 2...e5 is a Vienna, Four
Knight's or Scotch, while 2...g6 is a
Pirc. The text is the method
preferred by true Alekhine
devotees.

3.e5 Ne4

Three-time U.S. Champion Lev
Alburt's favored method. The
alternative 3...d4 is safer, but more
drawish.

4.Nce2 d4 5.c3 Nc6 6.Nf3

As 6.cxd4 is strongly met by
6...Ng5!

6...dxc3 7.bxc3 Bg4 8.d4 e6
9.h3! Bxf3 10.gxf3 Nxc3?!

A better try was 10...Ng5 11.Bg2
h6 12.f4 Nh7 though 13.Qb3 is still
better for White.

11.Nxc3 Bb4 12.Bb2 Qxd4
13.Qxd4 Nxd4 14.O-O-O Nxf3 15.
Bg2 Nxe5 16.Nb5 Bd6 17.Rxd6!
cxd6 18.Nxd6+ Ke7 19.Bxe5 f6
20.Bg3 Rad8 21.Nxb7 Rd4
22.Na5 Rc8+ 23.Kb1 Kf7 24.Nc6
Rd7 25.Rc1 Ke8 26.Rc4 Rb7+
27.Kc2 Rb6 28.Kd3 a6 29. Nb4
Rxc4 30.Kxc4 Kd7 31.a4 e5 32.a5

Rd6 33.Bd5 g5 34.Kc5 h5 35.f3
Kc7 36.Nd3 Rd8 37.h4 gxh4
38.Bxh4 Rf8 39.Nb4 Kd7 40.
Bc6+ 1-0

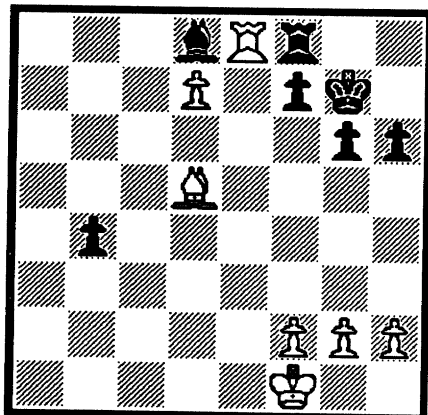
MISC RAMBLINGS...

* There is a new team in the Near West Division competing as an exhibition team. Please welcome the **Dupage County Corrections** team as they learn the ropes of competing in the CICL. Hopefully, we will see more new teams in the near future and make the CICL even bigger!

* **Strange, but True!** One tends to think of chess from the last century a having little to do with the present, but compare the following two positions.

Kramnik - Timman
Novgorod 1995
Grunfeld Exchange D85

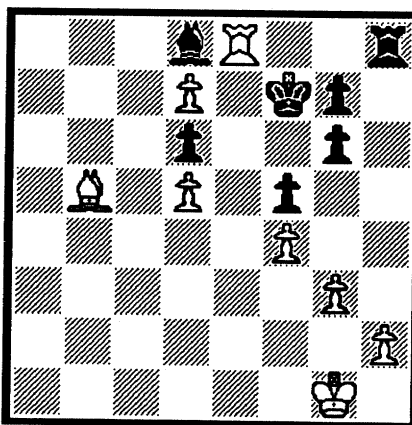
1.Nf3 g6 2.d4 Nf6 3.c4 Bg7 4.Nc3
d5 5.cxd5 Nxd5 6.e4 Nxc3
7.bxc3 c5 8.Rb1 O-O 9.Be2 cxd4
10.cxd4 Qa5+ 11.Bd2 Qxa2 12.O-O
Bg4 13.Bg5 h6 14.Be3 Nc6
15.d5 Na5 16.Bc5! Bf6 17.e5!
Bxe5 18.Rb4! Bxf3 19.Bxf3 Bf6?
20.Ra4 Qb3 21.Rxa5 Qxd1
22.Rxd1 b6 23.d6! Rac8 24.d7
Rcd8 25.Bxe7 Bxe7 26.Rxa7 Rb8
27.Re1 Bd8 28.Re8 b5 29.Ra8
Rxa8 30.Bxa8 b4 31. Bd5 Kg7
32.Kf1



And White won very quickly by running his King up the board to c8. Bobby Fischer, who is very well-read in the classics, is no doubt familiar with the following Morphy game. It's doubtful that Kramnik was when he played Timman (especially since Morphy was an American).

Paul Morphy - G. Salmon
Birmingham (blind simul) 1858
Evans Gambit C51

1.e4 e5 2.Nf3 Nc6 3.Bc4 Bc5 4.b4
d5?! 5.exd5 Nxb4 6.O-O Ne7 7.
Nxe5 O-O 8.d4 Bd6 9.Nc3 Bf5 10.
Bb3 a5 11.a3 a4 12.Nxa4 Nbx4
13.c4 Rxa4 14.cxd5 Ra5 15.Qf3
Bg6 16.Re1 Bb4 17.Re2 Nf5 18.
Bb2 Qa8 19.g3 Qa7 20.Nxg6
hxg6 21.Re5 Bxa3 22.d6! Bb4
23.Rexa5 Bxa5 24. Qd5 b6 25.d7
Qa8 26.Rc1 Qxd5 27.Bxd5 b5
28.Bc6 Nd6 29.d5 Bd2 30.Rd1
Bg5 31.f4 Bd8 32. Ba3 f5 33.Re1
Kf7 34.Bxb5 Rh8 35.Bxd6 cxd6
36.Re8



36...Rf8 37.Kf2 g5 38.Ke3 g4 39.
Kd3 g5 40.Bc6 gxf4 41.gxf4 Rg8
42.Kc4 Rf8 43.Kb5 Rg8 44.Ka6
Rf8 45.Kb7 Rg8 46.Kc8 Bb6 47.
Rxc8 Kxc8 48.d8= Q+ Bxd8 49.
Kxd8 1-0

* PCA television calendar for this fall will include coverage on both ESPN and ESPN 2. Look for commentary by GM Danny King and IM Maurice ("That pawn's trying to score a Touch-Down!!")

Ashley at the following times.
ESPN: 10/9, 10/25 and 12/11 at
4:30 p.m., 12/18 at 4:00 p.m.;
ESPN 2: 10/17, 10/31, 12/5 and
12/26 at 5:30 p.m. I warn you to
check your local TV guide closely
as ESPN makes changes to their
programming without much notice.
Last issue's listing gave a number
of Grand Prix events that mutated
into World Championship
coverage and I reported what
ESPN put out on their own
homepage! Now if they would just
quit showing the second week of
the match and move on to the
third!

* The **1996 U.S. Masters** comes to Oak Brook, IL on March 7, 8, 9, and 10. This is a real big-time event. A big thank you goes to **Helen Warren** (wife of AT&T Chargers player Jim Warren) for bringing this event to the Chicago area. Helen is a real force in the local chess community and her efforts are greatly appreciated!

* Additionally, the Warrens run the **American Postal Chess Tournament**, the best way I know to play correspondence chess. I've found USCF's attempts to be somewhat feeble. Anyway, elsewhere in this issue you will see an advertisement for APCT's book sale. Be sure to take advantage of it while it lasts! Jim always has better prices than you will see elsewhere but this event goes even further. I left with enough books to last me well into next year! And don't forget to ask for your free book.

* **Lev Abramovich Polugaevsky**
(1934 - 1995)

Russian GM Lev Polugaevsky will be remembered as a very fine chessplayer whose theoretical preparation was amongst the very best, who had accute calculative abilities, particularly in his early career, and as a man not to turn down a challange, especially in the

Sicilian Defence. The line: 1. e4 c5 2. Nf3 d6 3. d4 cxd4 4. Nxd4 Nf6 5. Nc3 a6 6. Bg5 e6 7. f4 b5 became known as the Polugaevsky Variation. A consummate professional, whose career record was probably much better than people remember nowadays. As a writer he will definitely be remembered and I have yet to come across any book he authored that was not quality through and through. His passing is a greater loss than I suspect the typical player realizes. Below are a couple of examples of the chess he created.

**Polugaevsky - Tal
Moscow 1969**

1.d4 Nf6 2.c4 e6 3.Nc3 d5 4.Nf3 c5 5.cxd5 Nxd5 6.e4 Nxc3 7.bxc3 cxd4 8.cxd4 Bb4+ 9.Bd2 Bxd2+ 10.Qxd2 O-O 11.Bc4 Nc6 12.O-O b6 13.Rad1 Bb7 14.Rfe1 Na5 15.Bd3 Rc8 16.d5 exd5 17.e5 Nc4 18.Qf4 Nb2 19.Bxh7+ Kxh7 20.Ng5+ Kg6 21.h4 Rc4 22.h5+ Kh6 23.Nxf7+ Kh7 24.Qf5+ Kg8 25.e6 Qf6 26.Qxf6 gxf6 27.Rd2 Rc6 28.Rxb2 Re8 29.Nh6+ Kh7 30.Nf5 Rxe6 31.Rxe6 Rxe6 32.Rc2 Rc6 33.Re2 Bc8 34.Re7+ Kh8 35.Nh4 f5 36.Ng6+ Kg8 37.Rxa7 1-0

**Nezjmetdinov - Polugaevsky
Baku 1961**

1.e4 c5 2.Nf3 d6 3.d4 cxd4 4.Nxd4 Nf6 5.Nc3 a6 6.Bg5 e6 7.f4 b5 8.e5 dxe5 9.fxe5 Qc7 10.exf6 Qe5+ 11.Ne4 Qxe4+ 12.Ne2 Nc6 13.Qd2 h6 14.Be3 Bb7 15.Ng3 Qe5 16.fxg7 Bxg7 17.Bd3 Nb4 18.O-O Nxd3 19.Qxd3 Rd8 20.Qe2 h5 21.Rae1 h4 22.Qf2 Rd7 23.Ne2 h3 24.gxh3 Rxh3 25.Ng3 Qd5 26.Bb6 Be5 27.Rxe5 Qxe5 28.Re1 Qg5 29.Be3 Qg4 30.Rf1 f5 31.Bf4 Rd1 32.c3 Rh4 33.Bc7 f4 34.Qxf4 0-1

*** PCA - FIDE Unification match?**

Maybe, maybe not. So far the whole thing is still up in the air. Here's the latest as put forward by some of the protagonists in a recent BBC broadcast (greatly abbreviated). On the broadcast were Anatoly Karpov, Florencio Campomanes, Bill Hartston, Danny King (via satellite from the States), David Norwood and BBC host John Snow, given as [BBC].

[BBC] Is this as well as Kasparov has ever played? He destroyed Anand after all?

[Karpov] [Laughs] What I am to say? [Pause] If he will play with me like that I will be glad.

[BBC] How are you going to bring the two Federations together?

[Campomanes] We have already in Moscow, at the Congress signed a declaration of unity with the PCA and we are working out the agreement that will make possible the play between the winner of this match (that you have so kindly put on TV) and the winner of the Karpov-Kamsky match. The two winners will get to play next year when we get to sign a reasonable agreement with the PCA.

[King] I spoke to Kasparov and Bob Rice last night. They've formulated a contract, they've sent it to Mr Campomanes, ready for him, or rather FIDE to sign and also for the two potential challengers Kamsky and Karpov to sign that they're in agreement with the PCA proposals. Now Kasparov says that they are ready for the match next year, they already have sponsors lined up, and are ready with a VERY GENEROUS OFFER to FIDE, basically to support FIDE financially. In effect the PCA will be buying off the World Championship from FIDE and will be giving FIDE a very decent financial settlement.

Kasparov is just waiting for signatures.

[BBC to Campomanes] Do you welcome this?

[Campomanes] There will be a Karpov-Kamsky match, come, I would...

[BBC] When?

[Campomanes] Mr Snow because you have never been in FIDE. So you don't know that things materialise only when they do materialise.

[General laughter]

The fact is why should you be privy to what we do? The fact is that we will have the match and I have assured Mr Karpov and Mr Kamsky that we will have the match...

[Karpov apologises for interrupting and says:] This is nice to hear. We had an absolutely clear situation with Kamsky. But for the last month people try to separate us. So this is Kasparov's team. They are spreading the rumour that Kamsky will be kicked out and I play the match with Kasparov straight.

[King is asked at the end of the show of the prospects of a possible Karpov-Kasparov next year]

[King] Kasparov was actually rather dismissive of Karpov. Please don't blame the messenger here. He said: I have beaten him so many times before. Its going to be dead easy.

(Editor: I seem to remember all the previous K-K matches as being close. After the last year's results, I'll put my money on Karpov.)

THE FINAL WORD

Putting out the first issue was a real lesson and I have tried to put into action what I learned, and what I could regarding your comments. On that matter - I would like to thank all those I've talked to either by phone, in person, or by e-mail. The response to the first issue was overwhelmingly positive. I appreciate the kudos. Expect even more as the process continues to be tweaked.

Let me jump onto something that is a growing concern on my part. What you hold in your hands is basically the work of one person with contributions by a handful of people. Fortunately, the chess community around the world has been good enough to supply us with a world championship match and a good bit of commentary to go with it. But now the match is over. So what is next? To tell the truth, I'm not sure. Our bulletin is supposed to cover the action from around the CICL and showcase its better games. But to get to the point, at the moment that's not going to happen.

Total games submitted for publication equals zero.

While I could put my own games in every issue and some of the games the CASE team plays, is that what anyone wants? I KNOW there is some great chess being played out there. I have the results from Charlie Ward to prove it. Where is the Tamez-Levine, 27SEP95 game? Wallach-Hughes, 21SEP95? Benedek-Warren, 28SEP95? Jakstas-Stevanovic, 19SEP95? Where are YOUR games? Nobody plays any games worth publishing? I don't believe that for a minute! Show that great game to more than your wife, teammates, or dog. Send it to me and I'll make sure everyone in the league gets a copy! And maybe you'll even win an award that proves what a great game you played. Send your games! Fill my mailbox and e-mail with your material. If you really get going even write up an article and submit it. Who can write? Anyone! Yes, even you. Hey, I'm not going to shoot you down; my help is available if you need it. But the bottom line is - I NEED YOUR HELP!

I'd like to throw out the following idea and see how it is received. How about making copies of the scoresheets a requirement for submission to the Division Chairman along with match result sheets. Then the result sheets go to the Ratings Chairman and the games to the Bulletin Editor. Submitting scoresheets is far from uncommon. I am quite active in USCF tournaments and more often than not scoresheets are expected to be submitted to the TD. I propose adopting a similar practice for the CICL. What if GM's did not submit their scoresheets? What a mess! Anyway, that's my pitch. Let me know what you think.

- Tim Williams, Editor

NEXT ISSUE

- **Chess on the Information Super Highway? Where do you go to get information, programs, data, and more? The Internet.**
- **What to become a better player? A new column with a view towards analysing what players are doing (and not doing) and what it takes to correct these problems. Leave the analysis to the GM's, it's time to start looking for the causes of those losses!**
- **How are ratings calculated? Hopefully an answer is on the way.**
- **What are the hottest new books? A quick and dirty guide on what's worth buying.**
- **And the latest results from around the CICL as the season begins to take shape!**

NEAR WEST DIVISION 10-01-1995

TEAM NAME	W/L/D	GAME POINTS	MATCH POINTS	PCT
MIDCON CORP	1 0 0	5.5	1.0	1.00
ARGONNE KNIGHTS	1 0 0	5.5	1.0	1.000
AT&T CHARGERS	0 1 1	3.5	0.5	0.250
CASE	0 0 1	3.0	0.5	0.500
PAWNS	0 1 0	0.5	0.0	0.000

FAR WEST DIVISION 10-01-1995

TEAM NAME	W/L/D	GAME POINTS	MATCH POINTS	PCT
ARGONNE ROOKS	1 0 0	3.5	1.0	1.000
AT&T TYROS	0 1 0	2.5	0.0	0.000
AT&T DRAGONS	0 0 0	0.0	0.0	0.000
FERMILAB	0 0 0	0.0	0.0	0.000
WHEATON COLLEGE	0 0 0	0.0	0.0	0.000
AT&T ROYALS	0 0 0	0.0	0.0	0.000

NORTH DIVISION 10-01-1995

TEAM NAME	W/L/D	GAME POINTS	MATCH POINTS	PCT
SEARS	1 0 0	5.0	1.0	1.000
MOTOROLA	1 0 0	4.5	1.0	1.000
NORTHROP CORP.	1 0 0	3.5	1.0	1.000
UOP PROCESS DIV.	0 1 0	2.5	0.0	0.000
KEMPER INSURANCE	0 1 0	1.5	0.0	0.000
EXEMPLARS	0 1 0	1.0	0.0	0.000

EAST DIVISION 10-01-1995

TEAM NAME	W/L/D	GAME POINTS	MATCH POINTS	PCT
BANK AMERICA ILL.	0 0 0	0.0	0.0	0.000
CTA	0 0 0	0.0	0.0	0.000
CHICAGO POST OFFICE	0 0 0	0.0	0.0	0.000
CHICAGO MERC. EXCH.	0 0 0	0.0	0.0	0.000
CHICAGO RES. & TRDG.	0 0 0	0.0	0.0	0.000
AMOCO CORP.	0 0 0	0.0	0.0	0.000
ALUMNI CENTRAL	0 0 0	0.0	0.0	0.000

12-SEP-95 AT&T CHARGERS 3
ROUND 1

BD	RATINGS	SCORE
1. WARREN,J	2113 6	1
2. RADAVICIUS,E	1678 23	1
3. DOBR,K	1537 -7	0
4. THOMAS,J	1469 -9	0
5. BRADY,R	1300 -9	0
6. PATTON,D	0 0	1
(JCASE)KANAS,W	1316 14	1
(JCASE)OLSON,C	0 0	0
(JCASE)MOTYCKA	1147 0	0

CASE

3

RATINGS	SCORE
WILLIAMS,T	1986-15 0
KALE,S	1870-34 0
SATTERLEE,D	1649 10 1
WHITE,H	1627 13 1
KLINEFELTER,H	1536 9 1
REID,C	1433 0 0
JACKLIN,E	1288-21 0
ANDERSON,CJ	1495 0 1 (ROYLS)
NOBLE,S	0 0 1

21-SEP-95 MIDCON CORP 5.5
ROUND 2

BD	RATINGS	SCORE
1 CONNOR,P	2089-12	.5
2 EGERTON,B	0 0	1
3 LORENZ,B	1438 7	1
4 HANSEN,B	1313 0	1
5 ROSENBERG,B	1291 0	1
6 LOGAN,H	1273 0	1F

PAWNS

.5

RATINGS	SCORE
ELLICE,W	1887 12 .5
NOTERMAN,T	1198 0 0
DZURICKO,G	1158 -7 0
HARD,R	0 0 0
MACBEAN,J	0 0 0
	0 0 0F

28-SEP-95 ARGONNE KNIGHTS 5.5
ROUND 2

BD	RATINGS	SCORE
1 BENEDEK,R	2173 13	1
2 HILL,R	1849 0	1F
3 SUAREZ,E	1622 17	1
4 BAURAC,D	1591 -5	.5
5 RONIN,D	0 0	1
6 BURBA,K	1371 0	1F

AT&T CHARGERS

.5

RATINGS	SCORE
WARREN,J	2119 -8 0
RADAVICIUS,E	1701 0 0F
DOBR,K	1530 -7 0
THOMAS,J	1460 5 .5
BRADY,R	1291 0 0
	0 0 0F

19-SEP-95 NORTHROP CORP. 3.5
ROUND 1

BD	RATINGS	SCORE
1 JAKSTAS,K	2198 18	1
2 GOLUMBOVSKI,P	2158 -5	.5
3 DIAZ,P	2084-26	0
4 CAIRONE,B	1793-25	0
5 VIGANTS,A	1528 31	1
6 ALFONSO,E	0 0	1
7 ELEK,G	1066 0	1

UOP PROCESS DIV.

2.5

RATINGS	SCORE
STEVANOVIC,M	2269-18 0
BUERGER,E	2095 3 .5
BOLDINGH,E	2028 26 1
SAJBEL,P	1755 25 1
MICKLICH,F	1660-20 0
VAN ZILE,C	1357 0 0
VANDECOTTE,M	0 0 0

19-SEP-95	EXEMPLARS	1	SEARS	5
ROUND 1				
BD	RATINGS SCORE		RATINGS SCORE	
1 SULLIVAN,J	1996 -4	0	REYES,R	2346 4 1
2 FRISKE,T	1927 0	0F	LATIMER,E	2037 0 1F
3 BURIAN,D	1626 -9	0	MILLER,TT	1767 14 1
4 SUERTH,F	1597 12	1	DORFF,M	1529-18 0
5	0 0	0F	VITAVER,L	0 0 1F
6	0 0	0F	FLOREY,J	0 0 1F
21-SEP-95	MOTOROLA	4.5	KEMPER INSURANCE	1.5
ROUND 1				
BD	RATINGS SCORE		RATINGS SCORE	
1 HASAN,Y	2237 -7	.5	SIWEK,M	2142 4 .5
2 WALLACH,C	2094-36	0	HUGHES,N	1852 24 1
3 CIESLEK,D	1973 2	1	OLSEN,A	1474 -2 0
4 LESTER,M	1583 0	1	PAYTON,P	0 0 0
5 AUGSBURGER,L	1732 0	1F		0 0 0F
6 GONCHAROFF,N	1789 0	1F		0 0 0F
7 MELNIKOV,I	2154 5	1	GONCHAROFF,N	1789 -2 0 (MTRLA)
8 MORRIS,R	0 0	1	AUGSBURGER,L	1732 0 0 (MTRLA)
9 MELNIKOV,N	0 0	0	VALDEZ,C	0 0 1 (MTRLA)
27-SEP-95	AT&T TYROS	2.5	ARGONNE ROOKS	3.5
ROUND 1				
BD	RATINGS SCORE		RATINGS SCORE	
1 TAMEZ,I	2047 -5	0	LEVINE,D	2395 5 1
2 STOLTZ,B	1968 8	.5	SHEYNIN,S	2083 -8 .5
3 BROZOVICH,J	1726 -3	0	BERRY,G	2080 3 1
4 SHAFF,R	1535 -6	0	GREEN,D	1768 6 1
5 KARPIERZ,J	1179 0	1	SEMONES,E	0 0 0
6 SCHWARTZ,M	1091 0	1F	MORRISON,J	1765 0 0F

NEAR WEST DIVISION TOP TEN

BENEDEK,R	KNIGHT	2186D
WARREN,J	CHRGR	2111T
CONNOR,P	MDCON	2077
EGERTON,J	MDCON	1996
KEISLER,J	KNIGHT	1992
WILLIAMS,T	CASE	1971
ELLICE,W	PAWNS	1899
HILL,R	KNIGHT	1849
KALE,S	CASE	1836
WHITED,W	MDCON	1829

FAR WEST DIVISION TOP TEN

LEVINE,D	ROOKS	2400
BEZZUBOV,V	FERMI	2338*
TEGEL,F	DRGNS	2167D
KOZLOVSKY,M	FERMI	2167
BUCHNER,R	ROYLS	2106
LUDWIG,T	DRGNS	2095C
BERRY,G	ROOKS	2083D
SHEYNIN,S	ROOKS	2075
TAMEZ,I	TYROS	2042
MOTTA,H	FERMI	2039

NORTH DIVISION TOP TEN

REYES,R	SEARS	2350D
STEVANOVIC,M	UOP	2251C
HASAN,Y	MTRLA	2230
JAKSTAS,K	NORTH	2216C
WONG,P	EXMPL	2196C
MELNIKOV,I	MTRLA	2159
GOLUMBOVSKI,P	NORTH	2153
SIWEK,M	KEMPR	2146C
BUERGER,E	UOP	2098D
WALLACH,C	MTRLA	2058

EAST DIVISION TOP TEN

INUMERABLE,F	PSTOF	2306
JASAITIS,A	CRT	2150C
HODINA,J	AMCRP	2137
CZERNIECKI,A	ALUMN	2121C
FRIESEMA,W	CRT	2097
COX,M	ALUMN	2028C
MAREMA,D	PSTOF	2006
SMILEY,R	AMCRP	2005
MARCOWKA,R	PSTOF	2004C
LEONG,D	ALUMN	2001

CICL TOP TEN (DIVISION)

LEVINE,D	FAR WEST	2400
REYES,R	NORTH	2350*
BEZZUBOV,V	FAR WEST	2338
INUMERABLE,F	EAST	2306
STEVANOVIC,M	NORTH	2251C
HASAN,Y	NORTH	2230
JAKSTAS,K	NORTH	2216C
WONG,P	NORTH	2196C
BENEDEK,R	NEAR WEST	2186D
TEGEL,F	FAR WEST	2167D

MOST IMPROVED PLAYERS

VIGANTS,A	NORTH	31
BOLDINGH,E	UOP	26
SAJBEL,P	UOP	25
HUGHES,N	KEMPR	24
RADAVICIUS,E	CHRGR	23
JAKSTAS,K	NORTH	18
SUAREZ,E	KNIGHT	17
MILLER,TT	SEARS	14
KANAS,W	JCASE	14
WHITE,H	JCASE	13

NAME	TEAM	WL/D	RATING	NAME	TEAM	WL/D	RATING
ABRAHAM,T	CTA	0 0 0	1574	CONNOR,P	MDCON	0 0 1	2077
ALFONSO,E	NORTH	1 0 0	0000?	COOPER,W	PSTOF	0 0 0	1678
ALLEN,H	PSTOF	0 0 0	1849	COPELAND,P	WHEAT	0 0 0	1229?
ANDERSON,CJ	ROYLS	1 0 0	1495	COTE,J	MERC	0 0 0	1306
ANGELOS,S	COLUM	0 0 0	0000?	COX,M	ALUMN	0 0 0	2028C
AQUENDE,A	KEMPR	0 0 0	0000?	CREWSE,L	EXMPL	0 0 0	2058
ATKINSON,J	AMCRP	0 0 0	1758C	CROWE,R	ROYLS	0 0 0	1405*
AUGSBURGER,L	MTRLA	0 1 0	1732	CUMMUTA,P	KEMPR	0 0 0	1398
BABINEK,J	NORTH	0 0 0	1416#	CURRAN,T	MTRLA	0 0 0	0000?
BAKER,B	FLPRO	0 0 0	1042	CZERNIECKI,A	ALUMN	0 0 0	2121C
BAKER,LR	MERC	0 0 0	1093*	CZOSKE,M	ROYLS	0 0 0	0000?
BARGERSTOCK,D	CRT	0 0 0	1744	DAVIDSON,M	ALUMN	0 0 0	1617
BARTUSIAK,P	MTRLA	0 0 0	0000?	DECMAN,S	ROOKS	0 0 0	1638D
BAURAC,D	KNGHT	0 0 1	1586C	DELEON,J	CRT	0 0 0	1485#
BECK,P	MERC	0 0 0	0000?	DENG,J	CRT	0 0 0	1549
BENEDEK,R	KNGHT	1 0 0	2186D	DIAZ,L	JCASE	0 0 0	0000?
BERMAN,R	KEMPR	0 0 0	0000?	DIAZ,P	NORTH	0 1 0	2058
BERNARD,D	CRT	0 0 0	1296	DOBR,K	CHRGR	0 2 0	1523T
BERRY,G	ROOKS	1 0 0	2083D	DOBROVOLNY	ROYLS	0 0 0	1926
BEZZUBOV,V	FERMI	0 0 0	2338*	DORFF,M	SEARS	0 1 0	1511
BHOJWANI,C	TYROS	0 0 0	1933	DOTY,B	HULL	0 0 0	0000?
BLACKMON,E	ROYLS	0 0 0	1783	DUFRESNE,T	JCASE	0 0 0	997*
BLAZIE,J	TYROS	0 0 0	1830C	DURKEE,D	DRGNS	0 0 0	1777C
BLOOM,B	EXMPL	0 0 0	2034	DYCZKOWSKI	CONBK	0 0 0	1565
BOLDINGH,E	UOP	1 0 0	2054	DZEKHTSER,A	SEARS	0 0 0	1761*
BOSTICK,T	WHEAT	0 0 0	1431#	DZURICKO,G	PAWNS	0 1 0	1151*
BRADY,R	CHRGR	0 2 0	1291	EGERTON,B	MDCON	1 0 0	0000?
BRITT-WEBB,E	AMCRP	0 0 0	1265#	EGERTON,J	MDCO	0 0 0	1996
BROCKETT,M	SEARS	0 0 0	1801	ELEK,G	NORTH	1 0 0	1066
BRONFELD,A	ALUMN	0 0 0	1851	ELLICE,W	PAWNS	0 0 1	1899
BROTSOVICH,J	EXMPL	0 0 0	1533D	EUSTACE,D	DRGNS	0 0 0	1577
BROZOVICH,J	TYROS	0 1 0	1723C	FABIJONAS,R	ALUMN	0 0 0	1841D
BUCHNER,R	ROYLS	0 0 0	2106	FAHRENHOLTZ	MTRLA	0 0 0	1785*
BUERGER,E	UOP	0 0 1	2098D	FELDMAN,A	FLPRO	0 0 0	1420C
BURBA,K	KNGHT	0 0 0	1371C	FERGUSON,K	MDCON	0 0 0	0000?
BURDICK,S	COLUM	0 0 0	1569	FLEET,R	MDCON	0 0 0	1154#
BURIAN,D	EXMPL	0 1 0	1617C	FLOREY,J	SEARS	0 0 0	0000?
BYRNES,R	CTA	0 0 0	0000?	FRAATS,D	BKAMI	0 0 0	1857
CADE,M	UNILV	0 0 0	0000?	FRANEK,M	ALUMN	0 0 0	1776C
CAIRONE,B	NORTH	0 1 0	1768	FRANK,M	MERC	0 0 0	1726
CARDI,P	HULL	0 0 0	1240#	FRIESEMA,W	CRT	0 0 0	2097
CARNAL,D	CRT	0 0 0	1207#	FRISKE,T	EXMPL	0 0 0	1927
CARTER,L	PSTOF	0 0 0	1554	GAINES,I	FERMI	0 0 0	1776C
CARTER,O	CTA	0 0 0	0000?	GALKO,D	KEMPR	0 0 0	0000?
CATENA,J	MTRLA	0 0 0	0000?	GALLAGHER,H	KNGHT	0 0 0	1300
CHAN,H	SEARS	0 0 0	1574	GANSER,A	BKAMI	0 0 0	1266*
CHOUdry,A	KEMPR	0 0 0	0000?	GEBELE,R	UOP	0 0 0	0000?
CIESLEK,D	MTRLA	1 0 0	1975	GIMPLE,R	WHEAT	0 0 0	0000?
CISKO,G	FERMI	0 0 0	1621	GOLLA,R	SEARS	0 0 0	1982D
COLEMAN,O	CTA	0 0 0	0000?	GOLUMBOVSKI	NORTH	0 0 1	2153

? - UNRATED

- 5 TO 9 RATED GAMES

* - 10 TO 24 RATED GAMES

C - CENTURY CLUB MEMBER

D - DOUBLE CENTURION

T - TRIPLE CENTURION

Q - QUAD CENTURION

NAME	TEAM	WLD	RATING	NAME	TEAM	WLD	RATING
GONCHAROFF,N	MTRLA	0 1 0	1787Q	LASKY,N	RADIO	0 0 0	1352C
GORZ,E	RADIO	0 0 0	1289*	LATIMER,E	SEARS	0 0 0	2037D
GREEN,D	ROOKS	1 0 0	1774C	LAWRENCE,P	MTRLA	0 0 0	0000?
GRIESMEYER,W	PSTOF	0 0 0	1317	LEONG,D	ALUMN	0 0 0	2001
GRYPARIS,J	MTRLA	0 0 0	1499	LEONG,G	KEMPR	0 0 0	2012C
GUIO,J	ROYLS	0 0 0	1977	LERNER,R	SEARS	0 0 0	0000?
HAHNE,D	ROYLS	0 0 0	1586	LESTER,M	MTRLA	1 0 0	1583
HAMMOND,M	BKAMI	0 0 0	1426	LEVINE,D	ROOKS	1 0 0	2400
HANSEN,B	MDCON	1 0 0	1313#	LIKHTEREV,M	UOP	0 0 0	1500*
HARD,R	PAWNS	0 1 0	0000?	LITVINAS,A	ALUMN	0 0 0	1696C
HARDIN,L	KEMPR	0 0 0	0000?	LOGAN,H	MDCON	0 0 0	1273#
HARRIS,FF	CTA	0 0 0	1401#	LORENZ,B	MDCON	1 0 0	1445*
HARRIS,R	FERMI	0 0 0	1644	LOSOFF,A	CRT	0 0 0	1918
HASAN,Y	MTRLA	0 0 1	2230	LUDWIG,T	DRGNS	0 0 0	2095C
HERNANDEZ,DD	COLUM	0 0 0	1497	LUEDERS,J	CRT	0 0 0	0000?
HESS,B	FLPRO	0 0 0	1492	LULKIN,V	UNILV	0 0 0	1826#
HICKS,C	DRGNS	0 0 0	1501	LUSTRO,G	ROYLS	0 0 0	0000?
HILL,R	KNGHT	0 0 0	1849	MACBEAN,J	PAWNS	0 1 0	0000?
HILLIARD,J	BKAMI	0 0 0	0000?	MARCOWKA,R	PSTOF	0 0 0	2004C
HILTON,J	MERC	0 0 0	1087*	MAREMA,D	PSTOF	0 0 0	2006
HODINA,J	AMCRP	0 0 0	2137	MARTIN,K	COLUM	0 0 0	1493
HOWARD,W	PSTOF	0 0 0	1575	MATTHEWS,J	CTA	0 0 0	1782
HUGHES,N	KEMPR	1 0 0	1876C	MAYNARD,J	WHEAT	0 0 0	1330
INUMERABLE,F	PSTOF	0 0 0	2306	MCALISTER,K	COLUM	0 0 0	1977
ITZENHEUSER,W	JCASE	0 0 0	0000?	MCFARLIN,B	KEMPR	0 0 0	1209#
JACKLIN,E	JCASE	0 1 0	1267	MCKAY,P	UNILV	0 0 0	1395#
JAKSTAS,K	NORTH	1 0 0	2216C	MELNIKOV,I	MTRLA	1 0 0	2159
JARRETT,T	CTA	0 0 0	1660*	MELNIKOV,N	MTRLA	0 1 0	0000?
JASAITIS,A	CRT	0 0 0	2150C	MICKLICH,F	UOP	0 1 0	1640C
JONES,M	CTA	0 0 0	1387*	MIKULECKY,B	RADIO	0 0 0	1326C
JOSEPHSON,D	WHEAT	0 0 0	1845#	MILLER,J	NORTH	0 0 0	0000?
JOSHI,A	UNILV	0 0 0	0000?	MILLER,TT	SEARS	1 0 0	1781
KALE,S	JCASE	0 1 0	1836	MORRIS,R	MTRLA	1 0 0	0000?
KANAS,W	JCASE	1 0 0	1330C	MORRISON,J	ROOKS	0 0 0	1765
KARPIERZ,J	TYROS	1 0 0	1179*	MORTADA,C	MTRLA	0 0 0	0000?
KATAOKA,N	UOP	0 0 0	0000?	MOTTA,H	FERMI	0 0 0	2039
KATZ,J	JCASE	0 0 0	0000?	MOTYCKA,R	JCASE	0 1 0	1147
KAUFMAN,M	KEMPR	0 0 0	0000?	MUDAN,M	HULL	0 0 0	1123*
KEEFE,E	FLPRO	0 0 0	1181#	NARSOLIS,F	UOP	0 0 0	0000?
KEISLER,J	KNGHT	0 0 0	1992	NAUGHTON,T	HULL	0 0 0	1308*
KERCSMAR,J	WHEAT	0 0 0	0000?	NELL,D	UNILV	0 0 0	1073#
KINSELLA,G	KNGHT	0 0 0	1481C	NISHIMURA,K	FLPRO	0 0 0	1329*
KLINEFELTER,H	JCASE	1 0 0	1545C	NOBLE,S	JCASE	1 0 0	0000?
KOGAN,G	BKAMI	0 0 0	1855	NOTERMAN,T	PAWNS	0 1 0	1198
KOSTECKA,K	COLUM	0 0 0	1596	NOWAK,W	CTA	0 0 0	1365#
KOZLOVSKY,M	FERMI	0 0 0	2167	O'BRIEN,D	UOP	0 0 0	1377*
KRUEGER,J	DRGNS	0 0 0	1353*	O'DELL,DW	RADIO	0 0 0	1573C
KRULL,E	AMCRP	0 0 0	1476	OGASAWARA,L	ROYLS	0 0 0	1852C
LAMBIRIS,J	KEMPR	0 0 0	1441	OLSEN,A	KEMPR	0 1 0	1472
LASKY,JIM	RADIO	0 0 0	1693#	OLSON,C	JCASE	0 1 0	0000?

? - UNRATED

- 5 TO 9 RATED GAMES

* - 10 TO 24 RATED GAMES

C - CENTURY CLUB MEMBER

D - DOUBLE CENTURION

T - TRIPLE CENTURION

Q - QUAD CENTURION

NAME	TEAM	W	L	D	RATING	NAME	TEAM	W	L	D	RATING
OSTERLUND,R	EXMPL	0	0	0	1943	SLAGLE,S	MERC	0	0	0	1617
PARA,A	FERMI	0	0	0	1487	SMILEY,R	AMCRP	0	0	0	2005
PARAOAN,E	BKAMI	0	0	0	1726C	SMITH,BR	TYROS	0	0	0	1511
PATTON,D	CHRGR	1	0	0	0000?	SOMBONG,M	BKAMI	0	0	0	1634
PAWLUS,D	MTRLA	0	0	0	0000?	SPIEGEL,L	FERMI	0	0	0	1999C
PAYTON,P	KEMPR	0	1	0	0000?	STAMM,V	CHRGR	0	0	0	1722D
PEHAS,A	ROYLS	0	0	0	1977	STAPLES,M	CTA	0	0	0	0000?
PENNINGTON,J	WHEAT	0	0	0	0000?	STEVANOVIC,M	UOP	0	1	0	2251C
PERAREN,E	PSTOF	0	0	0	1733	STEVENS,J	COLUM	0	0	0	1340
PHELPS,C	DRGNS	0	0	0	1244#	STEVENS,N	MDCON	0	0	0	0000?
PIAO,T	DRGNS	0	0	0	1711	STEVENSON,R	UNILV	0	0	0	1363
PILLAI,J	MTRLA	0	0	0	0000?	STINSON,M	ROYLS	0	0	0	2008
POMA,D	AMCRP	0	0	0	1257	STOLTZ,B	TYROS	0	0	1	1976
POZNIAK,J	KEMPR	0	0	0	1479#	SUAREZ,E	KNGHT	1	0	0	1639
PRATT,C	MTRLA	0	0	0	0000?	SUERTH,F	EXMPL	1	0	0	1609C
PRATTS,M	COLUM	0	0	0	1792	SULLIVAN,C	MERC	0	0	0	1467
QUARTETTI,C	NORTH	0	0	0	0000?	SULLIVAN,J	EXMPL	0	1	0	1992D
QUERUBIN,R	FLPRO	0	0	0	2067#	SZONTAGH,T	CRT	0	0	0	0000?
RADAVICIUS,E	CHRGR	1	0	0	1701D	TAMEZ,I	TYROS	0	1	0	2042
REID,C	JCASE	0	1	0	1433	TEGEL,F	DRGNS	0	0	0	2167D
REYES,R	SEARS	1	0	0	2350D	TERPSTRA,D	WHEAT	0	0	0	0000?
RINGER,D	SEARS	0	0	0	0000?	THOMAS,G	TYROS	0	0	0	1438
RIPPE,D	TYROS	0	0	0	0000?	THOMAS,J	CHRGR	0	1	1	1465C
ROBERTS,J	WHEAT	0	0	0	0000?	THOMPSON,R	FLPRO	0	0	0	1061
ROMENESKO,G	UNILV	0	0	0	0000?	TSEITLIN,E	MTRLA	0	0	0	0000?
RONIN,D	KNGHT	1	0	0	0000?	TURNER,K	PSTOF	0	0	0	1559
ROSENBERG,B	MDCON	1	0	0	1291#	TYREE,D	RADIO	0	0	0	1475*
ROSLEY,D	ROYLS	0	0	0	1808	UNDERWOOD,W	WHEAT	0	0	0	1980C
RUBIN,A	CRT	0	0	0	0000?	VALDEZ,C	MTRLA	1	0	0	0000?
RUDDY,J	MERC	0	0	0	1234	VAN MEER,J	KEMPR	0	0	0	2007
RYU,R	UOP	0	0	0	1451	VAN METRE,R	SEARS	0	0	0	0000?
RZESZUTKO,R	ALUMN	0	0	0	1820	VAN OUTRIVE,R	CTA	0	0	0	1092#
SAHLI,E	UOP	0	0	0	1698	VAN ZILE,C	UOP	0	1	0	1357*
SAJBEL,P	UOP	1	0	0	1780	VANDECOTTE,M	UOP	0	1	0	0000?
SALAMANCA,R	ROYLS	0	0	0	1610	VENEGAS,B	HULL	0	0	0	0000?
SAMELSON,C	MTRLA	0	0	0	1990C	VIGANTS,A	NORTH	1	0	0	1559
SAMOYLOV,A	MTRLA	0	0	0	0000?	VITAVER,L	SEARS	0	0	0	0000?
SANTIAGO,T	COLUM	0	0	0	1962*	WACHTEL,H	COLUM	0	0	0	2230
SATTERLEE,D	JCASE	1	0	0	1659C	WALLACH,C	MTRLA	0	1	0	2058
SAUNDERS,N	MDCON	0	0	0	0000?	WALLIN,R	WHEAT	0	0	0	1746
SAWDO,E	JCASE	0	0	0	1412	WARD,C	DRGNS	0	0	0	1542D
SCHWAB,W	ROOKS	0	0	0	1481	WARE,K	MERC	0	0	0	0000?
SCHWARTZ,M	TYROS	0	0	0	1091	WARREN,J	CHRGR	1	1	0	2111T
SEMONES,E	ROOKS	0	1	0	0000?	WEBER,J	WHEAT	0	0	0	0000?
SHAFF,R	TYROS	0	1	0	1529C	WEISS,G	HULL	0	0	0	0000?
SHEU,G	CHRGR	0	0	0	1333*	WEISSKOPF,J	HULL	0	0	0	1381*
SHEYNIN,S	ROOKS	0	0	1	2075	WEITZ,R	EXMPL	0	0	0	1704C
SIEGEL,R	BKAMI	0	0	0	1483C	WELTER,P	SEARS	0	0	0	1642#
SIWEK,M	KEMPR	0	0	1	2146C	WENTLING,C	AMCRP	0	0	0	1661C
SKRZYPCZAK,T	MDCON	0	0	0	0000?	WHITE,H	JCASE	1	0	0	1640

? - UNRATED

- 5 TO 9 RATED GAMES

* - 10 TO 24 RATED GAMES

C - CENTURY CLUB MEMBER

D - DOUBLE CENTURION

T - TRIPLE CENTURION

Q - QUAD CENTURION

NAME	TEAM	WLID RATING	NAME	TEAM	WLID RATING
WHITE,T	BKAMI	0 0 0 1319#	WONG,KK	NORTH	0 0 0 0000?
WHITED,W	MDCON	0 0 0 1829	WONG,P	EXMPL	0 0 0 2196C
WILLIAMS,A	CTA	0 0 0 0000?	YOUNG,R	HULL	0 0 0 1406
WILLIAMS,T	JCASE	0 1 0 1971	ZOELLNER,J	BKAMI	0 0 0 1406C
WILSON,A	CTA	0 0 0 1576			

? - UNRATED

- 5 TO 9 RATED GAMES

* - 10 TO 24 RATED GAMES

C - CENTURY CLUB MEMBER

D - DOUBLE CENTURION

T - TRIPLE CENTURION

Q - QUAD CENTURION

APCT CHESS BOOK & SUPPLY SALE

BY APPOINTMENT ONLY--OCT 7 THRU NOV 12

ALL CHESS BOOKS & SUPPLIES 25% OFF

SOME BOOKS 30%, 40% EVEN 50% OFF

Free book to everyone who brings this brochure

FOR APPOINTMENT CALL JIM WARREN (708)663-0688

VISA/MasterCard accepted



Checks accepted with identification



7213 Grand Court

Downers Grove, IL 60516-3948

Our reputation and record of service is our best advertisement.

Directions to get here:

Grand Court is a small cul-de-sac just off Grand Ave., two blocks west of Fairview Ave, and three blocks north of 75th St. The nearest large intersection is Fairview Ave. & 75th St.

This area of Downers Grove is accessible from the tollways and expressways that reach the far west suburbs.

From the west: Exit Rte 355 at 75th St., go east on 75th St. to Fairview, then north to Blackburn, then west 2 short blocks to Grand Ave., right 1 block to Grand Ct.

From the east via the Stevenson: Exit Rte 55 at the Kingery Expressway (Rte 83) North, go north 2 lights to 75th St., then 2.5 miles west to Fairview, then north to Blackburn, west 2 short blocks to Grand Ave., right 1 block to Grand Ct.

From the north near Rte 355: See "From the west" above.

From the north near Rte 294: Go south to Rte 55 South, then see "From the east..." above.

From the east via the Eisenhower: Go west to Rte 294 South, south to Rte 55 South, then see "From the east..." above.

From the southeast: Take Rte 294 north to Rte 55 South, then see "From the east via the Stevenson" above.

From the southwest via the Stevenson: Exit Rte 55 at Lemont Rd North, go north to 75th St, then east on 75th St. to Fairview, then north to Blackburn, then west 2 short blocks to Grand Ave., right 1 block to Grand Ct.

From the southwest via Rte 355: See "From the west" above.

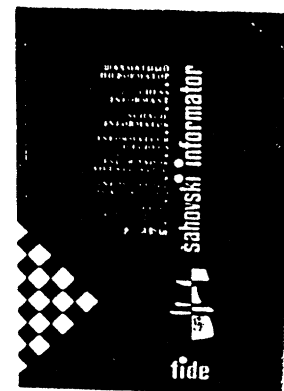
From the north near Oakbrook or Ogden Ave.: Take Fairview Ave. (or Meyers Rd which becomes Fairview Ave.) south to Claremont (7100 South), west on Claremont 2 short blocks to Grand Ave., left 2 short blocks to Grand Ct.

CHESS INFORMANT #63

Games from Feb-May 1995; 551 games; openings indexed by variation; games have short coded annotations. Figurine Algebraic notation. The most popular chess series in history!

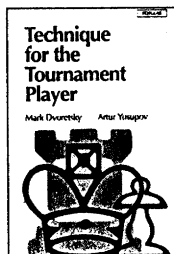
Only \$28.12 after 25% discount!

Earlier Informants available, too.



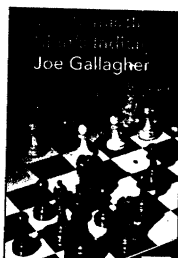
APCT Stocks over 1600 Chess Titles!

THE COMPLETE BENONI, IGM Lev Psakhis - This dynamic defence is about as close to total warfare as you get in modern chess. The likelihood of exchanges and a quick draw is minimized from the start. Thorough up-to-the-minute coverage of all the key lines. List \$23.95, APCT price \$22.75 w/discount you pay only \$17.06



TECHNIQUE FOR THE TOURNAMENT PLAYER, IM Dvoretsky & GM Yusupov, - Good technique is one of the key factors in a chess player's success & is best acquired from an experienced trainer, & Dvoretsky is the best in the world! With his 'star-pupil' Yusupov, he explains how to win won positions, and save difficult ones. List \$27.00, APCT \$25.65, w/disc. you pay \$19.24

THE SÄMISCH KING'S INDIAN, GM Joe Gallagher - The Sämisch has attracted players of an enormous range of temperaments - from Karpov to Kasparov! This book, by a renowned KI specialist, is the first for many years to deal systematically with all its variations - presents Black & White with a choice of repertoires - many complete analyzed games. List price \$23.00, APCT price \$21.85, w/discount you pay only \$16.39



EXAMPLES OF SOME RECENT TITLES PART OF OUR STOCK OF OVER 1600 DIFFERENT CHESS TITLES

- The Amateur's Mind, Jeremy Silman..... 13.46
- Road to the Expert Title, IM Tangborn..... 9.60
- Win At Chess - Comprehensive Guide to
Winning Chess for the Intermediate
Player, Ron Curry..... 13.46
- John Nunn's Best Games, John Nunn 19.20
- Trompowsky Attack, Soltis 11.74
- Soltis Var. of Yugoslav Attack, Mayer 14.21
- Winning Endgame Technique, Beliavsky 14.96
- Anthology of Chess Combinations (HB) . 31.42
- English Opening: Symmetrical, Bagirov.. 17.77
- Latvian Gambit, Tony Kosten 14.21
- Winning with the Ruy Lopez Exchange
Variation, Soltis..... 11.74
- Attack with Mikhail Tal, Tal & Damsky . 14.21
- Exchange Variation of the Slav, Silman &
Donaldson..... 9.22
- Anti-Dutch Spike (g4!), NM A. Watson.. 10.65
- Games of Wilhelm Steinitz, Pickard 14.21
- Queen's Gambit for the Attacking Player,
Burgess & Pedersen 14.21
- New In Chess #36 -- HB 22.46; PB 17.81
- Big Book of Busts, Watson & Schiller 16.35

Above prices reflect 25% off APCT prices.
Many titles are 30%, 40% or 50% off! All
chess sets, boards, bags, scorebooks, etc. are
25% off. Clocks partially discounted.



Chicago Industrial Chess League

Founded 1957

USCF Affiliate

TREASURER'S YEAR-END REPORT FOR THE 1994-1995 SEASON

Contents:

1. Schedules of Revenue/Cost Relationships for 1994-95 Season
2. Cash Receipts and Disbursements for 1994-1995
Reconciliation of Change in Cash with Accrual Basis Loss for the Season
3. Budget Proposal for 1995-96 Season
4. Dues and Other Charges for the 1995-1996 Season

Please note the following:

The cost of trophies and other awards continues to grow. Mostly for this reason, I find it necessary to propose a \$10 per team increase in dues.

The bulletin expense remained low this year largely because there were no publication costs incurred (postage costs only).

Although there was a decrease in cash of \$205.98 during 1994-95, only \$81.98 of that amount is "loss" for the 1994-95 season. (See reports on following pages.)

Respectfully Submitted,

Wesley K. Underwood
CICL Treasurer

August 23, 1995

Schedules of Revenue/Cost Relationships for 1994-95 Season:Schedule I: Bulletin Publication

Regular Team Subscriptions	325.00	
Individual Subscriptions	14.00	

Total Bulletin Revenue		339.00
Less: Publication & Mailing Costs		(235.67)

Gain from Bulletin 103.33

Schedule II: Banquet and Speed Chess

Team Banquet Guarantees	459.00	
Advance Dinners (79 @ \$16)	1264.00	
Dinners at the Door (16 @ \$18)	288.00	
Speed Chess Entries	56.00	

Total Banquet and Speed Chess Revenue		2067.00
Dinners/Tax/Tip/Bartender	1223.29	
Team Rebates (22 @ \$17)	374.00	
Triple Centurion Rebates	33.00	
Speed Chess Awards	139.00	
TV/VCR Rental/Raffle/Craft	99.02	

Total Banquet and Speed Chess Costs		(1868.31)

Gain from Banquet and Speed Chess 198.69

Schedule III: Undesignated (All Other) Funds

Regular Dues Received	1080.00	
Late Dues Penalties Received	10.00	
Savings Account Interest	74.33	
Miscellaneous Receipt	2.00	

Total Undesignated Revenue		1166.33
Trophies and Awards (net cost)	1314.80	
USCF/ICA Dues	55.00	
Postage, Phone, Copying, Etc.	133.22	
Playoffs Expenses	47.31	

Total Undesignated Costs		(1550.33)

Loss from Undesignated Funds (384.00)

Net Gain (Loss) for the 1994-95 Season (81.98)

=====

Cash Receipts and Disbursements for 1994-1995:

Beginning Cash Balance, August 1994 \$2600.02

Cash Receipts:

Basic Team Dues 25 @ \$40 (Note A)	\$1000.00
Late Dues Payment Penalties 1 @ \$10	10.00
Basic Co. Bulletin Subscr's 23 @ \$13	299.00
Individual Bulletin Subscr's 2 @ \$7	14.00
Team Banquet Guarantees 25 @ \$17	425.00
Banquet Dinners 79 @ \$16, 16 @ \$18	1552.00
Speed Chess Entry Fees 56 @ \$1	56.00
Savings Account Interest	74.33
Extra Individual Awards (Note C)	128.50
Miscellaneous Receipts	2.00

Total Cash Receipts 3560.83

Total Cash Available for Disbursement \$6160.85

Cash Disbursements:

Bulletin Publication/Mailing	\$235.67
League Mailings (Non-Bulletin)	73.53
USCF and ICA Dues	55.00
Trophies/Awards (Note C)	1427.30
Playoff Expenses	47.31
Banquet (Harvey's Prime Rib) Fee	1223.29
Team and Individual Banquet Rebates	407.00
Banquet Speed Chess Tourney Awards	139.00
Banquet Expenses	99.02
Miscellaneous Expenses	59.69

Total Cash Disbursements (3766.81)

Ending Cash Balance, August 1995 (Note B) \$2394.04

Reconciliation of Change in Cash with Accrual Basis Loss for the Season:

Ending Cash Balance 8/95	\$2394.04
Beginning Cash Balance 8/94	2600.02
Increase (Decrease) in Cash during 1994-95	(\$205.98)
94-95 dues prepaid from prior season (Note A)	140.00
Reimbursement rec'd for 93-94 indiv awards (Note C)	(16.00)
Accrual basis gain (loss) for 94-95	(\$81.98)

- (A) Two teams prepaid dues, thus none collected from them this season.
- (B) \$1400.00 has been reserved for the potential purchase of a new computer (to maintain ratings, standings, etc). \$70.00 is prepaid dues for Chicago Merc Exchange, and \$5 is prepaid dues for CTA. \$919.04 is undesignated. Checking Account Balance is \$238.44. Savings Account Balance is \$2155.60.
- (C) Extra individual awards totalling \$112.50 were ordered by various teams. \$16.00 was received from Chicago Post Office for last season awards.

Budget Proposal for 1995-96 Season:

	1993-94 Actual	1994-95 Actual	1995-96 Proposed Budget
Revenue:			
Basic Team Dues	1125	1090	1300 (Note A)
Bulletin	392	339	326 (Note B)
Banquet	1832	2067	1850
Miscellaneous	88	76	75
Total Revenue	<u>3437</u> =====	<u>3572</u> =====	<u>3551</u> =====
Disbursements:			
Bulletin	243	236	350
Banquet	1858	1868	1800
Awards	1010	1315	1200
USCF/ICA Dues	55	55	55
Playoffs	13	47	50
Miscellaneous	196	133	130
Total Disbursements	<u>3375</u> =====	<u>3654</u> =====	<u>3585</u> =====
Net Gain (Loss)	<u>62</u> =====	<u>(82)</u> =====	<u>(34)</u> =====

Note A: Budgeted revenue from dues is based on 26 teams @ \$50.00.

Note B: Budgeted bulletin revenue is based on 24 companies @ \$13.00 plus an additional 2 individual subscriptions @ \$7.00.

To: Chicago Industrial Chess League Team Captains
From: Wes Underwood, CICL Treasurer
Date: August 23, 1995
Re: Dues and Other Charges for the 1995-1996 Season

Below are the assessments to each CICL team for the 1995-1996 season. Please complete the form below, and return it with a check made payable to the Chicago Industrial Chess League.

Note: Payments postmarked after November 30th will require a \$5.00 additional fee. Payments postmarked after December 31st will require a \$10.00 additional fee, and will subject the team to possible dismissal both from the upcoming playoffs and from participation next season.

Team Name: _____

Annual Dues per 6-player Team	\$50.00	_____
Penalty fee if postmarked after 11/30/95	5.00	_____
Penalty fee if postmarked after 12/31/95	10.00	_____
CICL Bulletin Subscription (1 req'd per co.)*	13.00	_____
Add'l Subscriptions, each *	7.00	_____
Awards Banquet Ticket (1 req'd per team)	17.00	_____

Total (Payable to Chicago Industrial Chess League): \$ _____

Send payment with this form to the following:

Chicago Industrial Chess League
c/o Wesley K. Underwood
207 S. Dorchester Ave.
Wheaton IL 60187

* Specify the correct address(es) for the bulletin subscription(s):

