

The Chicago Chess Player
The Official Bulletin of the Chicago Industrial Chess League



Inside

- Games
- The finishing touch
- Tactics and Technique
- Team standings by division
- Match results
- Top 10, CICL MVP lists
- Ratings list

CICL OFFICERS

President: Satish Hale
(skate@casecorp.com (E-Mail))
CASE Corp
7 South 600 County Line Rd.
Burr Ridge, IL 60521
W: (630) 887-2372 H: (630) 325-KALE

Secretary Tony Jasaitis (CAT)
(tony@trollink.com (E-mail))
P.O. Box 664
Bedford Park, IL 60499-0664
H: (708) 448-4967 W: (312) 939-0081 (ext. 1206)

Treasurer Wesley K. Underwood (Wheaton)
(wesley.k.underwood@wheaton.edu (E-mail))
207 S. Dorchester Ave.
Wheaton, IL 60187
W: (630) 752-5127 H: (630) 462-0393

Ratings Charles Ward (Lucent Tech Dragons)
Chairman (ceward@lucent.com (E-mail))
615 S. Lincoln
Hinsdale, IL 60521
W: (630) 979-4599 H: (630) 325-3885
Fax: (630) 979-6124

Publicity Carl Reid (CASE)
Director 2289 Grand Drive
Northbrook, IL 60062-6937

Trophy Wayne Ellice (Pawns)
Chairman (wayne.ellice@crous.sprint.com (E-mail))
Crosfield Catalysts
4099 West 71st Street
Chicago, IL 60629
W: (773) 838-3215 Fax: (773) 838-3243

Banquet Len Spiegel (Fermi)
Chairman (lenny@fnal.gov (E-mail))
Fermilab MS 219
P.O. Box 500
Batavia, IL 60510
W: (630) 840-2809 H: (630) 377-2675

Bulletin Ruben Reyes (Sears)
Editor (RRgb@aol.com (E-mail))
2019 W. Leland Ave.
Chicago, IL 60625-1513
W: (847) 286-0758
H: (773) 334-0591
Fax: (773) 769-0311

Far West Irwin Gaines (Fermi)
Division Chairman (gaines@fnal.gov (E-Mail))
Fermilab MS 127
P.O. Box 500
Batavia, IL 60510
W: (630) 840-4022
H: (630) 420-1452
Fax: (630) 840-2783

North Pat Sajbel (UOP)
Division Chairman (Posajbel@uop.com (E-Mail))
616 S. Edward
Mt. Prospect, IL 60056
W: (847) 391-2134
H: (847) 506-9302

Near West Howard Klinefelter (Case)
Division Chairman (hklinefelter@casecorp.com)
1125 Manchester Court
Naperville, IL 60563-2110
H: (630) 961-0482

East Dan Froats (Bank of America)
Division Chairman
592 West 55th Street
Chicago, IL 60638
W: (773) 247-4343
H: (773) 581-0923

Reader's Forum

Ruben,

I am directing this to you as the bulletin editor. The annotated game (played by me, annotated by I don't know who) in the most recent CCP (*Feb. issue - ed*) (Roytburg-Keisler, p.7) is full of moves that never happened and positions that never happened, which led the annotator to make condescending comments about my play.

Here's the actual game:

Roytburg	Keisler	15 Ng5	e5
1 e4	g6	16 c5	Ng4
2 d4	Bg7	17 f3	Bh6
3 Nf3	d6	18 fg4	Rf1
4 Bc4	c6	19 Rf1	Bg5
5 Nc3	Nf6	20 Bc4	d5
6 Be3	b5	21 Qc2	Be3
7 Bd3	b4	22 Rf2	Qf6
8 Ne2	a5	23 Ng3	Bf2
9 00	Nbd7	24 Qf2	Qf2
10 c4	00	25 Kf2	dc4
11 Qd2	Ng4	26 d5	Bd7
12 Bg5	f6	27 Ne2	Rc8
13 h3	fg5	28 d6	Rb8
14 hg4	Nf6	29 Kg3	Rb5
		0	1

From Black's 20th on, nothing in the actual game was the same as what was printed. Please figure out how this happened so it doesn't again.

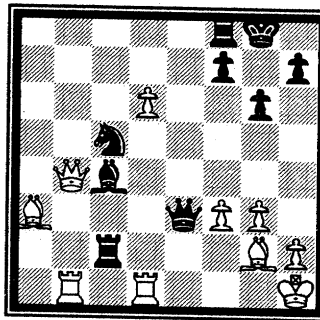
For fun, here are a couple other games I played, if you'd like them for the bulletin sometime.

JEFFREY KEISLER

Jeff,

Your game vs. Roytburg was one among several sent to me via E-mail by Tim Williams at the beginning of the 1997-98 season.

Thanks for your support.



Erratum : (Page 4, Feb. issue)

The continuation 26...Qf2 27.Rg1 Bf1 indicated as "flashier" loses to 28.Rbxf1.

(The finish was 26.Qe2 27.Rg1 Nd3 0-1)

GAMES

Acknowledgment: Special thanks to *Dennis Leong* for transcribing handwritten scoresheets into computer text.

Round 10 ; Feb. 19, 1997

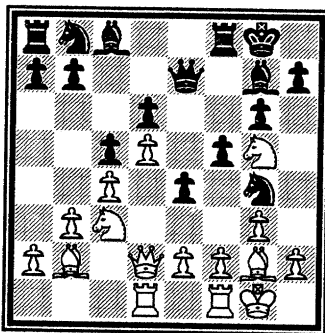
Nations Bank - Columbia College 3.5-2.5

Jasaitis, A.	.5	McAlister, K.	.5
Losoff, A.	0	Santiago, T.	1
Bargerstock, D.	1F	Pratts, M.	0F
De Leon, J.	1	Kostecka, K.	0
Shatsky, V.	0	Stevens, J.	1
Sitar, K.	1	Vaccaro, M.	0

Dutch

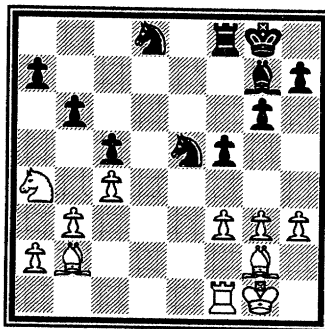
K. McAlister (1930) A. Jasaitis (2174)
(Columbia College) (Nations Bank)

1. d4 f5 2. g3 Nf6 3. Bg2 g6 4. Nf3 Bg7 5. b3 0-0 6. Bb2 d6 7. 0-0 c6 8. c4 Qc7 9. Nc3 e5 10. d5 c5 11. Qd2 e4 12. Ng5 Qe7 13. Rad1 Ng4



McAlister-Jasaitis
Position after 13...Ng4

14. Ne6 Bxe6 15. dxe6 Qxe6 16. Qxd6 Qxd6 17. Rxd6 Nc6 18. h3 Nge5 19. Na4 b6 20. f4 exf3 21. exf3 Rad8 22. Rxd8 Nxd8 1/2-1/2

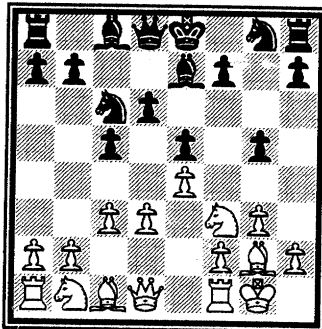


McAlister-Jasaitis
Final Position

French

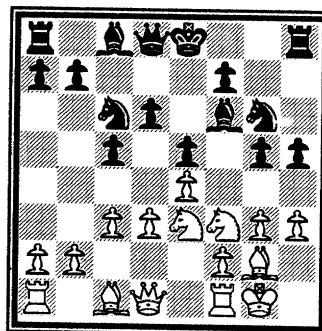
A. Losoff (1811) T. Santiago (2011)
(Nations Bank) (Columbia College)

1. e4 e6 2. d3 c5 3. Nf3 Nc6 4. c3 d6 5. g3 e5 6. Bg2 Be7 7. 0-0 g5



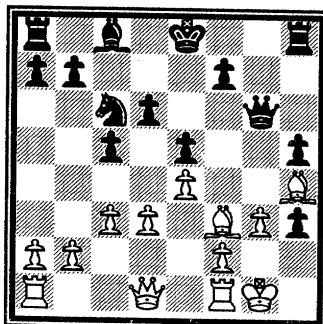
Losoff-Santiago
Position after 7...Ng4

8. h3 Bf6 9. Nbd2 Nge7 10. Nc4 Ng6 11. Ne3 h5



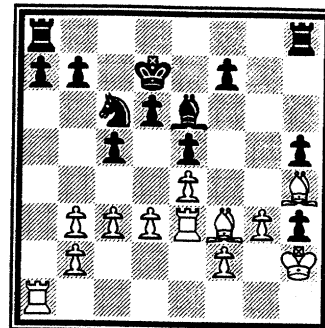
Losoff-Santiago
Position after 11...Ng4

12. Nd5 g4 13. Nxf6+ Qxf6 14. Bg5 Qe6 15. Nh4 Nxh4 16. Bxh4 gxh3 17. Bf3 Qg6



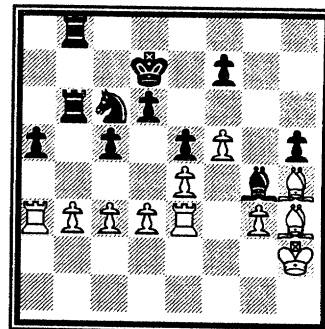
Losoff-Santiago
Position after 17...Qg6

18. Kh2 Bg4 19. Re1 Kd7 20. Re3 Qe6 21. Qb3 Qxb3 22. axb3 Be6



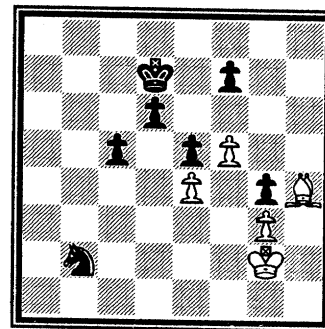
Losoff-Santiago
Position after 22...Be6

23. Bd1 a5 24. f4 Bg4 25. f5 b5 26. Be2 b4 27. Bf1 bxc3 28. bxc3 Rab8 29. Ra3 Rb6 30. Bxh3 Rhb8



Losoff-Santiago
Position after 30...Rhb8

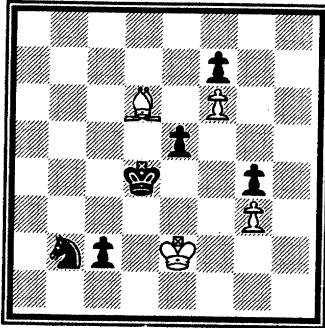
31. b4 axb4 32. cxb4 Rxb4 33. Bxg4 hxg4 34. Re2 Rb2 35. Ra2 Rxe2+ 36. Rxe2 Rb3 37. Rd2 Nb4 38. Kg2 Nxd3 39. Ra2 Rb2+ 40. Rxb2 Nxb2



Losoff-Santiago
Position after 40...Nxb2

41. Kf2 c4 42. Bg5 c3 43. Ke2 Kc6

44. Be7 d5 45. exd5+ Kxd5 46. Bb4 Kc4 47. Bd6 Kd4 48. f6 c2 0 - 1

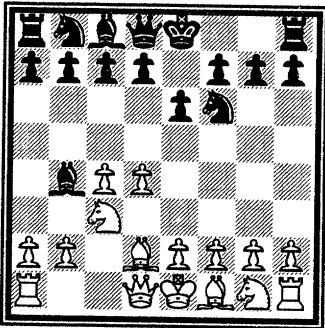


Losoff-Santiago
Final Position

Nimzo-Indian

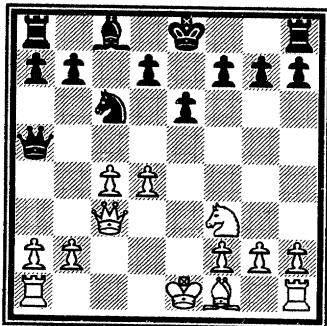
J. De Leon (1622) K. Kostecka (1589)
(Nations Bank) (Columbia College)

1. d4 Nf6 2. c4 e6 3. Nc3 Bb4 4. Bd2



De Leon - Kostecka
Position after 4. Bd2

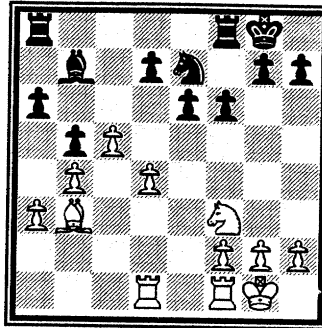
4...c5 5. Nf3 Nc6 6. e3 Bxc3 7. Bxc3 Ne4 8. Qc2 Nxc3 9. Qxc3 cxd4 10. exd4 Qa5



De Leon - Kostecka
Position after 10...Qa5

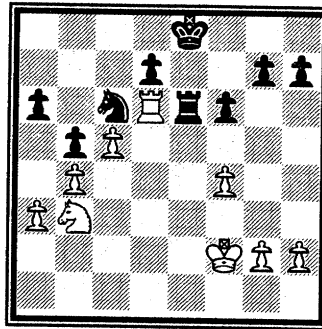
11. Qxa5 Nxa5 12. b4 Nc6 13. a3

b6 14. c5 0-0 15. Bb5 f6 16. 0-0 Bb7 17. Rad1 a6 18. Bc4 b5 19. Bb3 Ne7



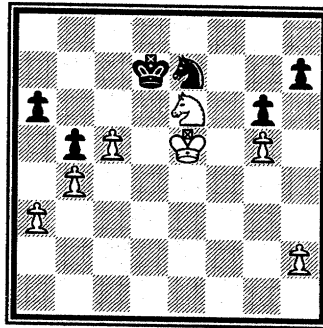
De Leon - Kostecka
Position after 20...Ne7

20. Nd2 Bd5 21. Rfe1 Bxb3 22. Nxb3 Kf7 23. Rc1 Nc6 24. f4 Rfe8 25. Rcd1 Rad8 26. d5 exd5 27. Rxe8 Rxe8 28. Rxd5 Re7 29. Kf2 Ke8 30. Rd6 Re6



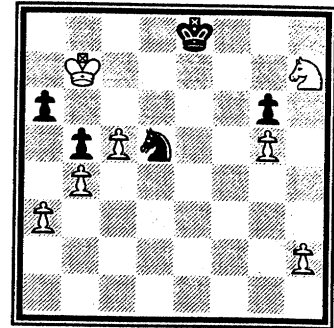
De Leon - Kostecka
Position after 30...Re6

31. Rxe6+ dxe6 32. Ke3 Kd7 33. Nd4 Ne7 34. Ke4 g6 35. g4 Nd5 36. g5 fxg5 37. fxg5 Ne7 38. Ke5 Nf5 39. Nxe6 Ne7



De Leon - Kostecka
Position after 39...Ne7

40. Nf8+ Ke8 41. Nxf7 Nc6+ 42. Kd6 Ne7 43. Kc7 Nd5+ 44. Kb7 1-0

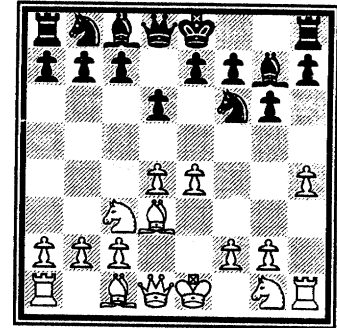


De Leon - Kostecka
Final Position

Pirc

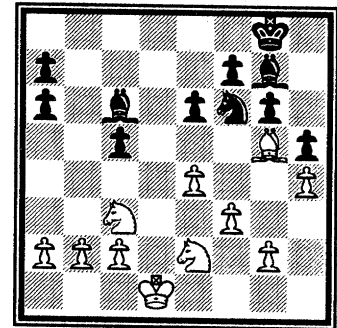
J. Stevens (1418) V. Shatsky (1499)
(Columbia College) (Nations Bank)

1. e4 d6 2. d4 Nf6 3. Bd3 g6 4. Nc3 Bg7 5. h4



Stevens - Shatsky
Position after 5. h4

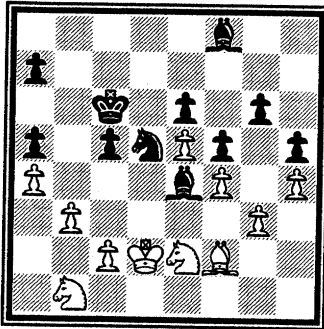
5...h5 6. Bg5 Na6 7. Qd2 c5 8. Nge2 0-0 9. 0-0-0 Bd7 10. Bxa6 bxa6 11. dxc5 Bc6 12. f3 dxc5 13. Qxd8 Rfxd8 14. Rxd8+ Rxd8 15. Rd1 Rxd1+ 16. Kxd1 e6



Stevens - Shatsky
Position after 16. e6

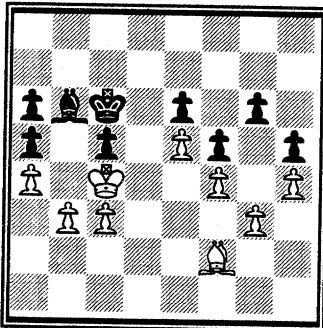
17. Be3 Nd7 18. Kd2 Kf8 19. f4 Ke7 20. g3 f5 21. e5 Kd8 22. a4 a5 23. Ng1 Bg2 24. Nge2 Bf8 25. Kd3 Nb6 26. b3 Kd7 27. Nb1 Be4+ 28.

Kd2 Nd5 29. Bf2 Kc6



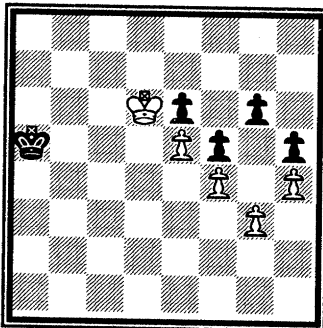
Stevens - Shatsky
Position after 29.Kc6

30. Nec3 Nxc3 31. Kxc3 Be7 32. Nd2 Bd5 33. Nc4 Bxc4 34. Kxc4 a6 35. Be1 Bd8 36. c3 Bb6 37. Bf2



Stevens - Shatsky
Position after 37.Bf2

37...Ba7 38. b4 axb4 39. cxb4 cxb4 40. Bxa7 a5 41. Bc5 Kb7 42. Bxb4 axb4 43. Kxb4 Kb6 44. a5+ Ka6 45. Kc5 Kxa5 46. Kd6



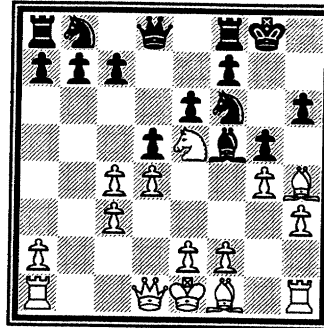
Stevens - Shatsky
Final Position

QP

K. Sitar (1573) **M. Vaccoro (Unrated)**
(Nations Bank) **(Columbia College)**

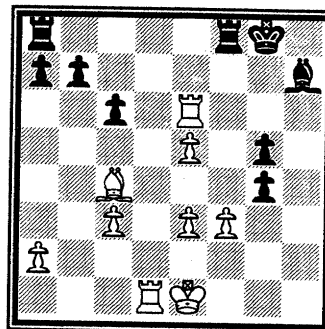
1. d4 d5 2. Nf3 Bf5 3. c4 e6 4. Nc3 Nf6 5. Bg5 Bb4 6. Ne5 Bxc3+ 7.

bxc3 0-0 8. f3 h6 9. Bh4 g5 10. g4



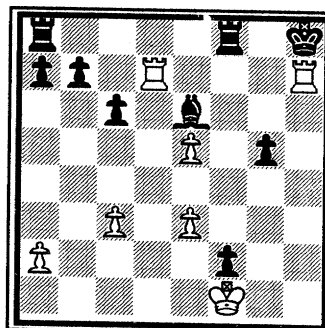
Sitar-Vaccoro
Position after 10.g4

10...Bh7 11. Bg3 Nbd7 12. h4 Nxe5 13. Bxe5 Nd7 14. hxg5 Nxe5 15. dxe5 hxg5 16. e3 c6 17. Bd3 f5 18. Rh6 dxc4 19. Bxc4 fxg4 20. Rxe6 Qxd1+ 21. Rxd1



Sitar-Vaccoro
Position after 21.Rxd1

21...gxf3 22. Re7+ Kh8 23. Rdd7 Bf5 24. Be6 f2+ 25. Kf1 Bxe6 26. Rh7+ 1-0



Sitar-Vaccoro
Final Position

A player making big waves in the North Division is Mike Curtis of Northrop-Grumman.

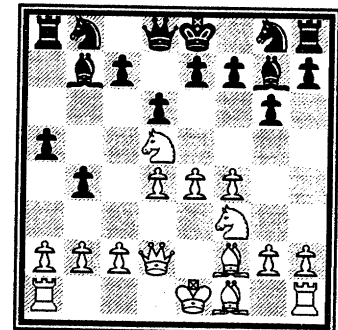
Curtis has so far earned a ratings increase of 137 points on board one!! He's second on Charlie Ward's "Most Improved Players" list (*S. Jackson of CCDOC is 1st with 160*).

Modern

M. Curtis (1962) **M. Stevanovic (2321)**
(Northrop) **(U.O.P.)**

January 7, 1997

1. e4 g6 2. d4 Bg7 3. Nc3 d6 4. f4 a6 5. Be3 b5 6. Nf3 Bb7 7. Qd2 b4 8. Nd5 a5 9. Bf2

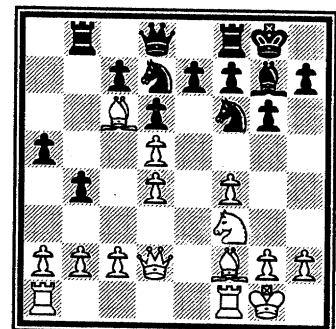


Curtis-Stevanovic
Position after 9.Bf2

9...Bxd5

or 9...e6 10.Ne3 Bxe5

10.exd5 Nf6 11. Bb5+ Nbd7 12. Bc6 Rb8 13. 0-0 0-0

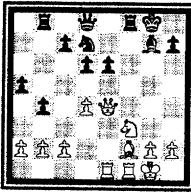


Curtis-Stevanovic
Position after 13...0-0

14. f5 Nb6

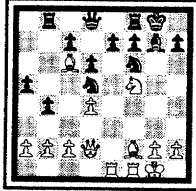
Analysis involving 14...gxf5 15.Rae1 and ensuing attempt by Black to defend the pawn at f5 directly (via ...e6) or indirectly (via an attack on White's pawn at d5 with ...Nb6) is just too complex to enumerate here. But it'd cost Black.

A few samples 14...gxf5 15.Rae1 Ne4 16. Qf4 e6 17.dxe6 fxe6 18.Bxe4 fxe4 19.Qxe4

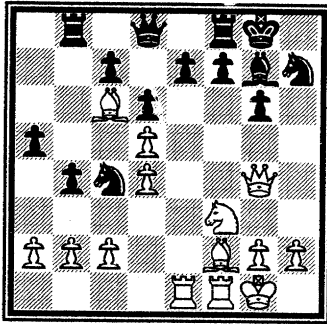


(diagram after 19. Qxe4)

Or 14...gxf5 15.Rae1 Nb6 16.Qg5 Nbx5 17.Qxf5 (see diagram below)



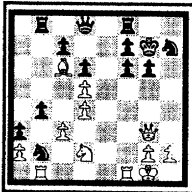
15. fxc6 hxc6 16. Qg5 Nh7 17. Qg4 Nc4 18. Rae1



Curtis - Stevanovic
Position after 18.Rae1

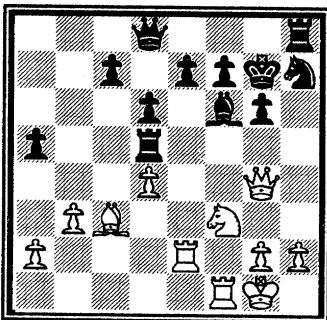
18...Bf6

18...Nxb2 19.Nd2 a4 20.Bh4 Bf6 (if 20...Qc8 21.Bd7 f5 22.Qxg6 Qxd7 23. Rxe7 threatening 24.Rxd7 and 24.Qxg7# wins) 21.Bxf6 exf6 wins a pawn. But White



could bring pressure on Black's N stranded at b2 such as after: 22. Qg3 Kg7 23.Rb1 a3 24.c3 (See diagram left) threatening 25.cxb4 Rxb4 26. Qxa3.

19. b3 Na3 20. Re2 Nb5 21. Be1 Kg7 22. Bd2 Rh8 23. Bxb5 Rxb5 24. c4 bxc3 25. Bxc3 Rxd5

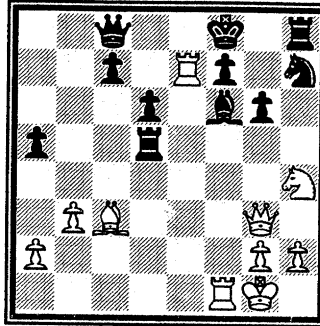


Curtis - Stevanovic
Position after 25...Rxd5

26. Nh4 Qc8 27. Qg3 Rh5 28. d5 28....Rxd5

28...Re8 holds.(29.Bxa5 fails against 29... Qa4 30.Qe1 Rxh4)

29. Rxe7 Kf8



Curtis - Stevanovic
Position after 29...Kf8

30. Rxf7+

White pursues the attack relentlessly.

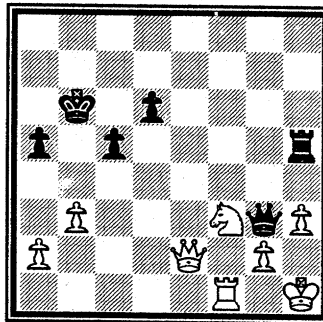
30...Kxf7 31. Qxg6+ Ke7 32. Bxf6+ Kd7

32...Nxf6 doesn't help because of 33.Qg7+ when both 33...Ke6 34.Rxf6+ Ke5 35.Re8+ and 33...Kd8 34.Qxh8+ and White's winning+.

33. Qg7+ Kc6 34. Qxh8

The rest of the game's as follows:

34...Qd7 35. Qg7 Nxf6 36. Qxf6 Rc5 37. Nf3 Qg4 38. Nd4+ Kb6 39. Qf2 Rd5 40. Nf3+ c5 41. h3 Qg6 42. Qe2 Rh5 43. Kh1 Qg3 44. Qf2 Qf4 45. Qe2 Qg3 1-0



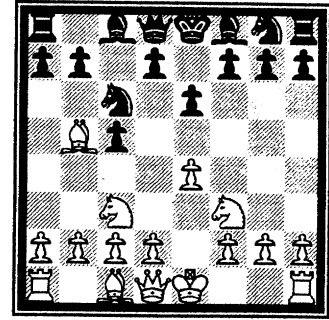
Curtis - Stevanovic
Final position

Sicilian

G. Berry (2128T) R.Benedek (2105D)
(Argonne Rooks) (Argonne Knights)

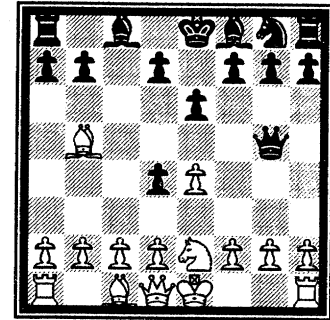
1. e4 c5 2. Nf3 e6 3. Nc3 Nc6 4. Bb5

(see diagram next column)



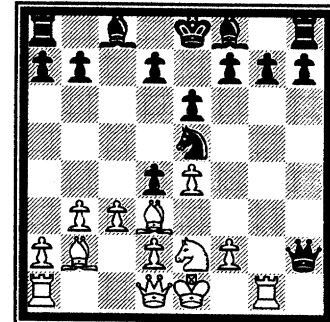
Berry-Benedek
Position after 4.Bb5

4...Nd4 5. Nxd4 cxd4 6. Ne2 Qg5



Berry-Benedek
Position after 4.Bb5

7. Bd3 Qxg2 8. Rg1 Qxh2 9. b3 Ne7 10. Bb2 Nc6 11. c3 Ne5



Berry-Benedek
Position after 11...Ne5

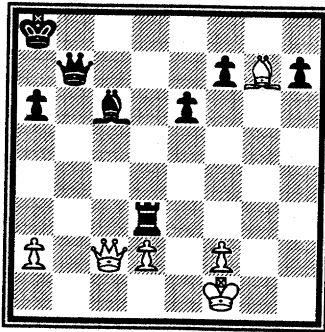
12. Qc2 Nf3+ 13. Kf1 Nxc3 14. Nxc3 Qc7

The rest of the game's as follows:

15. Nf3 d6 16. Nxd4 a6 17. c4 Bd7 18. Nf3 0-0-0 19. Rc1 Bc6 20. b4 Kb8 21. b5 Bd7 22. bxa6 bxa6 23. Bd4 Ka8 24. Rb1 Rb8 25. Rxb8+ Qxb8 26. e5 Bc6 27. Ng5 Qb7 28. exd6 Bxd6 29. c5 Bf4 30. Ne4 Rd8 31. Nd6 Bxd6 32. cxd6 Rxd6 33. Bxg7 Rxd3

0-1

(See final position next page)

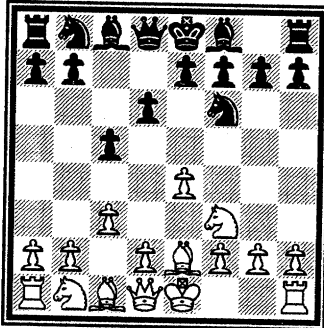


**Berry-Benedek
Final position**

Sicilian

S. Decman (1645) B. Golchert (1854)
(Argoone Rooks) (Argonne Knights)

1. e4 c5 2. Nf3 d6 3. c3 Nf6 4. Be2



**Decman - Golchert
Position after 4.Be2**

4...Nxe4

One begins to wonder if Black's accepting the pawn sacrifice may have been the result of how the wily Steve Decman prepared his opening concoction: (2.Nf3 3.c3 and then 4.Be2)

5. Qa4+

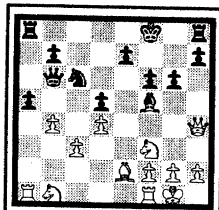
This wins the N.

(A theme similar to Steve Decman's invention occurs in the O'Kelly: 1.e4 c5 2.Nf3 a6 3.d4 cxd4 4.Nxd4 Nf6 and now if 5.e5 Black wins the e-pawn with 5...Qa5+)

So's this unusual continuation in the Caro-Kann: 1.e4 c6 2.d4 e5 when 3.dxe5 is met by 3...Qa5+ followed by 4...Qxe5)

The rest of the game went as follows:

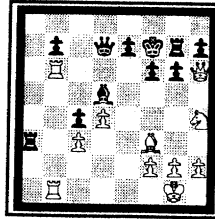
6.Nc6 6. Qxe4 g6 7. d4 d5 8. Qh4 c4 9. b3 cxb3 10. axb3 Qb6 11. b4 a5 12. 0-0 Bf5 13. Bh6 f6 14. Bxf8 Kxf8



**Position after
14...Kxf8**

15. Qh6+ Kf7

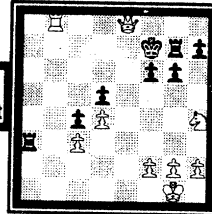
16. Nbd2 Rag8 17. Nh4 Be6 18. bxa5 Nxa5 19. Rfb1 Qc7 20. Rc1 Nc4 21. Nxc4 dxc4 22. Rcb1 Bd5 23. Rb5 Qd7 24. Rb6 Rg7 25. Rab1 Ra8 26. Bf3 Ra3



**Position after
26...Ra3**

27. Qe3 e6 28. Bxd5 exd5 29. Rxb7 Qxb7 30. Rxb7+ Kf8 31. Rb8+ Kf7 32. Qe8#

**Final Position
Decman-Golchert**



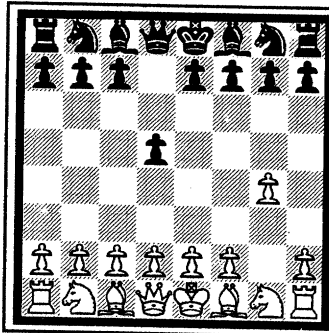
Sicilian

J. Keisler (2010) E. Radavicius (1700)
(Argonne Knights) (AT&t Chargers)

CICL Playoffs, 5/20/95

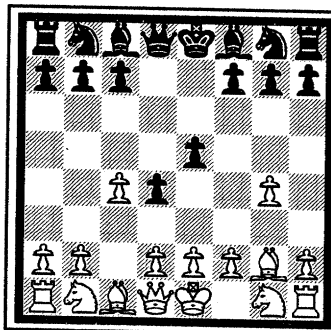
Notes by Jeff Keisler

1. g4 d5



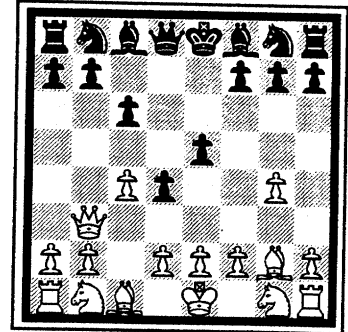
White prepares to open the g-file and win

2. Bg2 e5 3. c4 d4



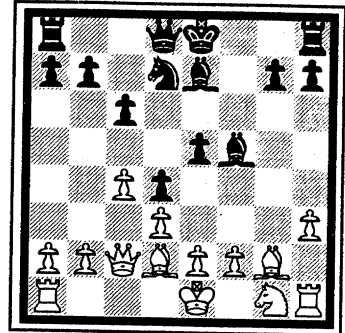
Premature

4. Qb3 c6



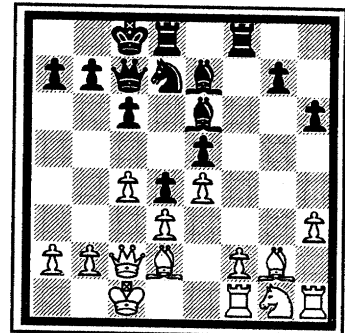
Instead of Qb3, immediate d3 with the idea of g5 followed by h4 is best.

5. d3 Nd7 6. h3 Be7 7. Nd2 Ngf6 8. g5 Nh5 9. Ne4 f5 0. gxf6 Nhx6 11. Qc2 Nxe4 12. Bxe4 Nc5 13. Bg2 Bf5 14. Bd2 Nd7



14...e4 followed by d3 would be strong

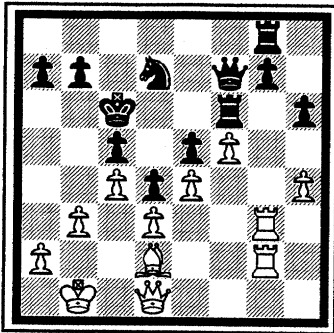
15. Nf3 h6 16. O-O-O Qc7 17. e4 Be6 18. Rdf1 O-O-O 19. Ng1 Rhf8



Mistaken plan. Immediate g5 here or on the next move would bind white.

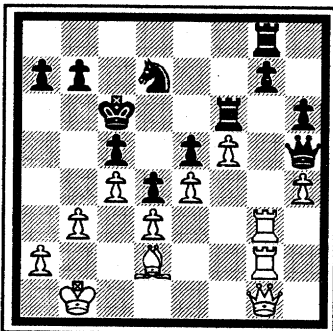
20. h4 Rf6 21. Ne2 Rdf8 22. f4 Bg4 23. Bf3 Bxf3 24. Rxf3 c5 25. f5 Ra6 26. Kb1 Bf6 27. Rg3 Nb6 28. b3 Nd7 29. Rg4 Qd8 30. Ng3 Qe8 31. Rg6 Rg8 32. Nh5 Nf8 33. Nxf6 Rxf6 34. Rg3 Qf7 35. Qd1 Nd7 36. Rhg1 Kc7

37. R1g2 Kc6



Here, I thought about b4, but figured I'd rather keep it simple

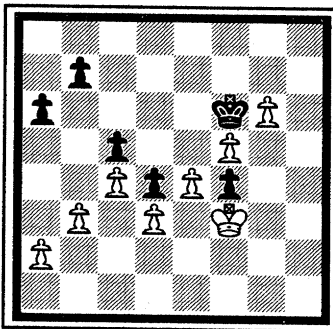
38. Qg1 Qh5



White's play on the g-file is instructive on how to win with this opening. The entry points of g6 and g7 are decisive.

39. Rg4 a6 40. Be1 Rd6 41. Kc1 Nf6 42. Rg6 Qf3 43. Kd2 Nh5 44. Qf2 Qxf2+ 45. Bxf2 Nf4 46. Rxd6+ Kxd6 47. Rg4 Ke7 48. Bg3 h5 49. Rg5 Nh3 50. Rxh5 Kf6 51. Ke1 Re8 52. Kf1 g6 53. Rh6 Rg8 54. Kg2 Nf4+ 55. Bxf4 exf4 56. h5 Kg5 57. Rxc6+ Rxc6 58. hxc6 Kf6 59. Kf3 1-0

Final Position
Keisler-Radavicius

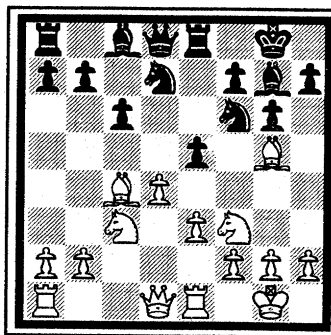


A pawn thrust in the center (10...e5) erupts into a tactical skirmish where White comes out the exchange up.

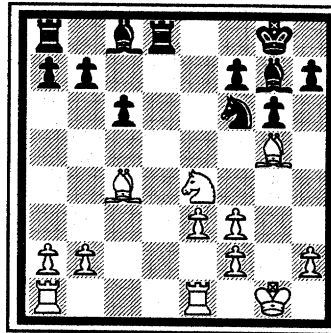
Queen's Pawn

I. Gaines (1785)
(Fermilab)J. Blazie (1860)
(Lucent Tyros)

1.d4 d5 2.c4 c6 3.Nf3 Nf6 4.Nc3 g6 5.Bg5 Bg7 6.e3 0-0 7.Bd3 Nbd7 8.0-0 Re8 9.Re1 dxc4 10. Bxc4 e5



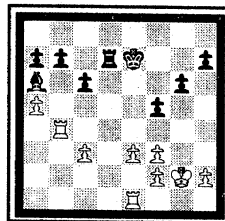
11.dxe5 Nxe5 12.Qxd8 Nxf3+ 13.gxf3 Rxd8 14.Ne4



14...Nxe4 15.Bxd8

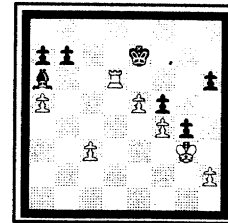
White's the exchange up. The rest of the game's as follows:

15...Nd2 16.Be2 Be6 17.Ba5 Nc4 18.Bxc4 Bxc4 19.Bc3 Bxc3 20.bxc3 Kf8 21.a4 Ke7 22.a5 Rd8 23.Rab1 Rd7 24.Rb4 Ba6



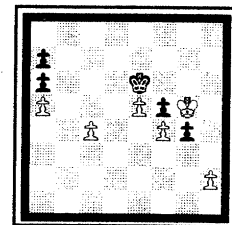
25.Kg2 f5 26.Kg3 g5 27.Rd4 Rd5 28.Rxd5 cxd5 29.e4 dxe4 30.fxe4 Kf6 31.e5+ Ke6

32.f4 h6 33.Rd1 g4 34.Rd6+ Ke7



35.Rxh6 Kd8 36.Rxa6 bxa6 37.Kh4 Ke7 38.Kg5 Ke6 39.c4 1-0

Final Position
Gaines-Blazie

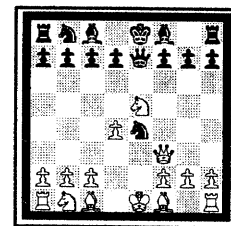


This short game illustrates emphatically the danger involved in pursuing material when the King's under attack.

Petroff

H. Logan (1269)
(Pawns)T. Uhleman (Unr)
(Pawns)

1. e4 e5 2. Nf3 Nf6 3. Nxe5 Qe7 4. d4 Nxe4 5. Qf3

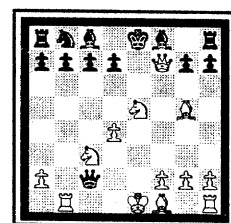


5...Ng5

This overloads the Black Q which not only has to protect f7 but also the N at g5. 5...d5 or 5...Nf6 looks OK.

6. Bxg5 Qb4+ 7. Nc3 Qxb2 8. Rb1 Qxc2 9. Qxf7#

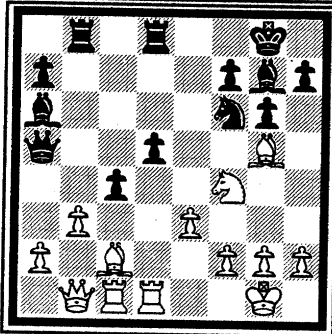
Final Position
Logan-Uhleman



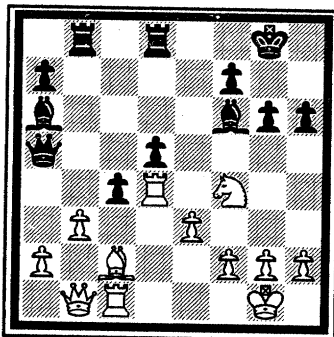
The finishing touch

by Ruben Reyes

Frank Tegel (2160) of Lucent Technologies Dragons turns what seems like a routine attempt by Black (2135) to break a pin into a relentless attack on Black's King. This is how it all begins: after **23.Nf4 Qa5** (diagram)



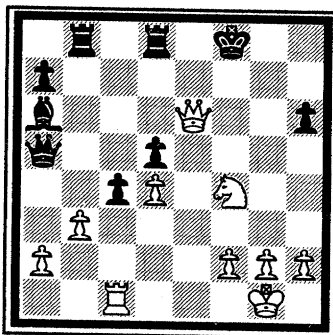
24.Rd4 h6 25.Bxf6 Bxf6



26.Bxg6

Instead of retreating with his Rook, White opts for the attack. Perhaps, the fact that all of Black's pieces are on the Queen's wing may have had some influence on White's decision to go all out for Black's K.

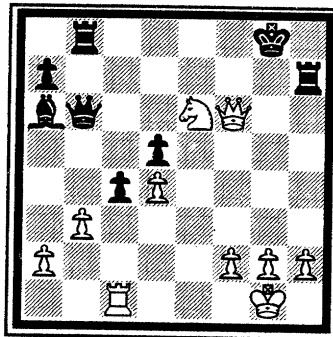
26...Bxd4 27.Bxf7+ Kxf7 28.Qg6+ Ke7 29.Qe6+ Kf8 30.exd4



30...Qb6

Using the Rook (30...Rb6) instead of the Q to protect the 3rd rank leaves the Black Q still on the diagonal a5-e1 and so prevent White from activating the R (Rc3).

31.Qf5+ Kg8 32.Ne6 Rd7 33.Qg6+ Kh8 34.Qxh6+ Rh7 35.Qf6+ Kg8

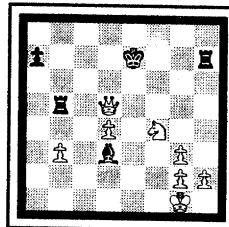


36.Rc3 Qd6 37.Rg3+ Qxg3 38.fxg3 cxb3 39.axb3 Bd3

39...Rc8 activates the Rook as well as threaten 40...Rc1+ 41.Kf2 Rf1+.

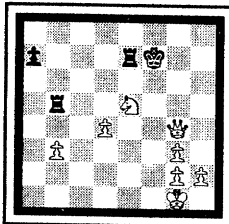
The rest of the game went as follows:

40.Qg5+ Kf7 41.Qxd5 Ke7 42.Nf4 Rb5



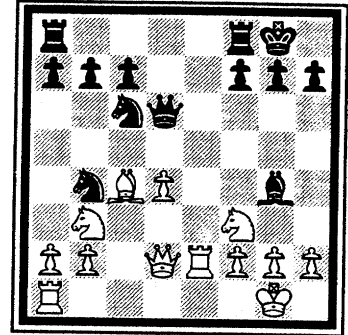
43.Qe6+ Kf8 44.Nxd3 Re7 45. Qc8+ Kg7 46.Qg4+ Kf7 47.Ne5+ 1-0

Final Position

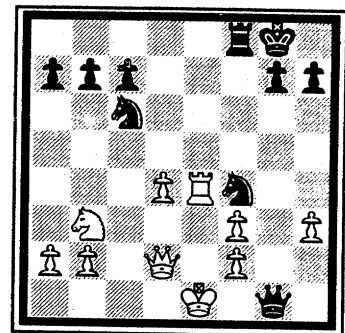


If 47...Kf8 (47...Ke8 49.Qc8#) then 48.Ng6+.

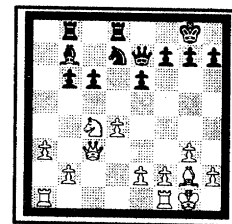
Igor Melnikov (2080) of Motorola, playing the black pieces, produced the following nice finish after **14.Re2 Bg4**:



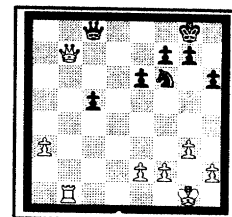
15.h3 Bxf3 16.gxf3 Nd5 17.Rae1 Nf4 18.Bxf7+ Rxf7 19.Re8+ Rf8 20.Rxf8+ Rxf8 21.Re4 Qg6+ 22.Kf1 Qg2+ 23.Ke1 Qg1++



Tim Williams (2161) of Case had this neat way of winning material and the game from the following position: 16...Nxc3 17.Qxc3



17...c5 18.Bxb7 Rxb7 19.Qf3 Nf6 20. dxc5 bxc5 21.Na5 Rxb2 22.Nc6 Qc7 23.Nxd8 Qxd8 24.Rfd1 Qc8 25.Rab1 Rxb1 26.Rxb1 h6 27.Qb7 1-0

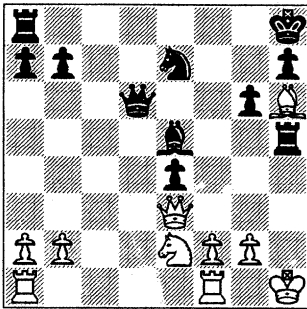


Tactics and Technique

Note: Examples shown in this column are taken from actual CIGL games. In most cases, names have been omitted to protect the identities of the players.

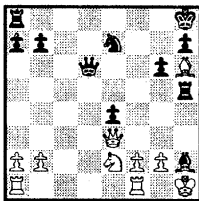
The King hunt-

From Tom Friske (1999) vs. a 1452 comes this position after 21.Qe3 Rh4+ 0 - 1

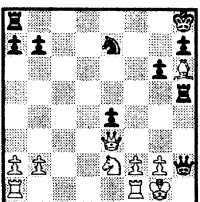


Friske's notes gave: "Bh2+ Bg1+ Qh2#". This translates to the following:

22.Ka1 Bh2+ 23.Kh1 (diagram right)



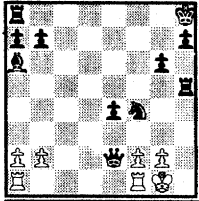
23...Bh1+ 24.Kxg1 Qh2# (diagram below)



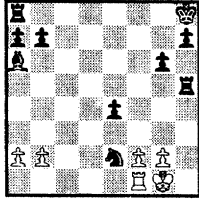
The technique with this B sac is called **clearance**.

The sacrifice clears the path for the mating piece - in this case the Queen.

Position on the right is a modification of diagram above left. Note that without the Q at e2, Black mates in one with 1...Ne2#.

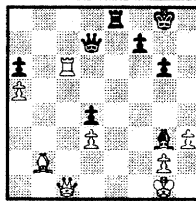
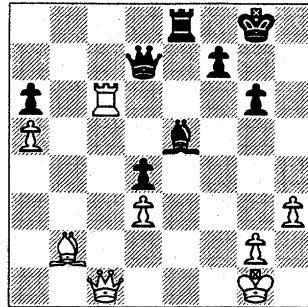


So, Black **clears** the square e2 by sacrificing the Q: 1... Qxf1+ 2.Rxf1 and then mates with 2...Ne2# (diagram right).



In the Tom Friske game, the mating piece was the Q. In this illustration, it's the N.

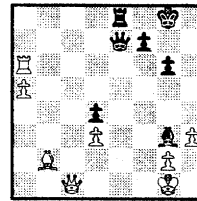
E. Sollano (1956) playing the black pieces reached the following position after 42.Rc6 (see diagram top of next column)



White threatens to win Black's a-pawn.

But Black ignores the threat and instead goes for White's K with 42...Bg3 (diagram left) threatening 43...Qxc6 44.Qxc6

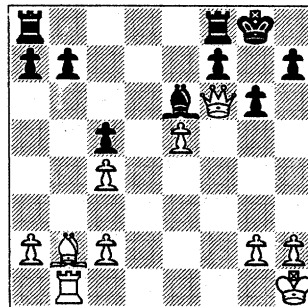
Re8 mate. White replied 43.Rxa6 but resigned after 43...Qe7 (diagram right) as there's no defense against the threat 44...Qe1+ 45.Qxe1 Rx e1#.



Notice that Sollano went for something much better than winning the Queen 43. ...Re8+ 44.Qxe8 Bxe8 : a mate!!

This one's after 20.Qf6 Be6 between a 2209 (White) and a 1554.

White to play and mate in ?



The key move is 21.Bc1, threatening mate in two with 22. Bh6 and 23.Qg7#.

Black can only delay the mate: 21... Bh3 22. Bh6 Bxg2+ 23.Kxg2 and 24.Qg7#. Or 21... Rfd8 22.Bh6 Rd1+ 23.Rxd1 and 24.Qg7#

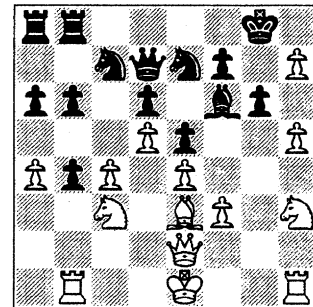
White won anyway: 21.Rd1 Re8 22.h4 b6 23.h5 gxh5 (forced, else 24.h6 and 25.Qg7#) 24.Rd3 1-0.

There's a barrier which a belea-

guered K can hide behind that's so impregnable to the extent that the opponent can't even touch it. What's it?

The opponent's own pawn.

Take this position after 20. gxh6 Bf6 21. h7+ from a playoff game.



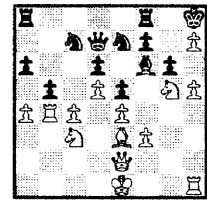
Normal here would be 21...Kxh7.

21...Kh8!

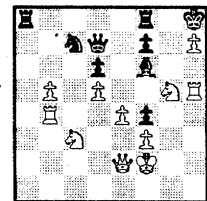
Black's King has obtained protection from frontal assault behind an invulnerable pawn - the opponent's.

The rest of the game went:

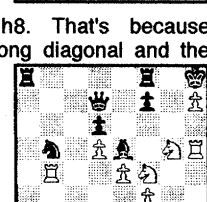
22. Rxb4 b5 23. Ng5 Rf8 (diagram right)



24. Kf2 gxh5 25. axb5 axb5 26. cxb5 Ng6 27. Rxh5 Nf4 28. Bx14 exf4 (diagram right)

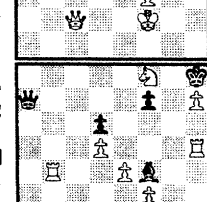


As you can see, White has enormous difficulty in flushing Black's King out of h8. That's because Black controls the long diagonal and the only way for White to be able to get a shot at Black's K is with a N check at g6 or f7.



29. Qc2 Be5 30. Ne2 Nxb5 31. Nxf4 (diagram right)

31...Nc3 32. Nge6 Ra2 33. Qxa2 Nxa2 34. Nxf8 Qa7+ 35. Kg2 Bxf4 0-1 (Final position diagram right)



So, the next time an opponent's h-pawn comes knocking at your castled King's door, let him in.

That enemy pawn may be just the ticket to save your King.

NEAR WEST DIVISION 03-26-1997

TEAM NAME	GAME			MATCH		PCT
	W	L	D	POINTS	POINTS	
CASE	6	2	0	33.5	6.0	0.750
ARGONNE KNIGHTS	6	2	0	30.5	6.0	0.750
COOK CO. DEPT. OF CORR.	4	3	1	23.0	4.5	0.563
LUCENT TECH. CHARGERS	2	5	1	22.5	2.5	0.313
PAWNS	0	7	1	10.5	0.5	0.063

FAR WEST DIVISION 03-26-1997

TEAM NAME	GAME			MATCH		PCT
	W	L	D	POINTS	POINTS	
ARGONNE ROOKS	6	1	2	33.5	7.0	0.778
LUCENT TECH. ROYALS	6	2	0	30.5	6.0	0.750
FERMILAB	5	3	1	33.5	5.5	0.611
LUCENT TECH. TYROS	5	3	0	27.5	5.0	0.625
LUCENT TECH. DRAGONS	2	6	0	18.5	2.0	0.250
WHEATON COLLEGE	0	8	0	6.5	0.0	0.000

NORTH DIVISION 03-26-1997

TEAM NAME	GAME			MATCH		PCT
	W	L	D	POINTS	POINTS	
MOTOROLA	9	0	0	40.5	9.0	1.000
UOP PROCESS DIV.	6	2	1	35.0	6.5	0.722
EXEMPLARS	4	3	1	27.0	4.5	0.563
NORTHROP-GRUMMAN	2	5	1	23.0	2.5	0.313
SEARS	2	6	0	15.0	2.0	0.250
KEMPER INSURANCE	0	7	1	8.5	0.5	0.063

EAST DIVISION 03-26-1997

TEAM NAME	GAME			MATCH		PCT
	W	L	D	POINTS	POINTS	
ALUMNI ACES	10	0	0	43.5	10.0	1.000
NATIONSBANK-CRT	6	2	1	33.5	6.5	0.722
AMOCO CORP.	4	5	1	29.5	4.5	0.450
COLUMBIA COLLEGE	4	6	0	29.5	4.0	0.400
BANK AMERICA ILLINOIS	4	5	0	28.0	4.0	0.444
POSTAL SERVICE	3	6	0	18.5	3.0	0.333
CTA	0	7	0	8.5	0.0	0.000

04-MAR-97 EXEMPLARS 1 MOTOROLA 5
ROUND 8

BD	RATINGS	SCORE	RATINGS	SCORE
1 GAZMEN, E	2169-21	0	HASAN, Y	2185 21 1
2 FRISKE, T	2017 7	.5	MORRIS, R	2114 -7 .5
3 SOLLANO, E	1927 11	.5	WALLACH, C	2104-11 .5
4 BURIAN, D	1672 -3	0	MELNIKOV, I	2081 4 1
5 SUERTH, F	1623 -3	0	SAMELSON, C	1982 3 1
6 BROTSOS, J	1551 -3	0	MACKIE, A	1927 5 1
(MTRLA) 7 AUGSBURGER, L	1799 0	1	BALICKI, J	0 0 0

06-MAR-97 LUCENT TECH. TYROS 1.5 FERMILAB 4.5
ROUND 9

BD	RATINGS	SCORE	RATINGS	SCORE
1 DIAZ, P	2041-19	0	SPIEGEL, L	2103 12 1
2 STOLTZ, B	1919 -2	.5	MOTTA, H	1897 2 .5
3 BLAZIE, J	1838-18	0	GAINES, I	1775 18 1
4 SHENOUDA, R	0 0	1	GOMEZ, G	1542 0 0
5 THOMAS, G	1518-15	0	KELLOGG, K	1637 10 1
6 SHAFF, R	1531-16	0	PARA, A	1511 24 1

10-MAR-97 COOK CO. DEPT. OF CORR. 3.5 CASE 2.5
ROUND 9

BD	RATINGS	SCORE	RATINGS	SCORE
1 SEATON, E	0 0	0	WILLIAMS, T	2189 0 1
2 HALL, A	1454 42	1	KALE, S	1894-42 0
3 JACKSON, S	1292 17	.5	SATTERLEE, D	1615-11 .5
4 ROJO, V	1404 27	1	REID, C	1474-27 0
5 MYART, V	0 0	0	GERONA, R	1463 0 1
6 SANDEFUR, B	1320 23	1	KANAS, W	1326-15 0
7 APPLEBERRY, T	1281 16	1	MOTYCKA, R	1176-16 0
8 JOHNSON, W	1181 0	1	HAZELWOOD, R	0 0 0 (CCDOC)
9 GATSON, T	0 0	0	REID, C	1447 0 1

11-MAR-97 BANK AMERICA ILLINOIS 3.5 AMOCO CORP. 2.5
ROUND 11

BD	RATINGS	SCORE	RATINGS	SCORE
1 KOGAN, G	1926-28	0	ATKINSON, J	1845 18 1
2 PAROAN, E	1785 8	1	WENTLING, C	1620 -8 0
3 SIEGEL, R	1491-22	0	WOOD, L	1491 23 1
4 HAMMOND, M	1416 25	1	HOLMES, M	1453-25 0
5 ZOELLNER, J	1367 0	.5	VEREZHENSKY, E	0 0 .5
6 GANSER, A	1219 0	1F	PORTER, D	0 0 0F

11-MAR-97 SEARS 1.5 NORTHROP-GRUMMAN 4.5
ROUND 8

BD	RATINGS	SCORE	RATINGS	SCORE
1 LATIMER, E	2000-14	0	CURTIS, M	2021 21 1
2 MILLER, TT	1846 -9	.5	CAIRONE, B	1710 9 .5
3 HALL, L	1588-22	0	VIGANTS, A	1603 22 1
4 JONES, K	0 0	0	WALKER, A	0 0 1
5 BALASE, E	1343 24	1	BABINEC, J	1363-24 0
6 POLONCSIK, D	0 0	0	ELEK, G	1080 0 1

11-MAR-97 ARGONNE KNIGHTS

6

PAWNS

0

ROUND 9

BD	RATINGS	SCORE	RATINGS	SCORE
1 BENEDEK, R	2120	8 1	ELLICE, W	1942-12 0
2 HILL, R	1890	5 1	O'DELL, DW	1528 -3 0
3 GOLCHERT, B	1833	4 1	MIKULECKY, B	1420 -4 0
4 MAKAI, M	1754	4 1	HANSEN, B	1367 -4 0
5 SUAREZ, E	1682	4 1	LOGAN, H	1259 -4 0
6 ELLIOTT, M	1318	0 1	KREMER, T	0 0 0

12-MAR-97 ARGONNE ROOKS

3

LUCENT TECH. CHARGERS

3

ROUND 9

BD	RATINGS	SCORE	RATINGS	SCORE
1 BERRY, G	2096-15	0	WARREN, J	2097 10 1
2 KABELAC, J	1922	10 1	ROSLEY, D	1703-10 0
3 ANSELL, S	1819	11 1	RADAVICIUS, E	1616 -7 0
4 GREEN, D	1867-24	0	STAMM, V	1616 24 1
5 BAURAC, D	1644	9 1	DOBR, K	1496 -6 0
6 GARCIA, J	0 0	0	THOMAS, J	1497 0 1
7 HUSCHER, S	0 0	0	MUGASIMANGALAM	1600 0 1 (ROOKS)

13-MAR-97 POSTAL SERVICE

3.5

BANK AMERICA ILLINOIS

2.5

ROUND 10

BD	RATINGS	SCORE	RATINGS	SCORE
1 INUMERABLE, F	2270	4 1	FRAATS, D	1874 -4 0
2 MARCOWKA, R	1965	12 1	KOGAN, G	1898-18 0
3 ALLEN, H	1942-10	.5	PARAOAN, E	1793 6 .5
4 TURNER, K	1496-26	0	HAMMOND, M	1441 26 1
5 CARTER, L	1496	15 1	ZOELLNER, J	1367-15 0
6 DAVIS, R	0 0	0	GANSER, A	1219 0 1

06-MAR-97 KEMPER INSURANCE

1

UOP PROCESS DIV.

5

ROUND 8

BD	RATINGS	SCORE	RATINGS	SCORE
1 SIWEK, M	2117	-7 0	STEVANOVIC, M	2309 7 1
2 OLSEN, A	1552	-2 0	BUERGER, E	2086 1 1
3 MCKINNEY, T	1310	-2 0	PLETT, M	1859 2 1
4 PAYTON, P	1234-15	0	VAN ZILE, C	1355 15 1
5 HARDIN, L	0 0	1	SCHOONOVER, M	0 0 0
6 AMUNDSEN, C	0 0	0	RENDE, D	0 0 1

19-MAR-97 POSTAL SERVICE

2

NATIONSBANK-CRT

4

ROUND 14

BD	RATINGS	SCORE	RATINGS	SCORE
1 INUMERABLE, F	2274	16 1	JASAITIS, A	2165-10 0
2 MARCOWKA, R	1977	-3 .5	LOSOFF, A	1895 6 .5
3 ALLEN, H	1932-14	.5	BARGERSTOCK, D	1700 14 .5
4 TURNER, K	1470-12	0	DELEON, J	1642 12 1
5 CARTER, L	1511-19	0	SITAR, K	1573 19 1
6 DAVIS, R	0 0	0	BARNARD, C	0 0 1

20-MAR-97 COLUMBIA COLLEGE

2.5 ALUMNI ACES

3.5

ROUND 12

BD	RATINGS	SCORE		RATINGS	SCORE
1 SANTIAGO, T	2027 25	1	CZERNIECKI, A	2061-16	0
2 MCALISTER, K	1948 -3	.5	GOLLA, R	1915 1	.5
3 PRATTS, M	1781 24	1	FRANEK, M	1798-16	0
4 KOSTECKA, K	1569-12	0	FRANK, M	1748 12	1
5 STEVENS, J	1446 -7	0	FABIJONAS, R	1748 4	1
6 TURNER, R	1229-17	0	COTE, J	1323 17	1
7 BRANCH, Y	1276-13	0	SULLIVAN, C	1425 13	1

20-MAR-97 FERMILAB

5.5 WHEATON COLLEGE

.5

ROUND 10

BD	RATINGS	SCORE		RATINGS	SCORE
1 SPIEGEL, L	2115 -7	.5	UNDERWOOD, W	1945 7	.5
2 MOTTA, H	1899 3	1	BOSTICK, T	1436 -3	0
3 GOMEZ, G	1542 13	1	ENKE, E	1385-13	0
4 KELLOGG, K	1647 3	1	BROLLIER, B	1258 -4	0
5 PARA, A	1535 5	1	HELLER, T	1163 -5	0
6 WALKER, P	1345 0	1	DEMICK, D	0 0	0

20-MAR-97 UOP PROCESS DIV.

1 MOTOROLA

5

ROUND 9

BD	RATINGS	SCORE		RATINGS	SCORE
1 STEVANOVIC, M	2316-20	0	HASAN, Y	2206 29	1
2 BUERGER, E	2087-15	0	MELNIKOV, I	2085 23	1
3 BOLDINGH, E	1995-27	0	MACKIE, A	1932 27	1
4 PLETT, M	1861-20	0	CIESLEK, D	1899 20	1
5 MICKLICH, F	1636 7	.5	AUGSBURGER, L	1799-10	.5
6 SAHLI, E	1708 2	.5	GONCHAROFF, N	1732 -1	.5
7 RENDE, D	0 0	0	BALICKI, J	0 0	1
8 SCHOONOVER, M	0 0	0	FULLMER, G	0 0	1

PLAYOFFS

WHAT: 1996 - 1997 Playoffs

WHEN: First round before 15 May 1997.
Second and third rounds on Saturday 17 May 1997.

Clocks will start ticking at 9:00 AM SHARP

WHERE: MidCon Corporation (See Directions / Map Attached)
701 East 22nd Street
Lombard, Illinois 60148

WHO: **TOP TIER:**

Top Two teams from each division

SECOND TIER:

Instead of teams competing in the second tier this year, second tier is open for all CICL individuals (one has to be on the CICL roster - past or present to compete).
The competition is structured on the basis of class championships.
Three classes (2000 + ; 1600 - 1999 ; and 1599 -).
All three rounds to be played on Saturday in a Swiss format.
Each class will have one award.

Time control: G / 60. Clocks will start ticking 9:00 AM SHARP

For more info contact TD.

TOURNAMENT DIRECTOR: Dan Fraats
5820 West 55th Street
Chicago, Illinois 60638

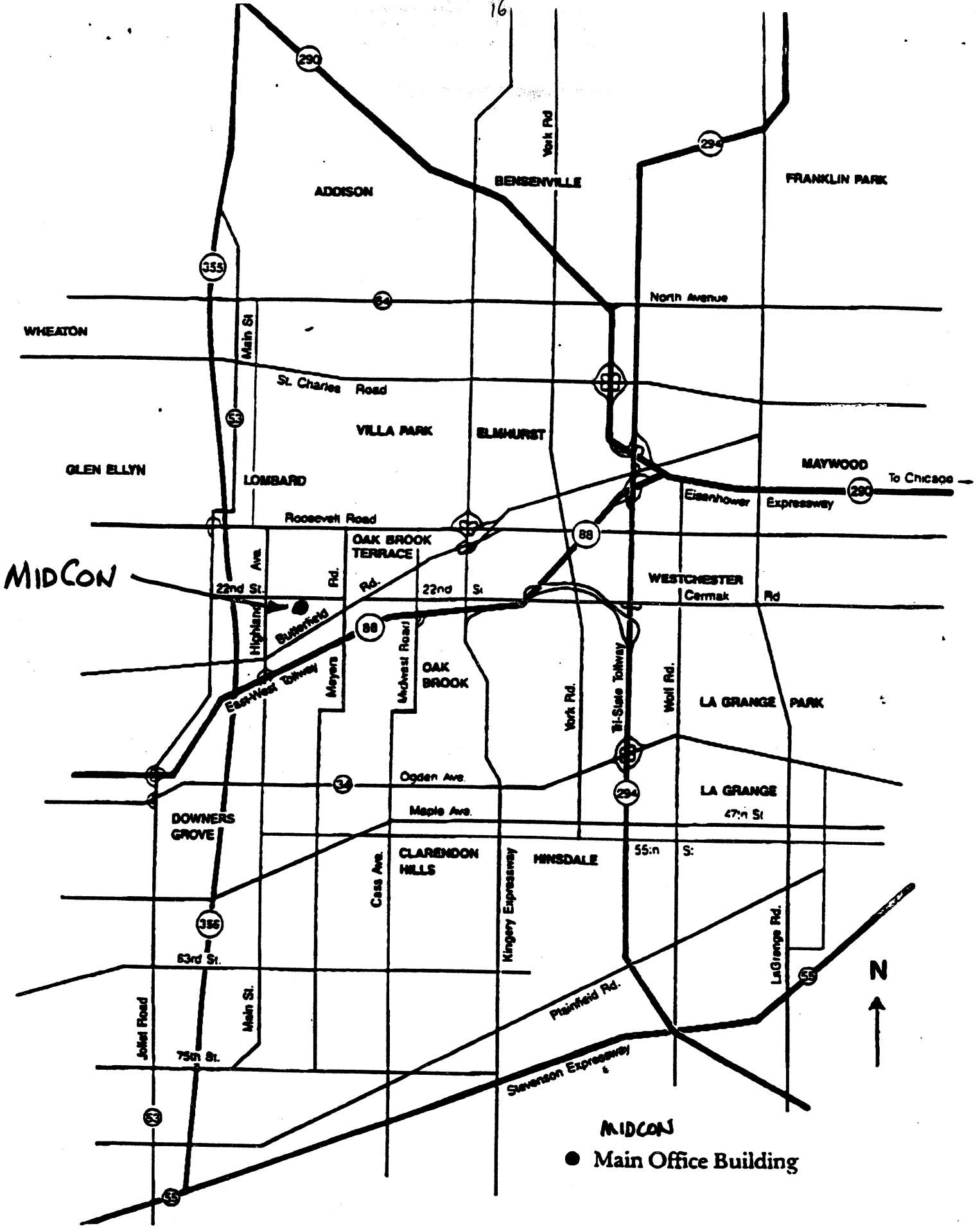
Phone Number: (773) 581-0923 (Home)

DIVISION CHAIRS: PLEASE report the top two standings in your division to Dan immediately or at the earliest possible time for pairings of the first round.

PLAYOFF TEAMS: PLEASE report the results of the first round to Dan at the earliest for pairings of the second round.

DO NOT FORGET TO BRING YOUR EQUIPMENT WITH YOU.

Thank you.



17

Directions to MidCon/Natural Gas Pipeline Office From Various Locations

701 East 22nd Street

Lombard, IL 60148

(708) 691-2500

From O'Hare:

1-90 East to 294 South. Take 294 South 9 miles to I-88 West. I-88 West 4 miles to Highland Avenue. Go North on Highland Avenue to 22nd Street (approximately 1 mile). Go East on 22nd Street approximately 0.60 of a mile. Building is on south side of the street.

From Chicago:

290 West approximately 20 miles to I-88 West. I-88 West 4 miles to Highland Avenue. Go North on Highland Avenue to 22nd Street (approximately 1 mile). Go East on 22nd Street approximately 0.60 of a mile. Building is on south side of street.

From Oakbrook:

Butterfield Road West to Meyers Road. North on Meyers Road to first stoplight (which is 22nd Street). Turn left at 22nd Street. Building is on the south side of street approximately 2 blocks.

From 355 South:

Exit at Roosevelt Road East to Highland Avenue. Go ^{South} North on Highland Avenue to 22nd Street (approximately 1 mile). Go East on 22nd Street approximately 0.60 of a mile. Building is on south side of street.

From 355 North:

Exit at Roosevelt Road and go East to Highland Avenue. Go South on Highland Avenue to 22nd Street. Go East on 22nd Street approximately 0.60 of a mile. Building is on south side of the street.

From Midway Airport:

Take 63rd Street West 0.50 mile to Central Avenue. North on Central Avenue 1.50 miles to I-55 South. I-55 South 11 miles to 294 North. 294 North to I-88 West. I-88 West 4 miles to Highland Avenue. Go North on Highland Avenue to 22nd Street (approximately 1 mile). Go East on 22nd Street approximately 0.60 of a mile. Building is on south side of street.

From South Suburbs:

Take 294 North to I-88 West. I-88 West 4 miles to Highland Avenue. Go North on Highland Avenue to 22nd Street (approximately 1 mile). Go East on 22nd Street approximately 0.60 of a mile. Building is on the south side of street.

NAME	TEAM	W	L	D	RATING	NAME	TEAM	W	L	D	RATING
ABRAHAM, T	CTA	0	0	0	1590	CHOUDRY, A	KEMPR	0	1	0	1309#
ALFONSO, E	NORTH	0	0	0	1583#	CHRISTIAN, R	DRGNS	0	0	0	1811C
ALLEN, H	PSTOF	3	0	2	1918	CICUCCI, S	KEMPR	0	0	0	0000?
AMUNDSEN, C	KEMPR	0	4	0	0000?	CIESLEK, D	MTRLA	5	1	1	1919
ANDERSON, CJ	ROYLS	1	0	0	1490	CISKO, G	FERMI	0	0	0	1608
ANDRYSIAK, B	KEMPR	0	0	0	0000?	COLBERT, W	PAWNS	0	0	0	0000?
ANSELL, S	ROOKS	4	3	0	1830#	CONDON, J	MDCON	0	0	0	2039
APPLEBERRY, T	CCDOC	5	2	0	1297#	CONNOR, P	MDCON	0	0	0	2086
ASSADIAN, K	MTRLA	0	0	0	0000?	COOPER, W	PSTOF	0	0	0	1637C
ATKINSON, J	AMCRP	4	2	2	1863C	CORBIN, Z	AMCRP	1	1	0	1286*
AUGSBURGER, L	MTRLA	6	0	1	1789	COSTELLO, W	NORTH	0	0	0	0000?
AVERY, G	CCDOC	0	0	0	0000?	COTE, J	ALUMN	1	0	0	1340
AZCUNA, L	WHEAT	0	1	0	1233	CUMBERLAND, N	SEARS	0	1	1	0000?
BABINEC, J	NORTH	1	6	0	1339*	CUMMUTA, P	KEMPR	1	1	0	1449C
BALASE, E	SEARS	2	3	0	1367*	CURRAN, T	CASE	0	0	0	1698
BALICKI, J	MTRLA	5	2	0	0000?	CURTIS, M	NORTH	5	1	2	2042
BARGERSTOCK, D	CRT	1	2	2	1714	CZERNIECKI, A	ALUMN	3	5	0	2045D
BARNARD, G	CRT	2	2	0	0000?	CZOSKE, M	ROYLS	1	0	0	1318#
BARNES, D	CTA	0	0	0	0000?	DALTON, M	CTA	0	0	0	0000?
BAURAC, D	ROOKS	6	1	1	1653C	DAVIDSON, M	ALUMN	2	0	0	1612
BENEDEK, R	KNGHT	4	4	0	2128D	DAVIS, R	PSTOF	0	2	0	0000?
BERRY, G	ROOKS	2	4	1	2081T	DECMAN, S	ROOKS	1	2	1	1668D
BEZZUBOV, V	FERMI	1	0	0	2350*	DELEON, J	CRT	5	2	2	1654*
BLACKMON, E	ROYLS	3	1	2	1740C	DEMICK, D	WHEAT	0	2	0	0000?
BLAZIE, J	TYROS	1	2	3	1820C	DENISENKO, K	SEARS	0	0	0	0000?
BLUE, J	CCDOC	0	0	0	0000?	DIAZ, L	CASE	0	0	0	0000?
BOLDINGH, E	UOP	2	4	1	1968	DIAZ, P	TYROS	3	3	2	2022
BOSTICK, T	WHEAT	1	6	0	1433*	DOBR, K	CHRGR	5	3	0	1490T
BOSWELL, H	CCDOC	1	1	0	0000?	DOBROVOLNY, C	ROYLS	4	1	3	1858
BRADY, R	CHRGR	3	0	0	1399	DORFF, M	SEARS	3	2	0	1618
BRANCH, Y	COLUM	1	3	0	1263*	DORIGO, T	FERMI	2	0	0	2093
BRIONES, M	UOP	0	0	0	1624C	DUCKSWORTH, R	PAWNS	0	0	0	0000?
BROLLIER, B	WHEAT	1	5	0	1254#	DURKEE, D	DRGNS	0	0	0	1767C
BRONFELD, A	EXMPL	0	0	0	1827	DZURICKO, G	PAWNS	0	0	0	1114*
BROTSOS, J	EXMPL	1	2	0	1548D	EDWARDS, S	EXMPL	2	0	0	1296
BROZOVICH, J	TYROS	3	1	1	1716D	EGERTON, J	MDCON	0	0	0	1995
BUCHNER, R	ROYLS	0	3	3	2072	ELEK, G	NORTH	3	3	0	1080
BUERGER, E	UOP	4	4	0	2072D	ELLICE, W	PAWNS	4	3	1	1930
BURBA, K	KNGHT	0	0	0	1402C	ELLIOTT, M	KNGHT	1	4	0	1318?
BURIAN, D	EXMPL	3	2	0	1669C	ENKE, E	WHEAT	1	6	0	1372*
BYRNES, R	CTA	2	1	1	2178*	EUSTACE, D	DRGNS	1	3	1	1632
CAIRONE, B	NORTH	1	3	2	1719	FABIJONAS, R	ALUMN	5	1	0	1752D
CAMPBELL, DD	KEMPR	1	1	0	0000?	FERGUSON, K	PAWNS	1	3	0	1098#
CARNAL, D	CRT	0	0	0	1207#	FLEET, R	MDCON	0	0	0	1140#
CARTER, D	CASE	0	1	0	1042	FLOREY, J	SEARS	0	1	0	1432#
CARTER, L	PSTOF	2	4	1	1492	FRAATS, D	BKAMI	1	2	1	1870
CARTER, O	CTA	0	0	0	0000?	FRANEK, M	ALUMN	5	2	1	1782C
CARVALHO, W	FERMI	0	0	0	1895	FRANK, M	ALUMN	5	0	1	1760
CHAMORRO, A	CCDOC	0	0	0	0000?	FRIESEMA, W	CRT	0	0	0	2109
CHIRCHIKOV, S	DRGNS	2	5	1	1722#	FRISKE, T	EXMPL	6	1	1	2024

? - UNRATED

- 5 TO 9 RATED GAMES

* - 10 TO 24 RATED GAMES

C - CENTURY CLUB MEMBER

D - DOUBLE CENTURION

T - TRIPLE CENTURION

Q - QUAD CENTURION

NAME	TEAM	W	L	D	RATING	NAME	TEAM	W	L	D	RATING
FROMM, J	FERMI	0	1	0	1540	JAKSTAS, K	NORTH	0	0	0	2175C
FULLMER, G	MTRLA	2	0	0	0000?	JARRETT, T	CTA	0	2	0	1624*
GAINES, I	FERMI	2	3	1	1793C	JASAITIS, A	CRT	4	2	2	2155C
GALKO, D	KEMPR	0	0	0	0000?	JASUNAS, J	ROOKS	0	0	0	1420
GALLAGHER, H	KNIGHT	0	0	0	1317	JOHNSON, D	CTA	0	4	0	1250#
GANSER, A	BKAMI	2	1	0	1219*	JOHNSON, W	CCDOC	2	1	0	1181#
GARCIA, J	ROOKS	1	3	1	0000?	JONES, K	SEARS	0	2	0	0000?
GARWOOD, B	COLUM	0	1	0	1956	JONES, M	CTA	0	3	1	1445*
GATSON, T	CCDOC	1	2	1	0000?	JONES, MIGUEL	CCDOC	0	0	0	0000?
GAZMEN, E	EXMPL	2	4	0	2148	JOSEPHSON, D	WHEAT	3	2	1	1738*
GERONA, R	CASE	3	3	1	1463	KABELAC, J	ROOKS	6	1	0	1932
GOLCHERT, B	KNIGHT	3	1	2	1837	KALE, S	CASE	4	2	1	1852
GOLLA, R	ALUMN	3	3	3	1916D	KANAS, W	CASE	1	2	1	1311C
GOLUMBOVSKI, P	NORTH	1	0	0	2129	KARPIERZ, J	TYROS	3	1	0	1238*
GOMEZ, G	FERMI	3	2	0	1555	KEISLER, J	KNIGHT	2	0	0	2039
GONCHAROFF, N	MTRLA	4	1	4	1731Q	KELLOGG, K	FERMI	3	2	1	1650C
GREEN, D	ROOKS	6	2	1	1843C	KELLY, S	DRGNS	1	1	0	1258
GRYPARIS, J	MTRLA	1	3	3	1464	KERCSMAR, J	WHEAT	0	3	0	0000?
GUIO, J	ROYLS	3	3	1	1976	KINSELLA, G	KNIGHT	0	1	0	1466C
HAHNE, D	ROYLS	3	2	0	1564	KIUSALS, D	SEARS	0	4	0	1072
HALL, A	CCDOC	2	5	1	1496*	KLAUDER, C	WHEAT	0	0	0	0000?
HALL, D	MDCON	0	0	0	0000?	KLINEFELTER, H	CASE	2	1	1	1571C
HALL, L	SEARS	2	5	0	1566#	KOGAN, G	BKAMI	2	5	1	1880
HALLMAN, W	CASE	0	0	0	1219*	KOSTECKA, K	COLUM	3	4	2	1557
HAMMOND, M	BKAMI	3	2	1	1467	KOZLOVSKY, M	FERMI	0	0	0	2106
HANSEN, B	PAWNS	1	4	1	1363*	KREMER, T	PAWNS	2	1	0	0000?
HARD, R	PAWNS	0	6	0	1168*	KRUEGER, J	DRGNS	0	1	1	1384*
HARDIN, L	KEMPR	1	0	0	0000?	KRULL, E	AMCRP	0	0	0	1510
HARRIS, R	FERMI	3	2	1	1611	LAKE, T	WHEAT	0	3	1	1227#
HARRUFF, E	WHEAT	0	0	0	0000?	LAMBIRIS, J	KEMPR	1	1	0	1452
HASAN, Y	MTRLA	4	2	1	2235	LANG, P	KEMPR	0	3	0	0000?
HAZELWOOD, R	CCDOC	0	2	0	0000?	LARSON, T	CCDOC	0	0	0	0000?
HELLER, T	WHEAT	1	4	0	1158*	LASKY, N	PAWNS	0	0	0	1352C
HERBER, S	KEMPR	0	0	0	0000?	LATIMER, E	SEARS	1	6	1	1986D
HESS, B	EXMPL	0	0	0	1451	LAWRENCE, P	MTRLA	0	0	0	0000?
HICKS, C	DRGNS	1	5	1	1538	LE, D	NORTH	0	1	0	0000?
HILL, C	FERMI	0	0	0	1643	LEONG, D	ALUMN	0	0	0	1997
HILL, R	KNIGHT	5	2	0	1895	LEONG, G	KEMPR	0	1	0	1995C
HILTON, J	MERC	0	0	0	1146	LESTER, M	MTRLA	0	0	0	1569
HODINA, J	AMCRP	1	1	1	2120	LEVINE, D	ROOKS	0	0	0	2357
HOLMES, M	AMCRP	3	5	0	1428#	LEWIS, N	WHEAT	1	1	0	0000?
HORTON, D	MTRLA	1	1	0	1832	LICARI, T	DRGNS	1	3	0	0000?
HOWARD, W	PSTOF	0	0	0	1566	LIKHTEREV, M	UOP	1	0	0	1464*
HUEBNER, R	ROOKS	0	0	0	0000?	LITVINAS, A	ALUMN	5	0	1	1740C
HUGHES, N	KEMPR	0	0	0	1837C	LODEWYCK, D	MERC	0	0	0	1414
HUSCHER, S	ROOKS	0	1	0	0000?	LOGAN, H	PAWNS	2	4	0	1255*
INUMERABLE, F	PSTOF	5	1	0	2290	LORENZ, B	PAWNS	0	1	0	1479*
JACKLIN, E	CASE	0	1	0	1231	LOSOFF, A	CRT	4	2	2	1901
JACKSON, S	CCDOC	4	3	1	1309*	LUDWIG, T	DRGNS	0	0	0	2098C
JAGGARD, A	WHEAT	1	1	0	0000?	LUEDERS, J	CRT	0	0	0	0000?

? - UNRATED
 # - 5 TO 9 RATED GAMES
 * - 10 TO 24 RATED GAMES
 C - CENTURY CLUB MEMBER
 D - DOUBLE CENTURION
 T - TRIPLE CENTURION
 Q - QUAD CENTURION

NAME	TEAM	W	L	D	RATING	NAME	TEAM	W	L	D	RATING
MACBEAN, J	PAWNS	0	0	0	0000?	REID, C	CASE	4	3	0	1447
MACKIE, A	MTRLA	4	1	0	1959	RENDE, D	UOP	2	1	0	0000?
MAKAI, M	KNGHT	5	1	1	1758#	REYES, E	COLUM	0	1	0	0000?
MALEN, M	AMCRP	1	2	0	0000?	REYES, R	SEARS	2	0	0	2362D
MARCOWKA, R	PSTOF	3	2	1	1974C	RINGER, D	SEARS	0	1	0	0000?
MATTAR, I	CCDOC	0	0	0	0000?	ROBERTS, J	WHEAT	0	0	0	1328#
MATTHEWS, J	CTA	0	0	0	1786	ROJAS, R	CTA	0	0	0	0000?
MAYNARD, J	WHEAT	0	0	1	1369	ROJO, V	CCDOC	3	1	2	1431*
MCALISTER, K	COLUM	4	2	4	1945	ROMENESKO, G	PAWNS	0	0	0	0000?
MCCARTHY, D	CHRGR	0	0	0	0000?	RONIN, D	KNGHT	0	0	0	1537*
MCCARTNEY, M	CTA	0	2	1	0000?	ROSENBERG, B	MDCON	0	0	0	1456*
MCKAY, P	PAWNS	0	0	0	1393#	ROSLEY, D	CHRGR	1	3	0	1693
MCKEEL, B	CTA	1	5	1	1393#	ROYTBURG, E	CASE	4	1	0	1984*
MCKINNEY, T	KEMPR	1	5	0	1308*	RUBIN, A	CRT	0	0	0	0000?
MELNIKOV, I	MTRLA	3	2	0	2108	RZESZUTKO, R	ALUMN	0	0	1	1834C
MICKLICH, F	UOP	4	2	1	1643C	SACKS, D	UOP	1	0	0	0000?
MIKULECKY, B	PAWNS	1	2	2	1416C	SAHLI, E	UOP	0	0	2	1710
MILLER, TT	SEARS	1	2	1	1837	SAJBEL, P	UOP	3	0	1	1805
MORRIS, R	MTRLA	6	0	2	2107	SAMELSON, C	MTRLA	4	1	0	1985C
MORRISON, J	KNGHT	1	1	0	1737	SANDEFUR, B	CCDOC	3	4	0	1343#
MOTTA, H	FERMI	4	3	2	1902	SANTIAGO, T	COLUM	4	4	1	2052
MOTYCKA, R	CASE	2	2	1	1160C	SATTERLEE, D	CASE	2	1	3	1604C
MUGASIMANGALAM	ROOKS	1	0	0	1600	SAUNDERS, N	MDCON	0	0	0	0000?
MYART, V	CCDOC	1	2	0	0000?	SAWDO, E	CASE	0	0	0	1412
NEWCOMER, K	WHEAT	0	4	1	0000?	SCHOONOVER, M	UOP	1	3	0	0000?
NIXON, L	MTRLA	0	0	0	0000?	SCHWAB, W	ROOKS	0	1	0	1419
NOBLE, S	JCASE	0	0	0	1286#	SCHWARTZ, M	TYROS	0	2	0	1073
NOTERMANN, T	PAWNS	0	0	0	1178	SEATON, E	CCDOC	2	1	0	0000?
NOTTOLI, R	AMCRP	0	2	2	1286#	SEMONES, E	KNGHT	1	2	0	1136#
O'DELL, DW	PAWNS	0	6	0	1525C	SHAFF, R	TYROS	0	2	1	1515C
OGASAWARA, L	ROYLS	2	0	2	1831C	SHATSKY, V	CRT	3	4	1	1471*
OLSEN, A	KEMPR	1	7	0	1550	SHENOUDA, R	TYROS	2	0	1	0000?
OLSON, C	CASE	0	0	0	0000?	SHEYNIN, S	ROOKS	0	0	0	2051
PADLO, R	MTRLA	0	0	0	0000?	SHOUSE, B	MTRLA	0	1	0	0000?
PARA, A	FERMI	4	0	0	1540	SIEGEL, R	BKAMI	2	1	0	1469C
PARAOAN, E	BKAMI	3	3	3	1799C	SIMS, B	CRT	1	0	0	1519#
PARK, J	AMCRP	0	1	0	0000?	SIPP, R	CCDOC	0	0	0	0000?
PATTON, D	CHRGR	0	0	0	0000?	SITAR, K	CRT	6	1	0	1592*
PAYTON, P	KEMPR	1	4	0	1219*	SIWEK, M	KEMPR	1	4	1	2110C
PEHAS, A	ROYLS	5	0	2	1996	SKRZYPCZAK, T	PAWNS	1	4	0	1109#
PHELPS, C	DRGNS	0	1	0	1248*	SLAGLE, S	MERC	0	0	0	1682
PIAO, T	DRGNS	0	0	0	1705	SMITH, BR	TYROS	2	0	0	1516
PLETT, M	UOP	4	2	1	1841	SOLLANO, E	EXMPL	5	1	1	1938
POLONCSIK, D	SEARS	0	2	0	0000?	SOMBONG, M	BKAMI	1	1	3	1641
PORTER, D	AMCRP	0	3	0	0000?	SPIEGEL, L	FERMI	4	1	4	2108C
POZNIAK, J	KEMPR	0	3	0	1455*	STAMM, V	CHRGR	1	5	1	1640D
PRATTS, M	COLUM	2	0	1	1805	STAPLES, C	FERMI	1	1	0	1192#
RADAVICIUS, E	CHRGR	2	6	0	1609D	STAPLES, M	CTA	1	4	1	1214*
REARDON, J	WHEAT	0	1	0	0000?	STEELE, B	CCDOC	0	2	0	0000?
REDDY, S	MTRLA	0	0	0	0000?	STEVANOVIC, M	UOP	7	2	0	2296C

? - UNRATED

- 5 TO 9 RATED GAMES

* - 10 TO 24 RATED GAMES

C - CENTURY CLUB MEMBER

D - DOUBLE CENTURION

T - TRIPLE CENTURION

Q - QUAD CENTURION

NAME	TEAM	W	L	D	RATING	NAME	TEAM	W	L	D	RATING
STEVENS, G	CTA	0	0	0	0000?	VANDECOTTE, M	UOP	0	0	0	0000?
STEVENS, J	COLUM	6	3	1	1439	VAYSBERG, O	CASE	2	0	0	0000?
STEVENSON, R	PAWNS	0	0	0	1360	VEREZHENSKY, E	AMCRP	1	1	1	0000?
STINSON, M	ROYLS	0	0	0	1937C	VIGANTS, A	NORTH	3	3	1	1625
STOLTZ, B	TYROS	3	1	2	1917	VITAVER, L	SEARS	0	0	0	1546#
SUAREZ, E	KNIGHT	6	1	0	1686	WALDEN, W	CCDOC	0	0	0	0000?
SUERTH, F	EXMPL	2	3	0	1620C	WALKER, A	NORTH	2	2	1	0000?
SULLIVAN, C	ALUMN	2	1	0	1438	WALKER, R	FERMI	1	0	0	1345C
SULLIVAN, J	EXMPL	2	1	1	1980D	WALLACH, C	MTRLA	3	0	1	2093
SZONTAGH, T	CRT	0	0	0	1184#	WALSH, W	ROOKS	2	1	0	1500C
TAKAOKA, M	UOP	0	1	0	0000?	WARD, C	DRGNS	3	3	2	1567D
TAMEZ, I	TYROS	4	2	0	2117	WARD, J	CTA	0	0	0	0000?
TAN, M	WHEAT	0	1	0	1191	WARREN, J	CHRGR	3	1	3	2107T
TAYLOR, M	CTA	0	0	0	0000?	WEITZ, R	EXMPL	1	2	1	1688C
TEGEL, F	DRGNS	4	1	3	2176T	WENTLING, C	AMCRP	2	3	3	1612C
THOMAS, G	TYROS	2	1	0	1503	WHARTON, P	WHEAT	0	1	1	0000?
THOMAS, J	CHRGR	4	3	1	1497C	WHITE, H	CASE	2	0	2	1644
THOMSON, J	MTRLA	1	0	0	0000?	WHITE, T	BKAMI	2	2	0	1344#
TOELLNER, T	ROOKS	2	1	0	0000?	WILLIAMS, A	CTA	0	3	1	1482*
TRUDY, E	CCDOC	0	0	0	0000?	WILLIAMS, T	CASE	7	0	1	2189
TURNER, K	PSTOF	2	3	1	1458	WILSON, A	CTA	1	1	1	1622
TURNER, R	COLUM	0	1	0	1212*	WILSON, M	SEARS	1	3	1	1247*
UHLEMAN, T	PAWNS	1	2	0	0000?	WOLF, D	MTRLA	0	1	0	2302
UNDERWOOD, W	WHEAT	0	2	1	1952C	WONG, P	EXMPL	0	0	0	2210C
VACCARO, M	COLUM	3	3	0	0000?	WOOD, L	AMCRP	3	3	0	1514*
VALDEZ, C	MTRLA	0	0	0	0000?	WRIGHT, E	CCDOC	0	1	0	0000?
VAN MEER, J	KEMPR	0	0	0	1958	YACOUT, A	KNIGHT	3	2	0	0000?
VAN METRE, R	SEARS	0	0	0	1483#	YOUNG, R	ALUMN	0	1	0	1413
VAN ZILE, C	UOP	2	2	0	1370	ZOELLNER, J	BKAMI	2	6	1	1352C

? - UNRATED

- 5 TO 9 RATED GAMES

* - 10 TO 24 RATED GAMES

C - CENTURY CLUB MEMBER

D - DOUBLE CENTURION

T - TRIPLE CENTURION

Q - QUAD CENTURION

NEAR WEST DIVISION TOP TEN

WILLIAMS, T	CASE	2189
BENEDEK, R	KNGHT	2128D
WARREN, J	CHRGR	2107T
KEISLER, J	KNGHT	2039
ROYTEBURG, E	CASE	1984*
ELLICE, W	PAWNS	1930
HILL, R	KNGHT	1895
KALE, S	CASE	1852
GOLCHERT, B	KNGHT	1837
MORRISON, J	KNGHT	1737

FAR WEST DIVISION TOP TEN

LEVINE, D	ROOKS	2357
BEZZUBOV, V	FERMI	2350*
TEGEL, F	DRGNS	2176T
TAMEZ, I	TYROS	2117
SPIEGEL, L	FERMI	2108C
KOZLOVSKY, M	FERMI	2106
LUDWIG, T	DRGNS	2098C
DORIGO, T	FERMI	2093
BERRY, G	ROOKS	2081T
BUCHNER, R	ROYLS	2072

NORTH DIVISION TOP TEN

REYES, R	SEARS	2362D
WOLF, D	MTRLA	2302
STEVANOVIC, M	UOP	2296C
HASAN, Y	MTRLA	2235
WONG, P	EXMPL	2210C
JAKSTAS, K	NORTH	2175C
GAZMEN, E	EXMPL	2148
GOLUMBOVSKI, P	NORTH	2129
SIWEK, M	KEMPR	2110C
MELNIKOV, I	MTRLA	2108

EAST DIVISION TOP TEN

INUMERABLE, F	PSTOF	2290
BYRNES, R	CTA	2178*
JASAITIS, A	CRT	2155C
HODINA, J	AMCRP	2120
FRIESEMA, W	CRT	2109
SANTIAGO, T	COLUM	2052
CZERNIECKI, A	ALUMN	2045D
LEONG, D	ALUMN	1997
MARCOWKA, R	PSTOF	1974C
GARWOOD, B	COLUM	1956

MOST IMPROVED PLAYERS

JACKSON, S	CCDOC	177
CURTIS, M	NORTH	158
STEVENS, J	COLUM	99
FRISKE, T	EXMPL	90
ROJO, V	CCDOC	84
ATKINSON, J	AMCRP	74
WILLIAMS, T	CASE	71
VIGANTS, A	NORTH	67
HALL, A	CCDOC	60
DELEON, J	CRT	59