

*The Chicago Chess Player*  
The Official Bulletin of the Chicago Industrial Chess League

## **Inside**

- **Games - by Tim Williams**
- **More Games**
- **The Finishing Touch**
- **1996 Playoffs at a Glance**
- **Team standings by division**
- **Match results**
- **Top 10, CICL MVP lists**
- **Ratings list**

**CICL OFFICERS**

**President:** Satish Hale (shale@casecorp.com (E-Mail))  
CASE Corp  
7 South 600 County Line Rd.  
Burr Ridge, IL 60521

W:(708) 887-2372 H:(708) 325-HALE

**Secretary** Tony Jasaitis (CRT) (tony@trdlnk.com (E-mail))  
P.O. Box 664  
Bedford Park, IL 60499-0664  
H:(708) 448-4967

**Treasurer** Wesley K. Underwood (Wheaton)  
(wu@david.wheaton.edu (E-mail))  
207 S. Dorchester Ave.  
Wheaton, IL 60187  
W:(708) 752-5127 H:(708) 462-0393

**Ratings  
Chairman** Charles Ward (Lucent Tech Dragons)  
(c.e.w.ward@att.com (E-mail))  
615 S. Lincoln  
Hinsdale, IL 60521  
W:(708) 979-4599 H:(708) 325-3885  
Fax: (708) 979-6124

**Publicity  
Director** Carl Reid (CASE)  
2289 Grand Drive  
Northbrook, IL 60062-6937

**Trophy  
Chairman** Wayne Ellice (Pawns)  
(wayne.ellice@crus.sprint.com (E-mail))  
Crosfield Catalysts  
4099 West 71st Street  
Chicago, IL 60629  
W:(312) 838-3215 Fax:(312) 838-3243

**Banquet  
Chairman** Len Spiegel (Fermi)  
(lenny@fnal.gov (E-mail))  
Fermilab MS 219  
P.O.Box 500  
Batavia, IL 60510  
W:(708) 840-2809 H:(708) 377-2675

**Bulletin  
Editor** Ruben Reyes (Sears)  
(RRgb@aol.com (E-mail))  
2019 W. Leland Ave.  
Chicago, IL 60625-1513  
W: (847) 286-0758  
H: (773) 334-0591  
Fax: (773) 769-0311

**Far West  
Division  
Chairman** Irwin Gaines (Fermi)  
(gaines@fnal.gov (E-Mail))  
Fermilab MS 127  
P.O.Box 500  
Batavia, IL 60510  
W: (708) 840-4022  
H: (708) 420-1452  
Fax: (708) 840-2783

**North  
Division  
Chairman** Pat Sajbel (UOP)  
(Posajbel@uop.com (E-Mail))  
616 S. Edward  
Mt. Prospect, IL 60056  
W:(847)391-2134  
H:(847)506-9302

**Near West  
Division  
Chairman** Howard Klinefelter (Case)  
1125 Manchester Court  
Naperville, IL 60563-2110  
H: (708) 961-0482

**East  
Division  
Chairman** Dan Froots (Bank of America)  
592- West 55th Street  
Chicago, IL 60638  
W:(312) 247-4343  
H:(312) 581-0923

**Reader's Forum****From the editor**

This column is reserved each issue for any subject concerning the CICL, the Chicago Chess Player, chess, or any other subject that you'd like to dwell on for the benefit of all the other readers or CICL officers.

**Because this issue had to be rushed to press on short notice, the minutes of the Fall business meeting are not in here and will appear in the next issue.**

On page 3 (next page) is a collection of recent CICL games compiled and annotated by Tim Williams. There are two exciting upset wins in William's collection.

**A Table of individual performances in the 1996 Tier 1 and Tier 2 playoffs is on page 12. About this table.**

Scores on a column are arranged by board.

For example, M.Stinson of the Royals played board 3 vs UOP, board 1 vs. the Knights and board 2 vs. Bank America.

Litvinas of Alumni played board 5 vs. the Knights, board 4 vs UOP and board 3 vs. the Royals.

A. Jasaitis played board 1 vs. Post Office, didn't play vs. Exemplars, and board 1 vs. Kemper.

In the East division, **Randy Byrnes of CTA** has for the first time taken a spot in Charlie Ward's Top Ten list for that division. Byrnes has overshoot almost everybody in the East except **Florentino Inumerable** who still keeps top gun position in the East's top ten list.

In the Near West division, **Tim Williams of Case** has gone and replaced R. Benedek of the Knights at the top in the Far West top ten list. Williams has shot up in the rankings from 6th early last season at a rating of 1917 to today's 2100+!!

With the return to tournament play of **V. Bezzubov of Fermilabs**, the top spot in the Far West is now a toss up between Bezzubov and perennial leader, **David Levine of the Rooks**.

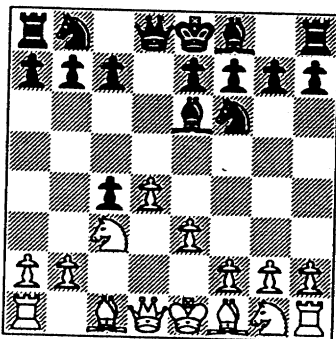
In the North Division, **Mike Stevanovic of UOP** appears to be continuing his fine performance in 1995-96 well into '96-97 and is closing in on top spot.

# GAMES

by Tim Williams

Here are some games played this season. Some of these will appear in the next Illinois Chess Bulletin which is at the publisher now. The annotations for good or bad are from me.

**V.Stamm (1670) - A. Hall (1436)**  
**Chargers @ CCDOC, 1996**  
 1.d4 d5 2.c4 dxc4 3.Nc3 Nf6 4.e3  
 Be6?!

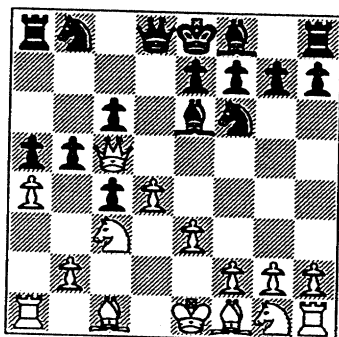


You won't see this in your typical opening book; it has to be dubious. On the other hand, White goes all out to punish Black and ends up getting himself in trouble!

**5.Qa4+**

*(Because development takes a high priority in the opening, a move such as 5.Nf3 leads to an idea for a way to recover the pawn. 5.Nf3 threatens to recover the c-pawn with 6.Nd2 or 6.Ne5 followed by 7. Nxc4 or 7.Bxc4. - ed)*

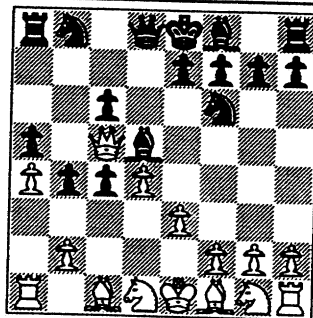
**5...c6 6.Qb4 b5 7.a4 a5! 8.Qc5?**



Not wanting to put the queen on a3 White moves forward. But now Black shows his side to suddenly be better.

**8...b4 9.Nd1 Bd5**

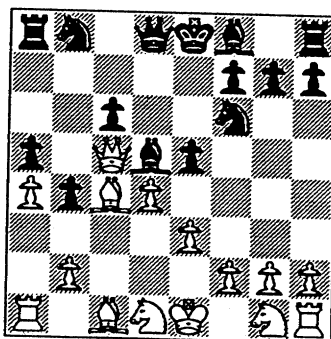
(See diagram top of next column)



**Stamm-Hall After 9...Bd5**

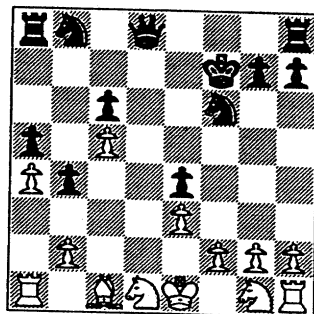
Say good-bye to the White queen.

**10.Bxc4 e5**



**11.Bxd5 Bxc5 12. Bxf7+ Kxf7**

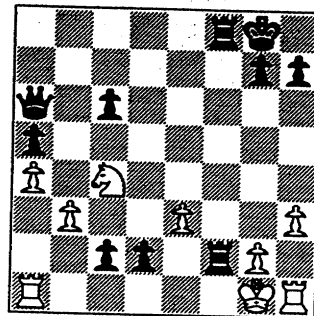
**13.dxc5 e4**



The rest is a slaughter but the more sadistic of you may enjoy the finish.

**14.Ne2 Qd3 15.Nf4 Qa6 16.Bd2 Nbd7 17.b3 Nxc5 18.Rb1 Nd5**

**19.Ne2 Nd3+ 20.Kf1 Rhf8 21.Nb2 Nc3 22.Bxc3 bxc3 23.Nc4 c2 24.Ra1 Kg8 25.Nc1 Rxf2+ 26.Kg1 Raf8 27.Nxd3 exd3 28.h3 d2 0-1**

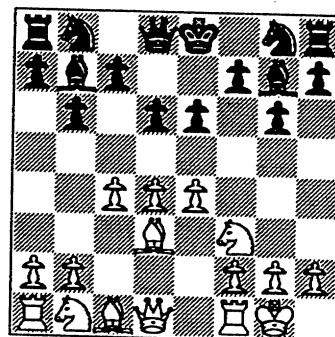


**Final Position (Stamm-Hall)**

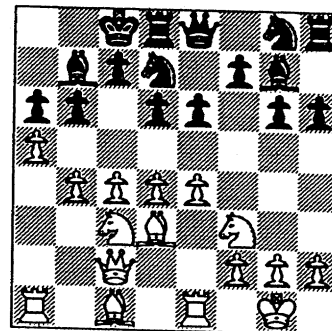
**L.Augsburger (1767) - M.Wilson (1266)**

**Sears @ Motorola, 1996**

**1.e4 b6 2.d4 Bb7 3.Bd3 g6 4.Nf3 Bg7 5.0-0 e6 6.c4 d6**

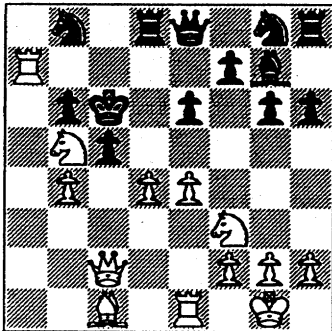


**7.Nc3 Qe7 8.Re1 h6 9.b4 Nd7 10.Qc2 0-0-0 11.a4 a6 12.a5 Qe8**



**13.axb6 cxb6 14.c5 dxc5 15. Bxa6 Bxa6 16.Rxa6 Kb7 17.Nb5**

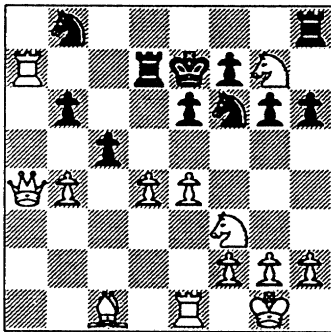
Nb8 18.Ra7+ Kc6



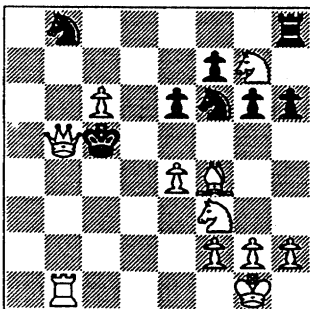
19.Qa4

[19.Rc7+! Kxb5 20.Qd3+ Ka4 21.Ra7+ Na6 22.Rxa6+ Kxb4 23.Ba3#]

19...Rd7 20.Nc7+ Kd6 21. Nxe8+ Ke7 22.Nxg7 Nf6



23.bxc5 bxc5 24.dxc5 Kd8 25.c6 Rc7 26.Rd1+ Kc8 27.Rxc7+ Kxc7 28.Bf4+ Kb6 29.Rb1+ Kc5 30. Qb5# 1-0

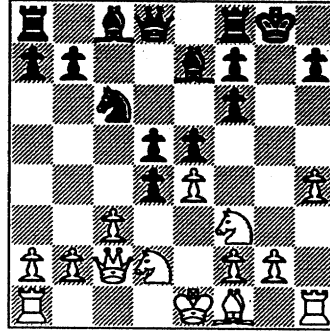


Final Position (Ausburger-Wilson)

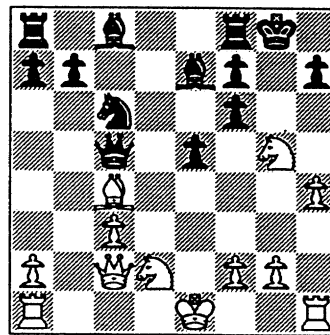
R. Hill (1887) - S. Kale (1885)  
Knight @ CASE, 1996  
[Williams,T]

1.d4 Nf6 2.Nf3 e6 3.Bg5 c5 4.c3

Qb6 5.Qc2 Be7 6.Nbd2 Nc6  
7.Nc4 Qd8 8.Bxf6 gxf6 9.e3 d5  
10.Ncd2 0-0 11.h4 e5 12.e4



12...cxd4 13.exd5 dxc3 14.bxc3 Qxd5 15.Bc4 Qc5 16.Ng5?!

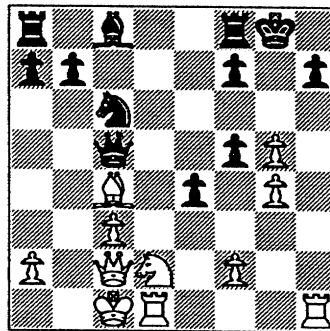


This is a hard move to put a sign to. Black has established a better position so White is looking for a tactical fix. The mate threat at h7 isn't quite right.

16.....!5?!

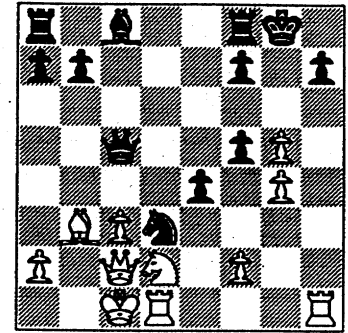
Black buys off on the threat, but 16...fxg5 17.hxg5 e4! 18.Qxe4 (18.Nxe4 Bf5 19.Nxc5 Bxc2 20. Nxb7 Bxg5+) 18...Bf5 +

17.g4 Bxg5 18.hxg5 e4 19.0-0-0



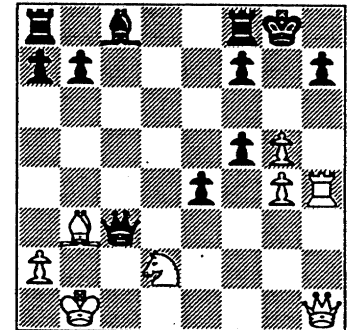
The open h-file is now beginning to loom ominously for Black.

19...Ne5! 20.Bb3 Nd3+



This will take care of any monkey business by White. Losing a rook will put an end to any threats on the h-file. Also notice how Black has jammed the b1-h7 diagonals with his pawns.

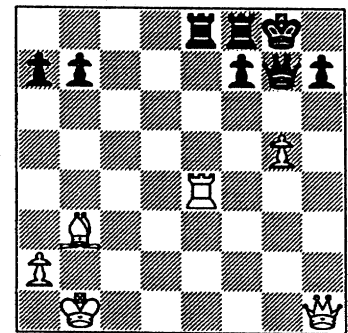
21.Kb1 Nxf2 22.Rh4 Nxd1 23.Qxd1 Qxc3 24.Qh1



24...Qg7

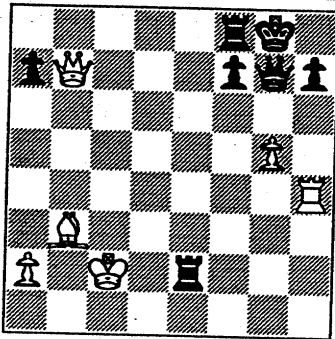
Even more direct was 24...Qxd2 25.Rxh7 Qd3+ 26.Bc2 Qd4.

25.gxf5 Bxf5 26.Nxe4 Bxe4+ 27.Rxe4 Rae8



28.Rh4 Re5 29. Qxb7 Re1+ 30. Kc2 Re2+ 0-1

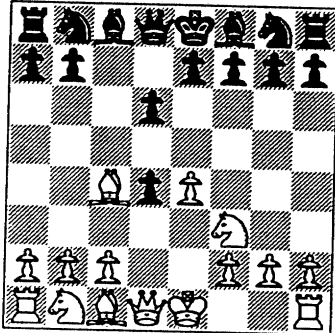
(Turn to next page for diagram of final position of Hill-Kale)



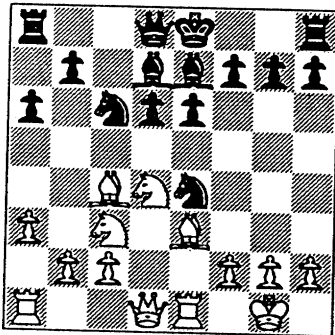
Final Position (Hill-Kale)

D. Green (1824) - B. Stoltz (1944)  
Rooks @ Tyros, 1996

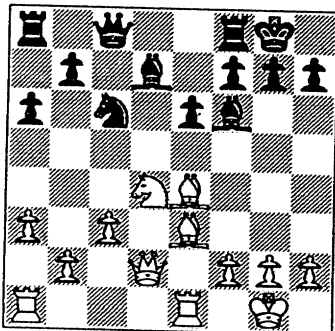
1.e4 c5 2.d4 cxd4 3.Nf3 d6 4.Bc4



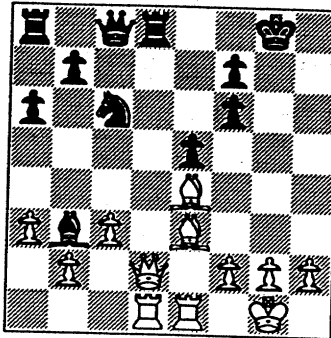
4...e6 5.0-0 Nf6 6.Re1 Nc6  
7.Nxd4 a6 8.Nc3 Be7 9.Be3 Bd7  
10.a3 Nxe4



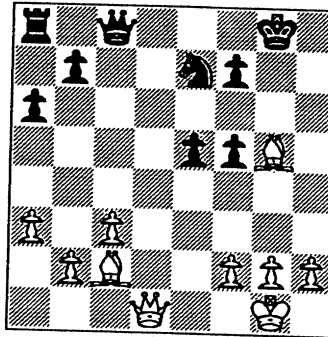
11.Nxe4 d5 12.Bd3 dxe4 13.Bxe4  
Qc8 14.c3 Bf6 15.Qd2 0-0



16.Rad1 e5 17.Nf3 Be6 18.Ng5  
Bb3 19.Nxh7!? Rd8 20.Nxf6+  
gxf6



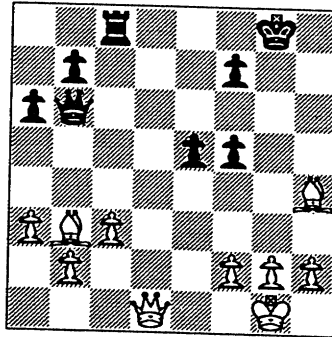
21.Qe2 Bxd1 22.Rxd1 Rxd1+  
23.Qxd1 f5 24.Bc2 Ne7 25.Bg5



25...Qe6?

[25...Ng6 26.Qd5<]

26.Bb3!+ Qb6 27.Bxe7 Re8 28.  
Bh4 Rc8



29.Bxf7+

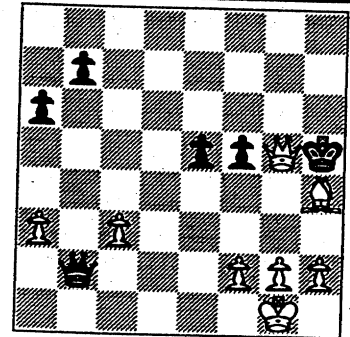
[29.Qh5! Rc7 (29...Qxb3? 30.Bf6!) 30.Bd8]

29...Kxf7 30.Qd7+ Kg6 31.Qxc8  
Qxb2 32.Qg8+ Kh5 33.Qg5# 1-0

(See diagram top of next column  
for final position of Green-Stoltz)

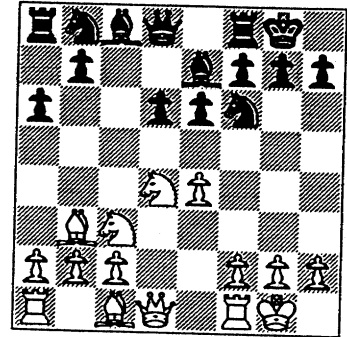
T. Bostlick (1435) - J. Gulo (2025)  
Wheaton @ Royals, 1996  
[Williams, T]

1.e4 c5 2.Nf3 d6 3.d4 cxd4

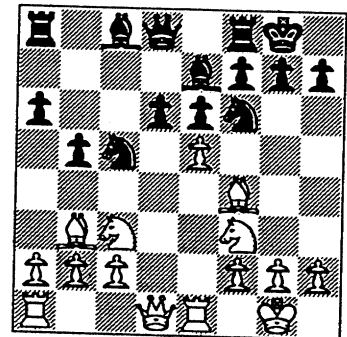


Final Position Green-Stoltz

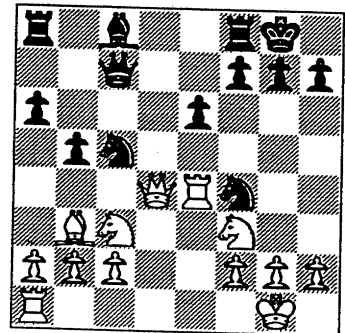
4.Nxd4 Nf6 5.Nc3 a6 6.Bc4 e6  
7.0-0 Be7 8.Bb3 0-0



9.Nf3 Nbd7 10.Bf4 Nc5 11.Re1  
b5 12.e5



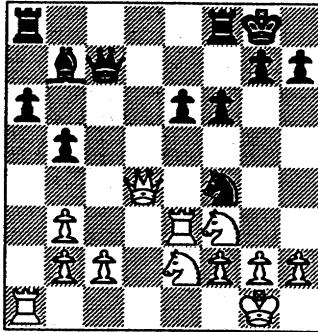
12...Nh5 13.exd6 Nxf4 14.dxe7  
Qxe7 15.Qd4 Qc7 16.Re4



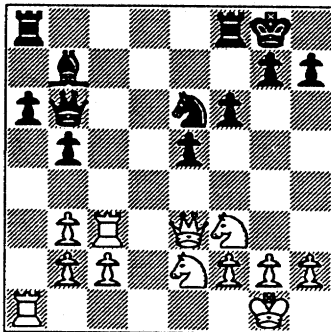
16...Nxb3

(16...Nxe4 17.Qxe4 Bb2 - ed)

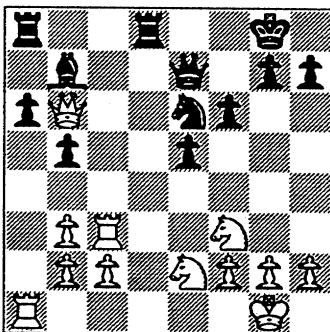
17.axb3 f6 18.Re3 Bb7 19.Ne2



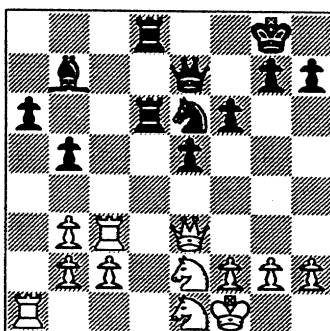
19...e5 20.Qd2 Ne6 21.Rc3 Qb6  
22. Qe3



22...Qd6 23.Rd3 Qc7 24.Rc3 Qe7  
25.Qb6 Rfd8

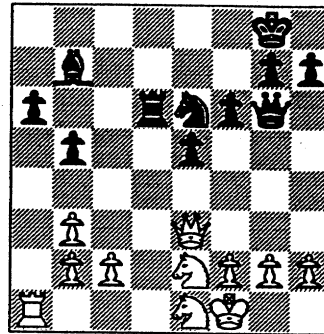


26.Kf1 Rd6 27.Qe3 Rad8 28.Ne1



28...Qf7 29.Rd3 Qg6 30.Rxd6

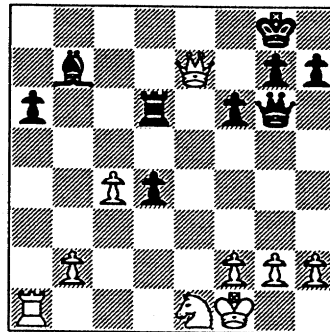
Rxd6



31.c4 bxc4 32.bxc4 Nd4 33.Nxd4  
exd4

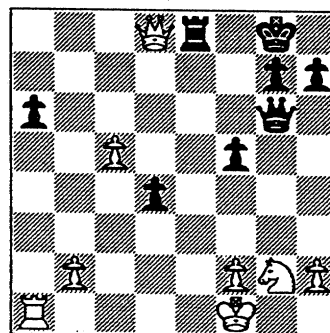
*(This, perhaps, is the turning point of the game. - ed)*

34.Qe7



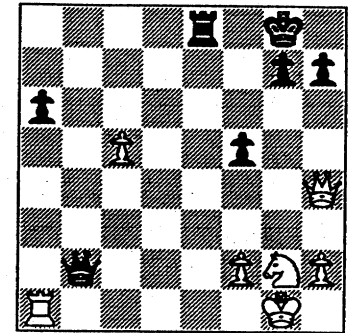
*(Alert play by White. Black can't save the piece. If 37...Rb6, then 38.Qd8+ and 39. Qxb6 picks up a Rook - ed)*

34...Bxg2+ 35.Nxg2 36.c5 Re6  
37.Qd8+ Re8

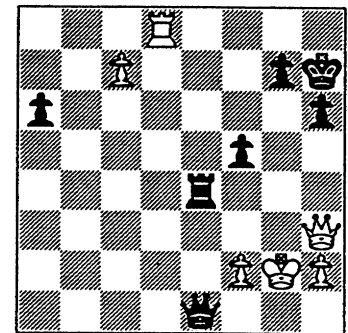


38.Qxd4 Qh5 39. Qh4 Qe2+  
40.Kg1 Qxb2

*(See diagram top of next column)*



41.Rd1 h6 42.c6 Qc2 43.Rd8  
Qc1+ 44. Ne1 Qxe1+ 45.Kg2  
Kh7? 46.c7 Re4 47.Qh3



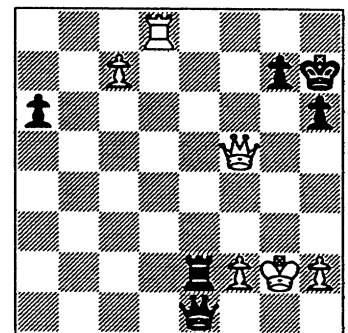
[47.c8Q Rxh4 48.Qxf5+ g6 49.Qf7#]

47...Re2

[47...Rg4+ 48.Qxg4 fxg4 49.c8Q]

48.Qxf5+ 1-0

*(48....g6 49.Qf7# - ed)*



**Final Position (Bostick-Guio)**

*(As Bostick was rated only 1435 compared to Guio's 2025 rating at the time this game was played, this huge upset win Bostick accomplished may rank among the TOP upset victories in this the 1996-97 season - ed)*

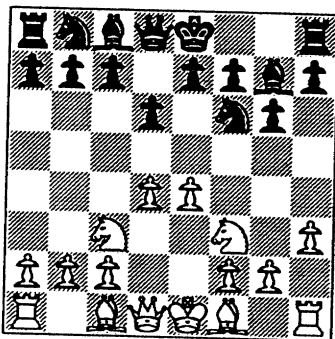


# More Games

- the editor

One amazing game containing gems of tactical subtlety is this upset victory that R. Harris of Fermilabs recorded 10/30/96.

**Robert Harris (1586) Fermilabs - Steve Decman (1655) Argonne**  
**Rooks: 1. e4 g6 2. d4 Bg7 3. Nf3 d6 4. Nc3 Nf6 5. h3**

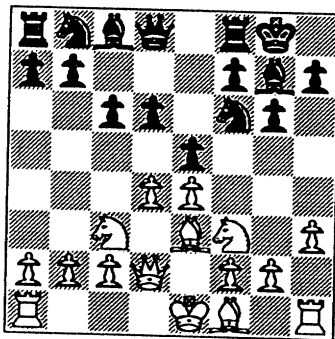


Preventing ...Ng4 either in preparation for the pawn advance e5 or for the move Be3.

**5...0-0 6. Be3**

Prevents 6...c5

**6...c6 7. Qd2 e5**



**8. 0-0-0**

As White hasn't played the move d5 yet, this use of a theme from the Saemisch KID playbook promises that an exciting battle is about to come.

**8...Qa5 9. g4 b5**

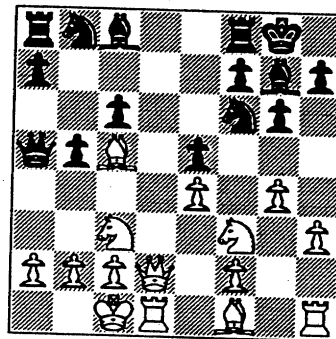
The battle lines are drawn. White's pawn attack in the King's wing is met by a counter attack on the other side.

**10. dxe5**

This closes down the diagonal a1-h8, keep-

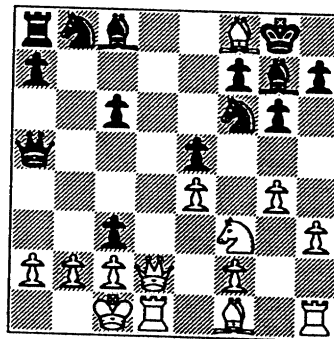
ing Black's B at g7 away.

**10...dxe5 11. Bc5**



Here, 11...Re8 would threaten 11...b4 followed by 12...Nxe4. But Black, however, sees an opportunity to win two minor pieces for the Rook

**11...b4 12. Bxf8 bxc3**



If now 13. Qxc3 then 13.....Qxc3 14. bxc3 Bxf8 is the culmination of the combo Black initiated with 11...b4.

**13. Qd8!**

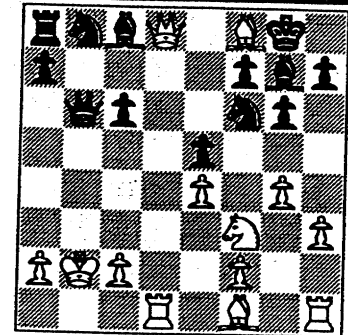
Superb tactical resourcefulness. If now 13....Qxd8 then 14.Rxd8, Bxf8 15.Rxc8, would bring Black the exchange up.

**13...cxb2+ 14. Kxb2 Qb6+**

Now, 15.Qxb6 axb6 16.Rd8 Bxf8 17.Rxc8 wins the exchange.

Here, however, Black resourcefully finds a reply which would give him more than the exchange.

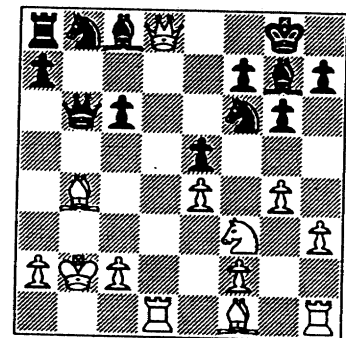
(See diagram top of next column)



**15. Bb4+!! 1-0**

After 15...Qxd8 (forced as otherwise Black gets mated on 15...Bf8 16.Qxf8#) 16. Rxd8+ Bf8 17.Rxf8+ Kg7 18.Rxc8 White would come out two pieces up (R + B).

A nice demo of resourceful tactical play from Robert Harris of Fermilabs.



The game J. Kabelac (Rooks) - I. Gaines (Fermi) was quite a nail biter..

First, In the opening, White's treatment of the King's Indian (7.dxe5 exe5 8.Qxd8 Rxd8 9.Nxe5 Nxe4 10.Nxf7) was refuted with 10...Bxc3+. The occurrence of disaster early can be demoralizing.

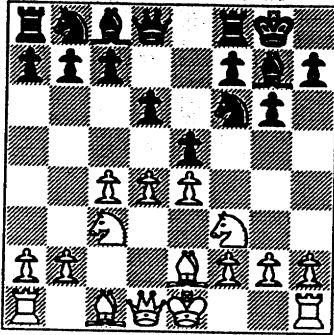
With Black a piece up and winning simply becoming a matter of "technique", Fermilab's hopes were probably high.

But then on the way to recording a win for Fermilabs, Black sallied forth with a N

into a trip of no return.

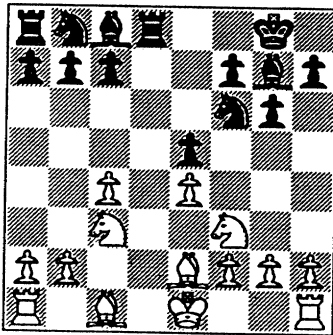
J. Kabelac (1903)-I Gaines (1799)

1. d4 Nf6 2. c4 g6 3. Nc3 Bg7 4. e4 d6 5. Be2 0-0 6. Nf3 e5



So far book. But what ensues next isn't

7. dxe5 dxe5 8. Qxd8 Rxd8

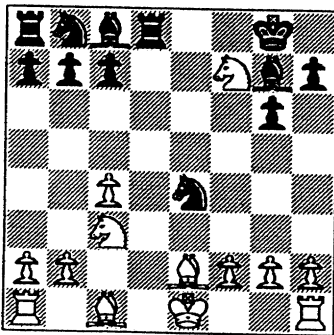


White embarked on a line that provides no advantage for White..

9. Nxe5

One try here's 9.Bg5. But 9...Re8 (Techner-Fischer, 1962) gets White nowhere.

9....Nxe4 10. Nxf7



A deviation from 10.Nxe4 Bxe5 11. 0-0.

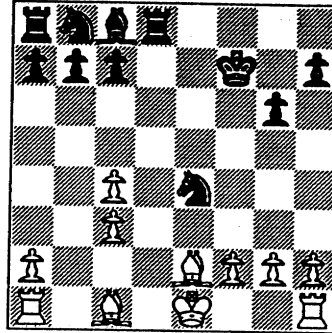
Perhaps, White expected here 10...Kxf7 when 11.Nxe4 results in White coming out

a pawn ahead. But ....

10...Bxc3+!

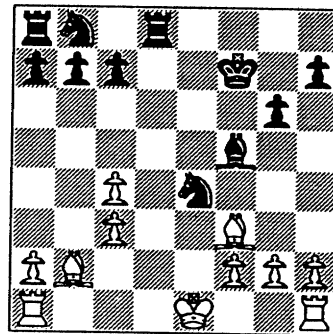
This spoils everything for White.

11. bxc3 Kxf7



Black's a piece up and can look forward to tallying a point for Fermilabs.

12. Bb2 Bf5 13. Bf3

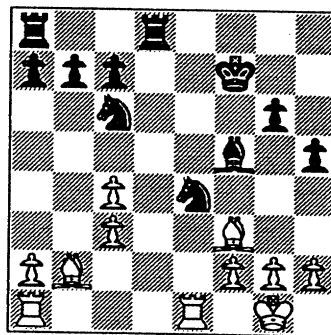


White threatens 14.g4 and 15.Bxe4 recovering the pawn.

13...h5

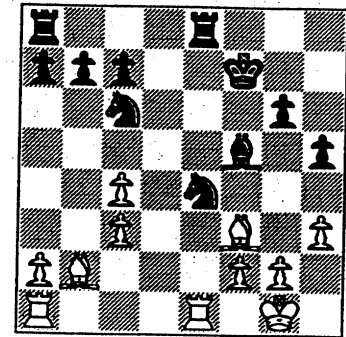
Or 13...Nc5 14.Ba3 Nba6. Here Black wants to keep his excellent N outpost as long as he can.

14. 0-0 Nc6 15. Rfe1



15...Re8 16. h3

This threatens again to recover the piece with 17.g4 hxg4 18.hxg4

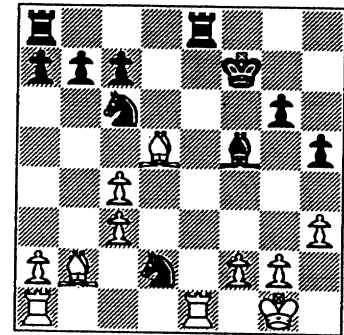


Black's N outpost can't be maintained anymore.

16...Nd2

This N foray deep within enemy territory looks good as it threatens ...Nxf3+ as well as Nxc5.

17. Bd5+



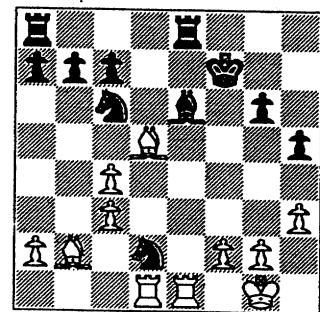
Protects the c-pawn and brings the B out of reach of the intruding Black N at d2.

17...Be6

White wins back the piece after 18...Kg7, 19.Rad1 Ne4 20.g4 hxg4 21.hxg4 Bxg4 22. Bxe4.

However: 18...Kf6 19.Rad1 Rxe1+ (to gain a tempo by deflecting the Rook that attacks the N at d2) 20. Rxe1 Na5 (grabs c4 as an escape route for the N at d2).

18. Rad1

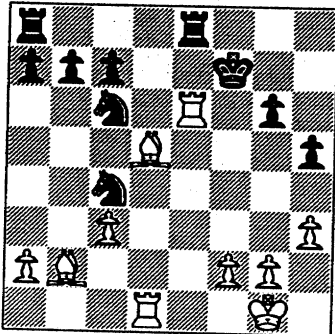


18...Nxc4



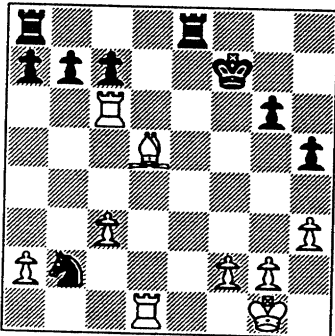
18...Bxd5 19.cxd5 Nc4 20.dxc6 Nxb2 21. Rxe8 Kxe8 22.cxb7 Rb8

19. Rxe6!



Nice. If now 19...Rxe6, then 20.Bxc4 and 21.Bxe6 recovers the piece and exchange.

19...Nxb2 20. Rxc6+

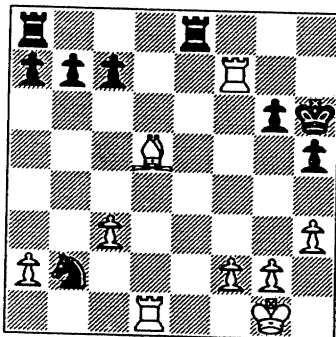


Both of White's rooks are *enprise*.

20...Kf8

20...Kg7 doesn't work either because of 21.Rxc7+

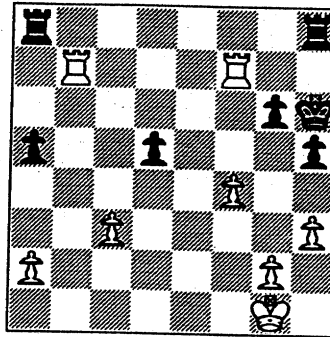
21. Rf6+ Kg7 22. Rf7+ Kh6



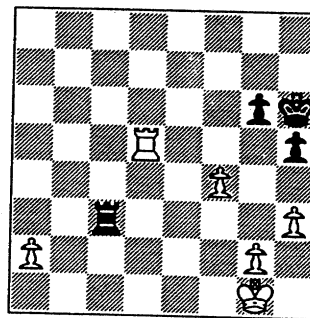
23. Rb1

White accelerates the deployment of his Rooks. Here, after 23...Nd3 24.Rxb7 White is winning.

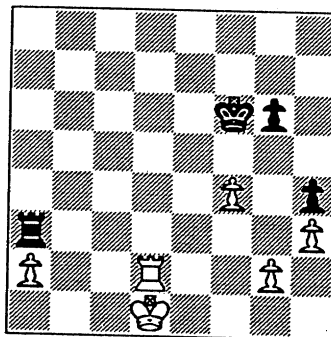
23...c6 24. Rxb2 cxd5 25. Rxb7 a5 26. f4 Rh8



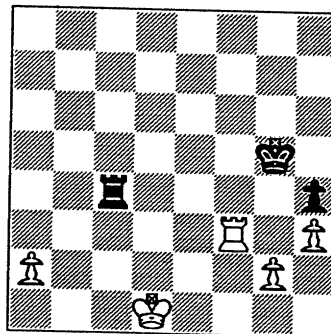
27. Ra7 Rxa7 28. Rxa7 Rc8 29. Rxa5 Rxc3 30. Rxd5



30...Ra3 31. Rd2 h4 32. Kf1 Kg7 33. Ke1 Kf6 34. Kd1

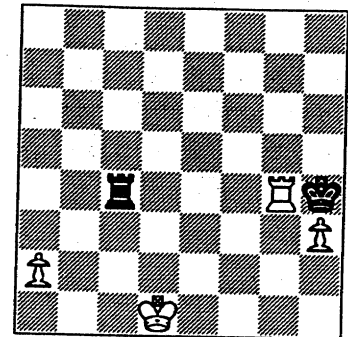


34...g5 35. fxg5+ Kxg5 36. Rf2 Rc3 37. Rf3 Rc4



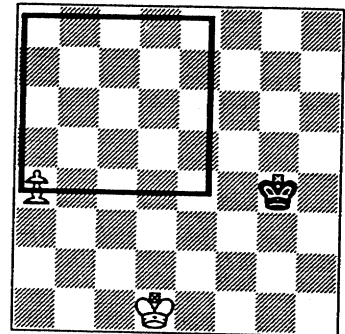
38. g4 hxg3 39. Rxc3+ Kh4 40.

Rg4+



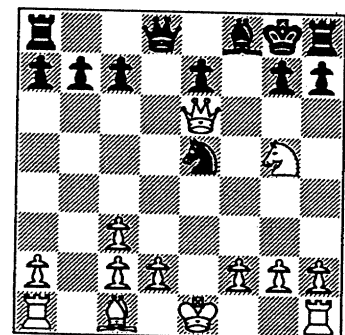
40...Rxc3 41. hxg4 Kxc3 42. a4 1-0

Black's K can't catch the White a-pawn in time.



Here's a short one from the Sears @ Northrop match

Larry Hall (Unrated) - J.Babinec (1406) : 1. e4 d5 2. exd5 Nf6 3. Nc3 Nxd5 4. Nf3 Nxc3 5. bxc3 Nc6 6. Bc4 Bg4 7. Bxf7+ Kxf7 8. Ng5+ Kg8 9. Qxg4 Ne5 10. Qe6+ 1-0

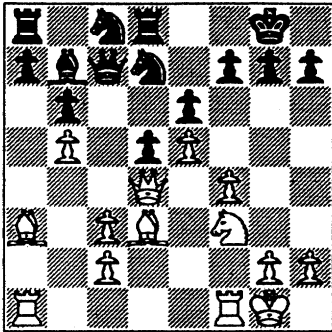


Or 10...Nf7 11.Qxf7#.

# The Finishing Touch

by Ruben Reyes

Here's an exciting finish from one of the East Division's "top ten" and who happens also to be our CICL secretary - **Tony Jasaitis**. We pick up the action after 14...Nd7 (see diagram below (left))



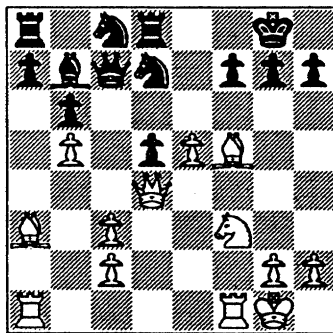
Black's pieces are all gathered together on the Queen's wing. The N at d7 is 2 moves away from posting up on e4 (...Nc5 and ... Ne4)

15. 15!

This not only threatens 16.f6 but also clears the f-file as well as the a4-h4 rank and unleash the full power of Q, B, N, and R on the undefended Black K.

The power of this pawn move is amazing .

15...exf5 16. Bxf5



16....Nc5

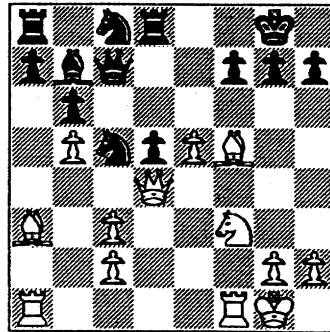
Jasaitis gives:

16...Qc4 17.Qxc4 d3 18. Rad1 (winning the pinned N at d7 - ed) .

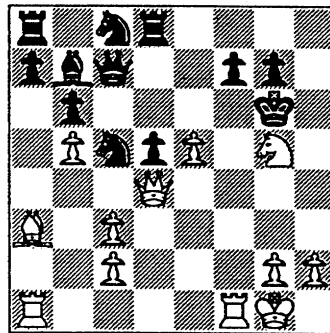
Or 16...g6 17.Qh4.

Or 16...h6 17.e6 fe 18. Bxf3+ Kh8 19. Ng5 hg 20.Rf7!

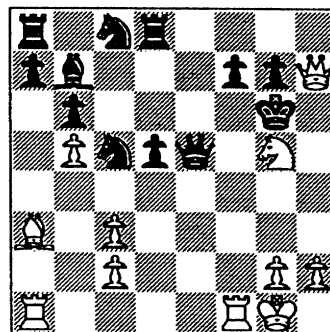
(Bringing at least a piece to the King's wing in defense of the K seems a better idea - such as 16...Nf8. But it'd be too late it would seem because of 17.Bxf8+ Rxf8 18. Bxh7+ Kxh7 19. Ng5+ Kg8 20.Qh4 - ed)



17. Bxh7+ Kxh7 18. Ng5+ Kg6



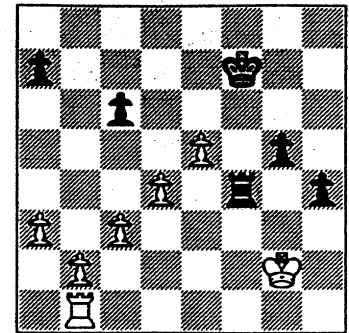
19. Qh4 Qxe5 20. Qh7+ 1-0



[20...Kxg5 21.Bc1 Kg4 22.Qh3# - Jasaitis]

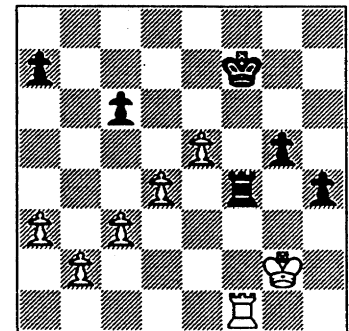
**Steve Decman** pulls a 280 rating points upset win with a remarkable pawn marching all alone and undefended right smack into the

face of White's King. Let's drop in right before Decman performs his magic act with the pawn: **38...h4**



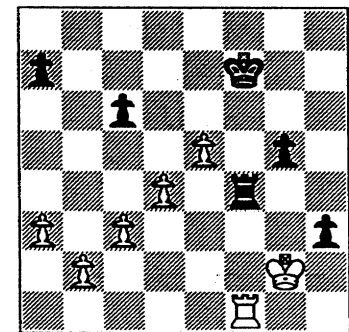
Seeing Black's K and R lined up on the f-file, White sees his opportunity to trade Rooks. So...

39.Rf1



There seems to be no way for Black to avoid a Rook trade. But. Decman has ...

39...h3+!



...a surprise up his sleeve: a *Kamikaze* pawn!

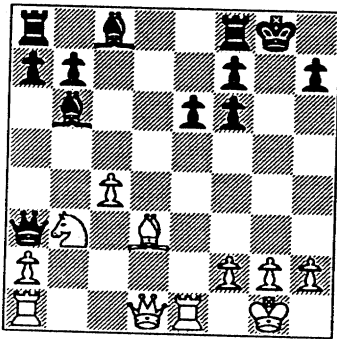
Look at him - the puny pawn I mean - attacking the King all alone by himself! This pawn attack is amazing because of its sheer audacity, simplicity and ingenuity. White loses the Rook after 40.Kxh3. But White

can't avoid taking the pawn because of 40.Kg1 h2+!! when 41.Kg2 Rxf1 42.Kxf1 h1=Q+ wins. So...

**41.Kxh3 Rxf1**

And White resigned 12 moves later.

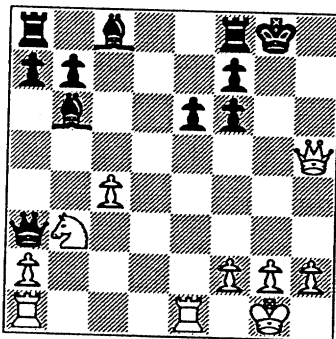
**Dave Baurac (1621)** pulled an upset of sort when he drew vs **J. Blazie (1887)** last season. Baurac was on the brink of defeat twice. But each time he saved himself with a jolting piece sacrifice. Let's drop in after 18...gxf6 :



**19. Bxh7+!**

This spells big trouble for Black.

**19...Kxh7 20. Qh5+ Kg8**



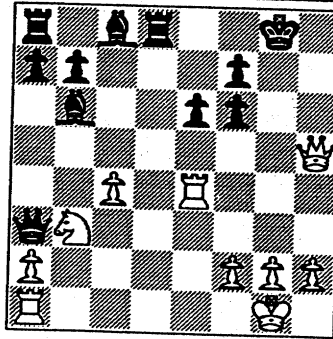
**21. Re4**

21.c5 not only threatens to win Black's B at b6 but also mate in 3: 22.Qg4+ Kh8 23.Re3 and 24.Rh3#.

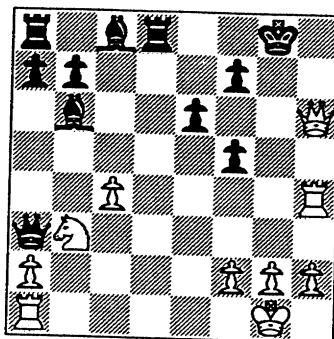
**21...Rd8**

Almost forced as this appears to be the best that Black can do to parry the coming mating threats.

(See diagram top of next column)



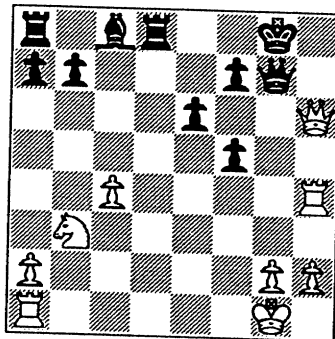
**22. Qh6 15 23. Rh4**



**23...Bxf2+!**

23...Qb7 24.Rh5 Bd4 25.Rd1 threatening 26.Nxd4 and 27.Rg5+ doesn't look good for Black.

**24. Kxf2 Qb2+ 25. Kg1 Qg7**



Black has obtained reprieve with a timely and surprising returning of material back.

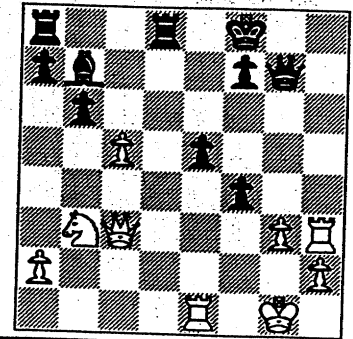
**26. Qe3**

Naturally, White wants no Queen trade.

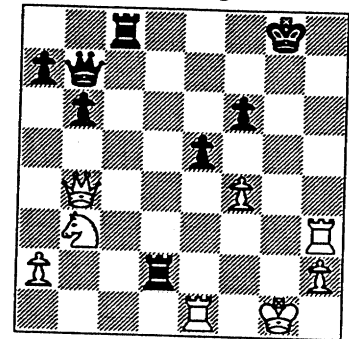
**26...b6 27. Rh3 Kf8 28. Rg3 Qf6 29. c5 e5 30. Qc3 Bb7 31. Re1 f4 32. Rh3 Qg7 33. g3**

(See diagram top of next column)

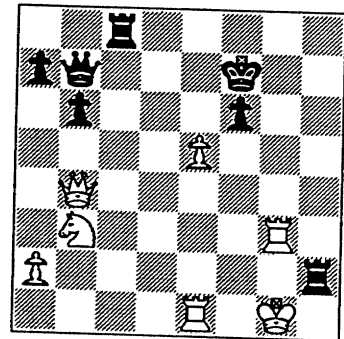
**33...f6 34. c6 Rac8 35. Qb4+ Kg8**



**36. cxb7 Qxb7 37. gxh4 Rd2**



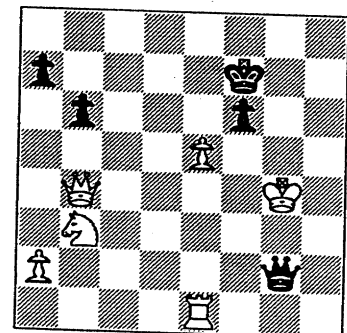
**38. Rg3+ Kf7 39. fxe5 Rxf2**



**40. Kxh2**

Perhaps jolted by Black's Rook sac, White overlooks a mate in two: 40.e6+ Ke8 41. Rg8#

**40...Rh8+ 41. Rh3 Rxf3+ 42. Kxh3 Qf3+ 43. Kh4 Qf2+ 44. Kh5 Qf5+ 45. Kh4 Qf4+ 46. Kh5 Qf5+ 47. Kh4 Qf2+ 48. Kg4 Qg2+ Draw**



### 1996 Playoffs-at-a-Glance

1996 CICL Champions				
Motorola	Rooks	Case	U.O.P.	Total Points
D. Wolf	0	.5	0	.5
Y. Hasan	1	.5	0	1.5
I. Melnikov	0	1	1	2
C. Wallach	1			1
R. Morris	1	1	1	3
C. Samelson		1	1	2
A. Mackie	1	1	1	3
<b>Total Points</b>	<b>4</b>	<b>5</b>	<b>4</b>	<b>13</b>

Rooks	Motorola	B. America	Alumni	Total Points
D. Levine	1			1
G. Berry	0	0	1	1
S. Sheynin	1	.5	.5	2
D. Green	0	1	1	2
S. Decman	0	1		1
J. Jasunas	0			0
W. Schwab		0		0
W. Walsh		1	0	1
<b>Total Points</b>	<b>2</b>	<b>3.5</b>	<b>2.5</b>	<b>8</b>

Alumni	Knights	U.O.P.	Rooks	Total Points
A. Czerniecki	.5	.5	0	1
T. Santiago	1	1	.5	2.5
D. Leong	.5			.5
R. Golla	1			1
M. Franek		0	1(4)	1.5
A. Litvinas	1	.5	0(3)	1
R. Fabijonas	0			0
<b>Total Points</b>	<b>4</b>	<b>2</b>	<b>1.5</b>	<b>7.5</b>

C.R.T.	P/Office	Exemplars	Kemper	Total Points
A. Jasaitis	1		1	2
A. Losoff	0			0
D. Bargerstock	1	.5	1	2.5
J. DeLeon	1	1	1	3
V. Shatsky	0	1(4)	1(5)	2
K. Sitar	0	1(3)	1(4)	2
<b>Total Points</b>	<b>3</b>	<b>3.5</b>	<b>5</b>	<b>11.5</b>

U.O.P.	Royals	Alumni	Motorola	Total Points
M. Stevanovic	1	.5	1	2.5
E. Buerger	1	0	1	2
E. Boldingh	1	1	0	2
P. Sajbel	.5	.5	0	1
F. Micklich	0	1F	0	1
C. Van Zile	0	1F	0	1
<b>Total Points</b>	<b>3.5</b>	<b>4</b>	<b>2</b>	<b>9.5</b>

Royals	U.O.P.	Knights	B. America	Total Points
R. Buchner	0			0
J. Guio	0		1	1
M. Stinson	0	0	0	0
A. Pehas	.5			.5
C. Dobrovoly	1	0	1	2
L. Osagawara	1			1
E. Blackmon		0	1	1
D. Hahne		1	1	2
CJ Anderson		1	1	2
<b>Total Points</b>	<b>2.5</b>	<b>2</b>	<b>5</b>	<b>9.5</b>

B. America	Case	Rooks	Royals	Total Points
G. Kogan	0			0
D. Fraats	0	1	0	1
E. Paroan	0	.5	1	1.5
M. Sombong		0	0	0
R. Siegel	0			0
J. Zoellner	0	0	0	0
M. Hammond	1	1	0	2
A. Ganser		0	0	0
<b>Total Points</b>	<b>1</b>	<b>2.5</b>	<b>1</b>	<b>4.5</b>

Exemplars	Kemper	C.R.T.	P/Office	Total Points
P. Wong	1			1
T. Friske	1	.5	.5	2
R. Weitz	1			1
F. Suerth	1	0	0	1
B. Hess		0	0	0
S. Edwards	1	0	0	1
<b>Total Points</b>	<b>5</b>	<b>.5</b>	<b>.5</b>	<b>6</b>

Case	B. America	Motorola	Knights	Total Points
T. Williams	1	.5	.5	2
S. Kale	1	.5	0	1.5
E. Roytburg	1	0	1	2
D. Saterlee	1	0	0	1
H. White	1	0	1	2
H. Klinefelter	0	0	1	1
<b>Total Points</b>	<b>5</b>	<b>1</b>	<b>3.5</b>	<b>9.5</b>

Knights	Alumni	Royals	Case	Total Points
R. Benedek	.5	1	.5	2
J. Keisler	0	1	1	2
R. Hill	.5	1	0	1.5
E. Suarez	0	0	1	1
D. Ronin	0	0	0	0
D. Baurac	1	1F	0	2
<b>Total Points</b>	<b>2</b>	<b>4</b>	<b>2.5</b>	<b>8.5</b>

2nd Tier Champions				
Post Office	C.R.T.	Kemper	Exemplars	Total Points
F. Inumerable	0	1	.5	1.5
R. Marcowka	1	1	1	3
H. Allen	0	1	1	2
W. Cooper	0	1	1	2
L. Carter	1	1	1F	3
W. Howard	1	1	1F	3
<b>Total Points</b>	<b>3</b>	<b>6</b>	<b>5.5</b>	<b>14.5</b>

Kemper	Exemplars	P/Office	C.R.T.	Total Points
A. Olsen	0	0	0	0
J. Lambiris	0	0(3)	0	0
P. Cummuta	0	0(2)	0	0
T. Mckinney	0	0	0(5)	0
L. Hardin	0			0
P. Payton	1F	0	0(4)	1
<b>Total Points</b>	<b>1</b>	<b>0</b>	<b>0</b>	<b>1</b>

### CICL RATINGS ON THE WEB!

Dave Baurac of the Argonne Knights is maintaining up-to-date division standings on the World-Wide Web at the Argonne Chess Club home page. CICL members with access to the Internet should direct their Web

browsers to the URL <http://www.anl.gov/OPA/chess/anlchess.html>. They can then click on a hyperlink to a Web page with their division's standings and results. The CICL ratings list can also be accessed from the Argonne Chess Club page; it is updated each month with the ratings list submitted for publication in the next issue of the bulletin. Thanks to Dave for his effort in providing and maintaining this outstanding new resource for the CICL!

### JOIN THE U.S. CHESS FEDERATION !!

Because the CICL is a USCF affiliate, our members can join the USCF or renew membership at a discount.

#### WHY JOIN?

Membership in the USCF includes a subscription to Chess Life, one of the world's best chess magazines. It also allows members to play in USCF-rated tournaments and to earn a nationally recognized rating. There is a USCF-rated tournament scheduled almost every week somewhere in the Chicago area, ranging from the Illinois championship down to small local tournaments. USCF members can also purchase books and equipment at discount prices.

#### WHAT DOES IT COST?

One year's USCF membership is \$35.00 (this includes the CICL's discount from the \$40.00 standard rate). To join, send a check made out to the U.S. Chess Federation to:

Charles Ward  
615 S. Lincoln St.  
Hinsdale, IL 60521

Be sure to include your full mailing address, including ZIP code. If you are already a member and would like to renew your membership, please also include your membership number and expiration date (printed on the Chess Life mailing label). If you were previously a member but let your membership expire, please provide the approximate expiration date of the earlier membership along with your old membership number if you know it.

#### WHAT HAPPENS NEXT?

Your check will be forwarded to the USCF along with a letter certifying that you qualify for the discount. You will also be sent a receipt that will serve as a temporary membership card until your permanent card arrives from the USCF.

## NEAR WEST DIVISION 11-20-1996

TEAM NAME	W	L	D	GAME MATCH		PCT
				POINTS	POINTS	
CASE	2	1	0	13.0	2.0	0.667
COOK CO. DEPT. OF CORR.	2	1	0	9.5	2.0	0.667
ARGONNE KNIGHTS	2	1	0	9.0	2.0	0.667
LUCENT TECH. CHARGERS	1	1	0	6.5	1.0	0.500
PAWNS	0	3	0	4.0	0.0	0.000

## FAR WEST DIVISION 11-20-1996

TEAM NAME	W	L	D	GAME MATCH		PCT
				POINTS	POINTS	
ARGONNE ROOKS	4	0	0	16.5	4.0	1.000
LUCENT TECH. ROYALS	3	0	0	13.0	3.0	1.000
FERMILAB	2	1	0	12.5	2.0	0.667
LUCENT TECH. TYROS	1	2	0	10.0	1.0	0.333
LUCENT TECH. DRAGONS	0	3	0	5.0	0.0	0.000
WHEATON COLLEGE	0	4	0	3.0	0.0	0.000

## NORTH DIVISION 11-20-1996

TEAM NAME	W	L	D	GAME MATCH		PCT
				POINTS	POINTS	
MOTOROLA	3	0	0	12.5	3.0	1.000
EXEMPLARS	1	1	1	11.0	1.5	0.500
UOP PROCESS DIV.	1	0	1	7.5	1.5	0.750
NORTHROP-GRUMMAN	1	1	0	7.5	1.0	0.500
SEARS	0	2	0	2.5	0.0	0.000
KEMPER INSURANCE	0	2	0	1.0	0.0	0.000

## EAST DIVISION 11-20-1996

TEAM NAME	W	L	D	GAME MATCH		PCT
				POINTS	POINTS	
ALUMNI ACES	4	0	0	18.0	4.0	1.000
NATIONSBANK-CRT	3	2	0	18.5	3.0	0.600
COLUMBIA COLLEGE	3	2	0	16.0	3.0	0.600
AMOCO CORP.	2	0	0	7.5	2.0	1.000
BANK AMERICA ILLINOIS	0	2	0	4.5	0.0	0.000
CTA	0	3	0	4.0	0.0	0.000
POSTAL SERVICE	0	3	0	2.5	0.0	0.000



23-OCT-96 POSTAL SERVICE  
ROUND 4

0 ALUMNI ACES

6

BD	RATINGS	SCORE		RATINGS	SCORE
1	0 0	0F	CZERNIECKI, A	2083 0	1F
2	0 0	0F	GOLLA, R	1960 0	1F
3	0 0	0F	FRANEK, M	1812 0	1F
4	0 0	0F	FABIJONAS, R	1737 0	1F
5	0 0	0F	FRANK, M	1733 0	1F
6	0 0	0F	LITVINAS, A	1730 0	1F

06-NOV-96 AMOCO CORP.  
ROUND 4

4 COLUMBIA COLLEGE

2

BD	RATINGS	SCORE		RATINGS	SCORE
1 HODINA, J	2133 16	1	SANTIAGO, T	2038-16	0
2 ATKINSON, J	1803 7	.5	MCALISTER, K	1992-12	.5
3 WENTLING, C	1603 0	1	REYES, E	0 0	0
4 NOTTOLI, R	1304 16	.5	KOSTECKA, K	1604-16	.5
5 HOLMES, M	0 0	0	STEVENS, J	1382 0	1
6 CORBIN, Z	1264 25	1	BRANCH, Y	1301-25	0

06-NOV-96 NATIONSBANK-CRT  
ROUND 5

2.5 ALUMNI ACES

3.5

BD	RATINGS	SCORE		RATINGS	SCORE
1 JASAITIS, A	2144 12	1	CZERNIECKI, A	2083-12	0
2 LOSOFF, A	1906 26	1	GOLLA, R	1960-17	0
3 DELEON, J	1612 12	.5	FRANEK, M	1812 -8	.5
4 SITAR, K	1547-12	0	LITVINAS, A	1730 8	1
5 SHATSKY, V	1541-19	0	DAVIDSON, M	1593 19	1
6 BARNARD, G	0 0	0	SULLIVAN, C	1425 0	1

06-NOV-96 ARGONNE KNIGHTS  
ROUND 3

1.5 LUCENT TECH. CHARGERS

4.5

BD	RATINGS	SCORE		RATINGS	SCORE
1 BENEDEK, R	2120-16	0	WARREN, J	2086 11	1
2 GOLCHERT, B	1867-13	.5	STAMM, V	1646 8	.5
3 MAKAI, M	0 0	1	RADAVICIUS, E	1618 0	0
4 YACOUT, A	0 0	0	THOMAS, J	1504 0	1
5 KINSELLA, G	1481-15	0	DOBR, K	1484 10	1
6 SEMONES, E	1108 -9	0	BRADY, R	1358 9	1

07-NOV-96 LUCENT TECH. ROYALS  
ROUND 3

4.5 LUCENT TECH. DRAGONS

1.5

BD	RATINGS	SCORE		RATINGS	SCORE
1 BUCHNER, R	2108 4	.5	TEGEL, F	2170 -3	.5
2 PEHAS, A	1982 0	.5	CHIRCHIKOV, S	0 0	.5
3 GUIO, J	1963 4	1	HICKS, C	1550 -4	0
4 DOBROVOLNY, C	1854 7	1	WARD, C	1568 -5	0
5 BLACKMON, E	1790-19	.5	KRUEGER, J	1370 19	.5
6 HAHNE, D	1621 0	1	LICARI, T	0 0	0

07-NOV-96 LUCENT TECH. TYROS 5 WHEATON COLLEGE 1  
ROUND 3

BD	RATINGS	SCORE	RATINGS	SCORE
1 TAMEZ, I	2103 13	1	UNDERWOOD, W	1954 -9 0
2 DIAZ, P	2063 7	1	JOSEPHSON, D	1774 -7 0
3 BRÓZOVICH, J	1730 2	1	BROLLIER, B	1261 -3 0
4 THOMAS, G	1491 0	1	HELLER, T	0 0 0
5 SMITH, BR	1509 0	1	KERCSMAR, J	0 0 0
6 KARPIERZ, J	1238 0	0	JAGGARD, A	0 0 1
7 SHENOUDA, R	0 0	.5	NEWCOMER, K	0 0 .5

13-NOV-96 ARGONNE ROOKS 5.5 WHEATON COLLEGE .5  
ROUND 4

BD	RATINGS	SCORE	RATINGS	SCORE
1 ANSELL, S	0 0	1	BOSTICK, T	1476 0 0
2 GREEN, D	1870 2	1	ENKE, E	1388 -3 0
3 KABELAC, J	1919 0	1	HELLER, T	0 0 0
4 BAURAC, D	1621 0	1	KERCSMAR, J	0 0 0
5 GARCIA, J	0 0	.5	WHARTON, P	0 0 .5
6 TOELLNER, T	0 0	1	LAKE, T	0 0 0

14-NOV-96 COLUMBIA COLLEGE 2.5 NATIONSBANK-CRT 3.5  
ROUND 5

BD	RATINGS	SCORE	RATINGS	SCORE
1 SANTIAGO, T	2022-14	0	JASAITIS, A	2156 9 1
2 MCALISTER, K	1980 -4	.5	LOSOFF, A	1932 4 .5
3 PRATTS, M	1771 14	1	DELEON, J	1624-14 0
4 KOSTECKA, K	1588-26	0	SITAR, K	1535 26 1
5 STEVENS, J	1382 31	1	SHATSKY, V	1522-31 0
6 VACCARO, M	0 0	0	BARNARD, G	0 0 1

14-NOV-96 MOTOROLA 4 EXEMPLARS 2  
ROUND 3

BD	RATINGS	SCORE	RATINGS	SCORE
1 HASAN, Y	2187 26	1	GAZMEN, E	2235-26 0
2 MELNIKOV, I	2112-31	0	FRISKE, T	1968 31 1
3 WALLACH, C	2078 0	0F	SOLLANO, E	1956 0 1F
4 MORRIS, R	2046 5	1	WEITZ, R	1703 -4 0
5 CIESLEK, D	1895 10	1	BURIAN, D	1678 -7 0
6 AUGSBURGER, L	1769 14	1	SUERTH, F	1632 -9 0
7 GONCHAROFF, N	1756-16	0	BROTSOS, J	1540 23 1
8 GRYPARIS, J	1477-35	0	EDWARDS, S	1261 35 1
9 SHOUSE, B	0 0	0	BALICKI, J	0 0 1 (MTRLA)

19-NOV-96 COOK CO. DEPT. OF CORR. 4 PAWNS 2  
ROUND 4

BD	RATINGS	SCORE	RATINGS	SCORE
1 HALL, A	1471 -3	0	ELLICE, W	1905 3 1
2 JACKSON, S	1219 40	1	O'DELL, DW	1565-26 0
3 ROJO, V	1359 0	1F	LORENZ, B	1479 0 0F
4 APPLEBERRY, T	1289-25	0	LOGAN, H	1244 25 1
5 SANDEFUR, B	0 0	1	HARD, R	1200 0 0
6 JOHNSON, W	1181 0	1	SKRZYPCZAK, T	0 0 0
7 GATSON, T	0 0	.5	MIKULECKY, B	1382 0 .5
8 STEELE, B	0 0	0	UHLEMAN, T	0 0 1

NAME	TEAM	W	L	D	RATING	NAME	TEAM	W	L	D	RATING
ABRAHAM, T	CTA	0	0	0	1590	CHRISTIAN, R	DRGNS	0	0	0	1811C
ALFONSO, E	NORTH	0	0	0	1583#	CICUCCI, S	KEMPR	0	0	0	0000?
ALLEN, H	PSTOF	1	0	0	1911	CIESLEK, D	MTRLA	2	0	0	1905
AMUNDSEN, C	KEMPR	0	1	0	0000?	CISKO, G	FERMI	0	0	0	1608
ANDERSON, CJ	ROYLS	0	0	0	1483	COLBERT, W	PAWNS	0	0	0	0000?
ANDRYSIAK, B	KEMPR	0	0	0	0000?	CONDON, J	MDCON	0	0	0	2039
ANSELL, S	ROOKS	3	0	0	0000?	CONNOR, P	MDCON	0	0	0	2086
APPLEBERRY, T	CCDOC	1	2	0	1264#	COOPER, W	PSTOF	0	0	0	1637C
ASSADIAN, K	MTRLA	0	0	0	0000?	CORBIN, Z	AMCRP	1	0	0	1289*
ATKINSON, J	AMCRP	1	0	1	1810C	COSTELLO, W	NORTH	0	0	0	0000?
AUGSBURGER, L	MTRLA	2	0	0	1783	COTE, J	MERC	0	0	0	1323
AVERY, G	CCDOC	0	0	0	0000?	CUMMUTA, P	KEMPR	1	1	0	1449C
AZCUNA, L	WHEAT	0	1	0	1233	CURRAN, T	CASE	0	0	0	1698
BABINEC, J	NORTH	1	1	0	1406*	CURTIS, M	NORTH	2	0	0	1927
BALASE, E	SEARS	0	2	0	1360*	CZERNIECKI, A	ALUMN	1	2	0	2071D
BALICKI, J	MTRLA	1	1	0	0000?	CZOSKE, M	ROYLS	0	0	0	0000?
BARGERSTOCK, D	CRT	1	1	0	1743	DALTON, M	CTA	0	0	0	0000?
BARNARD, G	CRT	1	2	0	0000?	DAVIDSON, M	ALUMN	2	0	0	1612
BARNES, D	CTA	0	0	0	0000?	DAVIS, R	PSTOF	0	0	0	0000?
BAURAC, D	ROOKS	2	0	1	1621C	DECMAN, S	ROOKS	0	2	0	1637D
BENEDEK, R	KNGHT	0	3	0	2104D	DELEON, J	CRT	2	1	2	1610*
BERRY, G	ROOKS	1	1	1	2113T	DENISENKO, K	SEARS	0	0	0	0000?
BEZZUBOV, V	FERMI	1	0	0	2350*	DIAZ, L	CASE	0	0	0	0000?
BLACKMON, E	ROYLS	1	0	1	1771C	DIAZ, P	TYROS	2	1	0	2070
BLAZIE, J	TYROS	0	1	1	1854C	DOBR, K	CHRGR	2	0	0	1494T
BLUE, J	CCDOC	0	0	0	0000?	DOBROVOLNY, C	ROYLS	2	0	1	1861
BOLDINGH, E	UOP	1	1	0	2062	DORFF, M	SEARS	1	1	0	1604
BOSTICK, T	WHEAT	1	2	0	1476*	DUCKSWORTH, R	PAWNS	0	0	0	0000?
BOSWELL, H	CCDOC	1	1	0	0000?	DURKEE, D	DRGNS	0	0	0	1767C
BRADY, R	CHRGR	2	0	0	1367	DZURICKSKO, G	PAWNS	0	0	0	1114*
BRANCH, Y	COLUM	0	2	0	1276*	EDWARDS, S	EXMPL	2	0	0	1296
BRIONES, M	UOP	0	0	0	1624C	EGERTON, J	MDCON	0	0	0	1995
BROLLIER, B	WHEAT	1	2	0	1258#	ELEK, G	NORTH	0	1	0	1052
BRONFELD, A	EXMPL	0	0	0	1827	ELLICE, W	PAWNS	2	1	0	1908
BROTSOS, J	EXMPL	1	0	0	1563D	ELLIOTT, M	KNGHT	0	1	0	2?
BROZOVICH, J	TYROS	2	0	1	1732D	ENKE, E	WHEAT	0	4	0	1385*
BUCHNER, R	ROYLS	0	1	1	2112	EUSTACE, D	DRGNS	1	1	0	1658
BUERGER, E	UOP	0	2	0	2094D	FABIJONAS, R	ALUMN	1	1	0	1737D
BURBA, K	KNGHT	0	0	0	1402C	FERGUSON, K	PAWNS	0	1	0	0000?
BURIAN, D	EXMPL	1	1	0	1671C	FLEET, R	MDCON	0	0	0	1140#
BYRNES, R	CTA	2	0	1	2217*	FLOREY, J	SEARS	0	1	0	1432#
CAIRONE, B	NORTH	1	1	0	1702	FRAATS, D	BKAMI	0	1	1	1869
CARNAL, D	CRT	0	0	0	1207#	FRANEK, M	ALUMN	2	0	1	1804C
CARTER, D	CASE	0	1	0	1042	FRANK, M	MERC	0	0	0	1733
CARTER, L	PSTOF	0	2	0	1486	FRIESEMA, W	CRT	0	0	0	2109
CARTER, O	CTA	0	0	0	0000?	FRISKE, T	EXMPL	3	0	0	1999
CARVALHO, W	FERMI	0	0	0	1895	FULLMER, G	MTRLA	1	0	0	0000?
CHAMORRO, A	CCDOC	0	0	0	0000?	GAINES, I	FERMI	1	1	0	1788C
CHIRCHIKOV, S	DRGNS	0	2	1	0000?	GALKO, D	KEMPR	0	0	0	0000?
CHOUDRY, A	KEMPR	0	1	0	1309#	GALLAGHER, H	KNGHT	0	0	0	1317

? - UNRATED  
# - 5 TO 9 RATED GAMES  
\* - 10 TO 24 RATED GAMES

C - CENTURY CLUB MEMBER  
D - DOUBLE CENTURION  
T - TRIPLE CENTURION  
Q - QUAD CENTURION

NAME	TEAM	W	L	D	RATING	NAME	TEAM	W	L	D	RATING
GANSER, A	BKAMI	0	0	0	1227*	JOSEPHSON, D	WHEAT	3	1	0	1767*
GARCIA, J	ROOKS	0	0	1	0000?	KABELAC, J	ROOKS	3	0	0	1919
GARWOOD, B	COLUM	0	1	0	1956	KALE, S	CASE	2	1	0	1871
GATSON, T	CCDOC	0	0	1	0000?	KANAS, W	CASE	1	1	0	1333C
GAZMEN, E	EXMPL	1	1	0	2209	KARPIERZ, J	TYROS	1	1	0	1238*
GERONIA, R	CASE	1	0	1	1523	KEISLER, J	KNGHT	1	0	0	2039
GOLCHERT, B	KNGHT	0	0	1	1854	KELLOGG, K	FERMI	0	1	1	1644C
GOLLA, R	ALUMN	1	1	1	1943D	KERCSMAR, J	WHEAT	0	3	0	0000?
GOLUMBOVSKI, P	NORTH	1	0	0	2129	KINSELLA, G	KNGHT	0	1	0	1466C
GOMEZ, G	FERMI	1	0	0	1527	KIUSALS, D	SEARS	0	1	0	1093
GONCHAROFF, N	MTRLA	1	1	1	1740Q	KLAUDER, C	WHEAT	0	0	0	0000?
GREEN, D	ROOKS	4	0	0	1872C	KLINEFELTER, H	CASE	0	1	0	1537C
GRYPARIS, J	MTRLA	0	1	1	1442	KOGAN, G	BKAMI	0	1	0	1894
GUIO, J	ROYLS	1	2	0	1967	KOSTECKA, K	COLUM	1	1	2	1562
HAHNE, D	ROYLS	3	0	0	1621	KOZLOVSKY, M	FERMI	0	0	0	2106
HALL, A	CCDOC	1	2	0	1468*	KRUEGER, J	DRGNS	0	0	1	1389*
HALL, D	MDCON	0	0	0	0000?	KRULL, E	AMCRP	0	0	0	1510
HALL, L	SEARS	0	1	0	0000?	LAKE, T	WHEAT	0	2	0	0000?
HALLMAN, W	CASE	0	0	0	1219*	LAMBIRIS, J	KEMPR	0	1	0	1452
HAMMOND, M	BKAMI	1	1	0	1443	LARSON, T	CCDOC	0	0	0	0000?
HANSEN, B	PAWNS	1	1	0	1353*	LASKY, N	PAWNS	0	0	0	1352C
HARD, R	PAWNS	0	3	0	1200*	LATIMER, E	SEARS	0	2	0	2016D
HARDIN, L	KEMPR	0	0	0	0000?	LAWRENCE, P	MTRLA	0	0	0	0000?
HARRIS, R	FERMI	2	0	1	1613	LEONG, D	ALUMN	0	0	0	1997
HARRUFF, E	WHEAT	0	0	0	0000?	LEONG, G	KEMPR	0	0	0	2007C
HASAN, Y	MTRLA	2	1	0	2213	LESTER, M	MTRLA	0	0	0	1569
HELLER, T	WHEAT	0	3	0	0000?	LEVINE, D	ROOKS	0	0	0	2357
HESS, B	EXMPL	0	0	0	1451	LEWIS, N	WHEAT	1	0	0	0000?
HICKS, C	DRGNS	0	3	0	1546	LICARI, T	DRGNS	0	1	0	0000?
HILL, C	FERMI	0	0	0	1643	LIKHTEREV, M	UOP	0	0	0	1447*
HILL, R	KNGHT	1	1	0	1871	LITVINAS, A	ALUMN	3	0	0	1738C
HILTON, J	MERC	0	0	0	1146	LODEWYCK, D	MERC	0	0	0	1414
HODINA, J	AMCRP	1	0	1	2149	LOGAN, H	PAWNS	1	1	0	1269*
HOLMES, M	AMCRP	1	1	0	0000?	LORENZ, B	PAWNS	0	1	0	1479*
HORTON, D	MTRLA	0	1	0	1831	LOSOFF, A	CRT	3	0	1	1936
HOWARD, W	PSTOF	0	0	0	1566	LUDWIG, T	DRGNS	0	0	0	2098C
HUEBNER, R	ROOKS	0	0	0	0000?	LUEDERS, J	CRT	0	0	0	0000?
HUGHES, N	KEMPR	0	0	0	1837C	MACBEAN, J	PAWNS	0	0	0	0000?
INUMERABLE, F	PSTOF	1	0	0	2293	MACKIE, A	MTRLA	1	0	0	1952
JACKLIN, E	CASE	0	0	0	1241	MAKAI, M	KNGHT	2	0	1	0000?
JACKSON, S	CCDOC	3	0	0	1259*	MARCOWKA, R	PSTOF	0	2	0	1934C
JAGGARD, A	WHEAT	1	1	0	0000?	MATTAR, I	CCDOC	0	0	0	0000?
JAKSTAS, K	NORTH	0	0	0	2175C	MATTHEWS, J	CTA	0	0	0	1786
JARRETT, T	CTA	0	1	0	1633*	MAYNARD, J	WHEAT	0	0	1	1369
JASAITIS, A	CRT	2	1	1	2165C	MCALISTER, K	COLUM	3	0	2	1976
JASUNAS, J	ROOKS	0	0	0	1420	MCCARTNEY, M	CTA	0	1	0	0000?
JOHNSON, D	CTA	0	2	0	0000?	MCKAY, P	PAWNS	0	0	0	1393#
JOHNSON, W	CCDOC	1	1	0	1181#	MCKEEL, B	CTA	1	2	0	0000?
JONES, M	CTA	0	1	1	1473*	MCKINNEY, T	KEMPR	0	2	0	1282*
JONES, MIGUEL	CCDOC	0	0	0	0000?	MELNIKOV, I	MTRLA	1	2	0	2081

? - UNRATED

# - 5 TO 9 RATED GAMES

\* - 10 TO 24 RATED GAMES

C - CENTURY CLUB MEMBER

D - DOUBLE CENTURION

T - TRIPLE CENTURION

Q - QUAD CENTURION

NAME	TEAM	W	L	D	RATING	NAME	TEAM	W	L	D	RATING
MICKLICH, F	UOP	1	1	0	1626C	SAUNDERS, N	MDCON	0	0	0	0000?
MIKULECKY, B	PAWNS	0	0	1	1382C	SAWDO, E	CASE	0	0	0	1412
MILLER, TT	SEARS	0	1	0	1823	SCHWAB, W	ROOKS	0	1	0	1419
MORRIS, R	MTRLA	2	0	1	2051	SCHWARTZ, M	TYROS	0	1	0	1073
MORRISON, J	KNGHT	1	1	0	1737	SEMONES, E	KNGHT	0	2	0	1099#
MOTTA, H	FERMI	1	2	0	1889	SHAFF, R	TYROS	0	0	0	1547C
MOTYCKA, R	CASE	1	1	0	1165C	SHATSKY, V	CRT	2	2	1	1491*
NEWCOMER, K	WHEAT	0	2	1	0000?	SHENOUDA, R	TYROS	0	0	1	0000?
NIXON, L	MTRLA	0	0	0	0000?	SHEYININ, S	ROOKS	0	0	0	2051
NOBLE, S	JCASE	0	0	0	1286#	SHOUSE, B	MTRLA	0	1	0	0000?
NOTERMANN, T	PAWNS	0	0	0	1178	SIEGEL, R	BKAMI	1	0	0	1469C
NOTTOLI, R	AMCRP	0	0	2	1320#	SIMS, B	CRT	1	0	0	1519#
O'DELL, DW	PAWNS	0	3	0	1539C	SIPP, R	CCDOC	0	0	0	0000?
OGASAWARA, L	ROYLS	1	0	0	1836C	SITAR, K	CRT	2	1	0	1561#
OLSEN, A	KEMPR	0	2	0	1554	SIWEK, M	KEMPR	0	0	0	2157C
OLSON, C	CASE	0	0	0	0000?	SKRZYPCZAK, T	PAWNS	0	2	0	0000?
PADLO, R	MTRLA	0	0	0	0000?	SLAGLE, S	MERC	0	0	0	1682
PARA, A	FERMI	1	0	0	1487	SMITH, BR	TYROS	1	0	0	1509
PARAOAN, E	BKAMI	0	2	0	1784C	SOLLANO, E	EXMPL	2	0	0	1956
PATTON, D	CHRGR	0	0	0	0000?	SOMBONG, M	BKAMI	1	0	0	1636
PAYTON, P	KEMPR	0	1	0	1221*	SPIEGEL, L	FERMI	2	0	1	2101C
PEHAS, A	ROYLS	2	0	1	1982	STAMM, V	CHRGR	0	1	1	1654D
PHELPS, C	DRGNS	0	0	0	1248*	STAPLES, C	FERMI	1	0	0	1199#
PIAO, T	DRGNS	0	0	0	1705	STAPLES, M	CTA	0	3	0	1170*
PORTER, D	AMCRP	0	1	0	0000?	STEELE, B	CCDOC	0	1	0	0000?
POZNIAK, J	KEMPR	0	1	0	1456*	STEVANOVIC, M	UOP	2	0	0	2301C
PRATTS, M	COLUM	1	0	0	1785	STEVENS, G	CTA	0	0	0	0000?
RADAVICIUS, E	CHRGR	0	2	0	1618D	STEVENS, J	COLUM	4	0	1	1413
REARDON, J	WHEAT	0	1	0	0000?	STEVENSON, R	PAWNS	0	0	0	1360
REDDY, S	MTRLA	0	0	0	0000?	STINSON, M	ROYLS	0	0	0	1937C
REID, C	CASE	1	2	0	1429	STOLTZ, B	TYROS	0	1	0	1914
REYES, E	COLUM	0	1	0	0000?	SUAREZ, E	KNGHT	2	0	0	1665
REYES, R	SEARS	1	0	0	2360D	SUERTH, F	EXMPL	1	1	0	1623C
RINGER, D	SEARS	0	1	0	0000?	SULLIVAN, C	ALUMN	1	1	0	1425
ROBERTS, J	WHEAT	0	0	0	1328#	SULLIVAN, J	EXMPL	1	1	0	1977D
ROJAS, R	CTA	0	0	0	0000?	SZONTAGH, T	CRT	0	0	0	1184#
ROJO, V	CCDOC	0	0	1	1359*	TAMEZ, I	TYROS	2	1	0	2116
ROMENESKO, G	PAWNS	0	0	0	0000?	TAN, M	WHEAT	0	0	0	1196
RONIN, D	KNGHT	0	0	0	1537*	TAYLOR, M	CTA	0	0	0	0000?
ROSENBERG, B	MDCON	0	0	0	1456*	TEGEL, F	DRGNS	1	1	1	2167T
ROSLEY, D	ROYLS	0	0	0	1716	THOMAS, G	TYROS	1	0	0	1491
ROYTBURG, E	CASE	2	1	0	1962#	THOMAS, J	CHRGR	1	1	0	1504C
RUBIN, A	CRT	0	0	0	0000?	TOELLNER, T	ROOKS	1	1	0	0000?
RZESZUTKO, R	ALUMN	0	0	0	1848C	TRUDY, E	CCDOC	0	0	0	0000?
SAHLI, E	UOP	0	0	1	1708	TURNER, K	PSTOF	0	1	1	1464
SAJBEL, P	UOP	1	0	0	1780	UHLEMAN, T	PAWNS	1	0	0	0000?
SAMELSON, C	MTRLA	2	0	0	2002C	UNDERWOOD, W	WHEAT	0	2	0	1945C
SANDEFUR, B	CCDOC	2	1	0	0000?	VACCARO, M	COLUM	2	1	0	0000?
SANTIAGO, T	COLUM	1	3	1	2008	VALDEZ, C	MTRLA	0	0	0	0000?
SATTERLEE, D	CASE	1	0	1	1616C	VAN MEER, J	KEMPR	0	0	0	1958

? - UNRATED  
 # - 5 TO 9 RATED GAMES  
 \* - 10 TO 24 RATED GAMES

C - CENTURY CLUB MEMBER  
 D - DOUBLE CENTURION  
 T - TRIPLE CENTURION  
 Q - QUAD CENTURION

NAME	TEAM	W	L	D	RATING	NAME	TEAM	W	L	D	RATING
VAN METRE, R	SEARS	0	0	0	1483#	WHARTON, P	WHEAT	0	1	1	0000?
VAN ZILE, C	UOP	0	0	0	1347	WHITE, H	CASE	1	0	0	1635
VANDECOTTE, M	UOP	0	0	0	0000?	WHITE, T	BKAMI	0	1	0	1332#
VAYSBERG, O	CASE	2	0	0	0000?	WILLIAMS, A	CTA	0	2	0	1468#
VEREZHENSKY, E	AMCRP	0	0	0	0000?	WILLIAMS, T	CASE	3	0	0	2154
VIGANTS, A	NORTH	0	1	1	1548	WILSON, A	CTA	0	1	0	1578
VITAVER, L	SEARS	0	0	0	1546#	WILSON, M	SEARS	0	1	1	1284*
WALDEN, W	CCDOC	0	0	0	0000?	WOLF, D	MTRLA	0	1	0	2302
WALLACH, C	MTRLA	2	0	0	2078	WONG, P	EXMPL	0	0	0	2210C
WALSH, W	ROOKS	0	1	0	1479C	WOOD, L	AMCRP	0	0	0	1488#
WARD, C	DRGNS	1	1	1	1563D	WRIGHT, E	CCDOC	0	1	0	0000?
WARD, J	CTA	0	0	0	0000?	YACOUT, A	KNGHT	2	1	0	0000?
WARREN, J	CHRGR	1	0	0	2097T	YOUNG, R	ALUMN	0	0	0	1413
WEITZ, R	EXMPL	1	1	0	1699C	ZOELLNER, J	BKAMI	0	2	0	1393C
WENTLING, C	AMCRP	1	0	1	1603C						

? - UNRATED  
# - 5 TO 9 RATED GAMES  
\* - 10 TO 24 RATED GAMES

C - CENTURY CLUB MEMBER  
D - DOUBLE CENTURION  
T - TRIPLE CENTURION  
Q - QUAD CENTURION

11-20-1996



## NEAR WEST DIVISION TOP TEN

WILLIAMS, T	CASE	2154
BENEDEK, R	KNGHT	2104D
WARREN, J	CHRGR	2097T
KEISLER, J	KNGHT	2039
ELLICE, W	PAWNS	1908
KALE, S	CASE	1871
HILL, R	KNGHT	1871
GOLCHERT, B	KNGHT	1854
MORRISON, J	KNGHT	1737
CURRAN, T	CASE	1698

## FAR WEST DIVISION TOP TEN

LEVINE, D	ROOKS	2357
BEZZUBOV, V	FERMI	2350*
TEGEL, F	DRGNS	2167T
TAMEZ, I	TYROS	2116
BERRY, G	ROOKS	2113T
BUCHNER, R	ROYLS	2112
KOZLOVSKY, M	FERMI	2106
SPIEGEL, L	FERMI	2101C
LUDWIG, T	DRGNS	2098C
DIAZ, P	TYROS	2070

## NORTH DIVISION TOP TEN

REYES, R	SEARS	2360D
WOLF, D	MTRLA	2302
STEVANOVIC, M	UOP	2301C
HASAN, Y	MTRLA	2213
WONG, P	EXMPL	2210C
GAZMEN, E	EXMPL	2209
JAKSTAS, K	NORTH	2175C
SIWEK, M	KEMPR	2157C
GOLUMBOVSKI, P	NORTH	2129
BUERGER, E	UOP	2094D

## EAST DIVISION TOP TEN

INUMERABLE, F	PSTOF	2293
BYRNES, R	CTA	2217*
JASAITIS, A	CRT	2165C
HODINA, J	AMCRP	2149
FRIESEMA, W	CRT	2109
CZERNIECKI, A	ALUMN	2071D
SANTIAGO, T	COLUM	2008
LEONG, D	ALUMN	1997
MCALISTER, K	COLUM	1976
GARWOOD, B	COLUM	1956

## MOST IMPROVED PLAYERS

JACKSON, S	CCDOC	127
STEVENS, J	COLUM	73
FRISKE, T	EXMPL	65
LOSOFF, A	CRT	62
GREEN, D	ROOKS	48
CURTIS, M	NORTH	43
HANSEN, B	PAWNS	41
DORFF, M	SEARS	41
BOSTICK, T	WHEAT	41
HARRIS, R	FERMI	37