

The Chicago Chess Player
The Official Bulletin of the Chicago Industrial Chess League



Inside

- Minutes of Fall business meeting - by Tony Jasaitis
- Games
- The Finishing Touch
- Team standings by division
- Match results
- Top 10, CICL MVP lists
- Ratings list

CICL OFFICERS

President: Satish Kale (skale@casecorp.com (E-Mail))
CASE Corp
7 South 600 County Line Rd.
Burr Ridge, IL 60521
W:(630) 887-2372 H:(630) 325-HALE

Secretary Tony Jasaitis (CRT) (tony@ardink.com (E-mail))
P.O. Box 664
Bedford Park, IL 60499-0664
H:(708) 448-4967

Treasurer Wesley K. Underwood (Wheaton)
(wu@david.wheaton.edu (E-mail))
207 S. Dorchester Ave.
Wheaton, IL 60187
W:(708) 752-5127 H:(708) 462-0393

Ratings Chairman Charles Ward (Lucent Tech Dragons)
(c.e.w.ward@att.com (E-mail))
615 S. Lincoln
Hinsdale, IL 60521
W:(708) 979-4599 H:(708) 325-3885
Fax: (708) 979-6124

Publicity Director Carl Reid (CASE)
2289 Grand Drive
Northbrook, IL 60062-6937

Trophy Chairman Wayne Ellice (Pawns)
(wayne.ellice@arous.sprint.com (E-mail))
Crosfield Catalysts
4099 West 71st Street
Chicago, IL 60629
W:(312) 838-3215 Fax:(312) 838-3243

Banquet Chairman Len Spiegel (Fermi)
(lenny@fnal.gov (E-mail))
Fermilab MS 219
P.O. Box 500
Batavia, IL 60510
W (708) 840-2809 H: (708) 377-2675

Bulletin Editor Ruben Reyes (Sears)
(RRgb@aol.com (E-mail))
2019 W. Leland Ave.
Chicago, IL 60625-1513
W: (847) 286-0758
H: (773) 334-0591
Fax: (773) 769-0311

Far West Division Chairman Irwin Gaines (Fermi)
(gaines@fnal.gov (E-Mail))
Fermilab MS 127
P.O. Box 500
Batavia, IL 60510
W: (708) 840-4022
H: (708) 420-1452
Fax: (708) 840-2783

North Division Chairman Pat Sajbel (UOP)
(Posajbel@uop.com (E-Mail))
616 S. Edward
Mt. Prospect, IL 60056
W:(847) 391-2134
H:(847) 506-9302

Near West Division Chairman Howard Klinefelter (Case)
(hklinefelter@casecorp.com)
1125 Manchester Court
Naperville, IL 60563-2110
H: (630) 961-0482

East Division Chairman Dan Fraats (Bank of America)
592 West 55th Street
Chicago, IL 60638
W:(312) 247-4343
H:(312) 581-0923

Minutes of Fall Business Meeting

Prepared by Tony Jasaitis, CICL Secretary

CHICAGO INDUSTRIAL CHESS LEAGUE

Meeting of August 29, 1996

at: Case Corporation

Attendees

Joe Babinec	Northrop Grumman
L. T. Carter	Post Office
Karel Dobr	Lucent Tech. Chargers
Charles Dobrovlny	Lucent Tech. Royals
Wayne Ellice	Alumni Pawns; Trophy Chairman
Dan Fraats	Bank of America; East Division Chairman
Marty Franek	Alumni Central
Irwin Gaines	Fermi; Far West Division Chairman
Tony Jasaitis	Chicago Research & Trading; CICL Secretary
Dwayne Johnson	CTA
Satish Kale	Case Corporation; President
Howard Klinefelter	Case Corporation; Near West Division Chairman
Algis Litvinas	Alumni Central
Art Olsen	Kemper
Erman Paraoan	Bank of America
Carl Reid	Case Corporation; Publicity Chairman
Ruben Reyes	Sears
Wes Underwood	Wheaton College; Treasurer
Charlie Ward	Lucent Tech. Dragons Ratings Chairman
Tim Williams	Case Corporation; Bulletin Editor

1. **President Satish Kale called the meeting to order at 7:15pm.**
2. No changes were noted to the minutes of the Spring 1996 meeting.
3. **Treasurer Wes Underwood presented a report of CICL finances, which will be published in the bulletin. He**

(Turn to next page)

reported a surplus of about \$500 from last season, due largely to savings on trophies realized by Wayne Ellice. Also, banquet-related activities were profitable, and the bulletin was under budget. Since we are a non-profit organization, Wes proposed cutting the dues this year to consume last year's surplus. We also have the cushion of a computer fund that will fund. With several budget-related items on the agenda, the determination and vote on the size of the dues was postponed until later in the meeting.

4. Ratings Chairman Charlie Ward asked any team captains that still do not have an e-mail contact to determine if any of their team members can receive e-mail for them; it makes mass communications much easier and quicker.
5. Bulletin Editor Tim Williams requested all division chairmen to submit their schedules and team captain contact lists for publication in the bulletin. Wes Underwood and Irwin Gaines suggested that items distributed in paper form, such as the Treasurer's Report, be distributed as part of the bulletin, as it is the most likely record of our activity to be preserved. After some discussion related to the effect of such materials on page numbering, Tim agreed to it. Tim reported that as editor of the Illinois Chess Bulletin, he has provided the CICL with its own section. Al Litvinas reported problems with the score of the game Santiago vs Buerger in the prior bulletin.
6. Trophy Chairman Wayne Ellice raised the issue of the monetary tradeoffs of teams choosing chess gift certificates instead of trophies, particularly whether they should receive an amount exactly equivalent to the value of the trophies. Karel Dobr pointed out that the amount could be ill-defined; we could get a poorer deal on fewer trophies, raising the cost per trophy. Irwin Gaines proposed that "cash" awards be fixed at \$70 and \$50 for first and second place for those less than the value of last season's trophies. The proposal passed 11-4.
7. Publicity Chairman Carl Reid reported distributing league literature at USCF tournaments. He reported difficulty getting publicity in any publications for free. Tim Williams, as editor of the ICB, offered a deal of running a 1/4 page ad for a year at a 1/8 page price, for \$86.40, which includes a 10% repeat-ad discount. The proposal was accepted 14-1.
8. East Division Chairman Dan Fraats reported that

the Mercantile Exchange has dropped out, and that Columbia College has returned. Columbia was readmitted unanimously.

9. Dan also reported that a team comprised of current and former officers of the Illinois Chess Association is interested in playing in the CICL. Discussion ensued about the concept of an "exhibition team", and the possibility of expanding our definition of eligibility, e.g., such as to include non-profit organizations. Irwin Gaines cut through a murky debate by pointing out that no vote is necessary for this team to play as a non-member against our teams this season any more than we needed to take special action to play against the Oak Park Chess Club. The consensus became that this team should pay our dues and receive our bulletin, as an introduction to our league; it should also define the nature of its membership so that we can consider amending our constitution to allow teams of its type at our next meeting. Dan will get back to the team and try to work it into the East Division schedule.
10. Near West Division Chairman Howard Klinefelter reported that the definition and schedule of the West and Far West divisions was still up in the air. It was unclear if Argonne will have two teams again. The Lucent teams favored a single West Division to provide a more varied schedule and a broader spectrum of opposition strength. Ultimately they agreed to continue with the two division setup provided there is an interlocking schedule between the two divisions, as there was a couple of years ago.
11. A new Alumni team was formed in the Near West Division, to be called Alumni Pawns, initially comprised of former Pawns and Midcon players. The following individuals were unanimously granted alumni status: from Midcon: Brent Hansen, Hardle Logan, Robert Young, Bob Lorenz from Pawns: Wayne Ellice, Ron Hard, Tom Notermann, George Dzurickso, Dave O'Dell, Bob Mikulecky, Pat McKay, John MacBean. [Since then, by consensus of e-mail exchanges, the Pawns have been admitted as a multi-company team; hence the specific names are no longer an issue -TJ].
12. North Division Chairman Pat Sajbel reported that the same six teams are back for this season, and will play a double round-robin. He also reported that a team with a controversial record is on "probation". In an ensuing discussion, Charlie

Ward emphasized that existing USCF ratings are to be used for all new CIGL players who have them. A note should be entered on the match result sheet to alert him.

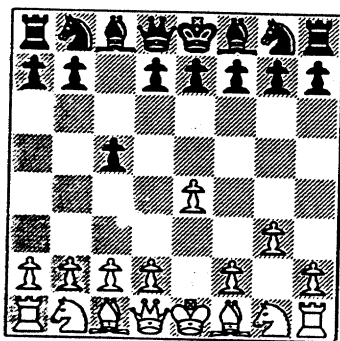
13. **With the adoption last meeting of two-part score sheets as a means of obtaining games for the bulletin, Irwin Gaines proposed that the prior incentive of monetary game awards (i.e., chess gift certificates) be eliminated. The proposal passed unanimously. Tony Jasaitis pointed out that the award to provide incentive for annotated games (Best Annotation) should be retained, but a vote on it slipped through the cracks.**
14. Ideas for smaller team sizes were discussed. The Mercantile Exchange could field a 4-man team next season. Sears expects to be able to field only 4 players dependably next year. Teams have folded in recent years that could have played with 4, and some teams might have been able to join the league in prior years if we had allowed 4-man teams. Tony Jasaitis explained his idea for "variable team sizes", published in the bulletin last season. Even though sub-sized teams would not be eligible for the playoffs in Tony's proposal, Irwin Gaines objected to the effect matches with those teams would have on standard-sized teams making the playoffs. Considerable discussion led nowhere concrete. Irwin called for others to submit alternate written proposals that we can study and vote on next meeting.
15. **The next subject was Howard Kilnefelter's proposal to rename the league, to get away from the potentially misleading word "Industrial". Al Litvinas countered that the word is not as narrow as some people have assumed: banking, retail, etc. are often referred to as industries. Wes Underwood pointed out the practical consequences of a name change, such as changing checks, accounts, logos, affiliate listings, loss of current name recognition, etc. People recalled similar chess leagues in other cities that also used the word "Industrial". The assembly unanimously voted to retain the current name.**
16. Irwin Gaines reminded us that the playoff tiebreaker was changed to game points last year without a league meeting, and should be on the agenda; otherwise it should revert back to the tiebreaker stated in the rules. We decided to tackle the subject in the spring meeting, after publication of an appropriate proposal in the bulletin.
17. **With the monetary issues resolved, Treasurer Wes Underwood proposed that dues be reduced this season to \$70 per team (refer to Item #3 above), which were approved unanimously. Anyone using the dues worksheet that was distributed at the meeting should change the line for "Annual Basic Dues" from \$35 to \$40.**
18. Discussion was opened on the site for this season's banquet. Chuck Dobrovoly pointed out that this season marks the league's 40th anniversary, and relayed a suggestion from Frank Suerth and Jim Brotsos to hold the banquet at the site of our very first banquet. However, Karel Dobr informed us that the place (in Cicero) burned down. The banquet will be held on Friday, June 6, at Harvey's Prime Rib in Westmont, as usual.
19. **The playoffs will be held on Saturday, May 17. No playoff site was determined. All teams should look into the possibility of making their sites available.**
20. Tony Jasaitis, who has been speed chess TD at the banquet in recent years, requested feedback on whether people prefer 7-minute or 5-minute chess. 7-minute was common at older banquets, but Tony has cut it to 5-minute several times so that the tournament would not go on too late. No one objected to permanently switching to 5-minute chess.
21. **Two-part scoresheets will be ordered and mailed to team captains. [Home team captains should collect copies of all the score sheets and send them to the bulletin editor. Those using their own record books should submit photocopies or transcribed copies. Interesting games should be marked in some way for the bulletin editor's attention. -TJ]**
22. Charlie Ward emphasized that BOTH team captains should send/fax copies of match result sheets to the division chairman AND the ratings chairman. He still encounters a large number of matches for which no results are submitted by anybody; he can always discard duplicates.
23. **Erman Paraoan inquired about the USCF membership dues discount that is available to league members [because we are an affiliate - TJ]. Charlie Ward said he will distribute the information by e-mail and in the bulletin.**
24. President Satish Kale closed the meeting at approximately 9:45pm.

GAMES

A. Czerniecki (2083) (Alumni Central) - A. Jasaitis (2144) (CRT) 11/06/96 Board 1 ;2.g3 Sicilian

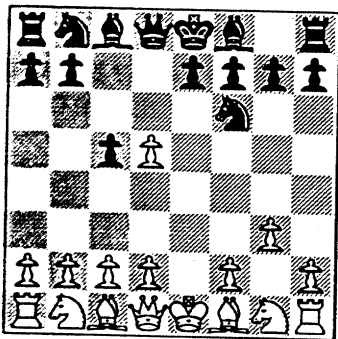
Notes by Tony Jasaitis

1.e4 c5 2.g3



An offbeat way to steer toward the Closed Sicilian, while willing to get into some unusual positions if Black wishes to try to exploit the lack of Nc3. Being an aggressive player, I do. Black's reply is recommended by Euwe.

2...d5 3. exd5 Nf6

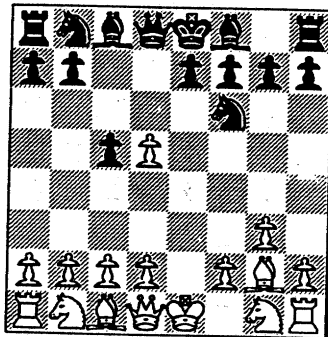


I can't find any analysis on this move, but I like it better than the positions resulting from the book 3...Qxd5 4.Nf3 Bg4 5.Bg2 Qe6+ 6.Kf1, Nc6 7.h3, when it turns out that the position of White's King is no worse than the position of Black's Queen and Bishop.

4.Bg2

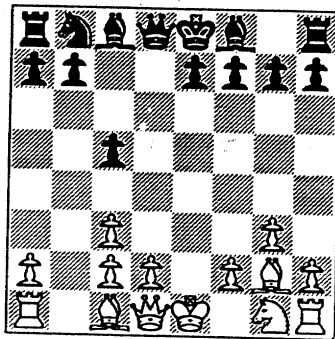
(See diagram top of next column)

Not 4.c4? e6!, when White's weak central squares and backward d-pawn will give



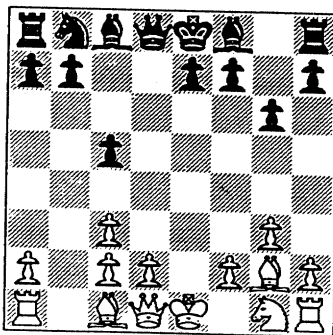
Black full compensation for the sacrificed pawn, as in similar themes in the Center Counter Defense (1.e4 d5 2.ed Nf6) and 2.f4 Sicilian (2...d5 3.ed Nf6).

4...Nxd5 5.Nc3!? Nxc3 6.bxc3



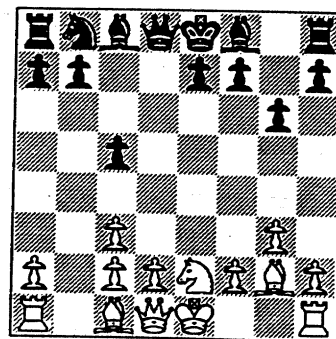
White has willingly taken on the disadvantage of doubled pawns (and a weakened a-pawn) for strong pressure generated by his KB on the long diagonal and his QR on the opened b-file, and, as I soon discovered, Black's c-pawn. Since White's doubled pawn is not on an open file, and is part of a compact mass, it will not be an easy target for some time. Further, weaknesses can be insignificant if one has the initiative.

6...g6



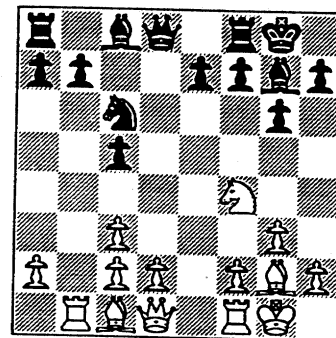
The most effective way to pressure White's pawns, but withdrawing defence of one of my own which will soon need it. The move also reduces the options for developing my QB, especially thanks to White's next move.

7.Ne2



Maximizes the power of the KB, with an eye on, of all things, my c-pawn!

7...Bg7 8.O-O Nc6 9.Nf4 O-O 10. Rb1

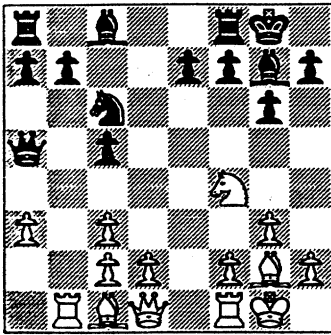


I started to become conscious of the consequences of my routine development. White is about to converge on my c-pawn with three pieces easily (Ba3/Nd3/Rb5), and more if needed. I can't play b6, and I can't play Rb8 to prepare b6, and I can't move my QB so that I could play Rb8. It is unclear if ...c4 works, or just changes the nature of the target. Since a Queen move helps, I chose the most aggressive one, which nips two of White's threats in the bud, and maybe threatens a pawn of my own.

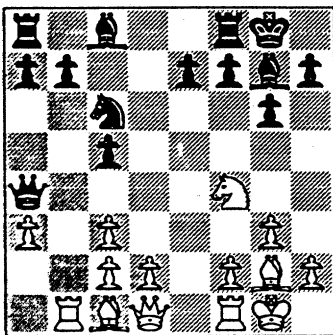
12...Qa5 11.a3

(See diagram next page)

I might not have taken the pawn even if it had been offered, since Black's position would have become very awkward, but my opponent is a conservative player and protects it. I was happy to see Ba3 further inhibited.

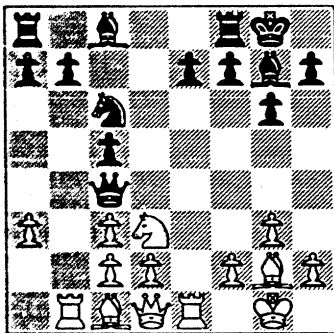


11....Qa4?!



Trying to prevent c4 and Qe2, both of which would support Rb5, but loses time and gets the Queen into an awkward situation. Black should have seriously considered...e5 and/or ...c4.

12.Nd3 Qc4 13.Re1

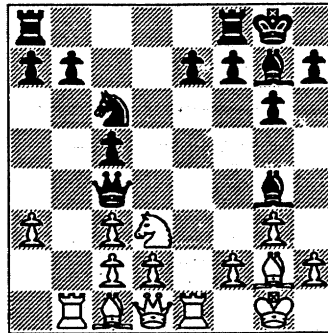


White threatens to force the Queen into a corner with 14.Re4 Qa2 15.Rb2 Qa1, not to mention the continuing paralysis of the Queenside. I was starting to conclude that I was lost when I finally resorted to the only chance...

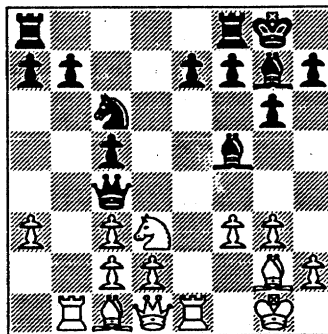
13.....Bg4!

(See diagram top of next column)

Let's just shut down that diagonal, if only for a moment...

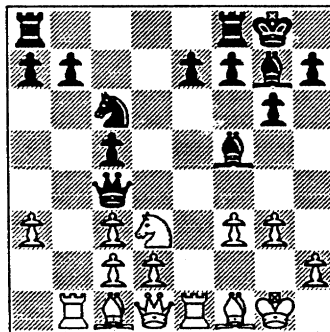


14.f3 Bf5!



Then try to turn the loss of the b-pawn into a trade, even if does leave things a little loose...

15.Bf1

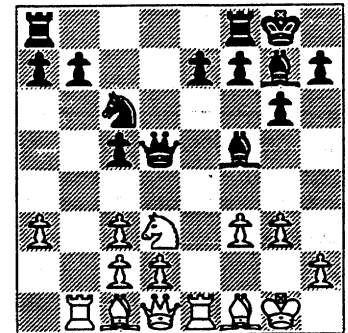


White declines the chance to win some dubious material with 15.Rxb7 Bxd3 16.cxd3 Qxd3 17.Bxc6, when Black has a bind as compensation, especially if he can get in ...c4. With the text move, White threatens to trap the Queen with Nb4, and is still attacking the free b-pawn. Is it over?

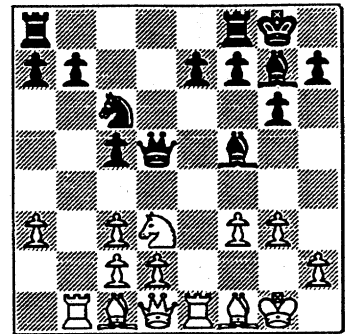
15....Qd5!

(See diagram top of next column)

Ha! The pawn is protected via 16.Rxb7, Ne5.

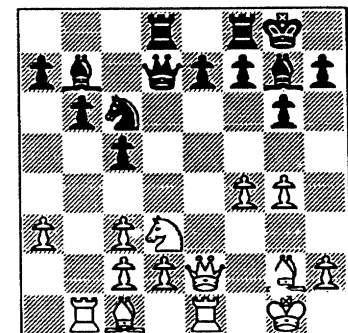


16.g4!?



Forces the B back to first rank, but I don't mind, as I finally get to develop it the way I wished for all along. But White's move has another point: he pushes back some of Black's immediate central pressure, and builds some of his own central and King-side pressure. For the time being, White has enough central control to afford the additional exposure of his king by g4. On his next move though, White drifts from his plan and gives Black two free moves.

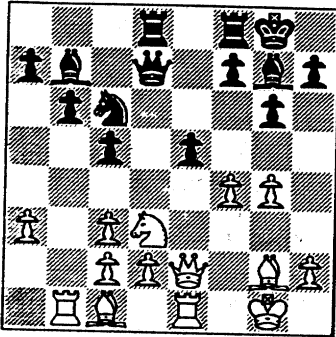
16....Bc8 17.Rb5? b6 18.Rb1 Bb7
19.Bg2 Rad8 20.Qe2 Qd7 21.f4



Believe it or not, Black's problems with his c-pawn, long diagonal, and b-file are not yet solved! The tempting 21...Ba6 fails to 22.Nxc5! Black must be careful about moving his N for the same reason. Black would like to play 21...Rfe8 to support ...e5 to open up lines to exploit his superior

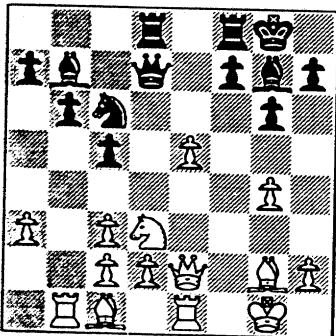
development and White's airy King-side, but that would probably be met by 22.Ne5, transforming the nature of the game. So now what?

21.....e5!



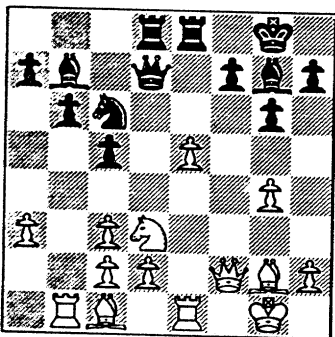
Break it open NOW! Because of the pending pin on White's Queen, the rook can enter play afterward.

22.fxex5?



White still could have made a game of it with 22.f5! gf 23.gf Qxf5 24.Nxc5! Ba8!, although Black should still have the upper hand once he gets ...f5 in.

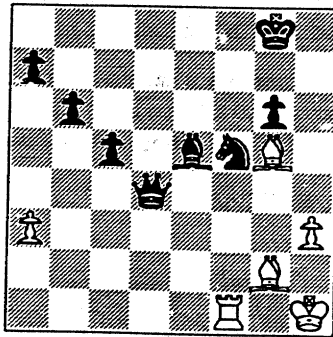
22.....Rfe8 23.Qf2



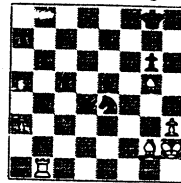
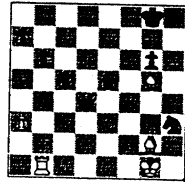
White also has difficulties after 23.Qe4 Na5 24.Qe2 c4. Black had about 10 minutes left on his clock for the rest of the game.

23.....Ba6 24.Re3 Qxg4 25.e6 Rxe6 26.Bb2 Rxe3 27.dxe3 Bxd3

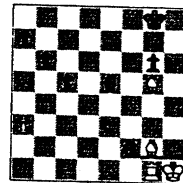
28.cxd3 Rxd3 29.Rf1 f5 30.h3 Qg5 31.e4 Rd2 32.Qxd2 Qxd2 33.Bc1 Qxc3 34.exf5 Bd4+ 35.Kh2 Be5+ 36.Kg1 Qd4+ 37.Kh1 Ne7 38.fxg6 hxg6 39.Bg5 Nf5 40.Resigns



I would not have minded White playing this game out to mate, as I had an "open" version of the classic Queen-sac & smothered mate in mind with 40.Rb1 Ng6+ 41.Kh7 Ne4+ (see diagram right) 42.Kh1 Nf7+ 43.Kg1 Nxf3+ (see diagram below)



44.Kh1 Qg1+ 45.Rxg1 Nf2#. (see diagram below)



The Cook County Department of Corrections team, outranked by an average of about 300 rating points against Lucent Chargers on boards 1-3, won all three boards!! That, plus a forfeit win on board 6 notched quite a team upset.

S. Jackson on board 2 scored the biggest upset for CCDOC.

Here's how:

White: S.Jackson (1132)
Black: E. Radavicius (1647)
GIUOCO PIANO

1. e4 e5 2. Nf3 Nc6 3. Bc4

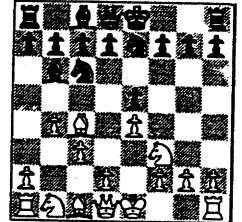
Good opening choice. The rarer the better.

3...Bc5 4. c3 Nge7

A deviation from the usual 4...Nf6.

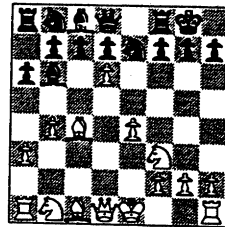
5. b4 Bb6

If 6.b5 (intending to win a pawn after 6... Na5 7. Nxe5) then 6... d5! 7.exd5 Na5 8.Nxe5 Nxc4 9. Nxc4 Qxd5 with the threat of 10... Qxg2 or 10...Qxb5 recovering the pawn.



6.d4 exd4 7. cxd4 O-O 8. a3 a6

8....d5 equalizes.



9. d5 Nb8 10. d6!

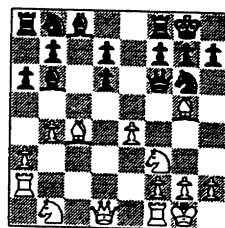
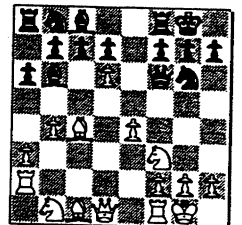
This screws up Black's development.

10...Ng6 11. O-O Qf6 12. Ra2

Diagram right.

12...cxd6??

This P inadvertently causes the Q to run out of room.



13. Bg5

Alert play by Black

13...Qe5 14. Nxe5 Nxe5

Down a Q for N, Black continued the game. But Jackson held on to win the game. For his remarkable upset victory, Jackson garnered 43 big rating points

The rest of the game follows.

15. Bb3 h6 16. Be7 Re8 17. Bxd6 Nbc6 18. Rd2 Ng6 19. Nc3 Nce5 20. Nd5 Bd8 21. f4 Nc6 22. f5 Nge5 23. Qe1 Kh8 24. Qg3 b5 25. Nf4 Rg8 26. Ng6+ fxc6 27. Bxc6 Kxc6 28. fxc6 Bf6 29. Rxf6 gxf6 30. Rf2 Nd4 31. Bxe5 fxe5 32. Qxe5 Ne6 33. Qf6 1-0

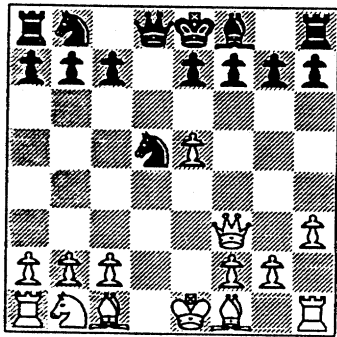
The Finishing Touch

by Ruben Reyes

The newest to grace **Charlie Ward's** TOP TEN list for the East Division is **Randy Byrnes**. Playing board 1 for **CTA**, Byrnes won all four of his games in 1994-95, and had no losses in also four games in '95-96 (1 win, 3 draws).

His initial rating was a high **2196**, from 5 wins, 1 draw!

In round 1 this year against CRT in the East division, he won a 15-mover against **Tony Jasaitis**, one of the Leagues strongest centurions. Let's view this game right after **7...dxe5** (diagram below). Notes by Tony Jasaitis



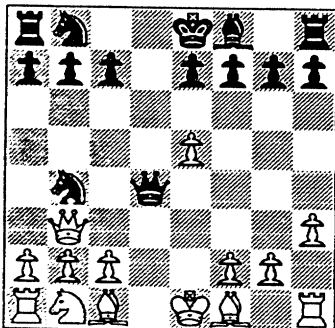
7...Nb4?!

(Jasaitis attaches a "?!" to this move, maybe because of the tactical complications the move provokes. - ed)

8. Qb3!

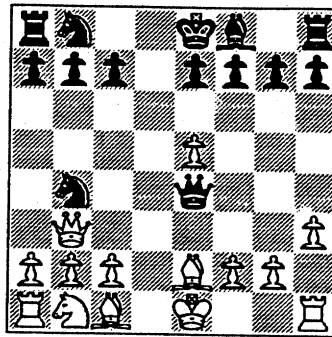
(The exclamation Jasaitis puts to this move possibly comes from the power of its simplicity and conservativeness as it defends c2 while at the same time threatens 9.a3 followed by 10. Qxb7 - ed)

8...Qd4!



(This provides a tactical response to the threat 9.a6 followed by 10. Qxb7 with the reply 9...Qe4+ defending the b-pawn - ed)

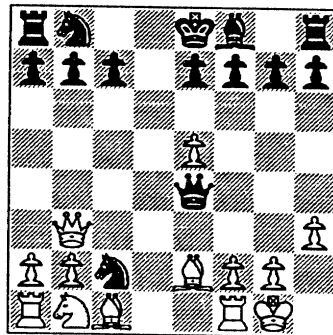
9. Be2 Qe4!



(Avoiding the fork 10.c3 while threatening both 10...Nxc2 and 10...Qxg2. - ed)

10. 0-0! Nxc2??

10...Qxe2 11.Qxb4 Qa6 †

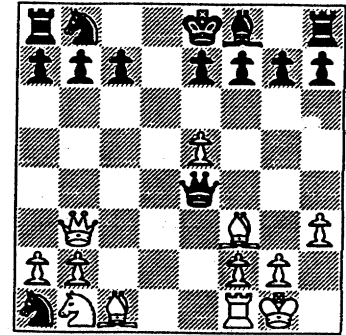


11. Bf3

I was counting on 11.Bd3 instead of Bf3 when 11...Nxa1 12.Bxe4 Nxb3 13.Bxb7 Nxc1 14.Rxc1 c6 15.Bxa8 Kd7 gives Black chances to win the bishop.

11...Nxa1

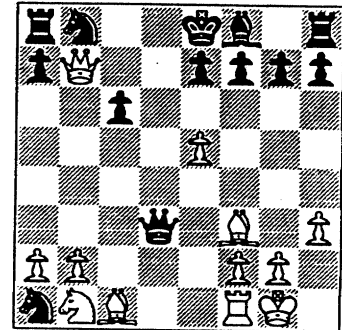
(See diagram top of next column)



12. Qb5+!

(This intermediate move that's a check is a killer as it enables White to keep material balance without having to trade Queens. All because White's superiority in development here turns into a winning advantage -- ed)

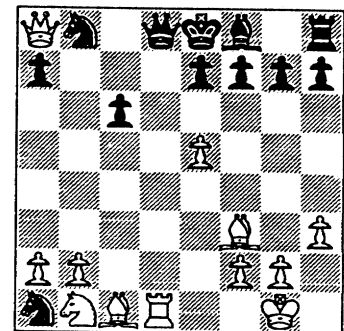
12... c6 13. Qxb7 Qd3



(13...Qf5 14.Qxa8 Qc8 brings no relief for Black after 15.Rd1 e6 16.Bxc6+ Qxc6 17.Qxb8+ Qc8 18.Qxc8+ Ke7 19.Qd8# -- ed)

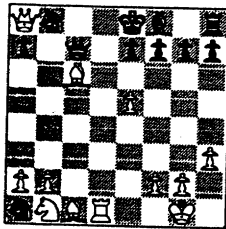
14. Qxa8 Qd8 15. Rd1 1-0

Final position, Byrnes-Jasaitis



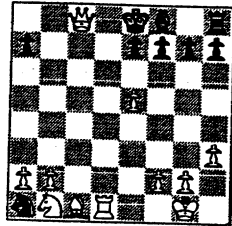
On any of Qc8, Qc7, Qb6, 16. Bxc6+

(See diagram next page)

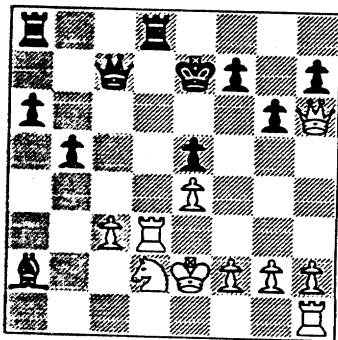


16...Qxc6
17. Qxb8+
(See diagram below)
(It's mate in two):
17...Qc8
18. Qxc8# -ed)

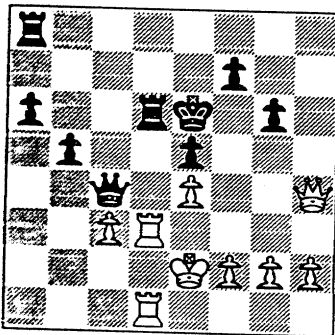
Quite a nice finishing touch I may say - ed



Sears' **Mike Dorff (1561)** scored a huge upset on board 2 in a Round 2 match vs. UOP. Here's how Dorff beat **Ed Buerger (2147)**. Let's drop in after 23. Ke2 Rhd8

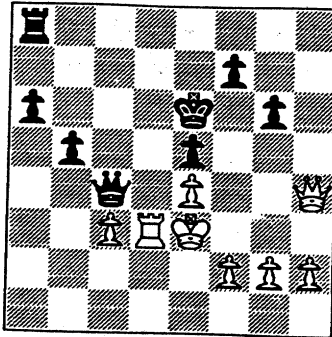


24. Qxh7 Bc4
Or 24...Rxd3 25.Kxd3 Rd8+ 26.Ke2 Qxc3, 28 Qh4+.
25. Qh4+ Ke6 26. Nxc4 Qxc4 27. Rhd1 Rd6



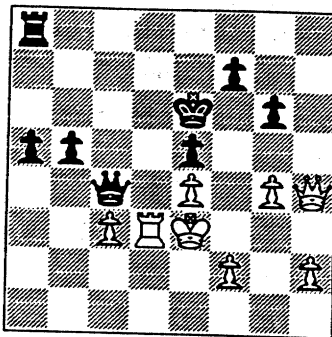
Black threatens 28...Rad8.

28. Ke3 Rxd3+ 29. Rxd3



Although Black's King is out in the middle, White doesn't have the capability to capitalize on such a situation..

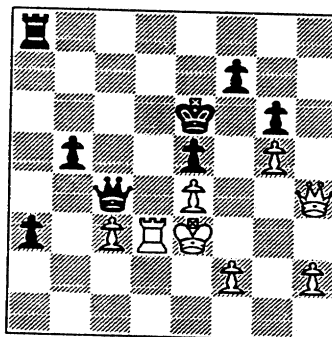
29...a5 30. g4



30.f4 would threaten 31.fxe5 and 32. Qf6+.. But after 30... exf4+ 31.Qxf4 Black can attempt to reach g7 with 31 ...Ke7 32. Qe5+ Qe6

The text move does not appear to have a purpose.

30... a4 31. g5 a3



32. Qh3+

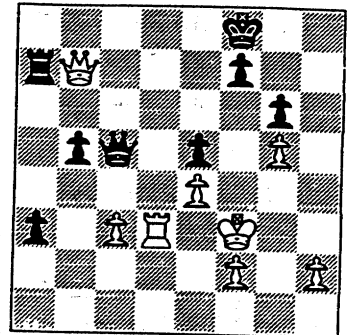
The point of White's last two moves now becomes clear. Black is prevented from escaping via f6.

32...Ke7 33. Qd7+ Kf8 34. Qb7

34...Qc5+

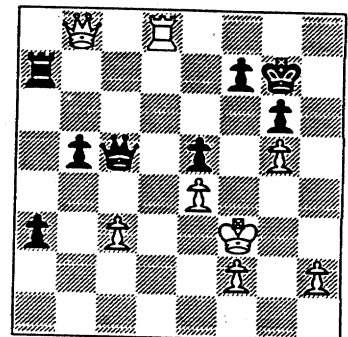
Black's reluctant to let go of his hold on the a-file with the R. His last move is a scheme to keep the R stationed on the a-file.

35. Kf3 Ra7



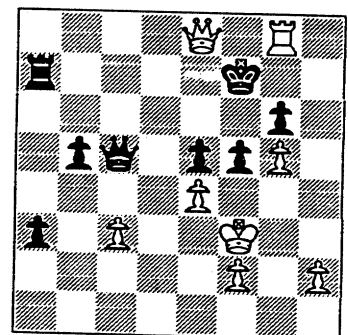
The point of Black's 34th move. Black gets to keep the R at the a-file while defending the rank a7-h7.

36. Qb8+ Kg7 37. Rd8



Suddenly, Black discovers that 38.Rg8+ Kh7 39. Rh8+ Kg7 40.Qg8 (or f8) is mate.

37...f5 38. Rg8+ Kf7 39. Qe8 mate



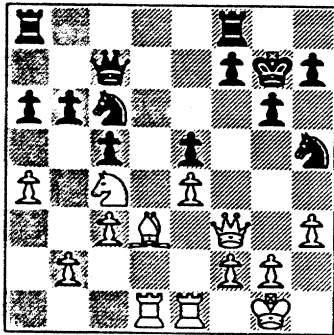
Final Position (Dorff-Buerger)

Games, more often than not, do not end in a spectacular fashion.

However, in a finish such as this one UOP's **Mike Stevanovic** had, it can consist of masterfully converting what would seem to many chessplayer as a small advantage into a win.

This is **M.Stevanovic (2254) - R.Reyes (2366); 03/21/96.**

Let's pick up the action after **19.Qxf3 Nh5** (diagram below)



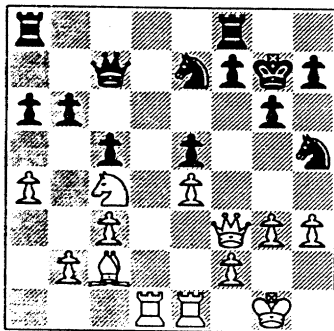
20. g3

Notice that Black's N's are now blocked from entering anywhere into White's territory? Except at a5 which would lead simply to doubled pawns there (...Na5; Nxa5 bxa5)

20...Ne7

This N has nowhere to go. White has control of all entry points.

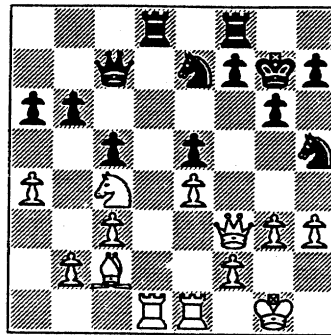
21. Bc2



This commencement of activities to grab hold of the d-file does not lead to control of the file as planned.

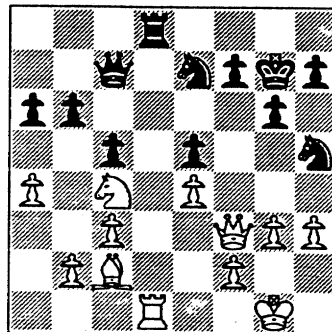
But the ramification of the start of this attempt to control the d-file only becomes apparent several moves later

22...Rad8



More or less forced. Black can't allow White to get a head start in gaining control of the d-file as that would mean the beginning of the end for Black.

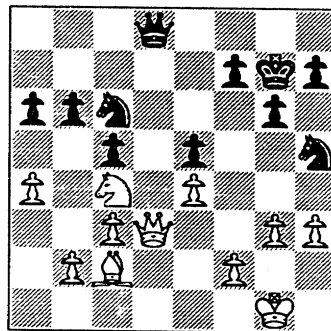
22. Rxd8 Rxd8 23. Rd1



At first glance, it would appear that mass exchanges would only lead to a draw.

But appearances can be deceiving.

24...Nc6 24. Rxd8 Qxd8 25. Qd3

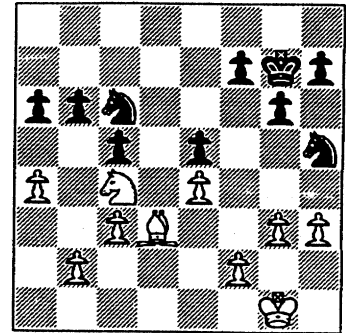


25...Qxd3

Again forced. Black can't let the White Q

alone in control of the d-file.

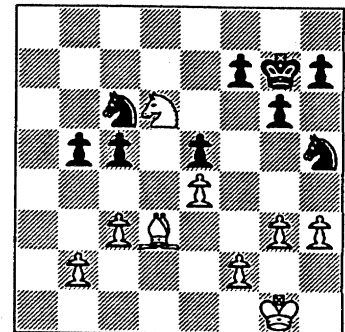
26. Bxd3



The point of White's 21st move: transposition into an ending where White's got two active pieces now in the Queen's wing against Black's lone N.

Transposition into the endgame via mass exchanges of major pieces on the d-file has left Black's N at h5 unable to help in defending the pawns in the Queen's wing.

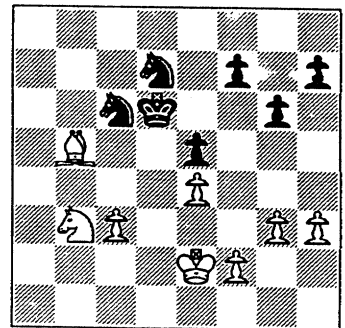
26....b5 27. axb5 axb5 28. Nd6



28...b4

Stevanovic pointed out after the game that 28....c5 is met by 29.Be2 Na7 30.Bxh4 gxh4, doubling Black's h-pawn

29. Nb7 29...bxc3 30. bxc3 Nf6 31. Nxc5 Kf8 32. Kf1 Ke7 33. Ke2 Kd6 34. Nb3 Nd7 35. Bb5 1-0



NEAR WEST DIVISION 01-04-1997

TEAM NAME	W	L	D	GAME MATCH		PCT
				POINTS	POINTS	
CASE	3	1	0	17.0	3.0	0.750
ARGONNE KNIGHTS	3	1	0	15.0	3.0	0.750
LUCENT TECH. CHARGERS	2	2	0	14.0	2.0	0.500
COOK CO. DEPT. OF CORR.	2	2	0	9.5	2.0	0.500
PAWNS	0	4	0	4.5	0.0	0.000

FAR WEST DIVISION 01-04-1997

TEAM NAME	W	L	D	GAME MATCH		PCT
				POINTS	POINTS	
ARGONNE ROOKS	5	0	0	20.5	5.0	1.000
LUCENT TECH. ROYALS	4	1	0	20.0	4.0	0.800
LUCENT TECH. TYROS	3	2	0	19.0	3.0	0.600
FERMILAB	2	3	0	16.0	2.0	0.400
LUCENT TECH. DRAGONS	0	4	0	5.5	0.0	0.000
WHEATON COLLEGE	0	4	0	3.0	0.0	0.000

NORTH DIVISION 01-04-1997

TEAM NAME	W	L	D	GAME MATCH		PCT
				POINTS	POINTS	
MOTOROLA	4	0	0	16.0	4.0	1.000
UOP PROCESS DIV.	2	1	1	16.0	2.5	0.625
EXEMPLARS	2	1	1	15.0	2.5	0.625
SEARS	2	2	0	11.0	2.0	0.500
NORTHROP-GRUMMAN	1	3	0	11.0	1.0	0.250
KEMPER INSURANCE	0	4	0	3.0	0.0	0.000

EAST DIVISION 01-04-1997

TEAM NAME	W	L	D	GAME MATCH		PCT
				POINTS	POINTS	
ALUMNI ACES	6	0	0	28.0	6.0	1.000
NATIONSBANK-CRT	4	2	0	23.0	4.0	0.667
COLUMBIA COLLEGE	3	3	0	16.5	3.0	0.500
AMOCO CORP.	2	1	0	9.0	2.0	0.667
BANK AMERICA ILLINOIS	0	3	0	6.0	0.0	0.000
CTA	0	3	0	4.0	0.0	0.000
POSTAL SERVICE	0	3	0	2.5	0.0	0.000

12-NOV-96	UOP PROCESS DIV.	6	KEMPER INSURANCE	0
ROUND 3				
	BD	RATINGS	SCORE	RATINGS SCORE
1	STEVANOVIC, M	2301 9	1	SIWEK, M 2157 -9 0
2	BUERGER, E	2094 1	1	OLSEN, A 1554 -2 0
3	BOLDINGH, E	2062 1	1	POZNIAK, J 1456 -1 0
4	PLETT, M	1844 1	1	PAYTON, P 1221 -1 0
5	SAJBEL, P	1780 0	1	LANG, P 0 0 0
6	MICKLICH, F	1626 0	1	AMUNDSEN, C 0 0 0
14-NOV-96	NORTHROP-GRUMMAN	1.5	SEARS	4.5
ROUND 3				
	BD	RATINGS	SCORE	RATINGS SCORE
1	CURTIS, M	1927 -3	0	REYES, R 2360 2 1
2	CAIRONE, B	1702 17	.5	LATIMER, E 2016-11 .5
3	BABINEC, J	1406 0	0	HALL, L 0 0 1
4	WALKER, A	0 0	0	DORFF, M 1604 0 1
5	ELEK, G	1052 36	1	WILSON, M 1284-36 0
6		0 0	0F	MILLER, TT 1823 0 1F
21-NOV-96	LUCENT TECH. CHARGERS	2	CASE	4
ROUND 4				
	BD	RATINGS	SCORE	RATINGS SCORE
1	WARREN, J	2097 2	.5	WILLIAMS, T 2154 -4 .5
2	STAMM, V	1654 -7	0	KALE, S 1871 10 1
3	RADAVICIUS, E	1618-15	0	SATTERLEE, D 1616 15 1
4	DOBR, K	1494 -6	0	WHITE, H 1635 14 1
5	THOMAS, J	1504 1	.5	KLINEFELTER, H 1537 -1 .5
6	BRADY, R	1367 32	1	GERONIA, R 1523-32 0
(CASE) 7	KLINEFELTER, H	1536 0	1	REID, C 1429 0 0
26-NOV-96	EXEMPLARS	4	NORTHROP-GRUMMAN	2
ROUND 4				
	BD	RATINGS	SCORE	RATINGS SCORE
1	GAZMEN, E	2209-38	0	CURTIS, M 1924 38 1
2	SULLIVAN, J	1977 0	1F	CAIRONE, B 1719 0 0F
3	FRISKE, T	1999 3	1	VIGANTS, A 1548 -3 0
4	SOLLANO, E	1956 0	1	WALKER, A 0 0 0
5	WEITZ, R	1699 0	0F	ELEK, G 1088 0 1F
6	BROTSOS, J	1563 0	1F	ALMAZAN, S 1344 0 0F
02-DEC-96	ARGONNE KNIGHTS	6	COOK CO. DEPT. OF CORR.	0
ROUND 5				
	BD	RATINGS	SCORE	RATINGS SCORE
1	BENEDEK, R	2104 1	1	HALL, A 1468 -1 0
2	HILL, R	1871 1	1	JACKSON, S 1259 -1 0
3	MAKAI, M	0 0	1	ROJO, V 1359 0 0
4	GOLCHERT, B	1854 0	1	SANDEFUR, B 0 0 0
5	SUAREZ, E	1665 0	1	MYART, V 0 0 0
6	YACOUT, A	0 0	1	STEELE, B 0 0 0
7	ELLIOTT, M	0 0	0	SEMONES, E 1099 0 1 (KNIGHT)

04-DEC-96 ALUMNI ACES
ROUND 5

4.5 AMOCO CORP.

1.5

BD	RATINGS	SCORE	RATINGS	SCORE
1 CZERNIECKI, A	2071-25	0	ATKINSON, J	1810 25 1
2 GOLLA, R	1943-11	.5	WENTLING, C	1603 17 .5
3 FRANEK, M	1804 0	1	MALEN, M	0 0 0
4 LITVINAS, A	1738 0	1	HOLMES, M	0 0 0
5 FRANK, M	1733 3	1	CORBIN, Z	1289 -3 0
6 FABIJONAS, R	1737 0	1F		0 0 0F

05-DEC-96 LUCENT TECH. DRAGONS
ROUND 4

.5 LUCENT TECH. TYROS

5.5

BD	RATINGS	SCORE	RATINGS	SCORE
1 TEGEL, F	2167 -4	.5	DIAZ, P	2070 7 .5
2 CHIRCHIKOV, S	0 0	0	TAMEZ, I	2116 0 1
3 WARD, C	1563 -4	0	STOLTZ, B	1914 5 1
4 HICKS, C	1546 -7	0	BLAZIE, J	1854 7 1
5 KRUEGER, J	1389 -5	0	BROZOVICH, J	1732 4 1
6 LICARI, T	0 0	0	KARPIERZ, J	1238 0 1

05-DEC-96 MOTOROLA
ROUND 4

3.5 UOP PROCESS DIV.

2.5

BD	RATINGS	SCORE	RATINGS	SCORE
1 HASAN, Y	2213-16	0	STEVANOVIC, M	2310 11 1
2 MACKIE, A	1952 0	0F	BUERGER, E	2095 0 1F
3 MORRIS, R	2051 23	1	BOLDINGH, E	2063-23 0
4 MACKIE, A	1952 16	1	PLETT, M	1845-16 0
5 CIESLEK, D	1905 -8	.5	SAJBEL, P	1780 8 .5
6 AUGSBURGER, L	1783 13	1	MICKLICH, F	1626 -9 0
7 BALICKI, J	0 0	1	VAN ZILE, C	1347 0 0
8 GRYPARIS, J	1442 16	.5	GONCHAROFF, N	1740 -7 .5 (MTRLA)

05-DEC-96 FERMILAB
ROUND 4

1 LUCENT TECH. ROYALS

5

BD	RATINGS	SCORE	RATINGS	SCORE
1 SPIEGEL, L	2101 0	.5	BUCHNER, R	2112 -1 .5
2 MOTTA, H	1889-17	0	PEHAS, A	1982 17 1
3 GAINES, I	1788 7	.5	GUIO, J	1967-11 .5
4 HARRIS, R	1613 -9	0	DOBROVOLNY, C	1861 9 1
5 GOMEZ, G	1527 -9	0	BLACKMON, E	1771 9 1
6 STAPLES, C	1199 -7	0	ANDERSON, CJ	1483 7 1

10-DEC-96 BANK AMERICA ILLINOIS
ROUND 7

1.5 NATIONSBANK-CRT

4.5

BD	RATINGS	SCORE	RATINGS	SCORE
1 KOGAN, G	1894 -8	0	JASAITIS, A	2165 5 1
2 PARAOAN, E	1784 21	1	LOSOFF, A	1936-32 0
3 SOMBONG, M	1636 7	.5	BARGERSTOCK, D	1743 -7 .5
4 HAMMOND, M	1443-12	0	DELEON, J	1610 12 1
5 ZOELLNER, J	1393-12	0	SITAR, K	1561 12 1
6 GANSER, A	1227 -8	0	SHATSKY, V	1491 8 1

11-DEC-96 ALUMNI ACES
ROUND 7

5.5 COLUMBIA COLLEGE .5

BD	RATINGS	SCORE		RATINGS	SCORE
1 CZERNIECKI, A	2046 0	1F	SANTIAGO, T	2008 0	0F
2 GOLLA, R	1932 17	1	MCALISTER, K	1976-25	0
3 FRANEK, M	1804 0	1	VACCARO, M	0 0	0
4 LITVINAS, A	1738 2	.5	PRATTS, M	1785 -4	.5
5 FRANK, M	1736 12	1	KOSTECKA, K	1562-12	0
6 FABIJONAS, R	1737 4	1	STEVENS, J	1413 -6	0

11-DEC-96 LUCENT TECH. CHARGERS
ROUND 5

5.5 PAWNS .5

BD	RATINGS	SCORE		RATINGS	SCORE
1 WARREN, J	2099 -5	.5	ELLICE, W	1908 12	.5
2 ROSLEY, D	1716 12	1	O'DELL, DW	1539 -8	0
3 STAMM, V	1647 0	1F	HANSEN, B	1353 0	0F
4 RADAVICIUS, E	1603 7	1	MIKULECKY, B	1382-10	0
5 THOMAS, J	1505 0	1	FERGUSON, K	0 0	0
6 DOBR, K	1488 0	1	SKRZYPCZAK, T	0 0	0

12-DEC-96 LUCENT TECH. ROYALS
ROUND 5

2 ARGONNE ROOKS 4

BD	RATINGS	SCORE		RATINGS	SCORE
1 BUCHNER, R	2111-22	0	BERRY, G	2113 15	1
2 PEHAS, A	1999 0	1	ANSELL, S	0 0	0
3 DOBROVOLNY, C	1870 1	.5	GREEN, D	1872 0	.5
4 OGASAWARA, L	1836 -8	.5	DECMAN, S	1637 8	.5
5 BLACKMON, E	1780-32	0	BAURAC, D	1621 21	1
6 HAHNE, D	1621-31	0	WALSH, W	1479 21	1

17-DEC-97 FERMILAB
ROUND 5

2.5 LUCENT TECH. TYROS 3.5

BD	RATINGS	SCORE		RATINGS	SCORE
1 SPIEGEL, L	2101-14	0	TAMEZ, I	2116 22	1
2 MOTTA, H	1872 12	.5	DIAZ, P	2077-12	.5
3 GAINES, I	1795-10	0	STOLTZ, B	1919 15	1
4 HARRIS, R	1604 31	1	BROZOVICH, J	1736-20	0
5 GOMEZ, G	1518 24	1	SHAFF, R	1547-16	0
6 FROMM, J	1567-27	0	THOMAS, G	1491 27	1

17-DEC-96 SEARS
ROUND 4

4 KEMPER INSURANCE 2

BD	RATINGS	SCORE		RATINGS	SCORE
1 LATIMER, E	2005 21	1	SIWEK, M	2148-21	0
2 DORFF, M	1604 19	1	OLSEN, A	1552-19	0
3 CUMBERLAND, N	0 0	0	LAMBIRIS, J	1452 0	1
4 HALL, L	0 0	1	POZNIAK, J	1455 0	0
5 KIUSALS, D	1093-15	0	PAYTON, P	1220 15	1
6 BALASE, E	1360 0	1	LANG, P	0 0	0

NAME	TEAM	W	L	D	RATING	NAME	TEAM	W	L	D	RATING
ABRAHAM, T	CTA	0	0	0	1590	CHRISTIAN, R	DRGNS	0	0	0	1811C
ALFONSO, E	NORTH	0	0	0	1583#	CICUCCI, S	KEMPR	0	0	0	0000?
ALLEN, H	PSTOF	1	0	0	1911	CIESLEK, D	MTRLA	2	0	1	1897
AMUNDSEN, C	KEMPR	0	2	0	0000?	CISKO, G	FERMI	0	0	0	1608
ANDERSON, CJ	ROYLS	1	0	0	1490	COLBERT, W	PAWNS	0	0	0	0000?
ANDRYSIAK, B	KEMPR	0	0	0	0000?	CONDON, J	MDCON	0	0	0	2039
ANSELL, S	ROOKS	3	1	0	0000?	CONNOR, P	MDCON	0	0	0	2086
APPLEBERRY, T	CCDOC	1	2	0	1264#	COOPER, W	PSTOF	0	0	0	1637C
ASSADIAN, K	MTRLA	0	0	0	0000?	CORBIN, Z	AMCRP	1	1	0	1286*
ATKINSON, J	AMCRP	2	0	1	1835C	COSTELLO, W	NORTH	0	0	0	0000?
AUGSBURGER, L	MTRLA	3	0	0	1796	COTE, J	MERC	0	0	0	1323
AVERY, G	CCDOC	0	0	0	0000?	CUMBERLAND, N	SEARS	0	1	0	0000?
AZCUNA, L	WHEAT	0	1	0	1233	CUMMUTA, P	KEMPR	1	1	0	1449C
BABINEC, J	NORTH	1	2	0	1406*	CURRAN, T	CASE	0	0	0	1698
BALASE, E	SEARS	1	2	0	1360*	CURTIS, M	NORTH	3	1	0	1962
BALICKI, J	MTRLA	2	1	0	0000?	CZERNIECKI, A	ALUMN	1	3	0	2046D
BARGERSTOCK, D	CRT	1	1	1	1736	CHESKES, M	ROYLS	0	0	0	0000?
BARNARD, G	CRT	1	2	0	0000?	DALTON, M	CTA	0	0	0	0000?
BARNES, D	CTA	0	0	0	0000?	DAVIDSON, M	ALUMN	2	0	0	1612
BAURAC, D	ROOKS	3	0	1	1642C	DAVIS, R	PSTOF	0	0	0	0000?
BENEDEK, R	KNGHT	1	3	0	2105D	DECMAN, S	ROOKS	0	2	1	1645D
BERRY, G	ROOKS	2	1	1	2128T	DELEON, J	CRT	3	1	2	1622*
BEZZUBOV, V	FERMI	1	0	0	2350*	DENISENKO, K	SEARS	0	0	0	0000?
BLACKMON, E	ROYLS	2	1	1	1748C	DIAZ, L	CASE	0	0	0	0000?
BLAZIE, J	TYROS	1	1	1	1861C	DIAZ, P	TYROS	2	1	2	2065
BLUE, J	CCDOC	0	0	0	0000?	DOBR, K	CHRGR	3	1	0	1488T
BOLDINGH, E	UOP	2	2	0	2040	DOBROVOLNY, C	ROYLS	3	0	2	1871
BOSTICK, T	WHEAT	1	2	0	1476*	DORFF, M	SEARS	3	1	0	1623
BOSWELL, H	CCDOC	1	1	0	0000?	DUCKSWORTH, R	PAWNS	0	0	0	0000?
BRADY, R	CHRGR	3	0	0	1399	DURKEE, D	DRGNS	0	0	0	1767C
BRANCH, Y	COLUM	0	2	0	1276*	DZURICKSKO, G	PAWNS	0	0	0	1114*
BRIONES, M	UOP	0	0	0	1624C	EDWARDS, S	EXMPL	2	0	0	1296
BROLLIER, B	WHEAT	1	2	0	1258#	EGERTON, J	MDCON	0	0	0	1995
BRONFELD, A	EXMPL	0	0	0	1827	ELEK, G	NORTH	1	1	0	1088
BROTSOS, J	EXMPL	1	0	0	1563D	ELLICE, W	PAWNS	2	1	1	1920
BROZOVICH, J	TYROS	3	1	1	1716D	ELLIOIT, M	KNGHT	0	1	0	2?
BUCHNER, R	ROYLS	0	2	2	2089	ELLIOTT, M	KNGHT	0	1	0	0000?
BUERGER, E	UOP	1	2	0	2095D	ENKE, E	WHEAT	0	4	0	1385*
BURBA, K	KNGHT	0	0	0	1402C	EUSTACE, D	DRGNS	1	1	0	1658
BURIAN, D	EXMPL	1	1	0	1671C	FABIJONAS, R	ALUMN	2	1	0	1741D
BYRNES, R	CTA	2	0	1	2217*	FERGUSON, K	PAWNS	0	2	0	0000?
CAIRONE, B	NORTH	1	1	1	1719	FLEET, R	MDCON	0	0	0	1140#
CARNAL, D	CRT	0	0	0	1207#	FLOREY, J	SEARS	0	1	0	1432#
CARTER, D	CASE	0	1	0	1042	FRAATS, D	BKAMI	0	1	1	1869
CARTER, L	PSTOF	0	2	0	1486	FRANEK, M	ALUMN	4	0	1	1804C
CARTER, O	CTA	0	0	0	0000?	FRANK, M	ALUMN	2	0	0	1748
CARVALHO, W	FERMI	0	0	0	1895	FRIESEMA, W	CRT	0	0	0	2109
CHAMORRO, A	CCDOC	0	0	0	0000?	FRISKE, T	EXMPL	4	0	0	2002
CHIRCHIKOV, S	DRGNS	0	3	1	0000?	FROMM, J	FERMI	0	1	0	1540
CHOUDRY, A	KEMPR	0	1	0	1309#	FULLMER, G	MTRLA	1	0	0	0000?

? - UNRATED

- 5 TO 9 RATED GAMES

* - 10 TO 24 RATED GAMES

C - CENTURY CLUB MEMBER

D - DOUBLE CENTURION

T - TRIPLE CENTURION

Q - QUAD CENTURION

NAME	TEAM	W	L	D	RATING	NAME	TEAM	W	L	D	RATING
GAINES, I	FERMI	1	2	1	1785C	JOHNSON, W	CCDOC	1	1	0	1181#
GALKO, D	KEMPR	0	0	0	0000?	JONES, M	CTA	0	1	1	1473*
GALLAGHER, H	KNIGHT	0	0	0	1317	JONES, MIGUEL	CCDOC	0	0	0	0000?
GANSER, A	BKAMI	0	1	0	1219*	JOSEPHSON, D	WHEAT	3	1	0	1767*
GARCIA, J	ROOKS	0	0	1	0000?	KABELAC, J	ROOKS	3	0	0	1919
GARWOOD, B	COLUM	0	1	0	1956	KALE, S	CASE	3	1	0	1881
GATSON, T	CCDOC	0	0	1	0000?	KANAS, W	CASE	1	1	0	1333C
GAZMEN, E	EXMPL	1	2	0	2171	KARPIERZ, J	TYROS	2	1	0	1238*
GERONIA, R	CASE	1	1	1	1491	KEISLER, J	KNIGHT	1	0	0	2039
GOLCHERT, B	KNIGHT	1	0	1	1854	KELLOGG, K	FERMI	0	1	1	1644C
GOLLA, R	ALUMN	2	1	2	1949D	KERC SMAR, J	WHEAT	0	3	0	0000?
GOLUMBOVSKI, P	NORTH	1	0	0	2129	KINSELLA, G	KNIGHT	0	1	0	1466C
GOMEZ, G	FERMI	2	1	0	1542	KIUSALS, D	SEARS	0	2	0	1078
GONCHAROFF, N	MTRLA	1	1	2	1733Q	KLAUDER, C	WHEAT	0	0	0	0000?
GREEN, D	ROOKS	4	0	1	1872C	KLINEFELTER, H	CASE	0	1	1	1536C
GRYPARIS, J	MTRLA	0	1	2	1458	KOGAN, G	BKAMI	0	2	0	1886
GUIO, J	ROYLS	1	2	1	1956	KOSTECKA, K	COLUM	1	2	2	1550
HAHNE, D	ROYLS	3	1	0	1590	KOZLOVSKY, M	FERMI	0	0	0	2106
HALL, A	CCDOC	1	3	0	1467*	KRUEGER, J	DRGNS	0	1	1	1384*
HALL, D	MDCON	0	0	0	0000?	KRULL, E	AMCRP	0	0	0	1510
HALL, L	SEARS	2	1	0	0000?	LAKE, T	WHEAT	0	2	0	0000?
HALLMAN, W	CASE	0	0	0	1219*	LAMBIRIS, J	KEMPR	1	1	0	1452
HAMMOND, M	BKAMI	1	2	0	1431	LANG, P	KEMPR	0	2	0	0000?
HANSEN, B	PAWNS	1	1	0	1353*	LARSON, T	CCDOC	0	0	0	0000?
HARD, R	PAWNS	0	3	0	1200*	LASKY, N	PAWNS	0	0	0	1352C
HARDIN, L	KEMPR	0	0	0	0000?	LATIMER, E	SEARS	1	2	1	2026D
HARRIS, R	FERMI	3	1	1	1635	LAWRENCE, P	MTRLA	0	0	0	0000?
HARRUFF, E	WHEAT	0	0	0	0000?	LEONG, D	ALUMN	0	0	0	1997
HASAN, Y	MTRLA	2	2	0	2197	LEONG, G	KEMPR	0	0	0	2007C
HELLER, T	WHEAT	0	3	0	0000?	LESTER, M	MTRLA	0	0	0	1569
HESS, B	EXMPL	0	0	0	1451	LEVINE, D	ROOKS	0	0	0	2357
HICKS, C	DRGNS	0	4	0	1539	LEWIS, N	WHEAT	1	0	0	0000?
HILL, C	FERMI	0	0	0	1643	LICARI, T	DRGNS	0	2	0	0000?
HILL, R	KNIGHT	2	1	0	1872	LIKHTEREV, M	UOP	0	0	0	1447*
HILTON, J	MERC	0	0	0	1146	LITVINAS, A	ALUMN	4	0	1	1740C
HODINA, J	AMCRP	1	0	1	2149	LODEWYCK, D	MERC	0	0	0	1414
HOLMES, M	AMCRP	1	2	0	0000?	LOGAN, H	PAWNS	1	1	0	1269*
HORTON, D	MTRLA	0	1	0	1831	LORENZ, B	PAWNS	0	1	0	1479*
HOWARD, W	PSTOF	0	0	0	1566	LOSOFF, A	CRT	3	1	1	1904
HUEBNER, R	ROOKS	0	0	0	0000?	LUDWIG, T	DRGNS	0	0	0	2098C
HUGHES, N	KEMPR	0	0	0	1837C	LUEDERS, J	CRT	0	0	0	0000?
INUMERABLE, F	PSTOF	1	0	0	2293	MACBEAN, J	PAWNS	0	0	0	0000?
JACKLIN, E	CASE	0	0	0	1241	MACKIE, A	MTRLA	2	0	0	1968
JACKSON, S	CCDOC	3	1	0	1258*	MAKAI, M	KNIGHT	3	0	1	0000?
JAGGARD, A	WHEAT	1	1	0	0000?	MALEN, M	AMCRP	0	1	0	0000?
JAKSTAS, K	NORTH	0	0	0	2175C	MARCOWKA, R	PSTOF	0	2	0	1934C
JARRETT, T	CTA	0	1	0	1633*	MATTAR, I	CCDOC	0	0	0	0000?
JASAITIS, A	CRT	3	1	1	2170C	MATTHEWS, J	CTA	0	0	0	1786
JASUNAS, J	ROOKS	0	0	0	1420	MAYNARD, J	WHEAT	0	0	1	1369
JOHNSON, D	CTA	0	2	0	0000?	MCALISTER, K	COLUM	3	1	2	1951

? - UNRATED
 # - 5 TO 9 RATED GAMES
 * - 10 TO 24 RATED GAMES

C - CENTURY CLUB MEMBER
 D - DOUBLE CENTURION
 T - TRIPLE CENTURION
 Q - QUAD CENTURION

NAME	TEAM	W	L	D	RATING	NAME	TEAM	W	L	D	RATING
MCCARTNEY, M	CTA	0	1	0	0000?	RZESZUTKO, R	ALUMN	0	0	0	1848C
MCKAY, P	PAWNS	0	0	0	1393#	SAHLI, E	UOP	0	0	1	1708
MCKEEL, B	CTA	1	2	0	0000?	SAJBEL, P	UOP	2	0	1	1788
MCKINNEY, T	KEMPR	0	2	0	1282*	SAMELSON, C	MTRLA	2	0	0	2002C
MELNIKOV, I	MTRLA	1	2	0	2081	SANDEFUR, B	CCDOC	2	2	0	0000?
MICKLICH, F	UOP	2	2	0	1617C	SANTIAGO, T	COLUM	1	3	1	2008
MIKULECKY, B	PAWNS	0	1	1	1372C	SATTERLEE, D	CASE	2	0	1	1631C
MILLER, TT	SEARS	0	1	0	1823	SAUNDERS, N	MDCON	0	0	0	0000?
MORRIS, R	MTRLA	3	0	1	2074	SAWDO, E	CASE	0	0	0	1412
MORRISON, J	KNGHT	1	1	0	1737	SCHWAB, W	ROOKS	0	1	0	1419
MOTTA, H	FERMI	1	3	1	1884	SCHWARTZ, M	TYROS	0	1	0	1073
MOTYCKA, R	CASE	1	1	0	1165C	SEMONES, E	KNGHT	1	2	0	1099#
MYART, V	CCDOC	0	1	0	0000?	SHAFF, R	TYROS	0	1	0	1531C
NEWCOMER, K	WHEAT	0	2	1	0000?	SHATSKY, V	CRT	3	2	1	1499*
NIXON, L	MTRLA	0	0	0	0000?	SHENOUDA, R	TYROS	0	0	1	0000?
NOBLE, S	JCASE	0	0	0	1286#	SHEYNIN, S	ROOKS	0	0	0	2051
NOTERMANN, T	PAWNS	0	0	0	1178	SHOUSE, B	MTRLA	0	1	0	0000?
NOTTOLI, R	AMCRP	0	0	2	1320#	SIEGEL, R	BKAMI	1	0	0	1469C
O'DELL, DW	PAWNS	0	4	0	1531C	SIMS, B	CRT	1	0	0	1519#
OGASAWARA, L	ROYLS	1	0	1	1828C	SIPP, R	CCDOC	0	0	0	0000?
OLSEN, A	KEMPR	0	4	0	1533	SITAR, K	CRT	3	1	0	1573#
OLSON, C	CASE	0	0	0	0000?	SIWEK, M	KEMPR	0	2	0	2127C
PADLO, R	MTRLA	0	0	0	0000?	SKRZYPCZAK, T	PAWNS	0	3	0	0000?
PARA, A	FERMI	1	0	0	1487	SLAGLE, S	MERC	0	0	0	1682
PARAOAN, E	BKAMI	1	2	0	1805C	SMITH, BR	TYROS	1	0	0	1509
PATTON, D	CHRGR	0	0	0	0000?	SOLLANO, E	EXMPL	3	0	0	1956
PAYTON, P	KEMPR	1	2	0	1235*	SOMBONG, M	BKAMI	1	0	1	1643
PEHAS, A	ROYLS	4	0	1	1999	SPIEGEL, L	FERMI	2	1	2	2087C
PHELPS, C	DRGNS	0	0	0	1248*	STAMM, V	CHRGR	0	2	1	1647D
PIAO, T	DRGNS	0	0	0	1705	STAPLES, C	FERMI	1	1	0	1192#
PLETT, M	UOP	1	1	0	1829	STAPLES, M	CTA	0	3	0	1170*
PORTER, D	AMCRP	0	1	0	0000?	STEELE, B	CCDOC	0	2	0	0000?
POZNIAK, J	KEMPR	0	3	0	1455*	STEVANOVIC, M	UOP	4	0	0	2321C
PRATTS, M	COLUM	1	0	1	1781	STEVENS, G	CTA	0	0	0	0000?
RADAVICIUS, E	CHRGR	1	3	0	1610D	STEVENS, J	COLUM	4	1	1	1407
REARDON, J	WHEAT	0	1	0	0000?	STEVENSON, R	PAWNS	0	0	0	1360
REDDY, S	MTRLA	0	0	0	0000?	STINSON, M	ROYLS	0	0	0	1937C
REID, C	CASE	1	2	0	1429	STOLTZ, B	TYROS	2	1	0	1934
REYES, E	COLUM	0	1	0	0000?	SUAREZ, E	KNGHT	3	0	0	1665
REYES, R	SEARS	2	0	0	2362D	SUERTH, F	EXMPL	1	1	0	1623C
RINGER, D	SEARS	0	1	0	0000?	SULLIVAN, C	ALUMN	1	1	0	1425
ROBERTS, J	WHEAT	0	0	0	1328#	SULLIVAN, J	EXMPL	1	1	0	1977D
ROJAS, R	CTA	0	0	0	0000?	SZONTAGH, T	CRT	0	0	0	1184#
ROJO, V	CCDOC	0	1	1	1359*	TAMEZ, I	TYROS	4	1	0	2138
ROMENESKO, G	PAWNS	0	0	0	0000?	TAN, M	WHEAT	0	0	0	1196
RONIN, D	KNGHT	0	0	0	1537*	TAYLOR, M	CTA	0	0	0	0000?
ROSENBERG, B	MDCON	0	0	0	1456*	TEGEL, F	DRGNS	1	1	2	2163T
ROSLY, D	CHRGR	1	0	0	1728	THOMAS, G	TYROS	2	0	0	1518
ROYTBURG, E	CASE	2	1	0	1962#	THOMAS, J	CHRGR	2	1	1	1505C
RUBIN, A	CRT	0	0	0	0000?	TOELLNER, T	ROOKS	1	1	0	0000?

? - UNRATED

- 5 TO 9 RATED GAMES

* - 10 TO 24 RATED GAMES

C - CENTURY CLUB MEMBER

D - DOUBLE CENTURION

T - TRIPLE CENTURION

Q - QUAD CENTURION

NAME	TEAM	W	L	D	RATING	NAME	TEAM	W	L	D	RATING
TRUDY, E	CCDOC	0	0	0	0000?	WARD, J	CTA	0	0	0	0000?
TURNER, K	PSTOF	0	1	1	1464	WARREN, J	CHRGR	1	0	2	2094T
UHLEMAN, T	PAWNS	1	0	0	0000?	WEITZ, R	EXMPL	1	1	0	1699C
UNDERWOOD, W	WHEAT	0	2	0	1945C	WENTLING, C	AMCRP	1	0	2	1620C
VACCARO, M	COLUM	2	2	0	0000?	WHARTON, P	WHEAT	0	1	1	0000?
VALDEZ, C	MTRLA	0	0	0	0000?	WHITE, H	CASE	2	0	0	1649
VAN MEER, J	KEMPR	0	0	0	1958	WHITE, T	BKAMI	0	1	0	1332#
VAN METRE, R	SEARS	0	0	0	1483#	WILLIAMS, A	CTA	0	2	0	1468#
VAN ZILE, C	UOP	0	1	0	1347	WILLIAMS, T	CASE	3	0	1	2150
VANDECOTTE, M	UOP	0	0	0	0000?	WILSON, A	CTA	0	1	0	1578
VAYSBERG, O	CASE	2	0	0	0000?	WILSON, M	SEARS	0	2	1	1248*
VEREZHENSKY, E	AMCRP	0	0	0	0000?	WOLF, D	MTRLA	0	1	0	2302
VIGANTS, A	NORTH	0	2	1	1545	WONG, P	EXMPL	0	0	0	2210C
VITAVER, L	SEARS	0	0	0	1546#	WOOD, L	AMCRP	0	0	0	1488#
WALDEN, W	CCDOC	0	0	0	0000?	WRIGHT, E	CCDOC	0	1	0	0000?
WALKER, A	NORTH	0	2	0	0000?	YACOUT, A	KNGHT	3	1	0	0000?
WALLACH, C	MTRLA	2	0	0	2078	YOUNG, R	ALUMN	0	0	0	1413
WALSH, W	ROOKS	1	1	0	1500C	ZOELLNER, J	BKAMI	0	3	0	1381C
WARD, C	DRGNS	1	2	1	1559D						

? - UNRATED

- 5 TO 9 RATED GAMES

* - 10 TO 24 RATED GAMES

C - CENTURY CLUB MEMBER

D - DOUBLE CENTURION

T - TRIPLE CENTURION

Q - QUAD CENTURION

01-04-1997

NEAR WEST DIVISION TOP TEN

WILLIAMS, T	CASE	2150
BENEDEK, R	KNGHT	2105D
WARREN, J	CHRGR	2094T
KEISLER, J	KNGHT	2039
ELLICE, W	PAWNS	1920
KALE, S	CASE	1881
HILL, R	KNGHT	1872
GOLCHERT, B	KNGHT	1854
MORRISON, J	KNGHT	1737
ROSLEY, D	CHRGR	1728

FAR WEST DIVISION TOP TEN

LEVINE, D	ROOKS	2357
BEZZUBOV, V	FERMI	2350*
TEGEL, F	DRGNS	2163T
TAMEZ, I	TYROS	2138
BERRY, G	ROOKS	2128T
KOZLOVSKY, M	FERMI	2106
LUDWIG, T	DRGNS	2098C
BUCHNER, R	ROYLS	2089
SPIEGEL, L	FERMI	2087C
DIAZ, P	TYROS	2065

NORTH DIVISION TOP TEN

REYES, R	SEARS	2362D
STEVANOVIC, M	UOP	2321C
WOLF, D	MTRLA	2302
WONG, P	EXMPL	2210C
HASAN, Y	MTRLA	2197
JAKSTAS, K	NORTH	2175C
GAZMEN, E	EXMPL	2171
GOLUMBOVSKI, P	NORTH	2129
SIWEK, M	KEMPR	2127C
BUERGER, E	UOP	2095D

EAST DIVISION TOP TEN

INUMERABLE, F	PSTOF	2293
BYRNES, R	CTA	2217*
JASAITIS, A	CRT	2170C
HODINA, J	AMCRP	2149
FRIESEMA, W	CRT	2109
CZERNIECKI, A	ALUMN	2046D
SANTIAGO, T	COLUM	2008
LEONG, D	ALUMN	1997
GARWOOD, B	COLUM	1956
MCALISTER, K	COLUM	1951

MOST IMPROVED PLAYERS

JACKSON, S	CCDOC	126
CURTIS, M	NORTH	78
FRISKE, T	EXMPL	68
STEVENS, J	COLUM	67
DORFF, M	SEARS	60
HARRIS, R	FERMI	59
GREEN, D	ROOKS	48
BAURAC, D	ROOKS	48
ATKINSON, J	AMCRP	46
ELLICE, W	PAWNS	42