

**CHICAGO INDUSTRIAL CHESS LEAGUE**

Meeting of March 25, 1997

at: Case Corporation

**Attendees**

Jim Atkinson	Amoco
Karel Dobr	Lucent Tech. Chargers
Wayne Ellice	Pawns; Trophy Chairman
Dan Fraats	Bank of America; East Division Chairman
Irwin Gaines	Fermi; Far West Division Chairman
Tony Jasaitis	Chicago Research & Trading; CICL Secretary
Satish Kale	Case; President
Howard Klinefelter	Case; Near West Division Chairman
Algis Litvinas	Alumni Aces
Pat Sajbel	UOP; North Division Chairman
Lenny Spiegel	Fermi; Banquet Chairman
Jerry Thomas	Lucent Tech. Chargers
Wes Underwood	Wheaton College; Treasurer
Charlie Ward	Lucent Tech. Dragons; Ratings Chairman

**Minutes**

Prepared by Tony Jasaitis, CICL Secretary

1. President Satish Kale called the meeting to order at 7:15pm.
2. No changes were noted to the minutes of the Fall 1996 meeting.
3. Wes Underwood presented a report of CICL finances. Since most of the expenses are incurred at season's end, there has not been a lot of financial activity. The CTA and Post Office teams have not paid their dues. Score sheets for the season cost more than planned, but we did not incur the Illinois Chess Bulletin advertising expense that was expected.
4. The Secretary, Ratings Chairman, and Banquet Chairman did not have any significant items to report.
5. Wayne Ellice, noting the league's 40th anniversary, proposed that the league order metal key fobs with our logo and dates to be distributed to all league members active this season. Charlie Ward estimated the number of currently active members to be 250-300. The estimated cost per person is \$2. Wes Underwood pointed out that between our cash reserves, and budget surpluses from the bulletin and banquet, we should have no trouble paying for the proposal. The proposal passed unanimously.
6. Satish Kale reported promising contacts with four potential new teams. The most promising of these is Leo Burnett, downtown.
7. East Division Chairman Dan Fraats indicated that he wishes to step down, and mentioned that Kelvin McAlister of Columbia has indicated an interest in resuming the post he held several years ago.
8. Pat Sajbel proposed that the upper-board forfeit rule limit reduced from 4 back to 2. The general consensus was that 4 such forfeits was excessive. It

will be voted upon next meeting.

9. No playoff site was determined as of the meeting. Satish recommended that all teams try to obtain their site as if it were the only option. [Afterward, Midcon managed to provide their site again].
10. Dan Fraats volunteered to be the playoffs TD.
11. Tony Jasaitis presented Tim Williams' proposal to change the playoff tiebreaker from cumulative round scores to game points, as well as an alternate proposal to use a team formula used at the US Amateur Team Tournament. After a lengthy discussion, it became apparent that all tiebreak methods have shortcomings for a 3-round tournament, Wes Underwood proposed that the tiebreaker be completely eliminated, and the league pay for additional trophies if necessary. The proposal to eliminate the tiebreaker passed unanimously.
12. Howard Klinefelter asked for clarification of the player eligibility for former employees of a company. The rule appears to allow former employees that never played on the team to subsequently play on it, which was probably not the intent of the rule. Irwin Gaines stated that the intent was for former PLAYING EMPLOYEES of a team to have residual eligibility. Additional issues would be whether the residual eligibility should extend only to employee team members, and the duration of play on the team, if any. Tony Jasaitis said he would put together a "mix and match" proposal of items to be pieced together into a rule at the next meeting. Charlie Ward endorsed this idea.

Howard said that he brought up this issue because in his division, some unknown player with no rating of any kind was placed on board 2, and he did not show up. Algis Litvinas said that names should not be listed for players who forfeit.

13. Pat Sajbel was unanimously elected President. Lenny Spiegel was unanimously elected Treasurer. The election for Secretary was postponed to the next meeting. Lenny will step down as Banquet Chairman at the end of the season.
14. Wes Underwood wished to relinquish his complete collection of 40 years of league bulletins, and felt that it should be passed on to an officer. Lenny Spiegel will assume possession of the collection for now.
15. Satish Kale, who mails out the bulletins, related problems with obsolete and wrong information in our mailing list. Some of the problems are caused by the long lead times in paying dues, renewing individual subscriptions, changes of address and/or team captains, etc. He proposed deleting the current mailing list and publishing a form in the last bulletin of the season and make it the responsibility of teams and subscribers to submit it at the beginning of every new season. Charlie Ward pointed out that team captain's lists are submitted by division chairmen at the beginning of every season, and should be used for the mailing list. Wes Underwood pointed out that the list would not cover individual subscriptions, nor companies with multiple teams that receive only one bulletin.

After a number of people wondered why using the same address for people

until notified differently is a problem, Satish revealed that Case envelopes are coming back to his company, causing an embarrassing situation. Wes Underwood pointed out that this what the Treasury is for: Satish should buy envelopes and charge the Treasury.

The final consensus was that no team bulletins will be mailed out until division chairmen submit their team captain lists. No individual bulletins will be mailed to individuals until the Treasurer receives a request with payment. A form will be published at the end of each season.

16. Wayne Ellice brought up a proposal to change wording in the Constitution which states the merged teams are "strongly discouraged", which made it difficult for his team to enter the league. He present a wording "A" to cover existing teams that could no longer survive on their own, and a "B" wording to cover new companies unable to field a full team on their own. Considerable discussion ensued as to how loose the wording should be, and whether the companies should have had prior teams in the league. The following version of "A" was approved 10 for, 1 against, 1 abstain:

"A merged team may be comprised of two or more separate companies which formerly had their own teams, but can no longer individually support a team. Merged teams need to state their name, the names of their merged companies, the names of the team captain(s), and the location of their playing site. The merged team must be approved by vote of team captains upon formation of the team, and whenever changes occur to the roster of companies comprising the team."

As for the "B" wording covering companies not in the league, Irwin felt that most people would not object to two companies legitimately falling somewhat short of a full team each and merging. What is of concern is a team falling short of a player, "recruiting" a strong player employed somewhere else, and calling it a merged team. The assembly decided to table exact wording covering non-member company merged teams until the next meeting. [Suggestion: how about an initial minimum of three players from a non-CICL-member company? Upon initial admission and any subsequent company composition change, an explicit list of players and their companies must be submitted. - TJ].

17. Satish asked whether regular-season use of score sheets should be continued, especially since there are not enough for another full season without ordering more. If used, they should be ordered in time to be distributed at the fall meeting, since they are costly to mail, and awkward to distribute otherwise. The general consensus was that as long as we have a bulletin editor willing to process the large volume of score sheets, we should continue them. Satish will follow this up.
18. Irwin Gaines expressed reservations about the value of continuing to present an Outstanding Team Captain award. No one present argued a case for retaining it. The award was eliminated by a vote of 11-1.
19. President Satish Kale closed the meeting at approximately 10pm.

# GAMES

Acknowledgment: Special thanks to *Dennis Leong* for transcribing handwritten scoresheets into computer text.

Outranked on all boards by as low as 80 to as high as 462 points, **NationsBank CRT** created quite a stir in the first round of the playoffs with an unlikely 3-3 tie versus Motorola.

Here's that match in its entirety.

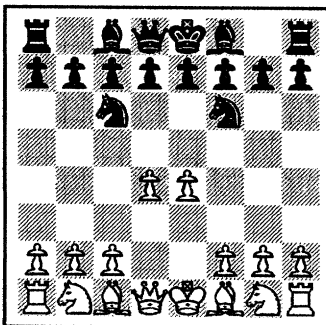
## Round 1 (Playoffs) ; May 5, 1997

Motorola		Nations Bank CRT	
Y. Hasan	0	A. Jasaitis	1
I. Melnikov	1	A. Losoff	0
R. Morris	1	D. Bargerstock	0
C. Wallach	0	J. DeLeon	1
C. Samelson	0	K. Sitar	1
A. Mackie	1	V. Shatsky	0
<b>3</b>		<b>3</b>	

WHITE: A. Jasaitis (2155) CRT  
BLACK: Y. Hasan (2235) Motorola

### Nimzovitch

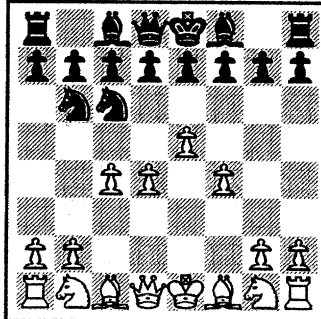
1. e4 Nc6 2. d4 Nf6



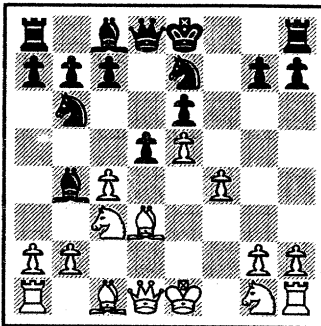
This game's interesting already and we're still on the second move.

3. e5 Nd5 4. c4 Nb6 5. f4

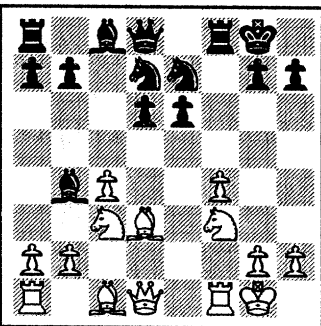
The position can arise from the Alekhine's after 1.e4 Nf6 2.e5 Nd5 3.c4 Nb6 4.d4 Nc6 5.f4



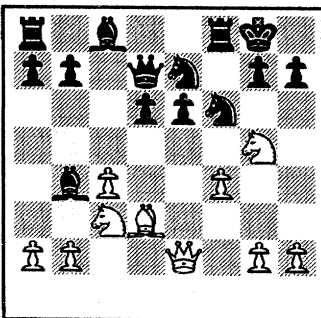
5...e6 6. d5 Bb4+ 7. Nc3 Ne7 8. dxe6 fxe6 9. Bd3 d5



10. exd6 cxd6 11. Nf3 Nd7 12. 0-0



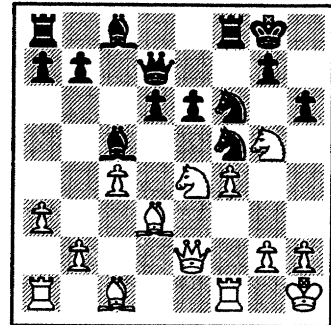
13. Ng5 Nf6 14. Qe2 Qd7



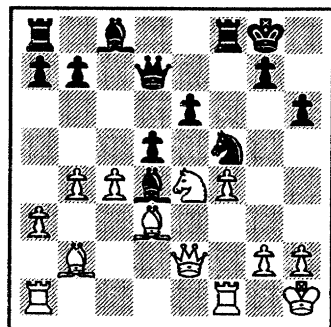
15. Nce4

15.Re1 doesn't win a pawn: 15...e5 16.fxe5 dxe5 (17.Qxe5?? Qxd3)

15...Nf5 16. a3 Bc5+ 17. Kh1 h6



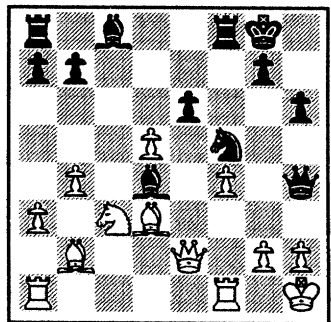
18. Nxf6+ Rxf6 19. Ne4 Rf8 20. b4 Bd4 21. Bb2 d5



22. Nc3 Qe7

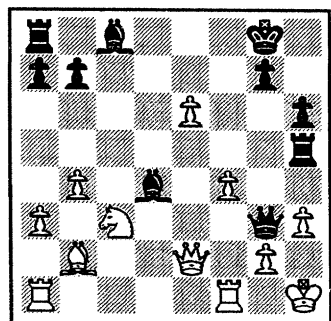
Black leaves his d-pawn on an attacking mission in the King's wing.

23. cxd5 Qh4



Threatens 24...Ng3+ forking White's K+Q..

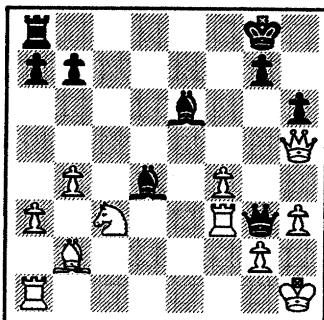
24. Bxf5 24...Rxf5 25. dxe6 Rh5 26. h3 Qg3



Rather unusual for Y. Hasan to hang a Rook like this. Black's losing anyway as

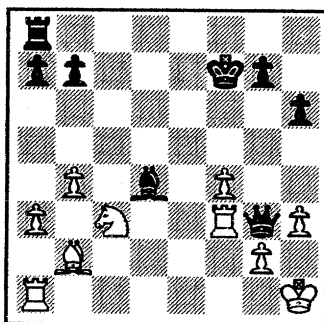
he's behind not only in material but also in development.

27. Qxh5 Bxe6 28. Rf3



Icing on the cake. Black's Q is trapped.

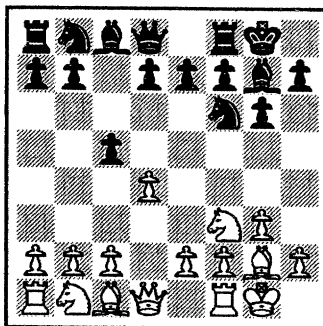
28...Bf7 29. Qxf7+ Kxf7 1-0



White: I. Melnikov (2108) Motorola  
Black: A. Losoff (1922) CRT

### King's Indian

1. d4 Nf6 2. Nf3 c5 3. g3 g6 4. Bg2 Bg7 5. 0-0 0-0



6. c3

Offering to play the Gruenfeld with colors reversed..

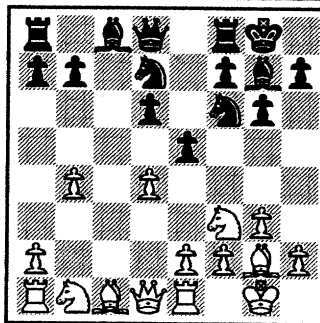
6...d6 7. Re1 Nbd7 8. b4 cxb4

Or 8...cxd4 9.Nxd4 e5

9. cxb4 e5

See diagram next column

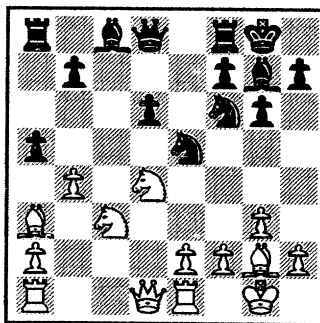
Or 9...Qb6 10.a3 Nc6.



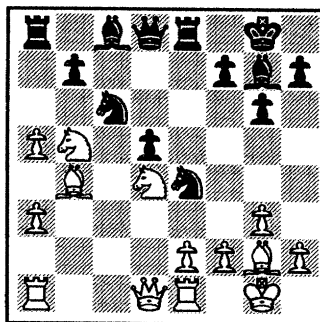
10. Nc3 exd4

This addresses Black's problem in developing the N at d7 but at the expense of getting an isolated d-pawn.

11. Nxd4 a5 12. Ba3 Ne5

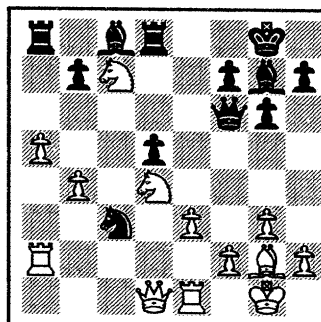


13. bxa5 Re8 14. Bb4 d5 15. Ncb5 Nc6 16. a3 Ne4



16...Be6.

17. e3 Qf6 18. Ra2 Rd8 19. Nc7 Nxb4 20. axb4 Nc3

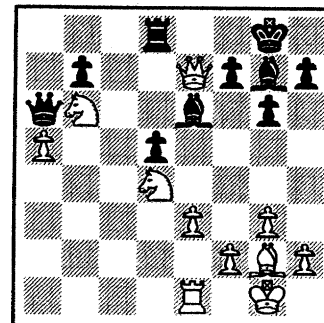


If 20...Rb8 then 21.Nxd5 Rxd5 22.Bxe4

21. Qb3 Nxa2 22. Nxa8

Capturing the N can wait as it can't escape anyway.

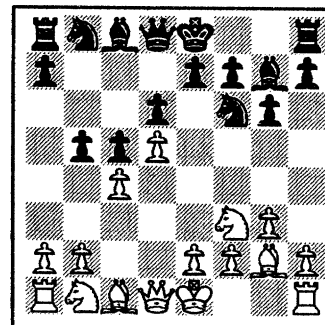
22...Qa6 23. Nb6 Nxb4 24. Qxb4 Be6 25. Qe7 1-0



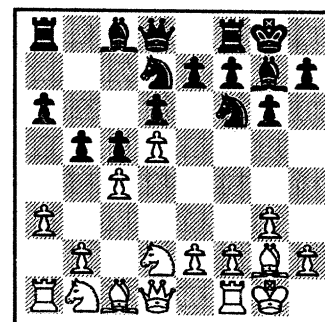
White: D. Bargerstock (1720) CRT  
Black: R. Morris (2108) Motorola

### King's Indian

1. d4 Nf6 2. Nf3 g6 3. c4 Bg7 4. g3 c5 5. d5 d6 6. Bg2 b5



7. Nfd2 a6 8. a3 Nbd7 9. 0-0 0-0



10. Nc3 Rb8

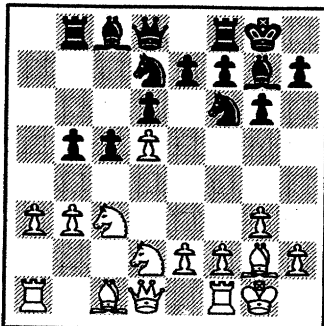
Or 10...Nb6

11. cxb5 axb5 12. b3?

See diagram next page

Black's B on the long diagonal (a1-h8) now gets a nice juicy White Rook at a1 for a target.

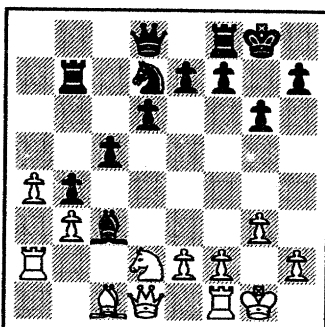
Position after 11.cxb5 axb5



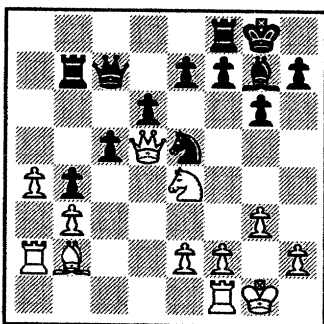
12...b4 13. Ncb1 Nxd5

The Rook at a1's hanging. White doesn't have time to capture the "free" N.

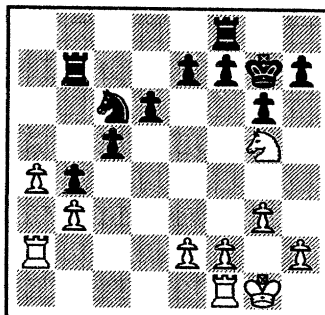
14. Ra2 Nc3 15. Nxc3 Bxc3 16. a4 Bb7 17. Bxb7 Rxb7



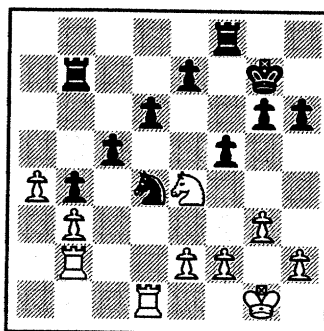
18. Ne4 Bg7 19. Bb2 Ne5 20. Qd5 Qc7



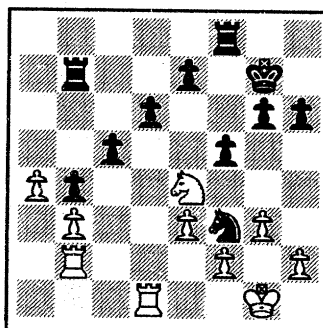
21. Ng5 Qc6 22. Qxc6 Nxc6 23. Bxg7 Kxg7



24. Rd1 Nd4 25. Rb2 h6 26. Ne4 f5



27. e3 Nf3+ 0-1



After 28.Kg2 fxe5 Black'd be a piece and a pawn up.

White: **A. Czerniecki**, Alumni Aces (2027)  
Black: **A. Jasaitis**, NationsBanc/CRT (2173)

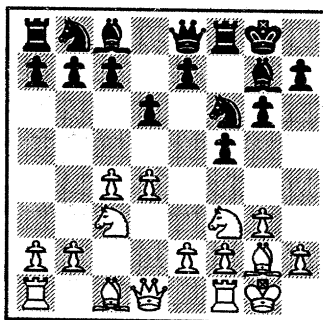
Opening: **Leningrad Dutch**

Event: CICL 1996-7 Season Playoffs, Round 2

Date: 5-17-97

Notes by: **A. Jasaitis**

1.Nf3 f5 2.g3 Nf6 3.Bg2 g6 4.O-O Bg7 5.c4 O-O 6.Nc3 d6 7.d4 Qe8



One of the richer variations of the Dutch. Black prepares ...e5 without having to put

up with a Queen trade. Depending on White's continuation, the Queen can later be used to pressure and/or defend the white squares on the Q-side, be placed on a semi-opened f-file, or help attack the K-side after an eventual ...g5. In this game, White likewise prepares to complete his occupation of the center.

8.Qc2 e5 9.de de 10.e4 f4!?

Aggressive to the max. 10...Nc6 would have been more solid.

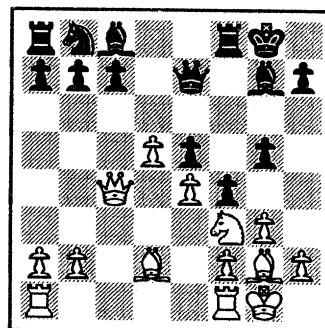
11.Nd5

On 10.gf of 11.Bf4, Black has Nxe4, exposing an attack on Bf4.

11... Nxd5 12.cxd5 Qe7?

White's Knight move gave him pressure on the c-file, but also made it easier for Black to storm the K-side. Black's move addresses both of these issues, supporting...g5. However, "undeveloping" the Queen with 12... Qd8 would have been more solid. Black is putting his K, Q, R, and c-pawn all on thin ice, as we will see. Now every move for Black will be a difficult, double-edged choice just to retain a semblance of counterbalance to White's pressure.

13.Bd2 g5!? 14.Qc4 g4!?



Not fearing the fate of any of those pieces on thin ice! The immediate 15.d6+ is met by ...Qf7.

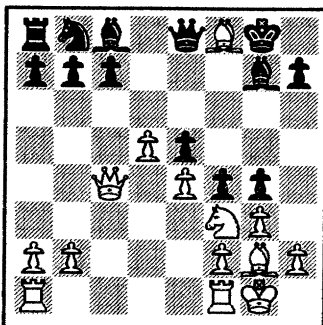
15.Bb4 Qe8

15...Qd8 would have given White chances for a dangerous attack, as illustrated by 15. Bxf8 Kxf8 16.Nxe5! Bxe5 17.gf Bxf4 18. e5! followed by f3! Now White rushes into grabbing the exchange immediately, but would have had better chances with the aggressive and complicated 16.Ng5!?, keeping his options open, and presenting Black with many pitfalls. An illustration 16...f3?! 17.d6+ Rf7! 18.dc?! fxd2?! 19. Rfd1 Nd7 [...Nc6? 20.Nxf7 Qxf7 21.Rd8+] 20.Rd2 with a bind.

16.Bxf8?! Bxf8

Intending to put the Bishop to better use consolidating the Queen-side. White retreats the Knight to challenge that consolidation. He could have avoided being saddled with a trapped Bishop with

the more confrontational 17.Ng5 Bd6 18. f3! f3! 19.hxg3, when a tug of wills ensues over Black's Bishop getting to c5 in time to do serious damage. Ruben Reyes points out that Black could have chosen to get two minor pieces for the rook after 16...gxf6 17.Bxg7 f3! 18.Rfc1 Kxg7 19.Qxc7+ Nd7 20.Kxg2.. However, White may be able to exploit that span in time Black needs to untangle his N and B and activate the R at a8. For example 20... b6 21.Rc6 Ba6 22.Rd6 Bb5 23.Rac1.



17.Nd2 f3

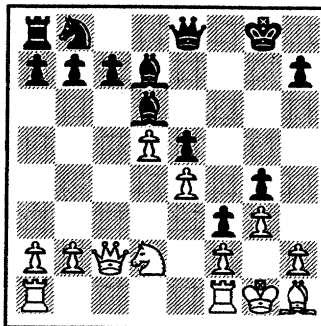
Now that the smoke has cleared, this is a good time to contemplate long-term strategy for both sides. Black's plan is clear to use his pawn wedge to help him crush the White King, either with Q + R on the h-file, or a N at h3. If he falls short of that, he has the advantage of having two pieces versus a rook, whether or not White's Bishop is actually on the board! Black just needs to take care to not let his pawn-chain get broken up, nor to neglect his Queen-side too much before the attack can be made deadly. However, a King-side crush is not a given. White can meet mate threats on the h-file by playing h4! at the right moment, inviting Black to break up his pawn chain and possibly freeing the trapped Bishop. The resulting position then would have to be evaluated on its own merits. If Black does not capture the h-pawn en-passant, the King-side becomes totally blockaded, requiring an alternate winning strategy or a well-calculated sacrifice. In the meantime, White must look for an optimal time to give back the piece for at least two pawns, and/or invite Black to overextend himself by neglecting the Queenside too much for the King-side attack.

White's task is the more difficult one. Even in retrospect, I can't suggest anything clearly better for White than giving back the piece immediately, leading to a difficult game of R + 2P vs 2 pieces.

**18.Bh1 Bd6 19.Qc2 Bd7**

19...Na6 might be more accurate. I rushed into having the option of planting the Bishop at e2, but that would give White the option of taking the B at e2 with a Rook, leaving him a pawn up and with a freed Bishop. I came to realize this soon afterward, but the Bishop did turn out to be

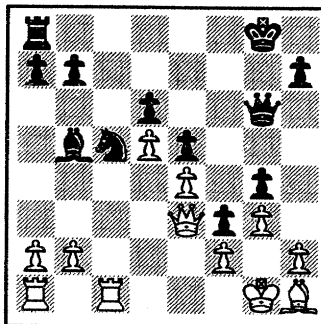
quite useful as a royal prison guard.



**20.Nc4 Bb5 21.Nd6 cxd6 22.Rfc1 Na6 23.Qd2**

To clear the file for occupation by Rooks, but gives Black some key tempos to move pieces to the Kingside. However, it is hard to suggest an effective alternative.

**23...Qg6 24.Qe3 Nc5 25.b4**



Giving up on the e-pawn looks bad, but if White does not penetrate on the c-file, what does he have to show for his troubles?

**25...Nxe4 26.Rc7 Ng5 27.h4 gxh6(ep)**

The crucial strategic moment has arrived. Can Black afford to break up his pawn chain, or must he look for an alternative? Actually, with the Q-side on fire, the bridges have already been burned! I didn't seriously consider 27...Nh3+?! creating a highly unusual position with three mutually trapped pieces (does anyone know of another game with such a position?), and the opportunity for White to free his Bishop cheaply with Bxf3, overloading Black's g-pawn. With his Q-side about to get munched, Black needs something with high heat content.

**28.Kh2?!**

Here was the brief moment of escape that the White Bishop was waiting for. Without a clock ticking away, and the benefit of hindsight, it is easy to say now that White should have grabbed his chance, despite aerating his King's zone. The best play I have been able to work out for both sides is:

**28.Bxf3 Rf8!**

[28...Nxf3+ 29.Qxf3 Rf8 30.Qe3 e4 31.Rac1 Rf3 32.Rc8+ Be8 33.Qe2! (to

discourage ...e3) h2+ 32.Kh1! (32.Kxh2? Qh5+ 33.K-any R3g3+). This line illustrates that White must not be given time to put both rooks on the c-file, generating too much counterplay against the Black King)]

**29.Be2!**

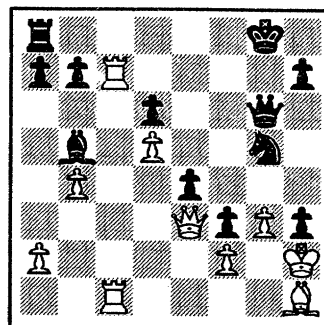
[29.Bh1? (depriving the K of shelter behind Black's pawn) h2+! 30.Kxh2 Qh5+ 31.Kg1 (or 31.Kg2 Nf3) Nh3+ 32.Kg2 Rxf2+]

29...h2+! 30.Kh1! Bxe2 31.Qxe2 Nh3 32.Rf1 Nxf2!! 33.Rxf2 Qb8+, leading to an ending with Black ahead by a pawn.

Another interesting continuation is 29.Bg4!? It encourages Black to further clog up the h-file with more black pawns (at the risk of them breaking through), and further exposing the Black King.

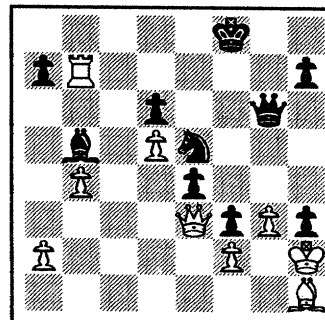
Now Black pours some new cement onto the White Bishop.

**28...e4 29.Rac1**



29.Rxb7 would have been a greater challenge for Black, but still meetable with a theme similar to the game's. I will put off presenting it until after the game's continuation, to better keep the suspense regarding Black's winning technique. A tug of wills now ensues over the freedom of White's executioner Black's Knight. Can he move in for the kill at g4 without allowing a fatal (or drawing) blow to his own King?

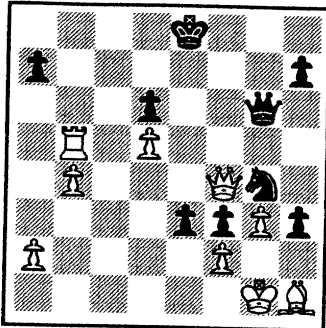
**29...Nf7 30.Rc8+ Rxc8 31.Rxc8+ Kg7 32.Rc7 Kf8 33.Rxb7 Ne5!!**



The answer is yes, but only with a lot of help from his own monarch!

**34.Qf4+ Ke8 35.Rxb5 Ng4+**

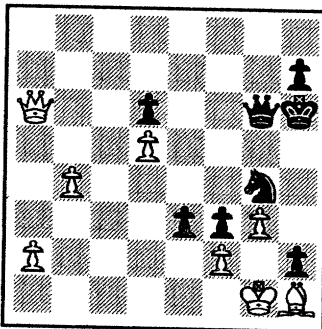
36.Kg1 e3!



Revealing that White and not Black is the one who neglected the Q-side in pursuit of a King, thanks to the uncovered threat of back-rank mate! Even though with three pawns on the 6th or beyond Black's position looks overwhelming, Black must still be careful and watch his move order. For example, even though it could transpose to the game, a mistake would be first 36...h2+ 37.Kf1 e3 due to 38.Qxf3.

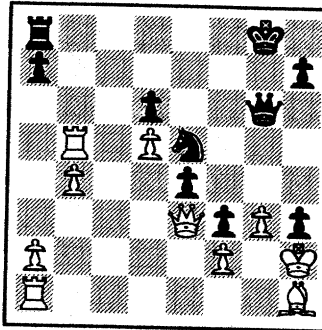
In the game, even though White can now assault the Black King with Queen and Rook, it is just barely insufficient due to the many ways White can get checkmated. Note that White would be vastly better off without his b-pawn. As it is, it takes a lengthy dodge-em by the Black King to finally evade his pursuers. These two attributes of the position give it a problem-like flavor.

- 37.Rb8+ Kd7 38.Rb7+ Kc8
- 39.Qc4+ Kxb7 40.Qc6+ Kb8
- 41.Qb5+ Kc7 42.Qc6+ Kd8
- 43.Qa8+ Ke7 44.Qxa7+ Kf8
- 45.Qb8+ Kg7 46.Qb7+ Kh6
- 47.Qa6 h2+ 0-1



Now back to 29.Rxb7 instead of the game's Rac1 after 29...Nf7 30.Rxb5 Ne5, the discoordination of White's pieces and lack of quick counter-targets to Black's onslaught appear to be fatal. However, very precise play is required of Black, who cannot afford to be down a Rook indefinitely.

See diagram next column



On 31.Qf4 Rf8 32.Qh4 Ng5+ 33.Kg1 Nxf2!! 34.Kxf2 Qc2+ wins, illustrating that the White Queen must hang around the middle of the board. However, on any of 31.Qd2, Qc3, or Qd4, the surprisingly quiet 31...Rf8!! [determined after several days of finding the more obvious aggressive moves to be just slightly inadequate with best White play, so I can't say I would have played this in the game] threatens the sequence 32...Ng4+ 33.Kg1 e3!! 34.fe f2+ 35.Kf1 Nh2+ 36.Ke2 f1/Q+ 37.Rxf1 Nxf1. With his material recovered, Black is well poised to continue the King-hunt. Despite an extra rook, White appears to have no useful move to prevent this sequence.

The move ...e3 appears to be the key to most winning lines for Black. If White specifically concentrates on preventing it with 31.Qc3 Rf8 32.Re1, Black wins with it anyway after 32...Ng4+ 33.Kg1 e3!! 34.Rxe3 h2+! 35.Kf1 Nxe3+ 36.Qxe3 Qb1+ 37.Qe1 Qd3+.

David Sacks of UOP won the individual tournament unbeaten and untied with a 4-0 score.

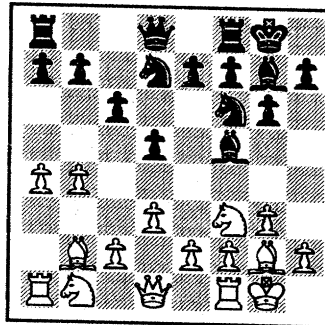
Here's the final game showdown .

WHITE: D. Sacks (UOP) 1700  
BLACK: D. Altshuller (DRGNS) 1800

- 1. Nf3 Nf6 2. g3 g6 3. b4

Barcza and the Polish is a nice meld.

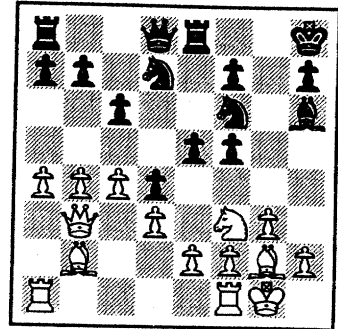
- Bg7 4. Bb2 d5 5. Bg2 c6 6. a4 Bf5
- 7. d3 Nbd7 8. 0-0 0-0



- 9. c4 Re8 10. Nd4

White doesn't give Black time to play ...Nf8 and give Black's B at f4 room to escape

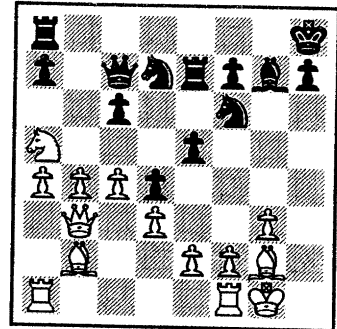
- 10...e5 11. Nxf5 gxf5 12. Nd2
- Kh8 13. Qb3 Bh6
- 14. Nf3 d4



- 15. Nh4 f4 16. Nf5 Bg7

Black's unaware of White's intentions, else 16...Bf8

- 17. Nd6 Re7 18. Nxb7 Qc7 19.
- Na5 fxc3 20. hxc3



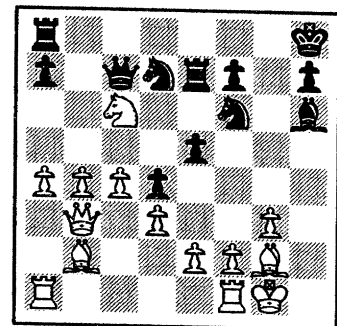
White's threatening to capture the c-pawn.

- 20...Bh6

Black doesn't seem to have any means with which to defend the c-pawn directly. That's because 20...Re6 21.Bh3 Rd6 22.c5 Rd5 23.Bg2 bags the R.

Black could try as a last resort 20...Nc5 21.bxc5 Qxc5 22.Bxc6 Rc8 which would limit White's two-pawn advantage to doubled c-pawns.

- 21. Nxc6 1-0





**CHICAGO INDUSTRIAL CHESS LEAGUE  
MID-YEAR TREASURER'S REPORT (part 1 of 2)**

**Cash Receipts and Disbursements for 1996-1997 (through 3/24/97):**

Beginning Cash Balance, August 1996 (Note A): \$2,833.39

Cash Receipts:

Basic Team Dues 22 @ \$40 (Note B)	\$880.00
Late Dues Payment Penalties	40.00
Basic Co. Bulletin Subscriptions 20 @ \$13	260.00
Individual Bulletin Subscriptions 1 @ \$7	7.00
Team Banquet Guarantees 22 @ \$17	374.00
Savings Account Interest	31.60

Total Cash Receipts: 1,592.60

Total Cash Available for Disbursement: \$4,425.99

Cash Disbursements:

Bulletin Publication/Mailing	\$125.36
Match Results Sheets	117.25
USCF and ICA Dues	65.00
Game Score Sheets	188.75
Postage/Copying Expense (non bulletin)	41.70
Banquet (Harvey's Prime Rib) Deposit	300.00

Total Cash Disbursements: 838.06

Current Cash Balance, March 24, 1997 (Notes A,C): \$3,587.93

Note A: Of this amount, \$1,400.00 is reserved for the purchase of a computer (to maintain ratings, standings, etc).

Note B: Two teams, CTA and Post Office, have not yet paid dues for the current season.

Note C: Checking Account Balance is \$1,390.93. Savings Account Balance is \$2,197.00.

Respectfully Submitted,



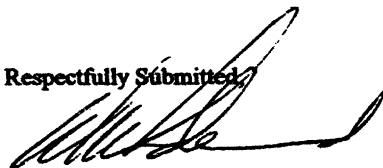
Wesley K. Underwood, Treasurer  
March 25, 1997

**CHICAGO INDUSTRIAL CHESS LEAGUE**  
**MID-YEAR TREASURER'S REPORT (part 2 of 2)**

**Budget/Actual (to-date) for 1996-97 Season, with Actual for 1994-95 and 1995-96:**

	<u>1994-95</u> <u>Actual</u>	<u>1995-96</u> <u>Actual</u>	<u>1996-97</u> <u>Adopted</u> <u>Budget</u>	<u>1996-97</u> <u>To-Date</u>
<b>Revenue:</b>				
Basic Team Dues	\$1,090	\$1,240	\$1,000	\$880
Bulletin	339	327	313	267
Banquet	2,067	2,017	1,955	374
Miscellaneous	76	89	75	72
<b>Total Revenue:</b>	<u>\$3,572</u>	<u>\$3,673</u>	<u>\$3,343</u>	<u>\$1,593</u>
<b>Disbursements:</b>				
Bulletin	\$236	\$217	\$300	\$125
Banquet	1,868	1,885	1,900	300
Awards (Net of Extra Orders)	1,315	864	910	0
Advertising (in ICA Bulletin)	0	0	140	0
USCF/ICA Dues	55	65	65	65
Playoffs	47	75	75	0
Scoresheets	0	0	125	189
Miscellaneous	133	51	200	159
<b>Total Disbursements:</b>	<u>\$3,654</u>	<u>\$3,158</u>	<u>\$3,715</u>	<u>\$838</u>
<b>Net Gain (Loss)</b>	<u>(\$82)</u>	<u>\$514</u>	<u>(\$372)</u>	<u>\$755</u>

Respectfully Submitted,



Wesley K. Underwood, Treasurer  
 March 25, 1997