

The Chicago Chess Player
The Official Bulletin of the Chicago Industrial Chess League



Inside

- Games
- The finishing touch
- Tactics and Technique
- Team standings by division
- Match results
- Top 10, CICL MVP lists
- Ratings list

CICL OFFICERS

President: Satish Kale (skale@casecorp.com (E-Mail))
CASE Corp
7 South 600 County Line Rd.
Burr Ridge, IL 60521
W:(630) 887-2372 H:(630) 325-KALE

Secretary Tony Jasaitis (CRT) (tony@trdlnk.com (E-mail))
P.O. Box 664
Bedford Park, IL 60499-0664
H:(708) 448-4967

Treasurer Wesley K. Underwood (Wheaton)
(wu@david.wheaton.edu (E-mail))
207 S. Dorchester Ave.
Wheaton, IL 60187
W:(708) 752-5127 H:(708) 462-0393

Ratings Chairman Charles Ward (Lucent Tech Dragons)
(c.e.w.ward@att.com (E-mail))
615 S. Lincoln
Hinsdale, IL 60521
W:(708) 979-4599 H:(708) 325-3885
Fax: (708) 979-6124

Publicity Director Carl Reid (CASE)
2289 Grand Drive
Northbrook, IL 60062-6937

Trophy Chairman Wayne Ellice (Pawns)
(wayne.ellice@arous.sprint.com (E-mail))
Crosfield Catalysts
4099 West 71st Street
Chicago, IL 60629
W:(312) 838-3215 Fax:(312) 838-3243

Banquet Chairman Len Spiegel (Fermi)
(lenny@fnal.gov (E-mail))
Fermilab MS 219
P.O.Box 500
Batavia, IL 60510
W:(708) 840-2809 H: (708) 377-2675

Bulletin Editor Ruben Reyes (Sears)
(RRgb@aol.com (E-mail))
2019 W. Leland Ave.
Chicago, IL 60625-1513
W: (847) 286-0758
H: (773) 334-0591
Fax: (773) 769-0311

Far West Division Chairman Irwin Gaines (Fermi)
(gaines@fnal.gov (E-Mail))
Fermilab MS 127
P.O.Box 500
Batavia, IL 60510
W: (708) 840-4022
H: (708) 420-1452
Fax: (708) 840-2783

North Division Chairman Pat Sajbel (UOP)
(Posajbel@uop.com (E-Mail))
616 S. Edward
Mt. Prospect, IL 60056
W:(847)391-2134
H:(847)506-9302

Near West Division Chairman Howard Klinefelter (Case)
(hklinefelter@casecorp.com)
1125 Manchester Court
Naperville, IL 60563-2110
H: (630) 961-0482

East Division Chairman Don Frauts (Bank of America)
592- West 55th Street
Chicago, IL 60638
W:(312) 247-4343
H:(312) 581-0923

Reader's Forum

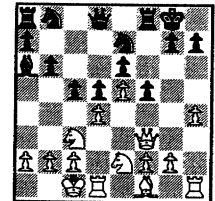
From the editor

Included in this issues are fine games from **Mike Stevanovic** (2301C), **Robert Morris** (2051), **Isidro Tamez** (2103) and **Chuck Dobrovoly** (1861).

There're also nice finishing touches from **L. Ausburger** of Motorola, **Alex Pehas** of Lucent Royals, and **Cliff Anderson** also of Lucent Royals. Also featured are the finale in the upset wins **Mike Curtis** (Northrop) and **Ed Latimer** (Sears) recorded.

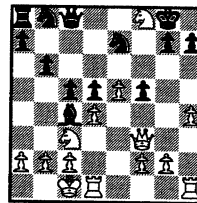
That was then

About a little over a quarter of a century ago, one-day chess events called tornados were quite prevalent. In the second round of a tornado in Cincinnati, Ohio in July of 1973 I got paired with a young player rated 1721. We reached this position after **11.Nge2 Ba6** (I've got Black):



Before I knew what was happening, we were soon involved in a series of tactical skirmishes.

12.Nf4 Bxf1
13.Nxe6 Qc8
14. Nxf8 Bc4
(diagram right)

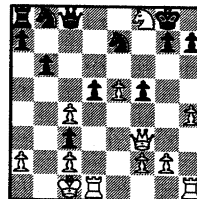


White's Knight is trapped so Black may yet get two minor pieces for his R.

15. b3 cxd4

Forced as 15... Ba6 16. Nxd5 B b7 17.Nxe7+ would be curtains for Black.

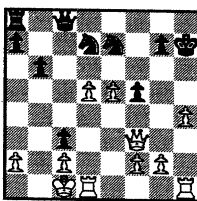
16.bxc4dxc3
(diagram right)



17. Nxf7

The desperado N takes down a pawn before dying. But 17.cxd5 accelerates the advance of White's central pawns: 17...Qxf8 18.d6 Nec6 19.d7 threatening 20.Qd5+ and 21.d8(Q)

17... Kxh7
18.cxd5 Nd7
(diagram right)

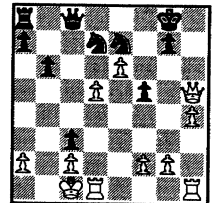


White has an advantage in development and his central pass-

ed connected pawns are awesome.

19.Qh5+ Kg8
20. e6
(diagram right)

White threatens 21.Qf7+ followed by 22.Qxe7



21...Ne5

Forced, to prevent 21.Qf7+

21. d6 Qc5

Unable to stop the central pawns, Black counters with an attack on White's K. Mate in 2 is threatened: 22...Qh6+ 23. Kb1 Qb2#. This attack on the King suddenly turns Black's game around.

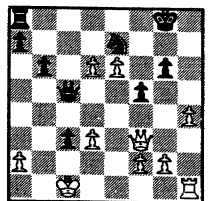
22. Rd3 Nxd3+ 23. cxd3 g6

Prevents the perpetual Qf7+, Qh4+ etc.

24. Qf3
(diagram right)

Better seems 24. Qe2.

24...Qa3+ 25. Kc2



If 25.Kd1 then Qb7 26.Qe2 Qb8# or 26.Qe3 c2+ and 27...c8=Q+ wins.

25...Qb2+ 26. Kd1 c2+ 0-1

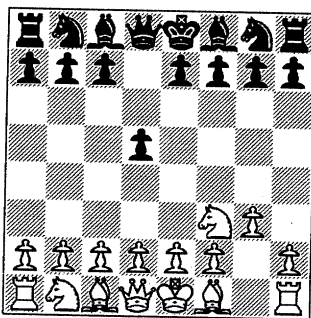
(That 1721 rated kid was Richard Horvich who's a 2364 USCF master today.)

GAMES

The thing about the following game isn't the two pins **Mike Stevanovic** exploits to score a nice victory but the manner with which White builds up mastery of the board simply from the awkward positioning of Black's N at c6.

WHITE: M. Stevanovic (2301C)
BLACK: Y. Hasan (2213)

1. Nf3 d5 2. g3

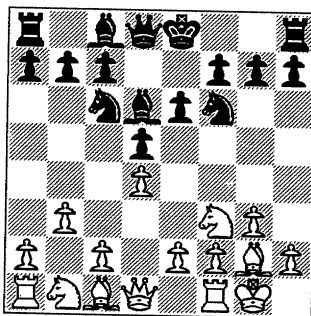


An opening such as the one used here which doesn't *control the center* is deceptive. Depending upon what Black does from here, White can transpose to any of the fianchetto defenses but with the added benefit of an extra move or into a regular White system such as the Catalan.

2....Nc6 3. d4

White has made the N at c6 awkwardly placed blocking the c-pawn.

3...Nf6 4. Bg2 e6 5. 0-0 Bd6 6. b3



The threat of pressure on the long diagonal (Bb2) and on the center (c4) discourages the central break 6...e5.

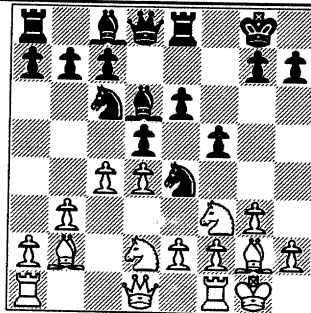
6...0-0 7. Bb2 Re8

Intending 8...e5.

8. c4

8...e5 9.c5 Bf8 10.dxe5 loses the e-pawn.

8....Ne4 9. Nbd2 f5



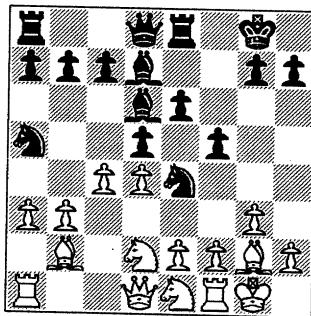
Position after 9...f5

The transposition into a Dutch Defense or Stonewall type opening system makes the N at c6 misplaced.

10. Ne1 Bd7

Black can't afford to entertain the thought of ...Nb8-d7-f6 as he lags behind in development.

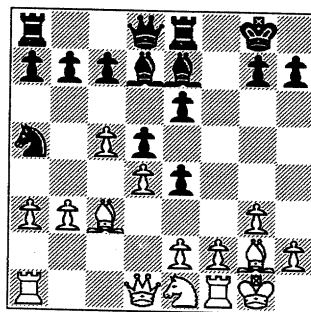
11. a3 Na5



12. Nxe4 fxe4 13. c5

A preparation for action on the Kingside

13...Be7 14. Bc3

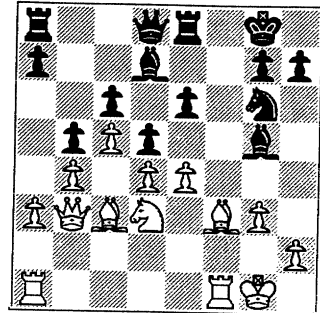


Compels Black's N to go back to c6 before White plays b4, else Black could sit his N at c4 after 14.b4.

14...Nc6 15. b4 b5 16. f3

Only now with the Queen's wing stabilized, does White begin Kingside activities.

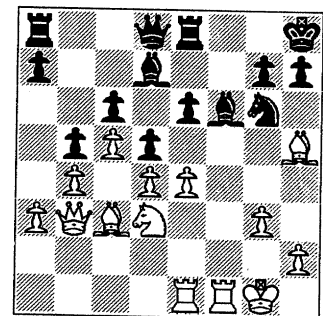
16...exf3 17. Bxf3 Bg5 18. e4 Ne7 19. Qb3 c6 20. Nd3 Ng6



21. Rae1

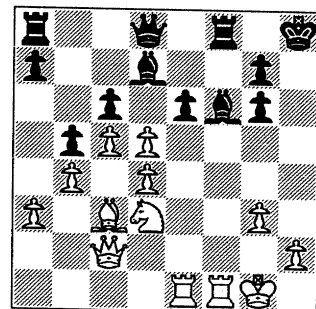
This deployment and centralization of the 2nd R leaves the B at f3 free from guarding the e-pawn.

21...Kh8 22. Bh5!



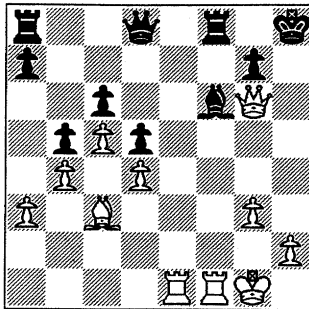
Provides the opening White needs to put pressure on Black's King.

22...Bf6 23. Qc2 Rf8 24. Bxg6 hxg6 25. exd5



25...exd5 26. Nf4 Bf5 27. Nxd6+

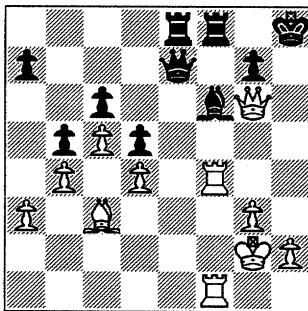
Bxg6 28. Qxg6



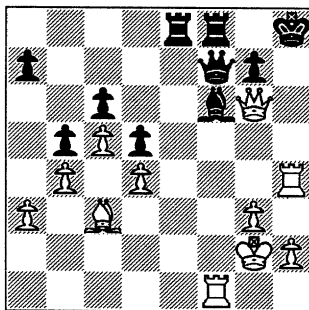
28...Qd7

Indirectly defends against the maneuver Rf5-h5 as 29.Rf5 fails against 29...Qxf5! 30.Qxf5 Bxd4+ 31.Bxd4 Rxf5 which not only foils the mating attack but also wins a pawn.

29. Rf4 Rae8 30. Ref1 Qe7 31. Kg2



31...Qf7? 32. Rh4+ 1-0



Black loses the Queen (32...Bxh5 33.Rxf7) or gets mated (32....Kg8 33.Qh7#)

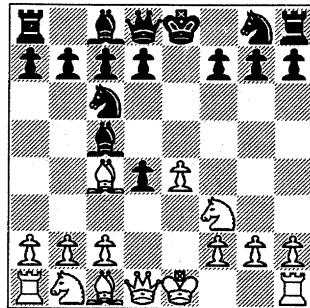
Robert Morris made quite an impression last season when he scored an amazing 10 wins, no losses, and no draws for the League

champion Motorola team.

A glimpse of Morris' style of play is shown in the following game.

**WHITE: Edwin Boldingh (2062)
BLACK: Robert Morris (2051)**

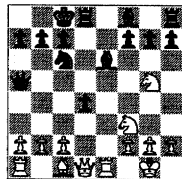
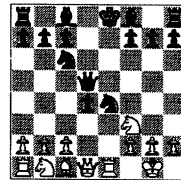
1. e4 e5 2. Nf3 Nc6 3. d4 exd4 4. Bc4 Bc5



In the 1990 Manila Inter-zonals, Gata Kamsky (2650), USA - Rongguang Ye (2525), Peoples Republic of China went:

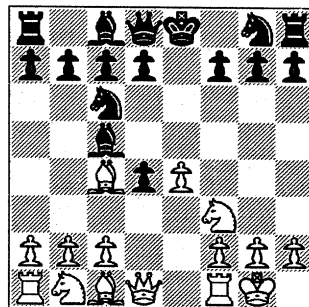
4...Nf6 5. 0-0 Nxe4 6. Re1 d5 7. Bxd5 Qxd5 (diagram right)

8. Nc3 Qa5 9. Nxe4 Be6 10. Neg5 0-0-0 (diagram below)



Black equalized after 11.Nxe6 fxe6 12.Rxe6 Bd6.

5.0-0

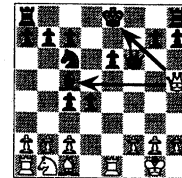
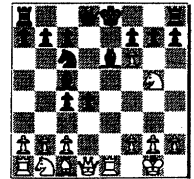


5...d6

This is a line safer than the double-edged Max Lange attack which contains a known trap:

5...Nf6 6. e5 d5 7. exf6 dxc4 8. Re1+ Be6 9. Ng5 (diagram right)

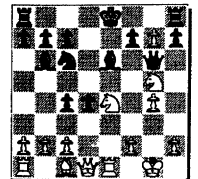
The known trap is 9...Qxf6? 10. Nxe6 fxe6 11.Qh5+ (diagram below)



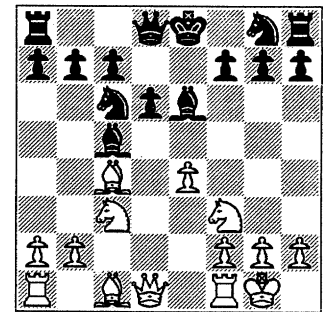
Proceeding from diagram above, the line continues: 9...Qd5 10. Nc3 Qf5 11. g4 Qg6 12. Nce4 Bb6 13. fxc7 (diagram below)

This is as far as my material can go on the main line in the Max Lange Attack.

Now, back to the game....



6. c3 dxc3 7. Nxc3 Be6

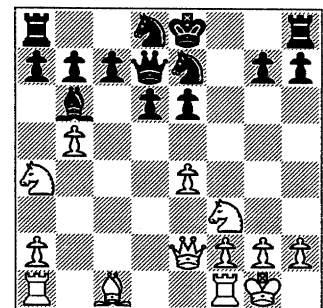


By challenging White's B on the diagonal leading towards Black's f7 square, Black removes a sting from the Scotch Gambit.

8. Bxe6 fxe6 9. Na4

After 9.Qb3, Black can defend his extra pawn with 9...Qc8 or give it back with 9...Qd7 10.Qxb7 Rb8. Keeping the extra pawn with 9...Qc8 10.Ng5 Nd8 has the risk of lagging behind in development after 11.Be3 Bb6 12.Bxb6 axb6 13.14.

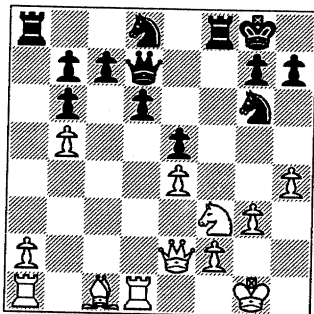
9....Bb6 10. b4 Qd7 11. b5 Nd8 12. Qe2 Ne7



Black has deliberately avoided ...Nf6 so as not to provide White the opportunity to play

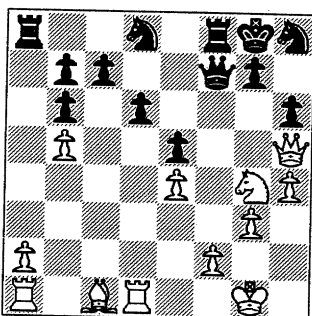
e5 without the corresponding ability to respond with ...d5.

13. Rd1 Ng6 14. h4 0-0 15. Nxb6 axb6 16. g3 e5



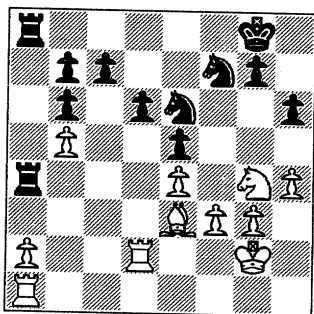
White can now win the e-pawn with 17.h5 Ne7 (or 17...Nh8) 18.Nxe5. The disappearance of Black's e-pawn would then provide an excellent diagonal for White's B to operate on: a1 to h8.

17. Nh2 h6 18. Qh5 Qf7 19. Ng4 Nh8



Shuts off all ambitious projects involving Black's K that White may have planned. For example, 20.Bxh6 gxh6 21.Nxh6+ forking Black's K and Q.

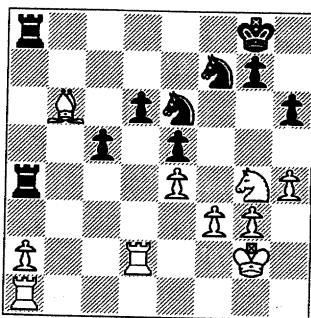
20. Qxf7+ Nxf7 21. Be3 Ne6 22. Kg2 Ra4 23. f3 Rfa8 24. Rd2



24...c5

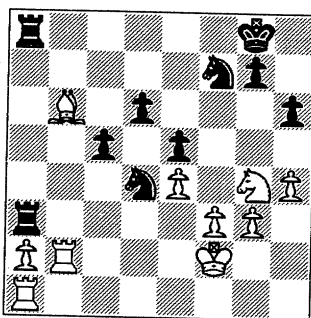
Foregoes winning White's b-pawn (24...Rb4) for another plan.

25. bxc6 bxc6 26. Bxb6 c5



The point of Black's plan. White's B is fenced in and temporarily put out of action.

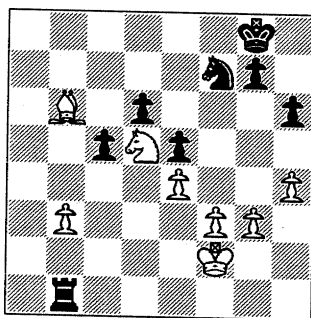
27. Rb2 Ra3 28. Kf2 Nd4



29. Ne3 Nb3

The clincher. White has to give up the a-pawn or lose the exchange. If now 30.Rab1 then 30...Rxa2.

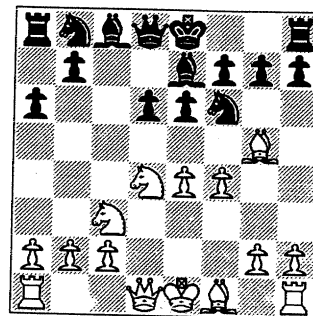
30. Rxb3 Rxb3 31. axb3 Rxa1 32. Nd5 Rb1 1-0



Isidro Tamez of Lucent Tyros exploits an early g4 in the Sicilian to cause White to lose castling privileges. Tamez wins the game shortly afterwards.

WHITE: Wes Underwood (1954)
BLACK: Isidro Tamez (2103)

1. e4 c5 2. Nf3 d6 3. d4 cxd4 4. Nxd4 Nf6 5. Nc3 a6 6. Bg5 e6 7. f4 Be7



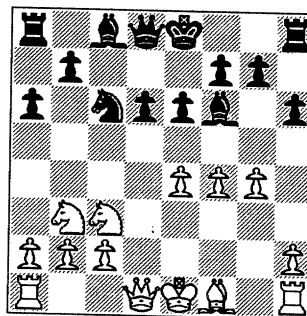
8. g4

Normal here's 8.Qf3 Qc7 9.0-0-0 Nbd7 and only now 10.g4.

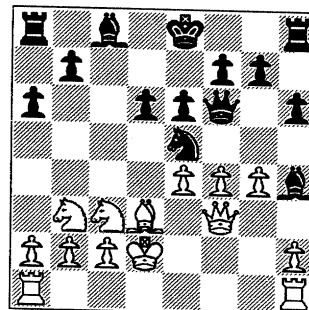
8...Nc6 9. Nb3 h6 10. Bxf6

Better 10.Bh4 as 10...Nxe4 11.Bxe7 Nxc3 12.Bxd8 Nxd1 13.Rxd1 Nxd8 14.Rxd6 keeps material even. Now White's powerless to avoid losing his castling privilege from the coming ...Bh4+

10...Bxf6



11. Qf3 Bh4+ 12. Kd2 Qf6 13. Bd3 Ne5 1-0



White loses a pawn: 14.Qh3 (or 14.Qg2) Qxf4+ or 15. Qf1 Nxg4.

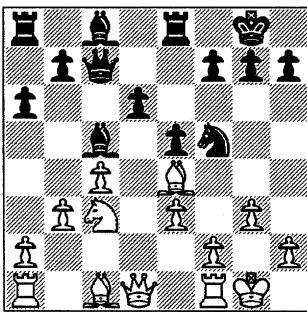
E. Enke seemed to be holding his ground against higher rated **A. Pehas**.

Immediately after he (Enke) loses a pawn (from a double attack) and is threatened with the loss of the exchange, he cooks up an intermediate move with a counter-threat to Pehas' Q.

Pehas cools off the counter-threat with an ingenious reply that wins the exchange.

White: A. Pehas (1982)
Black: E. Enke (1385)
ENGLISH

1. c4 e5 2. g3 Nf6 3. Bg2 Bc5 4. Nc3 Nc6 5. e3 O-O 6. Nge2 Re8 7. O-O a6 8. d4 Ba7 9. d5 Ne7 10. d6 Nf5 11. dxc7 Qxc7 12. b3 Bc5 13. Ne4 Nxe4 14. Bxe4 d6 15. Nc3 (diagram)

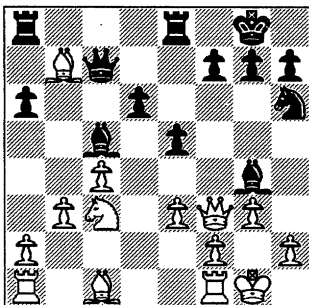


Black's OK so far.

15...Bd7 16. Qf3

Not anymore. This attack on Black's N at f5 and the pawn at b7 wins at least a pawn.

16...Nh6 17. Bxb7 Bg4 (diagram)



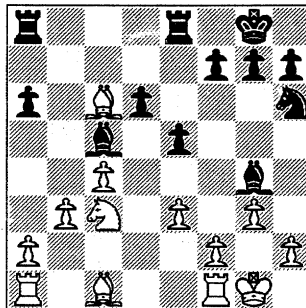
The point of Black's 16th move. The N gets to support an attack on White's Q.

Obviously if White's not looking and plays 18.Bxa8?, he loses the Q: 18...Bxf3.

18. Qc6!

Forces Black to trade Queens or lose the exchange

18...Qxc6 19. Bxc6 (diagram)

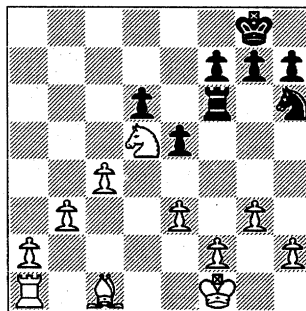


Ingenious. White has attained a rather unusual Bishop fork on both of Black's Rooks.

19...Bb4 20. Nd5 Be2?

This loses a piece and hastens the end for Black.

21. Nxb4 Rac8 22. Bxe8 Bxf1 23. Kxf1 Rxe8 24. Nxa6 Re6 5. Nc7 Rf6 26. Nd5 1-0

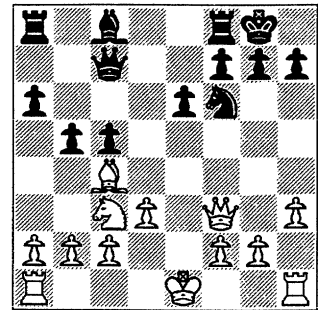


C. Dobrovolny offers the exchange to trap the Q. The offer is refused and Dobrovolny wins 2 pawns instead.

WHITE: L. Azcuna (1233)
BLACK: C. Dobrovolny (1861)
SICILIAN

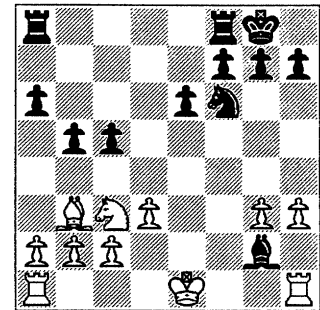
1. e4 c5 2. Nf3 d6 3. Bc4 Nf6 4. d3 e6 5. Bg5 Be7 6. Nc3 O-O 7. h3 a6 8. e5 dxe5 9. Nxe5 Qc7 10. Bxf6 Bxf6 11. Ng4 Nd7 12. Nxf6+

Nxf6 13. Qf3 b5

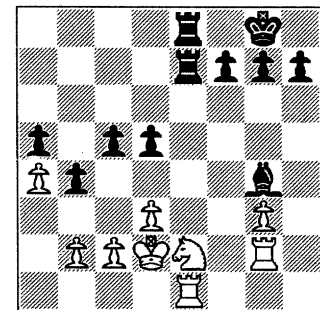


If 14.Qxa8 then 14...Bb7 15.Qa7 bxc4 and White's Q is trapped: 16.Na4 Nd7 with the threat of 17...Ra8 winning the Q.

14. Bb3 Bb7 15. Qg3 Qxg3 16. fxg3 Bxg2



17. Rg1 (17...Ra2) Bxh3 18. a4 b4 19. Ne2 Bg4 20. Bc4 a5 21. Rg2 Nd5 22. Bxd5 exd5 23. O-O-O Rfe8 24. Re1 Re7! (Pressure on the pin enables Black to transpose into a K and pawn ending easy to win and prevent Black from making a comeback.) 25. Kd2 Rae8



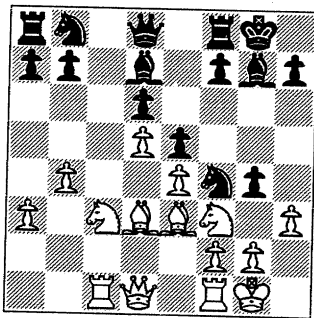
26. b3 16 27. Rf2 Kf7 28. Rh2 Rxe2+ 29. Rxe2 Rxe2+ 30. Rxe2 Bxe2 31. Kxe2 h5 32. Ke3 g5 33. d4 c4 34. bxc4 dxc4 35. d5 h4 36. gxh4 gxh4 37. Kd4 h3 38. d6 h2 39. Kc5 h1Q 40. Kb6 Qa8 41. Kc7 Qa7+ 42. Kd8 Ke6 43. Ke8 Qd7+ 44. Kf8 Qf7#

The finishing touch

by Ruben Reyes

L. Ausburger (Motorola) - **F. Micklich** (UOP) was quite an interesting matchup where the tempo of the attack, counter-attack seemed to cause each player to throw caution to the winds. Ausburger went on the attack in the queen's wing. Micklich countered with one of his own in the other wing. When the smoke cleared, Ausburger had a mate in 2.

Here's when all the fireworks started, after 17... g4 (diagram)

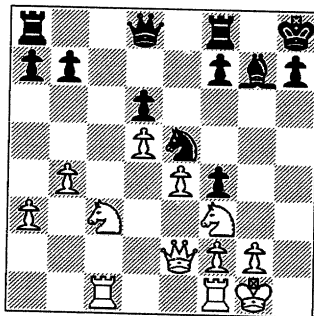


Black launches his first strike ...

18.hxg4 Bxg4 19.Bxf4

White can't afford to let Black maintain a strong N outpost near the area of White's K. The capture also provides White the square d4 for the N.

19...exf4 20.Be2 Nd7 21.Nh2 Bxe2 22.Qxe2 Ne5 23.Nf3 Kh8



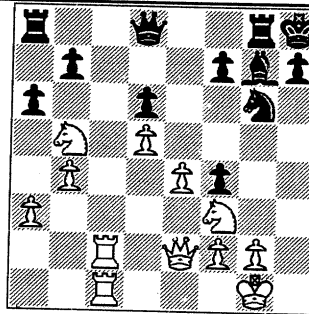
24.Rc2

Sensing impending pressure on the g-file, White prepares counterplay on the c-file.

24...Rg8 25.Rfc1 Ng6

Another plan here would be to build a wall similar to the Mar Del Plata and to conduct Kingside operations shielded by the wall.

25...Nxf3+ 26.Qxf3 Be5 26.Nb5 a6 (diagram top of next column)

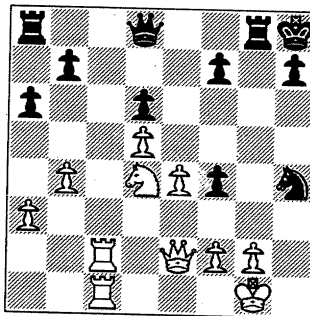


Position after 26...Ng6

27.Nbd4 Bxd4

The downside of this B for N trade is that Black now becomes vulnerable on the long diagonal.

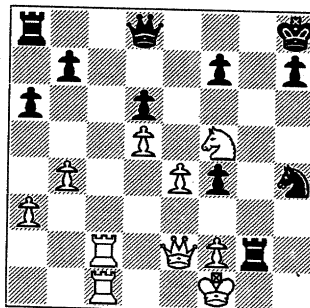
28.Nxd4 Nh4



29.Nf5

It takes sheer courage as well as precise calculator to ignore Black's menacing threat of 29... Rxc2+

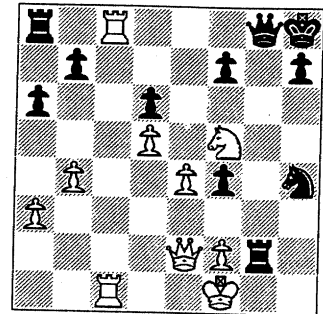
29...Rxc2+ 30.Kf1



30...Qg5

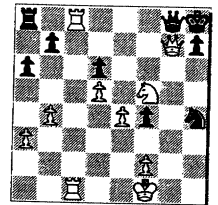
30...f3 31.Qe3 Ra2 32.Qd4+ f6 lets Black stay alive longer.

31.Rc8+ Qg8



32.Qb2+ 0-1

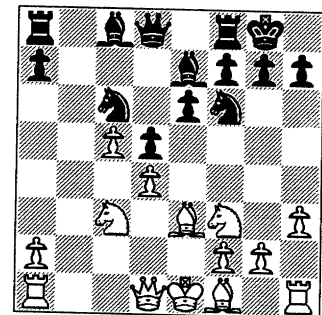
It's mate in two:
32...f6 33. Qxf6+ Rg7 34. Qxg7# (diagram right)



That was quite an excellent battle between two of the North Divisions' outstanding lower board players.

Alex Pehas (1982) of Lucent Royals reached the position below vs. **Helio da Motta** (1889) after 11.Nf3

A. Pehas (Black)



H. da Motta (White)
Black to play

Unbelievably from such a serene scene, Black wins in nine moves. Yes, just nine meager moves!!

Pehas begins the entanglement of White's pieces with....

11...Ne4 12. Bd2

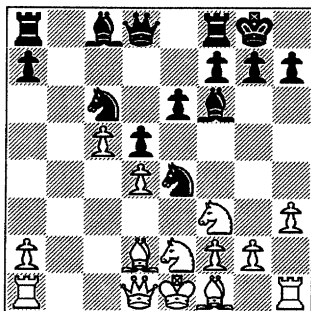
12.Nxe4 dxe4 would leave White with a backward d-pawn on a half-open file after 13.Nd7 or 13.Ng1, and a vulnerable c-pawn

after 13.Ne5 Nxe5 14.dxe5.

12...Bf6

This pressure on the d-pawn causes further entanglement of White's pieces.

13. Ne2

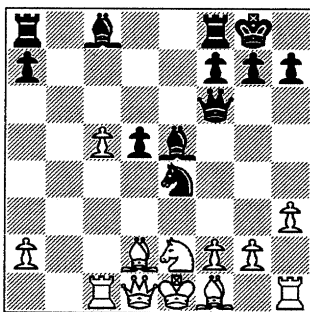


Black's pressure on the d-pawn has caused White's pieces to gather together into a cluster and hindering development.

13...e5!

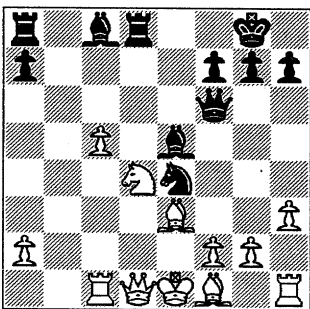
Brings R into play by opening up the center.

14. dxe5 Nxe5 15. Nxe5 Bxe5 16. Rc1 Qf6



This threat of mate in one (17...Qxf7#) can be met only one way as 17.f3 Qh4+ 16.g3 Bxg3+ 17.Nxg3 Qxg3+ 18.Ke2 Ba6+ 19.Ke3 Qf2# would be mate; and 17.f4 Bd4 18.Nxd4 Qh4+ 19.Ke2 Ba6+ 20.Ke3 Qf2# would also be mate.

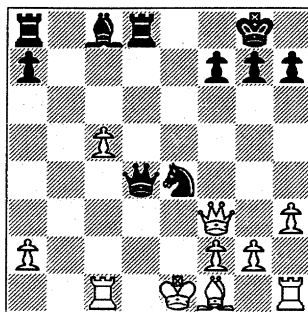
17. Be3 d4 18. Nxd4 Rd8



19. Qf3 Bxd4 20. Bxd4

20. Qxe4 Bc3+ is equally hopeless for White as 21.Ke2 Ba6+ 22.Qd3 Bxd3+ loses the Q and 21.Rxc3 loses the exchange.

20...Qxd4 0-1



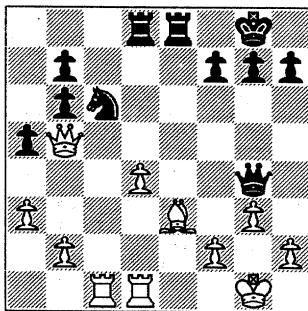
Final Position

H. da Motta-A.Pehas

White used 1 hr 30 minutes, Black 46 minutes.

Carl Staples (1199) gets good counterplay vs. **Cliff Anderson (1483)** by trading Q for N+R. But when things seems to be doing well for Staples, Anderson spoils everything with a blitz of an attack on Staples' King.

Here's how it all starts, after 23. Qb5 (diagram)



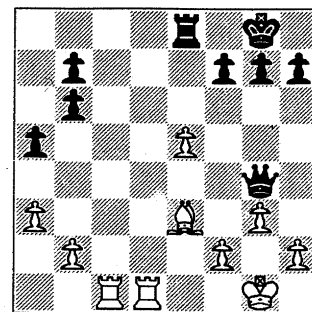
23...Ne5

Black's point is that if 24.dxe5 then 24...Rxd8+ 25.Rxd8 Qxd8+ wins the exchange.

24. Qxe8+

The counterpoint 24.h3 (to remove Black's Q away from the diagonal so that White can play dxe5) 24...Qh5 25.g4 fails because of 25...Nf6+ and 26...Qxb5 winning White's Q.

24...Rxe8 25. dxe5 (diagram)



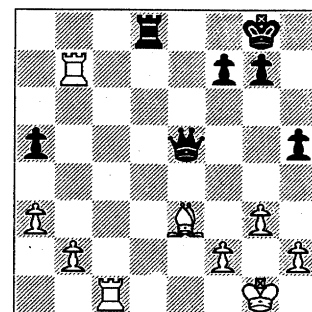
Position after 25.dxe5

Of course not now 25...Rxe5 because of 26.Re8+ Re8 27.Rxe8#

25...Qe6 26. Rd6 Qxe5 27. Rxb6 h5

Erases Black's vulnerability on the back rank and frees up the Rook for action.

28. Rxb7 Rd8

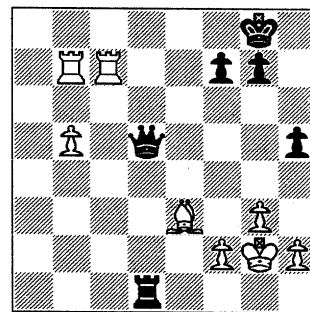


Nice. The Rook's brought into play.

29. b4 axb4 30. axb4 Qb2

The entry of Black's Q inside White's territory heralds the coming attack on White's K.

31. Rcc7 Qb3 32. b5 Rd1+ 33. Kg2 Qd5+

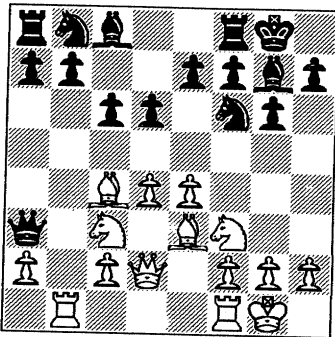


The beginning of the end for White.

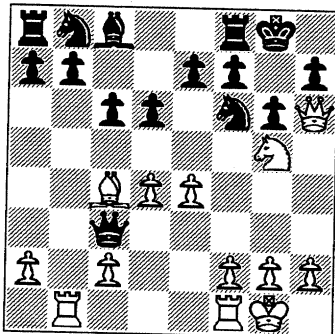
34. f3 Qa2+ 35. Bf2 Rd2 36. g4 Rxf2+ 37. Kg3 g5 38. Rc8+ Kg7 39. Rxf7+ Kxf7 40. Rc7+ Kf6 41. Rc6+ Ke5 0-1

Mike Curtis (1900 approx) Northrop - **Bert Gazmen** (2209) Exemplars turned on the fireworks quite early in the game. The end came when Curtis found a way to win Gazmen's Queen.

This is the peaceful scene after 9. 0-0 0-0 right before the storm.



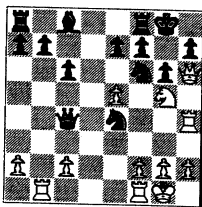
10. Bh6 Bxh6 11. Qxh6 Qxc3 12. Ng5



For the N, White has a long-lasting attack and grip on Black's Kingside. At this time, White threatens 12.e5 13.exf6 and 14. Qxh7#.

12...Qxd4

Or 12...Qxc4 13.e5 Nbd7 14.Rb3 dxe5 15. Rh3 Nc5 16.dxe5 Nce4 17.Rh4 and White's winning. He is threatening 18. Nxh7 followed by 19. Nxf6+ and 20.Qh8# as well as 18. exf6 followed by 21.Qxh7 mate.



13. Rb3 a5

Activating the Rook at a8 is the least of Black's concerns at this point in time. 13...Nbd7 could be more productive.

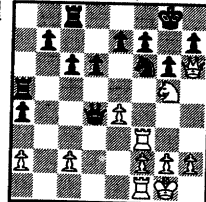
13...Qxc4 is risky. But after 14.f4 Qe2 (to meet 15.e5 with 15...Qh5) 15.Rb3 Bg4

16.e5 Nbd7, Black seems to hold.

13...d5, however, fails against 14.Rd3 Qb6 15.e5 Nbd7 16.Rf3 which threatens 17.exf6 followed by 18.Rxf6 and 19.Qxh7#.

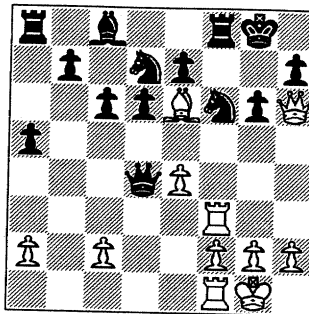
14. Rf3 Nbd7 15. Ne6?

15.Be6! threatens 16.Bxd7 followed by 17.Rxf6 and 18.Qxh7#. However, Black holds with 15...a4! (not 15...fxe6?? because of 16. Nxe6 threatening both 17. Nxd4 and 17. Qg7# and White wins) 16.Bxd7 Ra5! 17.Bxc8 Rxc8 (diagram right)



With the N sacrifice, White's attack vanishes.

16...fxe6 16. Bxe6+



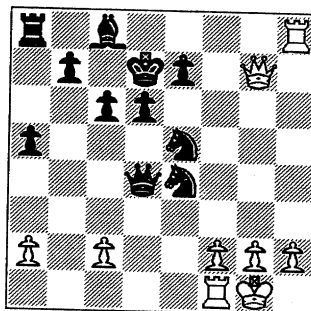
16...Rf7?

Correct is 16...Kh8, winning as White has insufficient material left on the board to pursue the attack.

Perhaps both players may have been under the impression that Black can't play 16...Kh8 because of 17.Bxd7. Such an erroneous impression may be the reason for the double blunder - White's 15th move and Black's 16th.

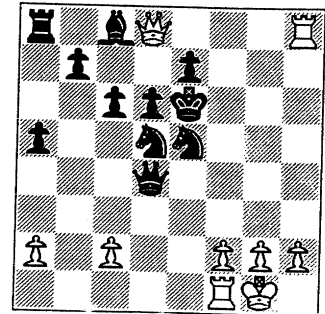
Both may have failed to see that after 16...Kh8 17. Bxd7 Bxd7 White can't play 18. Qxf8+?? which loses at once to 18...Rxf8.

17. Bxf7+ Kxf7 18. Qxh7+ Ke8 19. Qxg6+ Kd8 20. Rh3 Ne5 21. Rh8+ Kd7 22. Qg7 Nxe4



Although this pawn grab threatens the swindle 23...Nf6+ and 24...Qxg7, it would have been wiser for Black to attempt to activate the rest of his pieces with 23...b6.

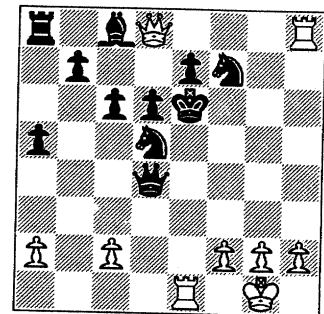
23. Qf8 Nf6 24. Qd8+ Ke6 25. Qc7 Nd5 26. Qd8



25...Nf7

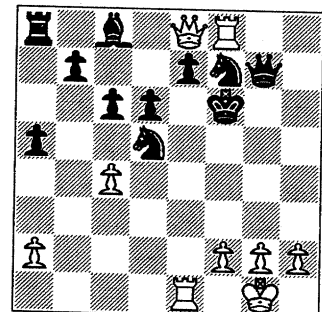
This looks like curtains for White.

27. Re1+



But not quite. The activation of White's 2nd Rook spells more trouble for Black now.

27...Kf5 28. Rf8 Qg7 29. Qe8 Kf6 30. c4



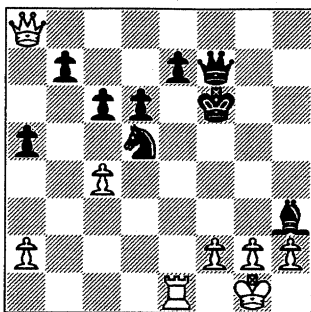
30...Bh3

Looks like the table's been turned. Black threatens 31...Rxe8 and 31...Qxg2#

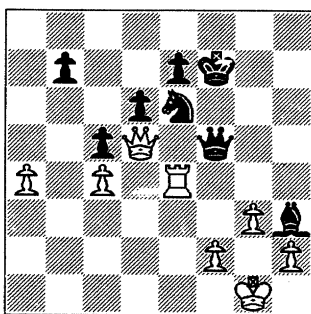
31. Rxf7+

Nice. Deflects Black's Q from g2 and allows White to capture the Rook at a8.

31...Qxf7 32. Qxa8



32...Qg7 33. g3 Nf4 34. Qxa5 Kf7
35. a4 c5 36. Qd2 Ne6 37. Qd5
Qg4 38. Re4 Qf5

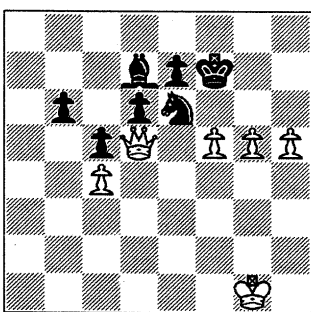


39. Rf4!

Ingenious in its simplicity, White wins the Queen. The rest of the game's as follows:

39...Kg6 40. Rxf5 Bxf5 41. h4 Kf6 42. f3
b6 43. g4 Bc2 44. g5+ Kf7 45. f4 Bxa4 46.
f5 Bd7 47. h5 1-0

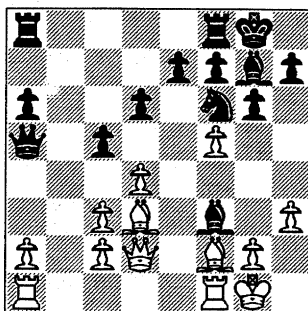
Final Position Curtis-Gazmen



Ed Latimer (2016D) had a nice finish in an upset win vs. **Mark Siwek (2157C)**.

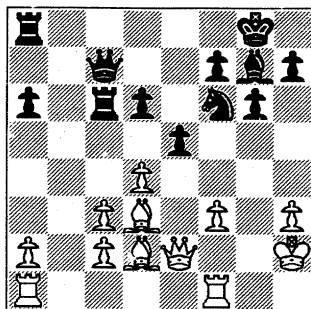
It was slow going beginning with 17...Bxf3 (see diagram top of next column)

18. gxf3 c4 19. Bxc4 Qxf5 20. Kh2 Rfc8 21. Qe2 Rc6 22. Bd3

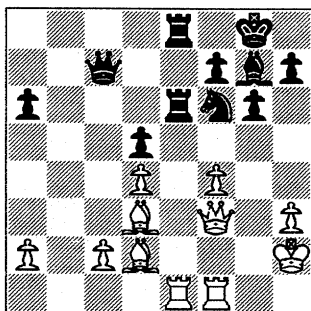


Siwek-Latimer after 17...Bxf3

Qa5 23. Be1 Qc7 24. Bd2 e5



25. Rae1 exd4 26. cxd4 d5+ 27. f4 Re6 28. Qf3 Rae8



29. Rxe6 Rxe6 30. Re1 Rxe1 31. Bxe1 Qd6!

On the surface, this puts pressure on the f-pawn.

The threat's 32...Bh6 and 33...Nh5 winning the f-pawn.

However, as we'll soon see, Black's last move has a second intent.

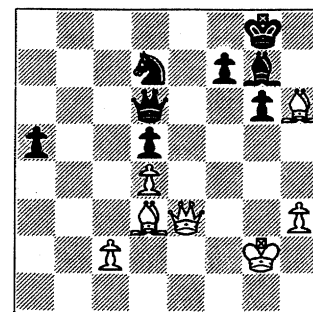
32. Bd2 Qa3

The 2nd point of Black's 31st move. Black wins the a-pawn.

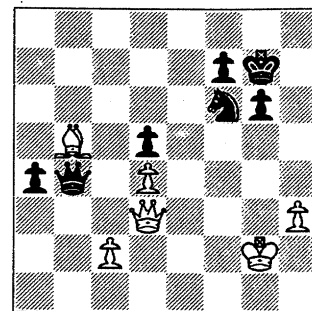
33. f5 Qxa2 34. fxg6 hxg6 35. Bf4 Nd7 36. Qe3 Qa3 37. Bh6 Qd6+ 38. Kg2 a5

See diagram top of next column

39. Bxg7 Kxg7 40. Bb5 Nf6 41.



Qf3 Qb4 42. Qd3 a4



Slowly but surely Black's a-pawn inches towards the queening square.

43. c4

White doesn't have time for this to clear the diagonal a2-g8 for the B.

43...Qb2+

Naturally, 43...dxc4 44.Bxc4 plays into White's hands.

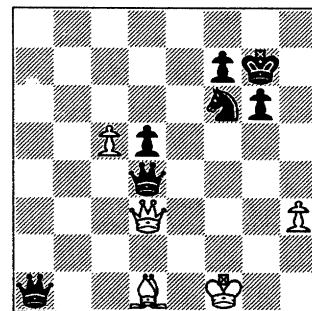
44. Kf1 a3 45. Ba4

White's too late with the B.

45...a2 46. c5 a1Q+ 47. Bd1

One for the road.

47...Qxd4 0-1

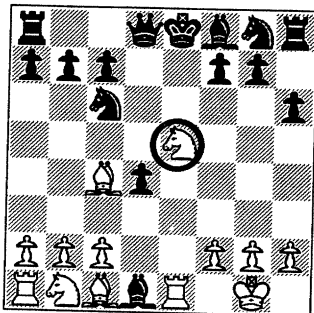


White's got to trade Q's here (or on the next move) else get mated. For example, 47. Qb5 Qa1xd1+ 48. Kg2 Q(d4)g1#.

Tactics and Technique

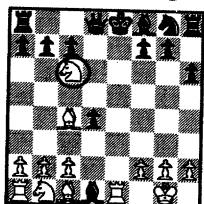
Note: Examples shown in this column are taken from actual CIGL games. In most cases, names have been omitted to protect the identities of the players.

Desperado/Discovered Chk -
This is after 8...Bxd1 (diagram below) from Pablo Diaz (2063) vs a 1774.



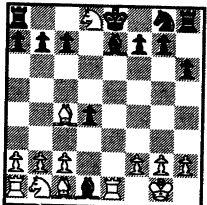
The N at e5 is a **desperado** piece. Now watch how Diaz wins back his Q and more with this desperado piece.

9.Nxc6+ (diagram)



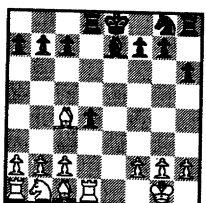
The N has picked up a piece with tempo via a dis. check.

9...Be7 10. Nxd8 (diagram)



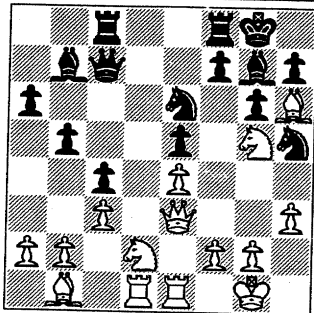
The **desperado** N has taken down two pieces (N and Q) before it's brought down itself....

10.....Rxd8 11. Rxd1 (diagram)



White has won a piece.

Here's another from a 1429 vs. E. Suarez (1665) after 18...Nh5 19.Ng5 (see diagram top of next column)

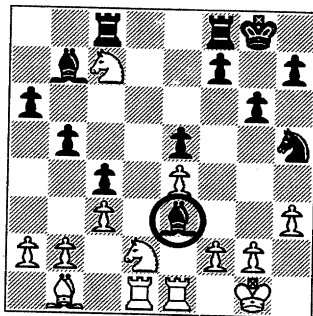


Why's White giving up his B at h6?

Perhaps, White has calculated that after 19...Bxh6 20.Nxe6 Bxe6 21.Nxc7 Rxc7 22.Rxe6 he'll be fine as he'd have given up B, Q, and N while taking in N, Q, and B.

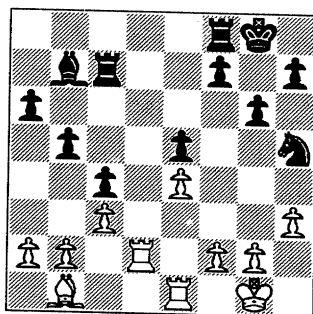
So, after....

19.....Bxh6 20.Nxe6 Bxe6 21. Nxc7 (diagram)



The B at e3 is a **desperado**. If now 21...Rxc7, then Black'd lose the B: 22.Rxe3. So, since the B's a goner anyway, it may as well bring down with it another piece:

21...Bxd2 22.Rxd2 Rxc7 (diagram)

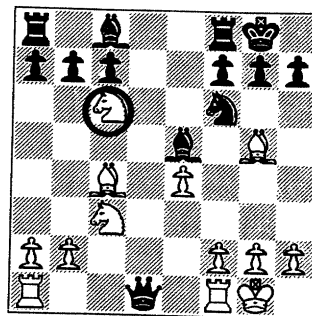


Black has won a piece, thanks to the desperado B.

Here's a different version of the **desperado**.

Keep in mind that the key to a piece being a desperado is that it'll be captured on the next move.

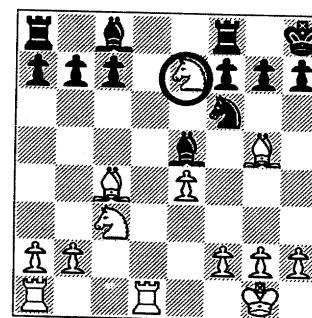
This is from a game between a 1238 (Black) and an unrated (White) after 12.Nxc6 Qxd1 (diagram).



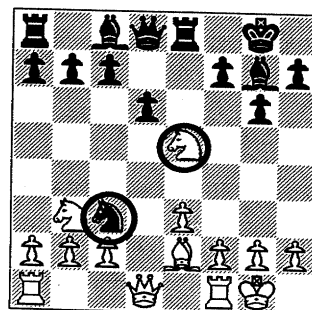
White's N at c6 is a **desperado**. By this is meant the fact that after now 13.Rfxd1, it's a goner after 13...bxc3.

So, before it can be brought down in the next move, White should play:

13. Ne7+ Kh8 14.Rfxd1 (diagram) and White's a piece up. In the actual game, White recaptured at d1 and missed out on winning a piece.



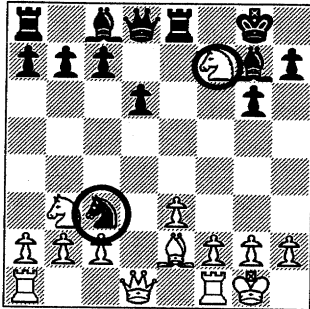
This one's after 11...Nxc6 from an



actual game.

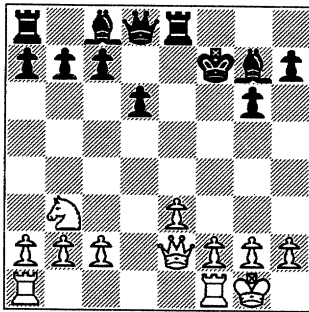
White reasons that since his N's going to be captured anyway on 12...bxc3 Bxe5, he may as well bring down a pawn with it:

12. Nxf7 (diagram)

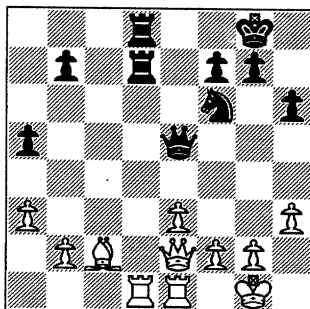


In the game, Black played 12...Kxf7 and missed out on winning a piece:

12...Nxe2+ 13.Qxe2 Kxf7 (diagram)



Mask - This position is from the game **K.Dobr** (1494T) versus an unrated after White's 25th move: **25.Qe2 (diagram)**.

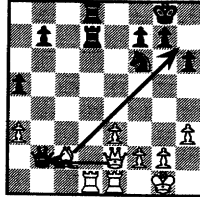


White's b-pawn appears to be undefended and ripe for the picking. But what the wily and experienced **Dobr** has set up is a trap featuring a **mask**.

The B at c2 is the mask. It hides the Q from any unit that shows up at b2.

Unaware of any threat, Black replied...

25...Qxb2 (diagram)

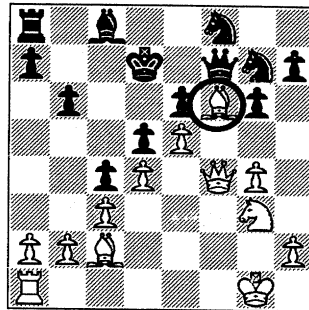


This is what **Dobr** had set up the trap for and now won the Q with:

**26.Bh7+ Kxh7
27.Qxb2**

The key to **Dobr's** trap is unmasking of the B with a tempo-gaining check. Black had no time to escape with his Q because of the check.

Here's another from **M. Davidson** (1593) against a 1541 after 24. Ng3 (diagram).



Black's unaware of the devastating impact that the unmasking of the masking piece has when executed with a check.

24....Kc7?

Black walks right into the path of the White B for the check.

25. Bd8+ 1-0

Black loses the Q after 25...Qxd8 26.Qxf7.

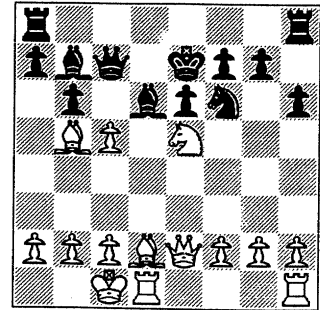
Another example of the **mask** is shown in **Steve Decman's** analysis on page 2 of the February issue.

A **mask**, however, may occur some moves deep into a combination.

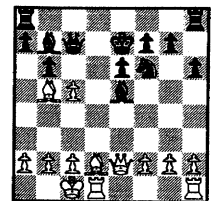
The **Diaz** game (page 11) is an ex-

ample.

Take the position below after 16. dxc5 (diagram)...

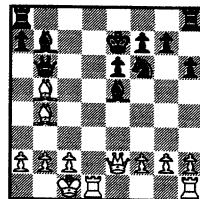
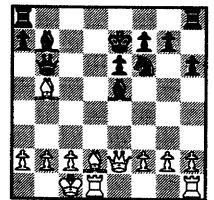
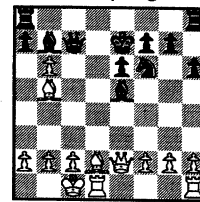


Few players in the lower-boards may be able to resist taking the free B: 16...Bxe5 (diagram)

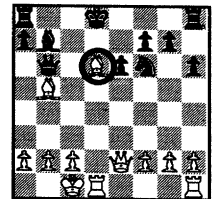


Here's what's wrong with 16...Bxe5:

17.cxb6 (diagram below) If now 17... Qxb6 (diagram below) then.



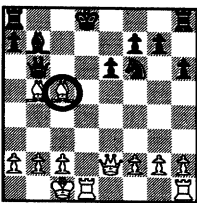
18.Bb4+ (diagram left) 18...Bd6 19.Bxd6+ Kd8 (diagram below)



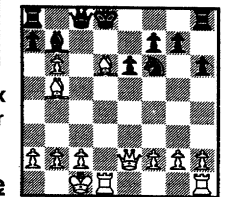
Now we've got ourselves a **mask**.

The unmasking in this one is with a discovered check:

20.Bc5+ (diagram)



If instead of 17... Qxb6 Black plays 17....Qc8 then 18. Bb4+ Bd6 19. Bxd6 Kd8 (diagram)



20.Bf8+Nd7 21.Rxd7+ is curtains for Black.

So beware of the desperado and the mask

(Note: this example is from the game Viswanathan Anand vs. Anatoly Karpov. Black played 16...Qxc5 - ed)

REMINDER FROM THE PAST

March 1, 1997

Gentlemen,

Some changes in the Area codes and E-Mail addresses have not been reflected in the bulletin. As promised last month, it will be corrected in the April issue. This is just a friendly reminder. Please note.

Thank you for your patience.

Satish Kale

PS If your area code / E - Mail address has changed recently and has not been reflected in the bulletin, please contact Charlie Ward immediately.

Thank you.

Changed Area Codes and E-Mail Addresses.

The following people have incorrect area codes given for their phone numbers:

Name	Correction
-----	-----
Wes Underwood	708 should be 630
Charlie Ward	708 should be 630
Wayne Ellice	312 should be 773
Len Spiegel	708 should be 630
Irwin Gaines	708 should be 630
Dan Fraats	312 should be 773

Also, the following people have incorrect e-mail addresses:

Name	Correct e-mail
-----	-----
Wes Underwood	wesley.k.underwood@wheaton.edu
Charlie Ward	cewward@lucent.com
Irwin Gaines	gaines@fnal.gov

NEAR WEST DIVISION 02-27-1997

TEAM NAME	W	L	D	GAME MATCH		PCT
				POINTS	POINTS	
CASE	6	1	0	31.0	6.0	0.857
ARGONNE KNIGHTS	5	2	0	24.5	5.0	0.714
COOK CO. DEPT. OF CORR.	3	3	1	19.5	3.5	0.500
LUCENT TECH. CHARGERS	2	5	0	19.5	2.0	0.286
PAWNS	0	6	1	10.5	0.5	0.071

FAR WEST DIVISION 02-27-1997

TEAM NAME	W	L	D	GAME MATCH		PCT
				POINTS	POINTS	
ARGONNE ROOKS	6	1	1	30.5	6.5	0.813
LUCENT TECH. ROYALS	6	2	0	30.5	6.0	0.750
LUCENT TECH. TYROS	5	2	0	26.0	5.0	0.714
FERMILAB	3	3	1	23.5	3.5	0.500
LUCENT TECH. DRAGONS	2	6	0	18.5	2.0	0.250
WHEATON COLLEGE	0	7	0	6.0	0.0	0.000

NORTH DIVISION 02-27-1997

TEAM NAME	W	L	D	GAME MATCH		PCT
				POINTS	POINTS	
MOTOROLA	7	0	0	30.5	7.0	1.000
UOP PROCESS DIV.	5	1	1	29.0	5.5	0.786
EXEMPLARS	4	2	1	26.0	4.5	0.643
SEARS	2	5	0	13.5	2.0	0.286
NORTHROP-GRUMMAN	1	5	1	18.5	1.5	0.214
KEMPER INSURANCE	0	6	1	7.5	0.5	0.071

EAST DIVISION 02-27-1997

TEAM NAME	W	L	D	GAME MATCH		PCT
				POINTS	POINTS	
ALUMNI ACES	9	0	0	40.0	9.0	1.000
NATIONSBANK-CRT	5	2	1	29.5	5.5	0.688
AMOCO CORP.	4	4	1	27.0	4.5	0.500
COLUMBIA COLLEGE	4	5	0	27.0	4.0	0.444
BANK AMERICA ILLINOIS	3	4	0	22.0	3.0	0.429
POSTAL SERVICE	2	5	0	13.0	2.0	0.286
CTA	0	7	0	8.5	0.0	0.000

29-OCT-96 AMOCO CORP.
ROUND 1

6 POSTAL SERVICE

0

BD	RATINGS	SCORE	RATINGS	SCORE
1 HODINA, J	2149 0	1F	0 0	0F
2 ATKINSON, J	1835 0	1F	0 0	0F
3 WENTLING, C	1620 0	1F	0 0	0F
4 WOOD, L	1488 0	1F	0 0	0F
5 HOLMES, M	0 0	1F	0 0	0F
6 PORTER, D	0 0	1F	0 0	0F

31-OCT-96 CTA
ROUND 4

1.5 BANK AMERICA ILLINOIS

4.5

BD	RATINGS	SCORE	RATINGS	SCORE
1 JARRETT, T	1633 -9	0	KOGAN, G	1882 9 1
2 WILLIAMS, A	1468 17	.5	PARAOAN, E	1794-11 .5
3 MCKEEL, B	0 0	.5	SOMBONG, M	1643 0 .5
4 STAPLES, M	1170 15	.5	HAMMOND, M	1431-15 .5
5	0 0	0F	ZOELLNER, J	1365 0 1F
6	0 0	0F	WHITE, T	1318 0 1F
(BKAMI) 7 ZOELLNER, J	1365-26	0	WHITE, T	1318 26 1

17-DEC-96 AMOCO CORP.
ROUND 6

1.5 BANK AMERICA ILLINOIS

4.5

BD	RATINGS	SCORE	RATINGS	SCORE
1 ATKINSON, J	1835 2	.5	KOGAN, G	1891 -4 .5
2 WOOD, L	1488 -5	0	FRAATS, D	1869 5 1
3 NOTTOLI, R	1320 -3	0	PARAOAN, E	1783 2 1
4 HOLMES, M	0 0	1	SOMBONG, M	1643 0 0
5 MALEN, M	0 0	0	ZOELLNER, J	1339 0 1
6 PARK, J	0 0	0	WHITE, T	1344 0 1

15-JAN-97 CTA
ROUND 7

1 AMOCO CORP.

5

BD	RATINGS	SCORE	RATINGS	SCORE
1	0 0	0F	ATKINSON, J	1837 0 1F
2 MCKEEL, B	0 0	0	WENTLING, C	1620 0 1
3 MCCARTNEY, M	0 0	0	WOOD, L	1483 0 1
4 STAPLES, M	1185 31	1	NOTTOLI, R	1317-31 0
5	0 0	0F	HOLMES, M	0 0 1F
6	0 0	0F	MALEN, M	0 0 1F

16-JAN-97 POSTAL SERVICE
ROUND 8

4 COLUMBIA COLLEGE

2

BD	RATINGS	SCORE	RATINGS	SCORE
1 INUMERABLE, F	2261 9	1	SANTIAGO, T	2008 -9 0
2 MARCOWKA, R	1950 15	1	MCALISTER, K	1951-23 0
3 ALLEN, H	1942 0	1F	PRATTS, M	1781 0 0F
4 CARTER, L	1516-20	0	KOSTECKA, K	1550 20 1
5 TURNER, K	1478 18	1	STEVENS, J	1407-18 0
6 DAVIS, R	0 0	0F	VACCARO, M	0 0 1F

22-JAN-97 CTA
ROUND 8

16
1 ALUMNI ACES

5

BD	RATINGS	SCORE		RATINGS	SCORE
1 WILSON, A	1578	42	1	CZERNIECKI, A	2070-28 0
2 WILLIAMS, A	1485	-3	0	GOLLA, R	1933 2 1
3 JONES, M	1473	-6	0	FRANEK, M	1794 4 1
4 MCKEEL, B	1428	-7	0	FRANK, M	1734 7 1
5 STAPLES, M	1216	-2	0	FABIJONAS, R	1741 1 1
6 JOHNSON, D	0	0	0	LITVINAS, A	1740 0 1

30-JAN-97 BANK AMERICA ILLINOIS
ROUND 9

5 CTA

1

BD	RATINGS	SCORE		RATINGS	SCORE
1 KOGAN, G	1887	39	1	BYRNES, R	2217-39 0
2 PARAOAN, E	1785	0	.5	MCCARTNEY, M	0 0 .5
3 SOMBONG, M	1643	-2	.5	WILSON, A	1620 2 .5
4 SIEGEL, R	1469	22	1	JONES, M	1467-22 0
5 ZOELLNER, J	1339	28	1	MCKEEL, B	1421-28 0
6 GANSER, A	1219	0	1	JOHNSON, D	0 0 0

04-FEB-97 PAWNS
ROUND 7

.5 CASE

5.5

BD	RATINGS	SCORE		RATINGS	SCORE
1 ELLICE, W	1951-10	0		WILLIAMS, T	2161 10 1
2 O'DELL, DW	1531	-3	0	KALE, S	1889 5 1
3 HANSEN, B	1351	16	.5	WHITE, H	1660-16 .5
4 LOGAN, H	1269-10	0		GERONA, R	1476 10 1
5 HARD, R	1193	-8	0	REID, C	1456 8 1
6 UHLEMAN, T	0	0	0	MOTYCKA, R	1176 0 1

05-FEB-97 LUCENT TECH. DRAGONS
ROUND 7

1.5 LUCENT TECH. ROYALS

4.5

BD	RATINGS	SCORE		RATINGS	SCORE
1 TEGEL, F	2165	-3	.5	BUCHNER, R	2089 5 .5
2 CHIRCHIKOV, S	1740-11	0		GUIO, J	1945 11 1
3 EUSTACE, D	1620	-5	0	PEHAS, A	1991 5 1
4 WARD, C	1562	-5	0	DOBROVOLNY, C	1854 7 1
5 HICKS, C	1539	0	0	CZOSKE, M	0 0 1
6 KELLY, S	1258	0	1F		0 0 0F

05-FEB-97 LUCENT TECH. CHARGERS
ROUND 7

2 ARGONNE KNIGHTS

4

BD	RATINGS	SCORE		RATINGS	SCORE
1 WARREN, J	2094	11	1	BENEDEK, R	2121-16 0
2 ROSLEY, D	1715-12	0		HILL, R	1898 12 1
3 STAMM, V	1645-11	0		MAKAI, M	1737 17 1
4 RADAVICIUS, E	1626	-7	0	GOLCHERT, B	1819 11 1
5 THOMAS, J	1489	-7	0	SUAREZ, E	1686 11 1
6 DOBR, K	1482	0	1	YACOUT, A	0 0 0

05-FEB-97 AMOCO CORP.
ROUND 8

3 NATIONS BANK-CRT 3

BD		RATINGS	SCORE		RATINGS	SCORE
1	ATKINSON, J	1837	-4	0	JASAITIS, A	2170 4 1
2	WENTLING, C	1620	-5	0	LOSOFF, A	1904 7 1
3	WOOD, L	1483	36	1	BARGERSTOCK, D	1736-36 0
4	HOLMES, M	0	0	1	DELEON, J	1622 0 0
5	PORTER, D	0	0	0	SITAR, K	1573 0 1
6	MALEN, M	0	0	1	SHATSKY, V	1499 0 0

06-FEB-97 SEARS
ROUND 6

1 MOTOROLA 5

BD		RATINGS	SCORE		RATINGS	SCORE
1	LATIMER, E	2017	-12	0	MORRIS, R	2092 18 1
2	MILLER, TT	1823	33	1	SAMELSON, C	2004-22 0
3	WILSON, M	1248	-1	0	CIESLEK, D	1898 1 1
4	JONES, K	0	0	0	GONCHAROFF, N	1736 0 1
5	KIUSALS, D	1077	-5	0	GRYPARIS, J	1450 5 1
6	HALL, L	0	0	0	BALICKI, J	0 0 1

06-FEB-97 NORTHROP-GRUMMAN
ROUND 6

2.5 KEMPER INSURANCE 2.5

BD		RATINGS	SCORE		RATINGS	SCORE
1	CURTIS, M	2002	7	.5	SIWEK, M	2110 -5 .5
2	VIGANTS, A	1588	-26	0	OLSEN, A	1530 26 1
3	BABINEC, J	1396	-30	0	MCKINNEY, T	1281 30 1
4	ELEK, G	1080	0	1	CAMPBELL, DD	0 0 0
5	LE, D	0	0	1F		0 0 0F
6		0	0	0F		0 0 0F

06-FEB-97 UOP PROCESS DIV.
ROUND 6

4.5 EXEMPLARS 1.5

BD		RATINGS	SCORE		RATINGS	SCORE
1	STEVANOVIC, M	2294	10	1	GAZMEN, E	2185-16 0
2	BUERGER, E	2098	-19	0	FRISKE, T	2007 28 1
3	BOLDINGH, E	1997	-2	.5	SULLIVAN, J	1977 1 .5
4	PLETT, M	1829	30	1	SOLLANO, E	1956-30 0
5	SAJBEL, P	1788	17	1	WEITZ, R	1699-11 0
6	MICKLICH, F	1624	12	1	BROTSOS, J	1563-12 0
7	VAN ZILE, C	1355	0	0	SCHOONOVER, M	0 0 1 (UOP)

10-FEB-97 WHEATON COLLEGE
ROUND 7

1 COOK CO. DEPT. OF CORR. 5

BD		RATINGS	SCORE		RATINGS	SCORE
1	JOSEPHSON, D	1767	-16	.5	HALL, A	1466 16 .5
2	BOSTICK, T	1475	-35	0	JACKSON, S	1258 35 1
3	ENKE, E	1385	0	0	SEATON, E	0 0 1
4	LAKE, T	0	0	.5	ROJO, V	1397 0 .5
5	DEMICK, D	0	0	0	APPLEBERRY, T	1264 0 1
6	NEWCOMER, K	0	0	0	GATSON, T	0 0 1

12-FEB-97 COLUMBIA COLLEGE 6 AMOCO CORP. 0
ROUND 9

BD	RATINGS	SCORE	RATINGS	SCORE
1 SANTIAGO, T	1999 12	1	ATKINSON, J	1833 -8 0
2 MCALISTER, K	1928 6	1	WENTLING, C	1615 -4 0
3 KOSTECKA, K	1570 19	1	WOOD, L	1519-19 0
4 STEVENS, J	1389 29	1	HOLMES, M	1489-29 0
5 VACCARO, M	0 0	1	VEREZHENSKY, E	0 0 0
6 BRANCH, Y	1276 0	1	PORTER, D	0 0 0

16-FEB-97 UOP PROCESS DIV. 5 SEARS 1
ROUND 7

BD	RATINGS	SCORE	RATINGS	SCORE
1 STEVANOVIC, M	2304 5	1	LATIMER, E	2005 -5 0
2 BUERGER, E	2079 7	1	MILLER, TT	1856-10 0
3 BOLDING, E	1995 0	1F	DORFF, M	1618 0 0F
4 PLETT, M	1859 0	1	HALL, L	0 0 0
5 LIKHTEREV, M	1447 17	1	BALASE, E	1360-17 0
6 SCHOONOVER, M	0 0	0	WILSON, M	1247 0 1
7 TAKAOKA, M	0 0	0	RENDE, D	0 0 1 (UOP)

19-FEB-97 WHEATON COLLEGE 1 ARGONNE ROOKS 5
ROUND 8

BD	RATINGS	SCORE	RATINGS	SCORE
1 JOSEPHSON, D	1751-13	0	KABELAC, J	1909 13 1
2 BOSTICK, T	1440 -4	0	GREEN, D	1865 2 1
3 ENKE, E	1385 0	1	GARCIA, J	0 0 0
4 LEWIS, N	0 0	0	BAURAC, D	1644 0 1
5 BROLLIER, B	1258 0	0	TOELLNER, T	0 0 1
6	0 0	0F	ANSELL, S	1819 0 1F

19-FEB-97 MOTOROLA 3.5 NORTHROP-GRUMMAN 2.5
ROUND 7

BD	RATINGS	SCORE	RATINGS	SCORE
1 HASAN, Y	2197-12	.5	CURTIS, M	2009 12 .5
2 MORRIS, R	2110 4	1	CAIRONE, B	1714 -4 0
3 MACKIE, A	1968-41	0	VIGANTS, A	1562 41 1
4 CIESLEK, D	1899 0	0	WALKER, A	0 0 1
5 AUGSBURGER, L	1796 3	1	BABINEC, J	1366 -3 0
6 BALICKI, J	0 0	1	ELEK, G	1080 0 0
7 THOMSON, J	0 0	1	LE, D	0 0 0
8 GONCHAROFF, N	1736 3	1	GRYPARIS, J	1455 -7 0 (MTRLA)
9 GRYPARIS, J	1448 16	.5	GONCHAROFF, N	1739 -7 .5 (MTRLA)

19-FEB-97 AMOCO CORP. 2.5 ALUMNI ACES 3.5
ROUND 10

BD	RATINGS	SCORE	RATINGS	SCORE
1 HODINA, J	2149-29	0	CZERNIECKI, A	2042 19 1
2 ATKINSON, J	1825 20	1	GOLLA, R	1935-20 0
3 WENTLING, C	1611 9	.5	RZESZUTKO, R	1848-14 .5
4 WOOD, L	1500 -9	0	FABIJONAS, R	1742 6 1
5 HOLMES, M	1460 -7	0	FRANK, M	1741 7 1
6 VEREZHENSKY, E	0 0	1	YOUNG, R	1413 0 0

19-FEB-97 CASE
ROUND 8

4 LUCENT TECH. CHARGERS 2

BD		RATINGS	SCORE		RATINGS	SCORE
1	WILLIAMS, T	2171	18	1	WARREN, J	2105 -8 0
2	KALE, S	1894	0	1F	MCCARTHY, D	0 0 0F
3	ROYTBURG, E	1979	5	1	RADAVICIUS, E	1619 -3 0
4	KLINFELTER, H	1553	18	1	STAMM, V	1634-18 0
5	SATTERLEE, D	1636-21		0	DOBR, K	1482 14 1
6	GERONA, R	1486-23		0	THOMAS, J	1482 15 1
7	JACKLIN, E	1241-10		0	REID, C	1464 10 1 (CASE)

19-FEB-97 NATIONSBANK-CRT
ROUND 10

3.5 COLUMBIA COLLEGE 2.5

BD		RATINGS	SCORE		RATINGS	SCORE
1	JASAITIS, A	2174	-9	.5	MCALISTER, K	1934 14 .5
2	LOSOFF, A	1911-16		0	SANTIAGO, T	2011 16 1
3	BARGERSTOCK, D	1700	0	1F	PRATTS, M	1781 0 0F
4	DELEON, J	1622	20	1	KOSTECKA, K	1589-20 0
5	SHATSKY, V	1499-28		0	STEVENS, J	1418 28 1
6	SITAR, K	1573	0	1	VACCARO, M	0 0 0

24-FEB-97 PAWNS
ROUND 8

3 COOK CO. DEPT. OF CORR. 3

BD		RATINGS	SCORE		RATINGS	SCORE
1	ELLICE, W	1941	1	1	JACKSON, S	1293 -1 0
2	MIKULECKY, B	1392	28	1	HALL, A	1482-28 0
3	HANSEN, B	1367	0	0	SEATON, E	0 0 1
4	SKRZYPCZAK, T	1116	-7	0	ROJO, V	1397 7 1
5	HARD, R	1185-17		0	APPLEBERRY, T	1264 17 1
6	KREMER, T	0	0	1	GATSON, T	0 0 0
7	FERGUSON, K	0	0	1	SANDEFUR, B	1320 0 0

25-FEB-97 EXEMPLARS
ROUND 7

4 KEMPER INSURANCE 2

BD		RATINGS	SCORE		RATINGS	SCORE
1	FRISKE, T	2035-18		0	SIWEK, M	2105 12 1
2	SULLIVAN, J	1978	2	1	OLSEN, A	1556 -4 0
3	SOLLANO, E	1926	1	1	MCKINNEY, T	1311 -1 0
4	BRONFELD, A	1827	0	1F	PAYTON, P	1234 0 0F
5	BURIAN, D	1672	0	1	LANG, P	0 0 0
6	SUERTH, F	1623	0	0	CAMPBELL, DD	0 0 1
7	EDWARDS, S	1296	0	1F	HERBER, S	0 0 0F

25-FEB-97 LUCENT TECH. TYROS
ROUND 8

3.5 LUCENT TECH. DRAGONS 2.5

BD		RATINGS	SCORE		RATINGS	SCORE
1	TAMEZ, I	2138-21		0	TEGEL, F	2162 14 1
2	DIAZ, P	2034	7	1	CHIRCHIKOV, S	1729 -7 0
3	STOLTZ, B	1936-17		.5	EUSTACE, D	1615 17 .5
4	BLAZIE, J	1848-10		.5	WARD, C	1557 10 .5
5	SHAFF, R	1531	0	.5	HICKS, C	1539 -1 .5
6	SHENOUDA, R	0	0	1	PHELPS, C	1248 0 0

26-FEB-97 LUCENT TECH. ROYALS
ROUND 8

4.5 ARGONNE KNIGHTS

1.5

BD	RATINGS	SCORE		RATINGS	SCORE
1 BUCHNER, R	2094-22	0	BENEDEK, R	2105 15	1
2 GUIO, J	1956 20	1	HILL, R	1910-20	0
3 PEHAS, A	1996 0	1F	MAKAI, M	1754 0	0F
4 DOBROVOLNY, C	1861 -3	.5	GOLCHERT, B	1830 3	.5
5 OGASAWARA, L	1821 10	1	SUAREZ, E	1697-15	0
6 BLACKMON, E	1740 0	1	ELLIOTT, M	1318 0	0

NAME	TEAM	W	L	D	RATING	NAME	TEAM	W	L	D	RATING
ABRAHAM, T	CTA	0	0	0	1590	CHOUDRY, A	KEMPR	0	1	0	1309#
ALFONSO, E	NORTH	0	0	0	1583#	CHRISTIAN, R	DRGNS	0	0	0	1811C
ALLEN, H	PSTOF	3	0	0	1942	CICUCCI, S	KEMPR	0	0	0	0000?
AMUNDSEN, C	KEMPR	0	3	0	0000?	CIESLEK, D	MTRLA	4	1	1	1899
ANDERSON, CJ	ROYLS	1	0	0	1490	CISKO, G	FERMI	0	0	0	1608
ANDRYSIAK, B	KEMPR	0	0	0	0000?	COLBERT, W	PAWNS	0	0	0	0000?
ANSELL, S	ROOKS	3	3	0	1819#	CONDON, J	MDCON	0	0	0	2039
APPLEBERRY, T	CCDOC	4	2	0	1281#	CONNOR, P	MDCON	0	0	0	2086
ASSADIAN, K	MTRLA	0	0	0	0000?	COOPER, W	PSTOF	0	0	0	1637C
ATKINSON, J	AMCRP	3	2	2	1845C	CORBIN, Z	AMCRP	1	1	0	1286*
AUGSBURGER, L	MTRLA	5	0	0	1799	COSTELLO, W	NORTH	0	0	0	0000?
AVERY, G	CCDOC	0	0	0	0000?	COTE, J	MERC	0	0	0	1323
AZCUNA, L	WHEAT	0	1	0	1233	CUMBERLAND, N	SEARS	0	1	1	0000?
BABINEC, J	NORTH	1	5	0	1363*	CUMMUTA, P	KEMPR	1	1	0	1449C
BALASE, E	SEARS	1	3	0	1343*	CURRAN, T	CASE	0	0	0	1698
BALICKI, J	MTRLA	4	1	0	0000?	CURTIS, M	NORTH	4	1	2	2021
BARGERSTOCK, D	CRT	1	2	1	1700	CZERNIECKI, A	ALUMN	3	4	0	2061D
BARNARD, G	CRT	1	2	0	0000?	CZOSKE, M	ROYLS	1	0	0	1318#
BARNES, D	CTA	0	0	0	0000?	DALTON, M	CTA	0	0	0	0000?
BAURAC, D	ROOKS	5	1	1	1644C	DAVIDSON, M	ALUMN	2	0	0	1612
BENEDEK, R	KNGHT	3	4	0	2120D	DAVIS, R	PSTOF	0	0	0	0000?
BERRY, G	ROOKS	2	3	1	2096T	DECMAN, S	ROOKS	1	2	1	1668D
BEZZUBOV, V	FERMI	1	0	0	2350*	DELEON, J	CRT	4	2	2	1642*
BLACKMON, E	ROYLS	3	1	2	1740C	DEMICK, D	WHEAT	0	1	0	0000?
BLAZIE, J	TYROS	1	1	3	1838C	DENISENKO, K	SEARS	0	0	0	0000?
BLUE, J	CCDOC	0	0	0	0000?	DIAZ, L	CASE	0	0	0	0000?
BOLDINGH, E	UOP	2	3	1	1995	DIAZ, P	TYROS	3	2	2	2041
BOSTICK, T	WHEAT	1	5	0	1436*	DOBR, K	CHRGR	5	2	0	1496T
BOSWELL, H	CCDOC	1	1	0	0000?	DOBROVOLNY, C	ROYLS	4	1	3	1858
BRADY, R	CHRGR	3	0	0	1399	DORFF, M	SEARS	3	2	0	1618
BRANCH, Y	COLUM	1	2	0	1276*	DORIGO, T	FERMI	2	0	0	2093
BRIONES, M	UOP	0	0	0	1624C	DUCKSWORTH, R	PAWNS	0	0	0	0000?
BROLLIER, B	WHEAT	1	4	0	1258#	DURKEE, D	DRGNS	0	0	0	1767C
BRONFELD, A	EXMPL	0	0	0	1827	DZURICKSKO, G	PAWNS	0	0	0	1114*
BROTSOS, J	EXMPL	1	1	0	1551D	EDWARDS, S	EXMPL	2	0	0	1296
BROZOVICH, J	TYROS	3	1	1	1716D	EGERTON, J	MDCON	0	0	0	1995
BUCHNER, R	ROYLS	0	3	3	2072	ELEK, G	NORTH	2	3	0	1080
BUERGER, E	UOP	3	3	0	2086D	ELLICE, W	PAWNS	4	2	1	1942
BURBA, K	KNGHT	0	0	0	1402C	ELLIOTT, M	KNGHT	0	4	0	1318?
BURIAN, D	EXMPL	3	1	0	1672C	ENKE, E	WHEAT	1	5	0	1385*
BYRNES, R	CTA	2	1	1	2178*	EUSTACE, D	DRGNS	1	3	1	1632
CAIRONE, B	NORTH	1	3	1	1710	FABIJONAS, R	ALUMN	4	1	0	1748D
CAMPBELL, DD	KEMPR	1	1	0	0000?	FERGUSON, K	PAWNS	1	3	0	1098#
CARNAL, D	CRT	0	0	0	1207#	FLEET, R	MDCON	0	0	0	1140#
CARTER, D	CASE	0	1	0	1042	FLOREY, J	SEARS	0	1	0	1432#
CARTER, L	PSTOF	1	3	1	1496	FRAATS, D	BKAMI	1	1	1	1874
CARTER, O	CTA	0	0	0	0000?	FRANEK, M	ALUMN	5	1	1	1798C
CARVALHO, W	FERMI	0	0	0	1895	FRANK, M	ALUMN	4	0	1	1748
CHAMORRO, A	CCDOC	0	0	0	0000?	FRIESEMA, W	CRT	0	0	0	2109
CHIRCHIKOV, S	DRGNS	2	5	1	1722#	FRISKE, T	EXMPL	6	1	0	2017

? - UNRATED

- 5 TO 9 RATED GAMES

* - 10 TO 24 RATED GAMES

C - CENTURY CLUB MEMBER

D - DOUBLE CENTURION

T - TRIPLE CENTURION

Q - QUAD CENTURION

NAME	TEAM	W	L	D	RATING	NAME	TEAM	W	L	D	RATING
FROMM, J	FERMI	0	1	0	1540	JARRETT, T	CTA	0	2	0	1624*
FULLMER, G	MTRLA	1	0	0	0000?	JASAITIS, A	CRT	4	1	2	2165C
GAINES, I	FERMI	1	3	1	1775C	JASUNAS, J	ROOKS	0	0	0	1420
GALKO, D	KEMPR	0	0	0	0000?	JOHNSON, D	CTA	0	4	0	1250#
GALLAGHER, H	KNIGHT	0	0	0	1317	JOHNSON, W	CCDOC	1	1	0	1181#
GANSER, A	BKAMI	1	1	0	1219*	JONES, K	SEARS	0	1	0	0000?
GARCIA, J	ROOKS	1	2	1	0000?	JONES, M	CTA	0	3	1	1445*
GARWOOD, B	COLUM	0	1	0	1956	JONES, MIGUEL	CCDOC	0	0	0	0000?
GATSON, T	CCDOC	1	2	1	0000?	JOSEPHSON, D	WHEAT	3	2	1	1738*
GAZMEN, E	EXMPL	2	3	0	2169	KABELAC, J	ROOKS	5	1	0	1922
GERONA, R	CASE	2	3	1	1463	KALE, S	CASE	4	1	1	1894
GOLCHERT, B	KNIGHT	2	1	2	1833	KANAS, W	CASE	1	1	1	1326C
GOLLA, R	ALUMN	3	3	2	1915D	KARPIERZ, J	TYROS	3	1	0	1238*
GOLUMBOVSKI, P	NORTH	1	0	0	2129	KEISLER, J	KNIGHT	2	0	0	2039
GOMEZ, G	FERMI	2	1	0	1542	KELLOGG, K	FERMI	1	2	1	1637C
GONCHAROFF, N	MTRLA	4	1	3	1732Q	KELLY, S	DRGNS	1	1	0	1258
GREEN, D	ROOKS	6	1	1	1867C	KERCSMAR, J	WHEAT	0	3	0	0000?
GRYPARIS, J	MTRLA	1	3	3	1464	KINSELLA, G	KNIGHT	0	1	0	1466C
GUIO, J	ROYLS	3	3	1	1976	KIUSALS, D	SEARS	0	4	0	1072
HAHNE, D	ROYLS	3	2	0	1564	KLAUDER, C	WHEAT	0	0	0	0000?
HALL, A	CCDOC	1	5	1	1454*	KLINEFELTER, H	CASE	2	1	1	1571C
HALL, D	MDCON	0	0	0	0000?	KOGAN, G	BKAMI	2	3	1	1926
HALL, L	SEARS	2	4	0	1588#	KOSTECKA, K	COLUM	3	3	2	1569
HALLMAN, W	CASE	0	0	0	1219*	KOZLOVSKY, M	FERMI	0	0	0	2106
HAMMOND, M	BKAMI	1	2	1	1416	KREMER, T	PAWNS	2	0	0	0000?
HANSEN, B	PAWNS	1	3	1	1367*	KRUEGER, J	DRGNS	0	1	1	1384*
HARD, R	PAWNS	0	6	0	1168*	KRULL, E	AMCRP	0	0	0	1510
HARDIN, L	KEMPR	0	0	0	0000?	LAKE, T	WHEAT	0	3	1	1227#
HARRIS, R	FERMI	3	2	1	1611	LAMBIRIS, J	KEMPR	1	1	0	1452
HARRUFF, E	WHEAT	0	0	0	0000?	LANG, P	KEMPR	0	3	0	0000?
HASAN, Y	MTRLA	2	2	1	2185	LARSON, T	CCDOC	0	0	0	0000?
HAZELWOOD, R	CCDOC	0	1	0	0000?	LASKY, N	PAWNS	0	0	0	1352C
HELLER, T	WHEAT	1	3	0	1163*	LATIMER, E	SEARS	1	5	1	2000D
HERBER, S	KEMPR	0	0	0	0000?	LAWRENCE, P	MTRLA	0	0	0	0000?
HESS, B	EXMPL	0	0	0	1451	LE, D	NORTH	0	1	0	0000?
HICKS, C	DRGNS	1	5	1	1538	LEONG, D	ALUMN	0	0	0	1997
HILL, C	FERMI	0	0	0	1643	LEONG, G	KEMPR	0	1	0	1995C
HILL, R	KNIGHT	4	2	0	1890	LESTER, M	MTRLA	0	0	0	1569
HILTON, J	MERC	0	0	0	1146	LEVINE, D	ROOKS	0	0	0	2357
HODINA, J	AMCRP	1	1	1	2120	LEWIS, N	WHEAT	1	1	0	0000?
HOLMES, M	AMCRP	3	4	0	1453#	LICARI, T	DRGNS	1	3	0	0000?
HORTON, D	MTRLA	1	1	0	1832	LIKHTEREV, M	UOP	1	0	0	1464*
HOWARD, W	PSTOF	0	0	0	1566	LITVINAS, A	ALUMN	5	0	1	1740C
HUEBNER, R	ROOKS	0	0	0	0000?	LODEWYCK, D	MERC	0	0	0	1414
HUGHES, N	KEMPR	0	0	0	1837C	LOGAN, H	PAWNS	2	3	0	1259*
INUMERABLE, F	PSTOF	3	1	0	2270	LORENZ, B	PAWNS	0	1	0	1479*
JACKLIN, E	CASE	0	1	0	1231	LOSOFF, A	CRT	4	2	1	1895
JACKSON, S	CCDOC	4	3	0	1292*	LUDWIG, T	DRGNS	0	0	0	2098C
JAGGARD, A	WHEAT	1	1	0	0000?	LUEDERS, J	CRT	0	0	0	0000?
JAKSTAS, K	NORTH	0	0	0	2175C	MACBEAN, J	PAWNS	0	0	0	0000?

? - UNRATED

- 5 TO 9 RATED GAMES

* - 10 TO 24 RATED GAMES

C - CENTURY CLUB MEMBER

D - DOUBLE CENTURION

T - TRIPLE CENTURION

Q - QUAD CENTURION

NAME	TEAM	W	L	D	RATING	NAME	TEAM	W	L	D	RATING
MACKIE, A	MTRLA	2	1	0	1927	REYES, E	COLUM	0	1	0	0000?
MAKAI, M	KNGHT	4	1	1	1754#	REYES, R	SEARS	2	0	0	2362D
MALEN, M	AMCRP	1	2	0	0000?	RINGER, D	SEARS	0	1	0	0000?
MARCOWKA, R	PSTOF	2	2	0	1965C	ROBERTS, J	WHEAT	0	0	0	1328#
MATTAR, I	CCDOC	0	0	0	0000?	ROJAS, R	CTA	0	0	0	0000?
MATTHEWS, J	CTA	0	0	0	1786	ROJO, V	CCDOC	2	1	2	1404*
MAYNARD, J	WHEAT	0	0	1	1369	ROMENESKO, G	PAWNS	0	0	0	0000?
MCALISTER, K	COLUM	4	2	3	1948	RONIN, D	KNGHT	0	0	0	1537*
MCCARTHY, D	CHRGR	0	0	0	0000?	ROSENBERG, B	MDCON	0	0	0	1456*
MCCARTNEY, M	CTA	0	2	1	0000?	ROSLEY, D	CHRGR	1	2	0	1703
MCKAY, P	PAWNS	0	0	0	1393#	ROYTBURG, E	CASE	4	1	0	1984*
MCKEEL, B	CTA	1	5	1	1393#	RUBIN, A	CRT	0	0	0	0000?
MCKINNEY, T	KEMPR	1	4	0	1310*	RZESZUTKO, R	ALUMN	0	0	1	1834C
MELNIKOV, I	MTRLA	1	2	0	2081	SAHLI, E	UOP	0	0	1	1708
MICKLICH, F	UOP	4	2	0	1636C	SAJBEL, P	UOP	3	0	1	1805
MIKULECKY, B	PAWNS	1	1	2	1420C	SAMELSON, C	MTRLA	3	1	0	1982C
MILLER, TT	SEARS	1	2	0	1846	SANDEFUR, B	CCDOC	2	4	0	1320#
MORRIS, R	MTRLA	6	0	1	2114	SANTIAGO, T	COLUM	3	4	1	2027
MORRISON, J	KNGHT	1	1	0	1737	SATTERLEE, D	CASE	2	1	2	1615C
MOTTA, H	FERMI	3	3	1	1897	SAUNDERS, N	MDCON	0	0	0	0000?
MOTYCKA, R	CASE	2	1	1	1176C	SAWDO, E	CASE	0	0	0	1412
MYART, V	CCDOC	1	1	0	0000?	SCHOONOVER, M	UOP	1	1	0	0000?
NEWCOMER, K	WHEAT	0	4	1	0000?	SCHWAB, W	ROOKS	0	1	0	1419
NIXON, L	MTRLA	0	0	0	0000?	SCHWARTZ, M	TYROS	0	2	0	1073
NOBLE, S	JCASE	0	0	0	1286#	SEATON, E	CCDOC	2	0	0	0000?
NOTERMANN, T	PAWNS	0	0	0	1178	SEMONES, E	KNGHT	1	2	0	1136#
NOTTOLI, R	AMCRP	0	2	2	1286#	SHAFF, R	TYROS	0	1	1	1531C
O'DELL, DW	PAWNS	0	5	0	1528C	SHATSKY, V	CRT	3	4	1	1471*
OGASAWARA, L	ROYLS	2	0	2	1831C	SHENOUDA, R	TYROS	1	0	1	0000?
OLSEN, A	KEMPR	1	6	0	1552	SHEYNIN, S	ROOKS	0	0	0	2051
OLSON, C	CASE	0	0	0	0000?	SHOUSE, B	MTRLA	0	1	0	0000?
PADLO, R	MTRLA	0	0	0	0000?	SIEGEL, R	BKAMI	2	0	0	1491C
PARA, A	FERMI	2	0	0	1511	SIMS, B	CRT	1	0	0	1519#
PARAOAN, E	BKAMI	2	3	2	1785C	SIPP, R	CCDOC	0	0	0	0000?
PARK, J	AMCRP	0	1	0	0000?	SITAR, K	CRT	5	1	0	1573#
PATTON, D	CHRGR	0	0	0	0000?	SIWEK, M	KEMPR	1	3	1	2117C
PAYTON, P	KEMPR	1	3	0	1234*	SKRZYPCZAK, T	PAWNS	1	4	0	1109#
PEHAS, A	ROYLS	5	0	2	1996	SLAGLE, S	MERC	0	0	0	1682
PHELPS, C	DRGNS	0	1	0	1248*	SMITH, BR	TYROS	2	0	0	1516
PIAO, T	DRGNS	0	0	0	1705	SOLLANO, E	EXMPL	5	1	0	1927
PLETT, M	UOP	3	1	1	1859	SOMBONG, M	BKAMI	1	1	3	1641
POLONCSIK, D	SEARS	0	1	0	0000?	SPIEGEL, L	FERMI	3	1	3	2103C
PORTER, D	AMCRP	0	3	0	0000?	STAMM, V	CHRGR	0	5	1	1616D
POZNIAK, J	KEMPR	0	3	0	1455*	STAPLES, C	FERMI	1	1	0	1192#
PRATTS, M	COLUM	1	0	1	1781	STAPLES, M	CTA	1	4	1	1214*
RADAVICIUS, E	CHRGR	2	5	0	1616D	STEELE, B	CCDOC	0	2	0	0000?
REARDON, J	WHEAT	0	1	0	0000?	STEVANOVIC, M	UOP	6	1	0	2309C
REDDY, S	MTRLA	0	0	0	0000?	STEVENS, G	CTA	0	0	0	0000?
REID, C	CASE	4	2	0	1474	STEVENS, J	COLUM	6	2	1	1446
RENDE, D	UOP	1	0	0	0000?	STEVENSON, R	PAWNS	0	0	0	1360

? - UNRATED

- 5 TO 9 RATED GAMES

* - 10 TO 24 RATED GAMES

C - CENTURY CLUB MEMBER

D - DOUBLE CENTURION

T - TRIPLE CENTURION

Q - QUAD CENTURION

NAME	TEAM	W	L	D	RATING	NAME	TEAM	W	L	D	RATING
STINSON, M	ROYLS	0	0	0	1937C	VEREZHENSKY, E	AMCRP	1	1	0	0000?
STOLTZ, B	TYROS	3	1	1	1919	VIGANTS, A	NORTH	2	3	1	1603
SUAREZ, E	KNGHT	5	1	0	1682	VITAVER, L	SEARS	0	0	0	1546#
SUERTH, F	EXMPL	2	2	0	1623C	WALDEN, W	CCDOC	0	0	0	0000?
SULLIVAN, C	ALUMN	1	1	0	1425	WALKER, A	NORTH	1	2	1	0000?
SULLIVAN, J	EXMPL	2	1	1	1980D	WALLACH, C	MTRLA	3	0	0	2104
SZONTAGH, T	CRT	0	0	0	1184#	WALSH, W	ROOKS	2	1	0	1500C
TAKAOKA, M	UOP	0	1	0	0000?	WARD, C	DRGNS	3	3	2	1567D
TAMEZ, I	TYROS	4	2	0	2117	WARD, J	CTA	0	0	0	0000?
TAN, M	WHEAT	0	1	0	1191	WARREN, J	CHRGR	2	1	3	2097T
TAYLOR, M	CTA	0	0	0	0000?	WEITZ, R	EXMPL	1	2	1	1688C
TEGEL, F	DRGNS	4	1	3	2176T	WENTLING, C	AMCRP	2	2	3	1620C
THOMAS, G	TYROS	2	0	0	1518	WHARTON, P	WHEAT	0	1	1	0000?
THOMAS, J	CHRGR	3	3	1	1497C	WHITE, H	CASE	2	0	2	1644
THOMSON, J	MTRLA	1	0	0	0000?	WHITE, T	BKAMI	2	2	0	1344#
TOELLNER, T	ROOKS	2	1	0	0000?	WILLIAMS, A	CTA	0	3	1	1482*
TRUDY, E	CCDOC	0	0	0	0000?	WILLIAMS, T	CASE	6	0	1	2189
TURNER, K	PSTOF	2	1	1	1496	WILSON, A	CTA	1	1	1	1622
UHLEMAN, T	PAWNS	1	2	0	0000?	WILSON, M	SEARS	1	3	1	1247*
UNDERWOOD, W	WHEAT	0	2	0	1945C	WOLF, D	MTRLA	0	1	0	2302
VACCARO, M	COLUM	3	3	0	0000?	WONG, P	EXMPL	0	0	0	2210C
VALDEZ, C	MTRLA	0	0	0	0000?	WOOD, L	AMCRP	2	3	0	1491*
VAN MEER, J	KEMPR	0	0	0	1958	WRIGHT, E	CCDOC	0	1	0	0000?
VAN METRE, R	SEARS	0	0	0	1483#	YACOUT, A	KNGHT	3	2	0	0000?
VAN ZILE, C	UOP	1	2	0	1355	YOUNG, R	ALUMN	0	1	0	1413
VANDECOTTE, M	UOP	0	0	0	0000?	ZOELLNER, J	BKAMI	2	5	0	1367C
VAYSBERG, O	CASE	2	0	0	0000?						

? - UNRATED

- 5 TO 9 RATED GAMES

* - 10 TO 24 RATED GAMES

C - CENTURY CLUB MEMBER

D - DOUBLE CENTURION

T - TRIPLE CENTURION

Q - QUAD CENTURION

02-27-1997

NEAR WEST DIVISION TOP TEN

WILLIAMS, T	CASE	2189
BENEDEK, R	KNGHT	2120D
WARREN, J	CHRGR	2097T
KEISLER, J	KNGHT	2039
ROYTBURG, E	CASE	1984*
ELLICE, W	PAWNS	1942
KALE, S	CASE	1894
HILL, R	KNGHT	1890
GOLCHERT, B	KNGHT	1833
MORRISON, J	KNGHT	1737

FAR WEST DIVISION TOP TEN

LEVINE, D	ROOKS	2357
BEZZUBOV, V	FERMI	2350*
TEGEL, F	DRGNS	2176T
TAMEZ, I	TYROS	2117
KOZLOVSKY, M	FERMI	2106
SPIEGEL, L	FERMI	2103C
LUDWIG, T	DRGNS	2098C
BERRY, G	ROOKS	2096T
DORIGO, T	FERMI	2093
BUCHNER, R	ROYLS	2072

NORTH DIVISION TOP TEN

REYES, R	SEARS	2362D
STEVANOVIC, M	UOP	2309C
WOLF, D	MTRLA	2302
WONG, P	EXMPL	2210C
HASAN, Y	MTRLA	2185
JAKSTAS, K	NORTH	2175C
GAZMEN, E	EXMPL	2169
GOLUMBOVSKI, P	NORTH	2129
SIWEK, M	KEMPR	2117C
MORRIS, R	MTRLA	2114

EAST DIVISION TOP TEN

INUMERABLE, F	PSTOF	2270
BYRNES, R	CTA	2178*
JASAITIS, A	CRT	2165C
HODINA, J	AMCRP	2120
FRIESEMA, W	CRT	2109
CZERNIECKI, A	ALUMN	2061D
SANTIAGO, T	COLUM	2027
LEONG, D	ALUMN	1997
MARCOVKA, R	PSTOF	1965C
GARWOOD, B	COLUM	1956

MOST IMPROVED PLAYERS

JACKSON, S	CCDOC	160
CURTIS, M	NORTH	137
STEVENS, J	COLUM	106
FRISKE, T	EXMPL	83
WILLIAMS, T	CASE	71
ELLICE, W	PAWNS	64
ALLEN, H	PSTOF	60
ROJO, V	CCDOC	57
ATKINSON, J	AMCRP	56
HANSEN, B	PAWNS	55