

December 1997

Volume 41.3

The Chicago Chess Player

The Official Bulletin of the Chicago Industrial Chess League

Inside

- **A word from the President**
- **Fall Business Meeting minutes**
- **Team Standings**
- **Match Results**
- **Ratings**
- **Division Top Ten List**
- **Most Improved Player List**
- **Games**
- **The Finishing Touch**

CICL OFFICERS

President:	Pat Sajbel (POSABEL@uop.com (POSABEL)) UOP 95 East Algonquin Road Des Plaines, IL 60017-5017 W:(847) 391-2134 H:(847) 506-9302
Secretary	Tony Jasaitis (CAT) (tony@trdlnk.com (E-mail)) P.O. Box 664 Bedford Park, IL 60499-0664 H:(708) 448-4967 W:(312) 939-0081 (ext.1206)
Treasurer	Len Spiegel (Fermi) (lenny@fnal.gov (E-mail)) Fermilab MS 219 P.O.Box 500 Batavia, IL 60510 W:(630) 840-2809 H:(630) 377-2675
Ratings Chairman	Charles Ward (Lucent Tech Dragons) (ceward@lucent.com (E-mail)) 615 S. Lincoln Hinsdale, IL 60521 W:(630) 979-4599 H:(630) 325-3885 Fax: (630) 979-6124
Publicity Director	Carl Reid (CASE) 2289 Grand Drive Northbrook, IL 60062-6937
Trophy Chairman	Wayne Ellice (Pawns) (wayne.ellice@crous.sprint.com (E-mail)) Crosfield Catalysts 4099 West 71st Street Chicago, IL 60629 W:(773) 838-3215 Fax:(773) 838-3243
Banquet Chairman	Satish Kale (skale@casecorp.com (E-Mail)) CASE Corp 7 South 600 County Line Rd. Burr Ridge, IL 60521 W:(630) 887-2372 H:(630) 325-KALE
Bulletin Editor	Ruben Reyes (Sears) (RRgb@aol.com (E-mail)) 2019 W. Leland Ave. Chicago, IL 60625-1513 W: (847) 286-3792 H: (773) 334-0591 Fax: (773) 769-0311
Far West Division Chairman	Irwin Gaines (Fermi) (gaines@fnal.gov (E-Mail)) Fermilab MS 127 P.O.Box 500 Batavia, IL 60510 W: (630) 840-4022 H: (630) 420-1452 Fax: (630) 840-2783
North Division Chairman	Art Olsen (Hemper) 721-G S. Elmurst Road Des Plaines, IL 60016 W:(847) 320-2420 H:(847) 437-9819 FAX:to TSS OTS, G-5 at (847) 320-4454
Near West Division Chairman	Howard Klinefelter (Case) (hklinefelter@casecorp.com) 1125 Manchester Court Naperville, IL 60563-2110 H: (630) 961-0482
East Division Chairman	Kelvin McAlister Accounting Dept.; Columbia College 600 S. Michigan Ave. Chicago, IL 60606 W:(312) 344-7437 H:(708) 747-2350 (kmcAlister@popmail.colum.edu (E-Mail))

A word from the President

FINANCES

Let me be blunt. The topic of this month's column is MONEY. We're getting into that time of the year when most people don't want to think about this subject. Charities need support and shopping can strain anyone's budget. I will keep the tone here upbeat, however, the timing of this column also coincides with the payment of team dues. We currently have 16 of our 24 member teams who have paid for the season. If you are among the 'late eight', please get your finances settled.

Managing money is a skill. Someone has to take charge to keep a house in order. In the CICL, we have been very fortunate to have people to take on this role. Wes Underwood has been our money man for many years. Lenny Spiegel has taken over as Treasurer this season. Wes still consults when needed.

The CICL has always impressed me as being a very fiscally conservative organization. We work on a shoestring budget (If only our government could function this well!). There have been past business meetings where I have had to stop and ask myself why we have lengthy discussions on matters when only a few dollars are concerned. When I think a bit further, I usually realize that it's not the question of a few dollars but consistency with past expenditures or matters of principal that are being debated.

When I consider the cost of playing in local tournaments, the team dues are an incredible bargain. This works out to \$10 or less per person per year for tournament-caliber play. That's about one U.S. buck per game! An individual's cost of playing in

the CICL is better measured by the mileage on their car and their travel time.

The CICL not only functions on a small budget, but has a cash surplus. We try to run on a balanced budget, but money was steadily accumulated to buy a computer for records purposes. This surplus was created before computers were commonly available and before the cost of computers starting dropping. This money has been sitting quietly collecting interest. Expenses last year for the commemorative medallions was the first time that we have ever dipped into this reserve.

The purpose of my column is not to look for more money, or to prepare everyone for a proposed budget change. Let me just say 'thank you' to our Treasurers, past and present, and to those of you who have paid dues already--and to remind everyone who is late. I also wanted to take the time to make you aware that the CICL is still a great bargain, and to share some good financial news with you as the holidays approach.

Pat Sajbel

Minutes of Fall Business Meeting

Prepared by Tony Jasaitis, CICL Secretary

CHICAGO INDUSTRIAL CHESS LEAGUE

Meeting of August 26, 1997

at: UOP, Des Plaines, IL

Attendees

Jim Atkinson	Amoco
Jeff Balicki	Motorola
Karel Dobr	Lucent Tech. Chargers
Charles Dobrovolny	Lucent Tech. Royals
Jim Duffy	Leo Burnett
Wayne Ellice	Pawns; Trophy Chairman
Tom Friske	Exemplars
Tony Jasaitis	NationsBanc/CRT; CICL Secretary
Ken Jones	Sears
Joe Karpierz	Lucent Tyros
Algis Litvinas	Alumni Aces
Kelvin McAlister	Columbia College; East Division Chairman
Robert Morris	Motorola
Art Olsen	Kemper; North Division Chairman
Mike Plett	UOP
Ruben Reyes	Sears; Bulletin Editor
Carl Reid	Case; Publicity Chairman
Pat Sajbel	UOP; President
Lenny Spiegel	Fermi; Treasurer
Charlie Van Zile	UOP
Charlie Ward	Lucent Tech. Dragons; Ratings Chairman

1. President Pat Sajbel called the meeting to order at 7:15 pm.
2. No changes were noted to the minutes of the Spring 1997 meeting.
3. Lenny Spiegel presented a report of CICL finances. Last season's budget was run at a loss of \$740 because of the treasury surplus, and because of one-time expenses such as the

anniversary medallions. The CTA and Post Office in the East Division did not pay their dues last year. Score sheets and match result sheets have already been paid for. Lenny proposed to keep dues the same, even though some expenses are expected to be higher, such as banquet costs. The projected deficit for this season is \$140, which will come out of the treasury surplus. The budget and dues were accepted unanimously.

4. Wayne Ellice wondered if too much emphasis is being placed on winning trophies, to the detriment of fun and fair spirit. Tony Jasaitis commented that anyone who is driven enough to cheat for just a trophy will probably cheat anyway. Pat Sajbel recommended that we review trophy allocations at the spring meeting. Wayne relayed difficulties in obtaining people's full names for trophy inscriptions in the brief time that is allotted, and asked the division chairmen to provide a list of team contacts in advance.
5. Satish Kale will serve as Banquet Chairman this year. Our banquet site, Harvey's Prime Rib, is expected to raise its prices this year.
6. Carl Reid reported poor response to publicity attempts. At tournaments, many of the people are not company types, such as students. WGN turned down his attempts at publicity via a "community announcement", because we are not exactly a community, and not exactly an event. An ad in the Illinois Chess Bulletin did not yield fruit. In conversations with possible candidates, he has found our team size requirement to be a stumbling block. Some people do not wish to travel as much as is required. A suggestion was made to publish our "flyer" in the bulletin so that anyone could distribute it. Carl said that he would submit a current copy for publication.
7. Kelvin McAlister reported that the Post Office and CTA teams dropped out of the East Division. He is attempting to organize a merged team that could consist of the CTA and the Mercantile Exchange. A new team, Leo Burnett, was seeking admission.
8. Art Olsen reported that Northrop has lost about half of its team, and would be able to field no more than 5 players. Pat Sajbel reported that his referrals have yielded Safety-Kleen and Miller Hydro-power as possible "merged team" candidates for Northrop. [The S-K connection has since panned out.]

9. Ruben Reyes reported that he needs help in producing the bulletin, and he expects a period of time when he will be unable to produce it at all. Pat Sajbel suggested that the task has become so ambitious that it could be broken up, such as the review of games. He also offered to handle the printing and mailing. Ruben said he would publish a list of tasks that comprise his production of the bulletin. He also pointed out that if people are willing to do without the page headers introduced by Tim Williams, other people's contributions could be collated in directly by the person assembling the bulletin.

10. The office of the Secretary was put up for nominations, which did not lead anywhere. Tony Jasaitis offered to continue as "interim Secretary." Pat Sajbel suggested publishing a "job description" in the bulletin.

11. Leo Burnett, an advertising agency, was admitted unanimously to the East Division. The firm has the distinction of having one of the top 50 women players in the country, Elise Sophia Gates.

12. Pat Sajbel introduced a proposal to reduce "upper-board" forfeit rule limit from 4 back to 2. This refers to the number of times a team may forfeit boards leaving a "hole" in the lineup (i.e., without moving players up). Once this limit is exceeded, all boards below the forfeited board will also be recorded as forfeits for match result purposes. The proposal also completely forbids such "upper-board" forfeits involving absent new or inactive players, inactive meaning that the name does not appear in the most recent rating list. The proposal passed unanimously.

Some discussion ensued as to whether the opposing team needs to claim a violation of the rule for the penalty to apply. The general consensus was that a captain violating the rule is going to know that he is cheating and should be penalized even after the fact.

13. In the prior meeting, a proposal was passed defining merged teams when they consist solely of existing CICL teams. A definition for merged teams consisting of new companies was tabled for this meeting. Eventually, the following proposal passed unanimously:

"A merged team may be comprised of two separate companies one or both of which were

not previously members of the CICL but cannot individually support a full team. Each company must contribute an initial roster of at least three players to the team. Merged teams also need to state their name, the names of their merged companies, the names of the team captain(s), and the location of their playing site. The merged team must be approved by a vote of team captains upon formation, and whenever changes occur to the roster of companies comprising the team."

14. A possible revision to the definition of member eligibility had been tabled to this meeting, but got nowhere.

15. Pat Sajbel brought up, at the request of several individuals, a minor physical altercation that occurred during a dispute at the playoffs. He pointed out that we cannot tolerate such behavior, regardless of the reasons. Besides being unprofessional, it could lead to loss of valued tournament sites. With one of the individuals in question present, a very chaotic meeting resulted which will not be recorded here. The clear consensus that verbally or physically aggressive behavior is completely unacceptable and should not be tolerated.

16. May 16 was set as "playoff Saturday". Kemper appeared to be likely to be available as a playoff site. The banquet will be held on June 5.

17. President Pat Sajbel closed the meeting at approximately 10 pm.

NEAR WEST DIVISION 11-30-1997

TEAM NAME	W	L	D	GAME MATCH		PCT
				POINTS	POINTS	
ARGONNE KNIGHTS	3	0	0	14.5	3.0	1.000
US POSTAL SERVICE-IPR	2	1	0	11.0	2.0	0.667
CASE	2	1	0	10.5	2.0	0.667
COOK CO. DEPT. OF CORR	1	2	1	10.0	1.5	0.375
LUCENT TECH. CHARGERS	1	2	0	7.5	1.0	0.333
PAWNS	0	3	1	6.5	0.5	0.125

FAR WEST DIVISION 11-30-1997

TEAM NAME	W	L	D	GAME MATCH		PCT
				POINTS	POINTS	
ARGONNE ROOKS	2	1	1	14.0	2.5	0.625
LUCENT TECH. DRAGONS	2	1	1	13.5	2.5	0.625
LUCENT TECH. TYROS	2	0	1	12.0	2.5	0.833
LUCENT TECH. ROYALS	1	1	1	9.5	1.5	0.500
FERMILAB	0	1	2	8.0	1.0	0.333
WHEATON COLLEGE	0	3	0	3.0	0.0	0.000

NORTH DIVISION 11-30-1997

TEAM NAME	W	L	D	GAME MATCH		PCT
				POINTS	POINTS	
MOTOROLA	3	0	0	14.0	3.0	1.000
EXEMPLARS	2	1	0	11.0	2.0	0.667
UOP PROCESS DIV.	1	1	1	8.0	1.5	0.500
SEARS	1	0	1	6.5	1.5	0.750
KEMPER INSURANCE	0	3	0	5.5	0.0	0.000
NORTHROP/SK	0	2	0	3.0	0.0	0.000

EAST DIVISION 11-30-1997

TEAM NAME	W	L	D	GAME MATCH		PCT
				POINTS	POINTS	
COLUMBIA COLLEGE	3	1	0	14.5	3.0	0.750
ALUMNI ACES	3	0	0	13.5	3.0	1.000
AMOCO CORP.	2	1	0	8.5	2.0	0.667
NATIONSBANK-CRT	1	3	0	10.0	1.0	0.250
LEO BURNETT	1	2	0	7.0	1.0	0.333
BANK AMERICA ILLINOIS	0	3	0	4.5	0.0	0.000

29-SEP-97 CASE		1		ARGONNE KNIGHTS		5	
ROUND 1							
BD	RATINGS	SCORE		RATINGS	SCORE		
1 ROYTBURG, E	1989-13	0		BENEDEK, R	2147 9	1	
2 KALE, S	1805-15	0		HILL, R	1933 15	1	
3 WHITE, H	1600-11	0		MAKAI, M	1788 11	1	
4 SATTERLEE, D	1594-10	0		SUAREZ, E	1707 15	1	
5 KLINEFELTER, H	1541 13	1		YACOUT, A	1506-20	0	
6 GERONA, R	1453 0	0		SIRAKOV, I	0 0	1	
7 REID, C	1379-17	0		KINSELLA, G	1466 11	1	
8 MOTYCKA, R	1159 0	1		STALKER, M	0 0	0(CASE)	

20-OCT-97 CASE		5		COOK CO. DEPT. OF CORR		1	
ROUND 2							
BD	RATINGS	SCORE		RATINGS	SCORE		
1 ROYTBURG, E	1976 14	1		SEATON, E	1846-14	0	
2 WHITE, H	1589 10	1		JACKSON, S	1381-10	0	
3 SATTERLEE, D	1584 9	1		ROJO, V	1432-13	0	
4 REID, C	1362 21	1		APPLEBERRY, T	1335-21	0	
5 KANAS, W	1287 0	1		GATSON, T	0 0	0	
6 STALKER, M	0 0	0		SANDEFUR, B	1343 0	1	
7 KLINEFELTER, H	1554 3	1		JOHNSON, W	1181 -5	0	
8 GERONA, R	1453 0	1		JEFFERIES, P	0 0	0	

21-OCT-97 NORTHROP/SK		1.5		EXEMPLARS		4.5	
ROUND 2							
BD	RATINGS	SCORE		RATINGS	SCORE		
1 SCHMUGGEROW, K	2123-19	0		BENESA, A	2176 19	1	
2 CURTIS, M	2023-14	0		GAZMEN, E	2154 14	1	
3 WALKER, A	1682 -5	0		FRISKE, T	2042 5	1	
4 VIGANTS, A	1631 15	.5		SOLLANO, E	1901-15	.5	
5 ELEK, G	1077 -2	0		BURIAN, D	1643 1	1	
6 VELEZ, L	0 0	1		SUERTH, F	1623 0	0	

28-OCT-97 LEO BURNETT		3.5		NATIONSBANK-CRT		1.5	
ROUND 3							
BD	RATINGS	SCORE		RATINGS	SCORE		
1 GATES, E	1852 39	1		JASAITIS, A	2186-26	0	
2 EAMAN, R	1525 40	1		LOSOFF, A	1905-40	0	
3 DUFFY, J	1630 22	1		SITAR, K	1625-22	0	
4 BANNON, B	0 0	0		SHATSKY, V	1544 0	1	
5 SAWIN, B	0 0	.5		BARNARD, G	1091 0	.5	
6	0 0	0F			0 0	0F	

30-OCT-97 BANK AMERICA ILLINOIS 2 AMOCO CORP. 3
 ROUND 3

BD	RATINGS	SCORE		RATINGS	SCORE
1 KOH, J	2009-17	0	HODINA, J	2101 17	1
2 KOGAN, G	1890-24	0	ATKINSON, J	1865 16	1
3 PAROAN, E	1786 8	1	WENTLING, C	1602 -8	0
4 HAMMOND, M	1522-29	0	HOLMES, M	1412 29	1
5 ZOELLNER, J	1326 0	1	SULLIVAN, CC	0 0	0
6	0 0	0F		0 0	0F

04-NOV-97 CASE 4.5 PAWNS 1.5
 ROUND 3

BD	RATINGS	SCORE		RATINGS	SCORE
1 ROYTBURG, E	1990 0	0F	ELLICE, W	1861 0	1F
2 WHITE, H	1599 -6	.5	O'DELL, DW	1505 4	.5
3 SATTERLEE, D	1593 4	1	LOGAN, H	1263 -6	0
4 GERONA, R	1453 5	1	SKRZYPCZAK, T	1107 -5	0
5 REID, C	1383 0	1	KREMER, T	0 0	0
6 CARTER, D	1056 0	1	GRANTHAM, D	0 0	0

05-NOV-95 ARGONNE KNIGHTS 3.5 LUCENT TECH. CHARGERS 2.5
 ROUND 3

BD	RATINGS	SCORE		RATINGS	SCORE
1 BENEDEK, R	2156 13	1	WARREN, J	2106 -9	0
2 HILL, R	1948 1	.5	MARCOWKA, R	1954 0	.5
3 SUAREZ, E	1722 2	.5	ROSLEY, D	1739 -2	.5
4 YACOUT, A	1486 9	.5	STAMM, V	1621 -6	.5
5 SIRAKOV, I	0 0	1	DOBR, K	1482 0	0
6 KINSELLA, G	1477-14	0	THOMAS, J	1494 14	1

06-NOV-97 LUCENT TECH. ROYALS 4 LUCENT TECH. DRAGONS 2
 ROUND 3

BD	RATINGS	SCORE		RATINGS	SCORE
1 GUIO, J	1968-11	0	TEGEL, F	2173 7	1
2 PEHAS, A	1999-12	.5	EUSTACE, D	1630 18	.5
3 PEIJFFERS, S	1994 4	1	WARD, C	1595 -3	0
4 DOBROVOLNY, C	1831-21	.5	KELLY, S	1255 21	.5
5 OGASAWARA, L	1810 0	1	LICARI, T	0 0	0
6 BLACKMON, E	1770 0	1F		0 0	0F

06-NOV-97 AMOCO CORP.
ROUND 2

5 LEO BURNETT 1

BD	RATINGS	SCORE	RATINGS	SCORE
1 HODINA, J	2118 10	1	GATES, E	1891-10 0
2 ATKINSON, J	1881 4	1	EAMAN, R	1565 -6 0
3 WENTLING, C	1594 17	1	DUFFY, J	1652-26 0
4 SULLIVAN, CC	0 0	1	BANNON, B	0 0 0
5 MARQUES, N	0 0	1	SAWIN, B	0 0 0
6	0 0	0F	MARVIN, C	0 0 1F

06-NOV-97 MOTOROLA
ROUND 3

4 EXEMPLARS 2

BD	RATINGS	SCORE	RATINGS	SCORE
1 HASAN, Y	2226 19	1	GAZMEN, E	2168-19 0
2 MORRIS, R	2161 15	1	FRISKE, T	2047-15 0
3 MELNIKOV, I	2119 13	1	SULLIVAN, J	1968 -9 0
4 WALLACH, C	2059-33	0	SOLLANO, E	1886 33 1
5 AUGSBURGER, L	1764-18	0	BRONFELD, A	1828 18 1
6 SMITH, J	0 0	1	BURIAN, D	1644 0 0
7 BALICKI, J	1612-22	0	SUERTH, F	1623 15 1
8 GONCHAROFF, N	1731 3	1	GRYPARIS, J	1452 -8 0 (MTRLA)
9 BANOS, M	0 0	0	LE, D	0 0 1 (MTRLA)

06-NOV-97 US POSTAL SERVICE-IPR
ROUND 3

2.5 COOK CO. DEPT. OF CORR 3.5

BD	RATINGS	SCORE	RATINGS	SCORE
1 INUMERABLE, F	2306 3	1	SEATON, E	1832 -3 0
2 STOCKE, M	1876-18	.5	HALL, A	1513 18 .5
3 CARVER, A	0 0	0	JACKSON, S	1371 0 1
4 TURNER, K	1433 22	1	ROJO, V	1419-22 0
5 VERMA, S	0 0	0	APPLEBERRY, T	1314 0 1
6 DAVIS, R	0 0	0	GATSON, T	1059 0 1
7 GUTIERREZ, R	0 0	0	MYART, V	0 0 1
(CCDOC) 8 MCGEE, L	0 0	1	LOPEZ, C	0 0 0
(CCDOC) 9 SANDEFUR, B	1343-38	0	GATSON, T	1059 38 1

12-NOV-97 ARGONNE ROOKS
ROUND 2

5 WHEATON COLLEGE 1

BD	RATINGS	SCORE	RATINGS	SCORE
1 KABELAC, J	1987 2	1	BOSTICK, T	1432 -2 0
2 ANSELL, S	1840 3	1	ENKE, E	1363 -3 0
3 GREEN, D	1818 0	1	DEMICK, D	0 0 0
4 BAURAC, D	1681 0	1	LUDWIG, M	0 0 0
5 GARCIA, J	0 0	1	RICHERT, E	0 0 0
6 TOELLNER, T	0 0	0	KERCSMAR, J	0 0 1

13-NOV-97 UOP PROCESS DIV. 4.5 KEMPER INSURANCE 1.5
 ROUND 3

BD	RATINGS	SCORE	RATINGS	SCORE
1 STEVANOVIC, M	2250 -6	.5	SIWEK, M	2099 6 .5
2 BUERGER, E	2006 8	1	HUGHES, N	1837 -8 0
3 BOLDINGH, E	1963 0	1	GARCIA, A	0 0 0
4 LECHNICK, J	1838 8	1	OLSEN, A	1560 -8 0
5 SAJBEL, P	1800 5	1	LAMBIRIS, J	1448 -5 0
6 MICKLICH, F	1650-23	0	CUMMUTA, P	1448 34 1
7 VAN ZILE, C	1364-26	0	MCKINNEY, T	1308 26 1
8 SCHOONOVER, M	0 0	1	ALLEN, R	0 0 0 (UOP)

18-NOV-97 ARGONNE ROOKS 2.5 LUCENT TECH. DRAGONS 3.5
 ROUND 4

BD	RATINGS	SCORE	RATINGS	SCORE
1 KABELAC, J	1989 12	.5	TEGEL, F	2180 -8 .5
2 ANSELL, S	1843-24	0	ALTSHULLER, D	1816 24 1
3 GREEN, D	1818-16	0	NAIR, U	1796 24 1
4 BAURAC, D	1681 14	1	EUSTACE, D	1648-20 0
5 GARCIA, J	0 0	0	WARD, C	1592 0 1
6 SIMON, D	0 0	1	KELLY, S	1276 0 0

19-NOV-97 WHEATON COLLEGE 1 LUCENT TECH. TYROS 5
 ROUND 3

BD	RATINGS	SCORE	RATINGS	SCORE
1 MONTGOMERY, J	1459 -2	0	DIAZ, P	2000 2 1
2 DEMICK, D	0 0	0	STOLTZ, B	1934 0 1
3 ENKE, E	1360 42	1	BLAZIE, J	1810-28 0
4 HELLER, T	1154 -2	0	SHENOUDA, R	1728 2 1
5 LUDWIG, M	0 0	0	SHAFF, R	1515 0 1
6 KERCSMAR, J	0 0	0	KARPIERZ, J	1213 0 1

20-NOV-97 COLUMBIA COLLEGE 4 NATIONS BANK-CRT 2
 ROUND 4

BD	RATINGS	SCORE	RATINGS	SCORE
1 SANTIAGO, T	2008-13	0	JASAITIS, A	2160 9 1
2 MCALISTER, K	1975-14	0	FRIESEMA, W	2109 14 1
3 PRATTS, M	1831 25	1	LOSOFF, A	1865-25 0
4 HAYES, W	1807 18	1	BARGERSTOCK, D	1742-18 0
5 STEVENS, J	1481 25	1	SIMS, B	1519-25 0
6 VACCARO, M	1436 5	1	BARNARD, G	1091 -5 0

24-NOV-97 COOK CO. DEPT. OF CORR 3 PAWNS 3
 ROUND 4

BD	RATINGS	SCORE	RATINGS	SCORE
1 SEATON, E	1829-20	0	ELLICE, W	1861 20 1
2 HALL, A	1531 21	1	O'DELL, DW	1509-14 0
3 JACKSON, S	1371-18	0	MIKULECKY, B	1435 12 1
4 ROJO, V	1397 19	1	HANSEN, B	1348-19 0
5 APPLEBERRY, T	1314-24	0	KREMER, T	1287 24 1
6 GATSON, T	1097 32	1	LOGAN, H	1257-32 0
7 SANDEFUR, B	1305 0	0	GIBBS, D	0 0 1
8 MCGEE, L	0 0	0	FOX, P	0 0 1 (CCDOC)

NAME	TEAM	W	L	D	RATING	NAME	TEAM	W	L	D	RATING
ADARE, A	WHEAT	0	1	0	0000?	CUMBERLAND, N	SEARS	0	0	0	0000?
ALLEN, H	ALUMN	0	1	2	1897	CUMMUTA, P	KEMPR	1	0	0	1482C
ALLEN, R	UOP	0	1	0	0000?	CURTIS, M	NORTH	0	2	0	2009
ALTSHULLER, D	DRGNS	3	0	0	1840#	CZERNIECKI, A	ALUMN	2	0	1	2055D
AMUNDSEN, C	KEMPR	0	0	0	0000?	CZOSKE, M	ROYLS	0	0	0	1318#
ANDERSON, CJ	ROYLS	0	1	0	1454	DACANAY, D	PSIPR	0	1	0	0000?
ANSELL, S	ROOKS	2	2	0	1819*	DAVIDSON, M	ALUMN	1	0	1	1608
APPLEBERRY, T	CCDOC	1	2	1	1290*	DAVIS, R	PSIPR	0	1	0	0000?
ATKINSON, J	AMCRP	2	0	1	1885C	DECMAN, S	ROOKS	1	1	0	1625D
AUGSBURGER, L	MTRLA	0	1	1	1746	DELEON, J	CRT	0	1	0	1640
AZCUNA, L	WHEAT	0	0	0	1233	DEMICK, D	WHEAT	0	2	0	0000?
BABINEC, J	NORTH	0	0	0	1336*	DEPERALTA, A	PSIPR	1	0	0	1688
BALASE, E	SEARS	0	0	0	1376*	DIAZ, P	TYROS	2	1	0	2002
BALICKI, J	MTRLA	1	1	1	1590*	DOBR, K	CHRGR	1	2	0	1482T
BANNON, B	LBURN	0	3	0	0000?	DOBROVOLNY, C	ROYLS	1	1	1	1810
BANOS, M	MTRLA	0	1	0	0000?	DORFF, M	SEARS	0	2	0	1604
BARGERSTOCK, D	CRT	1	2	0	1724	DORIGO, T	FERMI	0	0	0	2102
BARNARD, G	CRT	1	1	1	1086*	DUFFY, J	LBURN	1	2	0	1626
BAURAC, D	ROOKS	3	0	1	1695D	EAMAN, R	LBURN	1	1	1	1559
BENEDEK, R	KNGHT	2	0	0	2169D	EDWARDS, S	EXMPL	0	0	0	1296
BENESA, A	EXMPL	1	1	0	2195	ELEK, G	NORTH	0	2	0	1075
BERRY, G	ROOKS	0	0	0	2090T	ELLICE, W	PAWNS	1	2	0	1881
BEZZUBOV, V	FERMI	0	0	0	2350*	ELLIOTT, M	KNGHT	0	0	0	1310*
BLACKMON, E	ROYLS	0	0	0	1770C	ENKE, E	WHEAT	1	2	0	1402*
BLAZIE, J	TYROS	0	2	0	1782C	EUSTACE, D	DRGNS	1	2	1	1628
BOLDINGH, E	UOP	2	1	0	1963	FABIJONAS, R	ALUMN	0	0	0	1740D
BOSTICK, T	WHEAT	0	1	0	1430	FERGUSON, K	PAWNS	0	0	0	1098#
BOSWELL, H	CCDOC	0	0	0	0000?	FLOREY, J	SEARS	0	0	0	1432#
BRADY, R	CHRGR	1	1	0	1399	FOX, P	CCDOC	1	0	0	0000?
BRANCH, Y	COLUM	0	1	0	1237*	FRAATS, D	BKAMI	1	1	0	1822
BRAUNDMEIER, B	KEMPR	1	1	0	0000?	FRANEK, M	ALUMN	2	0	0	1799C
BROLLIER, B	WHEAT	0	0	0	1254#	FRANK, M	ALUMN	2	0	0	1844
BRONFELD, A	EXMPL	1	0	0	1846	FRIESEMA, W	CRT	1	0	0	2123
BROTSOS, J	EXMPL	0	0	0	1548D	FRISKE, T	EXMPL	2	1	0	2032
BROZOVICH, J	TYROS	2	0	0	1746D	FROMM, J	FERMI	0	0	0	1540
BUCHNER, R	ROYLS	0	0	0	2011	FULLMER, G	MTRLA	0	1	0	0000?
BUERGER, E	UOP	1	2	0	2014D	GAINES, I	FERMI	2	1	0	1833D
BURIAN, D	EXMPL	2	1	0	1644C	GANSER, A	BKAMI	0	2	0	1219*
BYRNES, R	CTA	0	0	0	2178*	GARCIA, A	KEMPR	1	1	0	0000?
CAIRONE, B	NORTH	0	0	0	1752	GARCIA, J	ROOKS	1	1	0	0000?
CAMPBELL, DD	KEMPR	0	0	0	0000?	GARWOOD, B	COLUM	0	0	0	1956
CARTER, D	CASE	1	0	0	1056	GATES, E	LBURN	1	1	0	1881
CARTER, L	PSTOF	0	0	0	1492C	GATSON, T	CCDOC	3	2	0	1129#
CARVER, A	PSIPR	0	1	1	0000?	GAZMEN, E	EXMPL	1	1	0	2149
CHELF, B	NORTH	0	1	0	0000?	GERONA, R	CASE	2	1	0	1458
CHIRCHIKOV, S	DRGNS	0	0	0	1727#	GIBBS, D	PAWNS	1	1	0	0000?
CHOUDRY, A	KEMPR	0	0	0	1309#	GOLCHERT, B	KNGHT	0	0	0	1905
CIESLEK, D	MTRLA	0	0	0	1919	GOLLA, R	ALUMN	1	1	1	1887D
CORBIN, Z	AMCRP	0	0	0	1286*	GOLUMBOVSKI, P	NORTH	0	0	0	2129
COTE, J	ALUMN	0	0	0	1340	GOMEZ, G	FERMI	0	2	1	1529

? - UNRATED

- 5 TO 9 RATED GAMES

* - 10 TO 24 RATED GAMES

C - CENTURY CLUB MEMBER

D - DOUBLE CENTURION

T - TRIPLE CENTURION

Q - QUAD CENTURION

The Chicago Chess Player

11-30-1997

NAME	TEAM	W	L	D	RATING	NAME	TEAM	W	L	D	RATING
GONCHAROFF, N	MTRLA	1	1	0	1734Q	KLINFELTER, H	CASE	2	0	0	1557C
GRANTHAM, D	PAWNS	0	1	0	0000?	KNEWTSON, S	NORTH	0	0	0	0000?
GREEN, D	ROOKS	2	2	0	1802D	KOGAN, G	BKAMI	0	2	1	1866
GRYPARIS, J	MTRLA	1	2	0	1444C	KOH, J	BKAMI	0	1	0	1992
GUIO, J	ROYLS	1	2	0	1957	KOSTECKA, K	COLUM	1	0	1	1570
GUTIERREZ, R	PSIPR	0	2	0	0000?	KREMER, T	PAWNS	2	2	0	1311#
HAHNE, D	ROYLS	0	1	0	1546	KRUEGER, J	DRGNS	0	0	0	1384*
HALL, A	CCDOC	2	0	1	1552*	LAKE, T	WHEAT	0	0	0	1224#
HALL, L	SEARS	0	0	0	1566#	LAMBIRIS, J	KEMPR	0	1	0	1443
HAMMOND, M	BKAMI	0	1	0	1493	LANG, P	KEMPR	0	1	0	0000?
HANSEN, B	PAWNS	0	2	0	1329*	LATIMER, E	SEARS	1	0	1	2010D
HARD, R	PAWNS	0	0	0	1162*	LE, D	MTRLA	2	0	0	0000?
HARDIN, L	KEMPR	0	0	0	0000?	LECHNICK, J	UOP	2	0	1	1846#
HARRIS, R	FERMI	0	3	0	1591	LEE, G	AMCRP	0	1	0	0000?
HASAN, Y	MTRLA	2	1	0	2245	LEONG, G	KEMPR	1	0	0	2018C
HAYES, W	COLUM	2	1	0	1825	LEWIS, N	WHEAT	0	0	0	0000?
HAZELWOOD, R	CCDOC	2	0	0	0000?	LICARI, T	DRGNS	0	1	0	0000?
HELLER, T	WHEAT	0	1	0	1152*	LIKHTEREV, M	UOP	0	0	0	1464*
HERBER, S	KEMPR	0	0	0	0000?	LIN, H	MTRLA	0	0	0	0000?
HICKS, C	DRGNS	0	0	0	1538	LITVINAS, A	ALUMN	2	0	0	1701D
HILL, R	KNGHT	2	0	1	1949C	LOGAN, H	PAWNS	0	4	0	1225*
HODINA, J	AMCRP	2	1	0	2128	LOPEZ, C	CCDOC	0	1	0	0000?
HOLMES, M	AMCRP	1	1	0	1441*	LORENZ, B	PAWNS	0	0	0	1479*
HORTON, D	MTRLA	0	0	0	1832	LOSOFF, A	CRT	0	2	2	1840
HUGHES, N	KEMPR	0	2	1	1829C	LUDWIG, M	WHEAT	0	2	0	0000?
HUSCHER, S	ROOKS	0	0	0	0000?	LUDWIG, T	DRGNS	0	0	0	2099C
INUMERABLE, F	PSIPR	3	0	0	2309C	MACKIE, A	MTRLA	0	0	0	1934
JACKLIN, E	CASE	0	0	0	1231	MAKAI, M	KNGHT	2	0	0	1799*
JACKSON, S	CCDOC	1	3	0	1353	MALEN, M	AMCRP	0	0	0	0000?
JAGGARD, A	WHEAT	0	0	0	0000?	MARCOWKA, R	CHRGR	0	1	1	1954D
JARRETT, T	CTA	0	0	0	1624*	MARQUES, N	AMCRP	1	0	0	0000?
JASAITIS, A	CRT	2	1	1	2169C	MARVIN, C	LBURN	1	0	0	0000?
JEFFERIES, P	CCDOC	0	1	0	0000?	MAYNARD, J	WHEAT	0	0	0	1369
JEFFRIES, P	CCDOC	0	1	0	0000?	MCALISTER, K	COLUM	2	1	1	1961
JOHNSON, D	CTA	0	0	0	1250#	MCCARTHY, D	CHRGR	0	0	0	0000?
JOHNSON, W	CCDOC	0	1	0	1176*	MCCARTNEY, M	CTA	0	0	0	0000?
JONES, K	SEARS	1	0	0	0000?	MCGEE, L	CCDOC	1	2	0	0000?
JONES, M	CTA	0	0	0	1445*	MCKEEL, B	CTA	0	0	0	1376#
JOSEPHSON, D	WHEAT	0	1	0	1732*	MCKINNEY, T	KEMPR	1	1	0	1334*
KABELAC, J	ROOKS	1	2	1	2001	MELNIKOV, I	MTRLA	2	0	0	2132
KALE, S	CASE	0	1	0	1790	MICKLICH, F	UOP	1	2	0	1627C
KANAS, W	CASE	1	0	0	1287C	MIKULECKY, B	PAWNS	2	1	0	1447C
KARPIERZ, J	TYROS	1	1	0	1213*	MILLER, TT	SEARS	0	1	0	1826
KEISLER, J	KNGHT	0	0	0	2070	MONTGOMERY, J	WHEAT	0	1	0	1457
KELLOGG, K	FERMI	0	2	0	1631C	MORRIS, R	MTRLA	3	0	0	2176
KELLY, S	DRGNS	1	2	1	1276	MORRISON, J	KNGHT	0	0	0	1739
KERCSMAR, J	WHEAT	1	2	0	0000?	MOTTA, H	FERMI	0	0	0	1910
KESTNER, M	ROYLS	0	1	0	1505	MOTYCKA, R	CASE	1	0	0	1159C
KINSELLA, G	KNGHT	2	1	0	1463C	MYART, V	CCDOC	2	0	0	0000?
KIUSALS, D	SEARS	0	0	0	1072	NAIR, U	DRGNS	2	0	0	1820

? - UNRATED

- 5 TO 9 RATED GAMES

* - 10 TO 24 RATED GAMES

C - CENTURY CLUB MEMBER

D - DOUBLE CENTURION

T - TRIPLE CENTURION

Q - QUAD CENTURION

11-30-1997

NAME	TEAM	W	L	D	RATING	NAME	TEAM	W	L	D	RATING
NEWCOMER, K	WHEAT	0	0	0	0000?	SIMON, D	ROOKS	1	0	0	0000?
NOTTOLI, R	AMCRP	0	0	0	1286#	SIMS, B	CRT	0	1	0	1494#
O'DELL, DW	PAWNS	0	3	1	1495C	SIMS, L	SEARS	2	0	0	1700
OGASAWARA, L	ROYLS	2	0	1	1810C	SIRAKOV, I	KNGHT	3	0	0	0000?
OLSEN, A	KEMPR	0	2	1	1552	SITAR, K	CRT	1	2	0	1603*
PARA, A	FERMI	1	0	0	1569	SIWEK, M	KEMPR	0	1	1	2105C
PARAOAN, E	BKAMI	2	1	0	1794C	SKRZYPCZAK, T	PAWNS	0	1	0	1102#
PARK, J	AMCRP	0	0	0	0000?	SMITH, BR	TYROS	0	0	1	1508
PAYTON, P	KEMPR	0	0	0	1219*	SMITH, J	MTRLA	2	0	0	0000?
PEHAS, A	ROYLS	1	1	1	1987C	SOBSKI, A	NORTH	0	1	0	0000?
PEIJFFERS, S	ROYLS	2	0	0	1998	SOLLANO, E	EXMPL	1	0	2	1919
PHELPS, C	DRGNS	0	0	0	1248*	SOMBONG, M	BKAMI	0	0	0	1635
PLETT, M	UOP	1	0	0	1820	SORIA, D	PSIPR	1	1	0	0000?
POLONCSIK, D	SEARS	0	1	0	0000?	SPIEGEL, L	FERMI	2	0	1	2108C
PORTER, D	AMCRP	0	0	0	0000?	STALKER, M	CASE	0	2	0	0000?
POZNIAK, J	KEMPR	0	0	0	1455*	STAMM, V	CHRGR	0	2	1	1615D
PRATTS, M	COLUM	2	0	1	1856	STAPLES, C	FERMI	2	1	0	1282*
RADAVICIUS, E	CHRGR	1	0	1	1626D	STAPLES, M	CTA	0	0	0	1240*
RAJA, M	ROOKS	2	0	0	1636	STEELE, B	CCDOC	0	0	0	0000?
REARDON, J	WHEAT	0	0	0	0000?	STEIN, P	TYROS	1	0	0	2255
REID, C	CASE	2	1	0	1383C	STEVANOVIC, M	UOP	0	2	1	2244C
RENDE, D	UOP	0	0	0	0000?	STEVENS, J	COLUM	3	0	1	1506
REYES, E	COLUM	0	0	0	0000?	STOCKE, M	PSIPR	2	0	1	1858
REYES, R	SEARS	2	0	0	2376D	STOLTZ, B	TYROS	3	0	0	1934
RICHERT, E	WHEAT	0	1	0	0000?	SUAREZ, E	KNGHT	2	0	1	1724
RINGER, D	SEARS	0	0	0	0000?	SUERTH, F	EXMPL	1	1	0	1638C
ROJO, V	CCDOC	2	2	0	1416*	SULLIVAN, C	ALUMN	0	0	0	1409
ROSLEY, D	CHRGR	0	0	1	1737	SULLIVAN, CC	AMCRP	1	1	0	0000?
ROYTBURG, E	CASE	1	1	0	1990*	SULLIVAN, J	EXMPL	1	1	0	1959D
RUBIN, A	CRT	0	0	0	0000?	TAKAOKA, M	UOP	0	0	0	0000?
RZESZUTKO, R	ALUMN	0	0	0	1886C	TAMEZ, I	TYROS	0	1	1	2100
SACKS, D	UOP	1	1	0	1764	TAN, M	WHEAT	0	0	0	1188
SAHLI, E	UOP	0	0	0	1710	TANGIRALA, Y	KEMPR	0	0	0	0000?
SAJBEL, P	UOP	1	1	0	1805	TEGEL, F	DRGNS	2	1	1	2172T
SAMELSON, C	MTRLA	2	0	0	1970C	THOMAS, G	TYROS	0	0	0	1511
SANDEFUR, B	CCDOC	1	3	0	1305#	THOMAS, J	CHRGR	2	0	1	1508C
SANTIAGO, T	COLUM	0	2	1	1995	THOMSON, J	MTRLA	2	0	0	0000?
SATTERLEE, D	CASE	2	1	0	1597C	TOELLNER, T	ROOKS	0	1	0	0000?
SAWIN, B	LBURN	0	2	1	0000?	TORRES, V	PSIPR	2	0	0	0000?
SCHMUGGEROW, K	NORTH	1	1	0	2104	TSEITLIN, E	MTRLA	0	0	0	1588#
SCHOONOVER, M	UOP	1	1	0	0000?	TURNER, K	PSIPR	1	1	0	1455
SCHWAB, W	ROOKS	0	0	0	1419	TURNER, R	COLUM	0	0	0	1189*
SCHWARTZ, M	TYROS	0	0	0	1073	UHLEMAN, T	PAWNS	0	0	0	0000?
SEATON, E	CCDOC	0	4	0	1809*	UNDERWOOD, W	WHEAT	0	0	0	1952C
SEMONES, E	KNGHT	0	0	0	1131*	VACCARO, M	COLUM	2	0	0	1441#
SHAFF, R	TYROS	1	0	0	1515C	VAN ZILE, C	UOP	0	2	0	1338
SHATSKY, V	CRT	2	1	0	1544*	VAYSBERG, O	CASE	0	0	0	0000?
SHENOUDA, R	TYROS	1	0	0	1730#	VELEZ, L	NORTH	1	0	1	0000?
SHOUSE, B	MTRLA	0	0	0	0000?	VEREZHENSKY, E	AMCRP	0	0	0	0000?
SIEGEL, R	BKAMI	0	2	0	1436C	VERMA, S	PSIPR	1	2	0	0000?

? - UNRATED

- 5 TO 9 RATED GAMES

* - 10 TO 24 RATED GAMES

C - CENTURY CLUB MEMBER

D - DOUBLE CENTURIAN

T - TRIPLE CENTURIAN

Q - QUAD CENTURIAN

11-30-1997

NAME	TEAM	W	L	D	RATING	NAME	TEAM	W	L	D	RATING
VIGANTS, A	NORTH	0	1	1	1646	WHITE, T	BKAMI	0	0	0	1344#
WALKER, A	NORTH	0	1	0	1677#	WILLIAMS, A	CTA	0	0	0	1482*
WALKER, R	FERMI	0	0	0	1345C	WILLIAMS, T	CASE	0	0	0	2137
WALLACH, C	MTRLA	1	1	0	2026	WILSON, A	CTA	0	0	0	1622C
WALSH, W	ROOKS	0	0	0	1498C	WILSON, M	SEARS	0	1	0	1241*
WARD, C	DRGNS	3	1	0	1592D	WOLF, D	MTRLA	0	0	0	2311
WARREN, J	CHRGR	1	2	0	2097Q	WOOD, L	AMCRP	0	1	0	1499*
WEITZ, R	EXMPL	0	0	0	1688C	WRIGHT, E	CCDOC	0	0	0	0000?
WENTLING, C	AMCRP	1	2	0	1611C	YACOUT, A	KNGHT	1	1	1	1495#
WHARTON, P	WHEAT	0	1	0	0000?	YOUNG, R	ALUMN	0	0	0	1413
WHITE, H	CASE	1	1	1	1593C	ZOELLNER, J	BKAMI	1	2	0	1326C

? - UNRATED
 # - 5 TO 9 RATED GAMES
 * - 10 TO 24 RATED GAMES

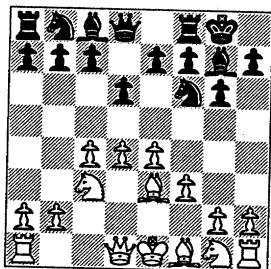
C - CENTURY CLUB MEMBER
 D - DOUBLE CENTURION
 T - TRIPLE CENTURION
 Q - QUAD CENTURION

King's Indian

WHITE: (2016)
 BLACK: R. Morris (2147)
 Motorola (board 2)

Black loses a pawn in the opening but wins with a nice counter combination in the middlegame.

1. d4 Nf6 2. c4 g6 3. Nc3 Bg7 4. e4 d6 5. f3 0-0 6. Be3

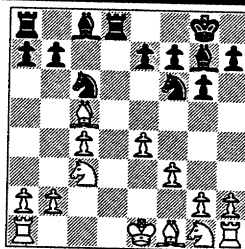


6...c5

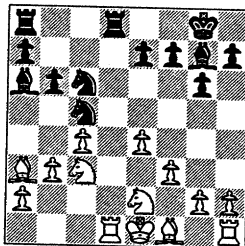
This loses a pawn.

7. dxc5 dxc5 8. Qxd8 Rxd8 9. Bxc5 Nc6

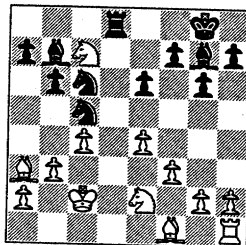
see diagram top of next column



10. Nge2 b6 11. Ba3 Ba6 12. b3 Nd7 13. Rd1 Nc5

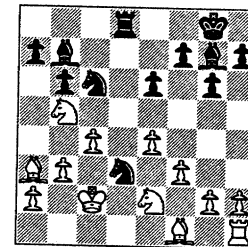


14. Nd5 e6 15. Nc7 Rxd1+ 16. Kxd1 Rd8+ 17. Kc2 Bb7

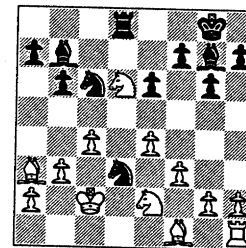


Black's far ahead in development.

18. Nb5 Nd3



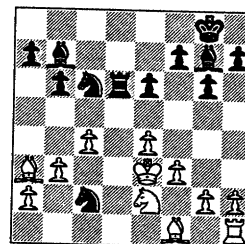
19. Nd6



Black appears to be in trouble as White threatens 20.Nxb7 as well as 20.Kxd3.

19...Ndb4+! 20. Kd2 Rxd6+ 21. Ke3 Nc2+ 1-0

Final Position Morris game



11-30-1997

NEAR WEST DIVISION TOP TEN

INUMERABLE, F	PSIPR 2309C
BENEDEK, R	KNGHT 2169D
WILLIAMS, T	CASE 2137
WARREN, J	CHRGR 2097Q
KEISLER, J	KNGHT 2070
ROYTBURG, E	CASE 1990*
MARCOWKA, R	CHRGR 1954D
HILL, R	KNGHT 1949C
GOLCHERT, B	KNGHT 1905
ELLICE, W	PAWNS 1881

FAR WEST DIVISION TOP TEN

BEZZUBOV, V	FERMI 2350*
STEIN, P	TYROS 2255
TEGEL, F	DRGNS 2172T
SPIEGEL, L	FERMI 2108C
DORIGO, T	FERMI 2102
TAMEZ, I	TYROS 2100
LUDWIG, T	DRGNS 2099C
BERRY, G	ROOKS 2090T
BUCHNER, R	ROYLS 2011
DIAZ, P	TYROS 2002

NORTH DIVISION TOP TEN

REYES, R	SEARS 2376D
WOLF, D	MTRLA 2311
HASAN, Y	MTRLA 2245
STEVANOVIC, M	UOP 2244C
BENESA, A	EXMPL 2195
MORRIS, R	MTRLA 2176
GAZMEN, E	EXMPL 2149
MELNIKOV, I	MTRLA 2132
GOLUMBOVSKI, P	NORTH 2129
SIWEK, M	KEMPR 2105C

EAST DIVISION TOP TEN

JASAITIS, A	CRT 2169C
HODINA, J	AMCRP 2128
FRIESEMA, W	CRT 2123
CZERNIECKI, A	ALUMN 2055D
SANTIAGO, T	COLUM 1995
KOH, J	BKAMI 1992
MCALISTER, K	COLUM 1961
GARWOOD, B	COLUM 1956
ALLEN, H	ALUMN 1897
GOLLA, R	ALUMN 1887D

MOST IMPROVED PLAYERS

HALL, A	CCDOC	72
NAIR, U	DRGNS	61
STAPLES, C	FERMI	53
PRATTS, M	COLUM	52
MORRIS, R	MTRLA	46
STEVENS, J	COLUM	43
SIMS, L	SEARS	38
HILL, R	KNGHT	37
EAMAN, R	LBURN	37
FRANK, M	ALUMN	36

GAMES

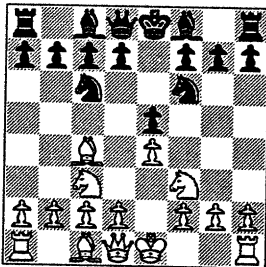
by Ruben Reyes

Four Knights

White: (1835C)
 Black: **Charles Ward**
 (1570D)
 Lucent Dragons (Bd 5)

Charles Ward of Lucent Tech. Dragons and CICL ratings chairman nails down this big upset victory with a beautiful Rook sacrifice.

1. e4 e5 2. Nf3 Nc6 3. Nc3 Nf6 4. Bc4

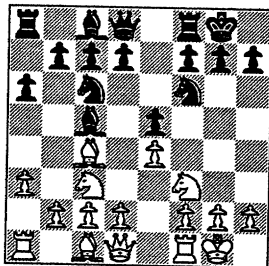


4...Bc5

I could be wrong. But I believe 4...Nxe4 equalizes for Black.

Black chooses to go along with the Giuoco Piano

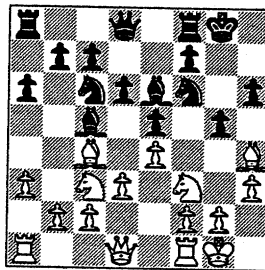
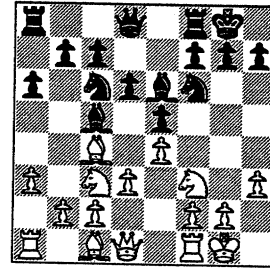
5. 0-0 0-0 6. a3 a6



7. d3 d6 8. h3 Be6

(see diagram top of next column)

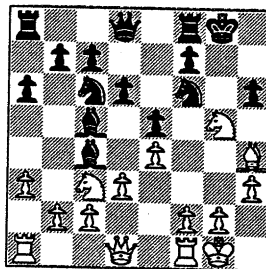
9. Bg5 h6 10. Bh4 g5



11. Nxc5

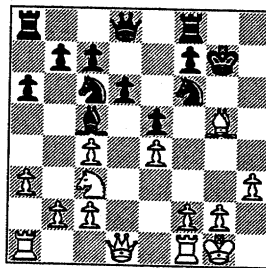
Gets two pawns for N and denudes Black's K of pawn cover.

11...Bxc4



Black needs to keep the B to prevent Nd5.

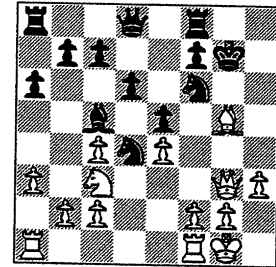
12. dxc4 hxg5 13. Bxg5 Kg7



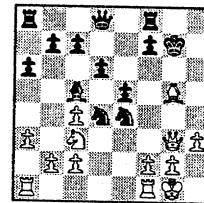
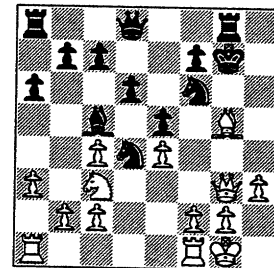
14. Qf3

14.Nd5 with winning advantage to White.

14...Nd4 15. Qg3

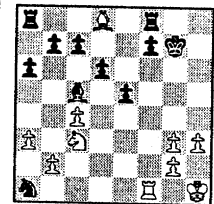


15...Rg8

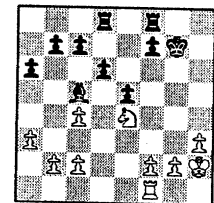


15..Nxe4 (diagram left)

If 16. Bxd8 then Nxc2+ 18.Kh1 Nxa1 (see diagram right) If 19. Rxa1 then 19... Raxd8

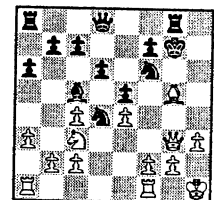


If 16.Nxe4 (instead of 16.Bxd8) then Ne2+ 17.Kh2 Nxc3 18.Bxd8 Nxf1+ 19. Rxf1 Raxd8 (see diagram right)

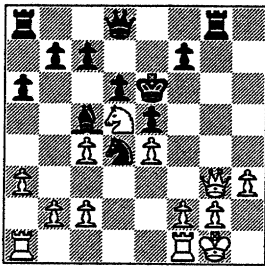


16. Bxf6+

Or 16.Kh1 which threatens 17.Nd5 or 17.f4. (see diagram right)



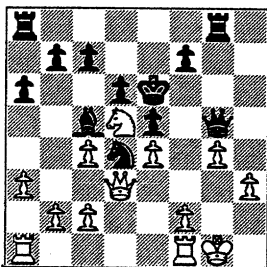
16...Kxf6 17. Nd5+ Ke6



18. Qd3 Qg5

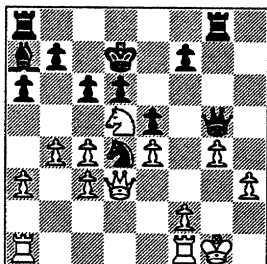
Threatens 19...Qxg2++ and triggers the start of Black's offensive.

19. g4

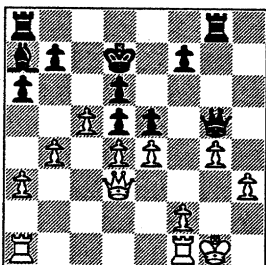


Or 19.g3 Kd7

19...Kd7 20. b4 Ba7 21. c3 c6



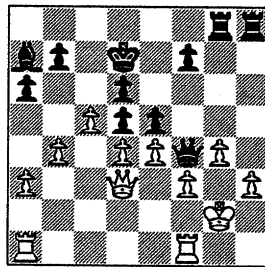
22. cxd4 cxd5 23. c5



Shuts out the Black B from the diagonal a7-g1.

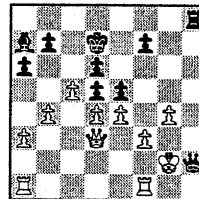
23...Rh8 24. Kg2 Rag8 25. f3 Qf4

See diagram top of next column

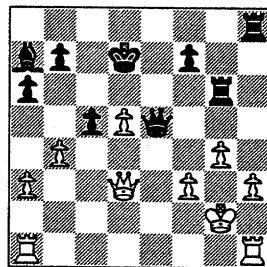


26. Rh1

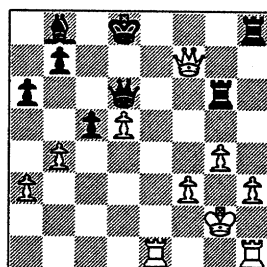
Black threatened 26...Rxh3! 27.Kxh3 Rh8+ 28.Kg2 Qh2++ (diagram right).



26... Rg6 27. dxe5 Qxe5 28. exd5 dxc5

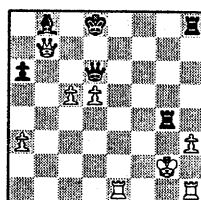
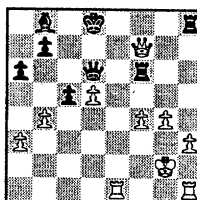


29. Rae1 Qd6 30. Qf5+ Kd8 31. Qxf7 Bb8



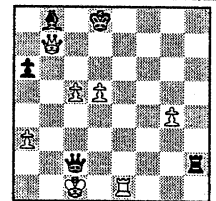
32. f4 Rf8

Or 32.Rf6 (see diagram right) 33. Qg7 Rh8.

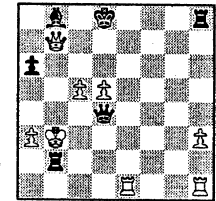


If 33. Qxb7 Rx15 34.bxc5, then 34... Rxg4+ (diagram left).

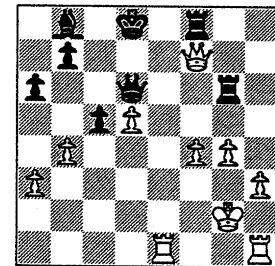
If now 35.hxg4 then 35... Qg3+ 36.Kf1 Rxh1+ 37. Ke2 Rh2+ 38. Kd1 (38. Kf1 Qf2++) 38... Qd3+ 39.Kc1 Qc2++ (diagram right)



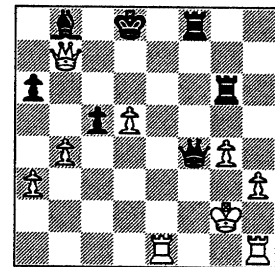
If 35.Kf2 then 35... Qf4+ 36.Ke2 Rg2+ 37.Kd3 (if 37.Kd1 then Qd2++) 37... Rd2+ 38.Kc3 Qd4+ 39.Kb3 Rb2++ (see diagram right)



Position after 32...Rf8



33. Qxb7 Qxf4

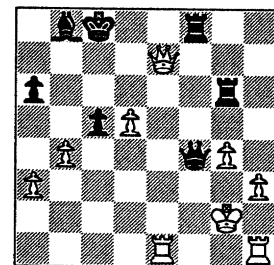


Black threatens 34...Qg3++ or 34.Qf2++

34. Qe7+

34.Rhf1 doesn't work because it's mate in one: 34...Qh2++.

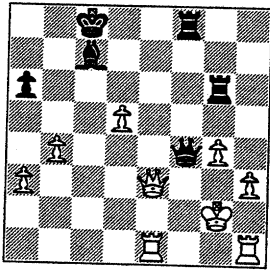
34...Kc8



35. Qxc5+

White's running out of options.

35...Bc7 36. Qe3

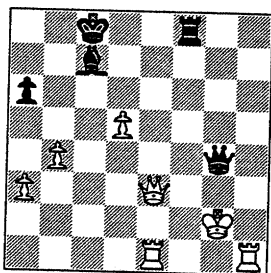


36...Rxc4+!

A beautiful shot.

37. hxc4 Qxc4+ 0-1

Final Position Ward game

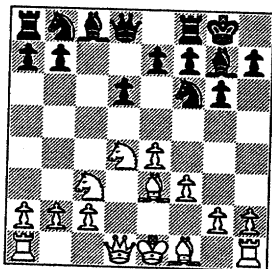


Sicilian (Dragon Variation)

White: D. Altshuller (1772)
Lucent Dragons (Bd 2)
Black: (2140)

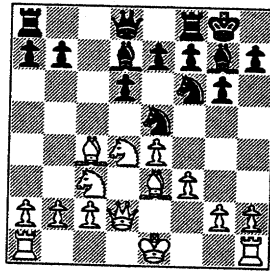
D. Altshuller (1772) of Lucent Technologies Dragons notches the following huge win over a 2140

1. e4 c5 2. Nf3 d6 3. d4 cxd4 4. Nxd4 Nf6 5. Nc3 g6 6. Be3 Bg7 7. f3 0-0

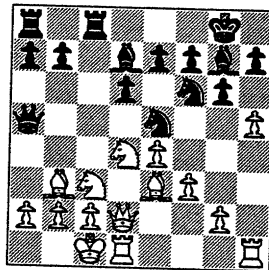


8. Qd2 Nc6 9. Bc4 Bd7 10. 0-0-0

10...Ne5



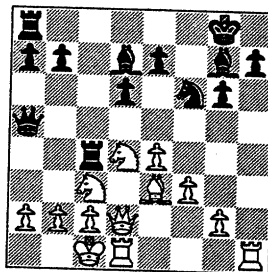
11. Bb3 Qa5 12. h4 Rfc8 13. h5



13...Nc4

Accepting the pawn sacrifice leads to book analysis too complex to show here, where the status of who's winning depends upon the freshness of the book line. Example, the line starting with (after 13...Nxh5) 14. Bh6 Nd3+. Or with 14.Kb1 or 14.g4.

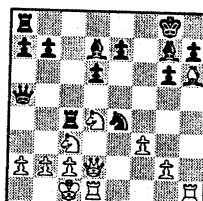
14. Bxc4 Rxc4 15. hxc6 fxg6



16. Bh6

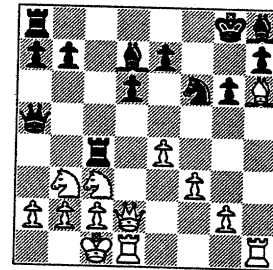
16.Nb3

16...Bh8



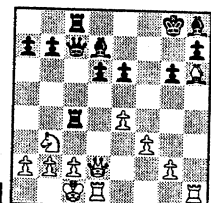
16...Nxe4 (diagram left) If 17.Nxe4 then 17.. Qxa2 18. Nc3 Qa1+ 19.Nb1 Bxd4 20.c3 Bf4 and Black's got 2 pawns and a strong attack. If 17.fxe4 (instead of 17.Nxe4) then 17... Rxd4 (intending 18...Rxd8+ 19...Bxc3 and 20...Qxa2 with advantage to Black).

17. Nb3



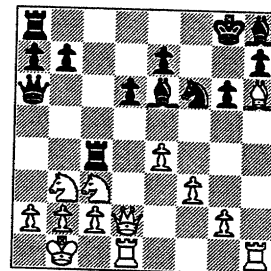
17...Qa6

17...Qc7 If for example, 18.Nd5 then 18...Nxd5 19. Qxd5+ e6 20.Qd2 Rc8 (see diagram right)



If now 22.c3, then 22...Rxc3+ 23. bxc3 Bxc3 24.Qe2 Bd2+ (see diagram left) and White gets mated in a hurry: 25.Kb2 (25.Kxd2 Qc3++ or 25.Kb1 Qc2+ 26.Ka1 Bc3++) 25...Qc3+ 26.Ka3 (26.Kb1 Qc2+ 27.Ka1 Bc3++) 26...Rc5 followed by ...Ra5++

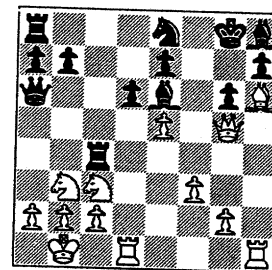
18. Kb1 Be6



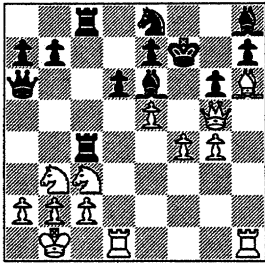
19. e5! Ne8

If 19...dxe5 then 20.Qd8+. If now Rxd8 then 21.Rxd8 Kf7 22.Rf8++.

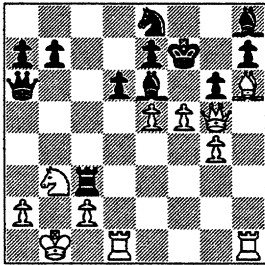
19 20. Qg5



20...Kf7 21. f4 Rac8 22. g4

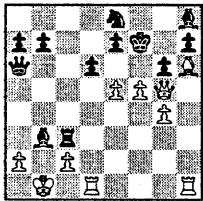


22...Rxc3 23. bxc3 Rxc3 24. f5



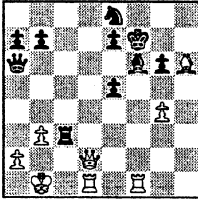
24...gx f5

Loses at once (mate in 2).



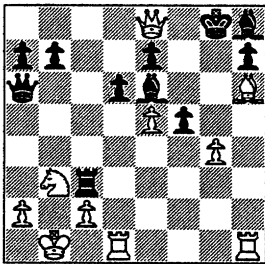
24...Bxb3 (see diagram left) only postpones the inevitable.

25. fxg6+ hxg6 26. Rhf1 + Bf6 27. cxb3 dxe5 28. Qd2 (see diagram right). White threatens 29. Qxc3 and 29. b5 winning a piece.



25. Qh5+ Kg8 26. Qxe8++ 1-0

Final Position Altshuller game



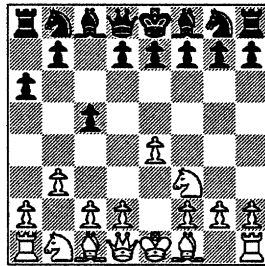
Overall a nice attacking game by Altshuller.

Sicilian

W: Kevin Schmuengerow (2104)
Northrop/SK (bd 1)
B: R. Reyes (2376D)

Kevin Schmuengerow of Northrop/SK produces this gem of a crushing 17-mover.

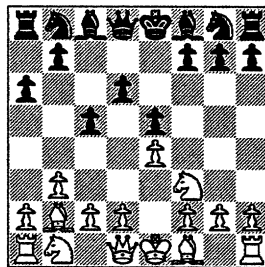
1. e4 c5 2. Nf3 a6 3. b3



An uncommon anti-Sicilian. Usually met here's 3.c4 (leading to the Maroczy Bind) or 3.c3 (Alapin). 3.Nc3 transposes to the regular Sicilian.

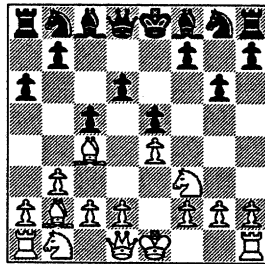
3...d6 4. Bb2 e5

Closes the door on the long diagonal a1-h8.



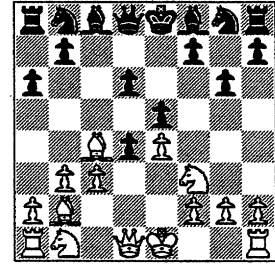
5. Bc4 g6

5...Be7.



6. d4!

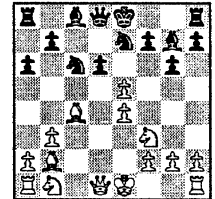
6...cxd4 7. c3



Now White increases the pressure a little more. Notice that Black during all this time has moved only pawns and has not developed a single piece at all!

7...dxc3

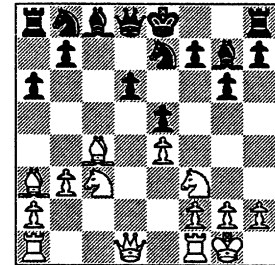
7...Bg7 if 8.cxd5 then 8...Nc6 9. dxe5 Nge7 (see diagram right) intending 10...0-0 and 11...dxe5.



8. Nxc3 Bg7

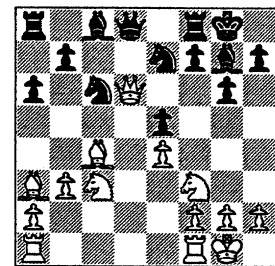
8...Be6

9. 0-0 Ne7 10. Ba3



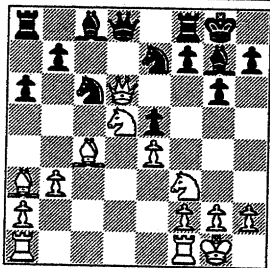
White recovers the pawn with positional advantage.

10...0-0 11. Qxd6 Nbc6

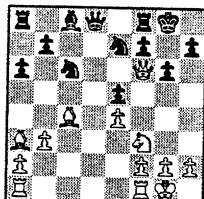


Black has almost caught up in development.

12. Nd5

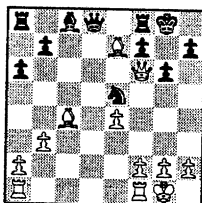


12...Nxd5

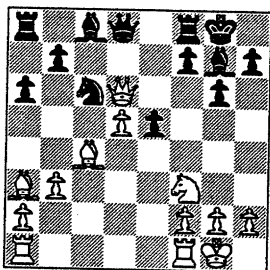


No better is 12... Re8 as after 13. Nf6+ Bxf6 14. Qxf6 Rf8 (see diagram left) White is winning. For example, 15.Nxe5 bursts thru

Black's defenses. If 15... Nxe5 then 16.Bxe7 (see diagram right) followed by 17.Bxf8 when White's not only the exchange but also a pawn up.

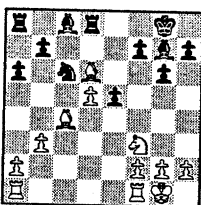


13. exd5



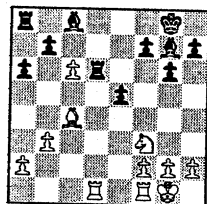
13...e4

If 13...Qxd6 14. Bxd6 Rd8 (see diagram right) then 15.dxc6 Rxd6

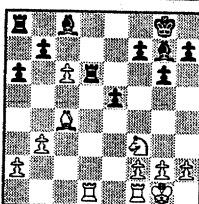
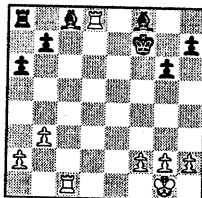


16. Rad1 (see diagram left)

If now 16...Rxc6 then 17.Rd8+ Bf8

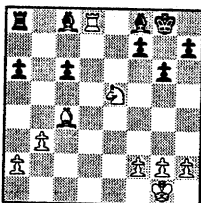


18..Nxe5 Rc7 19.Bxf7+! Rxf7 19. Nxf7 Kxf7 20.Rc1 (see diagram right) followed by 21. Rc (or Rd)xc8 wins.



16...Rxd1 then after 17.Rxd1 (see diagram right) White's winning.

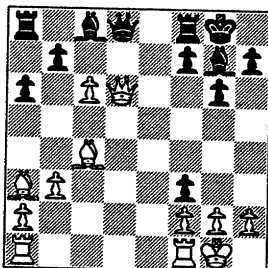
For example, if 17... bxc6 then 18.Rd8+



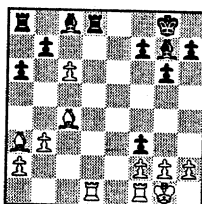
threatens 22. Ra7+ and 23.Rxa8. If 22... Kh8 then 23.Rxf8+

Or if 17...Bf6, then 18. Rd6 Be7 19. cxb7 Bxb7 20.Rd7 Bxf3 21.Rxe7 Bc3 22.Rxf7 and White's winning.

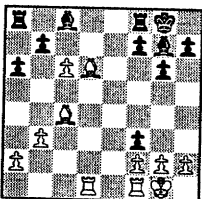
14. dxc6 exf3



15. Rad1



15...fxg2

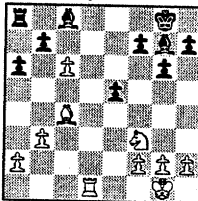


15...Qxd6 16.Bxd6 (see diagram left) is still hopeless for Black. If 16...Rd8, then 17.Ba3. If 16...Re8 then 17.Rfe1.

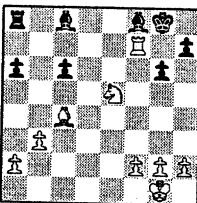
Analysis continued

If (from diagram left after 16.Rad1)

Black replies with

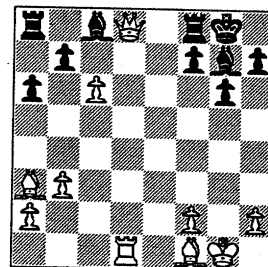


Bf8 19.Nxe5 (see diagram left). If now 19... Bb7, then 20.Rd7 Bc8 21. Rxf7 (see diagram below). White



16. Qxd8 gxf1Q+ 17. Bxf1 1-0

Final Position Schmuiggerow game



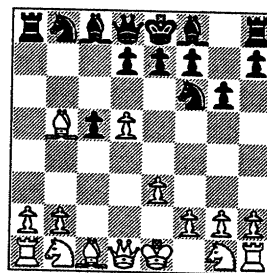
A terrific game from Kevin Schmuiggerow.

Benko

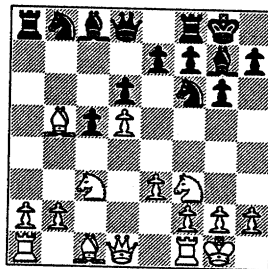
White: Irwin Gaines (1833D)
Fermilab (Bd 2)
Black: (1818D)

Irwin Gaines of Fermilab sacs two pieces and then hunts down Black's K with Q and two pawns.

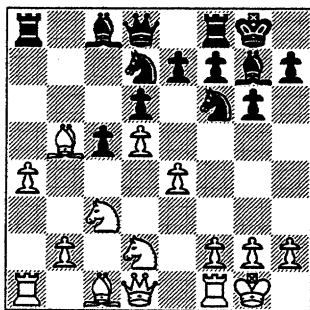
1. d4 Nf6 2. c4 c5 3. d5 b5 4. cxb5 a6 5. e3 axb5 6. Bxb5 g6



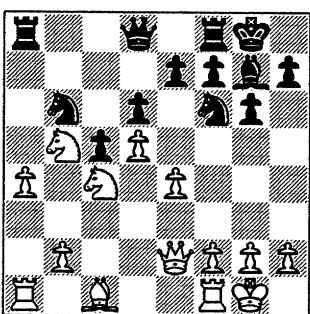
7. Nc3 Bg7 8. Nf3 0-0 9. 0-0 d6



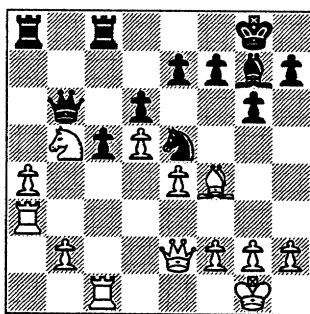
10. e4 Nbd7 11. a4 Ng4 12. Nd2 Ngf6



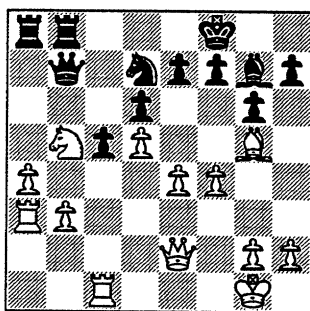
13. Nc4 Ba6 14. Qe2 Bxb5 15. Nxb5 Nb6



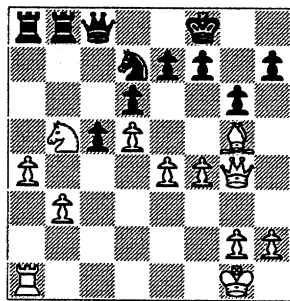
16. Nxb6 Qxb6 17. Bf4 Nd7 18. Ra3 Rfc8 19. Rc1 Ne5



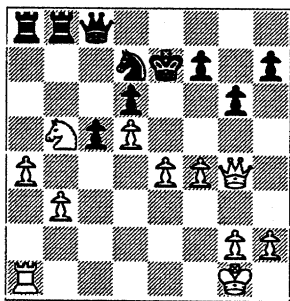
20. Be3 Qb7 21. b3 Rcb8 22. Bg5 Kf8 23. f4 Nd7



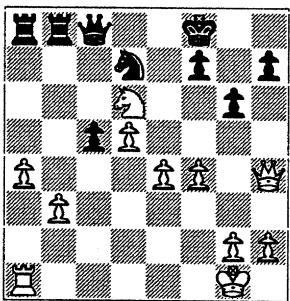
24. Qg4 Bb2 25. Raa1 Bxa1 26. Rxa1 Qc8



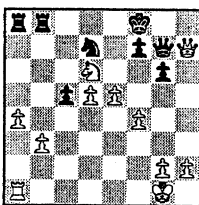
27. Bxe7+ Kxe7



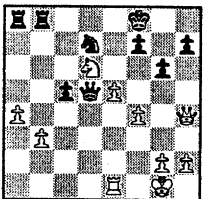
28. Qh4+ Kf8 29. Nxd6



29...Qa6



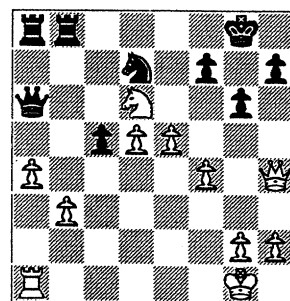
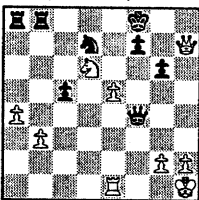
30. e5 Kg8



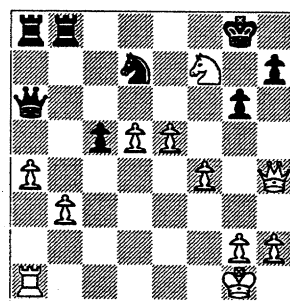
32. Qxh7 then 32...Qd4+ 33.Kh1 Qxf4 (diagram right)

On 29...Qe8 30. Qxh7 Qf6 31.e5 Qg7 (diagram left.) if 32. Qh3 Nxe5 not 33. fxe5 because of 33...Qxe5 but 33. Rd1.

30...Qd3. If 31.Re1 then 31...Qxd5 (diagram left) if now



31. Nx7

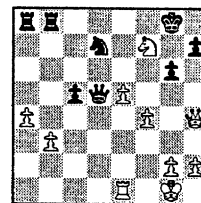


31...Kxf7

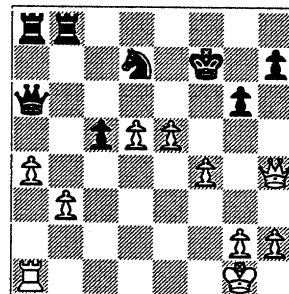
Accepting the N sac seems logical as all that White's got to continue with the attack is a Q with not a single piece within the vicinity to support White's Q.

But appearances can be deceiving as White now proceeds to demonstrate.

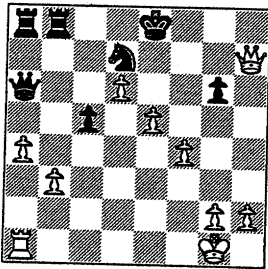
Perhaps, 31...Qd3. If 32.Re1 then 32...Qxd5 (see diagram right) if 33. e6 then 33...Re8. If 33.Ng5 then 33...Nf8



Now White conducts a unique King hunt: with Q and pawns. And all that Black's four pieces (2 Rooks, Q, and N) can do is watch helplessly as White hunts Black's K down.

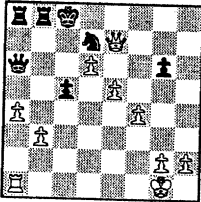


32. Qxh7+ Ke8 33. d6

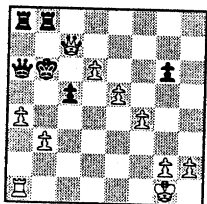


33...Kf8

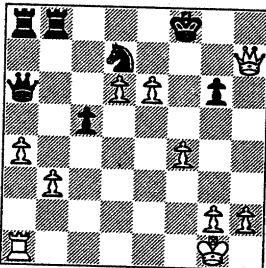
If 33...Kd8, then
34.Qe7+ Kc8 (see
diagram right)



35. Qe8+ Kb7
36. Qxd7+ Kb6
37. Qc7++ (see
diagram left)

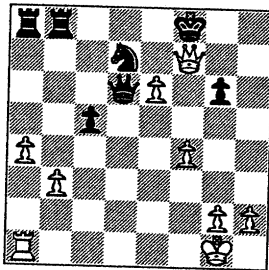


34. e6



34...Qxd6 35. Qf7++ 1-0

Final Position Gaines game



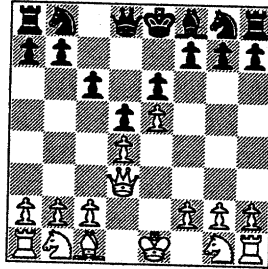
Caro Kann

White: **A Bronfeld** (1828)
Exemplars (Bd 5)
Black: (1764)

A. Bronfeld of Exemplars wins

this 23-mover with a N sac.

1. e4 c6 2. d4 d5 3. e5 Bf5 4. Bd3
Bxd3 5. Qxd3 e6



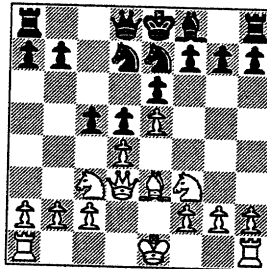
6. Nc3

Or 6.c3

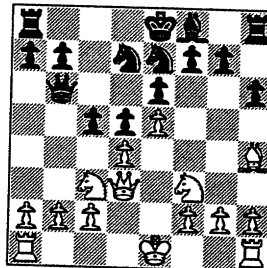
6...Nd7

Or 6...Qb6

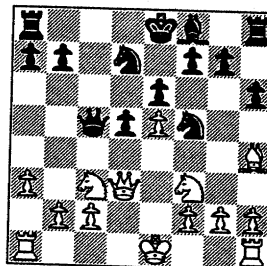
7. Nf3 c5 8. Be3 Ne7



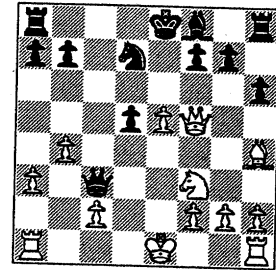
9. Bg5 h6 10. Bh4 Qb6



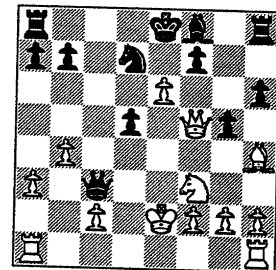
11. dxc5 Qxc5 12. a3 Nf5



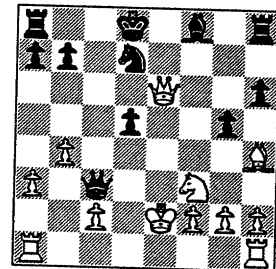
13. b4 Qc7 14. Nxd5 exd5 15.
Qxf5 Qc3+



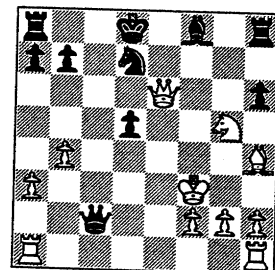
16. Ke2 g5 17. e6



17...fxe6 18. Qxe6+ Kd8



19. Nxc5 Qxc2+ 20. Kf3

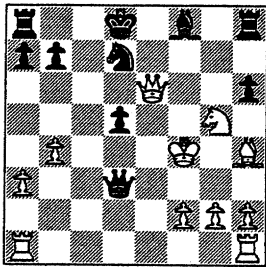


20...Qd3+

Because of the threat of a B check on the
diagonal h4-d8 followed by Rac1 if the
initiative were to pass on to White, Black
can't afford not to keep on checking White's
K.

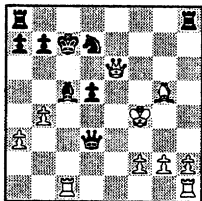
21. Kf4

See diagram top of next column

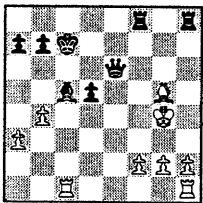


21...Qd2+

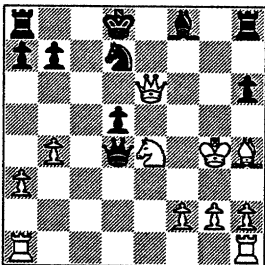
With White's K blocking the diagonal g3-b8, perhaps here 21..hxg5+ instead could give Black respite from an ensuing relentless White attack. The thing for Black is to return the piece in order to get the breather he needs. For example: If 22. Bxg5+ Kc7 23. Rac1+ then 34...Bc5 (see diagram right)



(Black threatens 24... Raf8+ 25.Kg4 Nf6+ 26.Bxf6 Qg6+ 27.Bg5 (or 27.Kf4 Rxf6+) Qxd6 (see diagram left))



22. Kg4 Qd4+ 23. Ne4+ 1-0
Final position Bronfeld game



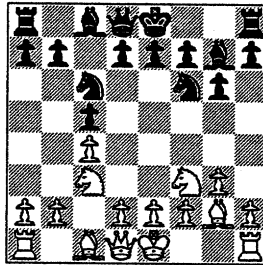
Reti

W: (2088)
B: C.A.Czerniecki (2055D)
Alumni Aces (Bd 1)

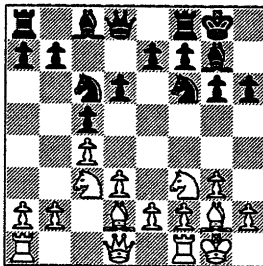
C.A. Czerniecki, top ace of the Alumni Aces with the black pieces wins a nice one here.

Black gives up his b-pawn to launch an attack against the White K.

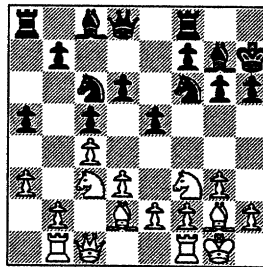
1. Nf3 Nf6 2. g3 g6 3. Bg2 Bg7 4. c4 c5 5. Nc3 Nc6



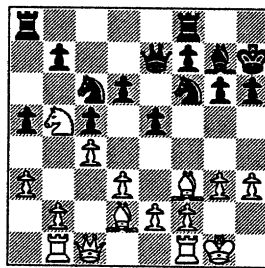
6. 0-0 d6 7. d3 0-0 8. Bd2 h6



9. Qc1 Kh7 10. Rb1 e5 11. a3 a5

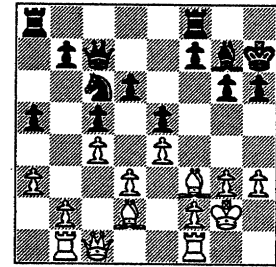


12. Nb5 Bg4 13. h3 Bxf3 14. Bxf3 Qe7

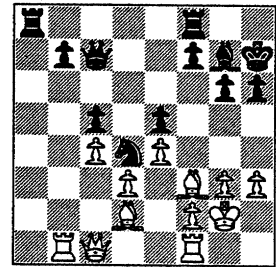


15. e4 Ne8 16. Kg2 Nc7 17. Nxc7 Qxc7

See diagram top of next column



18. b4 axb4 19. axb4 Nd4 20. bxc5 dxc5



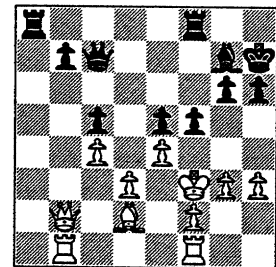
21. Qb2

Not so much to win the b-pawn which can be easily defended as to begin grabbing space such as with 22.Qb6.

22...Nxf3

This intermediate move draws the K into the center.

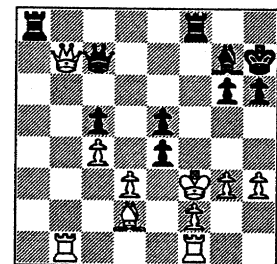
22. Kxf3 f5



23. Qxb7

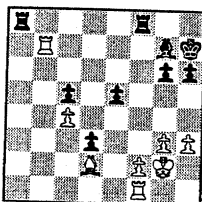
23.Kg2.

23...fxe4+

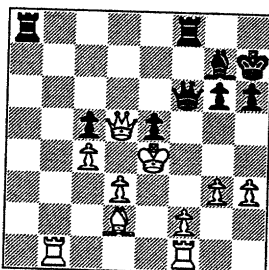


24. Kxe4

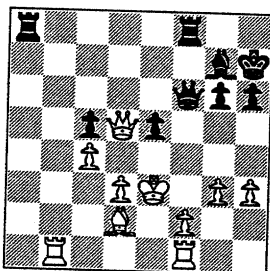
White rejects 24. Kg2 as it loses a pawn after 24... Qxb7 24.Rxb7 exd6 (see diagram right).



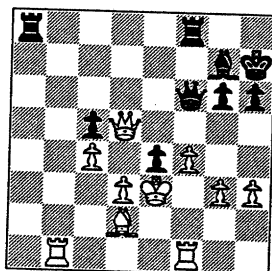
24...Qd8 25. Qd5 Qf6



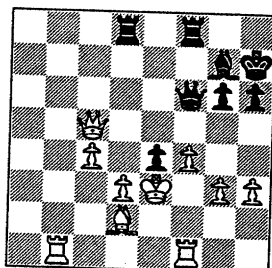
26. Ke3



26...e4 27.f4

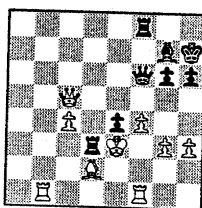


27...Rad8 28. Qxc5

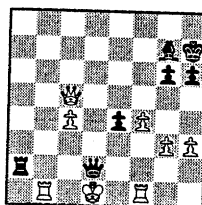
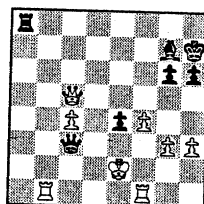


28...Qe6

Or 28...Rxd6+ (see diagram right) if 29.Kxe4 then 29.. Rxd6! threatening. mate in 2: 30..Qe6+ 31.Qe5 Qxc4+ 32.Qd4 33.Qxd4++.

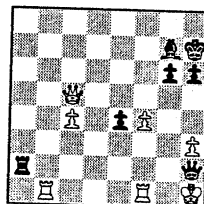


If 29.Ke2 then 29... Rxd2! 30.Kxd2 Qc3+ 31. Ke2 Ra8 (see diagram right)

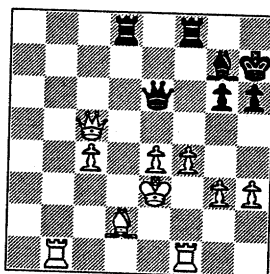


The threat's 32... Ra2+ 33.Kd1 Qd2 ++ (see diagram left).

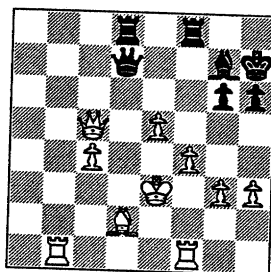
If 32.Kf2, then 32...Ra2+ 33.Kg1 Qxg3+ 34.Kh1 Qh2++ (diagram right)



29. dxe4



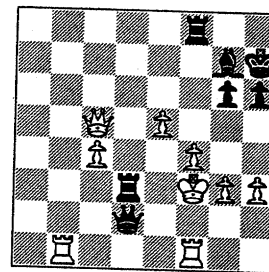
29....Qd7 30. e5



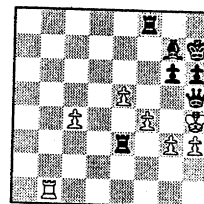
30...Qxd2+ 31. Kf3 Rd3+ 0-1

See final position top of next column

Final Position Cziernecki game

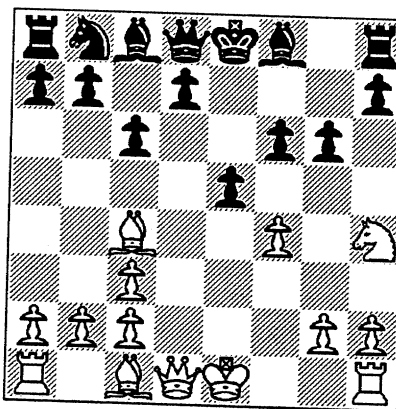


(Analysis): It's mate in four: 32.Qe3 (else it's mate in 3) 32...Rxe3 33. Kg4 Qe2+ 34.Rf3 (else it's mate next move) 34...Qxf3 35.Kh4 Qh5++ (see diagram right)

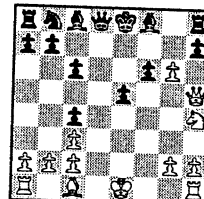


FYI -

This is the position in the analysis of Robert Morris' game shown on page 19 in the November issue of the Chicago Chess Player after 7.f4 c6.



Analysis went: 8.fxe5 fxe5 9.Nf3 d5.



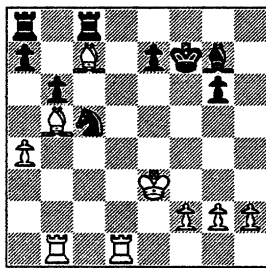
Robert Morris, gives 8.f5. If 8... d5 9. fxg6! 9...dxc4, then 10. Qh5. (see diagram left).

With best play white will be able to win back most if not all of the material, AND have some obvious compensation for any material he stays down, Morris writes.

The finishing touch

Lenny Spiegel (2108C) of Fermilab and CICL treasurer playing the black pieces provides us the following fantastic finish against a 1987 with a 4-move combination

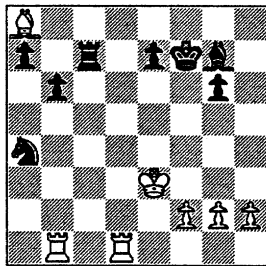
Let's look in after **24. Bc7 Rdc8** (see diagram below)



25. Bc6

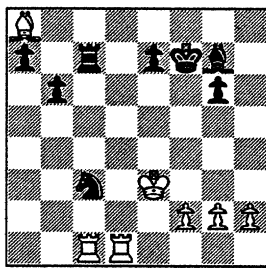
Alert play.

25...Rxc7 26. Bxa8 Nxa4



Things don't seem easy for Black although he has two passers on the queenside as he's down the exchange.

27. Rbc1 Nc3



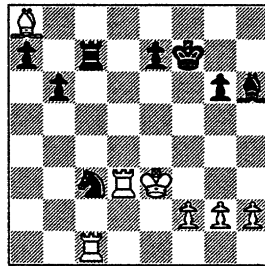
Excellent play. Black keeps White's R at bay while holding on to a N outpost to support the advance of Black's 2 passed

pawns.

28. Rd3

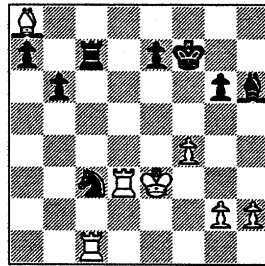
Formulates the start of an attempt to build pressure on the pinned N outpost. But now comes....

28...Bh6+!



29. f4

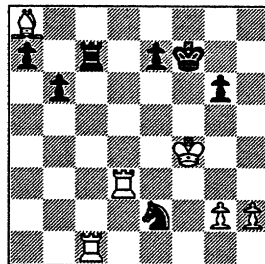
Forced. Else 29.Kf3 Bxc1 wins a whole R.



29...Bxf4+!

A fantastic shot.

30. Kxf4 Ne2+



The point: White's K has been forced into a square where it and the R can be forked.

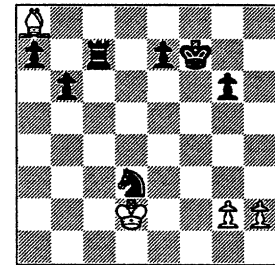
31. Ke3 Nxc1 32. Kd2

Perhaps still suffering from the effects of Black's shocking 4-move combination,

White unexplainably hangs the Rook.

32...Nxd3 0-1

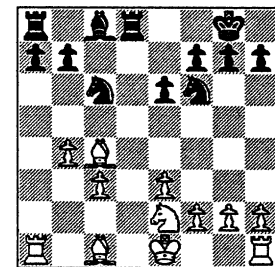
Final Position Spiegel game



After 33.Kxd3, White's not only down the exchange but also's down two pawns - two passers at that.

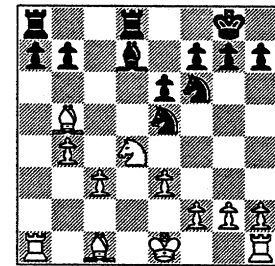
Sometimes one's game can fall apart at the blink of an eye.

This is Ed Buerger (2006D) of UOP with the white pieces against an 1837 on board 2 after **10. Qxd8 Rxd8 11. bxc3 Nc6** (see diagram below)



Black looks alright so far.

12. Nd4 Ne5 13. Bb5 Bd7



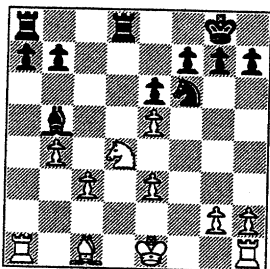
Develops the B and activates the a-Rook.

14.f4 Bxb5

Maybe, Black didn't like the isolani after **14... Nc6 15.Nxc6 Bxc6 16.Bxc6 bxc6**. With

the text move White may have expected
15. Nxb5.

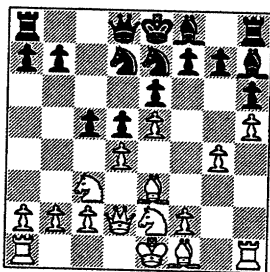
15. fxe5



In the blink of an eye, Black's prospects vanishes completely as he loses a piece.

If the N moves, then 16. Nxb5. If the Bishop moves then 16.exf6. So Black Resigns

This is a 1406 versus Len Augsburger (1795) of Motorola with the black pieces after 10.Qd2 Ne7 (see diagram below)

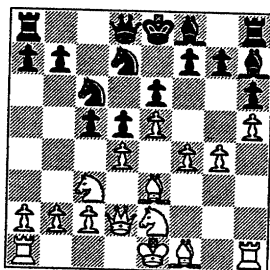


White looks OK. In fact White seems to be ahead in development.

11.f4

White's on the attack.

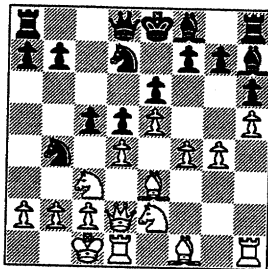
11...Nc6



12.0-0-0

Now White can concentrate on pursuing the attack without having to worry about the K.

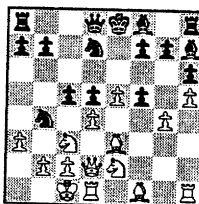
12...Nb4



Black's quick to spot a weakness.

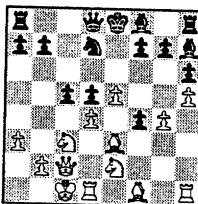
13.a3

13.f5 exf5 and only now 14.a3 (see diagram right) Now, if 14...Nc6 then 15.gxf5 Bxf5 16. Nxd5

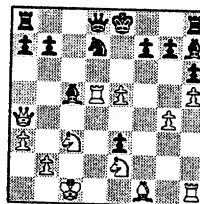


Or 14...Nxc2 15. Qxc2 f4 (see diagram right)

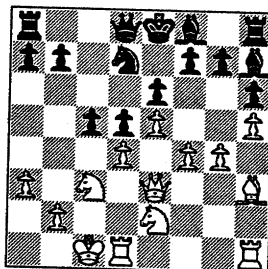
Black recovers the piece with pressure on the castled White K.



16. Qa4 fxe3 17. dxc5 Bxc5 18. Rxd5 (see diagram right) when White's initiative seems adequate compensation for the pawn. White threatens 19.Rxc5 or 19.Bh3 followed by 20.Rhd1 or 20.g5.



13. a3 Nxc2 14. Bh3 Nxe3 15. Qxe3



Although a pawn down, White's got a lot of counterplay as he's ahead in development and his kingside pawns are in attacking position.

15...cxd4

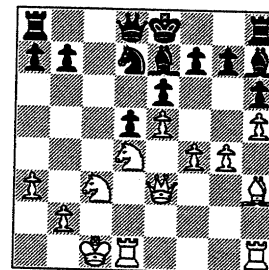
A well conceived defensive scheme

intended at restraining White's f-pawn.

16.Nxd4

Seems the only logical reply as 16.Rxd4 fails against the pin 16...Bc5 and 16.Qxd4 encourages 16...Nc5.

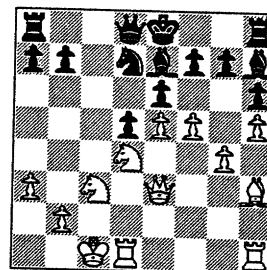
16...Be7



The point of this and Black's 15th move becomes apparent next move.

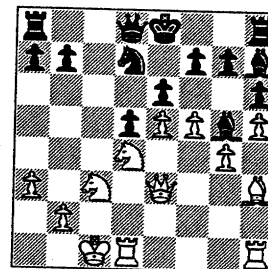
At the present time, White's K is in an awkward location at a half-open c-file. So White now tries to remedy the situation.

17 f5



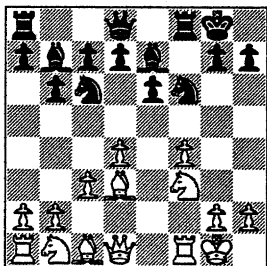
This closes the long diagonal b1-h7 and allows White's K to escape to the corner at a1. But...

17...Bg5



The dreaded pin. The point of Black's 15th and 16th move! In the blink of an eye, White's game falls apart. And Augsburger won after: 18.Qxg5 Qxg5+ 19.Rd2 Nc5 20.fxe6 Nxe6 21.Kd1 Nxd4 22.Rxd4 0-0-0 23.Re1 Be4 24.Nxe4 dxe4 0-1

This is a 1637 vs. **Chris Samelson** (1958C) of Motorola with the black pieces after 8. e4 Ne8 9. e5 f5 10.exf6 Nxf6 (see diagram below).

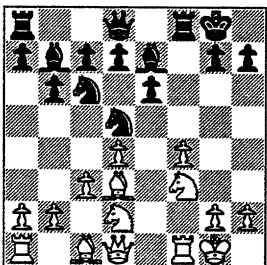


White's in good shape.

11. Nbd2

White's last move is the usual N maneuver in the Stonewall.

11...Nd5

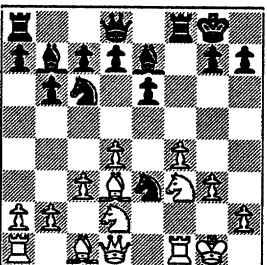


Black alertly spots a tactical opportunity for a double attack - threat to win a pawn or the exchange.

12. g3

Perhaps, White saw only the threat to his f-pawn or prefers to lose the exchange rather than a pawn.

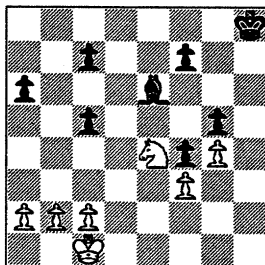
12...Ne3



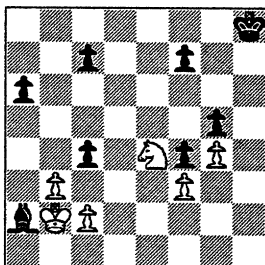
Just like that, in the blink of an eye White loses the exchange. And Samelson won after: 13. Qe2 Nxf1 14. Nxf1 Qe8 15. Ne5

Nxe5 fxe5 Qf7 17. Bf4 g5 18. Qg4 Kh8 19. Be3 Qf3 20. Qh3 Qh1++

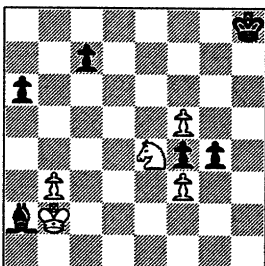
Jim Atkinson (1865C) of Amoco Corporation with the white pieces here wins this endgame against an 1887D. Let's pick up the action after 30. Ne4 (diagram below).



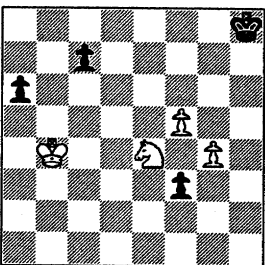
30...Bxa2 31. b3 c4 32.Kb2



32...cxb3 33. cxb3 f5 34. gxf5 g4

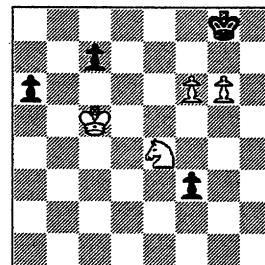


35. fxc4 Bxb3 36. Kxb3 f3 37.Kb4

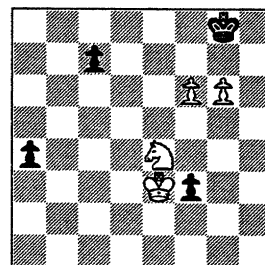


37...Kg7

38. g5 Kf7 39. Kc5 Ke7 40. g6 Kf8 41. f6 Kg8



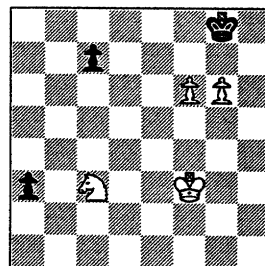
42. Kd4 a5 43. Ke3 a4



44. Kxf3

Or 44.Ng5 a3 45.Ne6 a7 46.f7+ Kh8 47. f8(Q)++

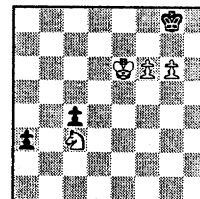
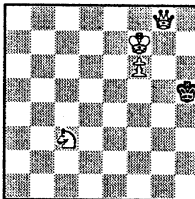
44...a3 45. Nc3



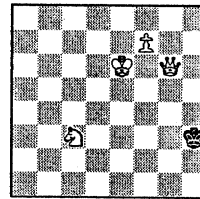
Black can resign here. Atkinson won as follows:

45...c5 46. Ke4 c4 47. Ke5 Kf8 48. Ke6 Kg8 (diagram right)

49. g7 a2 50. Nxa2 c3 51.



Nxc3 Kh7 52. Kf7 Kh6 53. g8(Q) Kh5 (diagram left)



54. Qg6+ (Mate in two: 54. Qg3 Kh6 55. Qh4++) 54...Kh4 55. Ke6 Kh3 56. f7 1-0 (final position is shown in diagram right)