

The Chicago Chess Player

The Official Bulletin of the Chicago Industrial Chess League

Inside

- **A word from the President**
- **Letters**
- **Spring Business Meeting Draft Agenda**
- **Directions to Business Meeting**
- **Team Standings**
- **Match Results**
- **Ratings**
- **Division Top Ten List**
- **Most Improved Player List**
- **Club Match Announcement**
- **Map to Club Match**
- **Games**
- **Chess Lesson**

CICL OFFICERS

President:	Pat Sajbel (Sajbels5@aol.com (e-mail)) UOP 25 East Algonquin Road Des Plaines, IL 60017-5017 W:(847) 391-2134 H:(847) 506-9302
Secretary	Wayne Ellice (Pawns) (wayne.ellice@crous.sprint.com (e-mail)) Crosfield Catalysts 4099 West 71st Street Chicago, IL 60629 W:(773) 838-3215 Fax:(773) 838-3243
Treasurer	Len Spiegel (Fermi)(lenny@fnal.gov (e-mail)) Fermilab MS 220 P.O.Box 500 Batavia, IL 60510 W:(630) 840-2809 H: (630) 208-4738
Ratings Chairman	Art Olsen (Hemper)(aolsen@interaccess.com) 721-G S. Elmurst Road Des Plaines, IL 60016-2539 W:(847) 320-2420 H:(847) 437-9819 FAX:to TSS OTS, G-5 at (847) 320-4464
Publicity Director	David W. Sods (UOP) (dwsacks@uop.com) - Same address as Pat Sajbel (President) W:(847) 375-7596 H: (847) 297-9641
Trophy Chairman	Marty Franek (Alumni Aces) (mjfranek@megsnet.net (e-mail)) 9044 S. 51st Ave. Oak Lawn, IL 60453-1730 W:(312) 353-0397 H:(708) 636-3714
Banquet Chairman	Satish Kale (Case) (skale@casecorp.com) CASE Corp 7 South 600 County Line Rd. Burr Ridge, IL 60521 W:(630) 887-2372 H:(630) 325-KALE
Bulletin Editor	Ruben Reyes (Alumni Aces) (Rrrgb@aol.com (e-mail)) 2019 W. Leland Ave. Chicago, IL 60625-1513 H: (773) 334-0591 Fax: (773) 769-0311
Games Editor	Tom Friske (Exemplars) (tfriske@interaccess.com (e-mail)) 1035 E. Algonquin Road Des Plaines, IL 60016 W: (847) 788-4315 H: (847) 299-1033
Far West Division Chairman	Irwin Gaines (Fermi) (gaines@fnal.gov (E-Mail)) Fermilab MS 120 P.O.Box 500 Batavia, IL 60510 W: (630) 840-4022 H: (630) 420-1452 Fax: (630) 840-2783
North Division Chairman	Art Olsen (Hemper) (aolsen@interaccess.com (e-mail)) 721-G S. Elmurst Road Des Plaines, IL 60016-2539 W:(847) 320-2420 H:(847) 437-9819 FAX:to TSS OTS, G-5 at (847) 320-4454
Near West Division Chairman	Carl Reid (Case) (creid@littelfuse.com (e-mail)) 2289 Grand Dr. Northbrook, IL 60062 W: (847) 391-0630
East Division Chairman	Kelvin McAllister (Columbia) (kmcallister@popmail.colum.edu (e-mail)) 151 Blackhawk Drive Park Forest, IL 60466 W:(312) 344-7437 H:(708) 747-8054

A word from the President

Many of you have been exchanging views on some of the key issues facing our league. Judging by the volume e-mail, these issues are: division realignment, the playoff format and team rosters. Any realignment/playoff format decision(s) will affect all teams—our intention will be to develop a consensus for draft proposal(s) at the Spring Business Meeting. Proposal(s) can be finalized and implemented in the Fall before next season begins.

The Spring Business Meeting has been scheduled for March 23rd at UOP in Des Plaines. A draft agenda and directions are provided in this bulletin. Art Olsen plans to issue draft proposals via e-mail prior to the meeting (please contact me if you need a hard copy).

Another club match has been scheduled in April against the Concordia Community Chess Club. This is the club formerly known as the Oak Park Chess Club. They have a new site, but it's in the same neighborhood. The match is open to everyone in the league. Pride is at stake instead of ratings. Each CICL player will be credited with a game towards Centurion awards.

Two games have recently been disputed on the basis of time control interpretations. Simply put, these disputes could have been avoided if the following rules/principles had been followed:

- Correct setting of the clocks should be verified by both players at the start of play—even if one player is late to for the match
- the CICL default time control is 45/90—changes must be by mutual agreement
- In order to claim a win you must
 - a) verify that your opponent's flag has fallen, and
 - b) have a "complete" scoresheet ("complete" is defined as having errors or missing moves in no than three pairs of moves)

Pat Sajbel
posajbel@uop.com
Work: (847) 391-2134
Home: (847) 506-9302

March Letters to the Editor

There were a lot of responses on realignment and Ruben Reyes' letter published in the February issue. -Pat

Here are my comments on the Divisional Realignment as captain of a "low ranking team" in the "weak" Near West division and a playoff participant.

I don't agree with playoff criteria based on the ranking of players. We are already having trouble keeping company teams, especially weak or new ones, and this just benefits existing combined large company and Alumni teams. If a team is unhappy with their Division, they should ask to move. With a new alignment, this problem should no longer exist.

I find it interesting that some players travel 40 miles in the North Division and our team travels 25 miles into the city for a couple of matches with probably a longer travel time and yet we let the East Division teams refuse to play outside the loop.

Enough with what is wrong about the current Divisional and Playoff setups. To resolve this, I would like to discuss the Divisional alignment issue at the Spring meeting and make changes for next season. First, we must agree on guidelines for Divisions. Here are my suggestions for some simple ones:

- 1) East Division = Downtown Chicago Division companies within 5 miles of the center of Chicago
- 2) North Division = companies North of Chicago
- 3) West Division = companies West of Chicago

Alumni teams will be placed in divisions to get to the optimum Division size (even number - 6 or greater).

Then for the playoffs, we add 2 wild-card teams with the best record or from the Divisions with 8 or more teams.

Jerry Thomas
Lucent Chargers Captain

Ruben's idea of using ratings is a major change, and I also have concerns. Under our current system, a "weaker" team with a stellar year can still take the title. I agree that this is good and an incentive to everyone.

I am not fixated with breaking up the Near West Division, but I think that your comments on division realignment are the most practical if we do divide into three divisions.

-Pat

I have read with great interest the letter from Ruben Reyes published in the most recent bulletin.

I am inclined to agree with him that the current system can eliminate some teams from the playoffs simply because they are in the stronger division. Division realignment may or may not correct this problem.

On the other hand, I think that the idea of a team qualifying for playoffs on the basis of ratings only is also questionable.

This brings me to the following idea. Suppose that two top teams from each division still qualify for playoffs. Eight more teams are then selected based on the highest percentages. In the event of a tie, a match is played between the teams involved unless they are from the same division (Usual tiebreak can be applied in this case). This will expand the playoffs by one round.

An even more radical proposal is to use regular season for seeding purposes only. That is all teams make the playoffs. This will expand the playoffs by two rounds.

Both proposals will lengthen the playoffs but I think the competition will be well worth it. Also, I wonder if we can implement one of these two proposals in the current season since no inherent unfairness is introduced.

Dmitry Altshuller
Lucent Dragons

Broadening the playoffs is tough for logistical reasons. The first round is usually rather difficult to stage, esp. since teams have to travel longer distances to unfamiliar sites.

-Pat

TENTATIVE
CICL SPRING BUSINESS MEETING AGENDA

All officers (present and future?), team captains and interested CICL players are encouraged to attend.

Date: Tuesday, March 23, 1999

Time: Meeting starts at 7 p.m., doors open for speed chess at 6:15 p.m.

Location: UOP, Des Plaines (Building C: see directions and map)

1. OFFICER'S REPORTS

- President, Pat Sajbel
- Treasurer, Lenny Spiegel
- Secretary, Wayne Ellice
- Bulletin Editor, Ruben Reyes / Games Editor, Tom Friske
- Ratings Chairman, Art Olsen
- Division Chairs; Carl Reid, Kelvin McAlister, Art Olsen, Irwin Gaines
- Publicity Chair, David Sacks
- Banquet Chairman, Satish Kale
- Trophy Chairman, Marty Franek

2. PLAYOFF DETAILS

- Date is set for May 15, 1999
- Site is not fixed
- Tournament Director is needed

3. ELECTION OF OFFICERS

- President vote for 1999/2000
- Secretary, Treasurer, Ratings Chairman voting as necessary
- All other officer are either appointed or voted in at the Fall Meeting

4. OLD BUSINESS

- a. Outside (club) match update
- b. Possible new teams
- c. ?

5. NEW BUSINESS

- a. Team Rosters
There have been a lot of exchanges of views on this subject. I believe that there is a consensus on this issue, but that we should summarize the outcome and what we need to do in the future.
- b. Setting Schedules at the Start of the Season

This item has been added at the suggestion of Far West Divisions teams. Again, this issue has been resolved, but a quick review of this issue could help to avoid future concerns.

c. **Playoff Qualification System and Realignment of Divisions**

These are related issues. At the heart of the matter is the playoff qualification process becoming less equitable as the differences in the sizes of the divisions has become greater. Ideas that have been floated include: changing the rules for qualification within the existing divisions, consolidating the number of divisions and then revising the rules accordingly, and broadening the playoffs to include more teams. This is a broad subject and the goal during this meeting will be to draft a proposal that can be voted on in the Fall.

d. **Adjournments**

It has been proposed that we change the rule to allow for adjournments after the first time control. By way of back ground, the bylaws were revised in 9/15/95 to reduce the number of adjournments. This was done at about the same time that the default time control was changed from 50 / 2 hrs. to 45 /90 min.

Pat Sajbel
CICL President
(847) 391-2134 (W)
(847) 506-9302 (H)
posajbel@uop.com

**CICL SPRING BUSINESS MEETING
Tuesday, March 23, 1999**

*****Directions to UOP*****

UOP is in Des Plaines. This is a couple miles North of O'Hare airport. There is a group of several buildings at the intersection of Algonquin and Mount Prospect Roads. We will meet in Building C at the Northeast corner of the intersection. You need to enter by way of the guard shack on Mount Prospect Road.

From the North, East or South:

You need to get on I-90 going West towards Rockford.

Go West on I-90 past I-294, then take the first exit, Lee Street.

The off-ramp takes you North (right), but quickly go left on Touhy (West).

Go to Mt. Prospect Road and then turn right (North).

Continue North a couple miles to Algonquin Road intersection.

From the West:

You need to get on I-90 going East towards Chicago.

Go East on I-90 and take the Arlington Heights Road exit.

From off-ramp, go left (North) on Arlington Hts. Rd.

Take the first main road right (East) on to Algonquin Road.

Continue East a couple miles to the Mount Prospect Road intersection

The attached map is pretty good when you get close. If you get lost, someone will answer your call at the guard shack: (847) 391-2172.

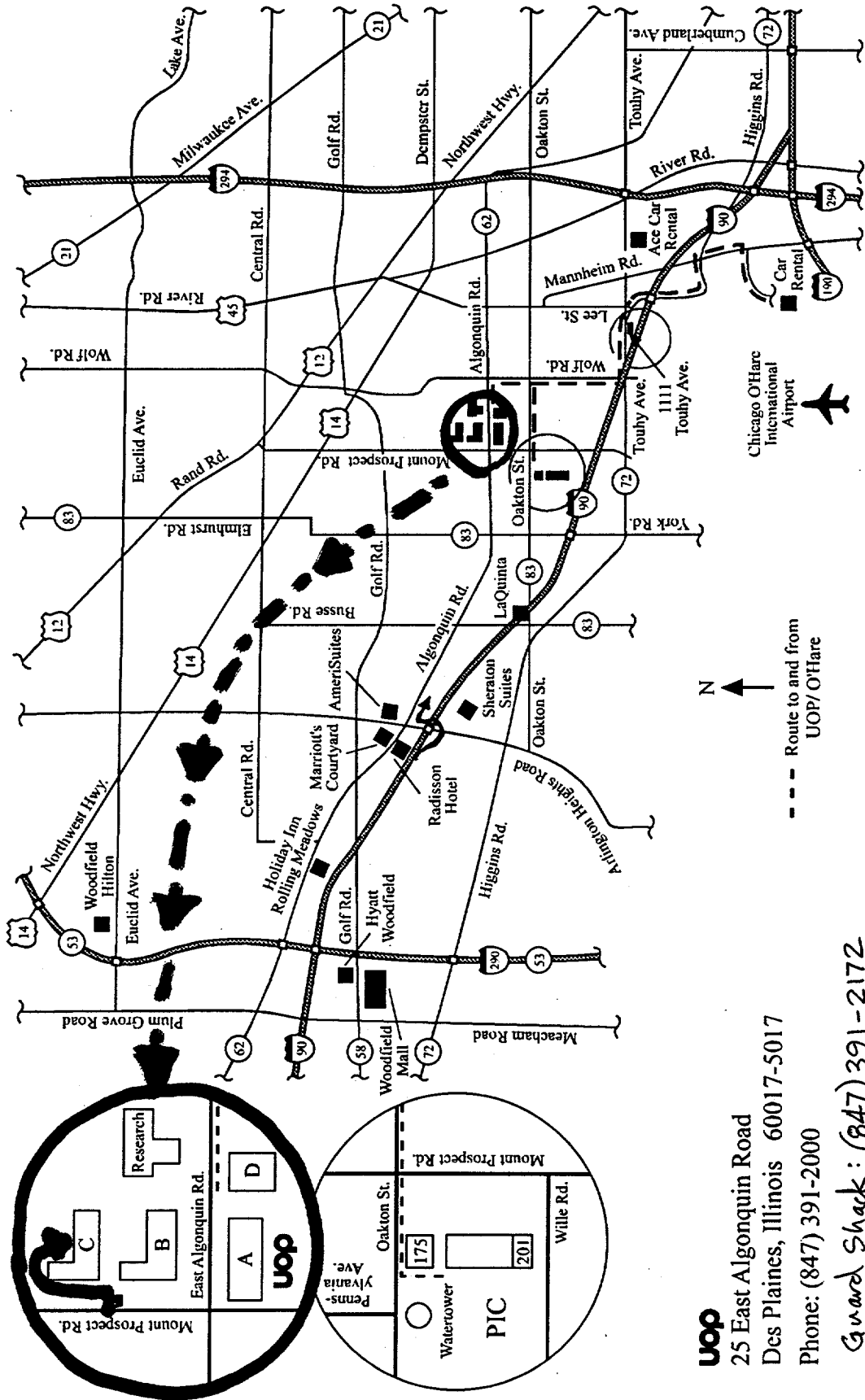
Pat Sajbel

CICL President

(847) 391-2134 (W)

(847) 506-9302 (H)

MAP to UOP, Des Plaines



uop
 25 East Algonquin Road
 Des Plaines, Illinois 60017-5017
 Phone: (847) 391-2000
 Guard Shack: (847) 391-2172

NEAR WEST DIVISION 03-01-1999

TEAM NAME	W	L	D	GAME MATCH		PCT
				POINTS	POINTS	
LUCENT TECH. CHARGERS	8	0	1	43.0	8.5	0.944
COOK CO. DEPT. OF CORR	4	4	1	26.5	4.5	0.500
CASE	3	5	1	24.5	3.5	0.389
PAWNS	1	7	1	13.0	1.5	0.167

FAR WEST DIVISION 03-01-1999

TEAM NAME	W	L	D	GAME MATCH		PCT
				POINTS	POINTS	
FERMILAB	5	1	0	22.0	5.0	0.833
LUCENT TECH. TYROS	4	1	1	20.0	4.5	0.750
LUCENT TECH. DRAGONS	3	3	1	21.5	3.5	0.500
ARGONNE ROOKS	1	3	2	18.0	2.0	0.333
LUCENT TECH. ROYALS	0	5	2	14.5	1.0	0.143

NORTH DIVISION 03-01-1999

TEAM NAME	W	L	D	GAME MATCH		PCT
				POINTS	POINTS	
EXEMPLARS	6	0	0	28.5	6.0	1.000
MOTOROLA	4	1	1	21.5	4.5	0.750
UOP	3	2	1	23.0	3.5	0.583
NORTHROP	2	3	1	14.0	2.5	0.417
KEMPER INSURANCE	0	3	3	12.5	1.5	0.250
SEARS	1	4	1	12.5	1.5	0.250
EXCALIBURS	1	4	1	12.0	1.5	0.250

EAST DIVISION 03-01-1999

TEAM NAME	W	L	D	GAME MATCH		PCT
				POINTS	POINTS	
NATIONSBANK-CRT	6	1	1	31.5	6.5	0.813
COLUMBIA COLLEGE	5	1	1	29.0	5.5	0.786
ALUMNI ACES	4	1	2	27.0	5.0	0.714
BANK AMERICA ILLINOIS	2	4	2	16.0	3.0	0.375
LEO BURNETT	1	5	1	14.5	1.5	0.214
THE READER	0	6	1	13.0	0.5	0.071

02-FEB-99 FERMILAB 5 LUCENT TECH. ROYALS 1
 ROUND 7

BD	RATINGS	SCORE	RATINGS	SCORE
1 DORIGO, T	2182 10	1	STINSON, M	1962 -7 0
2 SPIEGEL, L	2063 -2	.5	GUIO, J	2012 4 .5
3 KANTAR, M	0 0	1	PEHAS, A	1934 0 0
4 GAINES, I	1741 2	.5	DOBROVOLNY, C	1776 -2 .5
5 GOMEZ, G	1658 0	1	SAXENA, D	0 0 0
6 STAPLES, C	1361 31	1	KESTNER, M	1497-31 0
(ROYLS) 7 CZOSKE, M	1289 0	1	CARRANO, C	0 0 0

09-FEB-99 LUCENT TECH. TYROS 2.5 LUCENT TECH. DRAGONS 3.5
 ROUND 7

BD	RATINGS	SCORE	RATINGS	SCORE
1 STEIN, P	2252 12	1	LUDWIG, T	2078 -8 0
2 TAMEZ, I	2211-29	0	TEGEL, F	2106 13 1
3 DIAZ, P	1992 14	1	ALTSHULLER, D	1846-14 0
4 STOLTZ, B	1886-27	0	CHRISTIAN, R	1813 18 1
5 BLAZIE, J	1719-19	0	EUSTACE, D	1630 28 1
6 SMITH, BR	1548 7	.5	PIAO, T	1644 -7 .5
7 KARPIERZ, J	1237 0	0	SALERNO, S	0 0 1

16-FEB-99 ARGONNE ROOKS 2.5 LUCENT TECH. TYROS 3.5
 ROUND 8

BD	RATINGS	SCORE	RATINGS	SCORE
1 BENEDEK, R	2146-10	0	STEIN, P	2264 15 1
2 KABELAC, J	1979-11	0	TAMEZ, I	2182 11 1
3 HILL, R	1954 17	1	DIAZ, P	2006-26 0
4 GREEN, D	1844 1	.5	STOLTZ, B	1859 -1 .5
5 BAURAC, D	1705-15	0	BLAZIE, J	1700 15 1
6 SUAREZ, E	1707 13	1	SMITH, BR	1555-13 0
7 GARCIA, J	1182 16	.5	MEHTA, C	1481-16 .5

23-FEB-99 LUCENT TECH. DRAGONS 4 LUCENT TECH. ROYALS 2
 ROUND 8

BD	RATINGS	SCORE	RATINGS	SCORE
1 LUDWIG, T	2070-17	0	GUIO, J	2016 26 1
2 TEGEL, F	2119 8	1	PEIJFFERS, S	2065-19 0
3 CHRISTIAN, R	1831-16	0	OGASAWARA, L	1804 16 1
4 ALTSHULLER, D	1832 0	1F	KESTNER, M	1466 0 0F
5 PIAO, T	1637 0	1	CARRANO, C	0 0 0
6 EUSTACE, D	1658 0	1	APATA, D	0 0 0

03-FEB-99 LUCENT TECH. CHARGERS 4.5 COOK CO. DEPT. OF CORR 1.5
 ROUND 8

BD	RATINGS	SCORE	RATINGS	SCORE
1 WARREN, J	2123 0	1F	WILLIAMS, K	1968 0 0F
2 MARCOWKA, R	2004 5	1	ALEXANDER, W	1726 -8 0
3 STAMM, V	1611-21	0	HALL, A	1471 31 1
4 THOMAS, J	1555 8	1	JACKSON, S	1384-12 0
5 DOBR, K	1485 7	1	ROJO, V	1388-16 0
6 BRADY, R	1344 -1	.5	APPLEBERRY, T	1339 1 .5
7 MARCOWKA, R	2009-17	0	WILLIAMS, K	1968 25 1

09-FEB-99 PAWNS 4 CASE 1

ROUND 8

BD	RATINGS	SCORE	RATINGS	SCORE
1 ELLICE, W	1938-29	0	KALE, S	1827 29 1
2 MIKULECKY, B	1451 20	1	KLINEFELTER, H	1562-20 0
3 LASKY, N	1392 28	1	REID, C	1471-28 0
4 LOGAN, H	1252 0	1F		0 0 0F
5 WEISNER, T	1147 0	1F		0 0 0F
6	0 0	0F		0 0 0F
7 LOGAN, H	1252 -7	.5	WEISNER, T	1147 7 .5 (PAWNS)

22-FEB-99 CASE 3 LUCENT TECH. CHARGERS 3

ROUND 9

BD	RATINGS	SCORE	RATINGS	SCORE
1 ROYTBURG, E	2004 8	.5	WARREN, J	2123 -3 .5
2 KALE, S	1856 31	1	MARCOWKA, R	1992-21 0
3 SATTERLEE, D	1551 9	.5	ROSLEY, D	1777-13 .5
4 KLINEFELTER, H	1542 17	1	STAMM, V	1590-17 0
5 REID, C	1443-19	0	DOBR, K	1492 9 1
6 WONG, PETER	0 0	0F	THOMAS, J	1563 0 1F

22-FEB-99 PAWNS 1 COOK CO. DEPT. OF CORR 5

ROUND 9

BD	RATINGS	SCORE	RATINGS	SCORE
1 ELLICE, W	1909 6	.5	WILLIAMS, K	1993 -6 .5
2 MIKULECKY, B	1471 8	.5	SEATON, E	1676-12 .5
3 LASKY, N	1420-26	0	JACKSON, S	1372 26 1
4 LOGAN, H	1245-15	0	ROJO, V	1372 15 1
5 WEISNER, T	1154-11	0	APPLEBERRY, T	1340 11 1
6 SMOLARCZYK, S	0 0	0	SANDEFUR, B	1214 0 1

02-FEB-99 UOP 5.5 EXCALIBURS .5

ROUND 6

BD	RATINGS	SCORE	RATINGS	SCORE
1 STEVANOVIC, M	2216 0	1F	SULLIVAN, J	1935 0 0F
2 BUERGER, E	2024 -4	1	WEITZ, R	1674 -4 0
3 SACKS, D	1850-14	.5	SUERTH, F	1605 9 .5
4 BOLDINGH, E	1853 9	1	BURIAN, D	1604 -6 0
5 SAJBEL, P	1814 9	1	BROTSOS, J	1568 -6 0
6 PLETT, M	1789 0	1F		0 0 0F
7 MICKLICH, F	1630 5	1	SCHOONOVER, M	1333 -7 0 (UOP)
8 VAN ZILE, C	1319 -3	0	PLETT, M	1789 3 1 (UOP)

04-FEB-99 MOTOROLA 0 EXEMPLARS 6

ROUND 6

BD	RATINGS	SCORE	RATINGS	SCORE
1 WOLF, D	2341-29	0	BENESA, A	2243 29 1
2 HASAN, Y	2177-15	0	INUMERABLE, F	2289 10 1
3 MELNIKOV, I	2060-17	0	WEBER, L	2152 17 1
4 WALLACH, C	2071-22	0	GAZMEN, E	2074 22 1
5 SAMELSON, C	1930-15	0	SOLLANO, E	1938 22 1
6 HORTON, D	1853-17	0	FRISKE, T	1940 17 1
7 ABBOTT, J	0 0	1	AUGSBURGER, L	1741 0 0 (MTRLA)
8 PIPARIA, J	0 0	.5	THOMSON, J	1495 0 .5 (MTRLA)
9 DESAI, N	0 0	0	GONCHAROFF, N	1734 0 1 (MTRLA)

11-FEB-99 KEMPER INSURANCE 1 MOTOROLA 5
 ROUND 7

BD	RATINGS	SCORE		RATINGS	SCORE
1 SIWEK, M	2005 2	.5	MELNIKOV, I	2043 -3	.5
2 EASTON, R	1711 17	.5	WALLACH, C	2049-17	.5
3 WALKER, C	1701-11	0	ABBOTT, J	1902 11	1
4 OLSEN, A	1460 -3	0	SAMELSON, C	1915 2	1
5 CUMMUTA, P	1477 -8	0	AUGSBURGER, L	1741 8	1
6 MCKINNEY, T	1317-12	0	THOMSON, J	1495 12	1
7 BRAUNDMEIER, B	0 0	0	GRYPARIS, J	1451 0	1
8 FERNANDEZ, J	0 0	0	PIPARIA, J	0 0	1
9 ROSZKOWSKI, D	0 0	0	GONCHAROFF, N	1734 0	1

22-FEB-99 EXCALIBURS .5 SEARS 4.5
 ROUND 7

BD	RATINGS	SCORE		RATINGS	SCORE
1 SULLIVAN, J	1935 0	0F	LATIMER, E	2084 0	1F
2 WEITZ, R	1670 0	0F	MILLER, T	1861 0	1F
3 SUERTH, F	1614 -7	0	SIMS, L	1825 10	1
4 BURIAN, D	1598 -1	.5	LANGER, D	1573 2	.5
5 OELHAFEN, A	1278-15	0	BALASE, E	1402 15	1
6	0 0	0F		0 0	0F

23-FEB-99 EXEMPLARS 5 NORTHROP 1
 ROUND 7

BD	RATINGS	SCORE		RATINGS	SCORE
1 BENESA, A	2272 14	1	MININ, S	2126-14	0
2 INUMERABLE, F	2299 1	1	WALKER, A	1670 -1	0
3 GAZMEN, E	2096 3	1	VIGANTS, A	1608 -3	0
4 SOLLANO, E	1960 2	1	FONG, R	1401 -2	0
5 FRISKE, T	1957 0	1	ELEK, G	1086 0	0
6	0 0	0F	CHOROSINSKI, L	0 0	1F

03-FEB-99 BANK AMERICA ILLINOIS 3 THE READER 2
 ROUND 2

BD	RATINGS	SCORE		RATINGS	SCORE
1 KOGAN, G	1870 1	.5	ATKINSON, J	1880 0	.5
2 FRAATS, D	1808 2	.5	HENDERSON, H	1831 -2	.5
3 PARAOAN, E	1754 8	1	WENTLING, C	1590 -8	0
4 HAMMOND, M	1385-18	0	SULLIVAN, C	1463 18	1
5 ZOELLNER, J	1446 4	1	MARSH, M	1117 -6	0
6	0 0	0F		0 0	0F

09-FEB-99 LEO BURNETT 2.5 NATIONSBANK-CRT 3.5
 ROUND 7

BD	RATINGS	SCORE		RATINGS	SCORE
1 GATES, E	1793 -3	0	KRAS, T	2267 3	1
2 EAMAN, R	1633 43	1	JASAITIS, A	2145-29	0
3 DUFFY, J	1664 10	.5	LOSOFF, A	1827-10	.5
4 SOSSI, M	1456-12	0	SITAR, K	1629 12	1
5 BAYSINGAR, D	1416-11	0	DELEON, J	1608 11	1
6 BANNON, B	1154 22	1	BARNARD, G	1153-22	0

11-FEB-99 ALUMNI ACES 1.5 COLUMBIA COLLEGE 4.5
 ROUND 7

BD	RATINGS	SCORE	RATINGS	SCORE
1 JAKSTAS, K	2189-20	0	SANTIAGO, T	2068 30 1
2 CZERNIECKI, A	2000 -1	.5	MCALISTER, K	1972 2 .5
3 SAGALOVSKY, L	1977-25	0	HAYES, W	1938 25 1
4 GOLLA, R	1914-22	0	GROEGER, D	1735 33 1
5 FRANK, M	1837 16	1	PRATTS, M	1735-16 0
6 FRANEK, M	1772-22	0	STEVENS, J	1602 33 1

17-FEB-99 THE READER 3 BANK AMERICA ILLINOIS 3
 ROUND 7

BD	RATINGS	SCORE	RATINGS	SCORE
1 ATKINSON, J	1880 15	1	KOGAN, G	1871-22 0
2 HENDERSON, H	1829 21	1	FRAATS, D	1810-21 0
3 WENTLING, C	1582 22	1	PARAOAN, E	1762-22 0
4 SULLIVAN, C	1481-25	0	SIEGEL, R	1443 17 1
5 MARQUEZ, N	1203 -9	0	ZOELLNER, J	1450 6 1
6 MARSH, M	1111 -8	0	HAMMOND, M	1367 8 1

23-FEB-99 NATIONSBANK-CRT 5.5 BANK AMERICA ILLINOIS .5
 ROUND 8

BD	RATINGS	SCORE	RATINGS	SCORE
1 KRAS, T	2270-19	.5	KOGAN, G	1849 19 .5
2 JASAITIS, A	2116 4	1	FRAATS, D	1789 -6 0
3 MURPHY, J	2000 8	1	PARAOAN, E	1740 -5 0
4 BARGERSTOCK, D	1720 8	1	ZOELLNER, J	1456 -5 0
5 SITAR, K	1641 8	1	HAMMOND, M	1375 -8 0
6 SHATSKY, V	1604 4	1	GANSER, A	1197 -4 0

Board 6 makeup match from Round 5 CRT Versus BKAMI (12/17/98)
 (1 game point awarded to CRT)

6 BARNARD, G	1131 26	1	GANSER, A	1193-26 0
--------------	---------	---	-----------	-----------

NAME	TEAM	W	L	D	RATING	NAME	TEAM	W	L	D	RATING
ABBOTT, J	MTRLA	3	0	0	1913#	CHRISTIAN, R	DRGNS	2	1	2	1815C
ADARE, A	WHEAT	0	0	0	0000/1	CUMBERLAND, M	SEARS	0	4	0	0000/4
ADHIKARI, G	CASE	0	2	0	0000/3	CUMMUTA, P	KEMPR	0	4	0	1469C
ALEXANDER, W	CCDOC	2	6	0	1718*	CURTIS, M	NORTH	0	0	0	1971
ALLEN, H	ALUMN	0	0	0	1960	CZERNIECKI, A	ALUMN	3	3	1	1999D
ALLEN, R	UOP	0	2	0	1200#	CZOSKE, M	ROYLS	1	1	0	1289#
ALTSHULLER, D	DRGNS	4	1	1	1832*	DACANAY, D	PSIPR	0	0	0	0000/2
ANDERSON, CJ	ROYLS	0	0	0	1454	DAVIDSON, M	ALUMN	1	0	0	1611
ANSELL, S	ROOKS	0	0	0	1866*	DAVIS, R	PSIPR	0	0	0	923#
APATA, D	ROYLS	0	3	0	0000/1	DECMAN, S	ROOKS	1	0	0	1648D
APPLEBERRY, T	CCDOC	6	1	1	1351	DELEON, J	CRT	1	0	0	1619
ATKINSON, J	READR	2	3	2	1895C	DEMICK, D	WHEAT	0	0	0	1327#
AUGSBURGER, L	MTRLA	1	1	1	1749C	DEPERALTA, A	PSIPR	0	0	0	1696
BALASE, E	SEARS	2	2	0	1417	DESAI, N	MTRLA	1	2	0	0000/1
BALICKI, J	MTRLA	0	1	1	1590*	DIAZ, P	TYROS	3	3	0	1980
BANKS, K	READR	0	1	0	0000/1	DOBR, K	CHRGR	7	0	0	1501T
BANNON, B	LBURN	2	4	0	1176*	DOBROVOLNY, C	ROYLS	2	2	2	1774C
BANOS, M	MTRLA	0	0	0	0000/0	DORFF, M	SEARS	0	1	1	1610
BARGERSTOCK, D	CRT	3	1	2	1728	DORIGO, T	FERMI	4	0	2	2192
BARNARD, G	CRT	3	2	0	1157*	DROLEN, R	CASE	0	1	0	0000/1
BAURAC, D	ROOKS	2	3	0	1690D	DUFFY, J	LBURN	2	3	2	1674
BAYSINGAR, D	LBURN	3	3	0	1405*	EAMAN, R	LBURN	1	3	3	1676
BENEDEK, R	ROOKS	1	3	1	2136D	EASTON, R	KEMPR	3	1	2	1728#
BENESA, A	EXMPL	4	1	1	2286	EDWARDS, S	EXCLB	0	1	0	1284
BERRY, G	ROOKS	0	0	0	2081T	ELEK, G	NORTH	0	4	0	1086
BETELU, D	MTRLA	0	0	0	1907#	ELLICE, W	PAWNS	2	4	3	1915
BEZZUBOV, V	FERMI	0	0	0	2344*	ELLIOTT, M	KNGHT	0	0	0	1281
BLACKMON, E	ROYLS	0	0	1	1766C	ENKE, E	WHEAT	0	0	0	1463*
BLAZIE, J	TYROS	2	2	1	1715C	EUSTACE, D	DRGNS	3	1	0	1658C
BLINKOFF, D	LBURN	0	0	0	0000/0	FABIJONAS, R	ALUMN	0	0	0	1741D
BOLDINGH, E	UOP	3	3	0	1862	FENILI, A	KNGHT	0	0	0	0000/0
BOSTICK, T	WHEAT	0	0	0	1424	FERNANDEZ, J	KEMPR	0	1	0	0000/0
BRADTKE, J	LBURN	0	1	0	0000/1	FLORENCE, C	MTRLA	1	0	0	0000/1
BRADY, R	CHRGR	0	3	1	1343	FONG, R	NORTH	2	3	1	1399#
BRANCH, Y	COLUM	0	0	0	1237*	FOX, P	CCDOC	3	0	0	1118#
BRAUNMEIER, B	KEMPR	0	1	0	0000/4	FRAATS, D	BKAMI	2	2	2	1783
BRIONES, G	DRGNS	0	0	0	0000/0	FRANEK, M	ALUMN	2	1	2	1750C
BROLLIER, B	WHEAT	0	0	0	1266*	FRANK, M	ALUMN	1	1	1	1853
BRONFELD, A	EXMPL	0	0	0	1829	FRIESEMA, W	CRT	0	1	1	2047
BROTOSOS, J	EXCLB	2	1	0	1562D	FRISKE, T	EXMPL	5	1	0	1957
BROZOVICH, J	TYROS	2	1	1	1728D	FROMM, J	FERMI	0	0	0	1540
BUCHNER, R	ROYLS	0	0	0	2044	FULLMER, G	MTRLA	0	0	0	0000/2
BUERGER, E	UOP	3	1	1	2028T	GAINES, I	FERMI	0	4	2	1743D
BURIAN, D	EXCLB	2	1	2	1597C	GALLA, J	MTRLA	0	1	0	0000/0
CARRANO, C	ROYLS	1	4	0	0000/4	GANSER, A	BKAMI	0	4	0	1167
CARTER, D	CASE	0	0	0	1056	GARCIA, A	KEMPR	0	0	0	1819#
CARTER, M	PAWNS	0	1	0	0000/1	GARCIA, J	ROOKS	0	2	2	1198*
CARVER, A	PSIPR	0	0	0	0000/3	GATES, E	LBURN	0	5	2	1790
CHELF, B	NORTH	0	0	0	0000/2	GATSON, T	CCDOC	1	0	0	1100*
CHOROSINSKI, L	NORTH	2	2	0	0000/2	GAZMEN, E	EXMPL	4	0	2	2099

/x - UNRATED; x RATED GAMES
 # - 5 TO 9 RATED GAMES
 * - 10 TO 24 RATED GAMES

C - CENTURY CLUB MEMBER
 D - DOUBLE CENTURION
 T - TRIPLE CENTURION
 Q - QUAD CENTURION

The Chicago Chess Player

March 1999

NAME	TEAM	W	L	D	RATING	NAME	TEAM	W	L	D	RATING
GERONA, R	CASE	2	1	2	1406	KINSELLA, G	KNGHT	0	0	0	1449C
GIBBS, D	PAWNS	0	0	0	0000/3	KLEBANER, A	FERMI	0	0	0	0000/1
GOLLA, R	ALUMN	3	3	1	1892D	KLINFELTER, H	CASE	2	4	1	1559C
GOMEZ, G	FERMI	4	0	1	1658	KOGAN, G	BKAMI	1	4	3	1868
GONCHAROFF, N	MTRLA	4	0	1	1734Q	KOH, J	BKAMI	0	0	0	1992
GRANTHAM, D	PAWNS	0	0	0	0000/1	KOSTECKA, K	COLUM	2	1	0	1523
GREEN, D	ROOKS	2	1	3	1845D	KOZLOVSKY, M	FERMI	0	0	0	2085
GROEGER, D	COLUM	6	1	0	1768	KRAS, T	CRT	4	1	2	2251
GRYPARIS, J	MTRLA	2	2	0	1451C	KREMER, T	PAWNS	0	0	0	1319*
GUIO, J	ROYLS	4	1	2	2042	LAMBIRIS, J	KEMPR	0	0	0	1437
GUTIERREZ, R	PSIPR	0	0	0	0000/0	LANG, P	KEMPR	0	0	0	0000/6
HAHNE, D	ROYLS	1	2	0	1520	LANGER, D	SEARS	1	0	2	1575
HALL, A	CCDOC	3	3	2	1502	LANNNOYE, D	EXMPL	0	1	0	1698*
HALL, L	SEARS	0	0	0	1566#	LASKY, N	PAWNS	2	3	1	1394C
HAMMOND, M	BKAMI	1	7	0	1367	LATIMER, E	SEARS	0	1	0	2084D
HANSEN, B	PAWNS	0	0	0	1348	LE, D	MTRLA	2	0	0	0000/2
HARD, R	PAWNS	0	0	0	1193*	LECHNICK, J	UOP	1	1	2	1811*
HARRIS, R	FERMI	0	0	0	1554	LEE, G	AMCRP	0	0	0	0000/1
HASAN, Y	MTRLA	0	2	1	2162	LEONG, G	KEMPR	1	0	0	2019C
HASSO, S	ROYLS	2	2	0	0000/2	LICARI, T	DRGNS	0	0	0	0000/5
HAWLEY, L	SEARS	0	2	0	0000/1	LITVINAS, A	ALUMN	3	0	0	1696D
HAYES, W	COLUM	5	0	1	1963	LOGAN, H	PAWNS	1	3	1	1230
HAZELWOOD, R	CCDOC	0	0	0	0000/1	LOPEZ, C	CCDOC	0	0	0	0000/0
HELLER, T	WHEAT	0	0	0	1148*	LOSOFF, A	CRT	2	2	1	1817
HENDERSON, H	READR	4	2	1	1850	LOUGHEED, S	NORTH	0	0	0	0000/1
HILL, R	ROOKS	5	1	0	1971C	LUDWIG, M	WHEAT	0	0	0	0000/4
HODINA, J	AMCRP	0	0	0	2111	LUDWIG, T	DRGNS	2	5	0	2053C
HOLMES, M	AMCRP	0	0	0	1415*	MACKIE, A	MTRLA	0	0	0	1967
HORTON, D	MTRLA	0	1	0	1836	MAKAI, M	KNGHT	0	0	0	1799*
HOUPIS, G	NORTH	0	0	0	0000/1	MARCOWKA, R	CHRGR	7	3	0	1971D
HUGHES, N	KEMPR	0	0	0	1827C	MAREMA, D	PSIPR	0	0	0	2004
INUMERABLE, F	EXMPL	4	0	0	2300C	MARQUEZ, N	READR	0	6	0	1194*
JACKSON, S	CCDOC	4	4	1	1398	MARSH, M	READR	1	6	0	1103
JACOBY, W	NORTH	0	0	0	0000/1	MARVIN, C	LBURN	0	0	0	0000/2
JAKSTAS, K	ALUMN	1	1	0	2169C	MCALISTER, K	COLUM	3	2	2	1974
JASAITIS, A	CRT	5	2	1	2120C	MCCARTHY, D	CHRGR	3	0	0	1679#
JEFFERIES, P	CCDOC	0	0	0	0000/1	MC GEE, L	CCDOC	1	2	0	0000/7
JEFFRIES, P	CCDOC	0	0	0	0000/0	MCKAY, P	PAWNS	1	0	0	1415#
JOHNSON, W	CCDOC	0	0	0	1176*	MCKINNEY, T	KEMPR	2	2	0	1305*
JONES, K	SEARS	0	1	1	1494#	MEDINA, L	ROYLS	0	1	0	0000/0
JOSEPHSON, D	WHEAT	0	0	0	1721*	MEHTA, C	TYROS	0	1	1	1465#
KABELAC, J	ROOKS	2	4	0	1968	MELNIKOV, I	MTRLA	0	2	1	2040
KALE, S	CASE	5	4	0	1887	MICKLICH, F	UOP	5	1	1	1635C
KANAS, W	CASE	2	2	1	1262C	MIKULECKY, B	PAWNS	2	3	1	1479C
KANTAR, M	FERMI	2	0	1	0000/3	MILLER, T	SEARS	1	4	0	1861
KARPIERZ, J	TYROS	2	1	1	1237*	MININ, S	NORTH	4	2	0	2112
KELLOGG, K	FERMI	0	0	0	1607C	MOLINA, J	FERMI	3	0	0	0000/1
KELLY, S	DRGNS	0	0	0	1281	MONTGOMERY, J	WHEAT	0	0	0	1456
KERCSMAR, J	WHEAT	0	0	0	0000/0	MORRIS, R	MTRLA	0	0	0	2144
KESTNER, M	ROYLS	0	3	0	1466	MOTYCKA, R	CASE	0	0	0	1134C

/x - UNRATED; x RATED GAMES

- 5 TO 9 RATED GAMES

* - 10 TO 24 RATED GAMES

C - CENTURY CLUB MEMBER

D - DOUBLE CENTURION

T - TRIPLE CENTURION

Q - QUAD CENTURION

The Chicago Chess Player

March 1999

NAME	TEAM	W	L	D	RATING	NAME	TEAM	W	L	D	RATING
MURPHY, J	CRT	1	0	0	2008	SCHOONOVER, M	UOP	2	4	0	1326*
MYART, V	CCDOC	0	0	0	0000/3	SEATON, E	CCDOC	1	3	3	1664
NAIR, U	DRGNS	0	0	0	1827	SEN, S	UOP	1	2	1	0000/3
NALLATHAMBI, R	KEMPR	2	1	0	1485	SHAFF, R	TYROS	0	0	0	1515C
O'DELL, DW	PAWNS	0	4	0	1467C	SHATSKY, V	CRT	4	1	0	1608
OELHAFEN, A	EXCLB	1	2	0	1263	SHAWN, L	KEMPR	0	0	0	0000/2
OGASAWARA, L	ROYLS	1	1	0	1820C	SHENOUDA, RAFE	TYROS	0	0	0	1665*
OLSEN, A	KEMPR	0	5	1	1457	SHENOUDA, RUSS	TYROS	0	1	0	0000/1
PARA, A	FERMI	0	1	0	1545	SIEGEL, J	PAWNS	0	2	0	0000/2
PARAOAN, E	BKAMI	2	4	2	1735C	SIEGEL, R	BKAMI	2	1	0	1460C
PAREKH, C	DRGNS	0	2	1	0000/3	SIMON, D	ROOKS	0	0	0	0000/1
PATEL, S	CASE	0	0	0	0000/1	SIMS, B	CRT	0	0	0	1494#
PATRICK, J	NORTH	1	3	0	0000/3	SIMS, L	SEARS	3	1	1	1835
PEHAS, A	ROYLS	0	3	0	1934C	SIRAKOV, I	KNGHT	0	0	0	1842#
PEIJFFERS, S	ROYLS	1	2	1	2046	SITAR, K	CRT	3	2	2	1649
PETERS, E	PSIPR	0	0	0	1661	SIWEK, M	KEMPR	0	4	2	2007C
PHELPS, C	DRGNS	0	0	0	1240*	SKRZYPCZAK, T	PAWNS	0	0	0	1202*
PHELPS, D	MTRLA	0	0	0	0000/2	SLOAT, D	WHEAT	0	0	0	0000/1
PIAO, T	DRGNS	2	2	1	1637	SMITH, BR	TYROS	0	2	1	1542
PIPARIA, J	MTRLA	4	1	1	0000/3	SMITH, J	MTRLA	1	0	2	1708#
PLETT, M	UOP	3	0	2	1792	SMITH, R	SEARS	0	0	0	0000/1
POLONCSIK, D	SEARS	0	0	0	0000/3	SMOLARCZYK, S	PAWNS	0	4	0	0000/4
PORTANTE, E	KNGHT	0	0	0	0000/2	SOBSKI, A	NORTH	0	3	0	0000/4
PRATTS, M	COLUM	1	3	0	1719	SOLLANO, E	EXMPL	5	0	0	1962
RADAVICIUS, E	CHRGR	1	0	0	1628D	SOMBONG, M	BKAMI	0	0	0	1626C
RAJA, M	ROOKS	0	0	0	1757	SORIA, D	PSIPR	0	0	0	0000/4
REID, C	CASE	4	4	1	1424C	SOSSI, M	LBURN	2	4	0	1444*
REYES, R	ALUMN	4	0	1	2377D	SPIEGEL, L	FERMI	2	3	1	2061C
RICHERT, E	WHEAT	0	0	0	0000/1	SPURRIER, T	NORTH	0	0	0	0000/0
RICHERT, P	WHEAT	0	0	0	0000/1	STALKER, M	CASE	0	0	0	0000/2
ROBERTS, N	WHEAT	0	0	0	0000/1	STAMM, V	CHRGR	4	3	1	1573D
ROBINSON, J	DRGNS	1	3	0	0000/2	STANFIELD, D	CCDOC	0	0	0	0000/0
ROJO, V	CCDOC	3	2	1	1387	STAPLES, C	FERMI	4	1	1	1392*
ROMENOWSKI, G	PAWNS	0	0	0	0000/0	STEIN, P	TYROS	5	0	1	2279
ROSLEY, D	CHRGR	2	0	2	1764	STEVANOVIC, M	UOP	2	2	1	2216D
ROSZKOWSKI, D	KEMPR	1	4	0	0000/3	STEVENS, J	COLUM	3	0	1	1635
ROYTBURG, E	CASE	1	1	2	2012*	STINSON, L	PAWNS	0	1	0	0000/1
RZESZUTKO, R	ALUMN	0	1	0	1900C	STINSON, M	ROYLS	1	1	1	1955C
SACKS, D	UOP	3	0	3	1836	STOCKE, M	PSIPR	0	0	0	1758
SAGALOVSKY, L	ALUMN	6	1	0	1952	STOLTZ, B	TYROS	1	3	1	1858C
SAJBEL, P	UOP	3	2	0	1823C	SUAREZ, E	ROOKS	2	1	0	1720
SALERNO, S	DRGNS	1	1	0	0000/2	SUERTH, F	EXCLB	1	2	3	1607C
SAMELSON, C	MTRLA	3	2	0	1917C	SULLIVAN, C	READR	3	3	0	1456
SANDEFUR, B	CCDOC	1	4	0	1214*	SULLIVAN, J	EXCLB	2	1	1	1935D
SANTIAGO, T	COLUM	4	3	0	2098	TAMEZ, I	TYROS	4	1	1	2193
SATTERLEE, D	CASE	1	3	2	1560C	TAN, M	WHEAT	0	0	0	1186
SAVCIC, V	ROYLS	0	2	0	0000/1	TEGEL, F	DRGNS	3	4	0	2127T
SAWIN, B	LBURN	0	2	0	1208#	THOMAS, G	TYROS	0	0	0	1530C
SAXENA, D	ROYLS	4	2	0	1566#	THOMAS, J	CHRGR	5	1	0	1563C
SCHMUGGEROW, K	NORTH	0	0	0	2144	THOMSON, J	MTRLA	4	0	1	1507#

/x - UNRATED; x RATED GAMES
 # - 5 TO 9 RATED GAMES
 * - 10 TO 24 RATED GAMES

C - CENTURY CLUB MEMBER
 D - DOUBLE CENTURION
 T - TRIPLE CENTURION
 Q - QUAD CENTURION

NAME	TEAM	W	L	D	RATING	NAME	TEAM	W	L	D	RATING
TOELLNER, T	ROOKS	0	0	0	0000/4	WEBER, L	EXMPL	3	0	0	2169
TORRES, V	PSIPR	0	0	0	0000/4	WEISNER, T	PAWNS	0	3	2	1143
TRINIDAD, P	CCDOC	0	3	0	0000/2	WEITZ, R	EXCLB	1	2	0	1670C
TURNER, K	PSIPR	0	0	0	1455	WENTLING, C	READR	1	3	1	1604C
UNDERWOOD, W	EXCLB	1	0	0	1956C	WHARTON, P	WHEAT	0	0	0	0000/2
VACCARO, M	COLUM	0	0	0	1441#	WHITE, H	CASE	2	1	1	1659C
VALLIERE, D	WHEAT	0	0	0	0000/2	WILLIAMS, K	CCDOC	4	0	1	1987
VAN ZILE, C	UOP	2	3	1	1316	WILSON, M	SEARS	0	4	0	1207*
VANDECOTTE, M	UOP	0	0	0	0000/3	WOLF, D	MTRLA	1	1	0	2312
VELEZ, L	NORTH	0	0	0	0000/3	WONG, P	EXCLB	1	0	0	2221C
VERMA, S	PSIPR	0	0	0	0000/3	WONG, PETER	CASE	1	1	1	0000/4
VIGANTS, A	NORTH	2	4	0	1605	WOOD, L	AMCRP	0	0	0	1499*
WALKER, A	NORTH	1	4	1	1669*	YACOUT, A	KNIGHT	0	0	0	1547*
WALKER, C	KEMPR	2	3	0	1690	YOUSSEF, S	FERMI	0	0	0	2032
WALLACH, C	MTRLA	2	1	2	2032	ZELIGMAN, E	KEMPR	0	1	0	0000/1
WARD, C	DRGNS	0	0	0	1636D	ZOELLNER, J	BKAMI	4	3	1	1451C
WARREN, J	CHRGR	4	0	4	2120Q						

/x - UNRATED; x RATED GAMES

- 5 TO 9 RATED GAMES

* - 10 TO 24 RATED GAMES

C - CENTURY CLUB MEMBER

D - DOUBLE CENTURION

T - TRIPLE CENTURION

Q - QUAD CENTURION

03-01-1999

NEAR WEST DIVISION TOP TEN

WARREN, J	CHRGR 2120Q
ROYTBURG, E	CASE 2012*
WILLIAMS, K	CCDOC 1987
MARCOWKA, R	CHRGR 1971D
ELLICE, W	PAWNS 1915
KALE, S	CASE 1887
ROSLEY, D	CHRGR 1764
ALEXANDER, W	CCDOC 1718*
SEATON, E	CCDOC 1664
WHITE, H	CASE 1659C

FAR WEST DIVISION TOP TEN

BEZZUBOV, V	FERMI 2344*
STEIN, P	TYROS 2279
TAMEZ, I	TYROS 2193
DORIGO, T	FERMI 2192
BENEDEK, R	ROOKS 2136D
TEGEL, F	DRGNS 2127T
KOZLOVSKY, M	FERMI 2085
BERRY, G	ROOKS 2081T
SPIEGEL, L	FERMI 2061C
LUDWIG, T	DRGNS 2053C

NORTH DIVISION TOP TEN

WOLF, D	MTRLA 2312
INUMERABLE, F	EXMPL 2300C
BENESA, A	EXMPL 2286
WONG, P	EXCLB 2221C
STEVANOVIC, M	UOP 2216D
WEBER, L	EXMPL 2169
HASAN, Y	MTRLA 2162
SCHMUGGEROW, K	NORTH 2144
MORRIS, R	MTRLA 2144
MININ, S	NORTH 2112

EAST DIVISION TOP TEN

REYES, R	ALUMN 2377D
KRAS, T	CRT 2251
JAKSTAS, K	ALUMN 2169C
JASAITIS, A	CRT 2120C
SANTIAGO, T	COLUM 2098
FRIESEMA, W	CRT 2047
MURPHY, J	CRT 2008
CZERNIECKI, A	ALUMN 1999D
KOH, J	BKAMI 1992
MCALISTER, K	COLUM 1974

MOST IMPROVED PLAYERS

STAPLES, C	FERMI 125
APPLEBERRY, T	CCDOC 116
GUIO, J	ROYLS 112
GOMEZ, G	FERMI 102
DORIGO, T	FERMI 77
WILLIAMS, K	CCDOC 76
HAYES, W	COLUM 73
STEIN, P	TYROS 68
SULLIVAN, C	READR 67
HENDERSON, H	READR 64

03-01-1999

CICL vs. the Concordia Community Chess Club (CCCC)*

*Formerly known as the Oak Park Chess Club

All CICL players are welcomed to participate in this upcoming club match. Although the Oak Park Chess Club has changed name and location, the CCCC is basically the same bunch of players who have just moved across the street from their old site.

DETAILS:

Date: Tuesday, April 13, 1999

Time: All clocks start at 7:30 p.m. (please plan to be there by 7:15 p.m.)

Time Control: 45 moves / 90 min., followed by SD in 30 min.

Place: NOTE—NEW LOCATION!! Across the street from the old Priory playing site: Play will be in the Koehneke Community Center on the Concordia University campus. This building is on the Southwest corner of Division and Bonnie Brae Streets, behind Grace Lutheran Church. (see map and directions below)

Pre-register: for a rough head count, please check in with Pat Sajbel (phone and e-mail below)

Thank you.

Pat Sajbel
(847) 391-2134 (W), preferred
(847) 506-9302 (H)
e-mail: posajbel@uop.com

DIRECTIONS:

1. Take the Eisenhower to Harlem Ave., then go a few miles North-or- take North Avenue to Harlem Ave., then go a few blocks south
2. Turn West from Harlem Ave on to Division Street
{Landmarks: NE corner is Amoco, SW corner is 7-11 store}
3. After one block, there will be a large church on your left at Bonnie Brae Street. The Koehneke Center is behind the church.

(refer to map)

CONCORDIA COMMUNITY C.C.

OAK PARK CHESS CLUB

CICL vs OREG CCCC

Tue, April 13th

7:30 ~~8:00~~pm Start (no grace period)

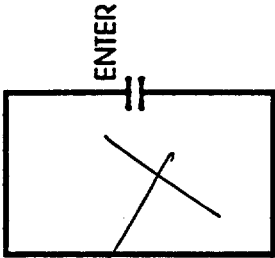
T/C: 45/90, SD/30

Info: Pat Sajbel
(847) 391-2134 (w)
(847) 506-9302 (h)



HARLEM AVE.

OLD SITE



Dominican Priory

1 block

DIVISION ST.



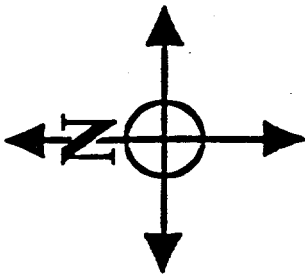
BONNIE ST

7 Eleven

CONCORDIA UNIVERSITY

NEW SITE: KOEHNEKE CENTER

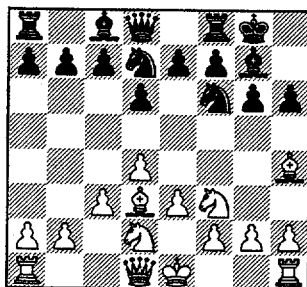
EISENHOWER EXPRESSWAY



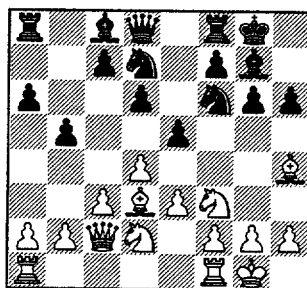
1. Take Eisenhower to HARLEM AVE.
2. Exit North on HARLEM.
3. Go to DIVISION ST. and turn West.
4. Park on Division street
5. Walk down Bonnie Brae. Bldg. is behind Grace Lutheran Church →

Siwek, Mark (2048) –
 Stevanovic, Mike (2206) [A48]
 Kemper-UOP, 15.12.1998

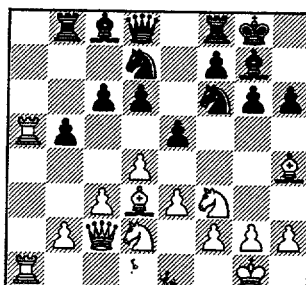
This game is difficult to figure out at home—I would've been lost over the board! 1.d4 Nf6 2.Nf3 g6 3.Bg5 Bg7 4.e3 d6 5.Bd3 Nbd2 6.Nbd2 h6 7.Bh4 0-0 8.c3



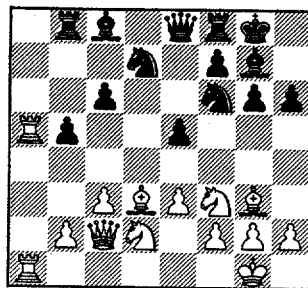
8...e5 9.Qc2 a6 10.0-0 b5



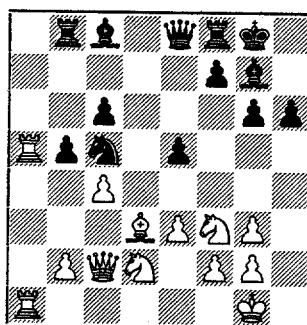
11.a4 Rb8 12.axb5 axb5 13.Ra5 c6 14.Rfa1



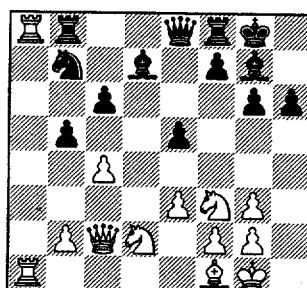
14...Qe8 15.dxe5 dxe5 16.Bg3



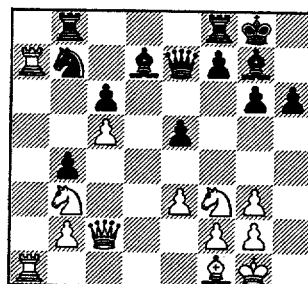
16...Nh5 17.c4 Nxg3 18.hxg3 Nc5



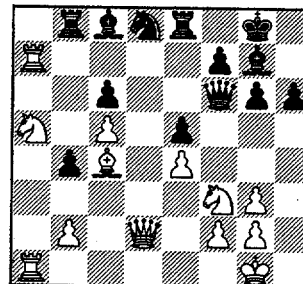
19.Bf1 Nb7 20.Ra8 Bd7



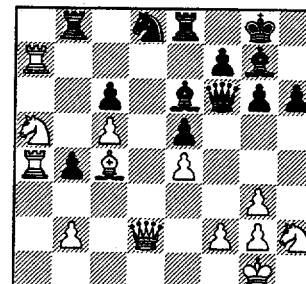
21.R8a7 b4 I imagine Black wanted to deny White space, but this allows the P to be isolated 22.c5! Qe7 23.Nb3



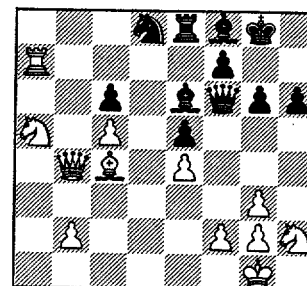
23...Nd8 24.Qd2 Qe6 25.Na5 Bc8 opens Ra7 onto f7 26.e4 Re8 27.Bc4 Qf6



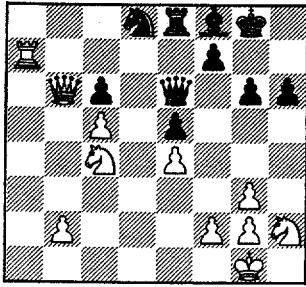
White has good pressure, but Black covers the entry squares. For example, if 28 Nxc6 Nxc6 29 Bf7+, but 28-Qxc6 29 R1a6 would trap Q if Bc8 didnt cover a6 (and c5 needs protection) 28.Ra4 Bg4 29.Nh2 Be6



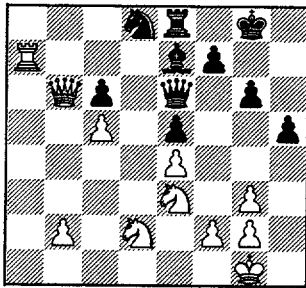
30.Rxb4 Rxb4 31.Qxb4 Bf8



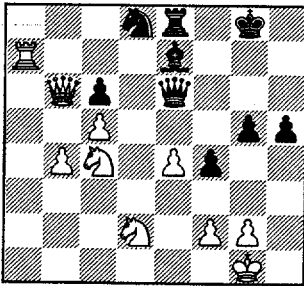
32.Qb6 Bxc4 33.Nxc4 Qe6



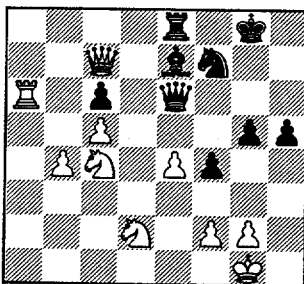
34.Ne3 or 34 b3. 34...h5 35.Nf3
Be7 36.Nd2



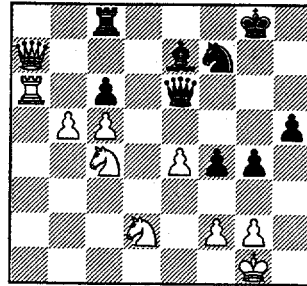
36...f5 37.b4 f4 38.gxf4 exf4
39.Nec4 g5



Black is brewing an attack, but
can White get to King?? 40.Qc7
Nf7 41.Ra6

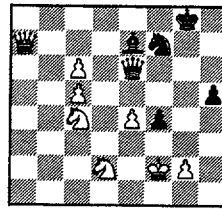


41...Rc8 42.Qa7 g4 43.b5

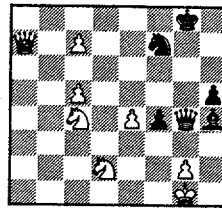


sure looks like a winner
43...g3 44.f3

[44.Rxc6 gxf2+ 45.Kxf2 Rxc6
46.bxc6

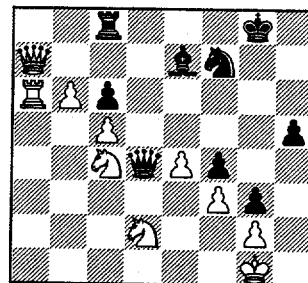


46...Bh4+ (46...Qxc6? 47.Qxe7)
47.Kg1 Qg4 (47...Qxc6
48.Qxf7+! Kxf7 49.Ne5+) 48.c7

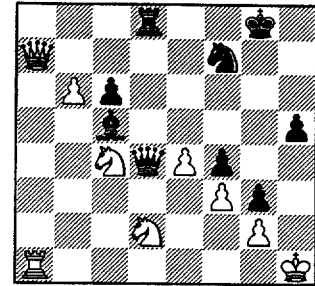


48...Qd1+ 49.Nf1 +- (49.Kh2??
Bg3+ 50.Kh3 Qg4#)]

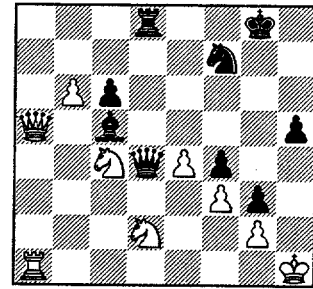
44...Qf6 45.b6 Qd4+



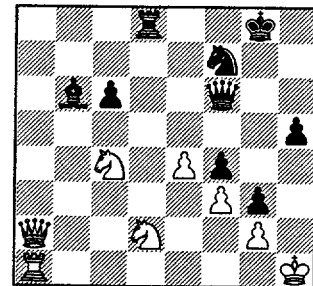
46.Kh1 Bxc5 47.Ra1 Rd8!



setting up Bxb6 since Nxb6
allows capture of Nd2 48.Qa5

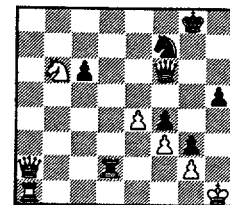


48...Bxb6 49.Qa2 Qf6



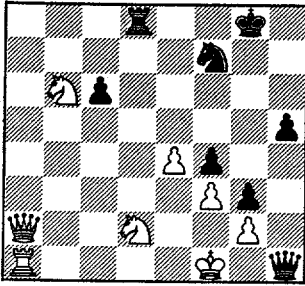
MATE cometh! 50.Nxb6 Qh4+

[50...Rxd2!

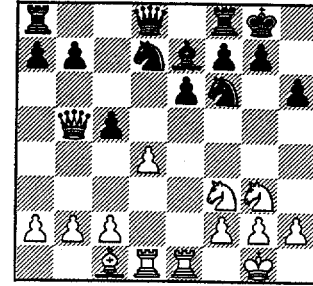
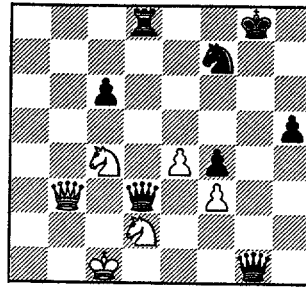


51.Qxd2 Qxa1+ mating]

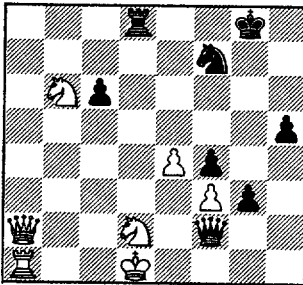
51.Kg1 Qh2+ 52.Kf1 Qh1+



60.Kc1 Qed3 61.Rg1+ Qxg1+



53.Ke2 Qxg2+ 54.Ke1 Qf2+
55.Kd1

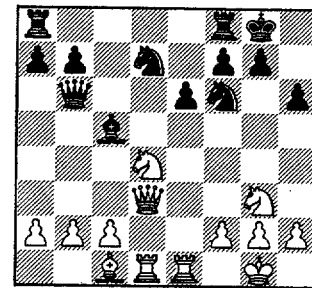


Wow! 0-1

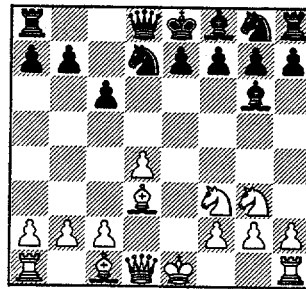
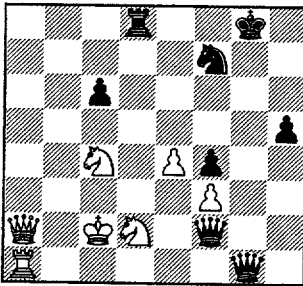
14...Qb6 15.Qd3 cxd4 16.Nxd4
Bc5

Roytburg, Eugene (2020) -
Warren, Jim (2115) [B18]
Case-Chargers, 21.12.1998

1.e4 c6 2.d4 d5 3.Nc3 dxe4
4.Nxe4 Bf5 5.Ng3 Bg6 6.Nf3
Nd7 7.Bd3

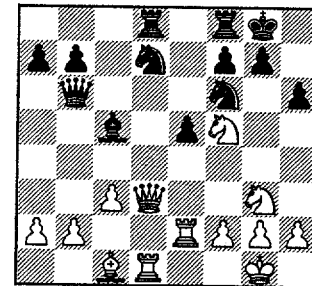


55...g2 56.Nbc4 g1Q+ 57.Kc2

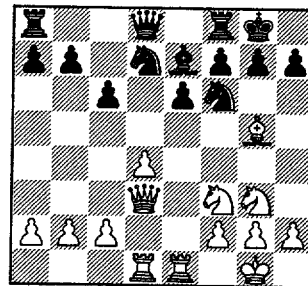
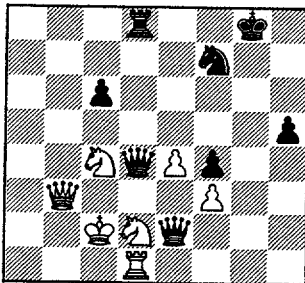


17.Re2 to cover threat to f2, but
ends up weakening backrank
17...Rad8 18.c3 e5 19.Ndf5

7...Bxd3 8.Qxd3 Ngf6 9.0-0 e6
10.Re1 Be7 11.Bg5 0-0 12.Rad1

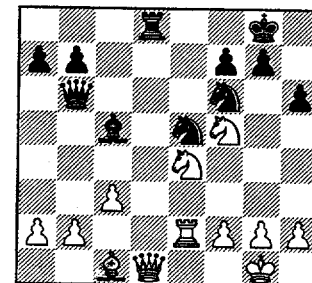


57...Qg7 58.Rd1 Qgd4 59.Qb3
Qe2



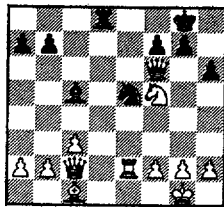
19...e4 frees e5 for N 20.Nxe4
Ne5 21.Qc2 Rxd1+ 22.Qxd1
Rd8

White has space, development,
Rooks ready, but what threats??
12...h6 13.Bc1 c5 14.Qb5



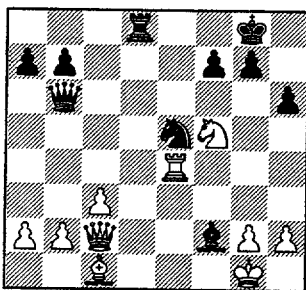
23.Qc2

[23.Nxf6+? Qxf6 24.Qc2

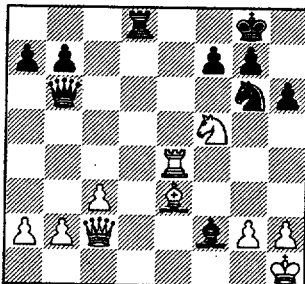


24...Qxf5! 25.Qxf5 Rd1+ mates next]

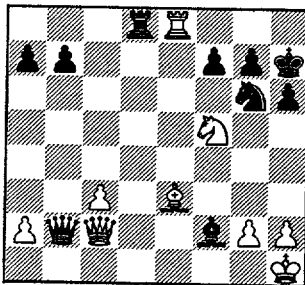
23...Nxe4 24.Rxe4 Bxf2+!



25.Kh1 Ng6 26.Be3



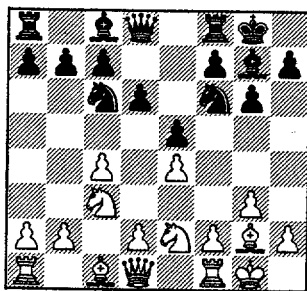
26...Qxb2! 27.Re8+ Kh7



Very nicely done by Black!! 0-1

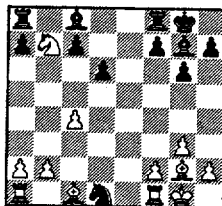
Ludwig, T (2062) -
Spiegel, L (2066) [A26]
Dragons-Fermi, 19.01.1999

1.c4 Nf6 2.Nc3 g6 3.g3 Bg7
4.Bg2 0-0 5.e4 d6 6.Nge2 e5
7.0-0 Nc6



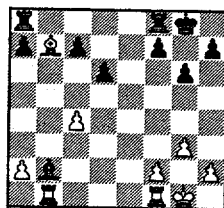
8.d3

[8.d4 might work 8...exd4 9.Nxd4
Nxe4!? 10.Nxc6 Nxc3 11.Nxd8
Nxd1 12.Nxb7



12...Nxb2 13.Bxb2 Bxb2

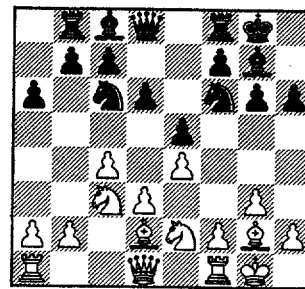
(13...Bxb7 14.Bxb7 Bxb2
15.Rab1



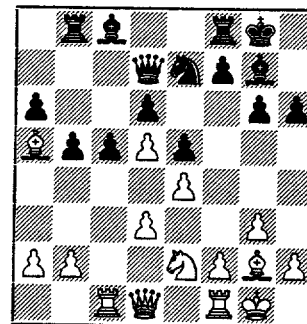
White up exchange for a Pawn)

14.Rab1 Bf6 15.Nxd6 White is
exchange up]

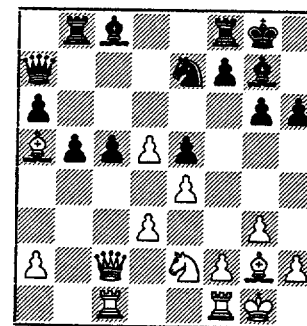
8...a6 9.Bg5 h6 10.Bd2 Rb8



11.Nd5 11 Qc2, Rc1 pressures
Pc7 11...Nxd5 12.cxd5 Ne7
13.Bc3 b5 14.Ba5 Qd7 15.Rc1
c5



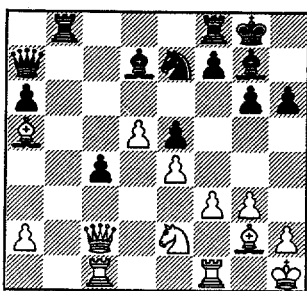
16.b4 Qa7 17.bxc5 dxc5
18.Qc2



looking to Pc5 18...Bg4 19.f3

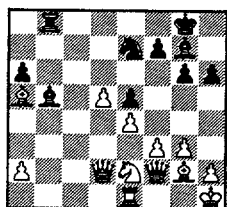
but this opens Qa7 [19.Rfe1
Rbc8]

19...c4+ 20.Kh1 Bd7 21.dxc4
bxc4



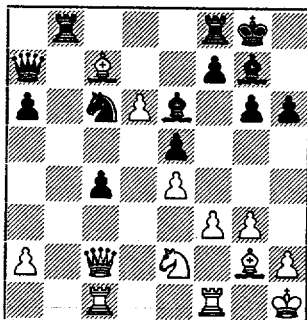
22.d6

[22.Qxc4 Rfc8 (22...Bb5 23.Qc2) 23.Qd3 Bb5 24.Qd2 Rxc1 25.Rxc1 Qf2 26.Re1

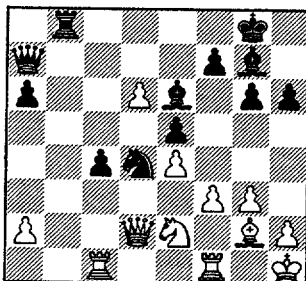


26...Nc8]

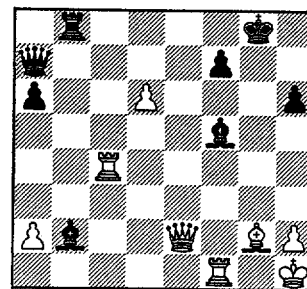
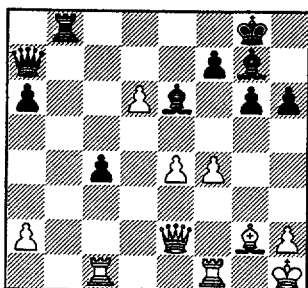
22...Nc6 23.Bc7 Be6



interesting exch sac 24.Bxb8 Rxb8 25.Qd2 Nd4

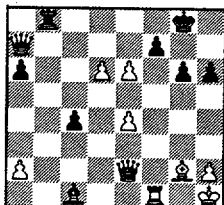


26.f4 Nxe2 27.Qxe2 exf4 28.gxf4



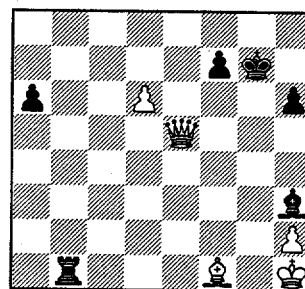
normal compensation for the exchange is: 1 passer threatening to queen, 2 connected passers, or coordinated minors. Black has none of them here. White has the d-pawn which can be protected by e5, blocking out Bg7. If Black allows this, he'd be effectively a Rook down 28...Bb2 29.f5 gxf5

[29...Bxc1 30.fxg6



30...Ba3 (30...fxe6 31.Rxc1 and White is a piece up) 31.exf7+ Kg7 (31...Kf8 32.Qg4 g5 33.Qe6) 32.Qxc4

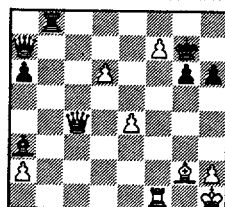
31...Be6 32.Rc2 Qd4 33.Rd1 Qa4 34.Rb1 Qxa2 35.Rcxb2 Qxb1+ 36.Rxb1 Rxb1+ 37.Bf1 Bh3 38.Qe8+ Kg7 39.Qe5+



Kh7 allows Qe4+ wins R, Kg6/Kg8/Pf6 allow Qg3+ & QxB, and Kf8 allows Qh8 mate. 1-0

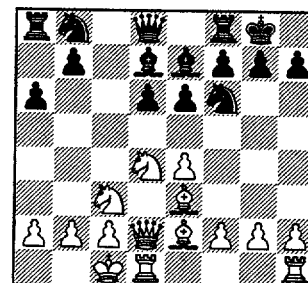
Gates, E (1813) - Kogan, G (1854) [B84] Lburn-Bkami, 19.01.1999

1.e4 c5 2.Nf3 d6 3.d4 cxd4 4.Nxd4 Nf6 5.Nc3 a6 6.Be2 e6 7.Be3 Be7 8.Qd2 0-0 9.0-0 Bd7

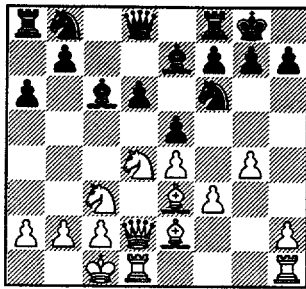


idea of Qc3+]

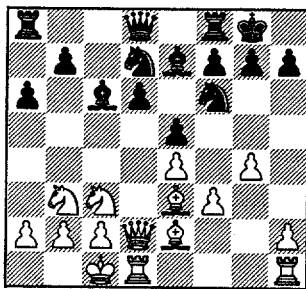
30.exf5 Bxf5 31.Rxc4



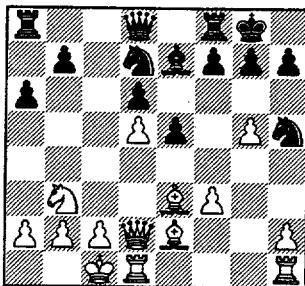
10.f3 Bc6 11.g4 e5



12.Nb3 [12.Nf5 looks better. NxB+ wins d-pawn or keep it to support Kside attack (if -g6, Ng3 idea h2-4-5)] 12...Nbd7

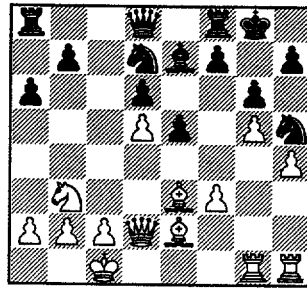


13.g5? Black can block the attack here. h4-5 is natural 13...Nh5 14.Nd5 Once again h4 is needed. If then 15 Nd5 Bxd5, White can keep pressure on d-pawn with Qxd5 14...Bxd5 15.exd5

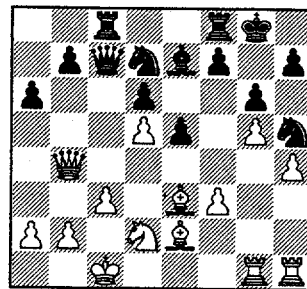


15...Nb8 Where's this N headed?

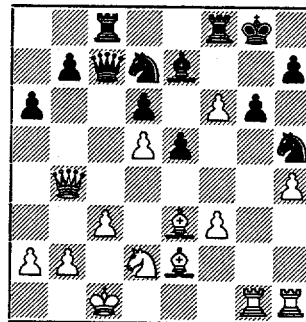
16.Rdg1 g6 17.h4 Nd7



18.Qb4 Qc7 19.Nd2 Rac8 20.c3

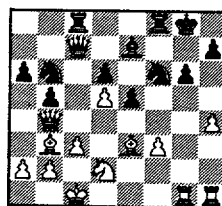


20...f5! 21.gxf6



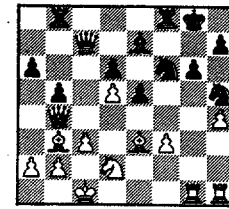
21...Rxf6?

[21...Nhxf6 attacks d-pawn, but.. 22.h5 Black's King is in trouble 22- Nh5? 23 RxN(22.Bc4 b5 23.Bb3 Nb6



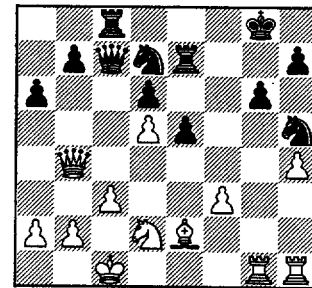
24.Bxb6 Qxb6 threat: a5-4) ;

Another try: 21...Ndx6! 22.Bc4 b5 23.Bb3 Rb8

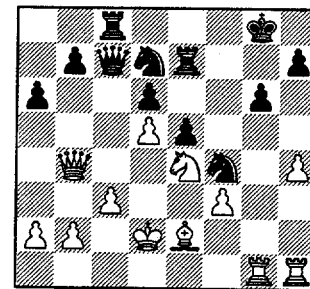


threat: a5-4]

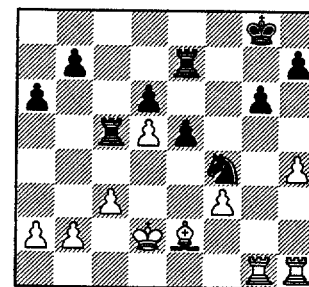
22.Bg5 Rf7 23.Bxe7 Rxe7



24.Ne4 Nf4 25.Kd2

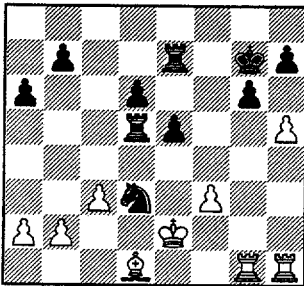


25...Nc5 26.Nxc5 Qxc5 27.Qxc5 Rxc5

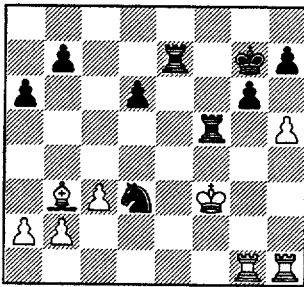


it's over 28.Bd1 28 c4? Nxe2 & 29- Rxc4

28...Rxd5+ 29.Ke1 Kg7 30.h5
Nd3+ 31.Ke2 Nf4+ 32.Ke1 Nd3+
33.Ke2



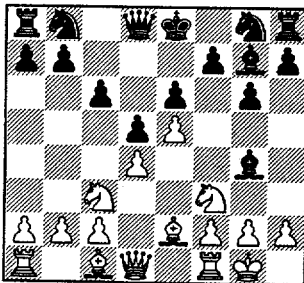
33...e4 34.Bb3 exf3+ 35.Kxf3
Rf5+



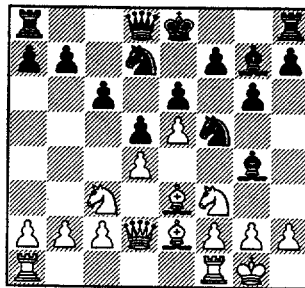
36.Kg2 Nf4+ 0-1

Siwek, M (2039) -
Minin, S (2109) [B15]
Kemper-Northrup, 28.01.1999

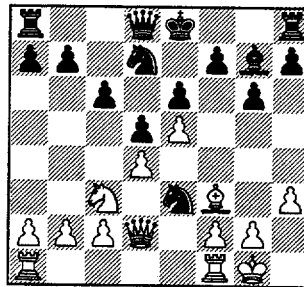
1.e4 g6 2.d4 Bg7 3.Nc3 c6
4.Nf3 d5 5.e5 Bg4 6.Be2 e6
7.0-0



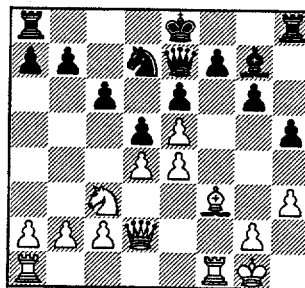
7...Nd7 8.Be3 Nh6 9.Qd2 Nf5



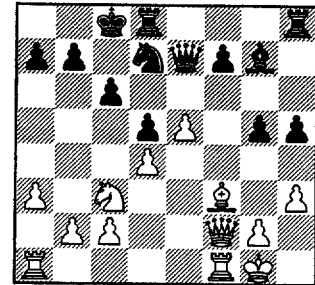
10.h3 [10.b4 would discourage
0-0-0 and the standard c5 pawn
break] 10...Bxf3 11.Bxf3 Nxe3



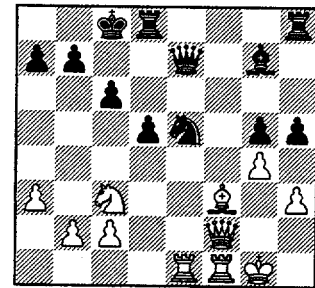
the opposite B middlegame
favors Black because the d4/e5
pawns are the natural targets
(with f6 or c5) and White is
missing the Bishop of their color.
12.fxe3! an interesting attempt to
gain open lines 12...Qe7 13.e4 h5



assuring Bf3 doesn't gain Bg4
(especially after f6) and preparing
an attack 14.a3 [14.b4 is still
possible: Qxb4 Rab1 wins b7-
pawn]
14...g5 15.Qf2 0-0-0 16.exd5
exd5

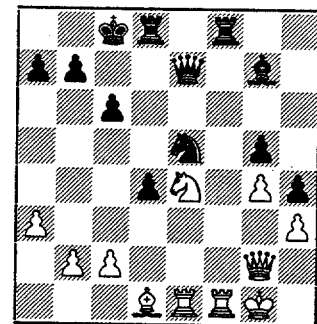


17.g4 f6 18.Rae1 fxe5 19.dxe5
Nxe5



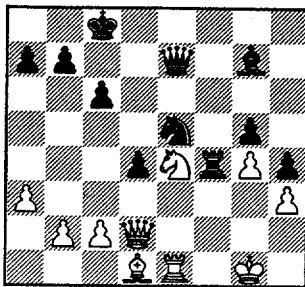
Black has won a pawn. Note that
the pinned N can't be exploited
due to Black's dark-square
dominance.

20.Bd1 d4 21.Ne4 Rhf8 22.Qg2
h4

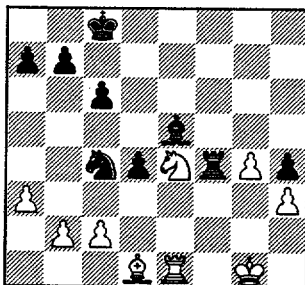


another interesting decision.
Black decides he has enough
open lines and secures some
space around opposing King

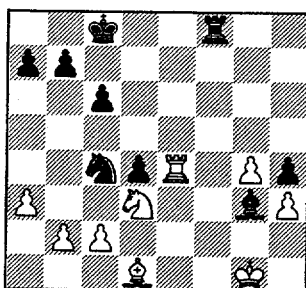
23.Rxf8 Rxf8 24.Qd2 Rf4



25.Qa5 of course Qxd4?? Nf3+ & BxQ 25...Nc4 [25...b6] 26.Qxg5 Qe5 27.Qxe5 Bxe5



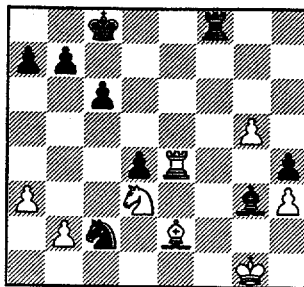
White seems to be fighting back, the g-passer and opposite Bs are hopeful. Black's pieces are more active, however. 28.Nf2 Rf8 29.Nd3 Bg3 30.Re4



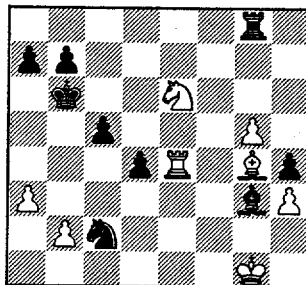
30...Ne3 threat of Rf1 mate

[30 -Nd2! and Black threatens NxR and Rf1+ winning B]

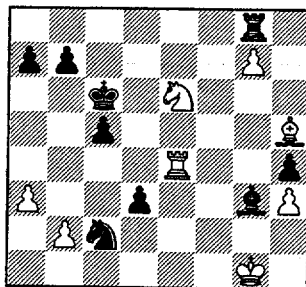
31.Be2 Nxc2 32.g5



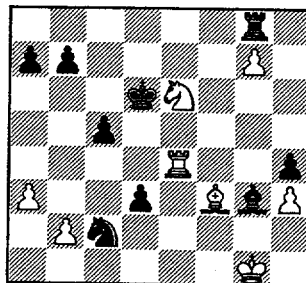
32...Rg8 33.Bg4+ Kc7 34.Nc5 Kb6 35.Ne6 c5



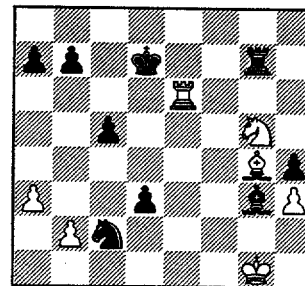
36.Bh5 d3 37.g6 Kc6 38.g7



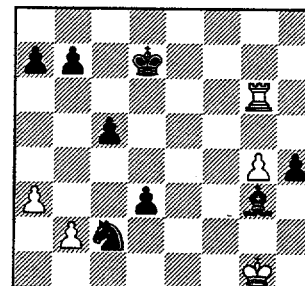
White has advanced the passer, but Black's threatens. 38...Kd5 39.Bf3 Kd6



40.Ng5 time pressure ? 40...Rxg7 41.Re6+ Kd7 42.Bg4



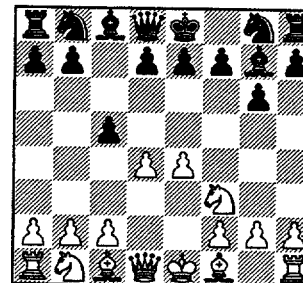
42...Rxg5! 43.Rg6+ Rxg4 44.hxg4



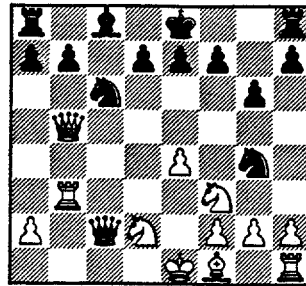
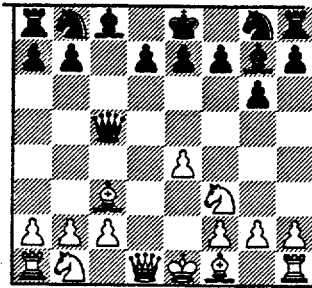
Black is materially up and d-pawn can't be stopped. If Rf6 d2, Rf1 Ne1 and Pawn queens. 0-1

Hasan, Y (2177) - Inumerable, F (2283) [B06] Motorola-Exemplars, 04.02.1999

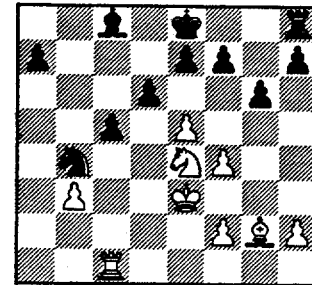
I love this game-Black comes out punching!! 1.e4 g6 2.d4 Bg7 3.Nf3 c5



4.dxc5 Qa5+ 5.Bd2 Qxc5 6.Bc3

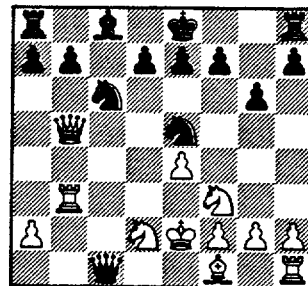
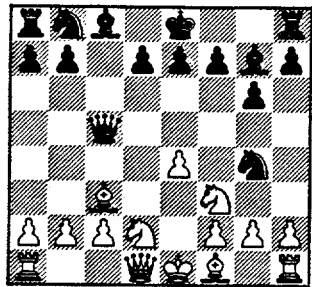


probably to finish Kside development, but... 12...Qc1+ 13.Ke2 Nge5!

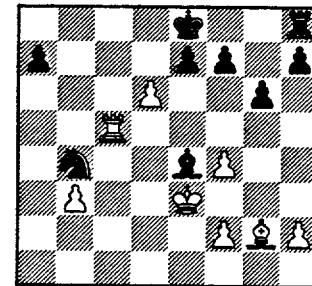


22...Bf5! to trade N away before it does damage 23.exd6 Bxe4 24.Rxc5

seems to pressure Bg7 6...Nf6 7.Nbd2 Ng4!



14.Ke3
14. Nxe5?? allows Nd4+ winning Q

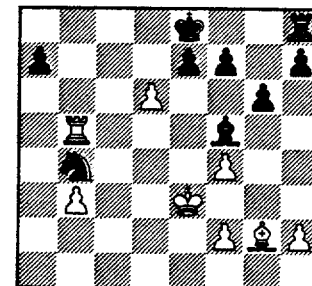


threat: Rc8+ to win Rh8 24...Bf5 calm defense and Black's a full piece up 25.Rb5

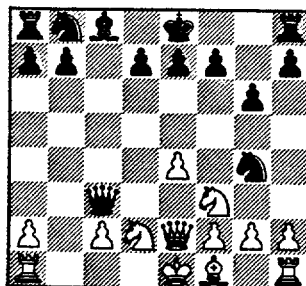
Suddenly, White's in trouble! Bc3 doesn't have enough protection and Qf2 mate is threatened! 8.Qe2 Bxc3 9.bxc3 Qxc3

14...Nxf3 15.gxf3 b6 16.Bg2 hits Q, but Black is 2 Ps up and forces Qs off

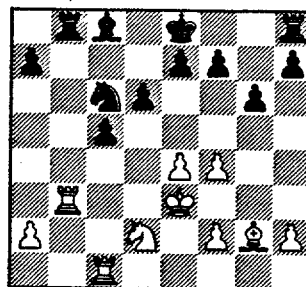
16...Qc5+ 17.Qxc5 bxc5 18.Rc1 d6 19.f4 Rb8



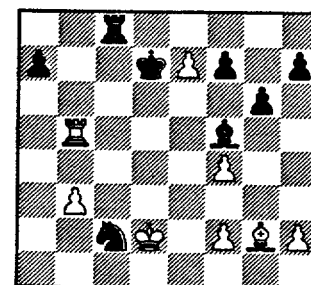
forking N & Rb8+ 25...Nc2+ 26.Kd2 Kd7 27.dxe7 Rc8



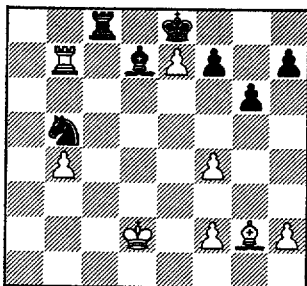
10.Rb1 Nc6 11.Rb3 Qxc2 12.Qb5



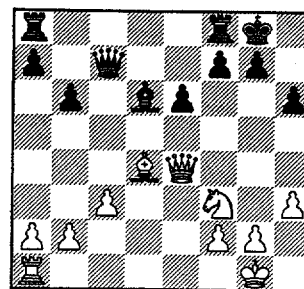
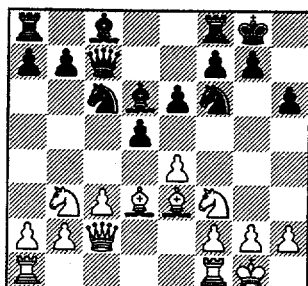
20.e5 Rxb3+ 21.axb3 Nb4 22.Ne4



28.Rb7+ Ke8 29.Rxa7 Nd4
30.b4 Nb5 31.Rb7 Bd7

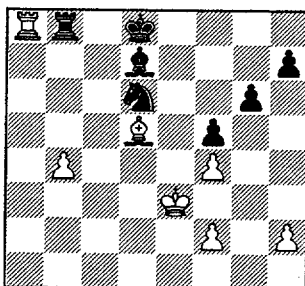


9.Qc2 h6 10.Nb3 Bd6 11.Be3
Qc7



the extra R will soon make itself
known 18...Rad8 19.Re1 Rfe8
20.Qg4

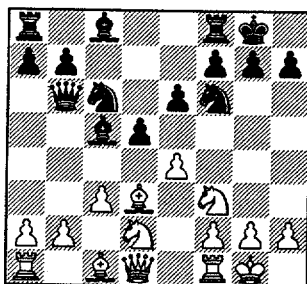
32.Bd5 Nd6 33.Ra7 Kxe7
34.Ke3 f5 35.Ra6 Rb8 36.Ra7
Kd8 37.Ra8



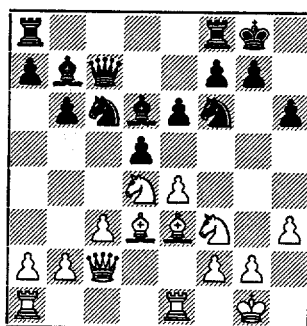
White flagged 0-1

Brotsos, J (1568) -
Sajbel, P (1820) [C05]
Excaliburs-UOP, 02.02.1999

1.e4 e6 2.d4 d5 3.Nd2 Nf6
4.Bd3 c5 5.c3 Nc6 6.Ngf3 Qb6
7.dxc5 Bxc5 8.0-0 0-0

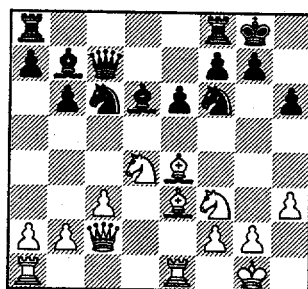


12.h3 b6 13.Nbd4 Bb7 14.Rfe1

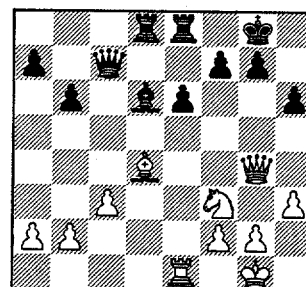


the Prez spots a nice combo that
not only wins an exchange, but
trades off a lot of wood (well,
plastic probably).

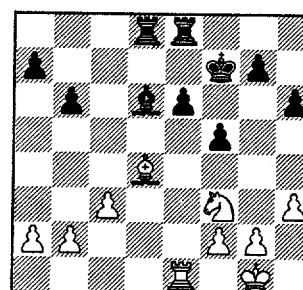
14...dxe4 15.Bxe4



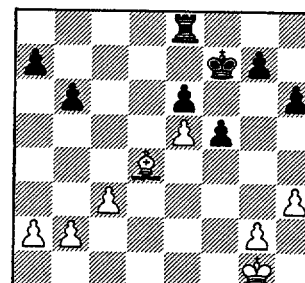
15...Nxd4! 16.Bxd4 Bxe4
17.Rxe4 Nxe4 18.Qxe4



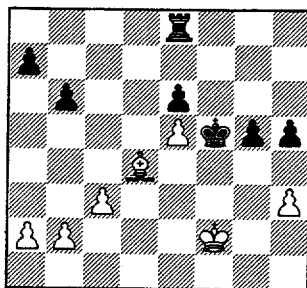
20...f5 21.Qg6 Qf7 22.Qxf7+
Kxf7



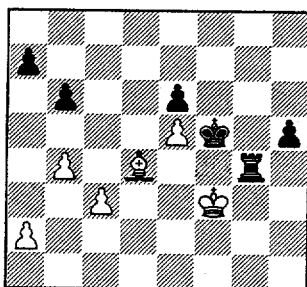
23.Ne5+ Bxe5 24.Rxe5 Rd5
25.f4 Rxe5 26.fxe5



White seems to have kept lines closed, but Black spots his other advantage--the 3 on 2 Kside Ps
 26...g5! 27.Kf2 Kg6 28.g4 h5
 29.gxf5+ Kxf5



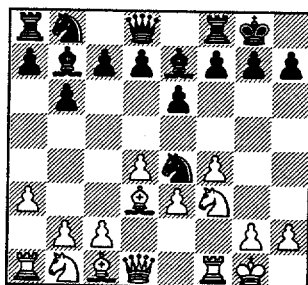
30.Kf3 Rg8 31.b4 g4+ 32.hxg4+
 Rxg4



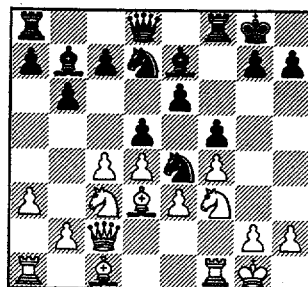
33.a4 h4 0-1

(Hall, A (1525) -
 Stamm, V (1607) [A02]
 CCDOC-Chargers, 03.02.1999

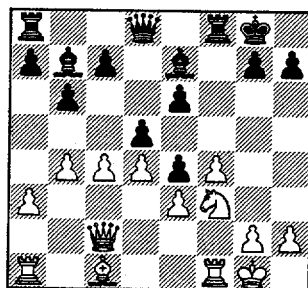
1.f4 b6 2.d4 Bb7 3.e3 e6 4.Nf3
 Nf6 5.a3 Be7 6.Bd3 Ne4 7.0-0
 0-0



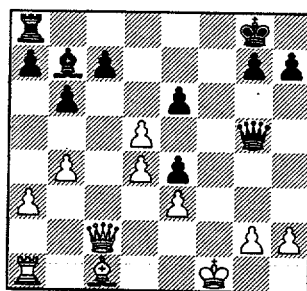
8.c4 d5 9.Qc2 Nd7 10.Nc3 f5



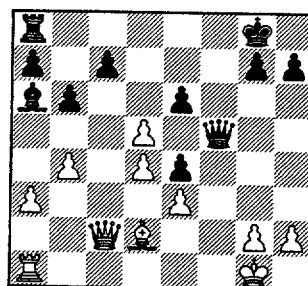
11.b4 Ndf6 12.Bxe4 Nxe4
 13.Nxe4 fxe4



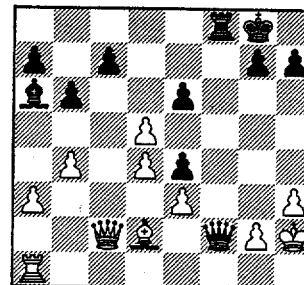
14.Ng5 Bxg5 15.fxg5 Rxf1+
 16.Kxf1 Qxg5 17.cxd5
 looking toward Qxc7



17...Ba6+ 18.Kg1 Qf5! threat:
 Qf1 mate 19.Bd2

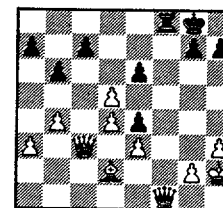


19...Rf8 now its Qf1+ Rf1 Rf1
 mate 20.h3 Qf2+ 21.Kh2



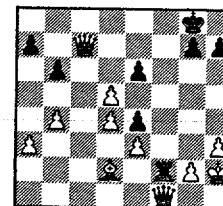
21...Bd3[21...Bf1 threat: Qg2
 mate 22.Qxe4] 22.Qc3 exd5

[22...Bf1 wins exchange due to
 threat of Qg2 mate
 23.Rxf1 Qxf1



24.Qxc7 (24.dxe6?? Rf2)

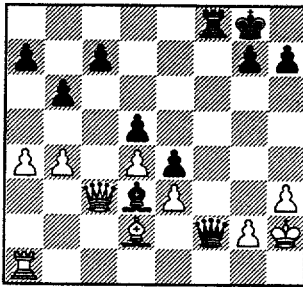
threatening mate with
 A) 24...Rf2? doesnt work



25.Qd8+
 A1) 25...Kf7 26.Qd7+ (26.dxe6+
 Kg6) 26...Kg6 27.Qxe6+;
 A2) 25...Rf8 26.Qd7 exd5
 27.Qxd5+ Kh8 28.Qxe4;

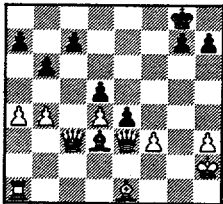
better is: B) 24...exd5 25.Qd6
 (25.Qxa7? Qe2 wins the B)
 25...Qf7 and Black has lines
 covered]

continuing actual game from top of last column ... 23.a4



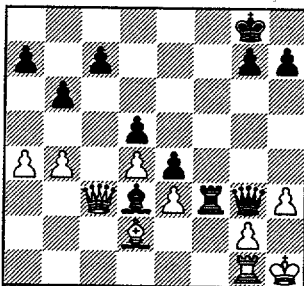
23...Rf3? 24.Rg1? MATE in 5, so White has to bail out with 24 Be1

[24.Be1 wins the R, but 24...Qxe3 25.gxf3



25...Qe2+ (25...exf3 26.Ra2) 26.Kg1 Qf1+ and Black has perpetual check(26...Qe3+ 27.Bf2)]

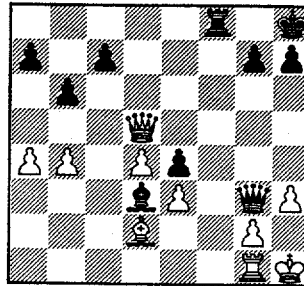
24...Qg3+ 25.Kh1



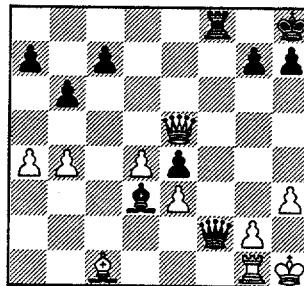
25...Rf1??

[25...Bf1 26.Qc1 or anything (26.Rxf1 Rxf1#) 26...Qxh3+! 27.gxh3 Rxh3#]

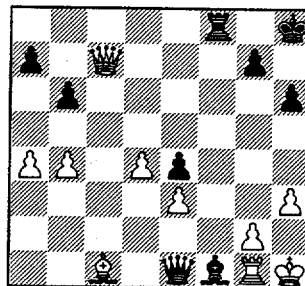
26.Qc6 Rf8 27.Qxd5+ Kh8



Materially even, but Black has an edge due to White's bad B and Black pressure to the King. If allowed, 28- Bf1 mates to 29-Bg2+ 30 Rg2 Rf1+ 31 Rg1 Rg1# 28.Qe5 Qf2 29.Bc1

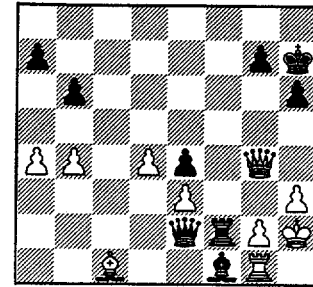


29...h6 to free the R from bankrank defense duties [29...Qf7] 30.Qxc7 Bf1 31.Qe5 Qe1 32.Qc7



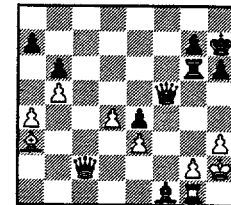
32...Rf2 33.Kh2 breaking pin so if Bg2+ Rg2 is possible

33...Qe2 34.Qc8+ Kh7 35.Qg4



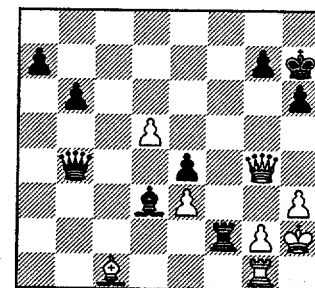
35...Qc2 36.Ba3 Bd3

[36...Be2 37.Qg3 (37.Qd7?? Bf3) 37...Bf3 38.Kh1; 36...Rf6 37.b5 Rg6 38.Qf5



38...Qc7+ (38...Bd3 39.h4; 38...Bxg2?? 39.Qxg6+ Kxg6 40.Rxg2+) 39.Kh1 Bd3 40.h4 Qd8 41.g3]

37.d5 Qxa4 38.Bc1 Qxb4

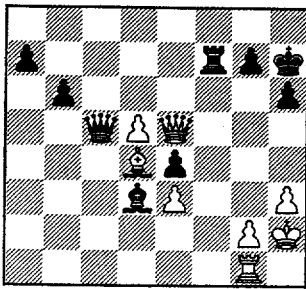


Black has emerged a Pawn up and can just push passers.

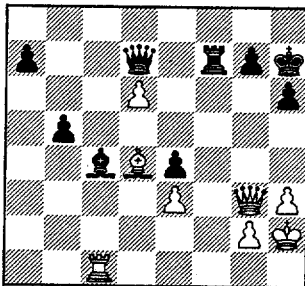
39.Qe6 Qc4?

[39...a5 40.d6 Rf6 41.d7 Rxe6 42.d8Q and Black still wins]

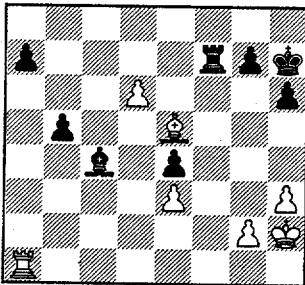
40.Qe5 Qc5 41.Bb2 Rf7 42.Bd4



White has solved his B problem
 42...Qe7 43.Qg3 b5 44.d6 Qd7
 45.Rc1 Bc4

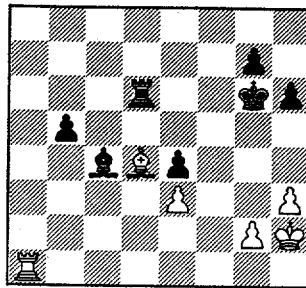


46.Qe5 Qf5 47.Ra1 Qxe5+
 48.Bxe5

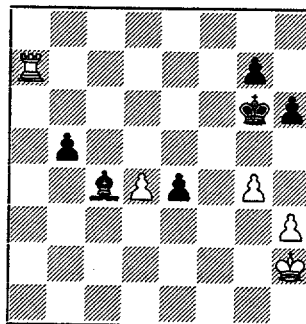


Black still has an edge but may
 have problems due to opposite
 Bs 48...Rd7
 the Pawn is not going anywhere.
 Kg6 gets him in the game.

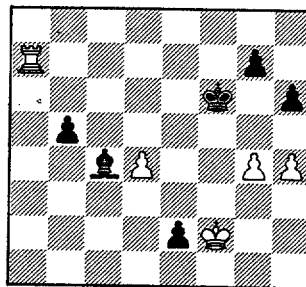
49.Bd4 Rxd6? 50.Bxa7
 the connected passers were
 Black's hope—probably is a draw
 now
 50...Kg6 51.Bd4



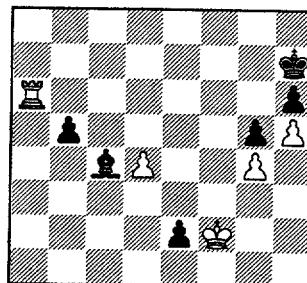
51...Kf5? Rd7 52.g4+ [52.Bxg7]
 52...Kg6 53.Ra7 Rxd4 54.exd4



the Black Pawns are easily
 stopped 54...e3 [54...b4 55.Rb7
 b3 56.Kg3] 55.Kg2 e2 56.Kf2 Kf6
 57.h4

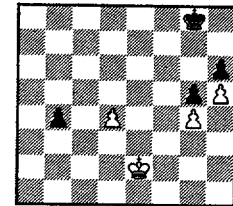


57...g5? 58.Ra6+ Kg7 59.h5 Kh7



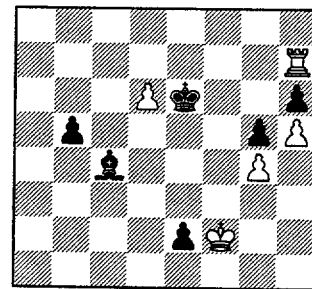
60.Rb6

[60.Ra7+ Kg8 61.Re7 b4
 62.Rxe2 Bxe2 63.Kxe2

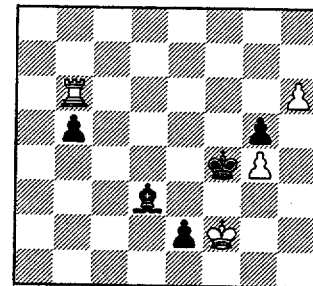


is easy 63...b3 64.Kd3 Kf7
 65.Kc3]

60...Kg7 61.Rd6 Kh7 62.d5 Kg7
 63.Rd7+ Kf6 64.d6 Ke6 65.Rh7



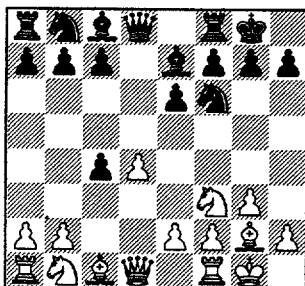
65...Kxd6 66.Rxh6+ Ke5
 67.Rb6 Kf4 68.h6 Bd3



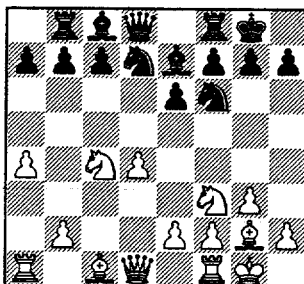
69.Rxb5 Kxg4 70.Rb7 Kf4
 71.h7 An exciting ride!! 1-0

Kale, S (1843) -
 Ellice, W (1963) [E05]
 Case-Pawns, 09.02.1999

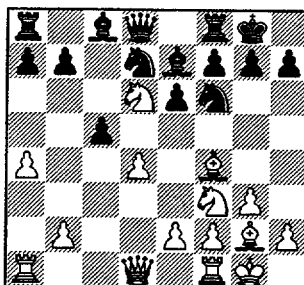
1.d4 d5 2.c4 e6 3.Nf3 Nf6 4.g3
 Be7 5.Bg2 0-0 6.0-0 dxc4



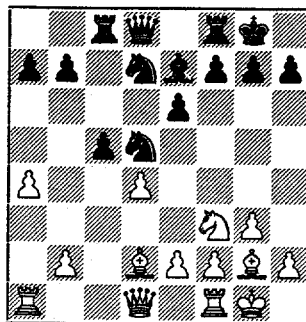
7.a4 to prevent -b5 after Nbd2.
 Other ways to develop are Qa4,
 Qc2, Ne5 or even an immediate
 Nbd2 since b5 opens Bg2 attack.
 7...Nbd7 8.Nbd2 Rb8 9.Nxc4



9...c5 10.Bf4 Ra8 11.Nd6

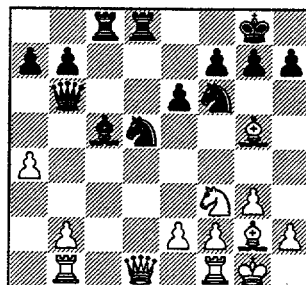


the Nc4 is an important attacker.
 Here, it gets traded for the
 problem Bc8. 11 Qc2 looks to c7
 along with allowing Rd1, looking
 toward Qd8. 11...Nd5 12.Nxc8
 Rxc8 13.Bd2

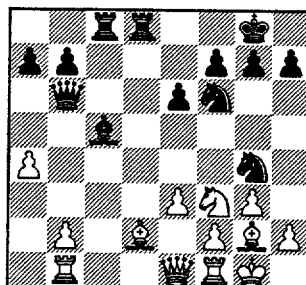


compare this and last diagram --
 Black has solved his opening
 problems

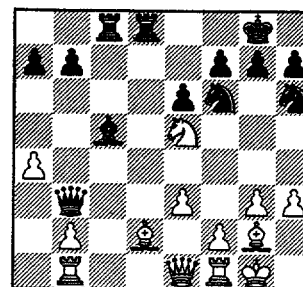
13...N7f6 14.Bg5 Qb6 15.Rb1
 Rfd8 16.dxc5 Bxc5



How can White protect his
 Queen? 17.Bd2 Ng4 18.Qe1
 Ndf6 19.e3

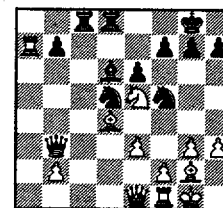


defends attack on f2. 19...Qb3
 [19...Ne4 20.Ba5 wins the
 exchange] 20.h3 Nh6 21.Ne5



21...Nf5

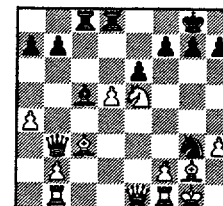
[21...Bd6 forces the N back
 since 22.Bc3 Nd5 23.Bd4 Qxa4
 24.Ra1 Qb3 25.Rxa7 Nf5



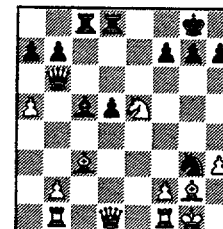
Black is better]

22.Bc3 Nd7

[interesting is 22...Nd5!? 23.e4
 Nxc3! 24.exd5



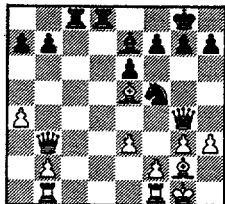
24...Nxf1 (24...exd5? 25.Qd1
 Qb6 26.a5



26...Qc7 27.Re1) 25.Nxf7 Re8]

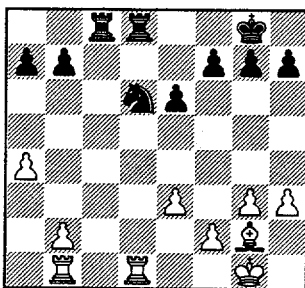
23.Qd1 offering to get rid of useless Queen, but..

[23.Qe2 Nxe5 24.Bxe5 Be7 25.Qg4!?

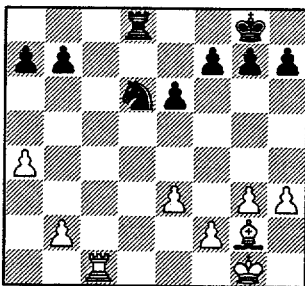


can White weaken Black King?]

23...Qxd1 [23...Qb6 24.Nxd7 Qc7 25.Be5 Qxd7 similar to game] 24.Rfxd1 Nxe5 25.Bxe5 Bd6 26.Bxd6 Nxd6

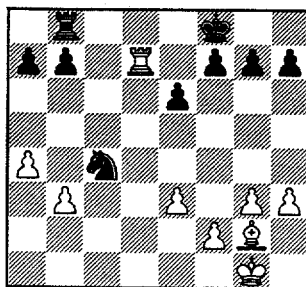


this isn't as interesting as earlier 27.Rbc1 Rxc1 28.Rxc1

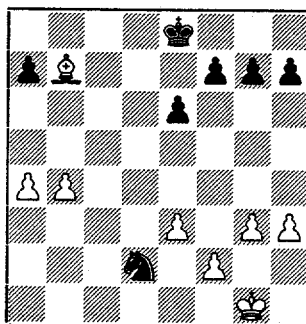


Rd7 is mandatory, have to believe Black is in time trouble

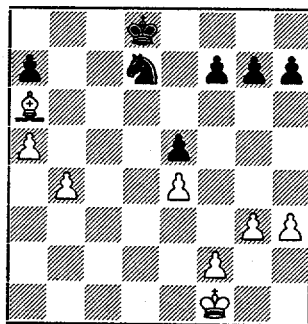
28...Kf8 29.Rc7 Rb8 30.Rd7 Nc4 31.b3



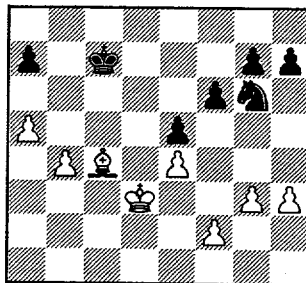
31...Ke8 32.Rxb7 Rxb7 33.Bxb7 Nd2 34.b4



34...Nc4 35.Ba6 Nb6 36.e4 e5 37.Kf1 Kd8 38.a5 Nd7



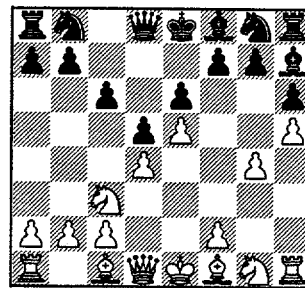
39.Ke2 Kc7 40.Bb5 Nf8 41.Bc4 f6 42.Kd3 Ng6



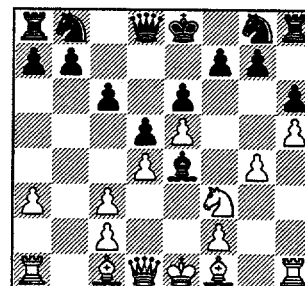
Black flagged 1-0

Braundmeier, B - Gryparis, J (1451) [B12] Kemper-Motorola, 11.02.1999

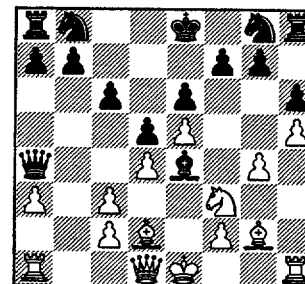
1.e4 c6 2.e5 d5 3.d4 Bf5 4.Nc3 e6 5.g4 Bg6 6.h4 h6 7.h5 Bh7



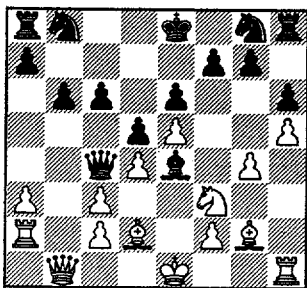
8.Nf3 [8.Nge2 to allow f4 and then Ng3 supports f5] 8...Bb4 9.a3 Bxc3+ 10.bxc3 Be4



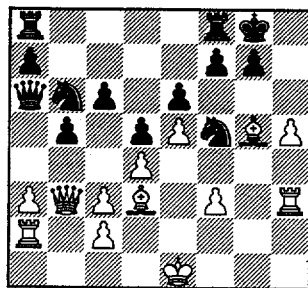
if White had played Nge2, f3 would be possible or 10 Nc3 could have been played 11.Bg2 Qa5 12.Bd2 Qa4



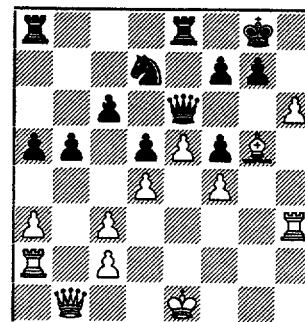
13.Ra2 Qc4 14.Qb1 b6



15.Bf1 [15.a4 threat: Bf1]
15...Qa4 16.Rh3 b5 17.Ng1 Ne7
18.Ne2 Nd7 19.f3 Bh7

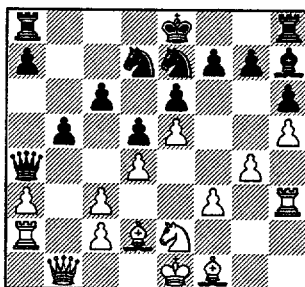


White needs to get Queen into
attack at g4 26.Bxf5 rids K of
only defender



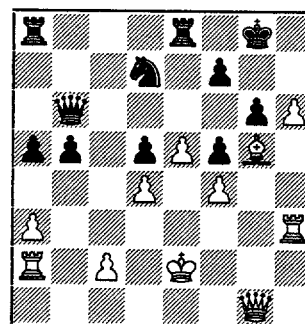
32...c5 33.Ke2 Kd2 gets King off
e-file, helps later 33...cxd4
34.cxd4 Qb6 35.Qg1 g6

[26.h6 doesn't quite work 26...g6
27.h7+ Kh8 28.Bf6+ Ng7]

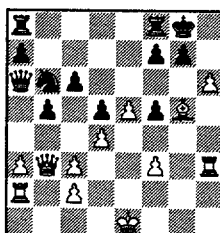


26...exf5 27.f4

[27.h6!]



20.Qb3 but the Queen will be
needed Kingside
[20.Ng3 with idea of f4, Bd3 & f5

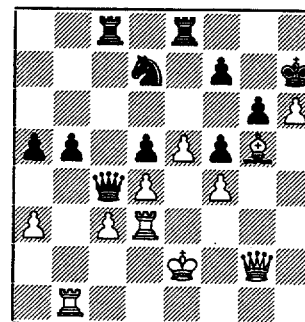
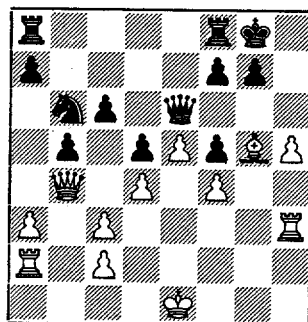
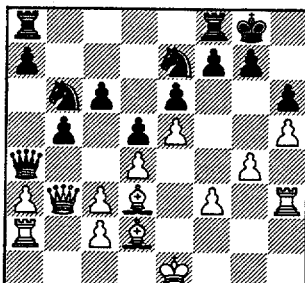


27...Rfe8 (27...g6 28.h7+ Kh8
29.Bf6#) 28.hxg7 Nd7
(28...Kxg7? 29.Bf6+ Kg6 30.Qb1
Nd7 31.Qc1 Nxf6 32.Qh6#)]

36.Ra1
[36.h7+ Kg7 (36...Kf8 37.h8Q#)
37.Qg3 f6 highlighting why 33
Ke2 is bad]
36...Kh7 37.c3 Rac8 38.Qg2
Qc6 39.Rb1 Qc4+ 40.Rd3

] 20...Nb6 21.Nc1 [21.Ng3]
21...0-0 22.Nd3 Bxd3 23.Bxd3

27...Qc8 28.Qb4 Qe6



23...Qa6 24.g5 hxg5 25.Bxg5
Nf5

29.h6 Nd7 [29...Nc4] 30.Qe7
[30.hxg7]

40...Qa2+ 41.Kd1 Qxg2 rest
of score unfathomable 0-1

30...Rfe8 31.Qb4 a5 32.Qb1

For the D/E & below player only

Chess Lesson

by rr

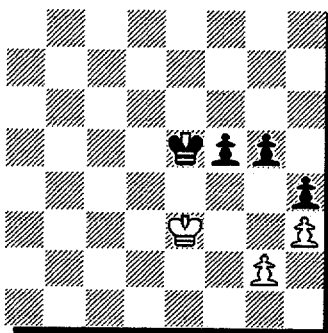
Here's an excerpt of an interesting article by Kasparov about the endgame (*source - CHESS ASIA*).

The endgame, the final part of the chess game, is inexhaustibly rich for chess players endowed with non-standard, original

thinking and capable of carrying out profound, "long range" ideas. This phase of the game requires clock-work precision. If you are not happy about the opening, you can improve your position in the middlegame, you may hope to correct them in the ending. But endgame errors, like a goalie's mistakes in football [*soccer - ed*], are, as a rule, incorrigible. **Remember: unless you like or unless you can play the endgame, you will never be a strong chess player.**

The great Capablanca advised starting with the most elementary Pawn endings. Why? It seems that there is very little chance of arriving at such positions. I was bitterly disappointed in this naive pragmatism in 1978 at the Daugavpils qualifying tournament of the [USSR] national championship. At the end of the tournament, in one of my games (I was playing Black) the following position was reached after White's 45th move:

Diagram 1

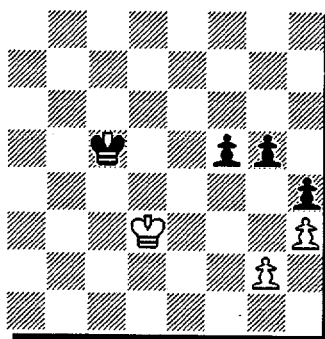


Black to play

At this moment many spectators

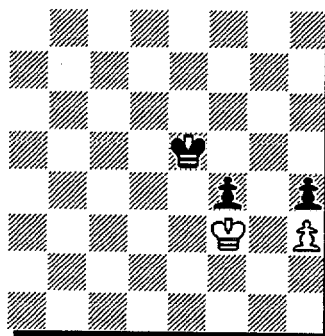
argued if Black could win this game. Sitting at the chessboard, I was checking the well-known winning method. First of all, Black must get a passed Pawn threatening to get around White's King from the flank: 45...Kd5 46.Kd3 Kc5!

Diagram 2



47.Kc3 White has no choice. 47...g4! 48.Kd3 gxh3 49.gxh3 Kd5 50.Ke3 Ke5 51.Kf3 f4

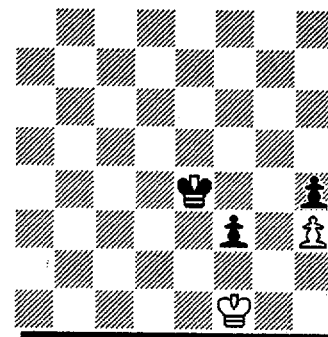
Diagram 3



White to play

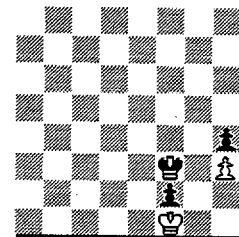
52.Kf2 Ke4 53.Ke2 f3 54.Kf1

Diagram 4



Black to play

At first glance Black's King cannot make headway because of the stalemate after 54.Kf4 55.Kf2 Ke4 56.Kf1 Ke3 57.Ke1 f2+ 58. Kf1 Kf3 (*see diagram right*)



But I knew it was all wrong. In this position it is necessary to concede the move to White, so as to create a "zugzwang", a position with no useful moves. This is achieved by the distant opposition of the Kings.

The distant opposition, when the Kings are separated by three ranks, is a subtle method leading, in the final analysis, to a close opposition.

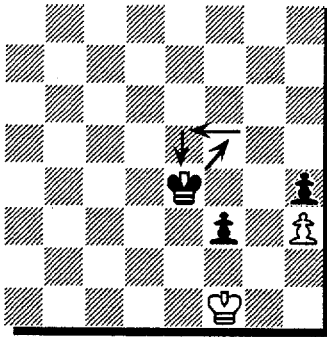
In this case, Pawnf3 does not let White's King on f1 occupy e2 with Black's King on e4. (*Note: What Kasparov's about to demonstrate is the technique of TRIANGULATION whereby Black reaches the same position as Diagram 4, except that then it'll be "White's instead of Black's move - ed*)

54...Kf5! 55.Kg1. After 55.Kf2 Kf4 Black seizes the close opposition taking White's last Pawn after 56.Kg1 Kg3.

55...Ke5 56.Kf1 Ke4 Now White's King cannot get to e2, so resistance is useless. (*Note: what has been reached is DIAGRAM 4 but with White to move. The maneuver is called Triangulation because it involves drawing a triangle*

on the chessboard with the king: step back one step (either diagonal or vertical), sidestep on the next move, and on the third move go forward to the original position of the King. - ed)

Diagram 5



White to play

If now 57.Ke1 (or 57.Kg1), then 57...Ke3 58.Kf1 f7 59.Kg2 Ke2 and the f-pawn queens. - ed.

If 57.Kf2, then 57...Kf4 and 58...Kg3 wins the h-pawn - ed.

Editor's note: - An alternative winning method is 45...

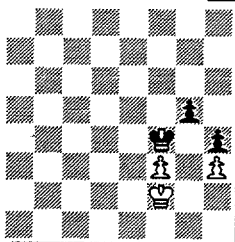
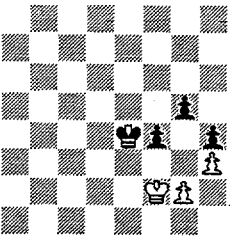
Kd5 46.Kd3 f4

47.Ke2 Ke4

48.Kf2 (diagram

right) 48...f3 49.

axf3+ Kf4, zug-

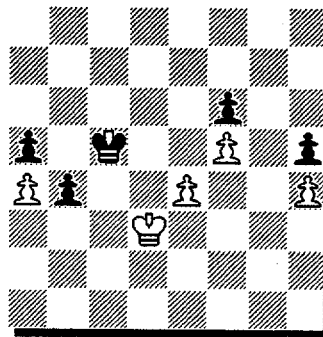


zwang. (see diagram left) 50. Kg2 Ke3 51.f4 axf4 52.Kf1 (else 52...Ke2) 52...Kf3 53.Ka1 Ke2 and wins

It is interesting that five years later at the international tournament in the Yugoslav town of Niksic I happened to win a game using a similar method.

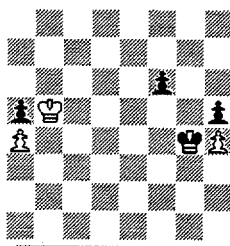
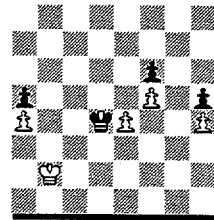
(See diagram 6 next column)

Diagram 6



Seirawan-Kasparov
Position after 47.f5

It is conspicuous that Black's King can advance to the K-side
Pawns: 47... b3 48. Kc3 b2 49. Kxb2 49. Kxb2 Kd4, (diagram right) but

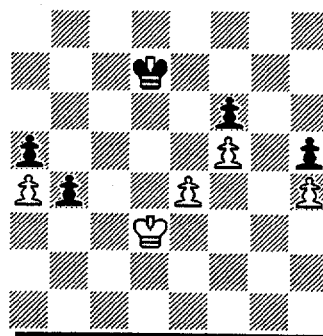


after 50.Kb3 Kxe4 51.Kc4 Kxf5 52.Kb5 Kg4 (diagram left) the ending with Black's h-Pawn is drawish. However, I spotted the

chance of exploiting a distant opposition, conceding the move to the opponent, thus reaching a zugzwang.

47...Kc6 48.Kc4 Kc7! 49.Kd3 Kd7! Having circumscribed a triangle, Black's King is now ready for a victorious march to c5.

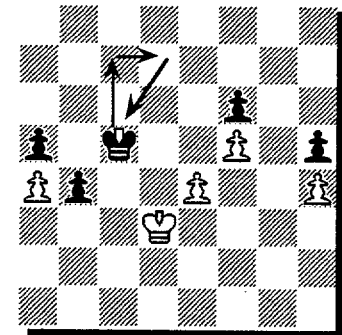
Diagram 7



White to play

50.Ke3 Kc6 51.Kd3 Kc5. White's King has to give way (ed - see diagram 8 which is exactly identical to diagram 6 except that it's now White's instead of Black's move)

Diagram 8



Seirawan-Kasparov
Position after 51...Kc5

52.Ke3 b3! the only move (see diagram 9). The "natural" 52... Kc4 would lead to a draw after 53. e5! Kd5 54. e6! Kd6. (see diagram right)

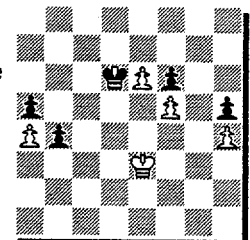
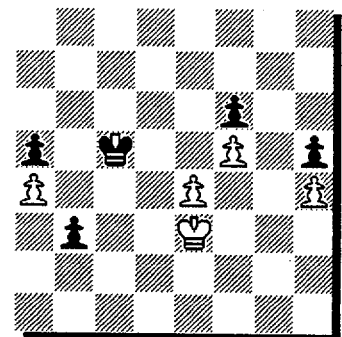


Diagram 9



Seirawan-Kasparov
Position after 52...b3!

53.Kd3 Kb4 54.e5 Ka3! (See diagram 10 next column)

Again the only good move!
After 54...b2 55. Kc2 Ka3 56.Kb1 White wins (see diagram right).

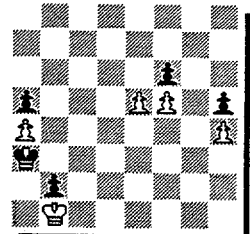
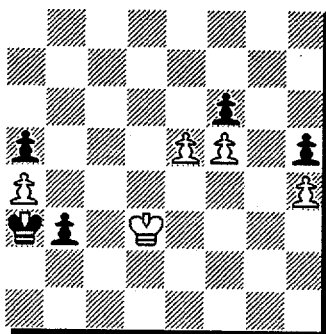


Diagram 10

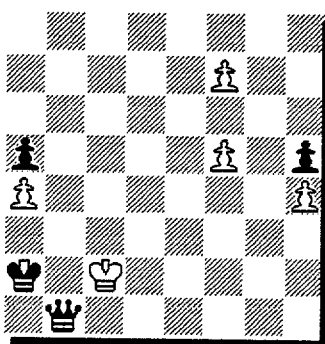


Seirawan-Kasparov
Position after 54...Ka3!

Now the game reaches its logical end:

55.exf6 b2 56. Kc2 Ka2 57.f7 b1Q+.
Missing just one tempo White resigned.

Diagram 11



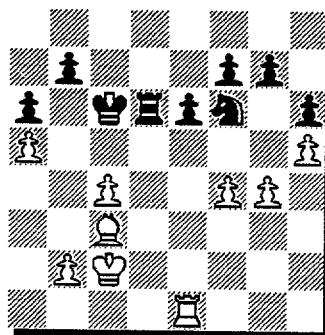
Seirawan-Kasparov
Position after 57...b1Q+

For the third time, my knowledge of typical Pawn-endgame positions saved me the trouble of playing a long ending against Milan Vukic (Yugoslavia) at the European Team Championship in 1980. My opponent was playing Black.

(See diagram 12 next column)

White has a positional advantage: the powerful Bishop and the strong Pawn formation keep Black cramped on both flanks. As a rule, the exploitation of positional advantages requires a lot of time. But in this case, the game comes to an abrupt end. First, White

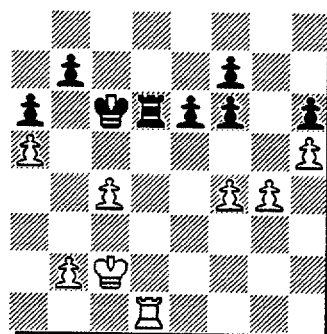
Diagram 12



Kasparov-Vukic
Position after 35...Nf6

exchanges the strong Bishop - 36. Bxf6! gxh6, and then the Rook - 37. Rd1 (see diagram 13). Black has to

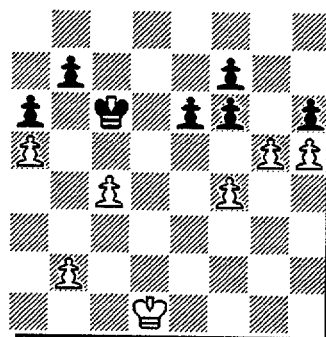
Diagram 13



Kasparov-Vukic
Position after 37.Rd1 (analysis)

resign because the Pawn ending after 37...Rxd1 38.Kxd1 Kd6 39.g5! is

Diagram 14

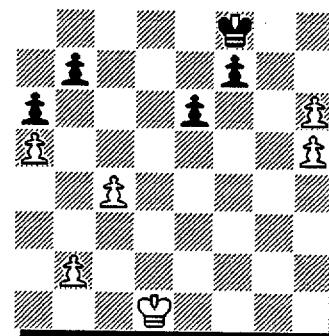


Kasparov-Vukic
Position after 39.g5! (analysis)

easily won for White. Well, Black has a

Pawn advantage on the K-side, but on account of the defects of the Pawn structure (Pawns e6, f7, f6, and h6) he cannot prevent White from organizing a passed Pawn. Black's King can catch up with the passed Pawn after 39...fxg5 40.fxg5 Ke7 41.gxh6 Kf8 (see diagram 15), but then White will live up on the

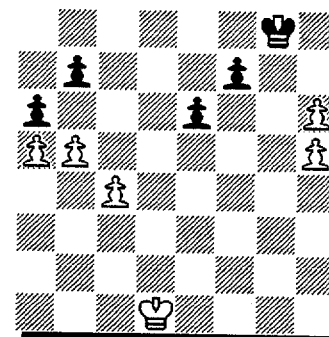
Diagram 15



Kasparov-Vukic
Position after 41...Kf8 (analysis)

other side of the chessboard: 42.b4 Kg8 43.b5, and the second passed Pawn is irresistible.

Diagram 16



Kasparov-Vukic
Position after 43.b5 (analysis)

I advise you to study the endgame thoroughly, it will be extremely useful for you. You can also read some special books. For example, Capablanca's "Last Lectures" delivered in 1941 or the many-volume "Chess Endings" by the well-known Soviet grandmaster Yuri Averbakh.