

The Chicago Chess Player

The Official Bulletin of the Chicago Industrial Chess League

Inside this Issue

A Word from the Editor

Speed Rating Lists

Chess Lesson

CICL vs CCCC Match Results

Games - A Few leftovers to Whet Your
Competitive juices

Fall Business Meeting Reports

Meeting Minutes

1999 Financial Final

2000 Proposed Budget

CICL OFFICERS

President	Irwin Gaines (Fermi) Gaines@fnal.gov Fermilab MS 120 P.O. Box 500 Batavia IL 60510 W: (630) 840-4022 H: (630) 420-1452 Fax: (630) 840-2783
Secretary	Wayne Ellice (Pawns) Wayne.ellice@crous.sprint.com Crosfield Catalysts 4099 West 71 st Street Chicago, IL 60629 W: (773) 838-3215 Fax: (773) 838-3243
Treasurer	Len Spiegel (Fermi) Lenny@fnal.gov Fermilab MS 220 Baravia IL 60510 W: (630) 840-2809 H: (630) 208-4738
Ratings	Art Olsen (Kemper)
Chairman	aolsen@interaccess.com 721-G S. Elmhurst Road Des Plaines IL 60016-2539 W: (847) 320-2420 H: (847) 437-9819 FAX: to TSS OTS, G-5 at (847) 320-4464
Trophy	Marty Franek (Alumni Aces)
Chairman	mjfranek@megsinet.net 9044 S. 51 st Avenue Oaklawn IL 60453-1730 W: (312) 353-0397 H: (708) 636-3714
Banquet	Satish Kale (Case)
Chairman	Skale@casecorp.com CASE Corp. 7 South 600 County Line Road Burr Ridge IL 60521 W: (630) 887-2372 H: (630) 325-KALE
Bulletin/ Games	Tom Friske (Alumni Exemplars) tfriske@interaccess.com
Editor	1035 E. Algonquin Road Des Plaines IL 60016 W: (847) 788-4315 H: (847) 299-1033
Far West	Irwin Gaines (Fermi) see CICL President above
Chairman	
North	Art Olsen (Kemper) see Ratings Chairman above
Division	Pat Sajbel (UOP)
Chairman	posajbel@uop.com UOP 25 East Algonquin Road Des Plaines IL 60017-5017 W: (847) 391-2134 H: (847) 506-9302
Near West	Carl Reid (Case)
Division	creid@littelfuse.com
Chairman	2289 Grand Dr. Northbrook IL 60062 W: (847) 391-0630
East	(Position available – contact President Gaines!!)
Division	
Chairman	

Website www.tomhq.com/cicl.htm

A Word from the Editor

It would be proper to welcome everyone to a new season, but I'm probably the last one in the League to arrive!

If there was ever a summer I didn't want to end, this was the one! Always had this dream to follow the Continental Chess Association tournaments around the country, but somehow the (real-world) work schedule always got in the way. Luckily, though, those work duties weren't assigned this year..and the opportunity was taken! I scheduled seven tournaments and travel, expecting to hit at least one first prize (\$6-10G)..and ended up with one second place finish for \$200! Ha! Oh well....

Which leads to an apology for the seeming abandoning of the website since June. Truly sorry, but I actually had no thought of it for a couple months! Then, as the season nears, something changed with the site host so I couldn't log into my own site! also getting in the way of the Fantasy Football league I also host there.

The beloved CICL has begun signs of new life anyhow and this first issue should get you up-to-date!

- The Spring Business meeting was held and some important discussion regarding the post-season occurred. See the meeting minutes!

- The annual CICL vs CCCC match was scheduled faithfully by Pat Sajbel and found the League a smash winner. The evidence is also found within.

- Also inside are some games that arrived too late to be published last season and are just perfect for getting you psyched for play! A 450-pt underdog draws, another attack throws a couple Knights at the King for an impressive win, and yet another sees no harm in sacrificing Her Majesty for the simple goal of an easy ending. Good stuff!!

Tom Friske. Editor

2000 Banquet Speed Tournament Results, Speed Chess Ratings, Top 25 Speed Chess Ratings

By Anthony Jasaitis

2000 Banquet Speed Tournament Section 1

Player name	1 Reyes	2 Bezzubov	3 Diaz	4 Stevanovic	5 Golla	6 Stein	7 Siwek	Score	New Rating	Chg
1. R. Reyes	1	1	1	1	1	1	1	6.0	2375	+27
2. V. Bezzubov	0	1	1	1	1	0	.5	3.5	2296	-13
3. P. Diaz	0	0	1	1	1	1	0	3.0	2132	+28
4. M. Stevanovic	0	0	0	1	1	1	1	3.0	2257	-14
5. R. Golla	0	0	0	0	1	1	1	2.0	2070	+22
6. P. Stein	0	1	0	0	0	1	1	2.0	2243	-36
7. M. Siwek	0	.5	1	0	0	0	1	1.5	2146	-17

Cross tables by ruben r. reyes

2000 Banquet Speed Tournament Section 2

Player name	1 Friske	2 Lechnick	3 Golchert	4 Green	5 Hill	6 Buerger	7 Goncharoff	Score	New Rating	Chg
1. T. Friske	1	0	1	1	1	1	1	5.0	2018	+16
2. J. Lechnick	1	1	0	1	1	1	0	4.0	1855	+43
3. B. Golchert	0	1	1	0	1	1	1	4.0	1919	+22
4. D. Green	0	0	1	1	1	0	1	3.0	1931	-9
5. R. Hill	0	0	0	0	1	1	1	2.0	1878	-18
6. E. Buerger	0	0	0	1	0	1	1	2.0	1848	-8
7. N. Goncharoff	0	1	0	0	0	0	1	1.0	1894	-50

Cross tables by ruben r. reyes

2000 Banquet Speed Tournament Section 3

Player name	1 Easton	2 Brozovich	3 Kale	4 Stamm	5 Cygan	6 Dobr	7 Thomson	Score	New Rating	Chg
1. R. Easton		1	1	1	0	1	.5	4.5	1754	+23
2. J. Brozovich	0		1	0	1	1	1	4.0	1783	+0
3. S. Kale	0	0		1	1	1	1	4.0	1701	+28
4. V. Stamm	0	1	0		1	0	1	3.0	1685	+7
5. J. Cygan	1	0	0	0		1	1	3.0	1693	+4
6. K. Dobr	0	0	0	1	0		.5	1.5	1667	-27
7. J. Thomson	.5	0	0	0	0	.5		1.0	1660	-39

Cross tables by ruben r. reyes

2000 Banquet Speed Tournament Section 4

Player name	1 Smith	2 Decman	3 Karpierz	4 Olsen	5 Reid	6 Suerth	7 Burian	8 Abraham	Score	New Rating	Chg
1. Br Smith		1	1	1	1	1	1	1	7.0	1629	+35
2. S. Decman	0		1	1	1	1	0	1	5.0	1481	+30
3. J. Karpierz	0	0		0	1	1	1	1	4.0	1536	-14
4. A. Olsen	0	0	1		1	1	.5	0	3.5	1336	+39
5. C. Reid	0	0	0	0		1	1	1	3.0	1302	+37
6. F. Suerth	0	0	0	0	0		1	1	2.0	1385	-17
7. D. Burian	0	1	0	.5	0	0		.5	2.0	1543	-70
8. T. Abraham	0	0	0	1	0	0	.5		1.5	1418	-42

Cross tables by ruben r. reyes

SPEED CHESS RATINGS 2000 BANQUET

(* = DID NOT PLAY IN 2000: OLD RATING)

<u>Name</u>		<u>Rating</u>	<u>Change</u>
ABRAHAM	T	1418	- 42
AUGSBURGER	L	1926	0 *
BALI CKI	J	1645	0 *
BANNON	B	1233	0 *
BENESA	A	2163	0 *
BERRY	G	2085	0 *
BETELU	D	1972	0 *
BEZZUBOV	V	2296	- 13
BHOJWANI	R	1544	0 *
BLACKMON	E	1849	0 *
BLAZI E	J	1650	0 *
BLOEDOW	P	1701	0 *
BOLDI NGH	E	1849	0 *
BROZOVI CH	J	1783	0
BUERGER	E	1848	- 8
BUJALSKI	J	1316	0 *
BURI AN	D	1543	- 70
CARTER	O	1383	0 *
CHEVERESAN	S	1344	0 *
CI ESLEK	D	1769	0 *
CI SKO	G	1415	0 *
COLE	P	1236	0 *
COOPER	W	1704	0 *
CREWSE	L	2334	0 *
CUMMUTA	P	1212	0 *
CURTIS	M	2270	0 *
CYGAN	J	1693	4
CZERNI ECKI	A	1934	0 *
CZOSKE	M	1334	0 *
DECMAN	S	1481	30
DELEON	J	1670	0 *
DEZONNO	T	1391	0 *
DI AZ	P	2132	28

SPEED CHESS RATINGS 2000 BANQUET

(* = DID NOT PLAY IN 2000: OLD RATING)

<u>Name</u>		<u>Rating</u>	<u>Change</u>
DOBR	K	1667	- 27
DOBROVOLNY	C	1871	0 *
DUMAR	R	1613	0 *
DURKEE	D	1743	0 *
EAMAN	R	1757	0 *
EASTON	R	1754	23
EGERTON	J	1993	0 *
ELLI CE	W	1580	0 *
EUSTACE	D	1395	0 *
FLORENCE	C	1612	0 *
FRANEK	M	2001	0 *
FRANK	M	1745	0 *
FREEMAN	R	1500	0 *
FRI SKE	T	2018	16
GAI NES	I	1757	0 *
GALLA	J	1420	0 *
GARCI A	A	1838	0 *
GASTON	K	1076	0 *
GAZMEN	B	2303	0 *
GOLCHERT	B	1919	22
GOLLA	R	2070	22
GONCHAROFF	N	1894	- 50
GREEN	D	1931	- 9
GRYPARI S	J	1673	0 *
HALL	A	1607	0 *
HAMMOND	M	1425	0 *
HANSEN	B	1332	0 *
HARD	R	1490	0 *
HASAN	Y	2312	0 *
HESS	W	1330	0 *
HI LL	R	1878	- 18
HODI NA	J	2205	0 *
HORTON	D	1782	0 *

SPEED CHESS RATINGS 2000 BANQUET

(* = DID NOT PLAY IN 2000: OLD RATING)

<u>Name</u>		<u>Rating</u>	<u>Change</u>
HUGHES	N	2023	0 *
I NUMERABLE	F	2225	0 *
JACKLI N	E	980	0 *
JARETT	T	1580	0 *
JASAI TIS	A	2176	0 *
JONES	M	1134	0 *
KABELAC	J	1982	0 *
KALE	S	1701	28
KANTAR	M	2217	0 *
KARPI ERZ	J	1536	- 14
KLI NEFELTER	H	1570	0 *
KOGAN	G	1837	0 *
LANGER		1614	0 *
LECHNI CK	J	1855	43
LESTER	M	1500	0 *
LEVI NE	D	2365	0 *
LI TVI NAS	A	1621	0 *
LOMONT	K	1458	0 *
LOSOFF	A	1858	0 *
MACKI E	A	2129	0 *
MAKAI	M	1986	0 *
MARSHALL	K	1530	0 *
MELNI KOV	I	2245	0 *
MELNI KOV	N	1490	0 *
MI CKLI CH	F	1487	0 *
MI LLER	T	1657	0 *
MI RANDA		1826	0 *
MORRI S	R	2274	0 *
MORTON	B	1337	0 *
MOTTA	H	1856	0 *
MOTYCKA	R	1475	0 *
McCARTNEY	M	1332	0 *
NALLATHAMBI	R	1485	0 *

SPEED CHESS RATINGS 2000 BANQUET

(* = DID NOT PLAY IN 2000: OLD RATING)

<u>Name</u>		<u>Rating</u>	<u>Change</u>
NOWAK	W	1063	0 *
OGASAWARA	L	1938	0 *
OLSEN	A	1336	39
PADLO	R	1172	0 *
PAWLUS	D	1066	0 *
RADAVI CI US	E	1660	0 *
REI CHERT	P	1458	0 *
REI D	C	1302	37
REYES	R	2375	27
ROJAS	R	1208	0 *
ROSZKOWSKI	D	1159	0 *
RZESZUTKO	R	2193	0 *
SACKS	D	1865	0 *
SAJBEL	P	1845	0 *
SAMELSON	C	1953	0 *
SAMOYLOV	A	1570	0 *
SANCHEZ	R	1769	0 *
SATTERLEE	D	1307	0 *
SATTERLEE	M	974	0 *
SATTERLEE	R	1997	0 *
SCHWARTZ	M	1270	0 *
SEATON	E	1594	0 *
SEFCHEK	M	1746	0 *
SHEYNI N	S	2325	0 *
SI EGEL	R	1595	0 *
SI TAR	K	1510	0 *
SI WEK	M	2146	- 17
SMI LEY	R	2096	0 *
SMI TH	BR	1629	35
SMI TH	J	1716	0 *
SOLANO	E	2137	0 *
SOSSI	M	1566	0 *

SPEED CHESS RATINGS 2000 BANQUET

(* = DID NOT PLAY IN 2000: OLD RATING)

<u>Name</u>		<u>Rating</u>	<u>Change</u>
SPIEGEL	L	2056	0 *
STAMM	V	1685	7
STAPLES	M	1280	0 *
STEIN	P	2243	- 36
STEVANOVI C	M	2257	- 14
SUERTH	F	1385	- 17
SULLIVAN	J	1841	0 *
SURTI	V	1195	0 *
SZAUKELLIS	W	1264	0 *
TAMEZ	I	2157	0 *
TEGEL	F	2070	0 *
THOMSON	J	1660	- 39
TSEITLIN	E	1780	0 *
UNDERWOOD	W	1933	0 *
VALDEZ	C	1595	0 *
VAN ZILE	C	1155	0 *
WALKER	A	1718	0 *
WALLACH	C	2056	0 *
WARREN	J	2072	0 *
WEST	R	1190	0 *
WHITE	H	1650	0 *
WILLIAMS	T	1953	0 *
WILSON	A	1500	0 *
YOUNG	A	1992	0 *
ZOELLNER	J	1305	0 *

TOP 25 CICAL SPEED CHESS RATINGS

REYES	R	2375
LEVINE	D	2365
CREWSE	L	2334
SHEYNIN	S	2325
HASAN	Y	2312
GAZMEN	B	2303
BEZZUBOV	V	2296
MORRIS	R	2274
CURTIS	M	2270
STEVANOVI C	M	2257
MELNI KOV	I	2245
STEIN	P	2243
INUMERABLE	F	2225
KANTAR	M	2217
HODINA	J	2205
RZESZUTKO	R	2193
JASAITIS	A	2176
BENESA	A	2163
TAMEZ	I	2157
SIWEK	M	2146
SOLANO	E	2137
DI AZ	P	2132
MACKIE	A	2129
SMILEY	R	2096
BERRY	G	2085

For the B & below player only

Chess Lesson

by Ruben R. Reyes

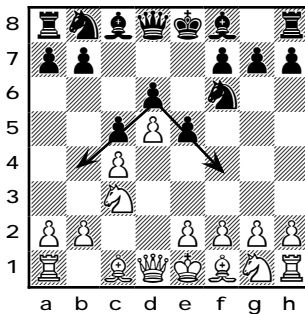
The Czech Benoni

Because of the fact that the central pawns (c, d, and e pawns) become locked, this particular opening may prove difficult to handle. The difficulty possibly arises from the locked nature of the center which is infertile grounds for short-range tactical play but fertile for long-range planning.

1.d4 Nf6 2.c4 c5 3. d5 e5 4. Nc3

4.dxe6 e.p. intending to put a bind on the center with 5.e4 can be perceived as a good alternative. But this perception may only be deceiving because Black's backward d-pawn is in no danger and Black gets lots of play after 4...fxe6.

4...d6



The inverted "V" formation of Black's center pawns gives Black a choice between a pawn expansion in the Q's or the K's wing.

As a *general rule*, when the center is locked, the direction to which pawn expansion is to go is determined by the direction to which the center pawns are pointing. In this case, the center pawns point in two different directions.

Then *the antidote to a wing attack* is a break-thru in the center.

The battle plan for either side may be summarized as follows: Black is to conduct a wing attack and White is to counter in the center

To accomplish his objective, White can hit the e-pawn with f4 or the c-pawn with b4.

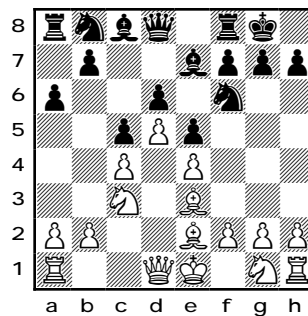
4.Nc3 d6 5.e4 Be2

As Black's not fianchettoing this B, the possibility may be that Black may later on play ...Bg5 to trade his "bad" B (bad because the immobile pawn center are of the same color as the B) for White's c-bishop.

6.Be2

To prevent the possibility of ...Bg5, White intends to double up on the diagonal with Be3 and Qd2. But he can't play Be3 just yet without the B being harassed by ...Ng4. So, the text develops the B while at the same time preventing ...Ng4.

6...0-0 7.Be3 a6



A sign that Black intends pawn expansion in the Q's wing.

8.Qd2 Nbd7 9.f3

A change in plans midstream. Instead of proceeding with 9.f4 followed by 10.Nf3 and 11.0-0, White opts for a Saemisch anti-King's Indian formation.

The downside of this change in plans is that White's B-e2 move turns into a total waste of time.

9...Nh5 10.g3 g6

Black wants to play ...f5 but can't do it yet because after 10...f5, 11.exf5, Black can't recapture with 11...Rxf5 because of the fork 12.g4.

The text prepares for ...f5 by being able to recapture at f5 with the g-pawn.

11.0-0-0

This decision to castle on the other wing may have been brought on because of Black's last move (...g6) which could provide White with a point of contact to open up the h-file later on with h5 and hxg6. But how White can achieve this seems unclear at this point of the game.

11...f5

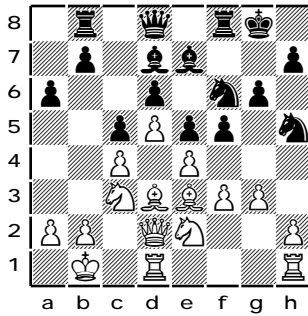
An excellent move. If White captures, then it'd provide Black with an opportunity to open up the long diagonal later on with ...e4 and attack the long diagonal (a1-h8) with B and Q.

12.Kb1 Ndf6

Although 12...f4 13.gxf4 exf4 14.Bf2 may cause the opening of the g-file, it's insignificant compared to what Black gets in return: the opening of the long diagonal a1-h8 for Black's f-bishop.

13.Bd6 Rb8 14.Nge2 Bd7

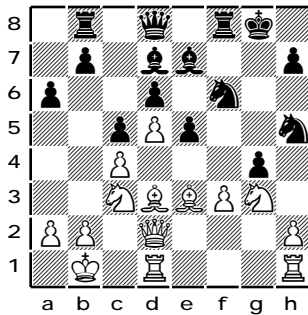
(See diagram next page)



15.exf5

With all pieces now developed, White embarks on a bold plan based upon the reply 15...gxf5 (as 15...Bxf5 comes up against the fork 16.g4) which would have Black's g-pawn vacate the g-file.

15...gxf5 16.g4 fxg4 17.Ng3

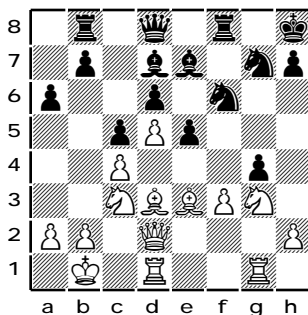


The pawn sacrifice has opened up lines of fire for White's B to the K's wing.

17...Ng7

Naturally not 17...Nxc3 18.hxc3 which would open up the h-file. Black avoids the opening of the g-file by refusing to accept the 2nd pawn sacrifice with 17...gxf3.

18.Rhg1 Kh1

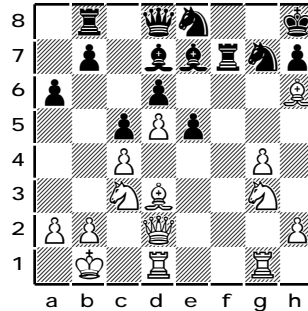


The K has to get out of the line of fire of White's rook.

19.Bh6 Nfe8

Overprotection and threatens to capture the f-pawn with the R.

20.fxg4 Rf7



Removes the rook from the pin and places additional protection on the N at g7.

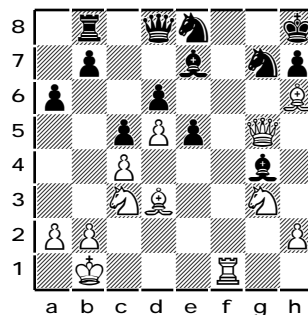
21.Rdf1

Why's White's deliberately leaving his g-pawn unprotected? EXPLANATION: If there were no Black R at f7, White would like to bring his Q to h6 for a mate at h7 (Qxh7#). But on Bxg7+, Black could reply with ...Kxg7 and so prevent the Q from reaching h6. However, if Black's B were at g4, White can attack the B with Qg5. And after Black defends or retreats the B then White can play Bxg7+ and force the reply ...Nxc7 followed by Qh6.

21...Rxf1+ 22.Rxf1 Bxg4

White's combo is too hidden to see.

23.Qg5!

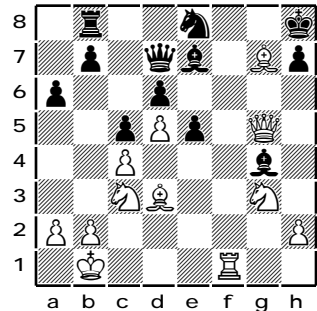


The queen is immune from capture because on 23...Bxg5 then 24.Rf8 is mate. But the thing here's that White picks up a tempo via an attack on Black's B.

23...Qd7

The lesser evil is 23...Bf5 24.Rxf5 Nxf5 25.Qxf5 when Black gets a R and P for B and N. Black's still unaware of White's intent.

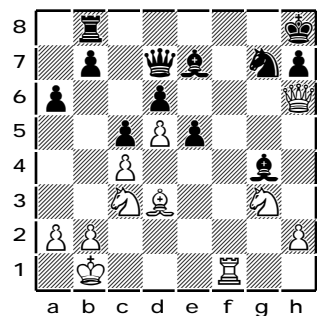
24.Bxg7+



The point of White's 23rd move. Black's compelled to recapture with the N.

24...Nxc7 25.Qh6 1-0

Final Position



The final point of the entire combination: the Q has reached h6 where it threatens mate (26. Qxh7#)

And the only way for Black to avoid getting mated at h7 is to interpose a piece along the diagonal b1-h7 with either 25...Bf5 or 25...Nf5.

In which case, White wins a piece as he's got three pieces (R, N, and B) bearing down on the f5 square to Black's two (Q and N if Black plays 25...Bf5 or Q and B if Black plays 25...Nf5). ♔

CICL crushes Concordia Community Chess Club!

What is the link between successful colleges that are building new construction and their willingness to provide great sites for local chess competition? I'm not sure myself, but the CICL managed to turn out in force and eventually find their way to the playing site and come out winners over the Concordia Chess Club at Concordia University. Details of the match are given below.

Look for a match against the Elmhurst Club at Elmhurst College in mid-winter.

CCCC vs. CICL

12-Sep-2000

Final Result

CICL	Rating*	Team	CCCC	Rating**	Score
Ruben Reyes	2335	Aces	Max Maksimovic	2350	0-1
Mike Stevanovic	2263	UOP	Mark Marovitch	2088	0-1
Lenny Spiegel	2045	Fermi	Blair Machaj	2082	1-0
Bob Hill	2033	Argon	Ray Satterlle	1974	1-0
Ed Buerger	2025	UOP	Robert Loncarevic	1950	0-1
Tony Czernieck	1997	Aces	Ely Solano	1900	1-0
Tom Friske	1992	Exemp	Fred Lahr	1800	1-0
Jay Lechnick	1858	UOP	Mariusz Gorski	1754	1/2-1/2
Marty Franek	1757	Aces	Butch Allen	1748	1/2-1/2
Hardy White	1700	Case	Wlad Boguslowicz	1675	0-1
Jim Duffy	1659	Lburn	Marty Ptacek	1670	1-0
Frank Micklich	1622	UOP	Derek Schneider	1600	1-0
Howard Klinefelter	1574	Case	Ken Marshall	1500	1/2-1/2
Duane Satterlee	1564	Case	Andy Schiller	1480	1-0
John Zoellner	1464	BnkAm	Eugene Lopez	1225	0-1

* CICL rating system

CICL 8 1/2

**USCF rating system

CCCC 6 1/2

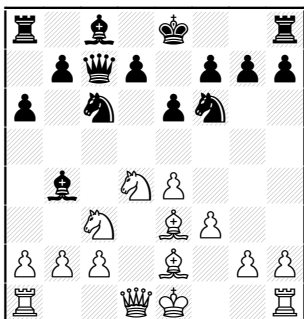
The following CICL players were on extra boards in unrated games.

Pat Sajbel	1915	UOP
Erman Paraoan	1647	Bank America
Frank Suerth	1584	Excaliburs
Herman Cease	1205	Fermilab

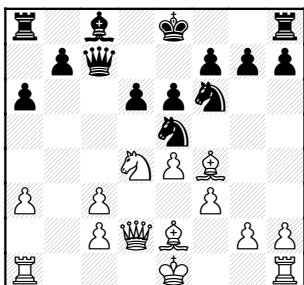
Thanks to all participants!

Eamon, R (1759) - Kras, T (2207) [B43]
 LBurn-BankAm, 2000

1.e4 c5 2.Nf3 e6 3.Nc3 a6
 4.d4 cxd4 5.Nxd4 Qc7 6.Be2
 Nf6 7.f3 Nc6 8.Be3 Bb4

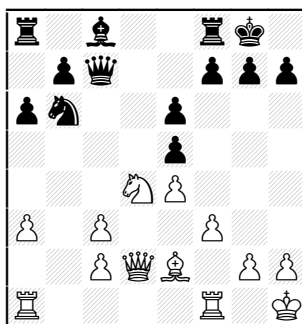


9.a3 Bxc3+ 10.bxc3 Ne5
 11.Qd2 d6 12.Bf4

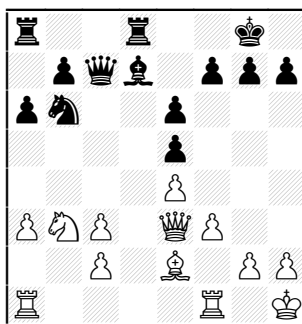


12.-- Bd7 with idea Rc8 reminds White of his Pawn weaknesses on c-file. Contrarily, if White plays Bxe5, Black's doubled Pawns are actually a bonus, jamming the center squares!

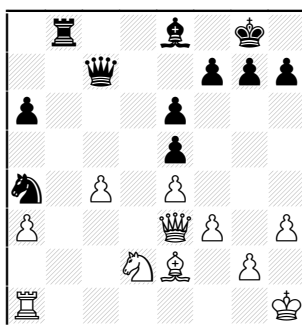
12...0-0 13.0-0 Nfd7 14.Kh1
 Nb6 15.Bxe5 dxe5



16.Nb3 Rd8
 giving White time to arrange counterplay on the b-file
 17.Qe3 Bd7

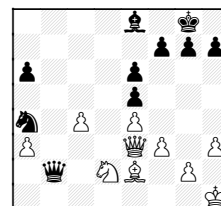


18.Rfb1 Na4
 18...Rac8 19.Nd2 Na4 20.c4
 19.c4 b5
 hoping to anchor Knight at c3 (after cb, ab)
 20.Nd2 Rab8 21.cxb5 Bxb5
 22.c4 Be8 23.Rxb8 Giving up the best file? 23...Rxb8 24.h3



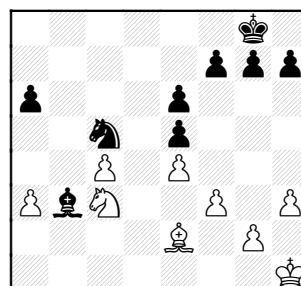
24...Qc5?

Apparently assuming White's Queenside can be invaded in ending, but he can keep the pressure on now! 24...Rb2 25.Rb1 Qb7 26.Rxb2 Qxb2

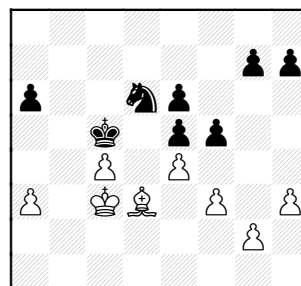


27.c5 Qc1+ 28.Kh2 Nxc5

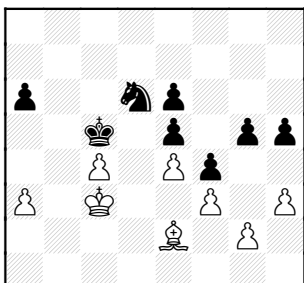
25.Qxc5 Nxc5 26.Rb1 Rxb1+
 27.Nxb1 Ba4 28.Nc3 Bb3



White is defensive, but where can Black break through?
 29.Kg1 Kf8 30.Kf2 Ke7
 31.Ke3 Kd6 32.Kd2 Nb7
 33.Nd1 Kc5 34.Kc3 Bxd1
 35.Bxd1 Nd6 36.Be2 f5
 37.Bd3

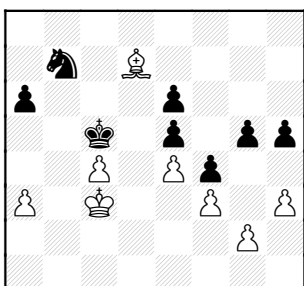


37...f4 38.Be2 g5 39.Bd3 h5
40.Be2

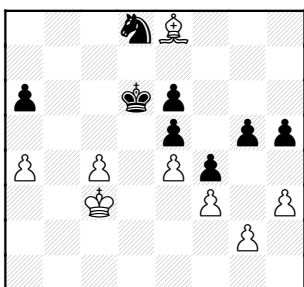


Black still hasn't broken through and now tries to get a situation where he can attack Pc4 with Knight and White's Bishop can't defend.

40...Nb7 41.Bd1 Nd8 42.Ba4 Nb7 43.Bd7!

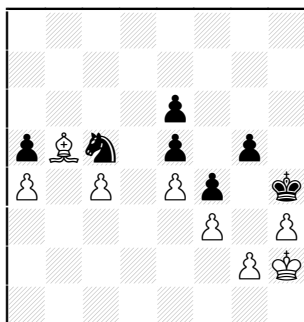


Very good, White stays as active as possible. 43...Nd8 44.a4 Kd6 45.Be8



45...a5 46.Bxh5 Nb7 47.Be8 Nc5 48.Kd2 Ke7 49.Bb5 Kf7

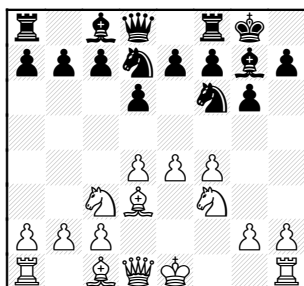
50.Ke2 Kg6 51.Kf2 Nd3+ 52.Kg1 Kh5 53.Kh2 Kh4 54.Be8 Nc5 55.Bb5



A nice draw by a 450-point underdog!! ½-½

Jasaitis, A (2133) - Czerniecki, A (1969) [B09] BankAm-Aces, 23.03.2000

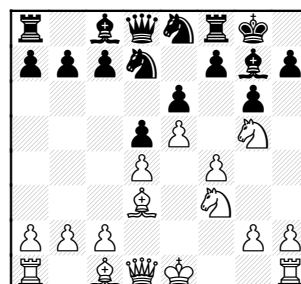
1.e4 d6 2.d4 g6 3.Nc3 Bg7 4.f4 Nf6 5.Nf3 0-0 6.Bd3 Nbd7



7.e5 Ne8 8.Ne4 d5 9.Neg5

Threatening Nxf7 followed by e6.

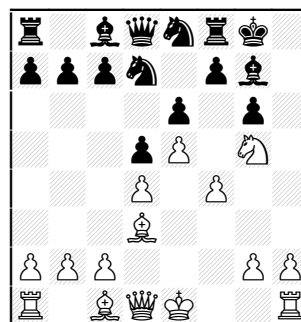
9...e6



10.Nxh7!!

A brilliant sacrifice based off the cramped nature of Black's position.

10...Kxh7 11.Ng5+ Kg8

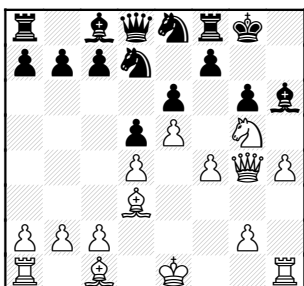


Black can't protect h7 and so White only needs to get his Queen to that square for mate.

12.Qg4

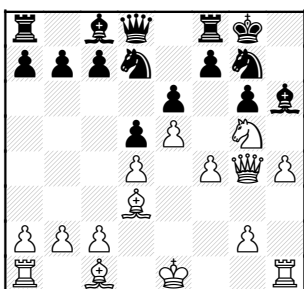
Maybe Black can now defend by returning some material: 12-Nef6 with idea Nh5

Bh6 13.h4



Now **Bxg5?** allows **hg**, opening the Rook attack onto h7 and beyond.

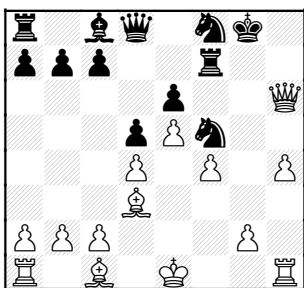
13...Ng7



14.Nxf7!

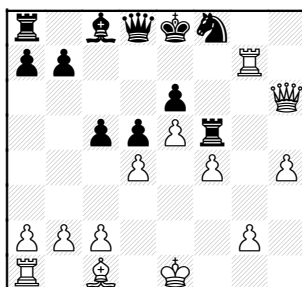
Finishing the destruction of Black's Pawn shield and winning a piece back since the Bishop at h6 is trapped after Qxg6.

14...Rxf7 15.Qxg6 Nf8
16.Qxh6 Nf5



Now the Rook lift Rh3 is in the air threatening Rg3+ and mating.

17.Bxf5 Rxf5 18.Rh3 c5
19.Rg3+ Kf7 20.Rg7+ Ke8

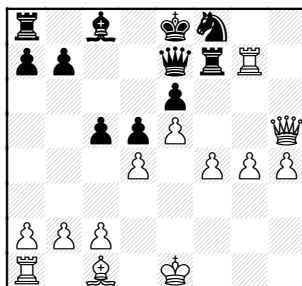


White has forced this position, and would like to finish Black off with Qg6+ or Qh5+, but these squares are protected!

21.g4

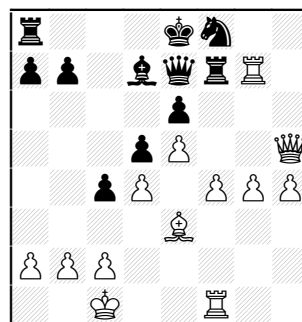
Forcing off Rook's protection of h5

21...Rf7 22.Qh5 Qe7



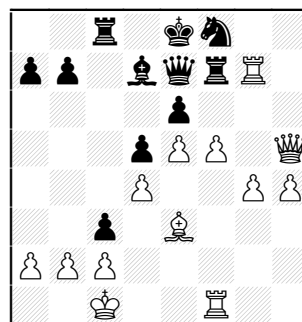
Black has defended his King, but has tied up all his pieces! White now brings his remaining forces into the game. At worst, White can win using his Kingside Pawns.

23.Be3 c4 24.0-0 Bd7
25.Rf1

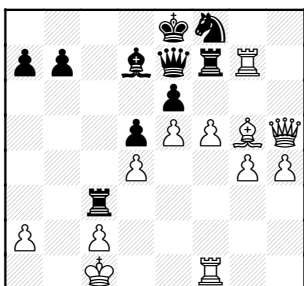


Now the threat is f5 with the idea of f6 which forces Queen away from protecting the pinned Rook!

25...Rc8 26.f5 c3



Trying to expose White's King.
27.bxc3 Rxc3 28.Bg5



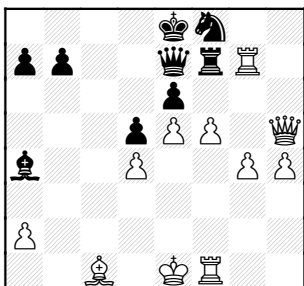
Mission accomplished: the Rook at f7 is lost

28...Rxc2+ 29.Kd1

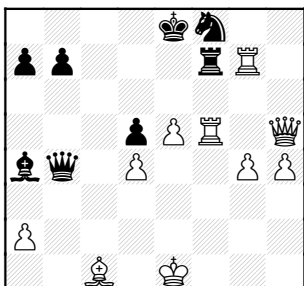
Not **29.Kxc2 Ba4+** and any reply allows Black perpetual checks with Queen

29...Rc1+ 30.Bxc1 Ba4+ 31.Ke1

The King runs to the safe corner



31...exf5 32.Rxf5 Qb4+



33.Bd2 Qb1+ 34.Kf2

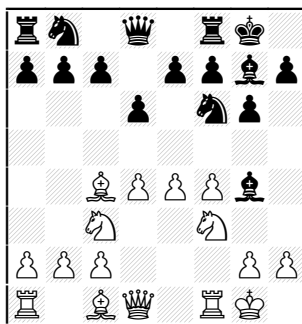
A beautiful attack that never resulted in mate, but, instead, showed the balance of material vs pressure! 1-0

Losoff, A (1860) - Abraham, T (1638) [B09]
BankAm-CTA, 2000

1.e4 d6 2.d4 Nf6 3.Nc3 g6 4.f4 Bg7 5.Nf3

The same position as Jasaitis-Czerniecki, there Black played O-O and Nbd7.

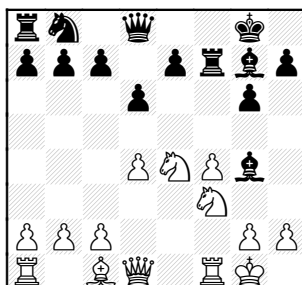
5...Bg4 6.Bc4 0-0 7.0-0



7...Nxe4 8.Bxf7+

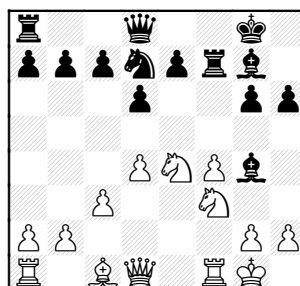
The immediate 8.Nxe4 allows d5 to get piece back

8...Rxf7 9.Nxe4

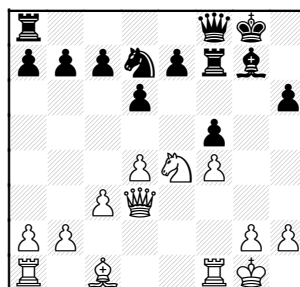


Black isn't cramped as in the previous game, but the weakness of g5 is still to his disadvantage.

9...Nd7 10.c3 h6



Trying to cover g5, but g6 now weak! **11.Qd3 Bf5 12.Nh4 Qf8 13.Nxf5 gxf5**



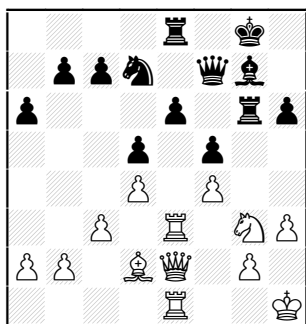
14.Ng3 d5 15.Bd2

15.Nh5 keeps Rook off f6 and opens themes down g-file

15...a6 16.Rae1 [16.Nh5] 16...Rf6 17.Rf3 Qf7 18.Rfe3 Re8 19.Qe2 e6 20.Kh1

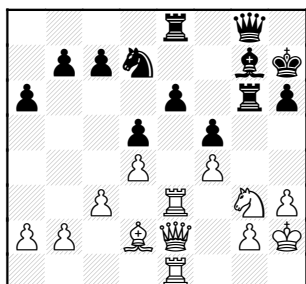
20.c4 c6 (20...dxc4 21.d5!) 21.c5 Activating Bishop with Ba5-c7

20...Rg6 21.h3

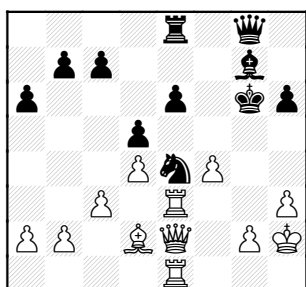


A serious weakening of g3. Black has Bf6-h4, then Qg7. So 21-Bf6 22 Rxe6? Rxe6 23 Qxe6 Qxe6 24 Rxe6 Rxe6 wins

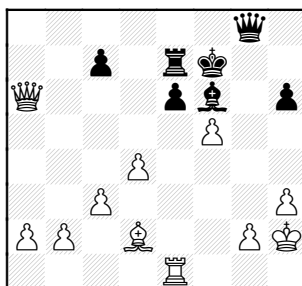
21...Kh7 22.Kh2 Qg8



23.Nxf5! Nf6 24.Nh4 trapping Rook at g6 24...Ne4 25.Nxg6 Kxg6

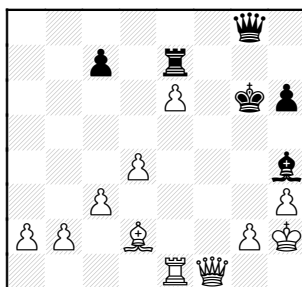


26.Rxe4! Opens position and nets a couple more Pawns
26...dxe4 27.Qxe4+ Kf7
28.Qxb7 Re7 29.Qxa6 Bf6
30.f5



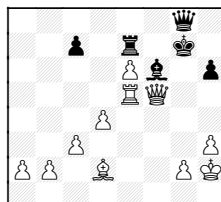
Forcing more open lines!

30...Bh4? 31.fxe6+ Kf6
32.Qf1+ Kg6



33.Re4

Better is 33.Re5 Bf6 34.Qf5+ Kg7



35.Bxh6+! Winning the house

after Kh8 (Not Kxh6, Qxf6+ wins R!) 36 Qxf6+

33...Bg5 34.Bxg5

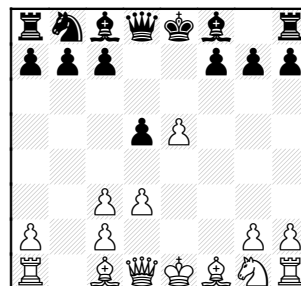
34.Rg4 with idea h4 fails to Qxe6

34...hxg5 35.Re5 Oh, now he finds it! 35...Rxe6? 36.Qf5+ Kh5 37.g4+ Kh6
37...Kh4 38.Qf2#

38.Rxe6+ 1-0

Diaz, P (1996) -
Suarez, E (1873) [C29]
Tyros-Rooks, 19.10.1999

1.e4 e5 2.Nc3 Nf6 3.f4 d5
4.fxe5 Nxe4 5.d3 Nxc3
6.bxc3

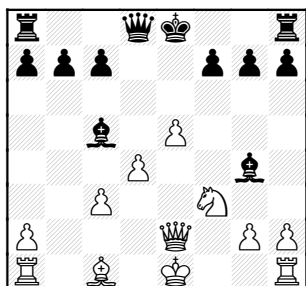


6...d4 7.Nf3 Nc6

7...dxc3? Abandons center at loss of tempo. White's piece play should be ample compensation for the Pawn, which can be won back after d4 and Qd3.

8.Be2 Bc5 9.cxd4 Nxd4
10.c3 Nxe2 11.Qxe2 Bg4

12.d4



Despite trades, White's center Pawns divide Black's forces.

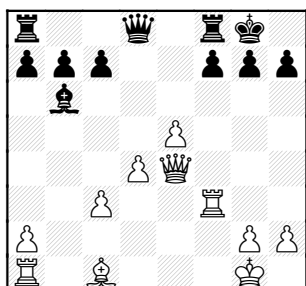
12...Bb6 13.0-0

13.Ba3 stops 0-0 and Black's Pc5. Or

13.Qe4 forks Bg4 and Pb7

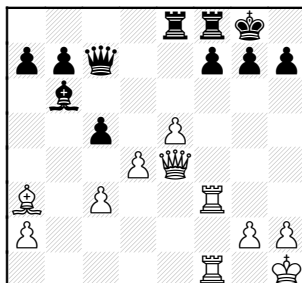
13...Bxf3 14.Qxf3 Qh4+ 15.g3

13...0-0 14.Qe4 Bxf3 15.Rxf3



16.d5 creates an easily-defended passer

16...Qc7 17.Raf1 Rae8
18.Kh1



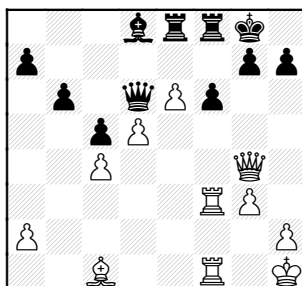
White's play has been stopped, and now Black can pressure the center Pawns.

18...Re7?

Blockade first! Qe7-e6 then Re7
19.e6 f6

19...Rxe6 20.Qxe6! fxe6
21.Rxf8#

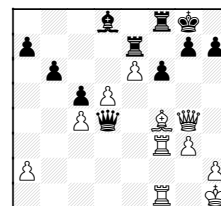
20.d5 Qd6 21.c4 Bc7 22.g3
b6 23.Bb2 Ree8 24.Qg4 Bd8
25.Bc1



White is back on top due to Black's 18th move. He now threatens Bh6 when Qe7 allows d6! or Re7 traps Q with Bf4!

25...Qe5 26.Rd3

Tying Black to stop mate with
26.Bh6 Re7 27.Bf4 Qd4

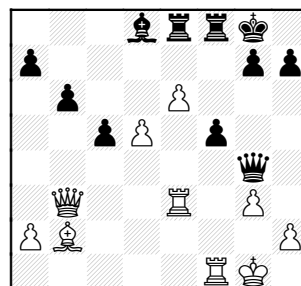


pinning Bishop, stops Bd6

26...f5! 27.Qd1

27.Qf4 White can trade to ending and win with the center passers.

27...Qe4+ 28.Kg1 Qxc4
29.Qb3 Qe4 30.Re3 Qd4
31.Bb2 Qg4

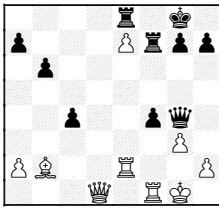


32.d6 threatening e7+ of course
32...c4 33.Qd1 Bg5 34.Re2

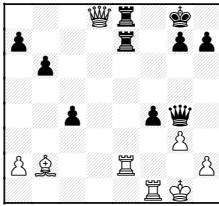
34.Qxg4 fxg4 35.Rxf8+ Kxf8
36.e7+ Bxe7 (36...Kf7 37.Re4
threatens d7) 37.dxe7+

34...f4 35.Re2?

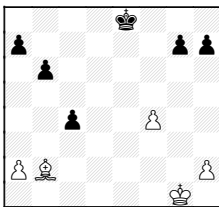
35.e7 and then d7 35...Bxe7
36.dxe7 Rf7
(Diagram)



37.Qd8! Rfxe7

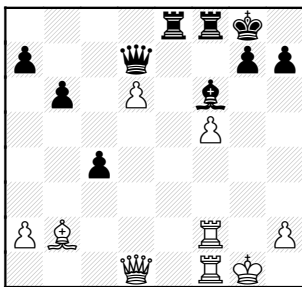


(37...Qxe2 38.Qxe8+ mating; or
37...Qc8 38.Qxc8 Rxc8
39.e8Q+)
38.Qxe8+! Rxe8 39.Rxe8+ Kf7
40.Rxf4+ Qxf4 41.gxf4 Kxe8



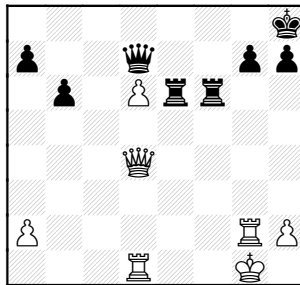
42.Bxg7 b5 43.a3 a5 44.Bc3
and the f-passer wins

Back to middle last column...
35...Qxe6 36.gxf4 Bf6 37.f5
Qd7



Black has defended successfully
and now cleans up

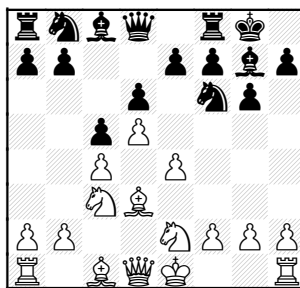
38.Qd5+ Kh8 39.Rd1?
Pf5 is weak
39...Bxb2 40.Rxb2 Rxf5
41.Qxc4 Rc5 42.Qf4 Rf5
43.Qd4 Re6 44.Rg2 Rff6



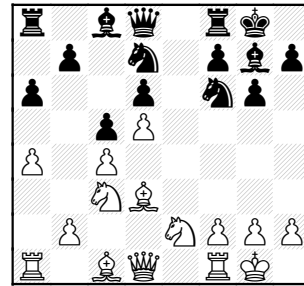
0-1

Hahne, D (1576) -
Eustace, D (1619) [E70]
Tyros-Dragons, 10.03.2000

1.d4 Nf6 2.c4 c5 3.d5 g6
4.Nc3 Bg7 5.e4 d6 6.Bd3 0-0
7.Nge2



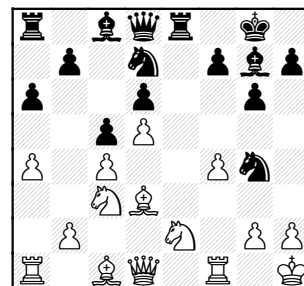
7...e6 8.0-0 exd5 9.exd5 a6
10.a4 Nbd7



11.f4

A benefit from 7 Nge2: White
has Ng3 followed by Nge4
hitting d6 Pawn.
The downside: Black can play 11-
Ne5, 12-Nxd3 and use Bishops

11...Re8 12.Kh1 Ng4

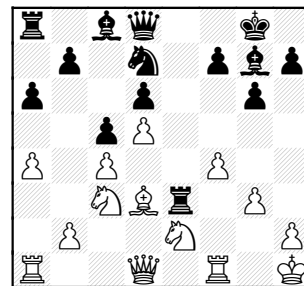


A problem with f4: White's dark
squares are weak.

13.g3

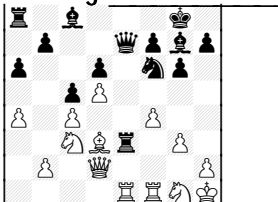
13.Rf3 Qh4 with idea of Nf2+
fork or Qxh2+

13...Ne3 14.Bxe3 Rxe3



15.Qc2

15.Qc2

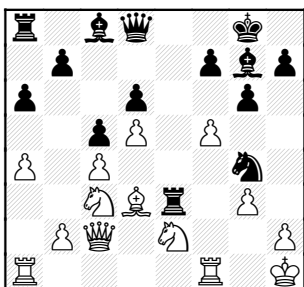


at least trades an attacker and covers the entry points h3, f3, and e2.

15...Nf6 16.f5

An attempt at counterplay, but Black's pieces are better placed to use open lines.

16...Ng4



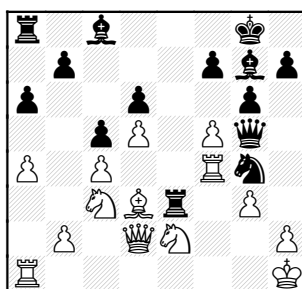
17.Qd2

17.Nf4 Bd4 18.Nce2 with the idea of fg and Bxg6 builds an interesting attack against the suddenly exposed Black King.

17...Qg5

Possibly looking to Qh5 hitting h2.

18.Rf4?



Black spots a combination netting at least a Pawn, but forces an ending with the Bishop pair!

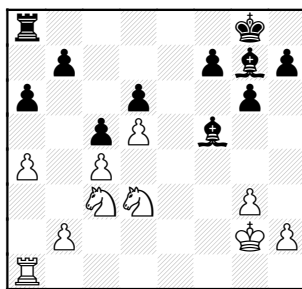
18...Rxd3!! 19.Qxd3 Qxf4!

the point: now Nf2+ forks.

20.Nxf4

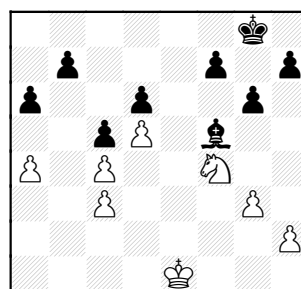
Recapturing with the Pawn results in White being down a piece.

20...Nf2+ 21.Kg2 Nxd3
22.Nxd3 Bxf5



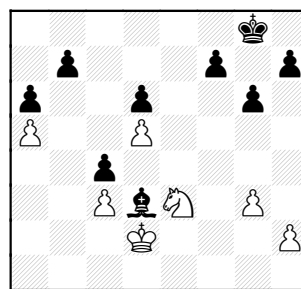
The smoke has cleared, finding White's Knights without much future.

23.Nf4 Re8 24.Kf1 Re3
25.Re1 Rxe1+ 26.Kxe1
Bxc3+ 27.bxc3



Black has forced this position and now finds a way to win another Pawn.

27...Bc2 28.a5 Bb3 29.Ng2
Bxc4 30.Ne3 Bd3 31.Kd2 c4



32.Nd1 f5 33.Nb2 Kf7

33...Bf1 34.Ke1 Bg2 35.Nxc4
Bxd5 36.Nxd5 is still to Blacks advantage

34.Nxd3 cxd3 35.Kxd3 Kf6
36.Kd4 Ke7 37.c4 Kd7
38.Ke3 Kc7 39.Kd4 b6
40.axb6+ Kxb6 41.c5+
dxc5+

Black need only keep his King in front of the d-Pawn to win easily.

42.Ke5 Kc7 43.Ke6 Kd8
44.d6 c4 0-1

CHICAGO INDUSTRIAL CHESS LEAGUE

Business Meeting of August 22, 2000

At: Lucent

Attendees:

Clarence Valdez
Dan Bargerstock
Dave Baurac
Dmitry Altshuller
Frank Suerth
Irwin Gaines
Jerry Thomas
Jim Duffy
Jim Thomson
Joe Karpierz
Karel Dobr
Leonard Spiegel
Pable Diaz
Ruben Reyes
Tom Friske
Tony Jasaitis
W. Jay Lechnick
Wayne Ellice

MINUTES

1. President Irwin Gaines called the meeting to order at 7:10pm.

2. OFFICERS REPORTS:

President:

Irwin welcomed all attendees and thanked Lucent for providing the meeting facilities, which are somewhat central to most teams. He asked members to start thinking about hosting our spring business meeting.

Irwin announced that there is no need for elections at this time. Current officers will continue on, with some exceptions to division chairmen (see reports below). Also, Tom Friske will not only be the Games Editor but also assumes the position of Bulletin Editor. Pablo Diaz will be the new

Banquet Chairman. Pat Sajbel agreed to do half the duties of the Publicity Chairman.

Secretary:

Wayne asked if there were any errors, comments or omissions from the minutes of the April 25 spring business meeting. There being none, a motion to accept the minutes was passed unanimously.

Treasurer:

Lenny submitted a full report of the 1999-00 season, see attached. There was a shortfall of \$415, \$215 more than the budgeted loss of \$200. The guest speaker at our banquet, GM Dmitry Gurevich, cost \$200. We again lost money at the banquet since we could not meet the minimum of 80.

Lenny proposed to keep team dues at \$80. However, after much discussion over the cost of mailing bulletins, the dues for 2000-01 was changed, depending upon whether a team requires the bulletin be sent by US mail, or it is obtained electronically (e-mail, or web access). The vast majority of teams have access to e-mail and/or the internet. Therefore, most teams can get the bulletin essentially free. Mailing hard copies to each team through the mail is becoming more costly and time consuming. Recognizing that some teams don't have electronic access, the following dues schedule was agreed:

Basic dues for teams requiring US mailed bulletins is \$85 (\$50 basic dues, \$15 mailed bulletin, and \$20 banquet ticket).

Basic dues for teams not requesting US mailed bulletins is \$70 (\$50 basic dues and \$20 banquet ticket). These teams will get the bulletin off the web or get it e-mailed to them. All teams need to state their preference of receiving bulletins when they submit their dues for the year. Choices are (a) US mail; (b) e-mailed a copy of the bulletin; or (c) notified by e-mail when the bulletin is available at Tom's web site.

The cost for any team or person requiring additional mailed bulletins is \$15 for the season.

Note, the league is moving in the direction of electronic messaging and hard copies for bulletins may increase in subsequent playing seasons.

Lenny reported that we are getting low on game sheets but recognized that most teams should have quite a few left over from previous years. If we need to, we will order some later.

Division Chairmen:

Near West-Carl Reid, Chairman (not present)

Carl reported to Irwin that there are no changes in this division, still the same 4 teams. Lucent has a new playing site. Wayne (of the Pawns) reported that his company was purchased by W.R. Grace Co. and there are 2 other Grace sites in the area that may have players that can join the team.

East-Jim Duffy, new Chairman

Jim reported that they will lose 2 teams (Columbia College and CTA) but will also pick up 2 new teams. Tony Jasaitis has formed TRDLNK, which is a combination of Trade Link and Michaels Trading (each having at least one CICL player). Stafford Trading is a new team formed by Dan Bargerstock. A motion to accept both teams into the league was accepted unanimously. Jim will make one more attempt to see if CTA will have a team this year.

North-Jim Thomson, new Chairman

Jim reported that Northrup may be returning and, if so, their division will still have 7 teams.

Far West-Bob Buchner, Chairman

Bob reported that their division will remain the same.

3. OTHER REPORTS:

Bulletin Editor-Tom Friske

Again, thanks to Tom for taking over this responsibility. He keeps adding to his web site and the CICL Bulletins are available there. Just go to <http://www.tomhq.com/cicl.htm>.

Games Editor-Tom Friske

Remember to mail a copy of all the games to him at 1035 E. Algonquin Road, Des Plaines, IL 60016. Chances are good you'll eventually see one of your games in print.

Rating Chairman-Art Olsen (not present)

Art has moved and gives the following information.

Mail to:

Art Olsen

714 E. Algonquin, #J102

Arlington Heights 60005

FAX to:

(847) 320-4464 with cover sheet to:

Art Olsen

Kemper Insurance

Operations Tech. Support, G-5

Work tel. (847) 320-2420

Home tel. (847) 437-9819

E-mail aolsen14@home.com

As a reminder

1. Send the results sheets to him promptly. Both teams should submit the results.
2. Include the player's initials on the results sheet to eliminate confusion with same last names.
3. Send in your roster if you have 2 teams from the same company.
- 4.. If you e-mail the results to Art, remember to include the names of the teams, date played, etc.

Publicity Chairman-Pat Sajbel (not present)

Pat has agreed to share the duties with someone. He is looking for a co-chairman who is willing to get CICL information to local tournaments. If interested, please give him a call at (847) 391-2134.

Banquet Chairman-Pablo Diaz

The losses incurred at our banquet is due to our inability to meet the minimum attendance of 80. Pablo was given information about the Bohemian Crystal Restaurant which is very close to Harvey's Prime Rib but their minimum is 60. Their prices seem comparable and those that have eaten there give it good marks. Pablo will look into this and other options and report later. He will secure a banquet hall with a deposit from our funds.

Trophy Chairman-Marty Franek (not present)

Marty will continue with this task, which might be a bit more difficult. There were discussions about shortening the time between the playoffs and the banquet. See #5 below, calendar.

4. ELECTIONS/APPOINTMENTS:

There was no need for any elections or appointments.

5. CALENDAR

After discussion, it was generally agreed that interest in attending the banquet may be greater if it was closer to the playoffs. A motion was made and approved to have the Playoffs on May 12 and the Banquet on May 19 on the condition that Marty Franek (trophy chairman) agrees. It is

expected that Marty will have to establish a final date to receive information needed for the plaques and trophies (e.g. most valuable player, first names when appropriate, number of additional trophies etc.). He will not be held responsible for any late information.

6. OLD BUSINESS:

New teams: See discussion of the East Division.

New alumni team players: No new players announced.

Additions to the player pool: No new additions announced. The Pawns asked if they could continue having Kaz Jakstas on their team like last year.

This was approved. The Excalibers and the Exemplers are looking for someone from the player pool. Please contact their team captain if interested.

Playoff eligibility: The CCDOC team of the Near West Division has only 3 players for the final 2 rounds of their playoff matches. Based on our Bylaws, they will not be eligible for the playoffs this season.

Club match vs. CCC: see announcement by Pat Sajbel. This is scheduled for Tuesday, September 12. Please let him know if you are playing.

7. DISCUSSION ITEMS:

a) Playoff pairings.

In the interest in having teams play against teams outside their division, it was decided that such interdivisional pairings can be made by the Tournament Director and the CICL President for teams that have the same score after the first round.

b) Playoff Expansion.

Again there was a discussion regarding those divisions with a larger number of teams, making it more difficult for the "top 2" teams to get into the playoffs. Should more than 8 teams get into the playoffs? Is the "automatic" 2 teams per division the best method? There was great debate over this issue. There are issues on both sides. Nothing was decided. However, if CCDOC places 1st or 2nd in their division, it will not be automatic that their division 3rd place will take their spot in the playoffs (remember they are not eligible). The CICL President will have the discretion to choose the most deserving team to play in the playoffs.

c) Improving League Competitiveness-Section Championships

Again, there were discussions about alternatives to geographical pairings. Once again, no decisions were made. Written proposals would be beneficial for further discussions. However, there was much enthusiasm for Ruben's proposal for Section Championships (see attachment). A motion was passed to have this proposal reviewed and submit a final proposal by the Spring meeting. Irwin, Ruben, and Dmitry agreed to work on a final proposal.

d) Keeping teams viable (alumni, combined teams, player pool)

It was pointed out that these various options for forming new teams and keeping teams going are in the overall objective of fielding teams for league play and not for the purpose of forming the strongest teams. On a similar note, Wayne handed out the following survey:

CICL SURVEY

The CICL is always looking at ways to increase team participation. The playoffs at the end of the season is also a very important part of our chess competition. When these 2 items are discussed, it is sometimes difficult to meet both objectives (participation & league champions).

The purpose of this survey is to find out what most players want whenever these 2 objectives seem to be in conflict. Please check your preference below:

Whenever there is a conflict between "maximizing overall team participation" and "determining the best teams in the league", I prefer to:

? Move in the direction to maximize team participation.

? Move in the direction to determine the best teams.

The intent is to survey the full membership. Several mentioned that this survey should be in 2 parts. One for the regular season, and one for the playoffs. Wayne will rework the survey and offer it in a subsequent bulletin.

The meeting was adjourned before 10:00 pm.

Wayne Ellice, Secretary

CICL 1999 Financial Report
and 2000 Proposed Budget

Revenue	Last Year (1999)		2000
	Proposed	Actual	Proposed
Basic Team Dues	1,034	987	987
Bulletin	286	260	260
Additional bulletins		144	
Late dues		25	
Total Revenue	\$1,320	\$1,416	\$1,247
Disbursements			
Trophies	800	779	800
Bulletin	250	207	260
Scoresheets	305	305	90
Playoff refreshments	100	156	150
Banquet speaker		200	
Banquest shortfall		119	
USCF / ICA dues	65	65	65
Total Disbursements	\$1,520	\$1,831	\$1,365
Net (Loss)	\$ (200)	\$(415)	\$(118)

We presently have \$61(!) in our checking account and \$837 in savings.

At this time last year we had \$1,335 in combined assets and earned \$14 in interest.

APCT Stocks over 3000 Chess Titles!

THE ROAD TO CHESS IMPROVEMENT - A US Champion provides solutions to real-life chess problems, GM Alex Yermolinsky, 224 pages. "How can I improve my game?" is a perennial question facing chess-players. While there are no easy answers, Alex Yermolinsky is better qualified than most to offer advice. Having found the famed 'Soviet School of Chess' wanting, he trained himself, slowly but surely raising his game to top-class grandmaster standard. In this book he passes on many of the insights he has gained over the years. He steers the reader away from 'quick-fix' approaches, and focuses on the critical areas of chess understanding and over-the-board decision-making. List price \$24.95, APCT price \$23.70, w/discount you pay only \$17.77

KRAMNIK MY LIFE AND GAMES, GM Vladimir Kramnik & Jakov Damsky, 272 pages. Since he first burst onto the world chess scene in 1992, displaying a maturity of play far beyond his sixteen years, **Vladimir Kramnik** has been tipped as a future World Champion. Still only in his mid-twenties, he is now firmly consolidated in the world's top three. He has won numerous tournaments in many countries, and is one of the very few player regularly to hold his own with Kasparov.

This book, Kramnik's first, describes his life and chess career, beginning with his unusual childhood. It features more than 50 of his best games, deeply annotated, plus numerous additional games and game extracts, including some from quickplay and blindfold events. List price \$24.95, APCT price \$23.70, w/discount you pay only \$17.77

SECRETS OF PAWN ENDINGS, GM Karsten Müller & FM Frank Lamprecht, 288 pages. Endgames with just kings and pawns are the most basic type of ending. Without an understanding of them it is impossible to master more complicated endings. This book provides a thorough course in pawn endings, from the simple to the highly complex. Many interesting and beautiful positions are included, and there are test positions for the reader to solve.

The authors follow the rigorously logical conventions introduced by John Nunn in his famous series of endgame manuals. This has necessitated a phenomenal amount of new analysis of theoretical positions to assess precisely the merits of each and every move. List price \$24.95, APCT price \$23.70, w/discount you pay only \$17.77

EXAMPLES OF SOME RECENT TITLES PART OF OUR STOCK OF OVER 3000 DIFFERENT CHESS TITLES

Play the Open Games as Black, Emms ..	\$17.06
Survival Guide to Rook Endings, Emms	\$13.46
Easy Guide to the Nge2 King's Indian, Forintos & Haag	\$13.46
Queen's Gambit Declined, Sadler.....	\$14.21
Life & Games of Carlos Torre, Velasco	\$17.77
Classical French, Gufeld & Stetsko.....	\$11.21
Botvinnik Semi-Slav, Pedersen.....	\$15.64
Benko Gambit, Kinsman & Jacobs.....	\$11.96
Two Knights Defence, Beliavsky & Mikhalchishin.....	\$11.96
500 Blackmar-Diemer Gambit Miniatures, Wall.....	\$5.32
Modern Chess Openings 14th Edition, GM Nick DiFirmian.....	\$21.37
Easy Guide to the Najdorf, Kosten	\$13.46
QGD: Bg5 Systems, Lalic	\$15.64
Soviet Chess 1917-1991, Soltis (HB).....	\$38.96
Tarrasch, Three Hundred Chess Games .	\$14.21
Most Amazing Chess Move of All Time, GM John Emms.....	\$14.21
Easy Guide to the Dragon, Golubev	\$14.21
Tal-Botvinnik 1960 5th Ed., Tal	\$14.21
Vienna Game, IM Gary Lane	\$14.21
Easy Guide to the Classical Sicilian, GM Jouni Yrjola.....	\$13.46
Mastering the Bishop Pair, Borulia.....	\$14.21
Tal-Botvinnik 1960 5th Ed., Tal	\$14.21
Unknown Bobby Fischer, Donaldson	\$13.46

Above prices reflect 25% off APCT prices.
Many titles are 30%, 40% or 50% off! All
chess sets, boards, bags, scorebooks, etc. are
25% off. Clocks partially discounted.

