

## *The Chicago Chess Player*

The Official Bulletin of the Chicago Industrial Chess League

### **An Unusual Night of Awards**



## CICL Contact List

---

Bulletin Editor/Webmaster Bulletin@ChicagoChessLeague.org	<b>Tom Friske</b>	1035 E Algonquin Road Des Plaines, IL 60016	H:(847) 299-1033 W:{847} 914-8448
Ratings Chairman Ratings@ChicagoChessLeague.org	<b>Art Olsen</b>	714 E Algonquin Road #J102 Arlington Heights, IL 60006	H:(847) 437-9819 W:(847) 719-8036
<b>FAX :</b> to SBS OTS, 22NW0644-5 at (847) 719-8151			
League President President@ChicagoChessLeague.org	<b>Tony Jasaitis</b>		C:(708) 903-6423 W:(312) 264-2044
League Secretary Secretary@ChicagoChessLeague.org	<b>Jerry Thomas</b>	745 Hageman Pl Naperville, IL 60563	<b>H:(630)420-0188</b>
League Treasurer Treasurer@ChicagoChessLeague.org	<b>Lenny Spiegel</b>	Fermilab MS 220 Batavia, il 60510	H: (630) 208-4738 W: (630) 840-2809
Trophy Chairman Trophy@ChicagoChessLeague.org	<b>Marty Franek</b>	9044 S 51 <sup>st</sup> Avenue Oak Lawn, IL 60453-1730	H: (708) 636-3714 W: (312) 353-0397
Publicity Chairman Publicity@ChicagoChessLeague.org	<b>(open)</b>	( Contact League President as designated above )	
Banquet Chairman Banquet@ChicagoChessLeague.org	<b>Burt Gazmen</b>	1614 Heather Lane Darrien, IL 60561	H: (630) 985-1882 W: (312) 666-8100 X228

### DIVISIONAL CHAIRMEN

East Division ChairmanEast@ChicagoChessLeague.org	<b>Jim Duffy</b>	152 Greenway Roselle, IL 60172	H: (630) 307-2414 W: (312) 220-3252
West Division ChairmanWest@ChicagoChessLeague.org	<b>Bob Buchner</b>	1316 Kallien Court Naperville, IL 60540	H: (630) 428-7707 W: (630) 979-7707
North Division ChairmanNorth@ChicagoChessLeague.org	<b>Art Olsen</b>	( See information for Ratings chairman above )	

---

### Mark Your Calendars with These Key League Dates:

<b>Fall Business Meeting</b>	Last Wednesday of August (Aug 30 2006)
<b>Spring Business Meeting</b>	3.5 Weeks Before Playoffs (April 19, 2006)
<b>Season Playoffs</b>	Second Saturday of May (May 13, 2006)
<b>CICL Open</b>	Second Saturday of May (May 13, 2006)
<b>League Awards Banquet</b>	First Friday of June (June 2, 2006)

Officer Contact List	2
Contents of Issue	3
<b><u>SEASON WRAP-UP</u></b>	
Final Rosters by Team	4
Final Ratings	12
Banquet Pictorial	15
Season Awards	17
<b><u>FEATURES</u></b>	
GAMES by THE PLAYERS !	19
A Review of the 2006 Playoffs (with analyzed Games)	30

*With contributions from : Art Olsen, Fred Furtner, Rob Eaman,  
Arnie Walker, Chuck Dobrovolny, Tony Jasaitis*

EAST DIVISION**ALUMNI ACES**

NAME	RATING	SEASON RATING			CHANGE	TOTAL GAMES	RATED GAMES
		W	L	D			
INUMERABLE, F	2203C	2	1	0	-4	182	174
GAZMEN, E	2080C	7	0	2	45	126	119
WEBER, L	2069	1	1	1	-48	40	37
BENESA, A	2057C	4	5	1	-55	124	121
SOLLANO, E	1978C	9	1	1	9	152	133
SANTIAGO, T	1908	1	2	1	-51	102	94
ALLEN, H	1907	5	4	1	-68	88	80
FRANK, M	1733C	9	2	0	15	123	107
MILLER, A	1413	5	4	1	-24	39	32

**LEO BURNETT**

NAME	RATING	SEASON RATING			CHANGE	TOTAL GAMES	RATED GAMES
		W	L	D			
GARRIDO, J	1100?	1	2	0	0	3	1
EAMAN, R	1879	3	3	3	-11	65	63
DUFFY, J	1804	3	4	2	-28	80	70
SITAR, K	1526	3	5	1	5	75	62
FULKERSON, R	1435	1	3	1	-15	46	33
CARRINGTON, S	0000?	0	0	0	0	0	0

**CITADEL GROUP**

NAME	RATING	SEASON RATING			CHANGE	TOTAL GAMES	RATED GAMES
		W	L	D			
KUNHIRAMAN, P	1350?	2	3	1	0	6	3
METZLER, J	1250?	1	1	0	0	2	1
PARRA, J	1200?	2	1	0	0	3	1
FUNG, J	1200?	0	3	0	0	3	2
SAM, K	1100?	1	1	0	0	2	0
WINKLER, J	1100?	0	2	0	0	2	1
HAYHURST, W	1936	1	1	6	8	45	44
ONG, K	1886	2	1	0	-3	16	15
LE, DUC	1720*	2	5	1	-12	25	22
SENSAT, J	1558	2	4	1	-21	39	38
MUHS, A	1404	2	5	2	22	17	16
MICHALOPOULOS, G	1327	1	2	0	20	3	2
THORNE, P	0000?	0	1	0	0	1	1

**NORTHWESTERN CHESS CLUB**

NAME	RATING	SEASON			RATING CHANGE	TOTAL GAMES	RATED GAMES
		W	L	D			
WOHNS, N	1400?	1	1	0	0	3	3
ARUTCHEV, E	1300?	1	4	0	0	5	2
CHUN, A	0800?	0	0	0	0	0	0
MARTELL, J	0600?	0	1	0	0	1	0
CHAN, ROBERT	2077	1	0	0	26	1	1
BENDICH, I	2033	1	0	0	18	1	1
GORODETSKIY, S	1909	6	3	1	91	16	15
SMALLWOOD, J	1874	6	2	1	79	9	8
RODNYANSKY, S	1734	3	2	0	3	5	5
LU, D	1416*	3	5	1	41	9	9
KRAVIK, S	1380	4	2	0	3	6	3

**HEDGEHOGS**

NAME	RATING	SEASON			RATING CHANGE	TOTAL GAMES	RATED GAMES
		W	L	D			
RAUCHMAN, M	2145	2	1	3	-47	33	32
JASAITIS, A	1999D	5	2	2	-20	259	236
SMITH, M	1934	5	2	2	2	9	9
SEET, P	1890	6	0	1	53	33	30
KRATKA, M	1703	4	0	0	20	49	45
TAN, A	1662*	2	3	2	-48	18	14
SHEPARDSON, T	1558	0	1	0	-42	1	1
COOMBES, N	1299*	0	1	0	-24	12	9
WILLIAMS, S	1201#	2	0	0	0	10	6

**AMA TORNADO SNAKES**

NAME	RATING	SEASON			RATING CHANGE	TOTAL GAMES	RATED GAMES
		W	L	D			
JAMES, D	1500?	0	6	0	0	6	6
MCLAWHORN, M	1300?	0	4	0	0	4	2
MASITI, J	1275?	3	0	0	0	3	1
MCFADDEN, J	1150?	0	1	0	0	1	1
MEYER, C	1100?	2	3	0	0	5	2
PIWOWAR, T	1050?	0	3	0	0	3	1
FISSETTE, R	1721*	3	6	2	15	11	11
PETERSON, T	1463*	4	8	0	-11	12	10
FURTNER, F	1457	2	6	3	56	11	11
GOODFRIEND, B	1240	4	2	0	69	6	4
IRBY, L	0000?	0	1	0	0	1	1

**NORTH DIVISION**

NAME	RATING	<b>UOP</b>			SEASON RATING CHANGE	TOTAL GAMES	RATED GAMES
		W	L	D			
LEONG, G	1985C	3	3	5	5	185	167
SIWEK, M	1977D	1	1	4	7	210	202
EASTON, R	1891	5	4	2	18	90	81
BOLDINGH, E	1876C	6	2	1	15	174	168
WALKER, C	1834	4	2	1	24	26	25
LECHNICK, J	1699C	5	3	1	-44	112	93
MOSSBRIDGE, A	1678	0	1	0	-35	27	26
MICKLICH, F	1565D	5	4	1	-22	273	228
NALLATHAMBI, R	1559	5	1	1	54	23	18
OLSEN, A	1485C	5	2	1	1	162	147
SCHOONOVER, M	1237	0	2	0	-10	41	27

NAME	RATING	<b>NORTHROP</b>			SEASON RATING CHANGE	TOTAL GAMES	RATED GAMES
		W	L	D			
WARREN, R	2000?	0	0	1	0	1	1
HO, M	0900?	0	1	0	0	1	1
SEDERLAND, C	0900?	0	1	0	0	2	2
WALKER, A	1815	1	4	2	35	86	79
MCWHIRT, C	1621#	1	3	2	-20	6	6
AUBRY, B	1615#	3	3	0	0	6	5
VIGANTS, A	1596C	0	8	0	-56	148	135
BURIAN, D	1508D	0	2	0	-9	214	181
DENNISTON, E	1459#	1	2	2	0	8	5
ELLIOTT, T	1392	0	2	2	6	4	4
ELEK, G	1215C	0	3	1	-8	112	91

NAME	RATING	<b>EXCALIBURS</b>			SEASON RATING CHANGE	TOTAL GAMES	RATED GAMES
		W	L	D			
WONG, P	2154C	0	1	0	-19	175	170
LANG, R	2026	1	1	1	-24	31	30
LEE, D	1930	3	6	0	-90	9	8
BRONFELD, A	1845	4	3	0	28	68	61
KOGAN, G	1692C	1	0	0	13	166	152
WEITZ, R	1589D	5	3	0	64	213	193
BROTOS, J	1542T	1	5	1	-41	314	251
SUERTH, F	1485D	1	5	1	-23	226	186

**MOTOROLA KINGS**

NAME	RATING	SEASON RATING			CHANGE	TOTAL GAMES	RATED GAMES
		W	L	D			
SHPAKOV, A	1400?	3	0	0	0	3	1
LISSEMAN, E	1400?	1	3	1	0	5	2
SINGH, H	1400?	0	1	0	0	1	0
DECKER, D	1300?	0	1	0	0	1	0
MELNIKOV, I	2039C	3	3	3	20	123	121
WALLACH, C	1999C	2	4	4	-32	141	139
HORTON, D	1920	2	1	0	26	18	17
PIPARIA, J	1866	4	3	4	45	81	78
CYGAN, J	1755	3	5	0	-95	49	45
GONCHAROFF, N	1656Q	1	6	4	-28	548	464
JOSHI, B	1531*	7	3	1	205	18	16
RABINOVICH, E	1512	5	2	0	128	38	28
GRYPARIS, J	1407C	1	4	1	-52	163	121

**MOTOROLA KNIGHTS**

NAME	RATING	SEASON RATING			CHANGE	TOTAL GAMES	RATED GAMES
		W	L	D			
DUONG, R	1400?	1	2	2	0	5	2
ARJUN, A	1200?	1	0	0	0	1	0
MORRIS, R	2198	8	2	2	-3	94	88
FRIDMAN, Y	2186	4	2	6	-60	90	86
THOMSON, J	1978C	4	4	4	-15	119	97
BALICKI, J	1900C	8	0	4	114	117	96
AUGSBURGER, L	1788C	3	3	0	-27	176	148
KARANDIKAR, S	1639	7	4	2	-28	58	43
ALFONSO, E	1467	2	4	0	-53	55	50
ROSS, B	0000?	0	1	0	0	1	1
CHERKASSKY, G	1664#	4	4	0	-11	8	6

**RENAISSANCE KNIGHTS**

NAME	RATING	SEASON RATING			CHANGE	TOTAL GAMES	RATED GAMES
		W	L	D			
KRAUSE, R	1400?	1	3	0	0	4	2
HEISER, D	1150?	3	4	0	0	7	3
ALLSBROOK, F	2200	4	0	3	76	7	7
HEISER, E	2052	6	4	2	59	12	12
COHEN, L	1962	2	3	1	-41	6	6
HART, V	1948	4	2	3	6	9	9
GANDHI, R	1939	1	1	0	-7	2	2
BUKY, J	1938	1	1	0	-20	2	2
COHEN, H	1810	3	2	0	10	5	5
AROND, D	1746	6	3	1	-7	32	28
BAUMGARTNER, C	1727	6	3	3	32	17	14
ENGELN, M	1622	2	4	3	-42	12	10
MORAN, P	1615	1	0	2	9	3	2
MARSHAL, KEN	1484	2	3	1	-54	6	5
O'BRIEN, B	1291	0	0	1	16	1	1

**WALGREENS**

NAME	RATING	SEASON RATING			TOTAL RATED	GAMES	GAMES
		W	L	D CHANGE			
MCGUIRE, A	1850?	2	0	0	0	2	1
GRANDHI, V	1200?	0	1	0	0	1	1
SOROCK, R	0900?	0	7	0	0	7	5
FRISKE, T	2093C	5	1	3	18	172	154
LEVENSON, S	1887	7	2	0	71	9	8
HUGHES, N	1651C	2	4	2	-28	173	161
ANSARI, N	1571	2	6	1	-79	37	34
HUSSEIN, A	0000?	0	0	0	0	0	0

**WEST DIVISION****ARGONNE ROOKS**

NAME	RATING	SEASON RATING			TOTAL RATED	GAMES	GAMES
		W	L	D CHANGE			
BENEDEK, R	2148T	4	3	2	-28	355	343
HILL, R	1990C	4	4	0	-27	207	198
BAURAC, D	1846D	9	0	1	101	306	273
SUAREZ, E	1834	0	2	0	-48	92	89
YACOUT, A	1592	2	0	0	34	49	45
DECMAN, S	1573D	1	2	1	-13	295	264
DERIY, B	1485#	4	3	1	18	8	7
GRUDZINSKI, J	1431	0	1	0	-19	40	32
KINSELLA, G	1425C	0	2	0	-27	138	115
ROJO, V	1405	0	1	1	-26	80	71
KUHLMANN, S	1364*	1	3	0	-34	12	10
NABEREZHNEV, D	0000?	0	2	0	0	3	3
HLOHOWSKYJ, I	0000?	0	6	0	0	13	9

**FERMILAB**

NAME	RATING	SEASON RATING			TOTAL RATED	GAMES	GAMES
		W	L	D CHANGE			
ANNIS, J	1300?	3	2	0	0	5	3
GARZON, G	2284	8	1	3	29	48	47
DORIGO, T	2118	2	2	1	-45	52	49
SPIEGEL, L	1967D	6	2	5	4	293	267
GAINES, I	1780D	7	5	1	0	297	273
BOLSHOV, A	1638	8	1	2	115	32	29
STAPLES, C	1594	2	2	0	17	83	72
MOLINA, J	1581*	1	1	0	-9	17	13
DEGRAF, B	1488*	5	2	3	54	24	22
CEASE, H	1440	3	0	1	45	47	35
MOEHS, D	1423*	2	1	0	27	17	17



**LUCENT TECH. TYROS**

NAME	RATING	SEASON			RATING CHANGE	TOTAL GAMES	RATED GAMES
		W	L	D			
STEIN, P	2172	6	4	2	-21	100	99
DIAZ, P	2110C	8	2	2	27	191	178
STOLTZ, B	1925C	4	2	6	-45	190	171
GUIO, J	1846C	4	4	2	-53	170	167
BUCHNER, R	1714C	7	2	3	-6	136	129
HAHNE, D	1662C	6	1	1	35	161	134
SMITH, BR	1581C	4	4	1	-85	156	119
LAFORGE, W	1415	4	1	1	26	43	34
KARPIERZ, J	1298	1	0	0	29	68	42

**LUCENT TECH. DRAGONS**

NAME	RATING	SEASON			RATING CHANGE	TOTAL GAMES	RATED GAMES
		W	L	D			
TEGEL, F	2035Q	3	4	1	6	425	387
MARCOWKA, R	1961D	6	3	0	9	303	282
LUDWIG, T	1949C	1	2	2	-15	172	169
PEHAS, A	1862C	1	1	1	-28	156	149
DOBROVOLNY, C	1829C	4	1	0	12	201	183
THOMAS, J	1532D	2	3	1	-27	264	215
STAMM, V	1508T	3	3	1	-14	350	326
EUSTACE, D	1462C	2	4	2	-26	181	143
DOBR, K	1343Q	3	4	0	-34	459	406
BREYER, A	1319	3	3	1	20	41	37
KOMORAVOLU, K	1268	1	3	1	-37	31	26

**PAWNS**

NAME	RATING	SEASON			RATING CHANGE	TOTAL GAMES	RATED GAMES
		W	L	D			
JAKSTAS, K	2217D	9	0	4	43	218	212
LATIMER, E	2008T	0	0	1	-8	308	276
ELLICE, W	1800C	2	6	5	-64	158	150
FRANEK, M	1724D	4	2	3	17	247	196
FABIJONAS, R	1546T	2	8	2	-55	329	294
MIKULECKY, B	1431D	4	3	0	12	210	187
ABDALLAH, D	1403	0	4	0	-65	31	27
O'DELL, DW	1383C	1	6	3	-61	200	189

**CASE**

NAME	RATING	SEASON			RATING CHANGE	TOTAL GAMES	RATED GAMES
		W	L	D			
WILLIAMS, K	2153	0	1	0	-19	69	68
NURSE, G	1809	2	2	2	27	6	5
DOWELL, E	1776*	0	7	5	-31	12	11
PARAOAN, E	1617D	3	5	2	-19	234	204
ALEXANDER, W	1560	1	5	1	-60	98	94
JACKSON, S	1560C	2	1	0	3	106	95
HALL, A	1500	3	3	0	-5	87	82
REID, C	1455D	3	7	1	-86	237	194
ROJO, V	1405	0	1	1	-26	80	71
DYCZKOWSKI, R	1355	1	4	1	5	72	55
ZOELLNER, J	1326D	3	5	1	-22	240	172

**MOLEX**

NAME	RATING	SEASON			RATING CHANGE	TOTAL GAMES	RATED GAMES
		W	L	D			
CASHER, P	1100?	0	1	0	0	5	2
REICH, T	1882	2	6	1	-23	30	26
ZADEREJ, V	1630	6	3	1	167	34	29
FOX, R	1562	0	1	1	-9	20	18
HENDRICKSON, B	1505	1	6	2	-41	37	35
DEICHMANN, E	1294	1	7	1	-15	35	30
MCGOWAN, D	1275	3	4	2	18	28	24
RUFUS, B	1259*	4	3	2	93	19	16
MUELLER, R	1024*	0	2	0	-7	20	10

**ST CHARLES CHESS CLUB**

NAME	RATING	SEASON			RATING CHANGE	TOTAL GAMES	RATED GAMES
		W	L	D			
MARSHALL, J	2111	4	3	2	-10	16	16
SPLINTER, J	2033	4	3	2	-70	17	17
WIEWEL, J	2007	4	6	2	-123	21	21
MEISSEN, B	1791	7	3	1	93	13	12
MCCOY, N	1631	4	0	2	117	8	8
PRADT, D	1624	2	2	1	-16	9	8
LINDNER, E	1609	1	1	0	8	3	3
SUITS, J	1598	10	2	0	197	12	12
DJORDJEVIC, V	1581	3	0	0	64	3	3
PADILLA, R	1579	1	0	1	7	2	2
GIERTZ, C	1474	0	1	1	-26	3	2
MCGEE, M	1472	5	2	3	4	11	9
PIVOVITZ, M	1375	0	2	0	-30	3	2
BUCKLEY, J	1371	2	0	0	37	2	2
STOSKUS, A	1343	4	2	0	14	7	5
KELLEY, G	1324	1	0	0	31	2	2
STUMP, P	1168	1	1	0	-14	3	2

**BP CHICAGOLAND**

NAME	RATING	SEASON RATING			TOTAL RATED	GAMES	GAMES
		W	L	D CHANGE			
COULTER, D	1938	2	3	6 -8	38	34	
DENEEN, D	1447	3	8	0 38	16	16	
RINGENBERG, T	1421	2	2	0 28	51	39	
CASTANEDA, R	1259	1	5	2 42	33	32	
SUVARNAKANTI, R	1209*	1	5	1 -33	12	10	
ZUBIK, J	1180#	1	1	0 -2	9	8	
MANILA, M	1152*	0	6	0 -43	25	18	
HERNANDEZ, F	963#	0	5	1 -12	8	8	
SLATER, B	0000?	0	10	0 0	11	10	
HERMAN, J	0000?	0	1	0 0	1	1	

**ST CHARLES BAKER**

NAME	RATING	SEASON RATING			TOTAL RATED	GAMES	GAMES
		W	L	D CHANGE			
NGUYEN, T	2173	4	1	0 73	5	5	
RASO, P	2039	3	1	0 43	9	8	
FREIDEL, JESSE	1964	9	3	1 123	20	20	
FREIDEL, P	1903	5	4	4 16	15	14	
FREIDEL, JER	1769	8	3	1 54	18	18	
WANG, ANDREW	1743	3	0	2 32	5	5	
ALBERTS, W	1622	5	3	4 -50	16	14	
GUTIERREZ, M	1476	3	0	0 50	4	4	
VAN PETTEN, J	1462	1	1	0 -17	2	1	
JANSSEN, G	1441	6	3	0 9	12	10	
JOHNSON, K	1441	0	1	0 -19	1	1	
GREER, J	1415	3	2	2 -26	8	5	
BALES, R	1394	1	1	0 -13	2	2	
FREIDEL, D	1328	1	1	1 -9	6	5	
ALI, J	1188	0	1	0 -13	2	1	

**COMPUTER ASSOCIATES**

NAME	RATING	SEASON RATING			TOTAL RATED	GAMES	GAMES
		W	L	D CHANGE			
MILLING, J	1500?	3	0	0 0	4	4	
HANSON, M	1400?	3	2	0 0	5	3	
MARKLEY, S	1400?	1	0	0 0	3	2	
GRABSKIY, J	1300?	1	6	0 0	8	7	
WYKRET, J	1200?	0	1	0 0	1	1	
UNDERWOOD, W	1909C	0	4	2 -25	172	151	
DENMARK, T	1745	2	5	1 -18	32	28	
VAIL, M	1565	2	4	3 30	42	39	
BYRNE, M	1410*	4	5	1 67	17	16	
MCCLENDON, L	1298	0	7	0 -73	47	39	

NAME	TEAM	W	L	D	RATING	NAME	TEAM	W	L	D	RATING
ABDALLAH, D	PAWNS	0	4	0	1403	DEICHMANN, E	MOLEX	1	7	1	1294
AHK TAR, A	LOYLA	1	1	0	1200/1	DENEEN, D	BPCHI	3	8	0	1447
ALBERTS, W	BAKER	5	3	4	1622	DENMARK, T	COMPA	2	5	1	1745
ALEXANDER, W	CASE	1	5	1	1560	DENNISTON, E	NORTH	1	2	2	1459#
ALFONSO, E	MKNGT	2	4	0	1467	DERIY, B	ROOKS	4	3	1	1485#
ALI, J	BAKER	0	1	0	1188	DIAZ, P	TYROS	8	2	2	2110C
ALLEN, H	ALUMN	5	4	1	1907	DJORDJEVIC, V	STCCC	3	0	0	1581
ALLSBROOK, F	RKNGT	4	0	3	2200	DOBR, K	DRGNS	3	4	0	1343Q
ANNIS, J	FERMI	3	2	0	1300/3	DOBROVOLNY, C	DRGNS	4	1	0	1829C
ANSARI, N	WALGR	2	6	1	1571	DORIGO, T	FERMI	2	2	1	2118
ARJUN, A	MKNGT	1	0	0	1200/0	DOWELL, E	CASE	0	7	5	1776*
AROND, D	RKNGT	6	3	1	1746	DUEDE, E	LOYLA	0	0	0	1700/0
ARUTCHEV, E	NWEST	1	4	0	1300/2	DUFFY, J	LBURN	3	4	2	1804
AUBRY, B	NORTH	3	3	0	1615#	DUONG, R	MKNGT	1	2	2	1400/2
AUGSBURGER, L	MKNGT	3	3	0	1788C	DYCZKOWSKI, R	CASE	1	4	1	1355
BALES, R	BAKER	1	1	0	1394	EAMAN, R	LBURN	3	3	3	1879
BALICKI, J	MKNGT	8	0	4	1900C	EASTON, R	UOP	5	4	2	1891
BAUMGARTNER, C	RKNGT	6	3	3	1727	ELEK, G	NORTH	0	3	1	1215C
BAURAC, D	ROOKS	9	0	1	1846D	ELLICE, W	PAWNS	2	6	5	1800C
BENDICH, I	NWEST	1	0	0	2033	ELLIOTT, T	NORTH	0	2	2	1392
BENEDEK, R	ROOKS	4	3	2	2148T	ENGELN, M	RKNGT	2	4	3	1622
BENESA, A	ALUMN	4	5	1	2057C	EUSTACE, D	DRGNS	2	4	2	1462C
BOLDINGH, E	UOP	6	2	1	1876C	FABIJONAS, R	PAWNS	2	8	2	1546T
BOLSHOV, A	FERMI	8	1	2	1638	FELDMAN, M	BAKER	0	0	0	1300/0
BREYER, A	DRGNS	3	3	1	1319	FISSETTE, R	AMATS	3	6	2	1721*
BROCK, B	LOYLA	2	0	0	2095	FOX, R	MOLEX	0	1	1	1562
BRONFELD, A	EXCLB	4	3	0	1845	FRANEK, M	PAWNS	4	2	3	1724D
BROTSOS, J	EXCLB	1	5	1	1542T	FRANK, M	ALUMN	9	2	0	1733C
BUCHNER, R	TYROS	7	2	3	1714C	FREIDEL, D	BAKER	1	1	1	1328
BUCKLEY, J	STCCC	2	0	0	1371	FREIDEL, JER	BAKER	8	3	1	1769
BUKY, J	RKNGT	1	1	0	1938	FREIDEL, JESSE	BAKER	9	3	1	1964
BURDICK, T	AMATS	0	0	0	1000/0	FREIDEL, P	BAKER	5	4	4	1903
BURIAN, D	NORTH	0	2	0	1508D	FRIDMAN, Y	MKNGT	4	2	6	2186
BYRNE, M	COMPA	4	5	1	1410*	FRISKE, T	WALGR	5	1	3	2093C
CARRINGTON, S	LBURN	0	0	0	0000/0	FULKERSON, R	LBURN	1	3	1	1435
CASHER, P	MOLEX	0	1	0	1100/2	FUNG, J	CITGR	0	3	0	1200/2
CASTANEDA, R	BPCHI	1	5	2	1259	FURTNER, F	AMATS	2	6	3	1457
CEASE, H	FERMI	3	0	1	1440	GAFNI, K	LOYLA	1	0	0	1828
CHAN, R	LOYLA	0	2	0	1200/2	GAINES, I	FERMI	7	5	1	1780D
CHAN, ROBERT	NWEST	1	0	0	2077	GANDHI, R	RKNGT	1	1	0	1939
CHERKASSKY, G	MKNGT	4	4	0	1664#	GARRIDO, J	LBURN	1	2	0	1100/1
CHUN, A	NWEST	0	0	0	800/0	GARZON, G	FERMI	8	1	3	2284
COHEN, H	RKNGT	3	2	0	1810	GASIECKI, P	AMATS	0	0	0	1000/0
COHEN, L	RKNGT	2	3	1	1962	GAZMEN, E	ALUMN	7	0	2	2080C
COOMBES, N	HEDGE	0	1	0	1299*	GIERTZ, C	STCCC	0	1	1	1474
COULTER, D	BPCHI	2	3	6	1938	GONCHAROFF, N	MKING	1	6	4	1656V
CYGAN, J	MKING	3	5	0	1755	GOODFRIEND, B	AMATS	4	2	0	1240
DECKER, D	MKING	0	1	0	1300/0	GORODETSKIY, S	NWEST	6	3	1	1909
DECMAN, S	ROOKS	1	2	1	1573D	GRABSKIY, J	COMPA	1	6	0	1300/7
DEGRAF, B	FERMI	5	2	3	1488*	GRANDHI, V	WALGR	0	1	0	1200/1

/x - UNRATED; x = # OF RATED GAMES

# - 5 TO 9 RATED GAMES

\* - 10 TO 24 RATED GAMES

C - CENTURY CLUB MEMBER

D - DOUBLE CENTURION

T - TRIPLE CENTURION

Q - QUAD CENTURION

V - QUINTUPLE CENTURION

05-15-2006

NAME	TEAM	W	L	D	RATING	NAME	TEAM	W	L	D	RATING
GREER, J	BAKER	3	2	2	1415	LE, DUC	CITGR	2	5	1	1720*
GRUDZINSKI, J	ROOKS	0	1	0	1431	LECHNICK, J	UOP	5	3	1	1699C
GRUDZINSKI, T	AMATS	0	1	0	1300/1	LEE, D	EXCLB	3	6	0	1930
GRYPARIS, J	MKING	1	4	1	1407C	LEONG, G	UOP	3	3	5	1985C
GUIO, J	TYROS	4	4	2	1846C	LEVENSON, S	WALGR	7	2	0	1887
GUTIERREZ, M	BAKER	3	0	0	1476	LINDNER, E	STCCC	1	1	0	1609
HAHNE, D	TYROS	6	1	1	1662C	LISSERMAN, E	MKING	1	3	1	1400/2
HALL, A	CASE	3	3	0	1500	LU, D	NWEST	3	5	1	1416*
HANSON, M	COMPA	3	2	0	1400/3	LUDWIG, T	DRGNS	1	2	2	1949C
HART, V	RKNGT	4	2	3	1948	MANILA, M	BPCHI	0	6	0	1152*
HAYHURST, W	CITGR	1	1	6	1936	MARCOWKA, R	DRGNS	6	3	0	1961D
HEISER, D	RKNGT	3	4	0	1150/3	MARKLEY, S	COMPA	1	0	0	1400/2
HEISER, E	RKNGT	6	4	2	2052	MARSHAL, KEN	RKNGT	2	3	1	1484
HENDRICKSON, B	MOLEX	1	6	2	1505	MARSHALL, J	STCCC	4	3	2	2111
HERMAN, J	BPCHI	0	1	0	0000/1	MARTELL, J	NWEST	0	1	0	600/0
HERNANDEZ, F	BPCHI	0	5	1	963#	MASITI, J	AMATS	3	0	0	1275/1
HILL, R	ROOKS	4	4	0	1990C	MASON, K	LOYLA	0	0	0	1200/0
HLOHOWSKYJ, I	ROOKS	0	6	0	0000/9	MCCLENDON, L	COMPA	0	7	0	1298
HO, M	NORTH	0	1	0	900/1	MCCOY, N	STCCC	4	0	2	1631
HORTON, D	MKING	2	1	0	1920	MCFADDEN, J	AMATS	0	1	0	1150/1
HUGHES, N	WALGR	2	4	2	1651C	MC GEE, M	STCCC	5	2	3	1472
HUSSAIN, S	LOYLA	0	2	0	1700/2	MCGOWAN, D	MOLEX	3	4	2	1275
HUSSEIN, A	WALGR	0	0	0	0000/0	MCGUIRE, A	WALGR	2	0	0	1850/1
INUMERABLE, F	ALUMN	2	1	0	2203C	MCLAWHORN, M	AMATS	0	4	0	1300/2
IRBY, L	AMATS	0	1	0	0000/1	MCWHIRT, C	NORTH	1	3	2	1621#
JACKSON, S	CASE	2	1	0	1560C	MEISSEN, B	STCCC	7	3	1	1791
JAKSTAS, K	PAWNS	9	0	4	2217D	MELNIKOV, I	MKING	3	3	3	2039C
JAMES, D	AMATS	0	6	0	1500/6	METZLER, J	CITGR	1	1	0	1250/1
JANSSEN, G	BAKER	6	3	0	1441	MEYER, C	AMATS	2	3	0	1100/2
JASAITIS, A	HEDGE	5	2	2	1999D	MICHALOPOULOS, G	CITGR	1	2	0	1327
JAWAID, A	LOYLA	0	0	0	1313	MICKLICH, F	UOP	5	4	1	1565D
JOHNSON, K	BAKER	0	1	0	1441	MIKULECKY, B	PAWNS	4	3	0	1431D
JOSHI, B	MKING	7	3	1	1531*	MILLER, A	ALUMN	5	4	1	1413
JURGENSEN, A	STCCC	0	0	0	1207	MILLING, J	COMPA	3	0	0	1500/4
KARANDIKAR, S	MKNGT	7	4	2	1639	MOEHS, D	FERMI	2	1	0	1423*
KARPIERZ, J	TYROS	1	0	0	1298	MOLINA, J	FERMI	1	1	0	1581*
KATSUYAMA, M	AMATS	0	0	0	1400/0	MORAN, P	RKNGT	1	0	2	1615
KELLEY, G	STCCC	1	0	0	1324	MORRIS, R	MKNGT	8	2	2	2198
KINSELLA, G	ROOKS	0	2	0	1425C	MOSSBRIDGE, A	UOP	0	1	0	1678
KOGAN, G	EXCLB	1	0	0	1692C	MUELLER, R	MOLEX	0	2	0	1024*
KOMORAVOLU, K	DRGNS	1	3	1	1268	MUHS, A	CITGR	2	5	2	1404
KRATKA, M	HEDGE	4	0	0	1703	NABEREZHNEV, D	ROOKS	0	2	0	0000/3
KRAUSE, R	RKNGT	1	3	0	1400/2	NALLATHAMBI, R	UOP	5	1	1	1559
KRAVIK, S	NWEST	4	2	0	1380	NGUYEN, T	BAKER	4	1	0	2173
KUHLMANN, S	ROOKS	1	3	0	1364*	NURSE, G	CASE	2	2	2	1809
KUNHIRAMAN, P	CITGR	2	3	1	1350/3	O'BRIEN, B	RKNGT	0	0	1	1291
LACART, B	STCCC	0	0	0	1192	O'DELL, DW	PAWNS	1	6	3	1383C
LAFORGE, W	TYROS	4	1	1	1415	OLSEN, A	UOP	5	2	1	1485C
LANG, R	EXCLB	1	1	1	2026	ONG, K	CITGR	2	1	0	1886
LATIMER, E	PAWNS	0	0	1	2008T	PADILLA, R	STCCC	1	0	1	1579

/x - UNRATED; x = # OF RATED GAMES

# - 5 TO 9 RATED GAMES

\* - 10 TO 24 RATED GAMES

C - CENTURY CLUB MEMBER

D - DOUBLE CENTURION

T - TRIPLE CENTURION

Q - QUAD CENTURION

V - QUINTUPLE CENTURION

NAME	TEAM	W	L	D	RATING	NAME	TEAM	W	L	D	RATING
PARAOAN, E	CASE	3	5	2	1617D	STEIN, P	TYROS	6	4	2	2172
PARRA, J	CITGR	2	1	0	1200/1	STOLTZ, B	TYROS	4	2	6	1925C
PEHAS, A	DRGNS	1	1	1	1862C	STOSKUS, A	STCCC	4	2	0	1343
PETERSON, T	AMATS	4	8	0	1463*	STUMP, P	STCCC	1	1	0	1168
PIPARIA, J	MKING	4	3	4	1866	SUAREZ, E	ROOKS	0	2	0	1834
PIVOVITZ, M	STCCC	0	2	0	1375	SUERTH, F	EXCLB	1	5	1	1485D
PIOWAR, T	AMATS	0	3	0	1050/1	SUITS, J	STCCC	10	2	0	1598
PRADT, D	STCCC	2	2	1	1624	SUARNAKANTI, R	BPCHI	1	5	1	1209*
RABINOVICH, E	MKING	5	2	0	1512	TAN, A	HEDGE	2	3	2	1662*
RASO, P	BAKER	3	1	0	2039	TANNER, C	BAKER	0	0	0	1334
RAUCHMAN, M	HEDGE	2	1	3	2145	TEGEL, F	DRGNS	3	4	1	2035Q
REICH, T	MOLEX	2	6	1	1882	THOMAS, J	DRGNS	2	3	1	1532D
REID, C	CASE	3	7	1	1455D	THOMSON, J	MKNGT	4	4	4	1978C
RINGENBERG, T	BPCHI	2	2	0	1421	THORNE, P	CITGR	0	1	0	0000/1
RODNYANSKY, S	NWEST	3	2	0	1734	UNDERWOOD, W	COMPA	0	4	2	1909C
ROJO, V	CASE	0	1	1	1405	VAIL, M	COMPA	2	4	3	1565
ROSS, B	MKNGT	0	1	0	0000/1	VAN MEER, J	UOP	0	0	0	1958
RUFUS, B	MOLEX	4	3	2	1259*	VAN PETTEN, J	BAKER	1	1	0	1462
SAM, K	CITGR	1	1	0	1100/0	VIGANTS, A	NORTH	0	8	0	1596C
SANTIAGO, T	ALUMN	1	2	1	1908	VON HATTEN, J	BAKER	0	0	0	1540
SCHOONOVER, M	UOP	0	2	0	1237	WALKER, A	NORTH	1	4	2	1815
SEDERLAND, C	NORTH	0	1	0	900/2	WALKER, C	UOP	4	2	1	1834
SEET, P	HEDGE	6	0	1	1890	WALLACH, C	MKING	2	4	4	1999C
SENSAT, J	CITGR	2	4	1	1558	WANG, ANDREW	BAKER	3	0	2	1743
SHEPARDSON, T	HEDGE	0	1	0	1558	WARREN, R	NORTH	0	0	1	2000/1
SHPAKOV, A	MKING	3	0	0	1400/1	WEBER, L	ALUMN	1	1	1	2069
SINGH, H	MKING	0	1	0	1400/0	WEITZ, R	EXCLB	5	3	0	1589D
SITAR, K	LBURN	3	5	1	1526	WIEWEL, J	STCCC	4	6	2	2007
SIWEK, M	UOP	1	1	4	1977D	WILLIAMS, K	CASE	0	1	0	2153
SLATER, B	BPCHI	0	10	0	0000/0	WILLIAMS, S	HEDGE	2	0	0	1201#
SMALLWOOD, J	NWEST	6	2	1	1874	WINKLE, J	BAKER	0	0	0	1579
SMITH, BR	TYROS	4	4	1	1581C	WINKLER, J	CITGR	0	2	0	1100/1
SMITH, M	HEDGE	5	2	2	1934	WOHNS, N	NWEST	1	1	0	1400/3
SOLLANO, E	ALUMN	9	1	1	1978C	WONG, P	EXCLB	0	1	0	2154C
SOROCK, R	WALGR	0	7	0	900/5	WYKRET, J	COMPA	0	1	0	1200/1
SPIEGEL, L	FERMI	6	2	5	1967D	YACOUT, A	ROOKS	2	0	0	1592
SPLINTER, J	STCCC	4	3	2	2033	ZADEREJ, V	MOLEX	6	3	1	1630
STAFF, M	LOYLA	0	1	0	1200/0	ZOELLNER, J	CASE	3	5	1	1326D
STAMM, V	DRGNS	3	3	1	1508T	ZUBIK, J	BPCHI	1	1	0	1180#
STAPLES, C	FERMI	2	2	0	1594						

/x - UNRATED; x = # OF RATED GAMES

# - 5 TO 9 RATED GAMES

\* - 10 TO 24 RATED GAMES

C - CENTURY CLUB MEMBER

D - DOUBLE CENTURION

T - TRIPLE CENTURION

Q - QUAD CENTURION

V - QUINTUPLE CENTURION

05-15-2006

Our Awards Banquet this year was what we've grown accustomed – but, still, with a twist!

We had our normal activities, but also invited the Illinois Chess Association. This provided us with an interesting opportunity to share historical tales and meet our state counterparts.

At right, the head table shows the mix – members of the UOP team (including Art's daughter) and friends from the ICA.

The gentleman in the white shirt at right was the winner of the ICA Player of the Year.



After dinner, we heard histories from one of our CICL founders **Jim Brotsos** (above) and later from **ICA President Bill Brock** (right).





Everyone seemed in top spirits, as showed when the trophies were awarded



**Bijal Joshi** (Motorola Kings) won Most Improved Player



Outgoing Treasurer **Lenny Spiegel** (Fermilab) is heavily thanked for his years of service



**Tom Friske** (Walgreens) was shocked by the League's decision to award him the Ron Dargis Award. This special recognition is for "outstanding service for the CICL", usually given to an out-going officer.

A top-quality *Chronos* brand chess clock was presented.

Tom is pictured trying to collect his thoughts and explain the joy of spending half-a-life on the CICL.

The evening finished in traditional style with a demonstration from **IM Angelo Young**. His first example was an tight battle with no obvious errors, until he found a trick in a even Pawn ending to break through. A very instructive finish !

What would be an evening without chess ? **Tony Jasaitis** and **Art Olsen** got out the PC and paired attendees into three sections (by rating) and the day was finished on speed chess.

THANKS TO ALL ! Who planned and attended. Banquet Chairman **Burt Gazmen** did another excellent job !



## 2005 - 2006 LEAGUE CHAMPIONS

ST CHARLES BAKER CC



### Playoff Runners-up

Fermilab

### UOP CICL 2<sup>nd</sup>-Tier Champions

Gee Leong

Richard Easton

Frank Micklich

Art Olsen

### MOST IMPROVED PLAYER

BIJAL JOSHI (MOTOROLA KINGS)

### SPECIAL OFFICER AWARDS

LENNY SPIEGEL (FERMILAB)

for years of service as treasurer

BRIAN SMITH (LUCENT TYROS)

for ground-breaking breakthroughs as Publicity Chairman

TOM FRISKE (WALGREENS)

Presented the "Ron Dargis Award" for outstanding service to the CICL.



## DIVISION CHAMPIONS

EAST DIVISION  
2<sup>ND</sup> PLACE

ALUMNI ACES  
HEDGEHOGS

NORTH DIVISION  
2<sup>ND</sup> PLACE

MOTOROLA KNIGHTS  
RENAISSANCE KNIGHTS

WEST DIVISION  
2<sup>ND</sup> PLACE

LUCENT TYROS  
FERMILAB / ST CHARLES BAKER CC

## CENTURION AWARDS



### CENTURIONS (100+ GAMES PLAYED)

IM PETE STEIN (LUCENT TYROS) 100

TEDDY SANTIAGO (ALUMNI ACES) 102

### DOUBLE CENTURIONS (200+ GAMES PLAYED)

DAVE O'DELL (PAWNS) 200

CHUCK DOBROVOLNY (LUCENT DRAGONS) 201

BOB HILL (ARGONNE ROOKS) 207

### TRIPLE CENTURIONS (300+ GAMES PLAYED)

BOB MARCOWKA (LUCENT DRAGONS) 303

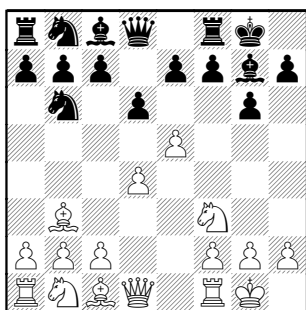
DAVE BAURAC (ARGONNE ROOKS) 306

Thank you, faithful contributors !  
Please forgive the apparent  
forgetting of these submissions  
which were put aside for the first  
issue of next season.

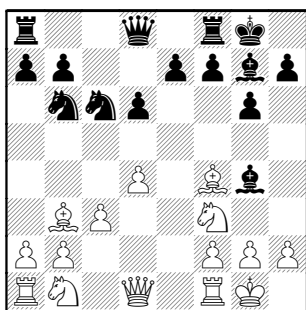
Walker,A - Friske,T [B04]  
2006

[ Notes by Arnie Walker, analysis  
by Fritz ]

1.e4 Nf6 2.e5 Nd5 3.d4 d6 4.Nf3 g6  
5.Bc4 Nb6 6.Bb3 Bg7 7.0-0 0-0

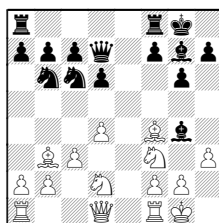


8.c3 Nc6 9.Bf4 Bg7 10.exd6 cxd6



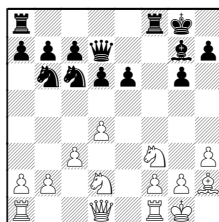
Taking with the e-pawn would have  
been quite drawish, I believe. Black  
will concentrate against c4 and the b-  
c-d pawn chain. The knights will  
support and occupy c4. If White plays  
b3 to counter this, c3 can become a  
fatal weakness. However, White has  
more space and controls more of the  
board (including where the kings  
reside). If White solves the Q-side  
problem, he is likely to attain the  
overall advantage.

An example recapture with e-Pawn:  
10...exd6 11.Nbd2 Qd7 12.h3

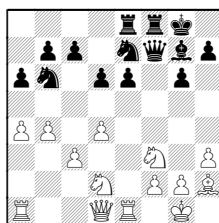


12...Bf5

12...Be6 13.Bxe6 fxe6 14.Bh2

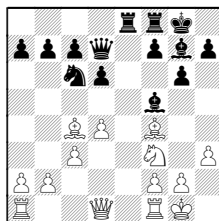


14...Rae8 15.Re1 Qf7 16.b4 a6 17.a4  
Ne7

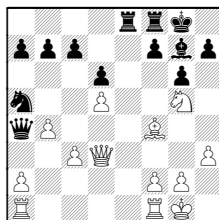


18.Qb3)

13.Nc4 Nxc4 14.Bxc4 Rae8



15.d5 Na5 16.Bd3 Be4 17.Ng5 Bxd3  
18.Qxd3 Qa4 19.b4



19...b5 20.Nf3 Nc4 21.Nd4

(21.Nd2? Nb2; -or-  
21.Rfc1 Re7 22.Nd2 Nb6)

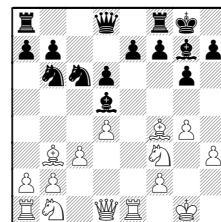
21...a6 22.a3 h6 23.Qf3 Kh8 24.Rfd1

**11.h3 Bxf3!?**

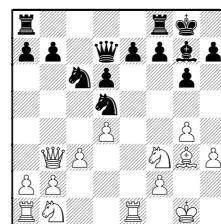
After the first 'long think', the first  
doubtful move. By relinquishing the  
bishop pair, Black is even more  
committed to the c4/ c3/b2 issue. If  
White can resolve it, he WILL have a  
lasting initiative and good winning  
chances.

11...Bf5 12.Re1

(12.g4!? Be4 13.Re1 Bd5

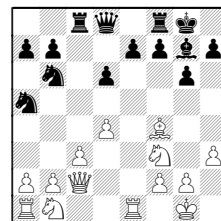


14.Bxd5 Nxd5 15.Bg3 Qd7 16.Qb3



16...Nb6 17.Nbd2 Na5 18.Qb4 Nc6  
19.Qb3)

12...Na5 13.Bc2 Bxc2 14.Qxc2 Rc8

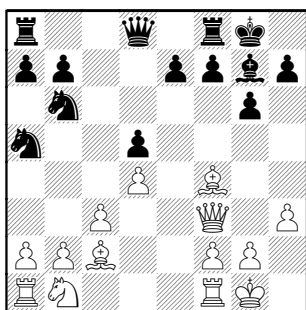


and Fritz plays itself....

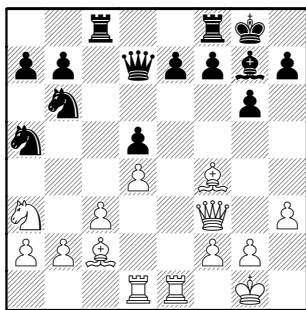
15.Nbd2 Nac4 16.Nxc4 Nxc4 17.Re2 e6 18.Rae1 Qb6 19.b3 Na3 20.Qd2 Nb5 21.Re3 d5 22.Ne5 Rfd8 23.Ng4 Qa5 24.Rf3! h5 (24...Nxc3 25.Ree3 e5 26.Nxe5 Bxe5 27.Rxe5+-) 25.Nh6+ Bxh6 26.Bxh6 Nd6 27.Bg5 Rd7 28.Bf6 Kh7 29.Qb2 Ne4 30.Ree3 Nxf6 31.Rxf6 Rdc7 32.Ref3 Kg8 33.Qe2 Qa6 34.Qd2 Qd6 35.Qh6 Rxc3 36.Rxg6+ fxg6 37.Qxg6+ Kh8 38.Qh6+ draw

12.Qxf3 Na5 [Ed: maybe 12...e5]

13.Bc2 d5

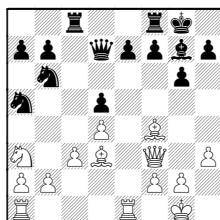


14.Na3 Qd7 15.Rfe1 Rac8 16.Rad1



Overprotecting d4 and developing the R before any minor goes back to b1 or c1

But while playing it I decided that better was: 16.Bd3

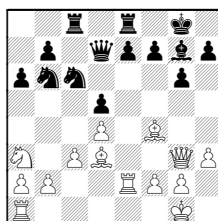


which watches c4, takes B out of R's line, and leaves c2 as an option for the N.

(The lines shown are distilled from (sadly) thousands of positions that I (obsessively) examined, with the best play Fritz and I could produce.) ...

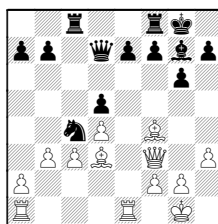
16...Nac4

(or 16...Nc6 17.Qe3 Rfe8 18.Qg3 a6 19.Re2

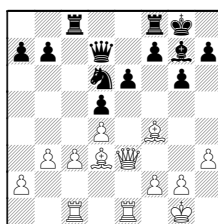


19...f6 20.Rd1 e5 21.dxe5 Nxe5

17.Nxc4 Nxc4 18.b3



18...Nd6 19.Rac1 e6 20.Qe3

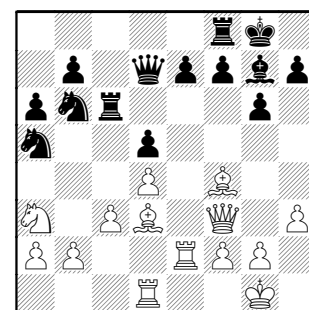


20...Nb5 21.Be2 Qc6 22.a4 Nd6 23.Bd3 Nf5 24.Qe2 a6

**16...Rc6**

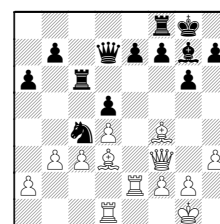
Bb5 prevents this in the other line, but this R excursion does not help Black anyway.

**17.Bd3 a6 18.Re2**

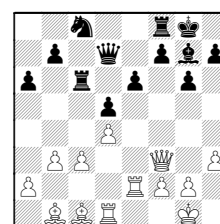


**18...Nc8?!**

18...Nbc4! 19.Nxc4 Nxc4 20.b3



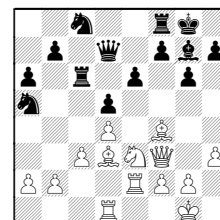
20...Nb6 21.Bb1 e6 22.Bc1 Nc8



23.Bb2 b5 24.Bd3 Nd6 25.Rc1 Rfc8

**19.Nc2 Rb6!?**

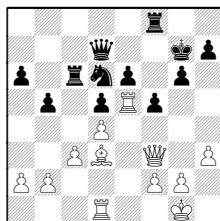
19...e6 20.Ne3



20...b5 21.Ng4 Nc4 22.Bh6 f5

(22...Bxh6?? 23.Nf6+-)

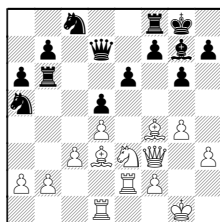
23.Bxg7 Kxg7 24.Ne5 Nxe5 25.Rxe5 Nd6



26.Rde1 Ne4 27.a3 Rfc8± Fritz's evaluation, but it doesn't look to be enough to win:

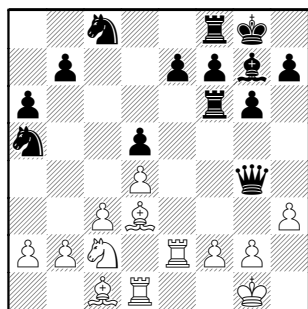
20.Bc1 perhaps too conservative, had B been as highly rated as White

White should proceed with kingside play as follows: 20.Ne3 e6 21.g4!



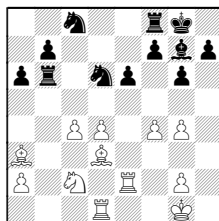
Although I doubt that there is a forced win here, White seems to have a long-lasting initiative

20...Rf6 21.Qg4! Qxg4



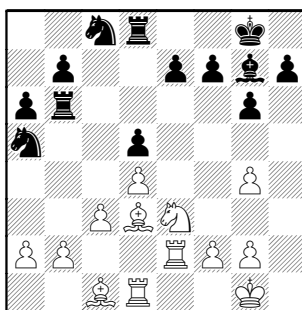
all other moves are bad for Black.  
22.hxg4 with two good bishops and a strong kingside attack under way, white still has good winning chances.  
22...Rb6 23.Ne3

23.f4! Nc4 24.b3 N4d6 25.Ba3 e6  
26.c4 dxc4 27.bxc4

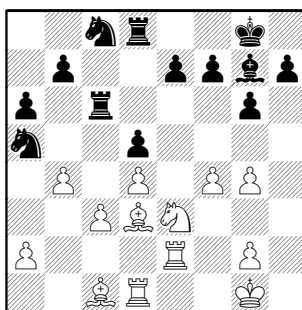


27...Rc6 28.f5!±

23...Rd8



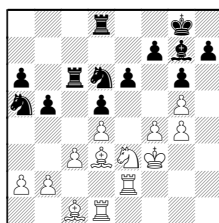
24.f4 Rc6 25.b4!?



Good enough for the draw, getting rid of the bother at c3/c4, but White could play for the win with...

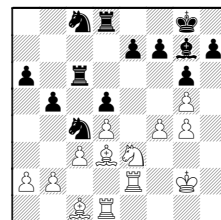
25.g5! Nc4

(25...e6 26.g4 Nd6 27.Kg2 b5 28.Kf3



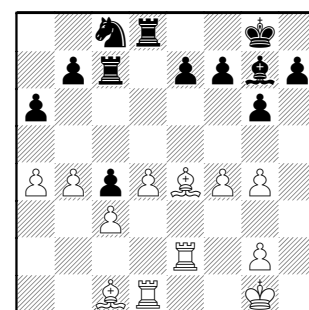
28...Rdc8 29.Nc2±)

26.g4 b5 27.Kg2



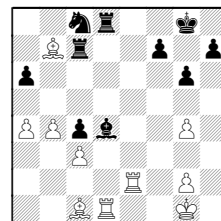
27...h6 28.gxh6 Bxh6 29.Nc2

25...Nc4 26.Nxc4 dxc4 27.Be4 Rc7  
28.a4

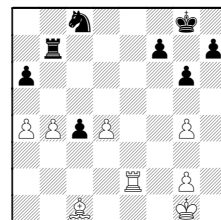


28...Nb6

Black certainly wanted to open lines here, but after a long think couldn't improve. 28...e5 29.fxe5 Bxe5  
30.Bxb7! Bxd4+

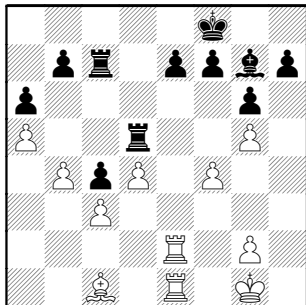


trying to win back the Pawn after Rxb7 31.Rxd4 Rxd4 32.cxd4 Rxb7



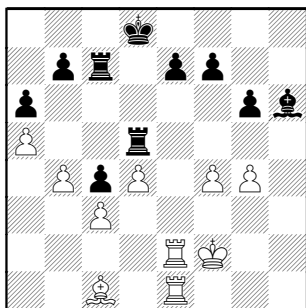
33.Re8+ Kg7 34.Rxc8 and Black has just lost a piece

29.a5 Nd5 30.Bxd5 Rxd5 31.Rde1 Kf8 32.g5



White offered a draw here.

32...Ke8?! 33.g4± Kd8? should lose badly 34.Kf2 34...h6 35.gxh6 Bxh6



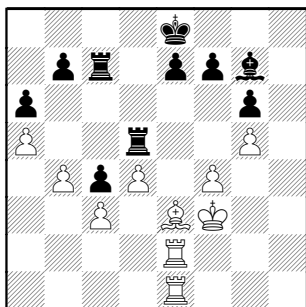
36.g5? throwing away the win!

36.Rh1 Bf8 37.Rh8 Ke8 38.f5! gxf5 39.Bh6

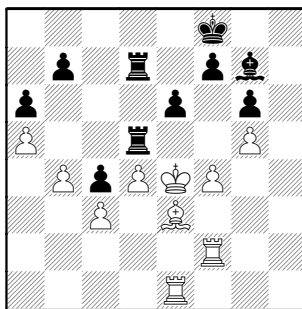
36...Bg7 37.Be3

37.Kf3 Ke8 38.Rh1 Rb5 39.Rh7 Kf8 also draws.

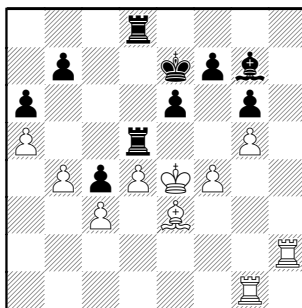
37...Ke8 38.Kf3



38...Kf8 39.Ke4 Rcd7 40.Rf2 e6



41.Rg1 Ke7 42.Ra2 Rd8 43.Rh2



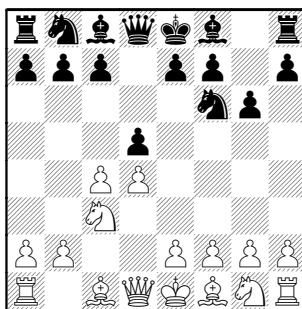
White accepted a draw. 1/2-1/2

Eaman,R (1839) – Benesa,A (2097) [D85]  
4-4-2006

[ Notes by Robert Eaman ]

My record to this point against Benesa was 0-4, so I wanted to play a solid game and hope for the best.

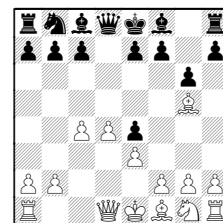
1.d4 Nf6 2.c4 g6 3.Nc3 d5



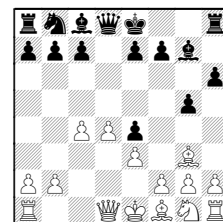
4.cxd5

4.Bg5 was something I'd tried before against Benesa, a year or two ago,

and I didn't like it then. 4...Ne4 5.Nxe4 dxe4 6.e3

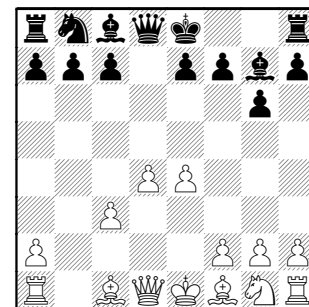


6...h6 7.Bh4 g5 8.Bg3 Bg7



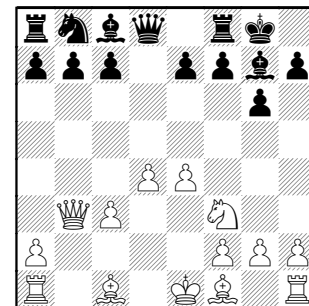
9.Ne2 c5 10.Qd2

4...Nxd5 5.e4 Nxc3 6.bxc3 Bg7



As soon as I saw this position, I realized black was going to play c5 at some point, so I prepared immediately.

7.Nf3 0-0 [7...Bg4 Might have been better.] 8.Qb3!?

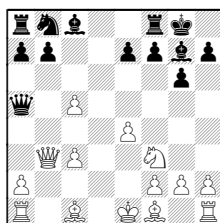


It was either this or Be2, and I thought I might be able to retard black's queenside development a bit while protecting the c3 pawn against a c5 push. [8.Be2 c5=]

**8...c5!?** I was surprised he played this, based upon the fact that my queen has c3 protected, but I didn't realize he's got Qa5 at his disposal later.

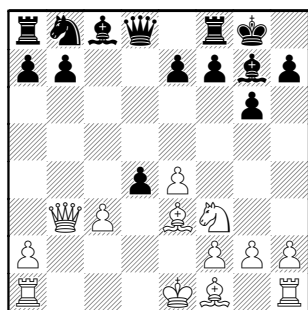
**9.Be3**

9.dxc5 Qa5



10.Bd2 Qxc5

**9...cxd4**

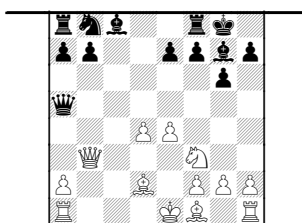


**10.Nxd4!?**

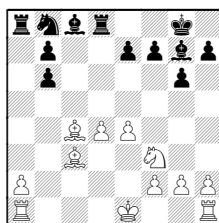
I debated long and hard on this move, and despite the fact that it leaves me with an isolated c-pawn, the knight retards the development of black's light-squared bishop and knight for a short while, which seemed better.

One try might be: 10.Bxd4 Nc6

Or how about 10.cxd4 Qa5+ 11.Bd2

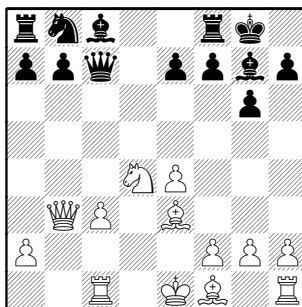


11...Qb6 12.Qxb6 axb6 13.Bc4 Rd8  
14.Bc3



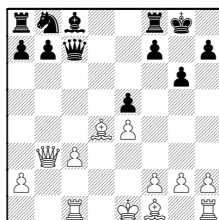
is unclear

**10...Qc7** Helping black to develop his knight, and opening the d-file for the rook. **11.Rc1**



**11...a6**

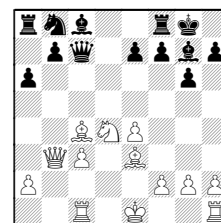
11...Bxd4 12.Bxd4 [Ed: Not seeing downside of.. 12.cxd4] 12...e5



13.Be3 Be6 14.Qb2

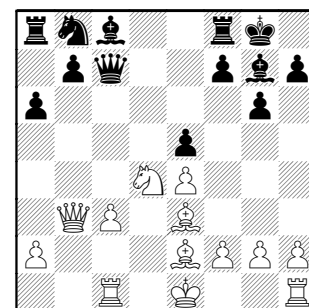
**12.Be2**

12.Bc4



I looked at this, but didn't like black's b5, nor how it tied down my queen.

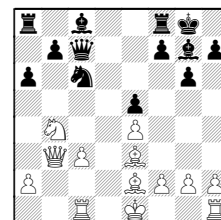
**12...e5?!**



Blocking in black's dark-squared bishop, which I liked, positionally.

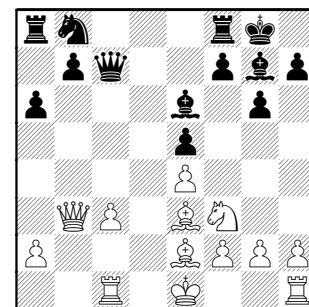
**13.Nf3**

13.Nc2 Nc6 14.Nb4

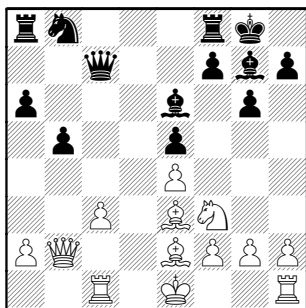


with the idea of Nd5.

**13...Be6**



14.Qb2 [14.c4? b5! 15.Qc2 Rc8]  
14...b5

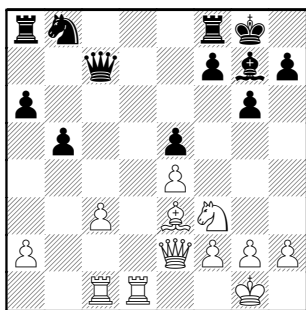


Making the c3 pawn an easier target.  
15.0-0

Relieved to finally castle, and noting that oddly enough, I seem to have positional equality and development advantages against someone who almost always has those against ME.

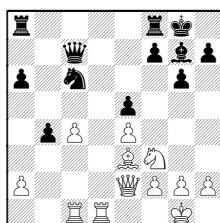
15...Bc4 with the desire to get the queen to c4, and keep the pressure on c3.

16.Rfd1 Bxe2 17.Qxe2



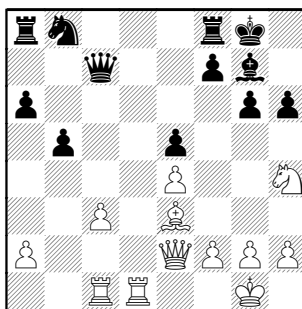
17...h6?! This seems like an unnecessary move that weakens black's kingside. This move comes back to haunt black later in the game.

17...Nc6 Allows me to play c4, but is probably better. 18.c4 b4



19.Rd5 Rfd8 White is slightly better

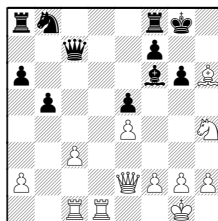
18.Nh4!?



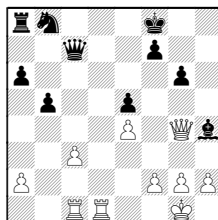
The rule of thumb (especially against stronger players) is to NOT move one's knight to the a or h files. But this move creates possibilities for some nice kingside attacking (I vaguely saw Nxg6 with the white queen on the a2-g8 diagonal as a possibility), and the knight will end up at the powerful f5 square if black plays g5.

18...Qe7

18...Bf6?! 19.Bxh6

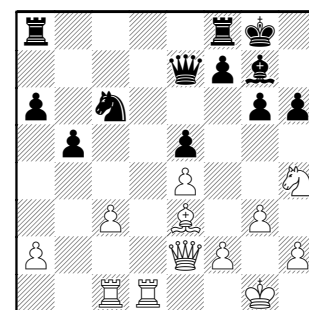


19...Bxh4 20.Bxf8 Kxf8 21.Qg4



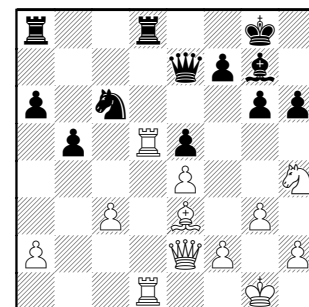
White is still slightly better

19.g3 Nc6



I immediately began to fear pushing c4, as black gets to play the positionally punishing Nb4 or Nd4. I also saw now how black could potentially get the knight to c4, so I had to mobilize quickly to avoid this fate.

20.Rd5 Rfd8 [20...Na5? 21.Bc5!]  
21.Rcd1

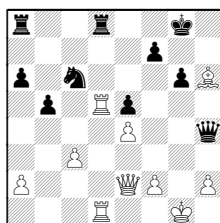


21...Qa3?! With the d-file to contest, I saw this as a slight positional mistake. The queen is almost always more powerful in the center. However, black's threats to white's 2 queenside pawns are to be taken seriously.

The question is: can white afford to give up those pawns for attacking chances? White now has many options here, and I spent a lot of time considering what I thought was the critical point in the game. I took stock of my positional advantages, and ultimately decided to play it conservatively for now, as black's counterplay is very limited.

A) Alternatively,  
21...Bf6 22.Bxh6 Bxh4 23.gxh4 Qxh4





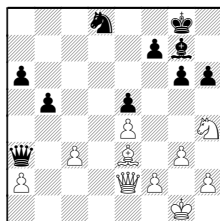
24.Bc1±;

**B)** But certainly not 21...Na5?! 22.a4!!  
Loses black both a and b pawns.

**22.Qc2**

**A)** I considered 22.Qg4?! with the idea of Nxg6 and Qe6+, forking king and the knight on c6. Not quick enough, I decided.;

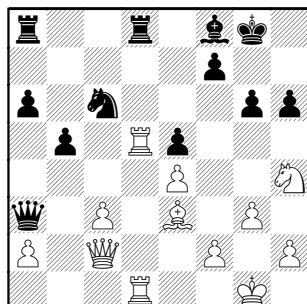
**B)** 22.Rxd8+!? Rxd8 23.Rxd8+ Nxd8



24.Qd2 Ne6= I did not see this continuation working as well for white, as it releases too much of the pressure on black.

**C)** Finally, there is 22.c4 b4 (22...bxc4 23.Qxc4±) 23.R1d3 Qa4±  
But this did not seem to be the right type of improvement for white, as I feared granting black the counterplay of a semi-passed b-pawn.

**22...Bf8**



Now we had approximately 20 minutes apiece to reach move 45. Time trouble began to weigh on my mind.

**23.Nf3** Double-attacking e5 again, and offering white the chance to cover d4 against black's knight invasion on d4 if white pushes c4.

If 23.Bc1 Qa5, again, it's not a clear improvement for white.

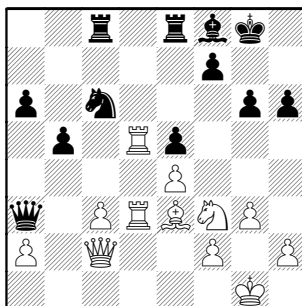
**23...Re8?!** As soon as I saw black give up the d-file, I knew I could now put more pressure on.

23...Bg7?! 24.Bc5! Qa5

**24.R1d3** This was a move in time pressure that looks a little worse for black than it is. When I made this move, I knew would cost my opponent some valuable time to work the variations through.

24.Bc1?! Qe7 with no improvement for white.

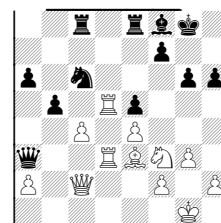
**24...Rac8**



**25.Qd2!**

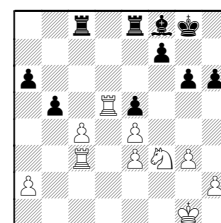
This nice move loads up on the d-file while threatening to take the weak h6 pawn, and threatening c4. My best move of the game to this point.

25.c4?!

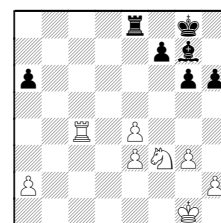


The implied threat from white's 24th move. I didn't like Nb4 at all, though, and didn't want to open that can of worms in time trouble.

**A)** 25...Nb4 26.Rxa3 Nxc2 27.Rc3 Nxe3 28.fxe3



28...bxc4 29.Rxe5 Bg7 30.Rxe8+ Rxe8 31.Rxc4



**B)** 25.Bc1 doesn't seem to accomplish much, and I liked Qd2 better. 25...Qe7

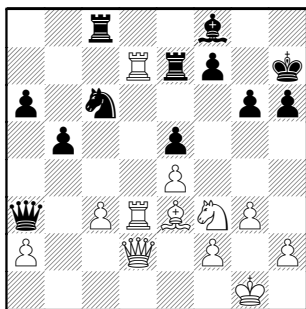
**25...Kh7?** Weakening f7, a mistake with the d-file under white's control.

25...h5 Keeping the king at home seems much better.

**26.Rd7!?** I think this is premature, as I now can no longer play the freeing move c4.

Is 26.c4 better here? Tough to say. 26...Qa4 27.cxb5

**26...Re7**



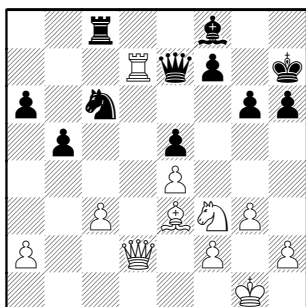
27.Rxe7

27.c4? Rxd7! 28.Rxd7 bxc4

27...Qxe7

27...Bxe7? 28.Bxh6! \*or\*  
27...Nxe7? 28.Nxe5

28.Rd7!

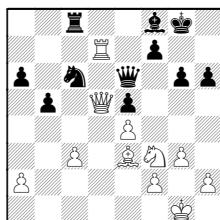


28...Qe6

A) 28...Qe8 29.Qd5 Kg8

B) 28...Qf6 Threatens to take the knight on f3, and wins a valuable tempo. 29.Kg2

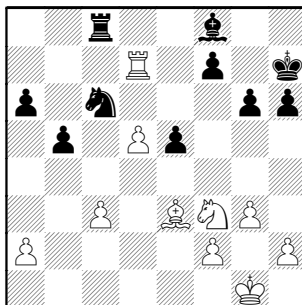
29.Qd5 Qxd5?? This is the critical mistake in the game. Black holds on much better with Kg8. We were both under some time trouble (less than 10 minutes left for 16 moves) at this point, though. [29...Kg8



is much better, as white now has no obvious continuations 30.Rb7!?

(30.Bxh6?! Bxh6 31.Rd6 Qxd5  
32.exd5 Ne7--+)

30.exd5



30...e4?!

A) 30...Ne7?! 31.d6!;

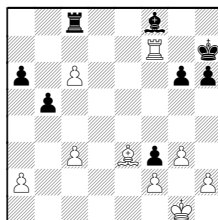
B) 30...Nd8 seemed best to me at the time, but not pretty for black either way. 31.Nxe5 Kg8

31.dxc6!

31.Nd2 is also good, but not as good as dxc6.

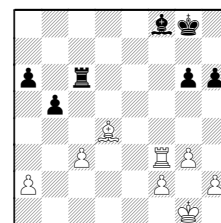
31...exf3 32.c7!! This move works because black has no open file to threaten back-rank mate.

32.Rxf7+



Another good variation, but I liked the pressure of the pawn at c7 slightly better.

32...Kg8 33.Rxf3 Rxc6 34.Bd4

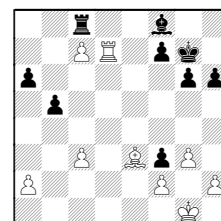


White is only up a pawn.

32...Bd6?!

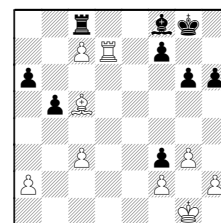
A) 32...Kg8?? 33.Bxh6! Bxh6  
34.Rd8+!!;

B) 32...Kg7



This move seems best, but it's fraught with peril.

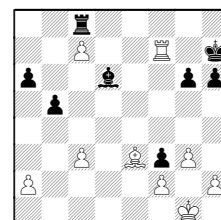
33.Bd4+ Kg8 34.Bc5!!



34...Bxc5 35.Rd8+!!

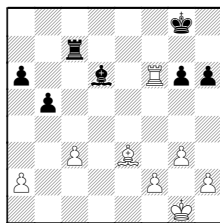
33.Rxd6

33.Rxf7+

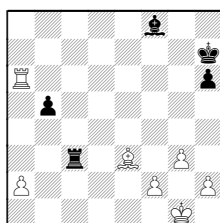


Nets white a 3 pawn advantage instead of the bishop. I liked the bishop better in this game.

33...Kg8 34.Rxf3 Rxc7 35.Rf6

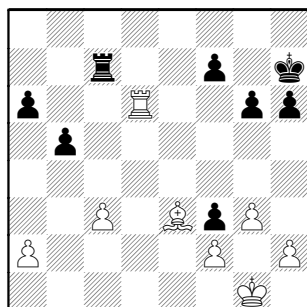


35...Bf8 36.Rxg6+ Kh7 37.Rxa6 Rxc3

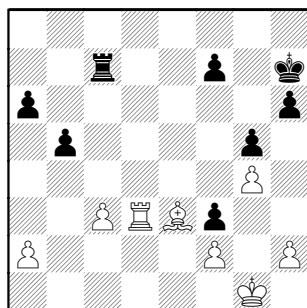


38.Rf6 Kg7 39.Rxh6

**33...Rxc7**



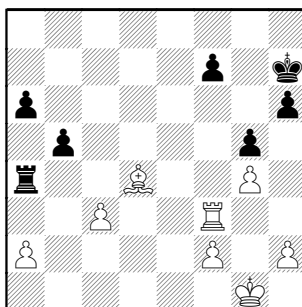
**34.Rd3 g5 35.g4**



**35...Rc4**

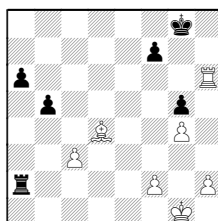
[35...h5 36.h3 f5 37.gxf5 g4 38.hxg4 hxg4 39.Rd4+-]

**36.Bd4! Ra4 37.Rxf3**



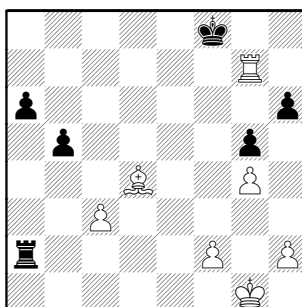
**37...Rxa2** Again, under serious time pressure.

Is 37...Kg8?! better for black? Doesn't seem so: 38.Rf6 Rxa2 39.Rxh6



with a huge mate threat at h8.

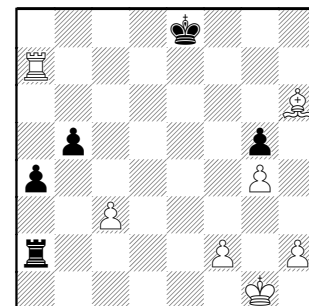
**38.Rxf7+ Kg8 39.Rg7+ Kf8**



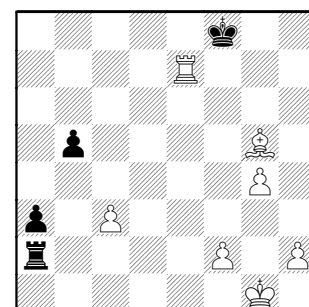
**40.Ra7?!**

40. Rb7 might have been better here, but under time pressure, I thought to block up the a-file instead. Either move threatens Bg7+, however.

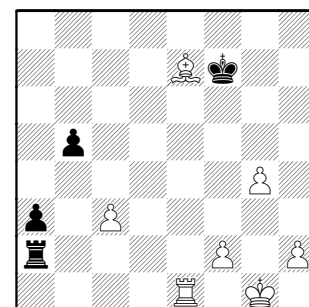
**40...a5?! 41.Bg7+! Ke8 42.Bxh6 a4**



**43.Bxg5 a3 44.Re7+** Trying to make time control. h4 and Be7 are other solid possibilities here. **44...Kf8**



**45.Re1!** Cutting off black's Ra1+. **45...Kf7 46.Be7!**



Now ready to sacrifice the bishop for the a3 pawn if necessary, but black has no counterplay anyway at this point.

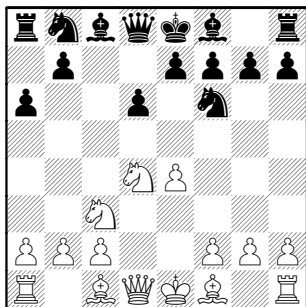
Overall, one of the most solidly played games of my chess career.

**1-0**

**Dobrovolny,C - Guio,J** [B84]  
 Dragons-Tyros, 2-6-2006

[ Notes by Chuck Dobrovolny ]

1.e4 c5 2.Nf3 d6 3.d4 cxd4 4.Nxd4  
 Nf6 5.Nc3 a6

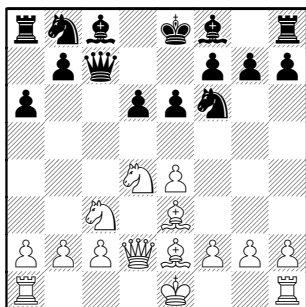


Now white has the usual choices: 6.  
 Bg5, Be3, Be2, Bc4, f4, and the  
 prophylactic a4

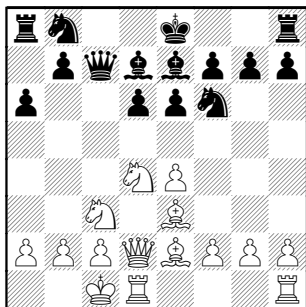
6.Be2 Qc7

Book is 6..e5, but few are comfortable  
 making black's d-pawn backward

7.Be3 e6 8.Qd2

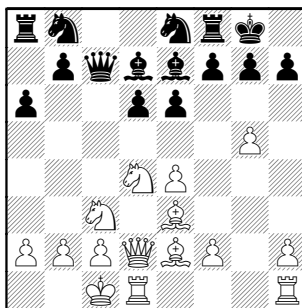


8...Be7 [8...b5 seems more active]  
 9.0-0-0 Bd7



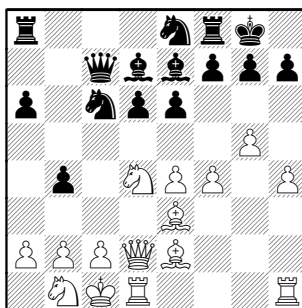
Seems too time-consuming as after  
 black's b5-4, the knight is ok at b1

10.g4 0-0 11.g5 Ne8



Black castled and played this quickly,  
 as if it was all part of his plan

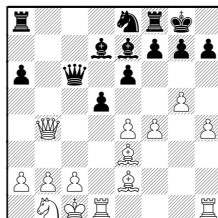
12.h4 b5 13.f4 b4 14.Nb1 Nc6



15.h5

15.Nxc6 Bxc6

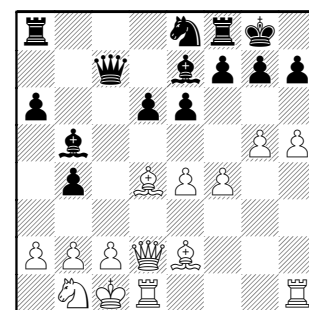
(15...Qxc6 16.Qxb4 d5



"is trouble" 17. Qd2 looking to the  
 weak Bd7 and Pd5)

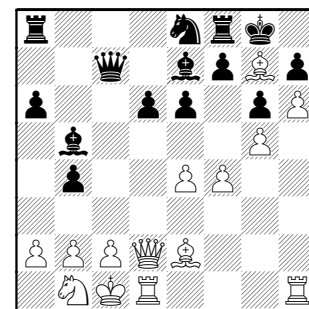
16.Qxb4 d5

15...Nxd4 16.Bxd4 Bb5?

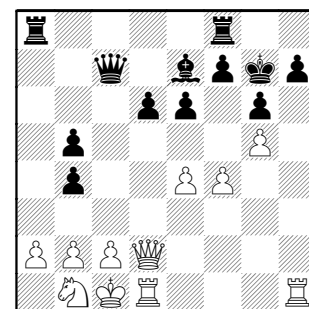


Tempting white to exchange and  
 activate black's queen rook, but it  
 seems like a mistake in light of what  
 follows

17.h6 g6 18.Bg7!



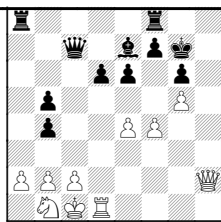
18...Nxcg7? Giving up the exchange  
 was preferable here. Now white gets  
 an attacking file 19.hxg7 Kxcg7  
 20.Bxb5 axb5?



Black cannot recapture the piece!

21.Rxh7+! Kxh7 22.Qh2+ Kg8

Much the same as game is 22...Kg7

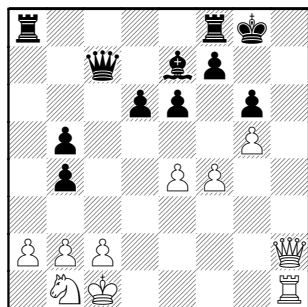


23.Qh6+

(23.Rh1? Rh8)

23...Kg8 24.Rh1

**23.Rh1**



Black resigned after a couple more checks. Mate is forced.

**1-0**

Your roving reporter was... well... roving, so missed the excitement on Playoff Saturday. Several cubs filed stories, so we do have a few bits to present... with games !

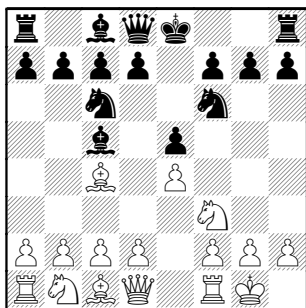
One note came in about the first-board battles. That opinion was that Pete Stein had the most interesting and enterprising games. One doesn't become a Master without a sense for tactics, and he had fertile positions.

His first game was a quickie:

**Stein,P (2206) – Melnikov,I (2048)** [C55]

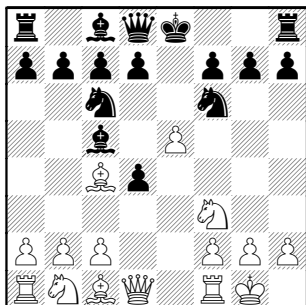
Tyros-Kings (1.1), 5-4-2006

**1.e4 e5 2.Nf3 Nc6 3.Bc4 Bc5 4.0–0 Nf6**

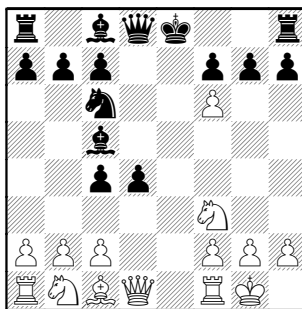


**5.d4** No time for Black to settle in; the threats begin !

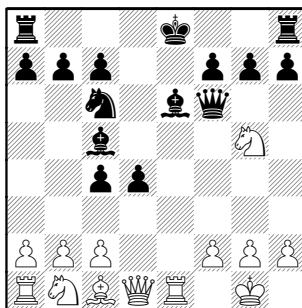
**5..exd4 6.e5**



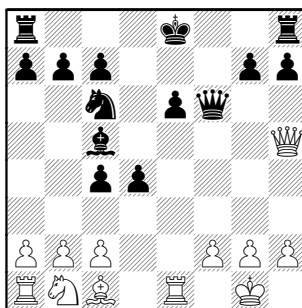
**6...d5 7.exf6 dxc4**



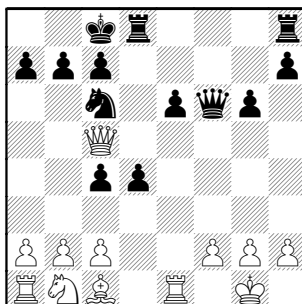
**8.Re1+ Be6 9.Ng5 Qxf6**



**10.Nxe6 fxe6 11.Qh5+**



White goes up material with Qxc5. But Black would have a lead in development and an advanced center. Find a good Black move?  
**11...g6 12.Qxc5 0–0–0?**



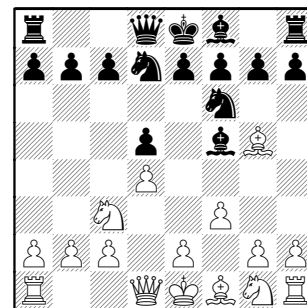
**13.Bg5 1–0**

*In round 2, he and Robert Morris had a bloody battle, storming each other's Kings on opposite wings. Morris' attack prevailed.*

**Stein,P (2219) – Morris,R (2202)** [D00]  
Tyros-Knights (2.1), 5-13-2006

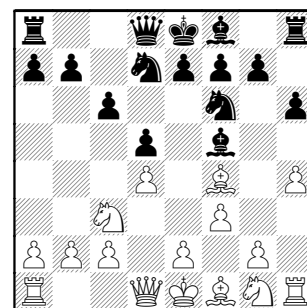
**1.d4 d5 2.Nc3** An odd move, but not to those North-Division top players that regularly had to meet Mik Stevanovic's (UOP alumnus) 1 Nc3.

**2...Bf5 3.f3 Nf6 4.Bg5 Nbd7**



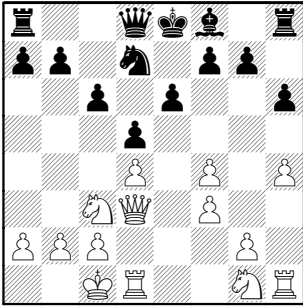
The initial battle centers around e4

**5.h4** idea g4, forcing Bf5 to e6 **5...h6 6.Bf4 c6**



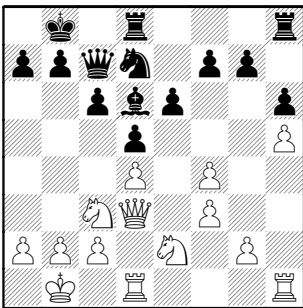
Holding d5, but also allowing the Queen out to harass the Queenside dark squares, thanks to their abandonment by Bf4.

**7.e3 e6 8.Bd3 Bxd3 9.Qxd3 Nh5 10.0–0–0 Nxf4 11.exf4**

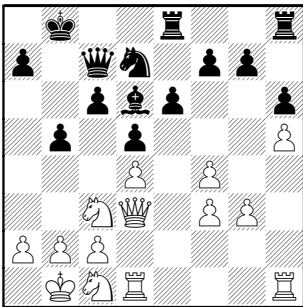


White's problem isn't the Pawns, rather, still, his inability to control all the board's dark squares (since his Bishop was traded away).

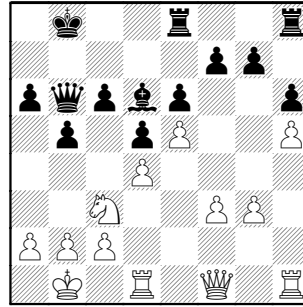
**11...Qc7 12.Nge2 0-0-0 13.h5 Kb8 14.Kb1 Bd6**



**15.g3 Rde8 16.Nc1 b5**

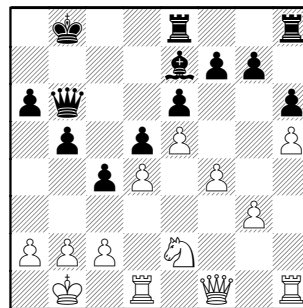


**17.Qf1 Qb6 18.Nd3 a6 19.Ne5 Nxe5 20.fxe5**



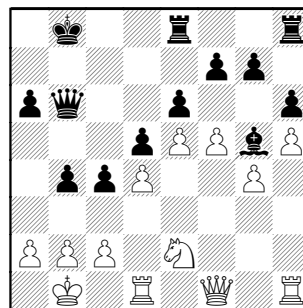
OK, the Kingside is secured. But Black always has the breakthrough c6-c5 ready.

**20...Be7 21.f4 c5 22.Ne2 c4!**

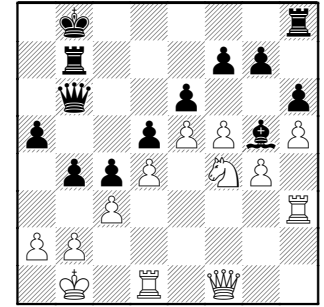


Nicely done! Intuitively, one would think the 3-3 wouldn't produce anything scary.

**23.f5 Bg5 24.g4 b4**

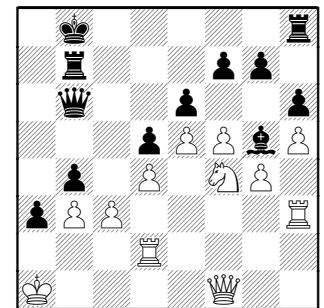


**25.Rh3 a5 26.c3 Re7 27.Nf4 Rb7**

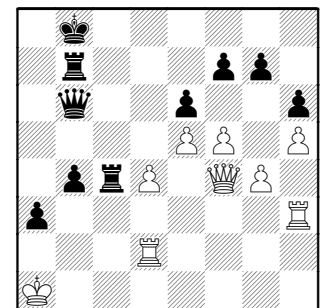


threatening ..Qxb2#

**28.Rd2 a4 29.Ka1 a3 30.b3 cxb3 31.axb3**



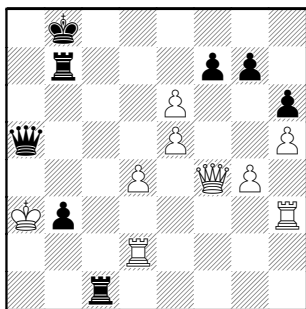
**31...Rc8 32.c4 dxc4 33.bxc4 Bxf4 34.Qxf4 Rxc4**



**35.fxe6? Rc1+ 36.Ka2 b3+**

Pawns really do get in the way, and the King isn't the piece to be forced into capturing them !

**37.Kxa3 Qa5+**



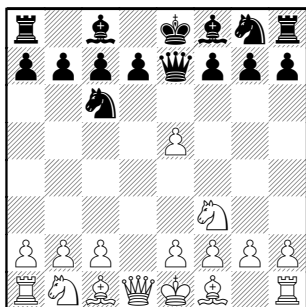
Black mates next with Qa1# 0-1

*In round 3, Pete uncorked a real shocker for an opening against the Aces' Florentino Inumberable - the Englund Gambit (1.d4, e5) to get away from any preparation for a King's Indian, and to get into an open game. Pete got what he wanted, but not a win as Florin squeezed it out in an endgame.*

**Inumberable,F (2188) – Stein,P (2195) [A40]**  
Aces-Tyros (3.1), 05-13-2006

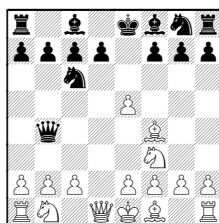
**1.d4 e5** The Englund Gambit. Tricky, but nothing special. Those curious can compare with the Budapest Defense 1 d4 Nf6 2 c4 e5

**2.dxe5 Nc6 3.Nf3 Qe7**



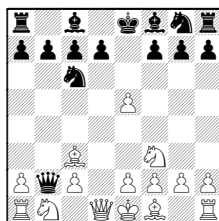
This is how Black assures he wins back the Pawn.**4.e4** This is also Alekhine's advice against the Budapest.

The main trick White must avoid is **4.Bf4?** trying to hold the Pawn.  
**4...Qb4+**



forks King, Bishop and b2

**5.Bd2 Qxb2 6.Bc3**

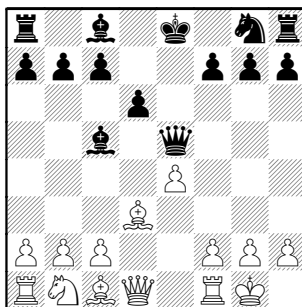


White seems to be OK, right ?

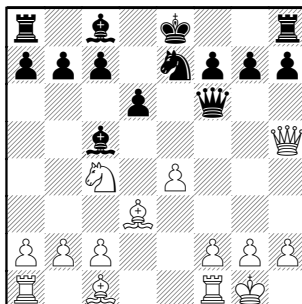
**6...Bb4!** pinning **7.Qd2** all seems forced  
(Not **7.Bxb4 Qxa1**)

**7...Bxc3 8.Qxc3 (8.Nxc3 Qxa1+)**  
**8...Qc1#**

**4...Nxe5 5.Nxe5 Qxe5 6.Bd3 Bc5**  
**7.0-0 d6**

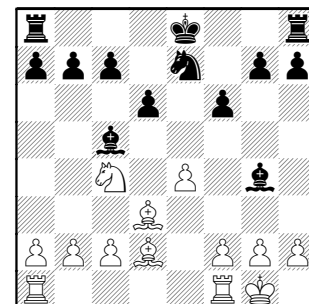


**8.Nd2 Ne7 9.Nc4 Qf6 10.Qh5**



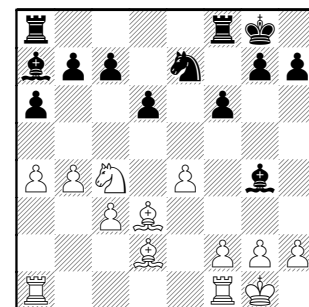
setting up an eventual e4-e5 hitting Queen and h7.

**10...Qg6 11.Qh4 Qg4 12.Bg5 f6**  
**13.Qxg4 Bxg4 14.Bd2**



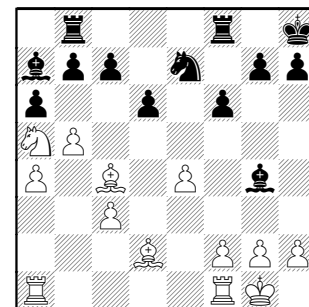
Idea is b4 to trade away one strong Bishop

**14...a6 15.b4 Bd4** just to make Bd2 worse **16.c3 Ba7 17.a4 0-0**



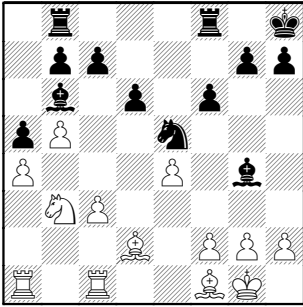
White has more space, but that's it.

**18.Na5 Rab8 19.Bc4+ Kh8 20.b5**



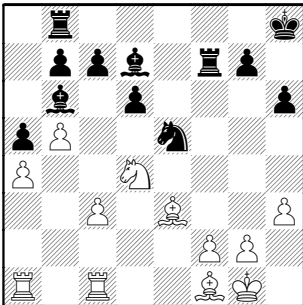
**20...Bb6 21.Nb3 a5 22.Bd3 Ng6**  
**23.Rfc1 Ne5 24.Bf1**



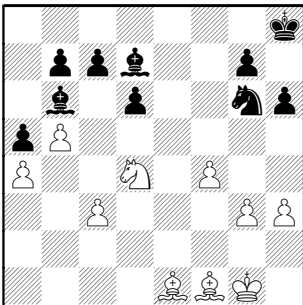


Black has made progress, so breaks open the position.

**24...f5 25.exf5 Rxf5 26.Nd4 Rf7  
27.Be3 Bd7 28.h3 h6**

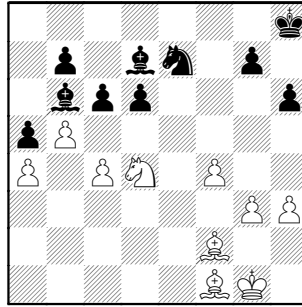


**29.f4 Ng6 30.g3 Re7 31.Bf2 Rbe8  
32.Re1 Rxe1 33.Rxe1 Rxe1 34.Bxe1**



Black can make a passer from his queenside 4-3, but doubtful that it will ever threaten.

**34...c6 35.Bf2 Ne7 36.c4**



The rest of score missing in time trouble. White eventually won the ending. Black resigned move 54. **1-0**

*The League Championship hinged on one last game, the game that wouldn't end, as most of us viewed it, going on an hour after all others. Even one of the TDs had to leave.*

*The Baker team just about had the title in the bag, leading 3-2, with Shekhar Karandikar struggling to make something out a drawish ending vs. Wally Alberts on board 6. Shekhar had a Rook vs Knight, but Wally was up several pawns including a solid passed one.*

*The dozen or so people milling around all pretty much thought nothing could be made of this position. As it dragged on and on everybody was thinking, "come on already". But Shekhar kept pressing in true team spirit fashion, Very little progress was being made and the Motorola Knight player was using all of his time in both time controls to try and win the game.*

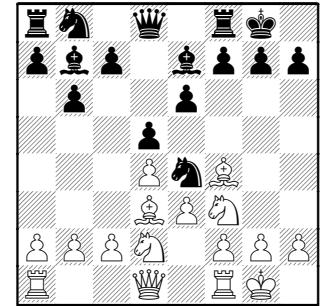
*After about an hour got to the point where maybe there were some possibilities after all. He took a chance on freeing up Wally's strong passer to try to make some progress, but it wasn't good enough, and he had to give up his rook for the pawn and the knight for a draw.*

*A great example of team play!*

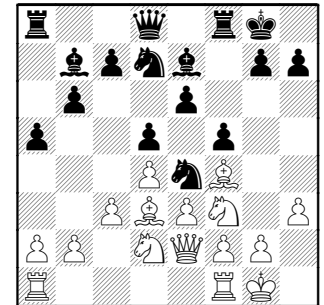
**Alberts,W - Karandikar,S [D03]**  
Baker-Knights (3.6), 5-13-2006

As it turned out, this was the final playoff game to complete.

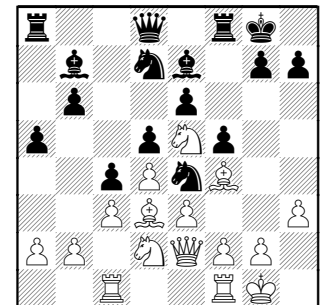
**1.Nf3 Nf6 2.d4 d5 3.Bg5 Ne4 4.Bf4  
e6 5.e3 Be7 6.Bd3 b6 7.Nbd2 Bb7  
8.0-0 0-0**



**9.h3 Nd7 10.Qe2 a5 11.c3 f5**



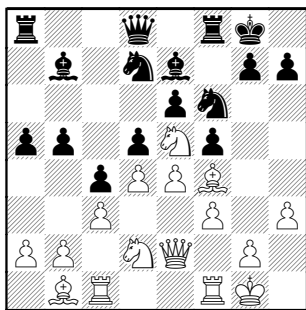
**12.Ne5 c5 13.Rac1 c4**



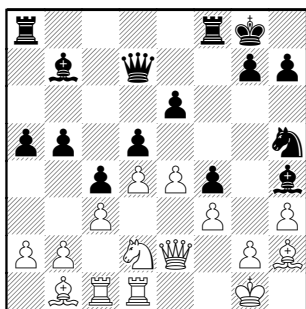
**14.Bb1**

It's pretty obvious that the light-squares are jammed, so 14.Bxe4 fxe4 but White has no influence on all the open kingside space. The trade would really only help Black, even with his worthless Bb7.

14...b5 15.f3 Nef6 16.e4

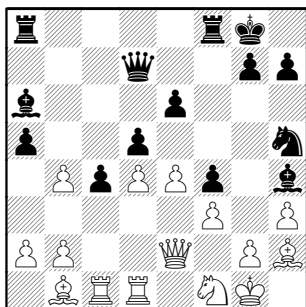


16...Nh5 17.Bh2 f4 18.Nxd7 Qxd7  
19.Rfe1 Bh4 20.Red1



Maybe Black can open the White King, he certainly can bring all pieces to bear (although that Bishop would have come in through e8, a long path)

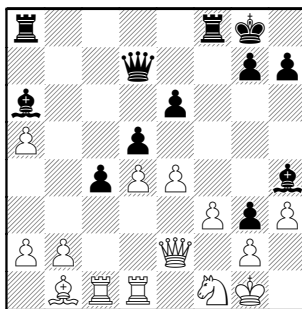
20...b4 21.cxb4 This frees Black's bad Bishop 21...Ba6 22.Nf1



22...Ng3 Never offer trades to a cramped opponent !

22...axb4 and continue Rfc8 and/or c3

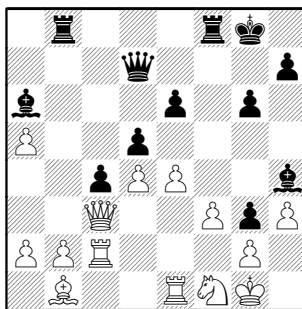
23.Bxg3 fxg3 24.bxa5



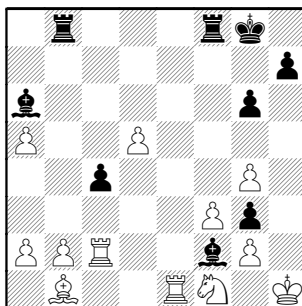
White's extra Pawns are doubled and on the rim, so not too scary

24...Qb5 25.Qc2 threatening on h7

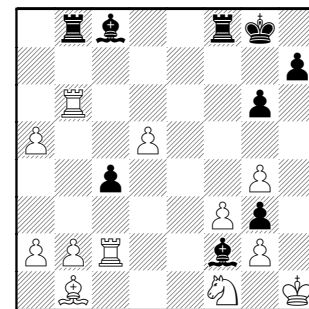
25...g6 26.Qc3 Rab8 27.Rc2 Qd7  
28.Re1



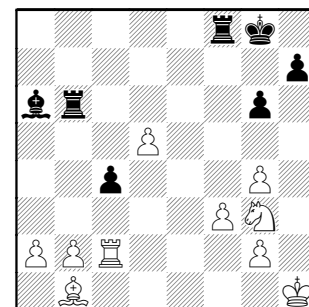
28...e5 29.exd5 exd4 30.Qxd4 Bf6  
31.Qg4 Qxg4 32.hxg4 Bd4+ 33.Kh1  
Bf2



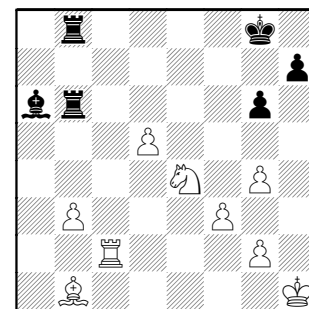
34.Re6 Bc8 35.Rb6



35...Bxb6 36.axb6 Rxb6 37.Nxg3  
Ba6



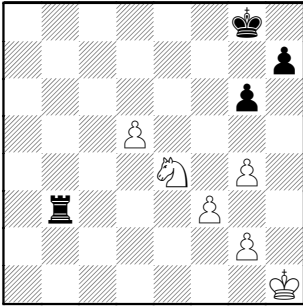
38.Ne4 Rfb8 39.b3 cxb3 40.axb3



40...Bd3

Black should be aware that he's running out of Pawns. This means a win can only come from overwhelming piece play. His move is obviously with trades in mind... which heads for a balance that is at best a draw for Black. Not what he wants.

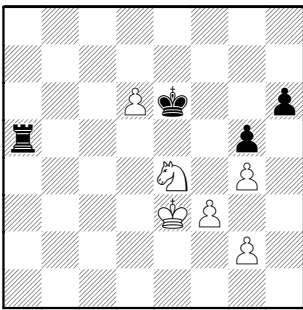
41.Rb2 Bxb1 42.Rxb1 Rxb3  
43.Rxb3 Rxb3



Black cannot win from this position. He should never have steered into it. Maybe the other games weren't finished, so he didn't know.

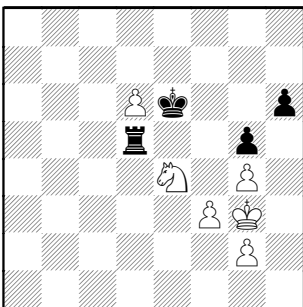
I always advise my players to keep a win in sight; never trade into a draw (from a promising position) before the match scenario is clear.

44.Kh2 h6 45.d6 Kf7 46.Kg3 g5 47.Kf2 Rb2+ 48.Kg3 Re2 49.Nc3 Rd2 50.Ne4 Rd5 51.Kf2 Ke6 52.Ke3 Ra5

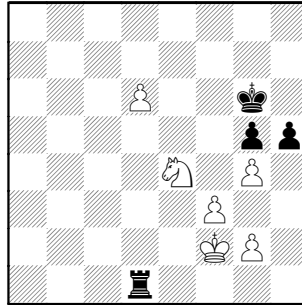


Somewhere around here, the other games were all decided, favoring St Charles Baker 3-2. So Black needs a win to save the match.

53.Kf2 Ra2+ 54.Kg3 Ra3 55.Kf2 Ra2+ 56.Kg3 Re2 57.Nc3 Re5 58.Ne4 Rd5

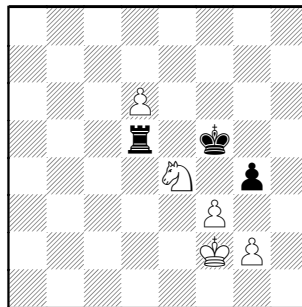


59.Kf2 Ke5 60.Kg3 Rd3 61.Kf2 Rd1 62.Ke2 Rd5 63.Kf2 Ke6 64.Ke2 Kf7 65.Kf2 Kg6 66.Kg3 Rd1 67.Kf2 h5



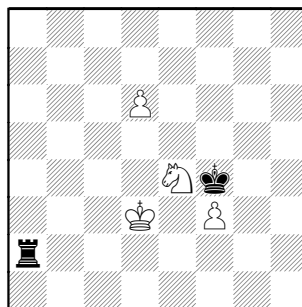
Geesh. Every Pawn gone is another nail in the drawing coffin.

68.gxh5+ Kxh5 69.Kg3 Rd4 70.Kh3 Kg6 71.Kg4 Rd5 72.Kg3 Kf5 73.Kf2 g4



Ditto #67. Don't know any R v N+2P mates.

74.Ke3 gxf3 75.gxf3 Ke6 76.Kf4 Rf5+ 77.Kg4 Rf8 78.Kg3 Kf5 79.Kg2 Kf4 80.Kf2 Ra8 81.Ke2 Ra2+ 82.Kd3



82...Kxf3 83.d7 Ra8 84.Ng5+ Kg4 85.Ne6 Kf5 test/Baker-Knights 0 (86) 86.d8Q 1/2-1/2

And the Baker club became CACL Champions .

### MEANWHILE...

For the non-playoff teams, a "2<sup>nd</sup>-tier" event was also held at the Computer Associates' site. To encourage participation, the team size for this tournament was reduce to 4-people.

Seven teams entered so three rounds were planned. (For full results, see last month's May 2006 bulletin).

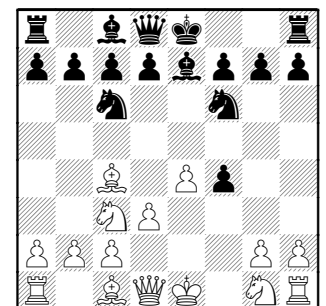
*The final round found UOP (Gee Leong, Richard Easton, Frank Micklich and Art Olsen) at 2-0 paired against the 1-1 Pawns (K. Jakstas, Wayne Ellice, R. Fabijonas and Bob Mikulecky) . This proved that UOP needed only a draw to clinch first place.*

*The top two boards were a bit one-sided, featuring game-killing blunders. So the other two games were the keys to the result.*

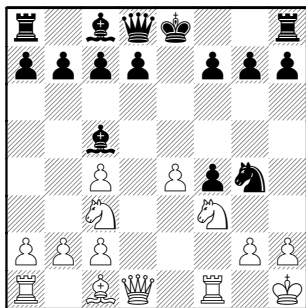
*First, Art Olsen defeated Bob Mikulecky and then Frank Micklich defeated R. Fabijonas to clinch 1st place for UOP in the 4-man team tournament.*

Micklich,F (1550) – Fabijonas,R (1561) [C24]  
UOP-Pawns (3.3), 5-13-2006

1.e4 e5 2.Bc4 Nf6 3.d3 Be7 4.Nc3 Nc6 5.f4 exf4

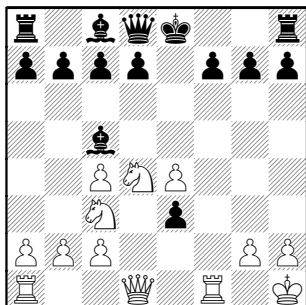


6.Nf3 Na5 7.0-0 Nxc4 8.dxc4 Bc5+  
9.Kh1 Ng4

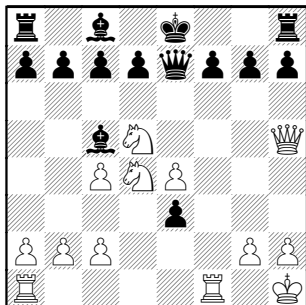


10.Nd4 Ne3 11.Bxe3 fxe3

Black has opened attacking lines for his opponent—White doesn't miss his chance!



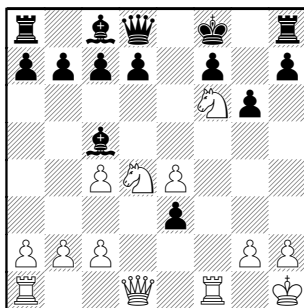
12.Qh5! hitting f7 and the loose Bc5  
12...Qe7 forced 13.Nd5



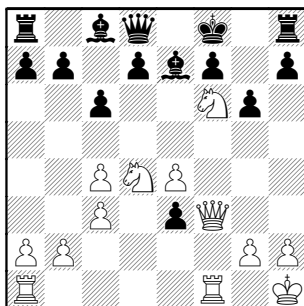
now it's Queen and c7 13...g6  
14.Qd1

14.Qf3 maintains the dual threats

14...Qd8 15.Nf6+ Kf8



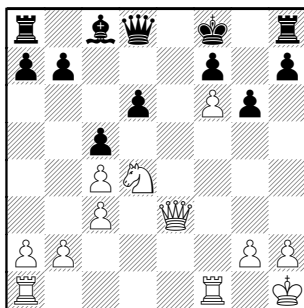
16.c3 c6 17.Qf3 back on track Be7



18.e5

18.Nxd7+ Ke8 19.Ne5 steals a Pawn  
and the one at e3 is also doomed

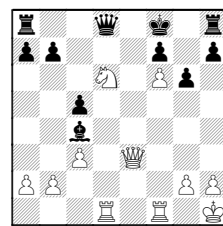
18...d6 19.Qxe3 Bxf6 20.exf6 c5



21.Nb5 Be6 22.Qf4

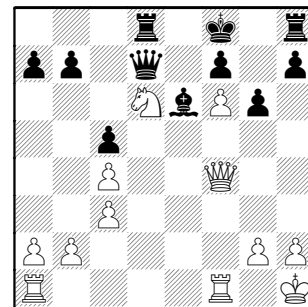
White has an opportunity to make  
some threats with

22.Rad1 Bxc4? 23.Nxd6



winning Bc4 as 23...Bxf1?? 24.Qh6+  
Kg8 25.Qg7#

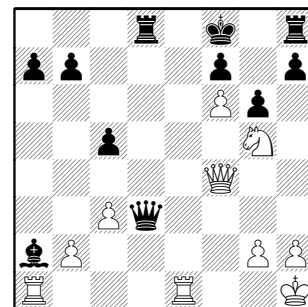
22...Qd7 23.Nxd6 Rd8



24.Ne4

Missing the same kill: 24.Qh6+ Kg8  
25.Qg7#

24...Qd3 25.Ng5 Bxc4 26.Rfe1 Bxa2



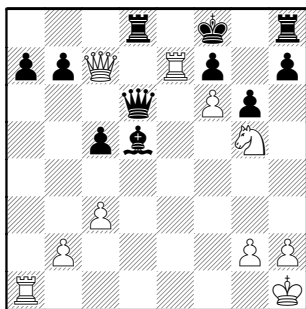
27.Qc7

Not seeing the problem with 27.Rxa2  
Qd1 28.Ra1

27...Qd6

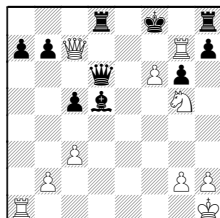
27...Bd5?? 28.Qxd8#

28.Re7 Bd5

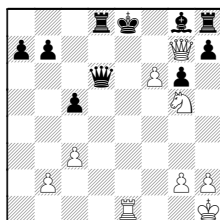


29.Rae1

White misses another kill: 29.Rxf7+ Kg8 (29...Bxf7?? 30.Qxf7#) 30.Rg7+ Kf8

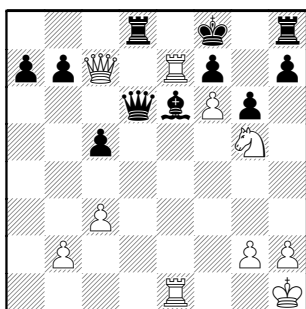


and Fritz snaps off mate in 4 after 31.Rg8+!! (I saw only 31.Nxh7+) 31...Bxg8 32.Qg7+ Ke8 33.Re1+



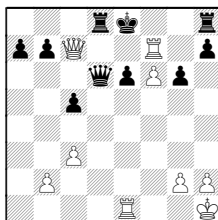
33...Qe6 (33...Be6 34.Qf7#) 34.Nxe6 Bxe6 35.Qe7#

29...Be6



30.h4?

MATES abound !!

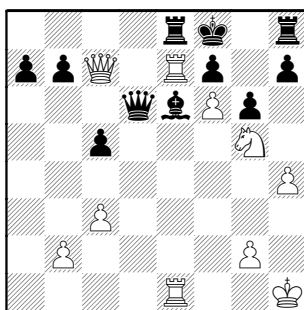
A) 30.Nxe6+ fxe6 31.Rf7+ Ke8

32.Rxe6+! Qxe6 33.Re7+ Kf8  
34.Qxd8#;

B) Or still 30.Rxf7+ is the same mate as last move

C) Oddly, White builds another !

30...Re8



31.R1xe6! idea Qxf7#

**BLACK RESIGNED**

31.Rxf7+ Kg8 32.Rg7+ Kf8 33.Nxe6+ Rxe6 34.Qf7#

Even the game move yields

31...Qxc7 32.Rxe8#

or 31...Rxe7 32.Qc8+ Re8 33.Qxe8#

1-0

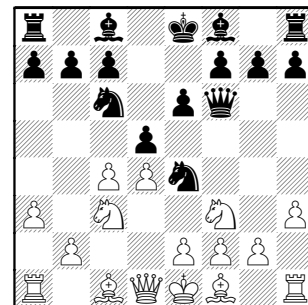
Mikulecky,B (1445) –  
Olsen,A (1471)  
Pawns-UOP (3.4), 5-13-2006

[D06]

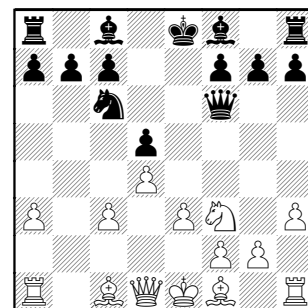
1.d4 d5 2.c4 Nf6 3.h3

The standard punishment to Black for his second move is 3.cxd5 Nxd5  
4.Nf3 and e4 comes easily

3...Nc6 4.a3 Ne4 5.Nf3 e6 6.Nc3 Qf6



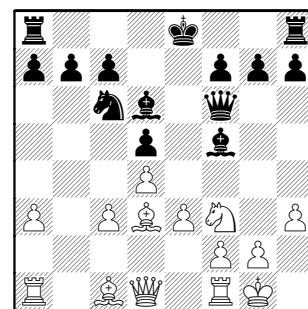
7.cxd5 Nxc3 8.bxc3 exd5 9.e3



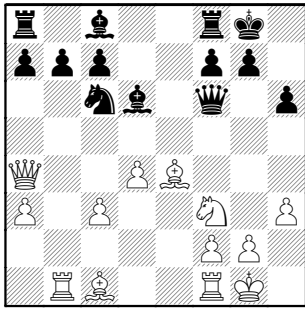
Bc1 isn't happy

9.Qc2 Bf5? 10.Qb3 wins Pd5 or Pb7

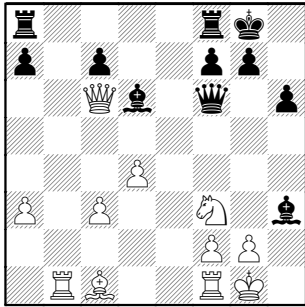
9...Bd6 10.Bd3 Bf5 11.0-0



11...Be6 12.e4 dxe4 13.Bxe4 h6  
14.Rb1 Bc8 15.Qa4 0-0



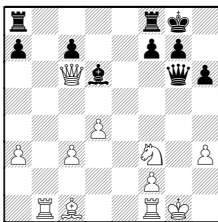
16.Bxc6 bxc6 17.Qxc6 Bxh3!



18.Qe4

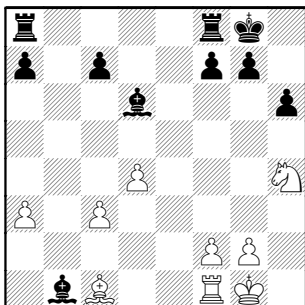
Watch the diagonal !

18.gxh3? Qg6+

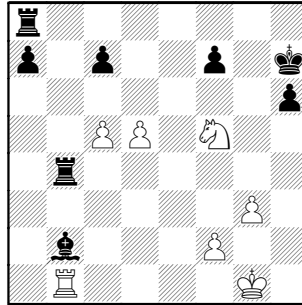


19.Kh1 Qxb1

18...Bf5 19.Qh4 Qxh4 20.Nxh4 Bxb1



21.Bxh6 gxh6 22.Rxb1 Rfb8 23.g3  
Bxa3 24.Nf5 Kh7 25.c4 Rb4 26.c5  
Bb2 27.d5



0-1

Congratulations to **Tony Jasaitis**  
for doing an excellent job of running  
the 2005-2006 playoffs as the CACL  
playoff Tournament Director.

Congratulations to **Matt Vail** and  
Computer Associates for hosting the  
2005-2006 CACL playoffs. CA was a  
very good host for this season's  
playoffs.

Although Tony replied "My pleasure.  
It's also to everybody else's credit for  
their parts in a well-behaved  
machine.

I no longer am able to put in the time  
to play well, so hopefully I can at least  
put in enough time to enable others to  
do so."

**Fred Furtner** (AMA Tornado  
Snakes) succinctly replied for the  
whole League : "What do you mean  
you're no longer able to put in the  
time to play well? You're doing a  
great job as CACL President! In fact, I  
was thinking of placing your name on  
the ballot this November to become  
an Illinois congressman as well. You  
can handle it -- Tony. You're  
organized, AND fun.

And it's about time the citizens of this  
state find out about just how much we

enjoy your tenure as leader of the  
CACL.

Thanks for a great season!