

## *The Chicago Chess Player*

The Official Bulletin of the Chicago Industrial Chess League

### **ST CHARLES BAKER EARNS THE TITLE !!**



## CICL Contact List

---

Bulletin Editor/Webmaster Bulletin@ChicagoChessLeague.org	<b>Tom Friske</b> 1035 E Algonquin Road Des Plaines, IL 60016	H:(847) 299-1033 W:{847} 914-8448
Ratings Chairman Ratings@ChicagoChessLeague.org	<b>Art Olsen</b> 714 E Algonquin Road #J102 Arlington Heights, IL 60006	H:(847) 437-9819 W:(847) 719-8036
	<b>FAX :</b> to SBS OTS, 22NW0644-5 at (847) 719-8151	
League President President@ChicagoChessLeague.org	<b>Tony Jasaitis</b>	C:(708) 903-6423 W:(312) 264-2044
League Secretary Secretary@ChicagoChessLeague.org	<b>Jerry Thomas</b> 745 Hageman Pl Naperville, IL 60563	H:(630)420-0188
League Treasurer Treasurer@ChicagoChessLeague.org	<b>Paul Freidel</b> 359 N. Worth Avenue Elgin, IL 60123	C:(224)436-6050
Trophy Chairman Trophy@ChicagoChessLeague.org	<b>Marty Franek</b> 9044 S 51 <sup>st</sup> Avenue Oak Lawn, IL 60453-1730	H: (708) 636-3714 C: (708) 846-8734
Publicity Chairman Publicity@ChicagoChessLeague.org	<b>Matt Vail</b>	C: (312) 933-1516 W: (630)505-6557
Banquet Chairman Banquet@ChicagoChessLeague.org	<b>Wayne Ellice</b>	H: (708) 636-1303

### DIVISIONAL CHAIRMEN

East Division ChairmanEast@ChicagoChessLeague.org	<b>Adam Muhs</b>	C: (847) 877-9629 W: (312) 497-1184
West Division ChairmanWest@ChicagoChessLeague.org	<b>Bob Buchner</b> 1316 Kallien Court Naperville, IL 60540	H: (630) 428-7707 W: (630) 979-7707
North Division ChairmanNorth@ChicagoChessLeague.org	<b>Jim Thomson</b>	W: (847) 538-5408

---

### Mark Your Calendars with These Key League Dates:

<b>Fall Business Meeting</b>	Last Wednesday of August (Aug 29 2007)
<b>Spring Business Meeting</b>	3.5 Weeks Before Playoffs (April 16, 2008)
<b>Season Playoffs</b>	Second Saturday of May (May 10, 2008)
<b>CICL Open</b>	Second Saturday of May (May 10, 2008)
<b>League Awards Banquet</b>	First Friday of June (June 6, 2008)

Officer Contact List	2
Contents of Issue	3
News	4
Banquet Details & REGISTRATION FORM	6

### **FINAL SEASON UPDATE**

Current Standings	8
Performance Ratings	9
Top Ten by Division	10
Most Improved Players	10
Current Ratings	11

### **THE 2008 CICL PLAYOFFS**

Sowing the Seeds	14
------------------	----

### **ROUND ONE Report**

Motorola Kings at St Charles CC (Boards 5 & 6)	15
Downers Grove CC at Hedgehogs	20
UOP at St Charles CC Baker	32
Motorola Kings at St Charles CC (Boards 1-4)	45
ALU Tyros at Northwestern University	52

*(ROUNDS TWO and THREE presented next month)*

<b>Playoff and CICL Open Match Results</b>	<b>64</b>
--	-----------

*On the cover...*

Our 2008 Champion St Charles CC Baker Team

*With contributions from:* **Art Olsen, Norm Hughes, Fred Furtner,  
Tam Nguyen Wayne Eliice, and Brian Smith**

## Playoff Gossip

"Hey, Tom !". I turned around; it was Chuck Dobrovolny from the Dragons. "Do you know how I know it's May?".

"Hmmp...OK, I'll bite..", I was thinking. "No, Chuck, how?" was the reply.

"Well the April bulletin just came out !" he said with this devilish grin.

We had a laugh. Later that afternoon we had time to chat a bit more. I explained my strategy of publishing the bulletin at the end of the month. As an attempt to journal each month's events, if you know when it happens, you know what bulletin to go reference. For example, the Business meetings always occur in April and August, so if you need to reference their minutes, you simply go to the April or August bulletin ! (Assuming it was published, at least. If there isn't one for that month, try the next one that was published.) Playoffs are in May, banquet in June, etc. Get it ?

But I guess this month shows the downside. Yup, it's June, so I guess it's time for the May bulletin ! OK, I wasn't interested in working it until Memorial Day weekend, and that just wasn't enough time. You'll forgive me for being a bit tardy, won't you ?!

---

"Guys, look! See that guy with the long pony tail over there?" I asked my fellow Walgreen teammates. "That's Gustavo, the top player in the whole League!" <no reaction>

After a pause, it suddenly dawned on me: "And, guys, his team, Fermilab, isn't in the playoffs this year, so it means he's intending to play in the Open. One of you might have to play him." I was just teasing.

Twenty minutes later the first round pairings had been given. Niels Hamelink rushes back toward our table. "Tom, guess who my opponent is!", he offers with a hopeful grin, with a shake of his head towards the subject.

Gustavo was in earshot so I replied, as earnestly as possible: "OK, Niels, remember our hand signals. One finger up means move a Pawn, two means..." Gustavo's head quickly turns and we couldn't keep straight faces !

---

## You are 'on board', aren't you ??

Did you volunteer to play in the Internet match vs. our New York counterpart ? All captains have been contacted (at least once a week) and a list of players has been made. If you intend on playing and have not heard from Norm Hughes, make sure you drop him a line at [nhughes6434@sbcglobal.net](mailto:nhughes6434@sbcglobal.net)

For you who are observing from the sidelines, Norm has arranged a 16-board match. There will be two teams, splitting at the 1900-rating mark; eight players over that are on the 'A' teams, eight rated under that as the 'B' team. The New York league rumors to have an IM and quite a few Experts! The 'B' players will be matched evenly, maybe to our advantage a bit. You are still invited to observe the games—simply follow the sign-on instructions below.

We will play on the World Chess Live site using their **Dasher** interface- a PC program that arranges matches, sends and receives moves, and appropriately updates the board on your screen. Each player will be given a free account so no expense is necessary. If you are a USCF member, you can already create an account on the site for free which lasts for six months! (Others can pay \$4.99 for a 1-month trial). To do this, go to [www.worldchesslive.com](http://www.worldchesslive.com) and click the 'Register' button. The first thing it asks for is your USCF number and pin. Entering this will allow you to complete the registration process. Then simply download Dasher, and you'll be playing in minutes !

We suggest you play some games now to get used to the whole experience so when June 14<sup>th</sup> rolls around you're ready to play!

## **Marty Franek given the Dargis Award !**

In the Business meetings for the past couple years the question had been posed: when is the appropriate time to give out another Dargis Award? Interestingly, it was only the *first* mention that it took to answer the 'who' question !

A quick search in the online Bulletin Index revealed Marty Franek's first mention was when he was elected President in 1983. But that was based on what had been recorded in past bulletins. Around the year 2000, a list of previous Bulletin Editors was generated from a similar search, but did not result in every year being mentioned. Marty then remarked that those missing years were when he volunteered to fill in.

One gets the idea that Marty is one of those types that happily works behind the scenes and doesn't



require much encouragement, perfectly willing to not even have his name associated with the hard work he's done. In reality, he has filled pretty much every position of the CICL and has been our Trophy Chairman for many, many years. Additionally, it was his efforts at scanning old bulletins which eventually resulted in the complete archives becoming available.

Normally the Award is given at the year's Banquet, but Marty mentioned that he would not be able to be there this year to do his normal trophy presentations. Our President Tony Jasaitis, with some sly questioning, did determine, however, that Marty would attend Playoff Saturday. It was quickly decided that was a good time to blind-side him! The picture at left verifies we were successful !

**Marty, THANK YOU,** for your many years of quiet and loyal service to the Chicago Industrial Chess League !!

## **One-liners... but don't miss!**

Here's a link to a recent chess-related article from the Chicago Tribune:  
[http://www.chicagotribune.com/news/local/chi-chess-club\\_30apr30,1,1019966.story](http://www.chicagotribune.com/news/local/chi-chess-club_30apr30,1,1019966.story)

And another of a band singing "Bad Losers on Yahoo Chess!" <http://www.youtube.com/watch?v=yzKdtMGBphY>

**BANQUET REGISTRATION EXTENDED !!!** You must register **NO LATER** than **MONDAY, JUNE 2<sup>nd</sup> !!**  
**WRITTEN** commitment OK... write our President or Banquet Chairman (email addresses on page 2)

## CICL BANQUET -- June 6, 2008 Must commit by Monday, June 2

### Alpine Banquets

11141 W. Roosevelt Rd. (Intersection of  
Roosevelt and Wolf Rd.)

Westchester, IL      Tel 708-409-8640

WEB SITE: [www.alpinebanquet.com](http://www.alpinebanquet.com)

Open 6:00 to 11:30 PM

### FAMILY STYLE MEAL

SERVING AT 6:45 pm

\$25/person

\$15.50 for children under age 10

\$3.00 extra for a fish dinner

Soup, salad, 3 meat entrees, 1 side dish, 1  
vegetable, rolls/butter, dessert,  
coffee/tea/milk.

Cash Bar

TROPHIES, AWARDS, SPEED CHESS  
(\$1.00 at the event) & GAME  
PRESENTATION

**We need an accurate head count, as the  
facility requires full payment in advance.**

**Payment can be given to Paul Freidel or  
Tony Jasaitis at the playoffs.** Otherwise  
mail check (payable to CICL) to be received  
by May 29

See form on following page, but **CONTACT  
President or Banquet IMMEDIATELY !!!!**

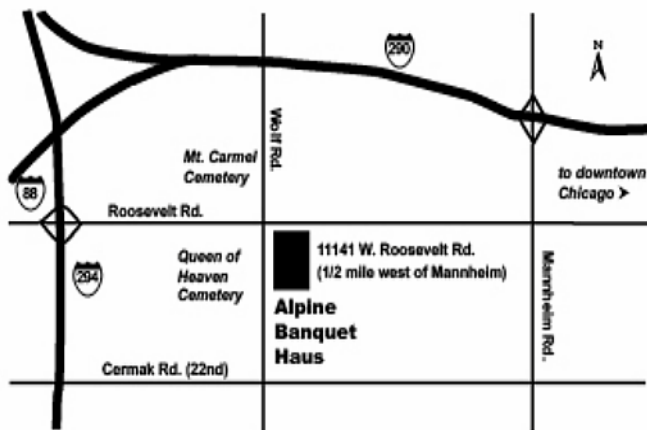
# SPECIAL RAFFLE

Note: All those whose payment  
is received by midnight, May 29  
will receive a special, separate  
raffle ticket (one per payment).

This raffle will include a wooden  
chess set, a new chess game variant,  
some used chess books and some  
chess collector pins.

**\*\* See pictures on following pages**

Unfortunately, payment "at the door" is not  
acceptable at this facility, and participation in  
the family style meal is not guaranteed.



**BANQUET RESERVATIONS**

I will be at the banquet on Friday, June 6, 2008. Please reserve the following number of dinners for me.

Your name: \_\_\_\_\_

\_\_\_\_\_ Adult dinners at \$25.00 each.

\_\_\_\_\_ Adult fish dinners at \$28.00 each.

\_\_\_\_\_ Child dinners (under age 10) at \$ 15.50 each.

\_\_\_\_\_ Optional advance payment for speed chess event, \$1 each.

Checks payable to: CICL

Payment can be given to Paul Freidel or Tony Jasaitis at the **Banquet**.

but you MUST FIRST CONTACT THEM BY EMAIL **N\*O\*W** or you won't have a  
spot reserved at this late date !!!

**EAST DIVISION 04-17-2008**

TEAM NAME				GAME	MATCH	PCT	PR	USAT
	W	L	D	POINTS	POINTS			
HEDGEHOGS	7	1	0	38.0	7.0	0.875	1874	110.5
NORTHWESTERN CHESS CLUB	7	1	0	33.5	7.0	0.875	1859	93.0
AMA ROGUE SQUADRON	3	5	0	19.0	3.0	0.375	1554	49.5
CITADEL GROUP	2	6	0	19.0	2.0	0.250	1485	56.0
AMA TORNADO SNAKES	1	7	0	10.5	1.0	0.125	1395	42.0

**NORTH DIVISION 04-17-2008**

TEAM NAME				GAME	MATCH	PCT	PR	USAT
	W	L	D	POINTS	POINTS			
MOTOROLA KNIGHTS	7	1	1	40.0	7.5	0.833	1881	157.5
MOTOROLA KINGS	6	1	2	35.0	7.0	0.778	1893	150.5
UOP	3	3	3	29.0	4.5	0.500	1755	141.5
WALGREEN FORKS	3	4	2	22.0	4.0	0.444	1627	83.8
WALGREEN SKEWERS	3	5	1	19.5	3.5	0.389	1656	90.0
NORTHROP	2	5	2	19.0	3.0	0.333	1610	74.8
EXCALIBURS	1	6	2	20.5	2.0	0.222	1599	84.3

**WEST DIVISION 04-17-2008**

TEAM NAME				GAME	MATCH	PCT	PR	USAT
	W	L	D	POINTS	POINTS			
ST CHARLES BAKER	7	1	1	37.0	7.5	0.833	1862	131.5
DOWNERS GR CHESS CLUB	6	1	2	35.5	7.0	0.778	1826	127.8
ST CHARLES CHESS CLUB	7	2	0	35.0	7.0	0.778	1847	141.8
LUCENT TECH. TYROS	6	3	0	35.0	6.0	0.667	1803	132.3
FERMILAB	5	3	1	29.5	5.5	0.611	1719	102.8
LUCENT TECH. DRAGONS	4	3	2	29.0	5.0	0.556	1712	113.8
ARGONNE ROOKS	3	5	1	21.5	3.5	0.389	1632	60.0
PAWNS	2	6	1	22.0	2.5	0.278	1538	68.3
MOLEX	1	8	0	15.0	1.0	0.111	1463	52.0
BP CHICAGOLAND	0	9	0	8.0	0.0	0.000	1245	36.5

**CICL Performance Ratings  
04/18/2008**

<b>Team</b>	<b>Division</b>	<b>Games Ave</b>	<b>Board PR</b>	<b>Match PR</b>	<b>PR (B+M) / 2</b>	<b>Adjusted PR</b>
HEDGEHOGS	East	4.8	1882.8	1864.2	1873.5	2037.5
NORTHWESTERN CHESS CLUB	East	4.8	1840.3	1877.8	1859.1	2023.1
MOTOROLA KINGS	North	7.7	1899.5	1886.5	1893.0	2002.0
MOTOROLA KNIGHTS	North	7.5	1877.8	1883.2	1880.5	1989.5
ST CHARLES BAKER	West	6.5	1824.9	1899.3	1862.1	1989.1
ST CHARLES CHESS CLUB	West	7.5	1825.0	1869.1	1847.1	1974.1
DOWNERS GR CHESS CLUB	West	7.5	1804.8	1847.3	1826.1	1953.1
LUCENT TECH. TYROS	West	7.2	1818.0	1788.0	1803.0	1930.0
UOP	North	7.7	1743.5	1767.0	1755.3	1864.3
FERMILAB	West	7.2	1697.2	1739.9	1718.6	1845.6
LUCENT TECH. DRAGONS	West	8.3	1709.2	1715.0	1712.1	1839.1
WALGREEN SKEWERS	North	6.2	1616.6	1694.9	1655.8	1764.8
ARGONNE ROOKS	West	7.3	1613.8	1651.0	1632.4	1759.4
WALGREEN FORKS	North	7.0	1574.3	1679.3	1626.8	1735.8
NORTHROP	North	6.8	1577.5	1643.0	1610.3	1719.3
AMA ROGUE SQUADRON	East	5.2	1521.5	1586.9	1554.2	1718.2
EXCALIBURS	North	7.0	1607.8	1590.6	1599.2	1708.2
PAWNS	West	7.2	1529.1	1546.7	1537.9	1664.9
CITADEL GROUP	East	5.3	1508.2	1462.6	1485.4	1649.4
MOLEX	West	7.0	1464.1	1461.8	1463.0	1590.0
AMA TORNADO SNAKES	East	3.5	1292.0	1498.1	1395.1	1559.1
BP CHICAGOLAND	West	5.0	1255.6	1234.7	1245.2	1372.2

**EAST DIVISION TOP TEN**

FRANKLIN, D	HEDGE	2206
RAUCHMAN, M	HEDGE	2060
BROCK, B	AMARS	2054
SMALLWOOD, J	NWEST	2037
BAKSHI, A	NWEST	2008
JASAITIS, A	HEDGE	2000D
GORODETSKIY, S	NWEST	1992
SMITH, M	HEDGE	1960
HAYHURST, W	CITGR	1916
SEET, P	HEDGE	1872

**NORTH DIVISION TOP TEN**

MORRIS, R	MKNGT	2242C
FRIDMAN, Y	MKNGT	2213C
LEVENSON, S	SKEWR	2044
MELNIKOV, I	MKING	2029C
HART, V	NORTH	2025
THOMSON, J	MKNGT	2017C
WALLACH, C	MKING	2003C
PIPARIA, J	MKING	1986
FRISKE, T	FORKS	1976C
SIWEK, M	UOP	1949D

**WEST DIVISION TOP TEN**

GARZON, G	FERMI	2282
MARSHALL, J	STCCC	2236
NGUYEN, T	BAKER	2229
KLUG, S	DGCC	2177
KRAS, T	PAWNS	2162C
RASO, P	BAKER	2138
BENEDEK, R	ROOKS	2133T
ALLSBROOK, F	TYROS	2117
DIAZ, P	TYROS	2067D
TEGEL, F	DRGNS	2063QQ

**MOST IMPROVED PLAYERS**

SUITS, J	STCCC	121
VON HATTEN, J	STCCC	110
HLOHOWSKYJ, I	ROOKS	109
SMITH, D	STCCC	108
SUVARNAKANTI, R	BPCHI	93
PIPARIA, J	MKING	93
WAKERLY, R	DGCC	83
CYGAN, J	MKING	83
KOMORAVOLU, K	DRGNS	82
SMALLWOOD, J	NWEST	79

**FINAL SEASON RATINGS (after Playoffs)**
**11**

NAME	TEAM	W	L	D	RATING	NAME	TEAM	W	L	D	RATING
ACEVEDO, U	LOYLA	0	1	0	0000/1	DJORDJEVIC, V	STCCC	3	1	0	1625
ADAMS, W	LOYLA	1	1	0	0000/2	DOBROVOLNY, C	TYROS	7	5	0	1757D
ALBERTS, W	BAKER	5	5	2	1562	DORSKY, A	NWEST	0	1	0	0000/0
ALEXANDER, J	LOYLA	1	0	0	0000/0	DOSIBHATLA, D	FORKS	5	2	2	1607*
ALFONSO, E	MKNGT	0	1	0	1467	DOWELL, E	EXCLB	5	2	1	1806
ALLEN, H	AMARS	2	7	0	1780	DRENDEL, B	FERMI	1	3	1	1010#
ALLSBROOK, F	TYROS	4	4	5	2117	DUONG, R	MKNGT	4	2	0	1539*
ALOP, J	DGCC	0	1	0	0000/1	DYCKZKOWSKI, R	PAWNS	0	1	2	1375
ANNIS, J	FERMI	2	2	2	1450*	EAMAN, R	AMARS	5	3	0	1844
ANSARI, N	SKEWR	3	4	1	1572	EASTON, R	UOP	5	5	1	1815C
AREVEDO, U	LOYLA	0	1	0	0000/1	EGERTON, J	DGCC	3	1	2	2023
AUBRY, B	NORTH	2	5	1	1593*	ELLICE, W	PAWNS	2	4	3	1812C
AUGSBURGER, L	MKNGT	0	0	1	1807C	ELLIOTT, T	NORTH	0	1	0	1330
BABINEC, J	MKNGT	3	1	0	1383*	ENGELN, M	NORTH	4	6	1	1670
BAKSHI, A	NWEST	1	3	4	2008	EUSTACE, D	DRGNS	6	3	0	1509C
BALES, R	BAKER	2	1	0	1401	FABIJONAS, R	PAWNS	0	8	1	1485T
BALICKI, J	MKNGT	3	1	1	1871C	FARMER, B	AMATS	0	2	0	0000/2
BAURAC, D	ROOKS	2	2	3	1799T	FAZEKAS, J	PAWNS	0	1	0	1625
BENEDEK, R	ROOKS	2	1	0	2133T	FRANEK, M	PAWNS	3	1	8	1728D
BERBARI, N	DGCC	1	1	0	1500/2	FRANK, M	AMARS	3	4	1	1720C
BERNSTEIN, B	HEDGE	0	1	0	1261	FRANKLIN, D	HEDGE	3	0	4	2206
BERNSTEIN, J	ROOKS	0	3	0	0000/2	FREIDEL, JER	BAKER	3	0	0	1829
BIALON, D	SKEWR	2	3	2	1767*	FREIDEL, JESSE	BAKER	5	1	5	2000
BIRO, R	DGCC	0	0	0	1375	FREIDEL, P	BAKER	9	2	1	1971
BLAZEK, G	NWEST	1	0	0	1566	FRIDMAN, Y	MKNGT	6	1	1	2213C
BOLDINGH, E	UOP	4	4	0	1886C	FRISKE, T	FORKS	1	6	2	1976C
BREYER, A	DRGNS	0	3	1	1271	FURTNER, F	AMATS	3	9	0	1452
BROCK, B	AMARS	4	2	2	2054	GAINES, I	FERMI	3	4	2	1729T
BRONFELD, A	EXCLB	0	3	0	1790	GAPNI, P	NWEST	3	1	0	0000/2
BROTSOS, J	EXCLB	1	4	0	1534T	GARZON, G	FERMI	8	2	1	2282
BUCHNER, R	TYROS	3	2	0	1668C	GIBSON, B	STCCC	0	1	0	1301
BYRNE, M	TYROS	4	0	1	1390	GOLOSSANOV, A	FERMI	1	3	0	1089#
CAMPBELL, DOUG	UOP	2	2	1	1446*	GONCHAROFF, N	MKING	2	6	5	1569V
CAMPBELL, G	DGCC	0	0	0	1000/0	GONZALES, T	DGCC	3	2	0	1594
CAPUTO, W	DGCC	0	1	0	1481	GOODFRIEND, B	AMARS	2	0	0	1301
CEASE, H	FERMI	1	0	0	1479	GORODETSKIY, S	NWEST	4	3	2	1992
CHAVEZ, A	HEDGE	2	3	3	1293#	GRANATA, M	SKEWR	4	3	1	1884*
CHERKASSKY, G	MKNGT	6	1	2	1658*	GREER, J	BAKER	1	2	0	1378
CHRISTIAN, T	PAWNS	0	0	1	0000/2	GRUDZINSKI, J	ROOKS	1	0	1	1453
CHUN, A	NWEST	0	0	1	800/1	GRUDZINSKI, T	AMARS	0	1	0	1300/1
COULTER, D	BPCHI	1	3	2	1904	GRYPARIS, J	MKING	1	2	0	1391C
CURRAN, T	DGCC	4	3	1	1661	GUIO, J	TYROS	2	5	0	1805C
CYGAN, J	MKING	7	3	0	1824	HAHNE, D	TYROS	5	3	3	1611C
DECMAN, S	ROOKS	0	1	0	1560D	HAMELINK, N	FORKS	2	7	2	1719*
DEGRAF, B	FERMI	1	2	4	1497	HARPER, M	AMATS	3	5	0	0000/2
DEICHMANN, E	MOLEX	3	5	2	1287	HART, V	NORTH	6	1	2	2025
DENEEN, D	BPCHI	0	3	0	1441	HAYES, D	BPCHI	0	1	0	1346#
DENMARK, T	TYROS	0	0	1	1664	HAYHURST, W	CITGR	1	3	2	1916
DERIY, B	ROOKS	3	1	0	1533*	HENDRICKSON, B	MOLEX	2	6	1	1532
DIAZ, P	TYROS	6	3	3	2067D	HERNANDEZ, F	BPCHI	2	4	0	955*

05-11-2008

NAME	TEAM	W	L	D	RATING	NAME	TEAM	W	L	D	RATING
HERR, T	BPCHI	0	2	0	0000/1	MILLER, A	AMARS	0	0	1	1428
HILL, R	ROOKS	1	4	2	1987D	MORAN, B	HEDGE	1	0	0	1526
HLOHOWSKY, J, I	ROOKS	3	3	0	1032*	MORRIS, R	MKNGT	5	0	1	2242C
HORTON, D	MKING	2	1	0	1916	MOSSBRIDGE, A	UOP	1	1	1	1652
HUGHES, N	FORKS	2	4	2	1611C	MUELLER, R	MOLEX	1	2	1	1063*
IRBY, L	AMARS	1	5	0	0000/7	MUHS, A	CITGR	3	4	2	1625
JANSSEN, G	BAKER	3	3	5	1537	NALLATHAMBI, R	UOP	7	1	1	1671
JASAITIS, A	HEDGE	7	0	2	2000D	NGUYEN, T	BAKER	6	1	2	2229
JAWORSKA, O	NWEST	0	1	0	1269	NICK, X	FORKS	1	4	0	0000/4
JOSHI, B	MKING	1	2	0	1556*	O'DELL, DW	PAWNS	4	2	0	1364D
KACZYNSKI, W	SKEWR	1	6	0	0000/5	OLSEN, A	UOP	2	1	2	1475C
KALAVAGUNTA, S	DGCC	3	2	4	2030	ONG, K	CITGR	2	3	1	1776
KANNAPPAN, V	SKEWR	1	2	0	0000/2	PARRA, J	CITGR	3	1	0	1200/3
KARANDIKAR, S	MKNGT	4	2	1	1714	PATELLA, C	AMATS	0	1	0	0000/2
KARPIERZ, J	TYROS	0	1	0	1297	PEHAS, A	DRGNS	1	0	1	1852C
KLUG, S	DGCC	3	1	5	2177	PERSONS, J	FORKS	3	4	0	1403#
KOMORAVOLU, K	DRGNS	4	0	2	1396	PETERSON, T	AMATS	1	5	1	1526
KRAS, T	PAWNS	2	0	2	2162C	PIPARIA, J	MKING	8	2	2	1986
KRATKA, M	HEDGE	4	1	1	1616	PIWOWAR, T	AMARS	0	1	0	1050/3
KRAVIK, S	NWEST	2	0	0	1428	PLOTHER, J	LOYLA	0	1	0	0000/0
KUCINAS, E	DGCC	0	0	0	1300/0	PLOTNER, J	LOYLA	0	1	0	0000/1
KUHLMANN, S	ROOKS	1	2	0	1385*	POTTS, K	DGCC	6	2	0	1838
KUNHIRAMAN, P	CITGR	2	0	0	1593#	POWERS, E	STCCC	1	4	1	1441
LATIMER, E	PAWNS	0	2	1	1973T	PROKOPOWICZ, P	CITGR	1	3	1	1177#
LE, DUC	CITGR	3	5	1	1664	RABINOVICH, E	MKING	5	2	2	1538
LECHNICK, J	UOP	8	2	2	1761C	RAMANATHAN, N	ROOKS	2	5	0	1307#
LEE, D	EXCLB	1	6	1	1875	RAMIREZ, A	UOP	0	2	0	0000/3
LEONG, G	UOP	2	4	4	1922C	RASO, P	BAKER	5	0	1	2138
LEVENSON, S	SKEWR	4	3	0	2044	RAUCHMAN, M	HEDGE	4	1	2	2060
LI, JEFF	NWEST	1	0	0	1600/0	REICH, T	MOLEX	0	8	1	1773
LU, D	NWEST	3	1	0	1387*	REID, C	EXCLB	3	4	1	1455D
LUDWIG, T	DRGNS	2	2	3	1993C	RINGENBERG, T	BPCHI	0	4	0	1434
MAMMA, M	BPCHI	0	1	0	0000/1	RODNYANSKY, S	NWEST	1	0	0	1704
MANEY, A	DGCC	3	1	3	1702	RUFUS, B	MOLEX	1	4	0	1309
MANILA, M	BPCHI	1	6	0	1105	SAJBEL, P	UOP	0	1	0	1764C
MARCOWKA, R	DRGNS	2	2	3	1919T	SANTIAGO, T	FORKS	5	4	0	1923C
MARSHALL, J	STCCC	5	2	3	2236	SCHILLER, A	DGCC	0	1	0	1352
MARTELL, J	NWEST	0	1	0	600/0	SCHULZ, N	DGCC	0	0	0	1508
MASITI, J	AMATS	2	3	0	1345*	SCHUPAK, M	AMATS	0	2	1	0000/1
MCGEE, M	STCCC	1	1	1	1438	SEDA, JOE	HEDGE	2	0	0	0000/0
MCGOWAN, D	MOLEX	4	4	0	1468	SEDOV, A	FERMI	3	1	2	1780*
MCGUIRE, A	SKEWR	1	4	0	1751#	SEET, P	HEDGE	6	1	0	1872
MEISSEN, B	STCCC	1	1	1	1766	SENSAT, J	CITGR	2	3	2	1509
MELNIKOV, I	MKING	3	2	5	2029C	SHENG, A	LOYLA	0	1	0	0000/0
MEYER, C	AMATS	3	2	1	1240#	SHEPARDSON, T	HEDGE	2	0	1	1553
MEYER-ABBOTT, B	AMATS	0	7	0	1317*	SIEGEL, R	NORTH	3	3	0	1464C
MICHALOPOULOS, G	CITGR	1	1	2	1314	SIWEK, M	UOP	2	3	6	1949D
MICKLICH, F	UOP	3	5	1	1489D	SMALLWOOD, J	NWEST	10	1	1	2037
MIKOS, D	LOYLA	0	2	0	0000/2	SMITH, BR	DGCC	3	0	1	1610C
MIKULECKY, B	PAWNS	3	2	1	1404D	SMITH, D	STCCC	5	2	2	1541

05-11-2008

NAME	TEAM	W	L	D	RATING	NAME	TEAM	W	L	D	RATING
SMITH, JEFF	ROOKS	0	2	0	0000/2	ULLOM, G	NWEST	3	5	3	1726
SMITH, M	HEDGE	7	2	2	1960	VAIL, M	TYROS	7	1	1	1603
SOBSKI, A	NORTH	0	1	0	0000/5	VALENTINE, T	DGCC	0	0	0	1232
SOLOMON, A	NWEST	3	1	2	1847*	VAN MEER, J	UOP	0	4	1	1858
SPIEGEL, L	FERMI	4	3	2	1943T	VECANSKI, D	DGCC	4	2	1	1608
SPITZIG, M	PAWNS	0	5	3	1354	VIGANTS, A	NORTH	2	6	2	1538C
SPLINTER, J	STCCC	5	1	3	2056	VOIGHT, T	BAKER	1	1	1	1249
STACKO, J	LOYLA	0	1	1	0000/2	VON HATTEN, J	STCCC	4	2	1	1650
STAMM, V	DRGNS	2	2	1	1506T	WAKERLY, R	DGCC	7	3	1	1793
STAPLES, C	FERMI	2	0	0	1621	WALKER, A	NORTH	0	4	0	1834
STILES, V	DGCC	0	0	0	1000/0	WALLACH, C	MKING	7	2	3	2003C
STOLTZ, B	TYROS	2	2	1	1904D	WANG, ANDREW	BAKER	4	2	1	1821
STOSKUS, A	STCCC	3	1	3	1491	WANG, B	NWEST	10	1	0	1803
SUAREZ, E	ROOKS	1	2	2	1861	WEITZ, R	EXCLB	2	3	1	1592D
SUERTH, F	EXCLB	2	1	1	1538D	WEZEMAN, H	DGCC	0	0	0	1400/0
SUITS, J	STCCC	7	3	1	1753	WIEWEL, J	STCCC	7	2	1	2056
SUVARNAKANTI, R	BPCHI	2	3	2	1270*	YACOUT, A	ROOKS	1	0	1	1598
TAN, A	HEDGE	4	2	1	1642*	YALAVARTHI, R	DGCC	1	2	0	1668
TEGEL, F	DRGNS	3	1	5	2063Q	ZADEREJ, V	MOLEX	1	8	0	1621
THOMAS, J	DRGNS	3	4	0	1481D	ZOELLNER, J	EXCLB	2	1	0	1336D
THOMSON, J	MKNGT	6	2	1	2017C	ZUBIK, J	BPCHI	0	3	0	1186*
TULLIS, B	DGCC	0	0	0	744						

/x - UNRATED; x = # OF RATED GAMES

# - 5 TO 9 RATED GAMES

\* - 10 TO 24 RATED GAMES

C - CENTURY CLUB MEMBER

D - DOUBLE CENTURION

T - TRIPLE CENTURION

Q - QUAD CENTURION

V - QUINTUPLE CENTURION

05-11-2008

**The 2007-2008 CICL season was a tall, cold glass of Guinness. As you examine it, the bubbles appeared to travel *downwards* in the pint glass.**

**According to wikipedia, “the effect is attributed to drag; bubbles that touch the walls of a glass are slowed in their travel upwards. Bubbles in the centre of the glass are, however, free to rise to the surface, and thus form a rising column of bubbles. The rising bubbles create a current by the entrainment of the surrounding fluid. As beer rises in the center, the beer near the outside of the glass falls. This downward flow pushes the bubbles near the glass towards the bottom. Although the effect occurs in any liquid, it is particularly noticeable in any dark nitrogen stout, as the drink combines dark-coloured liquid and light-coloured bubbles.”**

**A mid-season examination of the CICL season found many teams on the bubble**, some similarly seeming to slide downward in the standings. Yet those used to being the center of attention were free to rise, causing the rest of the League to follow in their wake.

The turmoil of team changes in the West found the revitalized ALU Tyros on top, with the newly-added Downers' Grove CC close behind, aided by having a game in hand. Yet the perennial leading St Charles CC teams were in position, being only a game back.

The other divisions had already settled into their normal patterns. In the East, Northwestern University was looking unstoppable and ready to repeat as Champions, being they were undefeated with a game in hand. The Hedgehogs were still afloat, near behind. Similarly, the two Motorola teams were holding on to their perches in the North.

But even so, there were up-and-comers, already rising above their previous efforts and ready to break free. New teams were only a game back from the goal: the AMA Rogue Squadron of the East as well as the Walgreen Skewers of the North. Not to be ignored, however were UOP and the Walgreen Forks in the North and all the veteran teams of the West—specifically, the ALU Dragons, Fermilab, and the Argonne Rooks.

**Who would continue their climb ? Who would stick to the glass, run out of gas and fizz into oblivion ?**

One team of each division went undefeated in the second half; each was a playoff veteran used to fighting their way upwards. The Hedgehogs and Motorola Knights took over the top of their divisions, while the similar run of the St Charles CC improved their playoff seeding. The former leaders, however, had only lost one game and thus NWU, DGCC, and Motorola Kings kept their playoff invitations. The other hopeful contenders, AMA Rogue Squadron, Walgreen Skewers, Fermilab, had their bubbles burst with the ALU Tyros at least able to float at eighth position.

However, the shake-up wasn't complete at season's end. The first-place Knights decided not to field a team, giving their Division rival UOP team a possible berth, which was accepted much to the dismay of last year's contending Walgreen Forks.

The froth had settled enough to announce seedings:

- |                   |                            |                     |                 |
|-------------------|----------------------------|---------------------|-----------------|
| 1. Motorola Kings | 3. St Charles CC Baker     | 5. St Charles CC    | 7. Lucent Tyros |
| 2. Hedgehogs      | 4. Northwestern University | 6. Downers Grove CC | 8. UOP          |

Happily, we have a complete record of every playoff battle ! Your roving reporter was able to observe most of the matches, yielding some additional onsite observations. And the games were of enough interest to the Games Editor to be worthy of some analysis with help from his trusty sidekick Deep Shredder 10 (often referred to as 'DS' within).

So sit back and enjoy the first of a series of articles detailing every move of the 2008 CICL Playoffs and Open !

**This month, on the following pages, we begin with Round 1 of the playoffs.**

## Tuesday, April 29<sup>th</sup> -- Motorola Kings at St Charles Chess Club Played at Computer Associates, Naperville

Due to schedule conflicts and travel needs, it was decided to split the match between today and May 6<sup>th</sup>. Do the teams know this makes it hard to know if a draw is an acceptable result? What happens if a possibly won game is drawn tonight and next week the team discovers it needs that extra half-point to win the match? I was expecting some drama, but got it in a different form. And how many boards will play? Turns out only the last two.

What if nobody even showed up? But it's the playoffs! Fifteen minutes before 7PM all four chessplayers had arrived, yet the chesspieces had lost their way. Isn't the hometeam responsible for assuring the equipment arrives?

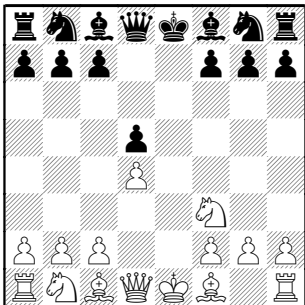
Actually, arrangements had been made but the responsible party had reneged. After 45 minutes and a couple phone calls, our local hero Jerry Thomas arrives with equipment and the matches begin at 7:45.

### Board 5, Kings-St Charles CC

Goncharoff, Nik (1595) –  
Von Hatten, Jeromy (1605) [C01]

Ideal play as Black against the French Exchange, for those interested!

1.e4 e6 2.Nf3 Nothing too clever, just a transposition of moves 2...d5 3.exd5 exd5 4.d4



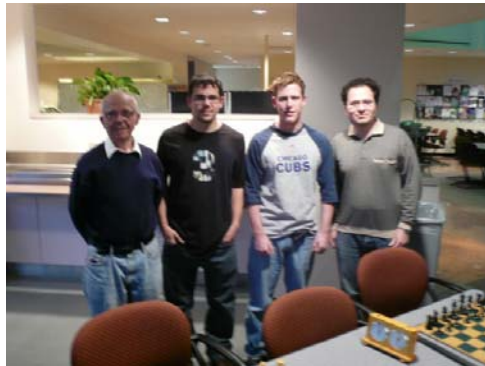
A basic French Exchange- the general rule for Black is to develop the King's Knight opposite of White's. Since White has already shown his hand, Black knows Nge7 is where it belongs. The fight is for the light squares, especially f5.

4...Bd6 5.Be2

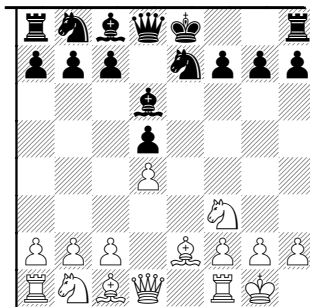
If White plans h2-h3, he could play it here and later play Bd3 directly. In that case, however Black could grab a key diagonal: 5.h3 Bf5

5...Ne7 Right on!

6.0-0



Tuesday night combatants: Nik Goncharoff (Kings), Derek Smith and Jeremy Von Hatten of St Charles CC, and Eugene Rabinovich (Kings).

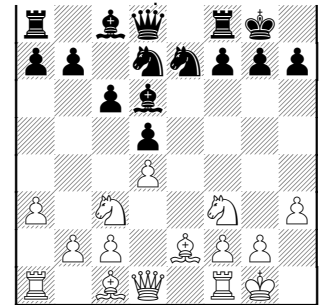


6...Nd7 This is new to me, but a clean plan... even the Queen's Knight targets the opponent's King.

7.Nc3

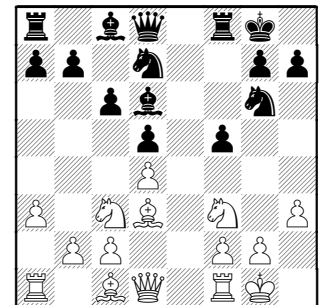
7.Bg5 idea of Nc3-e2 is the kind of play most commonly seen

7...c6 8.a3 0-0 9.h3



White's last two moves are a complete waste of time. Now not only does Black have an active (almost unstoppable) plan, he also has the initiative.

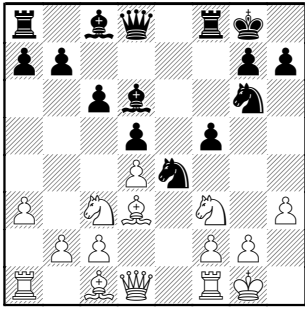
9...Ng6 10.Bd3 a third tempo wasted, for those who count such things 10...f5!



Another move I've never considered! Black prepares e4 as an outpost, as in Nf6-e4.

11.Ng5 not a long-term post, but White is running out of ideas

11...Nf6 12.Nf3 Ne4

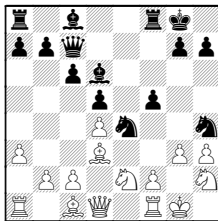


Simple chess, but so effective !

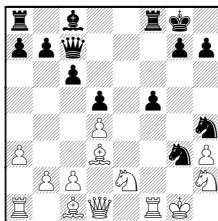
**13.Ne2 Nh4** killing a defender, making a invasion line for the Queen

**14.Nh2 f4** g5 is now available for the Queen

At this point, I originally was expecting  
14...Qc7 15.g3



15...Bxg3 16.fxg3 Nxb3

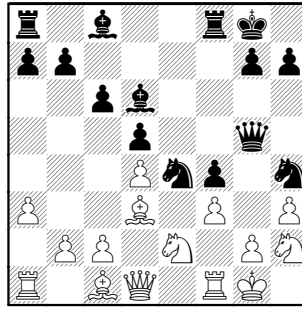


but eventually realized White defends  
with 17.Bf4

(The point of the sac was 17.Nxg3??  
Qxg3+ 18.Kh1 Qg2#)

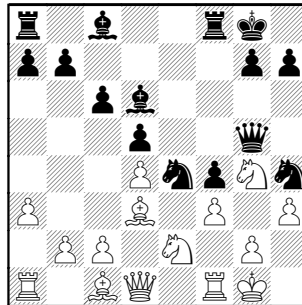
**15.f3** Not solving the threat, but I'm not  
finding the defense to g2.

**15...Qg5**



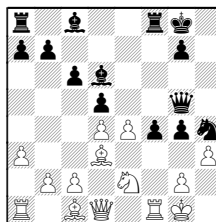
The fact that Black already has a  
crushing attack at move 15 is a sign  
White needs to re-examine his opening  
play. The threat was the simple Bxh3,  
but White's reply isn't a long-term fix as  
h7-h5 kicks it away.

**16.Ng4**



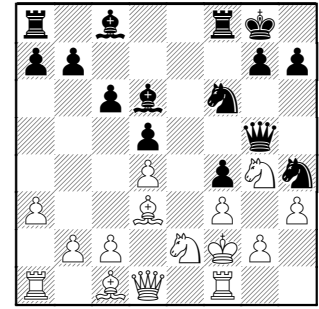
**16...Nf6**

Looks like Black could push on !  
16...h5 17.fxe4 hxg4

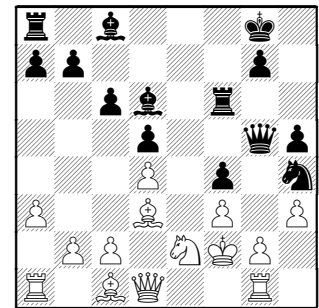


works pretty well (maybe Black needs  
dxe4 first to stop e4-e5 here)

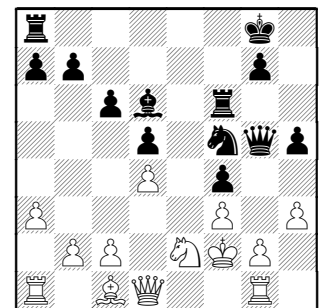
**17.Kf2**



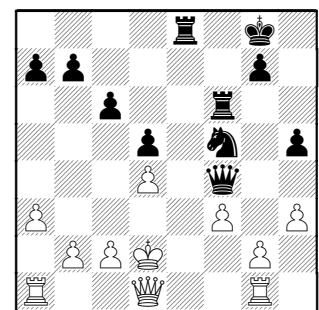
**17...h5 18.Nxf6+ Rxf6 19.Rg1**



**19...Bf5 20.Bxf5 Nxf5**

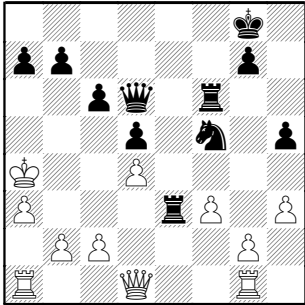


**21.Bxf4?** White stumbles **21...Bxf4**  
**22.Nxf4 Qg3+ 23.Ke2 [23.Kf1 Ne3+]**  
**23...Re8+ 24.Kd2 Qxf4+**



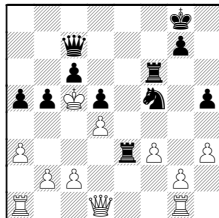
**25.Kc3 [25.Kd3 Qxd4#] 25...Re3+**

26.Kb4 [26.Kd2 Rxf3+ 27.Ke1 Re6+]  
26...Qd6+ 27.Ka4



27...c5

27...b5+ 28.Ka5 Qc7+ 29.Kb4 a5+  
30.Kc5



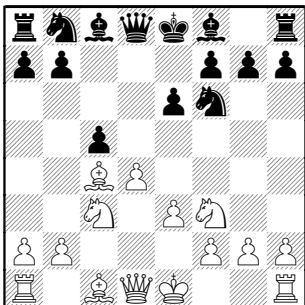
30...Qa7#

28.dxc5 Qa6+ 29.Kb4 Qc4+ 30.Ka5  
Ra6# 0-1

### Board 6, St Charles CC-Kings

Smith,Derek (1463) -  
Rabinovich,Eugene (1567) [D26]

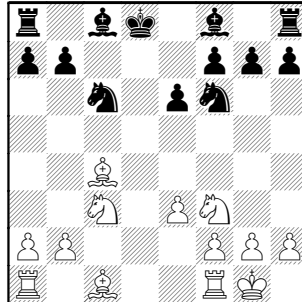
1.d4 d5 2.c4 dxc4 3.e3 Nf6 4.Bxc4 e6  
5.Nc3 c5 6.Nf3



6...cxd4 7.Qxd4!?

One of the noted themes of the Playoffs,  
Round 1: Queens were often played to  
the center of the board.

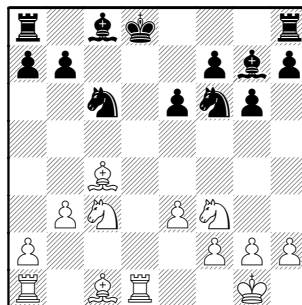
7...Nc6 8.Qxd8+ Kxd8 [8...Nxd8  
probably is required] 9.0-0



9...g6 10.b3 Nice discipline-- the Black  
King is sitting in the open, but White  
calmly activates his army !

I'd guess 95% of us would've played.  
10.Ng5

10...Bg7 11.Rd1+



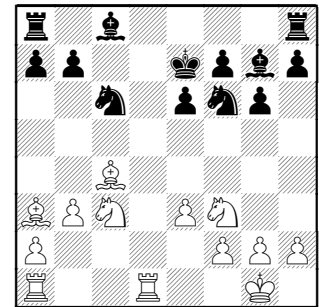
11...Ke7?

11...Kc7 12.Nb5+ Kb8 13.Bb2 idea  
Ne5,Bxe5#

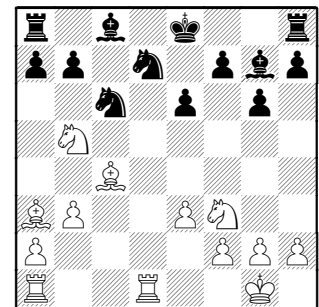
Instead, 13.Ba3 Ne4 (13...Bf8)

13...Nh5 (13...a6)

12.Ba3+



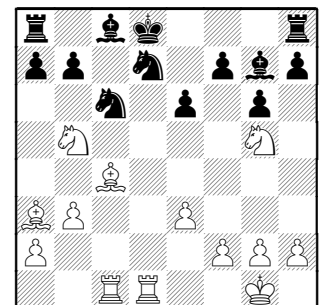
The point of his tenth move. 12...Ke8  
13.Nb5 White has some killer threats-  
the c7 and d6 squares are wonderful  
Knight outposts. 13...Nd7



14.Rac1 no need to play the fork, White  
can do without it. 14...Kd8

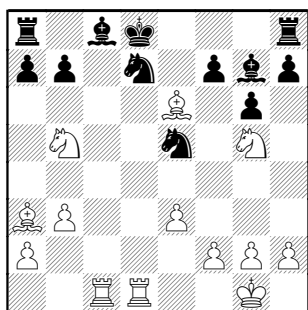
Black must drop at least an exchange  
14...Rb8 15.Nd6+ (15.Bd6) 15...Kd8  
(15...Kf8? 16.Nxc8+) 16.Nxf7+

15.Ng5



Doesn't get much better than this for  
White !

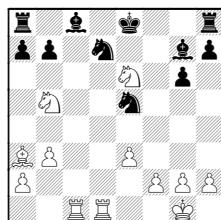
15...Nce5 16.Bxe6!



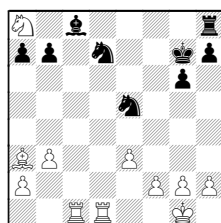
Hoping he'd see this ! If Black captures, Nxe6+ forks.

**16...f6** thought this best, but White just has too many threats !

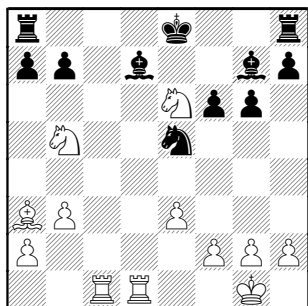
Black certainly reviewed 16...fxe6  
17.Nxe6+ Ke8



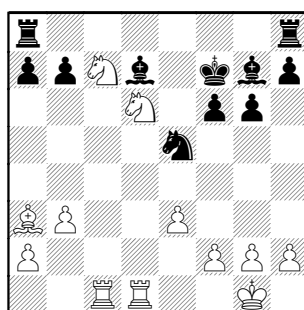
18.Nbc7+ (18.Nxg7+ Kf7) 18...Kf7  
19.Nxg7 Kxg7 20.Nxa8



**17.Bxd7 Bxd7 18.Ne6+ Ke8**



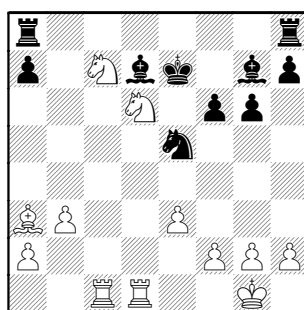
**19.Nec7+ Kf7 20.Nd6+**



**20...Ke7**

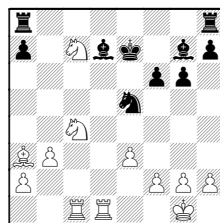
20...Kg8 21.Nxa8 nets a full Rook !

**21.Nxb7+ Kf7 22.Nd6+ Ke7**



**23.Nxa8 Nuts!**

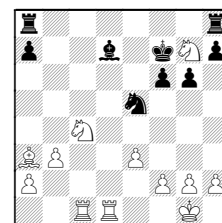
He missed some more fun with  
23.Nc4+!!



The point is Nxe5 undermines Bd7 support, and it occurs with check !

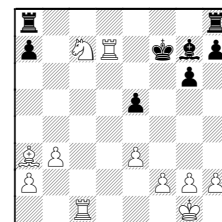
23...Kf7

(23...Kd8 24.Ne6+ [or even 24.Nxa8]  
Ke8 25.Nxg7+ Kf7



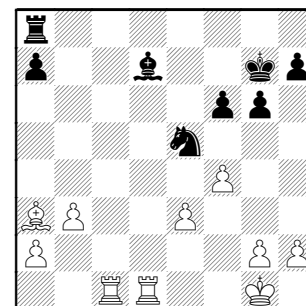
**26.Nxe5+ fxe5 27.Rxd7+)**

24.Nxe5+ fxe5 25.Rxd7+



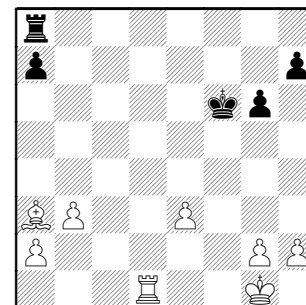
25...Kf6 26.Rc6+ Kg5 27.Nxa8 Rxa8  
28.Rxg7

**23...Rxa8 24.Nf5+ Kf7 25.Nxg7 Kxg7**  
**26.f4**



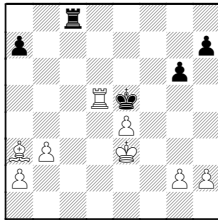
OK, he finds another way to win the piece !

**26...Bg4 27.fxe5 Bxd1 28.exf6+ Kxf6**  
**29.Rxd1**

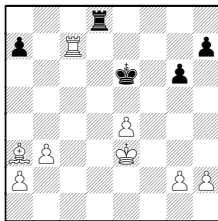


29...Re8 30.Kf2 Ke6 31.Rd6+

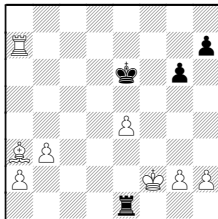
Simple centralization is probably the  
quickest 31.e4! Ke5 32.Ke3 Rc8  
33.Rd5+



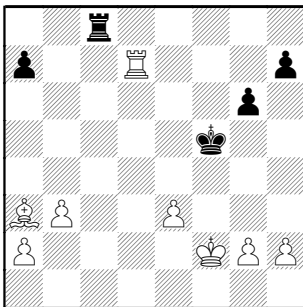
33...Ke6 34.Rc5 (34.Kd3) 34...Rd8  
35.Rc7



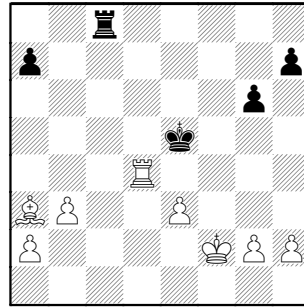
35...Rd1 36.Rxa7 Re1+ 37.Kf2



37...Ra1 (37...Rxe4? 38.Re7+) 38.Bb4  
(38.Bb2 Rd1 39.Ke3 Re1+) ] **31...Kf5**  
**32.Rd7 Rc8**



**33.Rd5+ [33.Rxa7 Rc2+ 34.Kf3 Rxa2]**  
**33...Ke4 34.Rd4+ Ke5**

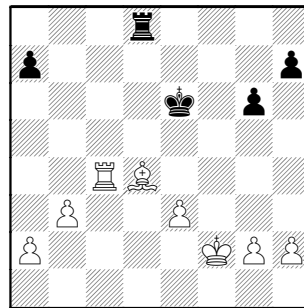


**35.Rc4**

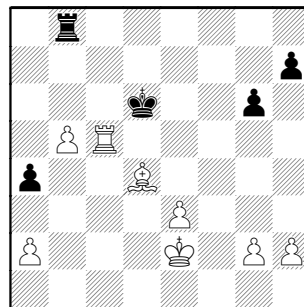
35.Ra4 Rc7 (35...Rc2+ 36.Kf3 Rxa2?  
37.Bd6+)

35.Rd7 Rc2+ 36.Kf3 Rxa2 37.Rxa7 idea  
Bd6+

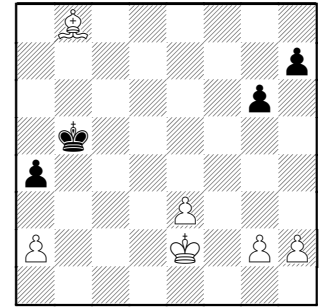
**35...Rd8 36.Bb2+ Ke6 37.Bd4**



**37...a5 38.Rc5 Ra8 39.Ke2 a4 40.b4**  
**Rb8 41.b5 Kd6**

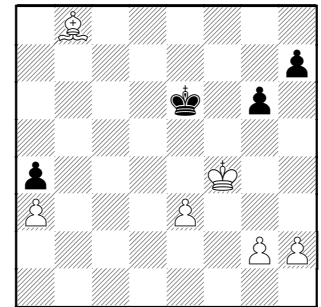


**42.Be5+! Kxc5 43.Bxb8 Kxb5**



absolutely no reason for Black to play on  
here...

**44.a3 [44.Kd3 Kb4 45.Bd6+] 44...Kc4**  
**45.Kf3 Kd5 46.Kf4 Ke6**



**47.Kg5 [47.e4 will force the King back]**  
**47...Kd5 48.Kh6 Ke4 49.Ba7 Kf5**  
**50.Kxh7 1-0**



Jerry Thomas lives near the site and  
solved the equipment crisis

### Wednesday, April 30<sup>th</sup> -- Downers' Grove Chess Club at Hedgehogs Played at Hedgehogs' site, LaSalle & Jackson, Chicago

A trip downtown always takes some planning and, not wanting to rush, I left plenty early. So early, took time to walk around a bit. A nice location (of course anything in the city isn't too far away)-- a couple blocks away from the Chicago Public Library and DePaul University which connects up with a Barnes & Noble. All the comforts of home--no wonder these guys never want to play 'away' matches outside the loop.

The email read "if you come early, eat with us as sandwiches will be provided". Friendly enough, but a bit understated. Walking through the front door of the suite and you're confronted with an eight-foot table spread fit for a banquet. "Sandwiches" became a mountain of various wraps, supported by a family of goodies like gourmet cookies, bags of chips, an ocean of soda varieties, and, just in case there's a healthy eater (not too many in this group), a stack of salad surrounded by plates of cheese, crackers, and fruit. That should about get us through the first time control.

A surprisingly casual atmosphere; maybe I get too psyched about what the playoffs mean. But a good time to meet some of these players I only know by name from their games. "And this is Mack Smith... and this is..." Oh! Mack Smith the superstar GM killer ?! Yup, one and the same.

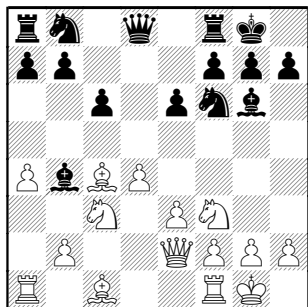
One Downers Grove player came straggling in; the rest of the team was apparently together being driven by their beloved captain, Brian Smith. Before I can remember I was going to get some group pictures of the teams (probably eating too much at this point), the board-six players have identified themselves and headed over to the playing area to get an early start. The carpool soon arrived and the teams settle down to the task at hand. But I'm surprised by the general confident calm in the air around each team- a real sense of camaraderie here; true team spirit. This should be a good one !

But what's up with the line-ups ? Brian had told me earlier he wasn't playing ("don't tell anyone"), but then the opposing captain, Tony Jasaitis, had similarly decided to step aside. Is this really the playoffs ? But questioning him, it was obvious Tony had complete confidence in his line-up. I found myself a bit jealous that both teams could have such flexibility. But would it cost them in the end ? The middle-board breakdowns all occurred within minutes of each other; team unity even in defeat.

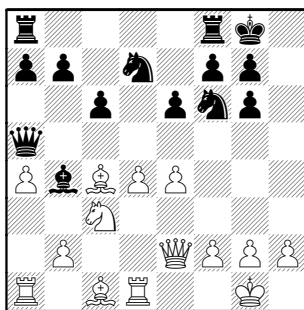
#### Board 1, DGCC-Hedgehogs

Klug, Steffen (2192) –  
Franklin, Dave (2203) [D19]

1.d4 Nf6 2.Nf3 d5 3.c4 c6 4.Nc3 dxc4  
5.a4 Bf5 6.e3 e6 7.Bxc4 Bb4 8.0-0 0-0  
9.Qe2 Bg6

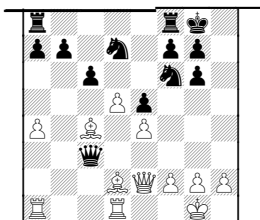


10.Ne5 Nbd7 11.Nxg6 hxg6 12.Rd1  
Qa5 13.e4



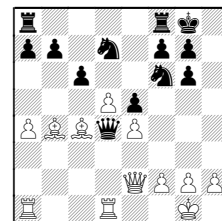
13...e5 14.d5 Nb6

14...Bxc3 15.bxc3 Qxc3 16.Bd2



16...Qc2 17.f3

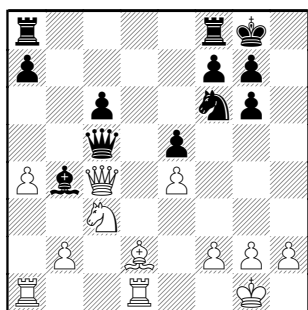
Instead of that 16..Qc2 reply, Black  
definitely doesn't play  
16...Qd4?! 17.Bb4



threatening to win an exchange for two  
Pawns 17...Qb6 18.Bxf8

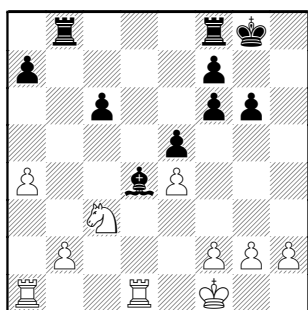
No difference in trying to nab a Pawn :  
17...Qxe4 18.Qxe4 Nxe4 19.dxc6 Ndc5  
[19...bxc6 20.Rxd7 (20.Bxf8 Nxf8) ]  
20.cxb7

15.dxc6 bxc6 16.Bd2 Nxc4 17.Qxc4  
Qc5

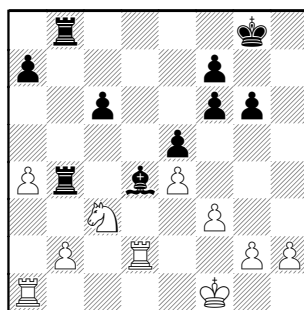


Black had offered a draw as he moved.

**18.Qxc5 Bxc5** Black is slightly better since all his pieces have active prospects. White can only defend.  
**19.Bg5 Bd4 20.Bxf6 gxf6 21.Kf1 Rab8**



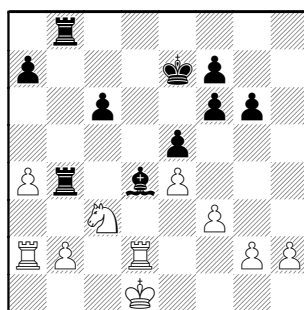
**22.Rd2 Rb4 23.f3 Rfb8**



**24.Ra2**

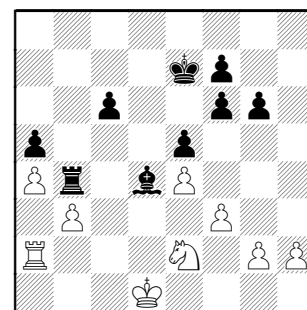
**24.Rb1? Bxc3**

**24...Kf8 25.Ke1 Ke7 26.Kd1**

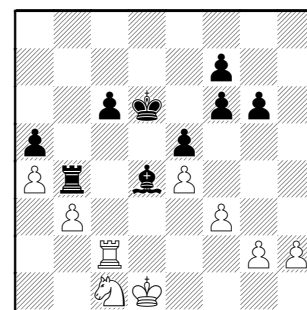


**26...Rc4** Deep Shredder likes 26...a5 idea Rb3 and advancing the King to squish White

**27.Rc2 a5 28.Ne2 Rbb4 29.Rxc4 Rxc4 30.b3 Rb4**



**31.Nc1 Kd6 32.Rc2**



**32...c5**

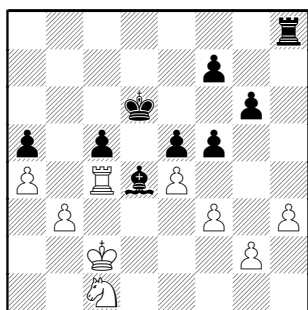
32...Be3 threatens to win Pb3 33.Rc3 holds;

32...f5 weakens e4 but gives White an h-passer

**33.Rc4 Rb8 34.Kc2 Rh8 35.h3 f5**



Team unity is at its max when you play shoulder-to-shoulder. The Hedgehogs are the foreground team, boards 6 to 1 in order from the left. Board 3 was played in another room.



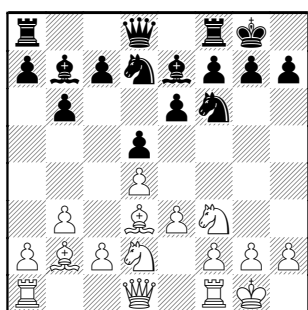
**36.Kd3 fxe4+ 37.Kxe4 f5+ 38.Kd3 g5**  
DRAW AGREED since the Hedgehogs  
had clinched the match. ½-½

## Board 2, Hedgehogs-DGCC

**Rauchman, Michael (2063) -**  
**Egerton, Jim (1992)** [D05]

In his match notes to the team, Captain  
Tony Jasaitis referred to this as a "boring  
Queen Pawn" game. Being a fan of  
similar positions, I jokingly replied "it's  
only boring if you don't play it right" –  
leading us into some deep analysis !!

**1.d4 Nf6 2.Nf3 e6 3.e3 d5 4.Bd3 Be7**  
**5.0-0 0-0 6.Nbd2 b6 7.b3 Bb7 8.Bb2**  
**Nbd7**



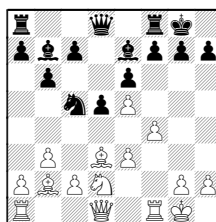
### 9.Ne5

A standard Zukertort attack- the b2-  
Bishop appears useless but supports e5.  
White continues to build attack or  
undermine e6 so the e-Pawn can  
advance and fully open the long  
diagonal.

Other move are equally played such as  
9.c4 and 9.Qe2

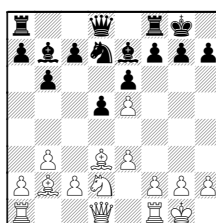
### 9...c5

**A) 9...Ne4 10.f3 Nxe5 11.dxe5 Nc5 12.f4**



was equal in the Master-level game  
Khurtsilava-Obodchuk, 2005

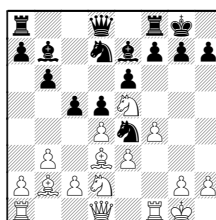
**B) White builds an attack after 9...Nxe5**  
**10.dxe5 Nd7**



**11.f4** (or 11.Qh5)

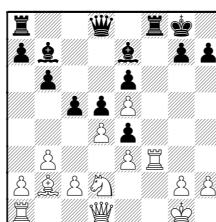
### 10.Qf3

[10.f4 Ne4



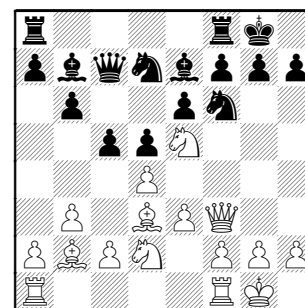
**A) 11.Nxe4 dxe4 12.Bc4**

**B) 11.Rf3 f5 12.Bxe4 Nxe5 13.fxe5 fxe4**



was eventually drawn in Bellon.Lopez-  
Gutierrez.Castillo, 2003 ]

### 10...Qc7

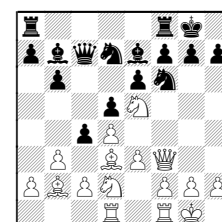


[10...Rc8 11.Qh3]

**11.Rad1** The first unique move, for quite  
a specific reason ! The main move here  
is 11.Qh3

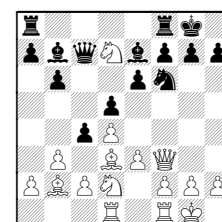
**11...Rac8**

**11...c4!**

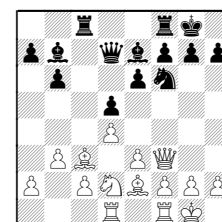


almost wins a piece-- 12.bxc4

Best move is **12.Nxd7**

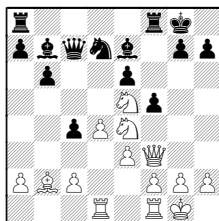


**12...Qxd7** (12...Nxd7 13.bxc4 dxc4  
14.Be4) **13.Be2 c3 14.Bxc3 Rac8**



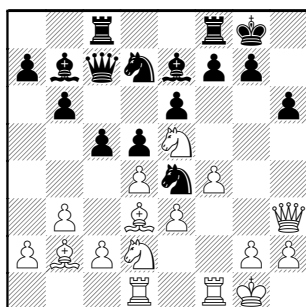
and Black breaks through

The lesser analysis line, as started last column, continues : 12...dxc4 ( hitting Queen and Bishop ) 13.Be4 Nxe4 14.Nxe4 f5



with interesting play nonetheless.

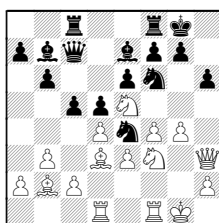
12.Qh3 h6 13.f4 Ne4



Afterwards, this position was the subject of much analysis. [Incidentally, Deep Shredder much preferred an earlier 13...cxd4 14.exd4 Ne4]

14.Nxd7 I was horrified by trading White's best piece, but Deep Shredder agrees with it.

A) The thought was to go for a full-blooded attack with 14.Ndf3 Ndf6 15.g4

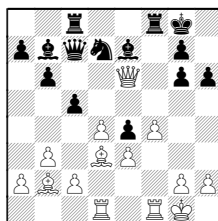


with g4-g5 looking like a crush but the computer shrugs it off with the simple 15...Nh7

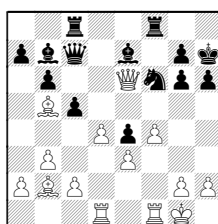
B) Teammate Mack Smith found 14.Ng6 fxg6 15.Qxe6+

(So how about a move order change to open the diagonal to the King ?

15.Nxe4 dxe4 16.Qxe6+

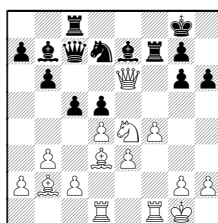


16...Kh7  
(16...Rf7 17.Bc4 Rcf8 18.Qxe7)  
17.Bb5 Nf6



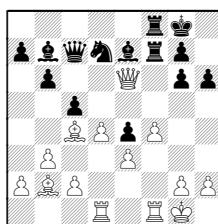
and Black is the sacrificed piece up)

So returning to Mack's original line:  
15...Rf7 16.Nxe4



but it falls apart with Black's 16...Nf8

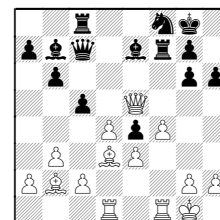
(Mack only considered 16...dxe4 17.Bc4 Rcf8



18.Qxe7)

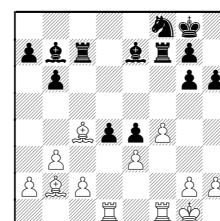
After some more study, he found 17.Qe5 Qxe5 (but the computer finds a Queen

trap 17...dxe4



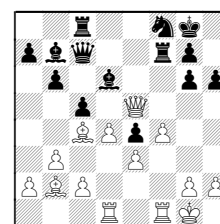
18.Bc4

(18.Qxc7 Rxc7 19.Bc4 cxd4



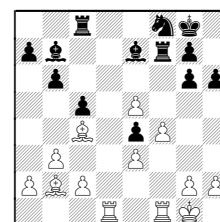
20.exd4 Rxc4)

18...Bd6



the Queen has no moves

18.dxe5 dxe4 19.Bc4

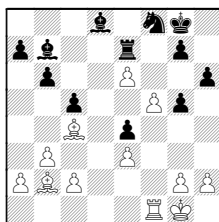


"and Black can't extricate himself from this dangerous pin" 19...b5

B1) 19...Nh7 20.Rd7 adds a Bishop to the tally;

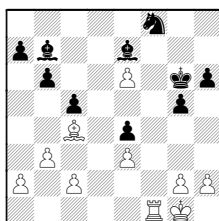
B2) 19...Rc7 20.f5 g5 21.f6 gxf6 22.exf6 wins the dark-squared Bishop;

**B3)** 19...Rd8 20.Rxd8 Bxd8 21.f5 g5  
22.e6 Re7



23.Bxg7! Kxg7  
 (23...Rxcg7 24.e7+ idea exdQ)

24.f6+ Kg6 25.fxg7 Bxe7

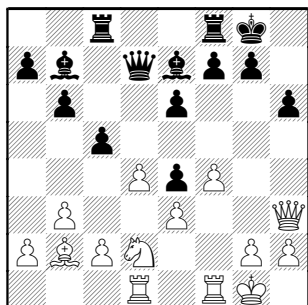


26.Rf7

So all that to show that there's a lot of possibilities, but White apparently can't force anything.



You'll have to turn back a page to pick-up the game, after 14. Ne5xd7 ...  
**14...Qxd7 15.Bxe4 dxe4**

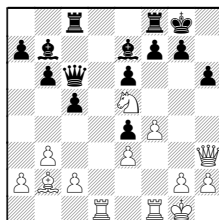


DS rates this as a Pawn-worth of White positional plusses.

**16.dxc5**

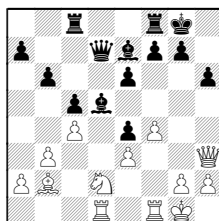
**A)** White can similarly open the Bishop without giving Black the c-file with 16.d5! Bxd5

(Black should avoid the Queen problems after 16...Qxd5 17.Nc4 Qc6 18.Ne5)



and a Rook invades to d7

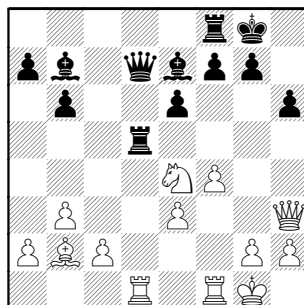
17.c4



idea Nxex4

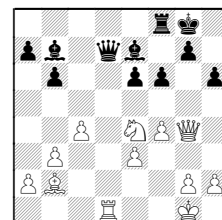
**B)** Mack also discussed 16.Nc4 (idea f5)  
 16...cxd4 17.Rxd4 Qc6

**16...Rxc5 17.Nxe4 Rd5**



**18.Rxd5**

It was agreed a promising try was 18.Qg4 threatens mate while holding d1  
18...f6 19.c4 Rxd1 20.Rxd1

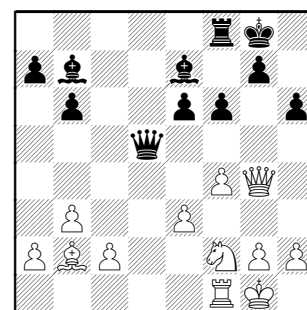


probing weakness of Queen and e6  
20...Qc6

**18...Qxd5 19.Qg4 f6**

Michael pointed out the dead draw  
 19...g6 20.Nf6+ Bxf6 21.Bxf6 Qd2

**20.Nf2**



**20...Bc5 21.Rd1 Qc6 22.Rd3**

White is a bit better. The match had been won by the Hedgehogs, so DRAW AGREED 1/2-1/2

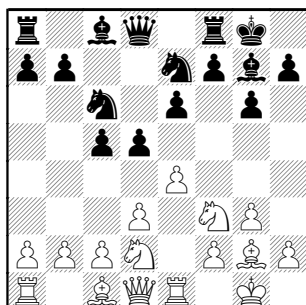


## Board 3, DGCC-Hedgehogs

Wakerly, Ralph (1781) –  
Smith, Mack (1982)

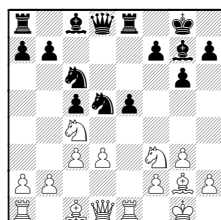
[A08]

1.e4 e6 2.d3 c5 This should be classified  
as a Sicilian Closed. 3.Nd2 Nc6 [3...d5]  
4.Ngf3 Nge7 5.g3 d5 [5...g6] 6.Bg2 g6  
7.0-0 Bg7 8.Re1 0-0



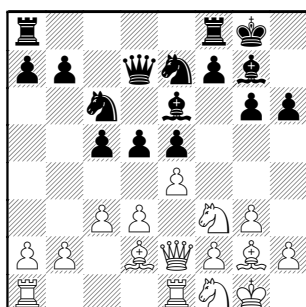
9.c3 e5 [9...b6] 10.Nf1

White's pieces spring into action with  
10.exd5 Nxd5 11.Nc4 Re8

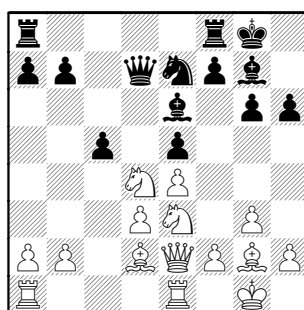


12.Ng5

10...h6 11.Qe2 Be6 12.Bd2 Qd7



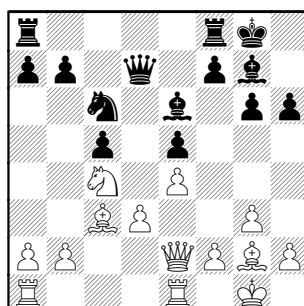
13.Ne3 d4 14.cxd4 Nxd4 15.Nxd4



15...Qxd4 targeting the backward Pawn

15...cxd4 16.Nc4 Rfc8

16.Bc3 Qd7 17.Nc4 Nc6



18.b3 Rfd8

18...Rad8 retains possibilities with f7-f5

19.Rad1 Qc7 20.a4

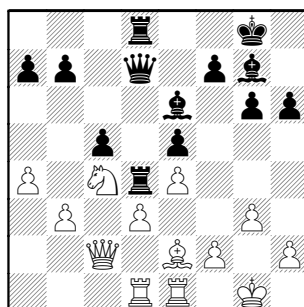
Deep Shredder prefers 20.Ne3 idea Nd5

20...Nd4 21.Bxd4

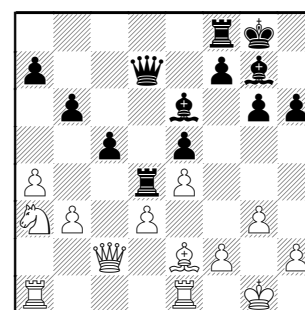
White can ignore the Knight, and work to  
undermine it: 21.Qb2 idea b4

21...Rxd4 Black begins building small  
advantages: weak Pd3, Bishop pair,  
more space.

22.Qc2 Rad8 23.Bf3 Qd7 24.Be2



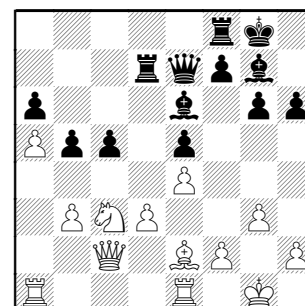
24...b6 25.Ra1 Rf8 26.Na3



26...Qe7

26...f5 opens the board, winning  
(according to DS) 27.exf5 Bxf5 and  
Black would like to get a Bishop on d4

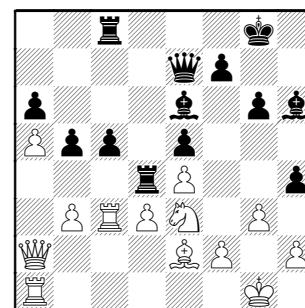
27.Nb5 Rd7 28.a5 a6 [28...h5] 29.Nc3  
b5



30.Nd1 [30.Bf3 idea Nd5] 30...Rd4  
31.Ne3 Rc8

DS suggests opening a second front :  
31...Rfd8 idea h5-h4, as Black soon finds

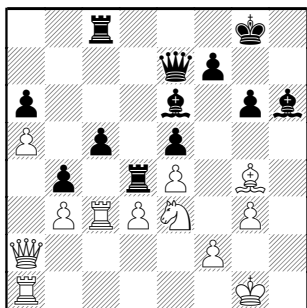
32.Rec1 h5 33.Qa2 Bh6 34.Rc3 h4



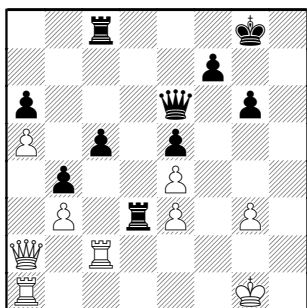
35.Bg4 oops, that was guarding the  
backward Pawn 35...hxg3

35...Bxe3 36.fxe3 unfortunately hitting the Rook, otherwise Bxg4 would've been possible(36.Bxe6 Bxf2+)

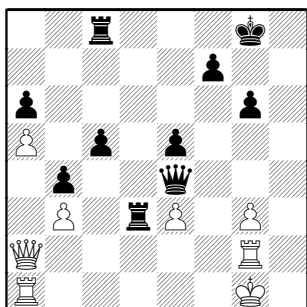
36.hxg3 b4



finally winning Pd3 37.Bxe6 Qxe6  
38.Rc2 Bxe3 39.fxe3 Rxd3



A second Pawn is in the offering  
40.Re2 Qg4 41.Rg2 Qxe4



42.Rf1 Qxe3+ 43.Kh1 Kg7 0-1

## Board 4, Hedgehogs-DGCC

Seet,Paul (1865) –  
Potts,Kevin (1802)

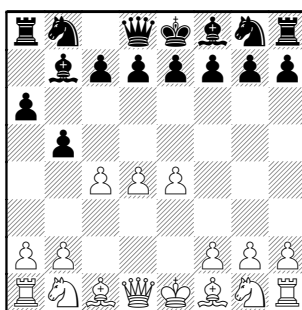
[B00]

1.e4 a6 hmmm. But GM Miles did gain a famous win versus Karpov with it ! DS already rates White a Pawn advantage !

2.d4 b5

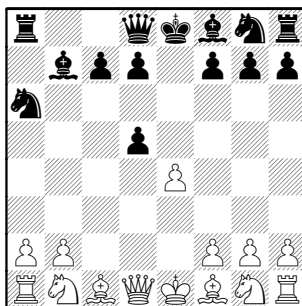
2...b6 doesn't make a weakness at b5, but Black would need to be prepared to play against a broad Pawn center.

3.c4 Bb7



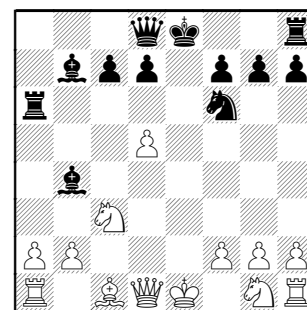
The point. White has advanced the Pawns close to Black's formation. Now it's time to counterattack as he develops.

4.d5 e6 5.cxb5 exd5 6.bxa6 Nxa6



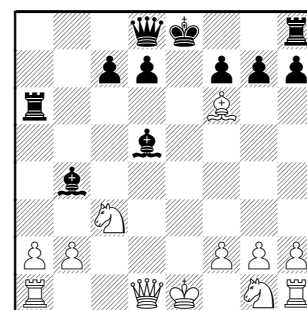
Center? What Pawn center ? Will White's queenside Pawns become more important than Black's center ones ? Don't touch that dial ! Stay tuned...

7.Bxa6 Rxa6 8.exd5 Nf6 9.Nc3 Bb4



DS changed his mind and rates this as a half-Pawn better for Black ! Black has a huge development lead for the Pawn. Let's see how to use it...

10.Bg5 Bxd5 11.Bxf6



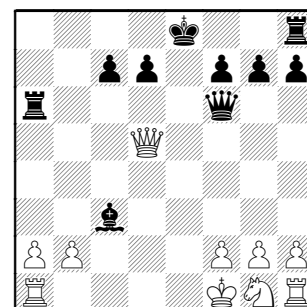
11...Qxf6

The machine realized a more forceful line with the immediate 11...Bxc3+ 12.Bxc3

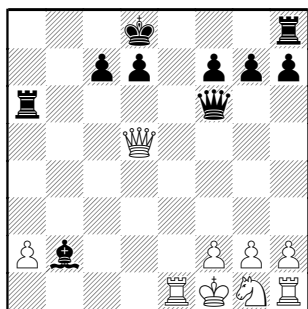
A) 12.bxc3 Qxf6 ideas Qxc3+ forking or Bxg2;

B) and White can't play the game line 12.Kf1? Bc4+ (12...Bxf6) ; 12...Bxg2]

12.Qxd5 Here we go with another game of centralized Queens. 12...Bxc3+ 13.Kf1



13...Bxb2 14.Re1+ Kd8

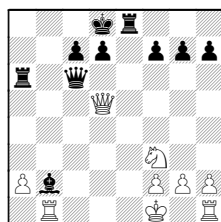


15.Rb1

The same thing happens after 15.Nf3  
Re8 16.Rb1

15...Re8 16.Nf3 Qc3

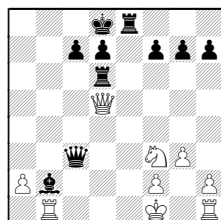
16...Qc6



is OK because of White's backrank  
problems

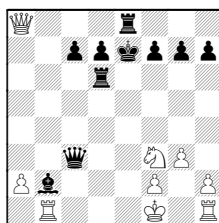
17.g3 c6

17...Rd6



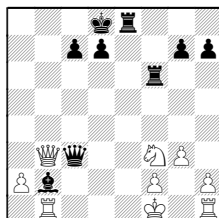
18.Qxf7

(18.Qa8+ Ke7



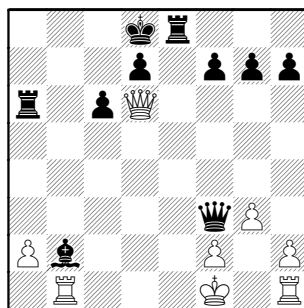
19.Re1+? Qxe1+!)

18...Rf6 wins the Knight 19.Qb3



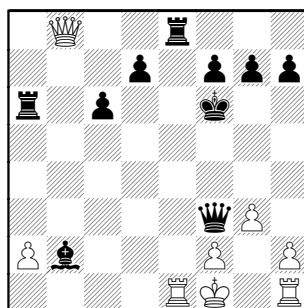
threatens the Bishop in return

18.Qd6 Qxf3

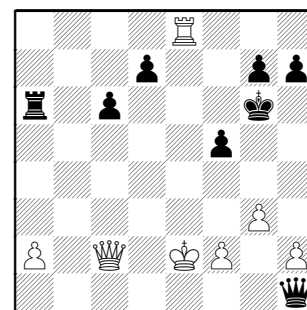


Things get hairy as time trouble  
approaches

19.Qb8+ Ke7 20.Re1+ Kf6



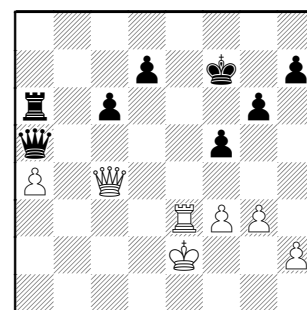
21.Qxb2+ Kg6 22.Qc2+ f5 23.Rxe8  
Qxh1+ 24.Ke2



24...Qd5

24...Qa1 wins the Pawn for sure

25.a4 Kf7 [25...Qd4] 26.Re3 g6 27.f3  
Qa5 28.Qc4+



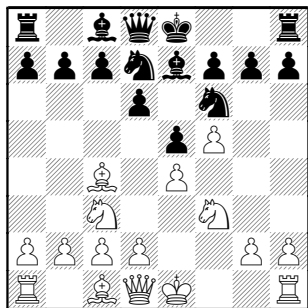
28...Qd5?? 29.Qxa6 1-0



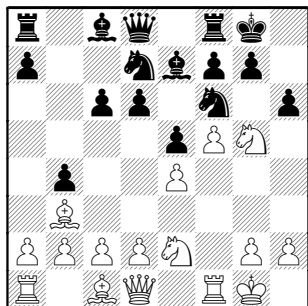
## Board 5, DGCC-Hedgehogs

Maney, Aaron (1731) –  
Tan, Arway (1636) [C30]

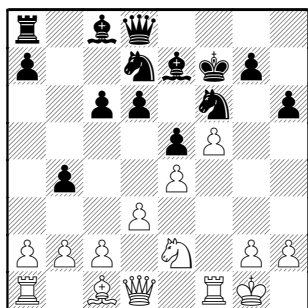
1.e4 d6 2.f4 Nd7 3.Nf3 e5 4.f5 [4.Bc4]  
4...Ngf6 5.Nc3 Be7 6.Bc4



6...c6 7.0-0 b5 8.Bb3 b4 9.Ng5 0-0  
10.Ne2 h6



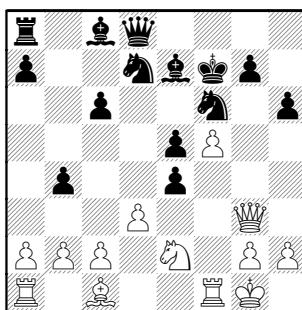
11.Nxf7 As there's no prospect for Rook  
play, the minor pieces are definitely  
stronger. 11...Rxf7 12.Bxf7+ Kxf7 13.d3



13...d5

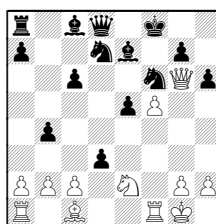
13...Qb6+ 14.Kh1 d5 (14...Ng4 15.Qe1)

14.Qe1 dxe4 15.Qg3



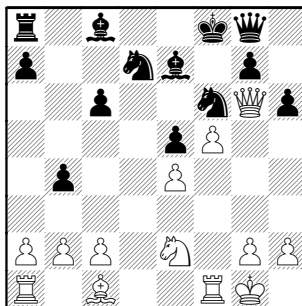
15...Qg8

15...Qb6+;  
15...exd3 16.Qg6+ Kf8



17.cxd3 Ba6 idea Nc5

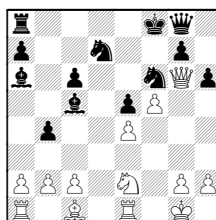
16.Qg6+ Kf8 17.dxe4



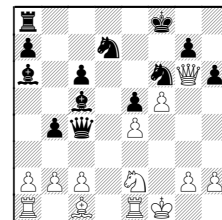
17...Nc5

17...Nxe4 18.Qxc6;

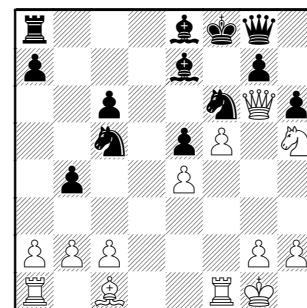
17...Ba6! 18.Re1 (18.Rf2? Bc5)  
18...Bc5+



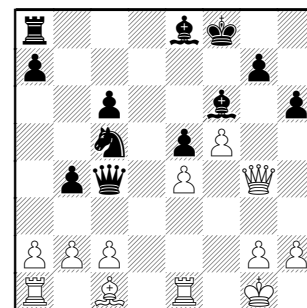
19.Kf1 (19.Kh1 Bf2) 19...Qc4



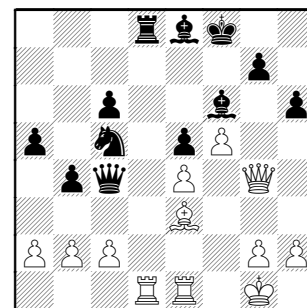
18.Ng3 Bd7 19.Nh5 Be8



20.Nxf6 Bxf6 21.Qg4 Qc4 22.Re1

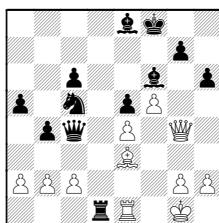


22...Rd8 [22...h5] 23.Be3 a5 24.Rad1?



24...Be7? Missing a nice series...

24...Rxd1!



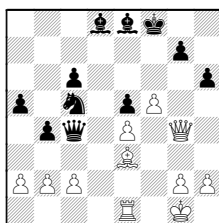
25.Qxd1 (25.Rxd1 Nxe4) 25...Nxe4

Note in either line, Bxc5+ doesn't bail White out since the re-capture is also with check!

**25.f6**

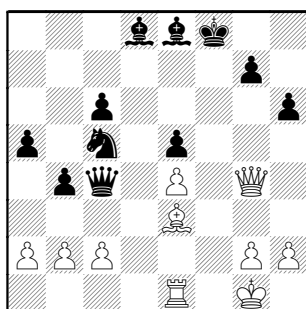
Now White misses a kill...

25.Rxd8! Bxd8



26.Qe2! forcing the Queen away from Nc5 protection Qxe2 27.Bxc5+ +-

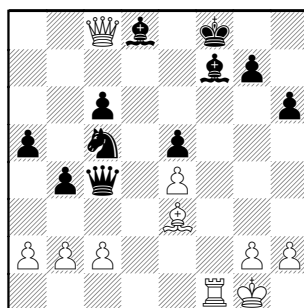
**25...Bxf6** 26.Rxd8 Bxd8



**27.Rf1+** [27.Qe2!] **27...Bf7**

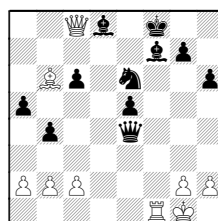
27...Bf6 28.Bxh6!

**28.Qc8**

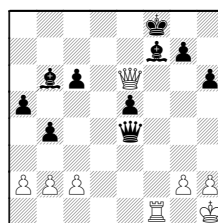


**28...Ne6** 29.Qd7

29.Bb6 Qxe4



30.Qxe6 (30.Bxd8? Qd4+) 30...Bxb6+  
31.Kh1



31...Bf2! **29...Be7** [29...Bf6 30.Qc8+ Be8] **30.b3** Qxe4 **31.Bc5??** 0-1

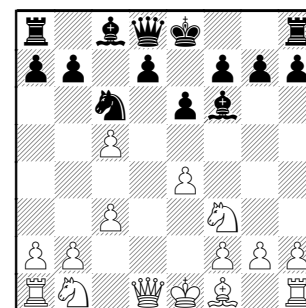
### Board 6, Hedgehogs-DGCC

Kratka, Milan (1633) –  
Vecanski, Drago (1578)

[B22]

This game started much earlier than the rest, giving the Hedgehogs early promises of the first full point.

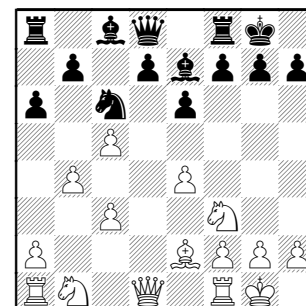
**1.e4 c5** **2.c3** **Nc6** **3.d4** **e6** **4.Nf3** **Nf6**  
**5.Bg5** [5.d5] **5...Be7** **6.Bxf6** **Bxf6?!**  
[6...gxf6] **7.dxc5**



**7...Be7** **8.b4** **a6** Black needs to weaken the Pawns before White can get his pieces to the weak squares. Otherwise, he'll get squished!

DS suggests any of: 8...d6; 8...b6; 8...d5, but I'm curious about 8...a5 with Pawn play as White has in a Queen's Gambit Accepted.

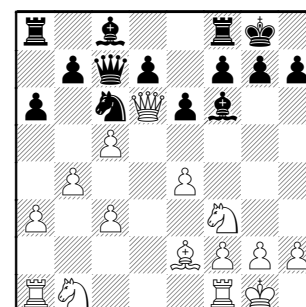
**9.Be2** 0-0 **10.0-0**



**10...Bf6** idea Nxb4

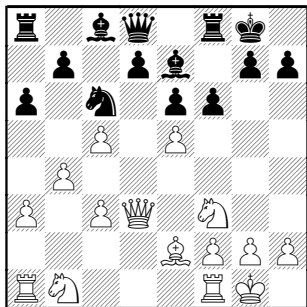
10...d6 is a must !; or 10...b6

**11.a3** **Qc7** **12.Qd6**



Black is officially in trouble

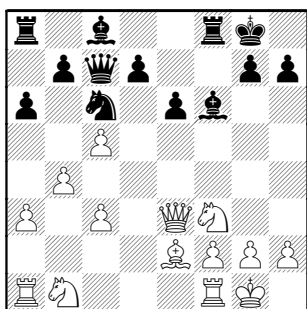
12...Qd8 13.e5 and d6 is clamped  
13...Be7 14.Qd3 f6



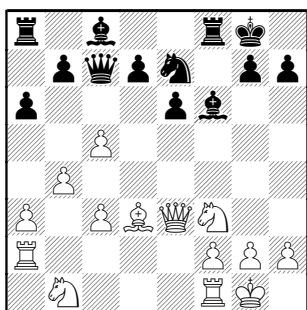
15.Qe3

15.exf6 Bxf6 16.Nbd2 idea Nc4-d6

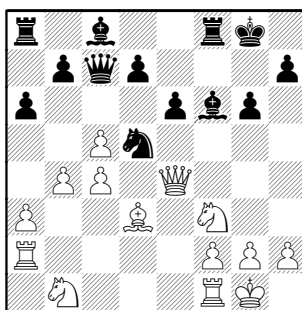
15...Qc7 16.exf6 Bxf6



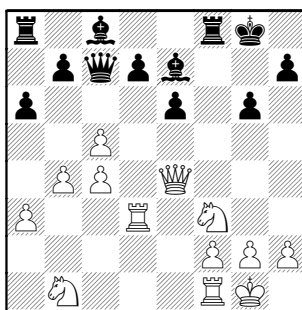
17.Ra2 [17.Nbd2] 17...Ne7 18.Bd3



18...Nd5 [18...d6] 19.Qe4 g6 20.c4

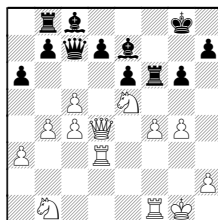


20...Nf4 21.Rd2 Nxd3 22.Rxd3 Be7



23.Ne5 idea Nxg6! 23...Rf5 24.f4 Rb8  
[24...d6] 25.Nd2

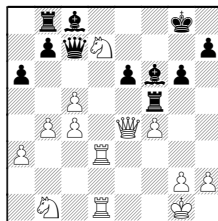
A) 25.g4 Rf6 26.Qd4



and d7 falls;

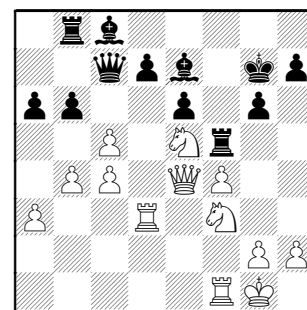
B) 25.Qd4 Bf6;

C) 25.Rfd1 Bf6 26.Nxd7

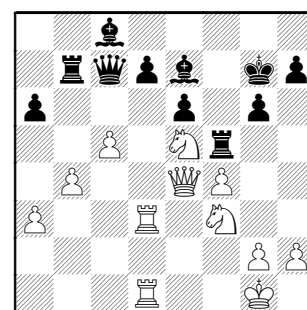


26...Bxd7 (26...Rxf4 27.Qxe6+) 27.Rxd7

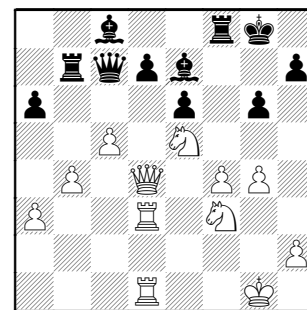
25...Kg7 26.Ndf3 b6



27.cxb6 [27.Rfd1] 27...Rxb6 28.c5 Rb8  
29.Rfd1 Rb7



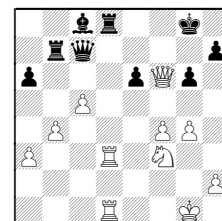
30.Qd4 Kg8 31.g4 Rf8



32.Qe4

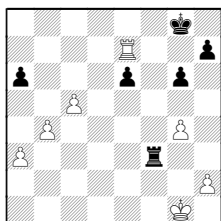
32.Nxd7 Bxd7

(32...Rd8 33.Nf6+ Bxf6 34.Qxf6



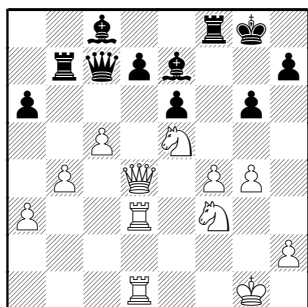
34...Rf8 35.Rd8)

33.Qxd7 Qxd7 34.Rxd7 Rxd7 35.Rxd7  
Rxf4 36.Rxe7 Rxf3

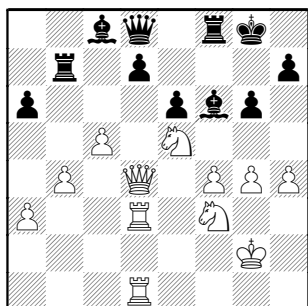


37.c6

32...Kg7 33.Qd4 Kg8

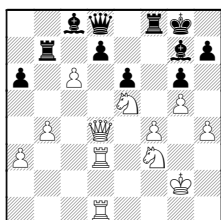


34.h4 Bf6 35.Kg2 Qd8

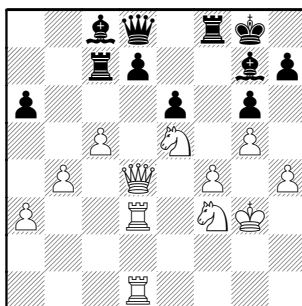


36.Kg3

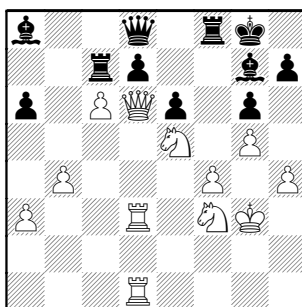
36.g5! Be7 37.Ng4 idea Nh6#  
(no time for 36...Bg7 as 37.c6!)



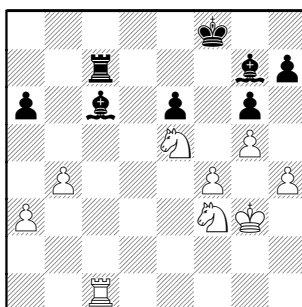
36...Rc7 37.g5 Bg7



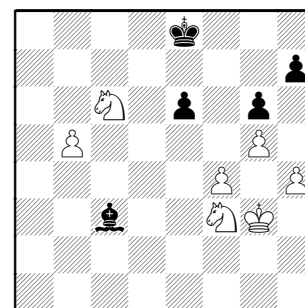
38.Qd6 Bb7 39.c6 [39.Qxe6+] 39...Ba8



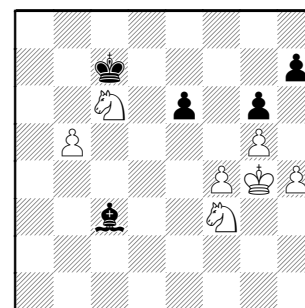
40.Qxe6+ dxe6 41.Rxd8 Bxc6 42.Rxf8+  
Kxf8 43.Rc1



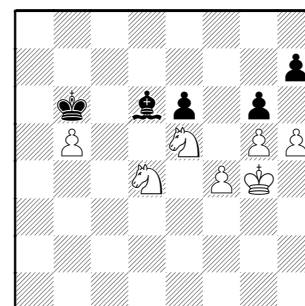
That's it ! 43...Ke8 44.Rxc6 Rxc6  
45.Nxc6 Bb2 46.a4 Bc3 47.b5 axb5  
48.axb5



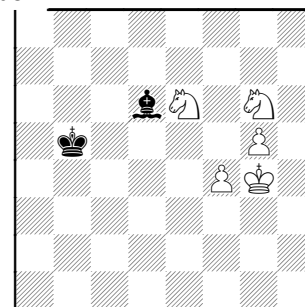
48...Kd7 49.Kg4 Kc7



50.h5 [50.Nfd4] 50...Kb6 51.Ncd4 Bb4  
52.Ne5 Bd6



53.hxg6 hxg6 54.Nxg6 Kc5 55.Nxe6+  
Kxb5



56.Ng8 Kc6 57.g6 1-0

### Thursday, May 1<sup>st</sup> -- UOP at St Charles Chess Baker Played at Baker's site, St Charles

There's one question on my mind tonight: "Just what is a Baker house?" If it turns out to be related to cake, cookies, and doughnuts, tonight will be swee-eet ! Seriously, I've heard the standard explanation- it's the name of the place they play to distinguish from the other (already established) St Charles CC team. But still, why 'Baker' and not 'Community Center' or Park 'District' ? I never have quite grasped the concept. At the site, however, quickly one realizes that 'the House' is the right emphasis; it is a beautifully-kept, historical house used for community gatherings. The St Charles club meets on the top floor.

There was no question, however, about why I was coming here. As a club formed decades ago, it is well-known among Chicago chess players as a hotbed for growing players. Being off North Avenue just west of the Fox River, it is unfortunately quite a drive west—so far it is even further West than areas friends jokingly refer to as "Iowa". Tonight I come with baited breath- not just a chance to experience the club (which is meeting alongside the CICL match), but also in anticipation of seeing my North Division buddies crush one of the perennial CICL champs.

I was still pleased from the previous night's battles; smiling with the remembrance of the serious post-games analysis. Even though they hadn't conquered, the Downer's Grove CC were true gentlemen and gave almost happy game commentary. I realized I have a lot to learn in this area. But my satisfaction rose with the early arrival of UOP's Rajan Nallathambi, the newest member and one I've never talked with much.

Soon the UOP team started arriving in bunches, one, now a couple more, here's a group of three, and another, and... Wait! How many could there be ?? Talk among the players was about how long it had been since UOP had been in the playoffs. General agreement centered around 15 years, but I can remember having to play against Edwin Boldingh (he opened with the Grob, 1. g4 ) and that was certainly after my start as Games Editor (1999). But the point was made—they were pleased and excited to be there. It was 'all hands on deck' – **nine** players were there in force.

As the normal club night was starting, the start of the match was still getting settled. I had a chance to see what Jeff Wiewel does to lead and tried to pick up some ideas for Walgreens' club nights. The real urge, however, was... to play chess ! After two nights of observing (and some instructional games, too, as we've already examined), the deep hatred of losing a game (which had happened much too often this season) was finally giving way to playing... despite the result.

Once the matches were well-started, Jeff whispers "would you like to play a ladder game for the club" ? I soon realized he meant against him, a guy I've always wanted to test over the board ! Of course I said 'yes' immediately, forgetting the reporting aspect for which I'd come. Next thing I know, my game had dwindled into a loss. I resign and turn around to find all the match games complete and hardly any CICL'ers even there. So who'd won ?

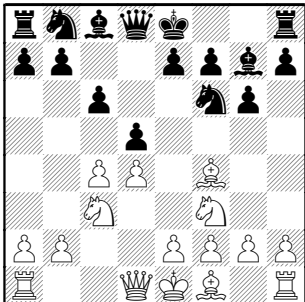
#### Board 1, Baker-UOP

Nguyen,Tam (2207) –  
Leong,Gee (1901)

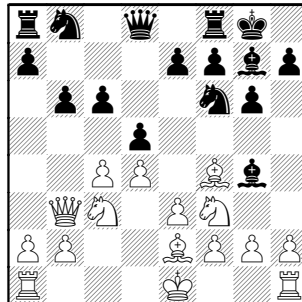
[D93]

"TN" marks comments by Tam Nguyen

1.d4 Nf6 2.c4 g6 3.Nc3 d5 4.Nf3 Bg7  
5.Bf4 c6

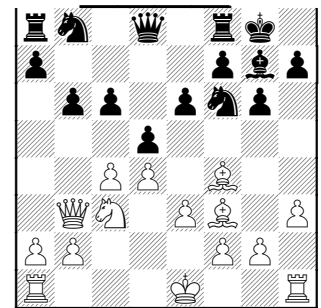


The Gruenfeld Defense has transposed to a slow, solid Slav line. 6.e3 0-0 7.Be2 Bg4 8.Qb3 b6



9.h3 [9.0-0] 9...Bxf3 [TN: It's bad to give up the bishop pair and gives white bishop the main diagonal. ]

10.Bxf3 e6

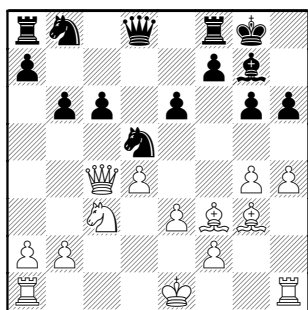


11.h4 TN: white gives black a chance to counter attack.

TN: 11.0-0 White has white squares' pressure and no weakness; with the bishop pair and better development, he is much better.

11...h6 12.g4 dxc4 13.Qxc4 Nd5

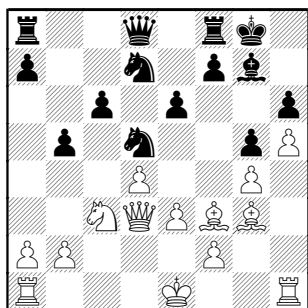
## 14.Bg3



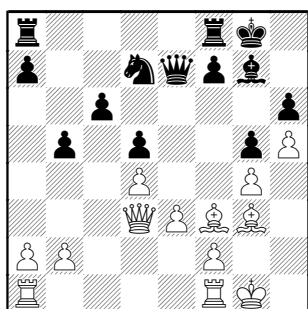
14...b5 TN: Creating a weakness for no good reason. 15.Qd3 Nd7

15...Na6 routing to b4 or c7

## 16.h5 g5



17.Nxd5 [17.0-0] 17...exd5 18.0-0 with idea Bd1-c2 18...Qe7



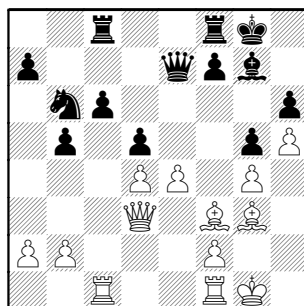
## 19.Rac1

TN: It's not easy to exploit the b1-h7 diagonal because g4 is weak

19...Rac8 20.e4 [20.Rc2] 20...Nb6



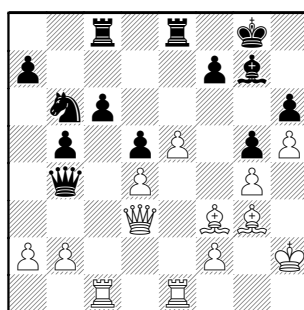
The famed and beautiful Baker House



21.Rfe1 Rfe8 22.Kh2 [22.e5] 22...Qb4

TN: At least one Pawn is lost.

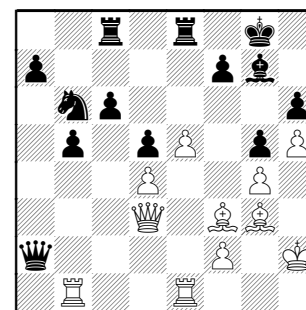
## 23.e5



23...Qxb2 24.Rb1

TN: when one pawn is lost, why not give up 3 pawns for an attack? As with 24.Rc2

24...Qxa2



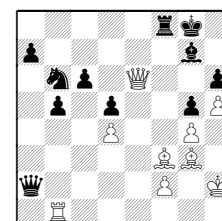
25.e6 TN: this sacrifice should not have worked.

## 25...fxe6

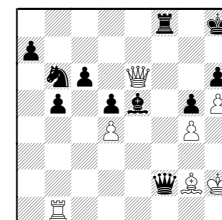
DS suggests 25...Re7 as winning for Black, as well as the immediate 25...Rxe6

TN: The game move should slow down white's attack significantly because white will operate with only one rook instead of two and white's queen will have to defend Rb1 and the f-file, it could be overloaded.

TN: Continuing from game, 26.Rxe6 fxe6 27.Qg6 Rf8 28.Qxe6+

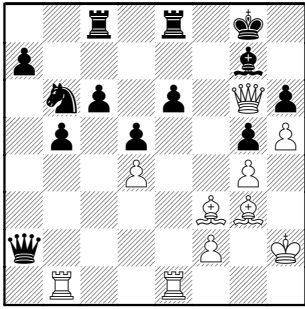


28...Kh8 29.Be5 Qxf2+ 30.Bg2 Bxe5+



is drawish

26.Qg6



TN: white has only one threat, that is 27.Ra1, a lesser threat is Rxe6

26...e5? [26...Re7] 27.Ra1 wins on the spot, taking over the 7th rank

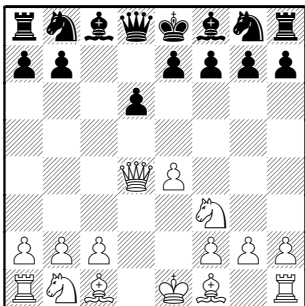
27...Qa4 [27...Qd2 28.Rxa7] 28.Rxa4 Nxa4 29.Bxe5 Kf8 1-0

## Board 2, UOP-Baker

Siwek, Mark (1952) –  
Raso, Paul (2081)

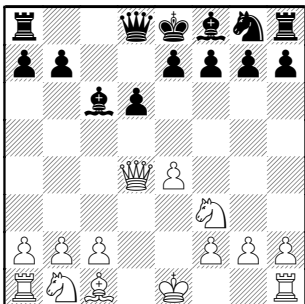
[B53]

1.e4 c5 2.Nf3 d6 3.d4 cxd4 4.Qxd4



Another Queen to the center !

4...Nc6 5.Bb5 Bd7 6.Bxc6 Bxc6



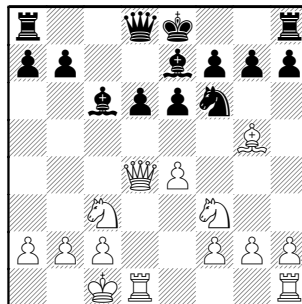
Eight of the nine "happy-to-be-here" UOP team: (l-to-r) Jay Lechnick, Captain Art Olsen, Gee Leong, Rajan Nallathambi, Edwin Boldingh, Mark Siwek, John Van Meer, and Richard Easton.

Mark has a fair amount of experience with this system, so I was interested in how Black would defend it.

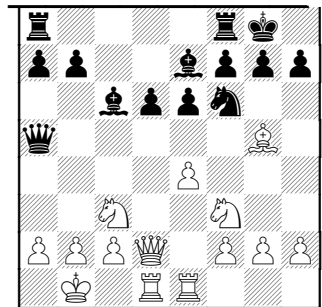
7.Nc3

I don't know the system, yet 7.c4 first seems to lock d5 for good, transposing into a Maroczy Bind where White's light-squared Bishop is often in the way. Of course here it's been traded away for a more useful Knight. A quick reference to my TWIC database shows both played, with the game move heavily favored.

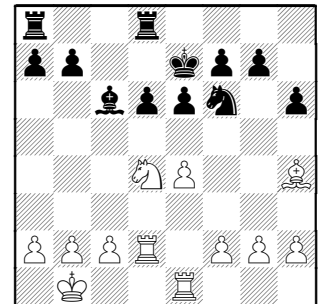
7...Nf6 8.Bg5 e6 9.0-0-0 Be7



10.Rhe1 [10.Qd3 is also played]  
10...Qa5 11.Kb1 0-0 12.Qd2



Yup, Mark knows his stuff... still following GM play. 12...Rfd8 [12...Qa6; 12...Qb6] 13.Nd5 a rare line in my TWIC database [13.Nd4] 13...Qxd2 14.Nxe7+ Kf8 15.Rxd2 Kxe7 16.Nd4 h6 17.Bh4

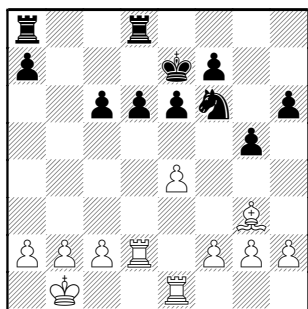


17...g5 The first independent move

17...Rac8 18.f4 Bxe4? 19.Bxf6+ Kxf6  
20.Rxe4 was a quick win for White in a

game between Experts, Chandrasiri-Chan, 2003

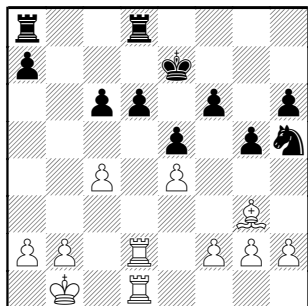
18.Nxc6+ bxc6 19.Bg3



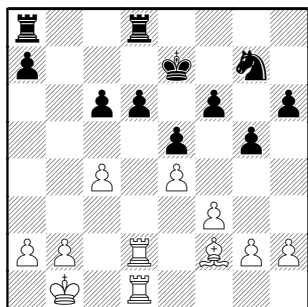
19...Nh5

19...d5 is preferred by the silicon monster

20.c4 f6 21.Red1 e5

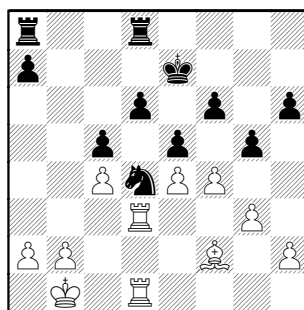


22.f3 [22.b3; 22.Kc2] 22...Ng7 23.Bf2



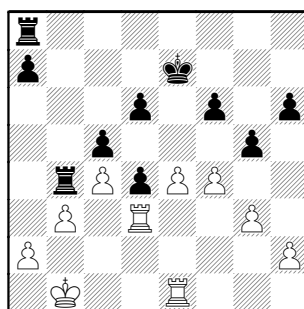
DS notices a recent gain for White, almost a Pawn's worth.

23...c5 [23...Ne6] 24.Rd3 [24.h4; 24.Rh1] 24...Ne6 25.g3 [25.Be3] 25...Nd4 26.f4

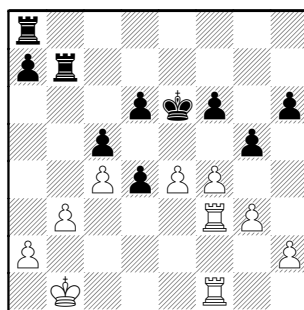


26...Rdb8 27.Bxd4 DS hates this trade. The protected passer is too strong.

27...exd4 28.Re1 Rb4 29.b3



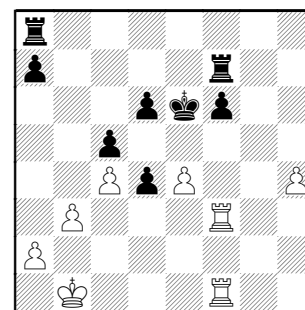
29...Ke6 [29...a5] 30.Rf3 Rb7 31.Ref1



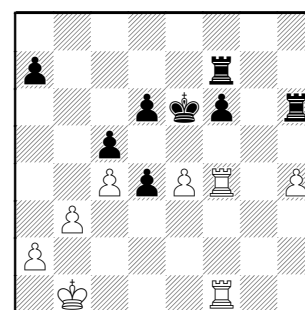
31...Rf7

31...g4 DS appears to prefer Black's queenside play.

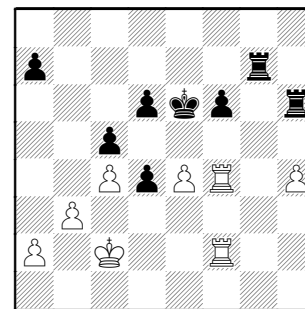
32.fxg5 hxg5 33.h4 gxh4 34.gxh4



34...Rh8 At least White has got Black to react. But can he hold his loose Pawns ? 35.Rf4 Rh6



36.Kc2? [36.Rg4 is necessary] 36...Rg7! 37.R1f2



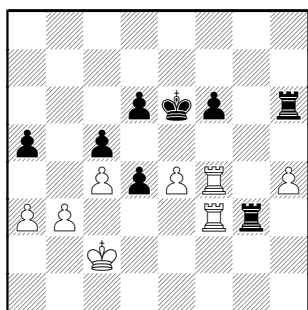
37...Rg3

Black has Rh3-xh4 if he wants it.

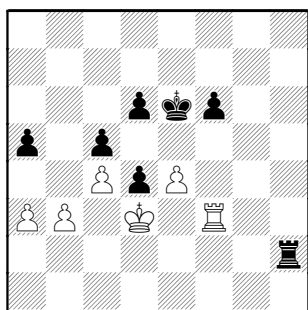
38.a3 this makes more weaknesses

38.Rh2 Ke5; 38.Rf5 Rh3 (38...Rxh4? 39.Rxf6+) ]

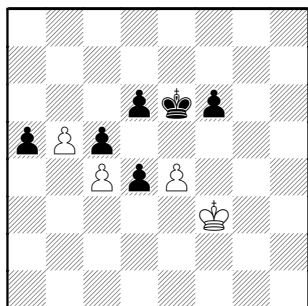
38...a5 39.R2f3



39...Rxf3 40.Rxf3 Rxh4 41.Kd3 Rh2



42.b4 Ra2 43.b5 Rxa3+ 44.Ke2 Rxf3  
45.Kxf3



45...a4 0-1

### Board 3, Baker-UOP

Freidel, Jesse (1992) –  
Van Meer, John (1920)

[A00]

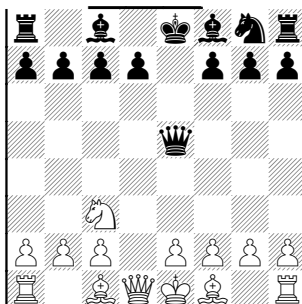
1.d4 e5 2.dxe5 Nc6 3.Nf3 Qe7 4.Nc3

Simple development, not trying to refute  
Black's system, is a good way to  
approach unfamiliar territory.

Nxe5 5.Nxe5 Qxe5

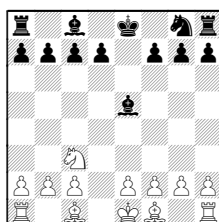


Six of the nine St Chas CC Baker team (l-to-r): Jesse Friedel, Tam Nguyen, (behind) Wally Alberts, Paul Friedel, Robert Bales, and Gary Janssen



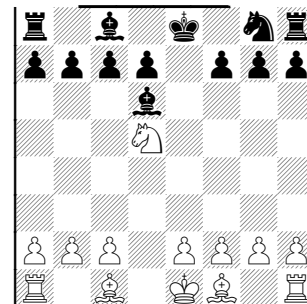
6.Qd5 Another game of Queens-in-the-center ! 6...Qxd5

6...Bd6 7.Qxe5+ Bxe5



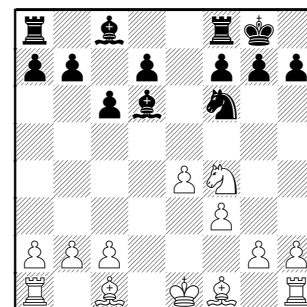
8.Nd5 c6 9.Ne3 d5 turned out well for  
Black in the Master-level game Silvestre-  
Lanier, 2006

7.Nxd5 Bd6

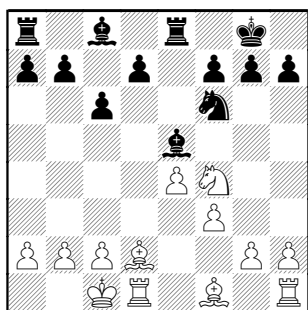


8.e4 c6 The Knight's a pest, but how is  
Black to finish his queenside  
development ?

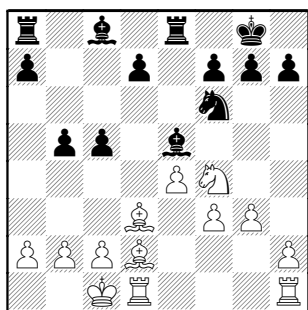
9.Nf4 Nf6 10.f3 0-0



11.Bd2 Re8 12.0-0-0 Be5

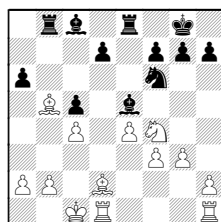


13.Bd3 [13.Nd3] 13...b5 14.g3 c5

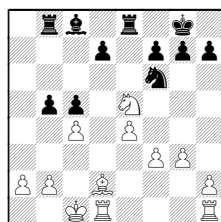


15.c4

Looks like it's OK to take the Pawn :  
15.Bxb5 Rb8 16.c4 a6

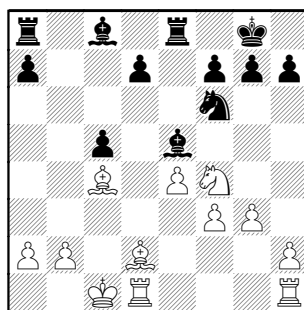


17.Nd3! covering b2 while setting up  
tactics 17...axb5 18.Nxe5



18...Ra8 (18...Rxe5? 19.Bf4) 19.Bf4  
Rxa2 20.cxb5

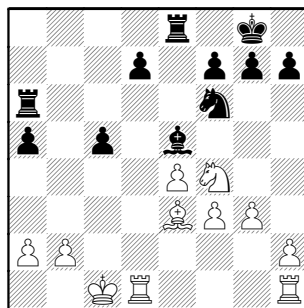
15...bxc4 16.Bxc4



White's freer position gives him a small  
advantage 16...a5

16...Rb8 17.Nd3 Bd4 18.e5

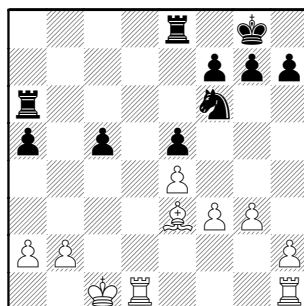
17.Be3 [17.Kc2 idea Bc3] 17...Ba6  
18.Bxa6 Rxa6



19.Nd3 d6

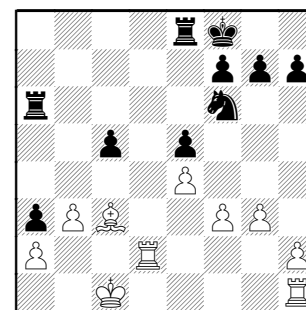
The computer advises 19...Bd6 and  
position the Rooks, but White still has  
almost a Pawn's worth of position

20.Nxe5 dxe5

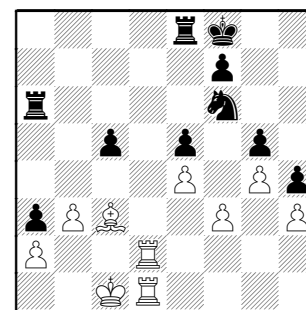


21.Bd2

[21.Rd2 doubling is usually a good thing,  
White improves his Bishop first] 21...Kf8  
22.Bc3 a4 23.Rd2 a3 24.b3

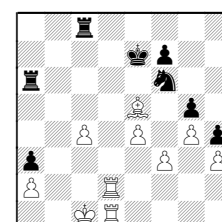


24...g5 25.g4 h5 26.h3 h4 27.Rhd1



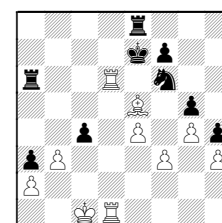
27...Ke7? 28.Bxe5 c4 29.b4

A) 29.bxc4 Rc8



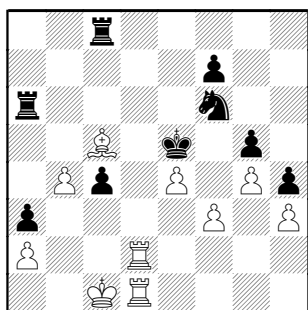
30.Bd6+ Ke6 31.c5

B) 29.Rd6 hitting two loose pieces



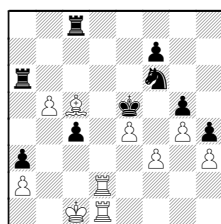
29...Rxd6 30.Bxd6+ Ke6 31.bxc4

29...Rc8 30.Bd6+ Ke6 31.Bc5 [31.Kc2]  
31...Ke5



**32.Be3**

32.b5!

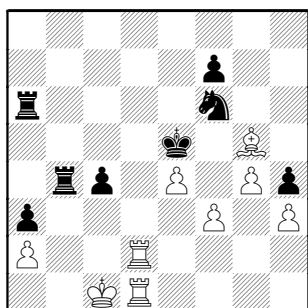


32...Raa8

**A) 32...Ra5 33.Bd4+ Ke6 (33...Kf4 34.Bxf6) 34.Bc3** idea Rd6+ winning Knight;

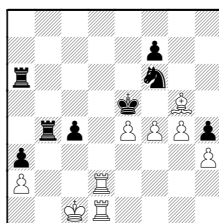
**B) 32...Ra4 33.Bd6+ Ke6 34.b6; 33.Bd6+ Ke6 34.b6**

**32...Rb8 33.Bxg5 Rxb4**



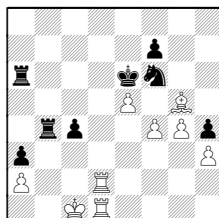
**34.Bxh4**

34.f4+!



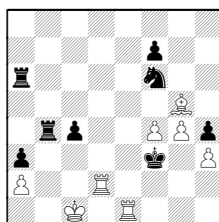
34...Kxe4

(34...Ke6 35.e5



35...Ne8 36.f5+ Kxe5 37.Re2#)

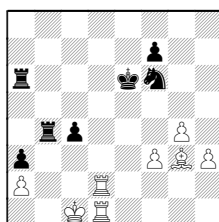
35.Re1+ Kf3



36.f5 idea Re3#

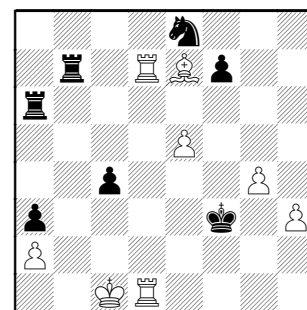
**34...Kf4 35.e5 Ne8**

35...Kxe5 36.Bg3+ Ke6

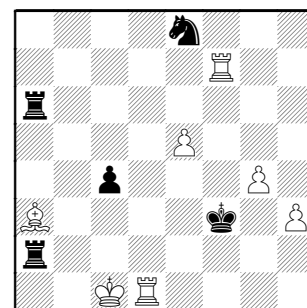


37.Re1+ Ne4 38.Rxe4+

**36.Be7 Rb7 37.Rd4+ Kxf3 38.Rd7**

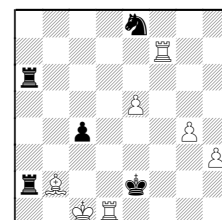


**38...Rb2 39.Bxa3 Rxa2 40.Rxf7+**



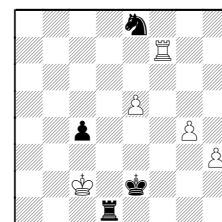
**40...Kg3**

40...Ke2 The Bishop or Rook will be won  
41.Bb2



41...Rxb2

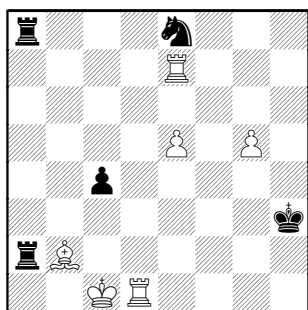
(41...Ra1+ 42.Bxa1 Rxa1+ 43.Kc2 Rxd1



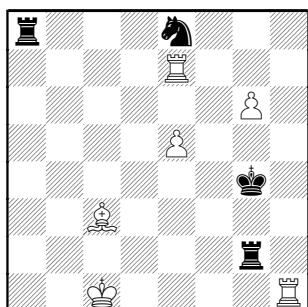
44.Re7 Rd8 45.g5)

42.Kxb2 Kxd1 Fortunately, White has a bunch of passers.

**41.Bb2 Kxh3 42.Re7 Ra8 43.g5**

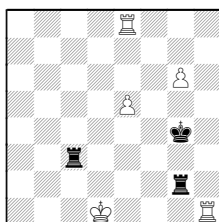


43...c3 44.Bxc3 Rg2 45.Rh1+? [45.Bd2]  
45...Kg4 46.g6



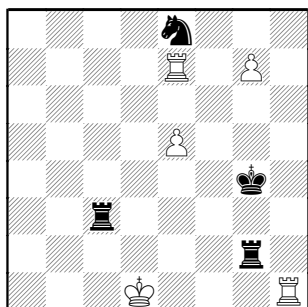
46...Rc8 47.g7

47.Kd1 Rxc3 48.Rxe8



48...Ra3 49.Rc8 Kf5 draws

47...Rxc3+ 48.Kd1

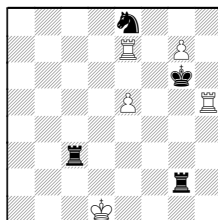


48...Kf5

48...Nxg7 49.Rxg7+ Kf3 50.Rf1+

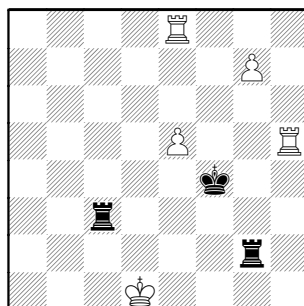
49.Rh5+ Kf4

49...Kg6



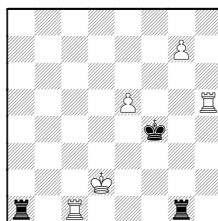
50.g8Q+ Kxh5 51.Qxg2

50.Rxe8



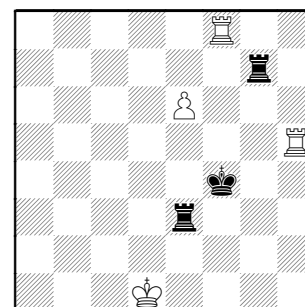
50...Rxg7

As a few moves back, Black has  
chances against the naked King:  
50...Ra3! idea Ra1# 51.Rc8 Ra1+  
52.Rc1 Rg1+ 53.Kd2

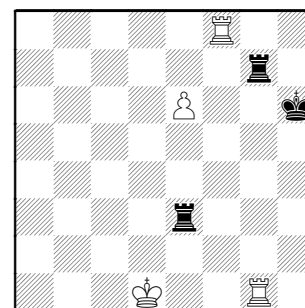


53...Raxc1 54.g8Q Rxg8 55.Kxc1 Re8  
draws

51.e6 Re3 52.Rf8+



52...Kg4? [52...Ke4 draws] 53.Rh1 Kg5  
54.Rg1+ Kh6

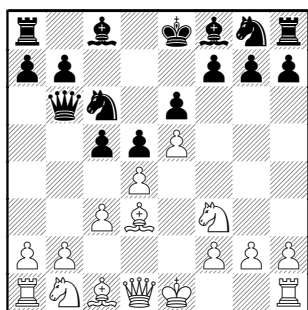


55.Rh8+ Rh7 56.Rh1+ 1-0

Board 4, UOP-Baker

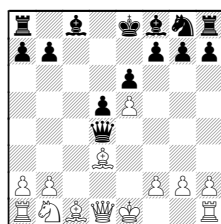
Boldingh, Edwin (1869) –  
Freidel, Paul (1965) [C02]

1.e4 e6 2.d4 d5 3.e5 c5 4.c3 Nc6 5.Nf3  
Qb6 6.Bd3



6...cxd4 7.cxd4 Bd7

The trap to avoid is, of course, 7...Nxd4?  
8.Nxd4 Qxd4

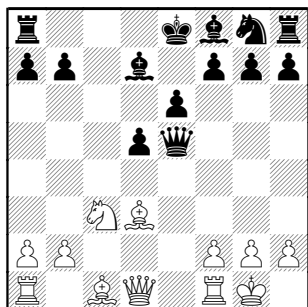


9.Bb5+ winning the Queen

8.0-0

8.Bc2 is possible, but Edwin loves opening Pawn gambits.

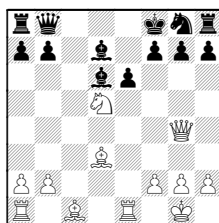
8...Nxd4 9.Nxd4 Qxd4 10.Nc3 Qxe5



This is a standard position from the well-analyzed French Advance, Milner-Barry Gambit. Black grabs everything offered, but pays for it with multiple Queen moves and nagging threats from White's better-placed pieces.

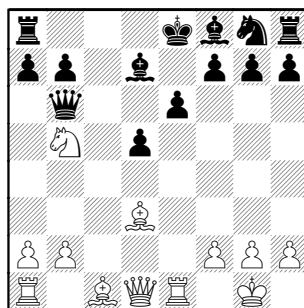
11.Re1 Qd6

11...Qb8 is almost always played at the Master level. 12.Nxd5 Bd6 13.Qg4 Kf8

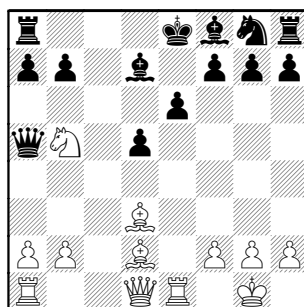


is the key position resulting

12.Nb5 Qb6



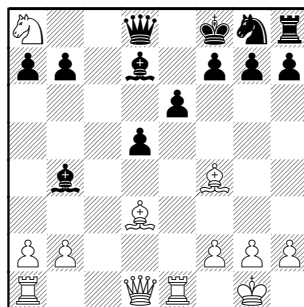
13.Be3 [13.a4] 13...Qa5 14.Bd2



14...Qd8

14...Qb6 15.a4  
(15.Be3 a tacit draw offer)

15.Bf4 Bb4 16.Nc7+ Kf8 17.Nxa8

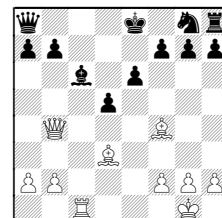


17...Bxe1

17...Qxa8 maintains the King's defense on the key diagonal

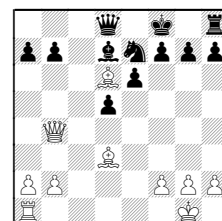
18.Bd6+

18.Qxe1 Qxa8 19.Qb4+ Ke8 20.Rc1 Bc6



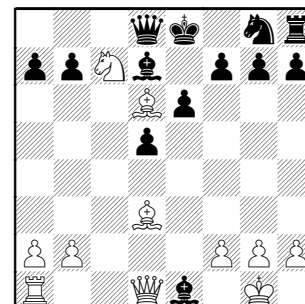
18...Ke8??

18...Ne7 19.Qxe1 Qxa8 20.Qb4 Qd8



21.Qxb7 White is winning

19.Nc7+



The Great Gambiteer won another  
1-0

## Board 5, Baker-UOP

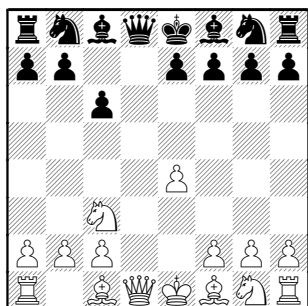
Alberts, Wally (1528) –  
Easton, Richard (1850)

[B11]

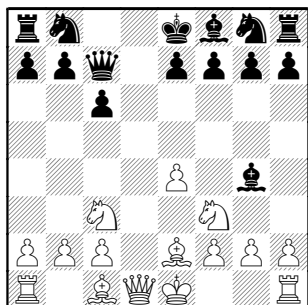
1.Nc3 d5 2.e4 c6

Richard is a Caro-Kann player, so quickly recognizes a chance to transpose to it.

3.d3 [3.d4 would be the normal position]  
3...dxe4 4.dxe4

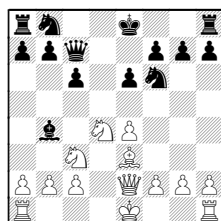


[4.Nxe4] 4...Qc7 5.Nf3 Bg4 6.Be2

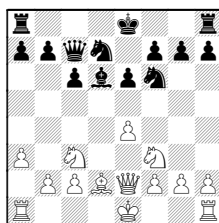


6...Nd7

6...e6 7.Nd4 Bxe2 8.Qxe2 Nf6 9.Be3  
Bb4

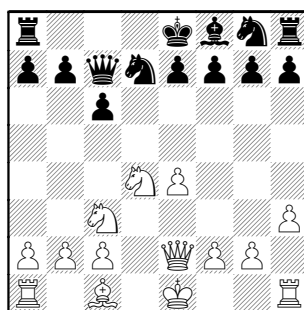


10.Bd2 Nbd7 11.a3 Bd6 12.Nf3



12...Ne5 was eventually drawn in the  
Expert-level game, Mannhart-Martinez,  
2002

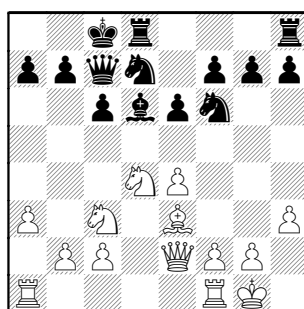
7.h3 Bh5 8.Nd4 Bxe2 9.Qxe2



9...0-0-0 10.Be3 e6 11.a3

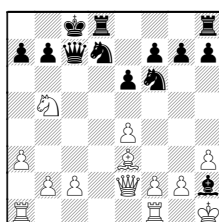
11.0-0 is a more efficient way of dealing  
with the problems threatened by Bf8-b4

11...Ngf6 12.0-0 Bd6



13.b4

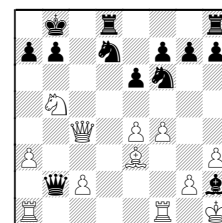
13.Ndb5! Bh2+ 14.Kh1 cxb5 15.Nxb5



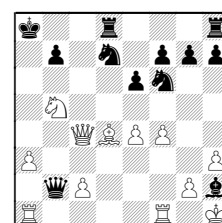
15...Qe5

(15...Qb8 16.Qc4+ Bc7 17.Nd6#;  
15...Qa5 16.Kxh2)

16.f4 Qxb2 17.Qc4+ (17.Kxh2) 17...Kb8



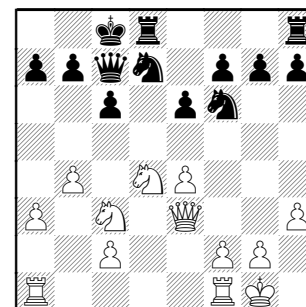
18.Bxa7+ Ka8 19.Bd4



13...Bf4

13...Bh2+ Might give Black an extra  
tempo in an endgame, as it pushes the  
King one square away from center.  
14.Kh1 Bf4

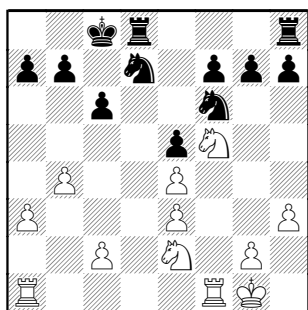
14.Qf3 no need to spend a tempo on  
what Black wants to do anyhow  
[14.Rfd1] 14...Bxe3 15.Qxe3



15...Qb6 [15...Kb8]

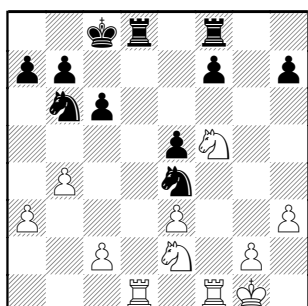
I always thought 15...c5 a keymove for  
the Caro, but here allows White to build  
an attack 16.Ndb5

16.Nce2? removing the guard of e4  
[16.Na4] 16...e5! 17.Nf5 Qxe3 18.fxe3



White does have threats of Nd6-xf7 and Nxg7

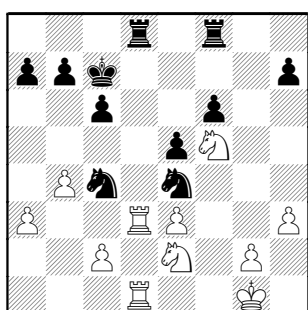
**18...Rhf8 19.Nxg7 Nxe4 20.Nf5**  
[20.Rad1] **20...Nb6 21.Rad1**



**21...f6**

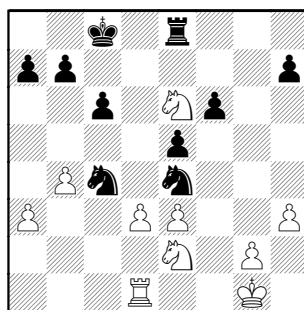
21...Nd2 would begin to smother White's play

**22.Rd3 Kc7 23.Rfd1 Nc4**



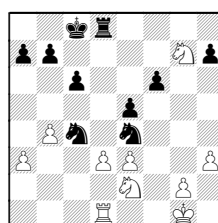
but now Black never has the option of playing Rxd3 since the reply cxd forks Knights

**24.Ng7 Kc8 25.Ne6 Rxd3 26.cxd3 Re8**



**27.dxc4**

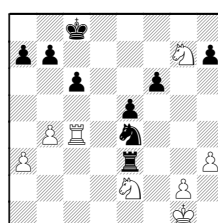
27.Ng7! Rd8



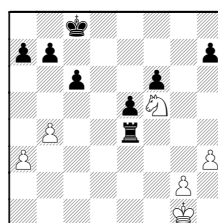
pinning the Pawn

(27...Re7 28.Nf5 Rd7 29.Rc1 White is better yet on the analysis mainline)

28.Rc1 and the piece is won 28...Rxd3  
29.Rxc4 Rxe3



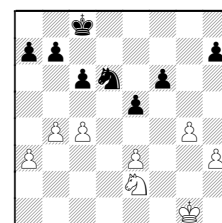
but DS finds a combination to a winning ending: 30.Nf5! Rxe2 31.Rxe4 Rxe4



32.Nd6+ Kd7 33.Nxe4

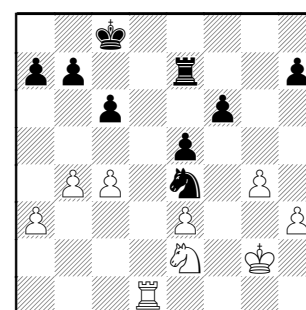
**27...Rxe6 28.g4 [28.c5] 28...Re7**

DS much prefers the Knight ending :  
28...Rd6 29.Rxd6 Nxd6



**30.c5 Nc4**

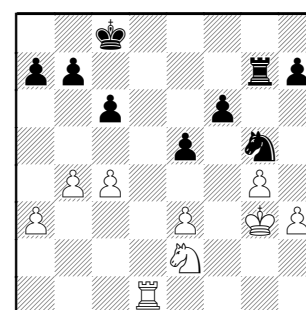
**29.Kg2**



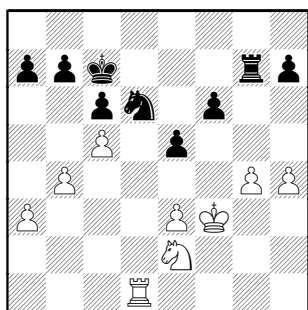
**29...Rg7**

29...Rd7 is another offer to that Knight ending

**30.Kf3 Ng5+ 31.Kg3**



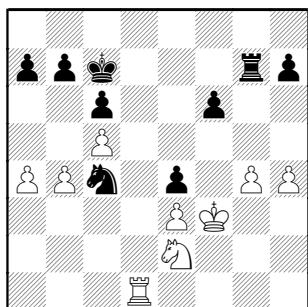
**31...Kc7 32.h4 Ne4+ 33.Kf3 Nd6 34.c5**



34...Nc4 35.a4

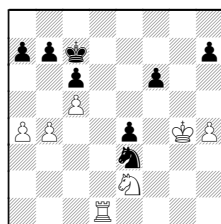
35.Nc3 Nxa3 36.Ra1 Nc2

35...e4+!



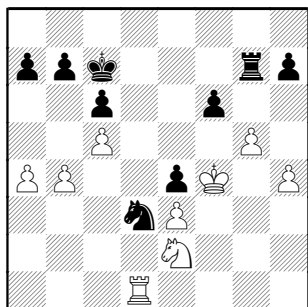
36.Kf4? Ne5?

36...Rxc4+! 37.Kxc4 Nxe3+

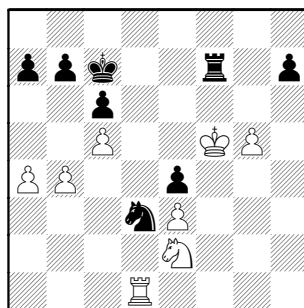


38.Kf4 Nxd1 39.Kxe4 Kd7

37.g5 Nd3+



38.Kf5 [38.Kxe4? Nf2+] 38...fxg5  
39.hxg5 Rf7+



40.Kg4

40.Ke6 Rg7 41.Kf6 Rg6+

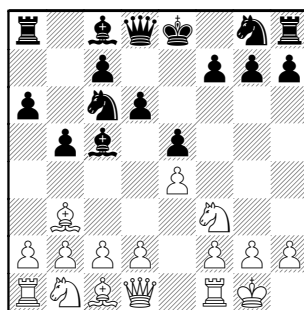
40...Nf2+ 0-1

Board 6, UOP-Baker

Lechnick, Jay (1762) –  
Janssen, G (1503)

[C78]

1.e4 e5 2.Nf3 Nc6 3.Bb5 a6 4.Ba4 Bc5  
5.0-0 b5 6.Bb3 d6

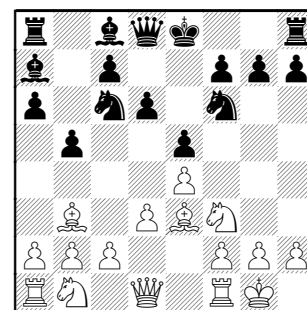


7.d3

A) 7.c3 prepares d2-d4 and thus Nf6-g4 can be ignored;

B) 7.a4 Bb7

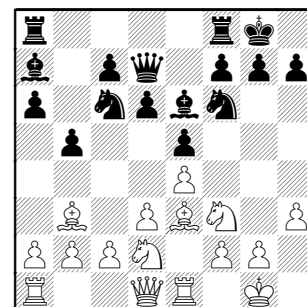
7...Nf6 8.Be3 Ba7



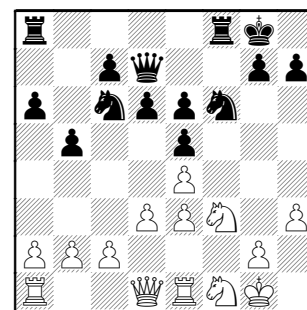
9.h3 0-0 10.Re1 Be6 11.Nbd2

11.Nc3 idea Nd5 11...Nd4

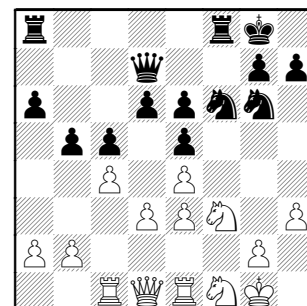
11...Qd7



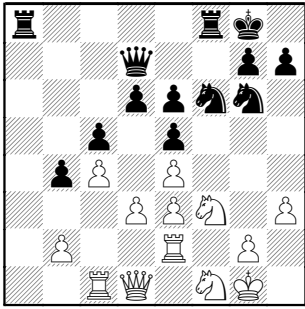
12.Bxe6 fxe6 13.Nf1 Bxe3 14.fxe3



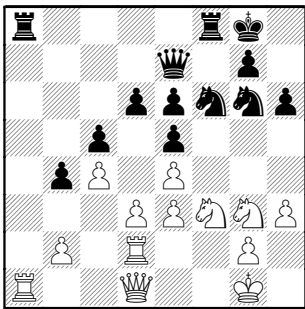
14...Ne7 [14...d5] 15.Rc1 Ng6 16.c4 c5



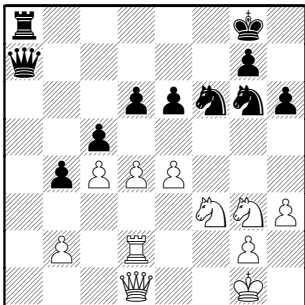
17.a3 a5 18.Re2 b4 19.axb4 axb4



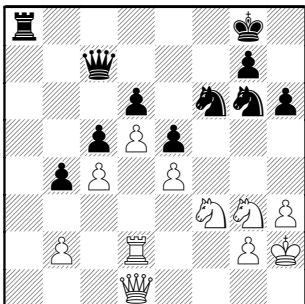
20.Ng3 h6 21.Rd2 Qe7 22.Ra1



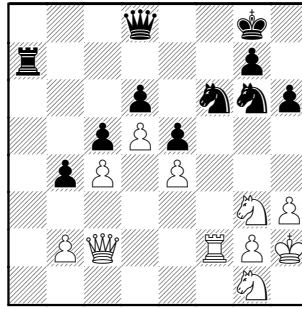
22...Ra7 23.d4 exd4 24.exd4 Rfa8  
25.Rxa7 Qxa7



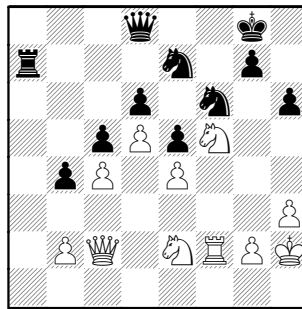
26.Kh2 Qc7 27.d5 e5



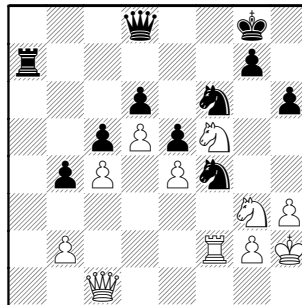
28.Ng1 Qd8 29.Rf2 Ra7 30.Qc2



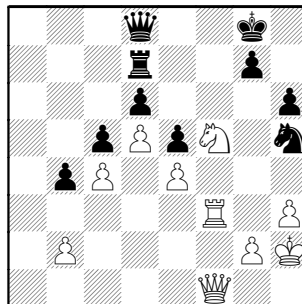
30...Nf8 31.Nf5 Ng6 32.Ne2 Ne7?



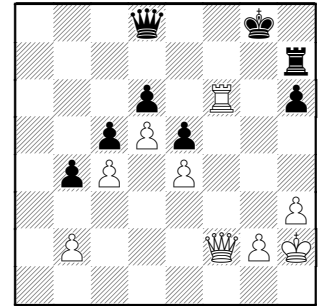
33.Neg3 [33.Nxh6+!] 33...Ng6 34.Qc1  
Nf4



35.Qf1 Rd7 36.Rf3 N6h5 37.Nxh5 Nxh5



38.Qf2 Nf6 39.Nxh6+ gxh6 [39...Kh7  
40.Nf5 Nxe4] 40.Rxf6 Rh7



41.Qf5 Black flagged 1-0

**Bales,Robert (1411) –  
Nallathambi,Rajan (1633)**

[D03]

Baker-UOP, 5-1-2008, BOARD 7

1.d4 Nf6 2.Nf3 d5 3.Nc3 e6 4.Bg5 Be7  
5.Bxf6 Bxf6 6.e3 0-0 7.Be2 c5 8.0-0 cxd4  
9.exd4 Nc6 10.a3 Qb6 11.Na4 Qc7 12.Nc3  
Bd7 13.b4 Nxd4 14.Nxd5 Nxe2+ 15.Qxe2  
exd5 16.Rad1 Rfe8 17.Qd3 Be6 18.h4 Rac8  
19.Ng5 Bxg5 20.hxg5 Qxc2 21.Qf3 Rc4  
22.Qe3 Qa4 23.Rfe1 Re4 24.Qd2 Rxe1+  
25.Rxe1 Rc8 26.g6 hxg6 27.Qf4 Qxa3  
28.Re3 Qc1+ 29.Kh2 Qc7 30.Re5 f6 1-0

**Campbell,Doug (1447) –  
Voight,Tro (1213)**

[B90]

UOP-Baker, 5-1-2008, BOARD 8

1.e4 c5 2.Nf3 d6 3.d4 cxd4 4.Nxd4 Nf6  
5.Nc3 a6 6.Bd2 e6 7.Be2 Qc7 8.0-0 Be7  
9.Bf3 Nbd7 10.Be3 b5 11.Qd2 Bb7 12.a3  
Nc5 13.Rfe1 Nfxe4 14.Nxe4 Bxe4 15.Qe2  
Bxf3 16.Qxf3 0-0 17.b3 Bf6 18.Rad1 Rac8  
19.Nc6 Qxc6 20.Qg3 Ne4 0-1

**Powers,Ed (1454) –  
Olsen,Art (1476)**

[A30]

Baker-UOP, 5-1-2008, BOARD 9

1.c4 c5 2.g3 Nc6 3.Bg2 e5 4.d3 Nge7 5.Nc3  
Nd4 6.e3 Ndc6 7.Nge2 a6 8.0-0 Rb8 9.a4  
Nb4 10.Ne4 d6 11.d4 f5 12.N4c3 cxd4  
13.exd4 e4 14.Qb3 Nbc6 15.Bg5 h6 16.Bxe7  
Bxe7 17.Nd5 Be6 18.Nxe7 Nxe7 19.d5 Bf7  
20.Qc3 0-0 21.Kh1 Ng6 22.f3 exf3 23.Rxf3  
Ne7 24.Nd4 g6 25.Re1 Re8 26.Ne6 Bxe6  
27.Rxe6 Rf8 28.Qe3 f4 29.gxf4 Kf7 30.Bh3  
b5 31.axb5 axb5 32.b3 bxc4 33.bxc4 Rb1+  
34.Kg2 Rb2+ 35.Kg3 Nf5+ 36.Bxf5 gxf5  
37.Qd4 Rg8+ 38.Kh3 Rgg2 39.Qa7+ Kf8  
40.Rf6+ Qxf6 41.Qa8+ Kf7 42.Qa7+ Qe7  
43.Qxe7+ Kxe7 44.Re3+ Kd7 45.Re6 Rxh2+  
46.Kg3 Rhg2+ 47.Kf3 Rgf2+ 48.Ke3 Rfe2+  
49.Kf3 0-1

## Tuesday, May 6th -- Motorola Kings at St Charles Chess Club Played at Computer Associates, Naperville

With the St Charles CC garnering two points of two a week ago, one would be tempted write-off this part of the split match. But I've had many personal encounters with the Kings' top boards; it is very possible they could cancel out the deficit. Tonight could go down to the difference on a single board.

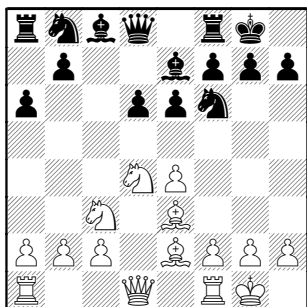
I would like to report more details, but Hartford, Connecticut was the closest I came (on a work trip).

### Board 1, Kings-St Charles CC

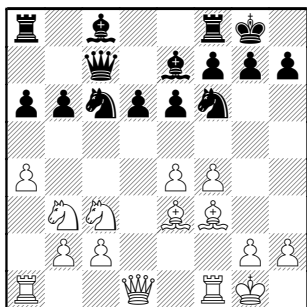
Piparia, Jankesh (2000) –  
Marshall, Jim (2218) [B85]

The North Division has watched our rising star, Jankesh, for several years. He apparently earned first board late in the season. At least I know he outplayed me in Round 10 !

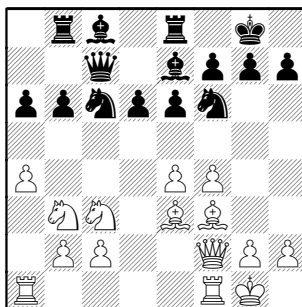
1.e4 c5 2.Nf3 d6 3.d4 cxd4 4.Nxd4 Nf6  
5.Nc3 a6 6.Be2 e6 7.Be3 Be7 8.0-0 0-0



9.a4 [9.f4; 9.Kh1] 9...Nc6 10.Nb3 [10.f4  
is most popular] 10...b6 11.f4 Qc7  
12.Bf3

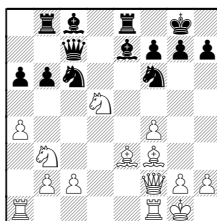


12...Rb8 [12...Bb7; 12...Re8] 13.Qe2  
Re8 14.Qf2



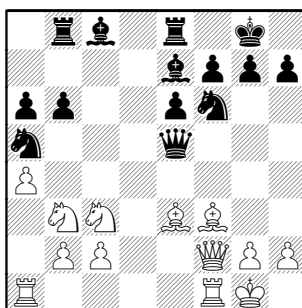
14...Na5

A) 14...Nd7;  
B) 14...d5 15.exd5 exd5 16.Nxd5

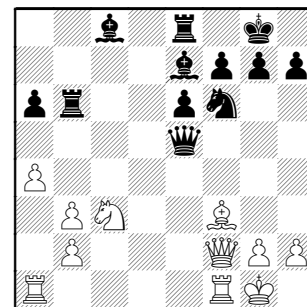


16...Nxd5 17.Bxd5 Nb4

15.e5? [15.Nxa5 bxa5] 15...dxe5  
16.fxe5 Qxe5



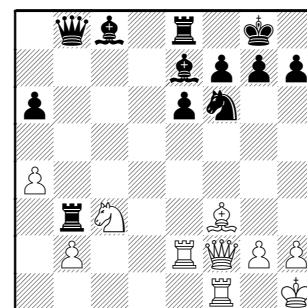
17.Bxb6 Nxb3 18.cxb3 Rxb6!



19.Kh1 [19.Qxb6? Bc5+] 19...Rxb3

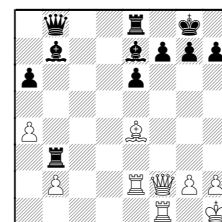
19...Bd6 20.g3 and then following the  
game line, has the added benefit of a  
weak a8-h1 diagonal

20.Rae1 Qb8 21.Re2



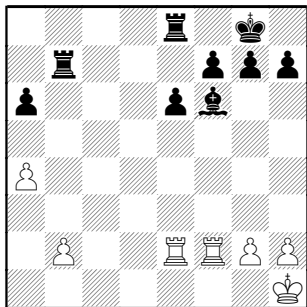
21...Bb7 22.Ne4 Qf4

22...Nxe4 23.Bxe4 [weak Pf7]

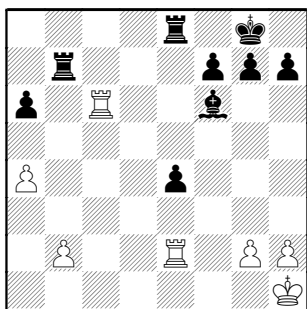


23...Bf6 and the b2-Pawn falls

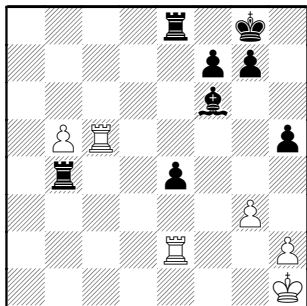
23.Nxf6+ Bxf6 24.Bxb7 Qxf2 25.Rxf2  
Rxb7



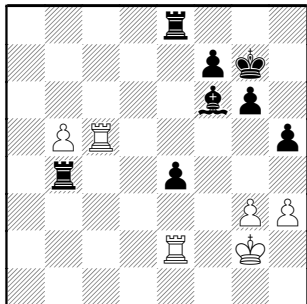
26.Rc2 e5 27.Rc6 e4 28.Re2



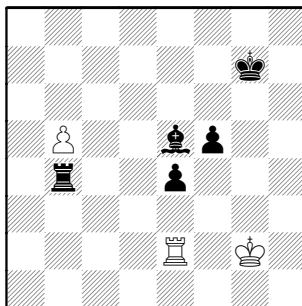
28...Rd7 29.g3 h5 30.b4 Rd4 31.b5  
axb5 32.axb5 Rb4 33.Rc5



33...g6 34.Kg2 Kg7 35.h3



35...Re5 36.Rxe5 Bxe5 37.g4 hxg4  
38.hxg4 f5 39.gxf5 gxf5

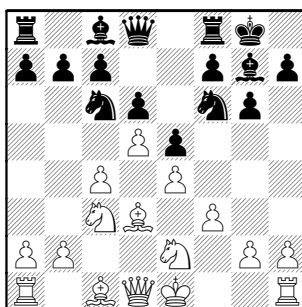


0-1

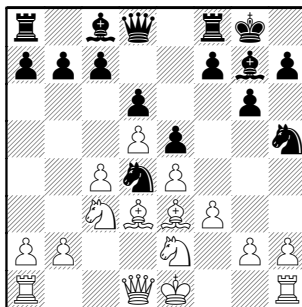
### Board 2, St Charles CC-Kings

Wiewel, Jeff (2061) –  
Wallach, Cliff (1998) [E83]

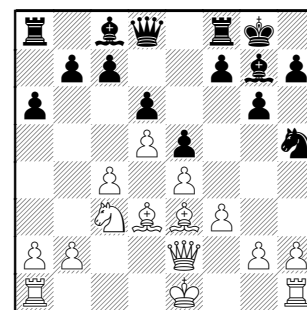
1.d4 Nf6 2.c4 g6 3.Nc3 Bg7 4.e4 d6  
5.Bd3 Nc6 6.Nge2 0-0 7.f3 e5 8.d5



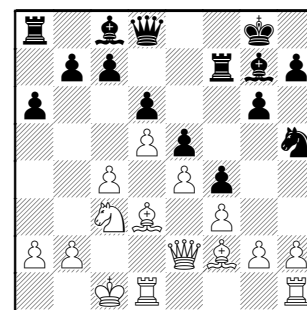
8...Nd4 9.Be3 Nh5



10.Nb5 [10.Qd2; 10.Bc2; 10.0-0]  
10...Nxe2 11.Qxe2 a6 [11...Nf4 12.Qd2]  
12.Nc3

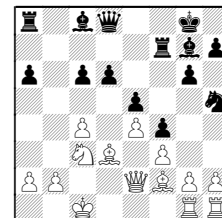


12...f5 13.0-0-0 f4 14.Bf2 Rf7



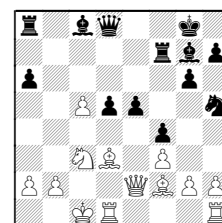
15.Rdg1 c5 16.Kb1

DS judges breaking down center is  
quicker than Black's queenside play :  
16.dxc6 bxc6



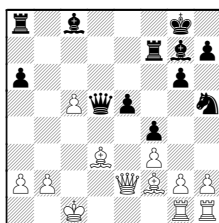
17.c5 d5 18.exd5 cxd5

A) 19 Rd1

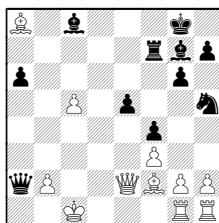


19...Nf6 20.Bc4 Be6

B) 19.Nxd5? Qxd5

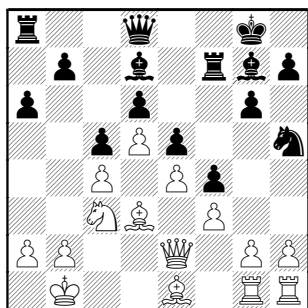


20.Be4 (20.Bc4 gives up too much)  
20...Qxa2 21.Bxa8



21...e4 and the King is flushed out

16...Bd7 17.Be1



17...Nf6

17...b5 gains some pressure, but is it worth a Pawn ?

18.g3 Ne8 19.h4 fxg3 20.h5 Nf6  
21.hxg6 hxg6 22.Bxg3 Nh5 23.Qh2 b5

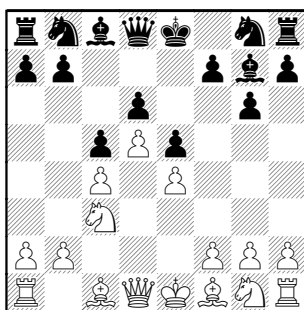
1/2-1/2

### Board 3, Kings-St Charles CC

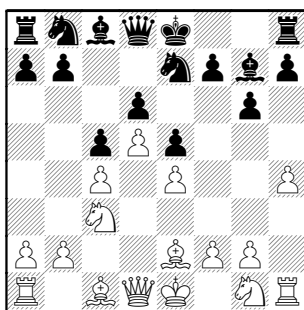
Melnikov,Igor (2024) –  
Splinter,Joe (2060)

[A44]

1.d4 c5 2.d5 g6 3.c4 Bg7 4.Nc3 e5  
[4...e6 heads for a Modern Benoni] 5.e4  
d6



6.Be2 Ne7 [6...f5] 7.h4



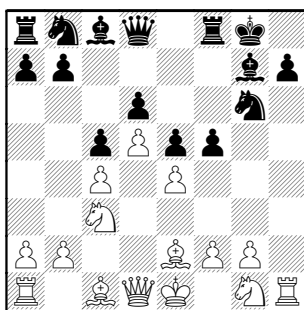
7...0-0

No Master games go this way as wing play is expected :

A) 7...h6 8.h5 g5;

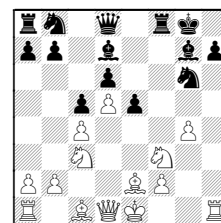
B) 7...f5 8.h5 f4

8.h5 f5 9.hxg6 Nxg6



10.Nf3

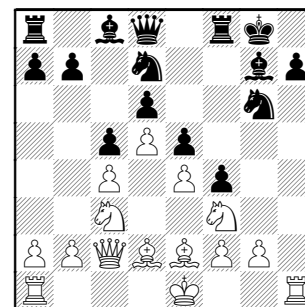
DS really likes 10.exf5 Bxf5 11.g4 Bd7  
12.Nf3



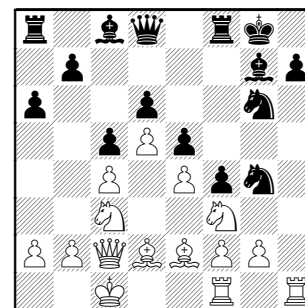
10...f4

10...Nf4. The game move only brings a Pawn closer to where White can attack it.

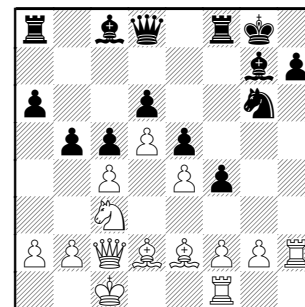
11.Bd2 Nd7 12.Qc2



12...Nf6 13.0-0-0 Ng4 14.Rdf1 a6



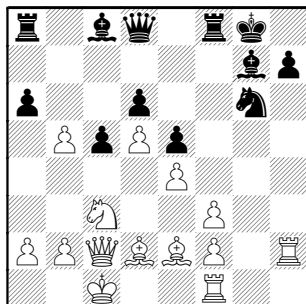
15.Nh2 Nxh2 16.Rxh2 b5



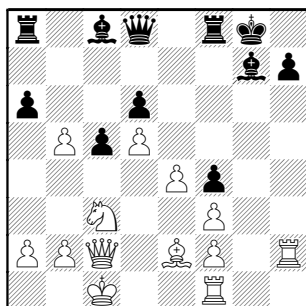
17.cxb5

17.Rfh1 b4 18.Nd1 h6 19.g3

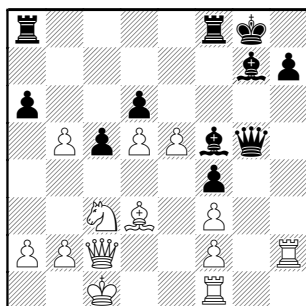
17...f3 18.gxf3



18...Nf4 19.Bxf4 exf4

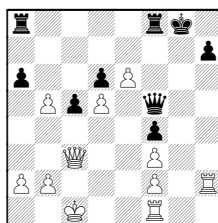


20.e5 [20.Rg1] 20...Bf5 21.Bd3 Qg5



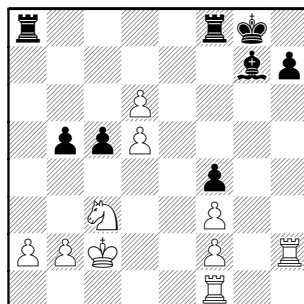
22.Bxf5 Qxf5 23.exd6

23.e6 Bxc3 24.Qxc3



idea Rg1+

23...Qxc2+ 24.Kxc2 axb5

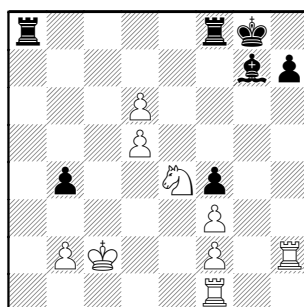


25.a3

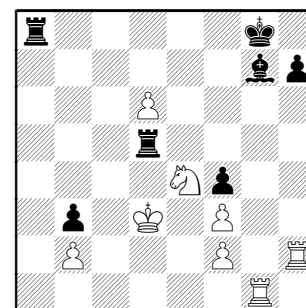
**A)** 25.Rg1 Kh8 26.Rgh1  
(26.Nxb5 Rxa2 27.Nc3)  
26...h6 ties the Bishop to h6

**B)** 25.Kb3 c4+ 26.Kb4

25...b4 26.axb4 cxb4 27.Ne4



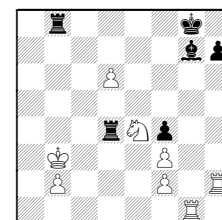
27...b3+ 28.Kd3 Rf5 29.Rg1 Rxd5+  
[29...Rc8]



30.Ke2

DS says this throws away most of White's large advantage.

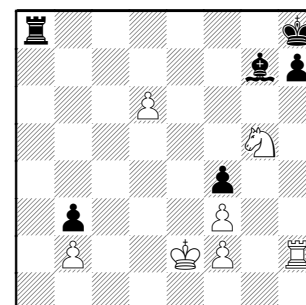
30.Kc4 Rd4+ 31.Kb5

**A)** 31.Kxb3 Rb8+

32.Ka2?? Ra4+ 33.Kb1 Rxb2+ 34.Kc1 Ra1#;

**B)** 31.Kc3 Rc8+ (31...Rxe4+? 32.Rxg7+ Kxg7 33.fxe4) 32.Kxb3;**C)** 31...Rd5+ (31...Rb8+ 32.Kc6) 32.Kc6

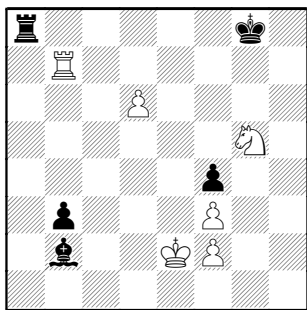
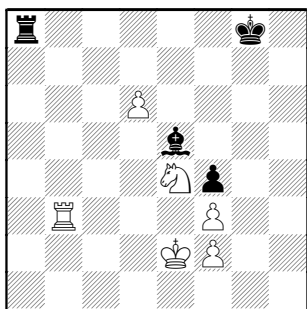
30...Kh8 31.Rg5 Rxg5 32.Nxg5



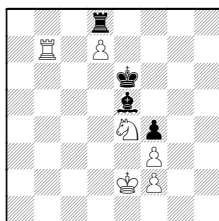
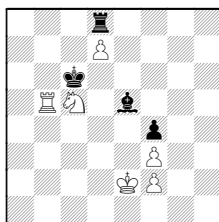
32...Bxb2 and this returns the initiative to White

Maybe 32...Kg8 moving off check, so  
33.Rxh7? (33.Nxh7 Bxb2) 33...Bf6

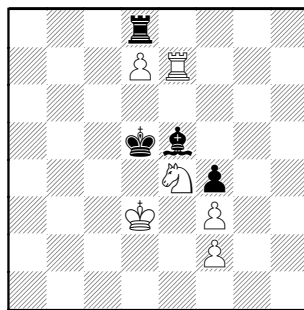
33.Rxh7+ Kg8 34.Rb7

34...Bf6 [34...Be5 35.d7] 35.Ne4 Be5  
36.Rxb3

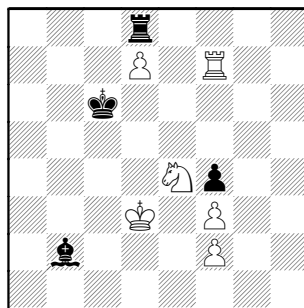
36...Kf7 37.Rb7+ Ke6 38.Re7+

38.d7! Rd839.Nc5+ Kd6 40.Rb5 Kc641.Ne6 Rxd7 42.Rxe5

38...Kd5 39.d7 Rd8 40.Kd3

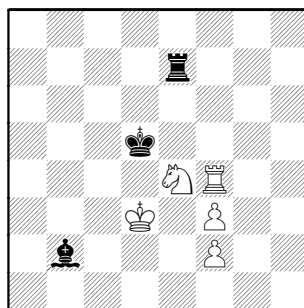


40...Bb2 41.Rf7 Kc6



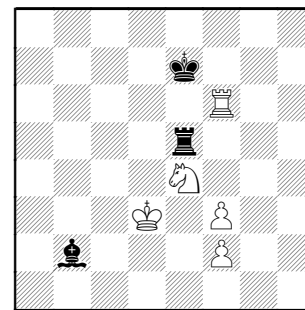
White can give up the passer if it involves a Rook trade as Black's King can't participate in the f-Pawn defence.

42.Rxf4 Rxd7+ 43.Ke2 Re7 44.Kd3 Kd5

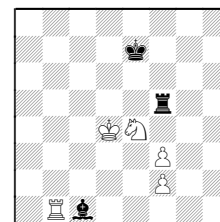
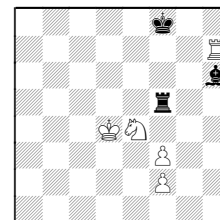


But with the King centralized and the power of the Rook, White's task becomes difficult.

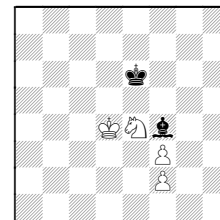
45.Rf5+ Re5 46.Rf8 Ke6 47.Rf6+ Ke7



48.Rb6 Bc1 49.Rc6

49.Kd4 Rf5 50.Rb150...Bh6(50...Ba3 51.Ke3;  
50...Bf4)51.Rb7+ Kf8 (51...Ke6? 52.Rb6+)  
52.Rh752...Bc1 53.Rh1

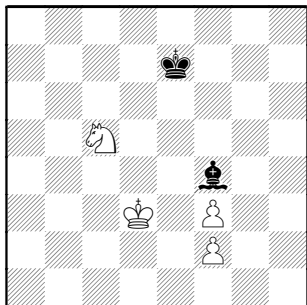
49...Bf4 50.Rc5

**A)** 50.Kd4 Re6 [Ra5] 51.Rxe6+ Kxe6

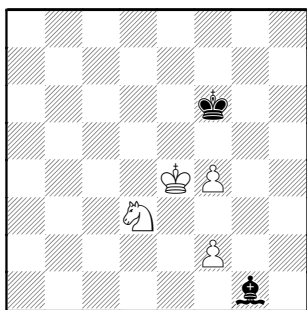
52.Ng3

**B) 50.Nc3 idea Ne2**

**50...Rxc5 51.Nxc5**

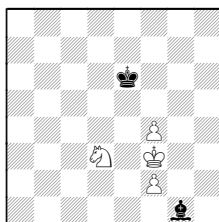


**51...Bh2 [51...Bd6 52.Kd4] 52.Ke4 Bg1  
53.Nd3 Kf6 54.f4**



**54...Ke6 55.f5+? lets the Bishop out !!**

55.Kf3 Go win the piece!



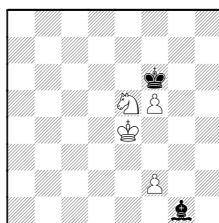
**A) 55...Kf5 56.Kg2**

**B) 55...Bh2 56.Kg2**

**C) 55...Kd5 56.Kg2 Kd4 57.Kxg1 Kxd3  
58.f5**

**55...Kf6 56.f4**

56.Ne5! Using fork threat, White wins in all variations !

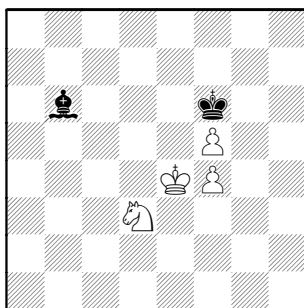


**A) 56...Ke7 57.Ng4**

**B) 56...Bxf2? 57.Ng4+**

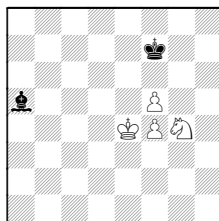
**C) 56...Kg5? 57.Nf3+**

**56...Bb6**



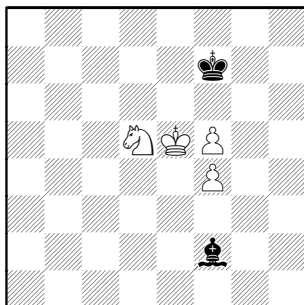
**57.Nb4**

57.Ne5 Ba5 58.Ng4+ Kf7



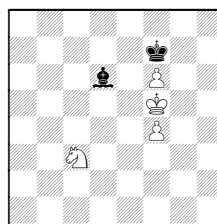
59.Ne3 Bd8 60.Nd5 idea Ke5

**57...Bf2 58.Nd5+ Kf7 59.Ke5**



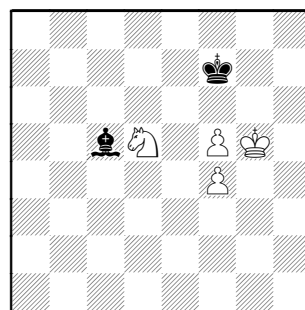
**59...Ba7 60.Ke4**

60.f6 Bb8+ 61.Kf5 Bd6 62.Nc3

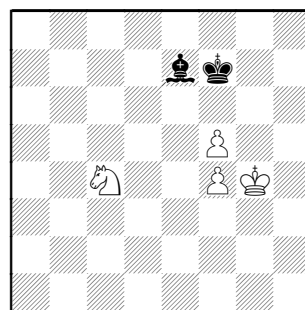


62...Bxf4!

**60...Bb8 61.Kf3 Bd6 62.Kg4 Bc5  
63.Kg5**



**63...Ba3 64.Ne3 Be7+ 65.Kg4 Ba3  
66.Nc4 Be7**



**67.Ne5+ Kf6 68.Nd7+ Kf7 69.Kf3 Ba3  
70.Ne5+ Kf6 71.Ke4 Bc1 72.Ng4+ Kf7  
73.f6 Ke6 74.f5+ Kf7**

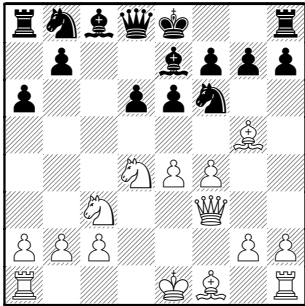
1/2-1/2

## Board 6, St Charles CC- Kings

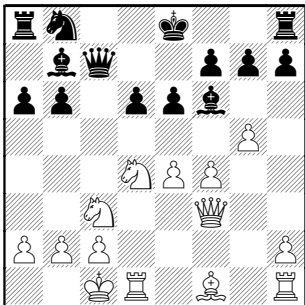
Suits, John (1694) –  
Cygan, Joe (1809)

[B98]

1.e4 c5 2.Nf3 d6 3.d4 cxd4 4.Nxd4 Nf6  
5.Nc3 a6 6.Bg5 e6 7.f4 Be7 8.Qf3



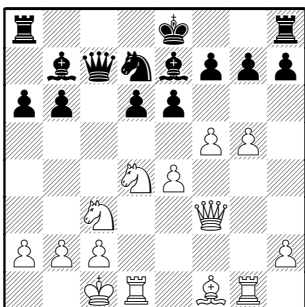
8...Qc7 9.0-0-0 b6 not found in my  
TWIC database [9...Nbd7; 9...b5] 10.g4  
Bb7 11.Bxf6 Bxf6 12.g5



12...Be7

12...Bxd4 13.Rxd4 Nc6 14.Rd1

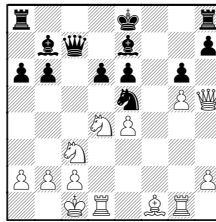
13.Rg1 Nd7 [13...Nc6] 14.f5



14...Ne5 [14...e5] 15.Qh5 g6 16.Qh3

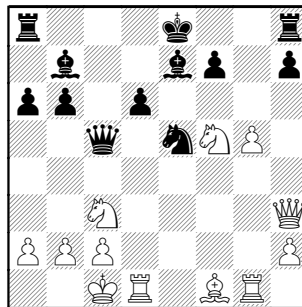
16.fxg6 Nxg6

(16...fxg6

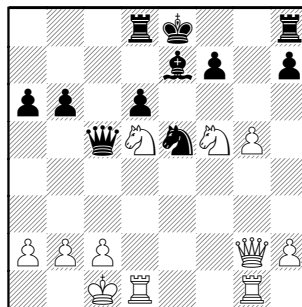


17.Nxe6? Qxc3! 18.bxc3 gxh5)

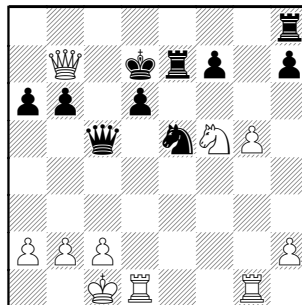
16...gxf5 [16...Qc5 17.fxe6 0-0] 17.exf5  
exf5 18.Nxf5 Qc5?



19.Bg2 Bxg2 20.Qxg2 Rd8 [20...Ra7  
21.Nd5 Bd8] 21.Nd5



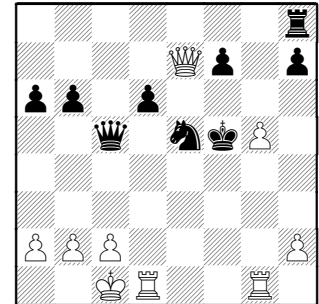
21...Rd7 [21...Bf8?? 22.Nf6#] 22.Ndxe7  
Rxe7 23.Qa8+ Kd7 24.Qb7+



24...Ke6

24...Qc7 25.Qxc7+ Kxc7 26.Nxe7

25.Qxe7+ Kxf5



26.Qf6+ 1-0



Igor Melnikov and Jankesh Piparia  
of the Motorola Kings

## Tuesday, May 6th -- ALU Tyros at Northwestern University Played at NWU, Evanston

One other reason I didn't see the rest of the Kings-StCCC match was I was more interested in this match-up. In the Tyros, you have an already-seasoned, veteran playoff team but improved with a new superb first-board, Scott Allsbrook. In the NWU team, you have the returning Champions from last year. This is one I was sorry to miss; when I heard the result was a drawn match, I wondered all the more of the story's gory details.

### Board 1, Tyros-NWU

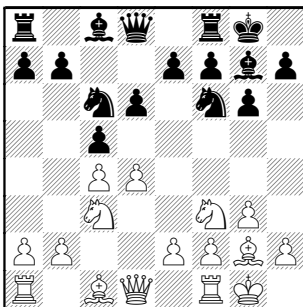
Allsbrook, Scott (2111) –  
Bakshi, Ankur (2042)

[E65]

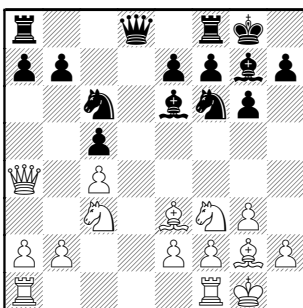
1.Nf3 Nf6 2.c4 g6 3.g3 Bg7 4.Bg2 0-0  
5.0-0 c5 6.d4 d6

6...cxd4 is played most often

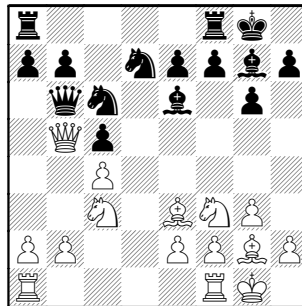
7.Nc3 [7.d5; 7.b3] 7...Nc6



8.dxc5 dxc5 9.Be3 [9.Bf4; 9.Qa4]  
9...Be6 [9...Qa5] 10.Qa4

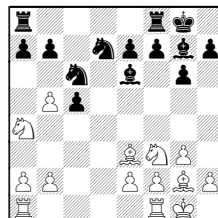


10...Qb6 [10...Nd4; 10...Qa5] 11.Qb5  
Nd7

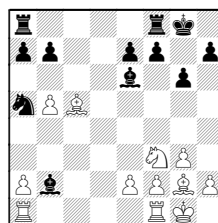


12.Ng5

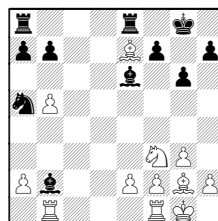
12.Na4 Qxb5 13.cxb5



13...Na5 14.Nxc5 Nxc5 15.Bxc5 Bxb2

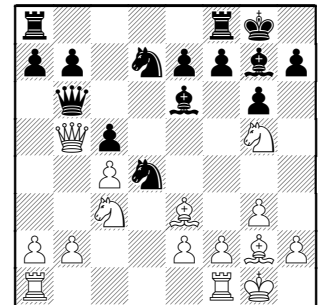


16.Bxe7 Rfe8 17.Rab1



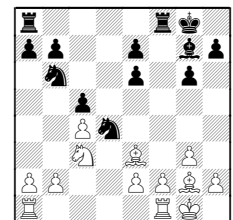
17...Nc4 18.Bb4 was eventually won by  
White in Giffard-Romero.Garcia, 2004

12...Nd4

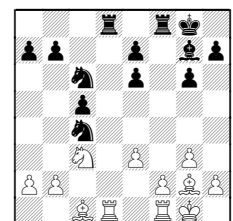


13.Bxd4

Much less accurate was 13.Qxb6 Nxb6  
14.Nxe6 fxe6

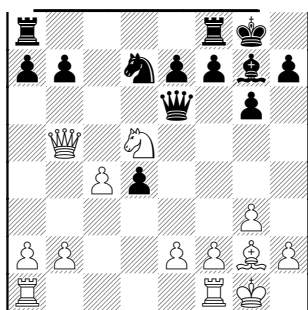


15.Rad1 Nxc4 16.Bc1 Rad8 17.e3 Nc6



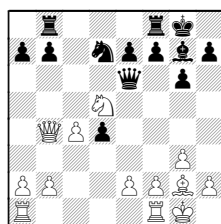
18.Na4 was eventually won by White in  
the Master game Giffard-Tupet, 2003

13...cxd4 14.Nxe6 Qxe6 15.Nd5



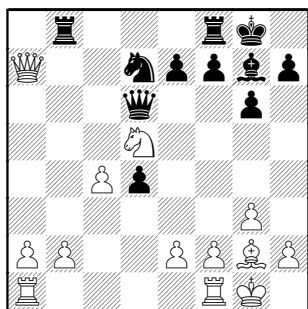
15...Qd6

15...Rab8 16.Qb4



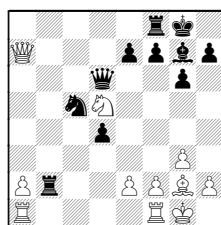
now focusing on weaknesses at e7 and d4 16...Bf6 (16...Qxe2 17.Rfe1) 17.Rad1

16.Qxb7 Rab8 17.Qxa7



17...e6

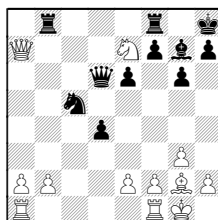
17...Rxb2 18.c5 Nxc5



19.Qxe7 Qxe7 20.Nxe7+ Kh8

18.Nc7

18.c5 Nxc5 19.Ne7+ Kh8

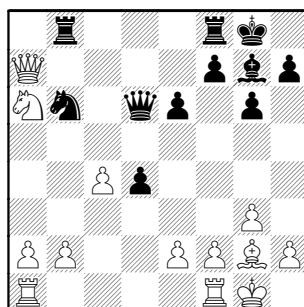


20.Rfc1 Nd7 21.Rc7

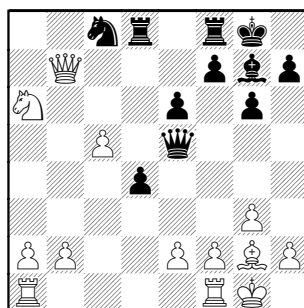
18...Nb6

18...Rfd8 19.Nb5 Qe5 20.Rad1;  
18...Qe5 19.Nb5 Nb6

19.Na6

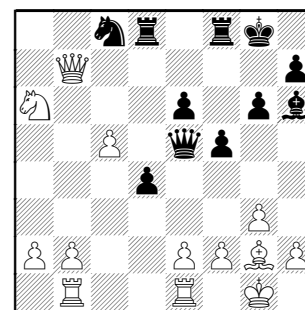


19...Rbd8 20.c5 Nc8 21.Qb7 Qe5

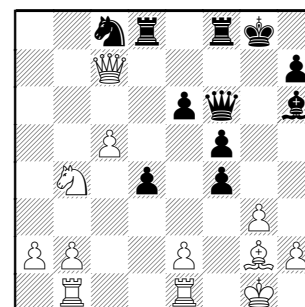


White's dominance of the Queenside is complete

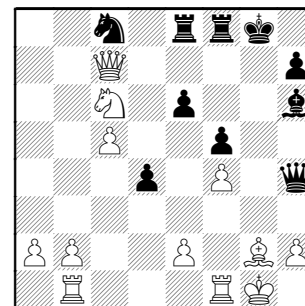
22.Rfe1 [22.Qe4] 22...Bh6 23.Rab1  
[23.a4] 23...f5



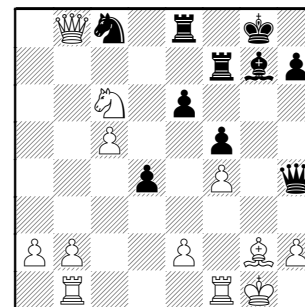
24.Qc7 [24.b4] 24...Qf6 25.f4 [25.b4 f4 26.Rf1] 25...g5 26.Nb4 gxf4



27.Nc6 Rde8 28.gxf4 Qh4 29.Rf1

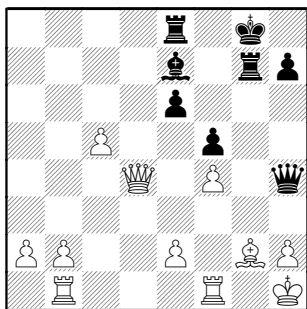


29...Rf7 30.Qe5 Bg7 31.Qb8

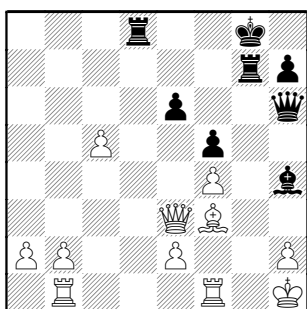


31...Bf8  
[31...Rf6 32.Nxd4 Rh6 33.Nf3]

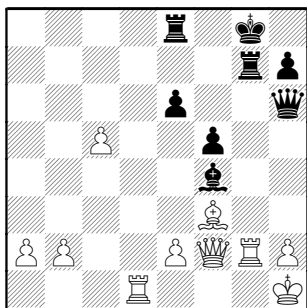
32.Qb4 [32.Qb5 idea b2-b4] 32...Rg7  
33.Kh1 Ne7 34.Nxe7+ Bxe7 35.Qxd4



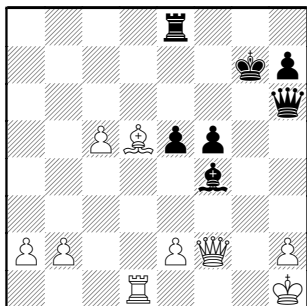
35...Rd8 36.Qe3 Qh6 37.Bf3 Bh4



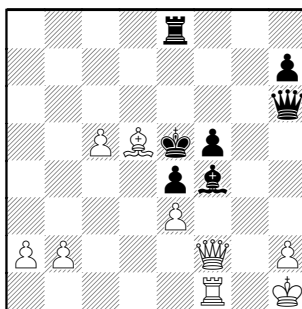
38.Rbd1 Re8 39.Rg1 Bg3 40.Rg2 Bxf4  
41.Qf2



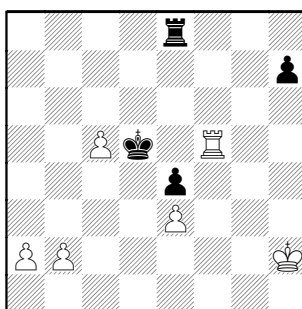
41...e5 42.Rxg7+ Kxg7 43.Bd5



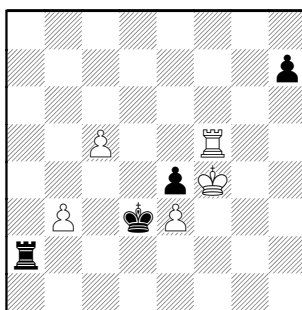
43...e4 44.Rg1+ Kf6 45.Rf1 Ke5 46.e3



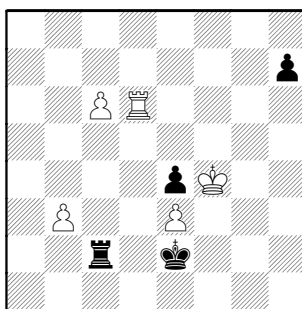
46...Qxh2+ 47.Qxh2 Bxh2 48.Kxh2  
Kxd5 49.Rxf5+



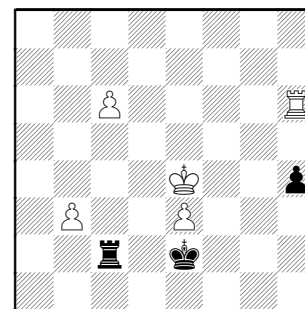
49...Kc4 50.Kg3 Ra8 51.b3+ Kd3  
52.Kf4 Rxa2



53.c6 Rc2 54.Rd5+ Ke2 55.Rd6



55...h5 56.Kxe4 h4 57.Rh6



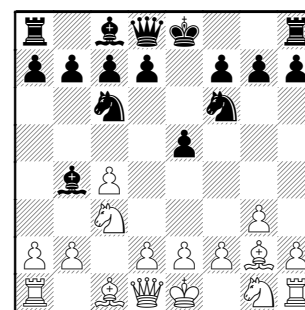
57...Rc3 58.b4 1-0

Board 2, NWU-Tyros

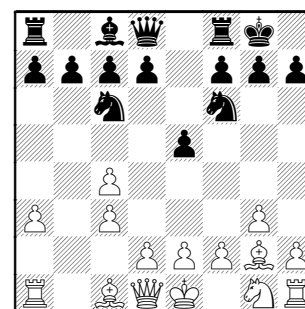
Gorodetskiy, Steve (2041) –  
Diaz, Pablo (2085)

[A25]

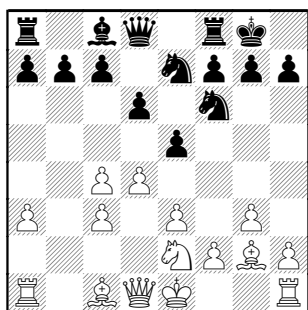
1.c4 e5 2.Nc3 Nf6 3.g3 Nc6 4.Bg2 Bb4



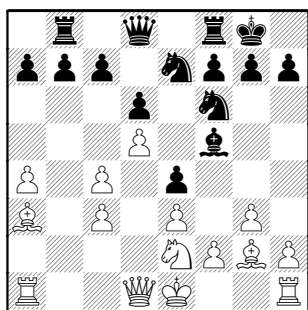
5.a3 [5.Nd5] 5...Bxc3 6.bxc3 0-0



7.e3 [7.e4] 7...Ne7 [7...e4] 8.d4 d6 9.Ne2



9...Rb8 10.a4 Be6 11.Ba3 e4 12.d5 Bf5

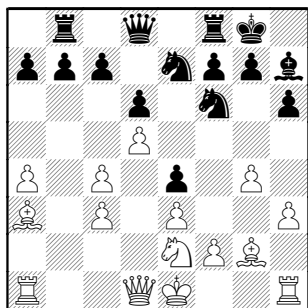


13.h3 h6

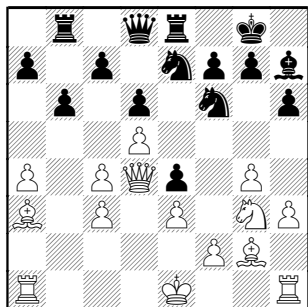
A) 13...Nd7 idea Ne5 14.g4 Bg6 15.h4;

B) 13...Ng6 14.g4 Nh4

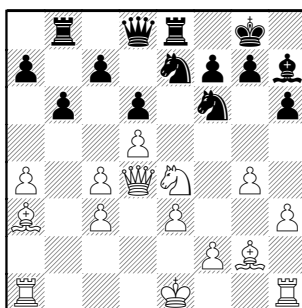
14.g4 Bh7



15.Qd4 b6 16.Ng3 Re8

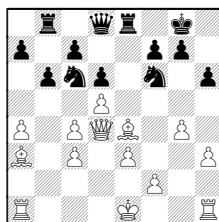


17.Nxe4?



17...Nexd5

Black seems to get more play from  
17...Bxe4 18.Bxe4 Nc6!



19.dxc6

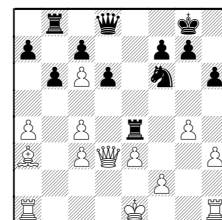
A) 19.Bh7+ Nxh7 20.dxc6 Ng5

B) 19.Qd3 Nxe4 (19...Ne5 20.Qc2)  
20.dxc6 Qf6

C) 19...Rxe4 20.Qd3

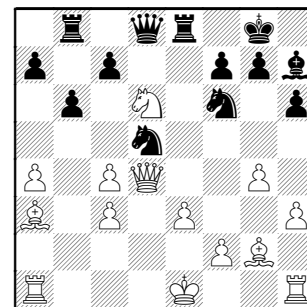


A few of the NWU team (l-to-r): , A. Solomon, S. Gorodetskiy, G. Ullom, A. Bakshi, J. Smallwood

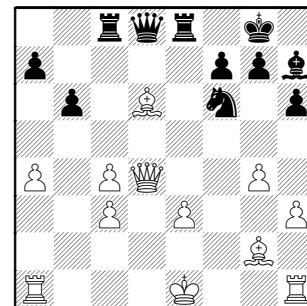


20...Qe8

18.Nxd6



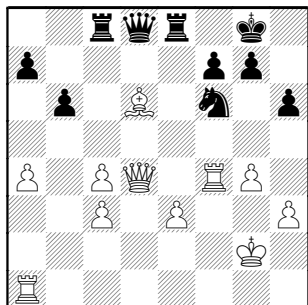
18...Nxe3 19.fxe3 cxd6 20.Bxd6 Rc8



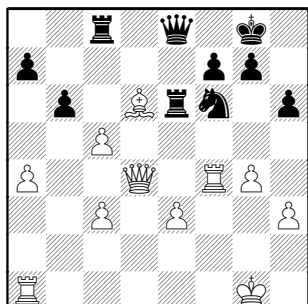
21.0-0 Be4

21...Ne4 22.Bf4 Qe7 with play against the scattered White Pawns

22.Rf4 Bxg2 23.Kxg2



23...Re6 24.c5 Qe8 25.Kg1

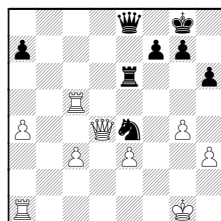


25...Ne4

25...Rd8 assures the c-Pawn and Bishop stay in place

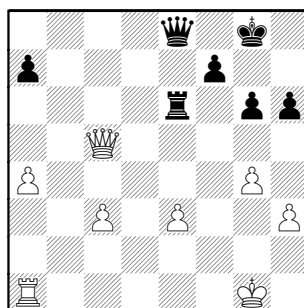
26.Rf5 g6

26...bxc5 27.Bxc5 Rxc5 28.Rxc5



28...Nxc5 (28...Qb8 idea Qg3+) 29.Qxc5 Rxe3

27.Rd5 bxc5 28.Bxc5 Nxc5 29.Rxc5 Rxc5 30.Qxc5

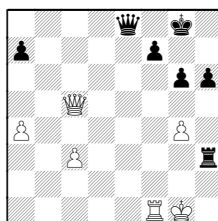


30...Rxe3

30...Qb8! idea Qg3/Qb2

31.Rf1 Qe4

31...Rxe3



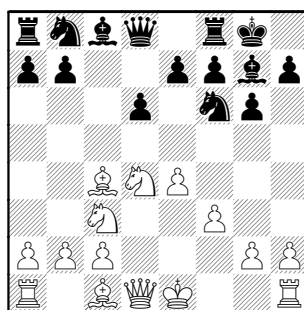
looks promising for Black

1/2-1/2

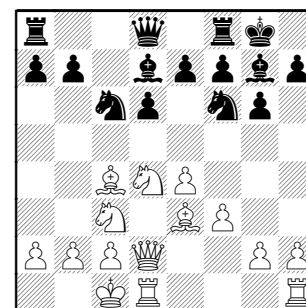
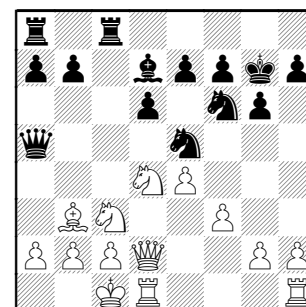
## Board 3, Tyros-NWU

Guio, Julian (1840) –  
Smallwood, Jim (2000)

[B78]

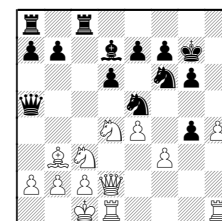
1.e4 c5 2.Nf3 d6 3.d4 cxd4 4.Nxd4 Nf6  
5.Nc3 g6 6.Bc4 Bg7 7.f3 0-0

8.Be3 Nc6 9.Qd2 Bd7 10.0-0-0

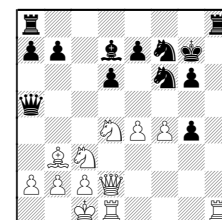
10...Ne5 [10...Rc8] 11.Bb3 Qa5 12.Bh6  
[12.h4; 12.Kb1] 12...Rfc8 13.Bxg7 Kxg7

14.h4 Nc4

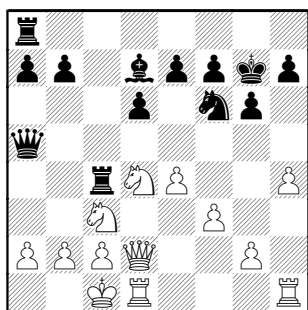
14...h5 15.g4 hxg4



16.h5 Rh8 17.hxg6 fxg6 18.f4 Nf7

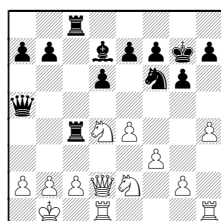
19.Bxf7 Kxf7 20.Rhe1 was drawn  
Jurkovic-Cebalo, 2000

15.Bxc4 Rxc4

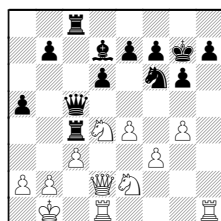


16.h5

16.Kb1 Rac8 17.Nce2

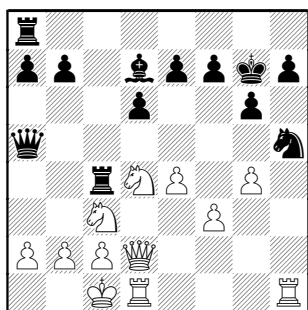


17...Qc5 18.c3 a5 19.h5 Nxh5 20.g4 Nf6



21.Qh6+ Kg8 22.Nf4 e6 23.g5 and White won in Castaneda-Rust, 1997

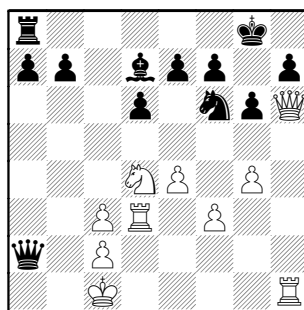
16...Nxh5 17.g4



17...Rxc3 18.bxc3 Nf6

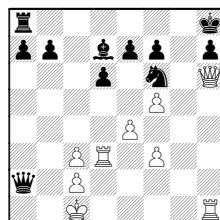
No improvement for Black is 18...Qa3+ 19.Kb1 Nf6

19.Qh6+ Kg8 20.Rd3 Qxa2



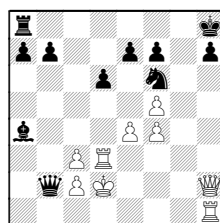
21.Nf5? pushing too hard ! [21.Kd2] 21...Bxf5?

Black can take the piece with thanks : 21...gxf5 22.gxf5 idea Rg1+, Qg7+, Qh8+ etc 22...Kh8



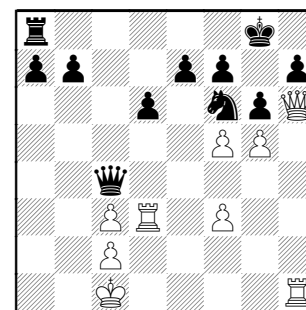
23.f4 idea Rg3, Qg7# (23.Rd2?? Qa1#; 23.Rg1? Qa1+ 24.Kd2 Qxg1)

23...Ba4 24.Qh2 (24.Rh2 Rg8) 24...Qa1+ 25.Kd2 Qb2

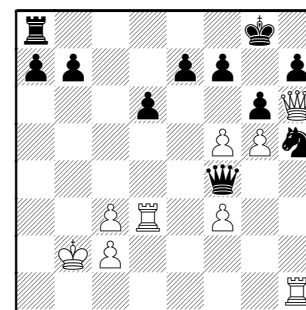


26.Ke1 (26.Rh3 Nxe4+) 26...Qc1+ 27.Rd1

22.exf5 Qc4 [22...a5] 23.g5?



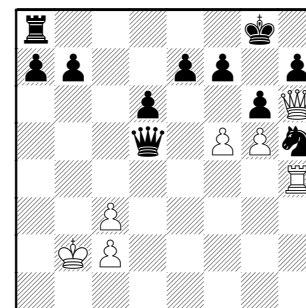
23...Qf4+ [23...Nh5] 24.Kb2 Nh5



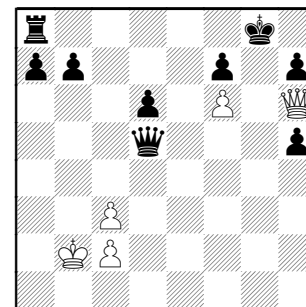
25.Rd5

A) 25.Re1 Qxf5 26.Rxe7 Qb5+; B) 25.fxg6 fxg6 26.Re1

25...Qxf3 26.Rh4? [26.Rhd1] 26...Qxd5

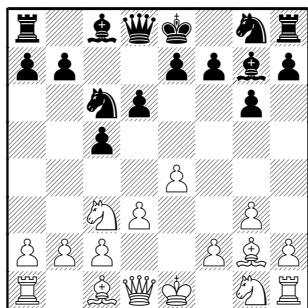
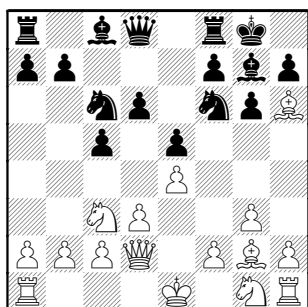


27.Rxh5 gxh5 28.f6 exf6 29.gxf6



29...Qg2 30.Qxh5 Qg6 31.Qf3 d5 0-1

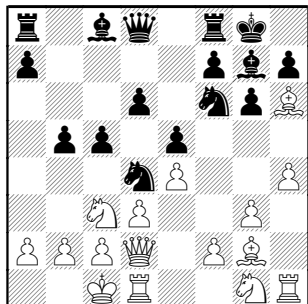
## Board 4, NWU-Tyros

Ullom, Garrett (1797) -  
Dobrovoly, Chuck (1752) [B26]1.e4 c5 2.Nc3 d6 3.g3 Nc6 4.Bg2 g6  
5.d3 Bg76.Be3 [6.f4] 6...e5 [6...e6; 6...Rb8] 7.Qd2  
[7.Nge2] 7...Nf6 [7...Nge7; 7...Be6]  
8.Bh6 0-0

9.h4

9.Bxg7 Kxg7 10.Nge2 (10.f4; 10.Nd5)

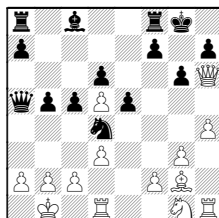
9...Nd4 10.0-0-0 b5



11.Nd5

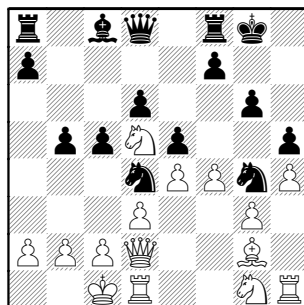
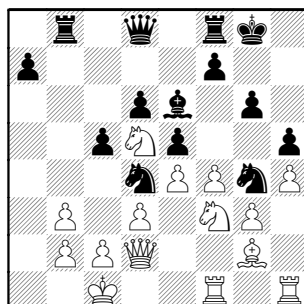
11.h5 Bxh6 12.Qxh6 Ng4

11...Bxh6 12.Qxh6 Ng4

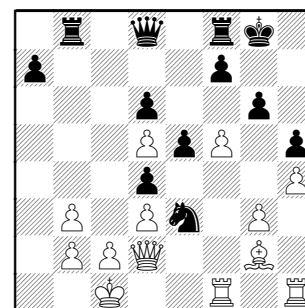
12...Nxd5 13.exd5 gives Black wonderful  
open lines 13...Qa5 14.Kb1

14...Qa4 (14...c4 15.h5 Nf5)

13.Qd2 h5 14.f4

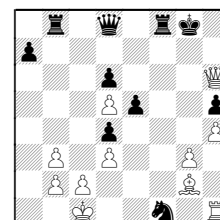
14...Rb8 [14...Be6; 14...b4] 15.Rf1  
[15.Nf3] 15...b4 16.Nf3 b3 17.axb3 Be6

18.Nxd4 cxd4 19.f5 Bxd5 20.exd5 Ne3



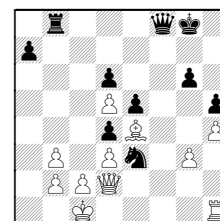
21.f6

21.fxg6! fxg6

21...Nxf1 22.Qh6 fxg6 23.Qxg6+ Kh8  
24.Qh6+ Kg8

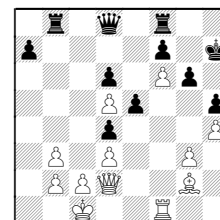
25.Bh3

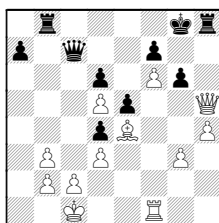
22.Rxf8+ Qxf8 23.Be4



23...Kg7

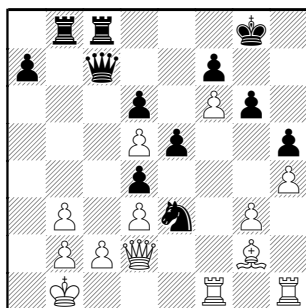
21...Qc7

21...Nxf1 22.Rxf1 (22.Qh6 Qxf6)  
22...Kh723.Be4 Rh8 24.Qg5 Qc7 (24...Kg8  
25.Bxg6) 25.Qxh5+ Kg8



26.Qg4

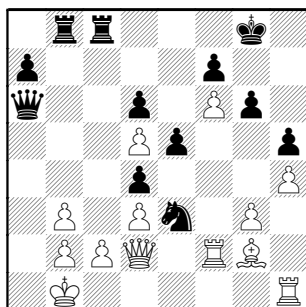
22.Kb1 Rfc8



23.Rf2 Qb6

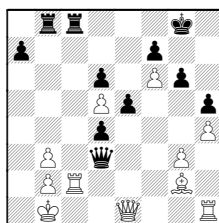
23...Rb5 24.Bh3 Rcb8;  
23...Qc524.Qc1? [Much better is 24.Rc1 ]  
24...Qa524...Qa6 idea Rc5-a5;  
24...Rc5

25.Qd2 Qa6



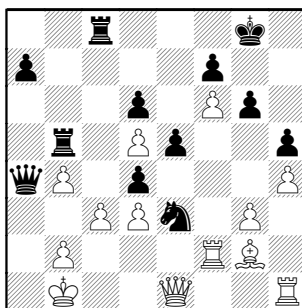
26.Qe1? [26.Rc1] 26...Rb5

26...Nxc2? 27.Rxc2 Qxd3

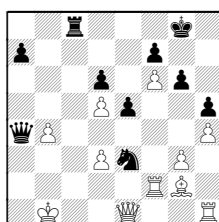


28.Be4 Qxb3 29.Rxc8+ Rxc8

27.b4 Qa4 [27...Rcb8] 28.c3?

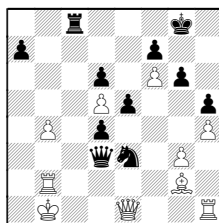


28...Rb6

A) 28...a5!;  
B) 28...dxc3 29.bxc3 Rxb4+! 30.cxb4

30...Nc2 idea Qa1# among others

29.b3 Qxb3+

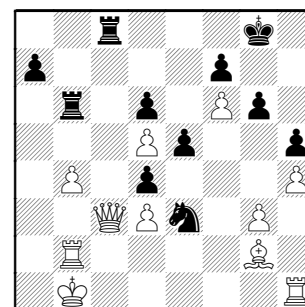
29...Rxb4! 30.cxb4 Qxb3+ 31.Rb2  
Qxd3+

32.Ka2 Rc3

30.Rb2 Qxc3

Again, Black can set up a Rook sac  
30...Qa3 31.Ra2 Rxb4+ 32.cxb4 Qb3+  
33.Rb2 Qxd3+

31.Qxc3

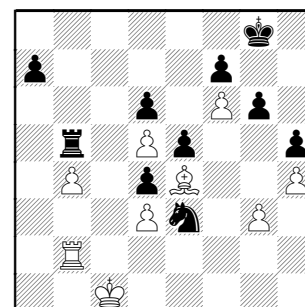


31...Rxc3

31...dxc3! 32.Rc1  
(32.Rb3 Nxg2;  
32.Re2 Rxb4)

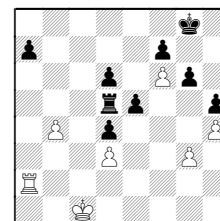
32...c2+ 33.Ka2 Nxg2

32.Be4 Rb5 33.Rc1 Rxc1+ 34.Kxc1

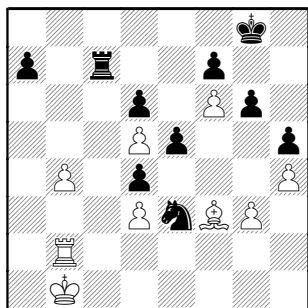


34...Rb7

34...Nxd5 35.Bxd5 Rxd5 36.Ra2

and Black's center Pawns aren't very  
mobile

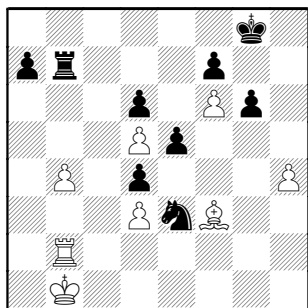
35.Bf3 Rc7+ 36.Kb1



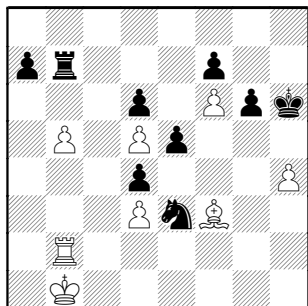
36...Nf1

36...Nf5 stops the g3-g4 reply

37.g4 hxg4 38.Bxg4 Ne3 39.Bf3 Rb7



40.Be4 Kh7 41.b5 Kh6 42.Bf3



42...Nf5 43.Bg4 Nxh4 0-1

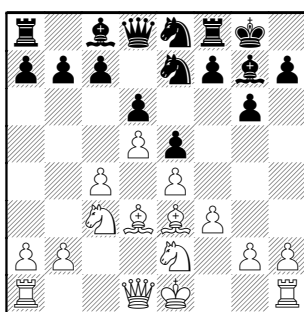
## Board 5, Tyros-NWU

Hahne,Dave (1625) –  
Solomon,Andrew (1854)

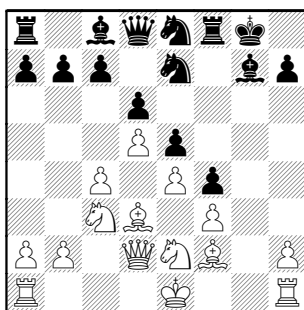
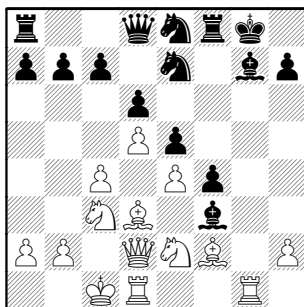
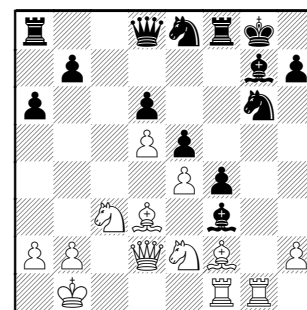
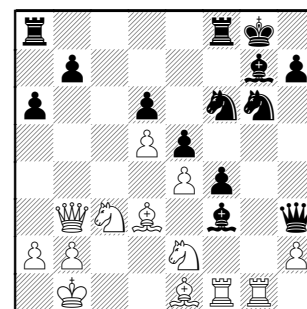
[E81]

1.d4 Nf6 2.c4 g6 3.Nc3 Bg7 4.e4 d6  
5.f3 0-0 6.Bd3 Nc6 7.Nge2 e5

8.d5 Ne7 9.Be3 Ne8

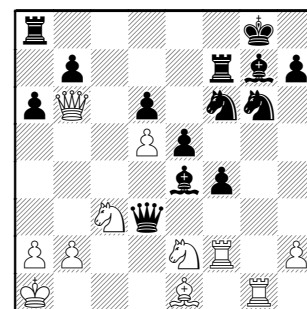


10.g4 f5 11.gxf5 gxf5 12.Qd2 f4 13.Bf2

13...Bh3 14.0-0-0 [14.Rg1] 14...Bg2  
15.Rhg1 Bxf316.c5 [16.Kb1 idea Rc1] 16...a6 17.Rdf1  
Ng6 18.cxd6 cxd6 19.Kb119...Qd7 20.Qc2 Nf6 21.Be1 [21.Bb6]  
21...Qh3 22.Qb3?

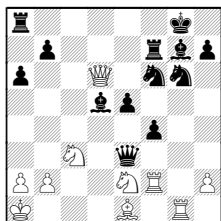
22...Rf7?

22...Bg2! 23.Rf2 Qxd3+

23.Qb6? Bg2 24.Rf2 Qxd3+ 25.Ka1  
Bxe4

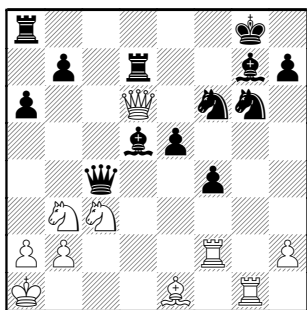
26.Qxd6 Bxd5 [26...Nxd5] 27.Nc1 Qc4

27...Qe3 idea Qxc1# and weakness Rg1  
28.N1e2

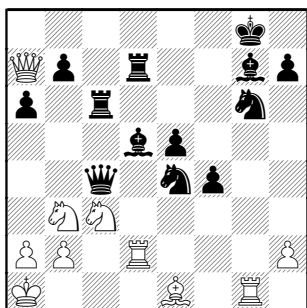


28...Rc8 29.Nxd5?? Rc1+

28.Nb3 Rd7

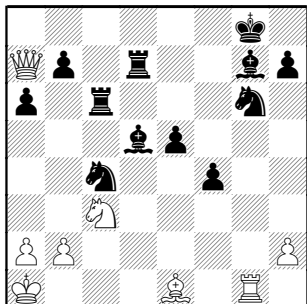


29.Qb6 Rc8 30.Rd2 Rc6 31.Qa7 Ne4

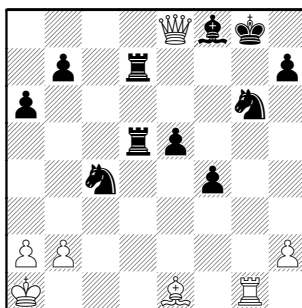


32.Na5 [32.Nxe4?? Qc1+]

32...Nxd2 this isn't necessary, but Black should still be OK [32...Qc5!] 33.Nxc4 Nxc4



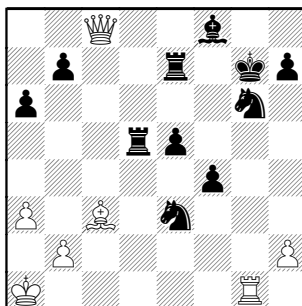
34.Qb8+ Bf8 35.Qe8 Rcd6 36.Nxd5 Rxd5



37.Qe6+ Kg7

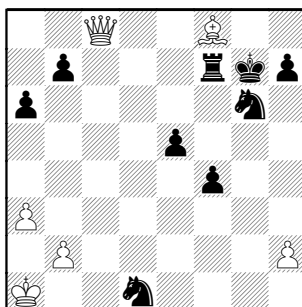
37...Kh8 idea Rd1# 38.a3 Bg7 idea e4 39.Qe8+ Nf8

38.a3 Ne3 [38...Bc5 idea Bd4] 39.Bc3 [39.Bh4 idea Bf6+] 39...Re7 40.Qc8



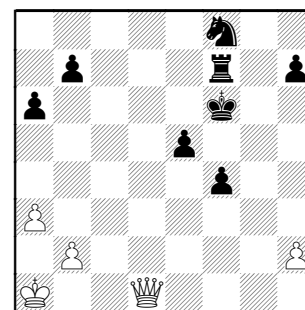
40...Rd1+?! trading a Rook makes it harder to coordinate the pieces. White shows the power of the Queen [40...f3!]

41.Rxd1 Nxd1 42.Bb4 Rf7 43.Bxf8+



43...Nxf8

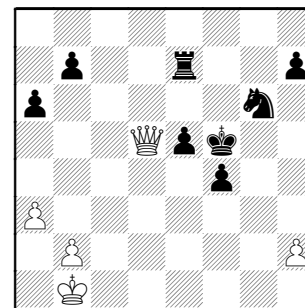
43...Rxf8 44.Qd7+ also picks off the Knight 44.Qg4+ Kf6 45.Qxd1



45...Ng6

45...Ne6 centralize ! also blocks Queen checks

46.Qd6+ Kf5 [46...Kg7] 47.Qd5 Re7 48.Kb1



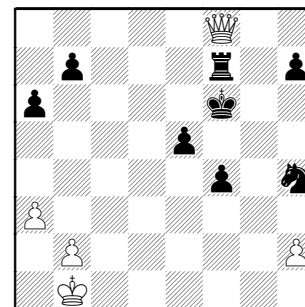
48...Nh4? breaking coordination of defense, the Queen has too many open lines.

48...b6 49.Qc6 Re6 50.Qd7 e4 51.Qxh7 e3

49.Qd8 Ke6 [49...Ng6] 50.Qg8+ Kf6

50...Kd6 51.Qd8+ Rd7? 52.Qxh4

51.Qf8+ Rf7

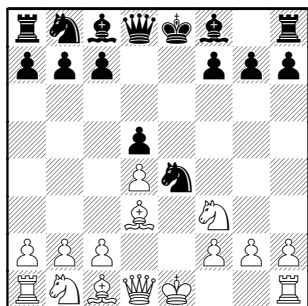


52.Qd8+ Re7 53.Qf8+ Ke6 54.Qg8+  
1/2-1/2

### Board 6, NWU-Tyros

Wang, Ben (1759) –  
Buchner, Bob (1680) [C42]

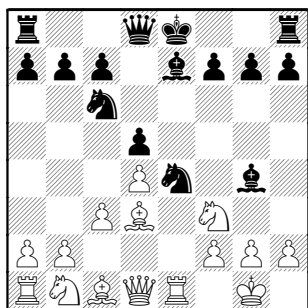
1.e4 e5 2.Nf3 Nf6 3.Nxe5 d6 4.Nf3  
Nxe4 5.d4 d5 6.Bd3



6...Bg4 [6...Bd6; 6...Nc6; 6...Be7;  
6...Nd7] 7.0-0 Nc6 8.c3

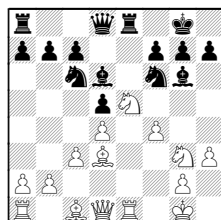
8.c4 begins undermining e4 and thus  
opens the e-file

8...Be7 9.Re1



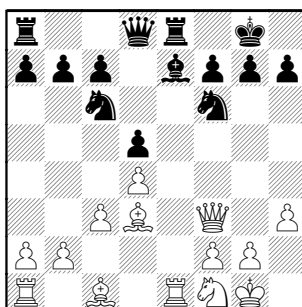
9...Nf6 [9...f5] 10.Nbd2 0-0 11.Nf1 Re8  
[11...Bd6] 12.h3 Bxf3

12...Bh5 13.Ng3 Bg6 14.Ne5 Bd6 15.f4

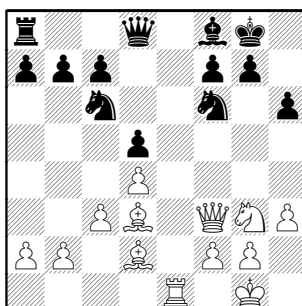


worked out well for White in the game  
Thorhallsson-Thorfinnsson, 1997

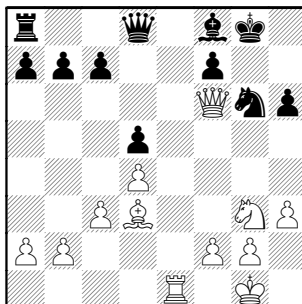
13.Qxf3



13...h6 [13...g6] 14.Ng3 Bf8 15.Bd2  
Rxe1+ 16.Rxe1

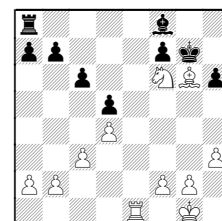


16...Ne7 17.Bxh6! small tactics, but  
effective ! 17...gxh6 18.Qxf6 Ng6



19.Nh5 Nh8

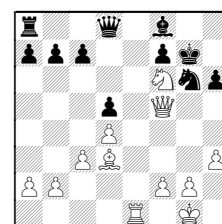
19...c6 20.Bxg6 Qxf6 21.Nxf6+ Kg7



22.Nxd5 (22.Bxf7)

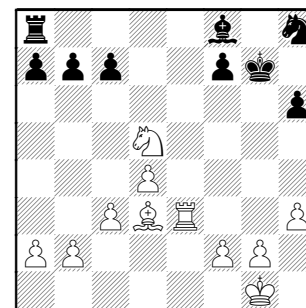
20.Re3

20.Qf5 is more forcing 20...Ng6 21.Nf6+  
Kg7

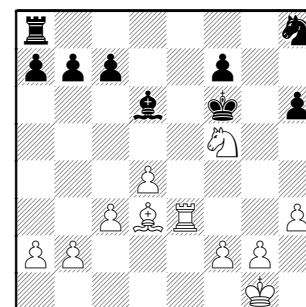


and DS finds the beautiful 22.Re6! idea  
Nh5+, Rxg6+, etc

20...Qxf6 21.Nxf6+ Kg7 22.Nxd5



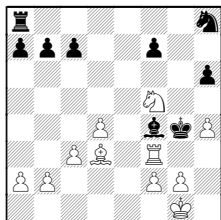
hard to disagree with White's position,  
however 22...Bd6 23.Ne7 Kf6 24.Nf5



The Knight completely dominates the Bishop

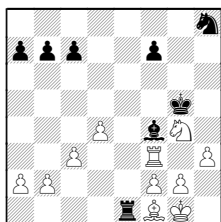
**24...Bf4 25.Rf3 Kg5 26.Ne3**

**A) 26.h4+ Kg4**



**27.Rh3** idea Ne7,f3+ mating;

**B) 26.Nxh6 Re8 27.Ng4 Re1+ 28.Bf1**



**28...Rb1 29.g3**

**26...Bd6 27.Rf5+ Kh4?**

**27...Kg6 28.Rb5+**

**28.g3+** idea Bf1# **1-0**

**PLAYOFF DIVISION 05-11-2008**

TEAM NAME				GAME MATCH		PCT
	W	L	D	POINTS	POINTS	
ST CHARLES BAKER	2	0	1	12.5	2.5	0.833
ST CHARLES CHESS CLUB	2	1	0	11.0	2.0	0.667
HEDGEHOGS	2	1	0	10.0	2.0	0.667
DOWNERS GR CHESS CLUB	2	1	0	8.5	2.0	0.667
NORTHWESTERN CHESS CLUB	1	1	1	9.0	1.5	0.500
MOTOROLA KINGS	1	2	0	7.5	1.0	0.333
UOP	0	2	1	7.5	0.5	0.167
LUCENT TECH. TYROS	0	2	1	6.0	0.5	0.167

**30-APR-08 HEDGEHOGS 5 DOWNERS GR CHESS CLUB 1**

## ROUND 1

BD	RATINGS	SCORE		RATINGS	SCORE
1 FRANKLIN, D	2203 -1	.5	KLUG, S	2192 1	.5
2 RAUCHMAN, M	2063 -5	.5	EGERTON, J	1992 5	.5
3 SMITH, M	1982 11	1	WAKERLY, R	1781-11	0
4 SEET, P	1865 18	1	POTTS, K	1802-18	0
5 TAN, A	1636 29	1	MANEY, A	1731-29	0
6 KRATKA, M	1633 19	1	VECANSKI, D	1578-19	0

**01-MAY-08 ST CHARLES BAKER 3 UOP 3**

## ROUND 1

BD	RATINGS	SCORE		RATINGS	SCORE
1 NGUYEN, T	2207 7	1	LEONG, G	1901 -4	0
2 RASO, P	2081 15	1	SIWEK, M	1952-10	0
3 FREIDEL, JESSE	1992 18	1	VAN MEER, J	1920-18	0
4 FREIDEL, P	1965-29	0	BOLDINGH, E	1869 19	1
5 ALBERTS, W	1528 -6	0	EASTON, R	1850 6	1
6 JANSSEN, G	1503 -8	0	LECHNICK, J	1762 6	1
7 BALES, R	1411-10	0	NALLATHAMBI, R	1633 10	1
8 VOIGHT, T	1213 36	1	CAMPBELL, DOUG	1447-36	0
(STCCC) 9 POWERS, E	1454 2	.5	OLSEN, A	1476 -1	.5

**06-MAY-08 ST CHARLES CHESS CLUB 5 MOTOROLA KINGS 1**

## ROUND 1

BD	RATINGS	SCORE		RATINGS	SCORE
1 MARSHALL, J	2218 10	1	PIPARIA, J	2000-10	0
2 WIEWEL, J	2061 -5	.5	WALLACH, C	1998 3	.5
3 SPLINTER, J	2060 -3	.5	MELNIKOV, I	2024 2	.5
4 SUITS, J	1694 30	1	CYGAN, J	1809-30	0
5 VON HATTEN, J	1605 22	1	GONCHAROFF, N	1595-10	0
6 SMITH, D	1463 29	1	RABINOVICH, E	1567-29	0

**06-MAY-08 NORTHWESTERN CHESS CLUB 3 LUCENT TECH. TYROS 3**

## ROUND 1

BD	RATINGS	SCORE		RATINGS	SCORE
1 BAKSHI, A	2042-18	0	ALLSBROOK, F	2111 18	1
2 GORODETSKIY, S	2041 3	.5	DIAZ, P	2085 -2	.5
3 SMALLWOOD, J	2000 13	1	GUIO, J	1840 -9	0
4 ULLOM, G	1797-25	0	DOBROVOLNY, C	1752 17	1
5 SOLOMON, A	1854-13	.5	HAHNE, D	1625 9	.5
6 WANG, B	1759 17	1	BUCHNER, R	1680-12	0

**10-MAY-08 NORTHWESTERN CHESS CLUB 3.5 UOP 2.5**

## ROUND 2

BD	RATINGS	SCORE		RATINGS	SCORE
1 BAKSHI, A	2024 -6	.5	SIWEK, M	1942 3	.5
2 GORODETSKIY, S	2044-31	0	LEONG, G	1897 21	1
3 SMALLWOOD, J	2013 16	1	VAN MEER, J	1902-16	0
4 ULLOM, G	1772-15	0	BOLDINGH, E	1888 10	1
5 SOLOMON, A	1841 23	1	EASTON, R	1856-23	0
6 WANG, B	1776 22	1	LECHNICK, J	1768-15	0

**10-MAY-08 ST CHARLES CHESS CLUB 2.5 HEDGEHOGS 3.5**

## ROUND 2

BD	RATINGS	SCORE		RATINGS	SCORE
1 MARSHALL, J	2228 -2	.5	FRANKLIN, D	2202 2	.5
2 SPLINTER, J	2057-22	0	RAUCHMAN, M	2058 22	1
3 SUITS, J	1724 37	1	SMITH, M	1993-37	0
4 VON HATTEN, J	1627 -8	0	SEET, P	1883 8	1
5 SMITH, D	1492 32	1	KRATKA, M	1652-32	0
6 POWERS, E	1456-10	0	TAN, A	1665 10	1

**10-MAY-08 ST CHARLES BAKER 5 LUCENT TECH. TYROS 1**

## ROUND 2

BD	RATINGS	SCORE		RATINGS	SCORE
1 NGUYEN, T	2214 17	1	ALLSBROOK, F	2129-17	0
2 RASO, P	2096 22	1	DIAZ, P	2083-14	0
3 FREIDEL, JESSE	2010 -6	.5	STOLTZ, B	1922 4	.5
4 FREIDEL, P	1936 16	1	GUIO, J	1831-11	0
5 ALBERTS, W	1522 36	1	DOBROVOLNY, C	1769-24	0
6 JANSSEN, G	1495 9	.5	HAHNE, D	1634 -6	.5

**10-MAY-08 MOTOROLA KINGS 2.5 DOWNERS GR CHESS CLUB 3.5**

## ROUND 2

BD	RATINGS	SCORE		RATINGS	SCORE
1 MELNIKOV, I	2026 7	.5	KLUG, S	2193-11	.5
2 PIPARIA, J	1990-22	0	EGERTON, J	1997 22	1
3 WALLACH, C	2001 6	1	WAKERLY, R	1770 -9	0
4 HORTON, D	1929-31	0	POTTS, K	1784 31	1
5 CYGAN, J	1779 17	1	CURRAN, T	1696-17	0
6 GONCHAROFF, N	1585-11	0	VECANSKI, D	1559 24	1

**10-MAY-08 HEDGEHOGS****1.5 ST CHARLES BAKER****4.5****ROUND 3**

BD	RATINGS	SCORE	RATINGS	SCORE
1 FRANKLIN, D	2204 2	.5	NGUYEN, T	2231 -2 .5
2 RAUCHMAN, M	2080-20	0	RASO, P	2118 20 1
3 SMITH, M	1956 4	.5	FREIDEL, JESSE	2004 -4 .5
4 SEET, P	1891-19	0	FREIDEL, P	1952 19 1
5 KRATKA, M	1620 -4	.5	ALBERTS, W	1558 4 .5
6 TAN, A	1675-33	0	JANSSEN, G	1504 33 1

**10-MAY-08 UOP****2 MOTOROLA KINGS****4****ROUND 3**

BD	RATINGS	SCORE	RATINGS	SCORE
1 SIWEK, M	1945 4	.5	MELNIKOV, I	2033 -4 .5
2 LEONG, G	1918 4	.5	WALLACH, C	2007 -4 .5
3 BOLDING, E	1898-12	0	PIPARIA, J	1968 18 1
4 EASTON, R	1833-18	0	HORTON, D	1898 18 1
5 VAN MEER, J	1886-28	0	CYGAN, J	1796 28 1
6 LECHNICK, J	1753 8	1	GONCHAROFF, N	1574 -5 0

**10-MAY-08 NORTHWESTERN CHESS CLUB****2.5 ST CHARLES CHESS CLUB****3.5****ROUND 3**

BD	RATINGS	SCORE	RATINGS	SCORE
1 BAKSHI, A	2018-10	0	MARSHALL, J	2226 10 1
2 GORODETSKIY, S	2013-21	0	SPLINTER, J	2035 21 1
3 SMALLWOOD, J	2029 8	1	SUITS, J	1761 -8 0
4 ULLOM, G	1757-31	0	VON HATTEN, J	1619 31 1
5 SOLOMON, A	1864-17	.5	SMITH, D	1524 17 .5
6 WANG, B	1798 5	1	POWERS, E	1446 -5 0

**10-MAY-08 DOWNERS GR CHESS CLUB****4****LUCENT TECH. TYROS****2****ROUND 3**

BD	RATINGS	SCORE	RATINGS	SCORE
1 KLUG, S	2182 -5	.5	ALLSBROOK, F	2112 5 .5
2 EGERTON, J	2019 4	.5	DIAZ, P	2069 -2 .5
3 WAKERLY, R	1761 32	1	STOLTZ, B	1926-22 0
4 POTTS, K	1815 23	1	GUIO, J	1820-15 0
5 CURRAN, T	1679-18	0	DOBROVOLNY, C	1745 12 1
6 VECANSKI, D	1583 25	1	HAHNE, D	1628-17 0

**10-MAY-08 EXTRA GAMES**

(STCCC)	1	STOSKUS, A	1477 14	.5	FRANEK, M	1727 -9	.5 (PAWNS)
(PAWNS)	2	FRANEK, M	1718 10	.5	JASAITIS, A	2010-10	.5 (HEDGE)

**10-MAY-08 INDIVIDUAL TOURNAMENT SECTION 1****ROUND 1**

	BD	RATINGS	SCORE	RATINGS	SCORE
(FERMI)	1	GARZON, G	2268 2 1	HAMELINK, N	1742 -2 0 (FORKS)
(NORTH)	2	HART, V	2049 4 1	NALLATHAMBI, R	1643 -4 0 (UOP )
(AMARS)	3	ALLEN, H	1825-34 0	ENGELN, M	1632 34 1 (NORTH)
(BAKER)	4	WANG, ANDREW	1809 0 1	PARMET, DANIEL	0 0 0 (GUEST)

**10-MAY-08 INDIVIDUAL TOURNAMENT SECTION 1****ROUND 2**

	BD		RATINGS	SCORE		RATINGS	SCORE
	1	HART, V	2053-19	.5	ENGELLEN, M	1666 19	.5 (NORTH)
(FERMI)	2	GARZON, G	2270 3	1	WANG, ANDREW	1809 -3	0 (BAKER)
(AMARS)	3	ALLEN, H	1791-32	0	NALLATHAMBI, R	1639 32	1 (UOP )
(FORKS)	4	HAMELINK, N	1740 0	0	PARMET, DANIEL	0 0	1 (GUEST)

**10-MAY-08 INDIVIDUAL TOURNAMENT SECTION 1****ROUND 3**

	BD		RATINGS	SCORE		RATINGS	SCORE
(FERMI)	1	GARZON, G	2273 9	1	HART, V	2034 -9	0 (NORTH)
(NORTH)	2	ENGELLEN, M	1685-15	0	WANG, ANDREW	1806 15	1 (BAKER)
(GUEST)	3	PARMET, DANIEL	0 0	0	NALLATHAMBI, R	1671 0	1 (UOP )
(AMARS)	4	ALLEN, H	1759 21	1	HAMELINK, N	1740-21	0 (FORKS)

**10-MAY-08 INDIVIDUAL TOURNAMENT SECTION 2****ROUND 1**

	BD		RATINGS	SCORE		RATINGS	SCORE
(TYROS)	1	VAIL, M	1638 0	1	GOLISZEK, M	0 0	0 (GUEST)
(NORTH)	2	VIGANTS, A	1578-22	0	CAMPBELL, DOUG	1411 33	1 (UOP )
(FORKS)	3	PERSONS, J	0 0	0	CHAVEZ, A	0 0	1 (HEDGE)
(GUEST)	4	RAJSKY, J	0 0	0	FURTNER, F	1391 0	1 (AMATS)
(UOP )	5	MICKLICH, F	1496 -6	.5	SPITZIG, M	1344 10	.5 (PAWNS)

**10-MAY-08 INDIVIDUAL TOURNAMENT SECTION 2****ROUND 2**

	BD		RATINGS	SCORE		RATINGS	SCORE
(TYROS)	1	VAIL, M	1638 0	1	CHAVEZ, A	0 0	0 (HEDGE)
(UOP )	2	CAMPBELL, DOUG	1444-26	0	FURTNER, F	1391 26	1 (AMATS)
(PAWNS)	3	SPITZIG, M	1354 0	.5	RAJSKY, J	0 0	.5 (GUEST)
(FORKS)	4	PERSONS, J	0 0	.5	GOLISZEK, M	0 0	.5 (GUEST)
(UOP )	5	MICKLICH, F	1490 18	1	VIGANTS, A	1556-18	0 (NORTH)

**10-MAY-08 INDIVIDUAL TOURNAMENT SECTION 2****ROUND 3**

	BD		RATINGS	SCORE		RATINGS	SCORE
(TYROS)	1	VAIL, M	1638-35	0	FURTNER, F	1417 35	1 (AMATS)
(UOP )	2	MICKLICH, F	1508-19	0	CAMPBELL, DOUG	1418 28	1 (UOP )
(PAWNS)	3	SPITZIG, M	1354 0	.5	CHAVEZ, A	0 0	.5 (HEDGE)
(FORKS)	4	PERSONS, J	0 0	0	VIGANTS, A	1538 0	1 (NORTH)
(GUEST)	5	GOLISZEK, M	0 0	1	RAJSKY, J	0 0	0 (GUEST)