

The Chicago Chess Player

The Official Bulletin of the Chicago Industrial Chess League

CROWDED AT THE TOP!



**Five Teams Tie For First Place In The 2010 CICL Team Championship!
Our Five Co-Champions are (alphabetically):**

Downers Grove Chess Club

Lucent Tyros

Motorola Knights

St. Charles Chess Club

South Suburban Chess Club Yorktown Wildcats

(In this issue – complete summary of post season results, annotated CICL games and commentary on the recent World Championship match in Bulgaria from our Games Editor.)

CICL Officer Contact List

League President President@ChicagoChessLeague.org	Tony Jasaitis		C:(708) 903-6423 W:(312) 264-2044
League Secretary Secretary@ChicagoChessLeague.org	Jerry Thomas	745 Hageman Pl Naperville, IL 60563	H:(630)420-0188
League Treasurer Treasurer@ChicagoChessLeague.org	Paul Freidel	212 Perry Street Elgin, IL 60123	C:(224)436-6050
Bulletin Editor/Webmaster Bulletin@ChicagoChessLeague.org Web@ChicagoChessLeague.org	Marty Franek	9044 S. 51 st Avenue Oak Lawn, IL 60453	H:(708) 636-3714
Games Editor Games@ChicagoChessLeague.org	Tom Friske	1035 E Algonquin Road Des Plaines, IL 60016	H:(847) 299-1033 W:(224)-542-6448
Ratings Chairman Ratings@ChicagoChessLeague.org	Art Olsen	714 E Algonquin Road J102 Arlington Heights, IL 60006 FAX : to SBS OTS, 22NW0644-5 at (847) 719-8151	H:(847) 437-9819 W:(847) 719-8036
Trophy Chairman Trophy@ChicagoChessLeague.org	Mia Pillarella		
Publicity Chairman Publicity@ChicagoChessleague.org	Matt Vail		C:(312) 933-1516 W:(630) 505-6557
Banquet Chairman Banquet@ChicagoChessLeague.org	Katherine Zack		

DIVISIONAL CHAIRMEN

East Division ChairmanEast@ChicagoChessLeague.org	Fred Furtner		C: (630) 291-4271 W: (312) 464-4495
West Division ChairmanWest@ChicagoChessLeague.org	Irwin Gaines		
North Division ChairmanNorth@ChicagoChessLeague.org	Jim Thomson		W: (847) 538-5408

Mark Your Calendars with These Key League Dates:

**League Awards Banquet
Fall Business Meeting**

First Friday of June (June 4, 2010)
Last Wednesday in August (August 25, 2010 – location to be announced)

Officer Contact List	2
Contents of Issue	3
World Chess Championship Aftermath (by Tom Friske)	4
Annotated CICL Games from the Games Editor	5
CICL Regular Season Match Results – post April 19, 2010	26
CICL Final Rating List (includes all regular season and post-season games)	28
Final Division Standings (includes all reported match results to date)	31
Playoff Division Match Results and Final Standings	32
CICL Individual Tournament Results	35
CICL Final Top Ten Lists for the 2009-2010 season	37

NOTE:

Don't forget the upcoming CICL annual awards banquet at Alpine Banquets in Westchester, IL (near Roosevelt and Wolf Roads) on June 4, 2010. Besides a dinner and awards presentation, there will be a sectioned speed chess tournament following a presentation by our guest speaker, National Master Dr. Steve Tennant. RSVP by June 2 with the CICL banquet chair or president (see page 2 for contact information).

CICL bulletin editor Marty Franek

World Championship Aftermath – submitted by Games Editor Tom Friske.

Every World Championship seems to stir up its own controversy, and the last one just completed (Topalov vs Anand, played in Sofia, Bulgaria) didn't disappoint. First, it was odd Anand didn't seem to mind playing in his opponent's back yard. Then add in the "volcano factor" which hindered the Champ from arriving on his planned schedule—and FIDE not providing any slack for him. Finally, you may have heard that Topalov, with the White side, quickly crushed Anand the first game from an opening (Gruenfeld) that the champion never plays. Anand stayed cool and won the second matchgame and the battle was joined.

But a recent perusal of the ChessBase news links (www.chessbase.com), as always, did not disappoint with background items. This writer doesn't claim to read every chess site on the Web, but is hooked on this wide-ranging and humorous one.

The question at hand is: What impresses you more: A 12-machine PC-cluster totaling 112 synchronized processors rumored to cost \$125,000 running a new version of Rybka not yet released.... or a "human cluster" consisting of the recent World Champions, the two hottest teen-age GMs, and a few other talents to boot ??

Is this what the World Championship has come to ? It was Topalov with the silicon friends (apparently at the Bulgarian government's expense) and Anand with the human. None of the processors (silicon or GM variety) were monetarily compensated; in fact, they volunteered!

I will let you read all the links below (if your Internet connection is live, you can just click the link right from this PDF and get there!) for all the details on how these teams got assembled (worth the read, it's quite amazing!), but it made me think. "Why were all these guys ganging up on Topalov" ? What has he done that makes these others want so badly to see him beat ? After some consideration, it occurred: Could it simply be a human factor of not wanting to let the computer have the final say ? The humans have taken a beating during the one-on-one Human vs Machine matches lately. Was this psychologically a gathering of the wagons in our defense ?

You decide. The facts are given on the net. Or just read the articles for their great entertainment value; the happy camaraderie between the GMs was priceless!! But Anand gets the quote of the day:

"Yes, my human cluster was actually fairly impressive". Or maybe Kramnik's phone call, as Anand relates: "After one of the white games of which I was particularly proud I came back and found a Skype message from Vlady saying **"Ah, so you managed to equalise with white!"**

The chess cluster:

<http://www.chessbase.com/newsdetail.asp?newsid=6340>

Anand interview, Part 1:

<http://www.chessbase.com/newsdetail.asp?newsid=6346>

Anand interview, Part 2:

<http://www.chessbase.com/newsdetail.asp?newsid=6348>

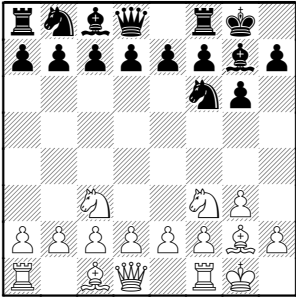
Topalov's reaction:

<http://www.chessbase.com/newsdetail.asp?newsid=6369>

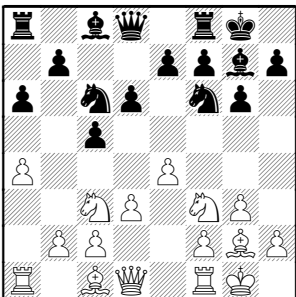
Marcowka, Bob (1898) -
Gaines, Irwin (1719) [B25]

Dragons-Fermilab, 2-25-2010

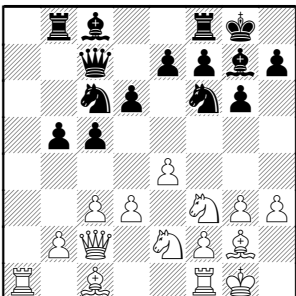
1.g3 Nf6 2.Nf3 g6 3.Bg2 Bg7 4.Nc3
0-0 5.0-0



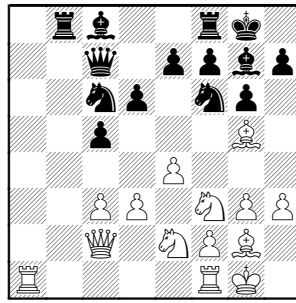
So much for taking the center with
Pawns ! 5...c5 6.e4 d6 7.d3 a6 8.a4
Nc6



9.h3 Rb8 10.Ne2 b5 11.axb5 axb5
12.c3 Qc7 13.Qc2



13...b4 14.Bg5 bxc3 15.bxc3

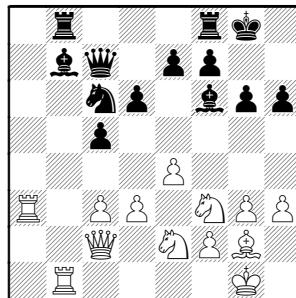


15...Bb7 kind of in the way, but where
else ?

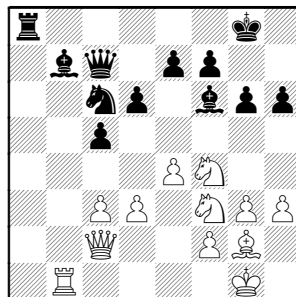
A) 15...Be6 16.d4 idea d4-d5 fork
16...Bc4 isn't overly convincing,
White's center advanced for free.

B) 15...Bd7 probably best, e7
probably won't need Queen's
protection

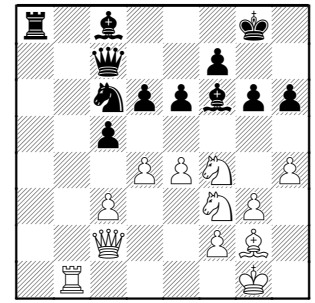
16.Rfb1 h6 17.Bxf6 Bxf6 18.Ra3



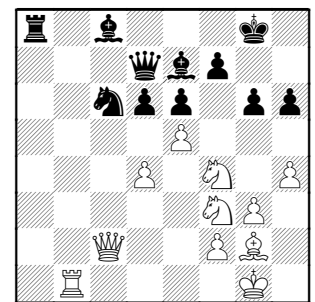
18...Ra8 19.Rxa8 Rxa8 20.Nf4



20...e6 21.h4 Bc8 22.d4



22...cxd4 [22...Ra3] 23.cxd4 Qd7
24.e5 Be7

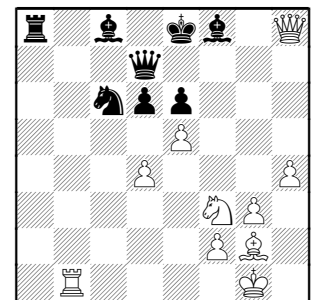


24...Bh8 maintains pressure on the
center

25.Nxg6! fxg6

25...Bd8 Black isn't forced to expose
the King

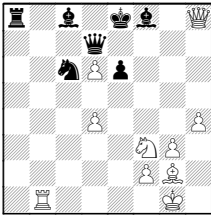
26.Qxg6+ Kf8 27.Qxh6+ Ke8
28.Qh8+ Bf8



29.Ng5

Rybka wants the minors to participate
immediately 29.exd6

(diagram follows)

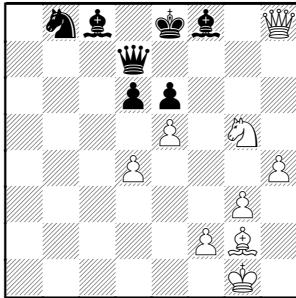


idea Ne5 piling on the pin 29...Ra2

(29...Qxd6 30.Ne5)

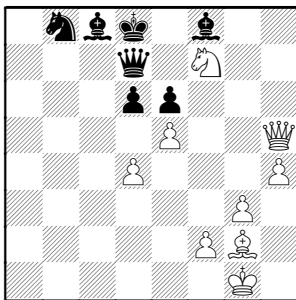
30.Rc1 and now c6 and c8 come under the gun

29...Rb8 White found a fine way to take advantage of this move !
30.Rxb8 Nxb8



The Knight is pulled away from a5....
Who would care at this point ??

31.Qh5+ Kd8 32.Nf7+

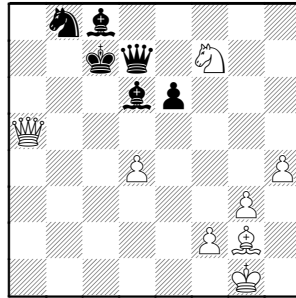


32...Kc7

The interested reader can examine the other ways out of check. There isn't one better.

33.exd6+ Bxd6 34.Qa5#

The final position deserves a diagram:

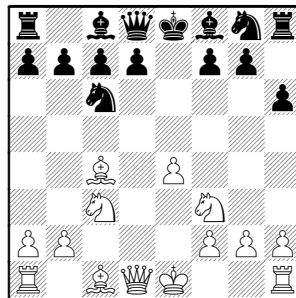


A pretty mate !! 1-0

Bian, Mike (1397) – Persons, Josh (1612) [C44]
Forks-Skewers, 3-3-2010

Josh was last year's MIP and North Division MVP. Mike was rapidly-improving then player as well. This year, they're on different Walgreen teams, so an interesting match-up !

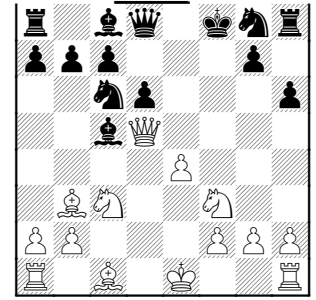
1.e4 e5 2.Nf3 Nc6 3.d4 exd4 4.Bc4 h6 5.c3 dxc3 6.Nxc3



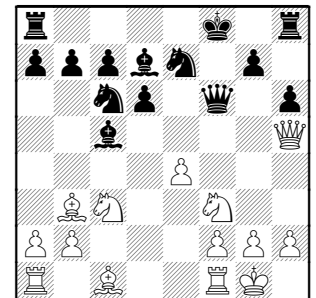
6...Bc5 7.Bxf7+ Kf8

Of course, 7...Kxf7 8.Qd5+ wins the piece back and Black's King will remain exposed

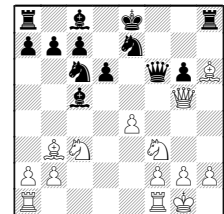
8.Bb3 d6 9.Qd5



9...Qf6 10.0-0 Nge7 11.Qh5 Bd7



11...g6?! doesn't actually chase Queen away 12.Bxh6+ Ke8 13.Qg5



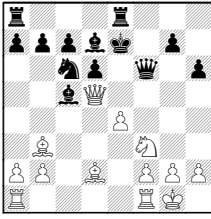
and Black is forced to trade Queens a Pawn down. White's Kingside Pawns might turn into three passers !

12.Nd5 Nxd5 13.Qxd5 Re8

Can Black take time to connect Rooks? 13...Ke7 14.Bd2 Be6 chases the Queen away from c5-Bishop

For example, if Black immediately attempted to play his Rook: (14...Rhe8

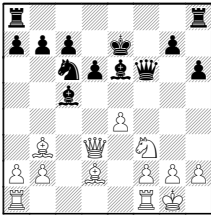
(Diagram follows)



(with idea of Kf8) White has the shot
 15.e5! Nxe5? 16.Nxe5 and dxe
 unprotects the c5-Bishop)

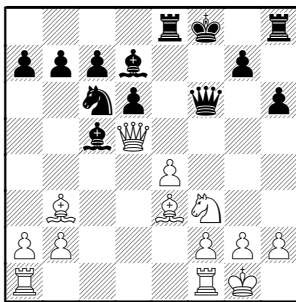
So if Black first chases the Queen
 with 14...Be6, then

15.Qd3



15...Rhe8 16.Bc3 and Black's play
 allowed White active pieces

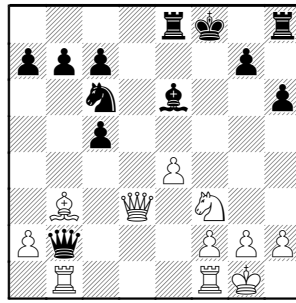
14.Be3



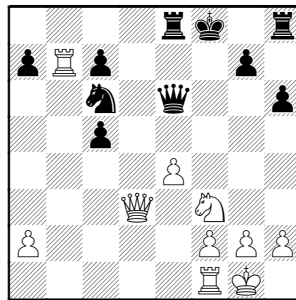
14...Be6 15.Qd3 Qxb2 opening the
 b-file for a White Rook.

A safe idea is 15...Bb6 breaking the
 overload of d6-Pawn, dampening e4-
 e5 shot. Maybe Black can then start
 Kg8-h7 run for safety.

16.Bxc5 dxc5 17.Rab1



17...Qf6 18.Bxe6 Qxe6 19.Rxb7



19...Nb4

Black's main problem is still his King.
 I'd try to solve that first

A) 19...Qxe4 20.Qb5

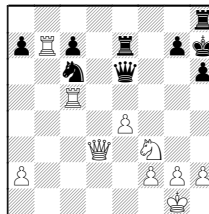
(20.Qb3 looks to weakness of f7 and
 g8)

20...Kg8

(20...Ke7? 21.Rxc7+ Kd6 22.Rd1+)

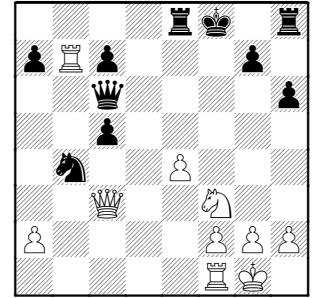
21.Rxc7 Nd4 22.Qc4+ Kh7.

B) 19...Re7 20.Rc1 Kg8 21.Rxc5 Kh7

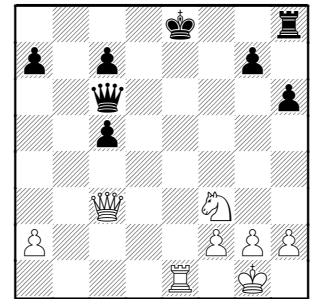


22.e5+ g6 23.Qc2 Black has too
 many weaknesses.

20.Qc3 Qc6?



21.Rxb4! Rxe4 22.Rb8+ Re8
 23.Rxe8+ Kxe8 24.Re1+



24...Kf8

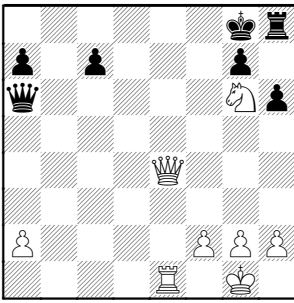
A) 24...Kd8? 25.Ne5 threatens
 Queen and fork at f7 25...Qf6
 26.Qxc5.

B) 24...Kf7?? 25.Ne5+

25.Ne5 Qa6

25...Qd5 26.Ng6+;
 25...Qd6 26.Qb3 mate on f7 or Qb8+
 wins Rook

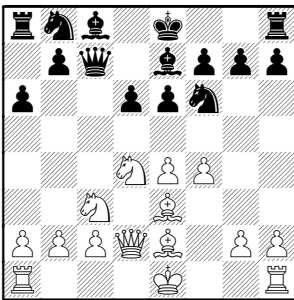
26.Qxc5+ [26.Qb3] 26...Kg8
 27.Qd5+ Kh7 28.Qe4+ Kg8 29.Ng6



29...Rh7 30.Qe8# cute 1-0

Pfau, M (2063) – Hayhurst, Lyle (1848) [B84]
 Citadel-DRW, 2-18-2010

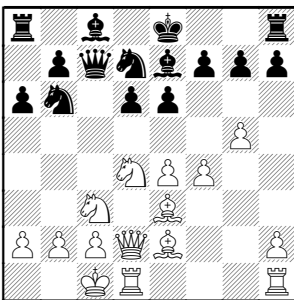
1.e4 c5 2.Nf3 d6 3.d4 cxd4 4.Nxd4 Nf6 5.Nc3 e6 6.Be3 a6 7.f4 Qc7 8.Be2 Be7 9.Qd2



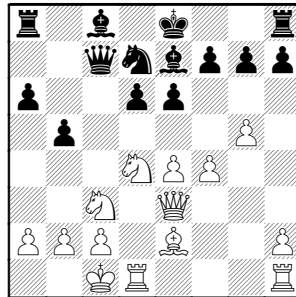
9...Nbd7

An unusual move, but maybe he's planning Nb6-c4 instead of the usual Nc6-e5-c4 path. Popular choices are 9...Nc6 or 9...0-0

10.g4 Nb6 [10...Nc5 11.Bf3] 11.g5 Nfd7 12.0-0-0



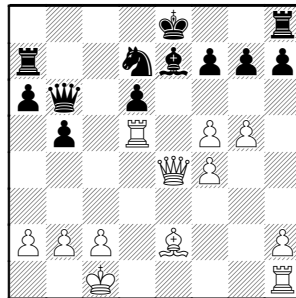
12...Nc4 13.Qd3 Nxe3 14.Qxe3 b5



15.Nf5!? One of many common Sicilian sacrifices! This one opens a pin on the Be7 Bishop and frees the d5 square for the Knight.

15...exf5 16.exf5 Qb6 obviously wanting to trade, but now only the King protects the Bishop

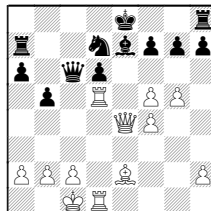
17.Qe4 Bb7 18.Nd5 Bxd5 19.Rxd5 Ra7



20.Rhd1 0-0?

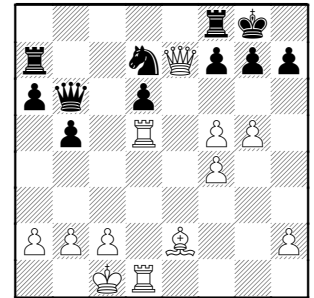
A) 20...Kd8;

B) 20...Qc6



pinning Rook, as White Queen hangs 21.Qe3 (21.Bf3 Rc7) 21...Rc7

21.Qxe7



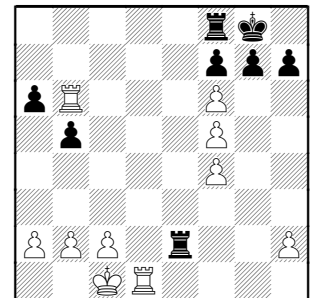
White is now up a Pawn with solid chances of more.

21...Nf6 22.Rxd6

White gives the advantage away with 22.Qxd6? Nxd5

(also bad is 22...Qe3+ idea Qxe2 23.R5d2)

22...Rxe7 23.Rxb6 Rxe2 24.gxf6

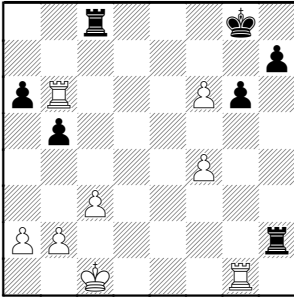


The tripled Pawns certainly look weak. I was amazed how little it matters here!

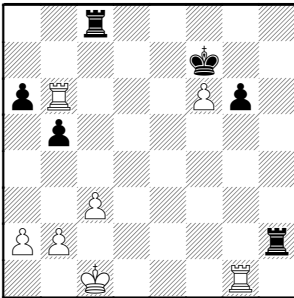
24...Rc8 25.c3

Rybka notices that there's a backrank problem and introduces 25.Rc6

25...Rxb2 26.Rg1 g6 27.fxg6 fxg6

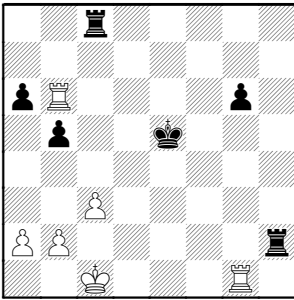


28.f5 Kf7 29.fxg6+ hxg6



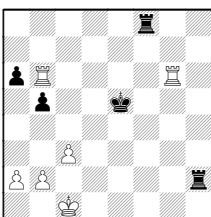
Wow! Tripled Pawns in front of the King were transformed to a deep passer!

30.Rb7+ Kxf6 31.Rb6+ Ke5



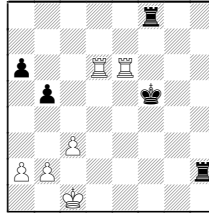
32.a4?

32.Rgxg6 Rf8



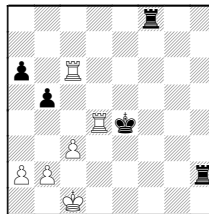
threatens mate, but 33.Rbe6+ Kd5
34.Rd6+ Kc5

(34...Ke5 35.Rge6+ Kf5



blocks the mate threat ! 36.Rxa6)

35.Rc6+ Kd5 36.Rgd6+ Ke4 37.Rd4+



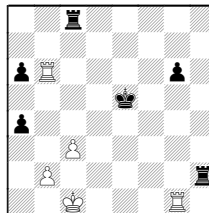
37...Ke5

(Not 37...Ke3 38.Re6+ again, blocking the mating move 38...Kf3 39.Rxa6)

38.Rd2 and the King escapes the backrank !

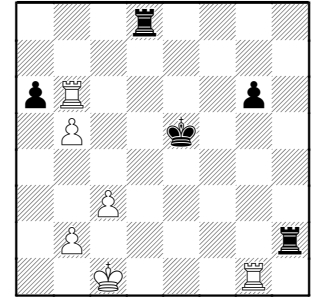
32...Rd8?

32...bxa4!



is rated a dead draw, Black's Rooks harass the remaining Pawns.

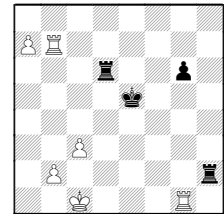
33.axb5



33...Rdd2 I guess going for perpetual (in time trouble?), but there is a simple defense.

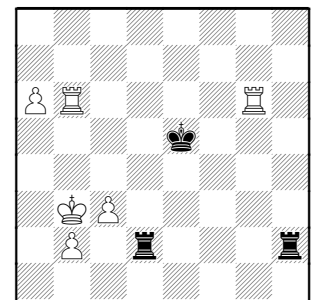
34.bxa6 The Rook now covers b2.
34...Rd7 35.Rgxg6

Why allow Black any play with 35.Rb7 Rd6 36.a7



36...Ra6 idea Ra1# 37.Kb1

35...Rh1+ 36.Kc2 Rh2+ 37.Kb3 Rdd2

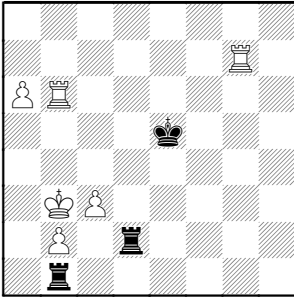


This still doesn't work for the same reason as earlier.

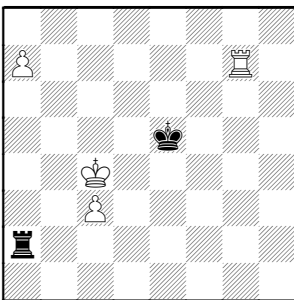
38.Ka3 Rh1 39.Rg7

Of course 39.a7? Ra1+ wins the passer

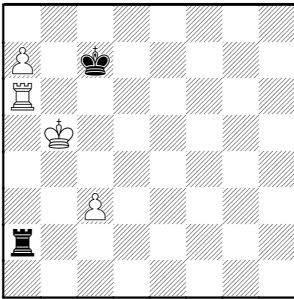
39...Ra1+ 40.Kb3 Rb1



41.Kc4 [41.Ka2] 41...Rdxb2 42.Rxb2 Rxb2 43.a7 Ra2



44.Kb5 Kd6 45.Rg6+ Kc7 46.Ra6



The Pawn will queen. 46...Rb2+ 47.Kc4 [47.Kc5] 47...Rb7 1-0

Bindler, Mary – McEneaney, Tim [C50]
BCBS-Hedgehogs, 3-9-2010

1.e4 e5 2.Nf3 Nc6 3.Bc4 Qe7

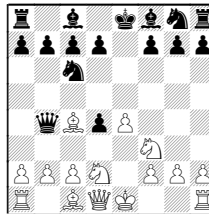
This blocks the pieces and doesn't improve any defense.

It also takes away the standard

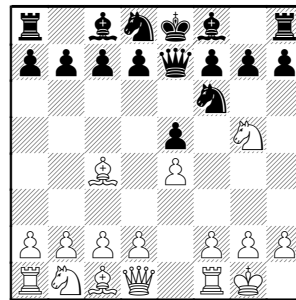
defense of f7 3...Nf6 4.Ng5 d5

4.0-0

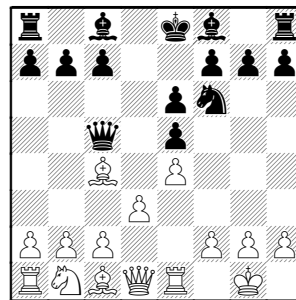
One benefit of Black's Queen excursion would be 4.d4? Qb4+ forking 5.Nbd2 exd4



4...Nf6 5.Ng5 Nd8

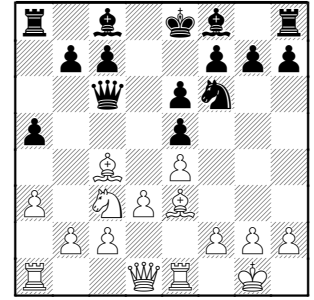


6.Re1 Ne6 [6...h6] 7.Nxe6 dxe6 8.d3 Qc5

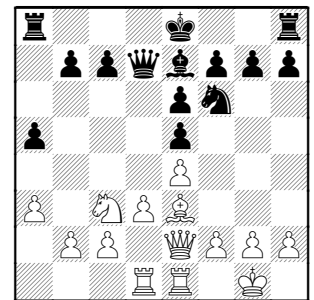


9.a3 a5 10.Be3 Qc6 11.Nc3

Hoping to pin the hyper-active Queen with Bb5

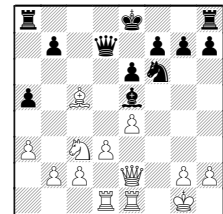


11...Bd7 12.Bb5 Qd6 13.Bxd7+ Qxd7 14.Qe2 Be7 15.Rad1



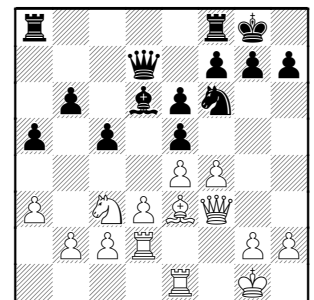
15...c5 16.f4 Bd6 17.Qf3

White could win a Pawn 17.fxe5 Bxe5 18.Bxc5



but Black could counter with 18...Qc7! 19.d4 Bxh2+

17...b6 18.Rd2 0-0

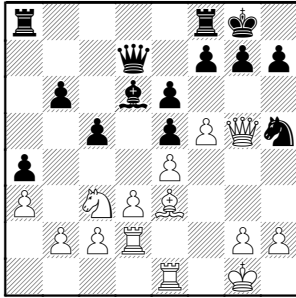


oddy, this actually places the King under pressure

19.f5 a4 20.Qg3

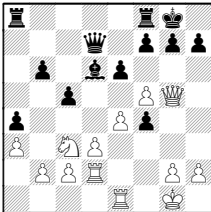
20.g4 kicks the Knight from defense and prepares Rg2

20...Nh5 21.Qg5



21...g6

A) 21...Nf4? 22.Bxf4 exf4

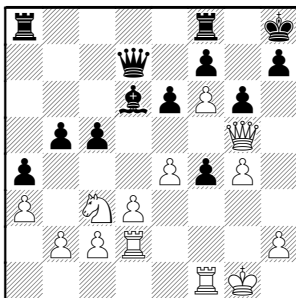


23.e5! Bc7 (23...Be7 24.f6) 24.f6;

B) Better is simply 21...Nf6

22.f6 idea g4 and Qh6-g7# or Rf1 and g4 winning a Pawn

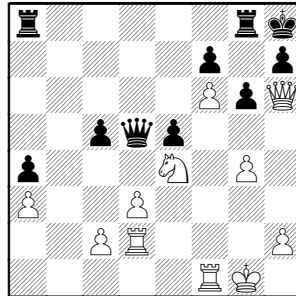
22...Kh8 good! now Rg8 can defend the mate 23.Rf1 b5 24.g4 Nf4 25.Bxf4 [25.Qh6 Rg8] 25...exf4



26.e5 b4? Allows White to create a second attack 27.Ne4 Bxe5 28.Qxe5 Qd5

Don't offer piece trades when down material! It makes the stronger side's job easier.

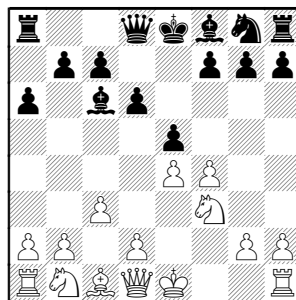
29.Qxf4 bxa3 30.bxa3 e5 31.Qh6 Rg8



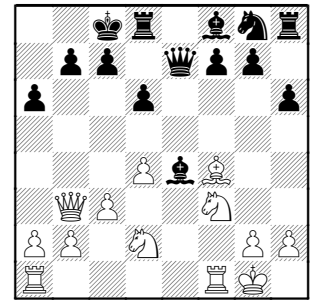
32.Rg2 [32.Ng5] 32...c4 33.Ng5 1-0

Mosley, Andy –
 Dosibhatla, Deek (1618) [C30]
 Hewitt-Skewers, 3-30-2010

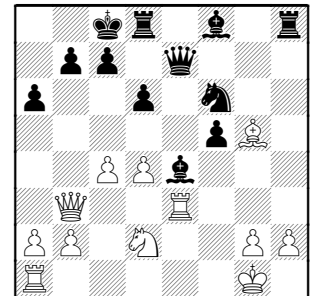
1.e4 e5 2.f4 d6 3.Nf3 Nc6 4.Bb5 Bd7 5.c3 a6 6.Bxc6 Bxc6



7.Qb3 exf4 8.d4 Bxe4 9.Bxf4 h6 10.Nbd2 Qe7 11.0-0 0-0-0



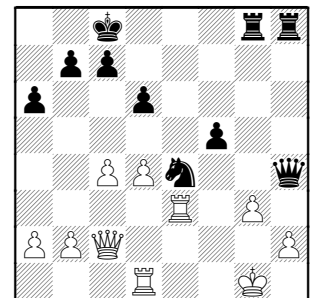
12.Rfe1 f5 securing the e4 outpost 13.Re3 Nf6 14.c4? g5 trapping the Bishop (or forking on f4) 15.Nxg5 hxg5 16.Bxg5



16...Qg7 [16...Qh7 17.Rh3] 17.Rg3 Be7

Black's attack keeps gathering, White's isn't even started.

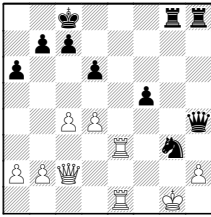
18.Nxe4 Nxe4 19.Bxe7 Qxe7 20.Re3 Qg5 21.Rd1 Rdg8 22.g3 Qh4 23.Qc2



23...Qg5

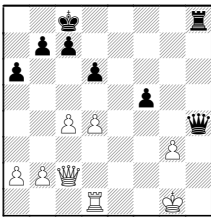
Black misses a kill!

23...Nxg3!! just happens to stop Qxf5+ 24.Rde1?



A) 24.hxg3 Qh1+ 25.Kf2 Rh2#;

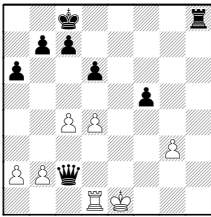
B) 24.Rxg3?? Rxg3+ 25.hxg3



25...Qh1+ 26.Kf2 Qh2+

(26...Rh2+ 27.Ke3 Rxc2 28.Rxh1)

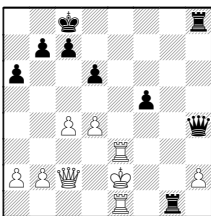
27.Ke1 Qxc2



and Rh1+ will win the Rook and mate

Picking up main analysis line from bottom last column...

24...Ne2+!! 25.Kf1 Rg1+ 26.Kxe2

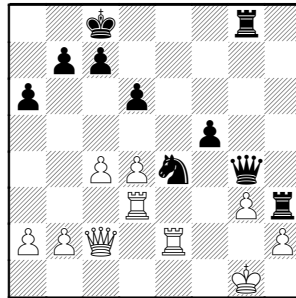


26...Rxe1+

(Or 26...Rg2+ 27.Kd3 Rxc2 28.Kxc2 Qxh2+)

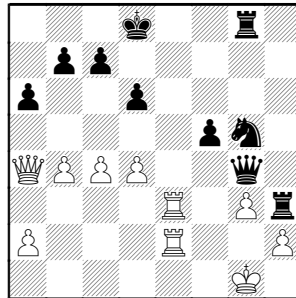
They all win, at any rate !

24.Re2 Rh3 25.Rd3 Qg4

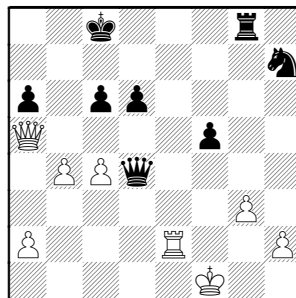


Black is posing to enter, but with no threats, White builds counterattack.

26.b4 Ng5 27.Rde3 Kd8 28.Qa4

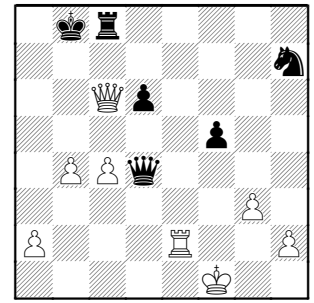


28...Qxd4 cutely pinning [28...Ne4] 29.Kf1 Rhh8 [29...Ne4] 30.Re7 idea Qd7# mate 30...c6 31.Rxb7 Rh7 32.Qa5+ Kc8 33.Rxh7 Nxh7



Both sides had seconds left to make the 45th move.

34.Qxa6+ Kb8 35.Qxc6 Rc8



36.Qb5+

I was seeing draws in—

36.Re8 Qd1+ 37.Kg2 Qd2+ 38.Kh3 Qh6+ 39.Kg2

A) 39... Rxe8 40.Qxe8+ Kc7 41.Qe7+ Kc6 42.Qe8+ =

B) 39...Qd2+ 40.Kf3

(40.Kh3 Rxe8 41.Qxe8+ Kc7 42.Qf7+)

40...Qd3+

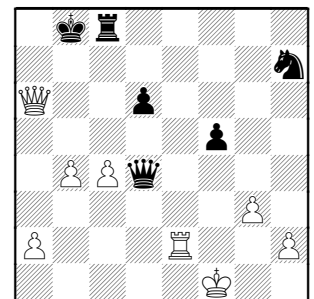
B1) 41.Kf2=

B2) 41.Kf4?? Qf1+! 42.Ke3 Qe1+ 43.Kf4 Rxe8

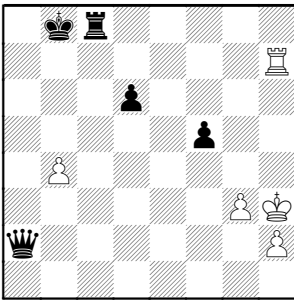
(43...Qxe8 44.Qb6+ Ka8 45.Qa6+ Kb8 46.Qb6+=)

44.Qxd6+ Kc8

36...Ka8 37.Qa6+ Kb8



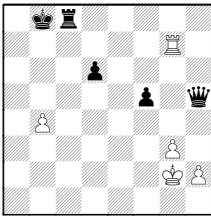
Both sides are in time trouble 38.Re7?? Qxc4+! 39.Kg2?? Qxa6 40.Rxh7 Qxa2+ 41.Kh3



41...Qe6

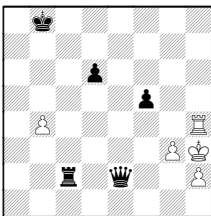
41...Qe2 idea Qg4+, Rc2+, Qd1#
42.Rh4

(42.Rg7?? Qh5+ 43.Kg2



43...Rc2+ 44.Kf1 Qd1# is the main theme Black could be working.)

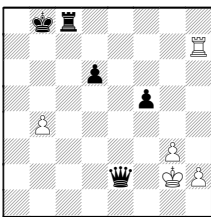
42...Rc2



43.Rh8+ Kb7 44.Kh4 Qxh2+ 45.Kg5 Qxh8

42.Kg2 f4 Black sees a different theme...

Even here, however, 42...Qe2+!



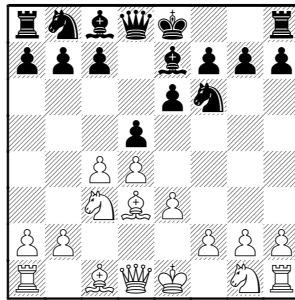
returns to the mating line

43.Kh3 (43.Kg1 Rc1#) 43...Qg4+
44.Kg2 Rc2+ 45.Kf1 Qd1#

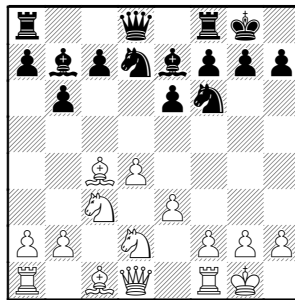
43.gxf4? Qe4+ 44.Kg3 Qxh7 45.h4
Qg7+ and since Black made the time control.... 0-1

Lou, Jingwei –
Chavez, Alejandro (1371) [D37]
NWU-Hedgehogs, 1-14-2010

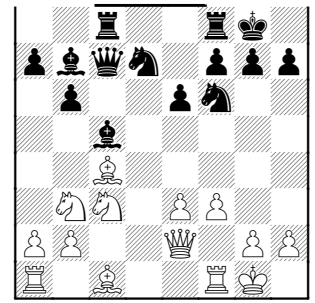
1.d4 d5 2.c4 e6 3.Nc3 Nf6 4.e3 Be7
5.Bd3



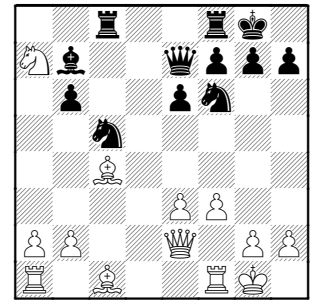
5...dxc4 6.Bxc4 0-0 7.Nf3 Nbd7
8.0-0 b6 9.Nd2 Bb7



10.f3 c5 11.dxc5 Bxc5 12.Nb3 Qc7
13.Qe2 Rac8



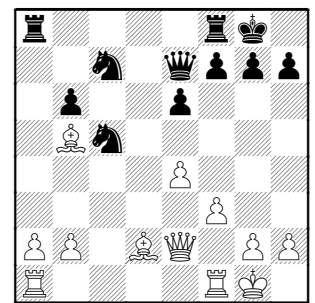
14.Nxc5 Nxc5 15.Nb5 Qe7 16.Nxa7



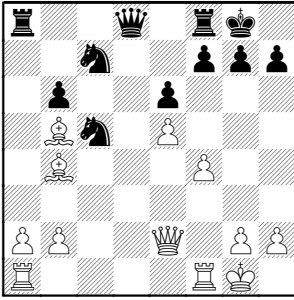
16...Ra8

16...Bxf3 17.Qxf3 Qxa7 wins the Pawn back, but one would suspect the Bishop pair and 2-1 pawn majority to be in White's favor

17.Nb5 Ba6 18.Bd2 Nd5 19.e4 Bxb5
20.Bxb5 Nc7

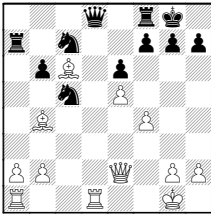


21.Bb4 Qg5 22.f4 Qf6 23.e5 Qd8

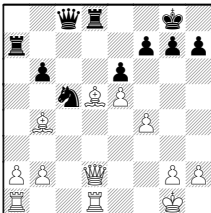


24.Bxc5

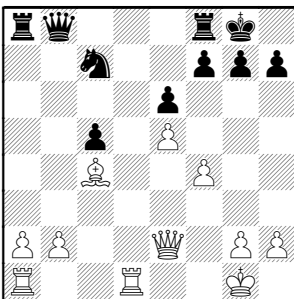
24.Bc6 Ra7 25.Rfd1



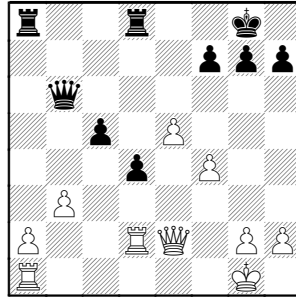
25...Nd5 26.Qd2 pins the Knight, setting up Bxd5 to win a Pawn
26...Qc8 27.Bxd5 Rd8



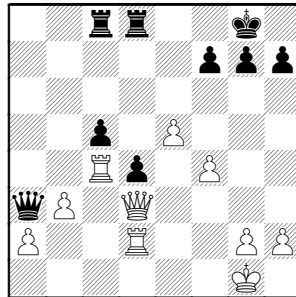
24...bxc5 25.Rfd1 Qb8 26.Bc4



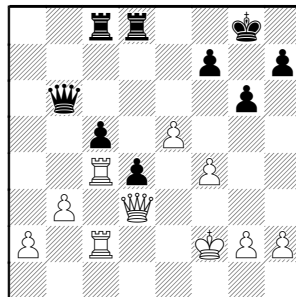
26...Rd8 27.b3 Nd5 28.Bxd5 gives Black a strong center and passer [28.Qf3] 28...exd5 29.Rd2 Qb6 30.Qf2 d4 31.Qe2



31...Qb4 32.Rc1 Rac8 33.Rc4 Qa3 34.Qd3



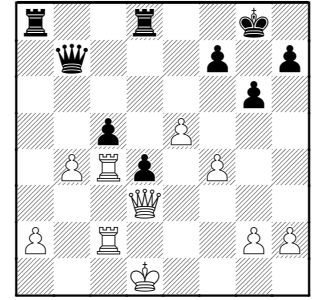
34...g6 35.Rdc2 Qa5 36.Kf2 Qb6



37.b4 Qa6 38.Ke2 Qb7

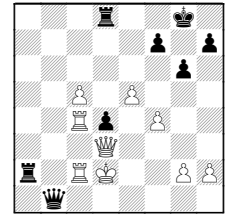
38...cxb4? Black drops a Rook after 39.Rxc8 Qxd3+ 40.Kxd3

39.Kd1 Ra8

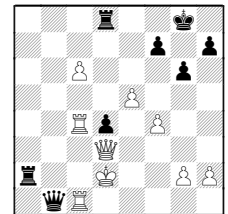


40.Qb3

40.bxc5 Qb1+ 41.Kd2 (41.Rc1?? Qxd3+) 41...Rxa2



42.c6 Ra1 (idea Qe1# or Qd1#)
43.Rc1 Ra2+

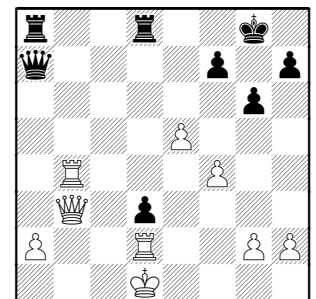


44.R4c2

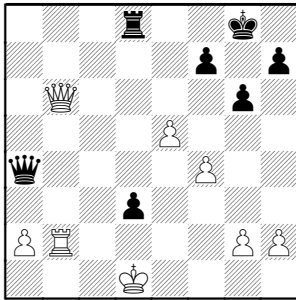
(44.R1c2 Ra1=;
44.Ke1?? Qxd3)

44...Qb4+ 45.Kd1 Ra3

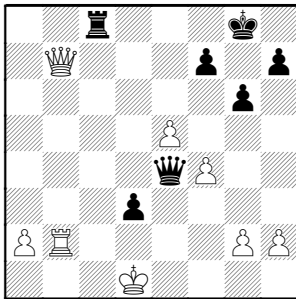
40...d3 41.Rd2 cxb4 42.Rxb4 Qa7



43.Rb6 [43.Rb7?? Qg1#] 43...Rab8
44.Rb2 Rxb6 45.Qxb6 Qa4+



46.Ke1 [46.Qb3] 46...Qe4+ 47.Kd1
Rc8 48.Qb7



48...Rc1+! A nice find!!
WHITE RESIGNED

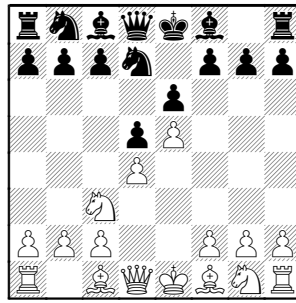
49.Kd2 [49.Kxc1 Qe1#] 49...Qe2+
[49...Qe1+ 50.Kxd3] 50.Kxc1 Qe1#
0-1

Rufus, Bernard (1392) -
Kukuruza, Vasyl (1681)
[C11]

BP/Molex-Pawns, 4-8-2010

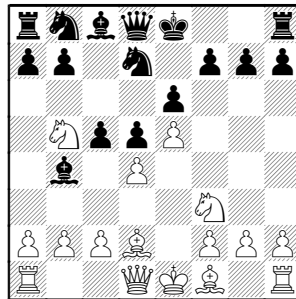
White is a 300-point underdog, but
comes out barking!

1.e4 Nf6 2.Nc3 d5 3.e5 Nfd7 4.d4 e6

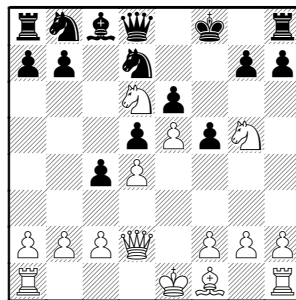


transposing to a French Steinitz

5.Nf3 Bb4 [5...c5] 6.Bd2 [6.Bg5]
6...c5 losing control of d6 [6...a6]
7.Nb5!



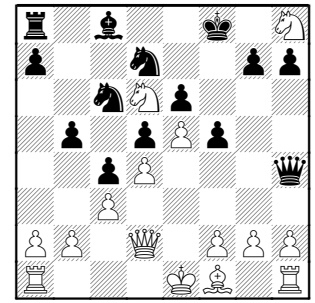
7...Bxd2+ 8.Qxd2 c4 9.Nd6+ Kf8
10.Ng5 f5



11.Ngf7

Simply 11.Nxe6+ wins Queen

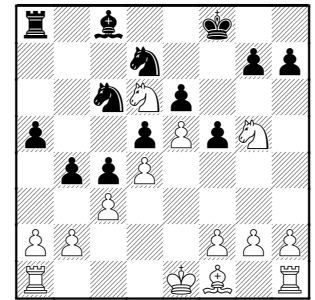
11...Qh4 12.Nxh8 Nc6 13.c3 b5



14.Nhf7 [14.Nxb5? Kg8] 14...a5
15.Qg5

Up a full Rook ? Just trade pieces like
crazy !

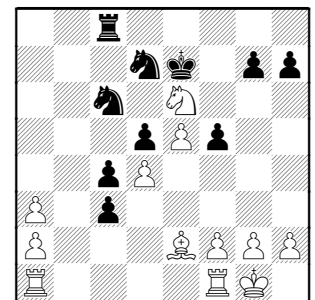
15...Qxg5 16.Nxg5 b4



17.Be2 [17.Nxe6+] 17...a4 18.0-0

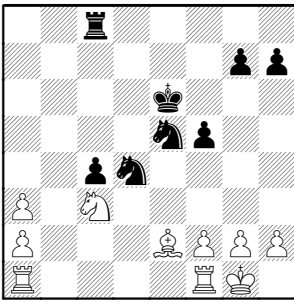
18.Kd2 helps hold the central
formation

18...a3 19.bxa3 bxc3 20.Nxe6+ Ke7
21.Nxc8+ Rxc8

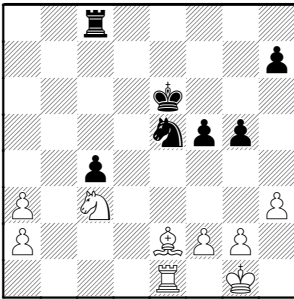


22.Nf4 (22.Nxg7 Nxd4 23.Bh5
Nxe5)

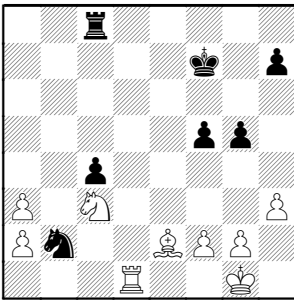
22...Nxd4 23.Nxd5+ Ke6 24.Nxc3
Nxe5



25.Rfe1 White can afford to give some back 25...Nc2 26.Rac1 Nxe1 27.Rxe1 g5 28.h3

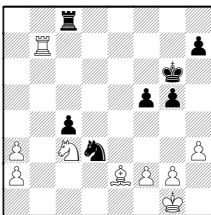


28...Kf6 29.Nd5+ Kf7 30.Nc3 Nd3 31.Rd1 Nb2



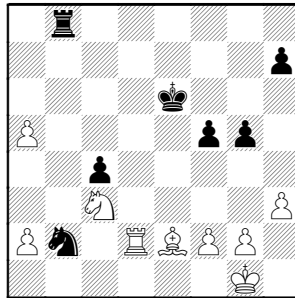
32.Rd2

32.Rd7+ Kg6 33.Rb7 Nd3



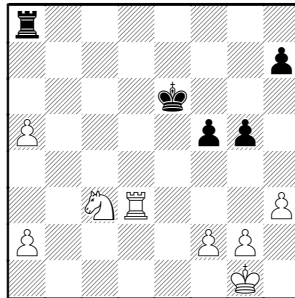
34.a4

32...Rb8 33.a4 Ke6 34.a5



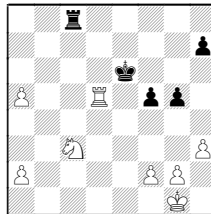
Black's King is cut off and his Rook tied to his Knight

34...Nd3 35.Bxd3 cxd3 36.Rxd3 Ra8



37.Re3+ lets the King roam, extending the game

37.Rd5 Rc8

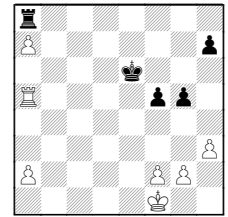


38.a6! Rxc3 39.Ra5!

(39.a7? Ra3)

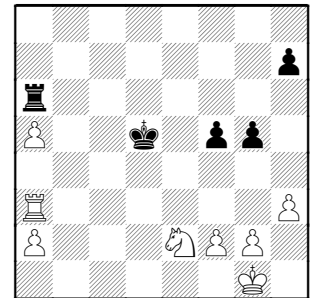
39...Rc8 only way to stop Pawn from queening !

40.a7 Ra8 41.Kf1

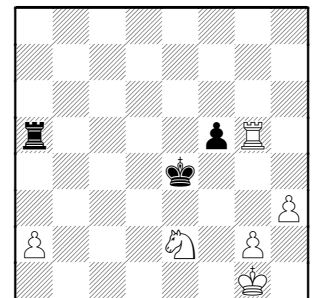


and now if Black ever captures the a-Pawn, White trades into easy Pawn ending. In the meantime the White King heads to b7 or the f-Pawn, depending on what Black does with his King.

37...Kd6 38.Rf3 Ke5 [38...Rxa5] 39.Re3+ Kd4 40.Ne2+ Kd5 41.Ra3 Ra6

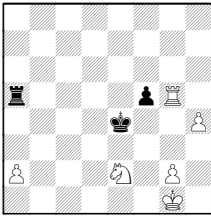


42.f4 h6 43.fxg5 hxg5 44.Rg3 Rxa5 45.Rxg5 Ke4

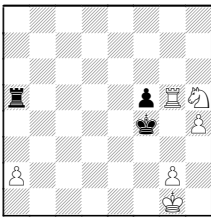


46.Nc1

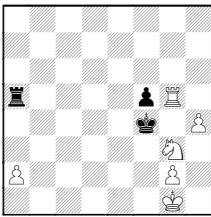
46.h4 (Diagram follows...)



46...Ke3 (46...Rxa2? 47.Nc3+)
47.Ng3 Kf4 (47...Rxa2 48.Rxf5)
48.Nh5+

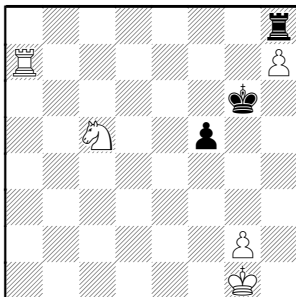


48...Ke4 (48...Ke3 49.Ng3) 49.Ng3+!
Kf4

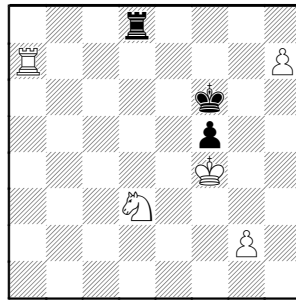


50.Rxf5+! and an easy Pawn ending,
 Black should resign.

46...Rb5 47.Nb3 Rb4 48.Rg6 Kf4
 49.h4 Ra4 50.h5 Rxa2 51.h6 Ra8
 52.h7 Rh8 53.Rg7 Ke5 54.Nc5 Kf6
 55.Ra7 Kg6

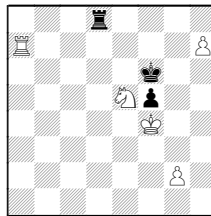


56.Kf2 Finally using all his pieces.
 [56.Ne6 Rxh7? 57.Nf8+] 56...Kf6
 57.Kf3 Kg5 58.Nd3 Kf6 59.Kf4 Rd8



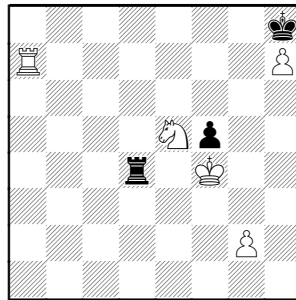
60.Ra6+ Again, allowing the King
 back into the defense.

Black's Rook is tied to its backrank,
 so White can invade with 60.Ne5



idea Nf7, h8Q 60...Rd4+ 61.Ke3 Rd8
 (61...Kxe5?? 62.h8Q+) 62.Nf7

60...Kg7 61.Ra7+ Kh8 62.Ne5 Rd4+

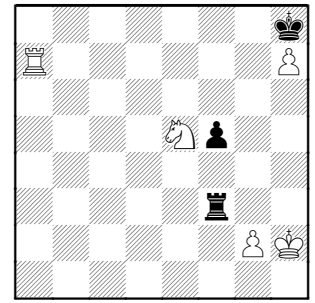


63.Kf3

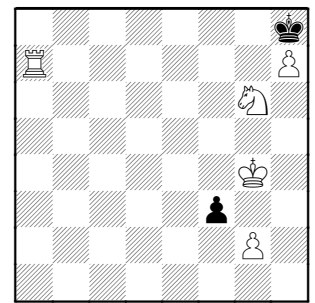
63.Kxf5 idea Ng6# 63...Rd5 idea
 Rxe5+ and stalemate 64.Kg6 idea
 Ra8# 64...Rd6+ 65.Kf7 Kxh7

63...Rf4+! Cute! Black tries for
 forced stalemate!

64.Kg3 Rf3+ 65.Kh2

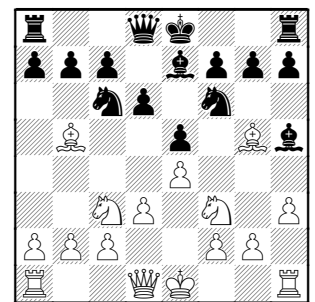


65...Rg3 The Pawn is no longer
 blockaded, so no stalemate. **66.Kxg3**
f4+ 67.Kg4 f3 68.Ng6#



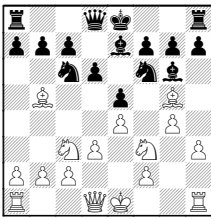
Le,Duc (1542) –
 Beder,Ben [C65]
 Citadel-DRW, 12-16-2009

1.e4 e5 2.Nf3 Nc6 3.Bb5 d6 4.Nc3
 Nf6 5.d3 Bg4 6.h3 Bh5 7.Bg5 Be7



8.Bxc6+ I would've kept this Bishop
 for attack along the a2-g8 diagonal.

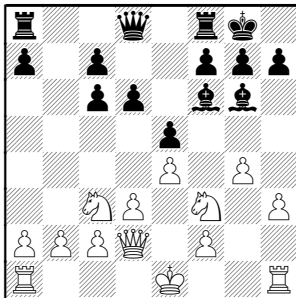
If White is concerned by Nc6-d4, he
 can dodge it with 8.g4 Bg6



A) 9.Ne2 and the Knight comes to g3.

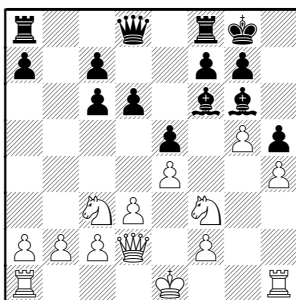
B) Or maybe the game plan 9.Bxf6 Bxf6 10.h4 h5 11.g5 Be7 12.Nd5 but seems the Queen's Knight has better future from g3, hitting h5 and f5.

8...bxc6 Now White still can't play his Queen Knight forward. 9.g4 Bg6 10.Qd2 0-0 11.Bxf6 Bxf6



Black wants to play d6-d5, but needs to defend e5 first. White can kick Bf6 with g5.

12.h4 h5 13.g5



White's blitz attack has reached an empassé. Black can begin freeing his Bishop pair.

13...Be7 14.0-0-0 Qb8

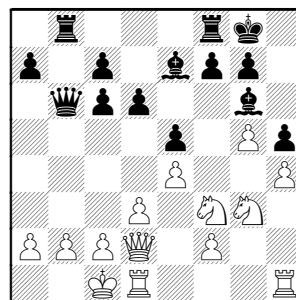
14...Re8 idea Bf8,d5 is a typical plan,

especially since White's only active plan is to get d3-d4 in.

15.Ne2 Now this plan has no force.

15.d4 would provoke some center action and clear the 3rd rank for defense, as in Rh3-b3 (if the way can be cleared!). But Black's Bishop is lurking, just waiting for those open lines!

15...Qb6 16.Ng3 The Knight has abandoned its King! 16...Rab8

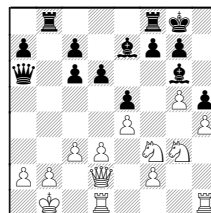


17.b3? horrible dark-square weaknesses beg for the Bishop to join at a3.

But how else to defend b2?

A) 17.Qc3? Qxf2 hangs both Knights!

B) 17.c3 looks best. 17...Qa6 18.Kb1



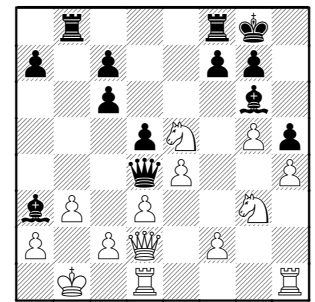
but still 18...Rb5 idea Rfb8 or Ra5 keeps the pressure coming

17...d5!

White is officially in trouble - call the paramedics!!

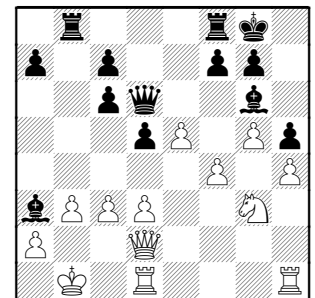
18.Nxe5? missing a small tactic

18...Ba3+ 19.Kb1 Qd4



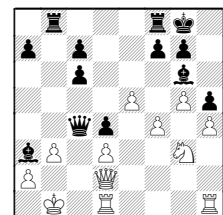
Forking! Mate on b2 and attacking hanging Knight.

20.c3 Qxe5 21.f4 Qd6 22.e5



22...Qd7

22...Qc5!? and White has to deal with the idea 23.-- d4 24.c4? Qxc4!

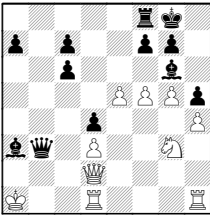


and pins all over the place!!

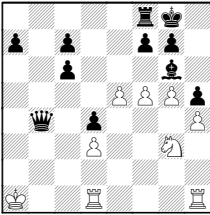
25.f5? idea dxQc4 25...Rxb3+!! 26.axb3??

(simply 26.Ka1 leaves Black with 3 pieces hanging!)

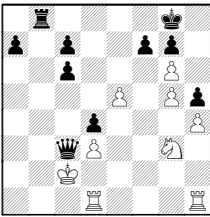
26...Qxb3+ 27.Ka1



27...Bb4! idea Bc3# or Bxd2 28.Qxb4
Qxb4

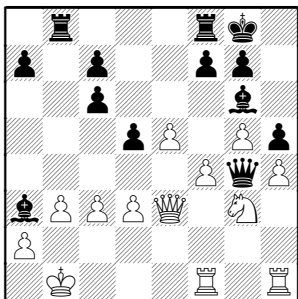


29.fxg6?? Qa3+ 30.Kb1 Rb8+ 31.Kc2
Qc3#



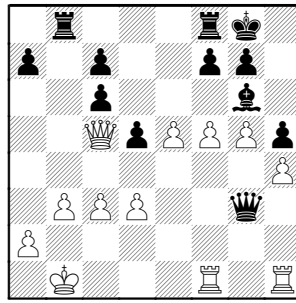
A bit of help-mate; that wasn't all forced, of course, but a fun look at some basic sacrificial threats.

23.Rdf1 Qg4 I assume the Queen is needed on the other side of the board, but White does have some weaknesses to probe. **24.Qe3**



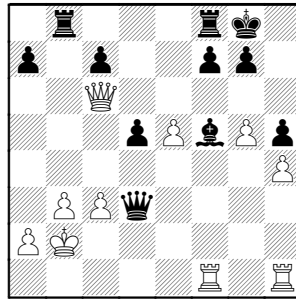
24...Bc5! nice diversion!

25.Qxc5 Qxg3 weakness at d3
26.f5?

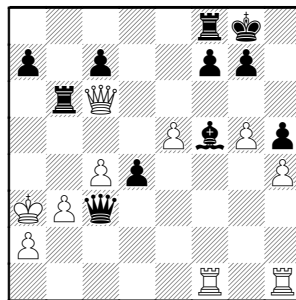


The Pawn is on a forked square !

26...Qxd3+ **27.Kb2** **Bxf5** **28.Qxc6**



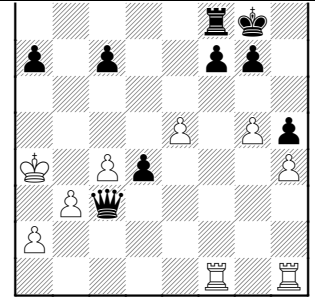
28...d4! not giving White any rest
29.c4 **Qc3+** **30.Ka3** **Rb6**



idea Ra6# or Rxc6, of course

31.Qa4 Bd7 That's the second Bishop diversion !

32.Qxd7 **Ra6+** **33.Qa4** **Rxa4+**
34.Kxa4



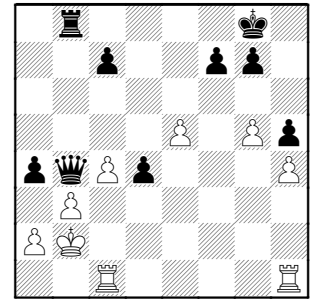
34...Rb8 idea Qb4# **35.Ka3**

35.a3? Qxb3+ 36.Ka5 Qb6+ 37.Ka4
Qa6#

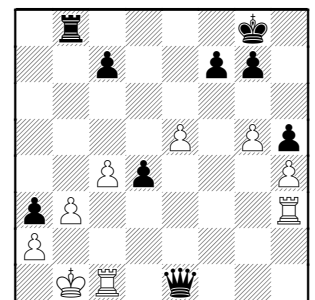
35...a5

It's funny that a few moves back Black found Rb6-a6# with his other Rook, but missed it here! 35...Rb6 and mate next move !

36.Rc1 **Qb4+** **37.Kb2** **a4**



38.Rh3 **Qd2+** **39.Rc2** **a3+!** **40.Kb1**
Qe1+! **41.Rc1**

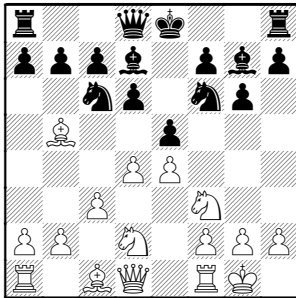


41...Qe2 not just a mate threat !
42.Rc2 White resigned, probably seeing Qf1+ idea Qxh3. A nicely-conducted game on Black's part!
0-1

Sensat, Jason (1504) –
Johnson, Zak [B07]

Citadel-Loyola, 2-4-2010

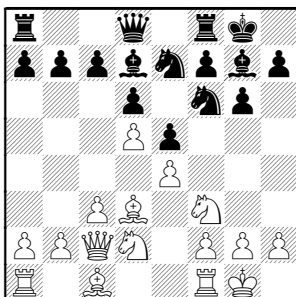
1.e4 d6 2.d4 Nf6 3.Nd2 e5 4.c3 g6
5.Ngf3 Nc6 6.Bb5 Bd7 7.0–0 Bg7



8.d5

8.Re1 idea Nf1 is a typical Spanish plan, maintaining center tension.

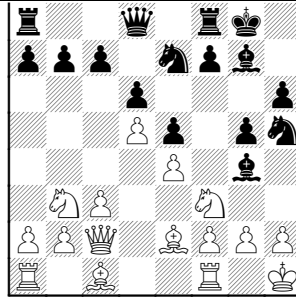
8...Ne7 9.Bd3 0–0 10.Qc2



10...Nh5 11.Nb3 Bg4 12.Be2 h6
13.Kh1

13.Be3 idea c4-5, Rac1 13...f5 idea f4 as in a King's Indian, when here White has no Queenside diversion even started.

13...g5

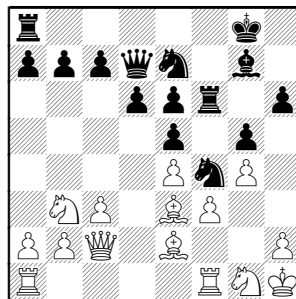


14.Ng1 Qd7? missing that his Bishop has no squares !

15.f3 Be6 16.dxe6 fxe6 17.g4

17.g3 covers f4, but the Ng1 isn't very happy with it.

17...Nf4 18.Be3 Rf6



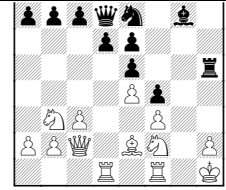
19.Bxf4 gxf4

19...Rxf4 at least keeps a look at the backward Pawn at f3, but also maintains f4 as an outpost for the Knight (as in Ng6-f4).

20.Rad1 h5 Black is only opening lines for the side with an extra piece. The White King can run away.

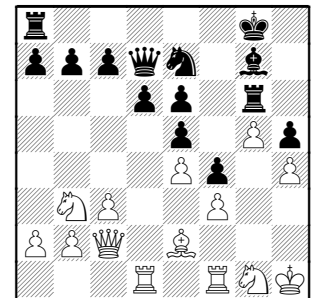
21.g5

21.gxh5 Rh6 22.Nh3 Rxh5 23.Nf2



idea Ng4, Rg1, etc

21...Rg6 22.h4

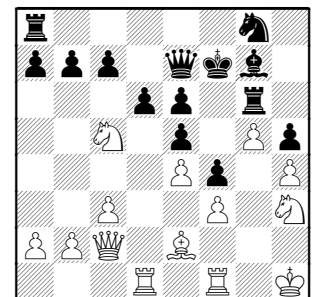


White's idea has worked out well, anyhow ! With a static Pawn structure, White can simply work on improving his pieces.

22...Kf7 23.Nh3

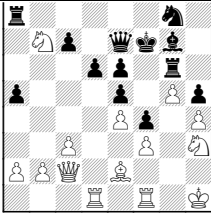
23.Rf2 introducing Bf1–h3 and/or Rfd2

23...Ng8 24.Nc5 Qe7



25.Nd3

Not seeing a downside to 25.Nxb7 idea Na5-c6 25...a5

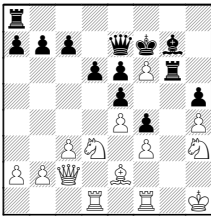


idea Ra7, trapping the Knight

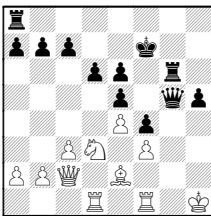
26.Bb5 Ra7 (26...c5? 27.Nxd6+)
27.Bc6

25...Nf6 Why not tempt him? **26.Rg1**
sensible reply

There's no reason to give Black hope
with 26.gxf6

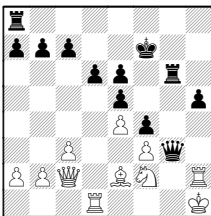


26...Bxf6 (26... Qxf6 27.Ng5+)
27.Ng5+ Bxg5 28.hxg5 Qxg5



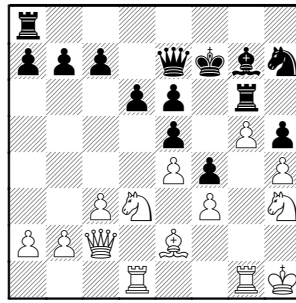
29.Rf2 (29.Rg1 Qh4#) 29...Qh4+
30.Rh2 Qg3

Even if 31.Nf2

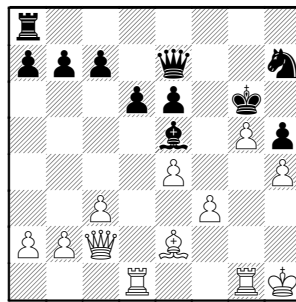


idea Nh3, Qc1, Rg1 appears to defend
31...Rag8 32.Nh3

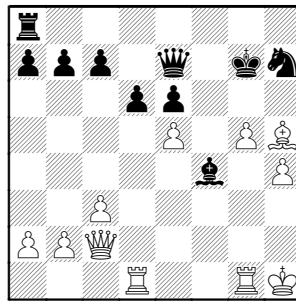
26...Nh7



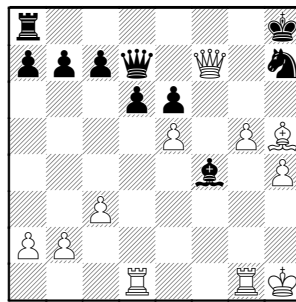
27.Nhx4! cleaning house **27...exf4**
28.Nxf4 Be5 29.Nxg6 Kxg6



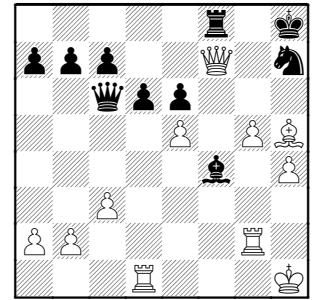
30.f4! Bxf4 31.e5+ Kg7 32.Bxh5



32...Qd7 33.Qg6+ Kh8 34.Qf7

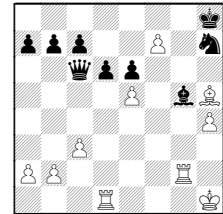


forking Queen and Bishop
34...Qc6+ 35.Rg2 Rf8



36.g6! Fun ! Mate on h7 threatens !
36...Rxf7 37.gxf7 Qc5??

Black could hold on while with
37...Bg5



38.hxg5

(38.Rf1 Nf8 39.Kh2 Bxh4; 38.Rf1 Nf8;
38.Kh2 Bf4+ 39.Kh3 Bg5 40.Rxg5
Nxg5+ 41.hxg5 Kg7)

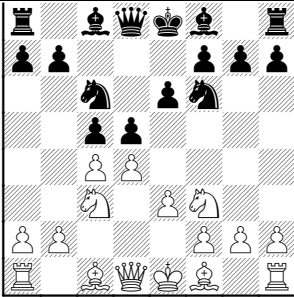
38...Kg7 39.g6 Nf8; 37...Ng5??
38.f8Q+

38.Rg8# 1-0

Brown, Brendan –
Primorac, Vlad [D40]

Loyola-Citadel, 2-4-2010

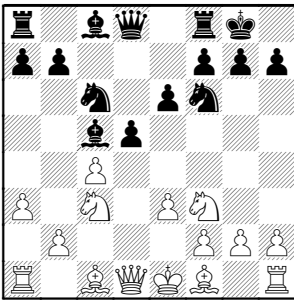
1.c4 c5 2.e3 e6 3.Nf3 Nf6 4.Nc3 Nc6
5.d4 d5



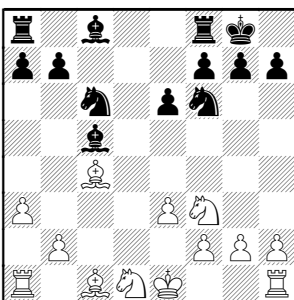
6.dxc5

6.cxd5 creates a target at d5

6...Bxc5 7.a3 0-0

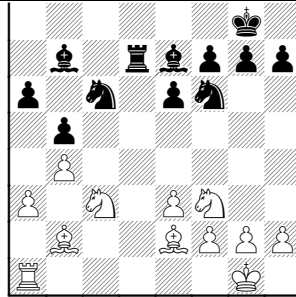


8.Bd3 [8.b4] 8...dxc4 9.Bxc4 Qxd1+ 10.Nxd1

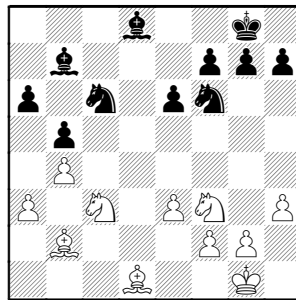


White has traded away any trace of advantage.

10...a6 11.0-0 b5 12.Be2 Bb7 13.b4 Be7 14.Nc3 Rfd8 15.Bb2 Rd7 16.Rfd1 Rad8 17.Rxd7 Rxd7



18.h3 Bd8 19.Rd1 Rxd1+ 20.Bxd1

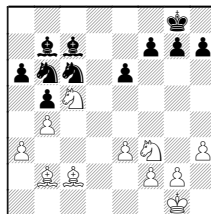


It's rare to reach a 4-minor-piece ending !! And nearly a complete mirror position !!

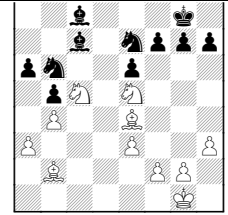
20...Bc7 21.Bc2 Ne7

A) 21...Ne5 would head for the c4 outpost 22.Nxe5 Bxe5 not really a pin on c3... 23.Nd1;

B) The safe route to c4 is via b6, so 21...Nd7 but White now has a path to get to his c5 outpost ! 22.Ne4 Nb6 23.Nc5

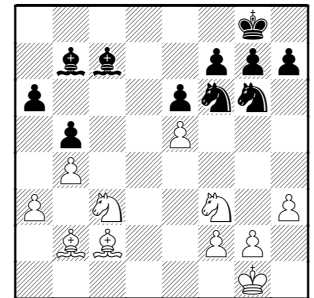


23...Bc8 24.Be4 Ne7 25.Ne5

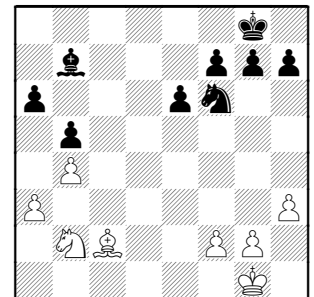


White has invaded, but not seeing to what purpose.

22.e4 Ng6 23.e5



23...Nxe5 24.Nxe5 Bxe5 25.Nd1 Bxb2 26.Nxb2

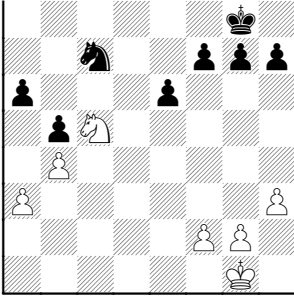


26...Be4

I would have retained the Bishop to maintain the a6-base. The stage is set for the Kings' entrance, and I'd plan for making a passer.

Maybe something like 26...Nd5 idea Nf4 hitting weak g2 27.Be4 f5 28.Bf3 Kf7 29.Nd3

27.Bd3 Bxd3 28.Nxd3 Nd5 29.Nc5 Nc7



30.f3 f5

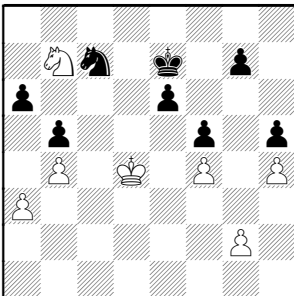
30...e5 follows "potential passer moves first" truism

31.f4! Now the potential is stuck as backward, making it hard for Black to progress without massive Pawn trades.

31...Kf7 32.Kf2 Ke7 33.Ke3 Kd6 34.Kd4 h6 35.Nb7+

35.Nd3 idea Ne5-f7+ may provide entry for his King

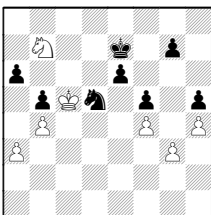
35...Kc6 36.Nc5 Kd6 37.h4 h5 38.Nb7+ Kc6 39.Nc5 Kd6 40.Nb7+ Ke7



41.Ke5

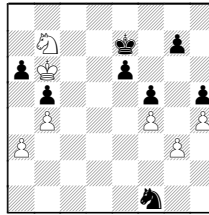
What happens if the White King makes a run for the border ?

41.Kc5 Nd5 42.g3



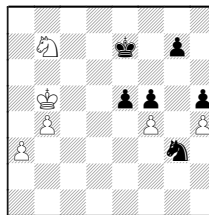
A) 42...Kd7! 43.Nd6 Ne3

B) 42...Ne3 43.Kb6 Nf1



44.Kxa6 Nxg3 45.Kxb5

B1) e5!

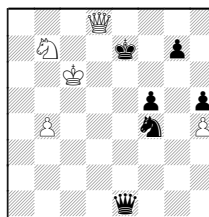


46.a4 exf4! queening on a checking square ! 47.a5 f3 48.a6 f2 49.a7 f1Q+ check!

B2) 45...Ne2 is too slow: 46.a4 Nxf4 (46...Kd7? 47.Nc5+ Kc7 48.Nd3)

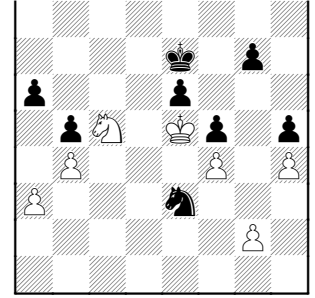
47.Kc6! (47.a5 Kd7 48.Kb6 Kc8)

47...e5 48.a5 e4 49.a6 e3 50.a7 e2 51.a8Q e1Q 52.Qd8+



52...Kf7 (52...Ke6?? 53.Qe8+) 53.Nd6+ Kg6 54.Qg5+ Kh7 55.Qxf4 and White wins.

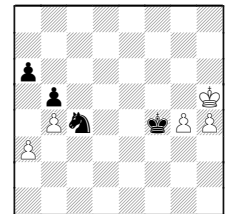
41...Nd5 42.Nc5 Ne3



43.g3

43.Nxe6!? It's fun to sit at home and explore long possibilities.

43...Nc4+ 44.Kxf5 g6+ 45.Kxg6 Kxe6 46.Kxh5 Kf5 47.g4+ Kxf4



48.g5 Kf5

(48...Ne5 49.g6 Nxg6 50.Kxg6 Kg4 51.Kf6+-)

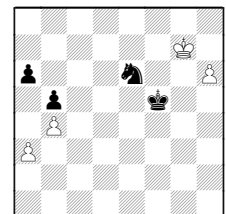
49.Kh6 Ne5

(49...Nxa3 50.g6 a5 51.g7+-)

50.h5 Nf7+ 51.Kg7 Nxg5

(51...Kxg5 52.Kxf7+-)

52.h6 Ne6+



A) 53.Kf7

A1) 53...Ng5+ 54.Ke7+-

A2) 53...Ke5 54.Ke7 (54.h7 Ng5+)

B) 53.Kg8

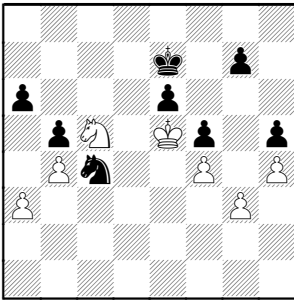
B1) 53...Nf4 54.h7 Ng6 55.Kf7 Nh8+ 56.Ke7+-

B2) 53...Ng5 54.Kf8 Ke6

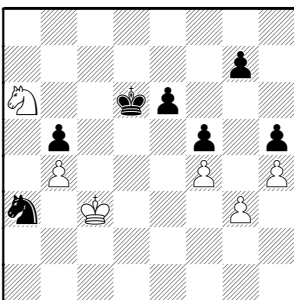
B21) 55.Ke8 Kd6

B22) 55.Kg7 Kd5 56.Kg6 Ne6 57.Kf7 (57.h7 Nf8+) 57...Ng5+ 58.Kg6 Ne6

43...Nc4+



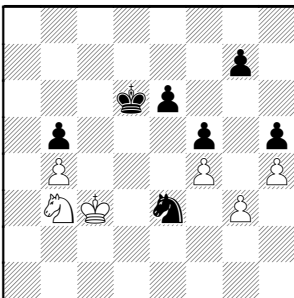
44.Kd4 Nxa3 45.Nxa6 Kd6 46.Kc3



46...Nc4

46...Kd5 47.Nc7+ (47.Nc5)

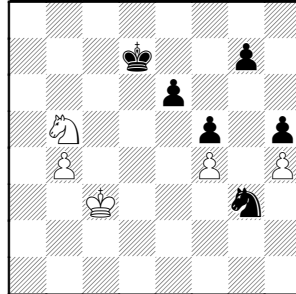
47.Nc5 Ne3 48.Nb3



48...Nf1

48...Kc6 49.Kd4 Nc2+ 50.Ke5 Kd7

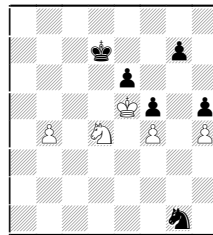
49.Nd4 Nxc3 50.Nxb5+ Kd7



51.Kd3

51.Kd4 Ne2+ 52.Ke5

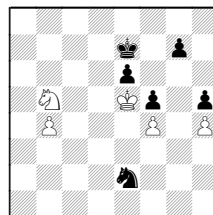
A) 52...Ng1 53.Nd4



is an easy White win.

B) 52...Kc6? 53.Nd4+ Nxd4 54.Kxd4 Kd6 (54...Kb5 55.Ke5) 55.b5+-

C) 52...Ke7

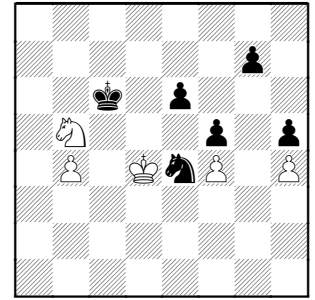


C1) 53.Nc7 53...Nc1 54.b5 Nd3+ 55.Kd4 Nxf4 56.b6 Kd7 57.Ke5 Nd3+ 58.Kd4

C2) 53.Nd4? Nc1!! idea Nd3+ forking 54.Nc6+ (54.b5?? Nd3#) 54...Kd7 55.b5 Nd3+ 56.Kd4 Nxf4

is an easy White win

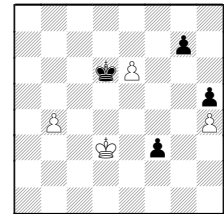
51...Ne4 52.Kd4 Kc6



White has the outside passer, so can go to a Pawn ending !

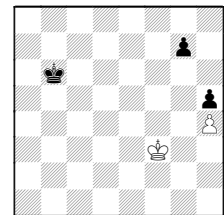
53.Na7+

53.Nc3! Nxc3? 54.Kxc3 e5 55.fxe5 f4 56.e6 f3 57.Kd3 Kd6



A) 58.Ke3 Kxe6 59.Kxf3+- is as easy as it gets

B) 58.b5? Kxe6 59.b6 Kd7 60.Ke3 Kc6 61.Kxf3 Kxb6

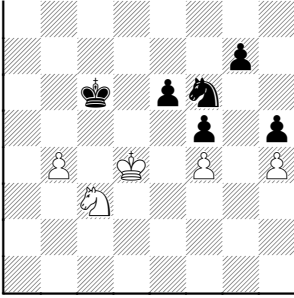


62.Ke4 shouldering !

(62.Kf4 Kc6 63.Kf5 Kd6 64.Kg6 Ke6 65.Kxg7 Kf5-+)

62...Kc6 63.Ke5 Kd7 64.Kf5 Ke7 65.Kg6 Kf8 66.Kxh5=

53...Kb7 54.Nb5 Kc6 55.Nc3 Nf6

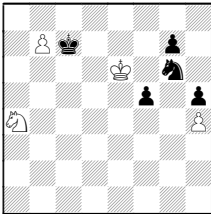


56.b5+

56.Ke5 Kd7 57.b5 Ng4+ 58.Kd4 Kc7
59.Kc5

56...Kd6 57.b6

57.Na4 Nd5 58.b6 Nxf4 59.b7 Kc7
60.Ke5 Ng6+ 61.Kxe6

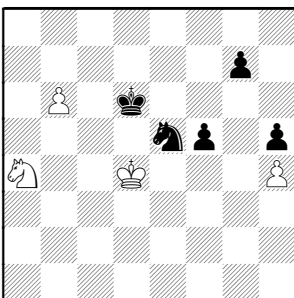


61...f4 62.Nc5 f3 63.Ne4 Nxf4 64.Kf7
g5 65.Kf6

(65.Nxg5?? f2)

65...g4 66.Kg5 Ng2 67.Kxh5=

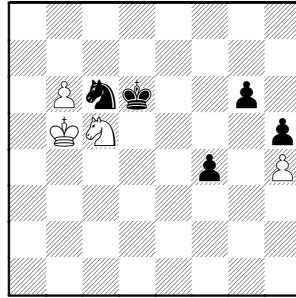
57...Nd7 58.Na4 e5+ 59.fxe5+ Nxe5



60.Nc5

60.b7 Nc6+ 61.Ke3 Ke5 62.Nb2 f4+
63.Kf3 Kf5 64.Nd3

60...Nc6+ 61.Kc4 g6 [61...Ke5]
62.Kb5 f4



63.Ne4+ Kd7 64.Nf6+ Kd6 65.Ne4+
Kd7 66.Nf6+ Kd6 1/2-1/2

REGULAR SEASON MATCH RESULTS AFTER APRIL 19, 2010

21-APR-10	PAWNS	3		MIDWAY CC HORNETS	3	
	ROUND 7					
	BD	RATINGS	SCORE		RATINGS	SCORE
1	LATIMER, E	2011-22	0	CELENTANO, A	1825 34	1
2	CHRISTIAN, T	1558-36	0	JACKSON, WILLIAM	1315 36	1
3	KUKURUZA, V	1630	0 1	TURNMAN, A	0 0	0
4	FABIJONAS, R	1502	0 1	MCDONNELL, B	0 0	0
5	O'DELL, DW	1372-24	0	ABNEY, I	1126 36	1
6	SINOPE, J	823 40	1	ONWUMAH, I	1177-40	0
21-APR-10	WALGREEN FORKS	3		WALGREEN SKEWERS	2	
	ROUND 8					
	BD	RATINGS	SCORE		RATINGS	SCORE
1	INUMERABLE, F	2189	0 0F	FRISKE, T	1969	0 0F
2	SANTIAGO, T	2005-18	0	LEVENSON, S	1923 28	1
3	SOLLANO, E	1967	5 1	HAMELINK, N	1694 -8	0
4	NICK, X	1248 -2	0	BIALON, D	1748	2 1
5	BIAN, M	1392 34	1	PERSONS, J	1593-34	0
6	KACZYNSKI, W	1091	0 1F	DOSIBHATLA, D	1603	0 0F
20-APR-10	FERMILAB	6		MIDWAY CC ENTERPRISE	0	
	ROUND 9					
	BD	RATINGS	SCORE		RATINGS	SCORE
1	STAPLES, C	1582 11	1	ADAMS, L	1396-11	0
2	DEGRAFF, B	1556	4 1	RAIMONDE, A	1165 -4	0
3	SERGATSKOV, D	2044	0 1F		0 0	0F
4	SPIEGEL, L	1966	0 1F		0 0	0F
5	GAINES, I	1714	0 1F		0 0	0F
6	STRAIN, D	1312	0 1F		0 0	0F
21-APR-10	MIDWAY CC HORNETS	1.5		LUCENT TECH. DRAGONS	4.5	
	ROUND 9					
	BD	RATINGS	SCORE		RATINGS	SCORE
1	CELENTANO, A	1859 12	.5	TEGEL, F	2055 -5	.5
2	JACKSON, WILLIAM	1351 -1	0	LUDWIG, T	1976	1 1
3	TURNMAN, A	0 0	0	MARCOWKA, R	1891	0 1
4	MCDONNELL, B	0 0	0	EUSTACE, D	1553	0 1
5	ABNEY, I	1162 38	1	STAMM, V	1460-17	0
6	ONWUMAH, I	1137-13	0	BREYER, A	1295 13	1
21-APR-10	WALGREEN FORKS	4		HEWITT	2	
	ROUND 10					
	BD	RATINGS	SCORE		RATINGS	SCORE
1	INUMERABLE, F	2189	2 1	GHAIBEH, AYMAN	1707 -3	0
2	SANTIAGO, T	1987	2 1	MITCHELL, D	1553 -3	0
3	SOLLANO, E	1972-28	0	KRISHNAMURTHY, S	1526 42	1
4	BIAN, M	1426	0 1	MOORE, A	0 0	0
5	NICK, X	1246	0 1	SAUSEDA, J	0 0	0
6	KACZYNSKI, W	1091	0 0	STILES, J	0 0	1
(SKEWR)	7 FRISKE, T	1969	0 1	MOSLEY, A	0 0	0

21-APR-10 LUCENT TECH. DRAGONS 4 MIDWAY CC ENTERPRISE 3
 ROUND 10

BD	RATINGS	SCORE		RATINGS	SCORE
1	MARCOWKA,R	1891 -4 0	CAVENEY,J	2118 10	1
2	EUSTACE,D	1553 -1 0	KOVALSKY,B	2087 2	1
3	THOMAS,J	1493 0 1F		0 0	0F
*** Upper Board Forfeit, Dragons awarded 1 game point ***					
4	STAMM,V	1443-12 0	ADAMS,L	1385 26	1
5	KOMORAVOLU,K	1443 0 1	RUSSO,S	0 0	0
6	BREYER,A	1308 15 1	SHEHAN,W	1191-15	0

Matches Not Played: (Double Forfeits)

RND 9 WEST BP-MX/JUDO
 RND 10 EAST AMATS/LOYLA

CICL RATINGS (as of May 14, 2010)

NAME	TEAM	W	L	D	RATING	NAME	TEAM	W	L	D	RATING
ABNEY, I	JUDO	2	8	2	1188*	CHO, V	NWEST	3	2	0	0000/2
ACEVEDO, U	LOYLA	1	5	2	1529*	CHRISTIAN, T	PAWNS	2	3	1	1522*
ACOSTA, M	STCCC	3	1	5	2172	CIULLA, S	GAMBT	1	0	0	0000/1
ADAMS, L	BIGE	4	7	1	1391*	CLARK, I	LOYLA	2	5	1	1457#
ADAMS, W	LOYLA	0	5	1	1449*	COLEMAN, M	BIGE	1	1	0	1616
AITIPAMULA, J	MKING	1	3	3	2023*	CONDITT, D	JUDO	0	1	0	0000/2
ALBERTS, W	STCCC	1	0	0	1569	CONNELLY, P	YRKTN	4	2	2	1577
ALEXANDER, A	LOYLA	0	3	0	0000/3	CORBO, M	FERMI	1	5	0	0000/5
ALEXANDER, J	LOYLA	2	1	0	1685*	CRISSMAN, J	STCCC	1	0	0	1421
ALFONSO, E	MKING	3	1	1	1482	CROSBY, N	HEDGE	0	6	0	1200/3
ALI, F	GAMBT	0	0	0	0000/0	CYGAN, J	MKING	4	2	3	1774
ALLEN, H	AMARS	0	5	2	1801C	DAVIS, M	YRKTN	0	1	0	0000/1
ALLSBROOK, F	TYROS	2	2	7	2159	DECMAN, S	ROOKS	1	2	0	1546D
ANDERSON, E	NWEST	0	0	1	0000/0	DEGRAFF, B	FERMI	3	1	0	1560
ANSARI, N	FORKS	0	1	0	1578	DEICHMANN, E	BPMLX	1	5	0	1253
ANTIPOVA, A	ROOKS	0	1	0	2080	DENMARK, T	TYROS	2	1	1	1627
AREND, A	BPMLX	0	3	0	0000/3	DIAZ, P	TYROS	4	3	4	2048D
BABINEC, J	MKNGT	1	3	1	1351	DIMOPOULOS, P	LOYLA	3	4	0	0000/4
BAKSHI, A	NWEST	0	1	0	1947	DJORDJEVIC, V	STCCC	2	1	0	1685
BALES, R	STCCC	2	1	1	1365	DOBROVOLNY, C	TYROS	8	3	2	1728D
BALICKI, J	MKNGT	5	3	5	1794C	DOLGIN, A	GAMBT	1	2	0	0000/3
BAROT, N	AMATS	0	1	0	0000/0	DOSIBHATLA, D	SKEWR	2	2	2	1603*
BAURAC, D	ROOKS	3	5	2	1686T	DOWELL, E	EXCLB	3	3	2	1748
BEDER, B	DRW	7	2	2	1649*	DUFFY, J	AMARS	7	1	2	1633
BENEDEK, R	ROOKS	2	4	3	2097T	DUGOVIC, D	DGCC	9	0	0	1860
BERGMEIER, C	GAMBT	0	2	0	0000/2	DUONG, R	MKNGT	1	0	1	1503*
BIALON, D	SKEWR	3	3	0	1750	EAMAN, R	AMARS	7	2	3	1797
BIAN, M	FORKS	2	4	1	1426*	EASTON, R	UOP	6	1	4	1819C
BINDLER, M	BCBS	4	5	1	1395#	EDEUS, D	PAWNS	1	4	3	1699
BLACKMAN, W	BIGE	1	2	0	1844	EGERTON, J	DGCC	3	1	4	2041
BLACKMON, E	DRGNS	0	1	1	1688C	ELLICE, W	YRKTN	5	5	2	1706C
BOLDINGH, E	UOP	2	5	5	1830D	ENGELAN, M	EXCLB	4	4	2	1791
BOLOTOV, A	HEDGE	0	4	0	1400/3	EUSTACE, D	DRGNS	3	4	3	1552D
BOURIS, B	STCCC	2	1	0	1257#	FABIJONAS, R	PAWNS	8	4	1	1505T
BRASWELL, I	AMARS	1	0	0	1837	FARMER, B	AMATS	1	1	0	1305#
BREYER, A	DRGNS	4	3	0	1323	FORRO, V	STCCC	0	2	0	1626
BROTSOS, J	EXCLB	0	2	0	1485T	FRAATS, D	BPMLX	1	1	4	1893C
BROWN, B	LOYLA	2	1	1	0000/0	FRANEK, M	YRKTN	6	3	3	1709D
BRUNO, R	BCBS	4	4	4	1609	FRANK, M	AMARS	5	1	3	1745C
BUCHNER, R	TYROS	4	2	0	1639C	FREIDEL, P	STCCC	1	1	1	1961
BUNGO, G	DGCC	4	1	2	1998	FREITAG, T	YRKTN	9	1	2	1990
BURGESS, A	BCBS	8	4	0	0000/4	FRIDMAN, Y	MKNGT	8	1	2	2230C
BYRNE, M	TYROS	2	1	1	1349	FRIEDLANDER, M	NWEST	0	1	0	0000/0
CAHILL, J	BIGE	0	0	1	0000/0	FRISKE, T	SKEWR	5	2	5	1970D
CAMPBELL, DOUG	UOP	5	6	0	1386	FULKERSON, R	AMARS	3	4	1	1468
CAVENEY, J	BIGE	4	2	5	2122	FURTNER, F	AMATS	5	6	3	1492
CELENTANO, A	JUDO	4	3	1	1849	GAFNI, P	NWEST	4	0	1	1670
CHAVEZ, A	HEDGE	3	1	1	1354*	GAINES, I	FERMI	1	3	4	1714T
CHEBOTAREV, A	UOP	1	0	1	1846*	GHAIBEH, AYMAN	GAMBT	2	4	2	1704#
CHERKASSKY, G	MKNGT	7	2	2	1738	GIANLUCA, I	FERMI	0	1	0	0000/1

/x - UNRATED; x = # OF RATED GAMES C - CENTURY CLUB MEMBER
 # - 5 TO 9 RATED GAMES D - DOUBLE CENTURION
 * - 10 TO 24 RATED GAMES T - TRIPLE CENTURION
 Q - QUAD CENTURION
 V - QUINTUPLE CENTURION 05-14-2010

NAME	TEAM	W	L	D	RATING	NAME	TEAM	W	L	D	RATING
GILVARY, B	BIGE	1	3	0	0000/4	KUHLMANN, S	ROOKS	1	0	1	1378*
GONCHAROFF, N	MKING	2	2	4	1562V	KUKURUZA, V	PAWNS	4	5	1	1630
GORODETSKIY, E	DRW	4	3	4	1839	LAMBSON, D	NWEST	0	1	0	0000/1
GORODETSKIY, S	DRW	2	4	6	1798	LATIMER, E	PAWNS	2	2	3	1989T
GRANATA, M	SKEWR	0	2	1	1899	LE, DUC	CITGR	1	7	0	1525
GREER, J	STCCC	3	4	0	1376	LECHNICK, J	UOP	3	4	3	1703C
GRUDZINSKI, J	ROOKS	0	2	0	1434	LEE, D	EXCLB	3	3	2	1903
GRYPARIS, J	MKING	0	1	0	1367C	LEONG, G	UOP	4	2	5	1953D
GUGENHEIM, O	DRW	4	4	3	1581	LEVENSON, S	SKEWR	3	4	0	1951
GUIO, J	TYROS	5	1	4	1871C	LINDBERG, S	GAMBT	0	2	0	0000/2
GUIU, C	BCBS	3	6	3	1544	LOU, J	NWEST	3	2	0	0000/2
GWEKOH, R	ROOKS	3	4	0	1308#	LUDWIG, T	DRGNS	3	3	2	1977C
HAHNE, D	TYROS	5	1	3	1625C	MANILA, M	BPMLX	3	4	0	1122
HAMELINK, N	SKEWR	3	2	1	1686	MARCOWKA, R	DRGNS	4	2	2	1887T
HARPER, M	AMATS	0	5	0	1244*	MARSHALL, J	STCCC	0	1	1	2265
HARRIS, M	AMATS	2	4	3	1883*	MASITI, J	AMATS	1	3	0	1345*
HART, V	EXCLB	6	0	2	2151	MATA, S	BCBS	9	3	1	1315
HAUGHTON, J	DGCC	0	1	0	1387	MCDONNELL, B	JUDO	1	9	0	0000/9
HAYHURST, W	DRW	5	5	3	1930	MCENEANY, T	HEDGE	0	7	0	1200/3
HEINER, J	HEDGE	2	2	0	1394	MCGOWAN, D	BPMLX	2	5	2	1489
HERNANDEZ, R	FERMI	7	0	1	2008#	MEHDI, SYED	AMATS	1	4	0	1252#
HILL, R	ROOKS	4	5	1	1945D	MEYER, C	AMATS	1	2	0	1242*
HLOHOWSKYJ, I	ROOKS	0	3	0	1054*	MEYER-ABBOTT, B	AMATS	0	2	1	1408*
HOLLAWAY, M	PAWNS	1	3	0	1800	MICKLICH, F	UOP	2	1	1	1510D
HUGHES, N	FORKS	0	3	1	1612D	MISHLOVE, D	PAWNS	0	1	0	1538
INUMERABLE, F	FORKS	5	2	0	2191C	MITCHELL, D	GAMBT	1	6	0	1550#
IRBY, L	AMARS	4	3	0	1071*	MOORE, A	GAMBT	1	1	0	0000/2
JACKSON, WILLIAM	JUDO	4	7	1	1378*	MORRIS, R	MKNGT	4	1	1	2220C
JAMES, D	AMATS	0	1	0	1500/7	MOSLEY, A	GAMBT	0	7	0	0000/6
JANSSEN, G	STCCC	3	1	1	1546	MOSSBRIDGE, A	UOP	3	1	1	1629
JASAITIS, A	HEDGE	8	1	1	1949D	MUELLER, R	BPMLX	1	2	0	1043*
JOHNSON, Z	LOYLA	1	2	0	0000/3	MUHS, A	CITGR	3	1	2	1716
KACZYNSKI, W	FORKS	0	4	1	1091*	NGUYEN, M	UOP	5	1	1	1720#
KALAVAGUNTA, S	DGCC	3	4	1	2031	NICK, X	FORKS	3	8	0	1230*
KARANDIKAR, S	MKNGT	6	2	3	1656	NORRIS, T	JUDO	0	3	0	0000/2
KARPIERZ, J	TYROS	2	1	0	1313	O'DELL, DW	PAWNS	4	6	0	1348D
KHAN, M	BCBS	4	6	2	1828	OLSEN, A	UOP	1	2	1	1469C
KLUG, S	DGCC	2	3	4	2125	ONG, K	CITGR	4	3	3	1767
KOLB, S	STCCC	1	1	0	1574	ONWUMAH, I	JUDO	1	8	0	1124#
KOLLI, S	AMATS	2	6	0	1369#	PADILLA, R	STCCC	3	4	1	1580
KOMBLEVITZ, A	DRW	1	4	0	0000/3	PALMER, J	HEDGE	2	0	0	1600
KOMORAVOLU, K	DRGNS	4	1	1	1443	PANNER, G	YRKTN	1	0	0	2105
KORENMAN, M	BIGE	1	1	0	1918	PARMET, D	DGCC	3	2	2	1771
KOVALSKY, B	BIGE	2	2	1	2089	PARRA, J	CITGR	1	4	0	1144#
KRAS, T	YRKTN	2	0	0	2149C	PATELLA, C	AMATS	0	1	0	0000/3
KRATKA, M	HEDGE	2	3	1	1576	PATTIAM, J	MKNGT	0	2	1	0000/3
KRAVIK, P	NWEST	5	0	1	1803	PEHAS, A	DRGNS	0	1	0	1838C
KRAVIK, S	NWEST	3	0	0	1459	PERSONS, J	SKEWR	3	4	1	1559*
KRISHNAMURTHY, S	GAMBT	2	5	0	1568#	PFAU, M	CITGR	6	1	3	2095
KRUEGER, J	TYROS	1	0	0	0000/0	PILLARELLA, M	BIGE	0	2	2	0000/7

/x - UNRATED; x = # OF RATED GAMES

- 5 TO 9 RATED GAMES

* - 10 TO 24 RATED GAMES

C - CENTURY CLUB MEMBER

D - DOUBLE CENTURION

T - TRIPLE CENTURION

Q - QUAD CENTURION

V - QUINTUPLE CENTURION 05-14-2010

NAME	TEAM	W	L	D	RATING	NAME	TEAM	W	L	D	RATING
PIPARIA, J	MKING	3	2	3	1948C	SPLINTER, J	STCCC	1	0	0	2127
PLOTNER, J	LOYLA	3	1	0	1304#	STAMM, V	DRGNS	1	5	1	1431T
POTTS, K	DGCC	6	2	0	1852	STAPLES, C	FERMI	3	4	1	1593
POWERS, E	STCCC	1	2	1	1375	STILES, J	GAMBT	1	3	0	0000/4
PRIMORAC, V	CITGR	3	2	1	1368#	STOLTZ, B	TYROS	4	1	3	1862D
PROKOPOWICZ, P	CITGR	0	5	0	1136*	STOSKUS, A	STCCC	2	0	0	1521
RABINOVICH, E	MKING	4	3	0	1482	STRAIN, D	FERMI	1	0	0	1312
RAIMONDE, A	BIGE	1	5	0	1161#	SUAREZ, E	ROOKS	6	0	5	1910C
RAMANATHAN, N	ROOKS	1	7	0	1250*	SUERTH, F	EXCLB	0	2	0	1511D
REDMOND, M	DRW	6	4	0	1513*	SUITS, J	STCCC	5	1	3	1858
REICH, T	BPMLX	1	7	0	1729	SUKAMAR, N	ROOKS	0	1	0	0000/1
REID, C	EXCLB	3	2	2	1475D	SWANSON, E	STCCC	0	0	1	1469
RIES, G	STCCC	1	1	0	1109	TAN, GADDIEL	DGCC	4	1	1	1772*
RINGENBERG, T	BPMLX	0	4	0	1366	TEGEL, F	DRGNS	0	1	5	2050Q
ROMANOWITZ, C	DGCC	5	1	0	1323	TENNANT, S	YRKTN	6	1	5	2231
RORVICK, C	HEDGE	1	5	0	0000/4	THOMAS, J	DRGNS	0	3	1	1493D
RUFUS, B	BPMLX	1	2	1	1425	THOMSON, J	MKNGT	5	2	5	1982C
RUSSO, S	BIGE	1	4	0	0000/4	TURNMAN, A	JUDO	0	8	0	0000/8
RYAN, P	DRW	5	2	0	1530#	ULLOM, G	NWEST	2	5	2	1647
SAJBEL, P	UOP	1	1	0	1781C	VAIL, M	TYROS	6	2	1	1585
SAMPEI	LOYLA	0	1	0	0000/1	VAN MEER, J	UOP	0	0	1	1904
SAMPSON, L	YRKTN	0	0	1	0000/1	VECANSKI, D	DGCC	3	0	0	1628
SAN MIGUEL, L	BCBS	2	3	5	1571*	VIGANTS, A	EXCLB	6	4	1	1532C
SANTIAGO, T	FORKS	4	2	1	1989C	VOIGHT, T	STCCC	1	1	0	1246
SAUSEDA, J	GAMBT	0	5	0	0000/5	VON HATTEN, J	STCCC	7	2	1	1811
SENSAT, J	CITGR	3	3	1	1489	WAID, G	GAMBT	0	1	0	0000/1
SERGATSKOV, D	FERMI	6	3	0	2044*	WAKERLY, R	DGCC	5	1	0	1863
SHEHAN, W	BIGE	1	6	0	1176*	WALLACH, C	MKING	2	6	1	1965C
SHEPARDSON, T	HEDGE	5	1	0	1612	WALSH, J	JUDO	0	4	0	0000/3
SHEVCHUK, E	CITGR	1	0	0	0000/0	WANG, B	NWEST	6	1	2	1888
SIEGEL, R	EXCLB	4	4	0	1479C	WEBER, L	YRKTN	4	1	3	2074
SINOPLE, J	PAWNS	3	7	0	863	WENGLARZ, J	GAMBT	0	1	0	0000/1
SIWEK, M	UOP	4	4	1	1926D	WIEWEL, J	STCCC	7	2	1	2150
SLIVKA, MAX	NWEST	4	1	0	1412	WOJDYLA	LOYLA	1	0	0	0000/0
SMITH, BR	DGCC	4	0	0	1612C	YACOUT, A	ROOKS	3	1	0	1583
SMITH, D	STCCC	5	1	0	1625	YALAVARTHI, R	DGCC	1	0	0	1736
SMITH, M	HEDGE	6	2	1	1936	YURCHENKO, O	AMATS	1	3	0	0000/2
SOLLANO, E	FORKS	4	1	2	1944C	ZACK, K	YRKTN	0	2	0	0000/2
SOLOMON, A	NWEST	4	1	1	1994	ZADEREJ, V	BPMLX	1	5	1	1647
SOVA, ANDREW	LOYLA	0	1	0	0000/2	ZAID, A	GAMBT	0	1	0	0000/1
SPIEGEL, L	FERMI	3	1	5	1966T	ZOLKOS, A	YRKTN	3	2	3	1716
SPITZIG, M	YRKTN	9	2	0	1334						

/x - UNRATED; x = # OF RATED GAMES
 # - 5 TO 9 RATED GAMES
 * - 10 TO 24 RATED GAMES

C - CENTURY CLUB MEMBER
 D - DOUBLE CENTURION
 T - TRIPLE CENTURION
 Q - QUAD CENTURION
 V - QUINTUPLE CENTURION 05-14-2010

CICL STANDINGS BY DIVISION (FINAL)

EAST DIVISION 05-10-2010

TEAM NAME	W	L	D	GAME	MATCH	PCT
				POINTS	POINTS	
DRW TRADING GROUP	7	2	1	34.5	7.5	0.750
BLUE CROSS BLUE SHIELD	7	3	0	36.0	7.0	0.700
NORTHWESTERN CHESS CLUB	7	3	0	38.0	7.0	0.700
HEDGEHOGS	4	3	3	31.0	5.5	0.550
AMA ROGUE SQUADRON	4	4	2	32.0	5.0	0.500
CITADEL GROUP	3	6	1	29.0	3.5	0.350
LOYOLA	2	5	2	22.5	3.0	0.333
AMA TORNADO SNAKES	0	8	1	12.0	0.5	0.056

NORTH DIVISION 05-10-2010

TEAM NAME	W	L	D	GAME	MATCH	PCT
				POINTS	POINTS	
MOTOROLA KNIGHTS	6	0	3	36.5	7.5	0.833
UOP	6	1	2	34.5	7.0	0.778
MOTOROLA KINGS	4	4	1	27.5	4.5	0.500
EXCALIBURS	3	4	2	27.5	4.0	0.444
WALGREEN FORKS	2	4	3	24.0	3.5	0.389
WALGREEN SKEWERS	2	5	2	22.0	3.0	0.333
HEWITT	1	6	2	14.5	2.0	0.222

WEST DIVISION 05-10-2010

TEAM NAME	W	L	D	GAME	MATCH	PCT
				POINTS	POINTS	
DOWNERS GR CHESS CLUB	9	1	0	44.5	9.0	0.900
ST CHARLES CHESS CLUB	9	1	0	43.0	9.0	0.900
SSCC YORKTOWN WILDCATS	8	2	0	42.5	8.0	0.800
LUCENT TECH. TYROS	7	2	1	40.0	7.5	0.750
PAWNS	5	4	1	26.5	5.5	0.550
FERMILAB	5	4	1	35.5	5.5	0.550
LUCENT TECH. DRAGONS	3	6	1	28.0	3.5	0.350
ARGONNE ROOKS	3	6	1	27.5	3.5	0.350
MIDWAY CC ENTERPRISE	1	8	1	16.5	1.5	0.150
MIDWAY CC HORNETS	0	8	1	8.5	0.5	0.056
BP-MOLEX	0	8	1	15.0	0.5	0.056

PLAYOFF DIVISION 05-13-2010

TEAM NAME				GAME	MATCH	PCT
	W	L	D	POINTS	POINTS	
SSCC YORKTOWN WILDCATS	2	1	0	11.0	2.0	0.667
DOWNERS GR CHESS CLUB	1	0	2	10.5	2.0	0.667
ST CHARLES CHESS CLUB	1	0	2	10.5	2.0	0.667
MOTOROLA KNIGHTS	1	0	2	10.0	2.0	0.667
LUCENT TECH. TYROS	1	0	2	10.0	2.0	0.667
DRW TRADING GROUP	0	1	2	8.5	1.0	0.333
BLUE CROSS BLUE SHIELD	0	2	1	5.0	0.5	0.167
UOP	0	2	1	6.5	0.5	0.167

05-MAY-10 DOWNERS GR CHESS CLUB 4.5 UOP 1.5

ROUND 1

BD	RATINGS	SCORE		RATINGS	SCORE
1 KLUG,S	2174-13	.5	LEONG,G	1954 8	.5
2 EGERTON,J	2013 17	1	SIWEK,M	1934-12	0
3 PARMET,D	1790-20	0	EASTON,R	1832 13	1
4 POTTS,K	1827 25	1	BOLDINGH,E	1865-17	0
5 WAKERLY,R	1827 16	1	LECHNICK,J	1722-11	0
6 TAN,GADDIEL	1756 16	1	MOSSBRIDGE,A	1645-16	0
7 BUNGO,G	1996 2	1	CAMPBELL,DOUG	1420 -2	0

28-APR-10 SSCC YORKTOWN WILDCATS 3.5 DRW TRADING GROUP 2.5

ROUND 1

BD	RATINGS	SCORE		RATINGS	SCORE
1 TENNANT,S	2222 6	1	HAYHURST,W	1891 -6	0
2 FREITAG,T	2010-14	.5	GORODETSKIY,S	1771 14	.5
3 WEBER,L	2064 10	1	GORODETSKIY,E	1849-10	0
4 ELLICE,W	1746-20	0	BEDER,B	1619 30	1
5 FRANEK,M	1728-23	0	GUGENHEIM,O	1532 34	1
6 CONNELLY,P	1519 27	1	REDMOND,M	1590-27	0
7 SPITZIG,M	1334 0	1	KOMBLEVITZ,A	0 0	0

28-APR-10 ST CHARLES CHESS CLUB 4.5 BLUE CROSS BLUE SHIELD 1.5

ROUND 1

BD	RATINGS	SCORE		RATINGS	SCORE
1 WIEWEL,J	2143 7	1	KHAN,M	1859 -7	0
2 SUITS,J	1864 9	1	BRUNO,R	1621 -9	0
3 VON HATTEN,J	1783 11	1	GUIU,C	1579-11	0
4 JANSSEN,G	1551 1	.5	SAN MIGUEL,L	1553 -1	.5
5 KOLB,S	1614-40	0	MATA,S	1241 40	1
6 SMITH,D	1610 0	1	BURGESS,A	0 0	0
(SKEWR) 7 FRISKE,T	1969 1	1	BINDLER,M	1397 -2	0

29-APR-10 MOTOROLA KNIGHTS 3 LUCENT TECH. TYROS 3

ROUND 1

BD	RATINGS	SCORE		RATINGS	SCORE
1 FRIDMAN,Y	2223 -5	.5	ALLSBROOK,F	2105 8	.5
2 MORRIS,R	2211 -6	.5	DIAZ,P	2063 6	.5
3 THOMSON,J	1981 10	1	GUIO,J	1854-10	0
4 BALICKI,J	1810 1	.5	STOLTZ,B	1830 -1	.5
5 CHERKASSKY,G	1734 -1	.5	DOBROVOLNY,C	1727 0	.5
6 KARANDIKAR,S	1709-28	0	HAHNE,D	1620 19	1

08-MAY-10 BLUE CROSS BLUE SHIELD 3 DRW TRADING GROUP 3
 ROUND 2

BD	RATINGS	SCORE	RATINGS	SCORE
1 KHAN, M	1852-20	0	HAYHURST, W	1885 20 1
2 BRUNO, R	1612-10	0	GORODETSKIY, E	1839 10 1
3 GUIU, C	1568-10	0	GORODETSKIY, S	1785 10 1
4 SAN MIGUEL, L	1552 23	1	GUGENHEIM, O	1566-23 0
5 MATA, S	1281 38	1	REDMOND, M	1563-38 0
6 BINDLER, M	1395 0	1	KOMBLEVITZ, A	0 0 0

08-MAY-10 DOWNERS GR CHESS CLUB 3 ST CHARLES CHESS CLUB 3
 ROUND 2

BD	RATINGS	SCORE	RATINGS	SCORE
1 KLUG, S	2161-20	0	ACOSTA, M	2192 20 1
2 KALAVAGUNTA, S	2074-31	0	FREIDEL, P	1930 31 1
3 EGERTON, J	2030-10	.5	SUITS, J	1873 10 .5
4 PARMET, D	1770 1	.5	VON HATTEN, J	1794 -2 .5
5 DUGOVIC, D	1833 10	1	SMITH, D	1610-10 0
6 ROMANOWITZ, C	1292 37	1	JANSSEN, G	1552-37 0

08-MAY-10 UOP 2 LUCENT TECH. TYROS 4
 ROUND 2

BD	RATINGS	SCORE	RATINGS	SCORE
1 LEONG, G	1962 -9	0	ALLSBROOK, F	2113 13 1
2 SIWEK, M	1922 21	1	DIAZ, P	2069-21 0
3 EASTON, R	1845 0	.5	GUIO, J	1844 0 .5
4 BOLDINGH, E	1848-16	0	STOLTZ, B	1829 16 1
5 LECHNICK, J	1711-14	0	DOBROVOLNY, C	1727 14 1
6 NGUYEN, M	1713 -5	.5	HAHNE, D	1639 3 .5

08-MAY-10 MOTOROLA KNIGHTS 4 SSCC YORKTOWN WILDCATS 2
 ROUND 2

BD	RATINGS	SCORE	RATINGS	SCORE
1 FRIDMAN, Y	2218 0	.5	TENNANT, S	2228 -1 .5
2 MORRIS, R	2205 7	1	FREITAG, T	1996-10 0
3 THOMSON, J	1991 5	1	FRANEK, M	1705 -5 0
4 CHERKASSKY, G	1733 22	1	ELLICE, W	1726-15 0
5 BALICKI, J	1811 -4	.5	ZOLKOS, A	1705 7 .5
6 KARANDIKAR, S	1681-31	0	CONNELLY, P	1546 31 1

08-MAY-10 ST CHARLES CHESS CLUB 3 LUCENT TECH. TYROS 3
 ROUND 3

BD	RATINGS	SCORE	RATINGS	SCORE
1 MARSHALL, J	2298-33	0	ALLSBROOK, F	2126 33 1
2 ACOSTA, M	2212-40	0	GUIO, J	1844 27 1
3 SUITS, J	1883-25	0	STOLTZ, B	1845 17 1
4 VON HATTEN, J	1792 19	1	DOBROVOLNY, C	1741-13 0
5 SMITH, D	1600 25	1	HAHNE, D	1642-17 0
6 JANSSEN, G	1515 31	1	DENMARK, T	1658-31 0

08-MAY-10 SSCC YORKTOWN WILDCATS 5.5 BLUE CROSS BLUE SHIELD .5

ROUND 3

BD	RATINGS	SCORE	RATINGS	SCORE
1 TENNANT, S	2227 4	1	KHAN, M	1832 -4 0
2 FREITAG, T	1986 4	1	SAN MIGUEL, L	1575 -4 0
3 ELLICE, W	1711 -5	.5	BRUNO, R	1602 7 .5
4 FRANEK, M	1700 9	1	GUIU, C	1558-14 0
5 ZOLKOS, A	1712 4	1	MATA, S	1319 -4 0
6 SPITZIG, M	1334 0	1	BURGESS, A	0 0 0

08-MAY-10 MOTOROLA KNIGHTS 3 DOWNERS GR CHESS CLUB 3

ROUND 3

BD	RATINGS	SCORE	RATINGS	SCORE
1 FRIDMAN, Y	2218 12	1	KLUG, S	2141-16 0
2 MORRIS, R	2212 8	1	KALAVAGUNTA, S	2043-12 0
3 THOMSON, J	1996-14	0	EGERTON, J	2020 21 1
4 CHERKASSKY, G	1755-17	0	DUGOVIC, D	1843 17 1
5 BALICKI, J	1807-13	0	WAKERLY, R	1843 20 1
6 KARANDIKAR, S	1650 6	1	ROMANOWITZ, C	1329 -6 0

08-MAY-10 DRW TRADING GROUP 3 UOP 3

ROUND 3

BD	RATINGS	SCORE	RATINGS	SCORE
1 HAYHURST, W	1905 25	1	SIWEK, M	1943-17 0
2 GORODETSKIY, S	1795 3	.5	BOLDINGH, E	1832 -2 .5
3 GORODETSKIY, E	1849-10	.5	LECHNICK, J	1697 6 .5
4 GUGENHEIM, O	1543 38	1	EASTON, R	1845-26 0
5 REDMOND, M	1525-12	0	NGUYEN, M	1708 12 1
6 KOMBLEVITZ, A	0 0	0	MOSSBRIDGE, A	1629 0 1

CICL INDIVIDUAL TOURNAMENT - MAY 8, 2010

08-MAY-10 INDIVIDUAL TOURNAMENT SECTION A

ROUND 1

	BD		RATINGS	SCORE		RATINGS	SCORE
(BIGE)	1	CAVENEY, J	2128	8 1	CELENTANO, A	1871	-8 0 (JUDO)
(EXCLB)	2	ENGELEN, M	1970	0 0	HUBBARB, A	UNR	0 1 (Exhibition)
(SKEWR)	3	FRISKE, T	1970	-8 .5	EAMAN, R	1773	8 .5 (AMARS)
(STCCC)	4	GREER, J	1385	-2 0	SUAREZ, E	1897	1 1

(ROOKS)

ROUND 2

	BD		RATINGS	SCORE		RATINGS	SCORE
(EXHIBITION)	1	HUBBARD, A	UNR	0 0	CAVENEY, J	2136	UNR 1 (BIGE)
(ROOKS)	2	SUAREZ, E	1898	3 .5	FRISKE, T	1962	-3 .5 (SKEWR)
(AMARS)	3	EAMAN, R	1781	16 1	ENGELEN, M	1812-25	0 (EXCLB)
(JUDO)	4	CELENTANO, A	1863	3 1	GREER, J	1383	-3 0 (STCCC)

ROUND 3

	BD		RATINGS	SCORE		RATINGS	SCORE
(BIGE)	1	CAVENEY, J	2136	-14 .5	SUAREZ, E	1901	9 .5 (ROOKS)
	2	HUBBARD, A	UNR	0 1	EAMAN, R	1797	0 0 (AMARS)
(SKEWR)	3	FRISKE, T	1959	11 1	CELENTANO, A	1866-17	0 (JUDO)
(EXCLB)	4	ENGELEN, M	1787	4 1	GREER, J	1380	-4 0 (STCCC)

08-MAY-09 INDIVIDUAL TOURNAMENT SECTION B

ROUND 1

	BD		RATINGS	SCORE		RATINGS	SCORE
(AMATS)	1	FURTNER, F	1507	-7 .5	ADAMS, L	1411	7 .5 (BIGE)
(AMATS)	2	KOLLI, S	1356-14	0	FABIJONAS, R	1502	6 1 (PAWNS)
(EXCLB)	3	VIGANTS, A	1501	0 1	MOSLEY, A	0	0 0 (GAMBT)
(JUDO)	4	MCDONNELL, B	0	0 0	CAMPBELL, DOUG	1418	0 1 (UOP)

ROUND 2

	BD		RATINGS	SCORE		RATINGS	SCORE
(PAWNS)	1	FABIJONAS, R	1508-10	0	VIGANTS, A	1501	15 1 (EXCLB)
(UOP)	2	CAMPBELL, DOUG	1418-17	0	FURTNER, F	1500	17 1 (AMATS)
(BIGE)	3	ADAMS, L	1418-27	0	KOLLI, S	1342	27 1 (AMATS)
(GAMBT)	4	MOSLEY, A	0	0 0	MCDONNELL, B	0	0 1 (JUDO)

ROUND 3

	BD		RATINGS	SCORE		RATINGS	SCORE
(EXCLB)	1	VIGANTS, A	1516	16 1	FURTNER, F	1517-25	0 (AMATS)
(UOP)	2	CAMPBELL, DOUG	1401-15	0	FABIJONAS, R	1498	7 1 (PAWNS)
(AMATS)	3	KOLLI, S	1369	0 1	MCDONNELL, B	0	0 0 (JUDO)
(GAMBT)	4	MOSLEY, A	0	0 0	ADAMS, L	1391	0 1 (BIGE)

09-MAY-09 INDIVIDUAL TOURNAMENT SECTION C

ROUND 1

BD	RATINGS	SCORE		RATINGS	SCORE
1 PILLARELLA,M	0	0	0	NICK,X	1246 0 1
2 JACKSON,WILLIAM	1366	0	1	CARROLL,S	UNR 0 1
3 ABNEY,I	* 1/2 POINT BYE *				

ROUND 2

BD	RATINGS	SCORE		RATINGS	SCORE
1 NICK,X	1246-16	0		JACKSON,WILLIAM	1350 16 1
2 CAROLL,S	UNR	0	0	ABNEY,I	1200 0 1
3 PILLARELLA,M	* 1/2 POINT BYE *				

ROUND 3

BD	RATINGS	SCORE		RATINGS	SCORE
1 JACKSON,WILLIAM	1366	12	1	ABNEY,I	1200-12 0
2 CAROLL,S	UNR	0	0	NICK,X	1230 0 1

OFFICIAL TOP TEN LISTS as of May 9, 2010 (includes all post-season results)

EAST DIVISION TOP TEN

PFAU, M	CITGR	2095
SOLOMON, A	NWEST	1994
JASAITIS, A	HEDGE	1949D
BAKSHI, A	NWEST	1947
SMITH, M	HEDGE	1936
HAYHURST, W	DRW	1930
WANG, B	NWEST	1888
HARRIS, M	AMATS	1883*
GORODETSKIY, E	DRW	1839
BRASWELL, I	AMARS	1837

NORTH DIVISION TOP TEN

FRIDMAN, Y	MKNGT	2230C
MORRIS, R	MKNGT	2220C
INUMERABLE, F	FORKS	2191C
HART, V	EXCLB	2151
AITIPAMULA, J	MKING	2023*
SANTIAGO, T	FORKS	1989C
THOMSON, J	MKNGT	1982C
FRISKE, T	SKEWR	1970D
WALLACH, C	MKING	1965C
LEONG, G	UOP	1953D

WEST DIVISION TOP TEN

MARSHALL, J	STCCC	2265
TENNANT, S	YRKTN	2231
ACOSTA, M	STCCC	2172
ALLSBROOK, F	TYROS	2159
WIEWEL, J	STCCC	2150
KRAS, T	YRKTN	2149C
SPLINTER, J	STCCC	2127
KLUG, S	DGCC	2125
CAVENEY, J	BIGE	2122
PANNER, G	YRKTN	2105

MOST IMPROVED PLAYERS

MATA, S	BCBS	213
BRUNO, R	BCBS	116
FREITAG, T	YRKTN	113
ROMANOWITZ, C	DGCC	104
HART, V	EXCLB	102
CHERKASSKY, G	MKNGT	99
DUGOVIC, D	DGCC	98
SMITH, D	STCCC	84
SERGATSKOV, D	FERMI	76
WANG, B	NWEST	74