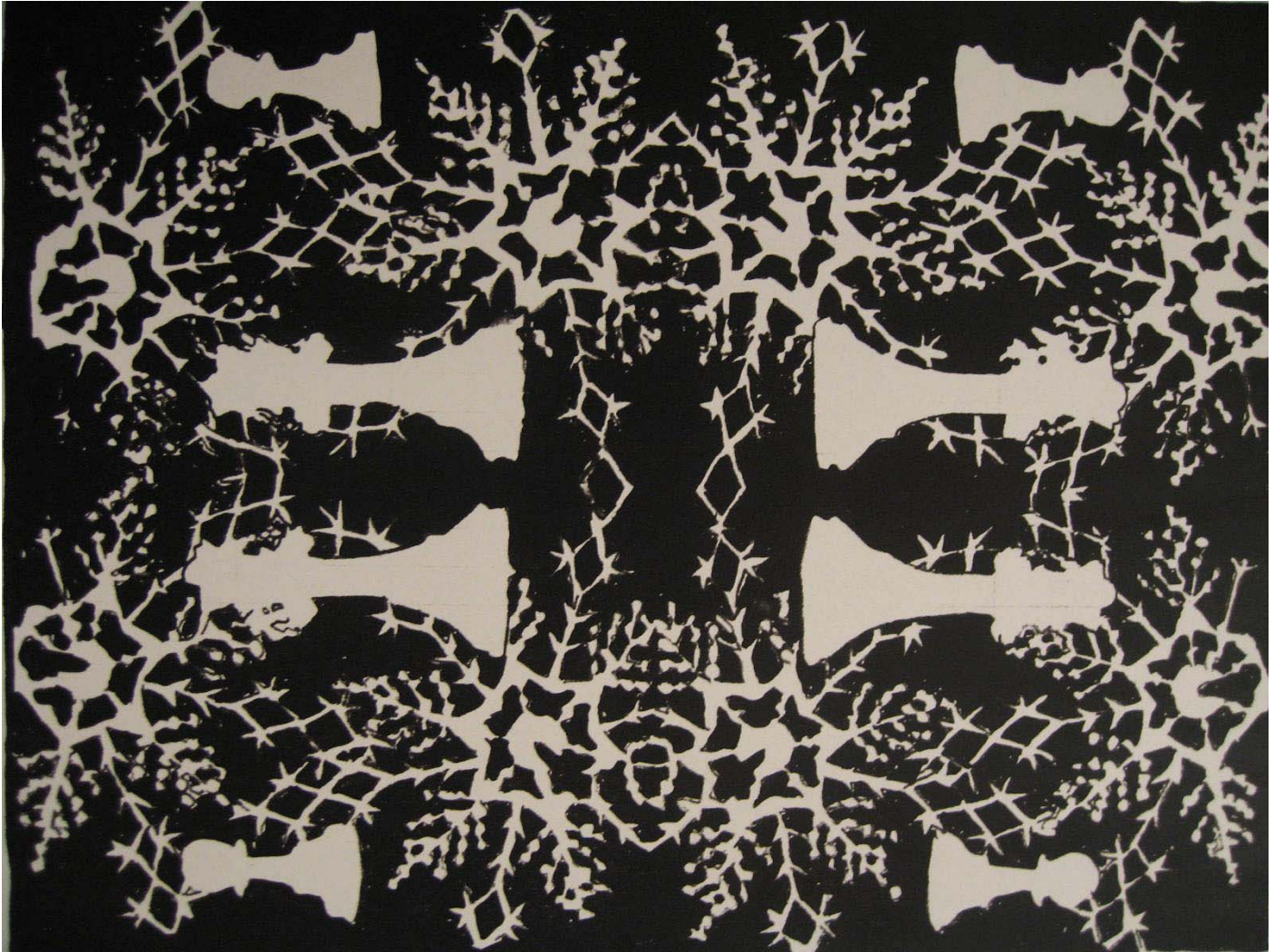


The Chicago Chess Player

The Official Bulletin of the Chicago Industrial Chess League



Happy Holidays!

**Inside This Edition:
Remembering those who passed in 2010
CICL celebrates the holidays**

CICL Officer Contact List

League President	Tony Jasaitis		C:(708) 903-6423
	President@ChicagoChessLeague.org		W:(312) 264-2044
League Secretary	Jerry Thomas	745 Hageman Pl	H:(630)420-0188
	Secretary@ChicagoChessLeague.org	Naperville, IL 60563	
League Treasurer	Paul Freidel	359 N. Worth Avenue	C:(224)436-6050
	Treasurer@ChicagoChessLeague.org	Elgin, IL 60123	
Bulletin Editor	Patrice Connelly		
	Bulletin@ChicagoChessLeague.org		
Webmaster	Tom Friske	(see information below)	
	Web@ChicagoChessLeague.org		
Games Editor	Tom Friske	1035 E Algonquin Road	H:(847) 299-1033
	Games@ChicagoChessLeague.org	Des Plaines, IL 60016	W:(847) 914-8448
Ratings Chairman	Jeff Balicki		
	Ratings@ChicagoChessLeague.org		
Trophy Chairman	Chuck Dobrovolny		
	Trophy@ChicagoChessLeague.org		
Publicity Chairman	Matt Vail		C:(312) 933-1516
	Publicity@ChicagoChessleague.org		W:(630) 505-6557
Banquet Chairman	Katherine Zack		
	Banquet@ChicagoChessLeague.org		

DIVISIONAL CHAIRMEN

East Division	Fred Furtner		C: (630) 291-4271
	ChairmanEast@ChicagoChessLeague.org		W: (312) 464-4495
West Division	Irwin Gaines		
	ChairmanWest@ChicagoChessLeague.org		
North Division	Jim Thomson		W(847) 538-5408
	<u>ChairmanNorth@ChicagoChessLeague.org</u>		

Officer Contact List	2
Contents of Issue	3
What Kind of Game is This? by Tom Friske	4-12
Games Analysis by Tom Friske	13-26
En Passant: Remembering those who passed in 2010	
Arnulfo Benesa: A Gentleman Remembered by Len Weber	27
Frank Micklich: A Tribute by Tom Friske	28-35
Extracurriculars: CICL Chess Clubs celebrate teammates	
SSCC celebrates the Holidays by Patrice Connelly	36-37
DGCC says goodbye to teammate by Steffen Klug	38-39
Correction: Klug vs. Tennant	40-43
Ratings as of December 14 (by team)	44-50

Editor's Notes:

Thank you to everyone who submitted articles and images for the December bulletin! Please continue to feel free to share your stories, games, and reflections with us for upcoming bulletins. We hope to keep the bulletin going strong in the next decade! Also special thanks to Len Weber and Tom Friske, who help us reflect on former teammates we lost this year- NM Arnulfo Benesa, and Frank Micklich

Corrections & Changes:

- The Klug vs. Tennant Game printed in the November Issue was erroneous. Please find a corrected game with analysis by Steffen Klug on page 40.
- In the November bulletin we reported on a simul with GM Mesgen Amanov at the North Shore Chess center. We have since learned that Amanov's record in the simul was 20-0-1, with the draw being awarded to CICL Player Roquito Bruno of the BCBS team. Congratulations Roquito!

The deadline for submissions to the January bulletin is January 15th with a tentative publishing date of January 17th. Please email submissions to Bulletin@ChicagoChessleague.org.

Happy Holidays and Good luck in the New Year!

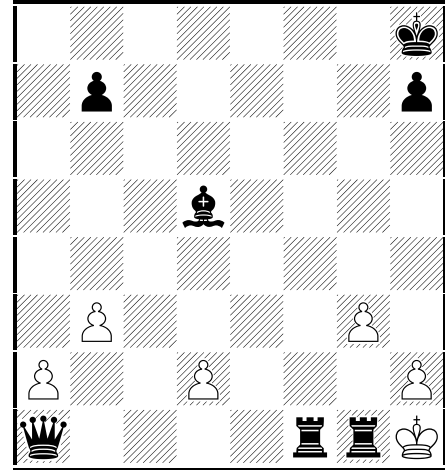
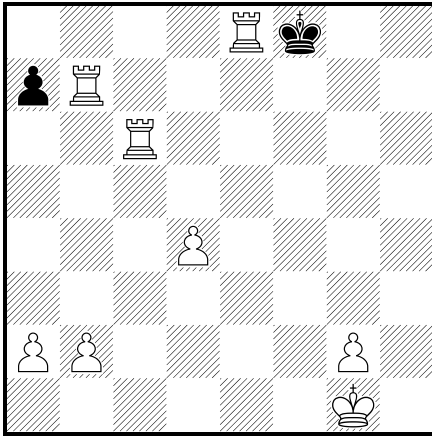
Patrice Connelly, Bulletin Editor

Cover Art Patrice Connelly

"Queen Claus" (right) courtesy Jacky Connelly



What kind of chess is *THIS*??



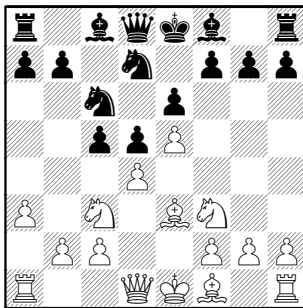
=== from the journal of Tom Friske ===

I attempt to review every game I play; Internet skittles also counts ! The above positions seem silly, but it was actually not from all that bad play. With notes, for your enjoyment.

The source games are included. As well as a fourth-round loss against my first CICL rival.

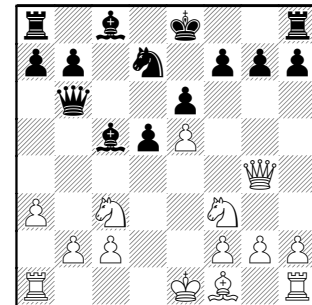
Internet Game 1. (I am Black)

1.e4 e6 2.d4 d5 3.Nc3 Nf6 4.e5 Nfd7 5.a3 c5 6.Nf3 Nc6 7.Be3



7...cxd4 8.Bxd4? The main key to the French is to maintain

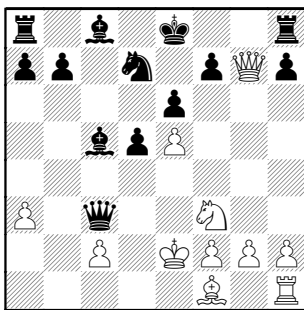
the dark squares! His move trades away their main defender. 8...Nxd4 9.Qxd4 Bc5 10.Qg4 Qb6 hitting f2 and b2



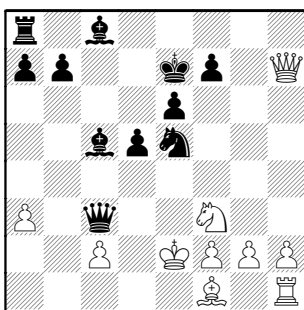
11.Qg3 Qxb2 Nc3 and Ra1 hang 12.Qxg7

12.Nb5 might generate some counterattack, but I doubt a Rook's worth 12...Qxa1+

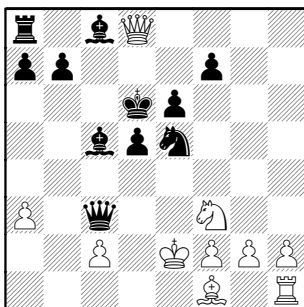
12...Qxa1+ 13.Ke2 Qxc3



14.Qxh8+ Ke7 15.Qxh7 Nxe5



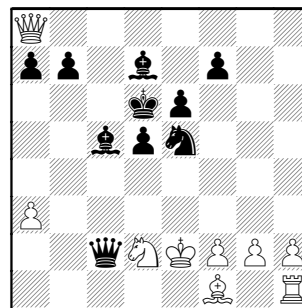
16.Qh4+ Kd6 17.Qd8+



17...Bd7!!

Interestingly, this same move and defense helped me win this week in my Round 5 game.

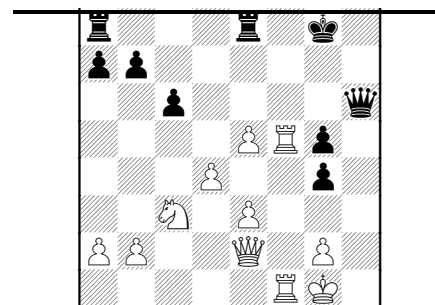
18.Qxa8 Qxc2+ 19.Nd2



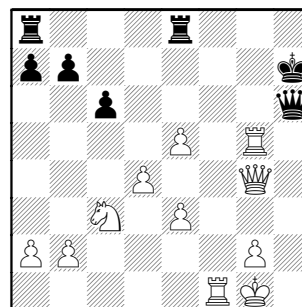
19...Bb5+ 20.Ke1 Qc1# 0-1

Internet Game 2. (I am White)

White to move...



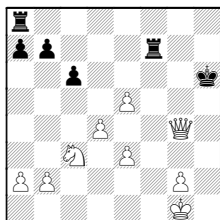
24.Qxg4 Kh7 25.Rxg5



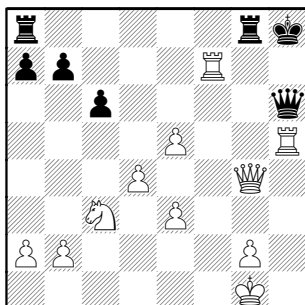
25...Rg8 26.Rf7+ Kh8

26...Rg7? 27.Rgxg7+

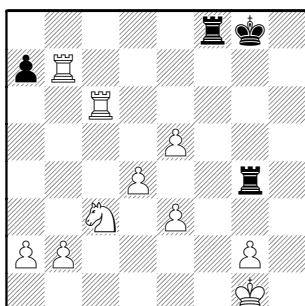
(In mind, however, was the much worse 27.Rh5? Rxf7 28.Rxh6+ Kxh6



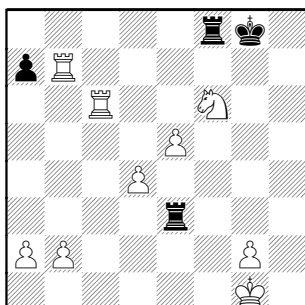
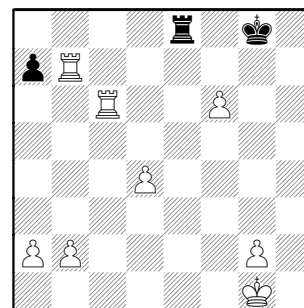
27.Rh5



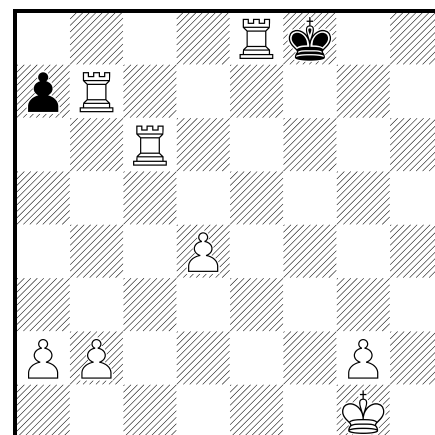
27...Rxc6 28.Rxh6+ Kg8 29.Rxb7 Rf8 30.Rxc6



to get R away from K, more than P-grabbing !

30...Rg3? immediately realized reply 31.Ne4 idea Nf6+/Nxg3
31...Rxe3 32.Nf6+32...Rxf6 [32...Kh8?? 33.Rh7#] 33.exf6 idea Rc8# 33...Re8
only move!

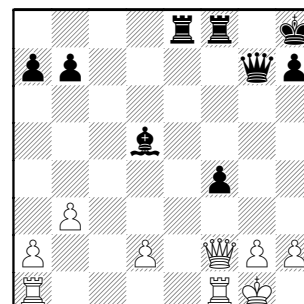
but walks into the forced.. 34.f7+ Kf8 35.fxe8R+



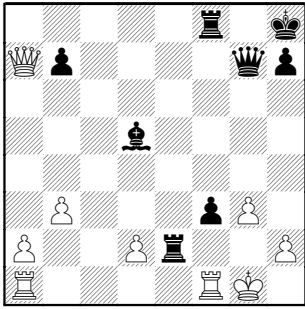
3 Rs, each on a different rank !! 35...Kxe8 36.Rc8# 1-0

Internet Game 3. (I am Black)

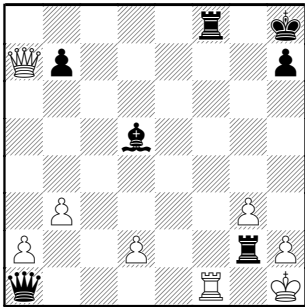
Black to move...



29...f3 30.g3 Re2 31.Qxa7



31...f2+ 32.Rxf2 Qxa1+ 33.Rf1 Rg2+ 34.Kh1



34...Rxf1+ 35.Qg1 Rgxg1# 0-1

Last, is my fourth-round game against friend and rival. Mark is the first player I remember playing (of course there were others; his games are the memorable) and he somehow manages to get counterplay against me, regardless of how good I believe my position is! This game is no exception, as you will now see...

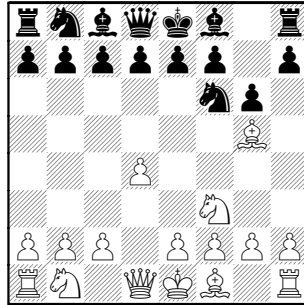
Siwek, Mark (1921) –
Friske, Tom (1987) [A48]

UOP-Forks, 11-16-2010

This season's emphasis is on pre-match preparation, so I was booked-up on the French Milner-Barry (an old favorite Mark and I debated early in my CICL days

1.d4 Before the game, Norm [Hughes] made a slip mentioning our team's

upcoming study session-- did it tip Mark off?? 1...Nf6 Ah, well, always ready for a Gruenfeld... 2.Nf3 g6 3.Bg5



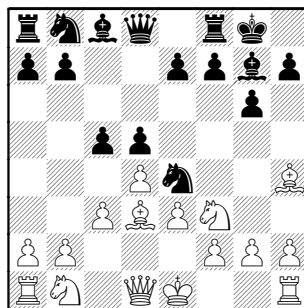
3...Ne4

Guess I need to check Black's history on this.. at least what I usually play in skittles.

4.Bh4 giving up the better diagonal [4.Bf4] 4...Bg7 5.e3 c5

Although I know he'll probably play c3, d4 is my target (with e5), so might as well get at it. Had enough skittles practice to not worry about Bg7 scope; the position will open eventually.

6.c3 0-0 7.Bd3 d5



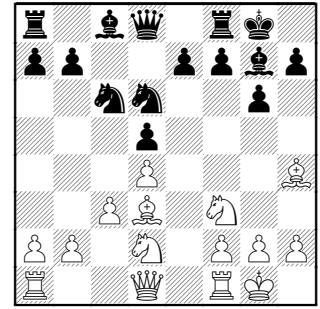
8.Nbd2

8.Bxe4 dxe4 is what I usually see, and Pe4 looks pretty weak. I'd keep hammering away on d4.. cxd, Nc6, e5, etc

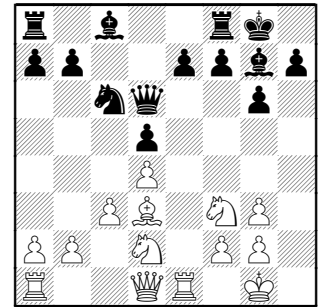
8...cxd4

He allows me to re-position the advanced Knight and suddenly my position starts playing itself.

9.exd4 Nd6 [idea Nf5] 10.0-0 Nc6



to maintain e5 for as long as possible 11.Re1 Nf5 12.Bg3 Nxg3 13.hxg3 Qd6

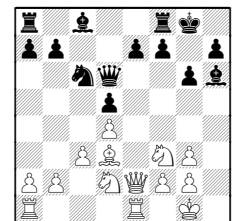


Very pleasing! White's pieces will take work to get going, while mine all have natural posts.

14.Qc2

14.Qe2 continues the battle for e5 14...Bg4 15.Qe3 idea Ne5

Was also curious about 14...Bh6



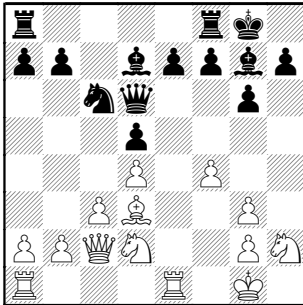
since I thought I can't maintain e5.. Idea being Bg4, and his Queen is in the way.; Over-the-board hadn't considered 14...f6

14...Bg4!?

14...Bd7 doesn't give him free tempi to get f2-f4 in, but I decided that the game

continuation misplaces his N (even if temporarily) and that the f4 thrust may give some serious targets.

15.Nh2 Bd7 16.f4

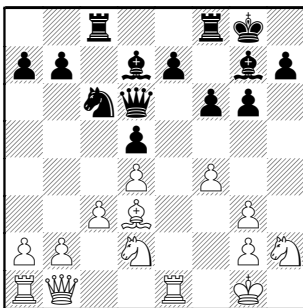


16...Rac8

Couldn't resist making the cheap threat Nxd4 or Nb4, just to see where he places his Queen.

17.Qb1 Big payoff! Now his Queen's Rook is useless. I was counting 3 of his six pieces as misplaced, with the Bishop fairly dreadful.

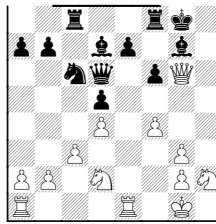
17...f6!



It took no effort to find a way to open the position immediately. The timing couldn't be more perfect !

18.Nb3

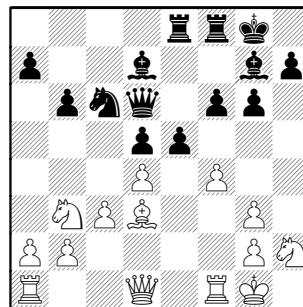
Awake enough to consider a piece sac
18.Bxg6 hxg6 19.Qxg6



idea Ng4-h6+-f7+ 19...Be8 20.Qf5 Qd7 didn't look too scary

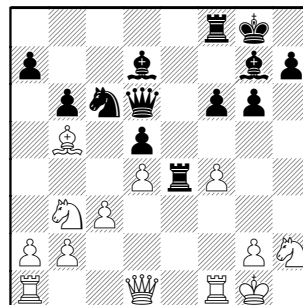
18...b6 pure prophylactics, but I've had games where the resulting weaknesses killed me. So add the N to the useless-piece list.

19.Qd1 e5 20.Rf1 Rce8



21.Bb5?! Couldn't figure the threat here, but quickly noticed that his move gave me the e4 square, so...

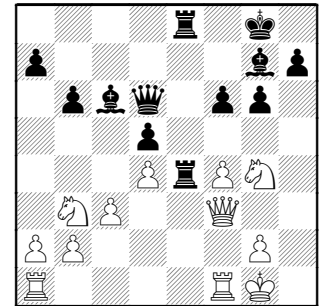
21...exf4 22.gxf4 Re4



Last move, I realized I have a real initiative since Pf4 hangs and double Rooks next !

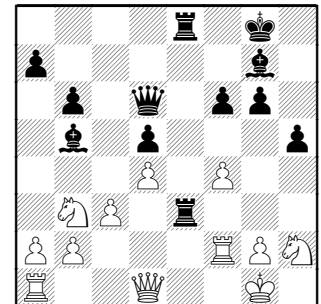
23.Bxc6 unbelievable! Now he gives me the Bishop pair and concedes the light squares ?!!

23...Bxc6 24.Qf3 Rfe8 with Re3 and/or Bb5 coming, begin to look for trapping his Queen 25.Ng4



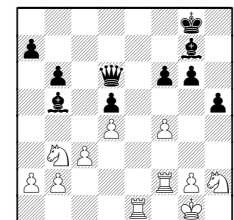
OK, no Re3, so 25...Bb5 26.Rf2 Rook needed to protect Pf4, so it pretty well forces the reply. And now his backrank has major problems.

26...h5 forcing the N back in the stable and giving me e3 27.Nh2 Re3 28.Qd1



28...Bh6 Pf4 is won !

My original plan was to win his Queen
28...Re1+ 29.Qxe1 Rxe1+ 30.Rxe1

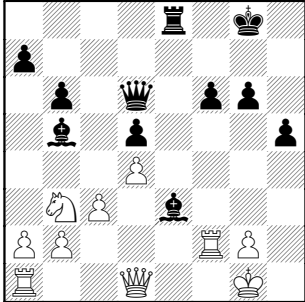


but I didn't like the pressure of Rooks on the e-file.

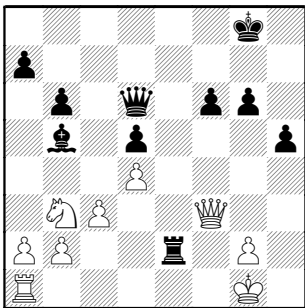
Only at later analysis did I see 30...Bd3! idea Be4, blocks the open line and f5 can always secure the strongpoint. But still question whether my Queen can pressure any targets.

31.Nd2 stops the Bishop move, but 31...f5 allows it anyhow, even if his Knights get nice posts at e5 and g5

29.Nf1 missing my reply [29.f5]
29...Bxf4! 30.Nxe3 Bxe3

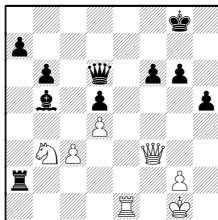


point of my last move 31.Qf3 Bxf2+
32.Qxf2 Re2 33.Qf3



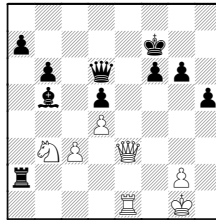
33...Qe6 Again, in no hurry, I maintain possession of the open lines.

Teammates chastised me for not continuing 33...Rxb2 34.Re1 Rxa2

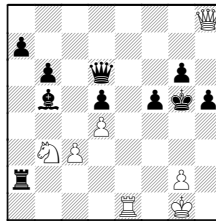


since all the entry squares are covered (I temporarily forgot this during the game)

35.Qe3 Kf7

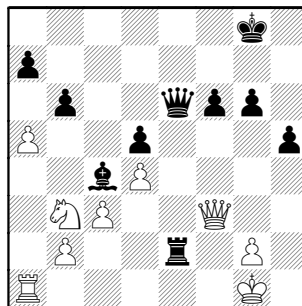


36.Qh6 threatens perpetual and win of Pg6 36...f5! 37.Qh7+ Kf6 38.Qh8+ Kg5



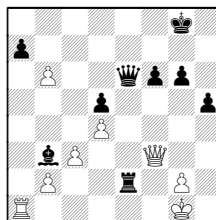
and Black has view of a kill with Qg3

34.a4 Bc4 forcing the Knight to jam the Rook's influence (or so I thought!) 35.a5



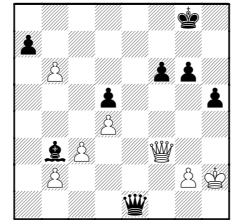
I viewed this as pure desperation...
35...b5

Of course, I first examined the obvious
35...Bxb3 36.axb6



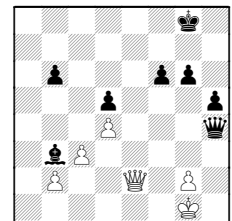
A) 36...Qxb6? 37.Qxe2

B) Teammates suggested 36...Re1+?
37.Rxe1 Qxe1+ 38.Kh2



but I was convinced not to trade my active Rook, and, anyhow, my half of the board has a lot of problems !

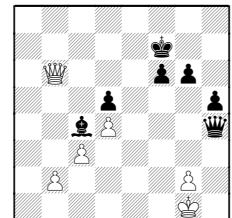
Later analysis didn't change that evaluation: 38...Qh4+ to hold f6 39.Kg1 axb6 40.Qe2



B1) 40...Ba4 41.Qe7 41...Qg5;

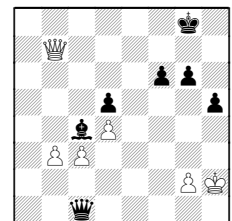
B2) 40...Kf7

B21) 41.Qb5 [Odd, the extra piece isn't helping much.] 41...Bc4 42.Qxb6



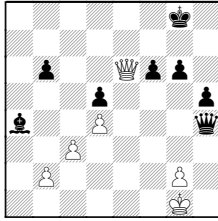
42...Qf4
(maybe better is 42...Qg4 43.b3? Qd1+ idea Bxb3)

43.Qb7+ Kg8 44.b3 Qf1+ 45.Kh2 Qf4+
46.Kg1 Qc1+ 47.Kh2



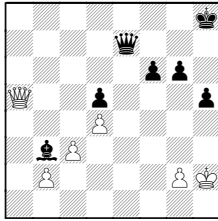
47...Qxc3! 48.bxc4 Qxc4 doesn't appear to be too hard to hold

from analysis diagram at top last column
B22) 41.Qe6+



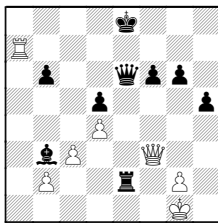
41...Kh8!
 (41...Kg7 42.Qxb6 idea Qa7+ forking)

42.Qxb6 Qe1+ 43.Kh2 Qe7 44.Qa5
 [weaknesses are Ba4,Pd5] 44...Bb3



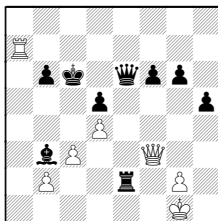
C) Mark's clever idea was quickly
 examined, and too detailed, as we now
 see.
 36...axb6 37.Ra8+

C1) The King can't hide Queenside:
 37...Kf7 38.Ra7+ Ke8

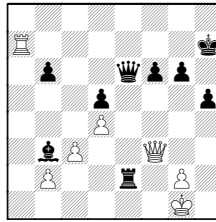


C11) 39.Qg3 idea Qb8# or Qxg6+

C12) 39.Ra8+ Kd7 40.Ra7+ Kc6

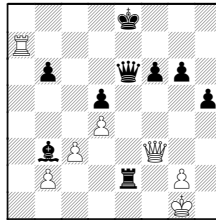


C2) Kh7 38.Ra7+



C21) As we were playing, I went looking
 for another variation because 38...Kg8
39.Ra8+ looks like perpetual.

After analysis added details to it: 39...Kf7
40.Ra7+ Ke8



But can the Queen join the fray ?

C211) 41.Qg3 idea Qb8# or Qxg6+

C212) 41.Ra8+ Kd7 42.Ra7+ Kc8
 43.Ra8+ Kb7 44.Ra1

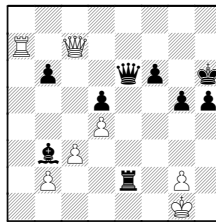
44.Rf8?? Re1+ 45.Kh2 Qd6+ 46.Kh3
 Rh1#

44...Rxb2 45.Rf1 Qe2
 (45...Bc4? 46.Qxf6)

46.Qg3
 (46.Qxe2 Rxe2 47.Rxf6 Bc2--)

46...Bc2 47.Rxf6 Be4--

C22) 38...Kh6 39.Qf4+ g5 40.Qc7



My first examination (after Mark's Knight
 offer) led me quickly here (I hadn't

looked at any of the previous variations).
 I wondered if I really had to allow all the
 checks....and so went looking elsewhere,
 fully intending to revisit this line if I don't
 find something better. **But I never came
 back to weigh this line with what I
 played !!**

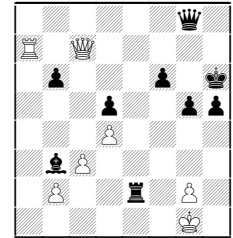
C221) 40...Kg6 41.Qh7#

C222) 40...f5 41.Qg7#

C223) But, when showing this to the
 team afterwards, stated I probably mate
 first here !! 40...Re1+ 41.Kh2 aaaa
 Tommy, you have no more checks !

(41.Kf2 Qe3# is quick enough)

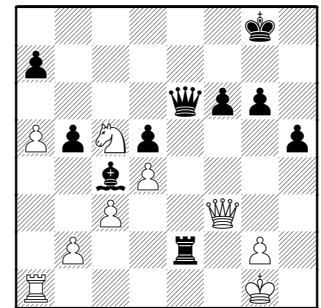
C224) 40...Qg8



41.Qxb6 Bc4 (41...Kg6 42.Qxb3)
 42.Qxf6+ Qg6 43.Qh8+

Back to the game, middle last page...
 At any rate, I needed to spend more time
 on those lines. When I saw a way to
 keep the checks from happening, I
 jumped on...

36.Nc5



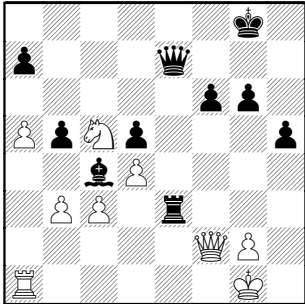
Yuck! The piece jumps out the prison
 window ! and attacks the Queen en
 route.

36...Qe7

The good news is I can survive and I gave myself time to fight off the sting of the blow to the body.

37.b3 It was during the recovery time I realized this was a killer threat, solved with a zwischenzug.

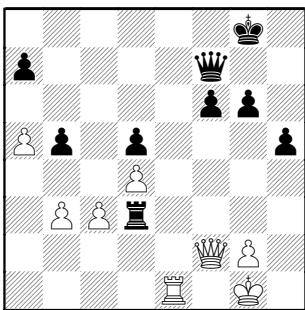
37...Re3 freeing e2 for the Bishop
38.Qf2



38...Bd3 forced, and White gains the open file

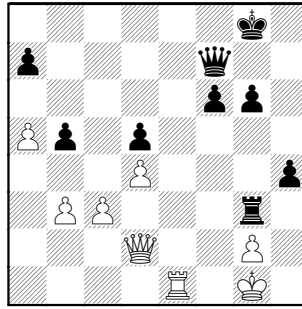
While waiting for his last move, realized **38...Be2** ties my pieces up after **39.Re1** and White can pile up on the pin with b4, Nb3-c1

39.Nxd3 Rxd3 40.Re1 Qf7



covering the various weak Pawns

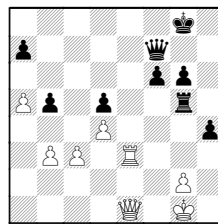
41.Qc2 Rg3 42.Qd2 h4



Spent quite a bit of time on this, and have minimal time to make the time control, especially fighting that slipping feeling...

43.Re3 Rxe3 If I don't trade, White will double on the e-file and invade.

43...Rg5?? 44.Qe1

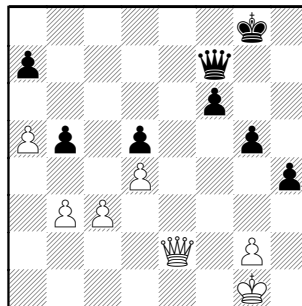


wins Ph4 as he also threatens Re8+-e7 winning Queen

44.Qxe3 g5

Black is still better, but the Queen's potential and my scattered Pawn base combine to keep me from getting very comfortable.

45.Qe2



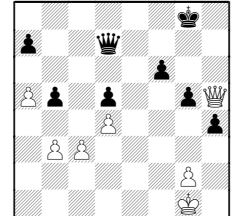
hitting Pb5, of course

45...Qd7 improving my Queen's range

45...a6 might be better as my Queen is currently stopping c3-c4. But also was concerned if his Queen could land on b6 here, as in Qb8+-b6 (but how will she ever enter that diagonal ?).

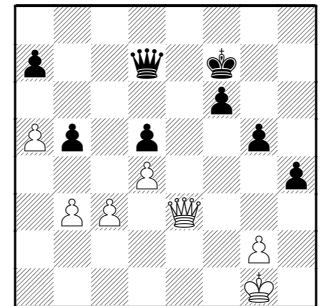
46.Qe3

46.Qh5



is no threat, simply **46...Kg7**

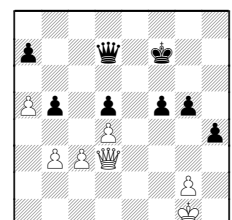
46...Kf7



My plan was to swing my King over Queenside and advance the 3-1 majority.

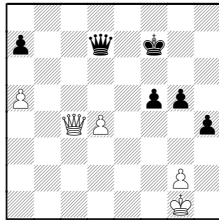
47.Qd3 Ke7 following the plan

I was intent on my plan and so didn't consider advancing the majority. It was later obvious I could tie his Queen to defense if I had threats against his King. **47...f5**



A) The following line shows why I intuitively wanted my King on the Queenside, to free my Queen from defense. But maybe it's more important to hide the King with the Queens on !

48.c4 dxc4 49.bxc4 bxc4 50.Qxc4+



A1) 50...Kf6 51.Qa6+

A2) 50...Kg6 51.Qg8+ Kh5 52.Qh8+ Kg4 53.Qe5 Qb7?! allows at least a draw

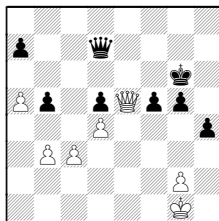
(53...f4 54.Qe2+ Kf5 55.Qe5+ Kg6 56.d5)

54.Qe2+ Kf4 55.Qf2+ Ke4??

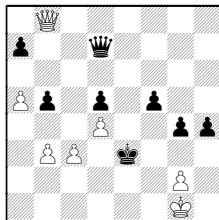
(55...Kg4 56.Qe2+ Kg3 57.Qf2+)

56.Qf3+

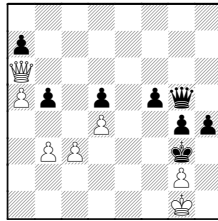
B) 48.Qe3 idea g4 49.Qe5



the Queen invades, but it isn't obvious what she can attack. 49...g4 50.Qb8 going for checks (similar is 50.Qh8 Kg5) 50...Kg5 51.Qg8+ Kf4 52.Qb8+ Ke3

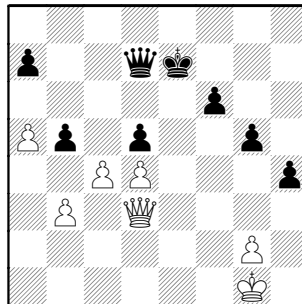


53.Qh8 Qe7 54.Qh5 Kf4 55.Qh6+ Qg5 56.Qa6 Kg3

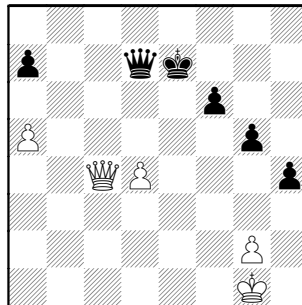


White's King is in trouble 57.Qd6+ Qf4 forces a Queen trade, ideas Qc1# or Qf2+ mating

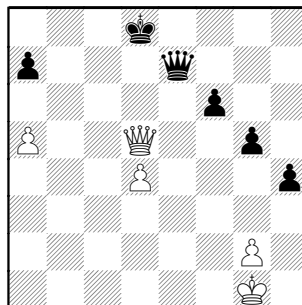
48.c4



48...bxc4 49.bxc4 dxc4 50.Qxc4



50...Kd8 51.Qc5 Qe7 52.Qd5+



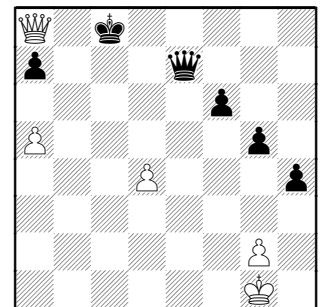
52...Kc8??

Completely oblivious that walking King along the 7th rank is a problem (the Queen covers it, right?).

I guess I needed to return to the Kingside and admit my plan was bad. My instincts were taught from endings other than with Queens on !

52...Ke8 53.Qg8+ Kd7 54.Qd5+ Qd6 55.Qb7+ Qc7 56.Qd5+ Ke7 57.Qe4+ Kf8 58.Qf5 Qe7 59.d5

53.Qa8+



BLACK RESIGNED

1-0

Only considered 53.Qc6+ Qc7 54.Qxf6 (54.Qe8+ Kb7 55.Qb5+ Ka8 56.Qe8+ Qb8 57.Qe4+=) 54...Qxa5

The finish would look like **53...Kd7 54.Qxa7+** The real problem is the King is pulled away from the a-passer. **54...Ke6 55.Qxe7+ Kxe7 56.a6** and queens.

Overall, of the 3 plans examined here (1. the game, 2. advancing the majority, 3. stopping c3-c4), the most natural seems to be #2-- advancing the majority. But, of course, it's taken several days of general reflection and at least two hours of analysis to come to that conclusion-- not a luxury one has over the board, of course !

What kind of chess is THIS ??

Adams, Larry (1388) –
Abney, Iln (1136)

[C15]

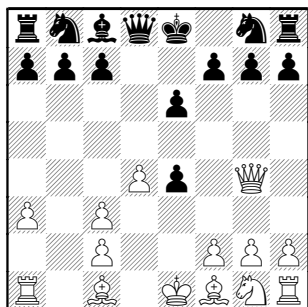
BigE-Judo, 3-23-2010

1.e4 e6 2.d4 d5 3.Nc3 Bb4 4.a3

4.e5 c5 5.a3

4...Bxc3+ 5.bxc3 dxe4 losing control of
c4 allows White's center Pawns to
expand

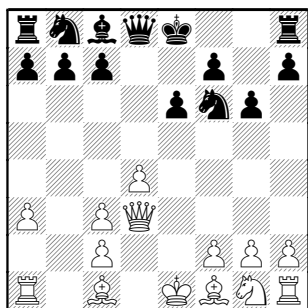
6.Qg4



6...g6

6...Nf6 7.Qxg7 Rg8 8.Qh6

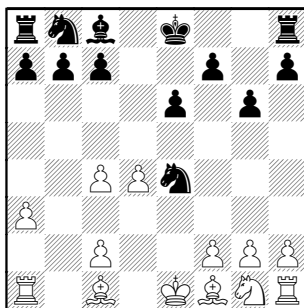
7.Qxe4 Nf6 8.Qd3



8...Qd5

8...0-0 idea c7-c5, Qa5, Rd8 9.Bh6 Re8
idea e5

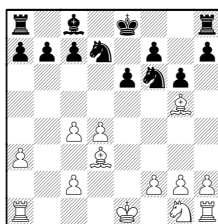
9.c4 Qe4+ 10.Qxe4 Nxe4



White will get a free development move
hitting the loose piece.

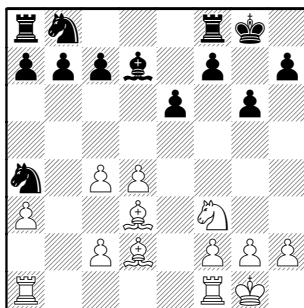
11.Bd3 Nc3 Doesn't solve the Knight's
placement problem

11...Nf6 is logical, but then 12.Bg5 also
gains a tempo 12...Nbd7

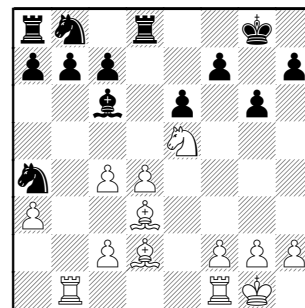


idea b6, Bb7 or maybe immediately c7-c5

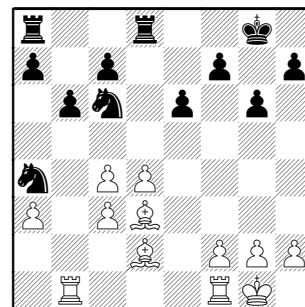
12.Bd2 Na4 a horrible place for the
Knight 13.Nf3 0-0 14.0-0 Bd7



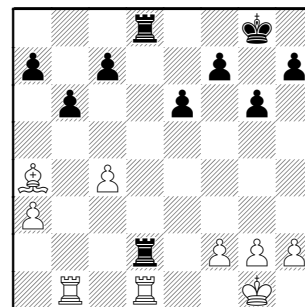
15.Rab1 Bc6 16.Ne5 Rd8



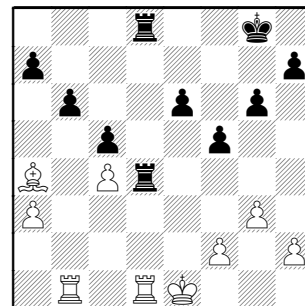
17.c3 b6 Now the Knight can't move !
18.Nxc6 Nxc6



19.Bc2 [19.Be4 idea Rb4] 19...Nxd4
20.cxd4 Rxd4 21.Bxa4 Rxd2 22.Rfd1
Rad8

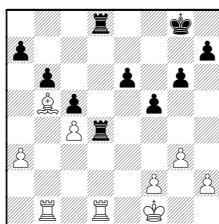


23.g3 [23.Kf1] 23...c5 24.Kf1 f5 25.Ke1
R2d4



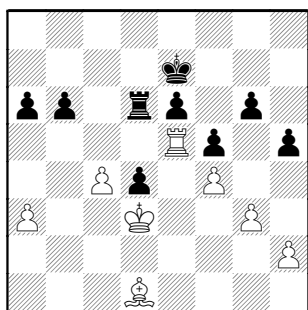
26.Rxd4

White's move is pretty well forced
26.Bb5 Re4+ 27.Kf1 Red4



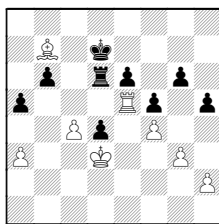
and White doesn't gain much from anything but a trade. 28.Re1 Kf7

26...cxd4 At any rate, the passer isn't dangerous as it's easily blocked. 27.f4 Kg7 28.Kd2 Kf6 29.Rb5 Rd6 30.Kd3 a6 31.Re5 h5 32.Bd1 Ke7



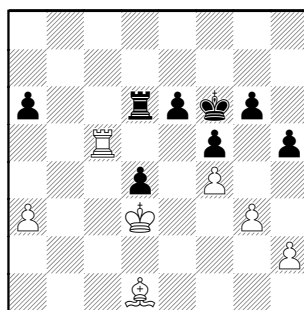
33.c5

33.Bf3 idea Bb7 33...Kd7 34.Bb7 a5



35.c5 bxc5 36.Rxc5 and the a-Pawn will fall

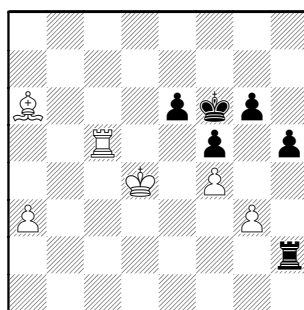
33...bxc5 34.Rxc5 Kf6



35.Bb3

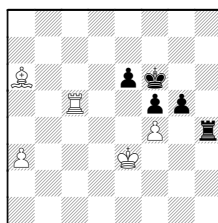
35.Bf3 idea Bb7 and Ra5, as above

35...Rb6 36.Bc4 Rb2 37.Kxd4 Rxd2 38.Bxa6

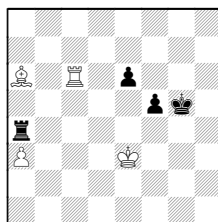


38...Rh3

38...h4! 39.gxh4 Rxh4 40.Ke3 g5!

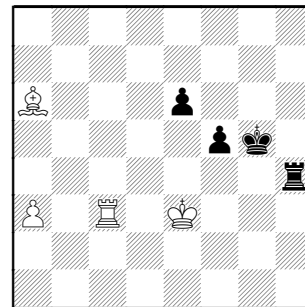


Draws can be built by eliminating Pawns:
41.fxg5+ Kxg5 42.Rc6 Ra4



Since the a-Pawn falls, a theoretical draw results.

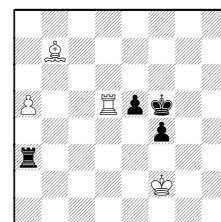
39.Rc3 h4 40.gxh4 Rxh4 41.Ke3 g5 42.fxg5+ Kxg5



Black had the right idea, just executed it late. Compared to move 38 analysis, here White holds his last Pawn.

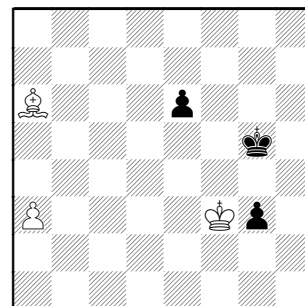
43.Rd3 f4+ 44.Ke4

44.Kf2 Always keep King in front of Pawns ! 44...e5 45.Bb7 Kf5 46.Rd5 Rh3 47.a4 Ra3 48.a5

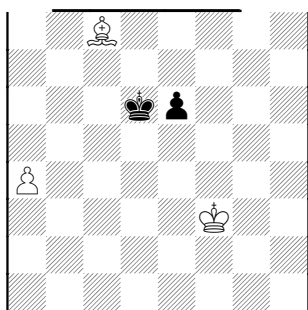


48...Ke6 49.Rb5 (49.a6 Rxa6! draws !)

44...Rg4 45.Rf3 Rg3 46.Rxg3+ [46.a4] 46...fxg3 47.Kf3



47...Kh4 48.Kg2 Kg4 49.Bc8 Kf5 50.Kxg3 Ke5 51.a4 Kd6 52.Kf3



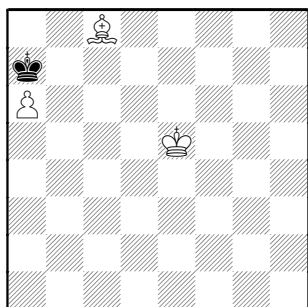
52...e5

Black could just resign, but White still can stumble into some stalemates...

52...Ke5 53.Ke3

(53.a5 Kd6 54.Ke4 Kc7 55.Bxe6 Kb7 56.Bc4)

53.Ke4 Kc5 54.a5 Kb5 55.a6 Kb6 56.Kxe5 Ka7



57.Bb7

With the King arriving, White doesn't need the Bishop.

57.Kd5 Kb6

(57...Kb8 58.Kc6! Kxc8 59.a7) 58.Kd6 Ka7 (58...Kb5 59.a7)

59.Kc7 Ka8 60.Kb6 Kb8 61.a7+

(61.Bb7??=)

57...Kb6 58.Kd5

58.Kd6 Ka7 59.Kc6 Kb8 60.Bc8

(60.Kb6??=) 60...Kxc8 (60...Ka7 61.Kc7 Ka8 62.Kb6 Kb8 63.a7+) 61.a7

58...Ka7

58...Kc7 59.Kc5 Kb8 60.Kb6??=

59.Kd6

59.Kc6 Kb8 60.Kb6?? draw !

59...Kb6 60.Kd7 Ka7

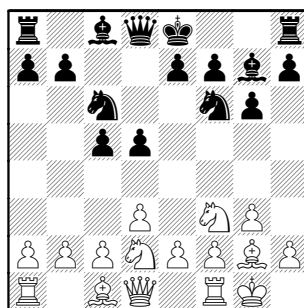
BLACK RESIGNED as 61.Kc8 Kb6 62.Kb8+- 1-0

Edeus,D (1718) –
Hill,Bob (1968)

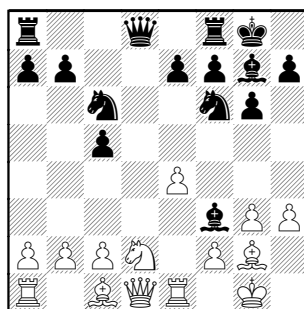
[A08]

Pawns-Rooks, 3-24-2010

1.Nf3 c5 2.g3 d5 3.Bg2 Nc6 4.d3 Nf6 5.0-0 g6 6.Nbd2 Bg7



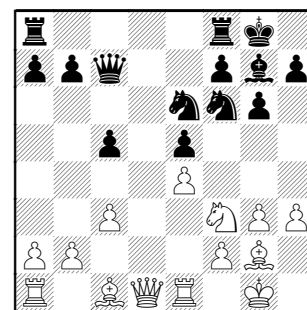
7.e4 dxe4 8.dxe4 0-0 9.Re1 Bg4 10.h3 Bxf3



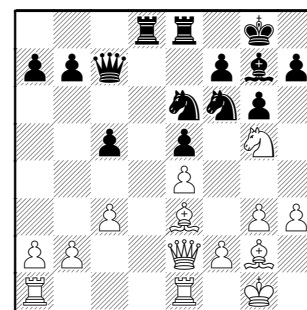
11.Bxf3

11.Nxf3 Qxd1 12.Rxd1 Nxe4 13.Rd7

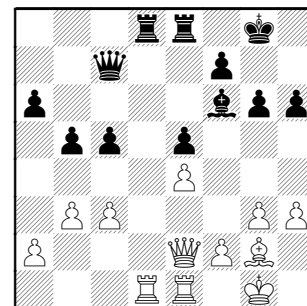
11...Nd4 12.Bg2 e5 13.Nf3 Qc7 14.c3 Ne6



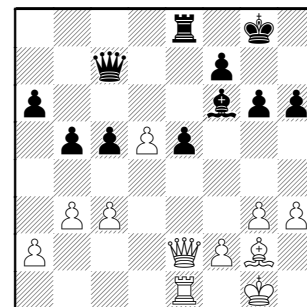
15.Ng5 Rfe8 16.Be3 Rad8 17.Qe2



17...a6 18.Rad1 Nxe5 19.Bxe5 b5 20.b3 h6 21.Bxf6 Bxf6



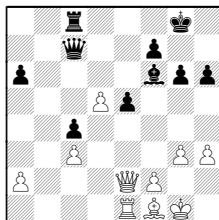
22.Rd5 Rxd5 23.exd5



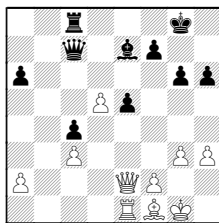
23...e4

23...c4 makes c3 a dark-squared target, and isolates Pd5... but is c4 weak ?

24.bxc4 bxc4 25.Bf1 Rc8



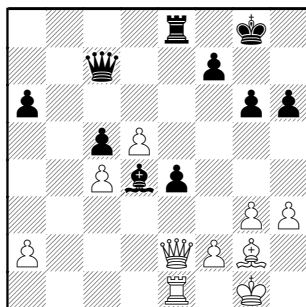
26.Rb1 idea Rb4 26...Be7 27.Re1



27...Bd6 idea Qa5, hitting d5 and c3

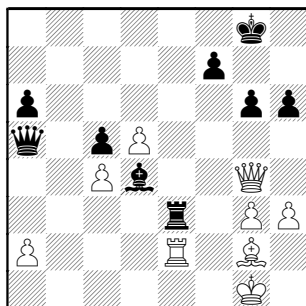
(27...f6? 28.Qg4 Kg7 29.Qe6

24.c4 bxc4 25.bxc4 Bd4



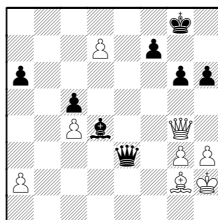
threat is Qxg3 !

26.Qg4 e3 27.fxe3 Qa5 28.Re2 Rxe3



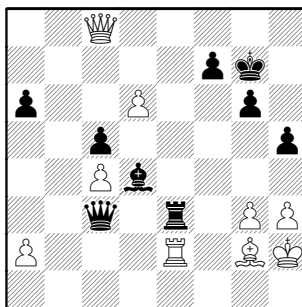
29.Kh2 Qc3 30.d6 h5

30...Be5? 31.Rxe3 Qxe3 32.d7 Bd4



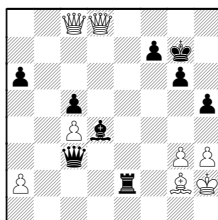
33.d8Q+ Kh7 34.h4 (34.Qdxd4)

31.Qc8+ Kg7



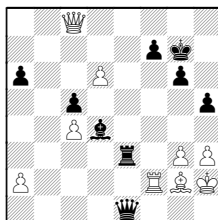
32.Rxe3

A) 32.d7?? Rxe2 33.d8Q

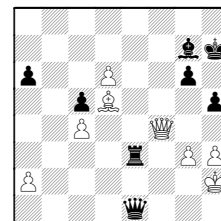


33...Rxcg2+! 34.Kxcg2 Qd2+ and mates

B) 32.Rf2 trying to attack f7 and/or run the passer 32...Qe1

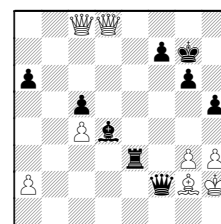


B1) 33.Rxf7+ Kxf7 34.Bd5+ Kg7
35.Qg8+ Kh6 36.Qf8+ Bg7 37.Qf4+ Kh7



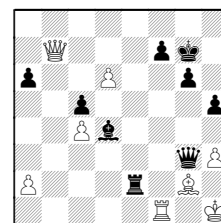
38.d7 Re2+ 39.Bg2

B2) 33.d7 Qxf2 34.d8Q



34...Qxg3+ 35.Kh1 Re1+

B3) So how about protecting the backrank with 33.Rf1 Qxg3+ 34.Kh1 Re2 35.Qb7



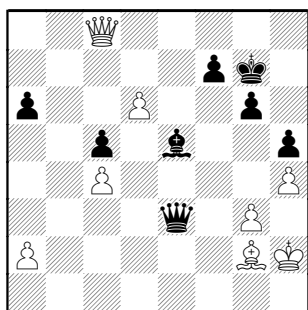
protecting g2 while hitting f7 35...Qxd6 36.Qxf7+

Back to game (middle last column)...

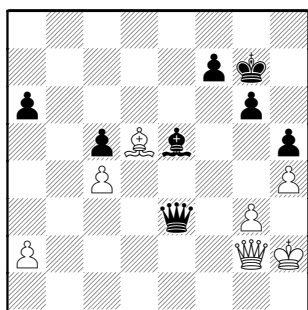
32...Qxe3 threat Qg1#

Black is slightly better as he has dark-squared threats. White's Bishop is stuck on defense.

33.h4 Be5

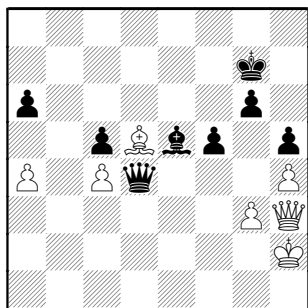


34.Qh3 Bxd6 35.Bd5 Be5 36.Qg2

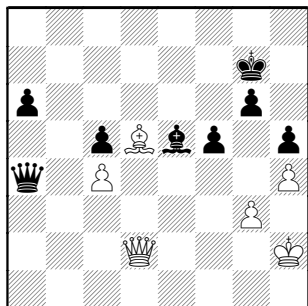


36...Qd4 idea Qxh4 [36...Bd4 wanting Qg1+-f1+,Bg1+]

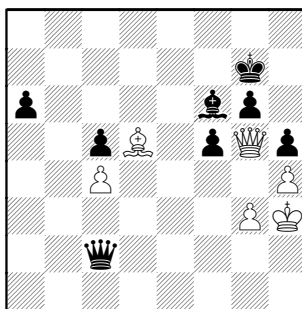
37.Qh3 [37.Kh3? Qg4+ 38.Kh2 Qxh4+] 37...f5 38.a4



38...Qa1 39.Qg2 Qxa4 40.Qd2



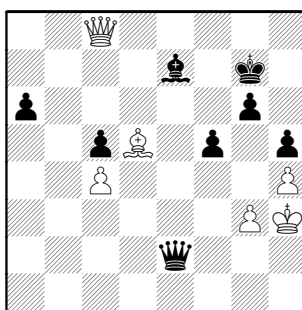
40...Qb3 41.Qg5 Qc2+ 42.Kh3 Bf6



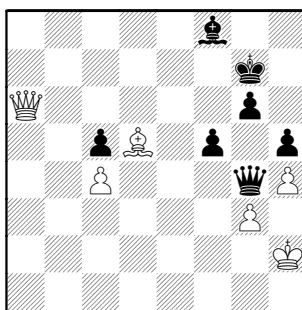
43.Qf4

43.Qe3! invades to e8 (idea Qg8+-h8# but Bf6 stops dark-squared checks) or Qxc5

43...Qe2 44.Qc7+ Be7 45.Qc8



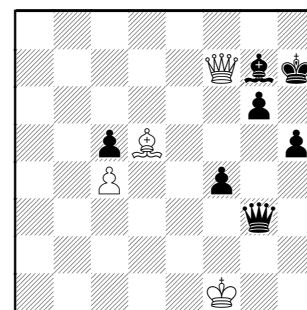
45...Bf8 46.Qxa6 Qg4+ 47.Kh2



47...f4 48.Qa1+ Kh7 49.Qf6

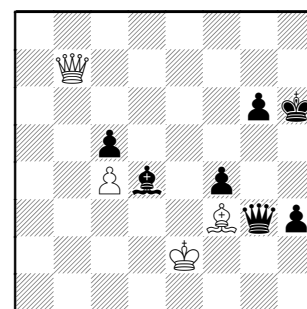
49.Qc3 protects f3 and g3 49...Bd6

49...Qxg3+ 50.Kh1 Bg7 51.Qf7 Qxh4+ 52.Kg2 Qg3+ 53.Kf1



Sure looks like a win for Black

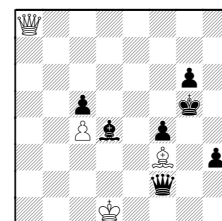
53...h4 54.Qb7 h3 55.Ke2 Kh6 56.Bf3 Bd4



57.Qa8 Black wants to play g5-g4, but how to defend his King in the process ?

57...Qf2+ 58.Kd1 Bc3

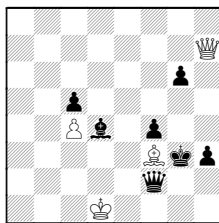
Can the King hide and escort the Pawns? Such as 58...Kg5



59.Qb7

(59.Qd8+ Bf6 60.Qd5+ Kh4 61.Qd6?? Qxf3+)

59...Kh4 60.Qh7+ Kg3

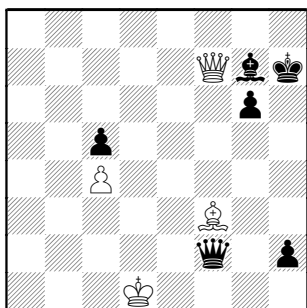


61..Bd5 (61.Be4 Qf1+ 62.Kc2 Qe2+)
61...Qf1+ 62.Kc2 Qe2+ 63.Kb3 Qg4
(63...Qd1+)

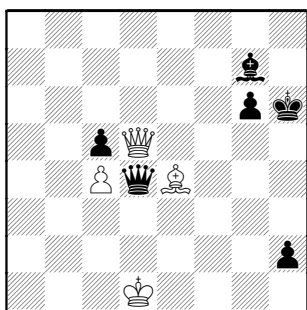
59.Qf8+ Kh7?

59...Kg5 60.Qe7+ Bf6 both White pieces
hang, so 61.Qe4

60.Qxf4 h2 61.Qf7+ Bg7



62.Qd5 Kh6 63.Be4 Qd4+

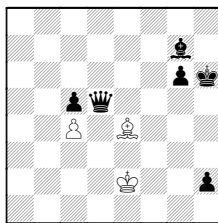


64.Ke2

64.Qxd4 cxd4 should win for Black

64...Qb2+

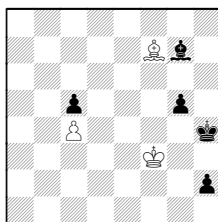
64...Qxd5



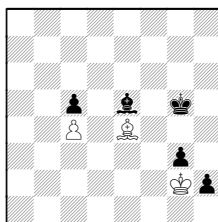
65.Bxd5 as long as the c4-Pawn stays
on, Black can't overload the defense.

(65.cxd5?? Be5 idea g5 and swing King
opposite direction as White King.
Should be a win for Black.)

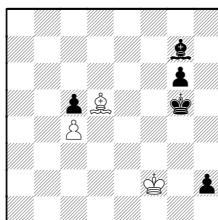
A) A similar finish to the game results
here after 65...g5 66.Kf3 Kh5 67.Bf7+
Kh4



68.Kg2 Be5 69.Be6 g4 70.Bd5 Kg5
71.Be4 g3

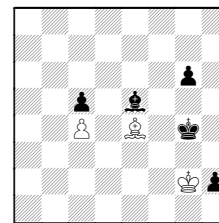


B) Another try is 65...Kg5 66.Kf2



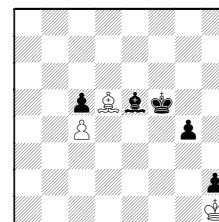
66...Kg4 (66...Kf4? 67.Kg2)

67.Kg2 Be5 68.Be4

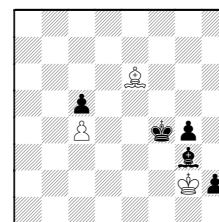


68...g5
(68...Kf4? 69.Bxg6 Ke3 70.Bf7)

69.Bf3+ Kf5 70.Kh1 g4 71.Bd5



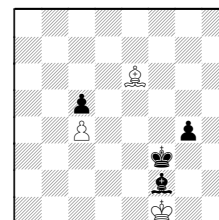
71...Bg3 72.Kg2 Kf4 73.Be6



73...h1Q+

73...Ke5? 74.Bxg4 (74.Kxg3?? h1Q)

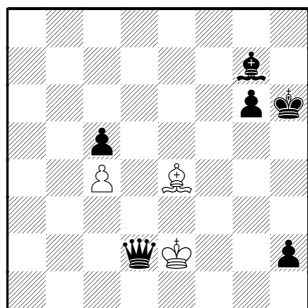
74.Kxh1 Kf3 75.Kg1 Bf2+ 76.Kf1



76...g3 77.Bd5+ Ke3 again, isn't enough.

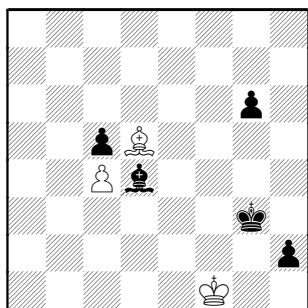
We left the game at the bottom of this
page's first column...

65.Qd2+ Qxd2+

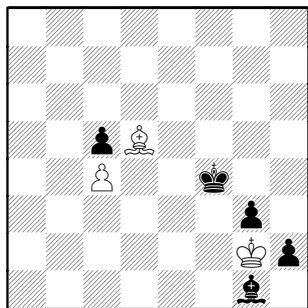


The White King has time to return to the defensive corner.

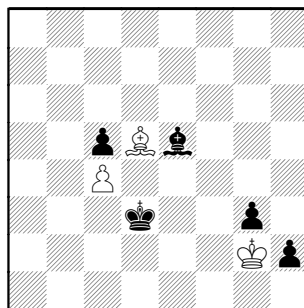
66.Kxd2 Kg5 67.Ke2 Kf4 68.Bd5 Bd4 69.Kf1 Kg3



70.Bc6 g5 71.Bd5 Bg1 72.Bc6 Kf4 73.Kg2 g4 74.Bd5 g3



75.Kh1 Bd4 76.Kg2 Be5 77.Bc6 Ke3 78.Bd5 Kd3

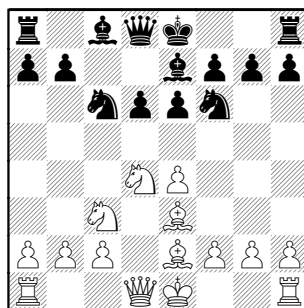


79.Be6 Ke2 80.Bd5 Ke1 81.Bc6 1/2-1/2

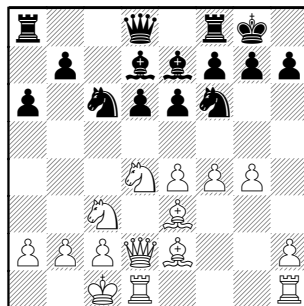
Pfau, Mattias (2095) - Khan, Mohammed (1828) [B84]

Citadel-BCBS, 9-27-2010

1.e4 c5 2.Nf3 d6 3.d4 cxd4 4.Nxd4 Nf6 5.Nc3 Nc6 6.Be2 e6 7.Be3 Be7

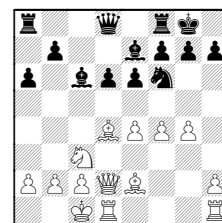


8.Qd2 0-0 9.f4 a6 [9...e5] 10.0-0-0 Bd7 [10...Nxd4; 10...Qc7] 11.g4



11...h6 I don't believe this move is necessary.

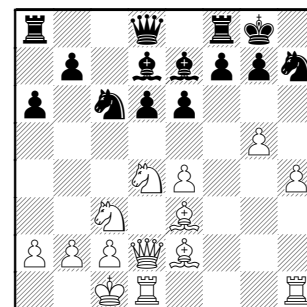
Black's goal of d6-d5 can get started with **11...Nxd4 12.Bxd4 Bc6**



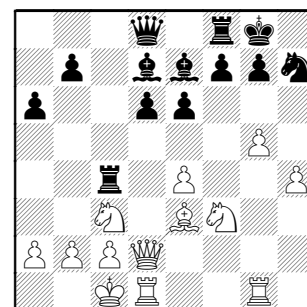
also hitting e4 and looking toward Rh1. Furthermore, when White plays g4-g5, the Knight can swing to d7.

11...b5 is also played

12.g5 hxg5 13.fxg5 Nh7 This Knight is permanently out of play. **14.h4**



14...Rc8 [14...Ne5] 15.Rhg1 Ne5 16.Nf3 Nc4 17.Bxc4 Rxc4



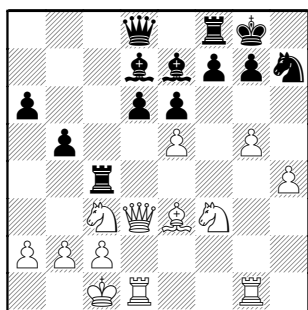
18.Qd3 Not just hitting the loose Rook, but also looking Kingside.

18.h5;
18.Bf4 hits Pd6 **18...Bc6**

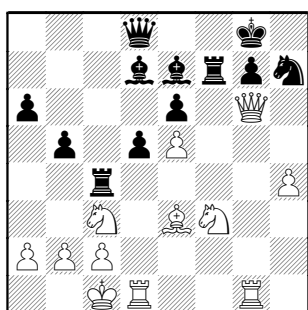
(**18...e5?** gives away the d5 square and more ! **19.Bxe5**)

18...b5 If Black is considering b5-b4, his Rook will still need support. [**18...Qc7**]

19.e5!



19...d5 20.g6 fxg6 21.Qxg6 Rf7

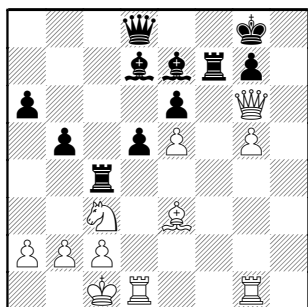


22.Ng5

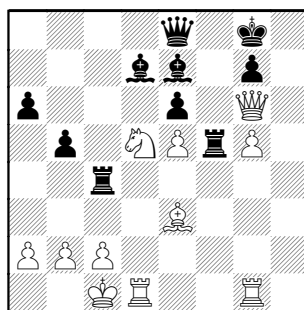
After 22.h5 Rybka3 advises 22...Nf8 making g7-g6 possible when White advances the h-Pawn further 23.Qg2

Note 22...Be8 the discovery is an idle threat, as g7 is only defended by the Rook, so it is pinned. 23.h6 (23.Qxe6)

22...Nxg5 23.hxg5



23...Rf5? 24.Nxd5! Qe8?



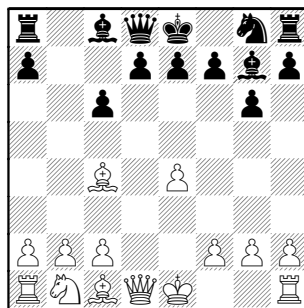
The Black Queen is overloaded [24...exd5 25.e6 idea exd or Qxf5]

25.Qxe8+ Bxe8 26.Nxe7+ 1-0

Brannon, Mike (940) –
Kuruvilla, E (1243) [B34]

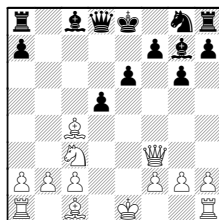
StXavier-Tyros, 10-20-2010

1.e4 c5 2.Nf3 Nc6 3.d4 cxd4 4.Nxd4 g6
5.Nxc6 bxc6 6.Bc4 Bg7



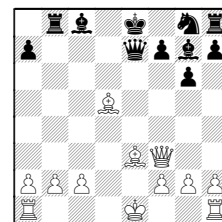
7.Qf3 a bit early to place the Queen, she needs to watch the central squares d4 and d5. 7...e6 8.Nc3 Ne7

8...d5 is the normal center move 9.exd5 cxd5



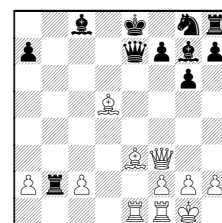
A) White might have found a way to take advantage of his Queen with 10.Nxd5?! exd5 11.Bxd5 seems to fork f7 and a8

but first 11...Qe7+ 12.Be3 Rb8



and Black has two hits to b2

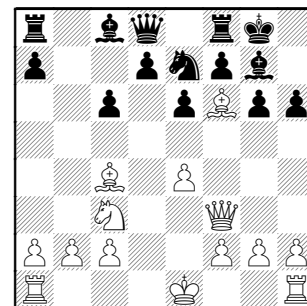
13.0-0 (13.Bc6+ Bd7) 13...Rxb2 (13...Bxb2 14.Rab1 pins Bishop to loose Rook) 14.Rae1



Hoping for tactics against lined-up Queen and King 14...Be6 blocking, and it doesn't look like White has enough for his piece. 15.Bb3 at least traps the Rook

B) Interesting could be 10.Bb5+ Bd7

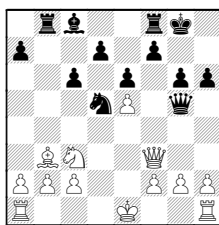
9.Bg5 h6 10.Bf6 0-0



11.e5 allows the Knight the d5 or f5 squares. This appears the turning point for White.

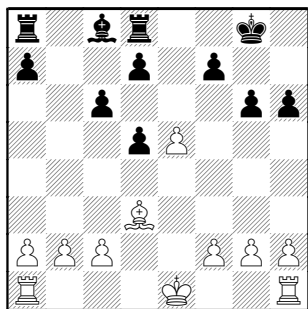
11...Bxf6 12.Qxf6 Nd5 13.Nxd5

13.Qf3 keeping Queens on 13...Rb8 14.Bb3 Qg5



overloads the White Queen, who must defend e5

13...exd5 14.Qxd8 Rxd8 15.Bd3

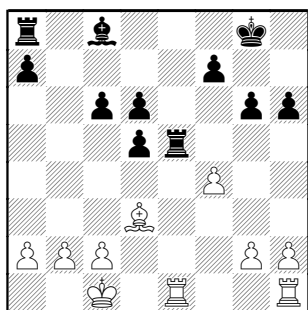


Black has a slight advantage, due to two half-open files for his two Rooks (with Pawn targets on each).

15...Re8 16.0-0-0

No help comes from 16.f4 d6

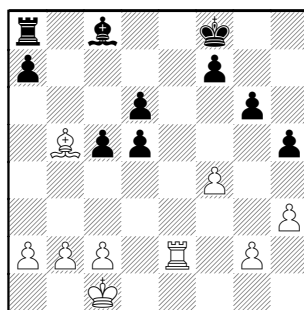
16...Rxe5 17.Rde1 d6 18.f4



18...Rxe1+ [18...Re6] 19.Rxe1 Kf8
nicely controlling the entry squares

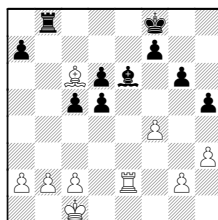
20.h3 h5 another strong move-- keeping the Kingside Pawns frozen.

21.Re2 c5 22.Bb5



22...Bb7

22...Be6 is more active, maintaining the watch of g4 and h3 while holding d5
23.Bc6 Rb8



24.Rd2 attacking d5

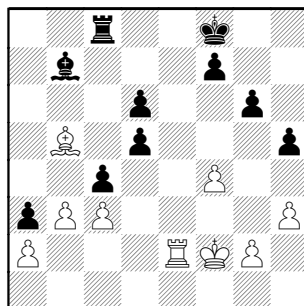
(24.c3 idea Rd2 24...d4! opens Bishop onto the a2-Pawn)

24...d4 25.c3

23.c3 a5 24.Kd1 Executing a plan that misplaces his King.

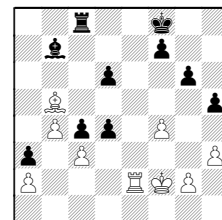
24.Bd3 supports f4-f5 24...a4 25.f5 g5 26.f6 idea of Re7, but 26...Re8 cancels that and the f6-Pawn becomes a target. Is that why White sent his King over there ?

24...a4 25.Ke1 a3 26.b3 Rc8 27.Kf2 c4!

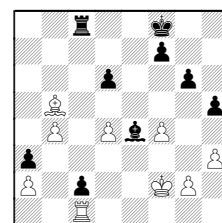


Nicely finding a breakthrough 28.bxc4

Worse for White is 28.b4 d4!



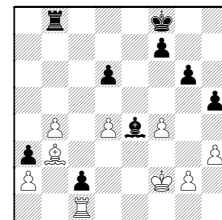
29.cxd4 c3 30.Rc2 Be4 31.Rc1 c2



32.Ba4 Ra8

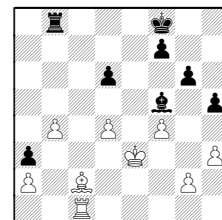
(32...Rc4 33.Ke3 Bf5 (33...Bxg2))

33.Bb3 (33.Bxc2? Rc8) 33...Rb8



34.Ke3 d5

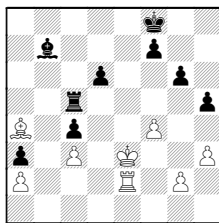
(34...Bf5 35.Bxc2



35...Rc8 36.Kd2 Rc4? 37.Bxf5 Rxc1
38.Kxc1 gxf5; Another try is 34...Bxg2)

28...dxc4 29.g4

I keep wanting to centralize King 29.Ke3 Rc5 30.Ba4

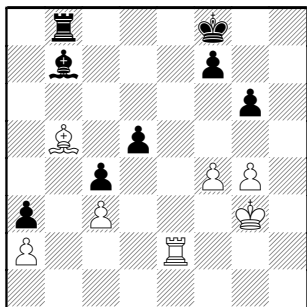


30...Rd5 cuts off the King's help, with Rd3+ threat

29...hgx4 30.hgx4 d5 31.Kg3

31.Ke3 is the move now, for sure !

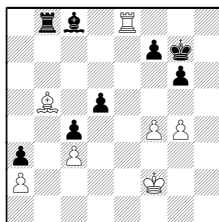
31...Rb8



Black has a long-term threat of Rb8-b2 which looks impossible to solve.

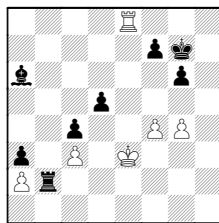
32.Kh4

It's apparently too late to post the King at d4. 32.Kf2 Bc8 hitting loose g-Pawn while discovering on White's Bishop but looking deeper... 33.Re8+ Kg7



34.Ba6? seems to win the pinned piece (about the same is 34.Bd7 Rb2+)

34...Rb2+ 35.Ke3 Bxa6

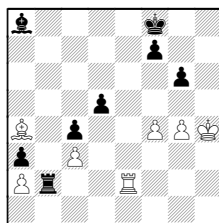


36.Ra8 Rb6

32.Ba4 or 32 Bd7 would get the Bishop off the masked file, meanwhile keeping the King closer to the action

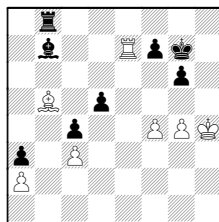
32...d4 I thought Black missed an opportunity (for Rb8-b2), but analysis shows his move is better.

A) 32...Ba8 33.Ba4 Rb2



Too early! Black has a backrank problem first. 34.Re8+ Kg7 35.Rxa8 Rxa2

B) 32...Kg7 prepares the Ba8,Rb2 kill 33.Re7



33...Bc8

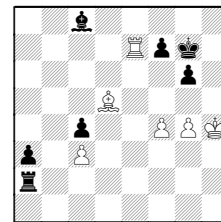
(33...Ba8 34.Ra7! Now capturing the Bishop allows White to do the same! 34...Rxb5 35.Rxa8 Rb2 36.Rxa3)

34.Bc6

(34.Re8? Rxb5 35.Rxc8 Rb2; 34.Be8? Kf8 wins a piece)

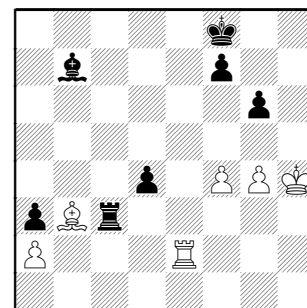
B1) 34...Be6 35.Ra7

B2) 34...Rb2 35.Bxd5 Rxa2



36.Bxc4 (36.Rxf7+) 36...Rh2+ 37.Kg3 a2 38.Rxf7+ Kh8 39.Ra7

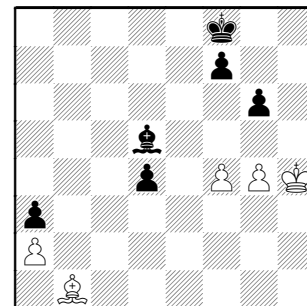
33.Bxc4 Rc8 34.Bb3 Rxc3



35.Rc2

With a passer on, White wants as many pieces on board as possible to defend it.

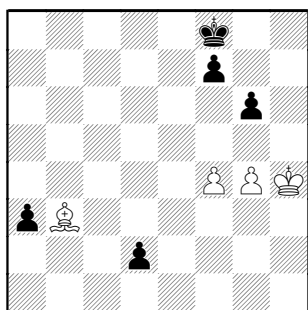
35...Rxc2 36.Bxc2 Bd5 37.Bb1



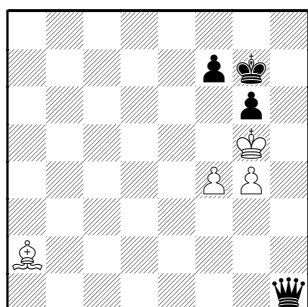
37...Bxa2! Nicely done!

The White King is too far away so the two passers overload the defending piece.

38.Bxa2 d3 39.Bb3 d2



40.Kg5 a2 41.Bxa2 d1Q 42.Kh6 Qh1+
43.Kg5 Kg7!



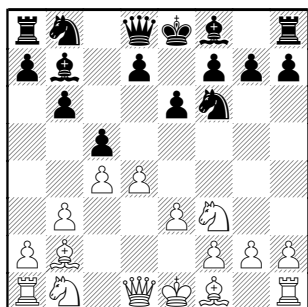
Very efficient, forcing mate. 44.Bxf7
Qh6# 0-1

Black should be very proud of his
endgame play !

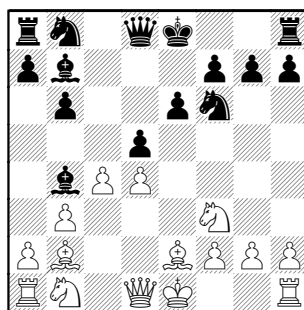
**Dobrovolny, Chuck (1730) -
Rajsky, Justin (1640)** [A30]

Tyros-Wombats, 11-3-2010

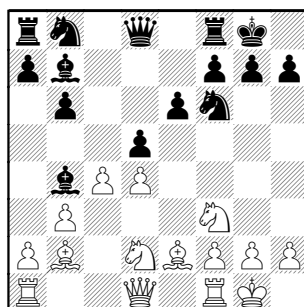
1.Nf3 Nf6 2.c4 c5 3.b3 b6 4.Bb2 e6
5.e3 Bb7 6.d4



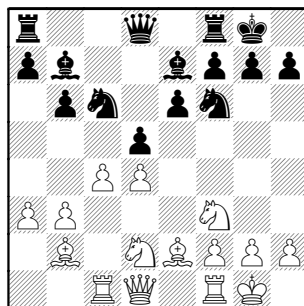
6...cxd4 7.exd4 d5 8.Be2 Bb4+



9.Nbd2 [9.Nc3 Ne4 10.Rc1] 9...0-0
10.0-0



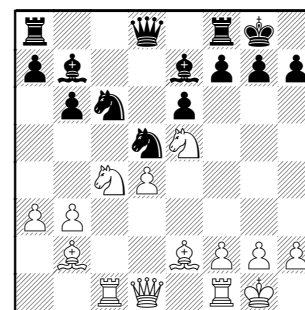
10...Nc6 11.a3 Be7 12.Rc1



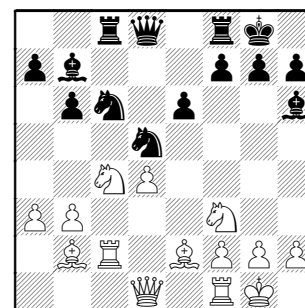
12...dxc4 13.Nxc4

Normally, White would reply 13.bxc4 with a "hanging Pawn" position, where theoretically White pursues d4-d5. In this game, however, the White Knight is at d2 where it not only does not participate on covering d5 (as it would if developed to c3), but also blocks the Queen's support of the same.

13...Nd5 14.Nfe5

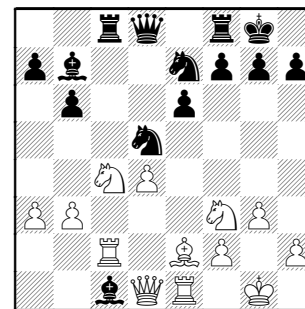


14...Bg5 15.Rc2 Rc8 16.Nf3 Bh6

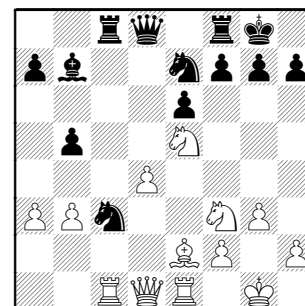


17.Re1 Nce7 18.Bc1
[18.Nce5 idea Ng4,g3,Ne3]

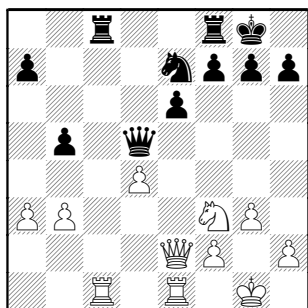
18...Bf4 19.g3 Bxc1



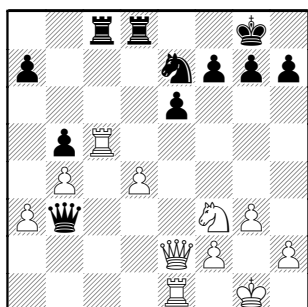
20.Rxc1 [20.Qxc1 idea Rd1] 20...b5
21.Nce5 Nc3



22.Qd2 Nxe2+ 23.Qxe2 Bxf3 24.Nxf3 Qd5



Heading for a classic IQP battle.
25.b4 Rfd8 26.Rc5 Qb3



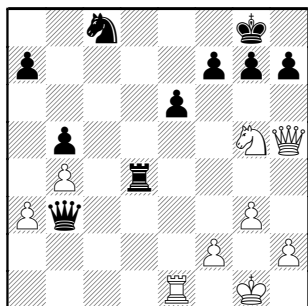
27.Ng5 Rxd4

27...h6 solves the Kingside threats, while White has scattered and loose material...
28.Qf3 Qxf3
(28...Qb2?? 29.Qxf7+ Kh8 30.Nxe6)
29.Nxf3 and White barely holds on

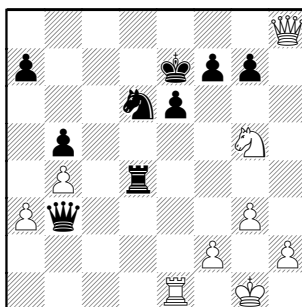
28.Rxc8+

28.Qh5 immediately is more forcing, the Black Rook must defend its backrank !

28...Nxc8 29.Qh5!



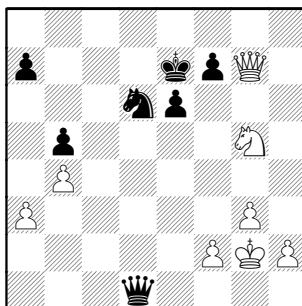
29...Nd6 30.Qxh7+ Kf8 31.Qh8+ Ke7



32.Qxg7

32.Rxe6+! fxe6 33.Qxg7+ and Qxd4

32...Rd1 33.Rxd1 Qxd1+ 34.Kg2

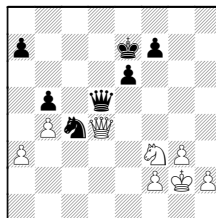


34...Qd5+ 35.Nf3

35.f3? Qa2+ 36.Kh3 Qxa3

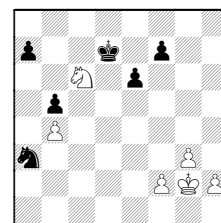
35...Ne4

35...Nc4 36.Qd4



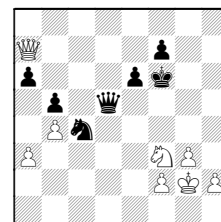
36...a6

(36...Qxd4 37.Nxd4 Nxa3 38.Nc6+ Kd7



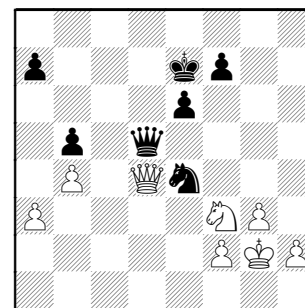
39.Nxa7 Kc7 winning trapped Knight 40.h4)

37.Qa7+ Kf6

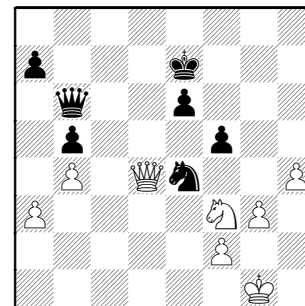


38.Qxa6?? Nd2

36.Qd4



36...Qb7 37.h4 f6 38.Qd3 f5 39.Kg1 Qb6 40.Qd4

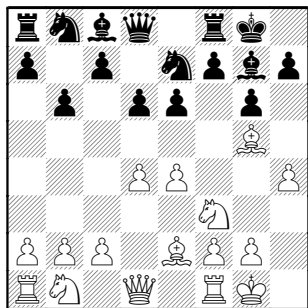


40...Qb7?? She was safe at last visit, but here the f-Pawn is no longer blocking along the 7th rank ! 41.Qg7+ 1-0

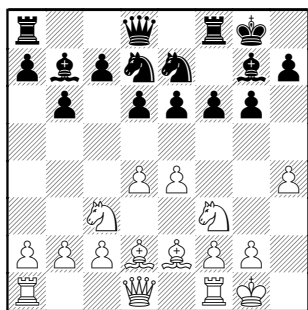
Pettis,Derrick (1272) –
Wong,Alfred
BCBS-AMATS, 11-9-2010

[C00]

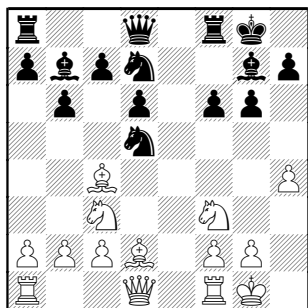
1.e4 e6 2.Nf3 d6 3.d3 g6 4.Be2 Bg7
5.0-0 Ne7 6.d4 0-0 7.h4 b6 8.Bg5



8...f6 9.Bd2 Bb7 10.Nc3 Nd7



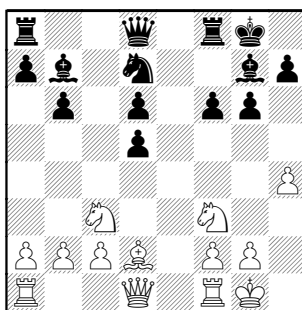
11.d5! Interesting play results 11...exd5
12.exd5 Nxd5 13.Bc4



The point to his 11th move. 13...c6
14.Bxd5+

14.Bf4 immediately is possible 14...Ne5
15.Bxd5+ cxd5 16.Nxd5

14...cxd5

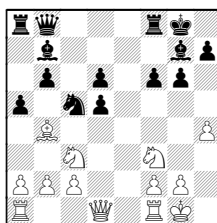


15.Nb5 The Knight releases pressure of
d5

15.Bf4 hits weak Pd5 and Pd6

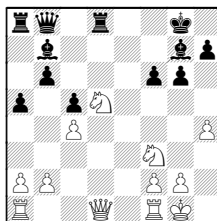
15...Qb8 16.Nfd4 blocks the Queen
attack of d5. White should return to
attacking the d5-Pawn.

A) 16.Bb4 Nc5 17.Nc3 a5

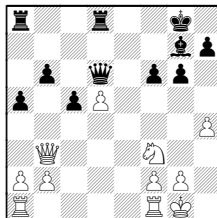


18.Ba3

18.Bxc5? dxc5 19.Nxd5 Rd8 20.c4



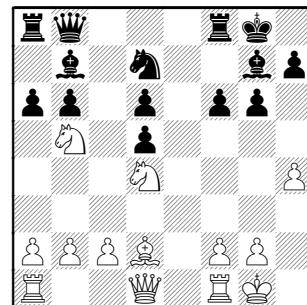
20...Bxd5 21.cxd5 Qd6 [wins a Pawn]
22.Qb3



22...Qxd5 (22...Rab8 23.Rad1) 23.Qxb6
Rdb8)

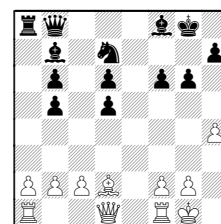
B) Another try from game position is
16.Bf4 Ne5 17.Nc3

16...a6



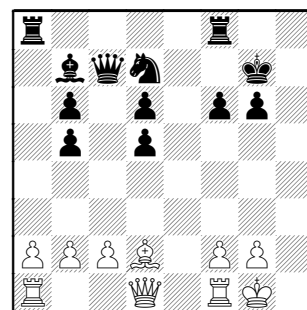
17.Ne6 axb5 18.Nxg7

18.Nxf8 Bxf8



Black has plenty material for a Rook, but
his Pawns are a mess !

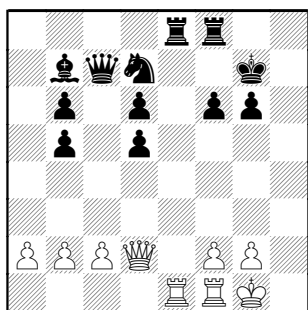
18...Kxg7 19.h5 Qc7 20.hxg6 hxg6



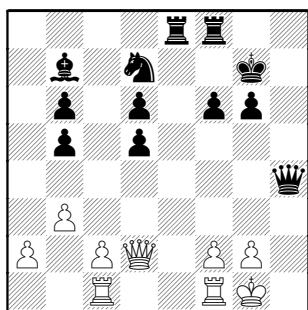
Black's weird Pawns don't seem to
matter

21.Bh6+? looks like a time-trouble error
[21.Qc1 Rh8]

21...Kxh6 22.Qd2+ Kg7 23.Rae1 Rae8

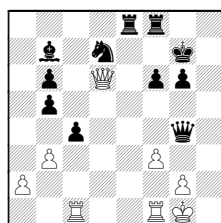


24.Rc1 Qc4 25.b3 Qh4



26.f3 probably anticipating the Bishop hitting g2, but weakening the dark squares.

26.c4 idea Qb4 26...dxc4 27.Qxd6 Qg4 28.f3



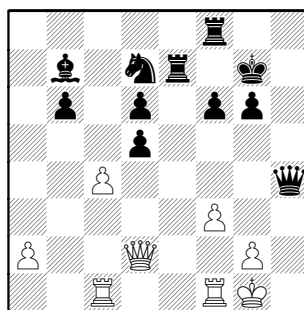
28...Re2! setting up the "windmill" 29.Rf2

(29.fxg4? Rxc2+ 30.Kh1 Rxa2+ 31.Kg1 Rg2+ 32.Kh1 Rd2+ winning back the Queen "with interest" 33.Kg1 Rxd6 34.bxc4 bxc4 35.Rxc4 isn't hard for Black)

26...Re7

26...Re6 stops c2-c4

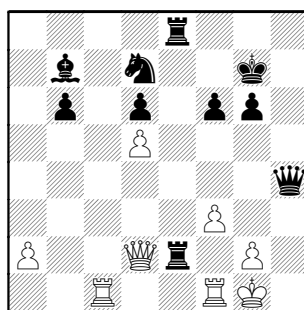
27.c4 bxc4 28.bxc4



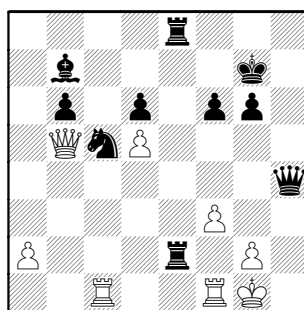
28...Rfe8

28...dxc4 29.Qxd6

29.cxd5 Re2

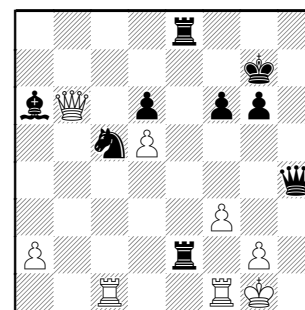


30.Qd3 Nc5 31.Qb5



31...Ba6!! forcing the Queen off of e2, setting up the kill !

32.Qxb6



MATE in 4 !!

32...Rxc2+!! Nicely done !! 33.Kxc2 Re2+ 34.Rf2 Rxf2+ 35.Kg1 Qh2#

Very pretty play !!

0-1



"Ready for a Foggy Knight..."
Courtesy Jacky Connelly

A Gentleman Remembered

Submitted by Len Weber (WMBATS)

I first met National Master Arnulfo Benesa through some of my co-workers at Franklin Watts Publishing in Chicago back around 1991. Some of those other co-workers were Ely Sollano (team captain) and Bert Gazmen.

Arnulfo (Arny) was then what I always knew him to be, a quiet, unassuming, polite man who happened to be very good at chess!

We played together on the Franklin Watts team, and when the parent company moved to the east coast, we then found ourselves on various alumni teams over the years.

What I remember about Arny the most was his modest demeanor. Like everyone, he had good games and bad games. But you'd never know which one Arny had just played unless you asked him. Did he just lose to a much lower rated player? Did he just beat GM Dmitri Gurevich? Even though I was present when both of those things happened, the expression on his face was the same! There was never a harsh word and always a sportsmanlike handshake after a game.

Arny was always the gentleman, in victory or defeat. This is what I will remember, and miss, the most about him.



NM Arnulfo "Arny" Benesa, 2000 US Senior Champion and CICL alum. Photo from ICA.

The announcement of Frank Micklich's passing this year breaks another link with our CICL history. He was a steadfast player in the North Division for as long as this writer was aware of the League.

Frank was one of those players that loved playing the game; results were a secondary consideration. I can still remember the respect necessary to face him; it quickly became obvious that his "C-" or "B-" class rating didn't adequately describe the level of play he could threaten.

Others have described his non-chess ways, so allow me to highlight his over-the-board personality.

As the following selection of the many games he left us shows, his play was characterized by a solid start, usually from an established "book" position. During the years this writer was working through the ranks, I was always intimidated by this knack to build and work from the tried and true.

I will always remember his games as featuring a piece sacrifice, whether to generate an attack or general tactics. Why he was less successful, is always a mystery... but it was realized that analyzing a little deeper lines would discover a problem with his plans. So an opportunity squandered could be one lost.

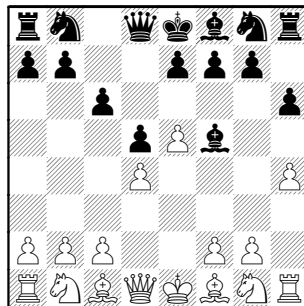
His featured games are fun to review! Something always

happens; improvements can sometimes be found.

This first game was a nice upset which illustrates why you didn't take him for granted!

Micklich, Frank (1609) – Easton, Rich (1877) [B12]
UOP-Kemper, 10-14-2004

1.e4 c6 2.d4 d5 3.e5 Bf5 4.h4 h6

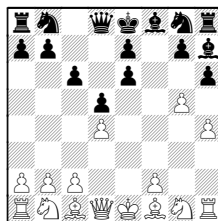


5.Nc3

NCO recommends Black to play 4..h5 instead of the game move.

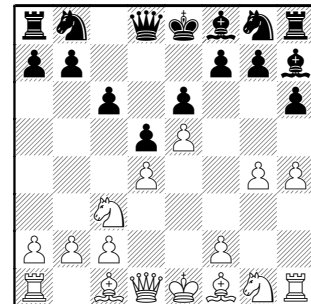
Here, White gains with an immediate 5.g4 Bd7 is forced.

(5...Bh7 allows 6.e6! as, apparently 6...fxe6 7.g5



really makes it tough for Black to unwind his Kingside.)

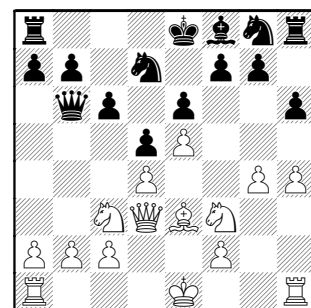
5...e6 Using the tempo given, Black gets out of the immediate bind. 6.g4 Bh7



7.Bd3

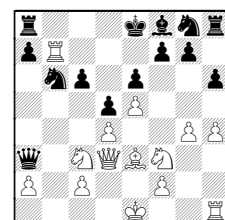
My favorite was 7.Nge2 with idea of Ng3,f4-5 but Black can counterattack with 7...f6

7...Bxd3 8.Qxd3 Nd7 9.Nf3 Qb6 10.Be3



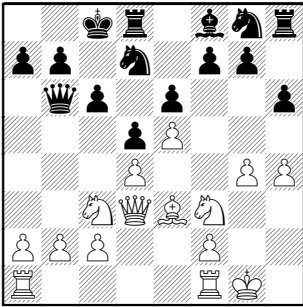
10...0-0-0

10...Qxb2!? 11.Rb1 Qa3 12.Rxb7 Nb6



idea of Ne7 and 0-0-0 wins the exchange. 13.Rc7? Ne7 idea of Kd8-c8

11.0-0

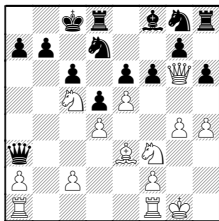


11...c5?!

Even though this is the normal Caro-Kann theme, with opposite-side castling the race is usually who can first open his opponent's King position. Then there's the simple problem of freeing the opponent's Bishop to molest a friendly Queen.

So maybe 11...f6?! and -h5 to get something going against White's side. 12.Qg6 Black's under-development becomes a problem 12...Qxb2?! 13.Ne2

13.Na4! Qa3 14.Nc5



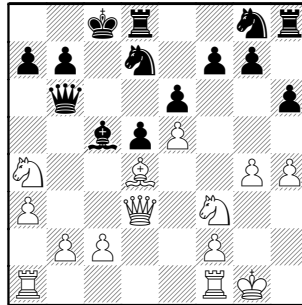
14...Bxc5
(14...Nxc5 15.dxc5 and how does Black protect f7 and e6 ?)

15.dxc5 Nxe5? 16.Nxe5 (16.Qxg7 Rd7) 16...fxe5)

13...fxe5 14.Rfb1

All the preceding suggests 11...Ne7 with idea of -f6,h5

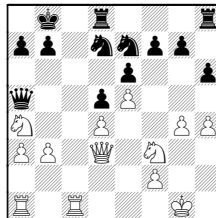
12.a3 cxd4 13.Bxd4 Bc5 14.Na4!



Another downside to Black's plan begun with his 11th move.

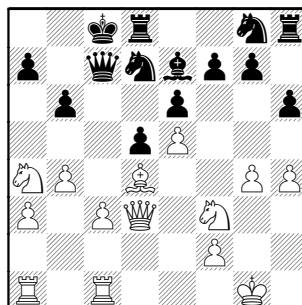
14...Qc7 15.c3 Nicely done! White keeps Black busy. 15...b6 another King position weakening.

Black can survive with 15...Bxd4 16.cxd4 Kb8 17.Rfc1 Qa5 18.b3 Ne7



and Rc8 next, but all the trades don't promise winning chances.

16.b4 Be7 17.Rfc1

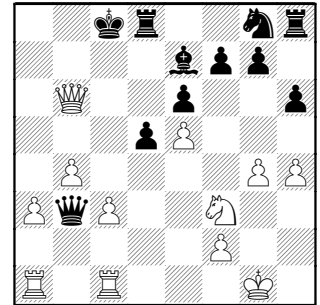


Trouble is brewing.

17...Qc4 18.Qe3

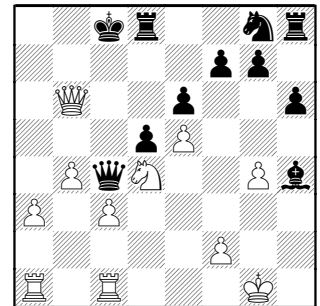
18.Qd1 with idea of Nb2 and c4 keep the White initiative.

18...Qb3 19.Nxb6+ axb6 20.Bxb6 Nxb6 21.Qxb6



Regardless whether it was planned or not, White has some interesting compensation for his piece. His real problem is that he only has one other piece (the Knight) that can threaten anything! But will the connected passers cause threats ?

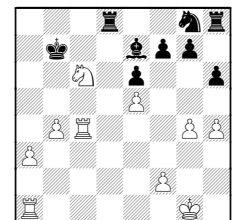
21...Qc4 22.Nd4 Bxh4?



Looks like Black has to trade Queens and set a blockade of the passers. 22...Qc7 23.Qxc7+ Kxc7 24.c4 dxc4

(24...Bxh4 25.c5 is really asking for it.)

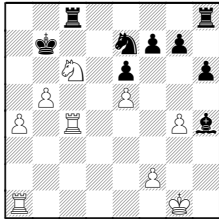
25.Rxc4+ Kb7 26.Nc6



26...Rc8

(26...Rd5? 27.a4 Bxh4 28.a5 Ne7
29.a6+ Kb6 30.a7)

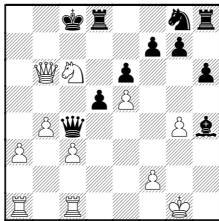
27.b5 Bxh4 28.a4 Ne7



Not an exhaustive study, but a trace of how Black can make trouble while passers get going.
29.Nxe7? Rxc4

23.b5

23.Nc6!

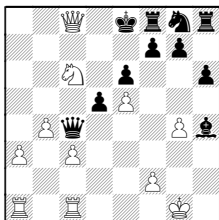


The threat of Qb8+ and Nxd8 put Black in a major dilemma. Apparently Black is forced to give up the exchange, but White's passers really do count.

A) 23...Rd7?? 24.Qb8#

B) 23...Re8?? 24.Qb8+ Kd7 25.Qb7#

C) 23...Rf8?? 24.Qb8+ Kd7 25.Qb7+ Ke8 26.Qc8+

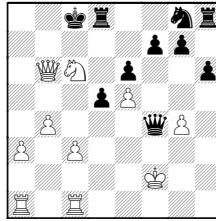


26...Bd8 27.Qxd8#

D) 23...Bxf2+? trying to expose the King and give perpetual

24.Kxf2 Qf4+

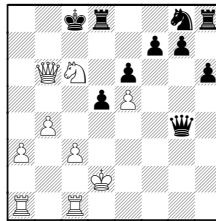
(Diagram follows)



25.Ke1!

White wants to sneak King to b2 and then his Q/N threats win.

25.Ke2 Qxg4+ assuring the King can't reach c2 to get to b3. 26.Kd2

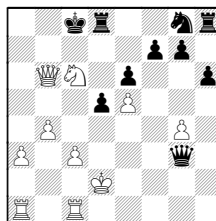


(Same result with 26.Kd3 Qf5+ 27.Kd2 Qg5+ 28.Kc2)

26...Qg2+ 27.Kd1+-

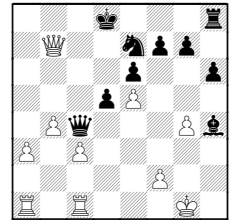
25...Qg3+
(25...Qe4+ 26.Kd2 Qg2+ 27.Kd1+-)

26.Kd2



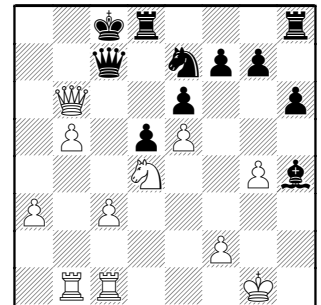
26...Qg2+ 27.Kd1 +-

E) The only other try appears to be :
23...Ne7 24.Qb8+ Kd7 25.Qb7+ Ke8
26.Nxd8 Kxd8

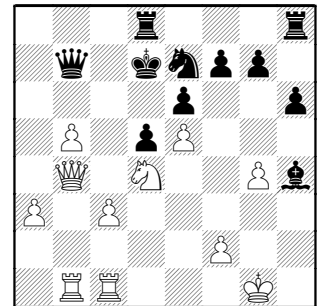


White has to figure defense of Pg4,Pf2 and King with the advancing of his passers. But will Black's Rook ever make a threat ? 27.a4 Qxg4+

23...Ne7 24.Rab1 Qc7

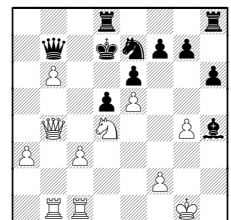


25.Qa6+ Qb7 26.Qa5 Kd7 27.Qb4



27...Rc8

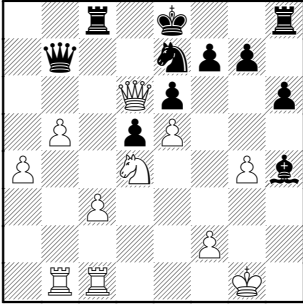
27...Nc8 idea Nb6-c4 is stopped by 28.b6 Ne7



29.Nb3! after Nc5, the connected passers roll

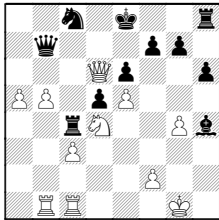
(29.a4 Ra8 to blockade at a6)

28.Qd6+ Ke8 29.a4



29...Qc7

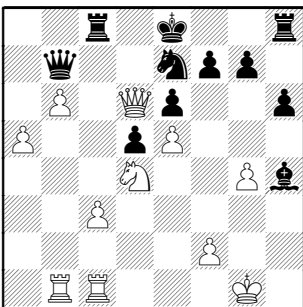
29...Rc4 30.a5 Nc8



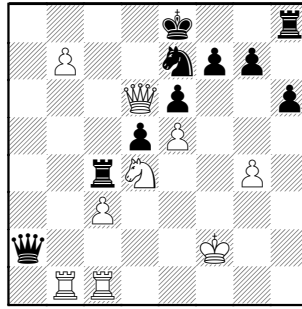
setting Knight where it can sacrifice for one of the Pawns.

31.Qa3 Be7 and Black is prepared to blockade whichever passer moves first.

30.b6 Qb7 31.a5



31...Rc4 too late ! [31...Ra8 idea of Ra6 or Nc8] **32.a6 Qxa6 33.b7 Bxf2+ 34.Kxf2 Qa2+**



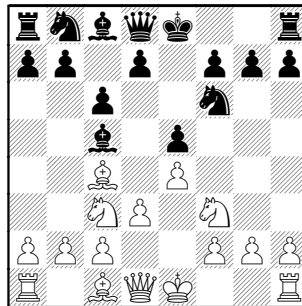
35.Kf1 Nc6 36.b8Q+

The backrank is weak -- mate cometh.
1-0

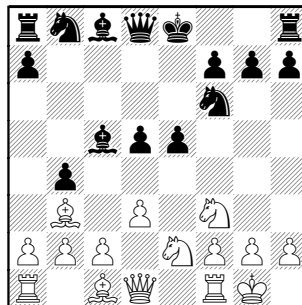
Frank seemed to prefer positions with fewer pieces—or once up any material he would trade, sometimes lengthening the game. The next game features a pretty Queen dance that sealed the opponent's fate.

Micklisch, Frank (1562) –
Nallathambi, R [C23]
UOP, 10-13-2005

1.e4 e5 2.Bc4 Bc5 3.d3 Nf6 4.Nc3 c6 5.Nf3



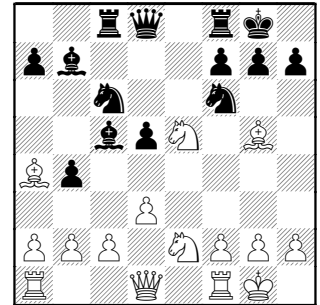
5...d5 6.exd5 b5 7.Bb3 cxd5 8.0-0 b4 9.Ne2



9...Nc6? Not just placing piece on an undefended square, but allowing a pin so that it doesn't really defend e5.

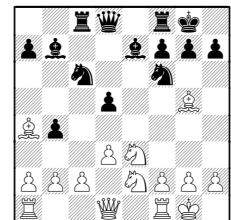
9...Bd6 is probably best as White has d3-d4 to force the trade of Black's central duo.

10.Ba4 Frank notices the problem. Any defense of Knight allows at least Bxc6 and Nxe5. **10...Bb7 11.Nxe5** incidently piling on the pinned piece **11...Rc8 12.Bg5 0-0**



13.Bxf6 finding a small tactic !

13.Ng4 harps on the new pin. **13...Be7** is the only way to maintain the Kingside Pawn structure **14.Ne3**

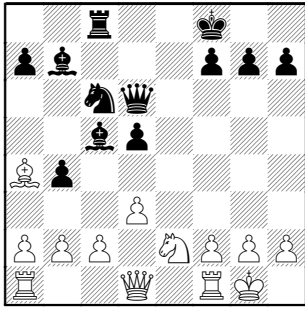


idea Bb3 keeps all the minors hyperactive, with Bxf6 undermining Pd5.

13...Qxf6

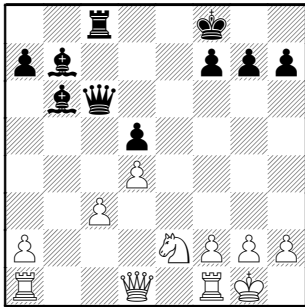
13...gxf6 14.Ng4 idea Nf4, Nh6+, Qg4 or Qh5 looks tempting.

14.Nd7 Qd6 15.Nxf8 Kxf8



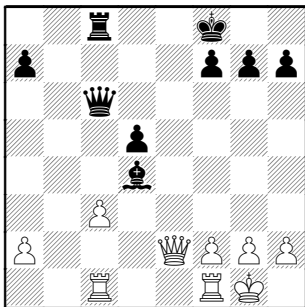
16.Bxc6 Qxc6 17.d4 wisely blocking the battery down the long diagonal

17...Bb6 18.c3 Needlessly makes a Pawn weakness on a half-open file.
18...bxc3 19.bxc3



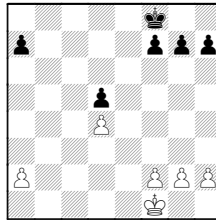
It is at this point White has wandered into a position where the conversion to a win is a bit problematic...

19...Ba6 20.Rc1 Bxe2 21.Qxe2 Bxd4



22.Qd3

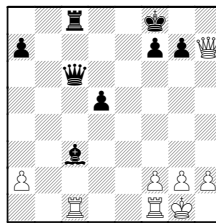
There's many "outs" to a draw:
22.cxd4 Qxc1 23.Rxc1 Rxc1+ 24.Qf1 Rxf1+ 25.Kxf1



is likely one such example

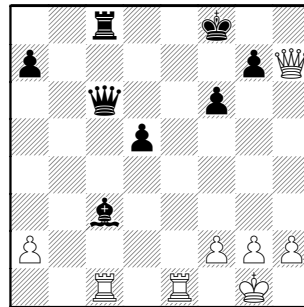
22...Be5

22...Bxc3 isn't a troublesome pin, as d5-d4 secures the piece 23.Qxh7

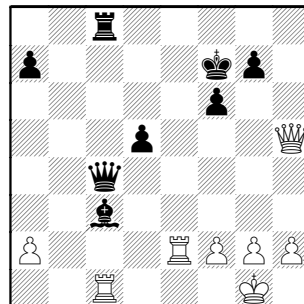


23...f6 as in game
(23...Qh6 may be good for a draw)

23.Qxh7 f6 24.Rfe1 Bxc3



OK, now he found it! **25.Re2 Qc4 26.Qh8+ Kf7 27.Qh5+**



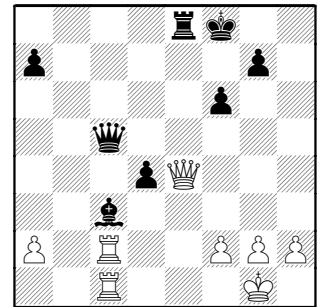
27...Kf8

27...Kg8 28.Re8+ Rxe8 29.Qxe8+ Kh7
30.Qh5+ is perpetual check

28.Rec2

28.Qh8+ is also perpetual if White is so inclined

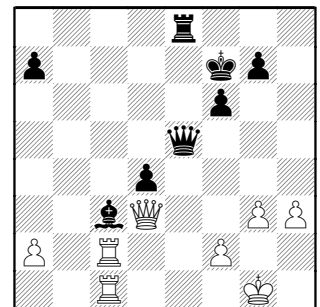
28...d4 now the Queen can interpose at g8 **29.Qg4 Qc5 30.Qe4 Re8**



31.Qd3

Black's dream is illustrated with
31.Qb7? d3! 32.Rxc3?? Qxc3 winning due to the backrank weakness

31...Qe5 32.h3 Maybe the wrong Pawn, as Black could reply Bb4-d6 and force g3 **32...Kf7 33.g3**

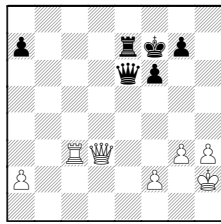


33...Qe6

33...Rh8 34.h4 (34.Kg2 Qe6) 34...g5

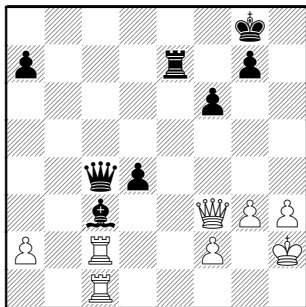
34.Kh2 Re7 [34...Rh8] 35.Qf3

35.Rxc3 dxc3 36.Rxc3

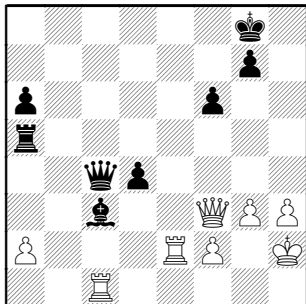


doesn't quite work: 36...Qxa2

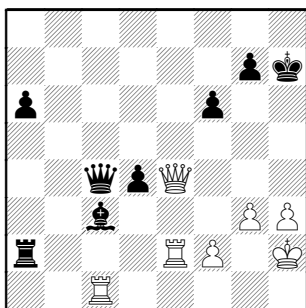
35...Qc4 36.Qh5+ Kg8 37.Qf3



37...a6 38.Qh5 Re5 39.Qf3 Ra5 40.Re2



40...Rxa2 41.Qa8+ Kh7 42.Qe4+



Chess Geometry-- The Queen began at f3 and uses diagonal and lateral powers to corner the King ! **42...Kg8?** [42...Kh6]

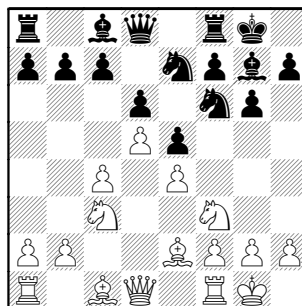
43.Qe8+ BLACK RESIGNED

43...Kh7 44.Qh5+ Kg8 45.Re8#
1-0

Next, we look at a game against a fellow North Division long-timer, which shows Frank's ability to get something from a known position.

Vigants,Albert (1578) -
Micklich,Frank (1496) [E97]
CICL op (2), 5-10-2008

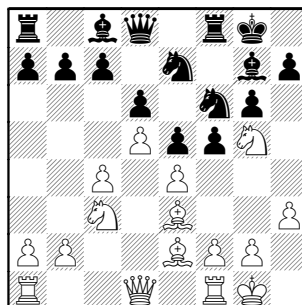
1.d4 Nf6 2.c4 g6 3.Nc3 Bg7 4.e4 d6
5.Nf3 Nc6 6.Be2 0-0 7.0-0 e5 8.d5
Ne7



A book position **9.h3**

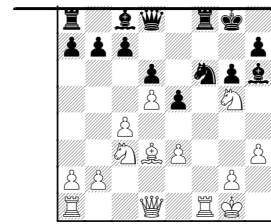
9.Ne1 is a standard move

9...Nd7 10.Be3 f5 11.Ng5 Nf6



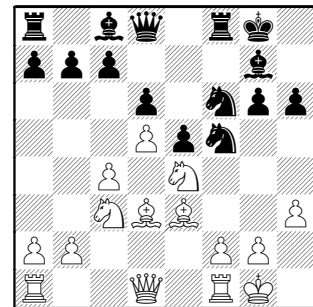
12.exf5 Nxf5 13.Bd3 h6

13...Nxe3 14.fxe3 Bh6



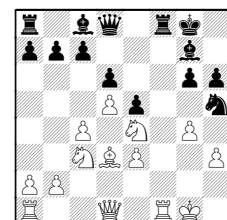
with idea Bxe3+ 15.h4 Ng4 reveals weaknesses at e3, g5 and the f-file

14.Nge4



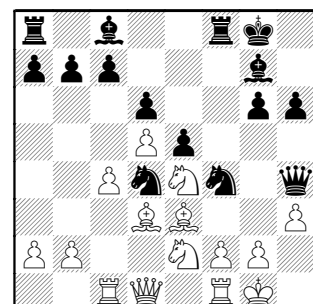
14...Nh5 15.Rb1

15.g4 Nxe3 16.fxe3



weakens squares around the White King, especially h4 and h3, but his pieces are actively placed.

15...Nd4 16.Rc1 Qh4 17.Ne2 Nf4

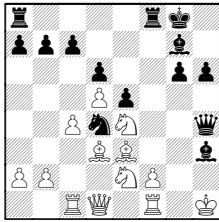


A King's Indian dream position-- Black's Knights are deep in there and the standard sac on h3 beckons.

18.Kh1 missing the threats **18...Nxg2**

More forcing is **18...Nxh3** as **Nxf2+** wins the Queen **19.Nxd4**

19.gxh3 Bxh3



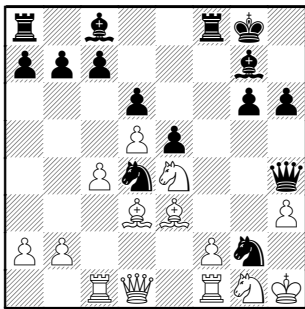
The reader can prove every reply is the same mating theme.

20.Re1 (20.Rg1 Bf1#)
20...Bg4+ 21.Kg1 Nf3+ will mate

19...exd4 20.gxh3
(20.Bd2 Nxf2+ wins Queen)

20...Bxh3 wins something, main threat is **Bg4+** winning Queen

19.Ng1

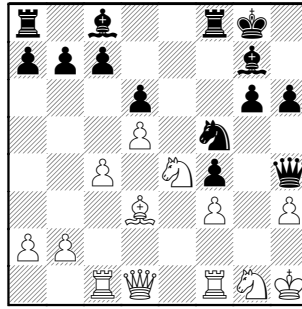


Of course the Knight can't be taken:
19.Kxg2?? Qxh3+ 20.Kg1 Nf3#

19...Nf4

Oddly missing the hanging Pawn !
19...Bxh3 back to discovery themes (mates involving h3 or f3 are temporarily guarded) such as **Bg4+** and **Nxe3, Bxf1+**. **20.Nxh3 Qxh3+ 21.Kg1 Nf3+** is curtains

20.Bxf4 exf4 21.f3 Nf5

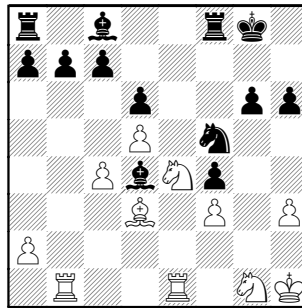


Of course Black is still winning, but now he has to work for it.

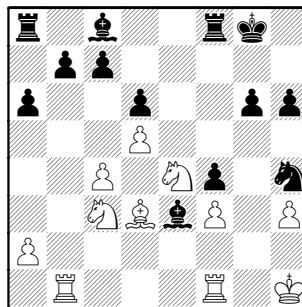
22.Qe1 Qxe1 The last thing to do is trade Queens during a flaming attack. Black is apparently satisfied being a mere couple Pawns up.

22...Qh5 idea **Ne3, Bxh3** keeps the pressure on

23.Rfxe1 Bxb2 24.Rb1 Bd4

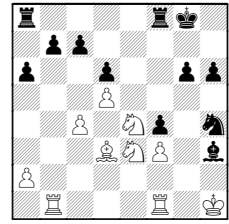


25.Ne2 Be3 26.N2c3 Nh4 27.Rf1 a6



28.Nd1 b6

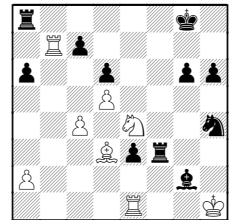
Suddenly not greedy! and missing another forced kill **28...Bxh3 29.Nxe3**



29...fxe3

(White gets some hope after **29...Bxf1 30.Nxf1 Nxf3 31.Rxb7**)

30.Rfe1 Rxf3 31.Rxb7 Bg2+



32.Kg1

(worse yet is **32.Kh2 Rh3+ 33.Kg1 Rh1#**)

32...Rh3 to mate at h1 forcing **33.Nf2 exf2+ 34.Kxf2 Rxd3**

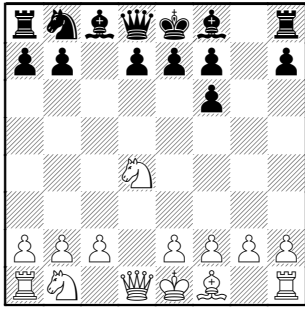
29.Nxe3 fxe3 30.Be2 Nf5 [30...Bxh3] 31.Rg1 Kg7 32.Rg2 Nd4 33.Rf1
White flagged, played some more for fun 0-1

In the last years, his perennially-strong, home team UOP forced Frank out of the counting boards. But he still wanted to play and be with them, so often found himself with games against the team captain, Art Olsen.

Our last feature happens to also be our last recorded game he left behind.

Olsen, Art (1483) –
Micklich, Frank (1496) [A45]
UOP, 1-20-2010

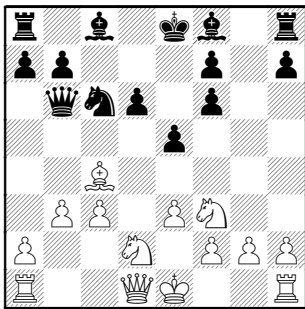
1.d4 Nf6 2.Bg5 c5 3.Bxf6 gxf6 4.Nf3 cxd4 5.Nxd4



5...e5 6.Nf3 Qb6 7.b3 Nc6 8.e3 Bb4+

8...Bc5 idea f5-4 looks interesting.

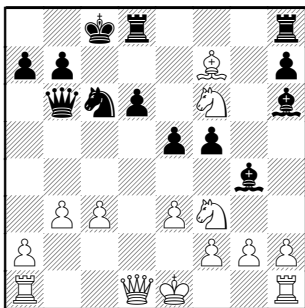
9.c3 Bf8 [9...Be7 seems natural]
10.Bc4 d6 11.Nbd2



11...Bg4

11...Be6 idea d5 (with Rd8 or 0-0-0)
12.Ne4 doesn't improve the game

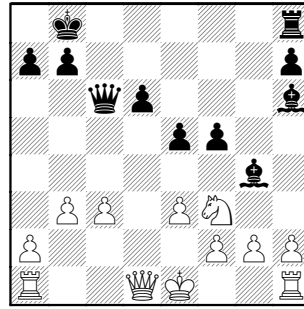
12.Ne4 0-0-0 13.Bxf7 f5 14.Nf6 Bh6?



15.Be6+ Kb8

worse yet is 15...Kc7 16.Nd5+

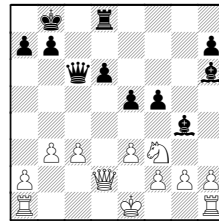
16.Nd7+ Rxd7 17.Bxd7 Qc7 18.Bxc6
Qxc6



The Bishop pair and lack of open lines for White's Rooks gives Black hope. Immediate threat is Qxc3+, of course

19.Qd2 Bxf3

19...Rd8



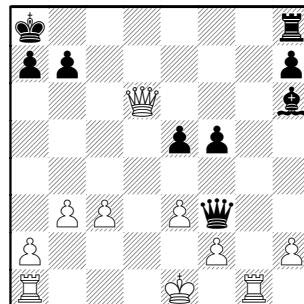
saves the d-Pawn, but still troubles f3.

20.Nh4

(20.Ng1? Qxg2; 20.Ke2? e4)

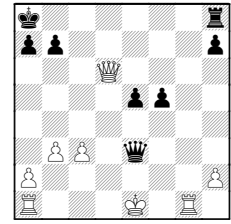
20...Bg5 21.f3 Bxh4+ 22.g3 Bxf3

20.gxf3 Qxf3 21.Qxd6+ Ka8 22.Rg1



22...Bxe3!! 23.Rf1

23.fxe3 Qxe3+



24.Kf1

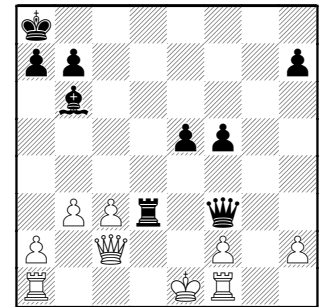
(24.Kd1 Qxg1+ 25.Kc2 Qxa1 26.Qxe5 Qxa2+)

24...Qf3+ draws

23...Bb6 Qe4+, Rd8 threatens 24.Qd2

No need to open lines for Black with 24.Qxe5 Rf8 idea Qc6, Re8

24...Rd8 25.Qc2 [25.Qe2?? Qxc3+] 25...Rd3



26.Qe2 Qd5 27.c4?? [27.Rd1] 27...Qa5+

Another mate with a dancing Queen.

0-1

Frank, you are already missed.

Thanks for the challenges, the games, the chats, and a witness that age is just a number !

Rest in peace, friend.

(Tom Friske)

SSCC Annual Christmas Party

By Patrice Connelly (WMBATS); Photos courtesy Wayne Ellice and Len Weber

For approximately the past fifteen years, the South Suburban Chess Club has celebrated the winter holidays with a pizza party for its members. Due to the tough economic times this year the Club was forced to forego pizza, but its players remained in high holiday spirits. This past Friday December 17th, players representing the two SSCC CICL team clubs (the Wombats and Pawns), as well as students from St. Xavier's CICL chess team were present along with other club members. Players brought potluck dishes to share, and a rated G10 blitz tournament directed by Wayne Ellice (WMBATS) was free to members. The tournament was won by Gopal Menon (WMBATS) in an Armageddon Match against Len Weber (WMBATS).



A festive Vito Vitkauskas (PAWNS) ponders his move while Marty Franek (WMBATS) looks on; right; the potluck refreshments included a tray of chocolate chessmen, courtesy of Patrice Connelly (WMBATS)

The club also honored its roots, the Orland Park Chess club, from which some claim the current SSCC grew. The Orland Park chess club held an annual award party which honored its members not only for their chess skills, but some other humorous ones as well! This year the SSCC renewed that tradition with its own set of awards. Players received certificates for titles such as “Most Improved Player (USCF Rating)” (awarded to Imtiaz Garcia, WMBATS), “Biggest Upset,” (awarded to Tony Christian, PAWNS), and “Club Officer of the Year” (awarded to Wayne Ellice, WMBATS). Other titles include “Player to most likely pull the fire alarm at a tournament (Chelsea Harper, PAWNS), and “Most games won while wearing sunglasses.” (Menon Gopal, WMBATS).

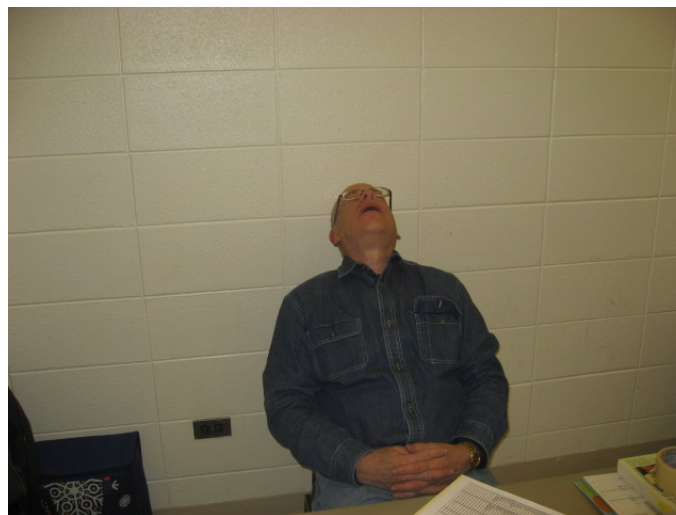
The Club also honored Joe Bannon with the “Lifetime Service to SSCC” award for his years of keeping the club afloat while it moved locations. Though he is currently in rehabilitation for a hip injury and was unable to attend the club, he is always up for a game at the Washington Smith rehabilitation center in Beverly, IL.



Patrice Connelly (WMBATS) awards Joe Sinople (StXav) "Chess player most likely to open for Eminem."

The Club's weekly newsletter, "The Open File," published predictions for the 2011 year, not only for its members, but for its two CICL teams as well. The SSCC Wombats are predicted to perform well this year (though how could they top their season last year, being one of the teams in last year's historic five-way tie?), and at the same time educate the chess players of Illinois as to exactly what a "wombat" is. The SSCC Pawns do not carry such a lofty goal, but are prophesized to make trades in the off season to create a superb line-up, but will keep their very modest and historic name.

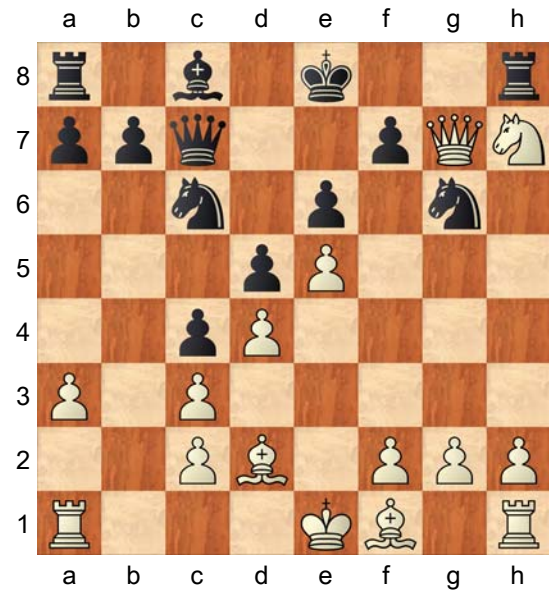
The holiday party was a great close to a big year for many of its members, who had progressed in their chess skills and enjoyed one another's company at various tournaments. Here's to a bright and promising new year for them and all CICL chess players!



**CICL Player and Tournament Director Wayne Ellice wishes
"A Merry Christmas to All, and to All, a Good Night!"**

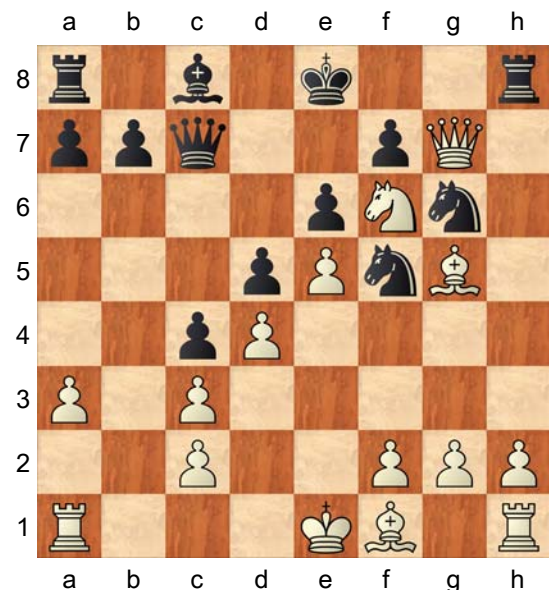
Vecanski,Drago **C18**
 Alberts,Wally **1605**
1578
 STCCC at DGCC Rnd 8, Brd 6 25.02.09
[Klug,Steffen]

Our long time club member Drago Vecanski decided to move back to Serbia to be with his family. Drago carries a FIDE rating of about 1800. He loves dynamic, sharp play. In skittles blitz games with Drago, it is common to experience wild positions with each side threatening mate, pieces en prise and unfathomable complications. Games would be so fun that sometimes both players would end the game laughing regardless of who won. He is a student of chess history, and brings an interesting Eastern European perspective and knowledge of chess history, given his roots in Belgrade, Serbia. Drago came to the Unites States about 10 years ago to pursue a career in electrical engineering. He showed great appreciation for the opportunities our country gave him, and carried himself with class on and off the chess board. We will certainly miss him. I wanted to use this opportunity to thank him for his contribution to our Downers Grove Chess Club. **1.e4 e6 2.d4 d5 3.Nc3 Bb4 4.e5 c5 5.a3 Bxc3+ 6.bxc3 Qa5 7.Bd2 c4** Black is wasting precious time. **Qa4** or **Ne7** is theory **8.Qg4 Ne7?** **Kf8** or **g6** are necessary **9.Qxg7 Ng6 10.Nf3 Nc6 11.Ng5** The Knight and the Queen make a powerful duo. The black squares f6, and f7 are very weak. **Qc7 12.Nxh7** Diagram **Nce7 13.Bg5** Bringing another piece into the attack and controlling the



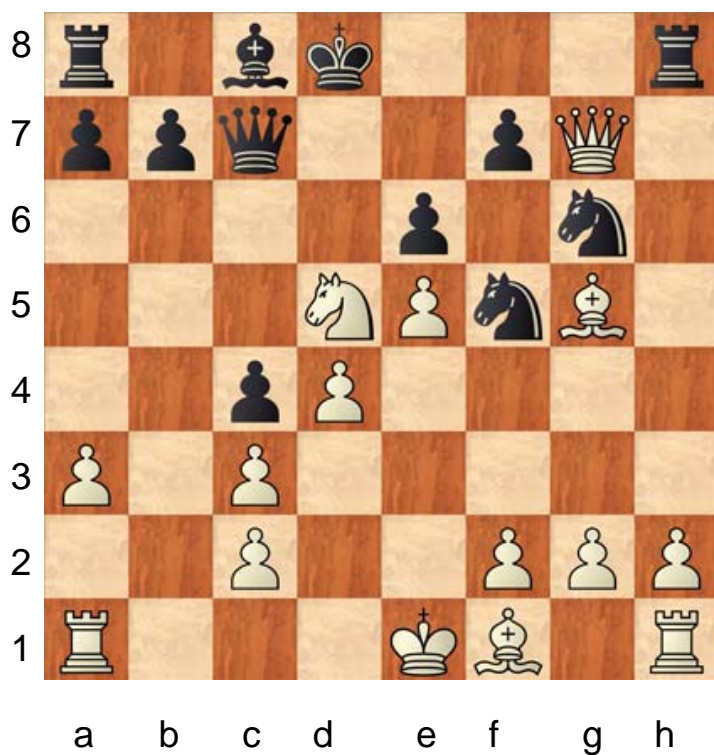
important dark squares **Nf5?** Black is already lost, but now Drago is in his element.

[13...Kd7 14.Qxf7 Kc6]
14.Nf6+ Diagram



Setting up a great combination where the bishop shines. **Kd8 15.Nxd5+** Diagram **Kd7** This is a great display of active pieces. **16.Qxf7+** Black loses the

ChessBase 11 Printout, Steffen Klug, 12/14/2010



Queen and resigns

1-0



Drago shakes hands with Club President Brian Smith. Photo Courtesy Brian Smith

E99

□ Klug

■ Tennant

Wombats - DgCC

06.10.2010

[Klug, Steffen]

1.d4 g6 2.c4 Nf6 3.Nc3 Bg7 4.e4 d6
5.Nf3 0-0 6.Be2 e5 7.0-0 Nc6 8.d5
Ne7 9.Ne1 Nd7 10.Nd3 f5 11.f3 Nf6
12.b4 f4 13.a4 g5 14.c5 Rf7 15.Ba3
Bf8 16.g4

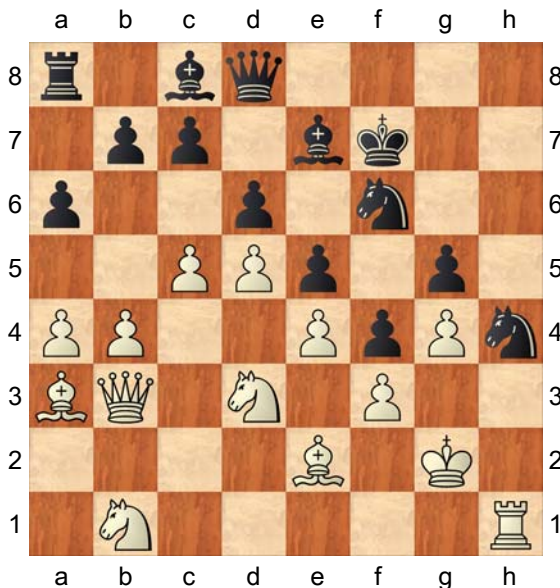
[better would be 16.a5 Rg7 17.Nf2
h5 18.h3 g4 19.hxg4 hxg4 20.fxg4
Ng6]

16...h5 17.h3 Rh7 18.Kg2 Ng6

19.Rh1 Be7 20.Qb3 My deep Rybka 4
says +0.2 Kf7 This is the different move
to the Bulletin. 21.Rag1

[21.a5 Qh8 22.Rag1 Nh4+ 23.Kf2
Kg6]

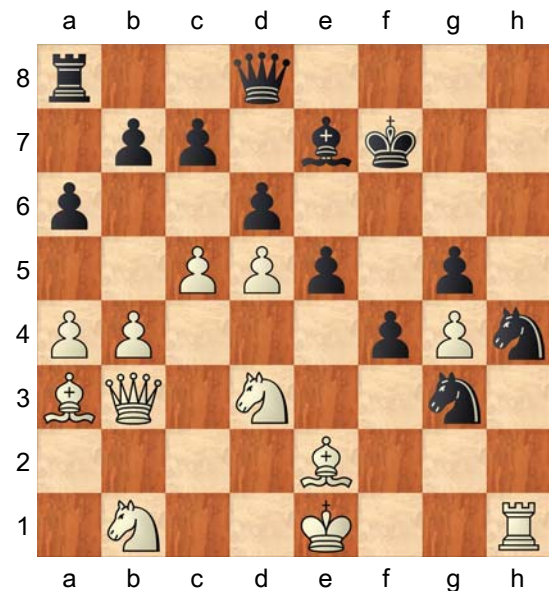
21...a6 22.Nb1 hxg4 23.hxg4 Rxh1
24.Rxh1 Nh4+ Diagram



25.Kf2? One of those crazy moments
when I knew Bxg4 was coming and
wanted to play Kf1, but performed a
finger fehler in the last moment.

[25.Kf1 Bxg4 26.fxg4 Nxe4 27.Rg1
f3 28.Bd1 Nf6 29.Nxe5+ dxe5
30.d6+ Kg7 31.dxe7 Qxe7 32.Bxf3
Nxf3 33.Qxf3]
[25.Kg1 Bxg4 26.fxg4 Nxe4 27.Rh3]
25...Bxg4 26.Rxh4

[26.fxg4 It is wonderful to have these
electronic beasts, but it does not help
during the game. Here is the line I saw
Nxe4+ 27.Ke1 Ng3 Diagram



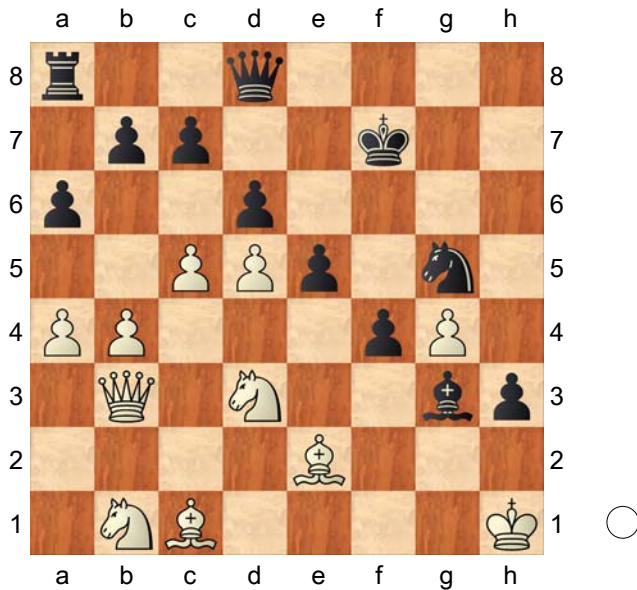
variation: without Rxh4

28.Rh3 e4 29.Nf2 e3 30.Nd3 Nxe2
31.Kxe2 Qd7 I can not protect g4 and
everything falls apart]
26...gxh4 27.fxg4 Nxe4+ 28.Kg2 h3+
29.Kh2 Bh4 30.Bc1 Bg3+ 31.Kh1
Qe7

[31...Ng5 Diagram

(Diagram)

I thought thas was the killer 32.Qd1
(32.Nc3 e4 33.Nxf4 Qf6 outch)
32...Qf6 33.Nd2 e4 (33...Re8 34.Bb2
Qg6 35.Qf1 Kg8) 34.Bb2 Qe7
and it is just too much without an



Variation: 31... Ng5, instead of Qe7

engine]

32.Nd2 Nxd2

[32...Ng5 Again I thought this was the killer, I think I am right 33.Nf1 Qf6 34.Qd1 e4 35.Bb2 Qh6 36.Ne1 Bxe1 37.Qxe1 e3]

33.Bxd2 Rf8 34.Qc4 Kg7 35.Bf3 b5
Diagram

(Diagram)

Here I feel like the tide is changing, but I am short on time and not patient

36.axb5

[36.Qe4 bxa4 37.Bc3]

36...axb5 37.Qe4 Qf7 38.Qe2??!

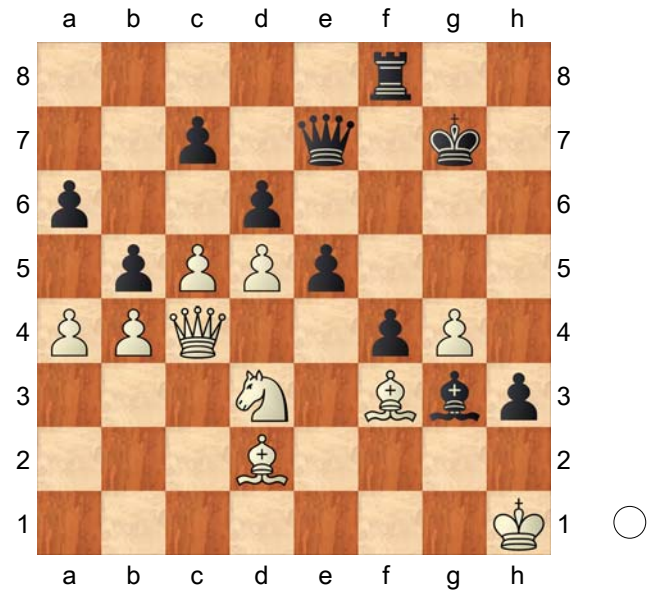
why ? there is time for that later
I was concerned about Qf7 and I did not want to exchange Queens. Do not ask me why

[38.Bc3 Re8]

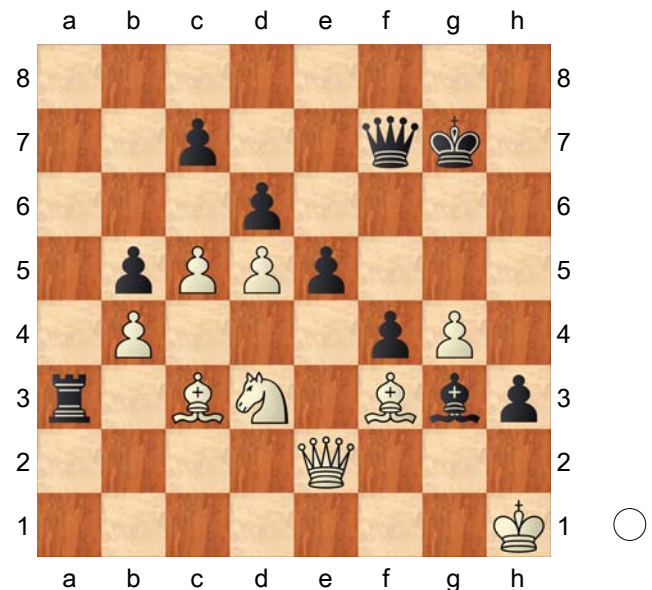
38...Ra8 39.Bc3 Ra3? Diagram

[39...Qg6 40.Be4 Qf6 (40...Ra2 41.Bb2 Qg5 42.Bf5) 41.Bf5]

40.Nxe5? Diagram Just not excusable



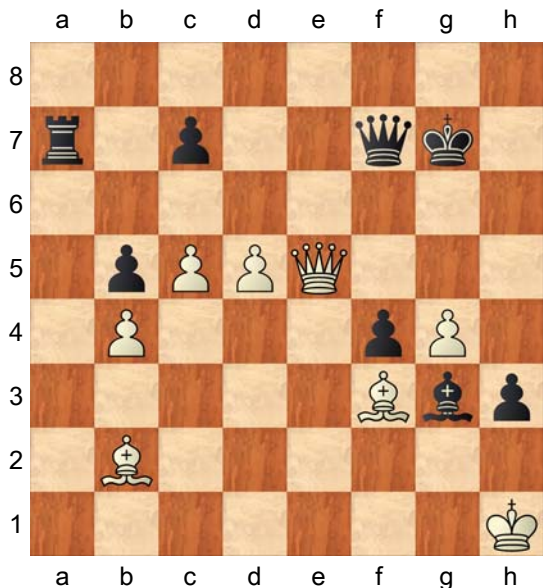
After 35... b5
Turning of the tide



After 39... Ra3?

Bb2 would have probably won outright
[40.Bb2! I believe this would have won the game for me, patience, patience Ra7 that is what we were looking at after the game, but it is totally lost now (40...Rb3 Rybka.. 41.Qc2 Rxb2 42.Qxb2 Qg6 43.Nf2 and there is a lot going on, but I think this is quite winable Bxf2 44.Qxf2 Qd3 45.Qe2 Qb1+ 46.Kh2 Qxb4 47.cxd6 cxd6

48.Kxh3 ; 40...Ra4 41.Nxe5 Qe8)
41.Nxe5 dxe5 42.Qxe5+ Diagram



Variation: 40. Bb2 Ra7 41
Nxe5 dxe5 42. Qxe5 ++-

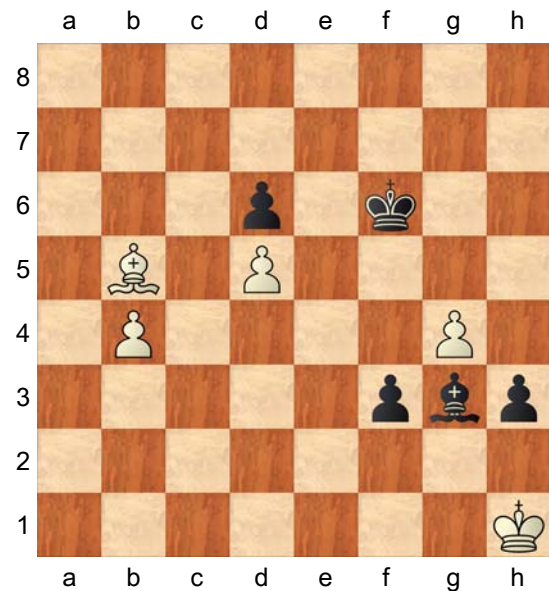
] 40...dxe5 Diagram
[40...Rxc3! Diagram



Variation: 40. ... Rxc3

I had seen this moves as soon as I hit the e5 pawn with my Knight, strange how the brain works. It saves the game, but it probably only leads to a draw
41.Nxf7 Rc1+ 42.Qd1 Rxd1+

43.Bxd1 Kxf7 44.cxd6 cxd6 45.Be2 Kf6 (45...Be1 46.Kh2 Bxb4 47.Bxb5) 46.Bxb5 f3 Diagram



Variation: 40. ..Rxc3, with opposite Bishop, but very dangerous

47.Bf1

A) 47...Kg5 48.Bxh3 Kh4 49.Bf1 Bf2 50.g5 Kxg5 51.b5 Kf4 52.Kh2 Ke4 53.Bc4 Kd4 54.Bb3 Kd3 (54...Kc5 55.Bd1);
B) 47...h2 48.b5 Bf2 49.Kxh2 Ke5]

(Diagram)

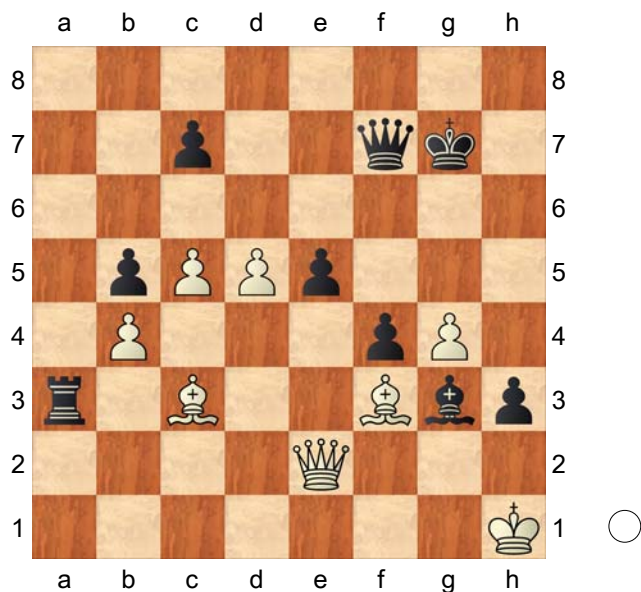
41.Qxe5+ Kf8 42.d6 Rxc3 Diagram

(Diagram)

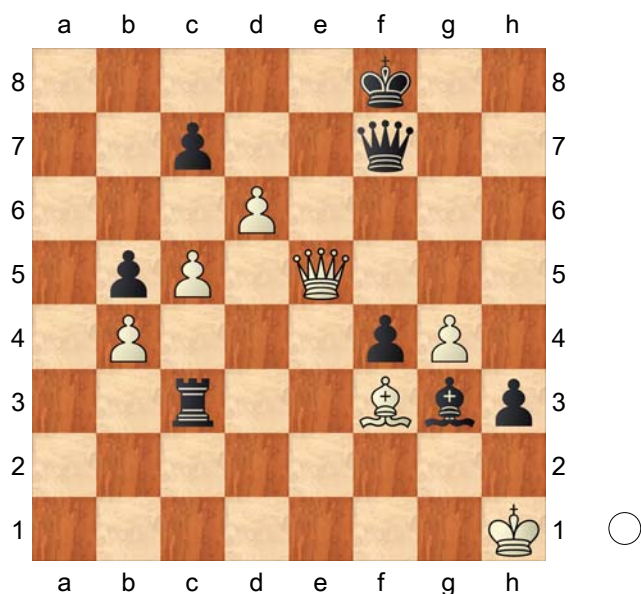
43.Qxc3

[43.Qh8+ Of course I saw this check, buy wow I did not think it made a difference Qg8 44.Qxc3 Diagram

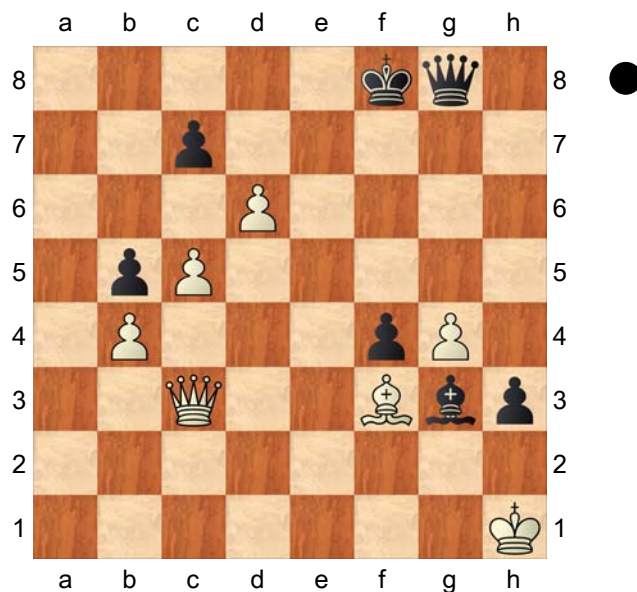
A) 44...Qa2 45.Qf6+ Kg8 46.Qd8+ Kg7 47.Qxc7+ Kh6 48.g5+ Kxg5 (48...Kg6 49.Be4+) 49.Qe7+ Kg6



Before 41. Qxe5



After 42. Rxc3



Variation: 42...Qh8 => Qxc3

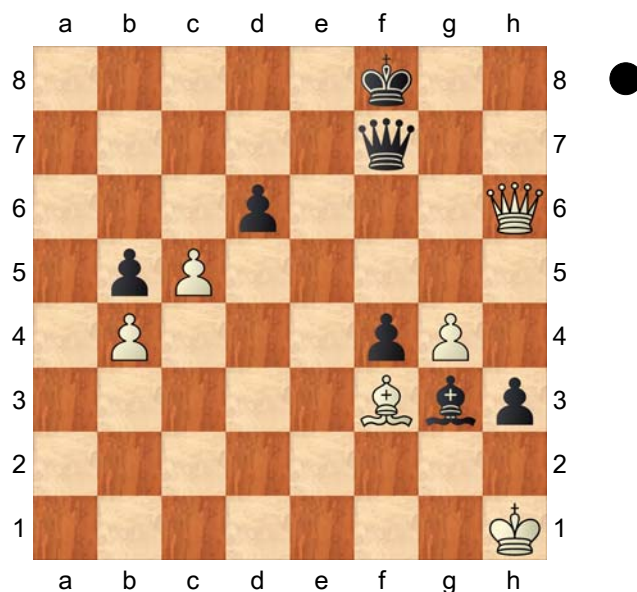
50.Be4+ Kh5 51.Qe5+ ;

B) 44...cxd6 45.Qf6+ Qf7

Now I thought I just take the pawn and it is drawn 46.Qh6+ Diagram

(46.Qxf7+ Kxf7 47.c6 Ke7

48.Bd5= ; 46.Qxd6+ Qe7 47.Qh6+)



Variation: 47...Qh6 instead of Qxd6

46...Kg8 47.Qg5+ Kf8 48.Bd5]

43...cxd6 44.cxd6 Qc4 That was one exciting game.

1/2-1/2



Player Ratings

Tuesday, December 14, 2010

Team Player W L D Rating

AMARS

BROCK,B	2	0	1	2036*
BRASWELL,I	0	0	0	1837#
ALLEN,H	0	0	0	1801C
EAMAN,R	1	0	2	1796C
FRANK,M	2	1	0	1727C
DUFFY,J	1	1	1	1600C
ACEVEDO,U	2	1	0	1512*
FULKERSON,R	2	0	0	1481
GRUDZINSKI,T	0	0	0	1100?
IRBY,L	0	0	0	1071*

AMATS

HARRIS,M	2	1	0	1890*
FURTNER,F	1	1	2	1494
JAMES,D	0	0	0	1413#
MEYER-ABBOTT,B	0	1	0	1408*
MASITI,J	2	0	0	1371*
KOLLI,S	1	1	0	1361*
FARMER,B	1	0	0	1356#
MEHDI,SYED	1	0	0	1310#
MEYER,C	0	2	0	1216*
HARPER,M	0	4	0	1171*
BAROT,N	0	1	1	1010#
YURCHENKO,O	0	0	0	999*
PATELLA,C	0	0	1	952#

BCBS

KHAN,M	0	2	1	1811*
BRUNO,R	2	1	0	1607*
SAN_MIGUEL,L	2	0	1	1588*
GUIDRY,D	0	1	2	1581*
GUIU,C	2	1	0	1572*
BURGESS,A	2	1	0	1467*
STURGEON,V	0	2	0	1421#
BINDLER,M	0	0	0	1395#
WONG,A	2	0	0	1393#
MATA,S	3	1	0	1376*
LACHOWIEC,S	0	1	0	1291#
PETTIS,D	1	1	0	1210#

BPMLX

REICH,T	0	3	1	1731
ZADEREJ,V	1	2	0	1660
HENDRICKSON,B	0	1	0	1522
MCGOWAN,D	0	1	1	1480
RUFUS,B	1	1	0	1463
RINGENBERG,T	0	0	0	1366
DEICHMANN,E	0	1	2	1287
MANILA,M	1	2	0	1135
MUELLER,R	0	2	0	1031*
AREND,A	0	3	0	800#

Rating Symbols: ? - PreCICL (0 games), # - New (1 to 8 rated games), * - Provisional (9 to 25), otherwise Established (26+)
 C - Centurian (100-199 games), D - Double (200-299), T - Triple (300-399), Q - Quad (400-499), V - Quintuple (500-599)

Tuesday, December 14, 2010

Page 1 of 7

Team	Player	W	L	D	Rating
CITGR					
	PFAU,M	11	1	0	2100
	ONG,K	8	2	1	1773
	MUHS,A	0	0	0	1716
	KUNHIRAMAN,P	6	5	1	1536*
	SENSAT,J	6	4	2	1511
	PRIMORAC,V	6	4	2	1480*
	LE,DUC	3	4	1	1474
	PROKOPOWICZ,P	3	7	0	1199*
	PARRA,J	2	7	0	1178*
	SHEVCHUK,E	0	7	0	1144#
DGCC					
	KLUG,S	2	0	1	2158
	BUNGO,G	4	0	0	2089*
	EGERTON,J	1	1	1	2025
	DUGOVIC,D	1	0	1	1874*
	WAKERLY,R	1	0	2	1850
	POTTS,K	1	2	1	1831
	TAN,GADDIEL	2	0	1	1807*
	PARMET,D	2	0	0	1792*
	YALAVARTHI,R	1	1	0	1720*
	MANEY,A	1	1	0	1644#
	SMITH,BR	1	0	0	1614C
	VECANSKI,D	0	1	0	1581*
	ROMANOWITZ,C	2	0	0	1383*

DRGNS					
	TEGEL,F	0	2	1	2026Q
	LUDWIG,T	2	1	1	1987D
	MARCOWKA,R	0	3	0	1845T
	PEHAS,A	0	0	0	1838C
	PARKER,L	0	1	1	1709
	BLACKMON,E	0	0	0	1688C
	EUSTACE,D	0	3	0	1524D
	THOMAS,J	0	2	0	1474D
	KOMORAVOLU,K	0	1	0	1412
	STAMM,V	1	2	0	1404T
	BREYER,A	2	1	0	1346
DRW					
	HAYHURST,W	2	0	0	1942
	GORODETSKIY,E	2	0	0	1846
	GORODETSKIY,S	2	0	0	1802
	GUGENHEIM,O	2	0	0	1594*
	CAPUTO,W	2	0	0	1552#
	RYAN,P	0	0	0	1530#
	REDMOND,M	3	0	0	1523*
	BEDER,B	1	2	0	1512*
	KOMBLEVITZ,A	0	1	1	1138#
EXCLB					
	HART,V	2	2	0	2129
	LEE,D	2	2	0	1899
	ENGELN,M	2	2	0	1795
	DOWELL,E	2	0	1	1782
	WEITZ,R	2	0	0	1621D
	VIGANTS,A	3	0	0	1574C
	REID,C	2	0	0	1504D
	SUERTH,F	0	1	0	1491D
	SIEGEL,R	0	1	0	1456C

Rating Symbols: ? - PreCICL (0 games), # - New (1 to 8 rated games), * - Provisional (9 to 25), otherwise Established (26+)
C - Centurian (100-199 games), D - Double (200-299), T - Triple (300-399), Q - Quad (400-499), V - Quintuple (500-599)

Team	Player	W	L	D	Rating						
FERMI	SERGATSKOV,D	3	1	1	2045*	GAMBT	CIULLA,S	0	1	0	1748#
	HERNANDEZ,R	0	0	0	2008#		GHAIBEH,AYMAN	0	3	0	1679*
	SPIEGEL,L	3	1	1	1959T		GILBERT,S	0	0	1	1630#
	GAINES,I	3	0	1	1758T		KRISHNAMURTHY,S	0	2	0	1568*
	STAPLES,C	1	0	1	1609C		DOLGIN,A	0	2	0	1563#
	DEGRAFF,B	1	1	1	1543		MITCHELL,D	0	2	0	1539*
	STRAIN,D	2	0	2	1430*		MOORE,A	0	3	0	1428#
	MHASHILKAR,P	2	1	1	1292#		STILES,J	1	1	1	1258#
	GIANLUCA,I	0	0	0	1216#		BERGMEIER,C	0	0	0	1239#
	CORBO,M	0	0	0	992#		NIAZI,S	0	1	0	1208#
	DRENDEL,B	0	2	0	958*		ALI,F	0	1	0	1168#
FORKS	INUMERABLE,F	0	0	1	2193C		WALD,G	0	0	0	1105#
	SANTIAGO,T	2	2	0	1981C		MOSLEY,A	0	4	0	928*
	FRISKE,T	2	1	0	1973D		LINDBERG,S	0	0	0	884#
	LEVENSON,S	1	1	2	1941		SAUSED,A,J	0	0	0	861#
	SOLLANO,E	1	1	1	1933C						
	BIALON,D	0	0	0	1750						
	HAMELINK,N	2	1	0	1687						
	HUGHES,N	0	1	1	1589D						
	BIAN,M	3	0	0	1483*						
	NICK,X	0	0	0	1230*						
	KACZYNSKI,W	1	0	0	1091*						

Rating Symbols: ? - PreCICL (0 games), # - New (1 to 8 rated games), * - Provisional (9 to 25), otherwise Established (26+)
C - Centurian (100-199 games), D - Double (200-299), T - Triple (300-399), Q - Quad (400-499), V - Quintuple (500-599)

Team	Player	W	L	D	Rating						
HEDGE						LOYLA					
	RAUCHMAN,M	1	0	1	2017		ALEXANDER,J	0	0	0	1685*
	JASAITIS,A	3	0	1	1949T		CLARK,I	0	3	1	1461*
	SMITH,M	3	0	0	1949		SOVA,ANDREW	0	0	0	1449#
	SHEPARDSON,T	2	1	0	1601*		ADAMS,W	0	0	0	1449*
	PALMER,J	0	0	0	1600*		DIMOPOULOS,P	2	1	0	1439*
	KRATKA,M	1	0	0	1587		ZACHAR,T	1	1	0	1432#
	CHAVEZ,A	2	0	1	1398*		GLIWA,D	2	1	0	1352#
	HEINER,J	0	0	0	1394*		PLOTNER,J	0	1	0	1291*
	COOMBES,N	2	0	0	1356*		JOHNSON,Z	0	0	0	1257#
	NICHOLS,P	2	0	0	1333#		SAMPEI	0	0	0	1236#
	GALE,M	0	1	0	1191#		WOJDYLA	0	3	0	1210#
	FINE,A	1	2	0	1175#		BROWN,B	0	4	0	1190#
	BOLOTOV,A	0	0	0	1131#		REITER,J	0	1	0	1139#
	CROSBY,N	1	1	0	1052*		MEDINA,D	0	2	0	1131#
	RORVICK,C	0	0	0	1002#		ALEXANDER,A	0	0	0	1130#
	MCENEANY,T	0	1	0	994*	MKING					
JJCCC							MELNIKOV,I	1	0	0	2033C
	BRUCE,K	0	1	1	1427#		AITIPAMULA,J	1	2	1	2012*
	ABERNATHY,J	0	2	0	1363#		WALLACH,C	1	1	2	1968C
	MARCHERT_JR ,J	0	1	0	1245#		PIPARIA,J	1	2	1	1930C
	RAINEY,R	0	1	0	1232#		CYGAN,J	1	1	2	1765
	THOMPSON,G	0	1	0	1192#		GONCHAROFF,N	1	0	3	1570V
	LEDFORD,J	0	1	0	1153#		ALFONSO,E	0	0	0	1482
	MARCHERT_SR,J	0	2	0	1042#		RABINOVICH,E	1	2	0	1440
	CRAIG,S	0	2	0	985#		GRYPARIS,J	0	0	1	1380C

Rating Symbols: ? - PreCICL (0 games), # - New (1 to 8 rated games), * - Provisional (9 to 25), otherwise Established (26+)
C - Centurian (100-199 games), D - Double (200-299), T - Triple (300-399), Q - Quad (400-499), V - Quintuple (500-599)

Team	Player	W	L	D	Rating
MKNGT					
	FRIDMAN,Y	3	0	1	2242C
	MORRIS,R	3	0	1	2222C
	THOMSON,J	3	0	1	1997C
	BALICKI,J	1	0	3	1800C
	CHERKASSKY,G	1	1	0	1731
	KARANDIKAR,S	0	0	1	1651
	DUONG,R	0	0	0	1503*
	BABINEC,J	1	1	1	1395
	PATTIAM,J	0	0	0	1368#
NWEST					
	SOLOMON,A	0	0	0	1994
	BAKSHI,A	0	0	0	1947
	WANG,B	0	0	0	1888
	KRAVIK,P	0	1	0	1774*
	SHEKHTMAN,L	0	2	0	1767#
	GAFNI,P	1	1	1	1718*
	MODI,P	0	0	2	1714#
	ULLOM,G	0	0	0	1647
	ANDERSON,E	0	0	0	1551#
	LOU,J	2	0	0	1495#
	KRAVIK,S	0	0	0	1459*
	GINZBERG,D	1	1	0	1417#
	SLIVKA,MAX	0	0	0	1412*
	CHO,V	0	0	0	1390#
	FRIEDLANDER,M	0	0	0	1381#
	KIM,C	1	0	0	1316#
	WEINFELD,M	1	1	0	1298#
	WU,S	0	1	0	1179#
	BABCOCK,S	0	2	0	1067#
	LAMBSON,D	0	0	0	800#

PAWNS					
	KRAS,T	0	0	0	2149C
	CAVENEY,J	0	1	2	2093*
	LATIMER,E	0	1	3	1961T
	KORENMAN,M	2	1	2	1945*
	HOLLAWAY,M	2	1	2	1794*
	EDEUS,D	2	1	1	1709*
	KUKURUZA,V	3	0	1	1699*
	MISHLOVE,D	0	0	0	1538#
	CHRISTIAN,T	0	0	0	1522*
	FABIJONAS,R	1	1	1	1452T
	HARPER,C	3	1	1	1430*
	SPITZIG,M	1	0	0	1359
	O'DELL,DW	0	0	0	1348D
ROOKS					
	BENEDEK,R	2	1	1	2102T
	ANTIPOVA,A	0	0	0	2080#
	HILL,R	1	2	1	1930D
	SUAREZ,E	2	0	1	1911C
	BAURAC,D	3	1	0	1708T
	YACOUT,A	0	0	0	1583
	DECMAN,S	0	2	1	1547T
	GRUDZINSKI,J	0	0	0	1434
	KUHLMANN,S	0	0	0	1378*
	GWEKOH,R	1	1	0	1355*
	RAMANATHAN,N	2	0	0	1256*
	HLOHOWSKYJ,I	0	2	0	1043*
	SUKAMAR,N	1	3	0	858#

Rating Symbols: ? - PreCICL (0 games), # - New (1 to 8 rated games), * - Provisional (9 to 25), otherwise Established (26+)
C - Centurian (100-199 games), D - Double (200-299), T - Triple (300-399), Q - Quad (400-499), V - Quintuple (500-599)

Team	Player	W	L	D	Rating						
STCCC	MARSHALL,J	1	1	0	2258	SXUCT	CELENTANO,A	1	1	0	1870*
	ACOSTA,M	0	0	1	2156*		SARNA,J	1	1	1	1420*
	WIEWEL,J	0	1	0	2137		JACKSON,WILLIAM	0	3	0	1370*
	SPLINTER,J	0	0	0	2127		TURNMAN,A	0	0	0	1235#
	FREIDEL,P	0	0	0	1961		ABNEY,I	1	2	0	1197*
	SUITS,J	1	1	0	1852		ONWUMAH,I	1	2	0	1162*
	VON_HATTEN,J	2	0	0	1834		BRANNON,M	2	2	0	1122#
	DJORDJEVIC,V	0	0	0	1685*		MCDONNELL,B	0	2	0	938*
	KOLB,S	2	0	0	1642#		SINOPLE,J	0	2	0	859*
	FORRO,V	0	0	0	1626#		WALSH,J	0	0	0	827#
	SMITH,D	1	1	0	1617*		NORRIS,T	0	0	0	800#
	PADILLA,R	0	0	0	1580		CONDITT,D	0	0	0	800#
	ALBERTS,W	0	0	0	1569	TT					
	JANSSEN,G	0	0	0	1546		KHLUS,V	1	4	0	1470#
	STOSKUS,A	0	0	0	1521*		HUNTER,JOSH	0	3	1	1464#
	GIERTZ,C	1	0	0	1474#		GOTTEMOLLER,A	2	3	0	1264#
	SWANSON,E	0	0	0	1469#		VISSER,JOUBERT	2	3	0	1189*
	CRISSMAN,J	0	0	0	1421#		SCHWARTZ,BRIAN	0	4	1	1151#
	GREER,J	0	0	0	1376*		BRINSON,J	1	0	0	1100#
	POWERS,E	0	0	0	1375*		WILK,M	0	3	1	999#
	BALES,R	0	0	0	1365*		VARGAS,R	0	2	0	888#
	BOURIS,B	0	0	0	1257#						
	VOIGHT,T	0	0	0	1246#						
	RIES,G	0	0	0	1109#						

Rating Symbols: ? - PreCICL (0 games), # - New (1 to 8 rated games), * - Provisional (9 to 25), otherwise Established (26+)
C - Centurian (100-199 games), D - Double (200-299), T - Triple (300-399), Q - Quad (400-499), V - Quintuple (500-599)

Team	Player	W	L	D	Rating						
TYROS	ALLSBROOK,F	0	0	1	2161	WMBAT	TENNANT,S	1	0	1	2226*
	DIAZ,P	1	1	1	2034D		MENON,G	0	0	1	2200*
	GUIO,J	0	1	0	1864C		PANNER,G	0	0	0	2105#
	STOLTZ,B	1	0	0	1864D		WEBER,L	1	0	1	2072
	DOBROVOLNY,C	2	1	0	1721D		FREITAG,T	3	0	0	2026
	BUCHNER,R	1	0	0	1650C		ELLICE,W	2	0	1	1734D
	DENMARK,T	0	0	0	1627		ZOLKOS,A	1	0	2	1718
	HAHNE,D	2	1	0	1615D		FRANEK,M	0	0	1	1694D
	VAIL,M	1	0	1	1597		SAMPSON,L	0	0	0	1649#
	KRUEGER,J	0	0	0	1467#		RAJSKY,J	0	2	0	1602#
	KURUVILLA,E	3	0	0	1368#		CONNELLY,P	1	0	0	1577*
	BYRNE,M	2	1	0	1359		DAVIS,M	0	0	0	936#
	KARPIERZ,J	0	0	0	1313		ZACK,K	0	0	0	800#
UOP	LEONG,G	1	0	1	1959D						
	SIWEK,M	1	1	1	1936D						
	VAN_MEER,J	1	0	0	1912						
	BOLDINGH,E	3	0	1	1873D						
	EASTON,R	0	1	1	1813C						
	SAJBEL,P	0	0	0	1781C						
	LECHNICK,J	0	2	2	1680C						
	MOSSBRIDGE,A	0	1	1	1589						
	OLSEN,A	2	1	1	1488C						
	CAMPBELL,DOUG	0	0	0	1386*						
	LANG,P	0	1	0	1229#						
	RAMIREZ,A	0	1	0	1080#						

Rating Symbols: ? - PreCICL (0 games), # - New (1 to 8 rated games), * - Provisional (9 to 25), otherwise Established (26+)
C - Centurian (100-199 games), D - Double (200-299), T - Triple (300-399), Q - Quad (400-499), V - Quintuple (500-599)