

The Chicago Chess Player

The Official Bulletin of the Chicago Industrial Chess League



Image: Patrice Connelly

**Inside This Edition:
Analysis of Season's Upsets
Ratings**

CICL Officer Contact List

League President	Tony Jasaitis		C:(708) 903-6423
	President@ChicagoChessLeague.org		W:(312) 264-2044
League Secretary	Jerry Thomas	745 Hageman Pl	H:(630)420-0188
	Secretary@ChicagoChessLeague.org	Naperville, IL 60563	
League Treasurer	Paul Freidel	359 N. Worth Avenue	C:(224)436-6050
	Treasurer@ChicagoChessLeague.org	Elgin, IL 60123	
Bulletin Editor	Patrice Connelly		
	Bulletin@ChicagoChessLeague.org		
Webmaster	Tom Friske	(see information below)	
	Web@ChicagoChessLeague.org		
Games Editor	Tom Friske	1035 E Algonquin Road	H:(847) 299-1033
	Games@ChicagoChessLeague.org	Des Plaines, IL 60016	W:(847) 914-8448
Ratings Chairman	Jeff Balicki		
	Ratings@ChicagoChessLeague.org		
Trophy Chairman	Chuck Dobrovolny		
	Trophy@ChicagoChessLeague.org		
Publicity Chairman	Matt Vail		C:(312) 933-1516
	Publicity@ChicagoChessLeague.org		W:(630) 505-6557
Banquet Chairman	Katherine Zack		
	Banquet@ChicagoChessLeague.org		

DIVISIONAL CHAIRMEN

East Division	Fred Furtner		C: (630) 291-4271
	ChairmanEast@ChicagoChessLeague.org		W: (312) 464-4495
West Division	Irwin Gaines		
	ChairmanWest@ChicagoChessLeague.org		
North Division	Jim Thomson		W(847) 538-5408
	<u>ChairmanNorth@ChicagoChessLeague.org</u>		

Officer Contact List	2
Contents of Issue	3
Games Analysis by Tom Friske: Upsets!	4-13
Extracurriculars: Brain Teaser	14-15
En Passant: A Chess Story by Rob Eaman	16-17
Upcoming Tournament Information	18
Ratings	19-30

Mark Your Calendars with These Key League Dates:

Spring Business Meeting 3.5 Weeks Before Playoffs (April 20, 2011)

Season Playoffs Second Saturday of (May May 14, 2011)

CICL Open Second Saturday of (May May 14, 2011)

League Awards Banquet First Friday of June (June 3, 2011)

Note from Ratings Chair Jeff Balicki: (as listed in league-wide correspondence 02/12/11) This Season Results rating report format will replace the current ratings report format for the rest of this season beginning in April and will be accessible on the CICL website using the regular "Ratings" link. The final regular season report will be posted to the CICL website no later than the weekend following the Spring Business meeting with a notification email sent out at that time and again when any corrections are made to the posted report. This report format excludes players who are not eligible for the playoffs, shows the total amount of rated and CICL games of each player, rating class, and indicates who has achieved the next level of centurian status this season as indicated by a prefaced "*New*" before their respective centurian status. No other reports or extracts will be impacted as a result of using this ratings report format.

Please direct any questions or comments to ratings@chicagochessleague.org

Editor's Notes:

The deadline for submissions to the March bulletin is March 18th. Please email submissions to Bulletin@ChicagoChessleague.org. The March issue will also include reports about the CICL in the North America Amateur Team North tournament- if you have any pictures or games you'd like to share from this event, please let us know!

Patrice Connelly, Bulletin Editor

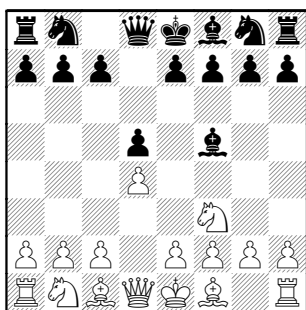
This month, I highlight the UPSETS so far this season !!

<White> (1945) –
Rufus, Bernard (1425) [D02]

Rooks-BPMolex, 9-27-2010

Black makes a series of positional moves that build into real pressure.

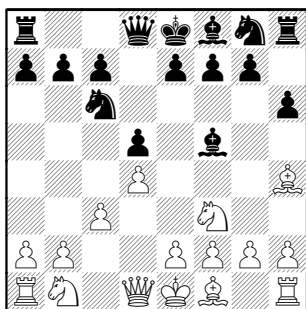
1.d4 d5 2.Nf3 Bf5



3.Bg5

3.c4 idea Qb3 is the quick way to highlight problems with the early Bishop move, but it's not an immediate advantage if Black is careful.

3...h6 4.Bh4 Nc6 5.c3



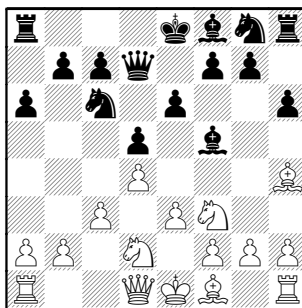
5...Qd7 idea e6, of course

5...Nf6 is just as well; the doubled Pawns won't be a problem if White captures

6.Nbd2

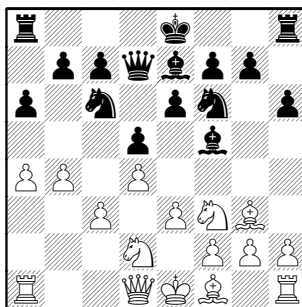
6.e3 idea Bd3 is another way, but I, as well, hate trading the light-squared Bishop !

6...e6 7.e3 a6



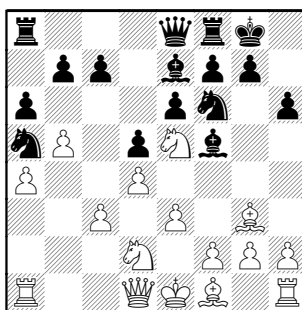
8.a4 Be7 9.Bg3 Nf6 Black has a clamp on e4, making it hard to imagine where White can break free.

10.b4



If the center is closed.. flank play !

10...0-0 11.b5 Na5 12.Ne5 Qe8

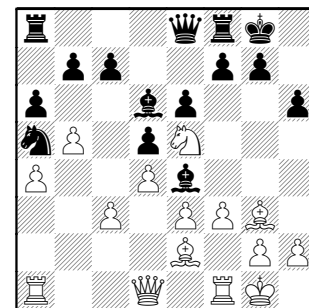


13.Be2

13.bxa6 bxa6 makes a target at a6...

but White has one, too, at a4 !

13...Ne4 14.Nxe4 Bxe4 15.0-0 Bd6 16.f3



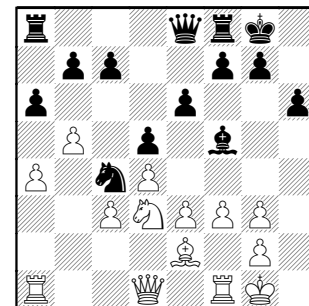
16...Bf5

16...Bh7 avoids an attack on this Bishop when White gets e3-e4 in. Black also is ready for f6,e5 once d5 is protected.

17.Nd3 allowing Black to invade

17.Re1 idea Bf1 provides the extra attack to e4 needed to play e3-e4

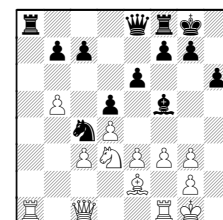
17...Bxg3 18.hxg3 Nc4



nicely hitting two weaknesses- e3 and b5

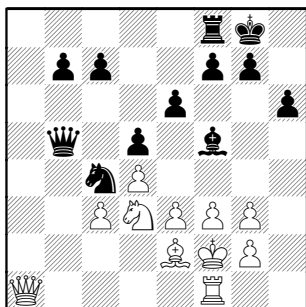
19.Kf2

No improvement is found with 19.Qc1 axb5 20.axb5

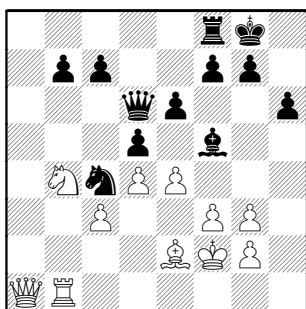


20...Rxa1 21.Qxa1 Qxb5 (21...Nxe3)

19...axb5 20.axb5 Rxa1 21.Qxa1 Qxb5



22.Rb1 Qc6 23.Nb4 hitting Queen, but discovering against b1–Rook !
23...Qd6 24.e4



24...Bg6 see comment at move 16

24...dxe4 25.Bxc4 e3+ wins Rook, but White gets two active pieces for it

25.Nc2 Nb6

25...dxe4 26.Bxc4 e3+ White looks worse after 27.Kxe3

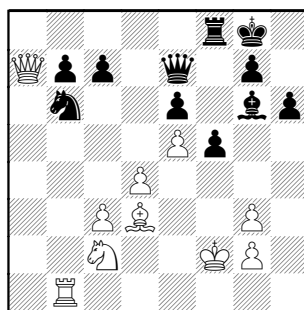
(27.Nxe3 is similar to 24..dxe4 a move ago)

27...Bxc2 28.Rxb7 Qxg3

26.Bd3 so now both White minors hang, whereas Black has no weaknesses (and a Pawn)

26...dxe4 27.fxe4 Qe7 28.Qa7 A poignant example of the problems with Pawn-hunting with the Queen.

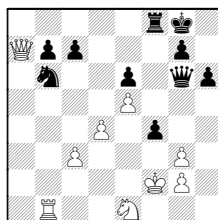
28...f5 29.e5



29...Qg5! The holes in White defense's are highlighted.. Qd2 is a tough threat!

30.Ne1 f4 31.g4

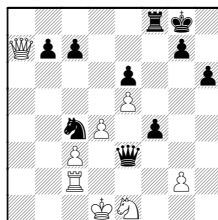
White's problems still exist after 31.Bxg6 Qxg6



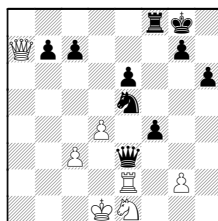
hits the loose Rook 32.Rc1 (32.Ra1 Qxg3+ and Qxc3)

32...Qxg3+ 33.Ke2 (33.Kg1 Qe3+ winning Rook)

33...Qe3+ 34.Kd1 Nc4 35.Rc2



35...Nxe5! 36.Re2



(36.dxe5?? Rd8+ mating (36...Qxa7

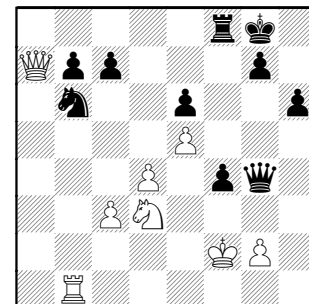
is there, too)

36...Nc6 (36...Qxc3 37.Rxe5) 37.Qa3

(37.Qxb7 Qxc3 38.Rc2 Qxd4+; 37.Rxe3 Nxa7 38.Rxe6)

37...Qg3 38.Rxe6

31...Bxd3 32.Nxd3 Qxg4



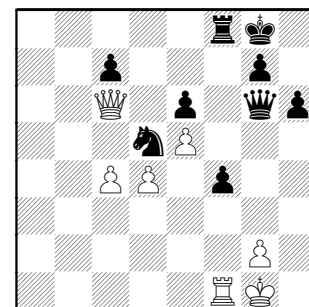
tough threat is Qg3+ and a capture at d3 or c3

33.Qxb7

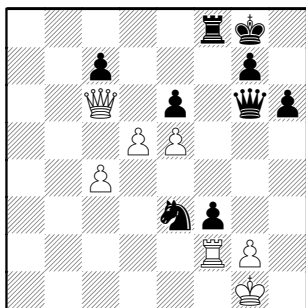
A) The King also needs some defence ! 33.Nc5? Qg3+ 34.Ke2 whatever square, really 34...f3+ (34...Qxc3)

B) So maybe best is 33.Ne1 Qg3+ 34.Kf1 (34.Kg1? f3 idea f2+ forking) 34...Qxc3 and d4 is weakened

33...Qg3+ 34.Kg1 [Knight still drops after 34.Ke2 Qe3+] **34...Qxd3 35.Rf1 Nd5 36.Qc6 Qg6 37.c4**



37...f3 relentless !! **38.Rf2 Ne3 39.d5**



39...Qb1+ forcing a walk on the fork side... 40.Kh2 Ng4+ 41.Kh3 Nxf2+

Thought there's a mate in there:
41...Qh1+ 42.Kxg4 Rf5 but how to cover g3 and f-file ?

42...h5+ 43.Kg3

43.Kg5 Kh7 sets up Rf5#
(43...Rf5+ 44.Kg6)
but that is killed with 44.Qxe6

42.Kh2

WHITE RESIGNED...
Qh1+ really is mate in a few

42.Kg3 Qg6+ 43.Kxf2
(43.Kh4 Qg4#;
43.Kh2 Qxg2#)

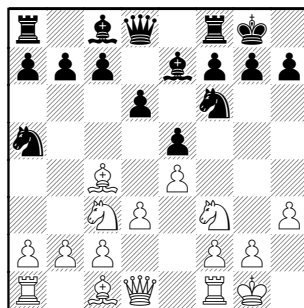
43...fxg2+ shouldn't be too hard

0-1

Deichmann, Eric (1253) –
<Black> (1910)
[C55]

BPMolex-Rooks, 27.09.2010

1.e4 e5 2.Nf3 Nc6 3.Bc4 Nf6 4.Nc3
Be7 5.0-0 0-0 6.d3 d6 7.h3 Na5

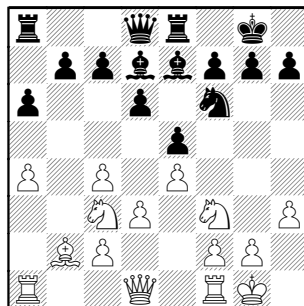


highlighting the downside of White's plan... the key Bishop is history

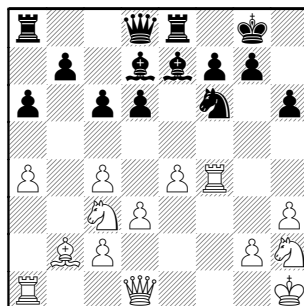
8.b3 [White just loses time with 8.Bb5 a6] 8...a6 9.a4 Nxc4 10.bxc4 Bd7 11.Bb2

Must admit, White isn't missing the light-squared Bishop

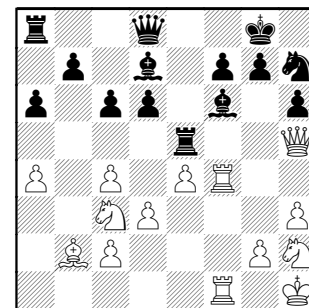
11...Re8



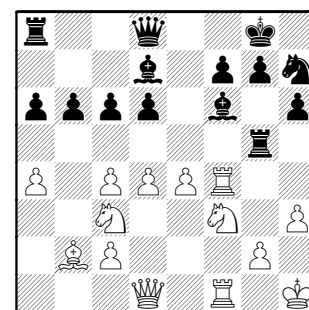
12.Nh2 h6 13.f4 c6 14.Kh1 exf4 15.Rxf4



15...Nh7 16.Qh5 Bf6 17.Raf1 Re5

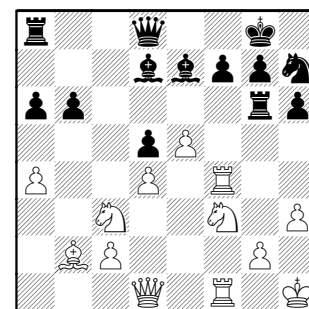


18.Qd1 Rg5 19.d4 b6 20.Nf3

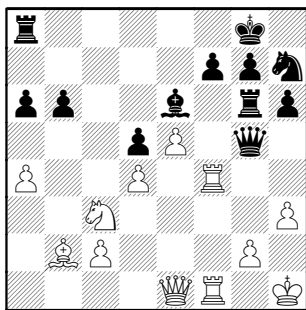


20...Rg6 an odd place for a Rook in such a crowded position, but a sacrifice at h3 (say, after Qc8, Bxh3) could make some sparks !

21.e5 Be7 22.Ne4 d5 23.cxd5 cxd5 24.Nc3



24...Be6 25.Qe1 Bg5 26.Nxg5 Qxg5



26.Nxg5 Qxg5 Probably clock considerations here

[26...hxg5 idea g4 27.R4f2 g4] ½–½

Prokopowicz, Pete –
<Black>

[B20]

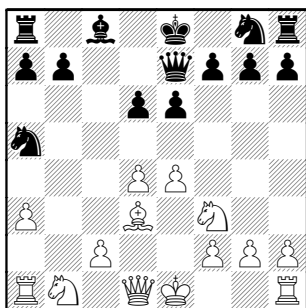
9-27-2010

[Notes by Matthias Pfau]

1.e4 c5 2.b4

White offers a wing Pawn to strengthen his center

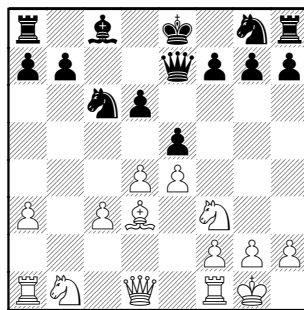
2...e6 3.bxc5 Bxc5 4.d4 Bb4+ 5.Bd2 Qe7 6.Nf3 Nc6 7.a3 Ba5 8.Bxa5 Nxa5 9.Bd3 d6



10.c3

Better to complete development 10.Qd2 or 10.0–0

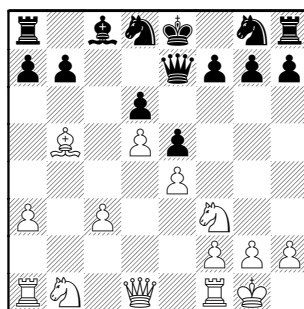
10...Nc6 11.0–0 e5



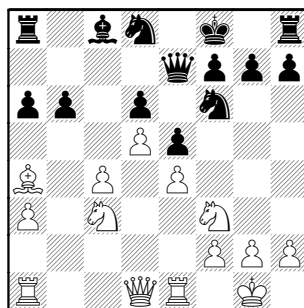
12.d5 closing the center seems contrary to the opening plan.

White's advantages are the a2–g8 diagonal and open b-file, so 12.Nbd2 idea Rb1, Qb3 with Bc4 in there

12...Nd8 13.Bb5+



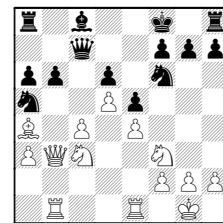
13...Kf8 [13...Bd7] 14.c4 Nf6 15.Re1 a6 16.Ba4 b6 17.Nc3



Black's King placement doesn't fit in with his Queenside weaknesses. The King's-Rook will be missed.

17...Rb8

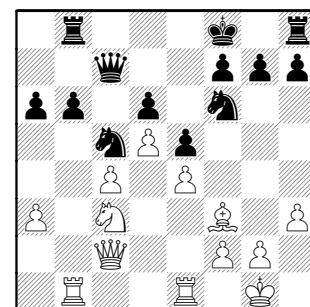
17...Nb7 18.Rb1 Qc7 19.Qb3 Na5



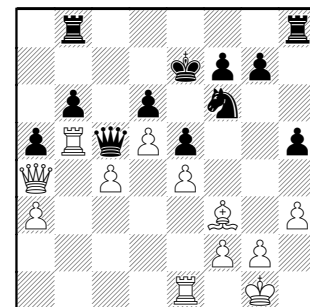
idea Nxc4 or Rb8, but the backrank problems remain

18.Rb1 Qc7 19.Qd3 [19.Qb3]

19...Nb7 20.Bd1 Nc5 21.Qe2 Bg4 22.h3 Bh5 23.Qc2 Bxf3 24.Bxf3



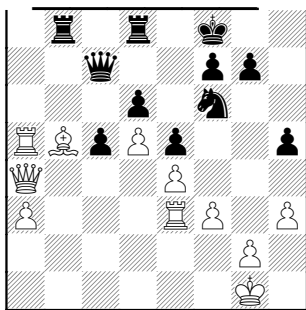
24...h5 25.Na4 Ke7 [25...Nfd7] 26.Nxc5 Qxc5 27.Qa4 a5 28.Rb5



28...Qc7 [28...Qd4] 29.c5 bxc5 [29...dxc5] 30.Rxa5 Qc8 31.Re3

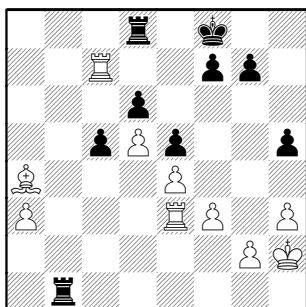
31.Ra7+ Kf8 32.Qa5

31...Rd8 32.Be2 Kf8 33.f3 Qc7 34.Bb5



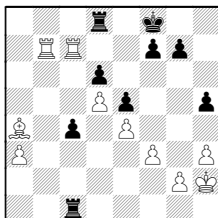
34...Nd7 35.Ra7 Nb6 hmm, looks like a tactical miscalculation (clock problem?) [35...Rb7]

36.Rxc7 Nxa4 37.Bxa4 Rb1+ 38.Kh2



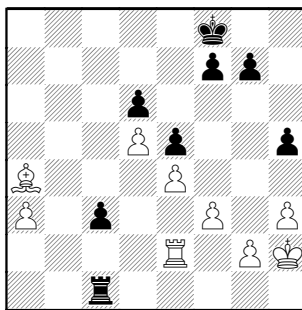
38...Rc1 39.Rd7

39.Rb3 c4 40.Rbb7

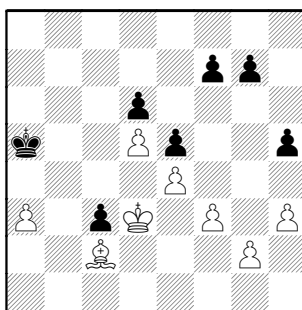


is more deadly

39...Rxd7 40.Bxd7 c4 41.Ba4 c3 42.Re2

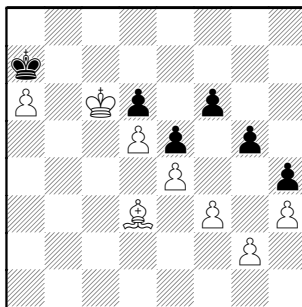


42...Ke7 [42...Ra1] 43.Rc2 Rxc2 44.Bxc2 Kd7 45.Kg1 Kc7 46.Kf2 Kb6 47.Ke3 Ka5 48.Kd3



Not seeing a White blunder which would give this win away.

48...h4 49.Kxc3 f6 50.Kd3 g5 51.Kc3 Kb6 52.a4 Ka5 53.Kb3 Kb6 54.Kb4 Kb7 55.a5 Ka6 56.Bd3+ Ka7 57.Kb5 Kb7 58.a6+ Ka7 59.Kc6

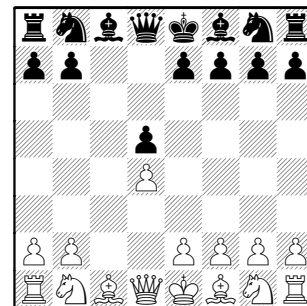


1-0

Strain,Doug (1430) –
<Black> (1792) [D13]

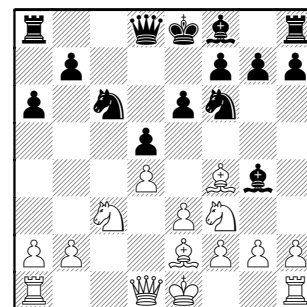
Fermilab-DGCC, 1-12-2011

1.d4 d5 2.c4 c6 3.cxd5 cxd5

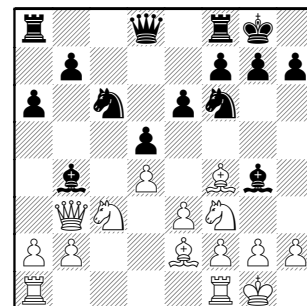


The Slav Exchange has a drawish reputation due to the solid Pawn structure and a tendency for heavy trades along the c-file. But such a result is acceptable to White, the underdog.

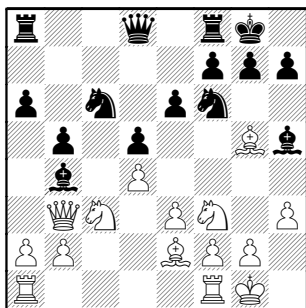
4.Nf3 Nf6 5.Nc3 Nc6 6.Bf4 a6 7.e3 Bg4 8.Be2 e6



9.Qb3 Bb4 10.0-0 0-0



11.h3 Bh5 12.Bg5 b5



c4 can become an outpost if White doesn't have b2-b3 to cover it.

13.Rac1

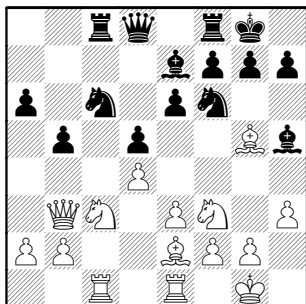
13.a4 makes Black's Queenside Pawns targets.

13.Rfc1 keeps the option of a2-a4 and thus Black's Rac8 isn't desirable

13...Rc8 14.Rfe1 probably to overprotect Be2, but what else will the Rook do ?

14.Rc2 idea Rfc1 also covers e2, but then 14...Bg6

14...Be7

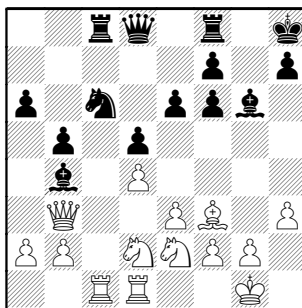


15.Bxf6 gxf6 Black apparently wants to attack down the g-file, but it will take some time to arrange. But the extra Pawn does have an influence in the center, and immobilizes Nf3.

16.Nd2 Bg6 17.Bf3

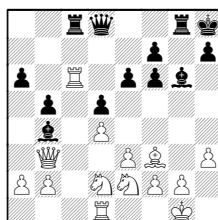
17.Bf1 keeps d3 and Queenside in view

17...Kh8 18.Ne2 Bb4 19.Red1



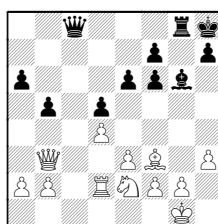
White could be threatening Rxc6 here
19...Qe7

19...Rg8 20.Rxc6



20...Rxc6

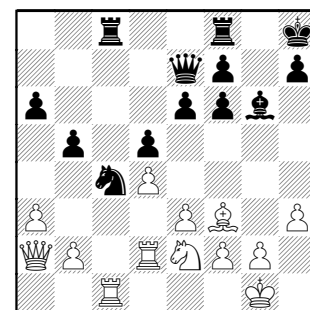
White wins a piece after 20...Bxd2
21.Rxc8 Qxc8 22.Rxd2



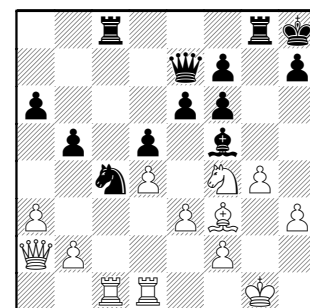
idea Rd1-c1 or a4

21.Qxb4 idea Nb3-c5 and I'd expect the extra minor piece to have its say.. but it would be interesting to see if Black can finally make use of the g-file.

20.a3 Bxd2 21.Rxd2 Na5 22.Qa2 Nc4



23.Rdd1 Rg8 24.Nf4 Bf5 25.g4

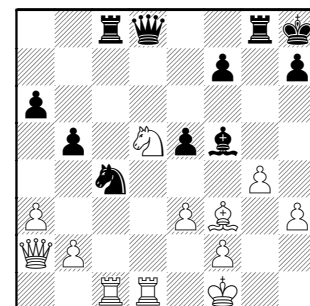


My reaction was "this can't be good, helping opponent open lines to the King", but watch what happens...

25...Qd8 [25...Qf8 idea Qh6] 26.Kf1 e5 I wouldn't open the center with an attack on the flank !

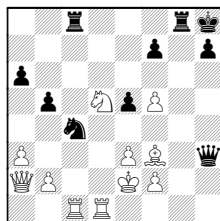
26...Be4 trades away a key defender and prepares f6-f5

27.dxe5 fxe5 28.Nxd5



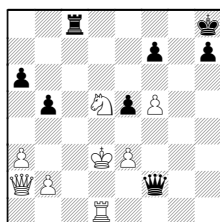
28...Qh4 29.gxf5 e4

29...Qxh3+ attacks the loose Bishop, but 30.Ke2



30...Nd2 hitting Bf3 31.Rxc8
(31.Rxd2 Rxc1)

31...Qxf3+ 32.Kxd2 Qxf2+ 33.Kd3
Rxc8



idea Qc2# 34.Nc3

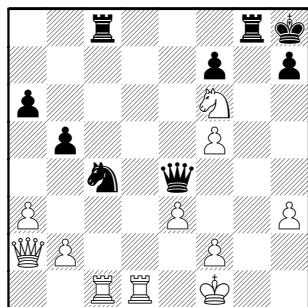
30.Bxe4 forced

30.Bg2 Rxg2 31.Kxg2 Rg8+ 32.Kf1
Qxh3+ 33.Ke2
(33.Ke1?? Rg1+ 34.Ke2 Qf3#)

33...Qf3+ 34.Kf1
(34.Ke1 Rg1#)

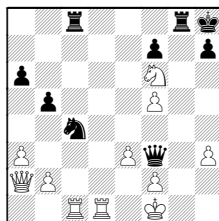
34...Qh1+ draws

30...Qxe4 31.Nf6



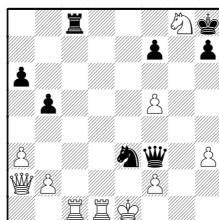
31...Nxe3+

Black apparently missed a kill here !
31...Qf3!



A) 32.Rd3 Nxe3+ 33.Rxe3 Rxc1+
34.Re1 Qd3#

B) 32.Nxg8 Nxe3+ 33.Ke1

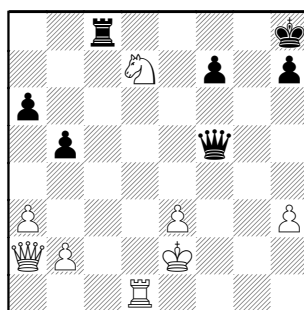


(33.Kg1 Qg2#) 33...Rc2!! 34.Rxc2
Qxd1#

C) 32.Re1 Nd2#

D) 32.Rxc4 to stop Nxe3+ 32...Qxd1#

32.Ke2 Qe5 33.Nd7 Qxf5 34.Rxc8
Rxc8 35.fxe3

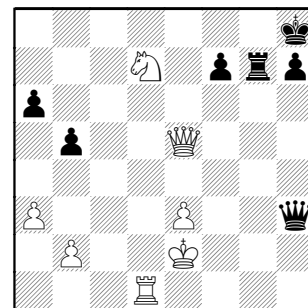


35...Rg8

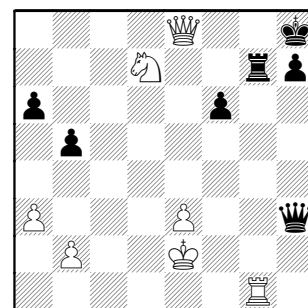
Even here, Black can survive
35...Rc2+ 36.Rd2 (36.Ke1?? Qf2#)
36...Rxd2+ 37.Kxd2 Qxd7+

36.Qd5! covering g2 while practically
forcing a Queen trade

36...Qxh3 37.Qe5+ Rg7 38.Qe8+
Rg8 39.Qe5+ Rg7



40.Rg1 f6 41.Qe8+



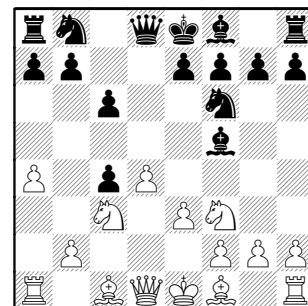
White found a nice finish, didn't he ??
1-0

Reich, Tom (1731) –
<Black>

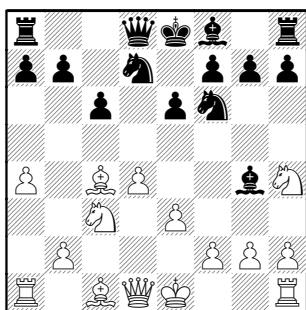
[D18]

BP/Molex-Tyros, 11-17-2010

1.d4 d5 2.Nf3 Nf6 3.c4 c6 4.Nc3
dxc4 5.a4 Bf5 6.e3



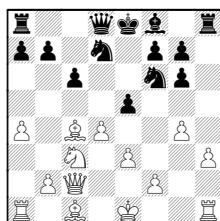
6...Nbd7 7.Bxc4 e6 8.Nh4 Bg4

**9.Be2**

White could continue normal Slav goals with 9.Qc2 preparing e3-e4 and/or h3,g4 Or, following the game's plan 9...e5

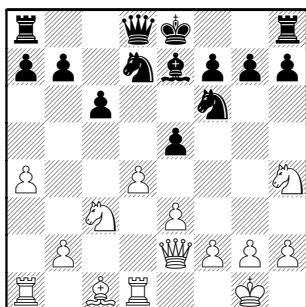
(9...g5 10.h3 (10.Nf3 Bf5 11.e4)
10...Bh5 11.Nf3 Bg6 12.e4 h6)

10.h3 Bh5 11.g4 Bg6 12.Nxg6 hxg6



13.dxe5 (13.d5)

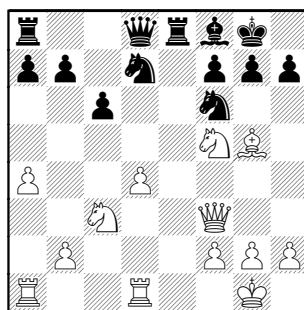
9...Bxe2 10.Qxe2 e5 11.0-0 Be7
12.Rd1



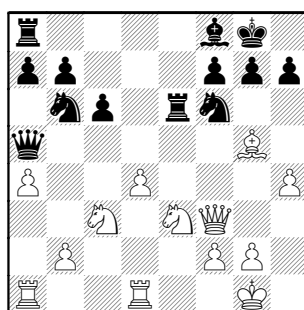
12...exd4 13.exd4

[13.Rxd4 avoids the isolate]

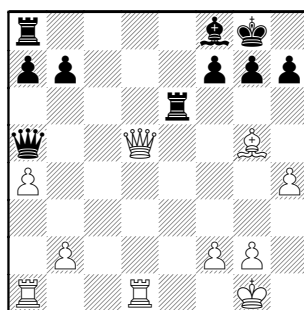
13...0-0 14.Bg5 Re8 15.Nf5 Bf8
16.Qf3



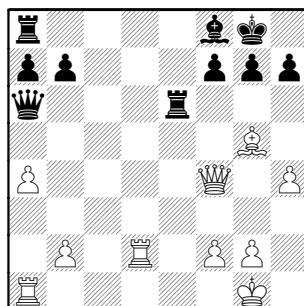
16...Qa5 looking toward the weak
Knight and Bishop on the 5th rank
17.h4 Re6 18.Ne3 Nb6



19.d5 Nbx d5 20.Ncx d5 Nxd5
21.Nxd5 cxd5 22.Qxd5

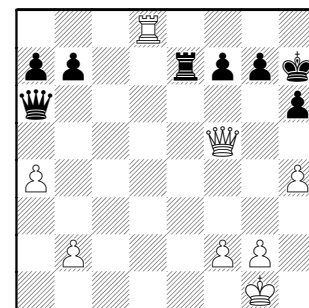


22...Qb4 23.Qd2 Qg4 24.Qf4 Qe2
25.Rd2 Qa6

**26.Rad1**

It was amusing that chasing the Queen has allowed White to double Rooks... but what's their target ?

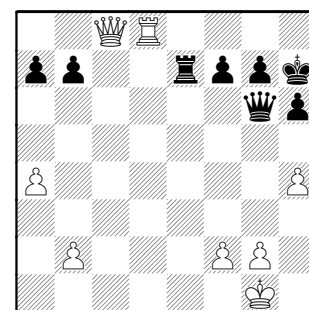
26...h6 27.Bd8 Be7 28.Bxe7 Rxe7
29.Rd8+ Rxd8 30.Rxd8+ Kh7
31.Qf5+

**31...Qg6**

31...g6 opens the Queen's reach to h8, if White can get her on the long diagonal. 32.Qf4 idea Qd4

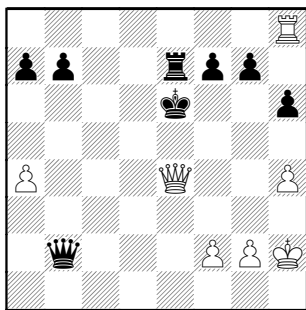
(32.Qf3 idea Qc3 32...Qc4)

32...Qb6 33.Qd2 idea Qc3 33...Qc5
34.b4 Qe5

32.Qc8

now White is avoiding the Queen trade !

32...Qb1+ 33.Kh2 Qxb2 34.Rh8+
Kg6 35.Qg4+ Kf6 36.Qf4+ Ke6
37.Qe4+

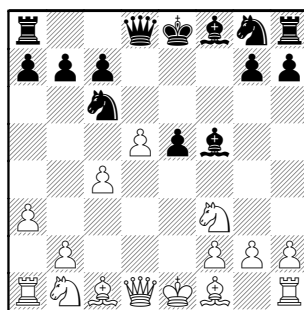


37...Kf6

37...Kd6?? 38.Rd8+ Rd7 (38...Kc7 39.Qxe7+) 39.Qd3+ idea Qxd7+

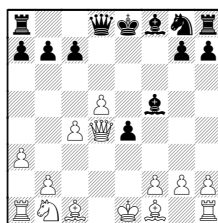
1/2-1/2

7...fxe5 8.d5



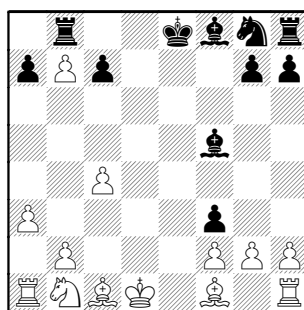
8...e4 9.dxc6 I wouldn't allow my center to disintegrate

9.Nd4 Nxd4 10.Qxd4



threatens Qe5+ forking 10...Qf6 is interesting, but White has a solid Pawn plus

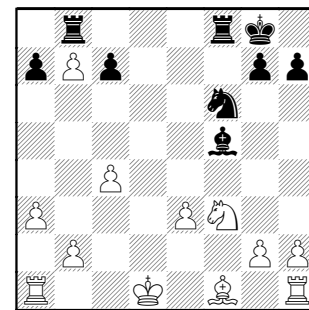
9...Qxd1+ 10.Kxd1 exf3 11.cxb7 Rb8



12.Nd2 Bc5

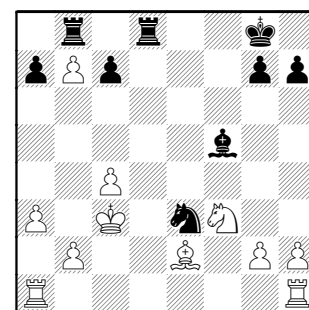
12...fxg2 13.Bxg2 helps White maintain the b7-Pawn

13.Nxf3 Nf6 [13...Bxf2] 14.Be3 Bxe3 15.fxe3 0-0

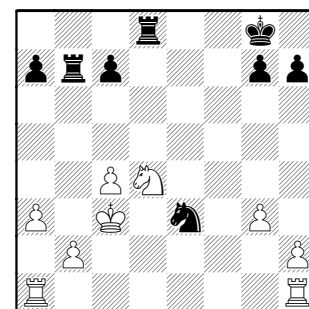


White is three Pawns up, but the b7 and e3 ones are going to take work to hold. So Black isn't yet too far away.

16.Be2 Ng4 two threats here, right ? 17.Kd2 Rfd8+ 18.Kc3 Nxe3



19.Nd4 Be4 20.Bf3 Bxb7 21.Bxb7 Rxb7 22.g3



White should have a hard time making his extra Pawn felt

22...c5 23.Ne6 Rdb8 Active pieces are most important !

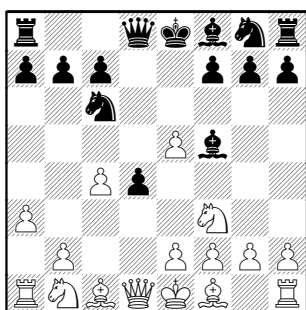
23...Rc8 is just plain an ugly job for a Rook

24.b4 cxb4+ 25.axb4 Rb6

Eustace, Dan (1556) –
<Black> (1824) [D08]

Dragons-Tyros, 1-27-2011

1.d4 d5 2.c4 e5 3.dxe5 d4 4.a3 Nc6 5.Nf3 Bf5



6.e3

More standard is 6.g3 looking to the Queenside, where Black usually castles

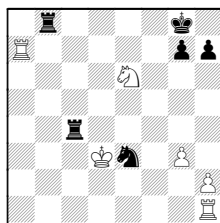
6...f6

6...Qe7 7.exd4 0-0-0 (7...f6)

7.exd4

7.exf6 Nxf6 only accelerates Black's development and claims the key e4 square

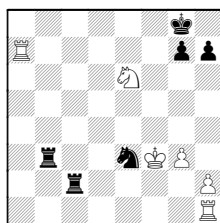
I prefer 25...Rxb4 26.Rxa7 Rxc4+
27.Kd3



27...Rb3+ gives Black time to defend
g7 28.Ke2

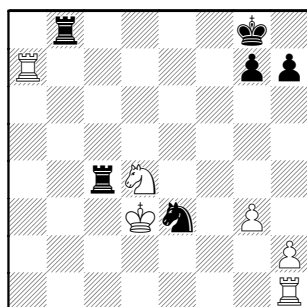
(28.Kd2?? Rc2+ 29.Ke1 Rb1#)

28...Rc2+ White is forced into a
discovery 29.Kf3



but where can the Knight go to take
advantage ?

26.Nd4 Rxb4 27.Rxa7 Rxc4+
28.Kd3



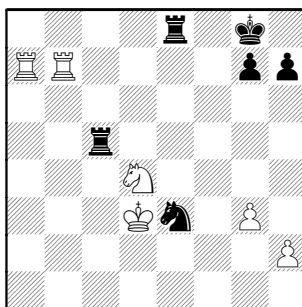
Compared to analysis at move 25,
here White's Knight stops Rb3+, but
Black also doesn't seem to need
worry about his King like then.

28...Re8 29.Rb1 Now White's pieces
go hyperactive !

29.Re1? trying to take advantage of
the unprotected Rook at e8
29...Rxd4+! 30.Kxd4 Nc2+ Black nets

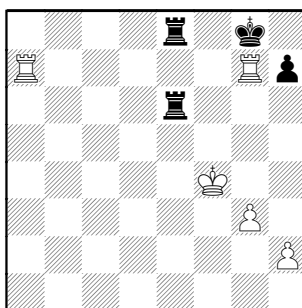
a piece !

29...Rc5 30.Rbb7

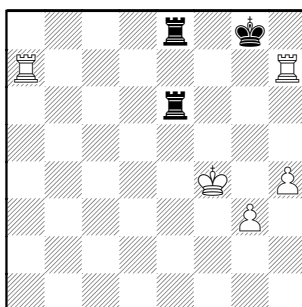


The old chess adage "possession of
the 7th rank is worth a Pawn" is now
demonstrated.

30...Rg5 31.Ne6! Highlighting a
backrank issue 31...Rd5+ 32.Kxe3
Re5+ 33.Kf4 R5xe6 34.Rxg7+

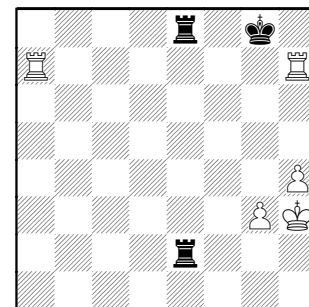


34...Kh8 [34...Kf8?? 35.Raf7#]
35.Rxh7+ Kg8 36.h4

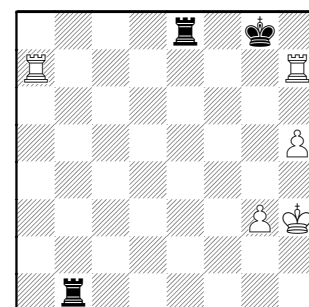


and White magically has a won
ending. Easiest theme is to force a
Rook trade (or two).

36...Re4+ 37.Kf3 Re3+ 38.Kg2 Re2+
39.Kh3



39...Re1 40.h5 Rb1

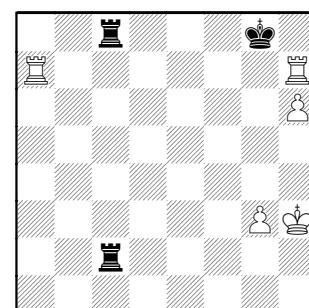


41.Kg2

and here's such a chance! 41.Rag7+
Kf8 42.Rh8+ Kxg7 43.Rxe8;

But White doesn't need to dodge a
check: 41.h6 Rh1+ 42.Kg2

41...Rc1 I missed White's reply as
well ! 42.h6! g7 is protected, so
there's a mate 42...Rc2+ 43.Kh3
Rec8



44.Rag7+ Kf8 45.Rh8# Nicely done !!
1-0

Brain Teaser!:

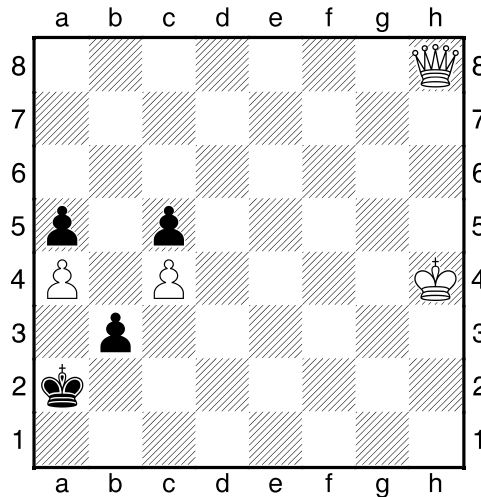
The following problem was submitted by Matthias Pfau and Vlatko Primorac of the Citadel Team. The following position was reached by Vlatko in an online game he played at chess.com against an anonymous opponent.

White to play and win:

(52) problem

FICS u 2 12

Diagram



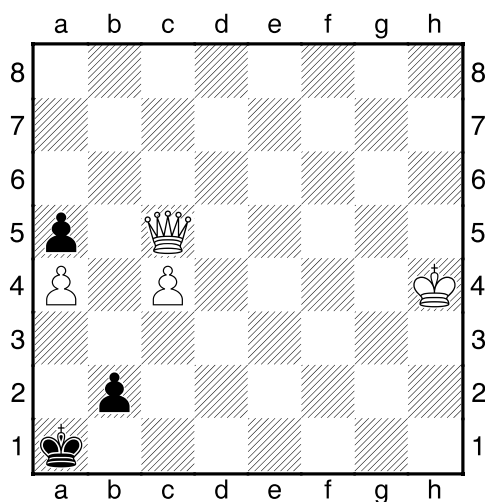
To find the solution one has to realize

- Black will queen his b pawn
- White has to pick up a pawn to let it run after a queen trade
- White has to make sure he can force a queen trade after black queens

Then it becomes clear for this to work the black king has to be on a1, white has to check from a3, this he can do only if he picks up the c5 pawn...

Here some lines that demonstrate the win:

41.Qf6 b2 42.Qf2 Ka1 (...Kb3) 43.Qxc5 Diagram



43...b1Q 44.Qa3+ Qa2 45.Qxa2+ Kxa2 46.c5 *

If 43....Ka2 44. Qb5 b1=Q 45. Qxb1+ Kxb1 46. c5 Kb2 47. c6 Kb3 48. c7 Kxa4 49. c8=Q*

Chess Stories: When the Unthinkable Happens

Submitted by Robert Eaman (AMARS)

"You can discover more about a person in an hour of play than in a year of conversation." — Plato

Competitiveness can bring out the best in people, but it can also occasionally bring out the worst. In over 10 years of CICL play, almost half of those as a team captain, I cannot recall any opponent or teammate making a single accusation of cheating. In CICL play, high levels of sportsmanship, fairness, and camaraderie have been the norm in almost all cases. And sportsmanship above and beyond the norm has been regularly evident.

But chess in other venues can be considerably different in nature. In a local area tournament last summer I played a game where the unthinkable happened.

I sat down to a game across from an experienced adult chess player (I'll call him "JR") whose wife and child occasionally stopped by to watch our game. We sat down amicably and played the first 16 moves without incident. However, on move 17, JR moved his bishop, took his hand off the bishop, and while he reached for the clock, realized he had left the bishop hanging. JR then picked up the piece and moved it to a safer location, and then pressed the clock. Nobody saw this happen except the two of us, as our game was at the end of a long table, and there was nobody nearby.

Baffled, I immediately informed JR that what he'd just done was not allowed. His response was "What? There's nothing wrong with that. Let's just play." I argued with him for a moment, but he continued to state that we should "Just play. Don't worry about it." I finally stopped the clocks and went looking for a tournament director.

When the TD arrived, the TD asked both of us for our versions of what happened. I told mine, and then JR said that nothing had happened: he picked up his bishop and put it down where it currently sat. When I heard him say this, I told JR he was lying. JR continued to deny what had happened, and the TD was finally left to make a decision. Unfortunately, due to the lack of honesty from JR, and lack of a 3rd-party witness, we had to let the bishop stay where it now was.

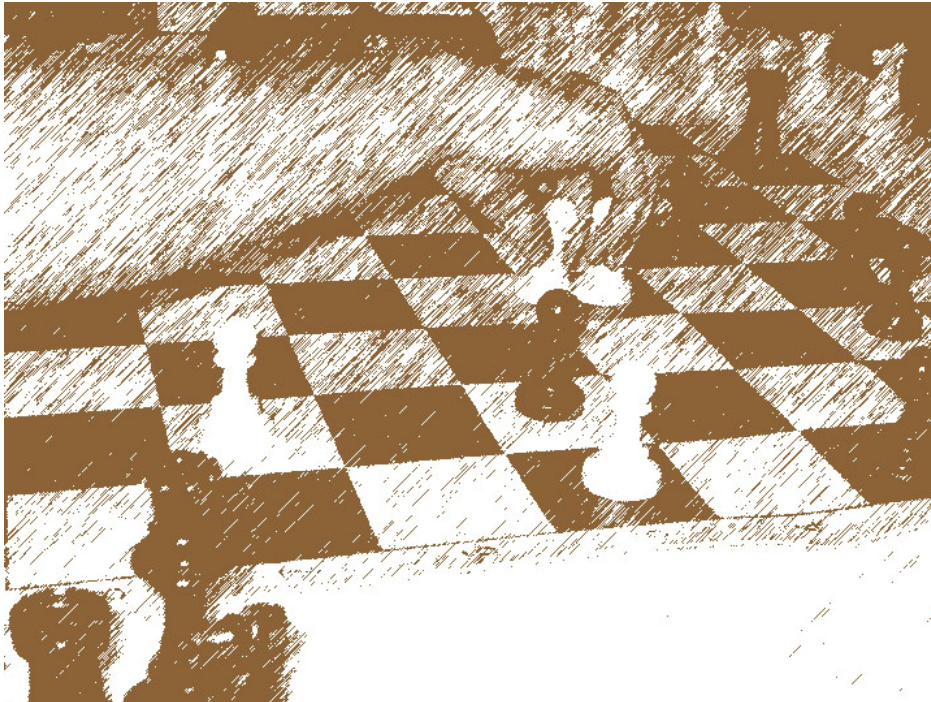
I was furious and baffled. In 30+ years of playing chess, I'd never seen this sort of behavior from an adult. It was bad enough to cheat, but to lie about it as well? I knew intuitively that this decision needed to stand, but now I was upset, and JR was no doubt upset too. But the game had to go on.

My position was slightly stronger at that point, but the emotional toll of this argument led us both to misplay the position as we went on. Worse yet, around move 60, I made a mistake, and I discovered that JR had the chance to deliver mate-in-four with accurate play (if inaccurate, I could intercede with a rook and then equalize). I was now fully despondent. However, as *Caissa taketh, Caissa giveth back*: JR missed the urgency of the move order, and I was able to equalize. Reinvigorated, I went on to ultimately win the game.

At the game's conclusion, there were no words spoken. I swallowed my desire to tell JR how horribly he'd acted, or to tell his family what incredible lack of character he'd displayed. The result stood. But I did keep an eye on JR as the tournament went on. Ultimately, he finished out of the money, and I came in 4th in my section. Justice was served, and I learned a valuable lesson about maintaining composure in the face of the

unthinkable.

I have subsequently been delighted to come back to the camaraderie and sportsmanship of my CICL team matches. Chess can be a community if you let it, and the CICL's chess community has always represented—to me—some of the best in chess.



April 9, 2011 Downers Grove Swiss #7

4-SS G/61 plus 5 sec delay. Fairview Village, 200 Village Drive, Downers Grove, IL

IM Florin Felecan, NM Mariano Acosta, and NM Trevor Magness are playing in this event.

Early Entry fee is \$20, if you preregister and payment is received by April 4th. After that EF is \$25.

Prizes: 70% of EFs will be returned as cash prizes. Book prizes for best u1800, u1600, and upset.

Pre-registration: maximum number of players is 50, advanced registration is advised. Send mail with

your name, phone number, USCF id number and a check payable to "Brian Smith" to:
Brian Smith
483 Nantucket Road
Naperville, IL 60565

Onsite registration: 8:30 to 8:50 a.m. If paying at the door, pay cash only (no checks).

First Round: 9:00 a.m. Clocks and sets provided. Daniel Parmet is the TD.

Email questions to brs483@att.net More info at <http://sites.google.com/site/downersgrovechess>

USCF rated, USCF membership required. Players may take a half point bye in any round except the last round. A half point bye must be requested before the round starts. Zero point bye only in final round. Free parking, but park only in a space marked for visitors. "200 Village Drive" is the "Village Apartments" building. Enter its main entrance, and tell receptionist you are there for the chess tournament. Multiple sections possible. Junior players (under sixteen years) rated 900+ are welcome, and must be accompanied by a parent throughout the day. Sorry, but we do not accept junior players rated under 900.



Season Results

Saturday, February 12, 2011

Team	Player	W	L	D	Rating Change	Rating	Rated Games	CICL Games	Rating Class
AMARS									
	BROCK,B	3	1	1	-13	1998	13	5	Provisional
	ALLEN,H	1	1	0	-6	1795	117	123	Centurian
	EAMAN,R	1	0	4	-8	1789	112	112	Centurian
	FRANK,M	2	2	0	-42	1703	129	155	Centurian
	DUFFY,J	2	1	2	-38	1595	94	107	Centurian
	ACEVEDO,U	4	1	0	+24	1553	25	26	Provisional
	FULKERSON,R	2	0	0	+13	1481	48	67	Established
	IRBY,L	1	0	0	+52	1123	12	22	Provisional
AMATS									
	HARRIS,M	2	2	0	-23	1860	13	13	Provisional
	FURTNER,F	2	2	3	+25	1517	61	65	Established
	MEYER-ABBOTT,B	0	1	1	+21	1429	24	27	Provisional
	SOVA,ANDREW	0	1	0	-59	1390	5	5	New
	MASITI,J	2	1	0	+13	1358	20	27	Provisional
	FARMER,B	1	0	0	+51	1356	7	7	New
	KOLLI,S	1	3	0	-33	1336	11	13	Provisional
	MEHDI,SYED	1	0	0	+58	1310	6	9	New
	MEYER,C	0	3	0	-78	1164	12	27	Provisional
	HARPER,M	0	6	0	-90	1154	21	32	Provisional
	BAROT,N	0	2	1	-132	968	4	4	New
	PATELLA,C	0	0	1	+49	952	5	5	New

Note: Only playoff eligible players are shown (those with at least 1 win, 1 draw, or 1 non-forfeit loss).

Note 2: Players may have slightly more Rated Games than CICL Games, due to their Initial Rating Source.

Saturday, February 12, 2011

The Chicago Chess Player

www.ChicagoChessLeague.com

Page 1 of 12

February 2011

Team	Player	W	L	D	Rating Change	Rating	Rated Games	CICL Games	Rating Class
BCBS									
	KHAN,M	1	2	1	-11	1817	20	16	Provisional
	BRUNO,R	2	1	1	-8	1601	21	16	Provisional
	GUIDRY,D	1	2	2	-48	1574	11	5	Provisional
	GUIU,C	2	2	0	+16	1560	18	16	Provisional
	SAN MIGUEL,L	2	1	2	-43	1528	14	15	Provisional
	STURGEON,V	1	2	0	-70	1487	6	3	New
	BURGESS,A	3	2	0	-58	1468	16	17	Provisional
	WONG,A	3	0	0	+125	1425	4	3	New
	MATA,S	5	1	0	+100	1415	17	19	Provisional
	LACHOWIEC,S	0	1	0	-309	1291	2	1	New
	PETTIS,D	1	1	0	+10	1210	4	2	New
BPMLX									
	REICH,T	1	3	1	+2	1731	63	69	Established
	ZADEREJ,V	1	3	0	+10	1657	69	70	Established
	HENDRICKSON,B	0	1	0	-10	1522	59	57	Established
	MCGOWAN,D	0	2	1	-15	1474	62	65	Established
	RUFUS,B	1	1	0	+38	1463	37	41	Established
	DEICHMANN,E	0	2	2	+27	1280	59	68	Established
	MANILA,M	1	3	0	+8	1130	42	51	Established
	MUELLER,R	0	2	0	-12	1031	19	31	Provisional
	AREND,A	0	4	0	0	800	7	7	New

Note: Only playoff eligible players are shown (those with at least 1 win, 1 draw, or 1 non-forfeit loss).

Note 2: Players may have slightly more Rated Games than CICL Games, due to their Initial Rating Source.

Team	Player	W	L	D	Rating Change	Rating	Rated Games	CICL Games	Rating Class
CITGR									
	PFAU,M	11	1	1	-1	2094	37	32	Established
	ONG,K	9	2	1	+30	1797	58	57	Established
	KUNHIRAMAN,P	6	5	1	-57	1536	19	26	Provisional
	PRIMORAC,V	7	4	2	+144	1512	20	26	Provisional
	SENSAT,J	6	4	2	+22	1511	68	79	Established
	LE,DUC	3	5	1	-78	1447	61	70	Established
	LARSEN FREEMAN,T	1	0	0	+77	1377	3	1	New
	PROKOPOWICZ,P	4	7	0	+103	1239	23	31	Provisional
	PARRA,J	2	7	0	+34	1178	16	28	Provisional
	SHEVCHUK,E	0	7	0	-601	1144	8	8	New
DGCC									
	KLUG,S	3	0	2	+41	2166	42	35	Established
	BUNGO,G	5	0	1	+102	2100	18	13	Provisional
	EGERTON,J	1	1	1	-16	2025	47	41	Established
	DUGOVIC,D	2	0	1	+34	1894	23	20	Provisional
	WAKERLY,R	2	0	2	-8	1855	31	28	Established
	POTTS,K	2	2	1	-6	1846	34	33	Established
	TAN,GADDIEL	3	0	1	+58	1830	18	19	Provisional
	PARMET,D	2	1	0	-19	1752	21	17	Provisional
	YALAVARTHI,R	1	1	1	-14	1722	18	16	Provisional
	MANEY,A	1	1	0	-58	1644	7	9	New
	SMITH,BR	1	0	0	+2	1614	140	177	Centurian
	VECANSKI,D	0	1	0	-47	1581	18	17	Provisional
	ROMANOWITZ,C	4	0	0	+116	1439	13	10	Provisional

Note: Only playoff eligible players are shown (those with at least 1 win, 1 draw, or 1 non-forfeit loss).

Note 2: Players may have slightly more Rated Games than CICL Games, due to their Initial Rating Source.

Team	Player	W	L	D	Rating Change	Rating	Rated Games	CICL Games	Rating Class
DRGNS									
	TEGEL,F	0	2	1	-24	2026	418	456	Quadruple Centurian
	LUDWIG,T	2	3	1	-4	1973	211	210	Double Centurian
	MARCOWKA,R	1	4	0	-32	1855	314	337	Triple Centurian
	PARKER,L	1	1	1	-6	1734	80	86	Established
	EUSTACE,D	1	4	0	+4	1556	184	226	Double Centurian
	THOMAS,J	1	2	0	-3	1490	240	293	Double Centurian
	KOMORAVOLU,K	1	2	0	+9	1452	49	58	Established
	STAMM,V	2	3	0	-15	1416	355	381	Triple Centurian
	BREYER,A	3	2	0	+32	1355	63	72	Established
DRW									
	HAYHURST,W	3	0	0	+14	1944	87	85	Established
	GORODETSKIY,E	3	0	0	+13	1852	29	26	Established
	GORODETSKIY,S	3	0	0	+11	1809	62	58	Established
	GUGENHEIM,O	2	0	1	+9	1590	25	25	Provisional
	CAPUTO,W	2	0	0	+71	1552	3	3	New
	BEDER,B	1	2	1	-127	1522	13	15	Provisional
	REDMOND,M	3	1	0	-26	1487	18	22	Provisional
	KOMBLEVITZ,A	0	2	1	-72	1124	8	8	New
EXCLB									
	HART,V	3	3	0	-15	2136	39	33	Established
	LEE,D	2	4	1	-18	1885	53	51	Established
	DOWELL,E	3	1	2	+53	1801	52	58	Established
	ENGELN,M	2	5	0	-36	1755	60	61	Established
	WEITZ,R	2	0	1	+22	1614	211	231	Double Centurian
	REID,C	4	0	0	+72	1547	224	272	Double Centurian
	VIGANTS,A	3	2	0	+6	1538	173	187	Centurian
	SUERTH,F	0	1	0	-20	1491	205	245	Double Centurian
	SIEGEL,R	1	1	0	+9	1488	123	154	Centurian

Note: Only playoff eligible players are shown (those with at least 1 win, 1 draw, or 1 non-forfeit loss).

Note 2: Players may have slightly more Rated Games than CICL Games, due to their Initial Rating Source.

Team	Player	W	L	D	Rating Change	Rating	Rated Games	CICL Games	Rating Class
FERMI	SERGATSKOV,D	3	2	1	-13	2031	25	26	Provisional
	SPIEGEL,L	3	2	1	-15	1951	313	340	Triple Centurian
	GAINES,I	3	1	1	+30	1744	316	343	Triple Centurian
	STAPLES,C	1	0	1	+16	1609	92	105	Centurian
	DEGRAFF,B	1	2	1	-24	1536	50	54	Established
	STRAIN,D	3	0	2	+197	1509	11	6	Provisional
	MHASHILKAR,P	2	2	1	-148	1252	7	5	New
	DRENDEL,B	0	2	0	-35	958	11	14	Provisional
FORKS	INUMERABLE,F	0	1	1	-10	2181	189	191	Centurian
	FRISKE,T	4	1	0	+16	1986	204	220	Double Centurian
	SANTIAGO,T	2	2	0	-8	1981	135	144	Centurian
	LEVENSON,S	2	1	2	-2	1949	55	52	Established
	SOLLANO,E	2	2	1	-26	1918	163	178	Centurian
	BIALON,D	0	1	0	-26	1724	34	34	Established
	HAMELINK,N	2	1	0	+1	1687	33	39	Established
	PERSONS,J	1	0	0	+21	1580	20	27	Provisional
	HUGHES,N	1	2	1	-48	1564	194	211	Double Centurian
	BIAN,M	3	0	0	+57	1483	15	18	Provisional

Note: Only playoff eligible players are shown (those with at least 1 win, 1 draw, or 1 non-forfeit loss).

Note 2: Players may have slightly more Rated Games than CICL Games, due to their Initial Rating Source.

Team	Player	W	L	D	Rating Change	Rating	Rated Games	CICL Games	Rating Class
GAMBT									
	CIULLA,S	0	1	0	-228	1748	2	2	New
	GHAIBEH,AYMAN	0	3	0	-25	1679	10	11	Provisional
	GILBERT,S	0	1	1	+18	1618	4	2	New
	DOLGIN,A	0	2	0	-195	1563	5	5	New
	KRISHNAMURTHY,S	0	3	0	-12	1556	10	10	Provisional
	MITCHELL,D	0	3	0	-55	1495	10	10	Provisional
	MOORE,A	0	3	0	-84	1428	5	5	New
	STILES,J	1	1	1	+83	1258	6	7	New
	NIAZI,S	0	1	0	-17	1208	3	1	New
	ALI,F	0	1	0	-32	1168	3	1	New
	MOSLEY,A	0	5	0	-9	925	12	12	Provisional
HEDGE									
	RAUCHMAN,M	2	0	1	+10	2028	55	57	Established
	SMITH,M	5	0	1	+34	1970	63	58	Established
	JASAITIS,A	3	1	3	-34	1915	281	308	Triple Centurian
	SHEPARDSON,T	4	2	0	0	1612	21	23	Provisional
	KRATKA,M	2	1	0	-2	1574	68	76	Established
	CHAVEZ,A	4	0	2	+99	1453	19	32	Provisional
	NICHOLS,P	2	0	0	+133	1333	4	2	New
	COOMBES,N	2	1	0	+2	1301	12	15	Provisional
	GALE,M	1	1	0	-87	1233	4	2	New
	FINE,A	2	4	0	-34	1166	8	6	New
	CROSBY,N	1	2	0	-9	1036	10	9	Provisional
	MCENEANY,T	0	1	0	0	994	9	8	Provisional
	RORVICK,C	0	1	0	-34	968	7	7	New

Note: Only playoff eligible players are shown (those with at least 1 win, 1 draw, or 1 non-forfeit loss).

Note 2: Players may have slightly more Rated Games than CICL Games, due to their Initial Rating Source.

Team	Player	W	L	D	Rating Change	Rating	Rated Games	CICL Games	Rating Class
JJCCC									
	BRUCE,K	0	1	3	+103	1463	10	4	Provisional
	HENDERSON,A	2	0	0	+196	1427	7	2	New
	ABERNATHY,J	0	3	0	0	1363	8	3	New
	LEDFORD,J	0	1	1	+3	1253	4	2	New
	MARCHERT JR ,J	0	2	0	-52	1193	8	2	New
	THOMPSON,G	0	1	1	-4	1188	8	2	New
	RAINEY,R	0	3	0	-144	1106	5	3	New
	MARCHERT SR,J	0	3	0	-30	1012	9	3	Provisional
	CRAIG,S	0	3	0	-65	985	5	3	New
LOYLA									
	CLARK,I	0	3	1	+4	1461	11	12	Provisional
	DIMOPOULOS,P	2	1	0	+126	1439	10	10	Provisional
	ZACHAR,T	1	1	0	-68	1432	4	2	New
	GLIWA,D	2	1	0	-48	1352	4	3	New
	PLOTNER,J	0	1	0	-13	1291	9	17	Provisional
	WOJDYLA	0	3	0	-290	1210	4	4	New
	BROWN,B	0	4	0	-105	1190	8	8	New
	REITER,J	0	1	0	-11	1139	3	1	New
	MEDINA,D	0	2	0	-169	1131	4	2	New
MKING									
	AITIPAMULA,J	3	2	1	+10	2033	20	22	Provisional
	MELNIKOV,I	1	1	0	-7	2017	144	146	Centurian
	WALLACH,C	3	1	2	+7	1972	187	187	Centurian
	PIPARIA,J	3	2	1	-16	1932	119	126	Centurian
	CYGAN,J	3	1	2	-5	1769	82	84	Established
	GONCHAROFF,N	3	0	3	+11	1573	503	593	Quintuple Centurian
	RABINOVICH,E	3	2	0	-30	1452	59	74	Established
	GRYPARIS,J	0	0	1	+13	1380	129	173	Centurian

Note: Only playoff eligible players are shown (those with at least 1 win, 1 draw, or 1 non-forfeit loss).

Note 2: Players may have slightly more Rated Games than CICL Games, due to their Initial Rating Source.

Team	Player	W	L	D	Rating Change	Rating	Rated Games	CICL Games	Rating Class
MKNGT									
	FRIDMAN,Y	5	0	1	+23	2253	133	140	Centurian
	MORRIS,R	5	0	1	+7	2227	135	137	Centurian
	THOMSON,J	5	0	1	+30	2012	141	166	Centurian
	BALICKI,J	2	1	3	+10	1804	140	166	Centurian
	CHERKASSKY,G	3	1	0	+16	1754	47	54	Established
	KARANDIKAR,S	0	0	1	-5	1651	74	91	Established
	BABINEC,J	1	2	1	+31	1382	31	39	Established
NWEST									
	KRAVIK,P	0	1	0	-29	1774	9	7	Provisional
	SHEKHTMAN,L	0	2	0	-34	1767	8	2	New
	GAFNI,P	1	1	1	+48	1718	17	16	Provisional
	MODI,P	0	0	2	-14	1714	8	2	New
	LOU,J	2	0	0	+206	1495	7	7	New
	GINZBERG,D	1	1	0	+36	1417	8	2	New
	KIM,C	1	0	0	+116	1316	3	1	New
	WEINFELD,M	1	1	0	+98	1298	4	2	New
	WU,S	0	1	0	-21	1179	3	1	New
	BABCOCK,S	0	2	0	-33	1067	4	2	New

Note: Only playoff eligible players are shown (those with at least 1 win, 1 draw, or 1 non-forfeit loss).

Note 2: Players may have slightly more Rated Games than CICL Games, due to their Initial Rating Source.

Team	Player	W	L	D	Rating Change	Rating	Rated Games	CICL Games	Rating Class
PAWNS									
	KRAS,T	0	1	0	-7	2142	113	115	Centurian
	CAVENEY,J	0	2	2	-55	2067	22	16	Provisional
	KORENMAN,M	2	2	2	+27	1945	12	7	Provisional
	LATIMER,E	0	2	3	-47	1942	300	332	Triple Centurian
	HOLLAWAY,M	2	2	2	-44	1756	15	10	Provisional
	EDEUS,D	2	1	2	+6	1705	18	13	Provisional
	KUKURUZA,V	3	0	1	+69	1699	16	14	Provisional
	FABIJONAS,R	1	1	1	-53	1452	341	379	Triple Centurian
	HARPER,C	3	1	2	+2	1445	12	6	Provisional
	SPITZIG,M	1	0	0	+25	1359	34	39	Established
ROOKS									
	BENEDEK,R	2	2	1	-2	2095	374	387	Triple Centurian
	HILL,R	1	3	1	-23	1922	235	247	Double Centurian
	SUAREZ,E	2	1	1	-8	1902	124	124	Centurian
	BAURAC,D	3	1	1	+24	1710	308	345	Triple Centurian
	DECMAN,S	0	3	1	-11	1535	273	305	Triple Centurian
	GWEKOH,R	1	1	0	+47	1355	9	9	Provisional
	RAMANATHAN,N	2	0	0	+6	1256	18	25	Provisional
	HLOHOWSKYJ,I	0	3	0	-15	1039	22	32	Provisional
	SUKAMAR,N	1	3	0	-88	858	4	5	New

Note: Only playoff eligible players are shown (those with at least 1 win, 1 draw, or 1 non-forfeit loss).

Note 2: Players may have slightly more Rated Games than CICL Games, due to their Initial Rating Source.

Team	Player	W	L	D	Rating Change	Rating	Rated Games	CICL Games	Rating Class
STCCC	MARSHALL,J	1	2	0	-7	2258	58	53	Established
	ACOSTA,M	1	0	1	-3	2169	21	14	Provisional
	WIEWEL,J	1	1	1	-10	2140	76	70	Established
	FREIDEL,P	1	0	0	+9	1970	53	50	Established
	SUITS,J	3	1	0	+19	1877	62	59	Established
	VON HATTEN,J	4	1	0	-1	1810	33	30	Established
	AILES,T	1	0	0	+1	1792	41	42	Established
	SMITH,D	2	1	0	-7	1618	21	18	Provisional
	KOLB,S	3	1	0	+35	1609	10	6	Provisional
	PADILLA,R	2	0	1	+14	1594	31	31	Established
	GIERTZ,C	1	0	0	0	1474	3	4	New
	CRISSMAN,J	1	0	0	+42	1463	7	2	New
	BOURIS,B	0	1	0	-51	1206	6	6	New
SXUCT	CELENTANO,A	1	1	0	+21	1870	15	10	Provisional
	JACKSON,WILLIAM	0	4	1	-2	1376	25	28	Provisional
	SARNA,J	1	3	1	-56	1370	11	5	Provisional
	ABNEY,I	2	3	0	+39	1227	22	25	Provisional
	BRANNON,M	3	3	0	+118	1168	7	6	New
	ONWUMAH,I	1	3	1	+37	1161	13	14	Provisional
	MCDONNELL,B	1	3	0	+49	992	14	14	Provisional
	SINOPLE,J	0	2	0	-4	859	20	21	Provisional

Note: Only playoff eligible players are shown (those with at least 1 win, 1 draw, or 1 non-forfeit loss).

Note 2: Players may have slightly more Rated Games than CICL Games, due to their Initial Rating Source.

Team	Player	W	L	D	Rating Change	Rating	Rated Games	CICL Games	Rating Class
TT									
	HUNTER,JOSH	0	4	1	0	1457	7	5	New
	KHLUS,V	1	5	0	-27	1423	8	6	New
	GOTTEMOLLER,A	2	3	0	+214	1264	7	5	New
	SCHWARTZ,BRIAN	1	4	1	+99	1247	8	6	New
	VISSER,JOUBERT	2	4	0	+124	1181	12	6	Provisional
	WILK,M	0	4	1	-21	999	7	5	New
	VARGAS,R	0	3	0	-112	888	4	2	New
TYROS									
	ALLSBROOK,F	1	0	3	+7	2166	65	61	Established
	DIAZ,P	1	3	2	-42	2006	235	241	Double Centurian
	GUIO,J	0	4	0	-40	1831	201	200	*New* Double Centurian
	STOLTZ,B	1	2	0	-38	1824	206	220	Double Centurian
	DOBROVOLNY,C	4	1	1	+9	1737	235	256	Double Centurian
	BUCHNER,R	1	0	0	+11	1650	162	165	Centurian
	HAHNE,D	2	1	1	-12	1613	174	206	Double Centurian
	VAIL,M	1	0	1	+12	1597	71	83	Established
	MCPHAIL,C	1	0	0	+85	1335	4	6	New
	BYRNE,M	2	3	0	-28	1321	42	51	Established
	KARPIERZ,J	0	1	0	-20	1293	49	75	Established
	KURUVILLA,E	3	2	0	+68	1268	7	5	New

Note: Only playoff eligible players are shown (those with at least 1 win, 1 draw, or 1 non-forfeit loss).

Note 2: Players may have slightly more Rated Games than CICL Games, due to their Initial Rating Source.

Team	Player	W	L	D	Rating Change	Rating	Rated Games	CICL Games	Rating Class
UOP									
	LEONG,G	1	2	1	-8	1945	214	232	Double Centurian
	SIWEK,M	1	1	1	+10	1936	237	247	Double Centurian
	BOLDINGH,E	5	0	2	+72	1902	214	221	Double Centurian
	VAN MEER,J	1	1	1	-6	1898	72	70	Established
	EASTON,R	1	2	1	+4	1823	123	139	Centurian
	LECHNICK,J	0	4	2	-45	1658	133	157	Centurian
	MOSSBRIDGE,A	1	1	1	-30	1599	40	39	Established
	SCHWANBECK,S	1	1	0	+125	1525	4	2	New
	OLSEN,A	3	2	2	+35	1504	169	189	Centurian
	SHAH,A	1	0	0	+45	1345	3	1	New
	LANG,P	0	1	0	-71	1229	3	1	New
	RAMOS,J	0	3	0	-180	1220	5	3	New
	RAMIREZ,A	0	2	0	0	1080	5	5	New
WMBAT									
	TENNANT,S	4	0	1	+27	2258	24	17	Provisional
	MENON,G	0	0	1	-5	2200	9	1	Provisional
	WEBER,L	4	0	2	-4	2070	70	67	Established
	FREITAG,T	7	0	0	+66	2056	33	28	Established
	ELLICE,W	5	0	2	+56	1762	201	209	Double Centurian
	ZOLKOS,A	3	0	2	+31	1747	29	26	Established
	FRANEK,M	1	1	2	-42	1667	245	301	*New* Triple Centurian
	CONNELLY,P	1	0	0	0	1577	12	9	Provisional
	GARCIA,I	1	0	0	0	1574	7	1	New
	RAJSKY,J	2	2	2	-125	1562	12	6	Provisional

Note: Only playoff eligible players are shown (those with at least 1 win, 1 draw, or 1 non-forfeit loss).

Note 2: Players may have slightly more Rated Games than CICL Games, due to their Initial Rating Source.