

The Chicago Chess Player

The Official Bulletin of the Chicago Industrial Chess League



**Inside This Edition:
CICL In the US Amateur Team North:
Results, Games, Photos, and more!**

CICL Officer Contact List

League President President@ChicagoChessLeague.org	Tony Jasaitis		C:(708) 903-6423 W:(312) 264-2044
League Secretary Secretary@ChicagoChessLeague.org	Jerry Thomas	745 Hageman Pl Naperville, IL 60563	H:(630)420-0188
League Treasurer Treasurer@ChicagoChessLeague.org	Paul Freidel	359 N. Worth Avenue Elgin, IL 60123	C:(224)436-6050
Bulletin Editor Bulletin@ChicagoChessLeague.org	Patrice Connelly		
Webmaster Web@ChicagoChessLeague.org	Tom Friske	(see information below)	
Games Editor Games@ChicagoChessLeague.org	Tom Friske	1035 E Algonquin Road Des Plaines, IL 60016	H:(847) 299-1033 W:(847) 914-8448
Ratings Chairman Ratings@ChicagoChessLeague.org	Jeff Balicki		
Trophy Chairman Trophy@ChicagoChessLeague.org	Chuck Dobrovolny		
Publicity Chairman Publicity@ChicagoChessLeague.org	Matt Vail		C:(312) 933-1516 W:(630) 505-6557
Banquet Chairman Banquet@ChicagoChessLeague.org	Katherine Zack		

DIVISIONAL CHAIRMEN

East Division ChairmanEast@ChicagoChessLeague.org	Fred Furtner		C: (630) 291-4271 W: (312) 464-4495
West Division ChairmanWest@ChicagoChessLeague.org	Irwin Gaines		
North Division ChairmanNorth@ChicagoChessLeague.org	Jim Thomson		W(847) 538-5408

Officer Contact List	2
Contents of Issue	3
Extracurriculars: CICL in USAT North by Len Weber	4-8
En Passant: Motivating Your Players	9-10
USAT North- Robert Morris Game	11-14
Games reviewed by Tom Friske	15-35
Ratings as of March 16 th	36-43

Mark Your Calendars with These Key League Dates:

Spring Business Meeting	3.5 Weeks Before Playoffs (April 20, 2011)
Season Playoffs	Second Saturday of (May 14, 2011)
CICL Open	Second Saturday of (May 14, 2011)
League Awards Banquet	Third Friday of June (June 17, 2011)

Editor's Notes:

Special thanks to Tom Friske and Len Weber for their contributions to this month's bulletin; Tom provided so much that we'll be fitting the rest in next month's! Also, please note that this year's League Awards Banquet has been moved to Friday, June 17th.

Patrice Connelly, Bulletin Editor

Bulletin@ChicagoChessleague.org.

CHICAGO INDUSTRIAL CHESS LEAGUE INVADES U.S. AMATEUR TEAM NORTH!

by NM Len Weber; Photos courtesy Len Weber and Wayne Ellice

The *Chicago Industrial Chess League* team competed again for team chess glory in the 2011 US Amateur Team North tournament, held February 18th-20th at the Crowne Plaza in Northbrook, Illinois. 34 teams and 143 players competed in this year's North edition of this long running national event.

This year our dedicated heroes were, in board order, master ranked Matthias Pfau (CITGR), NM Dr. Steven Tennant (WMBAT), NM F. Scott Allsbrook (TYRO), expert Yuri Fridman (MKNGT), and expert Robert Morris (MKNGT).



Matthias Pfau, Dr. Steve Tennant, and Robert Morris ponder their next moves.

The team, which came in ranked #5 overall, was tied for 1st place after three rounds. Alas, but our warriors fell in the last two matches to two of the other very strong teams in this years event.

We will give a play by play shortly, but first we will also discuss the *rest* of the CICL invasion! In addition to the official team, there were numerous other teams that showed a very heavy league influence. The most notable of these was the team *2011 Chess Odyssey: CICL North!* This team consisted of expert Vincent Hart (EXCLB), Joseph Cygan (MKING), Mark Engelen (EXCLB), and Gee Leong (UOP). This team finished at 3-2.

Downers Grove Chess Club sent two teams! *Downers Grove A Team* consisted of NM Steffan Klug, NM Greg Bungo, and experts Gaddiel Tan and Dan Parmet (all of DGCC). *Downers Grove Team B* featured Dan Dugovic, Kevin Potts, Rama Yalavarthi, and Roger Wang (all of DGCC). The A team finished 4-1, and the B Team finished at 3-2.



CICAL member teams *Downers Grove Team B* and *Hell Incorporated™* face off against one another in the last round.

South Suburban Chess Club also sent two teams! *Hell Incorporated(tm)*, featuring NM Len Weber, Wayne Ellice, CICAL Bulletin Editor Patrice Connelly (all WMBATs), and Aminah Garcia. They scored 2-3. *Gopal's Counter Gambit*, which consisted of Matthew Hollaway (PAWNS), Justin Rajsky (WMBAT), Imtiaz Garcia (WMBAT), and Jaclyn Sarna (SXUCT). They scored 1-4.

Finally, there was *Accounting Associates of America*, representing their namesake corporation, consisting of NM Mariano Acosta (STCCC), FM Andrew Hubbard, expert Dmitri Sergatskov (FERMI), Jeremy von Hatten (STCCC), and Bruno Roquito. This team was mostly CICAL players! They finished 3.5-1.5.

But without further delay, let's get to the play by play!

The *Chicago Industrial Chess League* entered in the 2 day schedule, and in round 1, played Saturday morning the 19th of February, they faced *Rick Who Parked The Long Car*.

Round 1.

Chicago Industrial Chess League

- | | |
|---------------------------------|---------|
| 1. Matthias Pfau (2223) | 1F - 0F |
| 2. NM Dr. Steven Tennant (2219) | 1F - 0F |
| 3. Yuri Fridman (2114) | 1F - 0F |
| 4. Robert Morris (2027) | 1F - 0F |
| | 4 - 0 |

Rick Who Parked The Long Car

- | |
|---------------------------------|
| 1. FM Aleksandr Stamniov (2222) |
| 2. Robert Loncarevic (2060) |
| 3. Joseph Bennett (1848) |
| 4. Rick Lutzke (1763) |

Ok, so the first match was a 4-0 forfeit match victory over the opponent. It seems FM Stannov had not been entered on the roster in advance and so his unexpected appearance on board 1 was a rule violation, the penalty for which was a forfeited match. Some of the players played their games anyway, and were rated as extra rated games. So, a good enough start.

Meanwhile, in other CIGL and related team action this round (team start ranking in parenthesis);

- (7) Downers Grove A Team - (28) Warriors of the Mind 4-0
- (17) Downers Grove B Team - (32) The Obstacles 2-2.
- (14) 2011 Chess Odyssey: CIGL North - (29) The Mighty Pawns 3-1
- (9) Accounting Associates of America - (1) For Who The Azbel Tolls 1.5-2.5
- (26) Hell Incorporated - (12) The Pawn Is Mightier Than The Sword 1-3
- (27) Gopal's Counter Gambit - (13) 4G Network: No Dropped Pawns 0-4.

Round 2.

This round saw a clash of CIGL teams! After this battle, the *Chicago Industrial Chess League* stood at 2-0.

<i>Chicago Industrial Chess League</i>		<i>2011 Chess Odyssey: CIGL North</i>
1. Matthias Pfau (2223)	1 - 0	1. Vince Hart (2006)
2. NM Dr. Steven Tennant (2219)	1 - 0	2. Joseph Cygan (1861)
3. Yuri Fridman (2114)	0 - 1	3. Mark Engelen (1818)
4. Robert Morris (2027)	1 - 0	4. Gee Leong (1764)
	3 - 1	

In other CIGL related action;

- (7) Downers Grove A Team - (1) For Whom the Azbel Tolls 0-4.
- (17) Downers Grove B Team - (20) 4 Pawns & A Queen 3.5-.5.
- (9) Accounting Associates of America - (22) Individual Needs A Team 3.5-.5.
- (26) Hell Incorporated - (30) Hartman 3-1.
- (27) Gopal's Counter Gambit - (23) Pawn Stars 3-1

Round 3.

The *Chicago Industrial Chess League* won this match decisively and became one of only two teams in the entire tournament to stand at 3-0! Things were looking good.

<i>Chicago Industrial Chess League</i>		<i>Pawn Is Mightier Than The Sword</i>
1. Matthias Pfau (2223)	1 - 0	1. Bryan Lilly (2152)
2. NM Dr. Steven Tennant (2219)	1 - 0	2. Scot Henderson (1912)
3. NM Fred Allsbrook (2115)	0 - 1	3. Wade Christensen (1860)
4. Robert Morris (2027)	1 - 0	4. Mark Parnaby (1703)
	3 - 1	

Other CICL related action;

- (7) *Downers Grove A Team* - (22) *Individual Needs A Team* 3-1
- (17) *Downers Grove B Team* - (13) *4G Network: No Dropped Pawns* 1.5-2.5
- (9) *Accounting Associates of America* - (23) *Pawn Stars* 3-1
- (14) *2011 Chess Odyssey: CICL North* - (26) *Hell Incorporated* 4-0
- (27) *Gopal's Counter Gambit* - (33) *Knight Moves* 3-1

Round 4.

The *Chicago Industrial Chess League* entered this round as one of the two perfect score teams and was duly assigned the top table, and the others 3-0 team! Would this be the year for the highest glory?! Alas it was not to be, as our heroes fell to the appropriately named *Torturetown*.

Chicago Industrial Chess League

- | | |
|---------------------------------|-------|
| 1. Matthias Pfau (2223) | 0 - 1 |
| 2. NM Dr. Steven Tennant (2219) | ½ - ½ |
| 3. Yuri Fridman (2114) | ½ - ½ |
| 4. Robert Morris (2027) | 0 - 1 |
| | 1 - 3 |

Torturetown

- | |
|-----------------------------|
| 1. FM Jim Dean (2327) |
| 2. NM John Langreck (2232) |
| 3. Daniel Gater (2136) |
| 4. Drew Hollinberger (2053) |

Other CICL action;

- (7) *Downers Grove A Team* - (15) *Pyramid Blockade* 3-1
- (17) *Downers Grove B Team* - (24) *Telebrenequiette* 2-2
- (9) *Accounting Associates of America* - (18) *Chen, Chen, & Peng* 3.5-.5
- (14) *2011 Chess Odyssey: CICL North* - (10) *The Young Guns* .5-3.5
- (26) *Hell Incorporated* - (25) *Check Norris and the Delta Force Knights* 2.5-1.5
- (27) *Gopal's Counter Gambit* - (22) *Individual Needs A Team* 1-2

FINAL ROUND!

In the final round, our heroes found themselves in a logjam near the top, but nevertheless out of the running for one of the top two spots. With the original mission of bringing publicity to the league more than likely accomplished, they sat down against yet another very strong team, *Chicago.edu*. But again it was not to be and in an anticlimactic finish our crew was taken down again.

The *Chicago Industrial Chess League* thus finished at 3-2, good for 9th place on tiebreaks.

Chicago Industrial Chess League

- | | |
|---------------------------------|-------|
| 1. NM Dr. Steven Yennant (2219) | ½ - ½ |
| 2. NM Fred Allsbrook (2115) | 0 - 1 |
| 3. Yuri Fridman (2114) | 0 - 1 |
| 4. Robert Morris (2027) | ½ - ½ |
| | 1 - 3 |

Chicago.edu

- | |
|---------------------------|
| 1. NM Jeremy Kane (2215) |
| 2. Spencer Bledsoe (2022) |
| 3. Steven Rand (1917) |
| 4. Mike Mei (1916) |

So then we will now focus our attention on the other CICL team and related action!

(7) *Downers Grove A Team* defeated (6) *The Young Guns* 2.5-1.5 to finish at 4-1 and 5th overall on tiebreaks!

(9) *Accounting Associates of America* accounted of themselves very well by drawing the event's defending champions (3) *Pinoy of Chicago (We're Back!)* 2-2 in the final round to finish at 3.5-1.5 and 6th place overall on tiebreaks.

(14) *2011 Chess Odyssey: CACL North* defeated (22) *Individual Needs A Team* 4-0 to finish with gusto and become 13th overall on tiebreak.

(17) *Downers Grove B Team* defeated (26) *Hell Incorporated* by a score of 2.5-1.5, to finish 15th overall on tiebreaks. The *Hell* crew finished 2-3, 27th on tiebreaks.

That just leaves (27) *Gopal's Counter Gambit*, who lost to (21) *The Crop of Wisconsin Talent* 1-3, to finish at 31st on tiebreak.

And so the ominously named *For Whom The Azbel Tolls* (named after 4th board Gregory Azbel) scored 4.5-.5, defeating *Torturetown* in the final round, and is the 2011 U.S. Amateur Team North Champions! Congratulations to the champs, GM Josh Freidel, NM Erik Santarius, FM Alexander Betaneli, and Gregory Azbel (1538).

Second place, on tiebreaks, went to *Chicago.edu*, also 4.5-.5, who defeated our league team in the final round.

Jeremy von Hatten (STCCC), playing for *Accounting Associates of America*, won the prize for top 4th Board, with 5-0! Congratulations Jeremy! Jeremy also won the U1800 prize in the accompanying Illinois Blitz Championship, which was held Saturday evening!

The Illinois blitz title was won by IM Angelo Young, the highest scoring Illinois player. Several CACL players competed, including NM's Gopal Menon (WMBAT), Fred Allsbrook (TYROS), and Floren Innumerable (FORKS).

And, for fun, we are going to have a top 5 USATN - CACL player "Most Improved" by USCF rating gain.

Jeremy von Hatten	(STCCC)	+52
Patrice Connelly	(WMBAT)	+52
Mark Engelen	(EXCLB)	+39
Matthew Hollaway	(PAWNS)	+31
Dmitri Sergatskov	(FERMI)	+17

What a great tournament! Congratulations to the CACL members who participated, and a special thanks to those who played on the official team on behalf of all of us!

Many of us are familiar with the “motivational” posters found in employees’ offices throughout the US (and probably throughout offices of many CICL players!). These inspiring placards offer a contemplative picture with a few words of encouragement. The recent USAT North tournament offered a few of these special moments, caught on camera by Len Weber and Andi Rosen. Patrice Connelly offers a few encouraging words to chess players everywhere.



POSING

It makes you look smarter than you really are.



LITTLE KIDS

They're not the ones who will go home crying.



THE POST MORTEM

Where you always win.



PRODUCT PLACEMENT

Because you've got to make your entry fee back somehow.

**Hollinberger, Drew (2087) -
Morris, Robert (2027)** [C44]
USAT North, 2-20-2011

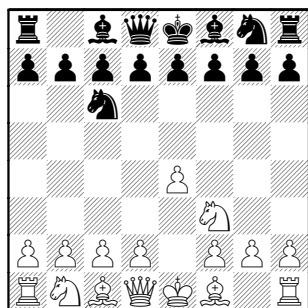
[Notes by Rob Morris]

This game was played in round 4 and, despite a very rocky start to the tournament, (including a near loss!) to our CICL North division brethren) we found ourselves as one of only 2 teams with a perfect 3-0-0 score.

Across from the table was a now very familiar crew of NM Jim Dean, NM John Lagreck, Daniel Gater (I don't recall him on this team before), and Drew Hollinberger. This is my third outing as part of a CICL team and it seems that it just wouldn't be a USAT north tournament without being paired against this team sometime during the weekend.

Since we came into this match with 3 people in contention for board prizes (Mathias, Steve, and I were all at 3-0-0 for the matches) it was obvious that all 3 of us were playing round 4. If this tournament was a journey then this is how that voyage effectively ended.

1.e4 Nc6 2.Nf3

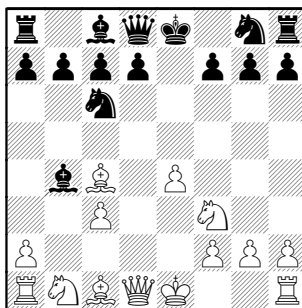


Drew and I have played in the USAT with these same colors. That game was annotated in the July 2007 issue of The Chicago Chessplayer. I came into this tournament intending to answer e4 with e5 however, I was curious as to what Drew had prepared for me.

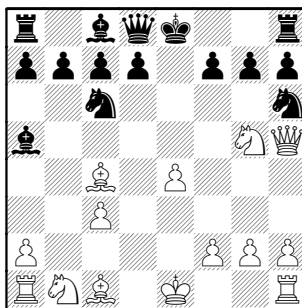
That said, since most of my

pre-tournament preparation focused on 1) ... e5 so I decided to accept his invitation to a transposition.

**2...e5 3.d4 exd4 4.Bc4 Bb4+ 5.c3
dxc3 6.bxc3**



6...Ba5 7.Ng5 Nh6 8.Qh5

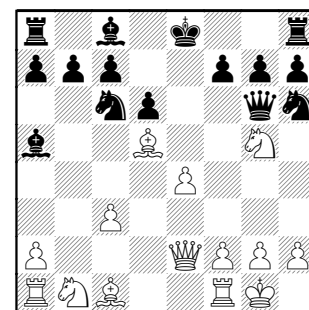


Drew has played this opening very slowly. Time controls for this tournament were different than I've previously dealt with. Game 90 with a 30 sec increment and a mandate to keep notation for the entire game is a FIDE standard and that was in force for this tournament.

In any case he has 60 min left at this point. (I have 83.)

Drew's slow play clearly stemmed from a surprising lack of familiarity with the opening since, as any regular aficionado will tell you, this is not the way to try blowing black off the board. It simply won't work.

8...Qf6 9.0-0 Qg6 10.Qe2 d6 11.Bd5



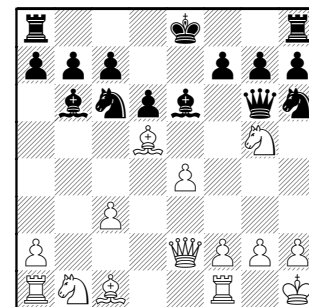
Drew is now down to 27 min. (I still have 60 min)

I had never seen this position before and I recall thinking that:

A) Black's fine. White clearly has insufficient compensation for his pawn

B) What on earth is he doing? No attempt to play f4? Positively shocking!

11...Bb6 12.Kh1 Be6



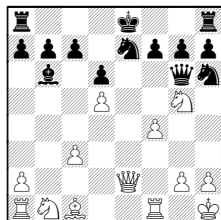
This was my longest think (22 min) of the game. Having decided that the only bad thing about Black's position was the unenviable Nh6 I concocted this scheme to find it a better square. The idea was simple.

13.Qb5?!

Given Black's advantage in development and extra pawn white is probably lost. White was having none of that and answered surprisingly quickly with a 3rd choice that I hadn't considered.

If he captures, 13.Nxe6 fxe6 my Knight can retreat to f7.

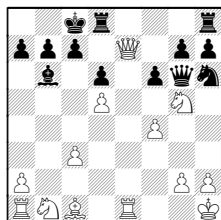
If, however, white plays the “obvious” 13.f4 then I planned the possible sequence 13...Bxd5 14.exd5+ Ne7



15.Re1

I felt it was screaming to be played

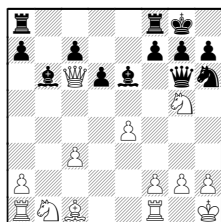
15...0-0-0! 16.Qxe7 f6



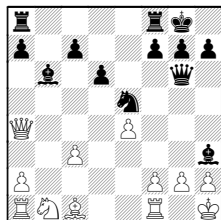
with the dual threats fxg (winning back the piece) and Rhe8 (trapping the Queen and/or skewering the hanging Rook at e1).

13...Ng4?

13...0-0 would have left black a clear pawn to the good since 14.Bxc6 bxc6 15.Qxc6?



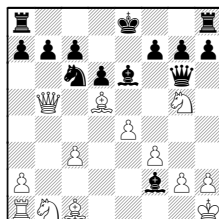
15...Ng4 16.Nh3 Ne5 17.Qa4 Bxh3



must be winning for Black

14.Nh3? Drew used most of the rest of his time on this lemon.

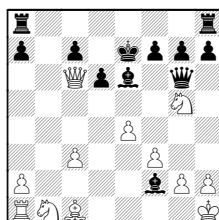
During the game I thought 14.f3 Nf2+ 15.Rxf2 Bxf2



16.Bxc6+

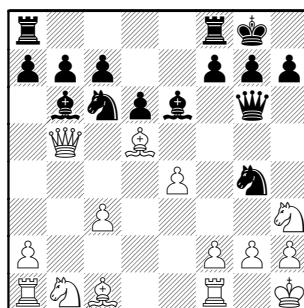
(Unfortunately, 16.Qxb7 leaves white with a clear advantage.)

16...bxc6 17.Qxc6+ Ke7



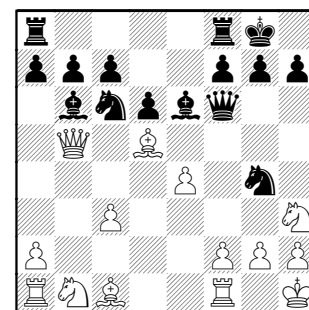
Black is fine

14...0-0



Drew has 8 min left I have 31

15.Nf4 Qh6 16.Nh3 Qg6 17.Nf4 Qf6 18.Nh3

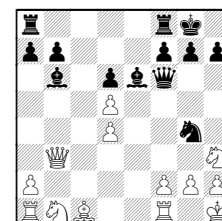


By this point Drew is “living on the increment”. From now until the end of the game he drops to 2 or 3 seconds multiple times.

18...h6?!

Still, Black's a full pawn to the good and very optimistic about his chances. The next dozen or so moves only tend to increase expectations.

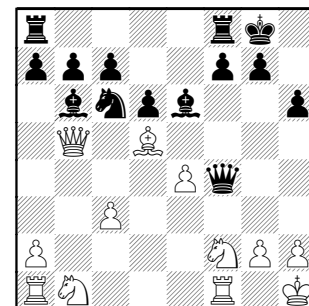
Missing the very pretty idea 18...Nd4 19.cxd4 c6! 20.Qb3 cxd5 21.exd5



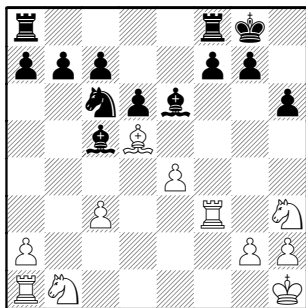
21...Bxd4 22.Bg5 Qe5 23.Bf4 Qxd5

It's too bad since I saw the Nd4 idea several moves ago but it wasn't ready then. I didn't think it worked now only because I missed the c6 intermezzo idea.

19.Bf4? Nxf2+ 20.Nxf2 Qxf4

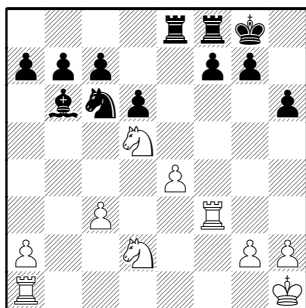


21.Nh3 Qe3 22.Rf3 Qc5 23.Qxc5
Bxc5

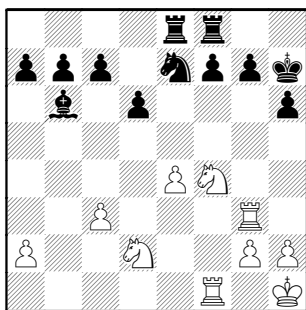


So we move into a late queenless middlegame where black has 2 extra pawns and white has a bad pawn structure but a slightly more active position. Black's pace of play picks up slightly as he works on unraveling his rooks and tries to budget his time.

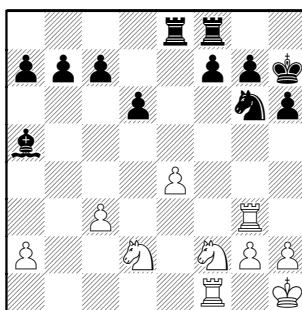
24.Nf4 Bxd5 25.Nxd5 Bb6 26.Nd2
Rae8



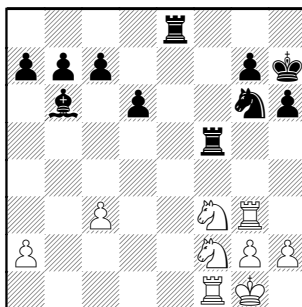
27.Rg3 Kh7 28.Rf1 Ne7 29.Nf4



29...Ng6 30.Nd3 Ba5 31.Nf2



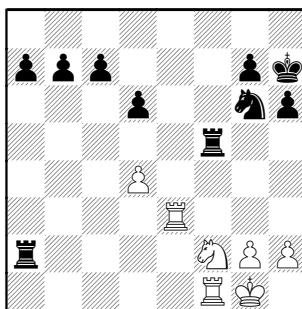
31...f5 32.Kg1 Bb6 33.exf5 Rxf5
34.Nf3



34...Re2

Missing the opportunity to play 34...Nf4 but since Black will soon be 3 pawns up things are clearly still well in hand.

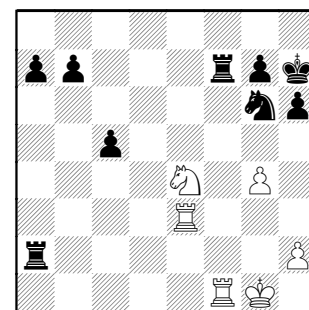
35.Nd4 Bxd4 36.cxd4 Rxa2 37.Re3



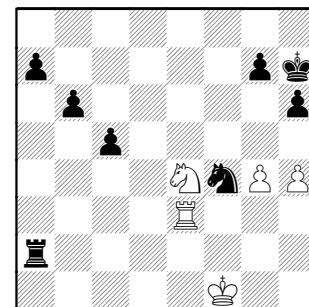
37...c5

37...b5 is better. Black's path to a win is clear. Push the extra pawns and this is the slow way to do it.

38.g4 Rf7 39.dxc5 dxc5 40.Ne4



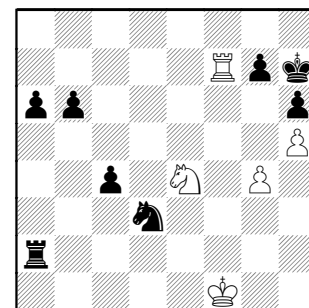
40...Rxf1+ 41.Kxf1 b6 42.h3 Nf4
43.h4



43...a6

43...b5 44.Nd6 Nd5 is great for Black

44.h5 c4 45.Rf3 Nd3 46.Rf7



Black still had a few minutes but the time pressure of the last 20 moves felt foreign. Not time pressure (had to take notation) though that seemed to be coming and not quite slow play (I'd never seen someone go down to 1 second so many times) and there was no relief in sight except to queen one of the pawns. Intuitively I knew I'd been overly cautious pushing the queenside so I paused to construct a plan and decided no more slow play.

Unfortunately I mysteriously forgot to do what I always tell my elementary kids to do. Check to see if your opponent's last move threatens something.

46...b5?? 47.Nf6+

Mate threatens, so... Black Resigned
1-0

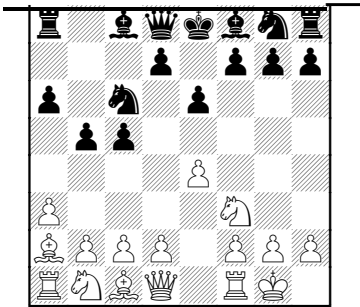
Last month was entirely devoted to upsets, and I appreciate the feedback the article generated! More surprisingly, as that issue was published, more interesting ones arrived in my mailbox. If that wasn't enough, this month the recent Joliet Jr College-Argonne Rooks gamescores were delivered,

and, despite the difference in performance ratings, I found myself delving into several of the games. Well, if four were interesting, might as well finish the whole match off! Each game had some instructive situations which you will surely enjoy!

**Zaderej, Victor (1657) –
<Black> (1855)** [B20]

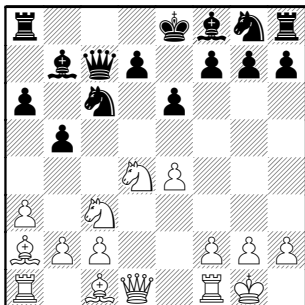
BP/Molex-Dragons, 2-16-2011

1.e4 c5 2.Bc4 e6 3.a3 Nc6 4.Nf3 a6
5.0-0 b5 6.Ba2



White has spent development time securing his Bishop, which isn't a GM idea, but let's see how it works out.

6...Bb7 7.d4 transposing into an odd Sicilian Kan 7...cxd4 8.Nxd4 Qc7 9.Nc3

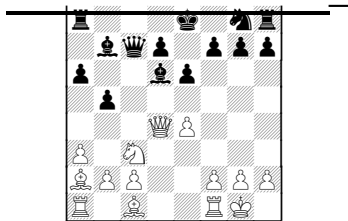


9...Nxd4

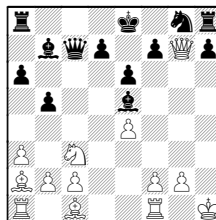
One known method is first 9...Nge7 so that after, say, 10.Be3 Nxd4 (as in game) can be followed by 11.Bxd4 Nc6 chasing the centralized piece away

10.Qxd4 White may be threatening e4-e5 here 10...Qc5

10...Bd6

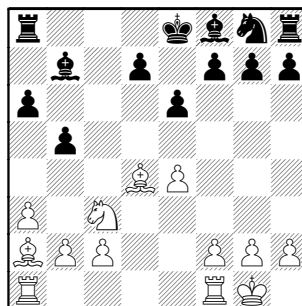


may be possible as 11.Qxg7 allows 11...Bxh2+ 12.Kh1 Be5



and Black has some open space to attack in. The one thing he needs to watch is f2-f4, however.

11.Be3 Qxd4 12.Bxd4



Way too many trades for my taste. Black doesn't have support to play d7-d5, e4-e5 can lock d6, and White's Bishop pair rakes the Kingside. Yet White has no immediate targets.

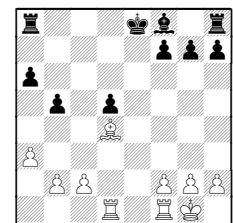
12...Ne7 13.b4

This only weakens c4 and c3, as Black immediately demonstrates.

13.Rad1 starts the concentration on d6

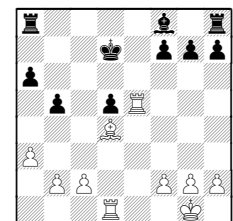
A) 13...d5 14.exd5 Nxd5
(14...exd5 15.Rfe1)

15.Nxd5 Bxd5 16.Bxd5 exd5

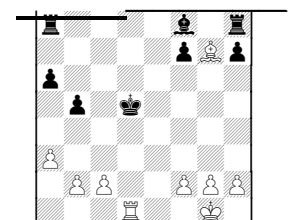


17.Rfe1+ Kd7
(17...Be7? 18.Bc5)

18.Re5!

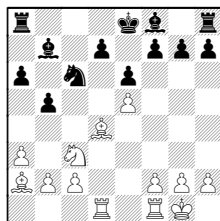


and one amusing line is 18...Kd6?
19.Rxd5+! Kxd5 20.Bxg7+

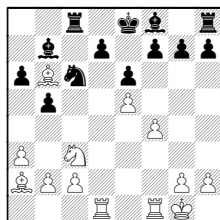


winning back the Rook with a couple Pawns in tow 20...Kc6 21.Bxh8 Bxa3 well, guess it's only one Pawn up, but still better for White 22.bxa3 Rxh8

B) 13...Nc6 14.e5

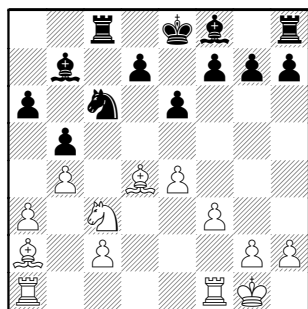


14...Rd8? 15.Bb6 Rc8 16.f4



and Ne4 dominates the key dark squares

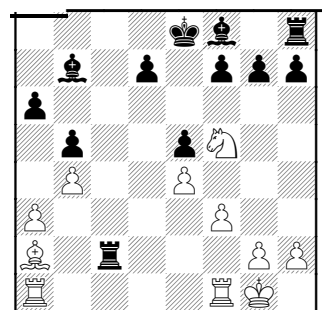
13...Rc8 14.f3 Nc6



15.Ne2

15.Be3 drops a Pawn (maybe two) to 15...Nxb4 thanks to White's 13th move

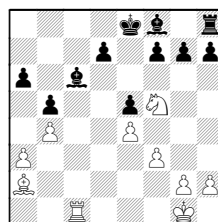
15...Nxd4 16.Nxd4 e5 17.Nf5 Rxc2



Guess that 13th move really did give up a Pawn ! Unfortunately, the extra Pawn is a backward d-Pawn that has no future, or support.

18.Rfc1 Rxc1+ 19.Rxc1 Kd8

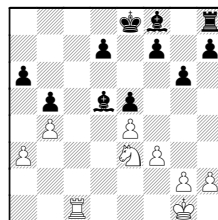
19...Bc6



to block, doesn't work because of 20.Bd5 winning c6 as 20...g6

(20...Bxd5?? allows mate ! 21.Rc8#)

21.Ne3 Bxd5

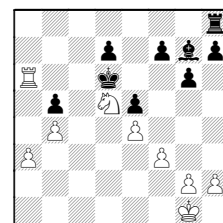


22.Rc8+! a nice zwischenzug !
22...Ke7 23.Nxd5+ Kd6

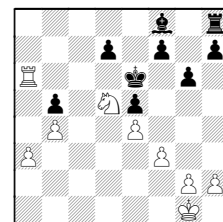
(23...Ke6 24.Re8+ transposes to this same analysis)

24.Ra8 wins the a-Pawn, with mate !!

A) 24...Bg7?? 25.Rxa6#

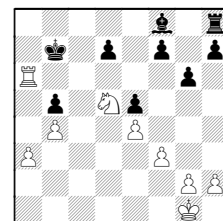


B) No better is 24...Ke6 25.Rxa6+



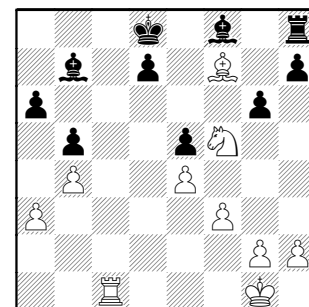
almost mate ! 25...d6 26.Rb6

C) 24...Kc6 25.Rxa6+ Kb7

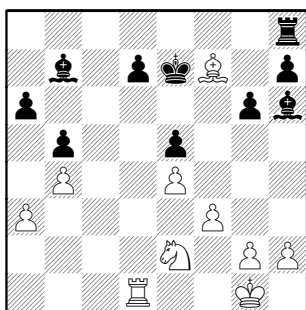


26.Rf6 White eats Pawns like Pez.

20.Bxf7 g6



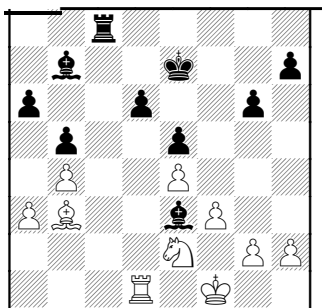
21.Ng3 Bh6 22.Rd1 Ke7 23.Ne2



23...Rc8

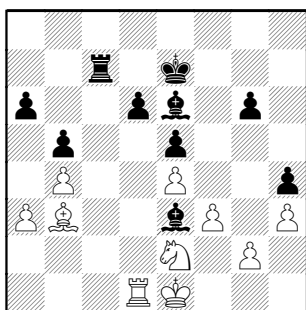
White depends on the small tactic:
23...Kxf7 24.Rxd7+ regaining the piece

24.Bb3 Be3+ 25.Kf1 d6



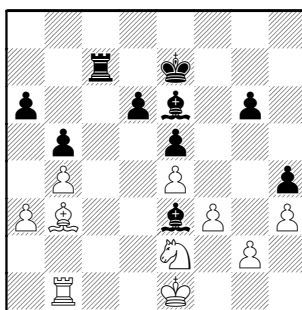
This is the kind of headache you end up with when the forces haven't been marshalled. There are a few threats which tie White down, but the early trades haven't left enough pieces to reach the weaknesses.

26.h3 h6 27.Ke1 Rc7 28.Kf1 h5
29.Ke1 h4 30.Kf1 Bc8 31.Ke1 Be6

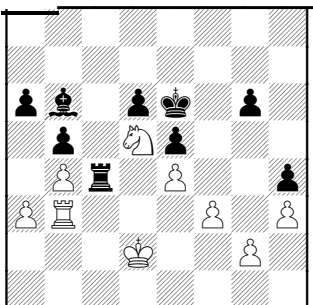


White gets kudos for being patient and not weakening his position.

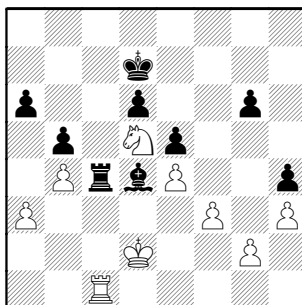
32.Rb1



32...Bb6 hmmm, letting the King roam a bit 33.Kd2 Bxb3 34.Rxb3 Ke6 35.Nc3 Rc4 36.Nd5



36...Bd4 37.Rb1 Kd7 38.Rc1



38...g5

38...Bb2 39.Rxc4 bxc4 40.a4, like the game, doesn't give either side hope

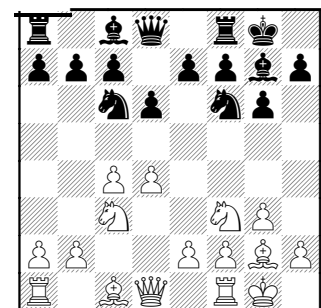
39.Rxc4 bxc4 40.Nf6+ Kc6 41.a4

I enjoyed White's cool-headedness.
1/2-1/2

<White> (1734) –
McGown, Dan (1474) [E62]

Dragons-BP/Molex, 2-16-2011

1.Nf3 d6 2.c4 Nf6 3.Nc3 g6 4.g3
Bg7 5.Bg2 0-0 6.0-0 Nc6 7.d4

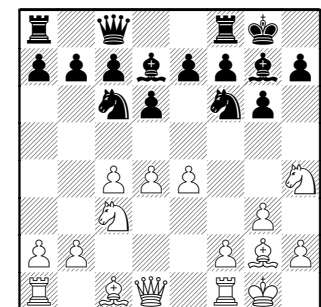


7...Bf5 [7...e5] 8.Nh4 Bd7

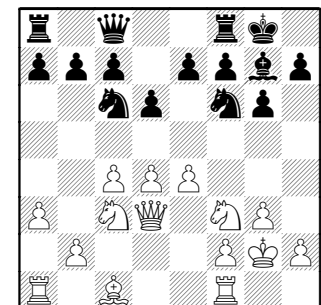
8...Bg4 9.h3 is the h-Pawn a weakness ? 9...Bd7 10.e4 Qc8 11.Kh2

8...Be6? 9.d5

9.e4 Qc8



10.a3 Bg4 11.Qd3 Bh3 12.Nf3 Bxg2
13.Kxg2



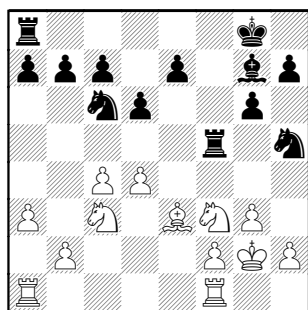
13...Nh5

13...Ne8 is preferred if the Knight doesn't have access to f4

14.Be3 f5 15.exf5 Qxf5 hitting weak Queen and Knight 16.Qxf5

16.Qe2 idea Ng5 hoping to move in on to e6 16...Rae8 idea e5, opening line towards Queen

16...Rxf5?



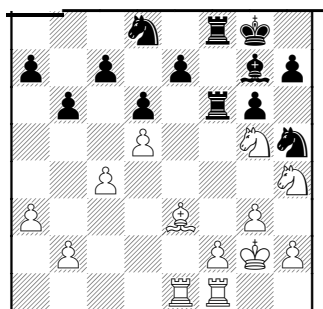
not possible thanks to Black's Knight placement 17.Nh4?

17.g4 wins material 17...Rxf3 18.Kxf3 Nf6 (18...Nxd4+? 19.Bxd4 and the Knight still hangs)

17...Rf7 18.Rae1 Raf8

18...Nxd4 looks possible

19.Ne4 Nd8 20.Ng5 Rf6 21.d5 b6

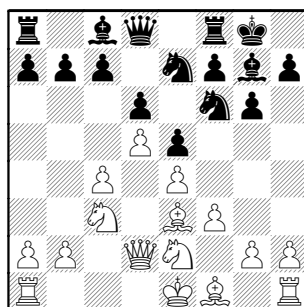


22.Ne4 R6f7 1/2-1/2

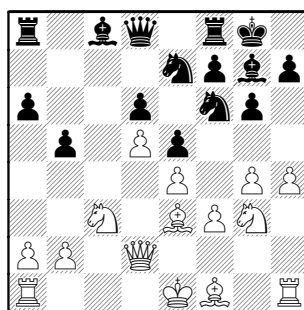
<White> (1830) –
Deichmann, Eric (1280) [E85]

DGCC-BP/Molex, 3-2-2011

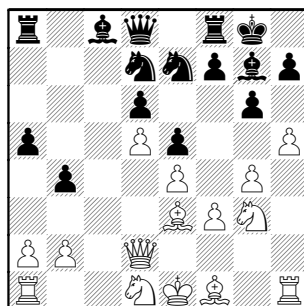
1.d4 Nf6 2.c4 d6 3.Nc3 g6 4.e4 Bg7
5.f3 Nc6 6.Be3 0-0 7.Qd2 e5 8.d5
Ne7 9.Nge2



9...c6 10.g4 cxd5 11.cxd5 a6 12.Ng3
b5 13.h4



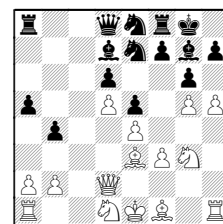
13...b4 [13...h5 should halt the Pawn storm] 14.Nd1 a5 15.h5 Nd7



leaving h7 unprotected

I examine 15...Bd7

A) 16.g5 the Pawn blocks the Q/B battery reaching h6 16...Ne8



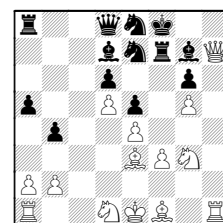
17.hxg6 fxg6

17...hxg6 18.Qh2 f6 19.Qh7+ Kf7

18.Qh2 Rf7

(18...Rxf3?! might be opening the f-file and/or d1-h5 diagonal to White's advantage)

19.Qxh7+ Kf8



Black has defended and it would have to be seen what White can get with his extra Pawn (which happens to be the backward f-Pawn)

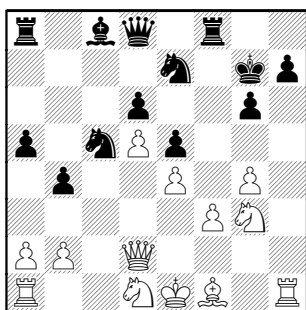
B) 16.hxg6 16...fxg6 17.Bh6 Rf7 maintains h7

16.Bh6 Nc5
[16...f6 provides the King luft]

17.hxg6 fxg6

17...hxg6? 18.Bxg7 Re8
(18...Kxg7?? 19.Qh6+ Kf6 20.g5#)

18.Bxg7 Kxg7

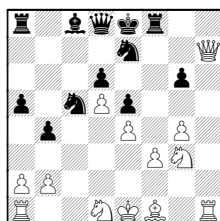
**19.Qg5**

White should take advantage of his series of checks ! 19.Qh6+ Kf7

(19...Kg8 or Kh8 20.Qxh7#;

No following line is changed by including 19...Kf6 20.g5+ Kf7)

20.Qxh7+ Ke8

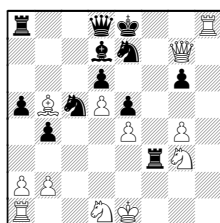


21.Qg7! threatening Rh8, and Black's Rook is required to save his Queen !

(If he plays 21.Bb5+? immediately, after 21...Bd7 White must waste a tempo on the hanging piece)

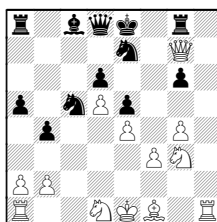
So Black can run his King, but White comes out at least a Pawn up:

A) 21...Rxf3 22.Bb5+! Bd7 23.Rh8+



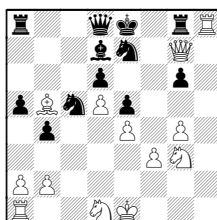
and mate on f8

B) 21...Rg8



22.Rh8

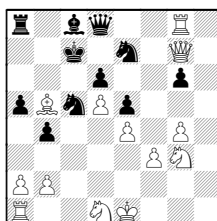
White could also go with 22.Bb5+ Bd7 23.Rh8



23...Bxb5 24.Rxg8+ Nxc8 25.Qxg8+ Kd7 26.Qxg6

22...Rxb8

(22...Kd7 23.Bb5+ Kc7 24.Rxg8

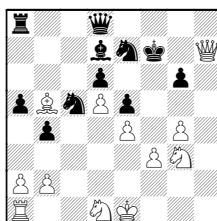


and since Nd7 is pinned, Black must drop material)

23.Bb5+

(The King can run after 23.Qxh8+ Kd7 24.Bb5+ Kc7)

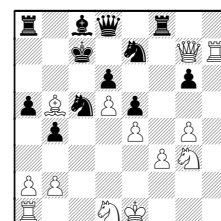
23...Bd7 24.Qxh8+ Kf7 25.Qh7+



and White is better, with a Pawn to give confidence of at least a draw

C) 21...Rf7?? 22.Rh8+ Kd7 23.Rxd8+ capturing with check saves his own Queen !;

D) 21...Kd7 22.Bb5+ Kc7 23.Rh7



White wins the Knight, so Black needs to look elsewhere!

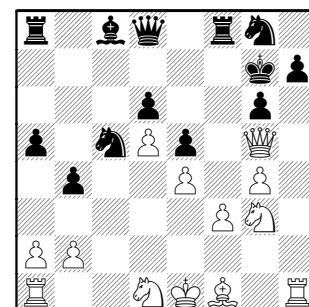
23...Kb6 hitting loose piece and walking away from the pin 24.Qxe7 (24.Be2 Ra7) 24...Kxb5

(24...Qxe7 25.Rxe7 Kxb5 26.Ke2)

25.Qxd8 Rxd8

Back to the game, left at beginning of this page...

19...Ng8



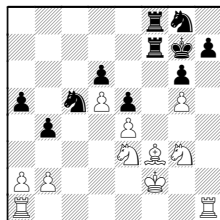
White has officially missed his opportunity !

20.Qxd8 Rxd8 21.g5 Rf8 22.Be2

22.Kf2 gives his Bishop a choice of b5 or h3 22...Bg4 23.Be2 and Ne3 connects the Rooks with tempo

23...Rf7!? Black sees his tactics !

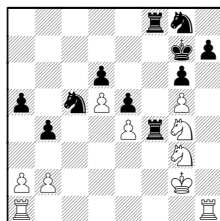
24.Ne3 Bxf3 25.Bxf3 Raf8



Black has won a Pawn, but there's a lot of pieces on the board. The immediate threat is Rxf3+, winning one of the Knights! Looks like White could just return the piece, getting a nice outpost for his Knight

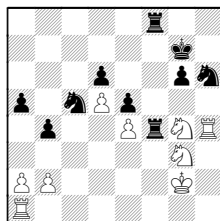
A) 26.Rh3? idea Rah1 26...Rxf3+ 27.Ke2 Rf2+ 28.Ke1 Rxb2 probably winning

B) 26.Ng4 Rxf3+ 27.Kg2 R3f4



if the Knight moves, Black has Rf2+

28.Rh4 but the just-moved Rook hangs! so... 28...h5 attacking the pinned Knight 29.gxh6+ Nxh6



maintaining hit to the Knight

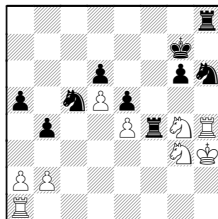
B1) 30.Rah1?! (let's see if White can harass the opponent's King) 30...Nxg4 31.Rh7+ Kf6

(31...Kg8 32.Ra7 idea Rhh7 can be handled with the simple R4f7)

32.Ra7 a4 33.Rhh7 not seeing what White has accomplished

B2) White drops another Pawn after 30.Rxh6 Rxg4 Rh6 hangs, right?! 31.Rah1 Nxe4

B3) 30.Kh3 Rh8!



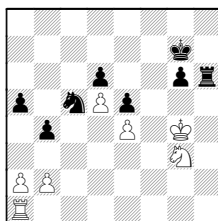
with threat of Nxg4, winning the poor Knight.

B31) White can't force the Rook away with 31.Ne2 Rxe4

B32) Looks like an endgame is forced: 31.Rxh6 Rxg4! 32.Kxg4

(32.Rxh8? Rxg3+ 33.Kxg3 Kxh8)

32...Rxh6



I doubt Black can immediately make his extra Pawn felt, so he needs to look for another weakness. Maybe White's second rank is it (looks like Black threatens Rh2 and Nd3)

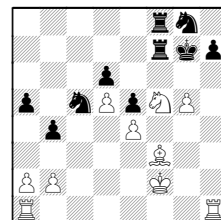
33.Kf3

(33.a3?! trying to eliminate Pawns, playing for a draw 33...b3 and b2 is set as a target; Or 33.Rh1? Rxh1 34.Nxh1 Nxe4)

33...Rh2 34.Ne2 blocking the attack 34...Nxe4!

B33) Black is better placed after 31.Nxh6 Rxh6 32.Rxh6 Kxh6 compared with the 31. Rxh6 line.

C) So, from the first analysis diagram on this page, I prefer: 26.Nef5+! gxf5 27.Nxf5+



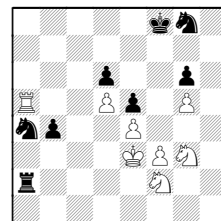
and d6 becomes a target

22...Ba6 23.Nf2 Bxe2 24.Kxe2 Rf7 25.Rh3 Rc8 26.Rah1 Na4 27.Rxh7+ Kf8 28.Rxf7+ Kxf7 29.Rh7+ Kf8 30.Ra7

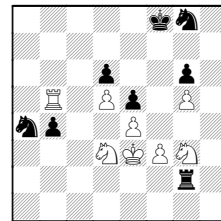
30.b3 Nc3+ 31.Kd2 Nxa2 32.Ra7 Rc5

30...Nxb2

Again, checks could create some tension 30...Rc2+ 31.Ke3 Rxb2 32.Rxa5 Rxa2



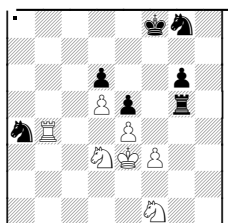
33.Rb5 Rb2 34.Nd3 winning the Pawn back 34...Rg2!?



35.Nf1

(35.Ne2? Rxe2+! netting a Knight 36.Kxe2 Nc3+ 37.Ke3 Nxb5 38.Nxb4)

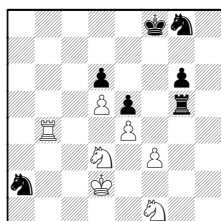
35...Rxg5 36.Rxb4



the Black Knight is in trouble 36...Nc3

(36...Nc5 37.Nxc5 dx5 38.Rc4)

37.Kd2 Na2



38.Ra4 (38.Rb2 Rg2+) 38...Rg2+
39.Ke3 (39.Kd1? Nc3+) 39...Nc3

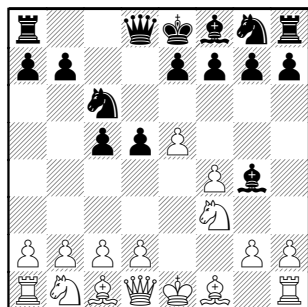
31.Rxa5 Rc2+ 32.Ke1 Rc1+ 33.Ke2
Rc2+ 34.Ke1 Rc1+ $\frac{1}{2}-\frac{1}{2}$

**AND NOW... We present the
complete battles of the JJCCC-
Rooks match...**

**Lerner, Tyler –
Benedek, Roy (2095) [B21]**

JolietJrCCC-Rooks, 03.02.2011

1.e4 c5 2.f4 Sicilian Grand Prix line is
noted for its attacks. **2...d5 3.e5 Nc6**
4.Nf3 Bg4

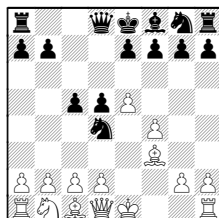


5.h3

I would continue development with
5.Be2 Bxf3

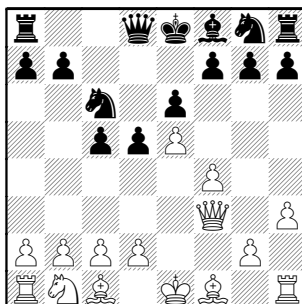
(5...Nd4? drops a piece to 6.Nxd4
Bxe2 7.Nxe2)

6.Bxf3 Nd4



7.Bg4 the Bishop isn't ideally placed,
but it still lives to support f4-f5

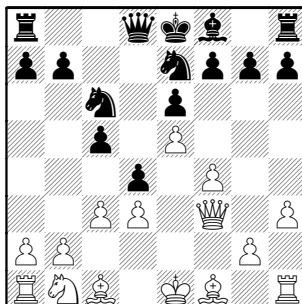
5...Bxf3 6.Qxf3 e6



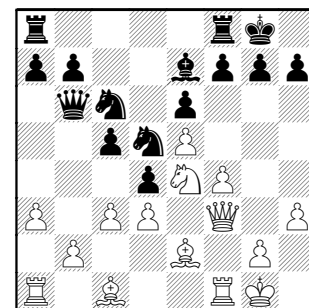
7.c3 White is rightly concerned about
Nd4, but his choice makes it longer to
bring out the Queenside pieces.

7.Qg3 questions Black's g7 square
7...Nd4 can be guarded by 8.Na3
and, if 8...c4 threatening Bxa3, Nxc2
9.c3

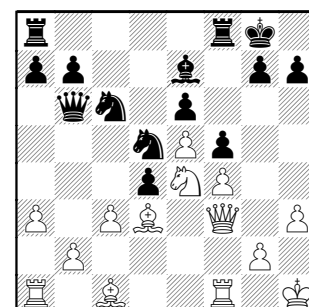
7...Nge7 8.d3 d4



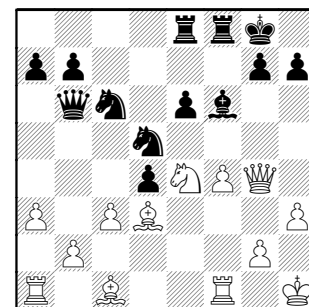
9.Nd2 Nd5 10.Ne4 Be7 11.a3 Qb6
12.Be2 0-0 13.0-0



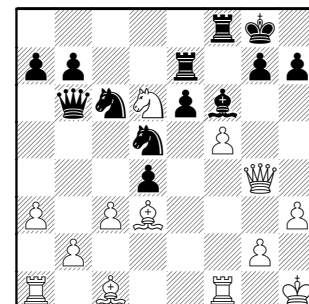
13...c4 14.Kh1 cxd3 15.Bxd3 f5



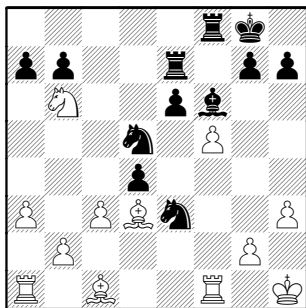
16.exf6 Bxf6 17.Qg4 Rae8



18.Nd6 Re7 19.f5?

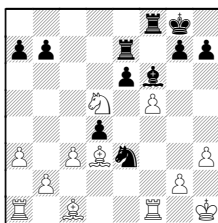


19...Ne5 20.Nc4 Nxg4 21.Nxb6
Nge3



22.Rf3 drops a piece

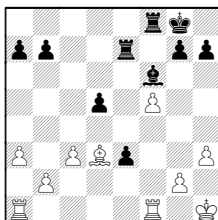
White has 22.Nxd5



22...exd5

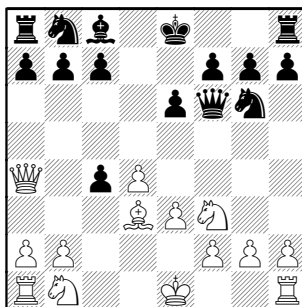
(22...Nxf1? drops a piece to
23.Nxe7+ Bxe7 24.Bxf1)

23.Bxe3 dxe3



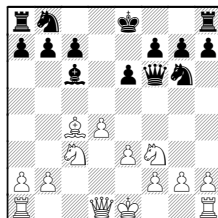
Black has a definite initiative with his
passer and supporting d5-d4.
0-1

6...Qf6 an unusual place (and time) to
move the Queen 7.c4 dxc4 8.Qa4+



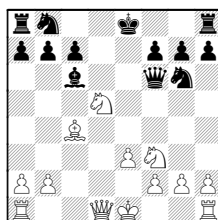
giving Black a free tempo

8.Bxc4 Bd7 9.Nc3 Bc6



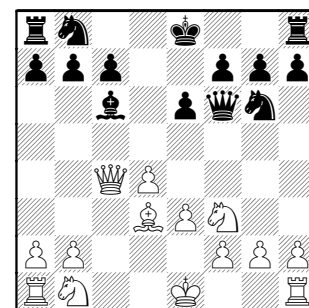
10.d5 the standard Queen's Gambit
center-break, here possible thanks to
Black pieces being completely on
wrong squares. Normally Queen
would be at d8, Knight at f6, both of
which defend d5.

10...exd5 11.Nxd5



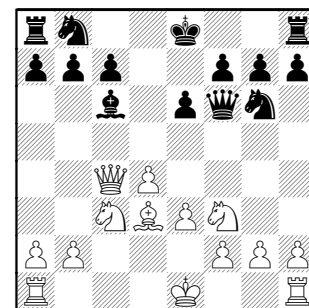
forking Queen and another fork at c7

8...Bd7 9.Qxc4 Bc6



now the Queen move has a point !

10.Nc3

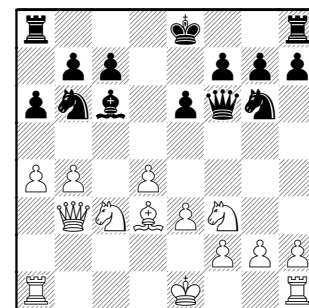


It's interesting how White dominates
the center just because there's no
Knight on f6 !

10...a6

10...Bxf3 11.gxf3 Qxf3? fails to
12.Be4

11.a4 Nd7 12.b4 Nb6 13.Qb3



13...Rb8 Black now threatens Bxf3

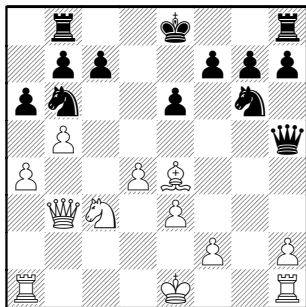
Hill,Rob (1922) –
Bruce,Ken (1463)

[D02]

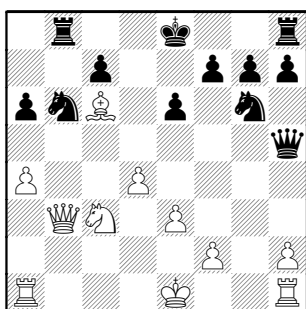
Rooks-JolietJrCCC, 2-3-2011

1.d4 d5 2.Nf3 e6 3.Bg5 Be7 4.Bxe7
Nxe7 5.e3 Ng6 6.Bd3

14.b5 Bxf3 15.gxf3 Qxf3 16.Be4 Qh5



17.bxa6 bxa6 18.Bc6+

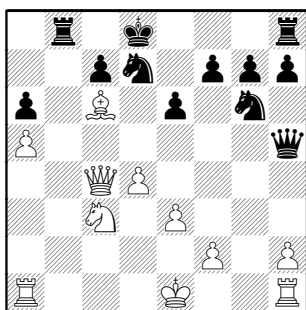


Black is made to suffer for gaining an extra Pawn before securing his King.

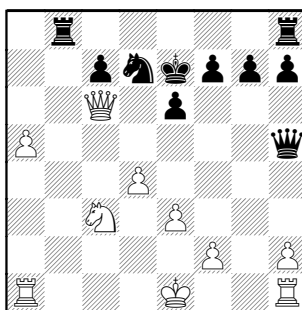
18...Kd8

A common way to wheeze out of such situations is 18...Kf8 and if 19.Qa3+ Kg8 Black "castles by hand" with h6 followed by Kh7

19.a5 Nd7 20.Qc4



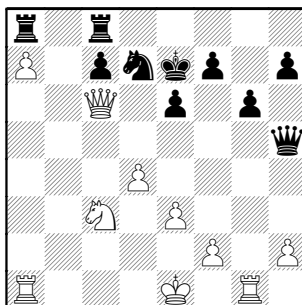
20...Ne7 21.Qxa6 Nxc6 22.Qxc6 Ke7



23.a6 now Qxc7 is possible because White has the reply Qa5, guarding the Knight

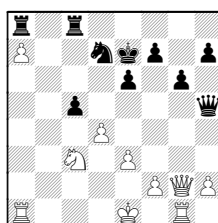
23.Qxc7 Rhc8 skewers onto c3

23...Rhc8 24.a7 Ra8 25.Rg1 g6



26.Qg2 Qf5

Maybe Black can play 26...c5

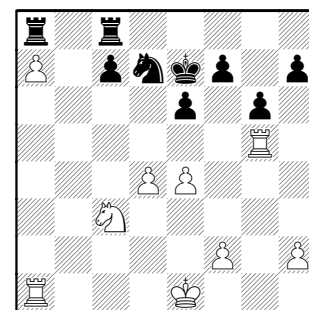


27.dxc5 (27.d5 Qe5) 27...Qxc5 forking Knight and a7-Pawn

27.e4 Qf6 28.Qg5 Qxg5

28...c5! now, for sure, because Rc7 is a real threat to a7. Earlier, it wasn't because the White Queen attacked Ra8.

29.Rxg5

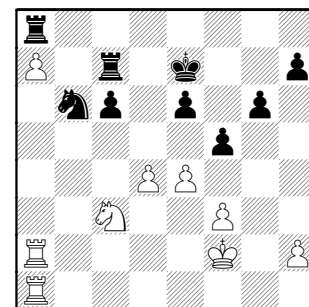


Black's trade has improved White's Rook while removing his Queen's threats.

29...f5 30.f3 c6

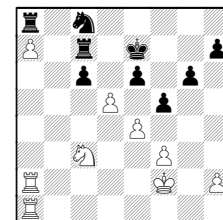
Rc7 is in the mix and this move stops Nb5 protecting Pa7.

31.Rg2 Rc7 32.Rga2 Nb6 33.Kf2



33...Rd7

Black can win a7 with 33...Nc8 but would have to consider the central break of 34.d5

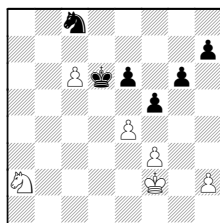


(34.Ra6 Rxa7 (34...Kd7))

34...Rcxa7

(The Rook would be forked after the mass trade 34...exd5 35.exd5 cxd5 36.Nxd5+)

35.dxc6 Rxa2+ 36.Rxa2 Rxa2+
37.Nxa2 Kd6

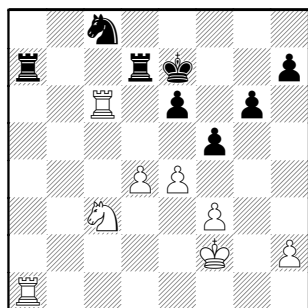


Black is better ! 38.Nb4 Ne7

34.Ra6 Nc8

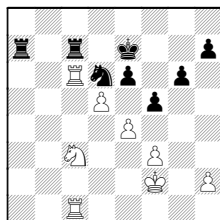
34...Rb7? idea Kd7 35.Rb1

35.Rxc6 Rxa7



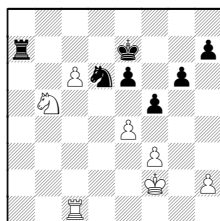
36.Rc1 Nd6 37.d5 exd5

37...Rdc7



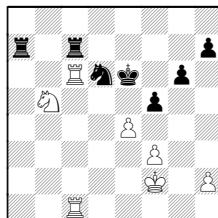
pinning down the c-file 38.dxe6

(38.Nb5 Rxc6 39.dxc6



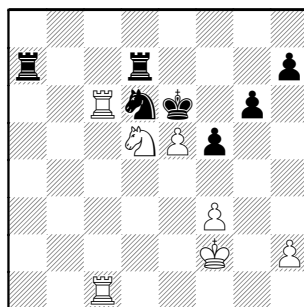
is different, the passer will cause anxiety)

38...Kxe6 39.Nb5



39...Rxc6 40.Rxc6 Rd7

38.Nxd5+ Kf7 39.e5 Ke6



40.Nb6

40.Rxd6+ Rxd6 41.exd6 Kxd5
42.Rd1+ Ke6

40...Kf7 41.exd6

After such an active game, played fairly accurately, one wonders if Black's last few moves were played under extreme time duress. At any rate, a very entertaining battle, giving a veteran player a run for his point!
1-0

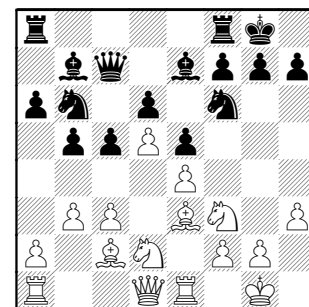
Abernathy,Jonathan (1363) - Suarez,Ed (1902) [C97]

JolietJrCCC-Rooks, 2-3-2011

The difference in rating was not noticed in this back-and-forth contest

1.e4 e5 2.Nf3 Nc6 3.Bb5 a6 4.Ba4 Nf6 5.0-0 Be7 6.Re1 b5 7.Bb3 0-0

8.c3 d6 9.h3 Na5 10.Bc2 c5 11.d4 Qc7 12.d5 Nc4 13.b3 Nb6 14.Be3
not the favorite choice by the big guys
[14.a4; 14.Nbd2] **14...Bb7 15.Nbd2**

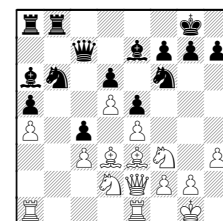


If you're interested in commentary on the moves to this point, you're probably the type willing to look it up in a book, as it is fairly standard play for what Black has selected. White usually is a bit better.

15...a5 16.a4 bxa4 17.bxa4 Rfb8 18.c4

18.Bd3 is possible,

A) 18...Ba6 19.Qe2
(19.Bb5 Bxb5 20.axb5 and Pb5 is a target after 20...c4)

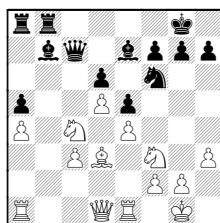


19...c4 20.Bxb6 Rxb6

(20...cxd3? 21.Bxc7 dxe2 22.Bxb8)

21.Bxc4

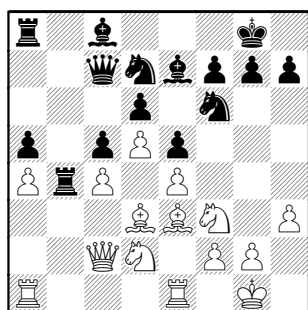
B) 18...c4 drops a Pawn 19.Bxb6 Qxb6 20.Nxc4 however **20...Qc7**



making c4 and c3 weaknesses, with ideas Ba6 and Rc8

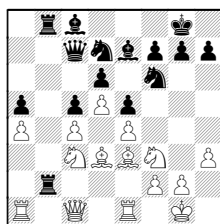
21.Rc1 Ba6 22.Na3

18...Bc8 19.Bd3 Nbd7 20.Qc2 Rb4



21.Nf1

I would squish Black's play with 21.Nb1 Rab8 22.Nc3 Rb2 23.Qc1

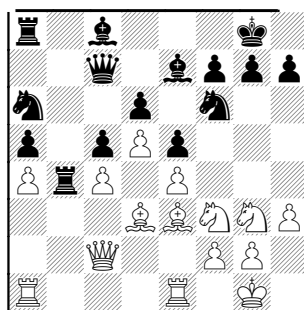


idea Nb5 forces Rb2 to go home]

21...Nb8

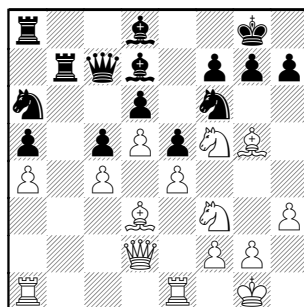
Black, as a 500+ rating advantage, doesn't want the tension-lessening trades with 21...Rab8 22.Reb1 Qb7

22.Ng3 Na6



The outpost at b4 is getting a lot of attention !

23.Qe2 Rb7 24.Bg5 Bd7 25.Nf5 Bd8 26.Qd2



26...Rb4 [26...Nb4] 27.Nxg7!?

Black defends the mate threat, but it is very tempting for White to sacrifice because he gets some pressure for quite a while !

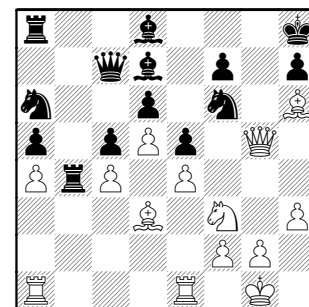
A) Looking back after analyzing what is coming, it looks like White should spend some time assuring ALL pieces can join the attack. 27.Nh2 idea of f2-f4 begins the process of opening Bd3 into the attack (with a potential e4-e5 Pawn sac).; mimics Kasparov's attack build in games versus Karpov in the 1980s world championship (1986, I believe!). The follow up is Bb1, Nh2, Rg3, etc. But here, Black has Queenside threats !

B) 27.Ra3 Rxa4 28.Rc3 and the a-passer will probably divert the long attack plan outlined

27...Kxg7 28.Bh6+ Kh8

28...Kg8?? 29.Qg5+ Kh8 30.Qg7#

29.Qg5



The immediate point of the earlier sacrifice: Qg7#

29...Ne8 only move 30.Qh5 Bxa4

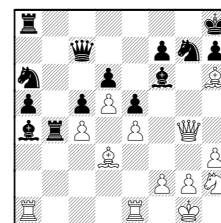
30...Kg8 31.Ng5 probably is the same as in the game

Chasing the Queen doesn't make progress: 30...Nf6 31.Qg5 Ne8 32.Qh5 repeating position

30...Bc8 also allows defence along the 7th rank

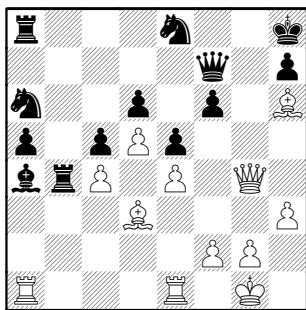
31.Ng5 I don't like to trade away a potential attacker

31.Nh2 idea f2-f4, but it feels slow 31...Ng7 32.Qg4 Bf6



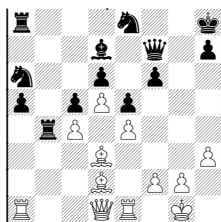
looks rock-solid, e5xf4 will discover on a1 (the a-passer's queening square)

31...Bxg5 32.Qxg5 f6 33.Qg4 Qf7



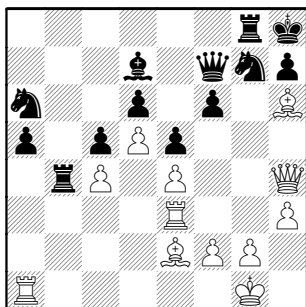
34.Re3

34.Bd2 hits the defender of Ba4, skewering to Pa5 if nothing else
34...Bd7 35.Qd1



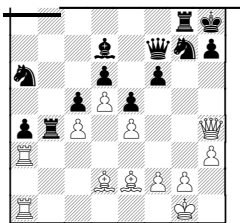
White could fight for a while, even if the piece-down balance isn't promising.

34...Bd7 35.Qh4 Ng7 36.Be2 Rg8



37.Rg3 allowing Bh6 to retreat, but also putting Rook on a square pretty well expected to get traded away.

37.Rea3 a4 38.Bd2?!

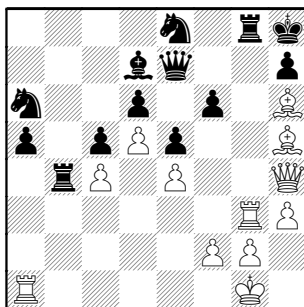


38...Rb2

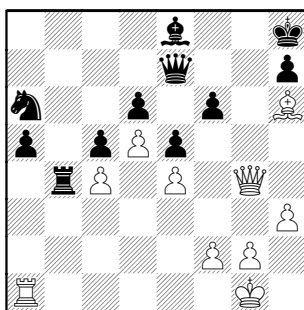
(38...Rb3? 39.Rxb3 axb3 40.Rxa6 b2 41.Bd3 Rb8 42.Bb1)

39.R1a2 also causes trades

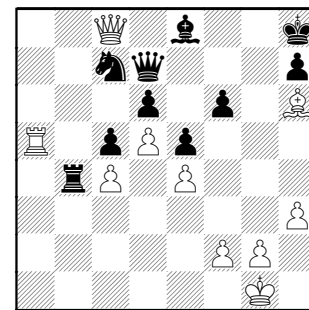
37...Ne8 38.Bh5 looks nice, but there's no real threat. It feels like White is throwing everything at the Kingside, hoping. **38...Qe7**



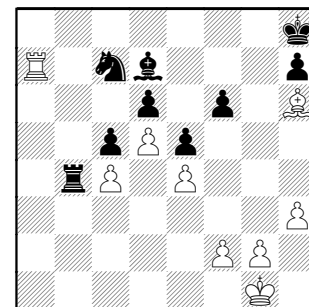
39.Bxe8 Again, avoid piece trades when down material !! [39.Rxa5] **39...Bxe8 40.Rxg8+ Kxg8 41.Qg4+ Kh8**



42.Qc8 Nc7 43.Rxa5 Qd7?



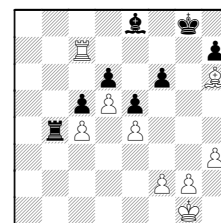
giving White what he hoped for !
44.Qxd7 Bxd7 45.Ra7



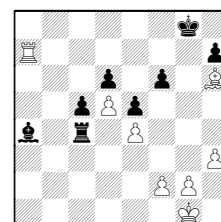
45...Rb8

Black realizes that his problem is not just the hanging pieces... but the backrank could allow mate !

More active appears to be 45...Kg8
46.Rxc7 Be8



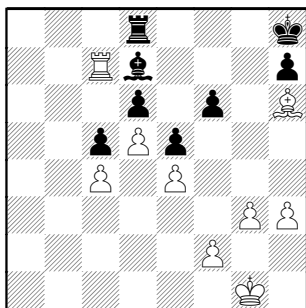
47.Re7 (47.Rc8 Kf7) 47...Ba4 48.Ra7 Rxc4



49.Ra8+ Kf7 50.Bf8 Endings with

opposite-colored Bishops can be tricky.. and drawn.

46.Rxc7 Rd8 47.g3

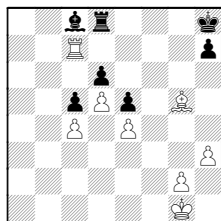


played to open the center with f2-f4

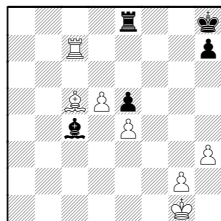
47.f4! looks very promising, Black's Pawns are weak !

A) 47...Kg8? 48.fxe5 fxe5
(48...dxe5 49.Rxc5) 49.Bg5 wins a piece !

B) 47...Bc8 48.fxe5 fxe5 49.Bg5

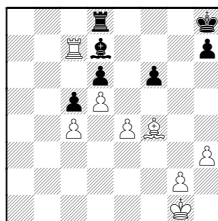


49...Re8 50.Be7 Ba6 51.Bxd6 Bxc4
52.Bxc5



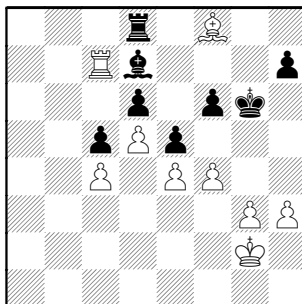
52...Bd3 53.d6

C) 47...exf4 48.Bxf4

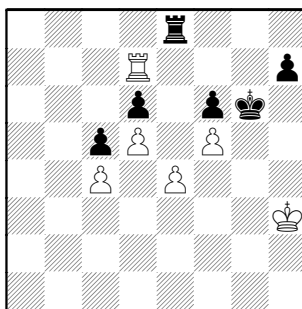


weak Pd6 48...Bc8 idea Ba6 49.Rf7
Ba6 50.Rxf6 Bxc4 51.Bxd6

47...Kg8 [47...Bxh3 48.Rf7] 48.Kg2
Kf7 49.f4 Kg6 50.Bf8

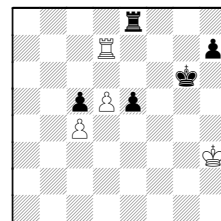


50...Bxh3+! Love it ! Tactics in the
endgame ! 51.Kxh3 Rxf8 52.Rd7
exf4 53.gxf4 Re8 54.f5+



White finally gets a position he can't
hold, e4 is too weak and his center
crumbles with it

I don't want to spend too much space
on the ending here, but I see some
potential for White with 54.e5 fxe5
55.fxe5 dxe5



Black's two passers look scary, but
his is the more-advanced: 56.d6

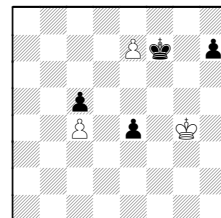
(56.Rc7? is slow-- the theme is to tie
down Rook or King to the d-passer !)

56...e4

(56...Kf6 57.Rxh7 Ke6 58.Rh6+ Kd7
looks drawish, but White's King is so
far away !)

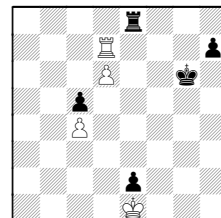
57.Kg2

(57.Re7? Rxe7 58.dxe7 Kf7 59.Kg4

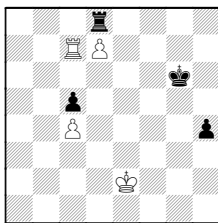


59...e3 60.Kf3 Kxe7 61.Kxe3 h5
Black wins easily)

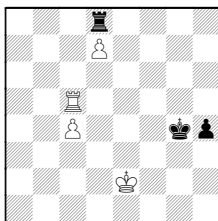
57...e3 58.Kf1 e2+ 59.Ke1



A) 59...h5 60.Rc7 h4 61.d7 (61.Rxc5)
61...Rd8 62.Kxe2



A1) 62...Kg5 63.Rxc5+ Kg4

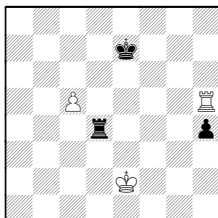


64.Rd5 Kg3 65.Kf1 and White reaches the corner in time and wins !

A2) 62...h3 63.Kf3 Kf7 trying to free the Rook from defense and allow Rh8

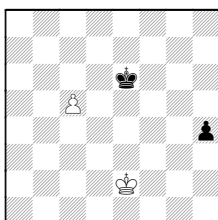
64.Kg3 Ke7 65.Kxh3 Rxd7 66.Rxc5 will draw, as White's King is too far away

A3) 62...Kf7 63.Rxc5 Rxd7 (63...Rh8 64.Rc8) 64.Rh5 Rd4 65.c5 Ke7



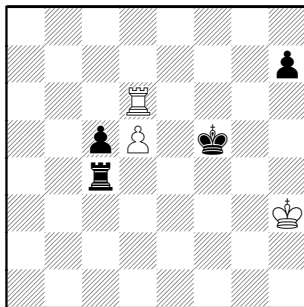
is a draw, White abandons his passer to get Black's

A4) 59...Re6 60.Rc7 Rxd6 61.Rxc5 Re6 62.Rb5 h5 63.c5 h4 64.Rb6 Kf6 65.Rxe6+ Kxe6 66.Kxe2



is a dead draw !

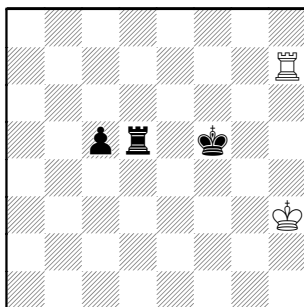
54...Kg5 55.Rg7+ Kf4 56.Rf7 Rxe4 57.Rxf6 Rxc4 58.Rxd6 Kxf5



59.Rd7 Rd4

59...h5 60.d6 Ke6 61.Rh7 Kxd6 62.Rxh5 is still a win for Black

60.Rxh7 Rxd5



61.Rh5+

61.Rc7 Kf4 62.Kg2 Ke3 63.Kf1 Rd1+ 64.Kg2 Rc1;

61.Re7 cutting off the King 61...Re5 62.Rc7 Ke4 63.Kg3;

61.Kg3 Ke4 62.Kf2 (62.Rh1 Rf5 63.Rc1 Kd3) 62...Kd3 63.Ke1 Kc2 64.Rc7 Re5+ is easy

61...Ke4 62.Rxd5 Trading isn't the theme, but doesn't matter

62...Kxd5 63.Kg2 Kd4 64.Kf2 Kc3 65.Ke2 Kc2 66.Ke1 c4 67.Ke2 c3 68.Ke1 Kc1 [68...Kb1] 69.Ke2 c2

0-1

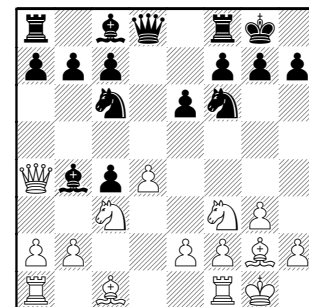
Baurac,Dave (1710) – Ledford,J (1253) [E01]

Rooks-JolietJrCCC, 2-3-2011

1.Nf3 Nc6 2.d4 d5 3.g3 Nf6 4.Bg2 e6 5.0-0 Bd6 6.c4

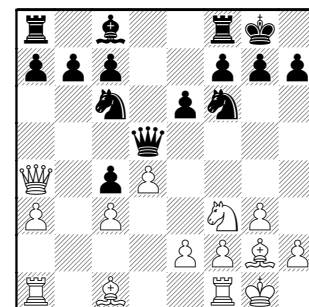
I enjoyed this game because White demonstrates some things in the Catalan that I never understood ! Number 1: how he deals with dxc.

6...0-0 7.Nc3 dxc4 8.Qa4 Bb4



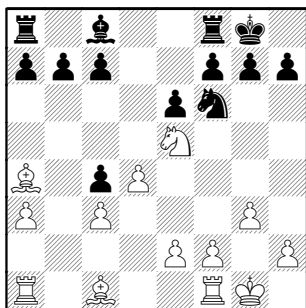
The few times I tried this in skittles, I stopped here, not happy being "a Pawn down".

9.a3 Bxc3 10.bxc3 Qd5

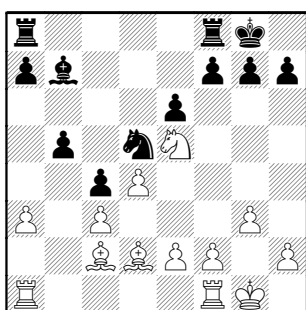


11.Ne5 guess c4 will fall **11...Qa5?** oops, drops a piece !

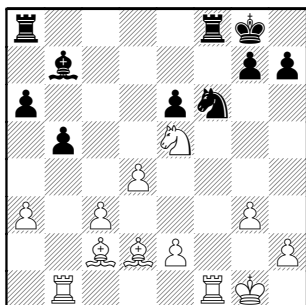
12.Bxc6 Qxa4 13.Bxa4



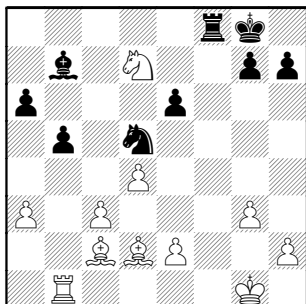
13...c6 14.Bc2 [14.Nxc4? b5]
14...Nd5 15.Bd2 b5 16.Nxc6 Bb7
17.Ne5



17...f5 18.Rab1 a6 missing the threat
of... 19.Nxc4! f4 [19...bxc4 20.Rxb7]
20.Ne5 fxc3 21.fxc3 Nf6



22.Rf4 Nd5 23.Rxf8+ Rxf8 24.Nd7

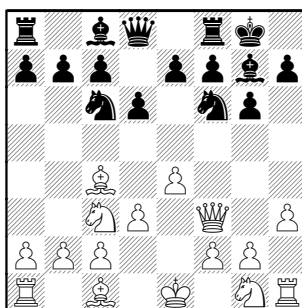


White was able to keep trades
coming and won move 70.
1-0

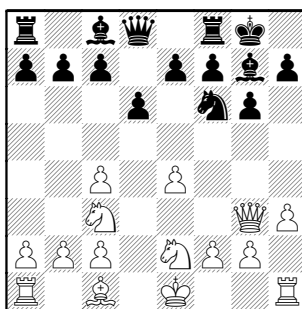
**Decman, Steve (1535) –
Marchert Jr, Jim (1193) [B06]**

Rooks-JolietJrCCC, 2-3-2011

1.e4 g6 2.Nc3 Bg7 3.Bc4 d6 4.Qf3
Nf6 5.h3 0-0 6.d3 Nc6



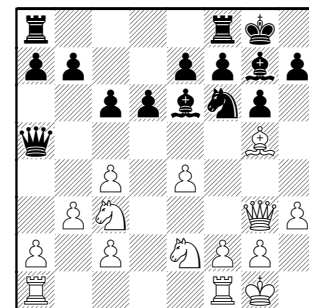
7.Nge2 Ne5 Good idea to rid yourself
of a pesky Bishop ! 8.Qg3 Nxc4
9.dxc4



9...c6 10.Bg5 Qa5 11.0-0 Be6

11...Nh5 doesn't quite chase the
Queen away from her Bg5 duties
12.Qe3

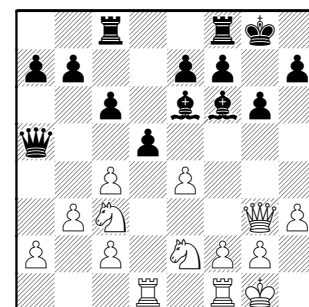
12.b3



Now White has to constantly be
aware of Nf6 discoveries on c3 or a1.

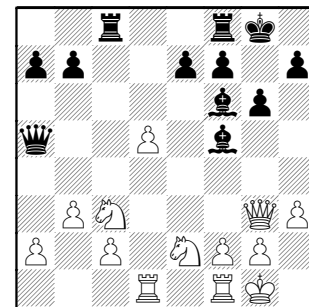
12...Rac8 13.Rad1 d5! Black's play
shows a good sense of piling on
White's weaknesses. The Bishops
need open lines !

14.Bxf6 Bxf6



White has undermined d5, but Black's
Ra8-c8 move has added a hit to c3.
The Bishop-pair are well positioned
here.

15.exd5 cxd5 16.cxd5 Bf5

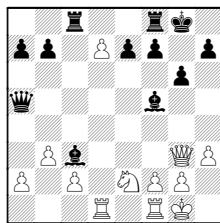


17.d6 exd6

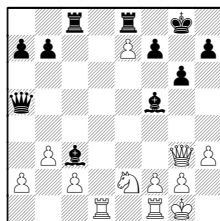
A lot of long lines indicates Black
could take the piece, but there's no

need to hurry-- he has plenty of piece activity.

17...Bxc3 White overloads the defenders of c3 with 18.d7



A) The wrong way for White is 18.dxe7?? Rfe8



19.Nxc3 Qxc3

19...Rxc3 20.Rd8
(20.Qxc3 Qxc3 21.Rd8 Bd7) 20...Rc8

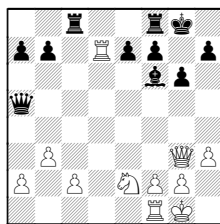
20.Qxc3 Rxc3 21.Rd8 Rc8

B) 18 d7

B1) 18...Rcd8 19.Qxc3 Qxc3 20.Nxc3 Rxd7

(too many wasted tempi with 20...Bxc2 21.Rd2 Bf5 22.Rfd1)

B2) But Black can simply give the piece back, and profit ! 18...Bxd7!
19.Rxd7 Bf6



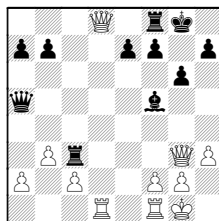
20.Rxb7

(20.Qd3 Rfd8 shows how Black's

opening the position is still active domination-- right into any ending.)

20...Rxc2 and the a2-Pawn is doomed

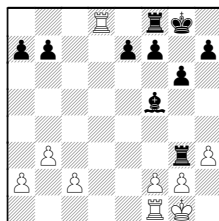
B3) 18...Rc6 19.Nxc3 Rxc3 20.d8Q



All replies lose:

B31) 20...Rxc3 21.Qxa5

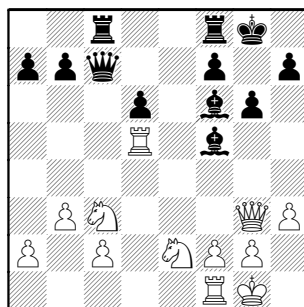
B32) 20...Qxd8 21.Rxd8 Rxc3



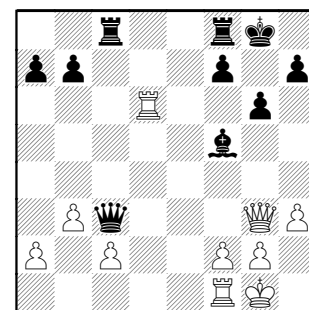
22.Rxf8+ Kxf8 23.fxc3

B33) 20...Rxd8 21.Rxd8+ Qxd8
22.Qxc3

18.Rd5 Qc7

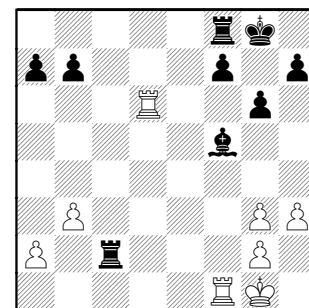


Rightly keeping an eye down the c-file. 19.Nd4 White must have missed Black's reply. 19...Bxd4! 20.Rxd4 Qxc3 21.Rxd6



21.Qxd6 keeps Queens on, but 21...Rfd8 forces White to give up his Queen, even if for two Rooks

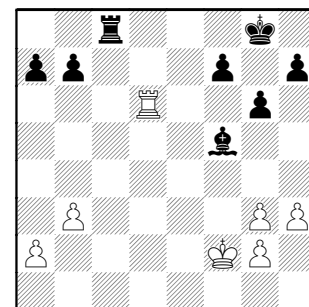
21...Qxg3 Another strong move, the ending isn't hard-- especially with another Pawn coming. **22.fxg3 Rxc2**



23.Rf2

To hold on, White needs every piece possible. But here, Black can still demonstrate his initiative. 23.Ra1 Be4 winning another Pawn with a rock-solid position.

23...Rxf2 24.Kxf2 Rc8



Black is forcing himself onto to the base (second) rank, so one of

White's Pawns on it are doomed.

25.g4

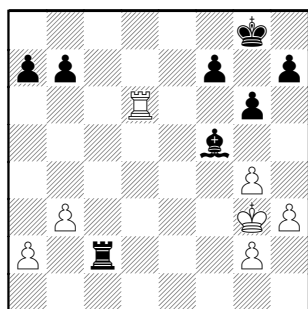
A) 25.Rd2 Rc2 forces another trade !

B) 25.a4 Rc2+

Wrong would be 25...Rc3 26.b4 Rb3
(26...Ra3 27.a5 Rb3 28.Rd4) 27.Rd4

26.Kg1 Be4

25...Rc2+ 26.Kg3

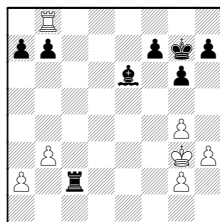


26...Be6

My initial reaction was that 26...Be4 is much stronger, protecting b7 and attacking g2, with safe home on c6 if needed. But now, as I look at it, how does the Rook even attack b7 ?

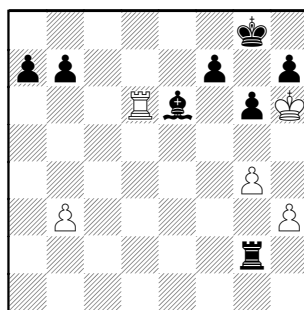
27.Kh4

Trying to tempo onto b7 with 27.Rd8+ Kg7 28.Rb8



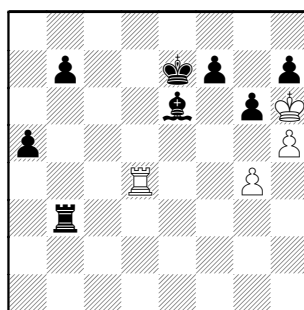
is an idle threat, because of 28...b6 29.Rb7 Rxa2

27...Rxa2 28.Kg5 Rxg2 29.Kh6



Be vigilant ! White has a threat !
Mate with Rd8#

29...Kf8 forced, of course **30.h4 Rb2**
[30...Rxg4] **31.Kg5 Rxb3 32.Rd4 Ke7**
33.h5 a5 34.Kh6

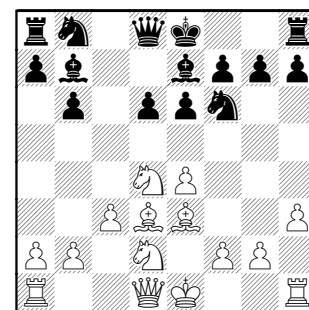


34...Rb4

I really enjoyed Black's foresight in Rook placement and opening the position at the perfect time !
0-1

**Gwekoh,R (1355) –
Rainey,Ron (1106)** [B07]
Rooks-JolietJrCCC, 2-3-2011

1.e4 d6 2.d4 Nf6 3.Bd3 e6 4.h3 Be7
5.Ne2 b6 6.Be3 Bb7 7.Nd2 c5 8.c3
cx d4 9.Nxd4



9...e5 10.Nf5 Rg8

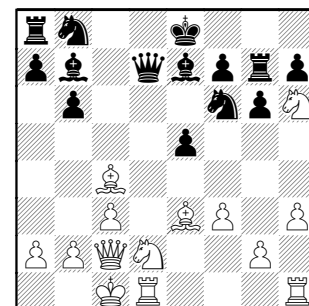
10...0-0 If Black was concerned about 11.Qf3 idea Qg3, Bh6, etc GMs do something like 11...Re8

A) 11...d5? 12.Qg3 Ne8 Although there's also 13.Qxe5
(13.Bh6 Bf6 defends the King)
13...Bf6 (13...Nc6 14.Qxd5)

B) 11...Ne8 12.Qg3 Kh8 idea g6,f5
(12...g6? idea Kh8,f5 13.Bh6)

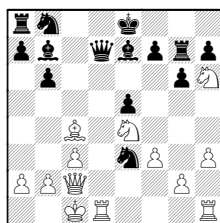
C) 11..Re8 12.Qg3 Bf8 13.Bh6 g6

11.f3 d5 probably too early, with your King in the center **12.exd5 Qxd5**
13.Bc4 Qd7 14.Qc2 g6 15.Nh6 Rg7
16.0-0-0



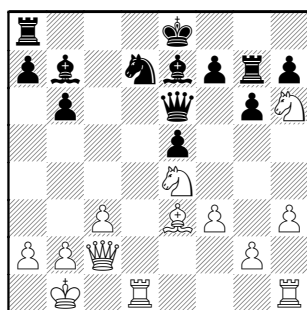
16...Nd5 17.Bxd5

Not quite a pin with 17.Ne4 Nxe3!

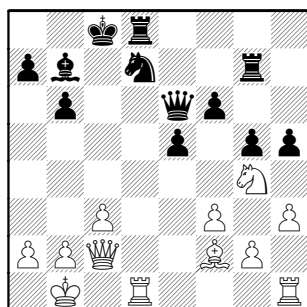


18.Rxd7 Nxc2 19.Rxb7 Ne3 20.Bb3
Nxc2

17...Qxd5 18.Kb1 Nd7 19.Ne4 Qe6



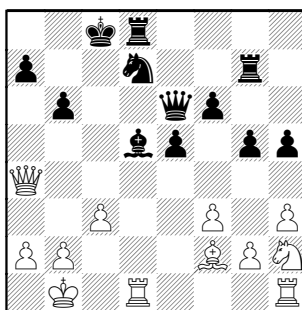
20.Ng5 Bxg5 21.Bxg5 f6 22.Bh4
0-0-0 23.Ng4 g5 24.Bf2 h5



25.Nh2?

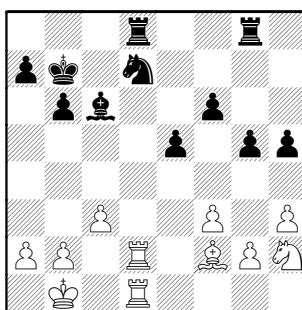
25.Ne3! idea Nf5-d6+ and stops
Black's Bd5 move

25...Bd5 26.Qa4



I enjoyed both sides trying to improve
their pieces while defending.

26...Kb7 27.Rd2 threatening Rhd1, of
course 27...Qc6 28.Qxc6+ Bxc6
29.Rhd1 Rgg8

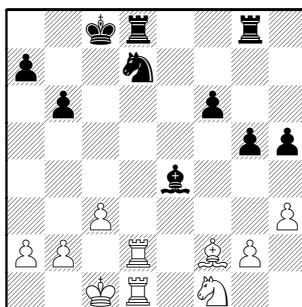


30.Nf1

The Knight heads for the square it
could have already been on !

30.Kc1 first, stops e5-e4, since White
would have Rxd7+ if the Bishop
moves (without check, as in game).

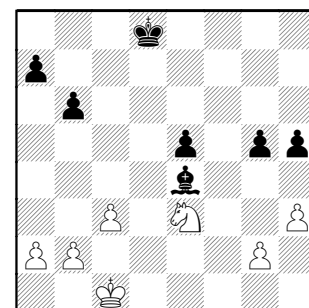
30...e4 31.fxex4 Bxe4+ 32.Kc1 Kc8



33.Bd4

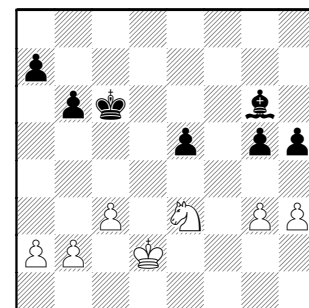
Again, 33.Ne3! here, with idea Nd5-
e7+ forking

33...Ne5 34.Bxe5 fxe5 35.Rxd8+
Rxd8 36.Rxd8+ Kxd8 37.Ne3



Once White protects g2 without the
Knight, he should be better, Black
cannot attack/defend the dark
squares all over the board.

37...Kc7 38.Kd2 Kc6 39.g3 Bg6

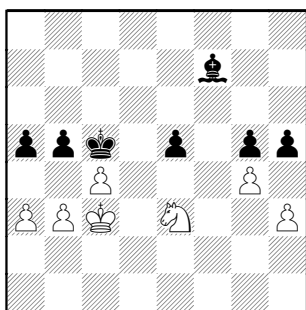


40.b3

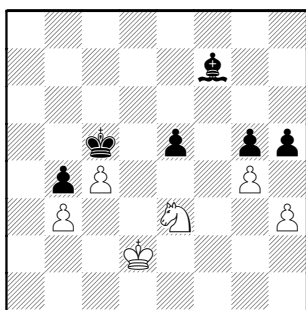
"Potential passer first" is the rule !
40.c4 Kc5 41.Kc3 idea b4+

40...b5 41.a3 a5 42.g4 Puts the
Pawn on a square that can be
attacked by Bishop, but does set Pg5
on a square that can't. Maybe Nf5
can be played next.

42...Bf7 43.c4 Kc5 44.Kc3



44...b4+ 45.axb4+ axb4+ 46.Kd2

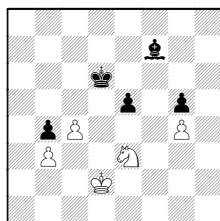


Black needs to realize his #1 problem is that his King is "in a box" - no useful moves.

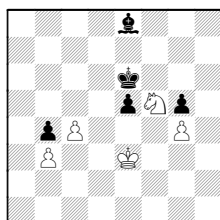
46...e4? the Pawn can't be defended on this square !

A) No progress from 46...Kd4
47.Nc2+ Kc5 48.Ke3 idea Ne1-d3+

B) 46...hxg4 eliminates a weakness, sets g4 as a target 47.hxg4 Kd6



48.Nf5+ Ke6 49.Ke3 Be8

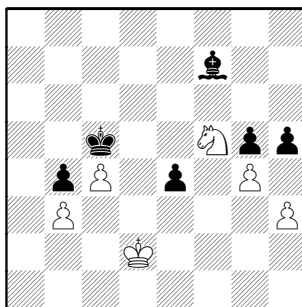


perfectly placing the Bishop to block passer and cover e4. With King near, e5-e4 may become possible.

50.Ke4 Bc6+ I don't see White making progress, but the protected passer can always create a diversion.

(Later, we'll meet the sac theme 50...Ba4 which won't work here)

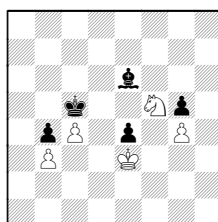
47.Nf5



This looks like a win for White, every Black Pawn is weak and the Black King is useless.

47...h4

Black should definitely eliminate a weakness with 47...hxg4 48.hxg4 Be6 although the e-Pawn will fall, and White has Kxe4-e5-f6, etc. 49.Ke3

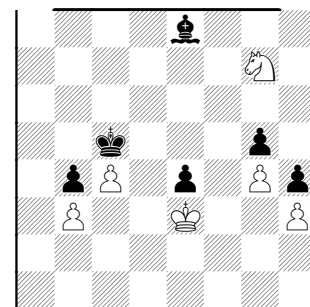


49...Kc6 is too late ! See discussion at move 46.

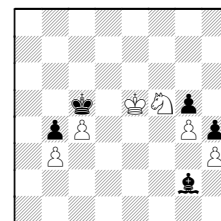
(49...Bxf5? 50.gxf5 g4 51.Kxe4 Kd6 52.Kf4 Ke7 53.Kxg4 Kf6 54.Kf4+-)

50.Kxe4 Kd7 51.Ke5 and Kf6-xg5 can't be stopped

48.Ke3 Be8 49.Ng7



Both sides needed to calculate deep to properly evaluate 49.Kxe4 Bc6+ 50.Ke5 Bg2

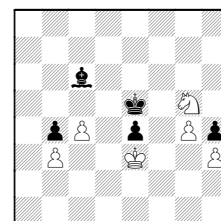


I stopped here, originally !

51.Kf6 Bxh3 52.Kxg5 White wins easily. Note Black's King still has no forward moves.

49...Bd7

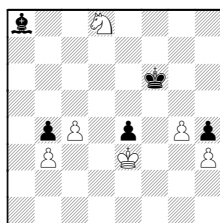
A) Black doesn't need to fear 49...Bc6 50.Ne6+ Kd6 51.Nxg5 Ke5



Black's active King should stall the g-Pawn and/or Knight (note it's trapped behind enemy lines!) coordination. Meanwhile, the e-passer keeps the White King from advancing too far.

52.Nh7 escort the passer 52...Ba4!!

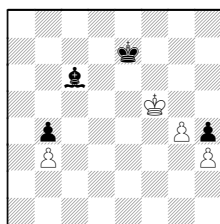
(really bad for White is something like 52.Nf7+ Kf6 53.Nd8 Ba8



when Black wins the piece after *Ke7*
54.c5

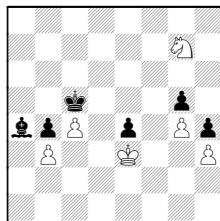
(54.Kf4 *Ke7* 55.Kg5?? e3 is obviously easy)

54...Ke7 55.c6 Kxd8 56.Kxe4 Bxc6+
57.Kf5 Ke7



(may be better to immediately make a passer 57...Bd5)

B) ChessBase engine introduced me to the possibility of 49...Ba4!!



50.Ne6+!

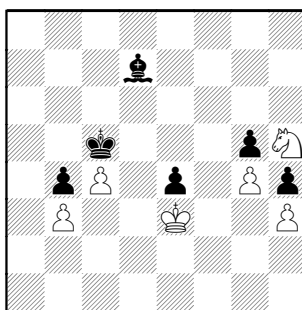
A) 50.bxa4?? b3 51.Kd2 e3+ overloads the King !;

B) 50.Kxe4 Bxb3 51.Kf5 Bxc4)

50...Kd6 51.Nd4

(White also looks OK after 51.Nxg5 Bxb3 52.Nxe4+ and Nd2)

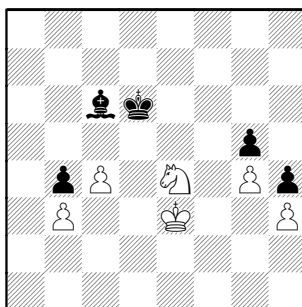
50.Nh5



50...Kd6

50...Ba4!! is a kill here, for sure !

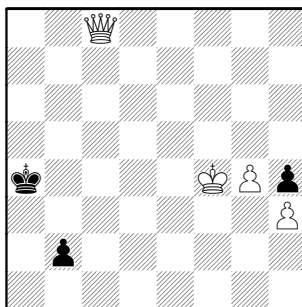
51.Nf6 Bc6 52.Nxe4+



Black is completely lost now.
52...Bxe4

The Kingside is doomed: 52...Ke6
53.Nxg5+ Kf6 54.Nf3 had the h-Pawns been removed earlier, Black would have better chances. But White's King is free to roam-- as opposed to earlier moves' analysis.

53.Kxe4 Kc7 all lines lose, so Black should just resign [53...Ke6 54.c5]
54.Ke5 Kc6 55.Kf5 Kc5 56.Kxg5 Kd4 57.Kf4 Kc3 58.c5 Kxb3 59.c6 Ka4 60.c7 b3 61.c8Q b2



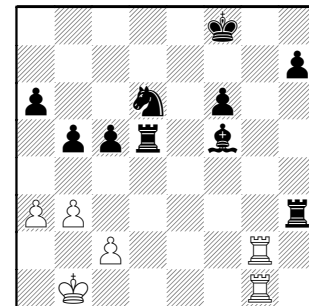
White plays it the easy way-- sit the Queen in front of the passer and wait for the King's arrival. 62.Qc2+ Ka3 63.Qb1 Kb3 64.Ke3 [64.g5] 64...Ka3 65.Kd3 Kb3 66.Kd2 Ka3 67.Kc2 Ka4 68.Kxb2 Kb4 1-0

Craig, Sean (1985) –
Sukumar (858)

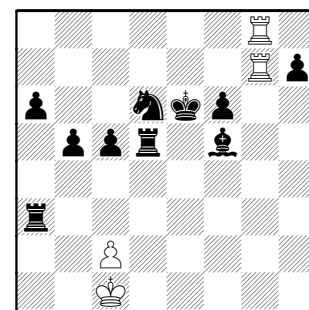
[A00]

JolietJrCCC-Rooks, 2-3-2011

1.Nc3 d5 2.b3 d4 3.Ne4 f5 4.d3 [4.Ng3] 4...fxe4 5.dxe4 e5 6.Nf3 Nc6 7.Bb2 Nf6 8.Nxe5 Nxe5 9.Qxd4 Qxd4 10.Bxd4 Bd6 11.e3 0-0 12.Bc4+ Nf7 13.0-0-0 Nxe4 14.Rhf1 Rd8 15.f3 Neg5 16.f4 Ne4 17.h3 c5 18.Bb2 a6 19.g4 b5 20.Bd5 Ra7 21.Bxe4 Re7 22.Bd5 Rxe3 23.a3 Rxh3 24.g5 Bg4 25.Rd2 Kf8 26.Rg1 Bf5 27.Rdg2 Bxf4+ 28.Kb1 Rxd5 29.Rf1 Bxg5 30.Re2 Nd6 31.Rg1 Bf6 32.Bxf6 gxf6 33.Reg2

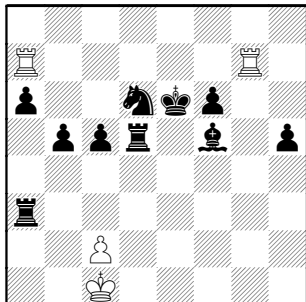


33...Rxb3+ Using the pin to pick off a couple more Pawns 34.Kc1 Rxa3 35.Rg8+ Ke7 36.R1g7+ Ke6



37.Ra8

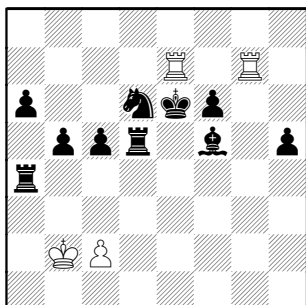
Black needs to figure out what White's manuevuer means.

37...h5 38.Raa7

Maybe Black was in time trouble and just moving too quickly, but White has made several odd Rooks moves... something's up !!

38...Ra1+? 39.Kb2 Ra4

39...Ke5 Black is up so much, he doesn't need the attacked Rook
 40.Kxa1 Bxc2 41.Rxa6 h4 shouldn't be too hard

40.Rae7#

Cute.

1-0



Player Ratings

Wednesday, March 16, 2011

Team	Player	W	L	D	Rating					
AMARS						BCBS				
	BROCK,B	3	1	2	1990*		KHAN,M	1	2	1 1817*
	BRASWELL,I	1	0	0	1838*		BRUNO,R	2	2	1 1590*
	EAMAN,R	2	0	5	1788C		GUIDRY,D	1	3	2 1555*
	ALLEN,H	2	2	0	1785C		GUIU,C	2	3	0 1547*
	FRANK,M	3	3	0	1679C		SAN MIGUEL,L	2	1	2 1528*
	DUFFY,J	4	1	2	1615C		STURGEON,V	1	2	0 1487#
	ACEVEDO,U	6	1	0	1561		BURGESS,A	4	2	0 1480*
	FULKERSON,R	2	0	0	1481		WONG,A	3	0	0 1425#
	IRBY,L	1	0	0	1123*		MATA,S	6	1	0 1422*
	GRUDZINSKI,T	0	0	0	1100?		BINDLER,M	0	0	0 1395#
AMATS							LACHOWIEC,S	0	1	0 1291#
	HARRIS,M	2	3	1	1842*		PETTIS,D	1	1	0 1210#
	FURTNER,F	3	3	3	1514	BPMLX				
	MEYER-ABBOTT,B	1	1	1	1455*		REICH,T	1	5	1 1720
	JAMES,D	0	0	0	1413#		ZADEREJ,V	1	4	1 1662
	MASITI,J	2	1	0	1358*		HENDRICKSON,B	0	1	0 1522
	FARMER,B	1	1	0	1324#		MCGOWAN,D	0	2	2 1489
	KOLLI,S	1	4	0	1314*		RUFUS,B	1	1	0 1463
	MEHDI,SYED	1	1	0	1277#		RINGENBERG,T	0	0	0 1366
	SOVA,ANDREW	0	3	0	1235#		DEICHMANN,E	0	3	3 1297
	MEYER,C	0	3	0	1164*		SIFUENTES	0	1	0 1239#
	HARPER,M	0	8	0	1123*		MANILA,M	1	5	0 1120
	YURCHENKO,O	0	0	0	999*		MUELLER,R	0	2	0 1031*
	BAROT,N	0	2	1	968#		AREND,A	0	6	0 800#
	PATELLA,C	0	0	1	952#					

Rating Symbols: ? - PreCICL (0 games), # - New (1 to 8 rated games), * - Provisional (9 to 25), otherwise Established (26+)
 C - Centurian (100-199 games), D - Double (200-299), T - Triple (300-399), Q - Quad (400-499), V - Quintuple (500-599)

Team	Player	W	L	D	Rating						
CITGR						DRGNS					
	PFAU,M	13	1	1	2107		TEGEL,F	0	2	1	2026Q
	ONG,K	10	2	1	1815		LUDWIG,T	3	3	1	1978D
	MUHS,A	0	0	0	1716		MARCOWKA,R	1	4	1	1847T
	KUNHIRAMAN,P	8	5	1	1595*		PEHAS,A	0	0	0	1838C
	PRIMORAC,V	8	4	3	1523*		PARKER,L	1	1	2	1723
	SENSAT,J	7	5	2	1506		BLACKMON,E	0	0	0	1688C
	LE,DUC	5	5	1	1481		EUSTACE,D	2	4	0	1564D
	LARSON FREEMAN,T	2	1	0	1330#		THOMAS,J	2	2	0	1496D
	PROKOPOWICZ,P	4	8	0	1212*		KOMORAVOLU,K	1	2	0	1452
	PARRA,J	2	7	0	1178*		STAMM,V	3	3	0	1418T
	SHEVCHUK,E	0	7	0	1144#		BREYER,A	3	2	0	1355
DGCC						DRW					
	KLUG,S	3	0	2	2166		HAYHURST,W	3	2	1	1926
	BUNGO,G	6	0	1	2106*		GORODETSKIY,E	4	1	1	1844
	EGERTON,J	2	1	1	2028		GORODETSKIY,S	3	2	1	1768
	DUGOVIC,D	2	0	1	1894*		GUGENHEIM,O	3	0	2	1597
	WAKERLY,R	2	0	2	1855		CAPUTO,W	2	0	0	1552#
	POTTS,K	2	2	1	1846		BEDER,B	2	3	2	1552*
	TAN,GADDIEL	3	0	2	1806*		RYAN,P	0	0	0	1530#
	PARMET,D	3	1	0	1754*		REDMOND,M	4	3	0	1457*
	YALAVARTHI,R	1	1	1	1722*		KOMBLEVITZ,A	0	4	1	1086*
	MANEY,A	1	1	0	1644#	EXCLB					
	SMITH,BR	2	0	0	1619C		HART,V	3	3	1	2131
	VECANSKI,D	0	1	0	1581*		LEE,D	2	4	2	1891
	ROMANOWITZ,C	5	0	0	1441*		DOWELL,E	3	1	2	1801
							ENGELN,M	2	5	1	1764
							WEITZ,R	2	1	1	1608D
							REID,C	4	0	0	1547D
							VIGANTS,A	3	3	0	1529C
							SUERTH,F	0	1	1	1495D
							SIEGEL,R	1	1	0	1488C

Rating Symbols: ? - PreCICL (0 games), # - New (1 to 8 rated games), * - Provisional (9 to 25), otherwise Established (26+)
C - Centurian (100-199 games), D - Double (200-299), T - Triple (300-399), Q - Quad (400-499), V - Quintuple (500-599)

Team	Player	W	L	D	Rating
FERMI	SERGATSKOV,D	3	3	1	2017
	HERNANDEZ,R	0	0	0	2008#
	SPIEGEL,L	3	2	2	1957T
	GAINES,I	3	1	2	1748T
	STAPLES,C	1	0	1	1609C
	DEGRAFF,B	1	2	1	1536
	STRAIN,D	3	0	3	1519*
	FISCHLER,M	0	1	0	1333#
	MHASHILKAR,P	2	3	1	1239#
	GIANLUCA,I	0	0	0	1216#
	CORBO,M	0	0	0	992#
	DRENDEL,B	0	2	0	958*
FORKS	INUMERABLE,F	0	2	2	2169C
	FRISKE,T	6	1	0	2015D
	SANTIAGO,T	2	2	2	1976C
	LEVENSON,S	3	1	2	1962
	SOLLANO,E	2	2	2	1914C
	GRANATA,M	0	0	0	1899
	BIALON,D	0	1	0	1724
	HAMELINK,N	2	1	0	1687
	DOSIBHATLA,D	0	0	0	1603*
	PERSONS,J	1	0	0	1580*
	ANSARI,N	0	0	0	1578
	HUGHES,N	2	3	1	1568D
	BIAN,M	4	1	0	1508*
	NICK,X	1	0	0	1270*
	KACZYNSKI,W	1	0	0	1091*
GAMBT	CIULLA,S	0	1	0	1748#
	GHAIBEH,AYMAN	0	4	0	1675*
	GILBERT,S	0	1	1	1618#
	DOLGIN,A	0	2	0	1563#
	KRISHNAMURTHY,S	0	3	0	1556*
	MITCHELL,D	0	3	0	1495*
	MOORE,A	0	4	0	1428#
	STILES,J	1	2	1	1258#
	BERGMEIER,C	0	0	0	1239#
	NIAZI,S	0	1	0	1208#
	ALI,F	0	1	0	1168#
	WALD,G	0	0	0	1105#
	MOSLEY,A	0	6	0	924*
	LINDBERG,S	0	0	0	884#
	SAUSEDAL,J	0	0	0	861#

Rating Symbols: ? - PreCICL (0 games), # - New (1 to 8 rated games), * - Provisional (9 to 25), otherwise Established (26+)
C - Centurian (100-199 games), D - Double (200-299), T - Triple (300-399), Q - Quad (400-499), V - Quintuple (500-599)

Team	Player	W	L	D	Rating						
HEDGE	RAUCHMAN,M	2	0	1	2028	LOYLA	ALEXANDER,J	0	0	0	1685*
	SMITH,M	5	0	1	1970		ADAMS,W	0	0	0	1449*
	JASAITIS,A	3	1	3	1915T		CLARK,I	0	5	2	1444*
	SHEPARDSON,T	4	2	0	1612*		ZACHAR,T	1	1	0	1432#
	PALMER,J	0	0	0	1600*		DIMOPOULOS,P	2	4	0	1389*
	KRATKA,M	2	1	0	1574		GLIWA,D	2	2	0	1324#
	CHAVEZ,A	4	0	2	1453*		JOHNSON,Z	0	1	0	1257#
	HEINER,J	0	0	0	1394*		SAMPEI	0	0	0	1236#
	NICHOLS,P	2	0	0	1333#		PLOTNER,J	0	2	0	1232*
	COOMBES,N	2	1	0	1301*		SOLOMON,S	0	1	0	1186#
	FINE,A	4	3	0	1278*		BROWN,B	0	6	0	1169*
	GALE,M	1	1	0	1233#		WOJDYLA	0	6	0	1149#
	BOLOTOV,A	0	0	0	1131#		MEDINA,D	0	2	0	1131#
	CROSBY,N	1	2	0	1036*		ALEXANDER,A	0	0	0	1130#
MCENEANY,T	0	1	0	994*	REITER,J	0	3	0	954#		
	RORVICK,C	0	1	0	978#	MKING					
JJCCC							AITIPAMULA,J	3	2	3	2033*
	LERNER,T	0	1	0	1715#		MELNIKOV,I	1	1	1	2021C
	BRUCE,K	0	2	3	1449*		WALLACH,C	3	2	3	1952C
	HENDERSON,A	2	1	0	1412#		PIPARIA,J	4	3	1	1925C
	ABERNATHY,J	0	3	0	1363#		CYGAN,J	4	1	3	1785
	LEDFORD,J	0	2	1	1197#		GONCHAROFF,N	3	1	4	1544V
	THOMPSON,G	0	1	1	1188#		ALFONSO,E	0	0	0	1482
	MARCHERT JR ,J	0	3	0	1178*		RABINOVICH,E	3	3	0	1436
	RAINEY,R	0	3	0	1106#		GRYPARIS,J	0	0	1	1380C
	MARCHERT SR,J	0	3	0	1012*						
	CRAIG,S	0	4	0	985#						

Rating Symbols: ? - PreCICL (0 games), # - New (1 to 8 rated games), * - Provisional (9 to 25), otherwise Established (26+)
C - Centurian (100-199 games), D - Double (200-299), T - Triple (300-399), Q - Quad (400-499), V - Quintuple (500-599)

Team	Player	W	L	D	Rating
MKNGT					
	FRIDMAN,Y	7	0	1	2262C
	MORRIS,R	5	1	1	2211C
	THOMSON,J	6	0	2	2011C
	BALICKI,J	3	1	4	1811C
	AUGSBURGER,L	1	0	0	1782C
	CHERKASSKY,G	5	1	0	1762
	KARANDIKAR,S	1	0	1	1662
	DUONG,R	2	1	0	1485*
	PATTIAM,J	0	0	0	1368#
	BABINEC,J	1	3	1	1347

NWEST					
	SOLOMON,A	0	0	0	1994
	BAKSHI,A	0	0	0	1947
	MCVAY	1	0	0	1928#
	DATLA,S	3	0	0	1914#
	WANG,B	0	0	0	1888
	KRAVIK,P	1	1	2	1813*
	GAFNI,P	5	1	1	1768*
	MODI,P	3	0	2	1744*
	SHEKHTMAN,L	1	3	0	1705*
	ULLOM,G	0	0	0	1647
	GINZBURG,D	4	1	1	1482*
	KRAVIK,S	0	0	0	1459*
	LOU,J	2	1	0	1440#
	SLIVKA,MAX	0	0	0	1412*
	CHO,V	0	0	0	1390#
	FRIEDLANDER,M	0	0	0	1381#
	ANDERSON,E	1	1	0	1339#
	KIM,C	1	0	0	1316#
	WEINFELD,M	2	3	0	1270#
	WU,S	0	1	0	1179#
	BI,TAO	2	1	0	1139#
	BABCOCK,S	1	2	0	1067#
	LAMBSON,D	0	0	0	800#

Rating Symbols: ? - PreCICL (0 games), # - New (1 to 8 rated games), * - Provisional (9 to 25), otherwise Established (26+)
 C - Centurian (100-199 games), D - Double (200-299), T - Triple (300-399), Q - Quad (400-499), V - Quintuple (500-599)

Team	Player	W	L	D	Rating					
PAWNS						STCCC				
	KRAS,T	0	1	0	2142C		MARSHALL,J	1	2	0 2258
	CAVENEY,J	0	2	2	2067*		ACOSTA,M	1	0	1 2169*
	KORENMAN,M	3	2	2	1962*		WIEWEL,J	2	1	1 2147
	LATIMER,E	0	2	3	1942T		SPLINTER,J	0	0	1 2122
	HOLLAWAY,M	3	2	2	1766*		FREIDEL,P	1	0	0 1970
	KUKURUZA,V	4	0	1	1709*		SUITS,J	3	1	0 1877
	EDEUS,D	2	1	2	1705*		VON HATTEN,J	4	1	1 1807
	MISHLOVE,D	0	0	0	1538#		AILES,T	1	0	0 1792
	CHRISTIAN,T	0	0	0	1522*		DJORDJEVIC,V	0	0	0 1685*
	HARPER,C	4	1	2	1459*		FORRO,V	0	0	0 1626#
	FABIJONAS,R	2	1	1	1456T		SMITH,D	2	1	0 1618*
	SPITZIG,M	2	0	0	1375		KOLB,S	3	1	0 1609*
	O'DELL,DW	0	0	0	1348D		PADILLA,R	2	0	2 1589
ROOKS							ALBERTS,W	0	0	0 1569
	BENEDEK,R	3	2	1	2095T		JANSSEN,G	1	0	0 1553
	ANTIPOVA,A	0	0	0	2080#		STOSKUS,A	0	0	0 1521*
	HILL,R	2	3	1	1922D		GIERTZ,C	1	0	0 1474#
	SUAREZ,E	3	1	1	1902C		SWANSON,E	0	0	0 1469#
	BAURAC,D	4	1	1	1710T		CRISSMAN,J	1	0	0 1463#
	YACOUT,A	0	0	0	1583		GREER,J	0	0	0 1376*
	DECMAN,S	1	3	1	1535T		POWERS,E	0	0	0 1375*
	GRUDZINSKI,J	0	0	0	1434		KELLEY,G	1	0	0 1373#
	KUHLMANN,S	1	0	0	1378*		BALES,R	0	0	0 1365*
	GWEKOH,R	1	1	0	1355*		VOIGHT,T	0	0	0 1246#
	RAMANATHAN,N	2	0	0	1256*		BOURIS,B	0	1	0 1206#
	HLOHOWSKYJ,I	0	3	0	1039*		RIES,G	0	0	0 1109#
	SUKAMAR,N	1	3	0	858#					

Rating Symbols: ? - PreCICL (0 games), # - New (1 to 8 rated games), * - Provisional (9 to 25), otherwise Established (26+)
C - Centurian (100-199 games), D - Double (200-299), T - Triple (300-399), Q - Quad (400-499), V - Quintuple (500-599)

Team Player W L D Rating

SXUCT						TYROS					
	CELENTANO,A	1	1	0	1870*		ALLSBROOK,F	1	0	3	2166
	JACKSON,WILLIAM	0	4	1	1376*		DIAZ,P	1	3	2	2006D
	SARNA,J	1	3	1	1370*		GUIO,J	0	4	0	1831D
	TURNMAN,A	0	0	0	1235#		STOLTZ,B	1	2	0	1824D
	ABNEY,I	2	3	0	1227*		DOBROVOLNY,C	4	1	1	1737D
	BRANNON,M	3	3	0	1168#		BUCHNER,R	1	0	0	1650C
	ONWUMAH,I	1	3	1	1161*		DENMARK,T	0	0	0	1627
	MCDONNELL,B	1	3	0	992*		HAHNE,D	2	1	1	1613D
	SINOPLE,J	0	2	0	859*		VAIL,M	1	0	1	1597
	WALSH,J	0	0	0	827#		KRUEGER,J	0	0	0	1467#
	CONDITT,D	0	0	0	800#		MCPHAIL,C	1	0	0	1335#
	NORRIS,T	0	0	0	800#		BYRNE,M	2	3	0	1321
TT							KARPIERZ,J	0	1	0	1293
	KHLUS,V	2	5	1	1510*		KURUVILLA,E	3	2	0	1268#
	HUNTER,JOSH	1	5	1	1500*	UOP					
	GOTTEMOLLER,A	3	3	0	1299#		LEONG,G	1	2	1	1945D
	SCHWARTZ,BRIAN	1	4	1	1247#		SIWEK,M	1	1	1	1936D
	VISSER,JOUBERT	3	5	0	1221*		BOLDINGH,E	5	0	2	1902D
	BRINSON,J	1	0	0	1100#		VAN MEER,J	1	1	1	1898
	WILK,M	1	5	1	1050*		EASTON,R	1	2	1	1823C
	GORDON,RYAN	0	1	0	900#		SAJBEL,P	0	0	0	1781C
	VARGAS,R	1	3	0	888#		LECHNICK,J	0	4	2	1658C
							MOSSBRIDGE,A	1	1	1	1599
							SCHWANBECK,S	1	1	0	1525#
							OLSEN,A	3	2	2	1504C
							CAMPBELL,DOUG	0	0	0	1386*
							SHAH,A	1	0	0	1345#
							LANG,P	0	1	0	1229#
							RAMOS,J	0	3	0	1220#
							RAMIREZ,A	0	2	0	1080#

Rating Symbols: ? - PreCICL (0 games), # - New (1 to 8 rated games), * - Provisional (9 to 25), otherwise Established (26+)
 C - Centurian (100-199 games), D - Double (200-299), T - Triple (300-399), Q - Quad (400-499), V - Quintuple (500-599)

Team	Player	W	L	D	Rating
WMBAT					
	TENNANT,S	4	0	1	2258*
	MENON,G	0	0	1	2200*
	PANNER,G	0	0	0	2105#
	WEBER,L	4	0	2	2070
	FREITAG,T	7	0	0	2056
	ELLICE,W	5	0	2	1762D
	ZOLKOS,A	3	0	2	1747
	FRANEK,M	1	1	2	1667T
	SAMPSON,L	0	0	0	1649#
	CONNELLY,P	1	0	0	1577*
	GARCIA,I	1	0	0	1574#
	RAJSKY,J	2	2	2	1562*
	DAVIS,M	0	0	0	936#
	ZACK,K	0	0	0	800#

Rating Symbols: ? - PreCICL (0 games), # - New (1 to 8 rated games), * - Provisional (9 to 25), otherwise Established (26+)
C - Centurian (100-199 games), D - Double (200-299), T - Triple (300-399), Q - Quad (400-499), V - Quintuple (500-599)