

The Chicago Chess Player

The Official Bulletin of the Chicago Industrial Chess League



Play-off Photo Courtesy Steffen Klug

This Issue:
End of the Season Ratings!
Game Analysis by the Players!
CICL Banquet Information

CICL Officer Contact List

League President **Tony Jasaitis** C:(708) 903-6423
 President@ChicagoChessLeague.org W:(312) 264-2044

League Secretary **Jerry Thomas** 745 Hageman Pl H:(630)420-0188
 Secretary@ChicagoChessLeague.org Naperville, IL 60563

League Treasurer **Paul Freidel** 359 N. Worth Avenue C:(224)436-6050
 Treasurer@ChicagoChessLeague.org Elgin, IL 60123

Bulletin Editor **Patrice Connelly**
 Bulletin@ChicagoChessLeague.org

Webmaster **Tom Friske** (see information below)
 Web@ChicagoChessLeague.org

Games Editor **Tom Friske** 1035 E Algonquin Road H:(847) 299-1033
 Games@ChicagoChessLeague.org Des Plaines, IL 60016 W:(847) 914-8448

Ratings Chairman **Jeff Balicki**
 Ratings@ChicagoChessLeague.org

Trophy Chairman **Chuck Dobrovolny**
 Trophy@ChicagoChessLeague.org

Publicity Chairman **Matt Vail** C:(312) 933-1516
 Publicity@ChicagoChessLeague.org W:(630) 505-6557

Banquet Chairman **Katherine Zack**
 Banquet@ChicagoChessLeague.org

DIVISIONAL CHAIRMEN

East Division **Fred Furtner** C: (630) 291-4271
 ChairmanEast@ChicagoChessLeague.org W: (312) 464-4495

West Division **Irwin Gaines**
 ChairmanWest@ChicagoChessLeague.org

North Division **Jim Thomson** W(847) 538-5408
 ChairmanNorth@ChicagoChessLeague.org

Officer Contact List	2
Contents of Issue	3
Games Analysis by The Players	4-12
En Passant: Remembering Karel Dobr	13
CICL Banquet Information	14
Note on Season-end ratings and accomplishments	15
Individual Ratings (Updated as of May 17 th)	16-28

Mark Your Calendars with These Key League Dates:

Spring Business Meeting	3.5 Weeks Before Playoffs (April 13, 2011)
Season Playoffs	Second Saturday of (May 14, 2011)
CICL Open	Second Saturday of (May 14, 2011)
League Awards Banquet	Third Friday of June (June 17, 2011)

Editor's Notes:

Congratulations to our league co-champions Motorola Knights and Downers Grove Chess Club! The June Bulletin will cover the play-off games and action!

Reminder: The League Awards Banquet will be Friday, June 17, at 7 pm at Alpine Banquet House at 11141 West Roosevelt Road, Westchester, IL. There will be a blitz tournament afterwards. For those of you playing in the blitz tournament, please pre-register for the tournament by sending an email to Art Olsen at aolsen14@comcast.net.

Patrice Connelly, Bulletin Editor

Bulletin@ChicagoChessleague.org.

While the Games Editor continues to chew on the Playoff Games, this month we present a few games analyzed by

Special thanks to Tony Jasaitis and Steve Tennant for their efforts. Also of special recognition is Steve's willingness to reveal a novelty in a topical Nimzo-Indian position !

Jasaitis, Tony (1949) – Clark, Ian (1457)
Hedgehogs-Loyola, 9-28-2010

[B09]

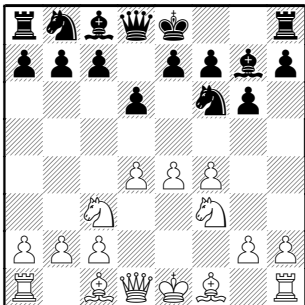
Notes by Tony Jasaitis

My young opponent was probably better than the slow-moving CICL rating indicates

1.e4 d6 2.d4 Nf6 3.Nc3 g6

The Pirc Defense. Black delays equalizing in the center until later, inviting White to overreach himself in the meantime. White responds with the aggressive Austrian Attack

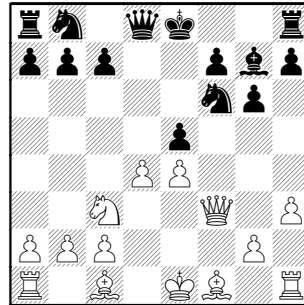
4.f4 Bg7 5.Nf3



5...Bg4 Black is willing to give up the Two Bishops to make his game less cramped, but this also increases White's mobility. From this point onward during much of the game, Fritz considers White to have about a +0.7 edge.

The main line is 5...0-0

6.h3 Bxf3 7.Qxf3 e5 8.fxe5 dxe5

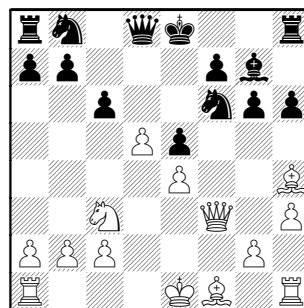


9.d5! An important move to keep Black cramped. If Black gets to trade on d4, all of his pieces will have active potential.

White doesn't have much after 9.dxe5 Nfd7

9...c6 10.Bg5 Causing Black to weaken his King's position since the pressure on f6 can quickly become unbearable. Black must be prepared to drive the B away with ...g5 at the critical moment

10...h6 11.Bh4

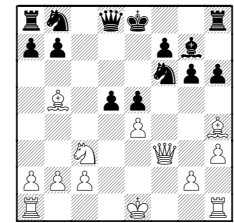


11...cxd5? A mistake opening up the position that should have hurt Black more than it did.

Better is 11...Nbd7

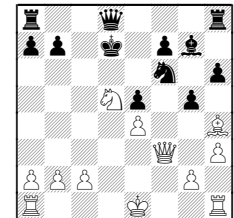
12.exd5

Stronger is 12.Bb5+



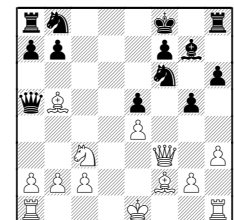
12...Kf8

Definitely not the seemingly obvious 12...Nbd7 13.Bxd7+ Kxd7 14.Nxd5 g5

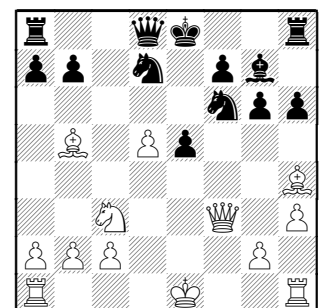


15.Rd1 Ke8 16.Bf2

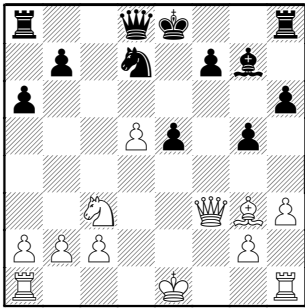
13.Nxd5 Qa5+ 14.Nc3 g5 15.Bf2



12...Nbd7 13.Bb5



13...g5 And there it is. White was threatening Bxd7 as in the prior example
 14.Bg3 a6 15.Bxd7+ Nxd7

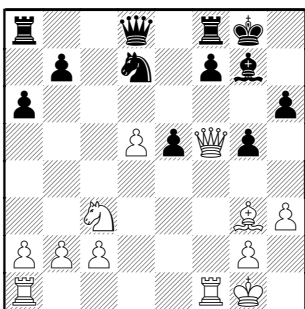


16.0-0

16.0-0-0 would also be good, but it seemed riskier, with Black having attacking chances against the King's position.

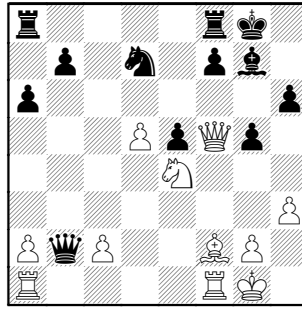
[Game editor] Yet considering opposite-side castling, the key factor is who can open lines first... and that would be White with h2-h4 and Ne4 further blocks the g7-Bishop participation (also hitting d6 and g5 squares.

16...0-0 17.Qf5!



Black must not be allowed to play ...f5, when he suddenly is well off. controlling much of the board, with White no longer having an attack. From f5, the White Q also hampers Black's development by attacking Black's Knight. The move also baits Black into unsoundly going after White's b2-pawn

17...Qb6+ 18.Bf2 Qxb2 19.Ne4



19...Qb5 All Black has accomplished is to accelerate White's attack and allow penetration of White's rook on the b-file. At this point, Fritz's evaluation of the position is +2.0

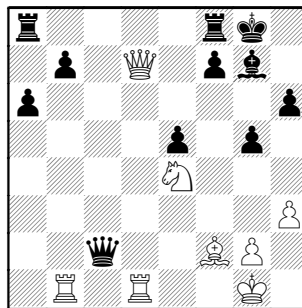
19...Qxc2?? 20.Nf6+ Bxf6 21.Qxc2 winning Queen

20.Rab1 Qxd5 21.Rfd1?

One of those wrong-rook situations. Instead, now Black gets pressure on both rooks in the game, with neither one being able to leave the first rank, needing to protect the other. Fritz's evaluation drops a whole point.

Correct is 21.Rbd1 to reply Rxd7 (instead of with Queen as forced in the game).

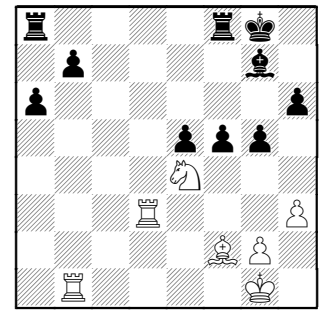
21...Qxa2 22.Qxd7 Qxc2



23.Qd3? Black's Queen is pressuring 3 pieces here. Having to trade Queens was a disappointment. Also not attractive is 23.Qxb7 Rab8.

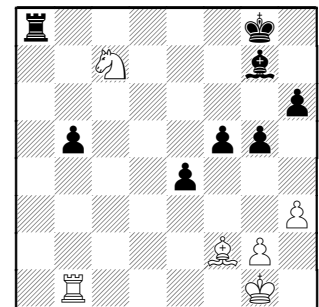
Fritz found 23.Qf5! to win the Queen with Nf6+,Qxc2 (as earlier)

23...Qxd3 24.Rxd3 f5



Black has a lot of pawns and a good position for the piece. But Black's Q-side pawns are likely to fall, and then the question will be whether White make enough of what's left on the K-side.

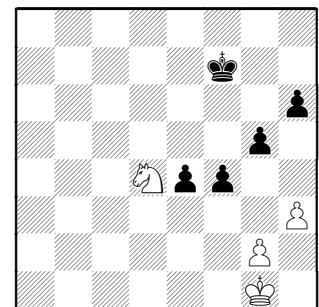
25.Nc5 e4 26.Ra3 b5 27.Rxa6 Rxa6 28.Nxa6 Ra8 29.Nc7



29...Ra1

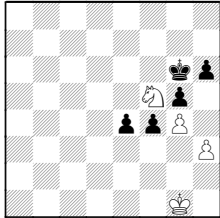
Black would be able to put up better resistance keeping the rooks on the board with 29...Ra2

30.Rxa1 Bxa1 31.Nxb5 Now White is better if he can find the right moves quickly. 31...f4 32.Bd4 Bxd4+ 33.Nxd4 Kf7

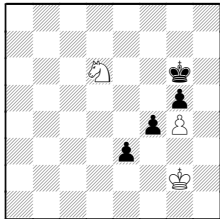


34.Kf2? Played too routinely. White needs to make the Black pawns break rank ASAP so that his pieces can infiltrate them and blockade them, while forcing Black back gradually.

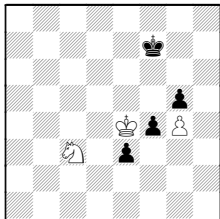
White could work up a won position with something like 34.Nf5 Kq6 35.g4



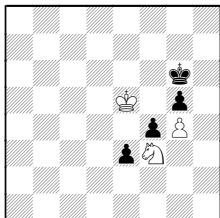
A) 35...e3 36.Kg2 h5 37.Nd6 hxg4 38.hxg4



A1) 38...Kh6 39.Kf3 Kg7 40.Ne4 Kg6 41.Nc3 Kf6 42.Ke4 Kf7



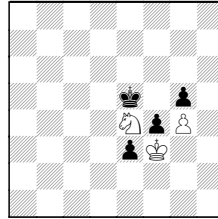
43.Ne2 (43.Kf5?? f3) 43...Kg7 44.Nd4 Kf6 45.Nf3 Kq6 46.Ke5



Nice play-- showing why Black must keep the White King away !

A2) [Game editor] That line makes me wonder if much better is to centralize the King 38...Kf6 39.Kf3 Ke5 40.Nc4+

40.Ne4??



seems to make a passer, but.. 40...e2!! and Black wins;

Another try 40.Nf7+ Kf6

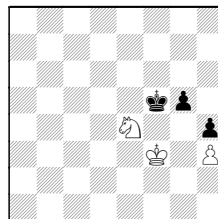
40...Kd4 and maybe White can somehow wind his Knight to attack g5 and get his King to breakthrough, but it's beyond me here....

B) [Game editor] But, from first diagram of this page, I'm also curious about an attempt to trade away White's Pawns.

35...fxg3 36.Nxg3

B1) transposing to my other line (see B2) is 36...h5 37.Nxe4 g4 38. h4

(37...h4 38.Kf2 Kf5 39.Kf3

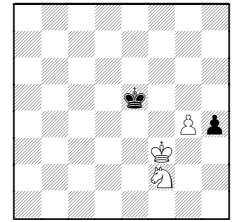


once again stopping g5-g4

39...g4+? 40.hxg4+ Ke5

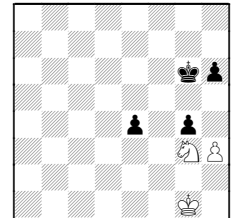
trying to tie the opponent's King to the Knight

41.Nf2



Black has run out of useful moves

B2) 36...g4



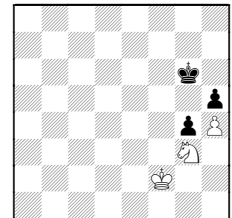
If White's last Pawn is eliminated, a draw results 37.h4!

(When I started writing, Kh5 was supposed to be possible here !)

37.hxg4? Kg5=; 37.Nxe4? gxh3=

37...e3 38. Kf1

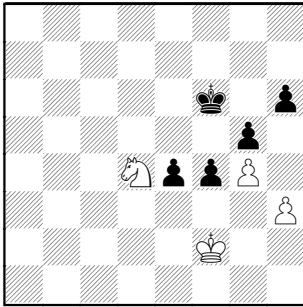
37...h5 38.Nxe4 Kf5 39.Ng3+ Kg6 40.Kf2



and in this line, as my analysis line, the King runs up to box-in his opponent's, eventually winning the h5-Pawn.

After that last page of analysis, we return to the game with Black's reply to 34 Kf2?

34...Kf6 35.g4



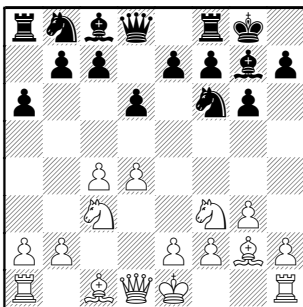
At this point, a group of people showed up to use the room at Loyola that they had scheduled. We could have continued the game somewhere else, but the match was already won, and it wasn't clear to me that I had a win anymore, so I offered a draw rather than press on.

To have a chance at winning, White would need to force one of the Black pawns to move as in the prior example, and it didn't seem possible any longer, at least not without taking risks I didn't feel like calculating 1/2-1/2

Sergatskov, D (2038) – Tennant, Steve (2268) [E67]
Fermilab-Wombats, 4-21-2011

Notes by Steve Tennant

1.d4 Nf6 2.c4 g6 3.Nc3 Bg7 4.Nf3 0-0
5.g3 d6 6.Bg2 a6

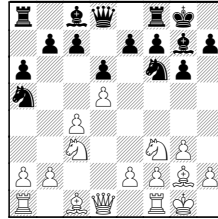


Black normally plays ..a6 after developing the Knight. Skipping that

allows me to disguise my intentions.

7.0-0 Nbd7

More normal is 7...Nc6 but I don't like the positions after 8.d5 Na5



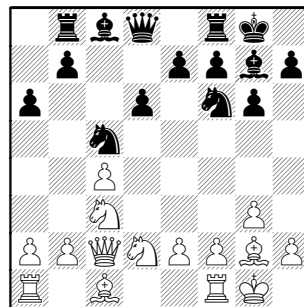
as the Knight often fails to get back into play.

8.Qc2 I was surprised to see ECO list this as the mainline. I don't understand why the Queen should go here.

8...c5

ECO gives 8...Rb8 but I still prefer my move.

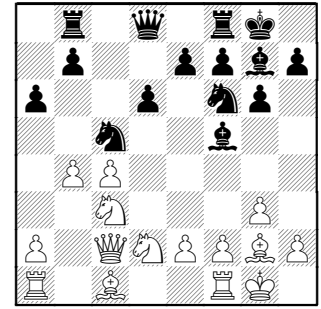
9.dxc5 Nxc5 10.Nd2 Apparently to play e4 if Black tries ...Bf5. 10...Rb8



A multi-purpose move! (1) Allows the development of the Bishop without risking the loss of the b-Pawn, (2) Gets the Rook off the long diagonal, (3) Prepares b7-b5

11.b4? This weakens the long diagonal and, in some cases, the c-Pawn.

11...Bf5!

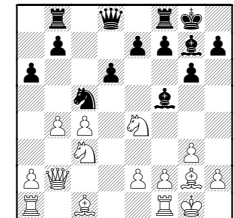


Immediately taking advantage of the weakened diagonal, pinning the c3-Knight which thus no longer helps protect e4. I'm sure he thought I couldn't play this due to 12 e4. Black has three pieces stopping this while White appears to have four supporting it.

However, a deeper look shows that neither the c3-Knight or Queen can recapture without hanging material. Consequently, 12 e4 loses as Black can just keep capturing there. At the end, either the c3-Knight or a-Rook will fall to the g7-Bishop !

12.Qd1

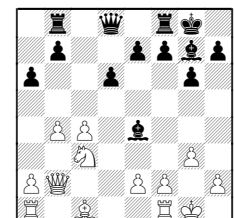
White could hold material with 12.Qb2 Nfe4 13.Ndxe4



13...Nxe4

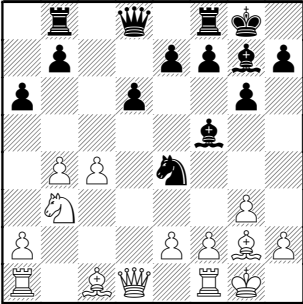
Note not 13...Na4? 14.Nxa4 Bxb2 15.Nxb2 .White has obtained three pieces for the Queen (including the Bishop pair) !

14.Bxe4 Bxe4



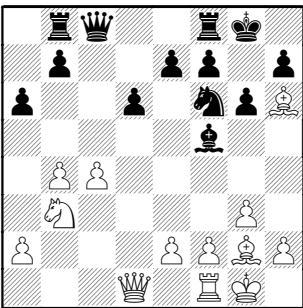
but he would clearly stand worse. Black would soon play Bf5-e6 and the c-Pawn will likely fall.

12...Nfe4 [12...Nce4 13.Bb2] 13.Ncxe4 Nxe4 14.Nb3



As a result of 12.Qd1, White offers the exchange to gain an attack.

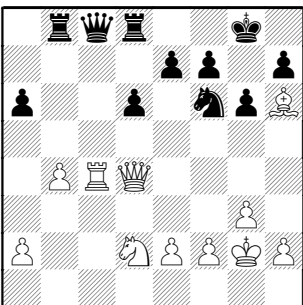
14...Bxa1 15.Nxa1 with idea g4 !
15...Nf6 16.Nb3 Qc8 17.Bh6



17...Rd8

I also considered 17...Qxc4 rather than saving the exchange, but decided not to return any material.

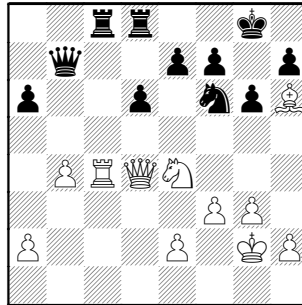
18.Qd4 Bh3 19.Nd2 Bxg2 20.Kxg2 b5
21.Rc1 bxc4 22.Rxc4



22...Qb7+

Looking more closely, 22...Qe6! threatened the e-Pawn and forced a trade of Rooks with a subsequent ...Rbc8. But there is also the second threat of ..Qd5+ removing the Queens. This would have eliminated White's coming counterattack before it got started! White could not continue as in the game because 23.f3? allows the simple Qxe2+, followed by Qe5.

23.f3 Rbc8 24.Ne4



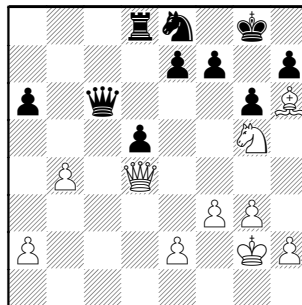
24...Ne8 forced

Not 24...Rxc4? 25.Nxf6+

25.Ng5 Rxc4 26.Qxc4 Idea Qxf7+-f8# !
26...d5

26...e6 but it also weakens the dark squares

27.Qd4 Qc6

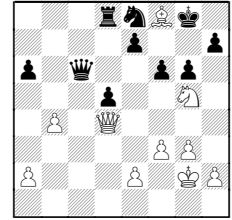


idea f6,e5 while not allowing White Ng5-e6

28.Bf8 e5

Obviously 28...Kxf8?? 29.Qh8#;

Also good (probably better, in fact) is 28...f6

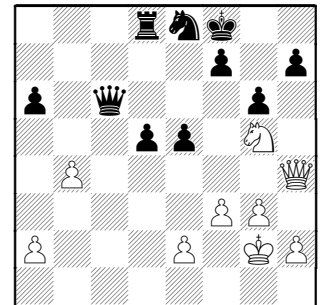


29.Bxe7 Rd7 which wins a piece (Bishop or Knight)

29.Qh4

After 29.Qxe5, Kxf8 is possible, as the King has the e7 flight square

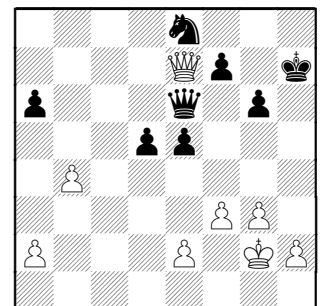
29...Kxf8



30.Nxh7+

30.Qxh7 Qf6 defends, and Black plays Ke7 next

30...Kg7 31.Qxd8 Kxh7 32.Qe7 Qe6

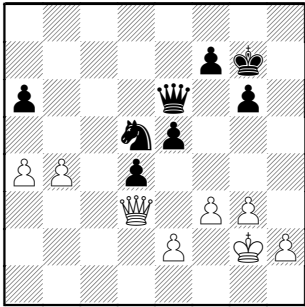


33.Qh4+

The position after a Queen trade is also hopeless-- 33.Qxe6 fxe6 Black plays Nd6 and e4, maintaining a healthy Pawn majority.

33...Kg7 34.a4 d4 See final diagram. Mates are possible by covering the e3 and c3 escape squares.

35.Qe4 Nf6 36.Qd3 Nd5



WHITE RESIGNED

Black threatens Ne3+, then Qh3 with a quick mate, thanks to his 34th move.

The finish could be 37.b5?? Ne3+ 38.Kf2 otherwise, Queen mates on g2 38...Qh3 mate on f1 39.Ke1 Qf1+ 40.Kd2 Qd1#

0-1

Tennant, Steve (2268) – Franklin (2206) [E20]
Wombats-Hedgehogs po (1.1), 5-9-2011

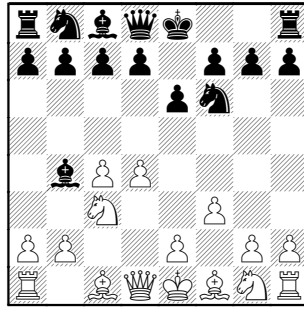
Notes by Steve Tennant

1.c4 Nf6 2.Nc3 e6 3.d4

Why this move order, instead of 1 d4 ? It avoids certain openings (QGA, Benko, Gruenfeld).

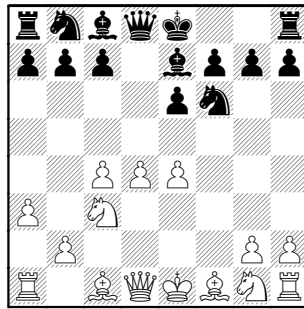
Additionally, if Black intends a Slav (after c6,d5) he has to be willing to face a Panov-Botvinnik variation (after Black's ..c6, White has e2-e4), or choose another opening.

3...Bb4 4.f3

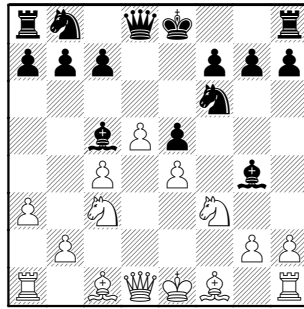


My choice here shouldn't have been a surprise.

4...d5 5.a3 Be7 6.e4 dxe4 7.fxe4



7...e5 8.d5 Bc5 9.Nf3 [9.Bg5] 9...Bg4



Black's chosen variation against 4 f3 has a good reputation, from a variety of sources.

Some sources only mention 9...Ng4

10.Qd3!

My TN (theoretical novelty). I've played it before, but never published it. The Knight is un-pinned without weakening h4 and g3. Also, e3 is protected making Be3 and 0-0 possible. Lastly, the Queen is centrally developed and an option for

0-0-0 is introduced. Black must first react to Nx5.

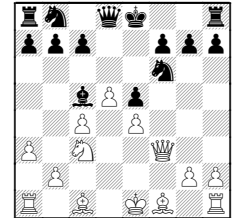
Regardless of their preferred 9th move, all sources have 10.h3 here. But I don't like it, because it weakens g3 (if for no other reason).

10...Bxf3

Other tries (like Qe7, Qd6, Nbd7 allow b2-b4, and Black will be forced to play Bxf3 anyway).

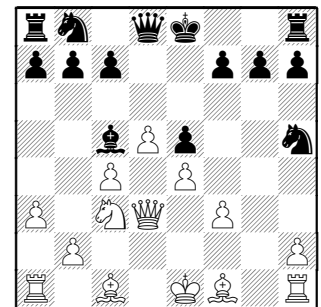
11.gxf3! Protecting Pe4 and opening the Bishop to its prime position on h3.

11.Qxf3



Is also OK, if you don't like the game's recapture. The g3-square is still not available to Black's Knight (as in the h2-h3 lines) and White still has the option of getting the Bishop to h3 (as in the game).

11...Nh5

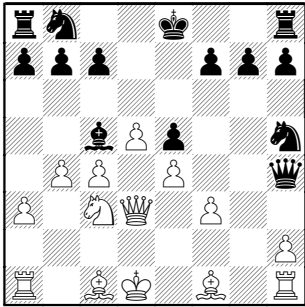


At least opening the Queen to the Kingside dark squares, especially the e1-h4 diagonal to the King.

12.b4! Chasing the Bishop off before

Black has time for a7-a5.

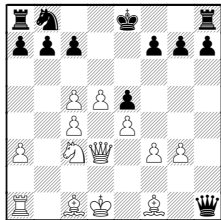
12...Qh4+ 13.Kd1



This is another advantage of my TN on move 10; the King is perfectly safe.

13...Bd4

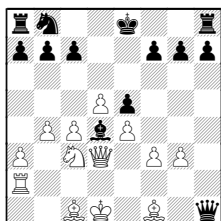
13...Ng3? 14.hxg3 Qxh1 15.bxc5



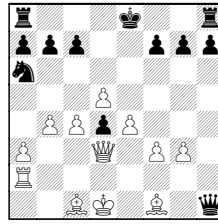
14.Ra2! Another forward move to unpin a Knight ! White now has Nb5 coming.

14...c6 Preventing Nb5.

A) Now, after 14...Ng3 15.hxg3 Qxh1



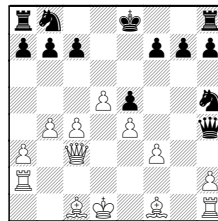
16.Nb5 Na6 17.Nxd4 exd4



18.Rf2!

White will win the d-Pawn and exits the combination with a Pawn and Bishop-pair for Rook+Knight, an interesting material imbalance. But positionally, Black's Knight is long-term misplaced and White's center Pawns are ready to roll. So Black avoids taking the exchange.

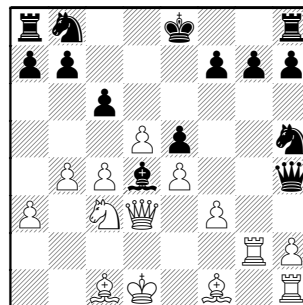
B) Another way to stop Nb5 is 14...Bxc3 15.Qxc3



but Black still cannot win the exchange!

15...Ng3? 16.Qxe5+ forking (16.Qe1 pinning is another way)

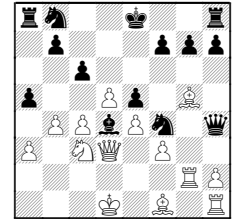
15.Rg2!



Stopping ..Ng3 once and for all ! But also introduces a Queen trap with Bg5 and Rg4. Dave must have also known this was all prepared analysis-- I hadn't even used two minutes yet !

15...a5 16.Ne2

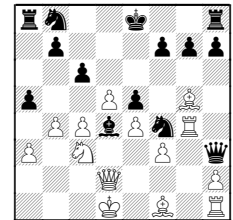
Why not the threatened 16.Bg5 Nf4



A) [Editor: I was expecting the reply would be 17.Qd2 Qh3

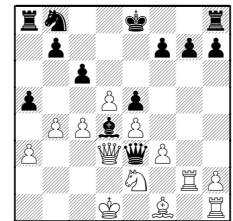
(17...Qh5 is possible, but 18.Rg4 blocks the Queen's attack to f3)

18.Rg4

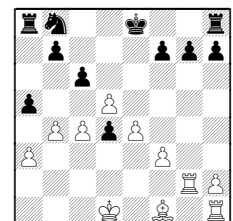


but Black has 18...Qxf3+ end Editor]

B) 17.Bxf4 Qxf4 18.Ne2 Qe3

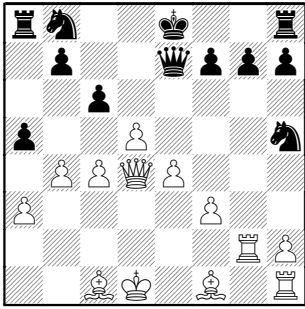


19.Nxd4 Qxd4 20.Qxd4 exd4

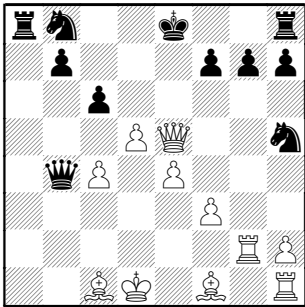


White wins at least a Pawn, but his Queenside is vulnerable.

16...Qe7 17.Nxd4 exd4 18.Qxd4



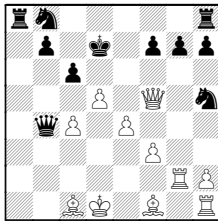
18...axb4 19.axb4 [19.d6 is better]
19...Qxb4 20.Qe5+



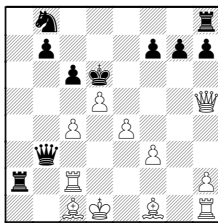
20...Kf8 only move

A) Not really better is 20...Kd8 21.Qxh5 Qb3+ 22.Rc2 Ra2;

B) Other replies allow the Queen to show-off her assets- 20...Kd7 21.Qf5+!



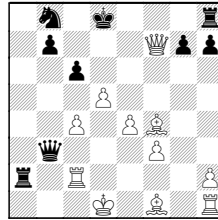
B1) 21...Kd6 22.Qxh5 Qb3+ 23.Rc2 Ra2



24.Bf4+!

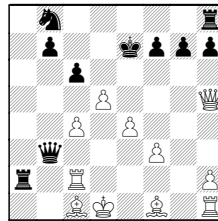
B11) 24...Kc5 25.dxc6+ Kxc6 26.Qb5+

B12) 24...Kd7 25.Qxf7+ Kd8



26.Bc7+ Kc8 27.Bh3+ Nd7 28.Qxd7#

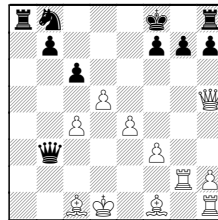
B2) 21...Ke7 22.Qxh5 Qb3+ 23.Rc2 Ra2



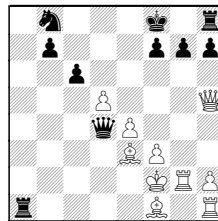
24.Qe5+ and the Queen can return to defend at c3

21.Rb2

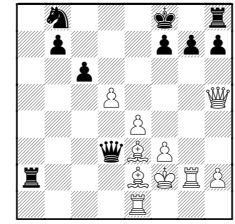
Another line is possible 21.Qxh5 Qb3+



22.Ke1 (22.Rc2? Ra2) 22...Qc3+ 23.Bd2 Ra1+ 24.Ke2 Qxc4+ 25.Kf2 Qd4+ 26.Be3

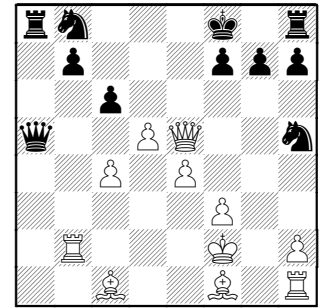


26...Ra2+ 27.Be2 Qd3 28.Re1



But, being a team event, exposing my King was undesirable in such a long line where something could easily be missed.

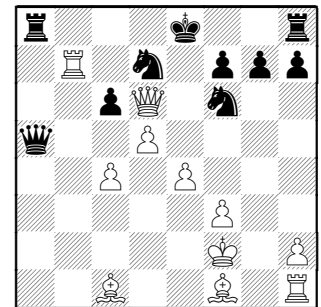
21...Qa4+ 22.Ke1 Qa5+ 23.Kf2



23...Nf6

23...Qa1 24.Qd6+ Ke8 25.Rxb7

24.Rxb7 Nbd7 25.Qd6+ Ke8

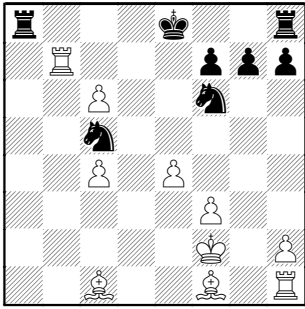


26.dxc6

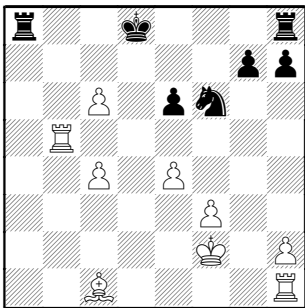
26.e5 allows the same reply 26...Qc5+

26...Qc5+ I also thought this was the only way to continue

27.Qxc5 Nxc5



28.Rb5 Ne6 29.Bh3 Kd8 30.Bxe6 fxe6



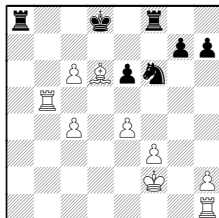
One advantage of the Bishop-pair versus the Knight-pair is you can trade Bishop for Knight and convert the endgame advantage of good Bishop versus bad Knight!

31.Bf4 Rf8

When I saw this, I told him "Nice try, but it won't work!".

32.Rb8+

32.Bd6



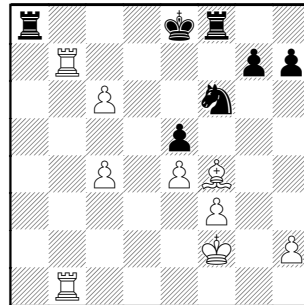
looks like a kill, but 32...Nxe4+ forking !

(32...Re8? (or wherever) 33.Rb8+ Rxb8 34.c7+)

32...Ke7

32...Rxb8 33.c7+

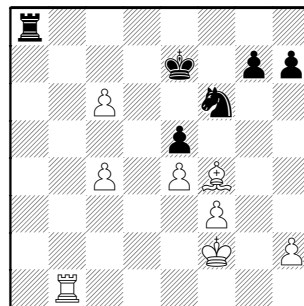
33.Rb7+ Ke8 34.Rhb1 e5



35.Rb8+

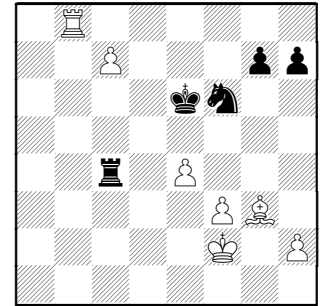
35.Bxe5? Ng4+

35...Ke7 36.Rxa8 Rxa8



37.Bxe5 Now possible since the Rook has left the f-file.

37...Ke6 38.Bg3 Ra4 39.c7 Rxc4 40.Rb8



BLACK RESIGNED

40...Kd7 41.Rd8+ and then queens

1-0

Saying Good-bye to a Quadruple Centurion

Submitted by Alex Pehas

This year we lost Karel Dobr, who passed away on May 7 at the age of 84. Karel was a Quadruple Centurion in the CICL.

Karel will be missed, but leaves behind quite the legacy. Over the years he played for Western Electric, AT&T, and Lucent teams. His first CICL game was played in December of 1961. He continued to play until 2007 for a total of 463 games!

Karel Dobr (right) playing white against Walter Elliot in a speed chess tournament game played at the 1973 CICL banquet.



You're invited to the annual CICL Banquet Ceremony**When? Friday June 17, 2011****Time? Dinner starts at 7:00****Arrival may begin as early as 5:00****Where? Alpine Banquet House****11141 W. Roosevelt****Westchester, IL****(on the SE corner of Wolf and Roosevelt)****There is parking off of Wolf rd or off Roosevelt.****Dinner Includes:**

Soup, Salad

Main Course, Side Dish, and Vegetable

Dessert

Dinner Rolls with Butter

Coffee, Hot Tea, and Milk

Additional Amenities Include:

White Table Cloths and White Linen Napkins

Tables Decorated with a Vase of Silk Flowers

Your dinner choices are:**Stuffed Chicken Breast** with Mozzarella Cheese and Vegetable Served with Marsala Wine Sauce
OR**Poached Salmon with Scallops Mousse** Served with BéurreBlanc Sauce**Please select one dinner option per person. Please encourage your significant others to join us. I do have events planned for non-chess players.****The cost is \$25.00 per person. Please send your checks to me this year so I can keep an accurate count. Make your checks payable to the CICL C/O Katherine Zack/ Send them to 560 Linden Rd. Frankfort, IL 60423.*****Also, please add in the memo section of your check what your order will be.****Ex: 1 stuffed chicken and 1 poached salmon****Thank you everyone!****Sincerely,****Katherine Zack****Banquet Chair CICL**

Note on season-end rating standings and achievements from Ratings Chair Jeff Balicki (from email correspondence May 17th):

All,

Corrected End of Season rating reports are available on the CICL website. Look for **all** reports dated May 17th.

Note:

1. Some player ratings corrected for Individual (Non-match) games played (Individual Tournament).
2. Seed added to playoff reports for sorting purposes.
3. Blank names (non-CICL opponents) removed from Individual Standings report.
4. Sections for Individual Games defined as Playoff Saturday Individual Tournament section 1 (IT1), section 2 (IT2), and Summer Games (SMR).

Here are the links to the files previously attached that may or may not be available on the CICL website:

http://www.chicagochessleague.org/generated/Playoff_Details.pdf

http://www.chicagochessleague.org/generated/Individual_Standings.pdf

Regards,
Jeff Balicki

Season Results report available on the "Ratings" link. The report shows all players who played in the season along with their rating and an indication of their playoff eligibility. The report also shows those who have crossed a new Centurion threshold.

Congratulations to:

Centurions:

Nik Goncharoff, Sextuple Centurion (600 CICL games)!

J. Guio, Double Centurion (202 CICL games)

Marty Franek, Triple Centurion (304 CICL games)

Most Improved Players.

Congratulations to S. Mata with a 173 point MIP rating gain for the season. Honorable mention to C. Romanowitz with 166 point MIP rating gain.

Biggest Upsets:

Congratulations to A. Mosley with a Game upset amount of 623 points!

Congratulations to Fermilab with a Match upset of an average 198 points per board!



Season Results

Tuesday, May 17, 2011

Team	Player	W	L	D	Rating Change	Rating	Rated Games	CICL Games	Rating Class	Playoff Eligible
AMARS										
	BROCK,B	5	2	4	+7	2018	19	11	Provisional	+
	BRASWELL,I	5	1	0	+96	1933	18	14	Provisional	+
	EAMAN,R	4	2	6	-19	1778	119	119	Centurion	+
	ALLEN,H	4	5	0	-39	1762	124	130	Centurion	+
	FRANK,M	5	5	0	-84	1661	135	161	Centurion	+
	DUFFY,J	6	1	5	-10	1623	101	114	Centurion	+
	ACEVEDO,U	7	2	0	+20	1549	29	30	Established	+
	FULKERSON,R	2	0	0	+13	1481	48	67	Established	+
	IRBY,L	1	1	0	+31	1102	13	23	Provisional	+
AMATS										
	HARRIS,M	3	3	1	-33	1850	16	16	Provisional	+
	FURTNER,F	5	3	4	+53	1545	66	70	Established	+
	MEYER-ABBOTT,B	1	2	1	+16	1424	26	29	Established	+
	MASITI,J	3	1	0	+17	1362	21	28	Provisional	+
	KOLLI,S	2	4	0	-29	1340	13	15	Provisional	+
	FARMER,B	1	1	0	+19	1324	8	8	New	+
	MEHDI,SYED	1	1	0	+25	1277	7	10	New	+
	SOVA,ANDREW	0	3	0	-214	1235	7	7	New	+
	MEYER,C	0	3	0	-78	1164	12	27	Provisional	+
	HARPER,M	0	8	0	-121	1123	23	34	Provisional	+
	BAROT,N	0	2	1	-132	968	4	4	New	+
	PATELLA,C	0	0	1	+49	952	5	5	New	+

Note: Only players with a non-zero W-L-D record, or with additional Rated Games this season, are shown.

Note 2: To be Playoff Eligible, a player must play a game (or accept a forfeit win) at a regular season match against a non-team member.

Team	Player	W	L	D	Rating Change	Rating	Rated Games	CICL Games	Rating Class	Playoff Eligible
BCBS										
	KHAN,M	1	3	2	-17	1811	22	18	Provisional	+
	BRUNO,R	2	2	1	-19	1590	22	17	Provisional	+
	GUIDRY,D	1	4	2	-79	1543	13	7	Provisional	+
	GUIU,C	2	4	0	-7	1537	20	18	Provisional	+
	SAN MIGUEL,L	2	2	3	-57	1514	16	17	Provisional	+
	BURGESS,A	5	2	1	-31	1495	19	20	Provisional	+
	MATA,S	7	1	1	+173	1488	20	22	Provisional	+
	STURGEON,V	1	2	0	-70	1487	6	3	New	+
	WONG,A	3	1	0	+74	1374	5	4	New	+
	THOMPSON,GZ	1	0	0	+35	1293	7	1	New	+
	LACHOWIEC,S	0	1	0	-309	1291	2	1	New	+
	PETTIS,D	2	1	0	+23	1223	5	3	New	+
BPMLX										
	REICH,T	2	6	1	-9	1720	67	73	Established	+
	ZADEREJ,V	1	5	2	-10	1637	73	74	Established	+
	HENDRICKSON,B	0	1	0	-10	1522	59	57	Established	+
	MCGOWAN,D	1	3	2	-1	1488	65	68	Established	+
	RUFUS,B	1	2	0	+28	1453	38	42	Established	+
	DEICHMANN,E	0	4	3	+38	1291	62	71	Established	+
	SIFUENTES	0	1	0	-11	1239	3	1	New	+
	MANILA,M	1	6	0	-27	1095	45	54	Established	+
	MUELLER,R	0	2	1	-7	1036	20	32	Provisional	+
	AREND,A	0	8	0	0	800	11	11	Provisional	+

Note: Only players with a non-zero W-L-D record, or with additional Rated Games this season, are shown.

Note 2: To be Playoff Eligible, a player must play a game (or accept a forfeit win) at a regular season match against a non-team member.

Team	Player	W	L	D	Rating Change	Rating	Rated Games	CICL Games	Rating Class	Playoff Eligible
CITGR										
	PFAU,M	6	1	1	+13	2108	40	27	Established	+
	ONG,K	5	1	2	+57	1824	61	53	Established	+
	KUNHIRAMAN,P	5	2	1	-2	1591	23	22	Provisional	+
	PRIMORAC,V	6	1	2	+194	1562	24	22	Provisional	+
	LE,DUC	4	2	1	-9	1516	64	68	Established	+
	SENSAT,J	4	3	1	+14	1503	72	75	Established	+
	LARSON FREEMAN,T	2	2	0	+10	1310	6	4	New	+
	SHEVCHUK,E	1	0	0	-553	1192	9	2	Provisional	-No-
	PROKOPOWICZ,P	2	3	0	+43	1179	25	25	Provisional	+
	PARRA,J	0	1	0	+34	1178	16	20	Provisional	+
DGCC										
	KLUG,S	4	1	4	+43	2168	46	39	Established	+
	BUNGO,G	8	3	1	+50	2048	23	19	Provisional	+
	EGERTON,J	2	1	2	-16	2025	49	43	Established	+
	DUGOVIC,D	4	0	2	+65	1925	25	23	Provisional	+
	WAKERLY,R	5	0	2	+20	1883	33	31	Established	+
	POTTS,K	5	2	1	+4	1856	36	36	Established	+
	TAN,GADDIEL	5	1	2	+69	1841	22	23	Provisional	+
	PARMET,D	5	1	0	+2	1773	23	20	Provisional	+
	YALAVARTHI,R	1	1	1	-14	1722	18	16	Provisional	+
	MANEY,A	1	1	0	-58	1644	7	9	New	+
	SMITH,BR	3	0	1	-3	1609	142	180	Centurion	+
	VECANSKI,D	0	1	0	-47	1581	18	17	Provisional	+
	ROMANOWITZ,C	8	1	0	+166	1489	18	15	Provisional	+

Note: Only players with a non-zero W-L-D record, or with additional Rated Games this season, are shown.

Note 2: To be Playoff Eligible, a player must play a game (or accept a forfeit win) at a regular season match against a non-team member.

Team	Player	W	L	D	Rating Change	Rating	Rated Games	CICL Games	Rating Class	Playoff Eligible
DRGNS										
	TEGEL,F	1	3	1	-26	2024	420	458	Quadruple Centurion	+
	LUDWIG,T	4	3	2	-10	1967	213	213	Double Centurion	+
	MARCOWKA,R	1	4	2	-32	1855	316	339	Triple Centurion	+
	PARKER,L	3	1	3	-13	1727	83	90	Established	+
	EUSTACE,D	4	4	1	+21	1573	187	230	Double Centurion	+
	THOMAS,J	3	3	0	-14	1479	242	296	Double Centurion	+
	KOMORAVOLU,K	3	3	0	-3	1440	51	61	Established	+
	STAMM,V	4	3	0	-10	1421	357	383	Triple Centurion	+
	BREYER,A	4	2	0	+32	1355	63	73	Established	+
DRW										
	HAYHURST,W	6	3	2	+15	1945	95	93	Established	+
	GORODETSKIY,E	4	2	2	-15	1824	34	31	Established	+
	GORODETSKIY,S	3	3	1	-38	1760	66	62	Established	+
	GUGENHEIM,O	3	1	2	-3	1578	28	28	Established	+
	BEDER,B	2	3	3	-74	1575	17	19	Provisional	+
	CAPUTO,W	3	0	0	+71	1552	3	4	New	+
	REDMOND,M	5	3	1	-57	1456	22	27	Provisional	+
	KOMBLEVITZ,A	0	5	1	-118	1078	11	11	Provisional	+
	MILLER,O	0	1	0	-13	877	5	3	New	+

Note: Only players with a non-zero W-L-D record, or with additional Rated Games this season, are shown.

Note 2: To be Playoff Eligible, a player must play a game (or accept a forfeit win) at a regular season match against a non-team member.

Team	Player	W	L	D	Rating Change	Rating	Rated Games	CICL Games	Rating Class	Playoff Eligible
EXCLB										
	HART,V	4	4	1	-34	2117	42	36	Established	+
	LEE,D	3	5	2	-20	1883	56	54	Established	+
	DOWELL,E	4	1	2	+58	1806	53	59	Established	+
	ENGELEN,M	2	6	1	-35	1756	62	63	Established	+
	WEITZ,R	2	2	2	+1	1593	214	234	Double Centurion	+
	VIGANTS,A	7	4	0	+55	1587	178	193	Centurion	+
	REID,C	4	1	0	+29	1504	225	273	Double Centurion	+
	SIEGEL,R	2	1	0	+19	1498	124	155	Centurion	+
	SUERTH,F	0	1	1	-16	1495	206	246	Double Centurion	+
FERMI										
	SERGATSKOV,D	4	4	2	-6	2038	29	30	Established	+
	SPIEGEL,L	4	2	4	+7	1973	317	344	Triple Centurion	+
	GAINES,I	3	2	4	+29	1743	320	347	Triple Centurion	+
	STAPLES,C	1	0	1	+16	1609	92	105	Centurion	+
	STRAIN,D	4	0	5	+269	1581	15	10	Provisional	+
	DEGRAFF,B	1	2	1	-24	1536	50	54	Established	+
	FISCHLER,M	0	1	0	-167	1333	3	1	New	+
	MHASHILKAR,P	3	5	1	-92	1308	11	9	Provisional	+
	FUSI,D	0	2	0	-172	1128	4	2	New	+
	DRENDEL,B	0	3	0	-37	956	12	15	Provisional	+

Note: Only players with a non-zero W-L-D record, or with additional Rated Games this season, are shown.

Note 2: To be Playoff Eligible, a player must play a game (or accept a forfeit win) at a regular season match against a non-team member.

Team	Player	W	L	D	Rating Change	Rating	Rated Games	CICL Games	Rating Class	Playoff Eligible
FORKS										
	INUMERABLE,F	0	3	3	-39	2152	193	195	Centurion	+
	FRISKE,T	7	2	1	+48	2018	209	225	Double Centurion	+
	SANTIAGO,T	4	3	2	-10	1979	140	149	Centurion	+
	LEVENSON,S	4	2	4	+9	1960	60	57	Established	+
	SOLLANO,E	4	2	2	-22	1922	166	181	Centurion	+
	GRANATA,M	2	2	1	-24	1875	36	39	Established	+
	BIALON,D	0	1	0	-26	1724	34	34	Established	+
	HAMELINK,N	2	1	0	+1	1687	33	39	Established	+
	PERSONS,J	3	0	0	+72	1631	22	29	Provisional	+
	HUGHES,N	2	3	1	-44	1568	196	213	Double Centurion	+
	BIAN,M	5	4	1	+75	1501	22	25	Provisional	+
	NICK,X	1	3	0	-21	1209	22	29	Provisional	+
	KACZYNSKI,W	1	0	0	0	1091	10	15	Provisional	+
GAMBT										
	CIULLA,S	0	1	0	-228	1748	2	2	New	+
	GHAIBEH,AYMAN	1	6	0	-8	1696	14	15	Provisional	+
	KRISHNAMURTHY,S	1	3	0	+70	1638	11	11	Provisional	+
	GILBERT,S	0	2	1	-7	1593	5	3	New	+
	DOLGIN,A	0	2	0	-195	1563	5	5	New	+
	MITCHELL,D	0	4	0	-69	1481	11	11	Provisional	+
	MOORE,A	0	5	1	-92	1420	8	8	New	+
	STILES,J	1	4	1	+64	1239	9	10	Provisional	+
	NIAZI,S	0	2	0	-47	1178	4	2	New	+
	ALI,F	0	2	0	-32	1168	3	1	New	+
	MOSLEY,A	3	8	1	+125	1059	18	19	Provisional	+

Note: Only players with a non-zero W-L-D record, or with additional Rated Games this season, are shown.

Note 2: To be Playoff Eligible, a player must play a game (or accept a forfeit win) at a regular season match against a non-team member.

Team	Player	W	L	D	Rating Change	Rating	Rated Games	CICL Games	Rating Class	Playoff Eligible
HEDGE										
	FRANKLIN,D	2	1	1	+3	2203	32	25	Established	+
	RAUCHMAN,M	7	0	1	+57	2075	60	62	Established	+
	SMITH,M	8	1	2	+39	1975	68	63	Established	+
	JASAITIS,A	5	2	5	-44	1905	286	313	Triple Centurion	+
	KRATKA,M	6	1	0	+38	1614	71	80	Established	+
	SHEPARDSON,T	5	5	1	-22	1590	26	28	Established	+
	CHAVEZ,A	7	1	4	+108	1462	25	38	Provisional	+
	NICHOLS,P	2	0	0	+133	1333	4	2	New	+
	COOMBES,N	2	2	0	-23	1276	13	16	Provisional	+
	FINE,A	4	4	0	+58	1258	10	8	Provisional	+
	GALE,M	1	1	0	-87	1233	4	2	New	+
	CROSBY,N	1	2	0	-9	1036	10	9	Provisional	+
	MCENEANY,T	0	1	0	0	994	9	8	Provisional	+
	RORVICK,C	0	1	0	-24	978	7	7	New	-No-
JJCCC										
	LERNER,T	0	3	1	+4	1745	10	4	Provisional	+
	ABERNATHY,J	2	4	1	+197	1560	12	7	Provisional	+
	BRUCE,K	0	5	4	+91	1451	15	9	Provisional	+
	HENDERSON,A	2	1	0	+181	1412	8	3	New	+
	LEDFORD,J	1	5	2	-73	1177	10	8	Provisional	+
	THOMPSON,G	0	3	1	-23	1169	10	4	Provisional	+
	MARCHERT JR, J	1	6	0	-90	1155	13	7	Provisional	+
	RAINEY,R	0	6	2	-145	1105	10	8	Provisional	+
	CRAIG,S	2	5	1	+4	1054	10	8	Provisional	+
	MARCHERT SR,J	0	4	0	-38	1004	10	4	Provisional	+
	SHORES,B	0	3	0	-66	834	5	3	New	+

Note: Only players with a non-zero W-L-D record, or with additional Rated Games this season, are shown.

Note 2: To be Playoff Eligible, a player must play a game (or accept a forfeit win) at a regular season match against a non-team member.

Team	Player	W	L	D	Rating Change	Rating	Rated Games	CICL Games	Rating Class	Playoff Eligible
LOYLA										
	CLARK,I	0	6	2	-15	1442	15	16	Provisional	+
	ZACHAR,T	1	1	0	-68	1432	4	2	New	+
	DIMOPOULOS,P	2	5	0	+70	1383	14	14	Provisional	+
	GLIWA,D	2	2	0	-76	1324	5	4	New	+
	JOHNSON,Z	0	1	0	0	1257	4	4	New	+
	PLOTNER,J	0	2	0	-72	1232	10	18	Provisional	+
	BROWN,B	0	6	0	-126	1169	10	10	Provisional	+
	SOLOMON,S	0	2	0	-33	1167	4	2	New	+
	WOJDYLA	0	7	0	-351	1149	8	8	New	+
	MEDINA,D	0	2	0	-169	1131	4	2	New	+
	REITER,J	0	4	0	-196	954	6	4	New	+
MKING										
	AITIPAMULA,J	4	2	4	+26	2049	24	26	Provisional	+
	MELNIKOV,I	1	2	1	-8	2016	146	148	Centurion	+
	WALLACH,C	3	3	4	-32	1933	191	191	Centurion	+
	PIPARIA,J	5	3	2	-26	1922	123	130	Centurion	+
	CYGAN,J	4	1	4	+9	1783	85	87	Established	+
	GONCHAROFF,N	4	3	6	-50	1512	510	600	*New* Sext Cent.	+
	ALFONSO,E	1	0	0	+7	1489	57	66	Established	+
	RABINOVICH,E	5	3	0	-28	1454	61	77	Established	+
	GRYPARIS,J	0	0	1	+13	1380	129	173	Centurion	-No-

Note: Only players with a non-zero W-L-D record, or with additional Rated Games this season, are shown.

Note 2: To be Playoff Eligible, a player must play a game (or accept a forfeit win) at a regular season match against a non-team member.

Team	Player	W	L	D	Rating Change	Rating	Rated Games	CICL Games	Rating Class	Playoff Eligible
MKNGT										
	FRIDMAN,Y	9	0	3	+36	2266	139	146	Centurion	+
	MORRIS,R	6	2	3	-22	2198	140	142	Centurion	+
	THOMSON,J	8	0	5	+39	2021	148	173	Centurion	+
	BALICKI,J	6	2	5	+48	1842	147	173	Centurion	+
	AUGSBURGER,L	3	1	0	0	1774	157	187	Centurion	+
	CHERKASSKY,G	5	3	2	-14	1724	53	60	Established	+
	KARANDIKAR,S	1	0	1	+6	1662	75	92	Established	+
	DUONG,R	3	1	1	-4	1499	18	29	Provisional	+
	BABINEC,J	1	4	1	-24	1327	33	41	Established	+
NWEST										
	MCVAY	1	0	0	0	1928	7	1	New	+
	DATLA,S	3	1	0	+46	1877	9	4	Provisional	+
	KRAVIK,P	1	2	2	-7	1796	13	11	Provisional	+
	GAFNI,P	5	1	2	+107	1777	22	21	Provisional	+
	MODI,P	4	0	2	+44	1772	12	6	Provisional	+
	SHEKHTMAN,L	1	3	0	-96	1705	10	4	Provisional	+
	GINZBURG,D	4	1	1	+101	1482	12	6	Provisional	+
	LOU,J	2	1	0	+151	1440	8	8	New	+
	KIM,C	1	0	0	+116	1316	3	1	New	+
	ANDERSON,E	1	2	0	-265	1286	3	4	New	+
	WEINFELD,M	2	3	0	+70	1270	7	5	New	+
	BI,TAO	3	1	0	+189	1214	9	4	Provisional	+
	WU,S	0	1	0	-21	1179	3	1	New	+
	BABCOCK,S	1	2	0	-33	1067	4	3	New	+

Note: Only players with a non-zero W-L-D record, or with additional Rated Games this season, are shown.

Note 2: To be Playoff Eligible, a player must play a game (or accept a forfeit win) at a regular season match against a non-team member.

Team	Player	W	L	D	Rating Change	Rating	Rated Games	CICL Games	Rating Class	Playoff Eligible
PAWNS										
	KRAS,T	0	2	1	-13	2136	115	117	Centurion	+
	CAVENEY,J	3	2	3	+11	2133	26	20	Established	+
	KORENMAN,M	5	3	3	+48	1966	17	12	Provisional	+
	LATIMER,E	0	3	4	-73	1916	302	334	Triple Centurion	+
	EDEUS,D	4	1	3	+55	1754	21	16	Provisional	+
	HOLLAWAY,M	5	4	3	-49	1751	21	16	Provisional	+
	KUKURUZA,V	6	2	1	+23	1653	21	19	Provisional	+
	VITKAUSKAS,V	0	2	1	-117	1591	9	3	Provisional	+
	HARPER,C	4	1	2	+16	1459	13	7	Provisional	+
	FABIJONAS,R	3	2	2	-64	1441	344	383	Triple Centurion	+
	O'DELL,DW	1	0	0	+3	1351	203	220	Double Centurion	+
	SPITZIG,M	3	3	0	-12	1322	39	44	Established	+
ROOKS										
	BENEDEK,R	5	4	1	-7	2090	378	392	Triple Centurion	+
	HILL,R	3	5	2	-36	1909	239	252	Double Centurion	+
	SUAREZ,E	4	2	2	-27	1883	127	128	Centurion	+
	BAURAC,D	5	2	2	+17	1703	311	349	Triple Centurion	+
	YACOUT,A	0	0	1	-3	1580	54	58	Established	+
	DECMAN,S	4	4	2	-27	1519	278	311	Triple Centurion	+
	GWEKOH,R	2	1	2	+122	1430	12	12	Provisional	+
	KUHLMANN,S	2	0	0	+10	1388	20	25	Provisional	+
	RAMANATHAN,N	2	0	0	+6	1256	18	25	Provisional	+
	HLOHOWSKYJ,I	0	4	0	-22	1032	23	33	Provisional	+
	NARAYARANASAMI,S	1	5	0	-146	800	6	7	New	+

Note: Only players with a non-zero W-L-D record, or with additional Rated Games this season, are shown.

Note 2: To be Playoff Eligible, a player must play a game (or accept a forfeit win) at a regular season match against a non-team member.

Team	Player	W	L	D	Rating Change	Rating	Rated Games	CICL Games	Rating Class	Playoff Eligible
STCCC										
	MARSHALL,J	1	2	0	-7	2258	58	53	Established	+
	ACOSTA,M	2	1	3	-38	2134	25	18	Provisional	+
	WIEWEL,J	3	3	2	-22	2128	80	75	Established	+
	SPLINTER,J	1	0	2	-1	2126	48	42	Established	+
	FREIDEL,P	2	2	0	-14	1947	55	53	Established	+
	SUITS,J	4	2	1	+9	1867	65	62	Established	+
	VON HATTEN,J	8	3	1	+6	1817	39	37	Established	+
	AILES,T	3	0	0	+15	1806	42	44	Established	+
	MEISSEN,B	1	0	0	0	1766	25	25	Provisional	+
	KOLB,S	3	1	1	+34	1608	11	7	Provisional	+
	SMITH,D	3	3	0	-27	1598	22	20	Provisional	+
	JANSSEN,G	4	1	1	+28	1574	44	48	Established	+
	PADILLA,R	6	3	2	-15	1565	37	39	Established	+
	GIERTZ,C	1	0	0	0	1474	3	4	New	+
	CRISSMAN,J	1	0	0	+42	1463	7	2	New	+
	KELLEY,G	2	0	0	+63	1380	8	4	New	+
	BALES,R	1	0	0	0	1365	18	17	Provisional	+
	BOURIS,B	1	1	0	-40	1217	7	7	New	+
SXUCT										
	CELENTANO,A	1	1	0	+21	1870	15	10	Provisional	+
	JACKSON,WILLIAM	0	4	1	-2	1376	25	28	Provisional	+
	SARNA,J	2	3	1	-52	1374	12	6	Provisional	+
	ABNEY,I	2	3	0	+39	1227	22	25	Provisional	+
	BRANNON,M	3	3	0	+118	1168	7	6	New	+
	ONWUMAH,I	1	3	1	+37	1161	13	14	Provisional	+
	MCDONNELL,B	1	3	0	+49	992	14	14	Provisional	+
	SINOPLE,J	0	2	0	-4	859	20	21	Provisional	+

Note: Only players with a non-zero W-L-D record, or with additional Rated Games this season, are shown.

Note 2: To be Playoff Eligible, a player must play a game (or accept a forfeit win) at a regular season match against a non-team member.

Team	Player	W	L	D	Rating Change	Rating	Rated Games	CICL Games	Rating Class	Playoff Eligible
TT										
	HUNTER,JOSH	1	5	2	+50	1507	10	8	Provisional	+
	KHLUS,V	2	6	1	+48	1498	11	9	Provisional	+
	GOTTEMOLLER,A	4	3	0	+307	1357	9	7	Provisional	+
	SCHWARTZ,BRIAN	1	4	1	+99	1247	8	6	New	+
	VISSER,JOUBERT	3	9	0	+112	1169	18	12	Provisional	+
	BRINSON,J	1	0	0	0	1100	2	1	New	+
	WILK,M	1	5	1	+30	1050	9	7	Provisional	+
	GORDON,RYAN	0	1	0	0	900	3	1	New	+
	VARGAS,R	1	4	0	-112	888	5	4	New	+
TYROS										
	ALLSBROOK,F	4	0	6	+6	2165	71	67	Established	+
	DIAZ,P	2	5	3	-66	1982	239	245	Double Centurion	+
	STOLTZ,B	1	2	0	-38	1824	206	220	Double Centurion	+
	GUIO,J	0	4	2	-49	1822	203	202	*New* Double Cent.	+
	DOBROVOLNY,C	5	2	3	-13	1715	239	260	Double Centurion	+
	BUCHNER,R	1	0	0	+11	1650	162	165	Centurion	+
	HAHNE,D	6	2	3	+15	1640	181	213	Double Centurion	+
	DENMARK,T	0	1	0	-12	1615	43	50	Established	+
	VAIL,M	3	1	2	+12	1597	75	87	Established	+
	MCPHAIL,C	6	2	1	+186	1436	9	14	Provisional	+
	KURUVILLA,E	5	2	1	+150	1350	10	8	Provisional	+
	BYRNE,M	3	4	1	-33	1316	45	54	Established	+
	KARPIERZ,J	0	1	0	-20	1293	49	75	Established	+

Note: Only players with a non-zero W-L-D record, or with additional Rated Games this season, are shown.

Note 2: To be Playoff Eligible, a player must play a game (or accept a forfeit win) at a regular season match against a non-team member.

Team	Player	W	L	D	Rating Change	Rating	Rated Games	CICL Games	Rating Class	Playoff Eligible
UOP										
	LEONG,G	3	2	2	-7	1946	215	235	Double Centurion	+
	SIWEK,M	1	1	1	+10	1936	237	247	Double Centurion	+
	BOLDINGH,E	6	0	4	+85	1915	216	224	Double Centurion	+
	VAN MEER,J	1	1	1	-6	1898	72	70	Established	+
	EASTON,R	1	2	1	+4	1823	123	139	Centurion	+
	SAJBEL,P	1	0	0	+17	1798	144	161	Centurion	+
	LECHNICK,J	1	6	2	-69	1634	135	160	Centurion	+
	MOSSBRIDGE,A	1	1	1	-30	1599	40	39	Established	+
	SCHWANBECK,S	2	2	0	+172	1572	6	4	New	+
	OLSEN,A	6	2	3	+48	1517	172	193	Centurion	+
	SHAH,A	1	0	0	+45	1345	3	1	New	+
	LANG,P	0	1	0	-71	1229	3	1	New	+
	RAMOS,J	1	5	0	-217	1183	8	6	New	+
	RAMIREZ,A	0	2	0	0	1080	5	5	New	+
WMBAT										
	TENNANT,S	8	1	2	+35	2266	30	23	Established	+
	MENON,G	0	0	1	-5	2200	9	1	Provisional	+
	WEBER,L	5	0	2	0	2074	71	68	Established	+
	FREITAG,T	8	3	2	+15	2005	39	34	Established	+
	ELLICE,W	7	1	4	+73	1779	206	214	Double Centurion	+
	ZOLKOS,A	4	2	3	+29	1745	33	30	Established	+
	FRANEK,M	2	1	4	-45	1664	248	304	*New* Triple Cent.	+
	CONNELLY,P	3	1	2	+34	1611	17	14	Provisional	+
	GARCIA,I	1	0	0	0	1574	7	1	New	+
	RAJSKY,J	4	5	2	-147	1540	17	11	Provisional	+
	ZACK,K	1	1	0	0	800	3	4	New	+

Note: Only players with a non-zero W-L-D record, or with additional Rated Games this season, are shown.

Note 2: To be Playoff Eligible, a player must play a game (or accept a forfeit win) at a regular season match against a non-team member.