

The Chicago Chess Player

The Official Bulletin of the Chicago Industrial Chess League



Inside This Edition:

- Division Standings
- CICL Chess Clubs
- CICL and the Chicago Blaze

CICL Officer Contact List

League President	Tony Jasaitis		C:(708) 903-6423
	President@ChicagoChessLeague.org		W:(312) 264-2044
League Secretary	Jerry Thomas	745 Hageman Pl	H:(630)420-0188
	Secretary@ChicagoChessLeague.org	Naperville, IL 60563	
League Treasurer	Paul Freidel	359 N. Worth Avenue	C:(224)436-6050
	Treasurer@ChicagoChessLeague.org	Elgin, IL 60123	
Bulletin Editor	Patrice Connelly		
	Bulletin@ChicagoChessLeague.org		
Webmaster	Tom Friske	(see information below)	
	Web@ChicagoChessLeague.org		
Games Editor	Tom Friske	1035 E Algonquin Road	H:(847) 299-1033
	Games@ChicagoChessLeague.org	Des Plaines, IL 60016	W:(847) 914-8448
Ratings Chairman	Jeff Balicki		
	Ratings@ChicagoChessLeague.org		
Trophy Chairman	Chuck Dobrovolny		
	Trophy@ChicagoChessLeague.org		
Publicity Chairman	Matt Vail		C:(312) 933-1516
	Publicity@ChicagoChessleague.org		W:(630) 505-6557
Banquet Chairman	Katherine Zack		
	Banquet@ChicagoChessLeague.org		

DIVISIONAL CHAIRMEN

East Division	Adam Muhs		C: (847) 877-9629
	ChairmanEast@ChicagoChessLeague.org		W: (312) 497-1184
West Division	Irwin Gaines		
	ChairmanWest@ChicagoChessLeague.org		
North Division	Jim Thomson		W(847) 538-5408
	ChairmanNorth@ChicagoChessLeague.org		

Officer Contact List	2
Contents of Issue	3
CICL Chess Clubs	
Downer's Grove	4
South Suburban	5
St. Charles	6
Games Analysis by Tom Friske	7-21
En Passant: Stories from CICL players	22
Extracurriculars: CICL in the chess community	23-26
Ratings (by team)	27-33
Independent Games	34-35
Matches	36-41
Division Standings	42
Division Top Ten	43
Most Improved Players	44

Editor's Note:

New Sections- Looking for Submissions!

We want to let everyone know about the league, and what better way to get the word out than to share our stories? Starting in this edition, we'll include two new sections: "En Passant" and "Extracurriculars" The first section is a place to share anecdotes, thoughts, and memorable experiences from CICL players, from CICL matches, tournaments, and beyond. The second section highlights some of the other chess "extracurriculars" our players are involved in, including running and playing in tournaments, working with scholastic groups, and more! This issue will focus on the connection between the CICL and the North American Chess Association.

The deadline for submissions to the December bulletin is December 15th with a tentative publishing date of December 17th. Please email submissions to Bulletin@ChicagoChessleague.org.

Good luck in your Games!

Patrice Connelly, Bulletin Editor

Downers Grove Chess Club

Meets: Wednesdays 6:30 p.m. to 10:30 p.m.

Location: Fairview Village, 200 Village Drive, Downers Grove, IL 60516

Activities:

- Club ladders
- Casual play
- CICL team (2009 league champions and 2010 co-champs)
- USCF-rated weekend tournaments
- Speed chess tournaments (first Wednesday of the month - unless there is a CICL Match)
- Training lectures
- Chess book library
-

Membership:

Membership and all activities are free, except USCF tournaments (which have low entry fees). Club open to all chess players.

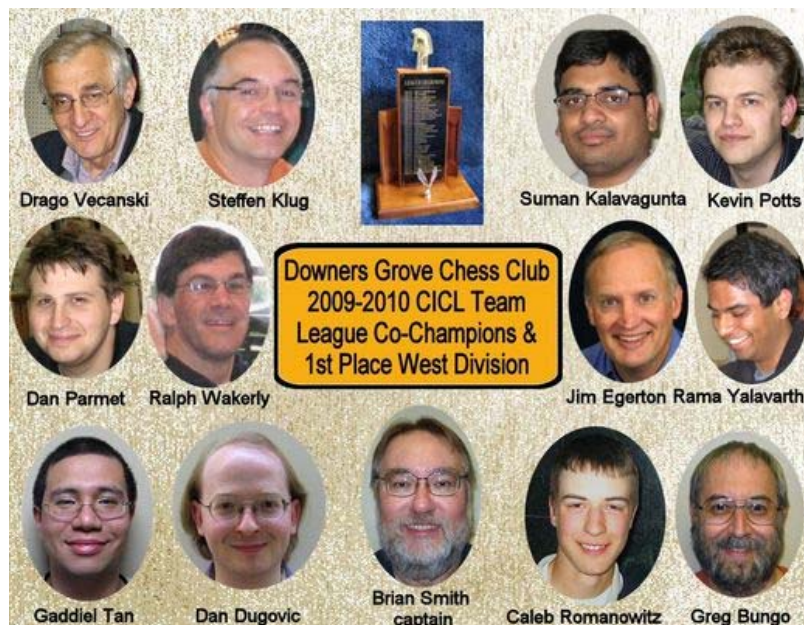
Website: <http://sites.google.com/site/downersgrovechess>

Contact:

Brian Smith

630-983-9316

brs483@att.net <mailto:brs483@att.net>



South Suburban Chess Club

Meets Friday nights in two locations:

Orland Park Cultural Center, 14760 Park Lane, Orland Park, IL 60462.

Fridays 6PM-9PM. (This location is in cooperation with the Karpov International Chess Institute.)

Oak View Community Center, 110th & Kilpatrick, Oak Lawn, IL 60453.

Fridays 7PM-10:30PM.

Membership is \$10 a year, and one membership pays for both locations.

The South Suburban Chess Club (SSCC) was formed in 1994 on the efforts of Fred Gruenberg and others in the wake of the closing of the Orland Park Chess Club, which in turn was formed in 1983 after the closing of the Homewood Flossmoor Chess Club. The SSCC is permeated in south suburban chess history!

The SSCC's first home was a community center in Palos Heights, and this was followed by a move to a church in Alsip, and later to its current home at the Oak View Community Center at 110th & Kilpatrick, in Oak Lawn, where the club has met every Friday night from 7PM to 1030PM excepting holidays since 1999. During all these years the club has been guided by the dedicated leadership of Joe Bannon, who, though largely inactive now, continues to stop by from time to time to make sure everyone is playing chess and having a good time. There will be no slacking on Joe's watch!

The club is an active one, with players ranging from beginners to masters, young and old and everything in between. The club has hosted rated events including USCF rated events, blitz tournaments, bughouse events, and even has a crazyhouse championship, and a blindfold championship. The club also sponsors events away from the actual club such as the recent APFU tournament series (run by Len Weber), and starting October 15th, the weekly Orland Park Saturday Rated. The Club has multiple Club and Local TDs, as well as National Tournament Director Glenn Panner, one of the organizers (along with NTD and USCF Rulebook author Timothy Just) of the upcoming Atlantic City International.

The SSCC is represented in the Chicago Industrial Chess League by two teams, which play in the leagues largest and strongest division, the West Division. The SSCC Pawns, and the SSCC Wombats (2009-2010 league co-champions).

The club continues to have a large footprint on the CICL and the Illinois chess scene. Members include former (and current!) CICL Bulletin Editors, current CICL Banquet Chairperson (Katherine Zack), 2008-2009 CICL West Division MVP (Adrian Zolkos), and 2009-2010 West Division MVP (Todd Freitag).

In recent weeks, the South Suburban Chess Club has also resumed publication of a 4 page weekly club newsletter, the "Open File", a continuation of a newsletter previously covering the H-F Chess Club, and later, the Orland Park Chess Club.

For information check out our facebook site;

<http://www.facebook.com/?sk3Dmessages&tid3D1644290104201#!/pages/South-Suburban-Chess-Club-of-Greater-Chicago/304439832152>

Or write to: ChessClub2K@aol.com

Hope to see you there!

St. Charles Chess Club

We meet every Thursday with the exception of Thanksgiving, 1/1, 7/4, 12/24, 12/25, 12/31. We will still meet if Thursday falls on 1/2, 7/3, 7/5, 12/23, 12/26, 12/30.

The site is the Baker House community center at 101 South Second Street in Saint Charles (west of the Fox River - 101 S. 2nd avenue is a different location on east of the river). It is one block south of the intersection of routes 31 and 64 (southwest corner) in the Women's Club room on the top floor.

7 PM is when people start trickling in and by 8 PM we generally have everybody who has opted to come that night. Casual play is 7-8 and our serious game of the night starts at 8 PM. Over two dozen sets and over 15 clocks stay on site for club use.

Dues are \$12 per year for an adult, \$6 per year for a senior (65 and over) or junior (under 18), \$3 per summer for a college student and \$15 per year for a family living in one residence (a bargain some years back for one family with a parent and seven participating kids). Dues are pro-rated from the beginning of April and two free visits are allowed to see if the format is one that is suitable for you. The park district requires a personal injury waiver to be signed (more significant for their dancing and karate groups).

We have sub-1000 players through experts coming on a regular basis with ages ranging from under 15 to over 70 (and more young players participating in the summers). We have a number of tournaments on Thursday nights at the club, and the entry fee is non-existent for club members (with participation limited to club members).

Our USCF rated tournaments include our club championship (5 rounds in Feb-Mar), our fall tournaments (5-7 rounds Sept-Nov with two round robins and a Swiss for players that aren't in the round robins) and our quick rated annual Game/10 night, annual Game/15 night, and what is becoming or annual Game/29 quad night.

We have a non-USCF-rated annual Game/5 night on the second Thursday in September.

The other 33-35 weeks are ladder nights. Non-USCF-rated ladder play is used to determine qualifiers for the fall round robins (eight qualify for the traveling Knights' Cup and then eight more for the traveling Squires' Trophy), and the new ladder season starts six weeks after the Game/5. The Knights' Cup has been awarded since 1984 and the Squires' Trophy since 1991. Ladder games start at 8 PM and are Game/90 (so that they are done before we have to leave at 11:15 PM) though if a game has a player under 18 then that player has the option of making the game Game/60. After finishing ladder games some players continue to casual play and others call it an evening. The ladder is paired by getting the current ladder standings of the players present that night and pairing with 1vs2, 3vs4, etc. There is a proviso that you play ladder games against four other people before facing the same player again that season (drops to two others in July).

The club currently has one National Tournament Director, one Senior TD, one Local TD and multiple Club TDs. We provide many of the TDs for area scholastic tournaments, which also means we have a number of opportunities for people to earn TD credits.

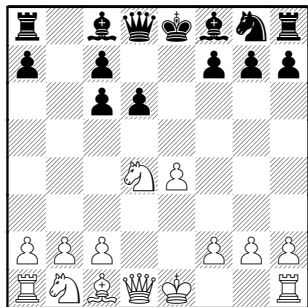
The club has made the CICL play-offs all six years of our participation in the league, garnering two league championships, three league co-championships, two league co-seconds, a league co-third, three division championships, three division seconds and three other play-off appearances (sometimes having multiple teams).

We open this month's section with a selection from a tourney hosted over the Summer at the Citadel site. There were a bunch of games, most were very interesting, and they were "game" enough to submit the scores for distribution in our database!

Parra, Juan (1144) –
Duc, Le (1525) [C62]
[
CIG Su10 (1), 5-11-2010

"Contrib" marks comments by score submitter – all others are the Game Editor.

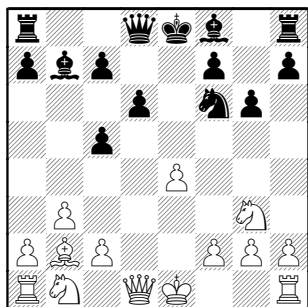
1.e4 e5 2.Nf3 Nc6 3.Bb5 d6 4.Bxc6+ bxc6 5.d4 exd4 6.Nxd4



6...Bb7 7.b3?

[contrib] no time for this, the e-pawn needs to be supported. [7.0-0]

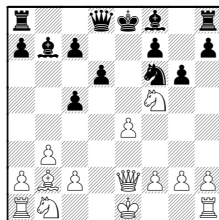
7...Nf6 8.Bb2 c5 9.Nf5 g6 10.Ng3



[contrib] Shies away from complications

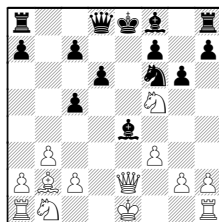
and leaves Black with the two Bishops on good diagonals. Meanwhile the White Knight made 4 moves to end up on g3, so clearly Black is now ahead in tempi and development. [contrib out]

White may have some tactics 10.Qe2



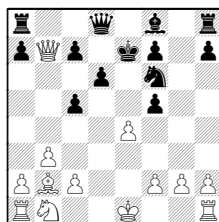
10...gxf5

No improvement is found with 10...Bxe4 walking into a pin 11.f3



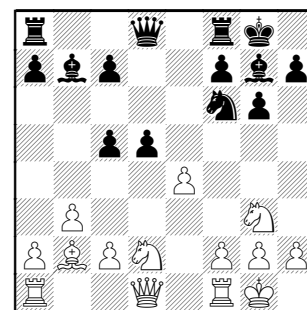
11...gxf5 12.fxe4 fxe4 13.0-0

11.Qb5+ Ke7 12.Qxb7



12...Rb8 13.Bxf6+ Kxf6 14.Qd5 and I much prefer White here.

10...Bg7 11.0-0 0-0 12.Nd2 d5

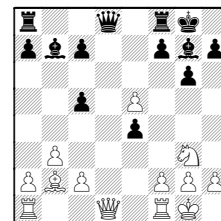


[contrib] If White trades the Pawn, Black is left with an awkward doubled Pawn. The diagonal b7-g2 can be easily blocked with Nf3

13.Re1

White might start an attack with 13.e5 Nd7

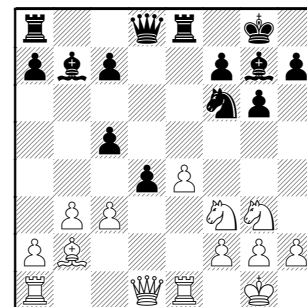
(13...Ne4 14.Ndx4 dxe4)



15.Qe2 ideas Rad1 or Nxe4 or Qb5 forking)

14.f4 (14.Nf3 d4)

13...d4 **14.c3** **Re8** **15.Nf3**



[contrib] this just loses the e-pawn with no compensation

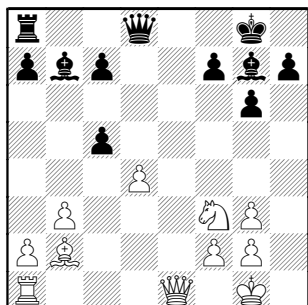
15...Nxe4 **16.cxd4**

Similar is 16.Nxe4 Bxe4 17.cxd4 Bxf3
18.Rxe8+ Qxe8 19.Qxf3 cxd4

16...Nxb3 17.hxb3

17.Rxe8+ Qxe8 18.hxb3 Bxf3 19.gxf3
cxd4 20.Bxd4? Rd8

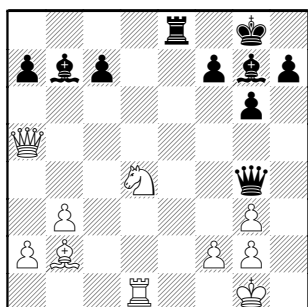
17...Rxe1+ 18.Qxe1



18...Qd7 19.Rd1

19.Ne5? Qd5 idea Qxg2#

19...Re8 20.Qa5 cxd4 21.Nxd4 Qg4

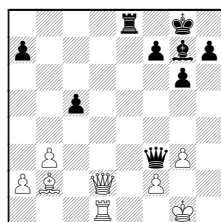


22.Rd3

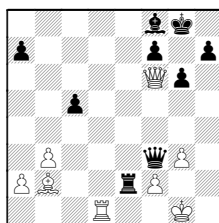
22.Qd2 c5 (22...Rd8) 23.Nf3

(23.Nb5 Bxb2 24.Qxb2 Qxd1+)

23...Bxf3 24.gxf3 Qxf3



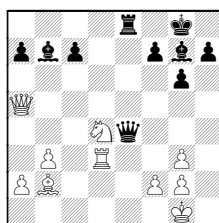
25.Qd7 Re2 26.Qd8+ Bf8 27.Qf6



defending for a while, but after 27...Qxf6
28.Bxf6 Rxa2 Black is up two Pawns

22...c5

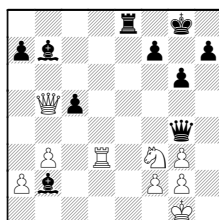
22...Qe4!



Ideas are Qxg2# or Qxd3, winning a
piece, though the game move is strong
too

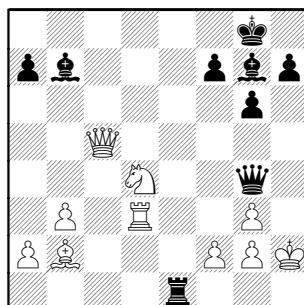
23.Qxc5

23.Nf3 Bxb2 24.Qb5



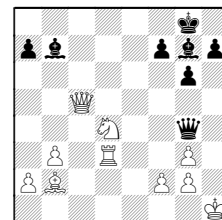
24...Re7 25.Rd8+ Kg7

23...Re1+ 24.Kh2



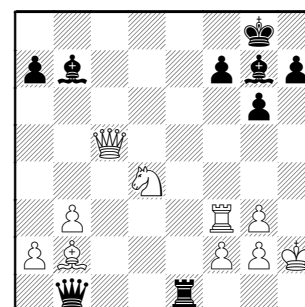
24...Qe4?

[contrib] missed a very pretty
combination 24...Rh1+!! 25.Kxh1



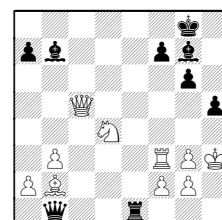
25...Qh3+ 26.Kg1 Qxg2#

25.Rf3 Qb1



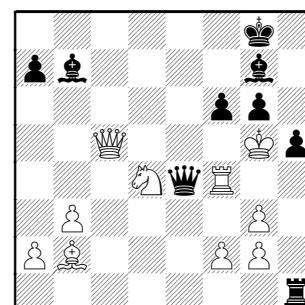
26.Kh3 Rh1+

26...h5 idea Rh1#



27.g4 Be5 28.gxh5 gxh5

27.Kg4 Qe4+ 28.Rf4 h5+ 29.Kg5 f6+

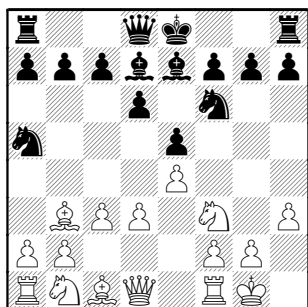


30.Rxf6 Qg4# 0-1

Mata,Santiago (1315) -
Kunhiraman,P

[C55]

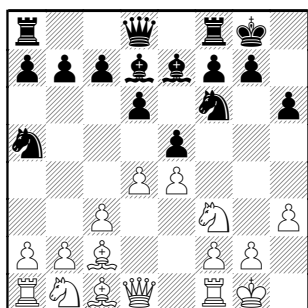
BCBS-Citadel, 9-27-2010

1.e4 e5 2.Nf3 d6 3.Bc4 Be7 4.h3 Nf6
5.d3 Nc6 6.c3 Bd7 7.0-0 Na5 8.Bb3

8...0-0

8...Nxb3 knocks out support of e4 and a
key attacker in such positions

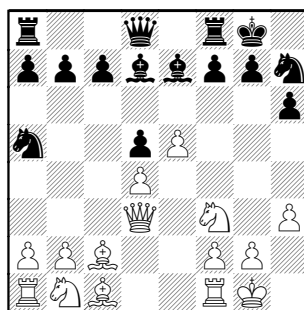
9.Bc2 h6 10.d4



10...exd4 11.cxd4 d5

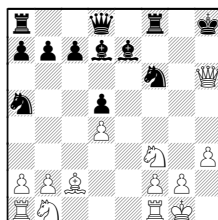
Black's last two moves have given White
an automatic attack.

12.e5 Nh7 13.Qd3



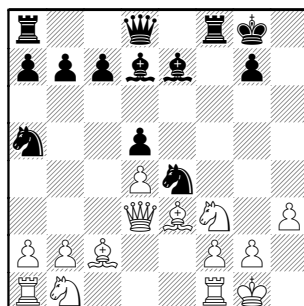
13...f5 14.exf6 Nxf6 15.Bxh6! Ne4

15...gxh6 16.Qg6+ Kh8 17.Qxh6+



17...Kg8 (17...Nh7 18.Qxh7#) 18.Ng5

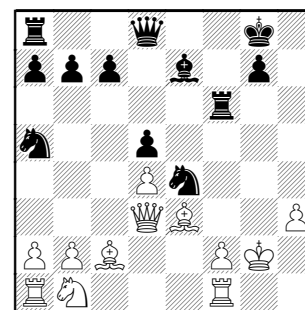
16.Be3



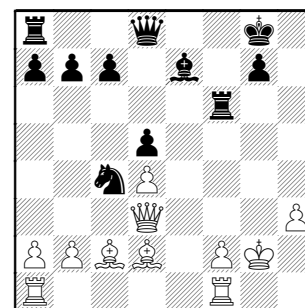
16...Bxh3!

I enjoyed the fact that both sides offered
Bishop sacs on against the same square
of the enemy King !

17.gxh3 Rxf3 18.Kg2 Rf6



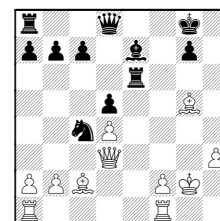
19.Nd2 Nxd2 20.Bxd2 Nc4



21.Bc3

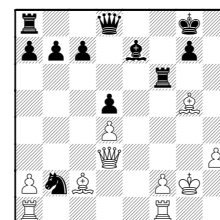
White can ignore the hanging b-Pawn:
21.Bg5

A) 21...Re6



22.Qh7+ Kf8 (22...Kf7 23.Qf5+) 23.Qf5+

B) 21...Nxb2

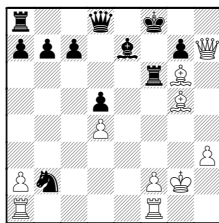


22.Qb3

(22.Qh7+ Kf8)

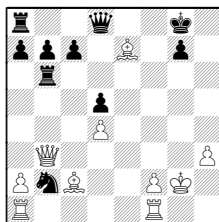
(22...Kf7 23.Bxf6 Bxf6 24.Bg6+ Kf8)

23.Bg6? idea Qh8#



23...Rxc6! idea Bxc5)

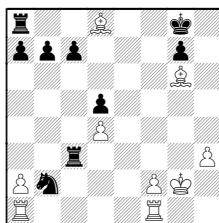
22...Rb6 23.Bxe7



B1) 23...Qxe7 24.Qxd5+

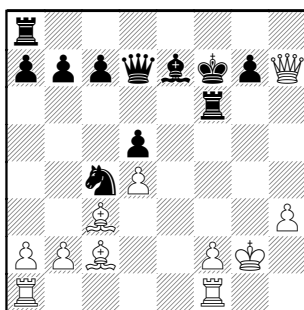
B2) 23...Rxb3 24.Bxd8 Rc3
(24...Rxd8? 25.Bxb3)

25.Bg6

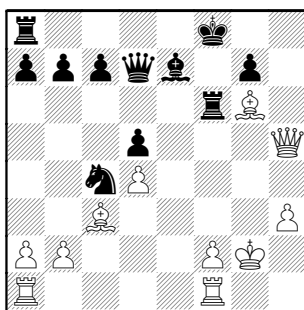


25...Rxd8 26.Rab1 Nc4 27.Rxb7

21...Qd7 22.Qh7+ Kf7



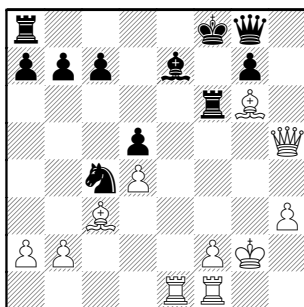
23.Qh5+ Kg8 24.Bh7+ Kf8 25.Bg6



threat is Qh8# **25...Qe6 26.Rae1**

Threat is now Qh8+, Qxc6+, Rxe7 but White also needs to do something about his g6-Bishop. Note how his c3-Bishop isn't participating.

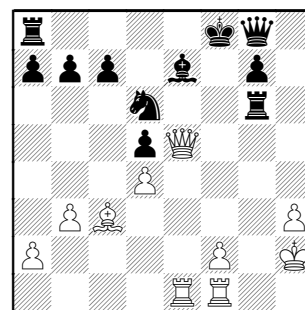
26...Qg8



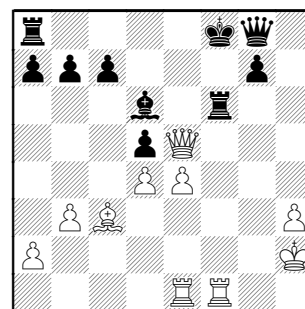
27.b3 Nd6 28.Qe5?

Maybe White missed the check, since it looks like his threat is Qxe7#

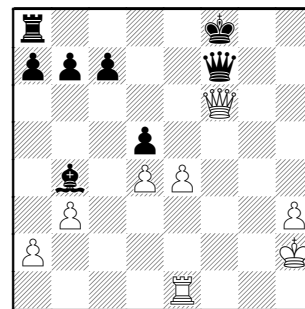
28...Rxc6+ 29.Kh2



29...Ne4 threat is Bd6, pinning Queen [29...Re8] **30.f3 Bd6 31.fxe4+ Rf6**



32.Bb4! the cross-pin at least saves the Queen **32...Bxb4 33.Rxf6+ gxf6 34.Qxf6+ Qf7**



35.Rf1

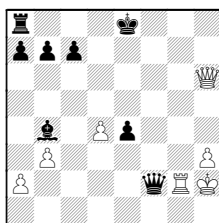
Much more hopeful is 35.Qh6+

A) 35...Kg8?? 36.Rg1+;

B) 35...Qg7? 36.Rf1+ Kg8 37.Rg1 Bd6+ 38.Kh1 (38.e5) 38...Bg3 39.Qxc7+ Kxc7 40.Rxc7+;

C) Best is 35...Ke8 36.Rg1 idea Rg7 36...dxe4 37.Qh8+

(37.Rg7 Qf2+ 38.Rg2



38...Bd6+
(38...Qf7 39.Rg7=)

39.Kh1 Qf1+ 40.Rg1 Qf3+ 41.Rg2 Kd7)

37...Bf8 38.Qe5+ Qe7 39.Qh5+;

D) 35...Ke7 36.Rg1 Rg8

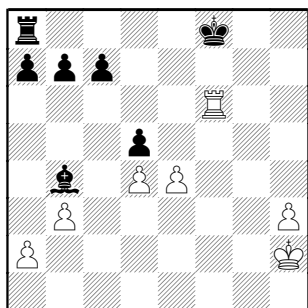
(36...Qf2+ 37.Rg2 Qxd4 38.Rg7+ Qxg7

(38...Kd8 39.Qh8+;
38...Ke8 39.Qe6+-)

39.Qxg7+)

37.Qh4+ Ke8 38.e5

35...Qxf6 36.Rxf6+



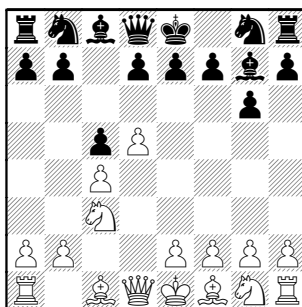
with Queens off, White has no real threats

36...Ke7 37.e5 Rf8 38.Rg6 Bc3 39.Rg4 b6 [39...Rf2+] 40.Kg2 c5 41.dxc5 bxc5 42.Rg7+ Rf7 43.Rg3 Bxe5 44.Re3 Kd6 45.h4 d4 46.Rd3 Kd5 47.h5 Ke4 48.Rh3 d3 49.h6 d2 50.Rh1 Rh7 51.Kf2 Bf4 52.Ke2 Rxh6 53.Rxh6 Bxh6 54.Kd1 Kd3 55.a4 Kc3 56.a5 Kxb3 57.a6 c4 58.Ke2 Kc2 0-1

**Celentano, Agustin (1849) -
Sergatskov, Dmitri (2044) [A40]**

StXavier-Fermilab, 9-24-2010

1.d4 g6 2.c4 Bg7 3.Nc3 c5 4.d5



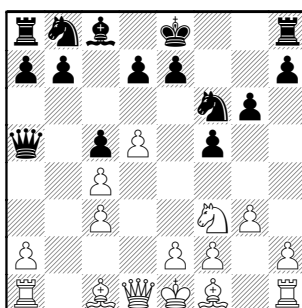
4...Bxc3+ 5.bxc3

The idea behind Black's play is to prove White's Pawns are vulnerable.

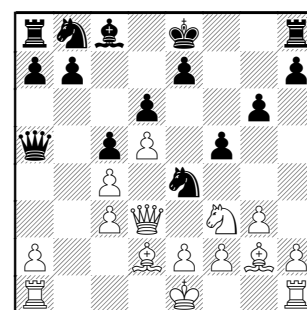
5...f5

With the Knight gone, e4 can be controlled, but will the dark-square Bishop be missed ?

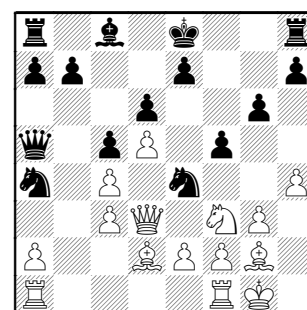
6.Nf3 Nf6 7.g3 Qa5



8.Qd3 d6 9.Bg2 Ne4 10.Bd2



10...Nd7 [idea could be Nb6 and Qa4, winning the c4-Pawn] **11.0-0 Nb6 12.h4 Na4**

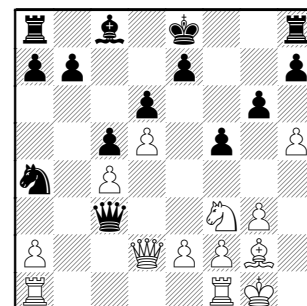


OK, Black is going for the c3-Pawn

13.h5

13.Rfc1 defends c3, but it's logical to look for counterplay elsewhere instead of being tied down. But I'd be tempted by, say, Be1 and Ng5, then Bd2-h6 gets the unopposed Bishop active.

13...Nxd2 14.Qxd2 Qxc3



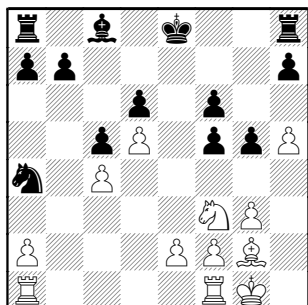
15.Qh6 pinning h-Pawn and stopping 0-0, so the counterattack begins

15...Qf6 16.Nh4

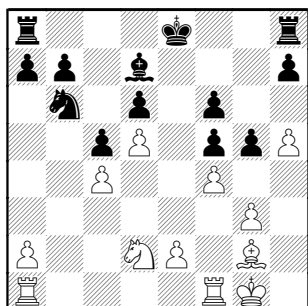
16.Bh3, with Nh4 next, makes g6-g5 less desirable due to the weakness of f5.;

16.Rae1 with e2-e4 and Ng5, clamping on the e6 hole and outpost (also pressurizing Pe7).

16...g5 17.Qxf6 forced 17...exf6 18.Nf3



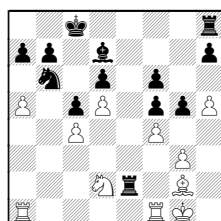
18...Nb6 19.Nd2 Bd7 20.f4



Pawn weaknesses are being exposed.

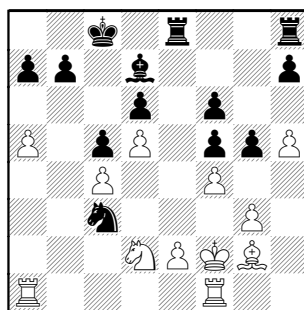
20...0-0-0 21.a4 Rde8 22.a5 Na4

22...Rxe2?



23.axb6 Rxd2 24.bxa7

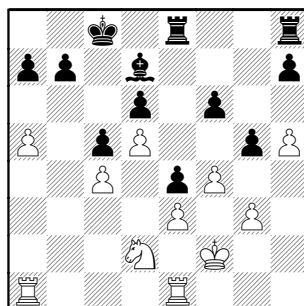
23.Kf2 Nc3



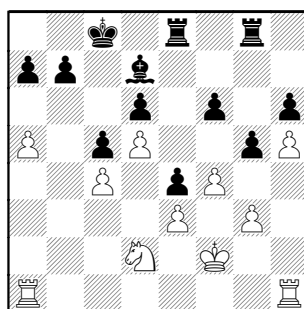
24.Rfe1

White can reach a game position at move 26, managing without this Rook move : 24.e3 Ne4+ 25.Bxe4 fxe4 and Black has Bg4

24...Ne4+ 25.Bxe4 fxe4 26.e3



The e1-Rook is misplaced. 26...h6 [idea Bg4] 27.Rh1 Rhg8

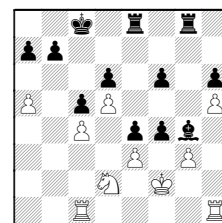


Black can double Rooks on the g-file and play gxf.

28.Rag1 Bg4 29.Rc1 Kc7

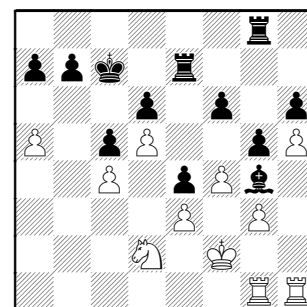
A) 29...Re7 idea f5, Reg7, gxf;

B) 29...gxf4



forcing 30.gxf4 (30.exf4? e3+) 30...f5 and Ph5 is a permanent target, so Black will eventually gain the open g-file

30.Rb1 Re7 31.Rbg1



31...Bd7? The Bishop will now be useless for the rest of the game.

31...f5;
31...gxf4 32.gxf4 f5

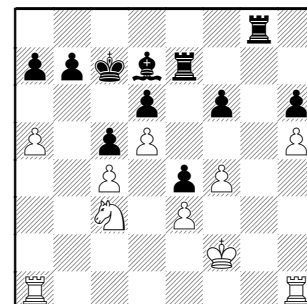
32.Ra1 Rb8

Black hasn't prepared for active play.
32...gxf4 33.gxf4 now f6-f5 blocks in Bd7
33...f5 with idea Be8

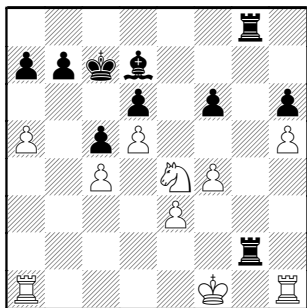
(33...Reg7? 34.Nxe4)

34.Rag1 Reg7

33.Nb1 releasing an attack on e4 !
33...gxf4 34.gxf4 Rg8 35.Nc3



35...Reg7 [35...f5 and Be8, still] 36.Nxe4 Rg2+ 37.Kf1

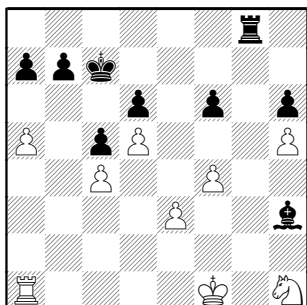


37...Bh3 38.Nf2

Of course, 38.Rxh3 Rg1+ nets an exchange, with more coming

38...Rh2+ cute, but Black's pieces are hanging 39.Ke2 [39.Nxh3 Rxh1+]

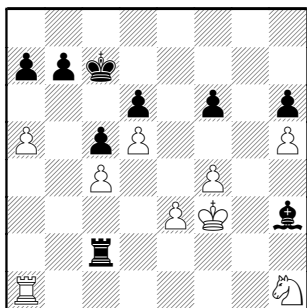
39...Bg4+ [39...Rgg2 idea Bg4+] 40.Kf1 [40.Kd3 Rxf2] 40...Rxh1+ 41.Nxh1 Bh3+



42.Kf2

42.Ke2 Bg4+ wins the h-Pawn;
42.Ke1 Rg1+ wins a Rook

42...Rg2+ 43.Kf3 Rc2



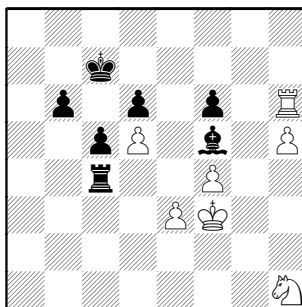
44.Rg1!

Demonstrating an endgame principle: **An active Rook is usually stronger than a Pawn.**

44...Rxc4 45.Rg7+ Bd7 46.Rh7 b5

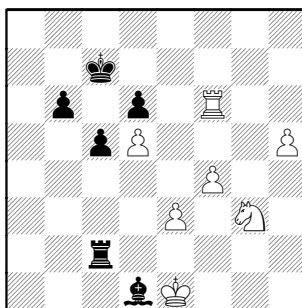
46...Ra4 would immediately release his passer and threaten 3 connected passers ! Black is probably considering that White's h-Pawn will be tricky to defend.

47.axb6+ axb6 48.Rxh6 Bf5



immediate threat is Be4+ winning the Knight. But long-term he should be willing to sac Bishop for h-Pawn and queen a Queenside passer.

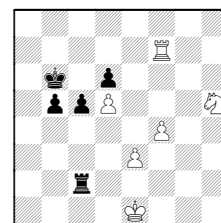
49.Ng3 Bc2 50.Rxf6 Bd1+ 51.Kf2 Rc2+ 52.Ke1



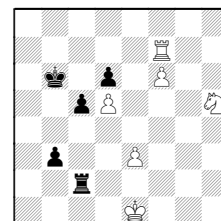
52...Bf3?? This is a wasted tempo, the d-Pawns are useless to both sides.

The following demonstrates the possible Bishop sac:

52...Bxh5 53.Nxh5 b5 54.Rf7+ Kb6

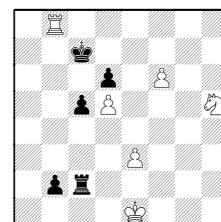


(55.f5 b4 56.f6 b3

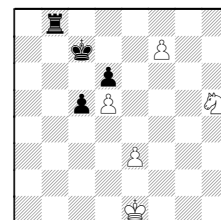


A) Any Rook move, say, 57.Rg7 b2 and mating

B) 57.Rf8 b2 58.Rb8+ Kc7



B1) White can force a draw here:
59.Rxb2 Rxb2 60.f7 Rb8

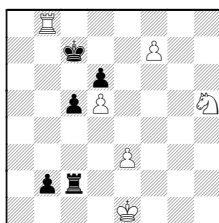


61.Nf4 Kd7

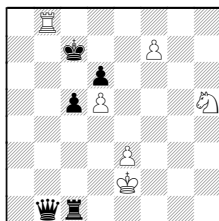
61...Rf8?? 62.Ne6+ wins the Rook

62.Ne6 Ke7 63.f8Q+ Rxf8 64.Nxf8 Kxf8

B2) 59.f7

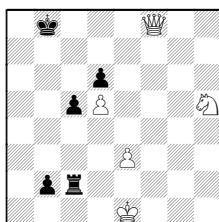


B21) 59...Rc1+ 60.Ke2 b1Q



61.Rxb1 Rxb1 62.f8Q wins

B22) 59...Kxb8 60.f8Q+



60...Kc7 61.Qe7+ Kc8

C) All the above shows White should defend first, depending on the extra piece and passer. **55.Kd1**

Returning to the actual game...

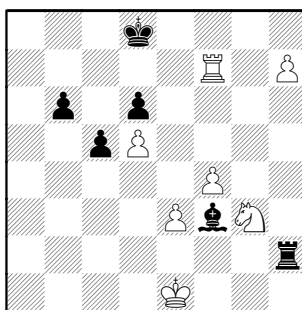
53.Rf7+ Kd8

53...Kc8 keeps the Black Rook from b7 (behind the passers)

54.h6 Rh2

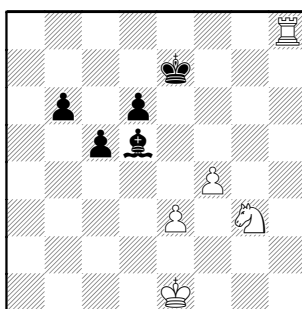
This was Black's defense, but he missed a theme: backrank check and queen.

55.h7



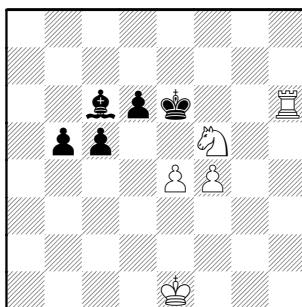
Black is forced to give up too much

55...Bxd5 [55...Ke8 56.Rb7] **56.Rf8+ Ke7 57.h8Q Rxh8 58.Rxh8**



Black gave up a Rook for the passer; it could have been only a Bishop, as shown earlier.

58...b5 59.e4 Bc6 60.Nf5+ Ke6 61.Rh6+



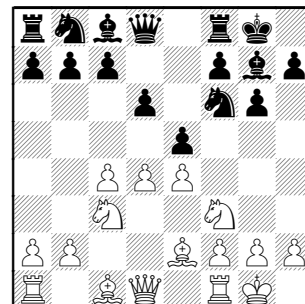
1-0

Our next game is the Best of the Month. Starting from known King's Indian territory and a standard piece sacrifice, Black may have missed a kill. A great study for everyone !!

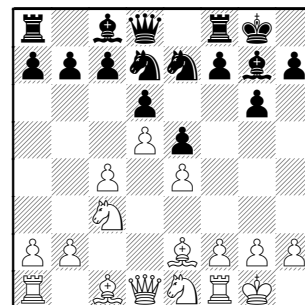
Klug,Stefan (2125) – Tennant,Steve (2231)
[E99]
DGCC-Wombats, 06.10.2010

Comments by Game Editor –
Tactics by Rybka !

1.d4 Nf6 2.c4 g6 3.Nc3 Bg7 4.e4 d6 5.Nf3 0-0 6.Be2 e5 7.0-0



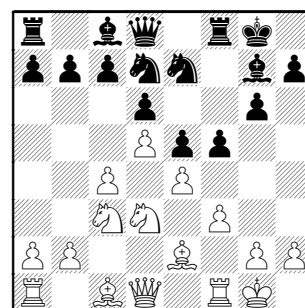
7...Nc6 8.d5 Ne7 9.Ne1 Nd7



10.Nd3

10.Be3 f5 11.f3 is another treatment

10...f5 11.f3 [11.Bd2]

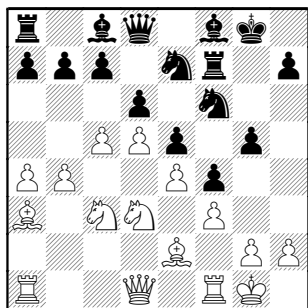


11...Nf6 12.b4 In GM play development

of the c1-Bishop or g2-g4 is preferred here.

But White's play will transpose into a book line (I researched out of curiosity, as I recognized the "Bayonet Attack" theme at move 16).

12...f4 13.a4 [13.c5] 13...g5 14.c5 Rf7 15.Ba3 Bf8

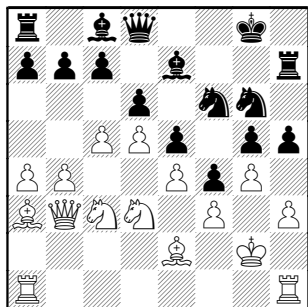


White appears to drift a bit here...

16.g4 opens targets on the Kingside instead of advancing the opposite-wing counterplay

Between a book study and Rybka, several moves are suggested: (16.a5; 16.b5; 16.Rc1; 16.Qc2), but all have to do with Queenside counterplay.

16...h5 [16...Ng6; 16...Bd7] 17.h3 Rh7 18.Kg2 Ng6 19.Rh1 Be7 20.Qb3

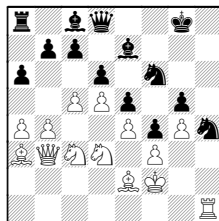


Rybka claims Black has climbed from a half-Pawn disadvantage to a slight preference here.

Immediately reacting to the Queen's entry on the diagonal, but walking into checks coming.

20...Kh8 play in just a couple moves shows the King under fire.

A) 20...a6 21.Rag1 mimicking the game 21...hgx4 22.hgx4 Rxh1 23.Rxh1 Nh4+ 24.Kf2

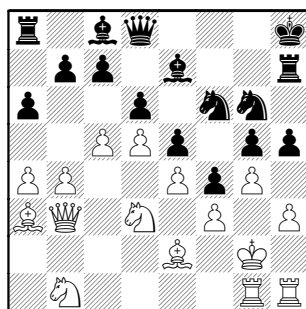


compare with game at move 25

24...Bxg4 sure looks like White's pieces are all vacationing queenside. 25.fxg4 Black no longer has Nxe4, however 25...Qd7

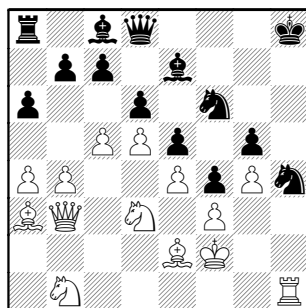
B) 20...Kg7 is Rybka's suggestion

21.Rag1 a6 22.Nb1



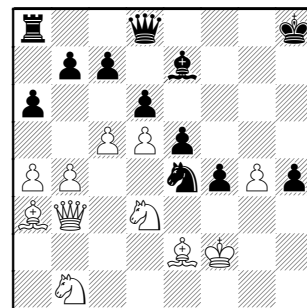
Here, for Black, Rybka prefers clearing the backrank before opening lines.

22...hgx4 trading away all advantage **23.hgx4 Rxh1 24.Rxh1+ Nh4+ 25.Kf2**



25...Bxg4! doesn't really change the balance, however. Yet White's is sub-optimal

26.Rxh4+ Not necessary - now Black has a permanent advantage. **26...gxh4 27.fxg4 Nxe4+**

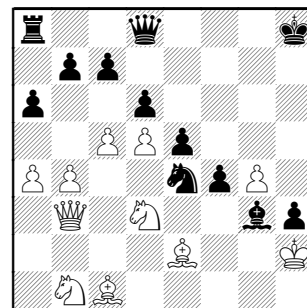


28.Kg2 h3+

A) 28...Bg5 idea Nf6,e4,f3+ forking **29.Bb2** once again shows the Black King is misplaced

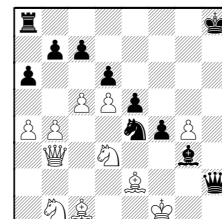
B) 28...Qf8 threatens f3+ since Bxf3 is weak (the h-Pawn can advance! overloading the King) 29.Bf3 Ng5

29.Kh2 Bh4 30.Bc1 Bg3+



31.Kh1

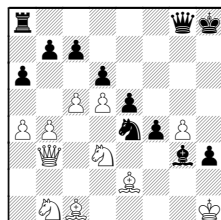
31.Kxh3?? Qh4+ 32.Kg2 Qh2+ 33.Kf1



33...Qh1#

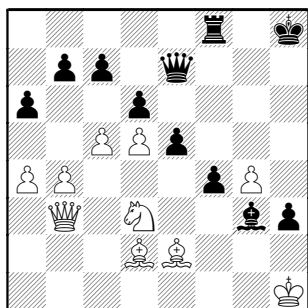
31...Qe7

31...Qg8



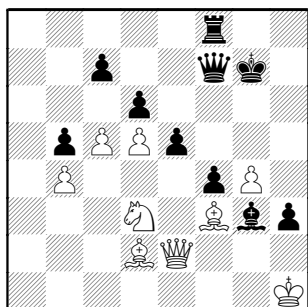
idea Nf6, wins another Pawn

32.Nd2 Nxd2 33.Bxd2 Rf8

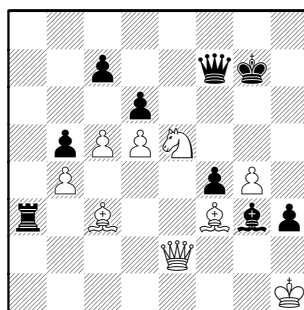


34.Qc4 Kg7

Rybka sees a kill from 34...f3 35.Bf1 e4

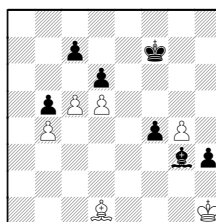
35.Bf3 b5 [35...Re8] 36.axb5 axb5
37.Qe4 Qf7 38.Qe2

38...Ra8 39.Bc3 Ra3 40.Nxe5



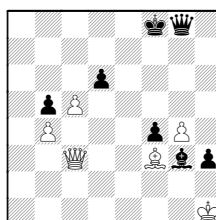
40...dxe5

40...Rxc3!! Thanks, Rybka!!

41.Nxf7 Rc1+ 42.Qd1 Rxd1+ 43.Bxd1
Kxf7and Black can win the b-Pawn, with the
opposite-Bishop ending in his favor.

41.Qxe5+ Kf8 42.d6 Rxc3 43.Qxc3

43.Qh8+! Qg8 44.Qxc3 cxd6

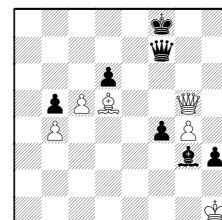
45.Qf6+!! (45.cxd6 Qc4) 45...Qf7
(45...Ke8?? 46.Bc6#) 46.Qh6+ luring the
King away from the d-passer 46...Kg8A) 46...Ke8 47.Bc6+ Kd8
(47...Ke7?? 48.Qxd6#)

48.cxd6 idea Qh8#

B) 46...Qg7??

B1) 47.Qxg7+ Kxg7 48.c6+-

B2) 47.Qg5+ Kf8 48.Bd5+-



48...Bh4 49.Qh6+ Qg7 50.Qxh4

43...cxd6 44.cxd6 Qc4

DRAW AGREED Qf1# or Qc1+ are
pending...but can White get something from
Queen checks ?

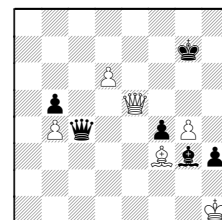
45.Qh8+ Kf7

45...Qg8?? 46.Qxg8+ Kxg8 47.d7

46.Qh7+ Kf8

46...Kf6? 47.Qe7+ mates in 11 (Rybka)
46...Ke6?? 47.Qe7#

47.Qe7+ Kg8 48.Qe8+ Kg7 49.Qe5+



now Bd5+ is possible

49...Kf8

49...Kh7?? 50.Be4+ Kh6 51.Qf6#;
49...Kg8?? 50.Bd5+

50.Qf6+

50.Qh8+ returns to the position at end-
of-game

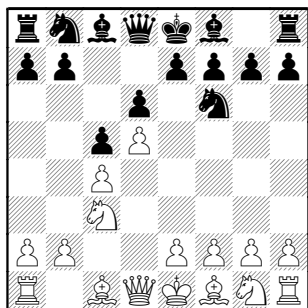
50...Kg8 [50...Ke8?? 51.Qe7#]

51.Qa1 Qc2 now Qh2# is threatened
1/2-1/2

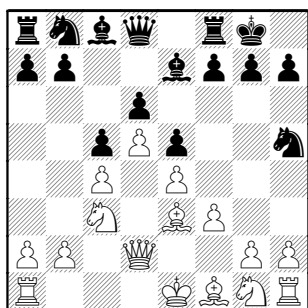
Holloway (1800) –
Marcowka, Bob (1887) [A56]

Pawns-Dragons, 9-22-2010

1.d4 Nf6 2.c4 c5 3.d5 d6 4.Nc3



4...e5 5.e4 Be7 6.f3 0-0 7.Be3 Nh5
8.Qd2

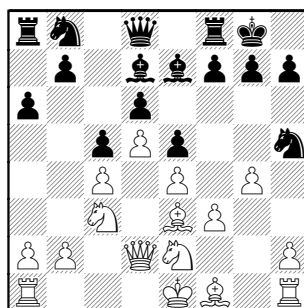


8...a6

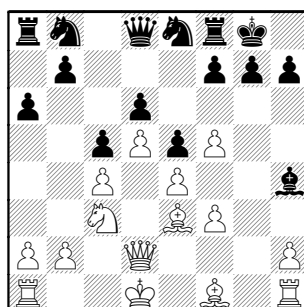
This reminds me of a King's Indian as played by Kasparov in the 1990s-- with the big difference he'd have c7-c6 on board, helping b7-b5 and maybe giving the Queen's Knight the c5-square.

The e7-Bishop has moved only once, saving him several tempi over the standard KID attack.

9.Nge2 Bd7 10.g4



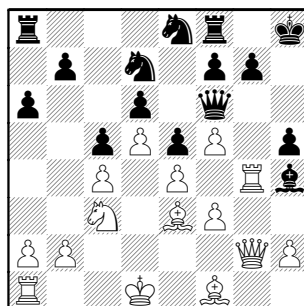
10...Bh4+ 11.Kd1 Nf6 12.Ng3 Ne8
13.Nf5 Bxf5 14.gxf5



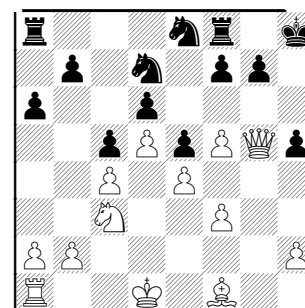
14...Nd7 15.Rg1 Qf6

Where is the Queen doing here ? Isn't f7-f5 a theme in such positions ?

16.Rg4 Kh8 17.Qg2 h5?



18.Rxh4! Qxh4 19.Bg5 traps the Queen
19...Qxg5 20.Qxg5

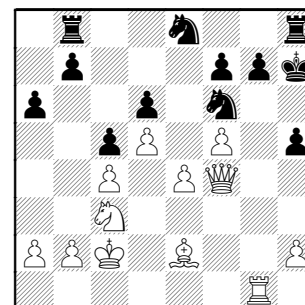


Now, can White force open lines for his extra heavy piece ?

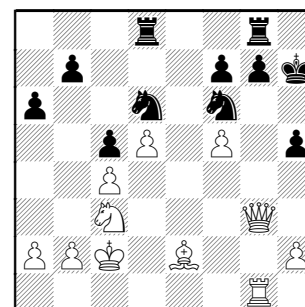
20...Ndf6 21.Be2 ...f4 is coming
21...Rb8 22.Kc2 Kh7 23.Rg1 Rh8

23...Rg8 frees the Knight for Nc7, idea b5

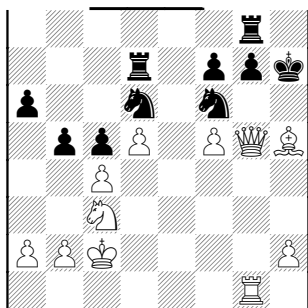
24.f4 exf4 25.Qxf4



25...Rd8 26.e5 dxe5 27.Qxe5 Nd6
28.Qg3 Rhg8



29.Qg5 b5 30.Bxh5 Rd7



31.Bg6+

Qh4+ will yield a mate 1-0

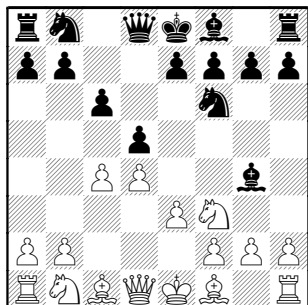
**Schwartz,Brian –
Duc,Le (1525)**

[B00]

TradeTech-Citadel 10-19-2010

[MP = Notes by,Matthias Pfau]

1.d4 d5 2.c4 c6 3.Nf3 Nf6 4.e3 Bg4

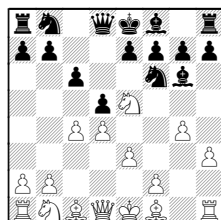


5.Nbd2

I used to play this as White, thanks to a book on the Zukertort system (b2-b3 coming). One can have fun with 5.h3 Bh5

(5...Bxf3 6.Qxf3 is also comfortable for White)

6.g4 Bg6 7.Ne5

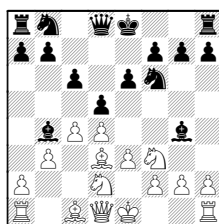


gaining the Bishop pair and a free threat to Black's Kingside (h4-5 or g5 could be in the works.)

5...e6 6.a3 not necessary

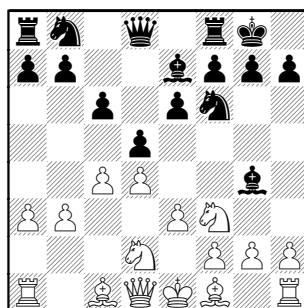
6.Bd3 prepares 0-0, and then b3,Bb2 saving a tempo on a2-a3 over game.

But that book shows the Bb4 pin isn't scary: 6.b3 Bb4 7.Bd3



7...Bxf3 (7...Ne4 8.0-0) 8.Qxf3

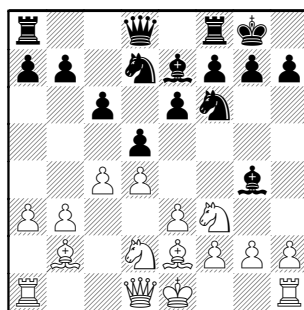
6...Be7 7.b3 0-0



8.Be2

8.Bd3 keeps e4 under control, and places on attack diagonal.

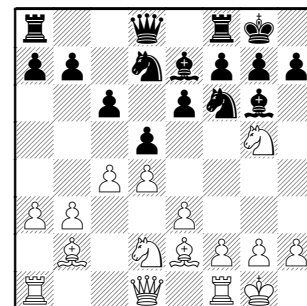
8...Nbd7 9.Bb2



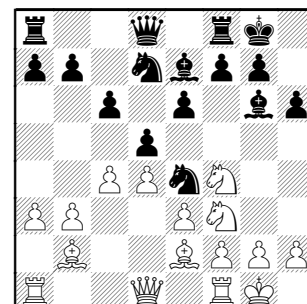
Keeping e5 under control, the point to

Zukertort play

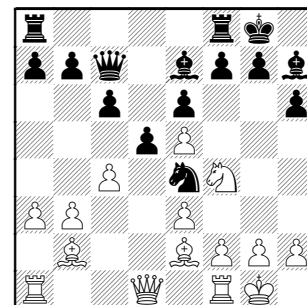
9...Bf5 10.0-0 Be4 11.Ng5 Bg6



12.Ndf3 h6 13.Nh3 Ne4 14.Nf4



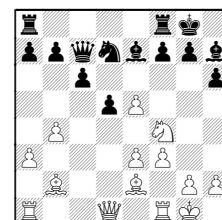
14...Bh7 15.Ne5 Nxe5 16.dxe5 Qc7



17.cxd5

[MP

17.f3 Nc5 18.b4 Nd7 19.cxd5 exd5

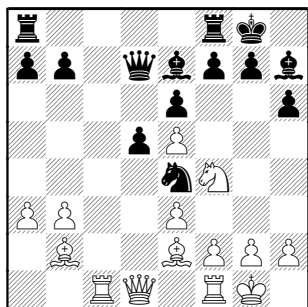


A) 20.Rc1 White has great control of the a1–g7 diagonal! [end MP]

I also see value for White after 20...Nxe5 21.Nxd5 piece weaknesses at c7, e7 and e5

B) But how about 20.e6

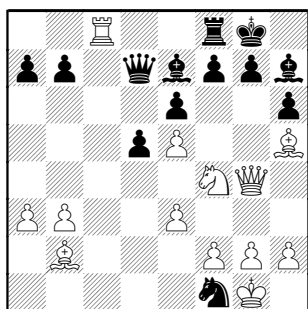
17...cxd5 18.Rc1 Qd7



19.Bh5

19.Bg4 may make a sac work on e6, but also Qf3–h3 could be in the mix. But Black's Nd2 (as in game) needs to be solved.

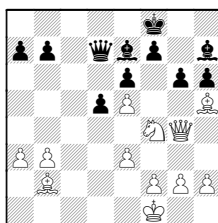
19...Rac8 20.Qg4 Nd2! [MP] and this puts black ahead. **21.Rxc8 Nxf1?**



[MP] White is clearly ahead, correct was Rxf8 **22.Bxf7+ [MP]** the game is equal, this time white had to take the rook. [end MP]

From that last diagram, I believe White gets more without the Bishop sac, which only nets a Pawn and wastes a tempo on top of that !

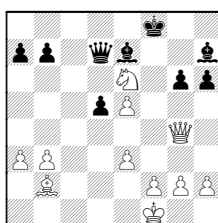
22.Rxf8+ Kxf8 23.Kxf1 g6



Why White sac'd the Bishop- but he can get two Pawns for it (instead of one, as in the game)

24.Bxg6

A) 24...fxg6 25.Nxe6+



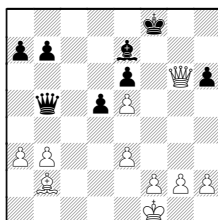
A1) A quick kill happens after the blunder 25...Kf7?? 26.Ng5+ discovering on Queen and Bishop!

26...Ke8 27.Qxd7+ Kxd7 28.Nxh7 and the piece is rescued with Nf6, thanks to that Zukertort Bishop at b2.

A2) 25...Ke8 26.Ng7+ Kd8 27.e6 (27.Ne6+; 27.Qf4)

A3) 25...Kg8 26.Qh3 Qb5+ 27.Ke1 Qxb3;

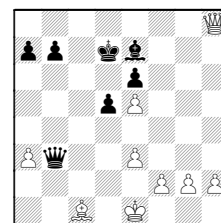
B) The least clear is 24...Bxg6 25.Nxg6+ fxg6 26.Qxg6 Qb5+



The Black Queen is annoying !

27.Ke1 Qxb3 28.Qxh6+

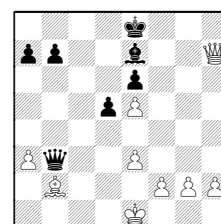
B1) 28... Ke8 29.Qh8+ Kd7 30.Bc1



30...Qc3+
(30...Bxa3 31.Qg7+ Kc6)

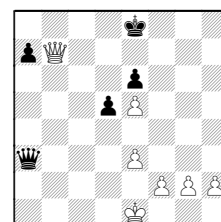
31.Kd1 idea Qh7–c2. White would love the Bishop ending here.

B2) 28...Kf7 29.Qh7+ Ke8

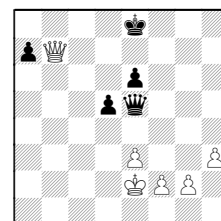


30.Bc1
(30.Qb1? Bxa3 wins the pinned Bishop)

30...Bxa3 31.Bxa3 Qxa3 32.Qxb7



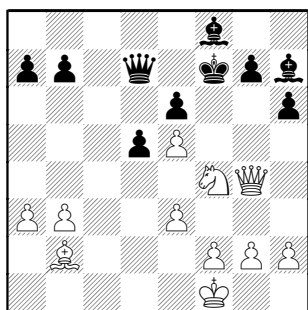
32...Qa1+ 33.Ke2 Qxe5 34.h3



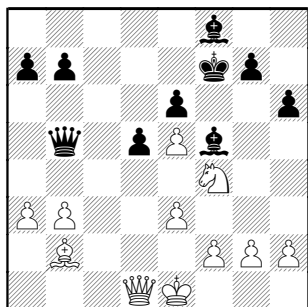
I prefer White here, but Queen endings are tough because of their power and checking abilities.

Well, let's get back to the game... at the bottom of this page's first column:

22...Kxf7 23.Rxf8+ Bxf8 24.Kxf1



24...Qb5+ 25.Ke1 White threatens Qxe6# 25...Bf5 26.Qd1

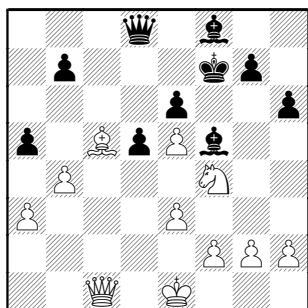


26...Qc6

[MP] little tactical shot. 26...Bxa3!
27.Bxa3 Qa5+]

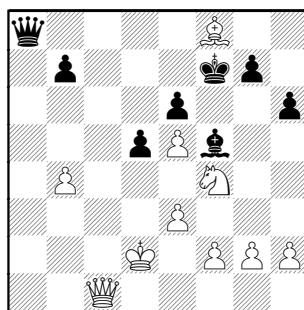
27.Qc1 Qb6 [MP] giving up the file is bad, Black should have traded Queens.

28.b4 a5 29.Bd4 Qd8 30.Bc5

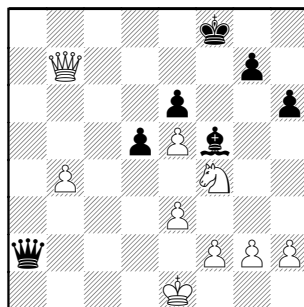


[MP] Here, White clearly ahead. The black-squared Bishops will be traded and White's Knight has lots of great squares.

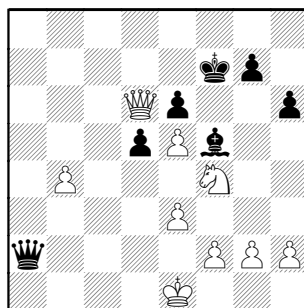
30...Qc8 31.Kd2 axb4 32.axb4 Qa8
33.Bxf8



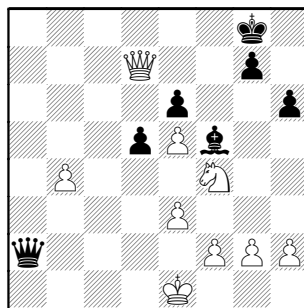
33...Qa2+ 34.Ke1 Kxf8 35.Qc8+ Ke7
36.Qxb7+ Kf8



37.Qc8+ Ke7 38.Qc7+ Ke8 39.Qc6+
Ke7 40.Qd6+ Kf7



41.Qd7+ Kg8

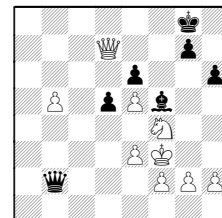


42.Nxe6

[MP] This gives away the advantage, the game is equal because of White's exposed King.

A) Correct was: 42.Qc8+ Kf7 43.Qc3 [end MP]

B) I'd like to see Black stop the passer after 42.b5 Qb1+ 43.Ke2 Qb2+ 44.Kf3

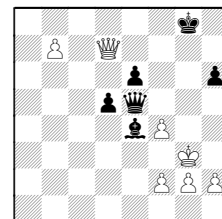


44...Qxe5

44...Be4+ 45.Kg3 g5? 46.Qxe6+
(46.Nxe6?? Qxe5+ 47.Kh3 Bf5+)

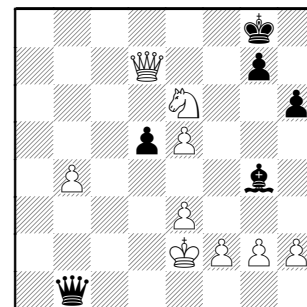
45.b6 idea Qc7 and push the Pawn

45...Be4+ 46.Kg3 g5 47.b7 gxf4+ 48.exf4



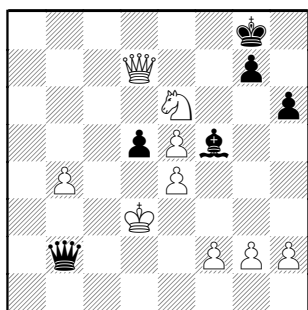
48...Qc3+ 49.f3 Qb3 50.Qc8+

42...Qb1+ 43.Ke2 Bg4+



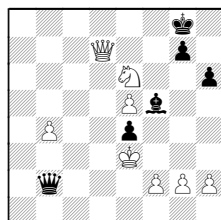
44.Kd2?? [MP the only move 44.f3]
44...Qb2+ 45.Kd3 Bf5+ [MP] good but suboptimal. [45...Be2#]

46.e4



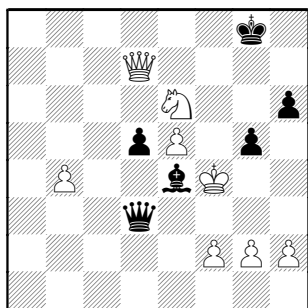
46...Bxe4+ [MP the only way to maintain the advantage.

[MP] 46...dxe4+ 47.Ke3



47...Qb3+ 48.Kf4 Bxe6

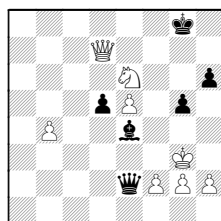
47.Ke3 Qc1+ 48.Kd4 Qc4+ 49.Ke3 Qd3+ 50.Kf4 g5+



51.Nxg5 Why break the mate threat ??

A) 51.Kg4 Bf5+ 52.Kh5 Bg6+ 53.Kg4 draws 53...Bf5+

B) 51...Qe2+?? 52.Kg3

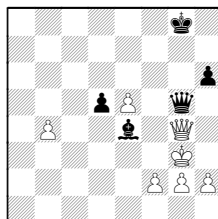


The checks are almost over and White still threatens Qg7#. Black must get his Queen to defend that square:

52...Qd3+ 53.f3 Bxf3 idea Qg6 54.Qg7#

51...Qd2+ 52.Kg3 hxg5

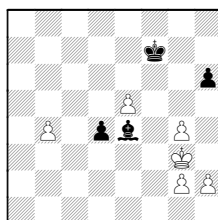
[MP] 52...Qxg5+ 53.Qg4



53...d4 54.f3 Qxg4+ 55.fxg4

[TGF] (55.Kxg4?? even saves a tempo over that, but.. 55...d3! queens)[out]

55...Kf7



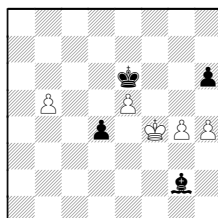
is a won endgame. [MP out]

[TGF] I disagree—

First, notice Black can't push his passer: (55...d3 56.Kf2)

Now, from 55...Kf7

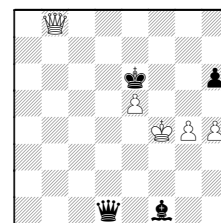
56.b5 (56.Kf4 Bxg2) 56...Ke6 57.Kf4 Bxg2 58.h4



White can control both the Black Pawns and at least draw. The Bishop is temporarily confined to cover b7.

A) 58...Bf1? 59.b6

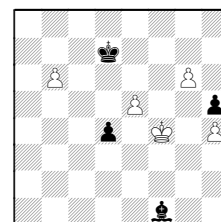
A1) 59...d3?? 60.b7! d2 61.b8Q d1Q



62.Qe8+ Kd5 63.Qd7+ Kc4 64.Qxd1

A2) 59... Kd7 60.g5 h5

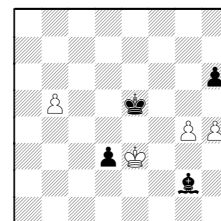
(60...hxg5+ no different is 61.hxg5) 61.g6



61...Kc8 62.g7 Bc4 63.Kf5 d3 64.e6 d2 65.g8Q+

B) 58...Kd7 59.g5 h5 60.g6 Bd5 61.g7 Be6 62.Ke4

C) 58...d3 59.Ke3 Kxe5



and the Black King cannot advance further into White's position:

60.g5 h5

(60...hxg5 61.hxg5 is a dead draw--Black cannot hold his lone passer. **THIS IS THE I CAN FIND for him!!**)

61.b6 d2 62.Kxd2 Kf4 63.g6 and the Bishop is overloaded. Similar is 62...Kf5, White would walk King to b-passer, win Bishop, and then win the Pawn ending.

Instead of all that, the game just ended: **53.Qe8+ Kg7** and White has the perpetual 1/2-1/2

Reflections from a CICL Player: Making a Better Decision

Submitted by Robert Eaman (AMARS)

I was at the Midwest Class Championships a few weeks ago when I happened to strike up a conversation with another player. “Pete” (name changed) was the 6-year-old son of an opponent I’d beaten several rounds before, and we’d developed a friendship over the post-mortem of my game with his dad and the several rounds in between. When I asked Pete how he’d been doing in the tournament, he replied “I just lost. I made a stupid mistake in my game.”

Having played chess since I was about his age, I felt like helping out with some of the kind of the chess advice we all hopefully pick up along the way. I asked Pete whether he could remember back to the “mistake” move to which he was referring; he did. So I asked: “When you were thinking about this move, did you think to yourself that you were about to make a stupid move?” And he said no, he thought it was a good move at the time (which we all usually do!).

So I said to Pete, “That’s my point. We never *think* we’re making a stupid move at the time. If you can figure out what you were thinking when you made that move, then maybe you can figure out what was bad about your thinking that led to that move.” This might sound obvious to many people, but it’s a chess lesson I know a lot of players have never taken time to fully consider. I hear the comment “I made a stupid move” pretty frequently when I ask other players why they lost games.

So Pete replied “I made the move too quickly because I needed to go to the bathroom.” I laughed, and said that many of us have made the same mistake. I asked him if he had time left on his clock when that happened, and if he could have gone to the bathroom before making that move. He confirmed he did have enough time, and would try to consider that for future games.

Bummer for Pete, but lesson learned.

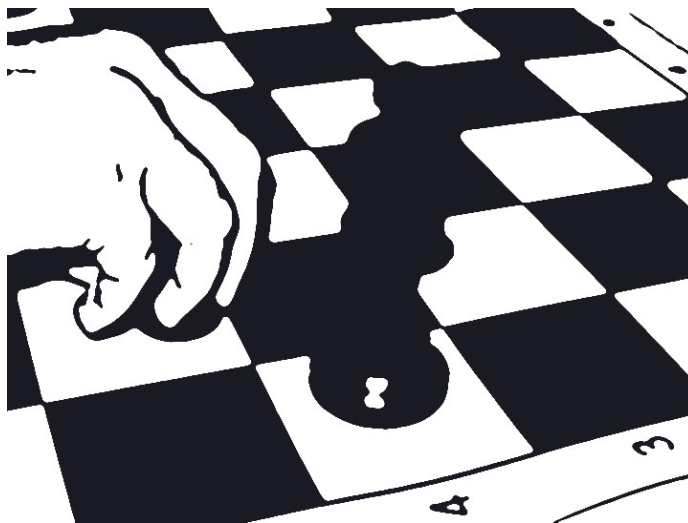


Photo courtesy Patrice Connelly

CICL and the North Shore Chess Center

Many a CICL player has been spotted lately at the North Shore Chess Center. The Chess Center (located at 5500 West Touhy Ave Suite A, Skokie, IL 60077) celebrated its grand opening Saturday, October 9th, on National Chess Day! Skokie Mayor George Van Dusen cut the ribbon, and various chess activities followed, including a Game 15 quick rated tournament, lectures, and a 21 board simul by Grandmaster Mesgen Amanov. CICL player Vito Vitkauskas (PAWNS) was among the participants in the simul; his game is immortalized by his picture in the Chicago Tribune's coverage of the event:

<http://www.chicagotribune.com/news/ct-met-chess-celebration-20101009,0,1569447.story>.

In addition to the USCF rated tournaments and activities offered by the Chess Center, it is also home to the Chicago Blaze, Chicago's team in the North American Chess League. The Blaze just concluded their ten game season by making it to the first round of the playoffs, for the first time in their three year history!

In addition to the impressive team line-up, (which includes GMs Dmitry Gurevich and Mesgen Amanov and IMs Florin Felecan and Angelo Young), CICL players can't help but get involved! Daniel Parmet (DDCC) serves as Blaze's General Manager, taking over for Glenn Panner (WMBAT), former Manager and current advisor for the team. "Celebrity" guest TDs at Blaze matches have included Len Weber (WMBAT), William Sheehan (MDWY), and Patrice Connelly (WMBAT).

Daniel Parmet describes his experience as General Manager with the Blaze in his article "Reflections of a Chess Manager," reprinted with permission from the Blaze Blog at

<http://www.chicagoblazechess.com/category/blog/>. Edited by Patrice Connelly.

"In victory you deserve Champagne; in defeat you need it." – Napoleon Bonaparte

A manager, who is not also a rostered player, just lurks in the strangest shadows. It is an interesting position because you're invested in the team's success, but no chance to drive in the lineup. Instead, you just create the lineup. So, without further ado... presenting the Chicago Blaze Manager's point of view!

Whew, lineups are due at Friday 9pm sharp, and I better make sure they are at least 6 minutes early or I won't earn my flair! Who to run? Who gave me what availability? What do I think the other team is putting down in the secret lineup box? What match ups do I want? Colors? Should I give every player an equal number of games or at least one chance to play? I have two stellar players available for the same spot? In the end the lineup often comes down to a mysterious picking of names out of a hat (by which I actually mean the players' availability). With the lineup in at 8:54pm on the dot, I wait 6 minutes so I can see what the official pairings are and email them out to the team with a word of encouragement!

The problem for me comes that once the lineup is finalized, my job as Manager is done for the most part. I can only be optimistic about our chances and look forward to the match with glee. I am out of the driver's seat and onto the spectator floor – front and center. And what a spectator seat it is! A room so quiet that you can hear a needle hit the ground (and louder things- in fact, during our first match a certain player broke the silence with a very LOUD expletive during his time scramble!).

The tension is obvious as each match up this season have been very close affairs. The expected razor thin margin predictions only ratchets the pressure higher as I prepare for what I have decided to call the "USCL roller coaster ride." The roller coaster slowly climbs as you watch the games with other spectators, realizing your team is better on board X, worse on Board Y, unclear on board Z, etc. Finally, it all comes down to a

time pressure scramble, and the roller coaster is off! Black has equalized, now winning, but wait, it's drawn, and your team needs a win, so the player can't accept a draw!

These time scrambles always send spectators into high hopes that the team can still win/draw the match! Until the score is in, the match is NOT over. I have seen time and again 'predicted' results based on the early assessments of the positions proven wrong. Of course, it's always heart wrenching to see your match go south. It's even worse when you have to look at your poor player's disheveled face as he or she looks broken feeling the final 'result' was THEIR fault. You win as a team, which means you lose and draw as a team. We even had a player actually collapse to the floor in pain after their game (one of the few matches I was unable to attend due to a graduate school class... but I have it on good authority it wasn't a pretty sight to witness). You never want your players to beat themselves up over a lost/drawn match or game. You should never assign blame as a Manager to any player ever. What is the point? I read all the time in other leagues about a manager blowing up at his players! How does this encourage a team aspect?! One must always be positive and showcase the manager trademark overconfidence bias that the NEXT match is yours. Always look forward with a smile, no matter how long and painful that drive home is going to be. It comes down to encouragement and never ever reproaching a player for an off day or match.

I enjoy nothing more than watching the players look at each other's games. They sometimes conduct small post mortems together after the match; other times a player may finish early and stay to analyze the other games still going. When the last game ends, and the final result is in, the room may burst out into joy and applause, or continue to hold its breath, as if refusing to recognize a loss. Whether a loss or a win, support is offered to the players in the form of congratulations or encouragement on a better game next time.

I am proud to say the Chicago Blaze has had its best season ever. While I would make predictions board by board for next year... one of our players always says "if you don't have faith in yourself who will?" I will. The manager always has faith in his players. Therefore, it is a little silly to make predictions when it is a foregone conclusion I predict for the Blaze!



Blaze Manager Daniel Parmet offers GM Dmitry Guervich some words of encouragement before the match. Photo courtesy Len Weber

Chess in Art

Not all artists are chess players but all chess players are artists. -Marcel Duchamp

During a recent trip to Toronto this past October, I had the pleasure of experiencing “Nuit Blanche,” (literally translated from the French to “white night,” it is used vernacularly as “sleepless night.”), an all-night art event. From dusk until dawn, public and private spaces throughout the city exhibited various art performances, installations, music, film, dance, visual art, themed social gatherings, and other activities.

One of the many creative and innovative artworks particularly enjoyed by this CICL player was *Reunion*, a twelve hour performance piece featuring original music, some unusual chess sets, and the participation of FIDE players and Grandmasters. Curator Sarah Sheridan organized several games played on chess sets created by Takako Saito, an internationally acclaimed artist famous for her modified chess sets. Her unusual playing pieces force players to utilize senses other than vision, such as smell and touch, to identify pieces. In Saito’s *Wine Chess*, WGM Jennifer Shahade and GM Pascal Charbonneau played with identical glasses of red and white wine. The only perceptible differences between the various wines were their bouquet.



Stage left, Jennifer Shahade with the red (wine!) pieces, and Pascla Charbonneau with white. Stage right, artists Dove Bradshaw and William Anastasi play *Canapé Chess*.

Hopefully the players enjoying Saito’s *Canapé Chess* weren’t too hungry. In this performance, the board is initially empty. Once a player has “moved” a piece, a waiter places the corresponding canapé (a foode) on the square. Only once a piece is captured may an opponent eat it, perhaps giving a player ulterior motives for forcing an exchange!

The assembled chess players also had the pleasure of playing the game on yet another type of board. During the course of the night two games were played upon an electronic musical chessboard. The moves determined the form and acoustical ambience of the event, as each square is responsible for different notes. The sound-distributing board was created by local Toronto-based artist Robert Cruickshank, who based his work from the schematics of the original “musical” chessboard, which was designed in 1968 by Lowell Cross for Marcel Duchamp.

Marcel Duchamp (1887-1968) was a French artist who worked with the Dadist and Surrealist movements in the first half of the 20th century. Duchamp is perhaps best known for his paintings and “readymades,” (found

objects that the artist declared as “art”), the most notorious of which is his piece *Fountain*. However, Duchamp was also an avid chess player, and made chess his artistic focus by the early 1920s.

Duchamp participated in tournaments, correspondence games, and even teamed up with a theorist to write a treatise about the Lasker-Reichhelm endgame position. For curious players, some of his games may be found on chess.com: http://www.chessgames.com/player/marcel_duchamp.html. His love of chess was shared by other contemporary 20th century artists, including Surrealist Man Ray, whose chess set may be seen on display at the Art Institute of Chicago, and John Cage, an American composer.

John Cage (1912-1992) was among the first composers to establish the use of chance in music. Cage admired Duchamp, and approached the artist in the 1960s to ask for lessons. The two men’s love of chess and art came together in 1968, when they collaborated on the original *Reunion*. In this performance the two men (accompanied by Alexia “Teeny” Duchamp, the artist’s second wife) played a game on the electronic musical chessboard onstage at the Ryerson Theater, Toronto, the same stage where forty-two years later their performance was reenacted.

Unfortunately, as this roving reporter had missed the earlier performance on the electronic chessboard, I was unable stay for the next one; it was scheduled at 5 AM, long after my bedtime!

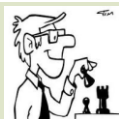


GM Charbonneau drinks one of his opponent’s captured “pieces.”

Article and Photos by Patrice Connelly

References:

- “Reunion”, printed in conjunction with *The night of Future Past* curated by Sarah Robayo Sheridan, Scotiabank Nuit Blanche, Toronto, 2 October 2010.
- Saint Louis University, “Marcel Duchamp: Chess Master” <http://www.slu.edu/x29638.xml>. 2010. October 8 2010.



Player Ratings

Monday, November 08, 2010

Team	Player	W	L	D	Rating						
AMARS						BCBS					
	BROCK,B	1	0	1	1974*		KHAN,M	0	1	1	1833*
	BRASWELL,I	0	0	0	1837#		BRUNO,R	1	1	0	1602*
	ALLEN,H	0	0	0	1801C		GUIDRY,D	0	1	1	1592#
	EAMAN,R	1	0	1	1798C		GUIU,C	1	1	0	1565*
	FRANK,M	1	1	0	1717C		SAN_MIGUEL,L	0	0	1	1545*
	DUFFY,J	1	1	0	1606C		STURGEON,V	0	1	0	1514#
	ACEVEDO,U	2	0	0	1538*		BURGESS,A	0	1	0	1460*
	FULKERSON,R	1	0	0	1473		BINDLER,M	0	0	0	1395#
	GRUDZINSKI,T	0	0	0	1100#		MATA,S	1	1	0	1322*
	IRBY,L	0	0	0	1071*		LACHOWIEC,S	0	1	0	1291#
AMATS							PETTIS,D	1	0	0	1272#
	HARRIS,M	1	1	0	1853*	BPMLX					
	FURTNER,F	1	1	0	1491		FRAATS,D	0	0	0	1893C
	JAMES,D	0	0	0	1413#		REICH,T	0	2	0	1723
	MEYER-ABBOTT,B	0	1	0	1408*		ZADEREJ,V	0	1	0	1642
	KOLLI,S	1	0	0	1397#		MCGOWAN,D	0	0	0	1489
	MASITI,J	1	0	0	1358*		RUFUS,B	1	1	0	1463
	MEHDI,SYED	1	0	0	1310#		RINGENBERG,T	0	0	0	1366
	FARMER,B	0	0	0	1305#		DEICHMANN,E	0	0	2	1306
	MEYER,C	0	1	0	1228*		MANILA,M	0	1	0	1119
	HARPER,M	0	2	0	1224*		MUELLER,R	0	1	0	1041*
	BAROT,N	0	0	0	1100#		AREND,A	0	1	0	800#
	YURCHENKO,O	0	0	0	999*						
	PATELLA,C	0	0	1	952#						

Rating Symbols: # - New (1 to 8 rated games), * - Provisional (9 to 25), otherwise Established (26+)
 C - Centurian (100-199 CICL games), D - Double (200-299), T - Triple (300-399), Q - Quad (400-499), V - Quintuple (500-599)

Monday, November 08, 2010

The Chicago Chess Player

www.ChicagoChessLeague.org

Page 1 of 7

November 2010

Team	Player	W	L	D	Rating						
CITGR						DRGNS					
	PFAU,M	10	0	0	2114		TEGEL,F	0	0	1	2048Q
	ONG,K	8	1	0	1790		LUDWIG,T	0	0	1	1975D
	MUHS,A	0	0	0	1716		MARCOWKA,R	0	1	0	1871T
	KUNHIRAMAN,P	6	4	0	1538*		PEHAS,A	0	0	0	1838C
	SENSAT,J	6	3	1	1529		PARKER,L	0	1	0	1722
	LE,DUC	3	4	1	1474		BLACKMON,E	0	0	0	1688C
	PRIMORAC,V	4	4	2	1421*		EUSTACE,D	0	1	0	1536D
	PROKOPOWICZ,P	3	6	0	1220*		THOMAS,J	0	0	0	1493D
	PARRA,J	2	6	0	1188*		KOMORAVOLU,K	0	0	0	1443
	SHEVCHUK,E	0	7	0	1144#		STAMM,V	0	1	0	1410T
DGCC							BREYER,A	0	1	0	1298
	KLUG,S	1	0	1	2141	DRW					
	EGERTON,J	0	0	1	2037		HAYHURST,W	1	0	0	1940
	KALAVAGUNTA,S	0	0	0	2031		GORODETSKIY,E	0	0	0	1839
	BUNGO,G	1	0	0	2028*		GORODETSKIY,S	0	0	0	1798
	DUGOVIC,D	0	0	1	1851*		GUGENHEIM,O	1	0	0	1587*
	WAKERLY,R	0	0	2	1849		BEDER,B	0	1	0	1581*
	POTTS,K	0	1	1	1843		CAPUTO,W	1	0	0	1552#
	TAN,GADDIEL	0	0	1	1796*		RYAN,P	0	0	0	1530#
	PARMET,D	0	0	0	1771*		REDMOND,M	1	0	0	1513*
	YALAVARTHI,R	1	0	0	1759*		KOMBLEVITZ,A	0	0	1	1156#
	MANEY,A	1	1	0	1644#						
	VECANSKI,D	0	0	0	1628*						
	SMITH,BR	0	0	0	1612C						
	HAUGHTON,J	0	0	0	1387#						
	ROMANOWITZ,C	1	0	0	1374*						

Rating Symbols: # - New (1 to 8 rated games), * - Provisional (9 to 25), otherwise Established (26+)
 C - Centurian (100-199 CICL games), D - Double (200-299), T - Triple (300-399), Q - Quad (400-499), V - Quintuple (500-599)

Team	Player	W	L	D	Rating					
EXCLB						FORKS				
	HART,V	1	1	0	2146		INUMERABLE,F	0	0	0 2191C
	LEE,D	1	1	0	1909		SANTIAGO,T	2	0	0 2002C
	ENGELN,M	0	2	0	1769		FRISKE,T	2	0	0 1987D
	DOWELL,E	1	0	1	1765		LEVENSON,S	1	1	0 1944
	WEITZ,R	1	0	0	1620D		SOLLANO,E	0	1	0 1932C
	VIGANTS,A	2	0	0	1569C		GRANATA,M	0	0	0 1899
	SUERTH,F	0	0	0	1511D		BIALON,D	0	0	0 1750
	BROTSOS,J	0	0	0	1485T		HAMELINK,N	1	0	0 1694
	REID,C	0	0	0	1475D		DOSIBHATLA,D	0	0	0 1603*
	SIEGEL,R	0	1	0	1456C		HUGHES,N	0	1	0 1600D
FERMI							ANSARI,N	0	0	0 1578
	SERGATSKOV,D	1	1	0	2010*		PERSONS,J	0	0	0 1559*
	HERNANDEZ,R	0	0	0	2008#		BIAN,M	2	0	0 1470*
	SPIEGEL,L	1	0	1	1955T		NICK,X	0	0	0 1230*
	GAINES,I	1	0	0	1716T		KACZYNSKI,W	1	0	0 1091*
	STAPLES,C	1	0	0	1598C	GAMBT				
	DEGRAFF,B	1	0	0	1562		CIULLA,S	0	0	0 1976#
	STRAIN,D	1	0	0	1345#		GHAIBEH,AYMAN	0	2	0 1687*
	MHASHILKAR,P	1	1	0	1241#		KRISHNAMURTHY,S	0	2	0 1568*
	GIANLUCA,I	0	0	0	1216#		DOLGIN,A	0	1	0 1565#
	CORBO,M	0	0	0	992#		MITCHELL,D	0	1	0 1550#
	DRENDEL,B	0	1	0	985*		MOORE,A	0	2	0 1428#
							BERGMEIER,C	0	0	0 1239#
							STILES,J	1	0	0 1175#
							WALD,G	0	0	0 1105#
							MOSLEY,A	0	2	0 934*
							LINDBERG,S	0	0	0 884#
							SAUSED,A,J	0	0	0 861#

Rating Symbols: # - New (1 to 8 rated games), * - Provisional (9 to 25), otherwise Established (26+)

C - Centurian (100-199 CICAL games), D - Double (200-299), T - Triple (300-399), Q - Quad (400-499), V - Quintuple (500-599)

Team	Player	W	L	D	Rating						
HEDGE	RAUCHMAN,M	0	0	1	2012	LOYLA	ALEXANDER,J	0	0	0	1685*
	JASAITIS,A	1	0	1	1941T		CLARK,I	0	1	1	1508*
	SMITH,M	1	0	0	1940		GLIWA,D	2	0	0	1474#
	PALMER,J	0	0	0	1600*		ADAMS,W	0	0	0	1449*
	SHEPARDSON,T	1	1	0	1592*		SOVA,ANDREW	0	0	0	1449#
	KRATKA,M	1	0	0	1587		ZACHAR,T	0	1	0	1397#
	HEINER,J	0	0	0	1394*		DIMOPOULOS,P	1	0	0	1385#
	CHAVEZ,A	0	0	1	1372*		PLOTNER,J	0	0	0	1304#
	COOMBES,N	1	0	0	1342*		JOHNSON,Z	0	0	0	1257#
	FINE,A	1	0	0	1332#		SAMPEI	0	0	0	1236#
	NICHOLS,P	1	0	0	1312#		WOJDYLA	0	2	0	1223#
	GALE,M	0	1	0	1191#		BROWN,B	0	2	0	1191#
	BOLOTOV,A	0	0	0	1131#		MEDINA,D	0	2	0	1131#
	CROSBY,N	0	1	0	1024#		ALEXANDER,A	0	0	0	1130#
JJCCC	RORVICK,C	0	0	0	1002#	MKING	MELNIKOV,I	1	0	0	2033C
	MCENEANY,T	0	1	0	994*		AITIPAMULA,J	0	1	1	1985*
	BRUCE,K	0	0	1	1427#		PIPARIA,J	1	0	1	1959C
	ABERNATHY,J	0	1	0	1363#		WALLACH,C	0	1	1	1949C
	RAINEY,R	0	1	0	1232#		CYGAN,J	1	0	1	1779
	LEDFORD,J	0	1	0	1153#		GONCHAROFF,N	0	0	2	1545V
	MARCHERT_SR,J	0	1	0	1100#		ALFONSO,E	0	0	0	1482
	CRAIG,S	0	1	0	987#		RABINOVICH,E	1	1	0	1462
							GRYPARIS,J	0	0	1	1380C

Rating Symbols: # - New (1 to 8 rated games), * - Provisional (9 to 25), otherwise Established (26+)

C - Centurian (100-199 CICL games), D - Double (200-299), T - Triple (300-399), Q - Quad (400-499), V - Quintuple (500-599)

Team	Player	W	L	D	Rating
MKNGT					
	FRIDMAN,Y	2	0	0	2239C
	MORRIS,R	2	0	0	2224C
	THOMSON,J	2	0	0	1989C
	BALICKI,J	1	0	1	1796C
	CHERKASSKY,G	0	1	0	1715
	KARANDIKAR,S	0	0	0	1656
	DUONG,R	0	0	0	1503*
	BABINEC,J	1	1	0	1380
	PATTIAM,J	0	0	0	1368#
NWEST					
	SOLOMON,A	0	0	0	1994
	BAKSHI,A	0	0	0	1947
	WANG,B	0	0	0	1888
	KRAVIK,P	0	0	0	1803#
	MODI,P	0	0	1	1738#
	GAFNI,P	0	0	1	1694*
	ULLOM,G	0	0	0	1647
	ANDERSON,E	0	0	0	1551#
	GINZBERG,D	1	0	0	1470#
	KRAVIK,S	0	0	0	1459*
	LOU,J	1	0	0	1427#
	SLIVKA,MAX	0	0	0	1412*
	CHO,V	0	0	0	1390#
	FRIEDLANDER,M	0	0	0	1381#
	WU,S	0	1	0	1179#
	BABCOCK,S	0	1	0	1091#
	LAMBSON,D	0	0	0	800#
PAWNS					
	KRAS,T	0	0	0	2149C
	CAVENEY,J	0	1	0	2097*
	LATIMER,E	0	1	1	1980T
	KORENMAN,M	0	0	2	1939*
	HOLLAWAY,M	1	0	1	1846*
	EDEUS,D	1	0	1	1741*
	KUKURUZA,V	2	0	0	1693*
	MISHLOVE,D	0	0	0	1538#
	CHRISTIAN,T	0	0	0	1522*
	FABIJONAS,R	0	0	0	1505T
	HARPER,C	1	1	0	1430#
	SPITZIG,M	1	0	0	1359
	O'DELL,DW	0	0	0	1348D
ROOKS					
	BENEDEK,R	1	1	0	2094T
	ANTIPOVA,A	0	0	0	2080#
	HILL,R	0	1	1	1929D
	SUAREZ,E	0	0	1	1897C
	BAURAC,D	1	1	0	1678T
	YACOUT,A	0	0	0	1583
	DECMAN,S	0	1	0	1538T
	GRUDZINSKI,J	0	0	0	1434
	KUHLMANN,S	0	0	0	1378*
	GWEKOH,R	0	1	0	1298#
	RAMANATHAN,N	2	0	0	1256*
	HLOHOWSKYJ,I	0	1	0	1050*
	SUKAMAR,N	1	2	0	858#

Rating Symbols: # - New (1 to 8 rated games), * - Provisional (9 to 25), otherwise Established (26+)

C - Centurian (100-199 CICL games), D - Double (200-299), T - Triple (300-399), Q - Quad (400-499), V - Quintuple (500-599)

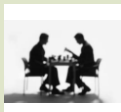
Team	Player	W	L	D	Rating						
STCCC						SXUCT					
	MARSHALL,J	1	0	0	2271		CELENTANO,A	1	1	0	1870*
	ACOSTA,M	0	0	1	2156*		JACKSON,WILLIAM	0	2	0	1372*
	WIEWEL,J	0	0	0	2150		SARNA,J	1	1	0	1370#
	SPLINTER,J	0	0	0	2127		TURNMAN,A	0	0	0	1235#
	FREIDEL,P	0	0	0	1961	ABNEY,I	1	1	0	1199*	
	SUITS,J	1	0	0	1866	ONWUMAH,I	1	1	0	1166*	
	VON_HATTEN,J	1	0	0	1817	BRANNON,M	1	2	0	940#	
	DJORDJEVIC,V	0	0	0	1685*	MCDONNELL,B	0	2	0	938*	
	SMITH,D	1	0	0	1632*	SINOPLE,J	0	1	0	862*	
	FORRO,V	0	0	0	1626#	WALSH,J	0	0	0	827#	
	PADILLA,R	0	0	0	1580	NORRIS,T	0	0	0	800#	
	KOLB,S	1	0	0	1574#	CONDITT,D	0	0	0	800#	
	ALBERTS,W	0	0	0	1569	TT					
	JANSSEN,G	0	0	0	1546		HUNTER,JOSH	0	2	0	1457#
	STOSKUS,A	0	0	0	1521*	KHLUS,V	0	2	0	1422#	
	GIERTZ,C	1	0	0	1474#	GOTTEMOLLER,A	1	1	0	1241#	
	SWANSON,E	0	0	0	1469#	SCHWARTZ,BRIAN	0	1	1	1229#	
	CRISSMAN,J	0	0	0	1421#	BRINSON,J	1	0	0	1100#	
	GREER,J	0	0	0	1376*	VISSER,JOUBERT	0	2	0	1057#	
	POWERS,E	0	0	0	1375*	WILK,M	0	1	0	1020#	
BALES,R	0	0	0	1365*	VARGAS,R	0	0	0	1000#		
BOURIS,B	0	0	0	1257#							
VOIGHT,T	0	0	0	1246#							
RIES,G	0	0	0	1109#							

Rating Symbols: # - New (1 to 8 rated games), * - Provisional (9 to 25), otherwise Established (26+)

C - Centurian (100-199 CICL games), D - Double (200-299), T - Triple (300-399), Q - Quad (400-499), V - Quintuple (500-599)

Team	Player	W	L	D	Rating
TYROS					
	ALLSBROOK,F	0	0	0	2159
	DIAZ,P	1	0	0	2054D
	GUIO,J	0	0	0	1871C
	STOLTZ,B	1	0	0	1864D
	DOBROVOLNY,C	1	0	0	1730D
	BUCHNER,R	0	0	0	1639C
	DENMARK,T	0	0	0	1627
	HAHNE,D	1	0	0	1626D
	VAIL,M	1	0	0	1589
	KRUEGER,J	0	0	0	1467#
	BYRNE,M	1	0	0	1378
	KARPIERZ,J	0	0	0	1313
	KURUVILLA,E	1	0	0	1243#
UOP					
	LEONG,G	0	0	1	1956D
	SIWEK,M	0	1	1	1921D
	VAN_MEER,J	0	0	0	1904
	BOLDINGH,E	1	0	1	1848D
	CHEBOTAREV,A	0	0	0	1846*
	EASTON,R	0	1	0	1807C
	SAJBEL,P	0	0	0	1781C
	NGUYEN,M	0	0	0	1720#
	LECHNICK,J	0	1	1	1692C
	MOSSBRIDGE,A	0	1	0	1605
	OLSEN,A	1	0	1	1498C
	CAMPBELL,DOUG	0	0	0	1386*
	RAMIREZ,A	0	1	0	1080#
WMBAT					
	TENNANT,S	1	0	1	2226*
	PANNER,G	0	0	0	2105#
	WEBER,L	0	0	1	2066
	FREITAG,T	2	0	0	2007
	ZOLKOS,A	1	0	1	1725
	ELLICE,W	1	0	1	1721D
	FRANEK,M	0	0	1	1694D
	SAMPSON,L	0	0	0	1649#
	RAJSKY,J	0	1	0	1640#
	CONNELLY,P	1	0	0	1577*
	DAVIS,M	0	0	0	936#
	ZACK,K	0	0	0	800#

Rating Symbols: # - New (1 to 8 rated games), * - Provisional (9 to 25), otherwise Established (26+)
 C - Centurian (100-199 CICL games), D - Double (200-299), T - Triple (300-399), Q - Quad (400-499), V - Quintuple (500-599)

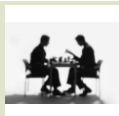


Independent Games

Monday, November 08, 2010

Date	Name	Rating	+/-	Score	Name	Rating	+/-	Score
04-May-10	ONG,K	1767	+1	1	PARRA,J	1144	0	0
	PRIMORAC,V	1368	+15	0.5	SENSAT,J	1489	-7	0.5
05-May-10	PROKOPOWICZ,P	1136	-6	0	KUNHIRAMAN,P	1593	0	1
06-May-10	PARRA,J	1144	+56	1	SHEVCHUK,E	1745	-451	0
07-May-10	LE,DUC	1525	-24	0	SENSAT,J	1482	+25	1
	PROKOPOWICZ,P	1130	+53	1	PRIMORAC,V	1383	-67	0
08-May-10	SENSAT,J	1507	-9	0	ONG,K	1768	+6	1
09-May-10	LE,DUC	1501	+26	1	KUNHIRAMAN,P	1593	-52	0
	PROKOPOWICZ,P	1183	-1	0	PFAU,M	2095	+1	1
10-May-10	SHEVCHUK,E	1294	0	0	ONG,K	1774	+2	1
11-May-10	KUNHIRAMAN,P	1541	-70	0	PRIMORAC,V	1316	+70	1
	PARRA,J	1200	-13	0	LE,DUC	1527	+6	1
17-May-10	PFAU,M	2096	+1	1	SHEVCHUK,E	1294	0	0
02-Jun-10	ONG,K	1776	+5	1	KUNHIRAMAN,P	1471	-14	0
03-Jun-10	SHEVCHUK,E	1294	-38	0	SENSAT,J	1498	+10	1
07-Jun-10	PFAU,M	2097	+1	1	PARRA,J	1187	-1	0
14-Jun-10	PRIMORAC,V	1386	-2	0	PFAU,M	2098	+1	1
23-Jun-10	LE,DUC	1533	-2	0	PFAU,M	2099	+2	1

Date	Name	Rating	+/-	Score	Name	Rating	+/-	Score
13-Jul-10	KUNHIRAMAN,P	1457	+18	1	SHEVCHUK,E	1256	-30	0
27-Jul-10	LE,DUC	1531	+6	1	PROKOPOWICZ,P	1182	-8	0
09-Aug-10	ONG,K	1781	+3	1	PRIMORAC,V	1384	-8	0
26-Aug-10	ONG,K	1784	-5	0	PFAU,M	2101	+5	1
27-Aug-10	PROKOPOWICZ,P	1174	-2	0	ONG,K	1779	+1	1
	SHEVCHUK,E	1226	-60	0	PROKOPOWICZ,P	1172	+31	1
30-Aug-10	PFAU,M	2106	+1	1	KUNHIRAMAN,P	1475	-2	0
31-Aug-10	PARRA,J	1186	+40	1	PROKOPOWICZ,P	1203	-29	0
	PRIMORAC,V	1376	+16	1	SHEVCHUK,E	1166	-22	0
01-Sep-10	KUNHIRAMAN,P	1473	+37	1	SENSAT,J	1508	-23	0
	PARRA,J	1226	-12	0	KUNHIRAMAN,P	1510	+11	1
	PRIMORAC,V	1392	+48	1	LE,DUC	1537	-29	0
	PROKOPOWICZ,P	1174	-9	0	SENSAT,J	1485	+7	1
03-Sep-10	PARRA,J	1214	-15	0	PRIMORAC,V	1440	+14	1
	SENSAT,J	1492	+7	1	PARRA,J	1199	-11	0
07-Sep-10	PFAU,M	2107	+1	1	SENSAT,J	1499	-2	0



Match Report

Monday, November 08, 2010

Date	Rd	Home Team			Home Score	Away Team			Away Score
	Bd	Player	Rating	+/-		Player	Rating	+/-	
15-Sep-10	1	FORKS			6	GAMBT			0
	1	FRISKE,T	1970	+4	1	GHAIBEH,AYMAN	1704	-17	0
	2	LEVENSON,S	1951	+3	1	MITCHELL,D	1550	0	0
	3	SANTIAGO,T	1989	+2	1	KRISHNAMURTHY,S	1568	0	0
	4	HAMELINK,N	1686	+8	1	MOORE,A	1512	-73	0
	5	BIAN,M	1426	+5	1	MOSLEY,A	934	0	0
	6	KACZYNSKI,W	1091		1				Forfeit
22-Sep-10	1	DRGNS			1	PAWNS			5
	1	TEGEL,F	2050	-2	0.5	LATIMER,E	1989	+2	0.5
	2	LUDWIG,T	1977	-2	0.5	KORENMAN,M	1918	+8	0.5
	3	MARCOWKA,R	1887	-16	0	HOLLAWAY,M	1800	+47	1
	4	PARKER,L	1740	-18	0	EDEUS,D	1699	+31	1
	5	EUSTACE,D	1552	-16	0	KUKURUZA,V	1630	+29	1
	6	STAMM,V	1431	-21	0	HARPER,C	1443	+52	1
	7	BREYER,A	1323	-25	0	SPITZIG,M	1334	+25	1
22-Sep-10	1	MKNGT			3.5	EXCLB			2.5
	1	FRIDMAN,Y	2230	+8	1	HART,V	2151	-12	0
	2	MORRIS,R	2220	+3	1	LEE,D	1903	-4	0
	3	THOMSON,J	1982	+6	1	ENGELN,M	1791	-8	0
	4	BALICKI,J	1794	-2	0.5	DOWELL,E	1748	+3	0.5
	5	CHERKASSKY,G	1738	-23	0	WEITZ,R	1592	+28	1
	6	BABINEC,J	1351	-14	0	VIGANTS,A	1532	+11	1
23-Sep-10	1	TT			1	AMARS			5
	1	HUNTER,JOSH	1457	0	0	BROCK,B	2011	0	1
	2	KHLUS,V	1450	-17	0	EAMAN,R	1797	+4	1
	3	SCHWARTZ,BRIAN	1148	0	0	FRANK,M	1745	+2	1
	4	VISSER,JOUBERT	1057	0	0	DUFFY,J	1633	+2	1
	5	GOTTEMOLLER,A	1050	0	0	ACEVEDO,U	1529	+3	1
	6	BRINSON,J	1100		1				Forfeit

Date	Rd	Home Team			Home Score	Away Team			Away Score
	Bd	Player	Rating	+/-		Player	Rating	+/-	
23-Sep-10	1	UOP			2.5	MKING			3.5
	1	LEONG,G	1953	+3	0.5	AITIPAMULA,J	2023	-6	0.5
	2	BOLDINGH,E	1830	+6	0.5	WALLACH,C	1965	-5	0.5
	3	SIWEK,M	1926	+1	0.5	PIPARIA,J	1948	-1	0.5
	4	LECHNICK,J	1703	+4	0.5	CYGAN,J	1774	-4	0.5
	5	OLSEN,A	1469	+6	0.5	GONCHAROFF,N	1562	-6	0.5
	6	RAMIREZ,A	1080	0	0	RABINOVICH,E	1482	+5	1
24-Sep-10	1	FERMI			2	SXUCT			4
	1	SERGATSKOV,D	2044	-36	0	CELENTANO,A	1849	+40	1
	2	SPIEGEL,L	1966	+1	1	JACKSON,WILLIAM	1378	-2	0
	3	DEGRAFF,B	1560	+2	1	MCDONNELL,B	943	-3	0
	4	MHASHILKAR,P	1400	-201	0	ONWUMAH,I	1124	+51	1
	5	DRENDEL,B	993	-8	0	SARNA,J	1426	0	1
	6				Forfeit	BRANNON,M	1050		1
	7	ABNEY,I	1188	+14	1	BRANNON,M	1050	-81	0
27-Sep-10	1	BCBS			1.5	CITGR			4.5
	1	KHAN,M	1828	-10	0	PFAU,M	2108	+5	1
	2	STURGEON,V	1557	-43	0	ONG,K	1780	+6	1
	3	GUIU,C	1544	+28	1	LE,DUC	1508	-19	0
	4	BRUNO,R	1609	-35	0	SENSAT,J	1497	+29	1
	5	GUIDRY,D	1622	-22	0.5	PRIMORAC,V	1454	+13	0.5
	6	MATA,S	1315	-17	0	KUNHIRAMAN,P	1521	+14	1
	7	BURGESS,A	1526	-66	0	PROKOPOWICZ,P	1165	+55	1
27-Sep-10	1	ROOKS			4.5	BPMLX			1.5
	1	BENEDEK,R	2097	+3	1	REICH,T	1729	-4	0
	2	HILL,R	1945	-24	0	RUFUS,B	1425	+48	1
	3	SUAREZ,E	1910	-13	0.5	DEICHMANN,E	1253	+29	0.5
	4	BAURAC,D	1686	+2	1	MANILA,M	1122	-3	0
	5	RAMANATHAN,N	1250		1				Forfeit
	6	SUKAMAR,N	946		1				Forfeit
	7	RAMANATHAN,N	1250	+6	1	SUKAMAR,N	946	-88	0

Date	Rd	Home Team			Home Score	Away Team			Away Score
		Bd	Player	Rating	+/-	Player	Rating	+/-	
28-Sep-10	1	LOYLA			1.5	HEDGE			4.5
	1	CLARK,I	1457	+58	0.5	JASAITIS,A	1949	-11	0.5
	2	WOJDYLA	1500	-134	0	SHEPARDSON,T	1612	+12	1
	3	ZACHAR,T	1500	-103	0	KRATKA,M	1576	+11	1
	4	BROWN,B	1295	-66	0	FINE,A	1200	+132	1
	5	GLIWA,D	1400	0	1	MCENEANY,T	994	0	0
	6	MEDINA,D	1300	-112	0	NICHOLS,P	1200	+112	1
05-Oct-10	2	GAMBT			1	MKNGT			5
	1	GHAIBEH,AYMAN	1687	0	0	FRIDMAN,Y	2238	+1	1
	2	KRISHNAMURTHY,S	1568	0	0	MORRIS,R	2223	+1	1
	3	MOSLEY,A	934	0	0	THOMSON,J	1988	+1	1
	4	MOORE,A	1439	-11	0	BALICKI,J	1792	+4	1
	5	DOLGIN,A	1758	-193	0	BABINEC,J	1337	+43	1
	6	STILES,J	1175		1				Forfeit
06-Oct-10	1	WMBAT			3	DGCC			3
	1	TENNANT,S	2231	-8	0.5	KLUG,S	2125	+4	0.5
	2	WEBER,L	2074	-8	0.5	TAN,GADDIEL	1772	+24	0.5
	3	FREITAG,T	1990	+12	1	POTTS,K	1852	-10	0
	4	ELLICE,W	1706	+8	0.5	WAKERLY,R	1863	-8	0.5
	5	ZOLKOS,A	1716	+8	0.5	DUGOVIC,D	1860	-9	0.5
	6	RAJSKY,J	1687	-47	0	YALAVARTHI,R	1736	+23	1
	7	SINOPLE,J	863	-1	0	MANEY,A	1702	0	1
07-Oct-10	2	MKING			3	FORKS			3
	1	MELNIKOV,I	2024	+9	1	LEVENSON,S	1954	-10	0
	2	AITIPAMULA,J	2017	-32	0	FRISKE,T	1974	+13	1
	3	WALLACH,C	1960	-11	0	SANTIAGO,T	1991	+11	1
	4	PIPARIA,J	1947	+12	1	SOLLANO,E	1944	-12	0
	5	CYGAN,J	1770	+9	1	HUGHES,N	1612	-12	0
	6	RABINOVICH,E	1487	-25	0	BIAN,M	1431	+39	1
	7	GONCHAROFF,N	1556	-11	0.5	GRYPARIS,J	1367	+13	0.5

Date	Rd	Home Team			Home Score	Away Team			Away Score
	Bd	Player	Rating	+/-		Player	Rating	+/-	
10-Oct-10	2	CITGR			4.5	TT			1.5
	1	PFAU,M	2113	+1	1	HUNTER,JOSH	1457	0	0
	2	ONG,K	1786	+4	1	KHLUS,V	1433	-11	0
	3	LE,DUC	1489	-15	0.5	SCHWARTZ,BRIAN	1148	+81	0.5
	4	SENSAT,J	1526	+3	1	VISSER,JOUBERT	1057	0	0
	5	PRIMORAC,V	1467	-46	0	GOTTEMOLLER,A	1050	+191	1
	6	KUNHIRAMAN,P	1535	+3	1	WILK,M	1020	0	0
11-Oct-10	2	AMARS			3	NWEST			3
	1	BROCK,B	2011	-37	0.5	GAFNI,P	1670	+24	0.5
	2	EAMAN,R	1801	-3	0.5	MODI,P	1728	+10	0.5
	3	FRANK,M	1747	-30	0	LOU,J	1289	+138	1
	4	DUFFY,J	1635	-29	0	GINZBERG,D	1381	+89	1
	5	ACEVEDO,U	1532	+6	1	WU,S	1200	-21	0
	6	FULKERSON,R	1468	+5	1	BABCOCK,S	1100	-9	0
13-Oct-10	2	DGCC			4.5	PAWNS			1.5
	1	KLUG,S	2129	+12	1	CAVENEY,J	2122	-25	0
	2	EGERTON,J	2041	-4	0.5	KORENMAN,M	1926	+13	0.5
	3	BUNGO,G	1998	+30	1	LATIMER,E	1991	-11	0
	4	POTTS,K	1842	+1	0.5	HOLLAWAY,M	1847	-1	0.5
	5	WAKERLY,R	1855	-6	0.5	EDEUS,D	1730	+11	0.5
	6	ROMANOWITZ,C	1323	+51	1	HARPER,C	1495	-65	0
	7	MANEY,A	1702	-58	0	KUKURUZA,V	1659	+34	1
13-Oct-10	2	WMBAT			5.5	BPMLX			.5
	1	TENNANT,S	2223	+3	1	REICH,T	1725	-2	0
	2	FREITAG,T	2002	+5	1	ZADEREJ,V	1647	-5	0
	3	ELLICE,W	1714	+7	1	RUFUS,B	1473	-10	0
	4	FRANEK,M	1709	-15	0.5	DEICHMANN,E	1282	+24	0.5
	5	ZOLKOS,A	1724	+1	1	MUELLER,R	1043	-2	0
	6	CONNELLY,P	1577	0	1	AREND,A	800	0	0

Date	Rd	Home Team			Home Score	Away Team			Away Score
	Bd	Player	Rating	+/-		Player	Rating	+/-	
14-Oct-10	2	STCCC			5.5	ROOKS			.5
	1	MARSHALL,J	2265	+6	1	BENEDEK,R	2100	-6	0
	2	ACOSTA,M	2172	-16	0.5	HILL,R	1921	+8	0.5
	3	SUITS,J	1858	+8	1	BAURAC,D	1688	-10	0
	4	VON_HATTEN,J	1811	+6	1	DECMAN,S	1546	-8	0
	5	SMITH,D	1625	+7	1	GWEKOH,R	1308	-10	0
	6	KOLB,S	1574	0	1	HLOHOWSKYJ,I	1054	-4	0
	7	GIERTZ,C	1474	0	1	SUKAMAR,N	858	0	0
19-Oct-10	1	DRW			4.5	AMATS			1.5
	1	HAYHURST,W	1930	+10	1	HARRIS,M	1883	-42	0
	2	BEDER,B	1649	-68	0	FURTNER,F	1492	+30	1
	3	GUGENHEIM,O	1581	+6	1	HARPER,M	1244	-8	0
	4	CAPUTO,W	1481	+71	1	MEYER,C	1242	-14	0
	5	KOMBLEVITZ,A	1196	-40	0.5	PATELLA,C	903	+49	0.5
	6	REDMOND,M	1513		1	MEYER-ABBOTT,B			Forfeit
19-Oct-10	2	FERMI			5.5	JJCCC			.5
	1	SERGATSKOV,D	2008	+2	1	ABERNATHY,J	1363	0	0
	2	SPIEGEL,L	1967	-12	0.5	BRUCE,K	1360	+67	0.5
	3	GAINES,I	1714	+2	1	MARCHERT_SR,J	1100	0	0
	4	STAPLES,C	1593	+5	1	RAINEY,R	1250	-18	0
	5	STRAIN,D	1312	+33	1	LEDFORD,J	1250	-97	0
	6	MHASHILKAR,P	1199	+42	1	CRAIG,S	1050	-63	0
20-Oct-10	2	HEDGE			3	BCBS			3
	1	RAUCHMAN,M	2018	-6	0.5	KHAN,M	1818	+15	0.5
	2	JASAITIS,A	1938	+3	1	GUIU,C	1572	-7	0
	3	SMITH,M	1936	+4	1	GUIDRY,D	1600	-8	0
	4	SHEPARDSON,T	1624	-32	0	BRUNO,R	1574	+28	1
	5	CHAVEZ,A	1354	+18	0.5	SAN_MIGUEL,L	1571	-26	0.5
	6	GALE,M	1320	-129	0	MATA,S	1298	+24	1
	7	COOMBES,N	1299	+43	1	LACHOWIEC,S	1600	-309	0
	8	CROSBY,N	1045	-21	0	PETTIS,D	1200	+72	1

Date	Rd	Home Team			Home Score	Away Team			Away Score
		Bd	Player	Rating	+/-	Player	Rating	+/-	
20-Oct-10	2	TYROS			6	SXUCT			0
	1	DIAZ,P	2048	+6	1	CELENTANO,A	1889	-19	0
	2	STOLTZ,B	1862	+2	1	JACKSON,WILLIAM	1376	-4	0
	3	DOBROVOLNY,C	1728	+2	1	ABNEY,I	1202	-3	0
	4	HAHNE,D	1625	+1	1	MCDONNELL,B	940	-2	0
	5	VAIL,M	1585	+4	1	ONWUMAH,I	1175	-9	0
	6	BYRNE,M	1349	+29	1	SARNA,J	1426	-56	0
	7	KURUVILLA,E	1200	+43	1	BRANNON,M	969	-29	0
27-Oct-10	2	EXCLB			4	UOP			2
	1	HART,V	2139	+7	1	SIWEK,M	1927	-6	0
	2	LEE,D	1899	+10	1	EASTON,R	1819	-12	0
	3	ENGELN,M	1783	-14	0	BOLDINGH,E	1836	+12	1
	4	DOWELL,E	1751	+14	1	LECHNICK,J	1707	-15	0
	5	VIGANTS,A	1543	+26	1	MOSSBRIDGE,A	1629	-24	0
	6	SIEGEL,R	1479	-23	0	OLSEN,A	1475	+23	1
02-Nov-10	2	AMATS			4	LOYLA			2
	1	HARRIS,M	1841	+12	1	CLARK,I	1515	-7	0
	2	FURTNER,F	1522	-31	0	DIMOPOULOS,P	1313	+72	1
	3	KOLLI,S	1369	+28	1	BROWN,B	1229	-38	0
	4	MEHDI,SYED	1252	+58	1	WOJDYLA	1366	-143	0
	5	HARPER,M	1236	-12	0	GLIWA,D	1400	+74	1
	6	MASITI,J	1345	+13	1	MEDINA,D	1188	-57	0



Division Standings

Monday, November 08, 2010

Division	Team	Type	W	L	D	Game Points	Match Points	H2H MPs	USAT	PR
East										
	Citadel Group	Comp	2	0	0	9.0	2.0	0	2.3	1739
	Hedgehogs	Assoc	1	0	1	7.5	1.5	0	1.5	1598
	AMA Rogue Squadron	Assoc	1	0	1	8.0	1.5	0	1.5	1459
	DRW Trading Group	Assoc	1	0	0	4.5	1.0	1	4.5	1484
	AMA Tornado Snakes	Comp	1	1	0	5.5	1.0	0	1.5	1450
	Blue Cross Blue Shield	Comp	0	1	1	4.5	0.5	0	7.5	1565
	Northwestern Chess Club	Comp	0	0	1	3.0	0.5	0	4.5	1699
	Trading Technologies	Comp	0	2	0	2.5	0.0	0	4.5	1366
	Loyola	Comp	0	2	0	3.5	0.0	0	4.3	1233
North										
	Motorola Knights	Comp	2	0	0	8.5	2.0	0	3.5	1963
	Walgreen Forks	Assoc	1	0	1	9.0	1.5	0.5	4.5	1901
	Motorola Kings	Comp	1	0	1	6.5	1.5	0.5	4.5	1806
	Excaliburs	Assoc	1	1	0	6.5	1.0	0	5.0	1824
	UOP	Assoc	0	2	0	4.5	0.0	0	5.8	1622
	Aon Hewitt Gambits	Comp	0	2	0	1.0	0.0	0	2.0	1407
West										
	Downers Grove Chess Club	Club	1	0	1	7.5	1.5	0.5	9.0	1984
	SSCC Wombats	Club	1	0	1	8.5	1.5	0.5	4.5	1850
	Lucent Tech. Tyros	Assoc	1	0	0	6.0	1.0	1	6.0	1635
	St. Charles Chess Club	Club	1	0	0	5.5	1.0	1	5.5	1870
	St. Xavier University	Comp	1	1	0	4.0	1.0	1	4.0	1486
	Pawns	Club	1	1	0	6.5	1.0	0	2.3	1836
	Fermilab	Comp	1	1	0	7.5	1.0	0	2.0	1352
	Argonne Rooks	Comp	1	1	0	5.0	1.0	0	0.5	1486
	BP-Molex	Assoc	0	2	0	2.0	0.0	0	2.3	1493
	Lucent Tech. Dragons	Comp	0	1	0	1.0	0.0	0	1.0	1513
	Joliet Junior College	Club	0	1	0	0.5	0.0	0	0.5	1365



Division Top Ten

Monday, November 08, 2010

Division	Player	Team	Rating
East			
	PFAU,M	CITGR	2114
	RAUCHMAN,M	HEDGE	2012
	SOLOMON,A	NWEST	1994
	BROCK,B	AMARS	1974
	BAKSHI,A	NWEST	1947
	JASAITIS,A	HEDGE	1941
	HAYHURST,W	DRW	1940
	SMITH,M	HEDGE	1940
	WANG,B	NWEST	1888
	HARRIS,M	AMATS	1853
North			
	FRIDMAN,Y	MKNGT	2239
	MORRIS,R	MKNGT	2224
	INUMERABLE,F	FORKS	2191
	HART,V	EXCLB	2146
	MELNIKOV,I	MKING	2033
	SANTIAGO,T	FORKS	2002
	THOMSON,J	MKNGT	1989
	FRISKE,T	FORKS	1987
	AITIPAMULA,J	MKING	1985
	PIPARIA,J	MKING	1959

West			
	MARSHALL,J	STCCC	2271
	TENNANT,S	WMBAT	2226
	ALLSBROOK,F	TYROS	2159
	ACOSTA,M	STCCC	2156
	WIEWEL,J	STCCC	2150
	KRAS,T	PAWNS	2149
	KLUG,S	DGCC	2141
	SPLINTER,J	STCCC	2127
	CAVENEY,J	PAWNS	2097
	BENEDEK,R	ROOKS	2094

Note: Only Players with 9 or more rated games are shown.



Most Improved Players

Monday, November 08, 2010

Player	Team	Base Rating	Current Rating	Rating Gain
PROKOPOWICZ,P	CITGR	1136	1203	+67
KUKURUZA,V	PAWNS	1630	1693	+63
DEICHMANN,E	BPMLX	1253	1306	+53
ROMANOWITZ,C	DGCC	1323	1374	+51
HOLLAWAY,M	PAWNS	1800	1846	+46
BIAN,M	FORKS	1426	1470	+44
COOMBES,N	HEDGE	1299	1342	+43
EDEUS,D	PAWNS	1699	1741	+42
RUFUS,B	BPMLX	1425	1463	+38
VIGANTS,A	EXCLB	1532	1569	+37

Note: Players must have 9 or more rated games at the start of the season to be eligible.

Note2: Impact of all games played between two players of the same team is removed.