

# *The Chicago Chess Player*

The Official Bulletin of the Chicago Industrial Chess League



## **Inside this edition:**

- \*2010-2011 Season Schedules
- \*New Ratings System Proposal and Overview
- \*Warren Junior Match ~article and games!

---

CICL Officer Contact List

League President	<b>Tony Jasaitis</b>		C:(708) 903-6423
	President@ChicagoChessLeague.org		W:(312) 264-2044
League Secretary	<b>Jerry Thomas</b>	745 Hageman Pl	H:(630)420-0188
	Secretary@ChicagoChessLeague.org	Naperville, IL 60563	
League Treasurer	<b>Paul Freidel</b>	359 N. Worth Avenue	C:(224)436-6050
	Treasurer@ChicagoChessLeague.org	Elgin, IL 60123	
Bulletin Editor	<b>Patrice Connelly</b>		
	Bulletin@ChicagoChessLeague.org		
Webmaster	<b>Tom Friske</b>	(see information below)	
	Web@ChicagoChessLeague.org		
Games Editor	<b>Tom Friske</b>	1035 E Algonquin Road	H:(847) 299-1033
	Games@ChicagoChessLeague.org	Des Plaines, IL 60016	W:(847) 914-8448
Ratings Chairman	<b>Jeff Balicki</b>		
	Ratings@ChicagoChessLeague.org		
Trophy Chairman	<b>Chuck Dobrovolny</b>		
	Trophy@ChicagoChessLeague.org		
Publicity Chairman	<b>Matt Vail</b>		C:(312) 933-1516
	Publicity@ChicagoChessLeague.org		W:(630) 505-6557
Banquet Chairman	<b>Katherine Zack</b>		
	Banquet@ChicagoChessLeague.org		

DIVISIONAL CHAIRMEN

East Division	<b>Adam Muhs</b>		C: (847) 877-9629
	ChairmanEast@ChicagoChessLeague.org		W: (312) 497-1184
West Division	<b>Irwin Gaines</b>		
	ChairmanWest@ChicagoChessLeague.org		
North Division	<b>Jim Thomson</b>		W(847) 538-5408
	ChairmanNorth@ChicagoChessLeague.org		

Officer Contact List	2
Contents of Issue	3
<b>CICL Yellow Pages</b>	
Email Directory	4-5
East Division Team Contact List	6
West Division Team Contact List	7
North Division Team Contact List	8
<b>CICL Regular Season Team Schedules</b>	
East Division	9
West Division	10
North Division	11
<b>CICL Business Meetings</b>	
Fall 2009 Business Meeting Minutes	12-15
Treasurer's Budget	16
CICL Dues Form	17
New Ratings System Proposal and Overview	18-21
Warren Junior Match Review & Photos	22-23
Warren Junior Annotated Games	24-42
Ratings by Team	43-48
Division Top Ten	49

### Editor's Introduction:

Welcome back to another great year! As last year's season ended with an unprecedented five-way tie for League Champion (with Downers Grove CC, Lucent Tyros, Motorola Knights, St. Charles CC, and the SSCC Yorktown Wildcats holding the title of co-champions) it will be interesting to see what this season holds in store!

I want to thank everybody for their patience with the release of this year's first bulletin, as I'm still learning the ropes. Special thanks to Tony Jasitis and Tom Friske for their help and wonderful contributions, as well as Marty Franek, Len Weber, and the Division chairs. Thanks from the entire league to Jeff Balicki, the new ratings chair, who had the formidable task this year of reformatting the CICL ranking system!

If you have any suggestions or ideas for news or information to be included in the bulletin, please email me at [Bulletin@ChicagoChessLeague.org](mailto:Bulletin@ChicagoChessLeague.org). I look forward to your feedback!

Best of luck on the new season!  
Patrice Connelly, Bulletin Editor

**CICL EMAIL ALAIS DIRECTORY (Officers in red)**

<b>Alias</b> (@chicagochessleague.org)	<b>Sends to what entity</b>	<b>Actual people mailed</b>
Banquet	<b>Banquet Chairman</b>	Katherine Zack
BlueKnights or BCBS	Blue Cross/Blue Shield team Capt.	Aaron Burgess, Sonny Mata
BPMolex	BP/MX Captains	Vic Zaderej, Dan McGowan
Bulletin	<b>Bulletin Editor</b>	Patrice Connelly
Captains	<b>All</b> CICL Captains	(each Captain named elsewhere)
ChairmanEast	<b>East Division Chairman</b>	Fred Furtner
ChairmanNorth	<b>North Division Chairman</b>	Jim Thomson
ChairmanWest	<b>West Division Chairman</b>	Irwin Gaines
Chairmen	<b>All</b> CICL Chairmen	(as listed above)
CharlieWard	Retired Ratings Chairman	Charlie Ward
CICL	<b>All</b> CICL members registered	(everybody in this table)
Citadel	Citadel Group Captain	Mattias Pfau, Vlatko Primorac
DownersGroveCC	Downers Grove CC Captain	Steffan Klug, Greg Bungo, Kevin Potts
Dragons	Lucent Dragon Captain	Dan Eustace
DRW	DRW Captain	Eugene Gorodetskiy, Lyle Hayhurst, Adam Komblewitz
East	<b>All</b> East Division Members	(total of each East Division team listed)
Enterprise	Midway CC Enterprise team Capt.	William Shehan
Excaliburs	Excalibur Captain	David Lee
Fermilab	Fermilab Captain	Lenny Spiegel
Forks	Walgreen Associate-team Captain	Norm Hughes, Tom Friske
Friends	Retired Members still in contact	Joe Brozovich, Ruben Reyes, Charlie Ward
Games	<b>Game Editor</b>	Tom Friske
HedgeHogs or Hedge	HedgeHog Captain	Tony Jasaitis, Tim McEneaney
HewittGambits	Hewitt team Captain	Ayman Ghaibeh, Charles Bergmeier
Internet	Webmaster	Tom Friske
JolietJrCollege	JJCCC team Captain	Jon Abernathy
Kings	Motorola Kings Captain	Jankesh Paparia, Nik Goncharoff
Knights	Motorola Knights Captain	Jim Thomson, Jeff Balicki
Loyola or Loyla	Loyola Captain	Ian Clark, Morle Wojdyla
Midway	Midway CC team Captain	William Shehan
North	<b>All</b> North Division Members	(total of each North Division team listed)
Northwestern or Nwst	Northwestern University Captain	Garrett Ullom, Paul Gatni
Officers	<b>All</b> CICL Officers	(each Officer highlighted in red, incl. Chairmen)
Pawns	SSCC Pawns Captain	Ray Fabijonas, David O'Dell
President	<b>The Head Cheese</b>	Tony Jasaitis
Publicity	<b>Publicity Chairman</b>	Matt Vail
Ratings	<b>Rating Chairman</b>	Jeff Balicki
RogueSquadron or AMARS	AMA Associate-type Captain	Rob Eaman, Bill Brock
Rooks	Argonne Rooks Captain	Bob Hill, Dave Baurac
RubenReyes	Retired Bulletin Editor, Contributor	Ruben Reyes
SaintCharles	St Charles CC Captain	Jeff Wiewel
Secretary	<b>CICL League Secretary</b>	Jerry Thomas
StXavier	St Xavier Captain	Cris Abney
TornadoSnakes or AMATS	AMA Company-type Team Captain	Fred Furtner, Jalal Masiti
Treasurer	<b>CICL League Treasurer</b>	Paul Freidel
TradingTechnologies	TTII team Captain	Joubert Visser, Josh Hunter
Trophy	<b>Trophy Chairman</b>	Chuck Dobrovolny
Tyros	Lucent Tyro Captain	C. Dobrovolny, Dave Hahne, Bob Buchner



UOP	UOP Captain	Art Olsen
Web	Webmaster	Tom Friske
West	<b>All</b> West Divison Members	(total of each West Division team listed)
YRKTN	SSCC Yorktown team Captain	Len Weber, Patrice Connelly
Wombats	SSCC Wombats team Captain	Len Weber, Patrice Connelly

**EAST Division – Contact Info: 2009-2010 Season**

(updated 9/15/2010)

<b>DRW</b>	<b>Captain:</b> Adam Komblevitz (cell: 312-315-7899) <b>Asst. C:</b> Lyle Hayhurst (cell: 312-315-2982) Eugene Gorodetskiy	<a href="mailto:akomblevitz@drw.com">akomblevitz@drw.com</a> <a href="mailto:sozinsky@gmail.com">sozinsky@gmail.com</a> <a href="mailto:egorod@gmail.com">egorod@gmail.com</a>
<b>** For match scheduling:</b> Please contact administrative asst: <b>Niki DeLong</b> (mobile: 312-320-2581) <a href="mailto:ndelong@drw.com">ndelong@drw.com</a>		
<b>AMARS</b>	<b>Captain:</b> Rob Eaman (cell: 312-351-0096) <b>Asst. C::</b> Bill Brock	<a href="mailto:sixty_four@yahoo.com">sixty_four@yahoo.com</a> <a href="mailto:billbrock1958@gmail.com">billbrock1958@gmail.com</a>
<b>Citadel</b>	<b>Captain:</b> Matthias Pfau (work: 312-395-3712) <b>Co-Cap:</b> Vlatko Primorac (cell: 630-544-7347)	<a href="mailto:mpfau@citadelgroup.com">mpfau@citadelgroup.com</a> <a href="mailto:cicl@vlptel.com">cicl@vlptel.com</a>
<b>HHogs</b>	<b>Captain:</b> Tony Jasaitis (cell: 312-903-6423) (work: 312-264-2044) <b>Asst. C:</b> Tim McEneany (cell: 773-677-1153) (work: 312-264-2177)	<a href="mailto:tony@trdlnk.com">tony@trdlnk.com</a> <a href="mailto:tim@trdlnk.com">tim@trdlnk.com</a>
<b>AMATS</b>	<b>Captain:</b> Fred Furtner (cell: 630-291-4271) (work: 312-464-4495) <b>Asst. C:</b> Jalal Masiti (cell: 630-715-2114) (work: 630-715-2114)	<a href="mailto:fred.furtner@ama-assn.org">fred.furtner@ama-assn.org</a> <a href="mailto:jalal.masiti@ama-assn.org">jalal.masiti@ama-assn.org</a>
<b>NWSTN</b>	<b>Captain:</b> Garrett Ullom (cell: 305-923-6481) <b>Co-Cap:</b> Paul Gafni	<a href="mailto:garrettullom2011@u.northwestern.edu">garrettullom2011@u.northwestern.edu</a> <a href="mailto:paul.gafni@gmail.com">paul.gafni@gmail.com</a>
<b>Loyola</b>	<b>Captain:</b> Ian Clark (cell: 630-310-7463) <b>Co-Caps:</b> Mark Wojdyla (cell: 773-965-3577)	<a href="mailto:iclark2@luc.edu">iclark2@luc.edu</a> <a href="mailto:mwojdyla@luc.edu">mwojdyla@luc.edu</a>
<b>BCBS</b>	<b>Captain:</b> Aaron Burgess (cell: 312-497-3205) (work: 312-653-8172) <b>Asst. C:</b> Sonny Mata (cell: 571-332-6812) (work: 312-653-8789)	<a href="mailto:Aaron_Burgess@bcbsil.com">Aaron_Burgess@bcbsil.com</a> <a href="mailto:Santiago_Mata@bcbsil.com">Santiago_Mata@bcbsil.com</a>
<b>TT</b>	<b>Captain:</b> Joubert Visser (cell: 312-231-8775) (work: 312-698-6557) <b>Asst. C:</b> Josh Hunter (work: 312-268-1698)	<a href="mailto:Joubert.visser@tradingtechnologies.com">Joubert.visser@tradingtechnologies.com</a> <a href="mailto:Joshua.hunter@tradingtechnologies.com">Joshua.hunter@tradingtechnologies.com</a>

Midway Chess Club **MDWY**  
William Shehan [wtshehaniv@tatteredtomes.com](mailto:wtshehaniv@tatteredtomes.com)  
St Xavier College **StXAV**  
Cris Abney [iHeedib@aol.com](mailto:iHeedib@aol.com) [i.abney@mymail.sxu.edu](mailto:i.abney@mymail.sxu.edu)  
South Suburban Chess Club Wombats **WMBAT**  
Len Weber [chessclub2k@aol.com](mailto:chessclub2k@aol.com)  
South Suburban Club Pawns **PAWNS**  
Romas Fabijonas [fabijonasr@sbcglobal.net](mailto:fabijonasr@sbcglobal.net)  
(h)708-448-4027  
Downers Grove Chess Club **DGCC**  
Steffen Klug [chess@klugonline.com](mailto:chess@klugonline.com)  
Greg Bungo [gbungo@earthlink.net](mailto:gbungo@earthlink.net)  
Kevin Potts [mojo666@comcast.net](mailto:mojo666@comcast.net)

St Charles Chess Club **SCCC**  
Jeff Wiewel [JWiewel@ntnusa.com](mailto:JWiewel@ntnusa.com)  
(h)847-818-8913, (w)847-298-7500(x637)

Lucent Dragons **DRGNS**  
Dan Eustace [deustace@alcatel-lucent.com](mailto:deustace@alcatel-lucent.com)  
(w)630-979-5826, (c)630-421-7114

Lucent Tyros **TYROS**  
Chuck Dobrovolny [dobrovolny@alcatel-lucent.com](mailto:dobrovolny@alcatel-lucent.com)  
Cell -- 773 307-9157  
Argonne National Laboratory Rooks **ROOKS**  
Dave Baurac [baurac@anl.gov](mailto:baurac@anl.gov)

Fermi National Accelerator Laboratory **FERMI**  
Lenny Spiegel [lenny@fnal.gov](mailto:lenny@fnal.gov) (w)630-840-2809,  
(c)630-677-2289

BP/Molex **BPMOL**  
Vic Zadarej [Victor.Zaderej@molex.com](mailto:Victor.Zaderej@molex.com)  
(w)630-718-5203

Joliet Junior College Chess Club **JJCCC**  
Jonathan Abernathy [jwabernathy1@hotmail.com](mailto:jwabernathy1@hotmail.com)

**Division Chair:**

Irwin Gaines [gaines@fnal.gov](mailto:gaines@fnal.gov)  
(w)630-840-4022 (c)630-212-2185

**North Division Chair:**

Jim Thomson

[ChairmanNorth@chicagochessleague.org](mailto:ChairmanNorth@chicagochessleague.org)

C: (630)330-1740

W: (847)538-5408

**Team Captains:**

Motorola Kings      Nik Goncharoff      [kings@chicagochessleague.org](mailto:kings@chicagochessleague.org)

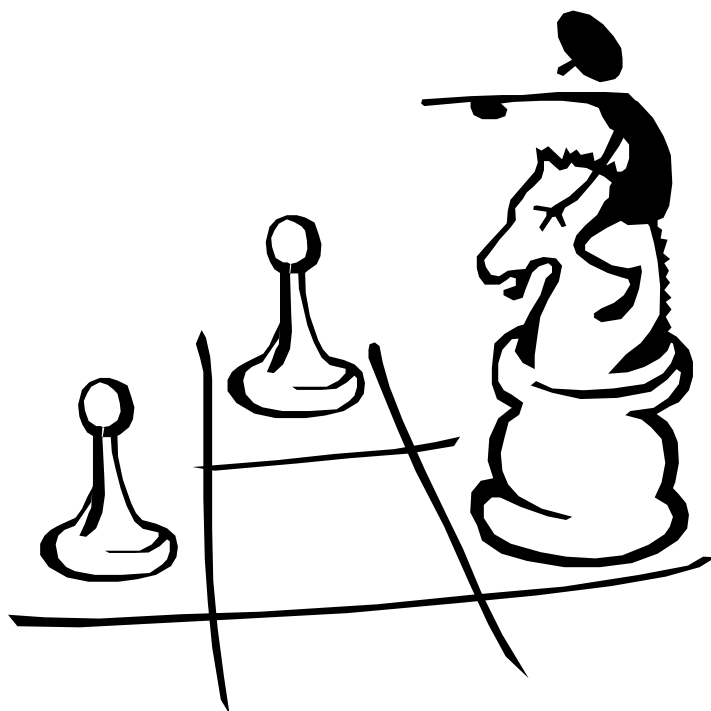
Hewitt Gambits      Ayman Ghaibeh      [gambt@chicagochessleague.org](mailto:gambt@chicagochessleague.org)

Motorola Knights      Jim Thomson      [knights@chicagochessleague.org](mailto:knights@chicagochessleague.org)

Excaliburs      David Lee      [exclb@chicagochessleague.org](mailto:exclb@chicagochessleague.org)

Walgreen Forks      Norm Hughes      [forks@chicagochessleague.org](mailto:forks@chicagochessleague.org)

UOP      Art Olsen      [uop@chicagochessleague.org](mailto:uop@chicagochessleague.org)



# EAST Division Schedule: 2010-11 Season

“Play-by” dates →	Rnd 1 9/24	Rnd 2 10/15	Rnd 3 11/5	Rnd 4 11/26	Rnd 5 12/3	Rnd 6 12/24	Rnd 7 1/21	Rnd 8 2/18	Rnd 9 3/11
NWSTN	BYE	@AMARS	Citadel	@HHogs	AMATS	@DRW	Loyola	@BCBS	TTech
AMARS	@TTech	NWSTN	BYE	@Citadel	HHogs	@AMATS	DRW	@Loyola	BCBS
Citadel	@BCBS	TTech	@NWSTN	AMARS	BYE	@HHogs	AMATS	@DRW	Loyola
HHogs	@Loyola	BCBS	@TTech	NWSTN	@AMARS	Citadel	BYE	@AMATS	DRW
AMATS	@DRW	Loyola	@BCBS	TTech	@NWSTN	AMARS	@Citadel	HHogs	BYE
DRW	AMATS	BYE	@Loyola	BCBS	@TTech	NWSTN	@AMARS	Citadel	@HHogs
Loyola	HHogs	@AMATS	DRW	BYE	@BCBS	TTech	@NWSTN	AMARS	@Citadel
BCBS	Citadel	@HHogs	AMATS	@DRW	Loyola	BYE	@TTech	NWSTN	@AMARS
TTech	AMARS	@Citadel	HHogs	@AMATS	DRW	@Loyola	BCBS	BYE	@NWSTN

After the 9-Round “Round Robin” schedule is played, the last round (see below) would match “adjacent teams in seedings” against each other. As to which team would be traveling, whichever team traveled in the first matchup, would be the home team in Round 10. Note that the last seed, Seed 9, is without a match in Round 10. Perhaps, Seed 8, wouldn’t mind playing an extra match, if time permits?

**Rnd 10**  
**4/15**

**Seed 1 vs Seed 2.**  
**Seed 3 vs Seed 4.**

**Seed 5 vs Seed 6.**  
**Seed 7 vs Seed 8.**

**Seed 9** (plays against Seed 8, if time and circumstances permit).

Sept 1, 2010

**CICL West Division Schedule 2010-2011**

Disputes about playing dates should be referred to the division chair. SCCC is St Charles Chess Club; DGCC is Downers Grove Chess Club; Wombats are the South Suburban Chess Club team previously known as Yorktown Wildcats; Midway is Midway Chess club (previously known as BigE); JJCCC is Joliet Junior College Chess Club (new team); StXav is St Xavier College (previously the Hornets) Tyros, Dragons, Fermi, Rooks, Pawns, BP/MX as before.

Visiting team is listed first; home team second for each match. Home/away should be opposite to last year for each match. Long commutes are concentrated in the first three and last three (hopefully good weather) rounds.

rd 1 by sep 24 SCCC@JJCCC StXav@Fermi Tyros@Midway Pawns@Dragons DGCC@Wombat BP/MX@Rooks

rd 2 by oct 15 Rooks@SCCC JJCCC@Fermi StXav@Tyros Dragons@Midway Pawns@DGCC Wombat@BP/MX

rd 3 by nov 5 Midway@SCCC Pawns@Fermi Wombat@Tyros Rooks@Dragon JJCCC@DGCC BP/MX@StXav

rd 4 by nov 26 DGCC@SCCC Fermi@Dragon BP/MX@Tyros Wombat@JJCCC Pawns@StXav Rooks@Midway

rd 5 by dec 17 SCCC@Tyros BP/MX@Fermi Dragons@DGCC Midway@Wombat Pawns@Rooks JJCCC@StXav

rd 6 by jan 14 SCCC@BP/MX Fermi@DGCC Tyros@Dragon Rooks@Wombat Pawns@JJCCC StXav@Midway

rd 7 by feb 4 SCCC@Fermi DGCC@Tyros Dragons@BP/MX Wombat@Pawns JJCCC@Midway StXav@Rooks

rd 8 by feb 25 Dragon@SCCC Tyros@Fermi DGCC@BP/MX Wombat@StXav Midway@Pawns JJCCC@Rooks

rd 9 by mar 11 SCCC@Pawns Fermi@Wombat Tyros@Rooks Dragons@JJCCC DGCC@StXav Midway@BP/MX

rd 10 by apr 1 SCCC@StXav Fermi@Midway Tyros@Pawns Dragons@Wombat Rooks@DGCC BP/MX@JJCCC

rd 11 by Apr 22 Wombat@SCCC Fermi@Rooks JJCCC@Tyros StXav@Dragon Midway@DGCC BP/MX@Pawns

## CICL 2010-2011 North Division Schedule – Regular Season

Rnd	End Date	Kings	Gambits	Knights	Excaliburs
1	Fri, Sep 17	@UOP	@Forks	Excaliburs	@Knights
2	Fri, Oct 08	Forks	Knights	@Gambits	UOP
3	Fri, Oct 29	@Excaliburs	@UOP	Forks	Kings
4	Fri, Nov 19	@Knights	Excaliburs	Kings	@Gambits
5	Fri, Dec 17	Gambits	@Kings	@UOP	Forks
6	Fri, Jan 21	UOP	Forks	@Excaliburs	Knights
7	Fri, Feb 11	@Forks	@Knights	Gambits	@UOP
8	Fri, Mar 04	Excaliburs	UOP	@Forks	@Kings
9	Fri, Mar 25	Knights	@Excaliburs	@Kings	Gambits
10	Fri, Apr 15	@Gambits	Kings	UOP	@Forks

Rnd	End Date	Forks	UOP
1	Fri, Sep 17	Gambits	Kings
2	Fri, Oct 08	@Kings	@Excaliburs
3	Fri, Oct 29	@Knights	Gambits
4	Fri, Nov 19	UOP	@Forks
5	Fri, Dec 17	@Excaliburs	Knights
6	Fri, Jan 21	@Gambits	@Kings
7	Fri, Feb 11	Kings	Excaliburs
8	Fri, Mar 04	Knights	@Gambits
9	Fri, Mar 25	@UOP	Forks
10	Fri, Apr 15	Excaliburs	@Knights



---

**CHICAGO INDUSTRIAL CHESS LEAGUE**

Fall Business Meeting of August 25, 2010

At: Lucent Indian Hill in Naperville

Attendees:

Ibn-umar Abney (St. Xavier) via conference call  
Patrice Connelly (South Suburban CC) via conference call  
Jonathan Abernathy (Joliet Junior College)    Jeff Balicki (Motorola Knights)  
Greg Bungo (DGCC)    Aaron Burgess (BCBS IL)  
Chuck Dobrovolny (ALU Tyros)    Dan Eustace (ALU Dragons)  
Marty Franek (SSCC YORKTOWN)    Tom Friske (Walgreens Forks)  
Fred Furtner (AMATS)    Irwin Gaines (Fermi)  
Norm Hughes (Walgreen Forks)    Tony Jasaitis (President, Hedgehogs)  
David Lee (Excaliburs)    Lenny Spiegel (Fermi)  
Jerry Thomas (Secretary, ALU Dragons)    Jim Thomson (Motorola Knights)  
Matt Vail (CA)    Jeff Wiewel (STCC)

**MINUTES**

President Tony Jasaitis called the meeting to order at 7:10 P.M.

**1. OFFICERS REPORTS:****A. President – Tony Jasaitis**

Tony welcomed everyone to the meeting.

**B. Secretary – Jerry Thomas**

Jerry said there were no changes to the spring business meeting minutes. The minutes were published in the bulletin.

**C. Treasurer – Paul Freidel (via email)**

Paul Freidel presented the treasurer's report and a draft dues sheet. The 2009-10 year had a \$136.41 deficit with larger expenses for trophies due to the huge tie for first in the playoff and new award trophies. The budget (see the web site) shows the final figures.

The proposed 2010-11 Fall Budget is based on losing one team (one of the Walgreens teams) and not gaining any, no change in dues, and another USAT team entry. Since we ordered 2 years of scoresheets last year, no scoresheet order is in the proposed budget. Included in the Special Disbursements is \$200 for the rating program re-write software.

The treasurer's report and proposed CICL 2010-11 Fall Budget were unanimously approved. The CICL 2010-11 Fall Budget and the approved dues form are on the CICL web site.

**Team captains should submit their team dues payment to:**

**Paul Freidel  
359 N. Worth Ave.  
Elgin, IL 60123**

**D. Division Chairmen:****North-Jim Thompson, Chairman**

Jim said that Hewitt in Lincolnshire only has 4 players and is not viable. Walgreens has 7 Walgreens players and 4 alumni and is going down to one team. Tom Friske said he just received Hewitt's information today and has not decided what to do. Hewitt is near one of Walgreen's locations and combining is one possibility. The attendees provided some possible solutions to Tom. All of the other teams from last year are returning.

**East-Fred Furtner, Chairman**

Fred said the East has 8 healthy teams returning. He has been unable to contact Northwestern as their new semester has just started. A new team, EmmiSolutions (a Software design company) is interested in joining. They are reluctant to commit. Tony will work with Fred to have them play an exhibition CICL match. **Post meeting: Northwestern has been contacted and will be back for this season. A new team Trading Technologies agreed to join and Tony will conduct an email vote on their admission. Fred is reworking the East schedule pending the admission of Trading Technologies and it should be ready by the middle of the Sept 1 week.**

**West-Irwin Gaines, Chairman**

Irwin Gaines said the Midway Chess Club Hornets would become the St. Xavier University team. All other teams are returning. The Midway Chess Club (2 teams) and possibly a third South Suburban Chess Club team will join the West (See New Business). CA will not be available as a neutral site for matches. There will be 12 or 13 teams in this division.

**2. OTHER REPORTS:****A. Bulletin Editor-vacant**

No report.

**B. Games Editor-Tom Friske**

Tom thanked Tony for his efforts reminding the captains to turn in their score sheets. Tom said he was pleased with the number of score sheets turned in last season including all those for the playoffs.

**C. Webmaster-vacant**

No report. Tom Friske will help with this temporarily.

**D. Rating Chair-Jeff Balicki**

Jeff Balicki is the new rating chair. See New Business for the report on the rating system upgrade.

**E. Publicity Chairman-Matt Vail**

Matt said we went after the following companies:

- 3 in the North
- 4 in the West
- 10 in the City
- 5 University and Club teams

There are possible teams at Dearborn in Downers Grove and Com Vault in Itasca. He agreed to contact the University of Chicago as a candidate. Matt mentioned the key challenge was getting a captain to commit.

**E. Banquet Chairman-Katherine Zak**

Tony said our current site and deal is the best we can obtain. Attendees said our Banquet Guest Speaker worked well and he was one of our best speakers. A couple of attendees said the Sliced Turkey tasted like tofu or processed meat and we should avoid choosing it for our next banquet.

At the last banquet, some of the awards did not get enough recognition. A checklist was suggested and will be used at the next banquet.

**F. Trophy Chairman-Chuck Dobrovoly**

Chuck will talk to Marty Franek about whether we should continue to use our current trophy supplier.

### 3. ELECTIONS and APPOINTMENTS

**A. Bulletin Editor** (vacant, no volunteers) **Post meeting: Patrice Connelly will be the new Bulletin Editor.**

**B. Games Editor** Tom Friske agreed to continue.

**C. Webmaster** (vacant, no volunteers)

**D. New Ratings Chair** Jeff Balicki

**E. Publicity Chair** Matt Vail agreed to continue

**F. Banquet Chair** Katherine Zack agreed to continue

**G. New Trophy Chair** Chuck Dobrovolny

### 4. NEW BUSINESS

#### A. New Teams and/or Reorganizations

##### East Division

Post meeting: **Trading Technologies agreed to join and Tony will conduct an email vote on their admission.**

##### North Division

As previously mentioned, Hewitt does not have enough players to be viable. Walgreens is dropping back to one team. Tony Jasaitis will email current players to see if any alumni are interested in playing for Hewitt. Tom Friske will contact his current Walgreens roster to determine if they can provide anyone to Hewitt.

##### West Division

Ibn-umar said the Midway Hornets would like to become St. Xavier and play at their site at 103<sup>rd</sup> & Pulaski. The current team members will not change. This team was unanimously accepted.

Jonathan Abernathy from the Joliet Junior College Chess Club wants to join the league as a club team. They have 7 signed up players plus 2 or 3 in the process of signing up. They would prefer to play their matches on Saturdays. They do have 6-7 of their players willing to play on Monday-Friday. They have a quiet room to play matches and chess equipment. The Joliet Junior College Chess Club received unanimous approval to be added as a new chess club team.

Patrice Connelly of the **South Suburban chess club** (SSCC) said they have enough players interested in forming a **third team**. They will hold a club meeting Friday and think they have a team captain. Post meeting: on Friday, August 27, 2010 they got a captain for this third team. An admission vote will be held by email once Tony Jasaitis and Irwin Gaines receive a roster.

Post meeting: **Midway CC Enterprise team asked to be known as “Midway”.**

#### B. Ratings system upgrade

Jim Thompson said we have talked about the rating system upgrade for a couple of years due to the inflexibility of the current system. He said the new rating system is based on the USCF rating method with a higher K factor. He said it is almost 75% done with the base stuff in place. He handed out an example of the rating reports available. There will be web based data entry forms for captains to enter match results, but these are not ready yet. These would then be automatically routed to the ratings chair.

Fred Furtner asked for details on the North and West division web sites where the ratings chair could obtain match results. Fred is interested in setting up an East division web site. Post meeting: Irwin Gaines and Jim Thomson sent Fred the web site details.

Jim said the new rating system would have provisional ratings for new players right away. After 9 games an initial rating would be established. The attendees liked the rating upgrade features, but wondered what they were going to vote on since there was no proposal.

Jim agreed to contact the rating upgrade committee and send out a proposal with examples of rating changes based on various results.

Jeff Balicki agreed to provide updating ratings monthly with the first set targeted for mid October. Attendees agreed this was acceptable.

**C. Discuss future of Traveling Trophy and old nameplates**

Jeff Wiewel suggested that we obtain a bigger base for the Traveling Trophy similar to the Stanley Cup. Chuck Dobrovolny will investigate that. The original nameplates on the Traveling Trophy were previously discarded. Jim Thomson will give the Traveling Trophy (from his car trunk) to Chuck.

**D. Internet matches with clubs in other cities – Norm Hughes**

Norm said the New York league cannot get anyone to do the “grunt” organizing work for an All-Star match with us. Other leagues are not interested. Norm recommended contacting chess clubs in Manhattan, Cleveland, LA, or other places for a summer all-star match. The attendees agree.

**E. Distribute:**

- **Score sheets** Tony distributed score sheets to the captains.
- **Corrected nameplates for trophy errors**

Corrected nameplates were not available. William Sheehan has them in his car trunk, but could not attend the meeting due to a family emergency. Tony will arrange for the distribution of the corrected nameplates.

The meeting was adjourned at 9:35 P.M.

## CICL 2010-11 Budget

	2009-10	2010-11
	Actual	Budget

## Revenue

Basic team dues	\$ 1,300.00	\$ 1,250.00
Donations	\$ 190.00	\$ -
Late fees	\$ 85.00	\$ 50.00
Banquet surplus(deficit)	\$ (24.61)	\$ -
Interest income	\$ 13.20	\$ 10.00

Total Revenue	\$ 1,563.59	\$ 1,310.00
---------------	-------------	-------------

## Disbursements:

Trophies	\$ 987.00	\$ 850.00
Scoresheets	\$ 395.00	\$ -
Playoff costs	\$ 100.00	\$ 150.00
USCF/ICA Dues	\$ 65.00	\$ 65.00
Special	\$ 153.00	\$ 350.00

Total Disbursements	\$ 1,700.00	\$ 1,415.00
---------------------	-------------	-------------

Surplus (Deficit)	\$ (136.41)	\$ (105.00)
-------------------	-------------	-------------

**Assets**

Checking account	\$ 537.75
Savings account	\$ 1,397.79
To be received	\$ 161.00
Dues credits to next year	\$ (275.00)
Expenses to be paid	\$ (40.00)
Net assets	\$ 1,781.54

**Notes**

2009-2010 Special expense includes \$13 in annual corporation fees and \$140 for the USAT entry fee

2010-2011 Special expense includes \$10 in annual corporation fees, \$140 for the USAT entry fee, and \$200 for expenses related to the rating program re-write.

Below are the assessments to each CICL team for the 2010-11 season. Please complete the form below and return it with a check made payable to the Chicago Industrial Chess League. Unless your team is making its payment late, the total assessment will typically total **\$75** for the season.

.....

Team Name:\_\_\_\_\_ Captain:\_\_\_\_\_

Annual Basic Dues per 6-player Team	<b>\$50.00</b>	_____
Penalty if postmarked after 11/30/10	\$5.00	_____
Penalty if postmarked after 12/31/10	\$10.00	_____
Awards Banquet Ticket ( <u>1 required per team</u> )	<b>\$25.00</b>	_____
	<b>Total</b>	<b>\$</b> _____

The CICL encourages you to pay team dues before 11/30/10. If you are not able to pay team dues before 11/30/10, please inform the treasurer. Any funds included with late payments in excess of the required amount will be considered a donation to the treasury.

Send payment with form to the following address:

Paul Freidel  
212 Perry St.  
Elgin, IL 60123

## USCF Rating Proposal as put forth by Tony Jasitis

Over the summer I took on the project of re-writing the CICL Ratings Programs. The goal was to make them more flexible and maintainable, but I also made some changes inspired by conversations with Len Weber, Jeff Wiewel, Tony Jasaitis, Irwin Gaines, Bob Buchner, Jeff Balicki, Art Olsen, Chuck Dobrovolsky, and Tom Friske.

This proposal document discusses the changes that directly impact league players so everyone is aware, and we can vote on them as needed. I didn't include all changes, as there are many that aren't controversial (e.g. sorting Division Standings by Match Points, then Head to Head MPs, then USAT, then PR). But I included those that may be perceived as requiring a rules update.

### The USCF Rating System

The most fundamental change was to implement the USCF method of Initial Ratings and Rating Updates. This is summarized here, and detailed at <http://www.glicko.net/ratings/rating.system.pdf>.

**Initial Ratings** – USCF accepts Initial Ratings from other rating sources (e.g. FIDE) by applying a conversion factor and assigning a confidence level (Initial # of Rated Games). I implemented a similar system for the CICL, including an option of starting from an Estimated Rating if no better Rating Source is available. The following table shows the various Rating Sources:

Rating Source	Conversion Factor	Initial # Rated Games
USCF $\geq$ 2000	None	8*
FIDE $\geq$ 2000	$-350 + 1.16 \times \text{FIDE}$	8*
USCF $<$ 2000	None	6*
FIDE $<$ 2000	$720 + 0.625 \times \text{FIDE}$	6*
CFC (Canadian) $\geq$ 1500	$1.1 \times \text{CFC} - 240$	6*
ICCA (IL Chess Coaches Assoc.)	None	5*
CFC $<$ 1500	CFC - 90	4*
FQE (Quebec)	FQE + 100	4*
ECF (England)	$\text{ECF} \times 8 + 650$	4*
Estimate from Captain $\pm$ 200	None	2
Estimate from Captain $\pm$ 400	None	1

\* Subtract 1 for each inactive year milestone the rating has passed {1, 3, 6, 10, 15, 21} to a minimum of 2.

The Rating Source with the highest Initial # Rated Games should be used as most accurate. The above should be applied to all New Players so that we no longer introduce unrated players!

**Rating Classes** – Players fall into 3 general rating classes: New (8 or less rated games played), Provisional (9 to 25 rated games played), and Established (26 or more rated games played).

**Initial Rating Updates** – For New Players, USCF applies a “Special” rating formula similar to what we use today for our first 5 unrated games. The main difference is that the rating is visible and used.



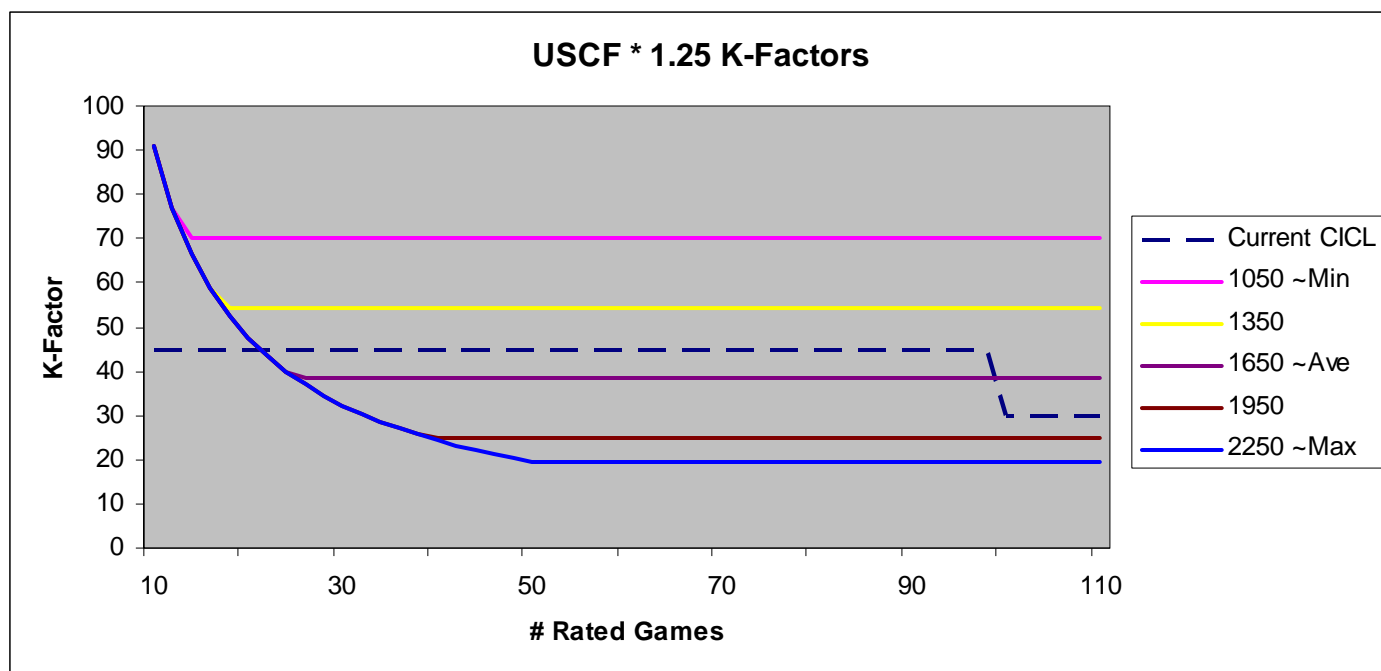
**Two Pass Approach** – One concern people have with ratings based on a small # of games is the potential inaccuracy. USCF improves on this somewhat by calculating an intermediate rating for a player's opponent based on the current game result, before using it to update the player's rating.

*For example, if an unrated 1600 strength Player A plays a 1600 and loses, his post-game rating would be 1200. If in his second game he plays a different 1600 and wins, that other 1600's rating would be adjusted down as if he lost to a 1600, rather than to a 1200, since Player A's intermediate rating would go up from 1200 to 1600 (having just beat a 1600).*

This two-pass approach doesn't solve everything (it adds 1 game of accuracy), but if you combine it with an Initial Rating (which also brings 1 or more games of accuracy), it should be sufficient for most purposes. Any remaining impact to opponent's ratings will dissipate as they play additional games.

**Standard Rating Formula** – For Provisional and Established Players, USCF applies a "Standard" rating formula. This formula is similar to today's:  $K\text{-factor} * (\text{Actual Result} - \text{Expected Result})$ , where K-Factor = the maximum # of rating points that can be won or lost in a single game. The main difference is USCF uses a K-factor that varies gradually based on a Player's Rating and # of Rated Games, whereas CICL uses one that varies abruptly on # Rated Games (our "Centurian Factor").

Below is a chart which shows how the K-factors behave in comparison. The dotted line represents our Current CICL K-factors. The K-factor starts at 45, decreases to 30 at 100 rated games, and decreases further to 20 at 300 rated games (too far to the right to show). The solid lines represent example USCF K-factors for various ratings. The blue curve is used by players of all rating levels until that curve intersects the flat line which represents their specific rating.



While on the blue curve, the small # of rated games dominates in determining the K-factor. After the # rated games increases, the player's rating instead dominates (quicker for lower rated players) and they move onto a colored line. While only a few lines are shown, these are just examples and there is actually one line per rating, with players moving up and down as their rating changes.

It should be noted that I adjusted the USCF K-factors up 25% to allow for faster rating adjustments. This was done to allow more rapid adjustments given relatively few games played per year, and to be more inline with CICL's historical factors (though still quite different on an individual basis).

*As an example, if Player A (a 1650 player with 50 rated games) beats Player B (a 1650 player with 14 rated games) the following would occur. Player A's intermediate rating would be his Initial Rating + K-Factor \* (Actual Result – Expected Result), or  $1650 + 39 * (1 - 0.5) = 1669.5$ . Player B's intermediate rating would be  $1650 + 67 * (0 - 0.5) = 1616.5$ . Player A's final rating is then calculated as  $1650 + 39 * (1 - 0.541875) = 1667.866875$  which is rounded away from his initial rating to 1668. Player B's final rating is then  $1650 + 67 * (0 - 0.4878125) = 1617.3165625$  rounded away to 1617. Note that the expected value changes between first pass and second due to the intermediate opponent rating.*

**Bonus Factors** – For events with  $\geq 3$  games, USCF awards bonus rating points to players whose performances are significantly better than expected. Most CICL matches are single game events, so these do not apply. But for the end of season Playoff Tournament (3 games), and the Individual Tournament (3 to 4 games), we will apply these as warranted. This is a great opportunity for Players who have improved, or are under-rated for some reason, to more rapidly raise their rating!

## Downstream Impacts

Making the above fundamental change has a downstream impact on currently Unrated Players, Rating Caps, our MIP formula, some MVP formulas, and our Biggest Upset formulas.

**Unrated Players** – Before the first Rating Report is published, the plan is to calculate a rating for each unrated player using the method described above. The # of rated games will be recalculated for these players, since all previously played unrated games will be used in determining this rating.

**Rating Caps** – Ratings Caps will no longer need to use Estimated Ratings directly, as there will be no unrated players. Inaccuracies previously seen by using a static Estimated Rating will disappear, but it may be more challenging for captains to keep up with changing New Player ratings.

**MIP formula** – Provisional and Established Players *at season start* will be eligible to win the MIP award that season. New Players ( $\leq 8$  rated games), still establishing a base rating, are not eligible.

Note: next year we may want to consider a separate MIP award for Established players, as the higher K-factors and reduced experience of Provisional players will make it very difficult for one to win, but let's defer that for now.

**MVP formula** – Some MVP formulas use Rating Improvement as a factor. For those MVP formulas, only Provisional and Established Players *at season start* should be considered.

**Biggest Player Upset** - Only games where both the Player and his Opponent are Provisional or Established *at game start* will be eligible to win this award. New Players become eligible after they've reached 9 rated games (become Provisional) even if this occurs mid-season.

**Biggest Team Upset** – All Regular Season Matches will be eligible, regardless of whether its Players are New ( $\leq 8$  rated games), Provisional (9 to 25), or Established ( $\geq 26$  rates games).

### **Team Lineup Change**

While implementing the calculation of a Team's Lineup Rating, I was more easily able to implement a better algorithm for forfeits than the one we voted in. The gist of it is this:

**Team Lineup Rating** - When a team forfeits a board, the opponent's rating minus 400 will be used for that board's rating (if there is an opponent), rather than the unrated formula minus 400 / 6. This is more accurate, in that it makes the expected value of that board exactly equal what it should be, rather than an approximation of what it should be (as the unrated formula minus 400 / 6 does).

**Biggest Team Upset** – With this change, we can remove the caviate on the # of board forfeits, since more than 1 forfeit at Opponent's Rating – 400 would make it impossible for an opponent team to win. Also, with unrated players being eliminated, we can remove the # of unrated players caviate as well.

**Editor's Note\*** As of September 24, 2010, the proposal for the new ratings system was passed with a vote of 18-0.

## “What CICL players did on their summer vacation.”

By Tony Jasitis, edited by Patrice Connelly

The CICL vs Warren Junior Scholars chess match was a very successful event Saturday, July 24<sup>th</sup>, despite a strong challenge from the weather, with many flooded streets and expressways.

Twelve boards committed to play in the match, and all 12 boards were played, although reserve players needed to be tapped in a couple of cases. Special mention goes to Sonny Mata of BCBS, who endured being stuck on I-294 for 1.5 hours, before managing to come in to provide CICL the margin of victory (which is also kind thanks to his opponent not wishing to claim a forfeit under the circumstances).

The success of the match is not to be measured by the score, but by the quality experience for everyone, from the Juniors being challenged by the much more experienced and higher-rated adults, to the adults encountering eye-opening strength from the Juniors, who were outrated by an average of 143 points per board, to the instructive post-game analysis by GM Mesgen Amanov, NM Eric Rosen, and NM Steve Tennant.



**Board 10- Matt Vail vs. Vincent Do (Photos courtesy of Tony Jasitis)**

Both sides showed great commitment to the match, with two CICL's needing to defer to backup players only because of flooding at home.

Many thanks to Matt Vail, for arranging for the Wheaton Library space, to Andi Rosen Jian Li for their tireless efforts with the Juniors Program, and to the parents of the juniors, who were sweet and supportive. Thanks also to everyone who made the time to participate, and Wayne Ellice and Chuck Dobrovolny, who were intending to play until they were checkmated by the weather that morning.

Below are the individual board results of the Juniors 5.5 @ CICL 6.5 result. The Juniors had White on the odd boards. Almost all of the games were close and hard-fought. Game scores will be published.

Something sobering not reflected in the numbers is the age of the Juniors. It is one thing to say they were outrated by

143 points per board, even discounting that they are rapidly improving and therefore underrated. It is another to be present at the match to see the age and size of the juniors. It was a bit comical to see James Wei, not much taller than the playing table, walking up to play the tallest person in the room, our board 3 Matthias Phau (the junior won, too!)

CICL	Junior	rating diff
-----	-----	-----
1. Tennant,Steve 2222	0.5 - 0.5 Kogen,Jonathan	2032 190
2. Hart,Vince 2151	0.5 - 0.5 Ulrich,Tommy	2062 89
3. Pfau,Matthias 2095	0.0 - 1.0 Wei,James	1878 217
4. Thomson,Jim 1981	0.0 - 1.0 Bian,Alex	1855 126
5. Friske,Tom 1969	1.0 - 0.0 Li,Zhaozhi(George)	1803 166
6. Jasaitis,Tony 1927	1.0 - 0.0 Curcio,Jack	1622 305 *
7. Franek,Marty 1728	0.0 - 1.0 Bian,Victoria	1573 155
8. Ghaibeh,Ayman 1704	1.0 - 0.0 Stevens,Matthew	1593 111
9. Hughes,Norm 1612	0.0 - 1.0 Xiao,Jack	1505 107
10. Vail,Matt 1585	1.0 - 0.0 Do,Vincent	1530 55
11. Furtner,Fred 1492	0.5 - 0.5 Peng,David	1445 47
12. Mata,Sonny 1366	1.0 - 0.0 Daniels,Jason	1215 151
---	---	
6.5	5.5	

\* This difference exceeded the target for the match (100-200 pts), but was necessary due to last-minute substitutions.

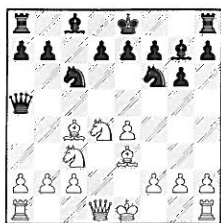
**Board 4 - Alex Bian vs Jim Thomson (CICL)  
with Dad (Mike Bian, Walgreens Forks)  
watching over his son.**



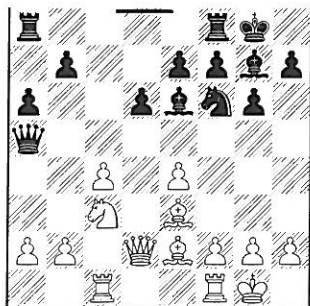
## BOARD 1

Kogen, Jonathan -  
Tennant, Steve

[B36]

1.e4 c5 2.Nf3 Nc6 3.d4 cxd4 4.Nxd4  
g6Black hasn't threatened e4, so White  
has time for 5.c4I'm still impressed with  
5.Nc3 Bg7 6.Be3 Nf6 7.Bc4 Qa5

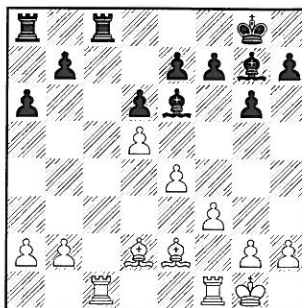
as Steve played in this year's  
playoffs. Black had some significant  
tactics against the center by  
deflecting the White Queen from  
protection of d4 (making ..Nxe4  
possible).

5...Nf6 6.Nc3 d6 7.Be2 Nxd4 8.Qxd4  
Bg7 9.Be3 0-0 10.Qd2 Qa5 11.0-0  
Be6 12.Rac1 a6

So far, so book. 13.f3

But here, 13.b3 appears to be the  
preferred move13...Rfc8 14.Nd5 This leads to mass  
exchanges and kills the game. [14.b3  
still] 14...Qxd2 15.Bxd2 Nxd5

16.cxd5



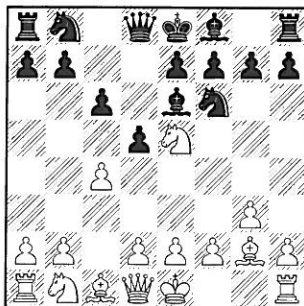
16...Bd7

16...Bd4+ 17.Kh1 Bd7 18.Bc3 isn't  
much different17.Bc3 Bxc3 18.bxc3 Rc5 19.c4  
Rac8 20.Rfd1 b5 21.Rd4 a5 22.Kf2  
e5 23.dxe6 Bxe6 24.Rxd6 Bxc4  
25.Bxc4 Rxc4 26.Rxc4 Rxc4 27.Rd2  
Rc3 28.Rd5 Rc2+ 29.Kg3 Rb2 30.a4  
bxa4 31.Rxa5 Ra2 32.h4 h5 33.Kf4  
Rxc2 34.Rxa4 Kg7 35.Ra7 Rh2  
1/2-1/2

## BOARD 2

Hart, Vince -  
Ulrich, Tommy

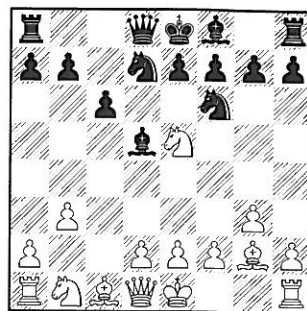
[A11]

1.c4 c6 2.g3 d5 3.Bg2 Nf6 4.Nf3  
Bg4 5.Ne5 Be6

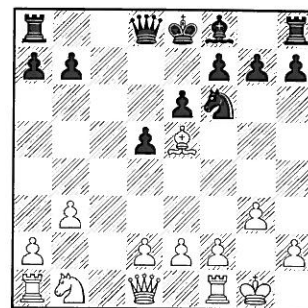
6.b3

6.cxd5 Bxd5 7.Nf3 is usually played

6...Nbd7 7.cxd5 Bxd5



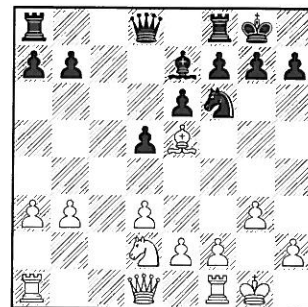
8.Bxd5

8.Nf3 keeps the King's fianchetto in  
place8...cxd5 9.Bb2 Nxe5 10.Bxe5 e6  
11.0-0

11...Bb4

Rybka suggests 11...h5 logically  
going after the weakened King  
position

12.a3 Be7 13.d3 0-0 14.Nd2

14...Qb6 15.Nf3 Rfc8 16.Qd2 Nd7  
17.Bd4 Bc5 18.Qb2 Bxd4 19.Nxd4  
Rc7 20.Rfc1 Rac8 21.Rxc7 Qxc7



22.b4 a6 23.Nb3 Qc3 24.Rb1 Qxb2  
25.Rxb2 Rc3 26.Nc5 Nxc5 ½-½

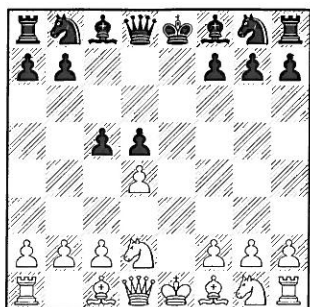
## BOARD 3

Wei, James –  
Pfau, Matthias

[C09]

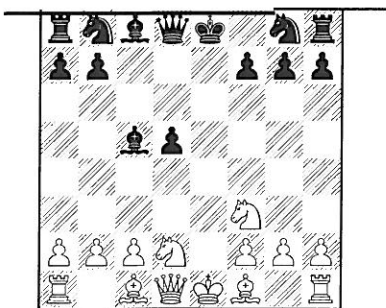
[Notes by Matthias Pfau]

1.e4 e6 2.d4 d5 3.Nd2 c5 4.exd5  
exd5



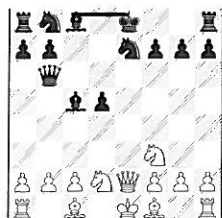
5.dxc5 [Book continuation gives  
5.Ngf3 Nc6]

5...Bxc5 6.Ngf3



6...Ne7

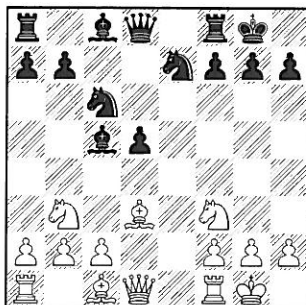
[tgf A] 6...Qb6 forcing a reply that  
delays White's Kingside 7.Qe2+ Ne7



8.Nb3 idea Nxc5 or Bg5;

tgf B) 6...Nc6 starts building  
possession of the key d4 square-- the  
IQP gains options if it can be  
advanced and traded away. tgf]

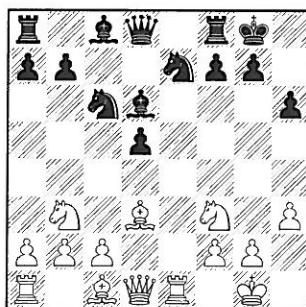
7.Bd3 0-0 8.0-0 Nbc6 9.Nb3



9...Bd6

[tgf 9...Bb6 maintains d4]

10.Re1 h6 [10...Re8 is stronger]  
11.h3

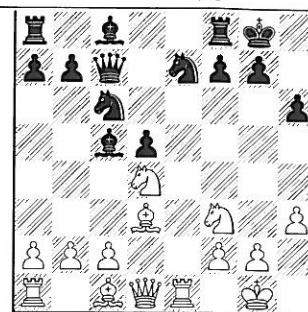


This move is also unnecessary: better  
11.Nbd4.

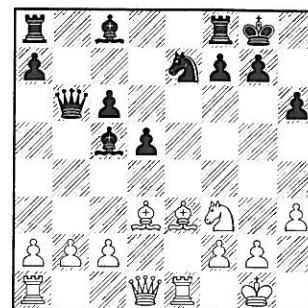
11...Qc7 Gives White a substantial  
advantage

11...Nf5 would continue the fight for  
control of d4

12.Nbd4 Bc5

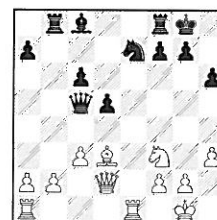


13.Be3 Qb6 14.Nxc6 bxc6



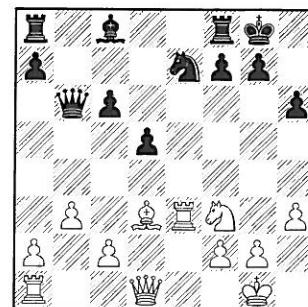
15.b3

15.Bxc5 Qxc5 16.Qd2 Rb8 17.c3



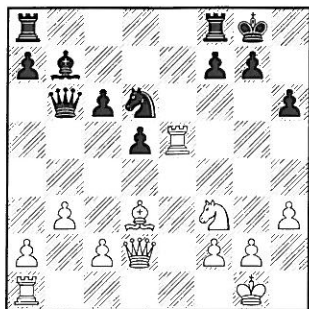
17...Qd6 18.b4

15...Bxe3 16.Rxe3



16...Nf5 17.Re5 Nd6 18.Qd2 Bb7

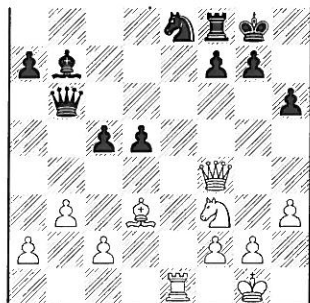




19.Rae1 c5 20.Qf4 Rae8

The exchanges favor White, and the computer evaluation jumps to +1.3 .

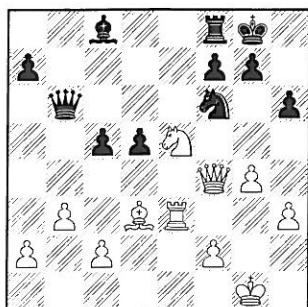
21.Rxe8 Nxe8



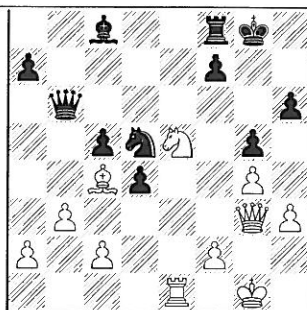
22.Ne5

The correct way of increasing the advantage is 22.Re7

22...Nf6 23.Re3 Bc8 24.g4



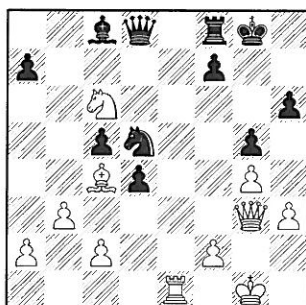
24...g5 25.Qg3 d4 26.Re1 Nd5  
27.Bc4



27...Qd8? A blunder, originally seen, but forgot. I was just too tired.

Black should just continue with the original idea-- 27...Nf4 28.Nd3 Ng6 is even, according to the computer

28.Nc6



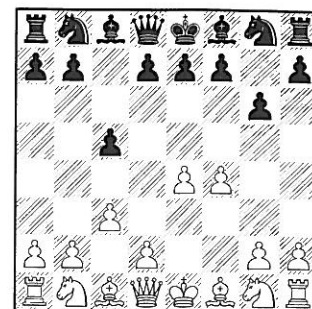
**BLACK RESIGNED** as Black's Queen hangs while White threatens Bxd5, Ne7+ forking 1-0

#### BOARD 4

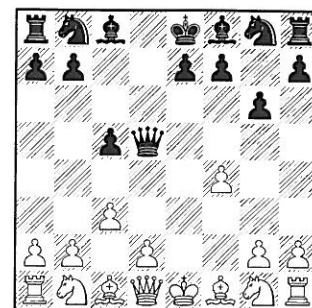
Thomson, Jim –  
Bian, Alex

[B22]

1.e4 c5 2.c3 g6 3.f4 an odd move, apparently



3...d5 very good, Black immediately gets a center break 4.exd5 Qxd5

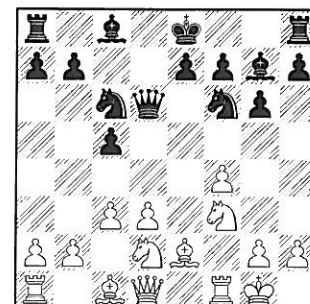


One of those exceptions where the Queen is perfectly happy in the center

5.Be2 Qd6

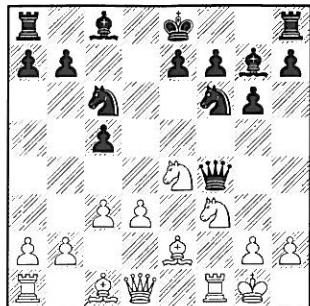
5...Bg7 continues to hold d4 6.Bf3 only gets in the Knight's way

6.Nf3 Bg7 [Not 6...Qxf4 wastes time]  
7.0-0 Nc6 8.d3 Nf6 9.Nbd2



With Ne4 coming, proof says Queen was better-placed at d5.

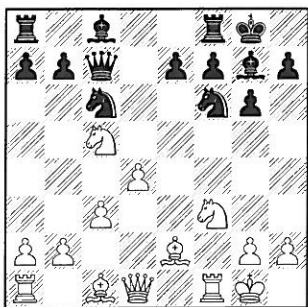
9...Qxf4 10.Ne4



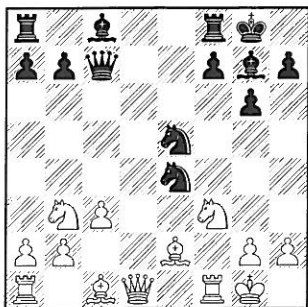
10...Qc7

10...Qf5 11.Nh4 Qd5 has just scattered White's position 12.c4 makes a huge hole at d4

11.Nxc5 0-0 12.d4



12...e5 13.dxe5 Nxe5 discovering on loose c5-Knight 14.Nb3 White has cleared d4 for a centralized Knight, but it's hard to see any threat it can make from there. 14...Ne4



Likewise, and it hangs too. 15.Bf4

15.Nbd4 or 15.Qe1 idea Qh4 hitting e4 and h6

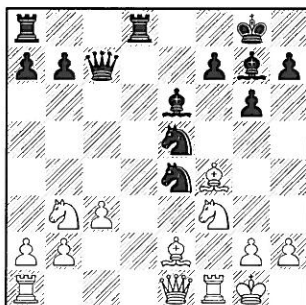
15...Rd8 only sends Queen where she wants to go !

15...Qb6+ so pretty much forced would be 16.Nfd4 a5.

If after Qb6+, 16.Kh1 Nxf3 (16...Nf2+? 17.Rxf2 Qxf2 18.Bxe5)

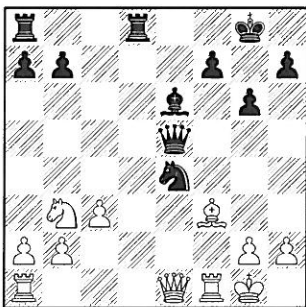
then 17.Bxf3 Nf2+ wins the exchange

16.Qe1 Be6

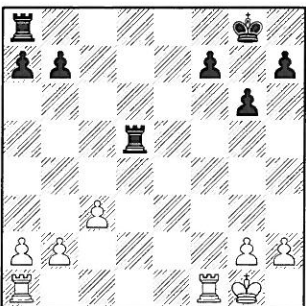


Now Qb6+ is actually in the works

17.Nxe5 Bxe5 18.Bxe5 Qxe5 19.Bf3



19...Bxb3 20.Qxe4 Qxe4 21.Bxe4 Bd5 22.Bxd5 Rxd5



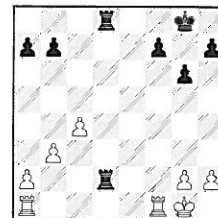
All these trades just strikes me as lazy. The only hope is that Black's Rook is more active.

23.Rf2 Typical endgame plan: secure the base, centralize the King, make a passer. Generally, the Kingside Pawns are slower (being around their King), so White would expect to make a passer first.

23...Rad8 24.Rc2 "Rook behind passer", but maybe too early as it is also a bit passive.

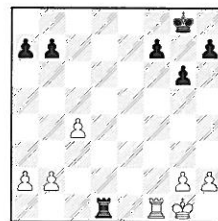
Something like 24.c4 would allow a quick draw 24...Rd1+ 25.Rxd1

(Certainly not 25.Rf1 R1d2 26.b3



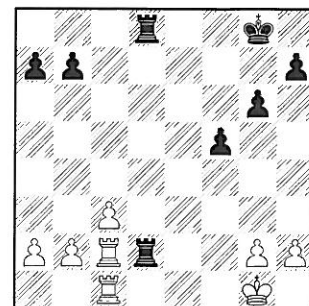
26...Rc2 and doubles on the 2nd or wins Pa2.)

25...Rxd1+ 26.Rf1



26...Rd2 27.Rf2 Rd1+

24...Rd2 25.Rac1 f5



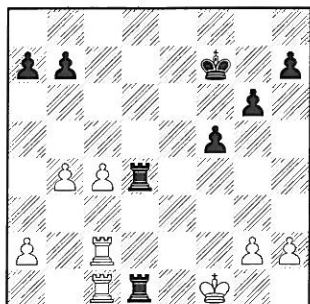
26.c4

26.Kf1 is more useful. White doesn't want to advance his majority until the King can help defend it.

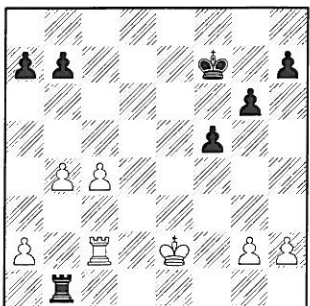
This is the last I saw "live" as this was one of the last games to finish. I imagine some kind of change in mindset occurred here, but, Jim was doing some tough calculating!

26...Kf7 27.b4 Advancing the Pawns makes them easier to attack.

27...R8d4 28.Kf1 Rd1+



29.Rxd1? [29.Ke2 is required]  
29...Rxd1+ 30.Ke2 Rb1



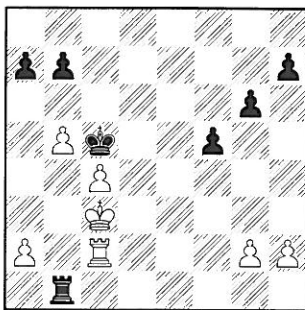
31.b5

The potential passer is now permanently backward. But there's no choice, in reply to 31 a3 simply ..Rb3

31...Ke6 32.Kd3 Kd6 33.Kc3

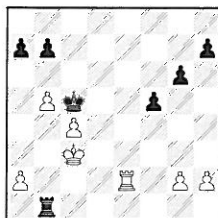
White appears to be able to defend the backward Pawn with Kb3 or Kd3 depending on where the Black Rook goes. But in the meantime, his Rook is still passive.

33...Kc5



34.a3 I guess to stop ..Rb4, but not seeing the problem with it. But White is running out of good moves.

Oh, there's an issue if immediately activating the Rook ! 34.Re2?

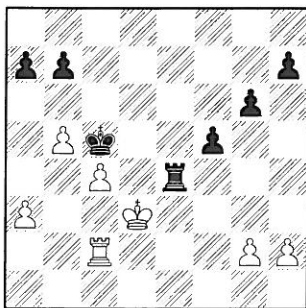


34...Rc1+

But, still, 34 a3 isn't part of the issue here: 34...Rb4? 35.Re5+ Kd6  
36.Rd5+ wins the Rook

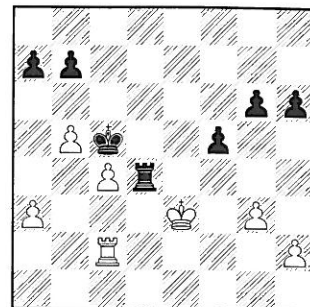
35.Kb3 Rxc4 36.Re7 Rb4+ 37.Kc3  
Rxb5 38.Rxh7 Black is still better

34...Re1 35.Kd2? [Kc3! but Black will create an outside passer on the Kingside] Re4! and that's the game !  
36.Kd3



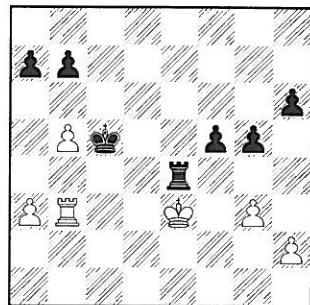
36...h6 [36...Rd4+ could be played

immediately] 37.g3 Rd4+ 38.Ke3



38...g5 no need to hurry the capture at c4

39.Rc3 Rxc4 40.Rb3 Re4+



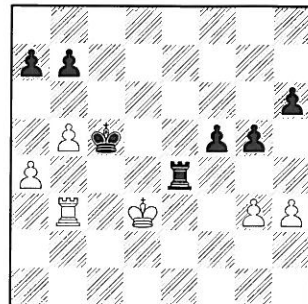
41.Kd3

No better is 41.Kf3 Ra4 idea Ra5

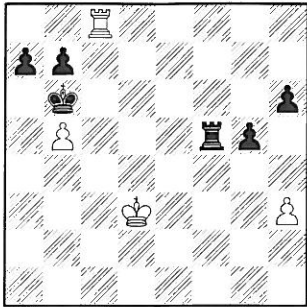
41...Re6

41...Ra4 idea Ra5 42.Rc3+ Kd6  
(42...Kd5 43.Rc7 Rxa3+ 44.Kd2 b6  
45.Rh7)

42.h3 Rb6 43.a4 Rd6+ 44.Ke3 Re6+  
45.Kd3 Re4



46.Rc3+ Kb6 47.g4 Rxa4 48.gxf5  
Rf4 49.Rc8 Rxf5



50.Ke4 Rxb5 51.Rh8 Rb4+ 52.Kd3  
0-1

### BOARD 5

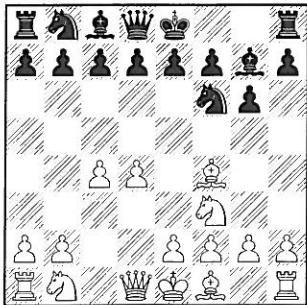
Li, George –  
Friske, Tom

[D93]

1.d4 Nf6 2.c4 g6 3.Nf3

3.Nc3 d5 4.Nf3 is a normal Gruenfeld  
order

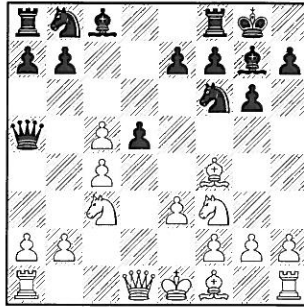
3...Bg7 4.Bf4



4...d5

Gives up e5, but holds e4. I decided  
not to waste time finding some trick to  
take advantage of this move order. I  
guess 5. cd would now gain Black a  
tempo with the Nxd5 hit on loose  
Bishop.

5.Nc3 0-0 6.e3 c5 7.dxc5 Qa5



So it all transposes to a normal Bf4  
Gruenfeld position.

8.Bd3

My whole point for playing normal  
moves was to see how deep his  
knowledge is (couldn't believe it  
would go too far). So far he has  
played simple moves, but here Black  
already has a real threat -- increasing  
pressure to c3 with ..Ne4. His move  
doesn't solve the problem and also  
gives Black a free tempo.

White could immediately release the  
pin and open possibilities against the  
loose Queen with 8.Qd2 which was  
played against me during the last  
season, something not often seen.

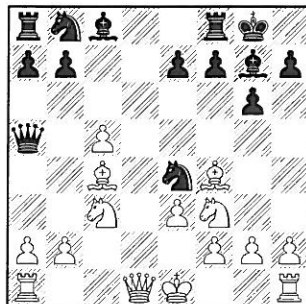
But there's 8.Rc1, the book move

Also examined was 8.cxd5 Nxd5  
9.Qxd5 Bxc3+ 10.bxc3 Qxc3+ to win  
the exchange

8...dxc4 9.Bxc4

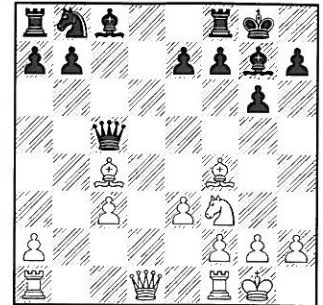
9.Bc2 would hold e4, but the c4-Pawn  
wouldn't be easily re-captured

9...Ne4



The basic problem Black aims for in  
this position, c3 is won.

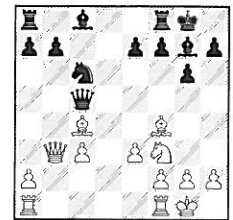
10.0-0 Nxc3 11.bxc3 Qxc5



Attacking the loose Bishop, gaining a  
tempo.

12.Bb3

12.Qb3 Nc6



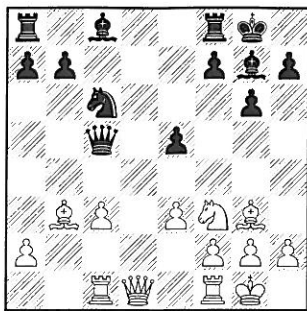
and the threat of Na5 is troublesome  
13.Bxf7+ Rxf7 14.Ng5 e6

12...Nc6

There's no reason to capture the  
hanging Pawn-- the Queen is not the  
right piece to do it, she'll lose a  
couple moves. I'd like to have the  
half-open file controlled by a Rook or  
two, and the Pawn blocks him from  
contesting it.

13.Rc1 The Rook has no future here  
and Black gains another tempo.  
13...e5 taking d4 away from the  
Knight and making a safe retreat for  
the Queen at e7. There is also the  
theme of e5-e4 creating an outpost at  
d3. Of course, hitting the Bishop  
means it's a free move, a third tempo-  
gainer. 14.Bg3



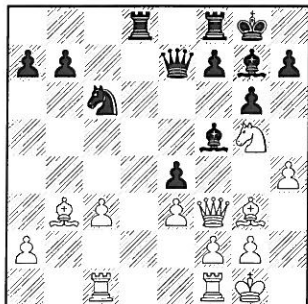
**14...Bf5**

I wasn't sure if a better move was 14...Rd8 controlling d5 (since a common technique for a lower-rated player is to trade pieces). My move was chosen to take the best square (c2) away from the Queen, while also controlling e4 (continuing to solidify the d3 outpost).

**15.Ng5** hitting f7, of course, and possibly Qf3 causes a pin of the f5-Bishop

I was expecting 15.Qe2 idea e4

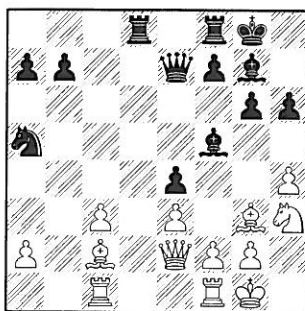
**15...Rad8 16.Qf3** idea e4 **16...Qe7!** White has to decide what to do about the hanging Knight, demonstrating that Ng5 was premature. **17.h4 e4**



Black's last move also kept e4 under control. Further idea now is Ne5-d3.

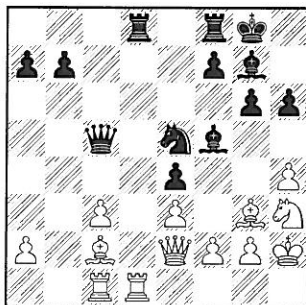
**18.Qe2 Na5** couldn't resist chasing off his best piece

**19.Bc2 h6 20.Nh3**



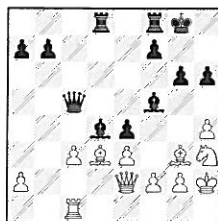
**20...Qc5** controlling c4 and b5 with idea Nc4, an always-advantageous place for a Knight in Gruenfeld play.

**21.Kh2** White doesn't bother to find a threat **21...Nc4 22.Rfd1 Ne5**



introducing ..Bg4 threat **23.Rd4 Nd3** discovering on one Rook, attacking the other **24.Rb1**

White gains nothing from 24.Bxd3 Bxd4

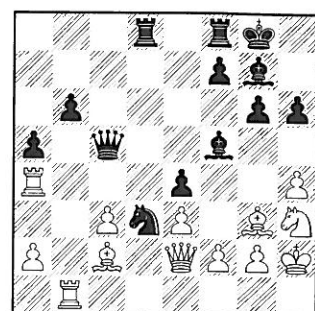


25.exd4 (25.cxd4? Qxc1) 25...exd3

**24...b6**

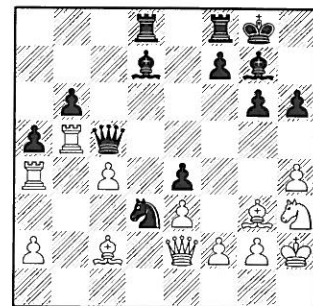
No need to rush or give his Rook scope and I value my g7-Bishop higher than his Rook.

**25.Ra4 a5**



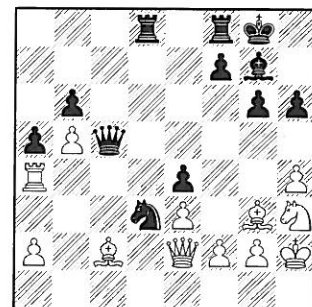
**26.c4** White saves the Pawn and keeps its b6 counterpart backward, but I immediately realized the a4-Rook has no moves. It thus didn't take long to find my reply...

**26...Bd7 27.Rb5**



Without much thought, but a clever idea. Capturing this Rook returns the other to threats against e4.

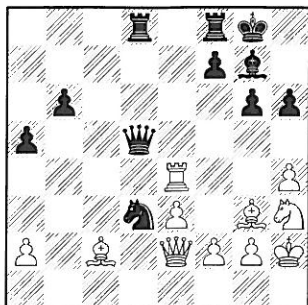
**27...Bxb5 28.cxb5**

**28...Qxb5**

I'd originally intended to protect the e4-Pawn (like with f7-f5), but a little calculation showed that my Queenside pawns can go mobile with this capture.

28...f5 was planned, but I refused to give him the nice a2-g8 diagonal.

29.Rxe4 Qd5

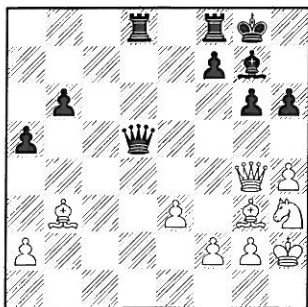


The keymove found previously- White is once again forced to defend a loose piece. Black hopes for b5 and a4 to permanently shut out the c2-Bishop.

30.Rg4 Ne5 just toying with him--his Rook really has no good square  
31.Bb3 played immediately.

After game, he simply said he wanted to pressure my King. But it is a pipe dream (that almost came true).

31...Nxb3 32.Qxb3

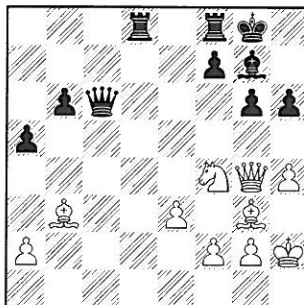


Of course, Qxg6 and Nf4-h5 is his desire.

32...Qc6! defending g6, controlling the light squares (so his Queen can't invade), and also guarding against a Bc7 fork.

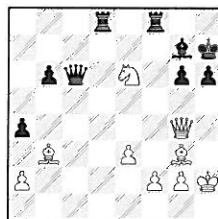
Now coming, 33.Ba4 b5 is simple enough, so he went

33.Nf4



33...a4! Chasing off his Bishop from b3 for the second time. Would've given 2 exclaims if I'd actually calculated the coming pseudo-sac

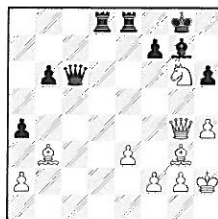
More solid is 33...Kh7 34.h5 a4  
35.hxg6+ fxg6 36.Ne6



36...axb3 37.Nxf8+ Bxf8 38.axb3

34.Nxg6 axb3 only considering Nxg8

Had I seen his reply, I might have found 34...Rfe8



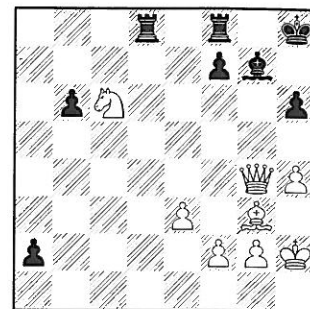
35.Be5 Rxe5

(35...Bxe5+?? 36.Nxe5+;

35...axb3?? 36.Ne7+ idea Qxg7# or Nxc6)

36.Nxe5 Qc7 37.Bxf7+ Kh8 wins a piece

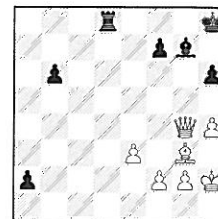
35.Ne7+ Fortunately, Black has just enough time to make a new Queen.  
35...Kh8 36.Nxc6 bxa2



As my teammate later pointed out, the decision to keep the g7-Bishop paid off. But, of course, capturing that d4-Rook way back when (at move 24) would've resulted in a completely different position.

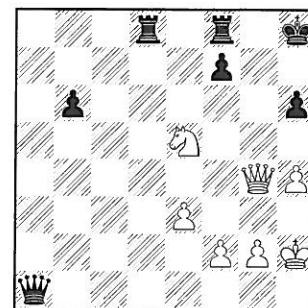
37.Be5

37.Nxd8? Rxd8



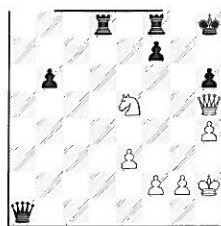
and then queens 38.Bc7 Rg8  
39.Bxb6?? Be5+ wins his Queen and mine is still resurrected

37...Bxe5+ 38.Nxe5 a1Q



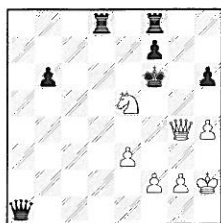
39.Qf5

I didn't take time to figure 39.Qh5!



A) 39...Kh7 40.Qf5+ is perpetual

B) So 39...Kg7 40.Qg4+ and here I guess Black has to run... 40...Kf6



If instead 40...Kh7 41.Qf5+ Kg8 (41...Kh8 42.Nxf7+) 42.Qg4+ Kh8 43.Qh5 Kh7 is the draw from Line A.

41.Qf4+  
(41.Nd7+? Rxd7 42.Qxd7 Qe5+  
43.g3 Qe6)

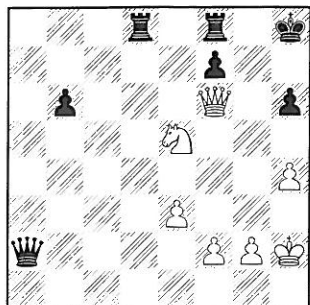
41...Ke6 idea Qxe5

**B1)** 42.Qxh6+ f6 (42...Kxe5?? 43.Qg7+ Ke6 44.Qxa1)

**B2)** 42.Qg4+ Kxe5

**B3)** 42.Nc6 Kd7 43.Nxd8 Kxd8 (43...Rxd8 44.Qxf7+) 44.Qd6+ Ke8 45.Qb8+ Ke7 46.Qc7+ Kf6 47.Qxb6+ Kg7—

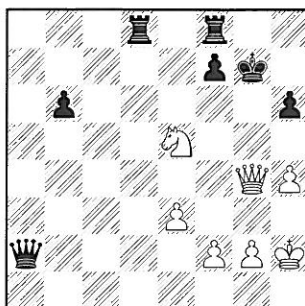
39...Qa2 once my Queen reaches e6, White has absolutely nothing.  
40.Qf6+



40...Kh7

I started to play 40...Kg8 to avoid checks, but remembered that a check is only a check! I can allow a couple checks and hold the h6-Pawn.

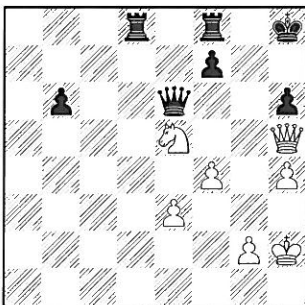
41.Qf5+ Kg7 42.Qg4+



Now the Queen isn't attacking the h6-Pawn, so it's time to stop allowing checks.

42...Kh8 43.Qh5 Bringing us back to move 39, but since then Black has improved his Queen.

43...Qe6 44.f4



Assuming he is going to make a desperate rush with g4-5. 44...Rd2

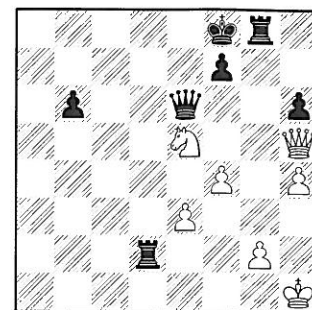
Only now, at home, realize 44...Rd5 causes an immediate crisis

45.Kh1

Not 45.Nf3 Rd5 trapping the Queen!  
46.Ne5 Rxe5! (46...f6? 47.Qxh6+)

45...Kg7 I was happy to find a few-move reorganization that brought all pieces to bear. 46.Kh2 Rg8 47.Kh1

Kf8



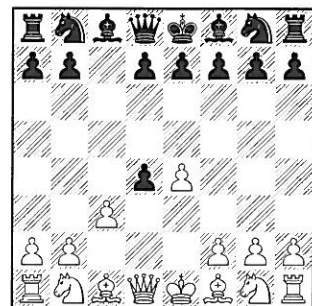
WHITE RESIGNED, he has no moves. 48.g4?? Qd5+  
0-1

## BOARD 6

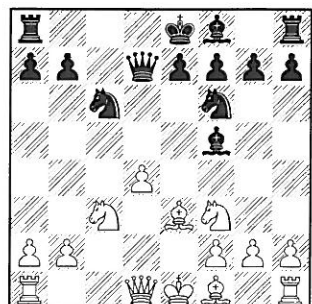
Jasaitis, Tony –  
Curcio, Jack

[B22]

1.e4 c5 2.d4 cxd4 3.c3



3...d5 4.exd5 Qxd5 5.Nf3 Nc6 6.cxd4 Bf5 7.Nc3 Qd7 8.Be3 Nf6

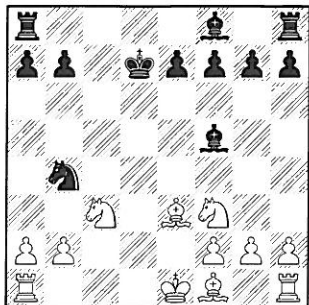




9.d5 Nxd5 (see his next move )

10.Qxd5 Nb4 Black's idea appears to be the fork at c2, but there's a couple problems with it. White's choice of gambit-play has probably had its psychological effect.

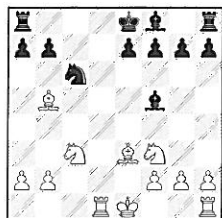
11.Qxd7+ Kxd7



12.Bb5+

My first reaction was 12.Rd1+ Kc8

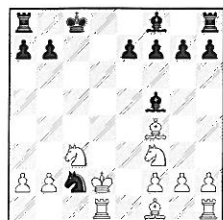
Easily bad is 12...Ke8 13.Bb5+ Nc6



14.Ne5

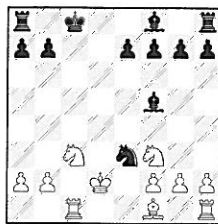
13.Rc1 setting up a discovery, but I guess Black can bail out with

(or maybe transpose moves, like 13.Bf4 Nc2+? 14.Kd2

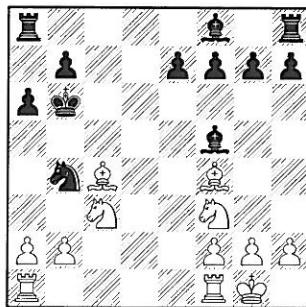


idea Rc1)

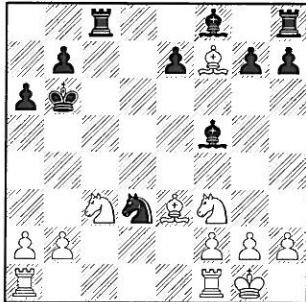
13...Nc2+ 14.Kd2 Nxe3



12...Kc7 13.0-0 Fork? What fork?  
13...a6 14.Bf4+ Kb6 15.Bc4



15...Rc8 16.Bxf7 Nd3 17.Be3+

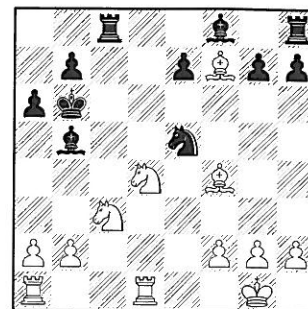


17...Ka5

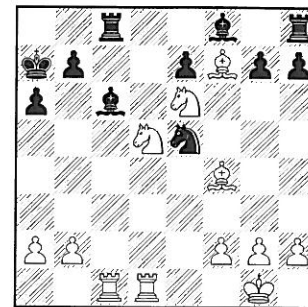
17...Kc6 18.Nd4+

18.Nd4 Ne5 Appears to be the recorded move, but White ignores the hanging Bishop

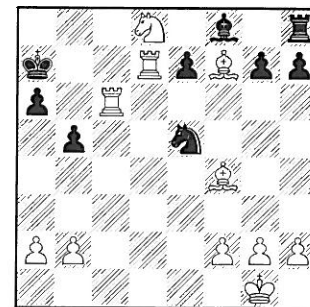
19.Bd2 Kb6 20.Bf4 Bd3 21.Rfd1 Bb5



22.Ne6 Ka7 23.Rac1 Bc6 24.Nd5



24...b5? weakening c6 and King  
25.Nb4 Kb7? [25...Bb7] 26.Nxc6 Rxc6 27.Nd8+ Ka8 28.Rxc6 Ka7 29.Rd7+



1-0

### BOARD 7

Bian, Victoria –  
Franek, Marty

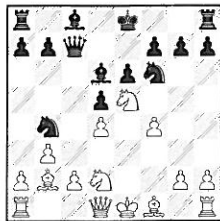
[D05]

1.d4 Nf6 2.Nf3 d5 3.e3 e6 4.Bd3

If White has decided to play the Zukertort, 4.b3 saves White the

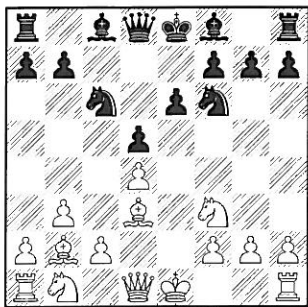
problems around move 10, by not placing the Bishop where ..Nb4 attacks it and saves a tempo.

Mirroring the game's moves, like,  
4...c5 5.Bb2 cxd4 6.exd4 Nc6 7.Nbd2  
Bd6 8.Ne5 Qc7 9.f4 Nb4



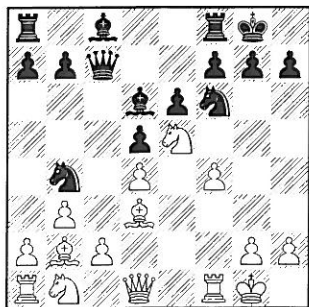
compared with game at move 10  
10.c4 idea a3

4...c5 5.b3 cxd4 6.exd4 Nc6 7.Bb2



The Zukertort Variation first controls e5, stopping Black's breaking the center structure.

7...Bd6 8.0-0 0-0 9.Ne5 Qc7 10.f4  
 maintaining e5 10...Nb4!

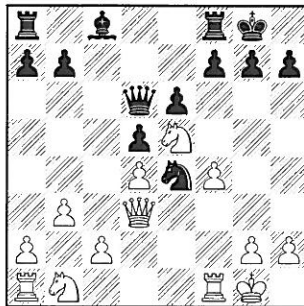


Black has played directly at the problem with White's move order.

11.Ba3

11.Be2? idea a3, saves the key attacking Bishop, which can eventually return to d3.. but allows 11...Nxc2

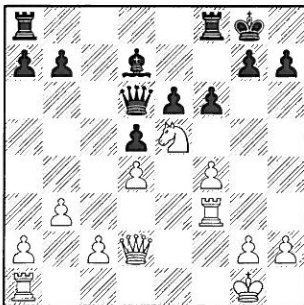
11...Nxd3 12.Bxd6 Qxd6 13.Qxd3  
Ne4



14.Nd2

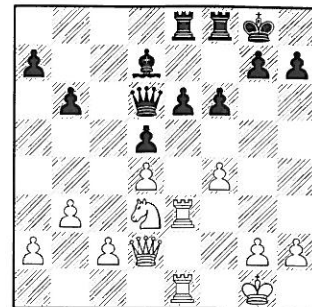
14.c4 could introduce Queen Pawn pressure with c5, b4, etc. A timely 14...a5, however would make that plan tough to gain an advantage

14...Nxd2 15.Qxd2 Bd7 16.Rf3 f6



Reminds me of the French game being played on board 9, except here Black can attack the center with Pawns.

17.Nd3 Rae8 18.Re1 b6 19.Rfe3



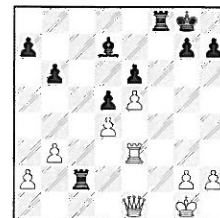
19...Qc7

No better is 19...Qa3 20.c4

20.R1e2 White is loading up for Qe1, f5 20...Rc8 nicely running away from the building pressure 21.Qe1 Qc3 22.Rd2

22.Ne5 Qxe3+  
 (22...Qc7 23.Nxd7 Qxd7 24.Rxe6)

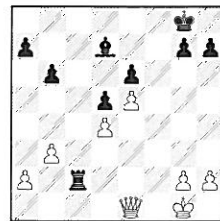
23.Rxe3 fxe5 24.fxe5 Rxc2



with idea Bb5, Rf1+ Was the goal of my Queen sac, but looks like Black's defense is too weak for a hyper-active Queen: 25.Re2 Rfc8

(25...Bb5? 26.Rxc2 Rf1+ 27.Qxf1 Bxf1 28.Kxf1+-)

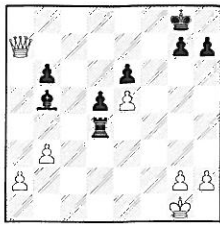
26.Rxc2 Rxc2



27.Qb1 Rd2? 28.Qc1!  
 (28.Qa1 Be8 idea Bg6)

28...Rxd4 29.Qc7 Bb5 (29...Be8 30.Qe7 Bf7 31.Qd8+ Be8 32.Qxe8#)

30.Qxa7



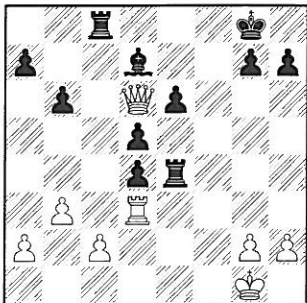
30...Rd1+ 31.Kf2 Rf1+ 32.Ke3 Rf5  
33.Qxb6 (33.Kd4 Rf4+ idea Re4)

33...Be8 34.Qxe6+ White wins  
(34.Qd8 Kf7)

22...Qxd4 23.Ne5 fxe5 24.Rxd4  
exd4 25.Rd3

25.Rf3 Rxc2 is similar to my Queen  
sac (22 Ne5), but Black has an extra  
Rook for defense

25...Rxf4 26.Qe5 Re4 27.Qd6!



An Altoid - surprisingly strong !  
Centralized Queens love scattered  
pieces.

27...Rxc2 abandoning the King,  
although here it's hard to believe he's  
in trouble

A) 27...Rd8 28.Qe7; It's admittedly  
hard for Black to concentrate his  
forces! I discarded the variation.

B) But Rybka tells me Black does fine  
with 27...Bb5

B1) 28.Rxd4! Rxd4? 29.Qxe6+ Kf8  
30.Qxc8+

B2) 28.Rf3 h6 (28...Re1+? 29.Kf2

Rybka loves Black after 29...Re2+

(29...Rf1+ 30.Kg3 Rxf3+ 31.Kxf3  
(31.gxf3 Kf7) 31...Rf8+ 32.Kg3 Rf6  
33.Qb8+ Kf7 34.Qxa7+ Kg6 35.Qxb6  
and the White passers will be  
troublesome)

30.Kg3 h6)

28.h3 Bb5

Attempting to block the backrank  
doesn't work: 28...Be8 29.Qd8

29.Rf3 Rc8 (29...Bf7?? 30.Qd8+)

29...Kf7 30.Rf3+

29.Qd8+ Kf7 30.Rf3+ Kg6 31.Rg3+  
Kf7

31...Kf5?? 32.Qg5#

32.Qh8 g6 33.Rf3+ Ke7 34.Qf8+  
Kd7 35.Rf7+

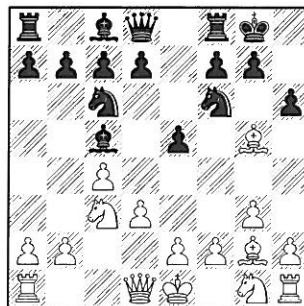
BLACK RESIGNED 1-0

## BOARD 8

Ghaibeh,Ayman -  
Stevens,Matthew

[A25]

1.c4 e5 2.Nc3 Nf6 3.g3 Bc5 4.Bg2  
0-0 5.d3 Nc6 6.Bg5 [6.Nf3; 6.e3]  
6...h6

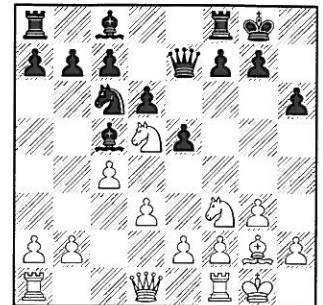


7.Bxf6 securing d5 7...Qxf6 8.Nf3  
Qe7 but coming Nd5 will hit the

Queen !

8...Ne7 idea c6,d5 9.Ne4;  
Or 8...Qd8

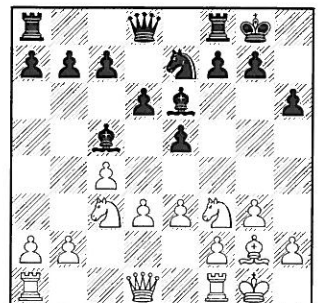
9.0-0 d6 10.Nd5



10...Qd8 11.e3 Be6 12.Nc3

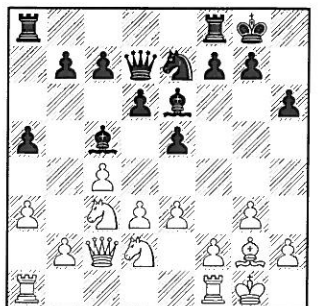
Just sit back and watch how White  
builds using his d5 outpost.

12...Ne7

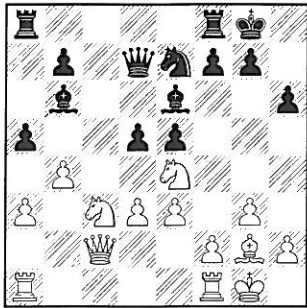


If his idea is to play d6-d5, now Pe5  
needs protection.

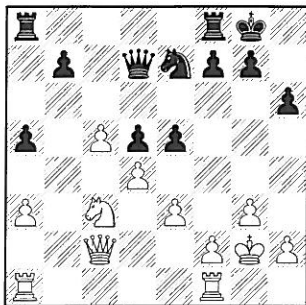
13.Qc2 [13.d4] 13...Qd7 14.a3 a5  
15.Nd2



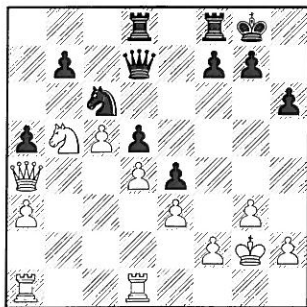
15...c6 [15...d5] 16.Nde4 Bb6 17.b4  
d5 18.cxd5 cxd5



19.Nc5 Bxc5 20.bxc5 Bh3 21.d4  
Bxg2 22.Kxg2

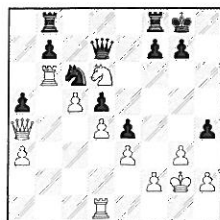


22...Nc6 23.Qa4 Rad8 24.Rfd1  
[24.Rab1] 24...e4 25.Nb5



25...h5 26.Nd6 h4 27.Qb3

27.Rab1 Rb8 28.Rb6

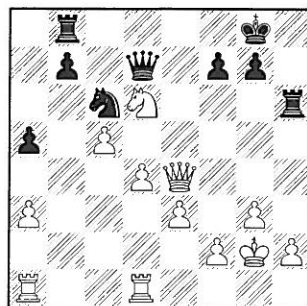


28...h3+ 29.Kg1 Qg4 idea Qf3-g2#

27...Rb8 28.Qxd5



28...Rfe8 29.Qh5 Re6 30.Qxh4 Rh6  
31.Qxe4



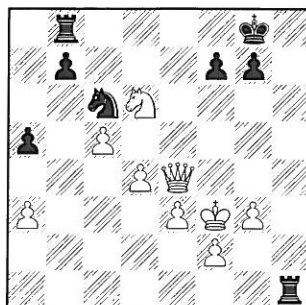
31...Qh3+ 32.Kf3 Qxh2?

32...Qh5+ 33.g4

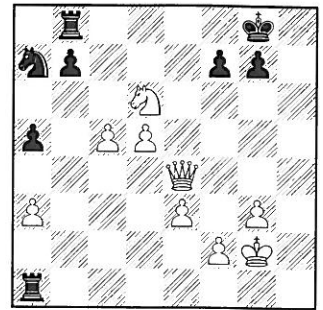
(33.Qg4?? Rf6+;  
33.Kg2 Qh3+)

33...Qh3+ 34.Ke2

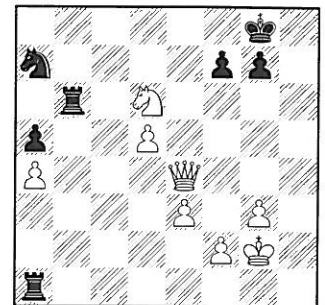
33.Rh1 Qxh1+ 34.Rxh1 Rxh1



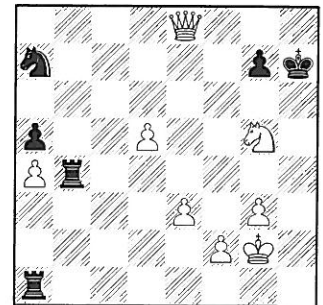
35.Kg2 Ra1 36.d5 Na7



37.a4 [37.Qe7] 37...b5 38.cxb6 Rxb6



39.Qe8+ Kh7 40.Nxf7 Rb4 41.Ng5+



41...Kh6 42.Qe6+! Kxg5 43.Qe5+  
1-0

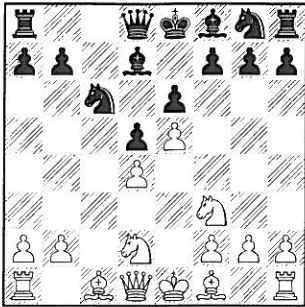
### BOARD 9

Xiao, Jack –  
Hughes, Norm

[C02]

1.e4 e6 2.d4 d5 3.Nd2 c5 [3...Be7;  
3...Nf6] 4.c3 Nc6 [4...cxd4 is also  
played] 5.Ngf3 [5.Bb5; 5.exd5]  
5...Bd7 too early to place the Bishop,

blocks the Queen from d5 duties  
[5...Nf6; 5...cxd4] **6.e5** [6.exd5]  
**6...cxd4 7.cxd4**

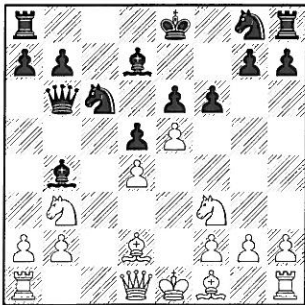


**7...f6** A unique move that we've been studying. Black either gets f6 for his Knight or shields his weak Pawn at e6. Note that Bd7 has added nothing to this position.

**8.Nb3** Where is this guy headed ?  
**8...Bb4+**

**8...Qc7** hits e5, which White hasn't rushed to defend.

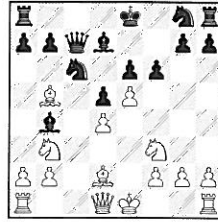
**9.Bd2 Qb6**



White has played a Tarrasch variation like an Advanced, so Black plays his preferred moves in it.

White's Queenside Knight is not on its normal path (at c3), but does help hold d4 here (while blocking Black's attack to b2).

**A)** The e5 square should be his target here **9...Qc7** is indicated, with idea **Ne7-g6** but White builds pressure with **10.Bb5**



idea **Bxc6, Bxb4 10...Nge7**

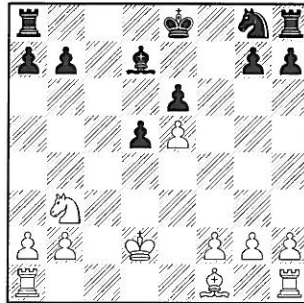
**A1) 10...Bxd2+ 11.Qxd2** looking toward b4 or g5;

**A2) 10...Be7 11.Rc1** makes c6 a target

**11.exf6 gxf6** idea 0-0-0, etc **12.Rc1;**

**B) 9...fxe5?** idea **Nh6-f5 10.Nxe5!**  
**Nxe5 11.Bxb4!?** (**11.dxe5**)

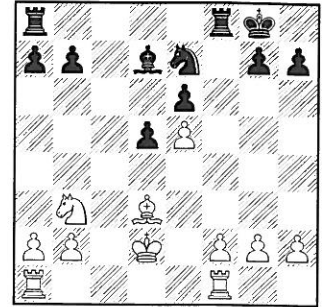
**10.Bxb4 Qxb4+ 11.Qd2 Qxd2+**  
**12.Kxd2 fxe5 13.Nxe5 Nxe5 14.dxe5**



Another game where mass trades have killed the play.

The key to the French is domination of the dark squares--here they've traded away everything that can travel on them! Black's minors will stumble over each other; as the Knight wants to hit e5, it gets in the way at c6 or g6.

**14...Ne7 15.Bd3 0-0 16.Rhf1**

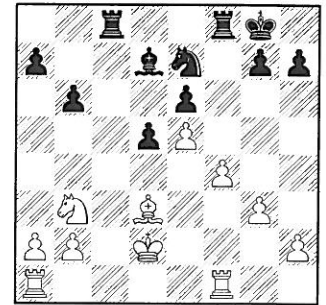


White is ready for f4 and maybe g4, f5 against Black's King.

**16...b6 17.f4 Rac8**

**17...Nc6** controls dark squares d4 and e5, threatening g7-g5 **18.Rae1** (**18.Bb5** idea **Bxc6**)

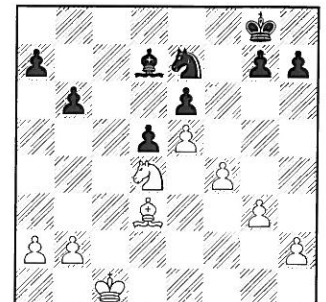
**18.g3**



**18...Rc7** White controls the c-file, so Black's doubling Rooks is an empty threat. **19.Nd4** e6 is a permanent weakness **19...Rfc8 20.Rac1** Only helping Black clear his congestion.

**20.g4** idea **Rae1, f5**, etc

**20...Rxc1 21.Rxc1 Rxc1 22.Kxc1**

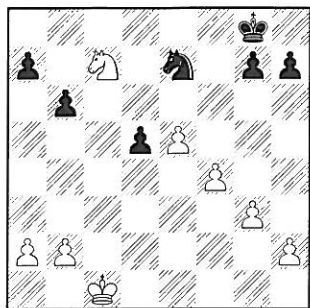




**22...Be8?** Temporary forgetfulness, Black rightly wants to improve his bad piece.

**23.Nxe6 Bg6** Don't trade pieces when down material! Trade Pawns, instead! Here, Pd5 will need protection by a piece.

**24.Bxg6 Nxg6 25.Nc7 Ne7**



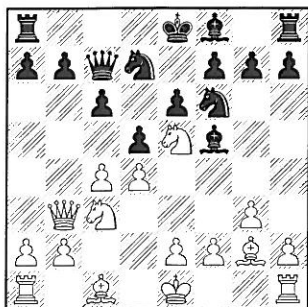
**26.Kd2 Kf7 27.Kd3**

Black will lose a second Pawn.  
1-0

### BOARD 10

Vail, Matt (1585) –  
Do, Vincent (1530) [D15]

1.d4 d5 2.c4 c6 3.Nc3 Nf6 4.Nf3 Bf5  
5.Qb3 Qc7 6.Ne5 e6 7.g3 Nbd7  
8.Bg2

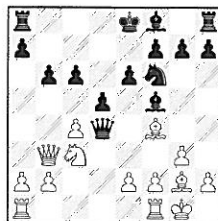


**8...b6**

The Black Queen is tied to b7, so he can't win Pawn on e5 yet: 8...Nxe5 9.dxe5 Qxe5? 10.Qxb7

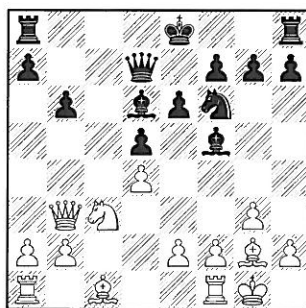
**9.0-0 Bd6**

**9...Nxe5 10.dxe5 Qxe5 11.Bf4 Qd4**



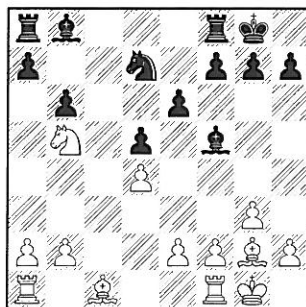
The weakness of c4 allows the Black Queen to survive... otherwise **12.Na4** with idea **Rad1** would trap the Queen (**12.Rad1 Qc5**). But **12...Nh5** I guess also gives the Queen f6

**10.Nxd7 Qxd7 11.cxd5 cxd5**

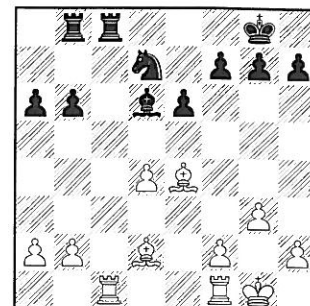


Vincent is thinking of opening the c file, while I wanted the b5 square open. [**11...exd5** keeps the b5 square guarded]

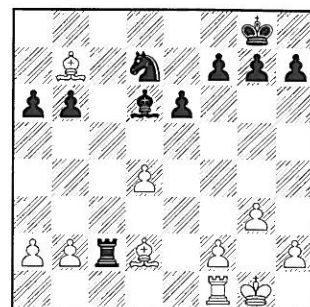
**12.Qb5 0-0 13.Qxd7 Nxd7 14.Nb5 Bb8**



the only place for the Bishop to go, and ineffective **15.Bd2 a6 16.Nc3 Bd6 17.e4 dxe4 18.Nxe4 Bxe4 19.Bxe4 Rab8 20.Rac1 Rfc8?**

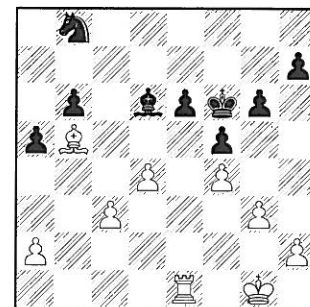


**21.Rxc8+ Rxc8 22.Bb7 Rc2?**

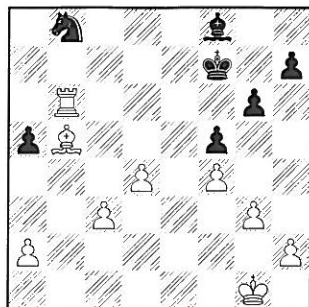


**23.Bc3 a5** his choice is take the bishop now or possibly lose the Rook for less in a few moves

**24.Be4** trapping the Rook **24...Rxc3 25.bxc3 f5 26.Bc6 Nb8 27.Bb5** dominating the Knight! **27...Kf7 28.Re1 Kf6 29.f4 g6**



**30.Bc4 Bf8 31.Rxe6+ Kg7 32.Bb5 Kf7 33.Rxb6**



Black should resign.

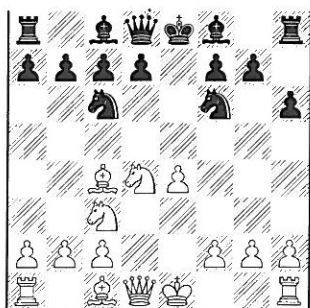
33...Kg7 34.Rxb8 Bd6 35.Rd8 Ba3  
36.Kf2 [36.c4 and the Pawn will  
queen] 36...Kh6 37.Kf3 Bb2 38.c4  
Bc3 39.Rd7 [39.c5 a4 40.Bxa4 Ba5  
41.Rd7] 39...Bb4 40.h3 Bf8 41.c5  
Bg7 42.g4 Bf6 43.c6 Bh4 44.c7 Bf6  
45.c8R a4 46.Rcc7 Bg7 47.g5+ Kh5  
48.Kg3 a3 49.Be2# 1-0

## BOARD 11

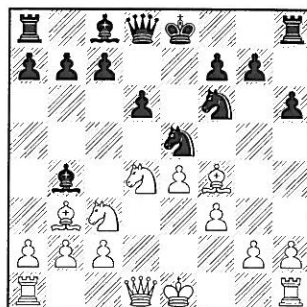
Peng, David –  
Furtner, Fred

[C55]

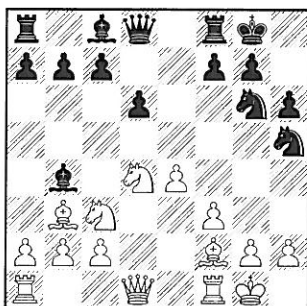
1.e4 Nf6 2.Nc3 e5 3.Nf3 Nc6 4.Bc4  
h6 5.d4 exd4 6.Nxd4



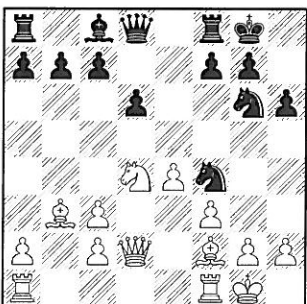
6...Ne5 7.Bb3 Bb4 8.f3 d6 9.Bf4



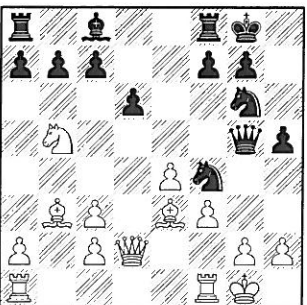
9...Ng6 10.Bg3 Nh5 11.Bf2 0-0  
12.0-0



12...Bxc3 13.bxc3 Nh4 14.Qd2

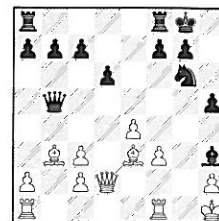


14...Qg5 15.Be3 h5 16.Nb5



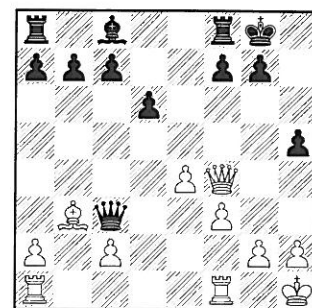
16...Qxb5

Black could also win a Pawn with  
16...Nh3+ 17.Kh1 Qxb5 18.gxh3  
Bxh3

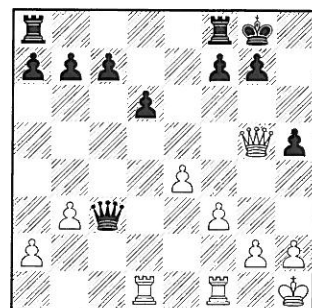


but White's pieces would all be active  
against his King !

17.Bxf4 Nxf4 18.Qxf4 Qc5+ 19.Kh1  
Qxc3



20.Rad1 Be6 21.Qg5 Bxb3 22.cxb3

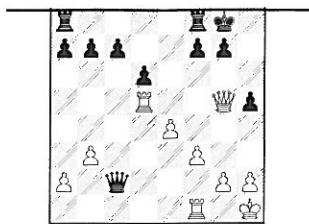


22...Qe5

Maybe Black increases his chances  
after 22...Qc5 23.Rd5

(23.Qxc5 dxc5 shielding a frontal  
attack on c7 24.Rd7 Rac8)

23...Qc2



and from this diagram, two tries:

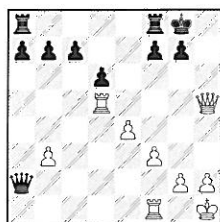
A) 24.Ra1

A1) 24..Qb2 25.Rdd1 forcing a position similar to game: 25...Qe5 26.Qxe5 dxe5 27.Rd7

A2) 24...Qc3 25.Rdd1  
(25.Rad1 Qb2 26.R5d2)

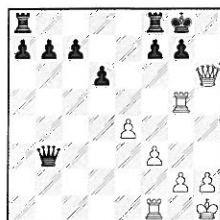
25...Qc5 26.Rd5 could draw

B) 24.Qxh5 Qxa2



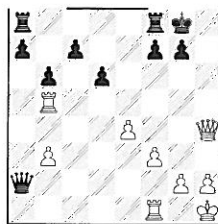
White can try to make trouble on the h-file, however: 25.Rb5

25.Rg5 Qxb3 26.Qh6



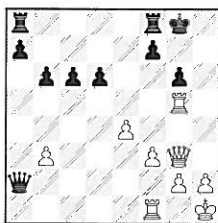
26...Qc3  
(26...g6? 27.Rxg6+ is a draw with perpetual check)

25...b6 26.Qh4



26...g6 (26...a6 27.Rh5) 27.Qg3 a6

27...c6? 28.Rg5



(with at least a draw if Rxg6+)  
28...Qxb3 29.Qxd6

28.Rb4  
(28.Rg5 Qxb3 29.h4 Kg7 30.h5 Rh8)

28...Qa3  
(28...Rfb8 29.f4 defending the b-Pawn, and threatening f4-f5)

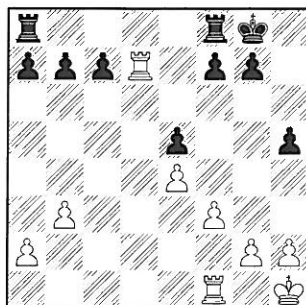
29.Rc4

The Queen is in the way after 29.Qe1  
Rfb8 30.Rc4

29...Rfc8 30.f4

But back to the game (end of previous page)...

23.Qxe5 dxe5 24.Rd7

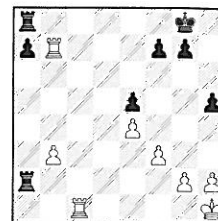


So we get an example of the adage "Rook on the 7th is worth at least a Pawn".

24...Rac8

Two-Rook endings are usually interesting:

A) 24...Rfd8 25.Rxc7 Rd2 26.Rxb7  
Rxa2 27.Rc1

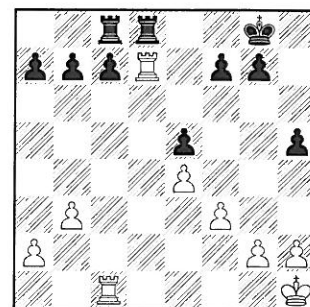


After giving his King *luft*, White can double on the 7th.

27...Rd8 Black gets there first 28.h4  
Rdd2;

B) I'd attempt to keep as many Pawns as possible. 24...b6 25.Rxc7  
Rfd8 26.Rc2

25.Rc1 Rfd8



26.Re7

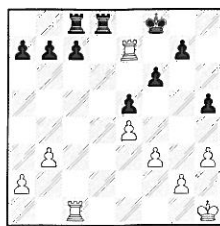
26.Rxd8+ Rxd8 27.Rxc7?? Rd1#;

26.Rcd1 Rxd7 27.Rxd7 Kf8 and Ke8  
chases the Rook away

26...f6 27.h3 b5

A) King activity is worth considering:  
27...Kf8

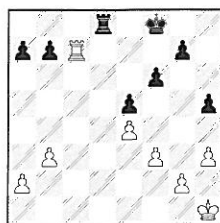




28.Rexc7

(28.Re6?? Kf7 wins the Rook !)

28...Rxc7 29.Rxc7

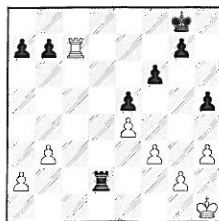


White's established Rook will cause discomfort once his King joins the fray. (see Thomson-Bian, board 4 of the match for an example).

29...Rb8;

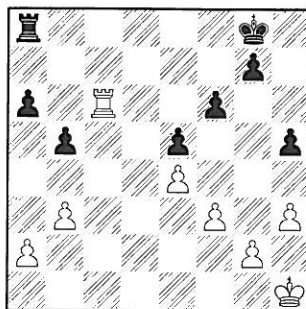
(from diagram last page)

**B)** No improvement is gained from  
27...Rd2 28.Rexc7 (28.a4? Rd3)  
28...Rxc7 29.Rxc7



29...Rxa2 30.Rxb7

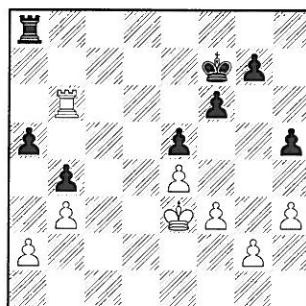
28.Rcxc7 Rxc7 29.Rxc7 a6 30.Rc6  
Ra8



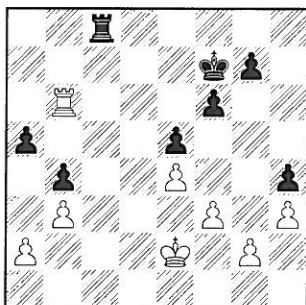
31.Kg1 Kf7

31...Ra7 first maintains the Pawn base, but probably doesn't change the outcome

32.Kf2 a5 33.Rb6 b4 34.Ke3



34...h4 35.Kd3 Rd8+ 36.Ke2 Rc8



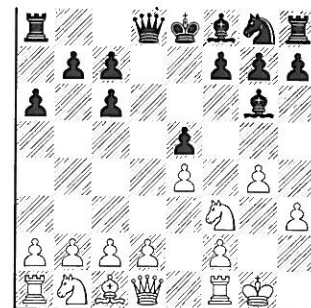
37.Kd2 Rd8+ 38.Kc2 Rc8+ 1/2-1/2

## BOARD 12

Mata,Santiago –  
 Daniel,Jason

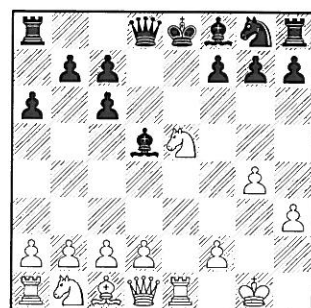
[C68]

1.e4 e5 2.Nf3 Nc6 3.Bb5 a6 4.Bxc6  
 dxc6 5.0-0 Bg4 [5...f6] 6.h3 Bh5  
 7.g4 Bg6



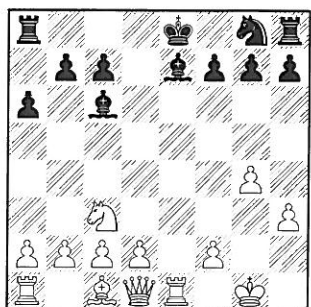
8.Nxe5 Bxe4 opening the e-file to his King generates tactics for White !

9.Re1 Bd5



The discovered check wins the Queen !

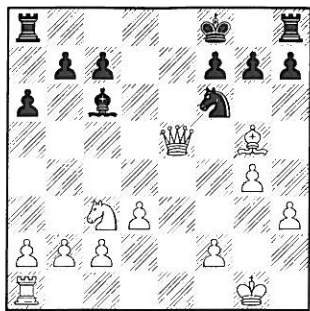
10.Nxc6+ Qe7 11.Nxe7 Bxe7 12.Nc3  
Bc6



13.d3

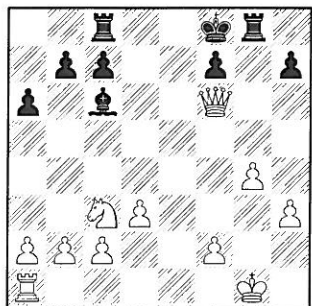
[13.d4 idea d5 further restricts Black]

13...Nf6 14.Bg5 [14.Qe2 causes  
 serious pain] 14...Kf8 15.Rxe7 Kxe7  
16.Qe2+ Kf8 17.Qe5

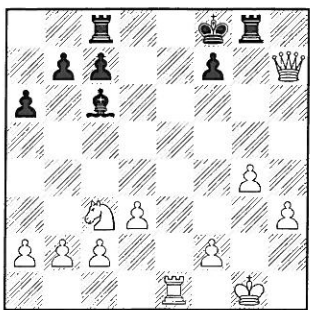


Hitting both c7 and f6, forcing win of Pawn

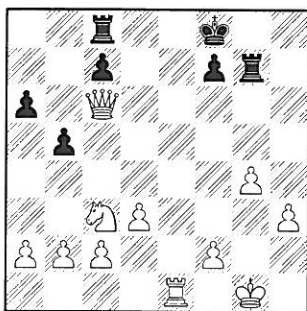
17...Rc8 18.Bxf6 gxf6 19.Qxf6 Rg8



20.Re1 Rg6 21.Qh8+ Rg8 22.Qxh7



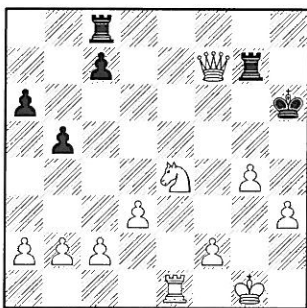
22...b5 now Bc6 hangs, so...  
23.Qh6+ Rg7 24.Qxc6



24...Kg8 25.Nd5 Kh7 26.Nf6+ Kh6  
27.Ne4+

27.Re5 idea Rh4+ wins quickly

27...Rg6 28.Qd7 Rgg8 29.Qxf7 Rg7



30.Qh5# 1-0

## Ratings Report

Sunday, October 17, 2010

Page 1 of 6

Team	Player	W	L	D	Rating					
<b>AMARS</b>						<b>BCBS</b>				
	BROCK,B	o	o	o	2011#		KHAN,M	o	o	1828*
	BRASWELL,I	o	o	o	1837#		BRUNO,R	o	o	1609*
	ALLEN,H	o	o	o	1801C		LACHOWIEC,S	o	o	1600#
	EAMAN,R	o	o	o	1797C		SAN MIGUEL,L	o	o	1571*
	FRANK,M	o	o	o	1745C		GUIU,C	o	o	1544*
	DUFFY,J	o	o	o	1633C		BURGESS,A	o	o	1526*
	ACEVEDO,U	o	o	o	1529*		BINDLER,M	o	o	1395*
	FULKERSON,R	o	o	o	1468		MATA,S	o	o	1315*
	GRUDZINSKI,T	o	o	o	1100#	<b>BPMLX</b>				
	IRBY,L	o	o	o	1071*		FRAATS,D	o	o	1893C
<b>AMATS</b>							REICH,T	o	o	1729
	HARRIS,M	o	o	o	1883*		ZADEREJ,V	o	o	1647
	FURTNER,F	o	o	o	1492		MCGOWAN,D	o	o	1489
	JAMES,D	o	o	o	1413#		RUFUS,B	o	o	1425
	MEYER-ABBOTT,B	o	o	o	1408*		RINGENBERG,T	o	o	1366
	KOLLI,S	o	o	o	1369*		DEICHMANN,E	o	o	1253
	MASITI,J	o	o	o	1345*		MANILA,M	o	o	1122
	FARMER,B	o	o	o	1305#		MUELLER,R	o	o	1043*
	MEHDI,SYED	o	o	o	1252#		AREND,A	o	o	800#
	HARPER,M	o	o	o	1244*	<b>CITGR</b>				
	MEYER,C	o	o	o	1242*		PFAU,M	o	o	2095*
	BAROT,N	o	o	o	1100#		ONG,K	o	o	1767
	YURCHENKO,O	o	o	o	999*		SHEVCHUK,E	o	o	1745#
	PATELLA,C	o	o	o	903#		MUHS,A	o	o	1716
							LE,DUC	o	o	1525
							SENSAT,J	o	o	1489
							PRIMORAC,V	o	o	1368*
							PARRA,J	o	o	1144*
							PROKOPOWICZ,P	o	o	1136*

Rating Symbols: # - New (1 to 8 rated games), \* - Provisional (9 to 25), otherwise Established (26+)

C - Centurian (100-199 CICL games), D - Double (200-299), T - Triple (300-399), Q - Quad (400-499), V - Quintuple (500-599)

Team	Player	W	L	D	Rating						
DGCC	KLUG,S	o	o	o	2125	DRW	HAYHURST,W	o	o	o	1930
	EGERTON,J	o	o	o	2041		GORODETSKIY,E	o	o	o	1839
	KALAVAGUNTA,S	o	o	o	2031		GORODETSKIY,S	o	o	o	1798
	BUNGO,G	o	o	o	1998#		BEDER,B	o	o	o	1649*
	WAKERLY,R	o	o	o	1863		GUGENHEIM,O	o	o	o	1581*
	DUGOVIC,D	o	o	o	1860*		RYAN,P	o	o	o	1530*
	POTTS,K	o	o	o	1852		REDMOND,M	o	o	o	1513*
	TAN,GADDIEL	o	o	o	1772*		KOMBLEVITZ,A	o	o	o	1196#
	PARMET,D	o	o	o	1771*	EXCLB					
	YALAVARTHI,R	o	o	o	1736*		HART,V	o	o	o	2151
	VECANSKI,D	o	o	o	1628*		LEE,D	o	o	o	1903
	SMITH,BR	o	o	o	1612C		ENGELN,M	o	o	o	1791
DRGNS	HAUGHTON,J	o	o	o	1387#		DOWELL,E	o	o	o	1748
	ROMANOWITZ,C	o	o	o	1323#		VIGANTS,A	o	o	o	1532C
							SUERTH,F	o	o	o	1511D
	TEGEL,F	o	o	o	2050Q		BROTSOS,J	o	o	o	1485T
	LUDWIG,T	o	o	o	1977D		SIEGEL,R	o	o	o	1479C
	MARCOWKA,R	o	o	o	1887T		REID,C	o	o	o	1475D
	PEHAS,A	o	o	o	1838C	FERMI					
	BLACKMON,E	o	o	o	1688C		SERGATSKOV,D	o	o	o	2044*
	EUSTACE,D	o	o	o	1552D		HERNANDEZ,R	o	o	o	2008#
	THOMAS,J	o	o	o	1493D		SPIEGEL,L	o	o	o	1966T
	KOMORAVOLU,K	o	o	o	1443		GAINES,I	o	o	o	1714T
	STAMM,V	o	o	o	1431T		STAPLES,C	o	o	o	1593C
	BREYER,A	o	o	o	1323		DEGRAFF,B	o	o	o	1560
							STRAIN,D	o	o	o	1312#
							GIANLUCA,I	o	o	o	1216#
							CORBO,M	o	o	o	992#

Rating Symbols: # - New (1 to 8 rated games), \* - Provisional (9 to 25), otherwise Established (26+)

C - Centurian (100-199 CICL games), D - Double (200-299), T - Triple (300-399), Q - Quad (400-499), V - Quintuple (500-599)

Team	Player	W	L	D	Rating
<b>FORKS</b>					
	INUMERABLE,F	o	o	o	2191C
	SANTIAGO,T	o	o	o	1989C
	FRISKE,T	o	o	o	1970D
	LEVENSON,S	o	o	o	1951
	SOLLANO,E	o	o	o	1944C
	GRANATA,M	o	o	o	1899
	BIALON,D	o	o	o	1750
	HAMELINK,N	o	o	o	1686
	HUGHES,N	o	o	o	1612D
	DOSIBHATLA,D	o	o	o	1603*
	ANSARI,N	o	o	o	1578
	PERSONS,J	o	o	o	1559*
	BIAN,M	o	o	o	1426*
	NICK,X	o	o	o	1230*
	KACZYNSKI,W	o	o	o	1091*
<b>GAMBT</b>					
	CIULLA,S	o	o	o	1976#
	WENGLARZ,J	o	o	o	1807#
	DOLGIN,A	o	o	o	1758#
	GHAIBEH,AYMAN	o	o	o	1704#
	KRISHNAMURTHY,S	o	o	o	1568#
	MITCHELL,D	o	o	o	1550#
	MOORE,A	o	o	o	1512#
	BERGMEIER,C	o	o	o	1239#
	STILES,J	o	o	o	1175#
	WAID,G	o	o	o	1105#
	ZAID,A	o	o	o	1072#
	MOSLEY,A	o	o	o	934#
	LINDBERG,S	o	o	o	884#
	SAUSEDAL,J	o	o	o	861#
<b>HEDGE</b>					
	JASAITIS,A	o	o	o	1949T
	SMITH,M	o	o	o	1936
	SHEPARDSON,T	o	o	o	1612*
	PALMER,J	o	o	o	1600*
	KRATKA,M	o	o	o	1576
	HEINER,J	o	o	o	1394*
	CHAVEZ,A	o	o	o	1354*
	BOLOTOV,A	o	o	o	1131#
	CROSBY,N	o	o	o	1045#
	RORVICK,C	o	o	o	1002#
	MCENEANY,T	o	o	o	994#
<b>LOYLA</b>					
	ALEXANDER,J	o	o	o	1685*
	WOJDYLA	o	o	o	1500#
	CLARK,I	o	o	o	1457#
	SOVA,ANDREW	o	o	o	1449#
	ADAMS,W	o	o	o	1449*
	DIMOPOULOS,P	o	o	o	1313#
	PLOTNER,J	o	o	o	1304*
	BROWN,B	o	o	o	1295#
	JOHNSON,Z	o	o	o	1257#
	SAMPEI	o	o	o	1236#
	ALEXANDER,A	o	o	o	1130#

Rating Symbols: # - New (1 to 8 rated games), \* - Provisional (9 to 25), otherwise Established (26+)

C - Centurian (100-199 CICL games), D - Double (200-299), T - Triple (300-399), Q - Quad (400-499), V - Quintuple (500-599)

Team	Player	W	L	D	Rating
<b>MIDWY</b>					
	CAVENEY,J	o	o	o	2122*
	KOVALSKY,B	o	o	o	2089#
	KORENMAN,M	o	o	o	1918#
	BLACKMAN,W	o	o	o	1844#
	COLEMAN,M	o	o	o	1616#
	GILVARY,B	o	o	o	1466#
	ADAMS,L	o	o	o	1391*
	SHEHAN,W	o	o	o	1176*
	RAIMONDE,A	o	o	o	1161#
	RUSSO,S	o	o	o	1111#
	CAHILL,J	o	o	o	1001#
	PILLARELLA,M	o	o	o	965*
<b>MKING</b>					
	AITIPAMULA,J	o	o	o	2023*
	WALLACH,C	o	o	o	1965C
	PIPARIA,J	o	o	o	1948C
	CYGAN,J	o	o	o	1774
	GONCHAROFF,N	o	o	o	1562V
	ALFONSO,E	o	o	o	1482
	RABINOVICH,E	o	o	o	1482
	GRYPARIS,J	o	o	o	1367C
<b>MKNGT</b>					
	FRIDMAN,Y	o	o	o	2230C
	MORRIS,R	o	o	o	2220C
	THOMSON,J	o	o	o	1982C
	BALICKI,J	o	o	o	1794C
	CHERKASSKY,G	o	o	o	1738
	KARANDIKAR,S	o	o	o	1656
	DUONG,R	o	o	o	1503*
	PATTIAM,J	o	o	o	1368#
	BABINEC,J	o	o	o	1351
<b>NWEST</b>					
	SOLOMON,A	o	o	o	1994
	BAKSHI,A	o	o	o	1947
	WANG,B	o	o	o	1888
	KRAVIK,P	o	o	o	1803#
	GAFNI,P	o	o	o	1670*
	ULLOM,G	o	o	o	1647
	ANDERSON,E	o	o	o	1551#
	KRAVIK,S	o	o	o	1459*
	SLIVKA,MAX	o	o	o	1412*
	CHO,V	o	o	o	1390#
	FRIEDLANDER,M	o	o	o	1381#
	LOU,J	o	o	o	1289#
	LAMBSON,D	o	o	o	800#
<b>PAWNS</b>					
	LATIMER,E	o	o	o	1989T
	HOLLAWAY,M	o	o	o	1800#
	EDEUS,D	o	o	o	1699#
	KUKURUZA,V	o	o	o	1630*
	MISHLOVE,D	o	o	o	1538#
	CHRISTIAN,T	o	o	o	1522*
	FABIJONAS,R	o	o	o	1505T
	O'DELL,DW	o	o	o	1348D
	SINOPLA,J	o	o	o	863*

Rating Symbols: # - New (1 to 8 rated games), \* - Provisional (9 to 25), otherwise Established (26+)

C - Centurian (100-199 CIGL games), D - Double (200-299), T - Triple (300-399), Q - Quad (400-499), V - Quintuple (500-599)

Team	Player	W	L	D	Rating
ROOKS					
	BENEDEK,R	o	o	o	2097T
	ANTIPOVA,A	o	o	o	2080#
	HILL,R	o	o	o	1945D
	SUAREZ,E	o	o	o	1910C
	BAURAC,D	o	o	o	1686T
	YACOUT,A	o	o	o	1583
	DECMAN,S	o	o	o	1546T
	GRUDZINSKI,J	o	o	o	1434
	KUHLMANN,S	o	o	o	1378*
	GWEKOH,R	o	o	o	1308#
	RAMANATHAN,N	o	o	o	1250*
	HLOHOWSKYJ,I	o	o	o	1054*
	SUKAMAR,N	o	o	o	946#
STCCC					
	MARSHALL,J	o	o	o	2265
	ACOSTA,M	o	o	o	2172*
	WIEWEL,J	o	o	o	2150
	SPLINTER,J	o	o	o	2127
	FREIDEL,P	o	o	o	1961
	SUITS,J	o	o	o	1858
	VON HATTEN,J	o	o	o	1811
	DJORDJEVIC,V	o	o	o	1685*
	FORRO,V	o	o	o	1626#
	SMITH,D	o	o	o	1625*
	PADILLA,R	o	o	o	1580
	KOLB,S	o	o	o	1574#
	ALBERTS,W	o	o	o	1569
	JANSSEN,G	o	o	o	1546
	STOSKUS,A	o	o	o	1521*
	SWANSON,E	o	o	o	1469#
	CRISSMAN,J	o	o	o	1421#
	GREER,J	o	o	o	1376*
	POWERS,E	o	o	o	1375*
	BALES,R	o	o	o	1365*
	BOURIS,B	o	o	o	1257#
	VOIGHT,T	o	o	o	1246#
	RIES,G	o	o	o	1109#
SXUCT					
	CELENTANO,A	o	o	o	1849#
	JACKSON,WILLIAM	o	o	o	1378*
	TURNMAN,A	o	o	o	1235#
	ABNEY,I	o	o	o	1188*
	ONWUMAH,I	o	o	o	1124*
	MCDONNELL,B	o	o	o	943*
	WALSH,J	o	o	o	827#
	CONDITT,D	o	o	o	800#
	NORRIS,T	o	o	o	800#

Rating Symbols: # - New (1 to 8 rated games), \* - Provisional (9 to 25), otherwise Established (26+)

C - Centurian (100-199 CICL games), D - Double (200-299), T - Triple (300-399), Q - Quad (400-499), V - Quintuple (500-599)

Team	Player	W	L	D	Rating						
TT						WMBAT					
	HUNTER,JOSH	o	o	o	1457#		TENNANT,S	o	o	o	2231*
	SCHWARTZ,BRIAN	o	o	o	1148#		KRAS,T	o	o	o	2149C
	VISSER,JOUBERT	o	o	o	1057#		PANNER,G	o	o	o	2105#
TYROS							WEBER,L	o	o	o	2074
	ALLSBROOK,F	o	o	o	2159		FREITAG,T	o	o	o	1990
	DIAZ,P	o	o	o	2048D		ZOLKOS,A	o	o	o	1716*
	GUIO,J	o	o	o	1871C		FRANEK,M	o	o	o	1709D
	STOLTZ,B	o	o	o	1862D		ELLICE,W	o	o	o	1706D
	DOBROVOLNY,C	o	o	o	1728D		SAMPSON,L	o	o	o	1649#
	BUCHNER,R	o	o	o	1639C		CONNELLY,P	o	o	o	1577#
	DENMARK,T	o	o	o	1627		SPITZIG,M	o	o	o	1334
	HAHNE,D	o	o	o	1625D		DAVIS,M	o	o	o	936#
	VAIL,M	o	o	o	1585		ZACK,K	o	o	o	800#
	KRUEGER,J	o	o	o	1467#						
	BYRNE,M	o	o	o	1349						
	KARPIERZ,J	o	o	o	1313						
UOP											
	LEONG,G	o	o	o	1953D						
	SIWEK,M	o	o	o	1926D						
	VAN MEER,J	o	o	o	1904						
	CHEBOTAREV,A	o	o	o	1846*						
	BOLDINGH,E	o	o	o	1830D						
	EASTON,R	o	o	o	1819C						
	SAJBEL,P	o	o	o	1781C						
	NGUYEN,M	o	o	o	1720#						
	LECHNICK,J	o	o	o	1703C						
	MOSSBRIDGE,A	o	o	o	1629						
	OLSEN,A	o	o	o	1469C						
	CAMPBELL,DOUG	o	o	o	1386*						

Rating Symbols: # - New (1 to 8 rated games), \* - Provisional (9 to 25), otherwise Established (26+)

C - Centurian (100-199 CICL games), D - Double (200-299), T - Triple (300-399), Q - Quad (400-499), V - Quintuple (500-599)





## Division Top Ten

Sunday, October 17, 2010

Division	Player	Team	Rating				
East				West			
	PFAU,M	CITGR	2095		MARSHALL,J	STCCC	2265
	SOLOMON,A	NWEST	1994		TENNANT,S	WMBAT	2231
	JASAITIS,A	HEDGE	1949		ACOSTA,M	STCCC	2172
	BAKSHI,A	NWEST	1947		ALLSBROOK,F	TYROS	2159
	SMITH,M	HEDGE	1936		WIEWEL,J	STCCC	2150
	HAYHURST,W	DRW	1930		KRAS,T	WMBAT	2149
	WANG,B	NWEST	1888		SPLINTER,J	STCCC	2127
	HARRIS,M	AMATS	1883		KLUG,S	DGCC	2125
	GORODETSKIY,E	DRW	1839		CAVENEY,J	MIDWY	2122
	BRASWELL,I	AMARS	1837		BENEDEK,R	ROOKS	2097
North							
	FRIDMAN,Y	MKNGT	2230				
	MORRIS,R	MKNGT	2220				
	INUMERABLE,F	FORKS	2191				
	HART,V	EXCLB	2151				
	AITIPAMULA,J	MKING	2023				
	SANTIAGO,T	FORKS	1989				
	THOMSON,J	MKNGT	1982				
	FRISKE,T	FORKS	1970				
	WALLACH,C	MKING	1965				
	LEONG,G	UOP	1953				

Note: Only Players with 9 or more rated games are shown.