

The Chicago Chess Player

The Official Bulletin of the Chicago Industrial Chess League



Photo by Patrice Connelly

Inside this Issue:
Epic match recaps and Games!
Interview with Chuck Dobrovolny
A Tribute to a Fallen Teammate

CICL Officer Contact List

League President **Irwin Gaines**
President@ChicagoChessLeague.org

League Secretary **Jerry Thomas**
Secretary@ChicagoChessLeague.org

745 Hageman Pl
Naperville, IL 60563

H:(630)420-0188

League Treasurer **Paul Freidel**
Treasurer@ChicagoChessLeague.org

359 N. Worth Avenue
Elgin, IL 60123

C:(224)436-6050

Bulletin Editor **Patrice Connelly**
Bulletin@ChicagoChessLeague.org

Webmaster **Tom Friske**
Web@ChicagoChessLeague.org

(see information below)

Games Editor **Tom Friske**
Games@ChicagoChessLeague.org

1035 E Algonquin Road
Des Plaines, IL 60016

H:(847) 299-1033
W:(847) 914-8448

Ratings Chairman **Jeff Balicki**
Ratings@ChicagoChessLeague.org

Trophy Chairman **Chuck Dobrovolny**
Trophy@ChicagoChessLeague.org

Publicity Chairman **Matt Vail**
Publicity@ChicagoChessLeague.org

C:(312) 933-1516
W:(630) 505-6557

Banquet Chairman **Katherine Zack**
Banquet@ChicagoChessLeague.org

DIVISIONAL CHAIRMEN

East Division **Tony Jasaitis**
ChairmanEast@ChicagoChessLeague.org

C:(708) 903-6423
W:(312) 264-2044

West Division **Jeff Wiewel**
ChairmanWest@ChicagoChessLeague.org

North Division **Jim Thomson**
ChairmanNorth@ChicagoChessLeague.org

W(847) 538-5408

Officer Contact List	2
Contents of Issue	3
Interviews with the Officers: Chuck Dobrovolny	4-5
Isaac Braswell Tribute by Rob Eaman	6-8
Games by the Players!	9-15
An Epic Match in the East Division by Rob Eaman	16-17
A West Division Swashbuckling Epic by Tony Jasaitis	18-19
Ratings Report as of 03/27/12	20-36

Editor's Notes:

Thanks to the Bill Brock, Rob Eaman, and Tony Jasaitis who submitted wonderful write-ups this month commemorating former teammates and epic matches! Also thanks to Chuck Dobrovolny who was this month's interviewee.

Thanks to Jeff Balicki, Ratings Chair, and Tom Friske, for their continued great work keeping the ratings up to date and helping with game submissions!

We're looking for submissions! As always, feel free to submit stories, games, chess news, and information about local chess events to the bulletin. Please email submissions to Bulletin@ChicagoChessLeague.org.

Best to all,
Patrice Connelly
CICL Bulletin Editor

Arrr, matey, for a Swashbuckling epic, turn to page 18!



Name: Chuck Dobrovolny

Position: Trophy Chair

Team: Tyros

CICL Rating: 1680

What is your favourite food? Fish, with cheese a close second

And drink? Milk

Do you have a favourite painter or artist? Claude Monet

How long have you been playing in the CICL? Since the mid-eighties.

What do you see as your best result ever (in or outside the CICL)? Outside the CICL -- U.S. Open in '89 (?) (in Oakbrook). The USCF would not reinstate my 15 year-old rating of 1543 from high school, so I was entered as an unrated. I beat two 1900s and drew a 2136. I came in 2nd place for the unrated section and won \$100. My post-tournament rating was an all-time USCF high of 1854. Not bad for taking off rated chess for 15 years.

Who is your favourite chess player of all time? It used to be Fischer, but his being so anti-Semitic was unacceptable. I still think that the smarter you are, the less sense racism makes. But throw politics and/or religion into the mix and things get unpredictable. Now it's Hikaru Nakamura. I like the way he plays somewhat non-standard openings and defenses and lets his ability OTB dominate. Must be nice to be THAT good!

What are chess players particularly good at (except for chess)? Whadaya mean _except_ for chess? I think you mean "other than chess". So other than chess, I'm pretty good at English grammar, usage, punctuation, noun declensions, verb conjugations... Thank you 2 years of high school Latin!

Is there another skill or game you'd like to learn? I'd like to play piano.

If you could choose a superpower, what would it be? Hmmm. Superspeed, like The Flash. And I mean Barry Allen (speed of light), not Wally West (speed of sound). This would open a lot of doors, and probably break a lot of doors, like revolving doors which have a rotation limiter. Then again, I could just vibrate through them (like Barry used to all the time). And I'd have to get the Cosmic Treadmill up and running again so I could time-travel and right a ton of wrongs. I'd remember everything I changed, being the traveler, but you wouldn't notice anything. I'd say "how about that Adolf Hitler SOB?" and you'd say "Adolf who?" because, you know it was just a test to see if I got it right.

Did I mention that I have a large comic book collection?

If you had to choose an animal to play on your CICL team, what animal would it be? A trained gorilla who likes to view the games from our opponents' side of the board. He's quiet and courteous, of course, but he doesn't bathe, and he's a heavy breather, and doesn't brush regularly. But hey, he's a gorilla. And his rating is dismal so I'd only play him on an extra board once a year so he could qualify for the playoffs.



Is there a chess book that had a profound influence on you? "Bobby Fischer Teaches Chess" covered the basics like back-rank mates, but "Winning Chess: How to See Three Moves Ahead" by Horowitz and Chernev (?) really made it all click. It covered (I think it's out-of-print) all the combinational strategies like knight forks, skewers, etc. in a format that was ideal for study without a board. On one page you got the original position with question, and next to it another board with the winning position post-combination. After reading those two books, I emerged from my 1st tournament with a 1318 rating. More importantly, I got accepted to my high school chess team and we took city Catholic league championship 3 years in a row. Good times! We were the only team in our school with white (championship) letters.

If you could rename your CICL team any name, what would it be? The Wild and Ca-razy Guys (and we'd all dress like Steve Martin from the SNL skit of the same name)

What music do you like to listen to? Yes (original line-up), Genesis (with or without Peter Gabriel), and Pink Floyd (only with Roger Waters)

Chuck, how much wood would a wood chuck chuck if a wood chuck could chuck wood? If a wood chuck could chuck wood, said chucking would be limited to, say, 6 ft since he's holding and tossing the wood with his mouth, lacking opposable thumbs and the ability to fully grasp, wind up and hurl the wood.

If you wrote a chess book, what would the title be? "No, I Don't Play Basketball"

If chess colors weren't white and black, what two colors would you choose? Brown and taupe -- you can't go wrong with taupe.

Resigning in an Unclear Position, a Chess Tragedy Isaac Braswell (1979 – 2012)

Strong chess players often have the ability to beguile the average player with what seems like magic, bringing clarity to an unclear position, evaluating previously hidden positional elements or diving deeper down a tactical hole than most of us can do. Expert players in particular often have an intuitive feel for bringing that magic to the chessboard, or they can do it more quickly than most players.

The Chicago chess community lost a strong expert player on March 2nd in Isaac Braswell. Isaac was known to those who knew him well as “Brother Ike,” or to me on first meeting as “that scary lookin’ black guy with cornrows who could really play.” Isaac cultivated a rough, street-smart external appearance, but after just a few moments in his presence (and especially if chess was being played), you realized he was a playful, gregarious, likeable, funny guy. To those of us who knew him pretty well, he was a troubled genius, equal parts lightning intensity, emotionally fraught, laughably energetic, intellectually quick, unusually kind, and brilliant in chess vision. He was great with kids or anyone who was down on their luck, and was just about the nicest person most people will tell you they ever met. But he was troubled.

I met Isaac for the first time in the summer of 2010 at the Myopic Bookstore in Wicker Park on the City’s northwest side. He played pickup blitz games somewhat regularly there, as he also did at the North Avenue Starbucks downtown, at the Oak Street Chess Pavilion, at many local tournament halls, and about anywhere else he could find an opponent. Within weeks of first meeting him, I managed to convince him to join the CICL team I captained, the CICL East Division’s Rogue Squadron (an alumni team: Isaac had played years before for the Chicago Reader team).



Figure 1: Isaac Braswell examines Rob's game, 2010. Picture courtesy of Fred Furtner.

In our first year with Isaac on the squad (2010-11), the Rogue Squadron finished 2nd in the East and tied for 3rd in the playoffs. Isaac was a fundamental part of the team during that stretch, winning his final two playoff games. He was very happy to receive the trophy we received for that performance, and he loved the sense of community in the CICL.

For our 2011-12 season, Isaac rejoined the team after having shaved off his cornrows and lost a bunch of weight. He started to look like he’d gotten his life turned around. Isaac was still living at a downtown YMCA, but he sounded refreshed, energetic as always, and relatively happy.



Figure 2: Isaac Braswell at a Rogue Squadron match, late 2011. Picture courtesy of Fred Furtner

But all wasn't quite as it seemed, and his play started to suffer. Midway through this season, he went through a bad stretch (as many of us do), and he quit the team, citing the need to deal with personal issues. Team co-captain Bill Brock and I reached out to him extensively, but he needed his time off.

Only weeks later (mid-February), Isaac joined Bill to play in the Amateur Team tournament. He played well enough in that tournament that he decided to rejoin the Rogue Squadron for a pivotal match against the tough DRW squad.

The night of Thursday, February 23rd, the Rogue Squadron played to a 3-3 match draw with DRW. Isaac won his game. Afterward, he joked around, analyzed positions, and told me repeatedly in postgame analysis that I was analyzing a critical position from my game incorrectly. I remember once again being impressed by his lightning quick tactical sense and intuitive feel for positions.

After the match ended that night, I asked him to chat about his troubles. He and I spent the next 2 hours talking outside of Union Station in a light rain. He spoke sadly and energetically about some of his poisonous childhood memories, the lost possibilities in his life, the trouble he'd had finding love, the impossibility of following his dreams, and beyond all else the difficulty of learning to accept himself. His life was difficult, and he had struggled constantly with poverty and depression. But he also talked lovingly about a guitar that had been given him recently by a fellow chess player, the passion he had for music, basketball, and competition, and more than anything his love for chess and the chess community. He told me repeatedly how learning to play chess well had helped him survive some of the most difficult things in his life. He saw chess for its many life metaphors, and he talked about how its structure and camaraderie helped him cope with the demons he wouldn't often talk about.

A week later (Thu, 3/1), Isaac played former CICL president Tony Jasaitis in the last known chess game of his life, a match I missed due to a previous engagement. During the match, Isaac fought back from a tenuous position against a tough opponent to pull out an endgame victory. Tony reports that Isaac seemed fine that night, and the Rogue

Squadron teammates present didn't see anything in Isaac that gave them pause. He was again happy to analyze the games afterward, and seemed to be in bright spirits going home that night.

The next day (Friday, 3/2), Isaac took his own life. From what we know, he did not leave a note, did not tell anyone of his plans, and did not make any mistakes in his calculations. His suicide stunned his teammates, his good friends, and those who knew him well.

Isaac was a man for whom chess metaphors were a way of life. Using a chess metaphor now, I could angrily say Isaac resigned too early in an unclear position. Isaac himself might retort that he simply saw the position better than me, and that he tried the only sacrifice he could in a game that was essentially lost. But whenever Isaac *actually did* lose a chess game over the board, he almost always played it out until the ending was assured. When he was down, he fought hard: he gave his opponents every chance to blunder, and he frequently pulled games back from the brink in positions where others might have given up sooner. This is one of the reasons why his final act in life is so difficult for us fellow chess players to take. He was not the kind of man to give up easily when he was down. And he had survived those battles so many times before.

However, the truth is that chess metaphors do not come close to really explaining his final moves. Chess and the escape it provided only saved Isaac to a point: he ultimately could not remove the pain he rarely expressed to others. And although many of us will quickly judge his final move as horrifying and selfish, this final act was completely contrary to the way he had lived his life.

Isaac's loss is a tragic blow to the Rogue Squadron, the Chicago Industrial Chess League, the Chicagoland chess community, and anyone who got past the rough exterior to befriend "Brother Ike." More than 100 friends, family, and chess players turned out for his memorial service at the Lawson YMCA on 3/13, and all had very kind things to say about him.

Isaac's chess career spanned countless USCF tournament games, at least 25 CICL games, and countless pickup games. His USCF rating peaked above 2100, and at the time of his death his 2075 rating put him within the top 60 Illinois chess players.

The Rogue Squadron encourages anyone with an interest to consider joining us in a financial donation to the Warren Juniors in Isaac's memory. Please contact me (sixty_four@yahoo.com) or Bill Brock for details. And please, use this incident as a personal excuse to invest some personal time in building the Chicagoland chess community. Isaac would have loved that.

Isaac's final words to his teammates: "Checkmate you later. Promote those passed pawns!"

RIP Isaac Braswell.

Rob Eaman
Captain, Rogue Squadron

The Games Editor received a lot of scores in the passed month—and some were annotated!

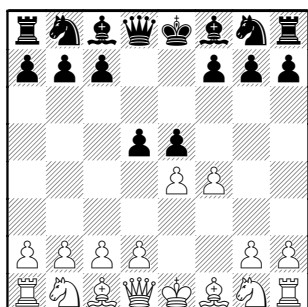
We start off with the last known game by Isaac Braswell, as mentioned in a Memorial, elsewhere in this issue.

**Jasaitis, Anthony (1906) -
Braswell, Isaac (1811)** [C32]

Zookeepers-Rogue Squadron,
3-1-2012

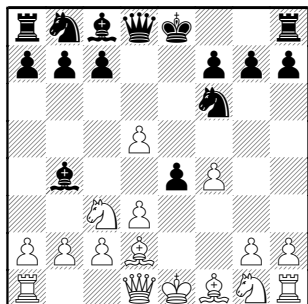
[Notes by Anthony Jasaitis]

1.e4 e5 2.f4 d5



Black meets the King's Gambit with the Falkbeer Counter Gambit, Black's most active option, throwing White on the defensive.

3.exd5 e4 4.d3 Nf6 5.Nc3 Bb4 6.Bd2



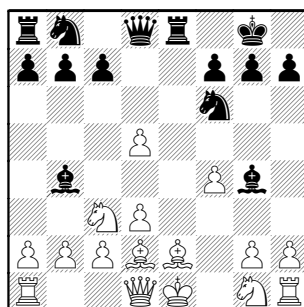
6...e3 This is Black's most energetic continuation, sacrificing the pawn for strong pressure on the e-file, along with a B on g4.

7.Bxe3 0-0 8.Be2 Re8

A comical situation resulted at this point. After White moved, he left the board to let in a visitor. When he came back, he was mortified to notice that his Bishop was hanging. After waiting for 15 minutes for Black to take the piece, White noticed that his clock was running, and thought that in addition to dropping a piece, he forgot to punch his clock.

After White punched his clock, Black said, "What are you doing? You haven't moved yet!". This backdrop might explain some of the foggy-headed moves of White's play.

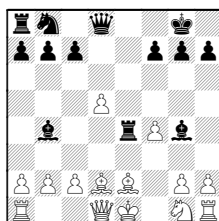
9.Bd2 Bg4



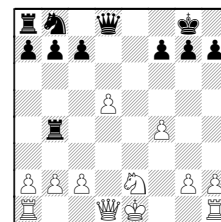
10.Kf1

In the KG spirit, White is not concerned about losing castling privilege. White often gets compensation in Black getting into awkward positions and wasted tempi trying to exploit the situation fruitlessly.

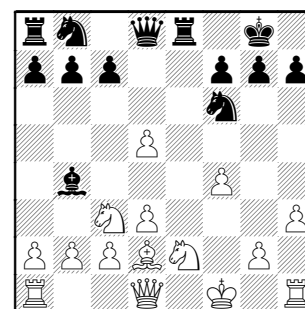
The alternative is about equal:
10.Ne4 Nxe4 11.dxe4 Rxe4



12.Bxb4 Bxe2 13.Nxe2 Rxb4



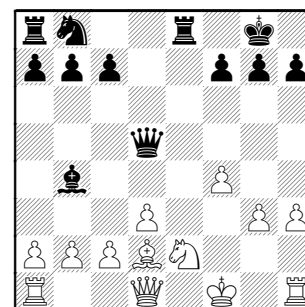
10...Bxe2+ 11.Ngxe2 Ng4 12.h3 Nf6



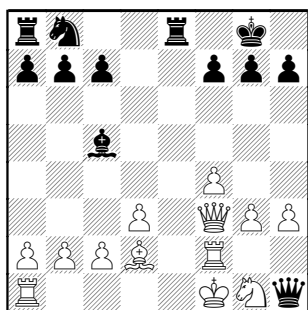
13.g3

Planning to activate the Rook via the 2nd rank. This opening of the King-side invites Black to undertake a fruitless raid which allows White to simplify and end up a solid pawn to the good.

13...Nxd5 14.Nxd5 Qxd5

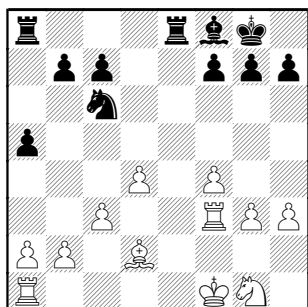


15.Rh2 Qf3+ 16.Rf2 Qh1+ 17.Ng1 Bc5
18.Qf3

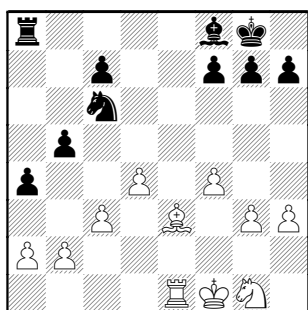


The key move that had to be foreseen back at move 13.

18...Qxf3 19.Rxf3 Nc6 20.c3 a5 21.d4 Bf8



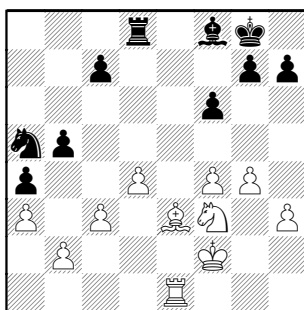
22.Re3 Rxe3 23.Bxe3 a4 24.Re1 b5



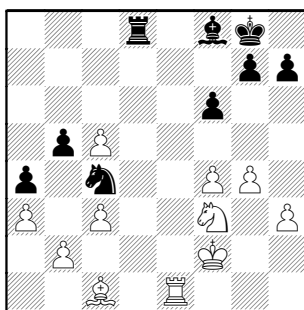
25.a3

White was probably overly concerned about keeping Black from opening lines on the Q-side, and foregoes the mobility of his pawns.

25...Na5 26.Nf3 f6 27.Kf2 Rd8 28.g4



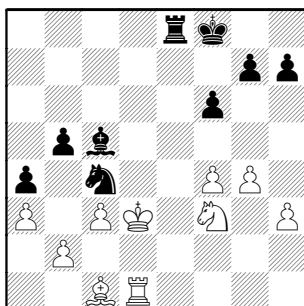
28...c5 29.dxc5 Nc4 30.Bc1



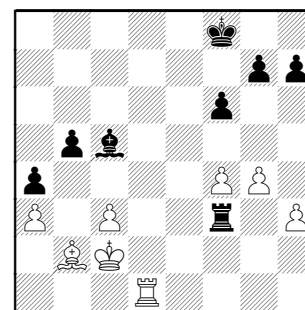
Unwilling to give up his Bishop, White concedes more activity to Black's pieces. Re2 would have been better. Now Fritz's rating of the position drops a whole point, from 1.3 to 0.3.

Somewhere around this point, Black offered a draw, but with the match at 0–3, White did not want to cause this game to clinch a lost match.

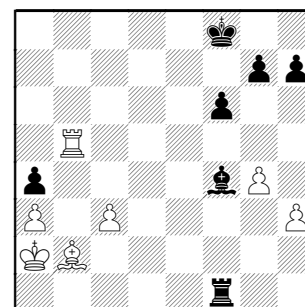
30...Bxc5+ 31.Ke2 Kf8 32.Rd1 Re8+ 33.Kd3



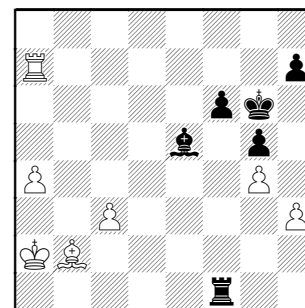
33...Nxb2+ 34.Bxb2 Re3+ 35.Kc2 Rxf3



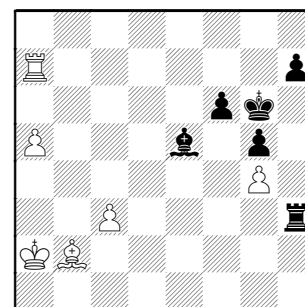
36.Rd5 Rf2+ 37.Kb1 Rf1+ 38.Ka2 Be3 39.Rxb5 Bxf4



40.Rb4 g5 41.Rxa4 Be5 42.Ra8+ Kf7 43.Ra7+ Kg6 44.a4



44...Rh1 45.a5 Rxb3



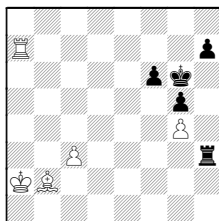
46.Kb3

[Editor] I've been in an endgame mood lately, and this position caught my interest!

A way to play for the win could have been: 46.a6 (to force Black to immediately take care).

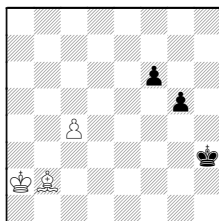
The best defense I find is getting the Rook behind the passer (just in time!) . A couple ideas which don't work are:

A) 46...Bf4 idea Be3 to sac at a7 47.Re7 Be3 48.a7 Bxa7 49.Rxa7



49...h5?! 50.gxh5+

A1) 50...Kxh5? 51.Rh7+! Kg4 52.Rxh3 Kxh3 53.c4

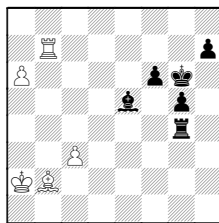


Two Pawns are slower than one. White's extra piece comes in handy.

53...f5 54.c5 g4 55.Be5 g3 56.c6 g2 57.Bd4

A2) 50...Rxh5 51.c4 idea Ra6 or c5;

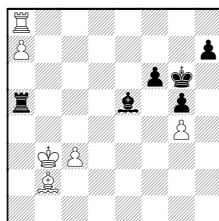
B) The Pawn definitely queens with the slow 46...Rg3?? 47.Rb7 Rxg4



idea Ra4+

48.Rb4! (48.a7 Ra4+ 49.Kb3 Ra6) 48...Rg2 49.a7+-

C) Those previous tries convince me the Rook would have to immediately react: 46...Rd3 47.Ra8 Rd5 48.a7 Ra5+ 49.Kb3



threatening Rg8+ to queen

49...Kg7 50.c4 idea c5!

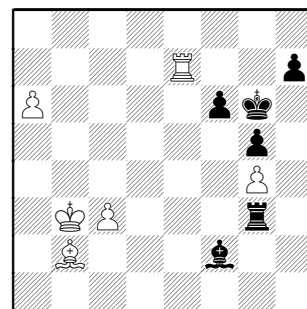
(Not 50.Ba3? idea Bc5, protecting the passer, and freeing the Rook which threatens to queen. 50...Bxc3! 51.Kxc3 Rxa3+

No progress from 50.Kb4 Ra2)

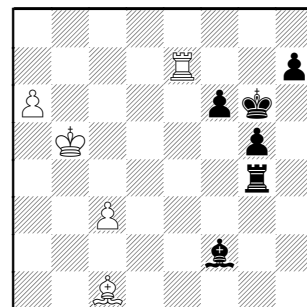
White's play in game walks his King into a pin (the c-Pawn could complicate) and gives Black time to build counter threats...

..Editor out...]

46...Bd4 [46...h5] 47.Re7 Bf2 48.a6 Rg3



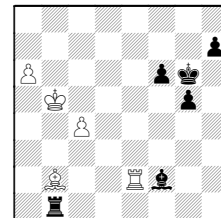
49.Bc1 [49.Re4] 49...Bb6 50.Kc4 [50.Re4] 50...Rxb4+ 51.Kb5 Bf2



52.Be3?! reducing pieces makes it harder

[Editor: I found another interesting idea-- 52.c4 idea c4-c5 to block the Bishop's hit to a7

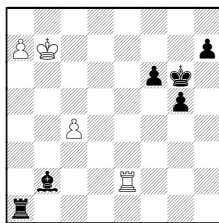
52...Rg1 53.Bb2 covering a1 53...Rb1 54.Re2



A) 54...Ba7 or anywhere else 55.c5 making both passers come to fore

B) 54...Bd4! 55.Kc6 Bxb2 (55...Rxb2?? 56.Rxb2 Bxb2 57.a7)

56.a7 Ra1 57.Kb7

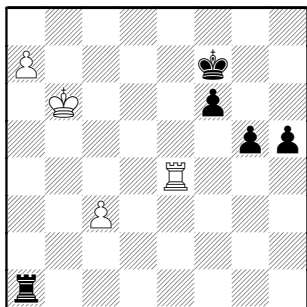


57...Bd4! Allowing White to queen forces King one square further from the action

(...as in 57...Rxa7+ 58.Kxa7 Bd4+ 59.Ka6 The King is a couple squares further along than the main analysis...but this is probably a win for Black as White's King is too far from the three Black passers.)

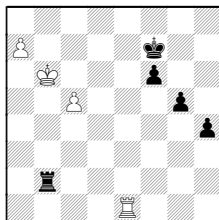
58.a8Q Rxa8 59.Kxa8
[Editor out..]

52...Bxe3 53.Rxe3 Rg1 54.a7 Ra1
55.Kb6 Kf7 56.Re4 h5



57.Kb7

White misses a beautiful but lengthy winning process with: 57.Re1 Ra2 58.c4 h4 59.c5 Rb2+

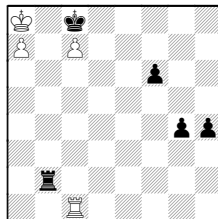


60.Ka6 Ra2+ 61.Kb7 Rb2+ 62.Ka8 Rc2

[Editor.. Black's goal is to get "passers on the 6th beat a Rook"

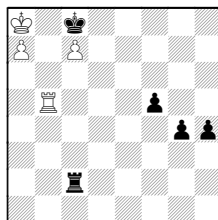
62...g4

A) 63.Rc1? Ke7 64.c6 Kd8 65.c7+ Kc8

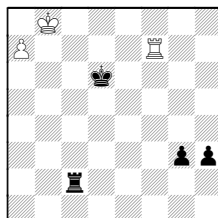


66.Rb1! Rc2
(66...Rxb1? STALEMATE!!)

67.Rb4 f5 68.Rb5



68...h3! 69.Rxf5 g3 70.Rf8+ Kxc7
71.Rf7+ Kd6 72.Kb8

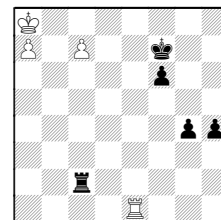


72...Rb2+ 73.Rb7 Ra2 74.Rh7 h2
75.a8Q Rxa8+ 76.Kxa8 g2 77.Rxh2 g1Q

B) 63.c6 Rc2 not seeing how White makes progress... I believe he can only force a draw

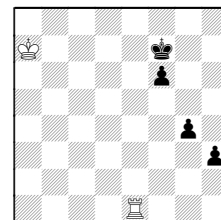
(63...g3?? too slow 64.Rc1 h3 65.c7)

B1) 64.c7



trying the trick from Tony's (upcoming) line

64...Rxc7 65.Kb8 Rxa7! 66.Kxa7 h3



and Black wins 67.Rh1

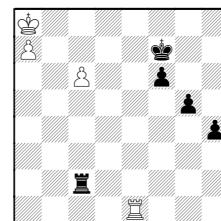
(Same thing after 67.Rg1 h2 68.Rh1 g3 etc)

67...f5 68.Kb6 f4 69.Kc5 f3 70.Kd4 g3
71.Ke3 (71.Rxh3 f2 72.Rh1 g2) 71...g2
72.Ra1 h2 just in time !

B2) 64.Kb7 Rb2+

[Editor out...]

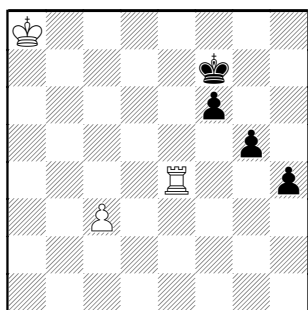
63.c6!!



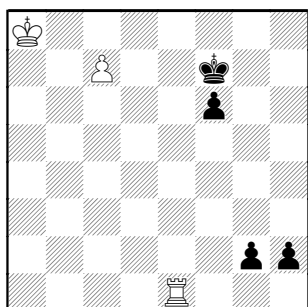
63...h3 (63...Rxc6 64.Kb7 and queens)
64.Kb7 Rb2+ 65.Ka6 Ra2+ 66.Kb6 Rb2+
67.Kc5 Ra2 68.c7 h2 69.Kb4

Back to the game...

57...h4 58.a8Q Rxa8 59.Kxa8

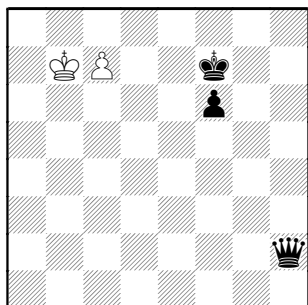


59...h3 60.c4 h2 61.Re1 g4 62.c5 g3
63.c6 g2 64.c7



White is a tempo short !!

64...h1Q 65.Rxh1 gxh1Q+ 66.Kb8 Qh2
67.Kb7



67...Qxc7+ 0-1

**Brock, William –
Smith, Mack**

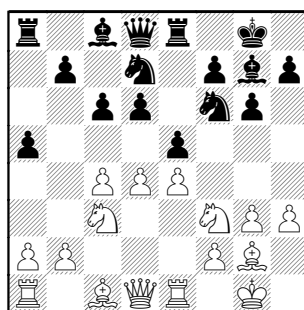
[E69]

CICL (9.1), 3-1-2012

[Notes by Bill Brock]

The queen is incredibly strong on an open board. But when the position is somewhat clogged, as most King's Indians are, a couple pieces are often stronger than the queen. And when the arithmetic is approximately equal, the pieces are usually better than the queen.

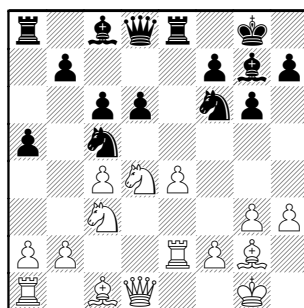
1.d4 Nf6 2.c4 g6 3.g3 Bg7 4.Bg2 0-0
5.Nc3 d6 6.Nf3 Nbd7 7.0-0 e5 8.e4 c6
9.h3 Re8 10.Re1 a5



11.Re2

Mack thought I should have played
11.Be3, the normal move.

11...exd4 12.Nxd4 Nc5



13.b3

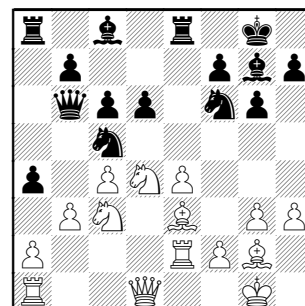
13.Bf4, as played once by Suba, makes more sense here. It's weird to play Re2 (guarding b2) and then play b2-b3. But I

liked the idea of keeping the options of the Bc1 open.

13...Qb6 14.Be3

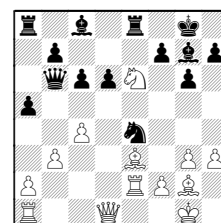
White sets up an e3-b6 battery as a counter to Black's Bg7, which threatens too many pieces to mention.

14...a4



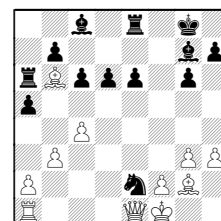
Black's opening has been successful: I have no advantage and might be slightly worse.

14...Nfxe4? 15.Nxe4 Nxe4 16.Ne6



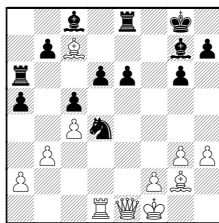
I stopped analyzing here: "looks good"

A) 16...fxe6!? 17.Bxb6 Nc3 18.Qe1 Nxe2+ 19.Kf1! Ra6!



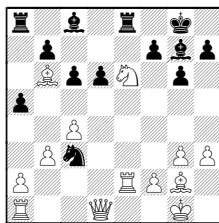
(*computer applauds*)

20.Bc7 Nd4 21.Rd1 c5



This position may be easier to play for Black!

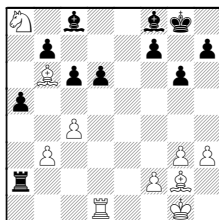
B) 16...Nc3 17.Bxb6



17...Nxd1 (17...Bxe6? 18.Rxe6!±)
18.Nc7!

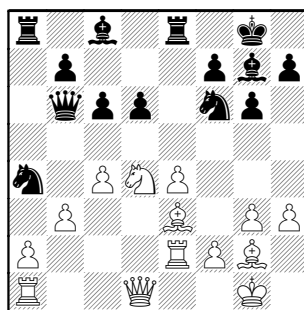
It looks weird to hang a whole rook, but White will get the material back with interest.

18...Rxe2 19.Rxd1 Bf8 (19...Rb8?
20.Ba7) 20.Nxa8 Rxa2



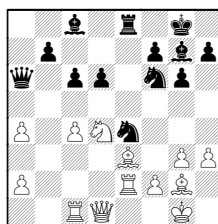
21.Re1!

15.Nxa4!? Nxa4



Now, in this fun position, I miscalculated.

Mack's first suggestion in post mortem analysis was 15...Rxa4!? 16.bxa4 Qa6 :
after 17.Rc1 Ncxe4



Black has excellent positional compensation for the Exchange.

16.Ne6?!

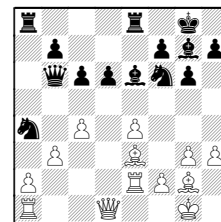
A) 16.Nf5!? Nc5 17.Nxg7 transposes to the piece-sac variation below, but doesn't allow Black to get an even clearer advantage by "losing" his queen.

B) 16.bxa4 is too ugly for words.

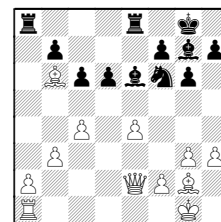
16...c5?!

Instead of winning the queen, Black should *lose* the queen! Black has two reasonable ways to do this. Or, if Black prefers suffering for material gain, he can win a piece for two pawns.

A) 16...Bxe6!



17.Bxb6 Nc3 18.Qd3 Nxe2+ 19.Qxe2



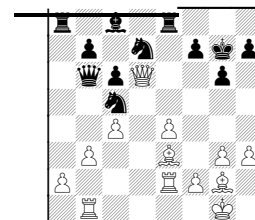
19...Nd7! The g7-Bishop awakes! We both missed this idea in the game and the post-mortem.

20.Rd1 Nxb6 21.Rxd6±

Would you rather have Q + P + P (point count 11.75, if we use the Kaufman 9.75-scale), or R + B + N (point count 12, with the 1/2 point bonus for two bishops)?

As there are no easy targets in Black's position, I like Black's winning chances here.

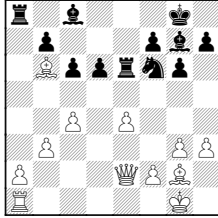
B) In the postmortem we looked at
16...Nc5 17.Nxg7 Kxg7 18.Qxd6 Nfd7
19.Rb1



19...Re6± While the position may be playable (Black's queenside is tied up,

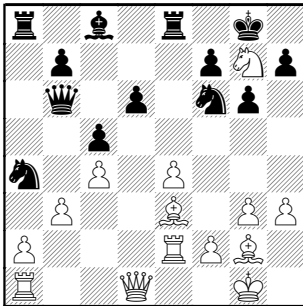
and there are dark square weaknesses on the kingside), we could not find full compensation for the piece. (maybe 19...Qb4!?)

C) At first, the computer likes 16...Rxe6 17.Bxb6 Nc3 18.Qe1 Nxe2+ 19.Qxe2



19...Nd7 20.Rd1 Nxb6 but after 21.h4 White seems only slightly worse. Active pieces are worth more to Black than holding on to the d6 pawn so awkwardly.

17.Nxg7

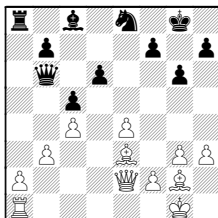


17...Nc3?

17...Kxg7 18.bxa4 White has positional compensation for his shattered queenside (the backward d6 pawn, the two bishops, Black's dark-square weakness on the kingside).

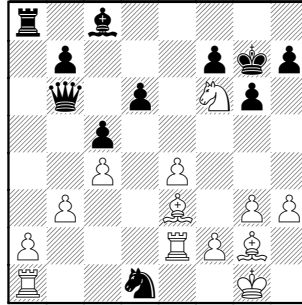
18.Nxe8! The horsie's next couple moves come with tempo. **18...Nxd1**

Black's last chance to resist was 18...Nxe2+ 19.Qxe2 Nxe8

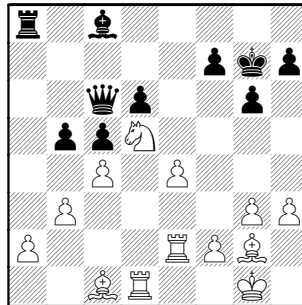


but White has the two bishops, better pawn structure, and an extra pawn.

19.Nxf6+ Kg7

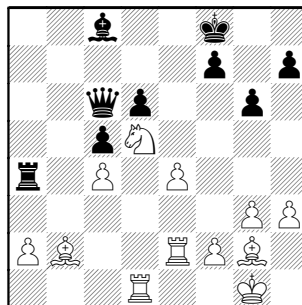


20.Nd5!+- Qc6 21.Rxd1 b5 22.Bc1



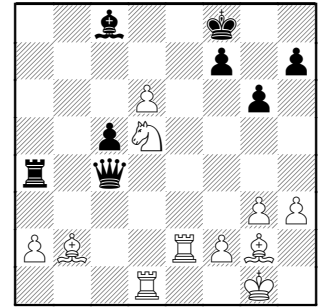
Black's kingside is naked.

22...bxc4 23.Bb2+ Kf8 24.bxc4 Ra4

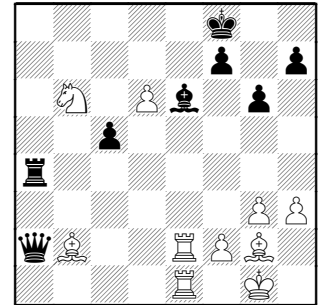


25.e5 Direct attack is the fastest way to win.

25...Qa6 26.exd6 Qxc4



27.Rde1 Be6 28.Nb6 Qxa2



29.Bd5 [Cute, but 29.d7 was stronger.] 1-0

Round 8, an Epic Battle in the East!

By Rob Eaman, Captain, Rogue Squadron

Going into Round 8, both DRW and Rogue Squadron came in tied for 2nd place in the East with identical 6-1 records after 7 rounds, and it was difficult to project final standings based upon the evening's result. (see table below for Pre-Round 8 East Division Standings.) And although it was likely that the top 3 teams in the EAST would make the playoffs due to the large size (10 teams) of the East Division, this was still a battle for the 2nd place trophy. However, the remaining schedule *might* be tougher for the DRW squad, as Round 9 features DRW at CITUC, ROGUE at TLZOO (2-5 record), etc.

East Division Standings Pre Round 8

provided by Ratings Chair Jeff Balicki

		Division Standings										Thursday, February 23, 2012
Division	Team	Organization Types	W	L	D	Game Points	Match Points	H2H MPs	USAT	PR	Playoff Seed	
East												
	Citadel/UofC	business, edu	6	0	1	33.5	6.5	0	85.0	1862	4	
	Rogue Squadron	cicl alumni	6	1	0	29.0	6.0	0	71.5	1810	6	
	DRW Trading Group	business, alum	6	1	0	31.5	6.0	0	68.0	1646	8	
	Citadel Group	business	4	3	1	27.0	4.5	0	87.0	1585	-290 PR	
	Chopper Trading/TT	business x2	3	4	0	18.5	3.0	1	50.0	1560		
	Loyola	edu institute	3	3	0	16.5	3.0	0	55.5	1507		
	Blue Cross Blue Shield	business	2	6	0	19.5	2.0	1	54.3	1439		
	Northwestern Chess Club	edu institute	2	4	0	11.5	2.0	1	40.8	1522		
	Tradelink Zookeepers	business	2	5	0	16.5	2.0	1	38.0	1342		
	AMA Tornado Snakes	business	0	7	0	4.5	0.0	0	14.3	1146		

Round 10 features #1 division seed vs. #2 division seed, #3 seed vs. #4 seed, etc. The final 10th round of our division standings chase is scheduled as a 1-game playoff due to the fact that there are 10 teams in our division and a 10-week CICL schedule. Each East Division team plays each other team exactly once during the first 9 rounds. And it has become highly likely in the East that whichever team finishes in 2nd place will once again play the powerhouse CITUC squad, increasing the likelihood of that #2 team absorbing a 10th round loss (and possibly dropping that team to #3 in the standings).

So before the match of DRW and ROGUE (both currently tied for 2nd), DRW team captain Lyle Hayhurst and I began to chat with everyone present about possible playoff scenarios. A quick glance at the standings before the Round 8 match reveals that CITGR could possibly catch one of our teams if CITGR won its remaining 3 matches and one of us lost our remaining 3 matches (this match, the round 9 match, and an inevitable showdown between CITGR and the #3 team in round 10). However, oddly enough a match draw would lock both DRW and ROGUE into playoff spots, and knock #4 CITGR out of the playoffs. Lyle and I laughed about this, but we agreed that wasn't our goal tonight.

So We Battled!

Early on it appeared ROGUE had the advantage on boards 4, 5, and 6, but DRW had the better middlegame on 3, and boards 1 and 2 were unclear.

About an hour into the match, the first result came in: board 5 (Mark Frank) pulled in the first point for ROGUE. Within 15 minutes of that finish, Board 4 wrapped up as well, another victory for ROGUE (Isaac Braswell). Shortly thereafter, DRW's board 6 (Mete Mustecaplioglu) pulled even from a down position to draw a tough endgame.

The match was 2.5 - .5 in favor of the Rogue Squadron with the top 3 boards still in play, and the match was starting to look uneven.

However, about 2 hours into the match, DRW's board 3 (Eugene Gorodetskiy) had developed a dominant position from white, and was the next to finish, pulling DRW closer at 2.5 - 1.5.

Attention then focused on the top 2 boards. On board 1, David Franklin of ROGUE had pulled ahead a pawn in a relatively equal position against the division's top-rated player (Igor Tsyganov). And on Board 2, Bill Brock gave back an earlier gambited pawn against Lyle Hayhurst to reach an unclear but even position. Two draws would secure the match for ROGUE. But the battle was on. Bill and Lyle traded down queens and got to an even endgame (B + 4 pawns vs. N + 4 pawns), and a draw soon ensued.

This left the match at 3.0 - 2.0, and all the attention on the remaining Board 1, where black (Franklin, of ROGUE) on move 40 managed to go up a bishop and a pawn. However, the bishop was costly: black's extra bishop was bad, and Igor had positional compensation despite his time trouble (less than a minute to make 5 moves). This game is annotated (by Franklin), and attached. Despite being down material, Igor eventually proved his rating, and managed to pull out a win to draw the match at 3.0 - 3.0.

What a match!

East Division Standings Post Round 8 provided by Ratings Chair Jeff Balicki

Division Standings		Monday, March 12, 2012									
Division	Team	Organization Types	W	L	D	Game Points	Match Points	H2H MPs	USAT	PR	Playoff Seed
East											
	Citadel/UofC	business, edu	6	0	1	33.5	6.5	1	87.3	1862	4
	Rogue Squadron	cicl alumni	6	1	1	32.0	6.5	0.5	91.0	1815	6
	DRW Trading Group	business, alum	6	1	1	34.5	6.5	0.5	87.5	1680	8
	Citadel Group	business	4	3	1	27.0	4.5	0	90.3	1585	-290 PR
	Chopper Trading/TT	business x2	3	4	0	18.5	3.0	1	50.8	1560	
	Loyola	edu institute	3	3	0	16.5	3.0	0	56.8	1507	
	Blue Cross Blue Shield	business	2	6	0	19.5	2.0	1	55.5	1439	
	Northwestern Chess Club	edu institute	2	4	0	11.5	2.0	1	42.3	1522	
	Tradelink Zookeepers	business	2	5	0	16.5	2.0	1	39.0	1342	
	AMA Tornado Snakes	business	0	7	0	4.5	0.0	0	14.8	1146	

Tradelink Zoo crew sends AMA Pirates of Wacker-ribbean to Davey Jones' Locker

By Tony Jasaitis, Tradelink Zookeepers.

On January 9th, in a surreal match inspired by fun trash talk between the AMA Tornado Snakes (so named after the AMA logo) and the Tradelink Zookeepers (so named for the trading models we caretake, which are mostly named after wildlife), the hurricane-driven sea serpents, charged by their pirate captain, clashed in a perfect storm ridden by the ravenous victory-starved zoo whose members included [from Tony's stuffed animal collection] Cheetah, Panther, Tiger, Hound, Tortoise, Snake, Hedgehog, Butterfly, Bee, and Octopus, in the Gargantuan Battle to Avoid Davey Jones' Locker [last place].

[real-life translation: I put out all my stuffed animals, and the AMA captain really did show up with a pirate outfit, including dreadlocks and eye patch. The metaphors stem from the evolving careening trash talk between myself and the AMA captain, Fred Further. We bottom feeders know how to have fun when we can't find it on the board.]

The ferocity of the trash talk belied the ultra-friendliness of the match, where our hospitality went beyond just sharing our pizza to offering them every opportunity to crawl out of the bottom of the barrel on the one hand, while bashing them with the other, in a 5-1 victory.

On board 2, I was in danger of slipping off deck when I blundered a piece, but then I brought in the Four Mouse-keteers for reinforcements [the cats on my coffee cup], and they guided a passed pawn down to the 7th rank, causing my opponent to give up his ill-gotten booty.

Tony Jasaitis of the Tradelink Zookeepers, armed only with his wits and fiendish feline coffee cup, faces off against Captain of the high seas and AMA team, Fred Furtner.



Their board 4 player technically should have forfeited for not showing up after an hour, but he was stuck at work and Nathan Crosby and I decided to be sportsmanlike and give him the full 1.5 hours (the normal time limit to make the first 45 moves when one has shown up). He showed up with just 5 minutes left on his clock, and quickly lost to Nate.

Tim McEneaney won his first game for us on board 6, possibly with enhanced powers bestowed by the chess clock housed in the Pink Panther carry case [a child's lunch box].

Mack Smith on board 1 and Neal Coombes on board 3 sunk their opponents, apparently with their own prowess.

The magic of the night didn't rub off on Ron Resnick, whose board 5 game was our only loss. We'll have perfect those charms.

Delirious from our swashbuckling victory, we will next raid Citadel!

Cap'n Fred Furtner points to the cat-emblazoned caffeine container that sent him down with his ship!





Season Results

Tuesday, March 27, 2012

Team	Player	W	L	D	Rating Change	Rating	Rated Games	CICL Games	Rating Class	Playoff Eligible
AMATS										
	HARRIS,M	0	3	0	-37	1813	19	19	Provisional	+
	FURTNER,F	4	6	0	+42	1587	83	80	Established	+
	COLEMAN,M	0	6	0	-146	1518	12	8	Provisional	+
	MEYER-ABBOTT,B	0	2	0	-38	1386	28	31	Established	+
	MASITI,J	0	1	0	-14	1348	22	29	Provisional	+
	SOVA,ANDREW	0	0	0	+101	1336	12	7	Provisional	-No-
	FARMER,B	0	0	0	0	1324	8	8	New	-No-
	MEHDI,SYED	0	0	0	0	1277	7	10	New	-No-
	MEYER,C	0	1	1	+27	1191	14	29	Provisional	+
	GRUDZINSKI,T	0	3	0	-129	1171	5	9	New	+
	HENDRICKS,B	0	3	0	-94	1106	5	3	New	+
	IRBY,L	2	7	0	-25	1077	22	32	Provisional	+
	HARPER,M	0	9	0	-140	983	32	43	Established	+
	BAROT,N	0	0	0	0	968	4	4	New	-No-

Note: Only players with a non-zero W-L-D record, or with additional Rated Games this season, are shown.

Note 2: To be Playoff Eligible, a player must play a game (or accept a forfeit win) at a regular season match against a non-team member.

Team	Player	W	L	D	Rating Change	Rating	Rated Games	CICL Games	Rating Class	Playoff Eligible
AONRK										
	CAVENEY,J	3	1	3	+7	2140	33	27	Established	+
	COHEN,L	4	1	3	+41	2062	26	14	Established	+
	SCOTT,G	0	0	1	+28	2046	9	1	Provisional	+
	COHEN,H	4	1	3	+67	1918	23	13	Provisional	+
	GAWRON,J	0	0	0	0	1798	6	0	New	-No-
	GHAIBEH,AYMAN	1	2	0	-29	1667	17	18	Provisional	+
	BARRERA,JORGE	2	3	2	-14	1620	13	7	Provisional	+
	GILBERT,S	0	2	0	-89	1504	7	5	New	+
	MOORE,A	1	2	0	-44	1376	10	11	Provisional	+
	JANCORAS,Z	2	3	0	-26	1374	7	5	New	+
	STILES,J	0	2	0	-36	1203	11	12	Provisional	+
	VILLVAIAM,R	0	0	0	0	1200	2	0	New	-No-
	GROSSMAN,P	0	0	0	0	1200	2	0	New	-No-
	MOSLEY,A	2	5	1	+60	1119	26	27	Established	+
	DAILY,S	0	0	0	0	1100	2	0	New	-No-
	HEISER,D	0	1	0	-42	1073	9	8	Provisional	+

Note: Only players with a non-zero W-L-D record, or with additional Rated Games this season, are shown.

Note 2: To be Playoff Eligible, a player must play a game (or accept a forfeit win) at a regular season match against a non-team member.

Team	Player	W	L	D	Rating Change	Rating	Rated Games	CICL Games	Rating Class	Playoff Eligible
BCBS										
	KHAN,M	3	3	1	+47	1858	29	25	Established	+
	GUIDRY,D	3	3	1	+84	1627	28	14	Established	+
	BRUNO,R	2	0	1	+35	1625	25	20	Provisional	+
	STURGEON,V	3	2	1	+48	1535	12	9	Provisional	+
	GUIU,C	0	1	2	-3	1534	23	21	Provisional	+
	MATA,S	4	3	1	+35	1523	34	30	Established	+
	SAN MIGUEL,L	0	0	0	0	1514	16	17	Provisional	-No-
	WONG,A	1	0	0	+50	1424	6	5	New	+
	THOMPSON,GZ	3	4	1	+126	1419	23	9	Provisional	+
	BURGESS,A	0	6	0	-180	1315	25	26	Provisional	+
	RATNAKARAM,S	0	0	0	0	1300	6	0	New	-No-
	LACHOWIEC,S	0	0	0	0	1291	2	1	New	-No-
	PETTIS,D	0	0	1	-25	1198	6	4	New	+
	GUEVARRA	0	2	0	-19	1181	4	2	New	+
	MORANO,B	1	2	0	-65	1035	5	3	New	+
CHPTT										
	LAWRENCE,D	4	3	1	-52	2123	16	8	Provisional	+
	GHOLIZADEH,R	5	1	3	+158	1907	14	9	Provisional	+
	KHLUS,V	1	1	2	+25	1523	15	13	Provisional	+
	HUNTER,JOSH	2	5	1	-27	1480	18	16	Provisional	+
	POLUPAN,O	4	4	0	+101	1351	10	8	Provisional	+
	JIANG,W	3	3	0	+75	1275	8	6	New	+
	GOTTEMOLLER,A	2	5	0	-101	1256	15	14	Provisional	+
	KAY,R	0	0	0	0	1200	2	0	New	-No-
	BOOSTRUM,A	0	0	0	0	1200	2	0	New	-No-
	VISSER,JOUBERT	2	2	0	+5	1174	22	16	Provisional	+
	KONTCHOU,T	0	1	0	-97	1103	3	1	New	+
	WILK,M	0	0	0	0	1050	9	7	Provisional	-No-

Note: Only players with a non-zero W-L-D record, or with additional Rated Games this season, are shown.

Note 2: To be Playoff Eligible, a player must play a game (or accept a forfeit win) at a regular season match against a non-team member.

Team	Player	W	L	D	Rating Change	Rating	Rated Games	CICL Games	Rating Class	Playoff Eligible
CITGR										
	ONG,K	5	3	0	+58	1882	78	61	Established	+
	MUHS,A	0	0	1	+14	1730	48	52	Established	+
	KUNHIRAMAN,P	2	3	3	+4	1595	38	30	Established	+
	SENSAT,J	3	0	1	+89	1592	82	79	Established	+
	PRIMORAC,V	2	4	1	-31	1531	40	29	Established	+
	LE,DUC	4	2	1	-7	1509	78	75	Established	+
	SHEVCHUK,E	4	2	1	+181	1373	21	9	Provisional	+
	SHAH,A	0	0	0	0	1345	3	1	New	-No-
	LARSON FREEMAN,T	3	2	0	-118	1192	19	9	Provisional	+
	GALE,M	0	1	0	-105	1128	9	3	Provisional	+
	PARRA,J	0	0	0	-113	1065	22	20	Provisional	-No-
	HAZEL,M	0	1	0	-74	926	3	1	New	+
CITUC										
	MICHAELIDES,M	6	1	0	+64	2275	15	7	Provisional	+
	PFAU,M	6	0	2	-27	2081	58	35	Established	+
	RAND,S	4	0	1	+40	2020	11	5	Provisional	+
	BLEDSON,S	1	0	1	+5	2016	10	2	Provisional	+
	MEI,M	8	0	1	+59	1940	15	9	Provisional	+
	DEVENPORT,S	2	0	0	+4	1869	8	2	New	+
	FRANCUS,M	0	1	1	-109	1757	8	2	New	+
	FRIESEN,D	1	0	0	0	1687	7	1	New	+
	ANTONYAN,E	4	2	1	+17	1417	9	7	Provisional	+
	PROKOPOWICZ,P	5	2	1	+91	1270	40	33	Established	+
	QI,YUAN	0	0	0	0	1200	2	0	New	-No-
	SHAHZAMAN,K	0	1	0	-142	1058	3	1	New	+

Note: Only players with a non-zero W-L-D record, or with additional Rated Games this season, are shown.

Note 2: To be Playoff Eligible, a player must play a game (or accept a forfeit win) at a regular season match against a non-team member.

Team	Player	W	L	D	Rating Change	Rating	Rated Games	CICL Games	Rating Class	Playoff Eligible
DGCC										
	KLUG,S	3	1	3	+4	2172	53	46	Established	+
	BUNGO,G	7	0	0	+81	2132	30	26	Established	+
	EGERTON,J	2	0	0	+10	2035	51	45	Established	+
	DIXON,J	1	0	0	0	1990	7	1	New	+
	DUGOVIC,D	0	1	0	-20	1905	26	24	Established	+
	POTTS,K	5	0	3	+21	1877	44	44	Established	+
	WAKERLY,R	3	1	1	-19	1864	38	36	Established	+
	TAN,GADDIEL	0	0	3	+9	1850	25	26	Provisional	+
	PARMET,D	3	0	0	+30	1803	26	23	Established	+
	YALAVARTHI,R	1	0	0	+10	1732	19	17	Provisional	+
	MANEY,A	0	0	0	0	1644	7	9	New	-No-
	WHITED,W	5	1	0	-29	1639	12	6	Provisional	+
	SMITH,BR	2	0	2	+6	1615	146	184	Centurion	+
	VECANSKI,D	0	0	0	0	1581	18	17	Provisional	-No-
	ROMANOWITZ,C	3	0	0	+43	1543	21	18	Provisional	+
	KIRKSY,M	2	1	0	+85	1133	6	3	New	+
DRGNS										
	TEGEL,F	1	2	1	0	2024	424	462	Quadruple Centurion	+
	LUDWIG,T	1	4	0	-23	1944	218	218	Double Centurion	+
	MARCOWKA,R	3	4	0	-23	1833	323	346	Triple Centurion	+
	PEHAS,A	0	0	1	-9	1829	157	166	Centurion	+
	PARKER,L	0	2	3	-58	1669	88	95	Established	+
	EUSTACE,D	3	4	0	-22	1551	194	237	Double Centurion	+
	KOMORAVOLU,K	5	1	0	+53	1493	57	67	Established	+
	THOMAS,J	1	2	0	-42	1437	245	299	Double Centurion	+
	STAMM,V	1	1	2	0	1421	361	387	Triple Centurion	+
	BREYER,A	0	2	0	-54	1301	65	75	Established	+

Note: Only players with a non-zero W-L-D record, or with additional Rated Games this season, are shown.

Note 2: To be Playoff Eligible, a player must play a game (or accept a forfeit win) at a regular season match against a non-team member.

Team	Player	W	L	D	Rating Change	Rating	Rated Games	CICL Games	Rating Class	Playoff Eligible
DRW										
	TSYGANOV,I	7	0	2	+36	2336	16	9	Provisional	+
	HAYHURST,W	2	4	3	-56	1889	104	102	*New* Centurion	+
	GORODETSKIY,E	6	3	0	+32	1856	52	40	Established	+
	POPOV,D	0	0	0	0	1850	2	0	New	-No-
	GORODETSKIY,S	3	1	2	-11	1749	72	68	Established	+
	MUSTEAPLIOGLU,M	1	0	1	+41	1641	4	2	New	+
	BEDER,B	5	0	1	+15	1590	23	25	Provisional	+
	GUGENHEIM,O	5	1	1	+5	1583	35	35	Established	+
	CAPUTO,W	2	0	0	0	1552	4	6	New	+
	RYAN,P	0	0	0	0	1530	6	14	New	-No-
	REDMOND,M	1	2	0	-43	1413	25	30	Provisional	+
	KOMBLEVITZ,A	1	0	0	+46	1124	12	12	Provisional	+
	MILLER,O	0	2	0	-32	845	7	5	New	+
EXCLB										
	HART,V	3	2	3	+1	2118	50	44	Established	+
	LEE,D	0	6	1	-37	1846	62	60	Established	+
	DOWELL,E	1	4	3	+11	1817	60	66	Established	+
	ENGELN,M	3	4	1	-1	1755	70	71	Established	+
	WEITZ,R	2	1	0	+50	1643	217	237	Double Centurion	+
	VIGANTS,A	2	3	3	-23	1564	185	201	*New* Double Cent.	+
	SUERTH,F	0	0	0	0	1495	206	246	Double Centurion	-No-
	SIEGEL,R	4	2	1	-7	1491	131	162	Centurion	+
	REID,C	2	3	1	-51	1453	231	279	Double Centurion	+

Note: Only players with a non-zero W-L-D record, or with additional Rated Games this season, are shown.

Note 2: To be Playoff Eligible, a player must play a game (or accept a forfeit win) at a regular season match against a non-team member.

Team	Player	W	L	D	Rating Change	Rating	Rated Games	CICL Games	Rating Class	Playoff Eligible
FERMI										
	KOZLOVSKY,M	0	0	0	0	2082	45	50	Established	-No-
	SERGATSKOV,D	2	4	1	-32	2007	36	37	Established	+
	SPIEGEL,L	4	2	1	+8	1981	324	351	Triple Centurion	+
	MOTTA,H	0	0	0	0	1872	61	65	Established	-No-
	GAINES,I	2	4	1	-37	1706	327	354	Triple Centurion	+
	STAPLES,C	0	0	1	+12	1621	93	106	Centurion	+
	STRAIN,D	3	2	1	+36	1618	21	16	Provisional	+
	DIMARCO,J	1	0	1	+148	1548	4	2	New	+
	DEGRAFF,B	2	2	1	-21	1515	55	59	Established	+
	MHASHILKAR,P	2	1	3	+69	1379	17	15	Provisional	+
	KATSANPOC,J	0	1	0	-143	1357	3	1	New	+
	FISCHLER,M	0	0	0	0	1333	3	1	New	-No-
	DRENDEL,B	0	0	0	0	956	12	15	Provisional	-No-
FORKS										
	INUMERABLE,F	0	0	0	0	2152	193	195	Centurion	-No-
	FRISKE,T	0	3	1	-22	1996	213	229	Double Centurion	+
	SANTIAGO,T	0	0	1	+2	1981	141	150	Centurion	+
	LEVENSON,S	1	1	1	-6	1954	62	60	Established	+
	SOLLANO,E	0	1	0	-16	1906	167	182	Centurion	+
	GRANATA,M	1	1	0	-3	1872	38	41	Established	+
	MCGUIRE,A	1	1	0	+37	1817	11	16	Provisional	+
	BIALON,D	0	0	0	0	1724	34	34	Established	-No-
	ANSARI,N	1	2	0	-4	1574	57	64	Established	+
	HUGHES,N	0	0	0	0	1568	196	213	Double Centurion	-No-
	BIAN,M	1	2	1	-3	1498	25	28	Provisional	+
	NICK,X	0	0	0	0	1210	22	29	Provisional	-No-
	KACZYNSKI,W	0	1	0	-11	1080	10	16	Provisional	+

Note: Only players with a non-zero W-L-D record, or with additional Rated Games this season, are shown.

Note 2: To be Playoff Eligible, a player must play a game (or accept a forfeit win) at a regular season match against a non-team member.

Team	Player	W	L	D	Rating Change	Rating	Rated Games	CICL Games	Rating Class	Playoff Eligible
JJCCC										
	ABERNATHY,J	0	4	0	-22	1538	16	11	Provisional	+
	BRUCE,K	0	5	1	+1	1452	21	15	Provisional	+
	GOEBEL,R	0	1	0	-43	1374	7	1	New	+
	LEDFORD,J	0	3	0	-19	1158	13	11	Provisional	+
	MARCHERT JR ,J	0	0	0	0	1155	13	7	Provisional	-No-
	THOMPSON,G	0	2	0	-15	1154	12	6	Provisional	+
	RAINEY,R	0	4	1	+17	1122	15	13	Provisional	+
	EMORY,I	1	3	0	+94	1114	6	4	New	+
	CLARK,D	1	0	0	+102	1100	7	1	New	+
	MARCHERT SR,J	1	3	1	+29	1033	15	9	Provisional	+
	CRAIG,S	0	4	0	-26	1029	14	12	Provisional	+
	THOMAN,J	0	1	0	-123	877	3	1	New	+
	SHORES,B	0	3	0	-35	800	8	6	New	+
LOYLA										
	GURCZAK,J	2	1	2	+35	2165	13	5	Provisional	+
	PUZANOV	2	6	1	-28	1652	15	9	Provisional	+
	GONZALEZ,D	0	1	0	-138	1462	3	1	New	+
	DIMOPOULOS,P	5	4	0	+77	1460	23	23	Provisional	+
	CLARK,I	2	2	0	+4	1446	19	20	Provisional	+
	SAMPEI,D	0	1	0	-55	1410	6	2	New	+
	ZACHAR,T	1	2	0	-71	1361	7	5	New	+
	GLIWA,D	0	0	0	0	1324	5	4	New	-No-
	JOHNSON,Z	0	0	0	0	1257	4	4	New	-No-
	NEMATI,N	2	3	0	+63	1249	13	5	Provisional	+
	ACOSTA,T	2	2	0	+61	1218	10	4	Provisional	+
	SOLOMON,S	0	0	0	0	1167	4	2	New	-No-
	WOJDYLA	3	5	0	-42	1107	15	16	Provisional	+
	HULLINGER,D	0	0	0	0	1100	2	0	New	-No-
	REITER,J	0	1	0	0	954	7	5	New	+

Note: Only players with a non-zero W-L-D record, or with additional Rated Games this season, are shown.

Note 2: To be Playoff Eligible, a player must play a game (or accept a forfeit win) at a regular season match against a non-team member.

Team	Player	W	L	D	Rating Change	Rating	Rated Games	CICL Games	Rating Class	Playoff Eligible
MKING										
	AITIPAMULA,J	3	2	3	-10	2039	31	34	Established	+
	MELNIKOV,I	2	2	1	+4	2020	151	153	Centurion	+
	WALLACH,C	2	1	3	-5	1928	196	197	Centurion	+
	PIPARIA,J	4	3	1	-24	1898	131	138	Centurion	+
	CYGAN,J	5	3	0	-10	1773	93	95	Established	+
	GONCHAROFF,N	4	2	3	+11	1523	518	609	Sextuple Centurion	+
	ALFONSO,E	0	1	0	-43	1446	58	67	Established	+
	RABINOVICH,E	2	3	1	-8	1446	66	82	Established	+
	GRYPARIS,J	0	1	0	-42	1338	130	174	Centurion	+
MKNGT										
	FRIDMAN,Y	4	0	4	-3	2263	147	154	Centurion	+
	MORRIS,R	5	0	2	+8	2207	147	149	Centurion	+
	THOMSON,J	5	2	1	-12	2009	156	181	Centurion	+
	BALICKI,J	8	0	0	+69	1911	155	181	Centurion	+
	AUGSBURGER,L	0	0	0	0	1774	157	187	Centurion	-No-
	CHERKASSKY,G	5	1	1	+4	1728	60	67	Established	+
	KARANDIKAR,S	0	0	0	0	1662	75	92	Established	-No-
	DUONG,R	3	1	1	+17	1516	23	34	Provisional	+
	BABINEC,J	2	2	1	-6	1321	38	46	Established	+

Note: Only players with a non-zero W-L-D record, or with additional Rated Games this season, are shown.

Note 2: To be Playoff Eligible, a player must play a game (or accept a forfeit win) at a regular season match against a non-team member.

Team	Player	W	L	D	Rating Change	Rating	Rated Games	CICL Games	Rating Class	Playoff Eligible
MLXAC										
	RENAUT,R	0	0	0	0	2238	4	0	New	-No-
	OBERWEIS,J	1	1	2	+37	1971	6	4	New	+
	WANG,A	0	1	2	+6	1878	9	3	Provisional	+
	STERN,B	0	1	0	-13	1846	7	1	New	+
	JARRETTE,P	0	0	0	0	1800	6	0	New	-No-
	REICH,T	1	4	0	-2	1718	72	78	Established	+
	ZADEREJ,V	2	2	0	+7	1644	77	78	Established	+
	MATHEWS,K	4	3	0	+187	1607	13	7	Provisional	+
	MCGOWAN,D	0	0	0	0	1489	65	68	Established	-No-
	RUFUS,B	1	1	0	+18	1472	40	44	Established	+
	FLYNN,M	1	2	0	-2	1449	9	3	Provisional	+
	FELDMAN,W	1	1	0	-66	1403	8	2	New	+
	LINK,D	3	3	1	+76	1385	13	7	Provisional	+
	ZARRIS,J	0	2	0	-34	1315	8	2	New	+
	DEICHMANN,E	1	2	2	+13	1304	67	76	Established	+
	MANILA,M	0	0	0	0	1095	45	54	Established	-No-
	MUELLER,R	0	1	0	-12	1024	21	33	Provisional	+
	AREND,A	0	4	0	0	800	15	15	Provisional	+

Note: Only players with a non-zero W-L-D record, or with additional Rated Games this season, are shown.

Note 2: To be Playoff Eligible, a player must play a game (or accept a forfeit win) at a regular season match against a non-team member.

Team	Player	W	L	D	Rating Change	Rating	Rated Games	CICL Games	Rating Class	Playoff Eligible
NWEST										
	ZABELL,S	0	1	0	-205	1920	4	1	New	+
	MCVAY,K	0	2	0	-29	1899	9	3	Provisional	+
	DATLA,S	0	1	0	-30	1847	10	5	Provisional	+
	SHEKHTMAN,L	5	2	0	+101	1806	17	11	Provisional	+
	KRAVIK,P	0	0	0	0	1796	13	11	Provisional	-No-
	MODI,P	2	3	1	-14	1758	18	12	Provisional	+
	LOU,J	4	3	0	+61	1501	15	15	Provisional	+
	GINZBURG,D	1	4	0	-48	1434	17	11	Provisional	+
	WEINFELD,M	3	1	0	+123	1393	11	9	Provisional	+
	KARALIS,P	0	0	0	0	1383	6	0	New	-No-
	BI,TAO	3	0	0	+89	1303	12	7	Provisional	+
	KIM,C	0	0	1	-16	1300	4	2	New	+
	ANDERSON,E	0	0	0	0	1286	3	4	New	-No-
	GLIEBE,M	0	0	0	0	1200	1	0	New	-No-
	KIM,EDWARD	2	1	1	+187	1187	5	4	New	+
	WU,S	0	0	0	0	1179	3	1	New	-No-
	BABCOCK,S	0	1	0	0	1067	5	4	New	+
	ATKINS,HARRISON	0	1	0	-110	1036	4	1	New	+
	CROFTS,J	0	1	0	0	1000	3	1	New	+

Note: Only players with a non-zero W-L-D record, or with additional Rated Games this season, are shown.

Note 2: To be Playoff Eligible, a player must play a game (or accept a forfeit win) at a regular season match against a non-team member.

Team	Player	W	L	D	Rating Change	Rating	Rated Games	CICL Games	Rating Class	Playoff Eligible
PAWNS										
	MENON,G	0	0	0	0	2200	9	1	Provisional	-No-
	PRUDE,S	1	1	1	+8	2082	11	3	Provisional	+
	KORENMAN,M	3	2	0	+31	1997	22	17	Provisional	+
	LATIMER,E	0	0	0	0	1916	302	334	Triple Centurion	-No-
	EDEUS,D	4	1	0	+56	1815	26	21	Established	+
	HOLLAWAY,M	2	3	2	0	1756	28	23	Established	+
	ALBOROVAS,K	4	1	1	+83	1631	12	6	Provisional	+
	KUKURUZA,V	0	3	1	-48	1605	25	23	Provisional	+
	VITKAUSKAS,V	0	0	0	0	1591	9	3	Provisional	-No-
	HARPER,C	1	0	1	+16	1476	15	9	Provisional	+
	RODRIGUEZ,CARLOS	0	0	0	0	1450	2	0	New	-No-
	FABIJONAS,R	1	2	0	-27	1414	347	386	Triple Centurion	+
	JACKSON,WILLIAM	2	0	0	+27	1403	27	30	Established	+
	O'DELL,DW	0	0	0	0	1351	203	220	Double Centurion	-No-
	WEBER,A	0	1	0	-11	1189	3	1	New	+
	SINOPLE,J	4	3	0	+230	1089	27	28	Established	+
	DENBY,T	1	2	0	+30	967	9	3	Provisional	+
ROGUE										
	FRANKLIN,D	2	3	0	-21	2182	37	30	Established	+
	BROCK,B	4	0	2	+25	2043	35	17	Established	+
	BRASWELL,I	4	5	0	-87	1849	27	23	Established	+
	EAMAN,R	4	3	0	+18	1796	134	126	Centurion	+
	FRANK,M	6	0	1	+58	1719	142	168	Centurion	+
	PERSONS,J	3	1	0	-5	1626	26	33	Established	+
	DUFFY,J	6	2	0	-24	1599	115	122	Centurion	+
	ACEVEDO,U	6	0	1	+12	1561	40	37	Established	+
	FULKERSON,R	0	0	0	0	1481	48	67	Established	-No-
	FINE,A	2	0	0	+88	1346	14	10	Provisional	+

Note: Only players with a non-zero W-L-D record, or with additional Rated Games this season, are shown.

Note 2: To be Playoff Eligible, a player must play a game (or accept a forfeit win) at a regular season match against a non-team member.

Team	Player	W	L	D	Rating Change	Rating	Rated Games	CICL Games	Rating Class	Playoff Eligible
ROOKS										
	BENEDEK,R	2	3	1	-4	2086	384	398	Triple Centurion	+
	HILL,R	4	2	0	+41	1950	245	258	Double Centurion	+
	SUAREZ,E	1	2	1	-9	1874	131	132	Centurion	+
	BAURAC,D	2	4	1	0	1703	318	356	Triple Centurion	+
	GWEKOH,R	4	1	2	+137	1567	19	19	Provisional	+
	YACOUT,A	1	3	0	-42	1538	58	62	Established	+
	DECMAN,S	1	2	2	+15	1534	283	316	Triple Centurion	+
	GRUDZINSKI,J	1	0	0	+36	1470	39	50	Established	+
	KUHLMANN,S	0	2	0	-68	1320	22	27	Provisional	+
	RAMANATHAN,N	0	0	0	0	1256	18	25	Provisional	-No-
	HLOHOWSKYJ,I	0	0	0	0	1033	23	33	Provisional	-No-
	SAKOWSKI,M	0	2	0	0	1000	4	2	New	+
	TORRELL,S	0	2	0	-135	865	4	2	New	+
	NARAYARANASAMI,S	1	0	0	+64	864	7	8	New	-No-

Note: Only players with a non-zero W-L-D record, or with additional Rated Games this season, are shown.

Note 2: To be Playoff Eligible, a player must play a game (or accept a forfeit win) at a regular season match against a non-team member.

Team	Player	W	L	D	Rating Change	Rating	Rated Games	CICL Games	Rating Class	Playoff Eligible
STCCC										
	SHAW,T	7	0	1	+119	2328	16	8	Provisional	+
	MARSHALL,J	0	0	0	0	2258	58	53	Established	-No-
	SPLINTER,J	0	0	0	0	2126	48	42	Established	-No-
	WIEWEL,J	3	1	1	-9	2120	85	80	Established	+
	ACOSTA,M	1	1	1	-19	2115	28	21	Established	+
	FREIDEL,P	1	1	0	-8	1939	57	55	Established	+
	SUITS,J	0	0	0	0	1867	65	62	Established	-No-
	VON HATTEN,J	5	3	0	-8	1809	47	45	Established	+
	AILES,T	0	0	0	0	1808	42	44	Established	-No-
	MEISSEN,B	0	0	0	0	1766	24	25	Provisional	-No-
	SMITH,D	0	0	0	0	1598	22	20	Provisional	-No-
	KOLB,S	3	1	3	-12	1596	18	14	Provisional	+
	PADILLA,R	4	2	0	+23	1588	43	45	Established	+
	JANSSEN,G	2	2	1	-1	1573	49	53	Established	+
	ALBERTS,W	0	0	0	0	1569	46	49	Established	-No-
	GIERTZ,C	0	0	0	0	1474	3	4	New	-No-
	CRISSMAN,J	0	0	0	0	1463	7	2	New	-No-
	POWERS,E	1	0	1	+21	1396	22	22	Provisional	+
	GREER,J	1	1	0	-1	1375	25	28	Provisional	+
	KELLEY,G	1	2	0	-49	1332	11	7	Provisional	+
	BALES,R	0	2	0	-64	1301	19	19	Provisional	+
	BOURIS,B	0	0	0	0	1217	7	7	New	-No-
	RIES,G	0	0	0	0	1109	5	2	New	-No-
	WIEWEL,M	0	0	0	0	1004	6	0	New	-No-

Note: Only players with a non-zero W-L-D record, or with additional Rated Games this season, are shown.

Note 2: To be Playoff Eligible, a player must play a game (or accept a forfeit win) at a regular season match against a non-team member.

Team	Player	W	L	D	Rating Change	Rating	Rated Games	CICL Games	Rating Class	Playoff Eligible
TLZOO										
	SMITH,M	2	5	2	-75	1900	86	72	Established	+
	JASAITIS,A	5	3	1	-16	1889	295	322	Triple Centurion	+
	KRATKA,M	0	2	1	-29	1586	74	83	Established	+
	COOMBES,N	2	3	1	+64	1340	19	22	Provisional	+
	SCHWARTZ,BRIAN	0	2	0	-41	1206	10	8	Provisional	+
	CROSBY,N	2	4	1	+80	1116	17	16	Provisional	+
	MCENEANY,T	1	4	0	+10	1004	14	13	Provisional	+
	REGAS,T	0	1	0	-117	983	3	1	New	+
	RORVICK,C	2	4	0	-16	962	11	13	Provisional	+
	RESNICK,R	0	3	1	-83	917	6	4	New	+
TYROS										
	ALLSBROOK,F	4	0	2	+30	2195	77	73	Established	+
	DIAZ,P	2	5	1	-45	1937	247	253	Double Centurion	+
	GUIO,J	1	2	2	+8	1830	208	207	Double Centurion	+
	STOLTZ,B	1	1	0	-6	1818	208	222	Double Centurion	+
	DOBROVOLNY,C	3	4	1	-35	1680	247	268	Double Centurion	+
	BUCHNER,R	0	0	0	0	1650	162	165	Centurion	-No-
	HAHNE,D	2	2	1	-4	1636	186	218	Double Centurion	+
	DENMARK,T	2	1	1	-14	1601	47	54	Established	+
	VAIL,M	0	1	0	-25	1572	76	88	Established	+
	KRUEGER,J	0	0	0	0	1467	1	1	New	-No-
	MCPHAIL,C	1	2	1	+12	1448	13	18	Provisional	+
	KURUVILLA,E	2	2	0	+6	1356	14	12	Provisional	+
	KARPIERZ,J	0	0	0	0	1293	49	75	Established	-No-
	BYRNE,M	2	4	0	-49	1268	51	60	Established	+

Note: Only players with a non-zero W-L-D record, or with additional Rated Games this season, are shown.

Note 2: To be Playoff Eligible, a player must play a game (or accept a forfeit win) at a regular season match against a non-team member.

Team	Player	W	L	D	Rating Change	Rating	Rated Games	CICL Games	Rating Class	Playoff Eligible
UOP										
	LEONG,G	2	3	2	+8	1954	221	242	Double Centurion	+
	SIWEK,M	1	1	2	+4	1940	241	251	Double Centurion	+
	BOLDINGH,E	2	4	3	-11	1904	224	233	Double Centurion	+
	VAN MEER,J	0	0	0	0	1898	72	70	Established	-No-
	EASTON,R	1	1	0	+12	1835	125	141	Centurion	+
	SAJBEL,P	0	1	0	-22	1776	145	162	Centurion	+
	NGUYEN,M	1	1	0	+41	1761	8	9	New	+
	LECHNICK,J	1	3	3	-5	1629	141	167	Centurion	+
	MOSSBRIDGE,A	1	1	0	-7	1592	41	41	Established	+
	SCHWANBECK,S	0	0	0	0	1572	6	4	New	-No-
	OLSEN,A	3	4	1	+21	1538	179	201	*New* Double Cent.	+
	STUDEBAKER,C	3	0	1	+264	1518	8	4	New	+
	LAMBIRIS,J	0	1	0	-25	1428	38	47	Established	+
	RAMOS,J	4	3	2	+137	1320	16	15	Provisional	+
	LANG,P	0	0	0	0	1229	3	1	New	-No-
	RAMIREZ,A	1	1	0	+56	1136	7	7	New	+

Note: Only players with a non-zero W-L-D record, or with additional Rated Games this season, are shown.

Note 2: To be Playoff Eligible, a player must play a game (or accept a forfeit win) at a regular season match against a non-team member.

Team	Player	W	L	D	Rating Change	Rating	Rated Games	CICL Games	Rating Class	Playoff Eligible
WMBAT										
	TENNANT,S	1	3	0	-49	2217	34	27	Established	+
	NGUYEN,T	1	1	0	-16	2153	30	27	Established	+
	GODFREY,J	0	0	0	0	2149	5	0	New	-No-
	PANNER,G	1	0	0	0	2105	7	2	New	+
	WEBER,L	3	1	0	-6	2068	75	72	Established	+
	FREITAG,T	5	2	0	+15	2020	46	41	Established	+
	YALAMANCHI,K	0	0	0	0	1966	6	0	New	-No-
	ELLICE,W	5	1	1	+23	1803	213	221	Double Centurion	+
	ZOLKOS,A	4	2	1	-20	1728	40	37	Established	+
	TOLLIVER,T	0	0	0	0	1683	6	0	New	-No-
	FRANEK,M	0	2	1	-56	1608	251	307	Triple Centurion	+
	RAJSKY,J	3	0	0	+42	1582	20	14	Provisional	+
	CONNELLY,P	1	1	2	-62	1550	21	18	Provisional	+
	MIKULECKY,B	0	0	0	0	1389	200	225	Double Centurion	-No-
	SARNA,J	0	0	0	0	1374	12	6	Provisional	-No-
	SPITZIG,M	2	1	0	-3	1319	42	47	Established	+
	ZACK,K	0	0	0	0	800	3	4	New	-No-

Note: Only players with a non-zero W-L-D record, or with additional Rated Games this season, are shown.

Note 2: To be Playoff Eligible, a player must play a game (or accept a forfeit win) at a regular season match against a non-team member.