

The Chicago Chess Player

The Official Bulletin of the Chicago Industrial Chess League



Happy Holidays!

Cover Art by Jacquelin Connelly

Inside this Issue:
Upcoming Tournaments
Ratings
Report from London Chess Classic

CICL Officer Contact List

League President **Irwin Gaines**
President@ChicagoChessLeague.org

League Secretary **Jerry Thomas**
Secretary@ChicagoChessLeague.org

745 Hageman Pl
Naperville, IL 60563

H:(630)420-0188

League Treasurer **Andy Mosley**
Treasurer@ChicagoChessLeague.org

1415 Downing Place Apt 9P
Mundelein, IL 60060

Bulletin Editor **Patrice Connelly**
Bulletin@ChicagoChessLeague.org

Webmaster
Web@ChicagoChessLeague.org

Games Editor **Steve Tennant**
Bulletin@ChicagoChessLeague.org

Ratings Chairman **Jeff Balicki**
Ratings@ChicagoChessLeague.org

Trophy Chairman **Chuck Dobrovolny**
Trophy@ChicagoChessLeague.org

Publicity Chairman **Matt Vail**
Publicity@ChicagoChessleague.org

C:(312) 933-1516

W:(630) 505-6557

Banquet Chairman **Katherine Zack**
Banquet@ChicagoChessLeague.org

DIVISIONAL CHAIRMEN

East Division **Tony Jasaitis**
ChairmanEast@ChicagoChessLeague.org

West Division **Jeff Wiewel**
ChairmanWest@ChicagoChessLeague.org

North Division **Jim Thomson**
ChairmanNorth@ChicagoChessLeague.org

W(847) 538-5408

CICL Officer Contact List	2
Table of Contents:	3
“London Chess Classic” by Dan Parmet:	4-9
Officer Interview: Patrice Connelly	10
Upcoming Tournaments:	11-12
Current Ratings as of 12/19/12	13-21

Editor’s Notes:

We’re still looking for submissions! As always, feel free to submit stories, games, chess news, and information about local chess events to the bulletin, even over the summer. Please email submissions to Bulletin@ChicagoChessLeague.org.

We’re especially interested in your games! Annotated or not, if you have an interesting game, please send it to Bulletin@ChicagoChessLeague.org. (I’ll be relaying the games to our Games Editor, who is currently experiencing technical difficulties at the moment!). Feel free to send it via PGN, word document, or PDF.

Happy Holidays, and a Happy New Year!

Best to all,

Patrice Connelly
CICL Bulletin Editor

London Chess Classic: Mate in 196

by Dan Parmet, DDCC, December 19, 2012
Reprinted with permission from author

This year's London Chess Classic was a historic event, marking Magnus Carlsen's shattering of Garry Kasparov's all-time rating high. I was a proud member of the staff for the 2nd time this year. The London Chess Classic is funded by the Chess in the Schools, a charity that brings chess to over 200 British Schools and offers free instruction during the event.



GM Nigel Short can be seen here playing 8-year-old Joshua Altman – the last man standing in a free simul provided to school children on the rest day.

However, what most of the world tunes in for is the main event.



I found one gentleman shooting photos of the empty chairs the players were soon going to be occupying.



The catch is of course that GM Hikaru Nakamura was sitting in front of him to his right, World Champion Vishy Anand is sitting directly in front of him... and former World Champion Vladimir Kramnik is directly to his left!

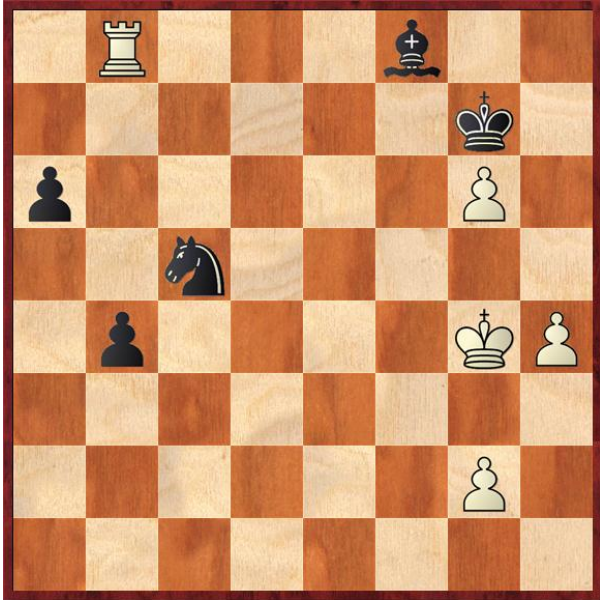
Speaking of reigning US Chess Champ Hikaru Nakamura, followers of the event know he finished joint 3rd with Mickey Adams on 13/24 (football scoring) or +2 by normal scoring (5/8). However, there are many stories that perhaps even the audience listening through streaming might have missed.



Here a child, representing a school that the charity supports, can be seen making the opening move for Hikaru Nakamura of 1. f4. An opening move that would be retracted just like many of the other ceremony opening moves (IM Michael Basman played 1. h3 for Magnus Carlsen).

The most exciting story comes from the VIP commentary room, accessible only to VIPs and staff that are on physical site. After the player that has the BYE completes their streaming commentary for the whole world, they proceed to the VIP room to continue at their leisure giving a bit more commentary with a variety of different GMs. On this particular day, GM Magnus Carlsen was the BYE commentator and the game that took his attention, and indeed nearly every GM in the VIP room's attention was: World Champion Vishy Anand – GM Hikaru Nakamura.

Their game was an extremely complex and rich game that could easily be played over multiple times without fully grasping the richness. While listening to Carlsen commentate, it became clear to me exactly how tough a game chess really is. Over 30 GMs were present in the room. Many GMs were expressing their preference for Anand's position while Carlsen stood firm with thinking it was dynamically equal but he'd rather have Hikaru's position. It was amazing to see such discourse and variations flying throughout the room without any engine advice being given or requested. All that would soon change though, after Carlsen left and the endgame position came to the board:



after 45...b4

Everyone had heard the engines say the win was gone after Anand played 46.h5 and that he should have played 46.Rxb4 Kxg6 47.h5+--.

Now the present GMs wanted to hear what the engines had to say.... and soon the engine spit out mate in 196! I was quick on the buzzard to request a screenshot of the engine output or no one would later believe this pronouncement.

Anand, Vishy - Nakamura, Hikaru *
London Chess Classic 2012, Olympia, London (9.11.2012.12.09)
B90: Sicilian, Najdorf, Adams Attack

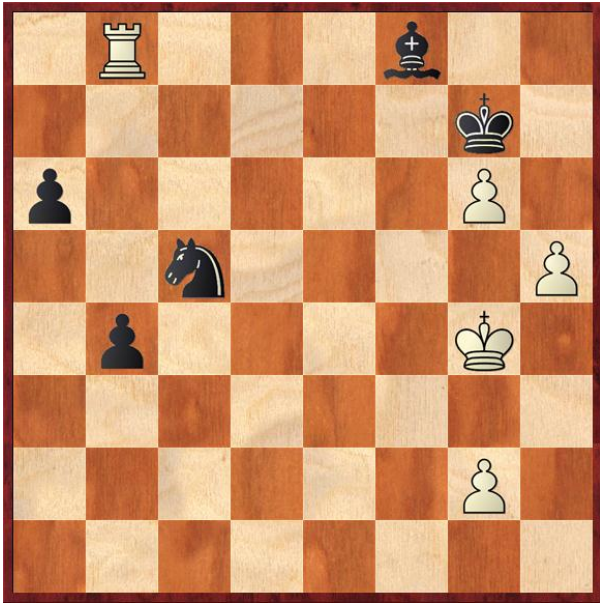
49. Bb6 a4 50. Bxg6 a3
50...b2 51. Bb6 a3 52. Qg5 Qe4+ 53. Qf5
53. Qf4 B 54. Bb7+
54. Bxb2 a1=Q 55. Bb7+ Qf6 56. Bb6+ (56. Bf7+)

Move	Games	Score	Rating

Lines: 1 Deep HSPARC5 14 WCSC 16 cores

1.55 54.Rxb2 (depth 26, 1/20), 1.4G nodes (12.8M nps), 2.4M tthits
1.14 # -196/26: 54. Bxb2 a1=Q
0.51 -13.18/25: 54. Bxb2 a1=Q 55. Bb7+ Qf6 56. Bb6+ Qe7 57. Q7
0.44 -13.20/25: 54. Bb7+ Qf6 55. Bb6+ Qe7 56. Q7 Qf6 57. Bb7+ Q
61. Bb7+ Qe7 62. Qg3 Qe5+ 63. Qf2 Qe4 64. Bb5 Qd4+
0.17 -13.17/24: 54. Bb7+ Qf6 55. Bb6+ Qe7 56. Q7 Qf6 57. Bb7+ Q

Back to the game after 46.h5?



46...b3 47.Kf5 Bd6 48.Rb4

Anand 48.Rb6 Bc7 49.Rc6 Ba5—+

48...a5 49.Rb6 a4 50.Rxd6 b2 51.Rb6

51.Rd1 a3 52.Rh1 Kh6 53.g4 Nakamura: this beautiful 53...Ne4!! (Anand, "and not: 53...Ne6?? 54.Kxe6 a2 55.Kf6 and he can't stop mate.") 54.Kxe4 a2—+

51...a3 52.Kg5 Ne4+

Anand, "I wanted to play Kf5 here, but I put it on f4 and released my hand and then saw what I had done. So I hesitated on whether I could do a Garry." (referencing Kasparov - Polgar Linares 1994)

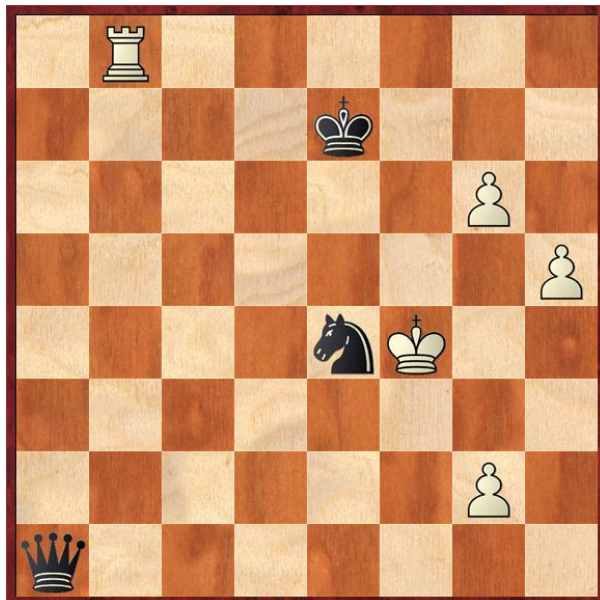
53.Kf4

53.Kf5 a2 54.Rxb2 Nd6+ 55.Kg5 a1Q 56.h6+ Kf8 57.g7+

53...a2 54.Rb7+

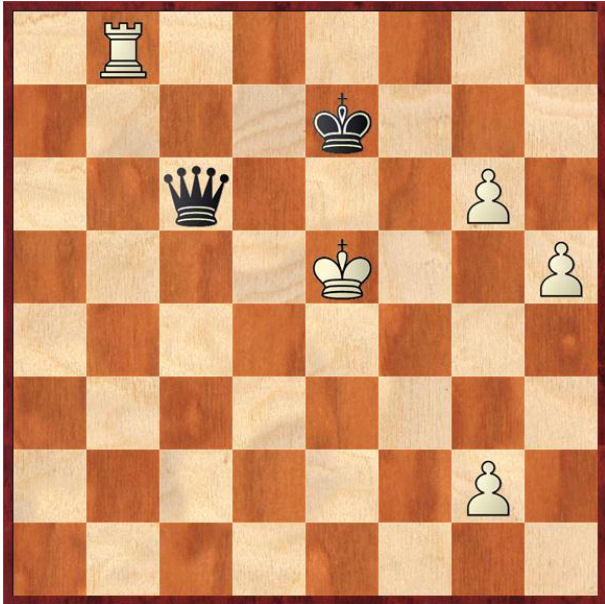
Nakamura & Anand: 54.Rxb2 a1Q 55.Rb7+ Kf6 (55...Kf8 56.Rf7+=) 56.Rf7+ Ke6 57.Kxe4 Qe5+ 58.Kf3 Qxh5+ 59.Kf2 Qxg6 60.Rf3=

54...Kf8 55.Rxb2 a1Q 56.Rb8+ Ke7



57.Kxe4

After the laughter subsided, and the final endgame arose, GM Julian Hodgson pronounced that this would be a “draw” as no human would be able to calculate the win the computer was seeing. Nigel Short then regaled the audience with stories about how hard Queen Endings were and how when Nalimov tablebases were first developed that the most errors were discovered in such endings. However, once the engine showed the win: 57... Qa4+ 58. Ke5 Qc6 (or Qa6) it split the masters in the room down the middle... half claimed “no human could ever see this line” and the other half claimed that once the idea had been shown it was actually quite “rational”....



White cannot hold on to his rook after 58..Qc6!

But with little time left, Nakamura missed this continuation and the game did eventual end in a draw. However, our story does not end there!

“You [the audience] might be able to tell them one or two things that only the computer saw and the rest of us could only imagine.” – IM Malcolm Pein said as he introduced Anand and Nakamura to talk about their game.

Anand, “And here, Hikaru rather carelessly threw away a win in 198 moves so...”

Someone had told Vishy the story from the VIP room already!

Hikaru said "I only looked at Qd7 here and then there is still a lot of play after Rb1 58...Qd7 59.Rb1) 59.Kf5 (59.Rb1 Qc5+ 60.Kf4 Qd4+ 61.Kg5 Qe3+) 59...Qd5+ 60.Kg4 Qxg2+"

The game ended in a draw after **58.Kf3 Qc3+ 59.Kg4 Qd4+ 60.Kh3 Qd3+ 61.Kh4 Qe4+ 62.g4 Qe1+ 63.Kh3 Qe3+ 64.Kh4 Qe1+ 65.Kh3 Qe3+ ½–½**

I strongly recommend to all viewers to head over to londonchessclassic.com and watch the full video... because you are in for a surprise conclusion to this story.

Even when the main event was over... the players never lost their passion for playing chess. Nakamura promptly engaged all comings in blitz starting with GM Nigel Short:



The festival itself was a major blast! It included a variety of different events from book signings, nightly blitz, and numerous other creative events for the children such as the spectacle of watching two GMs play 3 0 blitz on a big chess board.

It was easy too to forget there were also multiple tournament schedules going on as well right along aside the main event. I was shocked to run into with fellow Chicagoan Robert Mercer. I also met and was able to enjoy the company of IM John Bartholomew who came all the way from MN to play in the FIDE Open (he finished on a great 6.5/9). John traveled to the FIDE open with two other USA players the Schneider brothers. FM Igor Schneider finished on 5/9 and his brother IM Dmitry Schneider finished on 6/9.

[Full standings can be seen here.](#)

Here is a picture of the staff that made this wonderful event possible (not pictured are fearless leaders IM Malcolm Pein and Operations Director Tao Bhokanandh):



I encourage Americans to check out this event. Or in the words of my friend Matt Day from Seattle, whom I met on this trip, all chess players should “have a ‘chess trip of a lifetime.’ It brings to life everything that makes chess such an obsession, and shows that the elite players are just as obsessed as you and me.” My hope is that my article gives a bit of a feel of what it felt like to be there at this historic event. This tournament will surely be remembered in history books decades into the future, as the event in which Magnus Carlsen broke Kasparov’s record.

Name: Patrice Connelly
Position: Bulletin Editor
Team: SSCC Wombats
CICL Rating: 1562



What is your favorite food? sushi

And drink? Ginger Beer

Do you have a favorite painter or artist? I enjoy so many visual artists it's hard to choose just one. As far as music, I do enjoy the musical stylings of a somewhat well-known British musician named David Bowie.

How long have you been playing in the CICL? I'm currently working on my third year playing for the Wombats, but it feels like I've been playing the CICL for far longer...maybe that's because of the business meetings.

Who is your favorite chess player of all time? My favourite chess player of all time would be Joseph Bannon. Joe was a fixture in the Chicagoland chess community for many years, and helped start South Suburban Chess Club, which still thrives today, and volunteered his time teaching chess in many south suburban schools. When I was seven, my mother taught me the rules of chess, and then she took me to the local chess club, where Joe taught me the game. He passed away this past September, but his memory and games still live on.

I'm also big fan of Loek Van Wely. In addition to his playing style and awesome name, I enjoy the way he annotates his games and describes his thought process. He reinforces how the mindset is very important in chess in addition to being technically proficient.

What are chess players particularly good at (other than chess)? Figuring out how much everybody else owes on the bill (but not themselves).

Is there another skill or game you'd like to learn? Tight-rope walking

If you had to choose an animal to play on your CICL team, what animal would it be? I think I might be in trouble if I didn't choose a wombat. Fun Fact: Did you know Wombats are marsupials? It could hide pieces in its pouch.

Is there a chess book that had a profound influence on you? Though I'm sure many players have mentioned it before, I enjoy Bobby Fisher's *60 Memorable Games*.

If you could rename your CICL team any name, what would it be? The Motley Crew

If you could choose a superpower, what would it be? The ability to instantly learn and translate a foreign language; I only speak English and somewhat passable French.

Would you use your superpower in your chess game? Yes; so that I could kibitz in English and Russian.

Tim Just's Winter Open/Reserve XXIX



A Heritage Tournament Tour Event!

Chicagoland's longest continuously run chess tournament organized by the same organizer

When: January 5, 2013 - January 6, 2013

Where: DoubleTree Hotel: 1909 Spring Road, Oakbrook, Illinois 60523, (630) 472-6020, (630) 472-6000

Entry Fee: Pre-Entries (USPS) \$64 received by 12/31/12. Online entry fees until 1/04/13, 6 PM. (Phone and email entries not available.) \$10 extra to play up into Open Section with rating of 1799 and below .

At The Door:: \$80 by 8:30 am*, 1/5/13 *\$85 for registration after that time

Re-Entries

\$40 with 1/2 point bye Round 1.

\$85 Hotel Room Rates available (code CFL)

Sets, Boards, & Clocks provided by North American Chess Association for Winter Open/Reserve - ICA

Open Section Prizes: \$700 - \$300 - \$200; Under 2200: \$300-\$150; Under 2000 \$300-125

*Unrateds qualify for top prizes only Open to all players rated 1800 and above.(1799 and below must pay the extra \$10 "play up" fee). Players may be paired with any other player of any rating.

Reserve Section Prizes: \$700 - \$300 - \$200; Under 1600: \$225 - \$150 ; Under 1400: \$200 - \$100 ; Under 1200: \$150 - \$75

* Unrateds qualify for top prizes only. Open only to players rated 1799 and below. Players may be paired with any player rated 1799 or below

US Amateur Team North

2013 U.S. Amateur Team Championship North February 15-17, 2013

The 2013 U.S. Amateur Team Championship North will take place February 15-17, 2013 at the Hyatt Regency Schaumburg, 1800 E. Golf Rd., Schaumburg, Illinois.

Event Information: 5 round Swiss, open to 4 player teams with one optional alternate. Teams' average rating (January 2013 rating list) must be under 2200.

Time Controls: Game/90 +30s increment from move 1. Rounds 1 and 2 in the 2-day schedule play Game/60.

Entry Fees: \$140 per team if received USPS or online by 6pm on February 5th, \$160 if received USPS or online by 6pm on February 15th, \$180 online until 6pm on February 17th and onsite.

Individuals wishing to play, send \$40 and request to be put on team by USPS and online by 6pm on February 15th, \$45 thereafter.

Team changes onsite or after 6pm on February 15th, \$20.

Prizes: Awards to top two teams, top teams with average rating Under 1900, Under 1600 and Under 1300. Award for Best Team Name. Winning team qualifies for national play-offs. Prizes to best team composed of juniors (high school and younger). Prizes to top score on each board. Prizes are players choice of a selected clock or equivalent book store credit. Special raffle with prizes for players staying at the Hyatt!

Schedule: 3-day, onsite registration/check-in February 15, 5:30pm-6:30pm. Round 1; February 15, 7pm, Round 2; February 16, 10am, Round 3; February 16, 4pm, Round 4; February 17, 10am and Round 5; February 17, 3:30pm.

2-day, onsite registration/check-in February 16, 8am-9:30am. Round 1; February 16, 10am, Round 2; February 16, 1pm then merge with 3-day schedule in Round 3.

Illinois Blitz Championship: 5 round Swiss, Saturday night, February 16. Entry fee \$25 if received USPS or online by February 14th, \$30 at site. Round 1; 8pm, 2 games with each opponent.

Hotel: Hyatt Regency Schaumburg, 1800 E. Golf Rd., Schaumburg, IL 60173. Telephone 847-605-1234. \$89.00 chess rate single-double-triple-quad until 2/5/13, Free WiFi included with Room! Please reserve early. [Click here to visit the hotel's online booking system.](#)

To Enter: Make checks payable to and send to: Chess Weekend, 21694 Doud Ct., Frankfort, IL 60423. Please include Team's name and roster (plus ID#), captain's email and phone number, and desired schedule. Info: 815-955-4793 before 8pm.

North American Chess Association will provide Sets-Boards-Clocks.



Player Ratings

Wednesday, December 19, 2012

Team Player W L D Rating

AMATS

HARRIS,M	0	0	0	1813*
FURTNER,F	0	2	1	1577
COLEMAN,M	0	0	2	1569*
MEYER-ABBOTT,B	0	0	0	1386
MASITI,J	0	1	0	1344*
KOLLI,S	0	0	0	1340*
FARMER,B	0	0	0	1284*
MEHDI,SYED	0	0	0	1277#
MEYER,C	0	0	0	1207*
IRBY,L	1	1	0	1094*
GRUDZINSKI,T	0	1	0	1078#
HARPER,M	1	2	0	1069
HENDRICKS,B	0	1	0	1052#
BAROT,N	0	0	0	968#
PATELLA,C	0	0	0	952#

AONRK

COHEN,L	4	0	0	2113
CONSTANTIN,H	2	0	2	2092*
COHEN,H	2	1	1	1905
BARRERA,JORGE	1	1	1	1652*
KRISHNAMURTHY,S	0	0	0	1638*
DOLGIN,A	0	0	0	1563#
MARTIN,MATT	1	1	0	1558#
EVANS,BARBARA	0	0	0	1500?
MITCHELL,D	0	0	0	1481*
GILBERT,S	0	1	1	1469*
JANCORAS,Z	1	3	0	1364*
STILES,J	0	1	0	1189*
NIAZI,S	0	0	0	1178#
MOSLEY,A	0	2	0	1124
DAILY,S	0	0	0	1099#

Rating Symbols: ? - PreCICL (0 games), # - New (1 to 8 rated games), * - Provisional (9 to 25), otherwise Established (26+)
C - Centurian (100-199 games), D - Double (200-299), T - Triple (300-399), Q - Quad (400-499), V - Quintuple (500-599)

Team Player W L D Rating

BCBS						CITGR					
	KHAN,M	1	2	0	1874		PFAU,M	2	0	0	2101
	GUIDRY,D	0	1	2	1669		ONG,K	3	1	0	1902
	BRUNO,R	1	0	2	1649		MUHS,A	1	2	1	1708
	SAN MIGUEL,L	0	0	1	1568*		KUNHIRAMAN,P	1	1	1	1596
	MATA,S	2	2	0	1566		SENSAT,J	0	1	0	1571
	STURGEON,V	0	0	0	1535*		PRIMORAC,V	1	2	1	1506
	GUIU,C	0	2	0	1509		LE,DUC	0	0	0	1506
	WONG,A	1	0	0	1466#		ANTONYAN,E	0	1	0	1459*
	THOMPSON,GZ	0	0	0	1419*		SHEVCHUK,E	3	0	0	1455*
	BINDLER,M	2	1	0	1401*		PROKOPOWICZ,P	0	0	0	1265
	STEVENS,R	1	0	0	1245#		LARSON FREEMAN,T	1	0	0	1224*
	BURGESS,A	0	3	0	1223		GALE,M	0	0	0	1128*
	RATNAKARAM,S	0	0	0	1200?		PARRA,J	0	0	0	1065*
	GUEVARRA	0	0	0	1181#		SHAHZAMAN,K	0	0	0	1058#
	ANICIETE,J	1	1	0	1153#		HAZEL,M	0	2	0	882#
	PETTIS,D	0	0	0	1144#						
	MORANO,B	0	0	0	1035#						
CHOPP											
	LAWRENCE,D	4	1	0	2087*						
	GHOLIZADEH,R	2	2	1	1830*						
	JIANG,W	2	3	0	1412*						
	KONTCHOU,T	2	0	1	1347#						
	BOOSTRUM,A	3	2	0	1298#						
	POLUPAN,O	1	4	0	1294*						
	VYBOISCHIK,O	0	0	0	1100?						
	LADDEN,D	0	0	0	1000?						
	POPOVIC,B	0	0	0	1000?						
	SUMANADASA,E	0	0	0	1000?						
	ELIZONDO,S	0	2	0	955#						

Rating Symbols: ? - PreCICL (0 games), # - New (1 to 8 rated games), * - Provisional (9 to 25), otherwise Established (26+)
 C - Centurian (100-199 games), D - Double (200-299), T - Triple (300-399), Q - Quad (400-499), V - Quintuple (500-599)

Team Player W L D Rating

DGCC						DRW					
	KLUG,S	0	1	1	2172		TSYGANOV,I	3	0	1	2264*
	DIXON,J	3	0	0	2133*		HAYHURST,W	2	1	1	1883C
	BUNGO,G	2	1	1	2128		GORODETSKIY,E	3	0	1	1863
	EGERTON,J	0	0	1	2032		GUGENHEIM,O	3	0	0	1637
	DUGOVIC,D	1	0	0	1940		BEDER,B	3	0	1	1599
	TAN,GADDIEL	2	0	0	1882		MUSTEAPLIOGLU,M	0	0	0	1546#
	POTTS,K	3	0	1	1873		RYAN,P	0	0	0	1530#
	WAKERLY,R	0	0	2	1858		CAPUTO,W	1	1	0	1510#
	PARMET,D	1	0	0	1837		REDMOND,M	0	0	0	1413*
	YALAVARTHI,R	0	0	0	1700*		KOMBLEVITZ,A	2	1	0	1206*
	SMITH,BR	1	0	1	1642C		HUA,PETER	0	0	0	1100#
	ROMANOWITZ,C	2	1	0	1571		MILLER,O	0	0	0	845#
	REMISZEWSKI,J	1	0	0	1530#						
	KIRKSY,M	1	0	0	1326*						
DRGNS						ENOVA					
	TEGEL,F	1	2	1	2023Q		FAILOR,M	0	4	1	1830*
	LUDWIG,T	0	2	1	1894D		TSOULADZE,A	0	2	2	1690#
	PEHAS,A	1	0	0	1840C		BHARGAVA,S	2	1	1	1583#
	MARCOWKA,R	1	1	0	1837T		KHOURY,J	1	4	0	1290#
	BLACKMON,E	0	0	2	1686C		BRYAN,D	0	3	0	1257#
	PARKER,L	0	0	0	1659		TIWARI,P	0	0	0	1200?
	EUSTACE,D	1	3	0	1496D		ROYTMAN,M	0	1	0	1190#
	THOMAS,J	1	1	0	1474T		THOMAS,BLAKE	0	0	0	1100?
	STAMM,V	0	0	1	1427T		PHILLIPS,JONAH	0	1	0	1100#
	KOMORAVOLU,K	1	2	0	1417		YAN,MIN	0	0	0	1000?
	BREYER,A	2	2	0	1288		ZHAO,ALEX	0	0	0	1000?
							RUSSELL,N	0	4	0	997#
							LEE,RICHARD	0	1	0	949#

Rating Symbols: ? - PreCICL (0 games), # - New (1 to 8 rated games), * - Provisional (9 to 25), otherwise Established (26+)
 C - Centurian (100-199 games), D - Double (200-299), T - Triple (300-399), Q - Quad (400-499), V - Quintuple (500-599)

Team Player W L D Rating

EXCLB						HEDGE					
	HART,V	1	1	0	2115		RAUCHMAN,M	1	1	0	2071
	LEE,D	1	1	2	1860		STRUNK,ALEX	2	1	2	2031*
	DOWELL,E	0	1	2	1820		SMITH,M	3	1	1	1905
	BRONFELD,A	0	2	0	1767		JASAITIS,A	3	1	1	1868T
	ENGELEN,M	0	1	3	1739		SMITH,JASON	2	2	0	1626*
	WEITZ,R	0	1	0	1624D		KRATKA,M	2	0	0	1596
	VIGANTS,A	3	1	0	1527D		KHLUS,V	0	0	0	1523*
	SIEGEL,R	1	0	0	1507C		HUNTER,JOSH	0	1	1	1451*
	SUERTH,F	0	1	0	1485D		CHAVEZ,A	2	1	0	1445
	REID,C	2	1	0	1478D		COOMBES,N	0	1	0	1319*
FERMI							GOTTEMOLLER,A	0	1	0	1210*
	SPIEGEL,L	2	2	0	2009T		VISSER,JOUBERT	0	2	0	1150*
	KOCHEMIROVSKIY,A	0	0	0	2000?		RORVICK,C	0	0	0	1017*
	SERGATSKOV,D	0	3	1	1975		MCENEANY,T	0	0	0	986*
	DIMARCO,J	3	0	1	1754*		REGAS,T	0	0	0	983#
	GAINES,I	0	2	1	1717T		VARGAS,R	0	0	0	888#
	STRAIN,D	2	2	0	1653		CORNELL,M	0	0	0	800?
	STAPLES,C	0	0	0	1621C	LOYLA					
	DEGRAFF,B	1	0	1	1518		PUZANOV	0	4	0	1619*
	MHASHILKAR,P	2	1	0	1413*		DIMOPOULOS,P	0	4	0	1436
	KATSANPOC,J	0	0	0	1357#		SAMPEI,D	0	3	0	1332*
							ACOSTA,T	2	2	0	1303*
							JOHNSON,ZAK	0	2	0	1241#
							NEMATI,N	0	1	0	1230*
							ZACHAR,T	0	4	0	1230*
							BROWN,B	0	0	0	1169*
							WOJDYLA	1	0	1	1146*

Rating Symbols: ? - PreCICL (0 games), # - New (1 to 8 rated games), * - Provisional (9 to 25), otherwise Established (26+)
 C - Centurian (100-199 games), D - Double (200-299), T - Triple (300-399), Q - Quad (400-499), V - Quintuple (500-599)

Team Player W L D Rating

MKING					MLXAC						
	FRIDMAN,Y	2	0	1	2262C		OBERWEIS,J	0	3	0	1897*
	MORRIS,R	0	0	0	2192C		WANG,A	0	1	0	1863*
	MELNIKOV,I	0	0	0	2027C		JARRETTE,P	0	0	0	1800?
	THOMSON,J	0	1	1	2011C		REICH,T	2	0	0	1768
	AITIPAMULA,J	1	2	0	1988		MATHEWS,K	0	0	0	1603*
	PIPARIA,J	4	0	0	1908C		ZADEREJ,V	0	2	0	1594
	BALICKI,J	2	0	0	1908C		FLYNN,M	1	1	1	1510*
	WALLACH,C	2	1	1	1906D		MCGOWAN,D	0	1	0	1496
	CYGAN,J	2	0	1	1743C		RUFUS,B	0	0	0	1479
	CHERKASSKY,G	0	1	0	1689		LINK,D	0	0	0	1442*
	GONCHAROFF,N	0	1	0	1489S		FELDMAN,W	0	1	1	1396*
	DUONG,R	0	0	0	1489		ZARRIS,J	1	0	0	1378*
	RABINOVICH,E	2	1	0	1468		DEICHMANN,E	0	2	0	1264
	ALFONSO,E	0	0	0	1446		BANDAR,ABHILASH	0	1	0	1125#
	GRYPARIS,J	0	0	0	1338C		MUELLER,R	0	1	0	1013*
	BABINEC,J	0	0	0	1272		AREND,A	0	0	0	800#

Rating Symbols: ? - PreCICL (0 games), # - New (1 to 8 rated games), * - Provisional (9 to 25), otherwise Established (26+)
 C - Centurian (100-199 games), D - Double (200-299), T - Triple (300-399), Q - Quad (400-499), V - Quintuple (500-599)

Team Player W L D Rating

NWEST						PAWNS					
	ZABELL,S	0	0	0	1920#		PRUDE,S	3	0	0	2208*
	MCVAY,K	0	0	0	1899*		MACENIS,A	0	1	1	2177*
	DATLA,SAMEER	2	0	0	1861#		KORENMAN,M	2	0	1	2021*
	SHEKHTMAN,L	1	0	0	1822*		EDEUS,D	3	0	0	1861
	DATLA,SIDDARTH	0	2	0	1813*		EMOLE,J	0	0	0	1831?
	KRAVIK,P	1	0	0	1802*		HOLLAWAY,M	2	1	0	1775
	MODI,P	2	1	0	1762*		KOSTERIS,D	0	1	0	1737#
	FU, WATSON	1	0	1	1688#		VILLARREAL,B	2	1	0	1727*
	LI,DANIEL	2	0	0	1657#		VITKAUSKAS,V	0	1	0	1705*
	PONTISAKOS,C	2	0	0	1587#		ALBOROVAS,K	1	1	1	1598*
	LOU,J	1	0	0	1518*		KUKURUZA,V	0	1	0	1587
	LU,XIAOFEI	0	0	0	1500?		HARPER,C	0	0	0	1476*
	GAFFNEY,J	1	0	0	1460#		JACKSON,WILLIAM	1	0	0	1437
	GINZBURG,D	0	0	0	1434*		FABIJONAS,R	0	0	0	1374T
	KARALIS,P	1	0	0	1424#		WEBER,A	0	0	0	1189#
	WEINFELD,M	0	0	0	1393*		SINOPLA,J	1	1	1	1150
	BI,TAO	1	0	0	1346*		DENBY,T	0	0	0	967*
	KIM,C	0	0	0	1300#	ROGUE					
	KIM,EDWARD	2	0	0	1280#		FRANKLIN,D	3	0	0	2179
	HAN,NICHOLAS	0	0	0	1145?		BROCK,B	1	1	1	2048
	BABCOCK,S	0	0	0	1067#		EAMAN,R	3	0	1	1811C
	ATKINS,HARRISON	0	0	0	1036#		FRANK,M	2	0	0	1727C
	CROFTS,J	0	0	0	1000#		DUFFY,J	3	0	1	1633C
							PERSONS,J	1	0	0	1601
							ACEVEDO,U	2	1	0	1558
							FULKERSON,R	0	0	1	1462
							BANNON,B	0	0	0	1283
							SAWIN,B	0	0	0	1175*

Rating Symbols: ? - PreCICL (0 games), # - New (1 to 8 rated games), * - Provisional (9 to 25), otherwise Established (26+) C - Centurian (100-199 games), D - Double (200-299), T - Triple (300-399), Q - Quad (400-499), V - Quintuple (500-599)

Team Player W L D Rating

ROOKS					STCCC						
	STOUMBOS,K	1	2	1	2180*		SHAW,T	3	0	1	2404*
	BENEDEK,R	1	3	0	2056Q		MARSHALL,J	0	0	0	2237
	HILL,R	1	2	0	1935D		WIEWEL,J	1	2	0	2109
	SUAREZ,E	1	1	1	1843C		ACOSTA,M	1	0	0	2086
	MAMETJANOV,A	0	0	0	1813?		FREIDEL,P	0	0	0	1939
	BAURAC,D	2	1	1	1713T		SUITS,J	0	0	0	1867
	GWEKOH,R	2	2	0	1563*		VON HATTEN,J	0	0	0	1822
	YACOUT,A	0	0	0	1538		DI ORIO,J	1	0	0	1741#
	GRUDZINSKI,J	0	2	0	1403		CRISSMAN,J	0	0	0	1616*
	KUHLMANN,S	0	0	0	1320*		JANSSEN,G	1	2	1	1615
	SMITH,TIMOTHY	0	3	0	1175#		KOLB,S	0	1	1	1613*
	HLOHOWSKYJ,I	0	0	0	1033*		LAST,ERIK	0	0	0	1590?
	SUKUMAR,N	0	0	0	864#		PADILLA,R	1	3	0	1579
							ALBERTS,W	0	0	0	1573
							GIERTZ,C	0	0	0	1474#
							SWANSON,E	0	0	0	1437#
							POWERS,E	1	1	0	1424*
							GREER,J	0	0	0	1385
							KELLEY,G	1	2	0	1344*
							BALES,R	1	0	1	1318*
							RIES,G	0	0	0	1253*
							SEGRETO,T	0	1	0	1198#
							NEVILLE,J	0	0	0	1087?
							WIEWEL,M	0	0	0	1021?

Rating Symbols: ? - PreCICL (0 games), # - New (1 to 8 rated games), * - Provisional (9 to 25), otherwise Established (26+)
 C - Centurian (100-199 games), D - Double (200-299), T - Triple (300-399), Q - Quad (400-499), V - Quintuple (500-599)

Team Player W L D Rating

TYROS					UOP						
	ALLSBROOK,F	2	1	1	2205		LEONG,G	0	2	0	1938D
	DIAZ,P	2	1	1	1934D		SIWEK,M	0	2	0	1922D
	GUIO,J	1	2	0	1814D		BOLDINGH,E	1	1	2	1916D
	STOLTZ,B	0	0	1	1810D		VAN MEER,J	0	0	0	1898
	DOBROVOLNY,C	3	1	0	1692D		EASTON,R	1	1	1	1840C
	HAHNE,D	3	0	1	1679D		SAJBEL,P	0	0	0	1776C
	DENMARK,T	0	1	0	1582		NGUYEN,M	0	0	0	1761#
	VAIL,M	0	0	0	1519		LECHNICK,J	0	1	0	1622C
	MCPHAIL,C	1	0	0	1462*		MOSSBRIDGE,A	0	0	0	1592
	KURUVILLA,E	0	1	1	1325*		SCHWANBECK,S	0	0	1	1562#
	BYRNE,M	2	1	0	1309		HUGHES,N	0	1	1	1554D
							OLSEN,A	1	2	1	1526D
							STUDEBAKER,C	0	1	0	1516*
							BIAN,M	1	1	0	1512
							LAMBIRIS,J	0	0	0	1428
							RAMOS,J	2	1	0	1381*
							LANG,P	0	0	0	1229#
							RAMIREZ,A	0	0	0	1136#

Rating Symbols: ? - PreCICL (0 games), # - New (1 to 8 rated games), * - Provisional (9 to 25), otherwise Established (26+)
 C - Centurian (100-199 games), D - Double (200-299), T - Triple (300-399), Q - Quad (400-499), V - Quintuple (500-599)

Team Player W L D Rating

WCC						WMBAT					
	BERRY,VINCE	0	0	0	2228?		TENNANT,S	2	0	2	2222
	STEIN,KURT	2	0	1	2179*		NGUYEN,T	0	0	0	2153
	STEIN,PETE	0	0	1	2139C		PANNER,G	0	0	0	2105#
	CONNOR,PETER	0	0	0	2010?		FREITAG,T	3	1	0	2053
	PALMQUIST,W	0	0	0	1988?		WEBER,L	0	1	0	2045
	ENRIQUEZ,R	1	1	0	1979#		ELLICE,W	0	1	1	1781D
	MIDDLETON,DOUG	1	0	0	1963#		ZOLKOS,A	0	0	0	1740
	VIRIJEVICH,O	0	0	0	1911?		TOLLIVER,T	2	2	0	1623*
	BRUNNER,FRANK	0	0	0	1857?		RAJSKY,J	0	2	0	1580
	CONDON,JAMES	0	2	1	1778*		FRANEK,M	0	3	0	1575T
	DJORDJEVIC,V	1	0	1	1662		CONNELLY,P	0	0	1	1562*
	WHITED,W	0	2	0	1589*		CONNELLY,A	1	0	0	1542#
	SZELAG,B	0	1	0	1517#		BOGDAN,L	0	0	0	1524?
	NIEMAN,DAVE	0	0	0	1450?		MENDENHALL,E	0	0	0	1471?
	LEDGERPINE,T	1	1	0	1366#		FENNESSEY,J	1	1	0	1467#
	AMIRANTE,D	0	0	0	1350?		SPITZIG,M	0	0	0	1307
	GENTALLAN,F	1	2	0	1349*						
	NELSON,GEORGE	0	0	0	1300?						
	PATEL,BHARAT	0	0	0	1270?						
	DZIEDZIC,JOHN	0	0	0	1200?						
	VILT,JERRY	0	0	0	1200?						
	MIEDONA,T	0	0	0	1050?						

Rating Symbols: ? - PreCICL (0 games), # - New (1 to 8 rated games), * - Provisional (9 to 25), otherwise Established (26+)
 C - Centurian (100-199 games), D - Double (200-299), T - Triple (300-399), Q - Quad (400-499), V - Quintuple (500-599)