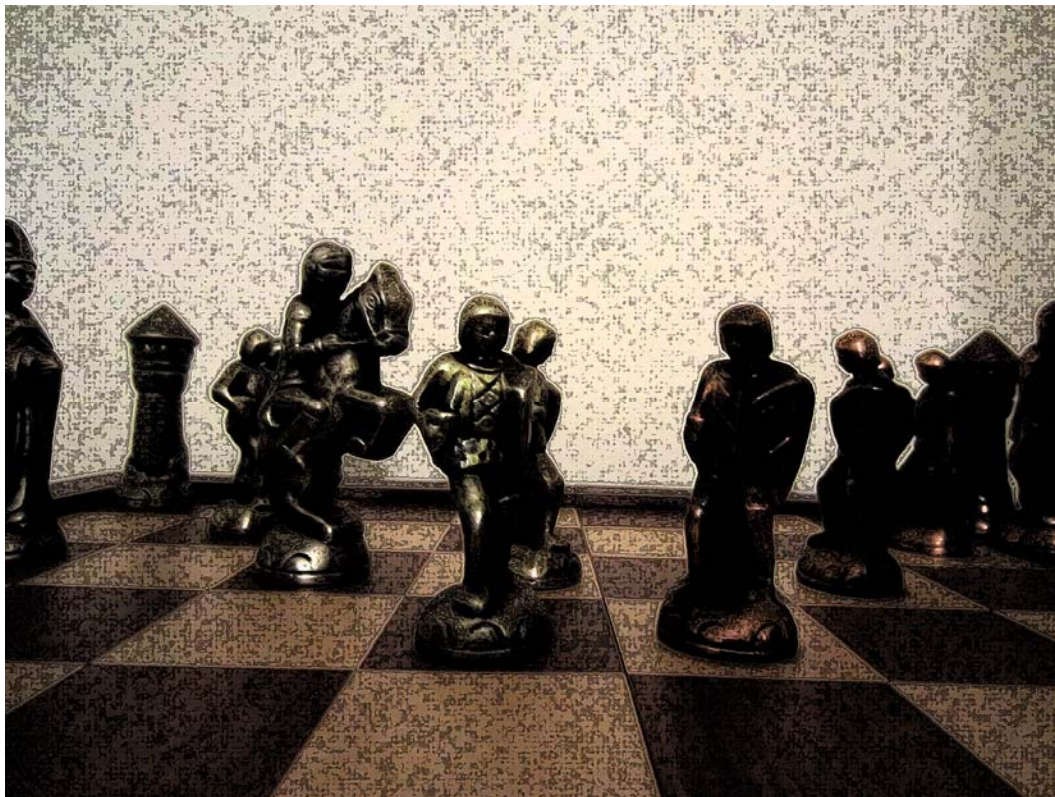


The Chicago Chess Player

The Official Bulletin of the Chicago Industrial Chess League



Cover Art by Patrice Connelly

Inside this Issue:
Upcoming Tournaments
Game Annotations
Ratings

CICL Officer Contact List

League President **Irwin Gaines**
 President@ChicagoChessLeague.org

League Secretary **Jerry Thomas**
 Secretary@ChicagoChessLeague.org

745 Hageman Pl
 Naperville, IL 60563

H:(630)420-0188

League Treasurer **Andy Mosley**
 Treasurer@ChicagoChessLeague.org

1415 Downing Place Apt 9P
 Mundelein, IL 60060

Bulletin Editor **Patrice Connelly**
 Bulletin@ChicagoChessLeague.org

Webmaster
 Web@ChicagoChessLeague.org

Games Editor **Steve Tennant**
 Bulletin@ChicagoChessLeague.org

Ratings Chairman **Jeff Balicki**
 Ratings@ChicagoChessLeague.org

Trophy Chairman **Chuck Dobrovolny**
 Trophy@ChicagoChessLeague.org

Publicity Chairman **Matt Vail**
 Publicity@ChicagoChessleague.org

C:(312) 933-1516

W:(630) 505-6557

Banquet Chairman **Katherine Zack**
 Banquet@ChicagoChessLeague.org

DIVISIONAL CHAIRMEN

East Division **Tony Jasaitis**
 ChairmanEast@ChicagoChessLeague.org

West Division **Jeff Wiewel**
 ChairmanWest@ChicagoChessLeague.org

North Division **Jim Thomson**
 ChairmanNorth@ChicagoChessLeague.org

W(847) 538-5408

CICL Officer Contact List	2
Table of Contents:	3
Game Analysis	4-7
Upcoming Tournaments:	8-11
Current Ratings as of 03/25/13	12-20

Editor's Notes:

We're still looking for submissions! As always, feel free to submit stories, games, chess news, and information about local chess events to the bulletin, even over the summer. Please email submissions to Bulletin@ChicagoChessLeague.org.

We're especially interested in your games! Annotated or not, if you have an interesting game, please send it to Bulletin@ChicagoChessLeague.org. (I'll be relaying the games to our Games Editor, who is currently experiencing technical difficulties at the moment!). Feel free to send it via PGN, word document, or PDF.

Best to all,

Patrice Connelly
CICL Bulletin Editor



Sergatskov (Fermi)-Tennant (SSCC)

Annotations by Steve Tennant, Game Editor

1. d4 Nf6 2. c4 g6 3. g3 Bg7 4. Bg2 0-0 5. Nf3 d6 6. Nc3 Nc6

White's system may look innocuous, but it isn't. White has to be prepared to meet a variety of defenses.

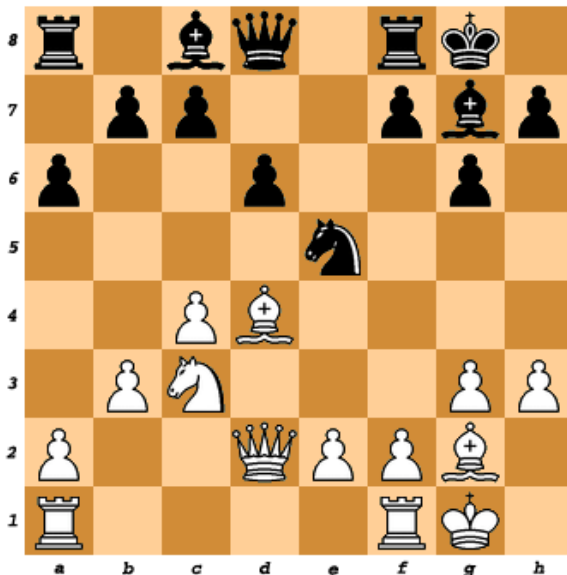
7. 0-0 Rb8 8. h3 a6 9. Qd3

This move was the subject of a Chess Life article over thirty years ago. The article concluded that this 9. Qd3 seems promising, yet the move never became popular.

9...Nd7 (That article considered this move inadequate.)

10. Be3 e5 Black threatens 11...exd 12. Nxd4 Nce5.

11. Qd2! Much stronger than 11. d5 Ne7 11...exd 12. Nxd4 Nxd4 13. Bxd4 Ne5 14.b3



Now, if Black plays passively, White will play Nd5, Rfd1, and Rac1. Ousting or trading the Knight will leave Black cramped and defending weak pawns.

14...b5!? Black decides to get counter play even if it costs the exchange. 15. Ba7 Rb7 16. Bxb7 Bxb7. White has the exchange, but his King is vulnerable and his Queen's Bishop could get trapped.

17. cxb axb 18. f4?

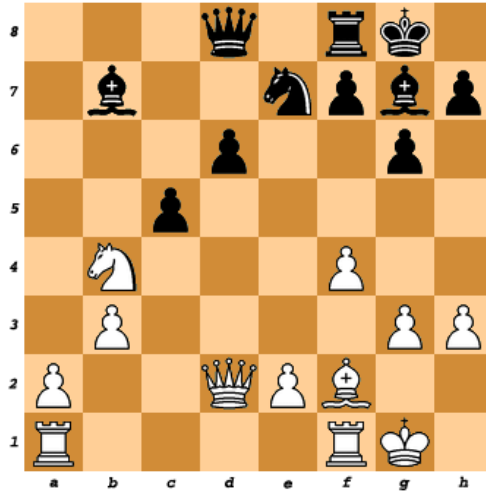
Clearly, 18 Nxb5 Qd7 19 saves knight, Qxh3 and White will soon be mated (20 f3, Ng4)

18. f4 is bad because it weakens the King's field further. It is hard to find a clear edge for White. 18. Rad1 (stopping ...c5) Qa8! 19 Be3 Bg2! 20. Rfe1 Bxh3 21. f3 Qb7! White has a Rook for his Bishop and Pawn, but I don't think Black is worse.

18...Nc6 19. Bf2 b4. 20. Nd5 Ne7! Not 20...Bxa1 as Black's King will be at least as vulnerable as White's.

21. Nxb4 If 21. e4, Nxd5 22. exd Bxa1 23. Rxa1 Qa8

21...c5

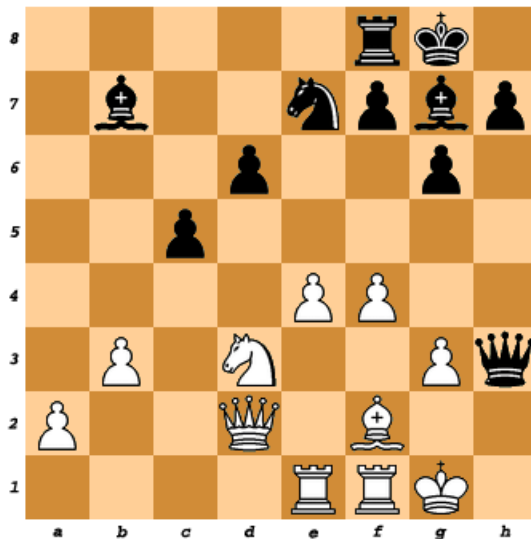


22. Nd3? I think this move loses: 22. Nc2 lets Black recover the exchange. His better piece play and better center control compensate for his pawn minus. Even 22. Rad1 has some merit.

22...Qc8 Obviously Qd7 allows Nxc5. I suspect he expected me to take the exchange first. 23. e4 If 23. Kh2 Qc6 24. Rg1 (or Ne1) Bxa1. This is why I didn't take the rook on the previous move.

23...Qxh3! Again declining the exchange. Black's Bishop will be more useful attacking than White's Rook defending.

24. Rae1



24...Nf5! Black has too many threats. 25. Re2 Nd4 26. Bxd4 (Not 26. Re3, Bxe4). 26...Bxd4+ 27. Nf2 Qxg3+ 28. Kh1 Re8. 29. Qe1

I had planned to answer 29. Rg1 with 29...Rxe4!! If 30. Rxg4, Rxe2+ 31. King moves, Rxd2 and Black also wins the Knight, leaving me up two Bishops and pawns. Or if 30. Rxe4, Bxe4+ 31. Nxe4, Qxg1++

29...f5 30. Nd1 Qh3+ White resigns; it will be mated in two: 31. Rh2 Bxe4+ 32. Qxe4 Qxf1++

Mark Siwek-Vince Hart
UOP vs. Excaliburs, Chicago Industrial Chess League
Round 6, 2/19/13

Annotations by Mark Siwek

1 d4

In my youth, I was almost exclusively an e4 player. However, as I've gotten older, I've mixed in d4 when I sought quieter, more positional play. That's not what I got in this game...

1 ... Nf6 2 Nf3 e6 3 Bg5

To try and avoid sharper theory, I like to play something in the Torre/Stonewall/Colle family.

3 ... h6 4 Bh4 b6 5 e3 Bb7 6 Bd3 Be7 7 Nbd2 d5



8 Ne5

I was surprised by Black's last move, as the Pawn on d5 blocks the Queen Bishop's diagonal. However, I assumed my opponent was interested in preventing e4. Since 8 ... Nbd7 would prevent the text, I decided to jump right in.

8 ... Nbd7 9 f4

Full steam ahead. White can't maintain the e5 outpost after 9 Ndf3 Nxe5 10 Nxe5 Nfd7 when Black also will have the option of ... f6.

9 ... Ne4 10 Bf2

I missed Black's last move. Though my Bishop is bad, I didn't want to exchange it for Black's Bishop, as that would free his position. I thus decided a retreat would be best. I didn't like my Pawn structure after 10 Bg3 Nxe5 11 fxe5 Nxc3 12 hxg3 and the more I looked at the text, the more I liked it. I can later castle "by hand", and even on f2, my King is relatively safe due to the blocked nature of the position. Besides, Black's only active piece is his Knight on e4, so I'll be happy if he exchanges it for my bad Bishop.

10 ... Nxf2 11 Kxf2 Nxe5 12 fxe5 Qd7 13 Rf1 O-O-O 14 Qe2

Connecting Rooks, threatening Ba6 or a later e4.

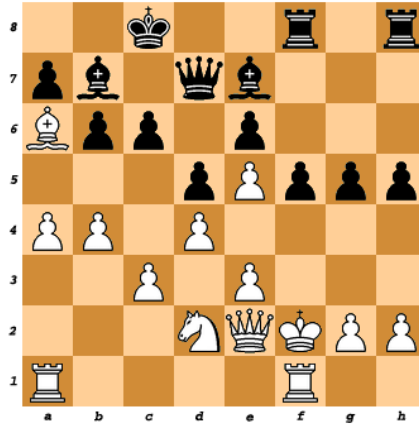
14 ... f5

Another surprise. I had expected ... f6 at some point to try and pry the position open.

15 Ba6

Mostly played to prevent ... a5, as I want to open lines with a4-a5 (after first posting a Pawn at b5).

15 ... g5 16 a4 c6 17 c3 Rdf8 18 b4 h5



Space Invaders, anyone?

19 b5

I debated between this and 19 Bxb7 followed by 20 b5. I thought 19 b5 Bxa6 20 bxc6 Bxe2 21 cxd7+ Kxd7 was cute, but in retrospect, I think it might have been advantageous to Black.

19 ... f4 20 Bxb7+ Kxb7 21 exf4 cxb5 22 axb5 h4 23 Ra6

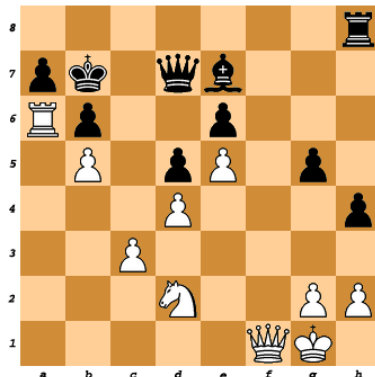
To fix the a-Pawn.

23 ... Rxf4+ 24 Kg1

24 Nf3 g4 25 Rfa1 gxf3 26 Rxa7+ followed by 27 Ra8+ and 28 R1a7 Mate is amusing, but I couldn't crack 25 ... Ra8 26 Qa2 Kb8 (27 Rxb6+ Kc7).

24 ... Rxf1+ 25 Qxf1

I offered a draw, which was accepted. My opponent quipped, "One of us is winning, but I don't know who."



Park Forest Chess Challenge Tournament

Saturday, May 25, 2013

Program #-237230-1

Hosted By The Village of Park Forest

An Affiliate of the United States Chess Federation

Tournament will be held at Dining on the Green

Located at 349 Main Street in Park Forest, IL 60466



Register at:

Park Forest Recreation & Parks

350 Victory Drive

Park Forest, IL 60466

708-748-2005

Credit card, check or cash

\$5.00 Tournament Fee

On site registration

(cash only) 9:00 am—9:30 am

Players must check in by 9:45 am

Tournament time: 10:00 am—4:00 pm

Please provide your own clock



Concessions will be sold at the event

This is a 4/SS G/40 USCF-rated tournament; must be a USCF member to participate. *If you are not a member, yearly memberships or a onetime tournament registration will be available at an extra fee.*

For details on joining the USCF, please visit their website @ www.uschess.org or contact the Recreation & Parks Department at 708-748-2005

Park Forest
Live Grow Discover



22nd annual

CHICAGO OPEN

May 23-27, 24-27, 25-27, or 26-27, 2013

Open Section: 9 rounds, May 23-27, GM & IM norms possible, FIDE rated.

Under 2300 Section: 7 rounds, May 24-27, FIDE rated.

Under 2100 to Under 1300 Sections: 7 rounds, May 24-27, 25-27 or 26-27

Adult Under 1100 Section (born 1994/before): 7 rounds, May 25-27 or 26-27

Junior Under 1100 Section (born 1995/after): 7 rounds, May 25-27 or 26-27

FREE ANALYSIS OF YOUR GAMES BY GM JOHN FEDOROWICZ

FREE LECTURES BY GM FEDOROWICZ 5 PM 5/24, 9 AM 5/25, 5/26, 5/27

Open Section: 9 rounds, May 23-27. 5-day schedule only, 40/90, SD/30, inc/30.

Under 2300 Section: 7 rounds, May 24-27. 4-day schedule only, 40/115, SD/1, d5.

Under 2100 to Under 1300 Sections: 7 rounds, choice of 4-day, 3-day or 2-day schedules.

4-day, May 24-27: 40/115, SD/1, d5.

3-day, May 25-27: rounds 1-2 Game/75, d5, rounds 3-7 40/115, SD/1, d5.

2-day, May 27-28: rounds 1-4 Game/40, d5, rounds 5-7 40/115, SD/1, d5.

Under 1100 Sections: 7 rounds, choice of 3-day or 2-day schedules.

3-day, May 25-27: Game/90, d5.

2-day, May 26-27: rounds 1-4 Game/40, d5, rounds 5-7 G/90, d5.

At Westin Chicago North Shore Hotel, 601 North Milwaukee Ave, Wheeling IL 60090 (from Chicago, I-294 north to US-45 north; from Milwaukee, I-94 east to Lake Cook Rd to US-45 south.) Free parking; restaurants within walking distance.

In 9 sections:

Open Section: \$10000-5000-2500-1200-1000-800-600-500-400-300, clear or tiebreak winner bonus \$200, top FIDE Under 2500/Unr \$2000-1000. GM and IM norms possible, FIDE rated.

Under 2300 Section: \$5000-2500-1200-1000-800-600-500-400-300-300. FIDE rated.

Under 2100 Section: \$5000-2500-1200-1000-800-600-500-400-300-300, unrated limit \$2500.

Under 1900 Section: \$5000-2500-1200-1000-800-600-500-400-300-300, unrated limit \$2000.

Under 1700 Section: \$5000-2500-1200-1000-800-600-500-400-300-300, unrated limit \$1600.

Under 1500 Section: \$4000-2000-1000-700-500-400-400-300-300-300, unrated limit \$1200.

Under 1300 Section: \$3000-1500-1000-700-500-400-400-300-300-300, unrated limit \$800.

Adult Under 1100 Section: \$1000-700-500-300-200-200, unrated limit \$400, trophies to first 3, top Under 900, Under 700, Unrated.

Junior Under 1100 Section: \$1000-700-500-300-200-200, unrated limit \$400, trophies to first 3, top Under 900, Under 700, Under 500, Unrated.

Prize limit: If any post-event rating posted 5/20/12-5/20/13 was more than 30 points over section maximum, prize limit \$1500.

Balance of any limited prize goes to next player(s) in line.

Top 7 sections entry fee: \$227 online at chessaction.com by 5/21, \$230 phoned by 5/21 (406-896-2038, entry only, no questions), 5-day \$235, 4-day \$234, 3-day \$233, 2-day \$232 mailed by 5/14; all \$250 online until 2 hours before game or at site until 1 hour before game. No checks at site, credit cards OK. No mailed credit card entries.

GMs in Open: free; \$200 deducted from prize.

IMs & WGMs in Open: \$30 online at chessaction.com by 5/21, \$50 after 5/21 or at site; \$200 deducted from prize.

All Open Section EF \$100 more for US players not FIDE rated 2200 or over.

Entry fee \$100 less to rated seniors age 65/over in U1300 or above sections.

Under 1100 Section entry fees: \$77 online at chessaction.com by 5/21, \$80 phoned to 406-896-2038 by 5/21 (entry only, no questions), Adult 3-day \$83.50, Adult 2-day \$82.50 mailed by 5/14, Junior 3-day \$83, Junior 2-day \$82 mailed by 5/14; all \$100 online until 2 hours before game or at site until 1 hour before game. No checks at site, credit cards OK. No mailed credit card entries.

Online or mailed entry fee: \$5 less to ICA members; join at il-chess.org. An ICA Tour event.

Re-entry: \$100, no re-entry from Open Section to Open Section.

USCF membership required. Special 1 yr USCF dues with paper magazine if paid with entry: Online at chesstour.com, Adult \$30, Young Adult \$20, Scholastic \$15. Mailed, phoned or paid at site, Adult \$40, Young Adult \$30, Scholastic \$20.

5-day schedule (Open only): Reg. ends Thu 6 pm, rds Thu 7 pm, Fri 12 noon & 7 pm, Sat 11 am & 6 pm, Sun 11 am & 6 pm, Mon 10 am & 4:30 pm.

4-day schedule (U2300 to U1300): Reg. ends Fri 6 pm, Rds. Fri 7 pm, Sat 11 am & 6 pm, Sun 11 am & 6 pm, Mon 10 am & 4:30 pm.

3-day schedule (U2100 to U1300): Reg. ends Sat 10 am, Rds. Sat 11 am, 2:30 pm & 6 pm, Sun 11 am & 6 pm, Mon 10 am & 4:30 pm. Merges with 4-day after round 2.

3-day schedule (U1100): Reg. ends Sat 1 pm, Rds. Sat. 2 pm & 6 pm, Sun 10 am, 2 pm & 6 pm, Mon 10 am & 2 pm.

2-day schedule (U2100 to U1300): Reg. ends Sun 9 am, Rds. Sun 10 am, 12 noon, 2 pm, 3:45 pm & 6 pm, Mon 10 am & 4:30 pm. Merges with 4-day/3-day after round 4.

2-day schedule (U1100): Reg. ends Sun 9 am, Rds. Sun 10 am, 12 noon, 2 pm, 3:45 pm & 6 pm, Mon 10 am & 2 pm. Merges with 3-day after round 4.

All U2100 to U1100 schedules merge into one and compete for the same prizes.

Half point byes: OK all, limit 4 (limit 2 in last 4 rds), Open must commit before rd 2, others before rd 4.

US player ratings: May official rating list used; FIDE ratings used in Open Section.

Unofficial uschess.org ratings usually used if otherwise unrated.

Hotel rates: \$105-105-105-105, 800-937-8461, 847-777-6500. Reserve by 5/10 or rate may increase.

Room sharing: If you want to share a room to save money, post on or see the [CCA FORUM](#).

Car rental: Avis, 800-331-1600, AWD #D657633, or [reserve car online](#) through chesstour.com.

[Foreign player rating info.](#)

Special rules: 1) Players must submit to a search for electronic devices if requested by Director. In round 3 or after, players with scores of 80% or over and their opponents may not use headphones, earphones, cellphones, or go to a different floor of the hotel without Director permission.

Mailed entry: Continental Chess, Box 249, Salisbury Mills, NY 12577.

Questions: DirectorAtChess.US (use @ in place of At), 845-496-9658, www.chesstour.com.

Bring set, board, clock if possible- none supplied.

\$15 service charge for refunds. Advance entries are posted at chesstour.com (online entries posted instantly). No smoking. Invitation requests: Go At Chess.us (use @ symbol in place of "At.") JGP (Chess Magnet School Junior Grand Prix Points available).



Player Ratings

Monday, March 25, 2013

Team Player W L D Rating

AMATS

HARRIS,M	0	0	0	1813*
COLEMAN,M	2	3	2	1644*
FURTNER,F	0	5	3	1561
MEYER-ABBOTT,B	1	1	0	1399
KOLLI,S	0	0	0	1340*
MASITI,J	0	2	0	1335*
FARMER,B	0	0	0	1284*
MEHDI,SYED	0	0	0	1277#
MEYER,C	0	2	0	1195*
GRUDZINSKI,T	0	2	0	1075#
HENDRICKS,B	1	2	0	1060*
IRBY,L	1	6	0	1043
HARPER,M	1	6	0	1018
BAROT,N	0	0	0	968#
PATELLA,C	0	0	0	952#

AONRK

CONSTANTIN,H	5	0	3	2166*
COHEN,L	7	0	1	2129
COHEN,H	2	2	4	1887
BARRERA,JORGE	2	1	4	1708*
KRISHNAMURTHY,S	0	0	0	1638*
MARTIN,MATT	2	2	0	1612#
DOLGIN,A	0	0	0	1563#
EVANS,BARBARA	0	0	0	1500?
MITCHELL,D	0	0	0	1481*
GILBERT,S	0	1	2	1462*
JANCORAS,Z	2	4	0	1396*
STILES,J	1	1	0	1230*
NIAZI,S	0	0	0	1178#
MOSLEY,A	1	5	0	1133
DAILY,S	0	0	0	1099#

Rating Symbols: ? - PreCICL (0 games), # - New (1 to 8 rated games), * - Provisional (9 to 25), otherwise Established (26+)
C - Centurian (100-199 games), D - Double (200-299), T - Triple (300-399), Q - Quad (400-499), V - Quintuple (500-599)

Team Player W L D Rating

BCBS					CHOPP						
	KHAN,M	1	7	0	1793		LAWRENCE,D	6	2	0	2089
	GUIDRY,D	1	4	3	1643		GHOLIZADEH,R	4	3	2	1826
	BRUNO,R	3	1	2	1639		JIANG,W	3	5	0	1422*
	MATA,S	5	2	1	1616		KONTCHOU,T	3	1	1	1346#
	SAN MIGUEL,L	0	0	1	1568*		POLUPAN,O	3	6	0	1324*
	STURGEON,V	1	0	0	1543*		BOOSTRUM,A	3	2	0	1298#
	GUIU,C	0	2	0	1509		HWANG,M	2	2	0	1266#
	BINDLER,M	5	2	0	1474*		VYBOISCHIK,O	0	0	0	1100?
	WONG,A	1	1	0	1437*		LADDEN,D	0	0	0	1000?
	THOMPSON,GZ	0	0	0	1419*		POPOVIC,B	0	0	0	1000?
	BURGESS,A	1	4	0	1231		SUMANADASA,E	0	0	0	1000?
	RATNAKARAM,S	0	0	0	1200?		ELIZONDO,S	0	5	1	924#
	GUEVARRA	0	0	0	1181#	CITGR					
	ANICIETE,J	1	1	0	1153#		PFAU,M	2	1	2	2091
	PETTIS,D	0	0	0	1144#		ONG,K	3	5	0	1851
	STEVENS,R	2	1	0	1117#		MUHS,A	4	2	3	1767
	MORANO,B	1	0	0	1112#		KUNHIRAMAN,P	3	4	1	1566
							SENSAT,J	2	3	0	1547
							LE,DUC	0	0	0	1506
							PRIMORAC,V	4	3	1	1493
							ANTONYAN,E	0	1	0	1459*
							SHEVCHUK,E	6	1	1	1451
							PROKOPOWICZ,P	0	0	0	1265
							LARSON FREEMAN,T	1	0	1	1226*
							GALE,M	0	0	0	1128*
							PARRA,J	0	0	0	1065*
							SHAHZAMAN,K	0	0	0	1058#
							HAZEL,M	0	2	0	882#

Rating Symbols: ? - PreCICL (0 games), # - New (1 to 8 rated games), * - Provisional (9 to 25), otherwise Established (26+)
 C - Centurian (100-199 games), D - Double (200-299), T - Triple (300-399), Q - Quad (400-499), V - Quintuple (500-599)

Team Player W L D Rating

DGCC						DRW					
	KLUG,S	2	1	2	2180		TSYGANOV,I	7	0	1	2289
	BUNGO,G	4	1	1	2146		HAYHURST,W	3	2	2	1879C
	DIXON,J	4	0	1	2103*		GORODETSKIY,E	5	2	1	1834
	EGERTON,J	0	0	1	2032		GORODETSKIY,S	0	0	0	1758
	DUGOVIC,D	2	1	0	1925		GUGENHEIM,O	6	1	0	1642
	TAN,GADDIEL	2	0	3	1879		BEDER,B	6	1	1	1606
	POTTS,K	5	0	1	1879		MUSTEAPLIOGLU,M	0	0	0	1546#
	WAKERLY,R	2	0	2	1863		RYAN,P	0	0	0	1530#
	PARMET,D	1	1	0	1823		CAPUTO,W	2	3	0	1419*
	YALAVARTHI,R	0	0	0	1700*		REDMOND,M	0	0	0	1413*
	SMITH,BR	2	0	1	1645C		KOMBLEVITZ,A	4	1	0	1217*
	ROMANOWITZ,C	2	3	0	1533		HUA,PETER	0	0	0	1100#
	REMISZEWSKI,J	1	0	0	1530#		MILLER,O	0	0	0	845#
	KIRKSY,M	1	1	0	1279*						
	WILDE,J	1	0	0	1010*						
DRGNS											
	TEGEL,F	1	6	1	1995Q						
	LUDWIG,T	3	3	1	1935D						
	PEHAS,A	1	1	2	1826C						
	MARCOWKA,R	1	3	0	1799T						
	BLACKMON,E	0	0	2	1686C						
	PARKER,L	0	0	0	1659						
	EUSTACE,D	2	6	0	1500D						
	KOMORAVOLU,K	3	3	0	1472						
	THOMAS,J	1	2	0	1469T						
	STAMM,V	0	3	1	1402T						
	BREYER,A	3	2	0	1319						

Rating Symbols: ? - PreCICL (0 games), # - New (1 to 8 rated games), * - Provisional (9 to 25), otherwise Established (26+)
 C - Centurian (100-199 games), D - Double (200-299), T - Triple (300-399), Q - Quad (400-499), V - Quintuple (500-599)

Team Player W L D Rating

ENOVA						FERMI					
	PELTS,P	0	0	0	2366?		SERGATSKOV,D	2	3	3	2011
	FAILOR,M	2	5	2	1856*		SPIEGEL,L	4	3	1	2010T
	TSOULADZE,A	1	3	2	1683#		KOCHEMIROVSKIY,A	1	0	1	1956#
	BHARGAVA,S	5	2	1	1644*		DIMARCO,J	5	1	1	1790*
	KHOURY,J	2	5	0	1277*		ANTIPOV,SERGEY A	2	0	1	1759#
	BRYAN,D	1	5	1	1236*		GAINES,I	1	3	2	1703T
	TIWARI,P	0	0	0	1200?		STRAIN,D	4	3	0	1647
	CASE,DANIEL	0	0	0	1200?		STAPLES,C	0	0	0	1621C
	ROYTMAN,M	0	1	0	1190#		DEGRAFF,B	1	0	1	1518
	THOMAS,BLAKE	0	0	0	1100?		MHASHILKAR,P	4	1	1	1440*
	PHILLIPS,JONAH	0	1	0	1100#		KATSANPOC,J	0	0	0	1357#
	YAN,MIN	0	0	0	1000?	HEDGE					
	ZHAO,ALEX	0	0	0	1000?		RAUCHMAN,M	2	1	0	2076
	RUSSELL,N	0	4	0	997#		STRUNK,ALEX	3	1	2	2045*
	BANICKI,G	0	0	0	950?		SMITH,M	5	1	1	1926
	LEE,RICHARD	1	2	0	940#		JASAITIS,A	4	2	1	1859T
	LAN,CHARLES	0	1	0	899#		SMITH,JASON	4	2	0	1692*
	HOU,JIA	0	1	0	800#		KRATKA,M	2	0	0	1596
EXCLB							KHLUS,V	0	0	0	1523*
	HART,V	2	2	2	2114		CHAVEZ,A	3	1	0	1471
	LEE,D	3	3	2	1879		HUNTER,JOSH	0	2	1	1435*
	DOWELL,E	0	2	4	1817		COOMBES,N	0	1	0	1319*
	BRONFELD,A	1	3	1	1777		GOTTEMOLLER,A	0	1	0	1210*
	ENGELEN,M	0	2	5	1731		VISSER,JOUBERT	0	3	0	1143*
	WEITZ,R	0	1	0	1624D		RORVICK,C	0	0	0	1017*
	VIGANTS,A	3	3	0	1504D		MCENEANY,T	0	0	0	986*
	SIEGEL,R	2	2	0	1483C		REGAS,T	0	0	0	983#
	SUERTH,F	0	3	0	1453D		VARGAS,R	0	0	0	888#
	REID,C	3	3	1	1453D		CORNELL,M	0	0	0	800?

Rating Symbols: ? - PreCICL (0 games), # - New (1 to 8 rated games), * - Provisional (9 to 25), otherwise Established (26+)
 C - Centurian (100-199 games), D - Double (200-299), T - Triple (300-399), Q - Quad (400-499), V - Quintuple (500-599)

Team Player W L D Rating

LOYLA					
	PUZANOV	0	6	0	1596*
	DIMOPOULOS,P	3	4	0	1531
	ACOSTA,T	4	3	0	1328*
	JOHNSON,ZAK	2	3	0	1303#
	SAMPEI,D	1	4	0	1300*
	ZACHAR,T	1	4	0	1237*
	NEMATI,N	0	2	0	1216*
	BROWN,B	0	0	0	1169*
	WOJDYLA	1	1	2	1128*
MKING					
	FRIDMAN,Y	3	1	1	2255C
	MORRIS,R	0	0	0	2192C
	MELNIKOV,I	0	1	0	2018C
	THOMSON,J	2	2	2	2011C
	AITIPAMULA,J	1	3	2	1961
	BALICKI,J	5	0	0	1917C
	PIPARIA,J	5	0	2	1909C
	WALLACH,C	3	2	3	1874D
	CYGAN,J	4	0	1	1758C
	CHERKASSKY,G	0	2	0	1660
	GERNES,L	1	0	0	1514
	DUONG,R	1	0	1	1493
	RABINOVICH,E	2	1	0	1468
	ALFONSO,E	0	0	0	1446
	GONCHAROFF,N	0	3	0	1445S
	GRYPARIS,J	0	0	0	1338C
	BABINEC,J	0	1	0	1239

MLXAC					
	MEEROVICH,I	0	0	1	2160*
	OBERWEIS,J	0	6	1	1876*
	WANG,A	0	3	0	1826*
	JARRETTE,P	0	0	0	1800?
	REICH,T	4	3	1	1788
	FREESTROM,J	0	0	1	1753#
	MATHEWS,K	1	0	1	1627*
	ZADEREJ,V	1	5	0	1573
	MCGOWAN,D	0	1	0	1496
	FLYNN,M	2	4	2	1484*
	RUFUS,B	0	2	0	1458
	LINK,D	0	0	0	1442*
	CRANE,G	0	1	0	1413*
	ZARRIS,J	1	0	0	1378*
	FELDMAN,W	1	5	2	1332*
	DEICHMANN,E	2	4	0	1305
	MUELLER,R	0	1	0	1013*
	BANDAR,ABHILASH	0	2	0	959#
	AREND,A	0	2	0	800#

Rating Symbols: ? - PreCICL (0 games), # - New (1 to 8 rated games), * - Provisional (9 to 25), otherwise Established (26+)
 C - Centurian (100-199 games), D - Double (200-299), T - Triple (300-399), Q - Quad (400-499), V - Quintuple (500-599)

Team Player W L D Rating

NWEST						PAWNS					
	ZABELL,S	0	0	0	1920#		PRUDE,S	3	1	2	2174*
	MCVAY,K	0	0	0	1899*		MACENIS,A	0	2	1	2127*
	SHEKHTMAN,L	3	0	0	1873*		KORENMAN,M	2	0	2	2013
	DATLA,SAMEER	3	3	0	1833*		EDEUS,D	4	0	0	1875
	LI,DANIEL	4	0	0	1821#		EMOLE,J	0	0	0	1831?
	DATLA,SIDDARTH	0	2	0	1813*		HOLLAWAY,M	2	2	0	1759
	KRAVIK,P	1	1	0	1787*		VILLARREAL,B	3	2	0	1740*
	MODI,P	3	2	0	1777*		KOSTERIS,D	0	2	0	1726#
	FU, WATSON	1	1	1	1634#		VITKAUSKAS,V	0	1	0	1705*
	PONTISAKOS,C	3	0	0	1599#		KUKURUZA,V	0	1	2	1601
	ANDERSON,E	0	0	0	1598#		ALBOROVAS,K	1	2	1	1568*
	TAKASE,A	1	1	0	1534#		HARPER,C	0	0	0	1476*
	LOU,J	2	1	0	1529*		JACKSON,WILLIAM	1	0	0	1437
	LU,XIAOFEI	0	0	0	1500?		FABIJONAS,R	0	0	0	1374T
	GAFFNEY,J	2	1	0	1462#		WEBER,A	0	0	0	1189#
	GINZBURG,D	0	0	0	1434*		SINOPLA,J	1	3	2	1164
	KARALIS,P	1	0	0	1424#		DENBY,T	0	0	0	967*
	WEINFELD,M	0	0	0	1393*	ROGUE					
	BI,TAO	1	0	0	1346*		FRANKLIN,D	4	0	1	2180
	KIM,C	0	0	0	1300#		BROCK,B	3	1	1	2058
	KIM,EDWARD	2	0	0	1280#		EAMAN,R	3	0	3	1797C
	HAN,NICHOLAS	0	0	0	1145?		FRANK,M	3	0	0	1738C
	DU,MATT	1	0	0	1100#		PERSONS,J	2	0	0	1613
	BABCOCK,S	0	0	0	1067#		DUFFY,J	3	2	1	1584C
	ATKINS,HARRISON	0	0	0	1036#		ACEVEDO,U	4	1	0	1582
	CROFTS,J	0	0	0	1000#		FULKERSON,R	0	0	1	1462
							BANNON,B	0	0	1	1296
							SAWIN,B	0	0	0	1175*

Rating Symbols: ? - PreCICL (0 games), # - New (1 to 8 rated games), * - Provisional (9 to 25), otherwise Established (26+) C - Centurian (100-199 games), D - Double (200-299), T - Triple (300-399), Q - Quad (400-499), V - Quintuple (500-599)

Team Player W L D Rating

ROOKS						STCCC					
	STOUMBOS,K	3	2	2	2227*		SHAW,T	5	0	3	2382
	BENEDEK,R	2	3	2	2055Q		MARSHALL,J	0	0	0	2237
	HILL,R	3	2	1	1941D		WIEWEL,J	2	2	1	2109
	SUAREZ,E	2	2	1	1829C		ACOSTA,M	3	1	0	2081
	MAMETJANOV,A	0	0	0	1813?		FREIDEL,P	0	0	0	1939
	BAURAC,D	3	2	2	1694T		SUITS,J	0	0	0	1867
	GWEKOH,R	3	2	2	1578		VON HATTEN,J	0	0	0	1822
	DECMAN,S	1	0	0	1563T		DI ORIO,J	2	0	0	1801#
	YACOUT,A	0	0	0	1538		COFFMAN	0	0	0	1798?
	GRUDZINSKI,J	1	3	0	1399		ASKARI,M	2	0	0	1777#
	KUHLMANN,S	0	0	0	1320*		JANSSEN,G	2	2	1	1646
	SMITH,TIMOTHY	1	3	0	1273#		CRISSMAN,J	0	0	0	1616*
	HLOHOWSKYJ,I	0	0	0	1033*		KOLB,S	1	2	3	1615*
	SUKUMAR,N	0	0	0	864#		PADILLA,R	4	4	0	1615
							LAST,ERIK	0	0	0	1590?
							ALBERTS,W	0	0	0	1573
							GIERTZ,C	0	0	0	1474#
							SWANSON,E	0	0	1	1423#
							POWERS,E	1	2	0	1397
							GREER,J	0	0	0	1385
							KELLEY,G	1	4	0	1318*
							LUNDGREN,J	0	0	0	1300?
							BALES,R	1	1	1	1290*
							RIES,G	0	0	0	1253*
							SEGRETO,T	0	3	0	1154*
							NEVILLE,J	0	0	0	1087?
							WIEWEL,M	0	0	0	1021?

Rating Symbols: ? - PreCICL (0 games), # - New (1 to 8 rated games), * - Provisional (9 to 25), otherwise Established (26+) C - Centurian (100-199 games), D - Double (200-299), T - Triple (300-399), Q - Quad (400-499), V - Quintuple (500-599)

Team Player W L D Rating

TYROS					UOP						
	ALLSBROOK,F	3	1	3	2206		LEONG,G	0	3	1	1938D
	DIAZ,P	2	2	3	1928D		SIWEK,M	0	2	1	1929D
	GUIO,J	1	2	2	1816D		VAN MEER,J	0	0	0	1898
	STOLTZ,B	0	0	1	1810D		BOLDINGH,E	1	3	4	1896D
	DOBROVOLNY,C	4	2	1	1702D		EASTON,R	2	2	3	1858C
	HAHNE,D	5	0	2	1695D		SAJBEL,P	0	0	1	1770C
	BUCHNER,R	0	2	1	1588C		NGUYEN,M	0	0	0	1761#
	DENMARK,T	0	1	0	1582		LECHNICK,J	1	1	3	1651C
	VAIL,M	0	1	0	1491		MOSSBRIDGE,A	2	0	0	1611
	MCPHAIL,C	1	1	0	1422*		SCHWANBECK,S	0	1	1	1555#
	KURUVILLA,E	0	1	1	1325*		HUGHES,N	0	1	1	1554D
	BYRNE,M	2	1	0	1309		STUDEBAKER,C	1	2	0	1538*
							OLSEN,A	2	3	1	1528D
							BIAN,M	1	1	0	1512
							RAMOS,J	5	1	1	1465*
							LAMBIRIS,J	0	0	0	1428
							LANG,P	0	0	0	1229#
							RAMIREZ,A	0	2	0	1075*

Rating Symbols: ? - PreCICL (0 games), # - New (1 to 8 rated games), * - Provisional (9 to 25), otherwise Established (26+)
 C - Centurian (100-199 games), D - Double (200-299), T - Triple (300-399), Q - Quad (400-499), V - Quintuple (500-599)

Team Player W L D Rating

WCC						WMBAT					
	BERRY,VINCE	0	0	0	2228?		TENNANT,S	4	1	2	2230
	STEIN,KURT	4	2	1	2143*		NGUYEN,T	0	0	0	2153
	STEIN,PETE	0	0	1	2139C		PANNER,G	0	0	0	2105#
	PAVESE,J	0	0	0	2072?		FREITAG,T	4	1	2	2055
	ENRIQUEZ,R	3	1	2	2028*		WEBER,L	1	1	0	2049
	CONNOR,PETER	0	0	0	2010?		ELLICE,W	1	2	2	1779D
	PALMQUIST,W	0	0	0	1988?		ZOLKOS,A	1	1	0	1755
	VIRIJEVICH,O	0	0	0	1911?		TOLLIVER,T	2	2	0	1623*
	MIDDLETON,DOUG	2	1	0	1904*		CONNELLY,P	2	0	1	1599*
	BRUNNER,FRANK	0	0	0	1857?		RAJSKY,J	0	2	0	1580
	CONDON,JAMES	2	3	1	1772*		FENNESSEY,J	3	1	0	1573*
	DJORDJEVIC,V	4	1	1	1680		FRANEK,M	0	4	2	1542T
	WHITED,W	1	3	0	1559*		BOGDAN,L	0	0	0	1524?
	SZELAG,B	1	2	0	1514*		CONNELLY,A	0	0	0	1517?
	DYREK,R	2	0	0	1477#		MENDENHALL,E	0	0	0	1471?
	NIEMAN,DAVE	0	0	0	1450?		SPITZIG,M	0	0	0	1307
	GENTALLAN,F	2	2	0	1406*						
	PATEL,BHARAT	2	0	0	1364#						
	AMIRANTE,D	0	0	0	1350?						
	NELSON,GEORGE	0	0	0	1300?						
	LEDGERPINE,T	1	2	0	1273#						
	DZIEDZIC,JOHN	0	0	0	1200?						
	VILT,JERRY	0	0	0	1200?						
	MIEDONA,T	0	0	0	1050?						

Rating Symbols: ? - PreCICL (0 games), # - New (1 to 8 rated games), * - Provisional (9 to 25), otherwise Established (26+)
 C - Centurian (100-199 games), D - Double (200-299), T - Triple (300-399), Q - Quad (400-499), V - Quintuple (500-599)