

The Chicago Chess Player

The Official Bulletin of the Chicago Industrial Chess League



2014 Play-Off Champions: South Suburban Chess Club Wombats!

Inside this Issue:
Banquet Highlights and Photos
Game Analysis
Banquet Blitz Cross Tables

CICL Officer Contact List

League President **Brian Smith**
President@ChicagoChessLeague.org

League Secretary **Jerry Thomas**
Secretary@ChicagoChessLeague.org

745 Hageman Pl
Naperville, IL 60563

H:(630)420-0188

League Treasurer **Andy Mosley**
Treasurer@ChicagoChessLeague.org

1415 Downing Place Apt 9P
Mundelein, IL 60060

Bulletin Editor **Pat Connelly**
Bulletin@ChicagoChessLeague.org

Webmaster **Irwin Gaines**
Web@ChicagoChessLeague.org

Games Editor **Steve Tennant**
Bulletin@ChicagoChessLeague.org

Ratings Chairman **Irwin Gaines**
Ratings@ChicagoChessLeague.org

Trophy Chairman **Chuck Dobrovolny**
Trophy@ChicagoChessLeague.org

Publicity Chairman **Matt Vail**
Publicity@ChicagoChessleague.org

C:(312) 933-1516
W:(630) 505-6557

Banquet Chairman **Katherine Zack**
Banquet@ChicagoChessLeague.org

DIVISIONAL CHAIRMEN

East Division **Tony Jasaitis**
ChairmanEast@ChicagoChessLeague.org

West Division **Jeff Wiewel**
ChairmanWest@ChicagoChessLeague.org

North Division **Jim Thomson**
ChairmanNorth@ChicagoChessLeague.org

W(847) 538-5408

2014-2015 League Officers Chicago Industrial Chess League



Photo Montage by Brian Smith, CICL President

CICL Officer Contact List	2
Officer Photos	3
Table of Contents:	4
Play Off, Division, Ind. Tournament Standings	5
Banquet Highlights	6-9
Bobby Fischer versus the CICL	10-13
Earning Your Black Belt in Chess	14-17
Upcoming Tournaments	18

We're always looking for submissions! As always, feel free to submit stories, games, chess news, and information about local chess events to the bulletin. If we receive submissions, we'll be happy to put out one more summer issue. If not, we'll see you back in the fall!

Your Opinions count! Please send us your feedback on CICL events, rules, bulletin, etc. In this issue you'll notice we're trying out chess diagrams in a few different visual formats. Please feel free to write the bulletin and let us know if there's one you prefer!

Thank you! Special thanks to our contributors for this issue, including Alex Pehas and Torriente Toliver for great articles and games. Thanks also to Brian Smith and Len Weber for providing banquet photos and cross tables.

The CICL is now on Facebook! Please "like" our page to get CICL updates, pictures, and more! Check us out here: <https://www.facebook.com/ChicagoIndustrialChessLeague>

Please email submissions to Bulletin@ChicagoChessLeague.org.

Have a great summer!

Pat Connelly
CICL Bulletin Editor

Final Division Standings:

Seeding	Team	PR	Division & Place
1	Argonne Rooks	1917	West #2
2	SSCC Wombats	1915	West #1
3	SSCC Pawns	1878	West #3
4	Fermilab	1875	West #4
5	Motorola Solutions Kings	1859	North #1
6	DRW Trading	1767	East #1
7	Rogue Squadron	1690	East #2
8	BCBS	1412	East #8

Play Off Standings:

1st Place: Wombats 3.0-0.0

2nd Place: Fermilab 2.5-0.5

3rd Place (3 way tie):

Motorola Kings 1.5-1.5

Rogue 1.5-1.5

ANL Rooks 1.5-1.5

DRW 1-2

Pawns 1-2

BCBS 0-3

Play-Off Games are available for download on the CACL League website Games [here](#).

Play-Off Individual Tournament Standings:

1st Place:

Steffen Klug

2nd Place (4-way tie)

Fred Scott Allsbrook

D. Arond

Pablo Diaz

Mariano Acosta

2014 CICL Banquet Highlights

This year's banquet featured the usual suspects (CICL players and guests) at the usual haunt (Alpine Banquet House in Winchester), but there were some special additions!



As usual, the teams were recognized for their play-off and Division standings. However, we recognized other key accomplishments as well. This included:

Most Valuable Player Awards:

East Division: Danyul Lawrence

West Division: Robert Hill

North Division: Edwin Boldingh

Most Improved Player: S. Kuhlmann, 123 point gain.

Torriente Toliver also received a special plaque as MVP for the WOMBATS. This recognizes this accomplishment of 8-0 games in his very first year in the league! Perhaps this recognition is what inspired his new ongoing column in the bulletin.



We also acknowledged our officers stepping down from their positions, thanking them for all their hard work! This included Irwin Gaines, President from 2011-2014 (and who has worn many other hats and continues to do so in the league!), and Jeff Balicki, Ratings Chairman from 2010-2014, who has done a fantastic job of keeping our players' ratings up to date!

We also acknowledged our Centurions (players who have played over one hundred CICL games!). We didn't have any single Centurions this year; instead, the league recognized dedicated players who have played over two hundred, and even over four hundred games in the league!

Double Centurions:

Jeff Balicki
Jim Thomson

Quadruple Centurion:

Romas Fabijonas

Biggest Upset Awards:

Individual: A. Vigants, 765 point Game Upset!

Team: *AMA Tornado Snakes, 383 point Match Upset!*

One very special award went to Tony Jasaitis, who received the Ron Dargis Lifetime Distinguished Service award for his long-standing and exceptional contributions to league.



Tony Jasaitis (right), who was awarded the prestigious Ron Dargis award. Video of Tony accepting his award can be seen on the CICL Facebook page, and on YouTube at http://www.youtube.com/watch?v=JWn_URpO9Lo.

Guest Lecturer IM Florin Felecan (USCF 2411) analyzed one of his games against GM Yury Shulman, and gave us a peek into how he trains and prepares.



Florin stuck around for the blitz tournament as well, playing in the top section. Though Felecan went undefeated, D. Franklin drew him- Congratulations! Here is the Section 1 Crosstable:

Blitz Section 1										
Rating	Name	1	2	3	4	5	6	7	Total	
2400	F. Felecan	X	0.5	1	1	1	1	1	5.5	
2220	D. Franklin	0.5	X	0	0	0.5	1	0.5	2.5	
2136	D. Lawrence	0	1	X	0	1	1	1	4	
2130	S. Klug	0	1	1	X	1	1	1	5	
2094	T. Freitag	0	0.5	0	0	X	1	1	2.5	
1965	P. Diaz	0	0	0	0	0	X	0	0	
2001	J. Thomson	0	0.5	0	0	0	1	X	1.5	



IM Florin Felecan plays CICAL players in a Round Robin Blitz Tournament.

Blitz Crosstables by Section:

Blitz Section 2								
Rating	Name	1	2	3	4	5	6	Total
1703	G. Irwin	X	0	0	0	0	0	0
1934	E. Boldingh	1 X		0	1	0	1	3
1810	A. Zolkos	1	1 X		1	0	1	4
1762	J. Cygan	1	0	0 X		0	1	2
1715	S. Mata	1	1	1	1 X		0	4
1713	T. Toliver	1	0	0	0	1 X		2

Blitz Section 3								
Rating	Name	1	2	3	4	5	6	Total
1628	C. Dobrovolny	X	1	0	1	0	0.5	2.5
1625	M. Franek	0 X		0	0	1	0	1
1523	D. Eustace	1	1 X		1	0	1	4
1500	R. Ernst	0	1	0 X				2
1488	F. Sureth	1	0	1	0 X			2
1469	B. Patel	0.5	1	0	1	1 X		3.5

Blitz Section 4:

Blitz Section 1						
Rating	Name	1	2	3	4	Total
1464	M. Vail	XX	1,1	1,1	2,0	4
1400	E. Harrison	1,1	XX	1,1	2,0	4
1265	M. Bryne	1,1	1,1	XX	2,0	4
1200	K. Olsen	0	0	0 XX		0

This year's banquet blitz tournament was one of the largest we've had in a few years, with Four Sections. Even Section 4, which only four players, played quite a few games, playing each other twice for a double round robin!

I think everyone can agree that this year's banquet was another great close to an outstanding year!

Bobby Fischer versus the CICL

Alex Pehas (DRAGONS) brought to attention a special CICL connection to Bobby Fischer mentioned in Chess Life's April 2014 issue. Alex writes:

"Bruce Pandolfini's column in the April 2014 issue of Chess Life presents a game that has a CICL connection. It was played during a fifty board simultaneous by Bobby Fischer cosponsored by the CICL and the Western Electric Chess Club. According to CICL bulletins of 1964, about 100 spectators gathered at Western Electric's Albright Gym on Cermak Road in Cicero to see Fischer win 44 games, draw 5, and lose just one game in three and a half hours. Three Argonne players drew: J. Jackson, T. DeParry, A. Puchala. Jim Warren from Western Electric and J. Bikulcius from Stewart Warner also drew. Erwin Puto of Western Electric was the only winner. Amazing for some of us is that the event occurred almost a half century ago!"

Steve Tennant, CICL Games Editor, offers his analysis for Fischer-Kumro (included in the April issue of Chess Life), along with the above-mentioned win by Puto.

Robert James Fischer- T. Kumro Fischer Tour Simul, 05/20/64, Cicero, 1-0

1. **e4 e5** 2. **Nc3** I'm sure Fischer didn't want to disclose home analysis in a simul, so he played something he isn't likely to play in a tournament game. 2...**Nf6** 3. **f4 d6?** It is well known that 3...**d5** is the only move in this position. The text allows white too much without any risks. 4. **Nf3 Nc6** 5. **Bb5 Bd7** 6. **d3** Protecting the e-pawn so that 7. **Bxc6, Bxc6** 8. **Nxe5** isn't just an exchange of pawns.



Position after 6. d3

6...Be7. 7. Bxc6 Bxc6 8. fxe5 dxe5 9. Nxe5 O-O. I think the main reason to keep playing in this position is to observe Fischer's technique. Objectively, Black must know he will lose. 10. Nxc6 bxc6 11. O-O Qd7 12. Qf3 Ng4 13. h3 Ne5 14. Qg3 Bd6 15. Bf4 f6 16. d4 Ng6 17. Bxd6 cxd6 18. Rad1 Qe6 19. d5 cxd5 20. Rxd5 Black's d pawn is much more vulnerable than white's e pawn (guarded by the Knight).

20...Rfd8 21. Rfd1 Ne5 22. Nb5 Rab8 23. Nxd6 Rf8. Black must get the rook out of the way because 24 Nf5 would be double threat; mate on g7 and the loose Rook.



Position after 23...Rf8

24. Nf5 Ng6 25. Rd7 Qb6+ 26. Kh1 Rbd8 26...Rf7 doesn't help. White trades rooks and plays Rd7+. 27. Rxg7+ Kh8 28. Rf1 Qxb2 29. Qg4 Rg8 30. Rxh7 1-0

Robert James Fischer- Erwin, Puto Fischer Tour Simul, 05/20/64, Cicero, 0-1

1. e4 e5 2. Nc3 Nc6 3. Bc4 Unlike the previous game, Fischer avoids 3. f4 because exf4 has a very good reputation. 3...Bc5 4. f4. Qg4 has been played here. Guarding or moving the g pawn is awkward. 4...d5! 5.Qxg7 Qh5 6. Qxh8 Qxf2+ 7. Kd1 Qxg2! appears to win for black. 4...Nf6 5. Nf3 d6 6. d3 O-O 7. f5 Nd4 The correct response to White relieving tension on the e pawn. 8. Bg5 c6 9. a3. A strange move from Fischer, but it would have been forced after ...b5 and ...a5



Position after 9. a3 –“A strange move for Fischer”

9...h6 10. Bh4 b5 11. Ba2 a5 12. g4 g5 Very double-edged. I'm not sure it's sound. 13. fxe6 Bxe4 14. Bxf7+ Kg7 15. Nxd4 Bxd4 16. Ne2. Much better is 16. Bxf6+ Qxf6 17. Qxg4 winning a piece. Perhaps he was afraid of 17...b4, but 18 Na4 seems to hold. White can drive Black back with either Qe2 or Qg3. Failure to play this results in Fischer getting crushed. 16...Bxb2 17. Rb1 Bc3+ 18. Kf2 Nxe4+ It's hard to believe that Fischer missed this.



Position after 18...Nxe4+

19. dxe4 Qxh4+ 20. Kg2 Qh3+ 21. Kg1 Qe3+ 0-1 Fischer must have been embarrassed to lose this. He didn't want to get mated.

Additional games from the 1964 Simultaneous (courtesy Alex Pehas):

Robert James Fischer- Jim Warren
Fischer Tour Simul, 05/20/64, Cicero, 1/2-1/2

1. e4 c5 2. Nf3 Nc6 3. d4 cxd4 4. Nxd4 Nf6 5. Nc3 d6 6. Bc4 e6 7. Bb3 Be7 8. Be3 O-O 9. O-O Bd7 10. f4 Nxd4 11. Bxd4 Bc6 12. Qe2 b5 13. Nxb5 Bxb5 14. Qxb5 Nxe4 15. f5 Bf6 16. Qd3 Bxd4+ 17. Qxd4 d5 18. c4 dxc4 19. Qxe4 cxb3 20. fxe6 Qb6+ 21. Kh1 fxe6 22. axb3 Qxb3 23. h3 Qxb2 24. Qxe6+ Kh8 25. Qe7 Rxf1+ 26. Rxf1 h6 27. Rf8+ Rxf8 28. Qxf8+ Kh7 29. Qf5+ Kg8 30. Qc8+ Kh7 31. Qf5+ g6 32. Qa5 Qb6 33. Qa2 Qb7 34. Qa1 Qc7 1/2-1/2

Robert James Fischer- J. Bikulcius
Fischer Tour Simul, 05/20/64, Cicero, 1/2-1/2

1. e4 e6 2. d4 d5 3. Nc3 Bb4 4. e5 Ne7 5. a3 Bxc3+ 6. bxc3 O-O 7. Nf3 Nd7 8. Bd3 h6 9. a4 a5 10. O-O c5 11. Re1 Qc7 12. Bf4 Ng6 13. Be3 c4 14. Bf1 f6 15. exf6 Nxf6 16. g3 Qf7 17. Bh3 Bd7 18. Nd2 Rab8 19. f4 Rfe8 20. Bg2 Bc6 21. Rf1 Qd7 22. h4 Bxa4 23. h5 Ne7 24. g4 b6 25. Bh3 Rf8 26. Nf3 Bc6 27. Ne5 Qc8 28. g5 hxg5 29. fxg5 Ne4 30. Rxf8+ Kxf8 31. Qf1+ Nf5 32. Bxf5 exf5 33. Nxc6 Qxc6 34. Qxf5+ Ke7 35. Qe5+ Qe6 36. Qxg7+ Kd8 37. Qf8+ Kd7 38. Qxb8 Qg4+ 39. Kh2 Qe2+ 40. Kg1 Qg4+ 1/2-1/2

Robert James Fischer- T. de Parry
Fischer Tour Simul, 05/20/64, Cicero, 1/2-1/2

1. e4 e6 2. d4 d5 3. Nc3 Bb4 4. e5 f6 5. a3 Ba5 6. Qg4 Qe7 7. Nf3 Nc6 8. Bb5 Bd7 9. O-O Qf7 10. b4 Bb6 11. Na4 h5 12. Qh4 g5 13. Qg3 g4 14. Nxb6 axb6 15. Bxc6 Bxc6 16. Ne1 f5 17. Nd3 Bb5 18. Rd1 h4 19. Qe3 Ne7 20. Nf4 Ng6 21. Nxc6 Qxc6 22. Qg5 Kf7 23. Qxc6+ Kxc6 24. Bf4 Ra4 25. c3 h3 26. g3 Rha8 27. Bc1 c5 28. bxc5 bxc5 29. dxc5 Rc4 30. Bd2 Rxc5 31. Rdb1 Ba6 32. Rb6 Kf7 33. Rd6 Rac8 34. Rd7+ Ke8 35. Rh7 R8c7 36. Rh6 Kd7 37. Rh7+ Kc6 38. Rh6 Re7 39. Rb1 Bd3 40. Rb4 Rb5 41. Be3 Rxb4 42. axb4 Kd7 43. Rh8 b5 1/2-1/2

Promotion: Earning Your Black Belt in Chess

by Torriente Toliver (WMBTS)

“You've Been Here Before”

Chess players are extremely hard workers. Unfortunately, we do not work as smart as we should. A key complaint among competitive players is a lack of "consistency". This means consistent improvement with respect to results and level of play. One would assume that with all the computers, books, opportunities to play opponents on and offline, and innumerable other resources, like YouTube trainers and live coaching, that progress is inevitable. If this were true, then why are players with years of competitive experience still stuck in the class ranks?

The fact is we, as competitors, forget the fundamentals of chess. It is a fight between two and only two people (sorry bughouse). Any good fighter will tell you that there are only 2 rules to fighting. 1. Don't get hit. 2. Hit the other person. You must have a few simple rules to win or at least survive a fight. With more options, you will spend more time thinking about which wrong thing you will end up doing. "I pity the fool" who's still thinking while I'm swinging.

One needs principles in order to come up with rules. Principle-You've been here before. Someone has sprung an opening, variation, or a trap on you before, stolen a pawn or piece, and cramped your position. These are not new concepts, but we do not play like we have been there before. We need an answer to the unexpected. If you have been there before, have a response ready.

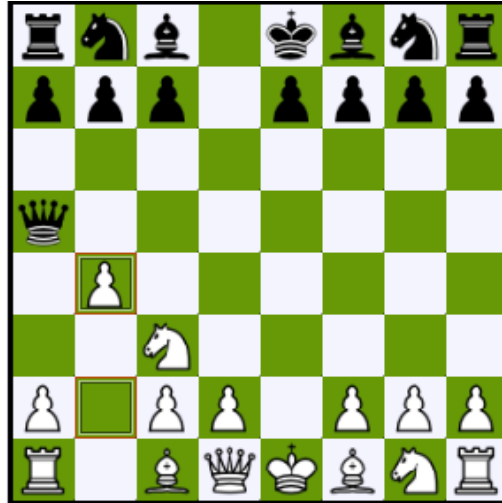
I was recently at a tournament analyzing with other players how to answer the center counter. About six other competitors had prepped lines a few moves deep; some mentioning traps and opening theory. The player who started the conversation mentioned b4, and everyone was visibly disturbed. I was instantly excited because I knew what was going on.

I had been there before, with other opponents popping out unexpected moves that made me change my way of thinking. I quickly saw how accepting b4 would lead to a queen chase and development. I could tell from the other players' games that their plans were discarded. They were playing like rank amateurs despite the fact that half had higher ratings and knew more theory. However, by move 4, they all fell apart due to the mental blow of the unexpected move.

Based on this experience, I've selected two games featuring 4. B4 to review. All analysis is mine and is purposefully done without use of a computer.

Barbara Hund -Christa Hartog Cologne, 1978

1. e4 d5 2. exd5 Qxd5 3. Nc3 Qa5 This is a natural normal book line. Wham! 4. b4



Position after 4.b4

This move is absent in MCO 15 and Chess Opening Essentials e4, two of the more popular general opening books. This is exactly the situation that you must recognize that you have been before. In high school I, as a rule, accepted all gambits. I made the opponent teach me a lesson in gambit play or I punished the audacity to give me material and expect a win. I only denied the gambit if I could quickly and clearly see a tactical or positional disadvantage.

4...Qxb4 Not a mistake if black has a clear course to escape safely. **5. Rb1 Qd6 6. Nf3 Nf6 7. d4 a6 8. Bd3 8...Bg4**



Position after 8...Bg4

Black goes against the plan. B7 is unguarded, queenside castle looks unhealthy, and black is not developing toward defense. I do not see the power of weakening light squares for the knight and giving white more tempo. **9. h3 Qc6** So, you want to attack with mini and the check at c3 develops a piece with tempo?

This is what usually happens when a queen is stuck in the center. She is chased and awkwardly placed. We all have been here before. Better is e6 or g6 at move 8 preparing a defense or counter attack and not giving up the center and both flanks. White's king is oddly safe in the center.

10. hxg4 Qxc3+ 11. Bd2 Qc6 12. g5 Now the bullying begins. **12...Ne4 13. Ne5 Qd5 14. Qf3** This situation happened because of white square dominance and black does not have a pawn structure to hold the position in a situation where white is far better developed. **14... Qxa2 15. Bxe4 Qxb1+ 16. Ke2 Qxh1** Gambit 101 mate trumps material. **17. Qxf7+ Kd8 18. Qd5+ Ke8 19. Qxb7 Kd8 20. Qxa8 Qb1 21. Bb7 1-0**

Black forgot the rules of fighting. The queen got the pawn but took a pounding for it. Black should have run toward safety instead of premature aggressiveness. Let's look at the other side.

Filip Panceyski (Elo 2402)- Dejan Stojanovski (Elo 2437) 19th Championship of Macedonia Open 07/24/10 1/2- 1/2

1. e4 d5 2. exd5 Qxd5 3. Nc3 Qa5 4. b4 Same situation. What do you do?

4... Qb6 Taking and running are both right if one has the clear view of what they want to accomplish based on prior experiences.



Position after 4...Qb6

5. Nf3 Nf6 6. Bc4 c6. This move shows the defensive structure black wants to adopt. **7. 0-0 Qxb4.** Yeah, take the pawn. Black has multiple escape routes and a defensive structure. **8. Qe2 e6** .This pawn move shuts white down. Offensively, castling is soon to come and black still has a pawn. The only drawback is slow development on the queenside but the setup is not easily broken.



Position after 8...e6

9. Re1 Be7 10. Rb1 Qd6 11. a4 0-0 12. h3 Qc7 Queen safe, king safe, pawn up, black is looking good.

13. d4 Rd8 Black is ready to fight back with a structure to support the plan. **14. Bg5 Nd5 15. Nxd5 cxd5 16. Bxe7 Qxe7 .5-.5 GM draw** but I see no danger for black.

Did black in game two have to prep all of this? No. Black chose not to go into a gambit line and used a clear plan to equalize. Black in game one could have pursued a similar defensive posture a pawn up and may have been alright. The challenge of a player is to know how to play chess period. What to do when...whatever. Remember you have been here before. If you lose, then learn what you need to handle the situation, but you should always have or create a principled answer that reflects your chess rules.

Upcoming Tournaments

Evanston Tri-Level, July 12th

4SS G/40 plus 5 second delay. USCF Dual Rated. Levy Senior Center, 300 Dodge Ave., Evanston, IL 60201. **Three Sections:** Gold: 1700 and over; Silver: 1200-1699; Bronze: Under 1200 and Unrated; 1600 - 1699 may play up to Gold; 1100 - 1199 may play up to Silver; published USCF Regular Rating determines eligibility; unrated players will be placed at TD discretion; sections may be combined at TD discretion; accelerated or decelerated pairings at TD discretion. Digital clocks are required and will be set to G/40 plus 5 seconds delay. **Schedule:** Registration 9:00-9:30 am, first Round 9:45 am, last round ends roughly 5:30 pm. Players who check in after 9:30 am will receive a half-point bye for the first round. You may take one half-point bye in any round but the last. **Entry Fee:** \$5.00, please pay cash (no checks) at the door. Masters and Experts play free. **Your Prize:** Four games of quality rated chess in a congenial atmosphere! **Pre-Registration Recommended:** **Entries:** send your name, USCF number, rating and phone number to Maret Thorpe enter@EvanstonChess.org. **Other information:** Junior players (under fourteen years) rated 900+ are welcome and must be accompanied by a parent throughout the event. Sorry, but we do not accept junior players rated under 900. Bring clocks. Wheelchair accessible. No Smoking. Limit: 52 players. For more information: www.evanstonchess.org

Glenwood Chess Club Quad Tournament July 13th

3 round Quad, G/70 Glenwood Chess Club, The Blakey Center, 1 South Rebecca St., Glenwood, IL 60425, EF: \$25 cash Club members \$35 for Non Club Members Cash Prizes: \$50 for 1st, \$25 for 2nd per quad (based on 4 per quad), Reg:8:45-9:45am: pairings are made at 10:00am, RDS: 10:00am, 1:15 and 3:45. Info: Wheelchair access is available please bring your chess set, clock, Food will be sold on site. For more info email Ken at kennethwindmon@gmail.com

Glenwood Chess Club \$5 Tournament July 27th

\$5 Tournament July 27th

Glenwood Chess Club July 27th Tournament. Where: Blakey Center 1 South Rebecca St. Glenwood IL 60425 3 rounds G/45 5 sec delay EF. \$5.00 (Cash Only) USCF RATED Reg 9-9:45am 1st round 10am 2nd, 3rd, ASAP. Please bring chess sets, clocks. Any question email kennethwindmon@gmail.com