

The Chicago Chess Player

The Official Bulletin of the Chicago Industrial Chess League

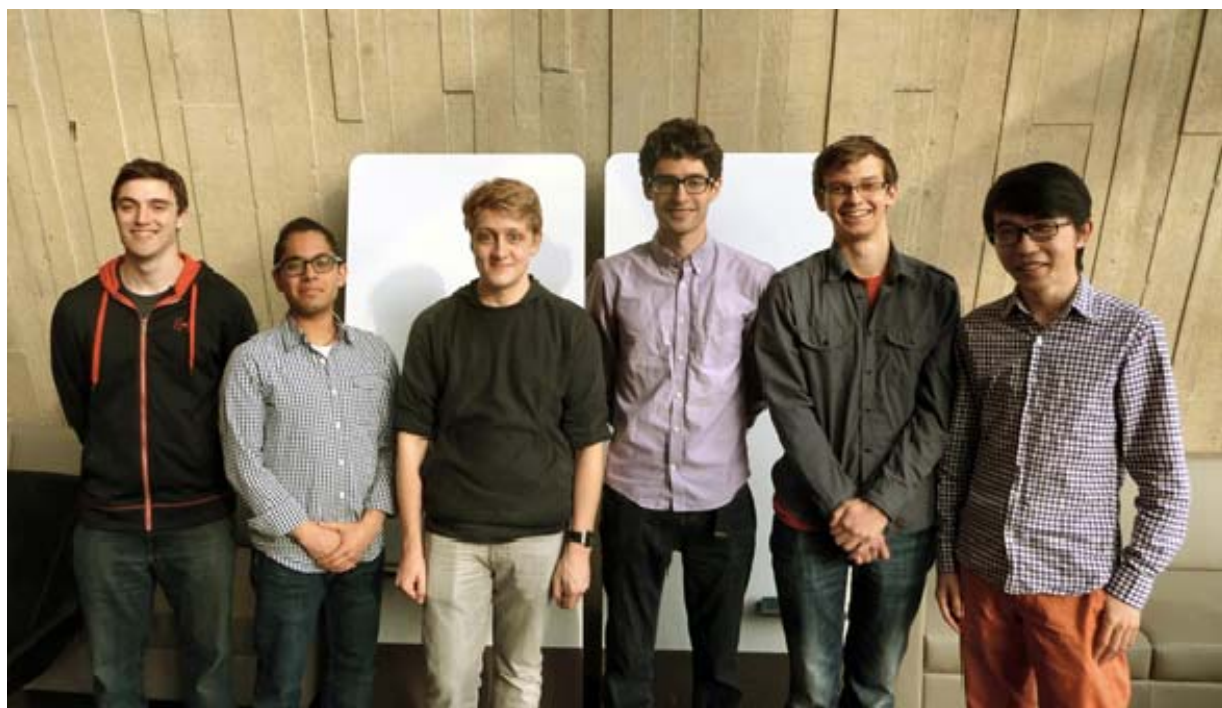


Photo courtesy Brian Smith

2015 Play-Off Champions: Northwestern University Chess Club

Inside this Issue:
Play-Off Standings
Individual and Team Awards
Spring Business Meeting Minutes

CICL Officer Contact List

League President **Jim Thomson**
President@ChicagoChessLeague.org

League Secretary **Jerry Thomas** 745 Hageman Pl H:(630)420-0188
Secretary@ChicagoChessLeague.org Naperville, IL 60563

League Treasurer **Aaron Maney**
Treasurer@ChicagoChessLeague.org

Bulletin Editor **Pat Connelly**
Bulletin@ChicagoChessLeague.org

Webmaster **Irwin Gaines**
Web@ChicagoChessLeague.org

Games Editor **Irwin Gaines/Steve Tennant**
Bulletin@ChicagoChessLeague.org

Ratings Chair **Irwin Gaines**
Ratings@ChicagoChessLeague.org

Trophy Chair **Chuck Dobrovolny**
Trophy@ChicagoChessLeague.org

Publicity Chair **Bill Whited**
Publicity@ChicagoChessleague.org

Banquet Chair
Banquet@ChicagoChessLeague.org

Playoffs Chair **Brian Smith**

Playoffs Tournament Director **Art Olsen; Andrew Zaleiski**

DIVISION CHAIRS

East Division **Tony Jasaitis**
ChairmanEast@ChicagoChessLeague.org

West Division **Jeff Wiewel**
ChairmanWest@ChicagoChessLeague.org

North Division **Art Olsen**
ChairmanNorth@ChicagoChessLeague.org

CICL Officer Contact List	2
Table of Contents	3
Play-Off and Division Awards	4
MVPs and Officer Changes	5
Centurion Award Recipients	6
Bulletin Award Recipients	7
Banquet Blitz Tournament Standings	8
Playoff Game and Analysis	9-10
Officer Interview with Katherine Zack	11
Spring Business Meeting Minutes	12-19

Thanks everyone for another great season! Thanks to all our readers and players who contributed great stories, games, and more to the bulletin for the 2014-2015 season. Special thanks to Torriente Tolliver whose “Earning your black belt in chess” column appeared in many of this season’s bulletins. Please email submissions to Bulletin@ChicagoChessLeague.org.

Fall Business Meeting Reminder: The CICL Fall Business meeting will take place on Wednesday, August 26th, from 7:00 to 10:00 PM at Fermilab in the 1 West conference room located on the 1st Floor of Wilson Hall (the same place the Playoffs were held). If you are the captain of a New CICL Team, or one that is restructuring, this is the meeting to be at! There is also a major new B-Team proposal to be voted on and possible Division Re-alignment with the North dropping to 3 teams.

The CICL is on Facebook! Check us out here: <https://www.facebook.com/ChicagoIndustrialChessLeague>

Pat Connelly
CICL Bulletin Editor



In the first round of the CICL Playoffs, Steve Tennant (WMBTS) watches Jonathan Kogen (NWEST) play Todd Freitag (WMBTS) on Board One. Photo Courtesy W. Ellice.

2014-2015 Play-Off Winners:

1st Place, Play-off Champions: Northwestern Chess Club
2nd Place (Tie): Aon Renaissance Knights and Downers Grove Chess Club

Division Awards:**2015 West Division:**

1st Place: Fermilab
2nd Place: Willowbrook Chess Club
3rd Place: Wombats

2015 East Division:

1st Place: Northwestern Chess Club
2nd Place: DRW Trading Group

2015 North Division:

1st Place: Motorola Kings

2015 CICL Individual Tournament Standings:**Section 1**

1st Place
Scott Allsbrook 3.0 points Tyros

2nd Place:
Mark Engelen 2.0 points Excaliburs
Richard Easton 2.0 points UOP

Section 2

1st Place
Sonny Mata 2.5 points Enova

2nd Place
Charles Dobrovolny 2.0 points Tyros
Rudy Padilla 2.0 points STCC
Krishna Komoravolu 2.0 points Dragons

Section 3:

1st Place
Eric Swanson 2.5 points STCC

2nd Place
Matthew Cimbalista 2.0 points Dragons
Rolando Gwekoh 2.0 points Argonne
Eapen Kuruvilla 2.0 points Tyros

2015 Most Valuable Player Awards

CICL North Division: Joseph Cygan

CICL East Division: Jonathan Kogen

CICL West Division: Dmitri Sergatskov

Most Improved Player Award: Alex Connelly, 139 Rating Gain

Biggest Upset Award (Individual): Andy Mosley, 411 point Game Upset

Biggest Upset Award (Team): St. Charles Chess Club 242-point Match Upset

Officer Changes:

We want to thank the following CICL Officers for all their hard work as they pass the torch!

Gary Janssen, Playoff Tournament Director (2014-2015)

Andy Mosley, Treasurer (2012-2015)

Brian Smith, President & Play-off Chair (2014-2015)

Jim Thomson, North Division Chair (2006-2015)

Matt Vail, Publicity Chair (2006-2015)

Katherine Zack, Banquet Chair (2009-2015)

We appreciate our new officers stepping up to fill roles!

Art Olsen, North Division Chair & Playoff Tournament Director, 2015

Jim Thomson, President, 2015

Bill Whited, Publicity Chair, 2015

Andrew Zaleiski, Playoff Tournament Director 2015



CICL Playoff Photo Courtesy B. Smith

Centurion Award Recipients

Players are recognized for playing one hundred CICL games with the Centurion Award. These dedicated CICL players prove that one hundred games isn't just a piece of cake, it's apparently not enough!

Centurion (100 Games):

- Fred Scott Allsbrook
- Mark Engelen
- Fred Furtner
- Jeff Wiewel
- Victor Zaderej



Double Centurion (200 Games):

- Brian Smith

Triple Centurion (300 Games):

- Charles Dobrovolny
- Carl Reid

Quadruple Centurion (400 Games):

- Vern Stamm



Trophy Chair Chuck Dobrovolny presents awards at the CICL June Banquet. Photo L. Weber

Bulletin Award Recipients

This year awards were once again offered for bulletin submissions. We want to thank all the players for their great articles, games, and photo contributions, and recognize our winners!

Category: player-analyzed game: David Franklin: For his annotated Kogen-Franklin game in the December bulletin (1 of 2 great annotated games David submitted this season!).

Category: CICL-Photo: Jim Brostos: Jim contributed a fantastic photo to Part 2 of our “Remembering Jim Warren” article in the January bulletin. The 1960s photo shows Jim Warren and others playing in a simultaneous.

Category: Readers’ Choice: Alex Pehas: Quite a few players were saddened by Jim Warren’s passing this year. Alex Pehas shared photos, games, and his own memories of Jim Warren for our 2 part article.

Category: CICL Match Recap: Tony Jasaitis: Tony Jasaitis entertained readers all with a match recap between the Hedgehogs and DRW Trading.



Tony Jasaitis and Katherine Zack smile for a picture at the CIGL June Banquet.
Photo Courtesy L. Weber

CICL Banquet Round Robin Blitz Tournament

Section Results:

Section 1

- S. Klug, 4 points
- D. Sergatskov, 3.5 points
- S. Tennant, 2.5 points
- A. Kochemirovsky, 2 points

Section 2

- S. Antipov, 5 points
- J. Cygan, 4.5 points
- C. Dobrovolny, 1.5 points
- R. Ernst, 0 points

Section 3

- A. Zaleiski, 4 points
- M. Byrne, 3 points
- E. Swanson, 3 points
- A. Mosley, 2 points
- F. Suerth, 2 points
- J. Sinople 1 point



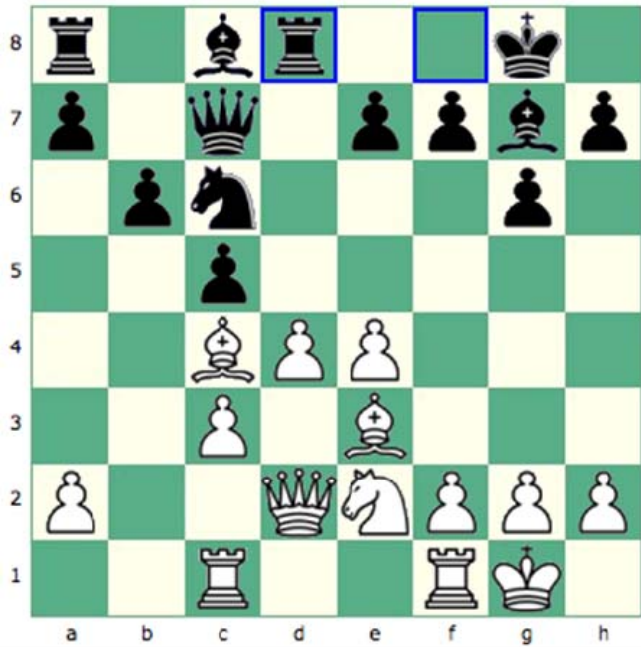
The players in action at the Banquet Round Robin Blitz Tournament!

Photo Courtesy L. Weber

Igor Alfimov-Jeff Dixon, CICL Play-offs, Round 3, 05/09/15

Analysis by Jeff Dixon

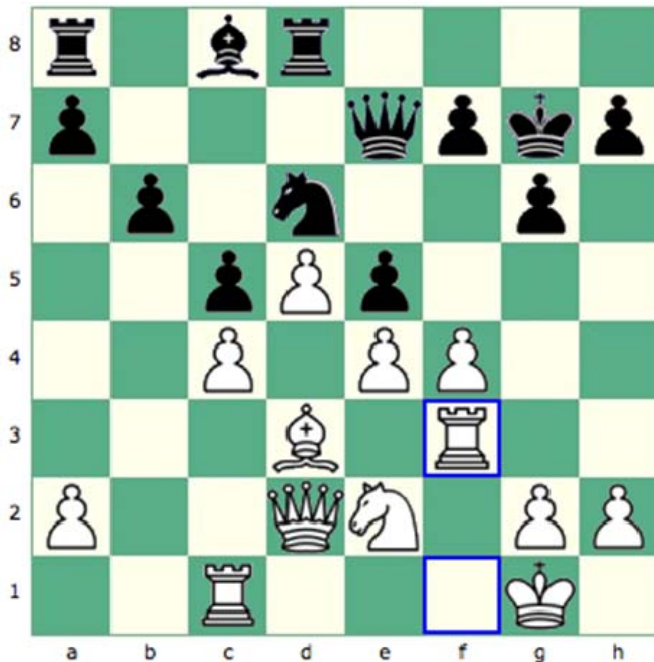
1. d4 Nf6 2. c4 g6 3. Nc3 d5 4. cxd5 Nxd5 5. e4 Nxc3 6. bxc3 Bg7 7. Bc4 c5 8. Be3 Nc6 9. Ne2 0-0 10. 0-0 Qc7 11. Rc1 b6 12. Qd2 Rd8



12...Rd8

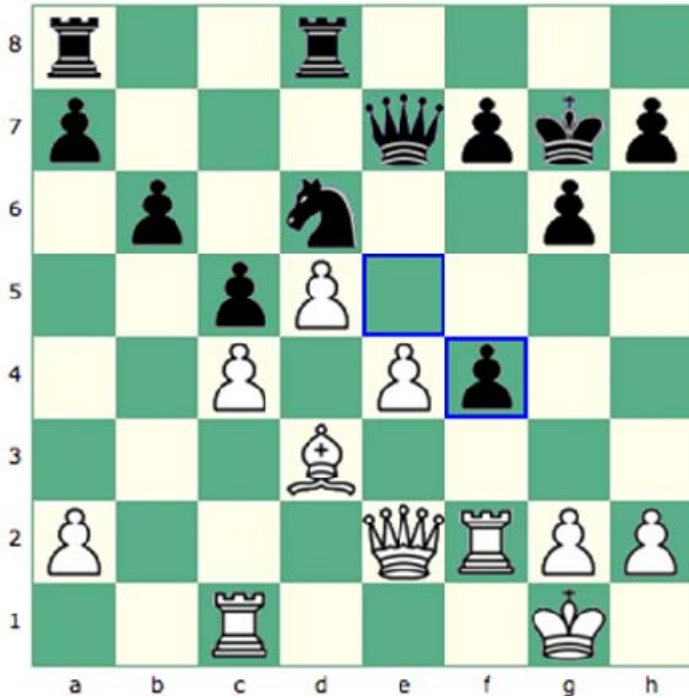
{Our friend GM Boris Avrukh recommends 12...Bb7 in his GM Repertoire Vol. 9 book - I was not sure whether I was still following him up to this point or not, thinking maybe he had recommended 11...Rd8}

13. Bh6 e5 14. Bxg7 Kxg7 15. d5 Na5 16. Bd3 Nb7 17. c4 Nd6 18. f4 Qe7 19. Rf3?!



19. Rf3?!

(Rf2+/=) Bg4! 20. Rf2 Bxe2 21. Qxe2(=) exf4??



21...exf4??

{Just about any other plausible move maintains a dead equal position—Rf8, Re8, Rab8, f6, to name a few. I had just spent a long time mulling over whether to play exf4 right away, Re8 with the idea of exf4, or Rf8 first followed by Rae8, only then intending exf4. I had initially downgraded the immediate capture because of 22.Rxf4(??) defending e4, whereas if White plays at some point fxe5, then Qxe5 threatens to capture e4 and White must take time to defend it. But then I saw White could play g2-g3, immediately decided this “threat” of White’s outweighed minor questions of tempo because of its permanent structural ramifications, and instantly played the horrible 21...exf4??. I expected only 22.Rxf4?? f6 =/+ , and only noticed White’s crushing zwischenzug reply--to my horror--just as my hand had made the move. Of course, in hindsight, Black simply must accept that he is not better, shore up e5 while allowing White to shore up f4, and hunker down for what will most likely be a boring draw.}

22. e5 (+-)Nb7 23. Rxf4 Re8 (23... Qg5) 24. Rcf1 Nd8 25. Re1 Rb8 (25... Qg5) 26. Qg4 a6 (26... h5 27. Qg3) 27. a4 Qc7 28. Qg5 Qd7 29. Rh4 Qxa4 30. Qh6+ Kg8 31. d6 f5 32. Qxh7+ Kf8 33. Qh8+ Kf7 34. Qf6+ Kg8 35. Rh8# 1-0

Officer Interview

Name: Katherine "Kat" Zack

Position: Banquet Chair (2009-2015)

Team: Wombats

CICL Rating: 800



What music do you like to listen to?

A variety! Country, pop, rock, 80s, others.

How long have you been playing in the CICL?

I've been involved in the league for about five years. I don't play very many games.

Who is your favorite chess player of all time?

Former Indian women's champion GM Humpy Koneru, of course!

Is there another skill or game you'd like to learn?

Maybe poker.

If you could choose a superpower, what would it be?

I'd like to be invisible!

Would you use your superpower in your chess game?

I'm not sure how that superpower would be helpful in a game of chess...

What do you think chess players are particularly good at (other than chess):

I don't think you can lump chessplayers together, there's so many different types of people who play, and at so many levels.

If you could rename your CICL team any name, what would it be?

I'd call it the Wombats (the name it is)! Best name ever!

If you wrote a chess book, what would the title be?

"How to play chess like a cat."

If chess colors weren't white and black, what two colors would you choose?

Purple and white!

CHICAGO INDUSTRIAL CHESS LEAGUE

Spring Business Meeting of April 15, 2015

At: Oak Trace in Downers Grove

Attendees:

Mariano Acosta (STCC)	Al Arend (Molex)
Greg Bungo (DGCC)	Charles Dobrovolsky (Trophy Chair, Tyros)
Irwin Gaines (Ratings Chair, Co-games Editor, Webmaster, Fermi)	
Aaron Maney (DGCC)	Andy Mosley (Treasurer, AonRen)
Art Olsen (UOP)	Brian Smith (President, DGCC)
Jerry Thomas (Secretary, ALU Dragons)	
Jim Thomson (North Division Chair, Motorola Kings)	Bill Whited (Willowbrook)
Jeff Wiewel (West Division Chair, STCC)	Katherine Zack (Banquet Chair, Wombats)

MINUTES

President Brian Smith welcomed the attendees and began the meeting 7:04 P.M.
He reviewed the rules for the meeting.

A. OFFICERS REPORTS:

1. President – Brian Smith

Brian said the season went smoothly and thanked all the officers.

2. Secretary – Jerry Thomas

Jerry said there were no changes to the fall business meeting minutes published in the September 2014 bulletin.

3. Treasurer – Andy Mosley

Please see the CICL web site for a summary of our 2014-15 budget, and the 2014-15 projected actual results based on the year so far.

Andy reviewed the budget report and said we would have a bit of a loss for the year due to fewer teams. He added a list of the team dues and credits. There is \$2,665 in the checking account and \$200 in the savings account.

Andy said the banquet and most expenses have not occurred yet.

4. Division Chairs

West-Jeff Wiewel, Chairman

Jeff said the season ran like clockwork. Four West division teams are in the playoffs. Play-off qualifying teams Fermilab, Willowbrook, Wombats and Downers Grove will play in the play-offs. Fermilab won the division and second-place Willowbrook was undefeated and the only team that beat Fermilab.

9 rounds, 45 matches – all completed (44 more than a week before the end of the season). It was a very close race. The six teams that still had play-off chances going into the final round each finished no more than 7 game points away from going 9-0 (1, 1.5, 2.5, 4.5, 5 and 7 for an average of 3.6 points away). Those six teams finished their 15 matches with each other with the match winners having a combined total of six points more than the minimum number of points needed to win the match.

MVP is Dimitri Sergatskov for going 7.5-1.5 on board one.

East-Tony Jasaitis, Chairman (via email)

The shrinkage of the East Division stabilized at 6 teams, with loose players absorbed by a new Enova/BCBS merged team and by the Hedgehogs.

The season consisted of a round robin, followed by a round-robin between just the top 4 teams, with the bottom two teams just playing each other during that time, with the understanding that they would be considered to be 5th/6th finishers even if their nominal records wound up better than any of the top 4 teams. This was done because a double RR would have been too tight timewise, and a regular 3-round-swiss would have allowed the possibility of one team to qualify for the playoffs with easier pairings than its competitors. This seems to have worked out satisfactorily, although the bottom 2 teams did not play their last round match.

The Division Champion is Northwestern University, followed by DRW Trading. The Rogue Squadron narrowly missed qualifying for the playoffs as a wild card with their 3rd place finish.

North-Jim Thomson, Chairman

Jim said the Motorola Kings took first and was a close fight for second. AonRen came in second based on the tiebreak. The North is done with its schedule.

Post-meeting from Jim Thomson: Congratulations to **Joseph Cygan** of the Motorola Kings for earning this year's **North Division MVP** award! Joseph went 7-0-2 on the season with a +34 rating gain. Great job, Joseph!

Honorable mentions go to Cliff Wallach (6-0-3 +21) and Jankesh Piparia (8-0-2 +11), also of the Motorola Kings, who had great seasons as well.

5. Playoff Chair – Brian Smith

Brian said the playoff site is Fermilab and the pairings are now official. Aonrk won the card drawing and will be the home site in their match vs. Willowbrook. Playoff pairings and all the playoff information is on the web at <http://www.chicagochessleague.org/cicl/po2015.html> including the individual tournament consisting of multiple sections.

Brian and Irwin Gaines went over Fermilab logistics. Fermilab 1st floor restrooms are under construction and the ones on the ground and 2nd floor will be used. Setup will need to move rectangular tables from various areas to the playoff area and returned. Planning needs to allow time and secure effort/help to do this. Coffee provided will be carafes rather than continuous brewing. Continuous brewing is just too much work.

The attendees decided that the other event would be an Individual Tournament with multiple sections with the same eligibility rules as previously. Only CICL players are eligible for prizes.

6. Webmaster – Irwin Gaines

Irwin said the Web site was updated frequently and is accurate. He would like feedback on it. He will turn off the old Web page soon. The new Web page allows direct access to multiple years' ratings, archived bulletins, individual performance ratings, and a centurion report. Irwin will write a bulletin article explaining features on the new Web pages.

7. Rating Chair- Irwin Gaines

Six new ratings reports on individual performance were added. Irwin said there was very prompt reporting of match results. Teams use screen shots or email instead of the match report tool. Irwin emailed changes in ratings with the results to Division captains and it is on the Web Division Standings pages. Player ratings changes have been added to the individual match results on the Web. Irwin says the rating program works fine and he is impressed with it.

Jim Thomson said he was considering in the long term integrating the rating program and the captain's report. One issue to make sure match results are official before using them. He thinks a pending status to allow captains to review them would be a solution.

8. Games Editor – Irwin Gaines and Steve Tennant

Irwin said thank you to everyone with very prompt game submission. He has 75 out of 85 matches played. Four of the 10 not received are the last matches played. At the meeting, Art Olsen gave him the 6 North Division games he was missing.

Irwin said he has difficulty getting games in a format for Steve Tennant to analyze.

9. Publicity Chairman-Matt Vail

No report.

10. Bulletin Editor –Patrice Connelly (via email)

This season we've published 6 bulletins, and will publish at least one more before the season finishes. This is a great improvement over last year's four bulletins. There has been an increase in submissions, with special thanks to Torriente Toliver for supplying his "Black Belt in Chess" column for every issue.

Bulletin Awards: The Bulletin Editor would like to recommend candidates for awards in at least three (possibly four) of the five bulletin award categories based on submissions received this season. Patrice will be reviewing the recommendations with the President and Webmaster before making a final decision.

Bulletin Award Prizes: At the fall meeting we briefly discussed prizes for these categories in the form of gift cards with a small amount to be determined based on league budget. Perhaps \$10-\$15 gift cards for either chess/game-related shops (USCF, Marbles Brain Store), or something more ubiquitous such as McDonalds, Starbucks, etc.

Bulletin Awards at Banquet: The Bulletin awards will be presented at the June Banquet. As Patrice will be traveling during this time and unable to attend, she would like to request if the President or another officer could present the awards (for which she will prepare the information).

2015-2016 Season: Patrice is happy to continue as Bulletin Editor for next season, though it will be her last one. If there are interested volunteers who would like to work with her on the bulletin, and then transition to full-time Bulletin Editor for the following season, she would be happy to work with them!

Attendees discussed the size of the awards and decided on \$10 each if 5 awards or \$15 each of 3 or 4 awards. They came to no decision on the method of award (place for gift cards) and left this to Patrice to decide.

Patrice cannot attend the banquet and asked for someone to present the bulletin awards there. Chuck Dobrovolny agreed to present the bulletin awards.

11. Trophy Chairman-Chuck Dobrovolny

Chuck said we will again get trophies from RTM with the same options. Chuck will be at the Playoff Saturday. He will be out of town May 16-30, but will have his laptop with him.

12. Banquet Chairman-Katherine Zack

Where: White Fence Farm
1376 JOLIET RD.
ROMEOVILLE, IL

When: Friday June 12, 2015

Time: Arrival 6:00pm

They will take our orders once we are all present. They do not need our orders in advance like the other place. However they do need a final count one week prior. I need to know if people are attending by June 5, 2015. There cannot be any last minute attendees.

Food is \$25 per person for shrimp or fish or chicken and \$15 for vegetarian and kid's meals. We will be collecting money in advance as usual. Send money to Andy Mosley. Attendees agreed that each team's prepaid banquet meal was for 1 adult meal. Therefore, if only 1 team attends and chooses vegetarian, that is the prepaid meal and there is no refund because the meal cost is less.

We can only stay until 10 P.M. or 10:30 P.M. Attendees discussed how to manage the banquet agenda and blitz tournament to make this deadline. Attendees decided to eliminate the speaker for this year's banquet and change the raffle to a book giveaway to allow sufficient time for the blitz tournament.

B. OFFICIER ELECTIONS and APPOINTMENTS

1A. President

Brian is stepping down. Jim Thomson volunteered to serve as president. There were no other nominees. Jim was unanimously elected.

B. Secretary

Jerry Thomas agreed to continue. There were no other nominees. Jerry was unanimously elected.

C. Treasurer

Andy Mosley is stepping down. Aaron Maney volunteered to serve as Treasurer. There were no other nominees. Aaron was unanimously elected.

2. Division Chair (Elected by division captains)

Division chairmen will be elected by their division's captains. The East (Tony Jasaitis) and West (Jeff Wiewel) current division chairmen emailed their captains, requested

candidates, held their elections, and were re-elected. Jim Thomson is stepping down as North Division Chair as he is becoming President. Art Olsen volunteered to be North Division Chair. Jim emailed the North Division captains to see if any other candidates. Jim will hold an election after receiving replies from the captains.

3, Appointments

- Publicity Chair

Matt Vail is stepping down. Bill Whited volunteered to serve as Publicity Chair. Bill was appointed as Publicity Chair.

- Tournament Directors

Art Olsen volunteered to be co-Playoff TD. Jeff Wiewel contacted Andrew Zaleiski who agreed to be the other co-Playoff TD.

C. PLAYOFFS

1. Site - Fermilab is the playoff site. Playoff information is on the web at

<http://www.chicagochessleague.org/cicl/po2015.html>

See A.5 Playoff Chair report for more details.

3. 2nd Tier Event (individual tournament)

Attendees agreed it will be an individual tournament with multiple sections.

D. NEW BUSINESS Potential Improvements of the CICL (no rule change votes are planned at this meeting)

D.1: "B" League from Vic Zaderej, captain of the Molex/Aurora Chess Club team

I have a proposal for next year's CICL organization.

I suggest that we create a "B" league within CICL. Over the past 10 years, I have seen all of the "company teams" basically become "Club teams." The average rating levels have increased dramatically and basically made it difficult for those of us that are still basically a "company team" to be competitive and enjoy playing the matches. I feel that there is enough interest in several of the company teams as well as many of the club teams to have a lower average rating level group.

Whereas the current average team rating needs to be in the 1900 range, what if we had a league where the average rating could not exceed 1600?

On our team, the only players that are able to play are 1600 and below. We can not compete in the regular CICL matches and as of today, we do not plan to have a team next year. If we could generate enough interest in some of the club teams to have a second "B" team, it would open the door to more players to play as well as get more people involved in the CICL. We would not need to have as many teams and not play as many matches during the year but it would allow more people to be involved in the CICL and keep the organization growing.

Al Arend from Molex described how they had many players but not many strong ones. Attendees agreed that a "B" league would help grow the league.

This is not a formal proposal yet and many details need to be worked out. Jim Thomson will setup a task force to come up with a proposal.

D.2: Eligibility Rules from Brian Smith

A. Status:

1. The number of teams in the CICL is declining.
 - a) Since just the 2011-12 season, the number of non-club teams has gone down by 29% from 21 teams to 15 teams, which is the lowest since the 1960s.
 - b) Since just the 2010-11 season, the number of 'single' company teams is down by 54%, from 13 teams to 6 teams, which is the lowest since the 1950s. The most recent business firm to join the CICL which still plays as a 'single' company team joined 13 years ago (Citadel), the firm before that joined in the 1960s.
 - c) The number of club teams is also not a source of growth, having the stable number of 5 teams for the last 5 seasons.
 - d) Some teams had a small roster with very limited chances to add players, leading eventually to them folding. Other teams were not competitive and had little hope of ever becoming competitive due to eligibility rule restrictions, leading the team to lose interest and leave the CICL.
2. At the same time, players interested in team chess in the Chicago-land area are being turned away from the CICL.
 - a) There are ongoing requests from players asking to join CICL who are not part of any organization with multiple chess players. Including in Divisions with no chess club teams (North and East).
 - b) Existing teams have expressed the desire to have more flexibility on adding players who currently are ineligible, including family and friends.
 - c) Asking a player to wait until the start of a new season, in hopes that some team might switch to his organization to represent in order to add him is a slow and uncertain, and overall not an effective way to encourage players to join the CICL.
3. Along with the above concerns, the eligibility rules need to be readdressed.
 - a) issue: teams adding players from a business/educational/governmental organization inconsistently apply eligibility rules for part-time employees (or conceivably part-time students).
 - b) issue: chess club team inconsistently apply eligibility rules for club members whose only tie to that club is playing in CICL matches.

B. Potential opportunities for improvement:

These are outlines of potential rule changes, not fully developed proposals.

1. Retain current teams and players by allowing a team to keep all its players no matter how it changes its sources of new players in future seasons. (The rules about 'single' company teams would need special considerations here.)
2. Retain current teams and add players who are ineligible by today's rules by expanding the eligibility options. This new option would help retain and fortify existing teams, especially a) those teams with viability problems due to limited roster size, or b) those teams who are not competitive season after season due to their team having limited sources of new players. Call this the "Recruit & Draft" eligibility option. Teams who choose to use R&D as a source of adding players may:
 - recruit an individual without that individual needing to be a member of any particular organization
 - add players via a structured draft system/wait list for "walk in" players looking to join any team in a specific Division.

To avoid possible negative consequences (e.g. displacing current players on those teams, teams becoming overly strong relative to other competitive teams, and players not acting as good citizens of the CICL), these limitations should be considered:

- a) The number of players added using the R&D option per season per team is limited to some small-ish number, to be determined (but I'd assume the limit would be some number greater than 1, but less than 7). Alternatively, where a team finished in their Division in the previous season (e.g. in the lower half of its Division, or following the "anti-Method") might be a factor if they can use the R&D option at all, or be a factor on the size of this limit per team.
- b) Players with eligibility for other existing team(s), including CICAL-alumni teams, couldn't be added to the roster of a team via the R&D option. It is only for players who are brand new to the CICAL.
- c) A team using the R&D option (or with players previously added via that option) adheres to the rating cap.
- d) R&D is an option only for returning teams, not brand new teams.
- e) R&D counts as one of a team's two sources of new players, e.g. a business firm + R&D, or CICAL-Alumni + R&D are allowed. But business firm + business firm + R&D is not allowed.

Brian went over this proposal and explained the CICAL decline in players and the numerous inquiries from individual players in the North and East to join the league that he cannot help. He mentioned that chess clubs are using different eligibility rules. Also, part time employees don't really have eligibility rules.

This is not a formal proposal yet and many details need to be worked out. Jim Thomson will setup a task force to come up with a proposal.

D.3: Rating Cap, Ratings Comparison, USCF id#s from Brian Smith

- Various discussions about the rating cap rules have taken place over the course of this season. An attempt is not made here to summarize them.
- Ratings compare summary and use of USCF id#s

The full document can be found online at

<https://drive.google.com/file/d/0Bw96vfLWQ4aeWHIzMFImd3liNk0/view?usp=sharing>

A summary of it follows. The CICAL's ratings system database includes a CICAL player's USCF id number if they have one. Every month the USCF provides on their website an updated version of all USCF ratings. A software program was written that merges info from a USCF golden database and an extract of data from the CICAL database.

Comparison of the data for players who have a rating in both databases was done. While this comparison is not yet fully completed it appears:

- For rating Classes B and C, there looks to be a significant gap, such that the number of players with a CICAL rating in those Classes (and below) is more than the number of players with a USCF rating in those Classes (and below).
- For players with both a USCF and a CICAL rating, on average the difference (one way or the other) between their two ratings is 102.5 (or 83.5 if you use median instead of mean as the average), which seems unexpectedly high.
- The strength of the lineups that club teams in general can field is potentially much higher than other rating capped teams in general, even if the other teams can field a lineup up to an average of 1900 CICAL.
- Further possible uses of the USCF id#s found in the CICAL database.

- a) Print a player's current USCF rating in one of the CICAL ratings report.
- b) Convert to a player's fuller name as found in the USCF database, instead of the short names frequently found in the CICAL database.

Brian said there are major differences between USCF and CICL ratings which he thinks should be corrected on a general method. Irwin, ratings chair, did not agree but said that there are some cases of this where players are improving quickly in the USCF and their CICL rating has not increased as fast. **Attendees did not decide on any action on this topic.**

E. OLD, Other BUSINESS – Attendees suggested a Simul be considered for the summer.

F. Events Calendar

Dates:

- | | |
|-------------------------|----------------------|
| - Playoffs final rounds | Saturday, May 9 |
| - Banquet | Friday, June 12 |
| - Fall Meeting | Wednesday, August 26 |

The meeting was adjourned at 10:54 P.M.

Jerry Thomas, CICL Secretary April 21, 2015