

# The Chicago Chess Player

The Official Bulletin of the Chicago Industrial Chess League



Jim Warren at the 1973 CICL Banquet  
Photo Courtesy Alex Pehas

**Inside this Issue:**  
**Remembering Jim Warren: Part 1 of 2**  
**Game Analysis**  
**Upcoming Tournaments**

**CICL Officer Contact List**

League President **Brian Smith**  
President@ChicagoChessLeague.org

League Secretary **Jerry Thomas**  
Secretary@ChicagoChessLeague.org

745 Hageman Pl  
Naperville, IL 60563

H:(630)420-0188

League Treasurer **Andy Mosley**  
Treasurer@ChicagoChessLeague.org

1415 Downing Place Apt 9P  
Mundelein, IL 60060

Bulletin Editor **Pat Connelly**  
Bulletin@ChicagoChessLeague.org

Webmaster **Irwin Gaines**  
Web@ChicagoChessLeague.org

Games Editor **Steve Tennant**  
Bulletin@ChicagoChessLeague.org

Ratings Chair **Irwin Gaines**  
Ratings@ChicagoChessLeague.org

Trophy Chair **Chuck Dobrovolny**  
Trophy@ChicagoChessLeague.org

Publicity Chair **Matt Vail**  
Publicity@ChicagoChessLeague.org

C:(312) 933-1516

W:(630) 505-6557

Banquet Chair **Katherine Zack**  
Banquet@ChicagoChessLeague.org

Playoffs Chair **(vacant)**

Playoffs Tournament Director **Gary Janssen**

**DIVISION CHAIRS**

East Division **Tony Jasaitis**  
ChairmanEast@ChicagoChessLeague.org

West Division **Jeff Wiewel**  
ChairmanWest@ChicagoChessLeague.org

North Division **Jim Thomson**  
ChairmanNorth@ChicagoChessLeague.org

W(847) 538-5408

CICL Officer Contact List	2
Table of Contents	3
Notes from the President	4
Remembering Jim Warren: Part 1 of 2	5-6
Game Analysis by David Franklin	7-9
Game Analysis by Rob Eaman	10-11
Post Mortem by Ruben Reyes	12
Upcoming Tournaments	13-14
Chess Coordinator Job Position	15-16
Ratings as of 12/23/14	17-24

**We're always looking for submissions!** As always, feel free to submit stories, games, chess news, and information about local chess events to the bulletin. Also, please send us your feedback. Remember, this year we are offering awards for various types of Bulletin Submissions, including articles about matches and tournaments, photo submissions, game analysis, and more!

**Thank you!** Special thanks to our contributors for this issue, Rob Eaman, David Franklin, Alex Pehas, and Ruben Reyes.

**Remembering Jim Warren:** The league was saddened by the passing of one of its most prestigious members, Jim Warren. We remember Jim in this issue, but acknowledge that with the busy time of season, not all players had a chance to share their thoughts and memories of Jim. We will also be featuring a tribute to Jim in our January issue, so there's still time to contribute! Email the bulletin by January 21<sup>st</sup>.

**The CICL is now on Facebook!** Please "like" our page to get CICL updates, pictures, and more! Check us out here: <https://www.facebook.com/ChicagoIndustrialChessLeague>

Please email submissions to [Bulletin@ChicagoChessLeague.org](mailto:Bulletin@ChicagoChessLeague.org).

Pat Connelly  
CICL Bulletin Editor



Photo from 1973 CICL Banquet, Jim Warren, seated right.

Courtesy Alex Pehas

---

## Notes from the President:

### Welcome to our new Treasurer!

CICL treasurer Andy Mosely announced at the August business meeting that he'll be moving out of state in July 2015, so won't be able to continue as treasurer after this season. He has sent emails requesting a volunteer to replace him. I'm pleased to announce that someone has answered the call. Aaron Maney is a professional accountant, a team co-captain, and member of the CICL for several years. The formal election for treasurer will be at the CICL business meeting in April, as usual. As of now, I appoint Aaron Maney to be the CICL's assistant treasurer. Thank you Aaron!

### Play-Offs Chair Available

Another very responsible CICL officer position remains vacant, the Playoffs Chair. The Playoffs Chair is responsible for the overall success of the playoffs, similar to how each Division Chair organizes his Division during the regular season. He works closely with the Playoffs TD and other officers. The Playoffs Chair can be a member of any CICL team, including teams playing in the Playoffs. While most of the Playoffs Chair's duties are performed in April and May, some things like scouting a location for Playoffs Saturday should begin soon. If you or someone you know may be interested or would like more info, contact me. Please give this opportunity to help the members of the CICL your full consideration.

### Reminder about Castling and Touch-move rule

January 1, 2015. Games played in the CICL as of this date use the following rule about castling and touch-move. Captains, you may want to announce this at the first couple of matches in 2015, before the start of the match.

When castling, players must touch the king first (or the king and rook at the same time). If the player touches the rook first, castling with that rook is not allowed, and the touch move rule is applied to the rook.

### Important Dates

Here are important event dates for your shiny new 2015 calendar!

**Wednesday April 15, 2015** is the constitutionally specified date for the Spring business meeting

**Saturday May 9, 2015** - team championship playoffs (final two rounds), and a CICL-rated tournament for individuals

**Friday June 12, 2015** - annual CICL awards banquet

**Wednesday August 26, 2015** is the constitutionally specified date for the Fall business meeting

Happy Holidays!

Brian Smith  
CICL president

## Remembering Jim Warren

The league was saddened to hear of the passing of Jim Warren on December 12, 2014, at the age of 81. Jim was an important figure in the league and in the Chicago chess community. Jim joined the CICL in its second season of 1958-59. He received the highest individual award of the CICL, the Ron Dargis Lifetime Achievement Award. He played over 400 CICL games.

Three sections from Jim Brotsos' history of the CICL (full history available on the CICL's website at <http://www.chicagochessleague.org/>) are included here:

Jim Warren was our first Expert player at a time when most teams were happy to have one Class A player on their team. In competition, he dominated for several years and always remained in the Top Ten of his Division. More importantly, he consulted with Professor Arpad Elo of Marquette U. and created our numerical rating system. He wrote a computer program for calculating self-consistent ratings. This work also formed the basis of the Elo/FIDE international rating system. Our ratings made it possible to create additional forms of competition and player recognition. Jim began the rating program in 1968 and served as Rating Statistician for several years. Jim introduced a popular Problem-Solving contest printed in the League Bulletin. He also served the League in many ways including heading it from 1964 to 1966. He was a great help in co-directing three Open Swiss-style tournaments held in the 1970's at the O'Hare Inn (now Ramada Inn) in Rosemont, the Western Electric Albright Gym in Cicero (razed several years ago), and the penthouse of the Leaning Tower YMCA in Niles. He also spearheaded the League sending a team of players into the Indiana State Penitentiary to play a team of prisoners.

In the early years of the League the competitive awards were all team-oriented. League officers were given plaques, gavels, etc., but these were for service. In the 1960s a couple of opportunities were created for individual competition recognition. One was competition in Chess Problem Solving as published by Jim Warren in the Bulletin. At times awards were also offered for Best-Played Game.

With the coming of Ratings, it was possible to identify The Most Improved Player each year. It was an obvious step to inaugurate awards in these categories and to give the originator of our all-important rating system recognition. Accordingly, I [Jim Brotsos] named these the James E. Warren Most Improved Player Award.

Jim Warren has already received mention as one of the pillars of the League. In addition, he has had leadership roles in the Illinois Chess Association and the APCT. In 1997 he received the U.S.C.F. Meritorious Service Award for helping to establish the FIDE rating system. He and his wife have sponsored major regional tournaments and the U. S. Masters, often acting as financial patrons. They have contributed to top notch journalism (Helen edited the bulletin for the Chess Journalists of America). Some years ago the Warrens established programs for fostering chess among talented youngsters. (now called the "Warren Junior Chess Scholars). They are, no doubt, the most influential couple in the history of Midwestern American chess. Jim has a significant collection of chessmen and one of the largest collections of chess books/magazines in the Midwest.

Players can also read more about Jim Warren's contributions to chess on the Illinois Chess Avocation's website at <http://www.il-chess.org/index.php/announcements/737-jim-warren-notice>

## Benko Versus Warren

In 1962, Pal Benko played Jim Warren in the New York State Championship. This game was originally published in the October 1962 CICL Bulletin, and annotated by Jim. Thanks to Alex Pehas for bringing this to our attention, and transcribing the game from descriptive to algebraic notation! You can see the original game in the bulletin here: [http://www.chicagochessleague.org/cicl/bulls/history/Yr1962\\_63/Oct1962.pdf](http://www.chicagochessleague.org/cicl/bulls/history/Yr1962_63/Oct1962.pdf)

**Pal Benko-Jim Warren, New York State Championship, 1962, .5-.5**  
**Analysis by Jim Warren (transcribed by Patrice Connelly to algebraic)**

1. e4 c5 2. Nf3 Nc6 3. d4 cxd4 4. Nxd4 Nf6 5. Nc3 d6 6. Bg5 e6 7. Qd2 Be7 8. O-O-O O-O 9. f4 h6 10. Bh4 Nxd4 11. Qxd4 Qa5 12. e5 dxe5 13. Qxe5

Position after 13.Qxe5.



In this position Black can choose between exchanging the Queens himself or letting White do the exchanging after 13...b6. Black should not evade the exchange with 13...Qb6? because of 14. Na4. After 13...b6, 14 QxQ, b6xQ White may play 15. a3; together with 16 Rd2. In this way White protects his b2 pawn from the side, while he keeps Black's dark-square bishop off his b2 square. **13...Qxe5 14. fxe5 Nd5 15. Bxe7 Nxe7 16. Bb5** In order to provoke 16...a6. If 16 Bd3, immediately 16...Nc6, 17. Rhe1, Bd7 18. Bh7+, KxB, 19. RxB b6 and Black has a perfectly satisfactory end game. White cannot start anything because of the vulnerability of his e5 pawn. **16...a6 17. Bd3 b5** 17...Nc6 followed by 18...Bd7 would be answered by 19. Bxp [Ed. Note- The original descriptive annotation a bit unclear here) . The idea of the text move is to enable Black to attack e5 by R-a7, b7, c7, c5. **18. Be4 Ra7 19. Rd6 Rc7 20. Rhd1 Ng6 21. Bxg6 f6 22. Rd8 Rc5 23. Rxf8+ Kxf8 24. Re1 Bb7 25. g3 g5** With the intention of playing Kf7, g6, f5. **Re3 Kf7 27. Ne2** If 27. Ne4, BxN, 28. RxB, g4! **27...Kg6** 27...b4 is perhaps stronger **28. Nd4 Bc8** Not 28...Bd5, 29. Ra3 **29. b4 Rc4 30. c3 Kh5 31. Kd2 Kg4 32. Re2 h5 33. Rf2 Rc7 34. Kd3 h4 35. gxh4 gxh4 36. Rf8 g5 37. Rg8 h3 38. Rh8 Kf4 39. Rf8+ Kg4** Not 39...Kxe5; 20. Nxf3+ **40. Rh8 Kf4 41. Rxh3 Kxe5 42. Rh6 Rg7 43. Rh8 Bb7 44. Nb3 Bd5 45. Nc5 Bxa2 46. Nxa6** White offered a draw at this point. Black declined and sealed his move. Subsequent analysis showed that although Black has an edge, it is not sufficient to win. **Kf4 47. Rf8+**

Note\* Incidentally, MCO 10 (1965) on page 227 mentioned the Benko-Warren game up to the 19th move and assessed it as “=”. –Alex Pehas

## A Board on Fire!

Analysis by David Franklin

Kogen, Jonathan 2244-Franklin, David 2212 CICL N WEST-ROGUE (3) 11/24/14

**1.d4 Nf6 2.c4 c5 3.d5 b5 4.cxb5 a6 5.bxa6 g6 6.Nc3 Bxa6 7.Nf3 d6 8. e4 Bxf1 9.Kxf1 Bg7 10.g3 0-0 11.Kg2 Nbd7 12.a4 Ra6**

White's 12<sup>th</sup> move, which currently has the entire Benko Gambit under a cloud, was popularized by the following game: 12...Qb6 13. Qe2 Rfb8 14. Bd2 Ne8 15. Rhb1 Nc7 16. Nd1 Qa6 17. Qxa6 Rxa6 18. a5 f5 19. exf5 Nxd5 20. fxc6 hxg6 21. Ra4 Nb4 22. Ne3 Rb5 23. b3 e6 24. Bxb4 Rxb4 25. Rxb4 cxb4 26. Rc1 Nc5 27. Rc4 Bc3 28. Nd1 Nxb3 29. Nxc3 bxc3 30. Rxc3 Nc5 31. Ra3 e5 32. Nd2 d5 33. Nf3 Nd7 34. Ne1 Nb8 35. Rb3 Nc6 36. Rb6 Rxb6 37. axb6 Kf7 38. b7 Ke6 39. h4 Kd6 40. g4 e4 41. h5 gxh5 42. gxh5 Kc7 43. h6 Ne5 44. h7 Nf7 45. Kg3 Kxb7 46. Nc2 Kc6 47. Kf4 Kd6 48. Kf5 Ke7 49. Kg6 Kf8 50. Kf6 Nh8 51. Nd4 Ke8 52. Kg7 Ke7 53. Kxh8 Kf8 54. Ne2 Kf7 55. Nc3 d4 56. Nxe4 d3 57. Nd2 Kf8 58. Nf3 1-0 Nakamura, H(2778)-Bologan, V (2732) Biel 2012.

**13.Re1 Qa8 14.Nb5 Rc8 15.Bd2 e6** Although White is clearly better after this thematic break, I didn't see any reason to delay playing it. **16.dxe6 fxe6 17.Ng5 Nf8** The text is terribly passive, but I rejected my originally planned 17...d5 because 18.exd5 exd5 19.Ne6 looked so dreadful for Black.  
**18.Qc2**



Position after 18. Qc2

An excellent consolidating move. Black has virtually zero compensation for the gambited pawn. **18...d5** Might as well complicate matters. **19.e5** After the game, Jonathan said he should have played positionally with 19.exd5 but the text is at least as good.

**19...N6d7 20.Nd6?!** This obvious move may be more optically pleasing than objectively strong. A better alternative seems to be 20. f4.

**20...Rb8!**



### Position after 20...Rb8!

Suddenly Black has lots of counterplay. **21.f4 c4?!** In retrospect, of course I should have gone for 21...Rxd6! 22.exd6 Rxb2 23.Qd1 c4 with a massive attack for the exchange. I saw this tactic in general but didn't consider using it in this particular position. **22.Ngf7** Shutting down the ...Rxd6 idea for now. **22...Nc5** 22...Rb3, aiming at the a4 pawn, was a nice finesse that I missed. In any event the game is dynamically balanced -- and already unbelievably complicated.

**23.a5 Nd3 24.Reb1 d4+ 25.Kg1 Qf3 26.Bc1** The engine slightly prefers 26.Be1. After the text, White's pieces are so bunched up and uncoordinated, and his king so exposed, that I felt I had to strike quickly.

**26...c3!?** After the game, Jonathan insisted that I should have played 26...h6! with a "middlegame zugzwang" (the idea is to prevent Nf7-g5). It probably is the best move, but there is no zugzwang. White can play 27. f5! (Jonathan said he would have played 27. Qg2 but Black can get an edge with Qxg2 28.Kxg2 Nd7!) 27...gxf5 28.Nxh6+ Bxh6 (28...Kh7 29.Nhf7) 29. Bxh6 and suddenly White's pieces are active again -- Black apparently should bail out here with something like Nxe5 30.Nxc4 Qc6! 31.Rc1 Nf3+ 32.Kf2 Nxh2 33.Kg1 Nf3+= Totally inhuman, of course -- although I did spot the f4-f5 idea during the game!

**27. bxc3! 27.Ng5 Ne1! =**

**27...Rxa5!**



### Position after 27..Rxa5!

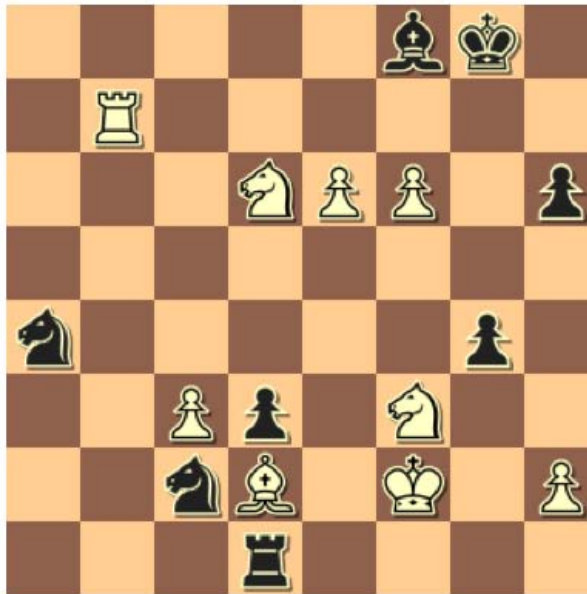


This move took Jonathan by surprise, but he reacted well. **28.Ng5!** 28.Rxa5?? Rxb1 29.Qxb1 Qf2+ 30.Kh1 Qf1#; 28.Rxb8?? Rxa1. The computer's suggestion is 28.cxd4 h6 29.Qd2 but it is hard to play quiet moves like these when the board is on fire!

### 28...Rxa1?

The idea was to drag White's remaining rook to a1 so that...Nxc2 comes with tempo. Apparently, though, I should have played the immediate 28...Ne1! when White's best chance is the amazing 29.Nc8!! (threatening mate in two!) Kh8 30.Ne7! Bh6 31.Nxf3 Nxc2 32.Rxb8 Rxa1 33.cxd4 Rxc1+ 34.Kf2 with a slight edge. Neither of us saw any of this, of course! Also strong was my originally intended 28...Rxb1 with the idea of 29.Rxb1 Ra2! (I missed this follow-up) 30.Nxf3 (30.Qxa2 Qd1+ 31.Kg2 Ne1+ (only thus!) is a perpetual) 30...Rxc2 31.Ba3 dxc3 with an unclear endgame.

**29.Rxa1** The queen-vs-two-rooks ending after 29. Nxf3 Raxb1! 30.Qxd3 R8b2! 31.Qd1 dxc3 can only be better for Black. **29...Ne1 30.Nxf3! Nxc2 31.Ra2!** I had misevaluated this endgame from a distance -- White is just much better. In my defense, we were both down to around 6 minutes by now (plus a 5-second delay). The following moves were played quickly and don't merit much comment. Basically, Jonathan outplayed me, a least up to a point. **31...d3 32.Bd2 Nd7 33.Nd4 Rb1+ 34.Kf2 Rd1 35.Nf3 Nc5 36.Rb2 h6 37.g4 g5 38.Rb8+ Kh7 39.Rb5! Na4 40.f5! exf5 41.gxf5 g4 42.e6 Bf8 43.Rb7+ Kg8 44.f6**



Position after 44.f6

44.Rb8 wins on the spot, thanks to Kg7 45. Ne8+ Kh8 46.Nf6 Kg7 45.Ne8+ Kh8 46.Nf6 Kg7 47.Rb7+ Kxf6 48.Rf7#, but the text doesn't spoil anything.

**44...Bxd6 45.e7??** With just seconds left for both sides, White gives me one last chance at redemption...

**45...Bxe7??** ...which I fail to take. 45...Kf7! is not only the obvious try -- it's a miracle draw: 46. Ne5+! (the only move that doesn't lose for White!) Kxf6! (46...Bxe5? 47.e8Q+! Kxe8 48.f7+! Kf8 49.Bxh6+ Bg7 50.Bf4! (again, the only move that doesn't lose -- but this one wins!)) 47.e8Q Rxd2+ 48.Kf1

(48.Kg3?? Bxe5+ 49.Kxg4 Rg2+ 50.Kh3 (50.Kf3 Ne1+ 51.Ke4 Nxc3+ 52.Ke3 Re2#!) Rxh2+ 51.Kg4 h5+! 52.Qxh5 (we've already seen 52.Kf3 Ne1+ 53.Ke4 Nxc3+ 54.Ke3 Re2#) 52...Rxh5 d2 and Black wins!) 48...Rd1+ 49.Kg2 Rd2+ is a perpetual.

**46.fxe7 Kf7 47.Ne5+** This easy-to-find winner happens to be the only move that doesn't lose! **47...Kf6** I should have at least tried 47...Ke8 but White wins easily enough with 48.Nxg4 Rxd2+ 49.Kg3.

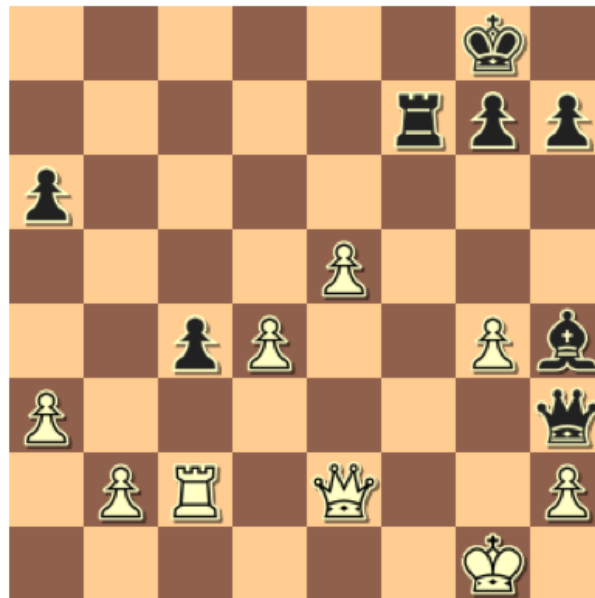
**48.e8Q Rxd2+ 49.Kg3 Rg2+ 50.Kxg2 Ne3+ 51.Kg1 d2 52.Rf7+ Kg5 53.Nf3+ gxf3 Qxe3+** The most complicated game I've played in a long time, and one that was no great shame to lose. **1-0**

## Decision Time

Eaman, Robert, 1760- Puzanov, Andrey, 1629 12/15/14 ROGUE VS. HEDGE  
Analysis by Rob Eaman

**1.e4 c5 2.c3 Nc6 3.d4 cxd4 4.cxd4 d5 5.e5** [5.exd5 Offers a slight improvement for white. 5...Qxd5 6.Nf3 Bg4 7.Nc3 Qa5 8.Be2] **5...Qb6!? 6.Ne2** Giving black the advantage, but limiting tactical opportunities. [6.Nc3!? Qxd4 7.Qxd4 Nxd4 8.Nxd5 Nc2+ 9.Kd1 Nxa1 10.Nc7+ Kd8 11.Nxa8 Bf5 12.Nf3 Kc8 13.Bc4 Kb8≤] **6...Bf5 7.Nbc3 e6 8.a3 Rc8 9.Na4** The best spot for black's queen is back home, but that's disconcerting. **9...Qc7 10.Ng3 Bg6 11.Be3 Nge7 12.Bd3 Bxd3 13.Qxd3 Ng6?! A tough spot for black's knight. 14.Nh5!!** And black is now going to have some trouble developing. **14...Nh4 15.0-0** [ 15.Bg5?! Nxg2+ 16.Kf1 h6 17.Bf6 Nf4 18.Nxf4 gxf6-+] **15...Nf5 16.Rac1 a6 17.g4!** Too early here for g4? Not with black's pieces locked up, and an opportunity to attack the centralized king at stake. **17...Nxe3 18.Qxe3 Qd8 19.f4 b5** [19...Qh4 20.h3±] **20.Nc3 Na5 21.Qf2 Nc4 22.Nd1?! [22.f5! A missed opportunity. I was worried about Qg5 to Qe3, but didn't realize how far the slicing pawn could go with tempo. 22...Qg5 23.fxe6! Qxg4+ ( 23...Qe3?! 24.exf7+ Ke7 25.Nxd5+) 24.Kh1! Qxe6 25.Nf4+-] 22...Rb8 23.Ne3 Qb6 24.Nxc4 bxc4 25.Rc2 Qb3 26.f5** Better late than never! **26...Rb7 27.Nf4** [ 27.fxe6 fxe6 28.Nf4 Rf7 29.Rc3 Qb7 30.Rf3 Qd7+-] **27...Be7 28.fxe6 Bh4! 29.Qe2 Rf8?** [ 29...0-0 30.Nxd5 fxe6 31.Rxf8+ Kxf8 32.Nf4+-] **30.Nxd5 fxe6 31.Rxf8+ Kxf8 32.Nf4!?** Looks dangerous, due to the rook sliding to f7, but white has a neat way to maintain the advantage. **32...Rf7 33.Nxe6+ Kg8 34.Nc5! Qh3?!**

Position after 34...Qh3?!



Now it's hard decision time with only 12 minutes on white's clock. Rc3 looks playable, but loses with a shocking tactic. Qd1 actually keeps a slight white advantage, but there's only one move that saves white's advantage. [ 34...Rf2?? 35.Nxb3 Rxe2 36.Rxe2 cxb3-+;

34...Qb6 35.e6 Rf4 36.e7 Bxe7 37.Qxe7 Rxf4+ 38.Kf2+-] **35.Ne4!** [ 35.Rc3?? Bf2+ 36.Kh1 ( 36.Qxf2 Qxf4+-) 36...Be3!! 37.Qxe3 Rf1+ 38.Qg1 Rxf1+ 39.Kxf1 Qxf4+-+;

35.Qd1?! Rf4 36.Rg2 Qe3+ 37.Kh1 Rxd4 38.Qe2 Qc1+ 39.Rg1≤] **35...Rf4?!** Now with close to 10 minutes left, white has to calculate the odds of mating while dealing with mate-in-one threats from black. [ 35...Qd3? 36.Qxd3 cxd3 37.Rc8+ Rf8 38.Rxf8+ Kxf8 39.Kf1+-] **36.Qxc4+! Kf8 37.Qc8+** And black is in serious danger, oddly enough due to the hanging g4 pawn. 37...Kf7 **38.e6+!** [ 38.Nd6+ Kg6 39.Qe8+ Rf7 40.Qxf7+ Kg5 41.Qf5+ Kh6 42.Qh5#] **38...Kg6 39.Qe8+ Kh6 40.Qh5# 1-0**



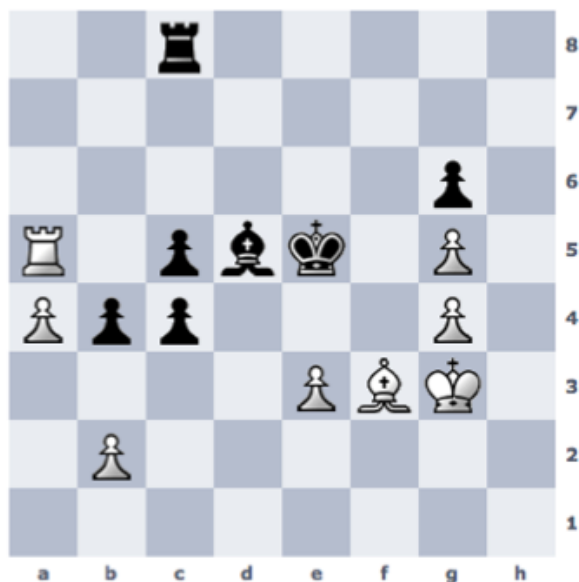
## Post-Mortem Analysis

by Ruben Reyes

R. Easton, 1845- C. Wallach, 1857, Motorola Kings at UOP, 09/21/14

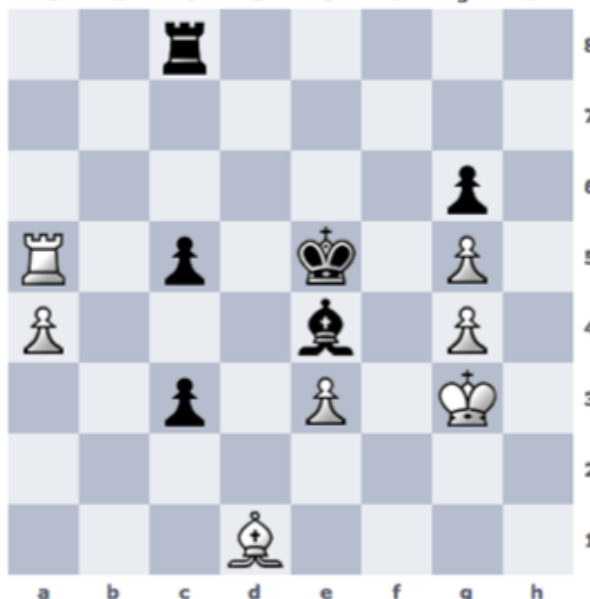
1.d4 d5 2.Bf4 Nf6 3.e3 e6 4.Nf3 c5 5.c3 Nc6 6.Nbd2 Be7 7.Bd3 O-O 8.O-O a6 9.h3 b5 10.Re1 Bb7 11.Ne5 Nxe5 12.dxe5 Ne4 13.Qh5 g6 14.Qe2 Nxd2 15.Qxd2 f5 16.exf6 Bxf6 17.Bg3 e5 18.Rad1 Bh4 19.Bxh4 Qxh4 20.Bf1 Rad8 21.g3 Qf6 22.Bg2 Rf7 23.Rf1 Rfd7 24.Qe2 Kg7 25.Rd2 Bc6 26.Rfd1 h5 27.Qf3 Qe6 28.g4 h4 29.g5 Rf8 30.Qg4 Qxg4 31.hxg4 Rfd8 32.Kh2 Kf7 33.Kh3 Ke6 34.Kxh4 a5 35.Kg3 b4 36.Rh1 e4 37.Rh3 Rg8 38.f4 exf3 39.Bxf3 Ke5 40.c4 dxc4 41.Rxd7 Bxd7 42.Rh7 Be6 43.Ra7 Bd5 44.Rxa5 Rc8 45.a4 Bxf3 46.Kxf3 c3 47.bxc3 bxc3 48.Ke2 Ke4 49.Ra7 c4 50.Re7+ Kd5 51.Kd1 Ra8 52.Kc2 Rxa4 53.Kxc3 1/2-1/2

Position after **45.a4** in R. Easton (1845) – C. Wallach (1871) - Motorola Kings at UOP match



The game ended in a draw after  
 45...Bxf3 46.Kxf3 c3 47.bxc3  
 bxc3 48.Ke2 Ke4 49.Ra7 c4  
 50.Re7+ Kd5 51.Kd1 Ra8 52.Kc2  
 Rxa4 53.Kxc3 -1/2 -1/2

**45....c3** instead of 45...Bxf3  
**46.bxc3 bxc3 47. Bd1 Be4** wins



**Position after 47.Bd1 Be4**  
*(Postmortem Analysis)*

## UPCOMING TOURNAMENTS

### US Amateur Team Championship North

February 20-22, 2015

EVEN MORE PRIZES AND FUN THAN LAST YEAR!!! <http://www.chessweekend.com/2013/2014-us-amateur-team-north/>

The 2015 U.S. Amateur Team Championship North will take place February 20-22, 2015 at the Hyatt Regency Schaumburg, 1800 E. Golf Rd., Schaumburg, Illinois.

**Event Information:** 5 round Swiss, open to 4 player teams with one optional alternate. Teams' average rating (January 2015 rating list) must be under 2200.

**Time Controls:** Game/90 +30s increment from move 1. Rounds 1 and 2 in the 2-day schedule play Game/60, d5.

**Entry Fees:** \$160 per team if received USPS or online by 6pm on February 6th, \$180 if received USPS or online by 6pm on February 14th, \$200 online until 6pm on February 20th and onsite.

Individuals wishing to play, send \$45 and request to be put on team by USPS and online by 6pm on February 14th, or \$50 thereafter. Team changes onsite or after 6pm on February 20th, \$20.

**Prizes:** Awards to top two teams, top teams with average rating Under 1900, Under 1600 and Under 1300. Award for Best Team Name, Best Costume or theme. Winning team qualifies for national play-offs. Prizes to best team composed of juniors (high school and younger), college team, best HS team, top Senior team, top team of coach and students. Prizes to top score on each board. Prizes are players choice of a selected clock or equivalent book store credit. Special raffle with prizes for players staying at the Hyatt!

**Schedule:** 3-day, onsite registration/check-in February 20, 5:30pm-6:30pm. Round 1; February 20, 7pm, Round 2; February 21, 10am, Round 3; February 21, 4pm, Round 4; February 22, 10am and Round 5; February 22, 3:30pm.

2-day, onsite registration/check-in February 21, 8am-9:30am. Round 1; February 21, 10am, Round 2; February 21, 1pm then merge with 3-day schedule in Round 3.

**Northern Blitz Championship:** 5 round Swiss, Saturday night, February 21. Entry fee \$25 if received USPS or online by February 18th, \$30 at site. Round 1; 8pm, 2 games with each opponent.

**Hotel:** Hyatt Regency Schaumburg, 1800 E. Golf Rd., Schaumburg, IL 60173. Telephone 847-605-1234. \$89.00 chess rate single-double-triple-quad until 2/6/15, Free WiFi included with Room! Please reserve early.

<https://resweb.passkey.com/go/USAmateurTeamChess>

**To Enter:** Make checks payable to and send to: Chess Weekend, 21694 Doud Ct., Frankfort, IL 60423. Please include Team's name and roster (plus ID#), captain's email and phone number, and desired schedule. Info: 815-955-4793 before 8pm. Or click [here to register online](#)

ChessIQ will provide Sets-Boards-Clocks.

# 21st Annual Bradley Winter Open, An Illinois Tour Event!

January 24<sup>th</sup>, 2015 at Bradley University

Robert Michel Student Center, 915 N Elmwood, Peoria, IL 61606.

**4 Round Swiss System, Game 80 + 5 Second Delay; Open and Reserve Sections  
Prize Fund (\$1000 Prizes):**

## **Open**

1st \$240, 2nd \$120, 3rd \$60,  
Expert (2000-2199) \$60 & \$30,  
Class A (1800-1999) \$60 & \$30,  
Class B (1600-1799) \$60 & \$30,  
Class C (Below 1600) \$60 & \$30,  
Upset \$25 (Unrated Players Not Eligible).

## **Reserve (under 1400)**

1st \$90, 2nd \$60  
Class D (1000-1199) \$60 & \$30,  
Class E (Below 1000) \$60 & \$30,  
Upset \$25 (Unrated Players Not Eligible).

Class prize guarantee based on 3 players per class. Classes may be combined if less than 3 players per class.

**Time Control:** Game 80 with 5 seconds delay.

**Schedule:** Check in from 8 to 8:45am. If you are registered and arrive late we can give you a first round ½ point bye and you play in rest of tournament. Rounds will start at 9am, Noon, 2:45pm, 5:30pm.

**Entry Fee:** \$30 per player if paid by January 22nd. \$35 at the door, (payable at site, check or cash OK. USCF membership can also be purchased or renewed at the site. As always, Masters play free in Peoria. We appreciate their participation.

**How to Enter:** Advance entry available at our web site:

[www.bradleywinteropen.com/BWOregistration.html](http://www.bradleywinteropen.com/BWOregistration.html).

Entries are also accepted at the door.

## **Directions to Bradley University:**

**From I-74** take University Street Exit (91) South. Turn Right into the Bradley campus just after passing Main Street. Go straight through the 1st intersection. Turn Left into the Bradley Visitors parking area halfway down the block. The Student Center will be a half block beyond the parking lot and on Elmwood to your right. The Chess Tournament will be in the second building on your left.

**From Downtown** (or entering the city from the highways along the river), turn away from the river on Main Street. Travel up the hill and Turn Left on University Street. Turn Right immediately into the Bradley campus. Go straight through the 1st intersection. Turn Left into the Bradley Visitors parking area halfway down the block. The Student Center will be a half block beyond the parking lot and on Elmwood to your right. The Chess Tournament will be in the second building on your left.

**Historical Note:** The first Bradley Winter Open was played in this same Student Center over 20 years ago in 1994. Over the years since, many masters as well as most of Peoria's and Central Illinois' own top players have played in the BWO. Competition is keen, but it is a good way to improve your play by playing against stronger players. While the average rating of the tournament winners is over 2000, there will also be prizes distributed by rating classes, so you will be competing against your own rating group for prizes while playing strong competition.

**Contact:** Murrel Rhodes, 1116 N Parkside Dr, Peoria, IL 61606,  
Phone:309-682-0675, Email:[murrel@gmail.com](mailto:murrel@gmail.com)

## Job Opening: Chess Program Coordinator for Chicago Public Schools

<https://cpsk12il.taleo.net/careersection/3/jobdetail.ftl?job=67363>

Job Number: 140002V4

### *Description*

#### **Position Overview**

The Chicago Public Schools (CPS) has set ambitious goals to ensure that every child -- in every school and in every neighborhood -- has access to a world-class learning experience from birth, resulting in graduation from high school ready for success in college, career, and life. The Chess Program Coordinator is responsible for oversight and coordination of all kindergarten to 12<sup>th</sup> grade chess activities, which includes chess academic curricula and out-of-school time chess clubs and competitions. The Chess Program Coordinator will ensure chess activities prepare students of all achievement levels for college and career by building and enhancing students' critical academic and interpersonal skills in a fun, competitive, safe, and supportive team environment. All chess activities support student learning and increase student engagement and attendance in school. The Chess Coordinator will report to the Manager of Academic Competitions, Student Support and Engagement in the Office of College and Career Success.

#### **Principal Accountabilities**

- Oversee District-wide elementary and high school chess initiatives.
- Coordinate and implement day-to-day chess operations, which includes planning school-based chess coach and student professional development activities, communicating with chess coaches, vendors, and partners to address related questions and concerns, overseeing chess program budget, and developing chess marketing materials.
- Build and maintain relationships with the chess community, which includes collaborating with external Chess advocates, funders, and partners to ensure coordination of resources and strategy.
- Support Manager of Academic Competitions to build, refine, and implement a comprehensive portfolio of chess schools, programs and activities that leverage both internal CPS Offices and external partners to address the needs of kindergarten to 12<sup>th</sup> grade students.
- Assist in planning and developing evaluation system for chess coach and student professional development activities.
- Build a system to evaluate the quality of the chess program and experiences for students.
- Analyze chess data on a quarterly basis and produce reports and action plans to measure quality of programs/vendors and communicate feedback to Central Office and school leaders to refine programs that best meet the needs and interests of students.
- Attend all chess related activities.
- Performs related duties as required.

#### **Qualifications**

#### **Skills & Abilities**

- Proven project management capabilities including the ability to establish long-term vision and goals, and the ability to align and implement activities toward execution of identified goals.
- Self-starter with ability to manage multiple projects concurrently, both independently, and as a member of a collaborative team.
- Proven ability to analyze quantitative and qualitative data to inform strategy and program quality and improvement.
- Strong service and support orientation towards schools and school communities.

- Ability to communicate effectively with a variety of audiences. Exceptional verbal and written skills.
- Willingness to learn and adapt in the midst of new and shifting program and priorities with a "can-do," solutions-oriented approach to learning and problem solving.
- Excellent organization and time management skills with impeccable attention to detail.
- Budget management experience and knowledge of basic budget functions.
- Advanced proficiency with Microsoft Office, specifically Excel, Power Point, Word.
- Ability to work evenings and weekends when needed.
- Ability to work with minimal supervision outside of formalized, central office setting.

**Type of Education Required:**

Bachelor's degree is required with 5-7 years experience program/project coordination experience.

**Type of Experience and Number of Years:**

- A minimum of three years of successful and relevant experience coordinating programs and analyzing program data.
- A minimum of three years of experience in urban education or related field.
- Knowledge of CPS Policy and Procedures.

**Residency Requirement: As a condition of employment with the Chicago Public Schools (CPS), an employee must be an actual resident of the City of Chicago or be willing to become a resident within six months of the date of his/her employment with Chicago public schools.**







# Player Ratings

Tuesday, December 23, 2014

Team	Player	W	L	D	Rating
	AROND,D	0	0	0	1813
<b>AONRK</b>	CONSTANTIN,H	3	0	1	2159
	COHEN,L	1	1	2	2070
	COHEN,H	1	0	2	1876
	BARRERA,JORGE	3	1	0	1777
	BAUMGARTNER,C	1	1	0	1740
	WINICK,J	0	0	0	1730*
	KAMARA, SEGUN	2	1	0	1517*
	MITCHELL,D	0	1	0	1470*
	JANCORAS,Z	2	3	0	1454
	SOMMERS, D	0	1	0	1333#
	STILES,J	0	0	0	1234*
	MOSLEY,A	1	2	0	1093
<b>CITGR</b>	PFAU,M	0	1	1	2077
	ONG,K	1	1	1	1823
	MUHS,A	1	2	0	1766
	STYRKAS, K	2	0	0	1710#
	KUNHIRAMAN,P	0	1	1	1560
	SENSAT,J	0	1	0	1543
	PRIMORAC,V	0	0	0	1499
	LE,DUC	0	2	0	1462
	SHEVCHUK,E	1	2	0	1428
	DUJOLS,N	0	1	0	1308#
	MORAVAPALLE, N	0	0	0	1300?
	LARSON FREEMAN,T	0	0	0	1205*
<b>DGCC</b>	KLUG,S	0	2	1	2118
	BUNGO,G	1	1	1	2112
	DIXON,J	1	1	0	2100*
	EGERTON,J	0	0	0	2032
	TAN,GADDIEL	3	0	1	1943
	DUGOVIC,D	0	0	0	1940
	POTTS,K	2	1	0	1896
	WAKERLY,R	1	0	1	1833
	YALAVARTHI,R	2	0	1	1725*
	JOSEPH,BEN	0	0	0	1684*
	SMITH,BR	1	1	0	1621C
	MANEY,A	3	1	0	1611*
	ADAMS, ISAAC D	1	0	0	1523#
	BORGENS, M	0	1	0	1326#
	KIRKSY,M	0	0	0	1301*
	CIMBALISTA, M	1	2	0	1301*
	BATTAGLIA,M	1	2	0	1008*
	WILDE,J	0	1	0	1000*
	ANDERSON, ANITA	0	1	0	800#

Rating Symbols: ? - PreCICL (0 games), # - New (1 to 8 rated games), \* - Provisional (9 to 25), otherwise Established (26+)  
 C - Centurian (100-199 games), D - Double (200-299), T - Triple (300-399), Q - Quad (400-499), V - Quintuple (500-599)

Team                      Player                      W   L   D   Rating

DRGNS					ENOVA						
	TEGEL,F	0	2	0	1986Q		KHAN,M	1	1	0	1820
	LUDWIG,T	1	2	1	1905D		FAILOR,M	1	1	0	1809*
	MARCOWKA,R	1	1	1	1870T		TSOULADZE,A	0	0	0	1711*
	PEHAS,A	0	1	2	1783C		MATA,S	1	1	0	1699
	KOMORAVOLU,K	1	1	2	1471		BHARGAVA,S	0	1	1	1697*
	EUSTACE,D	0	4	0	1467D		GUIDRY,D	1	1	0	1647
	THOMAS,J	1	0	0	1453T		BRUNO,R	0	1	0	1646
	STAMM,V	1	0	2	1405Q		SAN MIGUEL,L	0	0	0	1563*
	BREYER,A	1	0	1	1275		WU,S	0	0	0	1400*
DRW						SHANDILYA,S	0	0	0	1324*	
	TSYGANOV,I	2	0	1	2291		BRYAN,D	0	2	0	1282*
	HAYHURST,W	0	1	2	1855C		KHOURY,J	0	0	0	1245*
	GORODETSKIY,E	3	0	0	1854		BURGESS,A	0	1	0	1214
	GORODETSKIY,S	0	0	0	1757		CASE,DANIEL	0	0	0	1200#
	POPOV,D	0	0	0	1737#		ZETTINGER, MATT	1	0	0	1134#
	BEDER,B	2	0	0	1701		VOHRA,P	0	0	0	1102#
	POPOV,ANDREY	1	2	0	1662*		RUSSELL,N	0	0	0	948#
	GUGENHEIM,O	1	1	0	1654	EXCLB					
	CAPUTO,W	0	1	0	1404		HART,V	0	0	0	2131
	DISNEY,A	0	0	0	1309#		LEE,D	0	1	1	1864
	KOMBLEVITZ,A	0	0	0	1292*		DOWELL,E	0	0	0	1854
							BRONFELD,A	0	0	0	1767
							ENGELEN,M	0	2	1	1748
							SUERTH,F	0	3	1	1501D
							REID,C	0	4	0	1452T
							VIGANTS,A	2	2	0	1444D
							SIEGEL,R	1	1	0	1422C

Rating Symbols: ? - PreCICL (0 games), # - New (1 to 8 rated games), \* - Provisional (9 to 25), otherwise Established (26+)  
 C - Centurian (100-199 games), D - Double (200-299), T - Triple (300-399), Q - Quad (400-499), V - Quintuple (500-599)

Team                      Player                      W   L   D   Rating

FERMI						HEDGE					
	SERGATSKOV,D	3	0	1	2109		STRUNK,ALEX	0	0	0	2103*
	KOZLOVSKY,M	0	0	0	2082		SMITH,M	0	0	0	1859
	SPIEGEL,L	1	1	1	2004T		JASAITIS,A	1	3	0	1848T
	KOCHEMIROVSKIY,A	1	0	2	1991*		LINDAUER,E	0	3	1	1808*
	MOTTA,H	0	0	0	1872		SMITH,JASON	1	0	0	1703*
	DIMARCO,J	3	0	1	1780		COLEMAN,M	2	2	0	1692
	ANTIPOV,SERGEY A	3	0	1	1758*		KRATKA,M	1	0	1	1641
	GAINES,I	3	1	0	1694T		PUZANOV, A	2	2	0	1640
	CISKO,G	0	0	0	1561		FURTNER,F	2	0	1	1616
	MHASHILKAR,P	2	0	0	1390		AKPUOKWE, C	0	0	0	1600?
	KALEKO,D	1	0	0	1297#		CHAVEZ,A	0	0	0	1470
							HUNTER,JOSH	0	0	0	1469*
							ULYANOV,D	1	0	1	1465*
							BINDLER,M	0	0	0	1343*
							MEYER,C	0	0	0	1195*
							DOUGLAS,R	0	0	0	1167#
							SAMOYLOVICH,A	0	0	0	1161#
							CROTINGER,J	0	1	0	1117#
							VISSER,JOUBERT	0	1	0	1105
							WOOD,D	0	0	0	1051#
							RORVICK,C	0	0	0	1017*

Rating Symbols: ? - PreCICL (0 games), # - New (1 to 8 rated games), \* - Provisional (9 to 25), otherwise Established (26+)  
 C - Centurian (100-199 games), D - Double (200-299), T - Triple (300-399), Q - Quad (400-499), V - Quintuple (500-599)

Team                      Player                      W   L   D   Rating

MKING					MLXAC						
	FRIDMAN,Y	0	1	0	2200C		KRANJC,N	1	0	0	2166*
	MELNIKOV,I	0	0	1	2047C		ZINSKI,M	0	0	0	2035*
	THOMSON,J	1	0	1	2001D		OBERWEIS,J	0	0	0	1844*
	AITIPAMULA,J	3	0	1	1979		ZADEREJ,V	2	3	0	1556
	BALICKI,J	0	0	0	1898D		FLYNN,M	0	3	2	1522
	WALLACH,C	3	0	1	1878D		CRANE,G	0	0	0	1504*
	PIPARIA,J	5	0	0	1856C		SUH, GLEN	0	5	0	1501*
	CYGAN,J	4	0	0	1784C		KELLEY, DAN	0	0	0	1500?
	CHERKASSKY,G	0	0	0	1628		RUFUS,B	0	1	0	1437
	GONCHAROFF,N	2	0	1	1520S		DEETS,A	0	0	0	1400#
	RABINOVICH,E	0	0	0	1467		FELDMAN,W	0	0	0	1382*
	GERNES,L	2	3	0	1447		WILSON,STEVE	0	0	0	1339#
	GRYPARIS,J	0	0	0	1338C		DEICHMANN,E	0	3	1	1270
	BABINEC,J	0	0	0	1239		MADUGULA, S	0	4	1	1263#
							BANDAR,ABHILASH	0	4	0	1029*
							AREND,A	0	2	0	834*

Rating Symbols: ? - PreCICL (0 games), # - New (1 to 8 rated games), \* - Provisional (9 to 25), otherwise Established (26+)  
 C - Centurian (100-199 games), D - Double (200-299), T - Triple (300-399), Q - Quad (400-499), V - Quintuple (500-599)

Team	Player	W	L	D	Rating						
<b>NWEST</b>						<b>ROGUE</b>					
	KOGEN, J	3	0	0	2290*		FRANKLIN, D	2	2	0	2214
	ZEYTINOGLU, E	1	0	0	2038*		BROCK, B	4	0	0	2070
	ALFIMOV, I	0	0	0	2000?		EAMAN, R	2	2	0	1772C
	LI, DANIEL	3	0	0	1936*		FRANK, M	0	1	0	1667C
	DATLA, SAMEER	1	2	0	1868*		PERSONS, J	0	0	0	1654
	GRUDZINSKI, TOM	3	0	0	1770*		VITKAUSKAS, V	1	3	0	1637
	HAN, RICHARD	0	0	1	1702*		ACEVEDO, U	2	0	2	1606
	PONTISAKOS, C	1	0	1	1668*		DUFFY, J	2	0	1	1600C
	HAO, E	1	0	0	1650#	<b>ROOKS</b>					
	FU, WATSON	0	0	0	1610*		STOUMBOS, K	0	0	0	2318
	LOU, J	0	0	0	1584*		BENEDEK, R	1	2	1	2043Q
	TAKASE, A	0	0	0	1551#		HILL, R	2	0	2	1989D
	KARALIS, P	0	0	0	1424#		LEHMANN, S	1	1	2	1919*
	GAFFNEY, J	0	1	0	1316*		SUAREZ, E	0	0	0	1799C
	HAN, NICHOLAS	0	0	0	1188#		BAURAC, D	1	1	2	1634T
<b>PAWNS</b>							GWEKOH, R	1	1	2	1602
	MACENIS, A	0	0	0	2198*		YACOUT, A	0	0	0	1522
	PRUDE, S	0	1	2	2141		LAUTERMILCH, M	0	0	0	1500?
	KRAS, T	0	0	1	2128C		KUHLMANN, S	1	3	0	1358
	KORENMAN, M	0	0	0	2113						
	RZESZUTKO, R	1	0	1	1918C						
	BLACKMAN, W	0	3	0	1901*						
	TUMS, V	0	0	0	1890*						
	EDEUS, D	3	0	0	1853						
	HOLLAWAY, M	0	0	0	1764						
	FERIA, V	0	1	0	1664*						
	KUKURUZA, V	1	1	0	1574						
	FABIJONAS, R	0	1	0	1402Q						
	HARRISON, E	1	2	0	1298#						
	SINOPLA, J	1	0	1	1186						

Rating Symbols: ? - PreCICL (0 games), # - New (1 to 8 rated games), \* - Provisional (9 to 25), otherwise Established (26+)  
C - Centurian (100-199 games), D - Double (200-299), T - Triple (300-399), Q - Quad (400-499), V - Quintuple (500-599)

Team	Player	W	L	D	Rating
STCCC					
	SHAW,T	0	0	0	2371
	MARSHALL,J	3	0	0	2238
	WIEWEL,J	3	1	0	2136
	RASO, P	1	0	0	2128*
	ACOSTA,M	0	1	0	2068
	CRISSMAN,J	0	0	0	1839*
	DI ORIO,J	0	0	0	1824*
	COFFMAN	0	0	0	1818#
	BALE, LES	0	0	1	1745#
	KOLB,S	1	0	2	1726
	ALLISON, R	0	0	1	1725#
	JANSSEN,G	0	0	0	1695
	GIERTZ,C	0	0	1	1619#
	ALBERTS,W	0	0	0	1597
	PADILLA,R	1	0	1	1585
	TAYLOR, KEVIN	0	0	0	1510?
	GREER,J	0	0	0	1474
	POWERS,E	0	1	1	1447
	MARSHALL,K	0	1	0	1433*
	SWANSON,E	0	0	1	1421#
	KELLEY,G	0	1	0	1294*
	BALES,R	0	0	0	1284*
	WIEWEL, MATTHEW	0	0	0	1246?
	WREN, NEIL	0	0	0	1216?
	REYES, A	0	1	0	1200?
	VANDERWAL,GIORGI	0	0	0	1200?
	SEGRETO,T	0	0	0	1157*
	ZALEISKI, ANDREW	1	2	0	1115*
	BORGAS, NILS	0	0	0	800?
	KYLE, RYAN	0	0	0	800?
TYROS					
	ALLSBROOK,F	2	0	2	2183C
	DIAZ,P	1	0	3	1980D
	STINSON, MARCUS	0	4	0	1888C
	STOLTZ,B	0	0	0	1833D
	KRUEGER,J	0	0	0	1817#
	GUIO,J	0	1	0	1762D
	HAHNE,D	3	1	0	1669D
	DOBROVOLNY,C	3	1	0	1659D
	BUCHNER,R	0	0	0	1578C
	DENMARK,T	0	1	0	1576
	VAIL,M	0	0	0	1464
	MCPHAIL,C	0	0	0	1410*
	KURUVILLA,E	1	1	1	1343*
	BYRNE,M	1	2	1	1235

Rating Symbols: ? - PreCICL (0 games), # - New (1 to 8 rated games), \* - Provisional (9 to 25), otherwise Established (26+)  
C - Centurian (100-199 games), D - Double (200-299), T - Triple (300-399), Q - Quad (400-499), V - Quintuple (500-599)

Team                      Player                      W   L   D   Rating

UOP						WCC					
	SIWEK,M	1	0	1	1975D		ARAMIL, WILLIAM	1	0	0	2346*
	BOLDINGH,E	2	2	0	1944D		STEIN,KURT	1	0	1	2221
	VAN MEER,J	0	0	0	1898		STEIN,PETE	0	0	0	2110C
	LEONG,G	2	1	0	1898D		BAYARSAIKHAN, Y	0	0	0	1987?
	EASTON,R	1	0	3	1853C		ENRIQUEZ,R	0	2	1	1977*
	SAJBEL,P	1	1	0	1727C		PAVESE,J	0	1	0	1976*
	MOSSBRIDGE,A	0	1	0	1634		DONNAHUE,T	0	0	0	1928#
	STUDEBAKER,C	0	0	0	1574*		MIDDLETON,DOUG	3	1	0	1920*
	SCHWANBECK,S	0	0	0	1555#		COFFEY,A	0	1	0	1837*
	LECHNICK,J	0	4	0	1531C		CONDRON,JAMES	2	1	1	1779*
	HUGHES,N	0	1	0	1529D		GARCIA,I	0	1	1	1675*
	BIAN,M	0	0	0	1512*		HANSEN,S	1	1	0	1655*
	RAMOS,J	0	1	0	1476		WHITED,W	2	0	1	1558
	OLSEN,A	1	1	0	1468D		PATEL,BHARAT	2	0	0	1491*
	GARG, MUNISH	0	0	1	1467#		GENTALLAN,F	0	0	0	1456*
	LAMBIRIS,J	0	0	0	1428		GOEBEL,R	2	1	0	1443*
	LANG,P	0	0	0	1229#		DYREK,R	0	0	0	1427#
	RAMIREZ,A	0	0	0	1075#		LEDGERPINE,T	0	0	0	1259#

Rating Symbols: ? - PreCICL (0 games), # - New (1 to 8 rated games), \* - Provisional (9 to 25), otherwise Established (26+)  
 C - Centurian (100-199 games), D - Double (200-299), T - Triple (300-399), Q - Quad (400-499), V - Quintuple (500-599)

Team                      Player                      W   L   D   Rating

WMBAT

TENNANT,S	1	1	2	2162
NGUYEN,T	0	0	0	2143
FREITAG,T	2	0	2	2098
PANNER,G	0	0	1	2096#
WEBER,L	1	0	2	2022
ZOLKOS,A	0	1	0	1799
ELLICE,W	1	1	0	1771D
VILLARREAL,B	0	0	0	1740*
FENNESSEY,J	1	0	0	1718
TOLLIVER,T	0	1	0	1693*
CONNELLY,P	0	0	2	1610
FRANEK,M	1	0	1	1609T
CONNELLY,A	3	1	0	1595*
RAJSKY,J	0	0	0	1580
HARPER,C	0	0	0	1500*
SARNA,J	0	0	0	1365*
ZACK,K	0	0	0	800#

穿椀洵戀

CIM"	0	0	0	1429?
------	---	---	---	-------

Rating Symbols: ? - PreCICL (0 games), # - New (1 to 8 rated games), \* - Provisional (9 to 25), otherwise Established (26+)  
 C - Centurian (100-199 games), D - Double (200-299), T - Triple (300-399), Q - Quad (400-499), V - Quintuple (500-599)