

The Chicago Chess Player

The Official Bulletin of the Chicago Industrial Chess League



Photo by P. Connelly

Inside this Issue:
CICL Constitution Updates
Interview with CICL President
“Earning your Black Belt in Chess”

CICL Officer Contact List

League President **Brian Smith**
 President@ChicagoChessLeague.org

League Secretary **Jerry Thomas**
 Secretary@ChicagoChessLeague.org

745 Hageman Pl
 Naperville, IL 60563

H:(630)420-0188

League Treasurer **Andy Mosley**
 Treasurer@ChicagoChessLeague.org

1415 Downing Place Apt 9P
 Mundelein, IL 60060

Bulletin Editor **Pat Connelly**
 Bulletin@ChicagoChessLeague.org

Webmaster **Irwin Gaines**
 Web@ChicagoChessLeague.org

Games Editor **Steve Tennant**
 Bulletin@ChicagoChessLeague.org

Ratings Chair **Irwin Gaines**
 Ratings@ChicagoChessLeague.org

Trophy Chair **Chuck Dobrovolny**
 Trophy@ChicagoChessLeague.org

Publicity Chair **Matt Vail**
 Publicity@ChicagoChessleague.org

C:(312) 933-1516

W:(630) 505-6557

Banquet Chair **Katherine Zack**
 Banquet@ChicagoChessLeague.org

Playoffs Chair **(vacant)**

Playoffs Tournament Director **Gary Janssen**

DIVISION CHAIRS

East Division **Tony Jasaitis**
 ChairmanEast@ChicagoChessLeague.org

West Division **Jeff Wiewel**
 ChairmanWest@ChicagoChessLeague.org

North Division **Jim Thomson**
 ChairmanNorth@ChicagoChessLeague.org

W(847) 538-5408

CICL Officer Contact List	2
Table of Contents	3
Updates to the CICL Constitution	4
Match Recap by Tony Jasaitis	5
Interview with CICL President Brian Smith	6
Earning your Black Belt in Chess by Torriente Toliver	7-9
Upcoming Tournaments	10-11
Ratings Report (as of 11/25/14)	12-19

We're always looking for submissions! As always, feel free to submit stories, games, chess news, and information about local chess events to the bulletin.

Your Opinions count! Please send us your feedback on CICL events, rules, bulletin, etc. Remember, this year we are offering awards for various types of Bulletin Submissions, including articles about matches and tournaments, photo submissions, game analysis, and more!

Thank you! Special thanks to our contributors for this issue, including Tony Jasaitis and Torriente Toliver for great articles.

The CICL is now on Facebook! Please "like" our page to get CICL updates, pictures, and more! Check us out here: <https://www.facebook.com/ChicagoIndustrialChessLeague>

Please email submissions to Bulletin@ChicagoChessLeague.org.

Pat Connelly
CICL Bulletin Editor

CICL Constitution UPDATES

DUES (effective 10/31/14)

The approved proposal removes two sentences from the CICL constitution and replaces them as follows.

- Remove from "II. League Functions, B. League Funds, 1. Dues." these sentences: Veteran teams must pay their dues to the League treasurer prior to the start of the third month of the playing season, and new teams must pay prior any matches being played. Teams not paying their dues by the required date will be ineligible for further competition until their dues are paid.
- Replace the above sentences with the following two paragraphs:
New teams must pay their dues prior to any matches being played.

For veteran teams: dues will need to be postmarked by October 31. For the purposes of this rule, any payment by mail that is postmarked by a certain date is considered to have been paid by that date. Any dues postmarked or paid in person between November 1 and November 30 will require a \$25 late fee in addition to the annual dues. Teams not paying their dues and any applicable late fees by November 30 will be ineligible from further competition including the postseason. All matches already played by teams that have not fully paid their dues and any applicable late fees by November 30 will be retroactively forfeited on December 1. Individual game results and ratings will not be altered by such match forfeits.

The result of the vote on the proposal to change the CICL's constitution regarding dues was: YES - 14 (all teams now in the CICL, except the 6 listed below)

NO - 0

ABSTAIN (or abstain to vote) - 2 (Hedgehogs and Wombats)

A vote was not received from these 4 teams: DRW, Enova, Pawns, Tyros. (If the captain of one of these teams voted but it somehow was lost in email, let me now asap.) The proposal is approved and takes effect immediately.

Special thanks to our committee who created the proposal: Andy Mosley, Art Olsen, Chuck Dobrovolny, Greg Bungo, Irwin Gaines, Jeff Wiewel, Jim Thomson, and Tony Jasaitis.

CASTLING (effective 01/01/15)

Similar to the new rule adopted by the United States Chess Federation, when castling, CICL players must touch the king first (or the king and rook at the same time).

If the player touches the rook first, castling with that rook is not allowed, and the touch move rule is applied to the rook.

Hedgehogs topple Division Champs DRW Trading

A match recap by Tony Jasaitis, Captain, Hedgehogs

Fresh from knocking off their rival 2nd-place team Rogue Squadron last week, last year's division champion DRW Trading was looking to do the same or worse to us lowly Hedgehogs. They came bravely, despite the fact that our playing site was plagued by snafus, including the security desk misplacing visitor registrations, malfunctioning elevators, an emergency communication system, complete with flashing lights and audio, that tested the concentration of the players!

With the latest alumni additions from collapsed teams, we have improved depth on the lower boards, which was reflected on our October 7th match, as 3 of our 3.5 points came from the bottom half of the lineup. Our latest member Fred Furtner (formerly of AMATS) started us off with a lead that never looked back, winning on board 5 with the FrenchDefense over Oliver Gungenheim.

Andrey Puzanov (from AMATS and LOYOLA) padded the lead, besting Andrey Popov's Najdorf Sicilian on board 4 (the battle of the Andrey P's!)

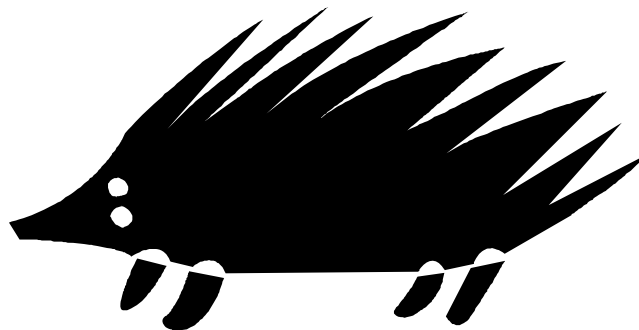
While the other boards were fairly closely matched, Tony Jasaitis faced the East division's highest rated player on board 1, Igor Tsyganove. Tony improvised an overly aggressive ...c5 response to an early b4 attack against his Dutch Defense, resulting in a couple of pawn weaknesses that were slowly exploited in masterly fashion, culminating in a decisive sham rook sacrifice that put him out of his misery.

Milan Kratka got HEDGE's our 3rd point on board 6, winning a pawn early from Bill Caputo with the c3 variation vs the Sicilian Defense, later winning an exchange and on to win the endgame.

On board 3, Mark Coleman (from AMATS) slowly succumbed to Eugene Gorodetsky's Closed Variation of the Ruy Lopez.

With the score 3-2, HEDGE just need a draw on board 2, where Eric Lindauer took on the Lyle Hayhurst's Benko Gambit. Lindauer held on to the extra pawn all the way into the endgame, but with all the pawns on the same side of the board, looking like a draw with a Rook per side still in the game. While all that was needed was a draw, Eric pressed on until the 104th move of the game trying to squeeze out a win, which did not materialize. [Hey, how about some consideration to the rest of us to get home at a reasonable hour?]

The sleep-deprived hedgehogs were delighted with their victory!



Interviews with Officers

Name: Brian Smith

Position: League President

Team: Downers Grove Chess Club

CICL Rating: 1621



What music do you like to listen to?

Besides family and health, music is my top passion and priority. I listen to all kinds of good stuff. Lately I've especially enjoyed Motown and Mozart, Lyle Lovett and Jimmy Webb, Basie and Beethoven.

How long have you been playing in the CICL?

I started in 1980, but took some years off.

Who is your favorite chess player of all time?

Among the best players of all time, I admire and enjoy the games of so many. I might be able to narrow my favorites down to a top ten list. The chess player who thought of the idea of the CICL and was one of its primary founders, Miroslav "Mirko" Mejzr, is a favorite.

Is there a chess book that had a profound influence on you?

In the 1970s, Ludek Pachman's "Modern Chess Strategy" opened my eyes that chess is about much more than tactics and memorizing a small number of opening moves.

Is there another skill or game you'd like to learn?

Songwriting.

If you could choose a superpower, what would it be?

Swim like a fish or Aquaman.

Would you use your superpower in your chess game?

I play chess like a fish already.

What do you think chess players are particularly good at (other than chess):

Citing quotes. For example, "Never make a good move too soon." - James Mason. Or, "You must take your opponent into a deep dark forest where $2+2=5$, and the path leading out is only wide enough for one." - Mikhail Tal.

If you could rename your CICL team any name, what would it be?

I suppose "The Most Fun and Friendly Group of Guys and Gals Who Play Great Chess Together" would be bit long.

What do you see as your best result ever (in or outside the CICL)?

My draw in the final round of the 2013 playoffs was exciting (including a knight sacrifice by me) and helped our team win the league championship.

Promotion: Earning Your Black Belt in Chess

by Torriente Toliver (WMBTS)

“What’s Your Style?”

Styles make fights. This was true since the beginnings of chess and remains true in MMA events. There are obvious issues that a boxer will have with a kicker or wrestler. These same issues exist when a theoretical player is forced to leave book preparation early. Even fighters with similar skills, like Judo and Brazilian Jujitsu competitors, have difficulty experience time trouble. Judo referees do not allow the fighters a lot of time to execute ground techniques, so Judoka are violent and quick with their moves. BJJ players take their time and generally maneuver slowly taking minutes just to setup the setup to a sweep.

In my experience with both chess and martial arts competition, the determining factors are the four “S”: speed, strength, skill, and spirit. Strength in chess corresponds to stamina, endurance, and focus. We all have dropped material, and mishandled known positions through fatigue and other physical factors. The ability to calculate deep lines in all three stages of the game is a testament to one’s strength. There have been a few articles in recent times praising the older Super GMs who are defying the recognized natural decrease in physical/mental acuity.

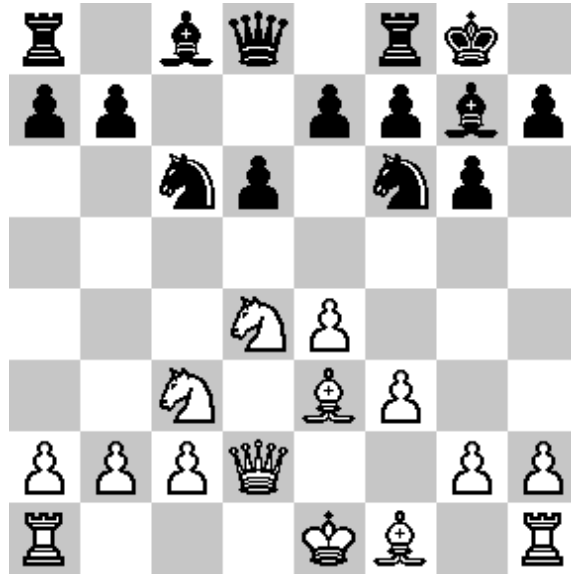
Skill is pure knowledge of positions, technique, and tactical understanding. There are those players who just memorize lines, and there are players who understand the reasoning behind those lines. While a win is a win, I appreciate those players who can explain the how and why of the game.

The bridge between the physical/psychological strength of players and the knowledge that they have is their speed. Think about the player at the club who has no opening theory yet can sit and, through raw calculation alone, find the way to a win. Also that Expert player who can spot the error in the position even though they don’t know how to capitalize on it until 10-20 moves later. These are two different skills but the balance between them is speed. How long it takes one to calculate variations or to recognize that a change in the position has occurred are both maintained by speed. This means that a calculating machine able to quickly spit out lines can beat a theoretically stronger opponent who can recognize the worse position but cannot successful calculate through the complications.

The result of the four S’s should exhibit one’s style. Your abilities make your style and it should not be the other way around. It is when players force openings and study habits that contradict their abilities that growth and progress is stunted. The Sicilian Dragon, (sorry, not Bruce Lee), will help demonstrate how one can define one’s style.

Sicilian Dragon Opening:

1. e4 c5 2. d4 cxd4 3. Nf3 d6 4. Nxd4 Nf6 5. Nc3 g6 6. Be3 Bg7 7. f3 Nc6 8. Qd2 0-0 (Diagram next page)

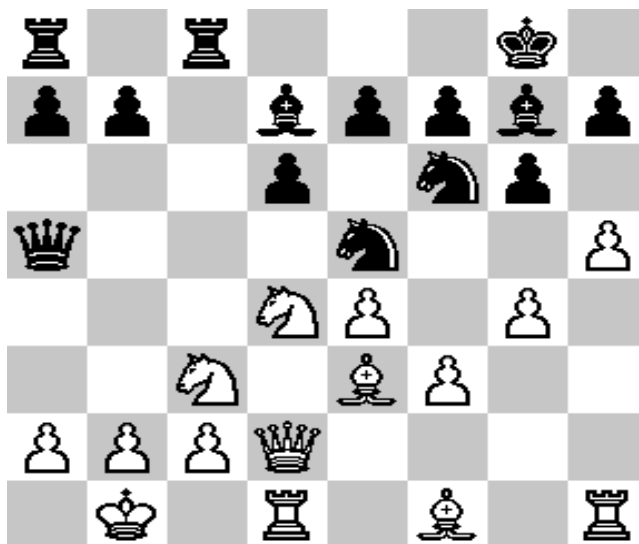


Position after 8...0-0

WHITE is wondering “ Which way to castle? Do I want to spend 3 moves with the Bishop on f1 to c4, or will Be2 suffice? What is the outcome of ...d5 if 0-0-0? Do I want to try something new to surprise this underrated player like g4 or h4? How do I not fall into any traps because I’m facing a Master?! What value is the Be6 after 0-0-0, I saw it on that DVD and didn’t plan a response?”

It is not your style to play the Yugoslav Attack. It is your style to make the game sharp with many variations and possibilities for both sides. It is your style to eliminate Black’s counter play with a solid bunker. It is your style to prepare deep and calculate quickly because you know your endgame is lacking.

9. 0-0-0 Bd7 10. g4 Qa5 11. h4 Rfc8 12. Kb1 Ne5 13. h5



Position after 13. h5

BLACK is wondering, "Should I continue with the Nc4 line? Is White's attack sound? Does the regulation Rc3 sac work in this position? Can I slow down White's attack with my attack? Is there a way to clear the way for my Dragon Bishop to use the diagonal?"

In reference to the last question, if 13... Nf3 what will the resulting position become, and who is better? The strong players can calculate through this. The theoretical won't and will assess the known strengths and weaknesses. Those who need time will take out their boards and coffee. Those who feel that thing inside them boiling will find new abilities in this pseudo 20 minute exercise. Either way this is your style. Would you make this sac as Black? Do you fear sacs like this as White? How well do you understand the imbalance in the final position? Do you look for novelties? Do you prep for opponents or for tournaments as a whole? The path to the black belt is understanding clearly what you know and what you can do. Then you turn your abilities into your style, your system, your game, and your wins.

If you have a question about a recent column or have a suggestion for Torriente, please email thechessdojo@gmail.com. You can also send responses and feedback to the Bulletin @ bulletin@chicagochessleague.org.



UPCOMING TOURNAMENTS

Individual Tournament, Sunday, December 28th, at Benedictine University.

No CICL match scheduled for your team over the Holidays? Looking for some chess action between celebrations? Here you go -- there will be a CICL tournament for individuals on Sunday, December 28, 2014 in west suburb Lisle.

About the CICL section of this tournament:

- It will be CICL rated.
- Three games will be played, using a time control of G/60 + 5 second delay (and swiss system pairings).
- It is open to all members of the CICL (and only to CICL members).
- It is free, no entry fee.
- Trophies will be awarded to the top finishers.
- It is organized by Jeff DiOrio, a member of St. Charles Chess Club's CICL team and president of Elite Chess.
- Location is Benedictine University - Krasa Center - 5700 College Rd, Lisle, IL 60532
- It does not require USCF membership. (At the same time and venue, there will also be USCF sections, which do require USCF membership, plus unrated scholastic sections.) The top USCF section is the 3rd Annual DuPage County Chess Championship.
- To register, go online at <http://elitechess.net/DCCCinfo.php> This webpage has more info too.

Hope to see lots of you there!

2nd Annual Greater Midwest Class Championships November 28th-30th at the Hyatt Regency Schaumburg

TROPHIES PLUS GRAND PRIX POINTS: 80 (ENHANCED)
\$12,000 b/200 - \$9,000 Guaranteed

Weekend AFTER Thanksgiving! 5R-SS. Hyatt Regency Schaumburg Hotel, 1800 E Golf Rd, Schaumburg, IL 60173. Free Parking! \$12,000 b/200 - \$9,000 Guaranteed.

In 5 sections: 3-day Game-90 + 30/sec increments, 2-day Game-45 d/5 for Rd 1-2 then merge in Rd-3. Master/Expert (2000-up):\$1500-1000-700-600-500, top U2300, U2200, U2100 \$300 each. FIDE rated. Class A (U2000):\$700-600-500-300-200. Class B (U1800):\$700-600-500-300-200. Class C (U1600): \$500-300-200-100-50. Class D and below (U1400 and below): \$400-300-200-100-50. Rated players may play up one section for \$25.

Prize limits: Unrated may not win over \$100 D, \$200 C, \$300 B, or \$400 A.

Entry Fee: \$99 online or postmarked by 11/1, \$109 online or postmarked by 11/15, \$119 thereafter, \$129 onsite. No checks at site, credit cards OK. Club Group Discount Special - 5 entries for the price of 4 if all in the same envelope by early registration cut-off (11/1). Re-entry \$50. 3-day schedule: Reg 4:30-6:30pm; Rd 1 Fri 7pm, Sat 10am and 3:30pm. 2-day schedule Reg ends Sat 10:30am Rd 1 11am Rd 2 1pm, then merge with 3-day in Rd 3. Bye: Up to 2. Last rd bye must commit by end of Rd 2 and not retractable. Side Events: 1-day Scholastic Saturday - 4R-SS Game-30 d/5 - Open, U1000, U600 sections - Trophies 1st-5th each section, participation ribbons for all players - \$30 by 11/15, \$40 thereafter and onsite - Reg ends 9:30am - Rd 1 10:00am with remaining rounds beginning ASAP. Game-3+2 Blitz (USCF/FIDE rated) Saturday night 8pm - \$20; 75% of entries returned in prizes.

Hotel Rate: \$84-84 847-605-1234, reserve by 11/15 or rate may increase. Ent: www.chessiq.com/gmclass or ChessIQ, 4957 Oakton Street Suite 113, Skokie, IL 60077.

Questions: sevan@chessiq.com ONLY. On tournament day ONLY - [847.274.1352](tel:847.274.1352). Advance entries posted at www.chessiq.com/gmclass (online entries posted instantly). Boards, sets, and clocks provided for the main event. None for skittles. Organizer provided equipment must be used. November rating supplement used.



Player Ratings

Tuesday, November 25, 2014

Team	Player	W	L	D	Rating
	AROND,D	0	0	0	1813
AONRK	CONSTANTIN,H	3	0	0	2167
	COHEN,L	1	0	2	2085
	COHEN,H	1	0	1	1877
	BARRERA,JORGE	2	1	0	1762
	BAUMGARTNER,C	1	0	0	1752
	WINICK,J	0	0	0	1730*
	KAMARA, SEGUN	1	1	0	1473#
	MITCHELL,D	0	1	0	1470*
	JANCORAS,Z	1	3	0	1421
	SOMMERS, D	0	1	0	1333#
	STILES,J	0	0	0	1234*
	MOSLEY,A	1	2	0	1093
CITGR	PFAU,M	0	1	0	2071
	ONG,K	1	1	0	1821
	MUHS,A	1	1	0	1779
	STYRKAS, K	1	0	0	1597#
	KUNHIRAMAN,P	0	0	1	1574
	SENSAT,J	0	1	0	1543
	PRIMORAC,V	0	0	0	1499
	LE,DUC	0	2	0	1462
	SHEVCHUK,E	1	1	0	1440
	DUJOLS,N	0	1	0	1308#
	MORAVAPALLE, N	0	0	0	1300?
	LARSON FREEMAN,T	0	0	0	1205*
DGCC	KLUG,S	0	2	1	2118
	BUNGO,G	1	1	1	2112
	DIXON,J	1	1	0	2100*
	EGERTON,J	0	0	0	2032
	TAN,GADDIEL	3	0	1	1943
	DUGOVIC,D	0	0	0	1940
	POTTS,K	2	1	0	1896
	WAKERLY,R	1	0	1	1833
	YALAVARTHI,R	2	0	1	1725*
	JOSEPH,BEN	0	0	0	1684*
	SMITH,BR	1	1	0	1621C
	MANEY,A	3	1	0	1611*
	ADAMS, ISAAC D	1	0	0	1523#
	BORGENS, M	0	1	0	1326#
	KIRKSY,M	0	0	0	1301*
	CIMBALISTA, M	1	2	0	1301*
	BATTAGLIA,M	1	2	0	1008*
	WILDE,J	0	1	0	1000*
	ANDERSON, ANITA	0	1	0	800#

Rating Symbols: ? - PreCICL (0 games), # - New (1 to 8 rated games), * - Provisional (9 to 25), otherwise Established (26+)
 C - Centurian (100-199 games), D - Double (200-299), T - Triple (300-399), Q - Quad (400-499), V - Quintuple (500-599)

Team Player W L D Rating

DRGNS					ENOVA						
	TEGEL,F	0	1	0	1992Q		KHAN,M	0	1	0	1802
	LUDWIG,T	1	2	0	1901D		FAILOR,M	0	1	0	1787*
	MARCOWKA,R	0	1	1	1854T		BHARGAVA,S	0	0	1	1733*
	PEHAS,A	0	1	2	1783C		MATA,S	1	0	0	1718
	KOMORAVOLU,K	1	0	2	1484		TSOULADZE,A	0	0	0	1711*
	EUSTACE,D	0	3	0	1479D		GUIDRY,D	1	0	0	1666
	THOMAS,J	1	0	0	1453T		BRUNO,R	0	1	0	1646
	STAMM,V	1	0	1	1410Q		SAN MIGUEL,L	0	0	0	1563*
	BREYER,A	1	0	0	1279		WU,S	0	0	0	1400*
DRW						SHANDILYA,S	0	0	0	1324*	
	TSYGANOV,I	2	0	0	2298		BRYAN,D	0	1	0	1290*
	HAYHURST,W	0	1	1	1857C		KHOURY,J	0	0	0	1245*
	GORODETSKIY,E	2	0	0	1842		BURGESS,A	0	0	0	1227
	GORODETSKIY,S	0	0	0	1757		CASE,DANIEL	0	0	0	1200#
	POPOV,D	0	0	0	1737#		VOHRA,P	0	0	0	1102#
	POPOV,ANDREY	1	1	0	1705#		ZETTINGER, MATT	0	0	0	1073?
	BEDER,B	1	0	0	1689		RUSSELL,N	0	0	0	948#
	GUGENHEIM,O	0	1	0	1645	EXCLB					
	CAPUTO,W	0	1	0	1404		HART,V	0	0	0	2131
	DISNEY,A	0	0	0	1309#		LEE,D	0	0	1	1875
	KOMBLEVITZ,A	0	0	0	1292*		DOWELL,E	0	0	0	1854
							BRONFELD,A	0	0	0	1767
							ENGELEN,M	0	1	1	1758
							SUERTH,F	0	1	1	1504D
							REID,C	0	2	0	1464D
							SIEGEL,R	1	0	0	1430C
							VIGANTS,A	1	1	0	1412D

Rating Symbols: ? - PreCICL (0 games), # - New (1 to 8 rated games), * - Provisional (9 to 25), otherwise Established (26+)
 C - Centurian (100-199 games), D - Double (200-299), T - Triple (300-399), Q - Quad (400-499), V - Quintuple (500-599)

Team Player W L D Rating

FERMI						HEDGE					
	SERGATSKOV,D	3	0	1	2109		STRUNK,ALEX	0	0	0	2103*
	KOZLOVSKY,M	0	0	0	2082		JASAITIS,A	1	1	0	1869T
	SPIEGEL,L	1	1	1	2004T		LINDAUER,E	0	1	1	1859*
	KOCHEMIROVSKIY,A	1	0	2	1991*		SMITH,M	0	0	0	1859
	MOTTA,H	0	0	0	1872		SMITH,JASON	0	0	0	1682*
	DIMARCO,J	3	0	1	1780		COLEMAN,M	0	2	0	1656
	ANTIPOV,SERGEY A	3	0	1	1758*		KRATKA,M	1	0	0	1644
	GAINES,I	3	1	0	1694T		PUZANOV, A	1	1	0	1629
	CISKO,G	0	0	0	1561		FURTNER,F	1	0	0	1612
	MHASHILKAR,P	2	0	0	1390		CHAVEZ,A	0	0	0	1470
	KALEKO,D	1	0	0	1297#		HUNTER,JOSH	0	0	0	1469*
							ULYANOV,D	0	0	1	1444*
							BINDLER,M	0	0	0	1343*
							DOUGLAS,R	0	0	0	1167#
							SAMOYLOVICH,A	0	0	0	1161#
							VISSER,JOUBERT	0	0	0	1138*
							CROTINGER,J	0	1	0	1117#
							WOOD,D	0	0	0	1051#
							RORVICK,C	0	0	0	1017*

Rating Symbols: ? - PreCICL (0 games), # - New (1 to 8 rated games), * - Provisional (9 to 25), otherwise Established (26+)
 C - Centurian (100-199 games), D - Double (200-299), T - Triple (300-399), Q - Quad (400-499), V - Quintuple (500-599)

Team Player W L D Rating

MKING					MLXAC						
	FRIDMAN,Y	0	1	0	2200C		KRANJC,N	1	0	0	2166*
	MELNIKOV,I	0	0	1	2047C		ZINSKI,M	0	0	0	2035*
	THOMSON,J	1	0	1	2001D		OBERWEIS,J	0	0	0	1844*
	AITIPAMULA,J	2	0	1	1977		ZADEREJ,V	2	2	0	1569
	BALICKI,J	0	0	0	1898D		CRANE,G	0	0	0	1504*
	WALLACH,C	2	0	1	1875D		SUH, GLEN	0	4	0	1503*
	PIPARIA,J	3	0	0	1853C		FLYNN,M	0	3	1	1500
	CYGAN,J	3	0	0	1779C		KELLEY, DAN	0	0	0	1500?
	CHERKASSKY,G	0	0	0	1628		RUFUS,B	0	1	0	1437
	GONCHAROFF,N	1	0	1	1520S		DEETS,A	0	0	0	1400#
	RABINOVICH,E	0	0	0	1467		FELDMAN,W	0	0	0	1382*
	GERNES,L	1	2	0	1452		WILSON,STEVE	0	0	0	1339#
	GRYPARIS,J	0	0	0	1338C		DEICHMANN,E	0	2	1	1274
	BABINEC,J	0	0	0	1239		MADUGULA, S	0	4	0	1205#
							BANDAR,ABHILASH	0	3	0	1030*
							AREND,A	0	1	0	836*

Rating Symbols: ? - PreCICL (0 games), # - New (1 to 8 rated games), * - Provisional (9 to 25), otherwise Established (26+)
 C - Centurian (100-199 games), D - Double (200-299), T - Triple (300-399), Q - Quad (400-499), V - Quintuple (500-599)

Team Player W L D Rating

NWEST

KOGEN, J	3	0	0	2290*
ZEYTIINOGLU, E	1	0	0	2038*
ALFIMOV, I	0	0	0	2000?
LI, DANIEL	3	0	0	1936*
DATLA, SAMEER	1	2	0	1868*
GRUDZINSKI, TOM	3	0	0	1770*
HAN, RICHARD	0	0	1	1702*
PONTISAKOS, C	1	0	1	1668*
HAO, E	1	0	0	1650#
FU, WATSON	0	0	0	1610*
LOU, J	0	0	0	1584*
TAKASE, A	0	0	0	1551#
KARALIS, P	0	0	0	1424#
GAFFNEY, J	0	1	0	1316*
HAN, NICHOLAS	0	0	0	1188#

PAWNS

MACENIS, A	0	0	0	2198*
KRAS, T	0	0	0	2133C
PRUDE, S	0	1	0	2133*
KORENMAN, M	0	0	0	2113
BLACKMAN, W	0	1	0	1984*
RZESZUTKO, R	0	0	1	1909C
TUMS, V	0	0	0	1890*
EDEUS, D	1	0	0	1819
HOLLAWAY, M	0	0	0	1764
FERIA, V	0	0	0	1699*
KUKURUZA, V	0	0	0	1578
FABIJONAS, R	0	0	0	1417Q
HARRISON, E	0	1	0	1277#
SINOPLA, J	1	0	0	1159

ROGUE

FRANKLIN, D	1	2	0	2211
BROCK, B	3	0	0	2066
EAMAN, R	1	2	0	1760C
FRANK, M	0	1	0	1667C
VITKAUSKAS, V	1	2	0	1655
PERSONS, J	0	0	0	1654
ACEVEDO, U	2	0	1	1603
DUFFY, J	2	0	0	1598C

ROOKS

STOUMBOS, K	0	0	0	2318
BENEDEK, R	1	1	1	2049Q
HILL, R	1	0	2	1971D
LEHMANN, S	1	1	1	1932*
SUAREZ, E	0	0	0	1799C
BAURAC, D	1	0	2	1658T
GWEKOH, R	0	1	2	1589
YACOUT, A	0	0	0	1522
LAUTERMILCH, M	0	0	0	1500?
KUHLMANN, S	0	3	0	1346

Rating Symbols: ? - PreCICL (0 games), # - New (1 to 8 rated games), * - Provisional (9 to 25), otherwise Established (26+)
 C - Centurian (100-199 games), D - Double (200-299), T - Triple (300-399), Q - Quad (400-499), V - Quintuple (500-599)

Team	Player	W	L	D	Rating
STCCC	SHAW,T	0	0	0	2371
	MARSHALL,J	2	0	0	2233
	WIEWEL,J	3	0	0	2151
	RASO, P	1	0	0	2128*
	ACOSTA,M	0	1	0	2068
	CRISSMAN,J	0	0	0	1839*
	DI ORIO,J	0	0	0	1824*
	COFFMAN	0	0	0	1818#
	BALE, LES	0	0	1	1745#
	ALLISON, R	0	0	1	1725#
	KOLB,S	1	0	1	1716
	JANSSEN,G	0	0	0	1695
	GIERTZ,C	0	0	1	1619#
	ALBERTS,W	0	0	0	1597
	PADILLA,R	0	0	1	1558
	TAYLOR, KEVIN	0	0	0	1510?
	GREER,J	0	0	0	1474
	POWERS,E	0	1	1	1447
	SWANSON,E	0	0	1	1421#
	KELLEY,G	0	1	0	1294*
BALES,R	0	0	0	1284*	
WIEWEL, MATTHEW	0	0	0	1246?	
WREN, NEIL	0	0	0	1216?	
VANDERWAL,GIORGI	0	0	0	1200?	
REYES, A	0	1	0	1200?	
SEGRETO,T	0	0	0	1157*	
ZALEISKI, ANDREW	1	1	0	1135#	
KYLE, RYAN	0	0	0	800?	
BORGAS, NILS	0	0	0	800?	

TYROS				
ALLSBROOK,F	1	0	1	2180
DIAZ,P	0	0	2	1972D
STINSON, MARCUS	0	2	0	1920C
STOLTZ,B	0	0	0	1833D
KRUEGER,J	0	0	0	1817#
GUIO,J	0	1	0	1762D
HAHNE,D	1	1	0	1637D
DOBROVOLNY,C	1	1	0	1632D
BUCHNER,R	0	0	0	1578C
DENMARK,T	0	1	0	1576
VAIL,M	0	0	0	1464
MCPHAIL,C	0	0	0	1410*
KURUVILLA,E	1	1	0	1337*
BYRNE,M	1	1	0	1255

Rating Symbols: ? - PreCICL (0 games), # - New (1 to 8 rated games), * - Provisional (9 to 25), otherwise Established (26+)
 C - Centurian (100-199 games), D - Double (200-299), T - Triple (300-399), Q - Quad (400-499), V - Quintuple (500-599)

Team Player W L D Rating

UOP					WCC						
	SIWEK,M	0	0	0	1958D		ARAMIL, WILLIAM	1	0	0	2346*
	BOLDINGH,E	0	2	0	1917D		STEIN,KURT	1	0	0	2226*
	VAN MEER,J	0	0	0	1898		STEIN,PETE	0	0	0	2110C
	LEONG,G	0	1	0	1889D		BAYARSAIKHAN, Y	0	0	0	1987?
	EASTON,R	0	0	2	1849C		PAVESE,J	0	1	0	1976*
	SAJBEL,P	0	0	0	1738C		ENRIQUEZ,R	0	2	0	1966*
	MOSSBRIDGE,A	0	1	0	1634		DONNAHUE,T	0	0	0	1928#
	LECHNICK,J	0	2	0	1588C		MIDDLETON,DOUG	2	1	0	1897*
	STUDEBAKER,C	0	0	0	1574*		COFFEY,A	0	0	0	1893*
	SCHWANBECK,S	0	0	0	1555#		CONDRON,JAMES	2	0	1	1794*
	HUGHES,N	0	1	0	1529D		GARCIA,I	0	1	1	1675*
	BIAN,M	0	0	0	1512*		HANSEN,S	1	1	0	1655*
	OLSEN,A	1	0	0	1490D		WHITED,W	2	0	0	1576*
	RAMOS,J	0	1	0	1476		PATEL,BHARAT	1	0	0	1475*
	GARG, MUNISH	0	0	1	1467#		GENTALLAN,F	0	0	0	1456*
	LAMBIRIS,J	0	0	0	1428		GOEBEL,R	2	1	0	1443*
	LANG,P	0	0	0	1229#		DYREK,R	0	0	0	1427#
	RAMIREZ,A	0	0	0	1075#		LEDGERPINE,T	0	0	0	1259#

Rating Symbols: ? - PreCICL (0 games), # - New (1 to 8 rated games), * - Provisional (9 to 25), otherwise Established (26+)
 C - Centurian (100-199 games), D - Double (200-299), T - Triple (300-399), Q - Quad (400-499), V - Quintuple (500-599)

Team	Player	W	L	D	Rating
WMBAT	TENNANT,S	0	1	2	2161
	NGUYEN,T	0	0	0	2143
	FREITAG,T	2	0	1	2108
	PANNER,G	0	0	1	2096#
	WEBER,L	0	0	2	2021
	ZOLKOS,A	0	1	0	1799
	ELLICE,W	0	1	0	1769D
	VILLARREAL,B	0	0	0	1740*
	FENNESSEY,J	0	0	0	1706*
	TOLLIVER,T	0	1	0	1693*
	FRANEK,M	1	0	0	1625T
	CONNELLY,P	0	0	2	1610
	CONNELLY,A	2	1	0	1594*
	RAJSKY,J	0	0	0	1580
	HARPER,C	0	0	0	1500*
	SARNA,J	0	0	0	1365*
ZACK,K	0	0	0	800#	

穿椀洵戀

CIM"	0	0	0	1429?
------	---	---	---	-------

Rating Symbols: ? - PreCICL (0 games), # - New (1 to 8 rated games), * - Provisional (9 to 25), otherwise Established (26+)
 C - Centurian (100-199 games), D - Double (200-299), T - Triple (300-399), Q - Quad (400-499), V - Quintuple (500-599)