

# The Chicago Chess Player

The Official Bulletin of the Chicago Industrial Chess League

## **DO NOT MISS THE POST-SEASON ACTIVITIES!!**

You can win cash !!!

You can get a trophy or book !!!

You can dine out !!!

You can get a free chess lesson from a Master !!!

(Detail inside, Page 3)

**CICL OPEN TOURNAMENT – May 18<sup>th</sup>**  
**Motorola 9 AM SHARP!!!**

## CICL OFFICERS

**President Irwin Gaines** [Fermi] Gaines@fnal.gov  
 Fermilab MS 120 W: (630) 840-4022  
 P.O. Box 500 H: (630) 420-1452  
 Batavia IL 60510 Fax: (630) 840-2783

**Secretary Wayne Ellice** (Pawns) Wayne.ellice@grace.com  
 Grace Division W: (773) 838-3215  
 4099 W. 71st Street Fax (773) 838-3243  
 Chicago IL 60629

**Treasurer Len Spiegel** (Fermi) Lenny@fnal.gov  
 Fermilab MS 220 W: (630) 840-2809  
 Baravia IL 60510 H: (630) 208-4738

**Ratings Chairman Art Olsen** (Kemper)  
 714 E. Algonquin Road, #1102 aolsen14@home.com  
 Arlington Heights, IL 60005  
 FAX: to EPS OTS, G-5 at W: (847) 320-2420  
 (847) 320-4464 H: (847) 437-9819

### Bulletin/Games Editor, Webmaster

**Tom Friske** (Alumni Excaliburs) tfriske@interaccess.com  
 1035 E. Algonquin Road W: (847) 788-4315  
 Des Plaines IL 60016 H: (847) 299-1033

**Trophy Chairman Marty Franek** (Alumni Aces)  
 9044 S. 51<sup>st</sup> Avenue mjfranek@megsinet.net  
 Oaklawn IL 60453-1730 W: (312) 353-0397  
 H: (708) 636-3714

**Publicity Chairman, Pat Sajbel** POSAJBEL@uop.com  
 UOP 25 East Algonquin Road W: (847) 391-2134  
 Des Plaines, IL 60017-5017 H: (847) 506-9302

**Banquet Chairman Pablo Diaz** (Lucent Tyros)  
 Lucent Technologies w: 630-979-3014  
 1960 Lucent Lane  
 7G-417  
 Naperville, Illinois 60566-7033

## DIVISIONAL CHAIRMEN

**North Division Jim Thomson** thomson@iden.comm.mot.com  
 141 Rosewood Drive W: (847) 538-5408  
 Roselle, IL 60172 H: (630) 307-2414

**Near West Division Carl Reid** (Case)  
 2289 Grand Dr. hyde65@juno.com  
 Northbrook IL 60062 W: 773 481-7726

**East Division Jim Duffy** jim\_duffy@chi.leoburnett.com  
 152 Greenway W: (312) 220-3252  
 Streamwood, IL 60107 H: (847) 497-8141

**Far West Division Bob Buchner** (Lucent Tyros)  
 1316 Kallien Court buchner@lucent.com  
 Naperville, IL 60540 W: (630) 979-7707  
 H: (630) 428-7707

**Website** [www.tomhq.com/cicl.htm](http://www.tomhq.com/cicl.htm)

Proud Member of :



### Inside this Issue

---

2002 CICL Playoff - Details

2002 CICL Open - Details

Cash Prizes will be awarded!!

Driving Instructions and Map to Playoff/Open Site:

At Motorola, Schuamburg IL. Algonquin and Meachem Roads  
Playoff Update

Editor Comments: "Kindred Spirits"

Standings

Division Top Ten

Most Improved Player Lists

Match Results

Ratings

Games

Game Errata (for the season)

Endgame Study by Ruben Reyes

with contributions from Art Olsen, Ruben Reyes,  
Marty Franek, and Chuck Dobrovoly

## Play-Off Announcement

### 2001-02 CICL PLAYOFF INFORMATION

Rounds 2 & 3 ONLY

**Saturday, May 18, 2002 At Motorola, Schaumburg, IL**

(For Map & Driving Instructions see page 6)

**Time Control:** 45/90, then Game/60 (sudden death), non-negotiable.

**Round 2 Start: 9am sharp. No grace period.**

Remember that upper board forfeits will result in a 1 game penalty point being subtracted from that team's total game points. There is no grace period for starting clocks. When the round starts, you must decide whether to gamble that your player will show up within 1 hour, or advance the lineup and not take a chance on losing an extra 1 game penalty point. Forfeited played games will still be rated.

**Round 3 Start: 2pm,** adjustable for conditions.

**Equipment: EVERYONE should bring sets and clocks.** Match result sheets and score sheets will be provided, but bring some if you have them, in case we have a glitch.

**Dining:** Coffee and doughnuts MIGHT be provided. Stay tuned to your team's e-mail. You are welcome to either "brown bag it" or go out for lunch.

**Round 1 Results:** Please bring your match result sheet from Round 1, as well as copies of your scoresheets.

Motorola will give a copy of this season's ratings list to Motorola security for them to use as a list of persons that may attend the CICL playoffs. If anyone from your team plans to attend the playoffs and is not on the current ratings list then the tournament host, Jim Thomson will need a list of their names by Tuesday May 14th.

Jim's email address is: [thomson@eis.comm.mot.com](mailto:thomson@eis.comm.mot.com)

Also, please continue to send me the match results of the round 1 playoff matches or bring the match sheets to the Motorola playoffs on May 18th.

**I'd like to thank Jim Thomson of Motorola** for agreeing to host this year's CICL playoffs. It takes time and effort to host 60 to 80 chess players. Motorola is an ideal site for the CICL playoffs. Thanks Jim!!!

**Thank You,  
Art Olsen, CICL Ratings Chairman**

## CICL Open Announcement

The Annual Open is for ALL CICL MEMBERS not involved in the playoffs.  
(For Map & Driving Instructions see next page)

### 2001-02 CICL INDIVIDUAL TOURNAMENT INDIVIDUAL MATCHES

**May 18, 2002 At Motorola, Schaumburg, IL**

**Format: 4-Rd Swiss System.** One section for each group of 16 players.

Trophy and title of "CICL Open Champion" will be given to the top player in each section. An effort will be made to pair unrated with rated players to help establish ratings.

An anonymous donor (not the TD) has donated **cash prizes for 1st and 2nd place.**  
**(1st place = \$30, 2nd place \$20).**

If there are two sections, each section will be awarded separate prizes.

**Alternate (Match) Format:**

Individuals can instead elect to play any number of games with others players of similar rating (as available), without competing in the tournament. TD will vary opponents from round to round (if desired, and as available).

**Time Control: Game/50 (sudden death)**

**Rounds' Start Times: Approx. 9am, 11am, 1:30pm, 3:30pm.**

(Doors open at 8:00 am.)

The TD's top priority will be the CICL Playoffs.

**Registration: Advance email** registration with Art Olsen is recommended:

E-mail: aolsen14@attbi.com

**Late registration will be accepted until 8:40am.** Latecomers will be paired with other latecomers if possible, at a time control set by the TD, or may choose a half-point bye for each round missed (but not forfeited).

Motorola will get a copy of this season's ratings list to Motorola security for them to use as a list of persons that may attend the CICL playoffs. If anyone from your team plans to attend the playoffs and is not on the current ratings list then the tournament host, Jim Thomson will need a list of their names by Tuesday May 14th. Jim's email address is: thomson@eis.comm.mot.com

**Equipment: EVERYONE should bring sets and clocks.** Match result sheets and score sheets will be provided, but bring yours if you have them.

All post-season festivities begin 9AM, May 18th at the site!

**Thanks, Art Olsen**

**CICL Playoff Tournament Director**

### DRIVING INSTRUCTIONS TO MOTOROLA :

Motorola is located **just North of the Northwest Tollway (I-90)**, so choose your favorite Interstate...

**From downtown**, take I-90/I-94 West. WATCH FOR THE I-90,I-94 SPLIT!!!

Follow I-90 West to Route-53 North.

(Continue with Route-53 North instructions next page)

**Or if close to I-290**, take I-290 West and it dumps into Route-53 North.

(Continue with Route-53 North instructions next page)

**From South and South-East**, take I-294 North to I-90 West.

Follow I-90 West to Route-53 North.

(Continue with Route-53 North instructions next page)

**From West**, take I-90 East to Route-53 North.

(Continue with Route-53 North instructions next page)

**From South-West**, take I-88 East to I-355 North.

Follow I-355 North and it turns into Route-53 North.

(Continue with Route-53 North instructions next page)

**From deeper South, South-West**, take I-55 North to I-355 North.

Follow I-355 North and it turns into Route-53 North.

(Continue with Route-53 North instructions next page)

### **\*\*FROM Route-53 North .....**

(Study the following map:



**Note** the diagonal gray-green line is I-90, the Northwest Tollway )

**Exit Route 53** onto Algonquin Road (Route 62) Westbound.

**Continue on** Algonquin Road, **crossing** Meachem Road.

Motorola is on your left, but **continue on** westbound Algonquin Road.

Pass the first gate and **enter the second gate** (you're facing South now).

At guard-station inform guard you're here to play chess.

Continue South, noticing buildings at left.

**Enter building at North-West corner, marked "Door 11".**

You will check-in with guard and get a badge.

You will need to be escorted to the cafeteria.

**\*\* FESTIVITIES START 9 AM SHARP!!! \*\***

## Playoff Update

### The 8th-seed playoff Qualifiers.

The teams that will participate in the playoff for the 8th CICL playoff spot (scheduled for Thursday May 2nd) are:

- 1) Motorola Knights,
- 2) The 3rd place winner of the Far West division (Argonne Rooks)
- 3) Citadel Group. (Citadel Group must won its final match of the season against the Chicago Reader to qualify for this playoff.)

The evening found the **Motorola Knights** move on to the Playoffs

### The 1st-Round pairings.

Here are the playoff qualifiers for Round 1 of the CICL playoffs and their pairing number in parenthesis.

Qualifiers are:

|                              |                               |                                     |
|------------------------------|-------------------------------|-------------------------------------|
| North Division:              | 1st-place UOP (3)             | and 2nd-place Excaliburs (5)        |
| East Division:               | 1st-place Alumni Aces (2)     | and 2nd-place Wolverine Trading (6) |
| Near West Division:          | 1st-place Lucent Chargers (1) |                                     |
| Far West:                    | 1st-place Fermilab (4)        | and 2nd-place Lucent Tyros (7)      |
| 8 <sup>th</sup> -seed winner | Motorola Knights (8)          |                                     |

The 1st-Round Pairings are: (\* The home team is listed last \*)

|                       |                       |
|-----------------------|-----------------------|
| Excaliburs (5)        | @ Lucent Chargers (1) |
| Wolverine Trading (6) | @ UOP (3)             |
| Lucent Tyros (7)      | @ Alumni Aces (2)     |
| Motorola Knights (8)  | @ Fermilab (4)        |

The pairings were adjusted to prevent Wolverine Trading from playing the Alumni Aces in round 1 because they are both from the same division.

### Round 1 Results:

Excaliburs 4.5, Lucent Chargers 1.5  
Wolverine Trading 2, UOP 4  
Lucent Tyros 1, Alumni Aces 5  
Motorola Knights - Fermilab, May 15<sup>th</sup>

### Standings

|             |     |              |
|-------------|-----|--------------|
| Alumni Aces | 1-0 | 5.0 game pts |
| Excaliburs  | 1-0 | 4.5 game pts |
| UOP         | 1-0 | 4.0 game pts |
| Wolverines  | 0-1 | 2.0 game pts |
| Chargers    | 0-1 | 1.5 game pts |
| Tyros       | 0-1 | 1.0 game pts |



From the Editor

## “KINDRED SPIRITS”

Two years' of questions...a few months' work...a couple decades revisited... Of such were my last couple weeks!

It all started on Playoff Saturday a couple seasons back. Art Olsen and I were chatting about things in general and he posed the question “If we were to find back issues of the Bulletin, would it possible to scan them to PDF ? And store them on CD?” Many would've laughed; I'd been wondering the same and readily responded “You get them, I'll try scanning them”.

But from where would they come? I knew my teammate, Jim Brotsos, is one of the CICL originals and a bit of the historian. So I posed the question. After a incredulous look, he said “Well it's a stack this high” putting his hand about 5-feet off the floor! Hmm, a bit intimidating....the subject forgotten.

You may have noticed that, when the website was recently cleaned up, there is a message at the bottom of the list of past-season online Bulletins: “Maybe we'll get ambitious and scan stuff from the last millenium”. Or maybe you didn't.

But Marty Franek (Alumni Aces) did. Unknown to me, he had recently gotten together with Chuck Dobrovolny (Lucent Chargers) and borrowed what Chuck had... the (couple issues short) complete set since 1980. With the use of a high-speed scanner at work, Marty had been feeding the machine about half the stack when he first emailed me. I was ecstatic! But to what purpose ?

As you read this, this phase of the project is winding down. By the League Banquet, I expect to have this portion available from the website. (If you're interested in a CD, write.) Is there someone who can fill in the decades before the 1980 season ?

Even as I progressed through the conversion to PDF, it was fascinating to review past issues. The board meetings are amply covered, giving a narrative of many of the decisions we've recently questioned. Teams have come and gone...players forgotten revisited.

But it was that first issue, October 1980, and its Editor, Don Graft, whom I'll probably never meet, that knocked me out with a statement that completely reflected my own attitude:

“When I heard no editor could be found for the CICL bulletin, I felt that, according to the dictates of my chess conscience, I was required to volunteer for the job. My offer was accepted and I now find myself in the position of being your editor.

My main goal for the Bulletin will be to make it less a special-purpose organ of the CICL designed to communicate results, ratings, and official business, and more a general-interest chess magazine. Of course, the emphasis will still be on the CICL, but by widening its scope, the Bulletin will, it is hoped, attract a wider readership outside the CICL, thereby providing greater visibility for the CICL”.

The Annual Season Yearbook will be presented next month (the June issue) and will feature the cover from that October 1980 issue, in his honor. I hope to reprint back articles in the coming season.

**Tom Friske, Editor**

## FINAL STANDINGS - Regular Season

### NEAR WEST DIVISION 04-28-2002

| TEAM NAME              | W  | L | D | GAME   | MATCH  | PCT   |
|------------------------|----|---|---|--------|--------|-------|
|                        |    |   |   | POINTS | POINTS |       |
| LUCENT TECH. CHARGERS  | 12 | 0 | 0 | 47.5   | 12.0   | 1.000 |
| PAWNS                  | 5  | 5 | 2 | 37.0   | 6.0    | 0.500 |
| COOK CO. DEPT. OF CORR | 3  | 8 | 1 | 31.0   | 3.5    | 0.292 |
| CASE                   | 1  | 8 | 3 | 28.5   | 2.5    | 0.208 |

### FAR WEST DIVISION 04-28-2002

| TEAM NAME            | W | L | D | GAME   | MATCH  | PCT   |
|----------------------|---|---|---|--------|--------|-------|
|                      |   |   |   | POINTS | POINTS |       |
| FERMILAB             | 6 | 4 | 2 | 37.5   | 7.0    | 0.583 |
| LUCENT TECH. TYROS   | 5 | 4 | 3 | 35.0   | 6.5    | 0.542 |
| ARGONNE ROOKS        | 4 | 5 | 3 | 38.5   | 5.5    | 0.458 |
| LUCENT TECH. DRAGONS | 4 | 6 | 2 | 33.0   | 5.0    | 0.417 |

### NORTH DIVISION 04-28-2002

| TEAM NAME        | W | L | D | GAME   | MATCH  | PCT   |
|------------------|---|---|---|--------|--------|-------|
|                  |   |   |   | POINTS | POINTS |       |
| UOP              | 8 | 1 | 1 | 37.0   | 8.5    | 0.850 |
| EXCALIBURS       | 7 | 1 | 2 | 41.0   | 8.0    | 0.800 |
| MOTOROLA KNIGHTS | 4 | 3 | 3 | 35.5   | 5.5    | 0.550 |
| MOTOROLA KINGS   | 3 | 5 | 2 | 29.5   | 4.0    | 0.400 |
| KEMPER INSURANCE | 2 | 6 | 2 | 22.5   | 3.0    | 0.300 |
| NORTHROP         | 1 | 9 | 0 | 14.5   | 1.0    | 0.100 |

### EAST DIVISION 04-28-2002

| TEAM NAME         | W | L | D | GAME   | MATCH  | PCT   |
|-------------------|---|---|---|--------|--------|-------|
|                   |   |   |   | POINTS | POINTS |       |
| ALUMNI ACES       | 6 | 0 | 2 | 39.5   | 7.0    | 0.875 |
| WOLVERINE TRADING | 4 | 1 | 3 | 29.0   | 5.5    | 0.688 |
| CITADEL GROUP     | 4 | 3 | 1 | 22.0   | 4.5    | 0.563 |
| THE READER        | 2 | 6 | 0 | 10.0   | 2.0    | 0.250 |
| LEO BURNETT       | 1 | 7 | 0 | 14.5   | 1.0    | 0.125 |

## Top Ten / Most Improved Players

### NEAR WEST DIVISION TOP TEN

|               |       |       |
|---------------|-------|-------|
| JAKSTAS, K    | PAWNS | 2129C |
| WILLIAMS, K   | CCDOC | 2098  |
| WARREN, J     | CHRGR | 2076Q |
| MARCOWKA, R   | CHRGR | 1996D |
| STINSON, M    | CHRGR | 1952C |
| ELLICE, W     | PAWNS | 1873  |
| FRAATS, D     | CASE  | 1869C |
| DOBROVOLNY, C | CHRGR | 1868C |
| KALE, S       | CASE  | 1867C |
| ROSLEY, D     | CHRGR | 1790  |

### FAR WEST DIVISION TOP TEN

|              |       |       |
|--------------|-------|-------|
| STEIN, P     | TYROS | 2335  |
| BEZZUBOV, V  | FERMI | 2242  |
| DORIGO, T    | FERMI | 2168  |
| BENEDEK, R   | ROOKS | 2119D |
| KOZLOVSKY, M | FERMI | 2092  |
| TEGEL, F     | DRGNS | 2074T |
| HILL, R      | ROOKS | 2036C |
| SPIEGEL, L   | FERMI | 2014D |
| DIAZ, P      | TYROS | 1983C |
| LUDWIG, T    | DRGNS | 1949C |

### NORTH DIVISION TOP TEN

|               |       |       |
|---------------|-------|-------|
| WOLF, D       | MKING | 2320  |
| INUMERABLE, F | EXCLB | 2289C |
| STEVANOVIC, M | UOP   | 2246D |
| MORRIS, R     | MKNGT | 2173  |
| FRIDMAN, Y    | MKNGT | 2081  |
| WALLACH, C    | MKING | 2049  |
| BUERGER, E    | UOP   | 2036T |
| FRISKE, T     | EXCLB | 2029C |
| SIWEK, M      | KEMPR | 2002C |
| MELNIKOV, I   | MKING | 1995  |

### EAST DIVISION TOP TEN

|               |       |       |
|---------------|-------|-------|
| VOLYNSKIY, G  | WOLVE | 2547* |
| REYES, R      | ALUMN | 2286D |
| BENESA, A     | ALUMN | 2224  |
| JASAITIS, A   | WOLVE | 2131D |
| LANG, R       | READR | 2076  |
| GAZMEN, E     | ALUMN | 2054  |
| SANTIAGO, T   | ALUMN | 2033  |
| SAGALOVSKY, L | WOLVE | 1985  |
| CZERNIECKI, A | ALUMN | 1948D |
| ALLEN, H      | ALUMN | 1947  |

### MOST IMPROVED PLAYERS

|               |       |     |
|---------------|-------|-----|
| SALERNO, S    | DRGNS | 129 |
| MOSSBRIDGE, A | KEMPR | 99  |
| WALLACH, C    | MKING | 90  |
| SUAREZ, E     | ROOKS | 79  |
| HILL, R       | ROOKS | 78  |
| VIGANTS, A    | NORTH | 73  |
| GOMEZ, G      | FERMI | 71  |
| DOBROVOLNY, C | CHRGR | 66  |
| TRINIDAD, P   | CCDOC | 62  |
| ROJO, V       | CCDOC | 60  |

## Match Results

### 11-APR-02 EXCALIBURS

5.5 UOP

.5

ROUND 10

| BD |               | RATINGS | SCORE |             | RATINGS | SCORE |
|----|---------------|---------|-------|-------------|---------|-------|
| 1  | INUMERABLE, F | 2283 6  | 1     | BUERGER, E  | 2040 -4 | 0     |
| 2  | FRISKE, T     | 2018 11 | 1     | BOLDINGH, E | 1935-11 | 0     |
| 3  | SOLLANO, E    | 1968 15 | 1     | SACKS, D    | 1839-15 | 0     |
| 4  | KOGAN, G      | 1825 13 | 1     | LECHNICK, J | 1784-20 | 0     |
| 5  | SULLIVAN, J   | 1735 4  | .5    | SAJBEL, P   | 1819 -4 | .5    |
| 6  | BROTSOS, J    | 1523 21 | 1     | MICKLICH, F | 1660-21 | 0     |

### 18-APR-02 NORTHROP

1

MOTOROLA KNIGHTS

5

ROUND 10

| BD |            | RATINGS | SCORE |               | RATINGS | SCORE |
|----|------------|---------|-------|---------------|---------|-------|
| 1  | WALKER, A  | 1769 -7 | 0     | FRIDMAN, Y    | 2074 7  | 1     |
| 2  | VIGANTS, A | 1669 -6 | 0     | THOMSON, J    | 1927 8  | 1     |
| 3  | BURIAN, D  | 1584 -4 | 0     | SAMELSON, C   | 1935 4  | 1     |
| 4  | GOTHIER, S | 1398 -6 | 0     | AUGSBURGER, L | 1728 4  | 1     |
| 5  | ELEK, G    | 1059 -1 | 0     | BALICKI, J    | 1677 1  | 1     |
| 6  | GOTHIER, N | 0 0     | 1F    |               | 0 0     | 0F    |

### 09-APR-02 PAWNS

2.5

LUCENT TECH. CHARGERS

3.5

ROUND 11

| BD |              | RATINGS | SCORE |               | RATINGS | SCORE |
|----|--------------|---------|-------|---------------|---------|-------|
| 1  | JAKSTAS, K   | 2129 0  | 1F    | MARCOWKA, R   | 1992 0  | 0F    |
| 2  | ELLICE, W    | 1888-25 | 0     | DOBROVOLNY, C | 1846 17 | 1     |
| 3  | FABIJONAS, R | 1684 11 | 1     | RADAVICIUS, E | 1601-11 | 0     |
| 4  | O'DELL, DW   | 1491-16 | 0     | STAMM, V      | 1477 16 | 1     |
| 5  | MIKULECKY, B | 1494 -4 | .5    | LAForge, W    | 1392 7  | .5    |
| 6  |              | 0 0     | 0F    | DOBR, K       | 1457 0  | 1F    |

### 10-APR-02 CASE

3

COOK CO. DEPT. OF CORR

3

ROUND 11

| BD |                | RATINGS | SCORE |               | RATINGS | SCORE     |
|----|----------------|---------|-------|---------------|---------|-----------|
| 1  | KALE, S        | 1867 0  | 0F    | WILLIAMS, K   | 2098 0  | 1F        |
| 2  | FRAATS, D      | 1851 10 | 1     | ALEXANDER, W  | 1723-15 | 0         |
| 3  | WHITE, H       | 1698-22 | 0     | ROJO, V       | 1534 32 | 1         |
| 4  | KLINEFELTER, H | 1588 8  | 1     | HALL, A       | 1406-12 | 0         |
| 5  | REID, C        | 1518 10 | 1     | APPLEBERRY, T | 1391-15 | 0         |
| 6  | ZOELLNER, J    | 1375-16 | 0     | JACKSON, S    | 1347 24 | 1         |
| 7  | KANAS, W       | 1248-26 | 0     | TRINIDAD, P   | 946 38  | 1         |
| 8  | REID, C        | 1528 17 | 1     | DYCKOWSKI, R  | 1565-25 | 0 (CASE ) |

## Match Results

|                  |                               |          |              |                   |
|------------------|-------------------------------|----------|--------------|-------------------|
| <b>22-APR-02</b> | <b>COOK CO. DEPT. OF CORR</b> | <b>5</b> | <b>PAWNS</b> | <b>1</b>          |
| ROUND 12         |                               |          |              |                   |
| BD               | RATINGS                       | SCORE    | RATINGS      | SCORE             |
| 1 SEATON,E       | 1655-10                       | 0        | ELLICE,W     | 1863 10 1         |
| 2 ALEXANDER,W    | 1708 22                       | 1        | FABIJONAS,R  | 1695-14 0         |
| 3 JACKSON,S      | 1371 0                        | 1        | ABDALLAH,D   | 0 0 0             |
| 4 APPLEBERRY,T   | 1376 30                       | 1        | MIKULECKY,B  | 1490-20 0         |
| 5 MCGEE,L        | 1066 0                        | 1F       |              | 0 0 0F            |
| 6 TRINIDAD,P     | 984 0                         | 1F       |              | 0 0 0F            |
| 7 TRINIDAD,P     | 984 32                        | 1        | SANDEFUR,B   | 1142-32 0 (CCDOC) |

|                  |                              |            |               |            |
|------------------|------------------------------|------------|---------------|------------|
| <b>22-APR-02</b> | <b>LUCENT TECH. CHARGERS</b> | <b>4.5</b> | <b>CASE</b>   | <b>1.5</b> |
| ROUND 12         |                              |            |               |            |
| BD               | RATINGS                      | SCORE      | RATINGS       | SCORE      |
| 1 WARREN,J       | 2082 -6                      | .5         | FRAATS,D      | 1861 8 .5  |
| 2 MARCOWKA,R     | 1992 4                       | 1          | WHITE,H       | 1676 -4 0  |
| 3 DOBROVOLNY,C   | 1863 5                       | 1          | KLINEFELTER,H | 1596 -5 0  |
| 4 THOMAS,J       | 1527 16                      | 1          | DYCKOWSKI,R   | 1540-23 0  |
| 5 STAMM,V        | 1493 2                       | .5         | REID,C        | 1545 -2 .5 |
| 6 DOBR,K         | 1457 -3                      | .5         | ZOELLNER,J    | 1359 4 .5  |
| 7 LAFORGE,W      | 1399 0                       | 1F         | KANAS,W       | 1222 0 0F  |

|                  |                           |            |                 |            |
|------------------|---------------------------|------------|-----------------|------------|
| <b>16-APR-02</b> | <b>LUCENT TECH. TYROS</b> | <b>4.5</b> | <b>FERMILAB</b> | <b>1.5</b> |
| ROUND 12         |                           |            |                 |            |
| BD               | RATINGS                   | SCORE      | RATINGS         | SCORE      |
| 1 STEIN,P        | 2316 19                   | 1          | BEZZUBOV,V      | 2261-19 0  |
| 2 DIAZ,P         | 1991 -8                   | 0          | DORIGO,T        | 2155 13 1  |
| 3 STOLTZ,B       | 1868 22                   | 1          | SPIEGEL,L       | 2036-22 0  |
| 4 GUIO,J         | 1908 5                    | 1          | CISKO,G         | 1608 -7 0  |
| 5 BUCHNER,R      | 1757-21                   | .5         | CEASE,H         | 1222 21 .5 |
| 6 HAHNE,D        | 1646 0                    | 1          | MOEHS,D         | 0 0 0      |

|                  |                      |            |                             |           |
|------------------|----------------------|------------|-----------------------------|-----------|
| <b>23-APR-02</b> | <b>ARGONNE ROOKS</b> | <b>5.5</b> | <b>LUCENT TECH. DRAGONS</b> | <b>.5</b> |
| ROUND 12         |                      |            |                             |           |
| BD               | RATINGS              | SCORE      | RATINGS                     | SCORE     |
| 1 BENEDEK,R      | 2105 14              | 1          | TEGEL,F                     | 2083 -9 0 |
| 2 HILL,R         | 2024 12              | 1          | LUDWIG,T                    | 1961-12 0 |
| 3 SUAREZ,E       | 1910 16              | 1          | ALTSHULLER,D                | 1808-16 0 |
| 4 BAURAC,D       | 1738 8               | 1          | EUSTACE,D                   | 1556 -8 0 |
| 5 DECMAN,S       | 1563 0               | 1F         | SALERNO,S                   | 1426 0 0F |
| 6 GRUDZINSKI,J   | 1423 -4              | .5         | BREYER,A                    | 1367 4 .5 |

## Match Results

### 11-APR-02 LEO BURNETT

ROUND 10

| BD            | RATINGS | SCORE |            | RATINGS | SCORE |
|---------------|---------|-------|------------|---------|-------|
| 1 DUFFY,J     | 1743    | -7 .5 | KRATKA,M   | 1633    | 7 .5  |
| 2 BANNON,B    | 1242    | -9 0  | LANSING,J  | 1494    | 9 1   |
| 3 FULKERSON,R | 1381    | 0 1   | WILLIAMS,S | 0       | 0 0   |
| 4             | 0       | 0 0F  |            | 0       | 0 1F  |
| 5             | 0       | 0 0F  |            | 0       | 0 1F  |
| 6             | 0       | 0 0F  |            | 0       | 0 1F  |

### 1.5 WOLVERINE TRADING

4.5

### 17-APR-02 LEO BURNETT

ROUND 8

| BD            | RATINGS | SCORE |            | RATINGS | SCORE |
|---------------|---------|-------|------------|---------|-------|
| 1 DUFFY,J     | 1736    | 10 .5 | HAYHURST,W | 1888-10 | .5    |
| 2 FULKERSON,R | 1381    | 0 0   | HTOO,M     | 0       | 0 1   |
| 3 BANNON,B    | 1233    | -2 0  | SENSAT,J   | 1776    | 2 1   |
| 4 DOMINGUEZ,R | 1319    | 0 1   | SANDLER,M  | 0       | 0 0   |
| 5 SAWIN,B     | 1189    | 0 0   | FOLEY,M    | 0       | 0 1   |
| 6             | 0       | 0 0F  | MAGEE,M    | 0       | 0 1F  |

### 1.5 CITADEL GROUP

4.5

### 25-APR-02 CITADEL GROUP

ROUND 10

| BD           | RATINGS | SCORE |            | RATINGS | SCORE |
|--------------|---------|-------|------------|---------|-------|
| 1 MORENZ,P   | 0       | 0 1   | LANG,R     | 2076    | 0 0   |
| 2 HAYHURST,W | 1878-31 | 0     | BRASWELL,I | 1737    | 31 1  |
| 3 HTOO,M     | 0       | 0 1   | SULLIVAN,C | 1511    | 0 0   |
| 4 SENSAT,J   | 1778    | 1 1   | MARSH,M    | 1167    | -1 0  |
| 5 MAGEE,M    | 0       | 0 .5  | BROIHIER,M | 1119    | 0 .5  |
| 6 FOLEY,M    | 1350    | 0 1F  |            | 0       | 0 0F  |

### 4.5 THE READER

1.5

## Ratings as of April 28th

| NAME            | TEAM  | W | L | D | RATING | NAME            | TEAM  | W  | L | D | RATING |
|-----------------|-------|---|---|---|--------|-----------------|-------|----|---|---|--------|
| ABDALLAH, D     | PAWNS | 3 | 2 | 0 | 1512#  | DITTMER, M      | FERMI | 1  | 1 | 2 | 0000/4 |
| AILES, T        | FERMI | 3 | 2 | 0 | 1547   | DOBR, K         | CHRGR | 8  | 1 | 2 | 1454Q  |
| ALBERS, M       | KEMPR | 0 | 1 | 0 | 0000/0 | DOBROVOLNY, C   | CHRGR | 10 | 1 | 1 | 1868C  |
| ALEXANDER, W    | CCDOC | 5 | 5 | 1 | 1730   | DOMINGUEZ, R    | LBURN | 3  | 1 | 2 | 1319*  |
| ALFONSO, E      | MKNGT | 3 | 1 | 1 | 1595   | DORIGO, T       | FERMI | 1  | 0 | 2 | 2168   |
| ALLEN, H        | ALUMN | 5 | 1 | 0 | 1947   | DUBILIRER, G    | MKING | 1  | 1 | 0 | 0000/2 |
| ALLEN, R        | UOP   | 0 | 1 | 0 | 1179#  | DUFFY, J        | LBURN | 1  | 3 | 3 | 1746   |
| ALMAULA, J      | MKING | 0 | 0 | 1 | 1288#  | DUNCAN, M       | PAWNS | 0  | 0 | 0 | 0000/1 |
| ALTSHULLER, D   | DRGNS | 5 | 4 | 3 | 1792   | DYCKOWSKI, R    | CASE  | 0  | 2 | 0 | 1517   |
| ANDRESEN, T     | EXCLB | 0 | 0 | 0 | 1735C  | EAMAN, R        | LBURN | 0  | 3 | 2 | 1836   |
| APPLEBERRY, T   | CCDOC | 6 | 5 | 0 | 1406   | EASTON, R       | KEMPR | 3  | 3 | 0 | 1769   |
| APTEKAR, S      | STFRD | 0 | 0 | 0 | 1607#  | ELEK, G         | NORTH | 1  | 6 | 0 | 1058   |
| AUGSBURGER, L   | MKNGT | 4 | 2 | 2 | 1732C  | ELLICE, W       | PAWNS | 5  | 4 | 2 | 1873   |
| BALICKI, J      | MKNGT | 6 | 4 | 3 | 1678   | ERIKSON, M      | ROOKS | 0  | 0 | 0 | 0000/0 |
| BANNON, B       | LBURN | 0 | 7 | 1 | 1231   | EUSTACE, D      | DRGNS | 4  | 7 | 1 | 1548C  |
| BARGERSTOCK, D  | STFRD | 0 | 0 | 0 | 1783C  | FABIJONAS, R    | PAWNS | 4  | 3 | 3 | 1681D  |
| BARNARD, G      | CITGR | 1 | 1 | 0 | 1179*  | FALCON, L       | CCDOC | 2  | 0 | 0 | 1203#  |
| BARTHOLF, P     | TRDLK | 0 | 0 | 0 | 0000/2 | FINKELSHTEYN, S | WOLVE | 0  | 1 | 0 | 0000/1 |
| BAURAC, D       | ROOKS | 4 | 3 | 5 | 1746D  | FITZGERALD, M   | FERMI | 0  | 0 | 0 | 1244*  |
| BENEDEK, R      | ROOKS | 5 | 3 | 2 | 2119D  | FOLEY, M        | CITGR | 3  | 3 | 0 | 1350#  |
| BENESA, A       | ALUMN | 5 | 2 | 1 | 2224   | FOREMAN, T      | TRDLK | 0  | 0 | 0 | 0000/1 |
| BEZZUBOV, V     | FERMI | 0 | 2 | 3 | 2242   | FRAATS, D       | CASE  | 3  | 4 | 4 | 1869C  |
| BLACKMON, E     | DRGNS | 1 | 3 | 0 | 1718C  | FRANEK, M       | ALUMN | 3  | 0 | 2 | 1723D  |
| BOLDINGH, E     | UOP   | 6 | 1 | 2 | 1924C  | FRANK, M        | ALUMN | 5  | 0 | 1 | 1756   |
| BOLLAPRAGADA, S | MKING | 0 | 4 | 0 | 1516#  | FRIDMAN, Y      | MKNGT | 4  | 4 | 2 | 2081   |
| BRASWELL, I     | READR | 1 | 1 | 0 | 1768   | FRISKE, T       | EXCLB | 6  | 1 | 3 | 2029C  |
| BRAUNDEMEIER, B | KEMPR | 0 | 0 | 0 | 1249#  | FULKERSON, R    | LBURN | 3  | 4 | 0 | 1381*  |
| BREYER, A       | DRGNS | 3 | 4 | 1 | 1371#  | GAINES, I       | FERMI | 4  | 3 | 2 | 1776D  |
| BROIHIER, M     | READR | 0 | 4 | 2 | 1119   | GALINSKY, V     | TRDLK | 0  | 0 | 0 | 0000/0 |
| BROTSOS, J      | EXCLB | 5 | 1 | 1 | 1544D  | GARCIA, J       | ROOKS | 0  | 0 | 0 | 1227*  |
| BUCHNER, R      | TYROS | 3 | 3 | 4 | 1736   | GARDNER, M      | NORTH | 1  | 2 | 0 | 1214*  |
| BUERGER, E      | UOP   | 4 | 4 | 2 | 2036T  | GASTON, K       | CASE  | 0  | 0 | 0 | 1251   |
| BURIAN, D       | NORTH | 1 | 6 | 3 | 1580C  | GAZMEN, E       | ALUMN | 5  | 1 | 0 | 2054   |
| BUTLER, E       | ROOKS | 4 | 4 | 0 | 1270*  | GOKHALE, P      | MKING | 0  | 0 | 0 | 0000/0 |
| CARTER, L       | READR | 1 | 2 | 0 | 1499C  | GOLCHERT, B     | ROOKS | 0  | 1 | 0 | 1875   |
| CASTILLA, H     | FERMI | 1 | 0 | 0 | 0000/2 | GOLLA, R        | ALUMN | 1  | 0 | 0 | 1813D  |
| CEASE, H        | FERMI | 0 | 0 | 1 | 1243*  | GOMEZ, G        | FERMI | 4  | 1 | 2 | 1752   |
| CHIN, M         | KEMPR | 0 | 0 | 0 | 0000/0 | GONCHAROFF, N   | MKING | 2  | 4 | 4 | 1679Q  |
| CHRISTIAN, R    | DRGNS | 0 | 0 | 0 | 1753C  | GOTHIER, N      | NORTH | 1  | 2 | 0 | 0000/2 |
| CHRISTOTEK, L   | FERMI | 0 | 1 | 0 | 0000/1 | GOTHIER, S      | NORTH | 0  | 6 | 3 | 1392*  |
| CISKO, G        | FERMI | 0 | 1 | 0 | 1601   | GOULET, W       | MKNGT | 1  | 0 | 0 | 0000/0 |
| COLLINS, G      | DRGNS | 0 | 1 | 0 | 0000/0 | GRANT, M        | STFRD | 0  | 0 | 0 | 0000/1 |
| CUMMUTA, P      | KEMPR | 0 | 2 | 0 | 1469C  | GRUDZINSKI, J   | ROOKS | 1  | 1 | 1 | 1419*  |
| CVETKOVICH, R   | STFRD | 0 | 0 | 0 | 0000/7 | GRYPARIS, J     | MKING | 5  | 4 | 0 | 1479C  |
| CYGAN, J        | MKING | 3 | 1 | 0 | 1793   | GRYZIAK, L      | STFRD | 0  | 0 | 0 | 0000/2 |
| CZERNIECKI, A   | ALUMN | 1 | 1 | 1 | 1948D  | GUIO, J         | TYROS | 2  | 5 | 2 | 1913C  |
| DAVIDSON, M     | ALUMN | 2 | 0 | 0 | 1612   | HAHNE, D        | TYROS | 6  | 3 | 0 | 1646C  |
| DECMAN, S       | ROOKS | 2 | 4 | 0 | 1563D  | HALL, A         | CCDOC | 0  | 6 | 1 | 1394   |
| DIAZ, P         | TYROS | 3 | 7 | 2 | 1983C  | HANDSCHKE, D    | KEMPR | 0  | 0 | 0 | 0000/2 |
| DILLON, M       | STFRD | 0 | 0 | 0 | 0000/2 | HAYHURST, W     | CITGR | 1  | 5 | 1 | 1847   |

## Ratings as of April 28th

| NAME           | TEAM  | W | L | D | RATING | NAME          | TEAM  | W | L | D | RATING |
|----------------|-------|---|---|---|--------|---------------|-------|---|---|---|--------|
| HELPER, A      | STFRD | 0 | 0 | 0 | 0000/8 | MCKINNEY, T   | KEMPR | 0 | 2 | 0 | 1217   |
| HELGESON, M    | WOLVE | 0 | 1 | 0 | 0000/1 | MELNIKOV, I   | MKING | 1 | 5 | 3 | 1995   |
| HERREN, R      | MKNGT | 0 | 0 | 0 | 0000/2 | MICKLICH, F   | UOP   | 5 | 3 | 1 | 1639D  |
| HILL, R        | ROOKS | 9 | 2 | 1 | 2036C  | MIKULECKY, B  | PAWNS | 3 | 4 | 4 | 1470C  |
| HIRSCH, D      | NORTH | 0 | 2 | 0 | 0000/2 | MILLER, K     | STFRD | 0 | 0 | 0 | 0000/1 |
| HTOO, M        | CITGR | 4 | 1 | 0 | 0000/4 | MITMAN, S     | STFRD | 0 | 0 | 0 | 0000/1 |
| HUGHES, N      | KEMPR | 0 | 4 | 1 | 1735C  | MOEHS, D      | FERMI | 1 | 1 | 0 | 0000/2 |
| HUNTER, M      | CCDOC | 1 | 0 | 0 | 0000/0 | MOLINA, J     | FERMI | 2 | 3 | 2 | 1560#  |
| INUMERABLE, F  | EXCLB | 6 | 0 | 2 | 2289C  | MORENZ, P     | CITGR | 1 | 0 | 0 | 0000/1 |
| JACKSON, S     | CCDOC | 2 | 7 | 2 | 1371   | MORRIS, R     | MKNGT | 0 | 0 | 0 | 2173   |
| JAKSTAS, K     | PAWNS | 4 | 0 | 5 | 2129C  | MOSSBRIDGE, A | KEMPR | 5 | 1 | 1 | 1755   |
| JASAITIS, A    | WOLVE | 5 | 1 | 0 | 2131D  | MOTTA, H      | FERMI | 0 | 1 | 0 | 1872   |
| KALE, S        | CASE  | 0 | 2 | 1 | 1867C  | MYERS, E      | KEMPR | 1 | 1 | 0 | 0000/1 |
| KANAS, W       | CASE  | 1 | 7 | 0 | 1222C  | NEU, E        | CCDOC | 1 | 0 | 0 | 0000/1 |
| KARANDIKAR, S  | MKNGT | 4 | 3 | 0 | 1576*  | NOEL, F       | CCDOC | 1 | 1 | 0 | 0000/3 |
| KARPIERZ, J    | TYROS | 0 | 1 | 1 | 1264   | O'DELL, DW    | PAWNS | 5 | 4 | 1 | 1475C  |
| KAUFFMANN, T   | WOLVE | 1 | 0 | 0 | 0000/0 | OELHAFEN, A   | EXCLB | 1 | 2 | 0 | 1252   |
| KESTNER, M     | DRGNS | 0 | 0 | 0 | 1431   | OGASAWARA, L  | DRGNS | 0 | 0 | 0 | 1823C  |
| KIERSCH, M     | READR | 0 | 0 | 0 | 0000/3 | OLEARY, R     | WOLVE | 0 | 1 | 0 | 0000/1 |
| KIM, J         | TRDLK | 0 | 0 | 0 | 0000/2 | OLSEN, A      | KEMPR | 3 | 5 | 2 | 1580C  |
| KISH, C        | CITGR | 0 | 1 | 0 | 0000/1 | OTTE, R       | WOLVE | 0 | 2 | 0 | 0000/1 |
| KLINEFELTER, H | CASE  | 3 | 4 | 3 | 1591C  | PARAOAN, E    | BKAMI | 0 | 0 | 0 | 1643C  |
| KOGAN, G       | EXCLB | 6 | 1 | 2 | 1838C  | PATEL, SU     | CITGR | 0 | 1 | 0 | 0000/1 |
| KOSMICKE, J    | STFRD | 0 | 0 | 0 | 0000/1 | PEHAS, A      | DRGNS | 2 | 0 | 2 | 1931C  |
| KOZLOVSKY, M   | FERMI | 1 | 0 | 0 | 2092   | PERKINS, D    | CCDOC | 0 | 0 | 0 | 1663#  |
| KRAS, T        | BKAMI | 0 | 0 | 0 | 2151   | PHELPS, D     | MKNGT | 2 | 1 | 1 | 1169*  |
| KRATKA, M      | WOLVE | 3 | 3 | 2 | 1640*  | PIPARIA, J    | MKING | 2 | 3 | 3 | 1840   |
| KREMPETZ, K    | FERMI | 0 | 0 | 0 | 0000/2 | PLEASANCE, M  | CCDOC | 0 | 1 | 0 | 0000/0 |
| KUBIT, K       | NORTH | 0 | 3 | 0 | 0000/3 | PODOKSIK, E   | CITGR | 1 | 1 | 0 | 1280   |
| LAForge, W     | CHRGR | 3 | 1 | 1 | 1399   | RABINOVICH, E | MKING | 2 | 3 | 1 | 1306   |
| LAMBIRIS, J    | KEMPR | 2 | 0 | 0 | 1453   | RADAVICIUS, E | CHRGR | 1 | 3 | 1 | 1590D  |
| LANG, R        | READR | 0 | 3 | 3 | 2076   | RAUCHMAN, M   | WOLVE | 2 | 1 | 0 | 0000/2 |
| LANSING, J     | WOLVE | 4 | 1 | 1 | 1503   | REID, C       | CASE  | 7 | 3 | 2 | 1543C  |
| LARSEN, B      | KEMPR | 0 | 1 | 0 | 0000/1 | RENDE, D      | UOP   | 0 | 0 | 0 | 1631*  |
| LECHNICK, J    | UOP   | 4 | 3 | 2 | 1764   | REYES, R      | ALUMN | 0 | 0 | 0 | 2286D  |
| LEONG, G       | KEMPR | 1 | 4 | 1 | 1961C  | RIFFLE, D     | FERMI | 0 | 0 | 0 | 0000/2 |
| LITTLE, C      | READR | 1 | 2 | 0 | 1275   | ROBB, D       | TRDLK | 0 | 0 | 0 | 0000/1 |
| LITVINAS, A    | ALUMN | 0 | 0 | 0 | 1655D  | ROGERS, N     | READR | 1 | 2 | 0 | 1916   |
| LOHJA, N       | NORTH | 0 | 0 | 0 | 0000/4 | ROJO, V       | CCDOC | 4 | 2 | 1 | 1566   |
| LOSOFF, A      | BKAMI | 0 | 0 | 0 | 1863C  | ROSLEY, D     | CHRGR | 0 | 0 | 0 | 1790   |
| LOWRY, D       | STFRD | 0 | 0 | 0 | 0000/3 | ROSZKOWSKI, D | KEMPR | 0 | 7 | 0 | 0000/1 |
| LUDWIG, T      | DRGNS | 1 | 5 | 3 | 1949C  | RZESZUTKO, R  | ALUMN | 1 | 0 | 0 | 1905C  |
| MAGEE, M       | CITGR | 1 | 1 | 1 | 0000/3 | SACKS, D      | UOP   | 2 | 1 | 1 | 1824   |
| MANN, D        | CITGR | 0 | 1 | 0 | 0000/1 | SAGALOVSKY, L | WOLVE | 4 | 1 | 1 | 1985   |
| MARCOWKA, R    | CHRGR | 6 | 3 | 1 | 1996D  | SAJBEL, P     | UOP   | 0 | 3 | 2 | 1815C  |
| MARSH, M       | READR | 1 | 4 | 1 | 1166   | SALERNO, S    | DRGNS | 4 | 1 | 4 | 1426*  |
| MARSHALL, K    | MKNGT | 5 | 2 | 1 | 1396*  | SAMELSON, C   | MKNGT | 4 | 3 | 0 | 1939D  |
| MCCARTHY, D    | CHRGR | 0 | 0 | 0 | 1754   | SANDEFUR, B   | CCDOC | 0 | 3 | 0 | 1110*  |
| MC GEE, L      | CCDOC | 3 | 3 | 0 | 1066*  | SANDLER, M    | CITGR | 0 | 4 | 0 | 0000/3 |
| MCKAY, P       | PAWNS | 0 | 0 | 0 | 1406*  | SANTIAGO, T   | ALUMN | 5 | 0 | 2 | 2033   |



# The Chicago Chess Player

May 2002

Ratings as of April 28th

| NAME         | TEAM  | W | L | D | RATING | NAME        | TEAM  | W | L | D | RATING |
|--------------|-------|---|---|---|--------|-------------|-------|---|---|---|--------|
| SATTERLEE,D  | CASE  | 2 | 1 | 1 | 1588D  | SUERTH,F    | EXCLB | 3 | 2 | 0 | 1508C  |
| SAVCIC,V     | TYROS | 2 | 2 | 0 | 1116*  | SULLIVAN,C  | READR | 3 | 5 | 0 | 1511   |
| SAWIN,B      | LBURN | 1 | 3 | 1 | 1189*  | SULLIVAN,J  | EXCLB | 3 | 5 | 2 | 1739D  |
| SCHOONOVER,M | UOP   | 0 | 0 | 0 | 1307*  | TEGEL,F     | DRGNS | 4 | 4 | 4 | 2074T  |
| SCHULTZ,R    | FERMI | 1 | 5 | 0 | 1241*  | THOMAS,G    | TYROS | 1 | 1 | 0 | 1563C  |
| SEATON,E     | CCDOC | 0 | 7 | 1 | 1645   | THOMAS,J    | CHRGR | 4 | 4 | 0 | 1543D  |
| SEDA,J       | CITGR | 0 | 2 | 0 | 0000/2 | THOMSON,J   | MKNGT | 7 | 3 | 0 | 1935   |
| SENSAT,J     | CITGR | 4 | 4 | 0 | 1779#  | TOERNER,G   | STFRD | 0 | 0 | 0 | 0000/0 |
| SERRANO,B    | PAWNS | 0 | 0 | 0 | 1438#  | TRINIDAD,P  | CCDOC | 3 | 3 | 0 | 1016*  |
| SHALABI,M    | PAWNS | 1 | 2 | 1 | 0000/4 | TRUFANOV,D  | UOP   | 1 | 0 | 0 | 1566#  |
| SHIREY,S     | KEMPR | 0 | 0 | 0 | 0000/4 | VALDEZ,C    | TYROS | 0 | 5 | 0 | 1418*  |
| SIEGEL,R     | BKAMI | 0 | 0 | 0 | 1490C  | VAN ZILE,C  | UOP   | 4 | 1 | 1 | 1345   |
| SITAR,K      | BKAMI | 0 | 0 | 0 | 1563   | VENSKE,D    | READR | 1 | 1 | 0 | 1729   |
| SIWEK,M      | KEMPR | 2 | 3 | 4 | 2002C  | VIGANTS,A   | NORTH | 4 | 6 | 0 | 1663C  |
| SMITH,BR     | TYROS | 1 | 0 | 5 | 1632C  | VOLYNSKIY,G | WOLVE | 4 | 0 | 0 | 2547*  |
| SMITH,JO     | TRDLK | 0 | 0 | 0 | 0000/5 | VORA,C      | STFRD | 0 | 0 | 0 | 0000/3 |
| SMITH,S      | READR | 0 | 0 | 0 | 0000/4 | WALKER,A    | NORTH | 1 | 6 | 4 | 1762   |
| SOLLANO,E    | EXCLB | 5 | 3 | 1 | 1983   | WALLACH,C   | MKING | 6 | 0 | 4 | 2049   |
| SOSSI,M      | LBURN | 0 | 1 | 0 | 1612   | WALSH,W     | ROOKS | 0 | 0 | 1 | 1494C  |
| SPIEGEL,L    | FERMI | 4 | 5 | 3 | 2014D  | WANG,G      | KEMPR | 1 | 0 | 0 | 0000/1 |
| STAFFORD,G   | TRDLK | 0 | 0 | 0 | 0000/2 | WARD,CH     | TRDLK | 0 | 0 | 0 | 1324   |
| STAMM,V      | CHRGR | 4 | 1 | 5 | 1495D  | WARREN,J    | CHRGR | 2 | 1 | 6 | 2076Q  |
| STAPLES,C    | FERMI | 4 | 0 | 2 | 1606   | WEISNER,T   | PAWNS | 0 | 0 | 0 | 1130   |
| STEEL,B      | CCDOC | 0 | 1 | 0 | 0000/1 | WEITZ,R     | EXCLB | 5 | 2 | 0 | 1640C  |
| STEELE,B     | CCDOC | 0 | 1 | 0 | 0000/4 | WHITE,H     | CASE  | 3 | 6 | 2 | 1672C  |
| STEIN,P      | TYROS | 1 | 0 | 0 | 2335   | WILLIAMS,K  | CCDOC | 4 | 1 | 4 | 2098   |
| STEVANOVIC,M | UOP   | 4 | 0 | 2 | 2246D  | WILLIAMS,S  | WOLVE | 0 | 1 | 0 | 0000/1 |
| STINSON,M    | CHRGR | 0 | 0 | 0 | 1952C  | WIRTZ,R     | KEMPR | 1 | 4 | 0 | 1350#  |
| STOLTZ,B     | TYROS | 6 | 5 | 0 | 1890C  | WOLF,D      | MKING | 0 | 0 | 1 | 2320   |
| SUAREZ,E     | ROOKS | 6 | 1 | 1 | 1926   | YACOUT,A    | ROOKS | 1 | 2 | 0 | 1549   |
| SUBECK,J     | KEMPR | 1 | 2 | 0 | 1374*  | ZOELLNER,J  | CASE  | 2 | 7 | 2 | 1363C  |

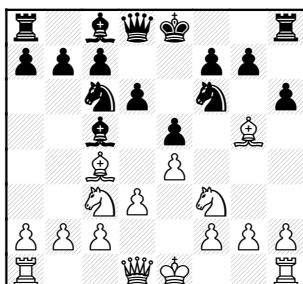
## LEGEND:

/x - UNRATED; x RATED GAMES  
 # - 5 TO 9 RATED GAMES  
 \* - 10 TO 24 RATED GAMES

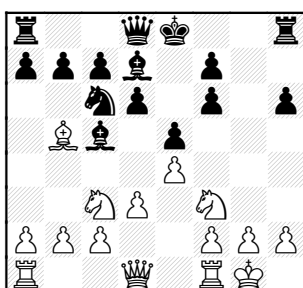
C - CENTURY CLUB MEMBER  
 D - DOUBLE CENTURION  
 T - TRIPLE CENTURION  
 Q - QUAD CENTURION

As the final Rooksac article is still in progress, I decided to devote this month's games to the attack. Even before the last installment was published, CICL players were creatively using their Rooks! We'll see some here.

Wirtz,R (1357) - Wang,G [C50]  
Kemper, 04.04.2002  
1.e4 e5 2.Nf3 Nc6 3.Bc4 Bc5  
4.Nc3 Nf6 5.d3 d6 6.Bg5 h6



7.Bxf6 gxf6 8.Bb5 Bd7 9.0-0

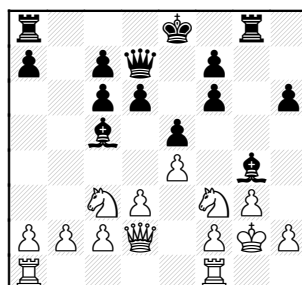


Kind of castling into open space.

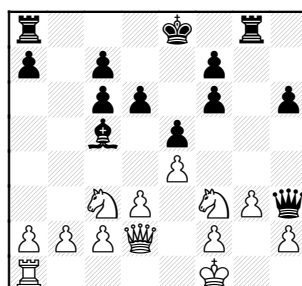
9...Rg8 10.g3 Bg4 11.Bxc6+ bxc6

If nothing else, Black has 6 Pawns that can effect the center!

12.Kg2 Qd7 13.Qd2



13...Bh3+ 14.Kg1 Bxf1 15.Kxf1 Qh3+



16.Kg1

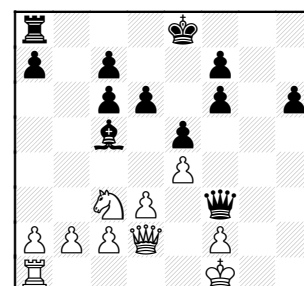
16.Ke2 Qg2 17.Rf1 With Qe1 and Rg1 to expel the Queen, but

then White has to worry about the open b-file!

16...Rxb3!

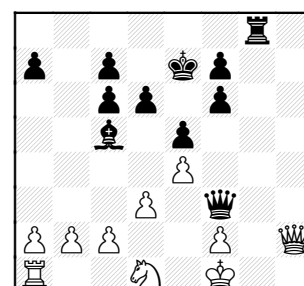
I often miss these pins to the f-Pawn.

17.hxg3 Qxb3+ 18.Kf1 Qxf3



White must solve Qxf2# to free his Queen and, meanwhile the Rook will sit.

19.Nd1 Ke7 20.Qxh6 Rg8 21.Qh2



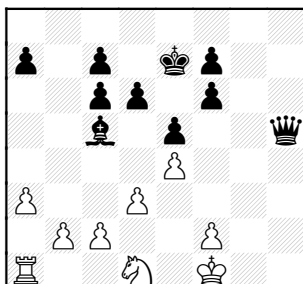
21...Rg5

Nice.. the h-file can be invaded!  
22.a3 Rh5 real threat is Rh1#  
23.Qxh5 Qxh5

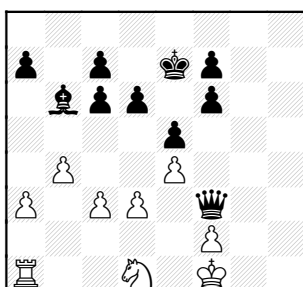
Games as reviewed by Tom Friske

Eustace,D (1564) -  
Dittmer,D [B77]  
Fermilab-Dragons, 18.02.2002

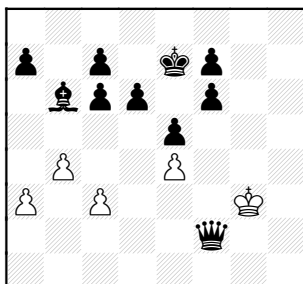
1.e4 c5 2.Nf3 Nc6 3.d4 cxd4  
4.Nxd4 d6 5.Nc3 g6 6.Be3 Bg7  
7.Bc4 Nf6 8.f3 0-0 9.Qd2 a6  
10.0-0-0



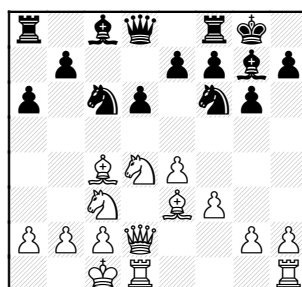
24.b4 Bb6 25.c3 Qf3



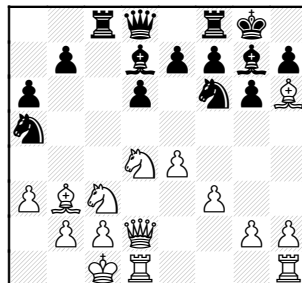
26.Ra2 oops 26...Qxd3+ 27.Re2  
Qxd1+ 28.Kg2 Qxe2 29.Kg3  
Qxf2+



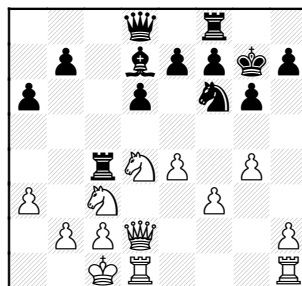
30.Kg4 Qf4+ 0-1



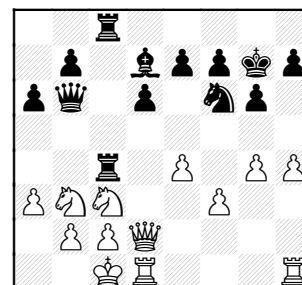
10...Bd7 11.a3 Rc8 12.Bb3 Na5  
13.Bh6



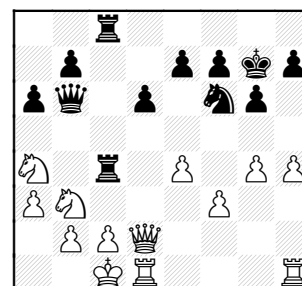
13...Nc4 14.Bxc4 Rxc4  
15.Bxg7 Kxg7 16.g4



All fairly normal so far 16...Qb6  
17.Nb3 Rfc8 18.h4

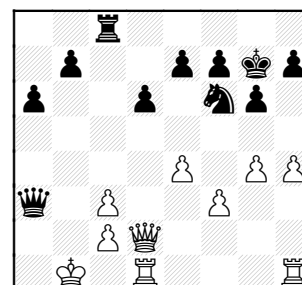


18...Ba4 19.Nxa4



19...Qxb3!  
One of the reasons White often  
plays Kb1 directly after 0-0-0.

20.Nc3 Rxc3! 21.bxc3 Qxa3+  
22.Kb1

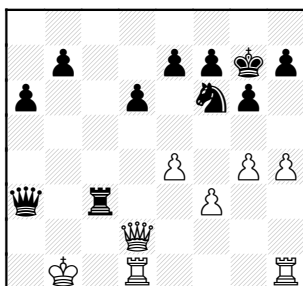


Games as reviewed by Tom Friske

22...Rc5

If 22...Rc6, 23 Qe3 stops Rb6#

23.c4 Rxc4 24.c3 Rxc3



25.Qd4

White has nothing better:

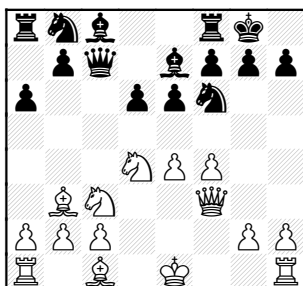
25.Qb2 Rb3 or

25.Qa2 Qb4+ 26.Ka1 (26.Qb2 Rb3) 26...Ra3

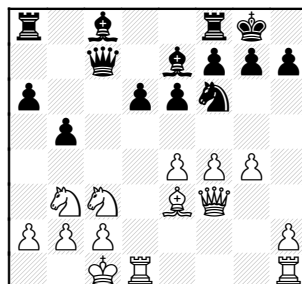
25...Rb3+ 26.Kc2 Qa2+ 0-1

Altshuller,D (1819) -  
Stoltz,B (1875) [B86]  
Dragons-Tyros, 11.03.2002

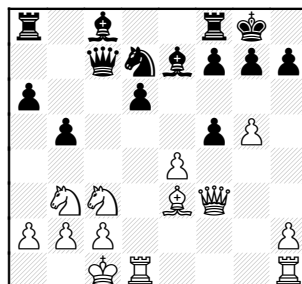
1.e4 c5 2.Nf3 d6 3.d4 cxd4  
4.Nxd4 Nf6 5.Nc3 a6 6.Bc4 e6  
7.Bb3 Be7 8.f4 0-0 9.Qf3 Qc7



10.Be3 Nc6 11.g4 Na5 12.0-0-0  
Nxb3+ 13.Nxb3 b5



14.g5 Nd7 15.f5 exf5

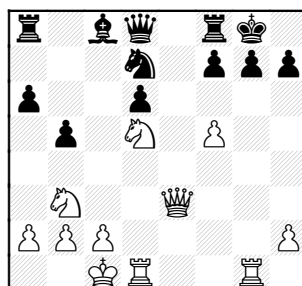


Giving up the d5 square is  
usually trouble in this variation of  
Sicilian.

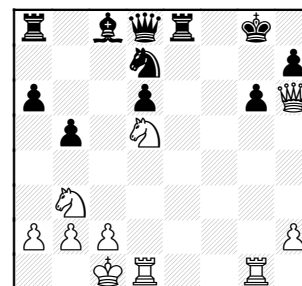
16.Nd5 Qd8 17.exf5

Of course the Knight is worth  
more than the Bishop!

17...Bxg5 18.Rhg1 Bxe3+  
19.Qxe3



19...Re8 20.Qh6 g6 21.fxg6  
fxg6



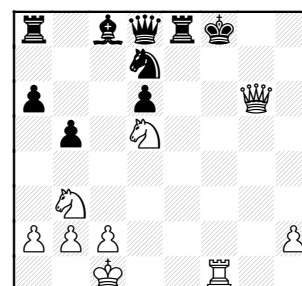
22.Rxg6+ hxg6 23.Qxg6+ Kf8

After 23...Kh8 24.Rd3? threatens  
Rh3# but Black has 24...Ne5  
uncovering the Bishop to h3.

So 23...Kh8 24 Qh6+ Kg8 25  
Rg1+ Kf7 26 Qg6+ Kf8 27 Qg7#

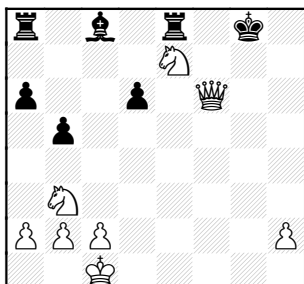
As noted in the Rooksac series,  
one Rook clears the lines, the  
other cleans house.

24.Rf1+



Time to resign...

24...Nf6 25.Rxf6+ Qxf6  
26.Qxf6+ Kg8 27.Ne7+



27...Rxe7

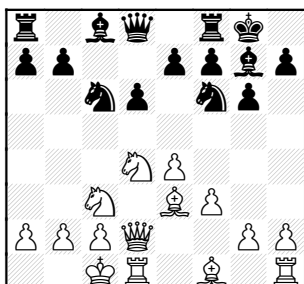
27...Kh7 28.Qg6+ Kh8 29.Qh6#

28.Qxe7 1-0

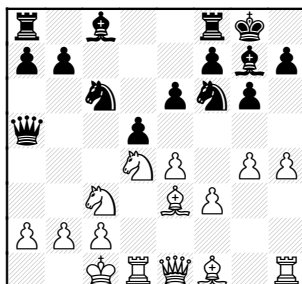
Oddly enough, Dmitry falls victim to a similar attack one month later!

Altshuller,D (1819) - Hill,R (2043) [B76]  
Dragons-Rooks, 08.04.2002

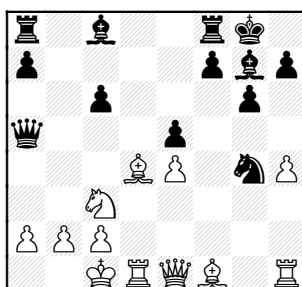
1.e4 c5 2.Nf3 d6 3.d4 cxd4  
4.Nxd4 Nf6 5.Nc3 g6 6.Be3  
Bg7 7.f3 Nc6 8.Qd2 0-0 9.0-0-0



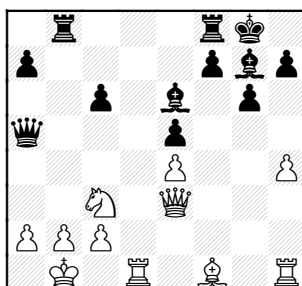
9...d5 10.Qe1 e6 11.h4 Qa5  
12.g4



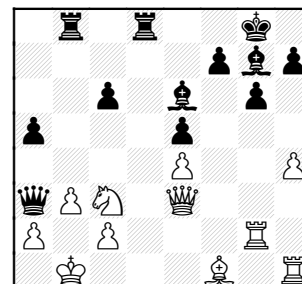
12...dxe4 13.fxe4 Nxg4  
14.Nxc6 bxc6 15.Bd4 e5



16.Be3 Be6 17.Kb1 Nxe3  
18.Qxe3 Rab8



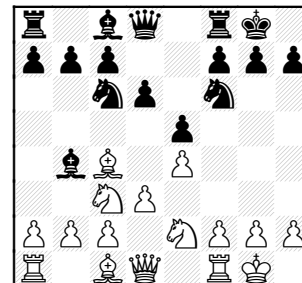
19.Rd2 Qa3 20.b3 Rfd8 21.Rg2  
a5



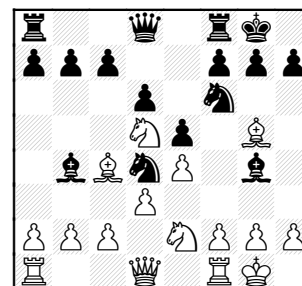
22.Ka1 Bxb3 23.cxb3 Rxb3!  
24.Rc2 Rxc3 Rd1+ is next 0-1

Buchner,B (1755) - Eustace,D (1564) [C28]  
Tyros-Dragons, 11.03.2002

1.e4 e5 2.Bc4 Nc6 3.Nc3 Nf6  
4.d3 Bb4 5.Nge2 0-0 6.0-0 d6

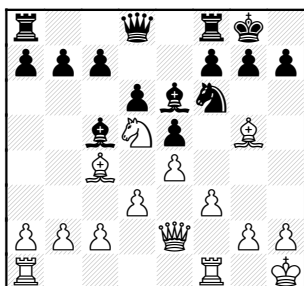


7.Bg5 Bg4 8.Nd5 Nd4

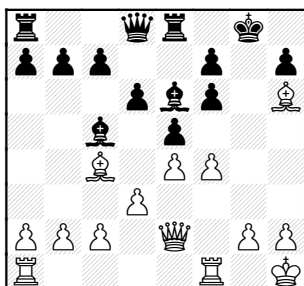


Games as reviewed by Tom Friske

9.f3 Nxe2+ 10.Qxe2 Bc5+  
11.Kh1 Be6



12.Nxf6+ gxf6 13.Bh6 Re8  
14.f4



threatening f5 and then Qg4+-  
g7#

14...Kh8 Missing the point: both  
the g- and h-files are weak!!

But a search for alternatives  
leave me thinking Black is  
simply busted....

If 14...Bxc4?? 15.Qg4+ Kh8  
16.Qg7#

Or 14...d5?? 15.f5

So how about if Black can open  
lines for his pieces with 14...f5

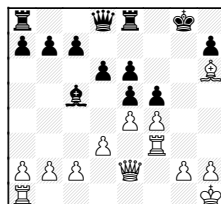
He still appears to have troubles

A) 15.exf5 Bxf5 16.Qh5 (16.g4  
Bd7 17.Bg5? Bc6+) 16...Bg6

B) 15.Qf3 Qh4 16.Bg5 Qg4

C) 15.Bxe6

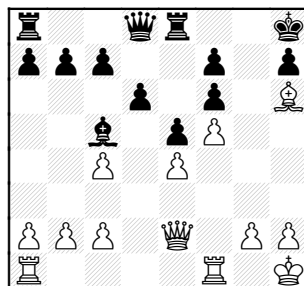
C1) 15...fxe6 16.Rf3



16...exf4 (16...Kf7 17.Rg3 Rg8  
18.Qh5+ Ke7 19.Bg5+)

C2) 15...Rxe6 16.Bg5

15.f5 Bxc4 16.dxc4



Black can't immediately take  
away any threats to his King.  
The threat, as shown in game, is  
Qh5 followed by Rf3-h3, hitting  
h7. Only Black's Queen can  
cover that square!

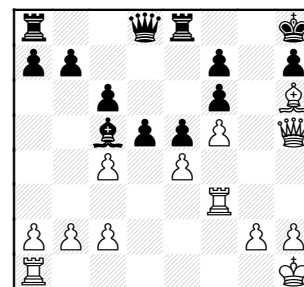
16...c6 not a defensive move

But 16...Rg8 17.Qh5

Nor 16...Re7 17.Qh5 Qg8

18.Rf3 with idea Rg3 and Bg7+

17.Qh5 d5 18.Rf3



18...Re7 good as any  
18...Qe7 19.Rh3

19.Rg3 Bf2 20.Bg7+ Kg8  
21.Qg4

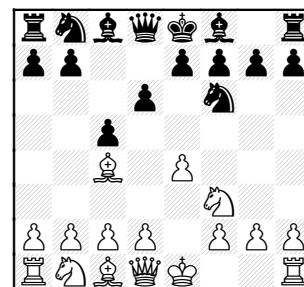
Bh6+ will setup Qg7#

1-0

Here, an exchange was spent  
and White won the lottery!

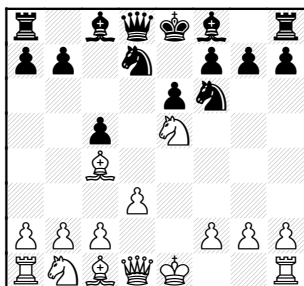
Kogan,G (1815) -  
Lechnick,J (1812) [B50]  
Excaliburs-UOP, 11.04.2002

1.e4 c5 2.Nf3 d6 3.Bc4 Nf6

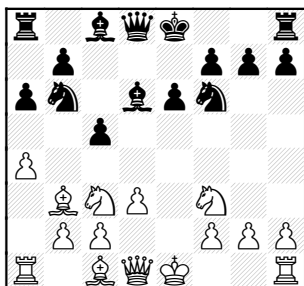


4.e5 dxe5 5.Nxe5 e6 6.d3 Nbd7

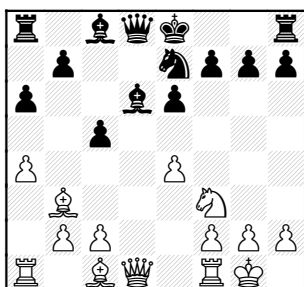
Games as reviewed by Tom Friske



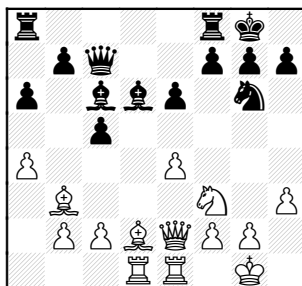
7.Nf3 Bd6 8.Nc3 a6 9.a4 Nb6  
10.Bb3



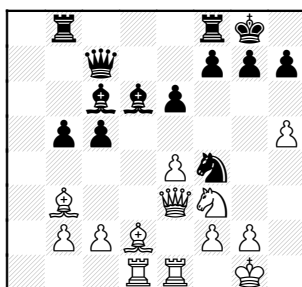
10...Nbd5 11.Ne4 Nxe4 12.dxe4  
Ne7 13.0-0



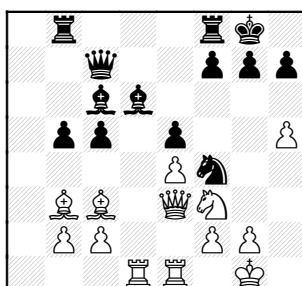
13...Ng6 14.Qe2 Qc7 15.h3 0-0  
16.Bd2 Bd7 17.Rad1 Bc6  
18.Rfe1



18...Rab8 19.h4 b5 20.axb5  
axb5 21.h5 Nf4 22.Qe3



threatening e5, to win f4-Knight  
22...e5 23.Bc3

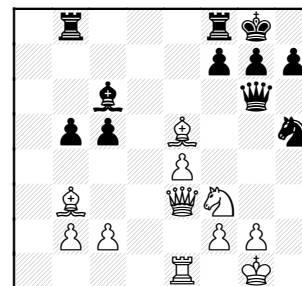


Do you spot White's threat?

23...Nxh5  
23...b4 dodges the problems

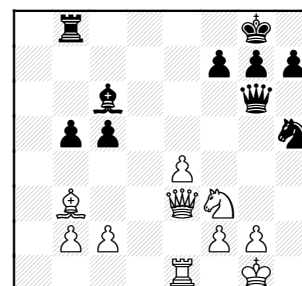
24.Rxd6  
The trading combo blasts Black

apart  
24...Qxd6 25.Bxe5 Qg6

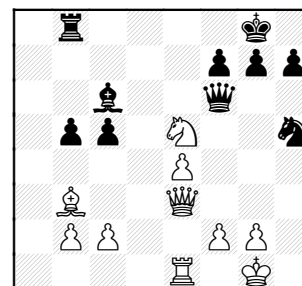


Maybe Black simply missed the  
zwischenzug at White's move 28

26.Bxb8 Rxb8



27.Ne5 Qf6

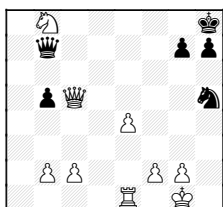


28.Bxf7+! Nicely done, getting  
use of the Knight while still on  
board, and attacking the loose  
piece.

Games as reviewed by Tom Friske

28...Kh8 29.Nxc6 Qxc6

No better is 29...Qxf7 intending to trap the Knight at b8 30.Nxb8 Qb7 (30...Nf6 31.Qxc5) 31.Qxc5

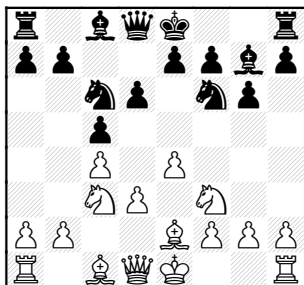


31...Qxb8 (31...Nf6 32.Qf8+ Ng8) 32.Qxh5

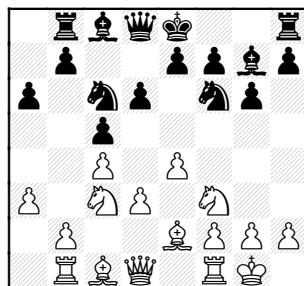
30.Bxh5 1-0

Magee,M -  
Broihier,M (1119) [B20]  
Citadel-Reader, 2002

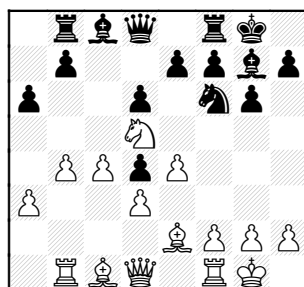
1.e4 c5 2.c4 Nc6 3.Nf3 g6 4.d3 Bg7 5.Be2 d6 6.Nc3 Nf6



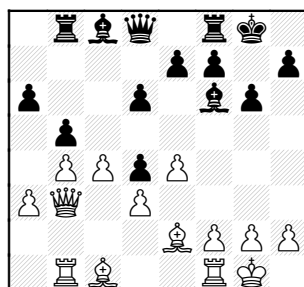
7.Rb1 a6 8.a3 Rb8 9.0-0



9...Nd4 10.Nxd4 cxd4 11.Nd5 0-0 12.b4



12...b5 13.Nxf6+ Bxf6 14.Qb3

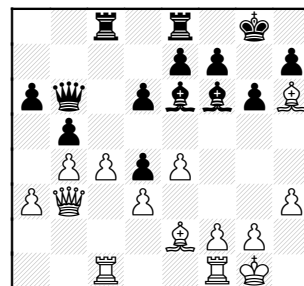


If Black can force dxc, the d-Pawn may become strong.

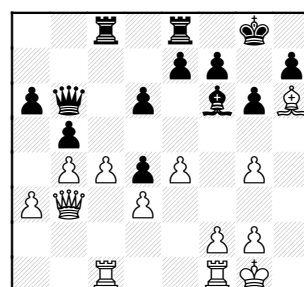
14...Be6

14...e5 15.f4 helps loosen the center squares, especially c5

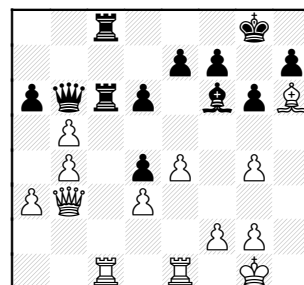
15.Bh6 Re8 16.h3 Rc8 17.Rbc1 Qb6



18.Bg4 Bxg4 19.hxg4



19...Rc6 20.Rfe1 Rec8 21.cxb5



21...Rc3! 22.Kf1 axb5

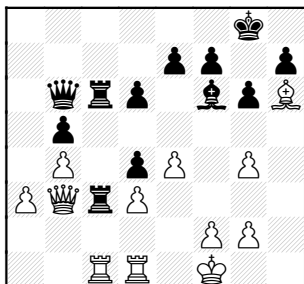
Of course 22...Rxb3?? allows a simple backrank mate

Interesting, though, is 22...g5!?



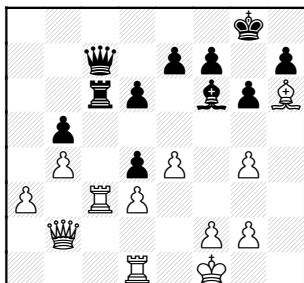
Forcing White to do something about c1 and after 23..Qxb5 begins to breakdown the Pawn support (at d3 and after -a5)

23.Red1 R8c6



Now the Queen is truly threatened

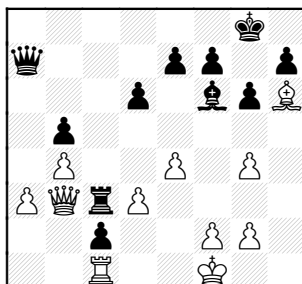
24.Qb2 Qc7 25.Rxc3



25...dxc3

25...Rxc3 targets a3, possibly d3, and maybe can cause trouble with a later Rc2 26.Rc1

26.Qc2 Qa7 27.Qb3 c2 28.Rc1 Rc3



29.Qd5

29.Rxc2 Is possible, as earlier, Black has backrank problems

29...Qxa3

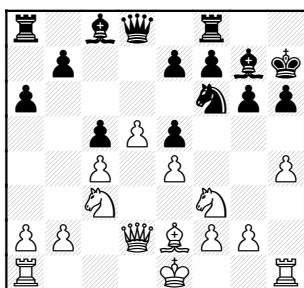
Greed kills. The backrank needs help! White's weaknesses aren't going anywhere.

30.Qb7 Bg7 31.Qb8+ 1-0

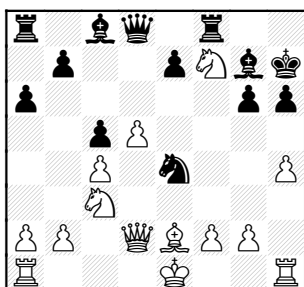
## Games Errata

**Faithfully**, every month, I can count on an analysis review from Ruben Reyes (who still finds time for chess during his retirement in Hawaii!). His keen eye and quick mind produced the following fireworks during the passed season..

Gaines,I (1735) - Ludwig,T (1996) [E74]



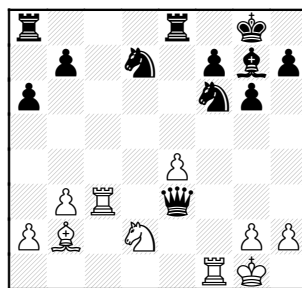
Did both sides examine the trading lines? White definitely needs to hold back here: 13.Nxe5 allows 13...Nxe4 14.Nxf7?



I suggested a few involved lines, but much more convincing (and easy) would be 14...Bxc3 forcing the response, and saving his Knight! 15.bxc3 Rxf7

Next, a simple theme, but often missed!

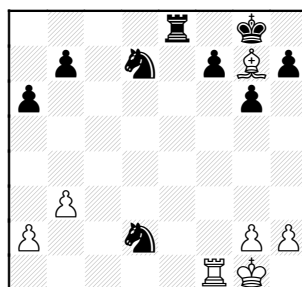
Subeck,J (1364) - Gothier,S (1404)



20.Rxe3 Nd5

But after 20. Rxe3, Black can net a Pawn and force more stuff off board with...

20...Nxe4 21.Bxg7 Nxd2  
22.Rxe8+ Rxe8



23.Rd1 Kxg7 24.Rxd2 Nf6

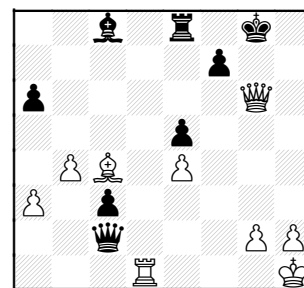
Or, if 23 Bh6 (or elsewhere) Black moves one of his Knights to avoid skewer.

Always look for a way to gain something with the discovering piece!

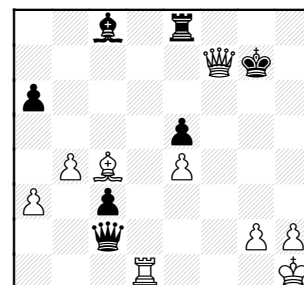
Almost got everything right on the following mating combo:

Olsen,A (1594) - Kogan,G (1809)

In analysis, reached the following forced continuation



47...Kh8 48.Qh5+ 48...Kg7  
49.Qxf7+



49...Kh6 From here Ruben demonstrates mates in all lines after

50.Rf1

**I had discarded it** because of 50...Qxe4 51.Rf6+ Kg5

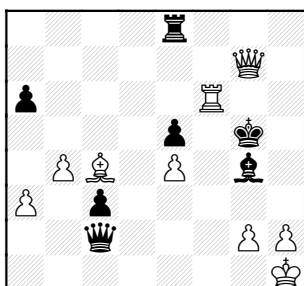
(only considering 52.Rg6+ Qxg6)

But, of course 52. Qg7+ Kh5  
53.Rh6#

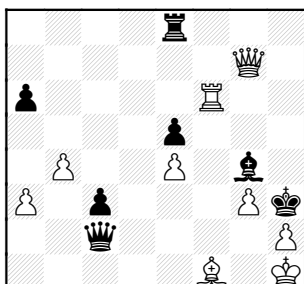
## Games Errata

But he showed another futile line of resistance (from diagram, after 49..Kh6 50 Rf1):

50...Bg4 51.Rf6+ Kg5 52.Qg7+



52...Kh4 53.g3+  
(Quickly, 53.Rh6+ Bh5 54.Qg3#)  
53...Kh3 54.Bf1+

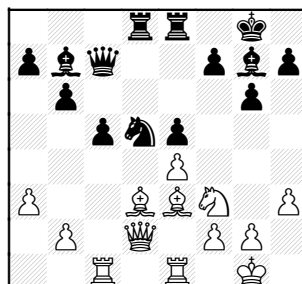


and mate next

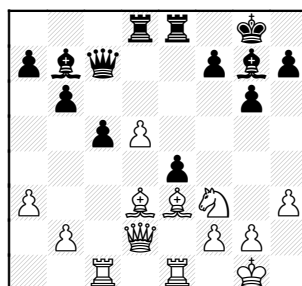
This one is simple, but both players and I missed it!

Kogan,G (1809) -  
Hirsch,D [B32]  
Excaliburs-Northrop,  
25.10.2001

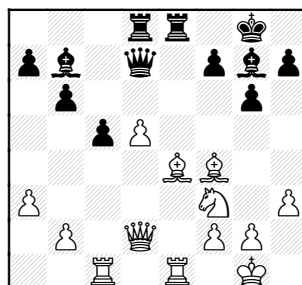
Black has just played a Knight sacrifice to set up a Pawn fork  
(Diagram follows)



18.exd5 e4



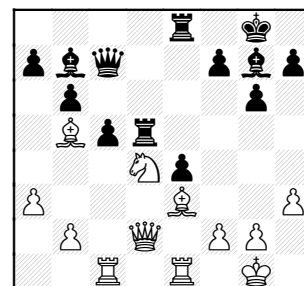
And here, Mr Keen-eye noticed  
19.Bf4 Qd7 (19...Qe7 20.Rxe4)  
20.Bxe4



White avoids the fork, so remains a piece up!

20...Bxd5 21.Rcd1

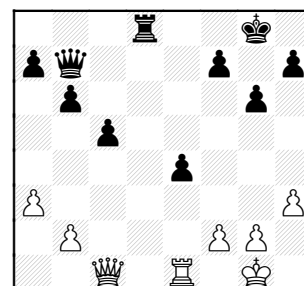
Instead, the game continued  
19 Bb5 Rxd5 20.Nd4



taking advantage of the c-Pawn pin

20...Red8 21.Qc2 Bxd4 22.Bc4  
Re5?

But Black can embark on a trading combo with: 22...Bxe3!  
23.Bxd5 Bxc1 24.Bxb7 Qxb7  
25.Qxc1

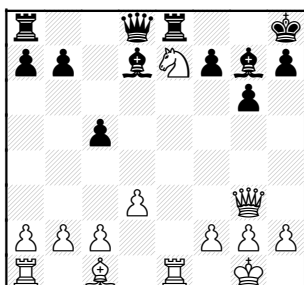


Black remains two solid Pawns up

## Games Errata

Mr. Curious had some interesting words about a game from the previous season...

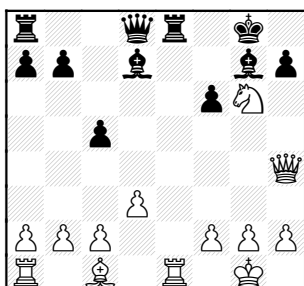
Boldingh, E (1846) -  
Thomson, J (1657)



Trying to pin and win Knight at e7 **16.Qh4** Protects Knight, but also stops the reply -f6 since White would then have Nxg6+! taking advantage of the pinned h-Pawn.

But, here is what caught his eye:

Does it really STOP f6? **16...f6**  
**17.Nxg6+ Kg8**



Black threatens Rxe1# as well as hxg6 !  
Is the Knight is a goner??

**18.Qc4+!!** As Ruben states:  
"Trapping the trapper!"

(Note **18.Rxe8+ Qxe8** Hasn't solved the dual threats.)

**18...Re6** (**18...Be6** **19.Rxe6**  
**Rxe6** **20.Qxe6#**) **19.Nf4**

**Then, there was the Mother of All Wake-up Calls !!**

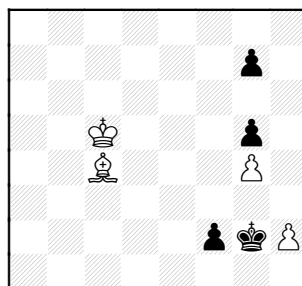
I stroll into work one Monday morning, happy to finish another Bulletin...proud of finding a flawless solution to the following ending using the "Ruben method" (see Endgame Study elsewhere this issue) .... only to be greeted by an email from him stating "There were several miscues in your analysis of Marshall-Brotsos. I could be wrong, but I counted eight (8)!"

It turns out there were actually two errors, but missed multiple times!

**Marshall,K (1339) -**  
**Brotsos,J (1531)**

Knights-Excaliburs, 29.11.2001

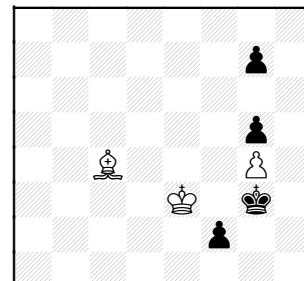
In analysis, I reached:



and stated **52...Kxh2?** loses!

Actually, it is a draw. As I had pointed out, Blacks goal is simply to eliminate Pawns.

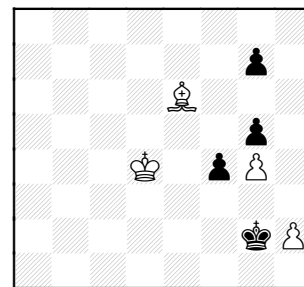
After **53.Kd4 Kg3** **54.Ke3**



**54...Kxg4** draws

From the game, however, I attempted to prove White wins. As it turns out Black decides whether game ends in a draw or if White wins.

The turning point came at my analysis starting  
**51.Be6 Kg2** **52.Kd4**



White's trick is to use King to win Black's g-Pawns, sac the Bishop for the passer, and queen the g-Pawn!

The key is Black's defence of g5. Defend it and draw; lose it lose game.

## Games Errata

The decision comes after **A)**  
**52...Kxh2 53.Ke5**

I examined two Black lines:

- A) King attacks g4-Pawn, and
- B) Black pushes passer.

As it turns out, #1 draws and #2 loses.

### *The forced draws...*

**A)** I stated "If Black attempts to avoid following analysis by protecting g5-Pawn, White can still force the same win!"

This is incorrect!! Black is able to use his passer to deflect Bishop and use g6+ to deflect the King from protection of the g4-Pawn. Thus, the draw! Let's watch:

53...Kg3 54.Kf5 Kh4 55.Kg6  
(55.Ke4 g6 56.Ke5 f3 57.Kf6 f2 58.Bc4 Kxg4=)

55...f3 56.Kxg7  
(56.Kf5 g6+ 57.Kxg6 f2 58.Bc4 Kxg4=)

56...f2 57.Bc4 Kxg4=

**Changing the move order does not change result...**

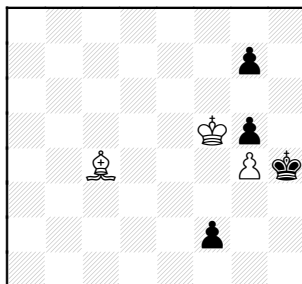
53...f3 I tried to show win, but it is still a draw if 54.Bd5? (Also 54. Kf5 is examined next column)

Kg3 55.Kf5 f2 56.Bc4 Kh4=

Or, after the same 54. Bd5?,

54...f2 55.Bc4 Kg3 56.Kf5 Kh4 =

**All the previous analysis** generates the same drawn position (Diagram next..)



Black will force the win of White's g-Pawn:

1.Be2 f1Q+ 2.Bxf1 g6+ 3.Kxg6 Kxg4=

Or 1. Bf1 g6+ 2. Kxg6 Kxg4=

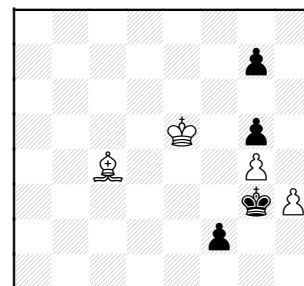
The other move after 53...f3 (See previous column) is to play 54. Ke5 f2 55.Bc4 Kg3 56.Kxg5

**The forced loss** for Black (from Diagram last page, sorry!) is a result of losing a precious tempo pushing passer:

**B)** 52...f3 53.Ke5 is similar to previous analysis 53...Kh3 (We have seen Black must defend the g-Pawn) but, here, 54.Kf5 Kh4 55.h3 wins because White has a defender to his g-Pawn!!

**In other analysis,** White can still get that win with:

52.Kd4 f3 53.Ke5 f2 54.Bc4

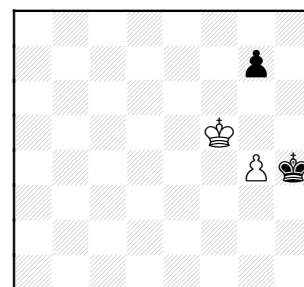


But White gets the now-known draw with 54...Kxh3 55.Kf5 Kh4

**One final mistake**, stated in analysis:

Transposes back to the analysis- Black loses 56.Ke5 f1Q 57.Bxf1+ Kxf1 58.Kf5 Kg2 59.Kxg5 Kg3 60.Kf5 Kh4

**and reached the following position, which is actually a draw**



White cannot defend his Pawn and capture the Black Pawn.

---

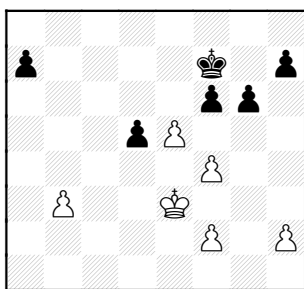
**All corrections and questions always invited! Please do not wait until last issue to write!**

The following endgame was one of those that's looks simple, but it actually quite tricky.

During the game...

**Barnard,G - Franek,M**  
Citadel-Aces, 17.10.2001

...the players traded to the following Pawn ending:



(In the game Black played an immediate 33...g5).

The position is a challenge! What's very interesting thing here is that a 4-stage battleplan wins the game for Black.

Here's how:

- 1) Isolate White's e-pawn.
- 2) Then attack the e-pawn with the K.
- 3) Now, with White compelled to defend the e-pawn with the K, force out White's K out from the defense of the e-pawn or from blocking the d-pawn via *zugzwang*.
- 4) Then, with the e-pawn now unguarded take it and queen the d-pawn.

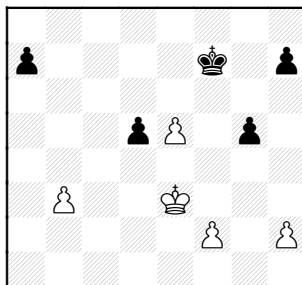
In formulating the battleplan for stage 3 and stage 4 move-by-move analysis may be needed. In other words, move-by-move analysis may be necessary to determine if **zugzwang** can be done in stage 3. And move-by-

move analysis may also be needed to determine if Black can queen first. And if so, will the new Black queen stop White from likewise queening a pawn. However, there may little need to do move-by-move analysis to determine **zugzwang** nor to determine who queens first.

Let's try to see if there's a trick one can use to make general but accurate decisions regarding "zugzwang" and "race to queen" **with little move-by-move analysis**. Once a general evaluation is made, move-by-move analysis will be made to confirm the evaluation.

Now, let's see how the plan works and how one can evaluate a position with few move-by-move analysis:

33...fxe5 34.fxe5 g5



*The first stage of the battleplan is complete.*

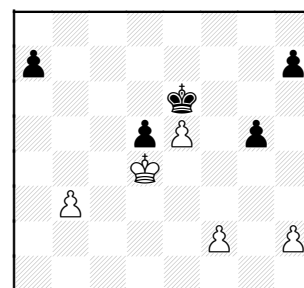
There are 2 paths for White:  
**35.Kd4** and  
**35.f4 gxf4 36.Kxf4**

No matter what path White chooses, Black kicks in the 2nd stage of the plan with **35...Ke6**

or **36...Ke6** (after **35. f4 gxf4 36.Kxf4**).

White's e-pawn would be under attack and White's compelled to defend it with the K. In arriving at a general evaluation of the positions involving Stage 3 (*zugzwang*), the trick is to COUNT!

After **35.Kd4 Ke6**



White's King can't move without leaving the d-pawn unguarded. So, the only moves he can make are his pawns.

**The 2nd stage of the battleplan is complete.**

White has only three (3) pawn moves (1.b4, 2.f3 and 3.h3 compared to Black's four (1...a6 (assuming White plays b4), 2...h6, 3...h5, and 4...h4

General evaluation? White will run out of moves.

Now stage 4: The race to queen. In last diagram, after White is in **zugzwang** he'll need 7 moves to queen the b-pawn (1.Kc5 2.Kb6 3.Kxa6 4.b5 5.b6 6.b7 7.b8=Q).

Black, on the other hand needs only five (5) moves to queen: 1...Kxe5, 2...d4, 3...d3, 4...d2 and 5...d1=Q.

General evaluation? Black queens first.

On White's 6th move, his pawn would be at b7 and his K at a6. With Black to play (his 6th move), he'd have a Q at d1.

Let's see how this plays out in actual move-by-move analysis and how accurate is the general evaluation.

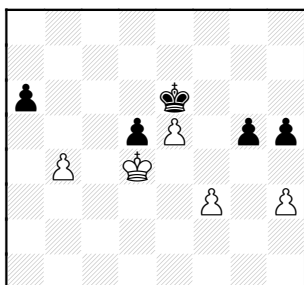
Starting from first diagram of article, we now continue with Whites first try:

**35.Kd4 Ke6 36.b4 a6**

*(36...g4 37.b5 h5 stops*

White's f and h pawns dead in their tracks but would allow White to play b5 and queen in 7 instead of 8 moves: 1.Kc5 2.Kc6 3.Kb7 4.Kxa7 5.b6 6.b7 and 7.b8=Q)

**37.f3 h6 38.h3 h5**

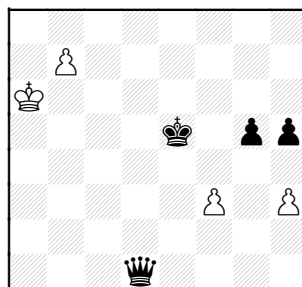


White's King is **zugzwang**.

Stage 3 is complete.

Now on to stage 4 ( race to the Queen).

**39.Kc5 Kxe5 40.Kb6 d4  
41.Kxa6 d3 42.b5 d2 43.b6  
d1Q 44.b7**



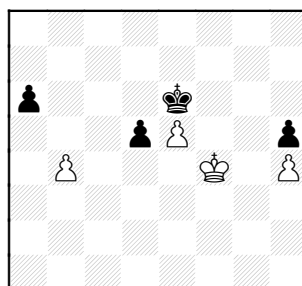
Black wins easily.

**44...Qa1+ 45.Kb6 Qb1+ 46.Kc7  
Qxb7+ 47.Kxb7 Kf4**

The worded analysis proves to be correct!

Let us find out if we did as well with Whites other choice (once again, from beginning diagram):

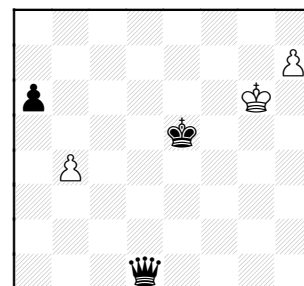
**35.f4 gxf4+ 36.Kxf4 Ke6 37.b4  
a6 38.h3 h6 39.h4 h5**



Stage 2 is complete. The isolated e-pawn is under attack and White's K is compelled to guard it.

Stage 3 (**zugzwang**) is not hard to calculate. White will run out of moves

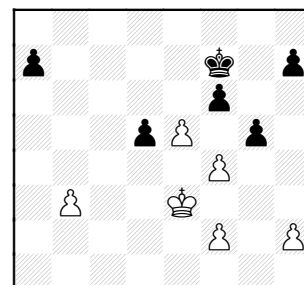
**40.Kg5 Kxe5 41.Kxh5 d4  
42.Kg6 d3 43.h5 d2 44.h6 d1Q  
45.h7**



and **Black wins**.

**PART 2.** Same game, earlier

A move earlier, White was at a crossroad:

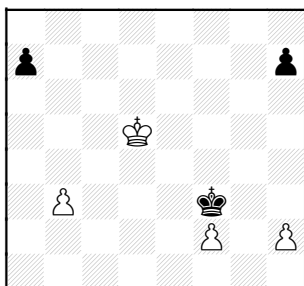


The game editor (correctly, even!) analyzed that a mutual wipe-out leads to a draw:

**34.exf6 Kxf6 35.fxg5+ Kxg5  
36.Kd4 Kf4 37.Kxd5 Kf3**

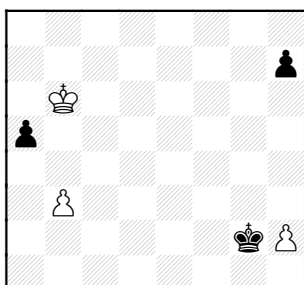
(Diagram next)

## Endgame Study by Ruben Reyes



and only considered 38.Ke5, which proved to be a draw.

But there is a method to a win! 38.Kc6 Kxf2 39.Kb7 a5 40.Kb6 Kg2



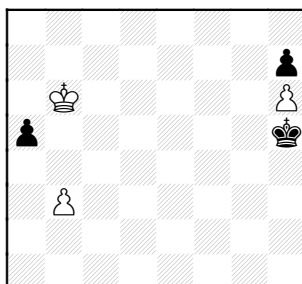
Without analysis, counting here may be able to predict the position of the K and the pawns:

It'll take 6 moves for White to queen the b pawn. It'll take Black 7 moves. Which means that Black's 6th move would be 6...h2 and the K at either g1 or g2.

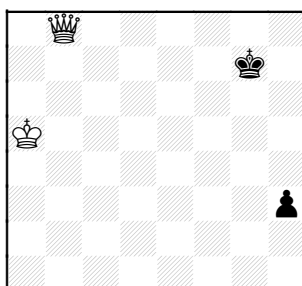
Which is a book draw.

But wait. There's no hurry to play 40. Kxa5 here. White can draw Black's King away from the vicinity of h2 by postponing Kxa5 and instead play

41.h4! Kh3 42.h5 Kh4 43.h6 Kh5



44.Kxa5 Kxh6 45.b4 Kg7 46.b5 h5 47.b6 h4 48.b7 h3 49.b8Q



White wins!

### *An added oddity...*

From the original diagram of Part 2, White could transpose back to part one with 34 fxg5.

But that would be a mistake! We have already determined that to be a forced win for Black.

On such single moves, the entire result may rest!!

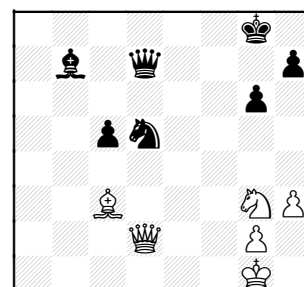
POSTLUDE (by the Editor).

So, kids, what have we learned? (Or re-learned?) For me,  
1) Always look for zugzwang in endings,  
2) Plan in obtainable goals.

Allow me to share my latest tournament win as a tribute to Ruben's constant watchfulness of my analysis!

Friske, T (1891) - Bloomer, J (2057) [A65]  
Levy mem (Denver), Round 1  
04.19.2002

After dodging some bullets, we both were approaching the time control with the following :

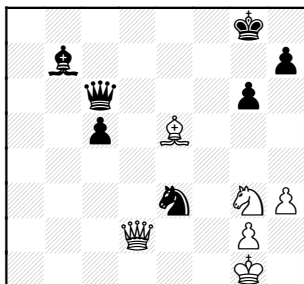


35.Kg1 6 min for 6 moves, depending on his exposed K for counterplay

35...Qc6 of course, realizing weakness of g2, but not envisioning N participation because of backrank weakness

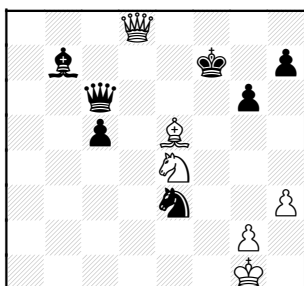
36.Be5 Ne3





Slammed immediately as if a winner, but I've seen a possible way out (enough to get to passed the control, at least!)

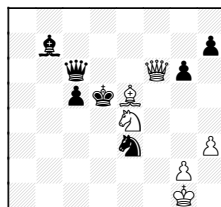
Realized the perpetual **37.Qd8+** with a minute to reach #40, used time to decide which is more forcing **37...Kf7 38.Ne4**



Threat of Ng5#  
**38...h6** (Time pressurer) played disgustedly

The perpetual is **38...Qxe4?**  
**39.Qd7+ Kf8 (39...Kg8??**  
**40.Qe8#) 40.Qd8+**

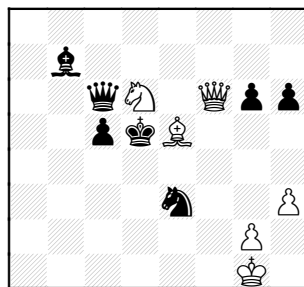
(From diagram) I was worried about **38...Ke6! 39.Qf6+ Kd5**



**40.Nd2**  
(**40.Nc3+ Kc4 41.Qf4+ Kd3-+**)  
not sure if I could survive

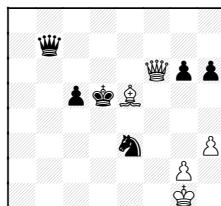
Of course, I only checked to get to TC, but realized I can force K to d5 to block g2, trade B and retreat my Q.

**39.Nd6+ Ke6 40.Qf6+ Kd5**



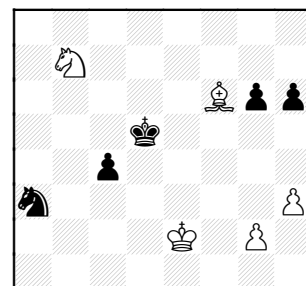
TC reached, and I took the time to realize win of piece **41.Nxb7 Qxf6?** Why trade Qs when down piece? He hopes to draw using passer or trapping my N, I guess.

Was hoping for **41...Qxb7??**



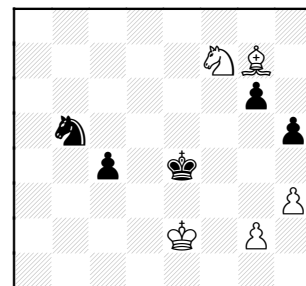
**42.Qf3+ Kxe5 43.Qxb7** winning

**42.Bxf6 c4** blocking N retreat square **43.Kf2 Nc2 44.Ke2 Na3**



And here the "Ruben method" took hold. My problem is to blockade passer and keep his King off my Kingside Ps. I'd decided to activate N via d8,f7 but at f7 it allows him to win a piece with Ke6. I had listed my goals as 1) get Knight participating, 2) keep his King off my Pawns, 3) activate King/win passer.

**45.Bg7**  
Not to win Pawn as much to avoid later Ke6  
**45...h5 46.Nd8 Nb5 47.Nf7 Ke4**

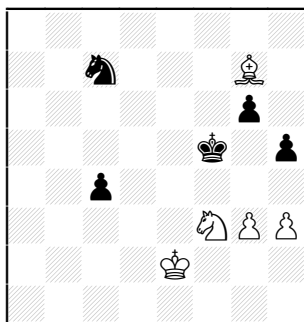


Stage 1 complete.  
My Knight is coming into play

## Endgame Study by Ruben Reyes

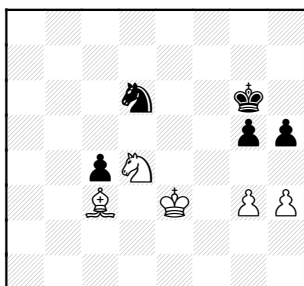
and his King hasn't reached my Pawns. Now how to keep it that way?

**48.g3!** his K is shut out. I depend on my B to stop passer  
**48...Nc7** didn't understand this, now my position is complete  
**49.Ng5+ Kf5 50.Nf3** and got that IT-IS-OVER feeling which so often a prelude to letting the guard down...



My N will pick off passer so my K can hold his away. Stage 2 complete. Now to win passer and clean house, assuring I keep both my Pawns! Was dreading the possibility of having to prove the B+N mate!

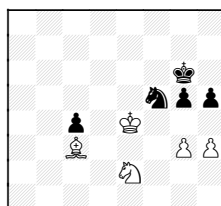
**50...Ne8 51.Bc3 g5 52.Ke3 Nd6 53.Nd4+ Kg6**



The final goal was to activate my King, how can I let him out?

**54.Ne2!** my K is free to advance!! **54...Kf5**

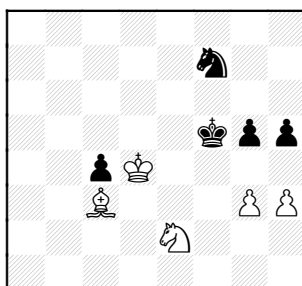
54...Nf5+ 55.Ke4



an added benefit to the Ne2 move.. g3 is covered

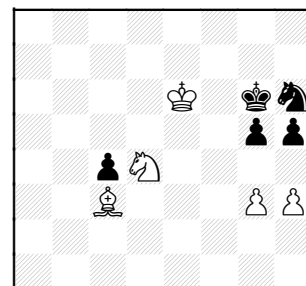
55...Nxg3+? hoping to trade away Ps 56.Nxg3 g4 57.h4

**55.Kd4 Nf7**

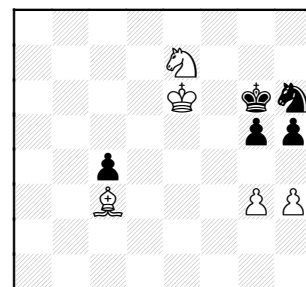


Great fun! Most people would snarf the Pawn (me included!)... but I see a major zugzwang!!

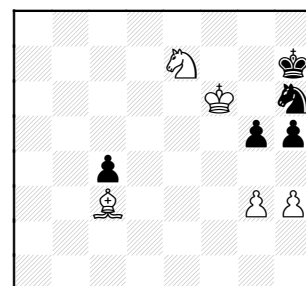
**56.Kd5 Nh6 57.Nd4+ Kg6 58.Ke6**



**58...Nf7 59.Nc6!** stopping Nd8+, so Black loses more ground  
**59...Nh6 60.Ne7+**



also stops any Nh6 moves  
**60...Kh7 61.Kf6**



**61...g4 62.h4 1-0**  
 A very enjoyable endgame!!

Thank you, Ruben!!