

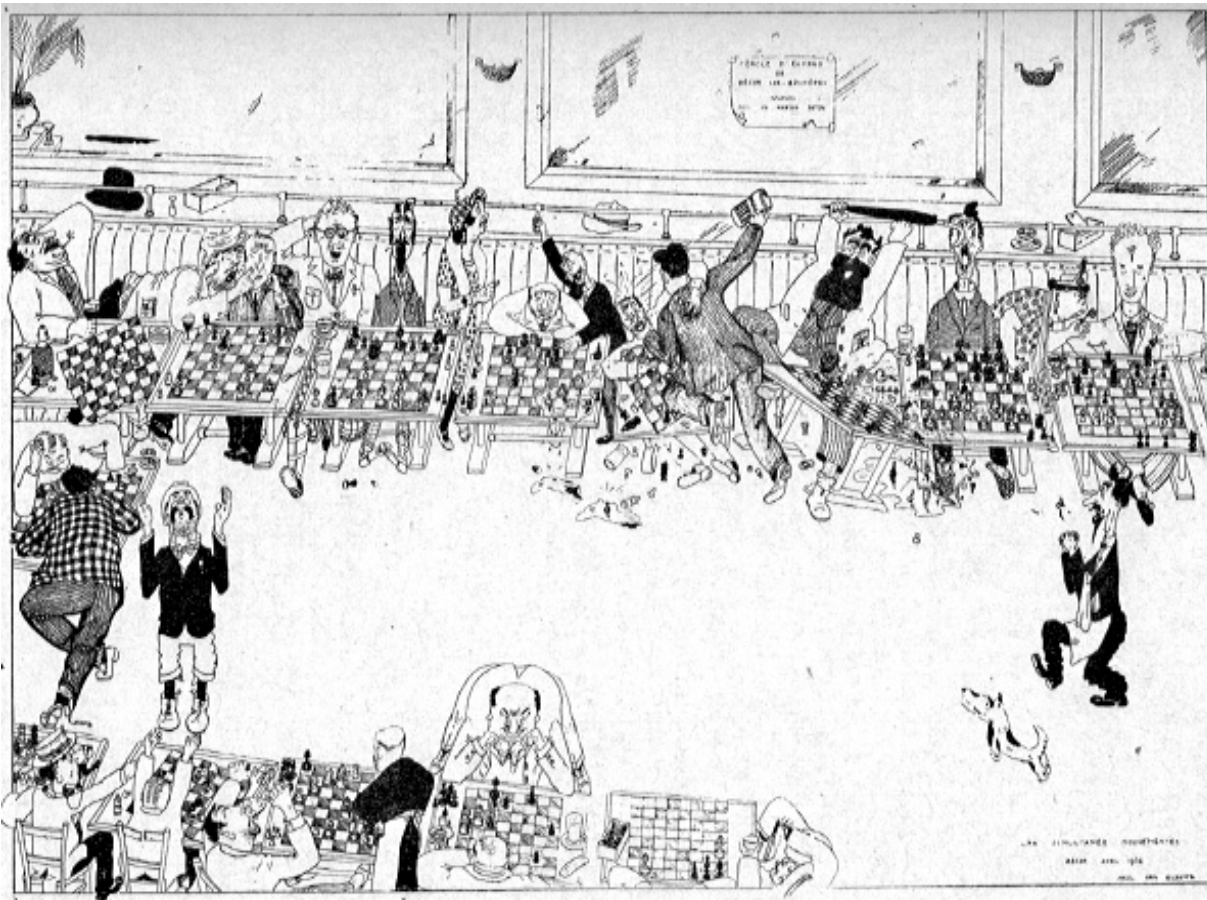
April 2004

Volume 47.7

The Chicago Chess Player

The Official Bulletin of the Chicago Industrial Chess League

CICL PLAYOFFS/OPEN - Saturday, May 15th
AWARDS BANQUET - Friday, June 4th



Bulletin Editor/Webmaster *TOM FRISKE*
BULLETIN@CHICAGOCHESSELEAGUE.ORG

1035 E ALGONQUIN ROAD
DES PLAINES, IL 60016

H:(847) 299-1033
W:{847} 914-8448

Ratings Chairman *ART OLSEN*
RATINGS@CHICAGOCHESSELEAGUE.ORG

714 E ALGONQUIN ROAD #J102
ARLINGTON HEIGHTS, IL 60006

H:(847) 437-9819
W:(847) 320-2420

FAX : TO EPS OTS, G-5 AT (847) 320-4464

League President *JIM THOMSON*
PRESIDENT@CHICAGOCHESSELEAGUE.ORG

2713 ANDREWS AVENUE
BATAVIA, IL 60510

H:(630) 406-0180
W:(847) 538-5408

League Secretary *WAYNE ELLICE*
SECRETARY@CHICAGOCHESSELEAGUE.ORG

4099 W 71ST STREET
CHICAGO, IL 60629

FAX: (773) 838-3243
W: (773) 838-3215

League Treasurer *LENNY SPIEGEL*
TREASURER@CHICAGOCHESSELEAGUE.ORG

FERMILAB MS 220
BATAVIA, IL 60510

H: (630) 208-4738
W: (630) 840-2809

Trophy Chairman *MARTY FRANEK*
TROPHY@CHICAGOCHESSELEAGUE.ORG

9044 S 51ST AVENUE
OAK LAWN, IL 60453-1730

H: (708) 636-3714
W: (312) 353-0397

Publicity Chairman *BRIAN SMITH*
PUBLICITY@CHICAGOCHESSELEAGUE.ORG

483 NANTUCKET ROAD
NAPERVILLE, IL 60565-3106

H: (630) 983-9316

Banquet Chairman *BURT GAZMEN*
BANQUET@CHICAGOCHESSELEAGUE.ORG

1614 HEATHER LANE
DARRIEN, IL 60561

H: (630) 985-1882
W: (312) 666-8100 X228

DIVISIONAL CHAIRMEN

East Division *JIM DUFFY*
CHAIRMANE@CHICAGOCHESSELEAGUE.ORG

152 GREENWAY
ROSELLE, IL 60172

H: (630) 307-2414
W: (312) 220-3252

Far West Division *BOB BUCHNER*
CHAIRMANFW@CHICAGOCHESSELEAGUE.ORG

1316 KALLIEN COURT
NAPERVILLE, IL 60540

H: (630) 428-7707
W: (630) 979-7707

Near West Division *CARL REID*
CHAIRMANNW@CHICAGOCHESSELEAGUE.ORG

2289 GRAND DRIVE
NORTHBROOK, IL 60062

W: (224) 232-2174

North Division *ART OLSEN*
CHAIRMANN@CHICAGOCHESSELEAGUE.ORG

(SEE INFORMATION FOR RATINGS CHAIRMAN ABOVE)

MARK YOUR CALENDARS WITH THESE KEY LEAGUE DATES:

FALL BUSINESS MEETING	LAST WEDNESDAY OF AUGUST
SPRING BUSINESS MEETING	FIRST WEDNESDAY OF APRIL
SEASON PLAYOFFS	THIRD SATURDAY OF MAY
CICL OPEN	THIRD SATURDAY OF MAY
LEAGUE AWARDS BANQUET	FIRST FRIDAY OF JUNE

Officer Contacts	2
Table of Contents	3
A Word from the Editor	4

News

2004 CICL Playoffs at Amoco/BP	5
2004 CICL Open (refer to Playoff info)	5
2004 CICL Awards Banquet	8

Spring Business Meeting

Meeting Minutes	9
Approved Changes to Constitution	13
Mid-Season Finance Report	16

Season Updates

Current Standings	17
Current Team Performance Ratings	18
Top Ten by Division	19
Most Improved Players	19
Match Results	20
Current Ratings	23

FEATURES

Kasparov Simul	25
A View from the Top: Kasparov-Lyle Hayhurst	
GAMES as reviewed by Tom Friske	28
GAMES as reviewed by The Players	39
FIDE WCC Update	42

On the cover: "The Simul". There's been a few stories told of Garry Kasparov's Chicago visit last summer, but hopefully nothing like this picture !!

Spring really is my favorite time of year! Seems like every Winter drags on longer and the cold, even when relatively warm, is more annoying than it's ever been. So when we hit the 80's this weekend, it's been back to my "happy place" – a West Coast beach.

You see, my brother was stationed near Long Beach, CA and even on my first visit there I felt like I was home (I was born in Sacramento, maybe that had something to do with it.)! The Air Force housing where he lived was up on the highest point in the area (you could walk up the block and literally look down on LA Harbor, Long Beach, and points south) so even when the city temperatures were over 100, the local temperatures were mid-70's thanks to the constant breeze coming off the ocean a couple blocks away !

Yup, opening the windows this weekend has definitely put me in my happy place...

But the excitement is also from the change in chess seasons, as well ! This is about the time of year the major national tournaments get going (or at least the time I begin following them) and by now some of the cities are feeling like home as well. Now if I could only get the chess-mind to come with me on these trips, I'll really be happy.

Of course, the **CICL Season enters wrap-up stage**, and faithful readers will remember my reactions to this. And I know I say it every year, but this season promises to be the best yet.

Last year's **Playoffs** found the Excaliburs uninvited, and I was a bit out of it between tournaments, especially with the huge Chicago Open coming the following weekend. So I came and decided to hang out. Made for some good pictures, so not all bad. But how I suffered realizing an opportunity had passed to play some of the stronger players in the League!

A	U	F	E	L	I	N	E
W	O	R	D	S	B	V	W
J	N	O	I	S	Y	C	M
H	P	M	T	G	F	X	I
X	X	T	O	M	X	Q	X
Z	O	F	R	I	S	K	E

OK, I'd sparred with Florin Innumerable when he was on the Excaliburs, but several others like Rich Easton, Kent Williams, and Gustavo Garzon were playing some fascinating chess!

But everyone seemed to play with heavy intensity! I also remember a team captain rightfully screaming for silence, Tony Jasaitis wielding the King's Gambit only to find himself in a better position that took an inordinate

amount of effort to plan, and the happy analyzation sessions between rounds.

My favorite, however, is the final game to finish– in the **Open section**, Irwin Gaines (who had TD'd all day) alertly defending a lost position against Kevin Marshall. The clock moved along passed seven o'clock and on they went... Kevin about to make a second Queen, Irwin checking the King mercilessly, for no other reason than to drive Kevin insane, waste his clock, and force him to mate before flagging. And then the crazed look on Kevin's face when he did flag... Why? Why not !!! .

I've heard from one of the League's strongest members he intends to come. So that, with last year's competitors returning, and some GETCO players (who cannot field a team for the playoffs) ought to make the Open really tight!

Then the **Awards Banquet** is planned. Our new Banquet Chairman, Burt Gazmen, has arranged a new site. Always good to have variety!

All the details are in either this or the May Bulletin, so make sure you check them out!

Happy browsing !

Tom Friske, Bulletin Editor

Century 21

Universal Real Estate

2748 W. Touhy Ave
Chicago, Illinois 60645

Business (773) 465-0300 Ext. 502

Fax (773) 764-0057, Cell (847) 977-7685

E-Mail ethelbert.gazmen@century21.com

Bert (Benjie) Gazmen
Sales Consultant

Each Office Is Independently Owned And Operated



MLS

MAKE or DONATE \$500 !!

Are you thinking about moving?
Considering buying rental property?

Bert Gazmen (Alumni Aces) will donate \$500 to the CICL or your favorite charity or "to anybody" for any reference (you, a relative, or friend) you give him leading to the sale of a house or apartment building.

CONTACT BERT GAZMEN
at his **Century 21** office

BP AMOCO TO HOST PLAYOFF SITE !

The **2004 CICL playoffs** (Rounds 2 and 3) and **2004 CICL Open** will be hosted by BP-Amoco

DATE: Saturday, May 15th starting at 8:45 AM.

The individual tournament will consist of 4 rounds of Game 60. If more than 16 players enter the Individual tournament a 2nd section will be added based on rating.

Directions to BP Amoco follow next page. Watch for further match details in a future email.

Thank you to Clayton Woods and BP Amoco for hosting this year's tournament.

SEEDINGS. (based on team performance ratings from the regular season)

1. FERMILAB	Far West	1940	6.2
2. ALUMNI ACES	East	1932	5.0
3. MOTOROLA KNIGHTS	North	1883	8.3
4. UOP	North	1828	8.3
5. MOTOROLA KINGS	North	1812	9.0
6. PAWNS	Near West	1789	11.2
7. LUCENT CHARGERS	Near West	1693	10.5
8. ARGONNE ROOKS	Far West	1635	7.8

PAIRINGS.

Round 1 (to be finished by May 10th)

- Motorola Kings** (3rd Place, 5th seed) at **Fermilab** (1st Place, 1st seed)
Fermilab is White on odd boards; Motorola Kings are White on even boards.
- Pawns** (1st Place, 6th seed) at **Alumni Aces** (1st Place, 2nd seed)
Pawns are white on odd boards; Alumni Aces are white on even boards.
- Lucent Chargers** (2nd Place, 7th seed) at **Motorola Knights** (1st Place, 3rd seed)
Motorola Knights are white on odd boards; Lucent Chargers are white on even boards
- Argonne Rooks** (2nd Place, 8th seed) at **UOP** (2nd Place, 4th seed)
UOP won the coin toss and is the home team in round 1.
Argonne is white on odd boards; UOP is white on even boards.

NOTES.

- (From the Editor: The seeds and pairings here DO NOT reflect the fact that the Lucent Chargers have announced they will not attend the Playoffs. Details for the 3rd and 4th matches of Round 1 are forthcoming.)
- The home team for round 1 is based on division standing. A 1st place team is the home team against a 2nd place team etc. A coin flip was used to determine the home team in the event of a tie.
- Color assignment, for round 1, for a team's board 1 follows normal swiss color assignment rules (see USCF 6th edition rules). A coin was tossed to determine the highest seed's board 1's color.
- These pairings were made without the round 12 Case at Lucent Chargers match. This decision was made to give teams more time to schedule their round 1 matches. The Case/Chargers match has not yet been played and probably will not be played until next week. I ran hypothetical performance ratings simulations for this match and found that the results of this match will not affect the playoff seedings.

5. Tony Jasaitis withdrew the Getco team from the May 15th playoffs due to a severe shortage of available players and to be fair to the rest of the teams since Getco could not field the full complement of six players. The Motorola Kings have the highest performance rating of the 3rd place teams and were the first choice to replace Getco. The Motorola Kings have agreed to fill Getco's spot in the playoffs this year.

Jankesh Piparia (email: CJP054@motorola.com or simply Kings@chicagochessleague.org) will captain the Kings in the playoffs because Nik Goncharoff is unable to attend the May 15th playoffs due to a prior commitment.

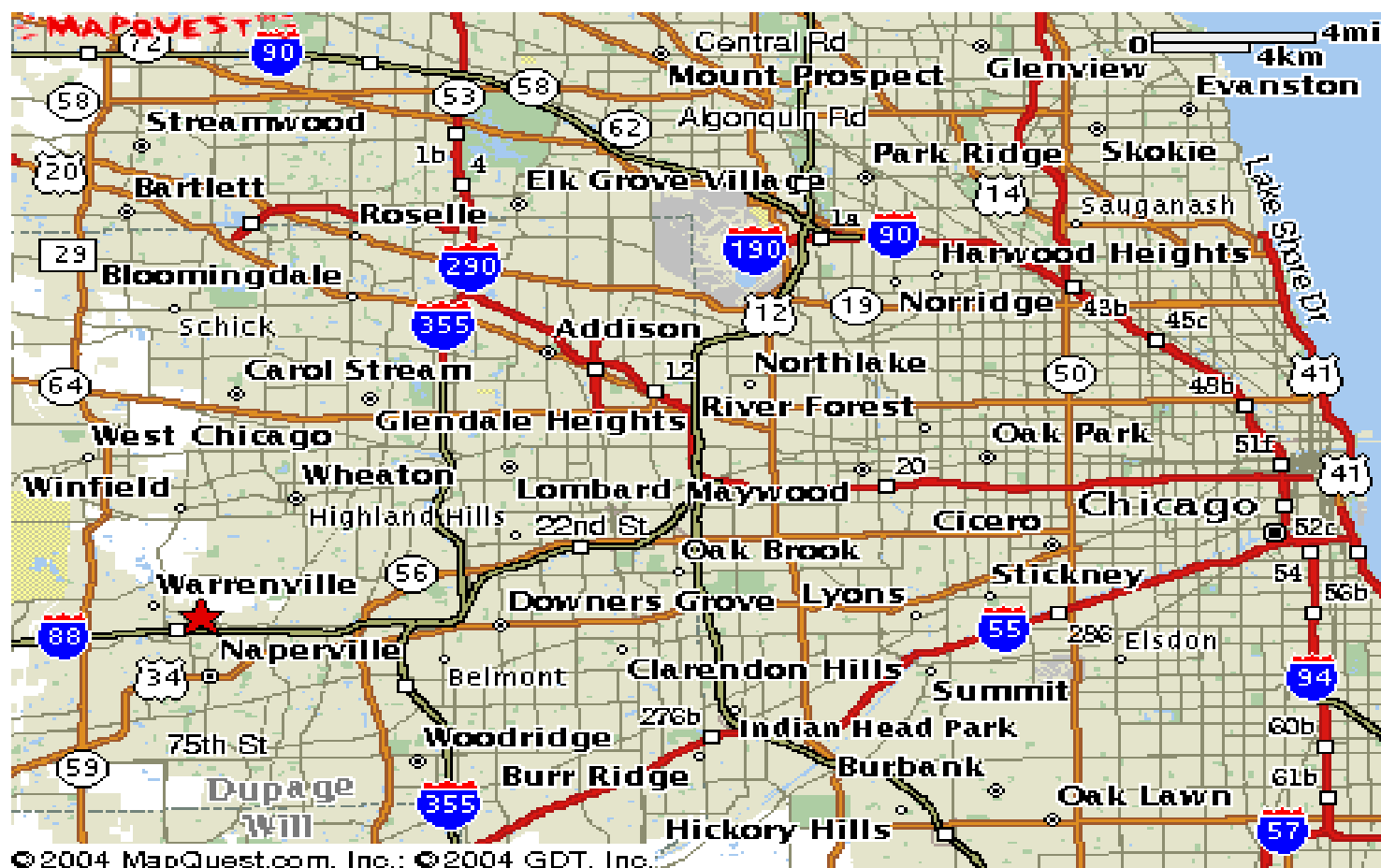
If anyone has questions, please let me know.

Thanks. **Art Olsen, CICL Playoff Tournament Director**

DRIVING DIRECTIONS.

Study the following map and locate the Interstate nearest your starting point.

Note red star in Naperville (bottom-left corner on map) the site of the festivities: **BP-Amoco, just off I-88**

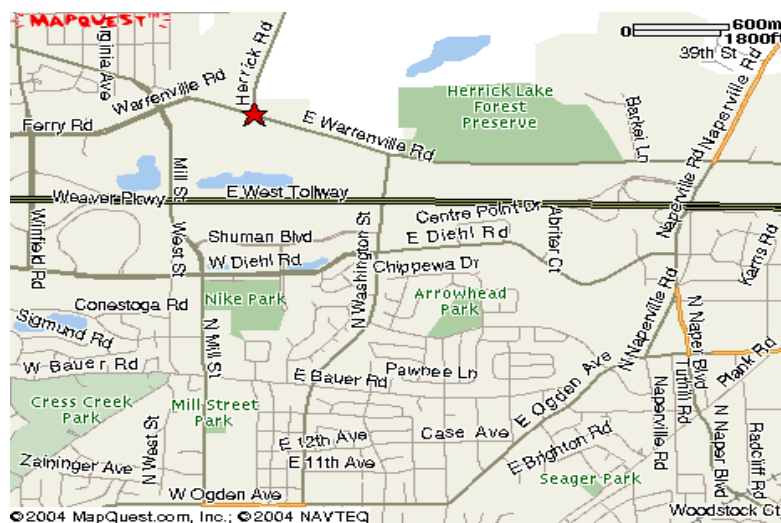


Generally, most drivers will follow the Interstate to a junction with I-88 and head WEST.

The next page details reaching the site from I-88 Westbound.

The map at right shows the connections off I-88 (on map, the horizontal, thick green line is the East-West Tollway, I-88).

1. Exit at Naperville Rd (far-right on map).
2. Turn left at light heading north.
3. Next intersection turn left at light heading west on Warrenville Rd.
4. Continue approximately 1 mile.
5. Amoco entrance is on your **left** (south side) at the light where Herrick Rd begins.

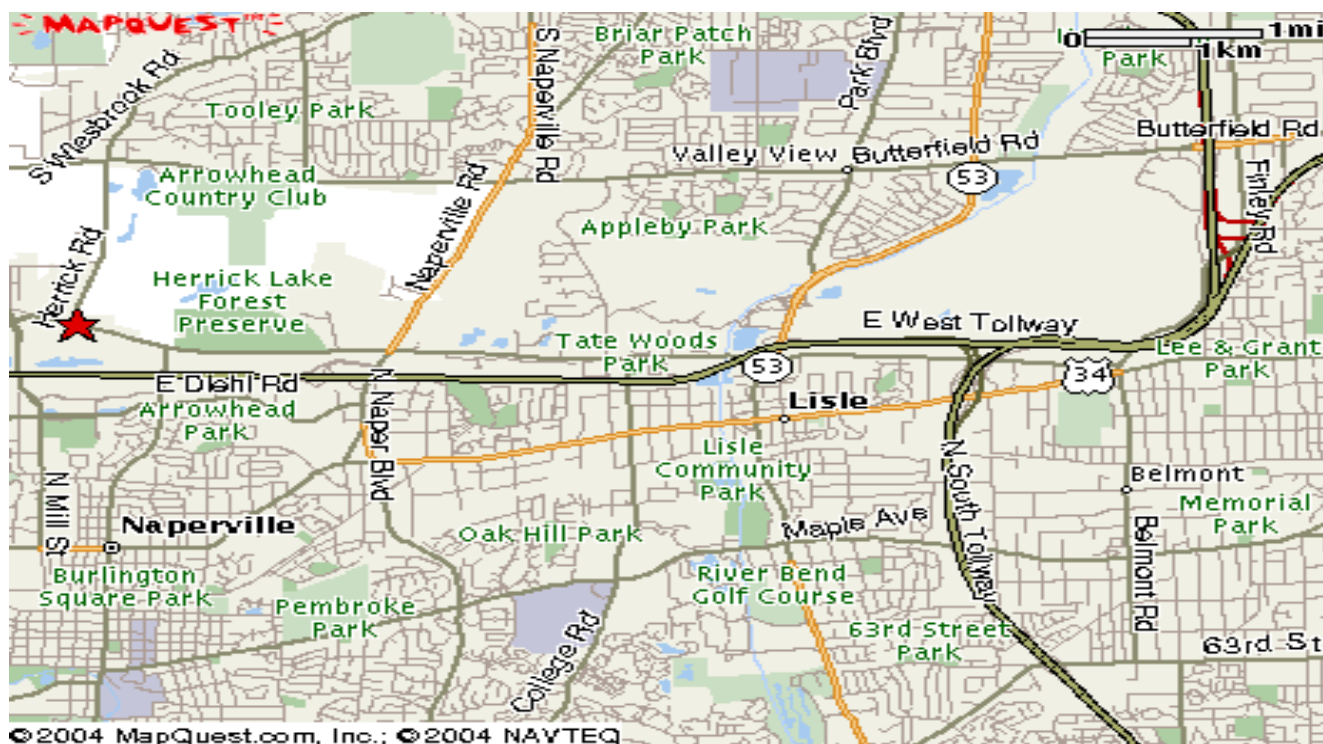


The last map, at bottom of page, shows the general areas around the site.

Eating establishments are abundant along Ogden Avenue (Route 34 on map below), mostly between Washington St and Naperville Rd/Blvd.

In case anyone has any problems or gets lost on playoff Saturday:
The host contact is **Clayton Woods**, cell phone **630-768-9222**.

(Thanks to Bob Buchner for maps and directions!)





Carriage Greens Country Club
 8700 Carriage Greens Drive
 Darien, IL 60561
 630-985-3400/630-985-3730
 Website: www.carriagegreens.com

CASS AVE

Carriage Green Dr

Carriage Greens
 Country Club

N FRONTAGE RD

55

2004 CICL BANQUET

When: Friday June 4th

Time: 06:30p (dinner served)

Place: Carriage Greens Country Club

Scheduled Events:

- Great Food (Cash Bar)

Main course:

Stuffed Boneless Breast of Chicken
 On rice pilaf or Wild Rice (no potato)

Meal service includes:

Appetizer, Salad, Vegetables, Potato
 or Rice, fresh Baked bread and Butter,
 Coffee, Tea, Milk and Dessert

- Award Presentation
- **Guest Speaker, IM Angelo Young**
- Raffle (books and/or equipment)
- Speed Chess Tournament (entry fee \$1.00)

Send \$23 Payment to:

Lenny Spiegel
 807 Wood Ave.
 Geneva, IL. 60134

\$25 at door.

CHICAGO INDUSTRIAL CHESS LEAGUE

Business Meeting of April 7, 2004

At: Motorola

Attendees:

Bob Buchner
Wayne Ellice
Marty Franek
Tony Jasaitis
Art Olsen
Brian Smith
Jim Thomson
Jerry Thomas
Vic Zaderej

MINUTES

1. President Jim Thomson called the meeting to order at 7:15pm.

2. OFFICERS REPORTS:

President-Jim Thomson:

Jim referenced the meeting agenda he prepared and mentioned the two significant items requiring a vote. These are the club teams and division alignment. Much work was done ahead of time regarding club teams. The proposal incorporates considerable input from league members.

Secretary-Wayne Ellice:

The minutes of the last business meeting held August 20 and printed in the October Bulletin were approved as written.

Treasurer-Lenny Spiegel (not present):

Lenny prepared for distribution a mid-season budget report (see attachment dated 4/7/04). At this time, we may end the season with a loss of \$235. Much, however, is determined by our banquet outcome. Income from 3 unpaid teams is still expected, although one team thought they already paid. They will check their records. Payment for dues or the banquet (\$23 in advance) can be paid to:

Lenny Spiegel
807 Wood Ave.
Geneva, IL 60134

Division Chairmen:

North-Art Olsen, Chairman

Art reported that the Knights have clinched first place and UOP have clinched second place.

Near West-Carl Reid, Chairman (not present)

Wayne was able to report that the Pawns are assured of first place (still one match to go) and the Lucent Chargers have clinched second place (one match to go).

East-Jim Duffy, Chairman (not present)

Tony and Marty represented the East. An upcoming match between the Aces and Getco will determine the first and second place division winners. Tony also reported that there is a possibility that Getco may not be able to play in the playoffs throughout and, therefore, may choose not to participate in the playoffs. He will keep Jim and Art informed.

Far West-Bob Buchner, Chairman:

Bob reported that Fermilab is in first place with a perfect score to date. The Rooks and Tyros are scheduled to play this upcoming Monday to determine second place.

3. OTHER REPORTS:

Bulletin Editor & Games Editor-Tom Friske (not present)

Tom prepared written reports for Jim to read. Combining duties as Bulletin Editor and Games Editor, the following was reported:

- Tom has published 6 issues so far this season. He is planning one for April, May and June. There is an outside chance for a summer issue.
- Only 1 annotated game has been submitted for the bulletin so far this season. Tom is reminding everyone of the \$25 cash prize and is encouraging everyone to submit a game. Send it to Tom at 1035 E. Algonquin Road, Des Plaines, IL 60016
- The submitting of game score sheets after each match was initially lagging, but it is starting to catch up. Please continue to send them!
- The Bulletin is continuously being improved with a look closer to that of a magazine.
<http://www.tomhq.com/cicl.htm>

Webmaster-Tom Friske

Items of note from Tom:

- A new website was purchased and assigned a new URL for exclusive CICL use. It is www.chicagochessleague.org <<http://www.chicagochessleague.org>>
- Art Olsen's published email alias list is on the new site. Some Yahoo host problems have been resolved.
- Still to load from the old site are the entire CICL Archives. All Archive data (bulletins, games, working papers, members' photos) have been digitalized and currently reside on Tom's home PC.
- Due to computer problems, the current site is a little less dependable this season.

Rating Chairman-Art Olsen

Art mentioned he is considering a proposal to make a slight change in our rating system. It will increase the number of games played before the next "ratings chart-or formula" applies. He intends to have a proposal for the fall business meeting. Art also mentioned that initial ratings for new players can come not only from a USCF rating but also from other recognized systems. This is especially appropriate for club teams.

Publicity Chairman-Tony Jasaitis, acting

Nothing new to report.

Banquet Chairman-Bert Gazmen, acting (not present)

Bert has found a new banquet site and prepared a handout for distribution. See separate attachment. In summary, it is Friday, June 4 starting at 6:30 at:

Carriage Greens Country Club

8700 Carriage Greens Drive

Darien, IL 60561

Tel. 630-985-3400

www.carriagegreens.com <<http://www.carriagegreens.com>>

Bert is working on a guest speaker as well as raffle prizes. Donations are welcomed. If you have used chess books you no longer need, give them to Bert at the PLAYOFFS so he will have them ahead of time.

Trophy Chairman-Marty Franek

Marty hopes to repeat last year's success and come in under budget again. Remember first time officers receive plaques but not repeating officers.

4. ELECTIONS for next season:

President:

Jim agreed to continue as president for a second term.

Secretary

Jim thanked Wayne for his services as secretary since 1998. Although Tony offered to fill in as acting secretary, Jerry Thomas volunteered. He was voted in unanimously.

Publicity Chairman

Due to the work Brian Smith has already done, it seemed natural for him to serve in this capacity. He accepted nomination and was elected unanimously.

Banquet Chairman

Acting chairman Bert Gazmen was unanimously voted in as our Banquet Chairman.

Treasurer

Lenny Spiegel received a unanimous vote to remain as our treasurer.

5. CALENDAR

Playoffs:

Rounds 2 & 3 will be Saturday, May 15. Art Olsen volunteered to be the Tournament Director. Tony Jasaitis will be assistant TD if his team is not playing. Art will announce details ahead of time. Rounds probably will be 9AM and 2PM. There are plans to hold a separate individual tournament. Remember non-CICL members can play in the latter, but are not eligible for prizes.

Playing Site- Unknown at this time.

We need to find alternative playing sites. Art reported that Kemper could no longer be an option. Vic mentioned that Molex might be a possibility in

the future. Bob will check with BP Amoco. Marty said that the Aces might be able to provide a playoff site at Harper Community College. He will follow up. Motorola could be available if nothing else works out.

Jim reminded us that we talked about renting a facility every third year or so.

Banquet: Friday, June 4, 2004. Different site. See details above and separate announcement sheet.

6. OLD BUSINESS:

Accepting Club Teams

This very important proposal was prepared weeks ahead of time by Brian Smith, James Thomson, Tony Jasaitis, Irwin Gaines and Jerry Thomas. If you have email, you probably had ample opportunity to comment or contribute. Because of its complexity, the entire proposal was submitted for a vote “as is”. There was some discussion, mainly around fully understanding the proposal in detail. Although some minor changes were suggested, Jim kept the discussions on track and reminded us to consider the proposal in total. This could not be a re-write discussion. A motion was made and seconded to accept the proposal. It passed unanimously, 12 for and 0 against. For the record, four teams voted by proxy. It is recommended, however, that the authors clarify a section about ratings (i.e. unrated players get a rating once they have played 5 games).

Club Teams & the Playoffs

Club teams being voted into the league, a motion was made and seconded to allow club teams to fully participate in the playoffs. Again, there was much discussion about this proposal ahead of time-and some at this meeting. This proposal was approved with 8 for, 3 against and 1 abstention. Four of the votes were by proxy.

Division Alignment

Because club teams are now a part of the CICL, it was decided to table the proposal of swapping the Lucent Chargers and Argonne Rooks until our fall business meeting.

Team Rosters

Decisions were made during the season to approve members to play for particular teams. These were Rick Lang for the Excalibers, Len Webber for the Aces and I. Tames for Leo Burnett. By vote, all were accepted unanimously.

7. NEW BUSINESS:

Constitution

Over the past few years, significant league changes have been made and documented in the minutes and the bulletin. Our Constitution now needs to be updated. Volunteering for the job are Brian Smith, Jerry Thomas and Art Olsen.

Internet Play

There was some discussion about team play over the internet and the different internet sites available for this purpose. It being late, nothing concrete was determined.

The meeting was adjourned at 10:08 PM.

Wayne Ellice, Secretary
4/12/04

As noted by the Meeting Minutes, the final version of the Club Team Proposal was approved. Following is that text:

James Thomson, Irwin Gaines, Tony Jasaitis, Jerry Thomas, and Brian Smith submit the following proposal to be voted on at the Spring 2004 CICL Business Meeting.

Proposal for CICL Club Teams

Proposed: add the following new section to the CICL Constitution, and modify existing sections as specified below. Further notes are also found below.

New Section of the CICL Constitution

I. CONSTITUTION B. TEAMS - STRUCTURE and ELIGIBILITY

10. Club Teams

1. Concept

Club teams formed of players who are members of the same chess club will be encouraged to participate in the CICL. This program is designed to promote League growth, and to maximize participation in team chess in the Chicago area.

2. Team Eligibility

- For a chess club to field a team in the CICL, it is to be an Illinois Chess Association affiliate, be open to the public, and meet regularly (twice a month or more) at a regular meeting site.
- A chess club may field more than one club team. Each club team that is new to the CICL must be accepted by vote of the CICL.
- At the business meeting preceding the season, each club team (both new and returning teams) participating in the CICL during that season must submit a written team roster and their home playing site (or willingness to play all matches at their opponents' home site). The team roster lists each player's name and rating. The team roster must list an estimated rating for each unrated player.
- Each club team must have a suitable playing site for conducting home matches (which includes being geographically close to the other teams in their division), or else they must be willing to play all their matches at their opponents' home site. Which evenings during the week a playing site will be available is to be considered if a playing site is suitable. This is to avoid site restrictions (for example, the club team's home site is only available one evening per week) from leading to problems with scheduling matches.
- The requirements "b)" about a team captain, "d)" about dues, and "e)" about playing equipment of Section "I.B.2. Requirements for Team Membership" apply to club teams as well as to other teams.

3. Player Eligibility

- By the time of the business meeting prior to the season, each person on a club team's player roster is to be verified by the club's organizer to be a member in good standing of that chess club, and of age 16 or older.
- Only people on a club team's player roster, including players added to it by means of the "I.B.10.e Mid-season Changes" Section, may play for that club team. This applies to both counting and non-counting boards.
- Players who are current employees (as defined in Section "I.B.2. Requirements for Team Membership") of a CICL member-company are not eligible to play on a club team. If a member of a club team becomes eligible to play on a CICL member-company team after the start of a season, his eligibility for the club team will continue for that season.
- Once a player has played on a club team, he is ineligible to play on any other CICL team for that season, even if hired by a CICL member-company.

4. Club Team Rating Cap

- For each League match, the average rating of the players on the six counting boards of a club team must not exceed the rating cap of 1900. This is verified by the club team captain prior to each match (but no later than when the lineup is written on the Match Results sheet).
- When checking the rating cap, for each unrated player who is playing on a counting board, the estimated rating from the club team's team roster is to be used.
- When checking the rating cap, the average rating must always be calculated using six ratings of players on the club team's player roster. Those six ratings include the ratings of the players written on the Match Results sheet for counting boards. If five or fewer players are written on the Match Results sheet for counting boards, then additional players from the team's roster are selected by the club team captain so that six ratings are always used to determine the average rating. The guideline for which additional rating(s) to use is: the rating of player(s) who commonly play for this team.

5. Mid-season Changes

- A club team may add players to their team roster during the course of a playing season only by consent of both the chairman of their division and the League president. These players must meet the player eligibility rules in Section I.B.10.c. The rating (or estimated rating for unrated players) must be provided for these players.
- Club teams may change their home playing site (or commitment to play all matches at their opponent's home site) during the course of a playing season only by consent of the chairman of their division and the League president. It must be voted on at a future business meeting.

(Continued, next page...)

Modifications to Current Sections of the Constitution

In section I. CONSTITUTION A. PURPOSE

Add the word "club" to the first sentence.

In section I. CONSTITUTION B. TEAMS - STRUCTURE and ELIGIBILITY 6. Alumni Teams b) Eligibility

Following the first sentence in this section, add:

"In addition to former member-company players, former members of club teams from clubs that are not able to field any CICL teams may become alumni team candidates."

In section I. CONSTITUTION I. AWARDS

Modify the first sentence from:

"The League will issue awards to at least the first and second place teams of each division."

to:

"The League will issue awards to at least the first and second place teams (including club teams) of each division."

In section III. LEAGUE CHAMPIONSHIP B. TEAM ELIGIBILITY

Modify the first sentence from:

"The top two teams of each division (including alumni teams) advance to the Playoffs."

to:

"The top two teams of each division (including alumni teams and club teams) advance to the Playoffs."

Notes (not part of the Constitution)

Club team members are not restricted from playing in the Individual Tournament (generally held on Playoffs Saturday), the CICL Winter Blitz Tournament, or at the banquet's Blitz tournament. They are encouraged to do so.

Of course, the effectiveness of club teams will be evaluated following the 2004/2005 season.

	2002-03	2003-04	2003-04
	Final	Budget	Bus. Meet.

Revenue

Basic Team Dues	950	950	800	*
Electronic bulletin				
Postal bulletin	15		30	
Late Dues	40		30	
Banquet surplus	132			

T o t a l	\$ 1,137	\$ 950	\$ 860
Revenue			

Disbursements:

Trophies	742	800	
Bulletin			
Scoresheets	93	220	220
Playoff refreshments	110	125	
USCF/ICA Dues	40	40	
Special			

T o t a l	\$ 985	\$ 1,185	\$ 220
disbursements			

\$ 152 \$ (235) \$ 640

*

Do not have a record of dues from the Aces, Citadel Group, or Leo Burnett.

Dues for Pawns carried over from last year per agreement.

We presently have \$1,548 in our checking account.

Respectfully submitted,
Lenny Spiegel, League Treasurer

NEAR WEST DIVISION 04-20-2004

TEAM NAME	W	L	D	GAME	MATCH	PCT
				POINTS	POINTS	
PAWNS	8	0	4	51.0	10.0	0.833
LUCENT TECH. CHARGERS	5	2	4	34.0	7.0	0.636
COOK CO. DEPT. OF CORR	3	7	2	26.5	4.0	0.333
CASE	1	8	2	24.5	2.0	0.182

FAR WEST DIVISION 04-20-2004

TEAM NAME	W	L	D	GAME	MATCH	PCT
				POINTS	POINTS	
FERMILAB	10	0	0	49.5	10.0	1.000
ARGONNE ROOKS	6	2	2	30.5	7.0	0.700
LUCENT TECH. TYROS	5	4	1	36.5	5.5	0.550
LUCENT TECH. DRAGONS	3	6	1	26.5	3.5	0.350
MOLEX	2	5	2	23.5	3.0	0.333
BP CHEMICALS	0	9	0	6.5	0.0	0.000

NORTH DIVISION 04-20-2004

TEAM NAME	W	L	D	GAME	MATCH	PCT
				POINTS	POINTS	
MOTOROLA KNIGHTS	9	1	0	39.0	9.0	0.900
UOP	7	2	1	36.0	7.5	0.750
MOTOROLA KINGS	5	4	1	33.5	5.5	0.550
EXCALIBURS	5	5	0	31.5	5.0	0.500
KEMPER INSURANCE	3	7	0	29.0	3.0	0.300
NORTHROP	0	10	0	8.0	0.0	0.000

EAST DIVISION 04-20-2004

TEAM NAME	W	L	D	GAME	MATCH	PCT
				POINTS	POINTS	
ALUMNI ACES	8	0	1	41.5	8.5	0.944
GETCO	6	2	1	34.5	6.5	0.722
LEO BURNETT	1	7	1	17.0	1.5	0.167
CITADEL GROUP	1	7	1	15.0	1.5	0.167

CICL Team Performance Ratings 04/20/04

Team	Division	Rating	Games Ave
FERMILAB	Far West	1940	6.2
ALUMNI ACES	East	1932	5.0
MOTOROLA KNIGHTS	North	1883	8.3
UOP	North	1828	8.3
MOTOROLA KINGS	North	1812	9.0
PAWNS	Near West	1789	11.2
GETCO	East	1748	5.7
EXCALIBURS	North	1732	8.5
KEMPER INSURANCE	North	1724	8.7
LUCENT TECH. CHARGERS	Near West	1693	10.5
LUCENT TECH. TYROS	Far West	1675	7.8
ARGONNE ROOKS	Far West	1635	7.8
MOLEX	Far West	1617	7.2
COOK CO. DEPT. OF CORR	Near West	1584	11.0
CASE	Near West	1571	10.0
CITADEL GROUP	East	1537	6.2
LEO BURNETT	East	1544	6.2
LUCENT TECH. DRAGONS	Far West	1531	7.8
NORTHROP	North	1388	6.0
BP CHEMICALS	Far West	1289	5.7

NEAR WEST DIVISION TOP TEN

WILLIAMS, K	CCDOC	2177
JAKSTAS, K	PAWNS	2140C
LATIMER, E	PAWNS	2065D
MARCOWKA, R	CHRGR	1975D
STINSON, M	CHRGR	1972C
ELLICE, W	PAWNS	1910C
FRAATS, D	CASE	1882C
DOBROVOLNY, C	CHRGR	1855C
MCCARTHY, D	CHRGR	1838
ROSLEY, D	CHRGR	1740

FAR WEST DIVISION TOP TEN

BEZZUBOV, V	FERMI	2229
GARZON, G	FERMI	2207
BENEDEK, R	ROOKS	2177T
DORIGO, T	FERMI	2159
DIAZ, P	TYROS	2068C
TEGEL, F	DRGNS	2066Q
HILL, R	ROOKS	1982C
LUDWIG, T	DRGNS	1964C
SPIEGEL, L	FERMI	1959D
COULTER, D	BPCHM	1957

NORTH DIVISION TOP TEN

WOLF, D	MKING	2377
FRIDMAN, Y	MKNGT	2237
STEVANOVIC, M	UOP	2226D
WONG, P	EXCLB	2180C
MORRIS, R	MKNGT	2158
LANG, R	EXCLB	2065
MELNIKOV, I	MKING	2037
FRISKE, T	EXCLB	2026C
BUERGER, E	UOP	2020T
SIWEK, M	KEMPR	2016C

EAST DIVISION TOP TEN

VOLYNSKIY, G	GETCO	2579*
INUMERABLE, F	ALUMN	2264C
STEIN, P	CITGR	2192
TAMEZ, I	LBURN	2191
WEBER, L	ALUMN	2190
BENESA, A	ALUMN	2157
RAUCHMAN, M	GETCO	2122*
JASAITIS, A	GETCO	2097D
GAZMEN, E	ALUMN	2074C
SANTIAGO, T	ALUMN	2002

MOST IMPROVED PLAYERS

ZADEREJ, V	MOLEX	206
RAUCHMAN, M	GETCO	120
VAIL, M	KEMPR	77
FRIDMAN, Y	MKNGT	75
MCGOWAN, D	MOLEX	73
BOLSHOV, A	FERMI	72
AROND, D	EXCLB	68
FULKERSON, R	LBURN	66
KRATKA, M	GETCO	56
WALKER, C	KEMPR	55

23-MAR-04 CITADEL GROUP 1 GETCO 5

ROUND 8

BD	RATINGS	SCORE		RATINGS	SCORE
1 HAYHURST, W	1854 -9	0	JASAITIS, A	2091 6	1
2 SENSAT, J	1591 -9	0	SEET, P	1830 9	1
3 LE, DUC	1614-18	0	KRATKA, M	1682 18	1
4 JANKE, A	0 0	0	MORAN, B	1512 0	1
5 FOLEY, M	1293 0	0	MARES, C	0 0	1
6	0 0	1F		0 0	0F

24-MAR-04 LEO BURNETT 1.5 ALUMNI ACES 4.5

ROUND 8

BD	RATINGS	SCORE		RATINGS	SCORE
1 TAMEZ, I	2162 23	1	BENESA, A	2172-15	0
2 EAMAN, R	1902 -5	0	INUMERABLE, F	2261 3	1
3 DUFFY, J	1805 -5	0	WEBER, L	2185 5	1
4 SITAR, K	1565 18	.5	CZERNIECKI, A	1924-12	.5
5 FULKERSON, R	1482 -3	0	SOLLANO, E	1963 2	1
6 BANNON, B	1273 -3	0	FRANEK, M	1707 2	1
(ALUMN) 7 FRANK, M	1762 -4	.5	FRANEK, M	1709 2	.5

14-APR-04 LEO BURNETT 4 CITADEL GROUP 2

ROUND 9

BD	RATINGS	SCORE		RATINGS	SCORE
1 TAMEZ, I	2185 6	1	HAYHURST, W	1845 -6	0
2 EAMAN, R	1897 6	1	SENSAT, J	1582 -6	0
3 DUFFY, J	1800-20	0	ONG, K	1841 20	1
4 SITAR, K	1583-22	0	LE, DUC	1596 22	1
5 FULKERSON, R	1479 0	1	JANKE, A	0 0	0
6 BANNON, B	1270 0	1F		0 0	0F

15-APR-04 GETCO 0 ALUMNI ACES 6

** GETCO forfeited it's round 9 match versus the Alumni Aces **
 ** The top 6 boards of Alumni were used to compute performance **
 ** ratings for Getco. Since forfeit wins are not counted for **
 ** performance ratings, no players were entered for Getco **

ROUND 9

BD	RATINGS	SCORE		RATINGS	SCORE
1	0 0	0F	INUMERABLE, F	2264 0	1F
2	0 0	0F	WEBER, L	2190 0	1F
3	0 0	0F	BENESA, A	2157 0	1F
4	0 0	0F	GAZMEN, E	2074 0	1F
5	0 0	0F	SANTIAGO, T	2002 0	1F
6	0 0	0F	ALLEN, H	1975 0	1F

18-MAR-04 MOTOROLA KINGS 5.5 NORTHROP .5

ROUND 9

BD	RATINGS	SCORE		RATINGS	SCORE
1 MELNIKOV, I	2032 5	1	WALKER, A	1750 -7	0
2 WALLACH, C	2004 3	1	VIGANTS, A	1624 -3	0
3 PIPARIA, J	1871 6	1	BURIAN, D	1551 -4	0
4 GONCHAROFF, N	1683 0	1F		0 0	0F
5 GRYPARIS, J	1453 -5	.5	FETTERMAN, M	1334 8	.5
6 RABINOVICH, E	1333 0	1	LANE, M	0 0	0

24-MAR-04 KEMPER INSURANCE**2.5 MOTOROLA KNIGHTS****3.5**

ROUND 9

BD	RATINGS	SCORE	RATINGS	SCORE
1 SIWEK, M	2008 8	.5	FRIDMAN, Y	2226-13 .5
2 LEONG, G	1997 -9	0	MORRIS, R	2145 13 1
3 EASTON, R	1881-14	0	THOMSON, J	2021 14 1
4 WALKER, C	1762-18	0	BALICKI, J	1833 18 1
5 MOSSBRIDGE, A	1674 16	1	BENFORADO, E	1570-16 0
6 OLSEN, A	1522 17	1	ALFONSO, E	1570-26 0

30-MAR-04 UOP**3.5 EXCALIBURS****2.5**

ROUND 9

BD	RATINGS	SCORE	RATINGS	SCORE
1 STEVANOVIC, M	2235 7	1	FRISKE, T	2039 -7 0
2 BOLDINGH, E	1827 9	.5	LANG, R	2085-15 .5
3 SACKS, D	1870-27	0	KOGAN, G	1802 18 1
4 SAJBEL, P	1815-18	0	AROND, D	1734 28 1
5 LECHNICK, J	1736 13	1	WEITZ, R	1576 -9 0
6 SAHLI, E	1710 12	1	SUERTH, F	1532 -8 0
7 MICKLICH, F	1609 0	1F	SULLIVAN, J	1782 0 0F
8 MICKLICH, F	1609 15	1	RENDE, D	1612-23 0 (UOP)

14-APR-04 NORTHROP**1 KEMPER INSURANCE****5**

ROUND 10

BD	RATINGS	SCORE	RATINGS	SCORE
1 WALKER, A	1743 0	1F		0 0 0F
2 VIGANTS, A	1621 -6	0	EASTON, R	1867 9 1
3 ELEK, G	1108 -1	0	WALKER, C	1744 1 1
4 LANE, M	0 0	0	MOSSBRIDGE, A	1690 0 1
5 WILKOSZ, A	0 0	0F	OLSEN, A	1539 0 1F
6 FETTERMAN, M	1342-26	0	VAIL, M	1283 26 1

15-APR-04 MOTOROLA KNIGHTS**1.5 UOP****4.5**

ROUND 10

BD	RATINGS	SCORE	RATINGS	SCORE
1 FRIDMAN, Y	2213 24	1	STEVANOVIC, M	2242-16 0
2 THOMSON, J	2035-34	0	SACKS, D	1843 34 1
3 BALICKI, J	1851-23	0	BOLDINGH, E	1836 16 1
4 ALFONSO, E	1544 12	.5	LECHNICK, J	1749-12 .5
5 KARANDIKAR, S	1637-18	0	SAHLI, E	1722 18 1
6 PHELPS, D	1208 -4	0	MICKLICH, F	1624 3 1

15-APR-04 EXCALIBURS**4.5 MOTOROLA KINGS****1.5**

ROUND 10

BD	RATINGS	SCORE	RATINGS	SCORE
1 LANG, R	2070 -5	.5	WALLACH, C	2007 3 .5
2 FRISKE, T	2032 -6	.5	PIPARIA, J	1877 10 .5
3 AROND, D	1762 17	1	GONCHAROFF, N	1683 -8 0
4 KOGAN, G	1820-13	.5	RABINOVICH, E	1333 20 .5
5 SUERTH, F	1524 0	1F		0 0 0F
6 BROTSOS, J	1508 0	1F		0 0 0F
7 BROTSOS, J	1508 16	1	SUERTH, F	1524-16 0 (EXCLB)

30-MAR-04 PAWNS 3 LUCENT TECH. CHARGERS 3

ROUND 11

BD	RATINGS	SCORE	RATINGS	SCORE
1 JAKSTAS, K	2129 9	1	MARCOWKA, R	1984 -9 0
2 LATIMER, E	2070 7	1	DOBROVOLNY, C	1862 -7 0
3 ELLICE, W	1901 5	1	RADAVICIUS, E	1621 -5 0
4 FABIJONAS, R	1710-20	0	THOMAS, J	1581 20 1
5 LITVINAS, A	1665-20	0	STAMM, V	1544 13 1
6 ABDALLAH, D	1498-28	0	DOBR, K	1411 12 1
7 MIKULECKY, B	1459 14	1	O'DELL, DW	1443-14 0 (PAWNS)

05-APR-04 CASE 5 COOK CO. DEPT. OF CORR 0

ROUND 11

BD	RATINGS	SCORE	RATINGS	SCORE
1 FRAATS, D	1874 8	1	ALEXANDER, W	1697-12 0
2 PARAOAN, E	1662 10	1	JACKSON, S	1539-15 0
3 WHITE, H	1623 8	1	APPLEBERRY, T	1459-13 0
4 KLINEFELTER, H	1565 3	1	MC GEE, L	1149 -4 0
5 ZOELLNER, J	1304 0	1F		0 0 0F
6 DYCZKOWSKI, R	1376 0	0F		0 0 0F

20-APR-04 COOK CO. DEPT. OF CORR 1.5 PAWNS 4.5

ROUND 12

BD	RATINGS	SCORE	RATINGS	SCORE
1 PERKINS, D	1663 -3	0	JAKSTAS, K	2138 2 1
2 ALEXANDER, W	1685 19	.5	LATIMER, E	2077-12 .5
3 SEATON, E	1598 -7	0	ELLICE, W	1906 4 1
4 JACKSON, S	1524 33	1	FABIJONAS, R	1690-22 0
5 APPLEBERRY, T	1446-24	0	O'DELL, DW	1429 16 1
6 MAHMOOD, S	0 0	0	MIKULECKY, B	1473 0 1

25-MAR-04 MOLEX 4 LUCENT TECH. DRAGONS 2

ROUND 9

BD	RATINGS	SCORE	RATINGS	SCORE
1 REICH, T	1967-17	0	TEGEL, F	2059 7 1
2 FOX, R	1495 25	1	EUSTACE, D	1526-16 0
3 HENDRICKSON, B	1497-28	0	LAFORGE, W	1411 28 1
4 ZADEREJ, V	1328 24	1	KOMORAVOLU, K	1355-24 0
5 DEICHMANN, E	1344 20	1	BREYER, A	1299-20 0
6 MCGOWAN, D	1120 0	1	WU, M	0 0 0

14-APR-04 LUCENT TECH. DRAGONS .5 FERMILAB 5.5

ROUND 10

BD	RATINGS	SCORE	RATINGS	SCORE
1 PEHAS, A	1891 -4	0	GARZON, G	2201 6 1
2 BLACKMON, E	1694 10	.5	SPIEGEL, L	1969-10 .5
3 EUSTACE, D	1510 -6	0	GOMEZ, G	1753 9 1
4 LAFORGE, W	1439 -5	0	GAINES, I	1784 4 1
5 BREYER, A	1279-17	0	BOLSHOV, A	1358 17 1
6	0 0	0F	MOEHS, D	1425 0 1F

14-APR-04 LUCENT TECH. TYROS 2.5 ARGONNE ROOKS 3.5

ROUND 10

BD	RATINGS	SCORE	RATINGS	SCORE
1 DIAZ, P	2079-11	0	BENEDEK, R	2170 7 1
2 STOLTZ, B	1916 19	1	HILL, R	2001-19 0
3 GUIO, J	1868 -9	.5	BAURAC, D	1637 9 .5
4 BUCHNER, R	1693 9	1	DECMAN, S	1558 -9 0
5 HAHNE, D	1597-21	0	YACOUT, A	1441 32 1
6 THOMAS, G	1563-29	0	GRUDZINSKI, J	1456 29 1

NAME	TEAM	W	L	D	RATING	NAME	TEAM	W	L	D	RATING
ABDALLAH, D	PAWNS	4	3	1	1470*	FOX, R	MOLEX	2	7	0	1520
AILES, T	FERMI	2	0	0	1725	FRAATS, D	CASE	4	5	0	1882C
ALEXANDER, W	CCDOC	2	8	2	1704	FRANEK, M	ALUMN	4	1	1	1711D
ALFONSO, E	MKNGT	0	2	2	1556	FRANK, M	ALUMN	6	0	1	1758C
ALLEN, H	ALUMN	0	1	0	1975	FRIDMAN, Y	MKNGT	7	0	1	2237
APPLEBERRY, T	CCDOC	4	5	1	1422	FRISKE, T	EXCLB	3	3	3	2026C
AROND, D	EXCLB	5	1	2	1779	FULKERSON, R	LBURN	3	3	1	1479
AUGSBURGER, L	MKNGT	3	1	2	1793C	GAINES, I	FERMI	8	0	1	1788D
BALICKI, J	MKNGT	7	2	2	1828	GARDNER, M	NORTH	1	4	1	1310*
BANNON, B	LBURN	1	5	1	1270	GARZON, G	FERMI	6	1	1	2207
BAREITHER, M	CITGR	1	1	0	0000/2	GAZMEN, E	ALUMN	5	0	1	2074C
BAURAC, D	ROOKS	3	4	2	1646D	GOMEZ, G	FERMI	4	0	4	1762
BENEDEK, R	ROOKS	6	2	2	2177T	GONCHAROFF, N	MKING	4	3	2	1675V
BENESA, A	ALUMN	4	4	0	2157	GORDON, R	BPCHM	0	6	0	1123
BENFORADO, E	MKNGT	4	1	0	1554	GRUDZINSKI, J	ROOKS	3	2	1	1485
BEZZUBOV, V	FERMI	1	0	0	2229	GRYPARIS, J	MKING	0	2	3	1448C
BLACKMON, E	DRGNS	2	3	1	1704C	GUIO, J	TYROS	3	3	3	1859C
BOLDINGH, E	UOP	3	4	1	1852C	HAHNE, D	TYROS	4	3	2	1576C
BOLSHOV, A	FERMI	5	0	1	1375	HALL, A	CCDOC	2	3	1	1505
BREYER, A	DRGNS	3	5	1	1262	HAYES, D	BPCHM	1	1	0	0000/2
BROTSOS, J	EXCLB	4	2	2	1524D	HAYHURST, W	CITGR	0	6	3	1839
BUCHNER, R	TYROS	3	1	3	1702C	HENDRICKSON, B	MOLEX	2	6	1	1469
BUERGER, E	UOP	0	1	0	2020T	HILL, R	ROOKS	5	5	0	1982C
BURIAN, D	NORTH	0	6	2	1547D	HTOO, M	CITGR	0	1	0	1735*
CAROSI, R	FERMI	0	1	0	0000/0	HUGHES, N	KEMPR	0	1	0	1683C
CASHER, P	MOLEX	3	0	0	0000/0	INUMERABLE, F	ALUMN	2	1	0	2264C
CASTANEDA, R	BPCHM	1	6	1	1228#	JACKSON, S	CCDOC	4	5	1	1557
CEASE, H	FERMI	2	0	0	1324	JAKSTAS, K	PAWNS	7	1	3	2140C
CHRISTOTEK, L	FERMI	1	0	0	0000/3	JANKE, A	CITGR	0	6	0	0000/6
COOMBES, N	GETCO	3	3	0	0000/4	JASAITIS, A	GETCO	5	3	0	2097D
COULTER, D	BPCHM	1	5	2	1957	KANAS, W	CASE	2	3	0	1183C
CYGAN, J	MKING	1	0	1	1871	KARANDIKAR, S	MKNGT	3	1	1	1619
CZERNIECKI, A	ALUMN	1	0	1	1912D	KARPIERZ, J	TYROS	2	0	2	1305
DAVIDSON, M	ALUMN	1	1	0	1632	KASPER, R	BPCHM	0	1	0	0000/1
DECMAN, S	ROOKS	1	3	1	1549D	KLINEFELTER, H	CASE	4	6	1	1568D
DEICHMANN, E	MOLEX	5	3	0	1364#	KOGAN, G	EXCLB	5	4	1	1807C
DIAZ, P	TYROS	6	3	1	2068C	KOMORAVOLU, K	DRGNS	1	5	2	1331*
DOBR, K	CHRGR	5	3	2	1423Q	KOSMICKE, J	GETCO	1	0	1	0000/2
DOBROVOLNY, C	CHRGR	4	3	4	1855C	KRATKA, M	GETCO	5	2	1	1700
DORIGO, T	FERMI	1	0	1	2159	KUHLMANN, S	ROOKS	2	1	1	0000/2
DUFFY, J	LBURN	1	7	1	1780	LAFORGE, W	DRGNS	3	2	0	1434
DYCZKOWSKI, R	CASE	1	7	1	1376	LAMBIRIS, J	KEMPR	1	0	0	1453
EAMAN, R	LBURN	3	4	1	1903	LANE, M	NORTH	0	5	0	0000/5
EASTON, R	KEMPR	3	5	1	1876	LANG, R	EXCLB	3	2	3	2065
ELEK, G	NORTH	0	6	2	1107	LATIMER, E	PAWNS	8	1	2	2065D
ELLICE, W	PAWNS	10	1	1	1910C	LE, DUC	CITGR	3	6	0	1618#
EUSTACE, D	DRGNS	3	6	1	1504C	LECHNICK, J	UOP	6	2	1	1737
FABIJONAS, R	PAWNS	6	4	2	1668D	LEONG, G	KEMPR	0	2	2	1988C
FETTERMAN, M	NORTH	1	7	1	1316*	LITVINAS, A	PAWNS	5	2	0	1645D
FOLEY, M	CITGR	0	2	0	1293*	LUDWIG, T	DRGNS	3	0	0	1964C

/x - UNRATED; x RATED GAMES

- 5 TO 9 RATED GAMES

* - 10 TO 24 RATED GAMES

C - CENTURY CLUB MEMBER

D - DOUBLE CENTURION

T - TRIPLE CENTURION

Q - QUAD CENTURION

V - QUINTUPLE CENTURION

04-20-2004

NAME	TEAM	W	L	D	RATING	NAME	TEAM	W	L	D	RATING
MAHMOOD, S	CCDOC	1	1	1	0000/3	SEET, P	GETCO	3	1	2	1839*
MANILA, M	BPCHM	0	2	0	1235*	SENSAT, J	CITGR	0	7	1	1576*
MARCOWKA, R	CHRGR	3	4	0	1975D	SITAR, K	LBURN	1	6	2	1561
MARES, C	GETCO	1	1	0	0000/1	SIWEK, M	KEMPR	3	3	2	2016C
MARSHALL, K	MKNGT	0	1	1	1294	SMITH, BR	TYROS	6	2	1	1680C
MASHKEVICH, I	KEMPR	0	2	0	1134*	SOLLANO, E	ALUMN	5	1	2	1965C
MCCARTHY, D	CHRGR	3	2	0	1838	SPIEGEL, L	FERMI	5	2	3	1959D
MCGEE, L	CCDOC	2	8	0	1145	STAMM, V	CHRGR	7	2	2	1557T
MCGOWAN, D	MOLEX	4	4	0	1120	STAPLES, C	FERMI	6	1	0	1647
MELNIKOV, I	MKING	2	2	5	2037	STEELE, B	CCDOC	0	1	0	925#
MICKLICH, F	UOP	5	3	0	1627D	STEIN, P	CITGR	1	2	0	2192
MIKULECKY, B	PAWNS	5	2	1	1473C	STEVANOVIC, M	UOP	7	2	1	2226D
MOEHS, D	FERMI	2	0	0	1425#	STINSON, M	CHRGR	1	0	0	1972C
MORAN, B	GETCO	3	0	0	1512	STOLTZ, B	TYROS	5	1	1	1935C
MORRIS, R	MKNGT	2	1	5	2158	SUAREZ, E	ROOKS	3	0	1	1836
MOSSBRIDGE, A	KEMPR	2	4	0	1690	SUERTH, F	EXCLB	3	3	1	1508D
MUELLER, R	MOLEX	0	5	1	0000/1	SULLIVAN, J	EXCLB	3	3	0	1782D
O'DELL, DW	PAWNS	5	6	1	1445C	TAMEZ, I	LBURN	2	0	0	2191
OGANESSYAN, G	MOLEX	0	1	0	0000/0	TEGEL, F	DRGNS	3	4	2	2066Q
OLSEN, A	KEMPR	5	3	2	1539C	THOMAS, G	TYROS	0	1	0	1534C
ONG, K	CITGR	2	3	1	1861	THOMAS, J	CHRGR	5	3	3	1601D
PARAOAN, E	CASE	5	4	1	1672D	THOMSON, J	MKNGT	6	2	1	2001
PEHAS, A	DRGNS	3	3	1	1887C	TRUFANOV, D	UOP	0	2	0	1553#
PERKINS, D	CCDOC	0	1	0	1660#	VAIL, M	KEMPR	4	4	0	1309*
PHELPS, D	MKNGT	1	1	0	1204*	VALDEZ, C	TYROS	1	1	0	1379*
PIPARIA, J	MKING	4	2	3	1887	VAN ZILE, C	UOP	0	1	0	1328
POMA, D	BPCHM	0	5	0	1234	VIGANTS, A	NORTH	0	8	1	1615C
RABINOVICH, E	MKING	3	1	2	1353	VOLYNSKIY, G	GETCO	1	0	0	2579*
RADAVICIUS, E	CHRGR	2	2	2	1616D	WALKER, A	NORTH	0	8	1	1743
RAUCHMAN, M	GETCO	7	0	0	2122*	WALKER, C	KEMPR	5	2	1	1745
REICH, T	MOLEX	3	5	1	1950#	WALLACH, C	MKING	6	3	1	2010C
REID, C	CASE	4	5	1	1479D	WALSH, W	ROOKS	0	1	0	1494C
RENDE, D	UOP	1	2	0	1589*	WANG, A	CITGR	1	0	1	1461#
REVELLON, L	UOP	3	3	1	1968	WEBER, L	ALUMN	1	0	0	2190
RINGENBERG, T	BPCHM	0	3	1	1361	WEITZ, R	EXCLB	3	5	0	1567C
ROJO, V	CCDOC	2	4	1	1431	WHITE, H	CASE	1	8	1	1631C
ROSLEY, D	CHRGR	1	3	1	1740	WILKOSZ, A	NORTH	1	0	0	0000/0
ROSZKOWSKI, D	KEMPR	0	3	0	0000/5	WILLIAMS, K	CCDOC	3	0	2	2177
RUFUS, B	MOLEX	1	3	0	0000/3	WILLIAMS, S	GETCO	1	2	0	1220#
SACKS, D	UOP	4	1	0	1877	WIRTZ, R	KEMPR	1	1	0	1310*
SAGALOVSKY, L	GETCO	0	0	1	1977	WOLF, D	MKING	1	0	0	2377
SAHLI, E	UOP	2	0	0	1740	WONG, P	EXCLB	0	1	0	2180C
SAJBEL, P	UOP	2	1	2	1797C	WOODS, C	BPCHM	0	7	0	0000/5
SAJKOWSKI, D	BPCHM	2	4	0	1916	WU, M	DRGNS	1	1	0	0000/1
SALERNO, S	DRGNS	0	0	1	1477*	YACOUT, A	ROOKS	3	5	1	1473
SAMELSON, C	MKING	4	2	0	1933D	ZADEREJ, V	MOLEX	6	1	1	1352
SANTIAGO, T	ALUMN	3	1	1	2002	ZOELLNER, J	CASE	2	4	4	1304D
SAWIN, B	LBURN	2	2	0	1175*	ZUBIK, J	BPCHM	0	5	0	0000/5
SEATON, E	CCDOC	3	7	1	1591						

/x - UNRATED; x RATED GAMES

- 5 TO 9 RATED GAMES

* - 10 TO 24 RATED GAMES

C - CENTURY CLUB MEMBER

D - DOUBLE CENTURION

T - TRIPLE CENTURION

Q - QUAD CENTURION

V - QUINTUPLE CENTURION

04-20-2004

Garry Kasparov visited Chicago last Summer on July 17th. As part of an invitation extended by Belzberg Technologies and the Chicago Board of Exchange, a simul was given by the GM after a time of autographs and picture-taking. Our own **Lyle Hayhurst (Citadel Group)** was one of the lucky 24 players and adds his comments to those of the Illinois Chess Bulletin and CICL Bulletin Editors. Among other things, we learn Garry is a trash-talker, even during exhibition sessions !

Kasparov, G – Hayhurst, L
[B50]
Chicago simul, July 17, 2003

Notes prefaced by [ICB] are attributed to Dennis Bourgerie, as published in the Illinois Chess Bulletin, issue 26:5, Sept/Oct 2003.

Notes prefaced by [LH] from Lyle Hayhurst of Citadel Trading.

Unattributed notes by the Games Editor.

1.e4 c5 2.Nf3 d6

Geesh, nothing like playing a well-known, sharp line against the world's number one player! If we go down, we go down swinging!

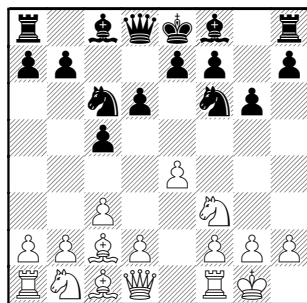
3.c3

Interesting, Black often plays ...d5 in response to this move. White would gain a tempo here with that reply.

3...Nf6 4.Bd3

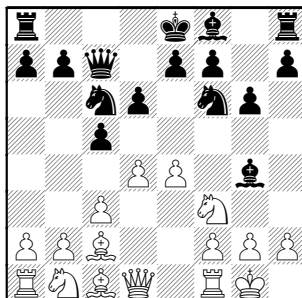
NCO line plays this after d4, which is played in place of Nf3

4...Nc6 5.Bc2 g6 6.0-0



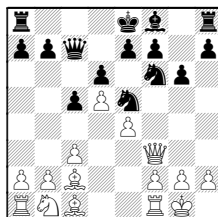
Idea of d4, then e5

6...Qc7 7.d4 Bg4

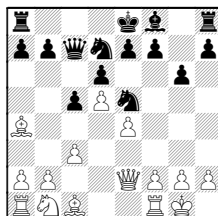


8.d5 Ne5

8...Bxf3 9.Qxf3 Ne5



10.Ba4+ Nfd7 11.Qe2



Is a tempo up on Rausis-Barczay, Paris 1994 (as quoted in NCO). White threatens f4, trapping the e5-Knight.

9.Nbd2 Bg7 10.h3 Bxf3 11.Nxf3 Nxf3+ 12.Qxf3 0-0

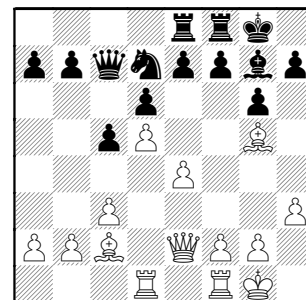
13.Bg5 Nd7

[ICB] The e7 Pawn is indirectly protected.

14.Qe2

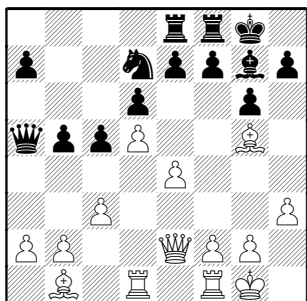
[ICB] 14.Bxe7? Ne5 15.Qe2 Qxe7

14...Rae8 15.Rad1



[ICB] White believes that sooner or later, Black will have to move the e-pawn to free himself. When that happens, White will capture dxe6, and his Rook will have a half-open file.

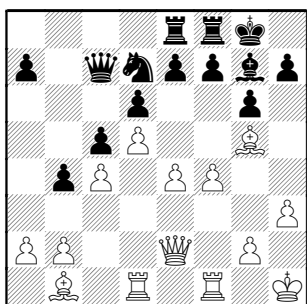
15...Qa5 16.Bb1 b5



17.Kh1 b4

17...c4 then b4 next, will guarantee some Queenside play.

18.c4 Qc7 19.f4

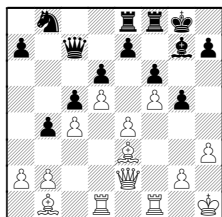


19...e6

This strikes me as impatient, but, with the Queenside dead, Black will just sit while White rolls the Pawns in his face.

Maybe Black should prepare ...e6 by threatening Nc6-d4 with:
19...Nb8 20.Rfe1 to push e5

Not 20.f5 f6 21.Be3 g5

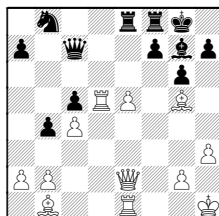


Locks the position, and prepares the Knight to land on e5. But how will Black unwind his Kingside, especially the Bishop? A White Kingside Pawn expansion would be difficult to defend.;

Also possible is 20.Qd2 looking at d6-Pawn and threatening f5,Bh6,etc.

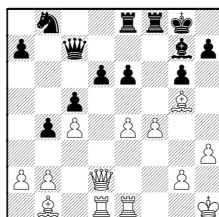
20...e6 21.dxe6

21.e5?! dxe5 22.fxe5
(22.d6!)
22...exd5 23.Rxd5



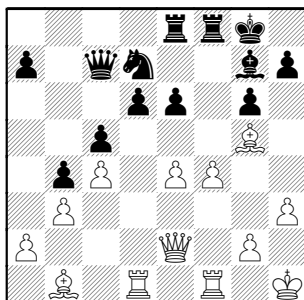
23...Nd7
(23...Nc6? 24.Rxc5)
24.Bf4 Re6 25.Rd6 Rfe8)

21...fxe6 22.Qd2



With much the same problems as in the game, but would the lessening of pressure on f5 (since Rfe1 was played) ease the pressure?]

20.dxe6 opens attack onto d6
20...fxe6 21.b3



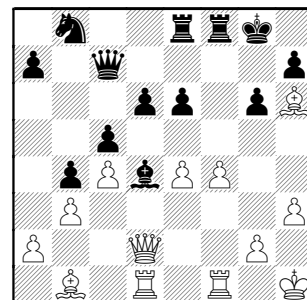
The position screams for a Knight to be placed at d4, and then a5-4 counterattacks. Unfortunately, Black has trouble defending the backward d6-Pawn.

21...Nb8

Hindsight suggests 21...Bd4 but where does the Knight fit in the scheme ?

21...Rf7 prepares Nf8, at least participating in the defense. Maybe in the future, ...e5 is played and the Knight could complete its journey to d4 via e6.

22.Qd2 Bd4 23.Bh6



23...Nc6!?

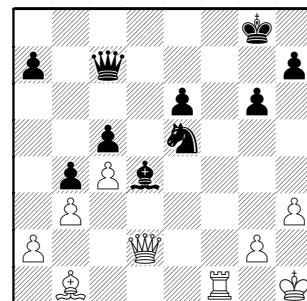
[ICB] 23...Rf7

[LH] OK, so I did play this move for the simple fact that I'd probably never get the chance to sacrifice an exchange against one of the strongest players ever. Nevertheless, the position after the exchange sac is quite interesting.

24.Bxf8 Rxf8 25.e5

[LH] ?! Played immediately, but this is actually a mistake. Better was 25 f5! and Black is in big trouble(Fritz).

dxe5 26.fxe5 Rxf1+ 27.Rxf1 Nxe5



An interesting position. Black seems to have active, centralized minors for his exchange loss, but, more importantly, he has no threats. At best, a dark-square attack around the King would highlight opposite Bishops. But White

has plenty of space, especially the f3–a8 diagonal and f–file, and the extra power to force play.

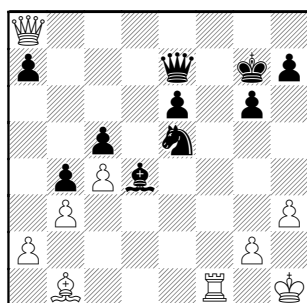
28.Qf4 Qg7

Defending invasions. Great would be posting the Knight at f5, eyeing g3. So he'd love to get Nf7–h6–f5 in.

29.Qe4

Light-square attack, also looking at e6–Pawn, and so stopping the Knight tour.

29...Qe7 30.Qa8+ Kg7



31.g3

When I originally saw this, it was "Whatever possessed Kaspy to do this ??" As I realized the Knight tour, however, it proves the genius GM is about 4 moves ahead of Black's threat: he's defending g3 !! Also, he starts building a known, strong defensive position.

31...Nf7 32.Be4

Doesn't hurt to overprotect the path to his King.

32...Ne5

[LH] At this point, there were only four of the twenty boards left, and Kaspy was moving around them pretty fast -- so I settled on the idea of shuttling the knight back and forth.

But Black missed a very good move here: 32 ... Be5! 33 Rg1

If instead 33 Kg2 Qg5 34 Rf3 Qd2+ and draws according to Fritz.

33 ... Qd6 Kh2 34Qd4 and Black is much better than in the game.

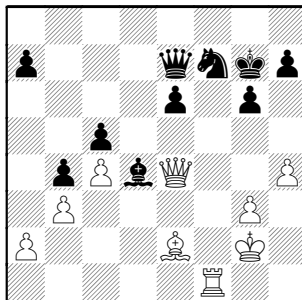
33.Kg2 Nf7 34.h4 Ne5

[ICB] It looks as if Black is close to setting up a fortress position with [these moves], against which it is hard for White to make progress.

35.Bf3 Nf7 36.Be2 Ne5

[LH] ? 'Time trouble' again. More stubborn was 36 ... Nh6 with the idea of redirecting to f5

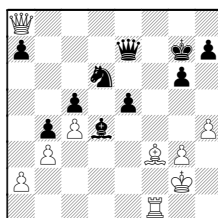
37.Qe4 Nf7



It was a cute theme, but White didn't need much coaxing to hone in on Black's weakness.

38.Bg4 Ne5

38...e5 only temporarily blocks the Bishop. Black threatens Nd6, then e4. 39.Bf3 Nd6 40.Qa8

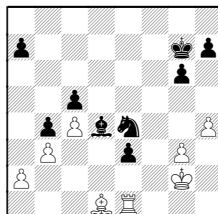


The threat is now Bd5 and flushing the King out with Qg8+.

40...e4 41.Bd1 Nf5 42.Bc2 Nd6 43.Re1

Forcing the light-squares open.

43...e3 44.Bd1 Qe4+ 45.Qxe4 Nxe4



Black is OK as long as he can keep the Rook from invading.

[LH] My take is that after 38 ... e5 39 Qd5 (instead of Tom's 39 Bf3) and White can gang up on f7 after Be6

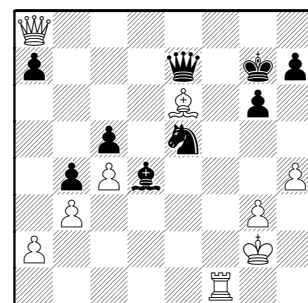
39.Bh3 Bc3 40.Qa8

[LH] Here Kasparov leaned over the board and said to me: "The final journey!" My heart sank -- I knew I was busted -- but there was something great about having the best player in the world talk trash on my helpless position!

40... Bd4

[LH] ? Losing. As pointed out by the ICB, 40 ... Nf7 would have put up more resistance, for example 41 Qc8 Nd8 42 Rd1 Bd4 and Black has some life left

41.Bxe6!



41...Bc3

[ICB] 41...Qxe6 42.Qf8#

42.g4 idea of g5, Qg8# 42...h6 43.Qg8#

1-0

[LH] I actually resigned before he could play 43 Qg8#.

[LH] *After going over this game, its surprising how much more resistance Black could have put up after the exchange sac. Maybe the idea wasn't so bad after all?!*

Wallach,C (1993) –
Fridman,Y (2214) [C17]
Kings-Knights, 1-15-2004

This is a prime example of the French Winawer, for anyone interested in its possibilities.

1.e4 e6 2.d4 d5 3.Nc3 Bb4 4.e5 c5
5.a3 Ba5

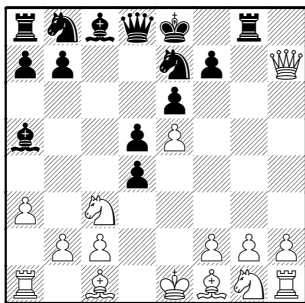
5...Bxc3+ is also played

6.Qg4

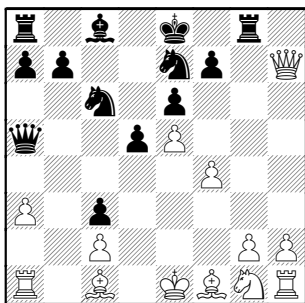
Options are 6.b4; 6.dxc5; 6.Bd2

6...Ne7 7.Qxg7 Rg8 8.Qxh7 cxd4

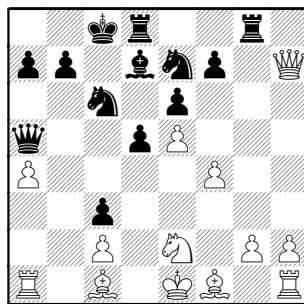
In the Bxc3 lines, White responds Pxc3, supporting d4 with a Pawn. Here, and with the Queen on vacation, Black gets good play.



9.b4 dxc3 10.bxa5 Nbc6 11.f4 Qxa5



12.a4 idea Ba3-d6 12...Bd7 13.Ne2
0-0-0



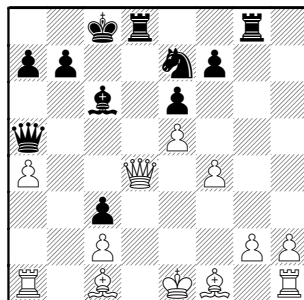
14.Qd3

The greedy 14.Qxf7 Rdf8 gives Black too much piece play

14...d4 15.Nxd4

Kd1 is a common way to dodge some of the coming tactics.

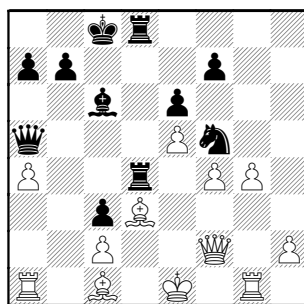
15...Nxd4 16.Qxd4 Bc6



17.Qf2

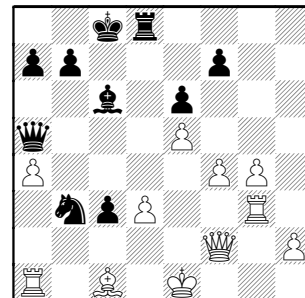
All these Queen moves have allowed Black to place pieces in magnificent squares.

17...Nf5 18.Rg1 Rd4 19.Bd3 Rgd8
20.g4



20...Rxd3!
Very nice!!

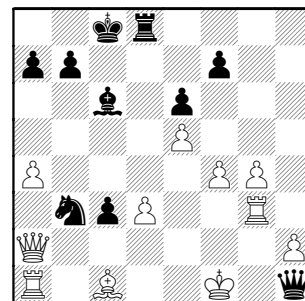
21.cxd3 Nd4 with forks on f3 or c2
22.Rg3 Nb3



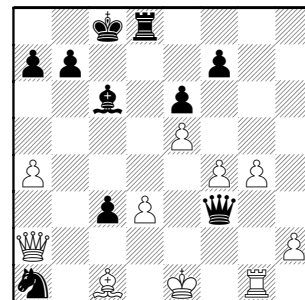
...or b3...
23.Qa2

23.Rb1?? c2+ 24.Bd2 cxb1Q+ CHECK
!! 25.Ke2 Qxd2#

23...Qd5 24.Kf1 Qh1+



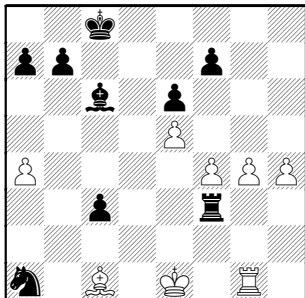
25.Rg1 Qf3+ 26.Ke1 Nxa1



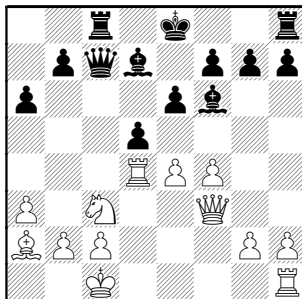
27.Qe2

27.Qxa1 Qxd3 idea Qd1+ flushing King out to h4 and using Rh8 to mate.

27...Rxd3 28.Qxf3 Rxf3 29.h4



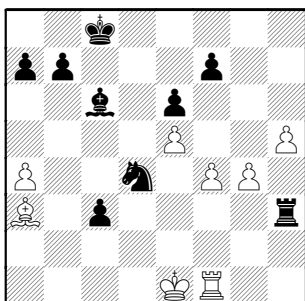
11.Bc4 Nxd4 12.Rxd4 Rc8 [12...e5]
13.Ba2 d5 14.Bxf6 Bxf6



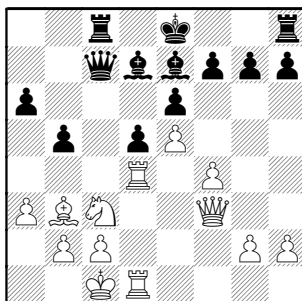
29...Rh3 30.h5 Nb3 31.Ba3

31.Kd1 Be4

31...Nd4 32.Rf1



15.e5 Be7 16.Bb3 b5 17.Rhd1

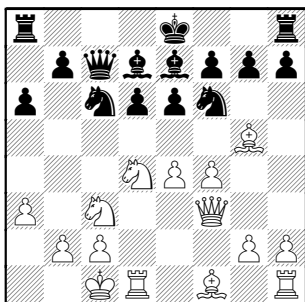


32...Nc2+ 0-1

Sensat,J (1598) –
Sollano,E (1975)
Citadel-Aces, 3-9-2004

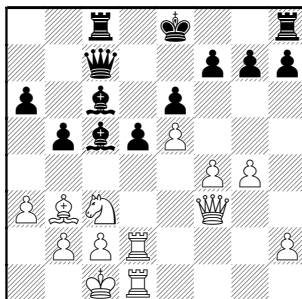
[B43]

1.e4 c5 2.Nf3 e6 3.Nc3 a6 4.d4 cxd4
5.Nxd4 Qc7 6.a3 Nf6 7.Bg5 Be7 8.f4
d6 9.Qf3 Nc6 10.0-0 Bd7



Threatening is 18 f5, then 19 f6 !

17...Bc6 18.g4 Bc5 19.R4d2

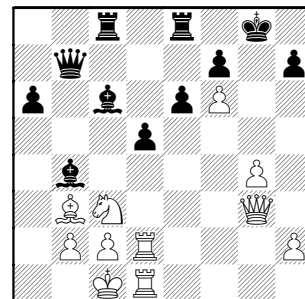


19...Qb7

19...d4 20.Ne4 Bb7 21.Re1

20.Qg3 b4 21.axb4 Bxb4 22.f5

22...0-0 23.f6 gxf6 24.exf6 Rfe8



25.Qf4?

25.Qh4!

Gains a crucial tempo on Rd3-h3 line,
as suggested at #26, and generates a
convincing mating attack!

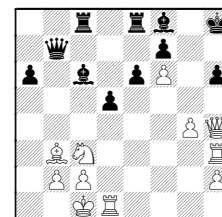
25...Kh8

25...Bxc3?? 26.Qg5+ Kh8 27.Qg7#

26.Rd3 Bf8

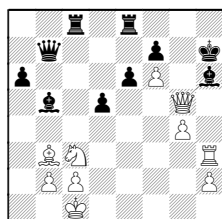
26...Rg8 27.Rh3 is curtains

27.Rh3 h6



28.Qg5! idea Rxh6+,Qxh6+,Qg7#

28...Kh729.Rdd3! Bb5 30.Rxh6+ Bxh6
31.Rh3



and mates with Qxh6 or Qg7!

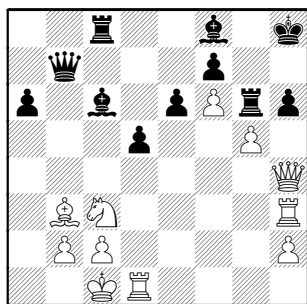
In the game, White builds the same attack, but the extra tempi spent by his Queen give Black time to defend....

25...Kh8 26.g5

26.Rd3 idea Qh6,Rh3

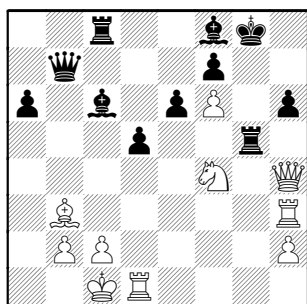
26...Rg8 27.Rh3 Rg6

26...Rg8 27.Qh4 Rg6 28.Rd3 Bf8 29.Rh3 h6



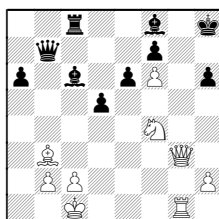
Compare with analysis of 25. Qh4!

30.Ne2 Kg8 [30...Rxc5? 31.Qxc5] 31.Nf4 Rxc5



32.Rg3 Kh7

32...Rxc5?? 33.Qxc5+ Kh8 34.Rg1

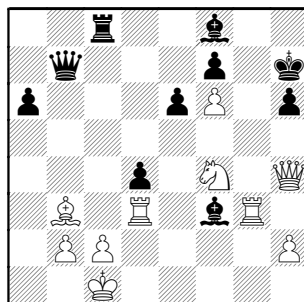


idea Qg8# 34...Bd6 35.Qg7#

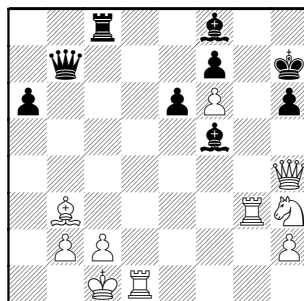
Also, from last game diagram, Black's try to attack c2 with 33...Be4 fails:

32...d4 33.Rxc5+ hxc5 34.Qxc5+ Kh7 35.Rd3

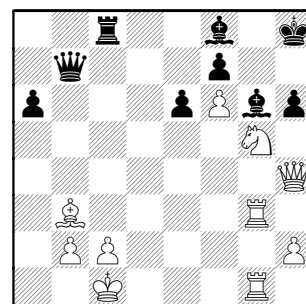
33.Rxc5 d4 34.Rd3 Bf3 35.Rg3



35...Be4 36.Rxd4 Bf5 37.Nh3 Qh1+ 38.Rd1 Qb7

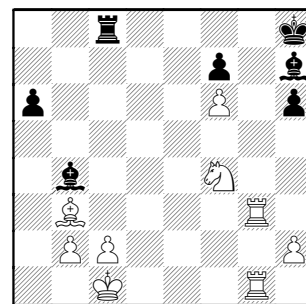


39.Ng5+ Kh8 40.Rdg1 Bg6

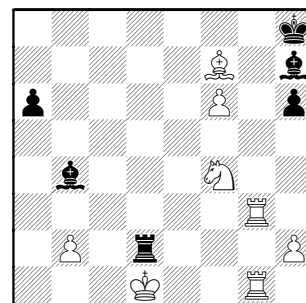


Opening the c-file does not work:
40...Bxc2 41.Nxf7+ Qxf7 42.Bxc2

41.Nxe6 Qb4 [41...fxe6 42.Rxc6] 42.Qxb4 [42.Rg4? Qxb3] 42...Bxb4 43.Nf4 Bh7



44.Bxf7 Rxc2+ 45.Kd1 Rd2+

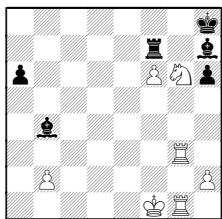


46.Kc1?

DRAW AGREED

White should not fear a discovery:
46.Ke1 Rd7+ 47.Kf1 Rxf7 48.Ng6+

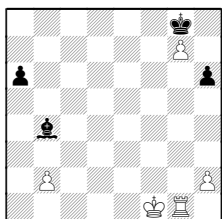
(Diagram follows...)



48...Bxg6

48...Kg8? 49.Ne5+ Kf8 50.Nxf7 Kxf7
51.Rg7+ White cleans house

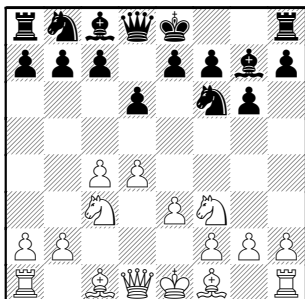
49.Rxg6 Kh7 50.Rg7+ Rxg7 51.fxg7
Kg8



White wins after a walk by King to g6 to mate on backrank while trying to win an edge Pawn.

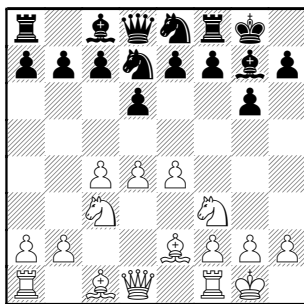
**Sullivan,J (1796) –
Balicki,J (1811)** [E61]
Excaliburs–Knights, 3–16–2004

1.d4 Nf6 2.c4 g6 3.Nc3 Bg7 4.Nf3 d6
5.e3



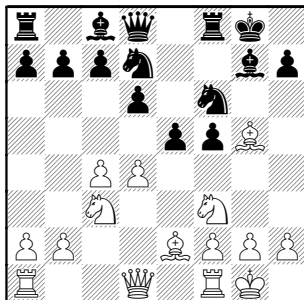
Not overly ambitious (especially playing White), but probably desiring to hold the center duo.

5...0-0 6.Be2 Nbd7 7.0-0 Ne8 8.e4



Hmmm, back to normal lines a tempo down.

8...e5 9.Be3 f5 10.Bg5 Nef6 11.exf5
gxf5

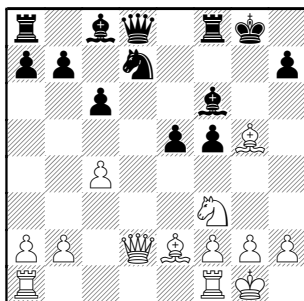


12.dxe5 dxe5
Now Black has a center duo that's not easily attacked by Pawns. He's definitely won the opening battle.

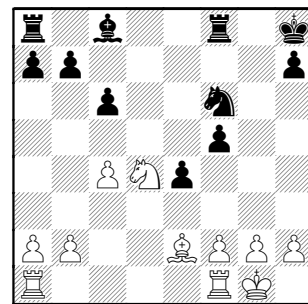
13.Nd5 c6 14.Nxf6+ Bxf6

14...Nxf6 15.Nxe5

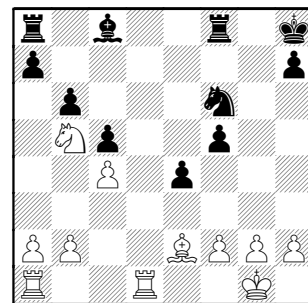
15.Qd2



15...e4 [15...Qe7 idea of Nc5–e4]
16.Bxf6 Qxf6 17.Qg5+ Kh8 18.Qxf6+
Nxf6 19.Nd4



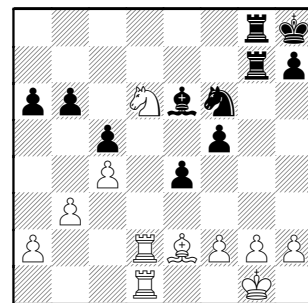
19...c5 20.Nb5 b6 21.Rfd1



21...a6

21...Bb7? 22.Nd6 Bc6 23.Nxf5

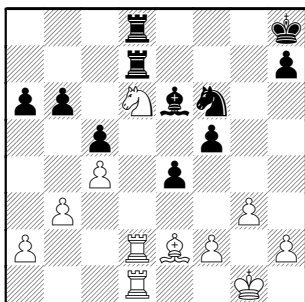
22.Nd6 Be6 23.Rd2 Ra7 24.Rad1 Rg7
25.b3 Rfg8



26.Bf1 Rd7 27.g3

Another wasted tempo, this could've been played last move.

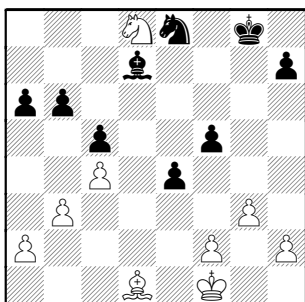
27...Rgd8 28.Be2



28...Kg8

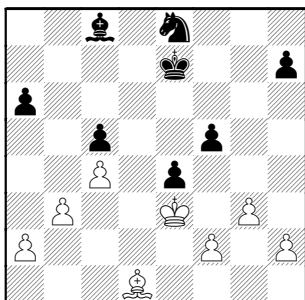
Black dodges a possible Knight check as in 28...Ne8? 29.Nf7+ Bxf7 30.Rxd7

29.Kf1 Ne8 30.Nb7 Rxd2 31.Nxd8 Rxd1+ 32.Bxd1 Bd7

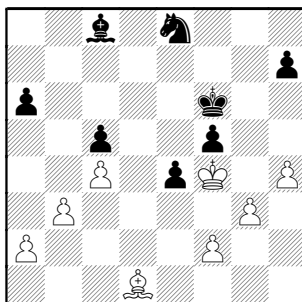


How will the Knight escape ?

33.Ke2 Kf8 34.Ke3 Ke7 35.Nb7 Bc8 36.Nxc5 bxc5



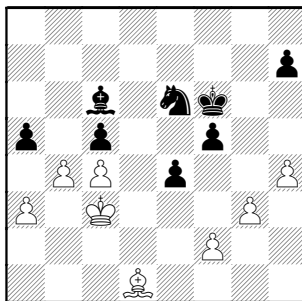
37.Kf4 Kf6 38.h4



38...Ng7 39.Ke3 Bb7 40.a3 a5

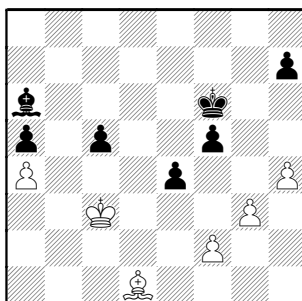
No need to concern oneself with an easily-blocked passer.
40...Ne6 idea Ke5,f4+, Nxf4-g2+-xh4

41.Kd2 Bc6 42.Kc3 Ne6 43.b4



See? White forces a passer anyway. But Black's continuation still makes sense.

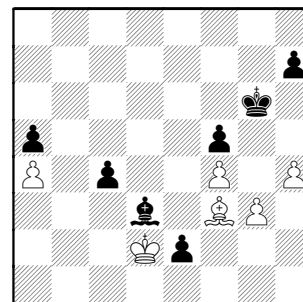
43...Nc7 44.b5 Nxb5+ 45.cxb5 Bxb5 46.a4 Ba6



47.f4

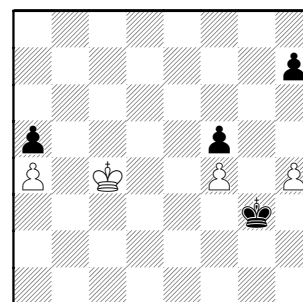
Sure seems to make it hard for Black to break through.

47...e3! 48.Bf3 Kg6 [48...e2 49.Kd2] 49.Bc6 e2 50.Kd2 Bd3 51.Bf3 c4!



A nice concept, but almost allows White to almost use his a-passer.

52.Bxe2 Bxe2 53.Kxe2 Kh5 54.Kd2 Kg4 55.Kc3 Kxg3 56.Kxc4



56...Kxh4

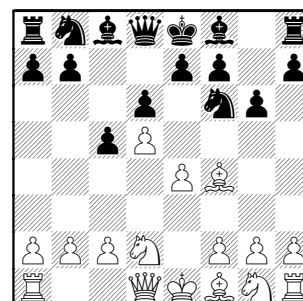
Quicker is 56...Kxf4 57.Kb5 Kg4

57.Kb5 h5 58.Kxa5 Kg4

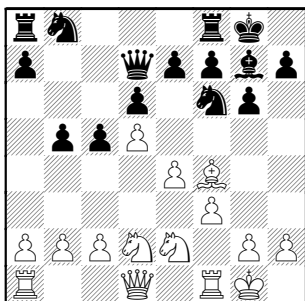
WHITE RESIGNED
Black queens first, covering White's queening square !
0-1

Smith,B (1711) – Eustace,D (1541) [A45]
Tyros-Dragons, 10-7-2003

1.d4 Nf6 2.Bg5 Ne4 3.Bf4 c5 4.d5 d6 5.Nd2 Nf6 6.e4 g6



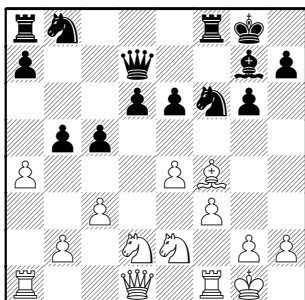
7.Bb5+ Bd7 8.Bxd7+ Qxd7 9.f3 Bg7
10.Ne2 0-0 11.0-0 b5



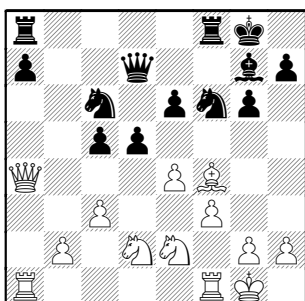
12.c3 e6

In sharp positions, It's usually dangerous to open lines without the Rooks connected.

13.dxe6 fxe6 14.a4



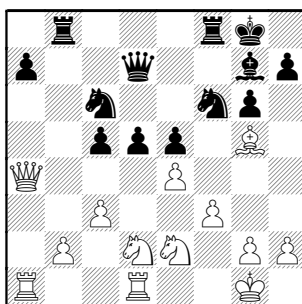
Thanks to a-Pawn pin along a-file.
14...d5 15.Qb3 bxa4 16.Qxa4 Nc6



17.Rfd1

That's two pins involving the Queen for anybody that's counting...

17...e5 18.Bg5 Rab8



19.Bxf6!!

A beautiful concept, keying on the resultant weakening of the d5-Pawn.

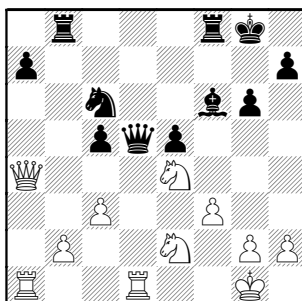
19...Bxf6

No relief comes from 19...Rxf6 20.exd5 Qxd5 21.Ne4 winning at least an exchange

20.exd5

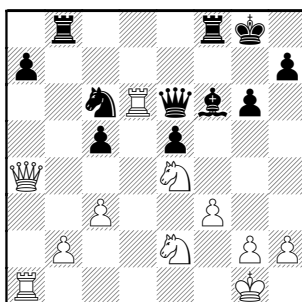
Black is forced to recapture as the Knight is pinned and attacked.

20...Qxd5 21.Ne4



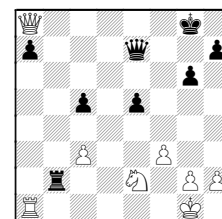
The point to White's 19th move. The discovery here and pressure to the c6-Knight overload the defense.

21...Qe6 22.Rd6



22...Qb3

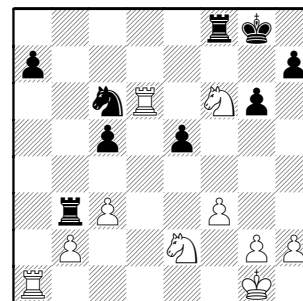
Black apparently can't preserve the Queen: 22...Qe7 23.Nxf6+ Rxf6 24.Rxc6 Rxc6 25.Qxc6 Rxb2 26.Qa8+



26...Qf8

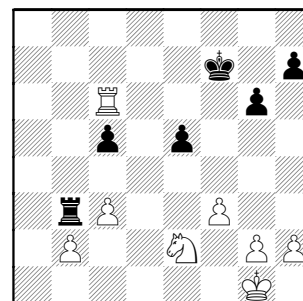
Since 26...Kg7?? allows 27.Rxa7

23.Qxb3+ Rxb3 24.Nxf6+



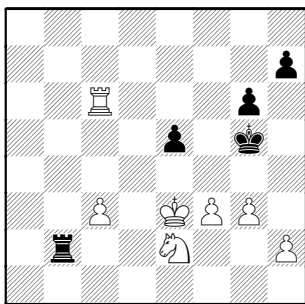
Geesh, White is relentless!

24...Kg7 25.Rxc6 Rxf6 26.Rxa7+ Rf7 27.Rxf7+ Kxf7

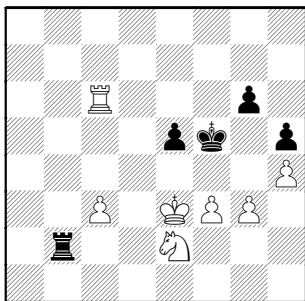


The trades were all forced. White has an easy ending.

28.Rxc5 Kf6 29.Kf2 Rxb2 30.Rc6+ Kf5 31.Ke3 Kg5 32.g3



32...h5 33.h4+ Kf5



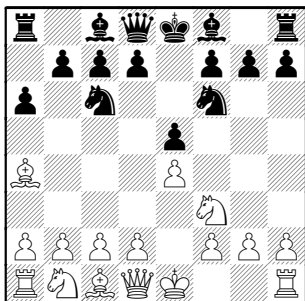
MATE IN TWO !!

Only way to continue was 33...Kh6
34.g4+ hxg4 35.Ng3# 1-0

Mares,C –
Coombes,N
GETCO, 01-15-2004

[C77]

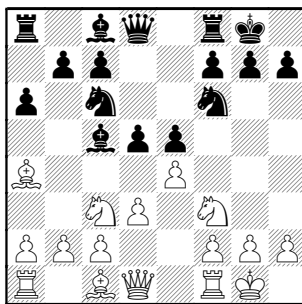
1.e4 e5 2.Nf3 Nc6 3.Bb5 a6 4.Ba4 Nf6



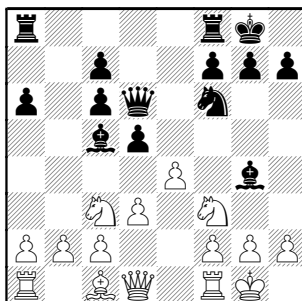
5.Nc3

Maybe 5.0-0 or 5.c3 (idea d4)

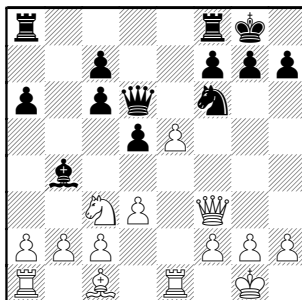
5...Bc5 6.0-0 0-0 7.d3 d5



The e-Pawn needs protection first
8.Bxc6 bxc6 9.Nxe5 Qd6 10.Nf3 Bg4



11.Re1 Bxf3 12.Qxf3 Bb4 13.e5



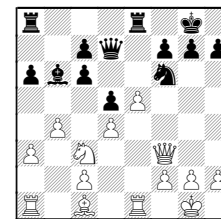
Only looks deadly

13...Rfe8!

One threat is to win e5-Pawn, among others

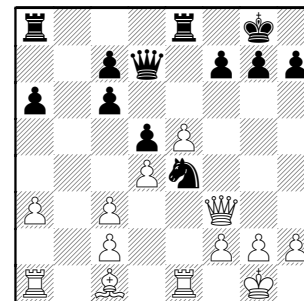
14.d4 Qd7 15.a3 Bxc3

Black misplaces his Bishop after
15...Ba5 16.b4 Bb6



17.Ne2

16.bxc3 Ne4



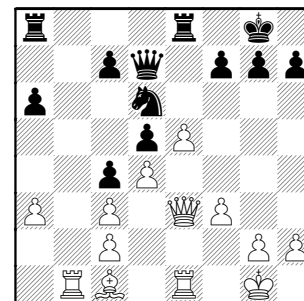
17.Rb1 c5!

A classic N v B position is brewing

18.Qe3 c4

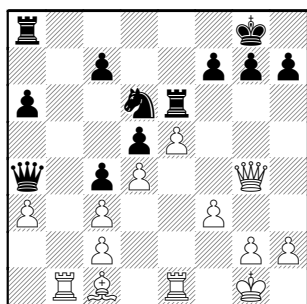
Setting the White Qside Pawn weaknesses

19.f3 Nd6



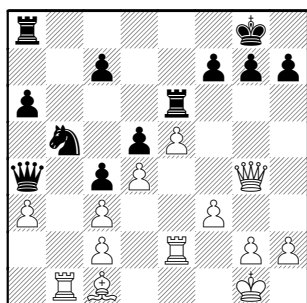
Again using the pin down the e-file

20.Qg5 Re6 21.Qg4 Qa4



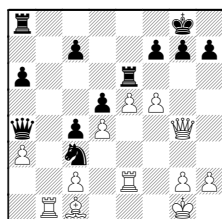
This position is similar to a French Winawer

22.Re2 Nb5



23.Re3

23.f4? idea f5 23...Nxc3 24.f5?



24...Nxe2+ CHECK!!

Another try from game diagram:
23.Bb2 Rb8 idea of Nxc3, using another pin !

23...Qxc2

That's game, White should resign.

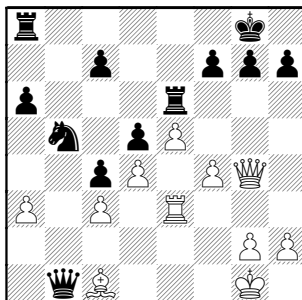
24.f4

24.Ra1 Nxc3 idea of Ne2+-xc1

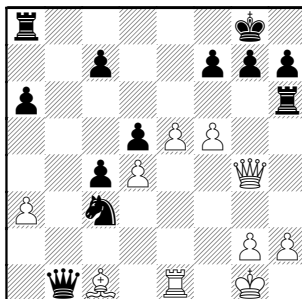
(The same position occurs after
24...Rg6 25.Qh3 Nxc3)

25.f4 Rg6 threatening mate on g2

24...Qxb1



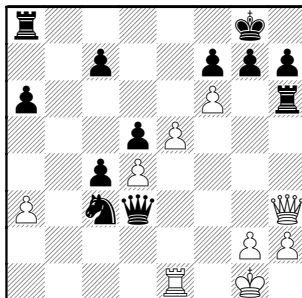
25.Re1 Nxc3 26.f5 Rh6



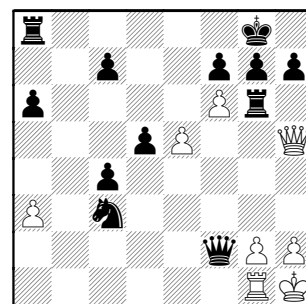
27.f6 Rg6 28.Qh3 Qd3 29.Bh6?

29.Re3 Qd1+ 30.Kf2 Qxc1 31.Rxc3

29...Rxc3



30.Qg4 Rg6 31.Qh5 Qxd4+ 32.Kh1 Qf2 33.Rg1



33...Ne2 0-1

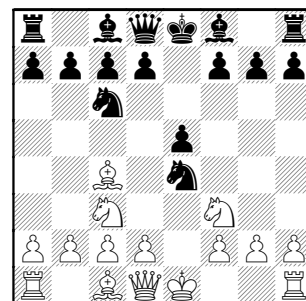
Goncharoff,N (1683) –

Arond,D (1734)

[C55]

Kings–Excaliburs, 04–15–2004

1.e4 e5 2.Nf3 Nf6 3.Nc3 Nc6 4.Bc4 Nxe4

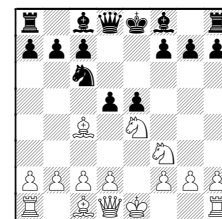


A common "fork trick" with which all players should be familiar.

5.Nd5

White decides to stay a Pawn down.

The point to the previous Black Knight move is when 5.Nxe4 d5

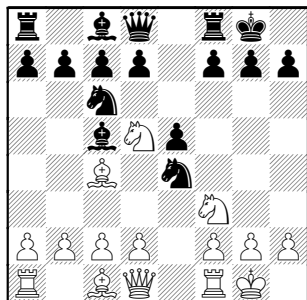


White can regain Pawn with 6.Bd3 but, for the little combination, Black has free development, and maybe even a better position.

So maybe White is better off playing

5. Bxf7+, then 6. Nxe4 which at least displaces the Black King.

5...Bc5 6.0-0 0-0



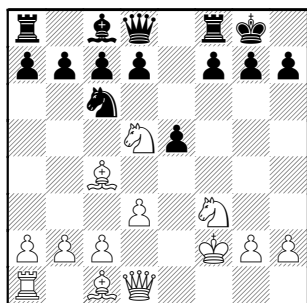
7.d3

The standard Spanish way to regain the Pawn is 7.Re1 looking on to the e5-Pawn. But, of course, here Black has the convincing 7...Bxf2+

7...Nxf2!?

Most chessplayers understand that two minors usually are better than the materially-equal Rook+Pawn. But this game is a wonderful example of how other factors, especially positional, can outweigh common cliches.

8.Rxf2 Bxf2+ 9.Kxf2

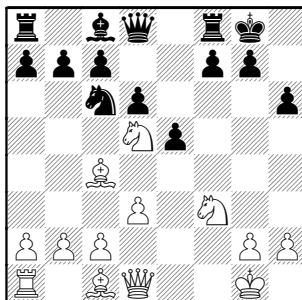


Time for an evaluation, which both players needed to consider during their seventh moves. (Incidentally, nice to make your opponent work hard early in the game!).

Black has two Pawns, not just one as is normal in the trading combination at f2 or f7. But, in addition, they are Pawns which can directly influence the center.

White's King will take a tempo or two for safety, and the half-open f-file isn't much help with only one Rook. I'd expect Black's Pawns to keep White from aggressively posting his (extra) pieces.

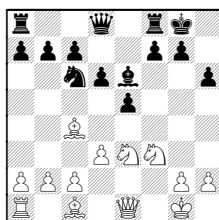
9...h6 10.Kg1 d6



11.h3

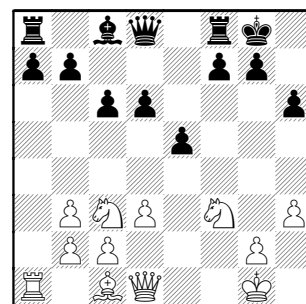
Weakening. If White wants to avoid the Bg4-pin, he can simply move the Queen here.

Like 11.Qe1 Be6
(11...Bg4 12.Nh4 g5!?)
12.Ne3

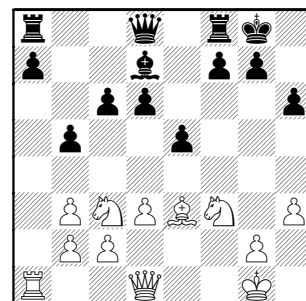


Idea of Nh4-f5. White should be trusting his Knights to find outposts AFTER Black advances his Pawns, and not worry about minor-piece trades. As long as the Black Rooks remain behind the lines, the extra White minors should be promising.

11...Na5 12.Bb3 Nxb3 13.axb3 c6
14.Nc3



14...Bd7 15.Be3 b5

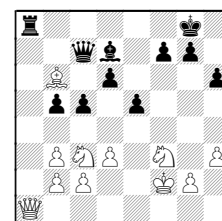


16.b4

White can't be greedy:
16.Rxa7? Rxa7 17.Bxa7 c5
How will the Bishop reach freedom?

Not going to happen!

A) 18.Qa1 Qc7 idea of Ra8 19.Kf2
(19.Nd5 Qb7 20.Nc3 Ra8)
19...Ra8 20.Bb6

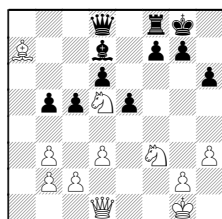


20...Qb7
(20...Rxa1 21.Bxc7)
21.Ba5 Qa6 22.b4 cxb4

So another?

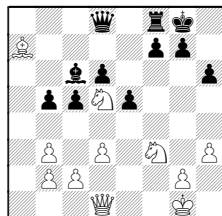
B) 18.Nd5 to cover b6 for the Bishop

(Diagram follows...)



18...Be6

Longer is 18...Bc6

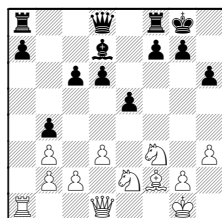


19.Bb6 Qa8
(19...Qb8? 20.Bc7)
20.Nc3 b4 traps the b6-Bishop

19.Bb6 Qa8 20.Ne3 b4

From the game diagram, last column of previous page, I would suggest using moves to build a Kingside initiative:

16.Bf2 b4 17.Ne2



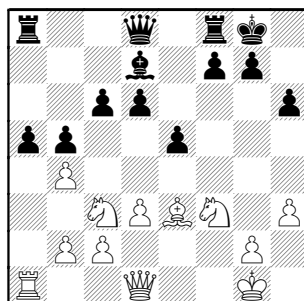
Idea is Ng3, Nh4-f5.

But, looking deeper at that game diagram, maybe White can post a Knight!

Probably best is 16.Ne4 hitting the d6-Pawn, which cannot move! So all the previous mess proves that Black must defend with 16...Qc7 White can continue his aggression with 17.Nh4

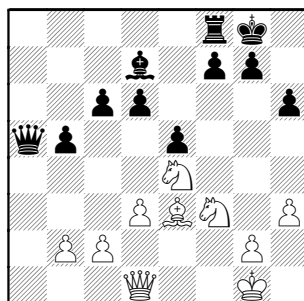
Not 16...d5? 17.Nc5 and one Knight is well-posted

Returning to game, last column of previous page:
16...a5!



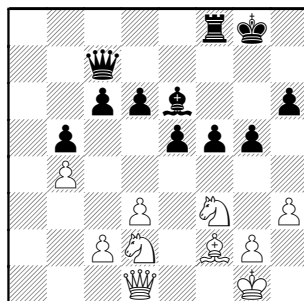
As stated earlier, White does not wish to open lines for the Black Rooks. Black now has the advantage.

17.bxa5 Rxa5 18.Rxa5 Qxa5 19.Ne4



19...Qc7 20.b4 [20.Qa1 f5] 20...f5
The center-influencing, extra Pawns have their say.

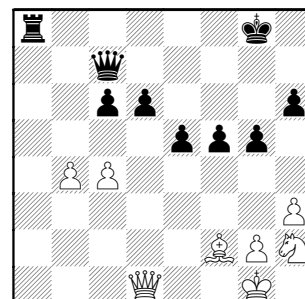
21.Ned2 Be6 22.Bf2 g5



Nothing Knights hate more than hoards

of angry farmers...

23.Nh2 Ra8 24.c4 bxc4 25.Nxc4 Bxc4 26.dxc4

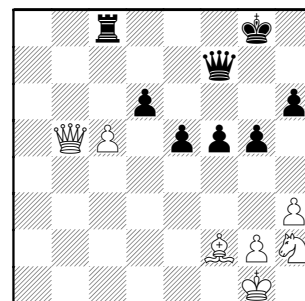


White apparently hoped for b5-6
.26...Rd8!

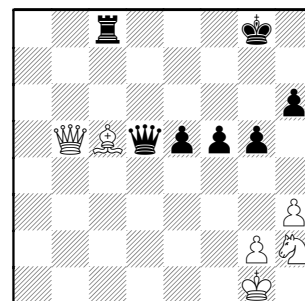
Another strong move. Black realizes once the c-Pawn becomes a b-file passer, he can push d5-4, blocking the Bishop's protection of b6.

27.b5 cxb5 28.Qd5+ Qf7!
Forces White to choose his poison.

29.Qxb5 Rc8 30.c5?



Missing a tactical subtlety...
30...dxc5 31.Bxc5 Qd5!



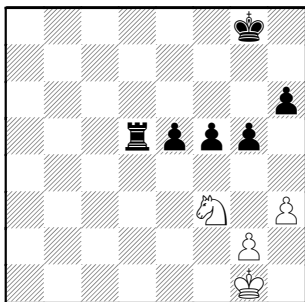
There is no reason for White to continue the game.

32.Qb6

Leaving Queen in contact with the checking square c5 forces the Queens off.

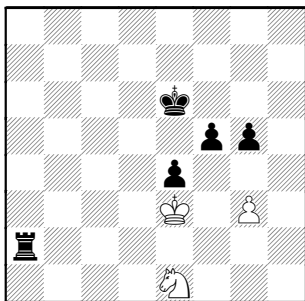
32.Qa6 expecting to check for a while or at least win a Pawn? 32...Qxc5+ CHECK !!

32...Qxc5+ 33.Qxc5 Rxc5 34.Nf3 Rd5



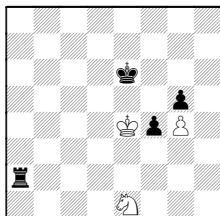
Restricting the Knight.

35.Kf2 e4 36.Ne1 Rd2+ 37.Ke3 Ra2 38.g3 Kf7 39.h4 Ke6 40.hxg5 hxg5



41.g4 f4+ 42.Kd4

42.Kxe4?

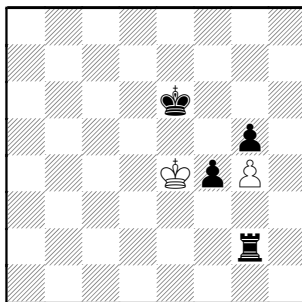


42...Re2+ 43.Kf3 Rxe1

42...Re2

Knights apparently also hate roaming Rooks.

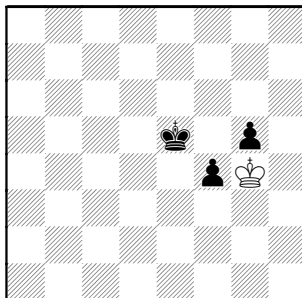
43.Nd3 exd3 44.Kxd3 Rg2 45.Ke4



45...Rg1

Next couple moves were just for fun to emphasize White is completely busted

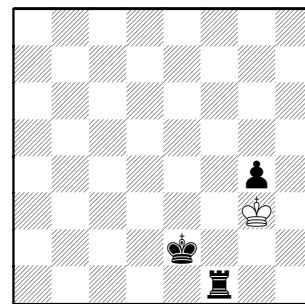
46.Kf3 Rxd3 47.Kxd3 Ke5



48.Kf3

Black is still hinting to White to resign!
48.Kxg5 Ke4 49.Kg4 Ke3 50.Kh3 Ke2

48...Kd4 49.Ke2 Ke4 50.Kf2 Kd3
51.Kf3 Kd2 52.Kf2 g4 53.Kf1 Ke3
54.Kg2 Ke2 55.Kg1 f3 56.Kh2 f2
57.Kg3 f1R



Hint, hint! **58.Kxg4 Ke3**
0-1

Gomez,G (1727) –

Eustace,D (1541)

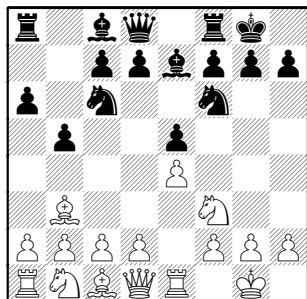
[C88]

Fermilab-Dragons, 12-9-2003

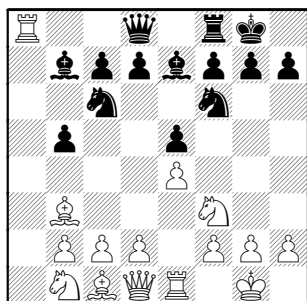
Notes submitted by Mr Gomez

1.e4 e5 2.Nf3 Nc6 3.Bb5 a6 4.Ba4 Nf6

5.0-0 Be7 6.Re1 b5 7.Bb3 0-0

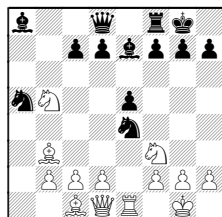


8.a4 Bb7 9.axb5 axb5 10.Rxa8

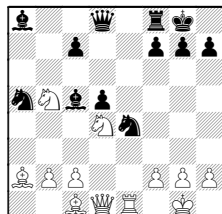


10...Qxa8

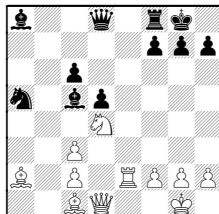
10...Bxa8 11.Nc3 Na5 12.Nxb5 Nxe4



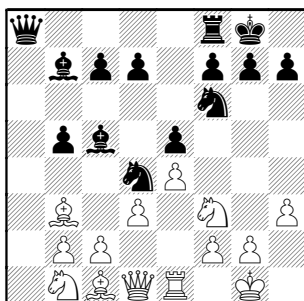
13.Ba2 Bc5 14.d4 exd4 15.Nfxd4 d5



16.Re2 c6 17.Nc3 Nxc3 18.bxc3

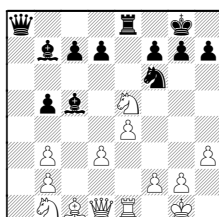


11.d3 Bc5 12.h3 Nd4

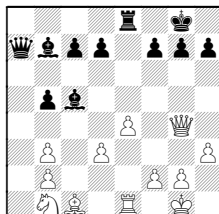


13.Nxd4

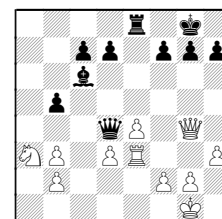
13.Nxe5 Nxb3 14.cxb3 Re8

15.Ng4
(15.Nf3)

15...Nxg4 16.Qxg4 Qa7

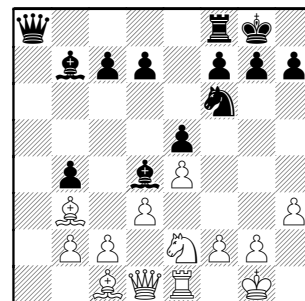
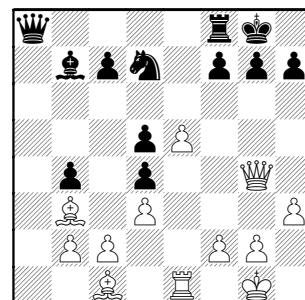


17.Be3 Bxe3 18.Rxe3 Bc6 19.Na3 Qd4



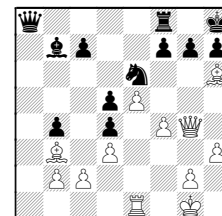
with piece power for Pawn

13...Bxd4 14.Nc3 b4 15.Ne2

15...d5 [15...Bb6] 16.Nxd4 exd4 17.e5
Nd7 18.Qg4

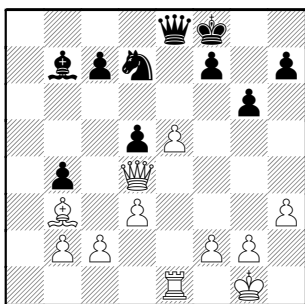
18...Qe8?

18...Nc5 19.Bh6 Ne6 20.f4 Kh8

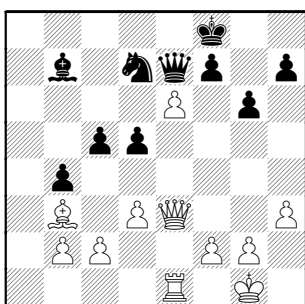


21.f5 gxh6 22.fxe6 with White better

19.Bh6 g6 20.Bxf8 Kxf8 21.Qxd4



21...c5 22.Qe3 Qe7 23.e6



23...d4

23...fxe6 24.Qxe6 Qxe6 25.Rxe6

24.Qh6+ Kg8 25.exf7+ 1-0

Ellice,W (1895) –
Paraoan,E (1651)
Pawns-Case, 11-24-2003

[A41]

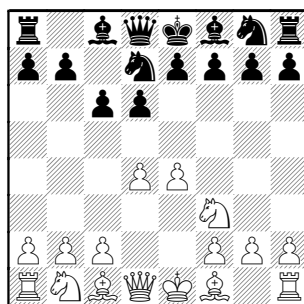
Notes by Wayne Ellice

A LESSON IN RULE #1.

Our team, the PAWNS, was fortunate to pick up an Expert player, Ed Latimer. This moved me down to board 3 with great expectations for the season. If I win, it is expected. If I lose, it's "Oops, what happened ?!".

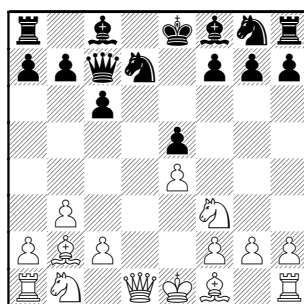
We've now completed 11 matches, but here's "what happened" in Round 3.

1.Nf3 d6 2.d4 c6 3.e4 Nd7

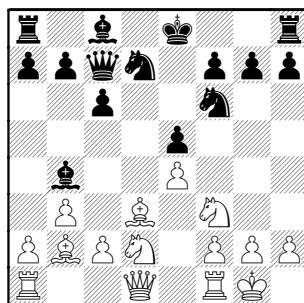


4.b3 Qc7 5.Bb2 e5 6.dxe5 dxe5

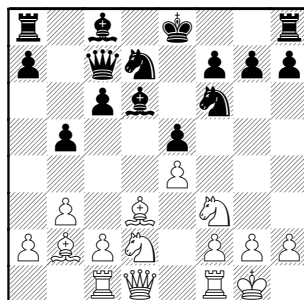
I wanted him to have a Pawn on e5 to limit the diagonal scope of his Queen.



7.Nbd2 Ngf6 8.Bd3 Bb4 9.0-0



Castling early is good, but it is not Rule #1. 9...b5 10.Rc1 Bd6



I was getting ready to push c4 which would pry open the c-file, favoring me.

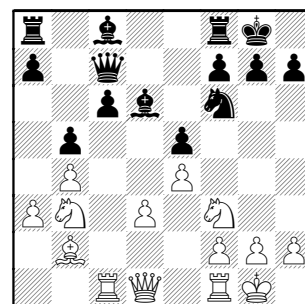
11.a3

Now if 11.c4 b4 making my bad Bishop on d3 terribly bad.

11...Nc5 12.b4

I don't mind trading my bad Bishop for his Knight.

12...Nxd3 13.cxd3 0-0 14.Nb3

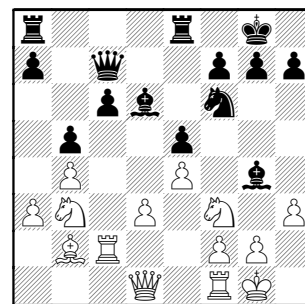


Although we both have backward Pawns, I thought I could work on his faster than he could work on mine.

14...Bg4 15.Rc2

Doubling Rooks on this half-open file is a good rule of thumb, but still isn't Rule #1.

15...Rfe8 16.h3



16...Bd7

I was happy to get rid of the annoying pin, but was he setting me up?

17.Qe2

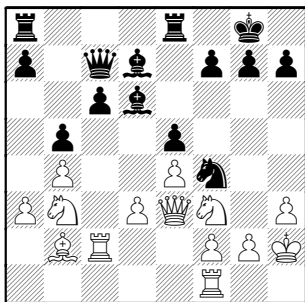
Probably better was 17.Qd2 as I waste

a tempo with her two moves later.

17...Nh5

I knew his Knight was itching to hop to f4, but I didn't think it was too dangerous.

18.Kh2 Nf4 19.Qe3

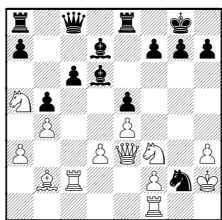


19...Qc8

Suddenly I remember Rule #1: **PROTECT THE KING !!** A few moves back, I didn't even dream he could whip up an attack so fast against my castled position.

20.Ng1

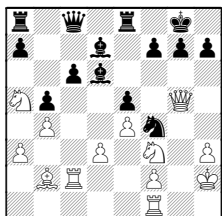
[Editor drops in...
Something nondescript like 20.Na5
allows 20...Nxg2!



21.Qg5

21.Kxg2? Bxh3+ 22.Kg1(to save Rf1)
22...Qg4+ 23.Kh1 Qg2#

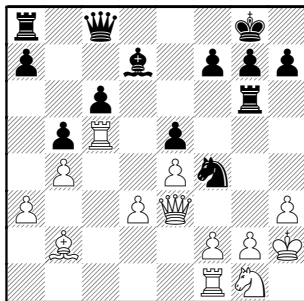
21...Nf4



22.Rg1 g6 23.Nxe5? hangs the f4-Knight, but 23...Nxh3 hangs a Rook!

Editor out...]

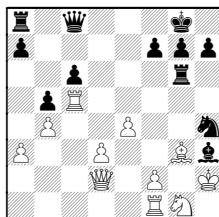
20...Re6 21.Nc5 Bxc5 22.Rxc5 Rg6



23.g3

But opening the Kingside position can't be good.

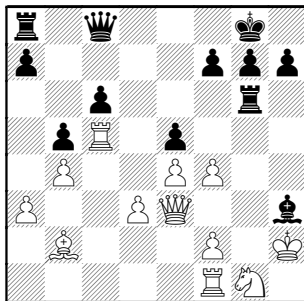
Possibly holding is 23.Bxe5 Nxg2
24.Qd2 Nh4 25.Bg3 Bxh3



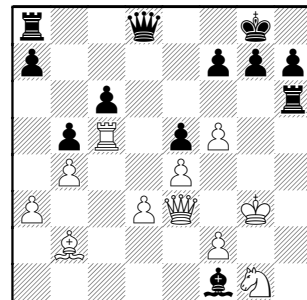
26.Rfc1

Certainly not 26.Nxh3?? Nf3+ winning the Queen.

23...Bxh3 24.gxf4



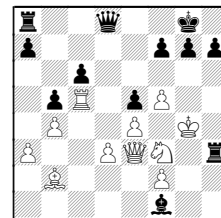
24...Bxf1 25.f5 Rh6+ 26.Kg3 Qd8



27.f6

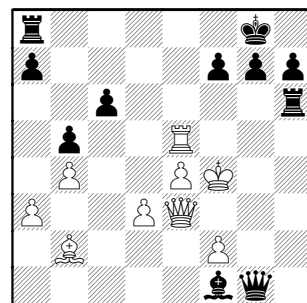
I am lost, but play on to see what will happen.

No improvement comes from 27.Nf3
Rh3+ 28.Kg4



28...h5#

27...Qxf6 28.Rxe5 Qh4+ 29.Kf3 Qh1+
30.Kf4 Qxg1



31.Qg3 Qxg3+ 32.fxg3 Bxd3 33.Re7
Re6

Resigning here is not premature. My opponent will clearly trade down and have an easy win.

0-1

I go from bad to worse. Whatever I was thinking, it was not Rule #1.

As news comes from chess of the rest of the world, I've tried to keep up with the major issues. Once again, the FIDE World Championship cycle is in doubt. We present an interview with the supposed current Champion, Ruslan Ponomarev and an interesting editorial by Mig Greengard, the most-entertaining writer whose column is now published at ChessBase.com.

[Editor Note:

The original text was in Russian so English generated by an online translator. Even with this Herculean task complete, some parts' meanings were confusing. In these situations, the words or phrase in question are included within brackets]

VICTIM PONOMAREV

World champion FIDE Ruslan Ponomarev and president ASHP Zhoel Lote answer questions posed by the [Russian magazine] "Sport Express" reporter Yuri Vaselivia

As already reported in "Sport Express", world champion FIDE Ruslan Ponomarev has mailed a note to the colleagues of Association of Chess Professionals (ASHP) in which he protested against granting exclusive privileges to GM Garry Kasparov in a match for the FIDE World Championship.

"The title 'the Strongest chess player of the world' which Mr. Kasparov himself appropriated, is not a stipulated FIDE title or of other official sources. I consider, that the similar state of affairs breaks all principles of fair sports" writes Ponomarev.

Q: Ruslan, does your submissive mean you will not play the next championship FIDE in Tripoli?

- It means, first of all, that I would like to introduce my colleagues from ASHP to my view of the developed situation. In no kind of sport will you meet such [a scenario]. The world champion should pass a sieve of selection, to prove that he is the champion, and only then meet the applicant who calls himself " the strongest chess player of the world ", not confirming it in the results!

Q: But, on participation in the championship, will you sign the contract or not? In fact its term expires on April 21st...

- I shall not be signing such a contract, naturally. What's in it for to me to participate in this performance? Even if I play well, there will be thought-up provocations to not allow me to keep the title...

Q: Explain, please, what you mean.

- You probably heard that in the championship of Europe in Plovdiv my mobile phone unexpectedly rung and I was forced to lose. It took place on my birthday, and I still do not know who needed to call me during a crucial game. The judges were relentless and strictly followed the letter of the rules: Player did not switch off phone - defeat [penalized]. And then recently in the Linares tournament, Kasparov during a game left the hall and [has risen to itself in number] a working woman of the press center confirmed she tracked Kasparov leaving the hall. The judges saw, how he has left the game hall, but have undertaken nothing. Lines of people have a suspicion that it isn't the first time for Garry Kimovich. However anything [any judgements] for " the strongest chess player of the world " as called by Kasparov, have not been made. Feel a difference in the attitude to me and to him?

Q: - How do you know such details of the incident in Linares?

- From the press. It was written by Leonche Garsija in the Spanish newspaper " Ale Pais ".

Q: - Garry's trainer, GM Yuri Dohoian told me, in conversation on the return plane from Linares to Moscow, that Kasparov left to take a breath of air on street...

- If during a game a player leaves the tournament premises " to take a breath of air " to me is a certain disqualification. Or at least a defeat. In fact it is forbidden by the rules. But, as you can see, the rules for me and for Kasparov are different.



Q: - In the letter you assert that Kasparov has appropriated the title " the strongest player in the world ". But you in fact will not deny, that the ex-world champion has headed the ratings list for almost 20 years? Such a record you will not meet in any other kind of sport.

- In any other kind of sport it is necessary to prove constantly that you are the strongest. Kasparov now plays so few times in a year, and, for example, for Anand to overtake him, many years will be required. For Kasparov unique conditions are created by all means to return to him the title. In my opinion, the FIDE President and Kasparov agreed upon all this during the period when Garry received the match with a computer, which Ilyumzhinov publicly promised to the FIDE World Champion. This match became a good indemnification for the broken match in Yalta, which Garry could in fact lose. And if it was lost, all his future contracts on matches with computers would hardly be made.

Q: - Ruslan, it seems to me, that you insult [the moves]. You accuse Kirsana Ilyumzhinov of arrangement with Kasparov. But in fact there are the Prague arrangements, a FIDE Congress, on which also the Chairman of the Ukraine Chess Federation Victor Petrov, by the way, acted. Why did you not protest against ratification of the Prague resolution? Why hasn't anybody from the 162 members of the FIDE General Assembly not condemned the "arrangement" which you interpret?

- Unfortunately, Victor Petrov at that Congress took a frankly treacherous position. I can only assume why it has taken place. Probably, because of the material dependence of the Ukraine Chess Federation from FIDE, and can be, because of political predilections of Mr. Petrov. In fact, it represents opposition for which it will be worse for us, the better.

Q: Excuse me, Ruslan, as policy, and furthermore on the Ukrainian, I - pass... We'd better return to chess. You haven't played anywhere for a year. Isn't it difficult to support your form? And when shall we see you among participants of any large tournament?

- Anytime not playing, [one's] form is uneasy to support. And when will I be invited somewhere? It is not a question to me. And to Kasparov...

Q: - And here Kasparov?!

- And that, thanking his extensive communications, organizers began to boycott me. And, I think, you will not soon see me in any large tournament. Unless until Garry Kimovich will grow old and will withdraw. To me - 20, and I expect to go through Kasparov.

Q: - Suffice it to say, that's sad, Ruslan. You recently have moved to the capital of the Ukraine. How were you arranged a new place?

- The Mayor of Kiev, Alexander Omelchenko, has allocated me a 4-roomed apartment. I made repairs and bought 10 small cactuses. I want to bring them up.

Q: - Cactuses grow slowly, so it will be a long time... Than even, except for cultivation of prickly plants, will you be engaged in nice Kiev hailstones?

- I've bought a sports bicycle. I daily wind 20-30 kilometers. Good training, and at the same time I study Kiev. The city is really nice and very beautiful. And recently Serezha Karjakin visited me. He has lived at my nedelku, we have worked a little [with it], then in a tournament in Dos-Ermanase he earned second place.

Q: - Well here, see, you have excellent prospects in a trainer's field...

- With that, nevertheless, I shall wait a little. I think that I haven't accomplished everything behind the board. I'm confident that sometime my [bojkotirovanie] will end, that there will be organizers on whom Kasparov and Ilyumzhinov's authority will not weigh so heavily. I believe that my best achievements are still ahead.

[The Mig column begins on following page...]

To the Shores of Tripoli

"Gens una sumus nisi Hebraei" - New FIDE motto

(* "We are one family, except the Jews." Thanks to Mark Josephson for the translation.)



I know, I know, what's the big deal, you're asking. So what if FIDE is hosting its 2002, no, 2003, I mean 2004 world championship in a country that will not admit players from one of FIDE's own member federations? Isn't a million dollars more important than quibbles over anti-Semitic bigotry? No doubt it is to the players and politicians who will be pocketing the **Libyan cash** (see FIDE news at www.fide.com/news.asp?id=409).

It's not fair to ask chessplayers to choose between eating and taking a vague stand. It should be up to the federations (Israel's in particular) to put the hard questions to FIDE. Israel has over 30 Grandmasters! There are two Israelis seeded into the KO, Gelfand and Sutovsky, and Smirin should be in as a reserve since Kramnik and Leko aren't likely to show up. Ponomarev has also stated he won't play but I hope he'll reconsider. Two years is a long time to sulk.

Of more long-term concern is that having the event in Libya rules out corporate sponsorship of any significance. With the world slowly running out of despots, private sponsors are more essential than ever. Since legitimate businesses would be justly nervous about dealing with FIDE, maybe less austere private concerns might be interested in chess.

A grand prix circuit could be established along these lines. Medellín could represent Latin America. Escobar is out of the picture but there must be a few high rollers left with money to launder. New Jersey would be the top candidate for the US leg of the circuit. At least that's what I've learned watching *The Sopranos* on HBO. The Bada-Bing Grand Prix has a nice ring to it. Are any of the Gambinos still on the loose?

Of course we've got to give the Sicilians a piece of the action, if only for the name. I hear Palermo is lovely in the spring. And when they say elimination tournament, they really mean it. Forget knock-out, we're talking about cement shoes when you lose a match. You won't believe what these wise guys do to you if your cell phone rings during a game. Let's just say it involves a bowling ball bag. The other big match, Kramnik-Leko, has corporate sponsorship in the, although it has its own problems. Quite a few have a ban that advertises tobacco products, including France and Italy.

The rules of the FIDE event refer to Prague and eventual title unification with the winner of the Kramnik-Leko match. Before July, 2005 the winner of the Libya KO will play a match against Garry Kasparov, more on that later. At this point it will be nice just to see some chess, even if the quality of the games in the knock-outs usually leaves much to be desired.

I hadn't planned to waste time reminiscing. I consider the real world championship title to be vacant at the moment, pretty much like it was back in 1999 when Kasparov couldn't get a match together and FIDE was showering money on a chess lottery system called the KO. The classical title has been collecting dust on Kramnik's bookshelf and Leko qualified for their match two years ago in Dortmund. Maybe 2003 Dortmund winner Bologan has claims.

The Postman Rings Twice

Now a squeaky voice has piped up and the fledgling Association of Chess Professionals (ACP) has chimed in, so let's take a look at the state of the chess universe before everyone forgets the recent past in the hail of press releases.

First was Ponomarev's open letter found at www.chessbase.com/newsdetail.asp?newsid=1569, a cry to remain relevant off the board after willfully becoming irrelevant at the board. Six months after his match with Kasparov was cancelled this letter comes out? Six months? As for blame for the cancellation, FIDE was responsible for making a mess of the organization, no doubt.

But as the official rules stood Kasparov was willing to play and Ponomarev wasn't. FIDE set a deadline for Ponomarev to agree to the match regulations and the deadline passed. It is only because they wanted to save themselves the embarrassment of stripping their own champion of his title (and leaving it vacant) that Ponomarev has even a technical claim.

(If he, or anyone, takes me as "pro-FIDE" perhaps they need to re-read the beginning of this article. The childish tendency to respond to criticism with "you're just saying that because" is usually just a way of not answering the criticism. Politicians do it all the time.)

There are all sorts of fascinating rumors around

Ponomarev's no-show against Kasparov last year and he should be the first to want it forgotten. We asked Ponomarev and his manager Danailov for confirmation/denial of a few of these items, but so far they have declined so we'll just have to go with the Deep Throat source method, I'm afraid.

The first is that Ponomarev received at least \$400,000 for the match, money that went into hiring big-time talent for training. According to excellent sources (not the players themselves, who refused to comment. Confidentiality agreements are standard in these things) he worked with van Wely, Topalov, Morozevich, and Short, none of whom would work cheap. Rumor has it that Pono lost training matches to Moro and Short, which couldn't have done much for his confidence or that of his supporters in Ukraine. (Botvinnik said that training matches should be played against weaker opponents so as not to damage your confidence.)

This may all be tied in to the rumors that were flying around about Ponomarev's health as the match approached. Some said he'd had an operation, others said nervous exhaustion. He made no public appearances at all, even during the height of the controversial negotiations. So you've got money in the bank, you're in poor health, you're losing your training matches, and you've got a motivated Kasparov on the calendar next month. This might explain why something as trivial as FIDE's adding a rest day to the schedule was enough for Ponomarev and/or his advisors to bail out of the match.

State of the Union

The ACP gave a curious reply :

www.chess-players.org/eng/news/viewarticle.asp?iCounter=64 to Ponomarev's complaint that the Libya winner will have to play a match against Kasparov:

"It does strike us as illogical that the official FIDE World Champion should take part in a large knock-out event that will produce a winner, when the latter is then obliged to play a title match with a seeded player who is not a title holder. Considering that the seeded player was your official challenger for the same title several months before, the current format imposed by FIDE is devoid of any sense from the sporting point of view."

It still strikes me as amusing that a big-money match against the world #1 should have to be "obliged" on a chessplayer. Favoritism of any kind leaves a sour taste, but there seems to be a major misconception in both Ponomarev's letter and the ACP's response regarding the post-KO Kasparov match.

The winner of the Libya KO will be the FIDE world champion, period. Kasparov is not a "seeded player" in the event at all. It's a separate event entirely. This isn't like the

first KO in 1997 in which Karpov was seeded into the final against exhausted KO winner Anand. The match between the Libya winner and Kasparov is an extraordinary one in the spirit of the Prague agreement toward unifying the world title. It will likely take place a year after the FIDE KO so the winner will enjoy a normal reign.

This exposes the fallacy of Ponomarev's statement that "I am ready to defend my title on the conditions that were clearly set at the time I won it." The conditions ARE the same! You win the KO, you are FIDE champ. Not only do you get the KO winner's paycheck and the title, but in the next year or two you get to play another big match, maybe two, for even more money and fame.

All this talk of "Prague is dead" ignores the entire point of Prague. It wasn't a binding contract with an expiration date. It was a commitment from the reigning powers to unify the title for the greater good of the entire chess world. One champion means more money, more events, more media coverage, more fans. The need for this hasn't gone away and the principals shouldn't be allowed to weasel out of their obligations without at least being called weasels.

It looks like both Ponomarev and the ACP - led by reasonable fellow Joel Lautier and his long-time friend and potential walking conflict of interest Vladimir Kramnik - are mostly concerned with getting Kasparov out of the picture. But I don't want to be unfair this early in the game.

I suppose it's the ACP's job to say all players are created equal regardless of their ability to bring in sponsorship or fracture the chess world. In Prague FIDE and Kramnik agreed that it was worth a one-time concession to Kasparov to get the 19-year world #1 back into the FIDE fold and unify the title. Now the weaseling has begun.

Back-scratch Fever

Why should Garry Kasparov get preferred treatment? Why not have a million-dollar reunification match between the Libya (Libya/Malta if you prefer) winner and Kramnik-Leko? (Answer: no money.) Why bother with the Kramnik-Leko winner at all? Surely that too is favoritism since there is no precedent for that either.

Good questions all, and there are plenty of answers. Whether or not the answers are good ones depends largely on your desire to cut off your nose to spite your face.

1) The FIDE championship is a year-and-a-half overdue because they can't get sponsorship. They slashed prices and shopped KO winners Khalifman and Ponomarev around and didn't get any decent offers. Pono complained that he was only offered \$50,000 for a computer match. He declined and then watched Kasparov play Junior for a million. Ruslan Ponomarev, meet Adam Smith.

2) The KO winner has little or no credibility as world

champion. When Anand won it was just the ratification of years at the top. If Kasparov entered the first round in Libya the eventual winner wouldn't have any more claim on the title of Steinitz than if Kasparov hadn't participated.

But because of his desire for the old title, the real, undisputed one he had back in 1993, he is willing to play their champion, regardless of how they find him/her, giving the FIDE title legitimacy and opening the chance for FIDE to actually make an honest buck at long last.

Not that this is charity from Kasparov. He stands to get a nice payday without having to slog through 127 other players. The worst-case scenario is Kasparov losing and then refusing to play ball with FIDE. That's why a serious match is important (and valid contracts). Losing a two-game KO mini-match is quite different than an eight or ten game world championship match when it comes time to make excuses.

3) FIDE may be dumb, but they aren't stupid. **Why let Kasparov get all the publicity and cash himself?** At least FIDE will be getting a slice of the pie that Kasparov serves up with remarkable consistency. He's all over the place in the news, playing exhibitions, fighting with Putin, writing best-selling books, appearing with celebrities, and sometimes even playing chess. With some of that money and media exposure FIDE could finance events (which include other players, doh) and find sponsorship. The 1999 FIDE KO in Las Vegas had worse attendance than the toilet paper expo held next door, and probably got less press coverage too. And Ilyumzhinov isn't soft OR squeezable.

The KOs are a spectacle, especially in Moscow 2001 when fans actually came.

4) Kasparov doesn't feel obliged to get sand in his eyebrows at the FIDE KO in Libya. The ACP seems to want to teach this Kasparov renegade a lesson by excluding him and stopping reunification. Umm, who would this punish? Should FIDE be expected to punish itself, its members, and all professional chessplayers just to deny Kasparov? Yay, food is overrated, let's all go hungry together. Except Kasparov, who will still be dining well.

It would be interesting if the ACP actually asked its membership if they were against the FIDE champion playing a unification match with Kasparov. It would be quite hard to make a case for how such a match would hurt the interests of the professional chessplayers the ACP professes to represent. Meanwhile it's not far-fetched to suggest that there will be a lot more sponsorship for FIDE events when Kasparov is in them.

5) It's easy for a few fat-cat GMs who don't need the money Kasparov would bring to go on about fairness. Perhaps Kramnik will voluntarily abandon his title claims if Alexei Shirov comes through as the FIDE champion. After all, Shirov beat him fair and square in a match and if Kramnik's win over Kasparov in 2000 counts, why not 1998? There must be a statute of limitations on fairness

that we don't know about.

The circumstances haven't changed since Prague. Ponomarev, the winner of the last FIDE KO, let his golden opportunity go by. Now the winner of the next KO will have a chance to be the first undisputed world champion since 1993. Let's see how self-destructive the world's chessplayers can be.

An encouraging sign is the new ACP version of the 2004 KO player's contract, just posted today. It is an eminently sane document that should go a long way toward letting FIDE know that scribbling demands on napkins and telling players to sign is not the way to run a major sports federation. FIDE must also make commitments. I wish the ACP every success in getting this document approved.

The very latest is a Ponomarev interview in the Russian paper Sport Express. In it, among other rants, he blames Kasparov for keeping him out of top tournaments! This is hardly original; Kasparov must be a very busy man. I'm sure that Ponomarev acting like a spoiled brat and already establishing a record of making excessive demands of organizers has nothing to do with it. Most players say he's a nice kid, but his public statements are ridiculous.

[Other interesting news from Mig:]

The first ACP tournament is an online blitz event held at the Playchess.com server. It's a great show and since it's being played online there aren't move transmission problems that often come with relaying blitz games on sensory boards. I love to play blitz there myself, but we already know that when serious money is on the line these online events turn into advanced chess or team efforts.

The strong Dos Hermanas online KO tournament held on the ICC last month disqualified both finalists after the event was over for computer cheating! (GMs Alexander Riazantsev and Julio Becerra.) From what I hear, discussion of what happened has been forbidden in the ICC chat channels, with violators getting the boot. No matter how good a server is at detecting computer cheating, it's still fairly easy to do if you have another computer.

The latest issue of the American magazine *Chess Life* preys on every player's paranoia with an "is your opponent cheating?" cover story. It's a worthless question because you'll simply never know for sure unless the server itself detects it by monitoring the player's computer. If you suspect someone enough for it to bother you, simply don't play them anymore.
