

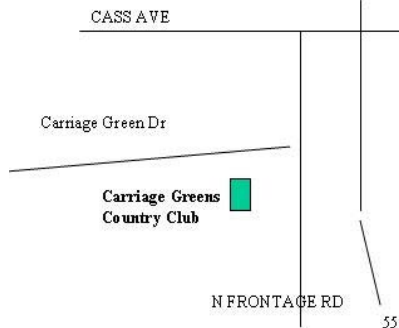
The Chicago Chess Player

The Official Bulletin of the Chicago Industrial Chess League

AWARDS BANQUET - Friday, June 4th



Carriage Greens Country Club
8700 Carriage Greens Drive
Darien, IL 60561
630-985-3400/630-985-3730
Website: www.carriagegreens.com



2004 CICL BANQUET

When: Friday June 4th

Time: 06:30p (dinner served)

Place: Carriage Greens Country Club

Scheduled Events:

- Great Food (Cash Bar)

Main course:

Stuffed Boneless Breast of Chicken

On rice pilaf or Wild Rice (no potato)

Meal service includes:

Appetizer, Salad, Vegetables, Potato
or Rice, fresh Baked bread and Butter,
Coffee, Tea, Milk and Dessert

- Award Presentation
- **Guest Speaker, IM Angelo Young**
- Raffle (books and/or equipment)
- Speed Chess Tournament (entry fee \$1.00)

Send \$23 Payment to:

Lenny Spiegel
807 Wood Ave.
Geneva, IL. 60134

\$25 at door.

Bulletin Editor/Webmaster *TOM FRISKE*
BULLETIN@CHICAGOCHESSELEAGUE.ORG

1035 E ALGONQUIN ROAD
DES PLAINES, IL 60016

H:(847) 299-1033
W:{847} 914-8448

Ratings Chairman *ART OLSEN*
RATINGS@CHICAGOCHESSELEAGUE.ORG

714 E ALGONQUIN ROAD #J102 H:(847) 437-9819
ARLINGTON HEIGHTS, IL 60006 W:(847) 320-2420

FAX : TO EPS OTS, G-5 AT (847) 320-4464

League President *JIM THOMSON*
PRESIDENT@CHICAGOCHESSELEAGUE.ORG

2713 ANDREWS AVENUE
BATAVIA, IL 60510

H:(630) 406-0180
W:(847) 538-5408

League Secretary *WAYNE ELLICE*
SECRETARY@CHICAGOCHESSELEAGUE.ORG

4099 W 71ST STREET
CHICAGO, IL 60629

FAX: (773) 838-3243
W: (773) 838-3215

League Treasurer *LENNY SPIEGEL*
TREASURER@CHICAGOCHESSELEAGUE.ORG

FERMILAB MS 220
BATAVIA, IL 60510

H: (630) 208-4738
W: (630) 840-2809

Trophy Chairman *MARTY FRANEK*
TROPHY@CHICAGOCHESSELEAGUE.ORG

9044 S 51ST AVENUE
OAK LAWN, IL 60453-1730

H: (708) 636-3714
W: (312) 353-0397

Publicity Chairman *BRIAN SMITH*
PUBLICITY@CHICAGOCHESSELEAGUE.ORG

483 NANTUCKET ROAD
NAPERVILLE, IL 60565-3106

H: (630) 983-9316

Banquet Chairman *BURT GAZMEN*
BANQUET@CHICAGOCHESSELEAGUE.ORG

1614 HEATHER LANE
DARRIEN, IL 60561

H: (630) 985-1882
W: (312) 666-8100 X228

DIVISIONAL CHAIRMEN

East Division *JIM DUFFY*
CHAIRMANE@CHICAGOCHESSELEAGUE.ORG

152 GREENWAY
ROSELLE, IL 60172

H: (630) 307-2414
W: (312) 220-3252

Far West Division *BOB BUCHNER*
CHAIRMANFW@CHICAGOCHESSELEAGUE.ORG

1316 KALLIEN COURT
NAPERVILLE, IL 60540

H: (630) 428-7707
W: (630) 979-7707

Near West Division *CARL REID*
CHAIRMANNW@CHICAGOCHESSELEAGUE.ORG

2289 GRAND DRIVE
NORTHBROOK, IL 60062

W: (224) 232-2174

North Division *ART OLSEN*
CHAIRMANN@CHICAGOCHESSELEAGUE.ORG

(SEE INFORMATION FOR RATINGS CHAIRMAN ABOVE)

MARK YOUR CALENDARS WITH THESE KEY LEAGUE DATES:

| | |
|-------------------------|--------------------------|
| FALL BUSINESS MEETING | LAST WEDNESDAY OF AUGUST |
| SPRING BUSINESS MEETING | FIRST WEDNESDAY OF APRIL |
| SEASON PLAYOFFS | THIRD SATURDAY OF MAY |
| CICL OPEN | THIRD SATURDAY OF MAY |
| LEAGUE AWARDS BANQUET | FIRST FRIDAY OF JUNE |

The May issue is usually stuck between the final season information already published in April and the season yearbook that comes in June. So what does May offer?

One advantage of Art's and my current habit of publishing the bulletin in the third week of the month is that the news and stats are reported for the printed month. So for this year I thought I'd put off the May issue until after the Playoffs for once and include the hot news from it!

I often wonder if you think I try to hype events too high. If you attended the Playoffs or Open this year, I believe you will agree it was even better than predicted ! The competition was absolutely blood-thirsty and yet everyone seemed happy at the family reunion.

While I'm thinking of it, a special thanks to all you that went out of your way to hunt me down and introduce yourselves! I see your names often, of course, and sometimes have questions I'd like to ask... but I don't know as many from other Divisions as I'd want. And if you think I was a little uncomfortable with your praise, just chalk it up to not getting enough so I don't know how to take it ! Maybe if you do it enough, I'll get use to it... : +) Seriously, your kind words mean a lot. I do wonder sometimes if anybody's "out there." Writing these one-sided conversations can be downright psychotic !

Publishing this issue after Saturday, however, wasn't quite as easy as expected ! I hadn't considered that no preparation could happen before that date, and that I'd be pressured to get it done. There's a fair amount of original material inside, and it definitely was more work than expected!

Will there be a July issue ? Who knows; somehow I always find something else to do as it seems the CICL is shutdown for the Summer.

Our new Publicity Chairman, **Brian Smith (Tyros)** made an interesting statement recently that really has me thinking. He wrote: "The season competition may be complete, but the CICL is still active over the Summer". Huh??

His point is that the break in organizing and playing matches can be put to good use in promotion of the CICL, especially since we'd want to introduce new teams at the August business meeting. Brian has been "on the job" for only a few weeks but has produced some materials. In addition, it sounds like he is really beating the bushes to scare up some activity from the Chicago-area chess clubs.

Keep it up, Brian!

Two helpful write-ups from Brian are included in this issue.

| | | | | | | | |
|---|---|---|---|---|---|---|---|
| A | U | F | E | L | I | N | E |
| W | O | R | D | S | B | V | W |
| J | N | O | I | S | Y | C | M |
| H | P | M | T | G | F | X | I |
| X | X | T | O | M | X | Q | X |
| Z | O | F | R | I | S | K | E |

First is a map of the area chess clubs and the CICL teams. Each division should be able to tell at a glance what clubs could be contacted and encouraged to join the League.

Second is a color, two-page poster ideal for placing in high-traffic areas at your workplace. He had many copies at the playoffs and they look just great on heavy yellow stock. I've already posted a few at Walgreens. If you print the PDF from this issue, you may want to print each page on one sheet so readers can flip it over to read the details on the second side.



Art Olsen was TD for Saturday (thanks to Tony Jasaitis for volunteering, as well) and found time to take lots of pictures. Above is one where he caught me doing what I do best. Too bad one can't make money doing it!

Finally, lest you missed the cover, please make a special effort to come to the Awards Banquet on June 4th. Find inside driving directions and maps. Along with dinner you'll get a chess lesson from much-respected trainer Angelo Young. With a raffle and the normal awards, you'll have plenty of chances to meet other members. Come and congratulate the season's stars ! You'll be glad you did.

Oooo, congrats need to go to the new CICL Champions!!

Nicely done, Motorola Knights !

Happy browsing !

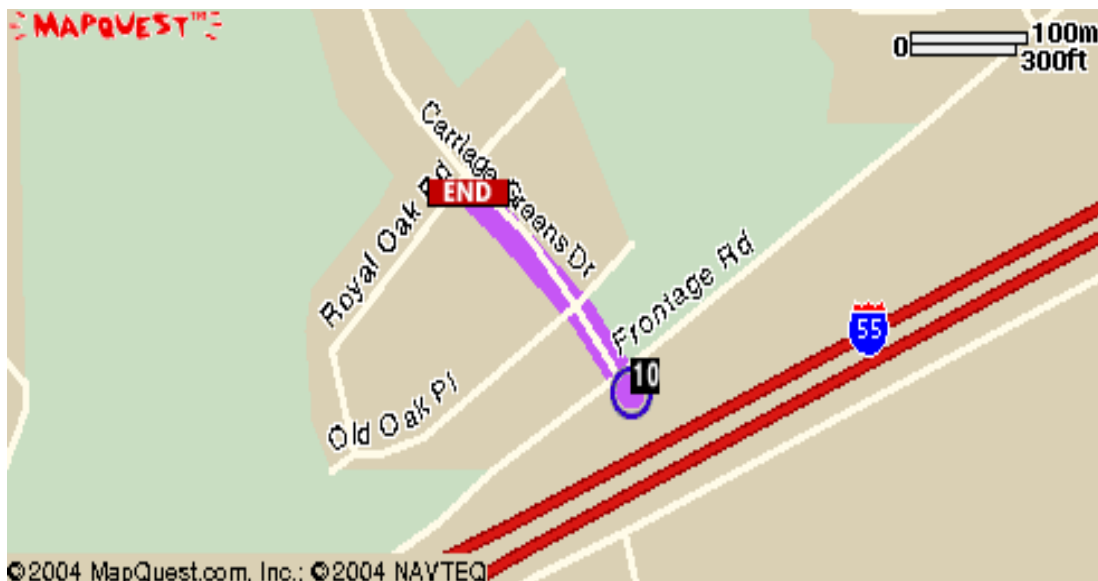
Tom Friske, Bulletin Editor

| | |
|---|----------|
| Officer Contacts | 2 |
| A Word from the Editor | 3 |
| Table of Contents | 4 |
| Banquet Driving Directions. June 4th !! | 5 |
| Playoff and CICL Open Round-up | |
| Playoff Final Standings | 6 |
| Playoff Match Results | 6 |
| Winter Blitz Results | 8 |
| CICL Open Match Results | 9 |
| Final Season Ratings | 11 |
| FEATURES | |
| The Roving Reporter at the Playoffs | 13 |
| GAMES as mentioned by the Reporter | 17 |
| By The Players | 28 |
| The Finishing Touch by Rueben Reyes | 30 |
| Help the CICL Grow !! | 32 |

With contributions from:
Art Olsen, Burt Gazmen, Jim Brotsos, Rueben Reyes,
Len Augsburg, Richard Easton, and Brian Smith

A general overview is given as part of the Banquet Announcement (on the cover), but a few driving details will help you arrive in a timely fashion. NOTE that Cass Avenue is a North–South road, and so on the cover the map-sketch has North at left of the map (instead of top). Also, the Carriage Green is just North of the Stevenson Expressway, I-55, but you cannot exit off the highway directly !

Study the following map which shows the entrance onto the club property:



The country club entrance is off a Frontage Road which you will enter off Cass Avenue (which is east of the club).

DRIVING INSTRUCTIONS

1. Choose your favorite Interstates and reach I-55 (most will be traveling South-bound)

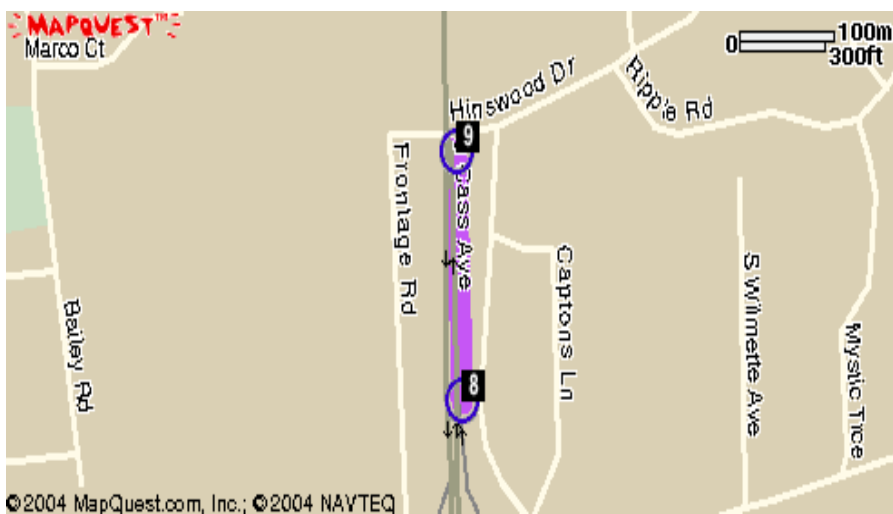
2. Take the Cass Avenue exit,
NORTHBOUND.

3. Get ready to make a left turn shortly
after entering onto Cass (see map at right)

4. Turn on to the Frontage Road (not sure
if a stop light there)

5. Follow road which will turn South and
the West

6. Follow signs at Carriage Green Drive.



Playoff DIVISION 05-16-2004
FINAL STANDINGS

| TEAM NAME | | | | GAME | MATCH | PCT |
|------------------|---|---|---|--------|--------|-------|
| | W | L | D | POINTS | POINTS | |
| MOTOROLA KNIGHTS | 3 | 0 | 0 | 13.0 | 3.0 | 1.000 |
| FERMILAB | 2 | 1 | 0 | 11.5 | 2.0 | 0.667 |
| ALUMNI ACES | 2 | 1 | 0 | 11.0 | 2.0 | 0.667 |
| ARGONNE ROOKS | 2 | 1 | 0 | 10.0 | 2.0 | 0.667 |
| UOP | 1 | 2 | 0 | 6.5 | 1.0 | 0.333 |
| PAWNS | 1 | 2 | 0 | 6.0 | 1.0 | 0.333 |
| MOTOROLA KINGS | 0 | 2 | 1 | 5.5 | 0.5 | 0.167 |
| EXCALIBURS | 0 | 2 | 1 | 4.5 | 0.5 | 0.167 |

PLAYOFF MATCH RESULTS

05-MAY-04 ALUMNI ACES 4.5 PAWNS 1.5

ROUND 1

| BD | RATINGS | SCORE | | RATINGS | SCORE |
|-----------------|---------|-------|--------------|---------|-------|
| 1 INUMERABLE, F | 2264-20 | 0 | JAKSTAS, K | 2140 20 | 1 |
| 2 BENESA, A | 2157 11 | 1 | LATIMER, E | 2065-11 | 0 |
| 3 WEBER, L | 2190-16 | .5 | ELLICE, W | 1910 10 | .5 |
| 4 GAZMEN, E | 2074 3 | 1 | FABIJONAS, R | 1668 -3 | 0 |
| 5 SANTIAGO, T | 2002 5 | 1 | LITVINAS, A | 1645 -3 | 0 |
| 6 FRANK, M | 1758 6 | 1 | O'DELL, DW | 1445 -4 | 0 |
| 7 MILLER, A | 1404 27 | 1 | MIKULECKY, B | 1473-18 | 0 |

05-MAY-04 UOP 2.5 ARGONNE ROOKS 3.5

ROUND 1

| BD | RATINGS | SCORE | | RATINGS | SCORE |
|-----------------|---------|-------|------------|---------|-------|
| 1 STEVANOVIC, M | 2226 -2 | .5 | BENEDEK, R | 2177 1 | .5 |
| 2 BOLDINGH, E | 1852-10 | 0 | HILL, R | 1982 10 | 1 |
| 3 SACKS, D | 1877 20 | 1 | SUAREZ, E | 1836-20 | 0 |
| 4 LECHNICK, J | 1737-28 | 0 | BAURAC, D | 1646 19 | 1 |
| 5 SAHLI, E | 1740 11 | 1 | DECMAN, S | 1549 -7 | 0 |
| 6 MICKLICH, F | 1627-21 | 0 | YACOUT, A | 1473 32 | 1 |

11-MAY-04 MOTOROLA KNIGHTS 5.5 EXCALIBURS .5

ROUND 1

| BD | RATINGS | SCORE | | RATINGS | SCORE |
|-----------------|---------|-------|------------|---------|-------|
| 1 FRIDMAN, Y | 2237 12 | 1 | LANG, R | 2065-12 | 0 |
| 2 MORRIS, R | 2158 -9 | .5 | FRISKE, T | 2026 5 | .5 |
| 3 THOMSON, J | 2001 10 | 1 | AROND, D | 1779-10 | 0 |
| 4 BALICKI, J | 1828 21 | 1 | KOGAN, G | 1807-14 | 0 |
| 5 AUGSBURGER, L | 1793 5 | 1 | SUERTH, F | 1508 -5 | 0 |
| 6 BENFORADO, E | 1554 21 | 1 | BROTSOS, J | 1524-14 | 0 |

12-MAY-04 MOTOROLA KINGS 2.5 FERMILAB 3.5

ROUND 1

| BD | RATINGS | SCORE | | RATINGS | SCORE |
|-----------------|---------|-------|------------|---------|-------|
| 1 MELNIKOV, I | 2037 7 | .5 | GARZON, G | 2207-11 | .5 |
| 2 WALLACH, C | 2010 21 | 1 | DORIGO, T | 2159-32 | 0 |
| 3 PIPARIA, J | 1887 5 | .5 | SPIEGEL, L | 1959 -3 | .5 |
| 4 GONCHAROFF, N | 1675 3 | .5 | GAINES, I | 1788 -5 | .5 |
| 5 RABINOVICH, E | 1353 -7 | 0 | STAPLES, C | 1647 7 | 1 |
| 6 | 0 0 | 0F | BOLSHOV, A | 1375 0 | 1F |

15-MAY-04 FERMILAB**2.5 MOTOROLA KNIGHTS****3.5**

ROUND 2

| BD | RATINGS | SCORE | RATINGS | SCORE |
|--------------|---------|-------|---------------|------------|
| 1 GARZON, G | 2196 4 | .5 | FRIDMAN, Y | 2249 -4 .5 |
| 2 DORIGO, T | 2127 2 | .5 | MORRIS, R | 2149 -2 .5 |
| 3 SPIEGEL, L | 1956 2 | .5 | THOMSON, J | 2011 -4 .5 |
| 4 GAINES, I | 1783 18 | 1 | BALICKI, J | 1849-27 0 |
| 5 AILES, T | 1725-18 | 0 | AUGSBURGER, L | 1798 12 1 |
| 6 STAPLES, C | 1654-25 | 0 | KARANDIKAR, S | 1619 25 1 |

15-MAY-04 ARGONNE ROOKS**4.5 ALUMNI ACES****1.5**

ROUND 2

| BD | RATINGS | SCORE | RATINGS | SCORE |
|---------------|---------|-------|---------------|------------|
| 1 BENEDEK, R | 2178 12 | 1 | INUMERABLE, F | 2244-18 0 |
| 2 HILL, R | 1992 22 | 1 | BENESA, A | 2168-22 0 |
| 3 SUAREZ, E | 1816 18 | .5 | WEBER, L | 2174-18 .5 |
| 4 BAURAC, D | 1665 27 | 1 | GAZMEN, E | 2077-27 0 |
| 5 YACOUT, A | 1505 21 | .5 | SANTIAGO, T | 2007-21 .5 |
| 6 KUHLMANN, S | 0 0 | .5 | SOLLANO, E | 1965 0 .5 |

15-MAY-04 MOTOROLA KINGS**1 UOP****3**

ROUND 2

| BD | RATINGS | SCORE | RATINGS | SCORE |
|-----------------|---------|-------|---------------|------------|
| 1 MELNIKOV, I | 2044 7 | .5 | STEVANOVIC, M | 2224 -7 .5 |
| 2 WALLACH, C | 2031-22 | 0 | BOLDINGH, E | 1842 22 1 |
| 3 PIPARIA, J | 1892-11 | .5 | LECHNICK, J | 1709 11 .5 |
| 4 RABINOVICH, E | 1346 -8 | 0 | MICKLICH, F | 1606 5 1 |
| 5 | 0 0 | 0F | | 0 0 0F |
| 6 | 0 0 | 0F | | 0 0 0F |

15-MAY-04 PAWNS**4 EXCALIBURS****2**

ROUND 2

| BD | RATINGS | SCORE | RATINGS | SCORE |
|----------------|---------|-------|-------------|-------------------|
| 1 JAKSTAS, K | 2160-20 | 0 | FRISKE, T | 2031 20 1 |
| 2 LATIMER, E | 2054 5 | 1 | AROND, D | 1769 -7 0 |
| 3 ELLICE, W | 1920 10 | 1 | KOGAN, G | 1793-10 0 |
| 4 FABIJONAS, R | 1665-21 | 0 | BROTSOS, J | 1510 21 1 |
| 5 LITVINAS, A | 1642 12 | 1 | WEITZ, R | 1567-12 0 |
| 6 ABDALLAH, D | 1470 0 | 1F | | 0 0 0F |
| 7 MIKULECKY, B | 1455-14 | 0 | ABDALLAH, D | 1470 22 1 (PAWNS) |

15-MAY-04 MOTOROLA KNIGHTS**4 ARGONNE ROOKS****2**

ROUND 3

| BD | RATINGS | SCORE | RATINGS | SCORE |
|-----------------|---------|-------|-------------|------------|
| 1 FRIDMAN, Y | 2245 19 | 1 | BENEDEK, R | 2190 -8 0 |
| 2 MORRIS, R | 2147 14 | 1 | HILL, R | 2014-10 0 |
| 3 THOMSON, J | 2007-11 | .5 | SUAREZ, E | 1834 11 .5 |
| 4 AUGSBURGER, L | 1810 -5 | .5 | BAURAC, D | 1692 5 .5 |
| 5 BALICKI, J | 1822-38 | 0 | YACOUT, A | 1526 38 1 |
| 6 KARANDIKAR, S | 1644 0 | 1 | KUHLMANN, S | 0 0 0 |

15-MAY-04 PAWNS**.5 FERMILAB****5.5**

ROUND 3

| BD | RATINGS | SCORE | RATINGS | SCORE |
|----------------|---------|-------|------------|------------|
| 1 JAKSTAS, K | 2140 3 | .5 | GARZON, G | 2200 -4 .5 |
| 2 LATIMER, E | 2059-12 | 0 | DORIGO, T | 2129 18 1 |
| 3 ELLICE, W | 1930-14 | 0 | SPIEGEL, L | 1958 14 1 |
| 4 FABIJONAS, R | 1644 -9 | 0 | GAINES, I | 1801 9 1 |
| 5 LITVINAS, A | 1654-13 | 0 | AILES, T | 1707 19 1 |
| 6 MIKULECKY, B | 1441 -8 | 0 | STAPLES, C | 1629 11 1 |

15-MAY-04 ALUMNI ACES**5 UOP****1**

ROUND 3

| BD | RATINGS | SCORE | RATINGS | SCORE |
|-----------------|---------|-------|---------------|-----------|
| 1 INUMERABLE, F | 2226-15 | 0 | STEVANOVIC, M | 2217 15 1 |
| 2 BENESA, A | 2146 5 | 1 | BOLDINGH, E | 1864 -5 0 |
| 3 WEBER, L | 2156 3 | 1 | LECHNICK, J | 1720 -3 0 |
| 4 GAZMEN, E | 2050 2 | 1 | MICKLICH, F | 1611 -2 0 |
| 5 SANTIAGO, T | 1986 0 | 1F | | 0 0 0F |
| 6 SOLLANO, E | 1965 0 | 1F | | 0 0 0F |

15-MAY-04 EXCALIBURS**2 MOTOROLA KINGS****2**

ROUND 3

| BD | RATINGS | SCORE | RATINGS | SCORE |
|-------------|---------|-------|---------------|-----------|
| 1 FRISKE, T | 2051 15 | 1 | MELNIKOV, I | 2051-15 0 |
| 2 KOGAN, G | 1783 -6 | 0 | WALLACH, C | 2009 6 1 |
| 3 AROND, D | 1762 30 | 1 | PIPARIA, J | 1881-30 0 |
| 4 WEITZ, R | 1555-23 | 0 | RABINOVICH, E | 1338 35 1 |
| 5 | 0 0 | 0F | | 0 0 0F |
| 6 | 0 0 | 0F | | 0 0 0F |

WINTER BLITZ RESULTS

On March 27, seven players competed in a double round robin for the title of "CICL Winter Blitz Champion".

Gustavo Garzon finished in clear first with a score of 11.5/12. Only your faithful tournament director prevented him from having a clean sweep, with a draw in round 1. I believe Gustavo was also undefeated in after-tournament blitz action.

Final scores were:

| | | |
|------------|----------|------|
| Garzon | Fermilab | 11.5 |
| Augsburger | Motorola | 9.0 |
| Dobrovolny | Lucent | 7.5 |
| Olsen | Kemper | 4.5 |
| Smith | Lucent | 4.0 |
| Cygan | Motorola | 4.0 |
| Reid | Case | 1.5 |

Regards,
Len.

The CICL Open had twenty participants this year and thus were split into two sections. Section 1 was for players rated over 1500, Section 2 was for players rated under 1500.

For list of prize winners, see "The Roving Report at the Playoffs" in this issue.

15-MAY-04 INDIVIDUAL TOURNAMENT SECTION 1

ROUND 1

| BD | RATINGS | SCORE | RATINGS | SCORE |
|------------------------|---------|-------|---------------|-------------------|
| (CITGR) 1 STEIN, P | 2192 6 | 1 | DOBROVOLNY, C | 1855 -4 0 |
| (CHRGR) 2 MARCOWKA, R | 1975-25 | 0 | SMITH, BR | 1680 25 1 (TYROS) |
| (BPCHM) 3 COULTER, D | 1956-41 | 0 | ALFONSO, E | 1556 41 1 (MKNGT) |
| (KEMPR) 4 EASTON, R | 1876 0 | 1 | MELNKOI, N | 0 0 0 (GUEST) |
| (BPCHM) 5 SAJKOWSKI, D | 1875 0 | 1 | DEGRA, B | 0 0 0 (FERMI) |

15-MAY-04 INDIVIDUAL TOURNAMENT SECTION 1

ROUND 2

| BD | RATINGS | SCORE | RATINGS | SCORE |
|-------------------------|---------|-------|------------|--------------------|
| (BPCHM) 1 SAJKOWSKI, D | 1875 17 | .5 | STEIN, P | 2198-17 .5 (CITGR) |
| (TYROS) 2 SMITH, BR | 1705 22 | 1 | EASTON, R | 1876-33 0 (KEMPR) |
| (CHRGR) 3 MARCOWKA, R | 1950 3 | 1 | ALFONSO, E | 1597 -5 0 (MKNGT) |
| (BPCHM) 4 COULTER, D | 1915 0 | 1 | MELNKOI, N | 0 0 0 (GUEST) |
| (CHRGR) 5 DOBROVOLNY, C | 1851 0 | .5 | DEGRA, B | 0 0 .5 (FERMI) |

15-MAY-04 INDIVIDUAL TOURNAMENT SECTION 1

ROUND 3

| BD | RATINGS | SCORE | RATINGS | SCORE |
|-------------------------|---------|-------|-------------|-------------------|
| (CITGR) 1 STEIN, P | 2181 3 | 1 | SMITH, BR | 1727 -2 0 (TYROS) |
| (BPCHM) 2 SAJKOWSKI, D | 1892-19 | 0 | MARCOWKA, R | 1953 12 1 (CHRGR) |
| (BPCHM) 3 COULTER, D | 1915-27 | 0 | EASTON, R | 1843 27 1 (KEMPR) |
| (CHRGR) 4 DOBROVOLNY, C | 1851 -6 | .5 | FRANEK, M | 1711 6 .5 (ALUMN) |
| (FERMI) 5 DEGRA, B | 0 0 | .5 | MELNKOI, N | 0 0 .5 (GUEST) |

15-MAY-04 INDIVIDUAL TOURNAMENT SECTION 1

ROUND 4

| BD | RATINGS | SCORE | RATINGS | SCORE |
|-------------------------|---------|-------|-----------|--------------------|
| (CHRGR) 1 MARCOWKA, R | 1965 -7 | 0 | STEIN, P | 2184 10 1 (TYROS) |
| (BPCHM) 2 COULTER, D | 1888 13 | 1 | SMITH, BR | 1725 -8 0 (TYROS) |
| (CHRGR) 3 DOBROVOLNY, C | 1845 1 | .5 | EASTON, R | 1870 -2 .5 (KEMPR) |
| (FERMI) 4 DEGRA, B | 0 0 | 0 | OLSEN, A | 1539 0 1 (KEMPR) |
| (BPCHM) 5 SAJKOWSKI, D | 1873 13 | 1 | FRANEK, M | 1717 -9 0 (ALUMN) |

15-MAY-04 INDIVIDUAL TOURNAMENT SECTION 2

ROUND 1

| BD | RATINGS | SCORE | RATINGS | SCORE |
|--------------------------|---------|-------|--------------|-------------------|
| (MOLEX) 6 HENDRICKSON, B | 1469 14 | 1 | DEICHMANN, E | 1333-14 0 (MOLEX) |
| (KEMPR) 7 WANG, G | 1631 8 | 1 | ZADEREJ, V | 1352 -8 0 (MOLEX) |
| (FERMI) 8 MOEHS, D | 1425 15 | 1 | VAIL, M | 1309-15 0 (KEMPR) |
| (CHRGR) 9 DOBR, K | 1423 0 | 1 | MUELLER, R | 0 0 0 (MOLEX) |
| (FERMI) 10 BOLSHOV, A | 1375 15 | 1 | CASTANEDA, R | 1259-15 0 (BPCHM) |

15-MAY-04 INDIVIDUAL TOURNAMENT SECTION 2

ROUND 2

| BD | RATINGS | SCORE | RATINGS | SCORE |
|------------------------|---------|-------|----------------|--------------------|
| (FERMI) 6 MOEHS, D | 1440 3 | .5 | HENDRICKSON, B | 1483 -3 .5 (MOLEX) |
| (CHRGR) 7 DOBR, K | 1423 -4 | 0 | WANG, G | 1639 10 1 (KEMPR) |
| (MOLEX) 8 DEICHMANN, E | 1319-18 | 0 | BOLSHOV, A | 1390 18 1 (FERMI) |
| (MOLEX) 9 ZADEREJ, V | 1344 0 | 1 | MUELLER, R | 0 0 0 (MOLEX) |
| (KEMPR) 10 VAIL, M | 1294 19 | 1 | CASTANEDA, R | 1244-19 0 (BPCHM) |

15-MAY-04 INDIVIDUAL TOURNAMENT SECTION 2

ROUND 3

| BD | RATINGS | SCORE | RATINGS | SCORE |
|--------------------------|---------|-------|------------|-------------------|
| (FERMI) 6 BOLSHOV, A | 1408 36 | 1 | WANG, G | 1649-36 0 (KEMPR) |
| (MOLEX) 7 HENDRICKSON, B | 1480 19 | 1 | DOBR, K | 1419 -8 0 (CHRGR) |
| (FERMI) 8 MOEHS, D | 1443-29 | 0 | ZADEREJ, V | 1344 29 1 (MOLEX) |
| (MOLEX) 9 DEICHMANN, E | 1301-22 | 0 | VAIL, M | 1313 22 1 (KEMPR) |
| (BPCHM) 10 CASTANEDA, R | 1225 0 | 1 | MUELLER, R | 0 0 0 (MOLEX) |

15-MAY-04 INDIVIDUAL TOURNAMENT SECTION 2

ROUND 4

| BD | RATINGS | SCORE | RATINGS | SCORE |
|--------------------------|---------|-------|------------|-------------------|
| (MOLEX) 6 HENDRICKSON, B | 1499 -4 | .5 | BOLSHOV, A | 1444 4 .5 (FERMI) |
| (KEMPR) 7 VAIL, M | 1335 25 | 1 | ZADEREJ, V | 1373-25 0 (MOLEX) |
| (KEMPR) 8 WANG, G | 1613 11 | 1 | MOEHS, D | 1414-11 0 (FERMI) |
| (BPCHM) 9 CASTANEDA, R | 0 0 | 1 | DOBR, K | 1411 0 0 (CHRGR) |
| (MOLEX) 10 DEICHMANN, E | 1279 0 | 1 | MUELLER, R | 0 0 0 (MOLEX) |

| NAME | TEAM | W | L | D | RATING | NAME | TEAM | W | L | D | RATING |
|---------------|-------|----|---|---|--------|----------------|-------|----|---|---|--------|
| ABDALLAH, D | PAWNS | 5 | 3 | 1 | 1492* | FABIJONAS, R | PAWNS | 6 | 7 | 2 | 1635D |
| AILES, T | FERMI | 3 | 1 | 0 | 1726 | FETTERMAN, M | NORTH | 1 | 7 | 1 | 1316* |
| ALEXANDER, W | CCDOC | 2 | 8 | 2 | 1704 | FOLEY, M | CITGR | 0 | 2 | 0 | 1293* |
| ALFONSO, E | MKNGT | 1 | 3 | 2 | 1592 | FOX, R | MOLEX | 3 | 7 | 0 | 1561 |
| ALLEN, H | ALUMN | 0 | 1 | 0 | 1975 | FRAATS, D | CASE | 4 | 5 | 0 | 1882C |
| APPLEBERRY, T | CCDOC | 4 | 5 | 1 | 1422 | FRANEK, M | ALUMN | 4 | 2 | 2 | 1708D |
| AROND, D | EXCLB | 6 | 3 | 2 | 1792 | FRANK, M | ALUMN | 7 | 0 | 1 | 1764C |
| AUGSBURGER, L | MKNGT | 5 | 1 | 3 | 1805C | FRIDMAN, Y | MKNGT | 9 | 0 | 2 | 2264 |
| BALICKI, J | MKNGT | 8 | 4 | 2 | 1784 | FRISKE, T | EXCLB | 5 | 3 | 4 | 2066C |
| BANNON, B | LBURN | 1 | 5 | 1 | 1270 | FULKERSON, R | LBURN | 3 | 3 | 1 | 1479 |
| BAREITHER, M | CITGR | 1 | 1 | 0 | 0000/2 | GAINES, I | FERMI | 10 | 0 | 2 | 1810D |
| BAURAC, D | ROOKS | 5 | 4 | 3 | 1697D | GARDNER, M | NORTH | 1 | 4 | 1 | 1310* |
| BENEDEK, R | ROOKS | 7 | 3 | 3 | 2182T | GARZON, G | FERMI | 6 | 1 | 4 | 2196 |
| BENESA, A | ALUMN | 6 | 5 | 0 | 2151 | GAZMEN, E | ALUMN | 7 | 1 | 1 | 2052C |
| BENFORADO, E | MKNGT | 5 | 1 | 0 | 1575 | GOMEZ, G | FERMI | 4 | 0 | 4 | 1762 |
| BEZZUBOV, V | FERMI | 1 | 0 | 0 | 2229 | GONCHAROFF, N | MKING | 4 | 3 | 3 | 1678V |
| BLACKMON, E | DRGNS | 2 | 3 | 1 | 1704C | GORDON, R | BPCHM | 0 | 6 | 0 | 1123 |
| BOLDINGH, E | UOP | 4 | 6 | 1 | 1859C | GRUDZINSKI, J | ROOKS | 3 | 2 | 1 | 1485 |
| BOLSHOV, A | FERMI | 8 | 0 | 2 | 1448 | GRYPARIS, J | MKING | 0 | 2 | 3 | 1448C |
| BREYER, A | DRGNS | 3 | 5 | 1 | 1262 | GUIO, J | TYROS | 3 | 3 | 3 | 1859C |
| BROTSOS, J | EXCLB | 5 | 3 | 2 | 1531D | HAHNE, D | TYROS | 4 | 3 | 2 | 1576C |
| BUCHNER, R | TYROS | 3 | 1 | 3 | 1702C | HALL, A | CCDOC | 2 | 3 | 1 | 1505 |
| BUERGER, E | UOP | 0 | 1 | 0 | 2020T | HAYES, D | BPCHM | 1 | 2 | 0 | 0000/3 |
| BURIAN, D | NORTH | 0 | 6 | 2 | 1547D | HAYHURST, W | CITGR | 0 | 6 | 3 | 1839 |
| CAROSI, R | FERMI | 0 | 1 | 0 | 0000/0 | HENDRICKSON, B | MOLEX | 5 | 6 | 3 | 1495 |
| CASHER, P | MOLEX | 3 | 0 | 0 | 0000/0 | HILL, R | ROOKS | 7 | 6 | 0 | 2004C |
| CASTANEDA, R | BPCHM | 3 | 8 | 1 | 1225* | HTOO, M | CITGR | 0 | 1 | 0 | 1735* |
| CASTENADA, R | BPCHM | 1 | 0 | 0 | 0000/1 | HUGHES, N | KEMPR | 0 | 1 | 0 | 1683C |
| CEASE, H | FERMI | 2 | 0 | 0 | 1324 | INUMERABLE, F | ALUMN | 2 | 4 | 0 | 2211C |
| CHRISTOTEK, L | FERMI | 1 | 0 | 0 | 0000/3 | JACKSON, S | CCDOC | 4 | 5 | 1 | 1557 |
| COOMBES, N | GETCO | 3 | 3 | 0 | 0000/4 | JAKSTAS, K | PAWNS | 8 | 2 | 4 | 2143C |
| COULTER, D | BPCHM | 2 | 7 | 3 | 1901 | JANKE, A | CITGR | 0 | 6 | 0 | 0000/6 |
| CYGAN, J | MKING | 1 | 0 | 1 | 1871 | JASAITIS, A | GETCO | 5 | 3 | 0 | 2097D |
| CZERNIECKI, A | ALUMN | 1 | 0 | 1 | 1912D | KANAS, W | CASE | 2 | 3 | 0 | 1183C |
| DAVIDSON, M | ALUMN | 1 | 1 | 0 | 1632 | KARANDIKAR, S | MKNGT | 5 | 1 | 1 | 1644 |
| DEAN, J | BPCHM | 0 | 1 | 0 | 0000/0 | KARPIERZ, J | TYROS | 2 | 0 | 2 | 1305 |
| DECMAN, S | ROOKS | 1 | 4 | 1 | 1542D | KASPER, R | BPCHM | 0 | 1 | 0 | 0000/1 |
| DEGRAFF, B | FERMI | 0 | 2 | 1 | 0000/3 | KLINEFELTER, H | CASE | 4 | 6 | 1 | 1568D |
| DEICHMANN, E | MOLEX | 6 | 7 | 0 | 1279* | KOGAN, G | EXCLB | 5 | 7 | 1 | 1777C |
| DIAZ, P | TYROS | 6 | 3 | 1 | 2068C | KOMORAVOLU, K | DRGNS | 1 | 5 | 2 | 1331* |
| DOBR, K | CHRGR | 6 | 6 | 2 | 1411Q | KOSMICKE, J | GETCO | 1 | 0 | 1 | 0000/2 |
| DOBROVOLNY, C | CHRGR | 4 | 4 | 7 | 1846C | KRATKA, M | GETCO | 5 | 2 | 1 | 1700 |
| DORIGO, T | FERMI | 2 | 1 | 2 | 2147 | KUHLMANN, S | ROOKS | 2 | 2 | 2 | 0000/4 |
| DUFFY, J | LBURN | 1 | 7 | 1 | 1780 | LAFORGE, W | DRGNS | 3 | 2 | 0 | 1434 |
| DYCKOWSKI, R | CASE | 1 | 7 | 1 | 1376 | LAMBIRIS, J | KEMPR | 1 | 0 | 0 | 1453 |
| EAMAN, R | LBURN | 3 | 4 | 1 | 1903 | LANE, M | NORTH | 0 | 5 | 0 | 0000/5 |
| EASTON, R | KEMPR | 4 | 6 | 2 | 1868 | LANG, R | EXCLB | 3 | 3 | 3 | 2053 |
| ELEK, G | NORTH | 0 | 6 | 2 | 1107 | LATIMER, E | PAWNS | 9 | 3 | 2 | 2047D |
| ELLICE, W | PAWNS | 11 | 2 | 2 | 1916C | LE, DUC | CITGR | 3 | 6 | 0 | 1618# |
| EUSTACE, D | DRGNS | 3 | 6 | 1 | 1504C | LECHNICK, J | UOP | 6 | 4 | 2 | 1717 |

/x - UNRATED; x RATED GAMES

- 5 TO 9 RATED GAMES

* - 10 TO 24 RATED GAMES

C - CENTURY CLUB MEMBER

D - DOUBLE CENTURION

T - TRIPLE CENTURION

Q - QUAD CENTURION

V - QUINTUPLE CENTURION

05-16-2004

| NAME | TEAM | W | L | D | RATING | NAME | TEAM | W | L | D | RATING |
|---------------|-------|---|---|---|--------|---------------|-------|---|---|---|--------|
| LEONG, G | KEMPR | 0 | 2 | 2 | 1988C | SANTIAGO, T | ALUMN | 4 | 1 | 2 | 1986 |
| LITVINAS, A | PAWNS | 6 | 4 | 0 | 1641D | SAWIN, B | LBURN | 2 | 2 | 0 | 1175* |
| LUDWIG, T | DRGNS | 3 | 0 | 0 | 1964C | SEATON, E | CCDOC | 3 | 7 | 1 | 1591 |
| MAHMOOD, S | CCDOC | 1 | 1 | 1 | 0000/3 | SEET, P | GETCO | 3 | 1 | 2 | 1839* |
| MANILA, M | BPCHM | 0 | 3 | 0 | 1205* | SENSAT, J | CITGR | 0 | 7 | 1 | 1576* |
| MARCOWKA, R | CHRGR | 5 | 6 | 0 | 1958D | SITAR, K | LBURN | 1 | 6 | 2 | 1561 |
| MARES, C | GETCO | 1 | 1 | 0 | 0000/1 | SIWEK, M | KEMPR | 3 | 3 | 2 | 2016C |
| MARSHALL, K | MKNGT | 0 | 1 | 1 | 1294 | SMITH, BR | TYROS | 8 | 4 | 1 | 1717C |
| MASHKEVICH, I | KEMPR | 0 | 2 | 0 | 1134* | SOLLANO, E | ALUMN | 5 | 1 | 3 | 1965C |
| MCCARTHY, D | CHRGR | 3 | 2 | 0 | 1838 | SPIEGEL, L | FERMI | 6 | 2 | 5 | 1972D |
| MC GEE, L | CCDOC | 2 | 8 | 0 | 1145 | STAMM, V | CHRGR | 7 | 2 | 2 | 1557T |
| MCGOWAN, D | MOLEX | 5 | 4 | 0 | 1150 | STAPLES, C | FERMI | 8 | 2 | 0 | 1640 |
| MELNIKOV, I | MKING | 2 | 3 | 7 | 2036 | STEELE, B | CCDOC | 0 | 1 | 0 | 925# |
| MICKLICH, F | UOP | 6 | 5 | 0 | 1609D | STEIN, P | CITGR | 4 | 2 | 1 | 2194 |
| MIKULECKY, B | PAWNS | 5 | 5 | 1 | 1433C | STEVANOVIC, M | UOP | 8 | 2 | 3 | 2232D |
| MILLER, A | ALUMN | 1 | 0 | 0 | 1431 | STINSON, M | CHRGR | 1 | 0 | 0 | 1972C |
| MOEHS, D | FERMI | 3 | 2 | 1 | 1403* | STOLTZ, B | TYROS | 5 | 1 | 1 | 1935C |
| MORAN, B | GETCO | 3 | 0 | 0 | 1512 | SUAREZ, E | ROOKS | 3 | 1 | 3 | 1845 |
| MORRIS, R | MKNGT | 3 | 1 | 7 | 2161 | SUERTH, F | EXCLB | 3 | 4 | 1 | 1503D |
| MOSSBRIDGE, A | KEMPR | 2 | 4 | 0 | 1690 | SULLIVAN, J | EXCLB | 3 | 3 | 0 | 1782D |
| MUELLER, R | MOLEX | 1 | 9 | 1 | 966# | TAMEZ, I | LBURN | 2 | 0 | 0 | 2191 |
| O' DELL, DW | PAWNS | 5 | 7 | 1 | 1441C | TEGEL, F | DRGNS | 3 | 4 | 2 | 2066Q |
| OGANESSYAN, G | MOLEX | 0 | 1 | 0 | 0000/0 | THOMAS, G | TYROS | 0 | 1 | 0 | 1534C |
| OLSEN, A | KEMPR | 6 | 3 | 2 | 1539C | THOMAS, J | CHRGR | 5 | 3 | 3 | 1601D |
| ONG, K | CITGR | 2 | 3 | 1 | 1861 | THOMSON, J | MKNGT | 7 | 2 | 3 | 1996 |
| PARAOAN, E | CASE | 5 | 4 | 1 | 1672D | TRUFANOV, D | UOP | 0 | 2 | 0 | 1553# |
| PEHAS, A | DRGNS | 3 | 3 | 1 | 1887C | VAIL, M | KEMPR | 7 | 5 | 0 | 1360* |
| PERKINS, D | CCDOC | 0 | 1 | 0 | 1660# | VALDEZ, C | TYROS | 1 | 1 | 0 | 1379* |
| PHELPS, D | MKNGT | 1 | 1 | 0 | 1204* | VAN ZILE, C | UOP | 0 | 1 | 0 | 1328 |
| PIPARIA, J | MKING | 4 | 3 | 5 | 1851 | VIGANTS, A | NORTH | 0 | 8 | 1 | 1615C |
| POMA, D | BPCHM | 0 | 5 | 0 | 1234 | VOLYNSKIY, G | GETCO | 1 | 0 | 0 | 2579* |
| RABINOVICH, E | MKING | 4 | 3 | 2 | 1373 | WALKER, A | NORTH | 0 | 8 | 1 | 1743 |
| RADAVICIUS, E | CHRGR | 2 | 2 | 2 | 1616D | WALKER, C | KEMPR | 5 | 2 | 1 | 1745 |
| RAUCHMAN, M | GETCO | 7 | 0 | 0 | 2122* | WALLACH, C | MKING | 8 | 4 | 1 | 2015C |
| REICH, T | MOLEX | 3 | 5 | 2 | 1951* | WALSH, W | ROOKS | 0 | 1 | 0 | 1494C |
| REID, C | CASE | 4 | 5 | 1 | 1479D | WANG, A | CITGR | 1 | 0 | 1 | 1461# |
| RENDE, D | UOP | 1 | 2 | 0 | 1589* | WANG, G | KEMPR | 3 | 1 | 0 | 1624* |
| REVELLON, L | UOP | 3 | 3 | 1 | 1968 | WEBER, L | ALUMN | 2 | 0 | 2 | 2159 |
| RINGENBERG, T | BPCHM | 0 | 3 | 1 | 1361 | WEITZ, R | EXCLB | 3 | 7 | 0 | 1532C |
| ROJO, V | CCDOC | 2 | 4 | 1 | 1431 | WHITE, H | CASE | 1 | 8 | 1 | 1631C |
| ROSLEY, D | CHRGR | 1 | 3 | 1 | 1740 | WILKOSZ, A | NORTH | 1 | 0 | 0 | 0000/0 |
| ROSZKOWSKI, D | KEMPR | 0 | 3 | 0 | 0000/5 | WILLIAMS, K | CCDOC | 3 | 0 | 2 | 2177 |
| RUFUS, B | MOLEX | 2 | 3 | 0 | 0000/3 | WILLIAMS, S | GETCO | 1 | 2 | 0 | 1220# |
| SACKS, D | UOP | 5 | 1 | 0 | 1897 | WIRTZ, R | KEMPR | 1 | 1 | 0 | 1310* |
| SAGALOVSKY, L | GETCO | 0 | 0 | 1 | 1977 | WOLF, D | MKING | 1 | 0 | 0 | 2377 |
| SAHLI, E | UOP | 3 | 0 | 0 | 1751 | WONG, P | EXCLB | 0 | 1 | 0 | 2180C |
| SAJBEL, P | UOP | 2 | 1 | 2 | 1797C | WOODS, C | BPCHM | 0 | 8 | 0 | 0000/5 |
| SAJKOWSKI, D | BPCHM | 4 | 6 | 1 | 1886 | WU, M | DRGNS | 1 | 1 | 0 | 0000/1 |
| SALERNO, S | DRGNS | 0 | 0 | 1 | 1477* | YACOUT, A | ROOKS | 5 | 5 | 2 | 1564 |
| SAMELSON, C | MKING | 4 | 2 | 0 | 1933D | ZADEREJ, V | MOLEX | 8 | 3 | 1 | 1348 |
| | | | | | | ZOELLNER, J | CASE | 2 | 4 | 4 | 1304D |
| | | | | | | ZUBIK, J | BPCHM | 0 | 5 | 0 | 0000/5 |

/x - UNRATED; x RATED GAMES

- 5 TO 9 RATED GAMES

* - 10 TO 24 RATED GAMES

C - CENTURY CLUB MEMBER

D - DOUBLE CENTURION

T - TRIPLE CENTURION

Q - QUAD CENTURION

V - QUINTUPLE CENTURION

It certainly was a bright and sunny day; almost too nice to be confined inside a building and sit around all day! But half the fun of a CICL match is seeing where others work, and neither the BP campus nor day's events disappointed !

After following the detailed maps and directions, the visitors were quickly signed in at the guard station and waved into the correct parking lot by a security officer. Sure made it easy to find the playoff sight.

LIFE IN A FISHBOWL.

It was a small, one-story building seemingly tucked in the middle of the BP grounds, a cozy setting for chess. But, after entering through a short hall into the playing area, one's eyes were opened by the bright sunlight pouring through the ceiling-to-floor glass windows three-quarters around the circular room! Jutting out over a pond, the cafeteria was a fishbowl; only here the water was on the outside.

In case some of the fish came up for air, stacks of donuts and coffee were provided. Enough, in fact, for an all-day feeding frenzy. What were there ? A couple-dozen dozen donuts ? Five gallons of coffee ? What else would a bottom-feeding chessplayer want?

There was, as well, plenty of room for the three invited chess schools: long rows of tables for the 6-fish playoff teams, and plenty of individual tables for the two sections of the CICL Open (a noteworthy event in its own right). Players could easily swim from game-to-game without bumping into those concentrating on their games.

With such a perfect setting, the tank was well-stocked for some exciting chess !!

GLASS HOUSES.

"People that live in glass houses shouldn't throw stones."

Your roving reporter was one of the last to finish in the Saturday morning round and amazed at the buzz in the playing area as he moved away from his completed game. A glance around the site revealed little groups scattered everywhere, except the top-match table, whispering "Did you hear? They lost!"

"Who? What's up!?" was the reply.

"The ACES LOST!!... and to the Rooks !"

Wow, the competition was proving to be as tough as could be hoped. The Great One had fallen at the feet of the lowest-placed rival. The CICL Olympus hadn't actually been reached, as assumed, during the build-up in the final weeks of the regular season.

PLAYOFF FOOTINGS.

The Saturday Playoff participants had been invited in the traditional manner, i.e. the two top teams from each Division, but had mutated into a series of scared monsters. The first to run away was the current champs, GETCO, that, last year, sacrificed both personal and family time to make the big effort to overcome their Division-rival Alumni Aces and the other CICL claimants. Chess followed other sports here, and the push for a repeat didn't occur.

This was an opportunity, however, for a disappointed team to suddenly participate in the championship fight. Thanks to the performance ratings, tracked during the season for just such an occasion, the open seed was filled by the Motorola Kings. For a third year running, more than two North-Division teams would take a shot at the title.

As the mutation progressed, more teams headed for the hills. The second-place lock from the Near West division, left the scene after determining there wasn't enough life-forces to continue. Their replacement would come from any division's third-place finisher: Leo Burnett of the East, Tyros of the Far West, or CCDOC of the Near West. In such short notice, however, none of these were prepared for battle and the call went out to the top fourth-place holder, the Excaliburs of the North, who finally assumed they were alive and agreed to stay.

Unfortunately, by this time the mutation was well-advanced and they played as ugly as they looked. Those teams which chose not to come half-baked had been proven wise, not running scared. Indeed, the Kings and Excaliburs did not present complete bodies on Saturday and were easily massacred despite some flailing appearances of life.



This would be the first time half of the Playoff teams would come from the same division. Yet, three of their four contenders would need to travel and two would have to be paired in the first round. Nevertheless, the main scuttlebutt favored not a North team, but the Alumni Aces from the East.

Late in the regular season, another strong Expert was added to the Ace roster, giving them a line-up boasting a 6th-board rated over 1950! At the time, many assumed they were taking advantage of their alumni status by stocking up for the playoff sessions. But a glance at the final standings shows the other divisions had no reason to worry; in fact, not a complaint was raised. Of the four division winners, there was only one loss and five draws, four of which came from the Pawns! Each division had a killer team. And there was also some major battles with their division rivals, GETCO, who, at this point, had yet to announce their playoff intentions. In hindsight, the other candidates should take the Aces' roster move as a complement; they apparently were concerned with the strength of their future opponents and taking precautions.

Be that as it may, the First Round pairings were finally announced:

The Alumni Pawns would visit the Alumni Aces, UOP would travel to Argonne, the Motorola Kings would experiment at Fermilab, and the Alumni Excaliburs would gasp at Motorola Knights' home.

Round 1: RUMORS OF WAR.

Swiss pairings make for wild first games as the field is in rating order; a high-rated team runs the risk of being eliminated from the title if they allow an upset. In the CICL, the lower-rated team has the additional often-proved burden of traveling. This year's family gatherings were no exception; there were no upsets and the visitors lost.

But more obvious was the effect team-depth played. The Aces-Pawns' top three boards finished tied; but the Aces won the lower three boards, confirming fears with a 4.5-1.5 win. The Excaliburs were similarly under-rated and spanked with a single draw. It was if the Knights were telling the League "We were good sports during the season. In the playoffs, we will take no prisoners!" The disparity, however, was most dramatic in the Kings-Fermilab match where the Kings, already giving up one chance, totaled 2.5 points over the top four boards, and thus needed a win from their 300-point underdog on board five. Positionally in trouble, their forces were in disarray and material losses ensured the fate of the entire Kingdom.

The contested match of the round, then, was UOP at Argonne; but at least UOP ignored the North Division precedent and traveled with a complete team. As the other first-round contests, the top three boards battled to a tie and the match result was settled by the remaining players. It was Board Five that provided controversy with an unusual clock problem. An Argonne Knight sacrificed to destroy an enemy castle, but, in hand-to-hand combat, the castle's strength proved difficult to mobilize. This, in turn, put their army in a dilemma that was resolved by an all-out attack, despite the fact the home countryside was left undefended. While the Argonne Queen was roaming in an attempt to compromise the enemy King, his mate was taking farmers as prisoners, unleashing hoards of angry UOP peasants. The Argonne kingdom was forced to surrender when, although its 45th term had been completed, a clock could not be stopped and their time was up! In the riots of confusion that resulted, the Argonne monarchy was found in the same disarray. The resultant fallout was resolved by continuing the battle, but the UOP peasants by this time were building homes for their royalty deep in Argonne territory, and this battle was theirs.

The cast for Saturday's drama could be published: Aces face the Rooks, Knights spar with Fermilab, Pawns confront the Excaliburs, and a North-Division rematch forms between UOP and the Kings.

Round 2: OUTBREAK OF UNREST.



Every win counts in a three-round contest, so one would expect all teams arrive ready to play. The title would likely be awarded to an undefeated team and those already with a loss could only hope for a miracle.

The late planning forced on the slot-filling Excaliburs and Kings caused disruption in the ranks and both came light-handed. Indeed, the Excalibur-Pawn affair was over practically before it had begun. With a forfeited last board and two quick losses the Excaliburs were reminded of their previous playoff defeat, needing all wins from the remaining boards. It was too much to expect.

Regardless of the order actually finished, the Fermilab-Knight war was determined by their highest-numbered quadrants. The Knight's

quadrant-five general began his assault with a sacrifice of a peon which allowed the remaining forces to aggressively post battle-stations at every possible angle toward the enemy. This did not divert the Fermilab commander from setting up defensive positions in the western half of his territory. Unfortunately, he apparently “could not go right”, leaving his eastern forces in their barracks. A timely sacrificial Knight excursion near the surrounded Fermi-king heightened the battle and the monarch was soon captured. Meanwhile, in quadrant six, a time of skirmishes to establish attacking positions resulted in the Knight commander winning a key central post. In the ensuing confusion, the Fermilab forces fled and were slaughtered. With these two battles won, the remaining generals were seemingly appeased; three of which agreed to a cease fire.

The top-seed had been vanquished and so the Aces’ pairing with the lowest-rated survivor, the Rooks, seemed to give them the statistical edge going into the title round. But this was not their destiny; very odd Cub-like curses began to strike.

After the carnage, the report from board four was that the Ace general was called away for personal business. On the board, play appeared to be well in hand for him as the Rook player had given two minor pieces for a Rook and Pawn, normally a questionable exchange. In this game, however, he showed skill, opening the position for his Rooks. The extra moving piece did prove to be more powerful, as expected, and the win for the Aces was near. But too much time was necessary to make this happen and he was forced to end the fight!

Next door, on board five the Ace player was rated over 500 points stronger than the opponent, and the tactical battle which ensued found him several Pawns up and a Knight kicking to boot. The habit of snaring material, however, became his downfall when later realizing the possibility of adding a Rook to his bounty. His Queen had checked the countryside before this excursion, and, with the King safety tucked in his castle, was not worried by the enemy. Unfortunately, she had forgotten to lock the window, and the enemy Dame was able to diagonally jump into the chambers. The King had just enough space to dodge her assaults and the fight was abandoned, despite the many captives taken by the Ace forces.

Yet another point was lost on board one. The Ace player here had determined from the outset to rush the opposing King with the farmers, interrupting for one tempo to protect his monarch in the western territory. In this battle, the farmers were slow to organize and the Rook general found enough interlopers to raid the castle. The Ace commander quickly sent messengers to order a retreat, but they arrived too late. The Rook forces had the King surrounded and were mercilessly shooting arrows from all directions. The Ace King was soon slain and when word reached the rest of the Ace’s quadrants the entire kingdom realized the end was near.

Yes, the rumors of their demise were not widely exaggerated this fateful day. Wishful thinkers became hopeful dreamers. The buzz afterwards was not so much amazement of the result, as much, rather, excited talk about new possibilities.

And so, going into the final round of battles, two teams were undefeated (Knights and Rooks), four others were expectant of the consolation prize, and the two remaining 4-person armies (Kings and Excaliburs) were simply hopeless.

Round 3: WAR AND PESTILENCE.

By this stage of the siege, the teams were obviously battle-weary. The un-winning teams fought fairly valiantly to an uninspiring 2-2 tie. The UOP forces, despite rock-solid determination from their leading first-board, with two generals AWOL, were no match for the angry Aces who showed their experience by not allowing previous times to discourage, but, instead, to unload on their opponents.



“Every Picture Tells A Story”

Argonne Rooks (left) battle the Alumni Aces. The board one game (foreground) captures the moment Black begins a massive counter-assault which will quickly overpower the defense.

Where’s Burt ? The Ace board four player is missing and a blow-up of the picture revealed a tale on their clock, which happens to face the camera: White has spent 16 minutes, Black 47. Time’s a-running, the position is a confusing one, and the General is nowhere in sight.

After a solid performance, the Pawns found themselves, on each board, just a little too slow and the Fermilab players were seen to gradually increase their small advantages and produce wins. One game did take a turn, however. On board three Fermilab had lost (sacrificed?) the exchange for what, at first, appeared to be only a whisper of hope against the opponent's unmoved King. As the Pawn commander was trying to rectify his monarch's vulnerability, a Fermi peasant was freed and made a direct lunge for the opponent. This one act of bravery caused much trouble in the Pawn camp, soon winning the battle. The Pawn generals conferred to count the dead and found only one draw of the six fights, and thus surrendered.

But who would not be vanquished and rule the CICL for the coming term ? The upstart Rooks had passed their previous tests and were willing to cross swords with the slightly more experienced Knight forces. But Mother Nature stepped in.

Fairly early into the battles, tremors shook all six kingdoms. The heaviest of these came from the first quadrant where the Knight general had massed his forces in a standard Gruenfeld Fianchetto formation. With a sudden sacrifice of a cleric, wild hand-to-hand combat began a bloody battle which very few soldiers survived. An extra Knight peasant was found, the remaining forces still active, and the end quickly came.

In the second quadrant, the Knights flooded the western territory in an effort to wash away the opponent's army. Here, however, a defense was found and a dam, securely grounded in the city of A7, was built to stem the tide. The tremors from the neighboring territories did not immediately reach the county. Word had just reached the general that battles had been won in quadrants one and six, with peace agreed in quadrant four, when a 7.8 earthquake struck. Once the countryside had been examined, it was determined a Knight castle had slid into Pawn territory, causing some damage to the dam that had been erected. Aftershocks that came caused additional cracks to form in the defense and, in a short time, had completely wiped out the Pawn-dam. The Knight flood came at last, wiping out both the Pawn's forces and their hopes of ruling the CICL world.

The Knight generals had emerged from the war and were crowned Chicago Industrial Chess League Champions. Once-conquered were the Alumni Aces, Fermilab, and Argonne Rooks.

POST-MORTEM.

Tournament directors should be seen and not heard. **Art Olsen** (Kemper) once again volunteered to run both Saturday competitions, but, when realizing the increased attendance for the CICL Open, **Tony Jasaitis** (GETCO) amiably offered his assistance. I was impressed by their organization and attention to the details required. Everything progressed on the time scale as announced, and the Open participants' 4-round, G/60 schedule did not disturb the CICL Playoffs. In fact, the Playoffs disturbed the Playoffs, what with an emergency notification test over the PA, a couple of heated arguments about time wins (when will we know how to report a time win ??), and falling over in chairs. In each situation, the TDs had firm control and their professionalism was widely admired.

In the **CICL Open**, top-rated USCF Master Pete Stein put on a clinic of well-planned chess. The time control was surely in his favor as in each game his early threats certainly appeared to take an immediate toll on the opponents. There were no endgames here.

With twenty participants this year, it was convenient to split the field in half; this point was the rating of 1500. Multiple donors raised \$140 in prize funds and this was split between the two sections. Both levels had clear winners and second-place funds were split.

| | |
|---|------------------------|
| 1st Place: Over-1500: Pete Stein (Citadel), Under-1500: A Bolshov (Fermilab) | both were awarded \$40 |
| 2nd Place Over-1500: Richard Easton (Kemper), and D Sajkowski (BPCHM) | both were awarded \$15 |
| Under-1500: Bill Hendrickson (Molex), Matt Vail (Kemper), Gary Wang (Kemper) | each awarded \$10 |

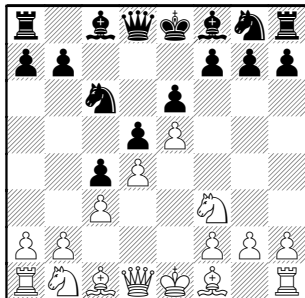
CLOCKS MISSING

Every year equipment is missing at the closing of Playoff Saturday. Would ALL CAPTAINS **PLEASE CHECK** their sets ?? Even those that did not attend.

MISSING ARE: Two standard large Black-cased analog clocks.
One brand-new, small plastic-cased BHB club analog clock

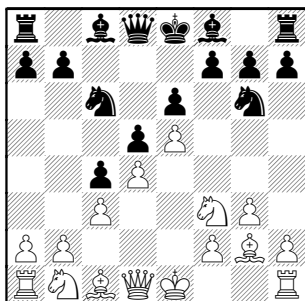
Decman,S (1549) –
 Sahli,E (1740) [C02]
 Rooks–UOP, Board 5
 Playoff Round 1, 05.05.2004

1.e4 e6 2.d4 d5 3.e5 c5 4.c3 Nc6
 5.Nf3 c4



Too committal at this point in the game since Black's possibilities are based on weakening d4 and e5.

6.g3 Nge7 7.Bg2 Ng6

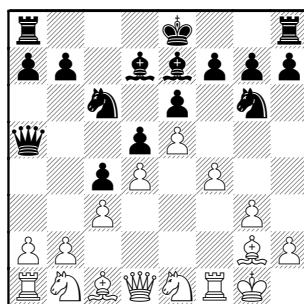


8.0-0

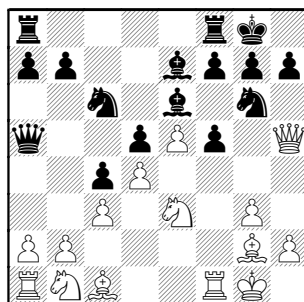
The Black Knight's placement at g6 can be proved shaky after 8.h4! With the reply h5?! Black depends on the Rook's protection of the h–Pawn, and so will not castle Kingside.

But a possible Queenside placement of the monarch can be attacked with the simple b3, so where will Black settle ?

8...Be7 9.Ne1 Bd7 10.f4 Qa5

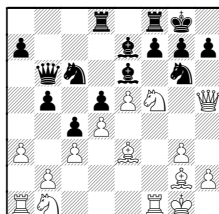


11.Nc2 0-0 12.f5 exf5 13.Ne3 Be6
 14.Qh5



14...Rad8 15.Nxf5 b5 16.Nxe7+

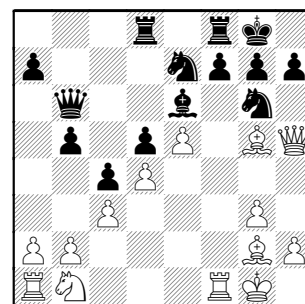
16.a3 to stop –b4 16...Qb6 idea of
 Ngxe5 or Na5–b3 17.Be3



If, instead, 17.Kh1 Na5 18.Nd2
 White will spend some time unwinding
 Queenside, but has time to attack as
 in game.

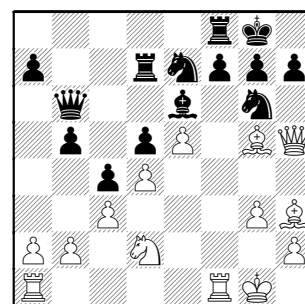
17...Bxf5 18.Rxf5 Ngxe5

16...Ncxe7 17.Bg5 Qb6



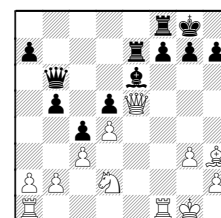
Pinning d4–Pawn, but Nxe5 is not yet
 a threat due to hanging e7–Knight

18.Nd2 Rd7 19.Bh3



19...a5

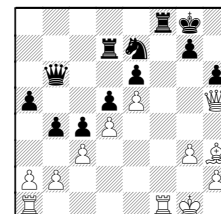
Black drops a piece after 19...Nxe5?
 20.Bxe7 Rxe7 21.Qxe5



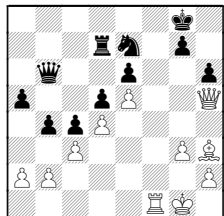
21...Bxh3 22.Qxe7 Bxf1 23.Kxf1

20.Nf3 b4 21.Bxe7 Rxe7?

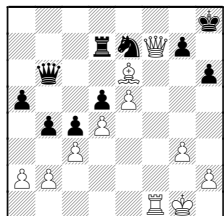
In all fairness, it appears Black
 realized he's busted after 21...Nxe7
 22.Ng5 h6 23.Nxe6 fxe6



24.Rxf8+ Kxf8 25.Rf1+ Kg8

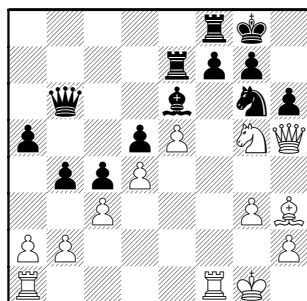


26.Qf7+ Kh8 27.Bxe6



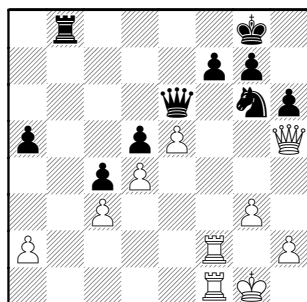
and the d5-Pawn falls as the Rook must retreat horizontally to protect the Knight.

22.Ng5 h6



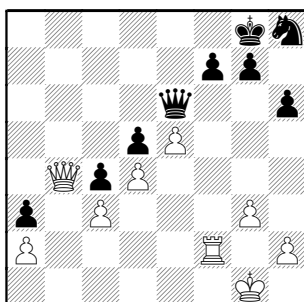
23.Nxe6 Rxe6
23...fxe6 24.Qxg6

24.Bxe6 Qxe6 25.Rf2 bxc3 26.bxc3
Rb8 27.Raf1



Enjoyed the way Black spent his whole game opening the b-file, and, when he finally has accomplished it, White simply runs away. Black's plan was shown to be too simplistic, beginning with the early c4 move.

27...Nh8 28.Qf5 a4 29.Rb1 Rxb1+
30.Qxb1 a3 31.Qb4

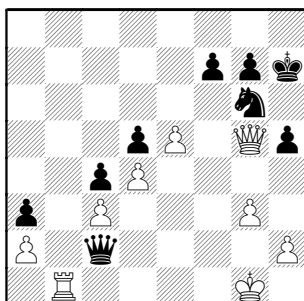


Black has been completely outplayed, but his King is safely defended. White has a fairly difficult task and probably began time pressure.

31...Qa6 32.Rf1 Ng6 33.Rb1 h5
34.Qd6 Qa4 35.Qd8+ Kh7 36.Qg5

36.Qxd5 Qc2 37.Rf1 Qxc3 38.Rxf7
Qe1+ 39.Kg2 Qe2+ 40.Rf2

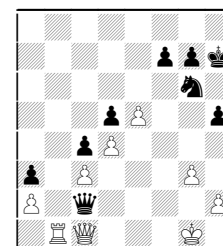
36...Qc2



White's goal needs to be defending weak points and get to the time control. Maybe then start planning an invasion with the Rook.

37.Qxh5+? No time for a vacation !

He could hold with 37.Qc1



37...Qxa2

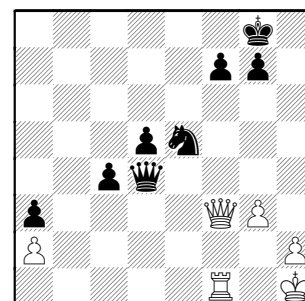
37...Qd3 38.Rb7
(38.Qxa3? Qxb1+)

38.Ra1 idea Rxa3 38...Qb2 39.Qxb2
axb2 40.Rb1

37...Kg8 38.Rf1 Qxc3 39.Qf3

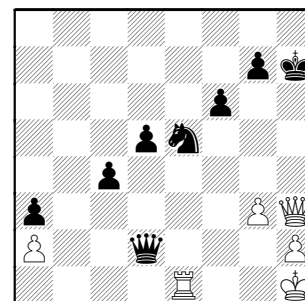
39.Qg4 Qe3+ 40.Kg2 c3 41.Rf2 Qd3

39...Qxd4+ 40.Kh1 Nxe5



Black now has the edge and White needs to look for a draw.

41.Qf4 Qb2 42.Re1 f6 43.Qf5 Qd2
44.Qe6+ Kh7 45.Qh3+



Time expired 1 second before White hit clock to complete this move! Black

claimed win on time, but, with only 13 seconds left himself, made his 45th move.

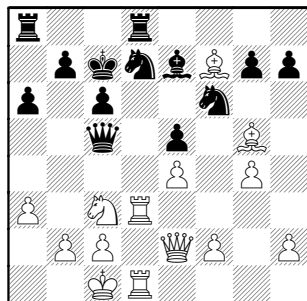
(Black should stop both clocks to claim win, (ed.))

The game was finished under protest that resulted, and White ended up resigning, even though Black offered a draw at this point !

45...Kg8 46.Qe6+ 0-1

**Gazmen,B (2074) –
Fabijonas,R (1668)** [C41]
Aces–Pawns, Board 4
Playoff Round 1, 05.04.2004

1.e4 e5 2.Nf3 d6 3.d4 Bg4 4.dxe5
Bxf3 5.Qxf3 dxe5 6.Bc4 Nf6 7.Qb3
Qe7 8.Nc3 [8.Qxb7] 8...c6 9.Bg5 Qb4
10.Bxf7+ Kd8 11.0-0-0+ Kc7 12.Qe6
Qe7 13.Qc4 Qc5 14.Qe2 Nbd7
15.Rd3 Be7 16.Rhd1 a6 17.a3 Rhd8
18.g4



18...b5??

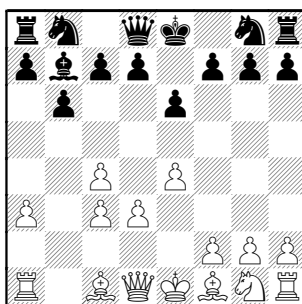
Why is this a blunder ?

19.Be3!

Black's last move blocked his Queen's only retreat ! 1-0

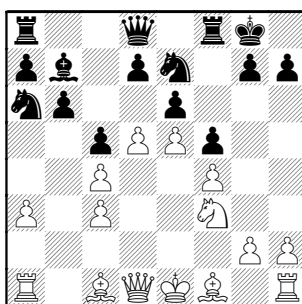
**Litvinas,A (1645) –
Santiago,T (2002)** [C00]
Pawns–Aces, Board 5
Playoff Round 1, 05.04.2004

1.e4 e6 2.c4 b6 3.d3 Bb7 4.Nc3 Bb4
5.a3 Bxc3+ 6.bxc3



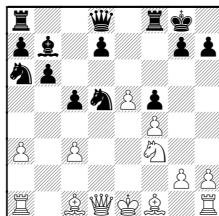
6...Ne7 7.f4

Pretty impressive Pawn center
7...0-0 8.Nf3 f5 9.e5 Na6 10.d4 c5
11.d5



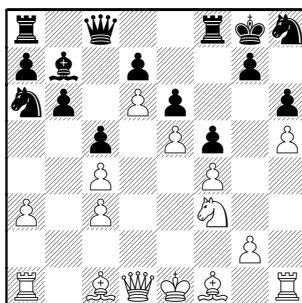
11...Qc8

11...exd5 12.cxd5 Nxd5?



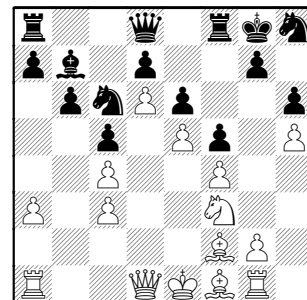
13.Bxa6 Nxc3 14.Qb3+

12.d6 Ng6 13.h4 h6 14.h5 Nh8



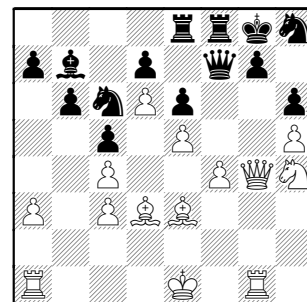
Black has major problems with his Knights. It appears both must route through c6.

15.Rg1 Qd8 16.Be3 Nb8 17.Bf2 Nc6



Na5 followed by Ba6 is the standard formation to counterattack the doublets.

18.Nh4 Qe8 19.g4 fxg4 20.Qxg4 Qf7
21.Be3 Rae8 22.Bd3



22...Ba6!?

Purposely sacrificing the exchange !?

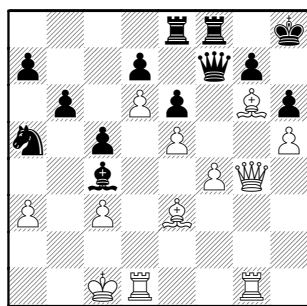
23.0-0-0 Na5

Finally accomplishing his plan, but...

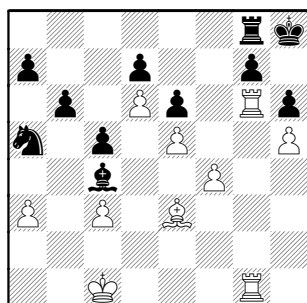
24.Ng6 Bxc4 25.Nxh8

Maybe Black assumed 25.Bxc4

25...Kxh8 26.Bg6



26...Qg8 27.Bxe8 Rxe8 28.Rg3 Qf7
29.Rdg1 Rg8 30.Qg6 Qxg6 31.Rxg6

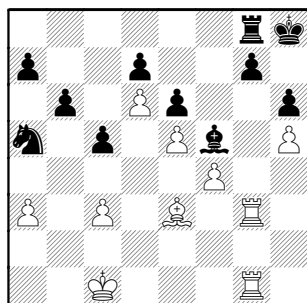


White wants to play f5 with idea of Bxh6 and on to Bxg7.

31...Bd3 32.R6g3

32.R6g2 idea of Bf2-h4-f6 32...Be4

32...Bf5

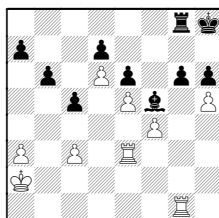


With opposite-colored Bishops, Black needs to stifle the opponent's Bishop and find counterplay Queenside without opening position for White's extra Rook. A tough order.

33.Bf2

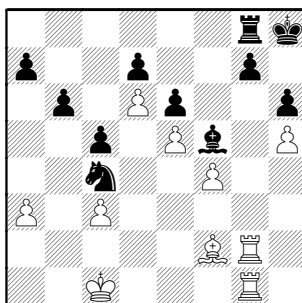
Hindsight tells us White needs to hold

the Pawn when he can with 33.Kb2
Nc4+ 34.Ka2 Nxe3 35.Rxe3 g6



An interesting ending that should slightly favor White's extra Rook, especially if he can trade off Black's after getting King over to block the h-passer.

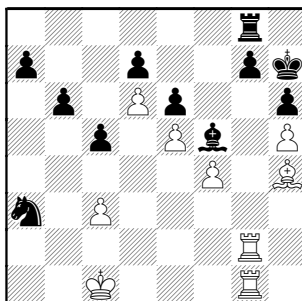
33...Nc4 34.R3g2



34...Nxa3

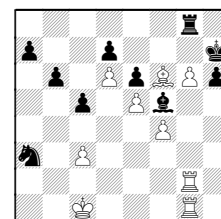
34...Be4 35.Rh2 Nxa3

35.Bh4 Kh7



36.Ra2

36.Bf6 g6 37.hxg6+



37...Rxg6

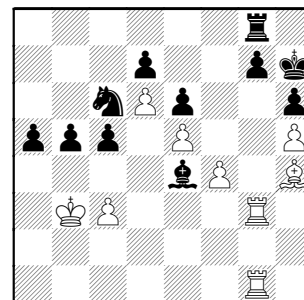
Maybe 37...Bxg6 38.Ra2 Nb5 39.c4 Nd4 40.Rxa7? Ne2+

38.Rxg6 Bxg6

36...Nb5 37.Kb2

37.c4 Nd4 idea Ne2+ or Nf3

37...a5 38.Kb3 Be4 39.Rg3 Na7
40.Ra1 Nc6 41.Rag1 b5



Demonstrating the exchange sac compensation

42.Bf6 g6 43.hxg6+ Rxg6 44.Rxg6
Bxg6 45.Rh1 a4+ 46.Kb2

Black plays the same after 46.Ka3.

Neither is the King safe with 46.Ka2
Bc2 idea Bb3+, Na5-c4, a3 or b4
47.Bg5

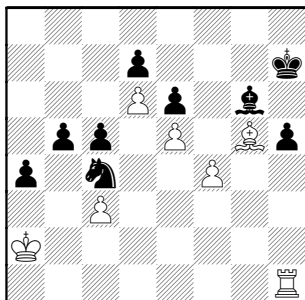
46...Na5 47.Bg5

47.Bh4 idea of Be1. White must force a hole for the King to blockade or die.
47...Nc4+ 48.Ka1

48.Ka2 b4 49.cxb4 cxb4 50.Be1 b3+
51.Ka1 a3 52.Bc3 b2+ 53.Bxb2 axb2+
54.Ka2 b1Q+

48...b4 49.cxb4 cxb4 50.Rh3

47...Nc4+ 48.Ka2 h5

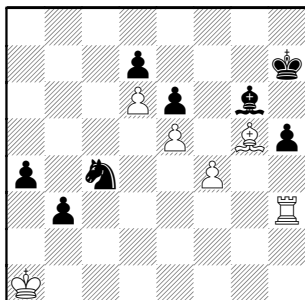


49.Rh3

White sure would like to play 49.Rb1?
but 49...Bxb1+.

Getting the Bishop defending after
49.f5 also fails: Bxf5 50.Bc1 Nxe5

49...b4 50.cxb4 cxb4 51.Ka1 b3



52.f5 Bxf5 53.Bc1 Bxh3 0-1

Inumerable,F (2264) –
Benedek,R (2177)

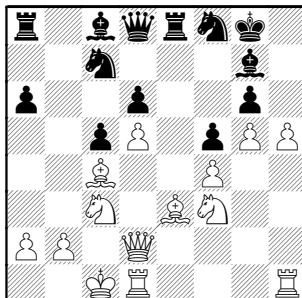
[E81]

Aces-Rooks, Board 1
Playoff Round 2, 05.15.2004

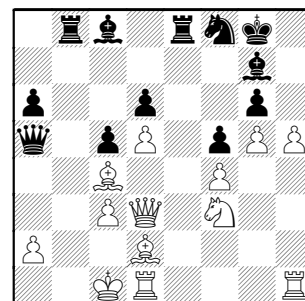
1.d4 Nf6 2.c4 g6 3.Nc3 Bg7 4.e4 d6
5.f3 0-0 6.Be3 c5 7.d5 e6 8.Qd2 exd5
9.exd5 Na6

Whose attack is stronger ?

18.h4 b5 19.h5 bxc4 20.Bxc4



20...Nb5 trading away a defender
21.Qd3 Nxc3 22.bxc3 Qa5 23.Bd2
Rb8

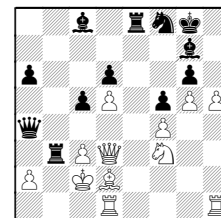


Idea is Qa3+--Qb2#

24.Kc2 Bd7

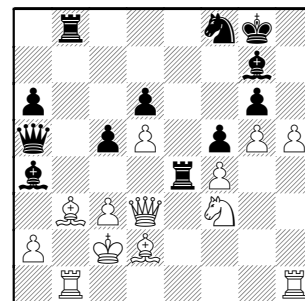
Black is planning something like
24...Qa4+ 25.Bb3

(25.Kc1?? Qa3+ 26.Kc2 Qb2#)
25...Rxb3



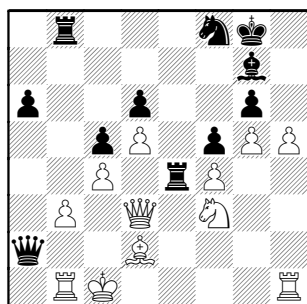
26.axb3 Qa2+ 27.Kc1 Qxb3 idea
Bd7,Rb8

25.Rb1 Ba4+ 26.Bb3 Re4



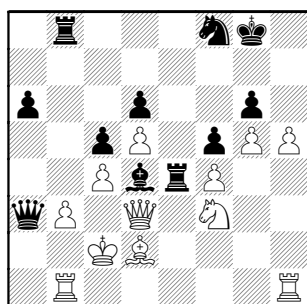
Idea of c4, so.. 27.c4
But now the g7-Bishop participates !

27...Bxb3+ 28.axb3 Qa2+ 29.Kc1



29...Qa3+ 30.Kd1 Bb2
idea Rxb3

31.Kc2 Bd4



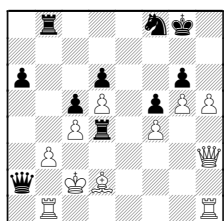
32.h6

32.Bc3 Re3 idea Rxc3+;

32.Nxd4 Rxd4 33.Qh3

(33.Qf3 Rxc4+!)

33...Qa2+



34.Rb2?

34.Kc3 Qa5+ 35.Kb2

(35.Kc2?? Qxd2#)

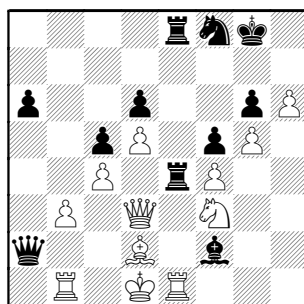
35...Rxd2+

(35...Qxd2+ 36.Ka1)

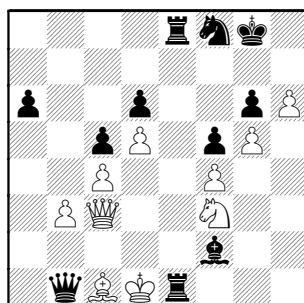
36.Kc1 Qa2 idea Qc2#

34...Rxd2+! Overloading King

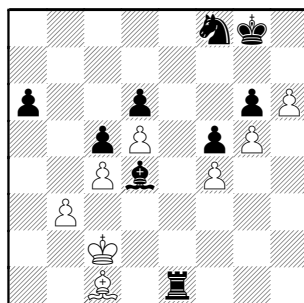
32...Qa2+ 33.Kd1 Rbe8 34.Re1 Bf2



35.Qc3? [35.Rh1] 35...Qxb1+ 36.Bc1
Rxe1+



37.Nxe1 Rxe1+ 38.Kd2 Bd4 39.Qc2
Qxc2+ 40.Kxc2

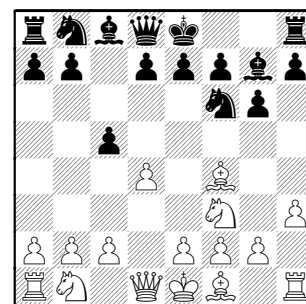


40...Rxc1+ 41.Kxc1 0-1

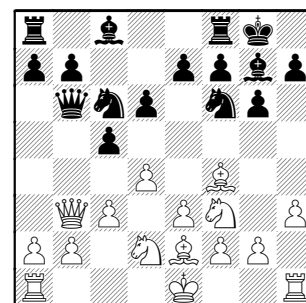
Baurac,D (1646) –
Gazmen,B (2074)
Rooks–Aces, Board 4
Playoff Round 2, 05.15.2004

[A40]

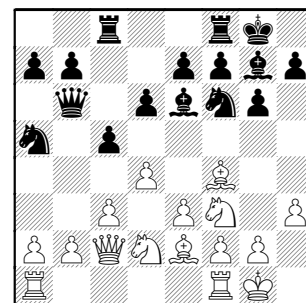
1.d4 g6 2.Nf3 Bg7 3.Bf4 Nf6 4.h3 c5



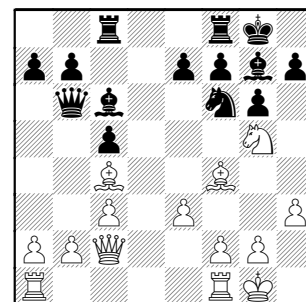
5.c3 Qb6 6.Qb3 d6 7.e3 Nc6 8.Nbd2
0-0 9.Be2



9...Na5 [9...Be6] 10.Qc2 Be6 11.0-0
Rac8



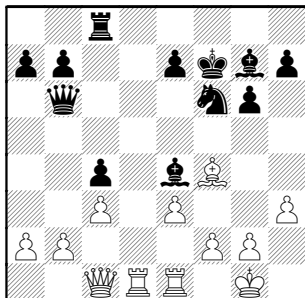
12.Ng5 Bd7 13.dxc5 dxc5 14.Nc4
Nxc4 15.Bxc4 Bc6



16.Bxf7+

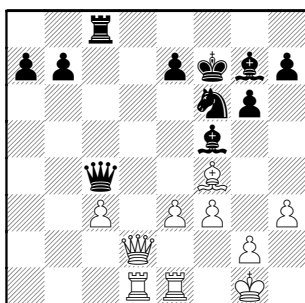
The two pieces are definitely more important than the Rook in this position. In addition, Black owns the squares on his side of the d-file so White can't invade.

16...Rxf7 17.Nxf7 Kxf7 18.Rad1 c4
idea of Be4-d3, blocking the d-file !
19.Rfe1 Be4 20.Qc1

**20...Qa5**

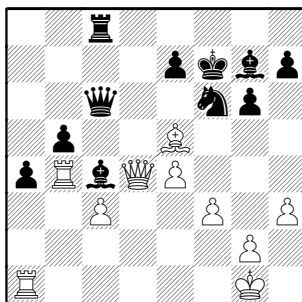
idea of b5 to maintain the base Pawn at c4

21.f3 Bd3 22.b3? Qxa2 23.bxc4
Qxc4 24.Qd2 Bf5

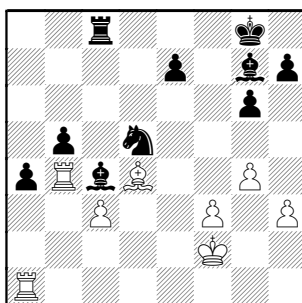


Black has added a Pawn target at c3 (remember the g7-Bishop ?) and a passer to his list of compensation for the Rook.

25.e4 Be6 26.Be5 a5 27.Ra1 a4
28.Reb1 b5 29.Rb4 Qc6 30.Qd4 Bc4



31.Qd2 Nxe4! idea Bxe5 32.Qf4+ Nf6
33.g4 Kg8 34.Qd4 Qd5 35.Kf2
Qxd4+ 36.Bxd4 Nd5

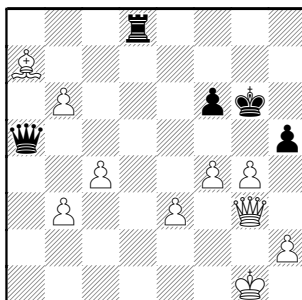


37.Rbxa4 bxa4 38.Rxa4 Nxc3
39.Bxc3 Bxc3

Black flagged 1-0

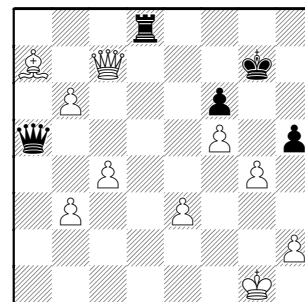
Santiago,T (2002) –
Yacouts,A (1473)
Aces-Rooks, Board 5
Playoff Round 2, 05.15.2004

[A00]



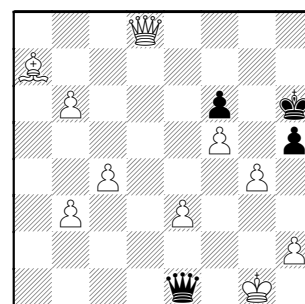
Black should've resigned long ago.

41.f5+ Kh6 42.Qf4+ Kg7 43.Qc7+



Running away from defense, possibly White only considered Qa1+ replies.

43...Kh6 44.Qxd8? Qe1+



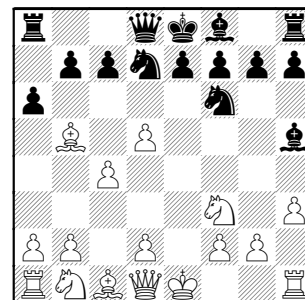
As if "jumping in an open window", the Queen surprises the sleeping King

45.Kg2 Qe2+ with obvious perpetual
46.Kg1 Qe1+ 47.Kg2 Qe2+ 48.Kg3
Qxe3+ 49.Kh4 Qf2+ 50.Kh3 Qf3+
51.Kh4 Qf2+ 52.Kh3 Qf3+ 53.Kh4
Qf2+ 1/2-1/2

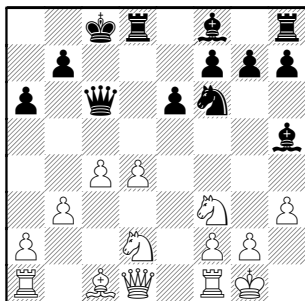
Wallach,C (2010) –
Boldingh,E (1852)
Kings-UOP, Board 2
Playoff Round 2, 05.15.2004

[B01]

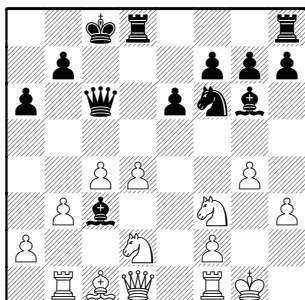
1.e4 d5 2.exd5 Nf6 3.Nf3 Bg4
4.Bb5+ Nbd7 5.h3 Bh5 6.c4 a6



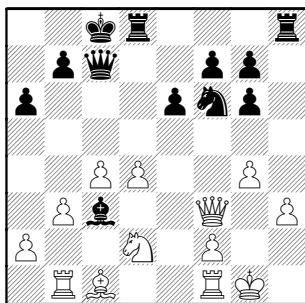
7.Bxd7+ Qxd7 8.d4 c6 9.dxc6 Qxc6
10.b3 e6 11.0-0 0-0-0 12.Nbd2



12...Bb4 13.g4 Bc3 14.Rb1 Bg6



15.Ne5 Qc7 16.Nxg6 hxg6 17.Qf3



17...Rxd4! 18.Qxc3?? Rxg4+!!
19.Kh1

No better was 19.Qg3 Rxg3+ 20.fxg3
Qxg3+ 21.Kh1 Rxh3#

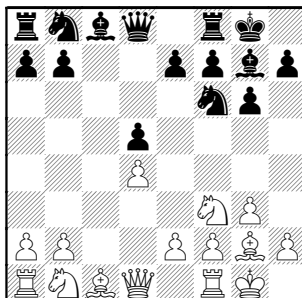
19...Qc6+

WHITE RESIGNED in view of
20.f3 Rxh3#

0-1

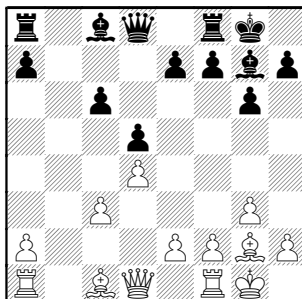
Benedek,R (2177) –
Fridman,Y (2237) [D79]
Rooks-Knights, Board 1
Playoff Round 3, 05.15.2004

1.Nf3 Nf6 2.g3 g6 3.Bg2 Bg7 4.0-0
0-0 5.c4 c6 6.d4 d5 7.cxd5 cxd5



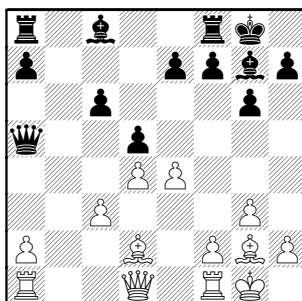
8.Nc3
Book suggests 8.Ne5 to fight for the
c6 square

8...Ne4 Now Black fights for the c3
square ! 9.Ne5 Nxc3 10.bxc3 Nc6
11.Nxc6 bxc6



This is less scary than normal since
White has already closed the c-file.

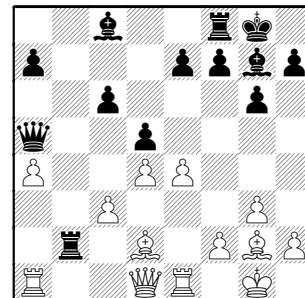
12.e4 trying to lengthen the Bishop
12...Qa5 13.Bd2



13...Rb8 14.Re1

14.c4 Qa6 hitting two Pawn
weaknesses 15.cxd5 Bxd4

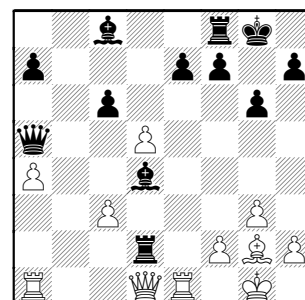
14...Rb2 15.a4



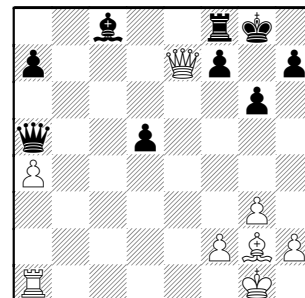
15...Bxd4! 16.exd5

16.cxd4? Rxd2

16...Rxd2!



Forcing, but what does Black gain ?
17.Qxd2 Bxc3 18.Qe3 Bxa1 19.Rxa1
cxd5 20.Qxe7

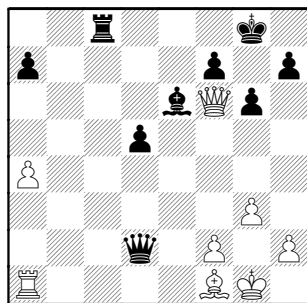


20...Be6

Black has gained a promising extra
Pawn in the form of a passer. The

tactics forced this position !

21.Qf6 Rc8 22.Bf1 Qd2



23.Rb1 d4 24.Rb7 Qd1 25.Rxa7?
Bc4

Black cut up the position like a surgeon !!

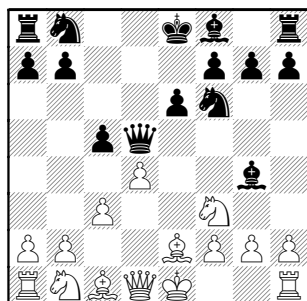
0-1

Morris,R (2158) –
Hill,B (1982)

[B22]

Knights-Rooks, Board 2
Playoff Round 3, 05.15.2004

1.e4 c5 2.c3 d5 3.exd5 Qxd5 4.d4
Nf6 5.Nf3 Bg4 6.Be2 e6



7.Na3 a6 8.Nc2

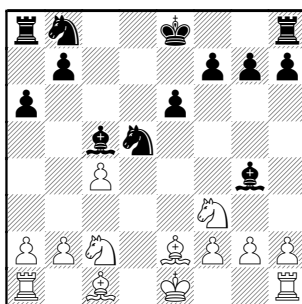
idea of Ne3 and holding d4 as f3–
Knight pinned to blocking the long
diagonal.

8...cxd4 9.Qxd4 Bc5 10.Qxd5 Nxd5
11.c4

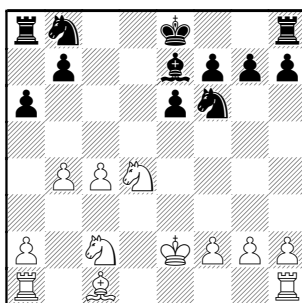
18.Rhd1 Rfd8 19.Rac1 Nh5 20.g3
Bg5 21.Nf3

21.f4 may weaken King after an
eventual –e5 by Black

21...Bh6 22.c5 Nh6 23.Rc3 e5
24.Nc4 e4 25.Ne1

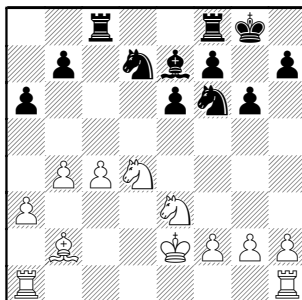


Already starting the majority moving !
11...Nf6 12.b4 Be7 13.Nfd4 Bxe2
14.Kxe2

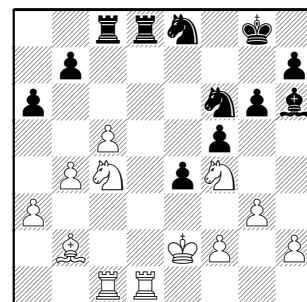


Rob apparently believes middlegame
tactics are less interesting than
endings.

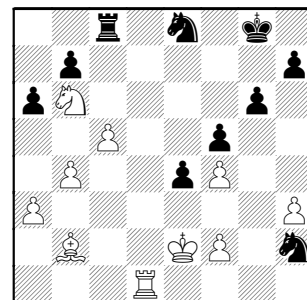
14...Nbd7 15.a3 0-0 16.Bb2 Rac8
17.Ne3 g6



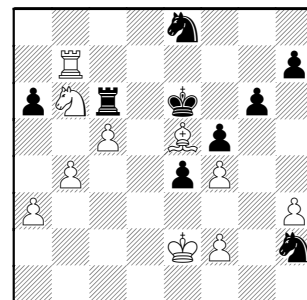
25...Ne8 26.Ng2 f5 27.Nf4 Ndf6
28.Rcc1



28...Bxf4 29.gxf4 Ng4 30.h3 Nh2
31.Nb6 Rxd1 32.Rxd1

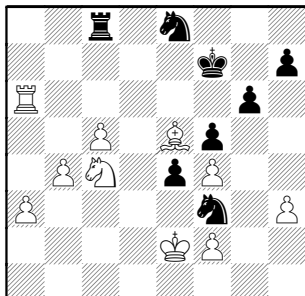


32...Rc7 33.Rd8 Kf7 34.Be5
Black is suddenly surrounded !
34...Rc6 35.Rd7+ Ke6 36.Rxb7



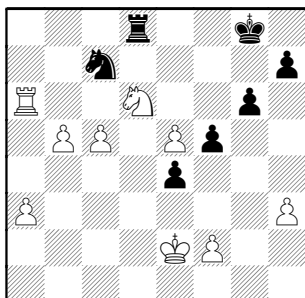
The dam that stopped the majority begins to crack...

36...Nf3 37.Nc4 Rc8 38.Rb6+ Kf7
39.Rxa6



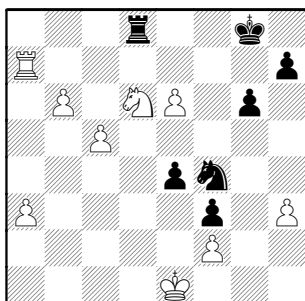
Geesh ! Flood stage, now !

39...Rd8 40.Nd6+ Kg8 41.b5 Nxe5
42.fxe5 Nc7



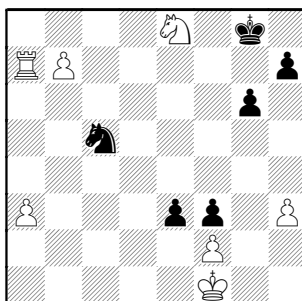
Too few pieces to stop too many passers.

43.Ra7 Nd5 44.b6 f4 45.e6 f3+
46.Ke1 Nf4



If Black resigns, the title goes to his opponent... so onward looking for a miracle.

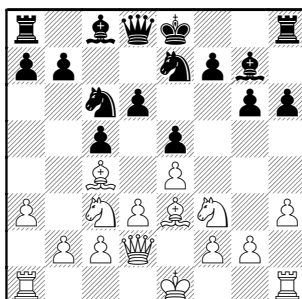
47.e7 Rb8 48.e8Q+ Rxe8 49.Nxe8
Nd3+ 50.Kf1 Nxc5 51.b7 e3



52.fxe3 1-0

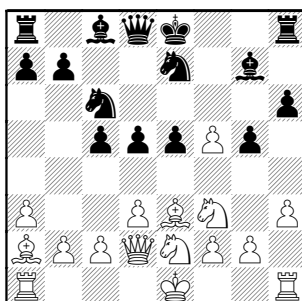
Spiegel,L (1959) –
Ellice,W (1910) [C25]
Fermilab–Pawns, Board 3
Playoff Round 3, 05.15.2004

1.e4 e5 2.Nc3 c5 3.Nf3 d6 4.Bc4 g6
5.d3 h6 6.Be3 Bg7 7.Qd2 Ne7 8.h3
Nbc6 9.a3



9...g5 10.Ne2 f5 idea f4 to trap Bishop
or get the center Pawns mobile

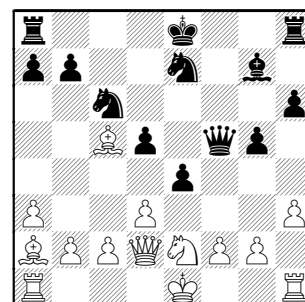
11.exf5 d5 12.Ba2



12...Bxf5

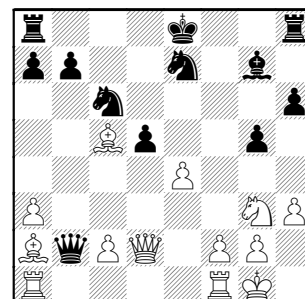
12...d4 wins piece for 3 Pawns, but
will the light squares be problems ?

13.Bxc5 e4 14.Nfd4 Qd7 15.Nxf5
Qxf5



White's Bishop pair looks menacing.

16.Ng3 Qe5 17.dxe4 Qxb2 18.0-0

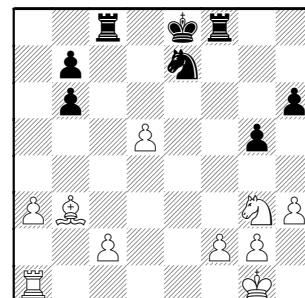


18...Qb5

But are you remembering RULE #1 ??
18...0-0

19.Bxe7 Bxa1 20.Rxa1 Nxe7
Black wants to castle Queenside, so...

21.Qc3 hits loose Rook, of course.
21...Rf8 A noose hangs over the Black
King. 22.exd5 Rc8 23.Qe3 Qb6
24.Qxb6 axb6 25.Bb3

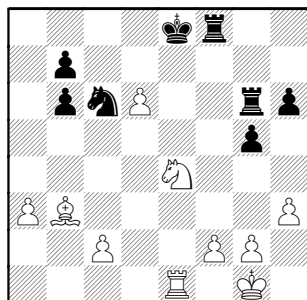


White's passer is the central point of the ending.

Too hasty is **25.Rd1** idea of d6–7+, forking **25...Rxc2** and hits loose Bishop

25...Rd8 stopping d6 with the further idea of Nc8–d6

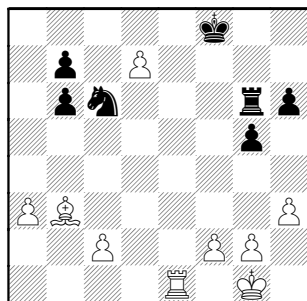
26.Re1 Rd6 gives a crucial tempo [26...Kd7] **27.Ne4 Rg6 28.d6 Nc6**



Allowing discovery: **29.Nc5+ Kd8**
Only square available ! **30.Ne6+ Ke8**

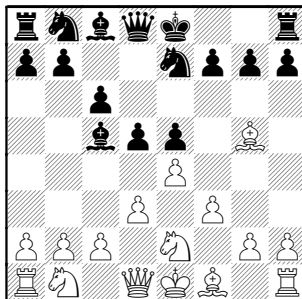
30...Kd7 drops two Rooks for free !

31.d7+ Kf7 32.Nxf8+ Kxf8

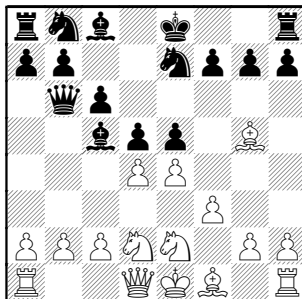


33.Re8+ Kg7 34.d8Q 1-0

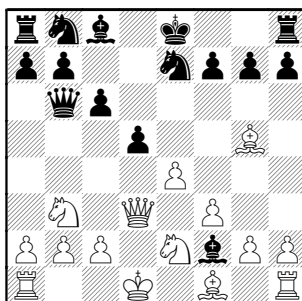
1.e4 d5 2.f3 e5 3.d3 Bc5 4.Ne2 Ne7 5.Bg5 c6



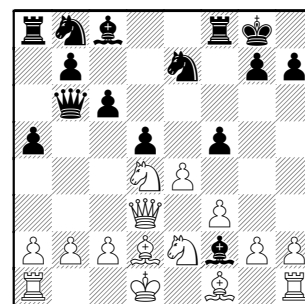
6.Nd2 Qb6 7.d4



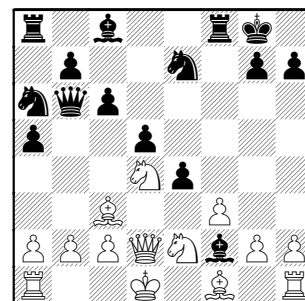
7...exd4 8.Nb3 d3! 9.Qxd3 Bf2+ 10.Kd1



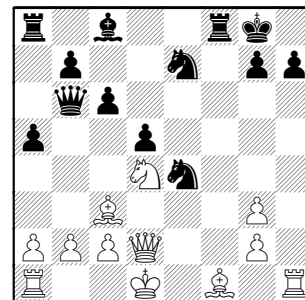
10...f5 11.Bd2 a5 12.Nbd4 0-0



13.Bc3 Na6 14.Qd2 fxe4



15.fxe4 [15.Bxa5? Qxb2] 15...Nc5 16.Ng3 Bxg3 17.hxg3 Nxe4



0-1

Next month, we present all Playoff Games and all Games of the CIGL Open in our annual Season Yearbook !!

Yacout,A (1473) –
Balicki,J (1828)
Rooks–Knights, Board 5
Playoff Round 3, 05.15.2004

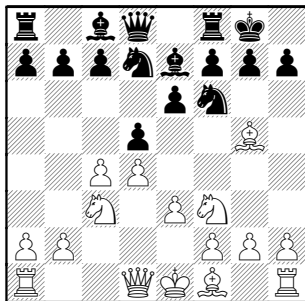
[B01]

Fabijonas,R (1668) –
 Brotsos,J (1524)
 Pawns–Excaliburs, Board 4
 Playoff Round 2, 05.15.2004

[D63]

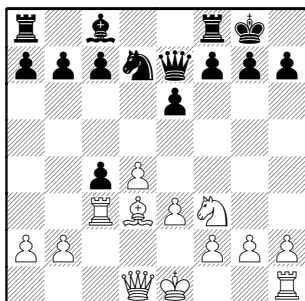
Notes by Jim Brotsos

1.d4 d5 2.c4 e6 3.Nf3 Nf6 4.Nc3
 Nbd7 5.Bg5 Be7 6.e3 0-0



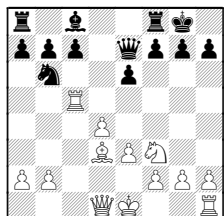
7.Rc1
 I expected 7.Bd3

7...Ne4 8.Bxe7 Qxe7 9.Bd3 Nxc3
 10.Rxc3 dxc4



11.Bxc4

11.Rxc4 Nb6 12.Rc5

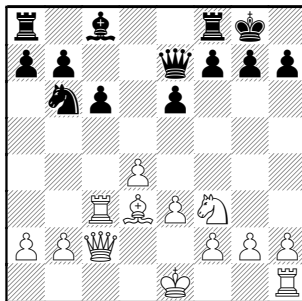


idea Rh5,Ng5,etc

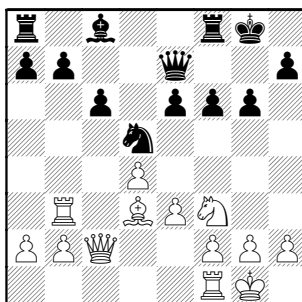
11...Nb6 12.Qc2 [12.Bd3] 12...c6

12...Nxc4 13.Rxc4 c6 14.Rc5

13.Bd3



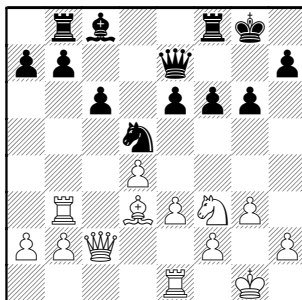
13...g6 14.0-0 Nd5 15.Rb3 f6



To prevent Ne5

16.Re1 Rb8
 Idea is Bd7 next

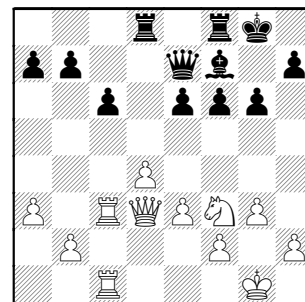
17.g3



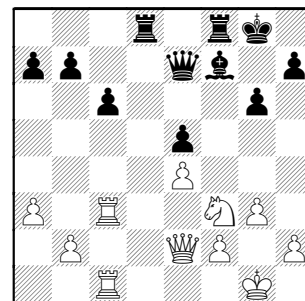
With this weakening of the White squares, Black felt it was time to trade the good Knight for the Bishop before it went to f1, heading on to g2. Now Black will strive to get his Bishop to d5.

17...Nb4! 18.Qd2 Nxd3 19.Qxd3 Bd7
 20.Rc1

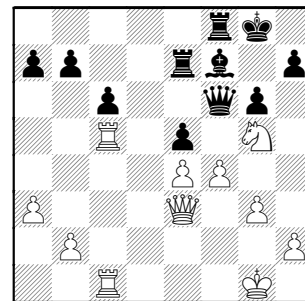
20...Be8 21.Rbc3 Bf7 22.a3 Rbd8



23.Qe2 e5 24.dxe5 fxe5 25.e4



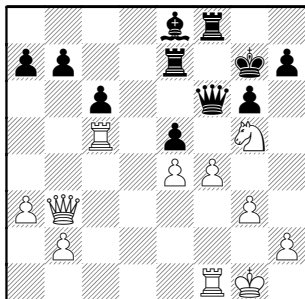
25...Rd6 26.Rc5 Re6 27.Qe3 Qf6
 28.Ng5 Re7 29.f4



29...Be8

Since White did not play Nxf7, Black backed away from the trade of minor pieces.

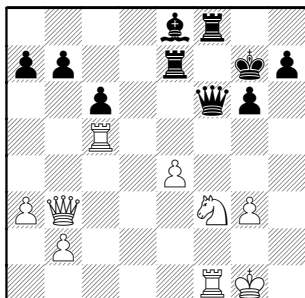
30.Qb3+ Kg7 31.Rf1?



31...exf4

Now both the Knight and c5-Rook are at risk.

32.Nf3 [32.gxf4 Qd4+] 32...fxg3
33.hxg3

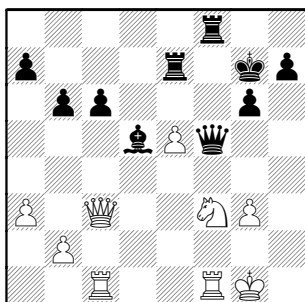


33...b6

So the e7-Rook can leave the 7th rank.

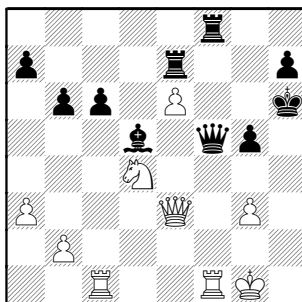
33...Rxe4 34.Qxb7+

34.e5 Qf5 35.Rcc1 Bf7 36.Qc3 Bd5



Journey completed.

37.e6+ Kh6 38.Qe3+ g5 39.Nd4?



39...Qh3

Threatening mate on h1 or g2. 0-1

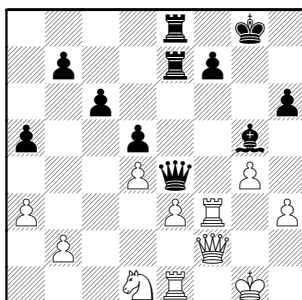
A Perfect Pair

(as practiced by Richard Easton)

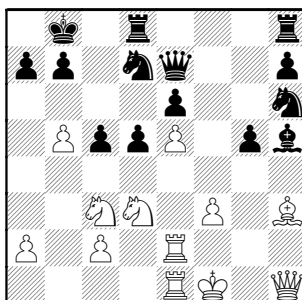
Richard Easton presents two positions from his games this season.

In each, try to find the winning combination which takes advantage of the relative placing of the opponents' pieces.

In both, **BLACK TO MOVE** and win **Problem 1.**

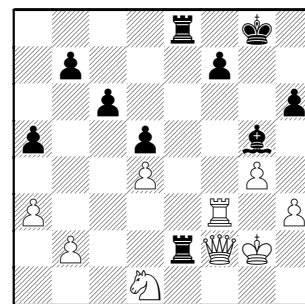


Problem 2.



SOLUTION to Problem 1.

1...Qxd4! 2.exd4 Rxe1+ 3.Kg2 R1e2

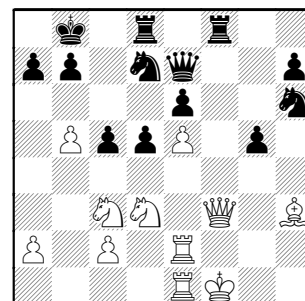


Black will win a second Pawn by Re4 followed by Bf6.

Not as good is 3...R8e2

SOLUTION to Problem 2.

1...Bxf3! the fork forces White's reply
2.Qxf3 Rhf8



Black wins Queen for Rook and Bishop.

The Finishing Touch

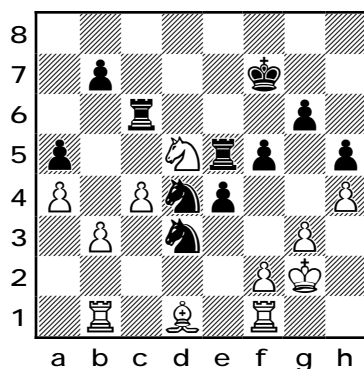
- ruben r. reyes

The position from the diagram on the right after **34.Kg2** gives the impression that neither side can do much.

But watch what happens in this interesting ending between a 2200+ (White) and a 2000+ (Black):

34...Re5 35.Rh1 Rc6 36.Rf1 (see Diagram #1)

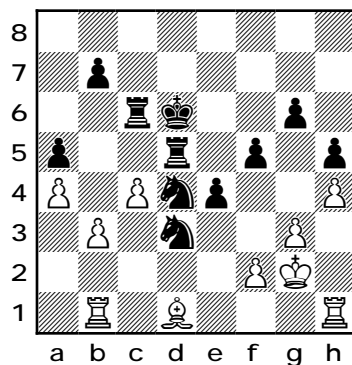
Diagram #1



36...Ke8

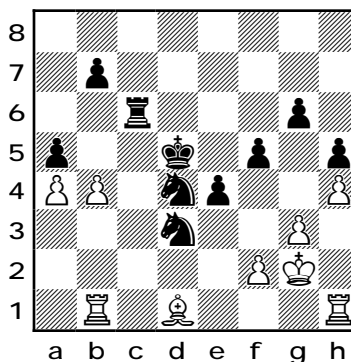
While White shuffles his R back and forth between h1 and f1, Black's K starts on a journey

37.Rh1 Kd7 38.Rf1 Kd6 39.Rh1 Rxd5!



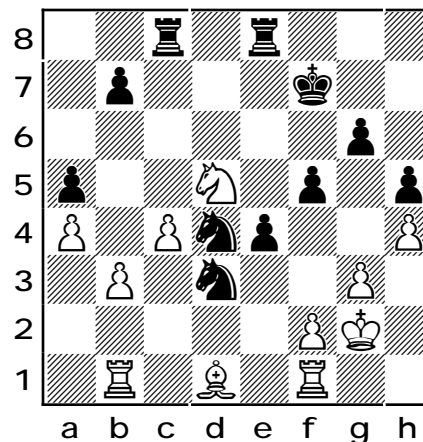
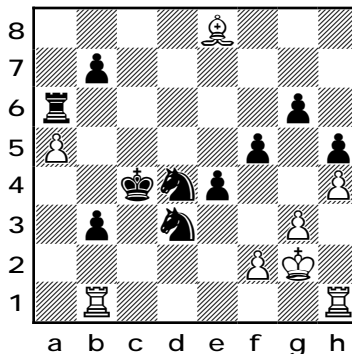
A bold sacrifice of the exchange

40.cxd5 Kxd5 41.b4



White takes no time in activating the B.

41...axb4 42.a5 Kc4 43.Ba4 Ra6 44.Be8 b3

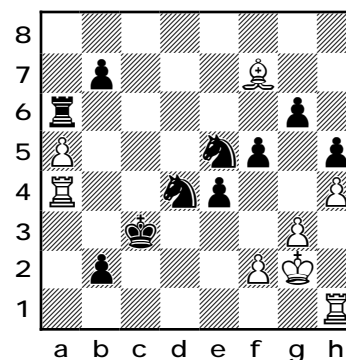


The value of Black's b-pawn goes up as it nears the queening square.

45.Bf7+ Kc3 46.Ra1

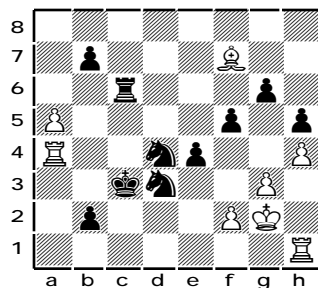
Guards the a-pawn. Also, the rook is awkward in front of an advancing pawn.

46...b2 47. Ra4 Ne5



Protects c4 from a R check. However, it deactivates the N and relinquishes the N outpost at d3.

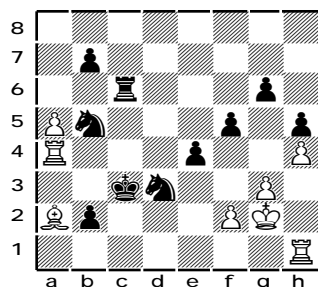
47...Rc6 activates the rook while protecting c4 and increases the pressure to promote the b-pawn.



Position after 47...Rc6 (Analysis)

After 47...Rc6 (see diagram above) the threat's 48...Nc1 49.Ba2 Nxa2 50.Rxa2 Kb3 winning.

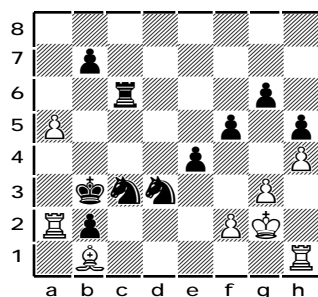
If: A) 48.Ba2, then 48...Nb5 (See diagram below)



Position after 48...Nb5(Analysis)

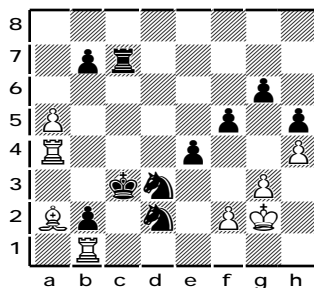
Black threatens 49...Nc1 and 50...Nxa2 followed by 51...Kb3 winning.

If 50.Bb1 then 50...Kb3 51.Ra2 Nc3 wins (see diagram below)



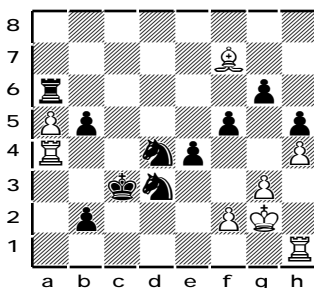
Position after 51...Nc3 (Analysis)

B) 48.Rb1 then 48...Nf3 49.Bd5 Rc7 50.Ba2 Nd2 (See diagram next column) wins.



Position after 50...Nd2 (Analysis)

But Black wins at once with 47...b5 (See diagram below)



Position after 47...b5!(Analysis)

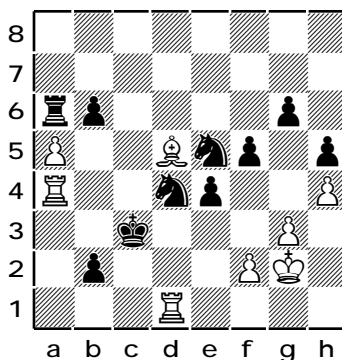
If 48.Ra2 then 48...Nc1 wins

If 48.Ra3+ then 48...Kc2 and the threats of...Nc1 and ...Nf3-d2 wins

48.Bd5 b6

48...b5 is also good.

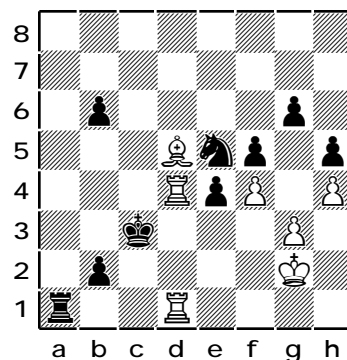
49.Rd1



49...Rxa5

Safer was 49...Nc2.

50. Raxd5 Ra1



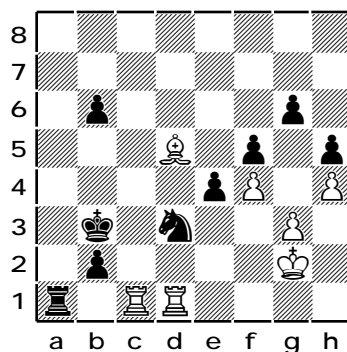
51...Rxd1 52.Rxd1 Kc2 and 53...b1=Q is threatened

51.f4 Ne3?

51...exf3+ wins at once as the threat of ...Rxd1; Rxd1 Kc2 and ...b1=Q winning is still present

For example, 51...exf3+ 52.Kf2 Rxd1 53.Rxd1 Nd3+ 54.Kxf3 Nc1 wins

52.Rc4+ 52...Kb3 53.Rcc1



A shocking turn of events.

Now White wins without much difficulty.. What a finish.

Black missed a lot of opportunities culminating in the fatal error of 51...Ne3?. But we have to give credit to White for keeping his R and B active.



To all CICL Members:

You can help the CICL grow, and have some chess fun while doing it ! Summer is an off-time for CICL competition, but "**prime time**" and the time of **most impact** for all these efforts.

The effort to encourage chess clubs to field teams in the CICL for next season is underway. The League is looking for CICL members who are familiar faces at a chess club to help let the clubs know about the League. If you don't now attend a club, but for example if you live or work near a chess club, you too can be of great help.

I've been visiting chess clubs and letting them know about the League, and enjoying the chess action that these clubs offer. Their responses are quite positive.

If you're uncertain which chess clubs may be close to you, there's a map of chess clubs that can be found at - <http://home.att.net/~teamchess/chicchessv3.jpg> . (See next page as well) The club info is from the ICA website, from the USCF, or from the Indiana State Chess website.

There are 16 clubs that meet in the greater Chicago area (except I haven't confirmed that Holy Trinity Northshore still meets, and the map includes Elmhurst even though it is temporarily closed). The map also shows where today's CICL teams play, and shows a couple of potential new CICL company team's playing sites.

If you're unfamiliar with the details about clubs fielding teams in the CICL, ask me about it, or see the one page document found at - <http://home.att.net/~teamchess/club-team.pdf> . (Generally the club organizers don't ask detailed questions to start out with, but it's good to be prepared. It's better not to overwhelm them with too much detail early on.)

Stacks of the CICL's new flyer will be distributed at the League's banquet on June 4th to anyone who can make good use of them. There are two pages which could be printed on both sides of a single sheet.

A copy of the League's flyer can be found at:

(front page of flyer) - <http://home.att.net/~teamchess/Flyer-p1.pdf>

(back page of flyer) - <http://home.att.net/~teamchess/Flyer-p2.pdf>

Before visiting a club to discuss the CICL, please contact me.

Other efforts to grow the CICL are also in progress. If you have info about potential new company teams, or former CICL members or teams who are looking for options to return, contact me about that too.

Thanks,

Brian Smith,
CICL Publicity Chairman

