

The Chicago Chess Player

The Official Bulletin of the Chicago Industrial Chess League

CICL DOMINATES US AMATEUR TEAM



CICL Contact List

Bulletin Editor/Webmaster Bulletin@ChicagoChessLeague.org	Tom Friske 1035 E Algonquin Road Des Plaines, IL 60016	H:(847) 299-1033 W:(847) 914-8448
Ratings Chairman Ratings@ChicagoChessLeague.org	Art Olsen 714 E Algonquin Road #J102 Arlington Heights, IL 60006 FAX : to SBS OTS, 22NW0644-5 at (847) 719-8151	H:(847) 437-9819 W:(847) 719-8036
League President President@ChicagoChessLeague.org	Tony Jasaitis	C:(708) 903-6423 W:(312) 264-2044
League Secretary Secretary@ChicagoChessLeague.org	Jerry Thomas 745 Hageman Pl Naperville, IL 60563	H:(630)420-0188
League Treasurer Treasurer@ChicagoChessLeague.org	Lenny Spiegel Fermilab MS 220 Batavia, il 60510	H: (630) 208-4738 W: (630) 840-2809
Trophy Chairman Trophy@ChicagoChessLeague.org	Marty Franek 9044 S 51 st Avenue Oak Lawn, IL 60453-1730	H: (708) 636-3714 W: (312) 353-0397
Publicity Chairman Publicity@ChicagoChessLeague.org	Brian Smith 483 Nantucket Road Naperville, il 60565-3106	H: (630) 983-9316
Banquet Chairman Banquet@ChicagoChessLeague.org	Burt Gazmen 1614 Heather Lane Darrien, IL 60561	H: (630) 985-1882 W: (312) 666-8100 X228

DIVISIONAL CHAIRMEN

East Division ChairmanE@ChicagoChessLeague.org	Jim Duffy 152 Greenway Roselle, IL 60172	H: (630) 307-2414 W: (312) 220-3252
West Division ChairmanFW@ChicagoChessLeague.org	Bob Buchner 1316 Kallien Court Naperville, IL 60540	H: (630) 428-7707 W: (630) 979-7707
North Division ChairmanN@ChicagoChessLeague.org	Art Olsen (See information for Ratings chairman above)	

Mark Your Calendars with These Key League Dates:

Fall Business Meeting	Last Wednesday of August (Aug 30 2006)
Spring Business Meeting	3.5 Weeks Before Playoffs (April 19, 2006)
Season Playoffs	Second Saturday of May (May 13, 2006)
CICL Open	Second Saturday of May (May 13, 2006)
League Awards Banquet	First Friday of June (June 2, 2006)

Officer Contact List	2
Contents of Issue	3
Words from the Editor	4
<u>LEAGUE UPDATES</u>	
Current Standings	5
Current Performance Ratings	6
Top Ten by Division	7
Most Improved Players	7
Match Results	8
Notes on Standings	10
Current Ratings	11
Upper Board Forfeits	13
<u>FEATURES</u>	
CICLNUSATM06	14
GAMES from the US Amateur Team	17
GAMES as reviewed by THE PLAYERS!	27

With contributions from : Art Olsen, Gustavo Otero y Garzon, Pete Stein,
Matt Vail, Wayne Ellice, Yuri Fridman, Rob Morris

WHAT A MONTH I'M HAVING !! Well, coming into it I knew it was going to be a busy one. But I never dreamed it would be so a rejuvenating!

For the last few months at work my only real project was the planning for installation of servers at the new Walgreens Distribution Center being built in northwestern South Carolina. We normally schedule two weeks to build and test new systems, but in this case we were doing it on the road. In addition, we had no less than seven to do including a new SAN and TAN, all on the fly. The 10-day trip stretched into two full weeks. We only took a break on Superbowl Sunday to watch the big game!

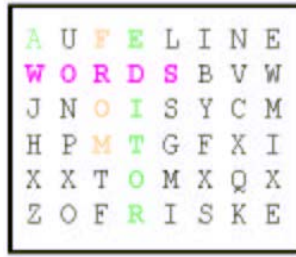
Last month, when CICL'ers started talking about the US Amateur team, I'd thought it was the second weekend of February which was the one we would be flying home from the trip- so I couldn't play. Half a week before we left, however, Pete Stein wrote that he'd organized a team and happened to mention the event's dates. I suddenly realized I had a week's buffer after the big trip! An email to everyone (or at least those of you that have requested to be included in the CICL email list) quickly helped me form a team and we were on our way !

All told, three CICL teams checked in with me. I saw others at the tournament, but not sure if they were completely composed of CICL players. At any rate, as the cover picture announced, we did ourselves proud. A few-page write-up is in this issue along with four games from a couple different participants. Most of those I talked with have promised a contrib so even in upcoming issues we should hear more !

Then there is the continued dedication from the Captains to send gamescores to the Games Editor. We're currently at a pace more than double the normal from past seasons ! Your effort has given me the material needed to add a monthly tactics column, and the responses to this have been very favorable ! (Incidentally, the planned column for this issue got passed-up for time reasons, as you're reading).

It was amusing, then, the one time I was trying to get everything done before I left for the trip, was also the one time I received over a dozen matches within a couple days! I was more than happy to stay up late to get those entered. Reviewing games has always been my most-enjoyed aspect of chess- even before I played in tournaments.

I hope you realize with all these things going on, two weeks of Olympics coverage, and normal Walgreen team duties (including practices), I didn't finish a couple



planned columns for this issue. But of course that only means more meat for another !

Looking back on the month, though, I'm really pleased how I was able to focus on any immediate task (not even chess things). This is so not like me and I can only attribute it to a lot of prayer that preceded. Originally it was needed especially when I wasn't looking forward to being cooped-up with a couple co-workers for two weeks, but it was really needed the whole month!

Anyways, it isn't too early to turn around and start looking in on details as the season close nears:

- April 19th is the set date for the Spring Business meeting, which is only a little over a month away.
- **CAPTAINS** need to make a point of assuring their matches finish on time (you can easily check the schedule with the "Results Received" link of the website). Knowledge of how the playoff seeds will be chosen is always needed going into the business meeting.
- The Carriage Greens has been reserved for our Banquet, so you can plan to attend now. Thanks to Burt for getting this settled early !

Finally, there was a little email traffic about the Banquet format. We have gotten in the habit of dinner, speaker, awards, and speed tournament for the evening, and in that order. The talk was about whether both the speaker and tournament are necessary as the two are time-consuming and seem to get in each other's way. And an additional problem is the closing time of our venues.

Personally, I wouldn't want to do without either. There was also a suggestion that maybe the tournament could be before dinner. But I'm sure this would make it hard for some to attend, with work schedules, traffic and all.

What is your opinion? We have plenty of time to figure this out to your approval.

Email us at: Officers@chicagochessleague.org !

Happy Browsing!

Tom Friske, Bulletin Editor

EAST DIVISION 02-26-2006

TEAM NAME				GAME	MATCH	PCT	PR	USAT
	W	L	D	POINTS	POINTS			
ALUMNI ACES	6	0	1	32.0	6.5	0.929	1834	65.5
HEDGEHOGS	4	1	1	24.5	4.5	0.750	1733	60.8
NORTHWESTERN CHESS CLUB	3	2	1	22.5	3.5	0.583	1678	49.8
CITADEL GROUP	2	5	0	15.5	2.0	0.286	1622	49.0
AMA TORNADO SNAKES	1	4	1	11.0	1.5	0.250	1500	29.5
LEO BURNETT	1	5	0	7.5	1.0	0.167	1342	20.0

NORTH DIVISION 02-26-2006

TEAM NAME				GAME	MATCH	PCT	PR	USAT
	W	L	D	POINTS	POINTS			
MOTOROLA KNIGHTS	5	1	0	24.5	5.0	0.833	1923	53.3
UOP	4	1	1	26.0	4.5	0.750	1850	55.5
MOTOROLA KINGS	4	1	1	23.0	4.5	0.750	1851	50.0
RENAISSANCE KNIGHTS	4	2	0	19.0	4.0	0.667	1799	39.0
WALGREENS	1	4	0	9.5	1.0	0.200	1556	29.3
EXCALIBURS	1	4	0	9.0	1.0	0.200	1598	17.3
NORTHROP	0	6	0	7.0	0.0	0.000	1493	20.3

North Division Exhibition Team

LOYOLA	0	4	1	4.0	0.5	0.100		
--------	---	---	---	-----	-----	-------	--	--

WEST DIVISION 02-26-2006

TEAM NAME				GAME	MATCH	PCT	PR	USAT
	W	L	D	POINTS	POINTS			
ST CHARLES BAKER	7	0	1	35.0	7.5	0.938	1860	90.8
LUCENT TECH. TYROS	7	1	0	34.5	7.0	0.875	1850	80.5
ST CHARLES CHESS CLUB	5	1	2	31.5	6.0	0.750	1842	124.3
FERMILAB	5	1	1	27.5	5.5	0.786	1840	71.8
LUCENT TECH. DRAGONS	4	2	1	22.0	4.5	0.643	1719	64.3
ARGONNE ROOKS	3	4	1	23.5	3.5	0.438	1568	63.3
CA	2	4	1	16.5	2.5	0.357	1520	49.0
MOLEX	1	4	3	20.5	2.5	0.313	1542	63.0
CASE	1	5	1	13.5	1.5	0.214	1514	38.0
BP CHICAGOLAND	1	8	0	12.5	1.0	0.111	1372	53.5
PAWNS	0	6	1	14.0	0.5	0.071	1535	70.0

CICL Performance Ratings

02/26/2006

Team	Division	Games Ave	Board PR	Match PR	PR (B+M) / 2
MOTOROLA KNIGHTS	North	4.5	1933.4	1912.0	1923
ST CHARLES BAKER	West	6.3	1811.6	1908.7	1860
MOTOROLA KINGS	North	5.0	1826.7	1875.5	1851
LUCENT TECH. TYROS	West	5.8	1832.4	1867.7	1850
UOP	North	3.7	1853.9	1845.2	1850
ST CHARLES CHESS CLUB	West	7.2	1827.4	1856.5	1842
FERMILAB	West	6.0	1817.8	1861.8	1840
ALUMNI ACES	East	3.3	1785.8	1882.7	1834
RENAISSANCE KNIGHTS	North	4.8	1755.1	1842.1	1799
HEDGEHOGS	East	3.5	1769.7	1696.1	1733
LUCENT TECH. DRAGONS	West	6.0	1696.7	1740.6	1719
NORTHWESTERN CHESS CLUB	East	3.3	1695.4	1660.4	1678
CITADEL GROUP	East	5.3	1615.6	1627.8	1622
EXCALIBURS	North	4.0	1601.1	1595.3	1598
ARGONNE ROOKS	West	6.8	1575.4	1560.7	1568
WALGREENS	North	3.3	1573.7	1537.7	1556
MOLEX	West	6.5	1552.0	1531.6	1542
PAWNS	West	5.3	1596.8	1473.0	1535
CA	West	4.7	1488.3	1550.9	1520
CASE	West	5.3	1538.4	1489.1	1514
AMA TORNADO SNAKES	East	3.7	1431.0	1569.0	1500
NORTHROP	North	5.0	1524.4	1461.0	1493
BP CHICAGOLAND	West	4.3	1284.2	1459.2	1372
LEO BURNETT	East	2.7	1366.2	1316.9	1342

EAST DIVISION TOP TEN

INUMERABLE, F	ALUMN	2207C
RAUCHMAN, M	HEDGE	2140
BENESA, A	ALUMN	2112C
WEBER, L	ALUMN	2106
CHAN, ROBERT	NWEST	2077
GAZMEN, E	ALUMN	2050C
BENDICH, I	NWEST	2033
JASAITIS, A	HEDGE	1983D
SOLLANO, E	ALUMN	1966C
HAYHURST, W	CITGR	1949

NORTH DIVISION TOP TEN

FRIDMAN, Y	MKNGT	2209
MORRIS, R	MKNGT	2166
ALLSBROOK, F	RKNGT	2143
FRISKE, T	WALGR	2074C
MELNIKOV, I	MKING	2039C
LANG, R	EXCLB	2026
WALLACH, C	MKING	2014C
COHEN, L	RKNGT	2004
SIWEK, M	UOP	1984D
LEONG, G	UOP	1983C

WEST DIVISION TOP TEN

GARZON, G	FERMI	2251
JAKSTAS, K	PAWNS	2213D
DORIGO, T	FERMI	2182
STEIN, P	TYROS	2180
MARSHALL, J	STCCC	2173
WILLIAMS, K	CASE	2153
BENEDEK, R	ROOKS	2151T
SPLINTER, J	STCCC	2098
DIAZ, P	TYROS	2094C
WIEWEL, J	STCCC	2092

MOST IMPROVED PLAYERS

ZADEREJ, V	MOLEX	134
FREIDEL, JESSE	BAKER	126
SUITS, J	STCCC	121
JOSHI, B	MKING	113
RUFUS, B	MOLEX	100
GORODETSKIY, S	NWEST	84
BYRNE, M	COMPA	78
MCCOY, N	STCCC	75
BAURAC, D	ROOKS	74
LEVENSON, S	WALGR	72

30-JAN-06 CA .5 LUCENT TECH. TYROS 5.5

ROUND 7

BD	RATINGS	SCORE	RATINGS	SCORE
1 DENMARK, T	1769 -3	0	STEIN, P	2211 3 1
2 VAIL, M	1561 21	.5	DIAZ, P	2088-14 .5
3 BYRNE, M	1389 -2	0	STOLTZ, B	1967 1 1
4 GRABSKIY, J	0 0	0	BUCHNER, R	1733 0 1
5 WYKRET, J	0 0	0	SMITH, BR	1637 0 1
6	0 0	0F	HAHNE, D	1645 0 1F

02-FEB-06 ST CHARLES BAKER 4.5 MOLEX 1.5

ROUND 8

BD	RATINGS	SCORE	RATINGS	SCORE
1 FREIDEL, JESSE	1948 19	1	REICH, T	1896-19 0
2 FREIDEL, P	1898-18	.5	ZADEREJ, V	1555 18 .5
3 FREIDEL, JER	1715 10	1	HENDRICKSON, B	1501-10 0
4 ALBERTS, W	1613 7	1	DEICHMANN, E	1317 -7 0
5 JANSSEN, G	1451 13	1	MCGOWAN, D	1294-13 0
6 GREER, J	1448-34	0	RUFUS, B	1250 34 1

02-FEB-06 ST CHARLES CHESS CLUB 3 FERMILAB 3

ROUND 8

BD	RATINGS	SCORE	RATINGS	SCORE
1 MARSHALL, J	2167 6	.5	GARZON, G	2257 -6 .5
2 WIEWEL, J	2111-19	0	DORIGO, T	2163 19 1
3 SPLINTER, J	2107 -9	.5	SPIEGEL, L	1962 6 .5
4 MEISSEN, B	1739 24	1	GAINES, I	1764-16 0
5 SUITS, J	1492 30	1	MOLINA, J	1611-30 0
6 MCGEE, M	1475-16	0	BOLSHOV, A	1571 16 1

09-FEB-06 MOTOROLA KINGS 2.5 RENAISSANCE KNIGHTS 3.5

ROUND 7

BD	RATINGS	SCORE	RATINGS	SCORE
1 MELNIKOV, I	2026 13	1	HEISER, E	1973-19 0
2 WALLACH, C	2014 0	.5	COHEN, L	2003 1 .5
3 PIPARIA, J	1852 28	1	HART, V	1940-28 0
4 CYGAN, J	1854-23	0	COHEN, H	1844 23 1
5 GONCHAROFF, N	1671 -9	0	BAUMGARTNER, C	1699 21 1
6 JOSHI, B	1450-11	0	ENGELN, M	1642 11 1
7 GRYPARIS, J	1433 -6	0	AROND, D	1684 9 1
8 LISSERMAN, E	0 0	0	MARSHAL, KEN	1511 0 1
9 DECKER, D	0 0	0	HEISER, D	0 0 1

06-FEB-06 LUCENT TECH. DRAGONS 3.5 LUCENT TECH. TYROS 2.5

ROUND 8

BD	RATINGS	SCORE	RATINGS	SCORE
1 TEGEL, F	2019 15	1	STEIN, P	2214-34 0
2 LUDWIG, T	1981-11	0	DIAZ, P	2074 11 1
3 MARCOWKA, R	1953 16	1	STOLTZ, B	1968-16 0
4 DOBROVOLNY, C	1811 18	1	GUIO, J	1881-18 0
5 EUSTACE, D	1454 10	.5	BUCHNER, R	1733-10 .5
6 DOBR, K	1346 -3	0	HAHNE, D	1645 5 1
7 BREYER, A	1327 -6	0	SMITH, BR	1637 4 1
8 KOMORAVOLU, K	1284-13	0	LAForge, W	1432 13 1

06-FEB-06 CA**4 CASE****2**

ROUND 8

BD	RATINGS	SCORE	RATINGS	SCORE
1 VAIL, M	1582-11	0	NURSE, G	1782 11 1
2 MILLING, J	0 0	1	DOWELL, E	1817 0 0
3 MCCLENDON, L	1332 -7	0	PARAOAN, E	1634 4 1
4 BYRNE, M	1387 34	1	ALEXANDER, W	1579-34 0
5 MARKLEY, S	0 0	1	REID, C	1498 0 0
6 HANSON, M	0 0	1	ZOELLNER, J	1327 0 0

07-FEB-06 BP CHICAGOLAND**3.5 ARGONNE ROOKS****2.5**

ROUND 8

BD	RATINGS	SCORE	RATINGS	SCORE
1 COULTER, D	1929 13	.5	BENEDEK, R	2154 -6 .5
2 DENEEN, D	1363 -1	0	HILL, R	1979 1 1
3 SLATER, B	0 0	0	BAURAC, D	1815 0 1
4 SUVARNAKANTI, R	1210 0	1	DERIY, B	0 0 0
5 ZUBIK, J	1180 0	1F		0 0 0F
6 CASTANEDA, R	1239 0	1F		0 0 0F

16-FEB-06 UOP**2 MOTOROLA KNIGHTS****4**

ROUND 7

BD	RATINGS	SCORE	RATINGS	SCORE
1 LEONG, G	1990 -7	0	FRIDMAN, Y	2199 10 1
2 SIWEK, M	1976 8	.5	MORRIS, R	2178-12 .5
3 BOLDINGH, E	1890 -2	.5	BALICKI, J	1839 4 .5
4 EASTON, R	1911-21	0	THOMSON, J	1931 21 1
5 WALKER, C	1825 22	1	AUGSBURGER, L	1820-15 0
6 LECHNICK, J	1772-27	0	KARANDIKAR, S	1707 27 1
7 NALLATHAMBI, R	1521 22	1	ALFONSO, E	1520-22 0
8 OLSEN, A	1472 0	1	ROSS, B	0 0 0

16-FEB-06 CITADEL GROUP**.5 ALUMNI ACES****4.5**

ROUND 7

BD	RATINGS	SCORE	RATINGS	SCORE
1 HAYHURST, W	1938 11	.5	BENESA, A	2119 -7 .5
2 LE, DUC	1747 -7	0	GAZMEN, E	2045 5 1
3 MUHS, A	1430 -3	0	ALLEN, H	1909 3 1
4 KUNHIRAMAN, P	0 0	0	SOLLANO, E	1966 0 1
5 * Board 5 with either be rescheduled, or not played.				
6 FUNG, J	0 0	0	MILLER, A	1428 0 1

19-FEB-06 LEO BURNETT**0****NORTHWESTERN CHESS CLUB 6**

* Match was forfeited by Leo Burnett *

ROUND 6

BD	RATINGS	SCORE	RATINGS	SCORE
1	0 0	0F	CHAN, ROBERT	2077 0 1F
2	0 0	0F	BENDICH, I	2033 0 1F
3	0 0	0F	GORODETSKIY, S	1902 0 1F
4	0 0	0F	SMALLWOOD, J	1852 0 1F
5	0 0	0F	RODNYANSKY, S	1733 0 1F
6	0 0	0F	KRAVIK, S	1377 0 1F

20-FEB-06 MOLEX**2 ARGONNE ROOKS****4**

ROUND 9

BD	RATINGS	SCORE	RATINGS	SCORE
1 REICH, T	1877 -8	0	BENEDEK, R	2148 3 1
2 HENDRICKSON, B	1491 -6	0	BAURAC, D	1815 4 1
3 ZADEREJ, V	1573 24	1	DECMAN, S	1589-16 0
4 DEICHMANN, E	1310 0	0	DERIY, B	0 0 1
5 RUFUS, B	1284-18	0	KUHLMANN, S	1356 18 1
6 MCGOWAN, D	1281 0	1	HLOHowskyJ, I	0 0 0

22-FEB-06 LUCENT TECH. TYROS**4.5 BP CHICAGOLAND****1.5**

ROUND 9

BD	RATINGS	SCORE	RATINGS	SCORE
1 DIAZ, P	2085 9	1	COULTER, D	1942-14 0
2 STOLTZ, B	1952 0	1	SLATER, B	0 0 0
3 GUIO, J	1863 1	1	SUARNAKANTI, R	1210 -1 0
4 BUCHNER, R	1723-13	.5	CASTANEDA, R	1239 20 .5
5 SMITH, BR	1641-25	0	DENEEN, D	1362 37 1
6 LAFORGE, W	1445 3	1	HERNANDEZ, F	967 -3 0

NOTES FROM THE RATING CHAIRMAN:

USAT Rating Points have been added to the CICL standings. USAT points are the 2nd tie breaker for breaking ties in the division standings.

The four tie breakers for handling ties in the division standings are:

1. head-to-head match points and
2. USAT Rating Points
3. Team Performance Rating.
4. Division Playoff Match

The USAT tie breaker was proposed by Brian Smith and approved at the CICL business meeting in August. Jerry Thomas updated the CICL constitution to include the USAT tie-breaker as a division standing tie breaker.

An explanation for the United States Amateur Tournament System ("USAT") tie breaker appears below.

A team is awarded "round points" for each round in the regular season. To calculate the "round points" for team A, for a round where team A played team F: multiply the number of game points won by team A in this match, by the total match points that team F won in the regular season. The sum of team A's "round points" is team A's USAT tie-break points.

Example. Team A scored 4 game points in their first round match against team F. Team F's total match points for the regular season was 5. Team A's "round points" for the first round are $4 \times 5 = 20$. Do the same calculation for the rest of team A's rounds. Then sum up all of team A's "round points" to get team A's USAT tie-break points.

NAME	TEAM	W	L	D	RATING	NAME	TEAM	W	L	D	RATING
ABDALLAH, D	PAWNS	0	4	0	1403	DEICHMANN, E	MOLEX	1	5	1	1310
AHK TAR, A	LOYLA	1	1	0	1200/1	DENEEN, D	BPCHI	1	6	0	1399
ALBERTS, W	BAKER	4	2	2	1620	DENMARK, T	COMPA	2	3	1	1766
ALEXANDER, W	CASE	1	5	0	1545	DENNISTON, E	NORTH	1	2	1	1400/4
ALFONSO, E	MKNGT	2	2	0	1498	DERIY, B	ROOKS	3	2	1	1467#
ALI, J	BAKER	0	1	0	1188	DIAZ, P	TYROS	5	1	1	2094C
ALLEN, H	ALUMN	3	2	0	1912	DJORDJEVIC, V	STCCC	2	0	0	1554
ALLSBROOK, F	RKNGT	1	0	1	2143	DOBR, K	DRGNS	2	4	0	1343Q
ANNIS, J	FERMI	3	1	0	1300/3	DOBROVOLNY, C	DRGNS	4	1	0	1829C
ANSARI, N	WALGR	1	5	0	1577	DORIGO, T	FERMI	1	0	0	2182
ARJUN, A	MKNGT	1	0	0	1200/0	DOWELL, E	CASE	0	4	3	1817#
AROND, D	RKNGT	3	3	0	1693	DUEDE, E	LOYLA	0	0	0	1700/0
ARUTCHEV, E	NWEST	0	4	0	1300/2	DUFFY, J	LBURN	1	3	1	1775
AUBRY, B	NORTH	2	2	0	1650/4	DUONG, R	MKNGT	1	2	0	1400/1
AUGSBURGER, L	MKNGT	1	1	0	1805C	EAMAN, R	LBURN	1	2	2	1854
BALES, R	BAKER	1	1	0	1394	EASTON, R	UOP	3	2	1	1890
BALICKI, J	MKNGT	5	0	2	1843C	ELEK, G	NORTH	0	2	1	1223C
BAUMGARTNER, C	RKNGT	4	1	1	1720	ELLICE, W	PAWNS	0	5	2	1802C
BAURAC, D	ROOKS	8	0	0	1819D	ELLIOTT, T	NORTH	0	2	0	1365
BENDICH, I	NWEST	1	0	0	2033	ENGELN, M	RKNGT	1	1	1	1653
BENEDEK, R	ROOKS	4	3	1	2151T	EUSTACE, D	DRGNS	1	3	2	1464C
BENESA, A	ALUMN	3	1	1	2112C	FABIJONAS, R	PAWNS	1	5	1	1573T
BOLDINGH, E	UOP	5	0	1	1888C	FELDMAN, M	BAKER	0	0	0	1300/0
BOLSHOV, A	FERMI	4	0	2	1587	FISSETTE, R	AMATS	1	3	1	1706#
BREYER, A	DRGNS	2	2	1	1321	FOX, R	MOLEX	0	1	0	1557
BROCK, B	LOYLA	2	0	0	2095	FRANEK, M	PAWNS	2	2	3	1720D
BRONFELD, A	EXCLB	2	2	0	1836	FRANK, M	ALUMN	6	0	0	1740C
BROTOS, J	EXCLB	1	4	0	1559T	FREIDEL, D	BAKER	1	1	1	1328
BUCHNER, R	TYROS	4	0	3	1710C	FREIDEL, JER	BAKER	6	2	0	1725
BUCKLEY, J	STCCC	2	0	0	1371	FREIDEL, JESSE	BAKER	7	1	0	1967
BUKY, J	RKNGT	1	1	0	1938	FREIDEL, P	BAKER	3	3	2	1880
BURDICK, T	AMATS	0	0	0	1000/0	FRIDMAN, Y	MKNGT	2	1	3	2209
BURIAN, D	NORTH	0	2	0	1508D	FRISKE, T	WALGR	3	1	2	2074C
BYRNE, M	COMPA	4	3	0	1421*	FULKERSON, R	LBURN	0	3	1	1435
CARRINGTON, S	LBURN	0	0	0	0000/0	FUNG, J	CITGR	0	2	0	1200/2
CASHER, P	MOLEX	0	1	0	1100/2	FURTNER, F	AMATS	1	4	1	1447
CASTANEDA, R	BPCHI	1	5	2	1259	GAFNI, K	LOYLA	1	0	0	1828
CEASE, H	FERMI	2	0	0	1425	GAINES, I	FERMI	3	4	0	1748D
CHAN, R	LOYLA	0	2	0	1200/2	GANDHI, R	RKNGT	0	0	0	1947/0
CHAN, ROBERT	NWEST	1	0	0	2077	GARRIDO, J	LBURN	1	2	0	1100/1
CHARKASSKY, G	MKNGT	1	2	0	1600/1	GARZON, G	FERMI	3	1	2	2251
CHUN, A	NWEST	0	0	0	800/0	GASIECKI, P	AMATS	0	0	0	1000/0
COHEN, H	RKNGT	3	0	0	1867	GAZMEN, E	ALUMN	4	0	1	2050C
COHEN, L	RKNGT	0	0	1	2004	GIERTZ, C	STCCC	0	1	1	1474
COOMBES, N	HEDGE	0	1	0	1299*	GONCHAROFF, N	MKING	0	3	2	1662V
COULTER, D	BPCHI	1	3	5	1928	GOODFRIEND, B	AMATS	1	1	0	1169
CYGAN, J	MKING	3	2	0	1831	GORODETSKIY, S	NWEST	4	0	1	1902
DECKER, D	MKING	0	1	0	1300/0	GRABSKIY, J	COMPA	1	5	0	1300/6
DECMAN, S	ROOKS	1	2	1	1573D	GRANDHI, V	WALGR	0	1	0	1200/1
DEGRAF, B	FERMI	2	1	2	1460*	GREER, J	BAKER	3	2	1	1414

/x - UNRATED; x = # OF RATED GAMES

- 5 TO 9 RATED GAMES

* - 10 TO 24 RATED GAMES

C - CENTURY CLUB MEMBER

D - DOUBLE CENTURION

T - TRIPLE CENTURION

Q - QUAD CENTURION

V - QUINTUPLE CENTURION

02-26-2006

NAME	TEAM	W	L	D	RATING	NAME	TEAM	W	L	D	RATING
GRUDZINSKI, J	ROOKS	0	1	0	1431	LINDNER, E	STCCC	1	1	0	1609
GRUDZINSKI, T	AMATS	0	1	0	1300/1	LISSERMAN, E	MKING	1	2	0	1400/2
GRYPARIS, J	MKING	1	2	1	1427C	LU, D	NWEST	1	3	0	1400/4
GUIO, J	TYROS	3	2	1	1864C	LUDWIG, T	DRGNS	1	1	2	1970C
GUTIERREZ, M	BAKER	3	0	0	1476	MANILA, M	BPCHI	0	6	0	1152*
HAHNE, D	TYROS	3	0	1	1650C	MARCOWKA, R	DRGNS	5	2	0	1969D
HALL, A	CASE	3	3	0	1500	MARKLEY, S	COMPA	1	0	0	1400/2
HANSON, M	COMPA	1	2	0	1400/2	MARSHAL, KEN	RKNGT	1	1	1	1511
HART, V	RKNGT	2	2	1	1912	MARSHALL, J	STCCC	3	0	1	2173
HAYHURST, W	CITGR	1	1	5	1949	MARTELL, J	NWEST	0	1	0	600/0
HEISER, D	RKNGT	1	2	0	1150/1	MASITI, J	AMATS	2	0	0	1275/1
HEISER, E	RKNGT	2	4	0	1954	MASON, K	LOYLA	0	0	0	1200/0
HENDRICKSON, B	MOLEX	1	6	1	1485	MCCLENDON, L	COMPA	0	5	0	1325
HERMAN, J	BPCHI	0	1	0	0000/1	MCCOY, N	STCCC	3	0	1	1589
HERNANDEZ, F	BPCHI	0	4	1	964#	MCFADDEN, J	AMATS	0	1	0	1150/1
HILL, R	ROOKS	3	3	0	1980C	MC GEE, M	STCCC	4	2	2	1459
HLOHOWSKYJ, I	ROOKS	0	4	0	0000/7	MCGOWAN, D	MOLEX	3	3	2	1281
HO, M	NORTH	0	1	0	900/1	MCGUIRE, A	WALGR	2	0	0	1850/1
HORTON, D	MKING	1	0	0	1900	MCLAWHORN, M	AMATS	0	2	0	1300/2
HUGHES, N	WALGR	1	3	1	1671C	MCWHIRT, C	NORTH	1	2	2	1641#
HUSSAIN, S	LOYLA	0	2	0	1700/2	MEISSEN, B	STCCC	4	1	1	1763
HUSSEIN, A	WALGR	0	0	0	0000/0	MELNIKOV, I	MKING	2	1	2	2039C
INUMERABLE, F	ALUMN	1	0	0	2207C	METZLER, J	CITGR	0	1	0	1250/1
JACKSON, S	CASE	2	1	0	1560C	MEYER, C	AMATS	2	2	0	1100/2
JAKSTAS, K	PAWNS	4	0	3	2213D	MICHALOPOULOS, G	CITGR	1	2	0	1327
JAMES, D	AMATS	0	5	0	1500/5	MICKLICH, F	UOP	3	1	0	1587D
JANSSEN, G	BAKER	6	2	0	1464	MIKULECKY, B	PAWNS	1	1	0	1416D
JASAITIS, A	HEDGE	2	2	2	1983D	MILLER, A	ALUMN	5	2	0	1428
JAWAID, A	LOYLA	0	0	0	1313	MILLING, J	COMPA	3	0	0	1500/4
JOHNSON, K	BAKER	0	1	0	1441	MOEHS, D	FERMI	2	1	0	1423*
JOSHI, B	MKING	4	1	0	1439*	MOLINA, J	FERMI	1	1	0	1581*
JURGENSEN, A	STCCC	0	0	0	1207	MORRIS, R	MKNGT	4	1	2	2166
KARANDIKAR, S	MKNGT	6	0	1	1734	MOSSBRIDGE, A	UOP	0	1	0	1678
KATSUYAMA, M	AMATS	0	0	0	1400/0	MUELLER, R	MOLEX	0	1	0	1031*
KELLEY, G	STCCC	1	0	0	1324	MUHS, A	CITGR	2	3	2	1427
KINSELLA, G	ROOKS	0	2	0	1425C	NABEREZHNEV, D	ROOKS	0	1	0	0000/2
KOMORAVOLU, K	DRGNS	1	2	1	1271	NALLATHAMBI, R	UOP	3	1	0	1543
KRATKA, M	HEDGE	3	0	0	1694	NGUYEN, T	BAKER	0	1	0	2081
KRAUSE, R	RKNGT	0	1	0	1400/0	NURSE, G	CASE	1	0	0	1793
KRAVIK, S	NWEST	1	0	0	1377	O'DELL, DW	PAWNS	0	4	3	1400C
KUHLMANN, S	ROOKS	1	2	0	1374*	OLSEN, A	UOP	2	1	0	1472C
KUNHIRAMAN, P	CITGR	2	2	1	1350/2	ONG, K	CITGR	2	1	0	1886
LACART, B	STCCC	0	0	0	1192	PADILLA, R	STCCC	1	0	1	1579
LAForge, W	TYROS	4	0	0	1448	PARAON, E	CASE	2	3	1	1638D
LANG, R	EXCLB	1	1	1	2026	PARRA, J	CITGR	1	1	0	1200/1
LE, DUC	CITGR	2	4	1	1740*	PEHAS, A	DRGNS	0	1	1	1857C
LECHNICK, J	UOP	5	1	0	1745C	PETERSON, T	AMATS	2	4	0	1474#
LEE, D	EXCLB	2	4	0	1979	PIPARIA, J	MKING	4	1	0	1880
LEONG, G	UOP	1	1	3	1983C	PIVOVITZ, M	STCCC	0	2	0	1375
LEVENSON, S	WALGR	5	1	0	1888	PIWOWAR, T	AMATS	0	2	0	1050/1

/x - UNRATED; x = # OF RATED GAMES

- 5 TO 9 RATED GAMES

* - 10 TO 24 RATED GAMES

C - CENTURY CLUB MEMBER

D - DOUBLE CENTURION

T - TRIPLE CENTURION

Q - QUAD CENTURION

V - QUINTUPLE CENTURION

NAME	TEAM	W	L	D	RATING	NAME	TEAM	W	L	D	RATING
PRADT, D	STCCC	1	1	1	1634	STOSKUS, A	STCCC	4	1	0	1372
RABINOVICH, E	MKING	2	1	0	1438	STUMP, P	STCCC	1	1	0	1168
RASO, P	BAKER	1	0	0	2027	SUAREZ, E	ROOKS	0	2	0	1834
RAUCHMAN, M	HEDGE	1	1	2	2140	SUERTH, F	EXCLB	0	4	1	1491D
REICH, T	MOLEX	1	5	1	1869	SUITS, J	STCCC	6	1	0	1522
REID, C	CASE	2	4	1	1498D	SUVARNAKANTI, R	BPCHI	1	5	1	1209*
RINGENBERG, T	BPCHI	2	2	0	1421	TAN, A	HEDGE	2	2	2	1681*
RODNYANSKY, S	NWEST	2	1	0	1733	TANNER, C	BAKER	0	0	0	1334
ROJO, V	CASE	0	1	1	1405	TEGEL, F	DRGNS	2	3	0	2034Q
ROSS, B	MKNGT	0	1	0	0000/1	THOMAS, J	DRGNS	2	2	0	1551D
RUFUS, B	MOLEX	4	2	1	1266*	THOMSON, J	MKNGT	2	3	1	1952C
SAM, K	CITGR	0	1	0	1100/0	UNDERWOOD, W	COMPA	0	1	2	1928C
SANTIAGO, T	ALUMN	1	2	0	1906	VAIL, M	COMPA	2	2	2	1571
SCHOONOVER, M	UOP	0	2	0	1237	VAN PETTEN, J	BAKER	1	1	0	1462
SEDERLAND, C	NORTH	0	1	0	900/2	VIGANTS, A	NORTH	0	6	0	1618C
SEET, P	HEDGE	5	0	1	1861	VON HATTEN, J	BAKER	0	0	0	1540
SENSAT, J	CITGR	1	4	0	1540	WALKER, A	NORTH	0	4	1	1765
SHPAKOV, A	MKING	3	0	0	1400/1	WALKER, C	UOP	3	1	0	1847
SINGH, H	MKING	0	1	0	1400/0	WALLACH, C	MKING	1	1	3	2014C
SITAR, K	LBURN	2	2	1	1556	WANG, ANDREW	BAKER	2	0	1	1738
SIWEK, M	UOP	1	0	3	1984D	WARREN, R	NORTH	0	0	1	2000/1
SLATER, B	BPCHI	0	9	0	0000/9	WEBER, L	ALUMN	1	0	1	2106
SMALLWOOD, J	NWEST	3	1	0	1852	WEITZ, R	EXCLB	2	3	0	1535D
SMITH, BR	TYROS	3	2	1	1616C	WIEWEL, J	STCCC	3	2	2	2092
SMITH, M	HEDGE	4	2	0	1934	WILLIAMS, K	CASE	0	1	0	2153
SOLLANO, E	ALUMN	5	0	1	1966C	WILLIAMS, S	HEDGE	1	0	0	1201#
SOROCK, R	WALGR	0	5	0	900/4	WINKLE, J	BAKER	0	0	0	1579
SPIEGEL, L	FERMI	3	1	3	1968D	WINKLER, J	CITGR	0	2	0	1100/1
SPLINTER, J	STCCC	3	1	1	2098	WOHNS, N	NWEST	1	1	0	1400/3
STAFF, M	LOYLA	0	1	0	1200/0	WYKRET, J	COMPA	0	1	0	1200/1
STAMM, V	DRGNS	2	1	1	1516T	YACOUT, A	ROOKS	1	0	0	1571
STAPLES, C	FERMI	1	0	0	1591	ZADEREJ, V	MOLEX	5	2	1	1597
STEIN, P	TYROS	3	2	2	2180	ZOELLNER, J	CASE	2	4	0	1327D
STOLTZ, B	TYROS	4	1	2	1952C	ZUBIK, J	BPCHI	1	1	0	1180#

/x - UNRATED; x = # OF RATED GAMES

- 5 TO 9 RATED GAMES

* - 10 TO 24 RATED GAMES

C - CENTURY CLUB MEMBER

D - DOUBLE CENTURION

T - TRIPLE CENTURION

Q - QUAD CENTURION

V - QUINTUPLE CENTURION

02-26-2006

UPPER BOARD FORFEITS

Each team is allowed 2 upper board forfeits per season.
After the 2nd upper board forfeit, the team is penalized
one extra game point for each such forfeit in the match.

TEAMS WITH 2 OR MORE UPPER BOARD FORFEITS

CASE

TEAMS WITH 1 UPPER BOARD FORFEIT

WALGREENS

SAINT CHARLES

RENAISSANCE KNIGHTS

CICLNUSATM06

CICL in the U.S. Amateur Team Midwest 2006

With great pride, we announce the CICL show of dedication to team chess the third weekend of February! Three 4-man teams composed of various CICL players were noted, and many other stragglers played or supported the tournament effort.

The USATM is an annual USCF-team event open to teams of 4 players with an average rating below 2200. It is announced in three sections: the title section for teams averaging 1800-2200, the Reserve Section for teams averaging under 1800, and a scholastic K-12 competition. The first-place team of the top section is invited to play for the final US Team Championship in another city, as arranged by the Federation (and if they can't attend the call is made to the second-place winner). Additionally, clock prizes are awarded not only to the top four teams of the sections, but for most valuable board and best team name as well. Our players scored several of these !

PLAYING FOR THE TITLE.

Our top entry was built from four of our top-rated players, under the leadership of **Pete Stein** (Lucent Tyros). As a longtime aficionado of team chess, he endeavored to organize a CICL all-star team to represent the League at this year's competition. As our League's top active players either have no USCF ratings or have USCF ratings lower than their CICL ratings, he felt this was a great opportunity to field a very competitive team to represent the CICL. The selection algorithm used was strictly based on CICL rating with preference given to maximum divisional representation in case of equal ratings. Unfortunately the East division's top ten didn't match up well rating wise and its top player opted to withdraw from consideration (was this **Florin Innumerable** (Alumni Aces) seen playing for a non-CICL team??). With several iterations of the algorithm, a team was finally recruited with very good players that were genuinely interested.



They were proud enough to fight under the team name "**CICL**", disdaining any shot for a name prize while putting the hallowed League out front. On first board was **Gustavo Gaston** (Fermilab), next Pete, third board was defended by **Yuri Fridman** (Motorola Knights), and **Robert Morris** (Motorola Knights) played the anchor (yea, pun intended).

As an entry in the top section, they were destined to play the very best of the Midwest, including well-known area Masters such as Alexander Stanmov (bottom-left of picture). But what about the titled players on some teams' first board? What are the likes of **GM Dmitry Gurevich** and **IM Angelo Young** doing playing in an "Amateur" event ??

On our team, each player chipped in with contributions, but especially noteworthy was Yuri's heroic performance which garnered the Board 3 prize. Several matches were decided by his fighting spirit and cool calculation against highly motivated opponents. Pete hadn't played in an USCF event in over 2 years, but his "rustiness" wasn't too bad. The quality of his games was reasonable with the exception of a poor game vs. the ex-Indiana master Langreck. He confessed to being somewhat fatigued during the 3rd round Langreck encounter, but that doesn't take away from his opponent's opportunistic play. His last-round game was influenced by fatigue and he prematurely agreed to a draw. This was an error in judgement as he was thinking the draw clinched the match; Yuri was winning his game more easily than Pete. The game is a relatively routine win, but with fatigue and time pressure he decided to bail out with the draw.

An example of their toughness was the team's key, last-round win against the Wisconsin Institute of Chess, stocked with two Masters (and then forced to balance that strength with a couple of under-rated "youngsters"). It was quite a contrast to see greying-haired Robert Morris, "head in hands" in total concentration, battling a seven-year-old, hyperactive kid ! (see issue cover). My worst tournament nightmare-- but you learn to play extra slow, watching the sugar pile up in their veins, driving the little tykes insane, and ultimately causing their hyperactive speed play to score a sure win!

Gustavo was a little wistful with his negative score, but the fact is his teammates looked to him as a shield, fending off these Masters so they could concentrate on their battles. Pete came away with a 3.5/5 score, Yuri won that board-MVP prize, and Rob finished off with a solid plus score; in fact, he, too, won a board-MVP for his efforts.

So not to worry ! Our guys have the right stuff, if not the titles, and came away participating in a three-way tie for First Place with a 4-1 team score. After application of the tie-break system, they were awarded second-place prizes! Will they get the call to the Nationals ??

PLAYING FOR THE FUN OF IT.

The other two teams were not strong enough to go for the title, but were willing to zap up a few clocks anyhow.

First of all were a few players from one of the League's new teams: The AMA Tornado Snakes captained, as in our League, by **Fred Furtner**. Your roving reporter made the mistake of not consulting the wall charts to discover where this "Fred guy" was hanging-out so needs to wait for them to be published to determine the team's situation. Rumor has it they did fairly well. Fred reports he won one, drew one, and lost two. His last game was a forfeit by the opposing team who could only field two players. Most of his games went the entire time control, and were intricate fire-traps of tactical mind-puzzles.

The other team was the result of some enthusiastic responses from the Editor's January plea to form. A couple other offers came after four had accepted so maybe a fourth team could've given it a go.

After a few email trades, a suggestion of the team name "Industrial Strength Team" was made, so Captain **Tom Friske** (Walgreens) made the call of "**Industrial Strength Chess**" (the TD soon dropped its third word). He was delighted with second board **Matt Vail** (Computer Associates), following with **Wayne Ellice** (Pawns), and having the excellent last board of **Carl Reid** (Case).



When the weekend had finished they looked back and saw that the first three rounds were the same result as their top brethren: two wins, and a loss in the middle round. But, even with a 5-0 performance from Wayne on board three, only a half point was gained in the second half of the tournament.

Tom felt quite the same as Gustavo on board one; squandered half-points cost the team its chance for glory. As it turned out, all first-board wins were with the player of the White pieces, so he came away 2-3. Matt played some sacrificial chess- especially interesting was a third-round draw earned with a Bishop-pair and passer fending off a Rook and passer. Carl is a sound fourth board for the simple fact that he plays much stronger than his rating, and, indeed, in every game made some spirited combinations and finished off his opponents with nicely played endgames. The team, however, did get a laugh at his expense in the last round when he discovered check to his opponent, discovery coming from a Knight he unknowingly moved to a square that also attacked the opponent's Queen ! At the game's end, he was completely steamed red, literally like a lobster, not just because he lost to an opponent he felt he should've easily beat, and not the way his opponent turned the tables to win, but, additionally, when this tactless dipstick rubbed his face in the fact that he missed that win of the Queen !



But where's Carl?? The team assumed he was still out looking for his opponent's Queen.

We all do it, and, indeed, the beloved first board actually lost to a 1500-rated player in the opening round--on time, though, a piece up, but the team, in this case, came to his rescue, winning the round. Later in a key fourth-round situation, where a win was required to draw the match, he had a forced draw but somehow had to make it a win and amateurly hung a piece! As a team, then, they just didn't quite get over the hill to raise the CICL banner.

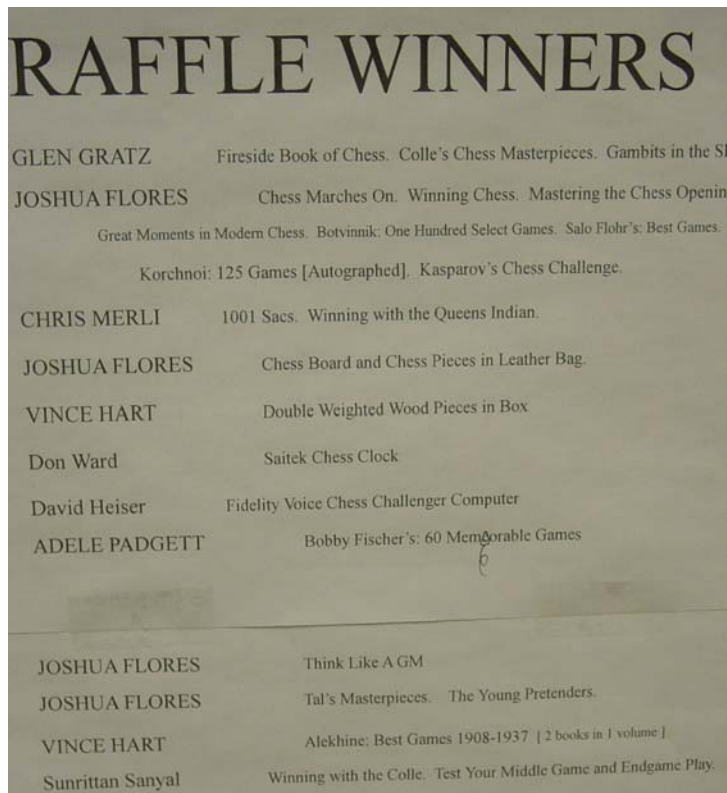
OTHER FUN FACTS.

So with all this excitement why weren't there more CICL teams ?? The common excuses are "I can't afford to spend a whole weekend playing chess" or "It's too tiring to play so many long games". Yes, these are the banes of weekend tournaments and this one was no exception. To make the pace a little more leisurely, usually there is the offering of a Friday-night round, but this time it wasn't (probably to keep hotel meeting-room rental costs down). This forced three rounds into Saturday so there was a high potential for a

9AM-12PM day of chess, with little break. Indeed, the McDonald's within the block did record business as the only obvious nearby fast-food place. (Actually, forgot to check the mall just across the street, oh well!) With the venue under reconstruction, there was little room for the boards and the total field was squished into a series of small rooms that only accommodated 12 boards each. If that wasn't enough distraction, add in the factors of funky air and some kind of dancing upstairs that involved multiple people rhythmically pounding on the floor, and you get a feel for the grizzly nature of weekend tournament chess! It's rarely pretty, but somehow everyone comes away happy with the experience.

Team chess has one additional attraction; part of the fun is to come up with a clever team name. With the recent news of Vice President Cheney's hunting escapade, there were several stabs at him. There were also the normal names representing clubs or ethnic organizations, but the most popular are always some kind of pun based off movie titles. My personal favorite is "Mate the Fokkers" from last year. This time, the Best Team Name prize went to "Brokeback Maters".

The last prize category was a simple raffle, but, as you can see from this picture,



I'm not sure that was even right. Josh Flores' name was drawn FOUR TIMES !!!!!? Something's not right; even some of the other names are all buddies.

THE CICL MADE ITS MARK.

Overall, it is obvious this a great venue for the CICL ! Our all-stars won Second Place from the title round along with two of its four board-MVP prizes. Even the inconsistent

second team made a mark for most of the tournament and collected another board-MVP prize.

Members of the Renaissance Chess Club team ran the event, including **Larry Cohen** as TD



with **Chris Baumgartner** and **Dean Arond** running the bookstall. There were also CICL participants playing for other teams. I chatted with **Florin Inumberable** (Alumni Aces), **Howard Cohen** (Renaissance Knights), and **Tim Ailes** (Fermilab, or is that St Charles CC ?).

But, in every case of mentioning the CICL, we are now immediately recognized. In passed years, at the mention of "CICL", the response was always "What's that?". That is no longer the case.

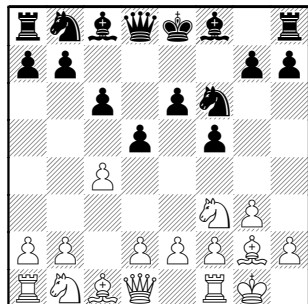
It was a great event that other CICL'ers really should attend. The tournament is annually scheduled in February, so as the end-of-year holidays expire, make it a reminder that the national team event is right around the corner!

Thanks to this year's players and their comments, which helped in writing this report. Their annotated games have also been promised, so watch the coming issues! (A couple actually follow in this one). In addition, a few dozen pictures were taken and can be viewed from our website: www.chicagochessleague.org.

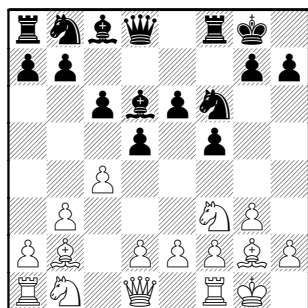
Robledo,M - Stein,P [A10]
MWAT (1.2), 18.02-18-2006

[Notes by Pete Stein]

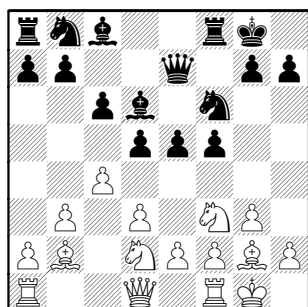
1.Nf3 f5 2.c4 Nf6 3.g3 e6 4.Bg2 c6
5.0-0 d5



6.b3 Bd6 7.Bb2 0-0

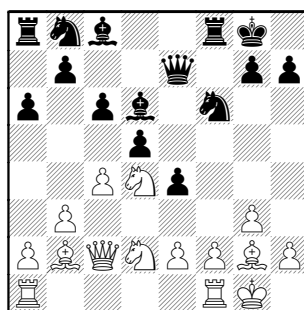


8.d3 This cannot be recommended.
White should continue with d4 to
keep a grip on e5. 8...Qe7 9.Nbd2 e5

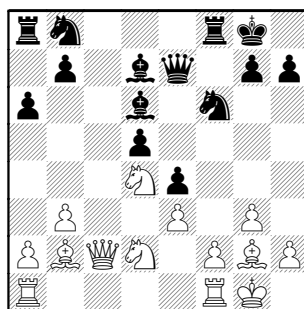


Not missing his chance.

10.Qc2 e4 11.dxe4 fxe4 12.Nd4 a6

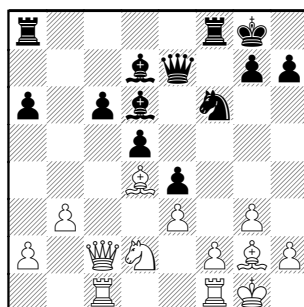


13.cxd5 cxd5 14.e3 Bd7



At first glance black's backward d-Pawn looks problematic, but how can it be exploited? As compensation black will have all his pieces bearing down on the white kingside.

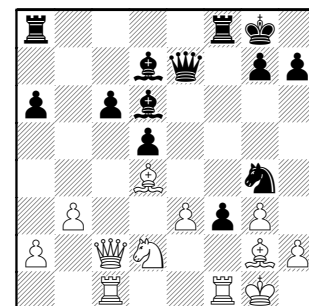
15.Rac1 Nc6 16.Nxc6 bxc6 17.Bd4



Trying to ease the pressure via exchanges, but black's initiative is already too strong.

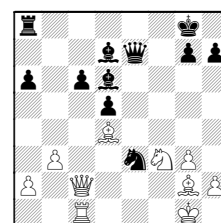
17...Ng4 18.f4

This outright loss of a pawn and weakening of the King position seems rash. Perhaps a better try was 18 h3 and then just sit and see if black can break through.
18...exf3

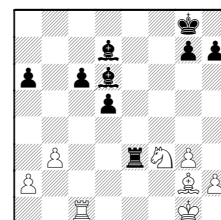


19.Nxf3

19.Rxf3 Rxf3 20.Nxf3 Nxe3

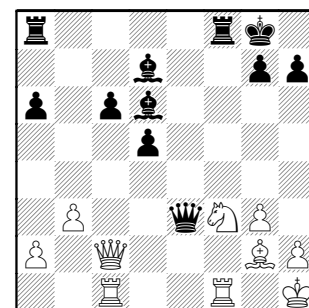


21.Qe2 Re8 22.Qxe3 Qxe3+ 23.Bxe3
Rxe3

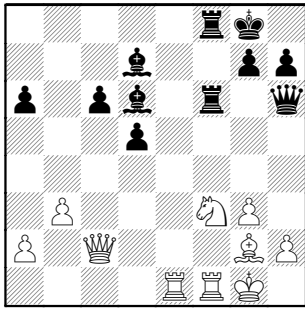


24.Nd4 Ba3 25.Rc2 Re1+ 26.Kf2 Rc1

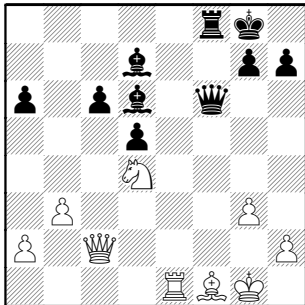
19...Nxe3+ 20.Bxe3 Qxe3+ 21.Kh1



21...Qh6 22.Kg1 Rf6 23.Rce1 Raf8



24.Nd4?? Rxf1+ 25.Bxf1 Qf6



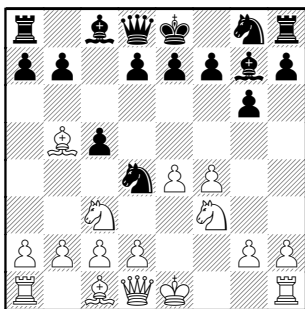
White cannot guard the f1, f2, and d4 squares simultaneously. Rd1 runs into Bg4. 0-1

Stein,P - Hart,V
MWAT (2.2), 2-18-2006

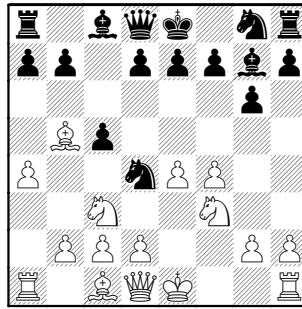
[B23]

[Notes by Pete Stein]

1.e4 c5 2.Nc3 Nc6 3.f4 g6 4.Nf3 Bg7
5.Bb5 Nd4

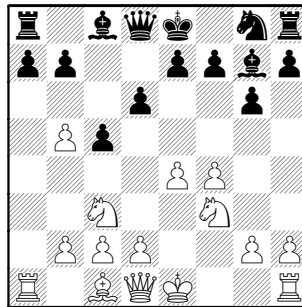


6.a4!?



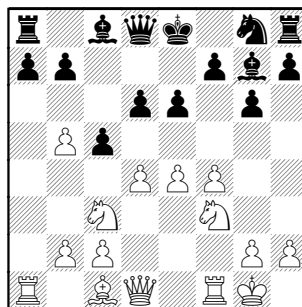
An invention of British GM Michael Adams, which is a safe try to pose some unique problems to black. It's a better try than the drawish 0-0 or the ultra complicated Bd3 which has not been scoring well lately.

6...Nxb5 7.axb5 d6



I don't like this at all. In fact d6 in general seems bad against the Sicilian Grand Prix. Both e6 and b6 are superior alternatives. Many years ago Albert Chow played b6 against me and achieved a comfortable game. Keep this in mind when noting all of black's difficulties in this game.

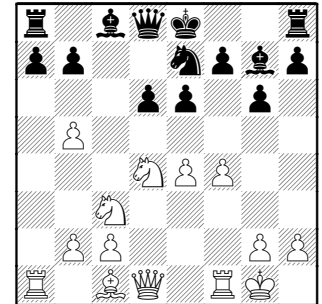
8.0-0 e6 9.d4!



GM Plaskett doesn't cover this in his 2000 book "Sicilian Grand Prix

Attack", but it certainly has merit. The centrally posted ♖ is very powerful after the exchange on d4 and black is rightfully loathe to part with his fianchettoed Bishop.

9...cxd4 10.Nxd4 Ne7

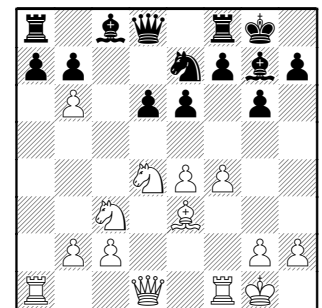


This doesn't seem quite right. The straightforward Nf6 seemed more natural.

11.Be3±

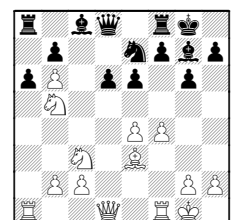
White has a sizeable advantage in the form of a spatial and developmental edge. Additionally, he can initiate an attack on either wing. If black delays d5 then the d6-Pawn may come under fire as well.

11...0-0 12.b6!

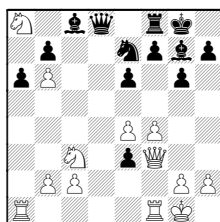


12...Qxb6

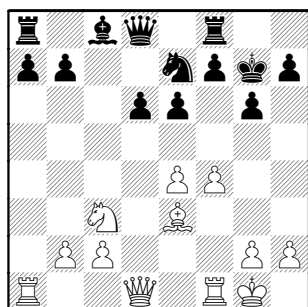
12...a6? 13.Ndb5!



13...d5 14.Nc7 d4 15.Nxa8 dxe3
16.Qf3±



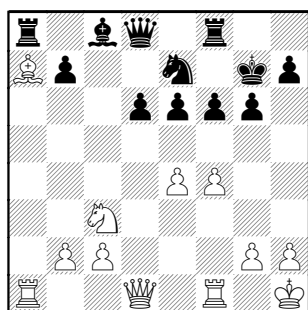
13.Nf5 Qd8 14.Nxg7 Kxg7



15.Bxa7

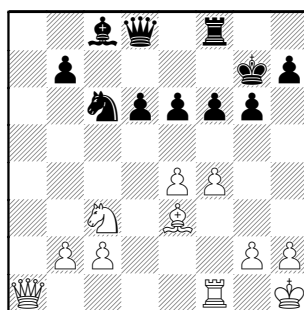
The point of the b6 tactic. Black's king Bishop has been removed and white now threatens Bd4+.

15...f6 16.Kh1

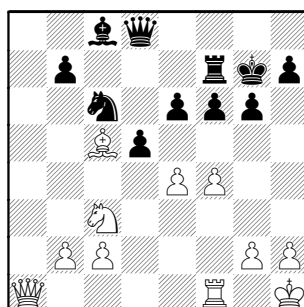


Inviting the unsound b6, but black fails to take the bait and makes a good solid move.

16...Nc6 17.Be3 Rxa1 18.Qxa1

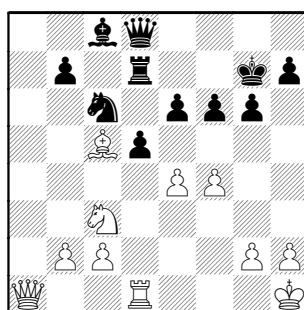


18...d5 Better late than never. 19.Bc5 Rf7



20.Rd1 Qa8 was a tempting alternative, but I preferred the Queen on the a1–h8 diagonal.

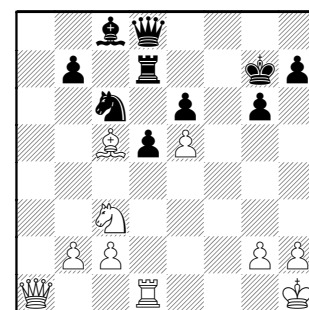
20...Rd7



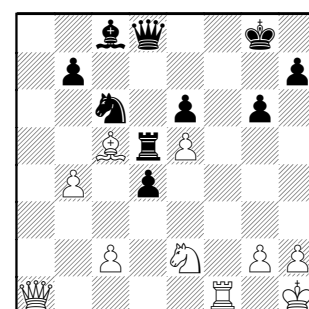
21.e5?! A foolish attempt to keep the Bishop bottled up and to trick black into losing the Knight.

To be considered is 21.exd5 exd5
22.Nb5±

21...fxe5 22.fxe5



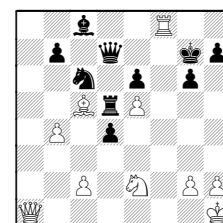
22...d4? [22...Qg5] 23.Ne2 Rd5?
[23...Nxe5 24.Nf4±] 24.b4+- Now the Queen's presence on the diagonal reveals itself. 24...Kg8 25.Rf1



A shot made possible by the earlier Bc5 and the absence of black's king bishop. 25...Rxe5

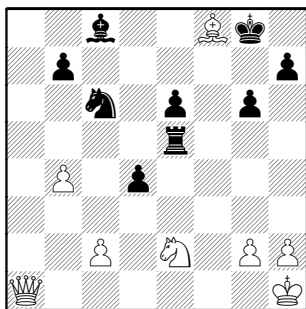
A) 25...Ne7 is an attempt to block the f-file, but both Nxd4 and Bxd4 are decisive.

B) 25...Qd7?? 26.Rf8+ Kg7



27.Qf1+-

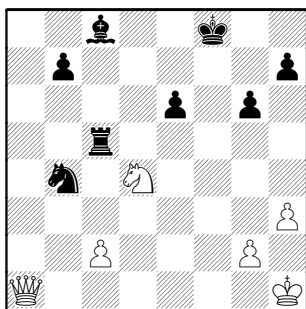
26.Rf8+ Qxf8 27.Bxf8



27...Kxf8 only move

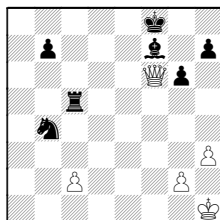
27...Rxe2?? 28.Qf1 Re5 29.g4+-

28.h3 Nxb4?? [28...Rd5] 29.Nxd4 Rc5



30.c3?

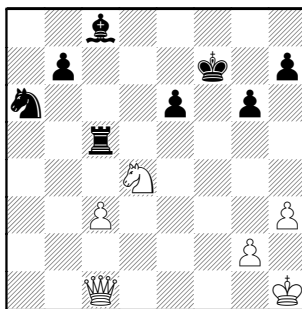
30.Nxe6+!! Bxe6 31.Qf6+ Bf7



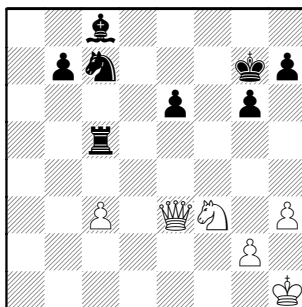
32.Qd6+ Kg7 33.Qd4+ Kg8

34.Qxc5+-

30...Na6 31.Qa3 Kf7 32.Qc1



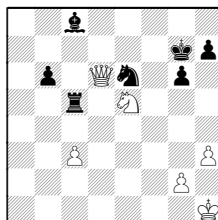
32...Kg7 33.Qe3 Nc7 34.Nf3



34...Rf5??

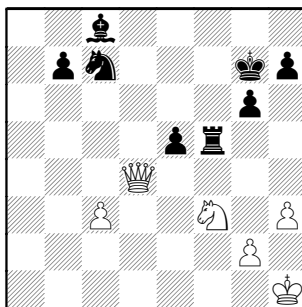
He must go 34...b6 35.Qd4+ e5

36.Qd6 Ne6 37.Nxe5

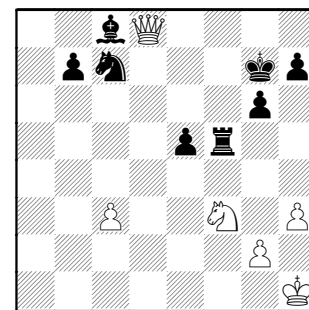


37...Rc7 38.Nf3+-

35.Qd4+ e5



36.Qd8

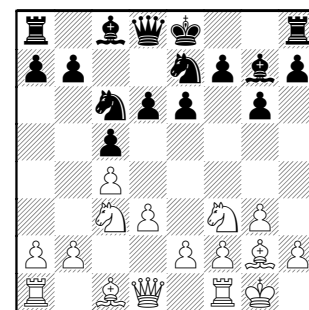


1-0

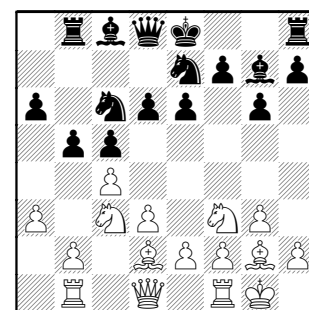
(name?) - Friske,T [A37]
US Amateur tm (4), 19.02-19-2006

[Notes by Tom Friske]

1.c4 c5 One of these days I'll prepare something more open.... 2.Nc3 Nc6 3.g3 g6 4.Bg2 Bg7 5.Nf3 e6 6.0-0 Nge7 7.d3 d6



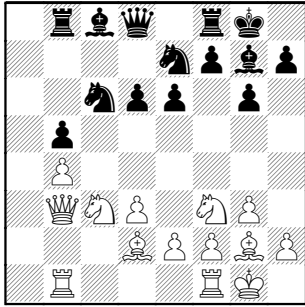
8.Bd2 Rb8 9.Rb1 a6 10.a3 b5



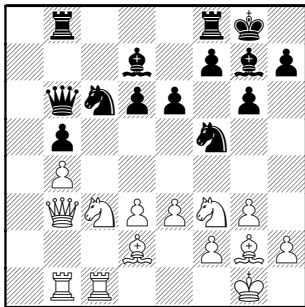
All I could remember from study is

b4/b5 and post a Knight on d4

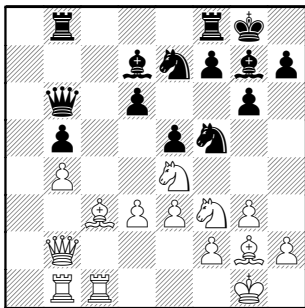
11.cxb5 axb5 12.b4 cxb4 13.axb4
0-0 14.Qb3



14...Bd7 [14...Nd4 15.Nxd4 Bxd4]
15.Rfc1 Nf5 16.e3 Qb6

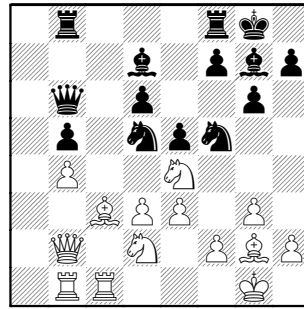


17.Ne4 idea g4, Nxd6 17...Nce7 real
point of Qb6- covering d6 from the
side, but now pressure to e3 and f2
materialize. 18.Bc3 e5 19.Qb2



White wants to play d3-d4 I was
remembering how a World Open
game boomeranged in the center and
wasn't gonna let that happen again.

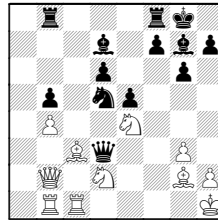
19...Nd5 20.Nfd2



giving me time to decide if I want the
Bishop. Right now I like my Knights.

20...Nfe7

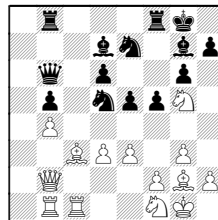
Really wondered about 20...Nfxe3
21.fxe3 Qxe3+ 22.Kh1 Qxd3



but didn't see anything concrete. At
home I suddenly noticed other issues:
23.Nxd6? Nxc3 I liked my centralized
Knights better than possible Pawn
play.

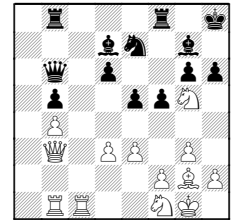
21.Nf1 love backwards moves. Last
chance to trade off Bishop 21...Kh8?
preparing f5

Was that really necessary ?
21...f5 22.Ng5

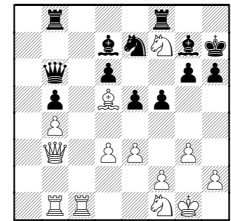


hmmm, gave White two moves, was
worried about Qb3 here !

22...Nxc3 23.Qxc3 h6 24.Qb3+ Kh8

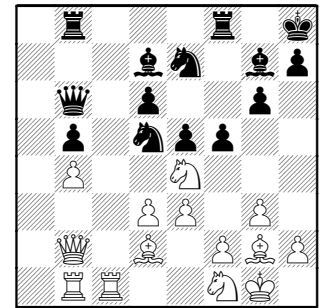


25.Nf7+?! Kh7 idea of Be8 26.Bd5

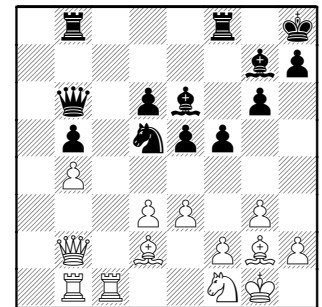


26...Be8 idea Nxd5, Bxf7
(26...Nxd5 27.Qxd5 idea Nxd6)
27.Be6 d5 28.Bxd5 Nxd5 29.Qxd5
Bxf7

22.Bd2 f5 idea of f4



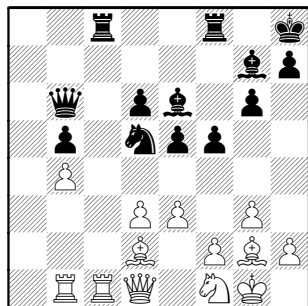
23.Nc3 Be6 24.Nxd5 Nxd5



I judged his Bishop less of a threat
than my attack against the Queenside
light-squares, especially Rh8-h2 but
this never materializes.

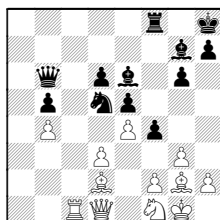
25.Qc2 Threat is Qc6, hitting Pawn weaknesses, especially d6.

25...Rbc8 26.Qd1



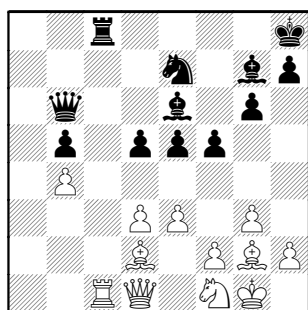
26...Ne7

I was so enthused with my center and Bishops pointing Queenside, didn't consider the breakthrough earlier planned: 26...Rxc1 27.Rxc1 f4 as planned #21 28.e4



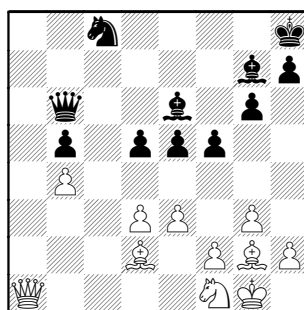
28...Ne7 idea Nc6-d4 and fg,Qxf2+

27.Rxc8 Rxc8 28.Rc1 d5



sure thought this forces e4 and traps out his Bg2

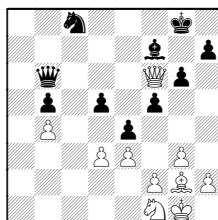
29.Rxc8+ Nxc8 30.Qa1



30...Ne7

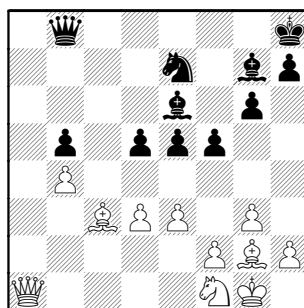
I'm just not thinking here. Been seriously behind in time, and trying to play faster before it gets serious (about a half hour left for me... 40 for him)

I overrated my dark-squared Bishop
30...e4 31.Bc3 Bxc3 32.Qxc3+ Kg8
33.Qf6 Bf7



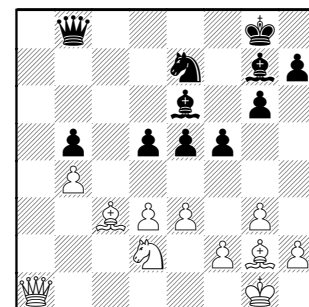
and both side's minors are trapped. By this time, I was knowing I needed to win for the home team.

31.Bc3 Qb8



trying to use opportunity to keep his Queen out, but mine becomes overloaded. I totally misjudged the position with Rooks off.

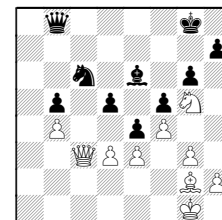
32.Nd2 Kg8



preparing to sac the Pawn, judging the pin down the diagonal is the worse threat.

33.Nf3

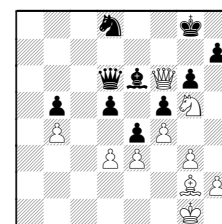
Missing his chance for 33.f4 but maybe the Pawn is dead anyhow after 33...Nc6 34.Nf3 e4 35.Ng5 Bxc3 36.Qxc3



Both Black minors hang ! 36...Nd8

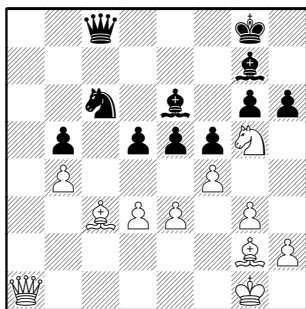
36...Qe8 37.Qf6 Bf7? 38.Nxf7 Qxf7 39.Qxc6

37.Qf6 Qd6

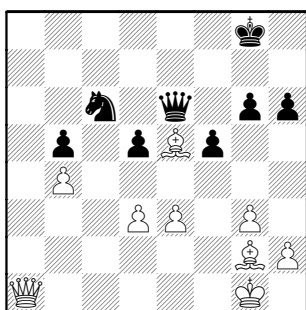


Black threatens Qf8-g7 or Qd7-g7

33...Nc6 34.Ng5 Qc8 35.f4 h6

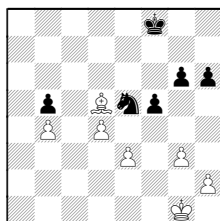


saving the Pawn for now **36.Nxe6**
[36.Nf3 e4] **36...Qxe6 37.fxe5 Bxe5**
38.Bxe5



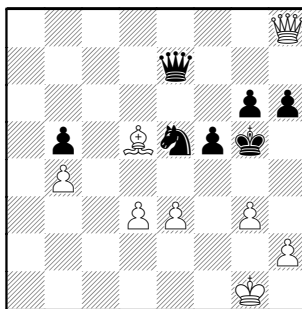
38...Nxe5

38...Qxe5 39.Qxe5 Nxe5 40.Bxd5+
Kf8 41.d4



41...Ng4 42.e4 fxe4 43.Bxe4 g5
44.Bd3

39.Qa8+ Kg7 40.Bxd5 Qe7 41.Qg8+
Kf6 42.Qh8+ Kg5

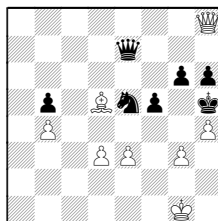


An odd place for my King, but, for
now thought it safe (even if very near
mated).

43.Qb8

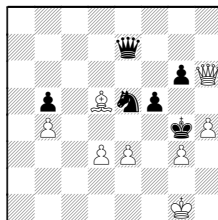
Only at home analysis, immediately
found we'd both missed a beauty:
43.h4+ Kg4

Certainly not 43...Kh5??



the Knight is the only thing stopping
Bf3#, so...44.Qxe5! Qxe5 45.Bf3#

44.Qxh6



threat is d4, Qxg6+ 44...Qf6

(44...Nxd3 45.Qxg6+ Kh3 46.Bg2#)

45.d4 Nd3

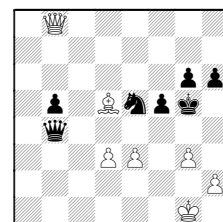
(45...Nf7 46.Bxf7 Qxf7 47.Kh2

(47.Qf4+ Kh3)

)

43...Nxd3 with mating threat !!

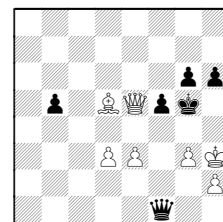
If in a tournament, I probably
would've played 43...Qxb4?



But I needed a win in this team event
and it seemed to only force a draw.

a) 44.Qd8+ Kh5 and Qb4 stops
Qh4#;

b) But the key line I messed up was
44.Qxe5 Qe1+ 45.Kg2 Qe2+ 46.Kh3
(46.Kg1=) 46...Qf1+

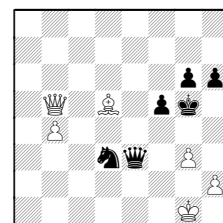


thinking this was mate ! So is there a
save? 47.Bg2 Qe2 idea Qg4#/Qh5#
48.Qe7+ mates, so there's no reason
to mention **(b1)** 48.Bd5 Qf1+= or
b2) 48.Qd4?? Qg4+ 49.Qxg4+ fxg4#)

Back to game...

44.Kg2

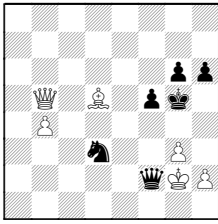
A) 44.Qxb5 Qxe3+



45.Kh1

(45.Kf1 Qf2#;
=45.Kg2 Qf2+ 46.Kh3 Qf1+ 47.Bg2
Nf2#)

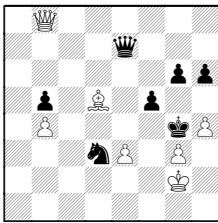
45...Qe1+ 46.Kg2 Qf2+



47.Kh3 (47.Kh1 Qf1#) 47...Qf1+
48.Bg2 Nf2#;

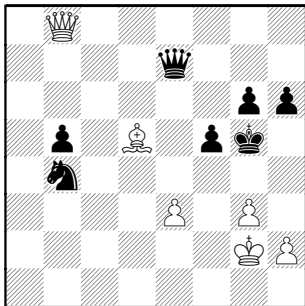
B) 44.h4+ Kg4 now the Knight is
stopping Qf4+,Bg2#/Bf3#
(Not 44...Kh5?? 45.Bf3#)

45.Kg2



45...Qxe3 allowing a draw

44...Nxb4



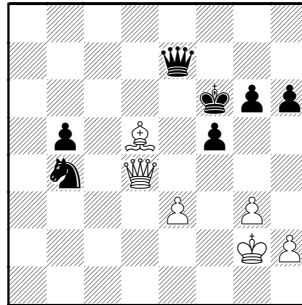
Not grabbing Pawns, but trying to
defend center, and happens to be a
protected square where the Bishop
can't get it.

When planning last move, I'd planned
44...Qxe3 but caught myself
forgetting the simple 45.Qd8+ Kh5
(=45...Kg4 46.Qh4#) 46.Qh4#

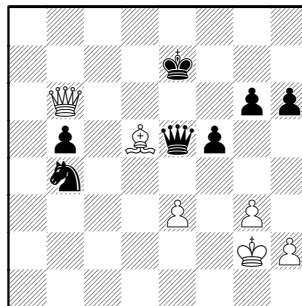
45.Qf4+ actually had decided Knight
needed to stay and stop this check,
so was kicking myself for allowing
this. Luckily, his Bishop hangs so

gives me a key defending tempo. My
two enemies are the clock and the
absolute need to win for the team.

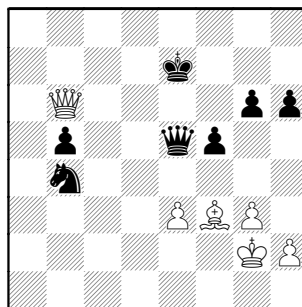
45...Kf6 46.Qd4+



46...Qe5 [46...Kg5?? 47.Qh4#]
47.Qb6+ [47.Qxb4 Qxd5+] 47...Ke7



Relaxing a lot, I thought I'd
consolidated a Pawn, so now how to
stop checks ? **48.Bf3**

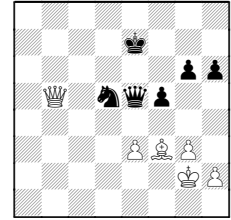


48...Nd5?? only considering Qb7+
whereupon Nc7

He suggested 48...Nc2 49.Qb7+ but I
wasn't confident the Knight wouldn't
be picked off as I tried to avoid a
perpetual check

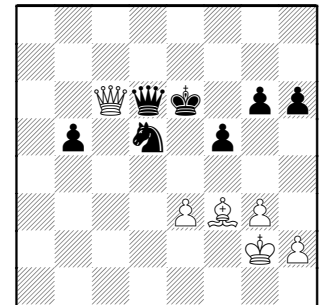
49.Qc5+

49.Qxb5??



49...Nxe3+ 50.Kf2 Qxb5

49...Ke6 50.Qc6+ Qd6

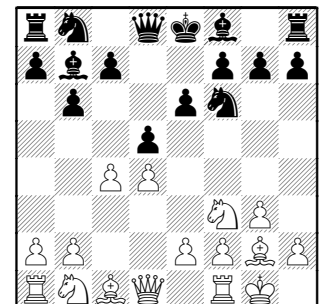


51.Bxd5+ A win would've only drawn
the match. I was on my to losing on
time, being 20 minutes behind him.
1-0

Friske, T - Garner, P [E15]
US Amateur tm (5), 02-20-2006

[Notes by Tom Friske]

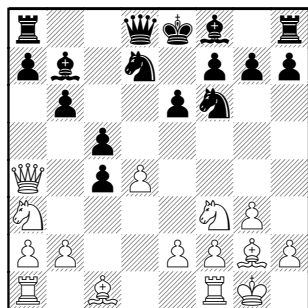
1.d4 Nf6 2.c4 e6 3.Nf3 Felt real good
playing White and then this position
which we had just discussed a
teammate's previous round game !
3...b6 and after a pause to remember
my current favorite... **4.g3 Bb7 5.Bg2**
d5 6.0-0



6...dxc4 7.Qa4+ Just to win back the Pawn 7...Nbd7 8.Na3

While waiting for his 8th, suddenly remembered the weakness at c6 theme 8.Ne5 idea Nc6

8...c5

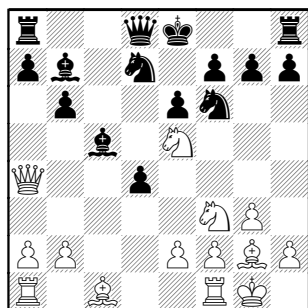


Black can't afford this delay in castling !

9.Nxc4 and the time for his replies at #8 and #9 made me realize the Queen's Knight can do the Ne5-c6 thing and preserve the Bishop ! And then the Nce5,Ng5 formation came to mind... but realized he has to delay castling for that to work.

9...cxd4? 10.Nce5 and since I expected Be7,0-0 began looking for theme to get to f7 before he can castle... and BINGO !

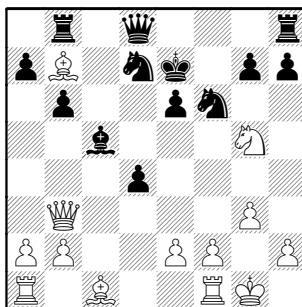
10...Bc5



11.Nxf7!

Unlike me to open tactics straight-away !!

11...Kxf7 12.Ng5+ Ke7 13.Bxb7 Rb8 14.Qb3

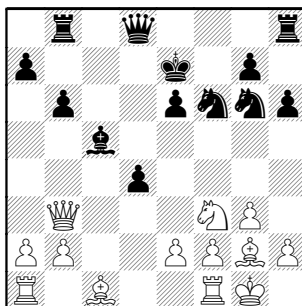


14...Nf8

14...Rxb7?? 15.Qxe6+ Kf8 16.Qf7#

15.Bg2 He visibly relaxed, but I was thrilled with my position. The exposed, centralized King, my Bishop pair and his cornered King Rook all spelled a major tempo gain.

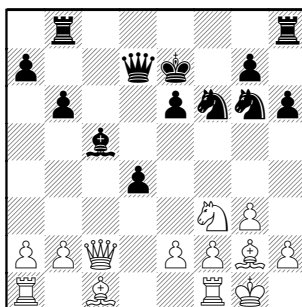
15...h6 16.Nf3 Ng6



I went into a 12-minute think, even though I saw all this coming. Main question: how to post the Queen's Bishop ? 17.Qa4 idea b4,Bb2

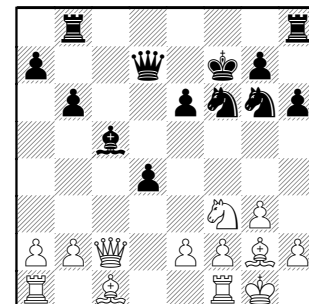
I almost played 17.h4 just to keep Nf6 from stopping h5, giving my Knight e5. But it was too vague.

17...Qd7 18.Qc2



slammed down with a loud sigh, I was holding the hanging Knight for better threats, but I need a tempo or two so he doesn't gain with Rbc8, etc.

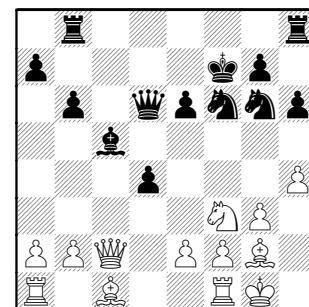
18...Kf7



and I immediately saw the fork possibility with Qxg6,Ne5+-xd7. Now I wished I'd played h4 as h5 here would win a piece ! Of course, hindsight reveals his Queen was lured to d7 by my Qa4 move, so maybe OK...

19.h4 Hoping the threat wasn't obvious, but somehow sensed he would mis-place his Queen.

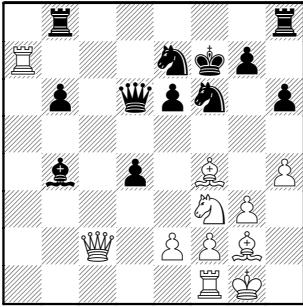
19...Qd6?



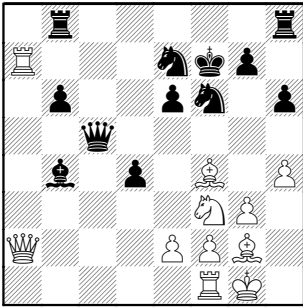
20.a3!! Took all of a minute to connect this with Ng6 troubles !

20...a5 Quickly replied, he has no clue the Pawn sac opens the Rook to the seventh and his position completely falls apart. I'm only playing to move Ng6 to skewer with Bf4 (solving problem #1 !!)

21.b4 axb4 22.axb4 Bxb4 23.Ra7+ Ne7 24.Bf4



The point of my play **24...Qc5 25.Qa2**



idea is **Ne5+, Qxe6-f7#**

25...Rbd8

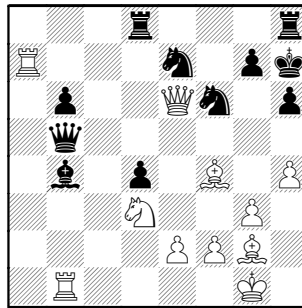
A) 25...Qd5?? 26.Ne5+ Kf8 27.Bxd5;
B) 25...Qc6?? 26.Ne5+;
C) 25...Qc8 26.Nxd4 the Rook can't move away from Bxb8, Qxe6+, etc.

26.Ne5+ Kg8 [26...Kf8?? 27.Qxe6 idea Qf7#] **27.Qxe6+ Kh7**

28.Nd3! the point is to lure Ne7 away from 7th rank so **Qxf6, Qxg7#**/Bf5+ is huge trouble

28.Nf7 was possible, but I found a kill

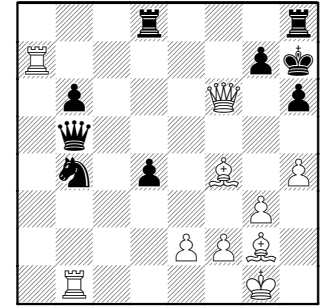
28...Qb5 only place to defend Bb4 (thanks to Pawn sac long ago !)
29.Rb1



now both Bb4 and Ne7 hang, so...**29...Ned5 30.Nxb4** my Knight is pinned too!

I'd planned 30.Qxf6?? but blunder-checked 30...Nxf6

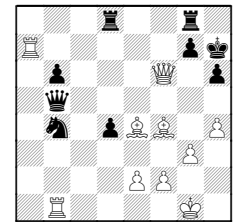
30...Nxb4? 31.Qxf6



immediate threat is **Qxg7#**, of course, but the real point is to free square e4 for the Bishop

31...Rd7 missing my reply, but there was no defense

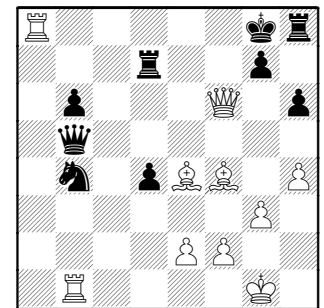
No better was **31...Rhg8 32.Be4+**



32...Kh8 33.Qg6 will mate

32.Be4+ and the un-opposed Bishop obtained long ago finally has its say !

32...Kg8 33.Ra8+

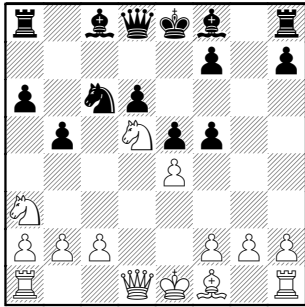


The thrill wasn't diminished when I realized I had just beat-up on a 1500.... **1-0**

Otero y Garzon,G (2244) –
Reich,T (1898) [B33]
Fermilab-Molex (Rnd 6), 01-9-2006

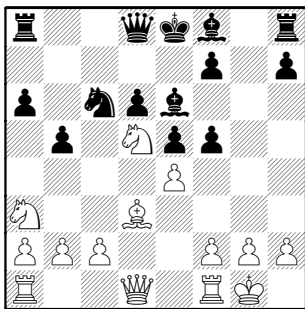
[Notes by Gustavo]

1.e4 c5 [Time: W=0; B=0] 2.Nf3 Nc6
[0;0] 3.d4 cxd4 [1;0] 4.Nxd4 Nf6 [1;0]
5.Nc3 e5 [1;1] 6.Ndb5 d6 [2;6] 7.Bg5
a6 [3;6] 8.Na3 b5 [6;9] 9.Bxf6 gxf6
[6;10] 10.Nd5 f5 [6;18]



The game has undergone a somewhat forced sequence of moves and there is still a huge amount of theory here. But Thomas started to think a lot at this point. In my opinion it is not the best option to enter voluntarily into a Sveshnikov as Black without sufficient preparation since it seems to be easier to play the white side.

11.Bd3 Be6 [9;23] 12.0–0



Too much time was spent on this natural and useful move because I was at the end of my knowledge on this opening, so I had to clarify the possible plans.

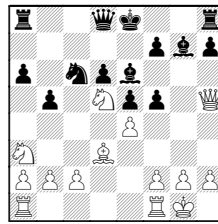
12...Rc8 [18;42]

After the game Thomas said he was not happy with this move but was

vague about an alternative.

Two possible continuations are:

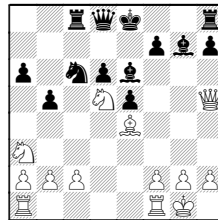
A) 12...Bg7 13.Qh5



13...fxe4

After 13...fxe4 14.c4 b4 15.Nc2 a5 16.g3, White has the initiative.

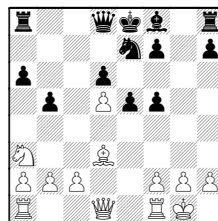
14.Bxe4 Rc8



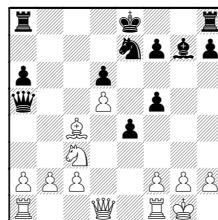
15.c4 Nd4 16.Rac1

White's pieces are more mobile and it seems that black does not have full compensation for the lack in space.

B) 12...Bxd5 13.exd5 Ne7

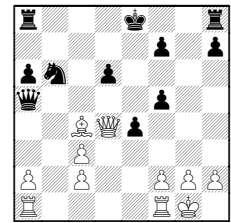


14.Nxb5 Bg7 15.Nc3 e4 16.Bc4 Qa5



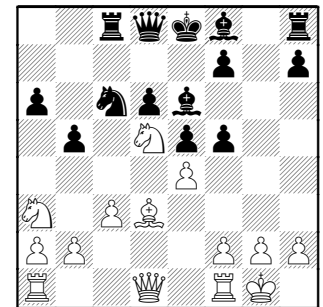
This looks more like the kind of play black would like, and, then

18.bxc3 Nxd5 19.Qd2 Nb6 20.Qd4
17.Qe2 Bxc3



This is a complex position, more appealing than the game from black's perspective.

13.c3

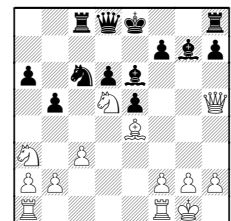


13...Bxd5? [25;50]

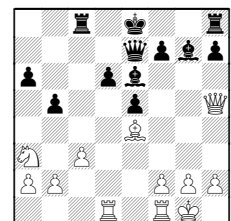
A mistake that gives white a definite advantage. Thomas mentioned he overlooked white's 15th move.

A serious alternative is:

13...Bg7 14.Qh5 fxe4 15.Bxe4

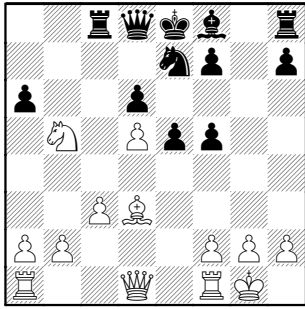


15...Ne7 16.Nxe7 Qxe7 17.Rad1



And the game appears to be in a dynamic balance.

14.exd5 Ne7 [25;50] 15.Nxb5!

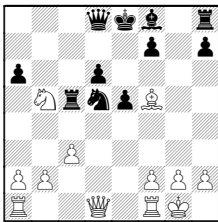


White has a winning advantage.

15...Qb6

This was the move I was expecting since others were clearly bad:

A) 15...Nxd5 16.Bxf5 Rc5

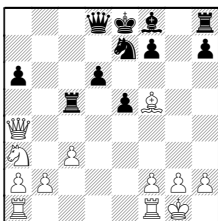


17.Nd4!

This nice move shows how bad black's king situation is.

Not 17.Na3 as I had in mind during the game, judging that white has a decisive advantage due to the delicate position of black's king, the light squares and the lack of coordination on black's side:

17...Ne7 18.Qa4+

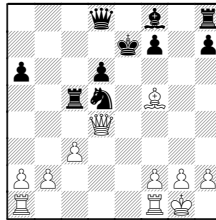


18...Nc6
(18...Rc6 19.Nc4+-)

19.b4 Rxc3 20.Rac1

So after 17 Nd4! : 17...Nb6

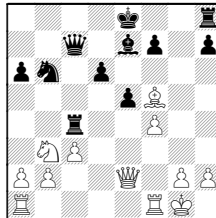
Worse is 17...exd4?! 18.Qa4+ Ke7
19.Qxd4



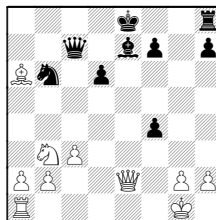
19...f6
(19...Rg8? 20.Rae1+ and black will be mated.)

20.Rfe1+ Kf7 21.Be6+ winning.

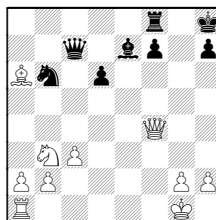
18.Qe2 Be7 19.Nb3 Rc4 20.f4 Qc7



21.Bd3 Rxf4 22.Rxf4 exf4 23.Bxa6

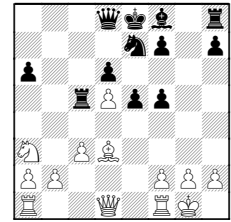


23...0-0 24.Qg4+ Kh8 25.Qxf4+-



Another try from game diagram (top of last column) is:

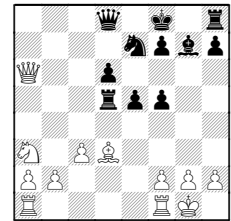
B) 15...Rc5 16.Na3



16...Bg7

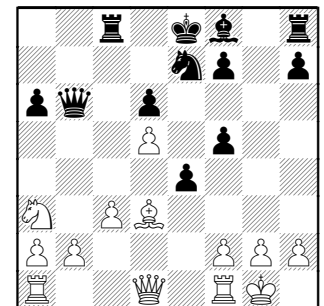
16...Rxd5 17.Qa4+ Qd7 18.Qxa6+-

17.Qa4+ Kf8 18.Qxa6 Rxd5



19.Rfd1+-

Returning to game, first column:
16.Na3 e4 [44;68]

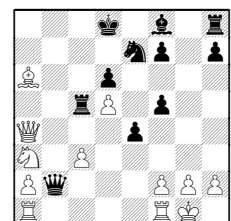


17.Qa4+ Not the strongest move.

The simple 17.Be2 would leave black in a worse situation. I don't see any decent way of play for him then.

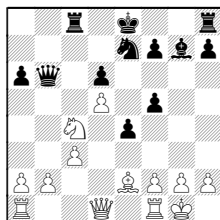
17...Bg7

17...Qxb2? 18.Qa4+ Kd8 19.Bxa6 Rc5

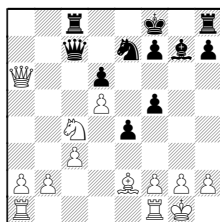


20.Rab1 Qxc3 21.Rb7 winning

18.Nc4



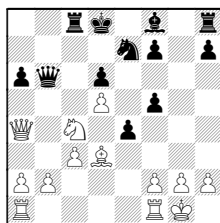
18...Qc7 19.Qa4+ Kf8 20.Qxa6+-



Black is completely tied up.
20...Nxd5?! 21.Nxd6

17...Kd8 [46;69] **18.Bc4** The main justification for this move is that it keeps black in a delicate situation and I was subconsciously very attached to the pawn in d5.

I spent some time considering 18.Nc4



18...Qb5 which was the only answer I considered during the game, probably because I was a bit tired, a state in which the mind prefers forced variations !

a) 18...Qc5 was suggested by Thomas but it is also insufficient.

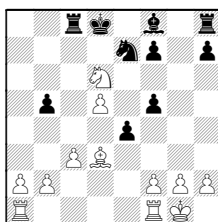
19.Qxa6 Nxd5

(19...exd3 20.Nxd6+-)

20.Na5 Ke7 21.Nb3+-;

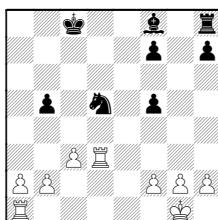
b) 18...Qc7 19.Be2 Nxd5 20.Qxa6 Nf4 21.Ne3+-;

19.Qxb5 axb5 20.Nxd6



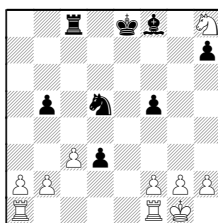
20...exd3 21.Nxf7+

21.Nxc8 Kxc8 22.Rfd1 Nxd5
23.Rxd3+-

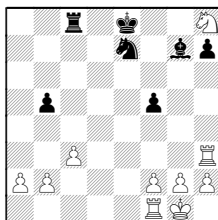


I had seen this position during the game which is forced (and I now see as an easy win), but for a wrong reason I preferred 18. Bc4.

21...Ke8 22.Nxh8 Nxd5



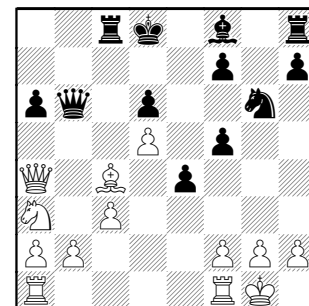
23.Rad1 Bg7 24.Rxd3 Ne7 25.Rh3+-



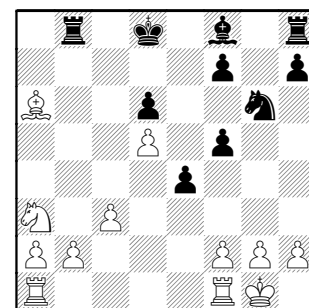
White wins without any problems.

18...Ng6 [59;76]

An understandable desire to strongly post the knight.



19.Qxa6 Qxa6 [69;79] **20.Bxa6 Rb8**



21.Rab1 Here I started to play erratically.

After spending an important deal of energy and time since move 15, I felt I had achieved a winning position and, as usual, I relaxed too much. This always costs a lot (my loss against Stein and Coulter are good examples) and this game is no exception. From now on my level of play dropped significantly allowing black back into the game.

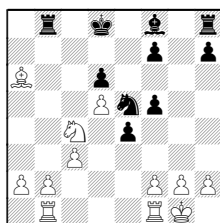
21.Rfb1 together with the regrouping of the minor pieces to the king side, depending on black's play, and the push of the queenside pawns was an easy an effective plan.

21...Ne5 [73;81] **22.Rfe1**

wanted to make black's central pawns static.

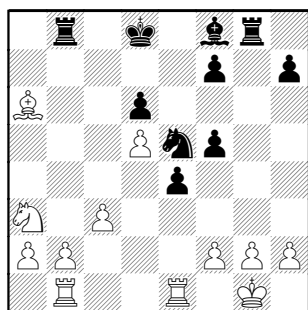
Better was: 22.Nc4

(Diagram follows)



22...Nxc4
(22...Nd3?! 23.Na5!?!+-)
23.Bxc4 with an easy win.

22...Rg8 [77;81]



23.Kf1?! Not a bad move in itself but I was starting to neglect black's intentions.

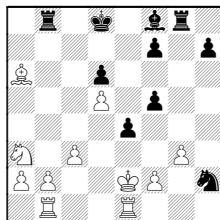
23.Be2 was simple and good.

23...Ng4 [77;84] This obvious maneuver took me by surprise and, together with its continuation, had a terrible practical impact.

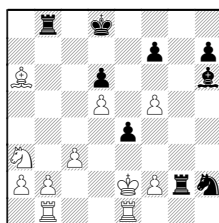
24.h3?

If I would have paused here and composed myself, I would have seen the still advantageous:

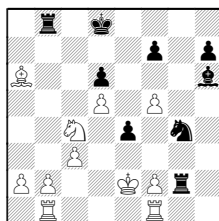
24.Ke2 Nxe2 25.g3



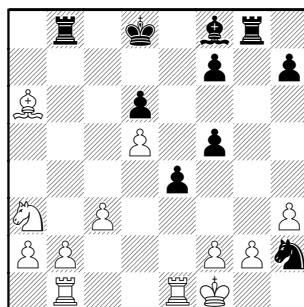
25...f4 26.gxf4 Bh6 27.f5 Rg2



28.Nc4 Ng4 29.Rf1

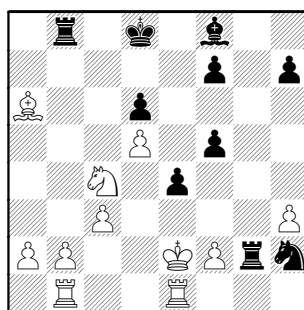


24...Nh2 [78;84]



Here I started to feel uncomfortable, after having a decisive advantage for several moves I ended up in a complex struggle.

25.Ke2 Rxe2 26.Nc4



26...Nf3 [81;84]

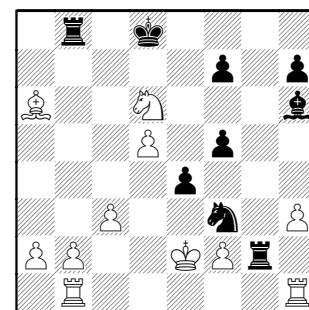
We both were short of time and in this

situation it is difficult not to go for this kind of move, but still much better is 26...f4 and suddenly the game is difficult for both players.

27.Rh1 Bh6?! [82;84]

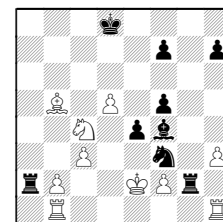
This returns the favor. Again, 27...f4 would have been a lot more tenacious.

28.Nxd6



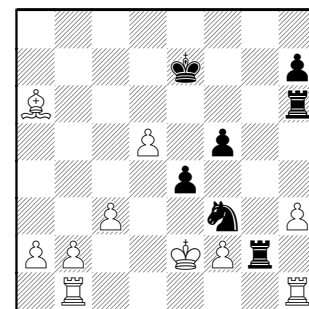
28...Rb6? [84;85] The final mistake.

Much better is 28...Bf4 29.Nc4 Ra8 30.Bb5 Rxa2

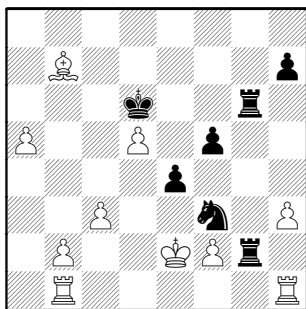


and, although white still has the advantage, the game is not over.

29.Nxf7+- Ke7 [84;86] 30.Nxh6 Rxh6 [84;87]



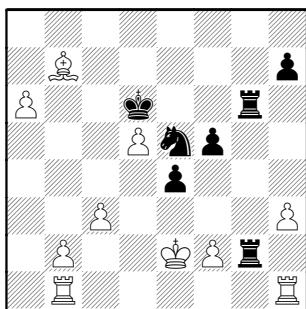
31.Bb7 (31.Bc8+- was even stronger) 31...Kd6 [86;87] 32.a4 Rhg6 [86;87] 33.a5



33...Ne5 [86;87]

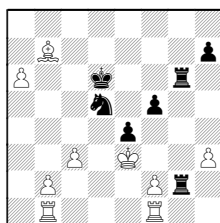
33...Ng1+ 34.Rhxg1 Rxc1 35.Rxc1
Rxc1 36.a6+-

34.a6



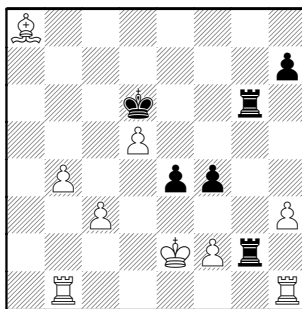
34...Nc4 [86;87]

34...Nd3 35.Rhf1 Nf4+ 36.Ke3 Nxd5+



37.Bxd5 Kxd5 38.Ra1+-

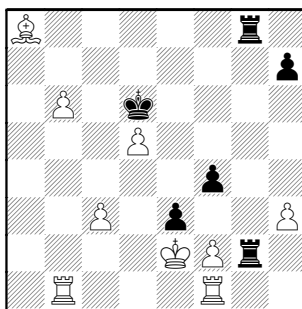
35.a7 Nb6 [86;87] 36.a8Q Nxa8
[86;87] 37.Bxa8 f4 [87;88] 38.b4



38...e3 [87;88]

38...R6g3 39.Kf1 Rg8 40.Ra1+-

39.Rhf1 Ke5 [87;88] 40.b5 Kd6
[87;88] 41.b6 Rg8 [87;89]

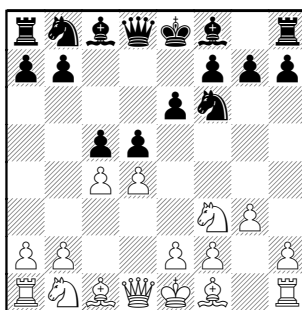


42.Bc6 Kc5 [87;89] 43.Rb4
[88;FLAG]
1-0

Friske,T (2078) –
Siwek,M (1972) [D33]
Walgreens-UOP, 1-25-2006

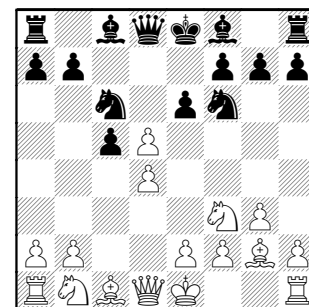
[Notes by Tom Friske]

1.d4 d5 2.Nf3 Nf6 3.c4 e6 4.g3 c5



I didn't realize this actually
transposes play into a QGD Tarrasch.
Not that that means anything...

5.Bg2 Nc6 6.cxd5

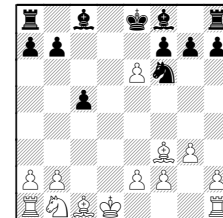


I like to create the isolate, even if it
gives his light-squared Bishop more
scope.

6...exd5

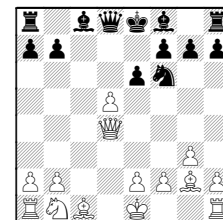
6...Nxd4 7.Nxd4

(7.dxe6 Nxf3+ 8.Bxf3 Qxd1+ 9.Kxd1



9...Bxe6 10.Bxb7)

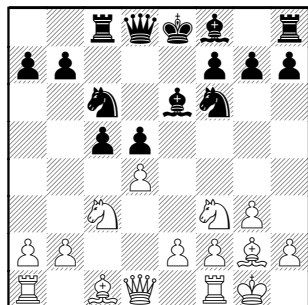
7...cxd4 8.Qxd4



8...Nxd5 9.e4 Nf6
(Not 9...Bb4+? 10.Kf1! two pieces
hang

7.0-0 Be6 8.Nc3 Rc8

With little experience in the Catalan,

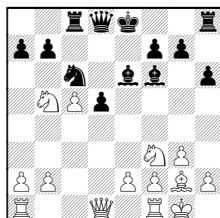


9.Bg5 Be7 10.dxc5

The Pawn probably can't be held, but the tempi he spends to recapture are worth something, even if miniscule.

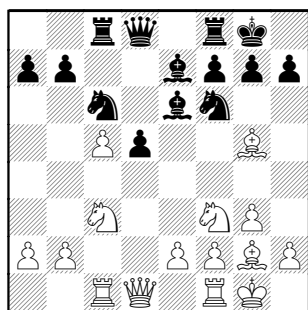
10...0-0

Was curious about 10...h6 11.Bxf6 Bxf6 12.Nb5



which I guess is similar to game, but here he can't take: 12...Bxb2? 13.Nd6+ Kf8 14.Rb1

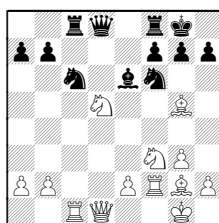
11.Rc1



11...h6

My idea is highlighted after 11...Bxc5

12.Nxd5 discovering on loose Bishop
12...Bxf2+ 13.Rxf2

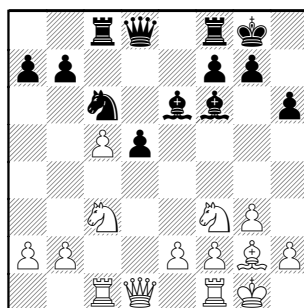


13...Bxd5

(13...Qxd5 14.Bxf6 Qxd1+ 15.Rxd1 gxf6)

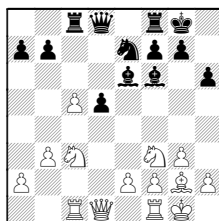
14.Bxf6 gxf6

12.Bxf6 Bxf6



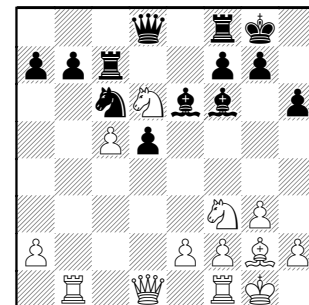
13.Nb5!? Already judging the extra Pawn was useless (Mark rarely misjudges his Pawn sacs), I found a way to screw up Black's Pawns some more. I was perfectly happy with a draw tonight, and so wasn't overly worried about his Bishop pair.

So concentrated on the immediate plan, I didn't even consider 13.b3 Ne7



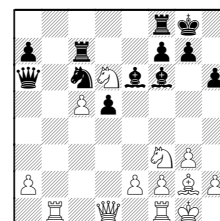
14.b4 b6 which is an example of why the c-Pawn isn't that glorious

13...Bxb2 14.Rb1 Bf6 15.Nd6 Rc7



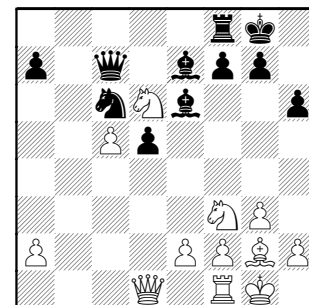
16.Rxb7

16.Nxb7 Qc8 17.Nd6 Qa6



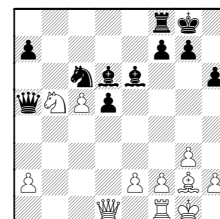
with d4 coming, Black has excellent play

16...Be7 17.Rxc7 Qxc7



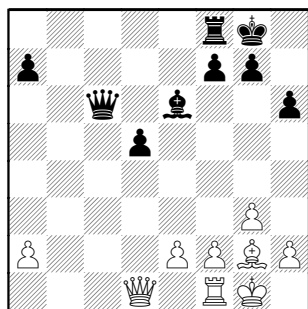
18.Nd4 Bxd6 19.cxd6

19.Nb5 Qa5



gives Black an a-passer 20.Nxd6
Qxa2 holds Pd5

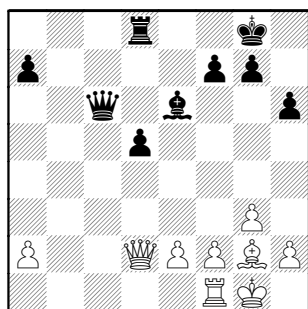
19...Qxd6 20.Nxc6 Qxc6



21.Qd2

Originally planned 21.Qd4 but here realized 21...Qc2

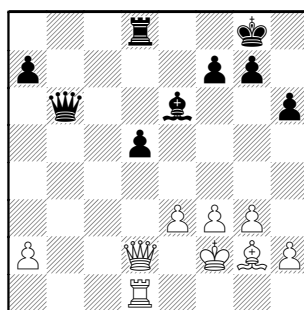
21...Rd8



22.e3 stopping the d-Pawn not only keeps it a target, but cuts down his Bishop's possibilities. It's pinned now, of course, but I wanted to make him declare his plan.

A Rook move was considered like 22.Rb1 or 22.Rc1 Qb6, but these seemed to help him put his Queen on a better square

22...Qb6 23.Rd1 Bg4 24.f3 Be6
 25.Kf2

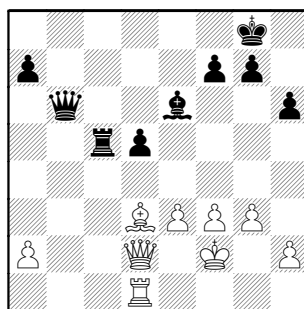


In the last three moves, White's position has improved with no appreciable gain for Black.

25...Rc8

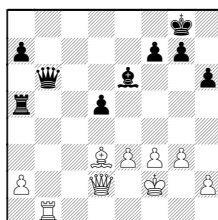
Last step is to activate my Bishop, and everybody's working for the home team!

26.Bf1 Rc5 27.Bd3



27...Qc7

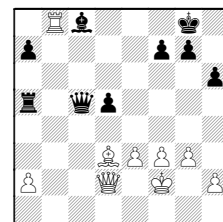
I was expecting 27...Ra5 with idea of d4 and Rxa2. 28.Rb1



28...Qc5

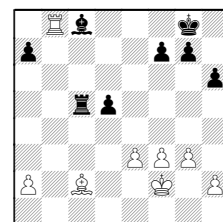
(28...Qc7 29.Rb2 idea of Qc2. The main goal is to trade heavy pieces and win one his isolates)

29.Rb8+ Bc8



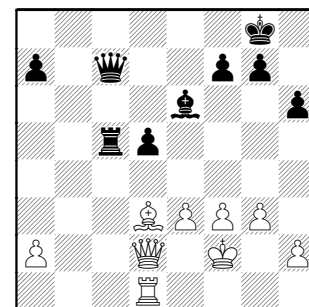
and expected to get something (at least some trades) from the pin.

30.Qc2 idea Rxc8+ 30...Qxc2+
 31.Bxc2 Rc5



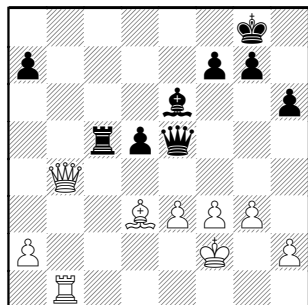
apparently his best, and maybe Black's weaknesses are hard to exploit with Queens off and Rooks on. 32.Bb3 Kh7 33.Ra8 a6

28.Bb1 idea Qd3 just to make him move a Pawn around King, but maybe not so bad for him 28...Qb6 idea Rb5-b2 29.Bd3 back to covering b5 from Rook 29...Qc7



with draw offer, but I was still enjoying seeing if I could create a clear initiative (and not sure if the team needed me to win).

30.Rb1 Qe5 31.Qb4

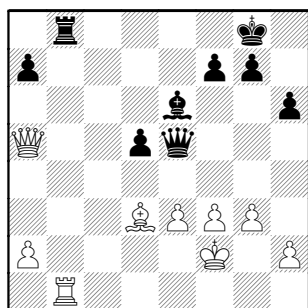


hits loose Rook and hoping to cause discomfort on his backrank

31...Rc8

Love forcing my opponent to retreat !
(Even if nothing else with it.)

32.Qa5 Things suddenly look hopeful!
Both Pawns are targeted, and the d-Pawn can't advance due the loose Queen. **32...Rb8**



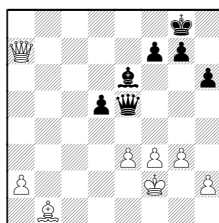
nearly overloading his Queen!

33.f4! Again, forcing his play, but I wasn't sure whose Bishop was happier with the open light squares !!

The real point is to force his Queen away from b2 so that I can win his a-Pawn.

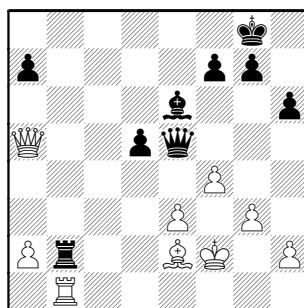
White obviously can't be greedy immediately:

33.Qxa7? Rxb1 34.Bxb1



34...Qb2+ wins my Bishop

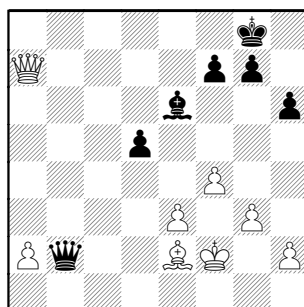
33...Rb2+ 34.Be2



34...Qb8

Two moves ago, I'd thought 34...Qf6 was his only choice. But my reply would've been the same.

35.Rxb2 Qxb2 36.Qxa7

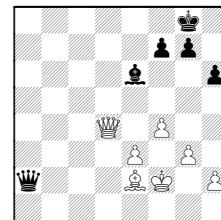


36...Bg4

Black's game seems clearer after 36...d4 which could create different fun after 37.exd4, or could go like game after 37.a4,

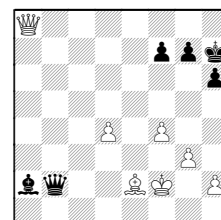
or, finally, a third way isn't so hopeful 37.Qxd4 regardless of recapture:

A) Qxa2



38.Qd8+ Kh7 and a tough win if there is one,

B) 37...Bxa2 38.Qa8+ Kh7

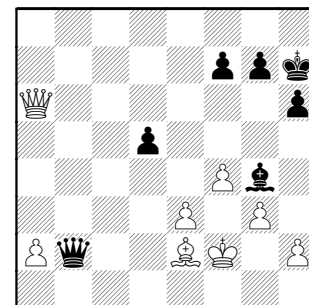


39.Qe4+ g6 (39...Kg8) 40.f5

37.Qa8+!

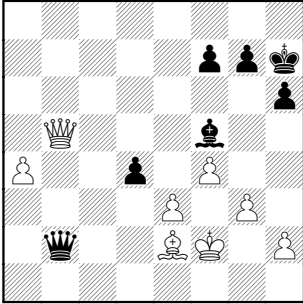
Picked up my Queen to play 37.Qa6 immediately, but started wondering if I'd have a tempo by first forcing King to a square where he can be checked again later. In analysis we'll see I'm glad the check was made.

37...Kh7 38.Qa6



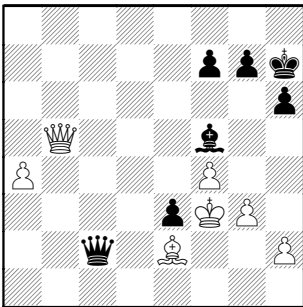
38...Bf5 best place for Bishop, but it solves my problem of breaking the pressure at e2 (I'd planned a4,Qb5 and pushing passer).

39.a4 d4 40.Qb5



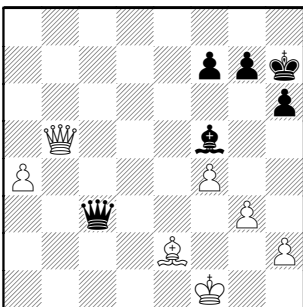
hitting both loose pieces, thinking if forces his Queen to retreat to f6

40...dxe3+ 41.Kf3 Qc2



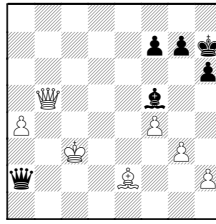
missed this, so now can I dodge a perpetual ? (I was now so focused on making a win, I'd totally forgotten about my team!)

42.Kxe3 Qe4+ 43.Kf2 Qd4+ 44.Ke1 Qc3+ 45.Kf1



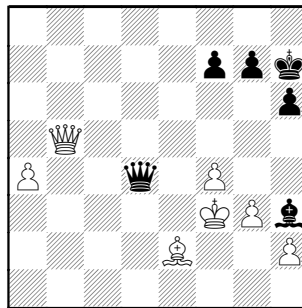
45...Bh3+

I was expecting 45...Qa1+ 46.Kf2 (46.Kg2 Be4+) 46...Qd4+ 47.Ke1 Qa1+ 48.Kd2 Qa2+ 49.Kc3



and my King runs via d4 or b4, meanwhile, his Bishop still hangs. Very happy the way my pieces hang together !

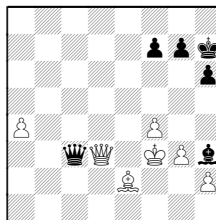
46.Kf2 Qd4+ 47.Kf3



Finally, no more checks!

47...g6

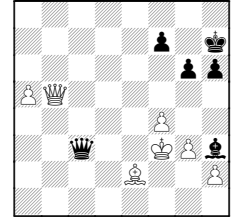
47...Qc3+? 48.Qd3+



and my intermediary check at move #37 proves useful

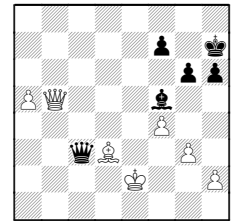
48.Qc4 more forking: Queen and f7.

I was tired of his checks, so didn't even delve into 48.a5 Qc3+



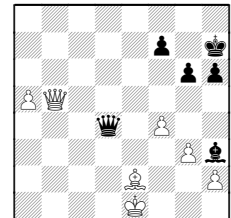
49.Kf2

But I did realize 49.Bd3 Bf5 50.Ke2



no more Queen checks, but 50...Bxd3+ 51.Qxd3 Qxa5 winning my passer

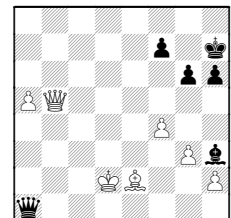
49...Qd4+ 50.Ke1



50...Qc3+

(50...Qa1+ 51.Kd2 also reaches the key square)

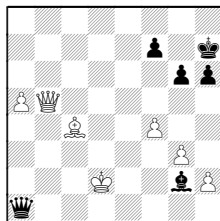
51.Kd1 Qa1+ 52.Kd2



escaping, as explained move #45 52...Bg2? to hold the queening square (but the Bishop can't reach key defensive squares involving f7). This was the general position in mind,

and here it is obvious the King is needed to support the passer so I can get Bc4,Qd7 in and win.

53.Bc4!



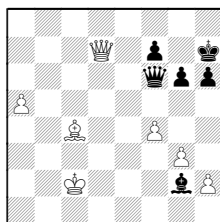
I guess I can abandon the passer if it yields mate !!

53...Qd4+

(53...Kg7? 54.Qe5+; 53...Kg8??

54.Qe8+ mating !)

54.Kc2 Qf6 55.Qd7



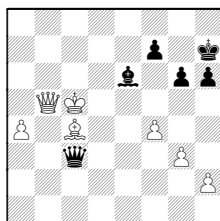
White plays a6-7,Bd5 and wins

Return to middle of last page:

More to the point may be 48.Bc4

Qc3+ 49.Ke4 Bf5+ 50.Kd5 Be6+

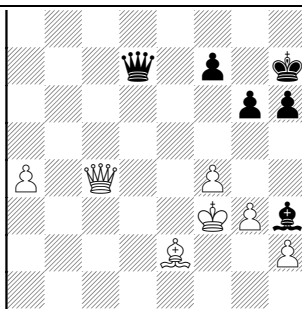
51.Kc5



with the King near the passer, it can be pushed and wait to attack f7 and/or King.

Well, that same diagram (last page) is where we return to game....

48...Qd7

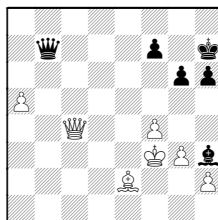


the match had already been decided, so.. DRAW AGREED.

49.Bd3 immediately came to me when a teammate asked why I offered the draw. The point is the King can walk over to the Queen side and help support the passer. Between that passer, the weak f7-Pawn, and the useless nature of the Black King, White should be able to force a win (a plan accomplished many times at speed on the Internet). But against a player of Mark's caliber, it would take some real work.

I almost played 49.Bd1?? idea Bb3 hitting f7 and threatening Qd5. But a blunder-check found the obvious 49...Qxd1+ and it scared me into realizing I was beating up my mind (had a heavy work schedule coming) for nothing. Even 49...Bg4+ 50.Ke3 Bxd1 with threats of Bxa4 or Qe6+ forcing Queens off, is a kill.

My teammate's thought was to simply push the passer 49.a5 Qb7+

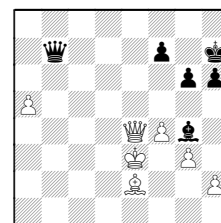


is a problem, as my King must walk

onto a dark square: 50.Ke3

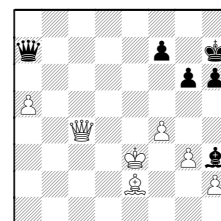
50.Qe4? Bg4+! Incidentally, it's very odd, this move was the immediate reason I gave for why pushing passer was wrong (well, his Queen was at d7 at the time), but I hadn't even considered this line at all ! Just something about my Bishop's placement !

51.Ke3



51...Qxe4+ 52.Kxe4 Bxe2 53.Kd5 Kg7 could be a win for Black, as he can advance his King into the White Pawns. White would be forced to retreat his King to hold.

50...Qa7+



winning the passer but then 51.Kf3 Qxa5 52.Qxf7+ Kh8 53.Qxg6

53.Bc4 Qa8+ 54.Ke3 Bf5 55.Bd5 and, as other endings, White has a long task of dodging checks while trying to progress.

1/2-1/2