

The Chicago Chess Player

The Official Bulletin of the Chicago Industrial Chess League



NWU and St Charles Baker are THE CHAMPIONS !!

CICL Contact List

| | | |
|--|--|--|
| Bulletin Editor/Webmaster Bulletin@ChicagoChessLeague.org | Tom Friske 1035 E Algonquin Road Des Plaines, IL 60016 | H:(847) 299-1033 W:{847} 914-8448 |
| Ratings Chairman Ratings@ChicagoChessLeague.org | Art Olsen 714 E Algonquin Road #J102 Arlington Heights, IL 60006 | H:(847) 437-9819 W:(847) 719-8036 |
| | FAX : to SBS OTS, 22NW0644-5 at (847) 719-8151 | |
| League President President@ChicagoChessLeague.org | Tony Jasaitis | C:(708) 903-6423 W:(312) 264-2044 |
| League Secretary Secretary@ChicagoChessLeague.org | Jerry Thomas 745 Hageman Pl Naperville, IL 60563 | H:(630)420-0188 |
| League Treasurer Treasurer@ChicagoChessLeague.org | Paul Freidel 3N861 Babson Lane St Charles, IL 60175 | |
| Trophy Chairman Trophy@ChicagoChessLeague.org | Marty Franek 9044 S 51 st Avenue Oak Lawn, IL 60453-1730 | H: (708) 636-3714 W: (312) 353-0397 |
| Publicity Chairman Publicity@ChicagoChessLeague.org | Matt Vail | C: (312) 933-1516 W: (630)505-6557 |
| Banquet Chairman Banquet@ChicagoChessLeague.org | Wayne Ellice | H: (708) 636-1303 |

DIVISIONAL CHAIRMEN

| | | |
|--|--|--|
| East Division ChairmanEast@ChicagoChessLeague.org | Jim Duffy 152 Greenway Roselle, IL 60172 | H: (630) 307-2414 W: (312) 220-3252 |
| West Division ChairmanWest@ChicagoChessLeague.org | Bob Buchner 1316 Kallien Court Naperville, IL 60540 | H: (630) 428-7707 W: (630) 979-7707 |
| North Division ChairmanNorth@ChicagoChessLeague.org | Jim Thomson | W: (847) 538-5408 |

Mark Your Calendars with These Key League Dates:

| | |
|--------------------------------|--|
| Fall Business Meeting | Last Wednesday of August (Aug 29 2007) |
| Spring Business Meeting | 3.5 Weeks Before Playoffs (April 16, 2008) |
| Season Playoffs | Second Saturday of May (May 10, 2008) |
| CICL Open | Second Saturday of May (May 10, 2008) |
| League Awards Banquet | First Friday of June (June 7, 2008) |

| | |
|---|---|
| Officer Contact List | 2 |
| Contents of Issue | 3 |
| Words from the Editor | 4 |
| News Midwest Team ! and online CICL Bulletin Board ! | 5 |

REGULAR SEASON WRAP-UP

| | |
|---------------------------|----|
| Final Standings | 7 |
| Final Performance Ratings | 8 |
| Top Ten by Division | 9 |
| Most Improved Players | 9 |
| Match Results | 10 |
| Final Rosters by Team | 24 |

POST-SEASON WRAP-UP

| | |
|---|----|
| Season Awards | 32 |
| Playoff Section Standings and Match Results | 34 |
| CICL Open Standings and Match Results | 37 |
| League Picnic Pictorial | 38 |

SPRING BUSINESS MEETING

| | |
|--------------------|----|
| Meeting Minutes | 40 |
| Treasurer's Report | 45 |

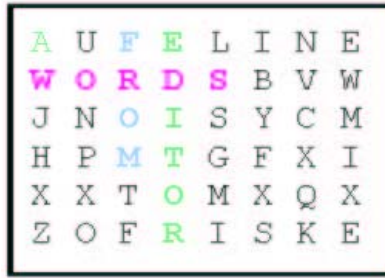
FEATURES

| | |
|-----------------------------------|----|
| US Amateur Team Write-up | 46 |
| Games from the US Amateur | 47 |
| Games as reviewed by The Players | 56 |
| Renaissance Knights Announcements | 69 |

On the cover... The NWU and St Charles Baker CC representatives accept their Championship trophies at the special Awards Picnic held in St Charles June 2nd.

*With contributions from : Art Olsen, Scott Allsbrook,
D.Franklin, Arnie Walker, and Wayne Ellice*

No excuses. Yes, this is the first bulletin published since last January. Neither sleet, nor rain,...., nor delayed ratings reports, nor sloth, are even good reasons. I image I've lost some friends on this one. At any rate, I'm calling this one "2007 Season – Lost Episodes".



Fortunately others have kept their promises and the League finished its 50th season ! How many unions last fifty years these days ? It is an accomplishment of which we should be proud !

I recently was preparing the latest CICL constitution for publishing on the website and it is a hallmark for any chess organization. Clearly readable and indexed to specific concerns or questions you may have, it deserves at least a quick review. I found myself reading it again, in its entirety. Kudos to the volunteers who cared enough to clean up the traditional old one ! At the risk of missing someone, I believe the committee consisted of President Tony Jasaitis, North Chairman Jim Thomson, West Chairman Bob Buchner, Secretary Jerry Thomas, Brian Smith, and Irwin Gaines. The League thanks you for your service !

So here we are at the middle of our off-season; a good time to review the past season and plan for the coming. Before I forget, please plan to attend the Fall Business Meeting scheduled for August 29th. The site is yet to be announced, but this is your bi-annual chance to make your ideas known and hear what's going on in the League. As always, officers are required to attend but are allowed to submit reports electronically. I'm even remembering to work my vacation days around it this time ! (Have had the odd habit of being out-of-town on meeting days !)

But what about the "Lost Episodes" ? In this cumulative issue, you'll find an excellent article written by Fred Allsbrook about the US Amateur Team held in February and games (yea!) by the players. (Fred, what can I say ? It's old news by now, yes, but I believe the League is more interested in your work, both written and representing us, than you realize.). For an amateur organization, we've had great results at this annual tournament.

Additionally, February was a month of introduction to the full extent of team chess in Illinois. I was personally introduced to the State High School Team Chess finals through a new teammate. Then, oddly, another new teammate needed help monitoring a Grade School individual tournament a couple weeks later. Out of idle curiosity, I found time to go to both of these; an article is coming next month that hopefully will spur some thought on ways the CICL could be improved. Even so, it was an eye-opener of how vital chess is to the community at the young adult level. There's a lot more enthusiasm for our game that I realized !

No season overview is complete without details about the playoff battles or the Awards Banquet, so you'll definitely catch up with this issue.

And we had a Spring Business meeting in April that needs official documenting, so find the Meeting Minutes and Treasurer's reports inside as well.

On a personal note, it really is depressing looking back six months and realizing I have WOW! Stopped right in mid-sentence there thinking to write "...nothing to really list as accomplishments." But it simply isn't true. Maybe nothing "Tom's-world"-shattering has occurred, but to say I have nothing for which to be thankful? I must have an attitude problem.

My chess results are dropping off, but then I have to admit I guess my quality of study hasn't really been the same either. Either way, very discouraging. Didn't even feel like I had the ability to represent the CICL at the USATM when invited last minute. And then the just-completed World Open (writing this while waiting at PHI) was a bumper-crop of blunders. I just couldn't keep up calculating accurately; also dropped a lot of promising lines too early in OTB analysis. Yea, there was a lot of long hours at work in the past months, and hassling from the boss, and evenings at the Walgreen CC... but the improvement isn't happening like it used to. Hmmm, wasn't there a couple bulletin articles a couple seasons back on improving with minimal time ? Somebody needs to do some review ! Chess used to have a hold on my emotions; now the losses habitually pile up and the wins just aren't that sweet.

One major distraction was my recent trip to the Holy Land (Jordan and Israel) last April, something I've wanted to do for decades and finally got the chance. My uncle's church has organized trips for over 10 years and they decided to go this year. Their thought to invite my mother made a thought for my mother to invite me, and next thing I know the deposit was paid and I was committed ! Jordan was especially surprising, both in its modern conditions (well, the cities at least) and their literally open-arm greeting of Americans. It went a lot deeper than wanting our money; it was the kids' smiles and "You're Americans, yes? Welcome!" that won me over. A real eye-opener. (Incidentally, I've created a 24-minute video from pictures taken. Anyone can have one for the asking. It's a work in progress)

I'm running low on space, so I guess that's it until next month (hopefully)! Catch up on the "CICL's Lost Episodes" !

Happy Browsing!

Tom Friske, Bulletin Editor

Just because it's summertime doesn't mean we don't have any chance to play chess ! Keep an eye on the Renaissance Knights' website, : www.RenKnights.org

FALL BUSINESS MEETING --- AUGUST 29th 7PM .

Details coming, but keep the night open NOW!

All officers and Captains must attend !

Looking for a place to play in the Western Suburbs?

Come one come all to CA on the **second Tuesday of each Month**, for a night of chess from 6:30 to 10pm.

- League members and guests invited
- Bring a set and clock
- Invite a league opponent or team member
- Play a league time control game, blitz* or analyze past games.
- * If enough interest in Blitz, we may set aside a place for those wishing to play in a quieter setting.

Regardless of turnout, we will provide a venue to play on this night. If it proves popular, we may expand to an additional evening. This is an opportunity to find and play league members in a central location. If games are recorded, we can submit them for ratings and recognition.

This is also a great way to invite potential new members, showcase play for new teams or make up a rescheduled/adjourned game.

For more information, you may e-mail me at matthew.vail@ca.com . Hope to see you on the 10th.

CA – Chess Always!!

July 20 - Harry Potter Human Chess Match

By popular demand, **Renaissance Knights**

is hosting a tournament of life-size chess games as part of Oak Park's

Harry Potter and the Deathly Hallows Book Release Festival.

Children & adults will act as chess pieces while special guests direct their "men" from the Scoville stage.

The Scoville Park location allows ample room for players & on-lookers.

All people acting as chess pieces will receive a special gift & the winning team members will receive an extra prize

If you would like to participate in this event you can reserve a space before July 15th by email RKNIGHTSCCC@aol.com.

Volunteers who sign up early can select the piece they would like to represent.

Over 10,000 people are expected to attend the festival.

Well, **we got national-level publicity** from our USAT team! The USCF website front-page article mentions the CICL team and includes a picture of Tam and Robert (see right).

The write-up on the USCF website is at:
http://beta.uschess.org/frontend/news_7_276.php

The team finished in 2nd place the "right" way: By making it to the top pairing in the last round vs the top seed of the tournament, placing our League on many people's lips. Congrats again!



Read the detail elsewhere in this issue !

July 15 - 3RD Coast Challenge

Renaissance Hotel, 933 Skokie Blvd, Northbrook

Open & U1800: 4-round SS, **Game/60. Prize Fund: \$\$700 b/50**

Open: \$150, \$100, \$50, U2000 \$50. Under 1800: \$150, 100, \$50, U1600 \$50

Check-in: 9:00-9:30 AM. Rounds: 10:00-12:15-2:30-4:45

Entry Fee: \$30 postmarked by July 9, \$35 after

U1200: 4-round SS, **Game 45. Trophies: Top 5** All others participation medal

Check-in: 9:00-9:30 AM. Round 1 at 10:00 rest ASAP

Entry Fee: \$20 postmarked by July 9, \$25 after

<http://www.eventbrite.com/event/59411702>

Questions: David Heiser Tel: 847-526-9025

RENAISSANCE KNIGHTS FOUNDATION

A 501 (C) (3) nonprofit org formed to improve academic, intellectual & social skills through chess...

www.RenaissanceKnights.org

www.IllinoisScholasticChess.org

In case anybody is interested in holding the office of President, I will be happy to step aside for new blood.

If no one wishes to step forward, I won't refuse another term.

Tony

FINAL 2006-2007 SEASON STANDINGS

EAST DIVISION 04-25-2007

| TEAM NAME | W | L | D | GAME | MATCH | PCT |
|-------------------------|---|---|---|--------|--------|-------|
| | | | | POINTS | POINTS | |
| NORTHWESTERN CHESS CLUB | 6 | 1 | 1 | 34.5 | 6.5 | 0.813 |
| HEDGEHOGS | 5 | 2 | 1 | 32.5 | 5.5 | 0.688 |
| ALUMNI ACES | 4 | 3 | 1 | 21.5 | 4.5 | 0.563 |
| CITADEL GROUP | 2 | 3 | 3 | 25.5 | 3.5 | 0.438 |
| AMA TORNADO SNAKES | 0 | 8 | 0 | 5.0 | 0.0 | 0.000 |

NORTH DIVISION 04-25-2007

| TEAM NAME | W | L | D | GAME | MATCH | PCT |
|------------------|---|---|---|--------|--------|-------|
| | | | | POINTS | POINTS | |
| MOTOROLA KNIGHTS | 9 | 1 | 0 | 47.5 | 9.0 | 0.900 |
| WALGREENS | 7 | 2 | 1 | 39.5 | 7.5 | 0.750 |
| UOP | 6 | 4 | 0 | 32.5 | 6.0 | 0.600 |
| MOTOROLA KINGS | 5 | 4 | 1 | 28.5 | 5.5 | 0.550 |
| NORTHROP | 1 | 8 | 1 | 16.5 | 1.5 | 0.150 |
| EXCALIBURS | 0 | 9 | 1 | 11.5 | 0.5 | 0.050 |

WEST DIVISION 04-25-2007

| TEAM NAME | W | L | D | GAME | MATCH | PCT |
|-----------------------|---|---|---|--------|--------|-------|
| | | | | POINTS | POINTS | |
| ST CHARLES BAKER | 9 | 0 | 1 | 42.5 | 9.5 | 0.950 |
| ST CHARLES CHESS CLUB | 9 | 1 | 0 | 45.5 | 9.0 | 0.900 |
| FERMILAB | 6 | 3 | 1 | 35.0 | 6.5 | 0.650 |
| LUCENT TECH. DRAGONS | 6 | 4 | 0 | 32.0 | 6.0 | 0.600 |
| LUCENT TECH. TYROS | 5 | 3 | 2 | 32.5 | 6.0 | 0.600 |
| PAWNS | 4 | 5 | 1 | 30.5 | 4.5 | 0.450 |
| MOLEX | 3 | 5 | 2 | 23.0 | 4.0 | 0.400 |
| ARGONNE ROOKS | 3 | 6 | 1 | 28.5 | 3.5 | 0.350 |
| CA | 2 | 7 | 1 | 20.5 | 2.5 | 0.250 |
| BP CHICAGOLAND | 2 | 8 | 0 | 15.0 | 2.0 | 0.200 |
| CASE | 1 | 8 | 1 | 16.0 | 1.5 | 0.150 |

CICL Performance Ratings
04/20/2007

| Team | Division | Games Ave | Board PR | Match PR | PR (B+M) / 2 | Adjusted PR |
|-------------------------|----------|-----------|----------|----------|--------------|-------------|
| ST CHARLES BAKER | West | 7.2 | 1861.3 | 1943.9 | 1903 | 2103 |
| ST CHARLES CHESS CLUB | West | 7.5 | 1882.4 | 1905.5 | 1894 | 2094 |
| MOTOROLA KNIGHTS | North | 5.7 | 1990.4 | 1951.3 | 1971 | 2007 |
| NORTHWESTERN CHESS CLUB | East | 5.0 | 1759.4 | 1845.7 | 1803 | 1966 |
| WALGREENS | North | 8.3 | 1887.6 | 1905.6 | 1897 | 1933 |
| LUCENT TECH. TYROS | West | 9.0 | 1715.4 | 1729.8 | 1723 | 1923 |
| FERMILAB | West | 8.7 | 1725.3 | 1707.3 | 1716 | 1916 |
| HEDGEHOGS | East | 5.2 | 1747.4 | 1733.2 | 1740 | 1904 |
| LUCENT TECH. DRAGONS | West | 7.2 | 1646.3 | 1682.3 | 1664 | 1864 |
| ALUMNI ACES | East | 5.0 | 1641.6 | 1707.3 | 1674 | 1838 |
| CITADEL GROUP | East | 4.8 | 1633.0 | 1680.0 | 1657 | 1820 |
| PAWNS | West | 7.8 | 1614.2 | 1603.9 | 1609 | 1809 |
| ARGONNE ROOKS | West | 7.0 | 1623.0 | 1590.5 | 1607 | 1807 |
| UOP | North | 8.2 | 1761.4 | 1773.2 | 1767 | 1804 |
| MOLEX | West | 7.7 | 1563.1 | 1631.0 | 1597 | 1797 |
| MOTOROLA KINGS | North | 8.2 | 1696.5 | 1785.1 | 1741 | 1777 |
| CA | West | 7.3 | 1518.6 | 1520.3 | 1519 | 1719 |
| NORTHROP | North | 7.3 | 1584.5 | 1582.1 | 1583 | 1620 |
| CASE | West | 7.3 | 1403.9 | 1351.9 | 1378 | 1578 |
| BP CHICAGOLAND | West | 5.5 | 1338.1 | 1395.0 | 1367 | 1567 |
| EXCALIBURS | North | 7.2 | 1536.6 | 1488.5 | 1513 | 1549 |
| AMA TORNADO SNAKES | East | 3.2 | 1268.0 | 1253.0 | 1261 | 1424 |

EAST DIVISION TOP TEN

| | | |
|----------------|-------|-------|
| FRANKLIN, D | HEDGE | 2164 |
| BAKSHI, A | NWEST | 2083 |
| CHAN, ROBERT | NWEST | 2061 |
| BROCK, B | ALUMN | 2061 |
| GORODETSKIY, S | NWEST | 2039 |
| RAUCHMAN, M | HEDGE | 2037 |
| BENESA, A | ALUMN | 2020C |
| SOLLANO, E | ALUMN | 2015C |
| JASAITIS, A | HEDGE | 1977D |
| SMALLWOOD, J | NWEST | 1958 |

NORTH DIVISION TOP TEN

| | | |
|-------------|-------|-------|
| MORRIS, R | MKNGT | 2233 |
| FRIDMAN, Y | MKNGT | 2203 |
| WONG, P | EXCLB | 2166C |
| FRISKE, T | WALGR | 2059C |
| LEVENSON, S | WALGR | 2024 |
| THOMSON, J | MKNGT | 2011C |
| MELNIKOV, I | MKING | 2006C |
| WALLACH, C | MKING | 1960C |
| SIWEK, M | UOP | 1942D |
| LEE, D | EXCLB | 1936 |

WEST DIVISION TOP TEN

| | | |
|--------------|-------|-------|
| GARZON, G | FERMI | 2283 |
| MARSHALL, J | STCCC | 2249 |
| JAKSTAS, K | PAWNS | 2196D |
| NGUYEN, T | BAKER | 2177 |
| ALLSBROOK, F | CA | 2139 |
| BENEDEK, R | ROOKS | 2136T |
| DORIGO, T | FERMI | 2126 |
| GAZMEN, E | PAWNS | 2087C |
| DIAZ, P | TYROS | 2086C |
| RASO, P | BAKER | 2065 |

MOST IMPROVED PLAYERS

| | | |
|----------------|-------|-----|
| MUHS, A | CITGR | 153 |
| MCGOWAN, D | MOLEX | 144 |
| MARSHALL, J | STCCC | 138 |
| LEVENSON, S | WALGR | 137 |
| GORODETSKIY, S | NWEST | 130 |
| STOSKUS, A | STCCC | 103 |
| BAKSHI, A | NWEST | 95 |
| WALKER, A | NORTH | 91 |
| SMALLWOOD, J | NWEST | 84 |
| RUFUS, B | MOLEX | 82 |

08-FEB-07 MOTOROLA KINGS 5.5 EXCALIBURS .5

ROUND 6

| BD | RATINGS | SCORE | RATINGS | SCORE |
|-----------------|---------|-------|------------|------------------|
| 1 WALLACH, C | 1988 3 | 1 | WEITZ, R | 1579 -3 0 |
| 2 PIPARIA, J | 1858 6 | 1 | SUERTH, F | 1523 -4 0 |
| 3 CYGAN, J | 1750-12 | .5 | BROTSOS, J | 1545 8 .5 |
| 4 GONCHAROFF, N | 1632 0 | 1F | | 0 0 0F |
| 5 JOSHI, B | 1582 0 | 1F | | 0 0 0F |
| 6 RABINOVICH, E | 1517 0 | 1F | | 0 0 0F |
| 7 RABINOVICH, E | 1517 -3 | 0 | LEE, D | 1967 3 1 |
| 8 GONCHAROFF, N | 1632 -4 | 0 | BALICKI, J | 1875 6 1 (MKNGT) |

15-FEB-07 NORTHROP 2.5 WALGREENS 3.5

ROUND 7

| BD | RATINGS | SCORE | RATINGS | SCORE |
|--------------|---------|-------|---------------|------------|
| 1 AROND, D | 1767 9 | .5 | GRANATA, M | 1898 -9 .5 |
| 2 WALKER, A | 1824 30 | 1 | SANTIAGO, T | 1951-20 0 |
| 3 ENGELEN, M | 1657 0 | 1 | BIALON, D | 0 0 0 |
| 4 VIGANTS, A | 1610 0 | 0 | HAMELINK, N | 0 0 1 |
| 5 AUBRY, B | 1579 0 | 0 | BOSIBHATLA, D | 0 0 1 |
| 6 | 0 0 | 0F | HUGHES, N | 1629 0 1F |

22-FEB-07 MOTOROLA KNIGHTS 4 MOTOROLA KINGS 1

ROUND 7

| BD | RATINGS | SCORE | RATINGS | SCORE |
|---|---------|-------|---------------|------------|
| 1 MORRIS, R | 2252 9 | 1 | MELNIKOV, I | 2012 -6 0 |
| 2 FRIDMAN, Y | 2199 10 | 1 | WALLACH, C | 1991 -7 0 |
| 3 THOMSON, J | 2019 -6 | .5 | PIPARIA, J | 1864 10 .5 |
| * Board 4 not played as agreed by both team captains. | | | | |
| 4 | 0 0 | 0F | | 0 0 0F |
| 5 CHERKASSKY, G | 1632 -1 | .5 | GONCHAROFF, N | 1628 0 .5 |
| 6 DUONG, R | 0 0 | 1 | RABINOVICH, E | 1514 0 0 |

15-MAR-07 EXCALIBURS 0 UOP 6

ROUND 7

| BD | RATINGS | SCORE | RATINGS | SCORE |
|---------------|---------|-------|-------------|-----------|
| 1 WONG, P | 2166 0 | 0F | BOLDINGH, E | 1900 0 1F |
| 2 SULLIVAN, J | 1756 -7 | 0 | SIWEK, M | 1948 7 1 |
| 3 WEITZ, R | 1576 -4 | 0 | LEONG, G | 1919 4 1 |
| 4 SUERTH, F | 1519 -3 | 0 | EASTON, R | 1905 4 1 |
| 5 | 0 0 | 0F | LECHNICK, J | 1733 0 1F |
| 6 | 0 0 | 0F | MICKLICH, F | 1541 0 1F |

01-MAR-07 UOP 4 MOTOROLA KINGS 2

ROUND 8

| BD | RATINGS | SCORE | RATINGS | SCORE |
|------------------|---------|-------|---------------|--------------|
| 1 LEONG, G | 1923 19 | 1 | MELNIKOV, I | 2006-19 0 |
| 2 BOLDINGH, E | 1900-11 | 0 | WALLACH, C | 1984 11 1 |
| 3 EASTON, R | 1909-25 | 0 | PIPARIA, J | 1874 25 1 |
| 4 SIWEK, M | 1955 4 | 1 | GONCHAROFF, N | 1628 -3 0 |
| 5 LECHNICK, J | 1733 6 | 1 | GRYPARIS, J | 1395 -4 0 |
| 6 NALLATHAMBI, R | 1600 0 | 1 | LEE, DON | 0 0 0 |
| 7 OLSEN, A | 1480 0 | 1 | RAMIREZ, A | 0 0 0 (UOP) |

08-MAR-07 MOTOROLA KNIGHTS 5.5 NORTHROP .5

ROUND 8

| BD | RATINGS | SCORE | | RATINGS | SCORE |
|-----------------|---------|-------|------------|---------|------------|
| 1 MORRIS, R | 2261-19 | .5 | WALKER, A | 1854 19 | .5 |
| 2 FRIDMAN, Y | 2209 3 | 1 | AROND, D | 1776 -3 | 0 |
| 3 THOMSON, J | 2013 3 | 1 | ENGELN, M | 1657 -5 | 0 |
| 4 BALICKI, J | 1881 5 | 1 | VIGANTS, A | 1610 -5 | 0 |
| 5 KARANDIKAR, S | 1645 18 | 1 | AUBRY, B | 1579-18 | 0 |
| 6 DUONG, R | 0 0 | 1F | | 0 0 | 0F |
| 7 ALFONSO, E | 1467 0 | .5 | DUONG, R | 0 0 | .5 (MKNGT) |

20-MAR-07 WALGREENS 6 EXCALIBURS 0

ROUND 8

| BD | RATINGS | SCORE | | RATINGS | SCORE |
|---------------|---------|-------|-----------|---------|-------|
| 1 LEVENSON, S | 1940 24 | 1 | LEE, D | 1970-24 | 0 |
| 2 SANTIAGO, T | 1931 3 | 1 | SUERTH, F | 1516 -3 | 0 |
| 3 BIALON, D | 0 0 | 1F | | 0 0 | 0F |
| 4 ANSARI, N | 1568 0 | 1F | | 0 0 | 0F |
| 5 HUGHES, N | 1629 0 | 1F | | 0 0 | 0F |
| 6 HAMELINK, N | 0 0 | 1F | | 0 0 | 0F |

17-JAN-07 ALUMNI ACES 4 AMA TORNADO SNAKES 1

ROUND 6

| BD | RATINGS | SCORE | | RATINGS | SCORE |
|--------------|---------|-------|-------------|---------|-------|
| 1 BENESA, A | 2045-29 | 0 | PETERSON, T | 1452 44 | 1 |
| 2 BROCK, B | 2061 1 | 1 | FURTNER, F | 1442 -1 | 0 |
| 3 SOLLANO, E | 2006 1 | 1 | MASITI, J | 1342 -1 | 0 |
| 4 ALLEN, H | 1940 0 | 1 | MEYER, C | 0 0 | 0 |
| 5 EAMAN, R | 1894 0 | 1 | PIWOWAR, T | 0 0 | 0 |
| 6 | 0 0 | 0F | | 0 0 | 0F |

15-FEB-07 CITADEL GROUP 2 ALUMNI ACES 4

ROUND 7

| BD | RATINGS | SCORE | | RATINGS | SCORE |
|-----------------|---------|-------|------------|---------|-------|
| 1 HAYHURST, W | 1920 9 | .5 | BROCK, B | 2062 -9 | .5 |
| 2 LE, DUC | 1698 -6 | 0 | BENESA, A | 2016 4 | 1 |
| 3 ONG, K | 1837-12 | 0 | SOLLANO, E | 2007 8 | 1 |
| 4 MUHS, A | 1525 18 | .5 | EAMAN, R | 1894-18 | .5 |
| 5 SENSAT, J | 1594 -5 | 0 | ALLEN, H | 1940 5 | 1 |
| 6 KUNHIRAMAN, P | 1588 0 | 1F | | 0 0 | 0F |

05-FEB-07 NORTHWESTERN CHESS CLUB 4.5 HEDGEHOGS 1.5

ROUND 7

| BD | RATINGS | SCORE | | RATINGS | SCORE |
|------------------|---------|-------|-------------|---------|-------|
| 1 CHAN, ROBERT | 2077-18 | 0 | FRANKLIN, D | 2154 18 | 1 |
| 2 GORODETSKIY, S | 1938 33 | 1 | RAUCHMAN, M | 2109-33 | 0 |
| 3 SMALLWOOD, J | 1867 28 | 1 | SMITH, M | 1954-28 | 0 |
| 4 SOLOMON, A | 0 0 | 1 | JASAITIS, A | 1976 0 | 0 |
| 5 RODNYANSKY, S | 1759 -7 | .5 | TAN, A | 1662 7 | .5 |
| 6 MARTELL, J | 0 0 | 1F | | 0 0 | 0F |

15-MAR-07 AMA TORNADO SNAKES 0 CITADEL GROUP 6

ROUND 8

| BD | RATINGS | SCORE | | RATINGS | SCORE |
|-----------------|---------|-------|----------------|---------|-------|
| 1 PETERSON, T | 1496-11 | 0 | LE, DUC | 1692 11 | 1 |
| 2 FURTNER, F | 1441-16 | 0 | MUHS, A | 1543 16 | 1 |
| 3 GOODFRIEND, B | 1236 -5 | 0 | KUNHIRAMAN, P | 1588 5 | 1 |
| 4 MEYER, C | 0 0 | 0 | SENSAT, J | 1589 0 | 1 |
| 5 PIOWAR, T | 0 0 | 0 | PROKOPOWICZ, P | 0 0 | 1 |
| 6 B, ABBOTT | 0 0 | 0 | PARRA, J | 0 0 | 1 |

08-FEB-07 PAWNS 1.5 LUCENT TECH. DRAGONS 4.5

ROUND 8

| BD | RATINGS | SCORE | | RATINGS | SCORE |
|----------------|---------|-------|---------------|---------|-------|
| 1 LATIMER, E | 2017 1 | .5 | TEGEL, F | 2030 0 | .5 |
| 2 ELLICE, W | 1829 -9 | 0 | LUDWIG, T | 1974 9 | 1 |
| 3 FRANEK, M | 1685 -5 | 0 | MARCOWKA, R | 1961 5 | 1 |
| 4 FABIJONAS, R | 1577-12 | 0 | STAMM, V | 1500 12 | 1 |
| 5 SPITZIG, M | 1456-23 | 0 | EUSTACE, D | 1447 15 | 1 |
| 6 CHRISTIAN, T | 0 0 | 1 | BREYER, A | 1348 0 | 0 |
| 7 MIKULECKY, B | 1415 -4 | .5 | KOMORAVOLU, K | 1317 7 | .5 |

08-FEB-07 ST CHARLES CHESS CLUB 5 CA 1

ROUND 8

| BD | RATINGS | SCORE | | RATINGS | SCORE |
|---------------|---------|-------|--------------|---------|-------|
| 1 MARSHALL, J | 2190 24 | 1 | ALLSBROOK, F | 2214-24 | 0 |
| 2 WIEWEL, J | 1999 10 | 1 | DENMARK, T | 1778-10 | 0 |
| 3 SUITS, J | 1632-25 | 0 | VAIL, M | 1592 25 | 1 |
| 4 ALBERTS, W | 1596 13 | 1 | BYRNE, M | 1436-13 | 0 |
| 5 PADILLA, R | 1594 13 | 1 | HANSON, M | 1434-13 | 0 |
| 6 GIBSON, B | 1308 0 | 1F | | 0 0 | 0F |

08-FEB-07 MOLEX 2 FERMILAB 4

ROUND 8

| BD | RATINGS | SCORE | | RATINGS | SCORE |
|------------------|---------|-------|------------|---------|-------|
| 1 REICH, T | 1824 -3 | 0 | GARZON, G | 2278 3 | 1 |
| 2 ZADEREJ, V | 1644 -6 | 0 | SPIEGEL, L | 1985 4 | 1 |
| 3 HENDRICKSON, B | 1555-11 | 0 | GAINES, I | 1742 8 | 1 |
| 4 MCGOWAN, D | 1374 0 | 1 | SEDOV, A | 0 0 | 0 |
| 5 RUFUS, B | 1308-11 | 0 | DEGRAF, B | 1497 11 | 1 |
| 6 JONNALA, B | 0 0 | 1 | MOEHS, D | 1415 0 | 0 |

08-FEB-07 BP CHICAGOLAND 3 CASE 2

ROUND 8

| BD | RATINGS | SCORE | | RATINGS | SCORE |
|-------------------|---------|-------|--------------|---------|-------|
| 1 COULTER, D | 1900 -9 | .5 | DOWELL, E | 1768 9 | .5 |
| 2 CASTANEDA, R | 1271 11 | .5 | REID, C | 1443 -7 | .5 |
| 3 ZUBIK, J | 1177-14 | 0 | ZOELLNER, J | 1317 9 | 1 |
| 4 SUVARNAKANTI, R | 1177 0 | 1F | DYCKOWSKI, R | 1311 0 | 0F |
| 5 | 0 0 | 1F | | 0 0 | 0F |
| 6 | 0 0 | 0F | | 0 0 | 0F |

07-MAR-07 FERMILAB**2.5 ST CHARLES CHESS CLUB 3.5**

ROUND 9

| BD | RATINGS | SCORE | RATINGS | SCORE |
|--------------|---------|-------|---------------|------------|
| 1 GARZON, G | 2281 -5 | .5 | MARSHALL, J | 2214 5 .5 |
| 2 SPIEGEL, L | 1989-14 | 0 | WIEWEL, J | 2009 21 1 |
| 3 GAINES, I | 1750-13 | 0 | MEISSEN, B | 1796 20 1 |
| 4 DEGRAF, B | 1508 7 | .5 | SUITS, J | 1607 -7 .5 |
| 5 SEDOV, A | 0 0 | 1 | ALBERTS, W | 1609 0 0 |
| 6 CEASE, H | 1468 9 | .5 | PADILLA, R | 1607 -9 .5 |
| 7 ANNIS, J | 0 0 | .5 | DJORDJEVIC, V | 1595 0 .5 |
| 8 MOEHS, D | 1415 7 | .5 | POWERS, E | 1524 -7 .5 |

15-MAR-07 BP CHICAGOLAND**4 PAWNS 2**

ROUND 9

| BD | RATINGS | SCORE | RATINGS | SCORE |
|-----------------|---------|-------|--------------|-----------|
| 1 COULTER, D | 1891 18 | 1 | ELLICE, W | 1820-12 0 |
| 2 RINGENBERG, T | 1438 36 | 1 | FRANEK, M | 1680-24 0 |
| 3 CASTANEDA, R | 1282 38 | 1 | FABIJONAS, R | 1565-17 0 |
| 4 ZUBIK, J | 1163 37 | 1 | SPITZIG, M | 1433-37 0 |
| 5 HERMAN, J | 0 0 | 0 | MIKULECKY, B | 1411 0 1 |
| 6 | 0 0 | 0F | | 0 0 1F |

22-FEB-07 ARGONNE ROOKS**4 LUCENT TECH. TYROS 2**

ROUND 9

| BD | RATINGS | SCORE | RATINGS | SCORE |
|--------------|---------|-------|---------------|-----------|
| 1 BENEDEK, R | 2151-13 | 0 | DIAZ, P | 2059 19 1 |
| 2 HILL, R | 2000 11 | 1 | STOLTZ, B | 1899-11 0 |
| 3 GREEN, D | 1923 10 | 1 | DOBROVOLNY, C | 1812-10 0 |
| 4 SUAREZ, E | 1838 13 | 1 | BUCHNER, R | 1678 -9 0 |
| 5 BAURAC, D | 1831-25 | 0 | SMITH, BR | 1552 25 1 |
| 6 DERIY, B | 1459 21 | 1 | LAForge, W | 1430-21 0 |

26-FEB-07 MOLEX**4.5 CA 1.5**

ROUND 9

| BD | RATINGS | SCORE | RATINGS | SCORE |
|------------------|---------|-------|--------------|------------|
| 1 REICH, T | 1821 -5 | 0 | ALLSBROOK, F | 2190 5 1 |
| 2 ZADEREJ, V | 1638 31 | 1 | DENMARK, T | 1768-31 0 |
| 3 HENDRICKSON, B | 1544 5 | .5 | VAIL, M | 1617 -5 .5 |
| 4 MCGOWAN, D | 1374 26 | 1 | BYRNE, M | 1423-26 0 |
| 5 RUFUS, B | 1297 22 | 1 | MCCLENDON, L | 1295-22 0 |
| 6 JONNALA, B | 0 0 | 1F | | 0 0 0F |

15-MAR-07 LUCENT TECH. DRAGONS**4 CASE 2**

ROUND 9

| BD | RATINGS | SCORE | RATINGS | SCORE |
|-----------------|---------|-------|--------------|-----------|
| 1 LUDWIG, T | 1983 7 | 1 | DOWELL, E | 1777-11 0 |
| 2 MARCOWKA, R | 1966 1 | 1 | REID, C | 1436 -1 0 |
| 3 STAMM, V | 1512-15 | 0 | DYCKOWSKI, R | 1311 34 1 |
| 4 EUSTACE, D | 1462-21 | 0 | ZOELLNER, J | 1326 21 1 |
| 5 THOMAS, J | 1478 0 | 1F | | 0 0 0F |
| 6 KOMORAVOLU, K | 1324 0 | 1F | | 0 0 0F |

14-MAR-07 LUCENT TECH. TYROS 4 FERMILAB 2

ROUND 10

| BD | RATINGS | SCORE | | RATINGS | SCORE |
|-----------------|---------|-------|------------|---------|-------|
| 1 DIAZ, P | 2078 -7 | 0 | GARZON, G | 2276 11 | 1 |
| 2 STOLTZ, B | 1888 19 | 1 | SPIEGEL, L | 1975-19 | 0 |
| 3 GUIO, J | 1858 10 | 1 | GAINES, I | 1737-10 | 0 |
| 4 DOBROVOLNY, C | 1802 7 | 1 | STAPLES, C | 1602-11 | 0 |
| 5 BUCHNER, R | 1669 9 | 1 | DEGRAF, B | 1515-13 | 0 |
| 6 HAHNE, D | 1684 0 | 0 | SEDOV, A | 0 0 | 1 |

22-MAR-07 CASE 1 MOLEX 5

ROUND 10

| BD | RATINGS | SCORE | | RATINGS | SCORE |
|-----------------|---------|-------|----------------|---------|-------|
| 1 DOWELL, E | 1766-19 | 0 | REICH, T | 1816 19 | 1 |
| 2 REID, C | 1435 -6 | 0 | ZADEREJ, V | 1669 9 | 1 |
| 3 DYCZKOWSKI, R | 1345 34 | 1 | HENDRICKSON, B | 1549-34 | 0 |
| 4 ZOELLNER, J | 1347-13 | 0 | MCGOWAN, D | 1400 19 | 1 |
| 5 | 0 0 | 0F | RUFUS, B | 1319 0 | 1F |
| 6 | 0 0 | 0F | JONNALA, B | 0 0 | 1F |

20-MAR-07 LUCENT TECH. TYROS 1 ST CHARLES CHESS CLUB 4

ROUND 11

| BD | RATINGS | SCORE | | RATINGS | SCORE |
|---|---------|-------|---------------|---------|-------|
| 1 DIAZ, P | 2071 21 | 1 | MARSHALL, J | 2219-32 | 0 |
| * BOARD 2 IS SCHEDULED TO BE PLAYED ON 3/29 | | | | | |
| 2 STOLTZ, B | 1907 | | WIEWEL, J | 2030 | |
| 3 GUIO, J | 1868 -8 | 0 | SPLINTER, J | 2051 12 | 1 |
| 4 DOBROVOLNY, C | 1809-23 | 0 | SUITS, J | 1600 35 | 1 |
| 5 BUCHNER, R | 1678-19 | 0 | DJORDJEVIC, V | 1595 28 | 1 |
| 6 HAHNE, D | 1684-19 | 0 | PADILLA, R | 1598 28 | 1 |
| 7 SMITH, BR | 1577 12 | 1 | POWERS, E | 1517-19 | 0 |

08-FEB-07 MOTOROLA KINGS 5.5 EXCALIBURS .5

ROUND 6

| BD | RATINGS | SCORE | | RATINGS | SCORE |
|-----------------|---------|-------|------------|---------|-----------|
| 1 WALLACH, C | 1988 3 | 1 | WEITZ, R | 1579 -3 | 0 |
| 2 PIPARIA, J | 1858 6 | 1 | SUERTH, F | 1523 -4 | 0 |
| 3 CYGAN, J | 1750-12 | .5 | BROTSOS, J | 1545 8 | .5 |
| 4 GONCHAROFF, N | 1632 0 | 1F | | 0 0 | 0F |
| 5 JOSHI, B | 1582 0 | 1F | | 0 0 | 0F |
| 6 RABINOVICH, E | 1517 0 | 1F | | 0 0 | 0F |
| 7 RABINOVICH, E | 1517 -3 | 0 | LEE, D | 1967 3 | 1 |
| 8 GONCHAROFF, N | 1632 -4 | 0 | BALICKI, J | 1875 6 | 1 (MKNGT) |

15-FEB-07 NORTHROP 2.5 WALGREENS 3.5

ROUND 7

| BD | RATINGS | SCORE | | RATINGS | SCORE |
|--------------|---------|-------|---------------|---------|-------|
| 1 AROND, D | 1767 9 | .5 | GRANATA, M | 1898 -9 | .5 |
| 2 WALKER, A | 1824 30 | 1 | SANTIAGO, T | 1951-20 | 0 |
| 3 ENGELEN, M | 1657 0 | 1 | BIALON, D | 0 0 | 0 |
| 4 VIGANTS, A | 1610 0 | 0 | HAMELINK, N | 0 0 | 1 |
| 5 AUBRY, B | 1579 0 | 0 | BOSIBHATLA, D | 0 0 | 1 |
| 6 | 0 0 | 0F | HUGHES, N | 1629 0 | 1F |

22-FEB-07 MOTOROLA KNIGHTS 4 MOTOROLA KINGS 1

ROUND 7

| BD | RATINGS | SCORE | | RATINGS | SCORE |
|---|---------|-------|---------------|---------|-------|
| 1 MORRIS, R | 2252 9 | 1 | MELNIKOV, I | 2012 -6 | 0 |
| 2 FRIDMAN, Y | 2199 10 | 1 | WALLACH, C | 1991 -7 | 0 |
| 3 THOMSON, J | 2019 -6 | .5 | PIPARIA, J | 1864 10 | .5 |
| * Board 4 not played as agreed by both team captains. | | | | | |
| 4 | 0 0 | 0F | | 0 0 | 0F |
| 5 CHERKASSKY, G | 1632 -1 | .5 | GONCHAROFF, N | 1628 0 | .5 |
| 6 DUONG, R | 0 0 | 1 | RABINOVICH, E | 1514 0 | 0 |

15-MAR-07 EXCALIBURS 0 UOP 6

ROUND 7

| BD | RATINGS | SCORE | | RATINGS | SCORE |
|---------------|---------|-------|-------------|---------|-------|
| 1 WONG, P | 2166 0 | 0F | BOLDINGH, E | 1900 0 | 1F |
| 2 SULLIVAN, J | 1756 -7 | 0 | SIWEK, M | 1948 7 | 1 |
| 3 WEITZ, R | 1576 -4 | 0 | LEONG, G | 1919 4 | 1 |
| 4 SUERTH, F | 1519 -3 | 0 | EASTON, R | 1905 4 | 1 |
| 5 | 0 0 | 0F | LECHNICK, J | 1733 0 | 1F |
| 6 | 0 0 | 0F | MICKLICH, F | 1541 0 | 1F |

01-MAR-07 UOP 4 MOTOROLA KINGS 2

ROUND 8

| BD | RATINGS | SCORE | | RATINGS | SCORE |
|------------------|---------|-------|---------------|---------|----------|
| 1 LEONG, G | 1923 19 | 1 | MELNIKOV, I | 2006-19 | 0 |
| 2 BOLDINGH, E | 1900-11 | 0 | WALLACH, C | 1984 11 | 1 |
| 3 EASTON, R | 1909-25 | 0 | PIPARIA, J | 1874 25 | 1 |
| 4 SIWEK, M | 1955 4 | 1 | GONCHAROFF, N | 1628 -3 | 0 |
| 5 LECHNICK, J | 1733 6 | 1 | GRYPARIS, J | 1395 -4 | 0 |
| 6 NALLATHAMBI, R | 1600 0 | 1 | LEE, DON | 0 0 | 0 |
| 7 OLSEN, A | 1480 0 | 1 | RAMIREZ, A | 0 0 | 0 (UOP) |

08-MAR-07 MOTOROLA KNIGHTS 5.5 NORTHROP .5

ROUND 8

| BD | RATINGS | SCORE | | RATINGS | SCORE |
|-----------------|---------|-------|-------------|---------|------------|
| 1 MORRIS, R | 2261-19 | .5 | WALKER, A | 1854 19 | .5 |
| 2 FRIDMAN, Y | 2209 3 | 1 | AROND, D | 1776 -3 | 0 |
| 3 THOMSON, J | 2013 3 | 1 | ENGELLEN, M | 1657 -5 | 0 |
| 4 BALICKI, J | 1881 5 | 1 | VIGANTS, A | 1610 -5 | 0 |
| 5 KARANDIKAR, S | 1645 18 | 1 | AUBRY, B | 1579-18 | 0 |
| 6 DUONG, R | 0 0 | 1F | | 0 0 | 0F |
| 7 ALFONSO, E | 1467 0 | .5 | DUONG, R | 0 0 | .5 (MKNGT) |

20-MAR-07 WALGREENS 6 EXCALIBURS 0

ROUND 8

| BD | RATINGS | SCORE | | RATINGS | SCORE |
|---------------|---------|-------|-----------|---------|-------|
| 1 LEVENSON, S | 1940 24 | 1 | LEE, D | 1970-24 | 0 |
| 2 SANTIAGO, T | 1931 3 | 1 | SUERTH, F | 1516 -3 | 0 |
| 3 BIALON, D | 0 0 | 1F | | 0 0 | 0F |
| 4 ANSARI, N | 1568 0 | 1F | | 0 0 | 0F |
| 5 HUGHES, N | 1629 0 | 1F | | 0 0 | 0F |
| 6 HAMELINK, N | 0 0 | 1F | | 0 0 | 0F |

17-JAN-07 ALUMNI ACES 4 AMA TORNADO SNAKES 1

ROUND 6

| BD | RATINGS | SCORE | | RATINGS | SCORE |
|--------------|---------|-------|-------------|---------|-------|
| 1 BENESA, A | 2045-29 | 0 | PETERSON, T | 1452 44 | 1 |
| 2 BROCK, B | 2061 1 | 1 | FURTNER, F | 1442 -1 | 0 |
| 3 SOLLANO, E | 2006 1 | 1 | MASITI, J | 1342 -1 | 0 |
| 4 ALLEN, H | 1940 0 | 1 | MEYER, C | 0 0 | 0 |
| 5 EAMAN, R | 1894 0 | 1 | PIWOWAR, T | 0 0 | 0 |
| 6 | 0 0 | 0F | | 0 0 | 0F |

15-FEB-07 CITADEL GROUP 2 ALUMNI ACES 4

ROUND 7

| BD | RATINGS | SCORE | | RATINGS | SCORE |
|-----------------|---------|-------|------------|---------|-------|
| 1 HAYHURST, W | 1920 9 | .5 | BROCK, B | 2062 -9 | .5 |
| 2 LE, DUC | 1698 -6 | 0 | BENESA, A | 2016 4 | 1 |
| 3 ONG, K | 1837-12 | 0 | SOLLANO, E | 2007 8 | 1 |
| 4 MUHS, A | 1525 18 | .5 | EAMAN, R | 1894-18 | .5 |
| 5 SENSAT, J | 1594 -5 | 0 | ALLEN, H | 1940 5 | 1 |
| 6 KUNHIRAMAN, P | 1588 0 | 1F | | 0 0 | 0F |

05-FEB-07 NORTHWESTERN CHESS CLUB 4.5 HEDGEHOGS 1.5

ROUND 7

| BD | RATINGS | SCORE | | RATINGS | SCORE |
|------------------|---------|-------|-------------|---------|-------|
| 1 CHAN, ROBERT | 2077-18 | 0 | FRANKLIN, D | 2154 18 | 1 |
| 2 GORODETSKIY, S | 1938 33 | 1 | RAUCHMAN, M | 2109-33 | 0 |
| 3 SMALLWOOD, J | 1867 28 | 1 | SMITH, M | 1954-28 | 0 |
| 4 SOLOMON, A | 0 0 | 1 | JASAITIS, A | 1976 0 | 0 |
| 5 RODNYANSKY, S | 1759 -7 | .5 | TAN, A | 1662 7 | .5 |
| 6 MARTELL, J | 0 0 | 1F | | 0 0 | 0F |

15-MAR-07 AMA TORNADO SNAKES 0 CITADEL GROUP 6

ROUND 8

| BD | RATINGS | SCORE | | RATINGS | SCORE |
|-----------------|---------|-------|----------------|---------|-------|
| 1 PETERSON, T | 1496-11 | 0 | LE, DUC | 1692 11 | 1 |
| 2 FURTNER, F | 1441-16 | 0 | MUHS, A | 1543 16 | 1 |
| 3 GOODFRIEND, B | 1236 -5 | 0 | KUNHIRAMAN, P | 1588 5 | 1 |
| 4 MEYER, C | 0 0 | 0 | SENSAT, J | 1589 0 | 1 |
| 5 PIWOWAR, T | 0 0 | 0 | PROKOPOWICZ, P | 0 0 | 1 |
| 6 B, ABBOTT | 0 0 | 0 | PARRA, J | 0 0 | 1 |

08-FEB-07 PAWNS 1.5 LUCENT TECH. DRAGONS 4.5

ROUND 8

| BD | RATINGS | SCORE | | RATINGS | SCORE |
|----------------|---------|-------|---------------|---------|-------|
| 1 LATIMER, E | 2017 1 | .5 | TEGEL, F | 2030 0 | .5 |
| 2 ELLICE, W | 1829 -9 | 0 | LUDWIG, T | 1974 9 | 1 |
| 3 FRANEK, M | 1685 -5 | 0 | MARCOWKA, R | 1961 5 | 1 |
| 4 FABIJONAS, R | 1577-12 | 0 | STAMM, V | 1500 12 | 1 |
| 5 SPITZIG, M | 1456-23 | 0 | EUSTACE, D | 1447 15 | 1 |
| 6 CHRISTIAN, T | 0 0 | 1 | BREYER, A | 1348 0 | 0 |
| 7 MIKULECKY, B | 1415 -4 | .5 | KOMORAVOLU, K | 1317 7 | .5 |

08-FEB-07 ST CHARLES CHESS CLUB 5 CA 1

ROUND 8

| BD | RATINGS | SCORE | | RATINGS | SCORE |
|---------------|---------|-------|--------------|---------|-------|
| 1 MARSHALL, J | 2190 24 | 1 | ALLSBROOK, F | 2214-24 | 0 |
| 2 WIEWEL, J | 1999 10 | 1 | DENMARK, T | 1778-10 | 0 |
| 3 SUITS, J | 1632-25 | 0 | VAIL, M | 1592 25 | 1 |
| 4 ALBERTS, W | 1596 13 | 1 | BYRNE, M | 1436-13 | 0 |
| 5 PADILLA, R | 1594 13 | 1 | HANSON, M | 1434-13 | 0 |
| 6 GIBSON, B | 1308 0 | 1F | | 0 0 | 0F |

08-FEB-07 MOLEX 2 FERMILAB 4

ROUND 8

| BD | RATINGS | SCORE | | RATINGS | SCORE |
|------------------|---------|-------|------------|---------|-------|
| 1 REICH, T | 1824 -3 | 0 | GARZON, G | 2278 3 | 1 |
| 2 ZADEREJ, V | 1644 -6 | 0 | SPIEGEL, L | 1985 4 | 1 |
| 3 HENDRICKSON, B | 1555-11 | 0 | GAINES, I | 1742 8 | 1 |
| 4 MCGOWAN, D | 1374 0 | 1 | SEDOV, A | 0 0 | 0 |
| 5 RUFUS, B | 1308-11 | 0 | DEGRAF, B | 1497 11 | 1 |
| 6 JONNALA, B | 0 0 | 1 | MOEHS, D | 1415 0 | 0 |

08-FEB-07 BP CHICAGOLAND 3 CASE 2

ROUND 8

| BD | RATINGS | SCORE | | RATINGS | SCORE |
|-------------------|---------|-------|--------------|---------|-------|
| 1 COULTER, D | 1900 -9 | .5 | DOWELL, E | 1768 9 | .5 |
| 2 CASTANEDA, R | 1271 11 | .5 | REID, C | 1443 -7 | .5 |
| 3 ZUBIK, J | 1177-14 | 0 | ZOELLNER, J | 1317 9 | 1 |
| 4 SUVARNAKANTI, R | 1177 0 | 1F | DYCKOWSKI, R | 1311 0 | 0F |
| 5 | 0 0 | 1F | | 0 0 | 0F |
| 6 | 0 0 | 0F | | 0 0 | 0F |

07-MAR-07 FERMILAB 2.5 ST CHARLES CHESS CLUB 3.5

ROUND 9

| BD | RATINGS | SCORE | | RATINGS | SCORE |
|--------------|---------|-------|---------------|---------|-------|
| 1 GARZON, G | 2281 -5 | .5 | MARSHALL, J | 2214 5 | .5 |
| 2 SPIEGEL, L | 1989-14 | 0 | WIEWEL, J | 2009 21 | 1 |
| 3 GAINES, I | 1750-13 | 0 | MEISSEN, B | 1796 20 | 1 |
| 4 DEGRAF, B | 1508 7 | .5 | SUITS, J | 1607 -7 | .5 |
| 5 SEDOV, A | 0 0 | 1 | ALBERTS, W | 1609 0 | 0 |
| 6 CEASE, H | 1468 9 | .5 | PADILLA, R | 1607 -9 | .5 |
| 7 ANNIS, J | 0 0 | .5 | DJORDJEVIC, V | 1595 0 | .5 |
| 8 MOEHS, D | 1415 7 | .5 | POWERS, E | 1524 -7 | .5 |

15-MAR-07 BP CHICAGOLAND 4 PAWNS 2

ROUND 9

| BD | RATINGS | SCORE | | RATINGS | SCORE |
|-----------------|---------|-------|--------------|---------|-------|
| 1 COULTER, D | 1891 18 | 1 | ELLICE, W | 1820-12 | 0 |
| 2 RINGENBERG, T | 1438 36 | 1 | FRANEK, M | 1680-24 | 0 |
| 3 CASTANEDA, R | 1282 38 | 1 | FABIJONAS, R | 1565-17 | 0 |
| 4 ZUBIK, J | 1163 37 | 1 | SPITZIG, M | 1433-37 | 0 |
| 5 HERMAN, J | 0 0 | 0 | MIKULECKY, B | 1411 0 | 1 |
| 6 | 0 0 | 0F | | 0 0 | 1F |

22-FEB-07 ARGONNE ROOKS 4 LUCENT TECH. TYROS 2

ROUND 9

| BD | RATINGS | SCORE | RATINGS | SCORE |
|--------------|---------|-------|---------------|-----------|
| 1 BENEDEK, R | 2151-13 | 0 | DIAZ, P | 2059 19 1 |
| 2 HILL, R | 2000 11 | 1 | STOLTZ, B | 1899-11 0 |
| 3 GREEN, D | 1923 10 | 1 | DOBROVOLNY, C | 1812-10 0 |
| 4 SUAREZ, E | 1838 13 | 1 | BUCHNER, R | 1678 -9 0 |
| 5 BAURAC, D | 1831-25 | 0 | SMITH, BR | 1552 25 1 |
| 6 DERIY, B | 1459 21 | 1 | LAFORGE, W | 1430-21 0 |

26-FEB-07 MOLEX 4.5 CA 1.5

ROUND 9

| BD | RATINGS | SCORE | RATINGS | SCORE |
|------------------|---------|-------|--------------|------------|
| 1 REICH, T | 1821 -5 | 0 | ALLSBROOK, F | 2190 5 1 |
| 2 ZADEREJ, V | 1638 31 | 1 | DENMARK, T | 1768-31 0 |
| 3 HENDRICKSON, B | 1544 5 | .5 | VAIL, M | 1617 -5 .5 |
| 4 MCGOWAN, D | 1374 26 | 1 | BYRNE, M | 1423-26 0 |
| 5 RUFUS, B | 1297 22 | 1 | MCCLENDON, L | 1295-22 0 |
| 6 JONNALA, B | 0 0 | 1F | 0 0 | 0F |

15-MAR-07 LUCENT TECH. DRAGONS 4 CASE 2

ROUND 9

| BD | RATINGS | SCORE | RATINGS | SCORE |
|-----------------|---------|-------|----------------|-----------|
| 1 LUDWIG, T | 1983 7 | 1 | DOWELL, E | 1777-11 0 |
| 2 MARCOWKA, R | 1966 1 | 1 | REID, C | 1436 -1 0 |
| 3 STAMM, V | 1512-15 | 0 | DYCKZKOWSKI, R | 1311 34 1 |
| 4 EUSTACE, D | 1462-21 | 0 | ZOELLNER, J | 1326 21 1 |
| 5 THOMAS, J | 1478 0 | 1F | 0 0 | 0F |
| 6 KOMORAVOLU, K | 1324 0 | 1F | 0 0 | 0F |

14-MAR-07 LUCENT TECH. TYROS 4 FERMILAB 2

ROUND 10

| BD | RATINGS | SCORE | RATINGS | SCORE |
|-----------------|---------|-------|------------|-----------|
| 1 DIAZ, P | 2078 -7 | 0 | GARZON, G | 2276 11 1 |
| 2 STOLTZ, B | 1888 19 | 1 | SPIEGEL, L | 1975-19 0 |
| 3 GUIO, J | 1858 10 | 1 | GAINES, I | 1737-10 0 |
| 4 DOBROVOLNY, C | 1802 7 | 1 | STAPLES, C | 1602-11 0 |
| 5 BUCHNER, R | 1669 9 | 1 | DEGRAF, B | 1515-13 0 |
| 6 HAHNE, D | 1684 0 | 0 | SEDOV, A | 0 0 1 |

22-MAR-07 CASE 1 MOLEX 5

ROUND 10

| BD | RATINGS | SCORE | RATINGS | SCORE |
|------------------|---------|-------|----------------|-----------|
| 1 DOWELL, E | 1766-19 | 0 | REICH, T | 1816 19 1 |
| 2 REID, C | 1435 -6 | 0 | ZADEREJ, V | 1669 9 1 |
| 3 DYCKZKOWSKI, R | 1345 34 | 1 | HENDRICKSON, B | 1549-34 0 |
| 4 ZOELLNER, J | 1347-13 | 0 | MCGOWAN, D | 1400 19 1 |
| 5 | 0 0 | 0F | RUFUS, B | 1319 0 1F |
| 6 | 0 0 | 0F | JONNALA, B | 0 0 1F |

20-MAR-07 LUCENT TECH. TYROS 1 ST CHARLES CHESS CLUB 4

ROUND 11

| BD | RATINGS | SCORE | RATINGS | SCORE |
|---|---------|-------|---------------|-----------|
| 1 DIAZ, P | 2071 21 | 1 | MARSHALL, J | 2219-32 0 |
| * BOARD 2 IS SCHEDULED TO BE PLAYED ON 3/29 | | | | |
| 2 STOLTZ, B | 1907 | | WIEWEL, J | 2030 |
| 3 GUIO, J | 1868 -8 | 0 | SPLINTER, J | 2051 12 1 |
| 4 DOBROVOLNY, C | 1809-23 | 0 | SUITS, J | 1600 35 1 |
| 5 BUCHNER, R | 1678-19 | 0 | DJORDJEVIC, V | 1595 28 1 |
| 6 HAHNE, D | 1684-19 | 0 | PADILLA, R | 1598 28 1 |
| 7 SMITH, BR | 1577 12 | 1 | POWERS, E | 1517-19 0 |

22-MAR-07 MOTOROLA KINGS 4 NORTHROP 2

ROUND 9

| BD | RATINGS | SCORE | RATINGS | SCORE |
|-----------------|---------|-------|---------------|-------------------|
| 1 WALLACH, C | 1995-20 | 0 | WALKER, A | 1873 30 1 |
| 2 PIPARIA, J | 1899 15 | 1 | AROND, D | 1773-15 0 |
| 3 CYGAN, J | 1738 17 | 1 | ENGELN, M | 1652-17 0 |
| 4 GONCHAROFF, N | 1625-12 | 0 | AUBRY, B | 1561 27 1 |
| 5 JOSHI, B | 1582 5 | 1 | ELEK, G | 1215 -5 0 |
| 6 RABINOVICH, E | 1514 0 | 1F | | 0 0 0F |
| 7 RABINOVICH, E | 1514-13 | 0 | KARANDIKAR, S | 1663 13 1 (MKNGT) |

20-MAR-07 LUCENT TECH. TYROS 1 ST CHARLES CHESS CLUB 5

ROUND 11

| BD | RATINGS | SCORE | RATINGS | SCORE |
|---------------------------------|---------|-------|-----------|-----------|
| * BOARD 2 WAS PLAYED ON 3/29/07 | | | | |
| 2 STOLTZ, B | 1907-10 | 0 | WIEWEL, J | 2030 15 1 |

11-APR-06 ALUMNI ACES 0 NORTHWESTERN CHESS CLUB 6

ROUND 8

| BD | RATINGS | SCORE | RATINGS | SCORE |
|----|---------|-------|----------------|-----------|
| 1 | 0 0 | 0F | CHAN, ROBERT | 2059 0 1F |
| 2 | 0 0 | 0F | BAKSHI, A | 2011 0 1F |
| 3 | 0 0 | 0F | GORODETSKIY, S | 1971 0 1F |
| 4 | 0 0 | 0F | SMALLWOOD, J | 1895 0 1F |
| 5 | 0 0 | 0F | SOLOMON, A | 1876 0 1F |
| 6 | 0 0 | 0F | LU, D | 1386 0 1F |

28-MAR-07 HEDGEHOGS 5.5 ALUMNI ACES .5

ROUND 9

| BD | RATINGS | SCORE | RATINGS | SCORE |
|---------------|---------|-------|----------|-----------|
| 1 FRANKLIN, D | 2172 -8 | .5 | BROCK, B | 2053 8 .5 |
| 2 SMITH, M | 1926 19 | 1 | EAMAN, R | 1876-19 0 |
| 3 JASAITIS, A | 1976 14 | 1 | ALLEN, H | 1945-20 0 |
| 4 SEET, P | 1830 7 | 1 | SITAR, K | 1526 -7 0 |
| 5 TAN, A | 1669 0 | 1F | | 0 0 0F |
| 6 MORAN, B | 1512 0 | 1F | | 0 0 0F |

12-APR-07 NORTHWESTERN CHESS CLUB 4 AMA TORNADO SNAKES 2

ROUND 9

| BD | RATINGS | | | SCORE | RATINGS | | | SCORE |
|-----------------|---------|-----|----|---------------|---------|----|----|-------|
| 1 SMALLWOOD, J | 1895 | 3 | 1 | FURTNER, F | 1425 | -3 | 0 | |
| 2 RODNYANSKY, S | 1752 | -43 | 0 | GOODFRIEND, B | 1231 | 43 | 1 | |
| 3 KRAVIK, S | 1380 | 0 | 0 | B, ABBOTT | 0 | 0 | 1 | |
| 4 MARTELL, J | 0 | 0 | 1 | PIWOWAR, T | 0 | 0 | 0 | |
| 5 LU, D | 1386 | 0 | 1F | | 0 | 0 | 0F | |
| 6 ARUTCHEV, E | 0 | 0 | 1F | | 0 | 0 | 0F | |

16-APR-07 AMA TORNADO SNAKES 0 HEDGEHOGS 6

ROUND 10

| BD | RATINGS | | | SCORE | RATINGS | | | SCORE |
|---------------|---------|----|----|---------------|---------|---|----|-------|
| 1 PETERSON, T | 1485 | -2 | 0 | JASAITIS, A | 1990 | 2 | 1 | |
| 2 MASITI, J | 1341 | -1 | 0 | SMITH, M | 1945 | 1 | 1 | |
| 3 MEYER, B | 0 | 0 | 0 | SEET, P | 1837 | 0 | 1 | |
| 4 B, ABBOTT | 0 | 0 | 0 | SHEPARDSON, T | 1558 | 0 | 1 | |
| 5 PATELLA, C | 0 | 0 | 0 | MORAN, B | 1512 | 0 | 1 | |
| 6 | 0 | 0 | 0F | KRATKA, M | 1635 | 0 | 1F | |

05-APR-07 EXCALIBURS 0 MOTOROLA KNIGHTS 6

ROUND 9

| BD | RATINGS | | | SCORE | RATINGS | | | SCORE |
|----|-------------|------|----|-------|---------------|------|---|-------|
| 1 | LEE, D | 1946 | -7 | 0 | MORRIS, R | 2242 | 7 | 1 |
| 2 | BRONFELD, A | 1835 | -5 | 0 | FRIDMAN, Y | 2212 | 5 | 1 |
| 3 | WEITZ, R | 1572 | -2 | 0 | THOMSON, J | 2016 | 2 | 1 |
| 4 | SUERTH, F | 1513 | -3 | 0 | BALICKI, J | 1886 | 3 | 1 |
| 5 | | 0 | 0 | 0F | CHERKASSKY, G | 1631 | 0 | 1F |
| 6 | | 0 | 0 | 0F | DUONG, R | 1568 | 0 | 1F |

05-APR-07 WALGREENS 4 MOTOROLA KINGS 2

ROUND 10

| BD | RATINGS | | SCORE | | RATINGS | | SCORE |
|---------------|---------|-----|-------|---------------|---------|-----|-------|
| 1 FRISKE, T | 2083 | -19 | 0 | MELNIKOV, I | 1987 | 19 | 1 |
| 2 LEVENSON, S | 1964 | 23 | 1 | WALLACH, C | 1975 | -15 | 0 |
| 3 SANTIAGO, T | 1934 | 14 | 1 | PIPARIA, J | 1914 | -21 | 0 |
| 4 GRANATA, M | 1889 | 14 | 1 | CYGAN, J | 1755 | -14 | 0 |
| 5 HUGHES, N | 1629 | -1 | .5 | GONCHAROFF, N | 1613 | 0 | .5 |
| 6 ANSARI, N | 1568 | 2 | .5 | JOSHI, B | 1587 | -2 | .5 |
| 7 SOROCK, R | 0 | 0 | 0 | RABINOVICH, E | 1501 | 0 | 1 |

10-APR-07 UOP 1.5 WALGREENS 4.5

ROUND 9

| BD | RATINGS | | | SCORE | RATINGS | | | SCORE |
|------------------|---------|-----|----|---------------|---------|-----|----|-------|
| 1 SIWEK, M | 1959 | -11 | 0 | FRISKE, T | 2064 | 11 | 1 | |
| 2 LEONG, G | 1942 | -13 | 0 | LEVENSON, S | 1987 | 20 | 1 | |
| 3 BOLDINGH, E | 1889 | 3 | .5 | SANTIAGO, T | 1948 | -3 | .5 | |
| 4 EASTON, R | 1884 | -21 | 0 | GRANATA, M | 1903 | 21 | 1 | |
| 5 LECHNICK, J | 1739 | 10 | 1 | HUGHES, N | 1628 | -10 | 0 | |
| 6 NALLATHAMBI, R | 1600 | 0 | 0 | HAMELINK, N | 0 | 0 | 1 | |
| 7 MICKLICH, F | 1541 | 0 | 1 | BOSIBHATLA, D | 0 | 0 | 0 | |
| 8 OLSEN, A | 1480 | -11 | 0 | ANSARI, N | 1570 | 17 | 1 | |

23-MAR-07 ST CHARLES BAKER 4.5 ARGONNE ROOKS 1.5

ROUND 10

| BD | RATINGS | SCORE | | RATINGS | SCORE |
|------------------|---------|-------|------------|---------|-------|
| 1 NGUYEN, T | 2175 20 | 1 | BENEDEK, R | 2138 -9 | 0 |
| 2 FREIDEL, JESSE | 1967 25 | 1 | HILL, R | 2011-17 | 0 |
| 3 FREIDEL, P | 1893 3 | .5 | GREEN, D | 1933 -2 | .5 |
| 4 WANG, ANDREW | 1765-17 | 0 | SUAREZ, E | 1851 17 | 1 |
| 5 FREIDEL, JER | 1779 7 | 1 | DERIY, B | 1480 -7 | 0 |
| 6 JANSSEN, G | 1478 0 | 1F | | 0 0 | 0F |

23-MAR-07 BP CHICAGOLAND 1 LUCENT TECH. DRAGONS 4

ROUND 10

| BD | RATINGS | SCORE | | RATINGS | SCORE |
|----------------|---------|-------|---------------|---------|-------|
| 1 COULTER, D | 1909-15 | 0 | TEGEL, F | 2030 7 | 1 |
| 2 DENEEN, D | 1459 24 | 1 | THOMAS, J | 1478-16 | 0 |
| 3 CASTANEDA, R | 1320-15 | 0 | EUSTACE, D | 1441 10 | 1 |
| 4 MANILA, M | 1152-11 | 0 | BREYER, A | 1348 11 | 1 |
| 5 HERNANDEZ, F | 974 -5 | 0 | KOMORAVOLU, K | 1324 5 | 1 |
| 6 | 0 0 | 0F | | 0 0 | 0F |

03-APR-07 CA 2 PAWNS 4

ROUND 10

| BD | RATINGS | SCORE | | RATINGS | SCORE |
|----------------------|---------|-------|--------------|---------|-------|
| 1 ALLSBROOK, F | 2195 12 | 1 | LATIMER, E | 2018 -8 | 0 |
| 2 DENMARK, T | 1737-18 | 0 | ELLICE, W | 1808 12 | 1 |
| 3 VAIL, M | 1612-20 | 0 | FRANEK, M | 1656 13 | 1 |
| 4 BYRNE, M | 1397-13 | 0 | FABIJONAS, R | 1548 6 | 1 |
| 5 MCCLENDON, L | 1273 0 | 0F | O'DELL, DW | 1377 0 | 1F |
| 6 HANSON, M | 1421 22 | 1 | MIKULECKY, B | 1411-15 | 0 |
| (PAWNS) 7 SPITZIG, M | 1396 -2 | .5 | O'DELL, DW | 1377 1 | .5 |

05-APR-07 FERMILAB 3 ST CHARLES BAKER 3

ROUND 11

| BD | RATINGS | SCORE | | RATINGS | SCORE |
|--------------|---------|-------|----------------|---------|-------|
| 1 GARZON, G | 2287 17 | 1 | NGUYEN, T | 2195-17 | 0 |
| 2 SPIEGEL, L | 1956 2 | .5 | FREIDEL, JESSE | 1992 -3 | .5 |
| 3 GAINES, I | 1727 -8 | 0 | FREIDEL, P | 1896 12 | 1 |
| 4 DEGRAF, B | 1502 -9 | 0 | WANG, ANDREW | 1748 9 | 1 |
| 5 SEDOV, A | 0 0 | 1 | FREIDEL, JER | 1786 0 | 0 |
| 6 MOEHS, D | 1422 -2 | .5 | GREER, J | 1406 2 | .5 |
| 7 ANNIS, J | 1510 7 | 1 | VOIGHT, T | 1220 -7 | 0 |

17-APR-06 CITADEL GROUP .5 NORTHWESTERN CHESS CLUB 5.5

ROUND 10

| BD | RATINGS | SCORE | | RATINGS | SCORE |
|------------------|---------|-------|--------------|---------|-------|
| 1 HAYHURST, W | 1929 6 | .5 | BAKSHI, A | 2011 -6 | .5 |
| 2 MUHS, A | 1559 -2 | 0 | CHAN, ROBERT | 2059 2 | 1 |
| 3 LE, DUC | 1703-11 | 0 | SMALLWOOD, J | 1898 11 | 1 |
| 4 SENSAT, J | 1589 0 | 0 | WANG, B | 0 0 | 1 |
| 5 PARRA, J | 0 0 | 0 | WU, A | 0 0 | 1 |
| 6 PROKOPOWICZ, P | 0 0 | 0 | LU, D | 1386 0 | 1 |

04-APR-07 MOTOROLA KNIGHTS**4.5 UOP****1.5**

ROUND 10

| BD | RATINGS | SCORE | | RATINGS | SCORE |
|-----------------|---------|-------|-------------|---------|-------|
| 1 MORRIS, R | 2249 6 | 1 | LEONG, G | 1929 -4 | 0 |
| 2 FRIDMAN, Y | 2217 5 | 1 | EASTON, R | 1863 -5 | 0 |
| 3 THOMSON, J | 2018 10 | 1 | BOLDINGH, E | 1892-10 | 0 |
| 4 AUGSBURGER, L | 1788 6 | .5 | SIWEK, M | 1948 -6 | .5 |
| 5 CHERKASSKY, G | 1631 11 | .5 | WALKER, C | 1814-11 | .5 |
| 6 DUONG, R | 1568 11 | .5 | LECHNICK, J | 1749 -7 | .5 |
| 7 BALICKI, J | 1889 2 | 1 | OLSEN, A | 1469 -2 | 0 |
| 8 BALICKI, J | 1891 4 | 1 | MICKLICH, F | 1541 -4 | 0 |

19-APR-07 NORTHROP**2.5 EXCALIBURS****1.5**

ROUND 10

| BD | RATINGS | SCORE | | RATINGS | SCORE |
|-------------|---------|-------|-------------|---------|-------|
| 1 WALKER, A | 1903 3 | .5 | LEE, D | 1939 -3 | .5 |
| 2 AROND, D | 1758 0 | 1F | SULLIVAN, J | 1749 0 | 0F |
| 3 ENGELN, M | 1635-27 | 0 | WEITZ, R | 1570 18 | 1 |
| 4 AUBRY, B | 1588 18 | 1 | SUERTH, F | 1510-12 | 0 |
| 5 | 0 0 | 0F | | 0 0 | 0F |
| 6 | 0 0 | 0F | | 0 0 | 0F |

* The game listed below was rerated with an initial CICL rating
 * (from USCF) of 1742 for B. Wang.

20-APR-07 CITADEL GROUP**NORTHWESTERN CHESS CLUB****1**

ROUND 10

| BD | RATINGS | SCORE | | RATINGS | SCORE |
|-------------|---------|-------|---------|---------|-------|
| 1 SENSAT, J | 1589-13 | 0 | WANG, B | 1742 13 | 1 |

23-APR-07 MOLEX**3 BP CHICAGOLAND****0**

ROUND 11

| BD | RATINGS | SCORE | | RATINGS | SCORE |
|------------------|---------|-------|---------------|---------|-------|
| 1 REICH, T | 1835 0 | 0F | COULTER, D | 1894 0 | 0F |
| 2 ZADEREJ, V | 1678 0 | 0F | RINGENBERG, T | 1474 0 | 0F |
| 3 HENDRICKSON, B | 1515 20 | 1 | DENEEN, D | 1483-20 | 0 |
| 4 MCGOWAN, D | 1419 0 | 0F | ZUBIK, J | 1200 0 | 0F |
| 5 RUFUS, B | 1319 22 | 1 | CASTANEDA, R | 1305-22 | 0 |
| 6 DEICHMANN, E | 1272 7 | 1 | HERNANDEZ, F | 969 -7 | 0 |

25-APR-07 CA**2 LUCENT TECH. DRAGONS****3**

ROUND 11

| BD | RATINGS | SCORE | | RATINGS | SCORE |
|----------------|---------|-------|---------------|---------|-------|
| 1 ALLSBROOK, F | 2207-35 | 0 | LUDWIG, T | 1990 23 | 1 |
| 2 DENMARK, T | 1719-37 | 0 | THOMAS, J | 1462 24 | 1 |
| 3 BYRNE, M | 1384-18 | 0 | EUSTACE, D | 1451 12 | 1 |
| 4 MCCLENDON, L | 1273 28 | 1 | BREYER, A | 1359-28 | 0 |
| 5 HANSON, M | 1443 15 | 1 | KOMORAVOLU, K | 1329-15 | 0 |
| 6 | 0 0 | 0F | | 0 0 | 0F |

25-APR-07 PAWNS

4.5 ARGONNE ROOKS

1.5

ROUND 11

| BD | RATINGS | SCORE | | RATINGS | SCORE |
|----------------|---------|-------|---------------|---------|-------|
| 1 LATIMER, E | 2010-10 | 0 | BENEDEK, R | 2129 7 | 1 |
| 2 ELLICE, W | 1820 -1 | .5 | BAURAC, D | 1806 1 | .5 |
| 3 FRANEK, M | 1669 6 | 1 | GRUDZINSKI, J | 1430 -9 | 0 |
| 4 FABIJONAS, R | 1554 5 | 1 | KUHLMANN, S | 1380-12 | 0 |
| 5 MIKULECKY, B | 1396 0 | 1F | | 0 0 | 0F |
| 6 SPITZIG, M | 1394 0 | 1F | | 0 0 | 0F |

EAST DIVISION**ALUMNI ACES**

| NAME | RATING | SEASON | | | RATING CHANGE | TOTAL GAMES | RATED GAMES |
|--------------|--------|--------|---|---|------------------|----------------|----------------|
| | | W | L | D | | | |
| BROCK, B | 2061 | 1 | 1 | 3 | -34 | 10 | 10 |
| BENESA, A | 2020C | 1 | 2 | 0 | -37 | 127 | 124 |
| SOLLANO, E | 2015C | 5 | 0 | 0 | 37 | 157 | 138 |
| ALLEN, H | 1925 | 5 | 1 | 0 | 18 | 94 | 85 |
| EAMAN, R | 1857 | 3 | 1 | 3 | -22 | 72 | 69 |
| DUFFY, J | 1764 | 0 | 1 | 0 | -40 | 81 | 71 |
| FRANK, M | 1733C | 1 | 1 | 0 | 0 | 125 | 107 |
| SITAR, K | 1519 | 0 | 1 | 0 | -7 | 76 | 63 |
| FULKERSON, R | 1456 | 2 | 0 | 0 | 21 | 48 | 34 |
| MILLER, A | 1413 | 0 | 0 | 1 | 0 | 40 | 32 |

CITADEL GROUP

| NAME | RATING | SEASON | | | RATING CHANGE | TOTAL GAMES | RATED GAMES |
|----------------|--------|--------|---|---|------------------|----------------|----------------|
| | | W | L | D | | | |
| FUNG, J | 1200? | 0 | 1 | 0 | 0 | 4 | 3 |
| PARRA, J | 1200? | 1 | 2 | 0 | 0 | 6 | 2 |
| HAYHURST, W | 1935 | 1 | 2 | 4 | -1 | 52 | 51 |
| ONG, K | 1825 | 0 | 3 | 0 | -61 | 19 | 18 |
| LE, DUC | 1692 | 2 | 5 | 0 | -28 | 32 | 29 |
| KUNHIRAMAN, P | 1593# | 5 | 0 | 1 | 34 | 12 | 7 |
| SENSAT, J | 1576 | 2 | 3 | 0 | 18 | 44 | 42 |
| MUHS, A | 1557 | 5 | 1 | 2 | 153 | 25 | 22 |
| PROKOPOWICZ, P | 0000? | 3 | 2 | 0 | 0 | 5 | 2 |

NORTHWESTERN CHESS CLUB

| NAME | RATING | SEASON | | | RATING CHANGE | TOTAL GAMES | RATED GAMES |
|----------------|--------|--------|---|---|------------------|----------------|----------------|
| | | W | L | D | | | |
| ARUTCHEV, E | 1300? | 1 | 1 | 0 | 0 | 7 | 3 |
| CHUN, A | 0800? | 1 | 1 | 0 | 0 | 2 | 0 |
| MARTELL, J | 0600? | 1 | 0 | 0 | 0 | 2 | 0 |
| BAKSHI, A | 2083 | 4 | 0 | 2 | 95 | 6 | 6 |
| CHAN, ROBERT | 2061 | 2 | 3 | 0 | -16 | 6 | 6 |
| GORODETSKIY, S | 2039 | 7 | 1 | 0 | 130 | 24 | 23 |
| SMALLWOOD, J | 1958 | 6 | 1 | 1 | 84 | 17 | 16 |
| SOLOMON, A | 1876# | 3 | 1 | 1 | 0 | 5 | 5 |
| WANG, B | 1755 | 1 | 0 | 0 | 13 | 1 | 1 |
| RODNYANSKY, S | 1683 | 2 | 3 | 2 | -51 | 12 | 12 |
| KRAVIK, S | 1414 | 2 | 1 | 0 | 34 | 9 | 4 |
| LU, D | 1378* | 1 | 3 | 0 | -38 | 13 | 12 |
| WU, A | 0000? | 2 | 2 | 0 | 0 | 4 | 3 |

HEDGEHOGS

| NAME | RATING | SEASON | | | RATING CHANGE | TOTAL GAMES | RATED GAMES |
|---------------|--------|--------|---|---|------------------|----------------|----------------|
| | | W | L | D | | | |
| FRANKLIN, D | 2164 | 6 | 1 | 2 | 59 | 9 | 9 |
| RAUCHMAN, M | 2037 | 0 | 3 | 2 | -108 | 38 | 37 |
| JASAITIS, A | 1977D | 5 | 3 | 1 | -22 | 268 | 243 |
| SMITH, M | 1944 | 7 | 3 | 0 | 10 | 19 | 19 |
| SEET, P | 1805 | 3 | 3 | 2 | -85 | 41 | 36 |
| TAN, A | 1672* | 3 | 2 | 2 | 10 | 25 | 18 |
| KRATKA, M | 1603 | 2 | 4 | 0 | -100 | 55 | 50 |
| SHEPARDSON, T | 1567 | 3 | 1 | 0 | 9 | 5 | 3 |
| MORAN, B | 1512 | 1 | 0 | 0 | 0 | 5 | 2 |
| MARES, C | 0000? | 0 | 1 | 0 | 0 | 4 | 2 |

AMA TORNADO SNAKES

| NAME | RATING | SEASON | | | RATING CHANGE | TOTAL GAMES | RATED GAMES |
|---------------|--------|--------|---|---|------------------|----------------|----------------|
| | | W | L | D | | | |
| MEYER, C | 1100? | 0 | 3 | 0 | 0 | 8 | 5 |
| PIWOWAR, T | 1050? | 0 | 4 | 0 | 0 | 7 | 3 |
| PETERSON, T | 1483* | 1 | 6 | 0 | 20 | 19 | 17 |
| FURTNER, F | 1422 | 0 | 7 | 0 | -35 | 18 | 17 |
| MASITI, J | 1340# | 0 | 6 | 0 | -2 | 9 | 7 |
| GOODFRIEND, B | 1274 | 1 | 3 | 0 | 34 | 10 | 8 |
| IRBY, L | 0000? | 0 | 3 | 0 | 0 | 4 | 2 |
| B, ABBOTT | 0000? | 1 | 2 | 0 | 0 | 3 | 2 |
| MEYER, B | 0000? | 0 | 1 | 0 | 0 | 1 | 1 |
| PATELLA, C | 0000? | 0 | 1 | 0 | 0 | 1 | 1 |

NORTH DIVISION

| NAME | RATING | UOP | | | SEASON RATING CHANGE | TOTAL GAMES | RATED GAMES |
|----------------|--------|-----|---|---|----------------------------|----------------|----------------|
| | | W | L | D | | | |
| SIWEK, M | 1942D | 3 | 3 | 1 | -35 | 217 | 209 |
| LEONG, G | 1925C | 3 | 7 | 0 | -60 | 195 | 177 |
| BOLDINGH, E | 1882C | 3 | 3 | 3 | 6 | 183 | 177 |
| EASTON, R | 1860 | 6 | 5 | 0 | -31 | 101 | 90 |
| WALKER, C | 1803 | 1 | 1 | 1 | -31 | 29 | 28 |
| SAJBEL, P | 1789C | 0 | 1 | 0 | 0 | 157 | 140 |
| LECHNICK, J | 1742C | 5 | 0 | 3 | 43 | 120 | 101 |
| NALLATHAMBI, R | 1600 | 4 | 2 | 2 | 41 | 31 | 24 |
| MICKLICH, F | 1537D | 2 | 3 | 0 | -28 | 278 | 232 |
| OLSEN, A | 1467C | 2 | 6 | 0 | -18 | 170 | 152 |

NORTHROP

| NAME | RATING | SEASON | | | RATING CHANGE | TOTAL GAMES | RATED GAMES |
|------------|--------|--------|---|---|------------------|----------------|----------------|
| | | W | L | D | | | |
| WALKER, A | 1906 | 4 | 3 | 2 | 91 | 95 | 88 |
| AROND, D | 1758 | 1 | 3 | 2 | 12 | 38 | 34 |
| ENGELN, M | 1614 | 4 | 7 | 0 | -8 | 23 | 20 |
| AUBRY, B | 1606* | 3 | 6 | 0 | -9 | 15 | 12 |
| VIGANTS, A | 1605C | 0 | 3 | 4 | 9 | 155 | 140 |
| BURIAN, D | 1516D | 0 | 0 | 1 | 8 | 215 | 182 |
| ELLIOTT, T | 1355 | 0 | 3 | 0 | -37 | 7 | 7 |
| ELEK, G | 1210C | 0 | 1 | 0 | -5 | 113 | 92 |

EXCALIBURS

| NAME | RATING | SEASON | | | RATING CHANGE | TOTAL GAMES | RATED GAMES |
|-------------|--------|--------|---|---|------------------|----------------|----------------|
| | | W | L | D | | | |
| WONG, P | 2166C | 1 | 0 | 0 | 12 | 176 | 171 |
| LEE, D | 1936 | 3 | 4 | 2 | 6 | 18 | 16 |
| BRONFELD, A | 1830 | 0 | 2 | 1 | -15 | 71 | 64 |
| SULLIVAN, J | 1749D | 0 | 3 | 0 | -33 | 297 | 277 |
| KOGAN, G | 1671C | 0 | 3 | 0 | -21 | 169 | 155 |
| WEITZ, R | 1588D | 2 | 6 | 1 | -1 | 222 | 202 |
| BROTSOS, J | 1553T | 0 | 1 | 3 | 11 | 318 | 255 |
| SUERTH, F | 1498D | 3 | 6 | 0 | 13 | 235 | 195 |

MOTOROLA KINGS

| NAME | RATING | SEASON | | | RATING CHANGE | TOTAL GAMES | RATED GAMES |
|---------------|--------|--------|---|---|------------------|----------------|----------------|
| | | W | L | D | | | |
| MELNIKOV, I | 2006C | 1 | 4 | 1 | -33 | 129 | 127 |
| WALLACH, C | 1960C | 3 | 4 | 3 | -39 | 151 | 149 |
| HORTON, D | 1920 | 1 | 0 | 0 | 0 | 19 | 17 |
| PIPARIA, J | 1893 | 6 | 3 | 1 | 27 | 91 | 87 |
| CYGAN, J | 1741 | 3 | 3 | 1 | -14 | 56 | 52 |
| GONCHAROFF, N | 1613Q | 0 | 5 | 5 | -43 | 558 | 474 |
| JOSHI, B | 1585* | 3 | 1 | 1 | 54 | 23 | 20 |
| RABINOVICH, E | 1501 | 3 | 4 | 1 | -11 | 46 | 33 |
| GRYPARIS, J | 1391C | 1 | 2 | 0 | -16 | 166 | 123 |

MOTOROLA KNIGHTS

| NAME | RATING | SEASON | | | RATING CHANGE | TOTAL GAMES | RATED GAMES |
|---------------|--------|--------|---|---|------------------|----------------|----------------|
| | | W | L | D | | | |
| THOMASON, A | 1600? | 0 | 1 | 0 | 0 | 1 | 0 |
| GONZALEZ, O | 1400? | 0 | 1 | 1 | 0 | 2 | 1 |
| MORRIS, R | 2233 | 10 | 1 | 1 | 35 | 106 | 100 |
| FRIDMAN, Y | 2203 | 9 | 1 | 2 | 17 | 102 | 98 |
| THOMSON, J | 2011C | 5 | 1 | 2 | 33 | 127 | 104 |
| BALICKI, J | 1877C | 7 | 3 | 2 | -23 | 129 | 107 |
| AUGSBURGER, L | 1809C | 2 | 0 | 2 | 21 | 180 | 151 |
| KARANDIKAR, S | 1676 | 4 | 1 | 0 | 37 | 63 | 48 |
| CHERKASSKY, G | 1608* | 2 | 5 | 2 | -56 | 17 | 15 |
| DUONG, R | 1562* | 3 | 2 | 4 | -6 | 14 | 9 |
| ALFONSO, E | 1467 | 0 | 0 | 1 | 0 | 56 | 50 |

WALGREENS

| NAME | RATING | SEASON | | | RATING CHANGE | TOTAL GAMES | RATED GAMES |
|---------------|--------|--------|---|---|------------------|----------------|----------------|
| | | W | L | D | | | |
| SOROCK, R | 0900? | 0 | 1 | 0 | 0 | 8 | 6 |
| FRISKE, T | 2059C | 4 | 6 | 0 | -34 | 182 | 164 |
| LEVENSON, S | 2024 | 8 | 3 | 1 | 137 | 21 | 20 |
| SANTIAGO, T | 1914C | 7 | 4 | 2 | 6 | 115 | 107 |
| GRANATA, M | 1873* | 5 | 4 | 2 | -1 | 11 | 11 |
| HAMELINK, N | 1818# | 5 | 3 | 2 | -122 | 10 | 8 |
| BIALON, D | 1804# | 4 | 2 | 1 | 19 | 7 | 7 |
| HUGHES, N | 1630C | 2 | 4 | 4 | -21 | 183 | 170 |
| ANSARI, N | 1587 | 3 | 1 | 2 | 16 | 43 | 39 |
| DOSIBHATLA, D | 1592 | 4 | 4 | 0 | 67 | 8 | 7 |
| PRASANTHI, D | 0000? | 0 | 1 | 1 | 0 | 2 | 1 |

WEST DIVISION**ARGONNE ROOKS**

| NAME | RATING | SEASON | | | RATING CHANGE | TOTAL GAMES | RATED GAMES |
|---------------|--------|--------|---|---|------------------|----------------|----------------|
| | | W | L | D | | | |
| BENEDEK, R | 2136T | 2 | 2 | 0 | -12 | 359 | 347 |
| HILL, R | 1994D | 3 | 3 | 2 | 4 | 215 | 206 |
| GREEN, D | 1931D | 5 | 3 | 1 | -12 | 259 | 226 |
| SUAREZ, E | 1868 | 3 | 0 | 0 | 34 | 95 | 92 |
| BAURAC, D | 1807T | 2 | 2 | 3 | -39 | 313 | 280 |
| YACOUT, A | 1584 | 0 | 1 | 0 | -8 | 50 | 46 |
| DECMAN, S | 1562D | 1 | 1 | 1 | -11 | 298 | 267 |
| DERIY, B | 1473* | 3 | 3 | 1 | -12 | 15 | 14 |
| GRUDZINSKI, J | 1421 | 1 | 2 | 1 | -10 | 44 | 35 |
| KUHLMANN, S | 1368* | 1 | 2 | 0 | 4 | 15 | 13 |
| HLOHowskyJ, I | 923* | 1 | 1 | 2 | 0 | 17 | 11 |

FERMILAB

| NAME | RATING | SEASON | | | RATING CHANGE | TOTAL GAMES | RATED GAMES |
|---------------|--------|--------|---|---|------------------|----------------|----------------|
| | | W | L | D | | | |
| GOLOSSANOV, A | 1400? | 0 | 4 | 0 | 0 | 4 | 2 |
| GARZON, G | 2283 | 9 | 2 | 2 | -1 | 61 | 60 |
| DORIGO, T | 2126 | 1 | 0 | 0 | 8 | 53 | 50 |
| SPIEGEL, L | 1953D | 5 | 3 | 4 | -14 | 305 | 279 |
| SEDOV, A | 1786# | 6 | 2 | 0 | 20 | 8 | 8 |
| GAINES, I | 1753D | 5 | 6 | 2 | -27 | 310 | 286 |
| BOLSHOV, A | 1657 | 1 | 0 | 0 | 19 | 33 | 30 |
| STAPLES, C | 1591 | 1 | 1 | 0 | -3 | 85 | 74 |
| DEGRAF, B | 1536 | 4 | 3 | 4 | 48 | 35 | 33 |
| ANNIS, J | 1479# | 2 | 2 | 2 | -31 | 11 | 8 |
| CEASE, H | 1464 | 2 | 1 | 2 | 24 | 52 | 39 |
| MOEHS, D | 1420* | 1 | 2 | 2 | -3 | 22 | 21 |
| DRENDEL, B | 0000? | 0 | 1 | 1 | 0 | 2 | 1 |

LUCENT TECH. TYROS

| NAME | RATING | SEASON | | | RATING CHANGE | TOTAL GAMES | RATED GAMES |
|---------------|--------|--------|---|---|------------------|----------------|----------------|
| | | W | L | D | | | |
| DIAZ, P | 2086C | 5 | 7 | 1 | -24 | 204 | 191 |
| STOLTZ, B | 1904C | 3 | 4 | 4 | -21 | 201 | 182 |
| GUIO, J | 1852C | 2 | 2 | 1 | 6 | 175 | 172 |
| DOBROVOLNY, C | 1770D | 3 | 5 | 2 | -59 | 211 | 193 |
| BUCHNER, R | 1659C | 4 | 6 | 3 | -55 | 149 | 141 |
| HAHNE, D | 1645C | 7 | 5 | 0 | -17 | 173 | 145 |
| SMITH, BR | 1600C | 6 | 1 | 3 | 19 | 166 | 128 |
| LAForge, W | 1409 | 3 | 2 | 0 | -6 | 48 | 38 |
| KARPIERZ, J | 1300 | 0 | 0 | 1 | 2 | 69 | 43 |

LUCENT TECH. DRAGONS

| NAME | RATING | SEASON | | | RATING CHANGE | TOTAL GAMES | RATED GAMES |
|---------------|--------|--------|---|---|------------------|----------------|----------------|
| | | W | L | D | | | |
| TEGEL, F | 2037Q | 2 | 2 | 3 | 2 | 432 | 394 |
| LUDWIG, T | 2013C | 7 | 2 | 0 | 64 | 181 | 178 |
| MARCOWKA, R | 1967T | 3 | 1 | 0 | 6 | 307 | 286 |
| PEHAS, A | 1849C | 2 | 1 | 3 | -13 | 162 | 154 |
| STAMM, V | 1497T | 1 | 2 | 1 | -11 | 354 | 330 |
| THOMAS, J | 1486D | 1 | 5 | 0 | -46 | 270 | 221 |
| EUSTACE, D | 1463C | 5 | 5 | 0 | 1 | 191 | 153 |
| BREYER, A | 1331 | 3 | 2 | 0 | 12 | 46 | 40 |
| DOBR, K | 1328Q | 1 | 3 | 0 | -15 | 463 | 409 |
| KOMORAVOLU, K | 1314 | 3 | 1 | 2 | 46 | 37 | 31 |

PAWNS

| NAME | RATING | SEASON | | | RATING CHANGE | TOTAL GAMES | RATED GAMES |
|--------------|--------|--------|---|---|------------------|----------------|----------------|
| | | W | L | D | | | |
| JAKSTAS, K | 2196D | 0 | 1 | 1 | -21 | 220 | 214 |
| GAZMEN, E | 2087C | 1 | 1 | 0 | 7 | 128 | 121 |
| LATIMER, E | 2000T | 1 | 2 | 1 | -8 | 312 | 280 |
| ELLICE, W | 1819C | 4 | 4 | 2 | 19 | 168 | 160 |
| FRANEK, M | 1675D | 3 | 7 | 0 | -49 | 257 | 206 |
| FABIJONAS, R | 1559T | 5 | 4 | 1 | 13 | 339 | 304 |
| MISHLOVE, D | 1548 | 1 | 0 | 0 | 10 | 1 | 1 |
| MIKULECKY, B | 1396D | 2 | 4 | 1 | -35 | 217 | 193 |
| SPITZIG, M | 1394 | 2 | 3 | 3 | -54 | 8 | 7 |
| O'DELL, DW | 1378D | 0 | 1 | 1 | -5 | 202 | 191 |
| CHRISTIAN, T | 0000? | 2 | 0 | 0 | 0 | 2 | 1 |

CASE

| NAME | RATING | SEASON | | | RATING CHANGE | TOTAL GAMES | RATED GAMES |
|----------------|--------|--------|---|---|------------------|----------------|----------------|
| | | W | L | D | | | |
| NURSE, G | 1830 | 3 | 4 | 0 | 21 | 13 | 12 |
| DOWELL, E | 1747* | 2 | 6 | 2 | -29 | 22 | 21 |
| PARAOAN, E | 1608D | 2 | 3 | 0 | -9 | 239 | 209 |
| REID, C | 1429D | 1 | 5 | 2 | -26 | 245 | 202 |
| DYCKZKOWSKI, R | 1379 | 2 | 4 | 3 | 24 | 81 | 63 |
| ZOELLNER, J | 1334D | 3 | 5 | 1 | 8 | 249 | 180 |

MOLEX

| NAME | RATING | SEASON | | | RATING CHANGE | TOTAL GAMES | RATED GAMES |
|----------------|--------|--------|---|---|------------------|----------------|----------------|
| | | W | L | D | | | |
| REICH, T | 1835 | 1 | 8 | 0 | -47 | 39 | 35 |
| ZADEREJ, V | 1678 | 3 | 5 | 0 | 48 | 42 | 37 |
| FOX, R | 1553 | 0 | 1 | 0 | -9 | 21 | 19 |
| HENDRICKSON, B | 1535 | 2 | 4 | 3 | 30 | 46 | 44 |
| MCGOWAN, D | 1419 | 6 | 1 | 0 | 144 | 35 | 30 |
| RUFUS, B | 1341* | 4 | 3 | 0 | 82 | 26 | 23 |
| DEICHMANN, E | 1279 | 1 | 4 | 0 | -15 | 40 | 35 |
| JONNALA, B | 0000? | 2 | 3 | 0 | 0 | 5 | 4 |
| GHAIBEN, A | 0000? | 0 | 2 | 1 | 0 | 3 | 3 |

ST CHARLES CHESS CLUB

| NAME | RATING | SEASON | | | RATING CHANGE | TOTAL GAMES | RATED GAMES |
|---------------|--------|--------|---|---|------------------|----------------|----------------|
| | | W | L | D | | | |
| MARSHALL, J | 2249 | 10 | 1 | 2 | 138 | 29 | 29 |
| SPLINTER, J | 2038 | 4 | 1 | 2 | 5 | 24 | 24 |
| WIEWEL, J | 2007 | 7 | 3 | 2 | 0 | 33 | 33 |
| MEISSEN, B | 1792 | 1 | 1 | 2 | 1 | 17 | 16 |
| PADILLA, R | 1639 | 4 | 0 | 1 | 60 | 7 | 7 |
| PRADT, D | 1635 | 1 | 0 | 0 | 11 | 10 | 9 |
| SUITS, J | 1632 | 5 | 3 | 4 | 34 | 24 | 24 |
| DJORDJEVIC, V | 1623 | 3 | 0 | 2 | 42 | 8 | 7 |
| ALBERTS, W | 1563 | 4 | 4 | 4 | -59 | 28 | 25 |
| POWERS, E | 1498 | 1 | 3 | 1 | -87 | 5 | 4 |
| STOSKUS, A | 1446 | 6 | 0 | 0 | 103 | 13 | 9 |
| MC GEE, M | 1438 | 0 | 1 | 0 | -34 | 12 | 10 |
| BUCKLEY, J | 1352 | 0 | 1 | 0 | -19 | 3 | 3 |
| GIBSON, B | 1308 | 0 | 0 | 0 | 0 | 0 | 0 |

COMPUTER ASSOCIATES

| NAME | RATING | SEASON | | | RATING CHANGE | TOTAL GAMES | RATED GAMES |
|--------------|--------|--------|---|---|------------------|----------------|----------------|
| | | W | L | D | | | |
| ALLSBROOK, F | 2139 | 6 | 3 | 1 | -61 | 17 | 17 |
| DENMARK, T | 1682 | 2 | 7 | 1 | -63 | 42 | 38 |
| VAIL, M | 1630 | 4 | 6 | 1 | 65 | 53 | 50 |
| HANSON, M | 1458* | 3 | 2 | 1 | 50 | 11 | 9 |
| BYRNE, M | 1366 | 2 | 8 | 0 | -44 | 27 | 26 |
| MCCLENDON, L | 1301 | 1 | 3 | 2 | 3 | 53 | 45 |
| GRABSKY, J | 1115* | 2 | 3 | 0 | 23 | 13 | 11 |
| MARLEY, S | 0000? | 0 | 0 | 1 | 0 | 1 | 1 |

BP CHICAGOLAND

| NAME | RATING | SEASON | | | RATING CHANGE | TOTAL GAMES | RATED GAMES |
|-----------------|--------|--------|---|---|------------------|----------------|----------------|
| | | W | L | D | | | |
| COULTER, D | 1894 | 2 | 6 | 1 | -44 | 47 | 43 |
| RINGENBERG, T | 1474 | 1 | 1 | 2 | 53 | 55 | 43 |
| DENEEN, D | 1463 | 2 | 6 | 0 | 16 | 24 | 24 |
| CASTANEDA, R | 1283 | 2 | 4 | 2 | 24 | 41 | 39 |
| ZUBIK, J | 1200* | 1 | 3 | 0 | 20 | 13 | 11 |
| SUVARNAKANTI, R | 1177* | 1 | 2 | 0 | -32 | 15 | 12 |
| MANILA, M | 1141* | 0 | 1 | 0 | -11 | 26 | 19 |
| HERNANDEZ, F | 962* | 0 | 6 | 1 | -1 | 15 | 15 |
| HERMAN, J | 0000? | 0 | 3 | 0 | 0 | 4 | 4 |
| MICAH, L | 0000? | 0 | 1 | 0 | 0 | 1 | 1 |

ST CHARLES BAKER

| NAME | RATING | SEASON | | | RATING CHANGE | TOTAL GAMES | RATED GAMES |
|----------------|--------|--------|---|---|------------------|----------------|----------------|
| | | W | L | D | | | |
| NGUYEN, T | 2177 | 4 | 2 | 3 | 4 | 14 | 14 |
| RASO, P | 2065 | 2 | 2 | 0 | 26 | 13 | 12 |
| FREIDEL, JESSE | 1981 | 5 | 3 | 4 | 17 | 32 | 32 |
| FREIDEL, P | 1929 | 6 | 1 | 5 | 26 | 27 | 26 |
| WANG, ANDREW | 1815 | 9 | 2 | 1 | 72 | 17 | 16 |
| FREIDEL, JER | 1811 | 9 | 2 | 1 | 42 | 30 | 29 |
| ALBERTS, W | 1563 | 4 | 4 | 4 | -59 | 28 | 25 |
| PALACIOS, M | 1560# | 1 | 0 | 1 | 13 | 2 | 2 |
| JANSSEN, G | 1522 | 5 | 0 | 4 | 81 | 21 | 18 |
| GREER, J | 1408 | 0 | 1 | 3 | -7 | 12 | 9 |
| BALES, R | 1369 | 0 | 1 | 0 | -25 | 3 | 3 |
| FREIDEL, D | 1310 | 0 | 0 | 1 | -18 | 7 | 6 |
| VOIGHT, T | 1213 | 0 | 1 | 0 | -7 | 1 | 1 |

2006 - 2007 LEAGUE Co-CHAMPIONS

NORTHWESTERN UNIVERSITY CC
ST CHARLES BAKER CC



Playoff Runners-up

Fermilab * St Charles CC

Motorola Knights * Walgreens

CICL Open Co-Champions

Scott Allsbrook (Computer Associates)

Deek Dosibhatla (Walgreens)

Richard Easton (UOP)

MOST IMPROVED PLAYER

ADAM MUHS (CITADEL)

EAST DIVISION MVP

DAVE FRANKLIN (HEDGEHOGS)

NORTH DIVISION MVP

ROB MORRIS (MOTOROLA KNIGHTS)

WEST DIVISION MVP

GUSTAVO GARZON (FERMILAB)



DIVISION CHAMPIONS

EAST DIVISION
2ND PLACE

NORTHWESTERN UNIVERSITY CC
HEDGEHOGS

NORTH DIVISION
2ND PLACE

MOTOROLA KNIGHTS
WALGREENS

WEST DIVISION
2ND PLACE

ST CHARLES BAKER CC
ST CHARLES CC

CENTURION AWARDS



CENTURIONS (100+ GAMES PLAYED)

ROB MORRIS (MOTOROLA KNIGHTS) 106

RICHARD EASTON (UOP) 101

YURI FRIDMAN (MOTOROLA KNIGHTS) 102

DOUBLE CENTURIONS (200+ GAMES PLAYED)

PABLO DIAZ (LUCENT TYROS) 204

BOB STOLTZ (LUCENT TYROS) 201

TRIPLE CENTURIONS (300+ GAMES PLAYED)

LENNY SPIEGEL (FERMILAB) 305

IRWIN GAINES (FERMILAB) 310

PLAYOFF DIVISION 05-13-2007

| TEAM NAME | GAME | | | MATCH | | PCT |
|-------------------------|------|---|---|--------|--------|-------|
| | W | L | D | POINTS | POINTS | |
| ST CHARLES BAKER | 2 | 0 | 1 | 12.0 | 2.5 | 0.833 |
| NORTHWESTERN CHESS CLUB | 2 | 0 | 1 | 11.5 | 2.5 | 0.833 |
| WALGREENS | 1 | 1 | 1 | 7.5 | 1.5 | 0.500 |
| ST CHARLES CHESS CLUB | 1 | 1 | 1 | 9.0 | 1.5 | 0.500 |
| MOTOROLA KNIGHTS | 1 | 1 | 1 | 9.5 | 1.5 | 0.500 |
| FERMILAB | 1 | 1 | 1 | 8.5 | 1.5 | 0.500 |
| HEDGEHOGS | 1 | 2 | 0 | 7.0 | 1.0 | 0.333 |
| LUCENT TECH. TYROS | 0 | 3 | 0 | 6.0 | 0.0 | 0.000 |

03-MAY-07 ST CHARLES CHESS CLUB 3 FERMILAB 3

ROUND 1

| BD | RATINGS | SCORE | | RATINGS | SCORE |
|---------------|---------|-------|------------|---------|-------|
| 1 MARSHALL, J | 2187 30 | 1 | GARZON, G | 2304-30 | 0 |
| 2 WIEWEL, J | 2030 -5 | .5 | SPIEGEL, L | 1958 3 | .5 |
| 3 SPLINTER, J | 2063-18 | .5 | GAINES, I | 1719 11 | .5 |
| 4 MEISSEN, B | 1816-26 | 0 | SEDOV, A | 1766 26 | 1 |
| 5 ALBERTS, W | 1609-30 | 0 | DEGRAF, B | 1493 30 | 1 |
| 6 PADILLA, R | 1626 13 | 1 | CEASE, H | 1477-13 | 0 |

08-MAY-07 LUCENT TECH. TYROS 1.5 WALGREENS 3.5

ROUND 1

| BD | RATINGS | SCORE | | RATINGS | SCORE |
|-----------------|---------|-------|-------------|---------|-------|
| 1 DIAZ, P | 2092 14 | 1 | FRISKE, T | 2075-14 | 0 |
| 2 STOLTZ, B | 1907-11 | 0 | LEVENSON, S | 2007 16 | 1 |
| 3 GUIO, J | 1860 4 | .5 | SANTIAGO, T | 1945 -4 | .5 |
| 4 DOBROVOLNY, C | 1786 0 | 0F | GRANATA, M | 1924 0 | 0F |
| 5 BUCHNER, R | 1659 0 | 0 | BIALON, D | 0 0 | 1 |
| 6 HAHNE, D | 1665-17 | 0 | HUGHES, N | 1618 17 | 1 |
| 7 SMITH, BR | 1589 0 | .5 | HAMELINK, N | 0 0 | .5 |

09-MAY-07 MOTOROLA KNIGHTS 3 NORTHWESTERN CHESS CLUB

3

ROUND 1

| BD | RATINGS | SCORE | | RATINGS | SCORE |
|-----------------|---------|-------|----------------|---------|-------|
| 1 FRIDMAN, Y | 2222 13 | 1 | CHAN, ROBERT | 2061-13 | 0 |
| 2 MORRIS, R | 2255-36 | 0 | BAKSHI, A | 2005 36 | 1 |
| 3 THOMSON, J | 2028-17 | 0 | GORODETSKIY, S | 1971 26 | 1 |
| 4 BALICKI, J | 1895-14 | 0 | SMALLWOOD, J | 1909 22 | 1 |
| 5 AUGSBURGER, L | 1794 0 | 1 | WU, A | 0 0 | 0 |
| 6 CHERKASSKY, G | 1642 8 | 1 | LU, D | 1386 -8 | 0 |
| 7 DUONG, R | 1579-34 | 0 | KRAVIK, S | 1380 34 | 1 |

| | | | | | |
|-----------------------------------|---------|-------|-------------|------------------|-----------|
| 10-MAY-07 ST CHARLES BAKER | | | 5.5 | HEDGEHOGS | .5 |
| ROUND 1 | | | | | |
| BD | RATINGS | SCORE | | RATINGS | SCORE |
| 1 NGUYEN, T | 2178 -1 | .5 | FRANKLIN, D | 2164 1 | .5 |
| 2 RASO, P | 2026 26 | 1 | RAUCHMAN, M | 2076-26 | 0 |
| 3 FREIDEL, JESSE | 1989 23 | 1 | JASAITIS, A | 1992-15 | 0 |
| 4 WANG, ANDREW | 1757 28 | 1 | SEET, P | 1837-28 | 0 |
| 5 FREIDEL, JER | 1786 15 | 1 | TAN, A | 1669-15 | 0 |
| 6 JANSSEN, G | 1478 32 | 1 | KRATKA, M | 1635-32 | 0 |

| | | | | | |
|-----------------------------------|---------|-------|------------|-----------------|----------|
| 11-MAY-07 MOTOROLA KNIGHTS | | | 4 | FERMILAB | 2 |
| ROUND 2 | | | | | |
| BD | RATINGS | SCORE | | RATINGS | SCORE |
| 1 FRIDMAN, Y | 2235 3 | .5 | GARZON, G | 2274 -3 | .5 |
| 2 MORRIS, R | 2219 8 | 1 | SPIEGEL, L | 1961 -6 | 0 |
| 3 BALICKI, J | 1881 -6 | .5 | GAINES, I | 1730 6 | .5 |
| 4 AUGSBURGER, L | 1794 15 | 1 | SEDOV, A | 1792-22 | 0 |
| 5 CHERKASSKY, G | 1650-30 | 0 | DEGRAF, B | 1523 30 | 1 |
| 6 DUONG, R | 1545 21 | 1 | ANNIS, J | 1517-21 | 0 |

| | | | | | |
|----------------------------|---------|-------|---------------|---------------------------|----------|
| 12-MAY-07 HEDGEHOGS | | | 4 | LUCENT TECH. TYROS | 2 |
| ROUND 2 | | | | | |
| BD | RATINGS | SCORE | | RATINGS | SCORE |
| 1 FRANKLIN, D | 2165 19 | 1 | DIAZ, P | 2106-12 | 0 |
| 2 RAUCHMAN, M | 2050-10 | .5 | STOLTZ, B | 1896 6 | .5 |
| 3 SMITH, M | 1946 17 | 1 | GUIO, J | 1864-12 | 0 |
| 4 SEET, P | 1809 -2 | .5 | DOBROVOLNY, C | 1786 1 | .5 |
| 5 TAN, A | 1654 22 | 1 | HAHNE, D | 1648-15 | 0 |
| 6 SHEPARDSON, T | 1558-16 | 0 | BUCHNER, R | 1659 11 | 1 |

| | | | | | |
|----------------------------|---------|-------|----------------|-------------------------|----------|
| 12-MAY-07 WALGREENS | | | 3 | ST CHARLES BAKER | 3 |
| ROUND 2 | | | | | |
| BD | RATINGS | SCORE | | RATINGS | SCORE |
| 1 FRISKE, T | 2061 15 | 1 | RASO, P | 2052-22 | 0 |
| 2 LEVENSON, S | 2023 22 | 1 | FREIDEL, JESSE | 2012-22 | 0 |
| 3 SANTIAGO, T | 1941-16 | 0 | FREIDEL, P | 1908 25 | 1 |
| 4 GRANATA, M | 1924-31 | 0 | WANG, ANDREW | 1785 31 | 1 |
| 5 BIALON, D | 1785 2 | .5 | FREIDEL, JER | 1801 -2 | .5 |
| 6 HUGHES, N | 1635 -5 | .5 | JANSSEN, G | 1510 8 | .5 |

| | | | | | |
|--|---------|-------|-------------|------------------------------|------------|
| 12-MAY-07 NORTHWESTERN CHESS CLUB | | | 3.5 | ST CHARLES CHESS CLUB | 2.5 |
| ROUND 2 | | | | | |
| BD | RATINGS | SCORE | | RATINGS | SCORE |
| 1 CHAN, ROBERT | 2048-12 | 0 | MARSHALL, J | 2217 12 | 1 |
| 2 BAKSHI, A | 2041 21 | 1 | WIEWEL, J | 2025-21 | 0 |
| 3 GORODETSKIY, S | 1997 26 | 1 | SPLINTER, J | 2045-26 | 0 |
| 4 SMALLWOOD, J | 1931 7 | 1 | SUITS, J | 1635 -7 | 0 |
| 5 RODNYANSKY, S | 1709 -9 | .5 | ALBERTS, W | 1579 9 | .5 |
| 6 WU, A | 0 0 | 0 | STOSKUS, A | 1404 0 | 1 |

12-MAY-07 FERMILAB**3.5 LUCENT TECH. TYROS****2.5**

ROUND 3

| BD | RATINGS | SCORE | RATINGS | SCORE |
|--------------|---------|-------|---------------|-----------|
| 1 GARZON, G | 2271 12 | 1 | DIAZ, P | 2094 -8 0 |
| 2 SPIEGEL, L | 1955 -2 | .5 | STOLTZ, B | 1902 2 .5 |
| 3 GAINES, I | 1736 17 | 1 | DOBROVOLNY, C | 1787-17 0 |
| 4 SEDOV, A | 1770 16 | 1 | BUCHNER, R | 1670-11 0 |
| 5 DEGRAF, B | 1553-17 | 0 | HAHNE, D | 1633 12 1 |
| 6 ANNIS, J | 1496-17 | 0 | SMITH, BR | 1589 11 1 |

12-MAY-07 ST CHARLES CHESS CLUB**3.5 HEDGEHOGS****2.5**

ROUND 3

| BD | RATINGS | SCORE | RATINGS | SCORE |
|---------------|---------|-------|---------------|------------|
| 1 MARSHALL, J | 2229 20 | 1 | FRANKLIN, D | 2184-20 0 |
| 2 WIEWEL, J | 2004 3 | .5 | RAUCHMAN, M | 2040 -3 .5 |
| 3 SPLINTER, J | 2019 19 | 1 | SMITH, M | 1963-19 0 |
| 4 MEISSEN, B | 1790 2 | .5 | SEET, P | 1807 -2 .5 |
| 5 SUITS, J | 1628 4 | .5 | TAN, A | 1676 -4 .5 |
| 6 ALBERTS, W | 1588-25 | 0 | SHEPARDSON, T | 1542 25 1 |

12-MAY-07 ST CHARLES BAKER**3.5 MOTOROLA KNIGHTS****2.5**

ROUND 3

| BD | RATINGS | SCORE | RATINGS | SCORE |
|------------------|---------|-------|---------------|------------|
| 1 RASO, P | 2030 35 | 1 | FRIDMAN, Y | 2238-35 0 |
| 2 FREIDEL, JESSE | 1990 -9 | 0 | MORRIS, R | 2227 6 1 |
| 3 FREIDEL, P | 1933 -4 | .5 | BALICKI, J | 1875 2 .5 |
| 4 WANG, ANDREW | 1816 -1 | .5 | AUGSBURGER, L | 1809 0 .5 |
| 5 FREIDEL, JER | 1799 12 | 1 | CHERKASSKY, G | 1620-12 0 |
| 6 JANSSEN, G | 1518 4 | .5 | DUONG, R | 1566 -4 .5 |

12-MAY-07 WALGREENS**1 NORTHWESTERN CHESS CLUB 5**

ROUND 3

| BD | RATINGS | SCORE | RATINGS | SCORE |
|---------------|---------|-------|----------------|-----------|
| 1 FRISKE, T | 2076-17 | 0 | CHAN, ROBERT | 2036 25 1 |
| 2 LEVENSON, S | 2045-21 | 0 | BAKSHI, A | 2062 21 1 |
| 3 SANTIAGO, T | 1925-11 | 0 | GORODETSKIY, S | 2023 16 1 |
| 4 GRANATA, M | 1893-20 | 0 | SMALLWOOD, J | 1938 20 1 |
| 5 BIALON, D | 1787 17 | 1 | RODNYANSKY, S | 1700-17 0 |
| 6 HUGHES, N | 1630 0 | 0 | WU, A | 0 0 1 |

2007 CICL OPEN RESULTS

With only 6 entries this year (probably due to the late decision to hold an individual instead of a 2nd-tier team event), the format was a 3-round, round-robin held May 12th at the Playoff site.

ROUND 1

| | BD | RATINGS | SCORE | | RATINGS | SCORE |
|---------|----------------|---------|-------|---------------|---------|-----------|
| (CA) | 1 ALLSBROOK, F | 2172-43 | 0 | ENGELN, M | 1608 43 | 1 (NORTH) |
| (WALGR) | 2 HAMELINK, N | 1940-40 | 0 | VAIL, M | 1592 40 | 1 (CA) |
| (UOP) | 3 EASTON, R | 1858 0 | 1 | DOSIBHATLA, D | 0 0 | 0 (WALGR) |

ROUND 2

| | BD | RATINGS | SCORE | | RATINGS | SCORE |
|---------|----------------|---------|-------|---------------|---------|-----------|
| (NORTH) | 1 ENGELN, M | 1651-10 | 0 | EASTON, R | 1858 10 | 1 (UOP) |
| (CA) | 2 ALLSBROOK, F | 2129 2 | 1 | VAIL, M | 1632 -2 | 0 (CA) |
| (WALGR) | 3 HAMELINK, N | 1900-40 | 0 | DOSIBHATLA, D | 1525 40 | 1 (WALGR) |

ROUND 3

| | BD | RATINGS | SCORE | | RATINGS | SCORE |
|---------|--------------|---------|-------|---------------|---------|-----------|
| (UOP) | 1 EASTON, R | 1868 -8 | 0 | ALLSBROOK, F | 2131 8 | 1 (CA) |
| (NORTH) | 2 ENGELN, M | 1641-27 | 0 | DOSIBHATLA, D | 1565 27 | 1 (WALGR) |
| (STCCC) | 3 STOSKUS, A | 1404 42 | 1 | HAMELINK, N | 1860-42 | 0 (WALGR) |

Richard Easton, Deek Dosibhatla, and Fred Allsbrook each scored 2 points to tie for first place. Each won \$25.

The annual Awards Banquet was combined with the St Charles Chess Club picnic as a special celebration of the completion of the Chicago Industrial Chess League's 50th season.

At right is a shot of the main pavilion. There was plenty of room for everyone !



It was designated as a family day, emphasizing picnic activities instead of "all chess"....

...But of course, chess had to be played. We might have seen some early work from upcoming CICL members !



We did get around to passing out some awards. President Tony Jasaitis hosted, and Trophy Chairman Marty Franek did their normal top job of highlighting the year's winners.

But the real entertainment for the day was softball, Bingo and speed chess (below, right), and the opportunity for boat rides on the Fox River (below, left).



The day went by too fast. One would think it is an idea worth repeating.

See you next time !?

CHICAGO INDUSTRIAL CHESS LEAGUE

Spring Business Meeting of April 18, 2007

At: Lucent in Naperville

Attendees:

| | |
|--------------------------------------|-----------------------------------|
| Matt Vail (CA) | Wayne Ellice (Pawns) |
| Tony Jasaitis (President, Hedgehogs) | Jerry Thomas (Secretary, Dragons) |
| Jeff Wiewel (STCCC) | Bob Buchner (Tyros) |
| Jim Thomson (MOT Knights) | Paul Freidel (Treasurer, Baker) |
| Leonard Spiegel (Fermi) | Irwin Gaines (Fermi) |

MINUTES

President Tony Jasaitis called the meeting to order at 7:10 P.M.

1. OFFICERS REPORTS:**A. President – Tony Jasaitis**

Tony reviewed the agenda and asked for the officers' reports.

B. Secretary – Jerry Thomas

Jerry said there were no changes to the fall business meeting minutes. The minutes were unanimously approved and are on the CICL web site.

C. Treasurer – Paul Freidel

Paul Freidel reported that the budget was on target and we have a cash balance of \$2,280. We have 1 less team than budgeted and a less expensive picnic instead of a banquet. After the meeting Paul emailed the budget YTD results (see web site link for budget).

He said the incorporation papers are done. The remaining large expenditure is \$800 for the trophies. Last year it was \$840. Tony Jasaitis said Marty Franek told him that trophies would be about the same.

D. Division Chairmen.**East-Tony Jasaitis for Jim Duffy, Chairman**

Tony said Northwestern finished first and the Hedgehogs were second. Both teams committed to playing in the playoffs. Tony mentioned the East division needs a new chairman. Jim Duffy has resigned as division chair and Alumni Ace team captain. There is a problem with the Alumni Aces team, which is falling apart. They need a team captain.

Anyone who is interested in being the East Division chairman should contact Tony.

West-Bob Buchner, Chairman

Bob Buchner agreed to continue as chairman. He said St. Charles Baker finished first, St. Charles Chess Club was second, Fermi third, and the Lucent Tech. Tyros were fourth. All teams committed to playing in the playoffs. He reported the CASE team is short 2 players and needs an association or players. Tony Jasaitis mentioned Skip Kale who previously played with CASE is interested. Tony will pass Skip's contact information to the CASE team captain.

North-Jim Thomson, Chairman

There are no nominations for the North division chairman and Jim Thomson will continue. Jim said the Motorola

Knights finished first and Walgreens second. Both teams committed to playing in the playoffs (Walgreens replied subsequent to the meeting.)

Jim reported the Renaissance Knights dropped out and he does not know why. Jeff Wiewel said the Renaissance Knights' captain was doing many things and may just had to cut back. He also mentioned that the Renaissance Knights had feuds with other outside organizations.

The Excaliburs Alumni team is struggling with forfeits and needs an association to pick up players or more alumni players.

2. OTHER REPORTS:

A. Bulletin, Games Editor Webmaster-Tom Friske (not present, emailed in)

WEB: We continue to have a website with 1 Terabyte of storage, enough for any Archives or other interesting material worthy of publishing. As of last Thanksgiving, a bulletin-board feature was added and allows any member, once approved, to chat or add topics as desired.

The registration process is specific so as to weed out spammers as much as possible, as follows:

- 1) a website visitor clicks a link and fills out a new-registration form, which includes a random, human-only-readable, identifier. User must include a valid email address and their name on the form. Others will be deleted.
- 2) Once entered, this visitor will receive a confirmation email containing a link. Once clicked, the registration is complete, but the member is still not allowed to update content.
- 3) At least once a week, the moderator (currently only me) must add each new user to a group which gives full-access permissions.

All valid users were in the full-access group as of April 12th (only 15 members).

Any new registers after that date will be approved in May.

PLEASE PASS THE WORD to your teammates. Even though this feature has existed most of the season, very few meaningful conversations have been started.

GAMES Editor: Games submission is almost nil. The only exception is the one time I begged for missing matches and then I was buried. Another call will go out before the playoffs. I will be attending on May 12th this year, so Captains can bring all game move sheets then.

Thanks to the very few that have been consistent in this area!

BULLETIN: No news, and not many issues. I refused to publish without ratings, but then have lately had other priorities.

MANY THANKS to the growing number of regular annotators !! Especially Gustavo Garzon, Arnie Walker, Wayne Ellice, and Tony Jasaitis. Others have also contributed occasionally, especially an upcoming excellent report from the USAT team.

Also got positive feedback on tactics problems and player-annotations.

Finally, I have never presumed that no one else wants to perform any of these three duties.

Although I am more than happy to continue in these roles, anyone with particular skills and willingness to contribute should speak up and offer their services.

Time constraints: Bulletin Editor is a constant, almost daily duty, impossible to do properly in a single sitting. Games Editor is next to nothing for game entry, 10-20 hours a month for annotations, and still my favorite. Web work averages 2 hours a week, depending on team schedules and ratings availability.

The attendees discussed splitting up these functions to help Tom. **If anyone is interested, please contact Tony Jasaitis.**

B. Rating Chairman-Art Olsen (not present, emailed in)

The major change to the ratings this year is the addition of adjusted performance ratings based on division membership for playoff seeding purposes.

1. Please email your match results promptly to the ratings chairman and bulletin editor after each match.
2. Please include the round #, Home and away team, and date of match when reporting the match results.
3. When claiming forfeits, the captain must write down the name of the forfeit winner on the match sheet. Some teams have claimed forfeits without writing down the name of the player claiming the forfeit win.
4. If a match is played out of order, please indicate when the matches are played out of round order on the match results sheet. Ratings can be delayed because match results can appear to be outstanding when matches are played out of round order.
5. Captains, please indicate if a new player has an existing over the board rating such as a USCF rating (or is unrated) on the match results sheet.

Thank you to the CICL for being patient for ratings updates this season.

Jim Thomson mentioned the ratings programs need to be rewritten and are in a very old language. **Anyone who would be willing to do this should contact Tony.**

C. Publicity Chairman-Matt Vail

Matt explored buying a banner for the picnic with Sign-O-Rama in Downers Grove. The cost would be \$10 per square foot. However, the banner would not be visible outside the picnic area and would cost \$200. After discussion, the attendees decided not to purchase a banner.

Matt said former players are an important resource. Right now, only captains have any contact info and it is not update to date for former players. **The attendees unanimously approved the following: The League will collect Contact Info on a volunteer basis for all players.**

Matt described the CICL monthly open house held at Computer Associates on the 2nd Tuesday of every month from 6:30 to 10 P.M. They had 6 players last week. **Everyone is invited to come and play at the open house!**

Matt said he was exploring the south Chicago area and companies in the loop for new teams. He is developing contacts with these companies. Tony said Zurich Insurance is a possible new team for the North division. Tony will forward their information to Jim Thomson.

Matt will provide an updated Map of Teams and a “State of Publicity” to be published on our web site.

D. Banquet Chairman-Wayne Ellice

Wayne said this year’s banquet was really the picnic that Jeff Wiewel is handling. Wayne agreed to be banquet chair for next year’s banquet.

The attendees agreed to the following charges for CICL families to attend the picnic; Adults (16 and over) - \$12, Children under 6 – Free, Children over 6 - \$6. There is also a \$1 per person charge for parking collected at the parking area by the park.

PICNIC

Jeff Wiewel described the picnic site and preparations:

- The pavilion is reserved and a deposit was paid (he will give Paul Freidel the bill for CICL's share of this).
- the hours will be 10 A.M. to 5 P.M. on Sat June 2nd.
- we will have a check-in table and stamp the hands of people as they come in.
- there will be small gift certificates for the games (CICL will share in this cost).
- we need 4 Setup Volunteers to put drop cloths on tables, setup the games, and bring in the food
- we need 5 Cleanup Volunteers to throw away trash and take down games.
- Jeff and Paul Freidel will email flyers with the picnic details (done).
- Wayne Ellice will rent a loudspeaker.
- An email will be sent the weekend after the playoffs.
- Whether to accept advance picnic payments at the playoffs is yet to be determined.

The attendees agreed that disposition of the team fees for the banquet would be decided at the Spring meeting based on the budget situation.

E. Trophy Chairman-Marty Franek (not present, Tony Jasaitis supplied)

The current vendor will continue to supply our chess trophies at similar prices. Last year it cost us \$858 and this year's budget is \$800 since there is no Dragis Award this year.

3. ELECTIONS

A. President

Tony Jasaitis agreed to continue. There were no other nominees. Tony was unanimously elected.

B. Secretary

Jerry Thomas agreed to continue. There were no other nominees. Jerry was unanimously elected.

E. Treasurer

Paul Freidel agreed to continue. There were no other nominees. Paul was unanimously elected.

4. PLAYOFFS

A. Determine Playoff Teams

The playoff teams are: Northwestern, Hedgehogs, Motorola Knights, Walgreens, St. Charles Baker, St. Charles Chess Club, Fermi, and Lucent Tyros. All teams committed to playing in the playoffs (Walgreens replied subsequent to the meeting).

B. TD(s)

We need some volunteers. Of the past TD(s), only Art Olsen is not on a playoff team. So far, there are no volunteers.

Anyone who would be willing to be the Playoff Tournament Director should contact Tony.

C. Determine Site

Matt Vail has volunteered Computer Associates as the playoff site. He has to make sure the building remodeling (painting on under floors) will not impact us. Matt is confident there should be no problem and will know by April 22nd. Tony Jasaitis asked for some alternate sites just in case. Jim Thomson volunteered Motorola. The attendees said that BP might be a possibility (BP captain not present).

D. 2nd Tier Event

Tony Jasaitis asked whether a 2nd tier team or individual event should be held. All attendees thought the 2nd tier 4-man team event went exceptionally well last year with many teams participating. Therefore, the attendees agreed that the 2nd Tier Event would be a 4-man team event again run just like last year. Tony Jasaitis will solicit opinions via

email. Afterward, lack of demand for an individual tournament indicated that the event would indeed be tournament of 4-man teams.

5. OLD BUSINESS – None.

6. NEW BUSINESS

A. Order scoresheets and result sheets for next seasons

Wayne Ellice agreed to order the scoresheets from the same supplier as last time to cover 2 years/seasons. The match scoresheet will be revised to include the new forfeit rule and the adjustments for upper board forfeits. New result sheets will use the same color alternation for extra boards as for the top 6.

B. Vote on forfeits proposal (see January bulletin)

This proposal was unanimously approved.

C. CICL Midwest Amateur Chess Team – review future sponsorship

The league will sponsor this again next year. Last year's team finished 2nd and generated lots of publicity for the league. Tony Jasaitis will also include details and encourage lower rated players to form other CICL (non-sponsored) teams and enter.

D. 50th Anniversary – Picnic, finalize details

Wayne Ellice proposed purchasing 300 pens for \$180 (\$.59 each) as a 50th Anniversary commemorative item to be given to all CICL players. This proposal was unanimously approved.

See picnic under Banquet Chair for picnic details.

E. Discuss eligibility ban on company players in club teams

After quite a discussion, Irwin Gaines, Bob Buchner, Jim Thompson, and Tony Jasaitis agreed to form a committee to review this issue and create a proposal. Anyone wishing to join this committee should contact Tony Jasaitis.

F. Consider publicity policy for other chess organizations

After discussion, the general consensus was this is up to the President's discretion. Attendees mentioned that the other chess organizations should reciprocate by putting a link to our web site on our web site.

G. Other allowed types of teams (issue stirred up by possibility of an ICA junior team)

Attendees agreed that any well-established organization would be able to enter the league as a club team.

6. Events Calendar

Dates:

- Playoffs Saturday, May 12
- Banquet aka Picnic Saturday, June 2
- Fall Meeting Wednesday, August 29

The meeting was adjourned at 10:38 P.M.

Jerry Thomas, Secretary April 22, 2007

CICL YTD results, 2006/2007 season
As of 4/18/07

| | <u>Actual</u> | <u>Budgeted</u> | |
|---------------------------------|---------------|-----------------|--|
| <i>Beginning cash</i> | 701.81 | 701.81 | |
| Plus: | | | |
| Dues | 1,210.00 | 1,320.00 | |
| Banquet deposit | 550.00 | 600.00 | |
| Late fees/donations | 55.00 | | |
| Minus: | | | |
| Credits (Ren Knights) | (20.00) | 0.00 | |
| Incorporation costs | (76.58) | (75.00) | |
| Amateur Team | (140.00) | (110.00) | |
| Other | 0.00 | (100.00) | |
| <i>Ending cash</i> | 2,280.23 | 2,336.81 | |
| Projected: | | | |
| Plus: | | | |
| Dues/deposit to be received | 80.00 | 0.00 | |
| Minus: | | | |
| Trophies | (800.00) | (800.00) | |
| Refreshments | (150.00) | (150.00) | |
| USCF/ICA | (65.00) | (65.00) | |
| Commemorative pens | (200.00) | 0.00 | |
| Projected cash | 1,145.23 | 1,321.81 | |
| <i>Projected surplus</i> | <u>443.42</u> | <u>620.00</u> | |
| Banquet deposit | 575.00 | 600.00 | <i>to potentially be credited to next year</i> |

United States Amateur North 2007

On the wintry weekend of February 17-18, 2007 the US Amateur Team North was held at the Fairfield Inn in Lombard, IL and the Chicago Industrial Chess League was there!

The US Amateur Team Champion is an annual US Chess Federation team 5 round event open to teams of 4 players with an average rating below 2200. Each team is allowed to have one alternate. There are four regional events US Amateur Team West (San Pedro, CA), US Amateur East (Parsippany, NJ.), US Amateur Team South (Kissimmee, Florida), and US Amateur Team North (Lombard, IL) all held on the same weekend February 16-18, 2007. On March 24, 2007 the winner of each regional team championship will compete in playoffs in cyberspace at the Internet Chess Club (ICC). The winner of the playoffs is called the US Amateur Team Champion.

Back at the US Amateur Team North, however, the CICL fielded a team of four players and one alternate:

- 1) Yuri Fridman of the Motorola Knights (USCF Rating = 2233, CICL Rating = 2199),
- 2) Fred Allsbrook of Computer Associates (USCF Rating = 2119, CICL Rating = 2214),
- 3) Tam Nguyen of the St Charles Bakers (USCF Rating = 2091, CICL Rating = 2175),
- 4) Robert Morris of the Motorola Knights (USCF Rating = 2003, CICL Rating = 2252), and
- 5) Gustavo Garzon of Fermilab (USCF Rating = 1893, CICL Rating = 2278).

The CICL Team turned in a great performance by coming in 2nd place out of 12 teams! Going into Round 5 CICL was in clear first place with a perfect 4-0 score. Unfortunately in Round 5 CICL lost to a very strong team The Repeat Offenders who edged CICL at the end with a 4.5-0.5 score to our 4-1 score. However, it was close at the end and CICL lost to The Repeat Offenders with a score of 1.5 – 2.5 with Robert Morris winning on board 4 and Fred Allsbrook drawing on board 2.

The individual performances of CICL's team is summarized below (U = unplayed).

| Player Name | Total Pts | Round 1 | Round 2 | Round 3 | Round 4 | Round 5 |
|-----------------------|--------------|------------|------------|------------|------------|------------|
| Yuri Fridman (2233) | 0.0 | 0 | U | U | 0 | 0 |
| Fred Allsbrook (2119) | 3.5 | U | 1 | 1 | 1 | 0.5 |
| Tam Nguyen (2091) | 3.5 | 1 | 1 | 0.5 | 1 | 0 |
| Robert Morris (2003) | 3.5 | 1 | 0.5 | 1 | U | 1 |
| Gustavo Garzon (1893) | 4.0 | 1 | 1 | 1 | 1 | U |

Gustavo Garzon turned in an excellent performance by winning every round he played. Consequently his USCF rating jumped from 1893 when the tournament began to 2017!

Wow! Yuri Fridman had very tough pairings on board 1. In Round 4 he played International Master Angelo Young and in Round 5 he played John Cole (USCF 2347). The truth is that any of the rest of us most likely would have done no better than Yuri did playing the opponents he did. Like a true gentleman Yuri never complained.

On a humorous note our Round 5 opponents were wearing matching blindingly bright orange hooded sweatshirts with each player's USCF member number on the front. If I had brought sunglasses I might have been tempted to wear them against these bright guys!

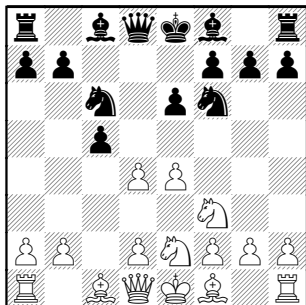
Kudos to Chief Tournament Director Christopher Merli who did a great job running this tournament.

Four annotated games from the event are included on the following pages !

Barclay,K (2052) –
 Allsbrook,F (2144) [C00]
 US Amateur Team North 2007
 Round 2, 02-17-2007

[Notes by Fred Allsbrook]

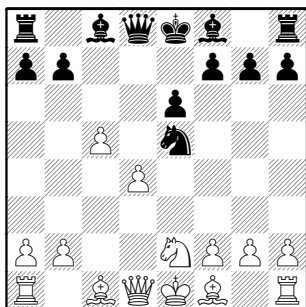
1.e4 e6 2.Nf3 d5 3.Nc3 d4 4.Ne2 c5
 5.c3 Nc6 6.cxd4 Nf6



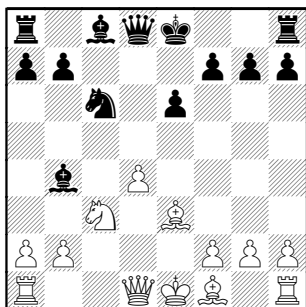
7.e5

7.dxc5 Bxc5 8.Nc3

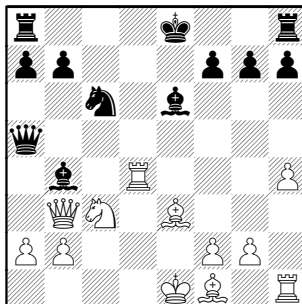
7...Nd7 8.dxc5 Ndx5 9.Nxe5 Nxe5
 10.d4



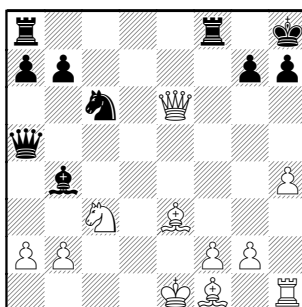
10...Bxc5 11.Be3 Bb4+ 12.Nc3 Nc6



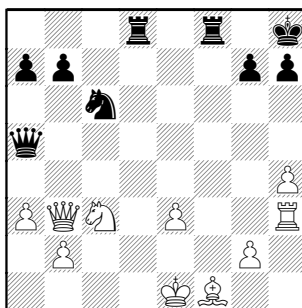
13.h4 Qa5 14.Qb3 e5 15.Rd1 exd4
 16.Rxd4 Be6



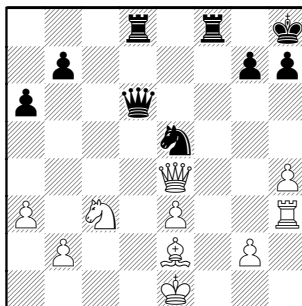
17.Re4 0-0 18.Rxe6 fxe6 19.Qxe6+
 Kh8



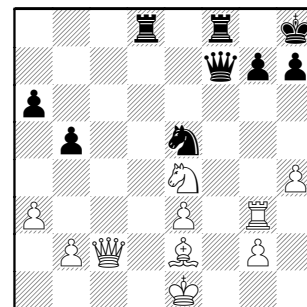
20.Qb3 Rad8 21.a3 Bc5 22.Rh3
 Bxe3 23.fxe3



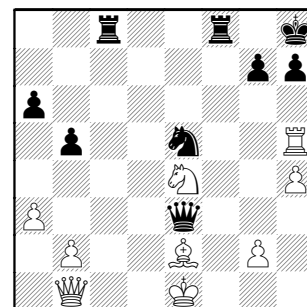
23...Ne5 24.Qc2 Qc7 25.Be2 Qc6
 26.Bb5 Qc7 27.Be2 a6 28.Qe4 Qd6



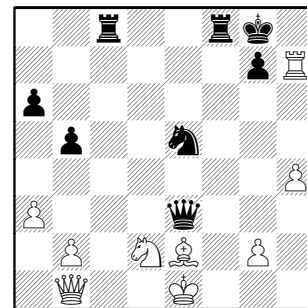
29.Qc2 b5 30.Ne4 Qg6 31.Rg3 Qf7



32.Rg5 Rc8 33.Qb1 Qb3 34.Rh5
 Qxe3



35.Rxh7+ Kg8 36.Nd2

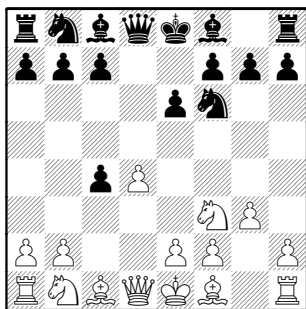


36...Qf2+ 37.Kd1 Qg1+ 0-1

Nguyen,T (2100) –
 Dean,J (2235) [E00]
 US Amateur Team North 2007
 Round 5, 02-18-2007

[Notes by Tam Nguyen]

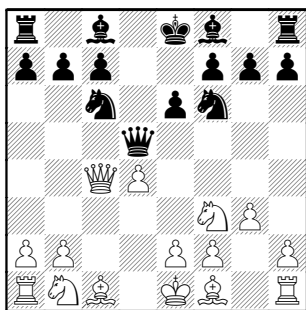
1.d4 d5 2.c4 e6 3.Nf3 Nf6 4.g3 dxc4



5.Qa4+?! This is a little inaccurate.

First, 5. Bg2 is stronger. Second, if white wants to play 5. Qa4+ then he should have played the classical Catalan move order 3.g3 4.Bg2 to avoid 5... Nc6 like in the game.

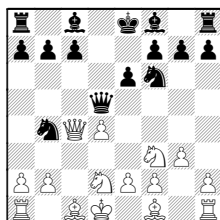
5...Nc6 6.Qxc4 Qd5



7.Nbd2? A deadly carelessness. 7. Qd3 or 7. QxQ leads to an equal game.

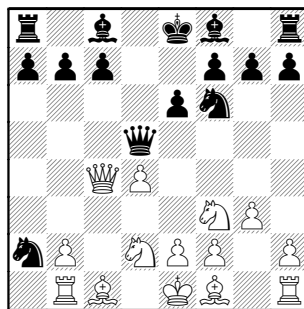
7...Nb4! The knight's invasion of c2 is unavoidable. 8.Rb1

8.Kd1



8...Ng4! and white is dead!

8...Nxa2

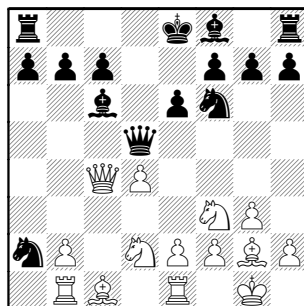


Black pragmatically grabs a pawn and will hold it for the rest of the game.

9.Bg2

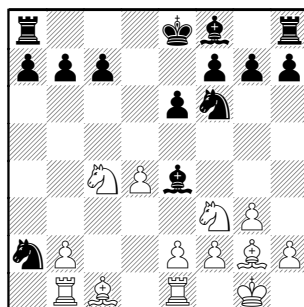
After **9.Qxc7 Bd7!** is extremely unpleasant.

9...Bd7 10.0-0 Bc6 and black's bishop has a great outpost **11.Re1**



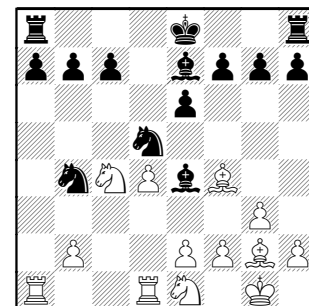
White must constantly keep an eye on the e4 square.

11...Qxc4 12.Nxc4 Be4



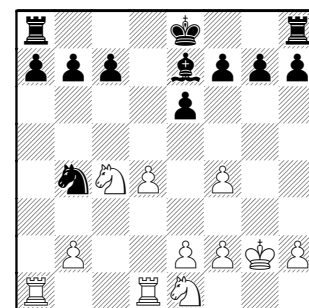
Black tries to take advantage of white's disorganized pieces but this is a waste of time.

13.Ra1 Nb4 14.Rd1 Be7 15.Bf4 Nfd5 16.Ne1



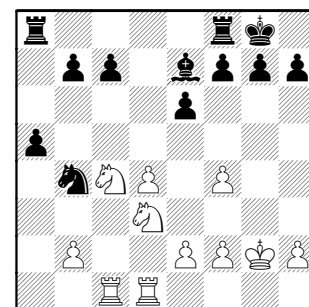
I don't mind having the double f-pawn since this is typical of the Catalan structure. White has too many pieces for a little space, he needs to exchange to have some air.

16...Bxg2 17.Kxg2 Nxf4+ 18.gxf4



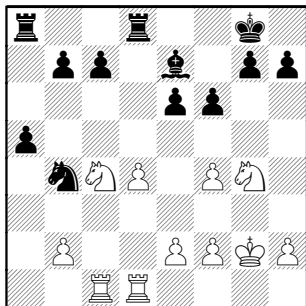
My strategy works, white has control of the center and semi opened g-file. His king will also be centralized.

18...0-0 19.Rac1 a5 20.Nd3



If black exchanges this knight, his queen pawns will be a little loose.

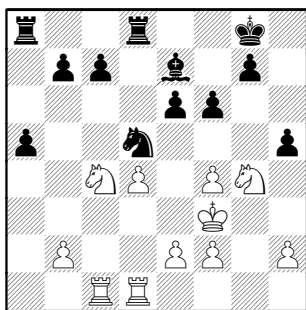
20...Rfd8 21.Nde5 White tries to provoke black's pawns to move forward. **21...f6 22.Ng4?**



22...Nd5?

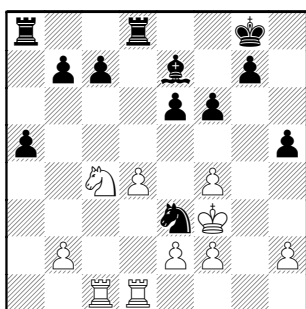
22...Nc6! wins the d4 pawn

23.Kf3 h5?!



The g6 square is pretty weak.

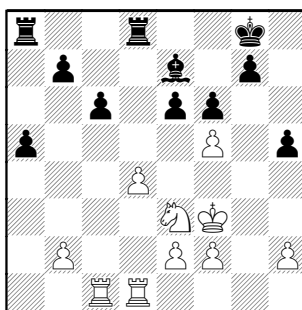
24.Nge3 Nxe3



25.Nxe3? Bad strategically. Up to now everything has gone well with white's plan, which is centralizing and attack the g-file. 25.fxe should secure the center so the rooks can freely attack the g7 pawn and perhaps h5.

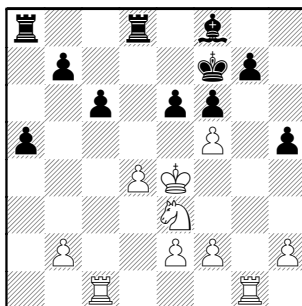
25.fxe3! and black will have difficulty proving his material advantage

25...c6 26.f5



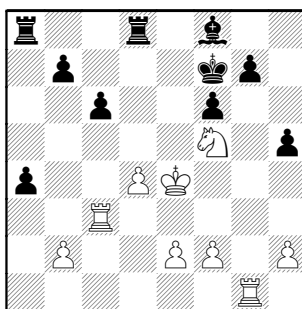
The point to the previous move. This looks aggressive but not useful. White's last move releases the tension of the g7-pawn, now can go to g5 at will.

26...Kf7! a very good defensive move, and will solve most of black's problems. **27.Rg1 Bf8 28.Ke4**

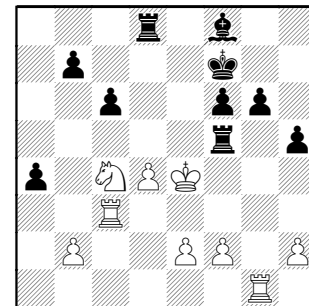


White now has great difficulty since his pieces in the center are not well supported.

28...exf5+ 29.Nxf5 a4 30.Rc3

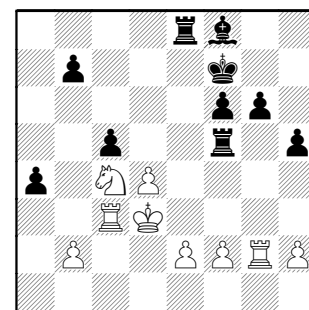


30...Ra5! The passive rook has spoken! **31.Ne3 g6 32.Nc4 Rf5!**



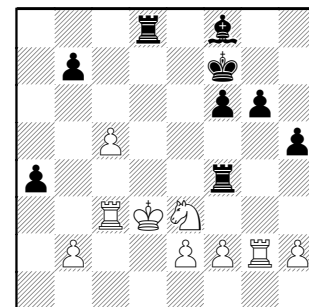
There's no good way to guard f2

33.Rg2 Re8+ 34.Kd3 c5?

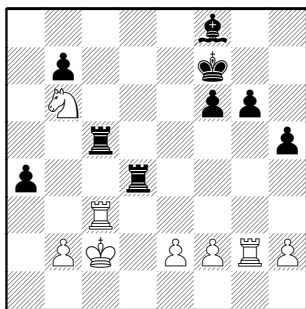


I don't think black intended to lose this pawn temporarily. But since his position is so good, it doesn't even matter.

35.Ne3! Rf4 36.dxc5 Rd8+



37.Kc2 Rc8 38.Nd5 Rd4 39.Nb6 Rxc5

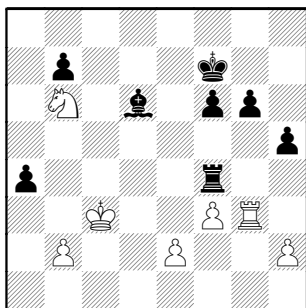


40.Rg3 trying to activate my rook

40.e3 is better with the idea of f4 and the rook is liberated through the second rank.

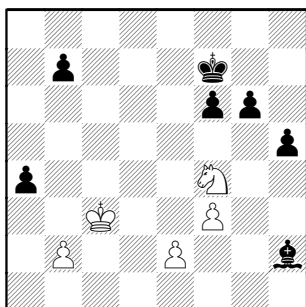
40...Rf4!! the white rook is not free yet! At this point I became very depressed about my position since black objective will be capturing h2 and there's nothing white can do about it.

41.f3 Rxc3+ 42.Kxc3 Bd6

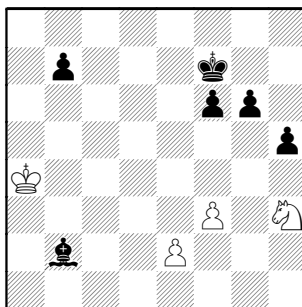


43.Rg1? In "my opponent" time pressure, I make a mistake but this position is beyond saving.

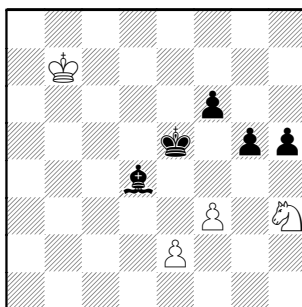
43...Bc5 and the rest is straight forward. Both players just blitz it out.
44.Nd5 Bxg1 45.Nxf4 Bxh2



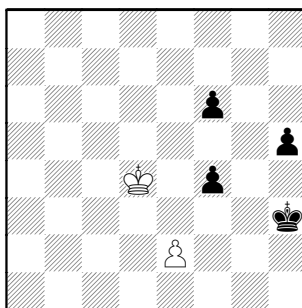
46.Nh3 Be5+ 47.Kb4 Bxb2 48.Kxa4



48...Ke6 49.Kb5 g5 50.Kb6 Ke5 51.Kxb7 Bd4



52.f4+ gxf4 53.Kc6 Kf5 54.Kd5 Kg4 55.Kxd4 Kxh3

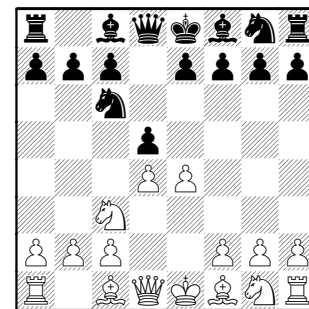


56.Ke4 Kg3 0-1

Hollinberger,D (1991) –
Morris,R (2020) [B00]
US Amateur Team North 2007
Round 5, 02-18-2007

[Notes by Rob Morris]

1.e4 Nc6 2.d4 d5 3.Nc3



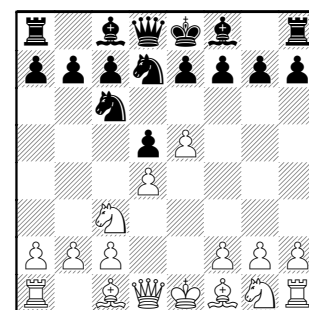
A part of the game's background is that our two teams met, with the same color arrangement, in last year's Amateur Team Midwest tournament. In that tournament I faced this attack by white for the 1st time, I took the pawn, improvised and lost in under 20 moves quite possibly costing us 1st place. Ouch. That's one of those games that haunt me.

This year they had a different 4th board but he had obviously talked with my opponent from a year ago.

3...Nf6

Last year I had just started dabbling with 1... Nc6. This time I was ready with stuff not in "the books".

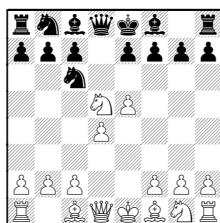
4.e5 Nd7



5.f4

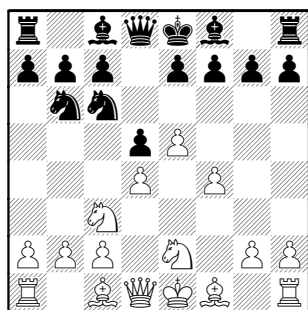
After the game Gustavo Garzon asked why white can't grab the pawn. Put simply. He can.. but he can't hold on to it

After **5.Nxd5 Ndb8**



and following with e6, Nxd4

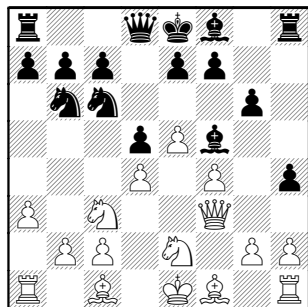
5...Nb6 6.Nge2?



Played after a long think and it caught me by surprise. It seems he is trying to avoid a black Bf5 (and lure me into Bg4) but the problem is this knight is now in his way for the rest of the game and the next few moves revolve around the eventual Bf5 by black. Frankly it seemed to me that White was scared and I was totally "in his head" for the rest of the game.

Maybe instead 6.Nf3

6...h5! 7.a3 h4 8.Qd3 g6 9.Qf3 Bf5



So I forced it through anyway 10.Kd1

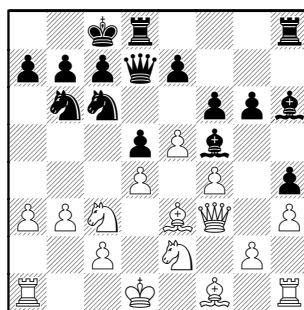
The computer seems to "think" that black is slightly better and white should just sack the pawn with 10.Be3 Bxc2 11.Rc1 Personally, I

thought I was much better, especially after his next move.

10...Qd7 11.h3 Otherwise a timely Bg4 will be decisive after I lure his e2 knight away.

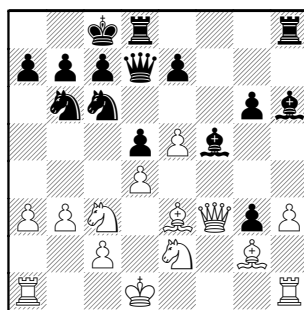
Maybe 11.Be3

11...0-0-0 12.b3 f6 13.Be3 Bh6



Black's development has been harmonious and white's hasn't really happened. To say I was happy at this point would be an understatement. It was about here when my opponent from last year's game started watching this encounter. He didn't look happy.

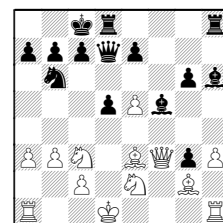
14.g4 hxg3 15.Bg2 fxe5 16.fxe5



16...Bxe3? The horror of it all. While this move is only 2nd best the question mark is really for the plan.

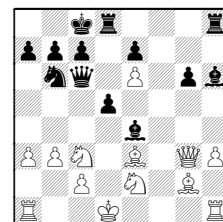
At this point I also saw 16...Nxe5 I figured it left black with an extremely nice position but thought it messy and that the game continuation would be "cleaner".

So like 16...Nxe5 17.dxe5



17...Bxe3

(17...Be4 18.e6 Qc6 19.Qxg3



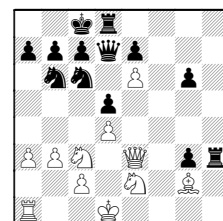
19...Bxg2 20.Bxh6 Bxh1)

18.Qxe3 d4 19.Qxd4 Qxd4+ 20.Nxd4 Rxd4+

17.Qxe3 Bxh3?? For some reason I forgot that white's e pawn is free to move. Better was 17...Rh4

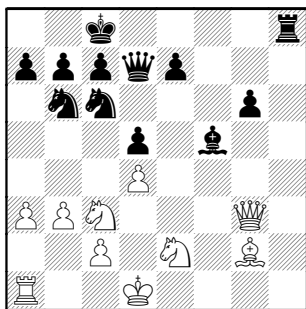
18.e6??

Had he played the now stunningly obvious 18.Rxh3 Rxh3 19.e6



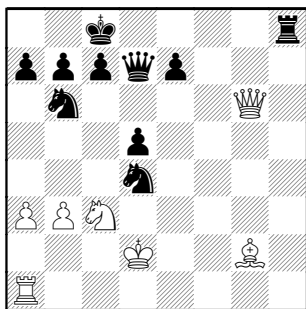
I would have been in for a very painful afternoon. As it was I didn't notice this resource at all during the game. My computer told me about it later that night. I guess that is why they call it an AMATEUR tournament.

18...Bxe6 19.Rxh8 Rxh8 20.Qxg3 Bf5

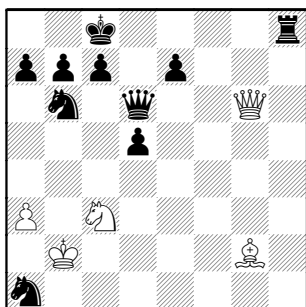


I think he was mentally broken at this moment. Otherwise I'm completely at a loss to explain the next sequence.

21.Nf4 Nxd4 22.Nxg6 Bxc2+ 23.Kd2 Bxg6 24.Qxg6

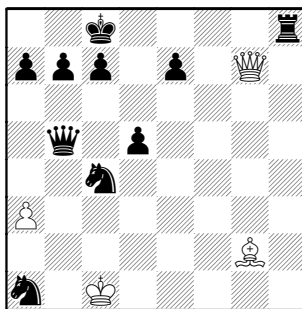


24...Nxb3+ 25.Kc2 Nxa1+ 26.Kb2 Qd6



Give him credit .. nobody ever won by resigning. That said ... There is a time and a place.

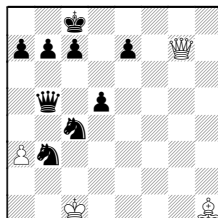
27.Qg7 Nc4+ 28.Kb1 Qb6+ 29.Nb5 Qxb5+ 30.Kc1



30...Nb3+

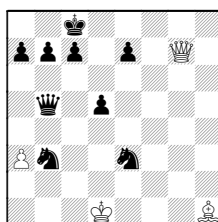
Missed a **MATE IN 8** here but frankly I was already in auto-pilot mode. I leave it to the reader as an exercise.

Answer: 30...Rh1+ 31.Bxh1 Nb3+



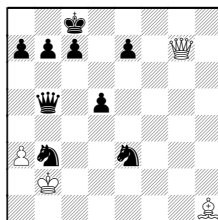
32.Kc2

(32.Kd1 Ne3+)

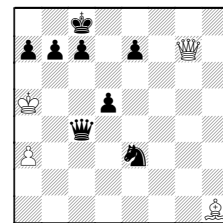


33.Ke1 Qf1#)

32...Ne3+ 33.Kb2



33...Qe2+ 34.Kxb3 Qc2+ 35.Kb4 Qc4+ 36.Ka5



36...b6#

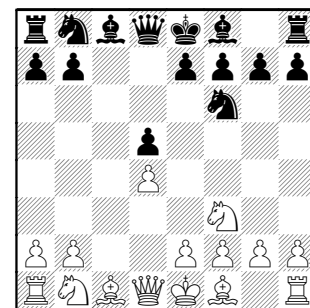
0-1

Otero y Garzon,G (2017) - Innumerable,F (2005) [D13]
US Amateur Team North 2007
Round 5, 02-18-2007

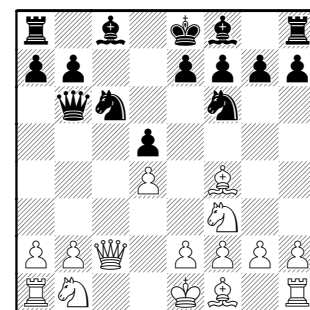
[Notes by Gustavo Garzon]

[Editor:] An interesting pairing. Floren is a CICL veteran, hopefully only temporarily playing for someone else!

1.d4 Nf6 [TIME: White = 1, Black = 1]
2.c4 c6 [1,1] 3.Nf3 d5 [3,1] 4.cxd5 cxd5 [5,1]

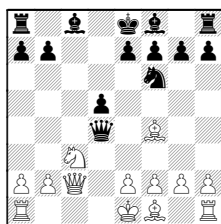


5.Bf4 Qb6 [6,7] 6.Qc2 Nc6 [11,10]



7.e3?! this is a concession that fortunately black did not use.

Correct is: 7.Nc3 although black has a good game. In this case the d-pawn cannot be taken because 7...Nxd4? 8.Nxd4 Qxd4

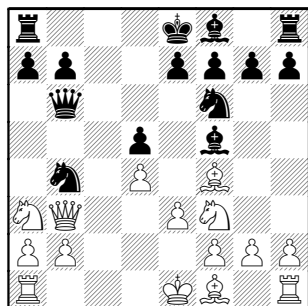


9.e4! opens many lines for white.

7...Nb4 [13,13] this looks a bit too ambitious.

I don't understand why black did not play: 7...Bf5 getting an easy game.

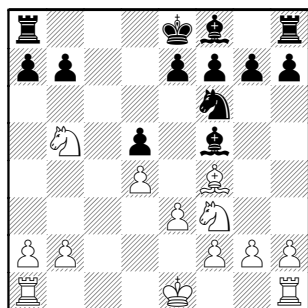
8.Qb3 Bf5 [15,31] 9.Na3



9...Nd3+ [17,46]

9...a6 denying access to b5 would be an improvement of black's idea.

10.Bxd3 Qxb3 [18,46] 11.Bb5+ Qxb5 [21,52] 12.Nxb5

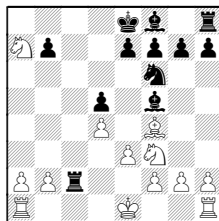


The position is about equal.

12...Kd8?! [21,54] Innumerable

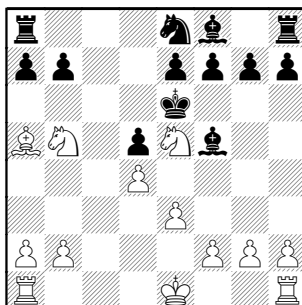
decides to defend passively and gives white a chance to get something.

It was probably better to continue with 12...Rc8 13.Nxa7 Rc2



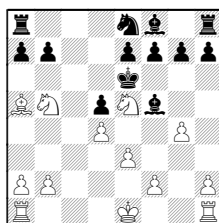
since white has to return the pawn in order to connect the rooks.

13.Bc7+ Kd7 [26,66] 14.Ne5+ Ke6 [30,67] 15.Ba5 Ne8 [36,69]



16.Rc1?! Losing the initiative as black now pushes back white's pieces.

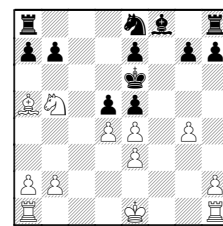
I failed to evaluate: 16.g4



which does not give black sufficient time to organize.

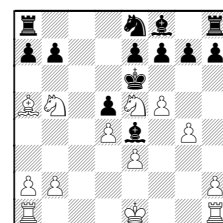
For example: 16...Bc2

There are a couple other tries:
A) 16...Be4 17.f3 f6 18.fxex4 fxe5



19.exd5+ Kxd5 20.dxe5 black's king in the centre gives white a sizeable advantage but for some reason I did not evaluate like this during the game.;

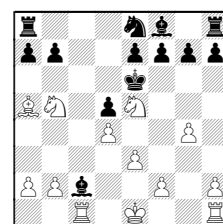
B) 16...Bg6? 17.f4 Be4 18.f5+



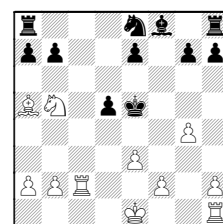
18...Kf6 19.0-0 white is winning.)

So back to my main analysis line
(from diagram bottom last column)

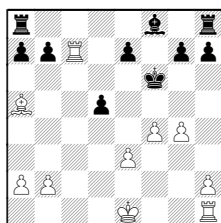
16..Bc2 17.Rc1



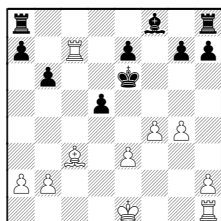
17...f6 (17...Be4 18.f3) 18.Rxc2 fxe5 19.dxe5 Kxe5



20.f4+ Kf6 21.Nc7 Nxc7 22.Rxc7



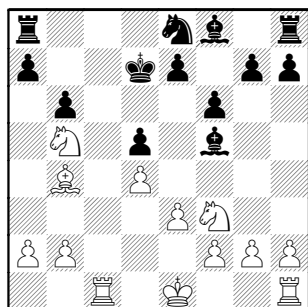
22...b6 23.Bc3+ Ke6



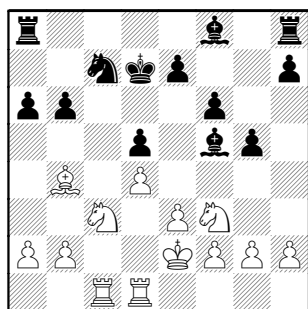
It looks like white's pieces have more targets and scope than black's.

Let's jump back to the game (left off at middle column of last page)...

16...f6 [42,76] Black's problems are starting to disappear. 17.Nf3 b6 [45,84] 18.Bb4 Kd7

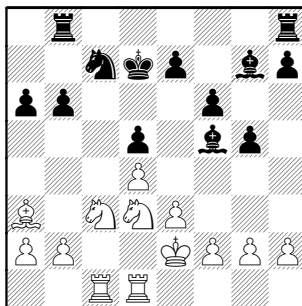


[45,87] 19.Ke2 a6 [47,90] 20.Nc3 Nc7 [48,97] 21.Rhd1 g5 [53,100]



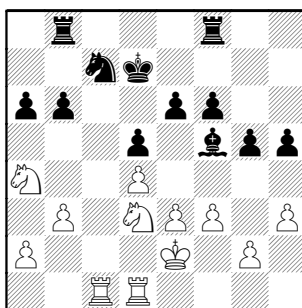
so Florin managed to balance the

game, but started to get a bit short of time. 22.Ne1 Rb8 [55,101] 23.Nd3 Bg7 [56,105] 24.Ba3



I now began to maneuver trying to keep him thinking as much as possible while having the most options possible.

24...Rhc8 [59,107] 25.f3 e6 [62,108] 26.h3 h5 [63,108] 27.b3 Bf8 [70,112] 28.Bxf8 Rxf8 [70,112] 29.Na4

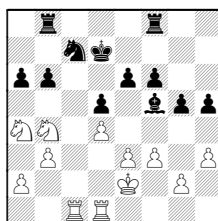


29...Nb5?! [70,114] Losing a pawn for not too much.

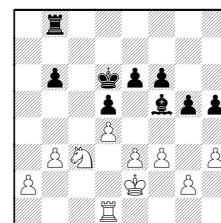
29...g4 was good enough.

30.Rd2

White can win a pawn by force with: 30.Nb4 Nc7

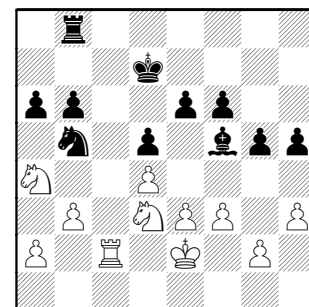


31.Rxc7+ Kxc7 32.Nxa6+ Kd6 33.Nxb8 Rxb8 34.Nc3

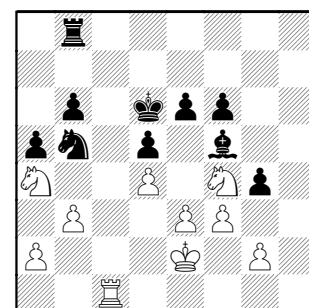


Although winning requires a lot of work, the task would be simplified given that Florin would have to blitz the rest of the game.

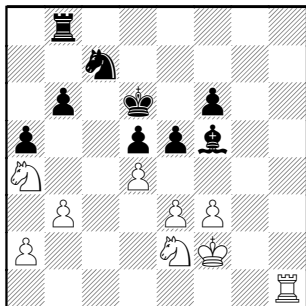
30...Rfc8 [75,114] 31.Rdc2 Rxc2+ [76,116] 32.Rxc2



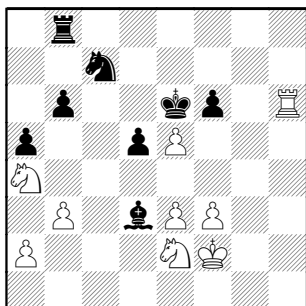
32...g4 [76,116] 33.hxg4 hxg4 [77,116] 34.Rc1 a5 [77,117] 35.Nf4 Kd6 [78,117]



36.Kf2 e5 [79,117] 37.Ne2 Nc7 [80,117] 38.Rh1 gxf3 [82,118] 39.gxf3



39...Bd3 [82,118] **40.Rh6** **Ke6**
[84,118] **41.dxe5**

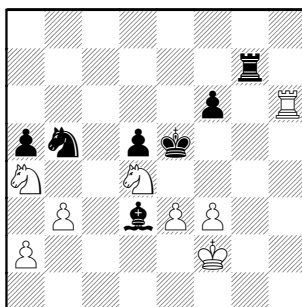


41...Kxe5? [85,118]

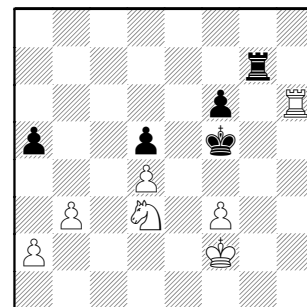
Finally he makes a big mistake.

I was expecting **41...Bxe2** **42.Kxe2**
Kxe5 and black holds.

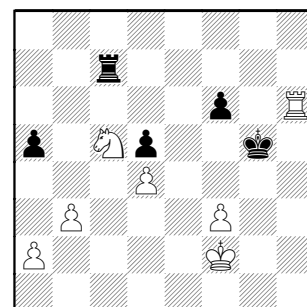
42.Nd4 **Rg8** [86,119] with few
seconds left black falls rapidly.
43.Nxb6 **Rg7** [87,119] **44.Na4** **Nb5?**
[88,119]



losing a piece. **45.Nc5** **Nxd4** [89,119]
46.Nxd3+ **Kf5** [89,119] **47.exd4**



47...Rc7 [89,119] **48.Nc5** **Kg5**

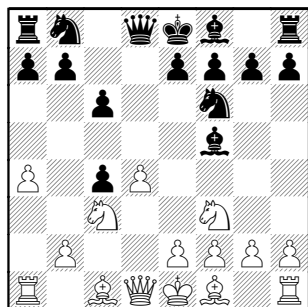


[89,119] **49.Ne6+** [90,flagged] **1-0**

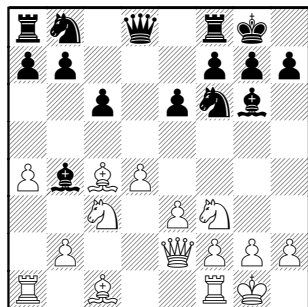
Brock,B (2061) –
Franklin,D (2144) [D19]
Aces-Hedgehogs, 03-28-007

[Notes by Dave Franklin]

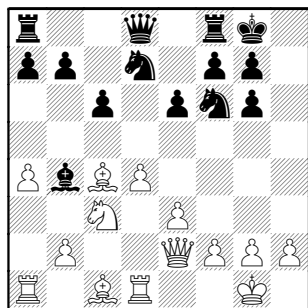
1.Nf3 d5 2.d4 Nf6 3.c4 c6 4.Nc3
dxc4 5.a4 Bf5



6.e3 e6 7.Bxc4 Bb4 8.0-0 0-0 9.Qe2
Bg6



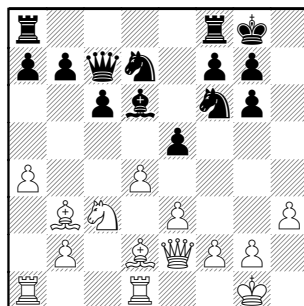
10.Ne5 Nbd7 11.Nxg6 hxg6 12.Rd1



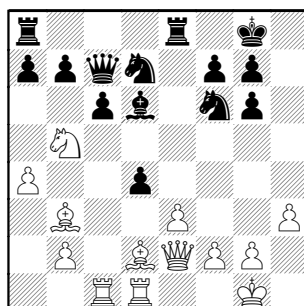
12...Qc7

The book move here is apparently
12...Qa5

13.Bd2 e5 14.Bb3 Bd6 15.h3



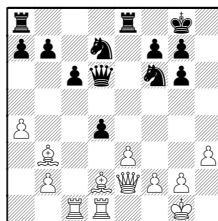
15...Rfe8 16.Rac1 exd4 17.Nb5



17...Bh2+

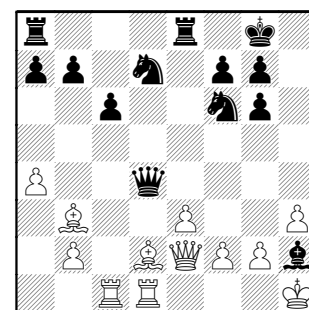
If 17...Qb8 White can keep an
advantage with 18.Nxd4

Not 18.Nxd6 Qxd6



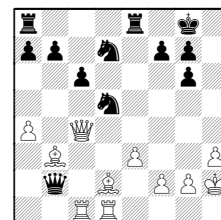
19.Bc3 c5 is less clear

18.Kh1 Qe5 19.Nxd4 Qxd4

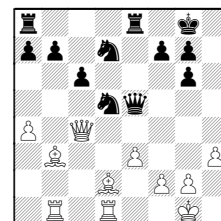


20.Bc3

After 20.Kxh2 Black has to brave the
consequences of 20...Qxb2 21.Qc4
Nd5



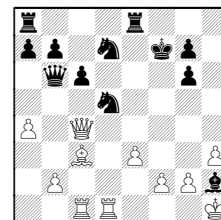
22.Rb1 Qe5+ 23.Kg1



with compensation for the Pawn

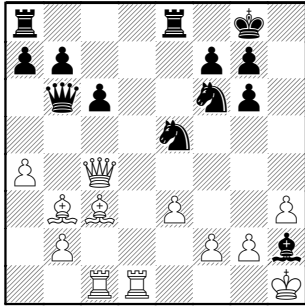
20...Qb6 21.Qc4

White doesn't gain from 21.Bxf7+
Kxf7 22.Qc4+ Nd5

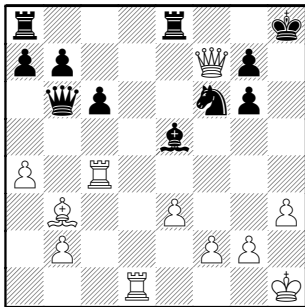


23.Kxh2 Rad8 and Black is winning

21...Ne5

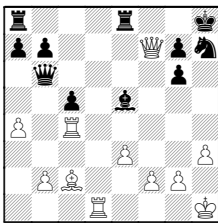


22.Bxe5 Bxe5 23.Qxf7+ Kh8 24.Rc4



24...g5

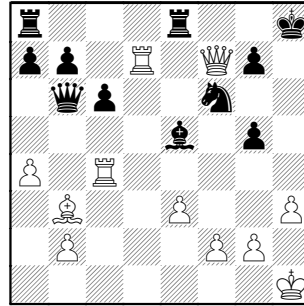
A) Shredder recommends 24...Nh7
25.Bc2 c5



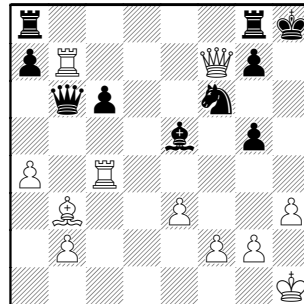
It is indeed hard to see how White continues his attack, but humans don't like to play this passively.

B) Another game move I considered was the immediate 24...c5 allowing the Black queen to cover h6 in some variations, but rejected it on intuitive grounds. White does have the strong reply 25.a5! and if 25...Qxa5 26.Qxg6 with Rh4+ next

25.Rd7!

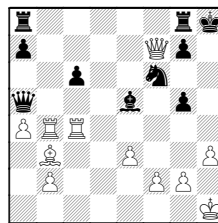


I had assumed this move wasn't playable. 25...Rg8 only reply
26.Rxb7



26...Raf8?

A) I had initially planned to play 26...Qa5 threatening mate on e1, but then I noticed that White has the brilliant, problem-like reply 27.Rbb4!

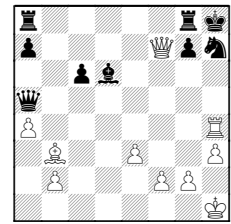


and it looks like Black is doomed by the amazing threat of a double rook sac on the h-file.

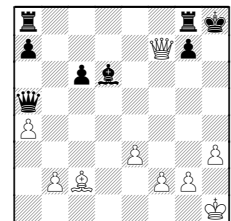
However, Shredder calmly notes that Black can play 27...Bd6! clearing the 5th rank and foiling White's idea.

Then 28.Rh4+ gxh4 29.Rxh4+ Nh7

(diagram follows)



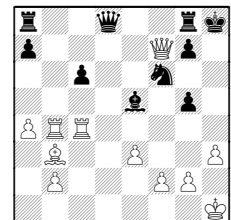
30.Rxh7+ Kxh7 31.Bc2+ Kh8



and Black wins

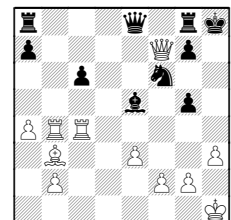
[Editor: I thought White threatens mate, but Black gets one first : If 32.Qg6 idea Qh7# 32...Qe1#!]

B) From the game, (diagram just left in previous column) the other possibility I looked at was 26...Qd8 and now it turns out that 27.Rbb4

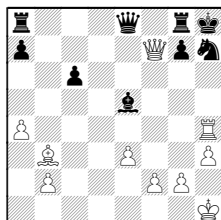


is answered by 27...Qd3! threatening mate and covering h7

Actually, it's a good thing I didn't go into this line, because I probably would have played 27...Qe8??

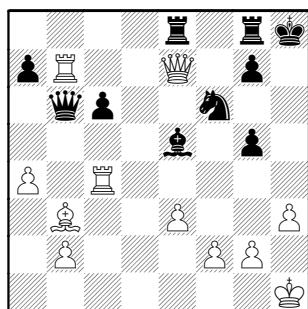


which gets mated after
28.Rh4+! gxh4 29.Rxh4+ Nh7

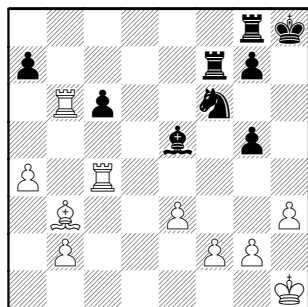


30.Bc2!!

Now back to game (middle last page)
27.Qe7 Re8 (0:45 - 0:29)



28.Qf7 Ref8 29.Rxb6!? A draw was not an option for White given the match situation. 29...Rxf7



30.Rbb4 A surprise.

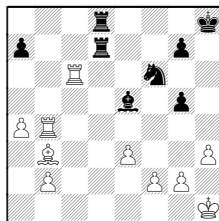
I had been expecting 30.Rbxc6 Rb7 when I felt Black was slightly better

30...Bd6? But this move, which worked so well in the note to Black's 26th move, is a mistake here. I played it on impulse, thinking White had misplaced his b4-rook and was now losing the exchange.

Why on earth did I suddenly overlook the idea of Rh4+, after calculating it

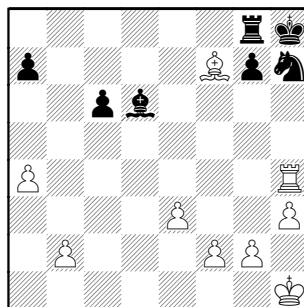
repeatedly a few moves earlier? I simply let my guard down once the queens came off. Inexcusable.

Instead, a move like 30...Rd8 would give Black the edge, e.g. 31.Rxc6 Rfd7



32.g3 Rd2

31.Rh4+ gxh4 32.Rxh4+ Nh7
33.Bxf7

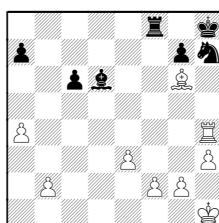


33...g5?! This was a huge decision point for me.

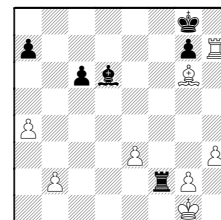
The analysis here branches into two very different endgames -- one in which I have a piece for three pawns, and another in which I am down a pawn but with opposite colored bishops.

In retrospect, I think I made the wrong choice; Black has virtually no winning chances in the piece-up ending and plenty of ways to lose.

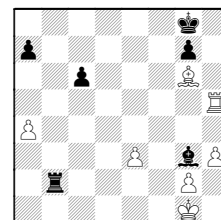
Probably better was 33...Rf8 34.Bg6



34...Rxf2 35.Rxh7+ Kg8 36.Kg1

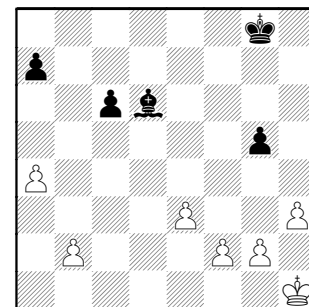


36...Bg3! 37.Rh5 Rxb2



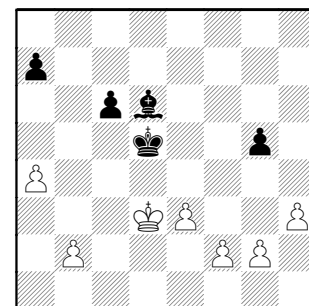
Black ought to be able to draw this admittedly cheerless position.

34.Rxh7+ Kxh7 35.Bxg8+ Kxg8



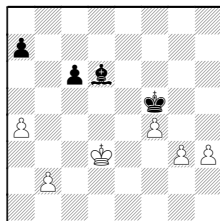
36.Kg1 [36.g3 to get the pawns rolling immediately, was probably better.]

36...Kf7 (0:13 - 0:16) 37.Kf1 Ke6
38.Ke2 Kd5 39.Kd3



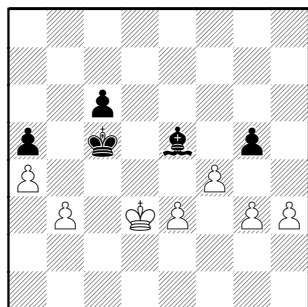
39...a5?!

The computer suggests that Black can draw here with 39...Ke5 40.g3 Kf5 41.f4 gxf4 42.exf4

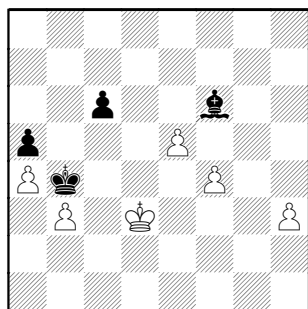


42...Bc5! 43.Ke2 Ke4=

40.g3 Be5 41.b3 Kc5 42.f4

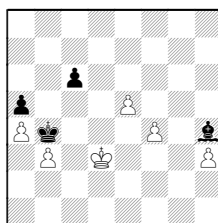


42...Bf6 43.e4 gxf4 44.gxf4 Kb4 45.e5



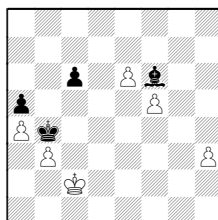
45...Bg7?

Even in time trouble and after an exhausting defense, it shouldn't have been impossible to find 45...Bh4!



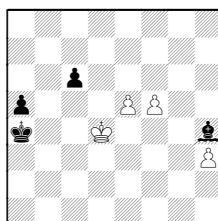
and White's only path to the draw is 46.Kd4

Not 46.Kc2? Bg3 47.e6 Bh4 48.f5 Bf6

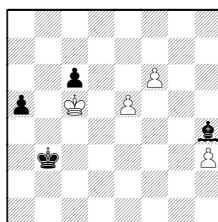


White loses all of his pawns

46...Kxb3 47.f5 Kxa4



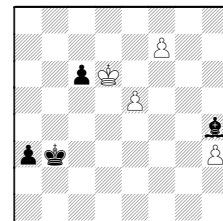
48.Kc5 Kb3 49.f6



49...a4 The players' analysis runs 50.f7

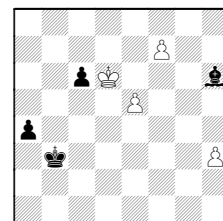
50...Bg5

(50...a3? 51.f7



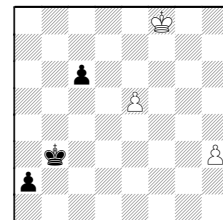
First to queen often wins. White wins if he can trade Queens and play Kxc6. Or Qf3+, Qe2+, Qd3+ since he can fork King and Bishop or first-rank checks will result in the Queen trade.)

51.f7 Bh6



52.e6

(52.Ke7 a3 53.f8Q Bxf8+ 54.Kxf8 a2

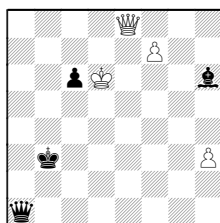


Black easily wins with his Queen)

52...Bf8+

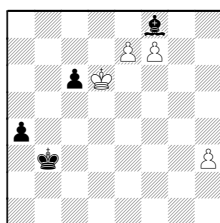
(52...a3 53.e7 a2 54.e8Q a1Q?

[Editor: I love endings and this one is too fascinating to pass...! A look at the coming analysis convinces me that taking time to capture the c-Pawn may be too slow. White has interesting possibilities after 50.Kd6

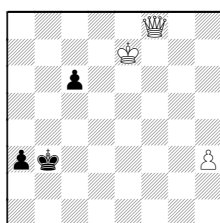


55.Qe6+ winning the Bishop and promoting another Queen)

53.e7

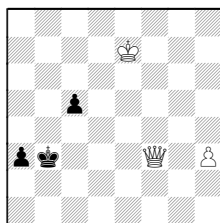


53...Bxe7+ 54.Kxe7 a3 55.f8Q



White wins easily after 55...a2

Just to show the c-passer isn't worth capturing with King (earlier):
If instead 55...c5 A) 56.Qf3+

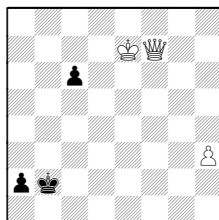


56...Kb4

(56...Kb2 57.Qf2+ idea Qxc5, Qa5 and queen the h-passer.

56...Ka4 57.Qc3)
(57.Qe2 c4 58.Qc2 and both passers are stopped)

Or 55...c5 B) 56.Qf7+ Kb2

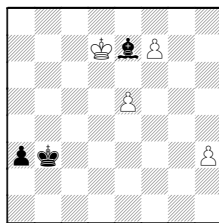


57.Qxa2+ Kxa2 58.Kd6 winning

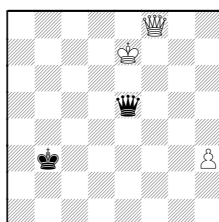
[EDITOR OUT. Thanks for the indulgence. A great ending !]

So back to last page, bottom of second column, **we now return to players' analysis** after 50 f7 :

50...Be7+ 51.Kxc6 [Ed: What I was flagging as too slow] a3 52.Kd7



52...Bb4 53.e6 a2 54.e7 Bxe7
55.Kxe7 a1Q 56.f8Q Qe5+

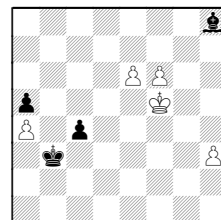


The h3 pawn will fall.

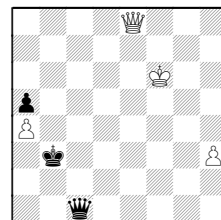
Wow! **Let's get back to the actual game** [way back on bottom of first column of previous page!!]

46.Kc2

White could have gotten good winning chances in a queen ending with 46.Ke4 Kxb3 47.f5 c5 48.f6 Bh8 49.Kf5 c4 50.e6

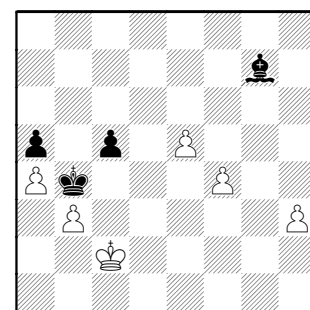


50...Bxf6 51.Kxf6 c3 52.e7 c2 53.e8Q c1Q

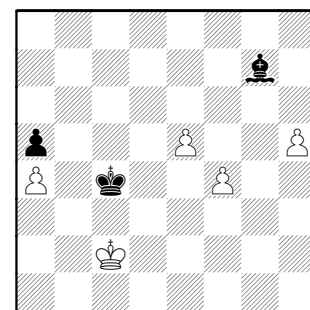


54.Qb5+

46...c5

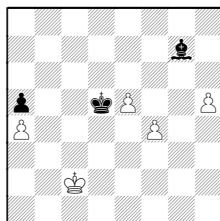


47.h4 c4 48.bxc4 Kxc4 49.h5

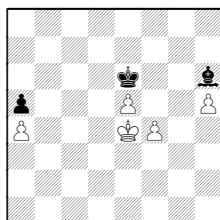


49...Kd4?

A) I dithered between the game move and 49...Kd5?



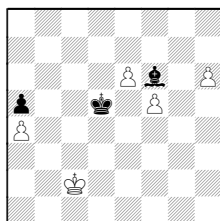
until my clock showed about 30 seconds left. After 50.Kd3 White's king has more scope, e.g. 50...Bh6 51.Ke3 Ke6 52.Ke4



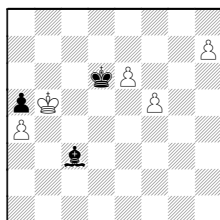
B) Shredder advocates 49...Bf8! keeping the opposition, e.g., 50.f5 Kd5 51.e6 Kd6 52.Kd3 Ke7 53.Ke4 Kf6 54.Kf4 Bd6+=

50.Kb3

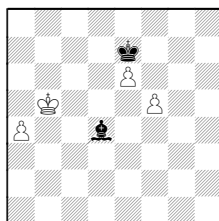
White's path to victory was 50.e6 Bf6 51.h6 Kd5 52.f5



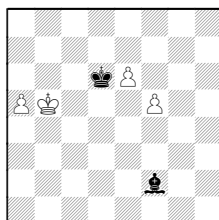
and the following long variation is representative: 52...Kd6 53.Kd3 Be5 54.Kc4 Bf6 55.Kb5 Bc3 56.h7



56...Ke7 57.h8Q Bxh8 58.Kxa5 Bd4 59.Kb5

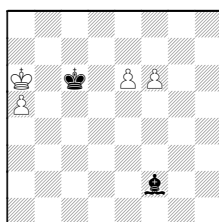


59...Kd6 60.a5 Bf2



61.a6

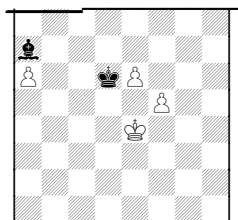
[Editor: Sorry, here I go again... Believe a win results from 61.Ka6 idea Kb7,a6,etc 61...Be1 (61...Kc6 62.f6



62...Bd4 (62...Kd6 63.e7 Kd7 64.Kb7 Bd4 65.a6) 63.e7 Kd7 64.Kb6! Bxf6 65 a6)

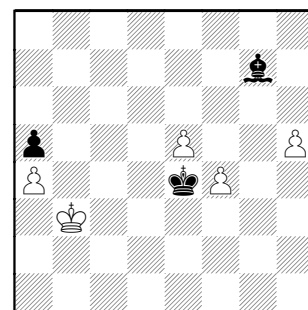
62.Kb6 Bf2+ 63.Kb7)
[Editor out for good, now]

61...Bg1 62.Kc4 Bf2 63.Kd3 Ba7 64.Ke4

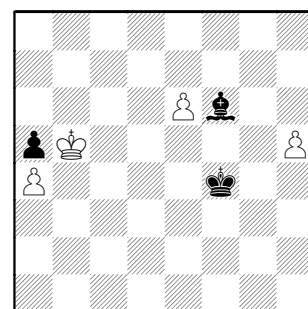


and the King penetrates at g6

50...Ke4

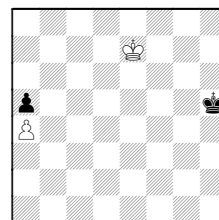


Now it's a dead draw. **51.e6 Bf6 52.Kc4 Kxf4 53.Kb5**

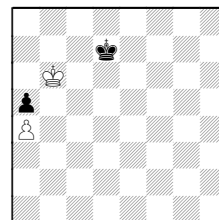


DRAW AGREED in consideration of

A) 53.h6 Ke5;
B) 53.Kd5 Kg5 54.Kd6 Kxh5 55.e7 Bxe7+ 56.Kxe7



56...Kg6 57.Kd7 Kf7 58.Kc6 Ke7 59.Kb6 Kd7

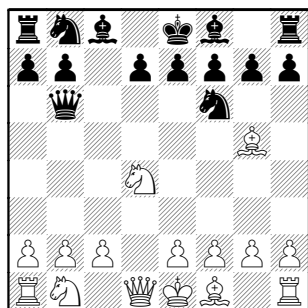


60.Kxa5 Kc8 61.Ka6 Kb8= reaching the corner in time 1/2-1/2

Walker,A (1840) –
Wallach,C (1988) [A45]
Northrop-Motorola Kings 03-22-2007

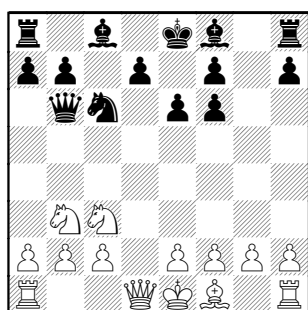
[Notes by Arnie Walker and
Fritz]

1.d4 Nf6 2.Bg5 c5 3.Nf3 cxd4
4.Nxd4 Qb6



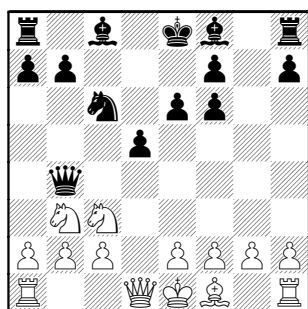
would have been better on the
previous move

5.Nb3 Nc6 6.Nc3 e6 7.Bxf6! gxf6

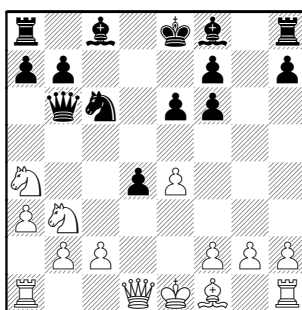


8.Ne4?! overlooking Black's reply.
Correct is 8.e4

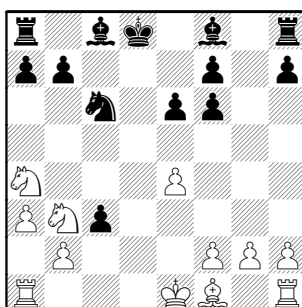
8...Qb4+ 9.Nc3 d5



10.a3 Qb6 11.e4 d4 12.Na4



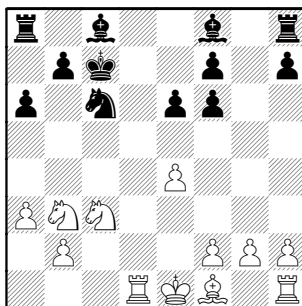
12...Qd8 13.c3 dxc3 14.Qxd8+
Kxd8?!



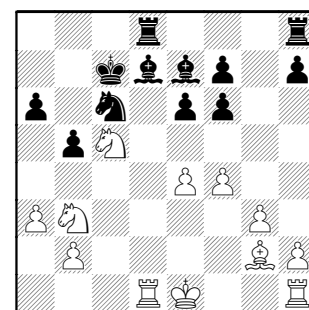
15.Nxc3

15.Rd1+! is more precise, preventing
...Bd7

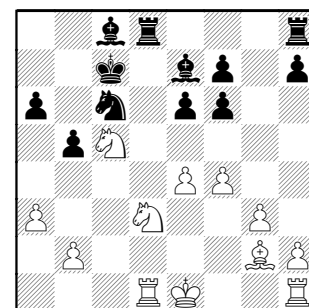
15...a6 [15...Bd7= is better] 16.Rd1+
Kc7



17.g3 Bd7 18.f4 Be7 19.Na4 Rad8
20.Bg2 b5 21.Nac5

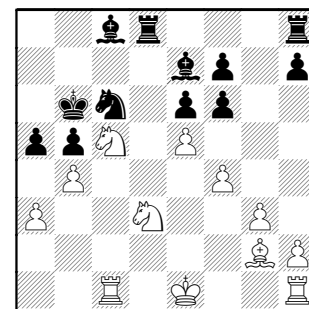


21...Bc8 22.Nd3 Bb7 23.Nbc5 Bc8

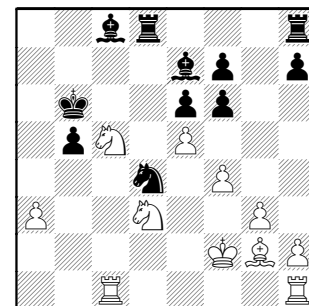


A mistake; Black is too concerned
with keeping the bishop pair.

24.Rc1 Kb6 25.b4 a5 26.e5



26...Nd4 27.bxa5+ Kxa5 28.Kf2 Kb6



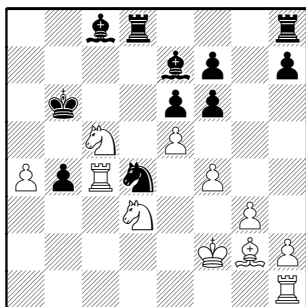
29.a4!? one move too early

29.exf6 Bxf6 30.a4

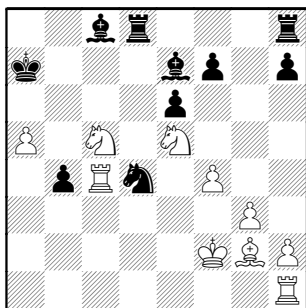
29...b4?

During the game I thought his queenside pawn moves dubious (back to 15...a6); this one is definitely bad. [29...fxe5]

30.Rc4

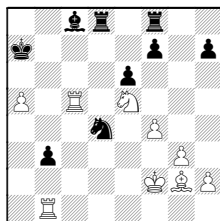


30...fxe5 31.a5+! Ka7 32.Nxe5

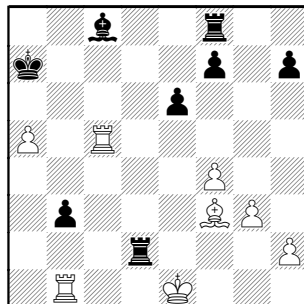


32...Rd5?!

Black could make White work harder, as in this line (in which Black's moves appear to be pretty much forced)
32...Rhf8 33.Rb1 Bxc5 34.Rxc5 b3

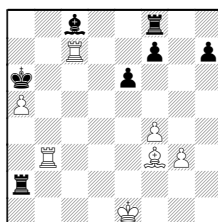


35.Nf3 Nxf3 36.Bxf3 Rd2+ 37.Ke1



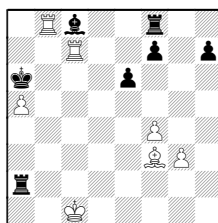
Less clear is 37...Rc2

Bad is being greedy: 37...Rxb2
38.Rxb3 Ra2 39.Rc7+ Ka6

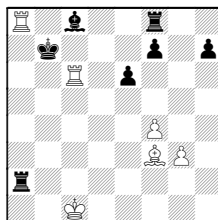


40.Rb8. Black is busted, his a-Rook and Bc8 hang, with mates threats to boot !

40...Ra1+ 41.Kd2 Ra2+ 42.Kc1

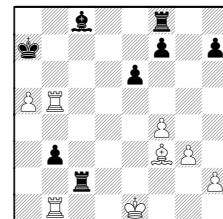


42...Kxa5 opening a-file for a discovery against Ra2
(42...Ra3 43.Be2+ [43.Ra8+ Kb5]
43...Kxa5 44.Ra7+ Ba6 45.Rxa6#)
43.Rc5+
(=43.Ra8+ Kb6 44.Rc6+)
43...Ka6 44.Ra8+ Kb6 45.Rc6+ Kb7



46.Rcxc8+ Kb6 47.Rc6+ Kb5
48.Rxa2

So after 37..Rc2 (top last column)
38.Rb5

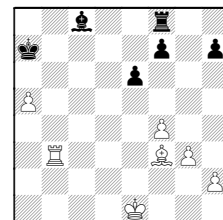


38...Rxb2?

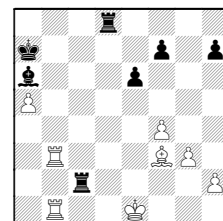
[Editor: this greedy move allows White to coordinate Rooks.

Black's defense is easier with a pair of Rooks traded away. The a-passer is adequately blocked.

A) 38...Rc3 39.R5xb3 Rxb3 40.Rxb3



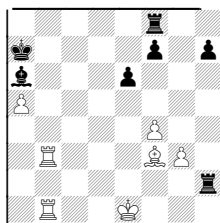
Black should be satisfied with blocking passer, not attempting to win it immediately. 40...Ka6? 41.Rb8 Kxa5? 42.Bb7;
B) 38...Bd7? 39.Rb7+;
C) 38...Ba6! 39.R5xb3 Rd8



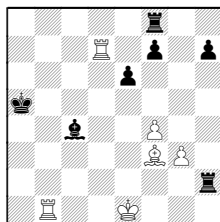
and R8d2 should get counterplay)

[EDITOR OUT]

39.R5xb3 Ba6

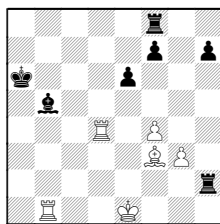


40.Rd1 Bc4 41.Rd7+ Ka6 42.Rb6+
Kxa5 43.Rb1

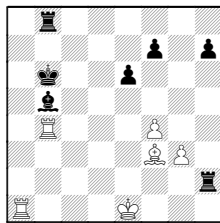


43...Ka6
(43...Ba6 44.Ra7 idea Ra1+, Rxa6)

44.Rd4 Bb5

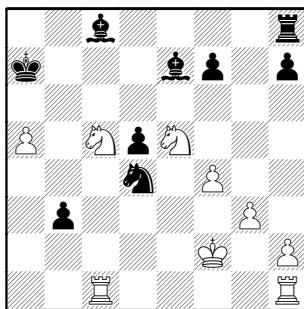


45.Rdb4 Rb8 46.Ra1+ Kb6

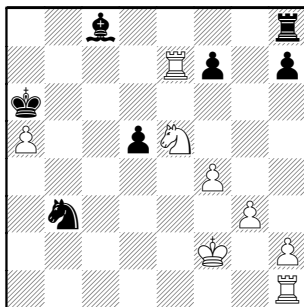


47.Rxb5+! Kxb5 48.Rb1+ Kc4
49.Rxb8+ White wins

33.Bxd5 exd5 34.Rcc1 b3

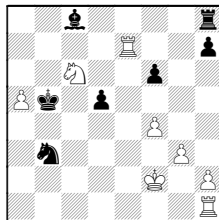


35.Nxb3! Nxb3 36.Rc7+ Ka6
37.Rxe7



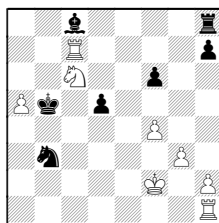
37...f6 38.Nc6 Bf5

38...Kb5



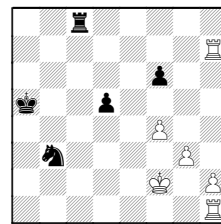
39.Na7+

(39.Rc7



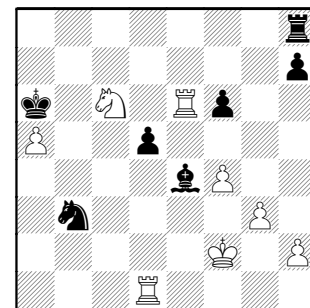
idea Na7+-xc8 39...Ba6 40.Na7+
Kxa5)

39...Kxa5 40.Nxc8 Rxc8 41.Rxh7



White should win

39.Rd1 Be4 40.Re6



40...Nxa5 41.Ra1 Rc8? 42.Ne7+
Black resigned. 1-0

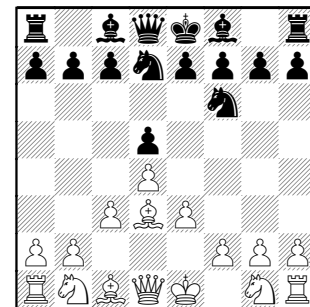
Denmark, T –Ellice, W [A45]
Pawns vs ComA,

[Notes by Wayne Ellice]

The BLACK HOLE OF CHESS

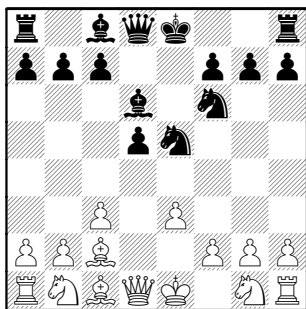
(or, "The Force At The End Of A Journey". See move 33).

1.d4 Nf6 2.e3 d5 3. Bd3 Nbd7 4.c3



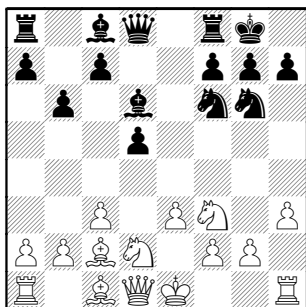
This seems a bit passive so I decide
to challenge the center with e5.

4...e5 5.dxe5 Nxe5 6.Bc2 Bd6



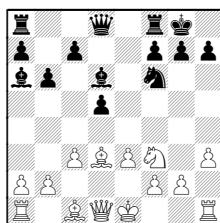
I have three chesscraft (pieces) developed, my opponent has one. Takeoff was successful and the journey begins.

7.h3 0-0 8.Nd2 b6 9.Ngf3 Ng6



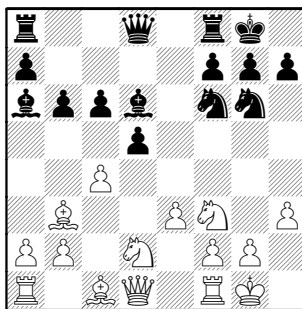
I don't want to trade if I'm better developed.

Can I hinder his castling attempt with 9...Ba6 10.Nxe5 Bxe5 11.Nf3 Bd6 12.Bd3



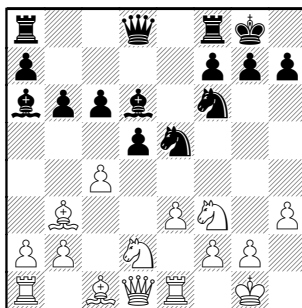
Looks like the answer is NO.

10.0-0 Bb7 11.c4 Ba6 12.Bb3 c6



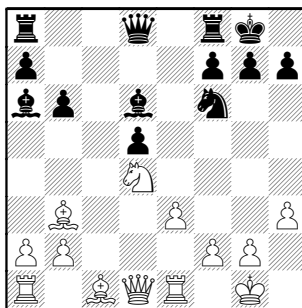
I really debated 12...c5 instead, giving me an eventual 3-2 pawn advantage on the Q side. But he gets to open up his game a bit in the center.

13.Re1 Ne5?



Up to this point my thinking was relatively clear. Now, suddenly I've entered a time warp. Of course he won't allow me to land on d3. My formation will now be neutralized. I'll have to reverse my thrusters and chart a new course.

14.Nxe5 Bxe5 15.cxd5 cxd5 16.Nf3 Bd6 17.Nd4



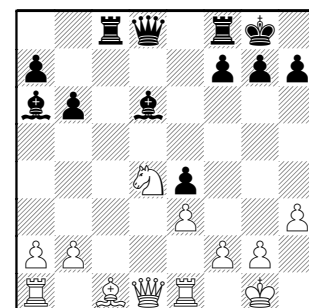
Naturally, no good was 17.Bxd5 Nxd5 18.Qxd5 Bh2+ which hangs

the White Q on d5 by this discovered check.

17...Rc8 18.Bc2

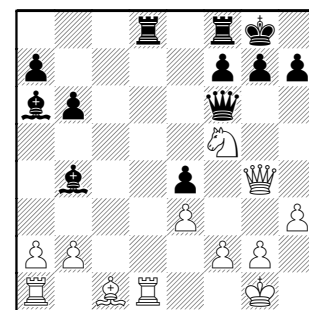
At the moment I'm thankful for this last move which takes pressure off my d5 pawn and doesn't develop a new piece for White. But it does aim at my King side, along with his Q and N. Can he launch a successful attack?

18...Ne4 19.Bxe4 dxe4



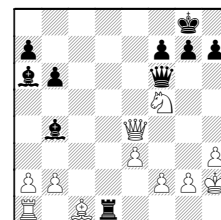
I reconnect my isolated pawn and now own the slight 2-Bishop advantage.

20.Nf5 Bb4 21.Qg4 Qf6 22.Rd1 Rcd8

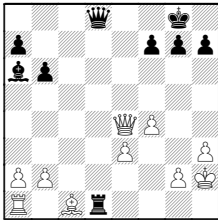


23.Nd4

23.Rxd8 Rxd8 24.Qxe4 Rd1+ 25.Kh2



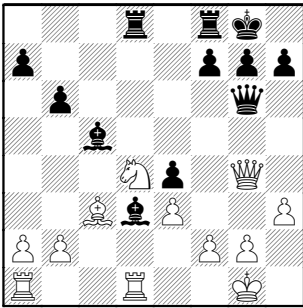
25...Bd6+ 26.Nxd6 Qxd6+ 27.f4 Qd8



If it wasn't for back rank mate threats, I might have something here.

28.Qa4 Be2 29.Qxa7 Doesn't look good for me.

23...Bd3 24.Bd2 Bc5 25.Bc3 Qg6

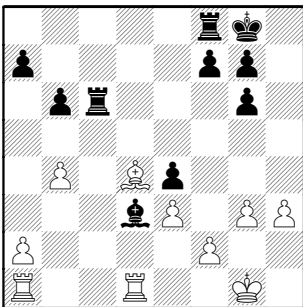


Can't let him have the discovered move against my Queen.

26.Qxg6 hxg6 27.g3 Rd6

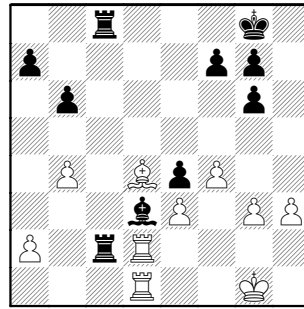
I can attack d4 more times than it can be defended.

28.b4 Bxd4 29.Bxd4 Rc6



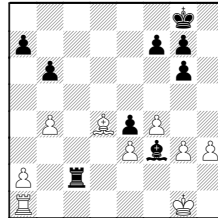
But doubling on the c file is almost as good.

30.Rd2 Rfc8 31.f4 Rc2 32.Rad1

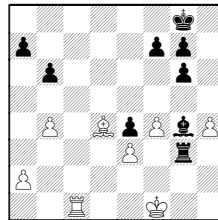


32...f6

32...Be2 (compliments of Fritz)
33.Rxc2 Rxc2 34.Ra1 Bf3

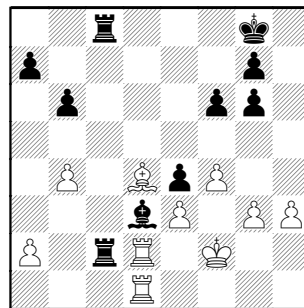


35.h4 Rg2+ 36.Kf1 Rxc3 37.Rc1 Bg4



I win a pawn, but it looks like White gets plenty of counter play now against my weak Q-side pawns.

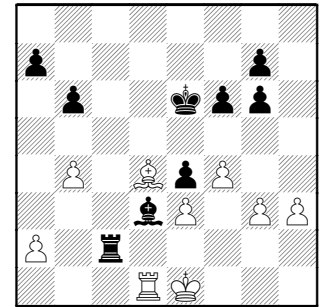
33.Kf2



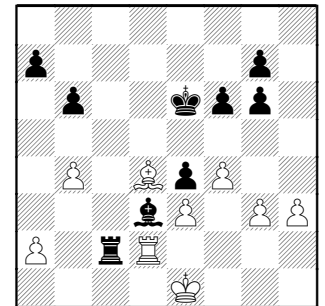
And now my mission is clear. Get thee King-ship to the a1/d4 quadrant

for battle. After the Rooks are gone, the King should be able to attack the stranded orbs (a&b pawns) from behind.

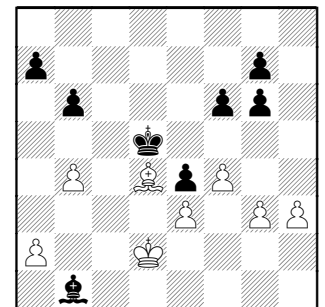
33...Kf7 34.Ke1 Ke6 35.Rxc2 Rxc2



36.Rd2 Rc1+ 37.Rd1 Rc2 38.Rd2

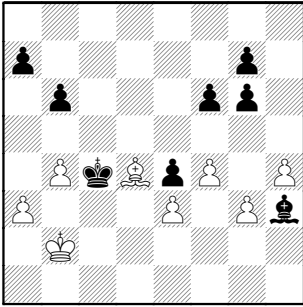


38...Kd5 39.Kd1 Rxd2+ 40.Kxd2 Bb1



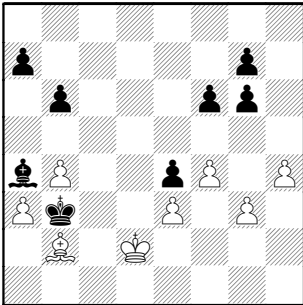
Indeed the Rooks are gone. My Sidewinder bishop enters first to disrupt the enemy's position.

41.a3 Kc4 42.Kc1 Bd3 43.Kb2 Bf1
44.h4 Bh3



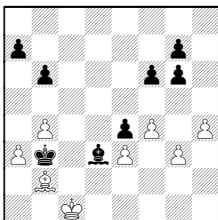
My Sidewinder has at least 17 reasonably good landing spots whereas my foe's Sidewinder has only 5. I guess this means I have more "space". The squeeze is on.

45.Kc2 . 45...Bd7 46.Bb2 Ba4+ 47.Kd2 Kb3



48.Bc1

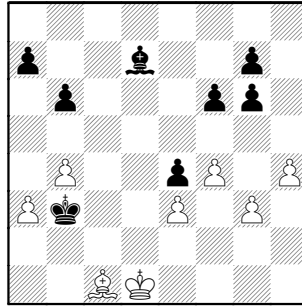
48.Kc1 Bd7 49.Kb1 Bb5 50.Kc1 Bd3



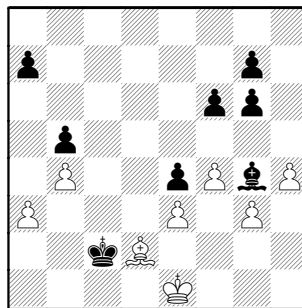
doesn't work either as he is forced to give up something.

48...Bd7 And now over to the h1/e4 quadrant to control yet more space.

49.Kd1



49...Bg4+ 50.Kd2 b5 Landing safely and preventing a future a2-a4.
51.Ke1 Kc2 52.Bd2

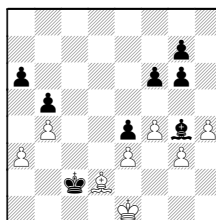


Mission nearly accomplished. I'm finally going to capture at least the a-pawn. My journey into this quadrant, which seemed so far far away, is now within my grasp. I'm at the event horizon and no turning back. I'm being pulled to the a-pawn so strongly, the "light of day" doesn't entry my realm. I can't see anything else. I've maneuvered my opponent into zugzwang, a good thing for me !?

52...Kb2 I was proud of this move. A real game winner I thought.

But, by blindly following the original mission, I missed the real winner. The Grand Zugzwang and not my Petit Zugzwang was...

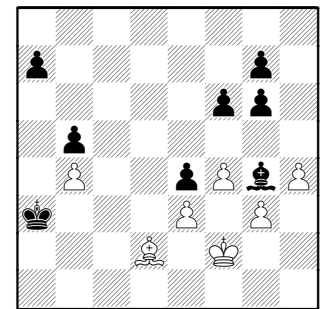
52...a6



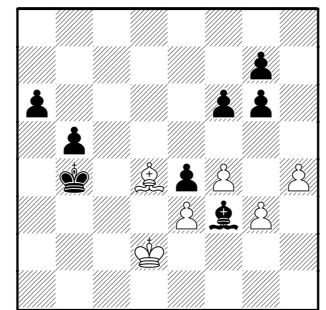
This or practically any Bishop (I mean Sidewinder) move that safely stays on the d1-h5 diagonal spells doomsday for my foe. How can I miss this??

Put this diagram (after White's 52nd move) in any chess book on tactics and the answer is obvious. But in the heat of battle one can easily fall into that dreaded of all places: THE BLACK HOLE OF CHESS, where time and logic don't exist.

53.Kf2 Kxa3

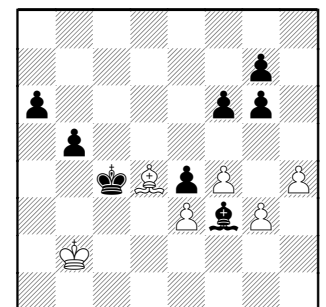


54.Bc3 a6 55.Ke1 Kb3 56.Kd2 Bf3 57.Bd4 Kxb4



The final phase begins.

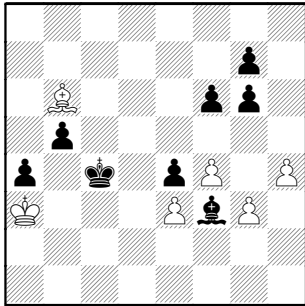
58.Kc2 Kc4 59.Kb2



59...a5

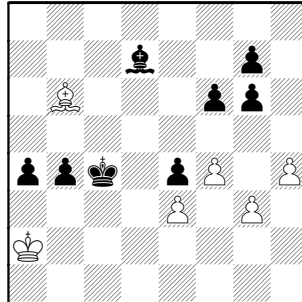
59...b4 is slightly better as it will be easier to get in the a4,b4 duo.

60.Bb6 a4 61.Ka3

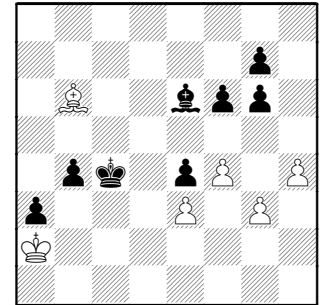


Stopping the immediate b4.

61...Bg4 62.Ba7 Bd7 63.Bb6 b4+
64.Ka2



64...Be6 65.Bd4 a3 66.Bb6?



An unfortunate blunder after 3 1/2 hrs. of play. But the end is in sight regardless. 66...Kb5+. 0-1

I Believe in your good work, and wish to support your school and community based programs. Enclosed is my tax-deductible contribution. (If your employer has a matching gift program, they may be able to make your contribution go even further.)

Name _____

Address _____

City / State / Zip _____

Telephone (_____) _____

E-mail Address _____



Renaissance Knights
PO Box 1074, Northbrook, IL 60065
Phone: 847-526-9025 • Fax: 847-526-0544 • E-mail: rknightsgccc@aol.com



OUR MISSION

The Renaissance Knights Foundation is an educational organization dedicated to the academic and social development of children & adults

OUR GOALS

To work with youth in creating the desire to succeed both in school and in life

CHILDREN WHO LEARN & PLAY CHESS DEVELOP:

Organized work habits

Increased self-confidence & respect for others

Enhanced problem-solving, analytical & critical thinking skills

Teamwork & sportsmanship skills

Increased patience & persistence

Improved attitude toward school & Improved attendance

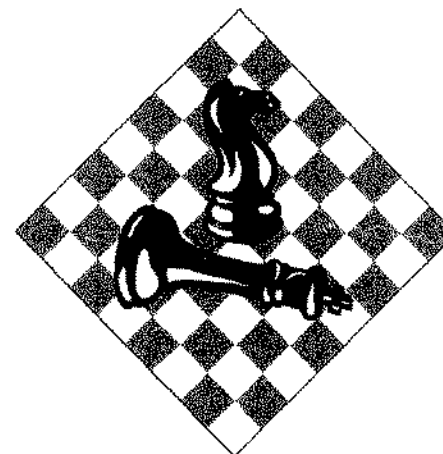


Presented by the Renaissance Knights

PO Box 1074
Northbrook, IL 60065
Phone: 847-526-9025
Fax: 847-526-0544
E-mail: rknightsgccc@aol.com

2007 A Summer for Chess

Presented by the Renaissance Knights



Renaissance Knights has been invited by the City of Chicago to be a part of **Art of Play**, the citywide summer celebration, and by the City of Oak Park to be a part of **Harry Potter and the Deathly Hallows** Book Release Festival.

www.RKnights.org

**Chess Programs at
The Chicago Cultural Center
"Come In and Play Center"
72 E. Randolph Street**

June 9
3rd Coast Summer Chess Event
Special Appearances by
IM Stan Smiatankin
& Master William Aramil

Between 11 am - 4 pm stop by the Come In and Play center, we will be having a fun filled day of chess. Events include a *noon time blitz tournament* and a *2 pm Quad tournament* with special prizes. Throughout the day you can stop in & play a friend, use one of our unique chess sets, or learn how to play from one of our instructors.

June 20, July 25
August 29 & September 26
Chess Lunch Break
Noon to 2pm

Stop in on your lunch break to play some chess or to learn this ancient game of strategy from **Chess Master William Aramil**, former Illinois High School Champion and past winner of the national Denker High School Champion of Champions tournament.

**COME IN
AND PLAY**
AT THE CHICAGO TOURISM CENTER

**Triple Play Simul
At the Taste of Chicago
July 8 (time TBA)**

Chicago has a new Taste Sport! Pavillon, located in the southwest corner of the Buckingham Fountain, as part of the Taste of Chicago.

We will be holding a unique simul in which GM Sam Palatnik, IM Stan Smiatankin & Master William Aramil will compete against up to 50 players at the same time.



If you would like to participate in this event you can reserve a space before July 5th by email rknightsgccc@aol.com.

Junior Knights Summer Camps

Wright College
July 30—August 3
9 am—3 pm
4300 N. Narragansett Ave, Chicago
With GM Sam Palatnik & Master William Aramil

Lake Zurich Chalet
August 6—10
9 am—4pm
200 S. Rand Rd., Lake Zurich, IL
IM Stan Smiatankin & Master William Aramil

**Harry Potter
Human Chess Match
July 20
at 2:30 & 4:30**

By popular demand, Renaissance Knights will host a tournament of life-size chess games as part of Oak Park's **Harry Potter and the Deathly Hallows** Book Release Festival.

Children and adults will act as chess pieces while special guests direct their "men" from the Scoville stage. The Scoville Park location allows ample room for players and on-lookers.

All people acting as chess pieces will receive a special gift and the winning team members will receive an extra prize.



If you would like to participate in this event you can reserve a space before July 15th by email rknightsgccc@aol.com.

Volunteers who sign up early can select the piece they would like to represent.

Over 10,000 people are expected to attend the festival.

Harry Potter and the Deathly Hallows Book can be pre-ordered through the Magic Tree Bookstore at www.magictreebookstore.com



Chess Sets for Soldiers Program...

Sponsored by the Renaissance Knights Foundation

A 501 (C) (3) nonprofit organization utilizing chess as a tool to improve academic, intellectual and social skills

The Renaissance Knights Foundation is raising money to purchase chess sets which will be sent to service members stationed in the Middle East. For every \$20 donated we are able to purchase and ship two sets to a unit. The below thank you letter shows how a few chess sets can make a difference to the men and women serving overseas.

We just received your club kind gift of two chess sets, and wanted to thank you wholeheartedly. This is by far the coolest care package we have received to date, and I can assure you that these will see lots of use as we have quite a bit of down-time and some chess players in the shop. We were actually talking about chess the other day and even those who hadn't played before seemed interested in learning. Although I'm not a great player, I have enjoyed playing chess for many years, and welcome the opportunity to play some now as I unfortunately forgot to bring one of my boards with me. Anyway, I just wanted to express out thanks, this is very thoughtful indeed and I will be dedicating my first Queen's Indian Defense in Iraq to the Renaissance Knights.

David Craik GySgt, USMC

Donations of any amount would be gratefully received. The Renaissance Knights Foundation is a tax-exempt 501(c)(3) nonprofit organization. Your gift is tax deductible to the full extent of the law.

Please do not hesitate to contact our Operations Director, Sheila Heiser, at 847-526-9025 or email RKnight@aol.com, with any questions. More information on the foundation and other programs we run can be found at **www.RKnights.org**. All donors and Thank You letters can be viewed on our website.

Chess Sets for Soldiers

Name/Company: _____

Phone: _____

Address: _____

City: _____

Email: _____

State/Zip: _____

Perpetual Checks Welcomed

Please mail to: Renaissance Knights Foundation, P.O. Box 1074, Northbrook, IL 60065