

The Chicago Chess Player

The Official Bulletin of the Chicago Industrial Chess League

KAZ JAKSTAS 1931 – 2008

30-year CICL Member

A True Gentleman, taken *en passant*



CICL Contact List

Bulletin Editor/Games Editor Tom Friske Bulletin@ChicagoChessLeague.org	1035 E Algonquin Road Des Plaines, IL 60016	H:(847) 299-1033 W:{847} 914-8448
Ratings Chairman Art Olsen Ratings@ChicagoChessLeague.org	714 E Algonquin Road #J102 Arlington Heights, IL 60006	H:(847) 437-9819 W:(847) 719-8036
	FAX : to SBS OTS, 22NW0644-5 at (847) 719-8151	
League President Tony Jasaitis President@ChicagoChessLeague.org		C:(708) 903-6423 W:(312) 264-2044
League Secretary Jerry Thomas Secretary@ChicagoChessLeague.org	745 Hageman Pl Naperville, IL 60563	H:(630)420-0188
League Treasurer Paul Freidel Treasurer@ChicagoChessLeague.org	359 N. Worth Avenue Elgin, IL 60123	C:(224)436-6050
Trophy Chairman Marty Franek Trophy@ChicagoChessLeague.org	9044 S 51 st Avenue Oak Lawn, IL 60453-1730	H: (708) 636-3714 C: (708) 846-8734
Publicity Chairman Matt Vail Publicity@ChicagoChessLeague.org		C: (312) 933-1516 W: (630)505-6557
Banquet Chairman Wayne Ellice Banquet@ChicagoChessLeague.org		H: (708) 636-1303

DIVISIONAL CHAIRMEN

East Division Adam Muhs ChairmanEast@ChicagoChessLeague.org		C: (847) 877-9629 W: (312) 497-1184
West Division Bob Buchner ChairmanWest@ChicagoChessLeague.org	1316 Kallien Court Naperville, IL 60540	H: (630) 428-7707 W: (630) 979-7707
North Division Jim Thomson ChairmanNorth@ChicagoChessLeague.org		W: (847) 538-5408

Mark Your Calendars with These Key League Dates:

Fall Business Meeting	Last Wednesday of August (Aug 27 2008)
Spring Business Meeting	3.5 Weeks Before Playoffs (April 16, 2008)
Season Playoffs	Second Saturday of May (May 10, 2008)
CICL Open	Second Saturday of May (May 10, 2008)
League Awards Banquet	First Friday of June (June 6, 2008)

Officer Contact List	2
----------------------	---

Contents of Issue	3
-------------------	---

A TRIBUTE TO KAZ JAKSTAS

Memories	4
----------	---

Example Games	4
---------------	---

WHAT WE DID ON OUR SUMMER VACATION

2008 CICL Playoffs – Feeding the Brain	10
--	----

CICL vs BAL – The Complete Games	11
----------------------------------	----

World Open 2008 – Mike Granata cashes	28
---------------------------------------	----

CICL vs Warren Juniors – The Complete Games	29
---	----

With contributions from: Art Olsen, Norm Hughes, and Tony Jasaitis

"I regret to inform you that Kaz Jakstas passed away Thursday". The brevity of the statement doesn't lessen the weight of sadness from the loss. Kaz has been a high-level Expert in the CICL for at least 30 years, and a fixture in our playoffs many years over that time. Now, as of July 10, 2008, that familiar friend has moved on.

But how to describe him to the rest of the League ? We knew him as one of those pleasant types, down-to-earth, easy to talk to. Seemingly that type that takes things as they come, not taking himself or others too seriously.

Indeed, your roving reporter remembers a playoff encounter that well illustrates the man. I'd been studying the IQP structure and Kaz, being a solid, slow positional type, played right into it. But despite trying my best to wind the themes and get a White advantage, he countered the threats before I could even put them on the board. As the game progressed, there was a slight White space gain, but certainly not enough to hope for a win. He offers a draw and I, being in a cruel mood, glance at his clock and realize he only has a few minutes left to make a dozen moves. I play on, happily finding a way to wind my Knight to a nice post at d5.

Taken a bit a-back, Kaz goes into a think- totally forgetting the clock! I follow along, yet come out of it just enough to call his flag as it dropped. With no change of expression or sign of anger, he simply replied "Well, then I lose," even with a bit of a smile !?

During a little post-mortem, his attitude is still thoughtful as if the game was still in progress. Teammates came by for an explanation of the turn of events, and I have to admit he simply flagged; the position was drawn. "No, it is lost- I flagged!" he reminded me, matter-of-factly.

An examination of his games reveals a player of over 2150 strength (at our earliest recording). An odd style during the 1990's of pawn-pushing while letting his pieces languish at home made for some exciting play, but a series of such games created a string of losses, often to much-lower-rated players. This dipped his rating down to the low 2100's. But with the turn of the millennium, we also see a major turn in his openings- now the Pawns stay at home and the pieces come out! With the early and often offer of trades, Kaz was always willing to reach simplified positions where he often proceeded to find a tactical finesse to win. If not, he calmly accepted the draw. This strategy improved his rating to well over 2200 which he never again crossed back under.

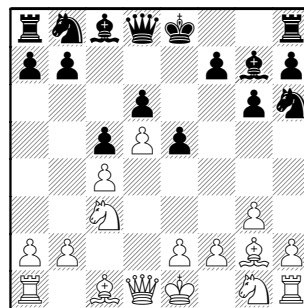
Outside of this chess career, his other accomplishments are not so well known. He achieved a PhD in Electrical Engineering. His workplaces crossed many CICL companies: IIT, Argonne, Bell Labs and Rockwell International, apparently playing on Northrop's team in the 1990's, a brief stint on the Alumni Aces, and finishing his days with the Pawns.

Kaz, rest in peace ! and we'll enjoy the games you've left us, as follows....

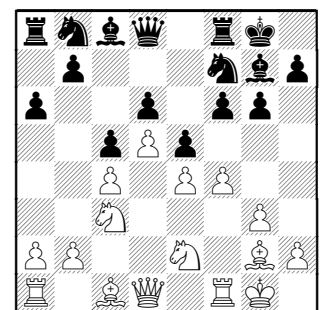
This first game amply illustrates Kaz' chess style

Buerger,E (2024) – Jakstas,K (2189) [A44]
UOP-Aces, Playoff Rnd 3, 5-15-1999

1.d4 c5 2.d5 e5 3.c4 d6 4.Nc3 g6 5.g3 Bg7 6.Bg2 Nh6

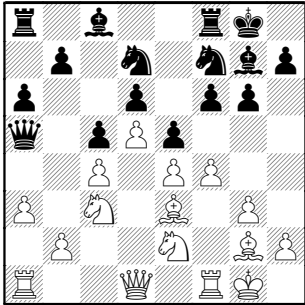


7.e4 0-0 8.Nge2 a6 9.0-0 f6 10.f4 Nf7

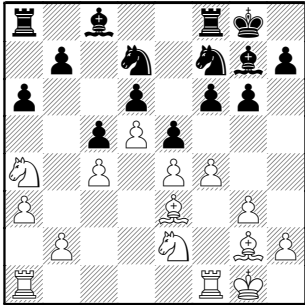


The point to Black's development and typical of Kaz style - slow, but solid.

11.Be3 Nd7 12.a3 Qa5



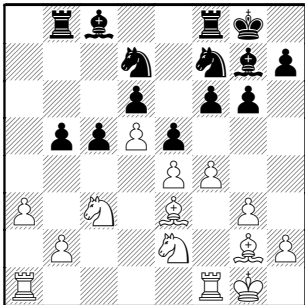
13.Qa4 Qxa4 14.Nxa4



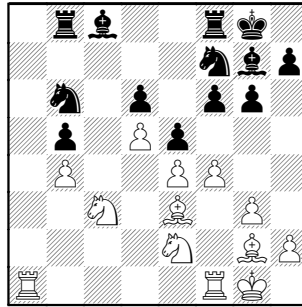
14...b5

Kaz was always aware of an opportunity to open the board

15.cxb5 axb5 16.Nac3 Rb8



17.b4 cxb4 18.axb4 Nb6

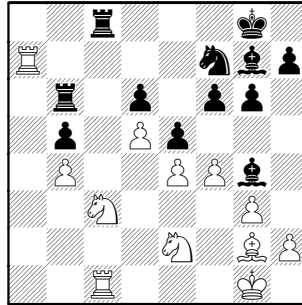


A little tactics to spice up the game

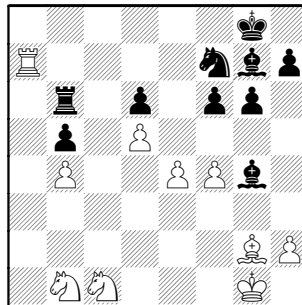
19.Bxb6

19.Nxb5 Nxd5 doesn't turn out well for White

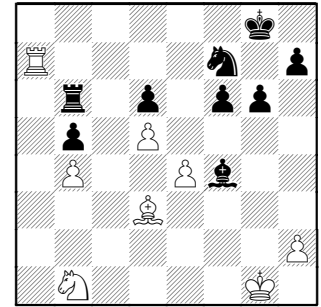
19...Rxb6 20.Ra7 Bg4 21.Rc1 Rc8



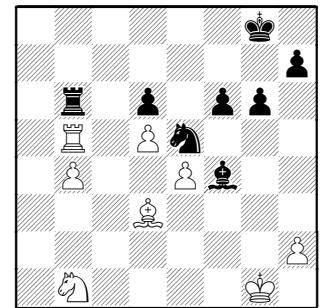
22.Nb1 Allowing Black the initiative
22...Rxc1+ 23.Nxc1 exf4 24.gxf4



24...Bh6! Winning an important Pawn
25.Nd3 Be2 26.Bf1 Bxd3 27.Bxd3 Bxf4



28.Ra5 Ne5 29.Rxb5?



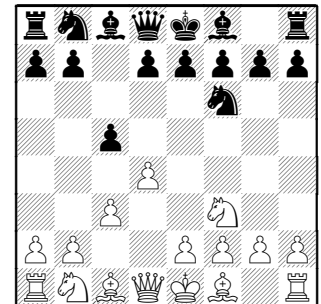
29...Be3+ always tactically aware in reduced situations 0-1

Jakstas,K (2121) –
Marcowka (2007)
Pawns-Chargers, 10-2-2001

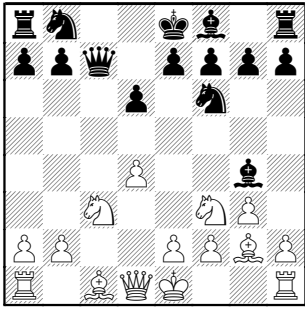
[A46]

Here's a positional crush with some interesting turns against an often-played, similarly-bent opponent.

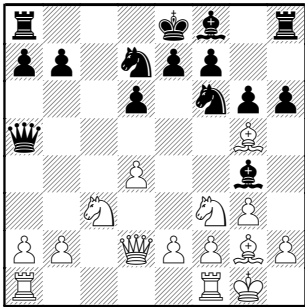
1.d4 Nf6 2.Nf3 c5 3.c3



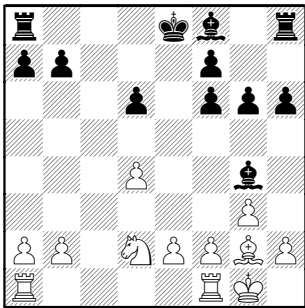
3...Qc7 4.g3 cxd4 5.cxd4 d6 6.Nc3 Bg4
7.Bg2



7...g6 8.Bg5 Nbd7 9.0-0 Qa5 10.Qd2 h6



11.Bxf6 Nxf6 12.Ne4 Qxd2 13.Nxf6+ exf6 14.Nxd2

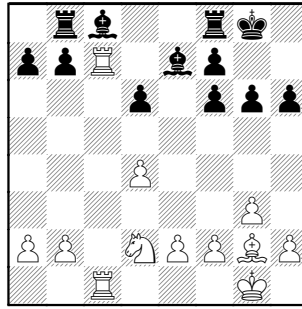


Once again, Kaz has simplified into a superior position.

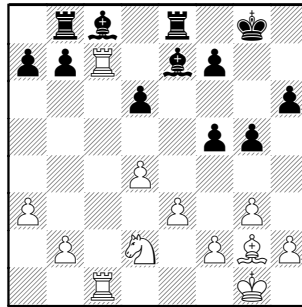
14...Bc8 15.Rac1 Be7 16.Rc3

16.Rc7 Bd8 17.Bxb7!

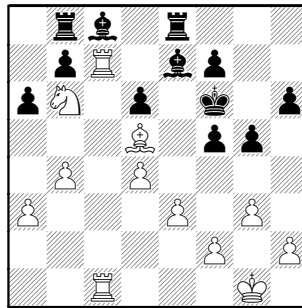
16...Rb8 17.Rfc1 0-0 18.Rc7



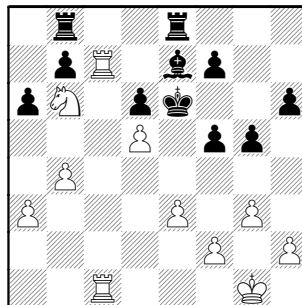
18...Re8 [18...Bd8 19.Rxc8] 19.a3 f5 20.e3 g5



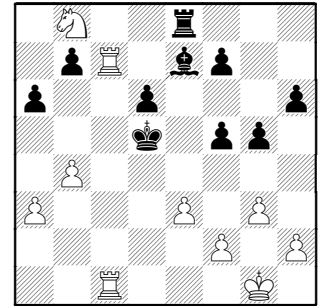
21.Bd5 a6 22.b4 Kg7 23.Nc4 Kf6 24.Nb6



24...Be6 25.Bxe6 Kxe6 26.d5+



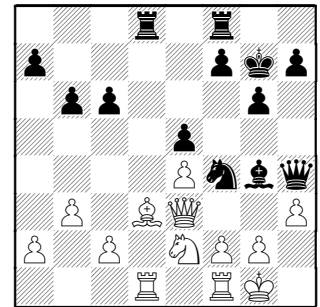
26...Ke5 [much the same after 26...Kf6 27.Nd7+] 27.Nd7+ Kxd5 28.Nxb8



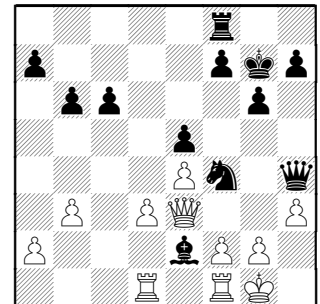
28...f4 29.exf4 gxf4 30.Rd1+ Ke6 31.Re1+ 1-0

Williams, Kent (2102) –
Jakstas, Kaz (2108)
CCDOC-Pawns, 2-20-2002

Kaz found a nice tactic

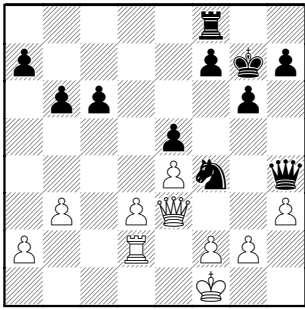


19...Rxd3 20.cxd3 Bxe2



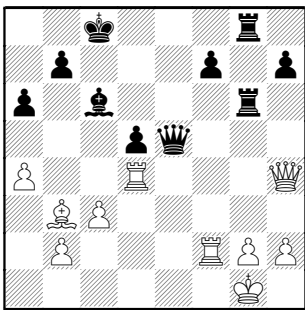
21.Rd2 Bxf1 22.Kxf1

Black to move and win

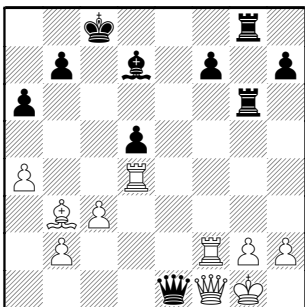


22...Qg5 White can't stop the dual threats of Nxh3 and Qxg2+ 0-1

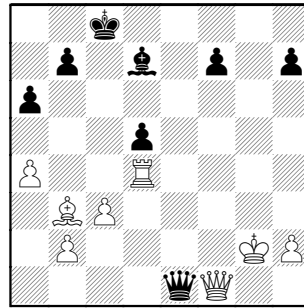
Williams, Kent (2177) –
Jakstas, Kaz (2145)
Case-Pawns, 10-12-2004



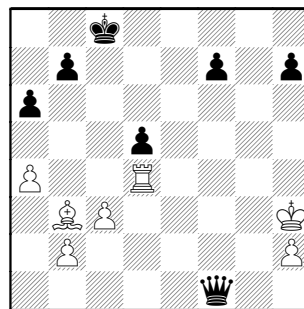
27.Qh3+ Bd7 28.Qd3 Qe1+ 29.Qf1



29...Rxc2+ 30.Rxc2 Rxc2+ 31.Kxc2



31...Bh3+ 32.Kxh3 Qxf1+



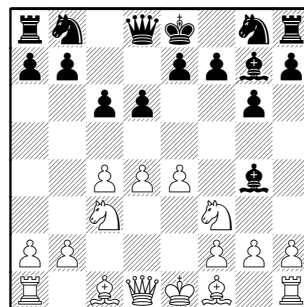
Black has won White's Queen through a nice combination, but White's compensation was proved to be enough for a draw.

Another beautiful, controlled win.

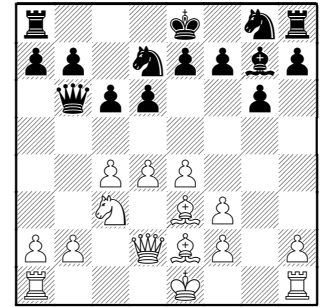
Benedek, Roy (2191) –
Jakstas, Kaz (2142)
Rooks-Pawns, 4-19-2005

[A42]

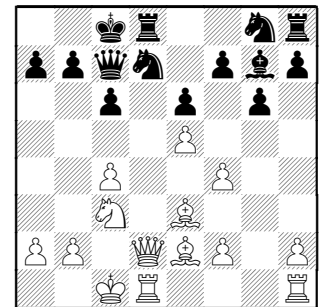
1.e4 g6 2.d4 Bg7 3.Nf3 c6 4.c4 d6
5.Nc3 Bg4



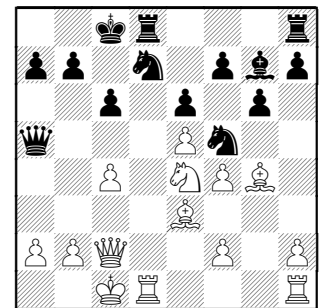
6.Be3 Qb6 7.Qd2 Bxf3 8.gxf3 Nd7
9.Be2



9...Qc7 10.f4 e6 11.e5 dxe5 12.dxe5 0-0 13.0-0-0

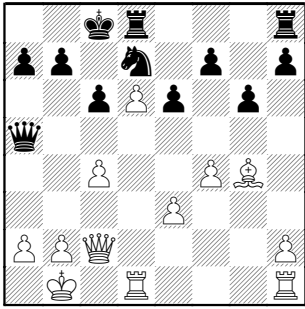


13...Ne7 14.Qc2 Qa5 15.Ne4 Nf5
16.Bg4



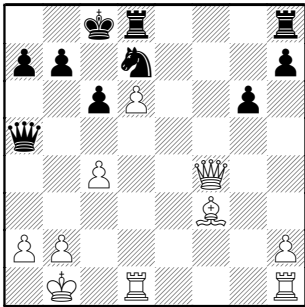
I would have certainly chosen White to win with the coming outpost at d6. Watch Kaz work around it !

16...Nxe3 17.fxe3 Bf8 18.Kb1 Be7
19.Nd6+ Bxd6 20.exd6



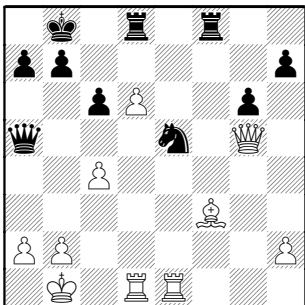
If White could get c5 or e5 played, his passer would be a rock. Kaz goes right at it !

20...f5 21.Bf3 e5 22.e4 fxe4 23.Qxe4 exf4 24.Qxf4



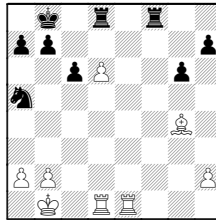
As we've seen Kaz often blasted the position open. The passer at d6 keeps things interesting.

24...Rh8 25.Qg4 Kb8 26.Rhe1 Ne5 27.Qg5



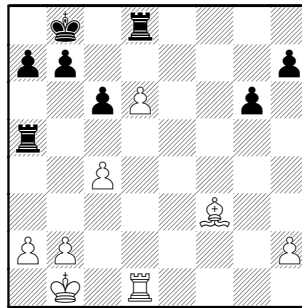
seems to pin the Knight **27...Rf5!** A nice find

27...Nxc4 28.Qxa5 Nxa5 29.Bg4

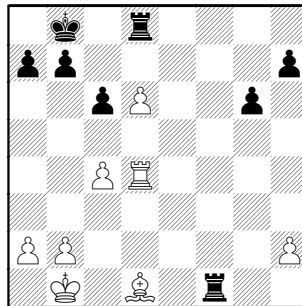


29...Nc4 30.d7

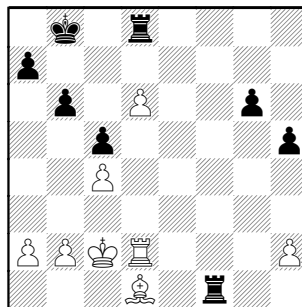
28.Rxe5 Rxc5 29.Rxa5 Rxa5



30.Rd4 [30.b4 idea c5 30...Ra4] 30...Rf5 31.Bg4 Rf1+ 32.Bd1

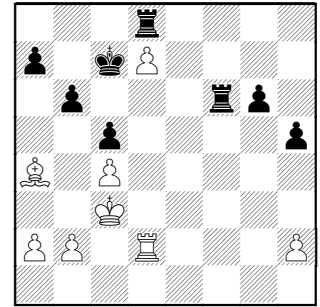


32...c5 assuring the passer remains artificially isolated **33.Rd2 b6 34.Kc2 h5**

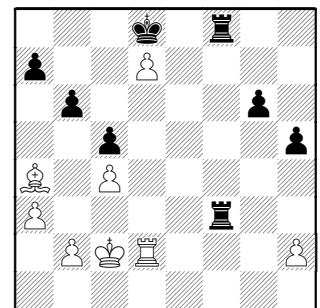


Keeping the Bishop off g4 where it helps the passer

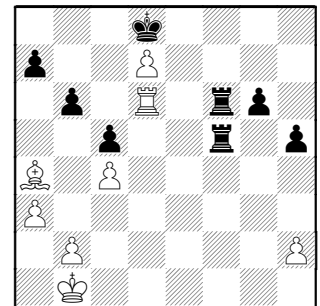
35.Kc3 Rf6 36.d7 Kc7 37.Ba4



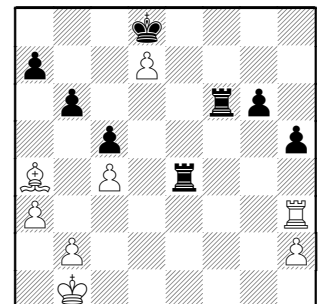
37...Rf3+ 38.Kc2 Rdf8 39.a3 Kd8



40.Rd6 [40.Re2 idea Re8+ 40...Rf2] 40...R3f6 41.Rd5 Rf2+ 42.Kb1 R2f5 43.Rd6 R8f6



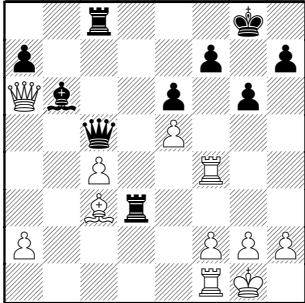
44.Rd3 Re5 45.Rh3 Re4



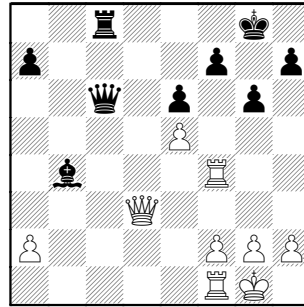
46.b3 Rf2 idea Re1# 0-1

Jakstas,Kaz (2174) –
Tegel,Frank (2029)
Pawns-Dragons, 11-29-2005

White spots an overloaded Queen.



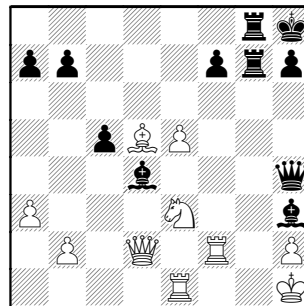
28.Bb4 Qc6 [28...Qxe5 29.Qxc8+] 29.c5
Bxc5 30.Qxd3 Bxb4



1-0

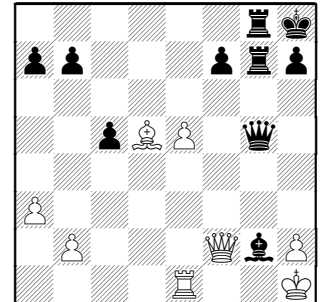
Stein,Pete (2211) –
Jakstas,Kaz (2213)
Tyros-Pawns, 1-12-2006

Black to move



It's already amazing Black has coordinated his pieces so well against a equal opponent !

29...Qg5 30.Ng2 Bxf2 31.Qxf2 Bxg2+



0-1

Highlights of the Fall Business meeting Wednesday, August 27th:

A. Two new teams:

- 1) **DRW Trading** in the East Division
 - 2) **St. Xavier University** in the West
- Welcome to both!!**

B. **Northrop** team folds. We will work on placing interested players with other teams.

C. **St. Charles CC** will field only one team due to impact of matches on club functioning.

D. **BP & Molex** will combine into one Associate Team.

E. **Scoresheet submission by home team captain is now officially mandatory** within two weeks of a match. No fine will be imposed at this time. Violations will be dealt with like any other rules violation.

F. **Club team players who are no longer members of the club are eligible to be alumni.**

G. Proposals tabled:

- 1) Associate Team Revision
- 2) Unrestricted Recruitment

Watch for complete minutes from Jerry Thomas, to be published in September bulletin!!

Regards, President Tony Jasaitis

Thanks to some tough planning and ample support from our members, the off-season was unusually active. And profitable to the tune of \$20,000 for one !

Follow along as we step through the dates and make some observations.

MAY 10, 2008 - The CICL Playoffs

We've chronicled the gamescores and results in the past three issues. But one highlight went unmentioned.

Chess is supposed to be a mind game and so you'd expect chessplayers to be experts at "care and feeding of the brain". Let's decide by gleaning some facts from the following pictures taken on Playoff Saturday.



Any nutritionist will tell you the day should start with breakfast. Any athlete carbo-loads to pack the muscles- the brain's a muscle right ?



Coffee stimulates and keeps us awake in the early hours before noon.



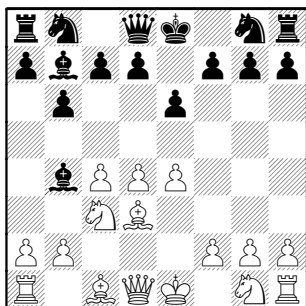
Beer is often the chessplayer's friend – especially when it's free !

JUNE 17, 2008 - The CICL vs New Yorkers' Athletic League

Could we play some other cities using the Internet ? That was the question Norm Hughes posed as we drove home from the Spring Business meeting in April. We had some history with these New Yorkers, so a quick question later and a couple month's worth of emails (read that as "hundreds a month"), Norm had worked it out with World Chess Live. You can get the match details from the June bulletin, but Norm has fully analyzed each game for your enjoyment and edification !

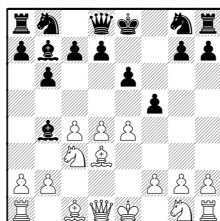
Smallwood,Jim (2037) -
Widmaier,Marc (1889) [A40]
 WCL World Chess Live, 6-14-2008
[Notes by Norm Hughes]

1.d4 b6 2.c4 e6 3.Nc3 Bb7 4.e4 Bb4
 5.Bd3



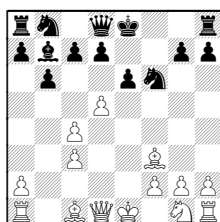
5...Bxc3+ this move is not played
 very often

More common is 5...f5



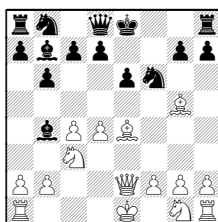
6.Qe2

(6.d5 fxe4 7.Bxe4 Nf6 8.Bf3 Bxc3+
 9.bxc3



9...0-0 10.Ne2 e5 is even)

6...Nf6 7.Bg5 fxe4 8.Bxe4

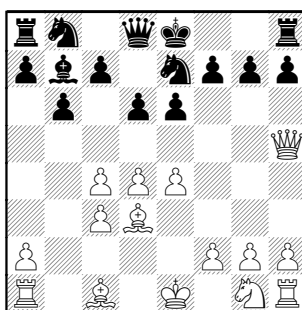


8...Bxe4 9.Bxf6 Qxf6 10.Qxe4 0-0
 with an even position

6.bxc3 Ne7

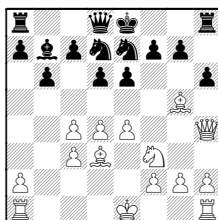
f5 transposing into normal lines
 seems better. Each player is on his
 own now.

7.Qh5 d6



8.f4

8.Bg5 Nd7 9.Nf3 h6 10.Qh4

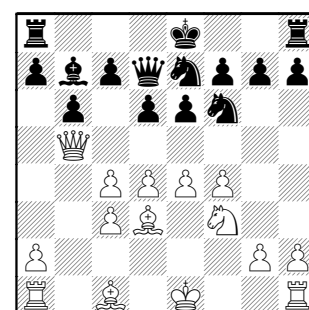


10...Rf8 11.Be3 Ng6 12.Qg3 with
 advantage White

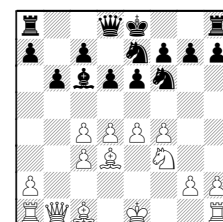
8...Nd7 9.Nf3

9.Nh3 allows the Queen a better
 retreat

9...Nf6 10.Qb5+ Qd7



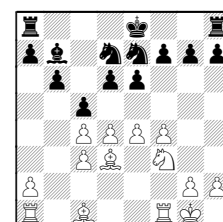
10...Bc6 idea Bxe4 11.Qb1



11...d5 12.e5 Ne4

11.Qb1

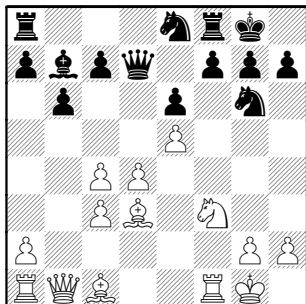
11.Qxd7+ Nxd7 12.0-0 c5



13.a4 Nc6 14.Be3 Ba6 15.Rad1 with

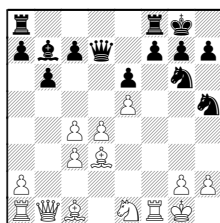
a position without Queens that gives advantage to White.

11...Ng6 12.0-0 0-0 13.e5 dxe5
14.fxe5 Ne8



White has a huge space advantage. and a Pawn on the 5th rank. Black does not have a piece past the third rank, amazing.

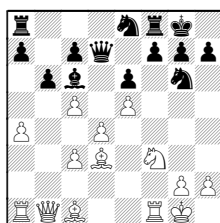
14...Nh5 15.Ne1?! idea g2-g4



15...c5 16.g4 Qc6

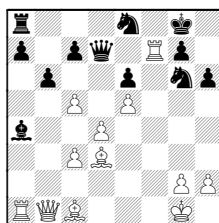
15.Ba3

15.c5 Bc6 16.a4



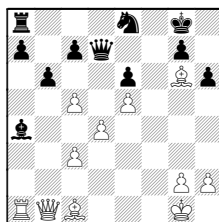
16...bxc5

(16...Bxa4 17.Ng5 h6 18.Nxf7 Rxf7
19.Rxf7



19...Kxf7

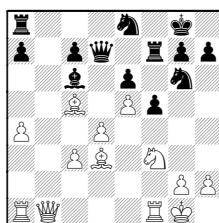
(19...Qxf7 20.Bxg6 Qd7



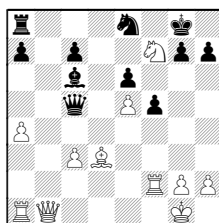
21.Ra2 bxc5 22.Rf2 White has the advantage.)

20.Bxg6+ Kg8 21.Ra2 Bc6 22.Rf2
White has the advantage. Notice again that White has a Bishop and two Pawns past the 4th rank, while Black has all his pieces behind the 4th rank.)

17.Ba3 f5 18.Bxc5 Rf7

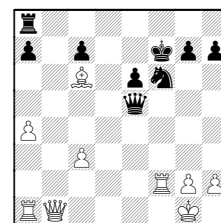


19.Ng5 Nxe5 20.dxe5 Qd5 21.Rf2
Qxc5 22.Nxf7



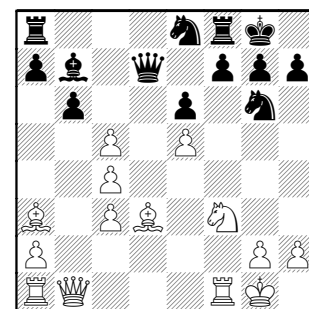
A) 22...Qxc3 23.Qc1 White has a winning position.

B) 22...Kxf7 23.Bxf5 Qxe5 24.Be4+
Nf6 25.Bxc6

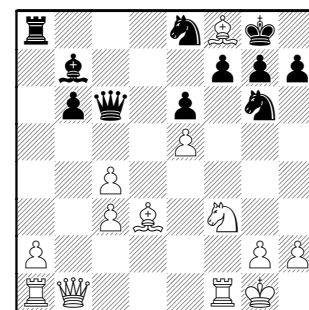


White also has a winning position

15...c5 16.dxc5

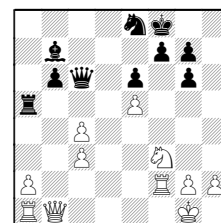


16...Qc6 17.cxb6 axb6 18.Bxf8

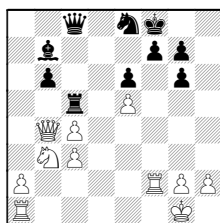


18...Nxf8

18...Kxf8 19.Rf2 Ra5 20.Bxg6 hxg6

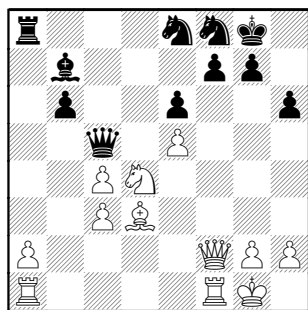


21.Qb4+ Rc5 22.Nd4 Qc8 23.Nb3

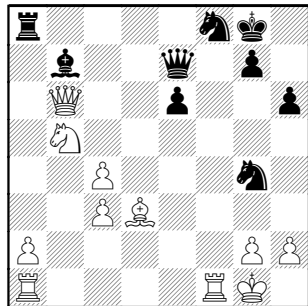


with advantage to White

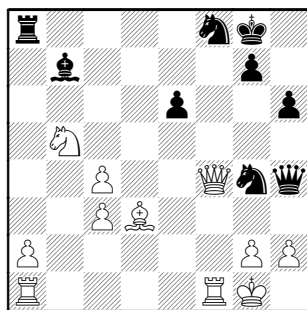
19.Qc2 h6 20.Nd4 Qc5 21.Qf2



21...Qe7 22.Nb5 f5 23.exf6 Nxf6
24.Qxb6 Ng4

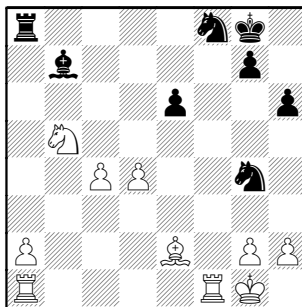


First move since 4....,Bb4 that a piece
was moved past the 4th rank for
Black. 25.Qd6 Qh4 26.Qf4

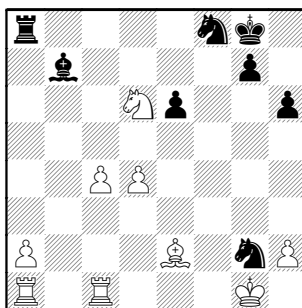


26...Qh5 27.Be2 Qc5+ 28.Qd4

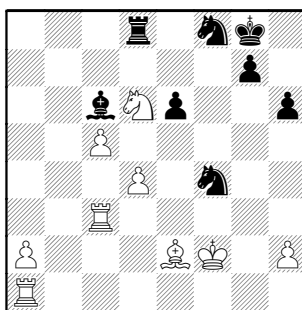
Qxd4+ 29.cxd4



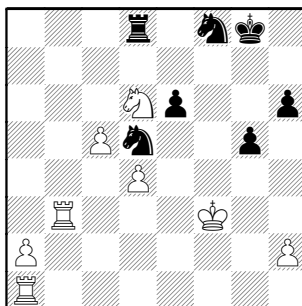
29...Ne3 30.Rfc1 Nxg2 31.Nd6



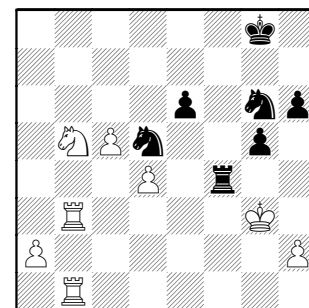
31...Nf4 32.Kf2 Bc6 33.Rc3 Rd8
34.c5



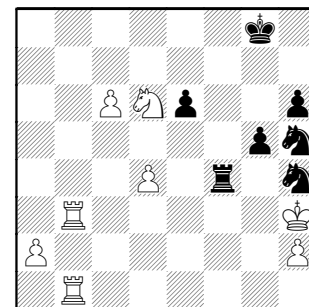
34...g5 35.Bf3 Bxf3 36.Kxf3 Nd5
37.Rb3



37...Ng6 38.Rab1 Rf8+ 39.Kg3 Rf4
40.Nb5



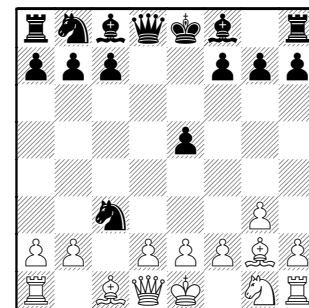
40...Nf6 41.c6 Nh4 42.Nd6 Nh5+
43.Kh3



43...Rxd4 44.c7 Nf4+ 45.Kg3 Ne2+
46.Kf2 1-0

Staub, Alan (1833) –
Dowell, Earnest (1806) [A22]
WCL World Chess Live, 6-14-2008
[Notes by Norm Hughes]

1.c4 e5 2.Nc3 Nf6 3.g3 d5 4.cxd5
Nxd5 5.Bg2 Nxc3



This exchange is criticized by
opening experts. Black wastes no
time defending the Knight. Black now

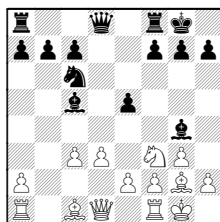
gets ready to bring out his inactive forces.

6.bxc3 Bc5

Most books give Nc6 here. However, my database gave Bc5 two to one over Nc6. It should transpose to normal lines.

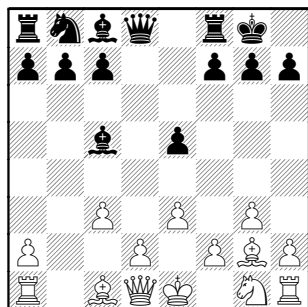
7.e3

More common is 7.d3 Nc6 8.Nf3 0-0 9.0-0 Bg4

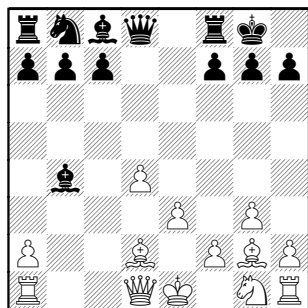


10.h3 Bh5 11.Qa4 Re8 with an equal position.

7...0-0

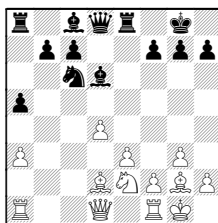


8.d4 exd4 9.cxd4 Bb4+ 10.Bd2



10...Bxd2+

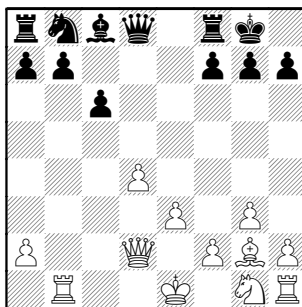
10...a5 11.Ne2 Nc6 12.0-0 Re8 13.a3 Bd6



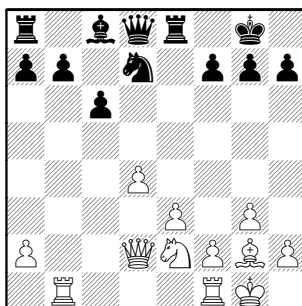
14.Nc3 a4 White has a slight edge.

11.Qxd2 c6 All these moves have been played before. My database ends here. Each player is on their own now.

12.Rb1



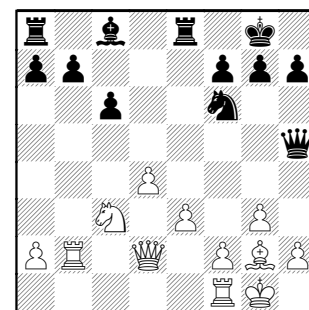
12...Re8 13.Ne2 Nd7 14.0-0



14...Nf6

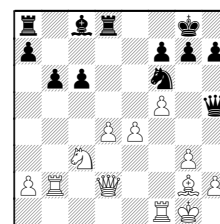
14...Nb6 The Knight belongs here.
15.Qc2

15.Nc3 Qa5 16.Rb2 Qh5



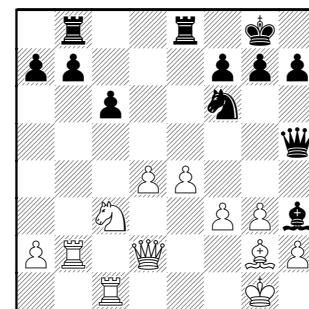
17.f3

17.e4 Rd8 18.f4 b6 19.f5

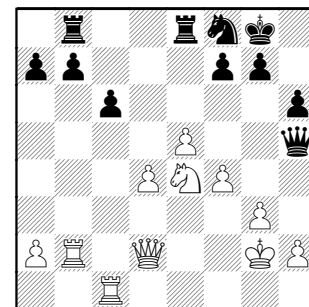


19...Ba6 20.Bf3 Qh3 21.Rc1 c5 22.d5 Bc4 23.Qg5 is also good for White

17...Rb8 18.Rc1 Bh3 19.e4

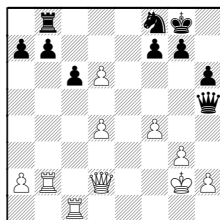


19...Bxg2 20.Kxg2 h6 21.e5 Nh7 22.f4 Nf8 23.Ne4

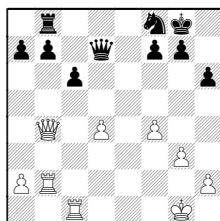


23...Ne6

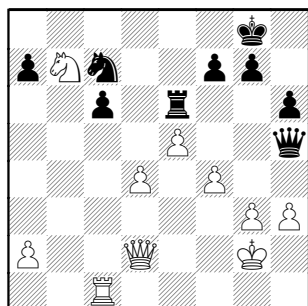
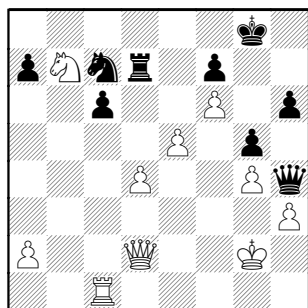
23...Red8 24.Nd6 Rxd6 25.exd6



25...Qd5+ 26.Kg1 Qxd6 27.Qb4 Qd7

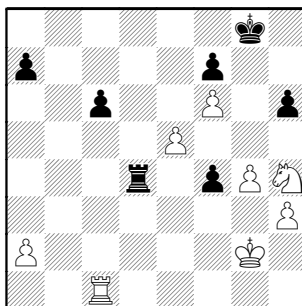
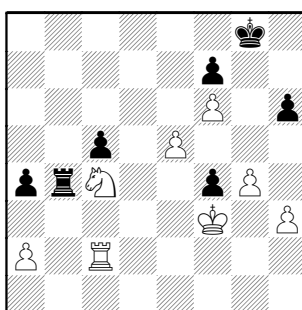
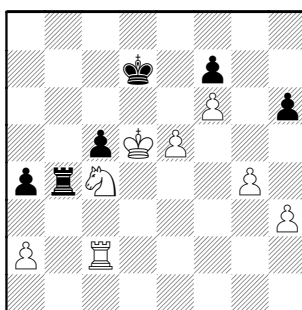
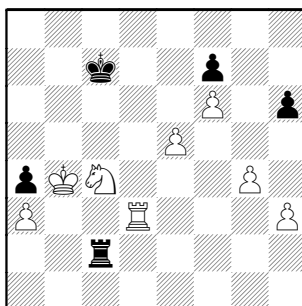


28.f5 Rd8 is also good for White

24.h3 Nc7 25.Nd6 Re6 26.Rxb7
Rxb7 27.Nxb727...g5 28.f5 Re7 29.g4 Qh4 30.f6
Rd7

31.Nd6 Nd5 32.Nf5 Nf4+ 33.Qxf4

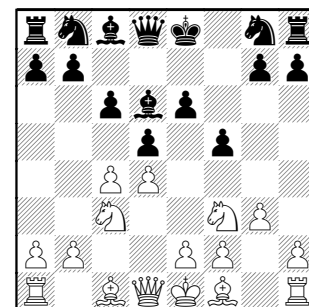
gxf4 34.Nxh4 Rxd4

35.Nf3 Rb4 36.Rc2 a5 37.Nd2 a4
38.Kf3 c5 39.Nc439...Kf8 40.Kxf4 Ke8 41.Ke4 Kd7
42.Kd542...Rb1 43.Kxc5 Rh1 44.Rd2+ Kc7
45.Rd3 Rh2 46.a3 Rc2 47.Kb4

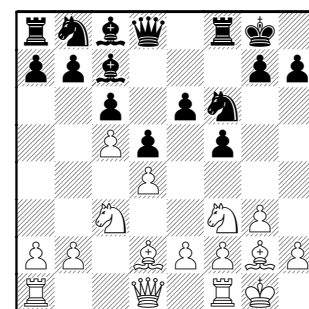
1-0

Vail, Matt (1603) – Alban, Mark (1256) [D31]
WCL World Chess Live, 6-14-2008
[Notes by Norm Hughes]

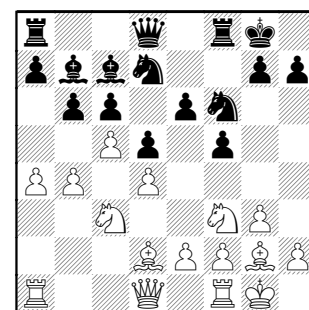
1.d4 d5 2.c4 c6 3.Nc3 e6 4.Nf3 Bd6
5.g3 f5



6.c5 Bc7 7.Bg2 Nf6 8.0-0 0-0 9.Bd2

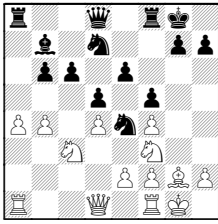


Cannot find this move in any of my
database. The players are on their
own. 9...Nbd7 10.a4 b6 11.b4 Bb7

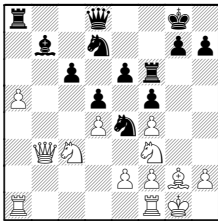


12.Re1

12.cxb6 axb6 13.Bf4 Bxf4 14.gxf4
Ne4

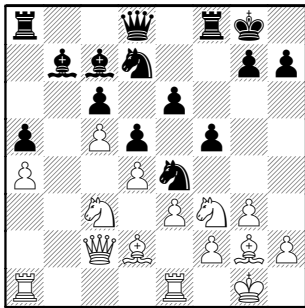


15.Qb3 Rf6 16.a5 bxa5 17.bxa5



with an even game.

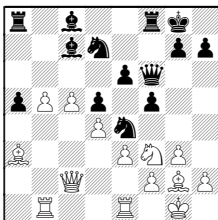
12...Ne4 13.e3 a6 14.Qc2 bxc5
15.bxc5 a5



16.Rab1 Ba6 17.Bc1 White shouldn't keep this Bishop, it has no future and is much worse that the piece that would capture it. 17...Qf6 18.Ne2

White may have an opportunity with 18.Nb5!? Bd8

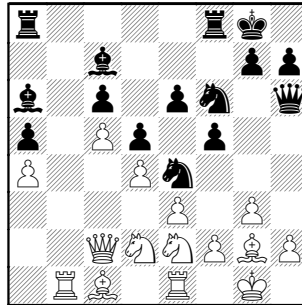
(18...cxb5 19.axb5 Bc8 20.Ba3



advantage to White.)

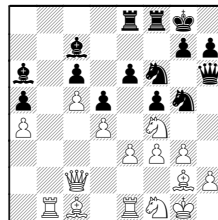
19.Nd6 Bc7 20.Nb5 with an even game.

18...Qh6 19.Nd2 Ndf6

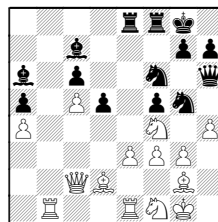


20.f3? oops-- one of the problems playing online, the board weaknesses don't stand out so well in video-2D mode.

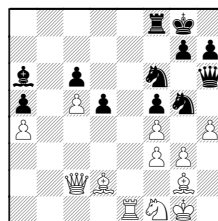
20.Nf1 Ng5 21.Nf4 Rae8 22.f3



22...e5 23.dxe5 Bxe5 24.Bd2 Bc7
25.h4

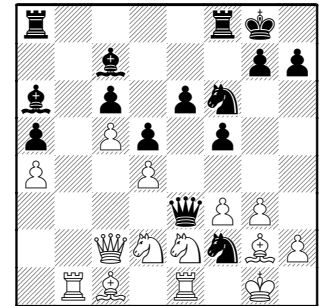


25...Bxf4
(25...Ne6 26.Nxe6 Rxe6 and Black maintains the advantage.) 26.exf4
Rxe1 27.Rxe1



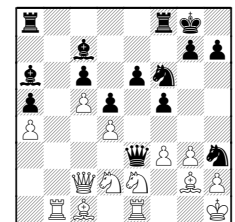
and White has the advantage.

20...Qxe3+ 21.Kh1 Nf2+ 22.Kg1



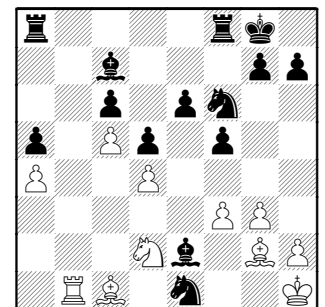
22...Nd3+ Black missed a mate, but the game's over all the same

He has a nice smothered mate by 22...Nh3+ 23.Kh1

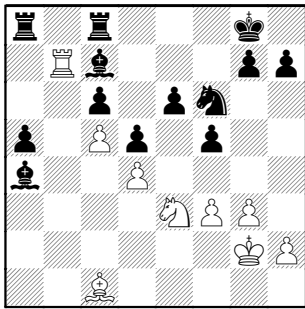


23...Qg1+ 24.Nxg1 Nf2#

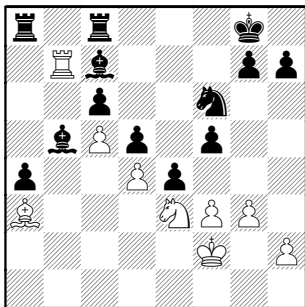
23.Kh1 Nxe1 24.Qd1 Qxe2 25.Qxe2
Bxe2



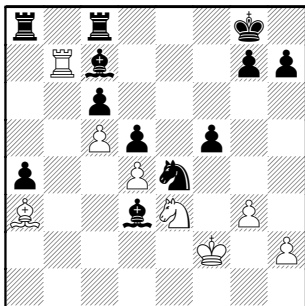
26.Rb7 Rfc8 27.Kg1 Nxg2 28.Kxg2
Bd1 29.Nf1 Bxa4 30.Ne3



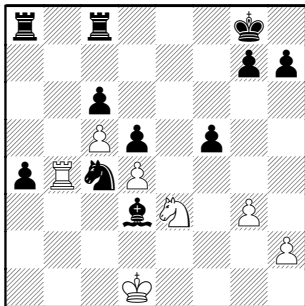
30...Bb5 31.Nc2 a4 32.Kf2 e5
33.Ba3 e4 34.Ne3



34...exf3 35.Kxf3 Bd3 36.Kf2 Ne4+



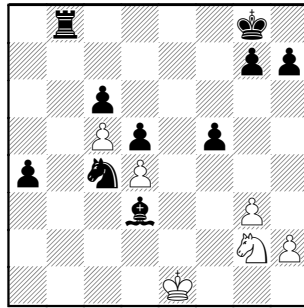
37.Ke1 [37.Kg2 Nc3] 37...Ba5+
38.Kd1 Nd2 39.Bb4 Bxb4 40.Rxb4
Nc4



41.Ng2

41.Nxc4 Bxc4 42.g4 a3 43.Rb1 a2
44.Ra1 fxg4 45.Kc2 Rf8 46.h4 Black
has many ways to win

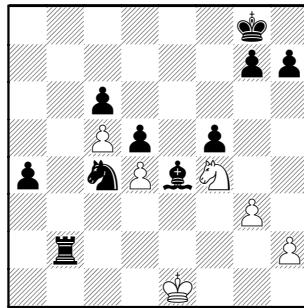
41...Rcb8 42.Rxb8+ Rxb8 43.Ke1



43...Rb2

Black missed a mate in 2 by
43...Rb1+ 44.Kf2 Rf1#

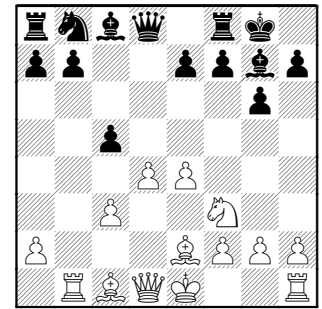
44.Nf4 Be4



45.h4 a3 46.Ne2 a2 47.Nc3 a1Q+
48.Nd1 Qa5+ 49.Kf1 Qd2 0-1

Ali, Robert (1659) –
Franeek, Marty (1728) [D85]
WCL World Chess Live, 6-14-2008
[Notes by Norm Hughes]

1.d4 Nf6 2.c4 g6 3.Nc3 d5 4.cxd5
Nxd5 5.e4 Nxc3 6.bxc3 Bg7 7.Rb1
c5 8.Nf3 0-0 9.Be2

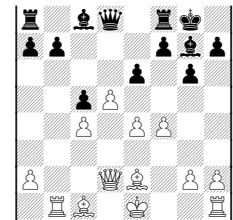


9...Nc6

[TF] 9...b6 is the current rage, thanks
to GM Peter Svidler. Black targets
d5,e4 maybe even a6 for his Bishop.

10.Be3

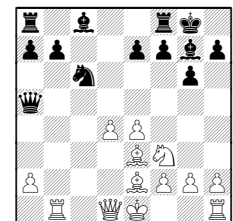
10.d5 Ne5 11.Nxe5 Bxe5 12.Qd2 e6
13.f4 Bg7 14.c4



14...exd5 15.cxd5 Bd4 with an even
position

10...Qa5

[TF] If Black is booked-up, he can go
in on another line that the GMs have
explored-- 10...cxd4 11.cxd4 Qa5+



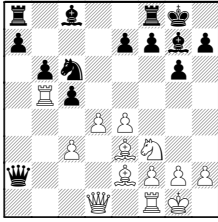
12.Bd2

(12. Qd2 Qxd2+ 13.Kxd2 Rd8)

12...Qxa2 13.d5 Ne5 14.Nxe5 Bxe5
15.0-0 f5 with an even game.

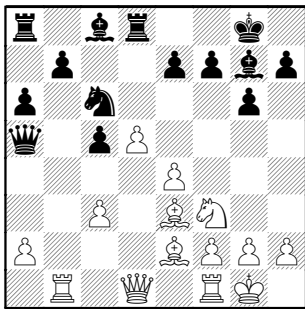
11.0-0 a6 defending against Rb5 fork

[TF] 11...b6 might be the better way
12.Rb5 Qxa2

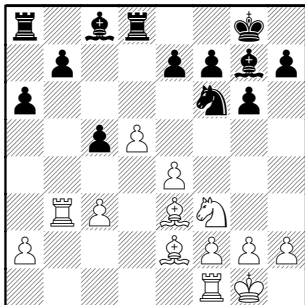


13.dxc5? Ba6 wins at least an
exchange

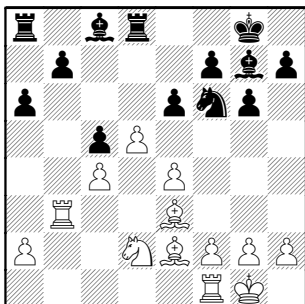
12.d5 Rd8



13.Qb3 Ne5 14.Qb6 Qxb6 15.Rxb6
Nd7 16.Rb3 Nf6



17.Nd2 [17.Bd3 c4] 17...e6 18.c4

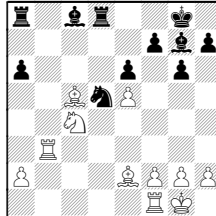


18...exd5

18...b5 19.e5

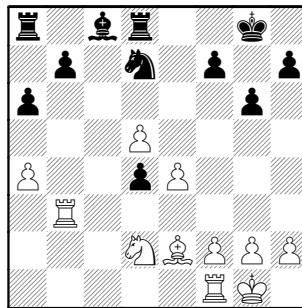
(19.Bxc5 bxc4 20.Bxc4 doesn't help
hold the center)

19...bxc4 20.Nxc4 Nxd5 21.Bxc5



d6 is horribly weak 21...Bd7 22.Bd6
Ba4 23.Rb7 Nc3 24.Bf3 with
advantage to White

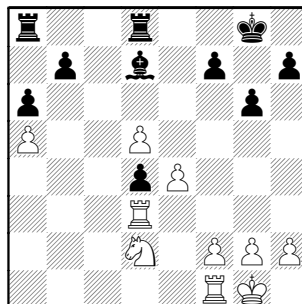
19.cxd5 Nd7 20.a4 Bd4 21.Bxd4
cxd4



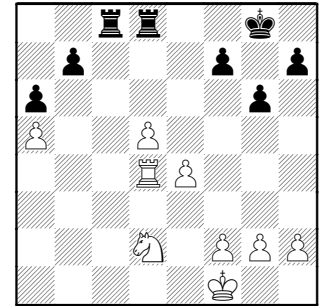
22.Bd3

22.Rb4 Nc5 23.Rxd4 Ne6 advantage
to White

22...Nc5 23.Ra3 Bd7 24.a5 Nxd3
25.Rxd3



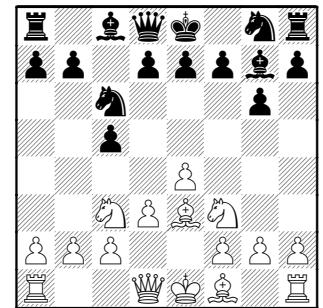
25...Bb5 26.Rxd4 Bxf1 27.Kxf1
Rac8



[TF] It would be interesting to know
the clock values here. With Rc5
coming, Black can target the
advanced Pawns and invade with the
other Rook. 1/2-1/2

Nallathambi,Rajan (1671) -
Miciak,Michael (1574) [B30]
WCL World Chess Live, 6-14-2008
[Notes by Norm Hughes]

1.e4 c5 2.Nf3 g6 3.d3 Nc6 4.Nc3
Bg7 5.Be3



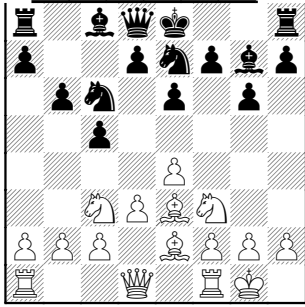
5...b6

5...d6 6.Qd2 Nf6 7.h3 0-0 8.Be2 Be6
9.0-0 with an even game.

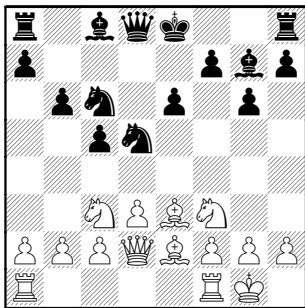
6.Be2 e6

6...Nf6 7.Qd2 Ng4 8.Bf4 0-0 9.h3
Nge5 10.Nxe5 Nxe5

7.0-0 Nge7

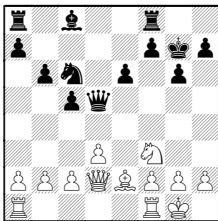


8.Qd2 d5 9.exd5 Nxd5

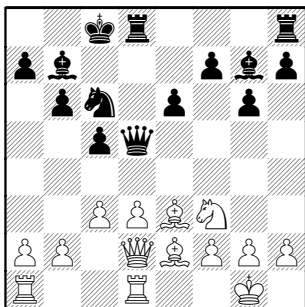


10.Nxd5

10.Bh6 0-0 11.Bxg7 Kxg7 12.Nxd5
Qxd5



10...Qxd5 11.c3 Bb7 12.Rfd1 0-0-0



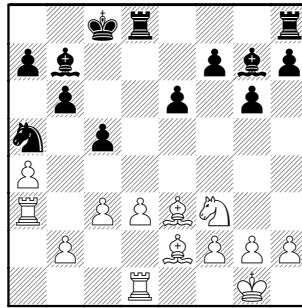
13.a4 Na5 14.Qc2 Qb3

[TF]

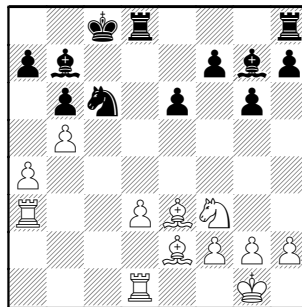
A) Ineffective is 14...Nb3 15.Ra3

B) Maybe Black can prepare to neutralize the c-file with 14...Kb8 I'm looking for Black to play f5-4,g5-4 after due preparation

15.Qxb3 Nxb3 16.Ra3 Na5



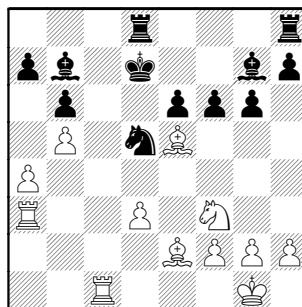
17.b4 cxb4 18.cxb4 Nc6 19.b5



19...Ne7

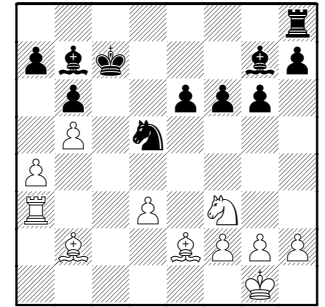
19...Nd4 20.Nxd4 Bxd4 each side has possibilities

20.Rc1+ [20.Ng5 Rdf8] 20...Kd7
21.Bf4 Nd5 22.Be5 f6

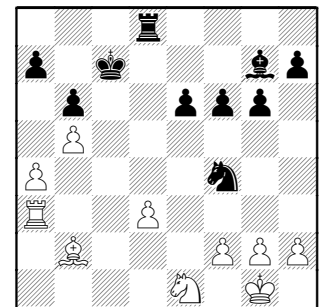


23.Bb2 Rc8 24.Rc4 Rc7 25.Rxc7+

Kxc7

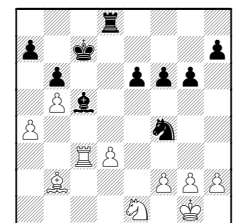


26.Ng5!? Nf4 27.Bf3 Bxf3 28.Nxf3
Rd8 29.Ne1



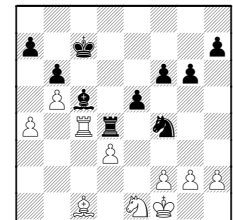
29...Rd5

29...Bf8 30.Rc3+ Bc5



idea Ne2+ forking 31.Kf1 e5 32.Ba3

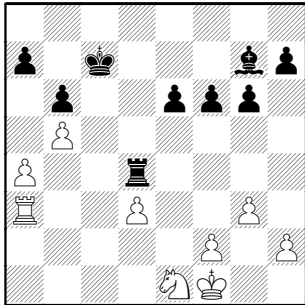
(A) 32.Bc1 Rd4 33.Rc4



33...Ne6 34.Be3 Rxc4 35.dxc4 Kd6
advantage to Black.; B) Maybe 32.g3)

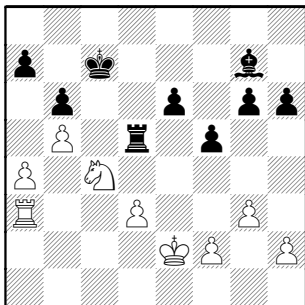
32...Rd5 33.g3 Ne6

30.g3 Ne2+ 31.Kf1 Nd4 32.Bxd4
Rxd4

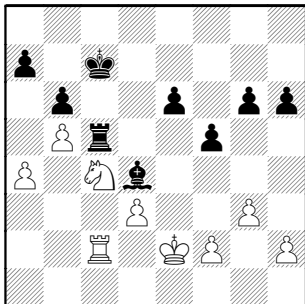


Black has a few small advantages (better Pawn structure, Bishop for Knight, more active pieces) but here it's hard to believe it's enough for a win.

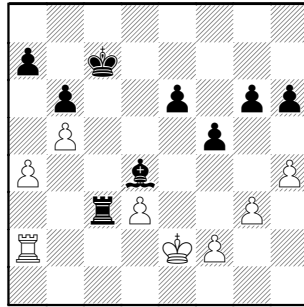
33.Ke2 f5 34.Nf3 Rd6 35.Nd2 h6
36.Nc4 Rd5



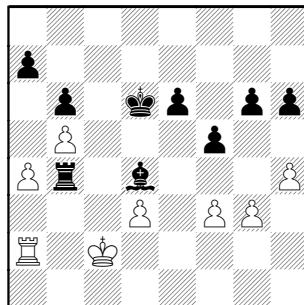
37.Ra2 Bd4 38.Rc2 Rc5



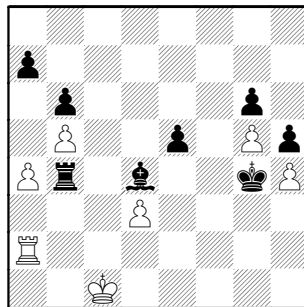
39.Ne3? oops 39...Bxe3! 40.Ra2
Bd4 41.h4 Rc3!



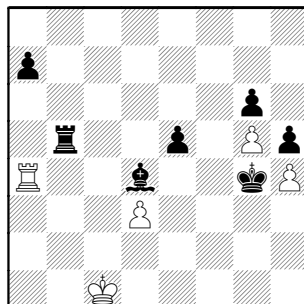
idea Rb3-b2+ 42.Kd2 Kd6 [42...Rb3
43.Kc2] 43.f3 Rb3 44.Kc2 Rb4



45.g4? gives Black f4 for his King
45...fxg4 46.fxg4 Ke5 47.Kc1 Kf4
48.g5 h5 49.Re2 e5 50.Ra2 Kg4



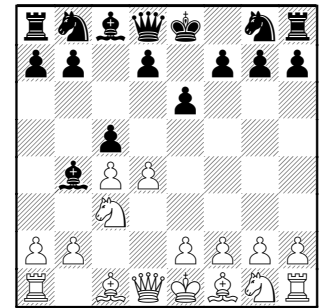
51.a5 Rxb5 52.axb6 Bxb6 53.Ra4+
Bd4



54.Rc4 Rc5 55.Kd2 Rxc4 56.dxc4
Kxh4 57.Kd3 Kxg5 58.Ke4 0-1

Santanna, Paulo (1954) -
Allsbrook, Scott (2117) [E20]
WCL World Chess Live, 6-14-2008
[Notes by Norm Hughes]

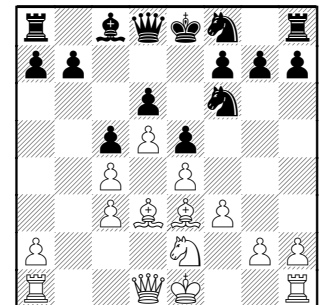
1.d4 e6 2.c4 Bb4+ 3.Nc3 c5



4.d5

4.e3 Nf6 5.Bd3 Nc6 6.Nge2 cxd4
7.exd4 d5 8.cxd5 Nxd5 9.0-0 0-0 is
more common with an equal game.

4...Nf6 5.f3 Bxc3+ 6.bxc3 d6 7.e4 e5
8.Bd3 Nbd7 9.Ne2 Nf8 10.Be3

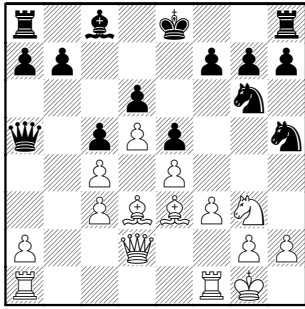


10...Qa5 Cannot find this move in any
book or database. Each player is on
their own.

A) 10...Nh5 11.g4 Nf6 12.Qa4+ Bd7
13.Qb3 Qc7 14.Ng3 0-0-0 White has
a slight advantage.;

B) 10...Ng6 11.Ng3 0-0 12.0-0 h6
13.Rb1 Qc7 14.a3 Rb8 with a slight
advantage for White.

11.Qd2 Ng6 12.0-0 Nh5 13.Ng3

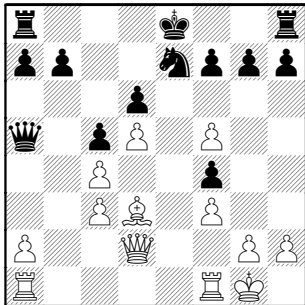


13...Nh4? Incredibly, this is the wrong Knight and it immediately matters! In fact with this move Black's game is lost.

A) 13...Nxg3 14.hxg3 h5 15.f4 h4 16.gxh4 Rxh4 17.f5 Nf8 White has a slight edge.

B) 13...Ngf4 14.Nxh5 (14.Nf5 Bxf5 15.exf5 Nxd3 16.Qxd3 0-0 17.Rfb1 Rab8 18.Bg5 Rfe8 with an even game.) 14...Nxh5 15.f4 exf4 16.Bxf4 Nxf4 17.Qxf4 0-0 18.Qxd6 White has the advantage.

14.Nf5 White must win at least a Pawn. 14...Bxf5 15.exf5 Ne7 16.Bxf4 exf4



17.f6! investing the extra Pawn
17...gxf6

17...Ng6? 18.Bxg6 hxg6

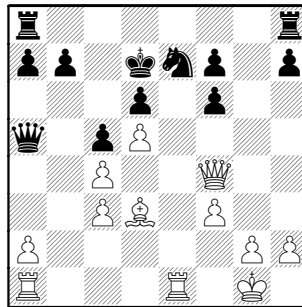
(18...fxg6? 19.Qe2+ Kd8 20.Qe7+ Kc8 21.fxg7)

19.Qe2+ Kf8

(*[TF]* uglier yet is 19...Kd8 20.Qe7+ Kc8 21.fxg7 Rg8 22.Qxf7)

20.Qe7+ Kg8 21.Qxd6 g5

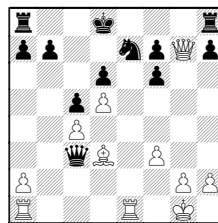
18.Rfe1 Kd7 19.Qxf4



19...Ng8

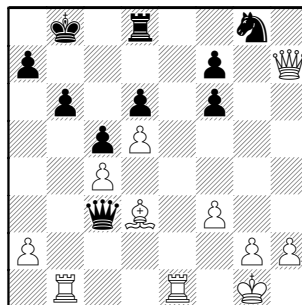
A) 19...Qxc3 20.Rab1 20...b6 21.Re3

B) White would probably continue as in game 19...Qxc3 20.Qg4+ Kd8 (20...Kc7 21.Rxe7+) 21.Qg7

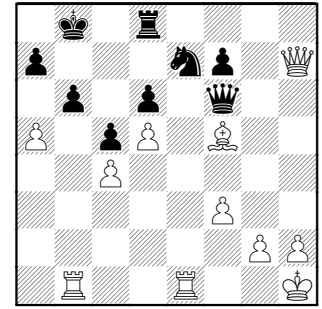


21...Kd7 22.Qxf7

20.Qg4+ Kc7 21.Qg7 Rd8 22.Qxh8 Qxc3 23.Qxh7 Kb8 24.Rab1 b6



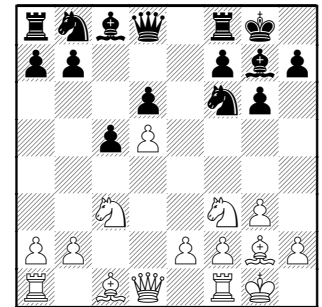
25.a4 f5 26.Bxf5 Qd4+ 27.Kh1 Qf6 28.a5 Ne7



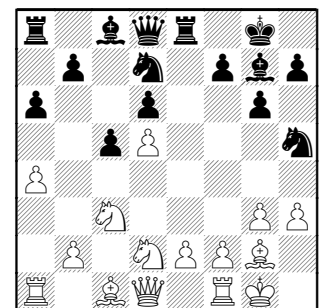
29.Be6! fxe6 1-0

Nguyen,Tam (2229) - Katz,Benjamin (2087) [A64]
WCL World Chess Live, 6-14-2008
[Notes by Norm Hughes]

1.d4 e6 2.c4 Nf6 3.g3 c5 4.d5 exd5 5.cxd5 d6 6.Bg2 g6 7.Nc3 Bg7 8.Nf3 0-0 9.0-0

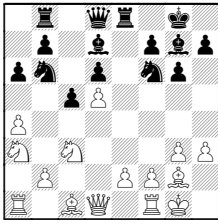


9...Re8 10.Nd2 a6 11.a4 Nbd7 12.h3 Nh5



We are still in Grandmaster territory here. The idea of this move is to be able play f5.

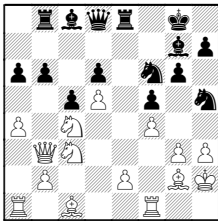
However 12...Rb8 13.Nc4 Nb6 14.Na3 Bd7



15.e4 Nc8 16.Qd3 Qc7 17.Be3 is another popular variation with an equal game

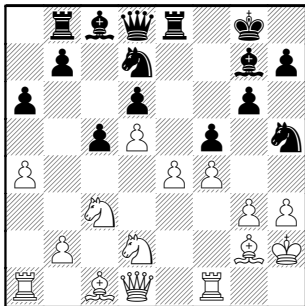
13.Kh2 f5 14.f4 Rb8

14...Ndf6 15.Nc4 b6 16.Qb3 Rb8



17.Na5 Qc7 18.Nc6 Ra8 19.Qc4 with an even game

15.e4

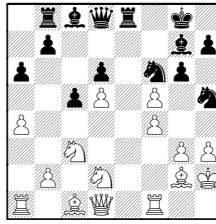


15...Ndf6

15...Nh6 16.Nc4 Nb6 17.Nxb6 Qxb6 18.a5 Qd8 19.exf5 gxf5 20.Bd2 is another way to play this with an even game.

16.Re1

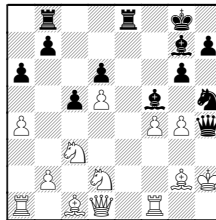
16.exf5



16...Bxf5 17.Nc4

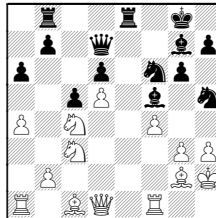
17.g4?? Nxg4+ 18.hxg4 (18.Qxg4 Bxg4 with advantage Black)

18...Qh4+



19.Kg1 Bd4+ 20.Rf2 Qxf2+ 21.Kh1 Qh4+ 22.Bh3 Qxh3#

17...Qd7

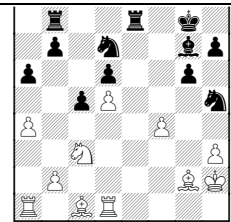


A) 18.g4? Bxg4 19.Nb6

A1) Black's minors crush after accepting the sacrifice: 19.hxg4?? Nxg4+ 20.Kg1 (20.Kh1 Ng3+ 21.Kg1 Bd4+) 20...Bd4+

A2) Maybe White's best is 19.Qb3 probably transposes to the 18 Ne3 line, see 'B' below

19...Bxd1 20.Nxd7 Nxd7 21.Rxd1



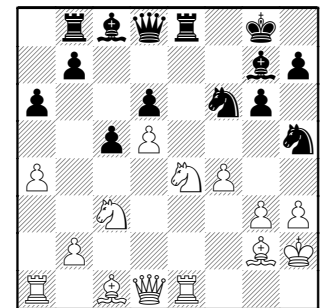
with advantage to Black

B) 18.Ne3 Bh8 19.a5

(19.g4 Rxe3 20.Bxe3 Bxg4 21.Qb3 with a slight advantage for White)

19...Ng7 20.Nc4 with advantage to White

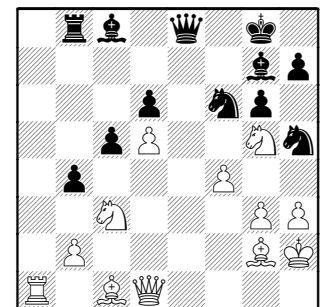
16...fxe4 17.Ndxe4



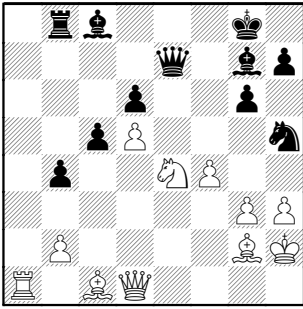
17...b5

Better for Black is 17...Nxe4 18.Nxe4 Bd4 with an equal position

18.axb5 axb5 19.Ng5 b4 20.Rxe8+ Qxe8



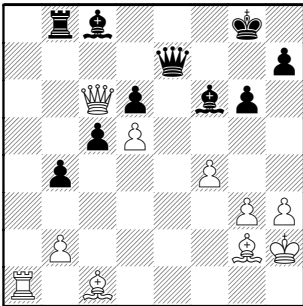
21.Nce4 Nxe4 22.Nxe4 Qe7



23.Qa4

23.Nd2 Bd4 24.Bf3 Qd7 25.Qf1 Qc7 26.Qg2 Bd7 27.Be2 is another variation that is an equal game

23...Nf6 24.Nxf6+ Bxf6 25.Qc6



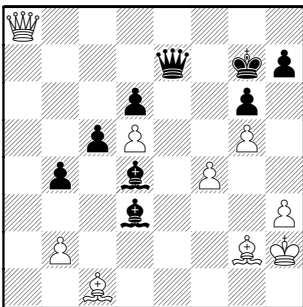
Black now has the advantage

25.Qa7 Qxa7

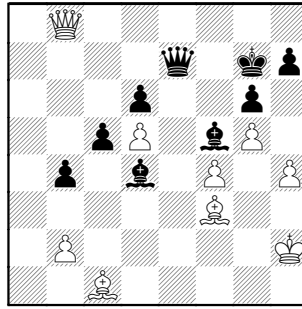
(25...Rb7 26.Qa8 Rc7 27.Qb8 Bd4 with advantage to Black)

26.Rxa7 Bf5 27.Ra6 Rd8 28.Bf1 Re8 29.Rxd6 Re1 with advantage Black

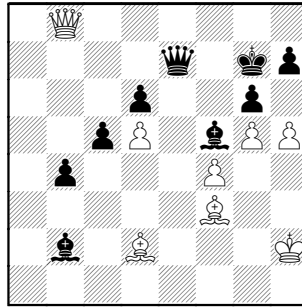
25...Bf5 26.Ra8 Rxa8 27.Qxa8+ Kg7 28.g4 Bd3 29.g5 Bd4



30.Qb8 Bc4 31.h4 Bd3 32.Bf3 Bf5



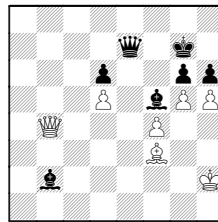
33.Bd2 Bxb2 34.h5



34...Bc3? Black with this move gave away all of his advantage.

34...h6 35.Kg2

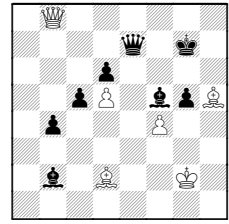
([TF] **A**) 35.Bxb4 cxb4 36.Qxb4



wanting to trap the Bishop 36...Ba1 37.Qa4 Bc3 38.Qc4 Be1 with the advantage to Black

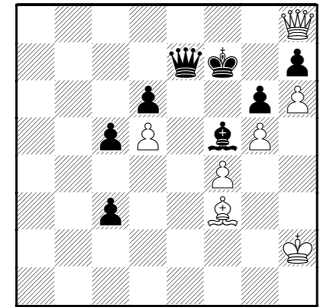
B) 35.gxh6+ doesn't help, just reduces the Pawn count)

35...gxh5 36.Bxh5 hxg5

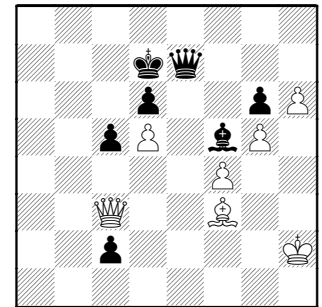


37.Qe8 Be4+ 38.Kf1 Qxe8 39.Bxe8 g4 and Black has an advantage

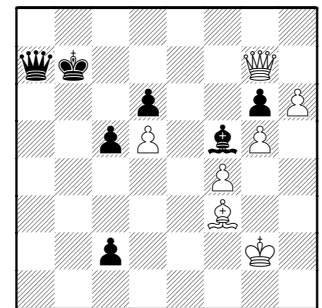
35.Bxc3+ bxc3 36.h6+ Kf7 37.Qh8



37...c2 [37...Qe3] 38.Qxh7+ Ke8 39.Qh8+ Kd7 40.Qc3



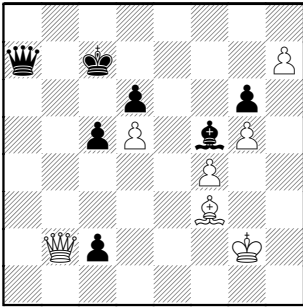
40...Kc8 41.Kg2 Qa7 42.Qh8+ Kb7 43.Qg7+



43...Kb6

43...Ka6 44.Qa1+;
43...Ka8 44.Qh8+

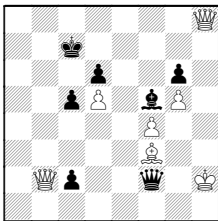
44.Qb2+ Kc7 45.h7



45...Qa8

45...Qa5!? 46.Qg7+

[TF] No time to queen ! 46.h8Q?
Qd2+ 47.Kg3 Qe1+ 48.Kh2 Qf2+



49.Bg2 (49.Kh1 Qxf3+) 49...Qxf4+
50.Kg1 c1Q+

46...Bd7 47.Bg4 Qd2+ 48.Kg3 Qe1+

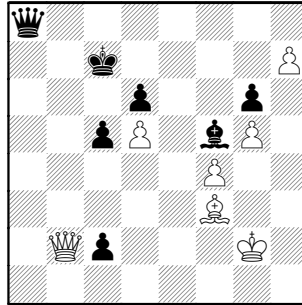
48...c1Q 49.Qxd7+ Kb6 50.Qxd6+
Ka5 51.Qc7+ Kb4 52.Qb6+ Ka3

(52...Kc4 53.Be2+ Qxe2 54.Qa6+
Kxd5 55.Qxe2 Qa1 56.Qe5+ Qxe5
57.fxe5 and White wins)

53.Qa6+ Kb4 54.Qb6+ with a Draw

49.Kg2 Qd2+ 50.Kg3 Qe1+ with a
Draw

46.Qg7+ 46...Kb6 47.Qb2+ Kc7
Diagram



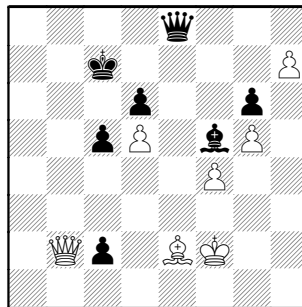
The position is unclear here.

48.Be2 with this move White could
hand the initiative back to Black.
White should have tried 48.Qc3

48...Qe8

48...Qxd5+ 49.Kf2 Qh1 with
advantage to Black. 50.h8Q?
accomplishes nothing 50...Qxh8
51.Qxh8 c1Q

49.Kf2



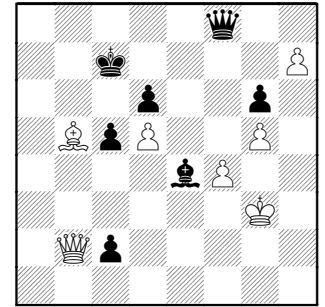
49...Be4 wrong piece to e4.

49...Qe4 50.h8Q Qxf4+ 51.Bf3 Qd2+
52.Be2

(52.Kg3 Qxg5+ (52...c1Q??
53.Qbb8+) 53.Kf2 Qd2+ 54.Kf1 c1Q+
should win)

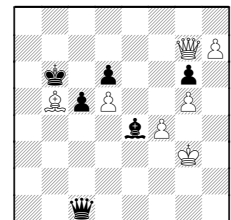
52...Qf4+ and can Draw if he wants
to.

50.Bb5 Qf8 51.Kg3



51...Bf5

51...Qh8 52.Qxh8 c1Q! 53.Qg7+ Kb6

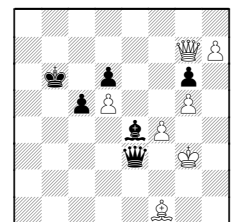


Black has mate or wins the Bishop
(53...Kb8 54.h8Q# mate.)

A) 54.h8Q doesn't stop the basic
mating pattern 54...Qe3+ 55.Kh2
Qf2+ 56.Kh3 Bf5#

B) The slowest loss is 54.Kf2 Qxf4+
(54...Qd2+ 55.Be2) 55.Ke2

C) 54.Bf1 Qe3+

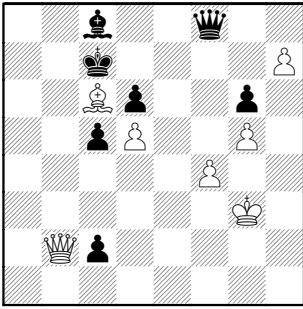


55.Kh2

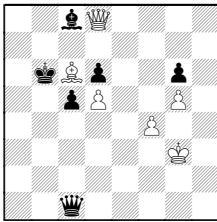
55.Kh4 Qf2+ 56.Kg4 (56.Kh3 Bf5#)
56...Bf5#

55...Qf2+ 56.Kh3 Bf5#

52.Bc6 Bc8

**53.Qxc2**

53.Qc3!? Kb6 54.h8Q Qxh8 55.Qxh8 c1Q 56.Qd8+

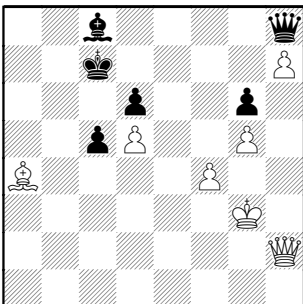
**56...Ka6**

(56...Ka7 57.Qa5+ Kb8 58.Qb6+ Bb7 59.Qxb7# mate.)

57.Qxc8+ Ka5 with advantage to White, if he can get his King protected from a perpetual

53...Qg7 54.Qh2 Black has many draws which he ignored both by way of a later offer and the various perpetuals we note. **54...Qh8**

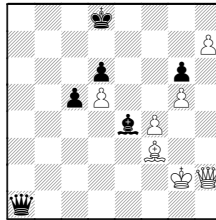
54...Qc3+ 55.Kf2 Qb2+ 56.Kg3 Qc3+ with an even game.

55.Ba4**55...Bf5**

55...Qc3+ 56.Kg2 Qd2+ 57.Kh1 Qe1+ 58.Qg1 Qh4+ 59.Kg2 Qg4+ 60.Kh1 Qh4+ with an even game.

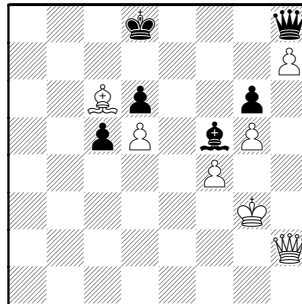
56.Bc6

White has won Black's passer, so he has an advantage with a safe King
56.Bd1 Kd8 57.Be2 Qc3+ 58.Kf2 Qd4+ 59.Kf1 Qa1+ 60.Kg2 Be4+ 61.Bf3

**61...Bxf3+**

(61...Qb2+ 62.Kg3 Qxh2+?? 63.Kxh2 Bxf3 64.h8Q+)

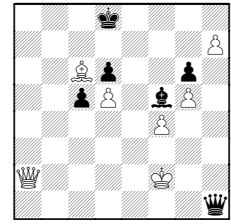
62.Kxf3 Qd1+ 63.Kg3 Qd3+ 64.Kg4 Qd1+ advantage White.

56...Kd8**57.Qa2** with draw offer **57...Ke7**

57...Qc3+ 58.Kf2 Qd4+ 59.Kg2 Qe4+ 60.Kf1 Qh1+ 61.Kf2 Qh2+ 62.Kf3 Qh1+

(62...Qxa2 63.h8Q+)

63.Kf2

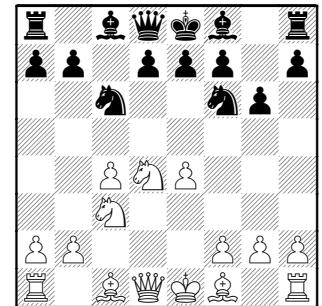


with a Draw likely. 63...Qxh7?? loses!
64.Qa8+ Ke7 65.Qb7+ wins Queen

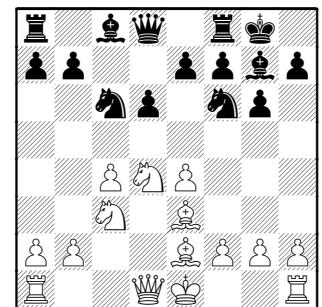
58.Qa7+ Kf8 59.Qb8+ Kg7 60.Qc7+ Kf8 61.Qd8+ Kg7 62.Qe7# 1-0

McGuire, Andrew (1751) - Jurin, Adam (1747) [B38]
WCL World Chess Live, 6-14-2008
[Notes by Norm Hughes]

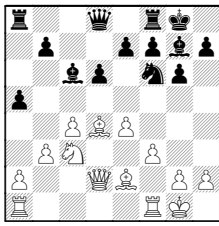
1.c4 c5 2.Nf3 Nc6 3.d4 cxd4 4.Nxd4 Nf6 5.Nc3 g6 6.e4



Transposing to a Sicilian Dragon, Maroczy. **6...d6 7.Be2 Bg7 8.Be3 0-0**

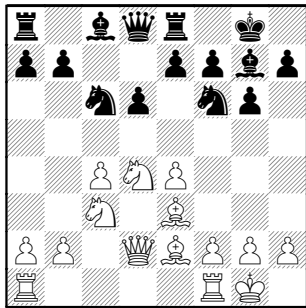
**9.Qd2**

9.0-0 Bd7 10.Qd2 Nxd4 11.Bxd4 Bc6 12.f3 a5 13.b3



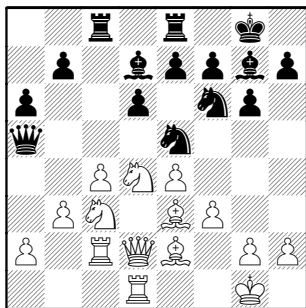
is more common.

9...Re8 10.0-0

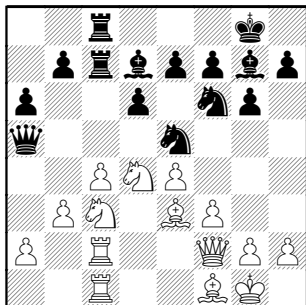


last book move **10...Bg4** Can not find this move in any book or database. The players are on their own.

11.f3 Bd7 12.Rac1 Rc8 13.Rfd1 Ne5 14.b3 a6 15.Rc2 Qa5

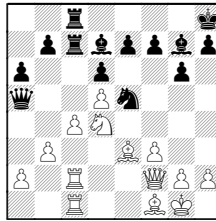


16.Rdc1 Rc7 17.Bf1 Rec8 18.Qf2

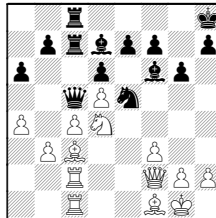


18...b5

18...Kh8 19.Nd5 Nxd5 20.exd5



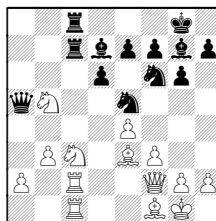
20...Bf6 21.a4 Qb4 22.Bd2 Qc5 23.Bc3



with a slight advantage to White.

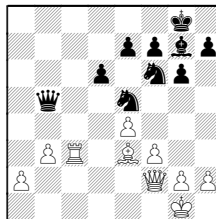
19.cxb5 Rxc3?

19...axb5 20.Ndxb5



20...Rb7

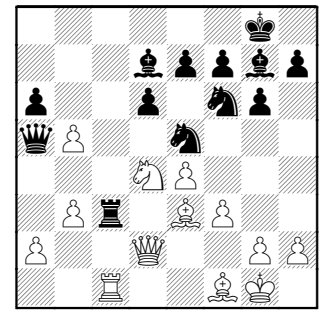
(20...Bxb5 21.Bxb5 Rxc3 22.Rxc3 Rxc3 23.Rxc3 Qxb5)



By point-count equal, White is probably winning with the connected passers and extra Rook.)

21.Nd4 (21.a4? Be6) 21...Rbc7

20.Rxc3 Rxc3 21.Qd2!



pinning to hanging Queen **21...Rxe3**

No better are:

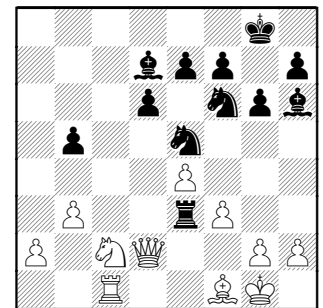
A) 21...axb5 22.Qxc3 b4 23.Qc7 Qa8 24.Qb6 Qxa2 25.Qxb4 Ne8 26.Qb8 h6 with advantage to White.

B) 21...Nc4 22.bxc4 Ra3 23.Qxa5 Rxa5 24.b6 with advantage White.

22.Qxa5 axb5 23.Qd2 Bh6

[TF] White had to realize this when he played Qd2, look what he had planned ! Watching real-time, however, I was convinced Andrew had missed something – he took so long to reply. But, then, I'd hadn't absorbed the fact White is temporarily a Queen up and can give back the material. A beautiful combination !!

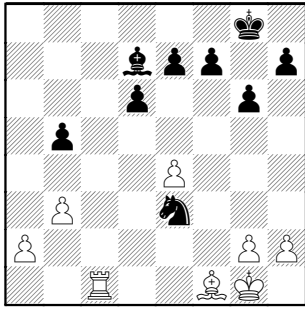
24.Nc2!



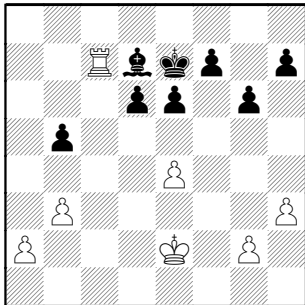
24...Nxe4 25.fxe4 Ng4 26.Nxe3

26.Qa5 Nf6 27.Re1 with advantage White.

26...Bxe3+ 27.Qxe3 Nxe3



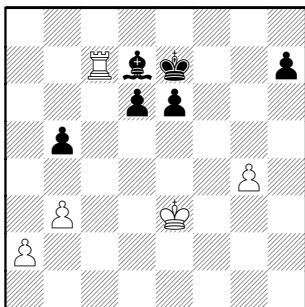
28.h3 [28.Rc7 wins quickly] **28...Nxf1**
29.Kxf1 Kf8 30.Ke2 e6 31.Rc7 Ke7



32.Ke3

32.a4 bxa4 33.bxa4 Kd8 isn't the win
 it was at move 28 since the King is
 one file closer to the passer!

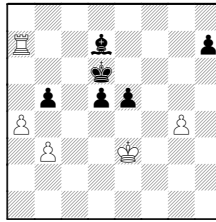
32...f5 33.exf5 gxf5 34.g4 fxg4
35.hxg4



35...h6

35...d5 36.Ra7
 (36.Kd4 Kd6 is similar)

36...e5 37.a4 Kd6

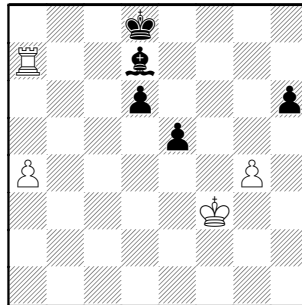


38.a5!

(38.axb5? Bxg4 39.Rxh7 Kc5 with an
 unclear position.)

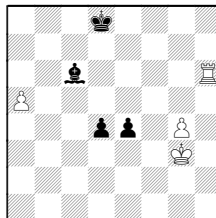
38...Bxg4 39.Rxh7 Bf5 (39...Kc5??
 40.a6 wins) **40.Rf7** (40.a6) **40...Be4**
 (40...Be6 41.Rf6!) **41.a6**

36.Ra7 e5 37.a4 bxa4 38.bxa4 Kd8
39.Kf3



39...e4+

39...Bc6+ 40.Kg3 d5 41.a5 d4 42.Rh7
e4 43.Rxh6



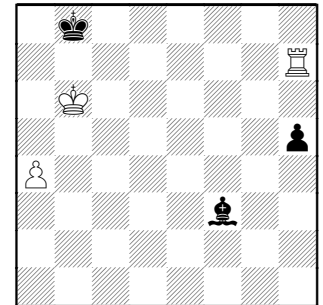
[TF] We list all replies to demonstrate
 the Rook dominating the Bishop.
 There's always the threat of RxB if it
 draws the King away from the a-
 passer.

- A) 43...Bb7 44.a6**
- B) 43...Bd5 44.Rd6+**
- C) 43...Ba8 44.Rh8+**
- D) 43...Bd7 44.a6 Kc8 (44...Kc7**
45.Rh7) 45.Rh8+
- E) 43...Kd7 44.a6 Bd5 45.a7 Kc7**

40.Kxe4 Bxg4 41.Kd5 h5

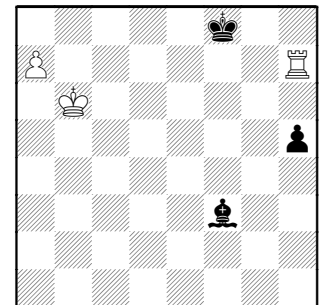
41...Kc8 42.Kxd6 Kb8 43.Rg7 Bd1
44.a5 Be2 45.Re7 with advantage
 White.

42.Kxd6 Kc8 43.Rh7 Kb8 44.Kc6
Bf3+ 45.Kb6

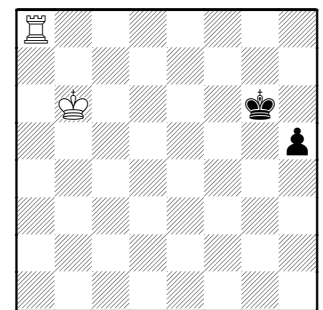


In such endgames, the backrank
 mate is an additional problem for the
 defending side.

45...Kc8 46.a5 Kd8 47.a6 Ke8 48.a7
Kf8



49.Rh8+ [49.a8Q+ is the same
 resulting position] **49...Kg7 50.a8Q**
Bxa8 51.Rxa8 Kg6



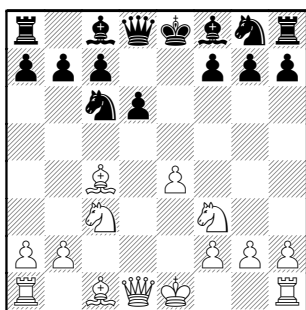
Remaining moves on page 45

JULY 1-7, 2008 - The World Open (Philadelphia)

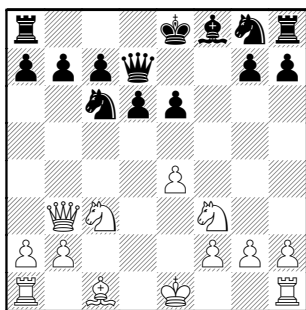
\$20,000 anyone ? Anybody out there willing to collect 20-grand ?? Well to get paid, you have to had played. Your roving reporter had gone to the big one since 1992, but decided there's other priorities for this year (hard to believe, all the same!). But one plucky fella, a Walgreen teammate, entered in the under-1800 section. Each round was some enterprising play, and Mike found himself at 8.5 of 9.0 by the end of the competition !! We present our favorite game of the set.

Granata, Mike (1680) -
Davidian, David (1779) [C44]
 World Open , U1800 round 4
[Notes by Norm Hughes]

1.e4 e5 2.d4 exd4 3.Nf3 Nc6 4.c3
 dxc3 5.Nxc3 d6 6.Bc4



6...Be6 7.Bxe6 fxe6 8.Qb3 Qd7



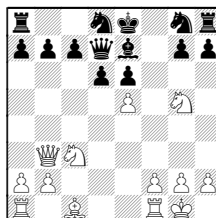
[8...Qc8 9.Ng5 is probably the same thing]

9.Ng5

Taking the Pawn only leads to an even position 9.Qxb7 Rb8 10.Qa6 Nf6 11.0-0 Be7 12.Rd1 0-0 13.Qe2=

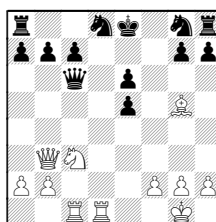
9...Ke7?

9...Nd8! 10.0-0 Be7 11.e5



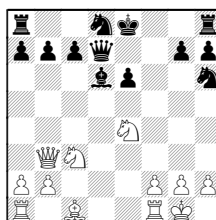
11...Nh6

(11...Bxg5 12.Bxg5 dxe5 13.Rfd1 Qc6 14.Rac1



14...a6 15.Na4 Qb5 16.Rxd8+ Rxd8 17.Qxe6+ Kf8)

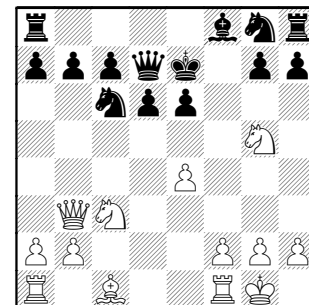
12.exd6 Bxd6 13.Nge4



Nhf7 Black may actually survive

13...0-0 14.Bxh6 gxh6 15.Nxd6 Qxd6 16.Rad1±

10.0-0

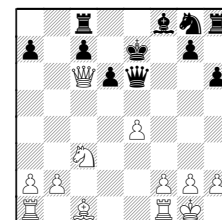


10...h6

10...Re8 11.f4 (11.Qxb7 Rb8) 11...h6 12.Nf3 Kf7 13.Qxb7 Nf6 14.Qa6+-

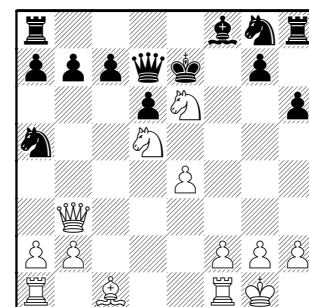
11.Nxe6! Na5

11...Qxe6 12.Qxb7 Rc8 13.Qxc6



13...Kf7 14.Re1 Ne7 15.Qb7 g6 16.Nb5 d5 17.Nxc7 Qd7+-

12.Nd5+!



Remaining moves on page 45

JULY 19, 2008 - CICL versus Warren Juniors Program

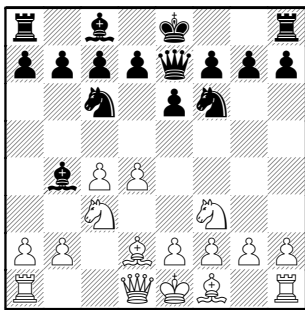
Even as Norm was investigating the possibilities of the Internet match, others were wondering about finding some local competition. The Warren Juniors are budding chessplayers, culled from grades K-8. Originally funded by former CICL member **Jim Warren** and his wife **Helen**, the sponsorship is under the Illinois Chess Association. Participation is by invitation only, given to the most promising youngsters.

Our President, Tony Jasaitis, did the legwork on this one, finding the organizers and parents as very enthusiastic for these prodigies to compete with adults. So the date was set and the place was the Skokie Public Library. Many parents accompanied the kids, the normal brain-feeding foods were there (see Playoff pictures above), and a nice buzz of goodwill filled the small conference room. After introductions (the kids had to tell what grade they're in – the adults told what business they were in, a nice touch), the games began. Their coach, GM Dmitry Gurevich, soon arrived and gave an one-on-one lesson to each pair of opponents after its completion.

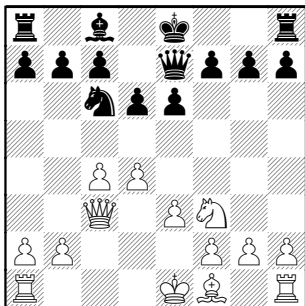
Everyone agreed this event should be often repeated !

Franeck, Marty –
Holecek, Zachary [E11]
 CICL-Warren Jrs, 7-19-2008
[Friske, Tom]

1.d4 Nf6 2.c4 e6 3.Nf3 Bb4+ 4.Bd2
 Qe7 5.Nc3 Nc6



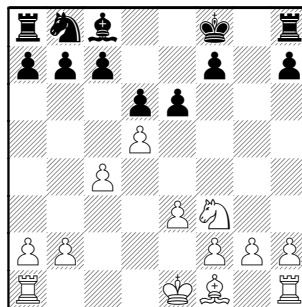
6.e3 [6.Qc2] 6...Bxc3 7.Bxc3 Ne4
 8.Qc2 Nxc3 9.Qxc3 d6



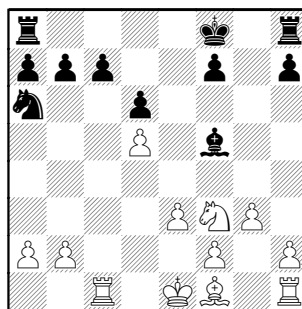
[9...0-0 10.d5 Nd8] **10.d5!** weakness
 at c6 and g7 **10...Nb8**

10...exd5? 11.Qxg7 (11.cxd5? Ne5
 12.Nxe5 is even)

11.Qxg7 Qf8 12.Qxf8+ Kxf8

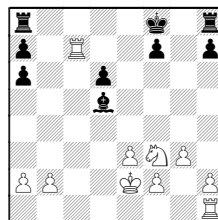


13.g3 Na6 14.Rc1 exd5 15.cxd5 Bf5



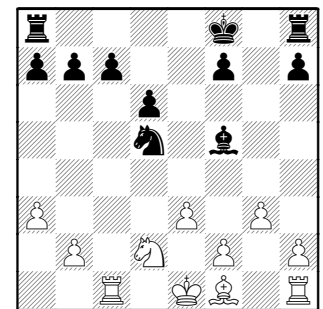
16.Nd2

16.Bxa6 bxa6 17.Rxc7 Be4 18.Ke2
Bxd5

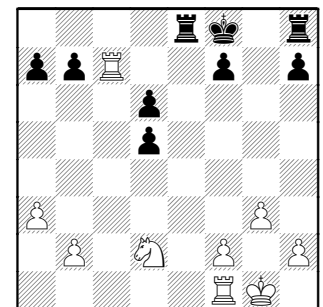


19.b3 idea Rd1, should be quick
 curtains

16...Nb4 17.a3 Nxd5



18.Bg2 c6? Black must have missed
 that the Bishop adds a defender to
 e4, making the Pawn fork a real
 threat. **19.e4 Re8 20.0-0 Be6**
21.exd5 Bxd5 22.Bxd5 cxd5 23.Rc7



23...Re7 24.Rc8+

24.Rfc1 guarantees a Pawn is
 bagged] **24...Kg7 25.Rxh8 Kxh8**
26.Rd1

More active is 26.Rc1 d4 27.Kf1 d5
28.Rc8+ Kg7 29.Rd8 Re5 30.f4 Rf5
31.Ke2 (31.Nf3)

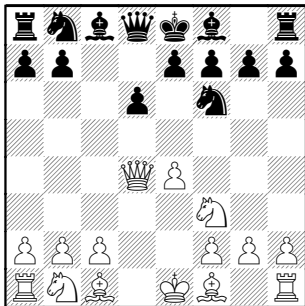
26...d4 27.Kf1 d3 28.Nc4 d5 Score
stops making sense 29.Rxd3 Re2
30.Nd6 Rxb2 31.Rxd5 Kg7 32.Rb5
Rxb5 33.Nxb5 a6 SCORE NOW
SEEMS TO WORK-- 34.Nd6 b5
35.Ke2 Kf8 36.Nf5 f6 37.Kd3 Kf7
38.Kd4 Kg6 39.Nd6 f5 40.f4 Kf6
41.Nxb5 axb5 42.Kc5 Kg6 43.Kxb5
Kh5 44.h3 Kg6 45.a4 h5 and White
soon queened the a-Pawn 1-0

Norm Hughes--
James Wei

[B53]

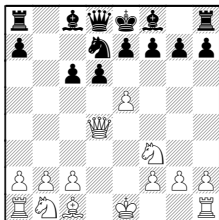
CICL-Warren Jrs, 7-19-2008
[Notes by Norm Hughes]

1.e4 c5 2.Nf3 d6 3.d4 cxd4 4.Qxd4
Nf6



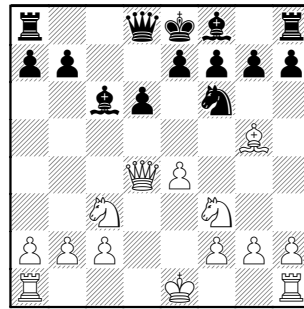
5.Bg5

5.e5 Nc6 6.Bb5 Nd7 7.Bxc6 bxc6

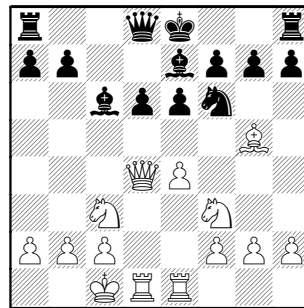


8.exd6 Nf6 9.0-0

5...Nc6 6.Bb5 Bd7 7.Bxc6 Bxc6
8.Nc3



8...e6 9.0-0-0 Be7 10.Rhe1



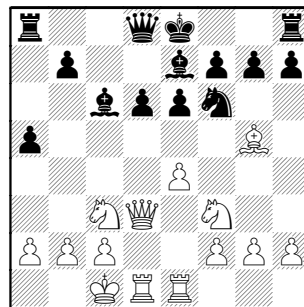
10...a5? This move was the start of
James' downfall.

Better for Black was

A) 10...Qa5 11.Kb1 0-0 12.Qd2 Rfd8
13.Nd5 Qxd2 14.Nxe7+ Kf8 15.Rxd2
Kxe7=

B) 10...0-0 11.Qd2 Qc7 12.Nd4 Rfd8
13.f3 Rab8 14.g4 b5 15.Nce2 Be8=

11.Qd3



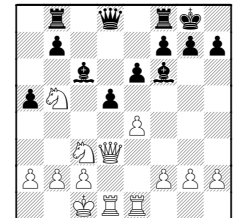
The Queen goes here instead of d2
to support the Knights heading to b5,
with the idea of putting more pressure
on the d6 square.

11...Rb8

11...0-0 12.Nd4 a4 13.a3 Qa5 14.f4
Rac8 15.e5±

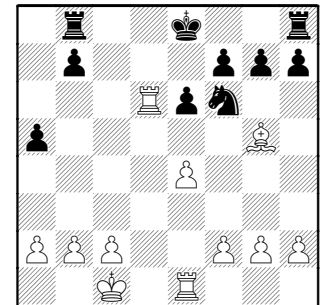
12.Nd4 Qc7

12...0-0 13.Ndb5 d5 14.Bxf6 Bxf6



15.exd5 exd5 16.Nxd5 Bxd5 17.Qxd5
Qb6

13.Ndb5 Bxb5 14.Nxb5 Qc6
15.Nxd6+ Bxd6 16.Qxd6 Qxd6
17.Rxd6

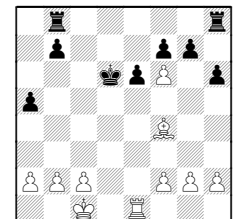


17...Ke7

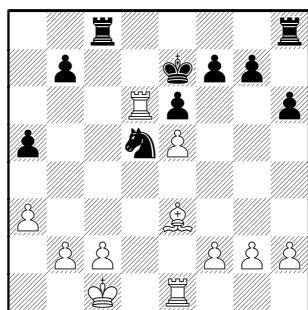
17...h6 18.Bd2 Ke7 19.e5 Nd5

18.e5 h6 19.Bf4

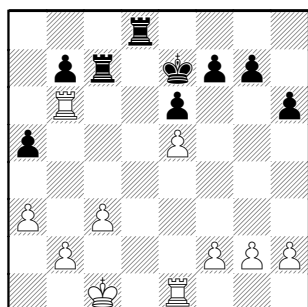
19.exf6+! Kxd6 20.Bf4+



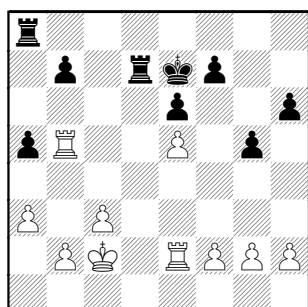
19...Nd5 20.Be3 Rbc8 21.a3



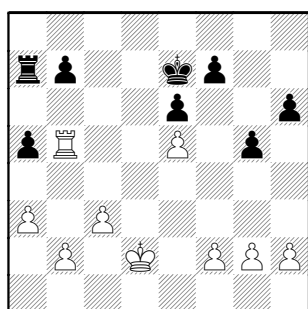
21...Rc7 22.Bb6 Nxb6 23.Rxb6
Rhc8 24.c3 Rd8



25.Kc2 [25.Rb5 Rd5] 25...Rcd7
26.Re2 g5 27.Rb5 Ra8

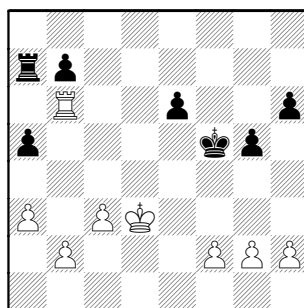


28.Rd2 Rxd2+ 29.Kxd2 Ra7

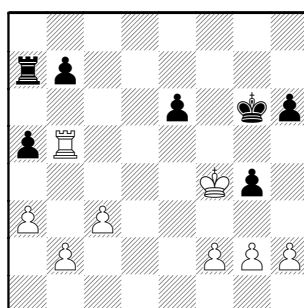


30.Rb6 [30.Kd3] 30...f6 31.exf6+

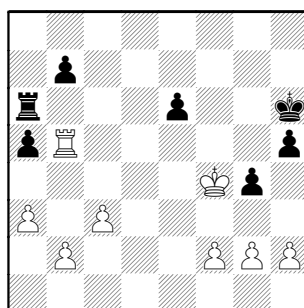
Kxf6 32.Kd3 Kf5



33.Ke3 g4 34.Rb5+ Kg6 35.Kf4



35...h5 36.Rg5+ Kh6 37.Re5 Ra6
38.Rb5



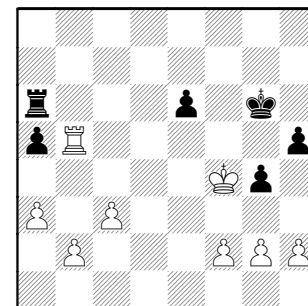
38...Ra7 39.Rb6 Ra6

39...a4 40.Rxe6+ Kh7 41.f3 gxf3
42.gxf3 Kg7 43.Rb6 Kf7 44.Kg5 Ra5+
45.Kh6 Rf5

40.Rxb7

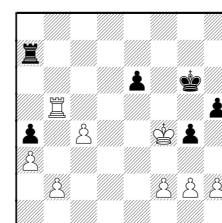
[TF] Resignation is forced after
40.Rxa6 bxa6 41.Ke5 and the c-
passer scores

40...Kg6 41.Rb5



41...Kf6

41...a4 42.c4 Ra7

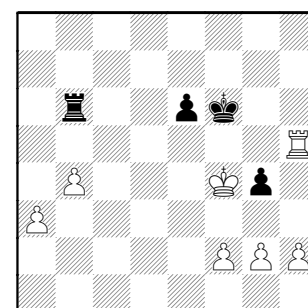


43.b4

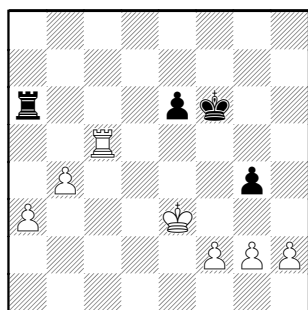
(43.Ke5 will escort the passer home
43...Rf7;
43.f3 idea Ke5)

43...axb3 44.Rxb3 Rf7+ 45.Ke3 h4

42.Rxh5 Rb6 43.b4 axb4 44.cxb4



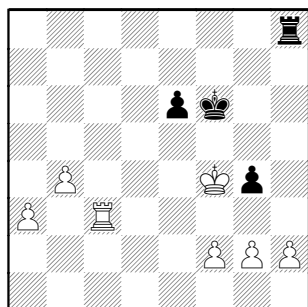
44...Rc6 45.Rc5 Rd6 46.Ke3 Ra6



47.Rc3

47.Ra5 Rb6 (47...Rc6 48.b5) 48.Kf4

47...Ra8 48.Kf4 [48.b5] 48...Rh8



49.Kg3

49.h3 gxh3 50.Rxh3 Rg8 51.Rg3 Rc8
52.Re3 Rc4+ 53.Re4 Rc3 54.a4

49...e5 50.b5 Rb8 51.a4 Ra8 52.Rc4
Kf5 53.h3 gxh3 54.gxh3 Kg5 55.Rb4
Kf6 56.b6 Ke7 57.a5 Kd7 58.b7 Rb8

58...Rg8+ 59.Kf3 Kc7 (59...Rb8 60.a6
idea a7) 60.b8Q+ Rxb8 61.Rxb8
Kxb8 62.Ke4 Kb7 63.Kxe5 Ka6 64.h4
Kxa5 65.h5 Ka6

59.a6 Kc7 60.Kf3 e4+ 61.Kxe4 Rh8

61...Re8+ 62.Kd5 Kb8 63.Rc4 Rd8+
64.Ke6 Rg8 65.Rc8+ Rxc8
66.bxc8Q+ Kxc8

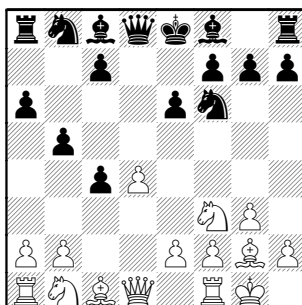
62.b8Q+ Rxb8 63.Rxb8 Kxb8 64.h4
Ka7 65.h5 Kxa6 66.h6 Kb7 67.h7
Kc7 68.h8Q Kd6 69.Qf6+ Kc5
70.Qd8

70.f4 Kb4 71.Qd4+ Kb5 72.Qd6 Kc4
73.f5 Kb5 74.f6 Kc4 75.Qc7+ Kb4

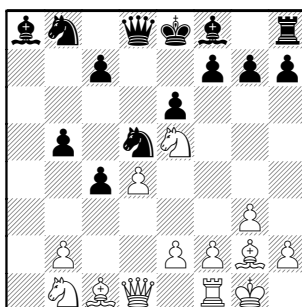
70...Kc6 71.Kd4 Kb5 72.Qc7 Kb4
73.Qb6+ Ka3 74.Kc3 Ka2 75.Qb2#
1-0

Morris, Rob –
Magness, Trevor [E04]
CICL-Warren Jrs, 7-192008
[Notes by Norm Hughes]

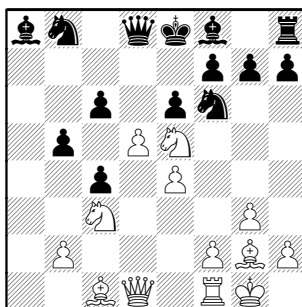
1.d4 Nf6 2.c4 e6 3.g3 d5 4.Bg2 dxc4
5.Nf3 a6 6.0-0 b5



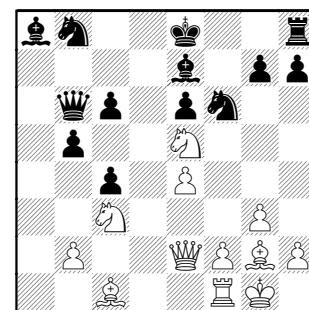
7.Ne5 Nd5 8.a4 Bb7 9.axb5 axb5
10.Rxa8 Bxa8



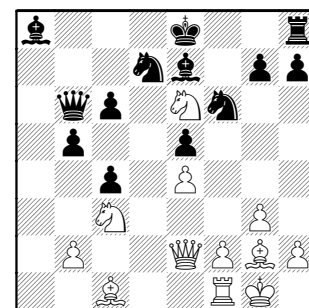
11.e4 Nf6 12.Nc3 c6 13.d5



13...Be7 14.dxe6 fxe6 15.Qe2 Qb6



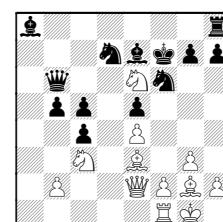
16.Nf3 Nbd7 17.Ng5 e5 18.Ne6



"Well I know one thing- Black won't
be castling this game"

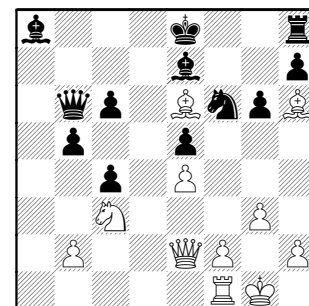
18...g6

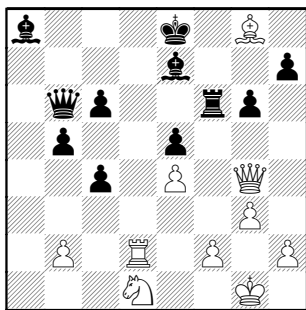
18...Kf7 19.Be3 c5



20.Ng5+ Kg8 21.Bh3 Nf8

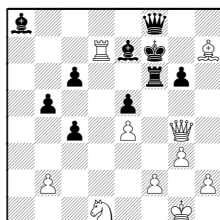
19.Bh6 Nc5 20.Bh3 Nxe6 21.Bxe6





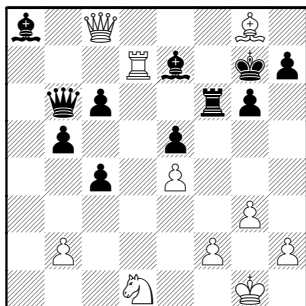
29...Kf8

29...Qb8 30.Bxh7 Kf7 31.Rd7 Qf8



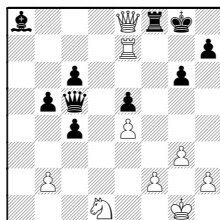
32.Ne3 idea f4,e5

30.Qc8+ Kg7 31.Rd7



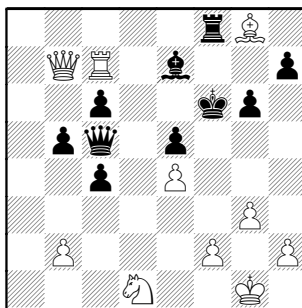
31...Qc5 32.Qxa8

Also effective is 32.Qe8 Rf8
33.Rxe7+ Kxg8



34.Qd7

32...Rf8 33.Qb7 Kf6 34.Rc7

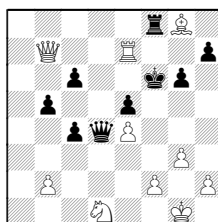


34...Qd4

34...Qb4 35.Rxc6+ Kg7 36.Bd5

35.Qxc6+

35.Rxe7



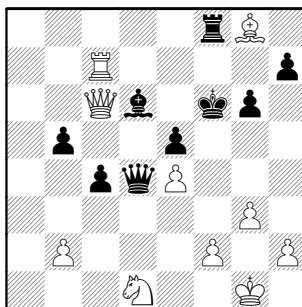
35...Qd6

(35...Rxg8 36.Rf7+ Kg5 37.Qe7+ and mates)

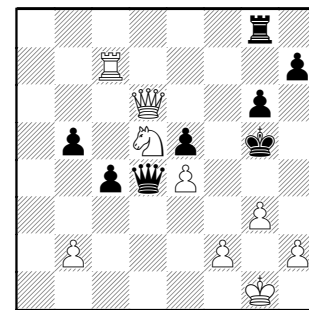
36.Re6+ Qxe6 37.Bxe6 Kxe6

38.Qxc6+ Kf7+-

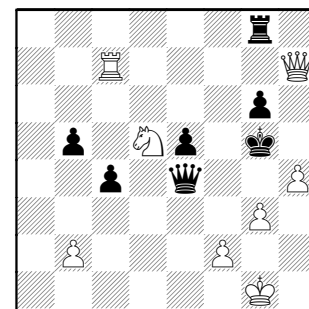
35...Bd6



36.Ne3 Rxg8 37.Nd5+ Kg5 38.Qxd6



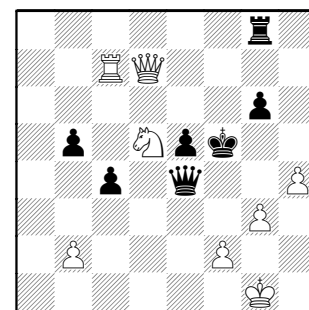
38...Qxe4 39.Qe7+ Kh6 40.Qxh7+ of course White has a free Rook when he wants it, but there's better stuff happening 40...Kg5 41.h4+



41...Kf5

41...Kg4 42.Nf6+ drops the Queen

42.Qd7#



Like I said, Rob has his way of mating....

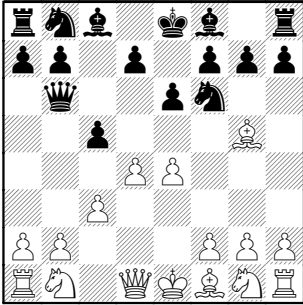
1-0

Bian,Alex – Friske,Tom [B22]
 Warren Jrs-CICL, 19.07.2008
[Tom Friske / Norm Hughes]

1.e4 e6 2.d4 c5 3.c3

3.Nf3 is a simple transposition back to a normal Sicilian Open.

3...Nf6 4.Bg5? Qb6!

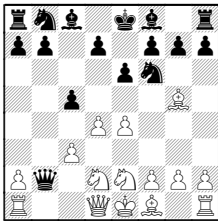


I've played a fair number of games beginning with the first three moves, but White's fourth was a real shock! I tend to learn openings by reviewing GM games – but his quick response, slammed into the board initially made me doubt my experience !

Black can counterattack the dark squares the Bishop has abandoned. He breaks the pin of the Knight while attacking three Pawns (d4, e4, b2).

5.Qc2

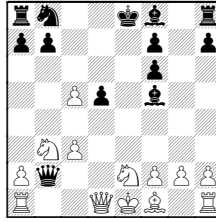
5.Nd2 Qxb2 6.Ne2



6...d5 Norm always goes for this (it's supposed to be the equalizer), but I don't open the center when my pieces aren't ready to rush into the open lines.

(I probably would've have continued 6...cxd4 7.cxd4 Nc6)

7.exd5 exd5 8.Nb3 Bf5 9.Bxf6 gxf6
 10.dxc5

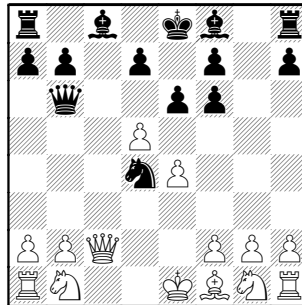


[TF] too messy for my taste

5...cxd4 6.cxd4 Nc6

Of course Black can't be greedy with 6...Qxd4?? 7.Qxc8+

7.Bxf6 gxf6 8.d5 Nd4



The whole point of a normal variation is pressure on the dark squares - White has no intuition about this. He was playing too quickly !

9.Qc3??

Very odd, because he actually paused for several minutes. I almost ignored the blunder to see what kind of stuff he can generate. But I believe bad moves should always be punished, even if in an exhibition setting !

Norm worked out all the gory details—I was aware of the various weaknesses, but never had to explore them over-the-board.

A) 9.Qd2 Bh6! [TF] GM Gurevich was very complimentary about this move I'd named the mainline without detailing it

A1) 10.Qd1 10...Nc2+ -2.27
 10...Qxb2 11.Nd2 11...Nc2+;

(11.Bd3 Qxa1 12.Qh5 Bf4 13.Nh3 Bc7 14.dxe6 dxe6 15.0-0 Qxa2)

A2) 10.Qc3 exd5 11.exd5 0-0
 12.Ne2 Re8 13.Na3 d6 14.Nc4 Qc5

A3) 10.Qxh6 Qxb2

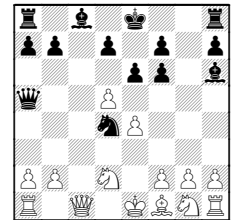
(10...Nc2+ 11.Ke2 Qxb2 12.Nc3 Na3+ 13.Qd2 Qxa1)

11.Bd3 (11.Qxf6 Qc1#) 11...Qxa1
 12.Nh3 d6 13.0-0

(13.Qxf6?? Nc2+ wins Queen !)

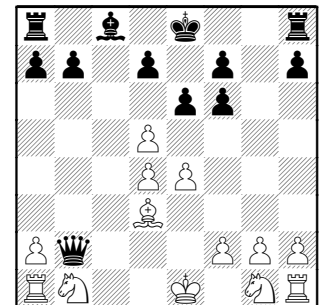
13...Rf8 14.Kh1

B) 9.Qc1 Bh6 10.Nd2 Qa5!



piles on d2 and threatens Nb3

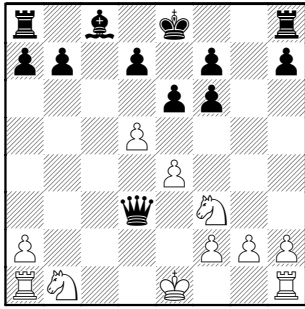
9...Bb4 10.Bd3 Bxc3+ 11.bxc3 Qb2
 12.cxd4



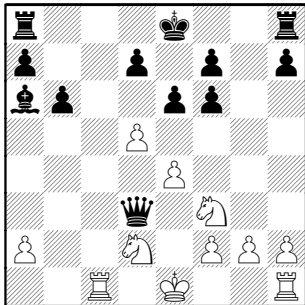
12...Qxd4!

If the Bishop moves off the original diagonal, the Queen takes it. Moving Bishop on the diagonal allows Qxa1 with the Knight pinned and hanging !

13.Nf3 Qxd3

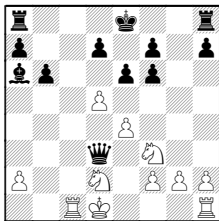


Stopping castling seemed the best choice **14.Nbd2 b6 15.Rc1 Ba6**



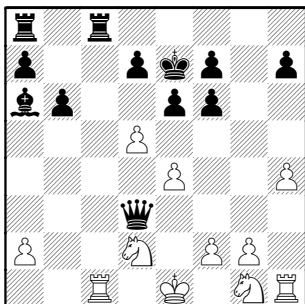
16.Ng1

I was expecting 16.Kd1



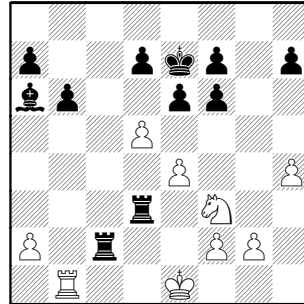
oddly White unwinds a bit after 16...Qe2+ 17.Kc2 Rc8+ 18.Kb2 but a Queen is a Queen...

16...Ke7 17.h4 Rhc8



There's no need to waste time or space examining anything else.

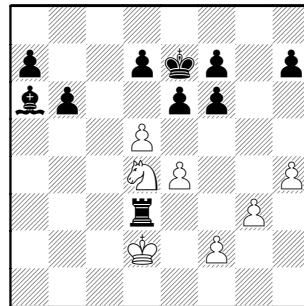
18.Rd1 Rc2 19.Rh3 Rxd2 20.Rxd3 Rxd3 21.Rc1 Rc8 22.Rb1 Rc2 23.Nf3



23...Re2+! couldn't resist finding ways to force exchanges **24.Kxe2 Rb3+ 25.Kd2 Rxb1 26.Nd4 Rb2+ 27.Ke3 Rxa2 28.g3?**

28.f4 Ra3+ 29.Kf2 Rd3 30.Nf3 exd5 31.exd5 Rxd5 32.h5 Bc4 33.g4 b5 34.Nh4

28...Ra3+ 29.Kd2 [29.Kf4 29...Rd3+ -16.34 29...e5+] **29...Rd3+**

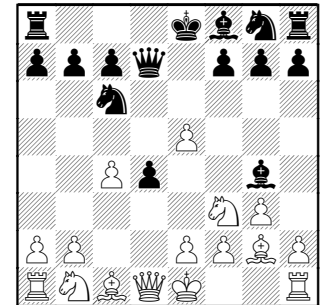


30.Ke1 Rxd4 31.f3 Kd6 deciding easiest mate involves the King, but I guess queening the b-Pawn might be quicker.

32.Kf2 e5 idea **Rd2+-d3+ 33.Ke3 Rd3+ 34.Kf2** [34.Ke2 Rxd5+ 35.Ke1 Rd3 36.Kf2 Rd2+ 37.Kg1 f5 38.g4 fxe4 39.fxe4 Bd3] **34...f5 35.Kg2 fxe4 36.fxe4 Re3 37.Kf2 Rxe4 38.Kf3 Kxd5 39.h5 Be2+ 40.Kf2 Bg4 41.Kg2 Re2+ 42.Kf1 Ke4 43.Kg1 Kf3 44.Kh1 Kxg3 45.Kg1 Re1# 0-1**

Ford, Sonam – Smith, Derek [D09]
Warren Jrs-CICL, 7-19-2008
[Norm Hughes]

1.d4 d5 2.c4 e5 Albin Counter Gambit **3.dxe5 d4 4.Nf3 Nc6 5.g3 Bg4 6.Bg2 Qd7**

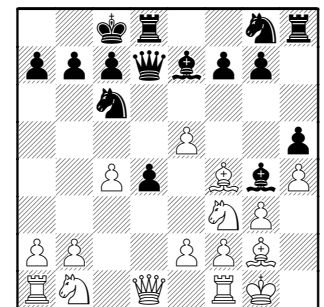


7.Bf4

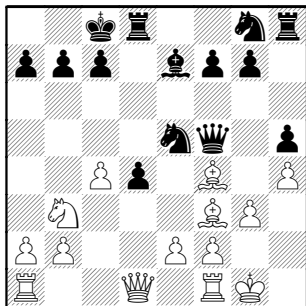
7.0-0 0-0-0 8.Nbd2 h5 9.h4 is also common.

But White's best is 7.Nbd2 0-0-0 8.h3 Bf5 9.a3 f6 10.exf6 Nxf6 11.b4 Re8 12.Bb2 Bd3 13.0-0 Bxe2 14.Qa4 Bxf1 15.Rxf1 Kb8 16.b5 Nd8 17.Nxd4 with excellent compensation for the exchange.

7...Be7 8.0-0 h5 9.h4 0-0-0

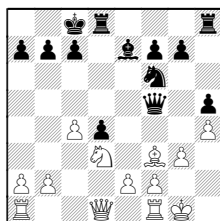


10.Nbd2 Qf5 11.Nb3 Bxf3 12.Bxf3 Nxe5

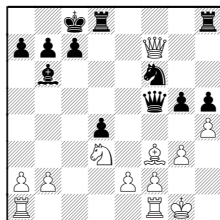


13.Bxe5 Qxe5 14.Bd5

14.Nc1 Nf6 15.Nd3 Qf5

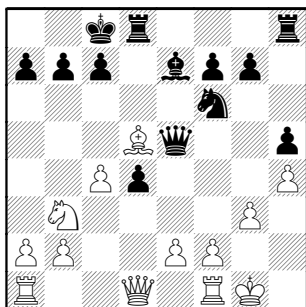


16.c5 Bxc5 17.Qb3 Bb6 18.Qxf7 g5



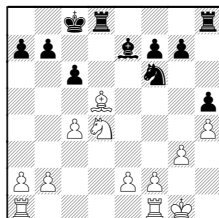
19.hxg5 Qxg5 20.Rac1—+

14...Nf6



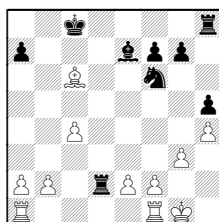
15.Na5? weaknesses across the 5th rank

Similarly 15.Qxd4?! creates weaknesses along the d-file
15...Qxd4 16.Nxd4 c6



and White only gets 2 Pawns for his piece (16...Nxd5 17.cxd5 Rxd5)

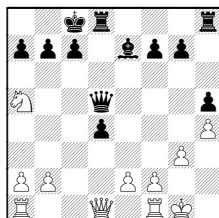
17.Nxc6 bxc6 18.Bxc6 Rd2



19.b3

15...c6

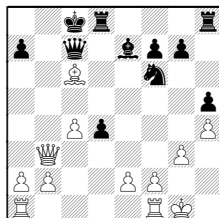
15...Nxd5 16.cxd5 Qxd5



17.Qa4 Rh6

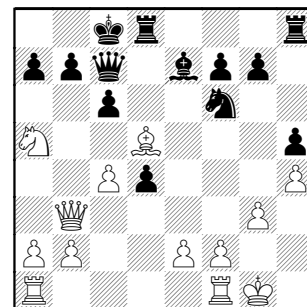
16.Qb3

16.Nxb7 Kxb7 17.Qb3+ Kc8 18.Bxc6 Qc7



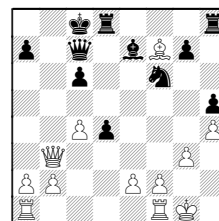
19.Qf3 Ng4 20.Rad1 Ne5 21.Qf5+ Kb8 22.Bd5 g6

16...Qc7

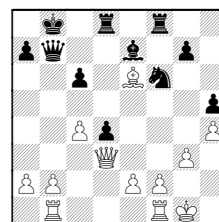


17.Qa4

17.Nxc6 bxc6 18.Bxf7 idea Be6+

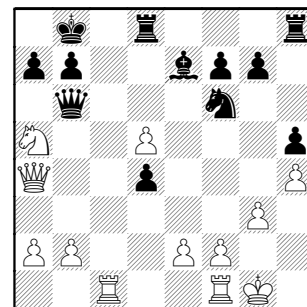


18...Qb7 19.Qd3 Rhf8 20.Be6+ Kb8 21.Rab1



21...c5 22.Rfe1

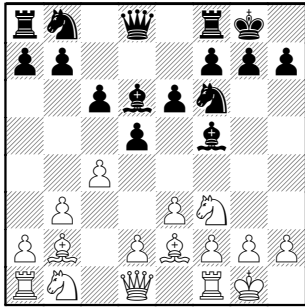
17...cxd5 18.cxd5 Kb8 19.Rac1 Qb6



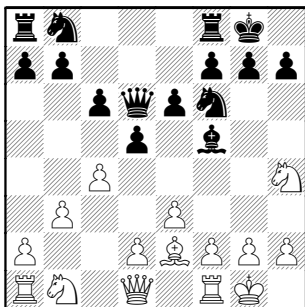
20.Nc4 Qb4 21.Qc2 Rxd5 0-1

Rosen, Eric –
Franklin, David [A12]
Warren Jrs-CICL, 7-19-2008
[Notes by Norm Hughes]

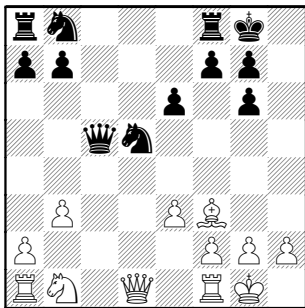
1.c4 c6 2.Nf3 d5 3.e3 Nf6 4.b3 Bf5
5.Bb2 e6 6.Be2 Bd6 7.0-0 0-0



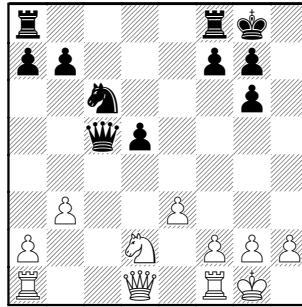
8.Be5 [8.Nh4 dxc4 9.bxc4 Nbd7
10.d4=] 8...Qc7 9.Bxd6 Qxd6
10.Nh4



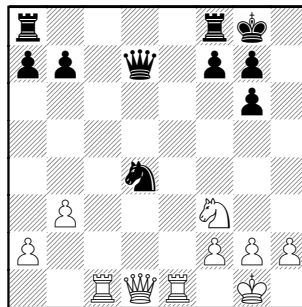
10...Bg6 11.Nxg6 hxg6 12.d4 c5
13.dxc5 Qxc5 14.cxd5 Nxd5 15.Bf3



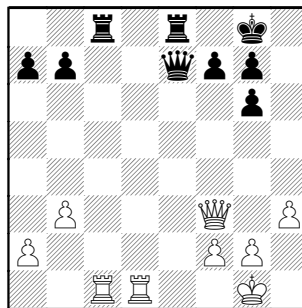
15...Nc6 [15...Rd8? 16.e4] 16.Bxd5
exd5 17.Nd2



17...d4 18.Rc1 Qe7 19.exd4 Nxd4
20.Re1 Qd7 21.Nf3



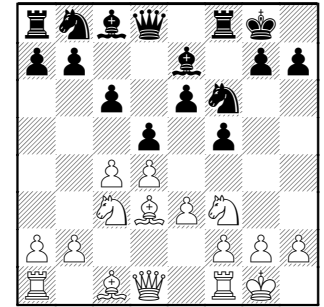
21...Nxf3+ 22.Qxf3 Rfe8 23.Red1
Qe7 24.h3 Rac8



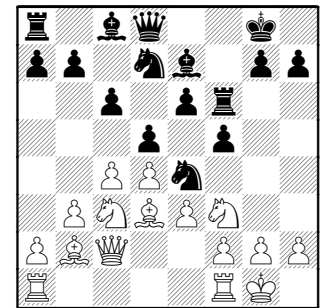
25.Qf4 Red8 26.Rxd8+ Qxd8 27.Re1
a6 1/2-1/2

Brock, Bill –
Vohra, Sonya [A85]
CICL-Warren Jrs, 7-19-2008
[Notes by Norm Hughes]

1.Nf3 d5 2.d4 c6 3.c4 e6 4.e3 f5
5.Nc3 Nf6 6.Bd3 Be7 7.0-0 0-0



8.b3 Ne4 9.Bb2 Nd7 10.Qc2 Rf6

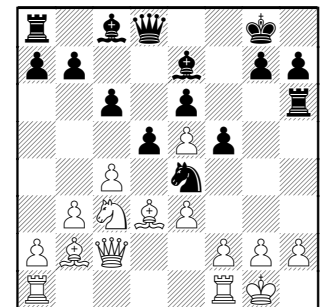


Afterwards, Bill said this Rook lift surprised him.

11.Ne5 not the best.

Better for White is 11.a4 Rh6 12.a5
Bd6 13.h3 Ng5 14.Nxg5 Qxg5 15.f4=

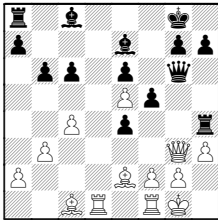
11...Nxe5 12.dxe5 Rh6



13.f3

13.h3 Qe8 14.Rad1 [TF] I'd expect
some timing of 14...g5 idea Qh5,g4

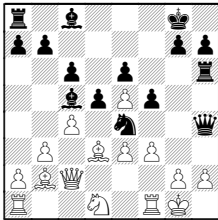
14...b6 15.Be2 Nxc3 16.Qxc3 Qg6
17.e4 dxe4 18.Bc1 Rh4 19.Qg3=



and it looks like White can hold on. Notice that Black can not take the White Queen for the Black Rook on h4 would be trapped.

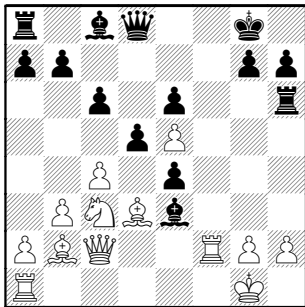
13...Bc5 White's King begins to feel very uncomfortable **14.fxe4**

14.Nd1 Qh4



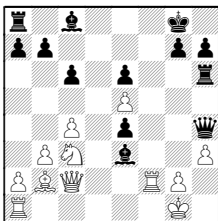
and bad things will still happen **15.g4**

14...Bxe3+ 15.Rf2 fxe4



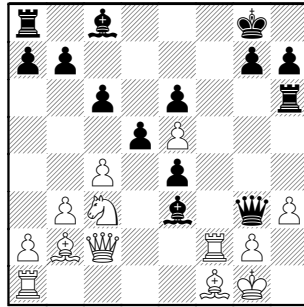
16.Bf1

16.Bxe4 gives his King room, but also gives up compensation for the coming exchange **16...Qh4 17.h3 dxe4**



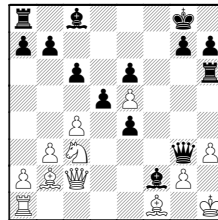
18.Re1 Bxf2+ 19.Qxf2 Bd7 20.Qxh4

16...Qh4 17.h3 Qg3 idea Rxh3, Qh2#



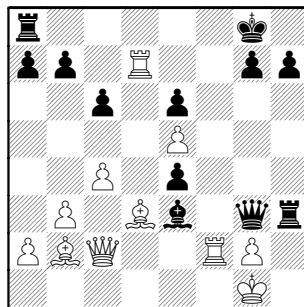
18.Nxe4

18.Kh1 Bxf2 idea Rxh3+, Qg1#



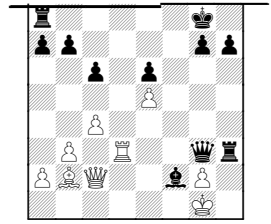
19.Ne2

18...dxe4 19.Rd1 19...Bd7! idea Rf8 nicely cleans up **20.Rxd7 Rxh3 21.Bd3**



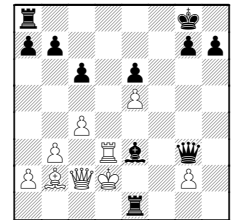
21...exd3 22.Rxd3 Qxf2+

22...Bxf2+



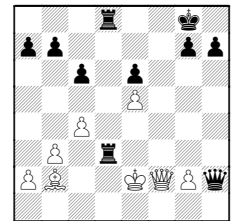
23.Qxf2

(**23.Kf1 Rh1+ 24.Ke2 Re1+ 25.Kd2 Be3+**



and mates in a few)

23...Qh2+ 24.Kf1 Rxd3 25.Ke2 Rad8



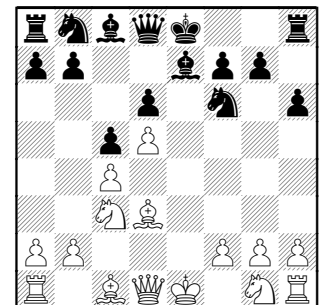
is also fairly convincing] 0-1

Wiewel, Jeff – Auger, Michael [A43]

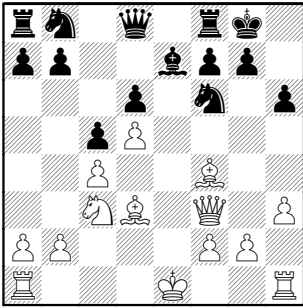
CICL-Warren Jrs, 7-19-2008

[Notes by Norm Hughes]

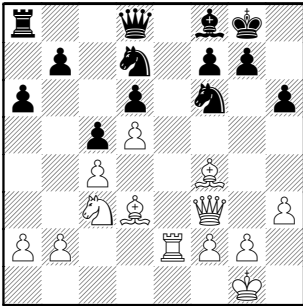
1.d4 c5 2.d5 d6 3.c4 Nf6 4.Nc3 e6 5.e4 exd5 6.exd5 Be7 7.Bd3 h6



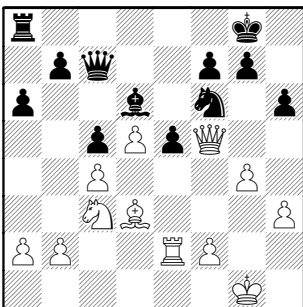
8.Bf4 0-0 9.Nf3 Bg4 10.h3 Bxf3
11.Qxf3



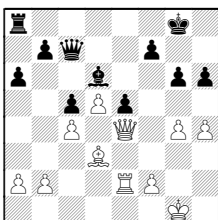
11...a6 12.0-0 Nbd7 13.Rfe1 Re8
14.Re2 Bf8 15.Rae1 Rxe2 16.Rxe2



16...Qc7 17.g4 Ne5 18.Bxe5 dxe5
19.Qf5 Bd6

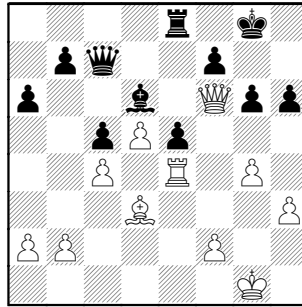


20.Ne4 Nxe4 21.Rxe4 the Rook is in
the way !
[21.Qxe4 g6 22.h4

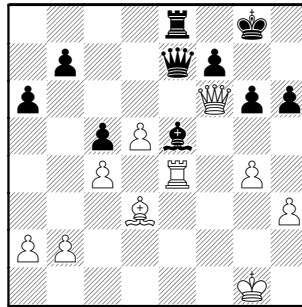


22...Rf8 23.h5 f5 24.Qg2 gxh5
25.gxf5+ and White has a nice attack.

21...g6 22.Qf6 Re8

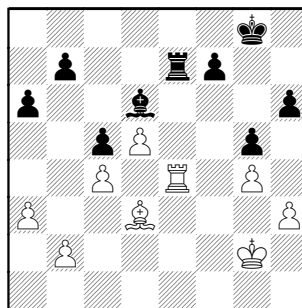


23.f4 Qe7 24.fxe5 Bxe5

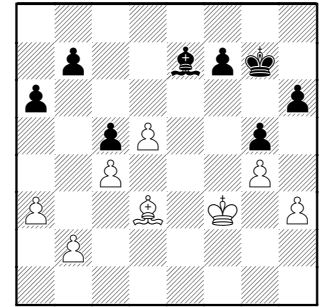


White can't try to capitalize on the
Bishop pin because Black can simply
play Bd4+ checking out of it.

25.Qxe7 Rxe7 26.Kg2 g5 27.a3 Bd6

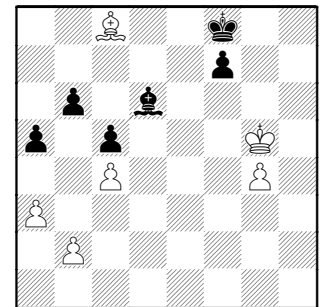


28.Kf3 Kg7 29.Rxe7 Bxe7



Draw- White can't make the second
passer required to win.

30.Bf5 a5 31.Bc8 b6 32.Ke4 Bd6
33.Kf5 Bf4 34.h4 Kf8 35.d6 Bxd6
36.hxg5 hxg5 37.Kxg5

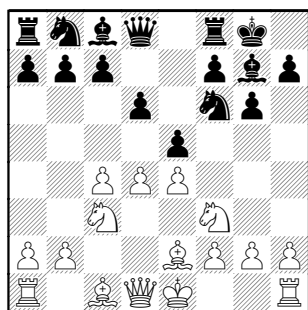


37...Be5 [37...Ke7] 38.b3 Ke7 39.Kf5
Kd6 40.g5 Bb2 41.a4 Bc3 42.Bb7
Bb2 43.Bf3 Bc3 44.Bh5 Ke7 45.Ke4
Bd2 46.Kf5 Bc3 1/2-1/2

Oberhaus, Conrad –
Von Hatten, Jeremy [E92]
Warren Jrs-CICL, 7-19-2008
[Notes by Tom Friske]

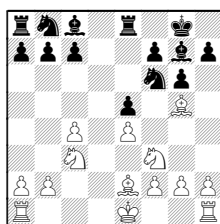
As if to complement the previous
game. in the present one of find
Black giving on a clinic on how to win
the opposite-Bishop ending. Each
move of the ending gets him a step
closer to the goal !

1.d4 Nf6 2.Nf3 g6 3.c4 Bg7 4.Nc3
d6 5.e4 0-0 6.Be2 e5



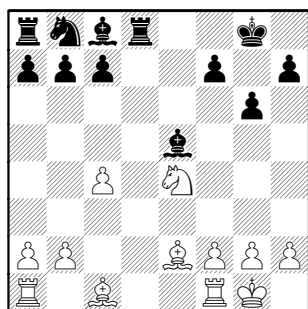
7.dxe5 dxe5 8.Qxd8 Rxd8 9.Nxe5

[NH] This is weak. Much better for White is 9.Bg5 Re8

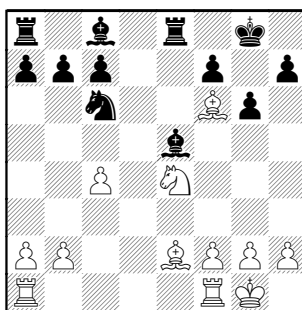


10.0-0-0 (10.Nd5 Nxd5 11.cxd5 c6=)
10...Na6 11.Ne1! c6 12.Nc2 Nc5
13.f3 Ne6 14.Be3 Bf8 15.Rd2 Bc5
16.Bxc5 Nxc5 17.b4 Ne6 White
 exerts considerable pressure and has
 more space.

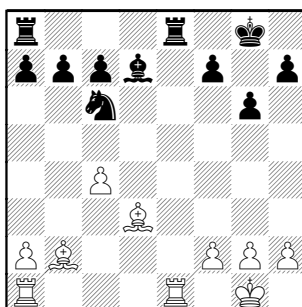
9...Nxe4 10.Nxe4 Bxe5 11.0-0



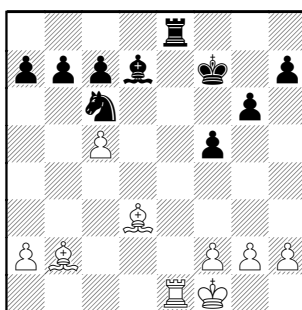
11...Nc6 12.Bg5 Re8 13.Bf6



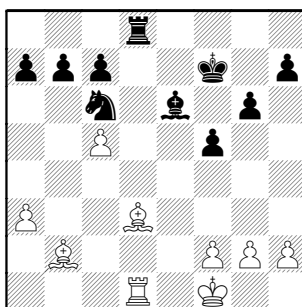
13...Bxb2! 14.Bxb2 Rxe4 15.Bd3
 Re8 16.Rfe1 Bd7



17.Kf1 f5 18.c5 Kf7 19.Rad1 Rxe1+
 20.Rxe1 Re8

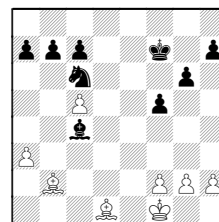


21.Rd1 Be6 22.a3 Rd8



23.f3

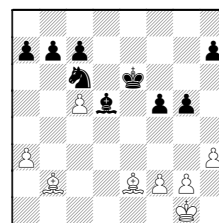
23.Be2 Rxd1+ 24.Bxd1 Bc4+



25.Kg1

Don't Kings belong in the center ?
 Not in this specific case: (25.Ke1 Ke6
 26.Bf3 Bd5) and Black wins

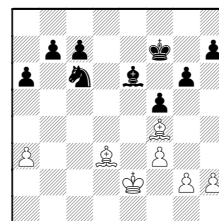
25...Ke6 heading for the isolate
26.Bf3 Bd5 27.Be2 g5 28.h3



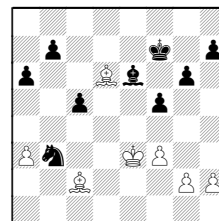
28...Ne5 29.Bc3

23...Rd5 24.Bc1

24.Ke2 Rxc5 25.Rc1 Rxc1 26.Bxc1
a6 27.Bf4



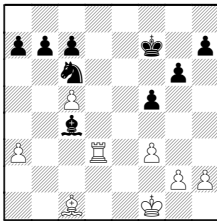
27...Nd4+ 28.Ke3 c5 29.Bd6 Nb3
 (29...b6 30.Bxa6) 30.Bc2



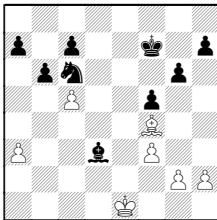
If White trades, he wins a Pawn but
 walks into an oppo-Bishop ending.

24...Rxc5

A reduced position can arise after
24...Rxd3!? 25.Rxd3 Bc4

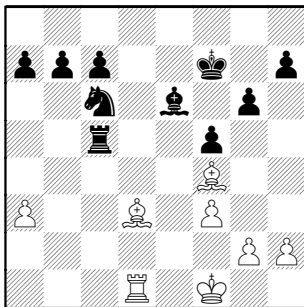


26.Bf4 Bxd3+ 27.Ke1 b6

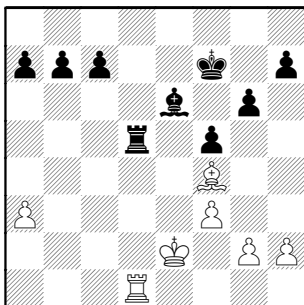


28.Kd2 Bf1 29.cxb6 cxb6 30.g4 b5
31.gxf5 gxf5 32.Bd6 Nd4

25.Bf4

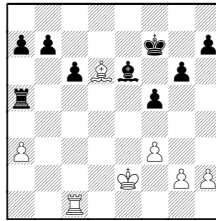


25...Ne5 26.Ke2 Nxd3 27.Kxd3
Rd5+ 28.Ke2



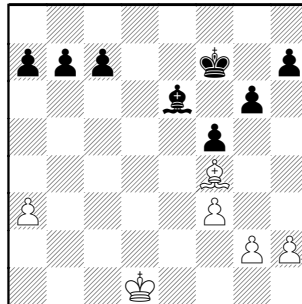
28...Rxd1

28...Ra5 29.Rc1 c6 30.Bd6



30...g5 31.Rc5 Ra4 32.Rc1 f4 33.Kd3
h5

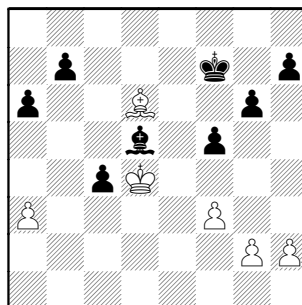
29.Kxd1



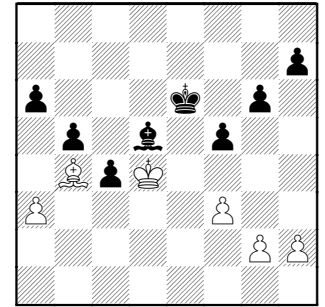
29...c5

Maybe 29...c6 to keep the Pawn solid
 until the King can help out

30.Kc2 a6 31.Bd6 c4 32.Kc3 Bd5
33.Kd4



33...Ke6 34.Bb4 b5

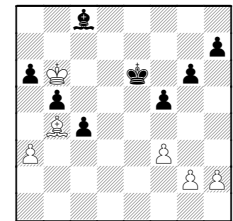


35.Bd2

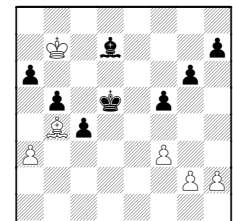
We'll see possibilities for White to win
 the Pawn base, so let's evaluate that
 strategy now: 35.Kc5 Bb7

(35...Ke5 36.Bc3+ Ke6
 (36...Kf4? 37.Kxd5)
 37.Kb6)

36.Kb6 Bc8



37.Kc7 Bd7 38.Kb7 Kd5!

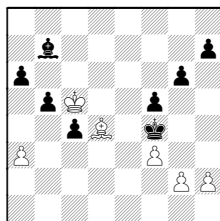


White's King is too far from the action
39.Bc3 a5 40.Kb6 (40.Bxa5 Kd4
 escorting the Pawn home) 40...a4

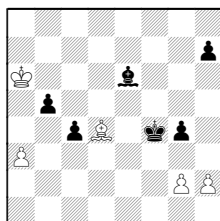
In coming examples, it's always bad.

35...Bb7 36.Bb4 Kf6 I was happy to
 see this move. Black understands the
 King must invade away from the
 current action. 37.h4

Another attempt at a King run...
37.Kc5 Ke5 38.Bc3+ Kf4 39.Bd4

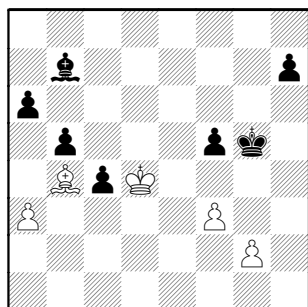


39...g5 40.Kb6 Bc8 41.Kc7 Be6
42.Kb7 g4 43.fxg4 fxg4 44.Kxa6

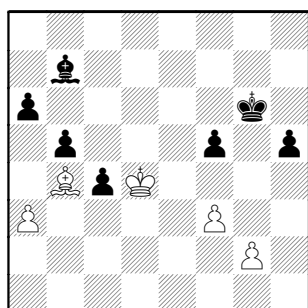


44...Ke4 idea c4-c3, so the raid fails

37...g5 38.hxg5+ Kxg5



39.Be7+ Kg6 40.Bb4 [40.Kc5?? c3]
40...h5



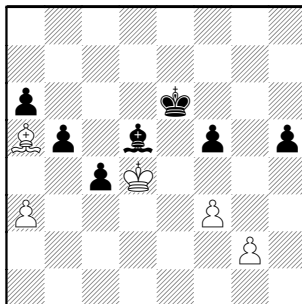
[40...Kg5 41.Ke5 h5 42.Bd2+ Kg6]

41.Be7

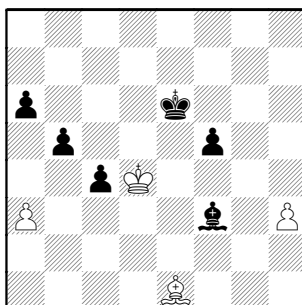
41.Kc5? Kg5 42.Kb6 Bc8 43.Kc7 Be6

44.Kb7 (44.Bd2+ Kh4) 44...Kf4
45.Be1 Ke3

41...Kf7 42.Bg5 Ke6 43.Bd8 Bd5
44.Ba5

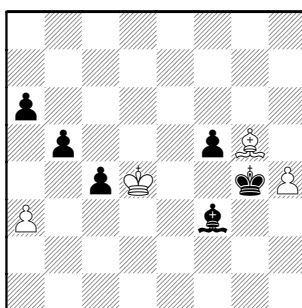


44...h4! Again, Black continues to
make progress. 45.Be1 h3 46.gxh3
Bxf3



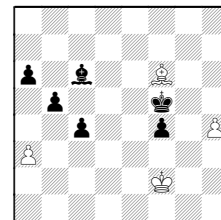
Step one complete - passers on two
sides of the board. **Step two** is
invade to the side the Bishop holds.
Are the passers far enough apart,
however?

47.Bg3 Kf6 48.Bf4 Kg6 49.h4 Kh5
50.Bg5 Kg4



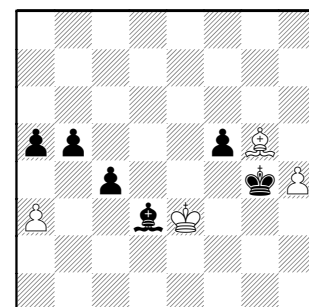
51.Ke5

51.Ke3 Bc6 52.Bf6 f4+ 53.Kf2 Kf5



and the King transfers to the other
side - again, where the Bishop is the
lone defender. Jeremy gets there !

51...Be4 52.Kd4 Bd3 53.Ke3 a5

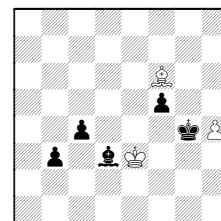


Black has more bullets in his gun
54.Be7

54.Bf6 b4

(54...f4+ makes the King immediately
choose, Black can position his King
accordingly 55.Kf2 b4)

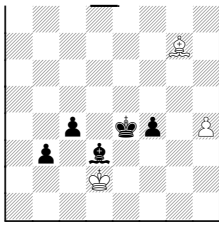
55.axb4 axb4 56.Be7 b3 57.Bf6



57...f4+ 58.Kd2 Kf5!

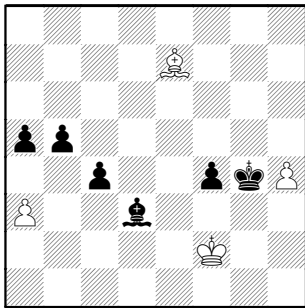
(58...Kg3 59.Be5)

59.Bg7 (59.Bg5 b2) 59...Ke4



idea f3-f2 60.h5 f3 61.h6 Kf4

54...f4+ 55.Kf2



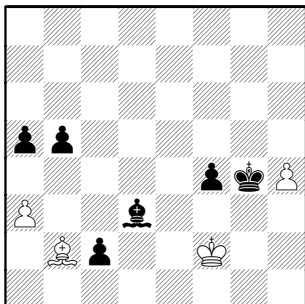
55...c3

I would've kept the King bottled up with 55...Be4 Black has multiple threats, mainly to bring his King to the Queenside

56.Bf6 c2

56...b4 forces the Bishop to remain on the long diagonal, and the King can come through c4 to finish him off

57.Bb2



57...Be4

57...Kxh4?? 58.Kf3 (58.Bc1 Kg4)
58...Kg5 59.Bc1

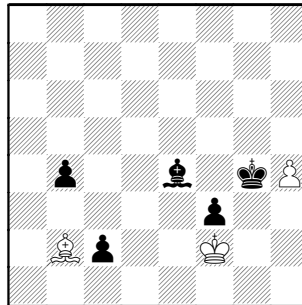
58.Bc1 f3? releasing his control of the dark squares

58...Kf5 is the key re-positioning, when the f-passer won't matter

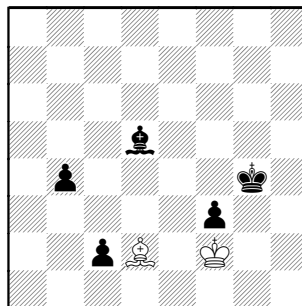
59.Bb2 b4 60.axb4

[NH] 60.h5 Kxh5 61.Bc1 b3 62.Kg3 Bd5 63.a4 Bc6 64.Bb2 Kg5 65.Bc1+ Kf5 66.Kf2

60...axb4

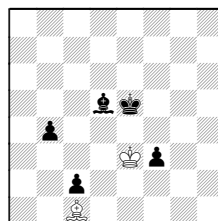


61.Bc1 [61.Ke3 Kxh4] **61...Kxh4**
62.Bb2 Kg4 63.Bc1 [63.Kg1 Kg3 64.Be5+] **63...Bd5 64.Bd2**



64...b3 Black again gives up the dark squares - the b3 square was where the King was to invade !

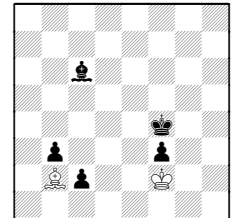
64...Kf5 65.Ke3 (65.Bxb4?? c1Q)
65...Ke5 66.Bc1 (Bc3+)



66...Be4 67.Bb2+ Kd5 once the King reaches c4, Black can sac the f-passer and win

65.Bc1 Kf5

65...Bc6 66.Bb2 Kf4

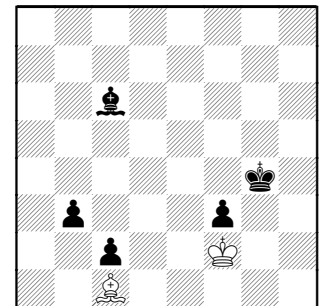


67.Bc1+

(67.Ke1? Ke3 wins 68.Bc1+ Kd3 69.Bb2 f2+ 70.Kxf2 Kd2)

67...Ke4 and invades at c3 or d2

66.Ke3 Kg4 67.Kf2 Bc6!

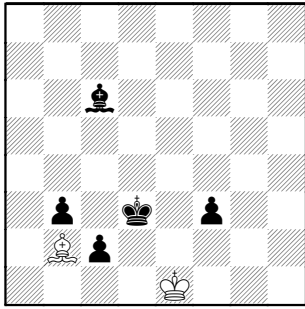


Zugzwang !! In the 64..Kf5 analysis line, everything works if the King has access to c5

68.Bb2

68.Ke3 Kg3;
68.Ba3 Kf4 69.Bc1+ Ke4 and invades to win

68...Kf4 69.Bc1+ Ke4 70.Ke1 Kd3 71.Bb2



Step two complete....**Final step** is to capture the queening square

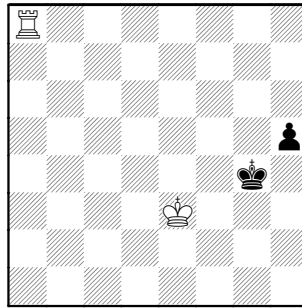
71...Bd5

More forcing is 71...f2+! 72.Kxf2
(72.Kf1 Bg2+! 73.Kxg2 Ke2) 72...Kd2
is curtains

72.Kf2 Kd2 73.Bc1+ Kxc1 74.Ke3
b2 75.Kd4 b1Q 76.Kc3 Qb3+
77.Kd4 Qc4+ 78.Ke3 Qe4+ 79.Kf2
Qe2+ 80.Kg3 f2 81.Kh4 f1Q 82.Kg5
Qeg2+ 83.Kh6 Qfh1# 0-1

(continued from page 27)
ANDREW McGUIRE GAME

52.Kc5 Kg5 53.Kd4 Kg4 54.Ke3



54...Kg3

54...Kf5 55.Kf3
54...h4 55.Kf2

55.Rg8+ Kh3 56.Kf3!
BLACK RESIGNED

56...h4 57.Rh8
56...Kh4 57.Rg1 Kh3 58.Rh1#;
56...Kh2 57.Rh8

1-0

(continued from page 28)

MIKE GRANATA GAME

12...Kxe6??

12...Kf7 13.Qf3+ Nf6 14.Nexc7 Rc8
15.Nxf6 gxf6 16.Nd5+-

13.Qh3+ 1-0

AUGUST 27, 2008 – Fall Business Meeting

The last Wednesday in August is the final planning for a new season and this year was no different. Once the Officer reports are presented, new business is begun.

There were two discussions: One, an addition to the constitution was approved to make submission of gamescores (that's the player's record moves) mandatory. PAGE TWO of each bulletin has the Bulletin/Game Editor's contact details.

The second debate raged to the point we ran out of time to settle the matter. Basically, the core question was: Will the CICL emphasize competition between area Companies, or emphasize team-chess competition regardless of work affiliation ?

A summary of the meeting can be found on page 9 of this issue. The formal minutes and treasurer reports will be published next month.