

The Chicago Chess Player

The Official Bulletin of the Chicago Industrial Chess League



CICL Contact List

Bulletin Editor/Webmaster Bulletin@ChicagoChessLeague.org	Tom Friske	1035 E Algonquin Road Des Plaines, IL 60016	H:(847) 299-1033 W:{847} 914-8448
Ratings Chairman Ratings@ChicagoChessLeague.org	Art Olsen	714 E Algonquin Road #J102 Arlington Heights, IL 60006	H:(847) 437-9819 W:(847) 719-8036
FAX : to SBS OTS, 22NW0644-5 at (847) 719-8151			
League President President@ChicagoChessLeague.org	Tony Jasaitis		C:(708) 903-6423 W:(312) 264-2044
League Secretary Secretary@ChicagoChessLeague.org	Jerry Thomas	745 Hageman Pl Naperville, IL 60563	H:(630)420-0188
League Treasurer Treasurer@ChicagoChessLeague.org	Paul Freidel	3N861 Babson Lane St Charles, IL 60175	
Trophy Chairman Trophy@ChicagoChessLeague.org	Marty Franek	9044 S 51 st Avenue Oak Lawn, IL 60453-1730	H: (708) 636-3714 W: (312) 353-0397
Publicity Chairman Publicity@ChicagoChessLeague.org	Matt Vail		C: (312) 933-1516 W: (630)505-6557
Banquet Chairman Banquet@ChicagoChessLeague.org	Wayne Ellice		H: (708) 636-1303

DIVISIONAL CHAIRMEN

East Division ChairmanEast@ChicagoChessLeague.org	Adam Muhs		C: (847) 877-9629 W: (312) 497-1184
West Division ChairmanWest@ChicagoChessLeague.org	Bob Buchner	1316 Kallien Court Naperville, IL 60540	H: (630) 428-7707 W: (630) 979-7707
North Division ChairmanNorth@ChicagoChessLeague.org	Jim Thomson		W: (847) 538-5408

Mark Your Calendars with These Key League Dates:

Fall Business Meeting	Last Wednesday of August (Aug 29 2007)
Spring Business Meeting	3.5 Weeks Before Playoffs (April 16, 2008)
Season Playoffs	Second Saturday of May (May 10, 2008)
CICL Open	Second Saturday of May (May 10, 2008)
League Awards Banquet	First Friday of June (June 7, 2008)

Officer Contact List	2
Contents of Issue	3

FEATURES

tactics, Tactics, TACTICS !!	4
Games as reviewed by Tom Friske	5
Guess the Christmas Carol	13
TACTICS !! Solutions	14
Christmas Cheer	16

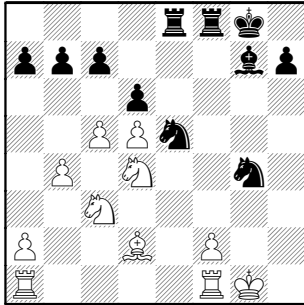
On the cover...

Say what you want about Cleveland, but they sure know how to deck the halls !
(Picture by the Editor, Christmas 2005).

TEST YOUR SKILLS against the League!

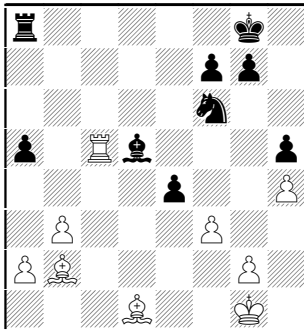
Solutions on page 14

PROBLEM 1.



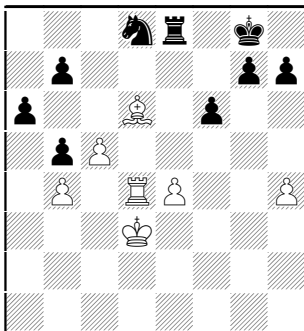
Black to move

PROBLEM 2.



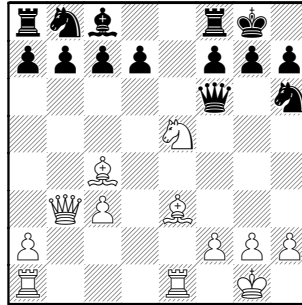
White to move

PROBLEM 3.



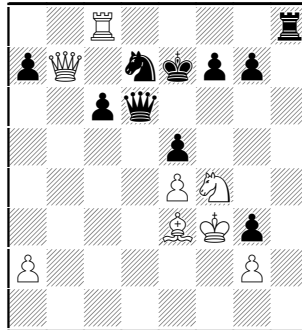
Black to move

PROBLEM 4.



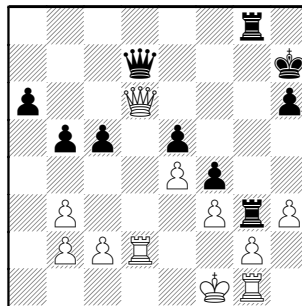
White to move

PROBLEM 5.



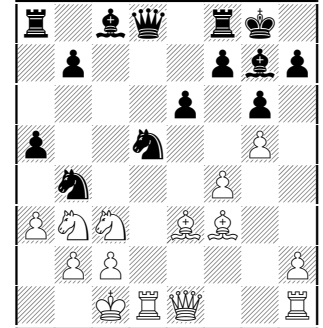
White to move

PROBLEM 6.



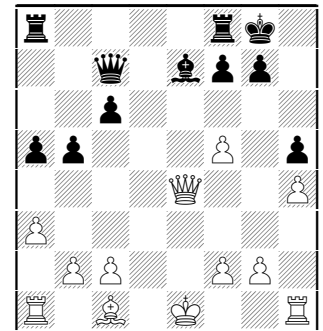
Black to move

PROBLEM 7.



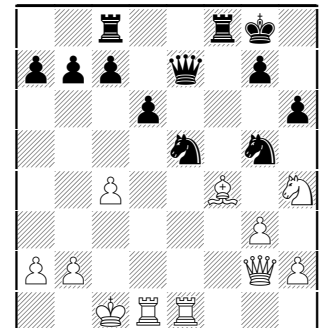
Black to move

PROBLEM 8.



Black to move

PROBLEM 9.

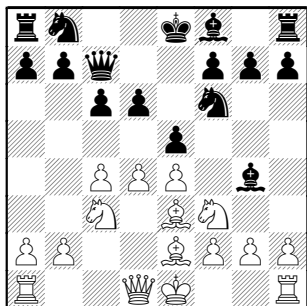


Black to move

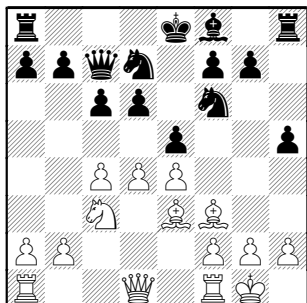
McGuire,A (1815) –
Santiago,T (1914)
Skewers-Forks, 11-13-2007

A16]

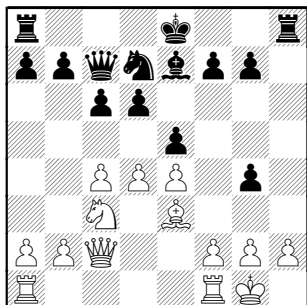
1.c4 Nf6 2.Nc3 c6 3.e4 d6 4.d4 Qc7
5.Be2 e5 6.Nf3 Bg4 7.Be3



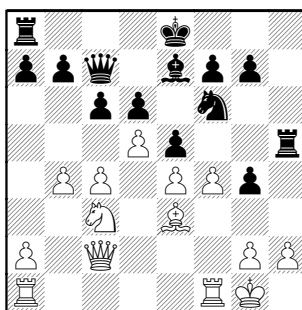
7...Bxf3 8.Bxf3 Nbd7 9.0-0 h5



10.Qc2 Be7 11.Be2 Ng4 12.Bxg4
hxg4



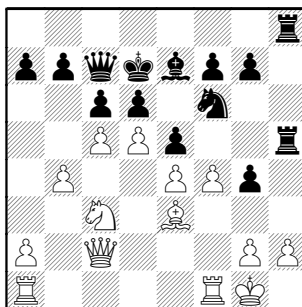
13.d5 Nf6 14.f4 Rh5 15.b4



15...Kd7

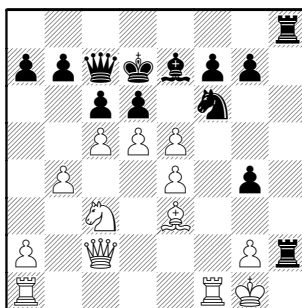
15...0-0-0!? but White can open this
area of the King as well

16.c5 Rah8



White has carefully allowed Black to
waste time on the h-file, so that his
center breakthrough will kill.

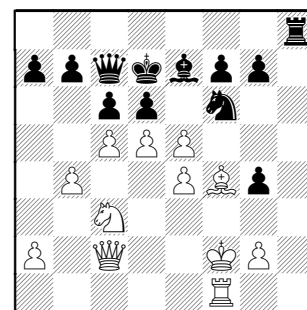
17.fxe5 Rxh2



18.Bf4

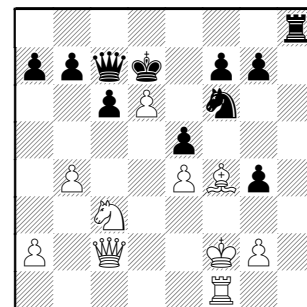
18.exf6?? g3 idea Rh1#

18...Rh1+ 19.Kf2 Rxf1+ 20.Rxf1



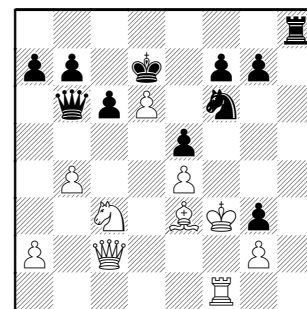
The real problem is Black, a Walgreen
Fork player, is threatened with a fork
at d6.

20...dxe5 21.d6 Bxd6? tactically
wrong 22.cxd6



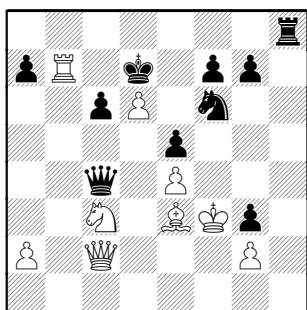
Saving the Bishop with attack on the
Queen

22...Qb6+ 23.Be3 g3+ 24.Kf3



The King needs to protect Be3, but is
surprisingly safe here

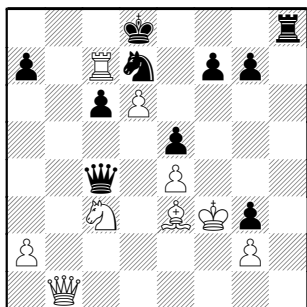
24...Qxb4? definitely wrong to open
lines for White 25.Rb1 the
counterattack begins in earnest
25...Qc4 [25...Qxd6? 26.Rd1 pinning]
26.Rxb7+



26...Kc8 [26...Kd8] **27.Rc7+** makes way for Queen on b7 **27...Kd8**

27...Kb8?? 28.Qb2+ Ka8 29.Qb7#

28.Qb1 idea Qb8# **28...Nd7**



29.Ne2! blocks Qc4-f1+

29.Qb7? idea Qa8# 29...Qf1+ Black can force a draw, regardless of either King move, as follows:

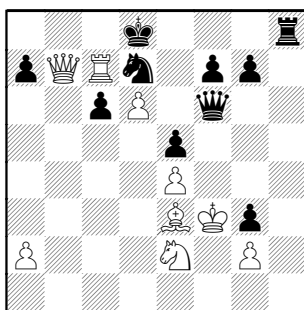
A) 30.Kxg3 Qe1+ 31.Kf3

31.Kg4 Nf6+ 32.Kf3, repeating
(Definitely not 32.Kf5?? Rh5+ 33.Bg5 Qf2+ 34.Kxe5 Rxc5#)

Worst of all is 31.Bf2 Qxc3+ 32.Kg4 Nf6+ 33.Kf5 Rh5#

B) 30.Kg4 Nf6+ 31.Kxg3
(31.Kg5?? Rh5#) 31...Nh5+
32.Kg4 Nf6+=

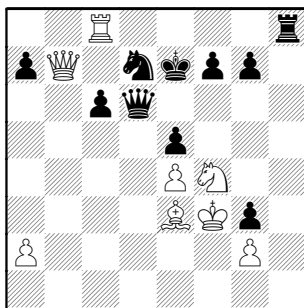
29...Qe6 **30.Qb7 Qf6+**



31.Nf4! idea Qa8# **31...Qxd6** **32.Rc8+** and now the Walgreen Skewer player delivers a skewer.

Obviously bad is 32.Qa8+?? Kxc7

32...Ke7



33.Nd5+! going for more than a measly Rook **Ke6**

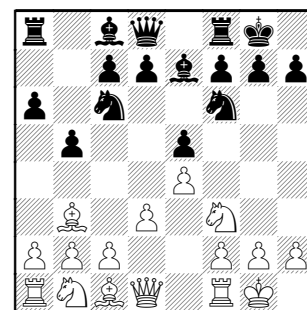
The point is the Queen is also lost after 33...cxd5?? 34.Bc5

34.Rxc6 idea Rxd6+, Qc7+-c6# **1-0**

Janssen,G (1522) – Dyczkowski,R (1379) [C77]

Baker-Pawns, 10-15-2007

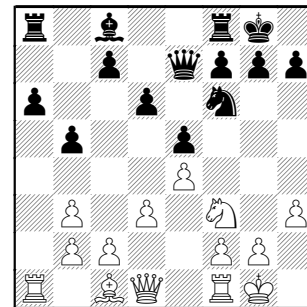
1.e4 e5 2.Nf3 Nc6 3.Bb5 a6 4.Ba4 Nf6 5.d3 b5 6.Bb3 Be7 7.0-0 0-0



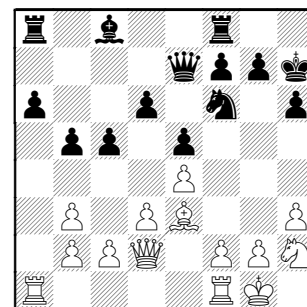
8.Nc3

8.c3 builds d3-d4 and provides a retreat for the Bishop, many times an important piece]

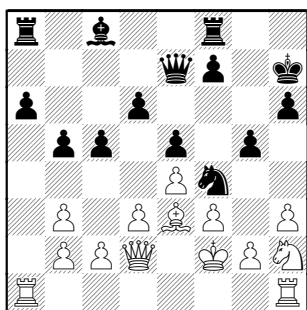
8...d6 9.h3 Na5 10.Nd5 Nxb3 11.Nxe7+ Qxe7 12.axb3



12...h6 13.Be3 c5 14.Qd2 Kh7 15.Nh2 (idea f4)



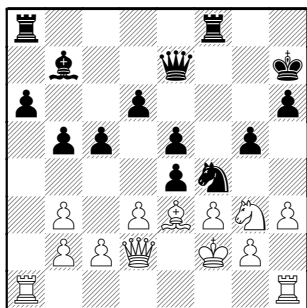
15...g5 16.f3 Nh5 17.Kf2 Nf4 18.Rh1



18...f5 It's hard to judge which King is more exposed ! 19.Nf1

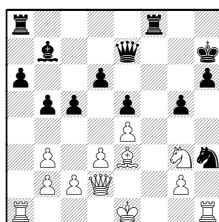
19.Rag1 idea Ke1, looking for g4,h4,etc

19...Bb7 20.Ng3 fxe4



21.dxe4

21.fxe4!? Nxh3+ 22.Ke1

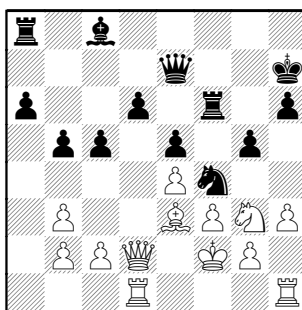


22...Nf4 23.Nf5 idea Rxh5+ or Nxe7

21...Bc8 guarding f5

21...Ne6 22.Nf5;
21...Rad8 22.Nf5

22.Rad1 Rf6

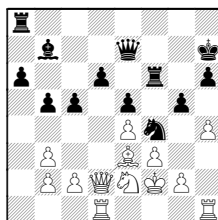


23.Ne2

23.h4? g4 24.Nf5 Bxf5 25.Bxf4 Bxe4

23...Bb7 idea d5 24.Nc3

24.h4!

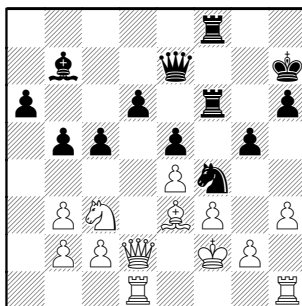


24...Nxe2

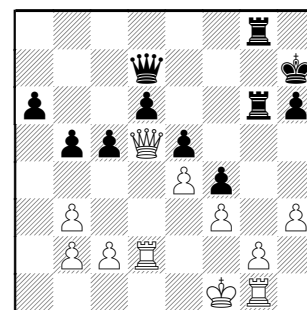
Or 24...g4 25 Nxf4 exf 26 Bxf4 Raf8 g3

25.hxg5!

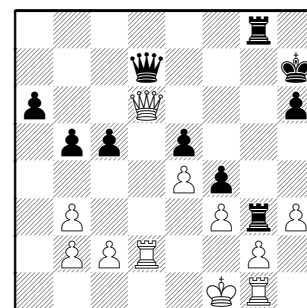
24...Raf8



25.Bxf4 gxf4 26.Nd5 Bxd5 27.Qxd5 Rg8 28.Rhg1 Rfg6 29.Kf1 Qd7 30.Rd2

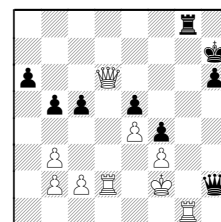


30...Rg3 31.Qxd6



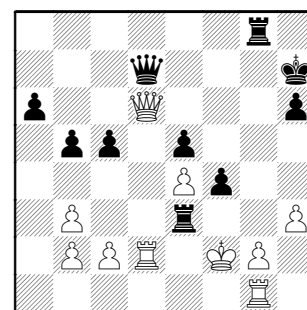
31...Rxf3+!! 32.Ke2

32.gxf3?? Qxh3+ 33.Kf2 Qh2+



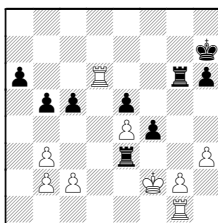
34.Kf1 Rxg1#

32...Re3+ 33.Kf2



33...Qg7

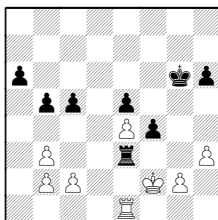
If, instead of that, 33...Qxd6 34.Rxd6 Rg6



35.Rxg6

(35.Rd5 Rxe4 36.Rxc5 is better for Black as he has the e-passer)

35...Kxg6 36.Re1



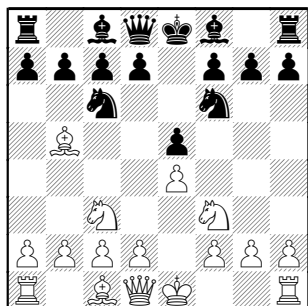
and White manages to hold

34.Qd7 Rxe4 Black has reason to be hopeful $\frac{1}{2}$ – $\frac{1}{2}$

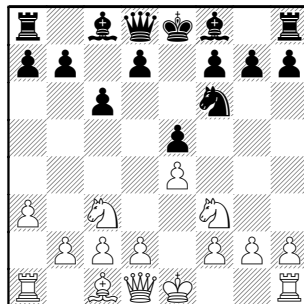
Berbari,N – Gonzales,T (1638) [C48]

CICL Rnd 3 Brd 7 11-7-2007

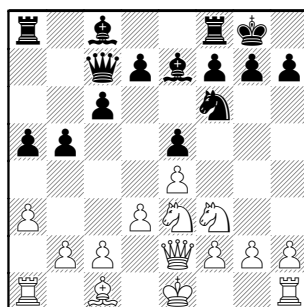
1.e4 e5 2.Nf3 Nc6 3.Nc3 Nf6 4.Bb5



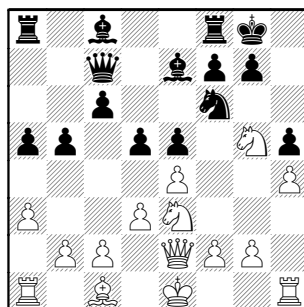
4...Nd4 5.a3 Nxb5 6.Nxb5 c6 7.Nc3



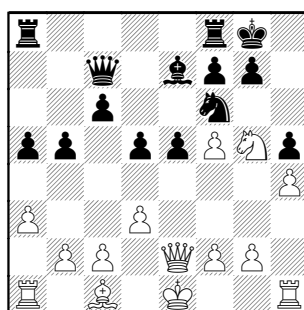
7...Qc7 8.d3 a5 9.Qe2 b5 10.Nd1 Be7 11.Ne3 0-0



12.h4 d5 13.Ng5 h5



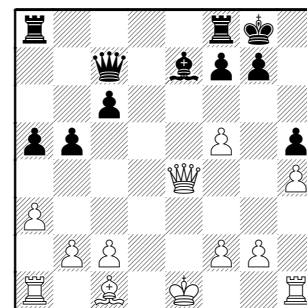
[13...h6] 14.Nf5 Bxf5 15.exf5



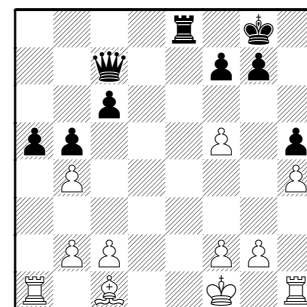
15...e4! A nice idea, opening lines (even at expense of Pawn) while the King is uncastled.

Black's h7-h5 has actually provided a base at g4 for his Knight which then adds to his Queen's pressure on h2.

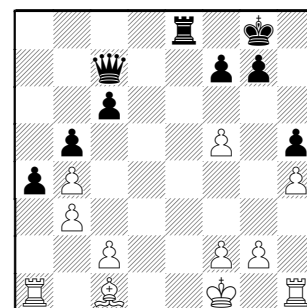
16.dxe4 dxe4 17.Nxe4 Nxe4 18.Qxe4



18...Bb4+!! idea Rfe8 19.Kf1 Rfe8 idea Re1# 20.Qxe8+ Rxe8 21.axb4



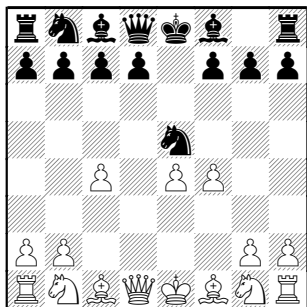
21...a4 22.b3?



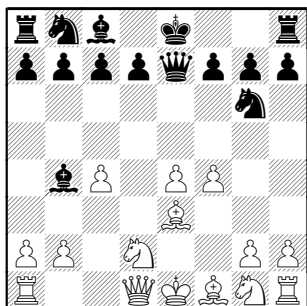
22...Qe5!
idea Qe1# or Qxa1, thanks to White's last move 0–1

Mark Engelen –
Jankesh Piparia [A52]
Northrop-Kings, 11-13-2007

1.d4 Nf6 2.c4 e5 3.dxe5 Ng4 4.e4
Alekhine's favorite versus the
Budapest 4...Nxe5 5.f4



5...Ng6 6.Be3 [6.Nf3] 6...Bb4+ 7.Nd2
Qe7



The basic setup in this line.

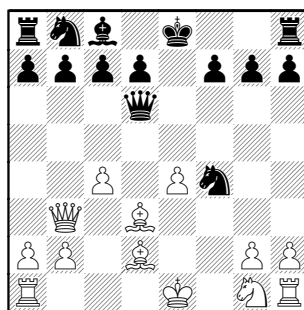
8.Bd3

The just-published *"The Fabulous Budapest Gambit"* by Viktor Moskalenko deems the game-move "too simple" and recommends 8.Qc2 or 8 Qf3 or even 8 f5 Qxe4 9 Qf3

8...Qd6 9.Qb3

9.Qc2 Nxf4 is "technically won" according to Moskalenko, but it's similar to this game which seems to work out OK for White.

9...Bxd2+ 10.Bxd2 Nxf4



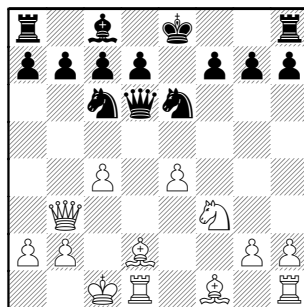
Black has the advantage, according to that book. 11.Bf1

More dull is 11.Bxf4 Qxf4 12.Bc2 idea Qf3

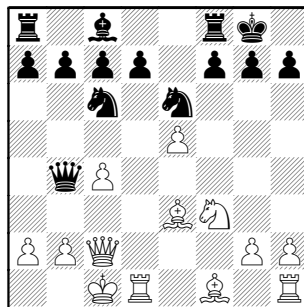
11...Ne6

Black needs to rally his army as in 11...Nc6, but maybe White can then cause discomfort with 12.Qg3.

12.Nf3 Nc6 13.0-0-0

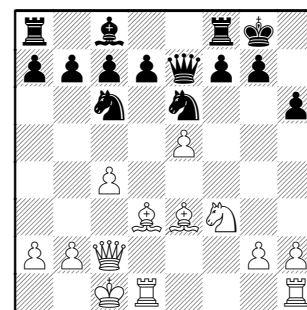


13...Qc5 14.Be3 Qb4 15.Qc2 0-0
16.e5



I'd rather be White here

16...Qe7 17.Bd3 h6

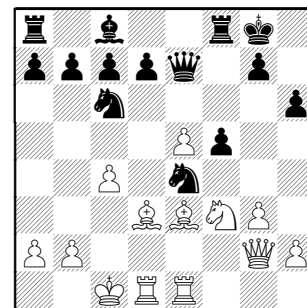


18.Qd2

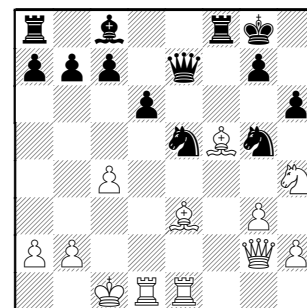
18.h4 idea g4-5 and, once h-file opens, Bh7+-g8+,Qh7#

18...f5 19.g3 [idea Nh4] 19...Nc5
20.Rhe1 [20.Bb1] 20...Ne4
[20...Nxd3+]

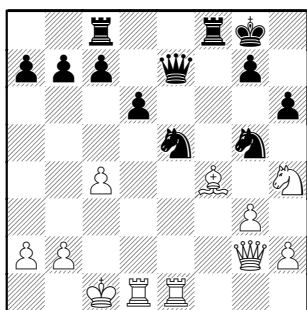
21.Qg2



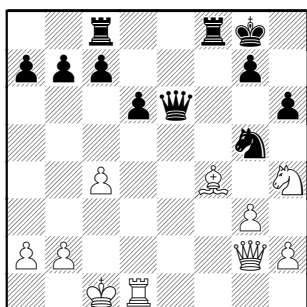
21...Ng5 [21...Nxe5] 22.Nh4 Nxe5
23.Bxf5 d6



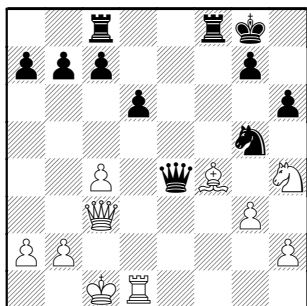
24.Bxc8 Raxc8 25.Bf4?



25...Nd3+! 26.Rxd3 Qxe1+ 27.Rd1 Qe6



28.Qc2 Qe4 29.Qc3



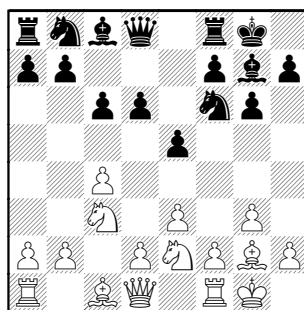
29...Rxf4! 0-1

Gorodetskiy – Peterson
NWU-AMATS, 11-15-2007

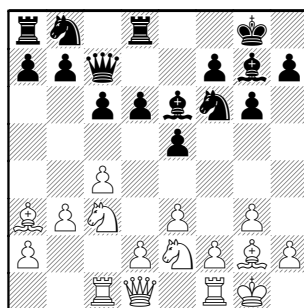
[A16]

I enjoyed the way this game started with innocent opening play then suddenly burst into an attack.

1.c4 Nf6 2.Nc3 g6 3.g3 Bg7 4.Bg2 0-0 5.e3 d6 6.Nge2 e5 7.0-0 c6



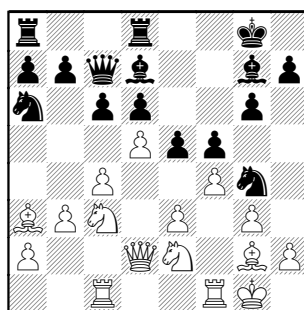
8.b3 Be6 9.Ba3 Qc7 10.Rc1 Rd8



11.d4 Na6 12.d5 Bd7

12...cxd5 would just present White with play down the c-file

13.f4 Ng4 14.Qd2 f5

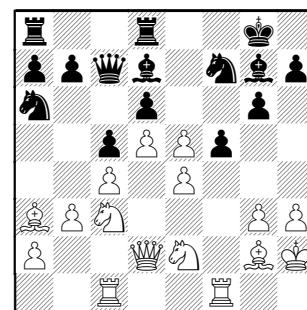


Things are heating up !

15.h3 Nh6 16.e4 Nf7

Black sits tight as, again, Pawn exchanges would just favor his opponent's Knights.

17.Kh2 c5 18.fxe5



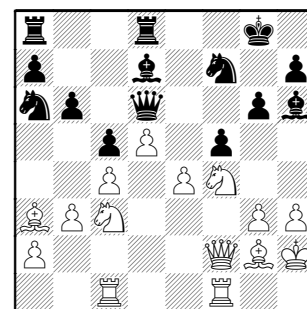
18...Bh6 Certainly makes specific threats, but also his King starts looking a bit more exposed.

I much prefer 18...Nxe5 idea Qa5,Nb4 which drives Black's pieces toward vulnerable squares

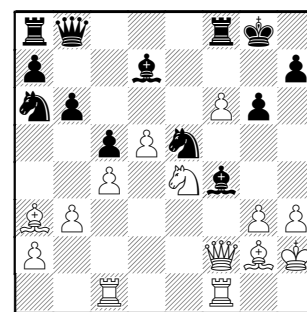
19.exd6 Qxd6 20.Nf4 b6

20...g5 idea g4,gxh trying to open White's King probably over-exposes his own King.

21.Qf2



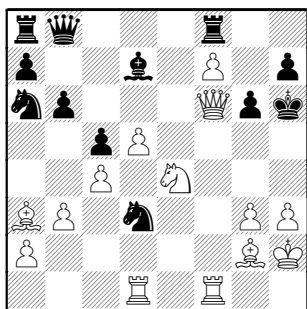
21...Rf8 22.exf5 Ne5 don't understand this and White finds a direct refutation 23.Ne4 Qb8 24.f6 Bxf4



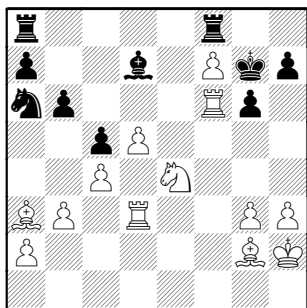
Trading away his best piece and King

defender?!

25.Qxf4! setting a nice trap 25...Nd3?
26.f7+ Kg7 27.Qf6+ Kh6 28.Rcd1



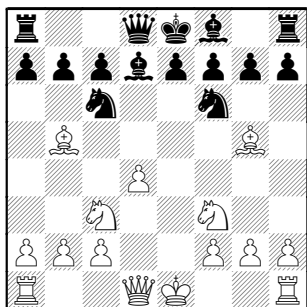
28...Qe5? not really parrying the threat
29.Rxd3 Qxf6 30.Rxf6 Kg7



31.Bb2 Black certainly does miss his
dark-squared Bishop! 1-0

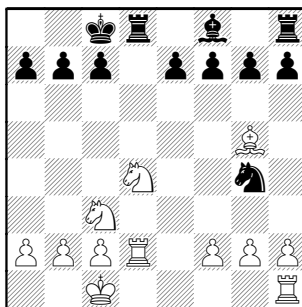
Jaworska - Meyer [B01]
NWU-AMA Snakes, 11-15-2007

1.e4 d5 2.exd5 Qxd5 3.Nf3 Nc6
4.Nc3 Qd8 5.Bb5 Bd7 6.d4 Nf6 7.Bg5



7...Nxd4 simply drops the Knight

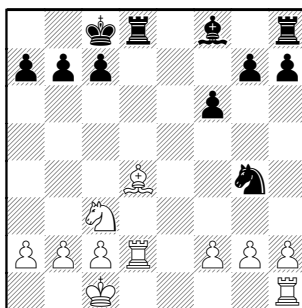
8.Bxd7+ Qxd7 9.Qxd4 Qxd4 10.Nxd4
0-0-0 11.0-0-0 Ng4 12.Rd2



12...f6

No good is 12...Nxf2 since Rd2 is
overloaded: 13.Rxf2 Rxd4 14.Rxf7 and
White is better

13.Bf4? now White needlessly drops a
piece 13...e5 14.Be3 exd4 15.Bxd4

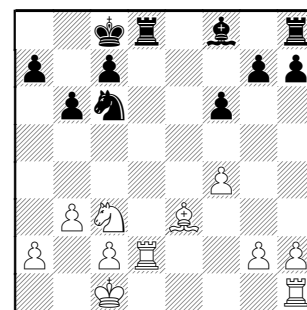


15...Ne5 the c4 square beckons to the
Knight

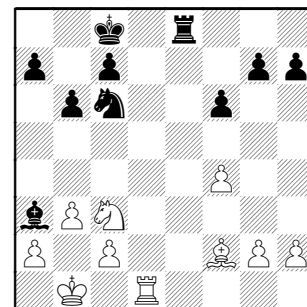
16.b3 covers c4, but the weakening of
the dark squares around his King
looks suspect

Of course 16.Bxa7 is always bad due
to the reply 16...Rxd2 17.Kxd2 b6
trapping the Bishop as in 18.Re1 Kb7
19.Nb5 c6

16...b6 17.f4 Nc6 18.Be3



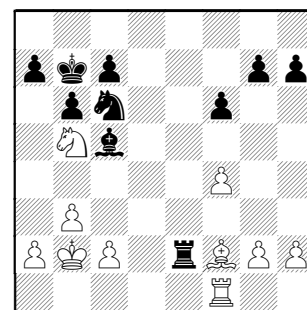
18...Ba3+ 19.Kb1 Rhe8 20.Rxd8+
Kxd8 21.Rd1+ Kc8 22.Bf2



22...Bb4 23.Nb5 Re2 simple chess

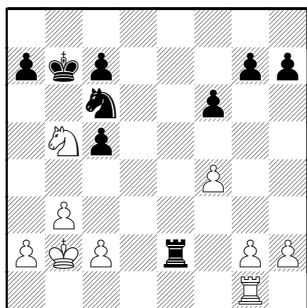
As Black shows, a Rook on the
second is troublesome

24.Rf1 Kb7 25.Kb2 Bc5!



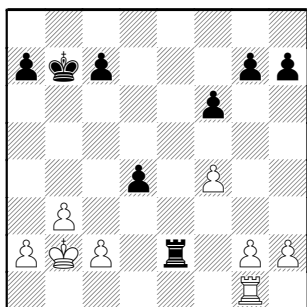
Despite offering his Pawns to be split,
Black does force the win of an enemy
Pawn.

26.Bxc5 bxc5 27.Rg1

**27...Nd4**

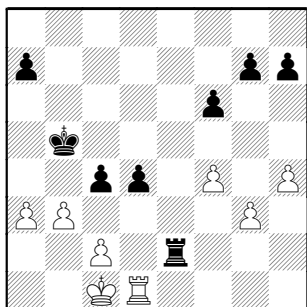
With 27...Rf2 he wins either f-Pawn or h-Pawn

28.Nxd4 I wouldn't have helped realign Black's Pawns—so maybe 28.Na3 idea Kb1,c3

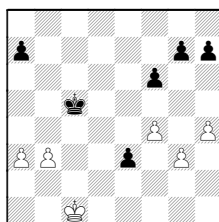
28...cxd4**29.Kc1**

29.b4 would artificially isolate d4-Pawn, but that Black Rook keeps White tied down !

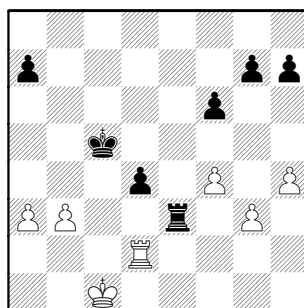
29...c5 30.h4 clearing the second rank, but the Pawn-base will still require support from its Rook **30...Kb6 31.g3 Kb5 32.a3 c4 33.Rd1**

**33...cxb3 34.cxb3 Kc5 35.Rd2?**

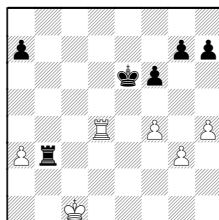
White must defend with 35.Rd3 Re3 36.Rxe3 dxe3



37.Kc2 and White actually has a potential outside passer with his 2-1 majority (so the Black King can't wander too far). Note the difference between King placement here and in the game continuation coming.

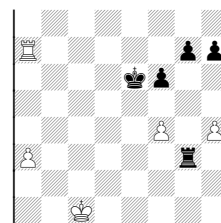
35...Re3**36.Rc2+ Rc3**

36...Kd6 37.Rc4 Rxb3 38.Rxd4+ Ke6

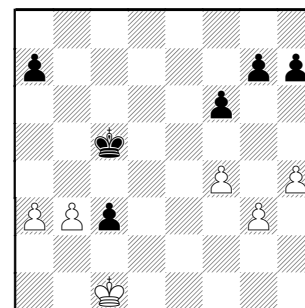
**39.Ra4**

(39.g4 Rxa3)

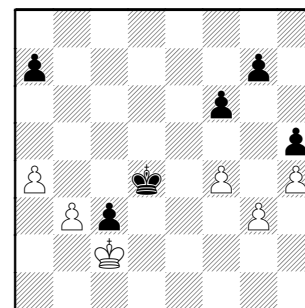
39...Rxg3 40.Rxa7



An interesting ending that should be at least a draw for Black.

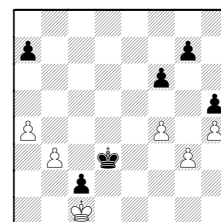
37.Rxc3+ dxc3

My initial take was this is a draw as White still has that queenside majority, but Black demonstrates the zugzwang theme. White is actually completely lost.

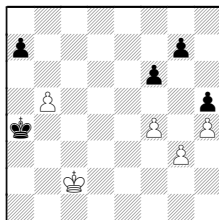
38.Kc2 Kd4 39.a4 h5

40.b4 gives Black the c4 square

But what else is there ? 40.Kd1 Kd3 41.Kc1 c2 is also a win for Black



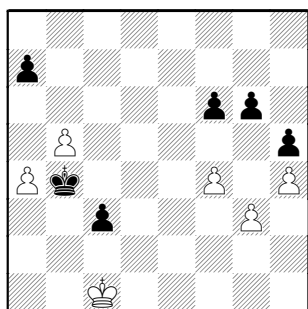
42.b4 Kc3 43.b5 Kb4 44.Kxc2 Kxa4



40...Kc4 41.b5 g6

41...Kb4 also works as in the analysis line above with 40 Kd1

42.Kc1 Kb4



43.Kc2 Kxa4 44.Kxc3 Kxb5 45.Kb3 f5

45...Kc5 is more direct, but that's splitting hairs

46.Kc3 a5 47.Kb3 Kc5 48.Ka4 Kd4 49.Kxa5 0-1

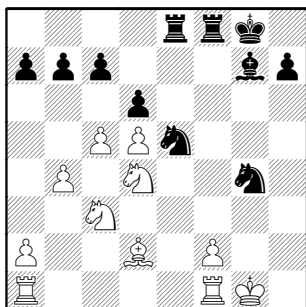


Try to guess the real names of these Christmas songs

1. Bleached Yule
2. Castaneous-colored Seed Vesicated in a Conflagration
3. Singular Yearning for the Twin Anterior Incisors
4. Righteous Darkness
5. Arrival Time 2400 hrs - Weather Cloudless
6. Loyal Followers Advance
7. Far Off in a Feeder
8. Array the Corridor
9. Bantam Male Percussionist
10. Monarchial Triad
11. Nocturnal Noiselessness
12. Jehovah Deactivate Blithe Chevaliers
13. Red Man En Route to Borough
14. Frozen Precipitation Commence
15. Proceed and Enlighten on the Pinnacle
16. The Quadruped with the Vermillion Proboscis
17. Query Regarding Identity of Descendant
18. Delight for this Planet
19. Give Attention to the Melodious Celestial Beings
20. The Dozen Festive 24 Hour Intervals
21. Our fervent hope is that you thoroughly enjoy your yuletide season
22. Parent was observed osculating a red-coated unshaven teamster
23. May the deity bestow an absence of fatigue to mild male humans
24. Natal celebration devoid of color, rather albino, as a hallucinatory phenomenon for me
25. Obese personification fabricated of compressed mounds of minute crystals
26. Tranquility upon the terrestrial sphere
27. Have hitherward the entire assembly of those who are loyal in their belief of Christmas

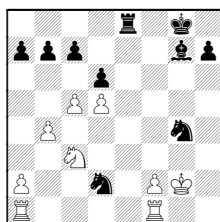
SOLUTION 1.

Hahne,D (1645) - Annis,J (1479)



22...Rf3! 23.Kg2

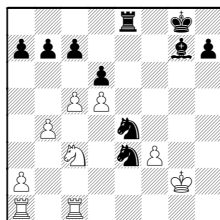
23.Nxf3 Nxf3+ 24.Kg2 Nxd2



25.Rfc1 Ne4 26.f3

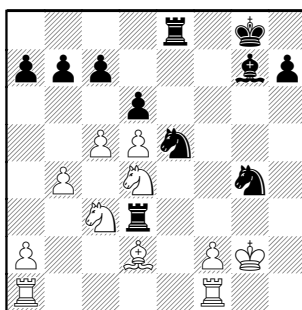
(26.Nxe4 Bxa1 27.Rxa1 Rxe4)

26...Ne3+



27.Kg1 Nxc3

23...Rd3



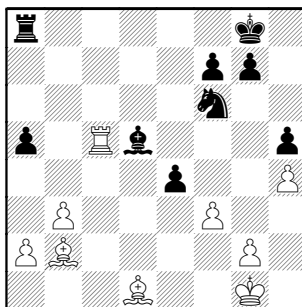
24.Rad1

24.Be3 Rxc3; 24.Nb3 Nc4 weakness
Bd2,Nc3

24...Rxd4 0-1

SOLUTION 2.

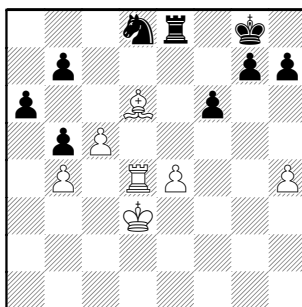
(Byrne,M (1366) - Drendel,B



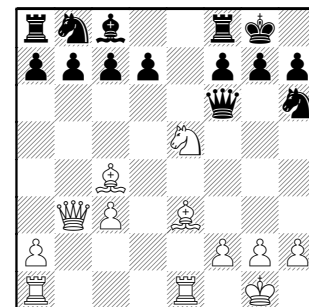
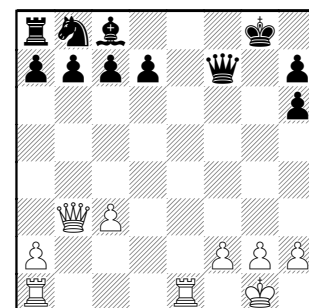
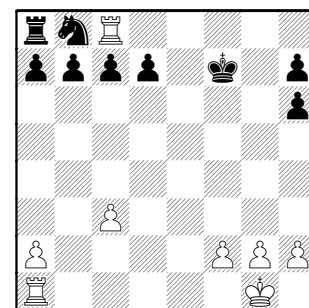
41.Bxf6 idea Rxd5

SOLUTION 3.

Reich,T (1835) - Garzon,G (2283)

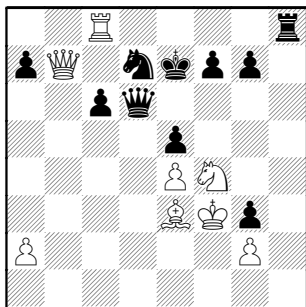
34...Nc6 35.Rd5 Nxb4+ 36.Kc3
Nxd5+ 37.exd5 Re4 38.Kd3 Rxh4
39.Be7 Kf7 40.d6 Ke6 41.Bd8 Rc4
42.Ke3 h5 43.Kd3 h4 0-1**SOLUTION 4.**

Spiegel,L (1953) - Zaderej,V (1678)

13.Bxh6 gxh6 14.Nxf7 Rxf7
15.Bxf7+ Qxf716.Re8+ Kg7 17.Qxf7+ Kxf7
18.Rxc8

SOLUTION 5.

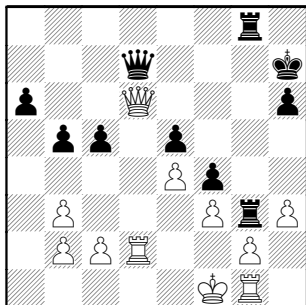
McGuire,A - Santiago,T



33.Nd5+! Ke6 [33...cxd5?? 34.Bc5]
34.Rxc6 idea Rxd6+,Qc7+-c6# 1-0

SOLUTION 6.

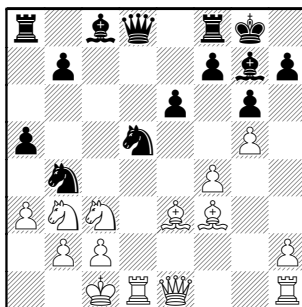
Janssen,G (1522) - Dyczkowski,R



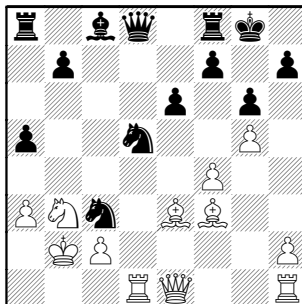
31...Rxf3+ 32.Ke2
[32.gxf3?? Qxh3+ 33.Kf2 Qh2+
mates] 32...Re3+ 33.Kf2 and was
soon drawn

SOLUTION 7.

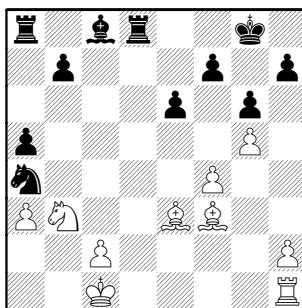
DeGraff,B (1536) - Curran,T (1698)



18...Bxc3 19.bxc3 Na2+ 20.Kb2
Naxc3



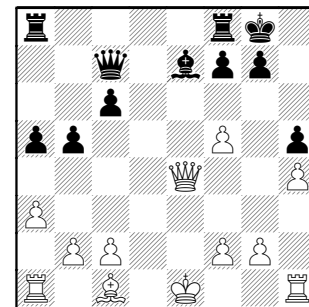
21.Qxc3? Nxc3 22.Rxd8 Na4+
23.Kc1 Rxd8



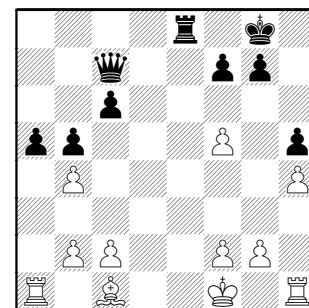
Black eventually won

SOLUTION 8.

Berbari,N - Gonzales,T (1638)

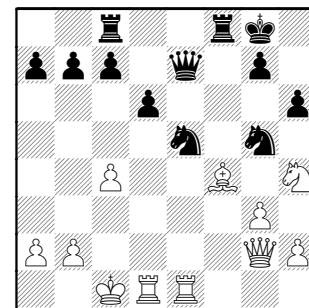


18...Bb4+!! idea Rfe8 19.Kf1 Rfe8
idea Re1# 20.Qxe8+ Rxe8 21.axb4



SOLUTION 9.

M. Engelen - J. Piparia [A52]



25...Nd3+! 26.Rxd3 Qxe1+



"Signs You've Eaten Too Much"

As presented on the 11/29/96
broadcast of LATE SHOW with
DAVID LETTERMAN

10. You ate the turkey, the pop-up thermometer and the plastic net
9. Last thing you remember is positioning your open mouth behind a dump truck full of yams
8. All your silverware is worn down to tiny stumps
7. While picking your teeth, you dislodge an angry construction worker
6. Strangers keep addressing you as "Mr. President"
5. This morning, the display on your bathroom scale read "Good Lord!"
4. You now have an ass the size of Plymouth Rock
3. People keep looking at you and saying, "I thought the Macy's Parade was over"
2. Your relatives can't go home because they're stuck in your gravitational field.
1. You're sweatin' gravy, my friend!

**"Signs the Person Answering the Butterball Turkey Hotline is Nuts"**

As presented on the 11/26/96
broadcast of LATE SHOW with
DAVID LETTERMAN

10. Starts out by asking, "What are you wearing?"
9. Keeps referring to product called "Vicks Vap-O-Gravy"
8. Recommends thawing the turkey in your pants
7. Wants you to look inside the turkey for contact lens he lost at the processing plant
6. When you ask, "How often should I baste it?" he says, "Are we still talking about the turkey?"
5. Tells you that when the timer pops up, you have ten seconds before the damn thing explodes
4. Insists you cook turkey at six degrees for 450 hours
3. Keeps interrupting to ask if you're planning to eat the bird or wear it as a hat
2. Claims to have sailed from New York to the Bahamas in a gravy boat
1. He tells you to go stuff yourself

**"Top Ten signs Santa hates you"**

10. He eats milk and cookies - and nails your wife
9. Every naughty thing you did this year was videotaped and posted on the Internet
8. On Christmas morning, your stocking stuffed with a severed leg
7. Only "gift" you received was left by Blitzen on your living room carpet
6. Instead of, "Ho, Ho, Ho," greets you with, "Nice sweater, fat ass"
5. Leaves mysterious letter, "I know when you are sleeping, I know how to kill a man without leaving any marks"
4. You get no presents - when you bump into him later, he gives you lame, "I thought you were Jewish" excuse
3. Brings you one copy of every Kathie Lee CD
2. Turns his reindeer loose on you
1. Writes "Happy Holidays" in the snow on the roof

